



Australian Government

Department of Infrastructure and Regional Development

Bureau of Infrastructure, Transport and Regional Economics

STATISTICAL REPORT



Aviation

Domestic airline on time performance
September 2017

© Commonwealth of Australia 2017

ISSN: 1832-0759

Ownership of intellectual property rights in this publication

Unless otherwise noted, copyright (and any other intellectual property rights, if any) in this publication is owned by the Commonwealth of Australia (referred to below as the Commonwealth).

Disclaimer

The material contained in this publication is made available on the understanding that the Commonwealth is not providing professional advice, and that users exercise their own skill and care with respect to its use, and seek independent advice if necessary.

The Commonwealth makes no representations or warranties as to the contents or accuracy of the information contained in this publication. To the extent permitted by law, the Commonwealth disclaims liability to any person or organisation in respect of anything done, or omitted to be done, in reliance upon information contained in this publication.

Creative Commons licence

With the exception of (a) the Coat of Arms; and (b) the Department of Infrastructure and Regional Development's photos and graphics, copyright in this publication is licensed under a Creative Commons Attribution 3.0 Australia Licence.

Creative Commons Attribution 3.0 Australia Licence is a standard form licence agreement that allows you to copy, communicate and adapt this publication provided that you attribute the work to the Commonwealth and abide by the other licence terms. A summary of the licence terms is available from <http://creativecommons.org/licenses/by/3.0/au/deed.en>. The full licence terms are available from <http://creativecommons.org/licenses/by/3.0/au/legalcode>.

Use of the Coat of Arms

The Department of the Prime Minister and Cabinet sets the terms under which the Coat of Arms is used. Please refer to the Department's Commonwealth Coat of Arms and Government branding web page <http://www.dpmmc.gov.au/guidelines/index.cfm#brand> and, in particular, the Guidelines on the use of the Commonwealth Coat of Arms publication.

An appropriate citation for this report is:

Bureau of Infrastructure, Transport and Regional Economics (BITRE), 2017, Domestic airline on time performance, Statistical Report, BITRE, Canberra ACT.

Contact us

This publication is available in PDF format. All other rights are reserved, including in relation to any Departmental logos or trade marks which may exist. For enquiries regarding the licence and any use of this publication, please contact:

Bureau of Infrastructure, Transport and Regional Economics (BITRE)
Department of Infrastructure and Regional Development
GPO Box 501, Canberra ACT 2601, Australia
Telephone: (international) +61 2 6274 7210
Fax: (international) +61 2 6274 6855
Email: bitre@infrastructure.gov.au
Website: www.bitre.gov.au

Inquiries

Should you require additional information about the statistics contained in this publication:

Telephone (02) 6274 7790 or Facsimile (02) 6274 7727

Electronic mail: AVSTATS@infrastructure.gov.au

Web site: <http://www.bitre.gov.au/statistics/aviation/otphome.aspx>

Foreword

The Bureau of Infrastructure, Transport and Regional Economics (BITRE) monitors the punctuality and reliability of major domestic airlines operating between Australian airports. The purpose of this is to allow for evaluation of overall industry and individual airline performance, so that consumers of air travel can make informed decisions.

The following domestic airlines currently report this information monthly to the BITRE: Jetstar, Qantas, QantasLink, Regional Express, Tigerair Australia, Virgin Australia and Virgin Australia Regional Airlines. Data has been gathered since November 2003, although some airlines commenced reporting at a later date, including Jetstar which first reported in May 2004, MacAir in July 2005, Tigerair Australia in April 2008 and Virgin Australia Regional Airlines in May 2013. MacAir ceased operations in February 2009 and data was not received for December 2008 onwards. Virgin Blue was rebranded as Virgin Australia in May 2011 and Tiger Airways was rebranded as Tigerair Australia in July 2013 and time series data in Microsoft Excel spreadsheet format on the BITRE website have been revised to reflect these changes. Services operated by Skywest on behalf of Virgin Australia using ATR/F100 aircraft commenced in November 2011 and were shown separately as Virgin Australia – ATR/F100 Operations. Virgin Australia Regional Airlines commenced operations in May 2013. It was formed after the acquisition of Skywest by Virgin Australia and represented a combination of operations previously reported under Skywest and Virgin Australia – ATR/F100 Operations. In January 2016, Virgin Australia transferred their ATR fleet from Virgin Australia Regional Airlines to Virgin Australia.

Information presented in this report is for Australian domestic routes for which the passenger load averaged 8 000 or more passengers per month over the previous six months and where two or more airlines operated in competition on those routes. There were 65 routes that met this definition in September 2017. Over time, routes which meet these criteria change as airline networks and traffic levels vary.

Participating airlines report their overall monthly network performance where this is possible.

Total industry figures encompass all services operated by reporting airlines only. These airlines collectively carried over 95 per cent of total domestic passengers (regular public transport only) in 2016.

The method of capturing on time performance varies between airlines utilising different recording systems. Jetstar and Qantas jet aircraft use Aircraft Communication Addressing and Reporting System (ACARS) to electronically measure on time performance. Regional Express, Tigerair Australia, Virgin Australia, Virgin Australia Regional Airlines and the Qantas non-jet fleet record on time performance manually using records from pilots, gate agents and/or ground crews.

After initial data is collected, aggregate reports are audited internally by participating airlines prior to publication.

Reports and detailed time series data in Microsoft Excel spreadsheet format are available from the BITRE website at: <http://www.bitre.gov.au/statistics/aviation/otphome.aspx>.

Contents

	Page
Industry performance	1
Individual routes	10
Airports	23
Definitions	30

Industry performance

For September 2017, on time performance over all routes operated by participating airlines (Jetstar, Qantas, QantasLink, Regional Express, Tigerair Australia, Virgin Australia and Virgin Australia Regional Airlines) averaged 79.3 per cent for on time arrivals and 80.6 per cent for on time departures. Cancellations represented 2.7 per cent of all scheduled flights. The equivalent figures for September 2016 were 83.5 per cent for on time arrivals, 84.6 per cent for on time departures and 1.7 per cent for cancellations.

This month's on time arrivals figure was lower than the long term average performance for all routes (82.7 per cent) and the on time departures figure was also lower than the long term average (84.1 per cent). The rate of cancellations was higher than the long term average of 1.4 per cent.

Qantas achieved the highest on time arrivals among the major domestic airlines at 81.5 per cent followed by Virgin Australia at 79.1 per cent, Jetstar at 73.9 per cent and Tigerair Australia at 66.6 per cent. Of the regional airlines, Regional Express recorded 82.9 per cent for on time arrivals, followed by QantasLink at 82.7 per cent and Virgin Australia Regional Airlines at 74.6 per cent. The Qantas network (Qantas and QantasLink combined operations) recorded 82.1 per cent for on time arrivals while the Virgin Australia network (Virgin Australia and Virgin Australia Regional Airlines combined operations) recorded 78.8 per cent.

Qantas also achieved the highest level of on time departures among the major domestic airlines for September 2017 at 82.8 per cent, followed by Virgin Australia at 82.0 per cent, Jetstar at 71.5 per cent and Tigerair Australia at 71.0 per cent. Of the regional airlines, Regional Express recorded 85.4 per cent, followed by QantasLink at 82.8 per cent and Virgin Australia Regional Airlines at 79.2 per cent. The Qantas network recorded 82.8 per cent for on time departures while the Virgin Australia network recorded 81.8 per cent.

Virgin Australia Regional Airlines recorded the highest percentage of cancellations (3.6 per cent) during the month, followed by Tigerair Australia (3.3 per cent), Virgin Australia (3.1 per cent), QantasLink (3.0 per cent), Qantas (2.7 per cent), Jetstar (2.1 per cent) and Regional Express (1.9 per cent).

Airlines' on time performance varies across the routes they serve. Individual route data by specific airline for 65 routes are shown on pages 10-22.

Of the 65 routes which met the criteria for on time performance reporting in September 2017, the Townsville-Cairns route had the highest percentage of on time arrivals (94.9 per cent) and the Darwin-Alice Springs route recorded the highest percentage of on time departures (93.5 per cent). The Sunshine Coast-Melbourne route had the lowest percentage of on time arrivals (57.8 per cent) and the Ayers Rock-Sydney route had the lowest percentage of on time departures (53.3 per cent).

Cancellations were highest on the Canberra-Sydney and Sydney-Canberra routes at 8.1 per cent, followed by the Sydney-Melbourne route at 7.5 per cent, the Melbourne-Sydney route at

7.4 per cent, the Tamworth-Sydney route at 6.3 per cent and the Sydney-Tamworth route at 5.8 per cent.

Port Lincoln Airport recorded the highest percentage of on time arrivals (89.6 per cent) and Karratha Airport recorded the highest percentage of on time departures (92.9 per cent). Ayers Rock Airport recorded the lowest percentage of on time arrivals (59.0 per cent) and the lowest percentage of on time departures (53.3 per cent). These figures only refer to reported routes and do not cover all flights at these airports.

Table 1 On time performance for September 2017 — Total Industry

	<i>Sectors</i>		<i>Arrivals On Time</i>		<i>Departures On Time</i>		<i>Cancellations</i>	
	<i>Scheduled</i>	<i>Flown</i>	<i>No.</i>	<i>%</i>	<i>No.</i>	<i>%</i>	<i>No.</i>	<i>%</i>
Jetstar	7 298	7 142	5 281	73.9	5 106	71.5	156	2.1
Qantas	9 049	8 805	7 173	81.5	7 290	82.8	244	2.7
QantasLink	10 339	10 024	8 292	82.7	8 295	82.8	315	3.0
Regional Express	6 593	6 470	5 365	82.9	5 526	85.4	123	1.9
Tigerair Australia	2 510	2 426	1 615	66.6	1 723	71.0	84	3.3
Virgin Australia	11 416	11 067	8 750	79.1	9 074	82.0	349	3.1
Virgin Australia Regional Airlines	857	826	616	74.6	654	79.2	31	3.6
All Airlines	48 062	46 760	37 092	79.3	37 668	80.6	1 302	2.7
Qantas - all QF designated services	19 388	18 829	15 465	82.1	15 585	82.8	559	2.9
Virgin Australia - all VA designated services	12 273	11 893	9 366	78.8	9 728	81.8	380	3.1

Total airline network data (including routes not shown in this report).

Airlines' on time performance varies across the routes they serve. Individual route data by specific airline for 65 routes are shown on pages 10-22.

Table 2 Top ten routes for on time performance for September 2017 (participating airlines only)

<i>Arrivals</i>		<i>Departures</i>	
<i>Route</i>	<i>On Time (%)</i>	<i>Route</i>	<i>On Time (%)</i>
Townsville-Cairns	94.9	Darwin-Alice Springs	93.5
Karratha-Perth	93.4	Karratha-Perth	92.9
Cairns-Townsville	92.8	Cairns-Townsville	92.8
Brisbane-Cairns	92.3	Townsville-Cairns	92.7
Perth-Darwin	91.9	Adelaide-Port Lincoln	92.5
Mackay-Brisbane	90.8	Brisbane-Adelaide	91.7
Port Hedland-Perth	90.6	Gold Coast-Adelaide	91.7
Hamilton Island-Brisbane	90.3	Brisbane-Hobart	91.4
Adelaide-Gold Coast	90.0	Port Lincoln-Adelaide	90.9
Adelaide-Port Lincoln	89.6	Perth-Karratha	90.6

Table 3 Top ten airports for on time performance for September 2017 (participating airlines and reported routes only)

<i>Arrivals</i>		<i>Departures</i>	
<i>Airport</i>	<i>On Time (%)</i>	<i>Airport</i>	<i>On Time (%)</i>
Port Lincoln	89.6	Karratha	92.9
Proserpine	89.3	Port Lincoln	90.9
Mackay	88.7	Port Hedland	88.9
Kalgoorlie	88.7	Newman	87.3
Karratha	88.5	Townsville	87.3
Moranbah	87.6	Kalgoorlie	87.1
Mount Isa	87.3	Moranbah	87.1
Townsville	87.1	Mackay	86.1
Newman	86.2	Gladstone	85.4
Port Hedland	86.1	Bundaberg	85.0

Total industry on time performance

Figure 1 On time performance (by month from September 2014)—Total Industry

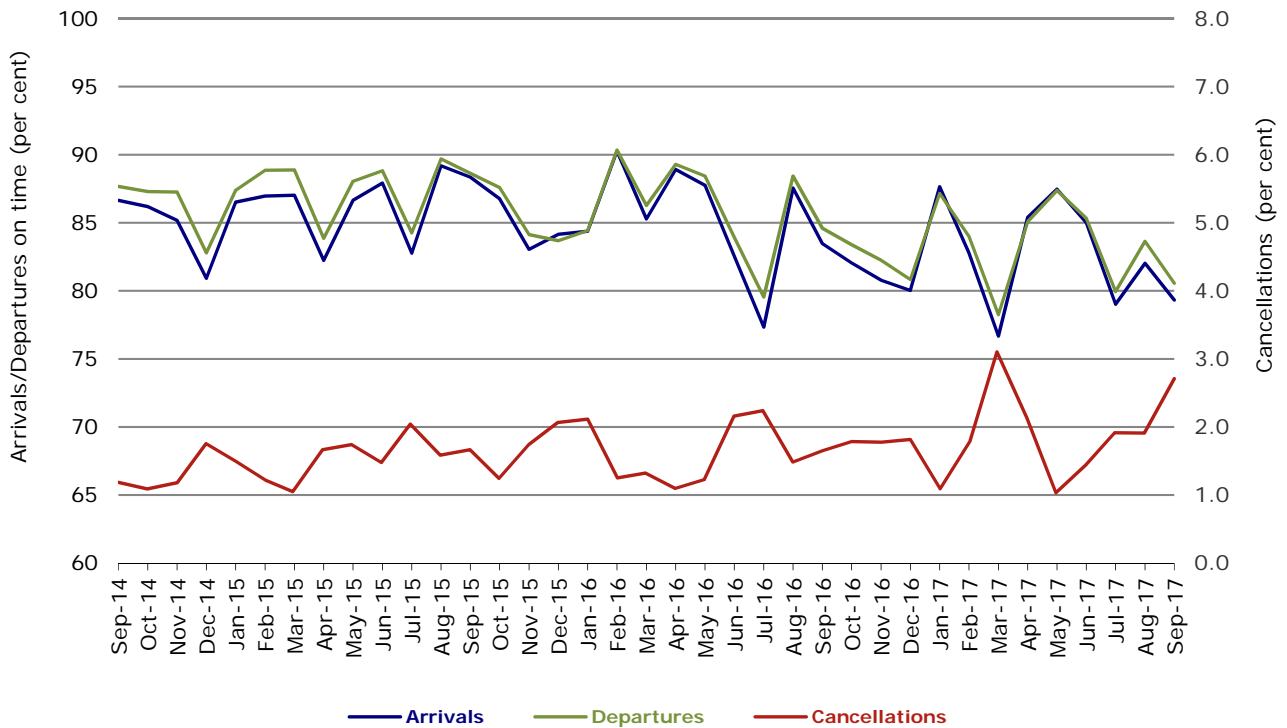


Figure 2 Arrivals on time (by month from September 2016)

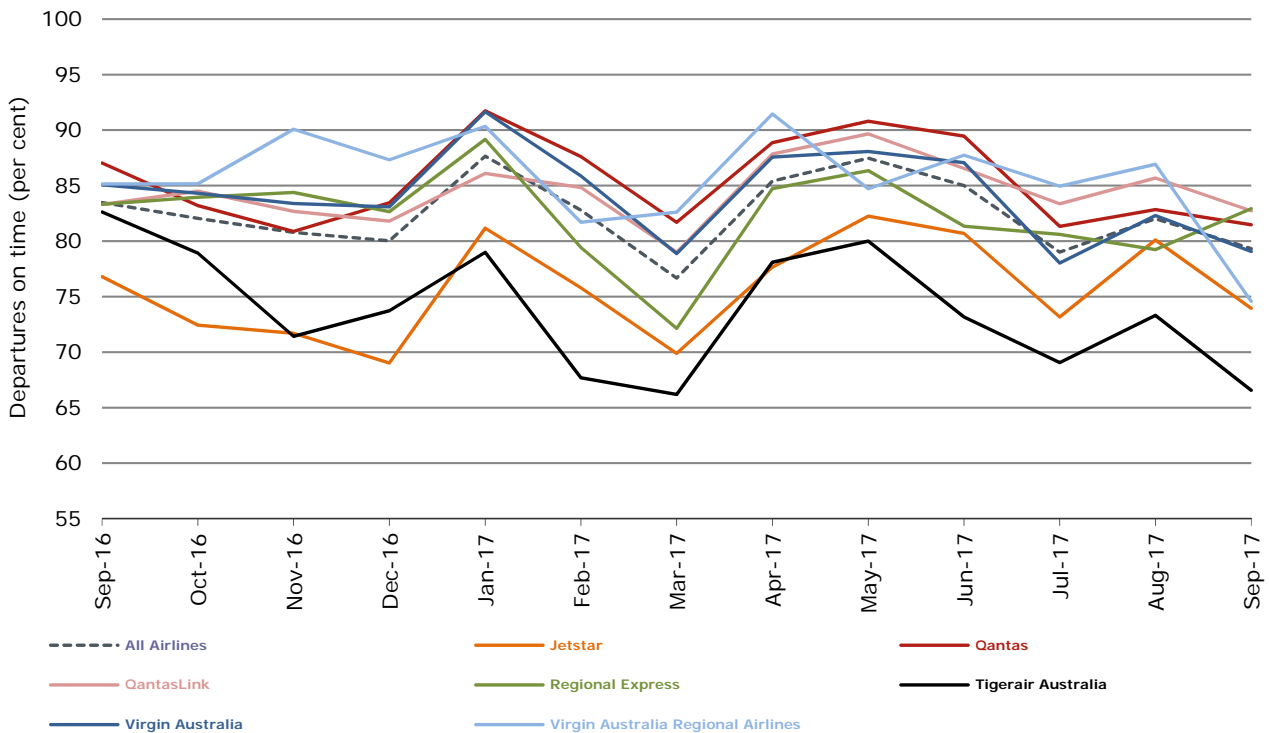


Figure 3 Departures on time (by month from September 2016)

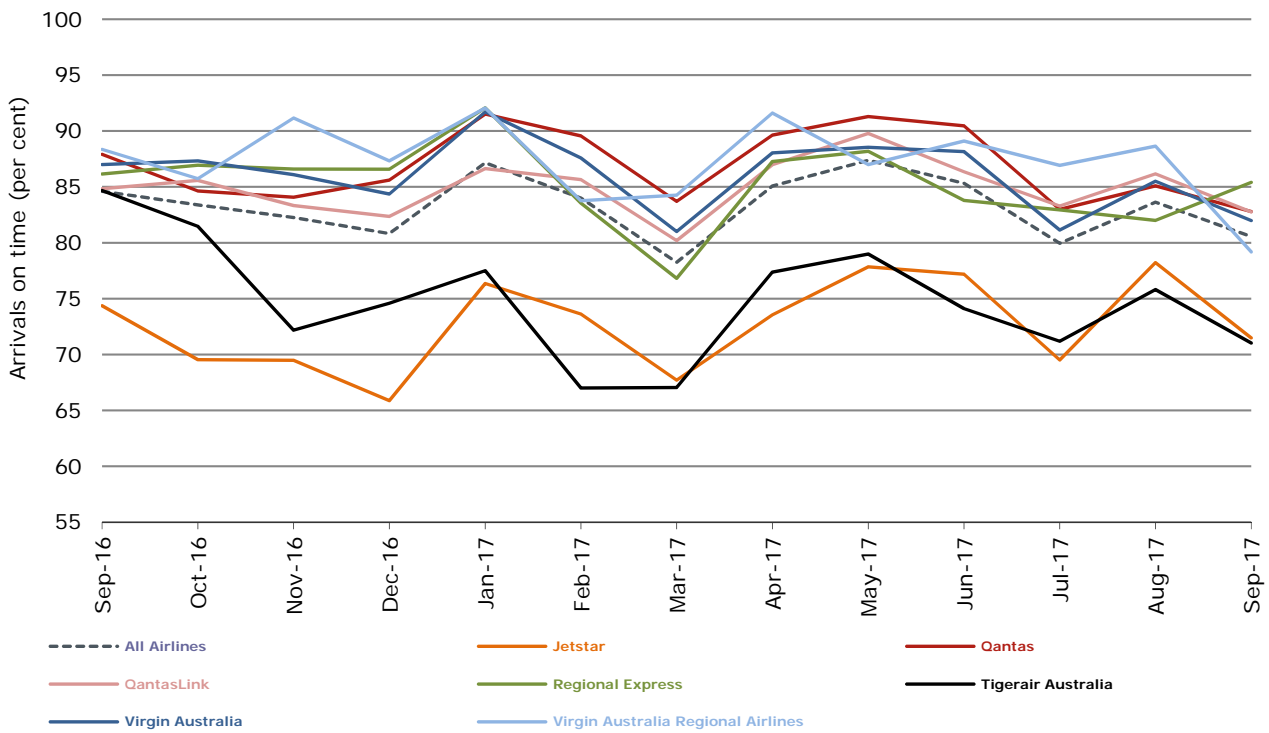
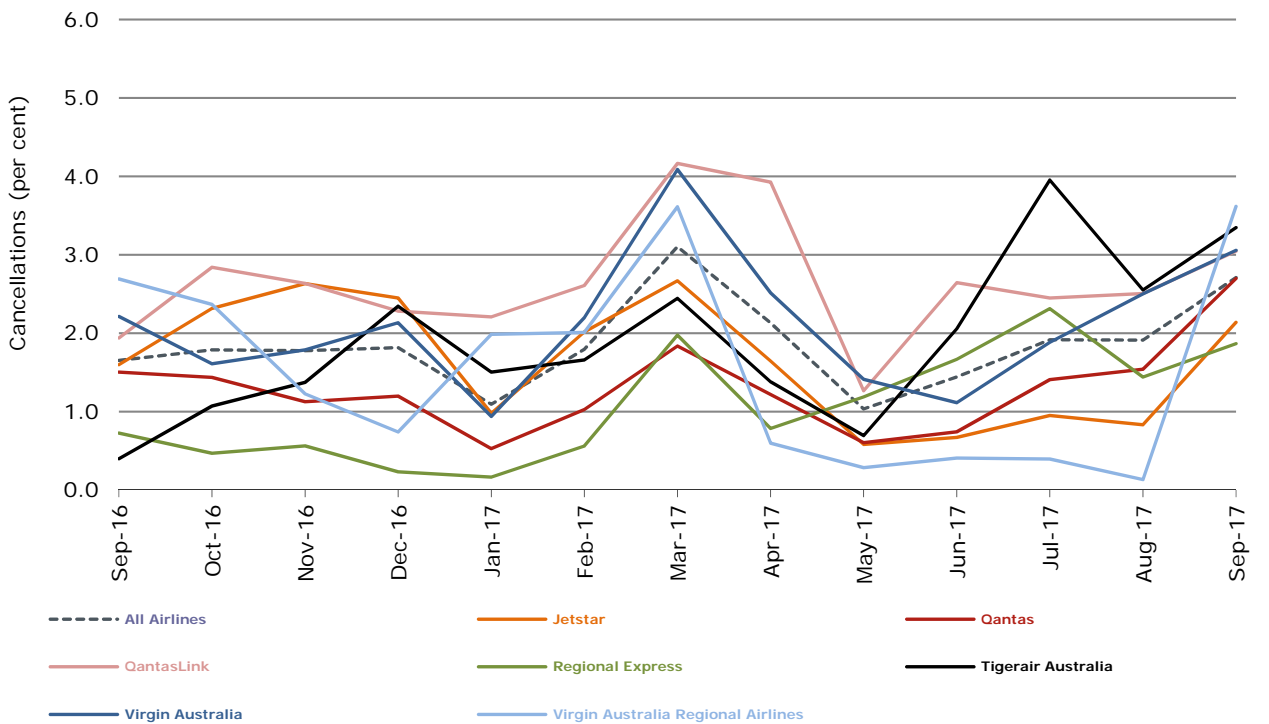


Figure 4 Cancellations (by month from September 2016)



Major domestic airlines on time performance

Figure 5 On time performance (by month from September 2014)—Jetstar

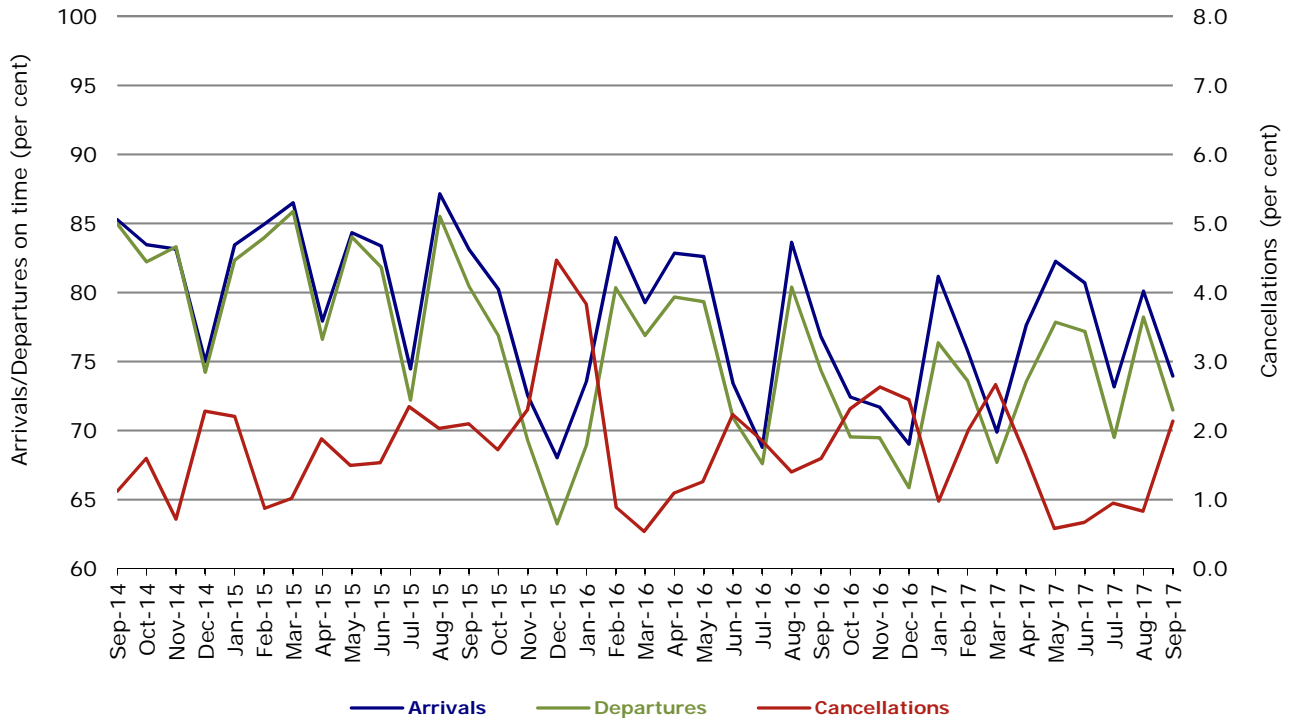


Figure 6 On time performance (by month from September 2014)—Qantas

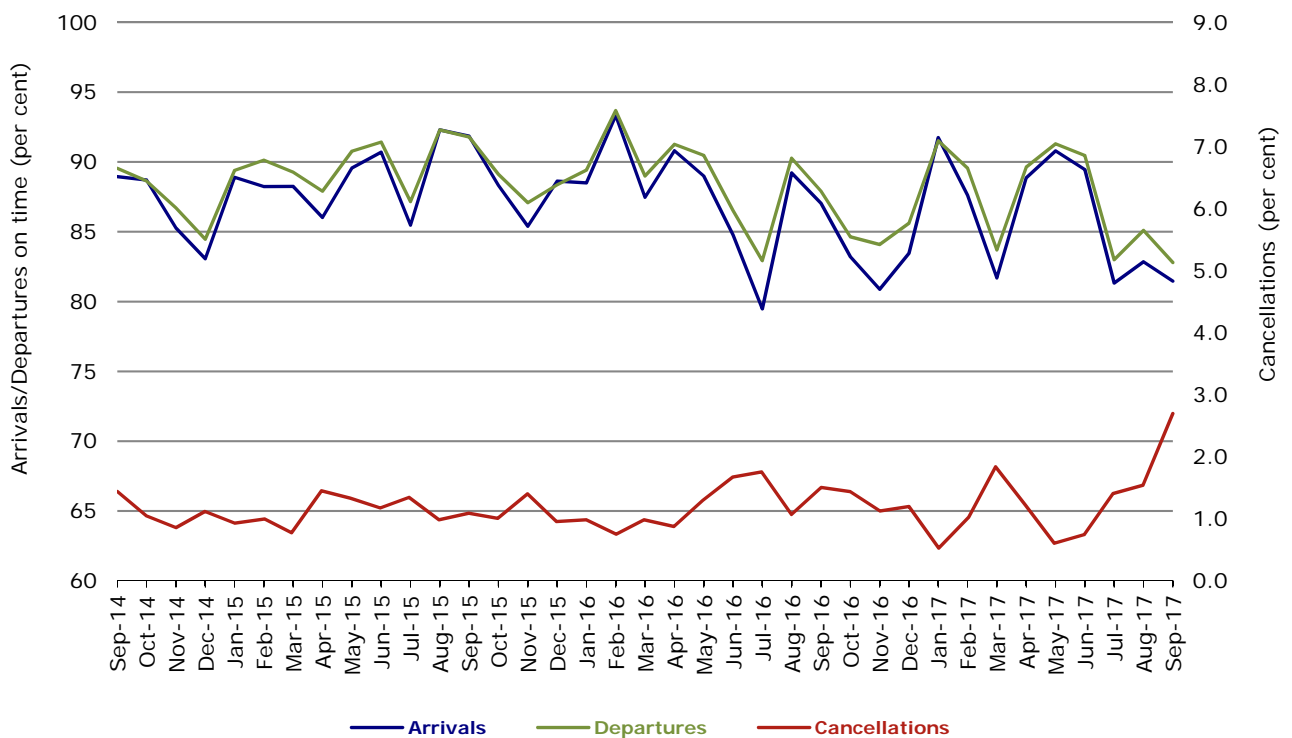


Figure 7 On time performance (by month from September 2014)—Tigerair Australia

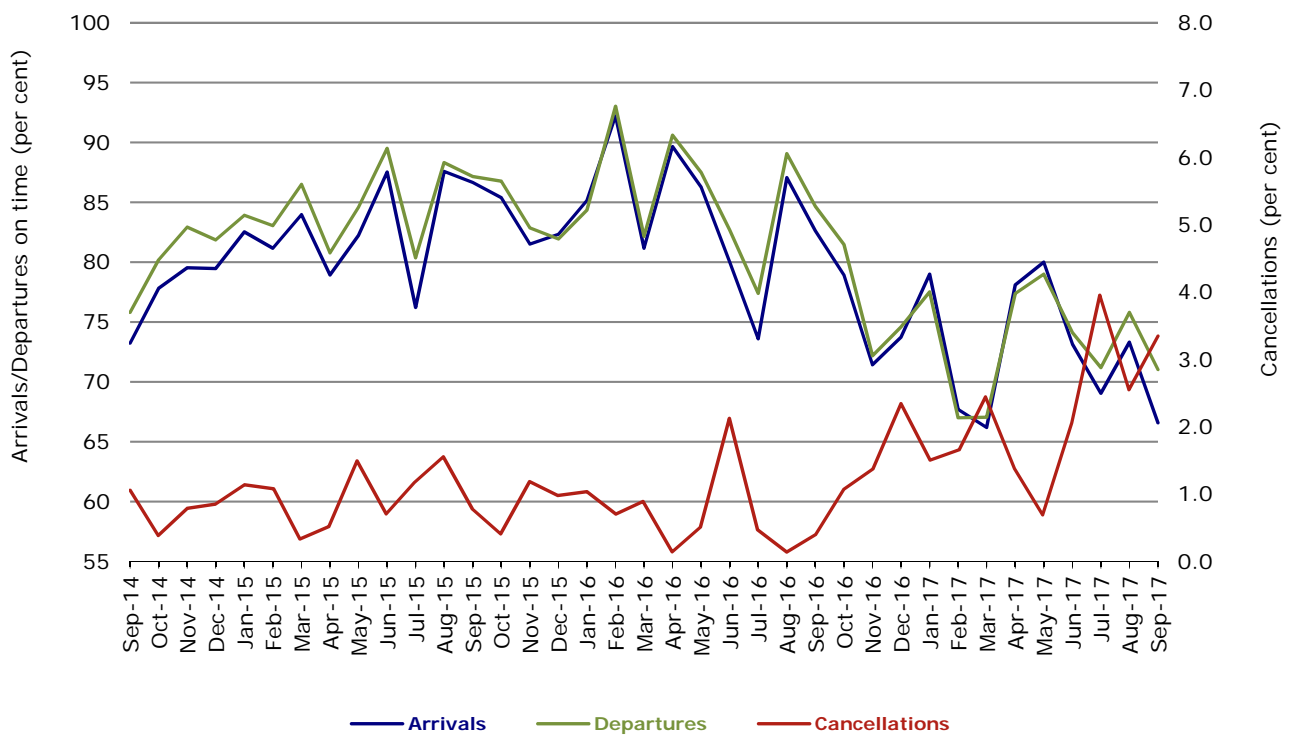
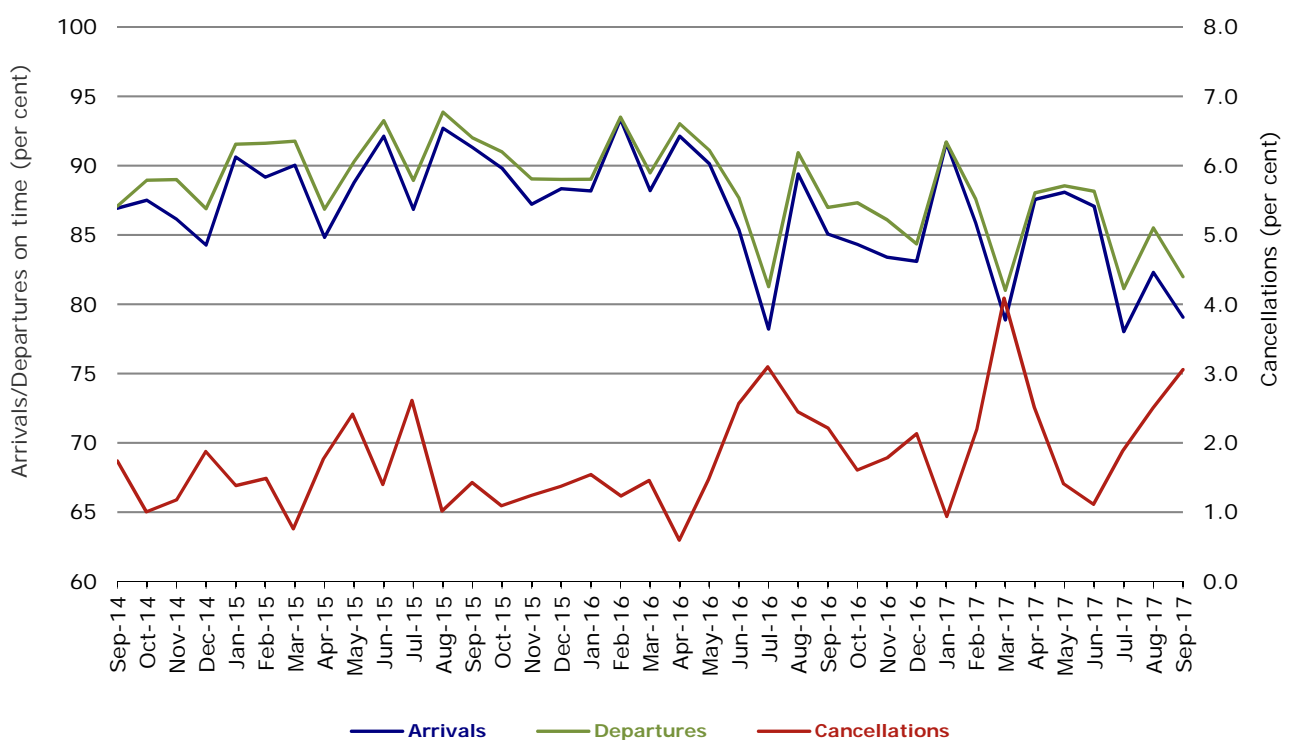


Figure 8 On time performance (by month from September 2014)—Virgin Australia



In January 2016, Virgin Australia transferred their ATR fleet from Virgin Australia Regional Airlines to Virgin Australia.

Major regional airlines on time performance

Figure 9 On time performance (by month from September 2014)—QantasLink

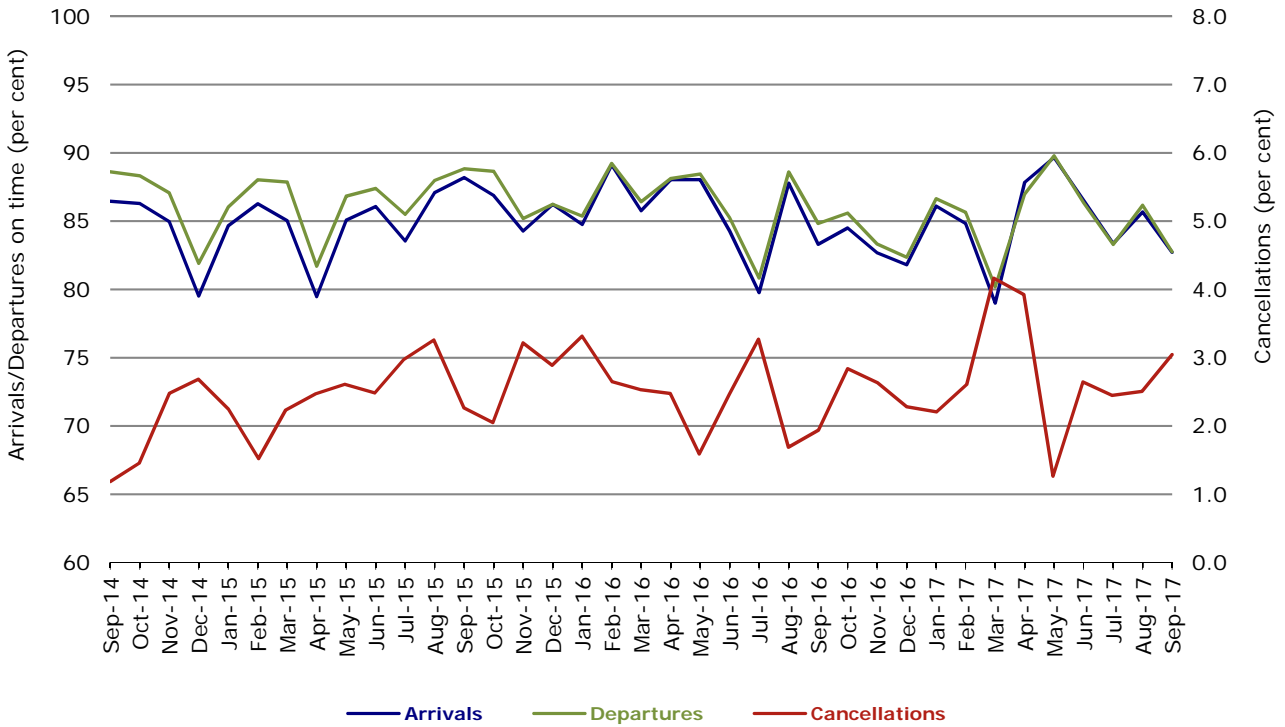


Figure 10 On time performance (by month from September 2014)—Regional Express

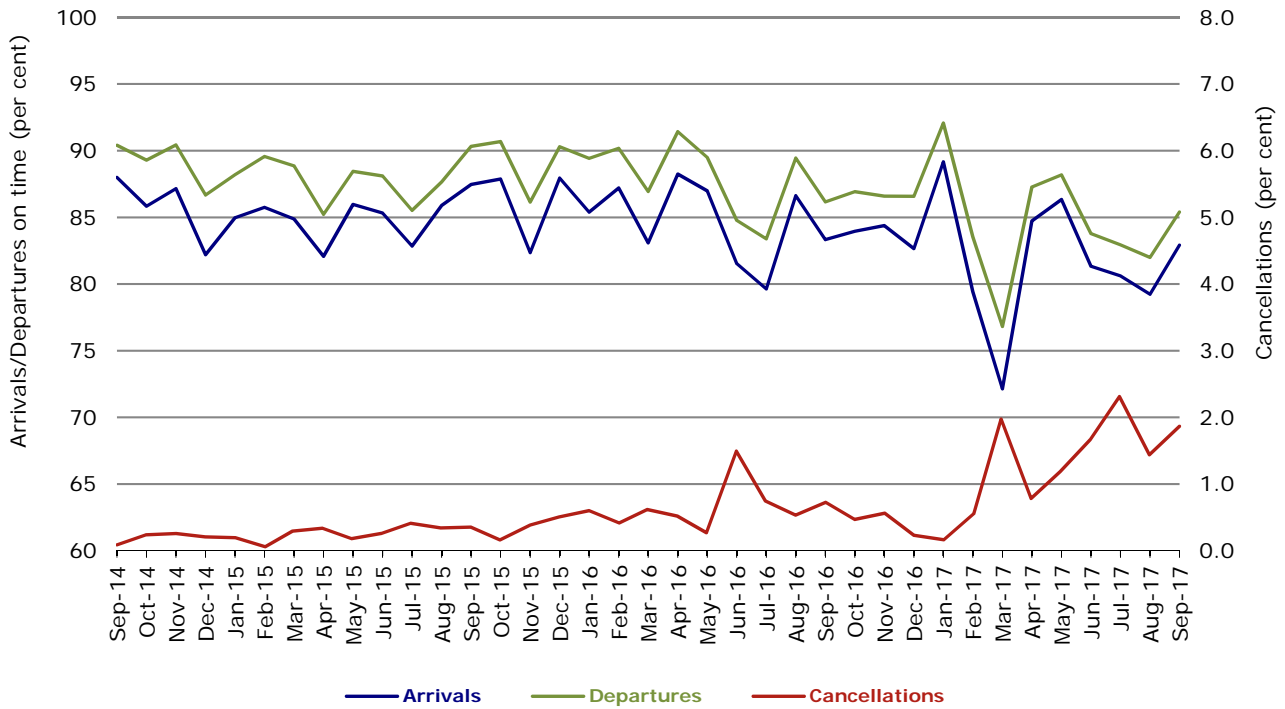
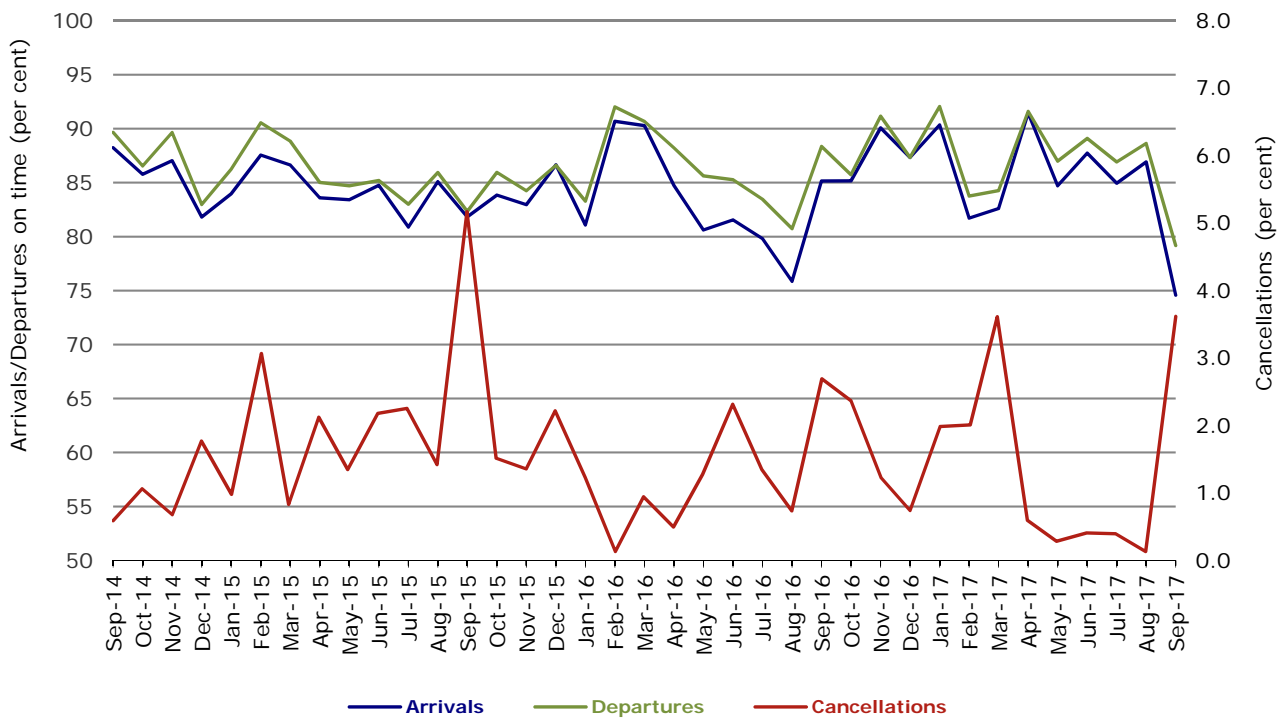


Figure 11 On time performance (by month from September 2014)
Virgin Australia Regional Airlines



In January 2016, Virgin Australia transferred their ATR fleet from Virgin Australia Regional Airlines to Virgin Australia.

Individual routes

On time performance is reported for all routes where the passenger load averages over 8000 passengers per month over the previous six months, and where two or more airlines operate in competition on those routes. There are now 65 routes which meet this definition. Over time, however, routes which meet this definition may change as airline networks and traffic levels vary.

	Sectors		Arrivals On Time		Departures On Time		Cancellations	
	Sched.	Flown	No.	%	No.	%	No.	%
Adelaide-Alice Springs								
Qantas	30	30	22	73.3	19	63.3	0	0.0
Virgin Australia	4	4	4	100.0	4	100.0	0	0.0
Virgin Australia Regional Airlines	17	15	5	33.3	6	40.0	2	11.8
All Airlines	51	49	31	63.3	29	59.2	2	3.9
Adelaide-Brisbane								
Jetstar	28	28	21	75.0	19	67.9	0	0.0
Qantas	100	100	90	90.0	85	85.0	0	0.0
QantasLink	28	24	21	87.5	20	83.3	4	14.3
Tigerair Australia	28	28	22	78.6	21	75.0	0	0.0
Virgin Australia	102	101	94	93.1	88	87.1	1	1.0
All Airlines	286	281	248	88.3	233	82.9	5	1.7
Adelaide-Canberra								
Qantas	46	46	40	87.0	38	82.6	0	0.0
Virgin Australia	25	25	22	88.0	20	80.0	0	0.0
All Airlines	71	71	62	87.3	58	81.7	0	0.0
Adelaide-Gold Coast								
Jetstar	30	30	25	83.3	22	73.3	0	0.0
Virgin Australia	30	30	29	96.7	28	93.3	0	0.0
All Airlines	60	60	54	90.0	50	83.3	0	0.0
Adelaide-Melbourne								
Jetstar	110	106	85	80.2	73	68.9	4	3.6
Qantas	282	280	238	85.0	236	84.3	2	0.7
Tigerair Australia	75	73	45	61.6	44	60.3	2	2.7
Virgin Australia	277	268	220	82.1	225	84.0	9	3.2
All Airlines	744	727	588	80.9	578	79.5	17	2.3
Adelaide-Perth								
Jetstar	26	26	17	65.4	20	76.9	0	0.0
Qantas	86	85	68	80.0	71	83.5	1	1.2
QantasLink	31	28	22	78.6	27	96.4	3	9.7
Virgin Australia	50	50	42	84.0	46	92.0	0	0.0
Virgin Australia Regional Airlines	27	25	11	44.0	13	52.0	2	7.4
All Airlines	220	214	160	74.8	177	82.7	6	2.7
Adelaide-Port Lincoln								
QantasLink	107	105	92	87.6	94	89.5	2	1.9
Regional Express	214	213	193	90.6	200	93.9	1	0.5
All Airlines	321	318	285	89.6	294	92.5	3	0.9
Adelaide-Sydney								
Jetstar	112	103	82	79.6	74	71.8	9	8.0
Qantas	231	227	202	89.0	186	81.9	4	1.7
QantasLink	30	24	15	62.5	12	50.0	6	20.0
Tigerair Australia	47	45	26	57.8	22	48.9	2	4.3
Virgin Australia	153	147	122	83.0	114	77.6	6	3.9
All Airlines	573	546	447	81.9	408	74.7	27	4.7

	<i>Sectors</i>		<i>Arrivals On Time</i>		<i>Departures On Time</i>		<i>Cancellations</i>	
	<i>Sched.</i>	<i>Flown</i>	<i>No.</i>	<i>%</i>	<i>No.</i>	<i>%</i>	<i>No.</i>	<i>%</i>
Albury-Sydney								
QantasLink	92	89	61	68.5	58	65.2	3	3.3
Regional Express	103	102	91	89.2	90	88.2	1	1.0
Virgin Australia	60	58	42	72.4	37	63.8	2	3.3
All Airlines	255	249	194	77.9	185	74.3	6	2.4
Alice Springs-Adelaide								
Qantas	30	30	23	76.7	20	66.7	0	0.0
Virgin Australia	4	4	4	100.0	3	75.0	0	0.0
Virgin Australia Regional Airlines	16	15	6	40.0	7	46.7	1	6.3
All Airlines	50	49	33	67.3	30	61.2	1	2.0
Alice Springs-Darwin								
QantasLink	60	58	56	96.6	55	94.8	2	3.3
Virgin Australia	4	4	3	75.0	4	100.0	0	0.0
Virgin Australia Regional Airlines	17	15	7	46.7	7	46.7	2	11.8
All Airlines	81	77	66	85.7	66	85.7	4	4.9
Armidale-Sydney								
QantasLink	100	92	55	59.8	55	59.8	8	8.0
Regional Express	75	74	50	67.6	57	77.0	1	1.3
All Airlines	175	166	105	63.3	112	67.5	9	5.1
Ayers Rock-Sydney								
Jetstar	30	30	18	60.0	13	43.3	0	0.0
Virgin Australia	30	30	25	83.3	19	63.3	0	0.0
All Airlines	60	60	43	71.7	32	53.3	0	0.0
Ballina-Sydney								
Jetstar	88	86	64	74.4	60	69.8	2	2.3
Regional Express	25	24	14	58.3	16	66.7	1	4.0
Virgin Australia	34	33	24	72.7	26	78.8	1	2.9
All Airlines	147	143	102	71.3	102	71.3	4	2.7
Brisbane-Adelaide								
Jetstar	28	28	24	85.7	24	85.7	0	0.0
Qantas	100	100	82	82.0	93	93.0	0	0.0
QantasLink	28	24	18	75.0	22	91.7	4	14.3
Tigerair Australia	28	28	24	85.7	26	92.9	0	0.0
Virgin Australia	97	96	73	76.0	88	91.7	1	1.0
All Airlines	281	276	221	80.1	253	91.7	5	1.8
Brisbane-Bundaberg								
QantasLink	125	123	100	81.3	99	80.5	2	1.6
Virgin Australia	30	30	22	73.3	22	73.3	0	0.0
All Airlines	155	153	122	79.7	121	79.1	2	1.3
Brisbane-Cairns								
Jetstar	114	113	106	93.8	94	83.2	1	0.9
Qantas	122	122	115	94.3	108	88.5	0	0.0
QantasLink	3	3	3	100.0	2	66.7	0	0.0
Tigerair Australia	47	47	38	80.9	39	83.0	0	0.0
Virgin Australia	116	116	108	93.1	104	89.7	0	0.0
All Airlines	402	401	370	92.3	347	86.5	1	0.2
Brisbane-Canberra								
Qantas	30	30	28	93.3	27	90.0	0	0.0
QantasLink	118	115	81	70.4	93	80.9	3	2.5
Tigerair Australia	7	7	4	57.1	7	100.0	0	0.0
Virgin Australia	104	104	86	82.7	89	85.6	0	0.0
All Airlines	259	256	199	77.7	216	84.4	3	1.2

	<i>Sectors</i>		<i>Arrivals On Time</i>		<i>Departures On Time</i>		<i>Cancellations</i>	
	<i>Sched.</i>	<i>Flown</i>	<i>No.</i>	<i>%</i>	<i>No.</i>	<i>%</i>	<i>No.</i>	<i>%</i>
Brisbane-Darwin								
Jetstar	25	25	20	80.0	21	84.0	0	0.0
Qantas	46	46	43	93.5	40	87.0	0	0.0
Tigerair Australia	17	16	12	75.0	15	93.8	1	5.9
Virgin Australia	30	30	24	80.0	25	83.3	0	0.0
All Airlines	118	117	99	84.6	101	86.3	1	0.8
Brisbane-Emerald								
QantasLink	111	111	85	76.6	89	80.2	0	0.0
Virgin Australia	50	50	44	88.0	49	98.0	0	0.0
All Airlines	161	161	129	80.1	138	85.7	0	0.0
Brisbane-Gladstone								
QantasLink	129	127	109	85.8	108	85.0	2	1.6
Virgin Australia	72	72	56	77.8	66	91.7	0	0.0
All Airlines	201	199	165	82.9	174	87.4	2	1.0
Brisbane-Hamilton Island								
QantasLink	34	32	28	87.5	25	78.1	2	5.9
Virgin Australia	30	30	27	90.0	27	90.0	0	0.0
All Airlines	64	62	55	88.7	52	83.9	2	3.1
Brisbane-Hobart								
Jetstar	27	27	24	88.9	25	92.6	0	0.0
Virgin Australia	31	31	25	80.6	28	90.3	0	0.0
All Airlines	58	58	49	84.5	53	91.4	0	0.0
Brisbane-Mackay								
Jetstar	48	48	40	83.3	34	70.8	0	0.0
QantasLink	105	103	91	88.3	88	85.4	2	1.9
Virgin Australia	140	140	127	90.7	127	90.7	0	0.0
All Airlines	293	291	258	88.7	249	85.6	2	0.7
Brisbane-Melbourne								
Jetstar	139	136	96	70.6	93	68.4	3	2.2
Qantas	409	407	319	78.4	355	87.2	2	0.5
QantasLink	19	19	14	73.7	17	89.5	0	0.0
Tigerair Australia	128	124	77	62.1	97	78.2	4	3.1
Virgin Australia	378	368	258	70.1	321	87.2	10	2.6
All Airlines	1 073	1 054	764	72.5	883	83.8	19	1.8
Brisbane-Moranbah								
QantasLink	82	81	71	87.7	69	85.2	1	1.2
Virgin Australia	16	16	14	87.5	15	93.8	0	0.0
All Airlines	98	97	85	87.6	84	86.6	1	1.0
Brisbane-Mount Isa								
QantasLink	55	55	48	87.3	47	85.5	0	0.0
Virgin Australia	16	16	14	87.5	15	93.8	0	0.0
All Airlines	71	71	62	87.3	62	87.3	0	0.0
Brisbane-Newcastle								
Jetstar	88	85	61	71.8	62	72.9	3	3.4
QantasLink	85	83	67	80.7	69	83.1	2	2.4
Virgin Australia	81	80	74	92.5	74	92.5	1	1.2
All Airlines	254	248	202	81.5	205	82.7	6	2.4
Brisbane-Perth								
Qantas	132	131	100	76.3	118	90.1	1	0.8
Tigerair Australia	21	21	16	76.2	17	81.0	0	0.0
Virgin Australia	105	105	68	64.8	81	77.1	0	0.0
All Airlines	258	257	184	71.6	216	84.0	1	0.4

	<i>Sectors</i>		<i>Arrivals On Time</i>		<i>Departures On Time</i>		<i>Cancellations</i>	
	<i>Sched.</i>	<i>Flown</i>	<i>No.</i>	<i>%</i>	<i>No.</i>	<i>%</i>	<i>No.</i>	<i>%</i>
Brisbane-Proserpine								
Jetstar	35	35	33	94.3	29	82.9	0	0.0
Tigerair Australia	17	17	16	94.1	16	94.1	0	0.0
Virgin Australia	32	32	26	81.3	26	81.3	0	0.0
All Airlines	84	84	75	89.3	71	84.5	0	0.0
Brisbane-Rockhampton								
QantasLink	175	174	146	83.9	150	86.2	1	0.6
Virgin Australia	137	137	100	73.0	109	79.6	0	0.0
All Airlines	312	311	246	79.1	259	83.3	1	0.3
Brisbane-Sydney								
Jetstar	188	173	128	74.0	127	73.4	15	8.0
Qantas	623	600	490	81.7	498	83.0	23	3.7
QantasLink	18	18	17	94.4	15	83.3	0	0.0
Tigerair Australia	110	100	65	65.0	71	71.0	10	9.1
Virgin Australia	526	511	400	78.3	427	83.6	15	2.9
All Airlines	1 465	1 402	1 100	78.5	1 138	81.2	63	4.3
Brisbane-Townsville								
Jetstar	47	47	38	80.9	39	83.0	0	0.0
Qantas	68	68	59	86.8	58	85.3	0	0.0
QantasLink	79	77	66	85.7	68	88.3	2	2.5
Virgin Australia	132	130	110	84.6	109	83.8	2	1.5
All Airlines	326	322	273	84.8	274	85.1	4	1.2
Broome-Perth								
Qantas	6	6	4	66.7	3	50.0	0	0.0
QantasLink	98	97	86	88.7	81	83.5	1	1.0
Virgin Australia	6	6	5	83.3	2	33.3	0	0.0
Virgin Australia Regional Airlines	70	70	58	82.9	60	85.7	0	0.0
All Airlines	180	179	153	85.5	146	81.6	1	0.6
Bundaberg-Brisbane								
QantasLink	125	123	105	85.4	106	86.2	2	1.6
Virgin Australia	30	30	20	66.7	24	80.0	0	0.0
All Airlines	155	153	125	81.7	130	85.0	2	1.3
Cairns-Brisbane								
Jetstar	115	114	98	86.0	97	85.1	1	0.9
Qantas	123	123	112	91.1	111	90.2	0	0.0
QantasLink	2	2	2	100.0	2	100.0	0	0.0
Tigerair Australia	47	47	37	78.7	36	76.6	0	0.0
Virgin Australia	116	116	111	95.7	108	93.1	0	0.0
All Airlines	403	402	360	89.6	354	88.1	1	0.2
Cairns-Melbourne								
Jetstar	121	121	90	74.4	91	75.2	0	0.0
Qantas	46	46	28	60.9	28	60.9	0	0.0
Tigerair Australia	39	38	22	57.9	25	65.8	1	2.6
Virgin Australia	35	35	20	57.1	17	48.6	0	0.0
All Airlines	241	240	160	66.7	161	67.1	1	0.4
Cairns-Sydney								
Jetstar	105	102	85	83.3	79	77.5	3	2.9
Qantas	83	83	69	83.1	64	77.1	0	0.0
Tigerair Australia	47	47	36	76.6	33	70.2	0	0.0
Virgin Australia	84	84	65	77.4	58	69.0	0	0.0
All Airlines	319	316	255	80.7	234	74.1	3	0.9

	<i>Sectors</i>		<i>Arrivals On Time</i>		<i>Departures On Time</i>		<i>Cancellations</i>	
	<i>Sched.</i>	<i>Flown</i>	<i>No.</i>	<i>%</i>	<i>No.</i>	<i>%</i>	<i>No.</i>	<i>%</i>
Cairns-Townsville								
QantasLink	140	139	131	94.2	130	93.5	1	0.7
Regional Express	42	41	36	87.8	37	90.2	1	2.4
All Airlines	182	180	167	92.8	167	92.8	2	1.1
Canberra-Adelaide								
Qantas	46	46	43	93.5	42	91.3	0	0.0
Virgin Australia	25	25	20	80.0	22	88.0	0	0.0
All Airlines	71	71	63	88.7	64	90.1	0	0.0
Canberra-Brisbane								
Qantas	30	30	28	93.3	27	90.0	0	0.0
QantasLink	118	115	100	87.0	85	73.9	3	2.5
Tigerair Australia	7	7	6	85.7	5	71.4	0	0.0
Virgin Australia	102	102	93	91.2	92	90.2	0	0.0
All Airlines	257	254	227	89.4	209	82.3	3	1.2
Canberra-Melbourne								
Qantas	198	197	170	86.3	176	89.3	1	0.5
QantasLink	100	93	74	79.6	78	83.9	7	7.0
Tigerair Australia	34	33	13	39.4	17	51.5	1	2.9
Virgin Australia	171	164	131	79.9	148	90.2	7	4.1
All Airlines	503	487	388	79.7	419	86.0	16	3.2
Canberra-Sydney								
QantasLink	471	440	360	81.8	351	79.8	31	6.6
Virgin Australia	256	228	190	83.3	182	79.8	28	10.9
All Airlines	727	668	550	82.3	533	79.8	59	8.1
Coffs Harbour-Sydney								
QantasLink	149	142	105	73.9	110	77.5	7	4.7
Tigerair Australia	13	13	11	84.6	10	76.9	0	0.0
Virgin Australia	49	45	36	80.0	38	84.4	4	8.2
All Airlines	211	200	152	76.0	158	79.0	11	5.2
Darwin-Alice Springs								
QantasLink	60	58	56	96.6	56	96.6	2	3.3
Virgin Australia	4	4	4	100.0	4	100.0	0	0.0
Virgin Australia Regional Airlines	16	15	9	60.0	12	80.0	1	6.3
All Airlines	80	77	69	89.6	72	93.5	3	3.8
Darwin-Brisbane								
Jetstar	25	25	23	92.0	19	76.0	0	0.0
Qantas	46	46	42	91.3	38	82.6	0	0.0
Tigerair Australia	17	16	15	93.8	15	93.8	1	5.9
Virgin Australia	30	30	23	76.7	23	76.7	0	0.0
All Airlines	118	117	103	88.0	95	81.2	1	0.8
Darwin-Melbourne								
Jetstar	29	29	24	82.8	16	55.2	0	0.0
Qantas	30	30	24	80.0	21	70.0	0	0.0
Virgin Australia	31	31	29	93.5	27	87.1	0	0.0
All Airlines	90	90	77	85.6	64	71.1	0	0.0
Darwin-Perth								
Qantas	33	33	31	93.9	29	87.9	0	0.0
Virgin Australia	23	23	17	73.9	19	82.6	0	0.0
Virgin Australia Regional Airlines	7	6	6	100.0	5	83.3	1	14.3
All Airlines	63	62	54	87.1	53	85.5	1	1.6

	<i>Sectors</i>		<i>Arrivals On Time</i>		<i>Departures On Time</i>		<i>Cancellations</i>	
	<i>Sched.</i>	<i>Flown</i>	<i>No.</i>	<i>%</i>	<i>No.</i>	<i>%</i>	<i>No.</i>	<i>%</i>
Darwin-Sydney								
Jetstar	23	23	17	73.9	17	73.9	0	0.0
Qantas	52	52	43	82.7	38	73.1	0	0.0
Virgin Australia	30	30	21	70.0	20	66.7	0	0.0
All Airlines	105	105	81	77.1	75	71.4	0	0.0
Dubbo-Sydney								
QantasLink	106	102	80	78.4	75	73.5	4	3.8
Regional Express	152	148	126	85.1	126	85.1	4	2.6
All Airlines	258	250	206	82.4	201	80.4	8	3.1
Emerald-Brisbane								
QantasLink	111	111	83	74.8	83	74.8	0	0.0
Virgin Australia	50	50	48	96.0	47	94.0	0	0.0
All Airlines	161	161	131	81.4	130	80.7	0	0.0
Geraldton-Perth								
QantasLink	47	46	40	87.0	40	87.0	1	2.1
Virgin Australia Regional Airlines	51	51	41	80.4	40	78.4	0	0.0
All Airlines	98	97	81	83.5	80	82.5	1	1.0
Gladstone-Brisbane								
QantasLink	127	126	114	90.5	111	88.1	1	0.8
Virgin Australia	72	72	60	83.3	58	80.6	0	0.0
All Airlines	199	198	174	87.9	169	85.4	1	0.5
Gold Coast-Adelaide								
Jetstar	30	30	23	76.7	27	90.0	0	0.0
Virgin Australia	30	30	21	70.0	28	93.3	0	0.0
All Airlines	60	60	44	73.3	55	91.7	0	0.0
Gold Coast-Melbourne								
Jetstar	218	217	161	74.2	164	75.6	1	0.5
Qantas	30	30	26	86.7	25	83.3	0	0.0
Tigerair Australia	82	81	43	53.1	58	71.6	1	1.2
Virgin Australia	176	176	126	71.6	134	76.1	0	0.0
All Airlines	506	504	356	70.6	381	75.6	2	0.4
Gold Coast-Sydney								
Jetstar	299	286	207	72.4	201	70.3	13	4.3
Qantas	95	95	80	84.2	78	82.1	0	0.0
QantasLink	20	20	13	65.0	13	65.0	0	0.0
Tigerair Australia	121	114	65	57.0	70	61.4	7	5.8
Virgin Australia	234	226	172	76.1	174	77.0	8	3.4
All Airlines	769	741	537	72.5	536	72.3	28	3.6
Hamilton Island-Brisbane								
QantasLink	34	32	28	87.5	26	81.3	2	5.9
Virgin Australia	30	30	28	93.3	27	90.0	0	0.0
All Airlines	64	62	56	90.3	53	85.5	2	3.1
Hamilton Island-Sydney								
Jetstar	30	30	26	86.7	25	83.3	0	0.0
Qantas	13	13	11	84.6	9	69.2	0	0.0
QantasLink	17	16	9	56.3	9	56.3	1	5.9
Virgin Australia	27	25	20	80.0	20	80.0	2	7.4
All Airlines	87	84	66	78.6	63	75.0	3	3.4
Hobart-Brisbane								
Jetstar	27	27	23	85.2	21	77.8	0	0.0
Virgin Australia	31	31	22	71.0	20	64.5	0	0.0
All Airlines	58	58	45	77.6	41	70.7	0	0.0

	<i>Sectors</i>		<i>Arrivals On Time</i>		<i>Departures On Time</i>		<i>Cancellations</i>	
	<i>Sched.</i>	<i>Flown</i>	<i>No.</i>	<i>%</i>	<i>No.</i>	<i>%</i>	<i>No.</i>	<i>%</i>
Hobart-Melbourne								
Jetstar	153	153	70	45.8	72	47.1	0	0.0
QantasLink	132	130	103	79.2	110	84.6	2	1.5
Tigerair Australia	30	30	21	70.0	23	76.7	0	0.0
Virgin Australia	132	132	89	67.4	92	69.7	0	0.0
All Airlines	447	445	283	63.6	297	66.7	2	0.4
Hobart-Sydney								
Jetstar	68	68	53	77.9	46	67.6	0	0.0
QantasLink	55	54	41	75.9	41	75.9	1	1.8
Virgin Australia	69	68	55	80.9	52	76.5	1	1.4
All Airlines	192	190	149	78.4	139	73.2	2	1.0
Kalgoorlie-Perth								
Qantas	12	12	11	91.7	12	100.0	0	0.0
QantasLink	70	68	61	89.7	61	89.7	2	2.9
Virgin Australia	25	24	21	87.5	20	83.3	1	4.0
Virgin Australia Regional Airlines	38	36	28	77.8	29	80.6	2	5.3
All Airlines	145	140	121	86.4	122	87.1	5	3.4
Karratha-Perth								
Qantas	14	13	13	100.0	13	100.0	1	7.1
QantasLink	170	163	156	95.7	155	95.1	7	4.1
Virgin Australia Regional Airlines	69	65	56	86.2	56	86.2	4	5.8
All Airlines	253	241	225	93.4	224	92.9	12	4.7
Launceston-Melbourne								
Jetstar	107	107	72	67.3	71	66.4	0	0.0
QantasLink	115	115	99	86.1	93	80.9	0	0.0
Virgin Australia	92	92	70	76.1	77	83.7	0	0.0
All Airlines	314	314	241	76.8	241	76.8	0	0.0
Launceston-Sydney								
Jetstar	33	33	24	72.7	22	66.7	0	0.0
Virgin Australia	29	29	23	79.3	22	75.9	0	0.0
All Airlines	62	62	47	75.8	44	71.0	0	0.0
Mackay-Brisbane								
Jetstar	48	48	43	89.6	32	66.7	0	0.0
QantasLink	106	105	91	86.7	89	84.8	1	0.9
Virgin Australia	141	141	133	94.3	132	93.6	0	0.0
All Airlines	295	294	267	90.8	253	86.1	1	0.3
Melbourne-Adelaide								
Jetstar	110	108	64	59.3	72	66.7	2	1.8
Qantas	283	281	225	80.1	241	85.8	2	0.7
Tigerair Australia	75	74	51	68.9	56	75.7	1	1.3
Virgin Australia	272	264	213	80.7	222	84.1	8	2.9
All Airlines	740	727	553	76.1	591	81.3	13	1.8
Melbourne-Brisbane								
Jetstar	138	136	96	70.6	73	53.7	2	1.4
Qantas	414	413	371	89.8	352	85.2	1	0.2
QantasLink	19	19	14	73.7	11	57.9	0	0.0
Tigerair Australia	128	124	96	77.4	88	71.0	4	3.1
Virgin Australia	383	377	318	84.4	314	83.3	6	1.6
All Airlines	1 082	1 069	895	83.7	838	78.4	13	1.2
Melbourne-Cairns								
Jetstar	120	120	82	68.3	85	70.8	0	0.0
Qantas	46	46	36	78.3	35	76.1	0	0.0
Tigerair Australia	39	38	32	84.2	34	89.5	1	2.6
Virgin Australia	35	35	24	68.6	29	82.9	0	0.0
All Airlines	240	239	174	72.8	183	76.6	1	0.4

	<i>Sectors</i>		<i>Arrivals On Time</i>		<i>Departures On Time</i>		<i>Cancellations</i>	
	<i>Sched.</i>	<i>Flown</i>	<i>No.</i>	<i>%</i>	<i>No.</i>	<i>%</i>	<i>No.</i>	<i>%</i>
Melbourne-Canberra								
Qantas	198	197	174	88.3	170	86.3	1	0.5
QantasLink	100	94	79	84.0	78	83.0	6	6.0
Tigerair Australia	34	33	25	75.8	26	78.8	1	2.9
Virgin Australia	169	162	138	85.2	135	83.3	7	4.1
All Airlines	501	486	416	85.6	409	84.2	15	3.0
Melbourne-Darwin								
Jetstar	29	29	22	75.9	22	75.9	0	0.0
Qantas	30	30	19	63.3	26	86.7	0	0.0
Virgin Australia	31	31	17	54.8	27	87.1	0	0.0
All Airlines	90	90	58	64.4	75	83.3	0	0.0
Melbourne-Gold Coast								
Jetstar	219	219	164	74.9	153	69.9	0	0.0
Qantas	30	30	29	96.7	28	93.3	0	0.0
Tigerair Australia	82	81	65	80.2	60	74.1	1	1.2
Virgin Australia	177	177	152	85.9	143	80.8	0	0.0
All Airlines	508	507	410	80.9	384	75.7	1	0.2
Melbourne-Hobart								
Jetstar	153	153	96	62.7	109	71.2	0	0.0
QantasLink	130	127	86	67.7	97	76.4	3	2.3
Tigerair Australia	30	30	24	80.0	25	83.3	0	0.0
Virgin Australia	132	132	93	70.5	106	80.3	0	0.0
All Airlines	445	442	299	67.6	337	76.2	3	0.7
Melbourne-Launceston								
Jetstar	108	108	78	72.2	78	72.2	0	0.0
QantasLink	115	115	100	87.0	100	87.0	0	0.0
Virgin Australia	91	91	67	73.6	79	86.8	0	0.0
All Airlines	314	314	245	78.0	257	81.8	0	0.0
Melbourne-Mildura								
QantasLink	94	94	80	85.1	84	89.4	0	0.0
Regional Express	83	83	70	84.3	72	86.7	0	0.0
Virgin Australia	30	30	23	76.7	26	86.7	0	0.0
All Airlines	207	207	173	83.6	182	87.9	0	0.0
Melbourne-Newcastle								
Jetstar	114	113	83	73.5	73	64.6	1	0.9
Virgin Australia	30	30	24	80.0	23	76.7	0	0.0
All Airlines	144	143	107	74.8	96	67.1	1	0.7
Melbourne-Perth								
Jetstar	47	45	34	75.6	34	75.6	2	4.3
Qantas	196	195	144	73.8	155	79.5	1	0.5
Tigerair Australia	53	52	28	53.8	36	69.2	1	1.9
Virgin Australia	129	127	85	66.9	78	61.4	2	1.6
All Airlines	425	419	291	69.5	303	72.3	6	1.4
Melbourne-Sunshine Coast								
Jetstar	95	95	77	81.1	71	74.7	0	0.0
Virgin Australia	54	53	45	84.9	39	73.6	1	1.9
All Airlines	149	148	122	82.4	110	74.3	1	0.7
Melbourne-Sydney								
Jetstar	366	349	239	68.5	219	62.8	17	4.6
Qantas	1 067	981	800	81.5	780	79.5	86	8.1
QantasLink	4	3	3	100.0	3	100.0	1	25.0
Tigerair Australia	251	240	139	57.9	140	58.3	11	4.4
Virgin Australia	746	680	554	81.5	540	79.4	66	8.8
All Airlines	2 434	2 253	1 735	77.0	1 682	74.7	181	7.4

	<i>Sectors</i>		<i>Arrivals On Time</i>		<i>Departures On Time</i>		<i>Cancellations</i>	
	<i>Sched.</i>	<i>Flown</i>	<i>No.</i>	<i>%</i>	<i>No.</i>	<i>%</i>	<i>No.</i>	<i>%</i>
Mildura-Melbourne								
QantasLink	94	94	81	86.2	83	88.3	0	0.0
Regional Express	84	84	61	72.6	62	73.8	0	0.0
Virgin Australia	30	30	26	86.7	24	80.0	0	0.0
All Airlines	208	208	168	80.8	169	81.3	0	0.0
Moranbah-Brisbane								
QantasLink	78	77	64	83.1	66	85.7	1	1.3
Virgin Australia	16	16	15	93.8	15	93.8	0	0.0
All Airlines	94	93	79	84.9	81	87.1	1	1.1
Mount Isa-Brisbane								
QantasLink	55	54	47	87.0	48	88.9	1	1.8
Virgin Australia	17	17	12	70.6	12	70.6	0	0.0
All Airlines	72	71	59	83.1	60	84.5	1	1.4
Newcastle-Brisbane								
Jetstar	87	85	67	78.8	66	77.6	2	2.3
QantasLink	86	83	76	91.6	72	86.7	3	3.5
Virgin Australia	81	80	76	95.0	72	90.0	1	1.2
All Airlines	254	248	219	88.3	210	84.7	6	2.4
Newcastle-Melbourne								
Jetstar	114	113	81	71.7	86	76.1	1	0.9
Virgin Australia	30	30	17	56.7	21	70.0	0	0.0
All Airlines	144	143	98	68.5	107	74.8	1	0.7
Newman-Perth								
Qantas	52	52	49	94.2	49	94.2	0	0.0
QantasLink	70	69	60	87.0	58	84.1	1	1.4
Virgin Australia	17	17	16	94.1	15	88.2	0	0.0
Virgin Australia Regional Airlines	20	20	16	80.0	16	80.0	0	0.0
All Airlines	159	158	141	89.2	138	87.3	1	0.6
Perth-Adelaide								
Jetstar	27	25	21	84.0	16	64.0	2	7.4
Qantas	91	90	87	96.7	83	92.2	1	1.1
QantasLink	31	28	27	96.4	28	100.0	3	9.7
Virgin Australia	50	50	47	94.0	45	90.0	0	0.0
Virgin Australia Regional Airlines	28	27	15	55.6	23	85.2	1	3.6
All Airlines	227	220	197	89.5	195	88.6	7	3.1
Perth-Brisbane								
Qantas	128	128	115	89.8	108	84.4	0	0.0
Tigerair Australia	21	21	16	76.2	15	71.4	0	0.0
Virgin Australia	102	102	89	87.3	84	82.4	0	0.0
All Airlines	251	251	220	87.6	207	82.5	0	0.0
Perth-Broome								
Qantas	6	6	3	50.0	4	66.7	0	0.0
QantasLink	98	98	85	86.7	83	84.7	0	0.0
Virgin Australia	6	6	4	66.7	3	50.0	0	0.0
Virgin Australia Regional Airlines	70	70	56	80.0	58	82.9	0	0.0
All Airlines	180	180	148	82.2	148	82.2	0	0.0
Perth-Darwin								
Qantas	33	33	30	90.9	31	93.9	0	0.0
Virgin Australia	23	23	21	91.3	19	82.6	0	0.0
Virgin Australia Regional Airlines	7	6	6	100.0	6	100.0	1	14.3
All Airlines	63	62	57	91.9	56	90.3	1	1.6

	<i>Sectors</i>		<i>Arrivals On Time</i>		<i>Departures On Time</i>		<i>Cancellations</i>	
	<i>Sched.</i>	<i>Flown</i>	<i>No.</i>	<i>%</i>	<i>No.</i>	<i>%</i>	<i>No.</i>	<i>%</i>
Perth-Geraldton								
QantasLink	47	46	39	84.8	37	80.4	1	2.1
Virgin Australia Regional Airlines	51	51	39	76.5	36	70.6	0	0.0
All Airlines	98	97	78	80.4	73	75.3	1	1.0
Perth-Kalgoorlie								
Qantas	12	12	11	91.7	11	91.7	0	0.0
QantasLink	70	68	63	92.6	63	92.6	2	2.9
Virgin Australia	26	25	23	92.0	23	92.0	1	3.8
Virgin Australia Regional Airlines	38	36	28	77.8	30	83.3	2	5.3
All Airlines	146	141	125	88.7	127	90.1	5	3.4
Perth-Karratha								
Qantas	14	13	13	100.0	13	100.0	1	7.1
QantasLink	171	166	155	93.4	155	93.4	5	2.9
Virgin Australia Regional Airlines	69	65	48	73.8	53	81.5	4	5.8
All Airlines	254	244	216	88.5	221	90.6	10	3.9
Perth-Melbourne								
Jetstar	47	45	39	86.7	27	60.0	2	4.3
Qantas	198	197	160	81.2	156	79.2	1	0.5
Tigerair Australia	54	53	42	79.2	35	66.0	1	1.9
Virgin Australia	134	131	97	74.0	93	71.0	3	2.2
All Airlines	433	426	338	79.3	311	73.0	7	1.6
Perth-Newman								
Qantas	52	52	46	88.5	49	94.2	0	0.0
QantasLink	70	70	57	81.4	60	85.7	0	0.0
Virgin Australia	17	17	16	94.1	16	94.1	0	0.0
Virgin Australia Regional Airlines	20	20	18	90.0	17	85.0	0	0.0
All Airlines	159	159	137	86.2	142	89.3	0	0.0
Perth-Port Hedland								
Qantas	28	27	27	100.0	26	96.3	1	3.6
QantasLink	107	102	90	88.2	90	88.2	5	4.7
Virgin Australia	14	14	12	85.7	13	92.9	0	0.0
Virgin Australia Regional Airlines	37	37	26	70.3	29	78.4	0	0.0
All Airlines	186	180	155	86.1	158	87.8	6	3.2
Perth-Sydney								
Jetstar	27	27	21	77.8	10	37.0	0	0.0
Qantas	206	203	173	85.2	150	73.9	3	1.5
Tigerair Australia	27	25	25	100.0	21	84.0	2	7.4
Virgin Australia	118	117	103	88.0	93	79.5	1	0.8
All Airlines	378	372	322	86.6	274	73.7	6	1.6
Port Hedland-Perth								
Qantas	28	27	26	96.3	24	88.9	1	3.6
QantasLink	107	102	92	90.2	91	89.2	5	4.7
Virgin Australia	14	14	14	100.0	13	92.9	0	0.0
Virgin Australia Regional Airlines	37	37	31	83.8	32	86.5	0	0.0
All Airlines	186	180	163	90.6	160	88.9	6	3.2
Port Lincoln-Adelaide								
QantasLink	108	106	93	87.7	95	89.6	2	1.9
Regional Express	215	214	192	89.7	196	91.6	1	0.5
All Airlines	323	320	285	89.1	291	90.9	3	0.9
Port Macquarie-Sydney								
QantasLink	119	115	71	61.7	73	63.5	4	3.4
Virgin Australia	60	57	37	64.9	39	68.4	3	5.0
All Airlines	179	172	108	62.8	112	65.1	7	3.9

	<i>Sectors</i>		<i>Arrivals On Time</i>		<i>Departures On Time</i>		<i>Cancellations</i>	
	<i>Sched.</i>	<i>Flown</i>	<i>No.</i>	<i>%</i>	<i>No.</i>	<i>%</i>	<i>No.</i>	<i>%</i>
Proserpine-Brisbane								
Jetstar	35	35	27	77.1	27	77.1	0	0.0
Tigerair Australia	17	17	15	88.2	16	94.1	0	0.0
Virgin Australia	32	32	25	78.1	24	75.0	0	0.0
All Airlines	84	84	67	79.8	67	79.8	0	0.0
Rockhampton-Brisbane								
QantasLink	175	172	141	82.0	146	84.9	3	1.7
Virgin Australia	138	138	115	83.3	110	79.7	0	0.0
All Airlines	313	310	256	82.6	256	82.6	3	1.0
Sunshine Coast-Melbourne								
Jetstar	95	94	61	64.9	61	64.9	1	1.1
Virgin Australia	54	53	24	45.3	28	52.8	1	1.9
All Airlines	149	147	85	57.8	89	60.5	2	1.3
Sunshine Coast-Sydney								
Jetstar	102	99	67	67.7	64	64.6	3	2.9
QantasLink	35	35	22	62.9	25	71.4	0	0.0
Virgin Australia	49	47	35	74.5	39	83.0	2	4.1
All Airlines	186	181	124	68.5	128	70.7	5	2.7
Sydney-Adelaide								
Jetstar	112	103	66	64.1	76	73.8	9	8.0
Qantas	226	222	163	73.4	182	82.0	4	1.8
QantasLink	30	24	13	54.2	16	66.7	6	20.0
Tigerair Australia	47	45	29	64.4	33	73.3	2	4.3
Virgin Australia	163	157	97	61.8	135	86.0	6	3.7
All Airlines	578	551	368	66.8	442	80.2	27	4.7
Sydney-Albury								
QantasLink	91	89	57	64.0	66	74.2	2	2.2
Regional Express	103	102	82	80.4	90	88.2	1	1.0
Virgin Australia	60	58	43	74.1	45	77.6	2	3.3
All Airlines	254	249	182	73.1	201	80.7	5	2.0
Sydney-Armidale								
QantasLink	99	93	55	59.1	53	57.0	6	6.1
Regional Express	75	75	62	82.7	63	84.0	0	0.0
All Airlines	174	168	117	69.6	116	69.0	6	3.4
Sydney-Ayers Rock								
Jetstar	31	31	16	51.6	24	77.4	0	0.0
Virgin Australia	30	30	20	66.7	29	96.7	0	0.0
All Airlines	61	61	36	59.0	53	86.9	0	0.0
Sydney-Ballina								
Jetstar	88	87	69	79.3	69	79.3	1	1.1
Regional Express	24	24	18	75.0	18	75.0	0	0.0
Virgin Australia	34	33	27	81.8	29	87.9	1	2.9
All Airlines	146	144	114	79.2	116	80.6	2	1.4
Sydney-Brisbane								
Jetstar	189	177	141	79.7	134	75.7	12	6.3
Qantas	624	606	504	83.2	500	82.5	18	2.9
QantasLink	18	17	16	94.1	17	100.0	1	5.6
Tigerair Australia	109	100	70	70.0	78	78.0	9	8.3
Virgin Australia	515	501	392	78.2	403	80.4	14	2.7
All Airlines	1 455	1 401	1 123	80.2	1 132	80.8	54	3.7

	<i>Sectors</i>		<i>Arrivals On Time</i>		<i>Departures On Time</i>		<i>Cancellations</i>	
	<i>Sched.</i>	<i>Flown</i>	<i>No.</i>	<i>%</i>	<i>No.</i>	<i>%</i>	<i>No.</i>	<i>%</i>
Sydney-Cairns								
Jetstar	104	101	83	82.2	78	77.2	3	2.9
Qantas	82	82	69	84.1	66	80.5	0	0.0
Tigerair Australia	47	47	39	83.0	42	89.4	0	0.0
Virgin Australia	84	84	70	83.3	68	81.0	0	0.0
All Airlines	317	314	261	83.1	254	80.9	3	0.9
Sydney-Canberra								
QantasLink	474	442	339	76.7	338	76.5	32	6.8
Virgin Australia	256	229	180	78.6	182	79.5	27	10.5
All Airlines	730	671	519	77.3	520	77.5	59	8.1
Sydney-Coffs Harbour								
QantasLink	149	142	118	83.1	108	76.1	7	4.7
Tigerair Australia	13	13	12	92.3	11	84.6	0	0.0
Virgin Australia	49	45	39	86.7	37	82.2	4	8.2
All Airlines	211	200	169	84.5	156	78.0	11	5.2
Sydney-Darwin								
Jetstar	23	23	19	82.6	19	82.6	0	0.0
Qantas	51	51	40	78.4	35	68.6	0	0.0
Virgin Australia	30	30	23	76.7	25	83.3	0	0.0
All Airlines	104	104	82	78.8	79	76.0	0	0.0
Sydney-Dubbo								
QantasLink	105	101	69	68.3	74	73.3	4	3.8
Regional Express	152	148	127	85.8	125	84.5	4	2.6
All Airlines	257	249	196	78.7	199	79.9	8	3.1
Sydney-Gold Coast								
Jetstar	299	289	221	76.5	215	74.4	10	3.3
Qantas	95	95	73	76.8	75	78.9	0	0.0
QantasLink	20	20	15	75.0	15	75.0	0	0.0
Tigerair Australia	122	115	79	68.7	87	75.7	7	5.7
Virgin Australia	233	224	177	79.0	182	81.3	9	3.9
All Airlines	769	743	565	76.0	574	77.3	26	3.4
Sydney-Hamilton Island								
Jetstar	30	30	28	93.3	26	86.7	0	0.0
Qantas	13	13	11	84.6	11	84.6	0	0.0
QantasLink	17	16	8	50.0	7	43.8	1	5.9
Virgin Australia	27	25	20	80.0	20	80.0	2	7.4
All Airlines	87	84	67	79.8	64	76.2	3	3.4
Sydney-Hobart								
Jetstar	68	68	57	83.8	57	83.8	0	0.0
QantasLink	55	55	42	76.4	43	78.2	0	0.0
Virgin Australia	69	68	57	83.8	57	83.8	1	1.4
All Airlines	192	191	156	81.7	157	82.2	1	0.5
Sydney-Launceston								
Jetstar	33	33	29	87.9	27	81.8	0	0.0
Virgin Australia	30	30	27	90.0	26	86.7	0	0.0
All Airlines	63	63	56	88.9	53	84.1	0	0.0
Sydney-Melbourne								
Jetstar	365	346	204	59.0	240	69.4	19	5.2
Qantas	1 071	984	679	69.0	810	82.3	87	8.1
QantasLink	4	3	3	100.0	3	100.0	1	25.0
Tigerair Australia	250	240	116	48.3	149	62.1	10	4.0
Virgin Australia	745	679	455	67.0	559	82.3	66	8.9
All Airlines	2 435	2 252	1 457	64.7	1 761	78.2	183	7.5

	<i>Sectors</i>		<i>Arrivals On Time</i>		<i>Departures On Time</i>		<i>Cancellations</i>	
	<i>Sched.</i>	<i>Flown</i>	<i>No.</i>	<i>%</i>	<i>No.</i>	<i>%</i>	<i>No.</i>	<i>%</i>
Sydney-Perth								
Jetstar	27	27	18	66.7	21	77.8	0	0.0
Qantas	204	203	125	61.6	150	73.9	1	0.5
Tigerair Australia	27	25	17	68.0	19	76.0	2	7.4
Virgin Australia	118	117	70	59.8	90	76.9	1	0.8
All Airlines	376	372	230	61.8	280	75.3	4	1.1
Sydney-Port Macquarie								
QantasLink	118	114	76	66.7	72	63.2	4	3.4
Virgin Australia	60	57	38	66.7	37	64.9	3	5.0
All Airlines	178	171	114	66.7	109	63.7	7	3.9
Sydney-Sunshine Coast								
Jetstar	103	100	77	77.0	73	73.0	3	2.9
QantasLink	34	34	26	76.5	26	76.5	0	0.0
Virgin Australia	49	47	44	93.6	43	91.5	2	4.1
All Airlines	186	181	147	81.2	142	78.5	5	2.7
Sydney-Tamworth								
QantasLink	139	131	99	75.6	97	74.0	8	5.8
Virgin Australia	50	47	37	78.7	39	83.0	3	6.0
All Airlines	189	178	136	76.4	136	76.4	11	5.8
Sydney-Townsville								
Jetstar	31	31	23	74.2	26	83.9	0	0.0
Virgin Australia	23	23	21	91.3	21	91.3	0	0.0
All Airlines	54	54	44	81.5	47	87.0	0	0.0
Sydney-Wagga Wagga								
QantasLink	108	105	88	83.8	85	81.0	3	2.8
Regional Express	133	128	112	87.5	117	91.4	5	3.8
All Airlines	241	233	200	85.8	202	86.7	8	3.3
Tamworth-Sydney								
QantasLink	140	131	101	77.1	102	77.9	9	6.4
Virgin Australia	51	48	40	83.3	39	81.3	3	5.9
All Airlines	191	179	141	78.8	141	78.8	12	6.3
Townsville-Brisbane								
Jetstar	47	47	37	78.7	36	76.6	0	0.0
Qantas	68	68	63	92.6	63	92.6	0	0.0
QantasLink	78	76	61	80.3	62	81.6	2	2.6
Virgin Australia	133	131	122	93.1	116	88.5	2	1.5
All Airlines	326	322	283	87.9	277	86.0	4	1.2
Townsville-Cairns								
QantasLink	138	137	130	94.9	126	92.0	1	0.7
Regional Express	42	41	39	95.1	39	95.1	1	2.4
All Airlines	180	178	169	94.9	165	92.7	2	1.1
Townsville-Sydney								
Jetstar	30	30	25	83.3	20	66.7	0	0.0
Virgin Australia	23	23	19	82.6	21	91.3	0	0.0
All Airlines	53	53	44	83.0	41	77.4	0	0.0
Wagga Wagga-Sydney								
QantasLink	109	106	87	82.1	85	80.2	3	2.8
Regional Express	135	129	110	85.3	109	84.5	6	4.4
All Airlines	244	235	197	83.8	194	82.6	9	3.7

Airports

On time performance is reported for all routes where the passenger load averages over 8000 passengers per month, and where two or more airlines operate in competition. The following data reports by airport against flights operated on those routes only. This month, 8 major city airports and 33 regional city airports are covered.

Airport	Arrivals			Departures		
	Sectors	On Time		Sectors	On Time	
	Flown	No.	%	Flown	No.	%
Adelaide						
Jetstar	294	198	67.3	293	208	71.0
Qantas	769	623	81.0	768	635	82.7
QantasLink	182	151	83.0	181	153	84.5
Regional Express	214	192	89.7	213	200	93.9
Tigerair Australia	147	104	70.7	146	87	59.6
Virgin Australia	626	475	75.9	625	525	84.0
Virgin Australia Regional Airlines	42	21	50.0	40	19	47.5
All Airlines	2 274	1 764	77.6	2 266	1 827	80.6
Relates to services to and from Alice Springs, Brisbane, Canberra, Gold Coast, Melbourne, Perth, Port Lincoln and Sydney.						
Albury						
QantasLink	89	57	64.0	89	58	65.2
Regional Express	102	82	80.4	102	90	88.2
Virgin Australia	58	43	74.1	58	37	63.8
All Airlines	249	182	73.1	249	185	74.3
Relates to services to and from Sydney only.						
Alice Springs						
Qantas	30	22	73.3	30	20	66.7
QantasLink	58	56	96.6	58	55	94.8
Virgin Australia	8	8	100.0	8	7	87.5
Virgin Australia Regional Airlines	30	14	46.7	30	14	46.7
All Airlines	126	100	79.4	126	96	76.2
Relates to services to and from Adelaide and Darwin.						
Armidale						
QantasLink	93	55	59.1	92	55	59.8
Regional Express	75	62	82.7	74	57	77.0
All Airlines	168	117	69.6	166	112	67.5
Relates to services to and from Sydney only.						
Ayers Rock						
Jetstar	31	16	51.6	30	13	43.3
Virgin Australia	30	20	66.7	30	19	63.3
All Airlines	61	36	59.0	60	32	53.3
Relates to services to and from Sydney only.						
Ballina						
Jetstar	87	69	79.3	86	60	69.8
Regional Express	24	18	75.0	24	16	66.7
Virgin Australia	33	27	81.8	33	26	78.8
All Airlines	144	114	79.2	143	102	71.3
Relates to services to and from Sydney only.						

Airport	Arrivals			Departures		
	Sectors	On Time		Sectors	On Time	
	Flown	No.	%	Flown	No.	%
Brisbane						
Jetstar	722	576	79.8	717	548	76.4
Qantas	1 514	1 325	87.5	1 504	1 297	86.2
QantasLink	1 136	963	84.8	1 145	961	83.9
Tigerair Australia	360	277	76.9	360	288	80.0
Virgin Australia	2 097	1 796	85.6	2 094	1 802	86.1
All Airlines	5 829	4 937	84.7	5 820	4 896	84.1

Relates to services to and from Adelaide, Bundaberg, Cairns, Canberra, Darwin, Emerald, Gladstone, Hamilton Island, Hobart, Mackay, Melbourne, Moranbah, Mount Isa, Newcastle, Perth, Proserpine, Rockhampton, Sydney and Townsville.

Broome

Qantas	6	3	50.0	6	3	50.0
QantasLink	98	85	86.7	97	81	83.5
Virgin Australia	6	4	66.7	6	2	33.3
Virgin Australia Regional Airlines	70	56	80.0	70	60	85.7
All Airlines	180	148	82.2	179	146	81.6

Relates to services to and from Perth only.

Bundaberg

QantasLink	123	100	81.3	123	106	86.2
Virgin Australia	30	22	73.3	30	24	80.0
All Airlines	153	122	79.7	153	130	85.0

Relates to services to and from Brisbane only.

Cairns

Jetstar	334	271	81.1	337	267	79.2
Qantas	250	220	88.0	252	203	80.6
QantasLink	140	133	95.0	141	132	93.6
Regional Express	41	39	95.1	41	37	90.2
Tigerair Australia	132	109	82.6	132	94	71.2
Virgin Australia	235	202	86.0	235	183	77.9
All Airlines	1 132	974	86.0	1 138	916	80.5

Relates to services to and from Brisbane, Melbourne, Sydney and Townsville.

Canberra

Qantas	273	242	88.6	273	245	89.7
QantasLink	651	499	76.7	648	514	79.3
Tigerair Australia	40	29	72.5	40	22	55.0
Virgin Australia	520	426	81.9	519	444	85.5
All Airlines	1 484	1 196	80.6	1 480	1 225	82.8

Relates to services to and from Adelaide, Brisbane, Melbourne and Sydney.

Coffs Harbour

QantasLink	142	118	83.1	142	110	77.5
Tigerair Australia	13	12	92.3	13	10	76.9
Virgin Australia	45	39	86.7	45	38	84.4
All Airlines	200	169	84.5	200	158	79.0

Relates to services to and from Sydney only.

Airport	Arrivals			Departures		
	Sectors Flown	On Time		Sectors Flown	On Time	
		No.	%		No.	%
Darwin						
Jetstar	77	61	79.2	77	52	67.5
Qantas	160	132	82.5	161	126	78.3
QantasLink	58	56	96.6	58	56	96.6
Tigerair Australia	16	12	75.0	16	15	93.8
Virgin Australia	118	88	74.6	118	93	78.8
Virgin Australia Regional Airlines	21	13	61.9	21	17	81.0
All Airlines	450	362	80.4	451	359	79.6
Relates to services to and from Alice Springs, Brisbane, Melbourne, Perth and Sydney.						
Dubbo						
QantasLink	101	69	68.3	102	75	73.5
Regional Express	148	127	85.8	148	126	85.1
All Airlines	249	196	78.7	250	201	80.4
Relates to services to and from Sydney only.						
Emerald						
QantasLink	111	85	76.6	111	83	74.8
Virgin Australia	50	44	88.0	50	47	94.0
All Airlines	161	129	80.1	161	130	80.7
Relates to services to and from Brisbane only.						
Geraldton						
QantasLink	46	39	84.8	46	40	87.0
Virgin Australia Regional Airlines	51	39	76.5	51	40	78.4
All Airlines	97	78	80.4	97	80	82.5
Relates to services to and from Perth only.						
Gladstone						
QantasLink	127	109	85.8	126	111	88.1
Virgin Australia	72	56	77.8	72	58	80.6
All Airlines	199	165	82.9	198	169	85.4
Relates to services to and from Brisbane only.						
Gold Coast						
Jetstar	538	410	76.2	533	392	73.5
Qantas	125	102	81.6	125	103	82.4
QantasLink	20	15	75.0	20	13	65.0
Tigerair Australia	196	144	73.5	195	128	65.6
Virgin Australia	431	358	83.1	432	336	77.8
All Airlines	1 310	1 029	78.5	1 305	972	74.5
Relates to services to and from Adelaide, Melbourne and Sydney.						
Hamilton Island						
Jetstar	30	28	93.3	30	25	83.3
Qantas	13	11	84.6	13	9	69.2
QantasLink	48	36	75.0	48	35	72.9
Virgin Australia	55	47	85.5	55	47	85.5
All Airlines	146	122	83.6	146	116	79.5
Relates to services to and from Brisbane and Sydney.						

Airport	Arrivals			Departures		
	Sectors Flown	On Time		Sectors Flown	On Time	
		No.	%		No.	%
Hobart						
Jetstar	248	177	71.4	248	139	56.0
QantasLink	182	128	70.3	184	151	82.1
Tigerair Australia	30	24	80.0	30	23	76.7
Virgin Australia	231	175	75.8	231	164	71.0
All Airlines	691	504	72.9	693	477	68.8

Relates to services to and from Brisbane, Melbourne and Sydney.

Kalgoorlie

Qantas	12	11	91.7	12	12	100.0
QantasLink	68	63	92.6	68	61	89.7
Virgin Australia	25	23	92.0	24	20	83.3
Virgin Australia Regional Airlines	36	28	77.8	36	29	80.6
All Airlines	141	125	88.7	140	122	87.1

Relates to services to and from Perth only.

Karratha

Qantas	13	13	100.0	13	13	100.0
QantasLink	166	155	93.4	163	155	95.1
Virgin Australia Regional Airlines	65	48	73.8	65	56	86.2
All Airlines	244	216	88.5	241	224	92.9

Relates to services to and from Perth only.

Launceston

Jetstar	141	107	75.9	140	93	66.4
QantasLink	115	100	87.0	115	93	80.9
Virgin Australia	121	94	77.7	121	99	81.8
All Airlines	377	301	79.8	376	285	75.8

Relates to services to and from Melbourne and Sydney.

Mackay

Jetstar	48	40	83.3	48	32	66.7
QantasLink	103	91	88.3	105	89	84.8
Virgin Australia	140	127	90.7	141	132	93.6
All Airlines	291	258	88.7	294	253	86.1

Relates to services to and from Brisbane only.

Melbourne

Jetstar	1 467	983	67.0	1 475	989	67.1
Qantas	2 171	1 644	75.7	2 173	1 787	82.2
QantasLink	454	374	82.4	452	373	82.5
Regional Express	84	61	72.6	83	72	86.7
Tigerair Australia	672	379	56.4	672	465	69.2
Virgin Australia	2 189	1 562	71.4	2 189	1 761	80.4
All Airlines	7 037	5 003	71.1	7 044	5 447	77.3

Relates to services to and from Adelaide, Brisbane, Cairns, Canberra, Darwin, Gold Coast, Hobart, Launceston, Mildura, Newcastle, Perth, Sunshine Coast and Sydney.

Mildura

QantasLink	94	80	85.1	94	83	88.3
Regional Express	83	70	84.3	84	62	73.8
Virgin Australia	30	23	76.7	30	24	80.0
All Airlines	207	173	83.6	208	169	81.3

Relates to services to and from Melbourne only.

Airport	Arrivals			Departures		
	Sectors Flown	On Time		Sectors Flown	On Time	
		No.	%		No.	%
Moranbah						
QantasLink	81	71	87.7	77	66	85.7
Virgin Australia	16	14	87.5	16	15	93.8
All Airlines	97	85	87.6	93	81	87.1
Relates to services to and from Brisbane only.						
Mount Isa						
QantasLink	55	48	87.3	54	48	88.9
Virgin Australia	16	14	87.5	17	12	70.6
All Airlines	71	62	87.3	71	60	84.5
Relates to services to and from Brisbane only.						
Newcastle						
Jetstar	198	144	72.7	198	152	76.8
QantasLink	83	67	80.7	83	72	86.7
Virgin Australia	110	98	89.1	110	93	84.5
All Airlines	391	309	79.0	391	317	81.1
Relates to services to and from Brisbane and Melbourne.						
Newman						
Qantas	52	46	88.5	52	49	94.2
QantasLink	70	57	81.4	69	58	84.1
Virgin Australia	17	16	94.1	17	15	88.2
Virgin Australia Regional Airlines	20	18	90.0	20	16	80.0
All Airlines	159	137	86.2	158	138	87.3
Relates to services to and from Perth only.						
Perth						
Jetstar	98	69	70.4	97	53	54.6
Qantas	757	571	75.4	761	631	82.9
QantasLink	573	517	90.2	578	516	89.3
Tigerair Australia	98	61	62.2	99	71	71.7
Virgin Australia	483	338	70.0	485	389	80.2
Virgin Australia Regional Airlines	310	247	79.7	312	252	80.8
All Airlines	2 319	1 803	77.7	2 332	1 912	82.0
Relates to services to and from Adelaide, Brisbane, Broome, Darwin, Geraldton, Kalgoorlie, Karratha, Melbourne, Newman, Port Hedland and Sydney.						
Port Hedland						
Qantas	27	27	100.0	27	24	88.9
QantasLink	102	90	88.2	102	91	89.2
Virgin Australia	14	12	85.7	14	13	92.9
Virgin Australia Regional Airlines	37	26	70.3	37	32	86.5
All Airlines	180	155	86.1	180	160	88.9
Relates to services to and from Perth only.						
Port Lincoln						
QantasLink	105	92	87.6	106	95	89.6
Regional Express	213	193	90.6	214	196	91.6
All Airlines	318	285	89.6	320	291	90.9
Relates to services to and from Adelaide only.						

Airport	Arrivals			Departures		
	Sectors Flown	On Time		Sectors Flown	On Time	
		No.	%		No.	%
Port Macquarie						
QantasLink	114	76	66.7	115	73	63.5
Virgin Australia	57	38	66.7	57	39	68.4
All Airlines	171	114	66.7	172	112	65.1
Relates to services to and from Sydney only.						
Proserpine						
Jetstar	35	33	94.3	35	27	77.1
Tigerair Australia	17	16	94.1	17	16	94.1
Virgin Australia	32	26	81.3	32	24	75.0
All Airlines	84	75	89.3	84	67	79.8
Relates to services to and from Brisbane only.						
Rockhampton						
QantasLink	174	146	83.9	172	146	84.9
Virgin Australia	137	100	73.0	138	110	79.7
All Airlines	311	246	79.1	310	256	82.6
Relates to services to and from Brisbane only.						
Sunshine Coast						
Jetstar	195	154	79.0	193	125	64.8
QantasLink	34	26	76.5	35	25	71.4
Virgin Australia	100	89	89.0	100	67	67.0
All Airlines	329	269	81.8	328	217	66.2
Relates to services to and from Melbourne and Sydney.						
Sydney						
Jetstar	1 439	1 056	73.4	1 446	1 085	75.0
Qantas	2 254	1 868	82.9	2 256	1 829	81.1
QantasLink	1 387	1 040	75.0	1 386	1 020	73.6
Regional Express	477	391	82.0	477	413	86.6
Tigerair Australia	584	367	62.8	585	419	71.6
Virgin Australia	2 486	1 983	79.8	2 484	2 027	81.6
All Airlines	8 627	6 705	77.7	8 634	6 793	78.7
Relates to services to and from Adelaide, Albury, Armidale, Ayers Rock, Ballina, Brisbane, Cairns, Canberra, Coffs Harbour, Darwin, Dubbo, Gold Coast, Hamilton Island, Hobart, Launceston, Melbourne, Perth, Port Macquarie, Sunshine Coast, Tamworth, Townsville and Wagga Wagga.						
Tamworth						
QantasLink	131	99	75.6	131	102	77.9
Virgin Australia	47	37	78.7	48	39	81.3
All Airlines	178	136	76.4	179	141	78.8
Relates to services to and from Sydney only.						
Townsville						
Jetstar	78	61	78.2	77	56	72.7
Qantas	68	59	86.8	68	63	92.6
QantasLink	216	197	91.2	213	188	88.3
Regional Express	41	36	87.8	41	39	95.1
Virgin Australia	153	131	85.6	154	137	89.0
All Airlines	556	484	87.1	553	483	87.3
Relates to services to and from Brisbane, Cairns and Sydney.						

<i>Airport</i>	<i>Arrivals</i>			<i>Departures</i>		
	<i>Sectors</i>	<i>On Time</i>		<i>Sectors</i>	<i>On Time</i>	
	<i>Flown</i>	<i>No.</i>	<i>%</i>	<i>Flown</i>	<i>No.</i>	<i>%</i>
Wagga Wagga						
QantasLink	105	88	83.8	106	85	80.2
Regional Express	128	112	87.5	129	109	84.5
All Airlines	233	200	85.8	235	194	82.6

Relates to services to and from Sydney only.

Definitions

On time arrival	A flight arrival is counted as "on time" if it arrived at the gate before 15 minutes after the scheduled arrival time shown in the carriers' schedule. Neither diverted nor cancelled flights count as on time.
On time departure	A flight departure is counted as "on time" if it departs the gate before 15 minutes after the scheduled departure time shown in the carriers' schedule.
Cancellation	A flight removed from service within 7 days of scheduled departure is regarded as a cancellation.
On time departure percentage	The percentage of on time departures is measured against the number of departures <i>operated</i> on any particular sector.
On time arrival percentage	The percentage of on time arrivals is measured against the number of arrivals <i>operated</i> on any particular sector.
Cancellation percentage	The percentage of cancellations is measured against the number of services <i>scheduled</i> on any particular sector.
