



**Australian Government**

**Department of Infrastructure and Regional Development**

Bureau of Infrastructure, Transport and Regional Economics

STATISTICAL REPORT



## Aviation

Domestic airline on time performance  
September 2016

© Commonwealth of Australia 2016

ISSN: 1832-0759

### **Ownership of intellectual property rights in this publication**

Unless otherwise noted, copyright (and any other intellectual property rights, if any) in this publication is owned by the Commonwealth of Australia (referred to below as the Commonwealth).

### **Disclaimer**

The material contained in this publication is made available on the understanding that the Commonwealth is not providing professional advice, and that users exercise their own skill and care with respect to its use, and seek independent advice if necessary.

The Commonwealth makes no representations or warranties as to the contents or accuracy of the information contained in this publication. To the extent permitted by law, the Commonwealth disclaims liability to any person or organisation in respect of anything done, or omitted to be done, in reliance upon information contained in this publication.

### **Creative Commons licence**

With the exception of (a) the Coat of Arms; and (b) the Department of Infrastructure and Regional Development's photos and graphics, copyright in this publication is licensed under a Creative Commons Attribution 3.0 Australia Licence.

Creative Commons Attribution 3.0 Australia Licence is a standard form licence agreement that allows you to copy, communicate and adapt this publication provided that you attribute the work to the Commonwealth and abide by the other licence terms. A summary of the licence terms is available from <http://creativecommons.org/licenses/by/3.0/au/deed.en>. The full licence terms are available from <http://creativecommons.org/licenses/by/3.0/au/legalcode>.

### **Use of the Coat of Arms**

The Department of the Prime Minister and Cabinet sets the terms under which the Coat of Arms is used. Please refer to the Department's Commonwealth Coat of Arms and Government branding web page <http://www.dpmmc.gov.au/guidelines/index.cfm#brand> and, in particular, the Guidelines on the use of the Commonwealth Coat of Arms publication.

An appropriate citation for this report is:

Bureau of Infrastructure, Transport and Regional Economics (BITRE), 2016, Domestic airline on time performance, Statistical Report, BITRE, Canberra ACT.

### **Contact us**

This publication is available in PDF format. All other rights are reserved, including in relation to any Departmental logos or trade marks which may exist. For enquiries regarding the licence and any use of this publication, please contact:

Bureau of Infrastructure, Transport and Regional Economics (BITRE)  
Department of Infrastructure and Regional Development  
GPO Box 501, Canberra ACT 2601, Australia  
Telephone: (international) +61 2 6274 7210  
Fax: (international) +61 2 6274 6855  
Email: [bitre@infrastructure.gov.au](mailto:bitre@infrastructure.gov.au)  
Website: [www.bitre.gov.au](http://www.bitre.gov.au)

### **Inquiries**

Should you require additional information about the statistics contained in this publication:

Telephone (02) 6274 7790 or Facsimile (02) 6274 7727

Electronic mail: [AVSTATS@infrastructure.gov.au](mailto:AVSTATS@infrastructure.gov.au)

Web site: <http://www.bitre.gov.au/statistics/aviation/otphome.aspx>

# Foreword

The Bureau of Infrastructure, Transport and Regional Economics (BITRE) monitors the punctuality and reliability of major domestic airlines operating between Australian airports. The purpose of this is to allow for evaluation of overall industry and individual airline performance, so that consumers of air travel can make informed decisions.

The following domestic airlines currently report this information monthly to the BITRE: Jetstar, Qantas, QantasLink, Regional Express, Tigerair Australia, Virgin Australia and Virgin Australia Regional Airlines. Data has been gathered since November 2003, although some airlines commenced reporting at a later date, including Jetstar which first reported in May 2004, MacAir in July 2005, Tigerair Australia in April 2008 and Virgin Australia Regional Airlines in May 2013. MacAir ceased operations in February 2009 and data was not received for December 2008 onwards. Virgin Blue was rebranded as Virgin Australia in May 2011 and Tiger Airways was rebranded as Tigerair Australia in July 2013 and time series data in Microsoft Excel spreadsheet format on the BITRE website have been revised to reflect these changes. Services operated by Skywest on behalf of Virgin Australia using ATR/F100 aircraft commenced in November 2011 and were shown separately as Virgin Australia – ATR/F100 Operations. Virgin Australia Regional Airlines commenced operations in May 2013. It was formed after the acquisition of Skywest by Virgin Australia and represented a combination of operations previously reported under Skywest and Virgin Australia – ATR/F100 Operations. In January 2016, Virgin Australia transferred their ATR fleet from Virgin Australia Regional Airlines to Virgin Australia.

Information presented in this report is for Australian domestic routes for which the passenger load averaged 8 000 or more passengers per month over the previous six months and where two or more airlines operated in competition on those routes. There were 66 routes that met this definition in September 2016. Over time, routes which meet these criteria change as airline networks and traffic levels vary.

Participating airlines report their overall monthly network performance where this is possible.

Total industry figures encompass all services operated by reporting airlines only. These airlines collectively carried over 95 per cent of total domestic passengers (regular public transport only) in 2015.

The method of capturing on time performance varies between airlines utilising different recording systems. Jetstar and Qantas jet aircraft use Aircraft Communication Addressing and Reporting System (ACARS) to electronically measure on time performance. Regional Express, Tigerair Australia, Virgin Australia, Virgin Australia Regional Airlines and the Qantas non-jet fleet record on time performance manually using records from pilots, gate agents and/or ground crews.

After initial data is collected, aggregate reports are audited internally by participating airlines prior to publication.

Reports and detailed time series data in Microsoft Excel spreadsheet format are available from the BITRE website at: <http://www.bitre.gov.au/statistics/aviation/otphome.aspx>.



# Contents

	Page
Industry performance .....	1
Individual routes .....	10
Airports .....	23
Definitions .....	29



## Industry performance

For September 2016, on time performance over all routes operated by participating airlines (Jetstar, Qantas, QantasLink, Regional Express, Tigerair Australia, Virgin Australia and Virgin Australia Regional Airlines) averaged 83.5 per cent for on time arrivals and 84.6 per cent for on time departures. Cancellations represented 1.7 per cent of all scheduled flights. The equivalent figures for September 2015 were 88.4 per cent for arrivals, 88.6 per cent for departures and 1.7 per cent for cancellations.

This month's on time arrivals figure was higher than the long term average performance for all routes (82.8 per cent) and the on time departures figure was also higher than the long term average (84.2 per cent). The rate of cancellations was higher than the long term average of 1.4 per cent.

Qantas achieved the highest on time arrivals among the major domestic airlines at 87.0 per cent followed by Virgin Australia at 85.1 per cent, Tigerair Australia at 82.6 per cent and Jetstar at 76.8 per cent. Of the regional airlines, Virgin Australia Regional Airlines recorded 85.2 per cent for on time arrivals, followed by Regional Express and QantasLink (both at 83.3 per cent). The Qantas network (Qantas and QantasLink combined operations) and the Virgin Australia network (Virgin Australia and Virgin Australia Regional Airlines combined operations) both recorded 85.1 per cent for on time arrivals.

Qantas also achieved the highest level of on time departures for September 2016 at 87.9 per cent, followed by Virgin Australia at 87.0 per cent, Tigerair Australia at 84.7 per cent and Jetstar at 74.4 per cent. Of the regional airlines, Virgin Australia Regional Airlines recorded 88.4 per cent, followed by Regional Express at 86.2 per cent and QantasLink at 84.8 per cent. The Qantas network recorded 86.3 per cent for on time departures while the Virgin Australia network recorded 87.1 per cent.

Virgin Australia Regional Airlines had the highest percentage of cancellations (2.7 per cent) during the month, followed by Virgin Australia (2.2 per cent), QantasLink (1.9 per cent), Jetstar (1.6 per cent), Qantas (1.5 per cent), Regional Express (0.7 per cent) and Tigerair Australia (0.4 per cent).

Airlines' on time performance varies across the routes they serve. Individual route data by specific airline for 66 routes are shown on pages 10-22.

Of the 66 routes which met the criteria for on time performance reporting in September 2016, the Brisbane-Hobart route had the highest percentage of on time arrivals (98.3 per cent) and the Adelaide-Alice Springs route had the highest percentage of on time departures (100.0 per cent). The Sydney-Ayers Rock route had the lowest percentage of on time arrivals (55.0 per cent) and the Ayers Rock-Sydney route had the lowest percentage of on time departures (48.3 per cent).

Cancellations were highest on the Moranbah-Brisbane route at 6.9 per cent, followed by the Brisbane-Moranbah route at 6.2 per cent, the Melbourne-Sydney route at 5.2 per cent, the Sydney-Melbourne route at 5.0 per cent and the Brisbane-Gladstone route at 4.8 per cent.

Newman Airport recorded the highest percentage of on time arrivals (97.9 per cent) and the highest percentage of on time departures (96.3 per cent). Ayers Rock Airport recorded the lowest percentage of on time arrivals (55.0 per cent) and the lowest percentage of on time departures (48.3 per cent). These figures only refer to reported routes and do not cover all flights at these airports.



Table 1 On time performance for September 2016 — Total Industry

	<i>Sectors</i>		<i>Arrivals On Time</i>		<i>Departures On Time</i>		<i>Cancellations</i>	
	<i>Scheduled</i>	<i>Flown</i>	<i>No.</i>	<i>%</i>	<i>No.</i>	<i>%</i>	<i>No.</i>	<i>%</i>
Jetstar	7 449	7 330	5 630	76.8	5 451	74.4	119	1.6
Qantas	9 377	9 236	8 039	87.0	8 120	87.9	141	1.5
QantasLink	10 574	10 369	8 638	83.3	8 796	84.8	205	1.9
Regional Express	6 614	6 566	5 471	83.3	5 657	86.2	48	0.7
Tigerair Australia	2 259	2 250	1 859	82.6	1 905	84.7	9	0.4
Virgin Australia	12 428	12 153	10 339	85.1	10 572	87.0	275	2.2
Virgin Australia Regional Airlines	706	687	585	85.2	607	88.4	19	2.7
All Airlines	49 407	48 591	40 561	83.5	41 108	84.6	816	1.7
Qantas - all QF designated services	19 951	19 605	16 677	85.1	16 916	86.3	346	1.7
Virgin Australia - all VA designated services	13 134	12 840	10 924	85.1	11 179	87.1	294	2.2

Total airline network data (including routes not shown in this report).

Airlines' on time performance varies across the routes they serve. Individual route data by specific airline for 66 routes are shown on pages 10-22.

Table 2 Top ten routes for on time performance for September 2016 (participating airlines only)

<i>Arrivals</i>		<i>Departures</i>	
<i>Route</i>	<i>On Time (%)</i>	<i>Route</i>	<i>On Time (%)</i>
Brisbane-Hobart	98.3	Adelaide-Alice Springs	100.0
Perth-Newman	97.9	Perth-Newman	97.3
Sydney-Launceston	95.6	Brisbane-Hobart	96.6
Perth-Sydney	95.5	Newman-Perth	96.3
Melbourne-Hamilton Island	94.7	Brisbane-Mount Isa	95.9
Cairns-Townsville	94.6	Perth-Port Hedland	94.5
Alice Springs-Darwin	94.5	Port Hedland-Perth	94.4
Kalgoorlie-Perth	94.4	Perth-Kalgoorlie	94.4
Newman-Perth	94.1	Kalgoorlie-Perth	94.4
Perth-Geraldton	93.3	Perth-Karratha	93.7

Table 3 Top ten airports for on time performance for September 2016 (participating airlines and reported routes only)

<i>Arrivals</i>		<i>Departures</i>	
<i>Airport</i>	<i>On Time (%)</i>	<i>Airport</i>	<i>On Time (%)</i>
Newman	97.9	Newman	96.3
Geraldton	93.3	Port Hedland	94.4
Port Hedland	92.5	Kalgoorlie	94.4
Kalgoorlie	92.3	Geraldton	93.3
Karratha	92.3	Karratha	92.8
Townsville	91.4	Perth	90.2
Alice Springs	91.4	Moranbah	89.3
Mount Isa	90.4	Port Lincoln	89.2
Ballina	90.1	Bundaberg	88.3
Port Lincoln	89.1	Mount Isa	87.8

## Total industry on time performance

Figure 1 On time performance (by month from September 2013)—Total Industry

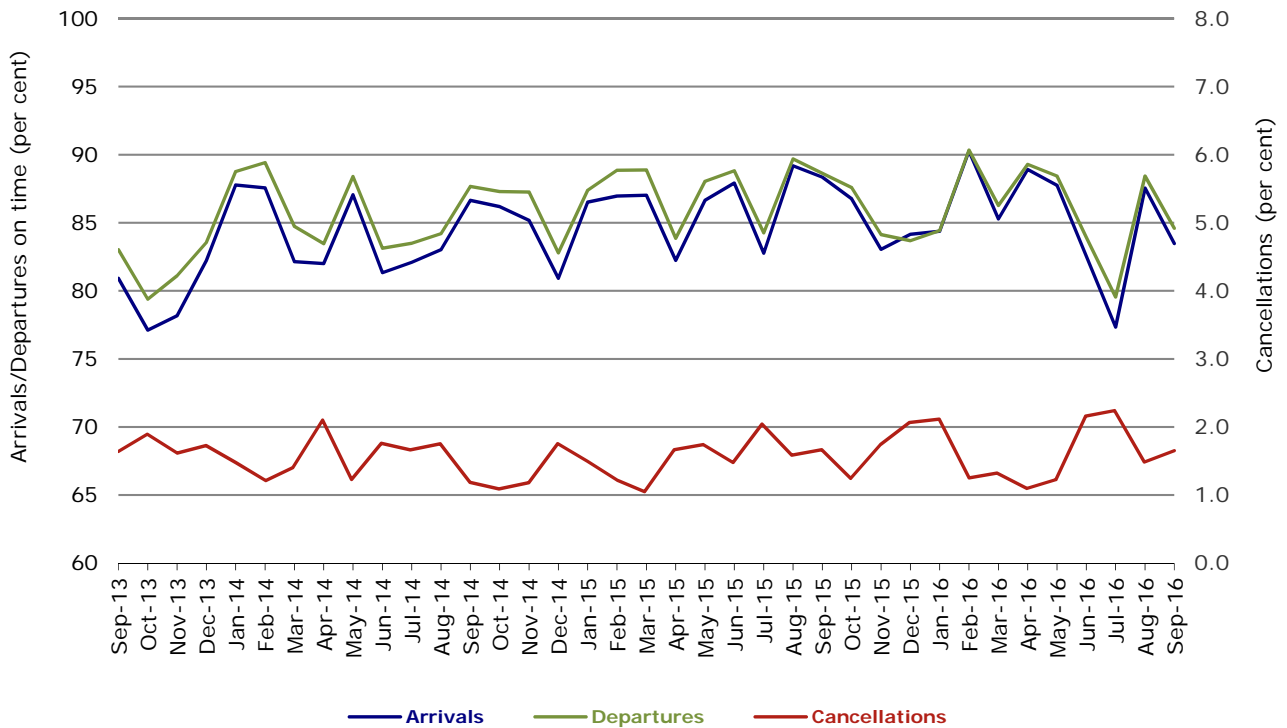


Figure 2 Arrivals on time (by month from September 2015)

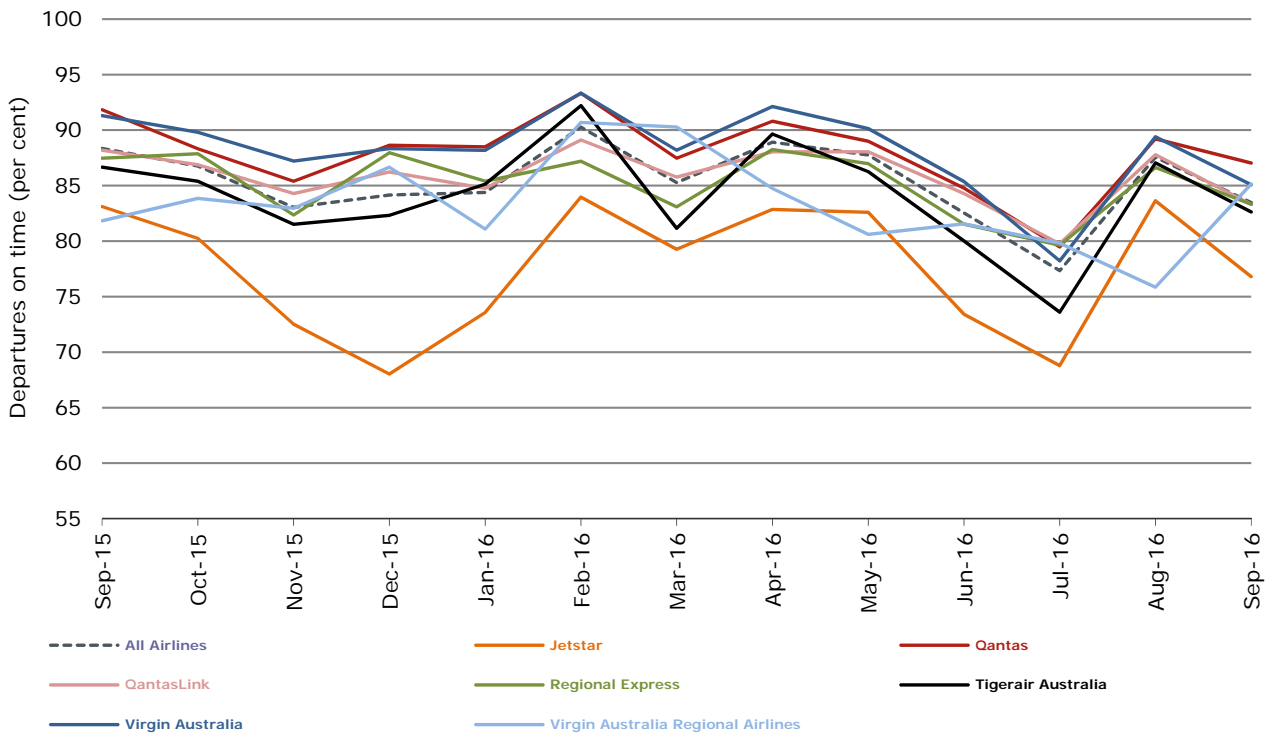


Figure 3 Departures on time (by month from September 2015)

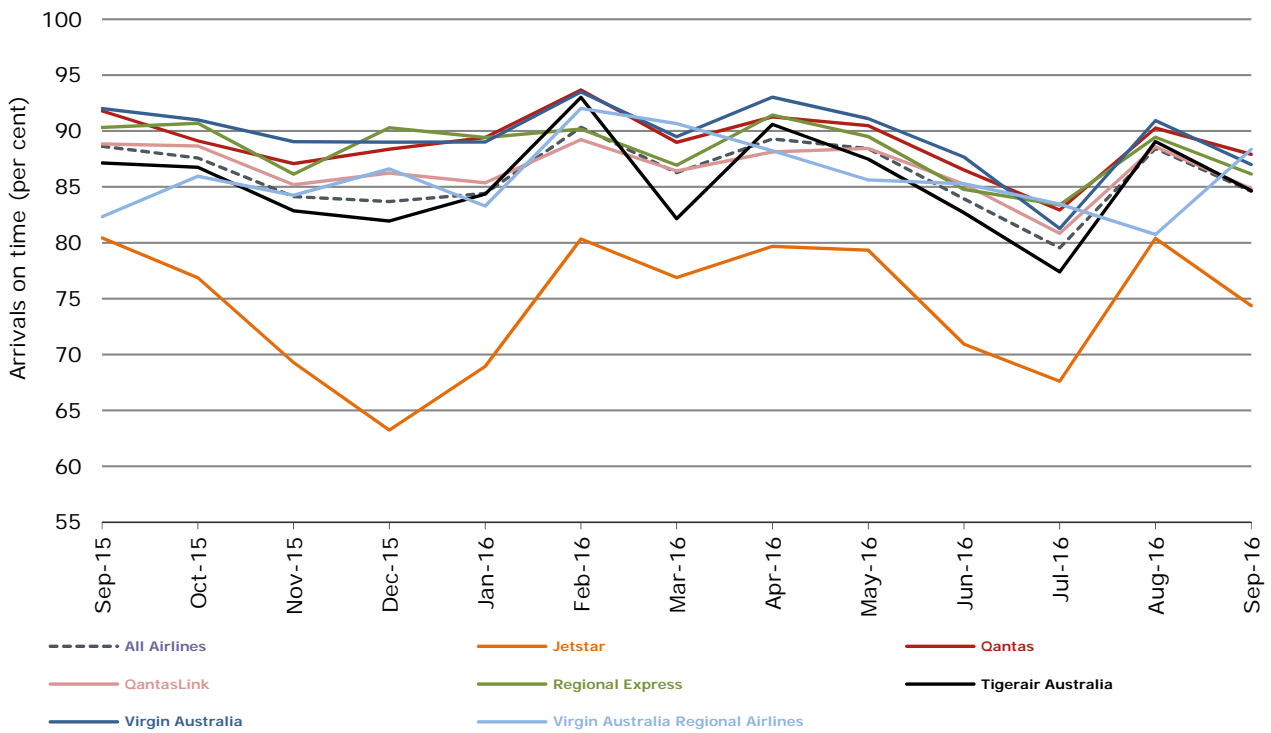
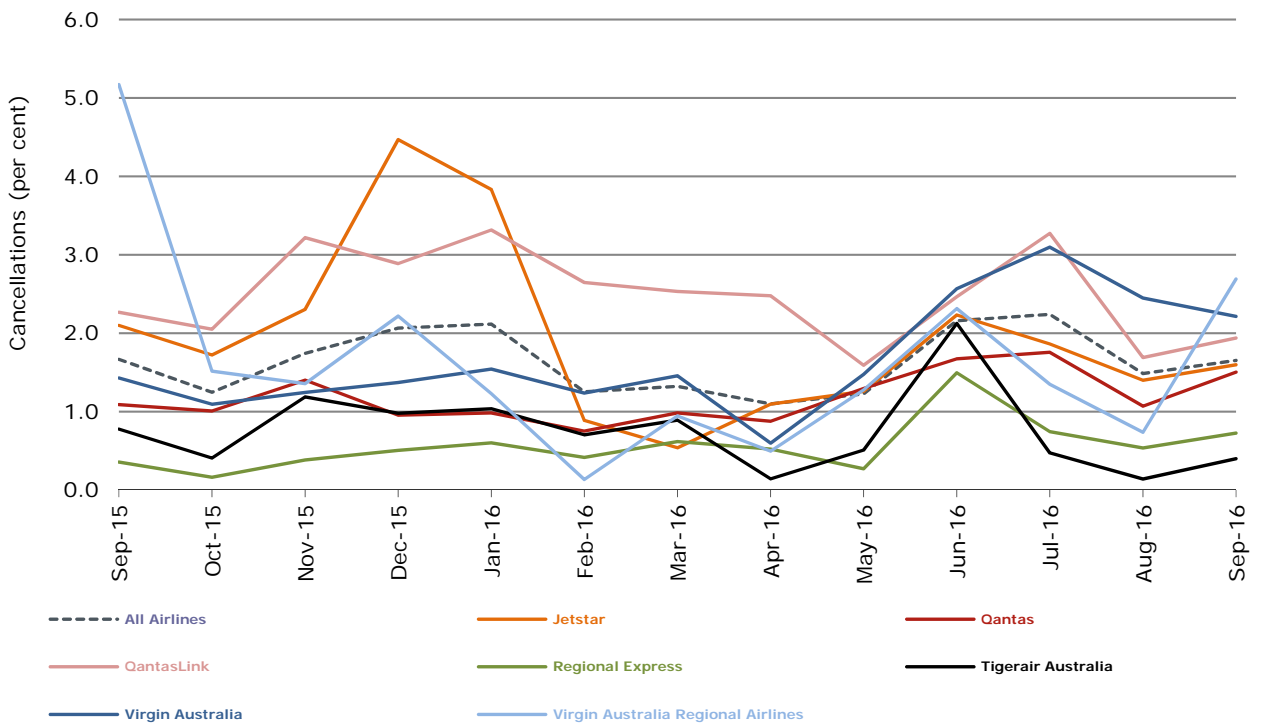


Figure 4 Cancellations (by month from September 2015)



## Major domestic airlines on time performance

Figure 5 On time performance (by month from September 2013)—Jetstar

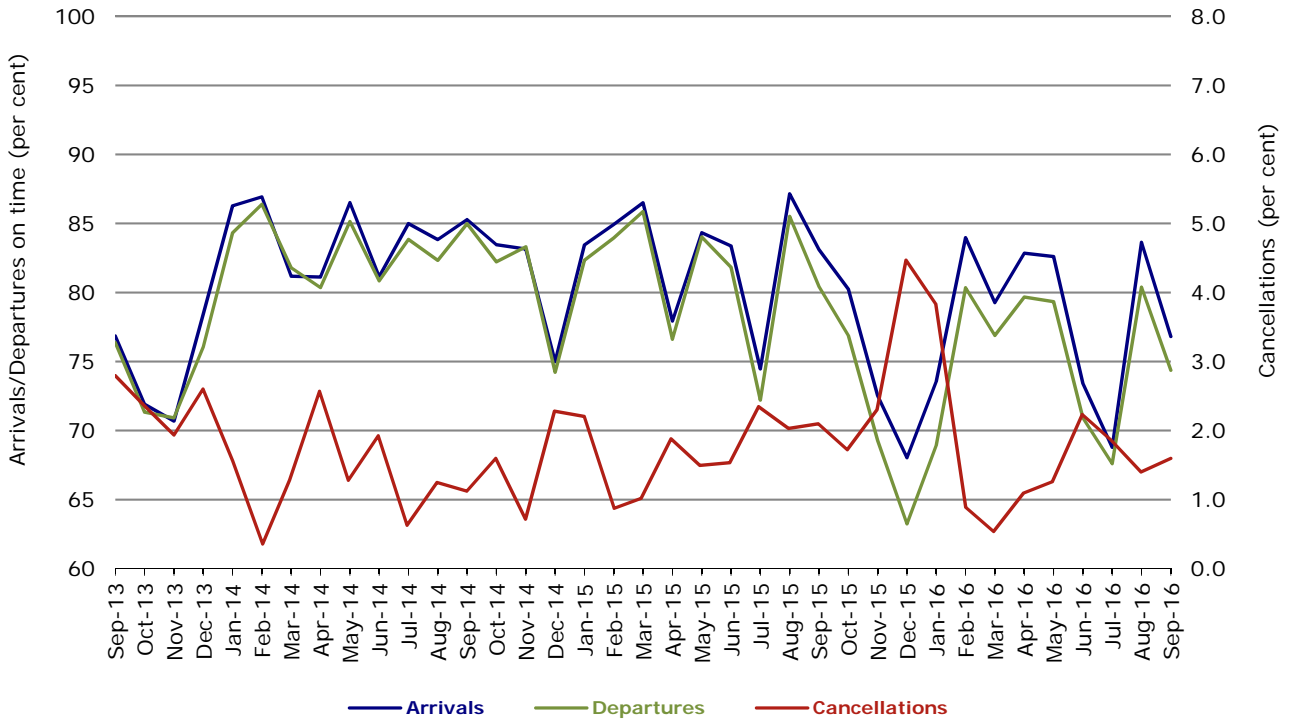


Figure 6 On time performance (by month from September 2013)—Qantas

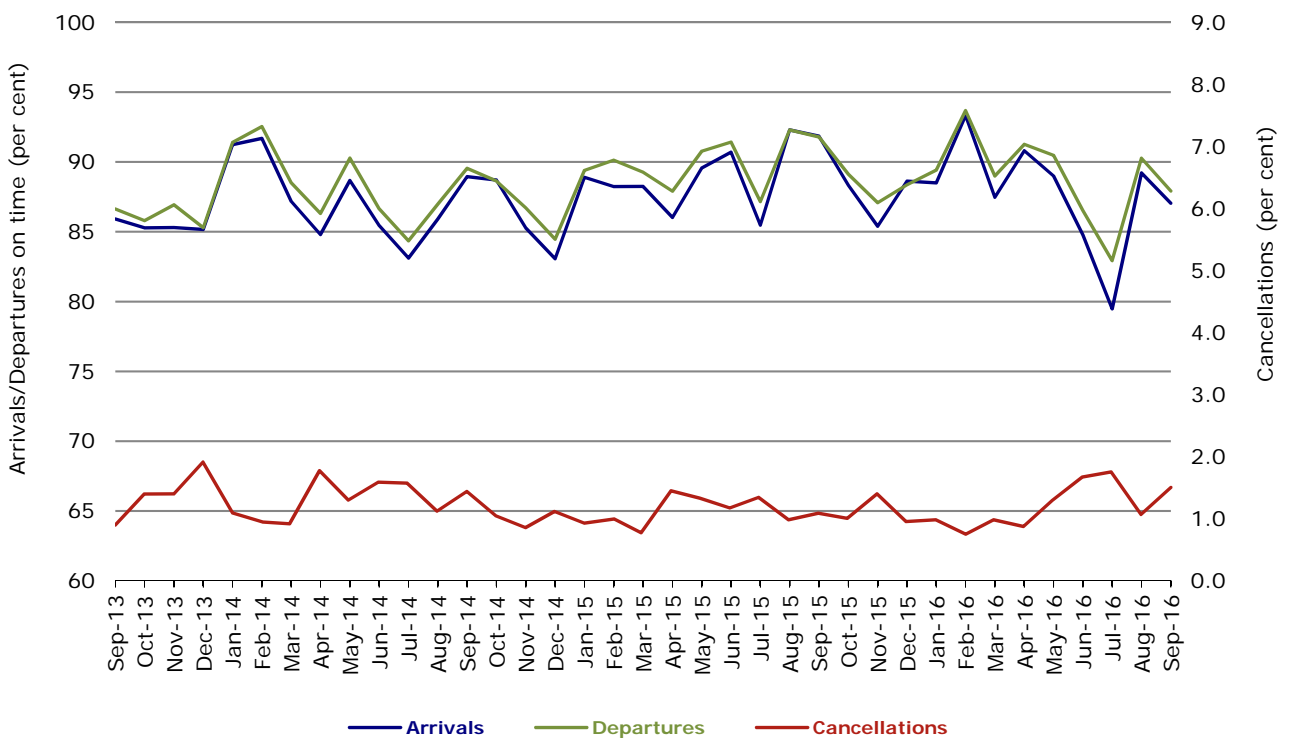


Figure 7 On time performance (by month from September 2013)—Tigerair Australia

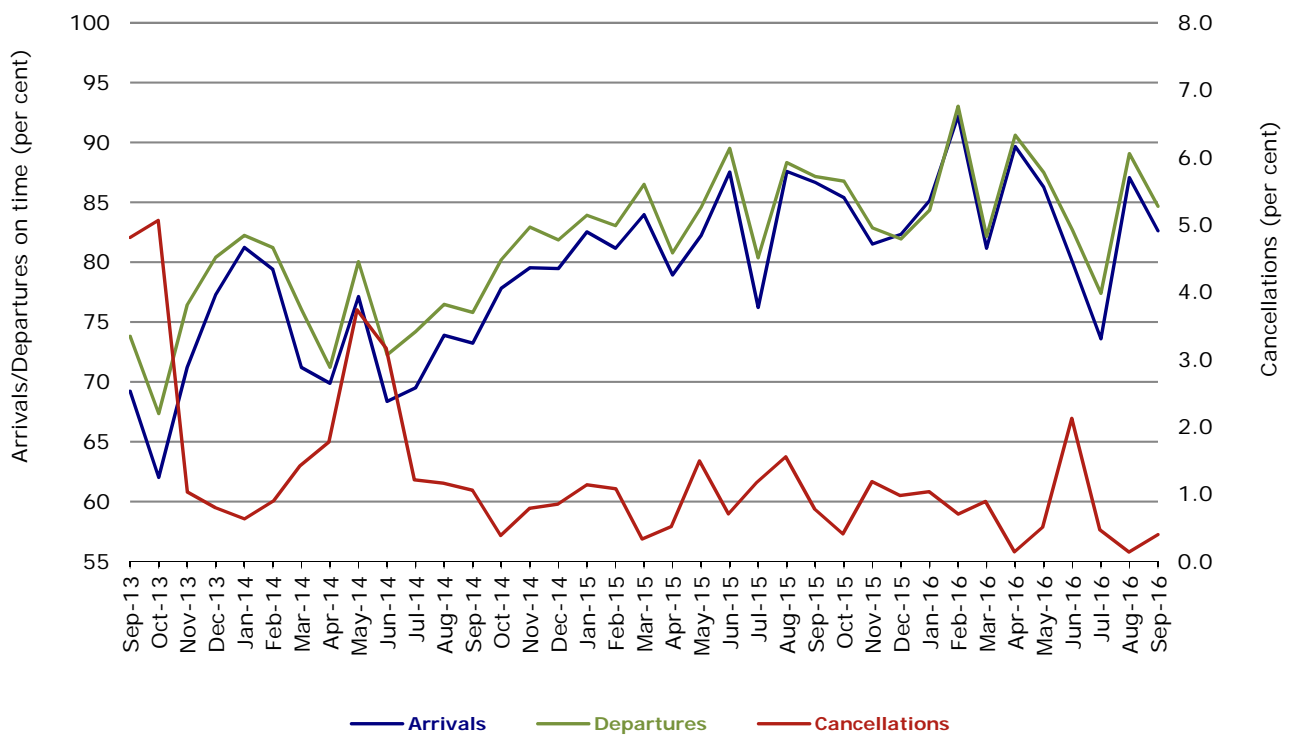
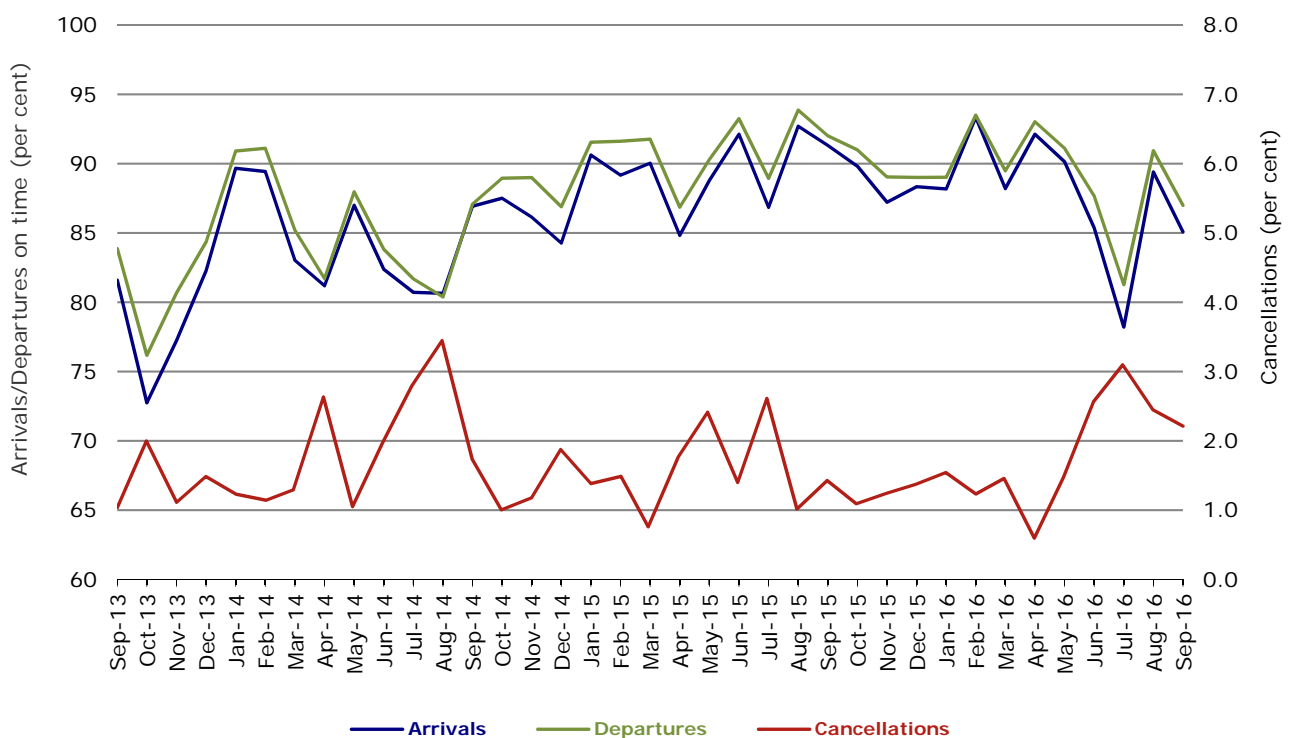


Figure 8 On time performance (by month from September 2013)—Virgin Australia



In January 2016, Virgin Australia transferred their ATR fleet from Virgin Australia Regional Airlines to Virgin Australia.

## Major regional airlines on time performance

Figure 9 On time performance (by month from September 2013)—QantasLink

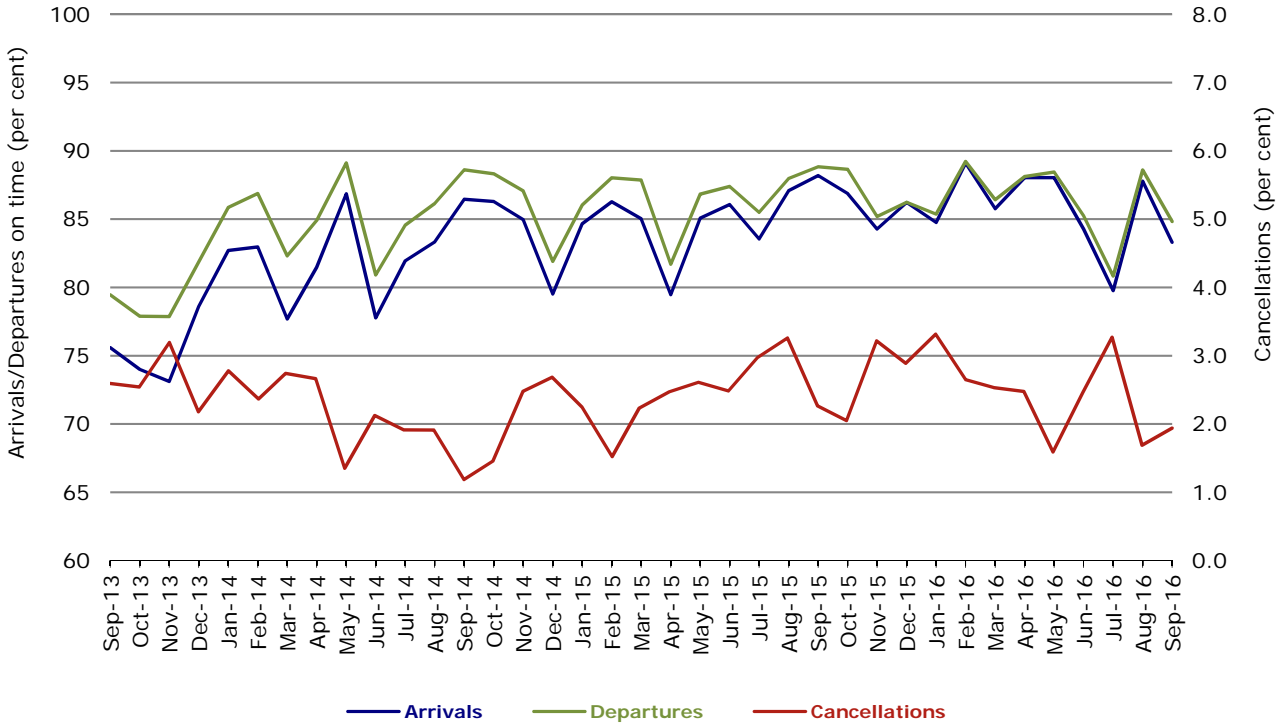


Figure 10 On time performance (by month from September 2013)—Regional Express

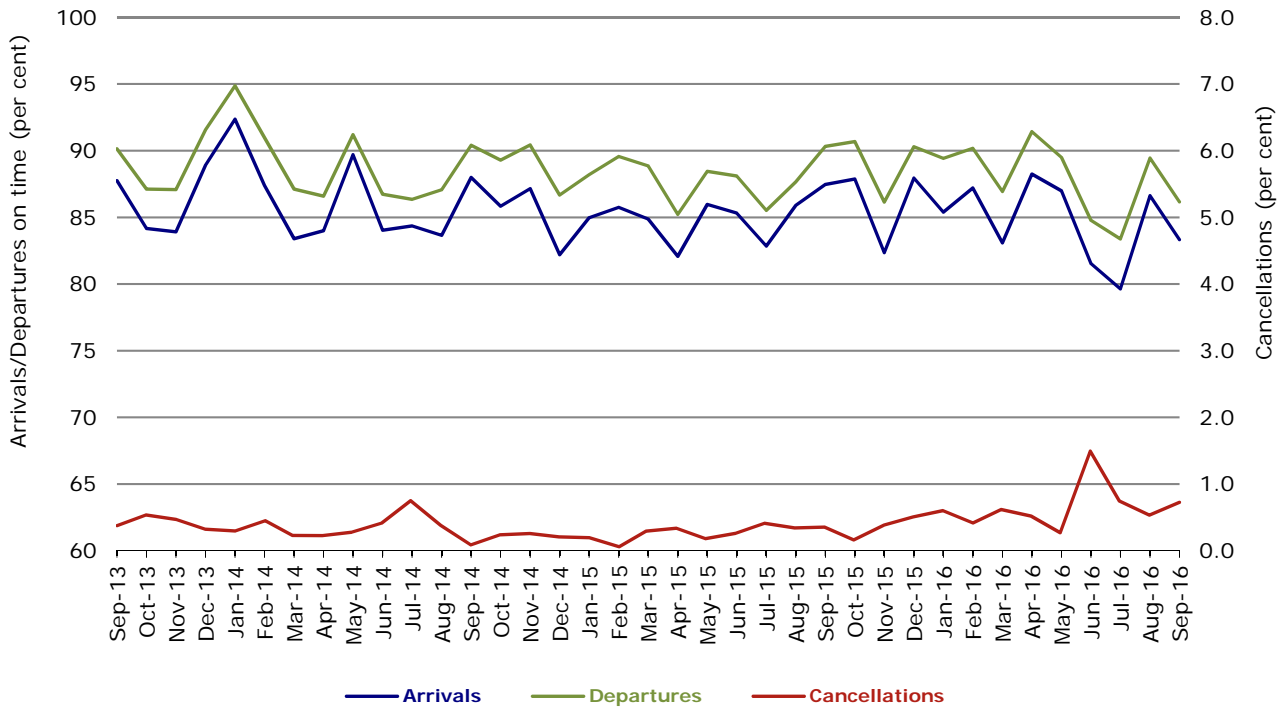
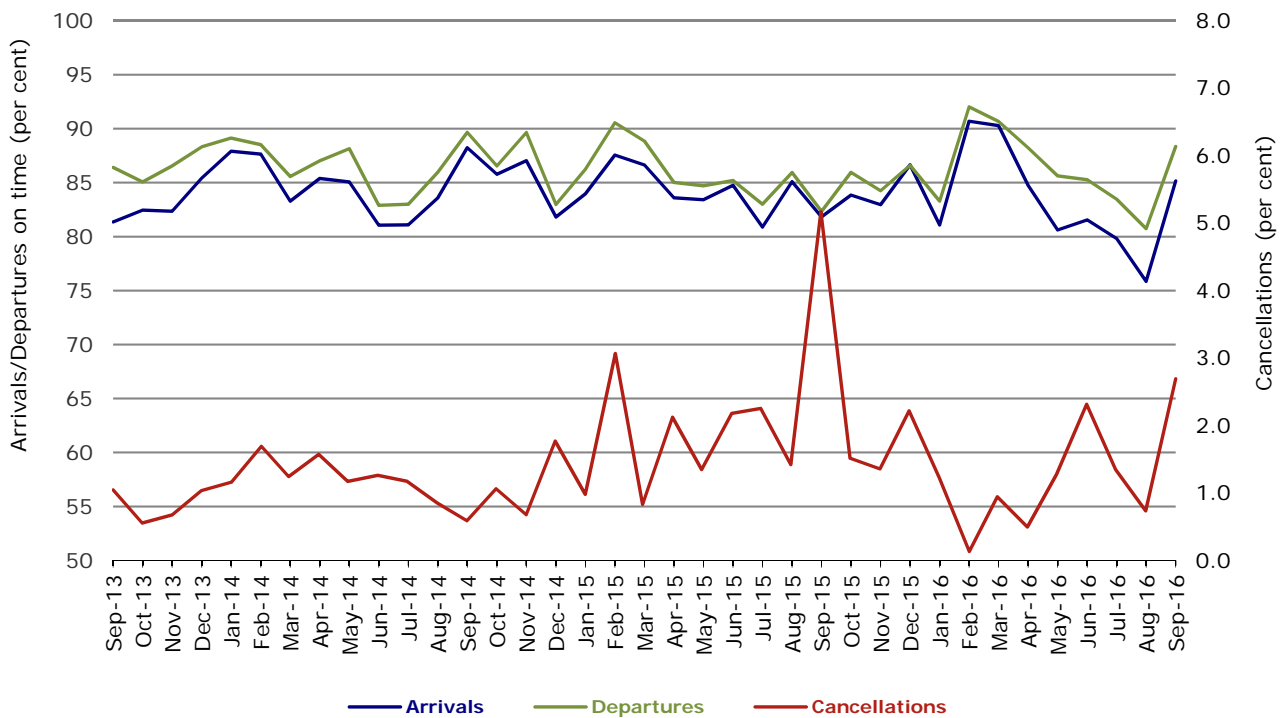


Figure 11 On time performance (by month from September 2013)  
Virgin Australia Regional Airlines



Virgin Australia Regional Airlines commenced operations in May 2013. It was formed after the acquisition of Skywest by Virgin Australia and represented a combination of operations previously reported under Skywest and Virgin Australia – ATR/F100 Operations. In January 2016, Virgin Australia transferred their ATR fleet from Virgin Australia Regional Airlines to Virgin Australia.

## Individual routes

On time performance is reported for all routes where the passenger load averages over 8000 passengers per month over the previous six months, and where two or more airlines operate in competition on those routes. There are now 66 routes which meet this definition. Over time, however, routes which meet this definition may change as airline networks and traffic levels vary.

	<i>Sectors</i>		<i>Arrivals On Time</i>		<i>Departures On Time</i>		<i>Cancellations</i>	
	<i>Sched.</i>	<i>Flown</i>	<i>No.</i>	<i>%</i>	<i>No.</i>	<i>%</i>	<i>No.</i>	<i>%</i>
<b>Adelaide-Alice Springs</b>								
Qantas	30	30	28	93.3	30	100.0	0	0.0
Virgin Australia	13	13	12	92.3	13	100.0	0	0.0
All Airlines	43	43	40	93.0	43	100.0	0	0.0
<b>Adelaide-Brisbane</b>								
Jetstar	27	27	21	77.8	23	85.2	0	0.0
Qantas	118	118	111	94.1	110	93.2	0	0.0
Tigerair Australia	24	24	22	91.7	21	87.5	0	0.0
Virgin Australia	112	111	96	86.5	85	76.6	1	0.9
All Airlines	281	280	250	89.3	239	85.4	1	0.4
<b>Adelaide-Canberra</b>								
Qantas	48	48	45	93.8	43	89.6	0	0.0
Virgin Australia	26	26	20	76.9	21	80.8	0	0.0
All Airlines	74	74	65	87.8	64	86.5	0	0.0
<b>Adelaide-Gold Coast</b>								
Jetstar	38	38	28	73.7	26	68.4	0	0.0
Virgin Australia	31	31	30	96.8	30	96.8	0	0.0
All Airlines	69	69	58	84.1	56	81.2	0	0.0
<b>Adelaide-Melbourne</b>								
Jetstar	114	110	81	73.6	72	65.5	4	3.5
Qantas	289	284	264	93.0	253	89.1	5	1.7
Tigerair Australia	78	78	62	79.5	60	76.9	0	0.0
Virgin Australia	277	268	222	82.8	222	82.8	9	3.2
All Airlines	758	740	629	85.0	607	82.0	18	2.4
<b>Adelaide-Perth</b>								
Jetstar	30	29	20	69.0	21	72.4	1	3.3
Qantas	119	119	110	92.4	111	93.3	0	0.0
Virgin Australia	72	71	61	85.9	64	90.1	1	1.4
All Airlines	221	219	191	87.2	196	89.5	2	0.9
<b>Adelaide-Port Lincoln</b>								
QantasLink	109	107	98	91.6	100	93.5	2	1.8
Regional Express	210	205	180	87.8	189	92.2	5	2.4
All Airlines	319	312	278	89.1	289	92.6	7	2.2
<b>Adelaide-Sydney</b>								
Jetstar	106	105	87	82.9	79	75.2	1	0.9
Qantas	235	234	205	87.6	211	90.2	1	0.4
QantasLink	30	26	20	76.9	18	69.2	4	13.3
Tigerair Australia	47	47	38	80.9	36	76.6	0	0.0
Virgin Australia	162	159	140	88.1	134	84.3	3	1.9
All Airlines	580	571	490	85.8	478	83.7	9	1.6
<b>Albury-Sydney</b>								
QantasLink	108	107	76	71.0	78	72.9	1	0.9
Regional Express	106	106	94	88.7	95	89.6	0	0.0
Virgin Australia	60	59	42	71.2	42	71.2	1	1.7
All Airlines	274	272	212	77.9	215	79.0	2	0.7



	<i>Sectors</i>		<i>Arrivals On Time</i>		<i>Departures On Time</i>		<i>Cancellations</i>	
	<i>Sched.</i>	<i>Flown</i>	<i>No.</i>	<i>%</i>	<i>No.</i>	<i>%</i>	<i>No.</i>	<i>%</i>
<b>Alice Springs-Adelaide</b>								
Qantas	30	30	17	56.7	18	60.0	0	0.0
Virgin Australia	13	13	12	92.3	12	92.3	0	0.0
All Airlines	43	43	29	67.4	30	69.8	0	0.0
<b>Alice Springs-Darwin</b>								
QantasLink	60	60	57	95.0	56	93.3	0	0.0
Virgin Australia	13	13	12	92.3	12	92.3	0	0.0
All Airlines	73	73	69	94.5	68	93.2	0	0.0
<b>Armidale-Sydney</b>								
QantasLink	121	119	86	72.3	81	68.1	2	1.7
Regional Express	76	76	61	80.3	62	81.6	0	0.0
All Airlines	197	195	147	75.4	143	73.3	2	1.0
<b>Ayers Rock-Sydney</b>								
Jetstar	30	30	23	76.7	14	46.7	0	0.0
Virgin Australia	30	30	20	66.7	15	50.0	0	0.0
All Airlines	60	60	43	71.7	29	48.3	0	0.0
<b>Ballina-Sydney</b>								
Jetstar	86	86	70	81.4	67	77.9	0	0.0
Regional Express	26	26	18	69.2	19	73.1	0	0.0
Virgin Australia	31	31	27	87.1	28	90.3	0	0.0
All Airlines	143	143	115	80.4	114	79.7	0	0.0
<b>Brisbane-Adelaide</b>								
Jetstar	27	27	23	85.2	24	88.9	0	0.0
Qantas	118	118	106	89.8	111	94.1	0	0.0
Tigerair Australia	24	24	22	91.7	22	91.7	0	0.0
Virgin Australia	111	111	86	77.5	97	87.4	0	0.0
All Airlines	280	280	237	84.6	254	90.7	0	0.0
<b>Brisbane-Bundaberg</b>								
QantasLink	133	132	112	84.8	110	83.3	1	0.8
Virgin Australia	30	30	29	96.7	28	93.3	0	0.0
All Airlines	163	162	141	87.0	138	85.2	1	0.6
<b>Brisbane-Cairns</b>								
Jetstar	118	118	90	76.3	78	66.1	0	0.0
Qantas	124	124	115	92.7	111	89.5	0	0.0
QantasLink	9	9	7	77.8	6	66.7	0	0.0
Tigerair Australia	30	30	25	83.3	24	80.0	0	0.0
Virgin Australia	134	134	119	88.8	114	85.1	0	0.0
All Airlines	415	415	356	85.8	333	80.2	0	0.0
<b>Brisbane-Canberra</b>								
Qantas	26	26	26	100.0	26	100.0	0	0.0
QantasLink	125	125	110	88.0	110	88.0	0	0.0
Virgin Australia	98	97	92	94.8	91	93.8	1	1.0
All Airlines	249	248	228	91.9	227	91.5	1	0.4
<b>Brisbane-Darwin</b>								
Jetstar	30	30	21	70.0	21	70.0	0	0.0
Qantas	47	47	44	93.6	45	95.7	0	0.0
Tigerair Australia	26	26	23	88.5	25	96.2	0	0.0
Virgin Australia	30	30	28	93.3	28	93.3	0	0.0
All Airlines	133	133	116	87.2	119	89.5	0	0.0
<b>Brisbane-Emerald</b>								
QantasLink	136	134	105	78.4	119	88.8	2	1.5
Virgin Australia	74	74	68	91.9	72	97.3	0	0.0
All Airlines	210	208	173	83.2	191	91.8	2	1.0

	<i>Sectors</i>		<i>Arrivals On Time</i>		<i>Departures On Time</i>		<i>Cancellations</i>	
	<i>Sched.</i>	<i>Flown</i>	<i>No.</i>	<i>%</i>	<i>No.</i>	<i>%</i>	<i>No.</i>	<i>%</i>
<b>Brisbane-Gladstone</b>								
QantasLink	191	181	145	80.1	162	89.5	10	5.2
Virgin Australia	122	117	111	94.9	108	92.3	5	4.1
All Airlines	313	298	256	85.9	270	90.6	15	4.8
<b>Brisbane-Hamilton Island</b>								
QantasLink	30	30	26	86.7	24	80.0	0	0.0
Virgin Australia	30	30	25	83.3	26	86.7	0	0.0
All Airlines	60	60	51	85.0	50	83.3	0	0.0
<b>Brisbane-Hobart</b>								
Jetstar	28	28	28	100.0	27	96.4	0	0.0
Virgin Australia	30	30	29	96.7	29	96.7	0	0.0
All Airlines	58	58	57	98.3	56	96.6	0	0.0
<b>Brisbane-Mackay</b>								
Jetstar	47	47	35	74.5	34	72.3	0	0.0
QantasLink	106	106	95	89.6	94	88.7	0	0.0
Virgin Australia	151	151	135	89.4	135	89.4	0	0.0
All Airlines	304	304	265	87.2	263	86.5	0	0.0
<b>Brisbane-Melbourne</b>								
Jetstar	155	146	118	80.8	107	73.3	9	5.8
Qantas	427	426	366	85.9	359	84.3	1	0.2
Tigerair Australia	126	125	100	80.0	97	77.6	1	0.8
Virgin Australia	394	377	300	79.6	339	89.9	17	4.3
All Airlines	1 102	1 074	884	82.3	902	84.0	28	2.5
<b>Brisbane-Moranbah</b>								
QantasLink	102	94	85	90.4	86	91.5	8	7.8
Virgin Australia	60	58	50	86.2	49	84.5	2	3.3
All Airlines	162	152	135	88.8	135	88.8	10	6.2
<b>Brisbane-Mount Isa</b>								
Qantas	26	26	23	88.5	25	96.2	0	0.0
QantasLink	30	30	27	90.0	28	93.3	0	0.0
Virgin Australia	17	17	16	94.1	17	100.0	0	0.0
All Airlines	73	73	66	90.4	70	95.9	0	0.0
<b>Brisbane-Newcastle</b>								
Jetstar	90	90	74	82.2	70	77.8	0	0.0
QantasLink	96	95	81	85.3	79	83.2	1	1.0
Virgin Australia	91	91	80	87.9	78	85.7	0	0.0
All Airlines	277	276	235	85.1	227	82.2	1	0.4
<b>Brisbane-Perth</b>								
Qantas	131	131	114	87.0	122	93.1	0	0.0
Virgin Australia	111	111	72	64.9	88	79.3	0	0.0
All Airlines	242	242	186	76.9	210	86.8	0	0.0
<b>Brisbane-Proserpine</b>								
Jetstar	30	30	24	80.0	20	66.7	0	0.0
Virgin Australia	32	32	31	96.9	30	93.8	0	0.0
All Airlines	62	62	55	88.7	50	80.6	0	0.0
<b>Brisbane-Rockhampton</b>								
QantasLink	190	188	152	80.9	160	85.1	2	1.1
Virgin Australia	187	180	153	85.0	155	86.1	7	3.7
All Airlines	377	368	305	82.9	315	85.6	9	2.4

	<i>Sectors</i>		<i>Arrivals On Time</i>		<i>Departures On Time</i>		<i>Cancellations</i>	
	<i>Sched.</i>	<i>Flown</i>	<i>No.</i>	<i>%</i>	<i>No.</i>	<i>%</i>	<i>No.</i>	<i>%</i>
<b>Brisbane-Sydney</b>								
Jetstar	189	186	134	72.0	129	69.4	3	1.6
Qantas	616	609	546	89.7	549	90.1	7	1.1
Tigerair Australia	103	103	83	80.6	84	81.6	0	0.0
Virgin Australia	560	549	486	88.5	494	90.0	11	2.0
All Airlines	1 468	1 447	1 249	86.3	1 256	86.8	21	1.4
<b>Brisbane-Townsville</b>								
Jetstar	48	48	40	83.3	42	87.5	0	0.0
Qantas	93	93	85	91.4	81	87.1	0	0.0
QantasLink	59	59	56	94.9	56	94.9	0	0.0
Virgin Australia	143	143	130	90.9	128	89.5	0	0.0
All Airlines	343	343	311	90.7	307	89.5	0	0.0
<b>Broome-Perth</b>								
Qantas	22	22	18	81.8	18	81.8	0	0.0
QantasLink	60	60	56	93.3	56	93.3	0	0.0
Virgin Australia	2	2	2	100.0	2	100.0	0	0.0
Virgin Australia Regional Airlines	67	66	43	65.2	46	69.7	1	1.5
All Airlines	151	150	119	79.3	122	81.3	1	0.7
<b>Bundaberg-Brisbane</b>								
QantasLink	133	132	109	82.6	115	87.1	1	0.8
Virgin Australia	30	30	29	96.7	28	93.3	0	0.0
All Airlines	163	162	138	85.2	143	88.3	1	0.6
<b>Cairns-Brisbane</b>								
Jetstar	118	118	92	78.0	84	71.2	0	0.0
Qantas	124	124	113	91.1	118	95.2	0	0.0
QantasLink	9	9	7	77.8	7	77.8	0	0.0
Tigerair Australia	30	30	25	83.3	25	83.3	0	0.0
Virgin Australia	133	133	119	89.5	119	89.5	0	0.0
All Airlines	414	414	356	86.0	353	85.3	0	0.0
<b>Cairns-Melbourne</b>								
Jetstar	112	112	86	76.8	74	66.1	0	0.0
Qantas	48	48	33	68.8	37	77.1	0	0.0
Tigerair Australia	45	45	42	93.3	38	84.4	0	0.0
Virgin Australia	34	34	26	76.5	20	58.8	0	0.0
All Airlines	239	239	187	78.2	169	70.7	0	0.0
<b>Cairns-Sydney</b>								
Jetstar	110	107	91	85.0	93	86.9	3	2.7
Qantas	82	81	69	85.2	66	81.5	1	1.2
Tigerair Australia	46	46	40	87.0	38	82.6	0	0.0
Virgin Australia	91	90	85	94.4	81	90.0	1	1.1
All Airlines	329	324	285	88.0	278	85.8	5	1.5
<b>Cairns-Townsville</b>								
QantasLink	135	134	126	94.0	124	92.5	1	0.7
Regional Express	71	68	65	95.6	65	95.6	3	4.2
All Airlines	206	202	191	94.6	189	93.6	4	1.9
<b>Canberra-Adelaide</b>								
Qantas	48	48	46	95.8	45	93.8	0	0.0
Virgin Australia	26	25	20	80.0	21	84.0	1	3.8
All Airlines	74	73	66	90.4	66	90.4	1	1.4
<b>Canberra-Brisbane</b>								
Qantas	26	26	26	100.0	24	92.3	0	0.0
QantasLink	125	125	106	84.8	108	86.4	0	0.0
Virgin Australia	98	97	80	82.5	85	87.6	1	1.0
All Airlines	249	248	212	85.5	217	87.5	1	0.4

	<i>Sectors</i>		<i>Arrivals On Time</i>		<i>Departures On Time</i>		<i>Cancellations</i>	
	<i>Sched.</i>	<i>Flown</i>	<i>No.</i>	<i>%</i>	<i>No.</i>	<i>%</i>	<i>No.</i>	<i>%</i>
<b>Canberra-Melbourne</b>								
Qantas	209	208	203	97.6	199	95.7	1	0.5
QantasLink	81	76	64	84.2	64	84.2	5	6.2
Virgin Australia	180	175	154	88.0	157	89.7	5	2.8
All Airlines	470	459	421	91.7	420	91.5	11	2.3
<b>Canberra-Sydney</b>								
QantasLink	467	458	401	87.6	394	86.0	9	1.9
Virgin Australia	270	253	210	83.0	201	79.4	17	6.3
All Airlines	737	711	611	85.9	595	83.7	26	3.5
<b>Coffs Harbour-Sydney</b>								
QantasLink	152	151	110	72.8	119	78.8	1	0.7
Tigerair Australia	14	14	13	92.9	13	92.9	0	0.0
Virgin Australia	60	59	49	83.1	51	86.4	1	1.7
All Airlines	226	224	172	76.8	183	81.7	2	0.9
<b>Darwin-Alice Springs</b>								
QantasLink	60	60	54	90.0	55	91.7	0	0.0
Virgin Australia	13	13	12	92.3	13	100.0	0	0.0
All Airlines	73	73	66	90.4	68	93.2	0	0.0
<b>Darwin-Brisbane</b>								
Jetstar	30	30	24	80.0	22	73.3	0	0.0
Qantas	47	47	42	89.4	42	89.4	0	0.0
Tigerair Australia	26	26	25	96.2	25	96.2	0	0.0
Virgin Australia	30	30	17	56.7	25	83.3	0	0.0
All Airlines	133	133	108	81.2	114	85.7	0	0.0
<b>Darwin-Melbourne</b>								
Jetstar	29	29	23	79.3	18	62.1	0	0.0
Qantas	30	30	27	90.0	23	76.7	0	0.0
Virgin Australia	30	30	25	83.3	26	86.7	0	0.0
All Airlines	89	89	75	84.3	67	75.3	0	0.0
<b>Darwin-Perth</b>								
Qantas	39	39	38	97.4	37	94.9	0	0.0
Virgin Australia	30	30	26	86.7	25	83.3	0	0.0
All Airlines	69	69	64	92.8	62	89.9	0	0.0
<b>Darwin-Sydney</b>								
Jetstar	27	27	24	88.9	21	77.8	0	0.0
Qantas	52	52	45	86.5	41	78.8	0	0.0
Virgin Australia	30	30	25	83.3	24	80.0	0	0.0
All Airlines	109	109	94	86.2	86	78.9	0	0.0
<b>Dubbo-Sydney</b>								
QantasLink	124	121	93	76.9	88	72.7	3	2.4
Regional Express	153	153	128	83.7	132	86.3	0	0.0
All Airlines	277	274	221	80.7	220	80.3	3	1.1
<b>Emerald-Brisbane</b>								
QantasLink	136	130	105	80.8	100	76.9	6	4.4
Virgin Australia	74	74	71	95.9	72	97.3	0	0.0
All Airlines	210	204	176	86.3	172	84.3	6	2.9
<b>Geraldton-Perth</b>								
QantasLink	48	48	45	93.8	46	95.8	0	0.0
Virgin Australia Regional Airlines	56	56	50	89.3	51	91.1	0	0.0
All Airlines	104	104	95	91.3	97	93.3	0	0.0

	<i>Sectors</i>		<i>Arrivals On Time</i>		<i>Departures On Time</i>		<i>Cancellations</i>	
	<i>Sched.</i>	<i>Flown</i>	<i>No.</i>	<i>%</i>	<i>No.</i>	<i>%</i>	<i>No.</i>	<i>%</i>
<b>Gladstone-Brisbane</b>								
QantasLink	191	182	151	83.0	147	80.8	9	4.7
Virgin Australia	122	117	110	94.0	112	95.7	5	4.1
All Airlines	313	299	261	87.3	259	86.6	14	4.5
<b>Gold Coast-Adelaide</b>								
Jetstar	39	39	24	61.5	30	76.9	0	0.0
Virgin Australia	31	31	20	64.5	29	93.5	0	0.0
All Airlines	70	70	44	62.9	59	84.3	0	0.0
<b>Gold Coast-Melbourne</b>								
Jetstar	229	226	174	77.0	161	71.2	3	1.3
Qantas	30	30	19	63.3	20	66.7	0	0.0
Tigerair Australia	85	85	70	82.4	72	84.7	0	0.0
Virgin Australia	185	184	147	79.9	142	77.2	1	0.5
All Airlines	529	525	410	78.1	395	75.2	4	0.8
<b>Gold Coast-Sydney</b>								
Jetstar	296	295	247	83.7	235	79.7	1	0.3
Qantas	90	90	77	85.6	78	86.7	0	0.0
QantasLink	21	21	11	52.4	14	66.7	0	0.0
Tigerair Australia	124	124	100	80.6	105	84.7	0	0.0
Virgin Australia	256	255	214	83.9	218	85.5	1	0.4
All Airlines	787	785	649	82.7	650	82.8	2	0.3
<b>Hamilton Island-Brisbane</b>								
QantasLink	31	31	25	80.6	23	74.2	0	0.0
Virgin Australia	30	30	25	83.3	25	83.3	0	0.0
All Airlines	61	61	50	82.0	48	78.7	0	0.0
<b>Hamilton Island-Melbourne</b>								
Qantas	14	14	12	85.7	11	78.6	0	0.0
Virgin Australia	24	24	22	91.7	23	95.8	0	0.0
All Airlines	38	38	34	89.5	34	89.5	0	0.0
<b>Hamilton Island-Sydney</b>								
Jetstar	30	30	21	70.0	17	56.7	0	0.0
Qantas	11	11	7	63.6	6	54.5	0	0.0
QantasLink	16	16	13	81.3	14	87.5	0	0.0
Virgin Australia	30	30	26	86.7	24	80.0	0	0.0
All Airlines	87	87	67	77.0	61	70.1	0	0.0
<b>Hobart-Brisbane</b>								
Jetstar	29	29	28	96.6	28	96.6	0	0.0
Virgin Australia	30	30	25	83.3	25	83.3	0	0.0
All Airlines	59	59	53	89.8	53	89.8	0	0.0
<b>Hobart-Melbourne</b>								
Jetstar	174	167	104	62.3	101	60.5	7	4.0
QantasLink	134	133	105	78.9	121	91.0	1	0.7
Tigerair Australia	30	30	28	93.3	26	86.7	0	0.0
Virgin Australia	139	138	115	83.3	118	85.5	1	0.7
All Airlines	477	468	352	75.2	366	78.2	9	1.9
<b>Hobart-Sydney</b>								
Jetstar	74	73	51	69.9	44	60.3	1	1.4
QantasLink	56	56	52	92.9	55	98.2	0	0.0
Virgin Australia	61	61	53	86.9	55	90.2	0	0.0
All Airlines	191	190	156	82.1	154	81.1	1	0.5

	<i>Sectors</i>		<i>Arrivals On Time</i>		<i>Departures On Time</i>		<i>Cancellations</i>	
	<i>Sched.</i>	<i>Flown</i>	<i>No.</i>	<i>%</i>	<i>No.</i>	<i>%</i>	<i>No.</i>	<i>%</i>
<b>Kalgoorlie-Perth</b>								
Qantas	4	4	4	100.0	4	100.0	0	0.0
QantasLink	78	78	72	92.3	71	91.0	0	0.0
Virgin Australia	27	27	27	100.0	27	100.0	0	0.0
Virgin Australia Regional Airlines	33	33	31	93.9	32	97.0	0	0.0
All Airlines	142	142	134	94.4	134	94.4	0	0.0
<b>Karratha-Perth</b>								
Qantas	41	41	39	95.1	39	95.1	0	0.0
QantasLink	167	161	151	93.8	153	95.0	6	3.6
Virgin Australia	8	8	5	62.5	4	50.0	0	0.0
Virgin Australia Regional Airlines	74	68	61	89.7	62	91.2	6	8.1
All Airlines	290	278	256	92.1	258	92.8	12	4.1
<b>Launceston-Melbourne</b>								
Jetstar	114	112	81	72.3	77	68.8	2	1.8
QantasLink	115	111	95	85.6	90	81.1	4	3.5
Virgin Australia	92	92	79	85.9	82	89.1	0	0.0
All Airlines	321	315	255	81.0	249	79.0	6	1.9
<b>Launceston-Sydney</b>								
Jetstar	39	38	29	76.3	29	76.3	1	2.6
Virgin Australia	30	30	24	80.0	24	80.0	0	0.0
All Airlines	69	68	53	77.9	53	77.9	1	1.4
<b>Mackay-Brisbane</b>								
Jetstar	47	47	35	74.5	31	66.0	0	0.0
QantasLink	107	106	89	84.0	82	77.4	1	0.9
Virgin Australia	151	151	138	91.4	137	90.7	0	0.0
All Airlines	305	304	262	86.2	250	82.2	1	0.3
<b>Melbourne-Adelaide</b>								
Jetstar	114	110	69	62.7	77	70.0	4	3.5
Qantas	289	285	244	85.6	252	88.4	4	1.4
Tigerair Australia	78	78	65	83.3	68	87.2	0	0.0
Virgin Australia	277	269	232	86.2	244	90.7	8	2.9
All Airlines	758	742	610	82.2	641	86.4	16	2.1
<b>Melbourne-Brisbane</b>								
Jetstar	154	149	99	66.4	103	69.1	5	3.2
Qantas	424	422	361	85.5	372	88.2	2	0.5
Tigerair Australia	126	125	100	80.0	105	84.0	1	0.8
Virgin Australia	394	377	326	86.5	339	89.9	17	4.3
All Airlines	1 098	1 073	886	82.6	919	85.6	25	2.3
<b>Melbourne-Cairns</b>								
Jetstar	113	113	62	54.9	69	61.1	0	0.0
Qantas	48	48	42	87.5	38	79.2	0	0.0
Tigerair Australia	47	47	37	78.7	41	87.2	0	0.0
Virgin Australia	34	34	23	67.6	28	82.4	0	0.0
All Airlines	242	242	164	67.8	176	72.7	0	0.0
<b>Melbourne-Canberra</b>								
Qantas	209	208	196	94.2	192	92.3	1	0.5
QantasLink	81	73	58	79.5	62	84.9	8	9.9
Virgin Australia	177	174	156	89.7	156	89.7	3	1.7
All Airlines	467	455	410	90.1	410	90.1	12	2.6
<b>Melbourne-Darwin</b>								
Jetstar	29	29	21	72.4	24	82.8	0	0.0
Qantas	30	30	25	83.3	26	86.7	0	0.0
Virgin Australia	30	30	20	66.7	24	80.0	0	0.0
All Airlines	89	89	66	74.2	74	83.1	0	0.0

	<i>Sectors</i>		<i>Arrivals On Time</i>		<i>Departures On Time</i>		<i>Cancellations</i>	
	<i>Sched.</i>	<i>Flown</i>	<i>No.</i>	<i>%</i>	<i>No.</i>	<i>%</i>	<i>No.</i>	<i>%</i>
<b>Melbourne-Gold Coast</b>								
Jetstar	229	226	154	68.1	154	68.1	3	1.3
Qantas	30	30	23	76.7	22	73.3	0	0.0
Tigerair Australia	85	85	76	89.4	78	91.8	0	0.0
Virgin Australia	186	185	156	84.3	163	88.1	1	0.5
All Airlines	530	526	409	77.8	417	79.3	4	0.8
<b>Melbourne-Hamilton Island</b>								
Qantas	14	14	13	92.9	11	78.6	0	0.0
Virgin Australia	24	24	23	95.8	22	91.7	0	0.0
All Airlines	38	38	36	94.7	33	86.8	0	0.0
<b>Melbourne-Hobart</b>								
Jetstar	174	169	118	69.8	121	71.6	5	2.9
QantasLink	134	133	122	91.7	124	93.2	1	0.7
Tigerair Australia	30	30	28	93.3	27	90.0	0	0.0
Virgin Australia	139	138	119	86.2	122	88.4	1	0.7
All Airlines	477	470	387	82.3	394	83.8	7	1.5
<b>Melbourne-Launceston</b>								
Jetstar	116	114	83	72.8	84	73.7	2	1.7
QantasLink	115	111	92	82.9	99	89.2	4	3.5
Virgin Australia	92	92	75	81.5	81	88.0	0	0.0
All Airlines	323	317	250	78.9	264	83.3	6	1.9
<b>Melbourne-Mildura</b>								
QantasLink	95	94	83	88.3	85	90.4	1	1.1
Regional Express	86	86	75	87.2	81	94.2	0	0.0
Virgin Australia	30	30	21	70.0	25	83.3	0	0.0
All Airlines	211	210	179	85.2	191	91.0	1	0.5
<b>Melbourne-Newcastle</b>								
Jetstar	115	114	93	81.6	87	76.3	1	0.9
Virgin Australia	30	30	27	90.0	26	86.7	0	0.0
All Airlines	145	144	120	83.3	113	78.5	1	0.7
<b>Melbourne-Perth</b>								
Jetstar	74	67	53	79.1	52	77.6	7	9.5
Qantas	199	199	172	86.4	168	84.4	0	0.0
Tigerair Australia	60	60	50	83.3	51	85.0	0	0.0
Virgin Australia	144	142	121	85.2	122	85.9	2	1.4
All Airlines	477	468	396	84.6	393	84.0	9	1.9
<b>Melbourne-Sunshine Coast</b>								
Jetstar	92	92	81	88.0	80	87.0	0	0.0
Virgin Australia	48	48	35	72.9	40	83.3	0	0.0
All Airlines	140	140	116	82.9	120	85.7	0	0.0
<b>Melbourne-Sydney</b>								
Jetstar	349	333	237	71.2	229	68.8	16	4.6
Qantas	1 018	961	806	83.9	806	83.9	57	5.6
Tigerair Australia	232	229	177	77.3	185	80.8	3	1.3
Virgin Australia	819	769	679	88.3	696	90.5	50	6.1
All Airlines	2 418	2 292	1 899	82.9	1 916	83.6	126	5.2
<b>Mildura-Melbourne</b>								
QantasLink	95	95	80	84.2	82	86.3	0	0.0
Regional Express	87	87	67	77.0	70	80.5	0	0.0
Virgin Australia	30	30	22	73.3	20	66.7	0	0.0
All Airlines	212	212	169	79.7	172	81.1	0	0.0

	<i>Sectors</i>		<i>Arrivals On Time</i>		<i>Departures On Time</i>		<i>Cancellations</i>	
	<i>Sched.</i>	<i>Flown</i>	<i>No.</i>	<i>%</i>	<i>No.</i>	<i>%</i>	<i>No.</i>	<i>%</i>
<b>Moranbah-Brisbane</b>								
QantasLink	100	91	81	89.0	80	87.9	9	9.0
Virgin Australia	60	58	53	91.4	53	91.4	2	3.3
All Airlines	160	149	134	89.9	133	89.3	11	6.9
<b>Mount Isa-Brisbane</b>								
Qantas	26	26	26	100.0	24	92.3	0	0.0
QantasLink	30	30	27	90.0	28	93.3	0	0.0
Virgin Australia	18	18	12	66.7	13	72.2	0	0.0
All Airlines	74	74	65	87.8	65	87.8	0	0.0
<b>Newcastle-Brisbane</b>								
Jetstar	90	90	69	76.7	74	82.2	0	0.0
QantasLink	96	95	85	89.5	80	84.2	1	1.0
Virgin Australia	90	90	79	87.8	79	87.8	0	0.0
All Airlines	276	275	233	84.7	233	84.7	1	0.4
<b>Newcastle-Melbourne</b>								
Jetstar	115	113	89	78.8	88	77.9	2	1.7
Virgin Australia	30	30	22	73.3	22	73.3	0	0.0
All Airlines	145	143	111	77.6	110	76.9	2	1.4
<b>Newman-Perth</b>								
Qantas	72	71	69	97.2	70	98.6	1	1.4
QantasLink	77	76	72	94.7	72	94.7	1	1.3
Virgin Australia	13	13	13	100.0	13	100.0	0	0.0
Virgin Australia Regional Airlines	27	27	22	81.5	25	92.6	0	0.0
All Airlines	189	187	176	94.1	180	96.3	2	1.1
<b>Perth-Adelaide</b>								
Jetstar	30	29	17	58.6	17	58.6	1	3.3
Qantas	125	125	123	98.4	120	96.0	0	0.0
Virgin Australia	72	71	61	85.9	62	87.3	1	1.4
All Airlines	227	225	201	89.3	199	88.4	2	0.9
<b>Perth-Brisbane</b>								
Qantas	133	133	119	89.5	118	88.7	0	0.0
Virgin Australia	111	111	100	90.1	96	86.5	0	0.0
All Airlines	244	244	219	89.8	214	87.7	0	0.0
<b>Perth-Broome</b>								
Qantas	22	22	20	90.9	20	90.9	0	0.0
QantasLink	60	60	59	98.3	59	98.3	0	0.0
Virgin Australia	2	2	2	100.0	2	100.0	0	0.0
Virgin Australia Regional Airlines	67	67	51	76.1	59	88.1	0	0.0
All Airlines	151	151	132	87.4	140	92.7	0	0.0
<b>Perth-Darwin</b>								
Qantas	39	39	37	94.9	37	94.9	0	0.0
Virgin Australia	30	30	27	90.0	26	86.7	0	0.0
All Airlines	69	69	64	92.8	63	91.3	0	0.0
<b>Perth-Geraldton</b>								
QantasLink	48	48	47	97.9	47	97.9	0	0.0
Virgin Australia Regional Airlines	56	56	50	89.3	48	85.7	0	0.0
All Airlines	104	104	97	93.3	95	91.3	0	0.0
<b>Perth-Kalgoorlie</b>								
Qantas	4	4	4	100.0	4	100.0	0	0.0
QantasLink	78	78	71	91.0	71	91.0	0	0.0
Virgin Australia	28	28	27	96.4	27	96.4	0	0.0
Virgin Australia Regional Airlines	33	33	30	90.9	33	100.0	0	0.0
All Airlines	143	143	132	92.3	135	94.4	0	0.0



	<i>Sectors</i>		<i>Arrivals On Time</i>		<i>Departures On Time</i>		<i>Cancellations</i>	
	<i>Sched.</i>	<i>Flown</i>	<i>No.</i>	<i>%</i>	<i>No.</i>	<i>%</i>	<i>No.</i>	<i>%</i>
<b>Perth-Karratha</b>								
Qantas	41	41	41	100.0	40	97.6	0	0.0
QantasLink	169	166	153	92.2	153	92.2	3	1.8
Virgin Australia	8	8	8	100.0	8	100.0	0	0.0
Virgin Australia Regional Airlines	74	70	61	87.1	66	94.3	4	5.4
All Airlines	292	285	263	92.3	267	93.7	7	2.4
<b>Perth-Melbourne</b>								
Jetstar	73	65	52	80.0	39	60.0	8	11.0
Qantas	198	198	177	89.4	175	88.4	0	0.0
Tigerair Australia	59	58	48	82.8	47	81.0	1	1.7
Virgin Australia	145	144	134	93.1	130	90.3	1	0.7
All Airlines	475	465	411	88.4	391	84.1	10	2.1
<b>Perth-Newman</b>								
Qantas	72	71	71	100.0	71	100.0	1	1.4
QantasLink	79	78	76	97.4	75	96.2	1	1.3
Virgin Australia	13	13	13	100.0	13	100.0	0	0.0
Virgin Australia Regional Airlines	26	26	24	92.3	24	92.3	0	0.0
All Airlines	190	188	184	97.9	183	97.3	2	1.1
<b>Perth-Port Hedland</b>								
Qantas	49	49	49	100.0	48	98.0	0	0.0
QantasLink	99	98	85	86.7	89	90.8	1	1.0
Virgin Australia	27	27	27	100.0	27	100.0	0	0.0
Virgin Australia Regional Airlines	26	26	24	92.3	25	96.2	0	0.0
All Airlines	201	200	185	92.5	189	94.5	1	0.5
<b>Perth-Sydney</b>								
Jetstar	30	29	27	93.1	14	48.3	1	3.3
Qantas	202	202	193	95.5	183	90.6	0	0.0
Tigerair Australia	27	26	24	92.3	23	88.5	1	3.7
Virgin Australia	117	117	113	96.6	111	94.9	0	0.0
All Airlines	376	374	357	95.5	331	88.5	2	0.5
<b>Port Hedland-Perth</b>								
Qantas	49	48	46	95.8	46	95.8	1	2.0
QantasLink	98	97	87	89.7	88	90.7	1	1.0
Virgin Australia	27	27	26	96.3	27	100.0	0	0.0
Virgin Australia Regional Airlines	26	26	25	96.2	26	100.0	0	0.0
All Airlines	200	198	184	92.9	187	94.4	2	1.0
<b>Port Lincoln-Adelaide</b>								
QantasLink	109	107	96	89.7	98	91.6	2	1.8
Regional Express	212	207	174	84.1	182	87.9	5	2.4
All Airlines	321	314	270	86.0	280	89.2	7	2.2
<b>Port Macquarie-Sydney</b>								
QantasLink	135	134	75	56.0	89	66.4	1	0.7
Virgin Australia	58	57	43	75.4	46	80.7	1	1.7
All Airlines	193	191	118	61.8	135	70.7	2	1.0
<b>Proserpine-Brisbane</b>								
Jetstar	30	30	25	83.3	25	83.3	0	0.0
Virgin Australia	32	32	29	90.6	27	84.4	0	0.0
All Airlines	62	62	54	87.1	52	83.9	0	0.0
<b>Rockhampton-Brisbane</b>								
QantasLink	190	188	154	81.9	154	81.9	2	1.1
Virgin Australia	187	180	162	90.0	163	90.6	7	3.7
All Airlines	377	368	316	85.9	317	86.1	9	2.4

	<i>Sectors</i>		<i>Arrivals On Time</i>		<i>Departures On Time</i>		<i>Cancellations</i>	
	<i>Sched.</i>	<i>Flown</i>	<i>No.</i>	<i>%</i>	<i>No.</i>	<i>%</i>	<i>No.</i>	<i>%</i>
<b>Sunshine Coast-Melbourne</b>								
Jetstar	92	92	68	73.9	63	68.5	0	0.0
Virgin Australia	47	47	31	66.0	28	59.6	0	0.0
All Airlines	139	139	99	71.2	91	65.5	0	0.0
<b>Sunshine Coast-Sydney</b>								
Jetstar	100	99	67	67.7	56	56.6	1	1.0
QantasLink	34	34	20	58.8	24	70.6	0	0.0
Virgin Australia	34	34	26	76.5	27	79.4	0	0.0
All Airlines	168	167	113	67.7	107	64.1	1	0.6
<b>Sydney-Adelaide</b>								
Jetstar	106	105	83	79.0	86	81.9	1	0.9
Qantas	230	229	202	88.2	209	91.3	1	0.4
QantasLink	30	26	19	73.1	23	88.5	4	13.3
Tigerair Australia	47	47	41	87.2	44	93.6	0	0.0
Virgin Australia	163	160	129	80.6	147	91.9	3	1.8
All Airlines	576	567	474	83.6	509	89.8	9	1.6
<b>Sydney-Albury</b>								
QantasLink	108	107	71	66.4	70	65.4	1	0.9
Regional Express	106	106	84	79.2	85	80.2	0	0.0
Virgin Australia	60	60	45	75.0	42	70.0	0	0.0
All Airlines	274	273	200	73.3	197	72.2	1	0.4
<b>Sydney-Armidale</b>								
QantasLink	121	119	70	58.8	88	73.9	2	1.7
Regional Express	79	78	59	75.6	64	82.1	1	1.3
All Airlines	200	197	129	65.5	152	77.2	3	1.5
<b>Sydney-Ayers Rock</b>								
Jetstar	30	30	17	56.7	28	93.3	0	0.0
Virgin Australia	30	30	16	53.3	24	80.0	0	0.0
All Airlines	60	60	33	55.0	52	86.7	0	0.0
<b>Sydney-Ballina</b>								
Jetstar	86	86	75	87.2	79	91.9	0	0.0
Regional Express	25	25	24	96.0	25	100.0	0	0.0
Virgin Australia	31	31	29	93.5	29	93.5	0	0.0
All Airlines	142	142	128	90.1	133	93.7	0	0.0
<b>Sydney-Brisbane</b>								
Jetstar	185	182	133	73.1	138	75.8	3	1.6
Qantas	615	610	507	83.1	544	89.2	5	0.8
Tigerair Australia	103	103	84	81.6	94	91.3	0	0.0
Virgin Australia	560	549	451	82.1	477	86.9	11	2.0
All Airlines	1 463	1 444	1 175	81.4	1 253	86.8	19	1.3
<b>Sydney-Cairns</b>								
Jetstar	110	107	84	78.5	80	74.8	3	2.7
Qantas	83	83	67	80.7	70	84.3	0	0.0
Tigerair Australia	45	45	38	84.4	42	93.3	0	0.0
Virgin Australia	91	91	77	84.6	76	83.5	0	0.0
All Airlines	329	326	266	81.6	268	82.2	3	0.9
<b>Sydney-Canberra</b>								
QantasLink	470	459	372	81.0	379	82.6	11	2.3
Virgin Australia	268	253	204	80.6	198	78.3	15	5.6
All Airlines	738	712	576	80.9	577	81.0	26	3.5

	<i>Sectors</i>		<i>Arrivals On Time</i>		<i>Departures On Time</i>		<i>Cancellations</i>	
	<i>Sched.</i>	<i>Flown</i>	<i>No.</i>	<i>%</i>	<i>No.</i>	<i>%</i>	<i>No.</i>	<i>%</i>
<b>Sydney-Coffs Harbour</b>								
QantasLink	152	151	106	70.2	111	73.5	1	0.7
Tigerair Australia	14	14	13	92.9	14	100.0	0	0.0
Virgin Australia	60	59	53	89.8	50	84.7	1	1.7
All Airlines	226	224	172	76.8	175	78.1	2	0.9
<b>Sydney-Darwin</b>								
Jetstar	27	27	22	81.5	22	81.5	0	0.0
Qantas	52	52	37	71.2	42	80.8	0	0.0
Virgin Australia	30	30	23	76.7	28	93.3	0	0.0
All Airlines	109	109	82	75.2	92	84.4	0	0.0
<b>Sydney-Dubbo</b>								
QantasLink	124	124	81	65.3	80	64.5	0	0.0
Regional Express	153	153	129	84.3	128	83.7	0	0.0
All Airlines	277	277	210	75.8	208	75.1	0	0.0
<b>Sydney-Gold Coast</b>								
Jetstar	296	295	235	79.7	236	80.0	1	0.3
Qantas	90	90	76	84.4	75	83.3	0	0.0
QantasLink	21	21	13	61.9	17	81.0	0	0.0
Tigerair Australia	124	124	108	87.1	112	90.3	0	0.0
Virgin Australia	256	255	209	82.0	222	87.1	1	0.4
All Airlines	787	785	641	81.7	662	84.3	2	0.3
<b>Sydney-Hamilton Island</b>								
Jetstar	30	30	22	73.3	26	86.7	0	0.0
Qantas	11	11	8	72.7	8	72.7	0	0.0
QantasLink	16	16	14	87.5	14	87.5	0	0.0
Virgin Australia	30	30	26	86.7	28	93.3	0	0.0
All Airlines	87	87	70	80.5	76	87.4	0	0.0
<b>Sydney-Hobart</b>								
Jetstar	74	73	51	69.9	50	68.5	1	1.4
QantasLink	56	56	48	85.7	46	82.1	0	0.0
Virgin Australia	61	61	56	91.8	55	90.2	0	0.0
All Airlines	191	190	155	81.6	151	79.5	1	0.5
<b>Sydney-Launceston</b>								
Jetstar	39	38	36	94.7	35	92.1	1	2.6
Virgin Australia	30	30	29	96.7	27	90.0	0	0.0
All Airlines	69	68	65	95.6	62	91.2	1	1.4
<b>Sydney-Melbourne</b>								
Jetstar	350	336	238	70.8	236	70.2	14	4.0
Qantas	1 021	969	766	79.1	824	85.0	52	5.1
Tigerair Australia	231	229	179	78.2	182	79.5	2	0.9
Virgin Australia	821	769	616	80.1	652	84.8	52	6.3
All Airlines	2 423	2 303	1 799	78.1	1 894	82.2	120	5.0
<b>Sydney-Perth</b>								
Jetstar	30	30	26	86.7	28	93.3	0	0.0
Qantas	207	207	182	87.9	168	81.2	0	0.0
Tigerair Australia	27	27	23	85.2	25	92.6	0	0.0
Virgin Australia	117	117	99	84.6	102	87.2	0	0.0
All Airlines	381	381	330	86.6	323	84.8	0	0.0
<b>Sydney-Port Macquarie</b>								
QantasLink	134	133	79	59.4	94	70.7	1	0.7
Virgin Australia	58	57	45	78.9	46	80.7	1	1.7
All Airlines	192	190	124	65.3	140	73.7	2	1.0

	<i>Sectors</i>		<i>Arrivals On Time</i>		<i>Departures On Time</i>		<i>Cancellations</i>	
	<i>Sched.</i>	<i>Flown</i>	<i>No.</i>	<i>%</i>	<i>No.</i>	<i>%</i>	<i>No.</i>	<i>%</i>
<b>Sydney-Sunshine Coast</b>								
Jetstar	100	100	74	74.0	71	71.0	0	0.0
QantasLink	34	34	21	61.8	22	64.7	0	0.0
Virgin Australia	33	33	31	93.9	30	90.9	0	0.0
All Airlines	167	167	126	75.4	123	73.7	0	0.0
<b>Sydney-Tamworth</b>								
QantasLink	156	150	106	70.7	117	78.0	6	3.8
Virgin Australia	52	52	42	80.8	44	84.6	0	0.0
All Airlines	208	202	148	73.3	161	79.7	6	2.9
<b>Sydney-Townsville</b>								
Jetstar	30	30	25	83.3	26	86.7	0	0.0
Virgin Australia	31	31	27	87.1	29	93.5	0	0.0
All Airlines	61	61	52	85.2	55	90.2	0	0.0
<b>Sydney-Wagga Wagga</b>								
QantasLink	112	111	65	58.6	72	64.9	1	0.9
Regional Express	137	137	121	88.3	125	91.2	0	0.0
All Airlines	249	248	186	75.0	197	79.4	1	0.4
<b>Tamworth-Sydney</b>								
QantasLink	156	149	112	75.2	111	74.5	7	4.5
Virgin Australia	52	52	45	86.5	46	88.5	0	0.0
All Airlines	208	201	157	78.1	157	78.1	7	3.4
<b>Townsville-Brisbane</b>								
Jetstar	48	48	41	85.4	38	79.2	0	0.0
Qantas	93	93	80	86.0	79	84.9	0	0.0
QantasLink	59	59	54	91.5	53	89.8	0	0.0
Virgin Australia	144	143	131	91.6	130	90.9	1	0.7
All Airlines	344	343	306	89.2	300	87.5	1	0.3
<b>Townsville-Cairns</b>								
QantasLink	137	134	122	91.0	118	88.1	3	2.2
Regional Express	71	67	64	95.5	63	94.0	4	5.6
All Airlines	208	201	186	92.5	181	90.0	7	3.4
<b>Townsville-Sydney</b>								
Jetstar	30	30	24	80.0	20	66.7	0	0.0
Virgin Australia	30	30	25	83.3	26	86.7	0	0.0
All Airlines	60	60	49	81.7	46	76.7	0	0.0
<b>Wagga Wagga-Sydney</b>								
QantasLink	112	111	79	71.2	71	64.0	1	0.9
Regional Express	138	138	115	83.3	120	87.0	0	0.0
All Airlines	250	249	194	77.9	191	76.7	1	0.4

## Airports

On time performance is reported for all routes where the passenger load averages over 8000 passengers per month, and where two or more airlines operate in competition. The following data reports by airport against flights operated on those routes only. This month, 8 major city airports and 33 regional city airports are covered.

Airport	Arrivals			Departures		
	Sectors	On Time		Sectors	On Time	
	Flown	No.	%	Flown	No.	%
<b>Adelaide</b>						
Jetstar	310	216	69.7	309	221	71.5
Qantas	835	738	88.4	833	758	91.0
QantasLink	133	115	86.5	133	118	88.7
Regional Express	207	174	84.1	205	189	92.2
Tigerair Australia	149	128	85.9	149	117	78.5
Virgin Australia	680	560	82.4	679	569	83.8
All Airlines	2 314	1 931	83.4	2 308	1 972	85.4
Relates to services to and from Alice Springs, Brisbane, Canberra, Gold Coast, Melbourne, Perth, Port Lincoln and Sydney.						
<b>Albury</b>						
QantasLink	107	71	66.4	107	78	72.9
Regional Express	106	84	79.2	106	95	89.6
Virgin Australia	60	45	75.0	59	42	71.2
All Airlines	273	200	73.3	272	215	79.0
Relates to services to and from Sydney only.						
<b>Alice Springs</b>						
Qantas	30	28	93.3	30	18	60.0
QantasLink	60	54	90.0	60	56	93.3
Virgin Australia	26	24	92.3	26	24	92.3
All Airlines	116	106	91.4	116	98	84.5
Relates to services to and from Adelaide and Darwin.						
<b>Armidale</b>						
QantasLink	119	70	58.8	119	81	68.1
Regional Express	78	59	75.6	76	62	81.6
All Airlines	197	129	65.5	195	143	73.3
Relates to services to and from Sydney only.						
<b>Ayers Rock</b>						
Jetstar	30	17	56.7	30	14	46.7
Virgin Australia	30	16	53.3	30	15	50.0
All Airlines	60	33	55.0	60	29	48.3
Relates to services to and from Sydney only.						
<b>Ballina</b>						
Jetstar	86	75	87.2	86	67	77.9
Regional Express	25	24	96.0	26	19	73.1
Virgin Australia	31	29	93.5	31	28	90.3
All Airlines	142	128	90.1	143	114	79.7
Relates to services to and from Sydney only.						

Airport	Arrivals			Departures		
	Sectors Flown	On Time		Sectors Flown	On Time	
		No.	%		No.	%
<b>Brisbane</b>						
Jetstar	750	567	75.6	750	552	73.6
Qantas	1 599	1 385	86.6	1 600	1 429	89.3
QantasLink	1 178	993	84.3	1 183	1 034	87.4
Tigerair Australia	308	256	83.1	308	252	81.8
Virgin Australia	2 361	2 053	87.0	2 362	2 106	89.2
All Airlines	6 196	5 254	84.8	6 203	5 373	86.6

Relates to services to and from Adelaide, Bundaberg, Cairns, Canberra, Darwin, Emerald, Gladstone, Hamilton Island, Hobart, Mackay, Melbourne, Moranbah, Mount Isa, Newcastle, Perth, Proserpine, Rockhampton, Sydney and Townsville.

#### Broome

Qantas	22	20	90.9	22	18	81.8
QantasLink	60	59	98.3	60	56	93.3
Virgin Australia	2	2	100.0	2	2	100.0
Virgin Australia Regional Airlines	67	51	76.1	66	46	69.7
All Airlines	151	132	87.4	150	122	81.3

Relates to services to and from Perth only.

#### Bundaberg

QantasLink	132	112	84.8	132	115	87.1
Virgin Australia	30	29	96.7	30	28	93.3
All Airlines	162	141	87.0	162	143	88.3

Relates to services to and from Brisbane only.

#### Cairns

Jetstar	338	236	69.8	337	251	74.5
Qantas	255	224	87.8	253	221	87.4
QantasLink	143	129	90.2	143	131	91.6
Regional Express	67	64	95.5	68	65	95.6
Tigerair Australia	122	100	82.0	121	101	83.5
Virgin Australia	259	219	84.6	257	220	85.6
All Airlines	1 184	972	82.1	1 179	989	83.9

Relates to services to and from Brisbane, Melbourne, Sydney and Townsville.

#### Canberra

Qantas	282	267	94.7	282	268	95.0
QantasLink	657	540	82.2	659	566	85.9
Virgin Australia	550	472	85.8	550	464	84.4
All Airlines	1 489	1 279	85.9	1 491	1 298	87.1

Relates to services to and from Adelaide, Brisbane, Melbourne and Sydney.

#### Coffs Harbour

QantasLink	151	106	70.2	151	119	78.8
Tigerair Australia	14	13	92.9	14	13	92.9
Virgin Australia	59	53	89.8	59	51	86.4
All Airlines	224	172	76.8	224	183	81.7

Relates to services to and from Sydney only.

#### Darwin

Jetstar	86	64	74.4	86	61	70.9
Qantas	168	143	85.1	168	143	85.1
QantasLink	60	57	95.0	60	55	91.7
Tigerair Australia	26	23	88.5	26	25	96.2
Virgin Australia	133	110	82.7	133	113	85.0
All Airlines	473	397	83.9	473	397	83.9

Relates to services to and from Alice Springs, Brisbane, Melbourne, Perth and Sydney.

Airport	Arrivals			Departures		
	Sectors Flown	On Time		Sectors Flown	On Time	
		No.	%		No.	%
<b>Dubbo</b>						
QantasLink	124	81	65.3	121	88	72.7
Regional Express	153	129	84.3	153	132	86.3
All Airlines	277	210	75.8	274	220	80.3
Relates to services to and from Sydney only.						
<b>Emerald</b>						
QantasLink	134	105	78.4	130	100	76.9
Virgin Australia	74	68	91.9	74	72	97.3
All Airlines	208	173	83.2	204	172	84.3
Relates to services to and from Brisbane only.						
<b>Geraldton</b>						
QantasLink	48	47	97.9	48	46	95.8
Virgin Australia Regional Airlines	56	50	89.3	56	51	91.1
All Airlines	104	97	93.3	104	97	93.3
Relates to services to and from Perth only.						
<b>Gladstone</b>						
QantasLink	181	145	80.1	182	147	80.8
Virgin Australia	117	111	94.9	117	112	95.7
All Airlines	298	256	85.9	299	259	86.6
Relates to services to and from Brisbane only.						
<b>Gold Coast</b>						
Jetstar	559	417	74.6	560	426	76.1
Qantas	120	99	82.5	120	98	81.7
QantasLink	21	13	61.9	21	14	66.7
Tigerair Australia	209	184	88.0	209	177	84.7
Virgin Australia	471	395	83.9	470	389	82.8
All Airlines	1 380	1 108	80.3	1 380	1 104	80.0
Relates to services to and from Adelaide, Melbourne and Sydney.						
<b>Hamilton Island</b>						
Jetstar	30	22	73.3	30	17	56.7
Qantas	25	21	84.0	25	17	68.0
QantasLink	46	40	87.0	47	37	78.7
Virgin Australia	84	74	88.1	84	72	85.7
All Airlines	185	157	84.9	186	143	76.9
Relates to services to and from Brisbane, Melbourne and Sydney.						
<b>Hobart</b>						
Jetstar	270	197	73.0	269	173	64.3
QantasLink	189	170	89.9	189	176	93.1
Tigerair Australia	30	28	93.3	30	26	86.7
Virgin Australia	229	204	89.1	229	198	86.5
All Airlines	718	599	83.4	717	573	79.9
Relates to services to and from Brisbane, Melbourne and Sydney.						
<b>Kalgoorlie</b>						
Qantas	4	4	100.0	4	4	100.0
QantasLink	78	71	91.0	78	71	91.0
Virgin Australia	28	27	96.4	27	27	100.0
Virgin Australia Regional Airlines	33	30	90.9	33	32	97.0
All Airlines	143	132	92.3	142	134	94.4
Relates to services to and from Perth only.						

Airport	Arrivals			Departures		
	Sectors Flown	On Time		Sectors Flown	On Time	
		No.	%		No.	%
<b>Karratha</b>						
Qantas	41	41	100.0	41	39	95.1
QantasLink	166	153	92.2	161	153	95.0
Virgin Australia	8	8	100.0	8	4	50.0
Virgin Australia Regional Airlines	70	61	87.1	68	62	91.2
All Airlines	285	263	92.3	278	258	92.8
Relates to services to and from Perth only.						
<b>Launceston</b>						
Jetstar	152	119	78.3	150	106	70.7
QantasLink	111	92	82.9	111	90	81.1
Virgin Australia	122	104	85.2	122	106	86.9
All Airlines	385	315	81.8	383	302	78.9
Relates to services to and from Melbourne and Sydney.						
<b>Mackay</b>						
Jetstar	47	35	74.5	47	31	66.0
QantasLink	106	95	89.6	106	82	77.4
Virgin Australia	151	135	89.4	151	137	90.7
All Airlines	304	265	87.2	304	250	82.2
Relates to services to and from Brisbane only.						
<b>Melbourne</b>						
Jetstar	1 508	1 114	73.9	1 516	1 080	71.2
Qantas	2 207	1 867	84.6	2 197	1 887	85.9
QantasLink	415	344	82.9	411	370	90.0
Regional Express	87	67	77.0	86	81	94.2
Tigerair Australia	650	529	81.4	654	555	84.9
Virgin Australia	2 342	1 915	81.8	2 342	2 088	89.2
All Airlines	7 209	5 836	81.0	7 206	6 061	84.1
Relates to services to and from Adelaide, Brisbane, Cairns, Canberra, Darwin, Gold Coast, Hamilton Island, Hobart, Launceston, Mildura, Newcastle, Perth, Sunshine Coast and Sydney.						
<b>Mildura</b>						
QantasLink	94	83	88.3	95	82	86.3
Regional Express	86	75	87.2	87	70	80.5
Virgin Australia	30	21	70.0	30	20	66.7
All Airlines	210	179	85.2	212	172	81.1
Relates to services to and from Melbourne only.						
<b>Moranbah</b>						
QantasLink	94	85	90.4	91	80	87.9
Virgin Australia	58	50	86.2	58	53	91.4
All Airlines	152	135	88.8	149	133	89.3
Relates to services to and from Brisbane only.						
<b>Mount Isa</b>						
Qantas	26	23	88.5	26	24	92.3
QantasLink	30	27	90.0	30	28	93.3
Virgin Australia	17	16	94.1	18	13	72.2
All Airlines	73	66	90.4	74	65	87.8
Relates to services to and from Brisbane only.						



Airport	Arrivals			Departures		
	Sectors	On Time		Sectors	On Time	
	Flown	No.	%	Flown	No.	%
<b>Newcastle</b>						
Jetstar	204	167	81.9	203	162	79.8
QantasLink	95	81	85.3	95	80	84.2
Virgin Australia	121	107	88.4	120	101	84.2
All Airlines	420	355	84.5	418	343	82.1
Relates to services to and from Brisbane and Melbourne.						
<b>Newman</b>						
Qantas	71	71	100.0	71	70	98.6
QantasLink	78	76	97.4	76	72	94.7
Virgin Australia	13	13	100.0	13	13	100.0
Virgin Australia Regional Airlines	26	24	92.3	27	25	92.6
All Airlines	188	184	97.9	187	180	96.3
Relates to services to and from Perth only.						
<b>Perth</b>						
Jetstar	126	99	78.6	123	70	56.9
Qantas	881	792	89.9	884	816	92.3
QantasLink	520	483	92.9	528	494	93.6
Tigerair Australia	87	73	83.9	84	70	83.3
Virgin Australia	548	452	82.5	551	502	91.1
Virgin Australia Regional Airlines	276	232	84.1	278	255	91.7
All Airlines	2 438	2 131	87.4	2 448	2 207	90.2
Relates to services to and from Adelaide, Brisbane, Broome, Darwin, Geraldton, Kalgoorlie, Karratha, Melbourne, Newman, Port Hedland and Sydney.						
<b>Port Hedland</b>						
Qantas	49	49	100.0	48	46	95.8
QantasLink	98	85	86.7	97	88	90.7
Virgin Australia	27	27	100.0	27	27	100.0
Virgin Australia Regional Airlines	26	24	92.3	26	26	100.0
All Airlines	200	185	92.5	198	187	94.4
Relates to services to and from Perth only.						
<b>Port Lincoln</b>						
QantasLink	107	98	91.6	107	98	91.6
Regional Express	205	180	87.8	207	182	87.9
All Airlines	312	278	89.1	314	280	89.2
Relates to services to and from Adelaide only.						
<b>Port Macquarie</b>						
QantasLink	133	79	59.4	134	89	66.4
Virgin Australia	57	45	78.9	57	46	80.7
All Airlines	190	124	65.3	191	135	70.7
Relates to services to and from Sydney only.						
<b>Proserpine</b>						
Jetstar	30	24	80.0	30	25	83.3
Virgin Australia	32	31	96.9	32	27	84.4
All Airlines	62	55	88.7	62	52	83.9
Relates to services to and from Brisbane only.						

Airport	Arrivals			Departures		
	Sectors	On Time		Sectors	On Time	
	Flown	No.	%	Flown	No.	%
<b>Rockhampton</b>						
QantasLink	188	152	80.9	188	154	81.9
Virgin Australia	180	153	85.0	180	163	90.6
All Airlines	368	305	82.9	368	317	86.1
Relates to services to and from Brisbane only.						
<b>Sunshine Coast</b>						
Jetstar	192	155	80.7	191	119	62.3
QantasLink	34	21	61.8	34	24	70.6
Virgin Australia	81	66	81.5	81	55	67.9
All Airlines	307	242	78.8	306	198	64.7
Relates to services to and from Melbourne and Sydney.						
<b>Sydney</b>						
Jetstar	1 468	1 132	77.1	1 469	1 141	77.7
Qantas	2 240	1 948	87.0	2 251	1 940	86.2
QantasLink	1 503	1 148	76.4	1 507	1 133	75.2
Regional Express	499	416	83.4	499	427	85.6
Tigerair Australia	589	475	80.6	589	513	87.1
Virgin Australia	2 695	2 332	86.5	2 698	2 306	85.5
All Airlines	8 994	7 451	82.8	9 013	7 460	82.8
Relates to services to and from Adelaide, Albury, Armidale, Ayers Rock, Ballina, Brisbane, Cairns, Canberra, Coffs Harbour, Darwin, Dubbo, Gold Coast, Hamilton Island, Hobart, Launceston, Melbourne, Perth, Port Macquarie, Sunshine Coast, Tamworth, Townsville and Wagga Wagga.						
<b>Tamworth</b>						
QantasLink	150	106	70.7	149	111	74.5
Virgin Australia	52	42	80.8	52	46	88.5
All Airlines	202	148	73.3	201	157	78.1
Relates to services to and from Sydney only.						
<b>Townsville</b>						
Jetstar	78	65	83.3	78	58	74.4
Qantas	93	85	91.4	93	79	84.9
QantasLink	193	182	94.3	193	171	88.6
Regional Express	68	65	95.6	67	63	94.0
Virgin Australia	174	157	90.2	173	156	90.2
All Airlines	606	554	91.4	604	527	87.3
Relates to services to and from Brisbane, Cairns and Sydney.						
<b>Wagga Wagga</b>						
QantasLink	111	65	58.6	111	71	64.0
Regional Express	137	121	88.3	138	120	87.0
All Airlines	248	186	75.0	249	191	76.7
Relates to services to and from Sydney only.						

## Definitions

---

On time arrival	A flight arrival is counted as "on time" if it arrived at the gate before 15 minutes after the scheduled arrival time shown in the carriers' schedule. Neither diverted nor cancelled flights count as on time.
On time departure	A flight departure is counted as "on time" if it departs the gate before 15 minutes after the scheduled departure time shown in the carriers' schedule.
Cancellation	A flight removed from service within 7 days of scheduled departure is regarded as a cancellation.
On time departure percentage	The percentage of on time departures is measured against the number of departures <i>operated</i> on any particular sector.
On time arrival percentage	The percentage of on time arrivals is measured against the number of arrivals <i>operated</i> on any particular sector.
Cancellation percentage	The percentage of cancellations is measured against the number of services <i>scheduled</i> on any particular sector.

---