



Australian Government

Department of Infrastructure and Regional Development

Bureau of Infrastructure, Transport and Regional Economics

STATISTICAL REPORT



Aviation

Domestic airline on time performance
September 2015

© Commonwealth of Australia 2015

ISSN: 1832-0759

Ownership of intellectual property rights in this publication

Unless otherwise noted, copyright (and any other intellectual property rights, if any) in this publication is owned by the Commonwealth of Australia (referred to below as the Commonwealth).

Disclaimer

The material contained in this publication is made available on the understanding that the Commonwealth is not providing professional advice, and that users exercise their own skill and care with respect to its use, and seek independent advice if necessary.

The Commonwealth makes no representations or warranties as to the contents or accuracy of the information contained in this publication. To the extent permitted by law, the Commonwealth disclaims liability to any person or organisation in respect of anything done, or omitted to be done, in reliance upon information contained in this publication.

Creative Commons licence

With the exception of (a) the Coat of Arms; and (b) the Department of Infrastructure and Regional Development's photos and graphics, copyright in this publication is licensed under a Creative Commons Attribution 3.0 Australia Licence.

Creative Commons Attribution 3.0 Australia Licence is a standard form licence agreement that allows you to copy, communicate and adapt this publication provided that you attribute the work to the Commonwealth and abide by the other licence terms. A summary of the licence terms is available from <http://creativecommons.org/licenses/by/3.0/au/deed.en>. The full licence terms are available from <http://creativecommons.org/licenses/by/3.0/au/legalcode>.

Use of the Coat of Arms

The Department of the Prime Minister and Cabinet sets the terms under which the Coat of Arms is used. Please refer to the Department's Commonwealth Coat of Arms and Government branding web page <http://www.dpmmc.gov.au/guidelines/index.cfm#brand> and, in particular, the Guidelines on the use of the Commonwealth Coat of Arms publication.

An appropriate citation for this report is:

Bureau of Infrastructure, Transport and Regional Economics (BITRE), 2015, Domestic airline on time performance, Statistical Report, BITRE, Canberra ACT.

Contact us

This publication is available in PDF format. All other rights are reserved, including in relation to any Departmental logos or trade marks which may exist. For enquiries regarding the licence and any use of this publication, please contact:

Bureau of Infrastructure, Transport and Regional Economics (BITRE)
Department of Infrastructure and Regional Development
GPO Box 501, Canberra ACT 2601, Australia
Telephone: (international) +61 2 6274 7210
Fax: (international) +61 2 6274 6855
Email: bitre@infrastructure.gov.au
Website: www.bitre.gov.au

Inquiries

Should you require additional information about the statistics contained in this publication:

Telephone (02) 6274 7790 or Facsimile (02) 6274 7727

Electronic mail: AVSTATS@infrastructure.gov.au

Web site: <http://www.bitre.gov.au/statistics/aviation/otphome.aspx>

Foreword

The Bureau of Infrastructure, Transport and Regional Economics (BITRE) monitors the punctuality and reliability of major domestic airlines operating between Australian airports. The purpose of this is to allow for evaluation of overall industry and individual airline performance, so that consumers of air travel can make informed decisions.

The following domestic airlines currently report this information monthly to the BITRE: Jetstar, Qantas, QantasLink, Regional Express, Tigerair, Virgin Australia and Virgin Australia Regional Airlines. Data has been gathered since November 2003, although some airlines commenced reporting at a later date, including Jetstar which first reported in May 2004, MacAir in July 2005 and Tigerair in April 2008. MacAir ceased operations in February 2009 and data was not received for December 2008 onwards. Virgin Blue was rebranded as Virgin Australia in May 2011 and Tiger Airways was rebranded as Tigerair in July 2013 and time series data in Microsoft Excel spreadsheet format on the BITRE website have been revised to reflect these changes. Virgin Australia Regional Airlines commenced operations in May 2013. It was formed after the acquisition of Skywest by Virgin Australia and represents a combination of operations previously reported under Skywest and Virgin Australia – ATR/F100 Operations. Services operated by Skywest on behalf of Virgin Australia using ATR/F100 aircraft commenced in November 2011 and were shown separately as Virgin Australia – ATR/F100 Operations until April 2013.

Information presented in this report is for Australian domestic routes for which the passenger load averaged 8 000 or more passengers per month over the previous six months and where two or more airlines operated in competition on those routes. There were 66 routes that met this definition in September 2015. Over time, routes which meet these criteria change as airline networks and traffic levels vary.

Participating airlines report their overall monthly network performance where this is possible.

Total industry figures encompass all services operated by reporting airlines only. These airlines collectively carried over 95 per cent of total domestic passengers (regular public transport only) in 2014.

The method of capturing on time performance varies between airlines utilising different recording systems. Jetstar and Qantas jet aircraft use Aircraft Communication Addressing and Reporting System (ACARS) to electronically measure on time performance. Regional Express, Tigerair, Virgin Australia, Virgin Australia Regional Airlines and the Qantas non-jet fleet record on time performance manually using records from pilots, gate agents and/or ground crews.

After initial data is collected, aggregate reports are audited internally by participating airlines prior to publication.

Reports and detailed time series data in Microsoft Excel spreadsheet format are available from the BITRE website at: <http://www.bitre.gov.au/statistics/aviation/otphome.aspx>.

Contents

	Page
Industry performance	1
Individual routes	10
Airports	23
Definitions	30

Industry performance

For September 2015, on time performance over all routes operated by participating airlines (Jetstar, Qantas, QantasLink, Regional Express, Tigerair, Virgin Australia and Virgin Australia Regional Airlines) averaged 88.3 per cent for on time arrivals and 88.6 per cent for on time departures. Cancellations represented 1.7 per cent of all scheduled flights. The equivalent figures for September 2014 were 86.6 per cent for arrivals, 87.7 per cent for departures and 1.2 per cent for cancellations.

This month's figures were significantly better than the long term average performance for all routes (82.6 per cent for arrivals and 84.0 per cent for departures). The rate of cancellations was higher than the long term average of 1.4 per cent.

Qantas achieved the highest on time arrivals among the major domestic airlines at 91.8 per cent, followed by Virgin Australia at 91.3 per cent, Tigerair at 86.4 per cent and Jetstar at 83.1 per cent. QantasLink was the best performing regional airline for on time arrivals at 88.2 per cent, followed by Regional Express at 87.5 per cent and Virgin Australia Regional Airlines at 81.8 per cent. The Qantas network (Qantas and QantasLink combined operations) recorded 90.0 per cent for on time arrivals while the Virgin Australia network (Virgin Australia and Virgin Australia Regional Airlines combined operations) recorded 89.6 per cent.

Virgin Australia achieved the highest level of on time departures for September 2015 at 92.0 per cent, followed by Qantas at 91.8 per cent, Tigerair at 86.9 per cent and Jetstar at 80.4 per cent. Of the regional airlines, Regional Express recorded 90.3 per cent followed by QantasLink at 88.8 per cent and Virgin Australia Regional Airlines at 82.3 per cent. Both the Qantas and Virgin Australia networks recorded 90.3 per cent for on time departures.

Virgin Australia Regional Airlines had the highest percentage of cancellations (5.2 per cent) during the month, followed by QantasLink (2.3 per cent), Jetstar (2.1 per cent), Virgin Australia (1.4 per cent), Qantas (1.1 per cent), Tigerair (0.8 per cent) and Regional Express (0.4 per cent).

Airlines' on time performance varies across the routes they serve. Individual route data by specific airline for 66 routes are shown on pages 10-22.

Of the 66 routes which met the criteria for on time performance reporting in September 2015, the Adelaide-Alice Springs route had the highest percentage of on time arrivals (100.0 per cent) and the Brisbane-Proserpine route had the highest percentage of on time departures (98.8 per cent). The Port Macquarie-Sydney route had the lowest percentage of on time arrivals (67.4 per cent) and the Sunshine Coast-Melbourne route had the lowest percentage of on time departures (71.4 per cent).

Cancellations were highest on the Moranbah-Brisbane route at 8.9 per cent, followed by the Brisbane-Moranbah route at 8.7 per cent, the Gladstone-Brisbane route at 8.1 per cent, the Brisbane-Gladstone route at 7.6 per cent and the Sydney-Canberra and Canberra-Sydney routes at 6.2 per cent.

Proserpine Airport recorded the highest percentage of on time arrivals (98.8 per cent) and Port Hedland Airport recorded the highest percentage of on time departures (95.6 per cent). Port

Macquarie Airport recorded the lowest percentage of on time arrivals (72.1 per cent) and the lowest percentage of on time departures (73.3 per cent). These figures only refer to reported routes and do not cover all flights at these airports.

Table 1 On time performance for September 2015 — Total Industry

	<i>Sectors</i>		<i>Arrivals On Time</i>		<i>Departures On Time</i>		<i>Cancellations</i>	
	<i>Scheduled</i>	<i>Flown</i>	<i>No.</i>	<i>%</i>	<i>No.</i>	<i>%</i>	<i>No.</i>	<i>%</i>
Jetstar	7 671	7 510	6 242	83.1	6 041	80.4	161	2.1
Qantas	9 543	9 439	8 669	91.8	8 664	91.8	104	1.1
QantasLink	10 151	9 921	8 750	88.2	8 814	88.8	230	2.3
Regional Express	6 190	6 168	5 395	87.5	5 571	90.3	22	0.4
Tigerair	2 013	1 997	1 726	86.4	1 736	86.9	16	0.8
Virgin Australia	11 137	10 978	10 024	91.3	10 101	92.0	159	1.4
Virgin Australia Regional Airlines	2 495	2 366	1 936	81.8	1 948	82.3	129	5.2
All Airlines	49 200	48 379	42 742	88.3	42 875	88.6	821	1.7
Qantas - all QF designated services	19 694	19 360	17 419	90.0	17 478	90.3	334	1.7
Virgin Australia - all VA designated services	13 632	13 344	11 960	89.6	12 049	90.3	288	2.1

Total airline network data (including routes not shown in this report).

Airlines' on time performance varies across the routes they serve. Individual route data by specific airline for 63 routes are shown on pages 10-22.

Table 2 Top ten routes for on time performance for September 2015 (participating airlines only)

<i>Arrivals</i>		<i>Departures</i>	
<i>Route</i>	<i>On Time (%)</i>	<i>Route</i>	<i>On Time (%)</i>
Adelaide-Alice Springs	100.0	Brisbane-Proserpine	98.8
Brisbane-Proserpine	98.8	Darwin-Alice Springs	98.6
Alice Springs-Adelaide	97.6	Brisbane-Mount Isa	98.4
Canberra-Adelaide	97.3	Adelaide-Canberra	97.3
Alice Springs-Darwin	97.3	Canberra-Adelaide	95.9
Darwin-Alice Springs	97.3	Perth-Karratha	95.9
Adelaide-Perth	96.8	Adelaide-Gold Coast	95.8
Melbourne-Hamilton Island	96.7	Townsville-Cairns	95.7
Adelaide-Gold Coast	95.8	Darwin-Perth	95.7
Port Hedland-Perth	95.6	Perth-Port Hedland	95.6

Table 3 Top ten airports for on time performance for September 2015 (participating airlines and reported routes only)

<i>Arrivals</i>		<i>Departures</i>	
<i>Airport</i>	<i>On Time (%)</i>	<i>Airport</i>	<i>On Time (%)</i>
Proserpine	98.8	Port Hedland	95.6
Alice Springs	98.3	Karratha	95.2
Newman	94.4	Alice Springs	94.8
Adelaide	93.6	Newman	94.4
Mount Isa	93.5	Port Lincoln	94.2
Karratha	92.5	Proserpine	93.8
Port Lincoln	92.4	Adelaide	93.5
Perth	92.1	Perth	91.4
Mackay	92.1	Kalgoorlie	91.3
Kalgoorlie	92.0	Mildura	91.1

Total industry on time performance

Figure 1 On time performance (by month from September 2012)—Total Industry

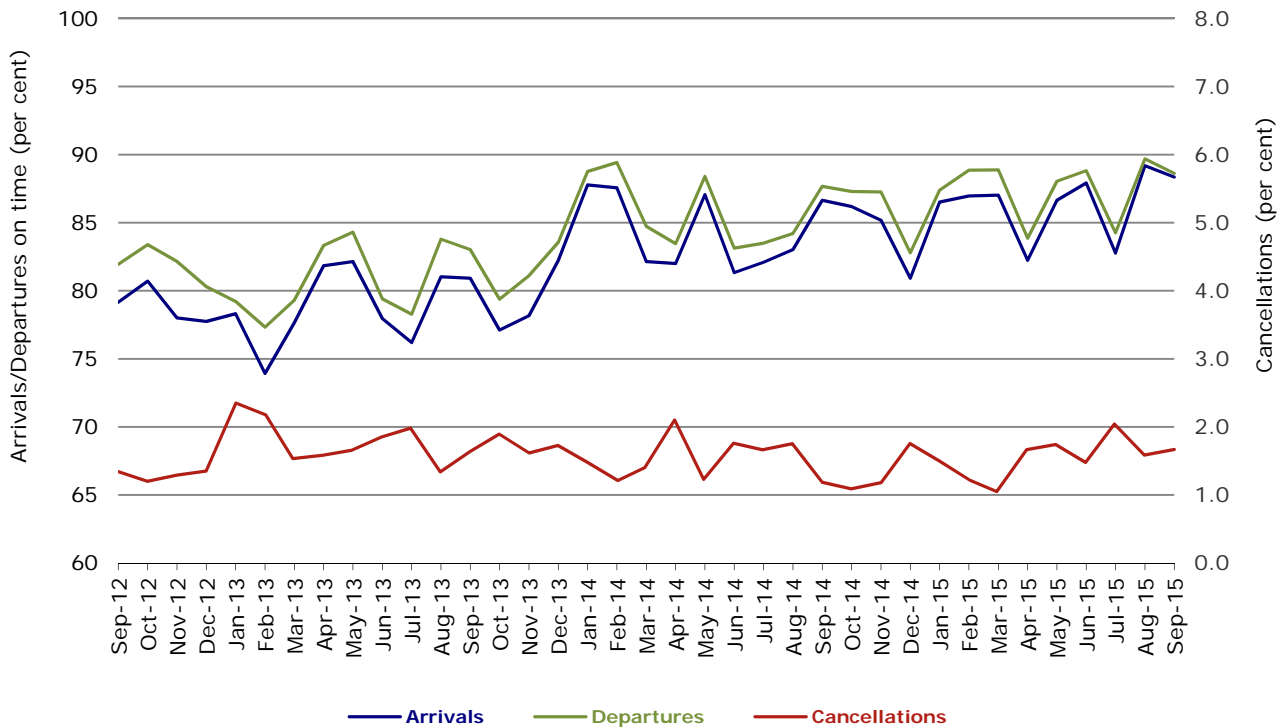


Figure 2 Arrivals on time (by month from September 2014)

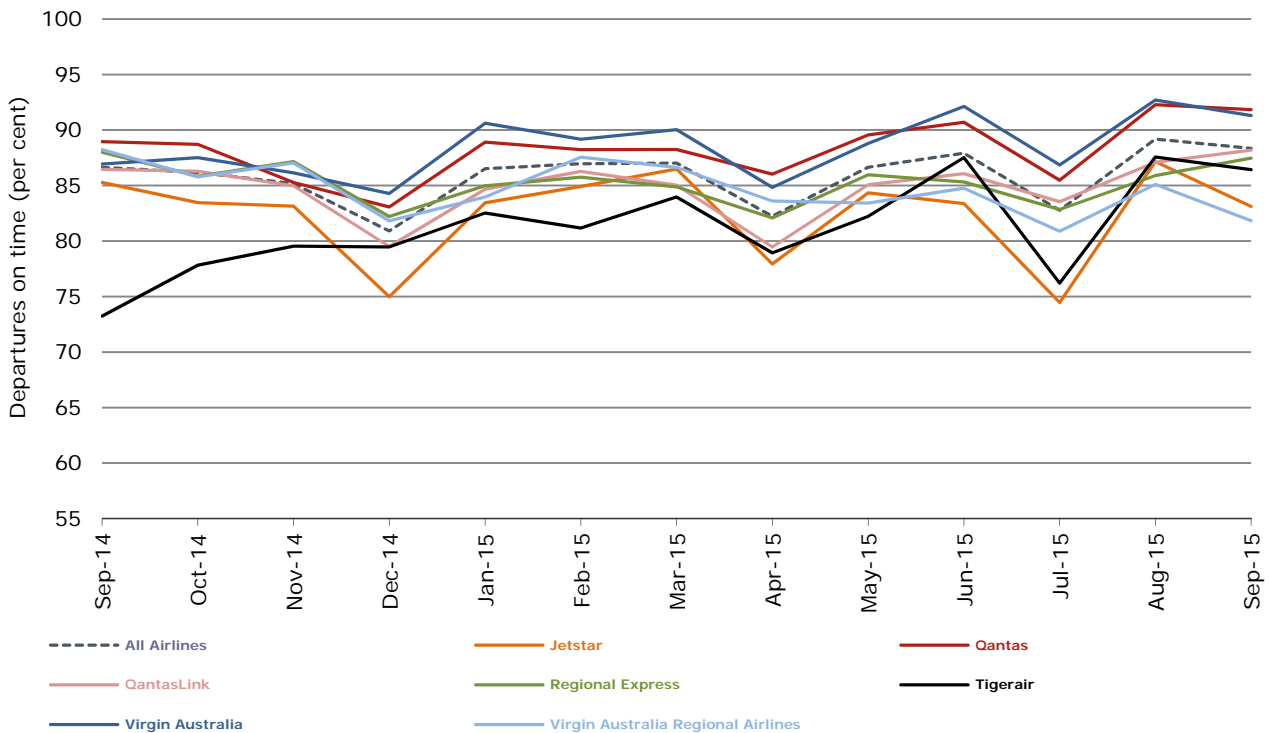


Figure 3 Departures on time (by month from September 2014)

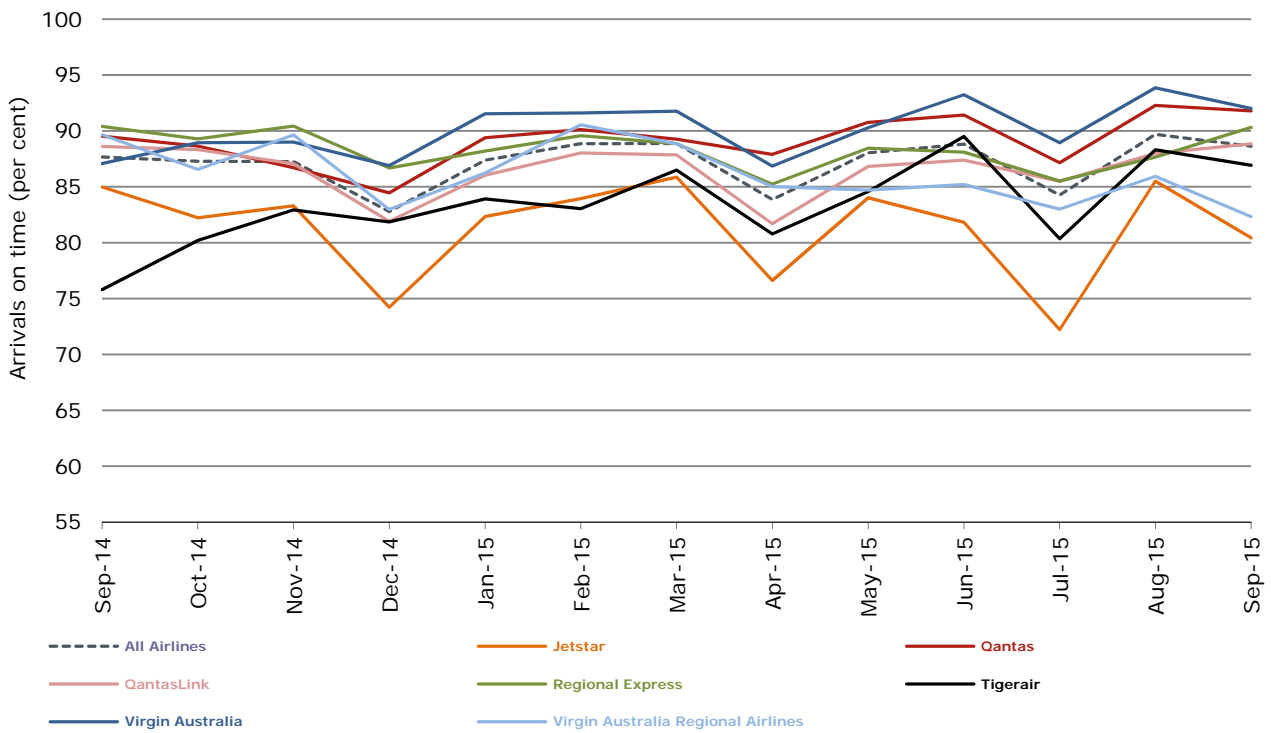
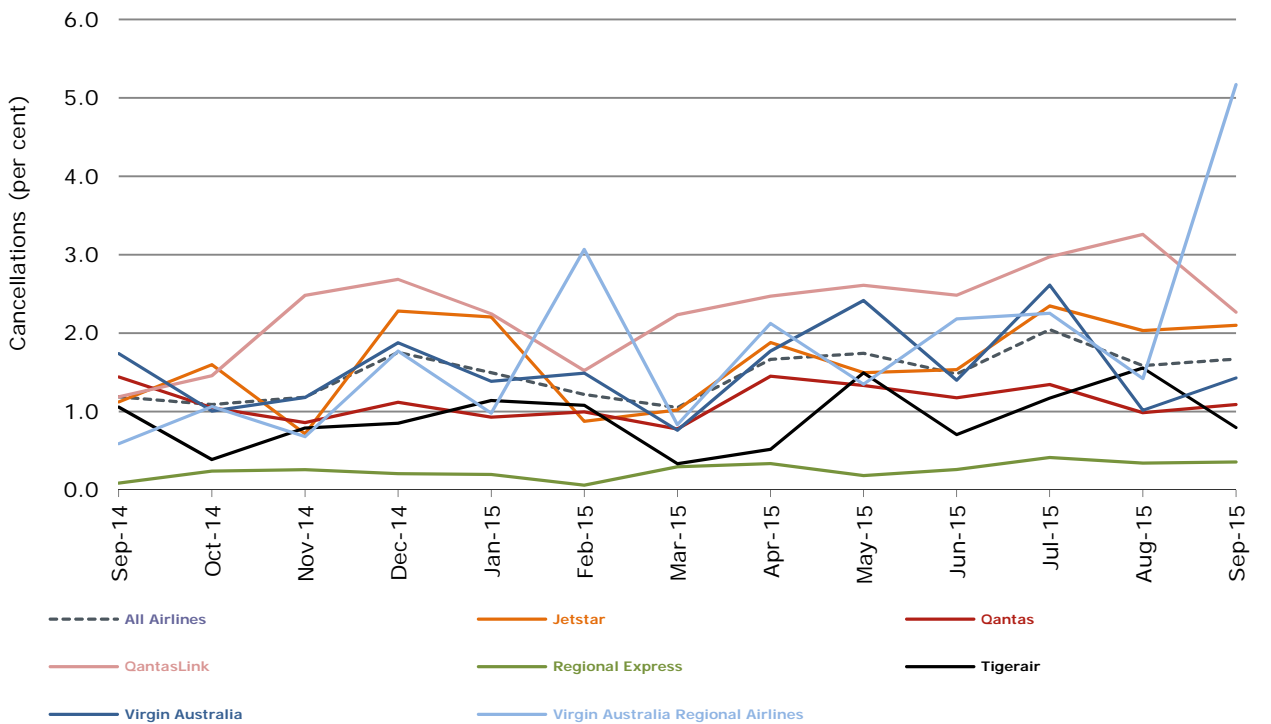


Figure 4 Cancellations (by month from September 2014)



Major domestic airlines on time performance

Figure 5 On time performance (by month from September 2012)—Jetstar

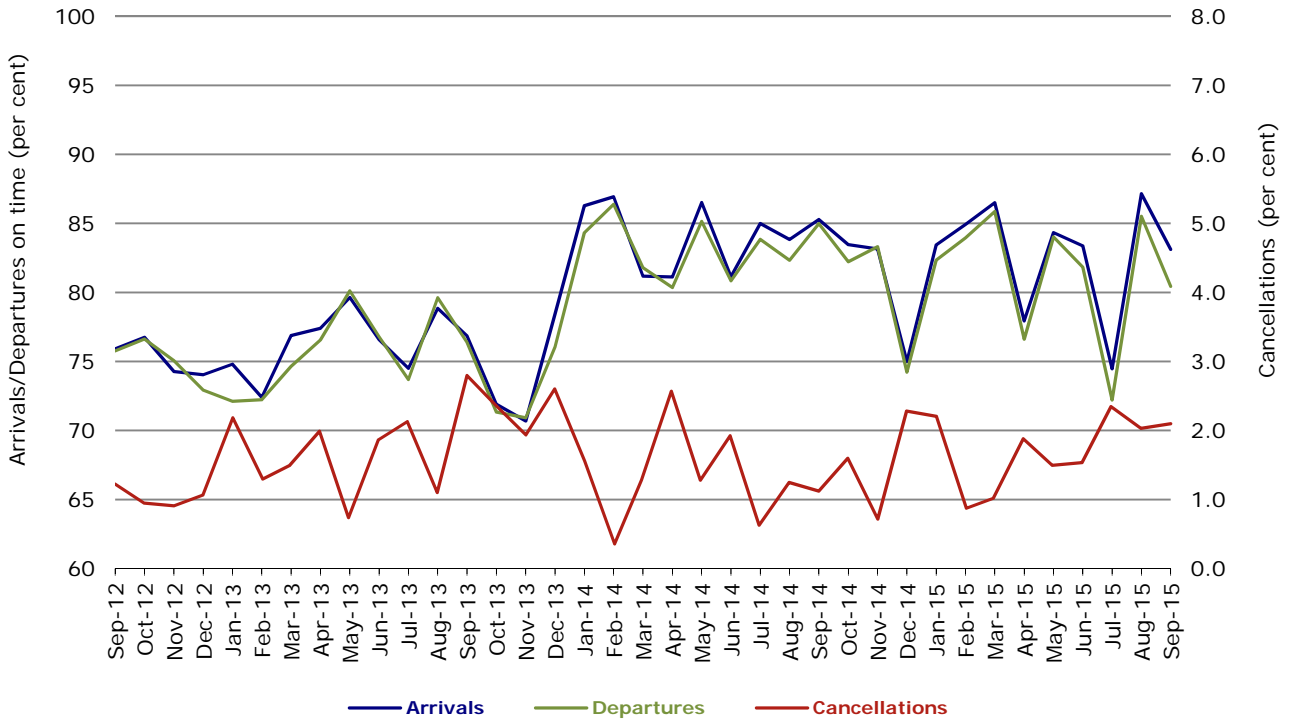


Figure 6 On time performance (by month from September 2012)—Qantas

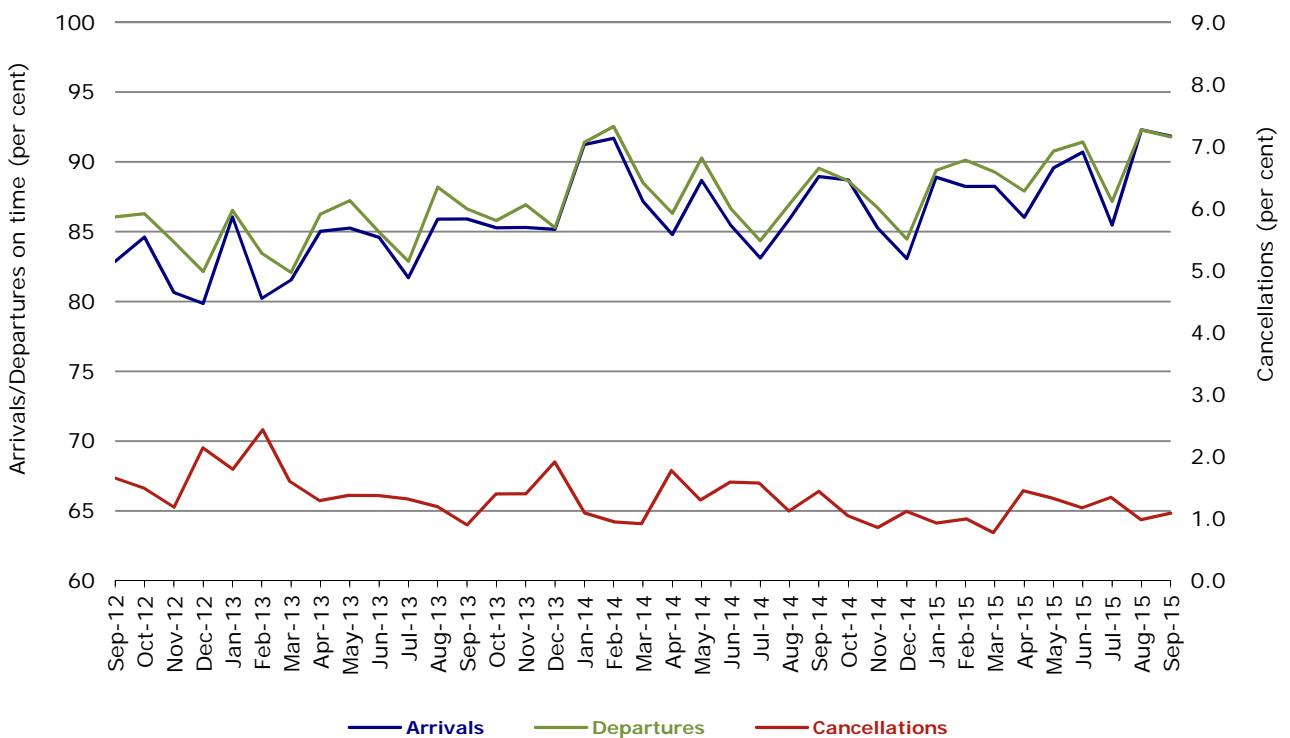


Figure 7 On time performance (by month from September 2012)—Tigerair

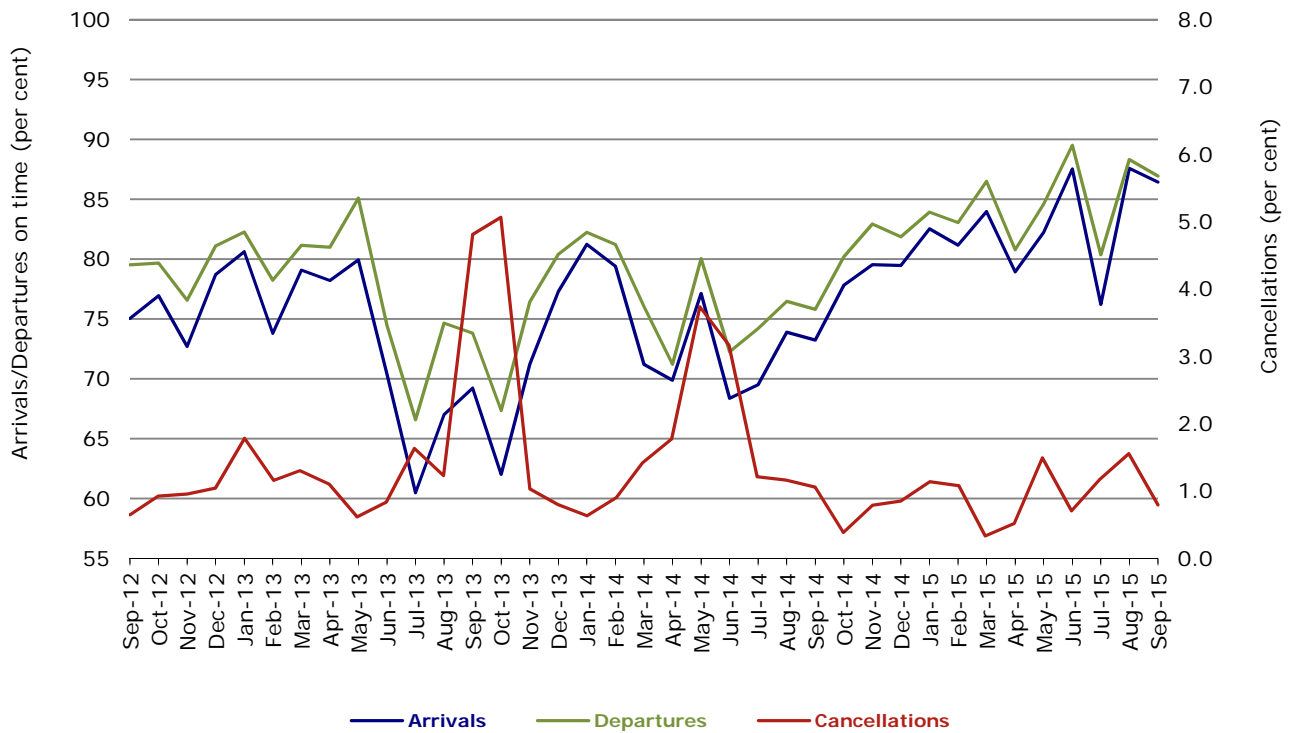
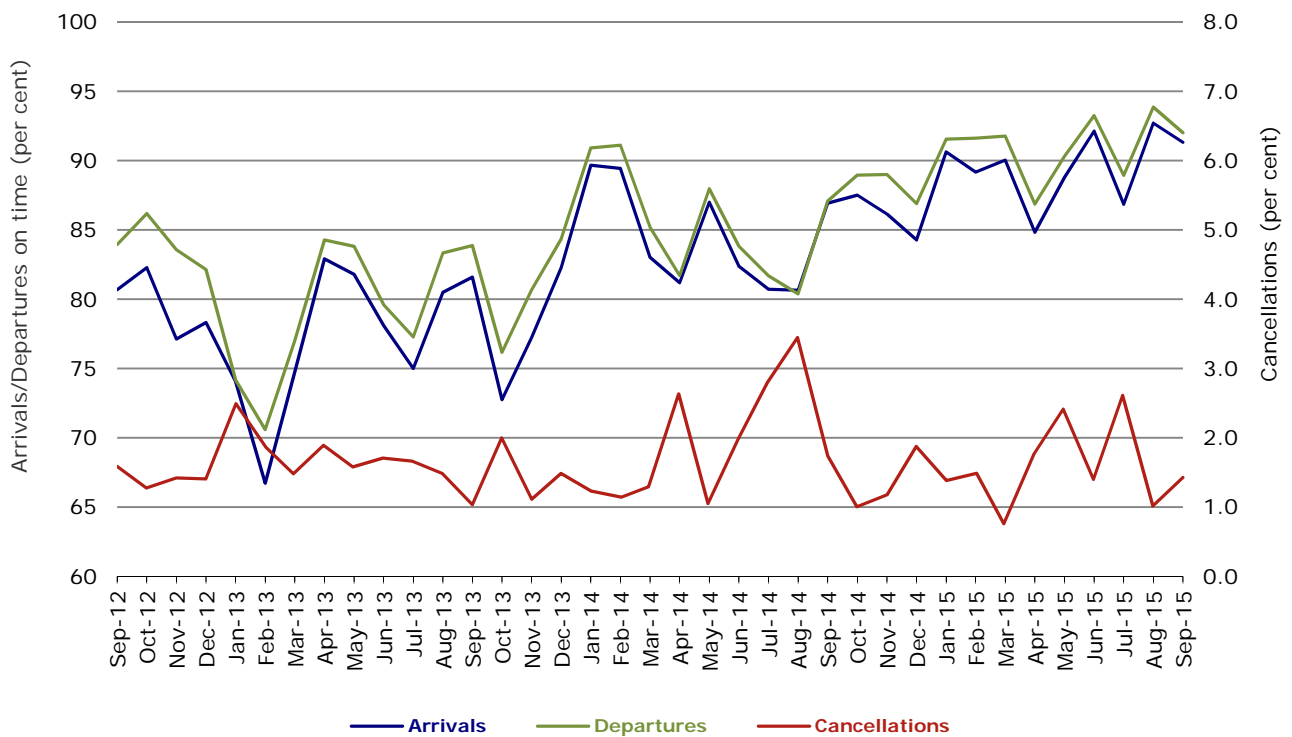


Figure 8 On time performance (by month from September 2012)—Virgin Australia



Major regional airlines on time performance

Figure 9 On time performance (by month from September 2012)—QantasLink

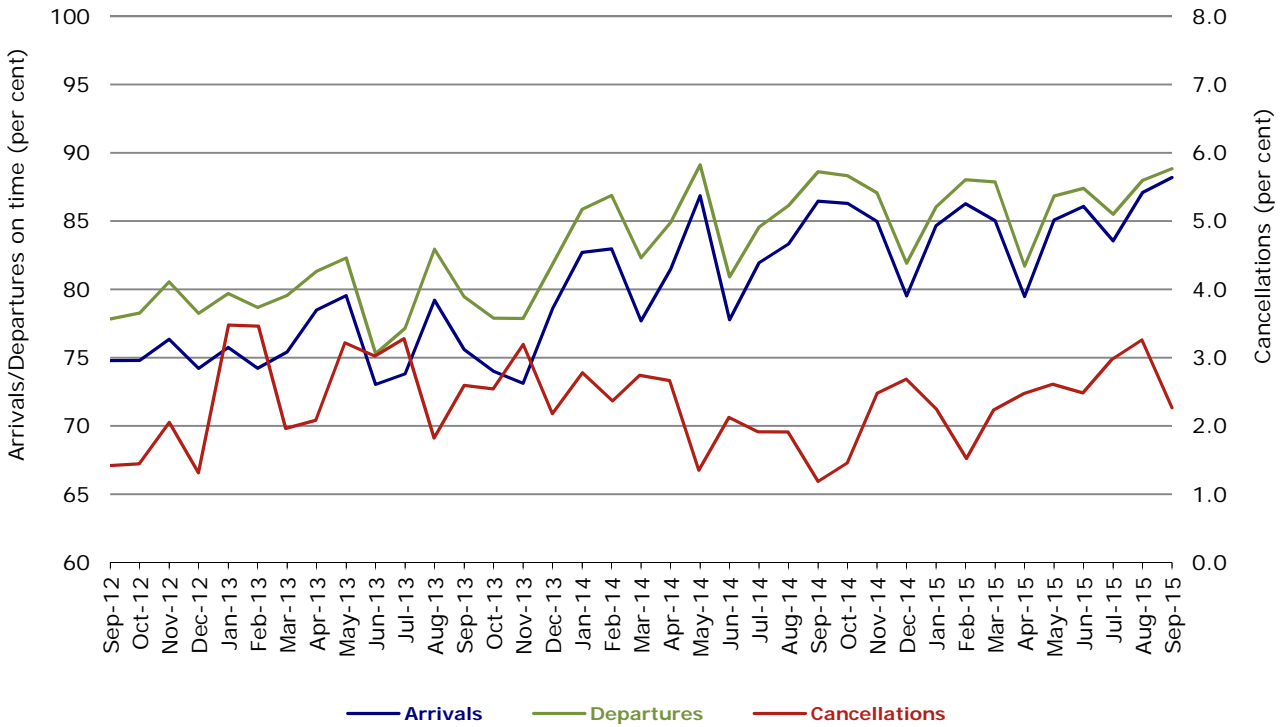


Figure 10 On time performance (by month from September 2012)—Regional Express

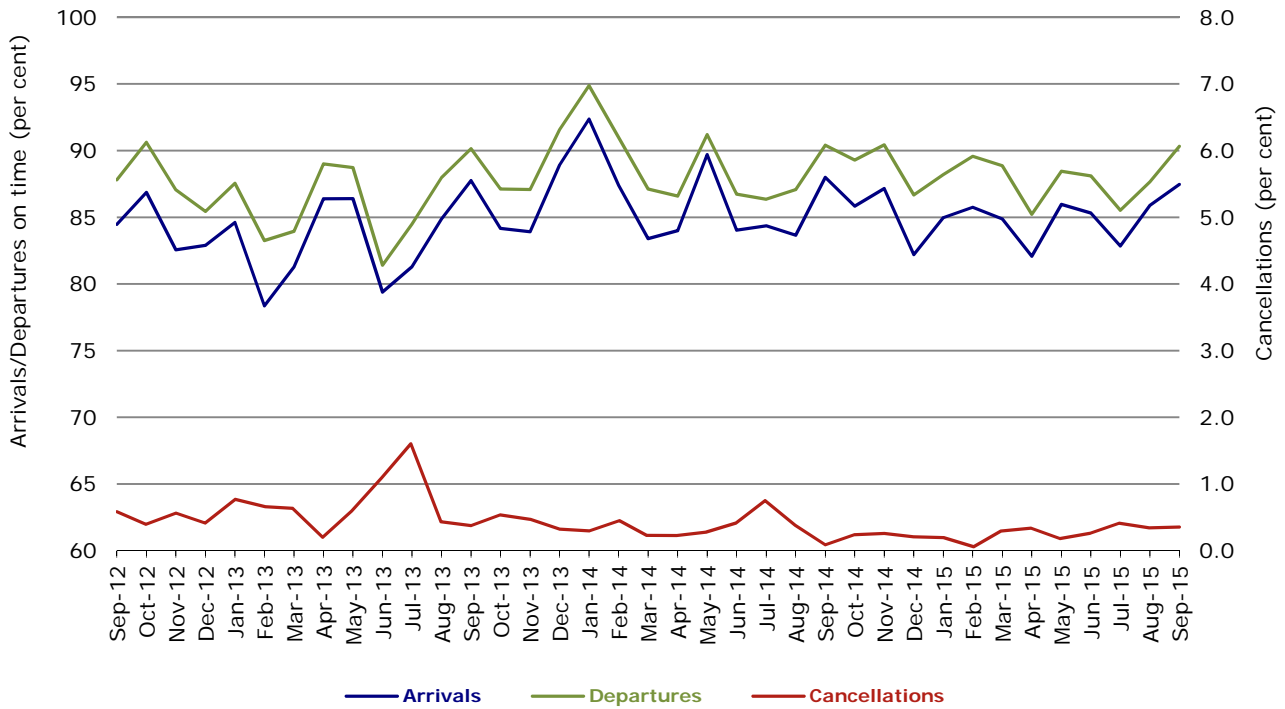
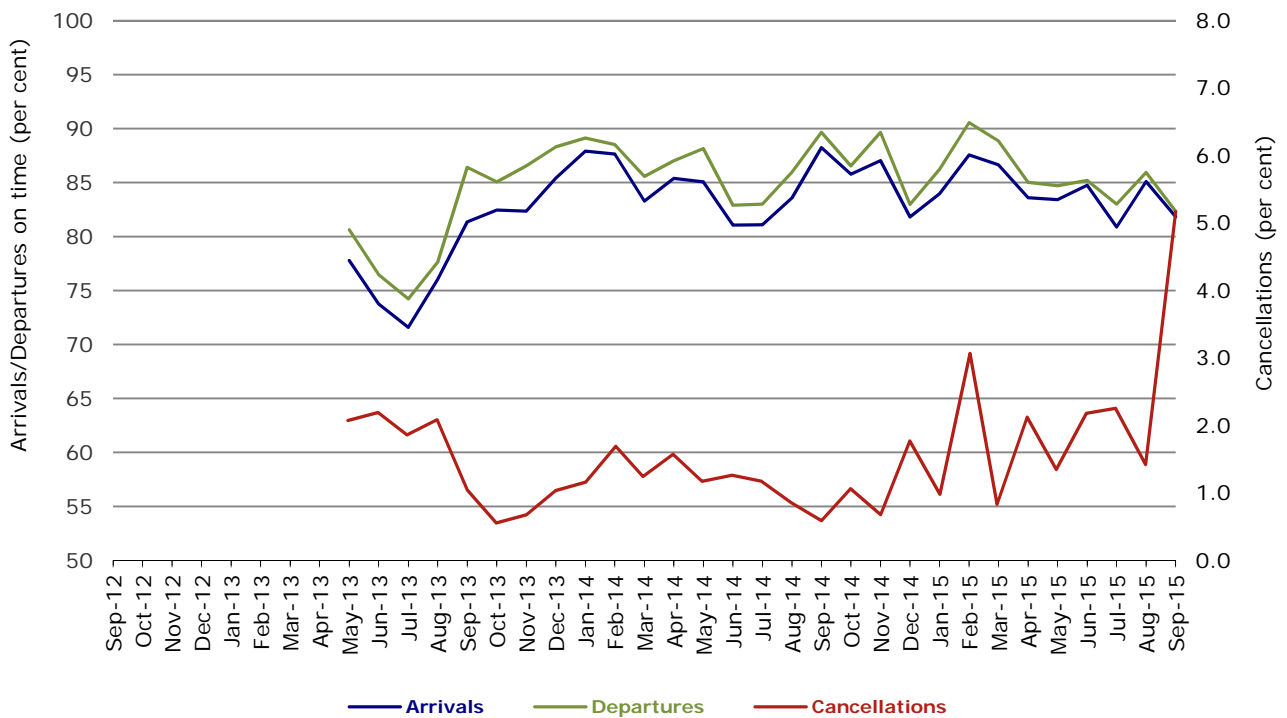


Figure 11 On time performance (by month from September 2012)
Virgin Australia Regional Airlines



Virgin Australia Regional Airlines commenced operations in May 2013. It was formed after the acquisition of Skywest by Virgin Australia and represents a combination of operations previously reported under Skywest and Virgin Australia – ATR/F100 Operations.

Individual routes

On time performance is reported for all routes where the passenger load averages over 8000 passengers per month over the previous six months, and where two or more airlines operate in competition on those routes. There are now 66 routes which meet this definition. Over time, however, routes which meet this definition may change as airline networks and traffic levels vary.

	<i>Sectors</i>		<i>Arrivals On Time</i>		<i>Departures On Time</i>		<i>Cancellations</i>	
	<i>Sched.</i>	<i>Flown</i>	<i>No.</i>	<i>%</i>	<i>No.</i>	<i>%</i>	<i>No.</i>	<i>%</i>
Adelaide-Alice Springs								
Qantas	30	30	30	100.0	29	96.7	0	0.0
Virgin Australia	13	13	13	100.0	12	92.3	0	0.0
All Airlines	43	43	43	100.0	41	95.3	0	0.0
Adelaide-Brisbane								
Jetstar	30	30	29	96.7	29	96.7	0	0.0
Qantas	108	108	103	95.4	103	95.4	0	0.0
Tigerair	21	21	21	100.0	20	95.2	0	0.0
Virgin Australia	112	110	104	94.5	105	95.5	2	1.8
All Airlines	271	269	257	95.5	257	95.5	2	0.7
Adelaide-Canberra								
Qantas	48	48	45	93.8	46	95.8	0	0.0
Virgin Australia	26	26	25	96.2	26	100.0	0	0.0
All Airlines	74	74	70	94.6	72	97.3	0	0.0
Adelaide-Gold Coast								
Jetstar	42	42	41	97.6	41	97.6	0	0.0
Virgin Australia	30	30	28	93.3	28	93.3	0	0.0
All Airlines	72	72	69	95.8	69	95.8	0	0.0
Adelaide-Melbourne								
Jetstar	115	111	92	82.9	81	73.0	4	3.5
Qantas	283	283	270	95.4	270	95.4	0	0.0
Tigerair	72	72	70	97.2	71	98.6	0	0.0
Virgin Australia	292	283	266	94.0	266	94.0	9	3.1
All Airlines	762	749	698	93.2	688	91.9	13	1.7
Adelaide-Perth								
Jetstar	35	35	32	91.4	28	80.0	0	0.0
Qantas	112	112	110	98.2	107	95.5	0	0.0
Virgin Australia	72	72	70	97.2	69	95.8	0	0.0
All Airlines	219	219	212	96.8	204	93.2	0	0.0
Adelaide-Port Lincoln								
QantasLink	106	106	95	89.6	95	89.6	0	0.0
Regional Express	209	208	195	93.8	202	97.1	1	0.5
All Airlines	315	314	290	92.4	297	94.6	1	0.3
Adelaide-Sydney								
Jetstar	138	135	125	92.6	125	92.6	3	2.2
Qantas	238	237	216	91.1	227	95.8	1	0.4
QantasLink	19	19	17	89.5	16	84.2	0	0.0
Tigerair	33	32	28	87.5	29	90.6	1	3.0
Virgin Australia	172	171	152	88.9	158	92.4	1	0.6
All Airlines	600	594	538	90.6	555	93.4	6	1.0
Albury-Sydney								
QantasLink	94	93	79	84.9	80	86.0	1	1.1
Regional Express	108	108	102	94.4	104	96.3	0	0.0
Virgin Australia Regional Airlines	60	59	50	84.7	50	84.7	1	1.7
All Airlines	262	260	231	88.8	234	90.0	2	0.8

	<i>Sectors</i>		<i>Arrivals On Time</i>		<i>Departures On Time</i>		<i>Cancellations</i>	
	<i>Sched.</i>	<i>Flown</i>	<i>No.</i>	<i>%</i>	<i>No.</i>	<i>%</i>	<i>No.</i>	<i>%</i>
Alice Springs-Adelaide								
Qantas	30	30	29	96.7	28	93.3	0	0.0
Virgin Australia	13	12	12	100.0	12	100.0	1	7.7
All Airlines	43	42	41	97.6	40	95.2	1	2.3
Alice Springs-Darwin								
QantasLink	60	60	58	96.7	57	95.0	0	0.0
Virgin Australia	13	13	13	100.0	12	92.3	0	0.0
All Airlines	73	73	71	97.3	69	94.5	0	0.0
Armidale-Sydney								
QantasLink	134	130	111	85.4	105	80.8	4	3.0
Regional Express	78	78	62	79.5	71	91.0	0	0.0
All Airlines	212	208	173	83.2	176	84.6	4	1.9
Ayers Rock-Sydney								
Jetstar	30	30	28	93.3	27	90.0	0	0.0
Virgin Australia	30	30	27	90.0	23	76.7	0	0.0
All Airlines	60	60	55	91.7	50	83.3	0	0.0
Ballina-Sydney								
Jetstar	85	85	66	77.6	62	72.9	0	0.0
Regional Express	24	22	16	72.7	18	81.8	2	8.3
Virgin Australia	30	30	28	93.3	27	90.0	0	0.0
All Airlines	139	137	110	80.3	107	78.1	2	1.4
Brisbane-Adelaide								
Jetstar	30	30	28	93.3	29	96.7	0	0.0
Qantas	108	108	104	96.3	102	94.4	0	0.0
Tigerair	21	21	20	95.2	19	90.5	0	0.0
Virgin Australia	112	111	102	91.9	103	92.8	1	0.9
All Airlines	271	270	254	94.1	253	93.7	1	0.4
Brisbane-Bundaberg								
QantasLink	134	132	122	92.4	117	88.6	2	1.5
Virgin Australia Regional Airlines	38	36	26	72.2	27	75.0	2	5.3
All Airlines	172	168	148	88.1	144	85.7	4	2.3
Brisbane-Cairns								
Jetstar	131	130	104	80.0	107	82.3	1	0.8
Qantas	116	116	102	87.9	102	87.9	0	0.0
QantasLink	4	4	3	75.0	3	75.0	0	0.0
Tigerair	29	29	25	86.2	26	89.7	0	0.0
Virgin Australia	133	132	123	93.2	124	93.9	1	0.8
All Airlines	413	411	357	86.9	362	88.1	2	0.5
Brisbane-Canberra								
Qantas	26	26	25	96.2	24	92.3	0	0.0
QantasLink	125	124	111	89.5	108	87.1	1	0.8
Virgin Australia	96	96	88	91.7	86	89.6	0	0.0
All Airlines	247	246	224	91.1	218	88.6	1	0.4
Brisbane-Darwin								
Jetstar	30	30	20	66.7	19	63.3	0	0.0
Qantas	48	48	45	93.8	47	97.9	0	0.0
Tigerair	16	16	14	87.5	15	93.8	0	0.0
Virgin Australia	30	30	27	90.0	26	86.7	0	0.0
All Airlines	124	124	106	85.5	107	86.3	0	0.0

	<i>Sectors</i>		<i>Arrivals On Time</i>		<i>Departures On Time</i>		<i>Cancellations</i>	
	<i>Sched.</i>	<i>Flown</i>	<i>No.</i>	<i>%</i>	<i>No.</i>	<i>%</i>	<i>No.</i>	<i>%</i>
Brisbane-Emerald								
QantasLink	143	140	122	87.1	126	90.0	3	2.1
Virgin Australia Regional Airlines	76	72	50	69.4	58	80.6	4	5.3
All Airlines	219	212	172	81.1	184	86.8	7	3.2
Brisbane-Gladstone								
QantasLink	185	177	161	91.0	165	93.2	8	4.3
Virgin Australia	46	42	38	90.5	38	90.5	4	8.7
Virgin Australia Regional Airlines	100	87	67	77.0	66	75.9	13	13.0
All Airlines	331	306	266	86.9	269	87.9	25	7.6
Brisbane-Hamilton Island								
QantasLink	25	25	23	92.0	24	96.0	0	0.0
Virgin Australia	30	30	28	93.3	28	93.3	0	0.0
All Airlines	55	55	51	92.7	52	94.5	0	0.0
Brisbane-Hobart								
Jetstar	30	30	25	83.3	22	73.3	0	0.0
Virgin Australia	30	30	29	96.7	30	100.0	0	0.0
All Airlines	60	60	54	90.0	52	86.7	0	0.0
Brisbane-Mackay								
Jetstar	46	46	37	80.4	36	78.3	0	0.0
QantasLink	104	104	95	91.3	92	88.5	0	0.0
Virgin Australia	154	154	148	96.1	145	94.2	0	0.0
All Airlines	304	304	280	92.1	273	89.8	0	0.0
Brisbane-Melbourne								
Jetstar	150	144	120	83.3	109	75.7	6	4.0
Qantas	438	434	396	91.2	396	91.2	4	0.9
Tigerair	113	110	91	82.7	94	85.5	3	2.7
Virgin Australia	393	390	331	84.9	353	90.5	3	0.8
All Airlines	1 094	1 078	938	87.0	952	88.3	16	1.5
Brisbane-Moranbah								
QantasLink	122	111	107	96.4	106	95.5	11	9.0
Virgin Australia Regional Airlines	74	68	49	72.1	51	75.0	6	8.1
All Airlines	196	179	156	87.2	157	87.7	17	8.7
Brisbane-Mount Isa								
Qantas	40	40	36	90.0	39	97.5	0	0.0
Virgin Australia	22	22	22	100.0	22	100.0	0	0.0
All Airlines	62	62	58	93.5	61	98.4	0	0.0
Brisbane-Newcastle								
Jetstar	88	88	76	86.4	75	85.2	0	0.0
QantasLink	78	76	64	84.2	70	92.1	2	2.6
Virgin Australia	82	82	80	97.6	80	97.6	0	0.0
All Airlines	248	246	220	89.4	225	91.5	2	0.8
Brisbane-Perth								
Qantas	128	128	119	93.0	109	85.2	0	0.0
Virgin Australia	109	109	93	85.3	84	77.1	0	0.0
All Airlines	237	237	212	89.5	193	81.4	0	0.0
Brisbane-Proserpine								
Jetstar	30	30	29	96.7	29	96.7	0	0.0
Virgin Australia	52	51	51	100.0	51	100.0	1	1.9
All Airlines	82	81	80	98.8	80	98.8	1	1.2

	<i>Sectors</i>		<i>Arrivals On Time</i>		<i>Departures On Time</i>		<i>Cancellations</i>	
	<i>Sched.</i>	<i>Flown</i>	<i>No.</i>	<i>%</i>	<i>No.</i>	<i>%</i>	<i>No.</i>	<i>%</i>
Brisbane-Rockhampton								
QantasLink	190	188	169	89.9	169	89.9	2	1.1
Virgin Australia	126	121	110	90.9	109	90.1	5	4.0
Virgin Australia Regional Airlines	78	64	47	73.4	44	68.8	14	17.9
All Airlines	394	373	326	87.4	322	86.3	21	5.3
Brisbane-Sydney								
Jetstar	193	183	149	81.4	145	79.2	10	5.2
Qantas	608	603	553	91.7	553	91.7	5	0.8
Tigerair	96	96	82	85.4	83	86.5	0	0.0
Virgin Australia	568	552	490	88.8	508	92.0	16	2.8
All Airlines	1 465	1 434	1 274	88.8	1 289	89.9	31	2.1
Brisbane-Townsville								
Jetstar	47	47	32	68.1	31	66.0	0	0.0
Qantas	146	146	131	89.7	132	90.4	0	0.0
Virgin Australia	154	154	140	90.9	138	89.6	0	0.0
All Airlines	347	347	303	87.3	301	86.7	0	0.0
Broome-Perth								
Qantas	27	27	24	88.9	24	88.9	0	0.0
QantasLink	54	54	52	96.3	50	92.6	0	0.0
Virgin Australia	20	20	19	95.0	18	90.0	0	0.0
Virgin Australia Regional Airlines	48	48	26	54.2	26	54.2	0	0.0
All Airlines	149	149	121	81.2	118	79.2	0	0.0
Bundaberg-Brisbane								
QantasLink	134	133	117	88.0	124	93.2	1	0.7
Virgin Australia Regional Airlines	39	37	26	70.3	25	67.6	2	5.1
All Airlines	173	170	143	84.1	149	87.6	3	1.7
Cairns-Brisbane								
Jetstar	124	123	114	92.7	104	84.6	1	0.8
Qantas	116	116	99	85.3	103	88.8	0	0.0
QantasLink	4	4	3	75.0	3	75.0	0	0.0
Tigerair	29	29	17	58.6	18	62.1	0	0.0
Virgin Australia	133	133	123	92.5	122	91.7	0	0.0
All Airlines	406	405	356	87.9	350	86.4	1	0.2
Cairns-Melbourne								
Jetstar	115	114	101	88.6	96	84.2	1	0.9
Qantas	38	38	37	97.4	37	97.4	0	0.0
Tigerair	30	30	24	80.0	25	83.3	0	0.0
Virgin Australia	34	34	30	88.2	32	94.1	0	0.0
All Airlines	217	216	192	88.9	190	88.0	1	0.5
Cairns-Sydney								
Jetstar	122	120	101	84.2	96	80.0	2	1.6
Qantas	72	72	71	98.6	69	95.8	0	0.0
Tigerair	39	39	33	84.6	30	76.9	0	0.0
Virgin Australia	90	89	83	93.3	82	92.1	1	1.1
All Airlines	323	320	288	90.0	277	86.6	3	0.9
Cairns-Townsville								
QantasLink	142	137	127	92.7	128	93.4	5	3.5
Regional Express	73	73	68	93.2	68	93.2	0	0.0
All Airlines	215	210	195	92.9	196	93.3	5	2.3
Canberra-Adelaide								
Qantas	48	48	46	95.8	46	95.8	0	0.0
Virgin Australia	26	26	26	100.0	25	96.2	0	0.0
All Airlines	74	74	72	97.3	71	95.9	0	0.0

	<i>Sectors</i>		<i>Arrivals On Time</i>		<i>Departures On Time</i>		<i>Cancellations</i>	
	<i>Sched.</i>	<i>Flown</i>	<i>No.</i>	<i>%</i>	<i>No.</i>	<i>%</i>	<i>No.</i>	<i>%</i>
Canberra-Brisbane								
Qantas	26	26	25	96.2	25	96.2	0	0.0
QantasLink	125	123	94	76.4	93	75.6	2	1.6
Virgin Australia	96	96	84	87.5	83	86.5	0	0.0
All Airlines	247	245	203	82.9	201	82.0	2	0.8
Canberra-Melbourne								
Qantas	185	184	175	95.1	172	93.5	1	0.5
QantasLink	82	77	68	88.3	66	85.7	5	6.1
Virgin Australia	155	154	145	94.2	146	94.8	1	0.6
Virgin Australia Regional Airlines	29	27	25	92.6	25	92.6	2	6.9
All Airlines	451	442	413	93.4	409	92.5	9	2.0
Canberra-Sydney								
QantasLink	505	473	432	91.3	434	91.8	32	6.3
Virgin Australia	32	31	29	93.5	28	90.3	1	3.1
Virgin Australia Regional Airlines	268	251	227	90.4	232	92.4	17	6.3
All Airlines	805	755	688	91.1	694	91.9	50	6.2
Coffs Harbour-Sydney								
QantasLink	150	147	122	83.0	119	81.0	3	2.0
Tigerair	12	12	11	91.7	11	91.7	0	0.0
Virgin Australia	60	59	57	96.6	55	93.2	1	1.7
All Airlines	222	218	190	87.2	185	84.9	4	1.8
Darwin-Alice Springs								
QantasLink	60	60	59	98.3	59	98.3	0	0.0
Virgin Australia	13	13	12	92.3	13	100.0	0	0.0
All Airlines	73	73	71	97.3	72	98.6	0	0.0
Darwin-Brisbane								
Jetstar	30	30	21	70.0	18	60.0	0	0.0
Qantas	48	47	41	87.2	40	85.1	1	2.1
Tigerair	15	14	12	85.7	12	85.7	1	6.7
Virgin Australia	30	30	25	83.3	27	90.0	0	0.0
All Airlines	123	121	99	81.8	97	80.2	2	1.6
Darwin-Melbourne								
Jetstar	30	30	23	76.7	22	73.3	0	0.0
Qantas	30	30	27	90.0	28	93.3	0	0.0
Virgin Australia	32	32	29	90.6	26	81.3	0	0.0
All Airlines	92	92	79	85.9	76	82.6	0	0.0
Darwin-Perth								
Qantas	39	39	38	97.4	38	97.4	0	0.0
Virgin Australia	30	30	27	90.0	28	93.3	0	0.0
All Airlines	69	69	65	94.2	66	95.7	0	0.0
Darwin-Sydney								
Jetstar	27	27	17	63.0	16	59.3	0	0.0
Qantas	51	51	45	88.2	44	86.3	0	0.0
Virgin Australia	30	30	21	70.0	22	73.3	0	0.0
All Airlines	108	108	83	76.9	82	75.9	0	0.0
Dubbo-Sydney								
QantasLink	126	126	103	81.7	103	81.7	0	0.0
Regional Express	155	155	137	88.4	143	92.3	0	0.0
All Airlines	281	281	240	85.4	246	87.5	0	0.0
Emerald-Brisbane								
QantasLink	143	140	122	87.1	122	87.1	3	2.1
Virgin Australia Regional Airlines	76	72	57	79.2	60	83.3	4	5.3
All Airlines	219	212	179	84.4	182	85.8	7	3.2

	<i>Sectors</i>		<i>Arrivals On Time</i>		<i>Departures On Time</i>		<i>Cancellations</i>	
	<i>Sched.</i>	<i>Flown</i>	<i>No.</i>	<i>%</i>	<i>No.</i>	<i>%</i>	<i>No.</i>	<i>%</i>
Geraldton-Perth								
QantasLink	47	47	41	87.2	41	87.2	0	0.0
Virgin Australia Regional Airlines	86	85	76	89.4	75	88.2	1	1.2
All Airlines	133	132	117	88.6	116	87.9	1	0.8
Gladstone-Brisbane								
QantasLink	187	178	163	91.6	163	91.6	9	4.8
Virgin Australia	46	42	38	90.5	35	83.3	4	8.7
Virgin Australia Regional Airlines	100	86	68	79.1	67	77.9	14	14.0
All Airlines	333	306	269	87.9	265	86.6	27	8.1
Gold Coast-Adelaide								
Jetstar	42	42	38	90.5	40	95.2	0	0.0
Virgin Australia	30	30	23	76.7	26	86.7	0	0.0
All Airlines	72	72	61	84.7	66	91.7	0	0.0
Gold Coast-Melbourne								
Jetstar	263	262	218	83.2	212	80.9	1	0.4
Tigerair	84	83	64	77.1	62	74.7	1	1.2
Virgin Australia	183	183	164	89.6	164	89.6	0	0.0
All Airlines	530	528	446	84.5	438	83.0	2	0.4
Gold Coast-Sydney								
Jetstar	353	343	278	81.0	266	77.6	10	2.8
Qantas	88	88	84	95.5	83	94.3	0	0.0
QantasLink	2	2	2	100.0	2	100.0	0	0.0
Tigerair	104	104	88	84.6	89	85.6	0	0.0
Virgin Australia	252	252	222	88.1	229	90.9	0	0.0
All Airlines	799	789	674	85.4	669	84.8	10	1.3
Hamilton Island-Brisbane								
QantasLink	25	25	25	100.0	22	88.0	0	0.0
Virgin Australia	30	30	24	80.0	25	83.3	0	0.0
All Airlines	55	55	49	89.1	47	85.5	0	0.0
Hamilton Island-Melbourne								
Qantas	8	8	6	75.0	5	62.5	0	0.0
Virgin Australia	22	22	21	95.5	20	90.9	0	0.0
All Airlines	30	30	27	90.0	25	83.3	0	0.0
Hamilton Island-Sydney								
Jetstar	32	31	23	74.2	18	58.1	1	3.1
Qantas	13	13	10	76.9	10	76.9	0	0.0
Virgin Australia	30	30	23	76.7	26	86.7	0	0.0
All Airlines	75	74	56	75.7	54	73.0	1	1.3
Hobart-Brisbane								
Jetstar	30	30	22	73.3	20	66.7	0	0.0
Virgin Australia	30	30	28	93.3	28	93.3	0	0.0
All Airlines	60	60	50	83.3	48	80.0	0	0.0
Hobart-Melbourne								
Jetstar	166	165	126	76.4	128	77.6	1	0.6
QantasLink	120	120	108	90.0	107	89.2	0	0.0
Tigerair	27	27	26	96.3	26	96.3	0	0.0
Virgin Australia	140	139	123	88.5	128	92.1	1	0.7
All Airlines	453	451	383	84.9	389	86.3	2	0.4
Hobart-Sydney								
Jetstar	73	73	62	84.9	58	79.5	0	0.0
QantasLink	30	29	21	72.4	23	79.3	1	3.3
Virgin Australia	60	60	55	91.7	53	88.3	0	0.0
All Airlines	163	162	138	85.2	134	82.7	1	0.6

	<i>Sectors</i>		<i>Arrivals On Time</i>		<i>Departures On Time</i>		<i>Cancellations</i>	
	<i>Sched.</i>	<i>Flown</i>	<i>No.</i>	<i>%</i>	<i>No.</i>	<i>%</i>	<i>No.</i>	<i>%</i>
Kalgoorlie-Perth								
Qantas	9	9	9	100.0	8	88.9	0	0.0
QantasLink	73	73	69	94.5	68	93.2	0	0.0
Virgin Australia	39	39	37	94.9	38	97.4	0	0.0
Virgin Australia Regional Airlines	17	17	13	76.5	12	70.6	0	0.0
All Airlines	138	138	128	92.8	126	91.3	0	0.0
Karratha-Perth								
Qantas	100	95	93	97.9	92	96.8	5	5.0
QantasLink	116	115	115	100.0	114	99.1	1	0.9
Virgin Australia	61	58	54	93.1	54	93.1	3	4.9
Virgin Australia Regional Airlines	26	25	18	72.0	19	76.0	1	3.8
All Airlines	303	293	280	95.6	279	95.2	10	3.3
Launceston-Melbourne								
Jetstar	115	113	93	82.3	91	80.5	2	1.7
QantasLink	116	111	95	85.6	100	90.1	5	4.3
Virgin Australia	90	90	85	94.4	88	97.8	0	0.0
Virgin Australia Regional Airlines	4	4	4	100.0	4	100.0	0	0.0
All Airlines	325	318	277	87.1	283	89.0	7	2.2
Launceston-Sydney								
Jetstar	41	41	36	87.8	36	87.8	0	0.0
Virgin Australia	30	30	28	93.3	29	96.7	0	0.0
All Airlines	71	71	64	90.1	65	91.5	0	0.0
Mackay-Brisbane								
Jetstar	47	47	41	87.2	36	76.6	0	0.0
QantasLink	104	103	98	95.1	95	92.2	1	1.0
Virgin Australia	154	154	147	95.5	145	94.2	0	0.0
All Airlines	305	304	286	94.1	276	90.8	1	0.3
Melbourne-Adelaide								
Jetstar	115	111	87	78.4	80	72.1	4	3.5
Qantas	283	283	271	95.8	266	94.0	0	0.0
Tigerair	72	72	71	98.6	70	97.2	0	0.0
Virgin Australia	292	282	269	95.4	269	95.4	10	3.4
All Airlines	762	748	698	93.3	685	91.6	14	1.8
Melbourne-Brisbane								
Jetstar	150	144	103	71.5	95	66.0	6	4.0
Qantas	429	423	371	87.7	368	87.0	6	1.4
Tigerair	113	111	103	92.8	90	81.1	2	1.8
Virgin Australia	394	386	351	90.9	367	95.1	8	2.0
All Airlines	1 086	1 064	928	87.2	920	86.5	22	2.0
Melbourne-Cairns								
Jetstar	115	114	101	88.6	92	80.7	1	0.9
Qantas	38	38	37	97.4	34	89.5	0	0.0
Tigerair	32	32	31	96.9	30	93.8	0	0.0
Virgin Australia	34	34	32	94.1	33	97.1	0	0.0
All Airlines	219	218	201	92.2	189	86.7	1	0.5
Melbourne-Canberra								
Qantas	185	185	169	91.4	171	92.4	0	0.0
QantasLink	82	77	64	83.1	66	85.7	5	6.1
Virgin Australia	155	154	147	95.5	146	94.8	1	0.6
Virgin Australia Regional Airlines	29	27	22	81.5	24	88.9	2	6.9
All Airlines	451	443	402	90.7	407	91.9	8	1.8

	<i>Sectors</i>		<i>Arrivals On Time</i>		<i>Departures On Time</i>		<i>Cancellations</i>	
	<i>Sched.</i>	<i>Flown</i>	<i>No.</i>	<i>%</i>	<i>No.</i>	<i>%</i>	<i>No.</i>	<i>%</i>
Melbourne-Darwin								
Jetstar	30	30	22	73.3	21	70.0	0	0.0
Qantas	30	30	29	96.7	27	90.0	0	0.0
Virgin Australia	32	32	29	90.6	30	93.8	0	0.0
All Airlines	92	92	80	87.0	78	84.8	0	0.0
Melbourne-Gold Coast								
Jetstar	264	263	203	77.2	205	77.9	1	0.4
Tigerair	84	84	71	84.5	74	88.1	0	0.0
Virgin Australia	183	183	171	93.4	166	90.7	0	0.0
All Airlines	531	530	445	84.0	445	84.0	1	0.2
Melbourne-Hamilton Island								
Qantas	8	8	8	100.0	8	100.0	0	0.0
Virgin Australia	22	22	21	95.5	19	86.4	0	0.0
All Airlines	30	30	29	96.7	27	90.0	0	0.0
Melbourne-Hobart								
Jetstar	166	165	134	81.2	135	81.8	1	0.6
QantasLink	120	120	101	84.2	102	85.0	0	0.0
Tigerair	27	27	25	92.6	26	96.3	0	0.0
Virgin Australia	140	140	131	93.6	130	92.9	0	0.0
All Airlines	453	452	391	86.5	393	86.9	1	0.2
Melbourne-Launceston								
Jetstar	115	113	93	82.3	93	82.3	2	1.7
QantasLink	116	111	92	82.9	95	85.6	5	4.3
Virgin Australia	90	90	86	95.6	87	96.7	0	0.0
Virgin Australia Regional Airlines	4	4	4	100.0	4	100.0	0	0.0
All Airlines	325	318	275	86.5	279	87.7	7	2.2
Melbourne-Mildura								
QantasLink	86	86	76	88.4	79	91.9	0	0.0
Regional Express	86	86	81	94.2	82	95.3	0	0.0
Virgin Australia	30	30	28	93.3	29	96.7	0	0.0
All Airlines	202	202	185	91.6	190	94.1	0	0.0
Melbourne-Newcastle								
Jetstar	103	103	89	86.4	89	86.4	0	0.0
Virgin Australia	30	30	29	96.7	30	100.0	0	0.0
All Airlines	133	133	118	88.7	119	89.5	0	0.0
Melbourne-Perth								
Jetstar	80	75	73	97.3	65	86.7	5	6.3
Qantas	220	220	200	90.9	187	85.0	0	0.0
Tigerair	51	51	44	86.3	43	84.3	0	0.0
Virgin Australia	149	147	137	93.2	131	89.1	2	1.3
All Airlines	500	493	454	92.1	426	86.4	7	1.4
Melbourne-Sunshine Coast								
Jetstar	90	90	71	78.9	65	72.2	0	0.0
Virgin Australia	37	37	34	91.9	31	83.8	0	0.0
All Airlines	127	127	105	82.7	96	75.6	0	0.0
Melbourne-Sydney								
Jetstar	344	312	253	81.1	249	79.8	32	9.3
Qantas	1 012	978	899	91.9	913	93.4	34	3.4
Tigerair	234	231	190	82.3	197	85.3	3	1.3
Virgin Australia	786	761	704	92.5	721	94.7	25	3.2
All Airlines	2 376	2 282	2 046	89.7	2 080	91.1	94	4.0

	<i>Sectors</i>		<i>Arrivals On Time</i>		<i>Departures On Time</i>		<i>Cancellations</i>	
	<i>Sched.</i>	<i>Flown</i>	<i>No.</i>	<i>%</i>	<i>No.</i>	<i>%</i>	<i>No.</i>	<i>%</i>
Mildura-Melbourne								
QantasLink	86	86	77	89.5	80	93.0	0	0.0
Regional Express	86	86	68	79.1	76	88.4	0	0.0
Virgin Australia	30	30	28	93.3	28	93.3	0	0.0
All Airlines	202	202	173	85.6	184	91.1	0	0.0
Moranbah-Brisbane								
QantasLink	117	106	104	98.1	100	94.3	11	9.4
Virgin Australia Regional Airlines	74	68	52	76.5	50	73.5	6	8.1
All Airlines	191	174	156	89.7	150	86.2	17	8.9
Mount Isa-Brisbane								
Qantas	40	40	38	95.0	36	90.0	0	0.0
Virgin Australia	22	22	21	95.5	20	90.9	0	0.0
All Airlines	62	62	59	95.2	56	90.3	0	0.0
Newcastle-Brisbane								
Jetstar	89	89	76	85.4	74	83.1	0	0.0
QantasLink	78	76	66	86.8	67	88.2	2	2.6
Virgin Australia	82	81	76	93.8	77	95.1	1	1.2
All Airlines	249	246	218	88.6	218	88.6	3	1.2
Newcastle-Melbourne								
Jetstar	103	102	89	87.3	91	89.2	1	1.0
Virgin Australia	30	30	29	96.7	29	96.7	0	0.0
All Airlines	133	132	118	89.4	120	90.9	1	0.8
Newman-Perth								
Qantas	80	80	76	95.0	76	95.0	0	0.0
QantasLink	76	76	73	96.1	73	96.1	0	0.0
Virgin Australia	18	18	17	94.4	17	94.4	0	0.0
Virgin Australia Regional Airlines	4	4	3	75.0	2	50.0	0	0.0
All Airlines	178	178	169	94.9	168	94.4	0	0.0
Perth-Adelaide								
Jetstar	35	35	29	82.9	27	77.1	0	0.0
Qantas	116	116	110	94.8	111	95.7	0	0.0
Virgin Australia	72	72	71	98.6	72	100.0	0	0.0
All Airlines	223	223	210	94.2	210	94.2	0	0.0
Perth-Brisbane								
Qantas	128	128	114	89.1	116	90.6	0	0.0
Virgin Australia	109	109	95	87.2	97	89.0	0	0.0
All Airlines	237	237	209	88.2	213	89.9	0	0.0
Perth-Broome								
Qantas	27	27	26	96.3	25	92.6	0	0.0
QantasLink	55	55	53	96.4	53	96.4	0	0.0
Virgin Australia	20	20	20	100.0	19	95.0	0	0.0
Virgin Australia Regional Airlines	48	48	33	68.8	38	79.2	0	0.0
All Airlines	150	150	132	88.0	135	90.0	0	0.0
Perth-Darwin								
Qantas	39	39	37	94.9	37	94.9	0	0.0
Virgin Australia	30	30	26	86.7	23	76.7	0	0.0
All Airlines	69	69	63	91.3	60	87.0	0	0.0
Perth-Geraldton								
QantasLink	47	47	43	91.5	44	93.6	0	0.0
Virgin Australia Regional Airlines	83	83	73	88.0	71	85.5	0	0.0
All Airlines	130	130	116	89.2	115	88.5	0	0.0

	<i>Sectors</i>		<i>Arrivals On Time</i>		<i>Departures On Time</i>		<i>Cancellations</i>	
	<i>Sched.</i>	<i>Flown</i>	<i>No.</i>	<i>%</i>	<i>No.</i>	<i>%</i>	<i>No.</i>	<i>%</i>
Perth-Kalgoorlie								
Qantas	9	9	8	88.9	9	100.0	0	0.0
QantasLink	73	73	70	95.9	70	95.9	0	0.0
Virgin Australia	39	39	38	97.4	37	94.9	0	0.0
Virgin Australia Regional Airlines	17	17	11	64.7	12	70.6	0	0.0
All Airlines	138	138	127	92.0	128	92.8	0	0.0
Perth-Karratha								
Qantas	100	96	93	96.9	95	99.0	4	4.0
QantasLink	116	115	109	94.8	112	97.4	1	0.9
Virgin Australia	61	58	53	91.4	54	93.1	3	4.9
Virgin Australia Regional Airlines	26	25	17	68.0	21	84.0	1	3.8
All Airlines	303	294	272	92.5	282	95.9	9	3.0
Perth-Melbourne								
Jetstar	79	73	63	86.3	65	89.0	6	7.6
Qantas	220	220	187	85.0	190	86.4	0	0.0
Tigerair	51	50	41	82.0	43	86.0	1	2.0
Virgin Australia	149	148	134	90.5	137	92.6	1	0.7
All Airlines	499	491	425	86.6	435	88.6	8	1.6
Perth-Newman								
Qantas	80	79	76	96.2	76	96.2	1	1.3
QantasLink	76	76	73	96.1	71	93.4	0	0.0
Virgin Australia	18	18	16	88.9	16	88.9	0	0.0
Virgin Australia Regional Airlines	4	4	2	50.0	2	50.0	0	0.0
All Airlines	178	177	167	94.4	165	93.2	1	0.6
Perth-Port Hedland								
Qantas	83	82	78	95.1	78	95.1	1	1.2
QantasLink	57	57	45	78.9	55	96.5	0	0.0
Virgin Australia	43	43	41	95.3	41	95.3	0	0.0
All Airlines	183	182	164	90.1	174	95.6	1	0.5
Perth-Sydney								
Jetstar	28	27	21	77.8	24	88.9	1	3.6
Qantas	202	201	161	80.1	178	88.6	1	0.5
Tigerair	24	23	20	87.0	21	91.3	1	4.2
Virgin Australia	116	114	104	91.2	105	92.1	2	1.7
All Airlines	370	365	306	83.8	328	89.9	5	1.4
Port Hedland-Perth								
Qantas	83	82	80	97.6	78	95.1	1	1.2
QantasLink	57	57	55	96.5	55	96.5	0	0.0
Virgin Australia	43	43	39	90.7	41	95.3	0	0.0
All Airlines	183	182	174	95.6	174	95.6	1	0.5
Port Lincoln-Adelaide								
QantasLink	106	106	95	89.6	95	89.6	0	0.0
Regional Express	209	207	197	95.2	200	96.6	2	1.0
All Airlines	315	313	292	93.3	295	94.2	2	0.6
Port Macquarie-Sydney								
QantasLink	134	130	76	58.5	92	70.8	4	3.0
Virgin Australia Regional Airlines	60	57	50	87.7	45	78.9	3	5.0
All Airlines	194	187	126	67.4	137	73.3	7	3.6
Proserpine-Brisbane								
Jetstar	30	29	25	86.2	25	86.2	1	3.3
Virgin Australia	52	51	50	98.0	50	98.0	1	1.9
All Airlines	82	80	75	93.8	75	93.8	2	2.4

	<i>Sectors</i>		<i>Arrivals On Time</i>		<i>Departures On Time</i>		<i>Cancellations</i>	
	<i>Sched.</i>	<i>Flown</i>	<i>No.</i>	<i>%</i>	<i>No.</i>	<i>%</i>	<i>No.</i>	<i>%</i>
Rockhampton-Brisbane								
QantasLink	190	187	164	87.7	169	90.4	3	1.6
Virgin Australia	125	121	113	93.4	108	89.3	4	3.2
Virgin Australia Regional Airlines	73	65	56	86.2	55	84.6	8	11.0
All Airlines	388	373	333	89.3	332	89.0	15	3.9
Sunshine Coast-Melbourne								
Jetstar	90	89	62	69.7	59	66.3	1	1.1
Virgin Australia	37	37	33	89.2	31	83.8	0	0.0
All Airlines	127	126	95	75.4	90	71.4	1	0.8
Sunshine Coast-Sydney								
Jetstar	125	124	102	82.3	97	78.2	1	0.8
Virgin Australia	30	30	28	93.3	29	96.7	0	0.0
All Airlines	155	154	130	84.4	126	81.8	1	0.6
Sydney-Adelaide								
Jetstar	138	135	124	91.9	120	88.9	3	2.2
Qantas	234	233	225	96.6	219	94.0	1	0.4
QantasLink	19	19	18	94.7	17	89.5	0	0.0
Tigerair	33	33	30	90.9	29	87.9	0	0.0
Virgin Australia	172	170	157	92.4	156	91.8	2	1.2
All Airlines	596	590	554	93.9	541	91.7	6	1.0
Sydney-Albury								
QantasLink	94	94	81	86.2	76	80.9	0	0.0
Regional Express	108	108	94	87.0	93	86.1	0	0.0
Virgin Australia Regional Airlines	60	59	49	83.1	47	79.7	1	1.7
All Airlines	262	261	224	85.8	216	82.8	1	0.4
Sydney-Armidale								
QantasLink	134	130	108	83.1	108	83.1	4	3.0
Regional Express	76	76	66	86.8	63	82.9	0	0.0
All Airlines	210	206	174	84.5	171	83.0	4	1.9
Sydney-Ayers Rock								
Jetstar	30	30	25	83.3	27	90.0	0	0.0
Virgin Australia	30	30	23	76.7	28	93.3	0	0.0
All Airlines	60	60	48	80.0	55	91.7	0	0.0
Sydney-Ballina								
Jetstar	86	86	69	80.2	70	81.4	0	0.0
Regional Express	27	26	24	92.3	25	96.2	1	3.7
Virgin Australia	30	30	29	96.7	29	96.7	0	0.0
All Airlines	143	142	122	85.9	124	87.3	1	0.7
Sydney-Brisbane								
Jetstar	192	182	144	79.1	146	80.2	10	5.2
Qantas	615	612	548	89.5	565	92.3	3	0.5
Tigerair	96	96	83	86.5	88	91.7	0	0.0
Virgin Australia	569	557	484	86.9	497	89.2	12	2.1
All Airlines	1 472	1 447	1 259	87.0	1 296	89.6	25	1.7
Sydney-Cairns								
Jetstar	122	120	97	80.8	90	75.0	2	1.6
Qantas	72	72	65	90.3	68	94.4	0	0.0
Tigerair	38	38	31	81.6	36	94.7	0	0.0
Virgin Australia	90	90	81	90.0	85	94.4	0	0.0
All Airlines	322	320	274	85.6	279	87.2	2	0.6

	<i>Sectors</i>		<i>Arrivals On Time</i>		<i>Departures On Time</i>		<i>Cancellations</i>	
	<i>Sched.</i>	<i>Flown</i>	<i>No.</i>	<i>%</i>	<i>No.</i>	<i>%</i>	<i>No.</i>	<i>%</i>
Sydney-Canberra								
QantasLink	504	473	427	90.3	414	87.5	31	6.2
Virgin Australia	32	31	28	90.3	27	87.1	1	3.1
Virgin Australia Regional Airlines	268	250	220	88.0	215	86.0	18	6.7
All Airlines	804	754	675	89.5	656	87.0	50	6.2
Sydney-Coffs Harbour								
QantasLink	150	147	128	87.1	122	83.0	3	2.0
Tigerair	12	12	11	91.7	11	91.7	0	0.0
Virgin Australia	60	60	58	96.7	59	98.3	0	0.0
All Airlines	222	219	197	90.0	192	87.7	3	1.4
Sydney-Darwin								
Jetstar	27	27	19	70.4	16	59.3	0	0.0
Qantas	51	51	45	88.2	45	88.2	0	0.0
Virgin Australia	30	30	29	96.7	30	100.0	0	0.0
All Airlines	108	108	93	86.1	91	84.3	0	0.0
Sydney-Dubbo								
QantasLink	126	126	92	73.0	89	70.6	0	0.0
Regional Express	154	154	149	96.8	142	92.2	0	0.0
All Airlines	280	280	241	86.1	231	82.5	0	0.0
Sydney-Gold Coast								
Jetstar	353	345	282	81.7	281	81.4	8	2.3
Qantas	88	88	85	96.6	83	94.3	0	0.0
QantasLink	2	2	2	100.0	2	100.0	0	0.0
Tigerair	104	104	90	86.5	96	92.3	0	0.0
Virgin Australia	252	252	218	86.5	219	86.9	0	0.0
All Airlines	799	791	677	85.6	681	86.1	8	1.0
Sydney-Hamilton Island								
Jetstar	32	32	24	75.0	23	71.9	0	0.0
Qantas	13	13	12	92.3	12	92.3	0	0.0
Virgin Australia	30	30	25	83.3	27	90.0	0	0.0
All Airlines	75	75	61	81.3	62	82.7	0	0.0
Sydney-Hobart								
Jetstar	73	73	63	86.3	63	86.3	0	0.0
QantasLink	30	29	22	75.9	25	86.2	1	3.3
Virgin Australia	60	60	56	93.3	57	95.0	0	0.0
All Airlines	163	162	141	87.0	145	89.5	1	0.6
Sydney-Launceston								
Jetstar	41	41	35	85.4	31	75.6	0	0.0
Virgin Australia	30	30	29	96.7	27	90.0	0	0.0
All Airlines	71	71	64	90.1	58	81.7	0	0.0
Sydney-Melbourne								
Jetstar	345	314	259	82.5	252	80.3	31	9.0
Qantas	1 005	970	879	90.6	886	91.3	35	3.5
Tigerair	234	231	200	86.6	190	82.3	3	1.3
Virgin Australia	784	756	690	91.3	698	92.3	28	3.6
All Airlines	2 368	2 271	2 028	89.3	2 026	89.2	97	4.1
Sydney-Perth								
Jetstar	28	28	27	96.4	25	89.3	0	0.0
Qantas	206	206	186	90.3	162	78.6	0	0.0
Tigerair	25	25	22	88.0	24	96.0	0	0.0
Virgin Australia	116	114	102	89.5	100	87.7	2	1.7
All Airlines	375	373	337	90.3	311	83.4	2	0.5

	<i>Sectors</i>		<i>Arrivals On Time</i>		<i>Departures On Time</i>		<i>Cancellations</i>	
	<i>Sched.</i>	<i>Flown</i>	<i>No.</i>	<i>%</i>	<i>No.</i>	<i>%</i>	<i>No.</i>	<i>%</i>
Sydney-Port Macquarie								
QantasLink	135	133	91	68.4	110	82.7	2	1.5
Virgin Australia Regional Airlines	60	57	46	80.7	46	80.7	3	5.0
All Airlines	195	190	137	72.1	156	82.1	5	2.6
Sydney-Sunshine Coast								
Jetstar	126	126	109	86.5	105	83.3	0	0.0
Virgin Australia	30	30	29	96.7	28	93.3	0	0.0
All Airlines	156	156	138	88.5	133	85.3	0	0.0
Sydney-Tamworth								
QantasLink	155	151	130	86.1	124	82.1	4	2.6
Virgin Australia Regional Airlines	26	26	24	92.3	24	92.3	0	0.0
All Airlines	181	177	154	87.0	148	83.6	4	2.2
Sydney-Townsville								
Jetstar	27	27	23	85.2	21	77.8	0	0.0
Virgin Australia	25	25	23	92.0	24	96.0	0	0.0
All Airlines	52	52	46	88.5	45	86.5	0	0.0
Sydney-Wagga Wagga								
QantasLink	112	112	93	83.0	91	81.3	0	0.0
Regional Express	138	138	116	84.1	117	84.8	0	0.0
All Airlines	250	250	209	83.6	208	83.2	0	0.0
Tamworth-Sydney								
QantasLink	155	152	125	82.2	120	78.9	3	1.9
Virgin Australia Regional Airlines	26	26	22	84.6	22	84.6	0	0.0
All Airlines	181	178	147	82.6	142	79.8	3	1.7
Townsville-Brisbane								
Jetstar	47	47	32	68.1	32	68.1	0	0.0
Qantas	146	146	140	95.9	137	93.8	0	0.0
Virgin Australia	154	154	139	90.3	132	85.7	0	0.0
All Airlines	347	347	311	89.6	301	86.7	0	0.0
Townsville-Cairns								
QantasLink	142	136	130	95.6	130	95.6	6	4.2
Regional Express	73	73	68	93.2	70	95.9	0	0.0
All Airlines	215	209	198	94.7	200	95.7	6	2.8
Townsville-Sydney								
Jetstar	27	27	24	88.9	21	77.8	0	0.0
Virgin Australia	25	25	22	88.0	22	88.0	0	0.0
All Airlines	52	52	46	88.5	43	82.7	0	0.0
Wagga Wagga-Sydney								
QantasLink	112	112	97	86.6	93	83.0	0	0.0
Regional Express	139	139	115	82.7	119	85.6	0	0.0
All Airlines	251	251	212	84.5	212	84.5	0	0.0

Airports

On time performance is reported for all routes where the passenger load averages over 8000 passengers per month, and where two or more airlines operate in competition. The following data reports by airport against flights operated on those routes only. This month, 8 major city airports and 33 regional city airports are covered.

Airport	Arrivals			Departures		
	Sectors	On Time		Sectors	On Time	
	Flown	No.	%	Flown	No.	%
Adelaide						
Jetstar	353	306	86.7	353	304	86.1
Qantas	818	785	96.0	818	782	95.6
QantasLink	125	113	90.4	125	111	88.8
Regional Express	207	197	95.2	208	202	97.1
Tigerair	126	121	96.0	125	120	96.0
Virgin Australia	703	660	93.9	705	664	94.2
All Airlines	2 332	2 182	93.6	2 334	2 183	93.5
Relates to services to and from Alice Springs, Brisbane, Canberra, Gold Coast, Melbourne, Perth, Port Lincoln and Sydney.						
Albury						
QantasLink	94	81	86.2	93	80	86.0
Regional Express	108	94	87.0	108	104	96.3
Virgin Australia Regional Airlines	59	49	83.1	59	50	84.7
All Airlines	261	224	85.8	260	234	90.0
Relates to services to and from Sydney only.						
Alice Springs						
Qantas	30	30	100.0	30	28	93.3
QantasLink	60	59	98.3	60	57	95.0
Virgin Australia	26	25	96.2	25	24	96.0
All Airlines	116	114	98.3	115	109	94.8
Relates to services to and from Adelaide and Darwin.						
Armidale						
QantasLink	130	108	83.1	130	105	80.8
Regional Express	76	66	86.8	78	71	91.0
All Airlines	206	174	84.5	208	176	84.6
Relates to services to and from Sydney only.						
Ayers Rock						
Jetstar	30	25	83.3	30	27	90.0
Virgin Australia	30	23	76.7	30	23	76.7
All Airlines	60	48	80.0	60	50	83.3
Relates to services to and from Sydney only.						
Ballina						
Jetstar	86	69	80.2	85	62	72.9
Regional Express	26	24	92.3	22	18	81.8
Virgin Australia	30	29	96.7	30	27	90.0
All Airlines	142	122	85.9	137	107	78.1
Relates to services to and from Sydney only.						

Airport	Arrivals			Departures		
	Sectors Flown	On Time		Sectors Flown	On Time	
		No.	%		No.	%
Brisbane						
Jetstar	751	607	80.8	758	602	79.4
Qantas	1 646	1 479	89.9	1 649	1 504	91.2
QantasLink	1 075	956	88.9	1 081	980	90.7
Tigerair	271	236	87.1	272	237	87.1
Virgin Australia	2 106	1 902	90.3	2 106	1 925	91.4
Virgin Australia Regional Airlines	328	259	79.0	327	246	75.2
All Airlines	6 177	5 439	88.1	6 193	5 494	88.7

Relates to services to and from Adelaide, Bundaberg, Cairns, Canberra, Darwin, Emerald, Gladstone, Hamilton Island, Hobart, Mackay, Melbourne, Moranbah, Mount Isa, Newcastle, Perth, Proserpine, Rockhampton, Sydney and Townsville.

Broome

Qantas	27	26	96.3	27	24	88.9
QantasLink	55	53	96.4	54	50	92.6
Virgin Australia	20	20	100.0	20	18	90.0
Virgin Australia Regional Airlines	48	33	68.8	48	26	54.2
All Airlines	150	132	88.0	149	118	79.2

Relates to services to and from Perth only.

Bundaberg

QantasLink	132	122	92.4	133	124	93.2
Virgin Australia Regional Airlines	36	26	72.2	37	25	67.6
All Airlines	168	148	88.1	170	149	87.6

Relates to services to and from Brisbane only.

Cairns

Jetstar	364	302	83.0	357	296	82.9
Qantas	226	204	90.3	226	209	92.5
QantasLink	140	133	95.0	141	131	92.9
Regional Express	73	68	93.2	73	68	93.2
Tigerair	99	87	87.9	98	73	74.5
Virgin Australia	256	236	92.2	256	236	92.2
All Airlines	1 158	1 030	88.9	1 151	1 013	88.0

Relates to services to and from Brisbane, Melbourne, Sydney and Townsville.

Canberra

Qantas	259	239	92.3	258	243	94.2
QantasLink	674	602	89.3	673	593	88.1
Virgin Australia	307	288	93.8	307	282	91.9
Virgin Australia Regional Airlines	277	242	87.4	278	257	92.4
All Airlines	1 517	1 371	90.4	1 516	1 375	90.7

Relates to services to and from Adelaide, Brisbane, Melbourne and Sydney.

Coffs Harbour

QantasLink	147	128	87.1	147	119	81.0
Tigerair	12	11	91.7	12	11	91.7
Virgin Australia	60	58	96.7	59	55	93.2
All Airlines	219	197	90.0	218	185	84.9

Relates to services to and from Sydney only.

Airport	Arrivals			Departures		
	Sectors Flown	On Time		Sectors Flown	On Time	
		No.	%		No.	%
Darwin						
Jetstar	87	61	70.1	87	56	64.4
Qantas	168	156	92.9	167	150	89.8
QantasLink	60	58	96.7	60	59	98.3
Tigerair	16	14	87.5	14	12	85.7
Virgin Australia	135	124	91.9	135	116	85.9
All Airlines	466	413	88.6	463	393	84.9
Relates to services to and from Alice Springs, Brisbane, Melbourne, Perth and Sydney.						
Dubbo						
QantasLink	126	92	73.0	126	103	81.7
Regional Express	154	149	96.8	155	143	92.3
All Airlines	280	241	86.1	281	246	87.5
Relates to services to and from Sydney only.						
Emerald						
QantasLink	140	122	87.1	140	122	87.1
Virgin Australia Regional Airlines	72	50	69.4	72	60	83.3
All Airlines	212	172	81.1	212	182	85.8
Relates to services to and from Brisbane only.						
Geraldton						
QantasLink	47	43	91.5	47	41	87.2
Virgin Australia Regional Airlines	83	73	88.0	85	75	88.2
All Airlines	130	116	89.2	132	116	87.9
Relates to services to and from Perth only.						
Gladstone						
QantasLink	177	161	91.0	178	163	91.6
Virgin Australia	42	38	90.5	42	35	83.3
Virgin Australia Regional Airlines	87	67	77.0	86	67	77.9
All Airlines	306	266	86.9	306	265	86.6
Relates to services to and from Brisbane only.						
Gold Coast						
Jetstar	650	526	80.9	647	518	80.1
Qantas	88	85	96.6	88	83	94.3
QantasLink	2	2	100.0	2	2	100.0
Tigerair	188	161	85.6	187	151	80.7
Virgin Australia	465	417	89.7	465	419	90.1
All Airlines	1 393	1 191	85.5	1 389	1 173	84.4
Relates to services to and from Adelaide, Melbourne and Sydney.						
Hamilton Island						
Jetstar	32	24	75.0	31	18	58.1
Qantas	21	20	95.2	21	15	71.4
QantasLink	25	23	92.0	25	22	88.0
Virgin Australia	82	74	90.2	82	71	86.6
All Airlines	160	141	88.1	159	126	79.2
Relates to services to and from Brisbane, Melbourne and Sydney.						

Airport	Arrivals			Departures		
	Sectors Flown	On Time		Sectors Flown	On Time	
		No.	%		No.	%
Hobart						
Jetstar	268	222	82.8	268	206	76.9
QantasLink	149	123	82.6	149	130	87.2
Tigerair	27	25	92.6	27	26	96.3
Virgin Australia	230	216	93.9	229	209	91.3
All Airlines	674	586	86.9	673	571	84.8
Relates to services to and from Brisbane, Melbourne and Sydney.						
Kalgoorlie						
Qantas	9	8	88.9	9	8	88.9
QantasLink	73	70	95.9	73	68	93.2
Virgin Australia	39	38	97.4	39	38	97.4
Virgin Australia Regional Airlines	17	11	64.7	17	12	70.6
All Airlines	138	127	92.0	138	126	91.3
Relates to services to and from Perth only.						
Karratha						
Qantas	96	93	96.9	95	92	96.8
QantasLink	115	109	94.8	115	114	99.1
Virgin Australia	58	53	91.4	58	54	93.1
Virgin Australia Regional Airlines	25	17	68.0	25	19	76.0
All Airlines	294	272	92.5	293	279	95.2
Relates to services to and from Perth only.						
Launceston						
Jetstar	154	128	83.1	154	127	82.5
QantasLink	111	92	82.9	111	100	90.1
Virgin Australia	120	115	95.8	120	117	97.5
Virgin Australia Regional Airlines	4	4	100.0	4	4	100.0
All Airlines	389	339	87.1	389	348	89.5
Relates to services to and from Melbourne and Sydney.						
Mackay						
Jetstar	46	37	80.4	47	36	76.6
QantasLink	104	95	91.3	103	95	92.2
Virgin Australia	154	148	96.1	154	145	94.2
All Airlines	304	280	92.1	304	276	90.8
Relates to services to and from Brisbane only.						
Melbourne						
Jetstar	1 517	1 246	82.1	1 520	1 189	78.2
Qantas	2 167	1 977	91.2	2 165	1 974	91.2
QantasLink	394	348	88.3	394	342	86.8
Regional Express	86	68	79.1	86	82	95.3
Tigerair	603	516	85.6	608	530	87.2
Virgin Australia	2 328	2 108	90.5	2 328	2 189	94.0
Virgin Australia Regional Airlines	31	29	93.5	31	28	90.3
All Airlines	7 126	6 292	88.3	7 132	6 334	88.8
Relates to services to and from Adelaide, Brisbane, Cairns, Canberra, Darwin, Gold Coast, Hamilton Island, Hobart, Launceston, Mildura, Newcastle, Perth, Sunshine Coast and Sydney.						

Airport	Arrivals			Departures		
	Sectors Flown	On Time		Sectors Flown	On Time	
		No.	%		No.	%
Mildura						
QantasLink	86	76	88.4	86	80	93.0
Regional Express	86	81	94.2	86	76	88.4
Virgin Australia	30	28	93.3	30	28	93.3
All Airlines	202	185	91.6	202	184	91.1
Relates to services to and from Melbourne only.						
Moranbah						
QantasLink	111	107	96.4	106	100	94.3
Virgin Australia Regional Airlines	68	49	72.1	68	50	73.5
All Airlines	179	156	87.2	174	150	86.2
Relates to services to and from Brisbane only.						
Mount Isa						
Qantas	40	36	90.0	40	36	90.0
Virgin Australia	22	22	100.0	22	20	90.9
All Airlines	62	58	93.5	62	56	90.3
Relates to services to and from Brisbane only.						
Newcastle						
Jetstar	191	165	86.4	191	165	86.4
QantasLink	76	64	84.2	76	67	88.2
Virgin Australia	112	109	97.3	111	106	95.5
All Airlines	379	338	89.2	378	338	89.4
Relates to services to and from Brisbane and Melbourne.						
Newman						
Qantas	79	76	96.2	80	76	95.0
QantasLink	76	73	96.1	76	73	96.1
Virgin Australia	18	16	88.9	18	17	94.4
Virgin Australia Regional Airlines	4	2	50.0	4	2	50.0
All Airlines	177	167	94.4	178	168	94.4
Relates to services to and from Perth only.						
Perth						
Jetstar	138	132	95.7	135	116	85.9
Qantas	998	935	93.7	997	915	91.8
QantasLink	422	405	96.0	423	405	95.7
Tigerair	76	66	86.8	73	64	87.7
Virgin Australia	650	595	91.5	651	601	92.3
Virgin Australia Regional Airlines	179	136	76.0	177	144	81.4
All Airlines	2 463	2 269	92.1	2 456	2 245	91.4
Relates to services to and from Adelaide, Brisbane, Broome, Darwin, Geraldton, Kalgoorlie, Karratha, Melbourne, Newman, Port Hedland and Sydney.						
Port Hedland						
Qantas	82	78	95.1	82	78	95.1
QantasLink	57	45	78.9	57	55	96.5
Virgin Australia	43	41	95.3	43	41	95.3
All Airlines	182	164	90.1	182	174	95.6
Relates to services to and from Perth only.						

Airport	Arrivals			Departures		
	Sectors	On Time		Sectors	On Time	
	Flown	No.	%	Flown	No.	%
Port Lincoln						
QantasLink	106	95	89.6	106	95	89.6
Regional Express	208	195	93.8	207	200	96.6
All Airlines	314	290	92.4	313	295	94.2
Relates to services to and from Adelaide only.						
Port Macquarie						
QantasLink	133	91	68.4	130	92	70.8
Virgin Australia Regional Airlines	57	46	80.7	57	45	78.9
All Airlines	190	137	72.1	187	137	73.3
Relates to services to and from Sydney only.						
Proserpine						
Jetstar	30	29	96.7	29	25	86.2
Virgin Australia	51	51	100.0	51	50	98.0
All Airlines	81	80	98.8	80	75	93.8
Relates to services to and from Brisbane only.						
Rockhampton						
QantasLink	188	169	89.9	187	169	90.4
Virgin Australia	121	110	90.9	121	108	89.3
Virgin Australia Regional Airlines	64	47	73.4	65	55	84.6
All Airlines	373	326	87.4	373	332	89.0
Relates to services to and from Brisbane only.						
Sunshine Coast						
Jetstar	216	180	83.3	213	156	73.2
Virgin Australia	67	63	94.0	67	60	89.6
All Airlines	283	243	85.9	280	216	77.1
Relates to services to and from Melbourne and Sydney.						
Sydney						
Jetstar	1 558	1 285	82.5	1 566	1 270	81.1
Qantas	2 243	2 039	90.9	2 245	2 040	90.9
QantasLink	1 413	1 185	83.9	1 416	1 178	83.2
Regional Express	502	432	86.1	502	440	87.6
Tigerair	537	452	84.2	539	474	87.9
Virgin Australia	2 294	2 073	90.4	2 295	2 091	91.1
Virgin Australia Regional Airlines	393	349	88.8	392	332	84.7
All Airlines	8 940	7 815	87.4	8 955	7 825	87.4
Relates to services to and from Adelaide, Albury, Armidale, Ayers Rock, Ballina, Brisbane, Cairns, Canberra, Coffs Harbour, Darwin, Dubbo, Gold Coast, Hamilton Island, Hobart, Launceston, Melbourne, Perth, Port Macquarie, Sunshine Coast, Tamworth, Townsville and Wagga Wagga.						
Tamworth						
QantasLink	151	130	86.1	152	120	78.9
Virgin Australia Regional Airlines	26	24	92.3	26	22	84.6
All Airlines	177	154	87.0	178	142	79.8
Relates to services to and from Sydney only.						

<i>Airport</i>	<i>Arrivals</i>			<i>Departures</i>		
	<i>Sectors</i>	<i>On Time</i>		<i>Sectors</i>	<i>On Time</i>	
	<i>Flown</i>	<i>No.</i>	<i>%</i>	<i>Flown</i>	<i>No.</i>	<i>%</i>
Townsville						
Jetstar	74	55	74.3	74	53	71.6
Qantas	146	131	89.7	146	137	93.8
QantasLink	137	127	92.7	136	130	95.6
Regional Express	73	68	93.2	73	70	95.9
Virgin Australia	179	163	91.1	179	154	86.0
All Airlines	609	544	89.3	608	544	89.5
Relates to services to and from Brisbane, Cairns and Sydney.						
Wagga Wagga						
QantasLink	112	93	83.0	112	93	83.0
Regional Express	138	116	84.1	139	119	85.6
All Airlines	250	209	83.6	251	212	84.5
Relates to services to and from Sydney only.						

Definitions

On time arrival	A flight arrival is counted as "on time" if it arrived at the gate before 15 minutes after the scheduled arrival time shown in the carriers' schedule. Neither diverted nor cancelled flights count as on time.
On time departure	A flight departure is counted as "on time" if it departs the gate before 15 minutes after the scheduled departure time shown in the carriers' schedule.
Cancellation	A flight removed from service within 7 days of scheduled departure is regarded as a cancellation.
On time departure percentage	The percentage of on time departures is measured against the number of departures <i>operated</i> on any particular sector.
On time arrival percentage	The percentage of on time arrivals is measured against the number of arrivals <i>operated</i> on any particular sector.
Cancellation percentage	The percentage of cancellations is measured against the number of services <i>scheduled</i> on any particular sector.
