



Australian Government

Department of Infrastructure and Regional Development

Bureau of Infrastructure, Transport and Regional Economics

STATISTICAL REPORT



Aviation

Domestic airline on time performance
September 2014

© Commonwealth of Australia 2014

ISSN: 1832-0759

Ownership of intellectual property rights in this publication

Unless otherwise noted, copyright (and any other intellectual property rights, if any) in this publication is owned by the Commonwealth of Australia (referred to below as the Commonwealth).

Disclaimer

The material contained in this publication is made available on the understanding that the Commonwealth is not providing professional advice, and that users exercise their own skill and care with respect to its use, and seek independent advice if necessary.

The Commonwealth makes no representations or warranties as to the contents or accuracy of the information contained in this publication. To the extent permitted by law, the Commonwealth disclaims liability to any person or organisation in respect of anything done, or omitted to be done, in reliance upon information contained in this publication.

Creative Commons licence

With the exception of (a) the Coat of Arms; and (b) the Department of Infrastructure and Regional Development's photos and graphics, copyright in this publication is licensed under a Creative Commons Attribution 3.0 Australia Licence.

Creative Commons Attribution 3.0 Australia Licence is a standard form licence agreement that allows you to copy, communicate and adapt this publication provided that you attribute the work to the Commonwealth and abide by the other licence terms. A summary of the licence terms is available from <http://creativecommons.org/licenses/by/3.0/au/deed.en>. The full licence terms are available from <http://creativecommons.org/licenses/by/3.0/au/legalcode>.

Use of the Coat of Arms

The Department of the Prime Minister and Cabinet sets the terms under which the Coat of Arms is used. Please refer to the Department's Commonwealth Coat of Arms and Government branding web page <http://www.dpmmc.gov.au/guidelines/index.cfm#brand> and, in particular, the Guidelines on the use of the Commonwealth Coat of Arms publication.

An appropriate citation for this report is:

Bureau of Infrastructure, Transport and Regional Economics (BITRE), 2014, Domestic airline on time performance, Statistical Report, BITRE, Canberra ACT.

Contact us

This publication is available in PDF format. All other rights are reserved, including in relation to any Departmental logos or trade marks which may exist. For enquiries regarding the licence and any use of this publication, please contact:

Bureau of Infrastructure, Transport and Regional Economics (BITRE)
Department of Infrastructure and Regional Development
GPO Box 501, Canberra ACT 2601, Australia
Telephone: (international) +61 2 6274 7210
Fax: (international) +61 2 6274 6855
Email: bitre@infrastructure.gov.au
Website: www.bitre.gov.au

Inquiries

Should you require additional information about the statistics contained in this publication:

Telephone (02) 6274 7790 or Facsimile (02) 6274 7727

Electronic mail: AVSTATS@infrastructure.gov.au

Web site: <http://www.bitre.gov.au/statistics/aviation/otphome.aspx>

Foreword

The Bureau of Infrastructure, Transport and Regional Economics (BITRE) monitors the punctuality and reliability of major domestic airlines operating between Australian airports. The purpose of this is to allow for evaluation of overall industry and individual airline performance, so that consumers of air travel can make informed decisions.

The following domestic airlines currently report this information monthly to the BITRE: Jetstar, Qantas, QantasLink, Regional Express, Tigerair, Virgin Australia and Virgin Australia Regional Airlines. Data has been gathered since November 2003, although some airlines commenced reporting at a later date, including Jetstar which first reported in May 2004, MacAir in July 2005 and Tigerair in April 2008. MacAir ceased operations in February 2009 and data was not received for December 2008 onwards. Virgin Blue was rebranded as Virgin Australia in May 2011 and Tiger Airways was rebranded as Tigerair in July 2013 and time series data in Microsoft Excel spreadsheet format on the BITRE website have been revised to reflect these changes. Virgin Australia Regional Airlines commenced operations in May 2013. It was formed after the acquisition of Skywest by Virgin Australia and represents a combination of operations previously reported under Skywest and Virgin Australia – ATR/F100 Operations. Services operated by Skywest on behalf of Virgin Australia using ATR/F100 aircraft commenced in November 2011 and were shown separately as Virgin Australia – ATR/F100 Operations until April 2013.

Information presented in this report is for Australian domestic routes for which the passenger load averaged 8 000 or more passengers per month over the previous six months and where two or more airlines operated in competition on those routes. There were 62 routes that met this definition in September 2014. Over time, routes which meet these criteria change as airline networks and traffic levels vary.

Participating airlines report their overall monthly network performance where this is possible.

Total industry figures encompass all services operated by reporting airlines only. These airlines collectively carried over 95 per cent of total domestic passengers (regular public transport only) in 2013.

The method of capturing on time performance varies between airlines utilising different recording systems. Jetstar and Qantas jet aircraft use Aircraft Communication Addressing and Reporting System (ACARS) to electronically measure on time performance. Regional Express, Tigerair, Virgin Australia, Virgin Australia Regional Airlines and the Qantas non-jet fleet record on time performance manually using records from pilots, gate agents and/or ground crews.

After initial data is collected, aggregate reports are audited internally by participating airlines prior to publication.

Reports and detailed time series data in Microsoft Excel spreadsheet format are available from the BITRE website at: <http://www.bitre.gov.au/statistics/aviation/otphome.aspx>.

Contents

	Page
Industry performance	1
Individual routes	9
Airports	21
Definitions	27

Industry performance

For September 2014, on time performance over all routes operated by participating airlines (Jetstar, Qantas, QantasLink, Regional Express, Tigerair, Virgin Australia and Virgin Australia Regional Airlines) averaged 87.7 per cent for on time departures and 86.6 per cent for on time arrivals. Cancellations represented 1.2 per cent of all scheduled flights. The equivalent figures for September 2013 were 83.0 per cent for departures, 80.9 per cent for arrivals and 1.6 per cent for cancellations.

This month's figures were better than the long term average performance for all routes (83.7 per cent for departures and 82.2 per cent for arrivals). The rate of cancellations was below the long term average of 1.3 per cent.

Of the major domestic airlines, Qantas achieved the highest level of on time departures for September 2014 at 89.5 per cent, followed by Virgin Australia at 87.1 per cent, Jetstar at 85.0 per cent and Tigerair at 75.8 per cent. The regional airlines were led by Regional Express at 90.4 per cent, followed by Virgin Australia Regional Airlines at 89.7 per cent and QantasLink at 88.6 per cent.

Qantas also achieved the highest on time arrivals among the major domestic airlines at 88.9 per cent, followed by Virgin Australia at 86.9 per cent, Jetstar at 85.3 per cent and Tigerair at 73.2 per cent. Virgin Australia Regional Airlines was the best performing regional airline for on time arrivals at 88.2 per cent, followed by Regional Express at 88.0 per cent and QantasLink at 86.5 per cent.

Virgin Australia had the highest percentage of cancellations (1.7 per cent) during the month, followed by Qantas (1.4 per cent), QantasLink (1.2 per cent), Jetstar (1.1 per cent), Tigerair (also 1.1 per cent), Virgin Australia Regional Airlines (0.6 per cent) and Regional Express (0.1 per cent).

Of the 62 routes which met the criteria for on time performance reporting in September 2014, the Adelaide-Port Lincoln route had the highest percentage of on time departures (97.7 per cent) and the Perth-Port Hedland route had the highest percentage of on time arrivals (97.5 per cent). The Sunshine Coast-Melbourne route had the lowest percentage of on time departures (72.4 per cent) and the Darwin-Brisbane route had the lowest percentage of on time arrivals (62.3 per cent).

Cancellations were highest on the Sydney-Melbourne and Melbourne-Sydney routes at 3.6 per cent, followed by Moranbah-Brisbane at 3.3 per cent and Brisbane-Sydney and Brisbane-Moranbah routes at 3.0 per cent.

Port Lincoln airport recorded the highest percentage of on time departures (96.1 per cent) and Port Hedland airport recorded the highest percentage of on time arrivals (97.5 per cent). Port Macquarie Airport recorded the lowest percentage of on time departures (76.8 per cent) and the lowest percentage of on time arrivals (79.0 per cent). These figures only refer to reported routes and do not cover all flights at these airports.

Table 1 On time performance for September 2014 — Total Industry

	<i>Sectors</i>		<i>Departures On Time</i>		<i>Arrivals On Time</i>		<i>Cancellations</i>	
	<i>Scheduled</i>	<i>Flown</i>	<i>No.</i>	<i>%</i>	<i>No.</i>	<i>%</i>	<i>No.</i>	<i>%</i>
Jetstar	7 398	7 315	6 216	85.0	6 238	85.3	83	1.1
Qantas	9 659	9 520	8 524	89.5	8 468	88.9	139	1.4
QantasLink	10 366	10 243	9 077	88.6	8 856	86.5	123	1.2
Regional Express	5 720	5 715	5 167	90.4	5 029	88.0	5	0.1
Tigerair	1 892	1 872	1 419	75.8	1 371	73.2	20	1.1
Virgin Australia	11 042	10 850	9 448	87.1	9 432	86.9	192	1.7
Virgin Australia Regional Airlines	2 548	2 533	2 271	89.7	2 235	88.2	15	0.6
All Airlines	48 625	48 048	42 122	87.7	41 629	86.6	577	1.2

Total airline network data (including routes not shown in this report).

Table 2 Top ten routes for on time performance for September 2014 (participating airlines only)

<i>Departures</i>		<i>Arrivals</i>	
<i>Route</i>	<i>On Time (%)</i>	<i>Route</i>	<i>On Time (%)</i>
Adelaide-Port Lincoln	97.7	Perth-Port Hedland	97.5
Perth-Port Hedland	97.0	Perth-Kalgoorlie	96.9
Brisbane-Mount Isa	96.2	Perth-Newman	96.4
Port Lincoln-Adelaide	96.1	Brisbane-Mount Isa	96.2
Perth-Newman	95.9	Newman-Perth	96.1
Perth-Karratha	95.3	Perth-Adelaide	94.9
Perth-Darwin	95.1	Port Lincoln-Adelaide	94.8
Newman-Perth	95.0	Adelaide-Brisbane	94.8
Sydney-Hamilton Island	95.0	Sydney-Sunshine Coast	94.7
Perth-Kalgoorlie	94.6	Sydney-Hobart	94.6

Table 3 Top ten airports for on time performance for September 2014 (participating airlines and reported routes only)

<i>Departures</i>		<i>Arrivals</i>	
<i>Airport</i>	<i>On Time (%)</i>	<i>Airport</i>	<i>On Time (%)</i>
Port Lincoln	96.1	Port Hedland	97.5
Newman	95.0	Kalgoorlie	96.9
Kalgoorlie	94.2	Newman	96.4
Karratha	93.5	Mount Isa	96.2
Canberra	93.1	Port Lincoln	94.5
Port Hedland	93.1	Broome	94.3
Geraldton	91.1	Karratha	93.4
Moranbah	90.8	Gladstone	90.9
Perth	90.3	Canberra	90.7
Adelaide	89.9	Hamilton Island	90.6

Total industry on time performance

Figure 1 On time performance (by month from September 2011)—Total Industry

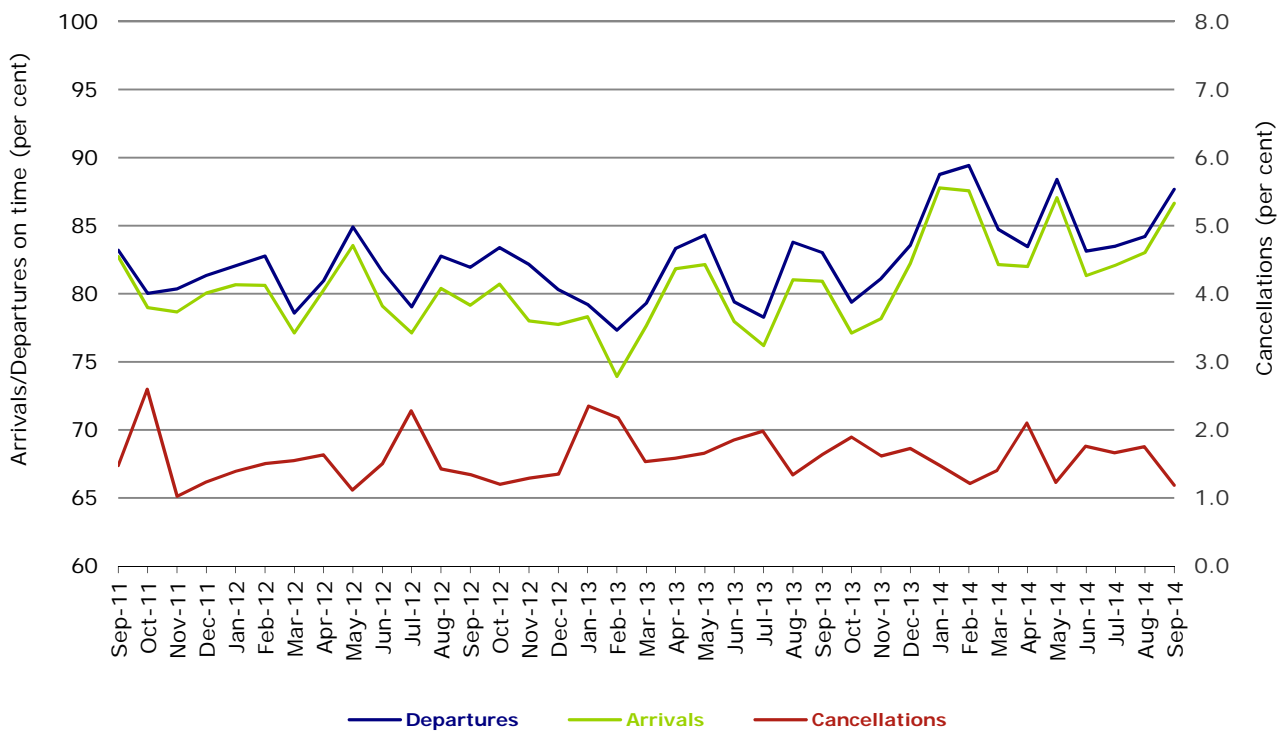


Figure 2 Departures on time (by month from September 2013)

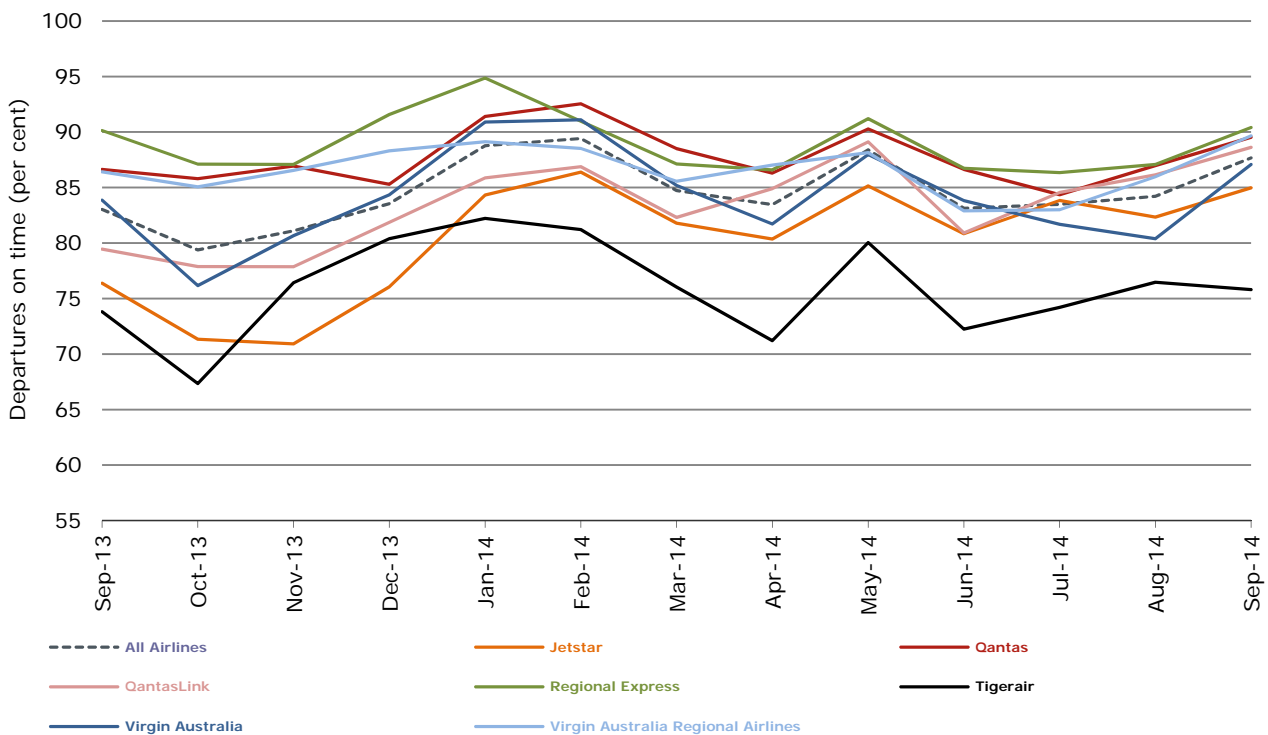


Figure 3 Arrivals on time (by month from September 2013)

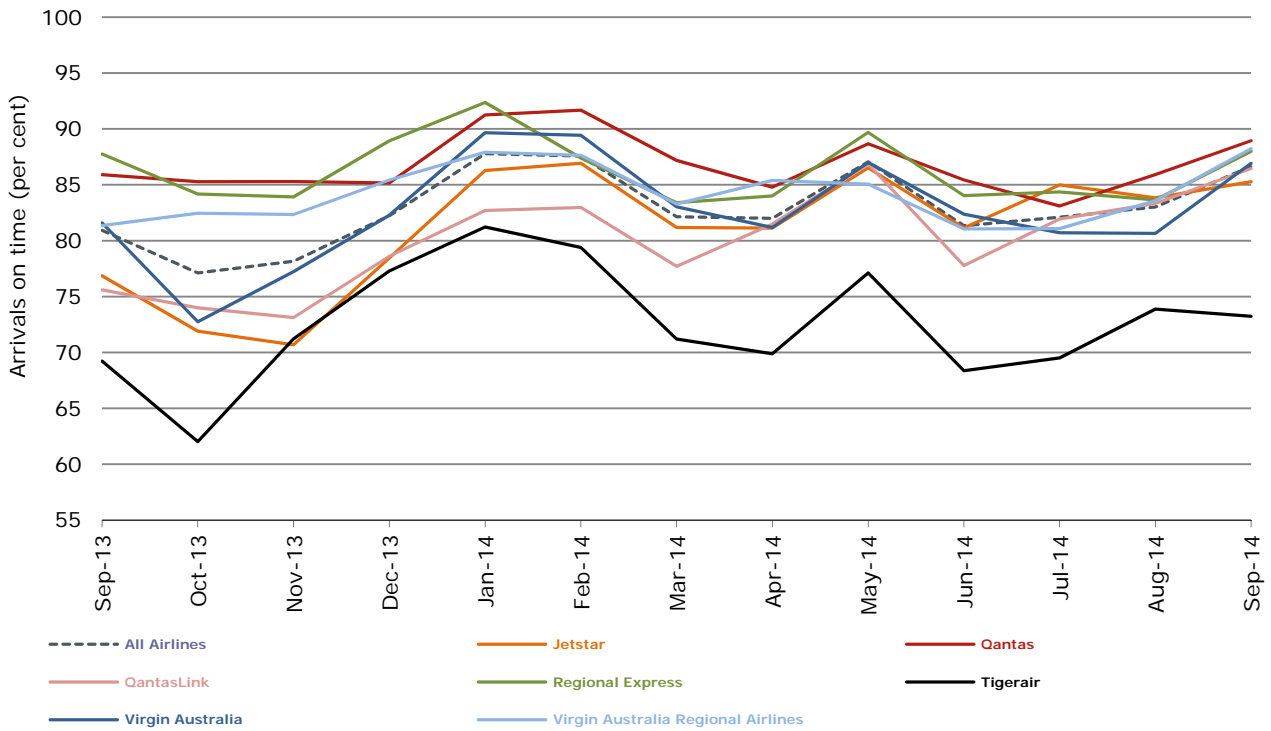
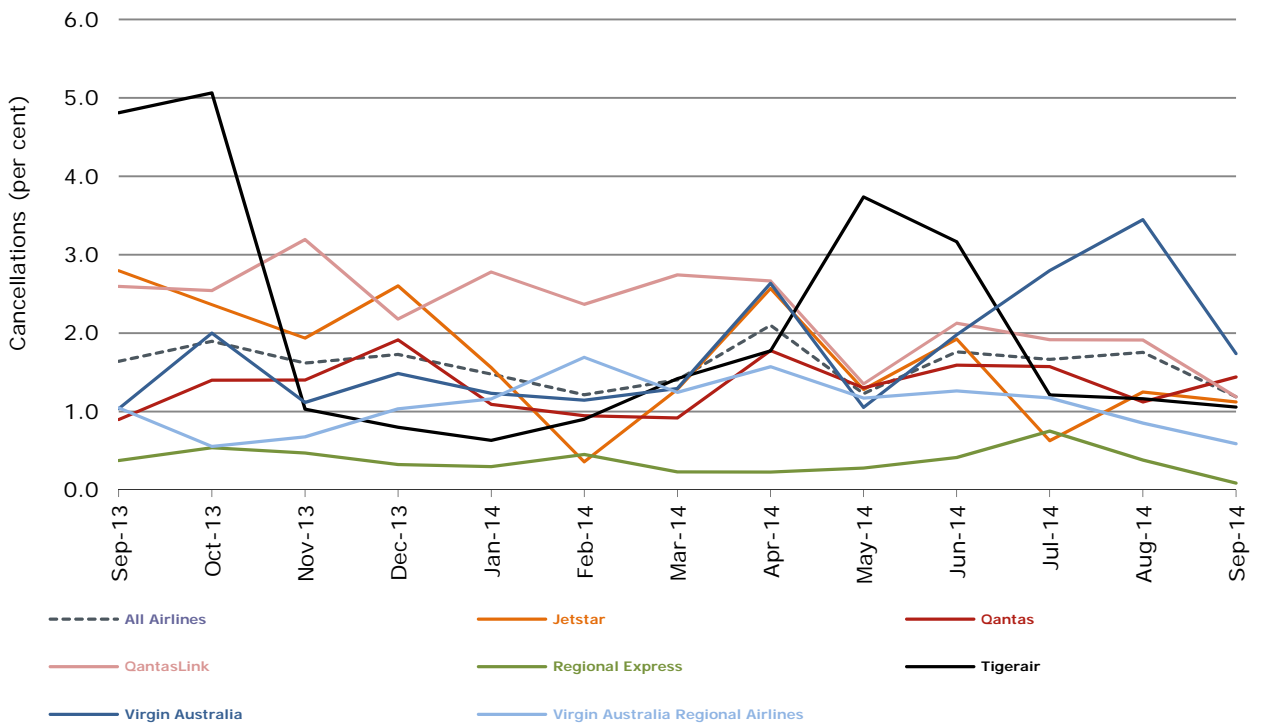


Figure 4 Cancellations (by month from September 2013)



Major domestic airlines on time performance

Figure 5 On time performance (by month from September 2011)—Jetstar

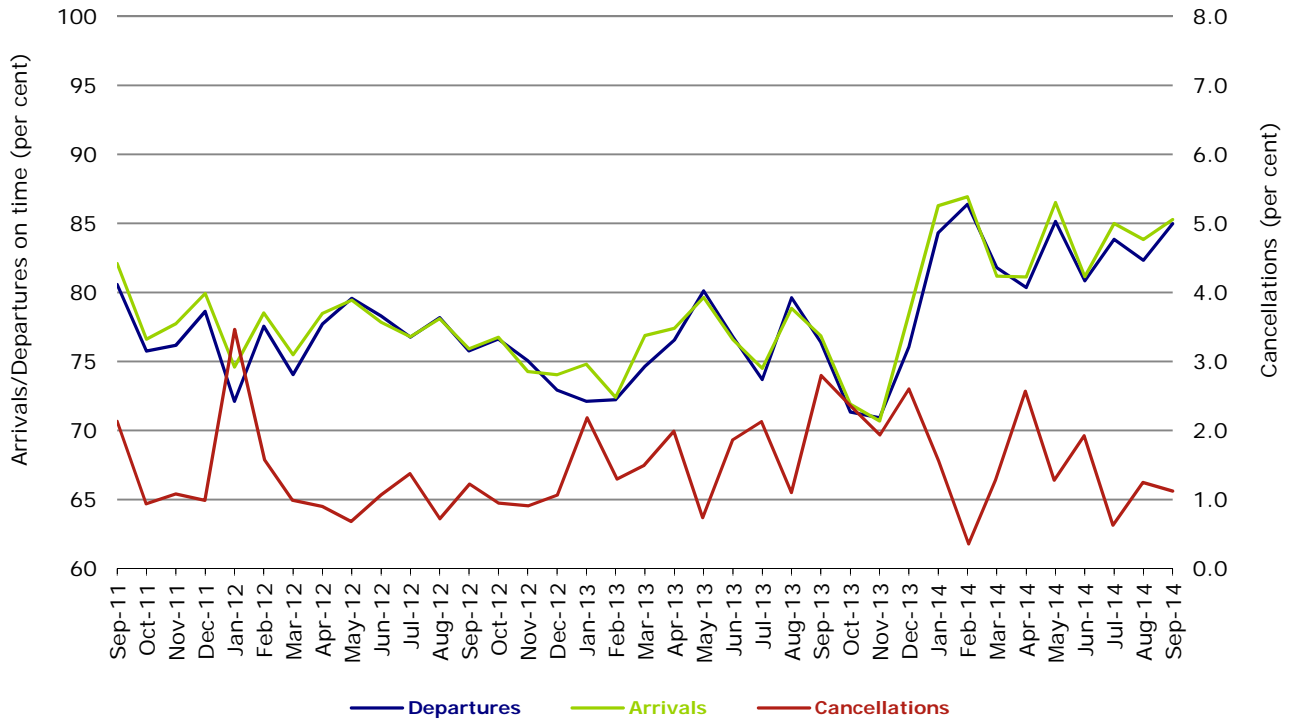


Figure 6 On time performance (by month from September 2011)—Qantas

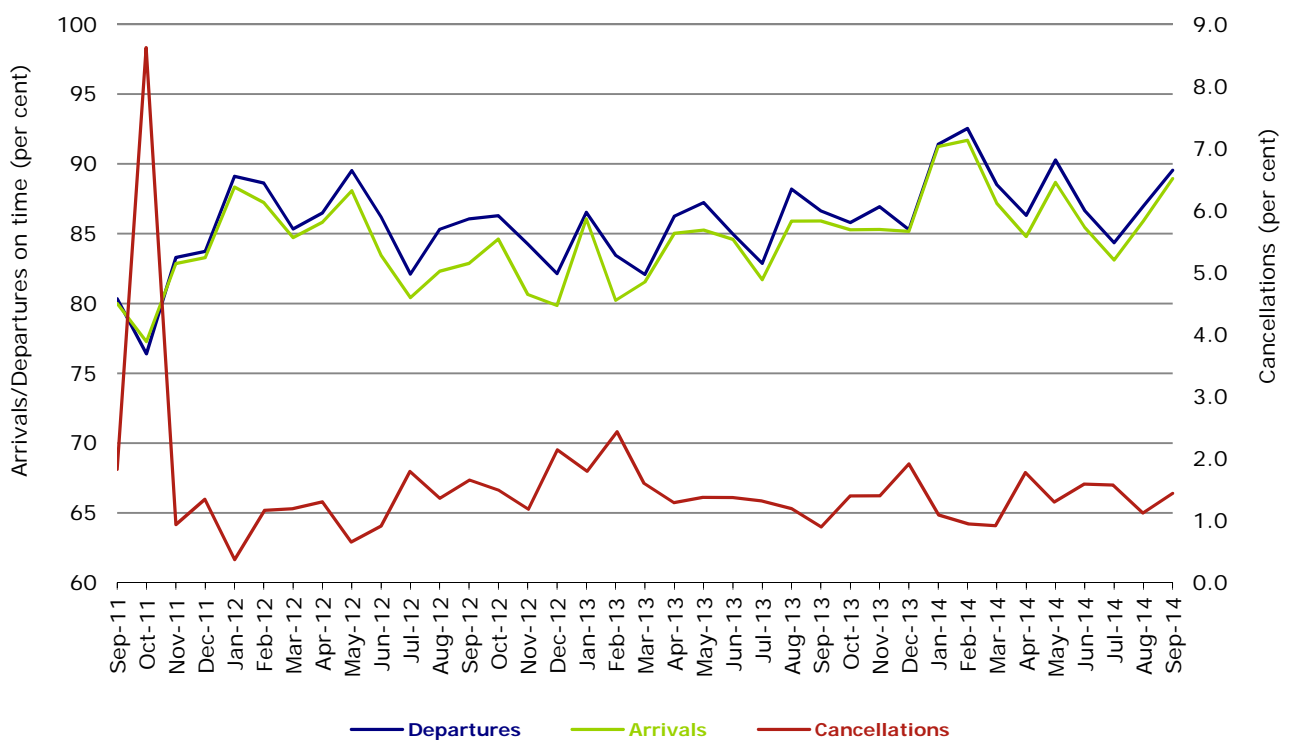


Figure 7 On time performance (by month from September 2011)—Tigerair

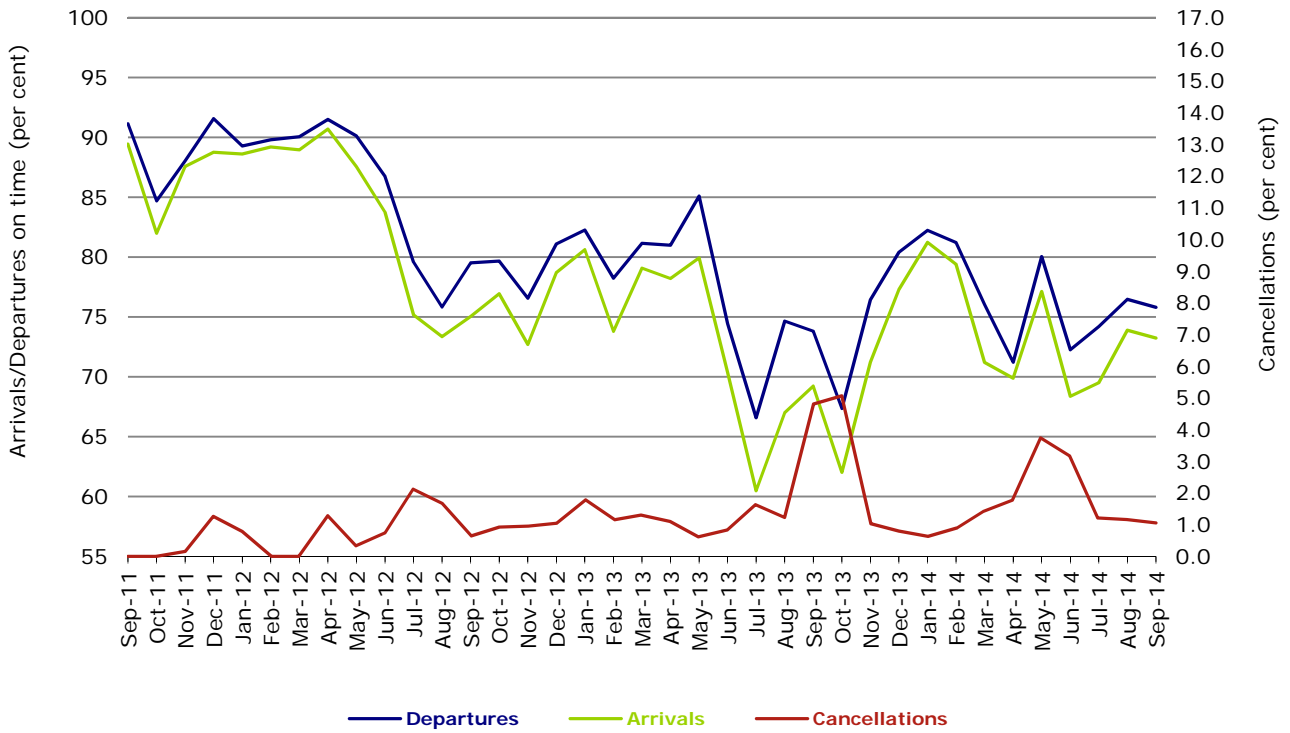
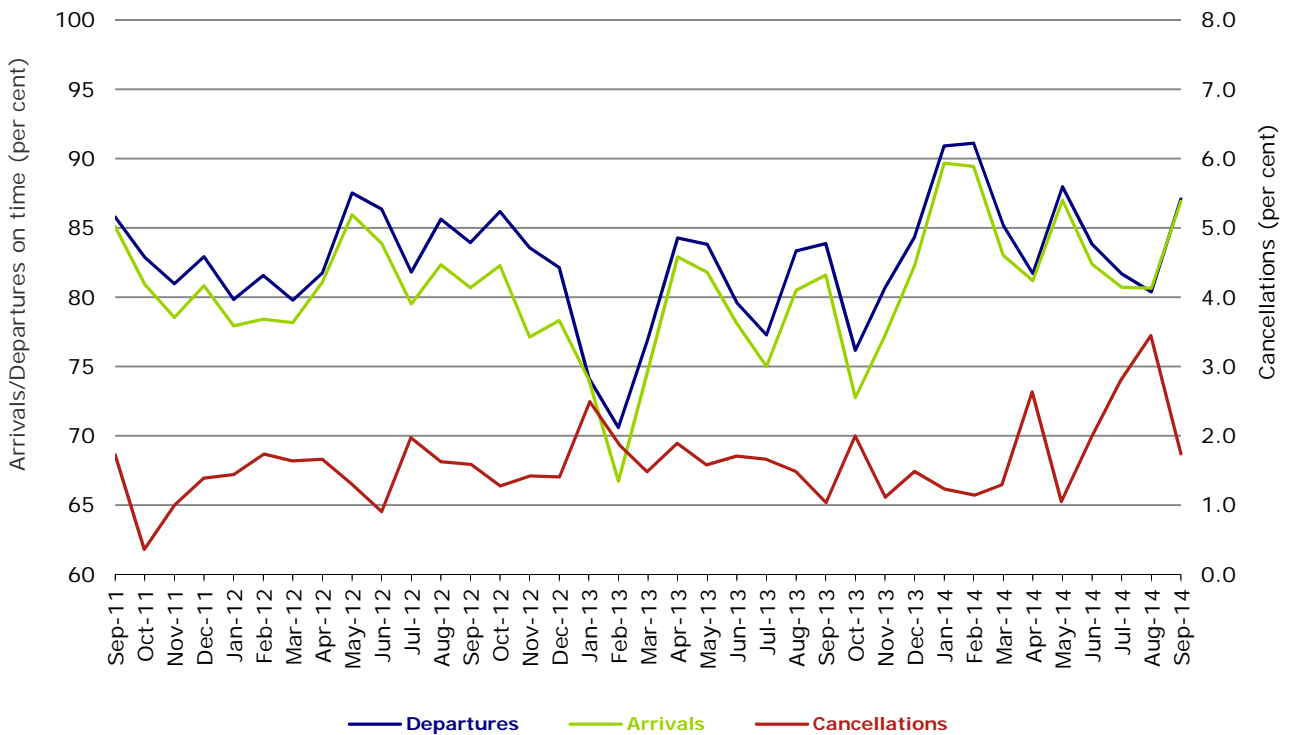


Figure 8 On time performance (by month from September 2011)—Virgin Australia



Major regional airlines on time performance

Figure 9 On time performance (by month from September 2011)—QantasLink

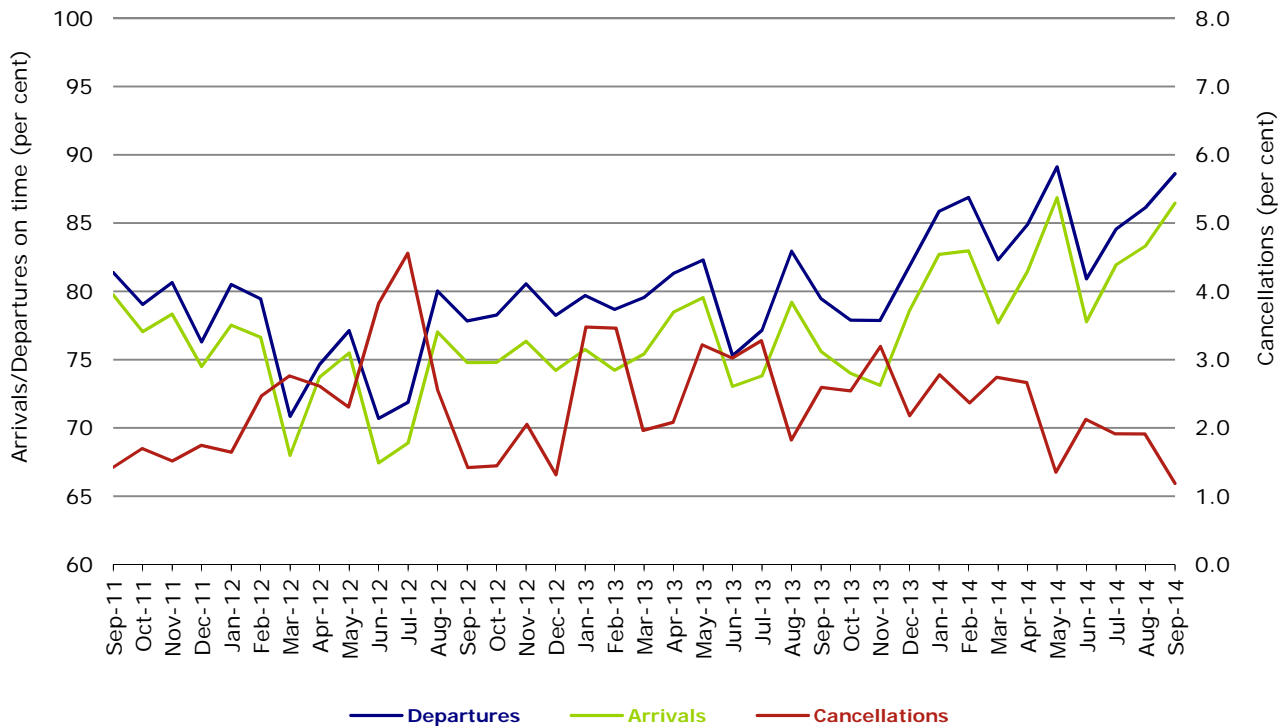


Figure 10 On time performance (by month from September 2011)—Regional Express

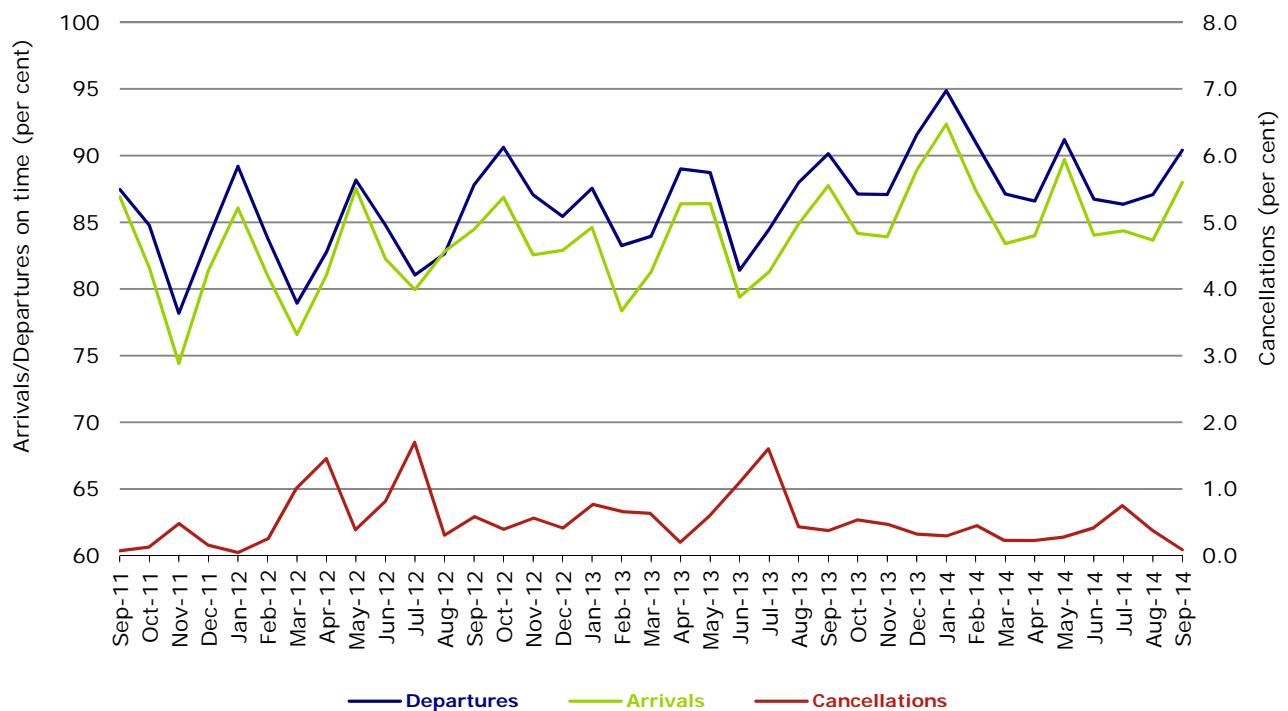
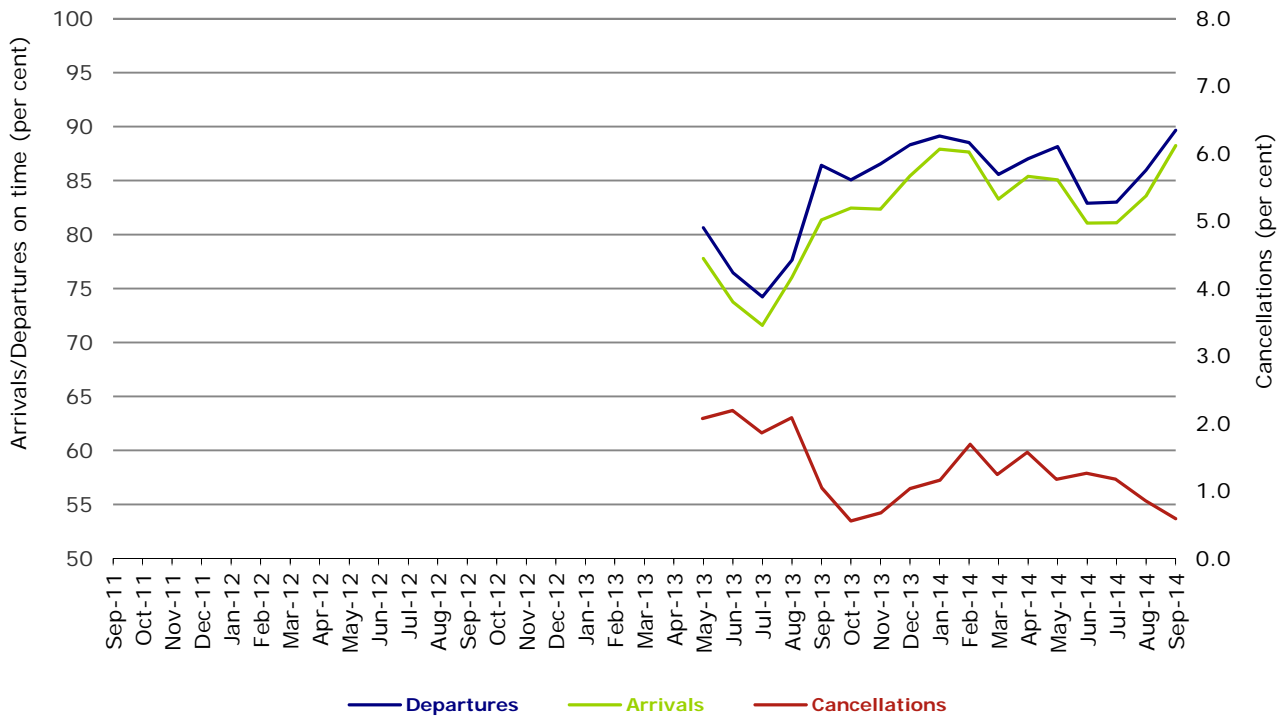


Figure 11 On time performance (by month from September 2011)
Virgin Australia Regional Airlines



Virgin Australia Regional Airlines commenced operations in May 2013. It was formed after the acquisition of Skywest by Virgin Australia and represents a combination of operations previously reported under Skywest and Virgin Australia – ATR/F100 Operations.

Individual routes

On time performance is reported for all routes where the passenger load averages over 8000 passengers per month over the previous six months, and where two or more airlines operate in competition on those routes. There are now 62 routes which meet this definition. Over time, however, routes which meet this definition may change as airline networks and traffic levels vary.

	<i>Sectors</i>		<i>Departures On Time</i>		<i>Arrivals On Time</i>		<i>Cancellations</i>	
	<i>Sched.</i>	<i>Flown</i>	<i>No.</i>	<i>%</i>	<i>No.</i>	<i>%</i>	<i>No.</i>	<i>%</i>
Adelaide-Brisbane								
Jetstar	27	27	24	88.9	26	96.3	0	0.0
Qantas	108	108	103	95.4	101	93.5	0	0.0
Tigerair	23	23	23	100.0	23	100.0	0	0.0
Virgin Australia	112	111	99	89.2	105	94.6	1	0.9
All Airlines	270	269	249	92.6	255	94.8	1	0.4
Adelaide-Canberra								
Qantas	48	48	46	95.8	45	93.8	0	0.0
QantasLink	17	17	16	94.1	17	100.0	0	0.0
Virgin Australia	26	26	23	88.5	23	88.5	0	0.0
All Airlines	91	91	85	93.4	85	93.4	0	0.0
Adelaide-Gold Coast								
Jetstar	37	37	33	89.2	32	86.5	0	0.0
Virgin Australia	30	30	29	96.7	28	93.3	0	0.0
All Airlines	67	67	62	92.5	60	89.6	0	0.0
Adelaide-Melbourne								
Jetstar	108	108	90	83.3	86	79.6	0	0.0
Qantas	293	286	258	90.2	260	90.9	7	2.4
Tigerair	74	74	59	79.7	54	73.0	0	0.0
Virgin Australia	275	270	232	85.9	240	88.9	5	1.8
All Airlines	750	738	639	86.6	640	86.7	12	1.6
Adelaide-Perth								
Jetstar	35	35	32	91.4	28	80.0	0	0.0
Qantas	113	112	106	94.6	107	95.5	1	0.9
Virgin Australia	65	65	58	89.2	59	90.8	0	0.0
All Airlines	213	212	196	92.5	194	91.5	1	0.5
Adelaide-Port Lincoln								
QantasLink	99	99	96	97.0	91	91.9	0	0.0
Regional Express	209	209	205	98.1	200	95.7	0	0.0
All Airlines	308	308	301	97.7	291	94.5	0	0.0
Adelaide-Sydney								
Jetstar	136	136	111	81.6	113	83.1	0	0.0
Qantas	239	239	217	90.8	227	95.0	0	0.0
QantasLink	22	21	14	66.7	18	85.7	1	4.5
Tigerair	26	25	18	72.0	22	88.0	1	3.8
Virgin Australia	167	167	151	90.4	154	92.2	0	0.0
All Airlines	590	588	511	86.9	534	90.8	2	0.3
Albury-Sydney								
QantasLink	96	96	82	85.4	75	78.1	0	0.0
Regional Express	112	112	99	88.4	99	88.4	0	0.0
Virgin Australia Regional Airlines	60	60	55	91.7	48	80.0	0	0.0
All Airlines	268	268	236	88.1	222	82.8	0	0.0
Armidale-Sydney								
QantasLink	134	134	109	81.3	117	87.3	0	0.0
Regional Express	78	78	68	87.2	62	79.5	0	0.0
All Airlines	212	212	177	83.5	179	84.4	0	0.0

	<i>Sectors</i>		<i>Departures On Time</i>		<i>Arrivals On Time</i>		<i>Cancellations</i>	
	<i>Sched.</i>	<i>Flown</i>	<i>No.</i>	<i>%</i>	<i>No.</i>	<i>%</i>	<i>No.</i>	<i>%</i>
Ayers Rock-Sydney								
Jetstar	30	30	25	83.3	23	76.7	0	0.0
Virgin Australia	30	30	26	86.7	27	90.0	0	0.0
All Airlines	60	60	51	85.0	50	83.3	0	0.0
Ballina-Sydney								
Jetstar	76	76	64	84.2	64	84.2	0	0.0
Regional Express	25	25	23	92.0	21	84.0	0	0.0
Virgin Australia	30	30	23	76.7	24	80.0	0	0.0
All Airlines	131	131	110	84.0	109	83.2	0	0.0
Brisbane-Adelaide								
Jetstar	27	27	26	96.3	26	96.3	0	0.0
Qantas	108	108	100	92.6	102	94.4	0	0.0
Tigerair	23	23	21	91.3	20	87.0	0	0.0
Virgin Australia	112	112	97	86.6	96	85.7	0	0.0
All Airlines	270	270	244	90.4	244	90.4	0	0.0
Brisbane-Bundaberg								
QantasLink	116	116	106	91.4	107	92.2	0	0.0
Virgin Australia Regional Airlines	30	30	25	83.3	25	83.3	0	0.0
All Airlines	146	146	131	89.7	132	90.4	0	0.0
Brisbane-Cairns								
Jetstar	123	123	111	90.2	106	86.2	0	0.0
Qantas	116	116	105	90.5	105	90.5	0	0.0
QantasLink	4	4	4	100.0	3	75.0	0	0.0
Tigerair	27	27	14	51.9	13	48.1	0	0.0
Virgin Australia	132	131	113	86.3	115	87.8	1	0.8
All Airlines	402	401	347	86.5	342	85.3	1	0.2
Brisbane-Canberra								
Qantas	51	51	44	86.3	46	90.2	0	0.0
QantasLink	113	113	105	92.9	106	93.8	0	0.0
Virgin Australia	95	95	79	83.2	78	82.1	0	0.0
All Airlines	259	259	228	88.0	230	88.8	0	0.0
Brisbane-Darwin								
Jetstar	30	30	28	93.3	28	93.3	0	0.0
Qantas	48	48	44	91.7	46	95.8	0	0.0
Tigerair	21	21	21	100.0	18	85.7	0	0.0
Virgin Australia	30	30	28	93.3	24	80.0	0	0.0
All Airlines	129	129	121	93.8	116	89.9	0	0.0
Brisbane-Emerald								
QantasLink	151	151	144	95.4	123	81.5	0	0.0
Virgin Australia Regional Airlines	82	82	76	92.7	69	84.1	0	0.0
All Airlines	233	233	220	94.4	192	82.4	0	0.0
Brisbane-Gladstone								
QantasLink	216	212	199	93.9	195	92.0	4	1.9
Virgin Australia	2	2	1	50.0	1	50.0	0	0.0
Virgin Australia Regional Airlines	150	149	141	94.6	134	89.9	1	0.7
All Airlines	368	363	341	93.9	330	90.9	5	1.4
Brisbane-Hamilton Island								
Jetstar	17	17	15	88.2	15	88.2	0	0.0
Virgin Australia	30	30	26	86.7	26	86.7	0	0.0
All Airlines	47	47	41	87.2	41	87.2	0	0.0
Brisbane-Hobart								
Jetstar	30	30	28	93.3	27	90.0	0	0.0
Virgin Australia	30	30	28	93.3	27	90.0	0	0.0
All Airlines	60	60	56	93.3	54	90.0	0	0.0

	<i>Sectors</i>		<i>Departures On Time</i>		<i>Arrivals On Time</i>		<i>Cancellations</i>	
	<i>Sched.</i>	<i>Flown</i>	<i>No.</i>	<i>%</i>	<i>No.</i>	<i>%</i>	<i>No.</i>	<i>%</i>
Brisbane-Mackay								
Jetstar	55	54	47	87.0	50	92.6	1	1.8
QantasLink	108	108	95	88.0	98	90.7	0	0.0
Virgin Australia	152	151	128	84.8	133	88.1	1	0.7
All Airlines	315	313	270	86.3	281	89.8	2	0.6
Brisbane-Melbourne								
Jetstar	111	109	89	81.7	94	86.2	2	1.8
Qantas	417	413	359	86.9	354	85.7	4	1.0
Tigerair	106	105	77	73.3	77	73.3	1	0.9
Virgin Australia	386	371	300	80.9	276	74.4	15	3.9
All Airlines	1 020	998	825	82.7	801	80.3	22	2.2
Brisbane-Moranbah								
QantasLink	130	125	119	95.2	114	91.2	5	3.8
Virgin Australia Regional Airlines	104	102	88	86.3	84	82.4	2	1.9
All Airlines	234	227	207	91.2	198	87.2	7	3.0
Brisbane-Mount Isa								
Qantas	56	56	53	94.6	53	94.6	0	0.0
Virgin Australia	22	22	22	100.0	22	100.0	0	0.0
All Airlines	78	78	75	96.2	75	96.2	0	0.0
Brisbane-Newcastle								
Jetstar	100	100	92	92.0	90	90.0	0	0.0
QantasLink	70	69	59	85.5	36	52.2	1	1.4
Virgin Australia	82	82	76	92.7	75	91.5	0	0.0
All Airlines	252	251	227	90.4	201	80.1	1	0.4
Brisbane-Perth								
Qantas	125	125	106	84.8	106	84.8	0	0.0
Virgin Australia	95	95	73	76.8	81	85.3	0	0.0
All Airlines	220	220	179	81.4	187	85.0	0	0.0
Brisbane-Proserpine								
Jetstar	30	30	27	90.0	27	90.0	0	0.0
Virgin Australia	52	51	44	86.3	46	90.2	1	1.9
All Airlines	82	81	71	87.7	73	90.1	1	1.2
Brisbane-Rockhampton								
QantasLink	217	215	195	90.7	188	87.4	2	0.9
Virgin Australia	107	107	93	86.9	94	87.9	0	0.0
Virgin Australia Regional Airlines	39	39	34	87.2	35	89.7	0	0.0
All Airlines	363	361	322	89.2	317	87.8	2	0.6
Brisbane-Sydney								
Jetstar	179	170	136	80.0	147	86.5	9	5.0
Qantas	608	595	530	89.1	531	89.2	13	2.1
Tigerair	92	90	67	74.4	65	72.2	2	2.2
Virgin Australia	547	528	473	89.6	465	88.1	19	3.5
All Airlines	1 426	1 383	1 206	87.2	1 208	87.3	43	3.0
Brisbane-Townsville								
Jetstar	60	60	53	88.3	48	80.0	0	0.0
Qantas	146	146	125	85.6	133	91.1	0	0.0
Virgin Australia	157	155	126	81.3	128	82.6	2	1.3
All Airlines	363	361	304	84.2	309	85.6	2	0.6
Broome-Perth								
Qantas	34	34	28	82.4	32	94.1	0	0.0
QantasLink	47	47	47	100.0	47	100.0	0	0.0
Virgin Australia	47	45	38	84.4	41	91.1	2	4.3
Virgin Australia Regional Airlines	25	25	15	60.0	14	56.0	0	0.0
All Airlines	153	151	128	84.8	134	88.7	2	1.3

	<i>Sectors</i>		<i>Departures On Time</i>		<i>Arrivals On Time</i>		<i>Cancellations</i>	
	<i>Sched.</i>	<i>Flown</i>	<i>No.</i>	<i>%</i>	<i>No.</i>	<i>%</i>	<i>No.</i>	<i>%</i>
Bundaberg-Brisbane								
QantasLink	116	115	103	89.6	101	87.8	1	0.9
Virgin Australia Regional Airlines	40	40	34	85.0	35	87.5	0	0.0
All Airlines	156	155	137	88.4	136	87.7	1	0.6
Cairns-Brisbane								
Jetstar	123	123	109	88.6	113	91.9	0	0.0
Qantas	116	116	101	87.1	101	87.1	0	0.0
QantasLink	4	4	4	100.0	4	100.0	0	0.0
Tigerair	27	27	13	48.1	11	40.7	0	0.0
Virgin Australia	132	131	104	79.4	110	84.0	1	0.8
All Airlines	402	401	331	82.5	339	84.5	1	0.2
Cairns-Melbourne								
Jetstar	119	118	101	85.6	97	82.2	1	0.8
Qantas	30	30	23	76.7	27	90.0	0	0.0
Tigerair	38	38	29	76.3	25	65.8	0	0.0
Virgin Australia	34	34	19	55.9	24	70.6	0	0.0
All Airlines	221	220	172	78.2	173	78.6	1	0.5
Cairns-Sydney								
Jetstar	116	116	102	87.9	104	89.7	0	0.0
Qantas	73	73	60	82.2	66	90.4	0	0.0
Tigerair	28	27	18	66.7	24	88.9	1	3.6
Virgin Australia	90	90	77	85.6	81	90.0	0	0.0
All Airlines	307	306	257	84.0	275	89.9	1	0.3
Canberra-Adelaide								
Qantas	48	48	46	95.8	46	95.8	0	0.0
QantasLink	17	17	15	88.2	15	88.2	0	0.0
Virgin Australia	26	26	22	84.6	24	92.3	0	0.0
All Airlines	91	91	83	91.2	85	93.4	0	0.0
Canberra-Brisbane								
Qantas	52	52	52	100.0	52	100.0	0	0.0
QantasLink	112	112	105	93.8	106	94.6	0	0.0
Virgin Australia	95	95	84	88.4	84	88.4	0	0.0
All Airlines	259	259	241	93.1	242	93.4	0	0.0
Canberra-Melbourne								
Qantas	181	181	170	93.9	168	92.8	0	0.0
QantasLink	96	95	85	89.5	83	87.4	1	1.0
Virgin Australia	181	181	165	91.2	162	89.5	0	0.0
All Airlines	458	457	420	91.9	413	90.4	1	0.2
Canberra-Sydney								
Qantas	31	31	30	96.8	30	96.8	0	0.0
QantasLink	509	492	454	92.3	448	91.1	17	3.3
Virgin Australia	47	46	45	97.8	44	95.7	1	2.1
Virgin Australia Regional Airlines	245	242	234	96.7	234	96.7	3	1.2
All Airlines	832	811	763	94.1	756	93.2	21	2.5
Coffs Harbour-Sydney								
QantasLink	151	151	121	80.1	124	82.1	0	0.0
Tigerair	13	13	11	84.6	11	84.6	0	0.0
Virgin Australia	60	58	49	84.5	53	91.4	2	3.3
All Airlines	224	222	181	81.5	188	84.7	2	0.9
Darwin-Brisbane								
Jetstar	30	30	27	90.0	30	100.0	0	0.0
Qantas	48	48	40	83.3	30	62.5	0	0.0
Tigerair	22	22	17	77.3	15	68.2	0	0.0
Virgin Australia	30	30	18	60.0	6	20.0	0	0.0
All Airlines	130	130	102	78.5	81	62.3	0	0.0

	<i>Sectors</i>		<i>Departures On Time</i>		<i>Arrivals On Time</i>		<i>Cancellations</i>	
	<i>Sched.</i>	<i>Flown</i>	<i>No.</i>	<i>%</i>	<i>No.</i>	<i>%</i>	<i>No.</i>	<i>%</i>
Darwin-Melbourne								
Jetstar	30	30	25	83.3	25	83.3	0	0.0
Qantas	30	30	23	76.7	21	70.0	0	0.0
Virgin Australia	30	30	27	90.0	22	73.3	0	0.0
All Airlines	90	90	75	83.3	68	75.6	0	0.0
Darwin-Perth								
Qantas	34	34	31	91.2	31	91.2	0	0.0
Virgin Australia	26	26	21	80.8	24	92.3	0	0.0
All Airlines	60	60	52	86.7	55	91.7	0	0.0
Darwin-Sydney								
Jetstar	27	27	23	85.2	15	55.6	0	0.0
Qantas	56	56	51	91.1	48	85.7	0	0.0
Virgin Australia	30	30	17	56.7	18	60.0	0	0.0
All Airlines	113	113	91	80.5	81	71.7	0	0.0
Dubbo-Sydney								
QantasLink	122	122	102	83.6	98	80.3	0	0.0
Regional Express	161	160	151	94.4	148	92.5	1	0.6
All Airlines	283	282	253	89.7	246	87.2	1	0.4
Emerald-Brisbane								
QantasLink	151	151	120	79.5	124	82.1	0	0.0
Virgin Australia Regional Airlines	82	82	72	87.8	74	90.2	0	0.0
All Airlines	233	233	192	82.4	198	85.0	0	0.0
Geraldton-Perth								
QantasLink	52	52	47	90.4	50	96.2	0	0.0
Virgin Australia Regional Airlines	95	94	86	91.5	84	89.4	1	1.1
All Airlines	147	146	133	91.1	134	91.8	1	0.7
Gladstone-Brisbane								
QantasLink	232	229	202	88.2	195	85.2	3	1.3
Virgin Australia	2	2	1	50.0	1	50.0	0	0.0
Virgin Australia Regional Airlines	150	149	130	87.2	128	85.9	1	0.7
All Airlines	384	380	333	87.6	324	85.3	4	1.0
Gold Coast-Adelaide								
Jetstar	37	37	33	89.2	34	91.9	0	0.0
Virgin Australia	30	30	27	90.0	27	90.0	0	0.0
All Airlines	67	67	60	89.6	61	91.0	0	0.0
Gold Coast-Melbourne								
Jetstar	229	228	197	86.4	196	86.0	1	0.4
Tigerair	70	70	43	61.4	45	64.3	0	0.0
Virgin Australia	175	174	146	83.9	151	86.8	1	0.6
All Airlines	474	472	386	81.8	392	83.1	2	0.4
Gold Coast-Sydney								
Jetstar	352	346	302	87.3	303	87.6	6	1.7
Qantas	90	90	77	85.6	80	88.9	0	0.0
Tigerair	73	71	52	73.2	57	80.3	2	2.7
Virgin Australia	272	263	228	86.7	234	89.0	9	3.3
All Airlines	787	770	659	85.6	674	87.5	17	2.2
Hamilton Island-Brisbane								
Jetstar	17	16	14	87.5	14	87.5	1	5.9
Virgin Australia	30	30	25	83.3	25	83.3	0	0.0
All Airlines	47	46	39	84.8	39	84.8	1	2.1

	<i>Sectors</i>		<i>Departures On Time</i>		<i>Arrivals On Time</i>		<i>Cancellations</i>	
	<i>Sched.</i>	<i>Flown</i>	<i>No.</i>	<i>%</i>	<i>No.</i>	<i>%</i>	<i>No.</i>	<i>%</i>
Hamilton Island-Melbourne								
Jetstar	21	21	18	85.7	16	76.2	0	0.0
Virgin Australia	22	22	19	86.4	20	90.9	0	0.0
All Airlines	43	43	37	86.0	36	83.7	0	0.0
Hamilton Island-Sydney								
Jetstar	30	30	26	86.7	24	80.0	0	0.0
Virgin Australia	30	30	25	83.3	24	80.0	0	0.0
All Airlines	60	60	51	85.0	48	80.0	0	0.0
Hobart-Brisbane								
Jetstar	30	30	27	90.0	26	86.7	0	0.0
Virgin Australia	30	30	26	86.7	28	93.3	0	0.0
All Airlines	60	60	53	88.3	54	90.0	0	0.0
Hobart-Melbourne								
Jetstar	174	170	140	82.4	137	80.6	4	2.3
QantasLink	111	111	83	74.8	77	69.4	0	0.0
Tigerair	25	25	15	60.0	14	56.0	0	0.0
Virgin Australia	141	139	122	87.8	115	82.7	2	1.4
All Airlines	451	445	360	80.9	343	77.1	6	1.3
Hobart-Sydney								
Jetstar	79	79	70	88.6	68	86.1	0	0.0
QantasLink	30	30	29	96.7	29	96.7	0	0.0
Virgin Australia	59	59	53	89.8	54	91.5	0	0.0
All Airlines	168	168	152	90.5	151	89.9	0	0.0
Kalgoorlie-Perth								
Qantas	24	24	22	91.7	23	95.8	0	0.0
QantasLink	59	58	56	96.6	57	98.3	1	1.7
Virgin Australia	43	42	39	92.9	39	92.9	1	2.3
Virgin Australia Regional Airlines	13	13	12	92.3	9	69.2	0	0.0
All Airlines	139	137	129	94.2	128	93.4	2	1.4
Karratha-Perth								
Qantas	118	117	114	97.4	112	95.7	1	0.8
QantasLink	94	93	86	92.5	85	91.4	1	1.1
Virgin Australia	62	62	59	95.2	58	93.5	0	0.0
Virgin Australia Regional Airlines	20	20	14	70.0	17	85.0	0	0.0
All Airlines	294	292	273	93.5	272	93.2	2	0.7
Launceston-Melbourne								
Jetstar	102	102	86	84.3	82	80.4	0	0.0
QantasLink	120	118	101	85.6	95	80.5	2	1.7
Virgin Australia	116	115	108	93.9	103	89.6	1	0.9
All Airlines	338	335	295	88.1	280	83.6	3	0.9
Launceston-Sydney								
Jetstar	49	49	33	67.3	36	73.5	0	0.0
Virgin Australia	29	29	26	89.7	24	82.8	0	0.0
All Airlines	78	78	59	75.6	60	76.9	0	0.0
Mackay-Brisbane								
Jetstar	55	54	45	83.3	44	81.5	1	1.8
QantasLink	108	106	87	82.1	92	86.8	2	1.9
Virgin Australia	152	151	131	86.8	134	88.7	1	0.7
All Airlines	315	311	263	84.6	270	86.8	4	1.3

	<i>Sectors</i>		<i>Departures On Time</i>		<i>Arrivals On Time</i>		<i>Cancellations</i>	
	<i>Sched.</i>	<i>Flown</i>	<i>No.</i>	<i>%</i>	<i>No.</i>	<i>%</i>	<i>No.</i>	<i>%</i>
Melbourne-Adelaide								
Jetstar	108	108	87	80.6	87	80.6	0	0.0
Qantas	292	286	262	91.6	263	92.0	6	2.1
Tigerair	74	74	67	90.5	62	83.8	0	0.0
Virgin Australia	276	274	238	86.9	245	89.4	2	0.7
All Airlines	750	742	654	88.1	657	88.5	8	1.1
Melbourne-Brisbane								
Jetstar	111	109	78	71.6	88	80.7	2	1.8
Qantas	415	412	356	86.4	355	86.2	3	0.7
Tigerair	106	105	77	73.3	73	69.5	1	0.9
Virgin Australia	385	369	303	82.1	294	79.7	16	4.2
All Airlines	1 017	995	814	81.8	810	81.4	22	2.2
Melbourne-Cairns								
Jetstar	119	118	104	88.1	101	85.6	1	0.8
Qantas	30	30	20	66.7	24	80.0	0	0.0
Tigerair	38	38	34	89.5	36	94.7	0	0.0
Virgin Australia	34	34	25	73.5	21	61.8	0	0.0
All Airlines	221	220	183	83.2	182	82.7	1	0.5
Melbourne-Canberra								
Qantas	181	181	167	92.3	163	90.1	0	0.0
QantasLink	96	94	83	88.3	79	84.0	2	2.1
Virgin Australia	181	180	166	92.2	165	91.7	1	0.6
All Airlines	458	455	416	91.4	407	89.5	3	0.7
Melbourne-Darwin								
Jetstar	30	30	25	83.3	26	86.7	0	0.0
Qantas	30	30	26	86.7	21	70.0	0	0.0
Virgin Australia	30	30	26	86.7	27	90.0	0	0.0
All Airlines	90	90	77	85.6	74	82.2	0	0.0
Melbourne-Gold Coast								
Jetstar	229	228	182	79.8	186	81.6	1	0.4
Tigerair	70	70	54	77.1	48	68.6	0	0.0
Virgin Australia	175	174	142	81.6	145	83.3	1	0.6
All Airlines	474	472	378	80.1	379	80.3	2	0.4
Melbourne-Hamilton Island								
Jetstar	20	20	18	90.0	18	90.0	0	0.0
Virgin Australia	22	22	20	90.9	21	95.5	0	0.0
All Airlines	42	42	38	90.5	39	92.9	0	0.0
Melbourne-Hobart								
Jetstar	174	170	143	84.1	147	86.5	4	2.3
QantasLink	111	111	72	64.9	70	63.1	0	0.0
Tigerair	25	25	18	72.0	17	68.0	0	0.0
Virgin Australia	141	139	121	87.1	120	86.3	2	1.4
All Airlines	451	445	354	79.6	354	79.6	6	1.3
Melbourne-Launceston								
Jetstar	102	102	88	86.3	89	87.3	0	0.0
QantasLink	120	118	105	89.0	101	85.6	2	1.7
Virgin Australia	116	115	106	92.2	102	88.7	1	0.9
All Airlines	338	335	299	89.3	292	87.2	3	0.9
Melbourne-Mildura								
QantasLink	86	86	77	89.5	71	82.6	0	0.0
Regional Express	85	85	81	95.3	77	90.6	0	0.0
Virgin Australia	30	30	24	80.0	25	83.3	0	0.0
All Airlines	201	201	182	90.5	173	86.1	0	0.0

	<i>Sectors</i>		<i>Departures On Time</i>		<i>Arrivals On Time</i>		<i>Cancellations</i>	
	<i>Sched.</i>	<i>Flown</i>	<i>No.</i>	<i>%</i>	<i>No.</i>	<i>%</i>	<i>No.</i>	<i>%</i>
Melbourne-Newcastle								
Jetstar	100	100	81	81.0	83	83.0	0	0.0
Virgin Australia	30	30	28	93.3	28	93.3	0	0.0
All Airlines	130	130	109	83.8	111	85.4	0	0.0
Melbourne-Perth								
Jetstar	82	80	65	81.3	65	81.3	2	2.4
Qantas	221	220	185	84.1	190	86.4	1	0.5
Tigerair	56	55	40	72.7	35	63.6	1	1.8
Virgin Australia	146	142	118	83.1	118	83.1	4	2.7
All Airlines	505	497	408	82.1	408	82.1	8	1.6
Melbourne-Sunshine Coast								
Jetstar	86	85	67	78.8	75	88.2	1	1.2
Virgin Australia	31	31	23	74.2	20	64.5	0	0.0
All Airlines	117	116	90	77.6	95	81.9	1	0.9
Melbourne-Sydney								
Jetstar	325	312	241	77.2	244	78.2	13	4.0
Qantas	918	881	790	89.7	783	88.9	37	4.0
Tigerair	221	220	172	78.2	173	78.6	1	0.5
Virgin Australia	787	757	677	89.4	676	89.3	30	3.8
All Airlines	2 251	2 170	1 880	86.6	1 876	86.5	81	3.6
Mildura-Melbourne								
QantasLink	86	85	76	89.4	72	84.7	1	1.2
Regional Express	86	86	75	87.2	74	86.0	0	0.0
Virgin Australia	30	30	23	76.7	25	83.3	0	0.0
All Airlines	202	201	174	86.6	171	85.1	1	0.5
Moranbah-Brisbane								
QantasLink	125	119	109	91.6	98	82.4	6	4.8
Virgin Australia Regional Airlines	88	87	78	89.7	78	89.7	1	1.1
All Airlines	213	206	187	90.8	176	85.4	7	3.3
Mount Isa-Brisbane								
Qantas	56	55	48	87.3	51	92.7	1	1.8
Virgin Australia	22	22	21	95.5	20	90.9	0	0.0
All Airlines	78	77	69	89.6	71	92.2	1	1.3
Newcastle-Brisbane								
Jetstar	100	100	84	84.0	84	84.0	0	0.0
QantasLink	69	68	39	57.4	37	54.4	1	1.4
Virgin Australia	82	82	72	87.8	73	89.0	0	0.0
All Airlines	251	250	195	78.0	194	77.6	1	0.4
Newcastle-Melbourne								
Jetstar	100	100	84	84.0	84	84.0	0	0.0
Virgin Australia	30	30	26	86.7	25	83.3	0	0.0
All Airlines	130	130	110	84.6	109	83.8	0	0.0
Newman-Perth								
Qantas	121	119	115	96.6	116	97.5	2	1.7
QantasLink	28	28	27	96.4	27	96.4	0	0.0
Virgin Australia	30	30	28	93.3	29	96.7	0	0.0
Virgin Australia Regional Airlines	4	4	2	50.0	2	50.0	0	0.0
All Airlines	183	181	172	95.0	174	96.1	2	1.1
Perth-Adelaide								
Jetstar	35	35	26	74.3	28	80.0	0	0.0
Qantas	117	116	114	98.3	116	100.0	1	0.9
Virgin Australia	64	64	58	90.6	60	93.8	0	0.0
All Airlines	216	215	198	92.1	204	94.9	1	0.5

	<i>Sectors</i>		<i>Departures On Time</i>		<i>Arrivals On Time</i>		<i>Cancellations</i>	
	<i>Sched.</i>	<i>Flown</i>	<i>No.</i>	<i>%</i>	<i>No.</i>	<i>%</i>	<i>No.</i>	<i>%</i>
Perth-Brisbane								
Qantas	125	125	106	84.8	109	87.2	0	0.0
Virgin Australia	94	94	90	95.7	89	94.7	0	0.0
All Airlines	219	219	196	89.5	198	90.4	0	0.0
Perth-Broome								
Qantas	34	34	29	85.3	29	85.3	0	0.0
QantasLink	48	48	48	100.0	48	100.0	0	0.0
Virgin Australia	47	45	42	93.3	42	93.3	2	4.3
Virgin Australia Regional Airlines	13	13	12	92.3	13	100.0	0	0.0
All Airlines	142	140	131	93.6	132	94.3	2	1.4
Perth-Darwin								
Qantas	35	35	33	94.3	33	94.3	0	0.0
Virgin Australia	26	26	25	96.2	24	92.3	0	0.0
All Airlines	61	61	58	95.1	57	93.4	0	0.0
Perth-Geraldton								
QantasLink	52	52	47	90.4	48	92.3	0	0.0
Virgin Australia Regional Airlines	21	21	15	71.4	14	66.7	0	0.0
All Airlines	73	73	62	84.9	62	84.9	0	0.0
Perth-Kalgoorlie								
Qantas	24	24	23	95.8	23	95.8	0	0.0
QantasLink	59	58	54	93.1	57	98.3	1	1.7
Virgin Australia	43	43	41	95.3	41	95.3	0	0.0
Virgin Australia Regional Airlines	4	4	4	100.0	4	100.0	0	0.0
All Airlines	130	129	122	94.6	125	96.9	1	0.8
Perth-Karratha								
Qantas	118	117	115	98.3	114	97.4	1	0.8
QantasLink	95	94	87	92.6	88	93.6	1	1.1
Virgin Australia	62	62	61	98.4	62	100.0	0	0.0
Virgin Australia Regional Airlines	90	90	83	92.2	75	83.3	0	0.0
All Airlines	365	363	346	95.3	339	93.4	2	0.5
Perth-Melbourne								
Jetstar	82	78	54	69.2	57	73.1	4	4.9
Qantas	224	220	195	88.6	196	89.1	4	1.8
Tigerair	57	53	33	62.3	31	58.5	4	7.0
Virgin Australia	146	145	127	87.6	134	92.4	1	0.7
All Airlines	509	496	409	82.5	418	84.3	13	2.6
Perth-Newman								
Qantas	121	119	114	95.8	115	96.6	2	1.7
QantasLink	28	28	28	100.0	28	100.0	0	0.0
Virgin Australia	30	30	28	93.3	28	93.3	0	0.0
Virgin Australia Regional Airlines	20	20	19	95.0	19	95.0	0	0.0
All Airlines	199	197	189	95.9	190	96.4	2	1.0
Perth-Port Hedland								
Qantas	113	110	107	97.3	108	98.2	3	2.7
QantasLink	47	46	44	95.7	44	95.7	1	2.1
Virgin Australia	44	44	43	97.7	43	97.7	0	0.0
All Airlines	204	200	194	97.0	195	97.5	4	2.0
Perth-Sydney								
Jetstar	25	25	18	72.0	13	52.0	0	0.0
Qantas	200	200	177	88.5	177	88.5	0	0.0
Tigerair	22	22	18	81.8	19	86.4	0	0.0
Virgin Australia	116	115	98	85.2	111	96.5	1	0.9
All Airlines	363	362	311	85.9	320	88.4	1	0.3

	<i>Sectors</i>		<i>Departures On Time</i>		<i>Arrivals On Time</i>		<i>Cancellations</i>	
	<i>Sched.</i>	<i>Flown</i>	<i>No.</i>	<i>%</i>	<i>No.</i>	<i>%</i>	<i>No.</i>	<i>%</i>
Port Hedland-Perth								
Qantas	113	110	101	91.8	103	93.6	3	2.7
QantasLink	48	48	46	95.8	46	95.8	0	0.0
Virgin Australia	44	44	41	93.2	41	93.2	0	0.0
All Airlines	205	202	188	93.1	190	94.1	3	1.5
Port Lincoln-Adelaide								
QantasLink	99	99	96	97.0	94	94.9	0	0.0
Regional Express	209	209	200	95.7	198	94.7	0	0.0
All Airlines	308	308	296	96.1	292	94.8	0	0.0
Port Macquarie-Sydney								
QantasLink	134	134	96	71.6	85	63.4	0	0.0
Virgin Australia Regional Airlines	60	60	53	88.3	51	85.0	0	0.0
All Airlines	194	194	149	76.8	136	70.1	0	0.0
Proserpine-Brisbane								
Jetstar	30	30	27	90.0	28	93.3	0	0.0
Virgin Australia	52	51	42	82.4	41	80.4	1	1.9
All Airlines	82	81	69	85.2	69	85.2	1	1.2
Rockhampton-Brisbane								
QantasLink	196	192	160	83.3	147	76.6	4	2.0
Virgin Australia	106	106	96	90.6	93	87.7	0	0.0
Virgin Australia Regional Airlines	104	101	93	92.1	93	92.1	3	2.9
All Airlines	406	399	349	87.5	333	83.5	7	1.7
Sunshine Coast-Melbourne								
Jetstar	86	85	69	81.2	67	78.8	1	1.2
Virgin Australia	31	31	15	48.4	21	67.7	0	0.0
All Airlines	117	116	84	72.4	88	75.9	1	0.9
Sunshine Coast-Sydney								
Jetstar	102	102	95	93.1	93	91.2	0	0.0
Virgin Australia	30	30	24	80.0	25	83.3	0	0.0
All Airlines	132	132	119	90.2	118	89.4	0	0.0
Sydney-Adelaide								
Jetstar	136	136	114	83.8	107	78.7	0	0.0
Qantas	236	235	222	94.5	215	91.5	1	0.4
QantasLink	22	21	17	81.0	16	76.2	1	4.5
Tigerair	26	25	21	84.0	21	84.0	1	3.8
Virgin Australia	167	167	153	91.6	158	94.6	0	0.0
All Airlines	587	584	527	90.2	517	88.5	3	0.5
Sydney-Albury								
QantasLink	96	96	75	78.1	73	76.0	0	0.0
Regional Express	112	112	88	78.6	91	81.3	0	0.0
Virgin Australia Regional Airlines	60	60	54	90.0	56	93.3	0	0.0
All Airlines	268	268	217	81.0	220	82.1	0	0.0
Sydney-Armidale								
QantasLink	134	134	119	88.8	112	83.6	0	0.0
Regional Express	78	78	67	85.9	69	88.5	0	0.0
All Airlines	212	212	186	87.7	181	85.4	0	0.0
Sydney-Ayers Rock								
Jetstar	30	30	26	86.7	28	93.3	0	0.0
Virgin Australia	30	30	29	96.7	25	83.3	0	0.0
All Airlines	60	60	55	91.7	53	88.3	0	0.0

	<i>Sectors</i>		<i>Departures On Time</i>		<i>Arrivals On Time</i>		<i>Cancellations</i>	
	<i>Sched.</i>	<i>Flown</i>	<i>No.</i>	<i>%</i>	<i>No.</i>	<i>%</i>	<i>No.</i>	<i>%</i>
Sydney-Ballina								
Jetstar	76	76	64	84.2	64	84.2	0	0.0
Regional Express	30	30	29	96.7	29	96.7	0	0.0
Virgin Australia	30	30	25	83.3	26	86.7	0	0.0
All Airlines	136	136	118	86.8	119	87.5	0	0.0
Sydney-Brisbane								
Jetstar	178	170	133	78.2	146	85.9	8	4.5
Qantas	577	567	494	87.1	467	82.4	10	1.7
Tigerair	92	90	78	86.7	69	76.7	2	2.2
Virgin Australia	547	529	471	89.0	454	85.8	18	3.3
All Airlines	1 394	1 356	1 176	86.7	1 136	83.8	38	2.7
Sydney-Cairns								
Jetstar	116	116	107	92.2	106	91.4	0	0.0
Qantas	73	73	61	83.6	67	91.8	0	0.0
Tigerair	28	28	22	78.6	21	75.0	0	0.0
Virgin Australia	90	90	77	85.6	69	76.7	0	0.0
All Airlines	307	307	267	87.0	263	85.7	0	0.0
Sydney-Canberra								
Qantas	32	32	31	96.9	30	93.8	0	0.0
QantasLink	508	496	441	88.9	443	89.3	12	2.4
Virgin Australia	47	47	46	97.9	46	97.9	0	0.0
Virgin Australia Regional Airlines	245	242	227	93.8	230	95.0	3	1.2
All Airlines	832	817	745	91.2	749	91.7	15	1.8
Sydney-Coffs Harbour								
QantasLink	151	151	121	80.1	123	81.5	0	0.0
Tigerair	13	13	11	84.6	11	84.6	0	0.0
Virgin Australia	60	58	50	86.2	51	87.9	2	3.3
All Airlines	224	222	182	82.0	185	83.3	2	0.9
Sydney-Darwin								
Jetstar	27	27	25	92.6	26	96.3	0	0.0
Qantas	56	56	49	87.5	50	89.3	0	0.0
Virgin Australia	30	30	26	86.7	25	83.3	0	0.0
All Airlines	113	113	100	88.5	101	89.4	0	0.0
Sydney-Dubbo								
QantasLink	122	122	105	86.1	101	82.8	0	0.0
Regional Express	157	156	144	92.3	146	93.6	1	0.6
All Airlines	279	278	249	89.6	247	88.8	1	0.4
Sydney-Gold Coast								
Jetstar	351	347	312	89.9	313	90.2	4	1.1
Qantas	90	90	81	90.0	83	92.2	0	0.0
Tigerair	73	71	58	81.7	55	77.5	2	2.7
Virgin Australia	272	265	237	89.4	232	87.5	7	2.6
All Airlines	786	773	688	89.0	683	88.4	13	1.7
Sydney-Hamilton Island								
Jetstar	30	30	29	96.7	27	90.0	0	0.0
Virgin Australia	30	30	28	93.3	28	93.3	0	0.0
All Airlines	60	60	57	95.0	55	91.7	0	0.0
Sydney-Hobart								
Jetstar	79	79	73	92.4	75	94.9	0	0.0
QantasLink	30	30	27	90.0	28	93.3	0	0.0
Virgin Australia	59	59	57	96.6	56	94.9	0	0.0
All Airlines	168	168	157	93.5	159	94.6	0	0.0

	<i>Sectors</i>		<i>Departures On Time</i>		<i>Arrivals On Time</i>		<i>Cancellations</i>	
	<i>Sched.</i>	<i>Flown</i>	<i>No.</i>	<i>%</i>	<i>No.</i>	<i>%</i>	<i>No.</i>	<i>%</i>
Sydney-Launceston								
Jetstar	49	49	33	67.3	37	75.5	0	0.0
Virgin Australia	29	29	28	96.6	28	96.6	0	0.0
All Airlines	78	78	61	78.2	65	83.3	0	0.0
Sydney-Melbourne								
Jetstar	325	313	258	82.4	254	81.2	12	3.7
Qantas	913	876	775	88.5	738	84.2	37	4.1
Tigerair	222	221	154	69.7	157	71.0	1	0.5
Virgin Australia	790	759	660	87.0	636	83.8	31	3.9
All Airlines	2 250	2 169	1 847	85.2	1 785	82.3	81	3.6
Sydney-Perth								
Jetstar	25	25	23	92.0	24	96.0	0	0.0
Qantas	205	204	178	87.3	169	82.8	1	0.5
Tigerair	21	21	20	95.2	16	76.2	0	0.0
Virgin Australia	116	115	99	86.1	103	89.6	1	0.9
All Airlines	367	365	320	87.7	312	85.5	2	0.5
Sydney-Port Macquarie								
QantasLink	135	135	117	86.7	97	71.9	0	0.0
Virgin Australia Regional Airlines	60	60	56	93.3	57	95.0	0	0.0
All Airlines	195	195	173	88.7	154	79.0	0	0.0
Sydney-Sunshine Coast								
Jetstar	102	102	98	96.1	99	97.1	0	0.0
Virgin Australia	30	30	26	86.7	26	86.7	0	0.0
All Airlines	132	132	124	93.9	125	94.7	0	0.0
Sydney-Townsville								
Jetstar	27	27	24	88.9	22	81.5	0	0.0
Virgin Australia	28	28	24	85.7	22	78.6	0	0.0
All Airlines	55	55	48	87.3	44	80.0	0	0.0
Sydney-Wagga Wagga								
QantasLink	112	112	95	84.8	95	84.8	0	0.0
Regional Express	138	138	129	93.5	126	91.3	0	0.0
All Airlines	250	250	224	89.6	221	88.4	0	0.0
Townsville-Brisbane								
Jetstar	60	60	49	81.7	46	76.7	0	0.0
Qantas	146	146	138	94.5	135	92.5	0	0.0
Virgin Australia	157	154	127	82.5	134	87.0	3	1.9
All Airlines	363	360	314	87.2	315	87.5	3	0.8
Townsville-Sydney								
Jetstar	27	27	23	85.2	23	85.2	0	0.0
Virgin Australia	28	28	18	64.3	20	71.4	0	0.0
All Airlines	55	55	41	74.5	43	78.2	0	0.0
Wagga Wagga-Sydney								
QantasLink	112	112	90	80.4	90	80.4	0	0.0
Regional Express	139	139	127	91.4	119	85.6	0	0.0
All Airlines	251	251	217	86.5	209	83.3	0	0.0

Airports

On time performance is reported for all routes where the passenger load averages over 8000 passengers per month, and where two or more airlines operate in competition. The following data reports by airport against flights operated on those routes only.

Airport	Departures			Arrivals		
	Sectors	On Time		Sectors	On Time	
	Flown	No.	%	Flown	No.	%
Adelaide						
Jetstar	343	290	84.5	343	282	82.2
Qantas	793	730	92.1	793	742	93.6
QantasLink	137	126	92.0	137	125	91.2
Regional Express	209	205	98.1	209	198	94.7
Tigerair	122	100	82.0	122	103	84.4
Virgin Australia	669	592	88.5	673	610	90.6
All Airlines	2 273	2 043	89.9	2 277	2 060	90.5
Relates to services to and from Brisbane, Canberra, Gold Coast, Melbourne, Perth, Port Lincoln and Sydney.						
Albury						
QantasLink	96	82	85.4	96	73	76.0
Regional Express	112	99	88.4	112	91	81.3
Virgin Australia Regional Airlines	60	55	91.7	60	56	93.3
All Airlines	268	236	88.1	268	220	82.1
Relates to services to and from Sydney only.						
Armidale						
QantasLink	134	109	81.3	134	112	83.6
Regional Express	78	68	87.2	78	69	88.5
All Airlines	212	177	83.5	212	181	85.4
Relates to services to and from Sydney only.						
Ayers Rock						
Jetstar	30	25	83.3	30	28	93.3
Virgin Australia	30	26	86.7	30	25	83.3
All Airlines	60	51	85.0	60	53	88.3
Relates to services to and from Sydney only.						
Ballina						
Jetstar	76	64	84.2	76	64	84.2
Regional Express	25	23	92.0	30	29	96.7
Virgin Australia	30	23	76.7	30	26	86.7
All Airlines	131	110	84.0	136	119	87.5
Relates to services to and from Sydney only.						
Brisbane						
Jetstar	750	652	86.9	749	645	86.1
Qantas	1 658	1 466	88.4	1 629	1 401	86.0
QantasLink	1 113	1 026	92.2	1 096	904	82.5
Tigerair	266	200	75.2	267	191	71.5
Virgin Australia	1 992	1 707	85.7	1 987	1 691	85.1
Virgin Australia Regional Airlines	402	364	90.5	459	408	88.9
All Airlines	6 181	5 415	87.6	6 187	5 240	84.7
Relates to services to and from Adelaide, Bundaberg, Cairns, Canberra, Darwin, Emerald, Gladstone, Hamilton Island, Hobart, Mackay, Melbourne, Moranbah, Mount Isa, Newcastle, Perth, Proserpine, Rockhampton, Sydney and Townsville.						

Airport	Departures			Arrivals		
	Sectors Flown	On Time		Sectors Flown	On Time	
		No.	%		No.	%
Broome						
Qantas	34	28	82.4	34	29	85.3
QantasLink	47	47	100.0	48	48	100.0
Virgin Australia	45	38	84.4	45	42	93.3
Virgin Australia Regional Airlines	25	15	60.0	13	13	100.0
All Airlines	151	128	84.8	140	132	94.3
Relates to services to and from Perth only.						
Bundaberg						
QantasLink	115	103	89.6	116	107	92.2
Virgin Australia Regional Airlines	40	34	85.0	30	25	83.3
All Airlines	155	137	88.4	146	132	90.4
Relates to services to and from Brisbane only.						
Cairns						
Jetstar	357	312	87.4	357	313	87.7
Qantas	219	184	84.0	219	196	89.5
QantasLink	4	4	100.0	4	3	75.0
Tigerair	92	60	65.2	93	70	75.3
Virgin Australia	255	200	78.4	255	205	80.4
All Airlines	927	760	82.0	928	787	84.8
Relates to services to and from Brisbane, Melbourne and Sydney.						
Canberra						
Qantas	312	298	95.5	312	284	91.0
QantasLink	716	659	92.0	720	645	89.6
Virgin Australia	348	316	90.8	348	312	89.7
Virgin Australia Regional Airlines	242	234	96.7	242	230	95.0
All Airlines	1 618	1 507	93.1	1 622	1 471	90.7
Relates to services to and from Adelaide, Brisbane, Melbourne and Sydney.						
Coffs Harbour						
QantasLink	151	121	80.1	151	123	81.5
Tigerair	13	11	84.6	13	11	84.6
Virgin Australia	58	49	84.5	58	51	87.9
All Airlines	222	181	81.5	222	185	83.3
Relates to services to and from Sydney only.						
Darwin						
Jetstar	87	75	86.2	87	80	92.0
Qantas	168	145	86.3	169	150	88.8
Tigerair	22	17	77.3	21	18	85.7
Virgin Australia	116	83	71.6	116	100	86.2
All Airlines	393	320	81.4	393	348	88.5
Relates to services to and from Brisbane, Melbourne, Perth and Sydney.						
Dubbo						
QantasLink	122	102	83.6	122	101	82.8
Regional Express	160	151	94.4	156	146	93.6
All Airlines	282	253	89.7	278	247	88.8
Relates to services to and from Sydney only.						

Airport	Departures			Arrivals		
	Sectors Flown	On Time		Sectors Flown	On Time	
		No.	%		No.	%
Emerald						
QantasLink	151	120	79.5	151	123	81.5
Virgin Australia Regional Airlines	82	72	87.8	82	69	84.1
All Airlines	233	192	82.4	233	192	82.4
Relates to services to and from Brisbane only.						
Geraldton						
QantasLink	52	47	90.4	52	48	92.3
Virgin Australia Regional Airlines	94	86	91.5	21	14	66.7
All Airlines	146	133	91.1	73	62	84.9
Relates to services to and from Perth only.						
Gladstone						
QantasLink	229	202	88.2	212	195	92.0
Virgin Australia	2	1	50.0	2	1	50.0
Virgin Australia Regional Airlines	149	130	87.2	149	134	89.9
All Airlines	380	333	87.6	363	330	90.9
Relates to services to and from Brisbane only.						
Gold Coast						
Jetstar	611	532	87.1	612	531	86.8
Qantas	90	77	85.6	90	83	92.2
Tigerair	141	95	67.4	141	103	73.0
Virgin Australia	467	401	85.9	469	405	86.4
All Airlines	1 309	1 105	84.4	1 312	1 122	85.5
Relates to services to and from Adelaide, Melbourne and Sydney.						
Hamilton Island						
Jetstar	67	58	86.6	67	60	89.6
Virgin Australia	82	69	84.1	82	75	91.5
All Airlines	149	127	85.2	149	135	90.6
Relates to services to and from Brisbane, Melbourne and Sydney.						
Hobart						
Jetstar	279	237	84.9	279	249	89.2
QantasLink	141	112	79.4	141	98	69.5
Tigerair	25	15	60.0	25	17	68.0
Virgin Australia	228	201	88.2	228	203	89.0
All Airlines	673	565	84.0	673	567	84.2
Relates to services to and from Brisbane, Melbourne and Sydney.						
Kalgoorlie						
Qantas	24	22	91.7	24	23	95.8
QantasLink	58	56	96.6	58	57	98.3
Virgin Australia	42	39	92.9	43	41	95.3
Virgin Australia Regional Airlines	13	12	92.3	4	4	100.0
All Airlines	137	129	94.2	129	125	96.9
Relates to services to and from Perth only.						
Karratha						
Qantas	117	114	97.4	117	114	97.4
QantasLink	93	86	92.5	94	88	93.6
Virgin Australia	62	59	95.2	62	62	100.0
Virgin Australia Regional Airlines	20	14	70.0	90	75	83.3
All Airlines	292	273	93.5	363	339	93.4
Relates to services to and from Perth only.						

Airport	Departures			Arrivals		
	Sectors		On Time	Sectors		On Time
	Flown	No.	%	Flown	No.	%
Launceston						
Jetstar	151	119	78.8	151	126	83.4
QantasLink	118	101	85.6	118	101	85.6
Virgin Australia	144	134	93.1	144	130	90.3
All Airlines	413	354	85.7	413	357	86.4
Relates to services to and from Melbourne and Sydney.						
Mackay						
Jetstar	54	45	83.3	54	50	92.6
QantasLink	106	87	82.1	108	98	90.7
Virgin Australia	151	131	86.8	151	133	88.1
All Airlines	311	263	84.6	313	281	89.8
Relates to services to and from Brisbane only.						
Melbourne						
Jetstar	1 462	1 179	80.6	1 462	1 195	81.7
Qantas	2 040	1 806	88.5	2 036	1 764	86.6
QantasLink	409	337	82.4	409	327	80.0
Regional Express	85	81	95.3	86	74	86.0
Tigerair	587	462	78.7	586	403	68.8
Virgin Australia	2 327	2 017	86.7	2 331	1 954	83.8
All Airlines	6 910	5 882	85.1	6 910	5 717	82.7
Relates to services to and from Adelaide, Brisbane, Cairns, Canberra, Darwin, Gold Coast, Hamilton Island, Hobart, Launceston, Mildura, Newcastle, Perth, Sunshine Coast and Sydney.						
Mildura						
QantasLink	85	76	89.4	86	71	82.6
Regional Express	86	75	87.2	85	77	90.6
Virgin Australia	30	23	76.7	30	25	83.3
All Airlines	201	174	86.6	201	173	86.1
Relates to services to and from Melbourne only.						
Moranbah						
QantasLink	119	109	91.6	125	114	91.2
Virgin Australia Regional Airlines	87	78	89.7	102	84	82.4
All Airlines	206	187	90.8	227	198	87.2
Relates to services to and from Brisbane only.						
Mount Isa						
Qantas	55	48	87.3	56	53	94.6
Virgin Australia	22	21	95.5	22	22	100.0
All Airlines	77	69	89.6	78	75	96.2
Relates to services to and from Brisbane only.						
Newcastle						
Jetstar	200	168	84.0	200	173	86.5
QantasLink	68	39	57.4	69	36	52.2
Virgin Australia	112	98	87.5	112	103	92.0
All Airlines	380	305	80.3	381	312	81.9
Relates to services to and from Brisbane and Melbourne.						

Airport	Departures			Arrivals		
	Sectors	On Time		Sectors	On Time	
	Flown	No.	%	Flown	No.	%
Newman						
Qantas	119	115	96.6	119	115	96.6
QantasLink	28	27	96.4	28	28	100.0
Virgin Australia	30	28	93.3	30	28	93.3
Virgin Australia Regional Airlines	4	2	50.0	20	19	95.0
All Airlines	181	172	95.0	197	190	96.4
Relates to services to and from Perth only.						
Perth						
Jetstar	138	98	71.0	140	117	83.6
Qantas	1 100	1 013	92.1	1 099	989	90.0
QantasLink	326	308	94.5	326	312	95.7
Tigerair	75	51	68.0	76	51	67.1
Virgin Australia	668	613	91.8	666	593	89.0
Virgin Australia Regional Airlines	148	133	89.9	156	126	80.8
All Airlines	2 455	2 216	90.3	2 463	2 188	88.8
Relates to services to and from Adelaide, Brisbane, Broome, Darwin, Geraldton, Kalgoorlie, Karratha, Melbourne, Newman, Port Hedland and Sydney.						
Port Hedland						
Qantas	110	101	91.8	110	108	98.2
QantasLink	48	46	95.8	46	44	95.7
Virgin Australia	44	41	93.2	44	43	97.7
All Airlines	202	188	93.1	200	195	97.5
Relates to services to and from Perth only.						
Port Lincoln						
QantasLink	99	96	97.0	99	91	91.9
Regional Express	209	200	95.7	209	200	95.7
All Airlines	308	296	96.1	308	291	94.5
Relates to services to and from Adelaide only.						
Port Macquarie						
QantasLink	134	96	71.6	135	97	71.9
Virgin Australia Regional Airlines	60	53	88.3	60	57	95.0
All Airlines	194	149	76.8	195	154	79.0
Relates to services to and from Sydney only.						
Proserpine						
Jetstar	30	27	90.0	30	27	90.0
Virgin Australia	51	42	82.4	51	46	90.2
All Airlines	81	69	85.2	81	73	90.1
Relates to services to and from Brisbane only.						
Rockhampton						
QantasLink	192	160	83.3	215	188	87.4
Virgin Australia	106	96	90.6	107	94	87.9
Virgin Australia Regional Airlines	101	93	92.1	39	35	89.7
All Airlines	399	349	87.5	361	317	87.8
Relates to services to and from Brisbane only.						

Airport	Departures			Arrivals		
	Sectors	On Time		Sectors	On Time	
	Flown	No.	%	Flown	No.	%
Sunshine Coast						
Jetstar	187	164	87.7	187	174	93.0
Virgin Australia	61	39	63.9	61	46	75.4
All Airlines	248	203	81.9	248	220	88.7
Relates to services to and from Melbourne and Sydney.						
Sydney						
Jetstar	1 527	1 319	86.4	1 525	1 270	83.3
Qantas	2 133	1 891	88.7	2 165	1 942	89.7
QantasLink	1 297	1 117	86.1	1 292	1 084	83.9
Regional Express	514	457	88.9	514	449	87.4
Tigerair	469	364	77.6	468	371	79.3
Virgin Australia	2 296	2 036	88.7	2 290	2 034	88.8
Virgin Australia Regional Airlines	362	337	93.1	362	333	92.0
All Airlines	8 598	7 521	87.5	8 616	7 483	86.9
Relates to services to and from Adelaide, Albury, Armidale, Ayers Rock, Ballina, Brisbane, Cairns, Canberra, Coffs Harbour, Darwin, Dubbo, Gold Coast, Hamilton Island, Hobart, Launceston, Melbourne, Perth, Port Macquarie, Sunshine Coast, Townsville and Wagga Wagga.						
Townsville						
Jetstar	87	72	82.8	87	70	80.5
Qantas	146	138	94.5	146	133	91.1
Virgin Australia	182	145	79.7	183	150	82.0
All Airlines	415	355	85.5	416	353	84.9
Relates to services to and from Brisbane and Sydney.						
Wagga Wagga						
QantasLink	112	90	80.4	112	95	84.8
Regional Express	139	127	91.4	138	126	91.3
All Airlines	251	217	86.5	250	221	88.4
Relates to services to and from Sydney only.						

Definitions

On time departure A flight departure is counted as "on time" if it departs the gate before 15 minutes after the scheduled departure time shown in the carriers' schedule.

On time arrival A flight arrival is counted as "on time" if it arrived at the gate before 15 minutes after the scheduled arrival time shown in the carriers' schedule.
Neither diverted nor cancelled flights count as on time.

Cancellation A flight removed from service within 7 days of scheduled departure is regarded as a cancellation.

On time departure percentage The percentage of on time departures is measured against the number of departures *operated* on any particular sector.

On time arrival percentage The percentage of on time arrivals is measured against the number of arrivals *operated* on any particular sector.

Cancellation percentage The percentage of cancellations is measured against the number of services *scheduled* on any particular sector.
