



**Australian Government**

**Department of Infrastructure and Regional Development**

Bureau of Infrastructure, Transport and Regional Economics

STATISTICAL REPORT



## Aviation

Domestic airline on time performance  
September 2013

© Commonwealth of Australia 2013

ISSN: 1832-0759

### **Ownership of intellectual property rights in this publication**

Unless otherwise noted, copyright (and any other intellectual property rights, if any) in this publication is owned by the Commonwealth of Australia (referred to below as the Commonwealth).

### **Disclaimer**

The material contained in this publication is made available on the understanding that the Commonwealth is not providing professional advice, and that users exercise their own skill and care with respect to its use, and seek independent advice if necessary.

The Commonwealth makes no representations or warranties as to the contents or accuracy of the information contained in this publication. To the extent permitted by law, the Commonwealth disclaims liability to any person or organisation in respect of anything done, or omitted to be done, in reliance upon information contained in this publication.

### **Creative Commons licence**

With the exception of (a) the Coat of Arms; and (b) the Department of Infrastructure and Regional Development's photos and graphics, copyright in this publication is licensed under a Creative Commons Attribution 3.0 Australia Licence.

Creative Commons Attribution 3.0 Australia Licence is a standard form licence agreement that allows you to copy, communicate and adapt this publication provided that you attribute the work to the Commonwealth and abide by the other licence terms. A summary of the licence terms is available from <http://creativecommons.org/licenses/by/3.0/au/deed.en>. The full licence terms are available from <http://creativecommons.org/licenses/by/3.0/au/legalcode>.

### **Use of the Coat of Arms**

The Department of the Prime Minister and Cabinet sets the terms under which the Coat of Arms is used. Please refer to the Department's Commonwealth Coat of Arms and Government branding web page <http://www.dpmmc.gov.au/guidelines/index.cfm#brand> and, in particular, the Guidelines on the use of the Commonwealth Coat of Arms publication.

An appropriate citation for this report is:

Bureau of Infrastructure, Transport and Regional Economics (BITRE), 2013, Domestic airline on time performance, Statistical Report, BITRE, Canberra ACT.

### **Contact us**

This publication is available in PDF format. All other rights are reserved, including in relation to any Departmental logos or trade marks which may exist. For enquiries regarding the licence and any use of this publication, please contact:

Bureau of Infrastructure, Transport and Regional Economics (BITRE)  
Department of Infrastructure and Regional Development  
GPO Box 501, Canberra ACT 2601, Australia  
Telephone: (international) +61 2 6274 7210  
Fax: (international) +61 2 6274 6855  
Email: [bitre@infrastructure.gov.au](mailto:bitre@infrastructure.gov.au)  
Website: [www.bitre.gov.au](http://www.bitre.gov.au)

### **Inquiries**

Should you require additional information about the statistics contained in this publication:

Telephone (02) 6274 7790 or Facsimile (02) 6274 7727

Electronic mail: [AVSTATS@infrastructure.gov.au](mailto:AVSTATS@infrastructure.gov.au)

Web site: <http://www.bitre.gov.au/statistics/aviation/otphome.aspx>

# Foreword

The Bureau of Infrastructure, Transport and Regional Economics (BITRE) monitors the punctuality and reliability of major domestic airlines operating between Australian airports. The purpose of this is to allow for evaluation of overall industry and individual airline performance, so that consumers of air travel can make informed decisions.

The following domestic airlines currently report this information monthly to the BITRE: Jetstar, Qantas, QantasLink, Regional Express, Tigerair, Virgin Australia and Virgin Australia Regional Airlines. Data has been gathered since November 2003, although some airlines commenced reporting at a later date, including Jetstar which first reported in May 2004, MacAir in July 2005 and Tigerair in April 2008. MacAir ceased operations in February 2009 and data was not received for December 2008 onwards. Virgin Blue was rebranded as Virgin Australia in May 2011 and Tiger Airways was rebranded as Tigerair in July 2013 and time series data in Microsoft Excel spreadsheet format on the BITRE website have been revised to reflect these changes. Virgin Australia Regional Airlines commenced operations in May 2013. It was formed after the acquisition of Skywest by Virgin Australia and represents a combination of operations previously reported under Skywest and Virgin Australia – ATR/F100 Operations. Services operated by Skywest on behalf of Virgin Australia using ATR/F100 aircraft commenced in November 2011 and were shown separately as Virgin Australia – ATR/F100 Operations until April 2013.

Information presented in this report is for Australian domestic routes for which the passenger load averaged 8 000 or more passengers per month over the previous six months and where two or more airlines operated in competition on those routes. There were 62 routes that met this definition in September 2013. Over time, routes which meet these criteria change as airline networks and traffic levels vary.

Participating airlines report their overall monthly network performance where this is possible.

Total industry figures encompass all services operated by reporting airlines only. These airlines collectively carried over 95 per cent of total domestic passengers (regular public transport only) in 2012.

The method of capturing on time performance varies between airlines utilising different recording systems. Jetstar and Qantas jet aircraft use Aircraft Communication Addressing and Reporting System (ACARS) to electronically measure on time performance. Regional Express, Tigerair, Virgin Australia, Virgin Australia Regional Airlines and the Qantas non-jet fleet record on time performance manually using records from pilots, gate agents and/or ground crews.

After initial data is collected, aggregate reports are audited internally by participating airlines prior to publication.

Reports and detailed time series data in Microsoft Excel spreadsheet format are available from the BITRE website at: <http://www.bitre.gov.au/statistics/aviation/otphome.aspx>.



# Contents

	Page
Industry performance .....	1
Individual routes .....	9
Airports .....	21
Definitions .....	27



## Industry performance

For September 2013, on time performance over all routes operated by participating airlines (Jetstar, Qantas, QantasLink, Regional Express, Tigerair, Virgin Australia and Virgin Australia Regional Airlines) averaged 83.0 per cent for on time departures and 80.9 per cent for on time arrivals. Cancellations represented 1.6 per cent of all scheduled flights. The equivalent figures for September 2012 were 81.9 per cent for departures, 79.2 per cent for arrivals and 1.3 per cent for cancellations.

This month's figures were below the long term average performance for all routes since the collection began (83.6 per cent for departures and 82.1 per cent for arrivals). The rate of cancellations was above the long term average of 1.3 per cent.

Of the major domestic airlines, Qantas achieved the highest level of on time departures for September 2013 at 86.6 per cent, followed by Virgin Australia at 83.8 per cent, Jetstar at 76.4 per cent and Tigerair at 73.8 per cent. The regional airlines were led by Regional Express at 90.1 per cent, followed by Virgin Australia Regional Airlines at 86.4 per cent and QantasLink at 79.5 per cent.

Qantas also achieved the highest on time arrivals among the major domestic airlines at 85.9 per cent, followed by Virgin Australia at 81.6 per cent, Jetstar at 76.9 per cent and Tigerair at 69.2 per cent. Regional Express was the best performing regional airline for on time arrivals at 87.8 per cent, followed by Virgin Australia Regional Airlines at 81.4 per cent and QantasLink at 75.6 per cent.

Tigerair had the highest percentage of cancellations (4.8 per cent) during the month, followed by Jetstar (2.8 per cent), QantasLink (2.6 per cent), Virgin Australia Regional Airlines (1.0 per cent), Virgin Australia (also 1.0 per cent), Qantas (0.9 per cent) and Regional Express (0.4 per cent).

Of the 62 routes which met the criteria for on time performance reporting in September 2013, the Sydney-Alice Springs route had the highest percentage of on time departures (93.5 per cent) while the Alice Springs-Melbourne route had the lowest percentage of on time departures (65.2 per cent). The Adelaide-Canberra route had the highest percentage of on time arrivals (94.5 per cent) while the Port Macquarie-Sydney route had the lowest percentage of on time arrivals (62.2 per cent).

Cancellations were highest on the Brisbane-Moranbah route at 4.8 per cent, followed by Canberra-Sydney at 4.6 per cent, Moranbah-Brisbane at 4.5 per cent, Sydney-Melbourne at 4.2 per cent and Sydney-Canberra and Melbourne-Sydney both at 4.0 per cent.

Port Hedland Airport recorded the highest percentage of on time departures (90.3 per cent) and Mount Isa Airport recorded the highest percentage of on time arrivals (92.2 per cent). Alice Springs Airport recorded the lowest percentage of on time departures (67.4 per cent) and Port Macquarie Airport recorded the lowest percentage of on time arrivals (62.6 per cent). These figures only refer to reported routes and do not cover all flights at these airports.

Table 1 On time performance for September 2013 — Total Industry

	<i>Sectors</i>		<i>Departures On Time</i>		<i>Arrivals On Time</i>		<i>Cancellations</i>	
	<i>Scheduled</i>	<i>Flown</i>	<i>No.</i>	<i>%</i>	<i>No.</i>	<i>%</i>	<i>No.</i>	<i>%</i>
Jetstar	7 081	6 883	5 257	76.4	5 290	76.9	198	2.8
Qantas	10 474	10 380	8 992	86.6	8 917	85.9	94	0.9
QantasLink	9 711	9 459	7 516	79.5	7 151	75.6	252	2.6
Regional Express	5 599	5 578	5 028	90.1	4 895	87.8	21	0.4
Tigerair	1 809	1 722	1 271	73.8	1 192	69.2	87	4.8
Virgin Australia	11 198	11 082	9 290	83.8	9 038	81.6	116	1.0
Virgin Australia Regional Airlines	2 677	2 649	2 289	86.4	2 155	81.4	28	1.0
All Airlines	48 549	47 753	39 643	83.0	38 638	80.9	796	1.6

Total airline network data (including routes not shown in this report).

Virgin Australia figures for September 2013 are provisional.

Table 2 Top ten routes for on time performance for September 2013 (participating airlines only)

<i>Departures</i>		<i>Arrivals</i>	
<i>Route</i>	<i>On Time (%)</i>	<i>Route</i>	<i>On Time</i>
Sydney-Alice Springs	93.5	Adelaide-Canberra	94.5
Perth-Karratha	92.6	Gold Coast-Adelaide	94.3
Perth-Port Hedland	92.6	Sydney-Cairns	93.9
Brisbane-Moranbah	92.3	Perth-Darwin	92.9
Adelaide-Port Lincoln	92.2	Cairns-Townsville	92.5
Cairns-Townsville	91.5	Brisbane-Mount Isa	92.2
Perth-Darwin	91.1	Perth-Port Hedland	92.1
Brisbane-Emerald	91.0	Brisbane-Townsville	91.7
Canberra-Adelaide	90.7	Canberra-Brisbane	91.7
Sydney-Cairns	90.7	Adelaide-Gold Coast	91.4

Table 3 Top ten airports for on time performance for September 2013 (participating airlines and reported routes only)

<i>Departures</i>		<i>Arrivals</i>	
<i>Airport</i>	<i>On Time (%)</i>	<i>Airport</i>	<i>On Time</i>
Port Hedland	90.3	Mount Isa	92.2
Mildura	89.1	Port Hedland	92.1
Port Lincoln	88.9	Townsville	91.9
Karratha	88.5	Mackay	91.4
Newman	88.3	Karratha	90.4
Canberra	87.7	Cairns	89.3
Cairns	87.3	Kalgoorlie	88.4
Mount Isa	86.8	Rockhampton	88.2
Townsville	86.5	Alice Springs	88.0
Gladstone	85.6	Port Lincoln	87.9



## Total industry on time performance

Figure 1 On time performance (by month from September 2010)—Total Industry

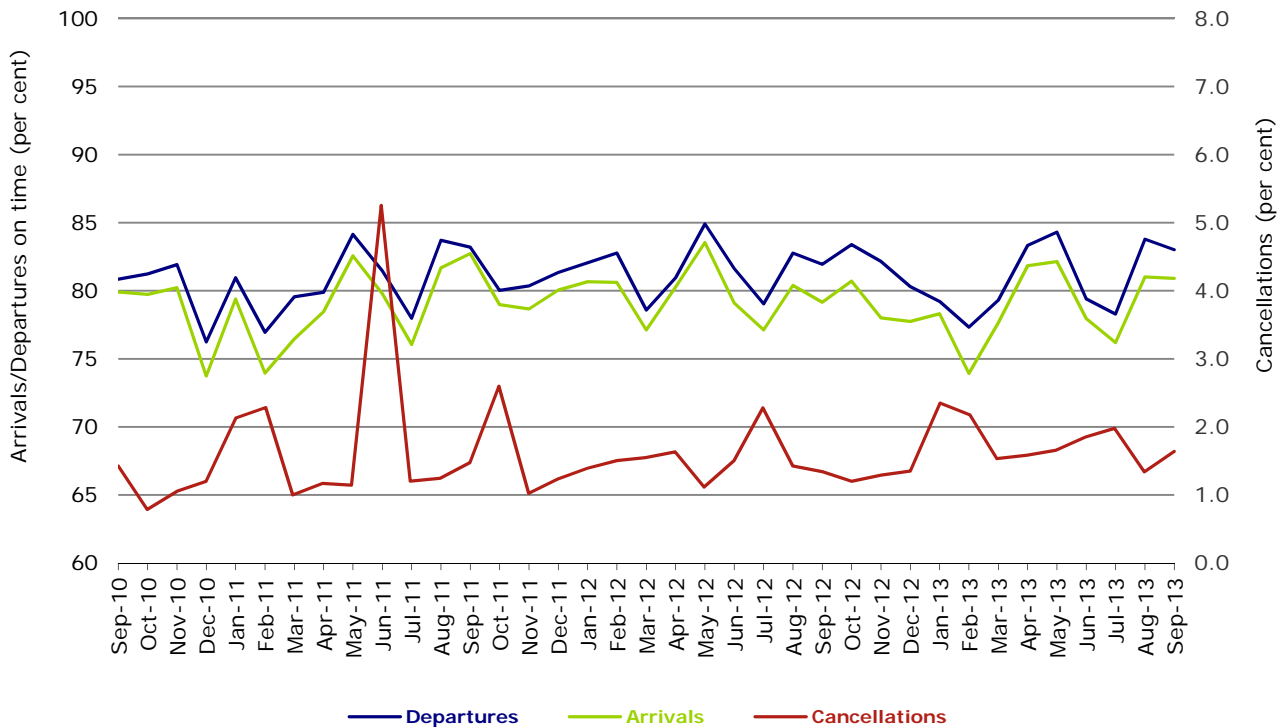
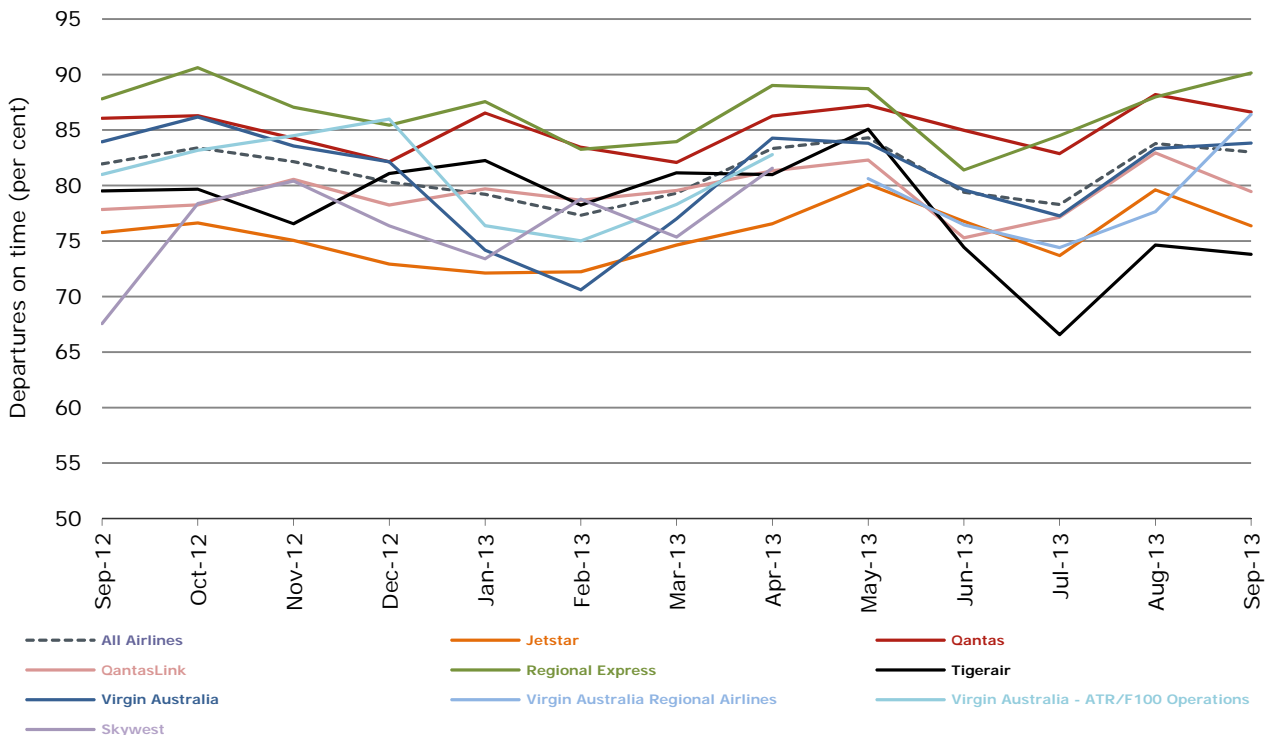
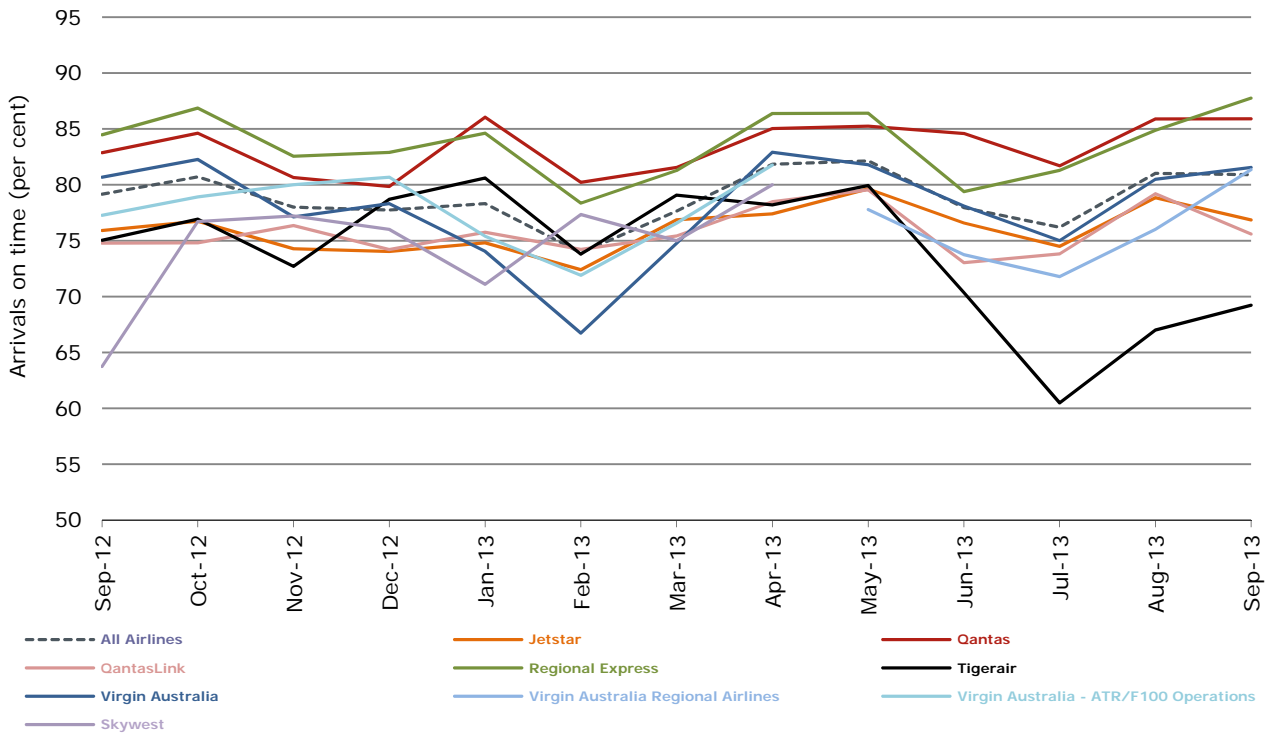


Figure 2 Departures on time (by month from September 2012)



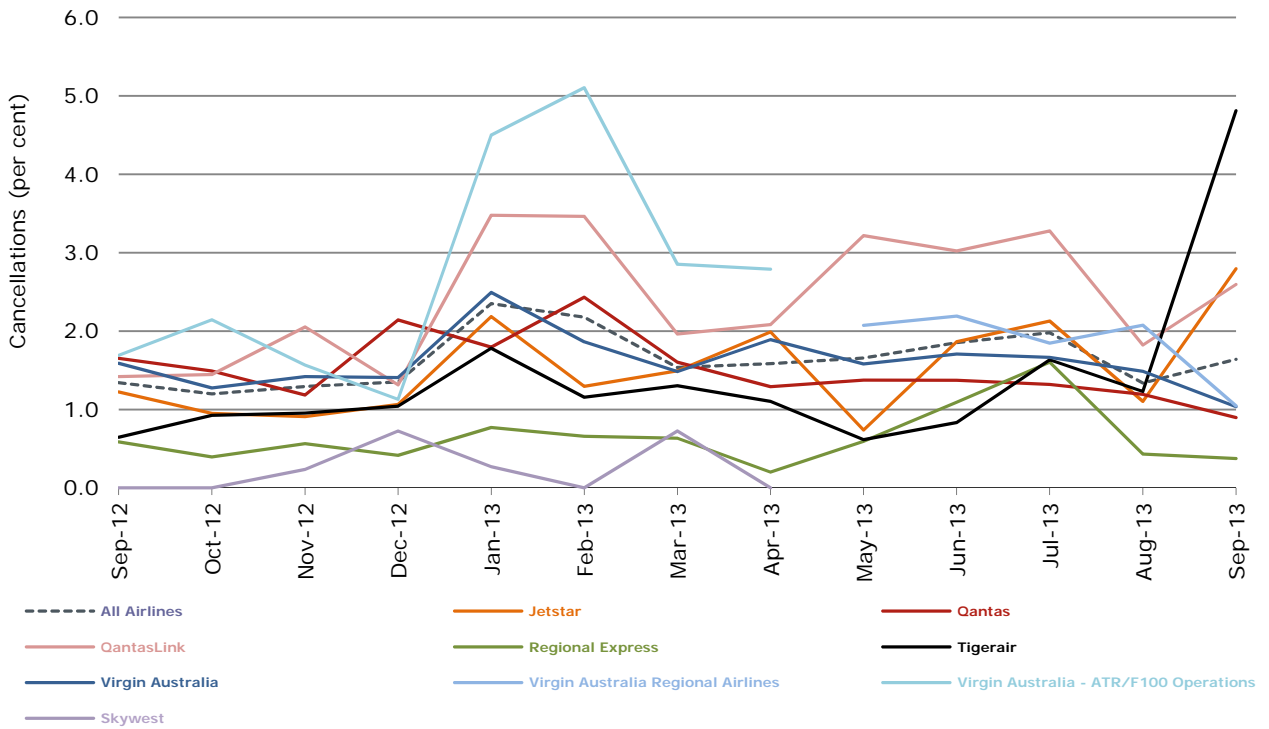
Virgin Australia Regional Airlines commenced operations in May 2013. It was formed after the acquisition of Skywest by Virgin Australia and represents a combination of operations previously reported under Skywest and Virgin Australia – ATR/F100 Operations. Virgin Australia figures for September 2013 are provisional.

Figure 3 Arrivals on time (by month from September 2012)



Virgin Australia Regional Airlines commenced operations in May 2013. It was formed after the acquisition of Skywest by Virgin Australia and represents a combination of operations previously reported under Skywest and Virgin Australia – ATR/F100 Operations. Virgin Australia figures for September 2013 are provisional.

Figure 4 Cancellations (by month from September 2012)



Virgin Australia Regional Airlines commenced operations in May 2013. It was formed after the acquisition of Skywest by Virgin Australia and represents a combination of operations previously reported under Skywest and Virgin Australia – ATR/F100 Operations. Virgin Australia figures for September 2013 are provisional.

## Major domestic airlines on time performance

Figure 5 On time performance (by month from September 2010)—Jetstar

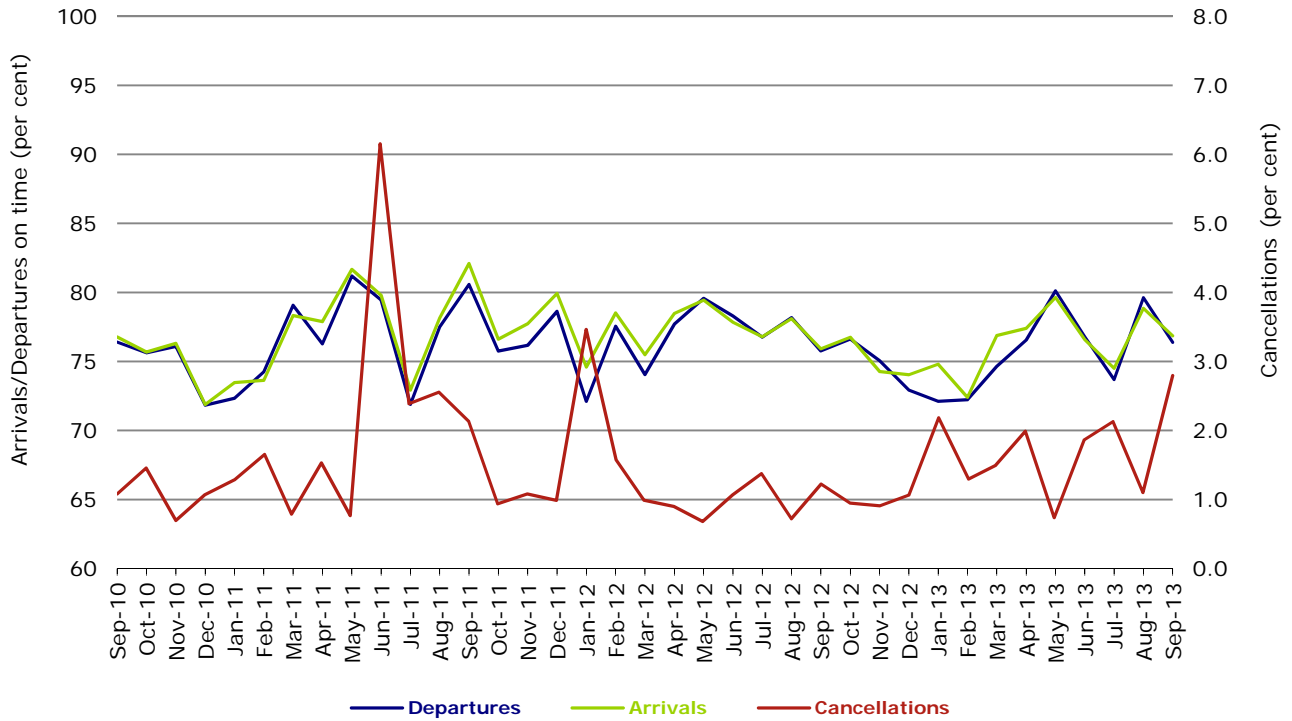


Figure 6 On time performance (by month from September 2010)—Qantas

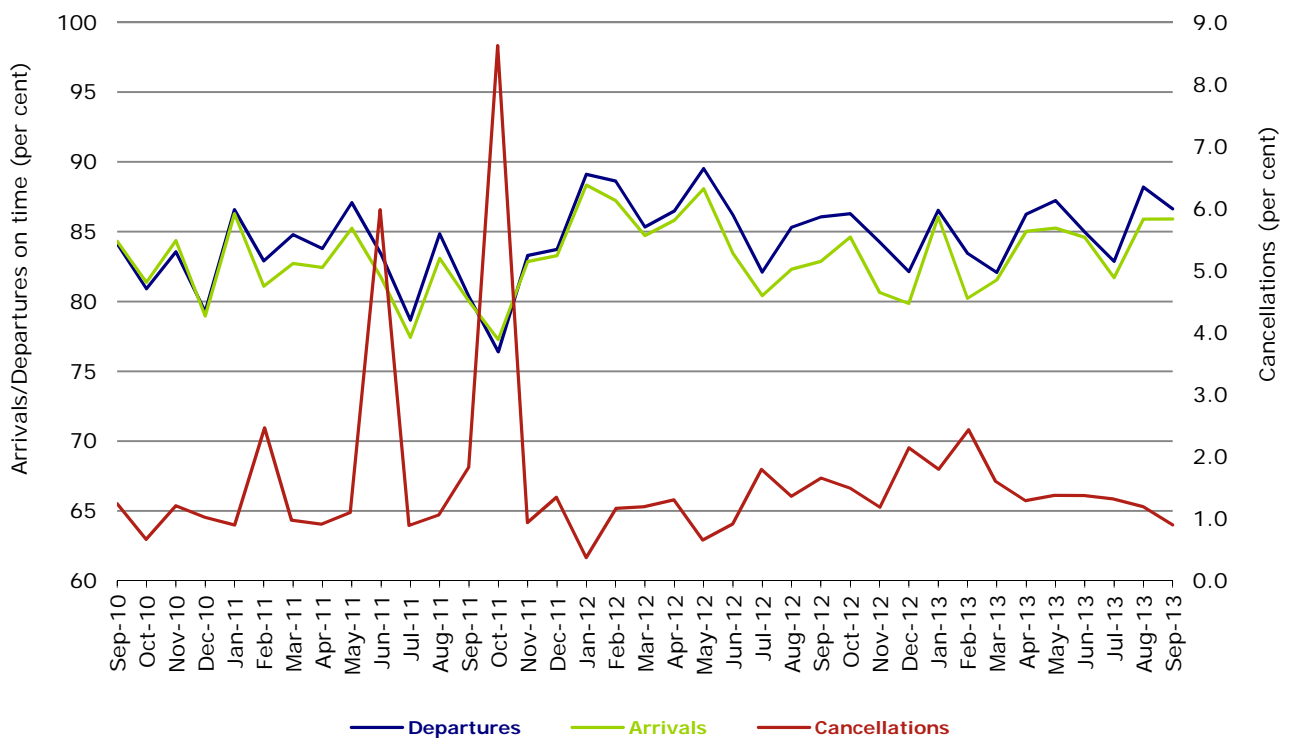
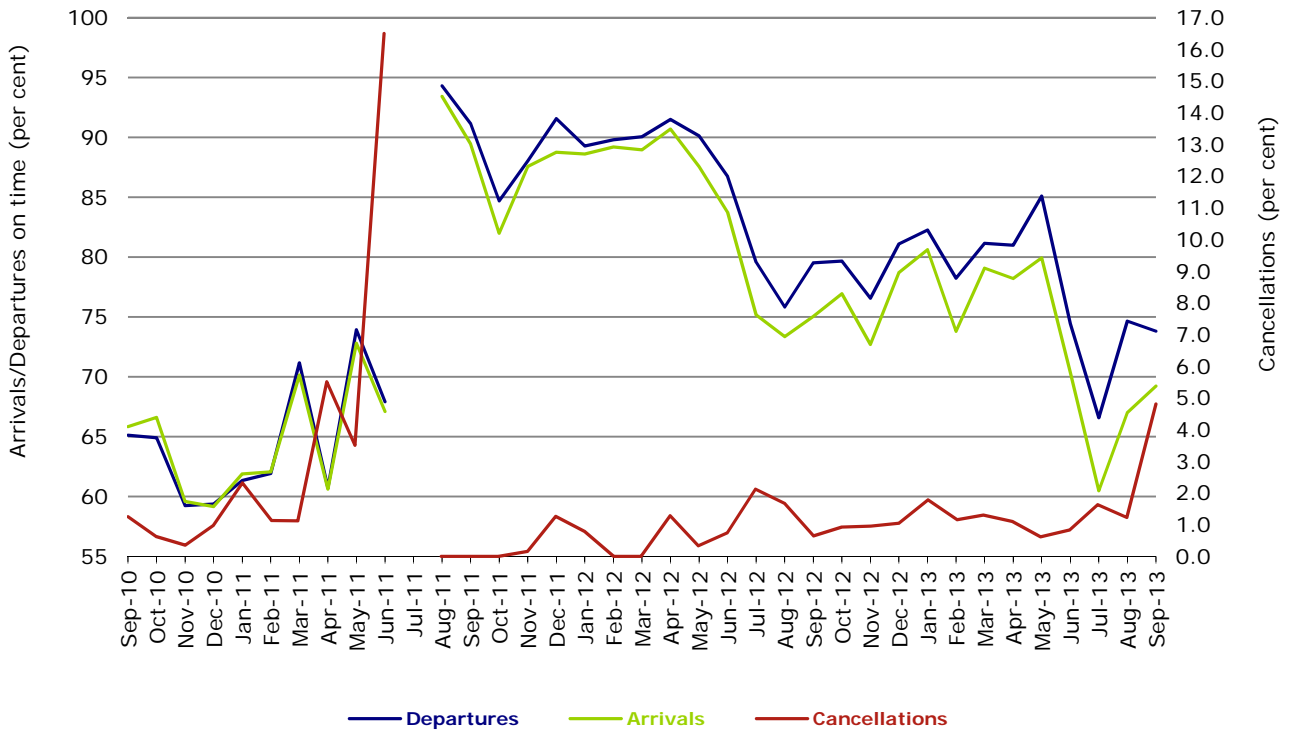
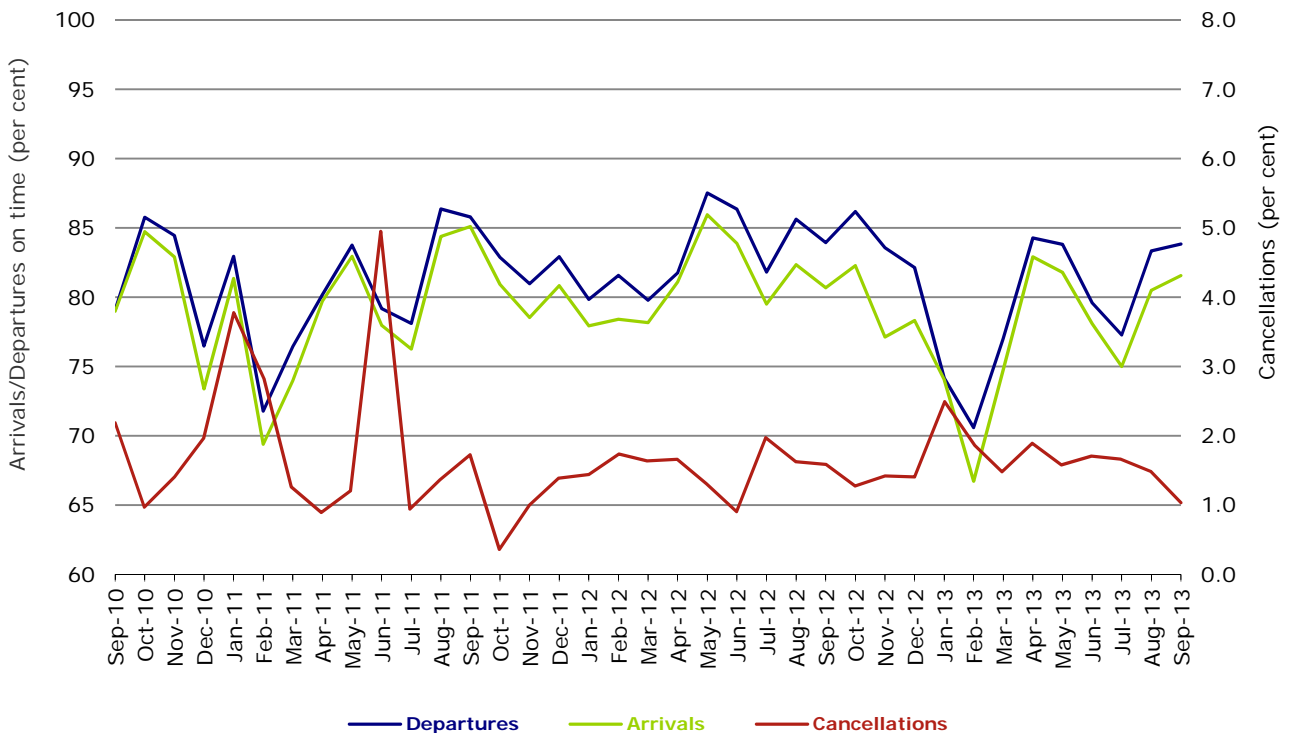


Figure 7 On time performance (by month from September 2010)—Tigerair



No data for Tigerair for July 2011 as it was grounded by CASA from 2/7/2011 to 11/8/2011.

Figure 8 On time performance (by month from September 2010)—Virgin Australia



Figures for September 2013 are provisional.

## Major regional airlines on time performance

Figure 9 On time performance (by month from September 2010)—QantasLink

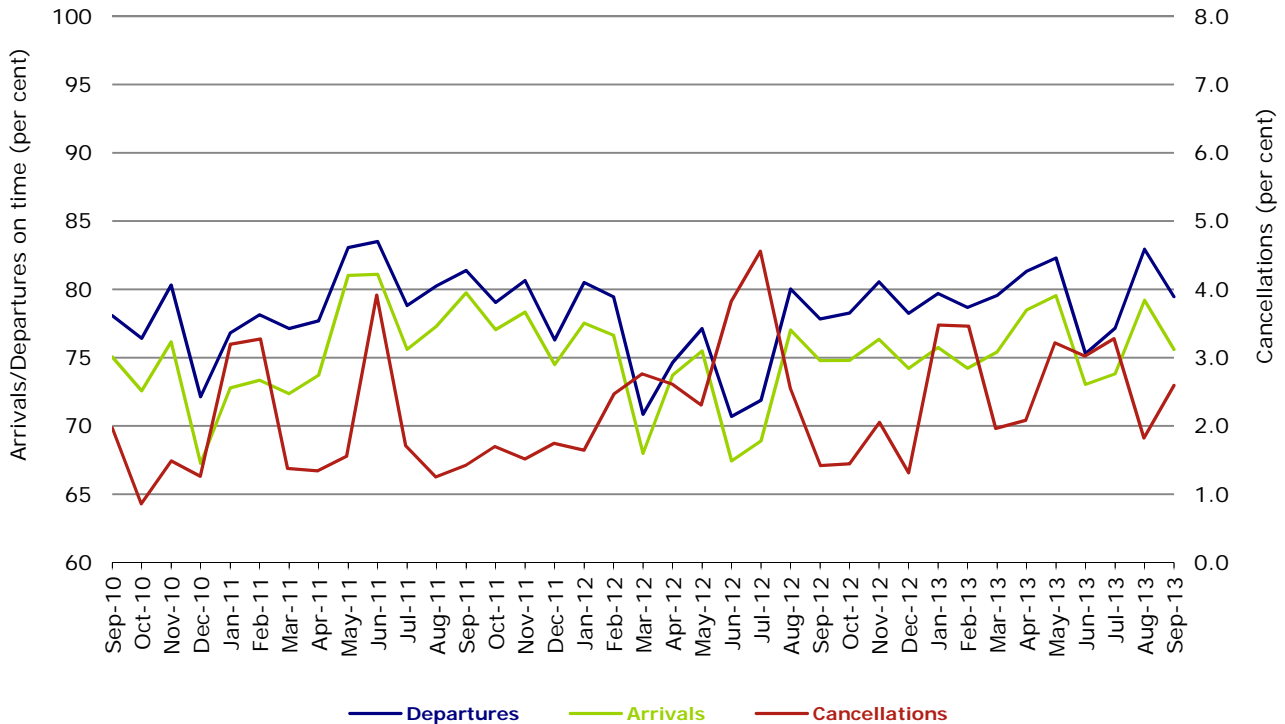


Figure 10 On time performance (by month from September 2010)—Regional Express

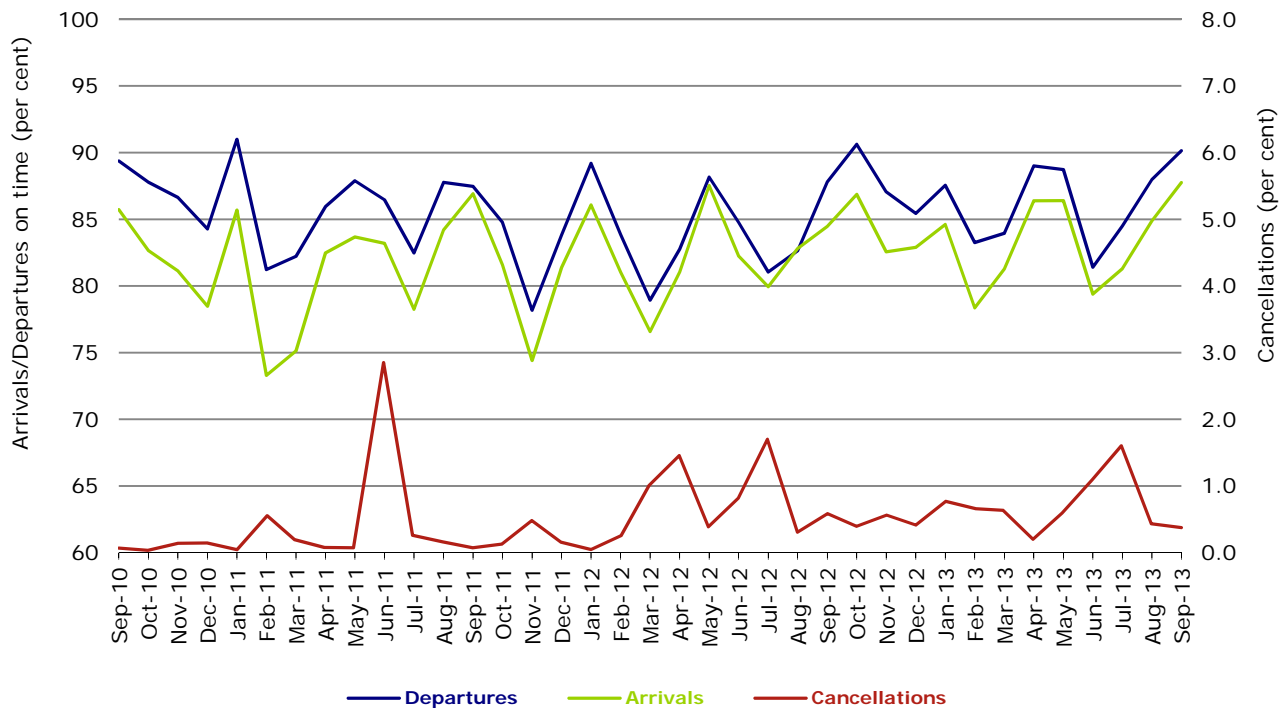
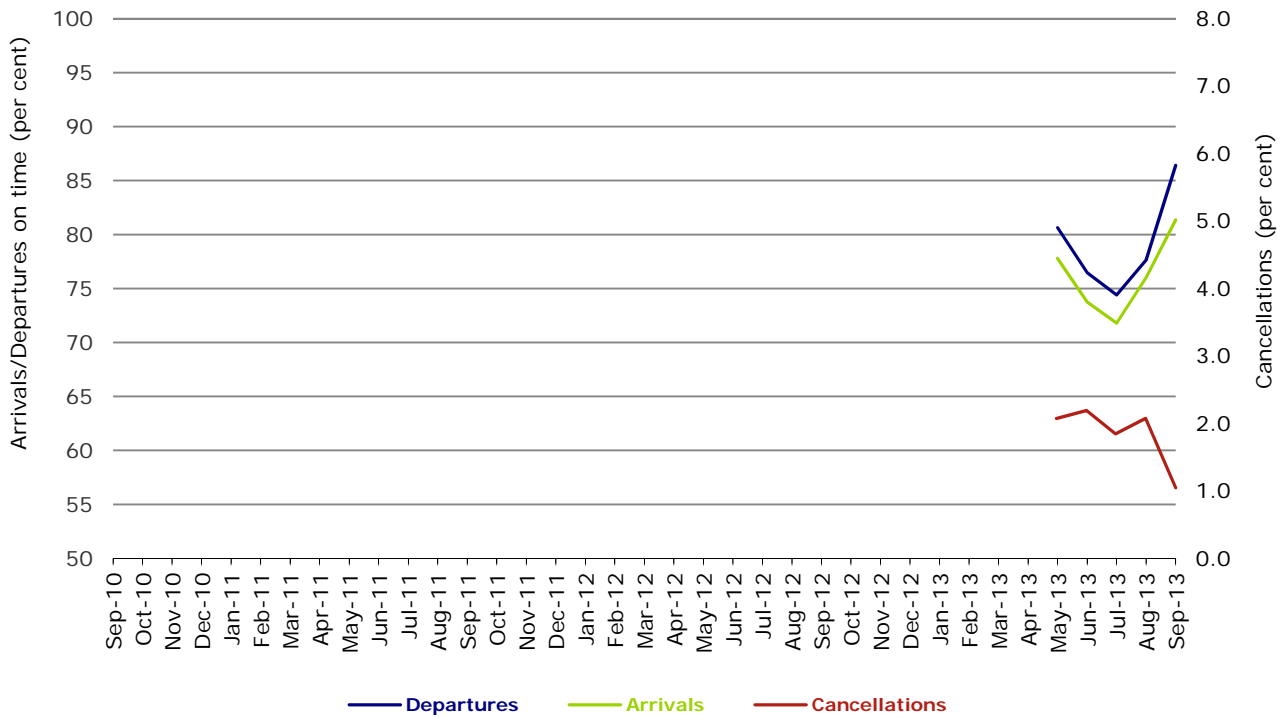


Figure 11 On time performance (by month from September 2010)  
Virgin Australia Regional Airlines



Virgin Australia Regional Airlines commenced operations in May 2013. It was formed after the acquisition of Skywest by Virgin Australia and represents a combination of operations previously reported under Skywest and Virgin Australia – ATR/F100 Operations.

## Individual routes

On time performance is reported for all routes where the passenger load averages over 8000 passengers per month over the previous six months, and where two or more airlines operate in competition on those routes. There are now 62 routes which meet this definition. Over time, however, routes which meet this definition may change as airline networks and traffic levels vary.

	<i>Sectors</i>		<i>Departures On Time</i>		<i>Arrivals On Time</i>		<i>Cancellations</i>	
	<i>Sched.</i>	<i>Flown</i>	<i>No.</i>	<i>%</i>	<i>No.</i>	<i>%</i>	<i>No.</i>	<i>%</i>
<b>Adelaide-Brisbane</b>								
Jetstar	30	30	20	66.7	22	73.3	0	0.0
Qantas	102	102	89	87.3	88	86.3	0	0.0
Virgin Australia *	106	106	83	78.3	81	76.4	0	0.0
All Airlines	238	238	192	80.7	191	80.3	0	0.0
<b>Adelaide-Canberra</b>								
Qantas	46	46	43	93.5	44	95.7	0	0.0
QantasLink	21	19	10	52.6	17	89.5	2	9.5
Virgin Australia *	26	26	25	96.2	25	96.2	0	0.0
All Airlines	93	91	78	85.7	86	94.5	2	2.2
<b>Adelaide-Gold Coast</b>								
Jetstar	40	40	34	85.0	36	90.0	0	0.0
Virgin Australia *	30	30	25	83.3	28	93.3	0	0.0
All Airlines	70	70	59	84.3	64	91.4	0	0.0
<b>Adelaide-Melbourne</b>								
Jetstar	85	83	61	73.5	65	78.3	2	2.4
Qantas	292	290	244	84.1	267	92.1	2	0.7
QantasLink	17	17	17	100.0	17	100.0	0	0.0
Tigerair	69	65	51	78.5	48	73.8	4	5.8
Virgin Australia *	269	266	226	85.0	224	84.2	3	1.1
All Airlines	732	721	599	83.1	621	86.1	11	1.5
<b>Adelaide-Perth</b>								
Jetstar	33	32	22	68.8	19	59.4	1	3.0
Qantas	111	111	100	90.1	84	75.7	0	0.0
Virgin Australia *	59	59	52	88.1	47	79.7	0	0.0
All Airlines	203	202	174	86.1	150	74.3	1	0.5
<b>Adelaide-Port Lincoln</b>								
QantasLink	99	98	91	92.9	88	89.8	1	1.0
Regional Express	208	208	191	91.8	181	87.0	0	0.0
All Airlines	307	306	282	92.2	269	87.9	1	0.3
<b>Adelaide-Sydney</b>								
Jetstar	120	113	85	75.2	95	84.1	7	5.8
Qantas	265	263	231	87.8	241	91.6	2	0.8
Virgin Australia *	167	165	149	90.3	153	92.7	2	1.2
All Airlines	552	541	465	86.0	489	90.4	11	2.0
<b>Albury-Sydney</b>								
QantasLink	111	111	53	47.7	58	52.3	0	0.0
Regional Express	111	111	96	86.5	96	86.5	0	0.0
Virgin Australia Regional Airlines	60	60	48	80.0	43	71.7	0	0.0
All Airlines	282	282	197	69.9	197	69.9	0	0.0
<b>Alice Springs-Melbourne</b>								
Qantas	30	30	21	70.0	23	76.7	0	0.0
Tigerair	16	16	9	56.3	11	68.8	0	0.0
All Airlines	46	46	30	65.2	34	73.9	0	0.0

	<i>Sectors</i>		<i>Departures On Time</i>		<i>Arrivals On Time</i>		<i>Cancellations</i>	
	<i>Sched.</i>	<i>Flown</i>	<i>No.</i>	<i>%</i>	<i>No.</i>	<i>%</i>	<i>No.</i>	<i>%</i>
<b>Alice Springs-Sydney</b>								
Qantas	30	30	16	53.3	22	73.3	0	0.0
Tigerair	16	16	16	100.0	15	93.8	0	0.0
All Airlines	46	46	32	69.6	37	80.4	0	0.0
<b>Ayers Rock-Sydney</b>								
Jetstar	17	17	12	70.6	13	76.5	0	0.0
Virgin Australia *	30	30	25	83.3	27	90.0	0	0.0
All Airlines	47	47	37	78.7	40	85.1	0	0.0
<b>Ballina-Sydney</b>								
Jetstar	77	75	51	68.0	52	69.3	2	2.6
Regional Express	26	26	21	80.8	18	69.2	0	0.0
Virgin Australia *	30	30	26	86.7	24	80.0	0	0.0
All Airlines	133	131	98	74.8	94	71.8	2	1.5
<b>Brisbane-Adelaide</b>								
Jetstar	30	30	27	90.0	23	76.7	0	0.0
Qantas	102	102	87	85.3	95	93.1	0	0.0
Virgin Australia *	107	107	88	82.2	90	84.1	0	0.0
All Airlines	239	239	202	84.5	208	87.0	0	0.0
<b>Brisbane-Bundaberg</b>								
QantasLink	120	118	91	77.1	95	80.5	2	1.7
Virgin Australia Regional Airlines	30	30	26	86.7	29	96.7	0	0.0
All Airlines	150	148	117	79.1	124	83.8	2	1.3
<b>Brisbane-Cairns</b>								
Jetstar	123	120	85	70.8	88	73.3	3	2.4
Qantas	116	116	102	87.9	110	94.8	0	0.0
QantasLink	4	3	3	100.0	3	100.0	1	25.0
Virgin Australia *	163	163	138	84.7	153	93.9	0	0.0
All Airlines	406	402	328	81.6	354	88.1	4	1.0
<b>Brisbane-Canberra</b>								
Qantas	141	141	136	96.5	136	96.5	0	0.0
QantasLink	22	22	20	90.9	17	77.3	0	0.0
Virgin Australia *	91	91	72	79.1	70	76.9	0	0.0
All Airlines	254	254	228	89.8	223	87.8	0	0.0
<b>Brisbane-Darwin</b>								
Jetstar	9	9	4	44.4	4	44.4	0	0.0
Qantas	30	30	25	83.3	28	93.3	0	0.0
Virgin Australia *	30	30	22	73.3	24	80.0	0	0.0
All Airlines	69	69	51	73.9	56	81.2	0	0.0
<b>Brisbane-Emerald</b>								
QantasLink	183	176	157	89.2	148	84.1	7	3.8
Virgin Australia Regional Airlines	103	103	97	94.2	95	92.2	0	0.0
All Airlines	286	279	254	91.0	243	87.1	7	2.4
<b>Brisbane-Gladstone</b>								
QantasLink	219	215	193	89.8	194	90.2	4	1.8
Virgin Australia *	32	31	26	83.9	24	77.4	1	3.1
Virgin Australia Regional Airlines	113	109	88	80.7	89	81.7	4	3.5
All Airlines	364	355	307	86.5	307	86.5	9	2.5
<b>Brisbane-Hamilton Island</b>								
Jetstar	18	18	18	100.0	18	100.0	0	0.0
Virgin Australia *	30	30	21	70.0	25	83.3	0	0.0
All Airlines	48	48	39	81.3	43	89.6	0	0.0



	<i>Sectors</i>		<i>Departures On Time</i>		<i>Arrivals On Time</i>		<i>Cancellations</i>	
	<i>Sched.</i>	<i>Flown</i>	<i>No.</i>	<i>%</i>	<i>No.</i>	<i>%</i>	<i>No.</i>	<i>%</i>
<b>Brisbane-Mackay</b>								
Jetstar	110	108	87	80.6	99	91.7	2	1.8
QantasLink	107	107	96	89.7	97	90.7	0	0.0
Virgin Australia *	164	158	143	90.5	145	91.8	6	3.7
All Airlines	381	373	326	87.4	341	91.4	8	2.1
<b>Brisbane-Melbourne</b>								
Jetstar	104	100	76	76.0	83	83.0	4	3.8
Qantas	409	406	352	86.7	335	82.5	3	0.7
Tigerair	83	78	51	65.4	49	62.8	5	6.0
Virgin Australia *	381	381	316	82.9	276	72.4	0	0.0
All Airlines	977	965	795	82.4	743	77.0	12	1.2
<b>Brisbane-Moranbah</b>								
QantasLink	158	147	133	90.5	138	93.9	11	7.0
Virgin Australia Regional Airlines	73	73	70	95.9	54	74.0	0	0.0
All Airlines	231	220	203	92.3	192	87.3	11	4.8
<b>Brisbane-Mount Isa</b>								
Qantas	56	56	46	82.1	52	92.9	0	0.0
Virgin Australia *	21	21	19	90.5	19	90.5	0	0.0
All Airlines	77	77	65	84.4	71	92.2	0	0.0
<b>Brisbane-Newcastle</b>								
Jetstar	116	115	86	74.8	84	73.0	1	0.9
QantasLink	68	66	49	74.2	31	47.0	2	2.9
Virgin Australia *	81	81	71	87.7	68	84.0	0	0.0
All Airlines	265	262	206	78.6	183	69.8	3	1.1
<b>Brisbane-Perth</b>								
Jetstar	30	30	22	73.3	20	66.7	0	0.0
Qantas	120	120	99	82.5	101	84.2	0	0.0
Virgin Australia *	86	86	73	84.9	63	73.3	0	0.0
All Airlines	236	236	194	82.2	184	78.0	0	0.0
<b>Brisbane-Proserpine</b>								
Jetstar	30	30	20	66.7	18	60.0	0	0.0
Virgin Australia *	51	51	42	82.4	48	94.1	0	0.0
All Airlines	81	81	62	76.5	66	81.5	0	0.0
<b>Brisbane-Rockhampton</b>								
QantasLink	208	206	170	82.5	176	85.4	2	1.0
Virgin Australia *	89	89	80	89.9	78	87.6	0	0.0
Virgin Australia Regional Airlines	121	119	106	89.1	111	93.3	2	1.7
All Airlines	418	414	356	86.0	365	88.2	4	1.0
<b>Brisbane-Sydney</b>								
Jetstar	118	112	78	69.6	82	73.2	6	5.1
Qantas	604	597	498	83.4	478	80.1	7	1.2
Tigerair	81	79	41	51.9	40	50.6	2	2.5
Virgin Australia *	553	541	467	86.3	438	81.0	12	2.2
All Airlines	1 356	1 329	1 084	81.6	1 038	78.1	27	2.0
<b>Brisbane-Townsville</b>								
Jetstar	30	29	19	65.5	22	75.9	1	3.3
Qantas	147	147	125	85.0	136	92.5	0	0.0
Virgin Australia *	163	162	144	88.9	152	93.8	1	0.6
All Airlines	340	338	288	85.2	310	91.7	2	0.6

	<i>Sectors</i>		<i>Departures On Time</i>		<i>Arrivals On Time</i>		<i>Cancellations</i>	
	<i>Sched.</i>	<i>Flown</i>	<i>No.</i>	<i>%</i>	<i>No.</i>	<i>%</i>	<i>No.</i>	<i>%</i>
<b>Broome-Perth</b>								
Qantas	34	34	20	58.8	23	67.6	0	0.0
QantasLink	51	51	47	92.2	47	92.2	0	0.0
Virgin Australia *	60	59	41	69.5	41	69.5	1	1.7
Virgin Australia Regional Airlines	25	25	15	60.0	12	48.0	0	0.0
All Airlines	170	169	123	72.8	123	72.8	1	0.6
<b>Bundaberg-Brisbane</b>								
QantasLink	120	119	97	81.5	79	66.4	1	0.8
Virgin Australia Regional Airlines	30	30	25	83.3	24	80.0	0	0.0
All Airlines	150	149	122	81.9	103	69.1	1	0.7
<b>Cairns-Brisbane</b>								
Jetstar	123	122	93	76.2	79	64.8	1	0.8
Qantas	115	115	107	93.0	98	85.2	0	0.0
QantasLink	5	5	5	100.0	5	100.0	0	0.0
Virgin Australia *	163	162	141	87.0	125	77.2	1	0.6
All Airlines	406	404	346	85.6	307	76.0	2	0.5
<b>Cairns-Melbourne</b>								
Jetstar	114	111	100	90.1	98	88.3	3	2.6
Qantas	30	30	26	86.7	24	80.0	0	0.0
Tigerair	53	48	33	68.8	28	58.3	5	9.4
Virgin Australia *	34	34	25	73.5	22	64.7	0	0.0
All Airlines	231	223	184	82.5	172	77.1	8	3.5
<b>Cairns-Sydney</b>								
Jetstar	106	105	91	86.7	85	81.0	1	0.9
Qantas	78	78	70	89.7	68	87.2	0	0.0
Tigerair	42	41	37	90.2	37	90.2	1	2.4
Virgin Australia *	85	85	81	95.3	79	92.9	0	0.0
All Airlines	311	309	279	90.3	269	87.1	2	0.6
<b>Cairns-Townsville</b>								
QantasLink	179	176	159	90.3	161	91.5	3	1.7
Virgin Australia Regional Airlines	27	25	25	100.0	25	100.0	2	7.4
All Airlines	206	201	184	91.5	186	92.5	5	2.4
<b>Canberra-Adelaide</b>								
Qantas	50	50	46	92.0	47	94.0	0	0.0
QantasLink	21	21	17	81.0	9	42.9	0	0.0
Virgin Australia *	26	26	25	96.2	25	96.2	0	0.0
All Airlines	97	97	88	90.7	81	83.5	0	0.0
<b>Canberra-Brisbane</b>								
Qantas	141	141	133	94.3	133	94.3	0	0.0
QantasLink	22	21	16	76.2	18	85.7	1	4.5
Virgin Australia *	91	91	79	86.8	81	89.0	0	0.0
All Airlines	254	253	228	90.1	232	91.7	1	0.4
<b>Canberra-Melbourne</b>								
Qantas	240	238	224	94.1	217	91.2	2	0.8
QantasLink	39	39	26	66.7	22	56.4	0	0.0
Virgin Australia *	177	175	152	86.9	150	85.7	2	1.1
All Airlines	456	452	402	88.9	389	86.1	4	0.9
<b>Canberra-Sydney</b>								
Qantas	146	145	128	88.3	124	85.5	1	0.7
QantasLink	398	366	292	79.8	306	83.6	32	8.0
Virgin Australia *	53	51	47	92.2	47	92.2	2	3.8
Virgin Australia Regional Airlines	243	239	221	92.5	221	92.5	4	1.6
All Airlines	840	801	688	85.9	698	87.1	39	4.6

	<i>Sectors</i>		<i>Departures On Time</i>		<i>Arrivals On Time</i>		<i>Cancellations</i>	
	<i>Sched.</i>	<i>Flown</i>	<i>No.</i>	<i>%</i>	<i>No.</i>	<i>%</i>	<i>No.</i>	<i>%</i>
<b>Coffs Harbour-Sydney</b>								
QantasLink	151	149	91	61.1	98	65.8	2	1.3
Tigerair	22	22	14	63.6	14	63.6	0	0.0
Virgin Australia *	60	60	53	88.3	52	86.7	0	0.0
All Airlines	233	231	158	68.4	164	71.0	2	0.9
<b>Darwin-Brisbane</b>								
Jetstar	9	9	4	44.4	5	55.6	0	0.0
Qantas	30	30	19	63.3	16	53.3	0	0.0
Virgin Australia *	30	30	26	86.7	26	86.7	0	0.0
All Airlines	69	69	49	71.0	47	68.1	0	0.0
<b>Darwin-Melbourne</b>								
Jetstar	30	30	14	46.7	16	53.3	0	0.0
Qantas	15	15	13	86.7	13	86.7	0	0.0
Virgin Australia *	30	30	27	90.0	26	86.7	0	0.0
All Airlines	75	75	54	72.0	55	73.3	0	0.0
<b>Darwin-Perth</b>								
Qantas	30	30	16	53.3	23	76.7	0	0.0
Virgin Australia *	26	26	25	96.2	25	96.2	0	0.0
All Airlines	56	56	41	73.2	48	85.7	0	0.0
<b>Darwin-Sydney</b>								
Jetstar	27	26	17	65.4	19	73.1	1	3.7
Qantas	51	51	41	80.4	41	80.4	0	0.0
Virgin Australia *	30	29	22	75.9	21	72.4	1	3.3
All Airlines	108	106	80	75.5	81	76.4	2	1.9
<b>Dubbo-Sydney</b>								
QantasLink	124	122	69	56.6	62	50.8	2	1.6
Regional Express	157	156	141	90.4	140	89.7	1	0.6
All Airlines	281	278	210	75.5	202	72.7	3	1.1
<b>Emerald-Brisbane</b>								
QantasLink	183	175	144	82.3	138	78.9	8	4.4
Virgin Australia Regional Airlines	103	102	92	90.2	92	90.2	1	1.0
All Airlines	286	277	236	85.2	230	83.0	9	3.1
<b>Geraldton-Perth</b>								
QantasLink	60	60	48	80.0	49	81.7	0	0.0
Virgin Australia Regional Airlines	95	95	76	80.0	63	66.3	0	0.0
All Airlines	155	155	124	80.0	112	72.3	0	0.0
<b>Gladstone-Brisbane</b>								
QantasLink	240	235	204	86.8	186	79.1	5	2.1
Virgin Australia *	32	29	22	75.9	14	48.3	3	9.4
Virgin Australia Regional Airlines	113	110	94	85.5	88	80.0	3	2.7
All Airlines	385	374	320	85.6	288	77.0	11	2.9
<b>Gold Coast-Adelaide</b>								
Jetstar	40	40	37	92.5	38	95.0	0	0.0
Virgin Australia *	30	30	25	83.3	28	93.3	0	0.0
All Airlines	70	70	62	88.6	66	94.3	0	0.0
<b>Gold Coast-Melbourne</b>								
Jetstar	216	213	179	84.0	167	78.4	3	1.4
Tigerair	75	72	51	70.8	38	52.8	3	4.0
Virgin Australia *	169	169	139	82.2	142	84.0	0	0.0
All Airlines	460	454	369	81.3	347	76.4	6	1.3

	<i>Sectors</i>		<i>Departures On Time</i>		<i>Arrivals On Time</i>		<i>Cancellations</i>	
	<i>Sched.</i>	<i>Flown</i>	<i>No.</i>	<i>%</i>	<i>No.</i>	<i>%</i>	<i>No.</i>	<i>%</i>
<b>Gold Coast-Sydney</b>								
Jetstar	360	335	272	81.2	277	82.7	25	6.9
Qantas	90	90	79	87.8	79	87.8	0	0.0
Tigerair	66	63	48	76.2	44	69.8	3	4.5
Virgin Australia *	304	304	261	85.9	259	85.2	0	0.0
All Airlines	820	792	660	83.3	659	83.2	28	3.4
<b>Hamilton Island-Brisbane</b>								
Jetstar	18	18	17	94.4	16	88.9	0	0.0
Virgin Australia *	30	30	24	80.0	22	73.3	0	0.0
All Airlines	48	48	41	85.4	38	79.2	0	0.0
<b>Hamilton Island-Sydney</b>								
Jetstar	30	30	18	60.0	19	63.3	0	0.0
Virgin Australia *	30	30	24	80.0	23	76.7	0	0.0
All Airlines	60	60	42	70.0	42	70.0	0	0.0
<b>Hobart-Melbourne</b>								
Jetstar	164	162	122	75.3	125	77.2	2	1.2
Qantas	60	59	56	94.9	55	93.2	1	1.7
QantasLink	30	29	26	89.7	21	72.4	1	3.3
Tigerair	32	30	16	53.3	14	46.7	2	6.3
Virgin Australia *	143	143	118	82.5	116	81.1	0	0.0
All Airlines	429	423	338	79.9	331	78.3	6	1.4
<b>Hobart-Sydney</b>								
Jetstar	79	77	55	71.4	56	72.7	2	2.5
Qantas	30	30	27	90.0	27	90.0	0	0.0
Virgin Australia *	60	60	49	81.7	50	83.3	0	0.0
All Airlines	169	167	131	78.4	133	79.6	2	1.2
<b>Kalgoorlie-Perth</b>								
Qantas	59	59	53	89.8	51	86.4	0	0.0
QantasLink	29	29	25	86.2	25	86.2	0	0.0
Virgin Australia *	43	43	35	81.4	32	74.4	0	0.0
Virgin Australia Regional Airlines	10	10	7	70.0	6	60.0	0	0.0
All Airlines	141	141	120	85.1	114	80.9	0	0.0
<b>Karratha-Perth</b>								
Qantas	185	182	169	92.9	164	90.1	3	1.6
QantasLink	62	58	55	94.8	51	87.9	4	6.5
Virgin Australia *	72	72	52	72.2	51	70.8	0	0.0
All Airlines	319	312	276	88.5	266	85.3	7	2.2
<b>Launceston-Melbourne</b>								
Jetstar	119	115	82	71.3	69	60.0	4	3.4
QantasLink	120	112	102	91.1	99	88.4	8	6.7
Virgin Australia *	115	115	94	81.7	84	73.0	0	0.0
All Airlines	354	342	278	81.3	252	73.7	12	3.4
<b>Launceston-Sydney</b>								
Jetstar	52	52	26	50.0	26	50.0	0	0.0
Virgin Australia *	30	30	28	93.3	27	90.0	0	0.0
All Airlines	82	82	54	65.9	53	64.6	0	0.0
<b>Mackay-Brisbane</b>								
Jetstar	111	108	69	63.9	61	56.5	3	2.7
QantasLink	106	106	94	88.7	97	91.5	0	0.0
Virgin Australia *	164	158	139	88.0	115	72.8	6	3.7
All Airlines	381	372	302	81.2	273	73.4	9	2.4

	<i>Sectors</i>		<i>Departures On Time</i>		<i>Arrivals On Time</i>		<i>Cancellations</i>	
	<i>Sched.</i>	<i>Flown</i>	<i>No.</i>	<i>%</i>	<i>No.</i>	<i>%</i>	<i>No.</i>	<i>%</i>
<b>Melbourne-Adelaide</b>								
Jetstar	86	83	63	75.9	60	72.3	3	3.5
Qantas	292	292	265	90.8	268	91.8	0	0.0
QantasLink	17	17	15	88.2	13	76.5	0	0.0
Tigerair	69	65	59	90.8	50	76.9	4	5.8
Virgin Australia *	270	270	220	81.5	221	81.9	0	0.0
All Airlines	734	727	622	85.6	612	84.2	7	1.0
<b>Melbourne-Alice Springs</b>								
Qantas	30	30	28	93.3	27	90.0	0	0.0
Tigerair	16	16	12	75.0	12	75.0	0	0.0
All Airlines	46	46	40	87.0	39	84.8	0	0.0
<b>Melbourne-Brisbane</b>								
Jetstar	104	101	68	67.3	71	70.3	3	2.9
Qantas	409	407	334	82.1	336	82.6	2	0.5
Tigerair	85	78	53	67.9	49	62.8	7	8.2
Virgin Australia *	381	380	281	73.9	278	73.2	1	0.3
All Airlines	979	966	736	76.2	734	76.0	13	1.3
<b>Melbourne-Cairns</b>								
Jetstar	114	111	93	83.8	96	86.5	3	2.6
Qantas	30	30	23	76.7	27	90.0	0	0.0
Tigerair	52	49	39	79.6	41	83.7	3	5.8
Virgin Australia *	34	34	25	73.5	27	79.4	0	0.0
All Airlines	230	224	180	80.4	191	85.3	6	2.6
<b>Melbourne-Canberra</b>								
Qantas	240	238	219	92.0	219	92.0	2	0.8
QantasLink	39	39	34	87.2	33	84.6	0	0.0
Virgin Australia *	177	176	145	82.4	152	86.4	1	0.6
All Airlines	456	453	398	87.9	404	89.2	3	0.7
<b>Melbourne-Darwin</b>								
Jetstar	30	30	16	53.3	22	73.3	0	0.0
Qantas	15	15	15	100.0	15	100.0	0	0.0
Virgin Australia *	30	30	27	90.0	27	90.0	0	0.0
All Airlines	75	75	58	77.3	64	85.3	0	0.0
<b>Melbourne-Gold Coast</b>								
Jetstar	216	214	138	64.5	147	68.7	2	0.9
Tigerair	75	72	55	76.4	50	69.4	3	4.0
Virgin Australia *	169	169	123	72.8	131	77.5	0	0.0
All Airlines	460	455	316	69.5	328	72.1	5	1.1
<b>Melbourne-Hobart</b>								
Jetstar	165	163	134	82.2	131	80.4	2	1.2
Qantas	60	60	59	98.3	59	98.3	0	0.0
QantasLink	30	29	19	65.5	19	65.5	1	3.3
Tigerair	32	30	16	53.3	13	43.3	2	6.3
Virgin Australia *	143	143	116	81.1	113	79.0	0	0.0
All Airlines	430	425	344	80.9	335	78.8	5	1.2
<b>Melbourne-Launceston</b>								
Jetstar	119	115	88	76.5	91	79.1	4	3.4
QantasLink	120	111	97	87.4	98	88.3	9	7.5
Virgin Australia *	115	115	93	80.9	98	85.2	0	0.0
All Airlines	354	341	278	81.5	287	84.2	13	3.7
<b>Melbourne-Mildura</b>								
QantasLink	86	85	72	84.7	69	81.2	1	1.2
Regional Express	86	86	82	95.3	76	88.4	0	0.0
Virgin Australia *	30	30	24	80.0	21	70.0	0	0.0
All Airlines	202	201	178	88.6	166	82.6	1	0.5

	<i>Sectors</i>		<i>Departures On Time</i>		<i>Arrivals On Time</i>		<i>Cancellations</i>	
	<i>Sched.</i>	<i>Flown</i>	<i>No.</i>	<i>%</i>	<i>No.</i>	<i>%</i>	<i>No.</i>	<i>%</i>
<b>Melbourne-Newcastle</b>								
Jetstar	101	100	78	78.0	78	78.0	1	1.0
Virgin Australia *	30	30	23	76.7	26	86.7	0	0.0
All Airlines	131	130	101	77.7	104	80.0	1	0.8
<b>Melbourne-Perth</b>								
Jetstar	86	81	68	84.0	52	64.2	5	5.8
Qantas	228	227	178	78.4	171	75.3	1	0.4
Tigerair	61	61	42	68.9	26	42.6	0	0.0
Virgin Australia *	146	146	111	76.0	82	56.2	0	0.0
All Airlines	521	515	399	77.5	331	64.3	6	1.2
<b>Melbourne-Sunshine Coast</b>								
Jetstar	70	70	57	81.4	59	84.3	0	0.0
Tigerair	33	32	30	93.8	29	90.6	1	3.0
Virgin Australia *	30	30	25	83.3	23	76.7	0	0.0
All Airlines	133	132	112	84.8	111	84.1	1	0.8
<b>Melbourne-Sydney</b>								
Jetstar	320	298	212	71.1	230	77.2	22	6.9
Qantas	875	851	726	85.3	735	86.4	24	2.7
Tigerair	222	208	156	75.0	170	81.7	14	6.3
Virgin Australia *	777	750	633	84.4	633	84.4	27	3.5
All Airlines	2 194	2 107	1 727	82.0	1 768	83.9	87	4.0
<b>Mildura-Melbourne</b>								
QantasLink	86	85	78	91.8	77	90.6	1	1.2
Regional Express	86	86	79	91.9	78	90.7	0	0.0
Virgin Australia *	30	30	22	73.3	22	73.3	0	0.0
All Airlines	202	201	179	89.1	177	88.1	1	0.5
<b>Moranbah-Brisbane</b>								
QantasLink	150	140	123	87.9	119	85.0	10	6.7
Virgin Australia Regional Airlines	73	73	59	80.8	27	37.0	0	0.0
All Airlines	223	213	182	85.4	146	68.5	10	4.5
<b>Mount Isa-Brisbane</b>								
Qantas	56	56	48	85.7	45	80.4	0	0.0
Virgin Australia *	21	20	18	90.0	16	80.0	1	4.8
All Airlines	77	76	66	86.8	61	80.3	1	1.3
<b>Newcastle-Brisbane</b>								
Jetstar	117	116	86	74.1	87	75.0	1	0.9
QantasLink	67	65	37	56.9	37	56.9	2	3.0
Virgin Australia *	81	81	60	74.1	59	72.8	0	0.0
All Airlines	265	262	183	69.8	183	69.8	3	1.1
<b>Newcastle-Melbourne</b>								
Jetstar	104	103	80	77.7	76	73.8	1	1.0
Virgin Australia *	30	30	18	60.0	17	56.7	0	0.0
All Airlines	134	133	98	73.7	93	69.9	1	0.7
<b>Newman-Perth</b>								
Qantas	127	125	114	91.2	109	87.2	2	1.6
QantasLink	34	33	29	87.9	26	78.8	1	2.9
Virgin Australia *	40	40	34	85.0	35	87.5	0	0.0
Virgin Australia Regional Airlines	8	8	5	62.5	4	50.0	0	0.0
All Airlines	209	206	182	88.3	174	84.5	3	1.4
<b>Perth-Adelaide</b>								
Jetstar	34	34	19	55.9	28	82.4	0	0.0
Qantas	115	115	95	82.6	104	90.4	0	0.0
Virgin Australia *	59	57	47	82.5	54	94.7	2	3.4
All Airlines	208	206	161	78.2	186	90.3	2	1.0

	<i>Sectors</i>		<i>Departures On Time</i>		<i>Arrivals On Time</i>		<i>Cancellations</i>	
	<i>Sched.</i>	<i>Flown</i>	<i>No.</i>	<i>%</i>	<i>No.</i>	<i>%</i>	<i>No.</i>	<i>%</i>
<b>Perth-Brisbane</b>								
Jetstar	30	30	9	30.0	20	66.7	0	0.0
Qantas	120	119	101	84.9	104	87.4	1	0.8
Virgin Australia *	86	86	71	82.6	72	83.7	0	0.0
All Airlines	236	235	181	77.0	196	83.4	1	0.4
<b>Perth-Broome</b>								
Qantas	35	35	30	85.7	29	82.9	0	0.0
QantasLink	51	51	49	96.1	47	92.2	0	0.0
Virgin Australia *	60	60	46	76.7	48	80.0	0	0.0
Virgin Australia Regional Airlines	21	21	15	71.4	17	81.0	0	0.0
All Airlines	167	167	140	83.8	141	84.4	0	0.0
<b>Perth-Darwin</b>								
Qantas	30	30	27	90.0	28	93.3	0	0.0
Virgin Australia *	26	26	24	92.3	24	92.3	0	0.0
All Airlines	56	56	51	91.1	52	92.9	0	0.0
<b>Perth-Geraldton</b>								
QantasLink	60	60	54	90.0	47	78.3	0	0.0
Virgin Australia Regional Airlines	91	91	78	85.7	72	79.1	0	0.0
All Airlines	151	151	132	87.4	119	78.8	0	0.0
<b>Perth-Kalgoorlie</b>								
Qantas	59	59	54	91.5	54	91.5	0	0.0
QantasLink	27	27	26	96.3	25	92.6	0	0.0
Virgin Australia *	43	43	36	83.7	34	79.1	0	0.0
Virgin Australia Regional Airlines	9	9	9	100.0	9	100.0	0	0.0
All Airlines	138	138	125	90.6	122	88.4	0	0.0
<b>Perth-Karratha</b>								
Qantas	185	182	173	95.1	164	90.1	3	1.6
QantasLink	62	58	55	94.8	56	96.6	4	6.5
Virgin Australia *	72	72	61	84.7	62	86.1	0	0.0
All Airlines	319	312	289	92.6	282	90.4	7	2.2
<b>Perth-Melbourne</b>								
Jetstar	86	80	46	57.5	58	72.5	6	7.0
Qantas	230	228	184	80.7	200	87.7	2	0.9
Tigerair	60	60	25	41.7	32	53.3	0	0.0
Virgin Australia *	144	144	115	79.9	122	84.7	0	0.0
All Airlines	520	512	370	72.3	412	80.5	8	1.5
<b>Perth-Newman</b>								
Qantas	127	125	115	92.0	114	91.2	2	1.6
QantasLink	34	32	28	87.5	29	90.6	2	5.9
Virgin Australia *	43	43	36	83.7	35	81.4	0	0.0
Virgin Australia Regional Airlines	8	8	5	62.5	4	50.0	0	0.0
All Airlines	212	208	184	88.5	182	87.5	4	1.9
<b>Perth-Port Hedland</b>								
Qantas	122	121	111	91.7	108	89.3	1	0.8
QantasLink	44	44	40	90.9	42	95.5	0	0.0
Virgin Australia *	51	51	49	96.1	49	96.1	0	0.0
All Airlines	217	216	200	92.6	199	92.1	1	0.5
<b>Perth-Sydney</b>								
Jetstar	42	42	15	35.7	30	71.4	0	0.0
Qantas	199	199	164	82.4	183	92.0	0	0.0
Virgin Australia *	115	115	90	78.3	104	90.4	0	0.0
All Airlines	356	356	269	75.6	317	89.0	0	0.0

	<i>Sectors</i>		<i>Departures On Time</i>		<i>Arrivals On Time</i>		<i>Cancellations</i>	
	<i>Sched.</i>	<i>Flown</i>	<i>No.</i>	<i>%</i>	<i>No.</i>	<i>%</i>	<i>No.</i>	<i>%</i>
<b>Port Hedland-Perth</b>								
Qantas	123	122	109	89.3	103	84.4	1	0.8
QantasLink	44	44	39	88.6	38	86.4	0	0.0
Virgin Australia *	51	51	48	94.1	45	88.2	0	0.0
All Airlines	218	217	196	90.3	186	85.7	1	0.5
<b>Port Lincoln-Adelaide</b>								
QantasLink	98	97	89	91.8	89	91.8	1	1.0
Regional Express	210	209	183	87.6	187	89.5	1	0.5
All Airlines	308	306	272	88.9	276	90.2	2	0.6
<b>Port Macquarie-Sydney</b>								
QantasLink	132	129	78	60.5	65	50.4	3	2.3
Virgin Australia Regional Airlines	60	59	54	91.5	52	88.1	1	1.7
All Airlines	192	188	132	70.2	117	62.2	4	2.1
<b>Proserpine-Brisbane</b>								
Jetstar	30	30	28	93.3	25	83.3	0	0.0
Virgin Australia *	51	51	41	80.4	32	62.7	0	0.0
All Airlines	81	81	69	85.2	57	70.4	0	0.0
<b>Rockhampton-Brisbane</b>								
QantasLink	188	187	144	77.0	129	69.0	1	0.5
Virgin Australia *	89	89	80	89.9	75	84.3	0	0.0
Virgin Australia Regional Airlines	120	119	110	92.4	102	85.7	1	0.8
All Airlines	397	395	334	84.6	306	77.5	2	0.5
<b>Sunshine Coast-Melbourne</b>								
Jetstar	71	71	52	73.2	51	71.8	0	0.0
Tigerair	32	32	27	84.4	23	71.9	0	0.0
Virgin Australia *	30	30	22	73.3	19	63.3	0	0.0
All Airlines	133	133	101	75.9	93	69.9	0	0.0
<b>Sunshine Coast-Sydney</b>								
Jetstar	101	101	82	81.2	82	81.2	0	0.0
Virgin Australia *	34	34	31	91.2	30	88.2	0	0.0
All Airlines	135	135	113	83.7	112	83.0	0	0.0
<b>Sydney-Adelaide</b>								
Jetstar	119	113	91	80.5	90	79.6	6	5.0
Qantas	257	257	217	84.4	214	83.3	0	0.0
Virgin Australia *	167	165	138	83.6	142	86.1	2	1.2
All Airlines	543	535	446	83.4	446	83.4	8	1.5
<b>Sydney-Albury</b>								
QantasLink	111	111	61	55.0	40	36.0	0	0.0
Regional Express	111	111	96	86.5	95	85.6	0	0.0
Virgin Australia Regional Airlines	60	60	55	91.7	42	70.0	0	0.0
All Airlines	282	282	212	75.2	177	62.8	0	0.0
<b>Sydney-Alice Springs</b>								
Qantas	30	30	27	90.0	26	86.7	0	0.0
Tigerair	16	16	16	100.0	16	100.0	0	0.0
All Airlines	46	46	43	93.5	42	91.3	0	0.0
<b>Sydney-Ayers Rock</b>								
Jetstar	17	17	11	64.7	14	82.4	0	0.0
Virgin Australia *	30	30	27	90.0	26	86.7	0	0.0
All Airlines	47	47	38	80.9	40	85.1	0	0.0



	<i>Sectors</i>		<i>Departures On Time</i>		<i>Arrivals On Time</i>		<i>Cancellations</i>	
	<i>Sched.</i>	<i>Flown</i>	<i>No.</i>	<i>%</i>	<i>No.</i>	<i>%</i>	<i>No.</i>	<i>%</i>
<b>Sydney-Ballina</b>								
Jetstar	77	76	60	78.9	62	81.6	1	1.3
Regional Express	30	30	25	83.3	25	83.3	0	0.0
Virgin Australia *	30	30	30	100.0	27	90.0	0	0.0
All Airlines	137	136	115	84.6	114	83.8	1	0.7
<b>Sydney-Brisbane</b>								
Jetstar	115	109	82	75.2	76	69.7	6	5.2
Qantas	575	567	486	85.7	447	78.8	8	1.4
Tigerair	81	79	50	63.3	39	49.4	2	2.5
Virgin Australia *	554	544	467	85.8	430	79.0	10	1.8
All Airlines	1 325	1 299	1 085	83.5	992	76.4	26	2.0
<b>Sydney-Cairns</b>								
Jetstar	106	106	96	90.6	97	91.5	0	0.0
Qantas	78	78	70	89.7	76	97.4	0	0.0
Tigerair	42	41	39	95.1	38	92.7	1	2.4
Virgin Australia *	86	86	77	89.5	81	94.2	0	0.0
All Airlines	312	311	282	90.7	292	93.9	1	0.3
<b>Sydney-Canberra</b>								
Qantas	152	151	135	89.4	126	83.4	1	0.7
QantasLink	398	371	271	73.0	277	74.7	27	6.8
Virgin Australia *	51	50	46	92.0	46	92.0	1	2.0
Virgin Australia Regional Airlines	246	241	222	92.1	215	89.2	5	2.0
All Airlines	847	813	674	82.9	664	81.7	34	4.0
<b>Sydney-Coffs Harbour</b>								
QantasLink	151	150	100	66.7	88	58.7	1	0.7
Tigerair	22	22	13	59.1	13	59.1	0	0.0
Virgin Australia *	60	60	55	91.7	56	93.3	0	0.0
All Airlines	233	232	168	72.4	157	67.7	1	0.4
<b>Sydney-Darwin</b>								
Jetstar	27	26	22	84.6	22	84.6	1	3.7
Qantas	51	51	42	82.4	45	88.2	0	0.0
Virgin Australia *	30	30	27	90.0	29	96.7	0	0.0
All Airlines	108	107	91	85.0	96	89.7	1	0.9
<b>Sydney-Dubbo</b>								
QantasLink	125	124	87	70.2	67	54.0	1	0.8
Regional Express	154	154	139	90.3	138	89.6	0	0.0
All Airlines	279	278	226	81.3	205	73.7	1	0.4
<b>Sydney-Gold Coast</b>								
Jetstar	361	339	271	79.9	269	79.4	22	6.1
Qantas	90	90	81	90.0	85	94.4	0	0.0
Tigerair	66	63	51	81.0	51	81.0	3	4.5
Virgin Australia *	304	304	256	84.2	259	85.2	0	0.0
All Airlines	821	796	659	82.8	664	83.4	25	3.0
<b>Sydney-Hamilton Island</b>								
Jetstar	30	30	20	66.7	21	70.0	0	0.0
Virgin Australia *	30	30	26	86.7	29	96.7	0	0.0
All Airlines	60	60	46	76.7	50	83.3	0	0.0
<b>Sydney-Hobart</b>								
Jetstar	79	79	66	83.5	65	82.3	0	0.0
Qantas	30	30	27	90.0	26	86.7	0	0.0
Virgin Australia *	60	60	50	83.3	50	83.3	0	0.0
All Airlines	169	169	143	84.6	141	83.4	0	0.0

	<i>Sectors</i>		<i>Departures On Time</i>		<i>Arrivals On Time</i>		<i>Cancellations</i>	
	<i>Sched.</i>	<i>Flown</i>	<i>No.</i>	<i>%</i>	<i>No.</i>	<i>%</i>	<i>No.</i>	<i>%</i>
<b>Sydney-Launceston</b>								
Jetstar	51	51	28	54.9	28	54.9	0	0.0
Virgin Australia *	30	30	29	96.7	28	93.3	0	0.0
All Airlines	81	81	57	70.4	56	69.1	0	0.0
<b>Sydney-Melbourne</b>								
Jetstar	318	292	247	84.6	234	80.1	26	8.2
Qantas	874	852	739	86.7	697	81.8	22	2.5
Tigerair	222	207	168	81.2	153	73.9	15	6.8
Virgin Australia *	777	749	636	84.9	577	77.0	28	3.6
All Airlines	2 191	2 100	1 790	85.2	1 661	79.1	91	4.2
<b>Sydney-Perth</b>								
Jetstar	42	42	31	73.8	18	42.9	0	0.0
Qantas	205	205	173	84.4	148	72.2	0	0.0
Virgin Australia *	116	115	94	81.7	79	68.7	1	0.9
All Airlines	363	362	298	82.3	245	67.7	1	0.3
<b>Sydney-Port Macquarie</b>								
QantasLink	133	131	91	69.5	71	54.2	2	1.5
Virgin Australia Regional Airlines	60	59	49	83.1	48	81.4	1	1.7
All Airlines	193	190	140	73.7	119	62.6	3	1.6
<b>Sydney-Sunshine Coast</b>								
Jetstar	100	100	82	82.0	84	84.0	0	0.0
Virgin Australia *	34	34	31	91.2	31	91.2	0	0.0
All Airlines	134	134	113	84.3	115	85.8	0	0.0
<b>Sydney-Townsville</b>								
Jetstar	27	27	21	77.8	24	88.9	0	0.0
Virgin Australia *	30	30	28	93.3	28	93.3	0	0.0
All Airlines	57	57	49	86.0	52	91.2	0	0.0
<b>Sydney-Wagga Wagga</b>								
QantasLink	112	112	68	60.7	52	46.4	0	0.0
Regional Express	137	137	131	95.6	129	94.2	0	0.0
All Airlines	249	249	199	79.9	181	72.7	0	0.0
<b>Townsville-Brisbane</b>								
Jetstar	30	29	15	51.7	14	48.3	1	3.3
Qantas	147	146	137	93.8	127	87.0	1	0.7
Virgin Australia *	163	162	136	84.0	113	69.8	1	0.6
All Airlines	340	337	288	85.5	254	75.4	3	0.9
<b>Townsville-Cairns</b>								
QantasLink	177	172	150	87.2	151	87.8	5	2.8
Virgin Australia Regional Airlines	27	25	25	100.0	25	100.0	2	7.4
All Airlines	204	197	175	88.8	176	89.3	7	3.4
<b>Townsville-Sydney</b>								
Jetstar	27	27	24	88.9	23	85.2	0	0.0
Virgin Australia *	30	30	24	80.0	22	73.3	0	0.0
All Airlines	57	57	48	84.2	45	78.9	0	0.0
<b>Wagga Wagga-Sydney</b>								
QantasLink	111	111	57	51.4	57	51.4	0	0.0
Regional Express	137	137	130	94.9	131	95.6	0	0.0
All Airlines	248	248	187	75.4	188	75.8	0	0.0

\* Virgin Australia figures for September 2013 are provisional.

# Airports

On time performance is reported for all routes where the passenger load averages over 8000 passengers per month, and where two or more airlines operate in competition. The following data reports by airport against flights operated on those routes only.

Airport	Departures			Arrivals		
	Sectors	On Time		Sectors	On Time	
	Flown	No.	%	Flown	No.	%
<b>Adelaide</b>						
Jetstar	298	222	74.5	300	239	79.7
Qantas	812	707	87.1	816	728	89.2
QantasLink	134	118	88.1	135	111	82.2
Regional Express	208	191	91.8	209	187	89.5
Tigerair	65	51	78.5	65	50	76.9
Virgin Australia *	652	560	85.9	655	560	85.5
All Airlines	2 169	1 849	85.2	2 180	1 875	86.0
Relates to services to and from Brisbane, Canberra, Gold Coast, Melbourne, Perth, Port Lincoln and Sydney.						
<b>Albury</b>						
QantasLink	111	53	47.7	111	40	36.0
Regional Express	111	96	86.5	111	95	85.6
Virgin Australia Regional Airlines	60	48	80.0	60	42	70.0
All Airlines	282	197	69.9	282	177	62.8
Relates to services to and from Sydney only.						
<b>Alice Springs</b>						
Qantas	60	37	61.7	60	53	88.3
Tigerair	32	25	78.1	32	28	87.5
All Airlines	92	62	67.4	92	81	88.0
Relates to services to and from Melbourne and Sydney.						
<b>Ayers Rock</b>						
Jetstar	17	12	70.6	17	14	82.4
Virgin Australia *	30	25	83.3	30	26	86.7
All Airlines	47	37	78.7	47	40	85.1
Relates to services to and from Sydney only.						
<b>Ballina</b>						
Jetstar	75	51	68.0	76	62	81.6
Regional Express	26	21	80.8	30	25	83.3
Virgin Australia *	30	26	86.7	30	27	90.0
All Airlines	131	98	74.8	136	114	83.8
Relates to services to and from Sydney only.						
<b>Brisbane</b>						
Jetstar	701	522	74.5	702	476	67.8
Qantas	1 715	1 470	85.7	1 683	1 394	82.8
QantasLink	1 060	912	86.0	1 053	808	76.7
Tigerair	157	92	58.6	157	88	56.1
Virgin Australia *	2 022	1 722	85.2	2 019	1 539	76.2
Virgin Australia Regional Airlines	434	387	89.2	434	333	76.7
All Airlines	6 089	5 105	83.8	6 048	4 638	76.7
Relates to services to and from Adelaide, Bundaberg, Cairns, Canberra, Darwin, Emerald, Gladstone, Hamilton Island, Mackay, Melbourne, Moranbah, Mount Isa, Newcastle, Perth, Proserpine, Rockhampton, Sydney and Townsville.						

Airport	Departures			Arrivals		
	Sectors Flown	On Time		Sectors Flown	On Time	
		No.	%		No.	%
<b>Broome</b>						
Qantas	34	20	58.8	35	29	82.9
QantasLink	51	47	92.2	51	47	92.2
Virgin Australia *	59	41	69.5	60	48	80.0
Virgin Australia Regional Airlines	25	15	60.0	21	17	81.0
All Airlines	169	123	72.8	167	141	84.4
Relates to services to and from Perth only.						
<b>Bundaberg</b>						
QantasLink	119	97	81.5	118	95	80.5
Virgin Australia Regional Airlines	30	25	83.3	30	29	96.7
All Airlines	149	122	81.9	148	124	83.8
Relates to services to and from Brisbane only.						
<b>Cairns</b>						
Jetstar	338	284	84.0	337	281	83.4
Qantas	223	203	91.0	224	213	95.1
QantasLink	181	164	90.6	175	154	88.0
Tigerair	89	70	78.7	90	79	87.8
Virgin Australia *	281	247	87.9	283	261	92.2
Virgin Australia Regional Airlines	25	25	100.0	25	25	100.0
All Airlines	1 137	993	87.3	1 134	1 013	89.3
Relates to services to and from Brisbane, Melbourne, Sydney and Townsville.						
<b>Canberra</b>						
Qantas	574	531	92.5	576	525	91.1
QantasLink	447	351	78.5	451	344	76.3
Virgin Australia *	343	303	88.3	343	293	85.4
Virgin Australia Regional Airlines	239	221	92.5	241	215	89.2
All Airlines	1 603	1 406	87.7	1 611	1 377	85.5
Relates to services to and from Adelaide, Brisbane, Melbourne and Sydney.						
<b>Coffs Harbour</b>						
QantasLink	149	91	61.1	150	88	58.7
Tigerair	22	14	63.6	22	13	59.1
Virgin Australia *	60	53	88.3	60	56	93.3
All Airlines	231	158	68.4	232	157	67.7
Relates to services to and from Sydney only.						
<b>Darwin</b>						
Jetstar	65	35	53.8	65	48	73.8
Qantas	126	89	70.6	126	116	92.1
Virgin Australia *	115	100	87.0	116	104	89.7
All Airlines	306	224	73.2	307	268	87.3
Relates to services to and from Brisbane, Melbourne, Perth and Sydney.						
<b>Dubbo</b>						
QantasLink	122	69	56.6	124	67	54.0
Regional Express	156	141	90.4	154	138	89.6
All Airlines	278	210	75.5	278	205	73.7
Relates to services to and from Sydney only.						

Airport	Departures			Arrivals		
	Sectors	On Time		Sectors	On Time	
	Flown	No.	%	Flown	No.	%
<b>Emerald</b>						
QantasLink	175	144	82.3	176	148	84.1
Virgin Australia Regional Airlines	102	92	90.2	103	95	92.2
All Airlines	277	236	85.2	279	243	87.1
Relates to services to and from Brisbane only.						
<b>Geraldton</b>						
QantasLink	60	48	80.0	60	47	78.3
Virgin Australia Regional Airlines	95	76	80.0	91	72	79.1
All Airlines	155	124	80.0	151	119	78.8
Relates to services to and from Perth only.						
<b>Gladstone</b>						
QantasLink	235	204	86.8	215	194	90.2
Virgin Australia *	29	22	75.9	31	24	77.4
Virgin Australia Regional Airlines	110	94	85.5	109	89	81.7
All Airlines	374	320	85.6	355	307	86.5
Relates to services to and from Brisbane only.						
<b>Gold Coast</b>						
Jetstar	588	488	83.0	593	452	76.2
Qantas	90	79	87.8	90	85	94.4
Tigerair	135	99	73.3	135	101	74.8
Virgin Australia *	503	425	84.5	503	418	83.1
All Airlines	1 316	1 091	82.9	1 321	1 056	79.9
Relates to services to and from Adelaide, Melbourne and Sydney.						
<b>Hamilton Island</b>						
Jetstar	48	35	72.9	48	39	81.3
Virgin Australia *	60	48	80.0	60	54	90.0
All Airlines	108	83	76.9	108	93	86.1
Relates to services to and from Brisbane and Sydney.						
<b>Hobart</b>						
Jetstar	239	177	74.1	242	196	81.0
Qantas	89	83	93.3	90	85	94.4
QantasLink	29	26	89.7	29	19	65.5
Tigerair	30	16	53.3	30	13	43.3
Virgin Australia *	203	167	82.3	203	163	80.3
All Airlines	590	469	79.5	594	476	80.1
Relates to services to and from Melbourne and Sydney.						
<b>Kalgoorlie</b>						
Qantas	59	53	89.8	59	54	91.5
QantasLink	29	25	86.2	27	25	92.6
Virgin Australia *	43	35	81.4	43	34	79.1
Virgin Australia Regional Airlines	10	7	70.0	9	9	100.0
All Airlines	141	120	85.1	138	122	88.4
Relates to services to and from Perth only.						

Airport	Departures			Arrivals		
	Sectors Flown	On Time		Sectors Flown	On Time	
		No.	%		No.	%
<b>Karratha</b>						
Qantas	182	169	92.9	182	164	90.1
QantasLink	58	55	94.8	58	56	96.6
Virgin Australia *	72	52	72.2	72	62	86.1
All Airlines	312	276	88.5	312	282	90.4
Relates to services to and from Perth only.						
<b>Launceston</b>						
Jetstar	167	108	64.7	166	119	71.7
QantasLink	112	102	91.1	111	98	88.3
Virgin Australia *	145	122	84.1	145	126	86.9
All Airlines	424	332	78.3	422	343	81.3
Relates to services to and from Melbourne and Sydney.						
<b>Mackay</b>						
Jetstar	108	69	63.9	108	99	91.7
QantasLink	106	94	88.7	107	97	90.7
Virgin Australia *	158	139	88.0	158	145	91.8
All Airlines	372	302	81.2	373	341	91.4
Relates to services to and from Brisbane only.						
<b>Melbourne</b>						
Jetstar	1 366	1 015	74.3	1 360	1 042	76.6
Qantas	2 150	1 847	85.9	2 148	1 831	85.2
QantasLink	281	237	84.3	282	236	83.7
Regional Express	86	82	95.3	86	78	90.7
Tigerair	611	462	75.6	608	396	65.1
Virgin Australia *	2 303	1 846	80.2	2 296	1 797	78.3
All Airlines	6 797	5 489	80.8	6 780	5 380	79.4
Relates to services to and from Adelaide, Alice Springs, Brisbane, Cairns, Canberra, Darwin, Gold Coast, Hobart, Launceston, Mildura, Newcastle, Perth, Sunshine Coast and Sydney.						
<b>Mildura</b>						
QantasLink	85	78	91.8	85	69	81.2
Regional Express	86	79	91.9	86	76	88.4
Virgin Australia *	30	22	73.3	30	21	70.0
All Airlines	201	179	89.1	201	166	82.6
Relates to services to and from Melbourne only.						
<b>Moranbah</b>						
QantasLink	140	123	87.9	147	138	93.9
Virgin Australia Regional Airlines	73	59	80.8	73	54	74.0
All Airlines	213	182	85.4	220	192	87.3
Relates to services to and from Brisbane only.						
<b>Mount Isa</b>						
Qantas	56	48	85.7	56	52	92.9
Virgin Australia *	20	18	90.0	21	19	90.5
All Airlines	76	66	86.8	77	71	92.2
Relates to services to and from Brisbane only.						

Airport	Departures			Arrivals		
	Sectors	On Time		Sectors	On Time	
	Flown	No.	%	Flown	No.	%
<b>Newcastle</b>						
Jetstar	219	166	75.8	215	162	75.3
QantasLink	65	37	56.9	66	31	47.0
Virgin Australia *	111	78	70.3	111	94	84.7
All Airlines	395	281	71.1	392	287	73.2
Relates to services to and from Brisbane and Melbourne.						
<b>Newman</b>						
Qantas	125	114	91.2	125	114	91.2
QantasLink	33	29	87.9	32	29	90.6
Virgin Australia *	40	34	85.0	43	35	81.4
Virgin Australia Regional Airlines	8	5	62.5	8	4	50.0
All Airlines	206	182	88.3	208	182	87.5
Relates to services to and from Perth only.						
<b>Perth</b>						
Jetstar	186	89	47.8	185	109	58.9
Qantas	1 213	1 054	86.9	1 215	977	80.4
QantasLink	272	252	92.6	275	236	85.8
Tigerair	60	25	41.7	61	26	42.6
Virgin Australia *	697	575	82.5	697	500	71.7
Virgin Australia Regional Airlines	129	107	82.9	138	85	61.6
All Airlines	2 557	2 102	82.2	2 571	1 933	75.2
Relates to services to and from Adelaide, Brisbane, Broome, Darwin, Geraldton, Kalgoorlie, Karratha, Melbourne, Newman, Port Hedland and Sydney.						
<b>Port Hedland</b>						
Qantas	122	109	89.3	121	108	89.3
QantasLink	44	39	88.6	44	42	95.5
Virgin Australia *	51	48	94.1	51	49	96.1
All Airlines	217	196	90.3	216	199	92.1
Relates to services to and from Perth only.						
<b>Port Lincoln</b>						
QantasLink	97	89	91.8	98	88	89.8
Regional Express	209	183	87.6	208	181	87.0
All Airlines	306	272	88.9	306	269	87.9
Relates to services to and from Adelaide only.						
<b>Port Macquarie</b>						
QantasLink	129	78	60.5	131	71	54.2
Virgin Australia Regional Airlines	59	54	91.5	59	48	81.4
All Airlines	188	132	70.2	190	119	62.6
Relates to services to and from Sydney only.						
<b>Proserpine</b>						
Jetstar	30	28	93.3	30	18	60.0
Virgin Australia *	51	41	80.4	51	48	94.1
All Airlines	81	69	85.2	81	66	81.5
Relates to services to and from Brisbane only.						

Airport	Departures			Arrivals		
	Sectors	On Time		Sectors	On Time	
	Flown	No.	%	Flown	No.	%
<b>Rockhampton</b>						
QantasLink	187	144	77.0	206	176	85.4
Virgin Australia *	89	80	89.9	89	78	87.6
Virgin Australia Regional Airlines	119	110	92.4	119	111	93.3
All Airlines	395	334	84.6	414	365	88.2
Relates to services to and from Brisbane only.						
<b>Sunshine Coast</b>						
Jetstar	172	134	77.9	170	143	84.1
Tigerair	32	27	84.4	32	29	90.6
Virgin Australia *	64	53	82.8	64	54	84.4
All Airlines	268	214	79.9	266	226	85.0
Relates to services to and from Melbourne and Sydney.						
<b>Sydney</b>						
Jetstar	1 407	1 128	80.2	1 410	1 089	77.2
Qantas	2 311	1 997	86.4	2 334	1 998	85.6
QantasLink	999	678	67.9	988	646	65.4
Regional Express	432	391	90.5	430	385	89.5
Tigerair	428	337	78.7	429	320	74.6
Virgin Australia *	2 347	2 017	85.9	2 344	1 989	84.9
Virgin Australia Regional Airlines	360	326	90.6	358	316	88.3
All Airlines	8 284	6 874	83.0	8 293	6 743	81.3
Relates to services to and from Adelaide, Albury, Alice Springs, Ayers Rock, Ballina, Brisbane, Cairns, Canberra, Coffs Harbour, Darwin, Dubbo, Gold Coast, Hamilton Island, Hobart, Launceston, Melbourne, Perth, Port Macquarie, Sunshine Coast, Townsville and Wagga Wagga.						
<b>Townsville</b>						
Jetstar	56	39	69.6	56	46	82.1
Qantas	146	137	93.8	147	136	92.5
QantasLink	172	150	87.2	176	161	91.5
Virgin Australia *	192	160	83.3	192	180	93.8
Virgin Australia Regional Airlines	25	25	100.0	25	25	100.0
All Airlines	591	511	86.5	596	548	91.9
Relates to services to and from Brisbane, Cairns and Sydney.						
<b>Wagga Wagga</b>						
QantasLink	111	57	51.4	112	52	46.4
Regional Express	137	130	94.9	137	129	94.2
All Airlines	248	187	75.4	249	181	72.7
Relates to services to and from Sydney only.						

\* Virgin Australia figures for September 2013 are provisional.



## Definitions

---

On time departure                      A flight departure is counted as "on time" if it departs the gate before 15 minutes after the scheduled departure time shown in the carriers' schedule.

---

On time arrival                         A flight arrival is counted as "on time" if it arrived at the gate before 15 minutes after the scheduled arrival time shown in the carriers' schedule.  
Neither diverted nor cancelled flights count as on time.

---

Cancellation                            A flight removed from service within 7 days of scheduled departure is regarded as a cancellation.

---

On time departure percentage                      The percentage of on time departures is measured against the number of departures *operated* on any particular sector.

---

On time arrival percentage                         The percentage of on time arrivals is measured against the number of arrivals *operated* on any particular sector.

---

Cancellation percentage                      The percentage of cancellations is measured against the number of services *scheduled* on any particular sector.

---