



**Australian Government**

**Department of Infrastructure and Transport**

Bureau of Infrastructure, Transport and Regional Economics

STATISTICAL REPORT



# Aviation

Domestic airline on time performance  
September 2012

© Commonwealth of Australia 2012

ISSN: 1832-0759

### **Ownership of intellectual property rights in this publication**

Unless otherwise noted, copyright (and any other intellectual property rights, if any) in this publication is owned by the Commonwealth of Australia (referred to below as the Commonwealth).

### **Disclaimer**

The material contained in this publication is made available on the understanding that the Commonwealth is not providing professional advice, and that users exercise their own skill and care with respect to its use, and seek independent advice if necessary.

The Commonwealth makes no representations or warranties as to the contents or accuracy of the information contained in this publication. To the extent permitted by law, the Commonwealth disclaims liability to any person or organisation in respect of anything done, or omitted to be done, in reliance upon information contained in this publication.

### **Creative Commons licence**

With the exception of (a) the Coat of Arms; and (b) the Department of Infrastructure's photos and graphics, copyright in this publication is licensed under a Creative Commons Attribution 3.0 Australia Licence.

Creative Commons Attribution 3.0 Australia Licence is a standard form licence agreement that allows you to copy, communicate and adapt this publication provided that you attribute the work to the Commonwealth and abide by the other licence terms. A summary of the licence terms is available from <http://creativecommons.org/licenses/by/3.0/au/deed.en>. The full licence terms are available from <http://creativecommons.org/licenses/by/3.0/au/legalcode>.

### **Use of the Coat of Arms**

The Department of the Prime Minister and Cabinet sets the terms under which the Coat of Arms is used. Please refer to the Department's Commonwealth Coat of Arms and Government branding web page <http://www.dpmmc.gov.au/guidelines/index.cfm#brand> and, in particular, the Guidelines on the use of the Commonwealth Coat of Arms publication.

An appropriate citation for this report is:

Bureau of Infrastructure, Transport and Regional Economics (BITRE), 2012, Domestic airline on time performance, Statistical Report, BITRE, Canberra ACT.

### **Contact us**

This publication is available in PDF format. All other rights are reserved, including in relation to any Departmental logos or trade marks which may exist. For enquiries regarding the licence and any use of this publication, please contact:

Bureau of Infrastructure, Transport and Regional Economics (BITRE)  
Department of Infrastructure and Transport  
GPO Box 501, Canberra ACT 2601, Australia  
Telephone: (international) +61 2 6274 7210  
Fax: (international) +61 2 6274 6855  
Email: [bitre@infrastructure.gov.au](mailto:bitre@infrastructure.gov.au)  
Website: [www.bitre.gov.au](http://www.bitre.gov.au)

### **Inquiries**

Should you require additional information about the statistics contained in this publication:

Telephone (02) 6274 7790 or Facsimile (02) 6274 7727

Electronic mail: [AVSTATS@infrastructure.gov.au](mailto:AVSTATS@infrastructure.gov.au)

Web site: <http://www.bitre.gov.au/statistics/aviation/otphome.aspx>

# Foreword

The Bureau of Infrastructure, Transport and Regional Economics (BITRE) monitors the punctuality and reliability of major domestic airlines operating between Australian airports. The purpose of this is to allow for evaluation of overall industry and individual airline performance, so that consumers of air travel can make informed decisions.

The following domestic airlines report this information monthly to the BITRE: Jetstar, Qantas, QantasLink, Regional Express, Skywest Airlines, Tiger Airways, Virgin Australia and Virgin Australia – ATR/F100 Operations. Data has been gathered since November 2003, although some airlines commenced reporting at a later date, including Jetstar which first reported in May 2004, MacAir in July 2005 and Tiger Airways in April 2008. MacAir ceased operations in February 2009 and data was not received for December 2008 onwards. Virgin Blue was rebranded as Virgin Australia in May 2011 and time series data in Microsoft Excel spreadsheet format on the BITRE website has been revised to reflect this. Services operated by Skywest on behalf of Virgin Australia using ATR/F100 aircraft commenced in November 2011 and are shown separately as Virgin Australia – ATR/F100 Operations.

Information presented in this report is for Australian domestic routes for which the passenger load averaged 8 000 or more passengers per month over the previous six months and where two or more airlines operated in competition on those routes. There were 57 routes that met this definition in September 2012. Over time, routes which meet these criteria change as airline networks and traffic levels vary.

Participating airlines report their overall monthly network performance where this is possible.

Total industry figures encompass all services operated by reporting airlines only. These airlines collectively carried over 95 per cent of total domestic passengers (regular public transport only) in 2011.

The method of capturing on time performance varies between airlines utilising different recording systems. Jetstar and Qantas jet aircraft use Aircraft Communication Addressing and Reporting System (ACARS) to electronically measure on time performance. Regional Express, Skywest, Tiger Airways, Virgin Australia, Virgin Australia – ATR/F100 Operations and the Qantas non-jet fleet record on time performance manually using records from pilots, gate agents and/or ground crews.

After initial data is collected, aggregate reports are audited internally by participating airlines prior to publication.

Reports and detailed time series data in Microsoft Excel spreadsheet format are available from the BITRE website at: <http://www.bitre.gov.au/statistics/aviation/otphome.aspx>.



# Contents

	Page
Industry performance .....	1
Individual routes .....	9
Airports .....	20
Definitions .....	26



## Industry performance

For September 2012, on time performance over all routes operated by participating airlines (Jetstar, Qantas, QantasLink, Regional Express, Skywest Airlines, Tiger Airways, Virgin Australia and Virgin Australia – ATR/F100 Operations) averaged 81.9 per cent for on time departures, and 79.2 per cent for on time arrivals. Cancellations represented 1.3 per cent of all scheduled flights. The equivalent figures for September 2011 were 83.2 per cent for departures, 82.7 per cent for arrivals and 1.5 per cent for cancellations.

The long term average performance for all routes since reporting commenced in November 2003 is 83.9 per cent for on time departures and 82.6 per cent for on time arrivals. Cancellations average 1.3 per cent of all scheduled flights.

Of the major domestic airlines, Qantas achieved the highest level of on time departures for September 2012 at 86.1 per cent, followed by Virgin Australia at 83.9 per cent, Tiger Airways at 79.5 per cent and Jetstar at 75.8 per cent. The regional airlines were led by Regional Express at 87.8 per cent, followed by Virgin Australia – ATR/F100 Operations at 81.0 per cent, QantasLink at 77.7 per cent and Skywest at 67.6 per cent.

Qantas also achieved the highest on time arrivals among the major domestic airlines at 82.9 per cent, followed by Virgin Australia at 80.7 per cent, Jetstar at 75.9 per cent and Tiger Airways at 75.0 per cent. Regional Express was the best performing regional airline for on time arrivals at 84.5 per cent, followed by Virgin Australia – ATR/F100 Operations at 77.3 per cent, QantasLink at 74.6 per cent and Skywest at 63.7 per cent.

Virgin Australia – ATR/F100 Operations and Qantas had the highest percentage of cancellations for September 2012 at 1.7 per cent, while Skywest had no cancellations.

Of the 57 routes which met the criteria for on time performance reporting in September 2012, the Adelaide-Gold Coast route had the highest percentage of on time departures (96.9 per cent) and the highest percentage of on time arrivals (100.0). The Hamilton Island-Sydney route had the lowest percentage of on time departures (48.3 per cent) and the lowest percentage of on time arrivals (46.7 per cent).

Cancellations were highest on the Sydney-Melbourne route at 4.0 per cent, followed by Melbourne-Sydney at 3.9 per cent, Ayers Rock-Sydney at 3.3 per cent, Gladstone-Brisbane and Canberra-Sydney on 3.2 per cent and Brisbane-Gladstone on 3.1 per cent.

Mildura Airport recorded the highest percentage of on time departures (89.4 per cent) and Geraldton Airport recorded the lowest percentage of on time departures (60.8 per cent). Proserpine Airport recorded the highest percentage of on time arrivals (88.8 per cent) and Geraldton Airport recorded the lowest percentage of on time arrivals (63.5 per cent). These figures only refer to reported routes and do not cover all flights at these airports.

Table 1 On time performance for September 2012 — Total Industry

	<i>Sectors</i>		<i>Departures On Time</i>		<i>Arrivals On Time</i>		<i>Cancellations</i>	
	<i>Scheduled</i>	<i>Flown</i>	<i>No.</i>	<i>%</i>	<i>No.</i>	<i>%</i>	<i>No.</i>	<i>%</i>
Jetstar	6 779	6 696	5 073	75.8	5 083	75.9	83	1.2
Qantas	10 586	10 411	8 959	86.1	8 628	82.9	175	1.7
QantasLink	8 997	8 870	6 891	77.7	6 621	74.6	127	1.4
Regional Express	5 461	5 429	4 767	87.8	4 586	84.5	32	0.6
Skywest	888	888	600	67.6	566	63.7	0	0.0
Tiger Airways	1 548	1 538	1 223	79.5	1 154	75.0	10	0.6
Virgin Australia	11 080	10 904	9 153	83.9	8 797	80.7	176	1.6
Virgin Australia - ATR/F100 Operations	1 419	1 395	1 130	81.0	1 078	77.3	24	1.7
All Airlines	46 758	46 131	37 796	81.9	36 513	79.2	627	1.3

Total airline network data (including routes not shown in this report).

Table 2 Top ten routes for on time performance for September 2012 (participating airlines only)

<i>Departures</i>		<i>Arrivals</i>	
<i>Route</i>	<i>On Time (%)</i>	<i>Route</i>	<i>On Time</i>
Adelaide-Gold Coast	96.9	Adelaide-Gold Coast	100.0
Gold Coast-Adelaide	96.9	Gold Coast-Adelaide	96.9
Brisbane-Proserpine	96.3	Brisbane-Darwin	92.6
Canberra-Adelaide	94.7	Canberra-Adelaide	92.0
Cairns-Brisbane	91.6	Sydney-Townsville	91.4
Brisbane-Adelaide	91.3	Melbourne-Canberra	90.2
Melbourne-Adelaide	91.2	Ayers Rock-Sydney	89.7
Canberra-Brisbane	89.7	Adelaide-Melbourne	89.3
Melbourne-Canberra	89.6	Brisbane-Adelaide	89.3
Mildura-Melbourne	89.4	Brisbane-Proserpine	88.8

Table 3 Top ten airports for on time performance for September 2012 (participating airlines and reported routes only)

<i>Departures</i>		<i>Arrivals</i>	
<i>Airport</i>	<i>On Time (%)</i>	<i>Airport</i>	<i>On Time</i>
Mildura	89.4	Proserpine	88.8
Proserpine	88.8	Emerald	87.7
Cairns	88.2	Townsville	86.3
Port Lincoln	87.0	Adelaide	85.0
Townsville	86.3	Darwin	84.8
Adelaide	86.0	Cairns	84.5
Canberra	85.5	Sunshine Coast	83.4
Darwin	84.8	Port Hedland	83.3
Brisbane	84.5	Port Lincoln	82.9
Emerald	83.1	Mackay	82.4



## Total industry on time performance

Figure 1 On time performance (by month from September 2009)—Total Industry

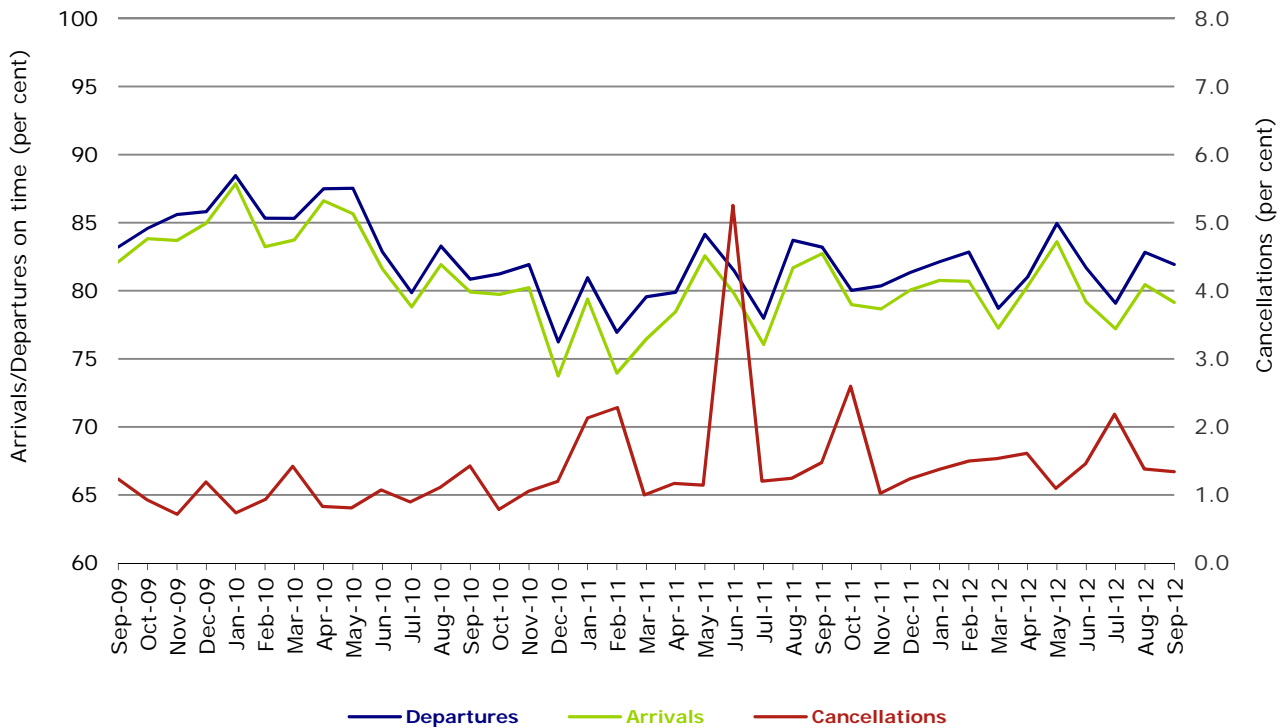
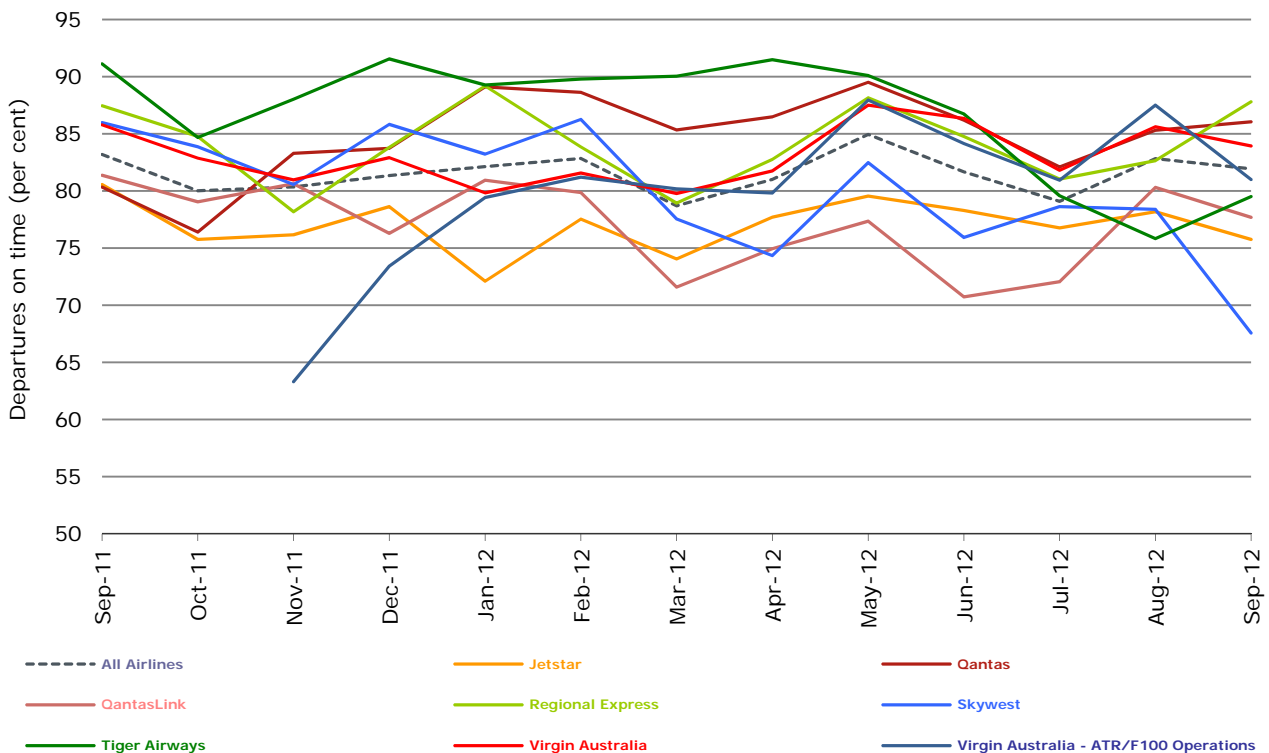
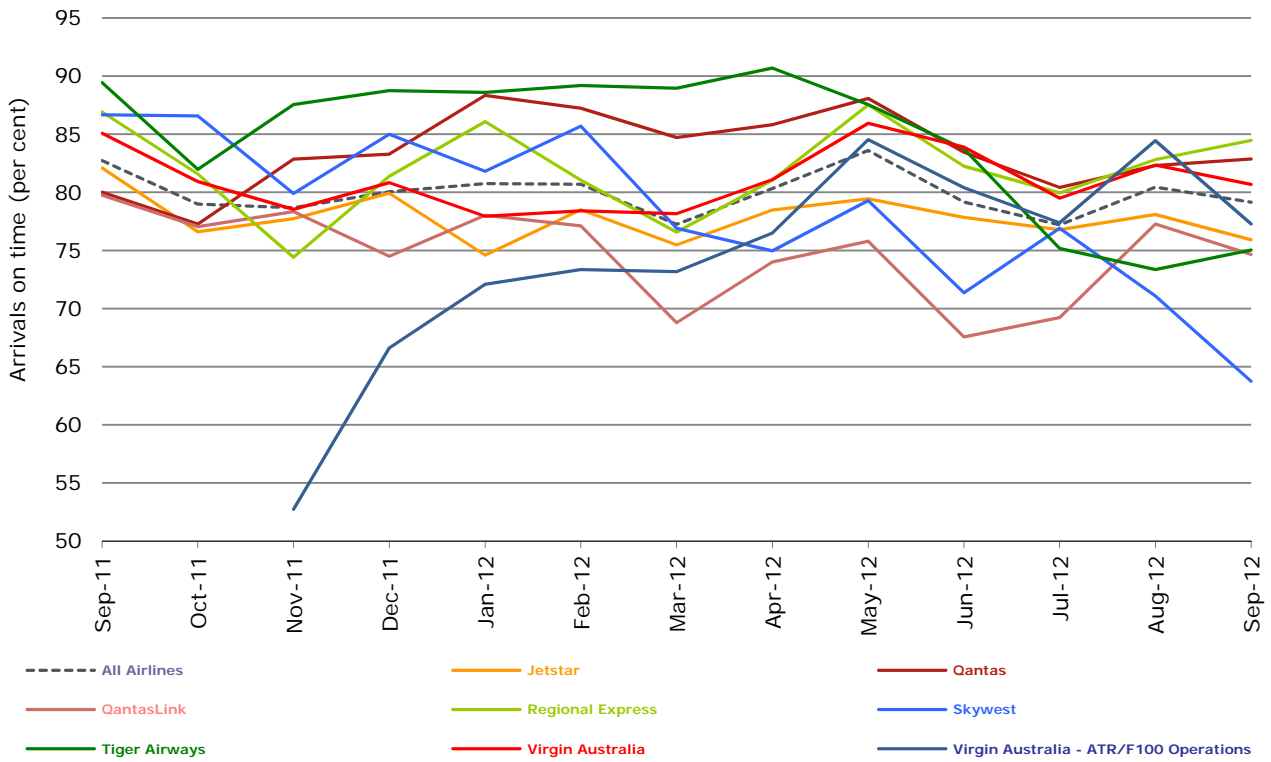


Figure 2 Departures on time (by month from September 2011)



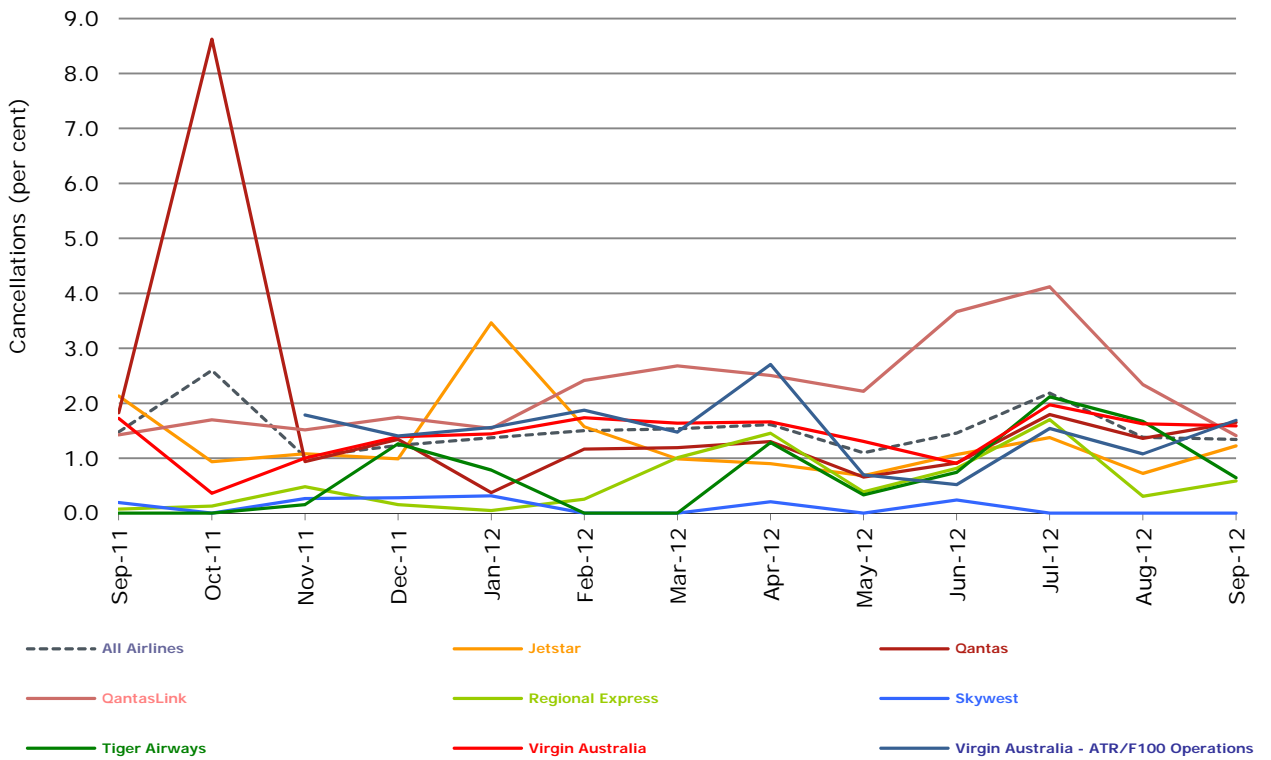
Virgin Australia - ATR/F100 Operations commenced in November 2011.

Figure 3 Arrivals on time (by month from September 2011)



Virgin Australia - ATR/F100 Operations commenced in November 2011.

Figure 4 Cancellations (by month from September 2011)



Virgin Australia - ATR/F100 Operations commenced in November 2011.

## Major domestic airlines on time performance

Figure 5 On time performance (by month from September 2009)—Jetstar

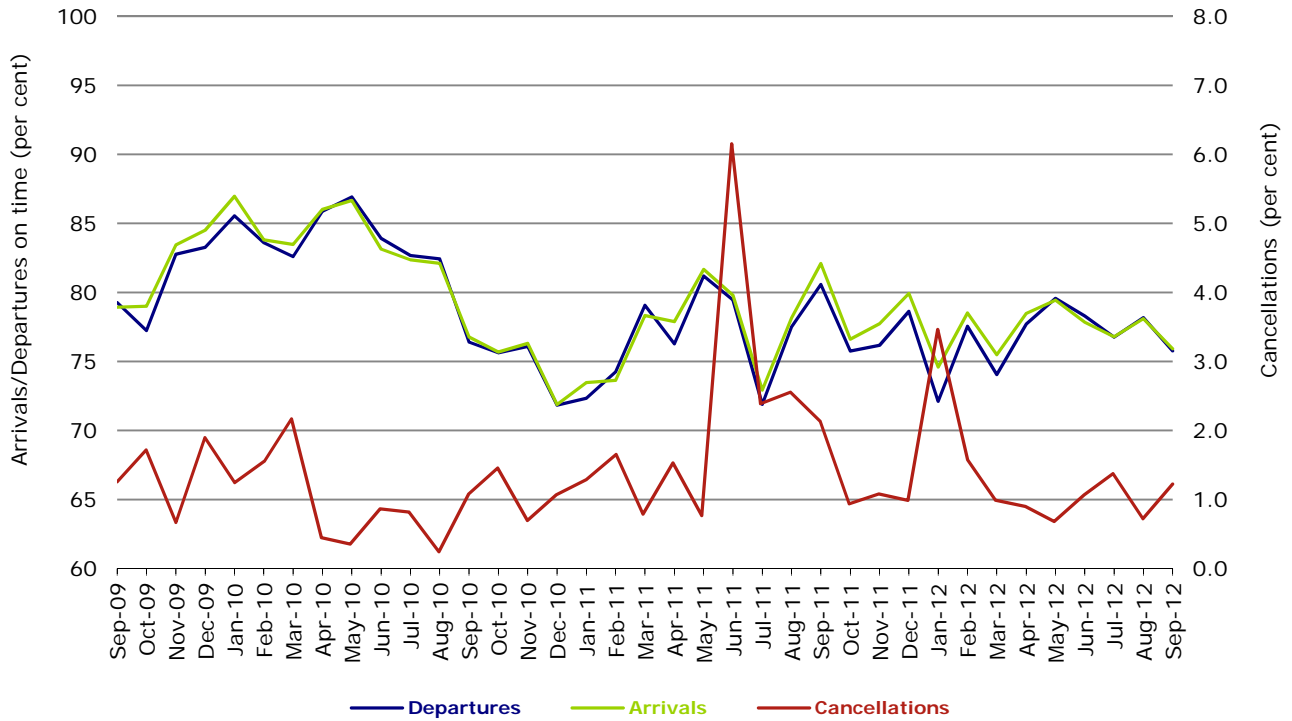


Figure 6 On time performance (by month from September 2009)—Qantas

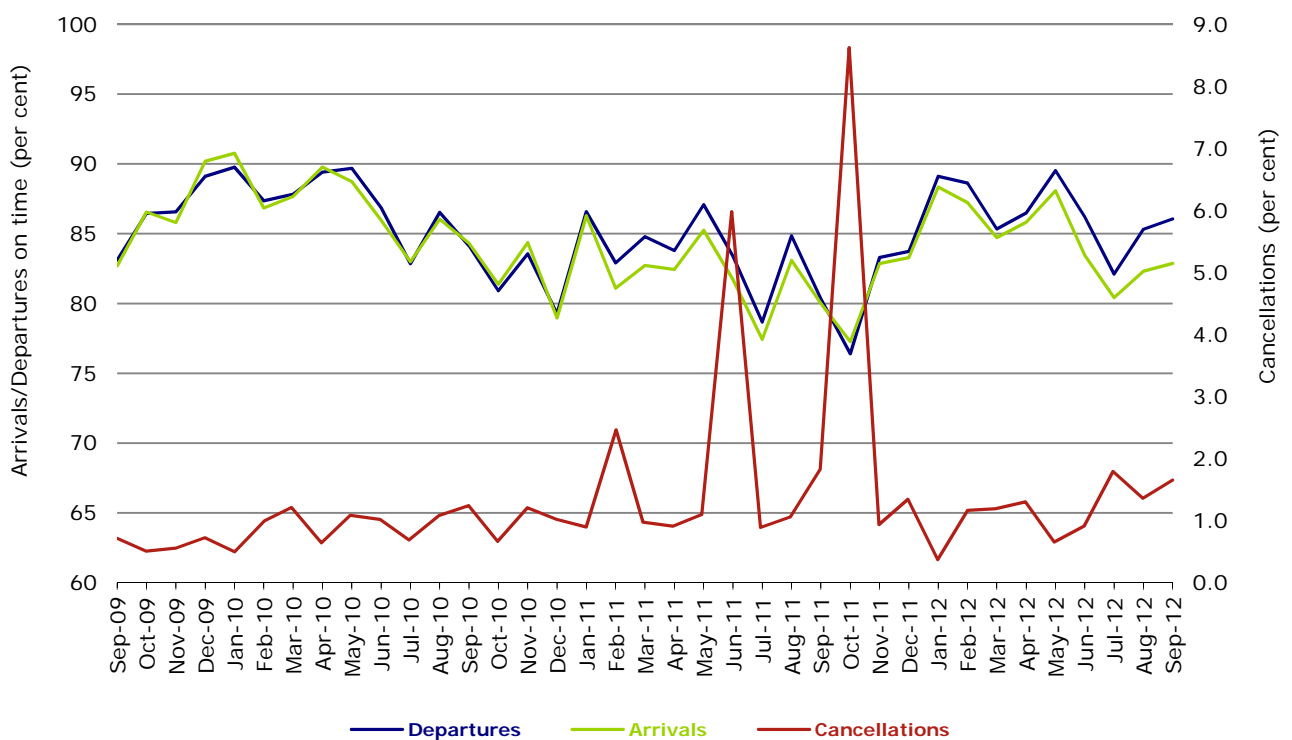
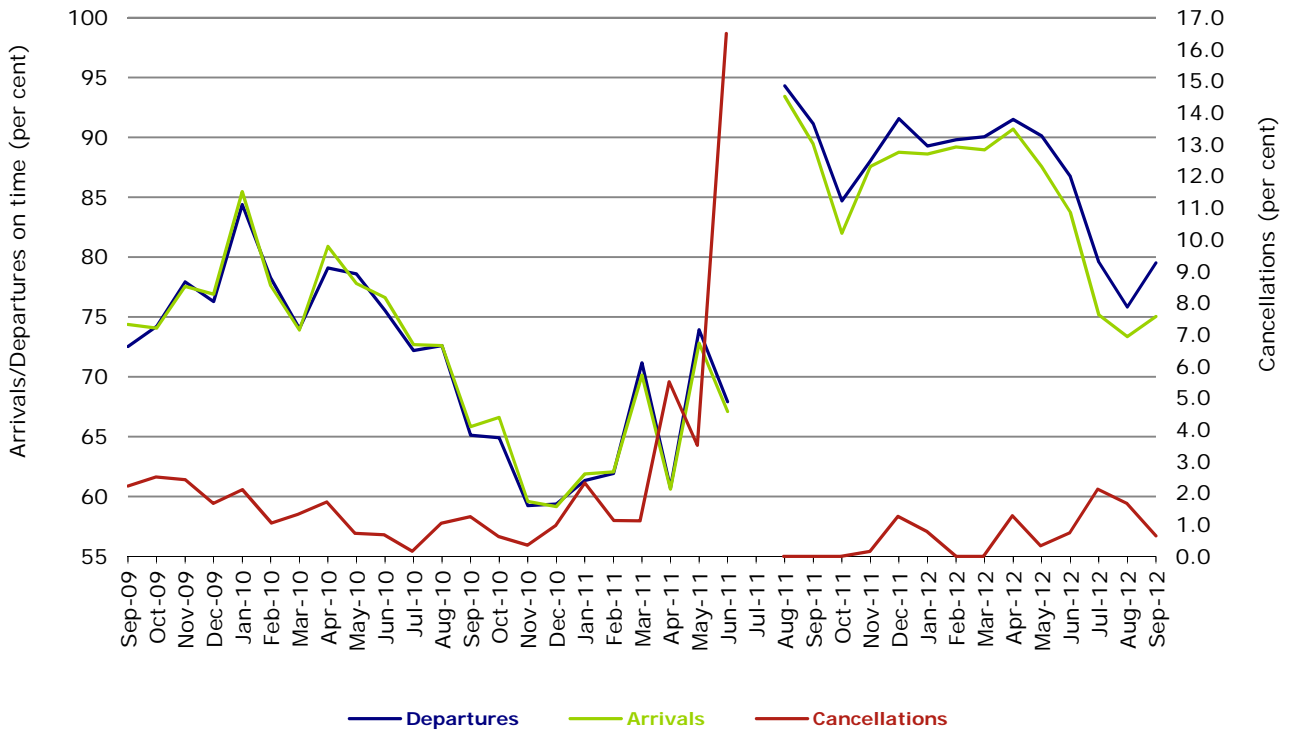
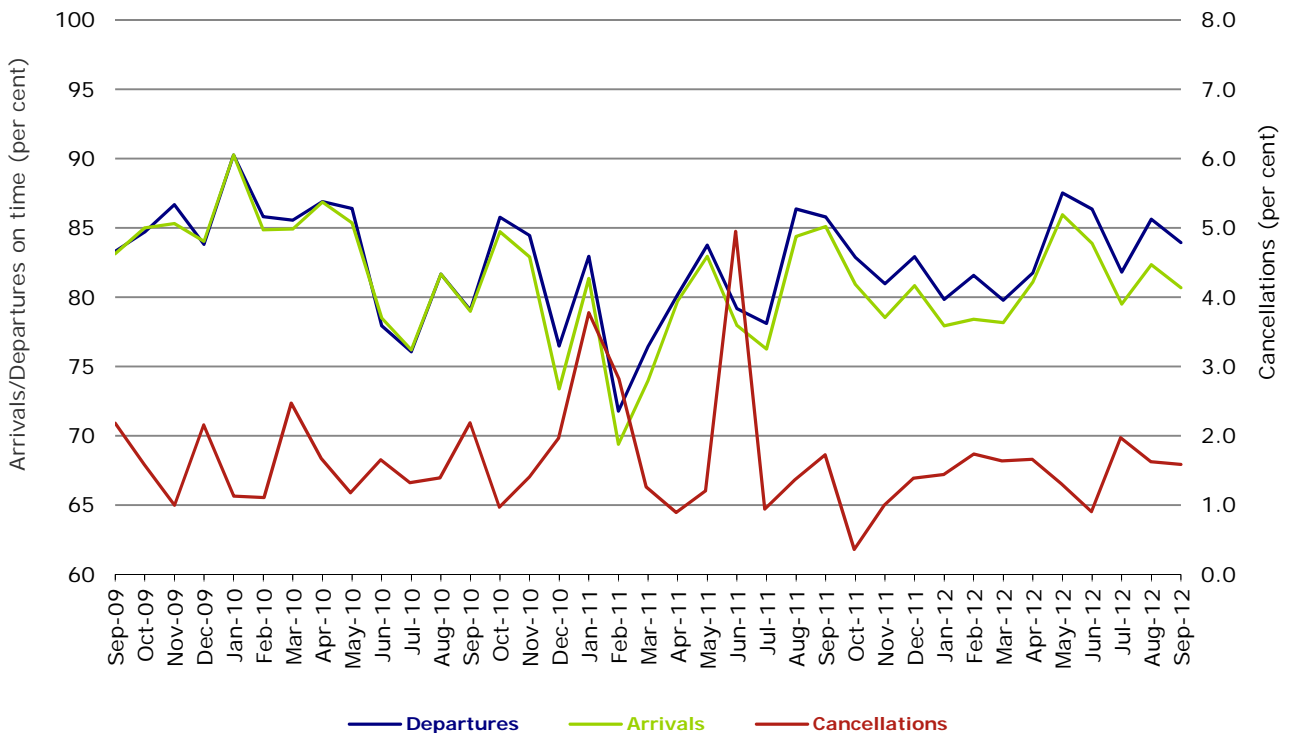


Figure 7 On time performance (by month from September 2009)—Tiger Airways



No data for Tiger Airways for July 2011 as it was grounded by CASA from 2/7/2011 to 11/8/2011.

Figure 8 On time performance (by month from September 2009)—Virgin Australia



## Major regional airlines on time performance

Figure 9 On time performance (by month from September 2009)—QantasLink

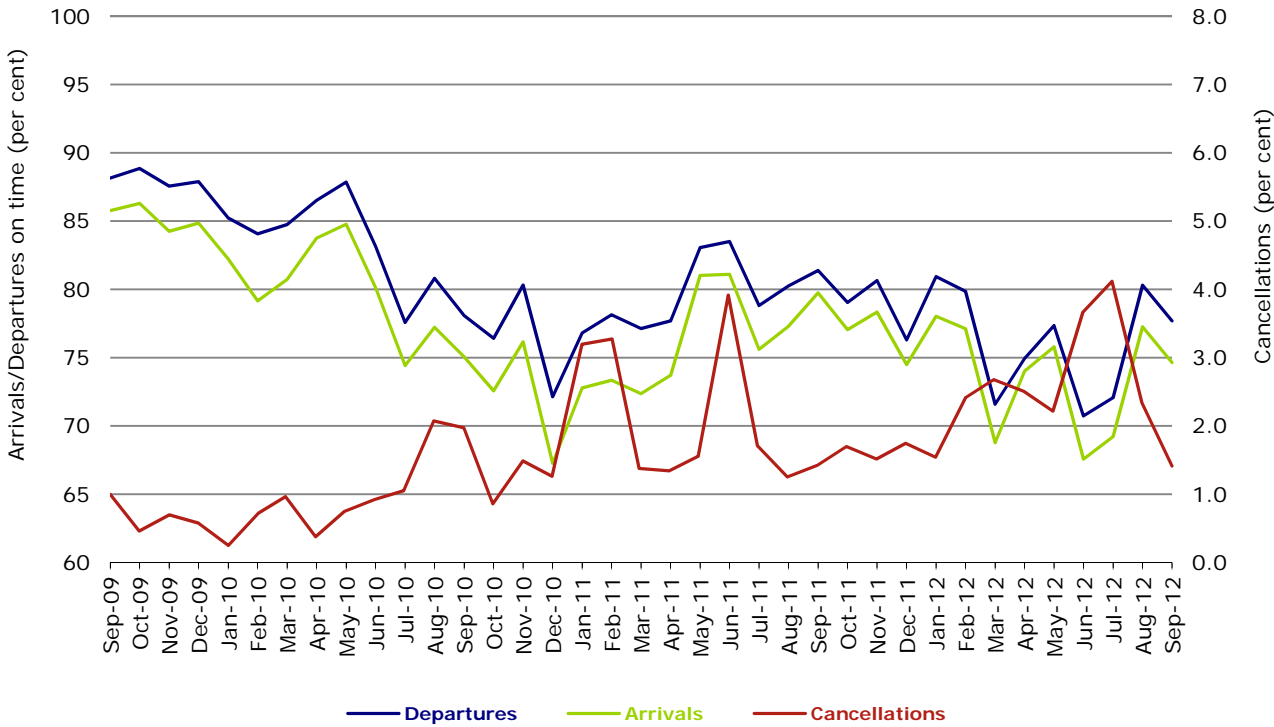


Figure 10 On time performance (by month from September 2009)—Regional Express

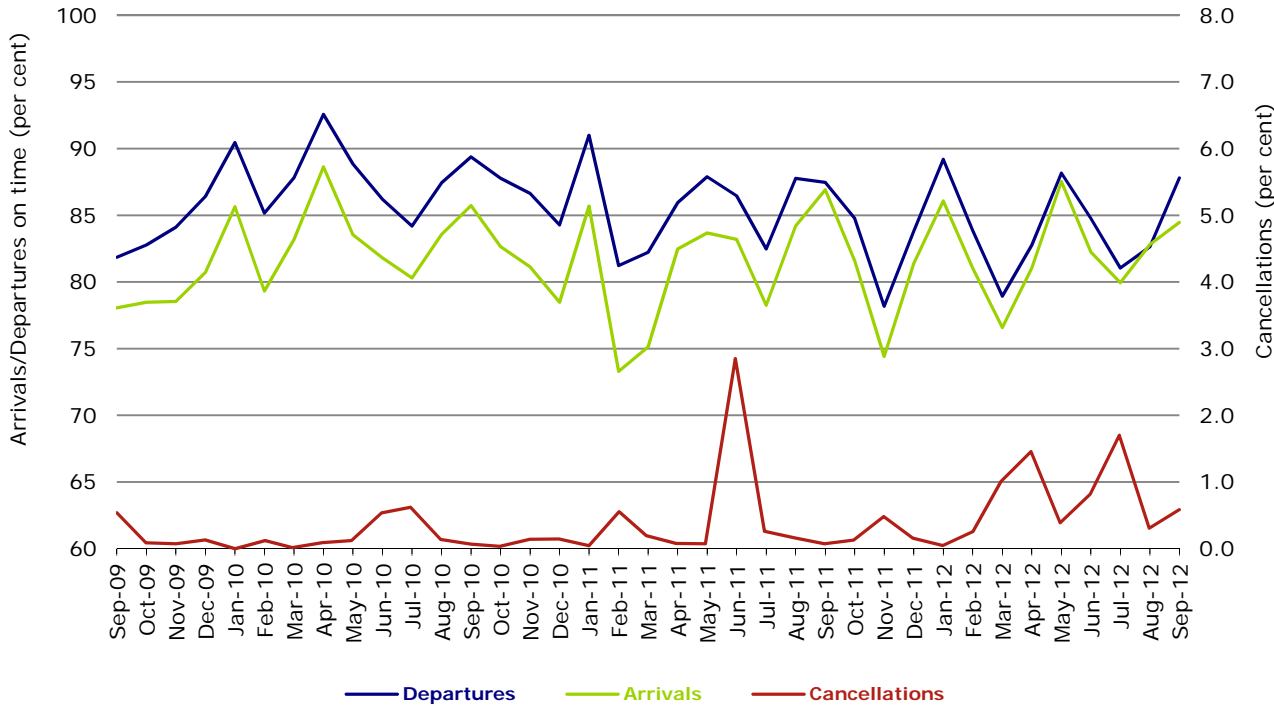


Figure 11 On time performance (by month from September 2009)—Skywest

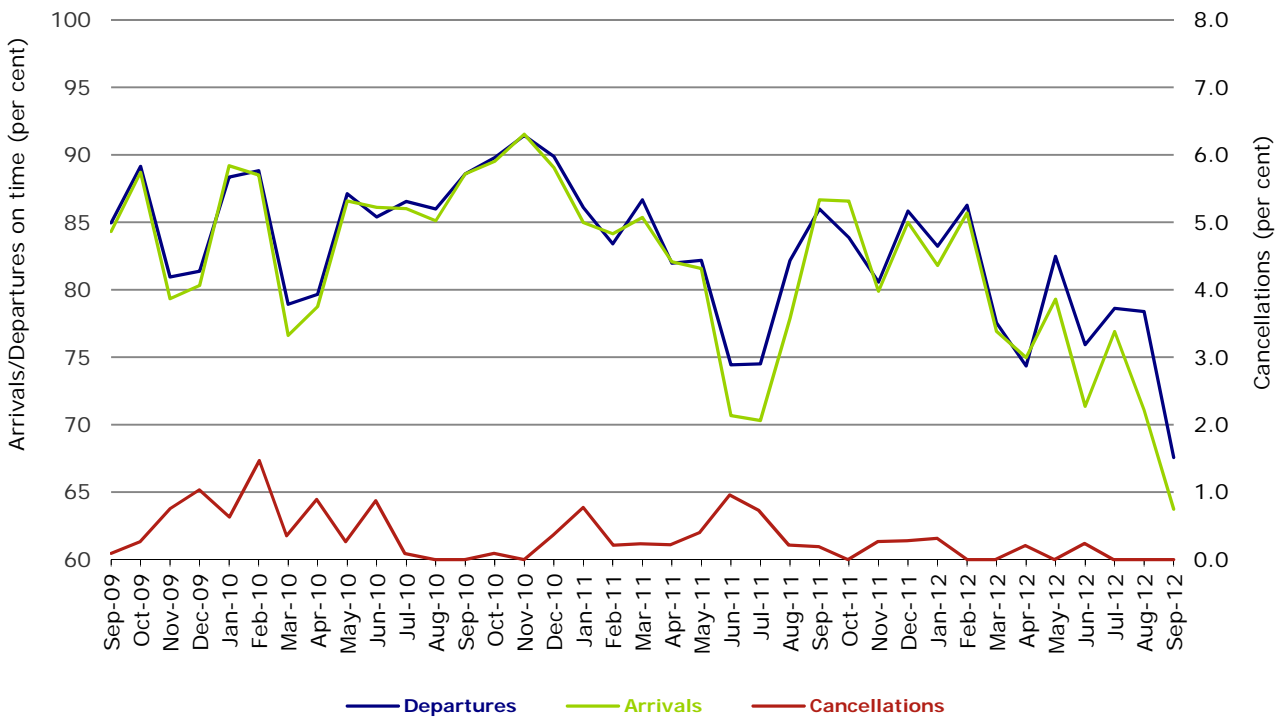
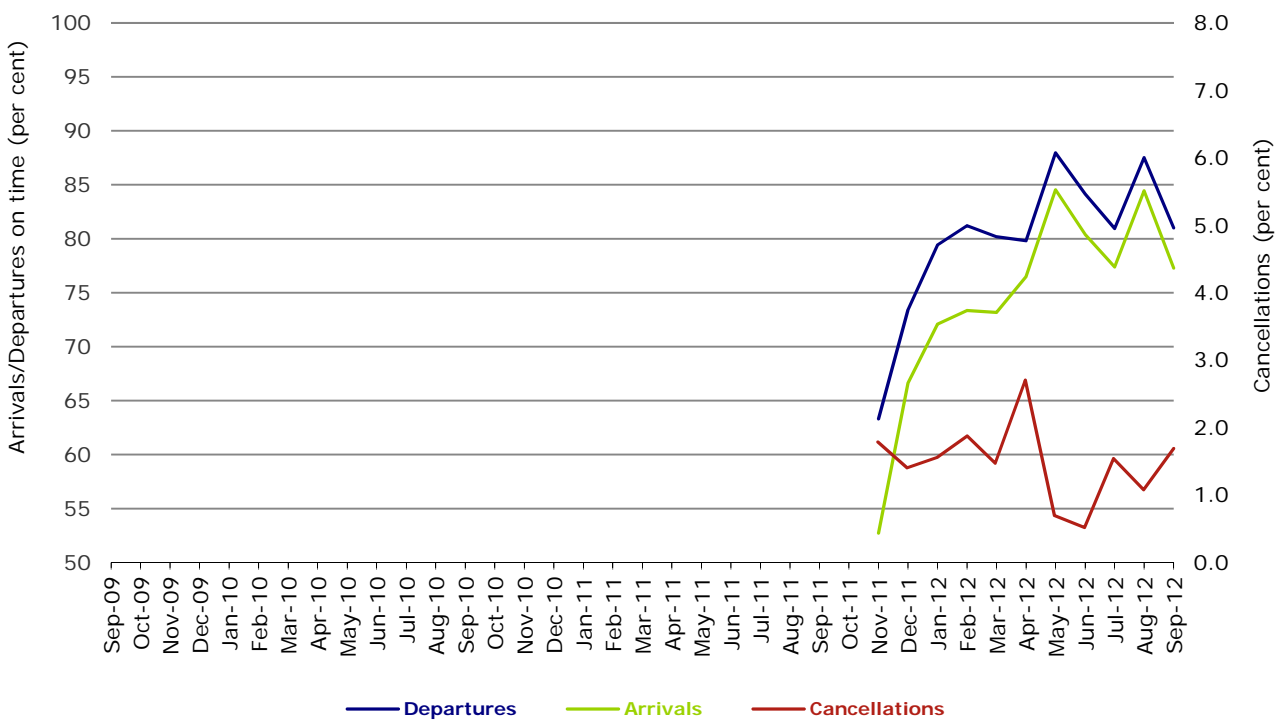


Figure 12 On time performance (by month from September 2009) Virgin Australia - ATR/F100 Operations



Virgin Australia - ATR/F100 Operations commenced in November 2011.

## Individual routes

On time performance is reported for all routes where the passenger load averages over 8000 passengers per month over the previous six months, and where two or more airlines operate in competition on those routes. There are now 57 routes which meet this definition. Over time, however, routes which meet this definition may change as airline networks and traffic levels vary.

	<i>Sectors</i>		<i>Departures On Time</i>		<i>Arrivals On Time</i>		<i>Cancellations</i>	
	<i>Sched.</i>	<i>Flown</i>	<i>No.</i>	<i>%</i>	<i>No.</i>	<i>%</i>	<i>No.</i>	<i>%</i>
<b>Adelaide-Brisbane</b>								
Jetstar	30	30	29	96.7	29	96.7	0	0.0
Qantas	106	106	89	84.0	89	84.0	0	0.0
Virgin Australia	120	118	94	79.7	103	87.3	2	1.7
All Airlines	256	254	212	83.5	221	87.0	2	0.8
<b>Adelaide-Canberra</b>								
Qantas	45	45	37	82.2	39	86.7	0	0.0
Virgin Australia	25	25	23	92.0	23	92.0	0	0.0
All Airlines	70	70	60	85.7	62	88.6	0	0.0
<b>Adelaide-Gold Coast</b>								
Jetstar	35	35	33	94.3	35	100.0	0	0.0
Virgin Australia	30	29	29	100.0	29	100.0	1	3.3
All Airlines	65	64	62	96.9	64	100.0	1	1.5
<b>Adelaide-Melbourne</b>								
Jetstar	85	83	66	79.5	67	80.7	2	2.4
Qantas	300	292	253	86.6	261	89.4	8	2.7
QantasLink	18	17	14	82.4	14	82.4	1	5.6
Virgin Australia	277	274	247	90.1	253	92.3	3	1.1
All Airlines	680	666	580	87.1	595	89.3	14	2.1
<b>Adelaide-Perth</b>								
Jetstar	39	39	29	74.4	26	66.7	0	0.0
Qantas	107	107	96	89.7	87	81.3	0	0.0
Virgin Australia	61	61	55	90.2	47	77.0	0	0.0
All Airlines	207	207	180	87.0	160	77.3	0	0.0
<b>Adelaide-Port Lincoln</b>								
QantasLink	98	94	83	88.3	75	79.8	4	4.1
Regional Express	200	198	177	89.4	167	84.3	2	1.0
All Airlines	298	292	260	89.0	242	82.9	6	2.0
<b>Adelaide-Sydney</b>								
Jetstar	89	88	60	68.2	58	65.9	1	1.1
Qantas	271	265	226	85.3	235	88.7	6	2.2
Virgin Australia	169	169	144	85.2	149	88.2	0	0.0
All Airlines	529	522	430	82.4	442	84.7	7	1.3
<b>Albury-Sydney</b>								
QantasLink	115	115	61	53.0	65	56.5	0	0.0
Regional Express	109	109	97	89.0	89	81.7	0	0.0
Virgin Australia	58	58	47	81.0	48	82.8	0	0.0
All Airlines	282	282	205	72.7	202	71.6	0	0.0
<b>Ayers Rock-Sydney</b>								
Qantas	30	29	23	79.3	26	89.7	1	3.3
Virgin Australia	30	29	24	82.8	26	89.7	1	3.3
All Airlines	60	58	47	81.0	52	89.7	2	3.3

	<i>Sectors</i>		<i>Departures On Time</i>		<i>Arrivals On Time</i>		<i>Cancellations</i>	
	<i>Sched.</i>	<i>Flown</i>	<i>No.</i>	<i>%</i>	<i>No.</i>	<i>%</i>	<i>No.</i>	<i>%</i>
<b>Ballina-Sydney</b>								
Jetstar	52	52	40	76.9	35	67.3	0	0.0
Regional Express	24	24	18	75.0	14	58.3	0	0.0
Virgin Australia	30	30	28	93.3	20	66.7	0	0.0
All Airlines	106	106	86	81.1	69	65.1	0	0.0
<b>Brisbane-Adelaide</b>								
Jetstar	30	30	30	100.0	30	100.0	0	0.0
Qantas	105	105	91	86.7	91	86.7	0	0.0
Virgin Australia	120	118	110	93.2	105	89.0	2	1.7
All Airlines	255	253	231	91.3	226	89.3	2	0.8
<b>Brisbane-Cairns</b>								
Jetstar	104	103	90	87.4	91	88.3	1	1.0
Qantas	112	112	84	75.0	97	86.6	0	0.0
Virgin Australia	142	142	120	84.5	128	90.1	0	0.0
Virgin Australia - ATR/F100 Operations	25	25	22	88.0	20	80.0	0	0.0
All Airlines	383	382	316	82.7	336	88.0	1	0.3
<b>Brisbane-Canberra</b>								
Qantas	137	137	124	90.5	124	90.5	0	0.0
QantasLink	22	22	17	77.3	15	68.2	0	0.0
Virgin Australia	94	94	84	89.4	79	84.0	0	0.0
All Airlines	253	253	225	88.9	218	86.2	0	0.0
<b>Brisbane-Darwin</b>								
Jetstar	8	8	7	87.5	8	100.0	0	0.0
Qantas	30	30	26	86.7	28	93.3	0	0.0
Virgin Australia	30	30	25	83.3	27	90.0	0	0.0
All Airlines	68	68	58	85.3	63	92.6	0	0.0
<b>Brisbane-Emerald</b>								
QantasLink	187	183	161	88.0	158	86.3	4	2.1
Virgin Australia - ATR/F100 Operations	70	70	63	90.0	64	91.4	0	0.0
All Airlines	257	253	224	88.5	222	87.7	4	1.6
<b>Brisbane-Gladstone</b>								
QantasLink	151	150	124	82.7	123	82.0	1	0.7
Virgin Australia - ATR/F100 Operations	111	104	86	82.7	85	81.7	7	6.3
All Airlines	262	254	210	82.7	208	81.9	8	3.1
<b>Brisbane-Hamilton Island</b>								
Jetstar	18	18	14	77.8	13	72.2	0	0.0
Virgin Australia	30	30	27	90.0	29	96.7	0	0.0
All Airlines	48	48	41	85.4	42	87.5	0	0.0
<b>Brisbane-Mackay</b>								
Jetstar	107	107	79	73.8	84	78.5	0	0.0
QantasLink	50	50	43	86.0	38	76.0	0	0.0
Virgin Australia	163	162	139	85.8	141	87.0	1	0.6
All Airlines	320	319	261	81.8	263	82.4	1	0.3
<b>Brisbane-Melbourne</b>								
Jetstar	95	93	75	80.6	76	81.7	2	2.1
Qantas	410	408	348	85.3	320	78.4	2	0.5
Tiger Airways	90	90	70	77.8	61	67.8	0	0.0
Virgin Australia	358	353	319	90.4	298	84.4	5	1.4
All Airlines	953	944	812	86.0	755	80.0	9	0.9
<b>Brisbane-Newcastle</b>								
Jetstar	118	118	93	78.8	93	78.8	0	0.0
QantasLink	66	64	44	68.8	30	46.9	2	3.0
Virgin Australia - ATR/F100 Operations	61	61	48	78.7	37	60.7	0	0.0
All Airlines	245	243	185	76.1	160	65.8	2	0.8



	<i>Sectors</i>		<i>Departures On Time</i>		<i>Arrivals On Time</i>		<i>Cancellations</i>	
	<i>Sched.</i>	<i>Flown</i>	<i>No.</i>	<i>%</i>	<i>No.</i>	<i>%</i>	<i>No.</i>	<i>%</i>
<b>Brisbane-Perth</b>								
Jetstar	30	30	28	93.3	17	56.7	0	0.0
Qantas	120	120	88	73.3	91	75.8	0	0.0
Virgin Australia	71	71	61	85.9	49	69.0	0	0.0
All Airlines	221	221	177	80.1	157	71.0	0	0.0
<b>Brisbane-Proserpine</b>								
Jetstar	30	30	28	93.3	27	90.0	0	0.0
Virgin Australia	30	30	29	96.7	29	96.7	0	0.0
Virgin Australia - ATR/F100 Operations	20	20	20	100.0	15	75.0	0	0.0
All Airlines	80	80	77	96.3	71	88.8	0	0.0
<b>Brisbane-Rockhampton</b>								
QantasLink	153	153	118	77.1	125	81.7	0	0.0
Virgin Australia	79	78	66	84.6	64	82.1	1	1.3
Virgin Australia - ATR/F100 Operations	121	121	88	72.7	92	76.0	0	0.0
All Airlines	353	352	272	77.3	281	79.8	1	0.3
<b>Brisbane-Sydney</b>								
Jetstar	107	105	75	71.4	59	56.2	2	1.9
Qantas	620	603	524	86.9	476	78.9	17	2.7
Tiger Airways	113	113	89	78.8	82	72.6	0	0.0
Virgin Australia	554	536	476	88.8	443	82.6	18	3.2
All Airlines	1 394	1 357	1 164	85.8	1 060	78.1	37	2.7
<b>Brisbane-Townsville</b>								
Jetstar	30	30	21	70.0	22	73.3	0	0.0
Qantas	144	144	121	84.0	128	88.9	0	0.0
Virgin Australia	164	164	141	86.0	142	86.6	0	0.0
All Airlines	338	338	283	83.7	292	86.4	0	0.0
<b>Broome-Perth</b>								
Qantas	30	30	17	56.7	19	63.3	0	0.0
QantasLink	52	52	46	88.5	48	92.3	0	0.0
Skywest	22	22	9	40.9	8	36.4	0	0.0
Virgin Australia	57	55	44	80.0	45	81.8	2	3.5
All Airlines	161	159	116	73.0	120	75.5	2	1.2
<b>Cairns-Brisbane</b>								
Jetstar	103	103	100	97.1	88	85.4	0	0.0
Qantas	112	112	101	90.2	89	79.5	0	0.0
Virgin Australia	141	141	129	91.5	106	75.2	0	0.0
Virgin Australia - ATR/F100 Operations	25	25	19	76.0	22	88.0	0	0.0
All Airlines	381	381	349	91.6	305	80.1	0	0.0
<b>Cairns-Melbourne</b>								
Jetstar	102	102	85	83.3	80	78.4	0	0.0
Qantas	30	30	26	86.7	27	90.0	0	0.0
Tiger Airways	31	31	25	80.6	22	71.0	0	0.0
Virgin Australia	35	34	28	82.4	28	82.4	1	2.9
All Airlines	198	197	164	83.2	157	79.7	1	0.5
<b>Cairns-Sydney</b>								
Jetstar	112	108	92	85.2	79	73.1	4	3.6
Qantas	78	78	69	88.5	71	91.0	0	0.0
Virgin Australia	90	89	79	88.8	74	83.1	1	1.1
All Airlines	280	275	240	87.3	224	81.5	5	1.8
<b>Cairns-Townsville</b>								
QantasLink	180	178	156	87.6	149	83.7	2	1.1
Virgin Australia - ATR/F100 Operations	25	25	22	88.0	23	92.0	0	0.0
All Airlines	205	203	178	87.7	172	84.7	2	1.0

	<i>Sectors</i>		<i>Departures On Time</i>		<i>Arrivals On Time</i>		<i>Cancellations</i>	
	<i>Sched.</i>	<i>Flown</i>	<i>No.</i>	<i>%</i>	<i>No.</i>	<i>%</i>	<i>No.</i>	<i>%</i>
<b>Canberra-Adelaide</b>								
Qantas	50	50	48	96.0	47	94.0	0	0.0
Virgin Australia	25	25	23	92.0	22	88.0	0	0.0
All Airlines	75	75	71	94.7	69	92.0	0	0.0
<b>Canberra-Brisbane</b>								
Qantas	137	137	124	90.5	117	85.4	0	0.0
QantasLink	22	22	17	77.3	18	81.8	0	0.0
Virgin Australia	94	94	86	91.5	74	78.7	0	0.0
All Airlines	253	253	227	89.7	209	82.6	0	0.0
<b>Canberra-Melbourne</b>								
Qantas	245	245	224	91.4	216	88.2	0	0.0
QantasLink	40	36	28	77.8	27	75.0	4	10.0
Virgin Australia	164	160	140	87.5	140	87.5	4	2.4
All Airlines	449	441	392	88.9	383	86.8	8	1.8
<b>Canberra-Sydney</b>								
Qantas	155	154	136	88.3	134	87.0	1	0.6
QantasLink	389	373	281	75.3	279	74.8	16	4.1
Virgin Australia	88	82	69	84.1	62	75.6	6	6.8
Virgin Australia - ATR/F100 Operations	157	155	134	86.5	132	85.2	2	1.3
All Airlines	789	764	620	81.2	607	79.5	25	3.2
<b>Coffs Harbour-Sydney</b>								
QantasLink	140	140	99	70.7	99	70.7	0	0.0
Virgin Australia	60	58	48	82.8	47	81.0	2	3.3
All Airlines	200	198	147	74.2	146	73.7	2	1.0
<b>Darwin-Brisbane</b>								
Jetstar	8	8	8	100.0	8	100.0	0	0.0
Qantas	30	30	23	76.7	23	76.7	0	0.0
Virgin Australia	30	30	28	93.3	27	90.0	0	0.0
All Airlines	68	68	59	86.8	58	85.3	0	0.0
<b>Darwin-Melbourne</b>								
Jetstar	11	11	7	63.6	6	54.5	0	0.0
Qantas	15	15	12	80.0	14	93.3	0	0.0
Virgin Australia	30	29	27	93.1	27	93.1	1	3.3
All Airlines	56	55	46	83.6	47	85.5	1	1.8
<b>Darwin-Perth</b>								
Qantas	30	30	21	70.0	23	76.7	0	0.0
Virgin Australia	25	25	24	96.0	25	100.0	0	0.0
All Airlines	55	55	45	81.8	48	87.3	0	0.0
<b>Darwin-Sydney</b>								
Jetstar	30	30	25	83.3	26	86.7	0	0.0
Qantas	51	51	48	94.1	44	86.3	0	0.0
Virgin Australia	30	30	22	73.3	20	66.7	0	0.0
All Airlines	111	111	95	85.6	90	81.1	0	0.0
<b>Dubbo-Sydney</b>								
QantasLink	108	108	72	66.7	61	56.5	0	0.0
Regional Express	167	166	146	88.0	138	83.1	1	0.6
All Airlines	275	274	218	79.6	199	72.6	1	0.4
<b>Emerald-Brisbane</b>								
QantasLink	188	184	149	81.0	149	81.0	4	2.1
Virgin Australia - ATR/F100 Operations	70	70	62	88.6	59	84.3	0	0.0
All Airlines	258	254	211	83.1	208	81.9	4	1.6

	<i>Sectors</i>		<i>Departures On Time</i>		<i>Arrivals On Time</i>		<i>Cancellations</i>	
	<i>Sched.</i>	<i>Flown</i>	<i>No.</i>	<i>%</i>	<i>No.</i>	<i>%</i>	<i>No.</i>	<i>%</i>
<b>Geraldton-Perth</b>								
QantasLink	50	50	34	68.0	26	52.0	0	0.0
Skywest	80	80	45	56.3	42	52.5	0	0.0
All Airlines	130	130	79	60.8	68	52.3	0	0.0
<b>Gladstone-Brisbane</b>								
QantasLink	171	169	135	79.9	126	74.6	2	1.2
Virgin Australia - ATR/F100 Operations	111	104	82	78.8	76	73.1	7	6.3
All Airlines	282	273	217	79.5	202	74.0	9	3.2
<b>Gold Coast-Adelaide</b>								
Jetstar	35	35	34	97.1	33	94.3	0	0.0
Virgin Australia	30	29	28	96.6	29	100.0	1	3.3
All Airlines	65	64	62	96.9	62	96.9	1	1.5
<b>Gold Coast-Melbourne</b>								
Jetstar	227	226	174	77.0	162	71.7	1	0.4
Tiger Airways	86	86	56	65.1	42	48.8	0	0.0
Virgin Australia	188	186	165	88.7	163	87.6	2	1.1
All Airlines	501	498	395	79.3	367	73.7	3	0.6
<b>Gold Coast-Sydney</b>								
Jetstar	349	347	274	79.0	268	77.2	2	0.6
Tiger Airways	116	114	88	77.2	73	64.0	2	1.7
Virgin Australia	317	315	265	84.1	247	78.4	2	0.6
All Airlines	782	776	627	80.8	588	75.8	6	0.8
<b>Hamilton Island-Brisbane</b>								
Jetstar	18	18	14	77.8	14	77.8	0	0.0
Virgin Australia	30	30	23	76.7	23	76.7	0	0.0
All Airlines	48	48	37	77.1	37	77.1	0	0.0
<b>Hamilton Island-Sydney</b>								
Jetstar	30	30	14	46.7	14	46.7	0	0.0
Virgin Australia	31	30	15	50.0	14	46.7	1	3.2
All Airlines	61	60	29	48.3	28	46.7	1	1.6
<b>Hobart-Melbourne</b>								
Jetstar	151	150	113	75.3	112	74.7	1	0.7
Qantas	60	60	58	96.7	54	90.0	0	0.0
Virgin Australia	138	137	98	71.5	100	73.0	1	0.7
All Airlines	349	347	269	77.5	266	76.7	2	0.6
<b>Hobart-Sydney</b>								
Jetstar	86	85	60	70.6	58	68.2	1	1.2
Qantas	30	30	25	83.3	27	90.0	0	0.0
Virgin Australia	60	60	30	50.0	35	58.3	0	0.0
All Airlines	176	175	115	65.7	120	68.6	1	0.6
<b>Kalgoorlie-Perth</b>								
Qantas	65	65	54	83.1	44	67.7	0	0.0
QantasLink	20	20	17	85.0	16	80.0	0	0.0
Skywest	55	55	30	54.5	27	49.1	0	0.0
All Airlines	140	140	101	72.1	87	62.1	0	0.0
<b>Karratha-Perth</b>								
Qantas	183	180	153	85.0	147	81.7	3	1.6
QantasLink	61	60	50	83.3	48	80.0	1	1.6
Virgin Australia	47	46	32	69.6	25	54.3	1	2.1
All Airlines	291	286	235	82.2	220	76.9	5	1.7

	<i>Sectors</i>		<i>Departures On Time</i>		<i>Arrivals On Time</i>		<i>Cancellations</i>	
	<i>Sched.</i>	<i>Flown</i>	<i>No.</i>	<i>%</i>	<i>No.</i>	<i>%</i>	<i>No.</i>	<i>%</i>
<b>Launceston-Melbourne</b>								
Jetstar	126	123	81	65.9	72	58.5	3	2.4
QantasLink	72	70	51	72.9	48	68.6	2	2.8
Virgin Australia	127	127	104	81.9	100	78.7	0	0.0
All Airlines	325	320	236	73.8	220	68.8	5	1.5
<b>Launceston-Sydney</b>								
Jetstar	30	30	20	66.7	22	73.3	0	0.0
Virgin Australia	30	30	15	50.0	18	60.0	0	0.0
All Airlines	60	60	35	58.3	40	66.7	0	0.0
<b>Mackay-Brisbane</b>								
Jetstar	107	107	80	74.8	75	70.1	0	0.0
QantasLink	50	50	32	64.0	34	68.0	0	0.0
Virgin Australia	163	162	140	86.4	125	77.2	1	0.6
All Airlines	320	319	252	79.0	234	73.4	1	0.3
<b>Melbourne-Adelaide</b>								
Jetstar	85	84	74	88.1	73	86.9	1	1.2
Qantas	300	294	273	92.9	245	83.3	6	2.0
QantasLink	18	17	14	82.4	13	76.5	1	5.6
Virgin Australia	278	275	250	90.9	242	88.0	3	1.1
All Airlines	681	670	611	91.2	573	85.5	11	1.6
<b>Melbourne-Brisbane</b>								
Jetstar	94	92	59	64.1	54	58.7	2	2.1
Qantas	411	410	360	87.8	340	82.9	1	0.2
Tiger Airways	90	90	75	83.3	69	76.7	0	0.0
Virgin Australia	356	352	299	84.9	292	83.0	4	1.1
All Airlines	951	944	793	84.0	755	80.0	7	0.7
<b>Melbourne-Cairns</b>								
Jetstar	103	103	78	75.7	89	86.4	0	0.0
Qantas	30	30	25	83.3	26	86.7	0	0.0
Tiger Airways	31	31	28	90.3	27	87.1	0	0.0
Virgin Australia	35	35	29	82.9	29	82.9	0	0.0
All Airlines	199	199	160	80.4	171	85.9	0	0.0
<b>Melbourne-Canberra</b>								
Qantas	245	244	223	91.4	226	92.6	1	0.4
QantasLink	40	36	33	91.7	32	88.9	4	10.0
Virgin Australia	164	161	139	86.3	140	87.0	3	1.8
All Airlines	449	441	395	89.6	398	90.2	8	1.8
<b>Melbourne-Darwin</b>								
Jetstar	11	11	7	63.6	7	63.6	0	0.0
Qantas	15	15	15	100.0	14	93.3	0	0.0
Virgin Australia	30	30	26	86.7	26	86.7	0	0.0
All Airlines	56	56	48	85.7	47	83.9	0	0.0
<b>Melbourne-Gold Coast</b>								
Jetstar	227	226	157	69.5	175	77.4	1	0.4
Tiger Airways	86	86	67	77.9	67	77.9	0	0.0
Virgin Australia	187	186	150	80.6	168	90.3	1	0.5
All Airlines	500	498	374	75.1	410	82.3	2	0.4
<b>Melbourne-Hobart</b>								
Jetstar	150	150	111	74.0	113	75.3	0	0.0
Qantas	60	60	46	76.7	44	73.3	0	0.0
Virgin Australia	138	137	101	73.7	99	72.3	1	0.7
All Airlines	348	347	258	74.4	256	73.8	1	0.3

	<i>Sectors</i>		<i>Departures On Time</i>		<i>Arrivals On Time</i>		<i>Cancellations</i>	
	<i>Sched.</i>	<i>Flown</i>	<i>No.</i>	<i>%</i>	<i>No.</i>	<i>%</i>	<i>No.</i>	<i>%</i>
<b>Melbourne-Launceston</b>								
Jetstar	126	123	91	74.0	92	74.8	3	2.4
QantasLink	72	69	45	65.2	41	59.4	3	4.2
Virgin Australia	127	127	96	75.6	110	86.6	0	0.0
All Airlines	325	319	232	72.7	243	76.2	6	1.8
<b>Melbourne-Mildura</b>								
QantasLink	85	85	66	77.6	63	74.1	0	0.0
Regional Express	84	84	79	94.0	73	86.9	0	0.0
Virgin Australia	30	30	27	90.0	25	83.3	0	0.0
All Airlines	199	199	172	86.4	161	80.9	0	0.0
<b>Melbourne-Newcastle</b>								
Jetstar	101	101	77	76.2	80	79.2	0	0.0
Virgin Australia	30	29	25	86.2	26	89.7	1	3.3
All Airlines	131	130	102	78.5	106	81.5	1	0.8
<b>Melbourne-Perth</b>								
Jetstar	82	79	57	72.2	41	51.9	3	3.7
Qantas	214	214	189	88.3	166	77.6	0	0.0
Tiger Airways	82	82	67	81.7	59	72.0	0	0.0
Virgin Australia	153	153	132	86.3	89	58.2	0	0.0
All Airlines	531	528	445	84.3	355	67.2	3	0.6
<b>Melbourne-Sunshine Coast</b>								
Jetstar	72	71	45	63.4	54	76.1	1	1.4
Virgin Australia	30	29	24	82.8	24	82.8	1	3.3
All Airlines	102	100	69	69.0	78	78.0	2	2.0
<b>Melbourne-Sydney</b>								
Jetstar	326	312	208	66.7	225	72.1	14	4.3
Qantas	944	896	789	88.1	755	84.3	48	5.1
Tiger Airways	256	253	218	86.2	221	87.4	3	1.2
Virgin Australia	776	751	644	85.8	614	81.8	25	3.2
All Airlines	2 302	2 212	1 859	84.0	1 815	82.1	90	3.9
<b>Mildura-Melbourne</b>								
QantasLink	85	85	69	81.2	67	78.8	0	0.0
Regional Express	84	84	83	98.8	81	96.4	0	0.0
Virgin Australia	30	30	26	86.7	27	90.0	0	0.0
All Airlines	199	199	178	89.4	175	87.9	0	0.0
<b>Newcastle-Brisbane</b>								
Jetstar	118	118	87	73.7	85	72.0	0	0.0
QantasLink	65	64	32	50.0	32	50.0	1	1.5
Virgin Australia - ATR/F100 Operations	60	60	32	53.3	32	53.3	0	0.0
All Airlines	243	242	151	62.4	149	61.6	1	0.4
<b>Newcastle-Melbourne</b>								
Jetstar	101	101	86	85.1	73	72.3	0	0.0
Virgin Australia	30	29	24	82.8	24	82.8	1	3.3
All Airlines	131	130	110	84.6	97	74.6	1	0.8
<b>Newman-Perth</b>								
Qantas	129	125	99	79.2	93	74.4	4	3.1
QantasLink	26	26	26	100.0	25	96.2	0	0.0
Virgin Australia	28	28	19	67.9	18	64.3	0	0.0
All Airlines	183	179	144	80.4	136	76.0	4	2.2
<b>Perth-Adelaide</b>								
Jetstar	38	37	15	40.5	22	59.5	1	2.6
Qantas	106	106	83	78.3	92	86.8	0	0.0
Virgin Australia	62	62	50	80.6	58	93.5	0	0.0
All Airlines	206	205	148	72.2	172	83.9	1	0.5

	<i>Sectors</i>		<i>Departures On Time</i>		<i>Arrivals On Time</i>		<i>Cancellations</i>	
	<i>Sched.</i>	<i>Flown</i>	<i>No.</i>	<i>%</i>	<i>No.</i>	<i>%</i>	<i>No.</i>	<i>%</i>
<b>Perth-Brisbane</b>								
Jetstar	30	30	5	16.7	24	80.0	0	0.0
Qantas	120	120	96	80.0	93	77.5	0	0.0
Virgin Australia	71	71	63	88.7	62	87.3	0	0.0
All Airlines	221	221	164	74.2	179	81.0	0	0.0
<b>Perth-Broome</b>								
Qantas	30	30	22	73.3	21	70.0	0	0.0
QantasLink	51	51	45	88.2	43	84.3	0	0.0
Skywest	21	21	10	47.6	12	57.1	0	0.0
Virgin Australia	57	55	47	85.5	44	80.0	2	3.5
All Airlines	159	157	124	79.0	120	76.4	2	1.3
<b>Perth-Darwin</b>								
Qantas	30	30	25	83.3	23	76.7	0	0.0
Virgin Australia	25	25	22	88.0	21	84.0	0	0.0
All Airlines	55	55	47	85.5	44	80.0	0	0.0
<b>Perth-Geraldton</b>								
QantasLink	50	50	41	82.0	39	78.0	0	0.0
Skywest	54	54	30	55.6	27	50.0	0	0.0
All Airlines	104	104	71	68.3	66	63.5	0	0.0
<b>Perth-Kalgoorlie</b>								
Qantas	65	65	57	87.7	54	83.1	0	0.0
QantasLink	20	20	19	95.0	19	95.0	0	0.0
Skywest	79	79	58	73.4	46	58.2	0	0.0
All Airlines	164	164	134	81.7	119	72.6	0	0.0
<b>Perth-Karratha</b>								
Qantas	183	180	159	88.3	148	82.2	3	1.6
QantasLink	61	61	54	88.5	49	80.3	0	0.0
Virgin Australia	47	47	38	80.9	35	74.5	0	0.0
All Airlines	291	288	251	87.2	232	80.6	3	1.0
<b>Perth-Melbourne</b>								
Jetstar	82	80	45	56.3	66	82.5	2	2.4
Qantas	214	212	161	75.9	188	88.7	2	0.9
Tiger Airways	82	82	46	56.1	50	61.0	0	0.0
Virgin Australia	153	153	132	86.3	105	68.6	0	0.0
All Airlines	531	527	384	72.9	409	77.6	4	0.8
<b>Perth-Newman</b>								
Qantas	129	125	102	81.6	99	79.2	4	3.1
QantasLink	26	26	26	100.0	26	100.0	0	0.0
Virgin Australia	28	27	22	81.5	20	74.1	1	3.6
All Airlines	183	178	150	84.3	145	81.5	5	2.7
<b>Perth-Port Hedland</b>								
Qantas	118	118	104	88.1	98	83.1	0	0.0
QantasLink	44	42	41	97.6	37	88.1	2	4.5
Virgin Australia	56	56	48	85.7	45	80.4	0	0.0
All Airlines	218	216	193	89.4	180	83.3	2	0.9
<b>Perth-Sydney</b>								
Jetstar	47	45	10	22.2	25	55.6	2	4.3
Qantas	205	204	152	74.5	168	82.4	1	0.5
Virgin Australia	127	126	99	78.6	101	80.2	1	0.8
All Airlines	379	375	261	69.6	294	78.4	4	1.1

	<i>Sectors</i>		<i>Departures On Time</i>		<i>Arrivals On Time</i>		<i>Cancellations</i>	
	<i>Sched.</i>	<i>Flown</i>	<i>No.</i>	<i>%</i>	<i>No.</i>	<i>%</i>	<i>No.</i>	<i>%</i>
<b>Port Hedland-Perth</b>								
Qantas	118	117	81	69.2	93	79.5	1	0.8
QantasLink	45	42	37	88.1	38	90.5	3	6.7
Virgin Australia	56	55	40	72.7	39	70.9	1	1.8
All Airlines	219	214	158	73.8	170	79.4	5	2.3
<b>Port Lincoln-Adelaide</b>								
QantasLink	98	94	78	83.0	77	81.9	4	4.1
Regional Express	200	198	176	88.9	174	87.9	2	1.0
All Airlines	298	292	254	87.0	251	86.0	6	2.0
<b>Port Macquarie-Sydney</b>								
QantasLink	129	128	87	68.0	87	68.0	1	0.8
Virgin Australia - ATR/F100 Operations	60	60	44	73.3	37	61.7	0	0.0
All Airlines	189	188	131	69.7	124	66.0	1	0.5
<b>Proserpine-Brisbane</b>								
Jetstar	30	30	27	90.0	29	96.7	0	0.0
Virgin Australia	30	30	29	96.7	26	86.7	0	0.0
Virgin Australia - ATR/F100 Operations	20	20	15	75.0	8	40.0	0	0.0
All Airlines	80	80	71	88.8	63	78.8	0	0.0
<b>Rockhampton-Brisbane</b>								
QantasLink	134	133	102	76.7	95	71.4	1	0.7
Virgin Australia	82	78	61	78.2	63	80.8	4	4.9
Virgin Australia - ATR/F100 Operations	121	116	104	89.7	93	80.2	5	4.1
All Airlines	337	327	267	81.7	251	76.8	10	3.0
<b>Sunshine Coast-Melbourne</b>								
Jetstar	71	69	42	60.9	38	55.1	2	2.8
Virgin Australia	30	29	20	69.0	19	65.5	1	3.3
All Airlines	101	98	62	63.3	57	58.2	3	3.0
<b>Sunshine Coast-Sydney</b>								
Jetstar	108	107	87	81.3	80	74.8	1	0.9
Virgin Australia	35	35	25	71.4	20	57.1	0	0.0
All Airlines	143	142	112	78.9	100	70.4	1	0.7
<b>Sydney-Adelaide</b>								
Jetstar	89	89	62	69.7	61	68.5	0	0.0
Qantas	266	266	240	90.2	223	83.8	0	0.0
Virgin Australia	170	170	136	80.0	135	79.4	0	0.0
All Airlines	525	525	438	83.4	419	79.8	0	0.0
<b>Sydney-Albury</b>								
QantasLink	115	115	64	55.7	53	46.1	0	0.0
Regional Express	109	109	86	78.9	82	75.2	0	0.0
Virgin Australia	58	58	48	82.8	48	82.8	0	0.0
All Airlines	282	282	198	70.2	183	64.9	0	0.0
<b>Sydney-Ayers Rock</b>								
Qantas	30	30	26	86.7	25	83.3	0	0.0
Virgin Australia	30	30	17	56.7	17	56.7	0	0.0
All Airlines	60	60	43	71.7	42	70.0	0	0.0
<b>Sydney-Ballina</b>								
Jetstar	53	53	42	79.2	43	81.1	0	0.0
Regional Express	28	28	21	75.0	19	67.9	0	0.0
Virgin Australia	30	30	30	100.0	29	96.7	0	0.0
All Airlines	111	111	93	83.8	91	82.0	0	0.0

	<i>Sectors</i>		<i>Departures On Time</i>		<i>Arrivals On Time</i>		<i>Cancellations</i>	
	<i>Sched.</i>	<i>Flown</i>	<i>No.</i>	<i>%</i>	<i>No.</i>	<i>%</i>	<i>No.</i>	<i>%</i>
<b>Sydney-Brisbane</b>								
Jetstar	108	106	84	79.2	84	79.2	2	1.9
Qantas	619	607	544	89.6	472	77.8	12	1.9
Tiger Airways	113	113	99	87.6	81	71.7	0	0.0
Virgin Australia	554	535	454	84.9	410	76.6	19	3.4
All Airlines	1 394	1 361	1 181	86.8	1 047	76.9	33	2.4
<b>Sydney-Cairns</b>								
Jetstar	111	110	84	76.4	88	80.0	1	0.9
Qantas	78	78	69	88.5	72	92.3	0	0.0
Virgin Australia	90	89	63	70.8	73	82.0	1	1.1
All Airlines	279	277	216	78.0	233	84.1	2	0.7
<b>Sydney-Canberra</b>								
Qantas	160	160	147	91.9	140	87.5	0	0.0
QantasLink	390	376	272	72.3	241	64.1	14	3.6
Virgin Australia	89	85	64	75.3	65	76.5	4	4.5
Virgin Australia - ATR/F100 Operations	157	155	119	76.8	115	74.2	2	1.3
All Airlines	796	776	602	77.6	561	72.3	20	2.5
<b>Sydney-Coffs Harbour</b>								
QantasLink	140	140	92	65.7	99	70.7	0	0.0
Virgin Australia	60	58	47	81.0	49	84.5	2	3.3
All Airlines	200	198	139	70.2	148	74.7	2	1.0
<b>Sydney-Darwin</b>								
Jetstar	30	30	29	96.7	28	93.3	0	0.0
Qantas	51	51	42	82.4	45	88.2	0	0.0
Virgin Australia	30	30	21	70.0	19	63.3	0	0.0
All Airlines	111	111	92	82.9	92	82.9	0	0.0
<b>Sydney-Dubbo</b>								
QantasLink	109	108	66	61.1	67	62.0	1	0.9
Regional Express	166	166	139	83.7	143	86.1	0	0.0
All Airlines	275	274	205	74.8	210	76.6	1	0.4
<b>Sydney-Gold Coast</b>								
Jetstar	348	346	264	76.3	272	78.6	2	0.6
Tiger Airways	116	114	85	74.6	95	83.3	2	1.7
Virgin Australia	318	316	253	80.1	261	82.6	2	0.6
All Airlines	782	776	602	77.6	628	80.9	6	0.8
<b>Sydney-Hamilton Island</b>								
Jetstar	30	30	13	43.3	18	60.0	0	0.0
Virgin Australia	30	30	23	76.7	23	76.7	0	0.0
All Airlines	60	60	36	60.0	41	68.3	0	0.0
<b>Sydney-Hobart</b>								
Jetstar	86	85	65	76.5	65	76.5	1	1.2
Qantas	30	30	28	93.3	28	93.3	0	0.0
Virgin Australia	60	60	35	58.3	36	60.0	0	0.0
All Airlines	176	175	128	73.1	129	73.7	1	0.6
<b>Sydney-Launceston</b>								
Jetstar	30	30	24	80.0	22	73.3	0	0.0
Virgin Australia	30	30	23	76.7	22	73.3	0	0.0
All Airlines	60	60	47	78.3	44	73.3	0	0.0
<b>Sydney-Melbourne</b>								
Jetstar	326	313	217	69.3	233	74.4	13	4.0
Qantas	942	890	804	90.3	734	82.5	52	5.5
Tiger Airways	256	253	210	83.0	205	81.0	3	1.2
Virgin Australia	776	752	626	83.2	586	77.9	24	3.1
All Airlines	2 300	2 208	1 857	84.1	1 758	79.6	92	4.0



	<i>Sectors</i>		<i>Departures On Time</i>		<i>Arrivals On Time</i>		<i>Cancellations</i>	
	<i>Sched.</i>	<i>Flown</i>	<i>No.</i>	<i>%</i>	<i>No.</i>	<i>%</i>	<i>No.</i>	<i>%</i>
<b>Sydney-Perth</b>								
Jetstar	46	44	34	77.3	21	47.7	2	4.3
Qantas	206	205	157	76.6	134	65.4	1	0.5
Virgin Australia	127	126	107	84.9	76	60.3	1	0.8
All Airlines	379	375	298	79.5	231	61.6	4	1.1
<b>Sydney-Port Macquarie</b>								
QantasLink	131	131	83	63.4	85	64.9	0	0.0
Virgin Australia - ATR/F100 Operations	60	60	48	80.0	45	75.0	0	0.0
All Airlines	191	191	131	68.6	130	68.1	0	0.0
<b>Sydney-Sunshine Coast</b>								
Jetstar	107	106	90	84.9	95	89.6	1	0.9
Virgin Australia	35	35	26	74.3	28	80.0	0	0.0
All Airlines	142	141	116	82.3	123	87.2	1	0.7
<b>Sydney-Townsville</b>								
Jetstar	28	28	23	82.1	26	92.9	0	0.0
Virgin Australia	30	30	28	93.3	27	90.0	0	0.0
All Airlines	58	58	51	87.9	53	91.4	0	0.0
<b>Sydney-Wagga Wagga</b>								
QantasLink	110	110	78	70.9	60	54.5	0	0.0
Regional Express	117	117	98	83.8	89	76.1	0	0.0
All Airlines	227	227	176	77.5	149	65.6	0	0.0
<b>Townsville-Brisbane</b>								
Jetstar	30	30	22	73.3	20	66.7	0	0.0
Qantas	144	144	131	91.0	124	86.1	0	0.0
Virgin Australia	164	163	144	88.3	130	79.8	1	0.6
All Airlines	338	337	297	88.1	274	81.3	1	0.3
<b>Townsville-Cairns</b>								
QantasLink	179	177	146	82.5	134	75.7	2	1.1
Virgin Australia - ATR/F100 Operations	25	25	23	92.0	22	88.0	0	0.0
All Airlines	204	202	169	83.7	156	77.2	2	1.0
<b>Townsville-Sydney</b>								
Jetstar	28	28	26	92.9	23	82.1	0	0.0
Virgin Australia	30	30	23	76.7	21	70.0	0	0.0
All Airlines	58	58	49	84.5	44	75.9	0	0.0
<b>Wagga Wagga-Sydney</b>								
QantasLink	110	110	72	65.5	63	57.3	0	0.0
Regional Express	117	117	101	86.3	95	81.2	0	0.0
All Airlines	227	227	173	76.2	158	69.6	0	0.0

## Airports

On time performance is reported for all routes where the passenger load averages over 8000 passengers per month, and where two or more airlines operate in competition. The following data reports by airport against flights operated on those routes only.

Airport	Departures			Arrivals		
	Sectors	On Time		Sectors	On Time	
	Flown	No.	%	Flown	No.	%
<b>Adelaide</b>						
Jetstar	275	217	78.9	275	219	79.6
Qantas	815	701	86.0	821	698	85.0
QantasLink	111	97	87.4	111	90	81.1
Regional Express	198	177	89.4	198	174	87.9
Virgin Australia	676	592	87.6	679	591	87.0
All Airlines	2 075	1 784	86.0	2 084	1 772	85.0
Relates to services to and from Brisbane, Canberra, Gold Coast, Melbourne, Perth, Port Lincoln and Sydney.						
<b>Albury</b>						
QantasLink	115	61	53.0	115	53	46.1
Regional Express	109	97	89.0	109	82	75.2
Virgin Australia	58	47	81.0	58	48	82.8
All Airlines	282	205	72.7	282	183	64.9
Relates to services to and from Sydney only.						
<b>Ayers Rock</b>						
Qantas	29	23	79.3	30	25	83.3
Virgin Australia	29	24	82.8	30	17	56.7
All Airlines	58	47	81.0	60	42	70.0
Relates to services to and from Sydney only.						
<b>Ballina</b>						
Jetstar	52	40	76.9	53	43	81.1
Regional Express	24	18	75.0	28	19	67.9
Virgin Australia	30	28	93.3	30	29	96.7
All Airlines	106	86	81.1	111	91	82.0
Relates to services to and from Sydney only.						
<b>Brisbane</b>						
Jetstar	672	540	80.4	672	510	75.9
Qantas	1 659	1 406	84.7	1 666	1 347	80.9
QantasLink	622	507	81.5	622	454	73.0
Tiger Airways	203	159	78.3	203	150	73.9
Virgin Australia	1 808	1 597	88.3	1 804	1 441	79.9
Virgin Australia - ATR/F100 Operations	401	327	81.5	395	290	73.4
All Airlines	5 365	4 536	84.5	5 362	4 192	78.2
Relates to services to and from Adelaide, Cairns, Canberra, Darwin, Emerald, Gladstone, Hamilton Island, Mackay, Melbourne, Newcastle, Perth, Proserpine, Rockhampton, Sydney and Townsville.						

Airport	Departures			Arrivals		
	Sectors	On Time		Sectors	On Time	
	Flown	No.	%	Flown	No.	%
<b>Broome</b>						
Qantas	30	17	56.7	30	21	70.0
QantasLink	52	46	88.5	51	43	84.3
Skywest	22	9	40.9	21	12	57.1
Virgin Australia	55	44	80.0	55	44	80.0
All Airlines	159	116	73.0	157	120	76.4
Relates to services to and from Perth only.						
<b>Cairns</b>						
Jetstar	313	277	88.5	316	268	84.8
Qantas	220	196	89.1	220	195	88.6
QantasLink	178	156	87.6	177	134	75.7
Tiger Airways	31	25	80.6	31	27	87.1
Virgin Australia	264	236	89.4	266	230	86.5
Virgin Australia - ATR/F100 Operations	50	41	82.0	50	42	84.0
All Airlines	1 056	931	88.2	1 060	896	84.5
Relates to services to and from Brisbane, Melbourne, Sydney and Townsville.						
<b>Canberra</b>						
Qantas	586	532	90.8	586	529	90.3
QantasLink	431	326	75.6	434	288	66.4
Virgin Australia	361	318	88.1	365	307	84.1
Virgin Australia - ATR/F100 Operations	155	134	86.5	155	115	74.2
All Airlines	1 533	1 310	85.5	1 540	1 239	80.5
Relates to services to and from Adelaide, Brisbane, Melbourne and Sydney.						
<b>Coffs Harbour</b>						
QantasLink	140	99	70.7	140	99	70.7
Virgin Australia	58	48	82.8	58	49	84.5
All Airlines	198	147	74.2	198	148	74.7
Relates to services to and from Sydney only.						
<b>Darwin</b>						
Jetstar	49	40	81.6	49	43	87.8
Qantas	126	104	82.5	126	110	87.3
Virgin Australia	114	101	88.6	115	93	80.9
All Airlines	289	245	84.8	290	246	84.8
Relates to services to and from Brisbane, Melbourne, Perth and Sydney.						
<b>Dubbo</b>						
QantasLink	108	72	66.7	108	67	62.0
Regional Express	166	146	88.0	166	143	86.1
All Airlines	274	218	79.6	274	210	76.6
Relates to services to and from Sydney only.						
<b>Emerald</b>						
QantasLink	184	149	81.0	183	158	86.3
Virgin Australia - ATR/F100 Operations	70	62	88.6	70	64	91.4
All Airlines	254	211	83.1	253	222	87.7
Relates to services to and from Brisbane only.						

Airport	Departures			Arrivals		
	Sectors Flown	On Time		Sectors Flown	On Time	
		No.	%		No.	%
<b>Geraldton</b>						
QantasLink	50	34	68.0	50	39	78.0
Skywest	80	45	56.3	54	27	50.0
All Airlines	130	79	60.8	104	66	63.5
Relates to services to and from Perth only.						
<b>Gladstone</b>						
QantasLink	169	135	79.9	150	123	82.0
Virgin Australia - ATR/F100 Operations	104	82	78.8	104	85	81.7
All Airlines	273	217	79.5	254	208	81.9
Relates to services to and from Brisbane only.						
<b>Gold Coast</b>						
Jetstar	608	482	79.3	607	482	79.4
Tiger Airways	200	144	72.0	200	162	81.0
Virgin Australia	530	458	86.4	531	458	86.3
All Airlines	1 338	1 084	81.0	1 338	1 102	82.4
Relates to services to and from Adelaide, Melbourne and Sydney.						
<b>Hamilton Island</b>						
Jetstar	48	28	58.3	48	31	64.6
Virgin Australia	60	38	63.3	60	52	86.7
All Airlines	108	66	61.1	108	83	76.9
Relates to services to and from Brisbane and Sydney.						
<b>Hobart</b>						
Jetstar	235	173	73.6	235	178	75.7
Qantas	90	83	92.2	90	72	80.0
Virgin Australia	197	128	65.0	197	135	68.5
All Airlines	522	384	73.6	522	385	73.8
Relates to services to and from Melbourne and Sydney.						
<b>Kalgoorlie</b>						
Qantas	65	54	83.1	65	54	83.1
QantasLink	20	17	85.0	20	19	95.0
Skywest	55	30	54.5	79	46	58.2
All Airlines	140	101	72.1	164	119	72.6
Relates to services to and from Perth only.						
<b>Karratha</b>						
Qantas	180	153	85.0	180	148	82.2
QantasLink	60	50	83.3	61	49	80.3
Virgin Australia	46	32	69.6	47	35	74.5
All Airlines	286	235	82.2	288	232	80.6
Relates to services to and from Perth only.						
<b>Launceston</b>						
Jetstar	153	101	66.0	153	114	74.5
QantasLink	70	51	72.9	69	41	59.4
Virgin Australia	157	119	75.8	157	132	84.1
All Airlines	380	271	71.3	379	287	75.7
Relates to services to and from Melbourne and Sydney.						

Airport	Departures			Arrivals		
	Sectors	On Time		Sectors	On Time	
	Flown	No.	%	Flown	No.	%
<b>Mackay</b>						
Jetstar	107	80	74.8	107	84	78.5
QantasLink	50	32	64.0	50	38	76.0
Virgin Australia	162	140	86.4	162	141	87.0
All Airlines	319	252	79.0	319	263	82.4
Relates to services to and from Brisbane only.						
<b>Melbourne</b>						
Jetstar	1 352	964	71.3	1 351	985	72.9
Qantas	2 163	1 920	88.8	2 152	1 814	84.3
QantasLink	207	158	76.3	208	156	75.0
Regional Express	84	79	94.0	84	81	96.4
Tiger Airways	542	455	83.9	542	380	70.1
Virgin Australia	2 295	1 942	84.6	2 293	1 870	81.6
All Airlines	6 643	5 518	83.1	6 630	5 286	79.7
Relates to services to and from Adelaide, Brisbane, Cairns, Canberra, Darwin, Gold Coast, Hobart, Launceston, Mildura, Newcastle, Perth, Sunshine Coast and Sydney.						
<b>Mildura</b>						
QantasLink	85	69	81.2	85	63	74.1
Regional Express	84	83	98.8	84	73	86.9
Virgin Australia	30	26	86.7	30	25	83.3
All Airlines	199	178	89.4	199	161	80.9
Relates to services to and from Melbourne only.						
<b>Newcastle</b>						
Jetstar	219	173	79.0	219	173	79.0
QantasLink	64	32	50.0	64	30	46.9
Virgin Australia	29	24	82.8	29	26	89.7
Virgin Australia - ATR/F100 Operations	60	32	53.3	61	37	60.7
All Airlines	372	261	70.2	373	266	71.3
Relates to services to and from Brisbane and Melbourne.						
<b>Newman</b>						
Qantas	125	99	79.2	125	99	79.2
QantasLink	26	26	100.0	26	26	100.0
Virgin Australia	28	19	67.9	27	20	74.1
All Airlines	179	144	80.4	178	145	81.5
Relates to services to and from Perth only.						
<b>Perth</b>						
Jetstar	192	75	39.1	192	105	54.7
Qantas	1 190	961	80.8	1 193	897	75.2
QantasLink	250	226	90.4	250	201	80.4
Skywest	154	98	63.6	157	77	49.0
Tiger Airways	82	46	56.1	82	59	72.0
Virgin Australia	622	521	83.8	620	413	66.6
All Airlines	2 490	1 927	77.4	2 494	1 752	70.2
Relates to services to and from Adelaide, Brisbane, Broome, Darwin, Geraldton, Kalgoorlie, Karratha, Melbourne, Newman, Port Hedland and Sydney.						

Airport	Departures			Arrivals		
	Sectors Flown	On Time		Sectors Flown	On Time	
		No.	%		No.	%
<b>Port Hedland</b>						
Qantas	117	81	69.2	118	98	83.1
QantasLink	42	37	88.1	42	37	88.1
Virgin Australia	55	40	72.7	56	45	80.4
All Airlines	214	158	73.8	216	180	83.3
Relates to services to and from Perth only.						
<b>Port Lincoln</b>						
QantasLink	94	78	83.0	94	75	79.8
Regional Express	198	176	88.9	198	167	84.3
All Airlines	292	254	87.0	292	242	82.9
Relates to services to and from Adelaide only.						
<b>Port Macquarie</b>						
QantasLink	128	87	68.0	131	85	64.9
Virgin Australia - ATR/F100 Operations	60	44	73.3	60	45	75.0
All Airlines	188	131	69.7	191	130	68.1
Relates to services to and from Sydney only.						
<b>Proserpine</b>						
Jetstar	30	27	90.0	30	27	90.0
Virgin Australia	30	29	96.7	30	29	96.7
Virgin Australia - ATR/F100 Operations	20	15	75.0	20	15	75.0
All Airlines	80	71	88.8	80	71	88.8
Relates to services to and from Brisbane only.						
<b>Rockhampton</b>						
QantasLink	133	102	76.7	153	125	81.7
Virgin Australia	78	61	78.2	78	64	82.1
Virgin Australia - ATR/F100 Operations	116	104	89.7	121	92	76.0
All Airlines	327	267	81.7	352	281	79.8
Relates to services to and from Brisbane only.						
<b>Sunshine Coast</b>						
Jetstar	176	129	73.3	177	149	84.2
Virgin Australia	64	45	70.3	64	52	81.3
All Airlines	240	174	72.5	241	201	83.4
Relates to services to and from Melbourne and Sydney.						
<b>Sydney</b>						
Jetstar	1 370	1 031	75.3	1 367	972	71.1
Qantas	2 317	2 057	88.8	2 310	1 936	83.8
QantasLink	980	655	66.8	974	654	67.1
Regional Express	420	344	81.9	416	336	80.8
Tiger Airways	480	394	82.1	480	376	78.3
Virgin Australia	2 464	2 001	81.2	2 458	1 959	79.7
Virgin Australia - ATR/F100 Operations	215	167	77.7	215	169	78.6
All Airlines	8 246	6 649	80.6	8 220	6 402	77.9
Relates to services to and from Adelaide, Albury, Ayers Rock, Ballina, Brisbane, Cairns, Canberra, Coffs Harbour, Darwin, Dubbo, Gold Coast, Hamilton Island, Hobart, Launceston, Melbourne, Perth, Port Macquarie, Sunshine Coast, Townsville and Wagga Wagga.						

<i>Airport</i>	<i>Departures</i>			<i>Arrivals</i>		
	<i>Sectors</i>	<i>On Time</i>		<i>Sectors</i>	<i>On Time</i>	
	<i>Flown</i>	<i>No.</i>	<i>%</i>	<i>Flown</i>	<i>No.</i>	<i>%</i>
<b>Townsville</b>						
Jetstar	58	48	82.8	58	48	82.8
Qantas	144	131	91.0	144	128	88.9
QantasLink	177	146	82.5	178	149	83.7
Virgin Australia	193	167	86.5	194	169	87.1
Virgin Australia - ATR/F100 Operations	25	23	92.0	25	23	92.0
All Airlines	597	515	86.3	599	517	86.3
Relates to services to and from Brisbane, Cairns and Sydney.						
<b>Wagga Wagga</b>						
QantasLink	110	72	65.5	110	60	54.5
Regional Express	117	101	86.3	117	89	76.1
All Airlines	227	173	76.2	227	149	65.6
Relates to services to and from Sydney only.						

## Definitions

---

On time departure                      A flight departure is counted as "on time" if it departs the gate within 15 minutes of the scheduled departure time shown in the carriers' schedule.

---

On time arrival                         A flight arrival is counted as "on time" if it arrived at the gate within 15 minutes of the scheduled arrival time shown in the carriers' schedule.  
Neither diverted nor cancelled flights count as on time.

---

Cancellation                            A flight removed from service within 7 days of scheduled departure is regarded as a cancellation.

---

On time departure percentage                      The percentage of on time departures is measured against the number of departures *operated* on any particular sector.

---

On time arrival percentage                         The percentage of on time arrivals is measured against the number of arrivals *operated* on any particular sector.

---

Cancellation percentage                         The percentage of cancellations is measured against the number of services *scheduled* on any particular sector.

---