



Australian Government

Department of Infrastructure and Transport

Bureau of Infrastructure, Transport and Regional Economics

STATISTICAL REPORT



Aviation

Domestic airline on time performance
September 2011

© Commonwealth of Australia 2011

ISSN 1832-0759

This work is copyright and the data contained in this publication should not be reproduced or used in any form without acknowledgement.

Enquiries

Bureau of Infrastructure, Transport and Regional Economics
GPO Box 501
Canberra ACT 2601

Telephone: 02 6274 7790

Facsimile: 02 6274 7727

Website: www.bitre.gov.au

Email: avstats@infrastructure.gov.au

This publication, including a spreadsheet of the time-series data, can be downloaded from the BITRE website: <http://www.bitre.gov.au/info.aspx?ResourceId=214&NodeId=104>.

Disclaimers

BITRE seeks to publish its work to the highest professional standards. However, it cannot accept responsibility for any consequences arising from the use of information herein. Readers should rely on their own skill and judgment in applying any information or analysis to particular issues or circumstances.

Foreword

The Bureau of Infrastructure, Transport and Regional Economics (BITRE) monitors the punctuality and reliability of major domestic airlines operating between Australian airports. The purpose of this is to allow for evaluation of overall industry and individual airline performance, so that consumers of air travel can make informed decisions.

The following domestic airlines report this data monthly to the BITRE: Jetstar, Qantas, QantasLink, Regional Express, Skywest Airlines, Tiger Airways, and Virgin Australia. Data has been gathered since November 2003, although some airlines commenced reporting since then, including Jetstar which first reported in May 2004, MacAir in July 2005 and Tiger Airways in April 2008. MacAir ceased operations in February 2009 and data was not received for December 2008 onwards. Virgin Blue was rebranded as Virgin Australia in May 2011, time series data in Microsoft Excel spreadsheet format on the BITRE website has been revised to reflect this.

Information presented in this report is for Australian domestic routes for which the passenger load averaged 8 000 or more passengers per month over the previous six months, *and* where two or more airlines operated in competition on those routes. There were 53 routes that met this definition in September 2011. Over time, routes which meet these criteria change as airline networks and traffic levels vary.

Participating airlines report their overall monthly network performance where this is possible.

Total industry figures encompass all services operated by reporting airlines only. These airlines collectively carried over 95 per cent of total domestic passengers (regular public transport only) in 2010.

The method of capturing on time performance varies between airlines utilising different recording systems. Jetstar and Qantas jet aircraft use Aircraft Communication Addressing and Reporting System (ACARS) to electronically measure on time performance. Regional Express, Skywest, Tiger Airways, Virgin Australia and the Qantas non-jet fleet record on time performance manually using records from pilots, gate agents and/or ground crews.

After initial data is collected, aggregate reports are audited internally by participating airlines prior to publication.

Reports and detailed time series data in Microsoft Excel spreadsheet format are available from the BITRE website at: <http://www.bitre.gov.au/info.aspx?ResourceId=214&NodeId=104>.

Contents

	Page
Industry performance	1
Individual routes	9
Airports	22
Definitions	28

Industry performance

For September 2011, on time performance over all routes operated by participating airlines (Jetstar, Qantas, QantasLink, Regional Express, Skywest Airlines, Tiger Airways and Virgin Australia) averaged 83.2 per cent for on time departures, and 82.7 per cent for on time arrivals. Cancellations represented 1.5 per cent of all scheduled flights. The equivalent figures for September 2010 were 80.9 per cent for departures, 79.9 per cent for arrivals and 1.4 per cent for cancellations.

The long term average performance for all routes since reporting commenced in November 2003 is 84.3 per cent for on time departures and 83.0 per cent for on time arrivals. Cancellations average 1.2 per cent of all scheduled flights.

Tiger Airways recorded on time departures of 91.1 per cent, on time arrivals of 89.4 per cent and no cancellations for its operations on a reduced schedule (530 sectors flown in September 2011 compared to 1 577 in September 2010).

Of the other major domestic airlines, Virgin Australia achieved the highest level of on time departures for September 2011 at 85.8 per cent, followed by Jetstar at 80.6 per cent and Qantas at 80.3 per cent. The regional airlines were led by Regional Express at 87.5 per cent, followed by Skywest at 86.0 per cent and QantasLink at 81.4 per cent.

Virgin Australia also achieved the highest on time arrivals among the other major domestic airlines at 85.1 per cent, followed by Jetstar at 82.1 per cent and Qantas at 80.0 per cent. Regional Express was the best performing regional airline for on time arrivals at 86.9 per cent, followed by Skywest at 86.7 per cent and QantasLink at 79.7 per cent.

Jetstar had the highest percentage of cancellations for September 2011 at 2.1 per cent, while Regional Express had the lowest percentage of cancellations at 0.1 per cent (excluding Tiger Airways).

Of the 53 routes which met the criteria for on time performance reporting in September 2011, the Adelaide-Gold Coast route had the highest percentage of on time departures (94.9 per cent) and the highest percentage of on time arrivals (96.9 per cent). The Melbourne-Sunshine Coast route had the lowest percentage of on time departures (64.7 per cent) while the Darwin-Brisbane route had the lowest percentage of on time arrivals (65.0 per cent).

Cancellations were highest on the Newcastle-Melbourne route at 5.9 per cent, followed by Melbourne-Newcastle at 5.3 per cent, Melbourne-Sydney at 4.7 per cent, Sydney-Melbourne at 4.4 per cent and Canberra-Sydney at 3.4 per cent.

Port Lincoln Airport recorded the highest percentage of on time departures (92.2 per cent) and the highest percentage of on time arrivals (91.9 per cent). Coffs Harbour Airport recorded the lowest percentage of on time departures (72.9 per cent) and Wagga Wagga Airport recorded the lowest percentage of on time arrivals (73.2 per cent). These figures only refer to reported routes and do not cover all flights at these airports.

Table 1 On time performance for September 2011 — Total Industry

	<i>Sectors</i>		<i>Departures On Time</i>		<i>Arrivals On Time</i>		<i>Cancellations</i>	
	<i>Scheduled</i>	<i>Flown</i>	<i>No.</i>	<i>%</i>	<i>No.</i>	<i>%</i>	<i>No.</i>	<i>%</i>
Jetstar	5 769	5 646	4 549	80.6	4 635	82.1	123	2.1
Qantas	10 240	10 053	8 076	80.3	8 043	80.0	187	1.8
QantasLink	9 061	8 932	7 269	81.4	7 123	79.7	129	1.4
Regional Express	5 468	5 464	4 779	87.5	4 749	86.9	4	0.1
Skywest	1 037	1 035	890	86.0	897	86.7	2	0.2
Tiger Airways	530	530	483	91.1	474	89.4	0	0.0
Virgin Australia	11 643	11 442	9 816	85.8	9 736	85.1	201	1.7
All Airlines	43 748	43 102	35 862	83.2	35 657	82.7	646	1.5

Total airline network data (including routes not shown in this report).

Table 2 Top ten routes for on time performance for September 2011 (participating airlines only)

<i>Departures</i>		<i>Arrivals</i>	
<i>Route</i>	<i>On Time (%)</i>	<i>Route</i>	<i>On Time (%)</i>
Adelaide-Gold Coast	94.9	Adelaide-Gold Coast	96.6
Gold Coast-Adelaide	94.9	Gold Coast-Adelaide	94.9
Adelaide-Port Lincoln	93.2	Port Lincoln-Adelaide	92.5
Canberra-Brisbane	92.5	Adelaide-Canberra	92.3
Adelaide-Canberra	92.3	Adelaide-Port Lincoln	91.9
Port Lincoln-Adelaide	92.2	Adelaide-Brisbane	90.7
Brisbane-Hamilton Island	91.7	Cairns-Sydney	90.6
Perth-Darwin	91.7	Sydney-Ballina	90.5
Sydney-Ayers Rock	90.0	Canberra-Adelaide	90.1
Townsville-Brisbane	89.9	Brisbane-Hamilton Island	90.0

Table 3 Top ten airports for on time performance for September 2011 (participating airlines and reported routes only)

<i>Departures</i>		<i>Arrivals</i>	
<i>Airport</i>	<i>On Time (%)</i>	<i>Airport</i>	<i>On Time (%)</i>
Port Lincoln	92.2	Port Lincoln	91.9
Adelaide	88.6	Ballina	90.5
Cairns	87.2	Proserpine	88.3
Mildura	86.5	Mackay	87.5
Dubbo	86.0	Adelaide	87.0
Mackay	85.9	Townsville	86.7
Canberra	85.7	Dubbo	86.1
Townsville	85.0	Newman	85.9
Port Hedland	83.9	Karratha	85.9
Port Macquarie	83.6	Hamilton Island	85.6

Total industry on time performance

Figure 1 On time performance (by month from September 2008)—Total Industry

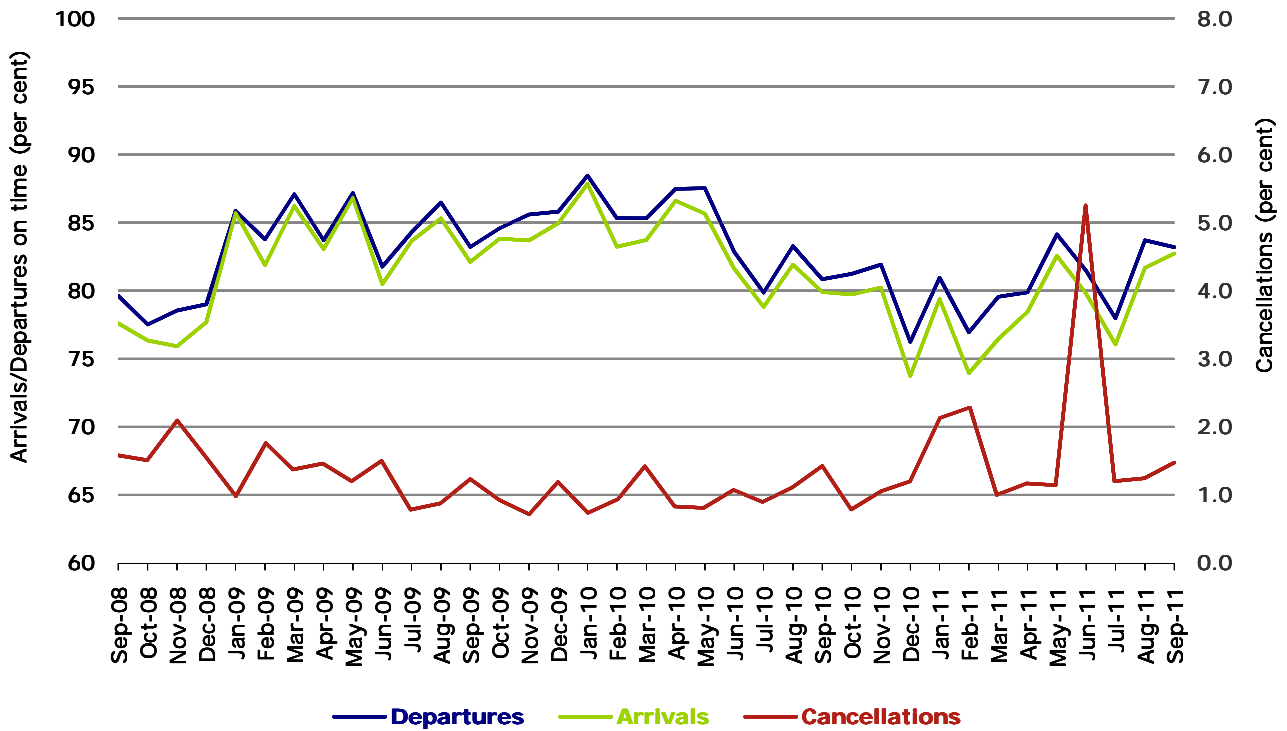
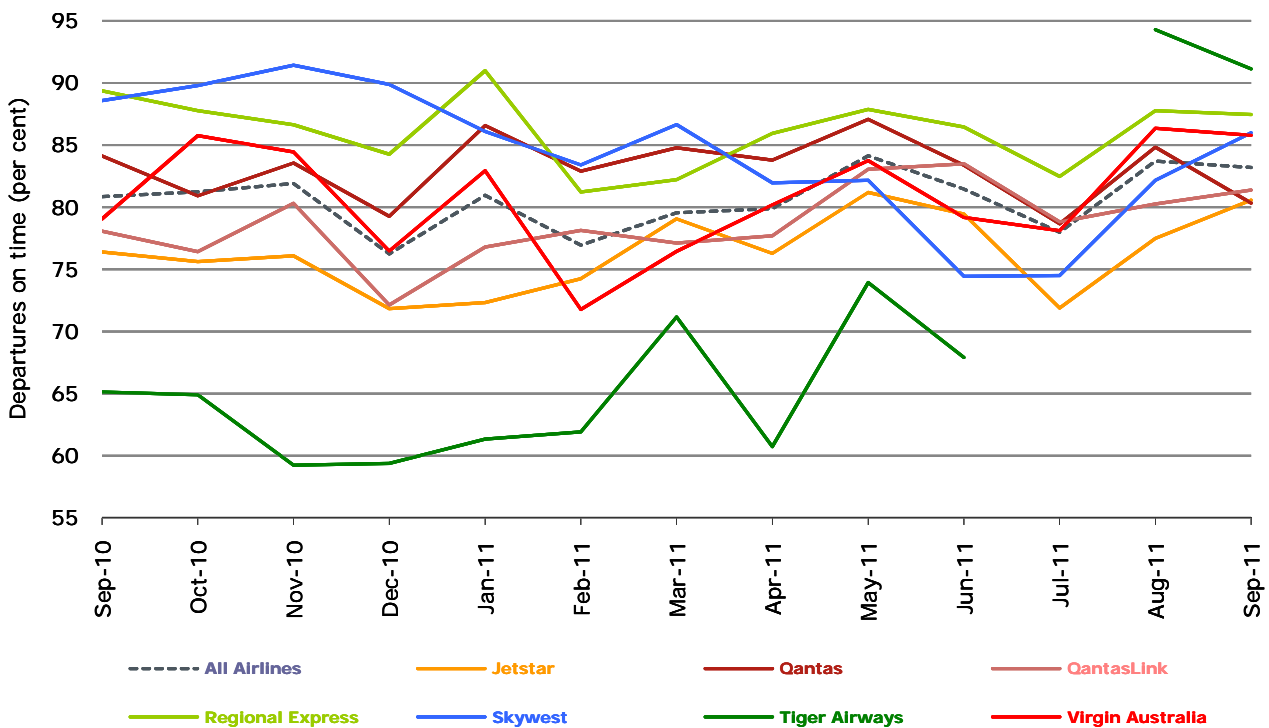
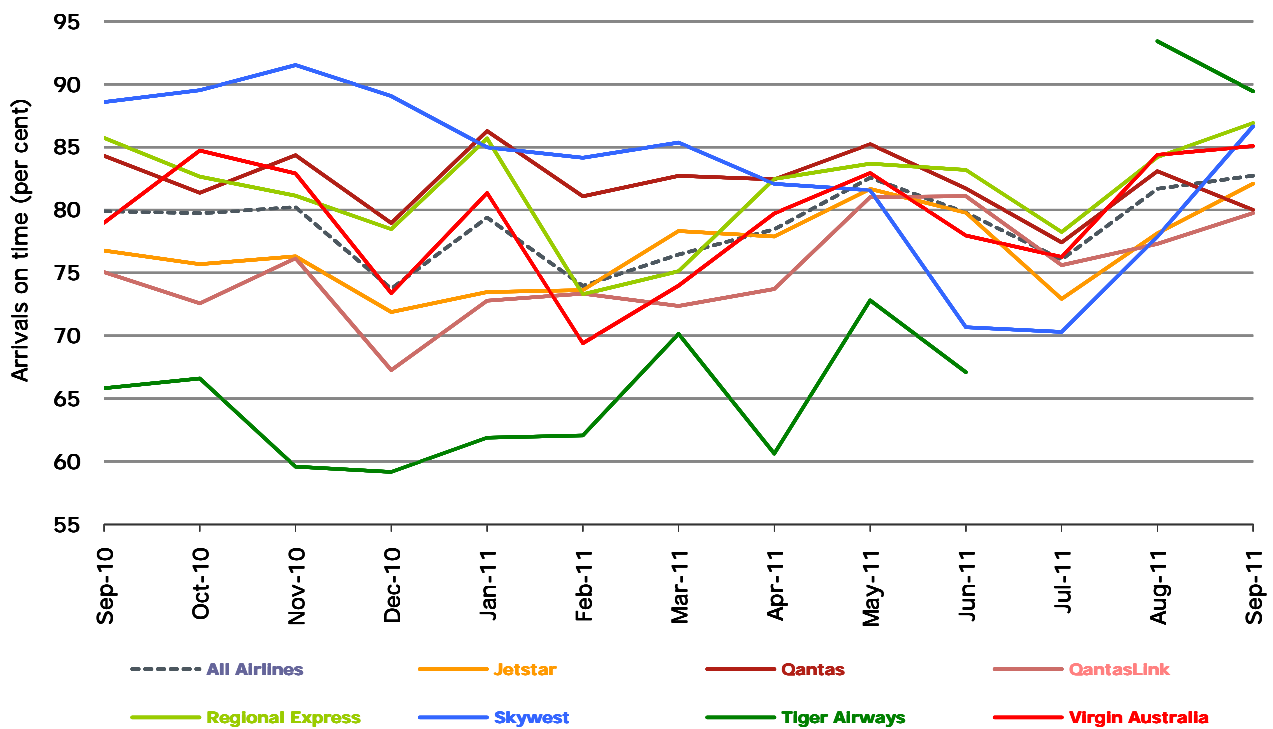


Figure 2 Departures on time (by month from September 2010)



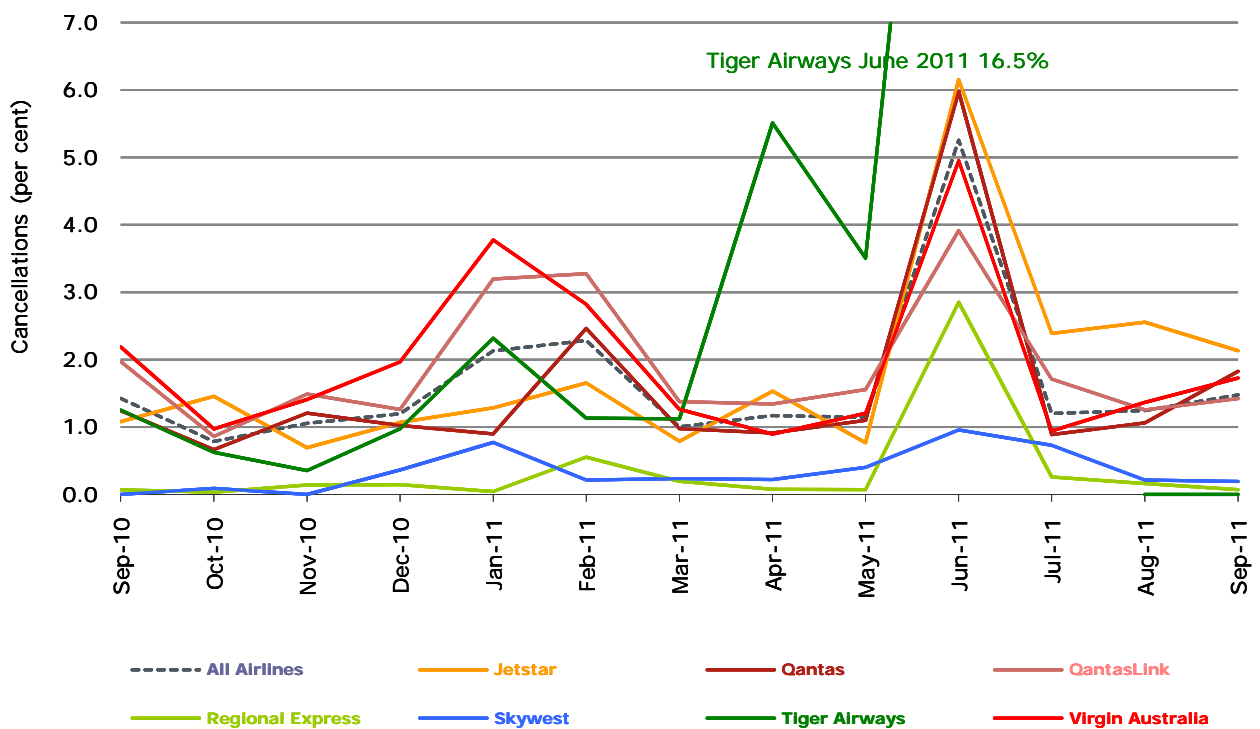
No data for Tiger Airways for July 2011 as it was grounded by CASA from 2/7/2011 to 11/8/2011.

Figure 3 Arrivals on time (by month from September 2010)



No data for Tiger Airways for July 2011 as it was grounded by CASA from 2/7/2011 to 11/8/2011.

Figure 4 Cancellations (by month from September 2010)



No data for Tiger Airways for July 2011 as it was grounded by CASA from 2/7/2011 to 11/8/2011.

Major domestic airlines on time performance

Figure 5 On time performance (by month from September 2008)—Jetstar

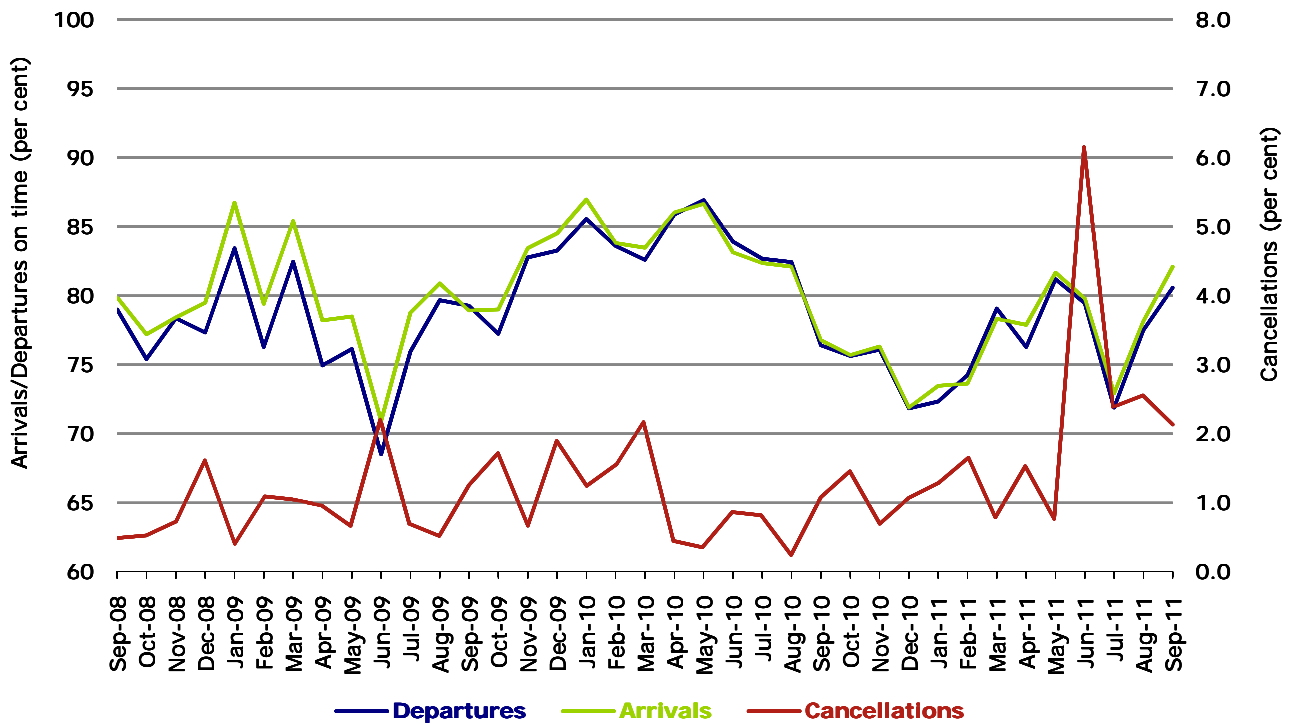


Figure 6 On time performance (by month from September 2008)—Qantas

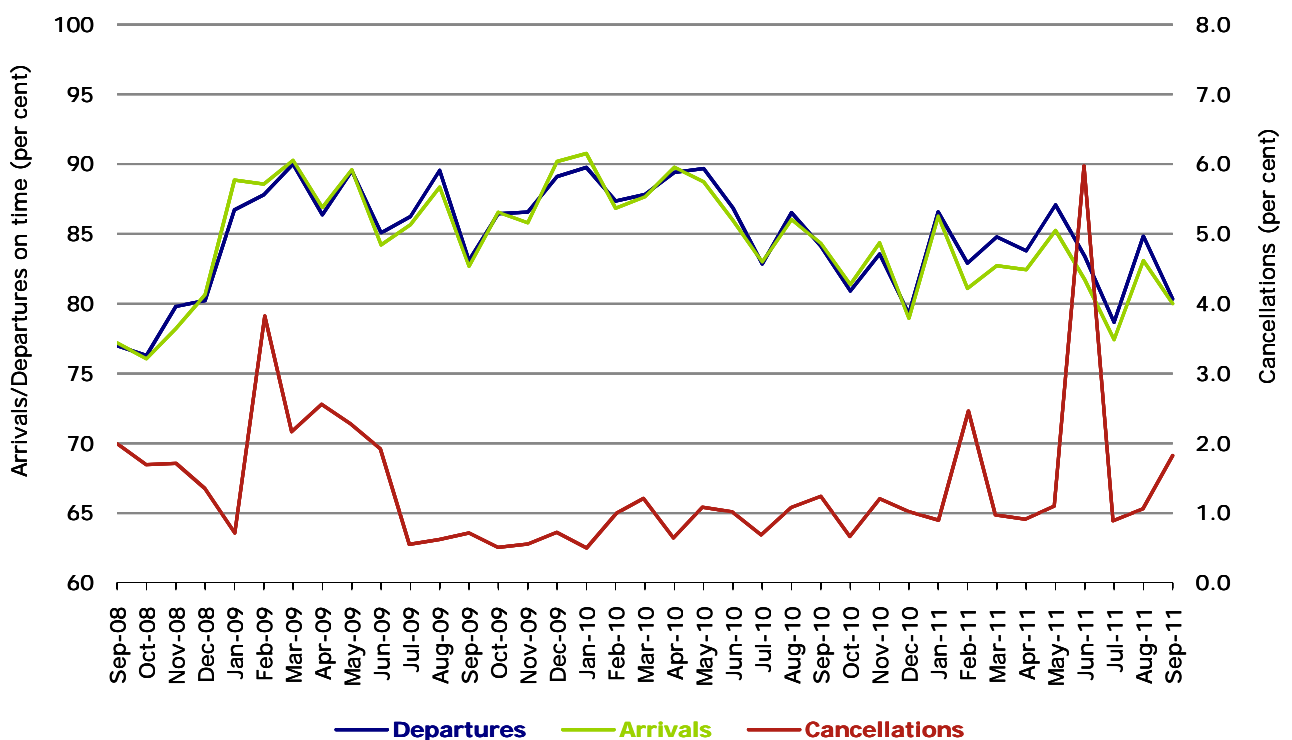
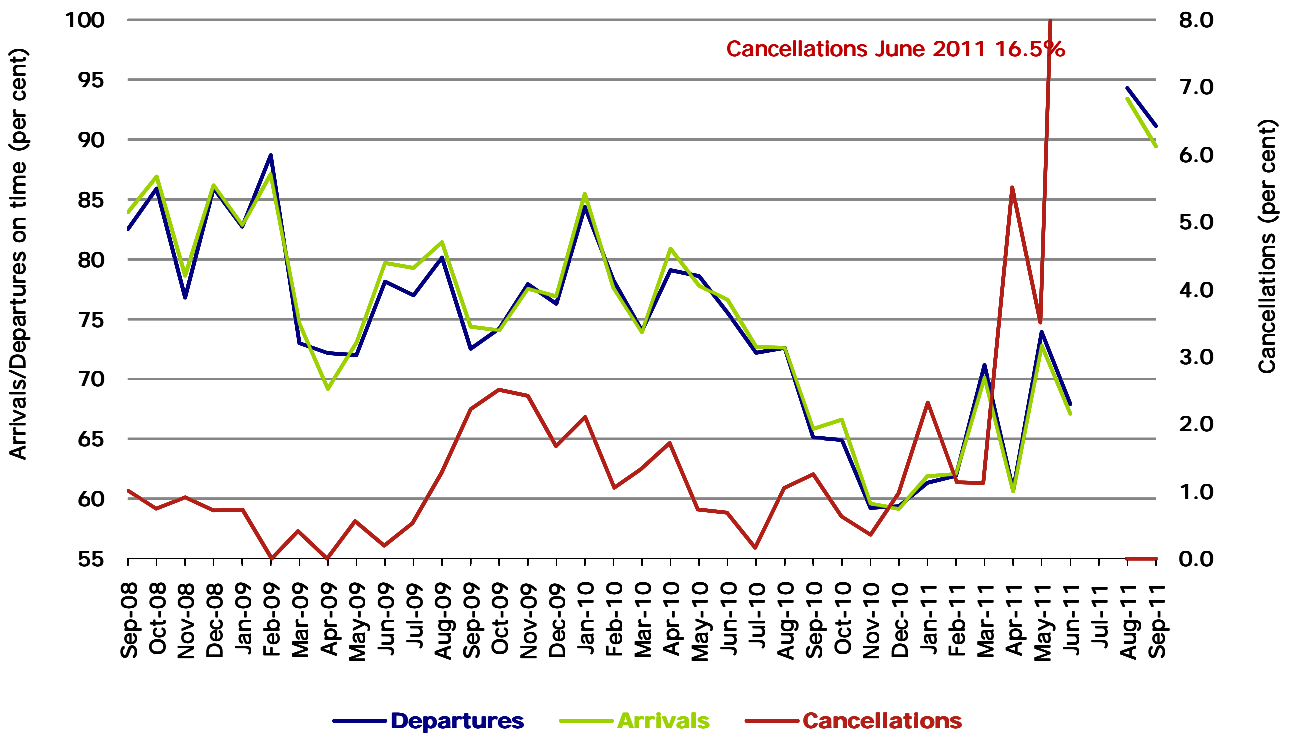
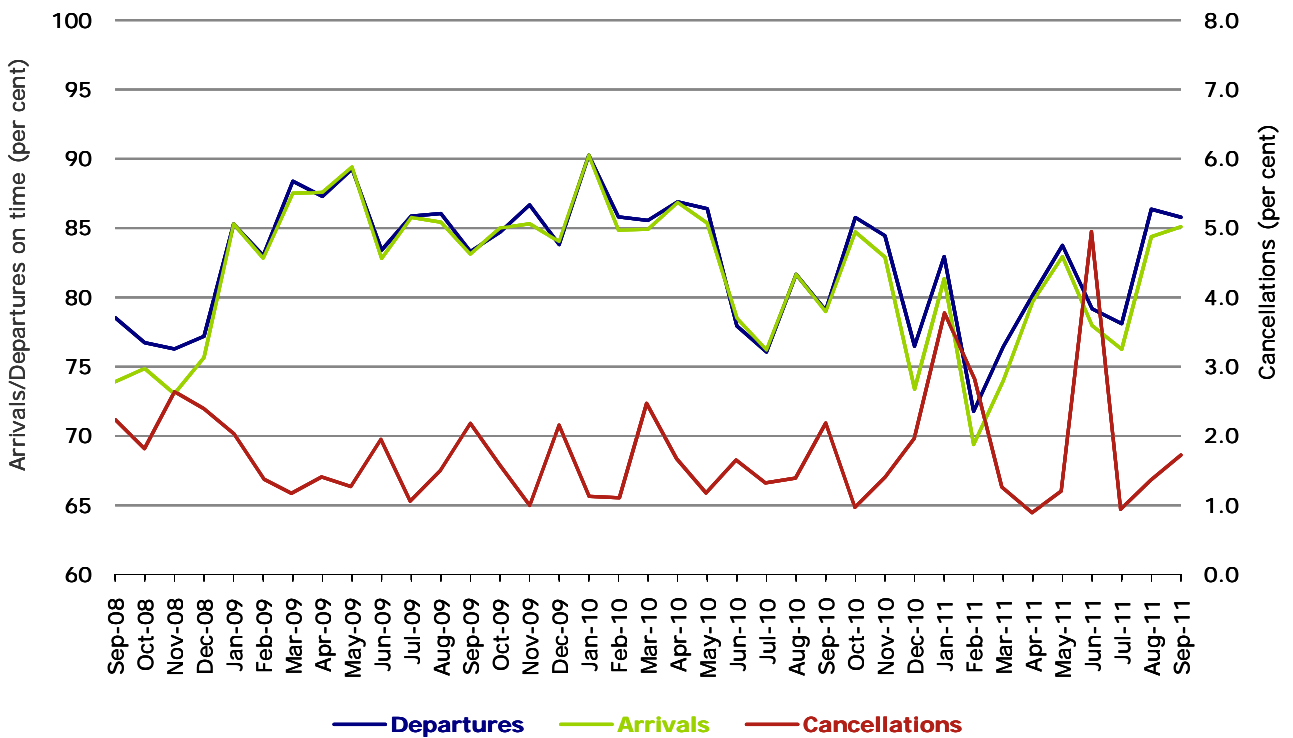


Figure 7 On time performance (by month from September 2008)—Tiger Airways



No data for Tiger Airways for July 2011 as it was grounded by CASA from 2/7/2011 to 11/8/2011.

Figure 8 On time performance (by month from September 2008)—Virgin Australia



Major regional airlines on time performance

Figure 9 On time performance (by month from September 2008)—QantasLink

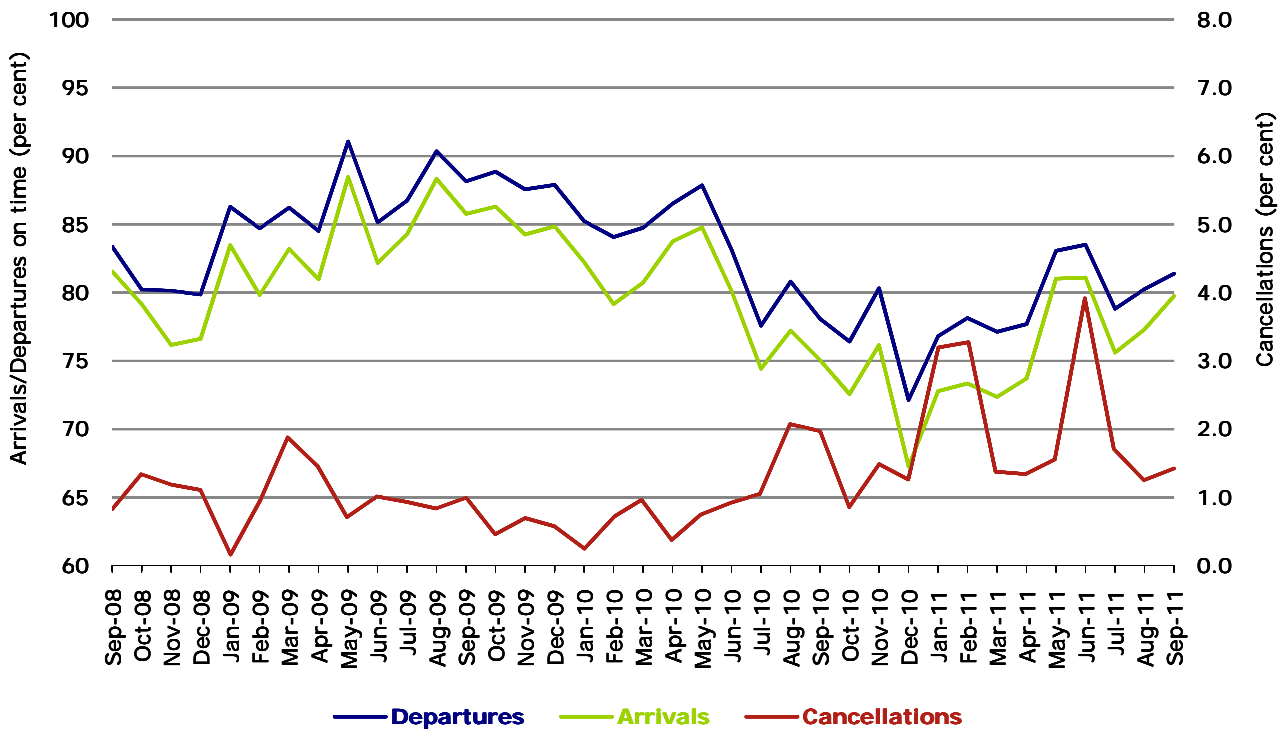


Figure 10 On time performance (by month from September 2008)—Regional Express

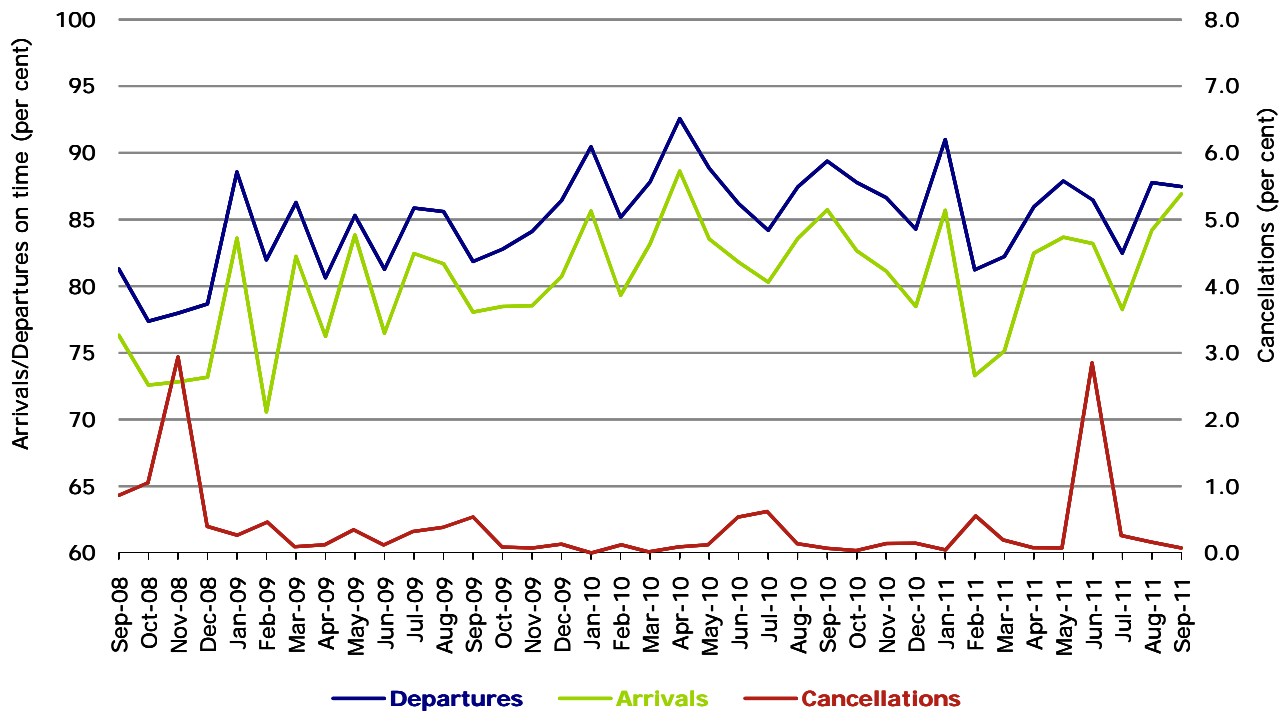
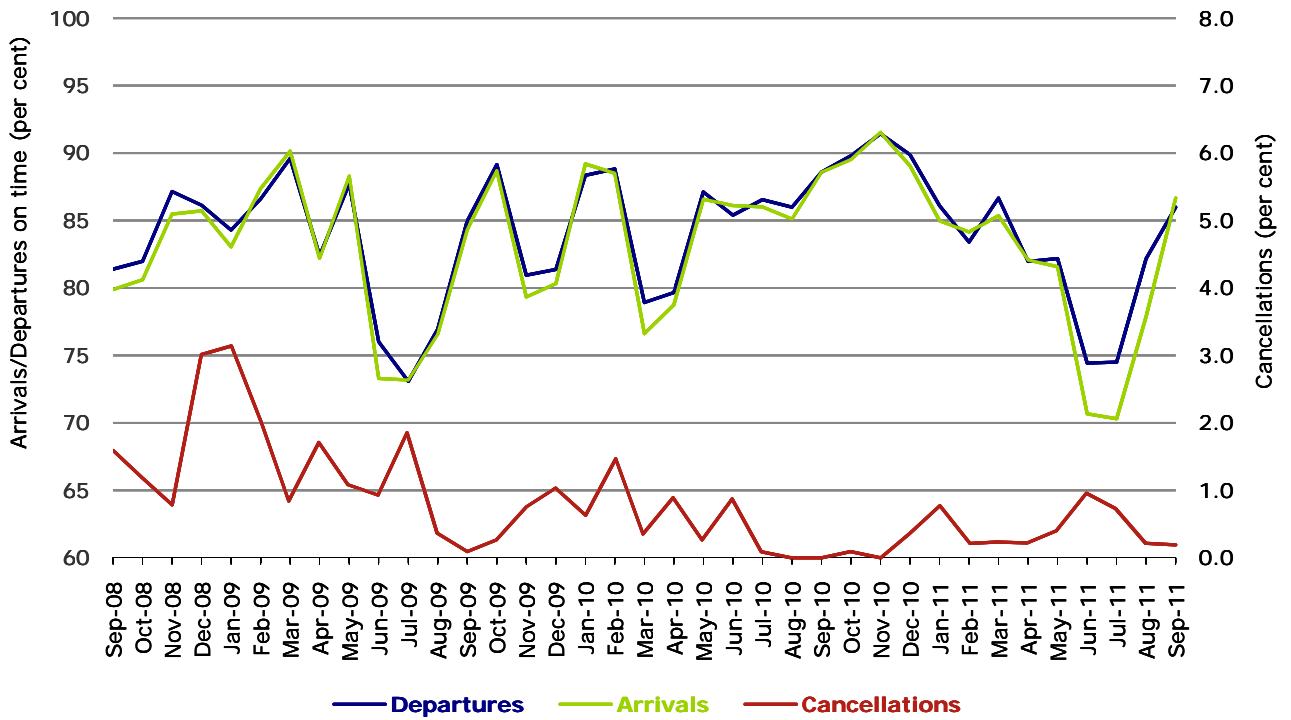


Figure 11 On time performance (by month from September 2008)—Skywest



Individual routes

On time performance is reported for all routes where the passenger load averages over 8000 passengers per month over the previous six months, and where two or more airlines operate in competition on those routes. There are now 53 routes which meet this definition. Over time, however, routes which meet this definition may change as airline networks and traffic levels vary.

	<i>Sectors</i>		<i>Departures On Time</i>		<i>Arrivals On Time</i>		<i>Cancellations</i>	
	<i>Sched.</i>	<i>Flown</i>	<i>No.</i>	<i>%</i>	<i>No.</i>	<i>%</i>	<i>No.</i>	<i>%</i>
Adelaide-Brisbane								
Jetstar	30	30	27	90.0	28	93.3	0	0.0
Qantas	108	108	92	85.2	95	88.0	0	0.0
Virgin Australia	91	87	81	93.1	81	93.1	4	4.4
All Airlines	229	225	200	88.9	204	90.7	4	1.7
Adelaide-Canberra								
Qantas	48	48	44	91.7	43	89.6	0	0.0
Virgin Australia	32	30	28	93.3	29	96.7	2	6.3
All Airlines	80	78	72	92.3	72	92.3	2	2.5
Adelaide-Gold Coast								
Jetstar	30	30	29	96.7	29	96.7	0	0.0
Virgin Australia	30	29	27	93.1	28	96.6	1	3.3
All Airlines	60	59	56	94.9	57	96.6	1	1.7
Adelaide-Melbourne								
Jetstar	83	80	68	85.0	72	90.0	3	3.6
Qantas	286	284	229	80.6	219	77.1	2	0.7
QantasLink	16	15	15	100.0	14	93.3	1	6.3
Virgin Australia	258	251	225	89.6	216	86.1	7	2.7
All Airlines	643	630	537	85.2	521	82.7	13	2.0
Adelaide-Perth								
Jetstar	30	30	24	80.0	24	80.0	0	0.0
Qantas	112	112	97	86.6	94	83.9	0	0.0
Virgin Australia	60	59	55	93.2	53	89.8	1	1.7
All Airlines	202	201	176	87.6	171	85.1	1	0.5
Adelaide-Port Lincoln								
QantasLink	100	96	82	85.4	82	85.4	4	4.0
Regional Express	212	212	205	96.7	201	94.8	0	0.0
All Airlines	312	308	287	93.2	283	91.9	4	1.3
Adelaide-Sydney								
Jetstar	83	82	67	81.7	68	82.9	1	1.2
Qantas	270	269	240	89.2	240	89.2	1	0.4
Virgin Australia	150	149	138	92.6	139	93.3	1	0.7
All Airlines	503	500	445	89.0	447	89.4	3	0.6

	<i>Sectors</i>		<i>Departures On Time</i>		<i>Arrivals On Time</i>		<i>Cancellations</i>	
	<i>Sched.</i>	<i>Flown</i>	<i>No.</i>	<i>%</i>	<i>No.</i>	<i>%</i>	<i>No.</i>	<i>%</i>
Albury-Sydney								
QantasLink	116	116	79	68.1	84	72.4	0	0.0
Regional Express	116	116	108	93.1	106	91.4	0	0.0
Virgin Australia	60	60	54	90.0	52	86.7	0	0.0
All Airlines	292	292	241	82.5	242	82.9	0	0.0
Ayers Rock-Sydney								
Qantas	30	30	25	83.3	24	80.0	0	0.0
Virgin Australia	30	30	22	73.3	26	86.7	0	0.0
All Airlines	60	60	47	78.3	50	83.3	0	0.0
Ballina-Sydney								
Jetstar	39	39	31	79.5	28	71.8	0	0.0
Regional Express	78	78	56	71.8	55	70.5	0	0.0
Virgin Australia	30	30	25	83.3	25	83.3	0	0.0
All Airlines	147	147	112	76.2	108	73.5	0	0.0
Brisbane-Adelaide								
Jetstar	30	30	29	96.7	28	93.3	0	0.0
Qantas	108	108	90	83.3	91	84.3	0	0.0
Virgin Australia	90	87	75	86.2	79	90.8	3	3.3
All Airlines	228	225	194	86.2	198	88.0	3	1.3
Brisbane-Cairns								
Jetstar	90	89	82	92.1	84	94.4	1	1.1
Qantas	114	114	90	78.9	97	85.1	0	0.0
Virgin Australia	146	145	131	90.3	132	91.0	1	0.7
All Airlines	350	348	303	87.1	313	89.9	2	0.6
Brisbane-Canberra								
Qantas	142	142	126	88.7	127	89.4	0	0.0
QantasLink	17	17	13	76.5	15	88.2	0	0.0
Virgin Australia	120	120	104	86.7	107	89.2	0	0.0
All Airlines	279	279	243	87.1	249	89.2	0	0.0
Brisbane-Darwin								
Qantas	30	30	15	50.0	17	56.7	0	0.0
Virgin Australia	30	30	25	83.3	25	83.3	0	0.0
All Airlines	60	60	40	66.7	42	70.0	0	0.0
Brisbane-Hamilton Island								
Jetstar	30	30	26	86.7	28	93.3	0	0.0
Virgin Australia	30	30	29	96.7	26	86.7	0	0.0
All Airlines	60	60	55	91.7	54	90.0	0	0.0
Brisbane-Mackay								
Jetstar	120	119	88	73.9	110	92.4	1	0.8
QantasLink	104	104	88	84.6	83	79.8	0	0.0
Virgin Australia	146	145	131	90.3	129	89.0	1	0.7
All Airlines	370	368	307	83.4	322	87.5	2	0.5

	<i>Sectors</i>		<i>Departures On Time</i>		<i>Arrivals On Time</i>		<i>Cancellations</i>	
	<i>Sched.</i>	<i>Flown</i>	<i>No.</i>	<i>%</i>	<i>No.</i>	<i>%</i>	<i>No.</i>	<i>%</i>
Brisbane-Melbourne								
Jetstar	90	86	72	83.7	74	86.0	4	4.4
Qantas	401	398	332	83.4	319	80.2	3	0.7
Tiger Airways	67	67	62	92.5	60	89.6	0	0.0
Virgin Australia	344	339	300	88.5	297	87.6	5	1.5
All Airlines	902	890	766	86.1	750	84.3	12	1.3
Brisbane-Newcastle								
Jetstar	114	113	95	84.1	95	84.1	1	0.9
QantasLink	70	69	50	72.5	36	52.2	1	1.4
Virgin Australia	60	60	51	85.0	51	85.0	0	0.0
All Airlines	244	242	196	81.0	182	75.2	2	0.8
Brisbane-Perth								
Jetstar	26	26	23	88.5	20	76.9	0	0.0
Qantas	116	116	74	63.8	82	70.7	0	0.0
Virgin Australia	73	73	64	87.7	68	93.2	0	0.0
All Airlines	215	215	161	74.9	170	79.1	0	0.0
Brisbane-Proserpine								
Jetstar	30	30	25	83.3	27	90.0	0	0.0
Virgin Australia	30	30	25	83.3	26	86.7	0	0.0
All Airlines	60	60	50	83.3	53	88.3	0	0.0
Brisbane-Rockhampton								
QantasLink	212	212	163	76.9	168	79.2	0	0.0
Virgin Australia	146	144	122	84.7	125	86.8	2	1.4
All Airlines	358	356	285	80.1	293	82.3	2	0.6
Brisbane-Sydney								
Jetstar	87	87	67	77.0	47	54.0	0	0.0
Qantas	564	546	420	76.9	414	75.8	18	3.2
Virgin Australia	551	543	469	86.4	458	84.3	8	1.5
All Airlines	1,202	1,176	956	81.3	919	78.1	26	2.2
Brisbane-Townsville								
Jetstar	30	30	21	70.0	25	83.3	0	0.0
Qantas	146	146	121	82.9	124	84.9	0	0.0
Virgin Australia	164	162	148	91.4	150	92.6	2	1.2
All Airlines	340	338	290	85.8	299	88.5	2	0.6
Broome-Perth								
Qantas	31	31	19	61.3	21	67.7	0	0.0
QantasLink	48	48	38	79.2	37	77.1	0	0.0
Skywest	30	30	25	83.3	26	86.7	0	0.0
Virgin Australia	60	59	47	79.7	49	83.1	1	1.7
All Airlines	169	168	129	76.8	133	79.2	1	0.6

	<i>Sectors</i>		<i>Departures On Time</i>		<i>Arrivals On Time</i>		<i>Cancellations</i>	
	<i>Sched.</i>	<i>Flown</i>	<i>No.</i>	<i>%</i>	<i>No.</i>	<i>%</i>	<i>No.</i>	<i>%</i>
Cairns-Brisbane								
Jetstar	91	90	80	88.9	77	85.6	1	1.1
Qantas	114	113	97	85.8	95	84.1	1	0.9
Virgin Australia	146	145	133	91.7	132	91.0	1	0.7
All Airlines	351	348	310	89.1	304	87.4	3	0.9
Cairns-Melbourne								
Jetstar	85	84	71	84.5	71	84.5	1	1.2
Qantas	30	30	21	70.0	24	80.0	0	0.0
Virgin Australia	34	34	30	88.2	28	82.4	0	0.0
All Airlines	149	148	122	82.4	123	83.1	1	0.7
Cairns-Sydney								
Jetstar	71	70	64	91.4	63	90.0	1	1.4
Qantas	97	97	81	83.5	86	88.7	0	0.0
Virgin Australia	90	88	77	87.5	82	93.2	2	2.2
All Airlines	258	255	222	87.1	231	90.6	3	1.2
Cairns-Townsville								
QantasLink	173	172	150	87.2	142	82.6	1	0.6
Virgin Australia	30	29	26	89.7	26	89.7	1	3.3
All Airlines	203	201	176	87.6	168	83.6	2	1.0
Canberra-Adelaide								
Qantas	52	52	46	88.5	47	90.4	0	0.0
Virgin Australia	30	29	25	86.2	26	89.7	1	3.3
All Airlines	82	81	71	87.7	73	90.1	1	1.2
Canberra-Brisbane								
Qantas	147	142	129	90.8	123	86.6	5	3.4
QantasLink	17	17	14	82.4	12	70.6	0	0.0
Virgin Australia	120	120	115	95.8	109	90.8	0	0.0
All Airlines	284	279	258	92.5	244	87.5	5	1.8
Canberra-Melbourne								
Qantas	262	258	216	83.7	194	75.2	4	1.5
QantasLink	37	35	31	88.6	30	85.7	2	5.4
Virgin Australia	169	163	142	87.1	142	87.1	6	3.6
All Airlines	468	456	389	85.3	366	80.3	12	2.6
Canberra-Sydney								
Qantas	170	166	139	83.7	132	79.5	4	2.4
QantasLink	394	374	289	77.3	270	72.2	20	5.1
Virgin Australia	227	224	208	92.9	192	85.7	3	1.3
All Airlines	791	764	636	83.2	594	77.7	27	3.4
Coffs Harbour-Sydney								
QantasLink	144	144	99	68.8	108	75.0	0	0.0
Virgin Australia	60	59	49	83.1	46	78.0	1	1.7
All Airlines	204	203	148	72.9	154	75.9	1	0.5

	<i>Sectors</i>		<i>Departures On Time</i>		<i>Arrivals On Time</i>		<i>Cancellations</i>	
	<i>Sched.</i>	<i>Flown</i>	<i>No.</i>	<i>%</i>	<i>No.</i>	<i>%</i>	<i>No.</i>	<i>%</i>
Darwin-Brisbane								
Qantas	30	30	15	50.0	13	43.3	0	0.0
Virgin Australia	30	30	27	90.0	26	86.7	0	0.0
All Airlines	60	60	42	70.0	39	65.0	0	0.0
Darwin-Melbourne								
Jetstar	4	4	1	25.0	1	25.0	0	0.0
Qantas	16	16	14	87.5	12	75.0	0	0.0
Virgin Australia	30	30	28	93.3	26	86.7	0	0.0
All Airlines	50	50	43	86.0	39	78.0	0	0.0
Darwin-Perth								
Qantas	30	30	26	86.7	27	90.0	0	0.0
Virgin Australia	30	30	26	86.7	27	90.0	0	0.0
All Airlines	60	60	52	86.7	54	90.0	0	0.0
Dubbo-Sydney								
QantasLink	108	108	92	85.2	81	75.0	0	0.0
Regional Express	177	177	153	86.4	154	87.0	0	0.0
All Airlines	285	285	245	86.0	235	82.5	0	0.0
Gold Coast-Adelaide								
Jetstar	30	30	29	96.7	29	96.7	0	0.0
Virgin Australia	30	29	27	93.1	27	93.1	1	3.3
All Airlines	60	59	56	94.9	56	94.9	1	1.7
Gold Coast-Melbourne								
Jetstar	189	187	148	79.1	142	75.9	2	1.1
Tiger Airways	37	37	31	83.8	30	81.1	0	0.0
Virgin Australia	207	201	164	81.6	167	83.1	6	2.9
All Airlines	433	425	343	80.7	339	79.8	8	1.8
Gold Coast-Sydney								
Jetstar	287	278	220	79.1	229	82.4	9	3.1
Virgin Australia	346	338	266	78.7	268	79.3	8	2.3
All Airlines	633	616	486	78.9	497	80.7	17	2.7
Hamilton Island-Brisbane								
Jetstar	30	30	25	83.3	26	86.7	0	0.0
Virgin Australia	30	30	22	73.3	22	73.3	0	0.0
All Airlines	60	60	47	78.3	48	80.0	0	0.0
Hamilton Island-Sydney								
Jetstar	28	28	20	71.4	19	67.9	0	0.0
Virgin Australia	30	30	25	83.3	25	83.3	0	0.0
All Airlines	58	58	45	77.6	44	75.9	0	0.0
Hobart-Melbourne								
Jetstar	113	112	76	67.9	77	68.8	1	0.9
Qantas	61	61	52	85.2	49	80.3	0	0.0
Virgin Australia	126	125	104	83.2	99	79.2	1	0.8
All Airlines	300	298	232	77.9	225	75.5	2	0.7

	<i>Sectors</i>		<i>Departures On Time</i>		<i>Arrivals On Time</i>		<i>Cancellations</i>	
	<i>Sched.</i>	<i>Flown</i>	<i>No.</i>	<i>%</i>	<i>No.</i>	<i>%</i>	<i>No.</i>	<i>%</i>
Hobart-Sydney								
Jetstar	60	59	47	79.7	53	89.8	1	1.7
Qantas	30	30	21	70.0	23	76.7	0	0.0
Virgin Australia	60	58	40	69.0	41	70.7	2	3.3
All Airlines	150	147	108	73.5	117	79.6	3	2.0
Kalgoorlie-Perth								
Qantas	77	75	61	81.3	58	77.3	2	2.6
QantasLink	16	16	12	75.0	13	81.3	0	0.0
Skywest	19	19	16	84.2	17	89.5	0	0.0
All Airlines	112	110	89	80.9	88	80.0	2	1.8
Karratha-Perth								
Qantas	171	165	136	82.4	136	82.4	6	3.5
QantasLink	74	73	66	90.4	67	91.8	1	1.4
Virgin Australia	53	52	38	73.1	36	69.2	1	1.9
All Airlines	298	290	240	82.8	239	82.4	8	2.7
Launceston-Melbourne								
Jetstar	90	90	65	72.2	70	77.8	0	0.0
QantasLink	83	80	54	67.5	53	66.3	3	3.6
Virgin Australia	120	119	107	89.9	104	87.4	1	0.8
All Airlines	293	289	226	78.2	227	78.5	4	1.4
Launceston-Sydney								
Jetstar	30	30	26	86.7	26	86.7	0	0.0
Virgin Australia	30	30	16	53.3	15	50.0	0	0.0
All Airlines	60	60	42	70.0	41	68.3	0	0.0
Mackay-Brisbane								
Jetstar	28	28	24	85.7	23	82.1	0	0.0
QantasLink	104	104	83	79.8	88	84.6	0	0.0
Virgin Australia	146	145	131	90.3	130	89.7	1	0.7
All Airlines	278	277	238	85.9	241	87.0	1	0.4
Melbourne-Adelaide								
Jetstar	83	82	72	87.8	68	82.9	1	1.2
Qantas	286	286	232	81.1	230	80.4	0	0.0
QantasLink	16	15	13	86.7	11	73.3	1	6.3
Virgin Australia	259	254	228	89.8	224	88.2	5	1.9
All Airlines	644	637	545	85.6	533	83.7	7	1.1
Melbourne-Brisbane								
Jetstar	91	86	52	60.5	63	73.3	5	5.5
Qantas	401	398	311	78.1	326	81.9	3	0.7
Tiger Airways	67	67	65	97.0	65	97.0	0	0.0
Virgin Australia	344	336	279	83.0	289	86.0	8	2.3
All Airlines	903	887	707	79.7	743	83.8	16	1.8

	<i>Sectors</i>		<i>Departures</i>		<i>Arrivals</i>		<i>Cancellations</i>	
	<i>Sched.</i>	<i>Flown</i>	<i>On Time</i>		<i>On Time</i>		<i>No.</i>	<i>%</i>
			<i>No.</i>	<i>%</i>	<i>No.</i>	<i>%</i>		
Melbourne-Cairns								
Jetstar	86	85	72	84.7	74	87.1	1	1.2
Qantas	30	30	24	80.0	25	83.3	0	0.0
Virgin Australia	34	34	28	82.4	31	91.2	0	0.0
All Airlines	150	149	124	83.2	130	87.2	1	0.7
Melbourne-Canberra								
Qantas	262	257	206	80.2	209	81.3	5	1.9
QantasLink	37	35	30	85.7	27	77.1	2	5.4
Virgin Australia	168	165	142	86.1	143	86.7	3	1.8
All Airlines	467	457	378	82.7	379	82.9	10	2.1
Melbourne-Darwin								
Jetstar	4	4	0	0.0	1	25.0	0	0.0
Qantas	16	16	13	81.3	16	100.0	0	0.0
Virgin Australia	30	30	27	90.0	25	83.3	0	0.0
All Airlines	50	50	40	80.0	42	84.0	0	0.0
Melbourne-Gold Coast								
Jetstar	187	184	138	75.0	148	80.4	3	1.6
Tiger Airways	37	37	33	89.2	33	89.2	0	0.0
Virgin Australia	208	202	164	81.2	172	85.1	6	2.9
All Airlines	432	423	335	79.2	353	83.5	9	2.1
Melbourne-Hobart								
Jetstar	113	112	79	70.5	79	70.5	1	0.9
Qantas	61	61	42	68.9	41	67.2	0	0.0
Virgin Australia	125	124	99	79.8	99	79.8	1	0.8
All Airlines	299	297	220	74.1	219	73.7	2	0.7
Melbourne-Launceston								
Jetstar	90	90	72	80.0	73	81.1	0	0.0
QantasLink	83	80	53	66.3	51	63.8	3	3.6
Virgin Australia	120	119	102	85.7	103	86.6	1	0.8
All Airlines	293	289	227	78.5	227	78.5	4	1.4
Melbourne-Mildura								
QantasLink	86	86	54	62.8	51	59.3	0	0.0
Regional Express	91	91	84	92.3	80	87.9	0	0.0
Virgin Australia	30	30	29	96.7	29	96.7	0	0.0
All Airlines	207	207	167	80.7	160	77.3	0	0.0
Melbourne-Newcastle								
Jetstar	122	115	97	84.3	101	87.8	7	5.7
Virgin Australia	30	29	24	82.8	27	93.1	1	3.3
All Airlines	152	144	121	84.0	128	88.9	8	5.3

	<i>Sectors</i>		<i>Departures On Time</i>		<i>Arrivals On Time</i>		<i>Cancellations</i>	
	<i>Sched.</i>	<i>Flown</i>	<i>No.</i>	<i>%</i>	<i>No.</i>	<i>%</i>	<i>No.</i>	<i>%</i>
Melbourne-Perth								
Jetstar	72	69	51	73.9	45	65.2	3	4.2
Qantas	210	206	154	74.8	159	77.2	4	1.9
Tiger Airways	23	23	22	95.7	15	65.2	0	0.0
Virgin Australia	120	120	107	89.2	93	77.5	0	0.0
All Airlines	425	418	334	79.9	312	74.6	7	1.6
Melbourne-Sunshine Coast								
Jetstar	73	72	43	59.7	59	81.9	1	1.4
Virgin Australia	30	30	23	76.7	25	83.3	0	0.0
All Airlines	103	102	66	64.7	84	82.4	1	1.0
Melbourne-Sydney								
Jetstar	178	161	131	81.4	131	81.4	17	9.6
Qantas	902	849	670	78.9	673	79.3	53	5.9
Tiger Airways	138	138	128	92.8	131	94.9	0	0.0
Virgin Australia	746	723	595	82.3	584	80.8	23	3.1
All Airlines	1,964	1,871	1,524	81.5	1,519	81.2	93	4.7
Mildura-Melbourne								
QantasLink	86	86	69	80.2	52	60.5	0	0.0
Regional Express	92	92	83	90.2	83	90.2	0	0.0
Virgin Australia	30	30	28	93.3	28	93.3	0	0.0
All Airlines	208	208	180	86.5	163	78.4	0	0.0
Newcastle-Brisbane								
Jetstar	114	113	95	84.1	95	84.1	1	0.9
QantasLink	70	69	46	66.7	48	69.6	1	1.4
Virgin Australia	60	60	51	85.0	52	86.7	0	0.0
All Airlines	244	242	192	79.3	195	80.6	2	0.8
Newcastle-Melbourne								
Jetstar	122	114	98	86.0	92	80.7	8	6.6
Virgin Australia	30	29	22	75.9	26	89.7	1	3.3
All Airlines	152	143	120	83.9	118	82.5	9	5.9
Newman-Perth								
Qantas	52	52	39	75.0	35	67.3	0	0.0
QantasLink	53	53	49	92.5	47	88.7	0	0.0
Virgin Australia	31	31	22	71.0	21	67.7	0	0.0
All Airlines	136	136	110	80.9	103	75.7	0	0.0
Perth-Adelaide								
Jetstar	30	28	16	57.1	22	78.6	2	6.7
Qantas	112	111	94	84.7	97	87.4	1	0.9
Virgin Australia	61	60	55	91.7	58	96.7	1	1.6
All Airlines	203	199	165	82.9	177	88.9	4	2.0

	<i>Sectors</i>		<i>Departures On Time</i>		<i>Arrivals On Time</i>		<i>Cancellations</i>	
	<i>Sched.</i>	<i>Flown</i>	<i>No.</i>	<i>%</i>	<i>No.</i>	<i>%</i>	<i>No.</i>	<i>%</i>
Perth-Brisbane								
Jetstar	26	26	13	50.0	19	73.1	0	0.0
Qantas	116	116	92	79.3	90	77.6	0	0.0
Virgin Australia	72	72	65	90.3	69	95.8	0	0.0
All Airlines	214	214	170	79.4	178	83.2	0	0.0
Perth-Broome								
Qantas	31	31	24	77.4	23	74.2	0	0.0
QantasLink	48	48	39	81.3	36	75.0	0	0.0
Skywest	35	35	29	82.9	31	88.6	0	0.0
Virgin Australia	60	59	49	83.1	49	83.1	1	1.7
All Airlines	174	173	141	81.5	139	80.3	1	0.6
Perth-Darwin								
Qantas	30	30	27	90.0	27	90.0	0	0.0
Virgin Australia	30	30	28	93.3	27	90.0	0	0.0
All Airlines	60	60	55	91.7	54	90.0	0	0.0
Perth-Kalgoorlie								
Qantas	77	75	64	85.3	63	84.0	2	2.6
QantasLink	16	16	12	75.0	12	75.0	0	0.0
Skywest	20	20	16	80.0	16	80.0	0	0.0
All Airlines	113	111	92	82.9	91	82.0	2	1.8
Perth-Karratha								
Qantas	171	166	145	87.3	146	88.0	5	2.9
QantasLink	74	73	62	84.9	62	84.9	1	1.4
Virgin Australia	52	52	45	86.5	42	80.8	0	0.0
All Airlines	297	291	252	86.6	250	85.9	6	2.0
Perth-Melbourne								
Jetstar	73	71	47	66.2	55	77.5	2	2.7
Qantas	211	207	149	72.0	161	77.8	4	1.9
Tiger Airways	23	23	12	52.2	11	47.8	0	0.0
Virgin Australia	119	119	110	92.4	108	90.8	0	0.0
All Airlines	426	420	318	75.7	335	79.8	6	1.4
Perth-Newman								
Qantas	52	52	46	88.5	43	82.7	0	0.0
QantasLink	53	53	49	92.5	48	90.6	0	0.0
Virgin Australia	31	30	23	76.7	25	83.3	1	3.2
All Airlines	136	135	118	87.4	116	85.9	1	0.7
Perth-Port Hedland								
Qantas	72	71	61	85.9	58	81.7	1	1.4
QantasLink	41	41	37	90.2	36	87.8	0	0.0
Virgin Australia	61	61	53	86.9	51	83.6	0	0.0
All Airlines	174	173	151	87.3	145	83.8	1	0.6

	<i>Sectors</i>		<i>Departures On Time</i>		<i>Arrivals On Time</i>		<i>Cancellations</i>	
	<i>Sched.</i>	<i>Flown</i>	<i>No.</i>	<i>%</i>	<i>No.</i>	<i>%</i>	<i>No.</i>	<i>%</i>
Perth-Sydney								
Jetstar	36	28	17	60.7	20	71.4	8	22.2
Qantas	212	210	147	70.0	147	70.0	2	0.9
Virgin Australia	147	145	113	77.9	122	84.1	2	1.4
All Airlines	395	383	277	72.3	289	75.5	12	3.0
Port Hedland-Perth								
Qantas	72	72	57	79.2	56	77.8	0	0.0
QantasLink	41	41	37	90.2	36	87.8	0	0.0
Virgin Australia	61	61	52	85.2	54	88.5	0	0.0
All Airlines	174	174	146	83.9	146	83.9	0	0.0
Port Lincoln-Adelaide								
QantasLink	100	96	83	86.5	84	87.5	4	4.0
Regional Express	212	212	201	94.8	201	94.8	0	0.0
All Airlines	312	308	284	92.2	285	92.5	4	1.3
Port Macquarie-Sydney								
QantasLink	135	135	110	81.5	106	78.5	0	0.0
Virgin Australia	60	60	53	88.3	52	86.7	0	0.0
All Airlines	195	195	163	83.6	158	81.0	0	0.0
Proserpine-Brisbane								
Jetstar	30	30	26	86.7	26	86.7	0	0.0
Virgin Australia	30	30	23	76.7	24	80.0	0	0.0
All Airlines	60	60	49	81.7	50	83.3	0	0.0
Rockhampton-Brisbane								
QantasLink	190	190	138	72.6	146	76.8	0	0.0
Virgin Australia	146	144	124	86.1	119	82.6	2	1.4
All Airlines	336	334	262	78.4	265	79.3	2	0.6
Sunshine Coast-Melbourne								
Jetstar	73	72	53	73.6	52	72.2	1	1.4
Virgin Australia	30	30	22	73.3	25	83.3	0	0.0
All Airlines	103	102	75	73.5	77	75.5	1	1.0
Sunshine Coast-Sydney								
Jetstar	97	96	80	83.3	81	84.4	1	1.0
Virgin Australia	41	41	34	82.9	33	80.5	0	0.0
All Airlines	138	137	114	83.2	114	83.2	1	0.7
Sydney-Adelaide								
Jetstar	83	82	68	82.9	72	87.8	1	1.2
Qantas	266	265	224	84.5	222	83.8	1	0.4
Virgin Australia	150	149	125	83.9	128	85.9	1	0.7
All Airlines	499	496	417	84.1	422	85.1	3	0.6

	<i>Sectors</i>		<i>Departures On Time</i>		<i>Arrivals On Time</i>		<i>Cancellations</i>	
	<i>Sched.</i>	<i>Flown</i>	<i>No.</i>	<i>%</i>	<i>No.</i>	<i>%</i>	<i>No.</i>	<i>%</i>
Sydney-Albury								
QantasLink	116	116	84	72.4	82	70.7	0	0.0
Regional Express	116	116	87	75.0	96	82.8	0	0.0
Virgin Australia	60	60	55	91.7	55	91.7	0	0.0
All Airlines	292	292	226	77.4	233	79.8	0	0.0
Sydney-Ayers Rock								
Qantas	30	30	27	90.0	25	83.3	0	0.0
Virgin Australia	30	30	27	90.0	23	76.7	0	0.0
All Airlines	60	60	54	90.0	48	80.0	0	0.0
Sydney-Ballina								
Jetstar	39	39	34	87.2	36	92.3	0	0.0
Regional Express	79	79	66	83.5	70	88.6	0	0.0
Virgin Australia	30	30	28	93.3	28	93.3	0	0.0
All Airlines	148	148	128	86.5	134	90.5	0	0.0
Sydney-Brisbane								
Jetstar	87	87	79	90.8	74	85.1	0	0.0
Qantas	563	553	442	79.9	440	79.6	10	1.8
Virgin Australia	552	542	476	87.8	476	87.8	10	1.8
All Airlines	1,202	1,182	997	84.3	990	83.8	20	1.7
Sydney-Cairns								
Jetstar	70	70	62	88.6	63	90.0	0	0.0
Qantas	97	97	68	70.1	82	84.5	0	0.0
Virgin Australia	90	89	68	76.4	69	77.5	1	1.1
All Airlines	257	256	198	77.3	214	83.6	1	0.4
Sydney-Canberra								
Qantas	174	172	148	86.0	141	82.0	2	1.1
QantasLink	393	377	291	77.2	274	72.7	16	4.1
Virgin Australia	227	223	194	87.0	192	86.1	4	1.8
All Airlines	794	772	633	82.0	607	78.6	22	2.8
Sydney-Coffs Harbour								
QantasLink	144	144	105	72.9	105	72.9	0	0.0
Virgin Australia	60	59	48	81.4	51	86.4	1	1.7
All Airlines	204	203	153	75.4	156	76.8	1	0.5
Sydney-Dubbo								
QantasLink	108	108	93	86.1	86	79.6	0	0.0
Regional Express	179	179	157	87.7	161	89.9	0	0.0
All Airlines	287	287	250	87.1	247	86.1	0	0.0
Sydney-Gold Coast								
Jetstar	285	279	230	82.4	234	83.9	6	2.1
Virgin Australia	347	338	275	81.4	279	82.5	9	2.6
All Airlines	632	617	505	81.8	513	83.1	15	2.4

	<i>Sectors</i>		<i>Departures On Time</i>		<i>Arrivals On Time</i>		<i>Cancellations</i>	
	<i>Sched.</i>	<i>Flown</i>	<i>No.</i>	<i>%</i>	<i>No.</i>	<i>%</i>	<i>No.</i>	<i>%</i>
Sydney-Hamilton Island								
Jetstar	28	28	18	64.3	23	82.1	0	0.0
Virgin Australia	30	30	28	93.3	24	80.0	0	0.0
All Airlines	58	58	46	79.3	47	81.0	0	0.0
Sydney-Hobart								
Jetstar	60	59	56	94.9	52	88.1	1	1.7
Qantas	30	30	26	86.7	27	90.0	0	0.0
Virgin Australia	60	58	40	69.0	45	77.6	2	3.3
All Airlines	150	147	122	83.0	124	84.4	3	2.0
Sydney-Launceston								
Jetstar	30	30	27	90.0	28	93.3	0	0.0
Virgin Australia	30	30	23	76.7	20	66.7	0	0.0
All Airlines	60	60	50	83.3	48	80.0	0	0.0
Sydney-Melbourne								
Jetstar	174	159	135	84.9	133	83.6	15	8.6
Qantas	904	857	687	80.2	643	75.0	47	5.2
Tiger Airways	138	138	130	94.2	129	93.5	0	0.0
Virgin Australia	746	721	601	83.4	551	76.4	25	3.4
All Airlines	1,962	1,875	1,553	82.8	1,456	77.7	87	4.4
Sydney-Perth								
Jetstar	36	29	22	75.9	22	75.9	7	19.4
Qantas	211	210	143	68.1	144	68.6	1	0.5
Virgin Australia	146	145	126	86.9	121	83.4	1	0.7
All Airlines	393	384	291	75.8	287	74.7	9	2.3
Sydney-Port Macquarie								
QantasLink	135	135	104	77.0	105	77.8	0	0.0
Virgin Australia	60	60	49	81.7	50	83.3	0	0.0
All Airlines	195	195	153	78.5	155	79.5	0	0.0
Sydney-Sunshine Coast								
Jetstar	96	96	83	86.5	85	88.5	0	0.0
Virgin Australia	41	41	31	75.6	33	80.5	0	0.0
All Airlines	137	137	114	83.2	118	86.1	0	0.0
Sydney-Townsville								
Jetstar	25	25	21	84.0	20	80.0	0	0.0
Virgin Australia	30	30	27	90.0	28	93.3	0	0.0
All Airlines	55	55	48	87.3	48	87.3	0	0.0
Sydney-Wagga Wagga								
QantasLink	112	112	87	77.7	68	60.7	0	0.0
Regional Express	142	142	115	81.0	118	83.1	0	0.0
All Airlines	254	254	202	79.5	186	73.2	0	0.0

	<i>Sectors</i>		<i>Departures On Time</i>		<i>Arrivals On Time</i>		<i>Cancellations</i>	
	<i>Sched.</i>	<i>Flown</i>	<i>No.</i>	<i>%</i>	<i>No.</i>	<i>%</i>	<i>No.</i>	<i>%</i>
Townsville-Brisbane								
Jetstar	30	30	24	80.0	24	80.0	0	0.0
Qantas	146	146	129	88.4	130	89.0	0	0.0
Virgin Australia	165	160	149	93.1	146	91.3	5	3.0
All Airlines	341	336	302	89.9	300	89.3	5	1.5
Townsville-Cairns								
QantasLink	176	172	132	76.7	129	75.0	4	2.3
Virgin Australia	30	29	25	86.2	26	89.7	1	3.3
All Airlines	206	201	157	78.1	155	77.1	5	2.4
Townsville-Sydney								
Jetstar	25	25	17	68.0	18	72.0	0	0.0
Virgin Australia	30	30	27	90.0	25	83.3	0	0.0
All Airlines	55	55	44	80.0	43	78.2	0	0.0
Wagga Wagga-Sydney								
QantasLink	112	112	85	75.9	80	71.4	0	0.0
Regional Express	143	143	127	88.8	130	90.9	0	0.0
All Airlines	255	255	212	83.1	210	82.4	0	0.0

Airports

On time performance is reported for all routes where the passenger load averages over 8000 passengers per month, and where two or more airlines operate in competition. The following data reports by airport against flights operated on those routes only.

Airport	Departures			Arrivals		
	Sectors	On Time		Sectors	On Time	
	Flown	No.	%	Flown	No.	%
Adelaide						
Jetstar	252	215	85.3	252	219	86.9
Qantas	821	702	85.5	822	687	83.6
QantasLink	111	97	87.4	111	95	85.6
Regional Express	212	205	96.7	212	201	94.8
Virgin Australia	605	554	91.6	608	542	89.1
All Airlines	2 001	1 773	88.6	2 005	1 744	87.0

Relates to services to and from Brisbane, Canberra, Gold Coast, Melbourne, Perth Port Lincoln and Sydney.

Albury

QantasLink	116	79	68.1	116	82	70.7
Regional Express	116	108	93.1	116	96	82.8
Virgin Australia	60	54	90.0	60	55	91.7
All Airlines	292	241	82.5	292	233	79.8

Relates to services to and from Sydney only.

Ayers Rock

Qantas	30	25	83.3	30	25	83.3
Virgin Australia	30	22	73.3	30	23	76.7
All Airlines	60	47	78.3	60	48	80.0

Relates to services to and from Sydney only.

Ballina

Jetstar	39	31	79.5	39	36	92.3
Regional Express	78	56	71.8	79	70	88.6
Virgin Australia	30	25	83.3	30	28	93.3
All Airlines	147	112	76.2	148	134	90.5

Relates to services to and from Sydney only.

Brisbane

Jetstar	640	528	82.5	550	455	82.7
Qantas	1 600	1 268	79.3	1 606	1 312	81.7
QantasLink	402	314	78.1	380	294	77.4
Tiger Airways	67	62	92.5	67	65	97.0
Virgin Australia	1 908	1 674	87.7	1 901	1 675	88.1
All Airlines	4 617	3 846	83.3	4 504	3 801	84.4

Relates to services to and from Adelaide, Cairns, Canberra, Darwin, Hamilton Island, Mackay, Melbourne, Newcastle, Perth, Proserpine, Rockhampton, Sydney and Townsville.

Airport	Departures			Arrivals		
	Sectors Flown	On Time No.	On Time %	Sectors Flown	On Time No.	On Time %
Broome						
Qantas	31	19	61.3	31	23	74.2
QantasLink	48	38	79.2	48	36	75.0
Skywest	30	25	83.3	35	31	88.6
Virgin Australia	59	47	79.7	59	49	83.1
All Airlines	168	129	76.8	173	139	80.3
Relates to services to and from Perth only.						
Cairns						
Jetstar	244	215	88.1	244	221	90.6
Qantas	240	199	82.9	241	204	84.6
QantasLink	172	150	87.2	172	129	75.0
Virgin Australia	296	266	89.9	297	258	86.9
All Airlines	952	830	87.2	954	812	85.1
Relates to services to and from Brisbane, Melbourne, Sydney and Townsville.						
Canberra						
Qantas	618	530	85.8	619	520	84.0
QantasLink	426	334	78.4	429	316	73.7
Virgin Australia	536	490	91.4	538	471	87.5
All Airlines	1 580	1 354	85.7	1 586	1 307	82.4
Relates to services to and from Adelaide, Brisbane, Melbourne and Sydney.						
Coffs Harbour						
QantasLink	144	99	68.8	144	105	72.9
Virgin Australia	59	49	83.1	59	51	86.4
All Airlines	203	148	72.9	203	156	76.8
Relates to services to and from Sydney only.						
Darwin						
Jetstar	4	1	25.0	4	1	25.0
Qantas	76	55	72.4	76	60	78.9
Virgin Australia	90	81	90.0	90	77	85.6
All Airlines	170	137	80.6	170	138	81.2
Relates to services to and from Brisbane, Melbourne and Perth.						
Dubbo						
QantasLink	108	92	85.2	108	86	79.6
Regional Express	177	153	86.4	179	161	89.9
All Airlines	285	245	86.0	287	247	86.1
Relates to services to and from Sydney only.						
Gold Coast						
Jetstar	495	397	80.2	493	411	83.4
Tiger Airways	37	31	83.8	37	33	89.2
Virgin Australia	568	457	80.5	569	479	84.2
All Airlines	1 100	885	80.5	1 099	923	84.0
Relates to services to and from Adelaide, Melbourne and Sydney.						

Airport	Departures			Arrivals		
	Sectors	On Time		Sectors	On Time	
	Flown	No.	%	Flown	No.	%
Hamilton Island						
Jetstar	58	45	77.6	58	51	87.9
Virgin Australia	60	47	78.3	60	50	83.3
All Airlines	118	92	78.0	118	101	85.6
Relates to services to and from Brisbane and Sydney.						
Hobart						
Jetstar	171	123	71.9	171	131	76.6
Qantas	91	73	80.2	91	68	74.7
Virgin Australia	183	144	78.7	182	144	79.1
All Airlines	445	340	76.4	444	343	77.3
Relates to services to and from Melbourne and Sydney.						
Kalgoorlie						
Qantas	75	61	81.3	75	63	84.0
QantasLink	16	12	75.0	16	12	75.0
Skywest	19	16	84.2	20	16	80.0
All Airlines	110	89	80.9	111	91	82.0
Relates to services to and from Perth only.						
Karratha						
Qantas	165	136	82.4	166	146	88.0
QantasLink	73	66	90.4	73	62	84.9
Virgin Australia	52	38	73.1	52	42	80.8
All Airlines	290	240	82.8	291	250	85.9
Relates to services to and from Perth only.						
Launceston						
Jetstar	120	91	75.8	120	101	84.2
QantasLink	80	54	67.5	80	51	63.8
Virgin Australia	149	123	82.6	149	123	82.6
All Airlines	349	268	76.8	349	275	78.8
Relates to services to and from Melbourne and Sydney.						
Mackay						
Jetstar	28	24	85.7	119	110	92.4
QantasLink	104	83	79.8	104	83	79.8
Virgin Australia	145	131	90.3	145	129	89.0
All Airlines	277	238	85.9	368	322	87.5
Relates to services to and from Brisbane only.						

Airport	Departures			Arrivals		
	Sectors	On Time		Sectors	On Time	
	Flown	No.	%	Flown	No.	%
Melbourne						
Jetstar	1 060	807	76.1	1 059	839	79.2
Qantas	2 103	1 652	78.6	2 111	1 621	76.8
QantasLink	216	150	69.4	216	149	69.0
Regional Express	91	84	92.3	92	83	90.2
Tiger Airways	265	248	93.6	265	230	86.8
Virgin Australia	2 196	1 847	84.1	2 191	1 817	82.9
All Airlines	5 931	4 788	80.7	5 934	4 739	79.9
Relates to services to and from Adelaide, Brisbane, Cairns, Canberra, Darwin, Gold Coast, Hobart, Launceston, Mildura, Newcastle, Perth, Sunshine Coast and Sydney.						
Mildura						
QantasLink	86	69	80.2	86	51	59.3
Regional Express	92	83	90.2	91	80	87.9
Virgin Australia	30	28	93.3	30	29	96.7
All Airlines	208	180	86.5	207	160	77.3
Relates to services to and from Melbourne only.						
Newcastle						
Jetstar	227	193	85.0	228	196	86.0
QantasLink	69	46	66.7	69	36	52.2
Virgin Australia	89	73	82.0	89	78	87.6
All Airlines	385	312	81.0	386	310	80.3
Relates to services to and from Brisbane and Melbourne.						
Newman						
Qantas	52	39	75.0	52	43	82.7
QantasLink	53	49	92.5	53	48	90.6
Virgin Australia	31	22	71.0	30	25	83.3
All Airlines	136	110	80.9	135	116	85.9
Relates to services to and from Perth only.						
Perth						
Jetstar	153	93	60.8	154	111	72.1
Qantas	1 069	849	79.4	1 069	812	76.0
QantasLink	231	199	86.1	231	200	86.6
Skywest	55	45	81.8	49	43	87.8
Tiger Airways	23	12	52.2	23	15	65.2
Virgin Australia	628	541	86.1	630	522	82.9
All Airlines	2 159	1 739	80.5	2 156	1 703	79.0
Relates to services to and from Adelaide, Brisbane, Broome, Darwin, Kalgoorlie, Karratha, Melbourne, Newman, Port Hedland and Sydney.						

<i>Airport</i>	<i>Departures</i>			<i>Arrivals</i>		
	<i>Sectors Flown</i>	<i>On Time No.</i>	<i>On Time %</i>	<i>Sectors Flown</i>	<i>On Time No.</i>	<i>On Time %</i>
Port Hedland						
Qantas	72	57	79.2	71	58	81.7
QantasLink	41	37	90.2	41	36	87.8
Virgin Australia	61	52	85.2	61	51	83.6
All Airlines	174	146	83.9	173	145	83.8
Relates to services to and from Perth only.						
Port Lincoln						
QantasLink	96	83	86.5	96	82	85.4
Regional Express	212	201	94.8	212	201	94.8
All Airlines	308	284	92.2	308	283	91.9
Relates to services to and from Adelaide only.						
Port Macquarie						
QantasLink	135	110	81.5	135	105	77.8
Virgin Australia	60	53	88.3	60	50	83.3
All Airlines	195	163	83.6	195	155	79.5
Relates to services to and from Sydney only.						
Proserpine						
Jetstar	30	26	86.7	30	27	90.0
Virgin Australia	30	23	76.7	30	26	86.7
All Airlines	60	49	81.7	60	53	88.3
Relates to services to and from Brisbane only.						
Rockhampton						
QantasLink	190	138	72.6	212	168	79.2
Virgin Australia	144	124	86.1	144	125	86.8
All Airlines	334	262	78.4	356	293	82.3
Relates to services to and from Brisbane only.						
Sunshine Coast						
Jetstar	168	133	79.2	168	144	85.7
Virgin Australia	71	56	78.9	71	58	81.7
All Airlines	239	189	79.1	239	202	84.5
Relates to services to and from Melbourne and Sydney.						
Sydney						
Jetstar	983	835	84.9	983	783	79.7
Qantas	2 214	1 765	79.7	2 197	1 739	79.2
QantasLink	992	764	77.0	989	729	73.7
Regional Express	516	425	82.4	514	445	86.6
Tiger Airways	138	130	94.2	138	131	94.9
Virgin Australia	2 635	2 221	84.3	2 638	2 185	82.8
All Airlines	7 478	6 140	82.1	7 459	6 012	80.6

Relates to services to and from Adelaide, Albury, Ayers Rock, Ballina, Brisbane, Cairns, Canberra, Coffs Harbour, Dubbo, Gold Coast, Hamilton Island, Hobart, Launceston, Melbourne,

<i>Airport</i>	<i>Departures</i>			<i>Arrivals</i>		
	<i>Sectors</i>	<i>On Time</i>		<i>Sectors</i>	<i>On Time</i>	
	<i>Flown</i>	<i>No.</i>	<i>%</i>	<i>Flown</i>	<i>No.</i>	<i>%</i>

Perth, Port Macquarie, Sunshine Coast, Townsville and Wagga Wagga.

Townsville

Jetstar	55	41	74.5	55	45	81.8
Qantas	146	129	88.4	146	124	84.9
QantasLink	172	132	76.7	172	142	82.6
Virgin Australia	219	201	91.8	221	204	92.3
All Airlines	592	503	85.0	594	515	86.7

Relates to services to and from Brisbane, Cairns and Sydney.

Wagga Wagga

QantasLink	112	85	75.9	112	68	60.7
Regional Express	143	127	88.8	142	118	83.1
All Airlines	255	212	83.1	254	186	73.2

Relates to services to and from Sydney only.

Definitions

On time departure A flight departure is counted as "on time" if it departs the gate within 15 minutes of the scheduled departure time shown in the carriers' schedule.

On time arrival A flight arrival is counted as "on time" if it arrived at the gate within 15 minutes of the scheduled arrival time shown in the carriers' schedule.
Neither diverted nor cancelled flights count as on time.

Cancellation A flight removed from service within 7 days of scheduled departure is regarded as a cancellation.

On time departure percentage The percentage of on time departures is measured against the number of departures *operated* on any particular sector.

On time arrival percentage The percentage of on time arrivals is measured against the number of arrivals *operated* on any particular sector.

Cancellation percentage The percentage of cancellations is measured against the number of services *scheduled* on any particular sector.
