



Australian Government

Department of Infrastructure, Transport,
Regional Development and Local Government
Bureau of Infrastructure, Transport and Regional Economics



bitre

AVIATION STATISTICS

Airline

On Time Performance

September 2008—OTP 65

© Commonwealth of Australia 2008

ISSN 1832-0759

This work is copyright and the data contained in this publication should not be reproduced or used in any form without acknowledgement.

Enquiries

Bureau of Infrastructure, Transport and Regional Economics
GPO Box 501
Canberra ACT 2601

Telephone: 02 6274 7210

Facsimile: 02 6274 7727

Website: www.bitre.gov.au

Email: avstats@infrastructure.gov.au

This publication, including a spreadsheet of the time-series data, can be downloaded from the BITRE website:

<http://www.bitre.gov.au/info.aspx?ResourceId=214&NodeId=104>.

Disclaimers

BITRE seeks to publish its work to the highest professional standards. However, it cannot accept responsibility for any consequences arising from the use of information herein. Readers should rely on their own skill and judgment in applying any information or analysis to particular issues or circumstances.

Foreword

The Bureau of Infrastructure, Transport and Regional Economics (BITRE) reports on domestic aviation on time performance of the following participating Australian domestic airlines: Jetstar, MacAir, Qantas, QantasLink, Regional Express, Skywest Airlines, Tiger Airways and Virgin Blue.

Reporting commenced in November 2003, except for Jetstar which commenced reporting in May 2004, MacAir which commenced reporting in July 2005, and Tiger Airways which commenced reporting in April 2008.

The purpose of collecting this information is to monitor overall industry and individual airline performance on punctuality, and to allow consumers of air travel to make informed decisions when planning air travel.

On time performance is reported for all routes where the passenger load averaged 8000 or more passengers per month over the previous six months, and where two or more airlines operated in competition on those routes. Currently, there are 47 routes that meet this definition, but over time routes which meet these criteria may change as airline networks and traffic levels vary.

The participating airlines also report overall monthly network performance, except for MacAir which only supplies total network data because it does not operate on competitive routes.

Total industry figures refer to all services operated by reporting airlines only. These airlines collectively carried over 95 per cent of total domestic passengers (regular public transport only) in 2007.

The method of capturing on time performance varies between airlines utilising different recording systems. Jetstar and Qantas jet aircraft use Aircraft Communication Addressing and Reporting System (ACARS) to electronically measure on time performance. MacAir, Regional Express, Skywest, Tiger Airways, Virgin Blue and the Qantas non-jet fleet record on time performance manually using records from pilots, gate agents and/or ground crews.

Reports are published monthly on the BITRE web site. After collection of initial data, aggregate reports are subject to internal audit by participating airlines prior to publication. The target date for publication is within six weeks of the end of the reporting period. The report for September 2008 includes comparable data for the total industry for previous months.

Information on the total network for the month ending 30 September 2008 is presented on Page 1.

On time performance reporting was provided for 47 different routes covering 29 airports for September 2008. Detailed information on the performance of these routes is included in the tables beginning on Page 9, while detailed information on performance by airport is included from Page 21. The definitions can be found on Page 27.

Detailed time series data is available in Microsoft Excel spreadsheet format from the BITRE website at <http://www.bitre.gov.au/info.aspx?ResourceId=214&NodeId=104>.

Contents

	Page
Industry performance	1
Individual routes	9
Airports	21
Definitions.....	27

Industry performance

For the month ending 30 September 2008, airline on time performance over all routes operated by participating airlines (Jetstar, MacAir, Qantas, QantasLink, Regional Express, Skywest Airlines, Tiger Airways, and Virgin Blue) averaged 79.6 per cent for on time departures, and 77.6 per cent for on time arrivals. Cancellations for September 2008 represented 1.6 per cent of all scheduled flights. On time performance figures increased in September when compared with those for August, but were below those for September 2007. The equivalent figures for September 2007 were 82.9 per cent for departures, 81.9 per cent for arrivals and 1.3 per cent for cancellations.

The long term average performance for all routes since reporting commenced in November 2003 is 85.3 per cent for on time departures and 84.0 per cent for on time arrivals. Cancellations average 1.1 per cent of all scheduled flights.

Of the major domestic airlines, Tiger Airways achieved the highest level of on time departures for September 2008 at 82.5 per cent, while Jetstar achieved 79.0 per cent, Virgin Blue 78.6 per cent, and Qantas 77.0 per cent. QantasLink was the best performing regional airline with 83.4 per cent departures on time, followed by Skywest (81.4 per cent), Regional Express (81.3 per cent) and MacAir (80.8 per cent).

Tiger Airways was also the best performing major domestic airline for on time arrivals at 83.9 per cent, with Jetstar at 79.9 per cent, Qantas at 77.2 per cent, and Virgin Blue at 73.9 per cent. QantasLink was also the best performing regional airlines for on time arrivals at 81.5 per cent, followed by MacAir (80.9 per cent), Skywest (79.9 per cent) and Regional Express (76.3 per cent).

MacAir had the highest percentage of cancellations for September 2008 at 4.6 per cent, followed by Virgin Blue with 2.2 per cent, Qantas with 2.0 per cent, Skywest with 1.6 per cent, Tiger Airways with 1.0 per cent, Regional Express with 0.9 per cent, QantasLink with 0.8 per cent, and Jetstar with 0.5 per cent.

Of the 47 routes which meet the criteria for on time performance reporting, the Sydney–Launceston route had the highest percentage of on time departures (93.3 per cent), while the Perth–Brisbane route had the lowest (53.1 per cent). On time arrivals were highest on the Hamilton Island–Brisbane route (95.0 per cent), and lowest on the Gold Coast–Adelaide route (38.3 per cent).

Cancellations were highest on the Melbourne–Perth route with 6.3 per cent, followed by Perth–Melbourne with 5.8 per cent, Canberra–Sydney with 4.7 per cent, Sydney–Melbourne with 4.5 per cent, and both Sydney–Canberra and Melbourne–Sydney with 4.4 per cent.

Hamilton Island Airport recorded the highest percentage of on time departures (93.3 per cent), and Ballina Airport recorded the lowest (59.9 per cent). Hamilton Island Airport also recorded the highest percentage of on time arrivals (93.3 per cent), while Perth Airport recorded the lowest (60.9 per cent).

Table 1 On time performance for September 2008—Total Industry

	<i>Sectors</i>		<i>Departures On Time</i>		<i>Arrivals On Time</i>		<i>Cancellations</i>	
	<i>Scheduled</i>	<i>Flown</i>	<i>No.</i>	<i>%</i>	<i>No.</i>	<i>%</i>	<i>No.</i>	<i>%</i>
Jetstar	4 901	4 877	3 853	79.0	3 896	79.9	24	0.5
MacAir	1 149	1 096	886	80.8	887	80.9	53	4.6
Qantas	10 674	10 461	8 053	77.0	8 074	77.2	213	2.0
QantasLink	7 591	7 528	6 276	83.4	6 139	81.5	63	0.8
Regional Express	5 336	5 290	4 300	81.3	4 037	76.3	46	0.9
Skywest	1 131	1 113	906	81.4	889	79.9	18	1.6
Tiger Airways	792	784	647	82.5	658	83.9	8	1.0
Virgin Blue	11 298	11 045	8 676	78.6	8 164	73.9	253	2.2
All Airlines	42 872	42 194	33 597	79.6	32 744	77.6	678	1.6

Note: 1. Total airline network data (including routes not shown in this report).
 2. Tiger Airways began reporting in April 2008.

Table 2 Top ten routes for on time performance for September 2008 (participating airlines only)

<i>Departures</i>		<i>Arrivals</i>	
<i>Route</i>	<i>On Time (%)</i>	<i>Route</i>	<i>On Time (%)</i>
Sydney-Launceston	93.3	Hamilton Island-Brisbane	95.0
Brisbane-Hamilton Island	93.3	Brisbane-Hamilton Island	93.3
Hamilton Island-Brisbane	93.3	Sydney-Townsville	92.3
Canberra-Adelaide	92.7	Townsville-Sydney	92.3
Sydney-Townsville	92.3	Melbourne-Maroochydore	91.3
Townsville-Sydney	92.3	Darwin-Melbourne	88.3
Adelaide-Gold Coast	90.0	Mackay-Brisbane	88.3
Canberra-Melbourne	89.4	Melbourne-Canberra	88.1
Townsville-Brisbane	87.8	Launceston-Sydney	88.1
Melbourne-Maroochydore	87.5	Townsville-Brisbane	87.8

Table 3 Top ten airports for on time performance for September 2008 (participating airlines and reported routes only)

<i>Departures</i>		<i>Arrivals</i>	
<i>Airport</i>	<i>On Time (%)</i>	<i>Airport</i>	<i>On Time (%)</i>
Hamilton Island	93.3	Hamilton Island	93.3
Townsville	88.4	Hervey Bay	87.2
Canberra	87.1	Maroochydore	84.8
Mackay	86.6	Darwin	84.7
Launceston	84.2	Townsville	83.8
Mildura	83.7	Alice Springs	83.7
Hervey Bay	83.0	Canberra	82.5
Cairns	81.9	Mackay	82.4
Brisbane	81.0	Cairns	81.6
Adelaide	79.3	Launceston	80.1

Total industry on time performance

Figure 1 On time performance (by month from September 2005)—Total Industry

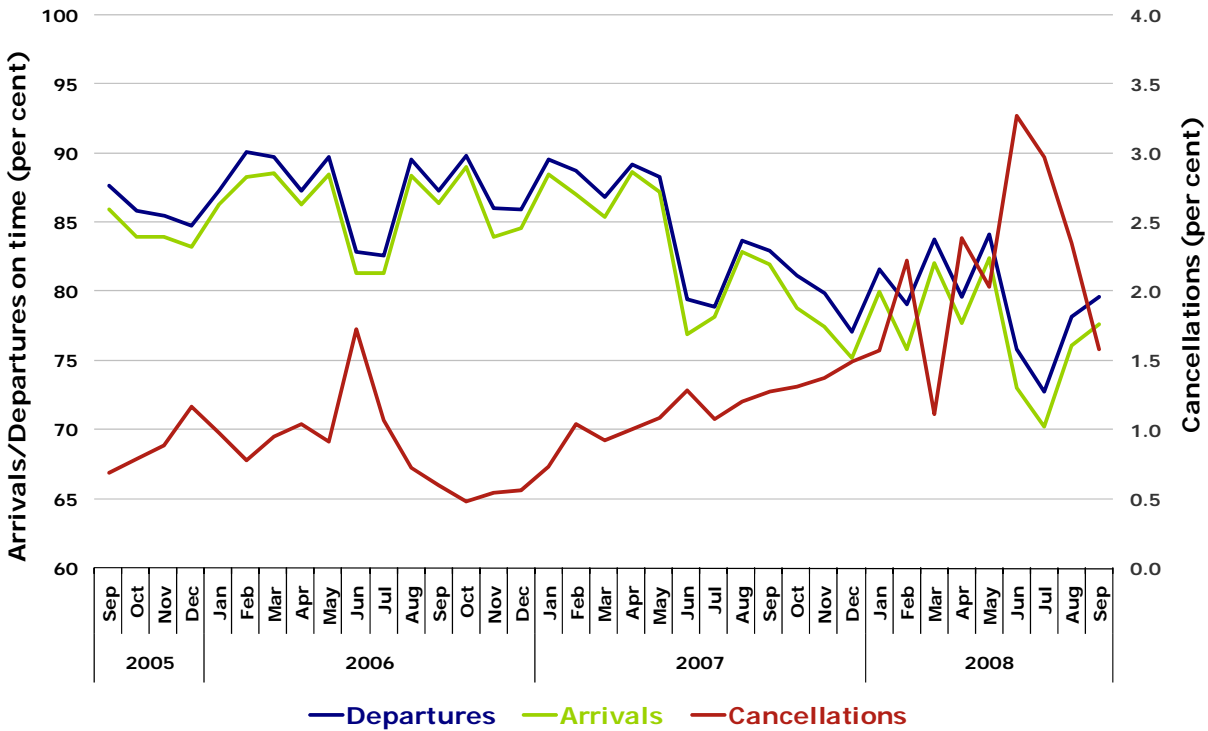


Figure 2 Departures on time (by month from September 2007)

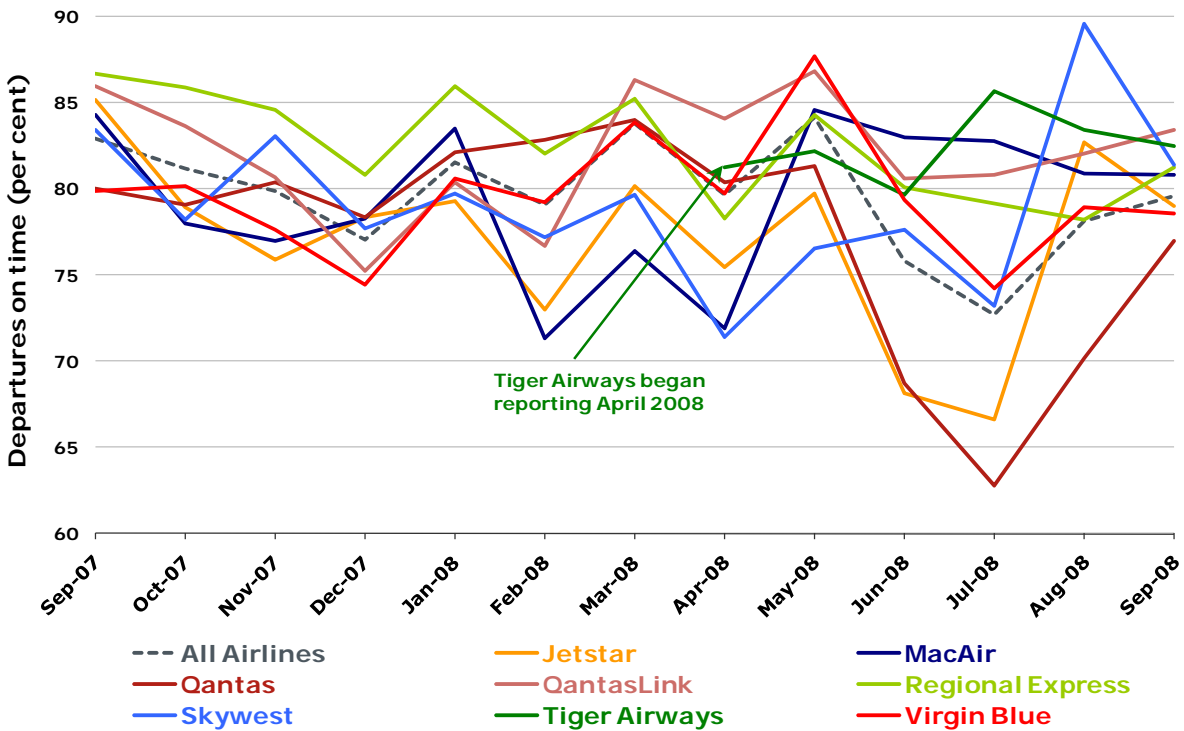


Figure 3 Arrivals on time (by month from September 2007)

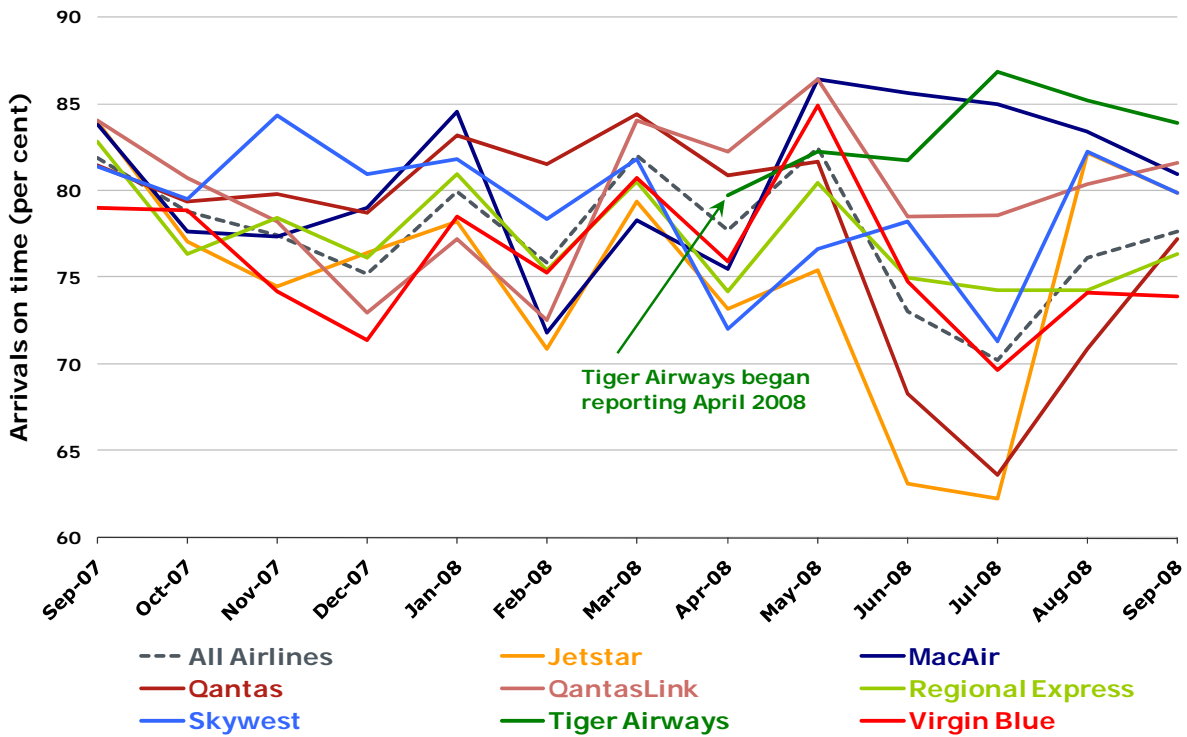
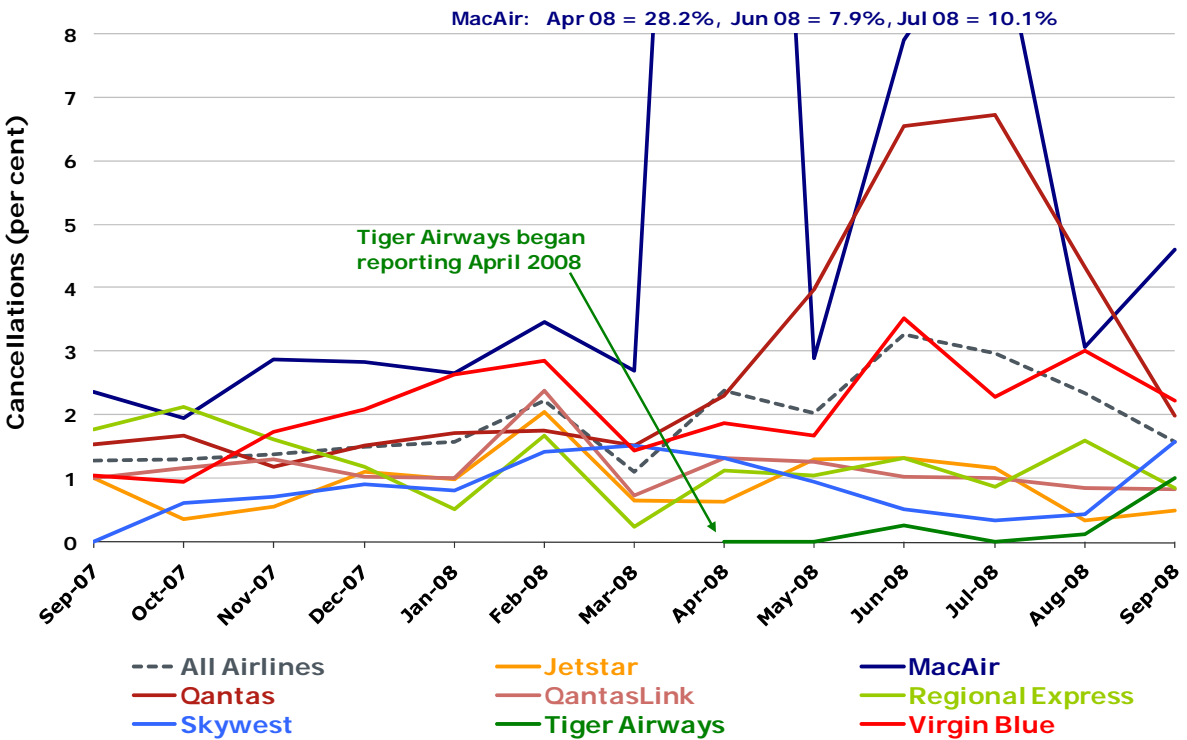


Figure 4 Cancellations (by month from September 2007)



Major domestic airlines on time performance

Figure 5 On time performance (by month from September 2005)—Jetstar

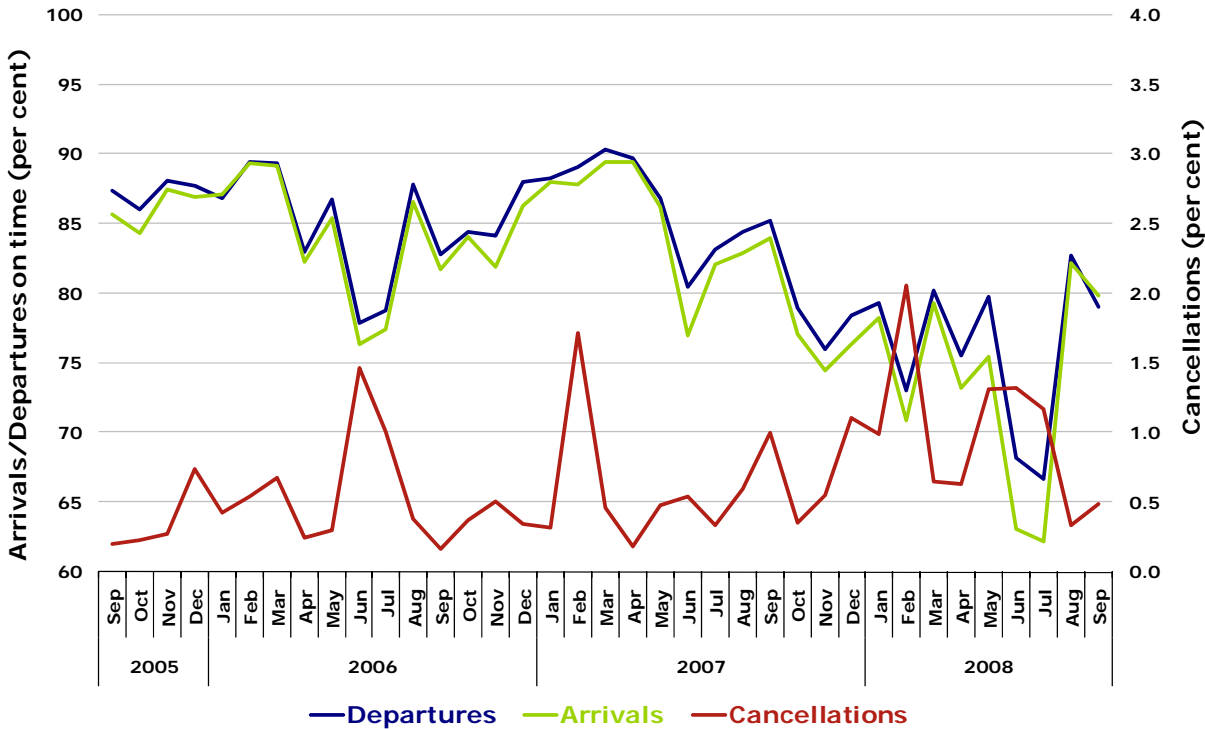


Figure 6 On time performance (by month from September 2005)—Qantas

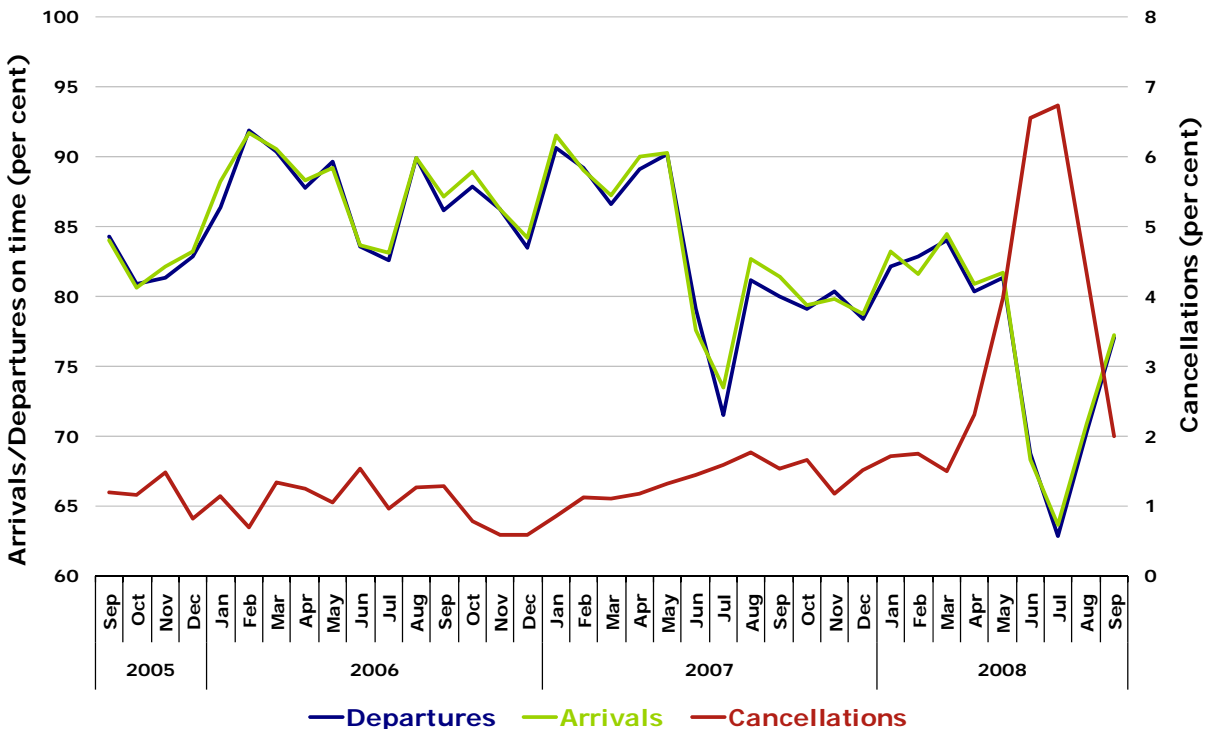


Figure 7 On time performance (by month from September 2005)—Tiger Airways

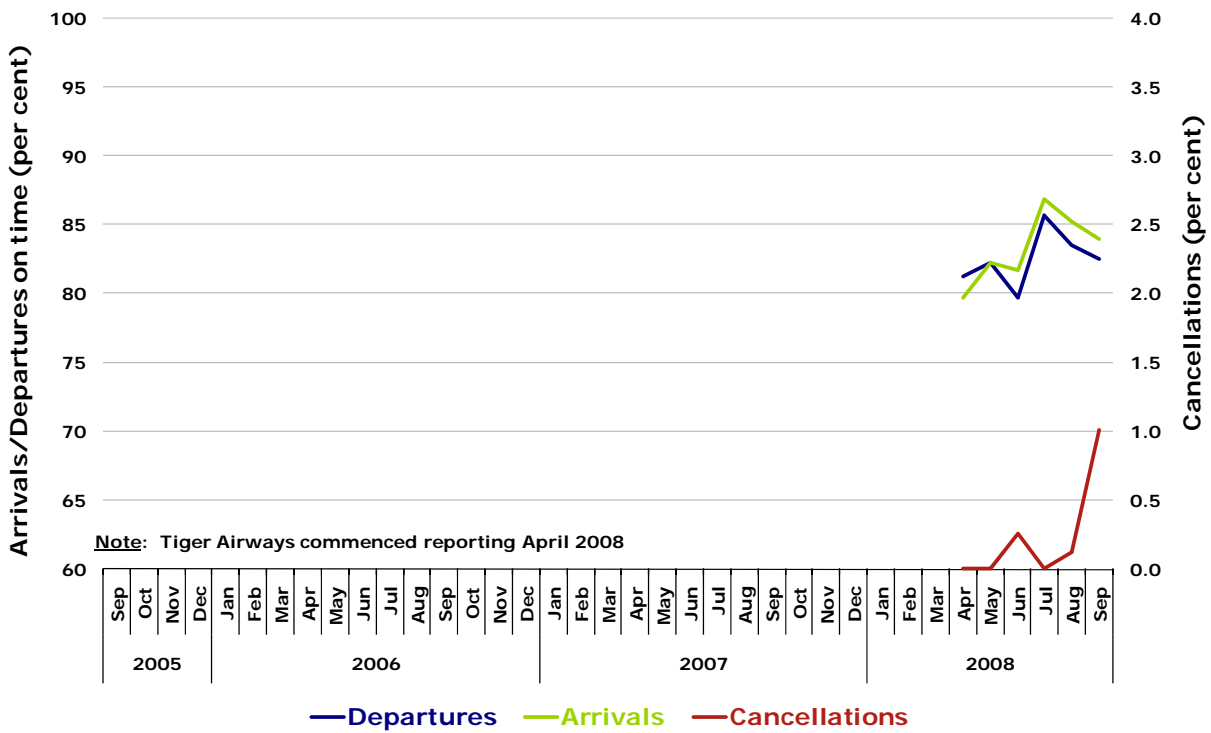
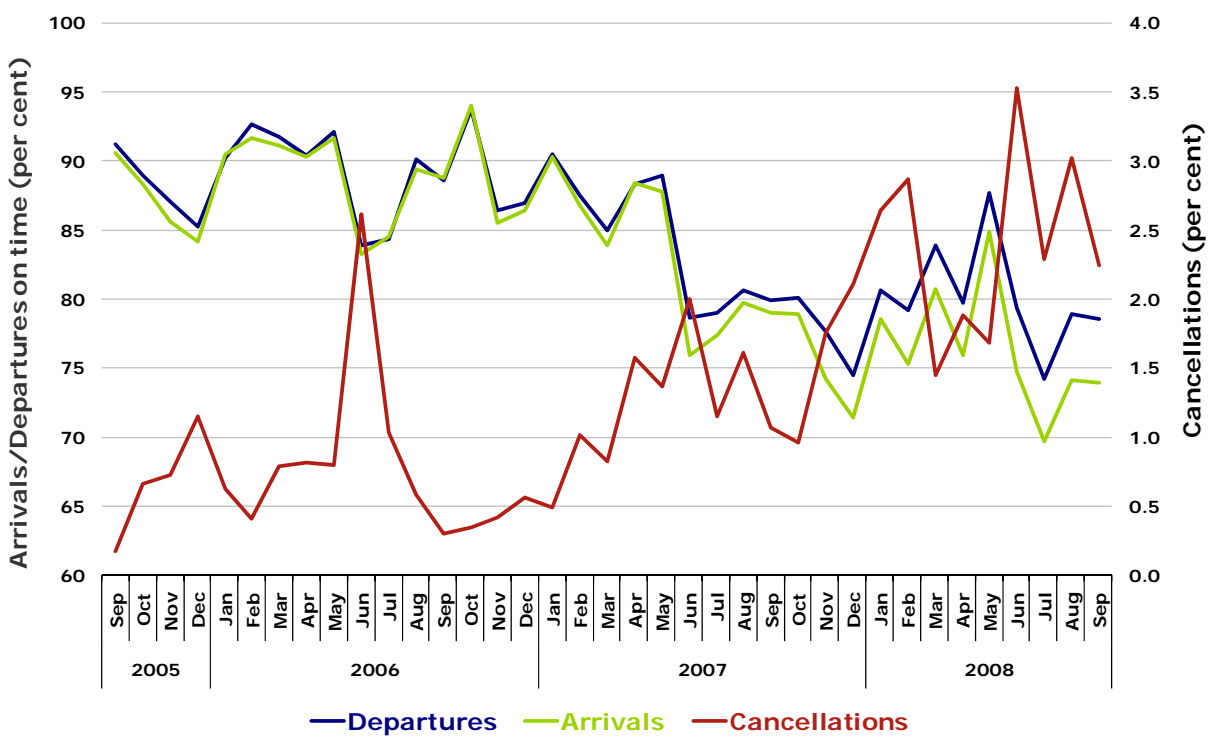


Figure 8 On time performance (by month from September 2005)—Virgin Blue



Major regional airlines on time performance

Figure 9 On time performance (by month from September 2005)—MacAir

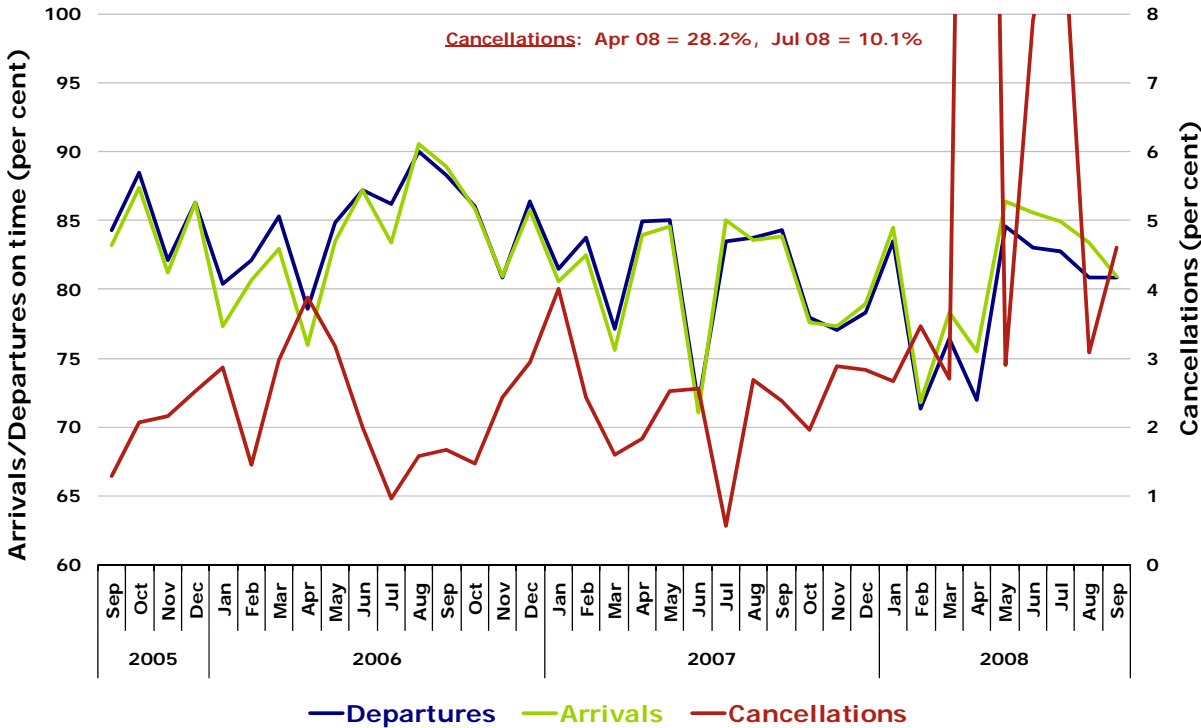


Figure 10 On time performance (by month from September 2005)—QantasLink

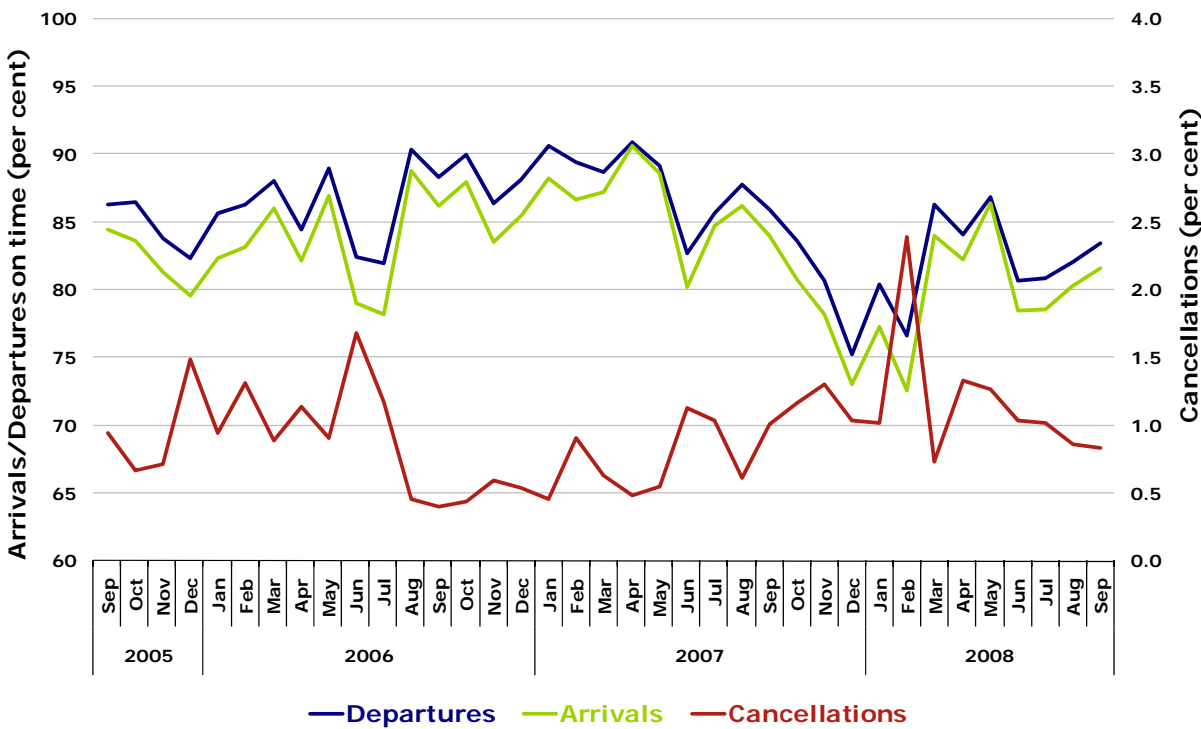


Figure 11 On time performance (by month from September 2005)—Regional Express

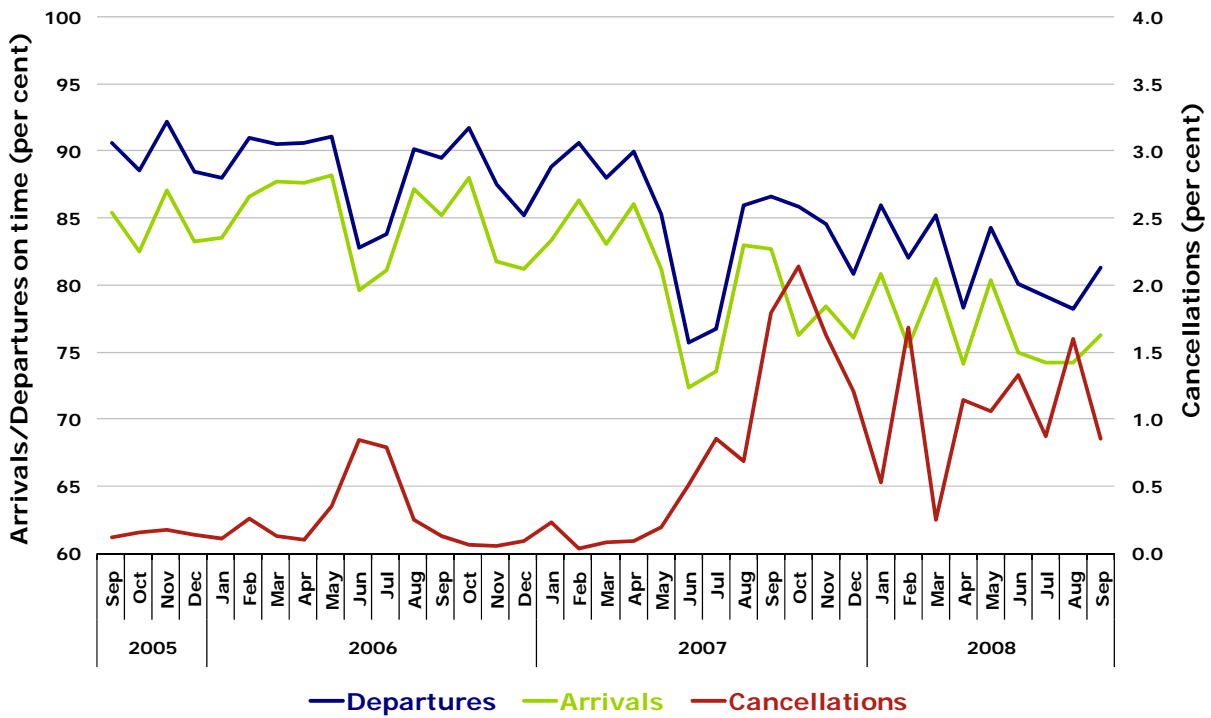
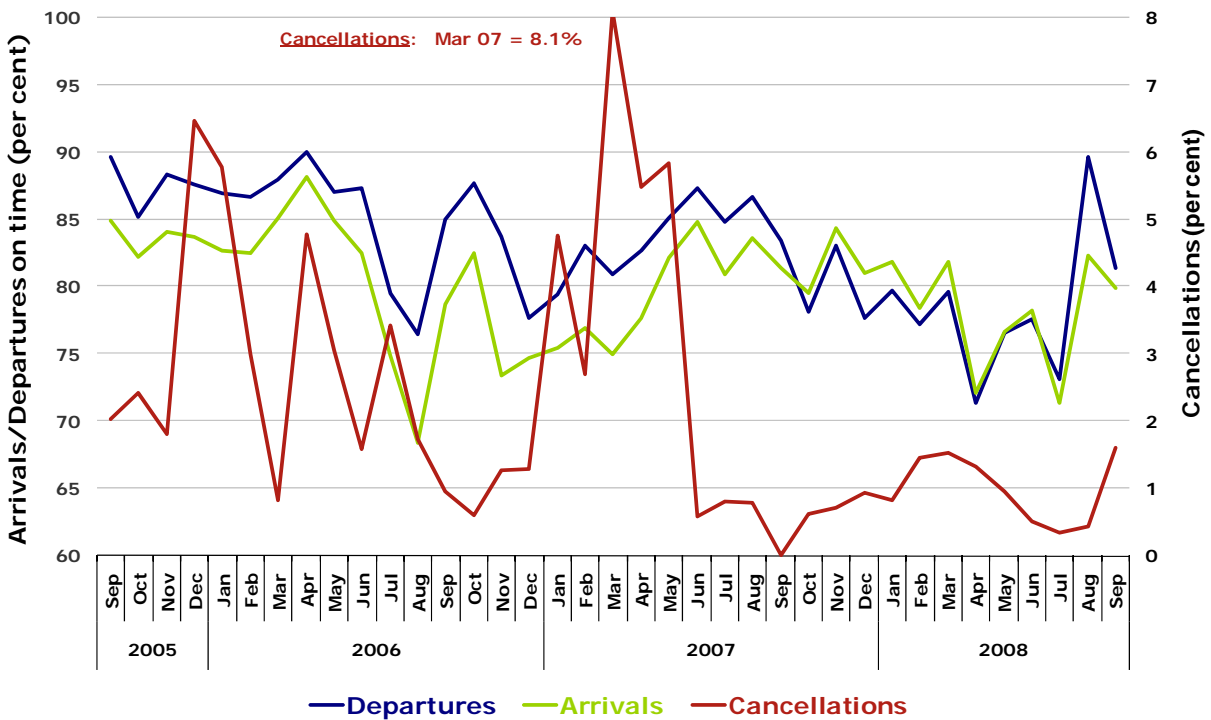


Figure 12 On time performance (by month from September 2005)—Skywest



Individual routes

On time performance is reported for all routes where the passenger load averages over 8000 passengers per month over the previous six months, and where two or more airlines operate in competition on those routes. There are now 47 routes which meet this definition. Over time, however, routes which meet this definition may change as airline networks and traffic levels vary.

	<i>Sectors</i>		<i>Departures On Time</i>		<i>Arrivals On Time</i>		<i>Cancellations</i>	
	<i>Sched.</i>	<i>Flown</i>	<i>No.</i>	<i>%</i>	<i>No.</i>	<i>%</i>	<i>No.</i>	<i>%</i>
Adelaide-Brisbane								
Jetstar	26	26	15	57.7	21	80.8	0	0.0
Qantas	86	86	77	89.5	76	88.4	0	0.0
Virgin Blue	120	120	79	65.8	91	75.8	0	0.0
All Airlines	232	232	171	73.7	188	81.0	0	0.0
Adelaide-Canberra								
Qantas	48	48	40	83.3	40	83.3	0	0.0
Virgin Blue	30	30	9	30.0	8	26.7	0	0.0
All Airlines	78	78	49	62.8	48	61.5	0	0.0
Adelaide-Gold Coast								
Jetstar	30	30	28	93.3	27	90.0	0	0.0
Virgin Blue	30	30	26	86.7	24	80.0	0	0.0
All Airlines	60	60	54	90.0	51	85.0	0	0.0
Adelaide-Melbourne								
Qantas	379	377	322	85.4	332	88.1	2	0.5
Tiger Airways	82	78	62	79.5	63	80.8	4	4.9
Virgin Blue	260	255	200	78.4	204	80.0	5	1.9
All Airlines	721	710	584	82.3	599	84.4	11	1.5
Adelaide-Perth								
Qantas	142	140	117	83.6	109	77.9	2	1.4
Virgin Blue	39	39	36	92.3	26	66.7	0	0.0
All Airlines	181	179	153	85.5	135	75.4	2	1.1
Adelaide-Sydney								
Jetstar	30	29	6	20.7	15	51.7	1	3.3
Qantas	313	308	249	80.8	259	84.1	5	1.6
Virgin Blue	150	150	119	79.3	126	84.0	0	0.0
All Airlines	493	487	374	76.8	400	82.1	6	1.2
Albury-Sydney								
QantasLink	116	116	86	74.1	91	78.4	0	0.0
Regional Express	116	115	80	69.6	83	72.2	1	0.9
Virgin Blue	56	55	47	85.5	43	78.2	1	1.8
All Airlines	288	286	213	74.5	217	75.9	2	0.7

	<i>Sectors</i>		<i>Departures On Time</i>		<i>Arrivals On Time</i>		<i>Cancellations</i>	
	<i>Sched.</i>	<i>Flown</i>	<i>No.</i>	<i>%</i>	<i>No.</i>	<i>%</i>	<i>No.</i>	<i>%</i>
Alice Springs-Melbourne								
Qantas	30	30	14	46.7	20	66.7	0	0.0
Tiger Airways	13	13	13	100.0	12	92.3	0	0.0
All Airlines	43	43	27	62.8	32	74.4	0	0.0
Ballina-Sydney								
Jetstar	29	29	19	65.5	19	65.5	0	0.0
Regional Express	79	79	40	50.6	41	51.9	0	0.0
Virgin Blue	34	34	26	76.5	20	58.8	0	0.0
All Airlines	142	142	85	59.9	80	56.3	0	0.0
Brisbane-Adelaide								
Jetstar	26	26	21	80.8	21	80.8	0	0.0
Qantas	86	85	68	80.0	75	88.2	1	1.2
Virgin Blue	121	121	103	85.1	71	58.7	0	0.0
All Airlines	233	232	192	82.8	167	72.0	1	0.4
Brisbane-Cairns								
Jetstar	103	102	84	82.4	84	82.4	1	1.0
Qantas	120	120	97	80.8	108	90.0	0	0.0
Virgin Blue	132	132	109	82.6	112	84.8	0	0.0
All Airlines	355	354	290	81.9	304	85.9	1	0.3
Brisbane-Canberra								
Qantas	142	142	127	89.4	129	90.8	0	0.0
QantasLink	8	8	8	100.0	7	87.5	0	0.0
Virgin Blue	150	145	116	80.0	103	71.0	5	3.3
All Airlines	300	295	251	85.1	239	81.0	5	1.7
Brisbane-Darwin								
Jetstar	26	26	21	80.8	20	76.9	0	0.0
Qantas	30	30	27	90.0	27	90.0	0	0.0
Virgin Blue	30	30	22	73.3	26	86.7	0	0.0
All Airlines	86	86	70	81.4	73	84.9	0	0.0
Brisbane-Hamilton Island								
Jetstar	30	30	27	90.0	27	90.0	0	0.0
Virgin Blue	30	30	29	96.7	29	96.7	0	0.0
All Airlines	60	60	56	93.3	56	93.3	0	0.0
Brisbane-Mackay								
Jetstar	88	88	75	85.2	79	89.8	0	0.0
QantasLink	56	56	48	85.7	44	78.6	0	0.0
Virgin Blue	146	145	121	83.4	115	79.3	1	0.7
All Airlines	290	289	244	84.4	238	82.4	1	0.3
Brisbane-Melbourne								
Qantas	431	430	340	79.1	355	82.6	1	0.2
Virgin Blue	349	345	304	88.1	244	70.7	4	1.1
All Airlines	780	775	644	83.1	599	77.3	5	0.6

	<i>Sectors</i>		<i>Departures On Time</i>		<i>Arrivals On Time</i>		<i>Cancellations</i>	
	<i>Sched.</i>	<i>Flown</i>	<i>No.</i>	<i>%</i>	<i>No.</i>	<i>%</i>	<i>No.</i>	<i>%</i>
Brisbane-Newcastle								
Jetstar	120	120	92	76.7	92	76.7	0	0.0
QantasLink	70	70	61	87.1	55	78.6	0	0.0
Virgin Blue	48	48	44	91.7	40	83.3	0	0.0
All Airlines	238	238	197	82.8	187	78.6	0	0.0
Brisbane-Perth								
Qantas	120	120	78	65.0	79	65.8	0	0.0
Virgin Blue	60	60	51	85.0	21	35.0	0	0.0
All Airlines	180	180	129	71.7	100	55.6	0	0.0
Brisbane-Proserpine								
Jetstar	30	30	18	60.0	21	70.0	0	0.0
Virgin Blue	32	32	28	87.5	27	84.4	0	0.0
All Airlines	62	62	46	74.2	48	77.4	0	0.0
Brisbane-Rockhampton								
Jetstar	30	30	22	73.3	24	80.0	0	0.0
QantasLink	150	150	121	80.7	121	80.7	0	0.0
Virgin Blue	150	149	108	72.5	102	68.5	1	0.7
All Airlines	330	329	251	76.3	247	75.1	1	0.3
Brisbane-Sydney								
Qantas	671	658	493	74.9	448	68.1	13	1.9
Virgin Blue	589	562	469	83.5	417	74.2	27	4.6
All Airlines	1 260	1 220	962	78.9	865	70.9	40	3.2
Brisbane-Townsville								
Jetstar	60	58	49	84.5	50	86.2	2	3.3
Qantas	159	159	132	83.0	136	85.5	0	0.0
Virgin Blue	120	120	98	81.7	92	76.7	0	0.0
All Airlines	339	337	279	82.8	278	82.5	2	0.6
Broome-Perth								
Qantas	30	30	20	66.7	20	66.7	0	0.0
QantasLink	47	47	38	80.9	37	78.7	0	0.0
Skywest	27	25	18	72.0	16	64.0	2	7.4
Virgin Blue	39	38	20	52.6	19	50.0	1	2.6
All Airlines	143	140	96	68.6	92	65.7	3	2.1
Cairns-Brisbane								
Jetstar	103	102	86	84.3	84	82.4	1	1.0
Qantas	120	120	107	89.2	107	89.2	0	0.0
Virgin Blue	132	132	106	80.3	110	83.3	0	0.0
All Airlines	355	354	299	84.5	301	85.0	1	0.3
Cairns-Melbourne								
Jetstar	55	55	50	90.9	45	81.8	0	0.0
Qantas	30	30	9	30.0	18	60.0	0	0.0
Virgin Blue	63	63	47	74.6	32	50.8	0	0.0
All Airlines	148	148	106	71.6	95	64.2	0	0.0

	<i>Sectors</i>		<i>Departures On Time</i>		<i>Arrivals On Time</i>		<i>Cancellations</i>	
	<i>Sched.</i>	<i>Flown</i>	<i>No.</i>	<i>%</i>	<i>No.</i>	<i>%</i>	<i>No.</i>	<i>%</i>
Cairns-Sydney								
Jetstar	64	64	57	89.1	60	93.8	0	0.0
Qantas	107	107	85	79.4	89	83.2	0	0.0
Virgin Blue	116	115	98	85.2	92	80.0	1	0.9
All Airlines	287	286	240	83.9	241	84.3	1	0.3
Canberra-Adelaide								
Qantas	52	52	51	98.1	50	96.2	0	0.0
Virgin Blue	30	30	25	83.3	18	60.0	0	0.0
All Airlines	82	82	76	92.7	68	82.9	0	0.0
Canberra-Brisbane								
Qantas	142	142	128	90.1	121	85.2	0	0.0
QantasLink	8	8	4	50.0	4	50.0	0	0.0
Virgin Blue	150	144	123	85.4	124	86.1	6	4.0
All Airlines	300	294	255	86.7	249	84.7	6	2.0
Canberra-Melbourne								
Qantas	276	273	245	89.7	237	86.8	3	1.1
QantasLink	38	35	32	91.4	31	88.6	3	7.9
Tiger Airways	60	60	53	88.3	51	85.0	0	0.0
Virgin Blue	180	171	152	88.9	147	86.0	9	5.0
All Airlines	554	539	482	89.4	466	86.5	15	2.7
Canberra-Sydney								
Qantas	208	207	179	86.5	174	84.1	1	0.5
QantasLink	440	419	354	84.5	355	84.7	21	4.8
Virgin Blue	206	188	160	85.1	161	85.6	18	8.7
All Airlines	854	814	693	85.1	690	84.8	40	4.7
Coffs Harbour-Sydney								
QantasLink	118	118	78	66.1	78	66.1	0	0.0
Virgin Blue	60	60	49	81.7	43	71.7	0	0.0
All Airlines	178	178	127	71.3	121	68.0	0	0.0
Darwin-Brisbane								
Jetstar	26	26	12	46.2	17	65.4	0	0.0
Qantas	30	30	24	80.0	22	73.3	0	0.0
Virgin Blue	30	30	24	80.0	22	73.3	0	0.0
All Airlines	86	86	60	69.8	61	70.9	0	0.0
Darwin-Melbourne								
Jetstar	60	60	51	85.0	52	86.7	0	0.0
Tiger Airways	17	17	11	64.7	16	94.1	0	0.0
All Airlines	77	77	62	80.5	68	88.3	0	0.0
Dubbo-Sydney								
QantasLink	86	86	77	89.5	67	77.9	0	0.0
Regional Express	158	157	115	73.2	115	73.2	1	0.6
All Airlines	244	243	192	79.0	182	74.9	1	0.4

	<i>Sectors</i>		<i>Departures On Time</i>		<i>Arrivals On Time</i>		<i>Cancellations</i>	
	<i>Sched.</i>	<i>Flown</i>	<i>No.</i>	<i>%</i>	<i>No.</i>	<i>%</i>	<i>No.</i>	<i>%</i>
Gold Coast-Adelaide								
Jetstar	30	30	14	46.7	10	33.3	0	0.0
Virgin Blue	30	30	20	66.7	13	43.3	0	0.0
All Airlines	60	60	34	56.7	23	38.3	0	0.0
Gold Coast-Melbourne								
Jetstar	182	182	147	80.8	131	72.0	0	0.0
Tiger Airways	87	87	69	79.3	70	80.5	0	0.0
Virgin Blue	154	153	108	70.6	78	51.0	1	0.6
All Airlines	423	422	324	76.8	279	66.1	1	0.2
Gold Coast-Sydney								
Jetstar	231	231	175	75.8	153	66.2	0	0.0
Virgin Blue	364	359	267	74.4	247	68.8	5	1.4
All Airlines	595	590	442	74.9	400	67.8	5	0.8
Hamilton Island-Brisbane								
Jetstar	30	30	27	90.0	27	90.0	0	0.0
Virgin Blue	30	30	29	96.7	30	100.0	0	0.0
All Airlines	60	60	56	93.3	57	95.0	0	0.0
Hervey Bay-Sydney								
Jetstar	17	17	15	88.2	16	94.1	0	0.0
Virgin Blue	30	30	24	80.0	19	63.3	0	0.0
All Airlines	47	47	39	83.0	35	74.5	0	0.0
Hobart-Melbourne								
Jetstar	147	146	135	92.5	136	93.2	1	0.7
Qantas	60	60	49	81.7	49	81.7	0	0.0
Tiger Airways	30	30	28	93.3	28	93.3	0	0.0
Virgin Blue	158	158	120	75.9	113	71.5	0	0.0
All Airlines	395	394	332	84.3	326	82.7	1	0.3
Hobart-Sydney								
Jetstar	47	47	41	87.2	41	87.2	0	0.0
Qantas	30	30	25	83.3	27	90.0	0	0.0
Virgin Blue	60	60	53	88.3	50	83.3	0	0.0
All Airlines	137	137	119	86.9	118	86.1	0	0.0
Kalgoorlie-Perth								
Qantas	59	59	42	71.2	46	78.0	0	0.0
QantasLink	24	24	21	87.5	21	87.5	0	0.0
Skywest	37	34	21	61.8	16	47.1	3	8.1
All Airlines	120	117	84	71.8	83	70.9	3	2.5
Launceston-Melbourne								
Jetstar	90	89	68	76.4	66	74.2	1	1.1
QantasLink	60	59	59	100.0	48	81.4	1	1.7
Tiger Airways	30	30	24	80.0	24	80.0	0	0.0
Virgin Blue	124	124	105	84.7	101	81.5	0	0.0
All Airlines	304	302	256	84.8	239	79.1	2	0.7

	<i>Sectors</i>		<i>Departures On Time</i>		<i>Arrivals On Time</i>		<i>Cancellations</i>	
	<i>Sched.</i>	<i>Flown</i>	<i>No.</i>	<i>%</i>	<i>No.</i>	<i>%</i>	<i>No.</i>	<i>%</i>
Launceston-Sydney								
Jetstar	30	29	22	75.9	24	82.8	1	3.3
Virgin Blue	30	30	26	86.7	28	93.3	0	0.0
All Airlines	60	59	48	81.4	52	88.1	1	1.7
Mackay-Brisbane								
Jetstar	89	89	77	86.5	79	88.8	0	0.0
QantasLink	56	56	48	85.7	52	92.9	0	0.0
Virgin Blue	147	145	126	86.9	125	86.2	2	1.4
All Airlines	292	290	251	86.6	256	88.3	2	0.7
Maroochydore-Melbourne								
Jetstar	61	61	49	80.3	46	75.4	0	0.0
Tiger Airways	13	13	12	92.3	12	92.3	0	0.0
Virgin Blue	30	29	19	65.5	14	48.3	1	3.3
All Airlines	104	103	80	77.7	72	69.9	1	1.0
Maroochydore-Sydney								
Jetstar	87	84	60	71.4	61	72.6	3	3.4
Virgin Blue	68	66	54	81.8	49	74.2	2	2.9
All Airlines	155	150	114	76.0	110	73.3	5	3.2
Melbourne-Adelaide								
Qantas	380	379	333	87.9	324	85.5	1	0.3
Tiger Airways	82	78	66	84.6	65	83.3	4	4.9
Virgin Blue	260	256	171	66.8	156	60.9	4	1.5
All Airlines	722	713	570	79.9	545	76.4	9	1.2
Melbourne-Alice Springs								
Qantas	30	30	23	76.7	23	76.7	0	0.0
Tiger Airways	13	13	12	92.3	13	100.0	0	0.0
All Airlines	43	43	35	81.4	36	83.7	0	0.0
Melbourne-Brisbane								
Qantas	430	429	343	80.0	344	80.2	1	0.2
Virgin Blue	349	341	256	75.1	251	73.6	8	2.3
All Airlines	779	770	599	77.8	595	77.3	9	1.2
Melbourne-Cairns								
Jetstar	55	55	40	72.7	49	89.1	0	0.0
Qantas	30	30	15	50.0	15	50.0	0	0.0
Virgin Blue	63	63	43	68.3	43	68.3	0	0.0
All Airlines	148	148	98	66.2	107	72.3	0	0.0
Melbourne-Canberra								
Qantas	276	274	238	86.9	243	88.7	2	0.7
QantasLink	38	35	31	88.6	32	91.4	3	7.9
Tiger Airways	60	60	51	85.0	52	86.7	0	0.0
Virgin Blue	180	171	146	85.4	149	87.1	9	5.0
All Airlines	554	540	466	86.3	476	88.1	14	2.5

	<i>Sectors</i>		<i>Departures On Time</i>		<i>Arrivals On Time</i>		<i>Cancellations</i>	
	<i>Sched.</i>	<i>Flown</i>	<i>No.</i>	<i>%</i>	<i>No.</i>	<i>%</i>	<i>No.</i>	<i>%</i>
Melbourne-Darwin								
Jetstar	60	60	51	85.0	49	81.7	0	0.0
Tiger Airways	17	17	16	94.1	16	94.1	0	0.0
All Airlines	77	77	67	87.0	65	84.4	0	0.0
Melbourne-Gold Coast								
Jetstar	183	183	132	72.1	145	79.2	0	0.0
Tiger Airways	87	87	69	79.3	72	82.8	0	0.0
Virgin Blue	154	153	120	78.4	122	79.7	1	0.6
All Airlines	424	423	321	75.9	339	80.1	1	0.2
Melbourne-Hobart								
Jetstar	147	146	120	82.2	126	86.3	1	0.7
Qantas	60	60	39	65.0	39	65.0	0	0.0
Tiger Airways	30	30	27	90.0	27	90.0	0	0.0
Virgin Blue	158	158	115	72.8	119	75.3	0	0.0
All Airlines	395	394	301	76.4	311	78.9	1	0.3
Melbourne-Launceston								
Jetstar	90	89	66	74.2	67	75.3	1	1.1
QantasLink	60	59	50	84.7	52	88.1	1	1.7
Tiger Airways	30	30	22	73.3	22	73.3	0	0.0
Virgin Blue	124	124	101	81.5	98	79.0	0	0.0
All Airlines	304	302	239	79.1	239	79.1	2	0.7
Melbourne-Maroochydore								
Jetstar	61	61	55	90.2	56	91.8	0	0.0
Tiger Airways	13	13	11	84.6	12	92.3	0	0.0
Virgin Blue	30	30	25	83.3	27	90.0	0	0.0
All Airlines	104	104	91	87.5	95	91.3	0	0.0
Melbourne-Mildura								
QantasLink	112	112	89	79.5	77	68.8	0	0.0
Regional Express	104	104	98	94.2	95	91.3	0	0.0
All Airlines	216	216	187	86.6	172	79.6	0	0.0
Melbourne-Newcastle								
Jetstar	87	87	53	60.9	57	65.5	0	0.0
Virgin Blue	30	29	27	93.1	27	93.1	1	3.3
All Airlines	117	116	80	69.0	84	72.4	1	0.9
Melbourne-Perth								
Qantas	232	209	128	61.2	109	52.2	23	9.9
Tiger Airways	30	30	27	90.0	27	90.0	0	0.0
Virgin Blue	120	119	102	85.7	86	72.3	1	0.8
All Airlines	382	358	257	71.8	222	62.0	24	6.3
Melbourne-Sydney								
Qantas	983	931	677	72.7	654	70.2	52	5.3
Virgin Blue	851	823	625	75.9	602	73.1	28	3.3
All Airlines	1 834	1 754	1 302	74.2	1 256	71.6	80	4.4

	<i>Sectors</i>		<i>Departures On Time</i>		<i>Arrivals On Time</i>		<i>Cancellations</i>	
	<i>Sched.</i>	<i>Flown</i>	<i>No.</i>	<i>%</i>	<i>No.</i>	<i>%</i>	<i>No.</i>	<i>%</i>
Mildura-Melbourne								
QantasLink	112	111	84	75.7	89	80.2	1	0.9
Regional Express	104	104	96	92.3	96	92.3	0	0.0
All Airlines	216	215	180	83.7	185	86.0	1	0.5
Newcastle-Brisbane								
Jetstar	120	120	90	75.0	88	73.3	0	0.0
QantasLink	70	70	60	85.7	60	85.7	0	0.0
Virgin Blue	48	48	41	85.4	40	83.3	0	0.0
All Airlines	238	238	191	80.3	188	79.0	0	0.0
Newcastle-Melbourne								
Jetstar	87	87	56	64.4	52	59.8	0	0.0
Virgin Blue	30	29	22	75.9	19	65.5	1	3.3
All Airlines	117	116	78	67.2	71	61.2	1	0.9
Perth-Adelaide								
Qantas	142	138	99	71.7	110	79.7	4	2.8
Virgin Blue	39	39	32	82.1	38	97.4	0	0.0
All Airlines	181	177	131	74.0	148	83.6	4	2.2
Perth-Brisbane								
Qantas	120	119	53	44.5	73	61.3	1	0.8
Virgin Blue	60	60	42	70.0	46	76.7	0	0.0
All Airlines	180	179	95	53.1	119	66.5	1	0.6
Perth-Broome								
Qantas	30	30	26	86.7	24	80.0	0	0.0
QantasLink	47	47	42	89.4	39	83.0	0	0.0
Skywest	27	25	18	72.0	17	68.0	2	7.4
Virgin Blue	39	39	23	59.0	16	41.0	0	0.0
All Airlines	143	141	109	77.3	96	68.1	2	1.4
Perth-Kalgoorlie								
Qantas	59	59	45	76.3	46	78.0	0	0.0
QantasLink	24	24	20	83.3	21	87.5	0	0.0
Skywest	35	32	27	84.4	24	75.0	3	8.6
All Airlines	118	115	92	80.0	91	79.1	3	2.5
Perth-Melbourne								
Qantas	232	210	118	56.2	141	67.1	22	9.5
Tiger Airways	30	30	15	50.0	15	50.0	0	0.0
Virgin Blue	120	120	84	70.0	94	78.3	0	0.0
All Airlines	382	360	217	60.3	250	69.4	22	5.8
Perth-Sydney								
Qantas	179	178	108	60.7	130	73.0	1	0.6
Virgin Blue	150	148	118	79.7	121	81.8	2	1.3
All Airlines	329	326	226	69.3	251	77.0	3	0.9

	<i>Sectors</i>		<i>Departures On Time</i>		<i>Arrivals On Time</i>		<i>Cancellations</i>	
	<i>Sched.</i>	<i>Flown</i>	<i>No.</i>	<i>%</i>	<i>No.</i>	<i>%</i>	<i>No.</i>	<i>%</i>
Port Macquarie-Sydney								
QantasLink	112	112	81	72.3	85	75.9	0	0.0
Virgin Blue	60	58	45	77.6	44	75.9	2	3.3
All Airlines	172	170	126	74.1	129	75.9	2	1.2
Proserpine-Brisbane								
Jetstar	30	30	17	56.7	19	63.3	0	0.0
Virgin Blue	32	32	26	81.3	29	90.6	0	0.0
All Airlines	62	62	43	69.4	48	77.4	0	0.0
Rockhampton-Brisbane								
Jetstar	30	30	22	73.3	23	76.7	0	0.0
QantasLink	124	124	99	79.8	98	79.0	0	0.0
Virgin Blue	150	146	100	68.5	96	65.8	4	2.7
All Airlines	304	300	221	73.7	217	72.3	4	1.3
Sydney-Adelaide								
Jetstar	30	29	27	93.1	29	100.0	1	3.3
Qantas	308	304	241	79.3	239	78.6	4	1.3
Virgin Blue	150	150	124	82.7	100	66.7	0	0.0
All Airlines	488	483	392	81.2	368	76.2	5	1.0
Sydney-Albury								
QantasLink	116	116	92	79.3	82	70.7	0	0.0
Regional Express	115	114	86	75.4	66	57.9	1	0.9
Virgin Blue	56	55	49	89.1	47	85.5	1	1.8
All Airlines	287	285	227	79.6	195	68.4	2	0.7
Sydney-Ballina								
Jetstar	30	30	25	83.3	27	90.0	0	0.0
Regional Express	79	79	54	68.4	54	68.4	0	0.0
Virgin Blue	34	34	28	82.4	29	85.3	0	0.0
All Airlines	143	143	107	74.8	110	76.9	0	0.0
Sydney-Brisbane								
Qantas	673	659	513	77.8	541	82.1	14	2.1
Virgin Blue	590	562	401	71.4	384	68.3	28	4.7
All Airlines	1 263	1 221	914	74.9	925	75.8	42	3.3
Sydney-Cairns								
Jetstar	64	64	59	92.2	60	93.8	0	0.0
Qantas	107	107	81	75.7	85	79.4	0	0.0
Virgin Blue	116	116	91	78.4	88	75.9	0	0.0
All Airlines	287	287	231	80.5	233	81.2	0	0.0
Sydney-Canberra								
Qantas	212	211	167	79.1	164	77.7	1	0.5
QantasLink	440	421	363	86.2	343	81.5	19	4.3
Virgin Blue	206	188	161	85.6	159	84.6	18	8.7
All Airlines	858	820	691	84.3	666	81.2	38	4.4

	<i>Sectors</i>		<i>Departures On Time</i>		<i>Arrivals On Time</i>		<i>Cancellations</i>	
	<i>Sched.</i>	<i>Flown</i>	<i>No.</i>	<i>%</i>	<i>No.</i>	<i>%</i>	<i>No.</i>	<i>%</i>
Sydney-Coffs Harbour								
QantasLink	118	118	87	73.7	80	67.8	0	0.0
Virgin Blue	60	60	45	75.0	47	78.3	0	0.0
All Airlines	178	178	132	74.2	127	71.3	0	0.0
Sydney-Dubbo								
QantasLink	86	86	75	87.2	74	86.0	0	0.0
Regional Express	158	157	109	69.4	102	65.0	1	0.6
All Airlines	244	243	184	75.7	176	72.4	1	0.4
Sydney-Gold Coast								
Jetstar	234	234	191	81.6	195	83.3	0	0.0
Virgin Blue	364	359	273	76.0	267	74.4	5	1.4
All Airlines	598	593	464	78.2	462	77.9	5	0.8
Sydney-Hervey Bay								
Jetstar	17	17	17	100.0	17	100.0	0	0.0
Virgin Blue	30	30	22	73.3	24	80.0	0	0.0
All Airlines	47	47	39	83.0	41	87.2	0	0.0
Sydney-Hobart								
Jetstar	47	47	42	89.4	44	93.6	0	0.0
Qantas	30	30	24	80.0	22	73.3	0	0.0
Virgin Blue	60	60	32	53.3	34	56.7	0	0.0
All Airlines	137	137	98	71.5	100	73.0	0	0.0
Sydney-Launceston								
Jetstar	30	30	29	96.7	28	93.3	0	0.0
Virgin Blue	30	30	27	90.0	23	76.7	0	0.0
All Airlines	60	60	56	93.3	51	85.0	0	0.0
Sydney-Maroochydore								
Jetstar	87	85	63	74.1	63	74.1	2	2.3
Virgin Blue	68	67	55	82.1	59	88.1	1	1.5
All Airlines	155	152	118	77.6	122	80.3	3	1.9
Sydney-Melbourne								
Qantas	982	930	642	69.0	590	63.4	52	5.3
Virgin Blue	851	820	651	79.4	589	71.8	31	3.6
All Airlines	1 833	1 750	1 293	73.9	1 179	67.4	83	4.5
Sydney-Perth								
Qantas	179	179	104	58.1	85	47.5	0	0.0
Virgin Blue	150	150	118	78.7	76	50.7	0	0.0
All Airlines	329	329	222	67.5	161	48.9	0	0.0
Sydney-Port Macquarie								
QantasLink	112	112	86	76.8	76	67.9	0	0.0
Virgin Blue	60	59	53	89.8	53	89.8	1	1.7
All Airlines	172	171	139	81.3	129	75.4	1	0.6

	<i>Sectors</i>		<i>Departures On Time</i>		<i>Arrivals On Time</i>		<i>Cancellations</i>	
	<i>Sched.</i>	<i>Flown</i>	<i>No.</i>	<i>%</i>	<i>No.</i>	<i>%</i>	<i>No.</i>	<i>%</i>
Sydney-Townsville								
Jetstar	22	22	22	100.0	22	100.0	0	0.0
Virgin Blue	30	30	26	86.7	26	86.7	0	0.0
All Airlines	52	52	48	92.3	48	92.3	0	0.0
Sydney-Wagga Wagga								
QantasLink	112	112	75	67.0	67	59.8	0	0.0
Regional Express	133	132	100	75.8	82	62.1	1	0.8
All Airlines	245	244	175	71.7	149	61.1	1	0.4
Townsville-Brisbane								
Jetstar	60	58	48	82.8	49	84.5	2	3.3
Qantas	159	159	143	89.9	139	87.4	0	0.0
Virgin Blue	120	120	105	87.5	108	90.0	0	0.0
All Airlines	339	337	296	87.8	296	87.8	2	0.6
Townsville-Sydney								
Jetstar	22	22	20	90.9	21	95.5	0	0.0
Virgin Blue	30	30	28	93.3	27	90.0	0	0.0
All Airlines	52	52	48	92.3	48	92.3	0	0.0
Wagga Wagga-Sydney								
QantasLink	112	112	75	67.0	84	75.0	0	0.0
Regional Express	133	132	101	76.5	100	75.8	1	0.8
All Airlines	245	244	176	72.1	184	75.4	1	0.4

Airports

On time performance is reported for all routes where the passenger load averages over 8 000 passengers per month, and where two or more airlines operate in competition. The following data reports by airport against flights operated on those routes only.

<i>Airport</i>	<i>Departures</i>			<i>Arrivals</i>		
	<i>Sectors</i>	<i>On Time</i>		<i>Sectors</i>	<i>On Time</i>	
	<i>Flown</i>	<i>No.</i>	<i>%</i>	<i>Flown</i>	<i>No.</i>	<i>%</i>
Adelaide						
Jetstar	85	49	57.6	85	60	70.6
Qantas	959	805	83.9	958	798	83.3
Tiger Airways	78	62	79.5	78	65	83.3
Virgin Blue	624	469	75.2	626	396	63.3
All Airlines	1 746	1 385	79.3	1 747	1 319	75.5
Relates to services to and from Brisbane, Canberra, Gold Coast, Melbourne, Perth and Sydney.						
Albury						
QantasLink	116	86	74.1	116	82	70.7
Regional Express	115	80	69.6	114	66	57.9
Virgin Blue	55	47	85.5	55	47	85.5
All Airlines	286	213	74.5	285	195	68.4
Relates to services to and from Sydney only.						
Alice Springs						
Qantas	30	14	46.7	30	23	76.7
Tiger Airways	13	13	100.0	13	13	100.0
All Airlines	43	27	62.8	43	36	83.7
Relates to services to and from Melbourne only.						
Ballina						
Jetstar	29	19	65.5	30	27	90.0
Regional Express	79	40	50.6	79	54	68.4
Virgin Blue	34	26	76.5	34	29	85.3
All Airlines	142	85	59.9	143	110	76.9
Relates to services to and from Sydney only.						
Brisbane						
Jetstar	510	409	80.2	511	407	79.6
Qantas	1 744	1 362	78.1	1 744	1 423	81.6
QantasLink	284	238	83.8	258	214	82.9
Virgin Blue	1 919	1 602	83.5	1 910	1 456	76.2
All Airlines	4 457	3 611	81.0	4 423	3 500	79.1
Relates to services to and from Adelaide, Cairns, Canberra, Darwin, Hamilton Island, Mackay, Melbourne, Newcastle, Perth, Proserpine, Rockhampton, Sydney and Townsville.						

<i>Airport</i>	<i>Departures</i>			<i>Arrivals</i>		
	<i>Sectors</i>	<i>On Time</i>		<i>Sectors</i>	<i>On Time</i>	
	<i>Flown</i>	<i>No.</i>	<i>%</i>	<i>Flown</i>	<i>No.</i>	<i>%</i>
Broome						
Qantas	30	20	66.7	30	24	80.0
QantasLink	47	38	80.9	47	39	83.0
Skywest	25	18	72.0	25	17	68.0
Virgin Blue	38	20	52.6	39	16	41.0
All Airlines	140	96	68.6	141	96	68.1
Relates to services to and from Perth only.						
Cairns						
Jetstar	221	193	87.3	221	193	87.3
Qantas	257	201	78.2	257	208	80.9
Virgin Blue	310	251	81.0	311	243	78.1
All Airlines	788	645	81.9	789	644	81.6
Relates to services to and from Brisbane, Melbourne and Sydney.						
Canberra						
Qantas	674	603	89.5	675	576	85.3
QantasLink	462	390	84.4	464	382	82.3
Tiger Airways	60	53	88.3	60	52	86.7
Virgin Blue	533	460	86.3	534	419	78.5
All Airlines	1 729	1 506	87.1	1 733	1 429	82.5
Relates to services to and from Adelaide, Brisbane, Melbourne and Sydney.						
Coffs Harbour						
QantasLink	118	78	66.1	118	80	67.8
Virgin Blue	60	49	81.7	60	47	78.3
All Airlines	178	127	71.3	178	127	71.3
Relates to services to and from Sydney only.						
Darwin						
Jetstar	86	63	73.3	86	69	80.2
Qantas	30	24	80.0	30	27	90.0
Tiger Airways	17	11	64.7	17	16	94.1
Virgin Blue	30	24	80.0	30	26	86.7
All Airlines	163	122	74.8	163	138	84.7
Relates to services to and from Brisbane and Melbourne.						
Dubbo						
QantasLink	86	77	89.5	86	74	86.0
Regional Express	157	115	73.2	157	102	65.0
All Airlines	243	192	79.0	243	176	72.4
Relates to services to and from Sydney only.						
Gold Coast						
Jetstar	443	336	75.8	447	367	82.1
Tiger Airways	87	69	79.3	87	72	82.8
Virgin Blue	542	395	72.9	542	413	76.2
All Airlines	1 072	800	74.6	1 076	852	79.2
Relates to services to and from Adelaide, Melbourne and Sydney.						

<i>Airport</i>	<i>Departures</i>			<i>Arrivals</i>		
	<i>Sectors</i>	<i>On Time</i>		<i>Sectors</i>	<i>On Time</i>	
	<i>Flown</i>	<i>No.</i>	<i>%</i>	<i>Flown</i>	<i>No.</i>	<i>%</i>
Hamilton Island						
Jetstar	30	27	90.0	30	27	90.0
Virgin Blue	30	29	96.7	30	29	96.7
All Airlines	60	56	93.3	60	56	93.3
Relates to services to and from Brisbane only.						
Hervey Bay						
Jetstar	17	15	88.2	17	17	100.0
Virgin Blue	30	24	80.0	30	24	80.0
All Airlines	47	39	83.0	47	41	87.2
Relates to services to and from Sydney only.						
Hobart						
Jetstar	193	176	91.2	193	170	88.1
Qantas	90	74	82.2	90	61	67.8
Tiger Airways	30	28	93.3	30	27	90.0
Virgin Blue	218	173	79.4	218	153	70.2
All Airlines	531	451	84.9	531	411	77.4
Relates to services to and from Melbourne and Sydney.						
Kalgoorlie						
Qantas	59	42	71.2	59	46	78.0
QantasLink	24	21	87.5	24	21	87.5
Skywest	34	21	61.8	32	24	75.0
All Airlines	117	84	71.8	115	91	79.1
Relates to services to and from Perth only.						
Launceston						
Jetstar	118	90	76.3	119	95	79.8
QantasLink	59	59	100.0	59	52	88.1
Tiger Airways	30	24	80.0	30	22	73.3
Virgin Blue	154	131	85.1	154	121	78.6
All Airlines	361	304	84.2	362	290	80.1
Relates to services to and from Melbourne and Sydney.						
Mackay						
Jetstar	89	77	86.5	88	79	89.8
QantasLink	56	48	85.7	56	44	78.6
Virgin Blue	145	126	86.9	145	115	79.3
All Airlines	290	251	86.6	289	238	82.4
Relates to services to and from Brisbane only.						
Maroochydore						
Jetstar	145	109	75.2	146	119	81.5
Tiger Airways	13	12	92.3	13	12	92.3
Virgin Blue	95	73	76.8	97	86	88.7
All Airlines	253	194	76.7	256	217	84.8
Relates to services to and from Melbourne and Sydney.						

<i>Airport</i>	<i>Departures</i>			<i>Arrivals</i>		
	<i>Sectors</i>	<i>On Time</i>		<i>Sectors</i>	<i>On Time</i>	
	<i>Flown</i>	<i>No.</i>	<i>%</i>	<i>Flown</i>	<i>No.</i>	<i>%</i>
Melbourne						
Jetstar	681	517	75.9	680	528	77.6
Qantas	2 342	1 796	76.7	2 340	1 742	74.4
QantasLink	206	170	82.5	205	168	82.0
Regional Express	104	98	94.2	104	96	92.3
Tiger Airways	358	301	84.1	358	291	81.3
Virgin Blue	2 267	1 731	76.4	2 267	1 635	72.1
All Airlines	5 958	4 613	77.4	5 954	4 460	74.9
Relates to services to and from Adelaide, Alice Springs, Brisbane, Cairns, Canberra, Darwin, Gold Coast, Hobart, Launceston, Maroochydore, Mildura, Newcastle, Perth and Sydney.						
Mildura						
QantasLink	111	84	75.7	112	77	68.8
Regional Express	104	96	92.3	104	95	91.3
All Airlines	215	180	83.7	216	172	79.6
Relates to services to and from Melbourne only.						
Newcastle						
Jetstar	207	146	70.5	207	149	72.0
QantasLink	70	60	85.7	70	55	78.6
Virgin Blue	77	63	81.8	77	67	87.0
All Airlines	354	269	76.0	354	271	76.6
Relates to services to and from Brisbane and Melbourne.						
Perth						
Qantas	734	449	61.2	737	448	60.8
QantasLink	71	62	87.3	71	58	81.7
Skywest	57	45	78.9	59	32	54.2
Tiger Airways	30	15	50.0	30	27	90.0
Virgin Blue	406	299	73.6	406	228	56.2
All Airlines	1 298	870	67.0	1 303	793	60.9
Relates to services to and from Adelaide, Brisbane, Broome, Kalgoorlie, Melbourne, and Sydney.						
Port Macquarie						
QantasLink	112	81	72.3	112	76	67.9
Virgin Blue	58	45	77.6	59	53	89.8
All Airlines	170	126	74.1	171	129	75.4
Relates to services to and from Sydney only.						
Proserpine						
Jetstar	30	17	56.7	30	21	70.0
Virgin Blue	32	26	81.3	32	27	84.4
All Airlines	62	43	69.4	62	48	77.4
Relates to services to and from Brisbane only.						

<i>Airport</i>	<i>Departures</i>			<i>Arrivals</i>		
	<i>Sectors</i>	<i>On Time</i>		<i>Sectors</i>	<i>On Time</i>	
	<i>Flown</i>	<i>No.</i>	<i>%</i>	<i>Flown</i>	<i>No.</i>	<i>%</i>
Rockhampton						
Jetstar	30	22	73.3	30	24	80.0
QantasLink	124	99	79.8	150	121	80.7
Virgin Blue	146	100	68.5	149	102	68.5
All Airlines	300	221	73.7	329	247	75.1

Relates to services to and from Brisbane only.

Sydney

Jetstar	558	475	85.1	552	410	74.3
Qantas	2 420	1 772	73.2	2 419	1 781	73.6
QantasLink	965	778	80.6	963	760	78.9
Regional Express	482	349	72.4	483	339	70.2
Virgin Blue	2 770	2 156	77.8	2 768	2 089	75.5
All Airlines	7 195	5 530	76.9	7 185	5 379	74.9

Relates to services to and from Adelaide, Albury, Ballina, Brisbane, Cairns, Canberra, Coffs Harbour, Dubbo, Gold Coast, Hervey Bay, Hobart, Launceston, Maroochydore, Melbourne, Perth, Port Macquarie, Townsville and Wagga Wagga.

Townsville

Jetstar	80	68	85.0	80	72	90.0
Qantas	159	143	89.9	159	136	85.5
Virgin Blue	150	133	88.7	150	118	78.7
All Airlines	389	344	88.4	389	326	83.8

Relates to services to and from Brisbane and Sydney.

Wagga Wagga

QantasLink	112	75	67.0	112	67	59.8
Regional Express	132	101	76.5	132	82	62.1
All Airlines	244	176	72.1	244	149	61.1

Relates to services to and from Sydney only.

Definitions

On time departure A flight departure is counted as "on time" if it departs the gate within 15 minutes of the scheduled departure time shown in the carriers' schedule.

On time arrival A flight arrival is counted as "on time" if it arrived at the gate within 15 minutes of the scheduled arrival time shown in the carriers' schedule.
Neither diverted nor cancelled flights count as on time.

Cancellation A flight is regarded as a cancellation if it is cancelled or rescheduled less than 7 days prior to its scheduled departure time.

On time departure percentage The percentage of on time departures is measured against the number of departures *operated* on any particular sector.

On time arrival percentage The percentage of on time arrivals is measured against the number of arrivals *operated* on any particular sector.

Cancellation percentage The percentage of cancellations is measured against the number of services *scheduled* on any particular sector.
