



Australian Government

Department of Infrastructure and Regional Development

Bureau of Infrastructure, Transport and Regional Economics

STATISTICAL REPORT



Aviation

Domestic airline on time performance
October 2016

© Commonwealth of Australia 2016

ISSN: 1832-0759

Ownership of intellectual property rights in this publication

Unless otherwise noted, copyright (and any other intellectual property rights, if any) in this publication is owned by the Commonwealth of Australia (referred to below as the Commonwealth).

Disclaimer

The material contained in this publication is made available on the understanding that the Commonwealth is not providing professional advice, and that users exercise their own skill and care with respect to its use, and seek independent advice if necessary.

The Commonwealth makes no representations or warranties as to the contents or accuracy of the information contained in this publication. To the extent permitted by law, the Commonwealth disclaims liability to any person or organisation in respect of anything done, or omitted to be done, in reliance upon information contained in this publication.

Creative Commons licence

With the exception of (a) the Coat of Arms; and (b) the Department of Infrastructure and Regional Development's photos and graphics, copyright in this publication is licensed under a Creative Commons Attribution 3.0 Australia Licence.

Creative Commons Attribution 3.0 Australia Licence is a standard form licence agreement that allows you to copy, communicate and adapt this publication provided that you attribute the work to the Commonwealth and abide by the other licence terms. A summary of the licence terms is available from <http://creativecommons.org/licenses/by/3.0/au/deed.en>. The full licence terms are available from <http://creativecommons.org/licenses/by/3.0/au/legalcode>.

Use of the Coat of Arms

The Department of the Prime Minister and Cabinet sets the terms under which the Coat of Arms is used. Please refer to the Department's Commonwealth Coat of Arms and Government branding web page <http://www.dpmmc.gov.au/guidelines/index.cfm#brand> and, in particular, the Guidelines on the use of the Commonwealth Coat of Arms publication.

An appropriate citation for this report is:

Bureau of Infrastructure, Transport and Regional Economics (BITRE), 2016, Domestic airline on time performance, Statistical Report, BITRE, Canberra ACT.

Contact us

This publication is available in PDF format. All other rights are reserved, including in relation to any Departmental logos or trade marks which may exist. For enquiries regarding the licence and any use of this publication, please contact:

Bureau of Infrastructure, Transport and Regional Economics (BITRE)
Department of Infrastructure and Regional Development
GPO Box 501, Canberra ACT 2601, Australia
Telephone: (international) +61 2 6274 7210
Fax: (international) +61 2 6274 6855
Email: bitre@infrastructure.gov.au
Website: www.bitre.gov.au

Inquiries

Should you require additional information about the statistics contained in this publication:

Telephone (02) 6274 7790 or Facsimile (02) 6274 7727

Electronic mail: AVSTATS@infrastructure.gov.au

Web site: <http://www.bitre.gov.au/statistics/aviation/otphome.aspx>

Foreword

The Bureau of Infrastructure, Transport and Regional Economics (BITRE) monitors the punctuality and reliability of major domestic airlines operating between Australian airports. The purpose of this is to allow for evaluation of overall industry and individual airline performance, so that consumers of air travel can make informed decisions.

The following domestic airlines currently report this information monthly to the BITRE: Jetstar, Qantas, QantasLink, Regional Express, Tigerair Australia, Virgin Australia and Virgin Australia Regional Airlines. Data has been gathered since November 2003, although some airlines commenced reporting at a later date, including Jetstar which first reported in May 2004, MacAir in July 2005, Tigerair Australia in April 2008 and Virgin Australia Regional Airlines in May 2013. MacAir ceased operations in February 2009 and data was not received for December 2008 onwards. Virgin Blue was rebranded as Virgin Australia in May 2011 and Tiger Airways was rebranded as Tigerair Australia in July 2013 and time series data in Microsoft Excel spreadsheet format on the BITRE website have been revised to reflect these changes. Services operated by Skywest on behalf of Virgin Australia using ATR/F100 aircraft commenced in November 2011 and were shown separately as Virgin Australia – ATR/F100 Operations. Virgin Australia Regional Airlines commenced operations in May 2013. It was formed after the acquisition of Skywest by Virgin Australia and represented a combination of operations previously reported under Skywest and Virgin Australia – ATR/F100 Operations. In January 2016, Virgin Australia transferred their ATR fleet from Virgin Australia Regional Airlines to Virgin Australia.

Information presented in this report is for Australian domestic routes for which the passenger load averaged 8 000 or more passengers per month over the previous six months and where two or more airlines operated in competition on those routes. There were 66 routes that met this definition in October 2016. Over time, routes which meet these criteria change as airline networks and traffic levels vary.

Participating airlines report their overall monthly network performance where this is possible.

Total industry figures encompass all services operated by reporting airlines only. These airlines collectively carried over 95 per cent of total domestic passengers (regular public transport only) in 2015.

The method of capturing on time performance varies between airlines utilising different recording systems. Jetstar and Qantas jet aircraft use Aircraft Communication Addressing and Reporting System (ACARS) to electronically measure on time performance. Regional Express, Tigerair Australia, Virgin Australia, Virgin Australia Regional Airlines and the Qantas non-jet fleet record on time performance manually using records from pilots, gate agents and/or ground crews.

After initial data is collected, aggregate reports are audited internally by participating airlines prior to publication.

Reports and detailed time series data in Microsoft Excel spreadsheet format are available from the BITRE website at: <http://www.bitre.gov.au/statistics/aviation/otphome.aspx>.

Contents

	Page
Industry performance	1
Individual routes	10
Airports	23
Definitions	29

Industry performance

For October 2016, on time performance over all routes operated by participating airlines (Jetstar, Qantas, QantasLink, Regional Express, Tigerair Australia, Virgin Australia and Virgin Australia Regional Airlines) averaged 82.0 per cent for on time arrivals and 83.4 per cent for on time departures. Cancellations represented 1.8 per cent of all scheduled flights. The equivalent figures for October 2015 were 86.8 per cent for arrivals, 87.6 per cent for departures and 1.2 per cent for cancellations.

This month's on time arrivals figure was lower than the long term average performance for all routes (82.8 per cent) and the on time departures figure was also lower than the long term average (84.2 per cent). The rate of cancellations was higher than the long term average of 1.4 per cent.

Virgin Australia achieved the highest on time arrivals among the major domestic airlines at 84.3 per cent followed by Qantas at 83.2 per cent, Tigerair Australia at 78.9 per cent and Jetstar at 72.4 per cent. Of the regional airlines, Virgin Australia Regional Airlines recorded 85.2 per cent for on time arrivals, followed by QantasLink at 84.5 per cent and Regional Express at 84.0 per cent. The Qantas network (Qantas and QantasLink combined operations) recorded 83.9 per cent for on time arrivals while the Virgin Australia network (Virgin Australia and Virgin Australia Regional Airlines combined operations) recorded 84.4 per cent.

Virgin Australia also achieved the highest level of on time departures for October 2016 at 87.3 per cent, followed by Qantas at 84.6 per cent, Tigerair Australia at 81.5 per cent and Jetstar at 69.5 per cent. Of the regional airlines, Regional Express recorded 86.9 per cent, followed by Virgin Australia Regional Airlines at 85.7 per cent and QantasLink at 85.6 per cent. The Qantas network recorded 85.1 per cent for on time departures while the Virgin Australia network recorded 87.2 per cent.

QantasLink had the highest percentage of cancellations (2.8 per cent) during the month, followed by Virgin Australia Regional Airlines (2.4 per cent), Jetstar (2.3 per cent), Virgin Australia (1.6 per cent), Qantas (1.4 per cent), Tigerair Australia (1.1 per cent) and Regional Express (0.5 per cent).

Airlines' on time performance varies across the routes they serve. Individual route data by specific airline for 66 routes are shown on pages 10-22.

Of the 66 routes which met the criteria for on time performance reporting in October 2016, the Cairns-Townsville route had the highest percentage of on time arrivals (98.9 per cent) and the highest percentage of on time departures (also 98.9 per cent). The Cairns-Melbourne route had the lowest percentage of on time arrivals (59.1 per cent) and the Sunshine Coast-Sydney route had the lowest percentage of on time departures (60.6 per cent).

Cancellations were highest on the Moranbah-Brisbane route at 6.3 per cent, followed by the Karratha-Perth route at 5.9 per cent, the Sydney-Tamworth and Tamworth-Sydney routes at 5.8 per cent, the Perth-Karratha route at 5.6 per cent and the Port Hedland-Perth route at 5.1 per cent.

Ayers Rock Airport recorded the highest percentage of on time arrivals (95.1 per cent) and Moranbah Airport recorded the highest percentage of on time departures (94.0 per cent). Launceston Airport recorded the lowest percentage of on time arrivals (72.8 per cent) and Sunshine Coast Airport recorded the lowest percentage of on time departures (61.9 per cent). These figures only refer to reported routes and do not cover all flights at these airports.

Table 1 On time performance for October 2016 — Total Industry

	<i>Sectors</i>		<i>Arrivals On Time</i>		<i>Departures On Time</i>		<i>Cancellations</i>	
	<i>Scheduled</i>	<i>Flown</i>	<i>No.</i>	<i>%</i>	<i>No.</i>	<i>%</i>	<i>No.</i>	<i>%</i>
Jetstar	7 600	7 424	5 377	72.4	5 163	69.5	176	2.3
Qantas	9 466	9 330	7 763	83.2	7 897	84.6	136	1.4
QantasLink	10 668	10 365	8 758	84.5	8 871	85.6	303	2.8
Regional Express	6 405	6 375	5 352	84.0	5 542	86.9	30	0.5
Tigerair Australia	2 335	2 310	1 823	78.9	1 882	81.5	25	1.1
Virgin Australia	12 553	12 351	10 414	84.3	10 785	87.3	202	1.6
Virgin Australia Regional Airlines	718	701	597	85.2	601	85.7	17	2.4
All Airlines	49 745	48 856	40 084	82.0	40 741	83.4	889	1.8
Qantas - all QF designated services	20 134	19 695	16 521	83.9	16 768	85.1	439	2.2
Virgin Australia - all VA designated services	13 271	13 052	11 011	84.4	11 386	87.2	219	1.7

Total airline network data (including routes not shown in this report).

Airlines' on time performance varies across the routes they serve. Individual route data by specific airline for 66 routes are shown on pages 10-22.

Table 2 Top ten routes for on time performance for October 2016 (participating airlines only)

<i>Arrivals</i>		<i>Departures</i>	
<i>Route</i>	<i>On Time (%)</i>	<i>Route</i>	<i>On Time (%)</i>
Cairns-Townsville	98.9	Cairns-Townsville	98.9
Townsville-Cairns	97.9	Brisbane-Hobart	98.3
Brisbane-Hamilton Island	96.8	Townsville-Cairns	97.9
Hamilton Island-Brisbane	96.8	Perth-Newman	96.7
Sydney-Ayers Rock	95.1	Brisbane-Hamilton Island	95.2
Darwin-Alice Springs	94.5	Brisbane-Emerald	95.0
Perth-Newman	93.9	Darwin-Alice Springs	94.5
Perth-Kalgoorlie	93.5	Brisbane-Darwin	94.4
Ayers Rock-Sydney	93.3	Perth-Darwin	94.1
Brisbane-Hobart	93.2	Moranbah-Brisbane	94.0

Table 3 Top ten airports for on time performance for October 2016 (participating airlines and reported routes only)

<i>Arrivals</i>		<i>Departures</i>	
<i>Airport</i>	<i>On Time (%)</i>	<i>Airport</i>	<i>On Time (%)</i>
Ayers Rock	95.1	Moranbah	94.0
Newman	93.9	Bundaberg	93.9
Kalgoorlie	93.5	Newman	93.3
Townsville	93.2	Mount Isa	93.0
Mount Isa	93.2	Rockhampton	92.5
Hamilton Island	92.7	Gladstone	92.4
Bundaberg	92.7	Port Hedland	92.0
Port Lincoln	92.5	Kalgoorlie	91.4
Alice Springs	92.3	Port Lincoln	90.9
Emerald	92.1	Townsville	90.8

Total industry on time performance

Figure 1 On time performance (by month from October 2013)—Total Industry

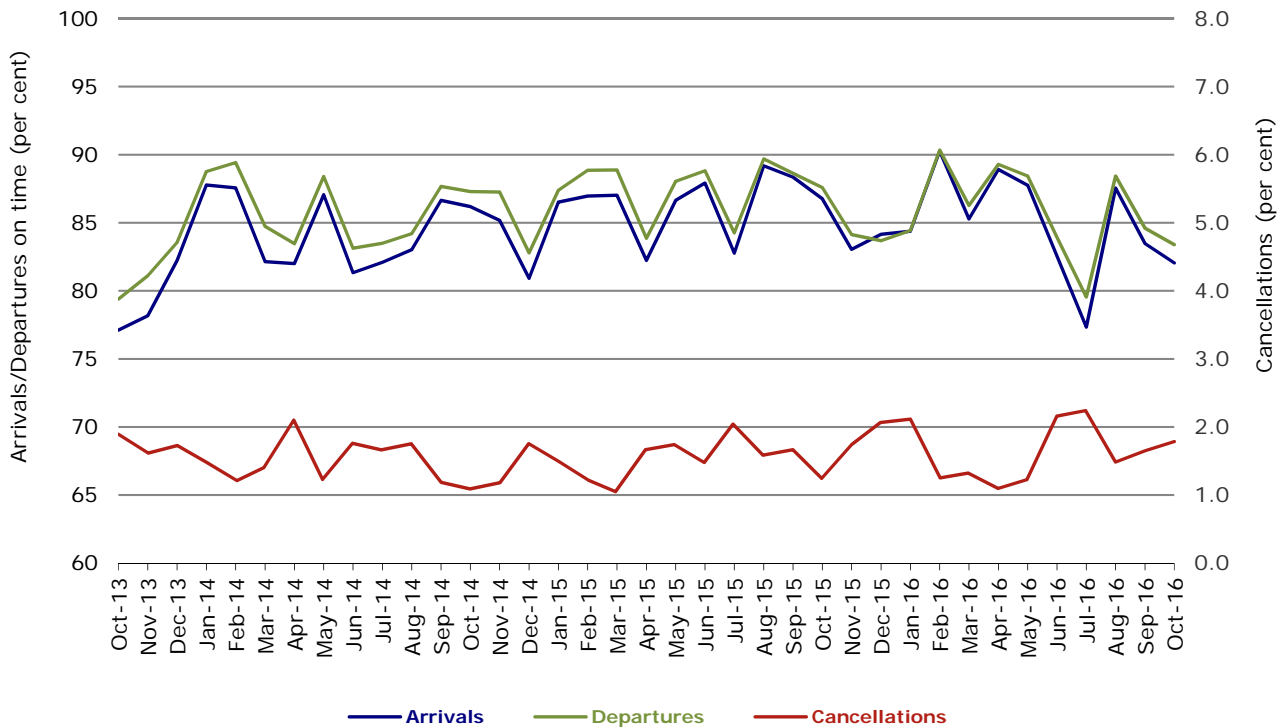


Figure 2 Arrivals on time (by month from October 2015)

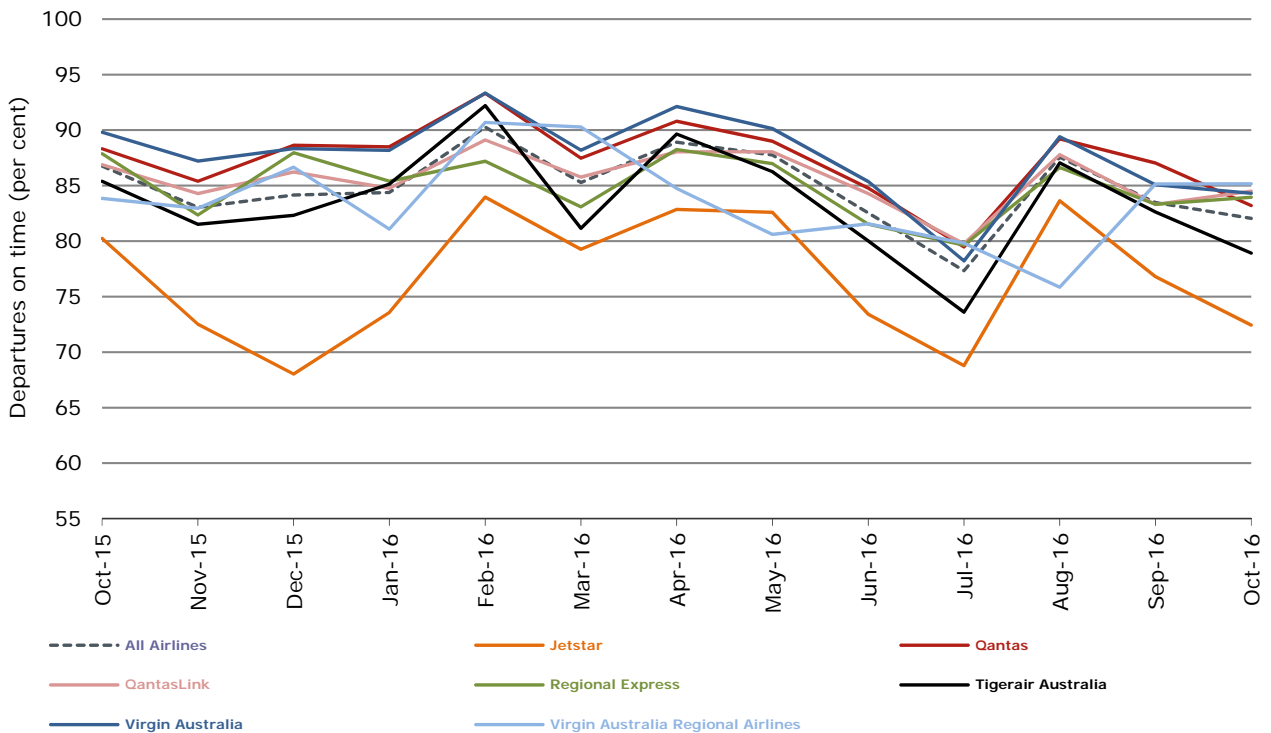


Figure 3 Departures on time (by month from October 2015)

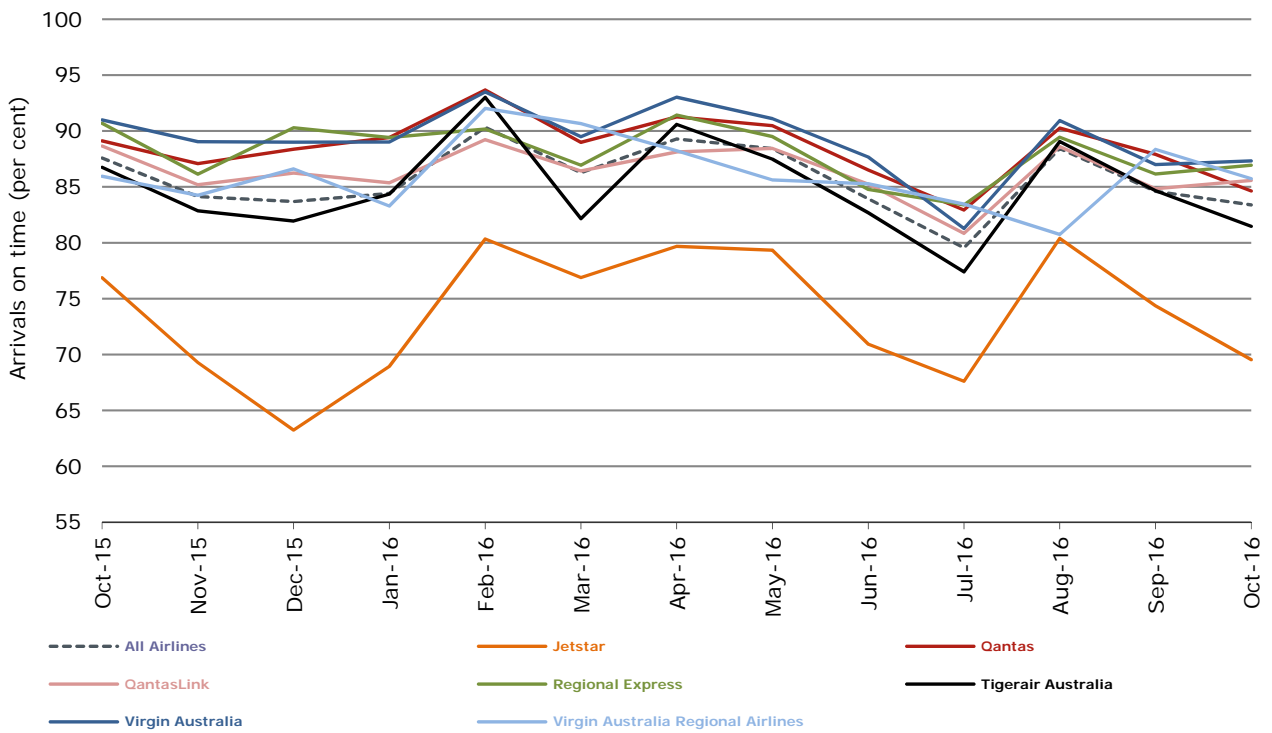
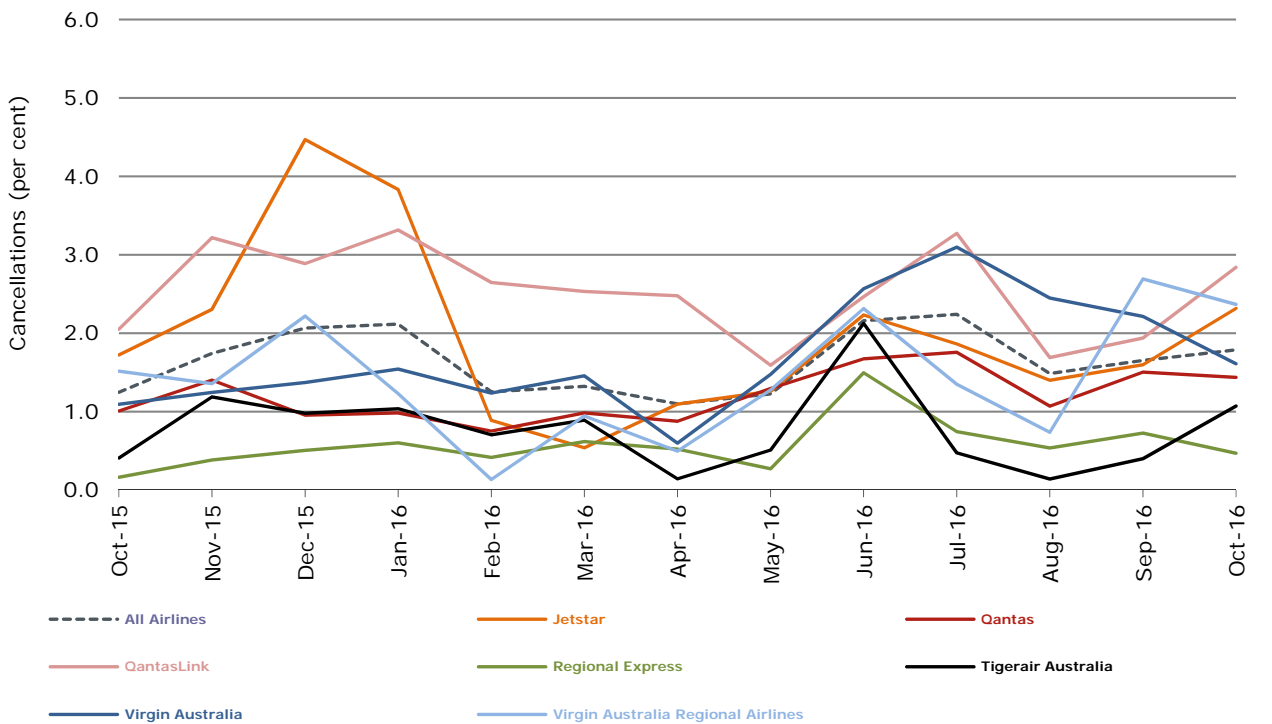


Figure 4 Cancellations (by month from October 2015)



Major domestic airlines on time performance

Figure 5 On time performance (by month from October 2013)—Jetstar

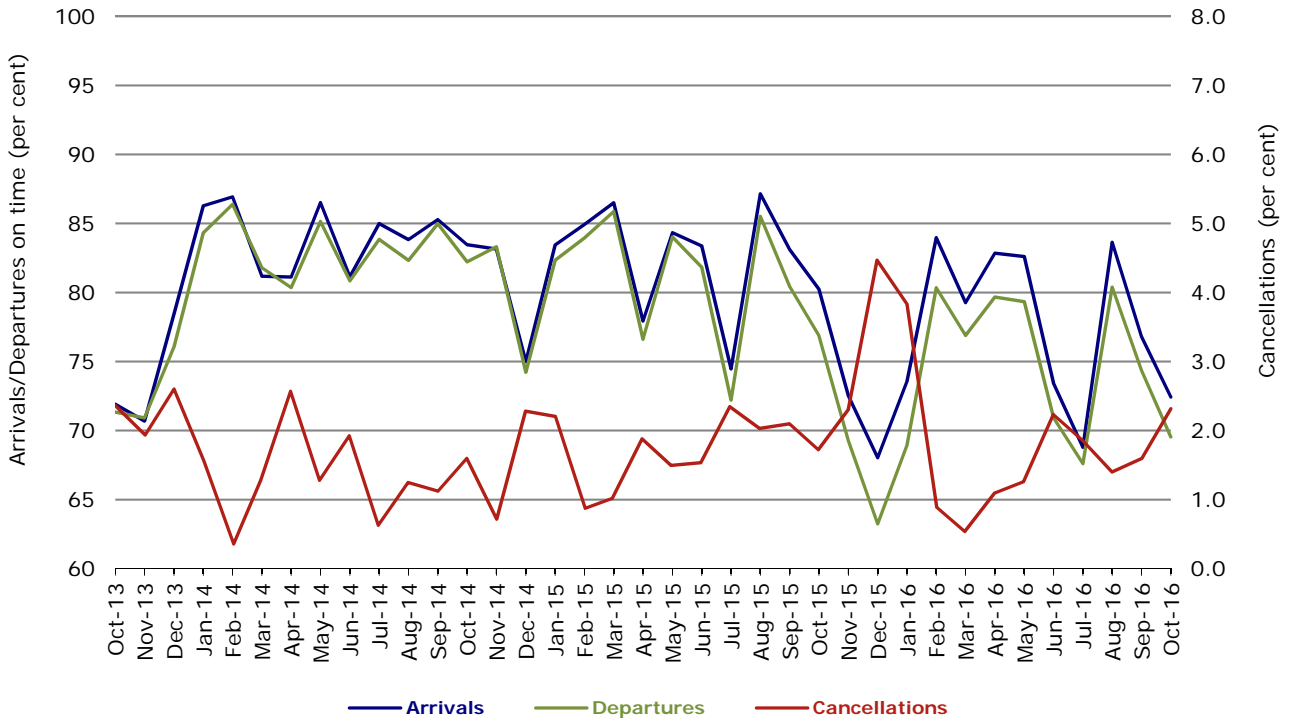


Figure 6 On time performance (by month from October 2013)—Qantas

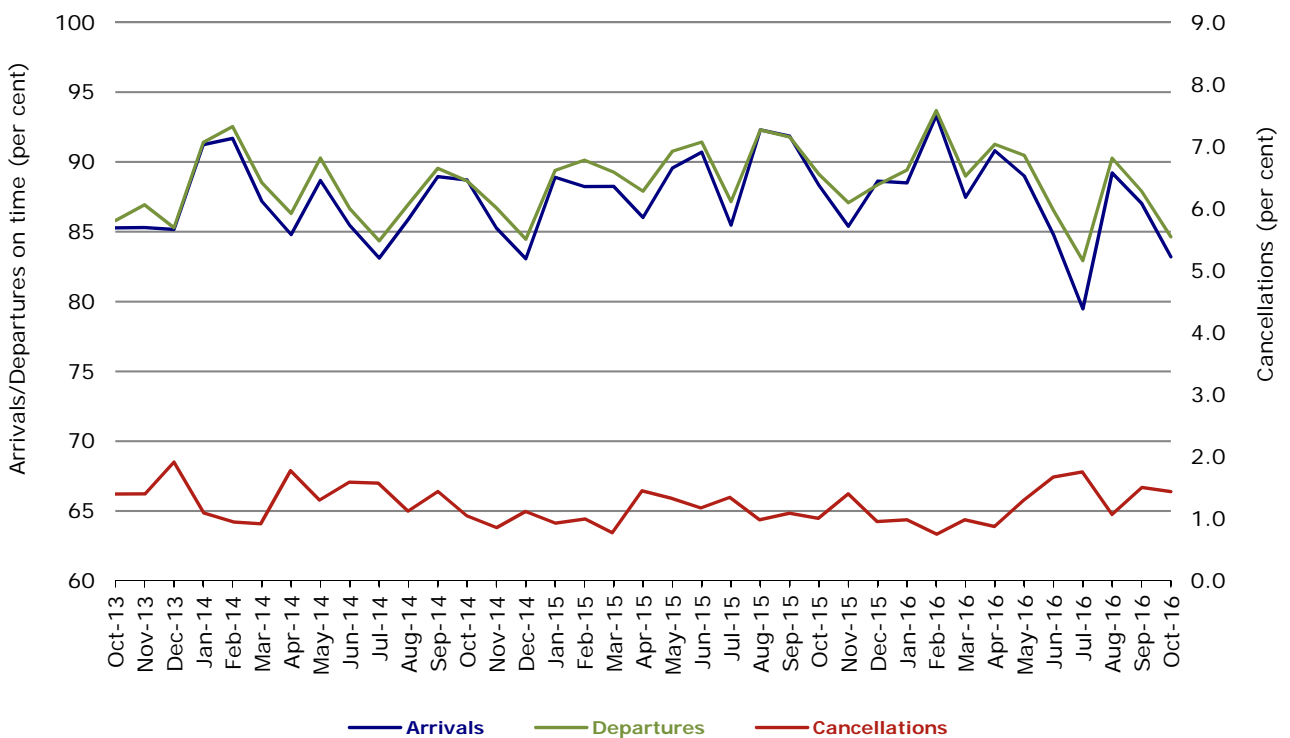


Figure 7 On time performance (by month from October 2013)—Tigerair Australia

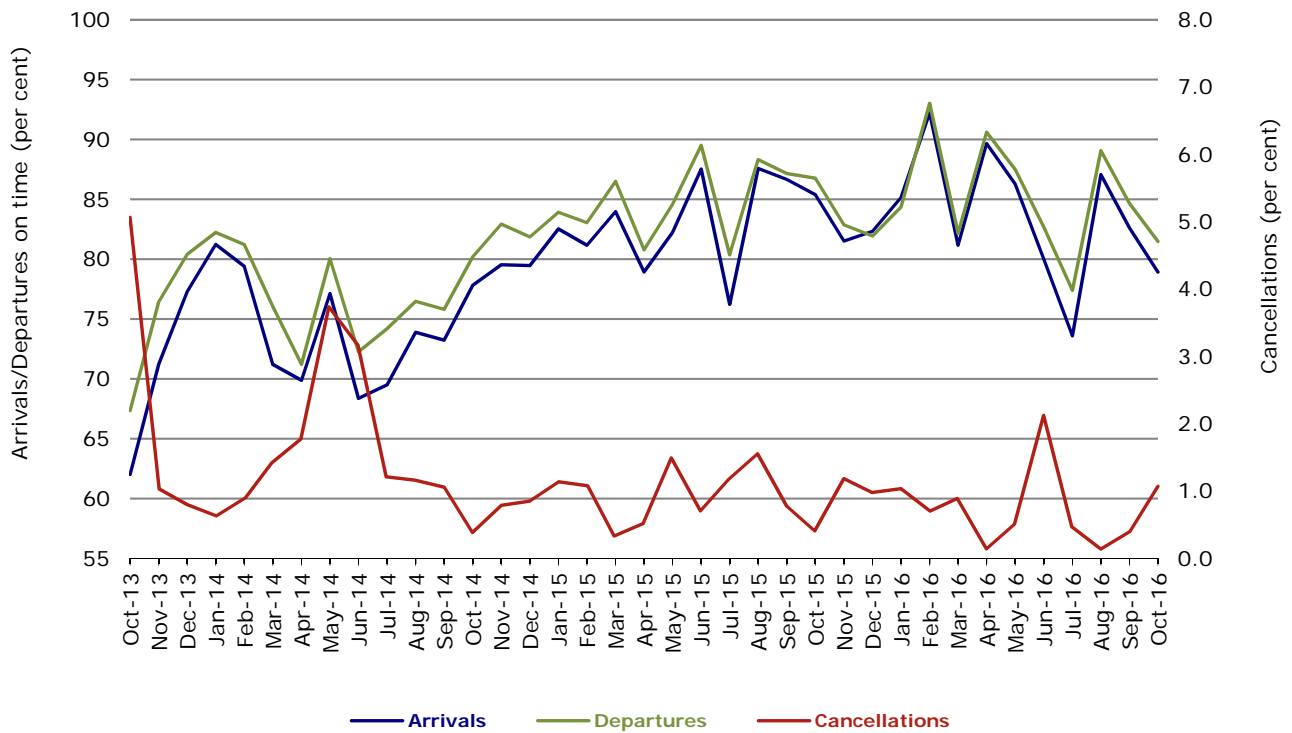
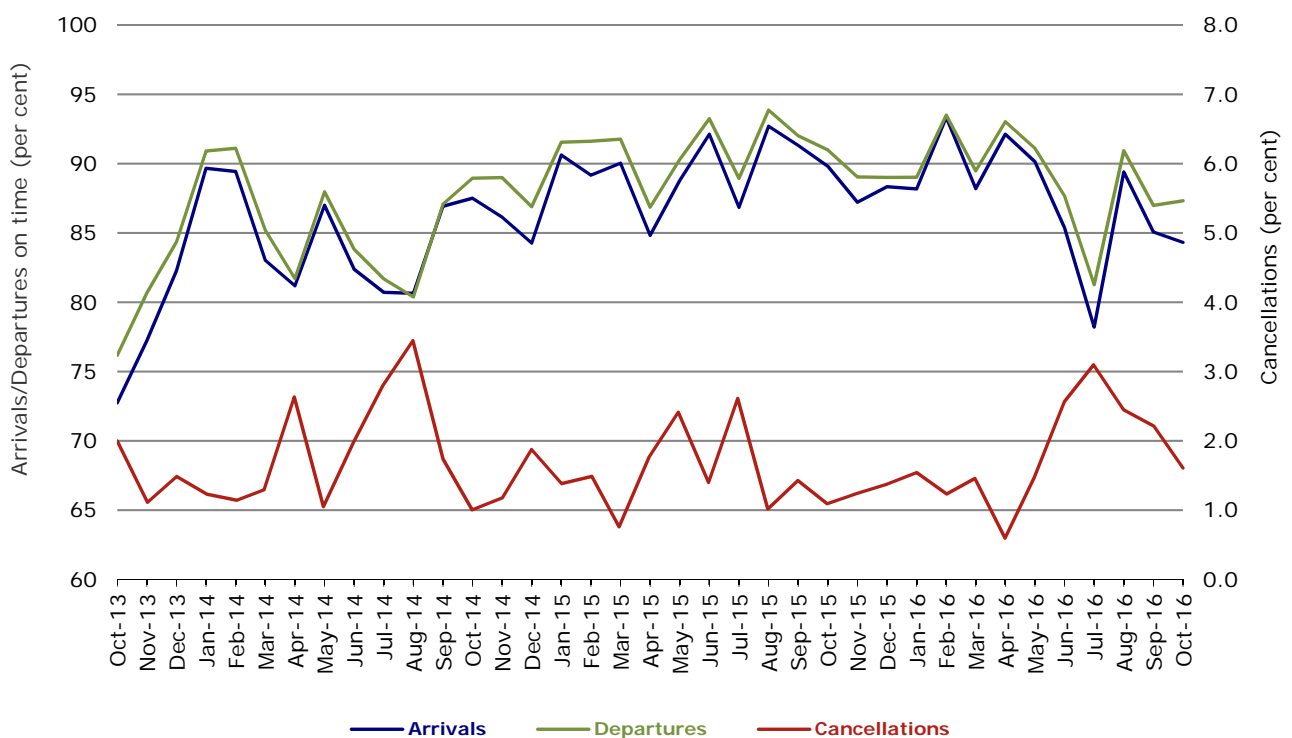


Figure 8 On time performance (by month from October 2013)—Virgin Australia



In January 2016, Virgin Australia transferred their ATR fleet from Virgin Australia Regional Airlines to Virgin Australia.

Major regional airlines on time performance

Figure 9 On time performance (by month from October 2013)—QantasLink

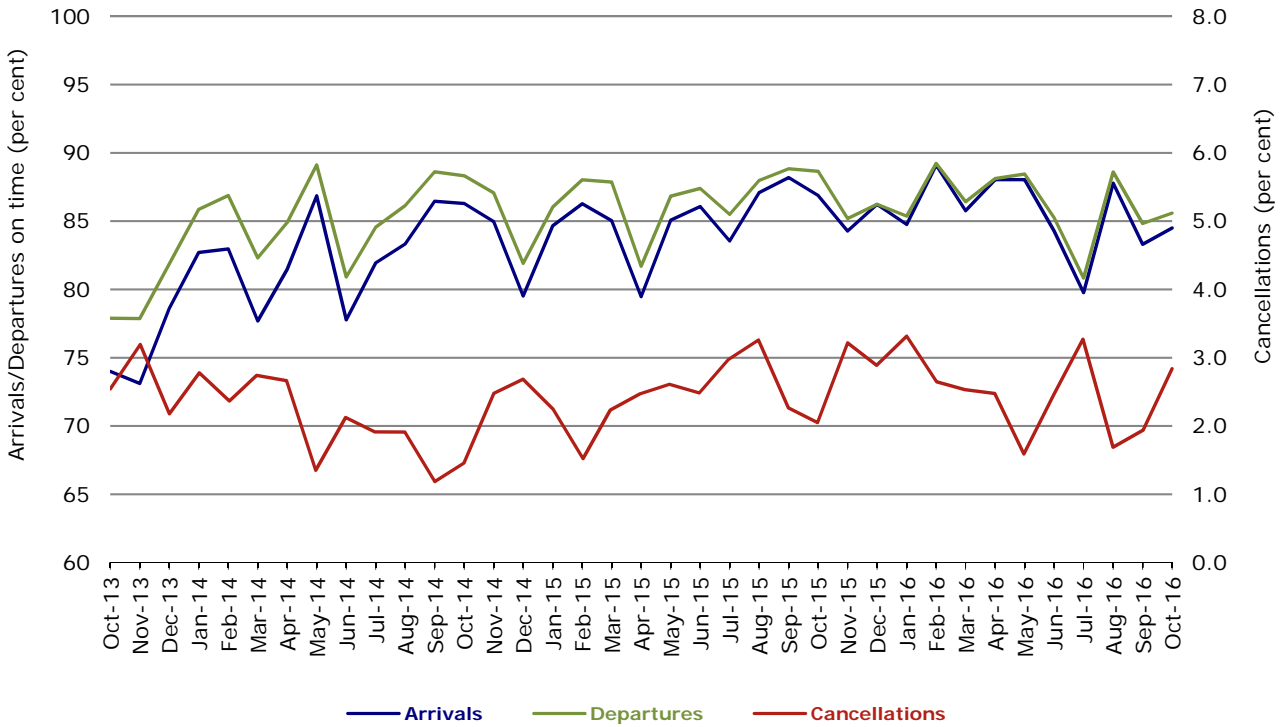


Figure 10 On time performance (by month from October 2013)—Regional Express

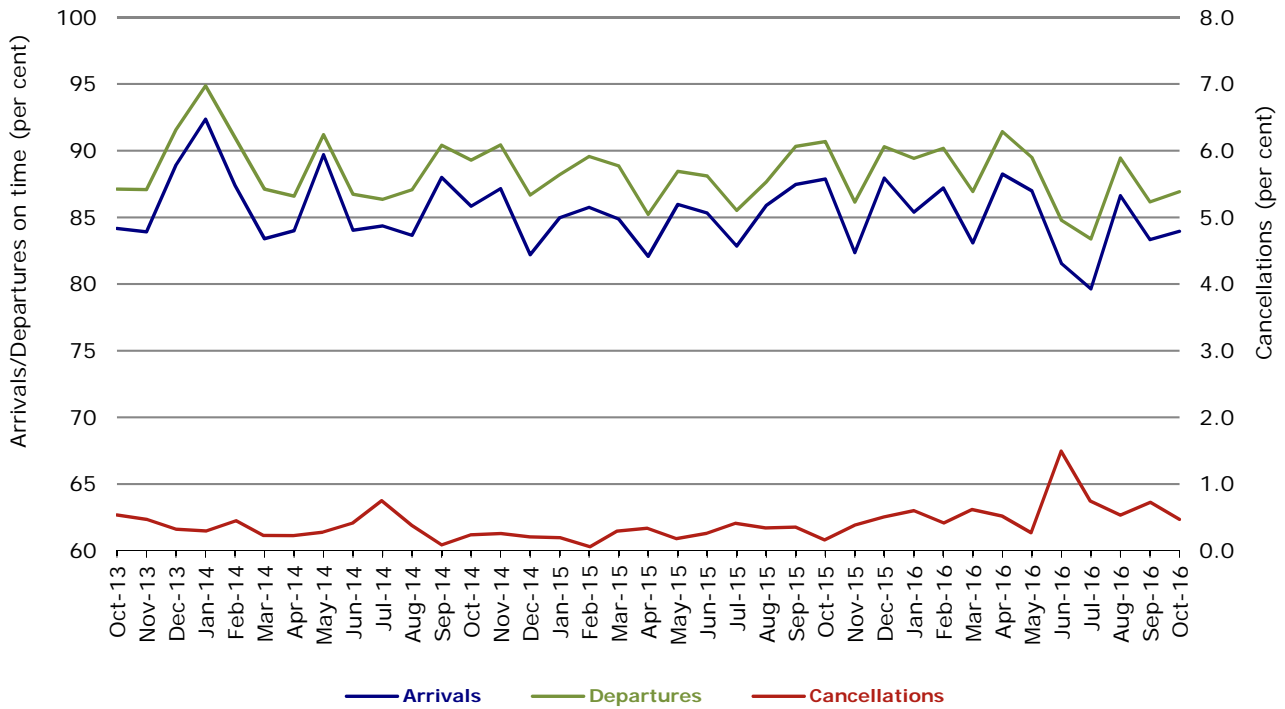
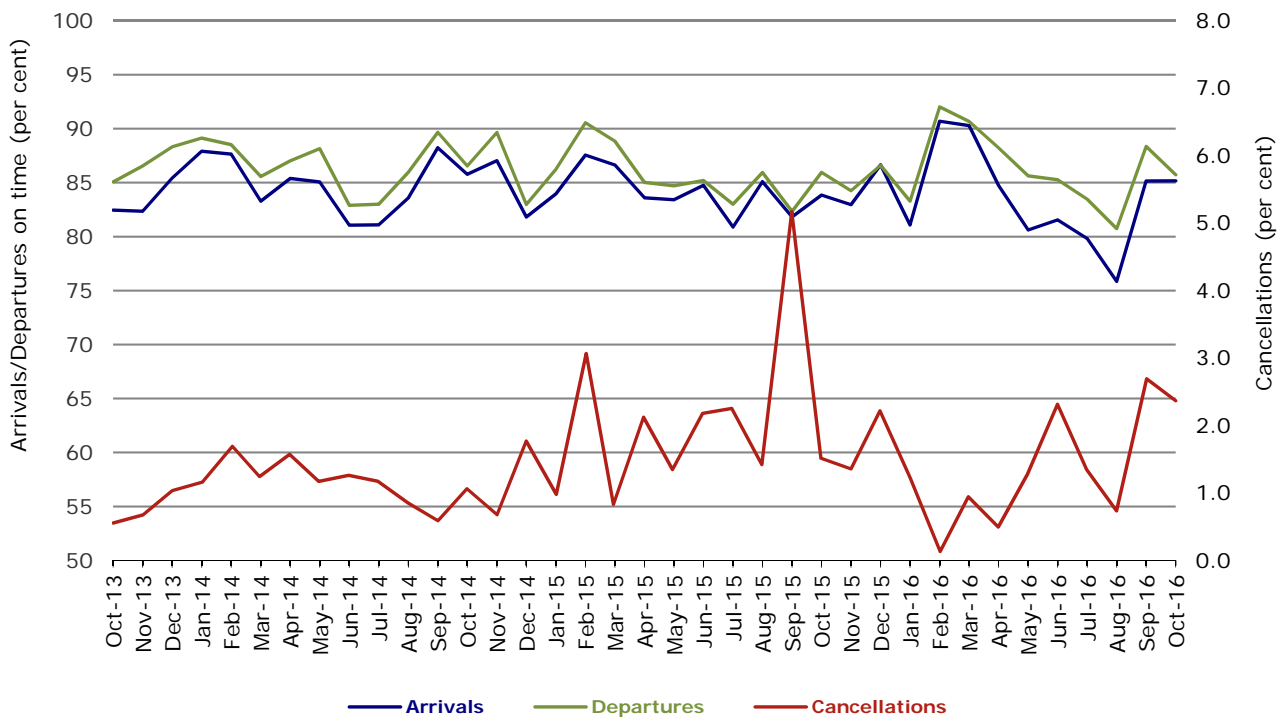


Figure 11 On time performance (by month from October 2013)
Virgin Australia Regional Airlines



Virgin Australia Regional Airlines commenced operations in May 2013. It was formed after the acquisition of Skywest by Virgin Australia and represented a combination of operations previously reported under Skywest and Virgin Australia – ATR/F100 Operations. In January 2016, Virgin Australia transferred their ATR fleet from Virgin Australia Regional Airlines to Virgin Australia.

Individual routes

On time performance is reported for all routes where the passenger load averages over 8000 passengers per month over the previous six months, and where two or more airlines operate in competition on those routes. There are now 66 routes which meet this definition. Over time, however, routes which meet this definition may change as airline networks and traffic levels vary.

	<i>Sectors</i>		<i>Arrivals On Time</i>		<i>Departures On Time</i>		<i>Cancellations</i>	
	<i>Sched.</i>	<i>Flown</i>	<i>No.</i>	<i>%</i>	<i>No.</i>	<i>%</i>	<i>No.</i>	<i>%</i>
Adelaide-Alice Springs								
Qantas	31	31	28	90.3	29	93.5	0	0.0
Virgin Australia	13	13	11	84.6	12	92.3	0	0.0
All Airlines	44	44	39	88.6	41	93.2	0	0.0
Adelaide-Brisbane								
Jetstar	31	31	27	87.1	27	87.1	0	0.0
Qantas	121	121	108	89.3	101	83.5	0	0.0
QantasLink	2	2	1	50.0	1	50.0	0	0.0
Tigerair Australia	26	25	23	92.0	20	80.0	1	3.8
Virgin Australia	114	114	107	93.9	103	90.4	0	0.0
All Airlines	294	293	266	90.8	252	86.0	1	0.3
Adelaide-Canberra								
Qantas	47	47	44	93.6	42	89.4	0	0.0
Virgin Australia	26	26	21	80.8	18	69.2	0	0.0
All Airlines	73	73	65	89.0	60	82.2	0	0.0
Adelaide-Gold Coast								
Jetstar	44	43	35	81.4	31	72.1	1	2.3
Virgin Australia	32	32	31	96.9	31	96.9	0	0.0
All Airlines	76	75	66	88.0	62	82.7	1	1.3
Adelaide-Melbourne								
Jetstar	110	102	65	63.7	55	53.9	8	7.3
Qantas	292	292	238	81.5	234	80.1	0	0.0
Tigerair Australia	81	80	65	81.3	63	78.8	1	1.2
Virgin Australia	282	276	225	81.5	221	80.1	6	2.1
All Airlines	765	750	593	79.1	573	76.4	15	2.0
Adelaide-Perth								
Jetstar	31	31	18	58.1	21	67.7	0	0.0
Qantas	119	119	101	84.9	105	88.2	0	0.0
Virgin Australia	76	76	52	68.4	69	90.8	0	0.0
All Airlines	226	226	171	75.7	195	86.3	0	0.0
Adelaide-Port Lincoln								
QantasLink	110	110	103	93.6	101	91.8	0	0.0
Regional Express	210	210	193	91.9	198	94.3	0	0.0
All Airlines	320	320	296	92.5	299	93.4	0	0.0
Adelaide-Sydney								
Jetstar	104	99	66	66.7	59	59.6	5	4.8
Qantas	234	234	209	89.3	207	88.5	0	0.0
QantasLink	31	28	22	78.6	21	75.0	3	9.7
Tigerair Australia	48	48	38	79.2	27	56.3	0	0.0
Virgin Australia	170	170	144	84.7	139	81.8	0	0.0
All Airlines	587	579	479	82.7	453	78.2	8	1.4
Albury-Sydney								
QantasLink	109	108	81	75.0	81	75.0	1	0.9
Regional Express	102	102	95	93.1	94	92.2	0	0.0
Virgin Australia	62	62	56	90.3	53	85.5	0	0.0
All Airlines	273	272	232	85.3	228	83.8	1	0.4

	<i>Sectors</i>		<i>Arrivals On Time</i>		<i>Departures On Time</i>		<i>Cancellations</i>	
	<i>Sched.</i>	<i>Flown</i>	<i>No.</i>	<i>%</i>	<i>No.</i>	<i>%</i>	<i>No.</i>	<i>%</i>
Alice Springs-Adelaide								
Qantas	31	31	25	80.6	26	83.9	0	0.0
Virgin Australia	13	13	12	92.3	11	84.6	0	0.0
All Airlines	44	44	37	84.1	37	84.1	0	0.0
Alice Springs-Darwin								
QantasLink	60	60	56	93.3	56	93.3	0	0.0
Virgin Australia	13	13	12	92.3	11	84.6	0	0.0
All Airlines	73	73	68	93.2	67	91.8	0	0.0
Armidale-Sydney								
QantasLink	123	122	94	77.0	89	73.0	1	0.8
Regional Express	75	74	51	68.9	58	78.4	1	1.3
All Airlines	198	196	145	74.0	147	75.0	2	1.0
Ayers Rock-Sydney								
Jetstar	31	29	28	96.6	26	89.7	2	6.5
Virgin Australia	31	31	28	90.3	24	77.4	0	0.0
All Airlines	62	60	56	93.3	50	83.3	2	3.2
Ballina-Sydney								
Jetstar	83	83	60	72.3	60	72.3	0	0.0
Regional Express	24	24	18	75.0	20	83.3	0	0.0
Virgin Australia	34	34	25	73.5	29	85.3	0	0.0
All Airlines	141	141	103	73.0	109	77.3	0	0.0
Brisbane-Adelaide								
Jetstar	31	31	26	83.9	27	87.1	0	0.0
Qantas	121	121	107	88.4	111	91.7	0	0.0
QantasLink	2	2	1	50.0	1	50.0	0	0.0
Tigerair Australia	26	26	24	92.3	24	92.3	0	0.0
Virgin Australia	115	115	100	87.0	104	90.4	0	0.0
All Airlines	295	295	258	87.5	267	90.5	0	0.0
Brisbane-Bundaberg								
QantasLink	133	133	125	94.0	121	91.0	0	0.0
Virgin Australia	31	31	27	87.1	28	90.3	0	0.0
All Airlines	164	164	152	92.7	149	90.9	0	0.0
Brisbane-Cairns								
Jetstar	115	112	92	82.1	78	69.6	3	2.6
Qantas	122	122	118	96.7	111	91.0	0	0.0
QantasLink	7	7	5	71.4	3	42.9	0	0.0
Tigerair Australia	31	31	27	87.1	27	87.1	0	0.0
Virgin Australia	137	137	126	92.0	128	93.4	0	0.0
All Airlines	412	409	368	90.0	347	84.8	3	0.7
Brisbane-Canberra								
Qantas	26	26	24	92.3	25	96.2	0	0.0
QantasLink	127	126	110	87.3	112	88.9	1	0.8
Virgin Australia	101	101	91	90.1	93	92.1	0	0.0
All Airlines	254	253	225	88.9	230	90.9	1	0.4
Brisbane-Darwin								
Jetstar	24	24	21	87.5	20	83.3	0	0.0
Qantas	48	48	45	93.8	46	95.8	0	0.0
Tigerair Australia	21	21	19	90.5	20	95.2	0	0.0
Virgin Australia	31	31	28	90.3	31	100.0	0	0.0
All Airlines	124	124	113	91.1	117	94.4	0	0.0
Brisbane-Emerald								
QantasLink	133	130	115	88.5	121	93.1	3	2.3
Virgin Australia	72	72	71	98.6	71	98.6	0	0.0
All Airlines	205	202	186	92.1	192	95.0	3	1.5

	<i>Sectors</i>		<i>Arrivals On Time</i>		<i>Departures On Time</i>		<i>Cancellations</i>	
	<i>Sched.</i>	<i>Flown</i>	<i>No.</i>	<i>%</i>	<i>No.</i>	<i>%</i>	<i>No.</i>	<i>%</i>
Brisbane-Gladstone								
QantasLink	185	181	167	92.3	173	95.6	4	2.2
Virgin Australia	115	110	99	90.0	96	87.3	5	4.3
All Airlines	300	291	266	91.4	269	92.4	9	3.0
Brisbane-Hamilton Island								
QantasLink	32	32	31	96.9	30	93.8	0	0.0
Virgin Australia	31	31	30	96.8	30	96.8	0	0.0
All Airlines	63	63	61	96.8	60	95.2	0	0.0
Brisbane-Hobart								
Jetstar	28	28	27	96.4	27	96.4	0	0.0
Virgin Australia	31	31	28	90.3	31	100.0	0	0.0
All Airlines	59	59	55	93.2	58	98.3	0	0.0
Brisbane-Mackay								
Jetstar	49	49	38	77.6	35	71.4	0	0.0
QantasLink	107	107	92	86.0	92	86.0	0	0.0
Virgin Australia	153	151	145	96.0	147	97.4	2	1.3
All Airlines	309	307	275	89.6	274	89.3	2	0.6
Brisbane-Melbourne								
Jetstar	136	132	102	77.3	101	76.5	4	2.9
Qantas	430	428	354	82.7	384	89.7	2	0.5
Tigerair Australia	132	129	100	77.5	112	86.8	3	2.3
Virgin Australia	405	392	303	77.3	360	91.8	13	3.2
All Airlines	1 103	1 081	859	79.5	957	88.5	22	2.0
Brisbane-Moranbah								
QantasLink	101	93	87	93.5	88	94.6	8	7.9
Virgin Australia	62	62	54	87.1	54	87.1	0	0.0
All Airlines	163	155	141	91.0	142	91.6	8	4.9
Brisbane-Mount Isa								
Qantas	24	24	23	95.8	23	95.8	0	0.0
QantasLink	33	32	29	90.6	29	90.6	1	3.0
Virgin Australia	17	17	16	94.1	16	94.1	0	0.0
All Airlines	74	73	68	93.2	68	93.2	1	1.4
Brisbane-Newcastle								
Jetstar	91	90	61	67.8	62	68.9	1	1.1
QantasLink	94	92	83	90.2	85	92.4	2	2.1
Virgin Australia	89	89	84	94.4	83	93.3	0	0.0
All Airlines	274	271	228	84.1	230	84.9	3	1.1
Brisbane-Perth								
Qantas	134	134	112	83.6	115	85.8	0	0.0
Virgin Australia	111	111	80	72.1	88	79.3	0	0.0
All Airlines	245	245	192	78.4	203	82.9	0	0.0
Brisbane-Proserpine								
Jetstar	31	31	23	74.2	19	61.3	0	0.0
Virgin Australia	33	33	33	100.0	32	97.0	0	0.0
All Airlines	64	64	56	87.5	51	79.7	0	0.0
Brisbane-Rockhampton								
QantasLink	193	193	172	89.1	173	89.6	0	0.0
Virgin Australia	177	173	158	91.3	156	90.2	4	2.3
All Airlines	370	366	330	90.2	329	89.9	4	1.1

	<i>Sectors</i>		<i>Arrivals On Time</i>		<i>Departures On Time</i>		<i>Cancellations</i>	
	<i>Sched.</i>	<i>Flown</i>	<i>No.</i>	<i>%</i>	<i>No.</i>	<i>%</i>	<i>No.</i>	<i>%</i>
Brisbane-Sydney								
Jetstar	176	164	121	73.8	117	71.3	12	6.8
Qantas	635	627	543	86.6	561	89.5	8	1.3
Tigerair Australia	108	107	86	80.4	85	79.4	1	0.9
Virgin Australia	541	532	484	91.0	495	93.0	9	1.7
All Airlines	1 460	1 430	1 234	86.3	1 258	88.0	30	2.1
Brisbane-Townsville								
Jetstar	48	47	41	87.2	39	83.0	1	2.1
Qantas	92	91	82	90.1	74	81.3	1	1.1
QantasLink	51	50	45	90.0	43	86.0	1	2.0
Virgin Australia	150	149	139	93.3	136	91.3	1	0.7
All Airlines	341	337	307	91.1	292	86.6	4	1.2
Broome-Perth								
Qantas	21	21	20	95.2	19	90.5	0	0.0
QantasLink	61	60	58	96.7	56	93.3	1	1.6
Virgin Australia	4	4	4	100.0	4	100.0	0	0.0
Virgin Australia Regional Airlines	66	65	44	67.7	41	63.1	1	1.5
All Airlines	152	150	126	84.0	120	80.0	2	1.3
Bundaberg-Brisbane								
QantasLink	133	133	123	92.5	126	94.7	0	0.0
Virgin Australia	31	31	28	90.3	28	90.3	0	0.0
All Airlines	164	164	151	92.1	154	93.9	0	0.0
Cairns-Brisbane								
Jetstar	116	113	93	82.3	93	82.3	3	2.6
Qantas	122	122	114	93.4	120	98.4	0	0.0
QantasLink	7	7	3	42.9	4	57.1	0	0.0
Tigerair Australia	31	31	25	80.6	27	87.1	0	0.0
Virgin Australia	137	137	120	87.6	128	93.4	0	0.0
All Airlines	413	410	355	86.6	372	90.7	3	0.7
Cairns-Melbourne								
Jetstar	111	109	73	67.0	82	75.2	2	1.8
Qantas	41	41	27	65.9	35	85.4	0	0.0
Tigerair Australia	44	44	25	56.8	35	79.5	0	0.0
Virgin Australia	38	38	12	31.6	27	71.1	0	0.0
All Airlines	234	232	137	59.1	179	77.2	2	0.9
Cairns-Sydney								
Jetstar	123	122	104	85.2	105	86.1	1	0.8
Qantas	77	77	55	71.4	54	70.1	0	0.0
Tigerair Australia	49	49	33	67.3	41	83.7	0	0.0
Virgin Australia	95	95	80	84.2	83	87.4	0	0.0
All Airlines	344	343	272	79.3	283	82.5	1	0.3
Cairns-Townsville								
QantasLink	141	140	140	100.0	140	100.0	1	0.7
Regional Express	50	50	48	96.0	48	96.0	0	0.0
All Airlines	191	190	188	98.9	188	98.9	1	0.5
Canberra-Adelaide								
Qantas	47	47	40	85.1	38	80.9	0	0.0
Virgin Australia	26	26	22	84.6	23	88.5	0	0.0
All Airlines	73	73	62	84.9	61	83.6	0	0.0
Canberra-Brisbane								
Qantas	26	26	24	92.3	23	88.5	0	0.0
QantasLink	127	124	104	83.9	104	83.9	3	2.4
Virgin Australia	100	100	94	94.0	91	91.0	0	0.0
All Airlines	253	250	222	88.8	218	87.2	3	1.2

	<i>Sectors</i>		<i>Arrivals On Time</i>		<i>Departures On Time</i>		<i>Cancellations</i>	
	<i>Sched.</i>	<i>Flown</i>	<i>No.</i>	<i>%</i>	<i>No.</i>	<i>%</i>	<i>No.</i>	<i>%</i>
Canberra-Melbourne								
Qantas	206	206	178	86.4	185	89.8	0	0.0
QantasLink	82	77	63	81.8	66	85.7	5	6.1
Virgin Australia	179	174	144	82.8	150	86.2	5	2.8
All Airlines	467	457	385	84.2	401	87.7	10	2.1
Canberra-Sydney								
QantasLink	467	444	382	86.0	363	81.8	23	4.9
Virgin Australia	276	267	241	90.3	238	89.1	9	3.3
All Airlines	743	711	623	87.6	601	84.5	32	4.3
Coffs Harbour-Sydney								
QantasLink	153	149	109	73.2	111	74.5	4	2.6
Tigerair Australia	14	14	11	78.6	11	78.6	0	0.0
Virgin Australia	56	56	45	80.4	44	78.6	0	0.0
All Airlines	223	219	165	75.3	166	75.8	4	1.8
Darwin-Alice Springs								
QantasLink	60	60	58	96.7	58	96.7	0	0.0
Virgin Australia	13	13	11	84.6	11	84.6	0	0.0
All Airlines	73	73	69	94.5	69	94.5	0	0.0
Darwin-Brisbane								
Jetstar	24	24	22	91.7	17	70.8	0	0.0
Qantas	48	48	42	87.5	42	87.5	0	0.0
Tigerair Australia	21	21	18	85.7	18	85.7	0	0.0
Virgin Australia	31	31	22	71.0	28	90.3	0	0.0
All Airlines	124	124	104	83.9	105	84.7	0	0.0
Darwin-Melbourne								
Jetstar	30	30	26	86.7	22	73.3	0	0.0
Qantas	31	31	24	77.4	26	83.9	0	0.0
Virgin Australia	32	31	25	80.6	27	87.1	1	3.1
All Airlines	93	92	75	81.5	75	81.5	1	1.1
Darwin-Perth								
Qantas	37	37	34	91.9	34	91.9	0	0.0
Virgin Australia	31	31	27	87.1	25	80.6	0	0.0
All Airlines	68	68	61	89.7	59	86.8	0	0.0
Darwin-Sydney								
Jetstar	29	29	24	82.8	22	75.9	0	0.0
Qantas	53	53	47	88.7	41	77.4	0	0.0
Virgin Australia	31	31	24	77.4	28	90.3	0	0.0
All Airlines	113	113	95	84.1	91	80.5	0	0.0
Dubbo-Sydney								
QantasLink	126	122	92	75.4	94	77.0	4	3.2
Regional Express	147	146	122	83.6	124	84.9	1	0.7
All Airlines	273	268	214	79.9	218	81.3	5	1.8
Emerald-Brisbane								
QantasLink	133	130	107	82.3	108	83.1	3	2.3
Virgin Australia	72	72	70	97.2	72	100.0	0	0.0
All Airlines	205	202	177	87.6	180	89.1	3	1.5
Geraldton-Perth								
QantasLink	48	48	40	83.3	40	83.3	0	0.0
Virgin Australia Regional Airlines	56	56	48	85.7	47	83.9	0	0.0
All Airlines	104	104	88	84.6	87	83.7	0	0.0

	<i>Sectors</i>		<i>Arrivals On Time</i>		<i>Departures On Time</i>		<i>Cancellations</i>	
	<i>Sched.</i>	<i>Flown</i>	<i>No.</i>	<i>%</i>	<i>No.</i>	<i>%</i>	<i>No.</i>	<i>%</i>
Gladstone-Brisbane								
QantasLink	186	180	166	92.2	169	93.9	6	3.2
Virgin Australia	115	110	97	88.2	99	90.0	5	4.3
All Airlines	301	290	263	90.7	268	92.4	11	3.7
Gold Coast-Adelaide								
Jetstar	44	44	35	79.5	40	90.9	0	0.0
Virgin Australia	32	32	24	75.0	28	87.5	0	0.0
All Airlines	76	76	59	77.6	68	89.5	0	0.0
Gold Coast-Melbourne								
Jetstar	232	226	156	69.0	152	67.3	6	2.6
Qantas	32	32	24	75.0	24	75.0	0	0.0
Tigerair Australia	85	85	66	77.6	69	81.2	0	0.0
Virgin Australia	194	192	152	79.2	162	84.4	2	1.0
All Airlines	543	535	398	74.4	407	76.1	8	1.5
Gold Coast-Sydney								
Jetstar	317	310	242	78.1	240	77.4	7	2.2
Qantas	94	94	85	90.4	86	91.5	0	0.0
QantasLink	20	19	15	78.9	14	73.7	1	5.0
Tigerair Australia	126	124	97	78.2	95	76.6	2	1.6
Virgin Australia	258	254	206	81.1	200	78.7	4	1.6
All Airlines	815	801	645	80.5	635	79.3	14	1.7
Hamilton Island-Brisbane								
QantasLink	32	32	31	96.9	30	93.8	0	0.0
Virgin Australia	31	31	30	96.8	29	93.5	0	0.0
All Airlines	63	63	61	96.8	59	93.7	0	0.0
Hamilton Island-Melbourne								
Qantas	14	14	10	71.4	8	57.1	0	0.0
Virgin Australia	23	23	20	87.0	21	91.3	0	0.0
All Airlines	37	37	30	81.1	29	78.4	0	0.0
Hamilton Island-Sydney								
Jetstar	31	31	21	67.7	19	61.3	0	0.0
Qantas	16	16	13	81.3	10	62.5	0	0.0
QantasLink	15	15	8	53.3	8	53.3	0	0.0
Virgin Australia	31	31	27	87.1	28	90.3	0	0.0
All Airlines	93	93	69	74.2	65	69.9	0	0.0
Hobart-Brisbane								
Jetstar	28	28	27	96.4	23	82.1	0	0.0
Virgin Australia	31	31	25	80.6	24	77.4	0	0.0
All Airlines	59	59	52	88.1	47	79.7	0	0.0
Hobart-Melbourne								
Jetstar	176	171	80	46.8	86	50.3	5	2.8
QantasLink	145	144	104	72.2	116	80.6	1	0.7
Tigerair Australia	32	32	29	90.6	28	87.5	0	0.0
Virgin Australia	146	145	103	71.0	117	80.7	1	0.7
All Airlines	499	492	316	64.2	347	70.5	7	1.4
Hobart-Sydney								
Jetstar	92	92	69	75.0	61	66.3	0	0.0
QantasLink	57	56	48	85.7	51	91.1	1	1.8
Virgin Australia	64	63	49	77.8	43	68.3	1	1.6
All Airlines	213	211	166	78.7	155	73.5	2	0.9

	<i>Sectors</i>		<i>Arrivals On Time</i>		<i>Departures On Time</i>		<i>Cancellations</i>	
	<i>Sched.</i>	<i>Flown</i>	<i>No.</i>	<i>%</i>	<i>No.</i>	<i>%</i>	<i>No.</i>	<i>%</i>
Kalgoorlie-Perth								
Qantas	5	5	5	100.0	5	100.0	0	0.0
QantasLink	74	74	66	89.2	66	89.2	0	0.0
Virgin Australia	31	31	29	93.5	29	93.5	0	0.0
Virgin Australia Regional Airlines	30	30	28	93.3	28	93.3	0	0.0
All Airlines	140	140	128	91.4	128	91.4	0	0.0
Karratha-Perth								
Qantas	37	37	37	100.0	37	100.0	0	0.0
QantasLink	171	157	144	91.7	143	91.1	14	8.2
Virgin Australia	5	5	5	100.0	5	100.0	0	0.0
Virgin Australia Regional Airlines	75	72	59	81.9	57	79.2	3	4.0
All Airlines	288	271	245	90.4	242	89.3	17	5.9
Launceston-Melbourne								
Jetstar	112	110	66	60.0	67	60.9	2	1.8
QantasLink	118	107	70	65.4	72	67.3	11	9.3
Virgin Australia	99	99	77	77.8	83	83.8	0	0.0
All Airlines	329	316	213	67.4	222	70.3	13	4.0
Launceston-Sydney								
Jetstar	38	38	24	63.2	20	52.6	0	0.0
Virgin Australia	31	31	25	80.6	23	74.2	0	0.0
All Airlines	69	69	49	71.0	43	62.3	0	0.0
Mackay-Brisbane								
Jetstar	49	49	35	71.4	32	65.3	0	0.0
QantasLink	107	106	96	90.6	99	93.4	1	0.9
Virgin Australia	153	151	146	96.7	146	96.7	2	1.3
All Airlines	309	306	277	90.5	277	90.5	3	1.0
Melbourne-Adelaide								
Jetstar	109	102	41	40.2	54	52.9	7	6.4
Qantas	291	290	235	81.0	242	83.4	1	0.3
Tigerair Australia	81	80	66	82.5	68	85.0	1	1.2
Virgin Australia	280	272	214	78.7	235	86.4	8	2.9
All Airlines	761	744	556	74.7	599	80.5	17	2.2
Melbourne-Brisbane								
Jetstar	136	132	79	59.8	77	58.3	4	2.9
Qantas	433	431	363	84.2	361	83.8	2	0.5
Tigerair Australia	132	129	112	86.8	108	83.7	3	2.3
Virgin Australia	403	392	342	87.2	341	87.0	11	2.7
All Airlines	1 104	1 084	896	82.7	887	81.8	20	1.8
Melbourne-Cairns								
Jetstar	109	108	71	65.7	59	54.6	1	0.9
Qantas	41	41	36	87.8	34	82.9	0	0.0
Tigerair Australia	43	43	37	86.0	39	90.7	0	0.0
Virgin Australia	38	38	28	73.7	33	86.8	0	0.0
All Airlines	231	230	172	74.8	165	71.7	1	0.4
Melbourne-Canberra								
Qantas	206	206	179	86.9	181	87.9	0	0.0
QantasLink	82	77	50	64.9	51	66.2	5	6.1
Virgin Australia	179	173	147	85.0	148	85.5	6	3.4
All Airlines	467	456	376	82.5	380	83.3	11	2.4
Melbourne-Darwin								
Jetstar	30	30	24	80.0	23	76.7	0	0.0
Qantas	31	31	29	93.5	28	90.3	0	0.0
Virgin Australia	32	32	23	71.9	25	78.1	0	0.0
All Airlines	93	93	76	81.7	76	81.7	0	0.0

	<i>Sectors</i>		<i>Arrivals On Time</i>		<i>Departures On Time</i>		<i>Cancellations</i>	
	<i>Sched.</i>	<i>Flown</i>	<i>No.</i>	<i>%</i>	<i>No.</i>	<i>%</i>	<i>No.</i>	<i>%</i>
Melbourne-Gold Coast								
Jetstar	233	228	159	69.7	157	68.9	5	2.1
Qantas	32	32	25	78.1	28	87.5	0	0.0
Tigerair Australia	85	85	75	88.2	74	87.1	0	0.0
Virgin Australia	195	193	162	83.9	166	86.0	2	1.0
All Airlines	545	538	421	78.3	425	79.0	7	1.3
Melbourne-Hamilton Island								
Qantas	14	14	13	92.9	12	85.7	0	0.0
Virgin Australia	23	23	21	91.3	21	91.3	0	0.0
All Airlines	37	37	34	91.9	33	89.2	0	0.0
Melbourne-Hobart								
Jetstar	175	172	110	64.0	112	65.1	3	1.7
QantasLink	145	143	117	81.8	117	81.8	2	1.4
Tigerair Australia	32	32	30	93.8	31	96.9	0	0.0
Virgin Australia	146	146	117	80.1	125	85.6	0	0.0
All Airlines	498	493	374	75.9	385	78.1	5	1.0
Melbourne-Launceston								
Jetstar	111	109	69	63.3	74	67.9	2	1.8
QantasLink	119	108	70	64.8	74	68.5	11	9.2
Virgin Australia	99	99	80	80.8	89	89.9	0	0.0
All Airlines	329	316	219	69.3	237	75.0	13	4.0
Melbourne-Mildura								
QantasLink	96	96	73	76.0	76	79.2	0	0.0
Regional Express	83	83	61	73.5	67	80.7	0	0.0
Virgin Australia	30	30	26	86.7	27	90.0	0	0.0
All Airlines	209	209	160	76.6	170	81.3	0	0.0
Melbourne-Newcastle								
Jetstar	114	112	73	65.2	66	58.9	2	1.8
Virgin Australia	34	34	25	73.5	27	79.4	0	0.0
All Airlines	148	146	98	67.1	93	63.7	2	1.4
Melbourne-Perth								
Jetstar	70	64	40	62.5	48	75.0	6	8.6
Qantas	210	210	137	65.2	159	75.7	0	0.0
Tigerair Australia	62	62	39	62.9	50	80.6	0	0.0
Virgin Australia	148	148	84	56.8	108	73.0	0	0.0
All Airlines	490	484	300	62.0	365	75.4	6	1.2
Melbourne-Sunshine Coast								
Jetstar	91	90	70	77.8	66	73.3	1	1.1
Virgin Australia	41	41	37	90.2	37	90.2	0	0.0
All Airlines	132	131	107	81.7	103	78.6	1	0.8
Melbourne-Sydney								
Jetstar	356	336	224	66.7	219	65.2	20	5.6
Qantas	1 027	977	756	77.4	746	76.4	50	4.9
Tigerair Australia	246	241	176	73.0	177	73.4	5	2.0
Virgin Australia	802	764	654	85.6	668	87.4	38	4.7
All Airlines	2 431	2 318	1 810	78.1	1 810	78.1	113	4.6
Mildura-Melbourne								
QantasLink	96	95	72	75.8	76	80.0	1	1.0
Regional Express	83	83	56	67.5	66	79.5	0	0.0
Virgin Australia	31	31	24	77.4	26	83.9	0	0.0
All Airlines	210	209	152	72.7	168	80.4	1	0.5

	<i>Sectors</i>		<i>Arrivals On Time</i>		<i>Departures On Time</i>		<i>Cancellations</i>	
	<i>Sched.</i>	<i>Flown</i>	<i>No.</i>	<i>%</i>	<i>No.</i>	<i>%</i>	<i>No.</i>	<i>%</i>
Moranbah-Brisbane								
QantasLink	99	89	84	94.4	86	96.6	10	10.1
Virgin Australia	61	61	54	88.5	55	90.2	0	0.0
All Airlines	160	150	138	92.0	141	94.0	10	6.3
Mount Isa-Brisbane								
Qantas	24	24	23	95.8	22	91.7	0	0.0
QantasLink	33	31	28	90.3	29	93.5	2	6.1
Virgin Australia	16	16	13	81.3	15	93.8	0	0.0
All Airlines	73	71	64	90.1	66	93.0	2	2.7
Newcastle-Brisbane								
Jetstar	91	90	68	75.6	67	74.4	1	1.1
QantasLink	94	92	89	96.7	88	95.7	2	2.1
Virgin Australia	90	90	85	94.4	83	92.2	0	0.0
All Airlines	275	272	242	89.0	238	87.5	3	1.1
Newcastle-Melbourne								
Jetstar	114	112	77	68.8	73	65.2	2	1.8
Virgin Australia	34	34	16	47.1	21	61.8	0	0.0
All Airlines	148	146	93	63.7	94	64.4	2	1.4
Newman-Perth								
Qantas	70	70	65	92.9	67	95.7	0	0.0
QantasLink	77	71	66	93.0	65	91.5	6	7.8
Virgin Australia	12	12	11	91.7	11	91.7	0	0.0
Virgin Australia Regional Airlines	26	25	23	92.0	23	92.0	1	3.8
All Airlines	185	178	165	92.7	166	93.3	7	3.8
Perth-Adelaide								
Jetstar	31	31	20	64.5	12	38.7	0	0.0
Qantas	122	122	117	95.9	117	95.9	0	0.0
Virgin Australia	75	75	71	94.7	66	88.0	0	0.0
All Airlines	228	228	208	91.2	195	85.5	0	0.0
Perth-Brisbane								
Qantas	133	133	122	91.7	119	89.5	0	0.0
Virgin Australia	112	112	103	92.0	103	92.0	0	0.0
All Airlines	245	245	225	91.8	222	90.6	0	0.0
Perth-Broome								
Qantas	21	21	20	95.2	20	95.2	0	0.0
QantasLink	63	61	59	96.7	57	93.4	2	3.2
Virgin Australia	4	4	4	100.0	4	100.0	0	0.0
Virgin Australia Regional Airlines	66	66	50	75.8	56	84.8	0	0.0
All Airlines	154	152	133	87.5	137	90.1	2	1.3
Perth-Darwin								
Qantas	37	37	35	94.6	36	97.3	0	0.0
Virgin Australia	31	31	25	80.6	28	90.3	0	0.0
All Airlines	68	68	60	88.2	64	94.1	0	0.0
Perth-Geraldton								
QantasLink	48	48	41	85.4	41	85.4	0	0.0
Virgin Australia Regional Airlines	56	56	48	85.7	47	83.9	0	0.0
All Airlines	104	104	89	85.6	88	84.6	0	0.0
Perth-Kalgoorlie								
Qantas	5	5	5	100.0	5	100.0	0	0.0
QantasLink	74	74	67	90.5	66	89.2	0	0.0
Virgin Australia	30	30	30	100.0	29	96.7	0	0.0
Virgin Australia Regional Airlines	30	30	28	93.3	28	93.3	0	0.0
All Airlines	139	139	130	93.5	128	92.1	0	0.0

	<i>Sectors</i>		<i>Arrivals On Time</i>		<i>Departures On Time</i>		<i>Cancellations</i>	
	<i>Sched.</i>	<i>Flown</i>	<i>No.</i>	<i>%</i>	<i>No.</i>	<i>%</i>	<i>No.</i>	<i>%</i>
Perth-Karratha								
Qantas	37	37	37	100.0	37	100.0	0	0.0
QantasLink	171	156	139	89.1	141	90.4	15	8.8
Virgin Australia	5	5	5	100.0	5	100.0	0	0.0
Virgin Australia Regional Airlines	75	74	61	82.4	68	91.9	1	1.3
All Airlines	288	272	242	89.0	251	92.3	16	5.6
Perth-Melbourne								
Jetstar	70	61	44	72.1	22	36.1	9	12.9
Qantas	211	211	182	86.3	180	85.3	0	0.0
Tigerair Australia	63	63	51	81.0	37	58.7	0	0.0
Virgin Australia	145	145	123	84.8	117	80.7	0	0.0
All Airlines	489	480	400	83.3	356	74.2	9	1.8
Perth-Newman								
Qantas	70	70	64	91.4	68	97.1	0	0.0
QantasLink	75	73	70	95.9	71	97.3	2	2.7
Virgin Australia	12	12	11	91.7	11	91.7	0	0.0
Virgin Australia Regional Airlines	26	25	24	96.0	24	96.0	1	3.8
All Airlines	183	180	169	93.9	174	96.7	3	1.6
Perth-Port Hedland								
Qantas	51	51	46	90.2	45	88.2	0	0.0
QantasLink	94	87	66	75.9	76	87.4	7	7.4
Virgin Australia	20	20	19	95.0	19	95.0	0	0.0
Virgin Australia Regional Airlines	32	32	31	96.9	32	100.0	0	0.0
All Airlines	197	190	162	85.3	172	90.5	7	3.6
Perth-Sydney								
Jetstar	30	30	25	83.3	13	43.3	0	0.0
Qantas	210	209	190	90.9	159	76.1	1	0.5
Tigerair Australia	27	27	25	92.6	22	81.5	0	0.0
Virgin Australia	122	122	110	90.2	99	81.1	0	0.0
All Airlines	389	388	350	90.2	293	75.5	1	0.3
Port Hedland-Perth								
Qantas	51	51	46	90.2	44	86.3	0	0.0
QantasLink	95	85	78	91.8	78	91.8	10	10.5
Virgin Australia	20	20	19	95.0	19	95.0	0	0.0
Virgin Australia Regional Airlines	32	32	31	96.9	32	100.0	0	0.0
All Airlines	198	188	174	92.6	173	92.0	10	5.1
Port Lincoln-Adelaide								
QantasLink	110	110	101	91.8	100	90.9	0	0.0
Regional Express	210	210	192	91.4	191	91.0	0	0.0
All Airlines	320	320	293	91.6	291	90.9	0	0.0
Port Macquarie-Sydney								
QantasLink	134	130	85	65.4	90	69.2	4	3.0
Virgin Australia	61	61	54	88.5	50	82.0	0	0.0
All Airlines	195	191	139	72.8	140	73.3	4	2.1
Proserpine-Brisbane								
Jetstar	31	31	25	80.6	22	71.0	0	0.0
Virgin Australia	33	33	31	93.9	31	93.9	0	0.0
All Airlines	64	64	56	87.5	53	82.8	0	0.0
Rockhampton-Brisbane								
QantasLink	193	191	171	89.5	175	91.6	2	1.0
Virgin Australia	177	171	161	94.2	160	93.6	6	3.4
All Airlines	370	362	332	91.7	335	92.5	8	2.2

	<i>Sectors</i>		<i>Arrivals On Time</i>		<i>Departures On Time</i>		<i>Cancellations</i>	
	<i>Sched.</i>	<i>Flown</i>	<i>No.</i>	<i>%</i>	<i>No.</i>	<i>%</i>	<i>No.</i>	<i>%</i>
Sunshine Coast-Melbourne								
Jetstar	91	90	55	61.1	50	55.6	1	1.1
Virgin Australia	41	40	30	75.0	33	82.5	1	2.4
All Airlines	132	130	85	65.4	83	63.8	2	1.5
Sunshine Coast-Sydney								
Jetstar	118	116	74	63.8	58	50.0	2	1.7
QantasLink	36	36	24	66.7	28	77.8	0	0.0
Virgin Australia	36	36	25	69.4	28	77.8	0	0.0
All Airlines	190	188	123	65.4	114	60.6	2	1.1
Sydney-Adelaide								
Jetstar	104	102	61	59.8	62	60.8	2	1.9
Qantas	231	231	182	78.8	189	81.8	0	0.0
QantasLink	31	31	23	74.2	25	80.6	0	0.0
Tigerair Australia	48	48	34	70.8	41	85.4	0	0.0
Virgin Australia	170	170	133	78.2	149	87.6	0	0.0
All Airlines	584	582	433	74.4	466	80.1	2	0.3
Sydney-Albury								
QantasLink	109	107	76	71.0	81	75.7	2	1.8
Regional Express	102	102	87	85.3	89	87.3	0	0.0
Virgin Australia	62	62	53	85.5	53	85.5	0	0.0
All Airlines	273	271	216	79.7	223	82.3	2	0.7
Sydney-Armidale								
QantasLink	123	122	88	72.1	100	82.0	1	0.8
Regional Express	74	74	61	82.4	62	83.8	0	0.0
All Airlines	197	196	149	76.0	162	82.7	1	0.5
Sydney-Ayers Rock								
Jetstar	31	30	30	100.0	30	100.0	1	3.2
Virgin Australia	31	31	28	90.3	27	87.1	0	0.0
All Airlines	62	61	58	95.1	57	93.4	1	1.6
Sydney-Ballina								
Jetstar	84	84	69	82.1	70	83.3	0	0.0
Regional Express	24	24	21	87.5	21	87.5	0	0.0
Virgin Australia	34	34	32	94.1	33	97.1	0	0.0
All Airlines	142	142	122	85.9	124	87.3	0	0.0
Sydney-Brisbane								
Jetstar	178	165	127	77.0	110	66.7	13	7.3
Qantas	633	626	530	84.7	532	85.0	7	1.1
Tigerair Australia	108	107	86	80.4	92	86.0	1	0.9
Virgin Australia	545	534	458	85.8	472	88.4	11	2.0
All Airlines	1 464	1 432	1 201	83.9	1 206	84.2	32	2.2
Sydney-Cairns								
Jetstar	124	123	105	85.4	90	73.2	1	0.8
Qantas	76	76	65	85.5	65	85.5	0	0.0
Tigerair Australia	49	49	43	87.8	45	91.8	0	0.0
Virgin Australia	95	95	83	87.4	81	85.3	0	0.0
All Airlines	344	343	296	86.3	281	81.9	1	0.3
Sydney-Canberra								
QantasLink	466	448	353	78.8	365	81.5	18	3.9
Virgin Australia	277	269	224	83.3	224	83.3	8	2.9
All Airlines	743	717	577	80.5	589	82.1	26	3.5

	<i>Sectors</i>		<i>Arrivals On Time</i>		<i>Departures On Time</i>		<i>Cancellations</i>	
	<i>Sched.</i>	<i>Flown</i>	<i>No.</i>	<i>%</i>	<i>No.</i>	<i>%</i>	<i>No.</i>	<i>%</i>
Sydney-Coffs Harbour								
QantasLink	153	149	108	72.5	109	73.2	4	2.6
Tigerair Australia	14	14	11	78.6	12	85.7	0	0.0
Virgin Australia	56	56	46	82.1	43	76.8	0	0.0
All Airlines	223	219	165	75.3	164	74.9	4	1.8
Sydney-Darwin								
Jetstar	29	29	24	82.8	26	89.7	0	0.0
Qantas	52	52	43	82.7	37	71.2	0	0.0
Virgin Australia	31	31	29	93.5	29	93.5	0	0.0
All Airlines	112	112	96	85.7	92	82.1	0	0.0
Sydney-Dubbo								
QantasLink	126	122	86	70.5	83	68.0	4	3.2
Regional Express	150	149	132	88.6	131	87.9	1	0.7
All Airlines	276	271	218	80.4	214	79.0	5	1.8
Sydney-Gold Coast								
Jetstar	317	312	253	81.1	244	78.2	5	1.6
Qantas	94	94	83	88.3	80	85.1	0	0.0
QantasLink	20	19	14	73.7	15	78.9	1	5.0
Tigerair Australia	126	124	105	84.7	110	88.7	2	1.6
Virgin Australia	256	255	215	84.3	214	83.9	1	0.4
All Airlines	813	804	670	83.3	663	82.5	9	1.1
Sydney-Hamilton Island								
Jetstar	31	31	27	87.1	26	83.9	0	0.0
Qantas	16	16	16	100.0	16	100.0	0	0.0
QantasLink	15	15	11	73.3	11	73.3	0	0.0
Virgin Australia	31	31	30	96.8	30	96.8	0	0.0
All Airlines	93	93	84	90.3	83	89.2	0	0.0
Sydney-Hobart								
Jetstar	92	92	76	82.6	72	78.3	0	0.0
QantasLink	57	57	48	84.2	46	80.7	0	0.0
Virgin Australia	64	63	54	85.7	55	87.3	1	1.6
All Airlines	213	212	178	84.0	173	81.6	1	0.5
Sydney-Launceston								
Jetstar	39	39	35	89.7	29	74.4	0	0.0
Virgin Australia	31	31	27	87.1	27	87.1	0	0.0
All Airlines	70	70	62	88.6	56	80.0	0	0.0
Sydney-Melbourne								
Jetstar	355	335	211	63.0	217	64.8	20	5.6
Qantas	1 025	976	702	71.9	810	83.0	49	4.8
Tigerair Australia	245	240	166	69.2	190	79.2	5	2.0
Virgin Australia	801	765	570	74.5	669	87.5	36	4.5
All Airlines	2 426	2 316	1 649	71.2	1 886	81.4	110	4.5
Sydney-Perth								
Jetstar	30	30	19	63.3	24	80.0	0	0.0
Qantas	214	213	152	71.4	164	77.0	1	0.5
Tigerair Australia	27	27	22	81.5	26	96.3	0	0.0
Virgin Australia	122	122	70	57.4	96	78.7	0	0.0
All Airlines	393	392	263	67.1	310	79.1	1	0.3
Sydney-Port Macquarie								
QantasLink	135	132	93	70.5	102	77.3	3	2.2
Virgin Australia	61	61	49	80.3	49	80.3	0	0.0
All Airlines	196	193	142	73.6	151	78.2	3	1.5

	<i>Sectors</i>		<i>Arrivals On Time</i>		<i>Departures On Time</i>		<i>Cancellations</i>	
	<i>Sched.</i>	<i>Flown</i>	<i>No.</i>	<i>%</i>	<i>No.</i>	<i>%</i>	<i>No.</i>	<i>%</i>
Sydney-Sunshine Coast								
Jetstar	118	116	82	70.7	73	62.9	2	1.7
QantasLink	36	36	24	66.7	26	72.2	0	0.0
Virgin Australia	36	36	31	86.1	30	83.3	0	0.0
All Airlines	190	188	137	72.9	129	68.6	2	1.1
Sydney-Tamworth								
QantasLink	157	146	109	74.7	118	80.8	11	7.0
Virgin Australia	51	50	41	82.0	42	84.0	1	2.0
All Airlines	208	196	150	76.5	160	81.6	12	5.8
Sydney-Townsville								
Jetstar	30	30	24	80.0	24	80.0	0	0.0
Virgin Australia	32	32	30	93.8	29	90.6	0	0.0
All Airlines	62	62	54	87.1	53	85.5	0	0.0
Sydney-Wagga Wagga								
QantasLink	114	114	70	61.4	78	68.4	0	0.0
Regional Express	130	128	117	91.4	117	91.4	2	1.5
All Airlines	244	242	187	77.3	195	80.6	2	0.8
Tamworth-Sydney								
QantasLink	157	146	110	75.3	115	78.8	11	7.0
Virgin Australia	51	50	45	90.0	45	90.0	1	2.0
All Airlines	208	196	155	79.1	160	81.6	12	5.8
Townsville-Brisbane								
Jetstar	48	47	40	85.1	37	78.7	1	2.1
Qantas	92	91	80	87.9	83	91.2	1	1.1
QantasLink	51	48	41	85.4	40	83.3	3	5.9
Virgin Australia	150	149	136	91.3	136	91.3	1	0.7
All Airlines	341	335	297	88.7	296	88.4	6	1.8
Townsville-Cairns								
QantasLink	141	140	136	97.1	137	97.9	1	0.7
Regional Express	51	50	50	100.0	49	98.0	1	2.0
All Airlines	192	190	186	97.9	186	97.9	2	1.0
Townsville-Sydney								
Jetstar	30	30	25	83.3	22	73.3	0	0.0
Virgin Australia	33	33	27	81.8	30	90.9	0	0.0
All Airlines	63	63	52	82.5	52	82.5	0	0.0
Wagga Wagga-Sydney								
QantasLink	114	114	85	74.6	87	76.3	0	0.0
Regional Express	129	127	111	87.4	110	86.6	2	1.6
All Airlines	243	241	196	81.3	197	81.7	2	0.8

Airports

On time performance is reported for all routes where the passenger load averages over 8000 passengers per month, and where two or more airlines operate in competition. The following data reports by airport against flights operated on those routes only. This month, 8 major city airports and 33 regional city airports are covered.

Airport	Arrivals			Departures		
	Sectors	On Time		Sectors	On Time	
	Flown	No.	%	Flown	No.	%
Adelaide						
Jetstar	310	183	59.0	306	193	63.1
Qantas	842	706	83.8	844	718	85.1
QantasLink	143	125	87.4	140	123	87.9
Regional Express	210	192	91.4	210	198	94.3
Tigerair Australia	154	124	80.5	153	110	71.9
Virgin Australia	703	576	81.9	707	593	83.9
All Airlines	2 362	1 906	80.7	2 360	1 935	82.0
Relates to services to and from Alice Springs, Brisbane, Canberra, Gold Coast, Melbourne, Perth, Port Lincoln and Sydney.						
Albury						
QantasLink	107	76	71.0	108	81	75.0
Regional Express	102	87	85.3	102	94	92.2
Virgin Australia	62	53	85.5	62	53	85.5
All Airlines	271	216	79.7	272	228	83.8
Relates to services to and from Sydney only.						
Alice Springs						
Qantas	31	28	90.3	31	26	83.9
QantasLink	60	58	96.7	60	56	93.3
Virgin Australia	26	22	84.6	26	22	84.6
All Airlines	117	108	92.3	117	104	88.9
Relates to services to and from Adelaide and Darwin.						
Armidale						
QantasLink	122	88	72.1	122	89	73.0
Regional Express	74	61	82.4	74	58	78.4
All Airlines	196	149	76.0	196	147	75.0
Relates to services to and from Sydney only.						
Ayers Rock						
Jetstar	30	30	100.0	29	26	89.7
Virgin Australia	31	28	90.3	31	24	77.4
All Airlines	61	58	95.1	60	50	83.3
Relates to services to and from Sydney only.						
Ballina						
Jetstar	84	69	82.1	83	60	72.3
Regional Express	24	21	87.5	24	20	83.3
Virgin Australia	34	32	94.1	34	29	85.3
All Airlines	142	122	85.9	141	109	77.3
Relates to services to and from Sydney only.						

Airport	Arrivals			Departures		
	Sectors Flown	On Time		Sectors Flown	On Time	
		No.	%		No.	%
Brisbane						
Jetstar	710	543	76.5	708	525	74.2
Qantas	1 622	1 406	86.7	1 621	1 450	89.5
QantasLink	1 165	1 044	89.6	1 178	1 071	90.9
Tigerair Australia	313	264	84.3	314	268	85.4
Virgin Australia	2 366	2 122	89.7	2 368	2 179	92.0
All Airlines	6 176	5 379	87.1	6 189	5 493	88.8

Relates to services to and from Adelaide, Bundaberg, Cairns, Canberra, Darwin, Emerald, Gladstone, Hamilton Island, Hobart, Mackay, Melbourne, Moranbah, Mount Isa, Newcastle, Perth, Proserpine, Rockhampton, Sydney and Townsville.

Broome

Qantas	21	20	95.2	21	19	90.5
QantasLink	61	59	96.7	60	56	93.3
Virgin Australia	4	4	100.0	4	4	100.0
Virgin Australia Regional Airlines	66	50	75.8	65	41	63.1
All Airlines	152	133	87.5	150	120	80.0

Relates to services to and from Perth only.

Bundaberg

QantasLink	133	125	94.0	133	126	94.7
Virgin Australia	31	27	87.1	31	28	90.3
All Airlines	164	152	92.7	164	154	93.9

Relates to services to and from Brisbane only.

Cairns

Jetstar	343	268	78.1	344	280	81.4
Qantas	239	219	91.6	240	209	87.1
QantasLink	147	141	95.9	147	144	98.0
Regional Express	50	50	100.0	50	48	96.0
Tigerair Australia	123	107	87.0	124	103	83.1
Virgin Australia	270	237	87.8	270	238	88.1
All Airlines	1 172	1 022	87.2	1 175	1 022	87.0

Relates to services to and from Brisbane, Melbourne, Sydney and Townsville.

Canberra

Qantas	279	247	88.5	279	246	88.2
QantasLink	651	513	78.8	645	533	82.6
Virgin Australia	569	483	84.9	567	502	88.5
All Airlines	1 499	1 243	82.9	1 491	1 281	85.9

Relates to services to and from Adelaide, Brisbane, Melbourne and Sydney.

Coffs Harbour

QantasLink	149	108	72.5	149	111	74.5
Tigerair Australia	14	11	78.6	14	11	78.6
Virgin Australia	56	46	82.1	56	44	78.6
All Airlines	219	165	75.3	219	166	75.8

Relates to services to and from Sydney only.

Darwin

Jetstar	83	69	83.1	83	61	73.5
Qantas	168	152	90.5	169	143	84.6
QantasLink	60	56	93.3	60	58	96.7
Tigerair Australia	21	19	90.5	21	18	85.7
Virgin Australia	138	117	84.8	137	119	86.9
All Airlines	470	413	87.9	470	399	84.9

Relates to services to and from Alice Springs, Brisbane, Melbourne, Perth and Sydney.

Airport	Arrivals			Departures		
	Sectors Flown	On Time		Sectors Flown	On Time	
		No.	%		No.	%
Dubbo						
QantasLink	122	86	70.5	122	94	77.0
Regional Express	149	132	88.6	146	124	84.9
All Airlines	271	218	80.4	268	218	81.3
Relates to services to and from Sydney only.						
Emerald						
QantasLink	130	115	88.5	130	108	83.1
Virgin Australia	72	71	98.6	72	72	100.0
All Airlines	202	186	92.1	202	180	89.1
Relates to services to and from Brisbane only.						
Geraldton						
QantasLink	48	41	85.4	48	40	83.3
Virgin Australia Regional Airlines	56	48	85.7	56	47	83.9
All Airlines	104	89	85.6	104	87	83.7
Relates to services to and from Perth only.						
Gladstone						
QantasLink	181	167	92.3	180	169	93.9
Virgin Australia	110	99	90.0	110	99	90.0
All Airlines	291	266	91.4	290	268	92.4
Relates to services to and from Brisbane only.						
Gold Coast						
Jetstar	583	447	76.7	580	432	74.5
Qantas	126	108	85.7	126	110	87.3
QantasLink	19	14	73.7	19	14	73.7
Tigerair Australia	209	180	86.1	209	164	78.5
Virgin Australia	480	408	85.0	478	390	81.6
All Airlines	1 417	1 157	81.7	1 412	1 110	78.6
Relates to services to and from Adelaide, Melbourne and Sydney.						
Hamilton Island						
Jetstar	31	27	87.1	31	19	61.3
Qantas	30	29	96.7	30	18	60.0
QantasLink	47	42	89.4	47	38	80.9
Virgin Australia	85	81	95.3	85	78	91.8
All Airlines	193	179	92.7	193	153	79.3
Relates to services to and from Brisbane, Melbourne and Sydney.						
Hobart						
Jetstar	292	213	72.9	291	170	58.4
QantasLink	200	165	82.5	200	167	83.5
Tigerair Australia	32	30	93.8	32	28	87.5
Virgin Australia	240	199	82.9	239	184	77.0
All Airlines	764	607	79.5	762	549	72.0
Relates to services to and from Brisbane, Melbourne and Sydney.						
Kalgoorlie						
Qantas	5	5	100.0	5	5	100.0
QantasLink	74	67	90.5	74	66	89.2
Virgin Australia	30	30	100.0	31	29	93.5
Virgin Australia Regional Airlines	30	28	93.3	30	28	93.3
All Airlines	139	130	93.5	140	128	91.4
Relates to services to and from Perth only.						

Airport	Arrivals			Departures		
	Sectors Flown	On Time		Sectors Flown	On Time	
		No.	%		No.	%
Karratha						
Qantas	37	37	100.0	37	37	100.0
QantasLink	156	139	89.1	157	143	91.1
Virgin Australia	5	5	100.0	5	5	100.0
Virgin Australia Regional Airlines	74	61	82.4	72	57	79.2
All Airlines	272	242	89.0	271	242	89.3
Relates to services to and from Perth only.						
Launceston						
Jetstar	148	104	70.3	148	87	58.8
QantasLink	108	70	64.8	107	72	67.3
Virgin Australia	130	107	82.3	130	106	81.5
All Airlines	386	281	72.8	385	265	68.8
Relates to services to and from Melbourne and Sydney.						
Mackay						
Jetstar	49	38	77.6	49	32	65.3
QantasLink	107	92	86.0	106	99	93.4
Virgin Australia	151	145	96.0	151	146	96.7
All Airlines	307	275	89.6	306	277	90.5
Relates to services to and from Brisbane only.						
Melbourne						
Jetstar	1 478	955	64.6	1 483	955	64.4
Qantas	2 231	1 739	77.9	2 232	1 791	80.2
QantasLink	423	309	73.0	424	318	75.0
Regional Express	83	56	67.5	83	67	80.7
Tigerair Australia	673	502	74.6	672	547	81.4
Virgin Australia	2 385	1 824	76.5	2 385	2 050	86.0
All Airlines	7 273	5 385	74.0	7 279	5 728	78.7
Relates to services to and from Adelaide, Brisbane, Cairns, Canberra, Darwin, Gold Coast, Hamilton Island, Hobart, Launceston, Mildura, Newcastle, Perth, Sunshine Coast and Sydney.						
Mildura						
QantasLink	96	73	76.0	95	76	80.0
Regional Express	83	61	73.5	83	66	79.5
Virgin Australia	30	26	86.7	31	26	83.9
All Airlines	209	160	76.6	209	168	80.4
Relates to services to and from Melbourne only.						
Moranbah						
QantasLink	93	87	93.5	89	86	96.6
Virgin Australia	62	54	87.1	61	55	90.2
All Airlines	155	141	91.0	150	141	94.0
Relates to services to and from Brisbane only.						
Mount Isa						
Qantas	24	23	95.8	24	22	91.7
QantasLink	32	29	90.6	31	29	93.5
Virgin Australia	17	16	94.1	16	15	93.8
All Airlines	73	68	93.2	71	66	93.0
Relates to services to and from Brisbane only.						

Airport	Arrivals			Departures		
	Sectors	On Time		Sectors	On Time	
	Flown	No.	%	Flown	No.	%
Newcastle						
Jetstar	202	134	66.3	202	140	69.3
QantasLink	92	83	90.2	92	88	95.7
Virgin Australia	123	109	88.6	124	104	83.9
All Airlines	417	326	78.2	418	332	79.4
Relates to services to and from Brisbane and Melbourne.						
Newman						
Qantas	70	64	91.4	70	67	95.7
QantasLink	73	70	95.9	71	65	91.5
Virgin Australia	12	11	91.7	12	11	91.7
Virgin Australia Regional Airlines	25	24	96.0	25	23	92.0
All Airlines	180	169	93.9	178	166	93.3
Relates to services to and from Perth only.						
Perth						
Jetstar	125	77	61.6	122	47	38.5
Qantas	897	709	79.0	896	786	87.7
QantasLink	495	452	91.3	499	452	90.6
Tigerair Australia	89	61	68.5	90	59	65.6
Virgin Australia	560	381	68.0	556	481	86.5
Virgin Australia Regional Airlines	280	233	83.2	283	255	90.1
All Airlines	2 446	1 913	78.2	2 446	2 080	85.0
Relates to services to and from Adelaide, Brisbane, Broome, Darwin, Geraldton, Kalgoorlie, Karratha, Melbourne, Newman, Port Hedland and Sydney.						
Port Hedland						
Qantas	51	46	90.2	51	44	86.3
QantasLink	87	66	75.9	85	78	91.8
Virgin Australia	20	19	95.0	20	19	95.0
Virgin Australia Regional Airlines	32	31	96.9	32	32	100.0
All Airlines	190	162	85.3	188	173	92.0
Relates to services to and from Perth only.						
Port Lincoln						
QantasLink	110	103	93.6	110	100	90.9
Regional Express	210	193	91.9	210	191	91.0
All Airlines	320	296	92.5	320	291	90.9
Relates to services to and from Adelaide only.						
Port Macquarie						
QantasLink	132	93	70.5	130	90	69.2
Virgin Australia	61	49	80.3	61	50	82.0
All Airlines	193	142	73.6	191	140	73.3
Relates to services to and from Sydney only.						
Proserpine						
Jetstar	31	23	74.2	31	22	71.0
Virgin Australia	33	33	100.0	33	31	93.9
All Airlines	64	56	87.5	64	53	82.8
Relates to services to and from Brisbane only.						

Airport	Arrivals			Departures		
	Sectors Flown	On Time		Sectors Flown	On Time	
		No.	%		No.	%
Rockhampton						
QantasLink	193	172	89.1	191	175	91.6
Virgin Australia	173	158	91.3	171	160	93.6
All Airlines	366	330	90.2	362	335	92.5
Relates to services to and from Brisbane only.						
Sunshine Coast						
Jetstar	206	152	73.8	206	108	52.4
QantasLink	36	24	66.7	36	28	77.8
Virgin Australia	77	68	88.3	76	61	80.3
All Airlines	319	244	76.5	318	197	61.9
Relates to services to and from Melbourne and Sydney.						
Sydney						
Jetstar	1 509	1 107	73.4	1 518	1 097	72.3
Qantas	2 287	1 898	83.0	2 284	1 893	82.9
QantasLink	1 489	1 155	77.6	1 498	1 159	77.4
Regional Express	473	397	83.9	477	420	88.1
Tigerair Australia	610	466	76.4	609	516	84.7
Virgin Australia	2 723	2 349	86.3	2 728	2 352	86.2
All Airlines	9 091	7 372	81.1	9 114	7 437	81.6
Relates to services to and from Adelaide, Albury, Armidale, Ayers Rock, Ballina, Brisbane, Cairns, Canberra, Coffs Harbour, Darwin, Dubbo, Gold Coast, Hamilton Island, Hobart, Launceston, Melbourne, Perth, Port Macquarie, Sunshine Coast, Tamworth, Townsville and Wagga Wagga.						
Tamworth						
QantasLink	146	109	74.7	146	115	78.8
Virgin Australia	50	41	82.0	50	45	90.0
All Airlines	196	150	76.5	196	160	81.6
Relates to services to and from Sydney only.						
Townsville						
Jetstar	77	65	84.4	77	59	76.6
Qantas	91	82	90.1	91	83	91.2
QantasLink	190	185	97.4	188	177	94.1
Regional Express	50	48	96.0	50	49	98.0
Virgin Australia	181	169	93.4	182	166	91.2
All Airlines	589	549	93.2	588	534	90.8
Relates to services to and from Brisbane, Cairns and Sydney.						
Wagga Wagga						
QantasLink	114	70	61.4	114	87	76.3
Regional Express	128	117	91.4	127	110	86.6
All Airlines	242	187	77.3	241	197	81.7
Relates to services to and from Sydney only.						

Definitions

On time arrival	A flight arrival is counted as "on time" if it arrived at the gate before 15 minutes after the scheduled arrival time shown in the carriers' schedule. Neither diverted nor cancelled flights count as on time.
On time departure	A flight departure is counted as "on time" if it departs the gate before 15 minutes after the scheduled departure time shown in the carriers' schedule.
Cancellation	A flight removed from service within 7 days of scheduled departure is regarded as a cancellation.
On time departure percentage	The percentage of on time departures is measured against the number of departures <i>operated</i> on any particular sector.
On time arrival percentage	The percentage of on time arrivals is measured against the number of arrivals <i>operated</i> on any particular sector.
Cancellation percentage	The percentage of cancellations is measured against the number of services <i>scheduled</i> on any particular sector.
