



Australian Government

Department of Infrastructure and Regional Development

Bureau of Infrastructure, Transport and Regional Economics

STATISTICAL REPORT



Aviation

Domestic airline on time performance
October 2015

© Commonwealth of Australia 2015

ISSN: 1832-0759

Ownership of intellectual property rights in this publication

Unless otherwise noted, copyright (and any other intellectual property rights, if any) in this publication is owned by the Commonwealth of Australia (referred to below as the Commonwealth).

Disclaimer

The material contained in this publication is made available on the understanding that the Commonwealth is not providing professional advice, and that users exercise their own skill and care with respect to its use, and seek independent advice if necessary.

The Commonwealth makes no representations or warranties as to the contents or accuracy of the information contained in this publication. To the extent permitted by law, the Commonwealth disclaims liability to any person or organisation in respect of anything done, or omitted to be done, in reliance upon information contained in this publication.

Creative Commons licence

With the exception of (a) the Coat of Arms; and (b) the Department of Infrastructure and Regional Development's photos and graphics, copyright in this publication is licensed under a Creative Commons Attribution 3.0 Australia Licence.

Creative Commons Attribution 3.0 Australia Licence is a standard form licence agreement that allows you to copy, communicate and adapt this publication provided that you attribute the work to the Commonwealth and abide by the other licence terms. A summary of the licence terms is available from <http://creativecommons.org/licenses/by/3.0/au/deed.en>. The full licence terms are available from <http://creativecommons.org/licenses/by/3.0/au/legalcode>.

Use of the Coat of Arms

The Department of the Prime Minister and Cabinet sets the terms under which the Coat of Arms is used. Please refer to the Department's Commonwealth Coat of Arms and Government branding web page <http://www.dpmmc.gov.au/guidelines/index.cfm#brand> and, in particular, the Guidelines on the use of the Commonwealth Coat of Arms publication.

An appropriate citation for this report is:

Bureau of Infrastructure, Transport and Regional Economics (BITRE), 2015, Domestic airline on time performance, Statistical Report, BITRE, Canberra ACT.

Contact us

This publication is available in PDF format. All other rights are reserved, including in relation to any Departmental logos or trade marks which may exist. For enquiries regarding the licence and any use of this publication, please contact:

Bureau of Infrastructure, Transport and Regional Economics (BITRE)
Department of Infrastructure and Regional Development
GPO Box 501, Canberra ACT 2601, Australia
Telephone: (international) +61 2 6274 7210
Fax: (international) +61 2 6274 6855
Email: bitre@infrastructure.gov.au
Website: www.bitre.gov.au

Inquiries

Should you require additional information about the statistics contained in this publication:

Telephone (02) 6274 7790 or Facsimile (02) 6274 7727

Electronic mail: AVSTATS@infrastructure.gov.au

Web site: <http://www.bitre.gov.au/statistics/aviation/otphome.aspx>

Foreword

The Bureau of Infrastructure, Transport and Regional Economics (BITRE) monitors the punctuality and reliability of major domestic airlines operating between Australian airports. The purpose of this is to allow for evaluation of overall industry and individual airline performance, so that consumers of air travel can make informed decisions.

The following domestic airlines currently report this information monthly to the BITRE: Jetstar, Qantas, QantasLink, Regional Express, Tigerair, Virgin Australia and Virgin Australia Regional Airlines. Data has been gathered since November 2003, although some airlines commenced reporting at a later date, including Jetstar which first reported in May 2004, MacAir in July 2005 and Tigerair in April 2008. MacAir ceased operations in February 2009 and data was not received for December 2008 onwards. Virgin Blue was rebranded as Virgin Australia in May 2011 and Tiger Airways was rebranded as Tigerair in July 2013 and time series data in Microsoft Excel spreadsheet format on the BITRE website have been revised to reflect these changes. Virgin Australia Regional Airlines commenced operations in May 2013. It was formed after the acquisition of Skywest by Virgin Australia and represents a combination of operations previously reported under Skywest and Virgin Australia – ATR/F100 Operations. Services operated by Skywest on behalf of Virgin Australia using ATR/F100 aircraft commenced in November 2011 and were shown separately as Virgin Australia – ATR/F100 Operations until April 2013.

Information presented in this report is for Australian domestic routes for which the passenger load averaged 8 000 or more passengers per month over the previous six months and where two or more airlines operated in competition on those routes. There were 66 routes that met this definition in October 2015. Over time, routes which meet these criteria change as airline networks and traffic levels vary.

Participating airlines report their overall monthly network performance where this is possible.

Total industry figures encompass all services operated by reporting airlines only. These airlines collectively carried over 95 per cent of total domestic passengers (regular public transport only) in 2014.

The method of capturing on time performance varies between airlines utilising different recording systems. Jetstar and Qantas jet aircraft use Aircraft Communication Addressing and Reporting System (ACARS) to electronically measure on time performance. Regional Express, Tigerair, Virgin Australia, Virgin Australia Regional Airlines and the Qantas non-jet fleet record on time performance manually using records from pilots, gate agents and/or ground crews.

After initial data is collected, aggregate reports are audited internally by participating airlines prior to publication.

Reports and detailed time series data in Microsoft Excel spreadsheet format are available from the BITRE website at: <http://www.bitre.gov.au/statistics/aviation/otphome.aspx>.

Contents

	Page
Industry performance	1
Individual routes	10
Airports	23
Definitions	30

Industry performance

For October 2015, on time performance over all routes operated by participating airlines (Jetstar, Qantas, QantasLink, Regional Express, Tigerair, Virgin Australia and Virgin Australia Regional Airlines) averaged 86.8 per cent for on time arrivals and 87.6 per cent for on time departures. Cancellations represented 1.2 per cent of all scheduled flights. The equivalent figures for October 2014 were 86.2 per cent for arrivals, 87.3 per cent for departures and 1.1 per cent for cancellations.

This month's figures were significantly better than the long term average performance for all routes (82.6 per cent for arrivals and 84.1 per cent for departures). The rate of cancellations was lower than the long term average of 1.4 per cent.

Virgin Australia achieved the highest on time arrivals among the major domestic airlines at 89.8 per cent, followed by Qantas at 88.3 per cent, Tigerair at 85.4 per cent and Jetstar at 80.2 per cent. Regional Express was the best performing regional airline for on time arrivals at 87.9 per cent, followed by QantasLink at 86.9 per cent and Virgin Australia Regional Airlines at 83.9 per cent. The Qantas network (Qantas and QantasLink combined operations) recorded 87.6 per cent for on time arrivals while the Virgin Australia network (Virgin Australia and Virgin Australia Regional Airlines combined operations) recorded 88.8 per cent.

Virgin Australia also achieved the highest level of on time departures for October 2015 at 91.0 per cent, followed by Qantas at 89.1 per cent, Tigerair at 86.8 per cent and Jetstar at 76.9 per cent. Of the regional airlines, Regional Express recorded 90.7 per cent followed by QantasLink at 88.7 per cent and Virgin Australia Regional Airlines at 86.0 per cent. The Qantas network recorded 88.9 per cent for on time departures while the Virgin Australia network recorded 90.1 per cent.

QantasLink had the highest percentage of cancellations (2.1 per cent) during the month, followed by Jetstar (1.7 per cent), Virgin Australia Regional Airlines (1.5 per cent), Virgin Australia (1.1 per cent), Qantas (1.0 per cent), Tigerair (0.4 per cent) and Regional Express (0.2 per cent).

Airlines' on time performance varies across the routes they serve. Individual route data by specific airline for 66 routes are shown on pages 10-22.

Of the 66 routes which met the criteria for on time performance reporting in October 2015, the Canberra-Adelaide route had the highest percentage of on time arrivals (97.3 per cent) and the Townsville-Cairns and Perth-Port Hedland routes had the highest percentage of on time departures (both 96.2 per cent). The Port Macquarie-Sydney route had the lowest percentage of on time arrivals (62.8 per cent) and the Sunshine Coast-Melbourne route had the lowest percentage of on time departures (67.4 per cent).

Cancellations were highest on the Moranbah-Brisbane route at 6.4 per cent, followed by the Brisbane-Moranbah route at 6.3 per cent, the Canberra-Sydney route at 4.6 per cent, the Sydney-Canberra route at 4.5 per cent and the Karratha-Perth route at 3.6 per cent.

Ayers Rock Airport recorded the highest percentage of on time arrivals (96.7 per cent) and Port Lincoln Airport recorded the highest percentage of on time departures (95.3 per cent). Port Macquarie Airport recorded the lowest percentage of on time arrivals (70.9 per cent) and

the lowest percentage of on time departures (71.9 per cent). These figures only refer to reported routes and do not cover all flights at these airports.

Table 1 On time performance for October 2015 — Total Industry

	<i>Sectors</i>		<i>Arrivals On Time</i>		<i>Departures On Time</i>		<i>Cancellations</i>	
	<i>Scheduled</i>	<i>Flown</i>	<i>No.</i>	<i>%</i>	<i>No.</i>	<i>%</i>	<i>No.</i>	<i>%</i>
Jetstar	7 375	7 248	5 816	80.2	5 572	76.9	127	1.7
Qantas	9 725	9 627	8 503	88.3	8 579	89.1	98	1.0
QantasLink	10 483	10 268	8 921	86.9	9 103	88.7	215	2.1
Regional Express	6 186	6 176	5 427	87.9	5 601	90.7	10	0.2
Tigerair	2 206	2 197	1 876	85.4	1 906	86.8	9	0.4
Virgin Australia	11 431	11 306	10 154	89.8	10 287	91.0	125	1.1
Virgin Australia Regional Airlines	2 523	2 485	2 086	83.9	2 138	86.0	38	1.5
All Airlines	49 929	49 307	42 783	86.8	43 186	87.6	622	1.2
Qantas - all QF designated services	20 208	19 895	17 424	87.6	17 682	88.9	313	1.5
Virgin Australia - all VA designated services	13 954	13 791	12 240	88.8	12 425	90.1	163	1.2

Total airline network data (including routes not shown in this report).

Airlines' on time performance varies across the routes they serve. Individual route data by specific airline for 66 routes are shown on pages 10-22.

Table 2 Top ten routes for on time performance for October 2015 (participating airlines only)

<i>Arrivals</i>		<i>Departures</i>	
<i>Route</i>	<i>On Time (%)</i>	<i>Route</i>	<i>On Time (%)</i>
Canberra-Adelaide	97.3	Townsville-Cairns	96.2
Melbourne-Hamilton Island	97.0	Perth-Port Hedland	96.2
Sydney-Ayers Rock	96.7	Darwin-Alice Springs	95.8
Townsville-Cairns	96.2	Port Lincoln-Adelaide	95.3
Darwin-Alice Springs	95.8	Cairns-Townsville	94.7
Brisbane-Perth	95.6	Canberra-Adelaide	94.6
Adelaide-Alice Springs	95.5	Darwin-Perth	94.4
Port Lincoln-Adelaide	95.0	Adelaide-Port Lincoln	94.4
Brisbane-Mount Isa	95.0	Perth-Kalgoorlie	94.4
Brisbane-Moranbah	95.0	Port Hedland-Perth	94.0

Table 3 Top ten airports for on time performance for October 2015 (participating airlines and reported routes only)

<i>Arrivals</i>		<i>Departures</i>	
<i>Airport</i>	<i>On Time (%)</i>	<i>Airport</i>	<i>On Time (%)</i>
Ayers Rock	96.7	Port Lincoln	95.3
Alice Springs	95.7	Port Hedland	94.0
Mount Isa	95.0	Kalgoorlie	93.6
Moranbah	95.0	Ayers Rock	93.2
Kalgoorlie	94.4	Karratha	93.2
Port Lincoln	93.8	Townsville	93.0
Karratha	92.9	Moranbah	92.6
Proserpine	92.8	Perth	92.2
Townsville	91.7	Gladstone	92.0
Gladstone	91.7	Mount Isa	91.5

Total industry on time performance

Figure 1 On time performance (by month from October 2012)—Total Industry

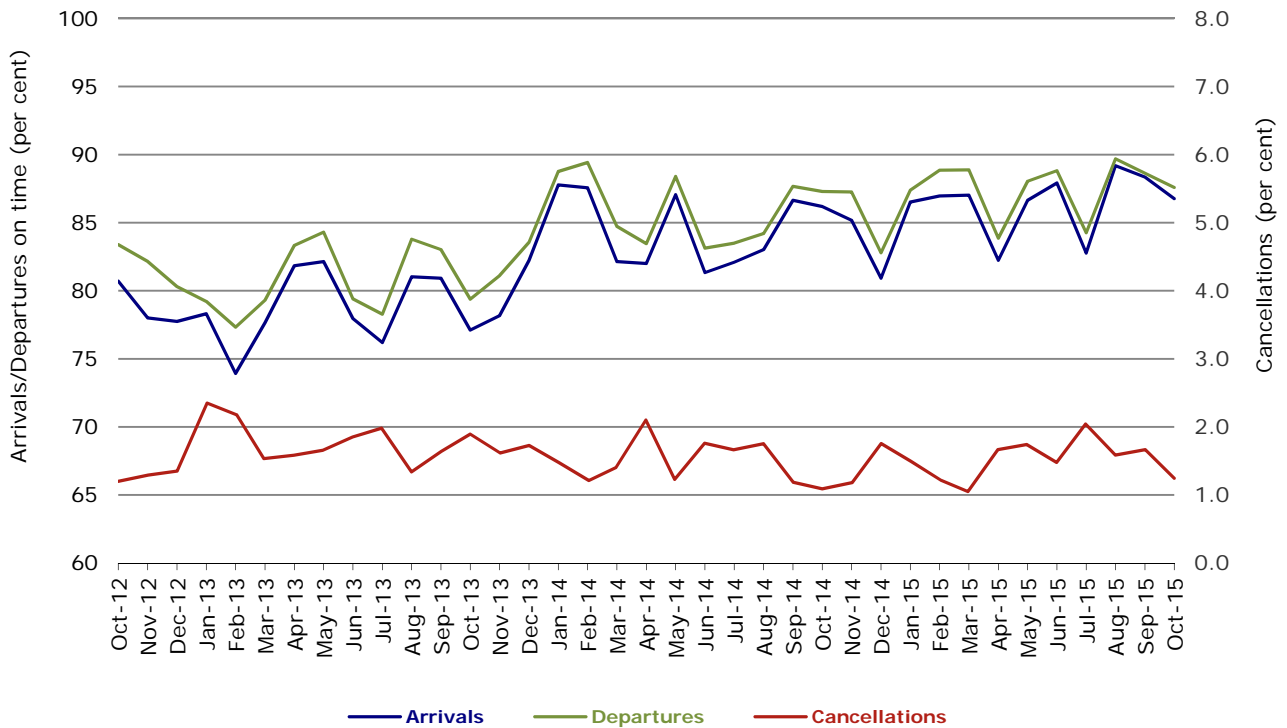


Figure 2 Arrivals on time (by month from October 2014)

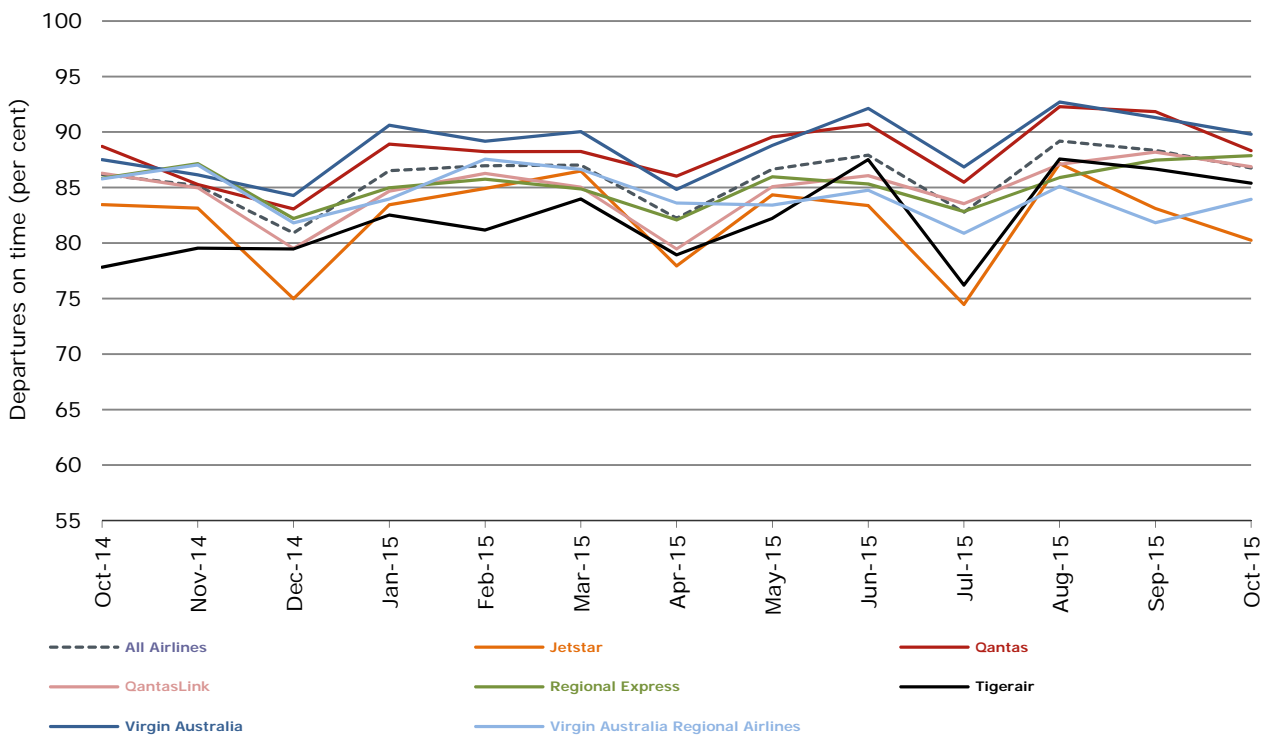


Figure 3 Departures on time (by month from October 2014)

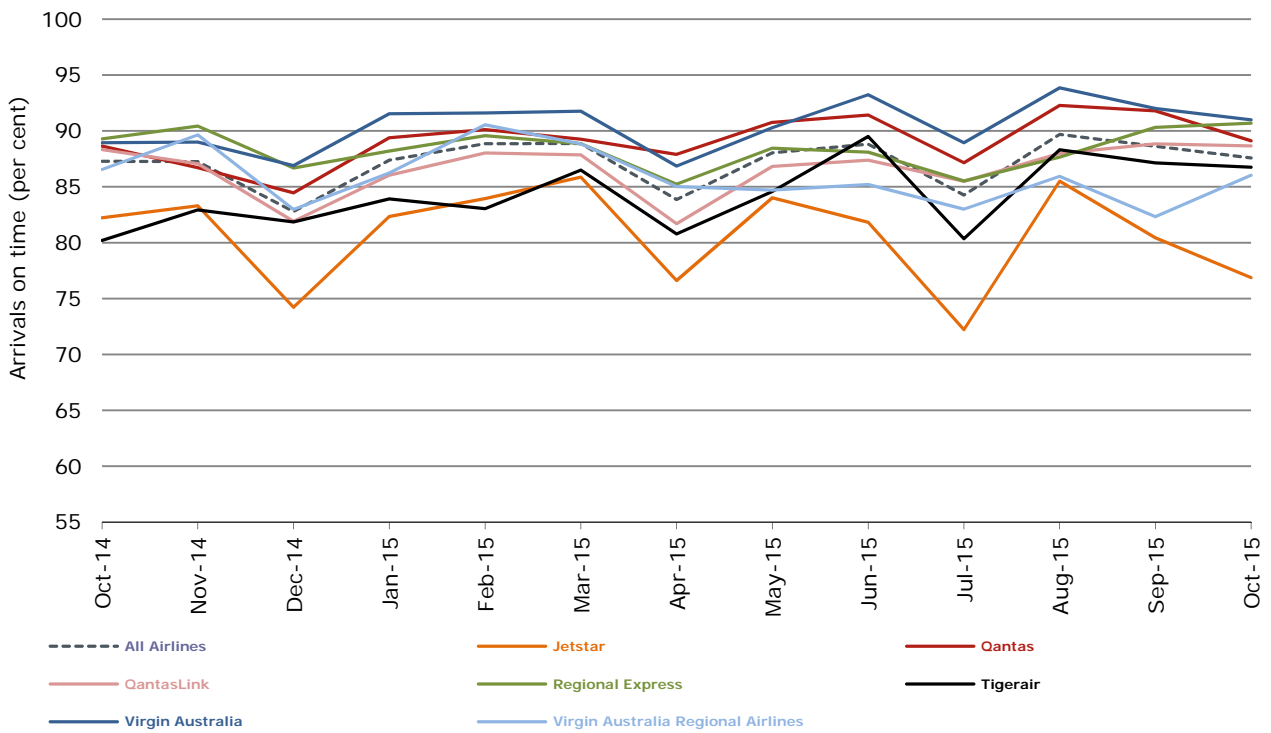
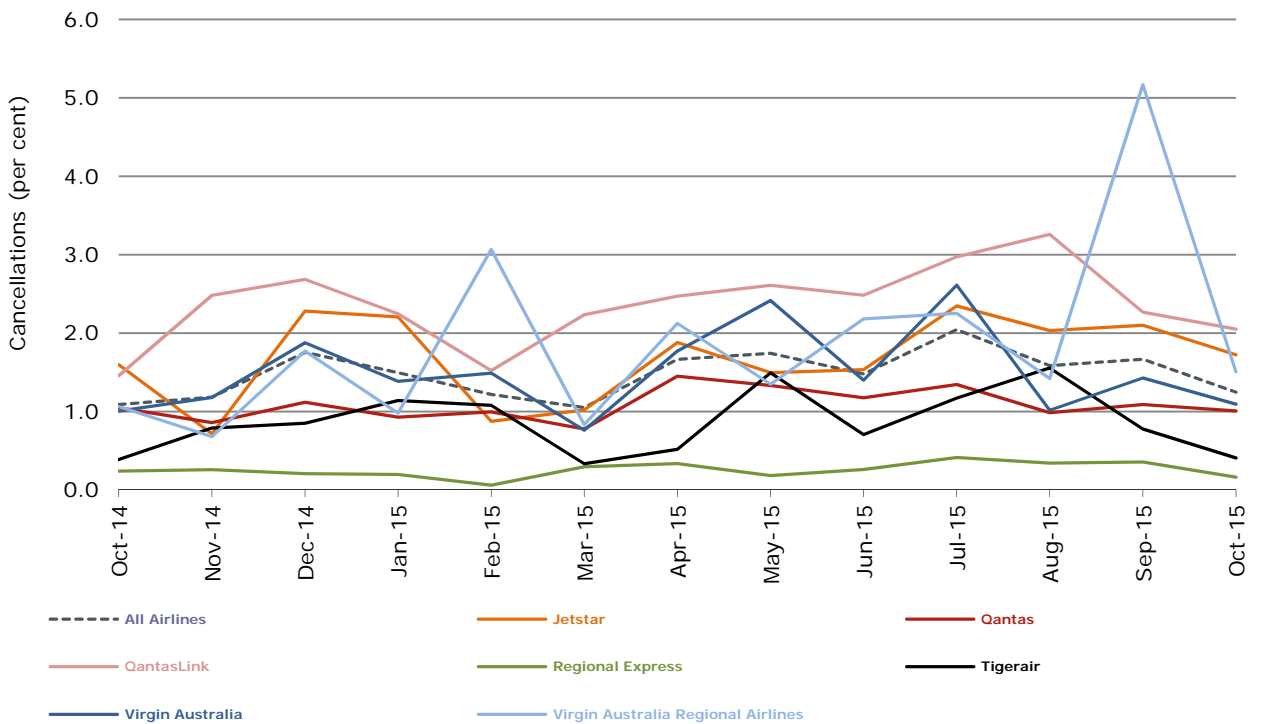


Figure 4 Cancellations (by month from October 2014)



Major domestic airlines on time performance

Figure 5 On time performance (by month from October 2012)—Jetstar

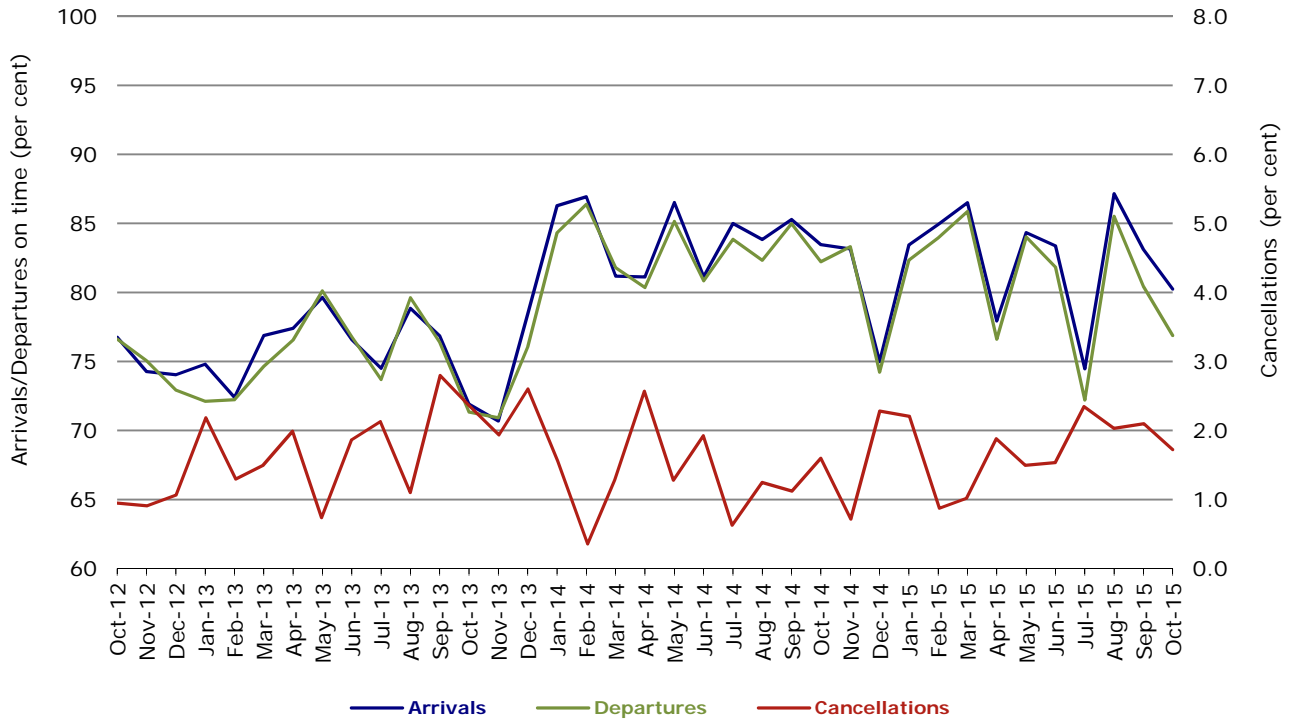


Figure 6 On time performance (by month from October 2012)—Qantas

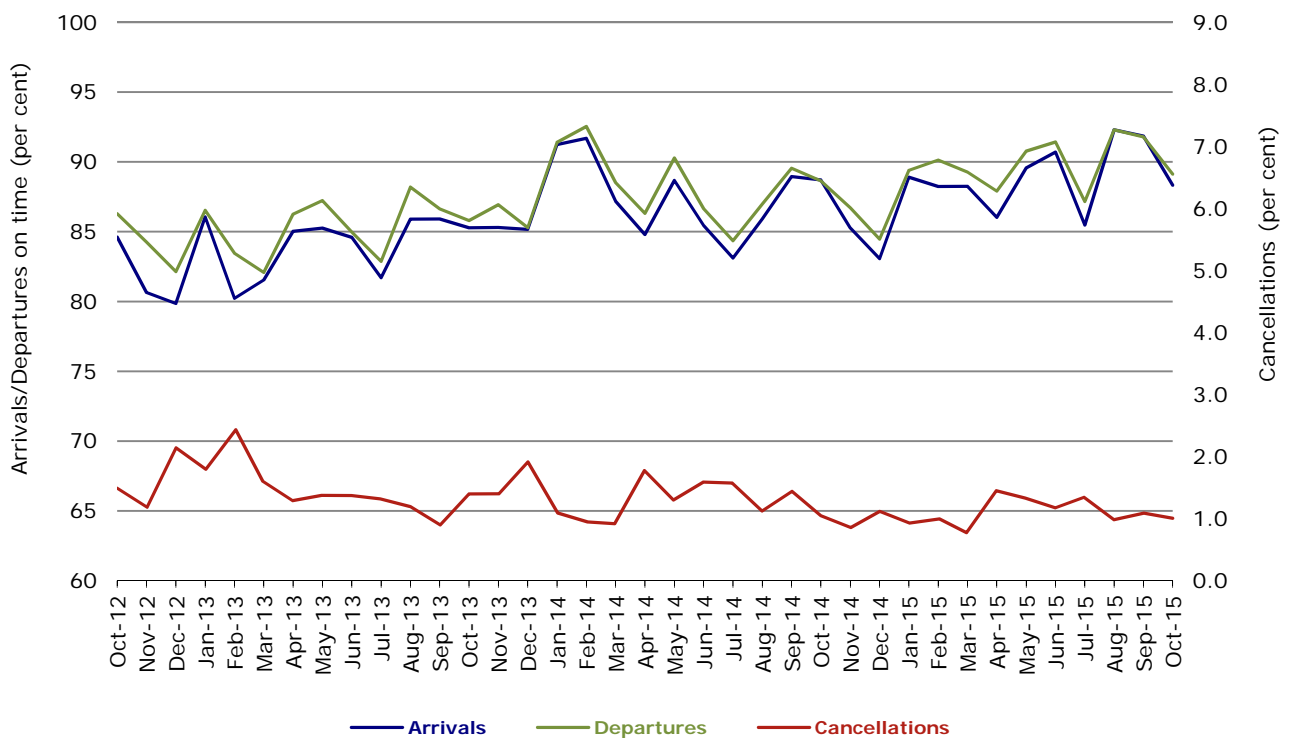


Figure 7 On time performance (by month from October 2012)—Tigerair

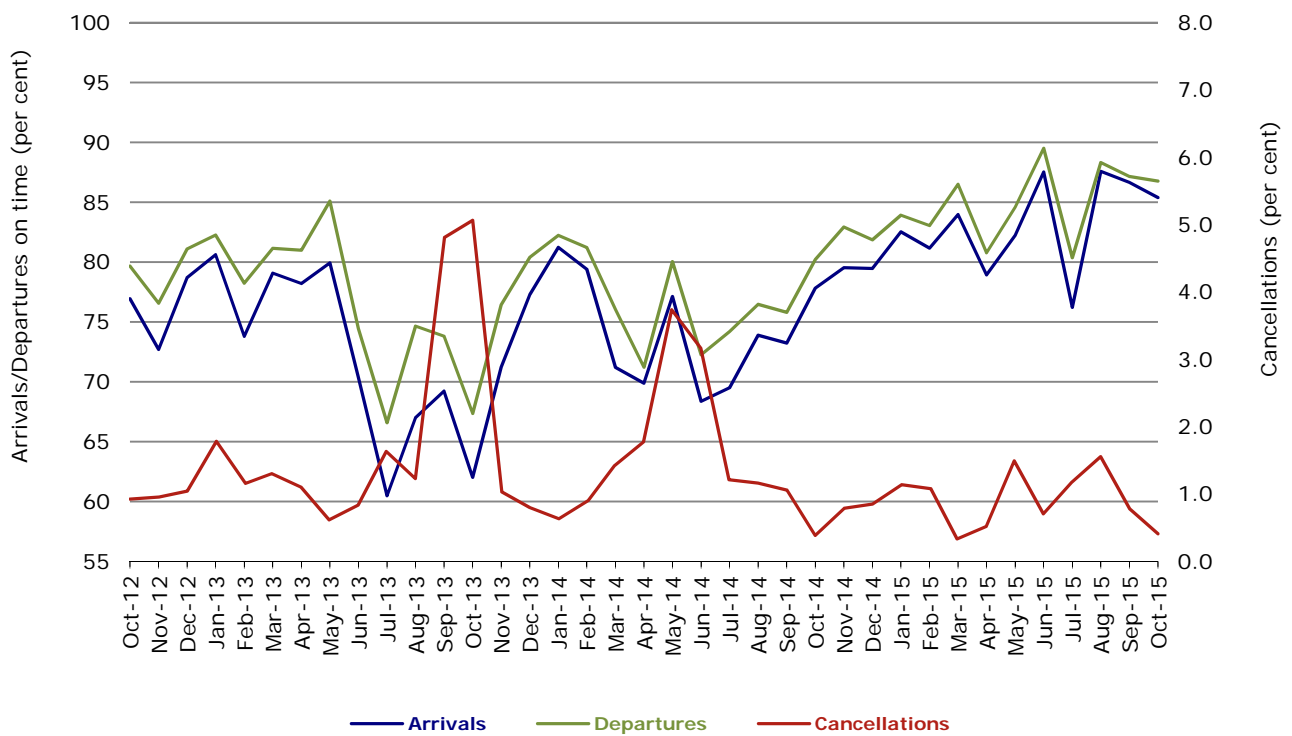
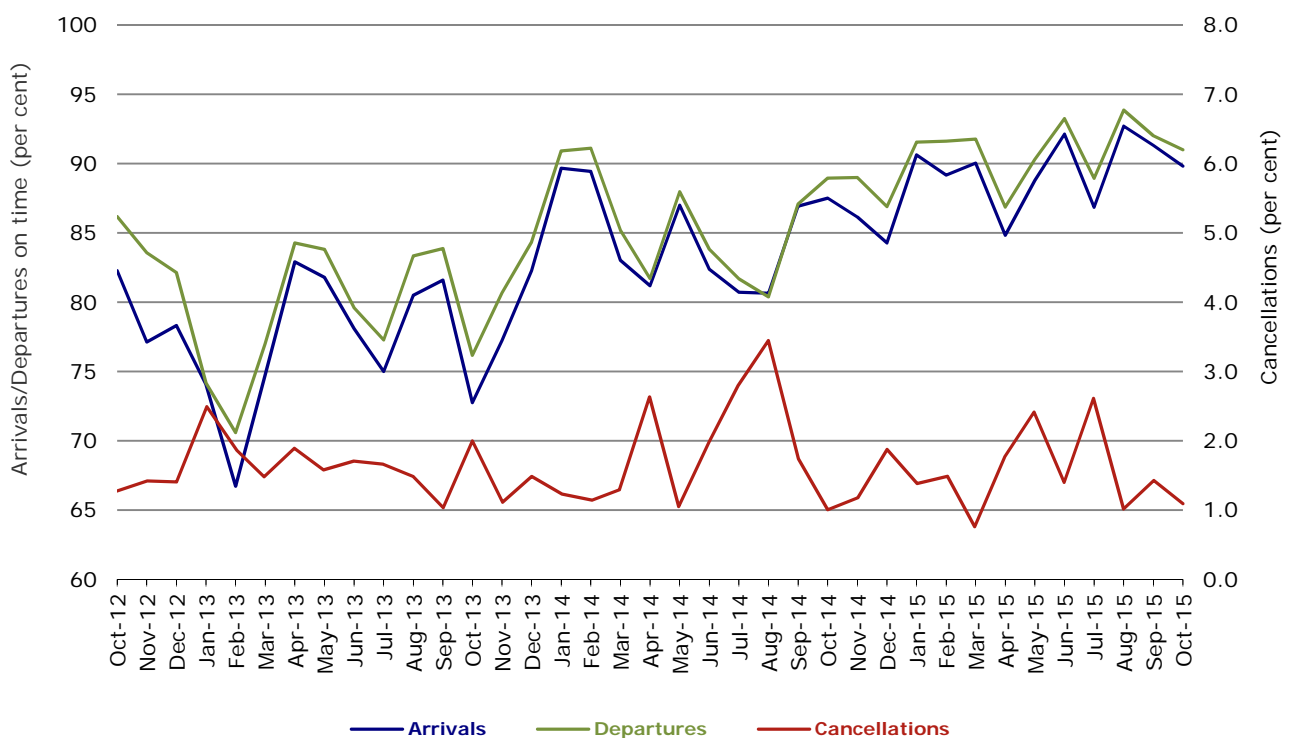


Figure 8 On time performance (by month from October 2012)—Virgin Australia



Major regional airlines on time performance

Figure 9 On time performance (by month from October 2012)—QantasLink

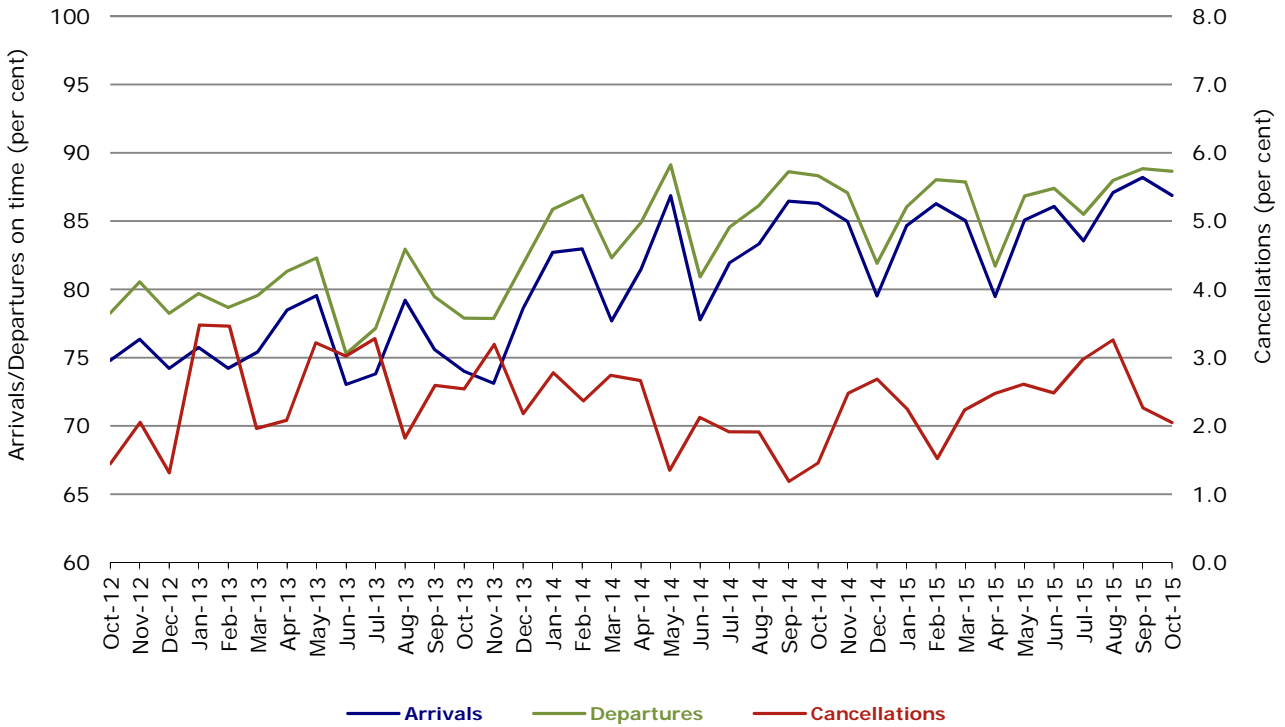


Figure 10 On time performance (by month from October 2012)—Regional Express

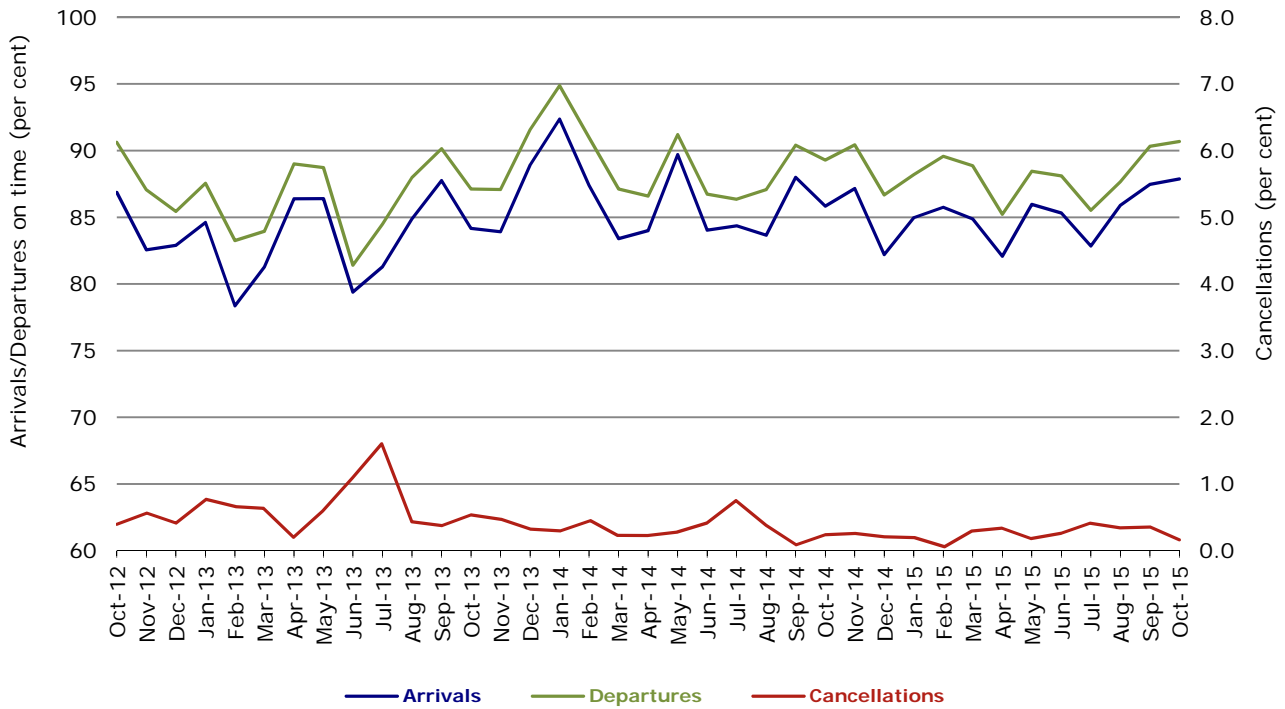
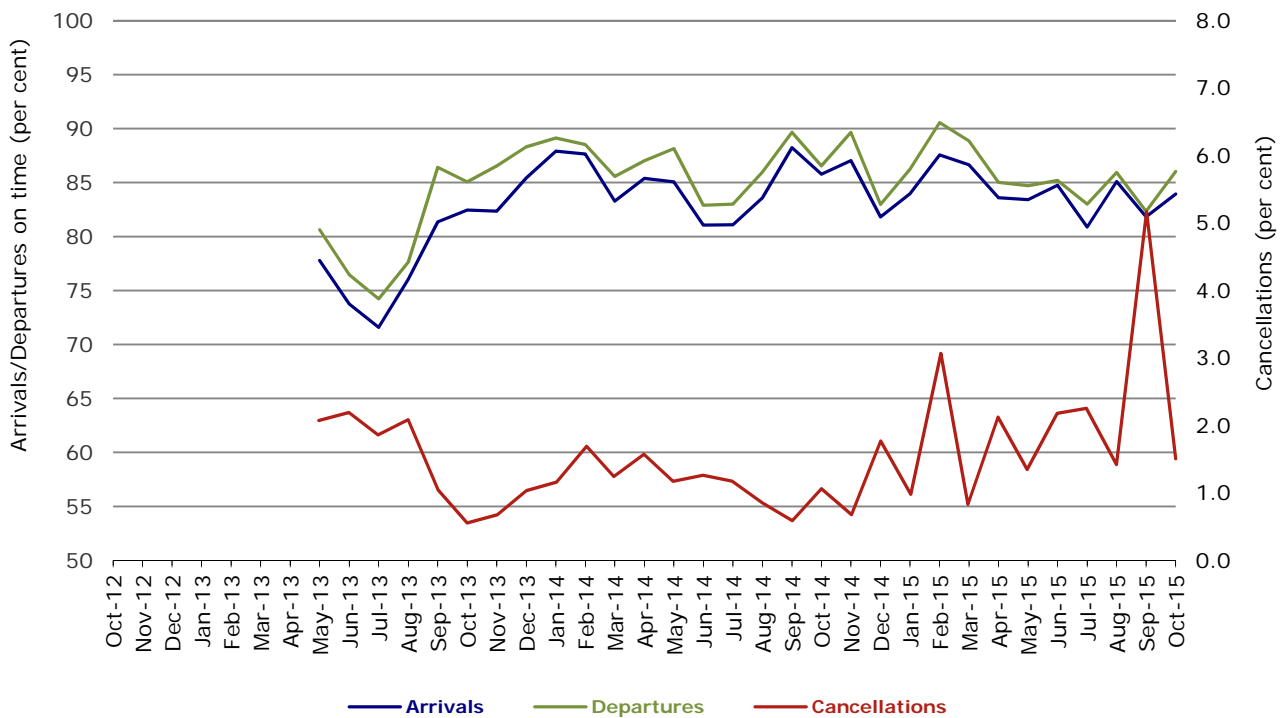


Figure 11 On time performance (by month from October 2012)
Virgin Australia Regional Airlines



Virgin Australia Regional Airlines commenced operations in May 2013. It was formed after the acquisition of Skywest by Virgin Australia and represents a combination of operations previously reported under Skywest and Virgin Australia – ATR/F100 Operations.

Individual routes

On time performance is reported for all routes where the passenger load averages over 8000 passengers per month over the previous six months, and where two or more airlines operate in competition on those routes. There are now 66 routes which meet this definition. Over time, however, routes which meet this definition may change as airline networks and traffic levels vary.

	<i>Sectors</i>		<i>Arrivals On Time</i>		<i>Departures On Time</i>		<i>Cancellations</i>	
	<i>Sched.</i>	<i>Flown</i>	<i>No.</i>	<i>%</i>	<i>No.</i>	<i>%</i>	<i>No.</i>	<i>%</i>
Adelaide-Alice Springs								
Qantas	31	31	31	100.0	30	96.8	0	0.0
Virgin Australia	13	13	11	84.6	11	84.6	0	0.0
All Airlines	44	44	42	95.5	41	93.2	0	0.0
Adelaide-Brisbane								
Jetstar	30	30	25	83.3	27	90.0	0	0.0
Qantas	112	112	102	91.1	104	92.9	0	0.0
Tigerair	23	23	21	91.3	21	91.3	0	0.0
Virgin Australia	116	116	107	92.2	106	91.4	0	0.0
All Airlines	281	281	255	90.7	258	91.8	0	0.0
Adelaide-Canberra								
Qantas	48	48	46	95.8	45	93.8	0	0.0
Virgin Australia	26	26	24	92.3	23	88.5	0	0.0
All Airlines	74	74	70	94.6	68	91.9	0	0.0
Adelaide-Gold Coast								
Jetstar	35	35	30	85.7	28	80.0	0	0.0
Virgin Australia	31	31	28	90.3	29	93.5	0	0.0
All Airlines	66	66	58	87.9	57	86.4	0	0.0
Adelaide-Melbourne								
Jetstar	108	105	91	86.7	83	79.0	3	2.8
Qantas	295	295	265	89.8	266	90.2	0	0.0
Tigerair	77	77	69	89.6	68	88.3	0	0.0
Virgin Australia	302	299	268	89.6	269	90.0	3	1.0
All Airlines	782	776	693	89.3	686	88.4	6	0.8
Adelaide-Perth								
Jetstar	31	31	26	83.9	25	80.6	0	0.0
Qantas	115	114	104	91.2	103	90.4	1	0.9
Virgin Australia	77	76	73	96.1	73	96.1	1	1.3
All Airlines	223	221	203	91.9	201	91.0	2	0.9
Adelaide-Port Lincoln								
QantasLink	110	109	100	91.7	102	93.6	1	0.9
Regional Express	213	212	201	94.8	201	94.8	1	0.5
All Airlines	323	321	301	93.8	303	94.4	2	0.6
Adelaide-Sydney								
Jetstar	126	125	108	86.4	106	84.8	1	0.8
Qantas	247	247	227	91.9	240	97.2	0	0.0
QantasLink	24	23	16	69.6	16	69.6	1	4.2
Tigerair	37	37	33	89.2	33	89.2	0	0.0
Virgin Australia	177	177	170	96.0	172	97.2	0	0.0
All Airlines	611	609	554	91.0	567	93.1	2	0.3
Albury-Sydney								
QantasLink	97	97	84	86.6	86	88.7	0	0.0
Regional Express	107	107	97	90.7	101	94.4	0	0.0
Virgin Australia Regional Airlines	62	61	53	86.9	53	86.9	1	1.6
All Airlines	266	265	234	88.3	240	90.6	1	0.4

	Sectors		Arrivals On Time		Departures On Time		Cancellations	
	Sched.	Flown	No.	%	No.	%	No.	%
Alice Springs-Adelaide								
Qantas	31	31	28	90.3	28	90.3	0	0.0
Virgin Australia	13	13	12	92.3	12	92.3	0	0.0
All Airlines	44	44	40	90.9	40	90.9	0	0.0
Alice Springs-Darwin								
QantasLink	59	59	55	93.2	54	91.5	0	0.0
Virgin Australia	13	13	12	92.3	11	84.6	0	0.0
All Airlines	72	72	67	93.1	65	90.3	0	0.0
Armidale-Sydney								
QantasLink	137	134	113	84.3	112	83.6	3	2.2
Regional Express	77	77	58	75.3	71	92.2	0	0.0
All Airlines	214	211	171	81.0	183	86.7	3	1.4
Ayers Rock-Sydney								
Jetstar	28	28	24	85.7	25	89.3	0	0.0
Virgin Australia	31	31	31	100.0	30	96.8	0	0.0
All Airlines	59	59	55	93.2	55	93.2	0	0.0
Ballina-Sydney								
Jetstar	75	75	61	81.3	56	74.7	0	0.0
Regional Express	25	25	23	92.0	24	96.0	0	0.0
Virgin Australia	31	31	28	90.3	28	90.3	0	0.0
All Airlines	131	131	112	85.5	108	82.4	0	0.0
Brisbane-Adelaide								
Jetstar	29	29	28	96.6	25	86.2	0	0.0
Qantas	112	112	108	96.4	101	90.2	0	0.0
Tigerair	23	23	21	91.3	17	73.9	0	0.0
Virgin Australia	117	117	109	93.2	109	93.2	0	0.0
All Airlines	281	281	266	94.7	252	89.7	0	0.0
Brisbane-Bundaberg								
QantasLink	137	137	126	92.0	127	92.7	0	0.0
Virgin Australia Regional Airlines	38	38	34	89.5	31	81.6	0	0.0
All Airlines	175	175	160	91.4	158	90.3	0	0.0
Brisbane-Cairns								
Jetstar	105	105	86	81.9	82	78.1	0	0.0
Qantas	119	119	106	89.1	102	85.7	0	0.0
QantasLink	5	5	5	100.0	4	80.0	0	0.0
Tigerair	31	31	27	87.1	28	90.3	0	0.0
Virgin Australia	138	138	124	89.9	121	87.7	0	0.0
All Airlines	398	398	348	87.4	337	84.7	0	0.0
Brisbane-Canberra								
Qantas	27	27	27	100.0	26	96.3	0	0.0
QantasLink	127	127	112	88.2	110	86.6	0	0.0
Virgin Australia	96	96	88	91.7	90	93.8	0	0.0
All Airlines	250	250	227	90.8	226	90.4	0	0.0
Brisbane-Darwin								
Jetstar	23	23	19	82.6	20	87.0	0	0.0
Qantas	47	47	41	87.2	42	89.4	0	0.0
Tigerair	21	21	18	85.7	20	95.2	0	0.0
Virgin Australia	31	31	27	87.1	28	90.3	0	0.0
All Airlines	122	122	105	86.1	110	90.2	0	0.0
Brisbane-Emerald								
QantasLink	144	137	127	92.7	127	92.7	7	4.9
Virgin Australia Regional Airlines	86	85	68	80.0	71	83.5	1	1.2
All Airlines	230	222	195	87.8	198	89.2	8	3.5

	<i>Sectors</i>		<i>Arrivals On Time</i>		<i>Departures On Time</i>		<i>Cancellations</i>	
	<i>Sched.</i>	<i>Flown</i>	<i>No.</i>	<i>%</i>	<i>No.</i>	<i>%</i>	<i>No.</i>	<i>%</i>
Brisbane-Gladstone								
QantasLink	197	192	180	93.8	179	93.2	5	2.5
Virgin Australia	44	44	40	90.9	39	88.6	0	0.0
Virgin Australia Regional Airlines	101	101	89	88.1	90	89.1	0	0.0
All Airlines	342	337	309	91.7	308	91.4	5	1.5
Brisbane-Hamilton Island								
QantasLink	27	27	24	88.9	25	92.6	0	0.0
Virgin Australia	31	31	27	87.1	27	87.1	0	0.0
All Airlines	58	58	51	87.9	52	89.7	0	0.0
Brisbane-Hobart								
Jetstar	31	31	28	90.3	25	80.6	0	0.0
Virgin Australia	31	31	29	93.5	28	90.3	0	0.0
All Airlines	62	62	57	91.9	53	85.5	0	0.0
Brisbane-Mackay								
Jetstar	46	46	38	82.6	32	69.6	0	0.0
QantasLink	109	108	97	89.8	96	88.9	1	0.9
Virgin Australia	159	158	146	92.4	146	92.4	1	0.6
All Airlines	314	312	281	90.1	274	87.8	2	0.6
Brisbane-Melbourne								
Jetstar	127	127	105	82.7	93	73.2	0	0.0
Qantas	434	433	394	91.0	394	91.0	1	0.2
Tigerair	130	129	111	86.0	109	84.5	1	0.8
Virgin Australia	410	401	351	87.5	357	89.0	9	2.2
All Airlines	1 101	1 090	961	88.2	953	87.4	11	1.0
Brisbane-Moranbah								
QantasLink	122	110	107	97.3	103	93.6	12	9.8
Virgin Australia Regional Airlines	69	69	63	91.3	63	91.3	0	0.0
All Airlines	191	179	170	95.0	166	92.7	12	6.3
Brisbane-Mount Isa								
Qantas	38	38	35	92.1	34	89.5	0	0.0
Virgin Australia	22	22	22	100.0	22	100.0	0	0.0
All Airlines	60	60	57	95.0	56	93.3	0	0.0
Brisbane-Newcastle								
Jetstar	87	87	80	92.0	76	87.4	0	0.0
QantasLink	82	82	71	86.6	76	92.7	0	0.0
Virgin Australia	84	84	78	92.9	75	89.3	0	0.0
All Airlines	253	253	229	90.5	227	89.7	0	0.0
Brisbane-Perth								
Qantas	141	141	137	97.2	123	87.2	0	0.0
Virgin Australia	111	111	104	93.7	89	80.2	0	0.0
All Airlines	252	252	241	95.6	212	84.1	0	0.0
Brisbane-Proserpine								
Jetstar	30	30	27	90.0	25	83.3	0	0.0
Virgin Australia	53	53	50	94.3	50	94.3	0	0.0
All Airlines	83	83	77	92.8	75	90.4	0	0.0
Brisbane-Rockhampton								
QantasLink	194	192	179	93.2	178	92.7	2	1.0
Virgin Australia	143	141	128	90.8	126	89.4	2	1.4
Virgin Australia Regional Airlines	56	56	48	85.7	47	83.9	0	0.0
All Airlines	393	389	355	91.3	351	90.2	4	1.0

	<i>Sectors</i>		<i>Arrivals On Time</i>		<i>Departures On Time</i>		<i>Cancellations</i>	
	<i>Sched.</i>	<i>Flown</i>	<i>No.</i>	<i>%</i>	<i>No.</i>	<i>%</i>	<i>No.</i>	<i>%</i>
Brisbane-Sydney								
Jetstar	174	165	134	81.2	125	75.8	9	5.2
Qantas	638	631	567	89.9	576	91.3	7	1.1
Tigerair	101	101	84	83.2	86	85.1	0	0.0
Virgin Australia	556	542	486	89.7	493	91.0	14	2.5
All Airlines	1 469	1 439	1 271	88.3	1 280	89.0	30	2.0
Brisbane-Townsville								
Jetstar	44	44	40	90.9	41	93.2	0	0.0
Qantas	150	150	136	90.7	130	86.7	0	0.0
Virgin Australia	156	154	137	89.0	138	89.6	2	1.3
All Airlines	350	348	313	89.9	309	88.8	2	0.6
Broome-Perth								
Qantas	26	26	23	88.5	20	76.9	0	0.0
QantasLink	58	56	51	91.1	52	92.9	2	3.4
Virgin Australia	17	17	15	88.2	14	82.4	0	0.0
Virgin Australia Regional Airlines	48	47	27	57.4	30	63.8	1	2.1
All Airlines	149	146	116	79.5	116	79.5	3	2.0
Bundaberg-Brisbane								
QantasLink	137	137	118	86.1	125	91.2	0	0.0
Virgin Australia Regional Airlines	38	38	33	86.8	33	86.8	0	0.0
All Airlines	175	175	151	86.3	158	90.3	0	0.0
Cairns-Brisbane								
Jetstar	106	106	90	84.9	86	81.1	0	0.0
Qantas	120	120	105	87.5	110	91.7	0	0.0
QantasLink	4	4	4	100.0	4	100.0	0	0.0
Tigerair	31	31	23	74.2	27	87.1	0	0.0
Virgin Australia	138	138	126	91.3	128	92.8	0	0.0
All Airlines	399	399	348	87.2	355	89.0	0	0.0
Cairns-Melbourne								
Jetstar	110	109	78	71.6	72	66.1	1	0.9
Qantas	37	37	32	86.5	31	83.8	0	0.0
Tigerair	41	41	32	78.0	34	82.9	0	0.0
Virgin Australia	35	35	33	94.3	32	91.4	0	0.0
All Airlines	223	222	175	78.8	169	76.1	1	0.4
Cairns-Sydney								
Jetstar	114	112	95	84.8	91	81.3	2	1.8
Qantas	75	75	70	93.3	69	92.0	0	0.0
Tigerair	37	37	35	94.6	33	89.2	0	0.0
Virgin Australia	93	93	87	93.5	89	95.7	0	0.0
All Airlines	319	317	287	90.5	282	89.0	2	0.6
Cairns-Townsville								
QantasLink	145	143	131	91.6	134	93.7	2	1.4
Regional Express	66	66	65	98.5	64	97.0	0	0.0
All Airlines	211	209	196	93.8	198	94.7	2	0.9
Canberra-Adelaide								
Qantas	48	48	47	97.9	46	95.8	0	0.0
Virgin Australia	26	26	25	96.2	24	92.3	0	0.0
All Airlines	74	74	72	97.3	70	94.6	0	0.0
Canberra-Brisbane								
Qantas	27	27	26	96.3	26	96.3	0	0.0
QantasLink	127	126	104	82.5	103	81.7	1	0.8
Virgin Australia	96	96	90	93.8	91	94.8	0	0.0
All Airlines	250	249	220	88.4	220	88.4	1	0.4

	<i>Sectors</i>		<i>Arrivals On Time</i>		<i>Departures On Time</i>		<i>Cancellations</i>	
	<i>Sched.</i>	<i>Flown</i>	<i>No.</i>	<i>%</i>	<i>No.</i>	<i>%</i>	<i>No.</i>	<i>%</i>
Canberra-Melbourne								
Qantas	194	194	175	90.2	176	90.7	0	0.0
QantasLink	85	78	60	76.9	62	79.5	7	8.2
Virgin Australia	160	160	146	91.3	150	93.8	0	0.0
Virgin Australia Regional Airlines	29	26	18	69.2	22	84.6	3	10.3
All Airlines	468	458	399	87.1	410	89.5	10	2.1
Canberra-Sydney								
QantasLink	513	484	424	87.6	429	88.6	29	5.7
Virgin Australia	26	26	24	92.3	26	100.0	0	0.0
Virgin Australia Regional Airlines	280	271	242	89.3	245	90.4	9	3.2
All Airlines	819	781	690	88.3	700	89.6	38	4.6
Coffs Harbour-Sydney								
QantasLink	155	154	131	85.1	131	85.1	1	0.6
Tigerair	13	13	9	69.2	12	92.3	0	0.0
Virgin Australia	62	62	58	93.5	58	93.5	0	0.0
All Airlines	230	229	198	86.5	201	87.8	1	0.4
Darwin-Alice Springs								
QantasLink	59	59	57	96.6	57	96.6	0	0.0
Virgin Australia	13	13	12	92.3	12	92.3	0	0.0
All Airlines	72	72	69	95.8	69	95.8	0	0.0
Darwin-Brisbane								
Jetstar	23	22	19	86.4	19	86.4	1	4.3
Qantas	47	47	41	87.2	39	83.0	0	0.0
Tigerair	21	20	20	100.0	19	95.0	1	4.8
Virgin Australia	31	31	23	74.2	26	83.9	0	0.0
All Airlines	122	120	103	85.8	103	85.8	2	1.6
Darwin-Melbourne								
Jetstar	28	28	21	75.0	17	60.7	0	0.0
Qantas	31	31	30	96.8	30	96.8	0	0.0
Virgin Australia	31	31	28	90.3	28	90.3	0	0.0
All Airlines	90	90	79	87.8	75	83.3	0	0.0
Darwin-Perth								
Qantas	41	41	40	97.6	40	97.6	0	0.0
Virgin Australia	31	31	26	83.9	28	90.3	0	0.0
All Airlines	72	72	66	91.7	68	94.4	0	0.0
Darwin-Sydney								
Jetstar	25	25	21	84.0	18	72.0	0	0.0
Qantas	54	54	49	90.7	53	98.1	0	0.0
Virgin Australia	31	31	24	77.4	25	80.6	0	0.0
All Airlines	110	110	94	85.5	96	87.3	0	0.0
Dubbo-Sydney								
QantasLink	127	125	99	79.2	104	83.2	2	1.6
Regional Express	151	151	134	88.7	140	92.7	0	0.0
All Airlines	278	276	233	84.4	244	88.4	2	0.7
Emerald-Brisbane								
QantasLink	144	137	124	90.5	124	90.5	7	4.9
Virgin Australia Regional Airlines	86	85	71	83.5	73	85.9	1	1.2
All Airlines	230	222	195	87.8	197	88.7	8	3.5
Geraldton-Perth								
QantasLink	49	49	46	93.9	46	93.9	0	0.0
Virgin Australia Regional Airlines	89	89	81	91.0	80	89.9	0	0.0
All Airlines	138	138	127	92.0	126	91.3	0	0.0

	<i>Sectors</i>		<i>Arrivals On Time</i>		<i>Departures On Time</i>		<i>Cancellations</i>	
	<i>Sched.</i>	<i>Flown</i>	<i>No.</i>	<i>%</i>	<i>No.</i>	<i>%</i>	<i>No.</i>	<i>%</i>
Gladstone-Brisbane								
QantasLink	197	192	172	89.6	178	92.7	5	2.5
Virgin Australia	44	44	41	93.2	41	93.2	0	0.0
Virgin Australia Regional Airlines	102	101	85	84.2	91	90.1	1	1.0
All Airlines	343	337	298	88.4	310	92.0	6	1.7
Gold Coast-Adelaide								
Jetstar	36	36	32	88.9	31	86.1	0	0.0
Virgin Australia	31	31	29	93.5	27	87.1	0	0.0
All Airlines	67	67	61	91.0	58	86.6	0	0.0
Gold Coast-Melbourne								
Jetstar	237	234	197	84.2	181	77.4	3	1.3
Qantas	7	7	4	57.1	4	57.1	0	0.0
Tigerair	90	89	75	84.3	71	79.8	1	1.1
Virgin Australia	193	193	178	92.2	168	87.0	0	0.0
All Airlines	527	523	454	86.8	424	81.1	4	0.8
Gold Coast-Sydney								
Jetstar	349	338	270	79.9	263	77.8	11	3.2
Qantas	90	90	84	93.3	85	94.4	0	0.0
QantasLink	3	3	2	66.7	2	66.7	0	0.0
Tigerair	110	110	94	85.5	95	86.4	0	0.0
Virgin Australia	265	262	238	90.8	235	89.7	3	1.1
All Airlines	817	803	688	85.7	680	84.7	14	1.7
Hamilton Island-Brisbane								
QantasLink	27	27	25	92.6	19	70.4	0	0.0
Virgin Australia	31	31	27	87.1	25	80.6	0	0.0
All Airlines	58	58	52	89.7	44	75.9	0	0.0
Hamilton Island-Melbourne								
Qantas	10	10	8	80.0	6	60.0	0	0.0
Virgin Australia	23	23	22	95.7	21	91.3	0	0.0
All Airlines	33	33	30	90.9	27	81.8	0	0.0
Hamilton Island-Sydney								
Jetstar	31	29	19	65.5	15	51.7	2	6.5
Qantas	13	13	9	69.2	10	76.9	0	0.0
Virgin Australia	31	31	28	90.3	28	90.3	0	0.0
All Airlines	75	73	56	76.7	53	72.6	2	2.7
Hobart-Brisbane								
Jetstar	31	31	27	87.1	25	80.6	0	0.0
Virgin Australia	31	31	23	74.2	24	77.4	0	0.0
All Airlines	62	62	50	80.6	49	79.0	0	0.0
Hobart-Melbourne								
Jetstar	183	183	118	64.5	112	61.2	0	0.0
QantasLink	124	122	87	71.3	96	78.7	2	1.6
Tigerair	32	32	22	68.8	25	78.1	0	0.0
Virgin Australia	148	147	131	89.1	134	91.2	1	0.7
All Airlines	487	484	358	74.0	367	75.8	3	0.6
Hobart-Sydney								
Jetstar	76	76	59	77.6	58	76.3	0	0.0
Qantas	1	1	0	0.0	0	0.0	0	0.0
QantasLink	30	30	22	73.3	25	83.3	0	0.0
Virgin Australia	62	62	58	93.5	60	96.8	0	0.0
All Airlines	169	169	139	82.2	143	84.6	0	0.0

	<i>Sectors</i>		<i>Arrivals On Time</i>		<i>Departures On Time</i>		<i>Cancellations</i>	
	<i>Sched.</i>	<i>Flown</i>	<i>No.</i>	<i>%</i>	<i>No.</i>	<i>%</i>	<i>No.</i>	<i>%</i>
Kalgoorlie-Perth								
Qantas	7	7	6	85.7	6	85.7	0	0.0
QantasLink	76	76	73	96.1	71	93.4	0	0.0
Virgin Australia	30	30	27	90.0	28	93.3	0	0.0
Virgin Australia Regional Airlines	27	27	26	96.3	26	96.3	0	0.0
All Airlines	140	140	132	94.3	131	93.6	0	0.0
Karratha-Perth								
Qantas	73	70	68	97.1	67	95.7	3	4.1
QantasLink	144	138	129	93.5	131	94.9	6	4.2
Virgin Australia	53	53	53	100.0	49	92.5	0	0.0
Virgin Australia Regional Airlines	35	33	19	57.6	27	81.8	2	5.7
All Airlines	305	294	269	91.5	274	93.2	11	3.6
Launceston-Melbourne								
Jetstar	129	128	94	73.4	93	72.7	1	0.8
QantasLink	119	114	90	78.9	97	85.1	5	4.2
Virgin Australia	93	93	75	80.6	78	83.9	0	0.0
Virgin Australia Regional Airlines	4	4	2	50.0	2	50.0	0	0.0
All Airlines	345	339	261	77.0	270	79.6	6	1.7
Launceston-Sydney								
Jetstar	51	51	42	82.4	38	74.5	0	0.0
Virgin Australia	31	31	28	90.3	28	90.3	0	0.0
All Airlines	82	82	70	85.4	66	80.5	0	0.0
Mackay-Brisbane								
Jetstar	46	46	34	73.9	28	60.9	0	0.0
QantasLink	110	109	100	91.7	97	89.0	1	0.9
Virgin Australia	159	158	149	94.3	149	94.3	1	0.6
All Airlines	315	313	283	90.4	274	87.5	2	0.6
Melbourne-Adelaide								
Jetstar	108	106	77	72.6	74	69.8	2	1.9
Qantas	295	295	269	91.2	259	87.8	0	0.0
Tigerair	77	77	72	93.5	74	96.1	0	0.0
Virgin Australia	298	295	263	89.2	266	90.2	3	1.0
All Airlines	778	773	681	88.1	673	87.1	5	0.6
Melbourne-Brisbane								
Jetstar	125	125	95	76.0	89	71.2	0	0.0
Qantas	433	431	361	83.8	385	89.3	2	0.5
Tigerair	130	129	105	81.4	104	80.6	1	0.8
Virgin Australia	404	394	338	85.8	360	91.4	10	2.5
All Airlines	1 092	1 079	899	83.3	938	86.9	13	1.2
Melbourne-Cairns								
Jetstar	109	108	80	74.1	75	69.4	1	0.9
Qantas	37	37	32	86.5	32	86.5	0	0.0
Tigerair	41	41	38	92.7	38	92.7	0	0.0
Virgin Australia	35	35	30	85.7	31	88.6	0	0.0
All Airlines	222	221	180	81.4	176	79.6	1	0.5
Melbourne-Canberra								
Qantas	194	194	172	88.7	176	90.7	0	0.0
QantasLink	85	78	62	79.5	64	82.1	7	8.2
Virgin Australia	160	160	143	89.4	148	92.5	0	0.0
Virgin Australia Regional Airlines	28	25	19	76.0	19	76.0	3	10.7
All Airlines	467	457	396	86.7	407	89.1	10	2.1

	<i>Sectors</i>		<i>Arrivals On Time</i>		<i>Departures On Time</i>		<i>Cancellations</i>	
	<i>Sched.</i>	<i>Flown</i>	<i>No.</i>	<i>%</i>	<i>No.</i>	<i>%</i>	<i>No.</i>	<i>%</i>
Melbourne-Darwin								
Jetstar	28	28	25	89.3	24	85.7	0	0.0
Qantas	31	31	29	93.5	28	90.3	0	0.0
Virgin Australia	31	31	25	80.6	26	83.9	0	0.0
All Airlines	90	90	79	87.8	78	86.7	0	0.0
Melbourne-Gold Coast								
Jetstar	236	233	167	71.7	171	73.4	3	1.3
Qantas	7	7	5	71.4	5	71.4	0	0.0
Tigerair	90	89	76	85.4	82	92.1	1	1.1
Virgin Australia	194	194	167	86.1	171	88.1	0	0.0
All Airlines	527	523	415	79.3	429	82.0	4	0.8
Melbourne-Hamilton Island								
Qantas	10	10	10	100.0	9	90.0	0	0.0
Virgin Australia	23	23	22	95.7	20	87.0	0	0.0
All Airlines	33	33	32	97.0	29	87.9	0	0.0
Melbourne-Hobart								
Jetstar	183	183	130	71.0	122	66.7	0	0.0
QantasLink	124	123	88	71.5	87	70.7	1	0.8
Tigerair	32	32	28	87.5	29	90.6	0	0.0
Virgin Australia	148	148	133	89.9	134	90.5	0	0.0
All Airlines	487	486	379	78.0	372	76.5	1	0.2
Melbourne-Launceston								
Jetstar	129	128	97	75.8	92	71.9	1	0.8
QantasLink	119	115	89	77.4	96	83.5	4	3.4
Virgin Australia	93	93	79	84.9	83	89.2	0	0.0
Virgin Australia Regional Airlines	4	4	4	100.0	4	100.0	0	0.0
All Airlines	345	340	269	79.1	275	80.9	5	1.4
Melbourne-Mildura								
QantasLink	92	92	71	77.2	76	82.6	0	0.0
Regional Express	87	87	79	90.8	83	95.4	0	0.0
Virgin Australia	31	31	29	93.5	29	93.5	0	0.0
All Airlines	210	210	179	85.2	188	89.5	0	0.0
Melbourne-Newcastle								
Jetstar	102	101	77	76.2	70	69.3	1	1.0
Virgin Australia	33	33	28	84.8	31	93.9	0	0.0
All Airlines	135	134	105	78.4	101	75.4	1	0.7
Melbourne-Perth								
Jetstar	83	78	71	91.0	65	83.3	5	6.0
Qantas	229	224	198	88.4	179	79.9	5	2.2
Tigerair	67	67	62	92.5	62	92.5	0	0.0
Virgin Australia	158	158	142	89.9	135	85.4	0	0.0
All Airlines	537	527	473	89.8	441	83.7	10	1.9
Melbourne-Sunshine Coast								
Jetstar	90	90	65	72.2	66	73.3	0	0.0
Virgin Australia	38	38	33	86.8	32	84.2	0	0.0
All Airlines	128	128	98	76.6	98	76.6	0	0.0
Melbourne-Sydney								
Jetstar	343	320	227	70.9	219	68.4	23	6.7
Qantas	1 025	998	817	81.9	844	84.6	27	2.6
Tigerair	247	245	201	82.0	203	82.9	2	0.8
Virgin Australia	814	789	698	88.5	723	91.6	25	3.1
All Airlines	2 429	2 352	1 943	82.6	1 989	84.6	77	3.2

	<i>Sectors</i>		<i>Arrivals On Time</i>		<i>Departures On Time</i>		<i>Cancellations</i>	
	<i>Sched.</i>	<i>Flown</i>	<i>No.</i>	<i>%</i>	<i>No.</i>	<i>%</i>	<i>No.</i>	<i>%</i>
Mildura-Melbourne								
QantasLink	92	91	75	82.4	78	85.7	1	1.1
Regional Express	87	87	73	83.9	76	87.4	0	0.0
Virgin Australia	31	31	30	96.8	29	93.5	0	0.0
All Airlines	210	209	178	85.2	183	87.6	1	0.5
Moranbah-Brisbane								
QantasLink	118	106	102	96.2	101	95.3	12	10.2
Virgin Australia Regional Airlines	69	69	57	82.6	61	88.4	0	0.0
All Airlines	187	175	159	90.9	162	92.6	12	6.4
Mount Isa-Brisbane								
Qantas	38	37	34	91.9	33	89.2	1	2.6
Virgin Australia	22	22	21	95.5	21	95.5	0	0.0
All Airlines	60	59	55	93.2	54	91.5	1	1.7
Newcastle-Brisbane								
Jetstar	87	87	76	87.4	74	85.1	0	0.0
QantasLink	83	83	76	91.6	76	91.6	0	0.0
Virgin Australia	84	84	76	90.5	76	90.5	0	0.0
All Airlines	254	254	228	89.8	226	89.0	0	0.0
Newcastle-Melbourne								
Jetstar	103	102	77	75.5	79	77.5	1	1.0
Virgin Australia	33	33	25	75.8	25	75.8	0	0.0
All Airlines	136	135	102	75.6	104	77.0	1	0.7
Newman-Perth								
Qantas	73	72	66	91.7	67	93.1	1	1.4
QantasLink	79	79	78	98.7	78	98.7	0	0.0
Virgin Australia	20	19	17	89.5	18	94.7	1	5.0
Virgin Australia Regional Airlines	15	15	4	26.7	4	26.7	0	0.0
All Airlines	187	185	165	89.2	167	90.3	2	1.1
Perth-Adelaide								
Jetstar	30	29	22	75.9	23	79.3	1	3.3
Qantas	121	121	116	95.9	114	94.2	0	0.0
Virgin Australia	80	79	75	94.9	75	94.9	1	1.3
All Airlines	231	229	213	93.0	212	92.6	2	0.9
Perth-Brisbane								
Qantas	143	142	110	77.5	125	88.0	1	0.7
Virgin Australia	112	112	96	85.7	106	94.6	0	0.0
All Airlines	255	254	206	81.1	231	90.9	1	0.4
Perth-Broome								
Qantas	26	26	24	92.3	24	92.3	0	0.0
QantasLink	58	57	54	94.7	55	96.5	1	1.7
Virgin Australia	17	17	15	88.2	15	88.2	0	0.0
Virgin Australia Regional Airlines	48	48	35	72.9	41	85.4	0	0.0
All Airlines	149	148	128	86.5	135	91.2	1	0.7
Perth-Darwin								
Qantas	41	41	39	95.1	39	95.1	0	0.0
Virgin Australia	31	31	29	93.5	27	87.1	0	0.0
All Airlines	72	72	68	94.4	66	91.7	0	0.0
Perth-Geraldton								
QantasLink	49	49	46	93.9	46	93.9	0	0.0
Virgin Australia Regional Airlines	83	83	70	84.3	72	86.7	0	0.0
All Airlines	132	132	116	87.9	118	89.4	0	0.0

	<i>Sectors</i>		<i>Arrivals On Time</i>		<i>Departures On Time</i>		<i>Cancellations</i>	
	<i>Sched.</i>	<i>Flown</i>	<i>No.</i>	<i>%</i>	<i>No.</i>	<i>%</i>	<i>No.</i>	<i>%</i>
Perth-Kalgoorlie								
Qantas	7	7	6	85.7	6	85.7	0	0.0
QantasLink	77	77	75	97.4	73	94.8	0	0.0
Virgin Australia	31	31	29	93.5	29	93.5	0	0.0
Virgin Australia Regional Airlines	27	27	24	88.9	26	96.3	0	0.0
All Airlines	142	142	134	94.4	134	94.4	0	0.0
Perth-Karratha								
Qantas	73	70	68	97.1	68	97.1	3	4.1
QantasLink	146	140	131	93.6	132	94.3	6	4.1
Virgin Australia	53	53	51	96.2	51	96.2	0	0.0
Virgin Australia Regional Airlines	35	34	26	76.5	28	82.4	1	2.9
All Airlines	307	297	276	92.9	279	93.9	10	3.3
Perth-Melbourne								
Jetstar	84	79	66	83.5	64	81.0	5	6.0
Qantas	230	224	203	90.6	209	93.3	6	2.6
Tigerair	68	68	62	91.2	62	91.2	0	0.0
Virgin Australia	155	155	145	93.5	145	93.5	0	0.0
All Airlines	537	526	476	90.5	480	91.3	11	2.0
Perth-Newman								
Qantas	73	72	69	95.8	70	97.2	1	1.4
QantasLink	79	79	77	97.5	78	98.7	0	0.0
Virgin Australia	20	19	17	89.5	18	94.7	1	5.0
Virgin Australia Regional Airlines	15	14	3	21.4	3	21.4	1	6.7
All Airlines	187	184	166	90.2	169	91.8	3	1.6
Perth-Port Hedland								
Qantas	82	82	77	93.9	78	95.1	0	0.0
QantasLink	60	59	51	86.4	58	98.3	1	1.7
Virgin Australia	43	43	40	93.0	41	95.3	0	0.0
All Airlines	185	184	168	91.3	177	96.2	1	0.5
Perth-Sydney								
Jetstar	27	27	23	85.2	23	85.2	0	0.0
Qantas	210	209	173	82.8	188	90.0	1	0.5
Tigerair	29	29	23	79.3	27	93.1	0	0.0
Virgin Australia	120	120	114	95.0	115	95.8	0	0.0
All Airlines	386	385	333	86.5	353	91.7	1	0.3
Port Hedland-Perth								
Qantas	82	82	79	96.3	79	96.3	0	0.0
QantasLink	60	59	55	93.2	54	91.5	1	1.7
Virgin Australia	43	43	38	88.4	40	93.0	0	0.0
All Airlines	185	184	172	93.5	173	94.0	1	0.5
Port Lincoln-Adelaide								
QantasLink	111	110	106	96.4	105	95.5	1	0.9
Regional Express	213	211	199	94.3	201	95.3	2	0.9
All Airlines	324	321	305	95.0	306	95.3	3	0.9
Port Macquarie-Sydney								
QantasLink	137	135	71	52.6	89	65.9	2	1.5
Virgin Australia Regional Airlines	61	61	52	85.2	52	85.2	0	0.0
All Airlines	198	196	123	62.8	141	71.9	2	1.0
Proserpine-Brisbane								
Jetstar	30	30	24	80.0	22	73.3	0	0.0
Virgin Australia	53	53	50	94.3	49	92.5	0	0.0
All Airlines	83	83	74	89.2	71	85.5	0	0.0

	<i>Sectors</i>		<i>Arrivals On Time</i>		<i>Departures On Time</i>		<i>Cancellations</i>	
	<i>Sched.</i>	<i>Flown</i>	<i>No.</i>	<i>%</i>	<i>No.</i>	<i>%</i>	<i>No.</i>	<i>%</i>
Rockhampton-Brisbane								
QantasLink	194	191	169	88.5	175	91.6	3	1.5
Virgin Australia	144	141	128	90.8	129	91.5	3	2.1
Virgin Australia Regional Airlines	57	56	48	85.7	51	91.1	1	1.8
All Airlines	395	388	345	88.9	355	91.5	7	1.8
Sunshine Coast-Melbourne								
Jetstar	91	91	66	72.5	59	64.8	0	0.0
Virgin Australia	38	38	30	78.9	28	73.7	0	0.0
All Airlines	129	129	96	74.4	87	67.4	0	0.0
Sunshine Coast-Sydney								
Jetstar	118	116	102	87.9	92	79.3	2	1.7
Virgin Australia	31	31	27	87.1	27	87.1	0	0.0
All Airlines	149	147	129	87.8	119	81.0	2	1.3
Sydney-Adelaide								
Jetstar	125	124	102	82.3	90	72.6	1	0.8
Qantas	241	241	214	88.8	209	86.7	0	0.0
QantasLink	24	23	16	69.6	16	69.6	1	4.2
Tigerair	37	37	33	89.2	33	89.2	0	0.0
Virgin Australia	175	175	163	93.1	160	91.4	0	0.0
All Airlines	602	600	528	88.0	508	84.7	2	0.3
Sydney-Albury								
QantasLink	97	97	81	83.5	80	82.5	0	0.0
Regional Express	107	107	93	86.9	95	88.8	0	0.0
Virgin Australia Regional Airlines	62	61	52	85.2	52	85.2	1	1.6
All Airlines	266	265	226	85.3	227	85.7	1	0.4
Sydney-Armidale								
QantasLink	136	134	104	77.6	111	82.8	2	1.5
Regional Express	75	75	68	90.7	69	92.0	0	0.0
All Airlines	211	209	172	82.3	180	86.1	2	0.9
Sydney-Ayers Rock								
Jetstar	29	29	28	96.6	25	86.2	0	0.0
Virgin Australia	31	31	30	96.8	29	93.5	0	0.0
All Airlines	60	60	58	96.7	54	90.0	0	0.0
Sydney-Ballina								
Jetstar	76	76	61	80.3	61	80.3	0	0.0
Regional Express	25	25	23	92.0	22	88.0	0	0.0
Virgin Australia	31	31	29	93.5	31	100.0	0	0.0
All Airlines	132	132	113	85.6	114	86.4	0	0.0
Sydney-Brisbane								
Jetstar	175	166	129	77.7	135	81.3	9	5.1
Qantas	634	628	534	85.0	555	88.4	6	0.9
Tigerair	101	101	84	83.2	89	88.1	0	0.0
Virgin Australia	559	541	448	82.8	488	90.2	18	3.2
All Airlines	1 469	1 436	1 195	83.2	1 267	88.2	33	2.2
Sydney-Cairns								
Jetstar	114	112	98	87.5	88	78.6	2	1.8
Qantas	75	75	71	94.7	67	89.3	0	0.0
Tigerair	37	37	35	94.6	36	97.3	0	0.0
Virgin Australia	92	92	85	92.4	85	92.4	0	0.0
All Airlines	318	316	289	91.5	276	87.3	2	0.6

	<i>Sectors</i>		<i>Arrivals On Time</i>		<i>Departures On Time</i>		<i>Cancellations</i>	
	<i>Sched.</i>	<i>Flown</i>	<i>No.</i>	<i>%</i>	<i>No.</i>	<i>%</i>	<i>No.</i>	<i>%</i>
Sydney-Canberra								
QantasLink	515	487	416	85.4	419	86.0	28	5.4
Virgin Australia	25	25	25	100.0	24	96.0	0	0.0
Virgin Australia Regional Airlines	281	272	226	83.1	226	83.1	9	3.2
All Airlines	821	784	667	85.1	669	85.3	37	4.5
Sydney-Coffs Harbour								
QantasLink	155	155	128	82.6	130	83.9	0	0.0
Tigerair	13	13	13	100.0	13	100.0	0	0.0
Virgin Australia	62	62	58	93.5	57	91.9	0	0.0
All Airlines	230	230	199	86.5	200	87.0	0	0.0
Sydney-Darwin								
Jetstar	25	25	19	76.0	19	76.0	0	0.0
Qantas	53	53	51	96.2	47	88.7	0	0.0
Virgin Australia	31	31	31	100.0	31	100.0	0	0.0
All Airlines	109	109	101	92.7	97	89.0	0	0.0
Sydney-Dubbo								
QantasLink	126	125	95	76.0	95	76.0	1	0.8
Regional Express	154	154	142	92.2	140	90.9	0	0.0
All Airlines	280	279	237	84.9	235	84.2	1	0.4
Sydney-Gold Coast								
Jetstar	350	339	261	77.0	264	77.9	11	3.1
Qantas	91	91	86	94.5	83	91.2	0	0.0
QantasLink	3	3	2	66.7	2	66.7	0	0.0
Tigerair	110	110	102	92.7	102	92.7	0	0.0
Virgin Australia	263	261	235	90.0	239	91.6	2	0.8
All Airlines	817	804	686	85.3	690	85.8	13	1.6
Sydney-Hamilton Island								
Jetstar	31	31	25	80.6	24	77.4	0	0.0
Qantas	13	13	13	100.0	13	100.0	0	0.0
Virgin Australia	31	31	29	93.5	28	90.3	0	0.0
All Airlines	75	75	67	89.3	65	86.7	0	0.0
Sydney-Hobart								
Jetstar	77	77	70	90.9	69	89.6	0	0.0
Qantas	1	1	0	0.0	0	0.0	0	0.0
QantasLink	30	30	24	80.0	24	80.0	0	0.0
Virgin Australia	62	62	58	93.5	61	98.4	0	0.0
All Airlines	170	170	152	89.4	154	90.6	0	0.0
Sydney-Launceston								
Jetstar	51	51	42	82.4	43	84.3	0	0.0
Virgin Australia	31	31	28	90.3	29	93.5	0	0.0
All Airlines	82	82	70	85.4	72	87.8	0	0.0
Sydney-Melbourne								
Jetstar	339	318	233	73.3	230	72.3	21	6.2
Qantas	1 028	998	813	81.5	853	85.5	30	2.9
Tigerair	247	245	191	78.0	198	80.8	2	0.8
Virgin Australia	812	790	685	86.7	714	90.4	22	2.7
All Airlines	2 426	2 351	1 922	81.8	1 995	84.9	75	3.1
Sydney-Perth								
Jetstar	27	27	25	92.6	23	85.2	0	0.0
Qantas	210	210	196	93.3	179	85.2	0	0.0
Tigerair	28	28	25	89.3	26	92.9	0	0.0
Virgin Australia	118	118	114	96.6	112	94.9	0	0.0
All Airlines	383	383	360	94.0	340	88.8	0	0.0

	<i>Sectors</i>		<i>Arrivals On Time</i>		<i>Departures On Time</i>		<i>Cancellations</i>	
	<i>Sched.</i>	<i>Flown</i>	<i>No.</i>	<i>%</i>	<i>No.</i>	<i>%</i>	<i>No.</i>	<i>%</i>
Sydney-Port Macquarie								
QantasLink	139	138	86	62.3	110	79.7	1	0.7
Virgin Australia Regional Airlines	61	61	55	90.2	55	90.2	0	0.0
All Airlines	200	199	141	70.9	165	82.9	1	0.5
Sydney-Sunshine Coast								
Jetstar	119	118	103	87.3	101	85.6	1	0.8
Virgin Australia	31	31	30	96.8	30	96.8	0	0.0
All Airlines	150	149	133	89.3	131	87.9	1	0.7
Sydney-Tamworth								
QantasLink	159	155	132	85.2	132	85.2	4	2.5
Virgin Australia Regional Airlines	26	26	23	88.5	23	88.5	0	0.0
All Airlines	185	181	155	85.6	155	85.6	4	2.2
Sydney-Townsville								
Jetstar	25	25	24	96.0	23	92.0	0	0.0
Qantas	2	2	1	50.0	1	50.0	0	0.0
Virgin Australia	31	31	30	96.8	28	90.3	0	0.0
All Airlines	58	58	55	94.8	52	89.7	0	0.0
Sydney-Wagga Wagga								
QantasLink	115	115	95	82.6	95	82.6	0	0.0
Regional Express	136	136	124	91.2	127	93.4	0	0.0
All Airlines	251	251	219	87.3	222	88.4	0	0.0
Tamworth-Sydney								
QantasLink	160	155	126	81.3	134	86.5	5	3.1
Virgin Australia Regional Airlines	26	26	21	80.8	23	88.5	0	0.0
All Airlines	186	181	147	81.2	157	86.7	5	2.7
Townsville-Brisbane								
Jetstar	44	44	39	88.6	36	81.8	0	0.0
Qantas	150	149	143	96.0	143	96.0	1	0.7
Virgin Australia	156	154	142	92.2	138	89.6	2	1.3
All Airlines	350	347	324	93.4	317	91.4	3	0.9
Townsville-Cairns								
QantasLink	147	145	138	95.2	138	95.2	2	1.4
Regional Express	66	66	65	98.5	65	98.5	0	0.0
All Airlines	213	211	203	96.2	203	96.2	2	0.9
Townsville-Sydney								
Jetstar	25	25	20	80.0	22	88.0	0	0.0
Qantas	2	2	1	50.0	1	50.0	0	0.0
Virgin Australia	31	31	28	90.3	30	96.8	0	0.0
All Airlines	58	58	49	84.5	53	91.4	0	0.0
Wagga Wagga-Sydney								
QantasLink	115	115	98	85.2	98	85.2	0	0.0
Regional Express	136	136	115	84.6	124	91.2	0	0.0
All Airlines	251	251	213	84.9	222	88.4	0	0.0

Airports

On time performance is reported for all routes where the passenger load averages over 8000 passengers per month, and where two or more airlines operate in competition. The following data reports by airport against flights operated on those routes only. This month, 8 major city airports and 33 regional city airports are covered.

Airport	Arrivals			Departures		
	Sectors	On Time		Sectors	On Time	
	Flown	No.	%	Flown	No.	%
Adelaide						
Jetstar	324	261	80.6	326	269	82.5
Qantas	848	782	92.2	847	788	93.0
QantasLink	133	122	91.7	132	118	89.4
Regional Express	211	199	94.3	212	201	94.8
Tigerair	137	126	92.0	137	122	89.1
Virgin Australia	736	676	91.8	738	683	92.5
All Airlines	2 389	2 166	90.7	2 392	2 181	91.2
Relates to services to and from Alice Springs, Brisbane, Canberra, Gold Coast, Melbourne, Perth, Port Lincoln and Sydney.						
Albury						
QantasLink	97	81	83.5	97	86	88.7
Regional Express	107	93	86.9	107	101	94.4
Virgin Australia Regional Airlines	61	52	85.2	61	53	86.9
All Airlines	265	226	85.3	265	240	90.6
Relates to services to and from Sydney only.						
Alice Springs						
Qantas	31	31	100.0	31	28	90.3
QantasLink	59	57	96.6	59	54	91.5
Virgin Australia	26	23	88.5	26	23	88.5
All Airlines	116	111	95.7	116	105	90.5
Relates to services to and from Adelaide and Darwin.						
Armidale						
QantasLink	134	104	77.6	134	112	83.6
Regional Express	75	68	90.7	77	71	92.2
All Airlines	209	172	82.3	211	183	86.7
Relates to services to and from Sydney only.						
Ayers Rock						
Jetstar	29	28	96.6	28	25	89.3
Virgin Australia	31	30	96.8	31	30	96.8
All Airlines	60	58	96.7	59	55	93.2
Relates to services to and from Sydney only.						
Ballina						
Jetstar	76	61	80.3	75	56	74.7
Regional Express	25	23	92.0	25	24	96.0
Virgin Australia	31	29	93.5	31	28	90.3
All Airlines	132	113	85.6	131	108	82.4
Relates to services to and from Sydney only.						

Airport	Arrivals			Departures		
	Sectors Flown	On Time		Sectors Flown	On Time	
		No.	%		No.	%
Brisbane						
Jetstar	687	558	81.2	687	544	79.2
Qantas	1 693	1 456	86.0	1 698	1 528	90.0
QantasLink	1 112	994	89.4	1 117	1 025	91.8
Tigerair	304	253	83.2	305	260	85.2
Virgin Australia	2 146	1 885	87.8	2 154	1 938	90.0
Virgin Australia Regional Airlines	349	294	84.2	349	302	86.5
All Airlines	6 291	5 440	86.5	6 310	5 597	88.7

Relates to services to and from Adelaide, Bundaberg, Cairns, Canberra, Darwin, Emerald, Gladstone, Hamilton Island, Hobart, Mackay, Melbourne, Moranbah, Mount Isa, Newcastle, Perth, Proserpine, Rockhampton, Sydney and Townsville.

Broome

Qantas	26	24	92.3	26	20	76.9
QantasLink	57	54	94.7	56	52	92.9
Virgin Australia	17	15	88.2	17	14	82.4
Virgin Australia Regional Airlines	48	35	72.9	47	30	63.8
All Airlines	148	128	86.5	146	116	79.5

Relates to services to and from Perth only.

Bundaberg

QantasLink	137	126	92.0	137	125	91.2
Virgin Australia Regional Airlines	38	34	89.5	38	33	86.8
All Airlines	175	160	91.4	175	158	90.3

Relates to services to and from Brisbane only.

Cairns

Jetstar	325	264	81.2	327	249	76.1
Qantas	231	209	90.5	232	210	90.5
QantasLink	150	143	95.3	147	138	93.9
Regional Express	66	65	98.5	66	64	97.0
Tigerair	109	100	91.7	109	94	86.2
Virgin Australia	265	239	90.2	266	249	93.6
All Airlines	1 146	1 020	89.0	1 147	1 004	87.5

Relates to services to and from Brisbane, Melbourne, Sydney and Townsville.

Canberra

Qantas	269	245	91.1	269	248	92.2
QantasLink	692	590	85.3	688	594	86.3
Virgin Australia	307	280	91.2	308	291	94.5
Virgin Australia Regional Airlines	297	245	82.5	297	267	89.9
All Airlines	1 565	1 360	86.9	1 562	1 400	89.6

Relates to services to and from Adelaide, Brisbane, Melbourne and Sydney.

Coffs Harbour

QantasLink	155	128	82.6	154	131	85.1
Tigerair	13	13	100.0	13	12	92.3
Virgin Australia	62	58	93.5	62	58	93.5
All Airlines	230	199	86.5	229	201	87.8

Relates to services to and from Sydney only.

Airport	Arrivals			Departures		
	Sectors Flown	On Time		Sectors Flown	On Time	
		No.	%		No.	%
Darwin						
Jetstar	76	63	82.9	75	54	72.0
Qantas	172	160	93.0	173	162	93.6
QantasLink	59	55	93.2	59	57	96.6
Tigerair	21	18	85.7	20	19	95.0
Virgin Australia	137	124	90.5	137	119	86.9
All Airlines	465	420	90.3	464	411	88.6
Relates to services to and from Alice Springs, Brisbane, Melbourne, Perth and Sydney.						
Dubbo						
QantasLink	125	95	76.0	125	104	83.2
Regional Express	154	142	92.2	151	140	92.7
All Airlines	279	237	84.9	276	244	88.4
Relates to services to and from Sydney only.						
Emerald						
QantasLink	137	127	92.7	137	124	90.5
Virgin Australia Regional Airlines	85	68	80.0	85	73	85.9
All Airlines	222	195	87.8	222	197	88.7
Relates to services to and from Brisbane only.						
Geraldton						
QantasLink	49	46	93.9	49	46	93.9
Virgin Australia Regional Airlines	83	70	84.3	89	80	89.9
All Airlines	132	116	87.9	138	126	91.3
Relates to services to and from Perth only.						
Gladstone						
QantasLink	192	180	93.8	192	178	92.7
Virgin Australia	44	40	90.9	44	41	93.2
Virgin Australia Regional Airlines	101	89	88.1	101	91	90.1
All Airlines	337	309	91.7	337	310	92.0
Relates to services to and from Brisbane only.						
Gold Coast						
Jetstar	607	458	75.5	608	475	78.1
Qantas	98	91	92.9	97	89	91.8
QantasLink	3	2	66.7	3	2	66.7
Tigerair	199	178	89.4	199	166	83.4
Virgin Australia	486	430	88.5	486	430	88.5
All Airlines	1 393	1 159	83.2	1 393	1 162	83.4
Relates to services to and from Adelaide, Melbourne and Sydney.						
Hamilton Island						
Jetstar	31	25	80.6	29	15	51.7
Qantas	23	23	100.0	23	16	69.6
QantasLink	27	24	88.9	27	19	70.4
Virgin Australia	85	78	91.8	85	74	87.1
All Airlines	166	150	90.4	164	124	75.6
Relates to services to and from Brisbane, Melbourne and Sydney.						

Airport	Arrivals			Departures		
	Sectors	On Time		Sectors	On Time	
	Flown	No.	%	Flown	No.	%
Hobart						
Jetstar	291	228	78.4	290	195	67.2
Qantas	1	0	0.0	1	0	0.0
QantasLink	153	112	73.2	152	121	79.6
Tigerair	32	28	87.5	32	25	78.1
Virgin Australia	241	220	91.3	240	218	90.8
All Airlines	718	588	81.9	715	559	78.2

Relates to services to and from Brisbane, Melbourne and Sydney.

Kalgoorlie

Qantas	7	6	85.7	7	6	85.7
QantasLink	77	75	97.4	76	71	93.4
Virgin Australia	31	29	93.5	30	28	93.3
Virgin Australia Regional Airlines	27	24	88.9	27	26	96.3
All Airlines	142	134	94.4	140	131	93.6

Relates to services to and from Perth only.

Karratha

Qantas	70	68	97.1	70	67	95.7
QantasLink	140	131	93.6	138	131	94.9
Virgin Australia	53	51	96.2	53	49	92.5
Virgin Australia Regional Airlines	34	26	76.5	33	27	81.8
All Airlines	297	276	92.9	294	274	93.2

Relates to services to and from Perth only.

Launceston

Jetstar	179	139	77.7	179	131	73.2
QantasLink	115	89	77.4	114	97	85.1
Virgin Australia	124	107	86.3	124	106	85.5
Virgin Australia Regional Airlines	4	4	100.0	4	2	50.0
All Airlines	422	339	80.3	421	336	79.8

Relates to services to and from Melbourne and Sydney.

Mackay

Jetstar	46	38	82.6	46	28	60.9
QantasLink	108	97	89.8	109	97	89.0
Virgin Australia	158	146	92.4	158	149	94.3
All Airlines	312	281	90.1	313	274	87.5

Relates to services to and from Brisbane only.

Melbourne

Jetstar	1 504	1 146	76.2	1 500	1 067	71.1
Qantas	2 229	1 924	86.3	2 227	1 917	86.1
QantasLink	405	312	77.0	408	323	79.2
Regional Express	87	73	83.9	87	83	95.4
Tigerair	681	562	82.5	680	592	87.1
Virgin Australia	2 429	2 147	88.4	2 422	2 189	90.4
Virgin Australia Regional Airlines	30	20	66.7	29	23	79.3
All Airlines	7 365	6 184	84.0	7 353	6 194	84.2

Relates to services to and from Adelaide, Brisbane, Cairns, Canberra, Darwin, Gold Coast, Hamilton Island, Hobart, Launceston, Mildura, Newcastle, Perth, Sunshine Coast and Sydney.

Airport	Arrivals			Departures		
	Sectors Flown	On Time		Sectors Flown	On Time	
		No.	%		No.	%
Mildura						
QantasLink	92	71	77.2	91	78	85.7
Regional Express	87	79	90.8	87	76	87.4
Virgin Australia	31	29	93.5	31	29	93.5
All Airlines	210	179	85.2	209	183	87.6
Relates to services to and from Melbourne only.						
Moranbah						
QantasLink	110	107	97.3	106	101	95.3
Virgin Australia Regional Airlines	69	63	91.3	69	61	88.4
All Airlines	179	170	95.0	175	162	92.6
Relates to services to and from Brisbane only.						
Mount Isa						
Qantas	38	35	92.1	37	33	89.2
Virgin Australia	22	22	100.0	22	21	95.5
All Airlines	60	57	95.0	59	54	91.5
Relates to services to and from Brisbane only.						
Newcastle						
Jetstar	188	157	83.5	189	153	81.0
QantasLink	82	71	86.6	83	76	91.6
Virgin Australia	117	106	90.6	117	101	86.3
All Airlines	387	334	86.3	389	330	84.8
Relates to services to and from Brisbane and Melbourne.						
Newman						
Qantas	72	69	95.8	72	67	93.1
QantasLink	79	77	97.5	79	78	98.7
Virgin Australia	19	17	89.5	19	18	94.7
Virgin Australia Regional Airlines	14	3	21.4	15	4	26.7
All Airlines	184	166	90.2	185	167	90.3
Relates to services to and from Perth only.						
Perth						
Jetstar	136	122	89.7	135	110	81.5
Qantas	987	917	92.9	994	921	92.7
QantasLink	457	432	94.5	461	442	95.9
Tigerair	95	87	91.6	97	89	91.8
Virgin Australia	656	609	92.8	660	622	94.2
Virgin Australia Regional Airlines	211	157	74.4	206	170	82.5
All Airlines	2 542	2 324	91.4	2 553	2 354	92.2
Relates to services to and from Adelaide, Brisbane, Broome, Darwin, Geraldton, Kalgoorlie, Karratha, Melbourne, Newman, Port Hedland and Sydney.						
Port Hedland						
Qantas	82	77	93.9	82	79	96.3
QantasLink	59	51	86.4	59	54	91.5
Virgin Australia	43	40	93.0	43	40	93.0
All Airlines	184	168	91.3	184	173	94.0
Relates to services to and from Perth only.						

Airport	Arrivals			Departures		
	Sectors	On Time		Sectors	On Time	
	Flown	No.	%	Flown	No.	%
Port Lincoln						
QantasLink	109	100	91.7	110	105	95.5
Regional Express	212	201	94.8	211	201	95.3
All Airlines	321	301	93.8	321	306	95.3
Relates to services to and from Adelaide only.						
Port Macquarie						
QantasLink	138	86	62.3	135	89	65.9
Virgin Australia Regional Airlines	61	55	90.2	61	52	85.2
All Airlines	199	141	70.9	196	141	71.9
Relates to services to and from Sydney only.						
Proserpine						
Jetstar	30	27	90.0	30	22	73.3
Virgin Australia	53	50	94.3	53	49	92.5
All Airlines	83	77	92.8	83	71	85.5
Relates to services to and from Brisbane only.						
Rockhampton						
QantasLink	192	179	93.2	191	175	91.6
Virgin Australia	141	128	90.8	141	129	91.5
Virgin Australia Regional Airlines	56	48	85.7	56	51	91.1
All Airlines	389	355	91.3	388	355	91.5
Relates to services to and from Brisbane only.						
Sunshine Coast						
Jetstar	208	168	80.8	207	151	72.9
Virgin Australia	69	63	91.3	69	55	79.7
All Airlines	277	231	83.4	276	206	74.6
Relates to services to and from Melbourne and Sydney.						
Sydney						
Jetstar	1 512	1 205	79.7	1 518	1 195	78.7
Qantas	2 320	1 997	86.1	2 312	2 007	86.8
QantasLink	1 455	1 186	81.5	1 462	1 214	83.0
Regional Express	496	427	86.1	497	453	91.1
Tigerair	572	479	83.7	571	497	87.0
Virgin Australia	2 350	2 127	90.5	2 343	2 146	91.6
Virgin Australia Regional Airlines	419	368	87.8	420	356	84.8
All Airlines	9 124	7 789	85.4	9 123	7 868	86.2
Relates to services to and from Adelaide, Albury, Armidale, Ayers Rock, Ballina, Brisbane, Cairns, Canberra, Coffs Harbour, Darwin, Dubbo, Gold Coast, Hamilton Island, Hobart, Launceston, Melbourne, Perth, Port Macquarie, Sunshine Coast, Tamworth, Townsville and Wagga Wagga.						
Tamworth						
QantasLink	155	132	85.2	155	134	86.5
Virgin Australia Regional Airlines	26	23	88.5	26	23	88.5
All Airlines	181	155	85.6	181	157	86.7
Relates to services to and from Sydney only.						

<i>Airport</i>	<i>Arrivals</i>			<i>Departures</i>		
	<i>Sectors</i>	<i>On Time</i>		<i>Sectors</i>	<i>On Time</i>	
	<i>Flown</i>	<i>No.</i>	<i>%</i>	<i>Flown</i>	<i>No.</i>	<i>%</i>
Townsville						
Jetstar	69	64	92.8	69	58	84.1
Qantas	152	137	90.1	151	144	95.4
QantasLink	143	131	91.6	145	138	95.2
Regional Express	66	65	98.5	66	65	98.5
Virgin Australia	185	167	90.3	185	168	90.8
All Airlines	615	564	91.7	616	573	93.0
Relates to services to and from Brisbane, Cairns and Sydney.						
Wagga Wagga						
QantasLink	115	95	82.6	115	98	85.2
Regional Express	136	124	91.2	136	124	91.2
All Airlines	251	219	87.3	251	222	88.4
Relates to services to and from Sydney only.						

Definitions

On time arrival	A flight arrival is counted as "on time" if it arrived at the gate before 15 minutes after the scheduled arrival time shown in the carriers' schedule. Neither diverted nor cancelled flights count as on time.
On time departure	A flight departure is counted as "on time" if it departs the gate before 15 minutes after the scheduled departure time shown in the carriers' schedule.
Cancellation	A flight removed from service within 7 days of scheduled departure is regarded as a cancellation.
On time departure percentage	The percentage of on time departures is measured against the number of departures <i>operated</i> on any particular sector.
On time arrival percentage	The percentage of on time arrivals is measured against the number of arrivals <i>operated</i> on any particular sector.
Cancellation percentage	The percentage of cancellations is measured against the number of services <i>scheduled</i> on any particular sector.
