



Australian Government

Department of Infrastructure and Regional Development

Bureau of Infrastructure, Transport and Regional Economics

STATISTICAL REPORT



Aviation

Domestic airline on time performance
October 2014

© Commonwealth of Australia 2014

ISSN: 1832-0759

Ownership of intellectual property rights in this publication

Unless otherwise noted, copyright (and any other intellectual property rights, if any) in this publication is owned by the Commonwealth of Australia (referred to below as the Commonwealth).

Disclaimer

The material contained in this publication is made available on the understanding that the Commonwealth is not providing professional advice, and that users exercise their own skill and care with respect to its use, and seek independent advice if necessary.

The Commonwealth makes no representations or warranties as to the contents or accuracy of the information contained in this publication. To the extent permitted by law, the Commonwealth disclaims liability to any person or organisation in respect of anything done, or omitted to be done, in reliance upon information contained in this publication.

Creative Commons licence

With the exception of (a) the Coat of Arms; and (b) the Department of Infrastructure and Regional Development's photos and graphics, copyright in this publication is licensed under a Creative Commons Attribution 3.0 Australia Licence.

Creative Commons Attribution 3.0 Australia Licence is a standard form licence agreement that allows you to copy, communicate and adapt this publication provided that you attribute the work to the Commonwealth and abide by the other licence terms. A summary of the licence terms is available from <http://creativecommons.org/licenses/by/3.0/au/deed.en>. The full licence terms are available from <http://creativecommons.org/licenses/by/3.0/au/legalcode>.

Use of the Coat of Arms

The Department of the Prime Minister and Cabinet sets the terms under which the Coat of Arms is used. Please refer to the Department's Commonwealth Coat of Arms and Government branding web page <http://www.dpmmc.gov.au/guidelines/index.cfm#brand> and, in particular, the Guidelines on the use of the Commonwealth Coat of Arms publication.

An appropriate citation for this report is:

Bureau of Infrastructure, Transport and Regional Economics (BITRE), 2014, Domestic airline on time performance, Statistical Report, BITRE, Canberra ACT.

Contact us

This publication is available in PDF format. All other rights are reserved, including in relation to any Departmental logos or trade marks which may exist. For enquiries regarding the licence and any use of this publication, please contact:

Bureau of Infrastructure, Transport and Regional Economics (BITRE)
Department of Infrastructure and Regional Development
GPO Box 501, Canberra ACT 2601, Australia
Telephone: (international) +61 2 6274 7210
Fax: (international) +61 2 6274 6855
Email: bitre@infrastructure.gov.au
Website: www.bitre.gov.au

Inquiries

Should you require additional information about the statistics contained in this publication:

Telephone (02) 6274 7790 or Facsimile (02) 6274 7727

Electronic mail: AVSTATS@infrastructure.gov.au

Web site: <http://www.bitre.gov.au/statistics/aviation/otphome.aspx>

Foreword

The Bureau of Infrastructure, Transport and Regional Economics (BITRE) monitors the punctuality and reliability of major domestic airlines operating between Australian airports. The purpose of this is to allow for evaluation of overall industry and individual airline performance, so that consumers of air travel can make informed decisions.

The following domestic airlines currently report this information monthly to the BITRE: Jetstar, Qantas, QantasLink, Regional Express, Tigerair, Virgin Australia and Virgin Australia Regional Airlines. Data has been gathered since November 2003, although some airlines commenced reporting at a later date, including Jetstar which first reported in May 2004, MacAir in July 2005 and Tigerair in April 2008. MacAir ceased operations in February 2009 and data was not received for December 2008 onwards. Virgin Blue was rebranded as Virgin Australia in May 2011 and Tiger Airways was rebranded as Tigerair in July 2013 and time series data in Microsoft Excel spreadsheet format on the BITRE website have been revised to reflect these changes. Virgin Australia Regional Airlines commenced operations in May 2013. It was formed after the acquisition of Skywest by Virgin Australia and represents a combination of operations previously reported under Skywest and Virgin Australia – ATR/F100 Operations. Services operated by Skywest on behalf of Virgin Australia using ATR/F100 aircraft commenced in November 2011 and were shown separately as Virgin Australia – ATR/F100 Operations until April 2013.

Information presented in this report is for Australian domestic routes for which the passenger load averaged 8 000 or more passengers per month over the previous six months and where two or more airlines operated in competition on those routes. There were 62 routes that met this definition in October 2014. Over time, routes which meet these criteria change as airline networks and traffic levels vary.

Participating airlines report their overall monthly network performance where this is possible.

Total industry figures encompass all services operated by reporting airlines only. These airlines collectively carried over 95 per cent of total domestic passengers (regular public transport only) in 2013.

The method of capturing on time performance varies between airlines utilising different recording systems. Jetstar and Qantas jet aircraft use Aircraft Communication Addressing and Reporting System (ACARS) to electronically measure on time performance. Regional Express, Tigerair, Virgin Australia, Virgin Australia Regional Airlines and the Qantas non-jet fleet record on time performance manually using records from pilots, gate agents and/or ground crews.

After initial data is collected, aggregate reports are audited internally by participating airlines prior to publication.

Reports and detailed time series data in Microsoft Excel spreadsheet format are available from the BITRE website at: <http://www.bitre.gov.au/statistics/aviation/otphome.aspx>.

Contents

	Page
Industry performance	1
Individual routes	9
Airports	21
Definitions	27

Industry performance

For October 2014, on time performance over all routes operated by participating airlines (Jetstar, Qantas, QantasLink, Regional Express, Tigerair, Virgin Australia and Virgin Australia Regional Airlines) averaged 87.3 per cent for on time departures and 86.2 per cent for on time arrivals. Cancellations represented 1.1 per cent of all scheduled flights. The equivalent figures for October 2013 were 79.4 per cent for departures, 77.1 per cent for arrivals and 1.9 per cent for cancellations.

This month's figures were better than the long term average performance for all routes (83.7 per cent for departures and 82.3 per cent for arrivals). The rate of cancellations was below the long term average of 1.3 per cent.

Of the major domestic airlines, Virgin Australia achieved the highest level of on time departures for October 2014 at 88.9 per cent, followed by Qantas at 88.6 per cent, Jetstar at 82.2 per cent and Tigerair at 80.2 per cent. The regional airlines were led by Regional Express at 89.3 per cent, followed by QantasLink at 88.3 per cent and Virgin Australia Regional Airlines at 86.5 per cent.

Qantas achieved the highest on time arrivals among the major domestic airlines at 88.7 per cent, followed by Virgin Australia at 87.5 per cent, Jetstar at 83.5 per cent and Tigerair at 77.8 per cent. QantasLink was the best performing regional airline for on time arrivals at 86.3 per cent, followed by Regional Express at 85.8 per cent and Virgin Australia Regional Airlines also at 85.8 per cent.

Jetstar had the highest percentage of cancellations (1.6 per cent) during the month, followed by QantasLink (1.5 per cent), Virgin Australia Regional Airlines (1.1 per cent), Qantas (1.0 per cent), Virgin Australia (also 1.0 per cent), Tigerair (0.4 per cent) and Regional Express (0.2 per cent).

Of the 62 routes which met the criteria for on time performance reporting in October 2014, the Adelaide-Gold Coast route had the highest percentage of on time departures (97.1 per cent) and the Newman-Perth route had the highest percentage of on time arrivals (98.4 per cent). The Launceston-Sydney route had the lowest percentage of on time departures (64.4 per cent) and the Port Macquarie-Sydney route had the lowest percentage of on time arrivals (66.2 per cent).

Cancellations were highest on the Canberra-Sydney route at 3.9 per cent, followed by the Newman-Perth and Perth-Newman routes at 3.5 per cent, Sydney-Canberra at 3.1 per cent and the Sydney-Melbourne and Melbourne-Sydney routes at 3.0 per cent.

Mount Isa airport recorded the highest percentage of on time departures (96.3 per cent) and Moranbah airport recorded the highest percentage of on time arrivals (96.4 per cent). Ballina Airport recorded the lowest percentage of on time departures (71.9 per cent) and Hobart Airport recorded the lowest percentage of on time arrivals (77.7 per cent). These figures only refer to reported routes and do not cover all flights at these airports.

Table 1 On time performance for October 2014 — Total Industry

	<i>Sectors</i>		<i>Departures On Time</i>		<i>Arrivals On Time</i>		<i>Cancellations</i>	
	<i>Scheduled</i>	<i>Flown</i>	<i>No.</i>	<i>%</i>	<i>No.</i>	<i>%</i>	<i>No.</i>	<i>%</i>
Jetstar	7 639	7 517	6 181	82.2	6 274	83.5	122	1.6
Qantas	10 027	9 922	8 795	88.6	8 802	88.7	105	1.0
QantasLink	10 779	10 622	9 382	88.3	9 166	86.3	157	1.5
Regional Express	5 832	5 818	5 195	89.3	4 994	85.8	14	0.2
Tigerair	2 073	2 065	1 656	80.2	1 607	77.8	8	0.4
Virgin Australia	11 232	11 119	9 890	88.9	9 730	87.5	113	1.0
Virgin Australia Regional Airlines	2 637	2 609	2 258	86.5	2 238	85.8	28	1.1
All Airlines	50 219	49 672	43 357	87.3	42 811	86.2	547	1.1

Total airline network data (including routes not shown in this report).

Table 2 Top ten routes for on time performance for October 2014 (participating airlines only)

<i>Departures</i>		<i>Arrivals</i>	
<i>Route</i>	<i>On Time (%)</i>	<i>Route</i>	<i>On Time (%)</i>
Adelaide-Gold Coast	97.1	Newman-Perth	98.4
Mount Isa-Brisbane	96.3	Adelaide-Gold Coast	97.1
Perth-Broome	96.2	Adelaide-Canberra	96.8
Perth-Port Hedland	96.2	Brisbane-Moranbah	96.4
Perth-Newman	95.8	Perth-Broome	96.2
Darwin-Perth	95.6	Perth-Newman	95.8
Perth-Darwin	95.5	Gold Coast-Adelaide	95.7
Brisbane-Hamilton Island	95.3	Perth-Port Hedland	95.7
Newman-Perth	95.3	Darwin-Perth	95.6
Adelaide-Port Lincoln	95.3	Perth-Karratha	94.5

Table 3 Top ten airports for on time performance for October 2014 (participating airlines and reported routes only)

<i>Departures</i>		<i>Arrivals</i>	
<i>Airport</i>	<i>On Time (%)</i>	<i>Airport</i>	<i>On Time (%)</i>
Mount Isa	96.3	Moranbah	96.4
Newman	95.3	Broome	96.2
Port Lincoln	94.3	Newman	95.8
Karratha	92.8	Port Hedland	95.7
Kalgoorlie	92.3	Karratha	94.5
Geraldton	92.1	Port Lincoln	94.3
Townsville	91.2	Mount Isa	93.8
Albury	90.8	Kalgoorlie	92.4
Broome	90.4	Mackay	91.9
Ayers Rock	90.3	Townsville	91.5

Total industry on time performance

Figure 1 On time performance (by month from October 2011)—Total Industry

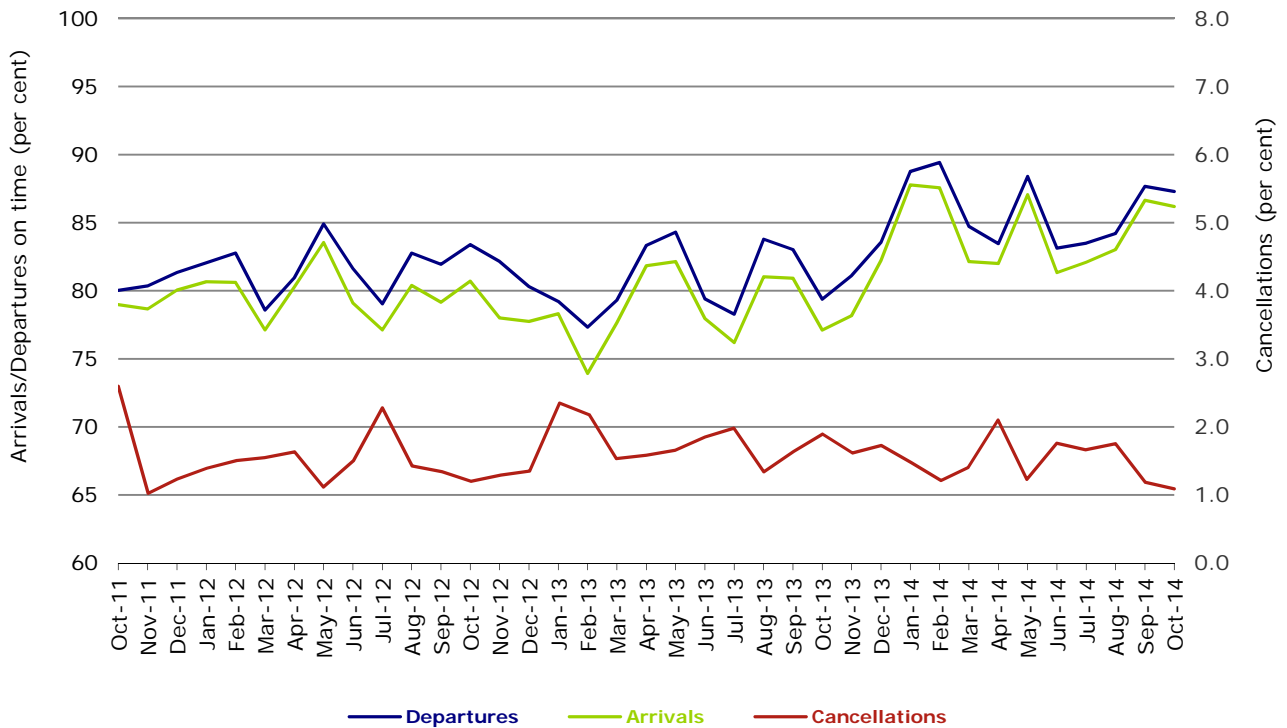


Figure 2 Departures on time (by month from October 2013)

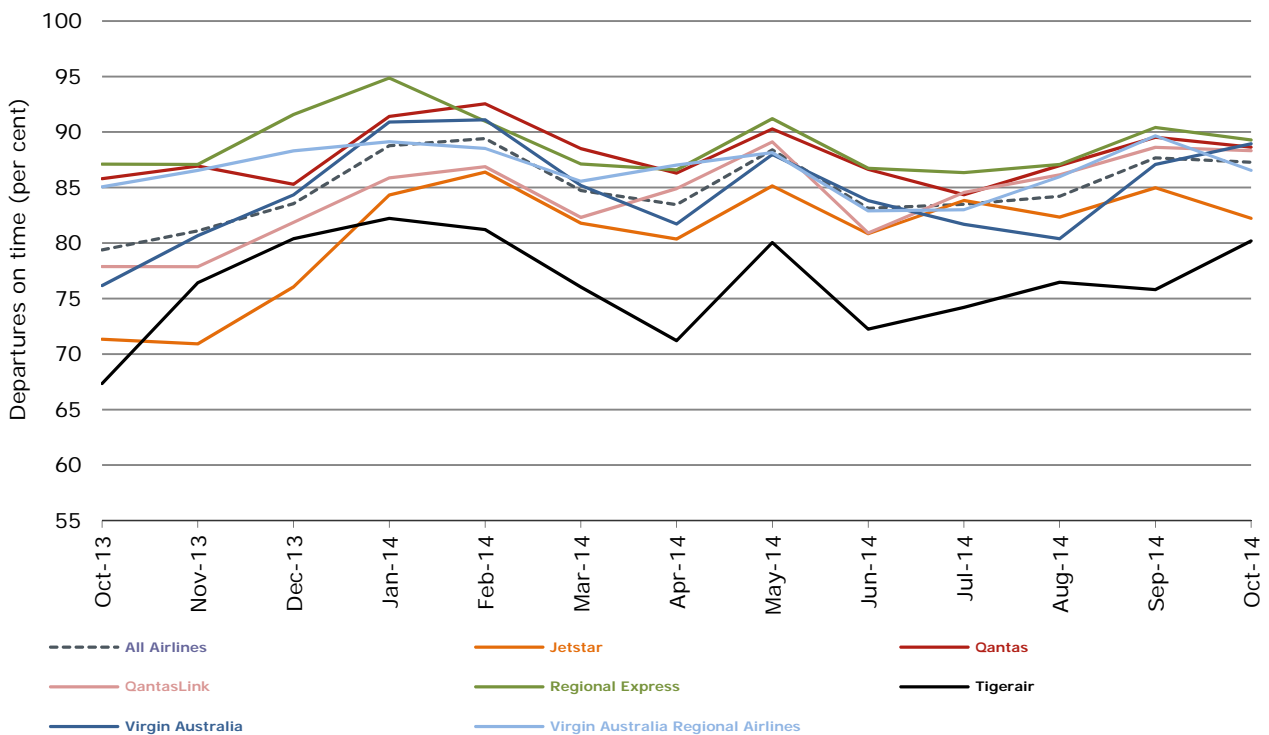


Figure 3 Arrivals on time (by month from October 2013)

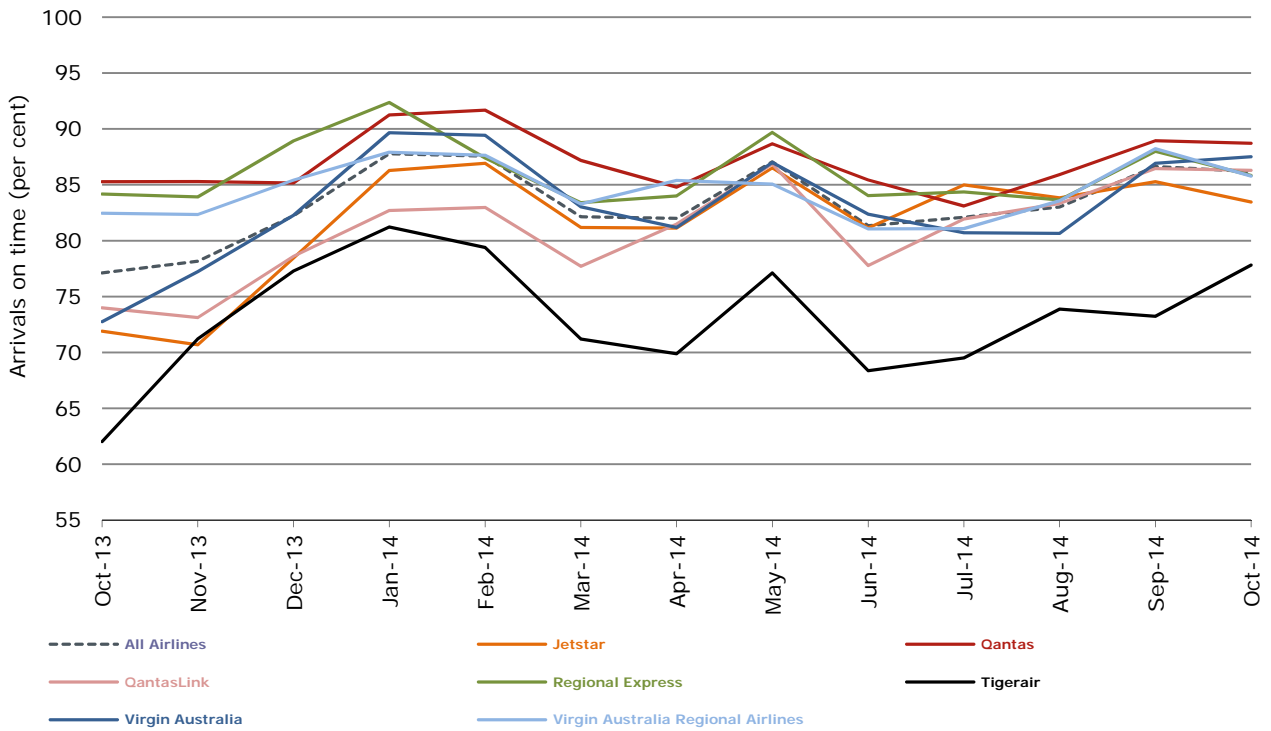
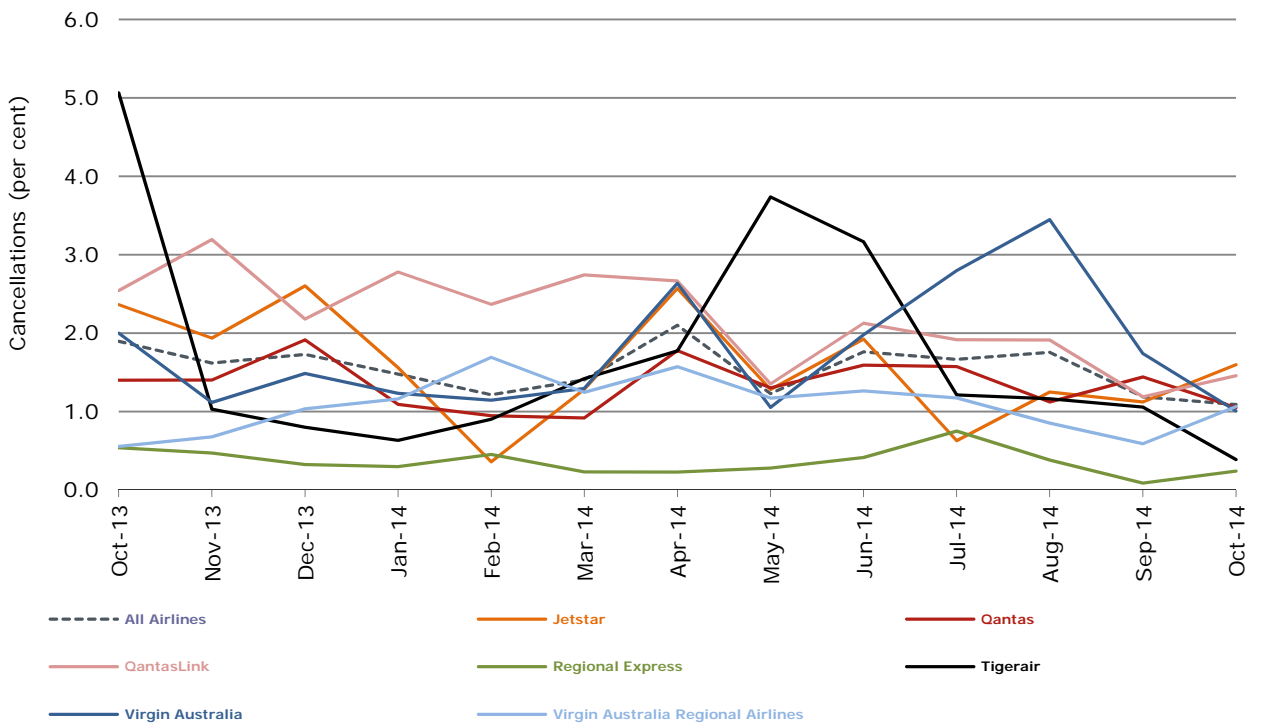


Figure 4 Cancellations (by month from October 2013)



Major domestic airlines on time performance

Figure 5 On time performance (by month from October 2011)—Jetstar

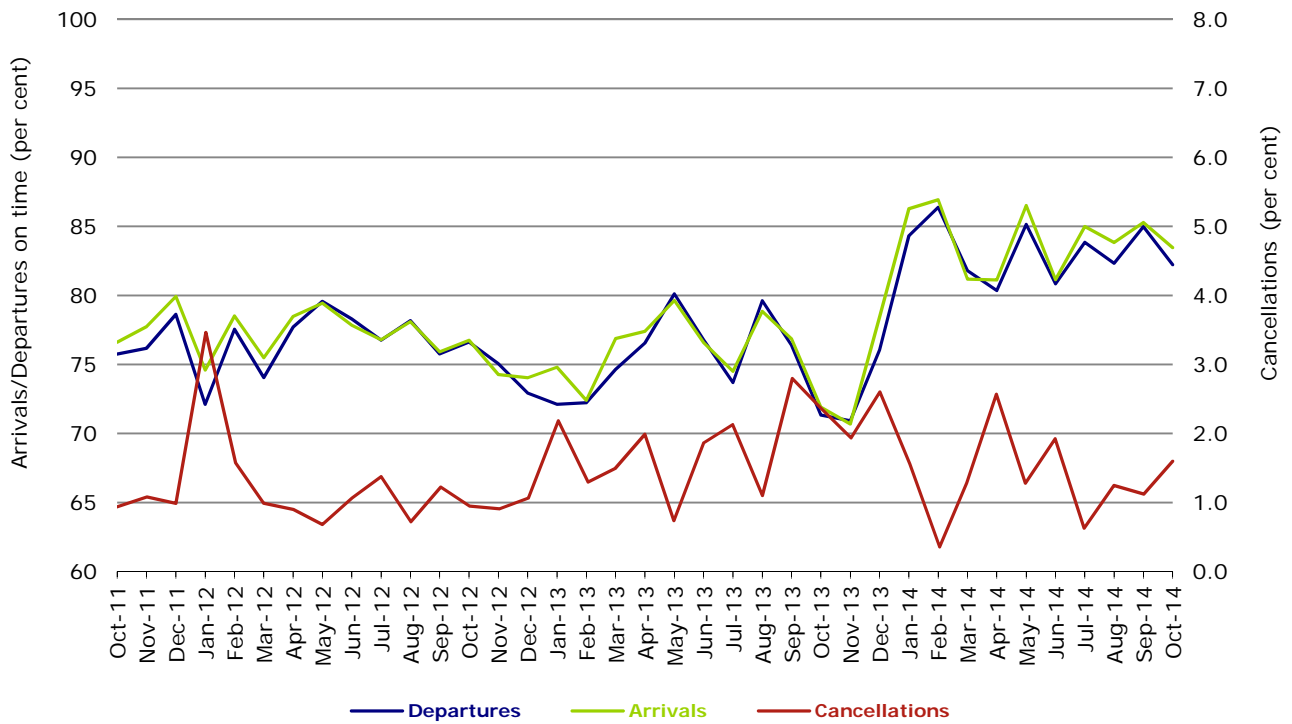


Figure 6 On time performance (by month from October 2011)—Qantas

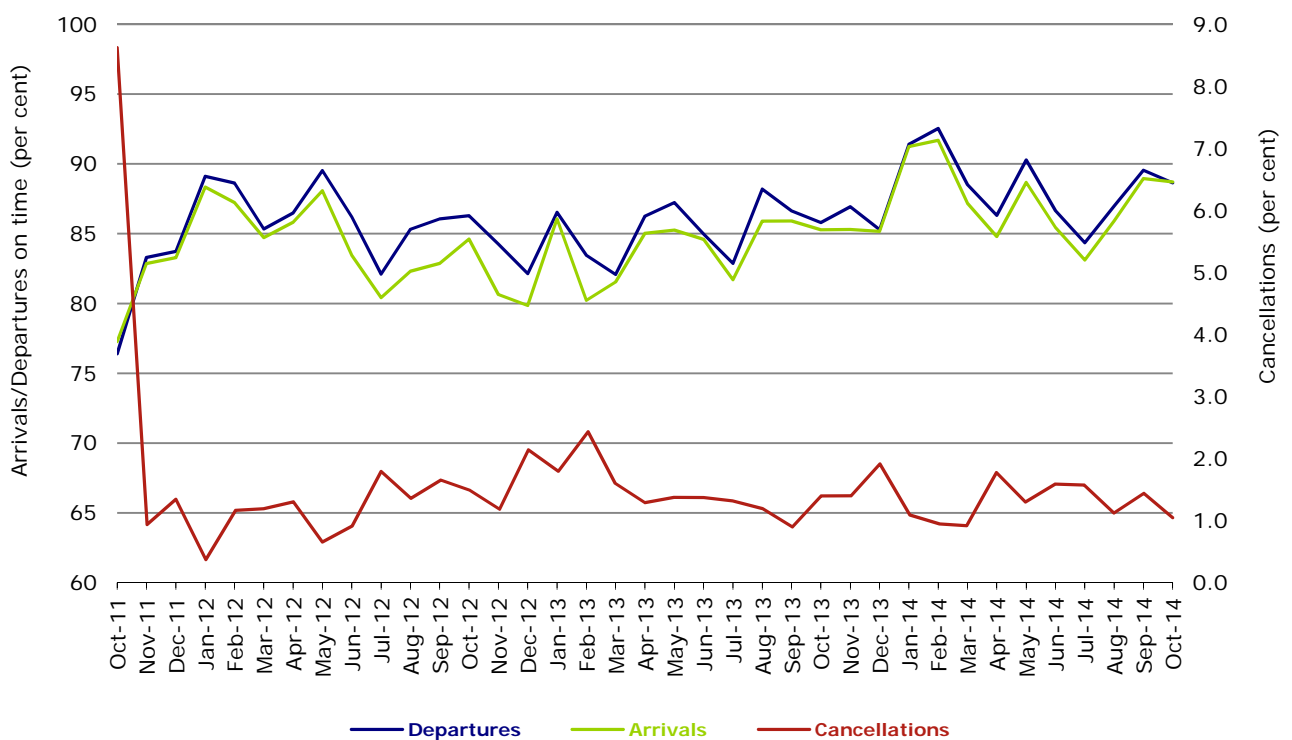


Figure 7 On time performance (by month from October 2011)—Tigerair

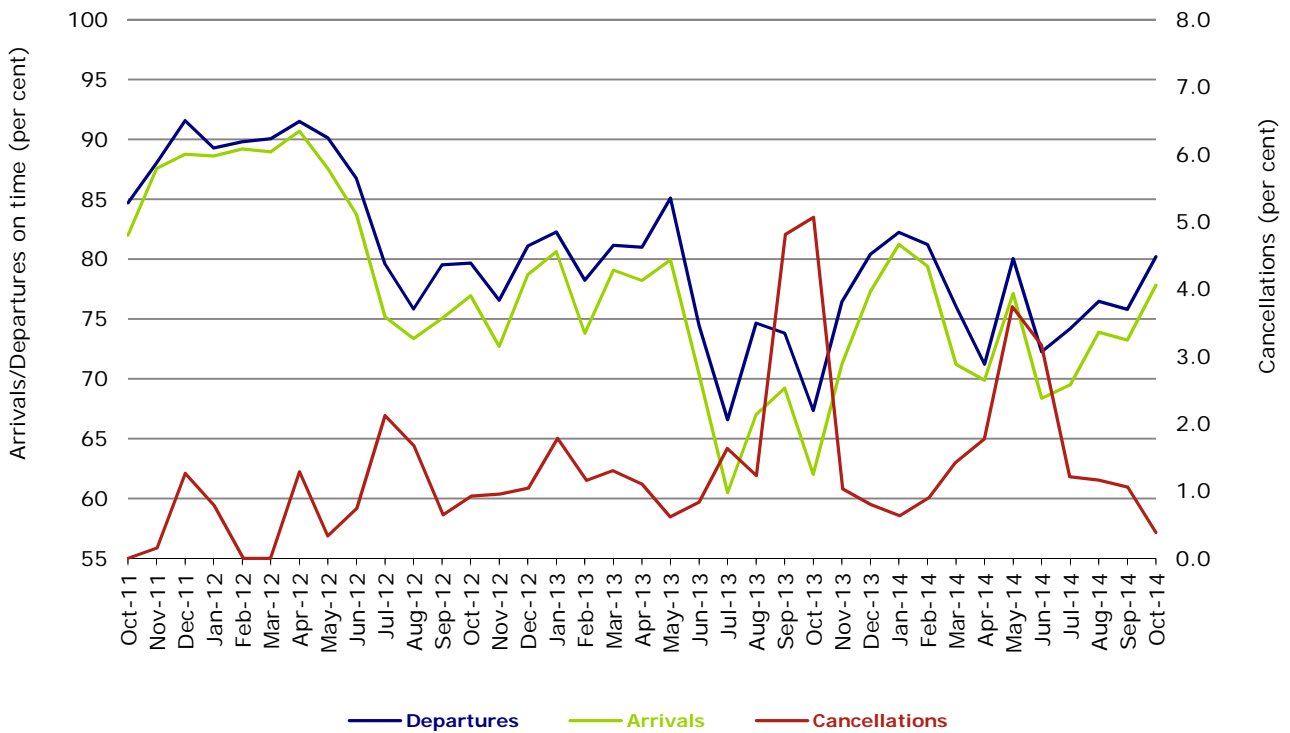
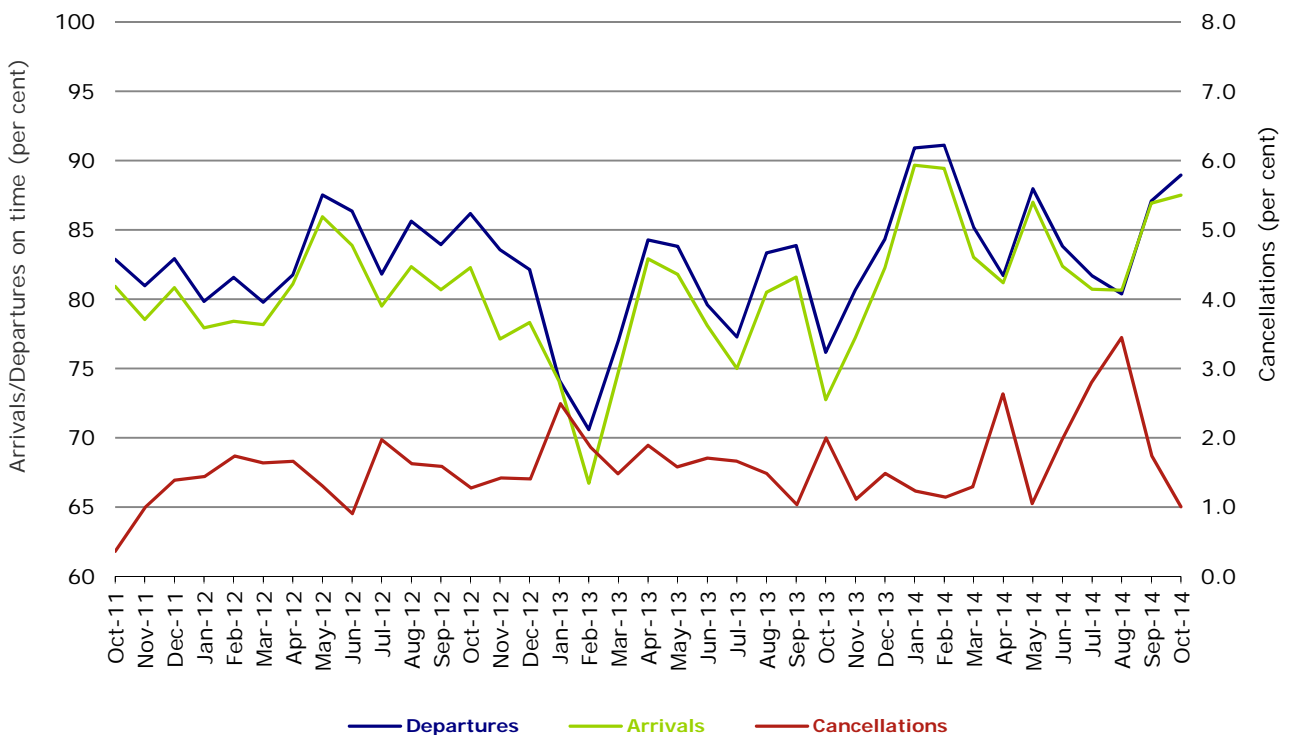


Figure 8 On time performance (by month from October 2011)—Virgin Australia



Major regional airlines on time performance

Figure 9 On time performance (by month from October 2011)—QantasLink

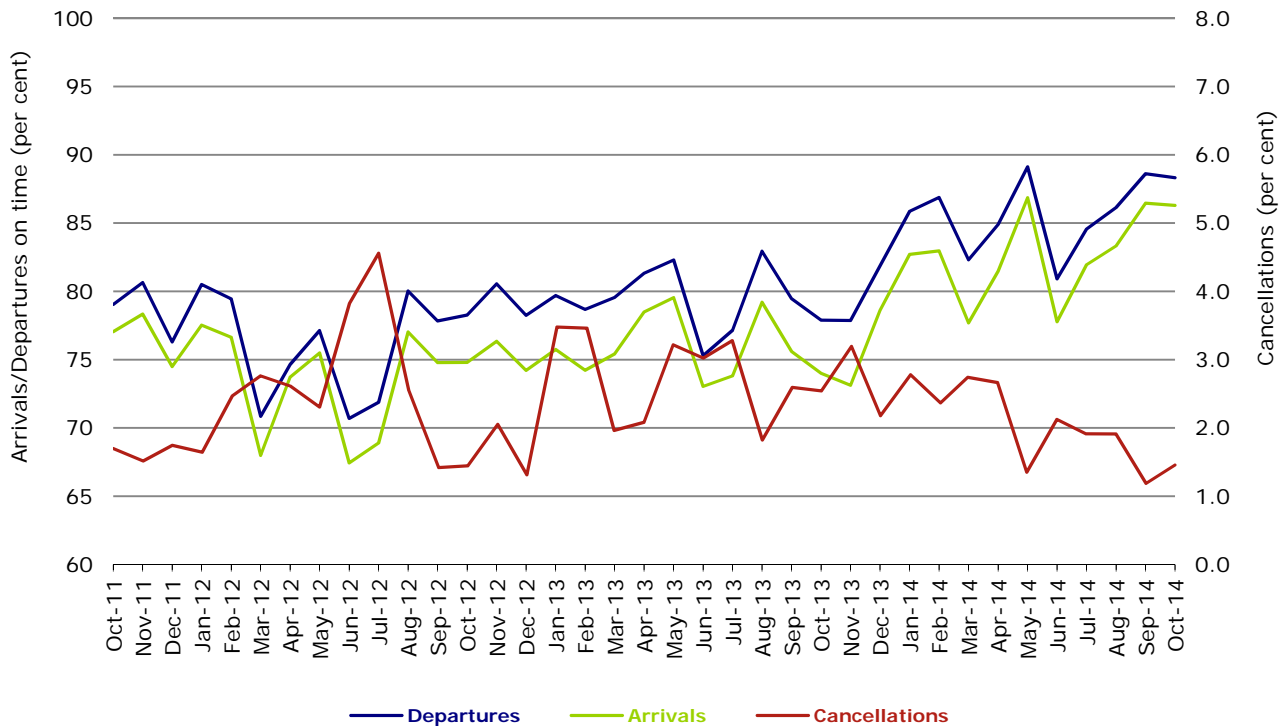


Figure 10 On time performance (by month from October 2011)—Regional Express

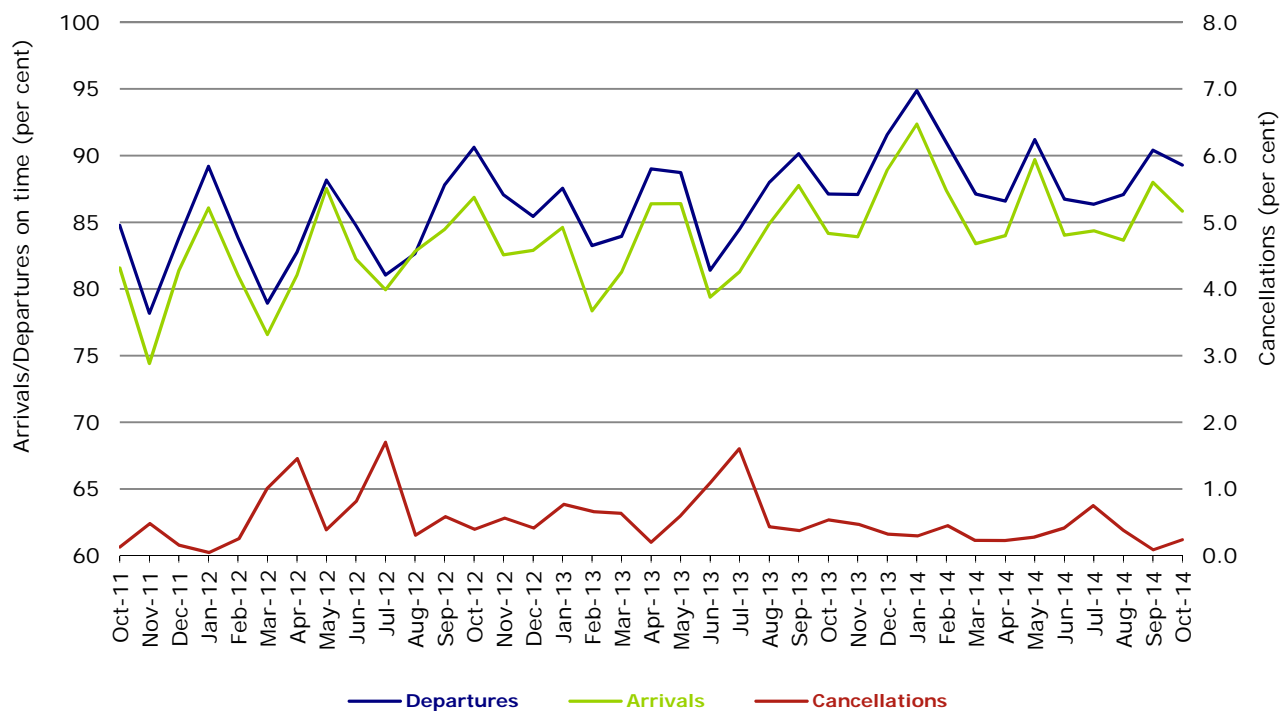
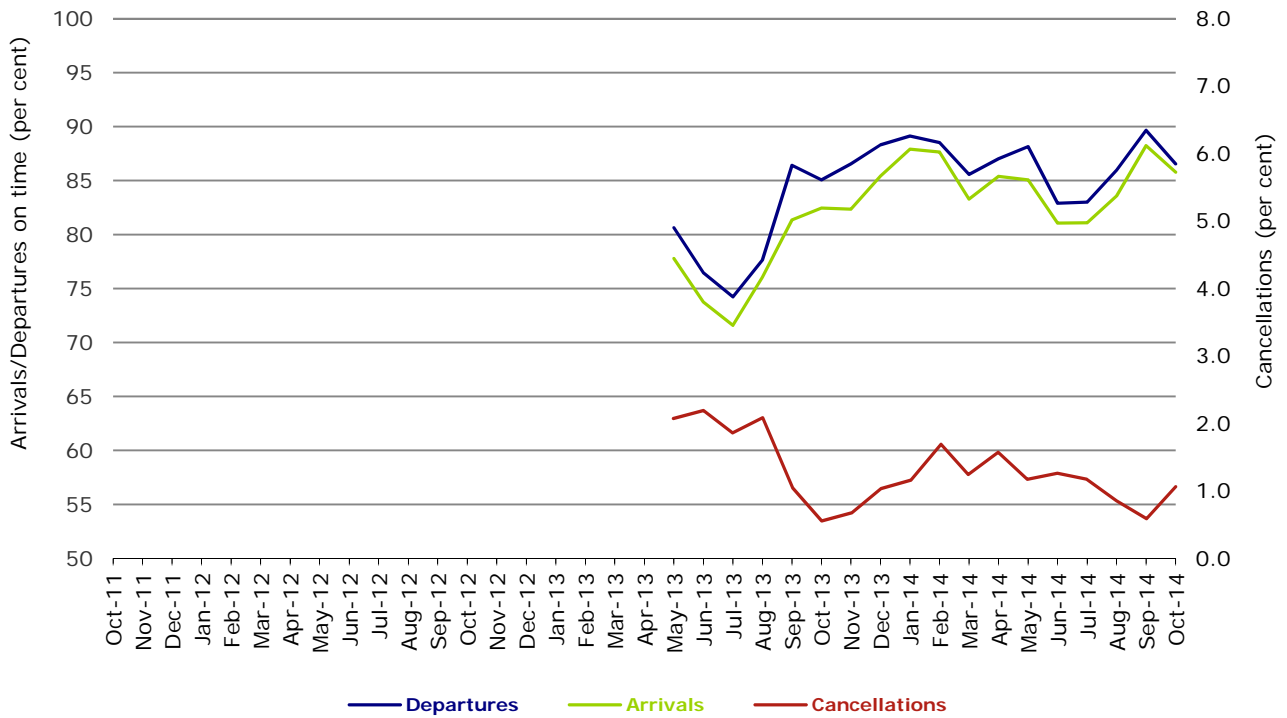


Figure 11 On time performance (by month from October 2011)
Virgin Australia Regional Airlines



Virgin Australia Regional Airlines commenced operations in May 2013. It was formed after the acquisition of Skywest by Virgin Australia and represents a combination of operations previously reported under Skywest and Virgin Australia – ATR/F100 Operations.

Individual routes

On time performance is reported for all routes where the passenger load averages over 8000 passengers per month over the previous six months, and where two or more airlines operate in competition on those routes. There are now 62 routes which meet this definition. Over time, however, routes which meet this definition may change as airline networks and traffic levels vary.

	<i>Sectors</i>		<i>Departures On Time</i>		<i>Arrivals On Time</i>		<i>Cancellations</i>	
	<i>Sched.</i>	<i>Flown</i>	<i>No.</i>	<i>%</i>	<i>No.</i>	<i>%</i>	<i>No.</i>	<i>%</i>
Adelaide-Brisbane								
Jetstar	31	31	28	90.3	29	93.5	0	0.0
Qantas	112	112	101	90.2	99	88.4	0	0.0
Tigerair	24	24	23	95.8	23	95.8	0	0.0
Virgin Australia	116	116	108	93.1	107	92.2	0	0.0
All Airlines	283	283	260	91.9	258	91.2	0	0.0
Adelaide-Canberra								
Qantas	50	50	46	92.0	49	98.0	0	0.0
QantasLink	16	16	14	87.5	15	93.8	0	0.0
Virgin Australia	27	27	26	96.3	26	96.3	0	0.0
All Airlines	93	93	86	92.5	90	96.8	0	0.0
Adelaide-Gold Coast								
Jetstar	39	38	37	97.4	36	94.7	1	2.6
Virgin Australia	30	30	29	96.7	30	100.0	0	0.0
All Airlines	69	68	66	97.1	66	97.1	1	1.4
Adelaide-Melbourne								
Jetstar	113	112	99	88.4	94	83.9	1	0.9
Qantas	298	297	260	87.5	274	92.3	1	0.3
Tigerair	78	78	65	83.3	63	80.8	0	0.0
Virgin Australia	281	279	243	87.1	240	86.0	2	0.7
All Airlines	770	766	667	87.1	671	87.6	4	0.5
Adelaide-Perth								
Jetstar	32	32	29	90.6	29	90.6	0	0.0
Qantas	116	116	103	88.8	113	97.4	0	0.0
Virgin Australia	66	65	60	92.3	59	90.8	1	1.5
All Airlines	214	213	192	90.1	201	94.4	1	0.5
Adelaide-Port Lincoln								
QantasLink	103	103	97	94.2	95	92.2	0	0.0
Regional Express	214	214	205	95.8	204	95.3	0	0.0
All Airlines	317	317	302	95.3	299	94.3	0	0.0
Adelaide-Sydney								
Jetstar	136	134	104	77.6	103	76.9	2	1.5
Qantas	254	254	224	88.2	231	90.9	0	0.0
QantasLink	23	23	13	56.5	17	73.9	0	0.0
Tigerair	28	28	25	89.3	25	89.3	0	0.0
Virgin Australia	174	173	161	93.1	158	91.3	1	0.6
All Airlines	615	612	527	86.1	534	87.3	3	0.5
Albury-Sydney								
QantasLink	97	96	86	89.6	82	85.4	1	1.0
Regional Express	113	113	107	94.7	102	90.3	0	0.0
Virgin Australia Regional Airlines	62	62	53	85.5	48	77.4	0	0.0
All Airlines	272	271	246	90.8	232	85.6	1	0.4
Armidale-Sydney								
QantasLink	139	139	117	84.2	122	87.8	0	0.0
Regional Express	80	80	72	90.0	54	67.5	0	0.0
All Airlines	219	219	189	86.3	176	80.4	0	0.0

	<i>Sectors</i>		<i>Departures On Time</i>		<i>Arrivals On Time</i>		<i>Cancellations</i>	
	<i>Sched.</i>	<i>Flown</i>	<i>No.</i>	<i>%</i>	<i>No.</i>	<i>%</i>	<i>No.</i>	<i>%</i>
Ayers Rock-Sydney								
Jetstar	31	31	26	83.9	23	74.2	0	0.0
Virgin Australia	31	31	30	96.8	30	96.8	0	0.0
All Airlines	62	62	56	90.3	53	85.5	0	0.0
Ballina-Sydney								
Jetstar	71	71	47	66.2	50	70.4	0	0.0
Regional Express	26	26	20	76.9	17	65.4	0	0.0
Virgin Australia	31	31	25	80.6	26	83.9	0	0.0
All Airlines	128	128	92	71.9	93	72.7	0	0.0
Brisbane-Adelaide								
Jetstar	31	31	29	93.5	30	96.8	0	0.0
Qantas	112	112	99	88.4	105	93.8	0	0.0
Tigerair	24	24	22	91.7	22	91.7	0	0.0
Virgin Australia	116	116	108	93.1	104	89.7	0	0.0
All Airlines	283	283	258	91.2	261	92.2	0	0.0
Brisbane-Bundaberg								
QantasLink	123	123	106	86.2	107	87.0	0	0.0
Virgin Australia Regional Airlines	39	39	36	92.3	39	100.0	0	0.0
All Airlines	162	162	142	87.7	146	90.1	0	0.0
Brisbane-Cairns								
Jetstar	112	110	94	85.5	95	86.4	2	1.8
Qantas	120	120	113	94.2	111	92.5	0	0.0
QantasLink	4	4	4	100.0	3	75.0	0	0.0
Tigerair	27	27	22	81.5	24	88.9	0	0.0
Virgin Australia	139	139	127	91.4	126	90.6	0	0.0
All Airlines	402	400	360	90.0	359	89.8	2	0.5
Brisbane-Canberra								
Qantas	46	46	40	87.0	42	91.3	0	0.0
QantasLink	122	121	112	92.6	111	91.7	1	0.8
Virgin Australia	94	94	84	89.4	84	89.4	0	0.0
All Airlines	262	261	236	90.4	237	90.8	1	0.4
Brisbane-Darwin								
Jetstar	26	25	21	84.0	22	88.0	1	3.8
Qantas	49	48	46	95.8	46	95.8	1	2.0
Tigerair	21	21	21	100.0	20	95.2	0	0.0
Virgin Australia	31	31	27	87.1	27	87.1	0	0.0
All Airlines	127	125	115	92.0	115	92.0	2	1.6
Brisbane-Emerald								
QantasLink	157	157	148	94.3	138	87.9	0	0.0
Virgin Australia Regional Airlines	85	85	78	91.8	73	85.9	0	0.0
All Airlines	242	242	226	93.4	211	87.2	0	0.0
Brisbane-Gladstone								
QantasLink	223	215	187	87.0	189	87.9	8	3.6
Virgin Australia	2	2	1	50.0	1	50.0	0	0.0
Virgin Australia Regional Airlines	156	156	132	84.6	132	84.6	0	0.0
All Airlines	381	373	320	85.8	322	86.3	8	2.1
Brisbane-Hamilton Island								
Jetstar	12	12	12	100.0	12	100.0	0	0.0
Virgin Australia	31	31	29	93.5	28	90.3	0	0.0
All Airlines	43	43	41	95.3	40	93.0	0	0.0
Brisbane-Hobart								
Jetstar	30	30	27	90.0	26	86.7	0	0.0
Virgin Australia	31	31	27	87.1	26	83.9	0	0.0
All Airlines	61	61	54	88.5	52	85.2	0	0.0

	<i>Sectors</i>		<i>Departures On Time</i>		<i>Arrivals On Time</i>		<i>Cancellations</i>	
	<i>Sched.</i>	<i>Flown</i>	<i>No.</i>	<i>%</i>	<i>No.</i>	<i>%</i>	<i>No.</i>	<i>%</i>
Brisbane-Mackay								
Jetstar	60	60	47	78.3	53	88.3	0	0.0
QantasLink	111	111	100	90.1	105	94.6	0	0.0
Virgin Australia	162	162	144	88.9	148	91.4	0	0.0
All Airlines	333	333	291	87.4	306	91.9	0	0.0
Brisbane-Melbourne								
Jetstar	127	125	96	76.8	103	82.4	2	1.6
Qantas	441	440	387	88.0	397	90.2	1	0.2
Tigerair	131	131	100	76.3	100	76.3	0	0.0
Virgin Australia	400	397	355	89.4	316	79.6	3	0.8
All Airlines	1 099	1 093	938	85.8	916	83.8	6	0.5
Brisbane-Moranbah								
QantasLink	136	131	125	95.4	126	96.2	5	3.7
Virgin Australia Regional Airlines	89	89	81	91.0	86	96.6	0	0.0
All Airlines	225	220	206	93.6	212	96.4	5	2.2
Brisbane-Mount Isa								
Qantas	58	58	54	93.1	54	93.1	0	0.0
Virgin Australia	23	23	22	95.7	22	95.7	0	0.0
All Airlines	81	81	76	93.8	76	93.8	0	0.0
Brisbane-Newcastle								
Jetstar	91	91	83	91.2	84	92.3	0	0.0
QantasLink	73	72	68	94.4	58	80.6	1	1.4
Virgin Australia	85	85	76	89.4	76	89.4	0	0.0
All Airlines	249	248	227	91.5	218	87.9	1	0.4
Brisbane-Perth								
Qantas	134	134	107	79.9	122	91.0	0	0.0
Virgin Australia	98	98	77	78.6	70	71.4	0	0.0
All Airlines	232	232	184	79.3	192	82.8	0	0.0
Brisbane-Proserpine								
Jetstar	31	31	30	96.8	29	93.5	0	0.0
Virgin Australia	54	54	48	88.9	48	88.9	0	0.0
All Airlines	85	85	78	91.8	77	90.6	0	0.0
Brisbane-Rockhampton								
QantasLink	227	224	190	84.8	195	87.1	3	1.3
Virgin Australia	107	106	97	91.5	94	88.7	1	0.9
Virgin Australia Regional Airlines	115	113	94	83.2	92	81.4	2	1.7
All Airlines	449	443	381	86.0	381	86.0	6	1.3
Brisbane-Sydney								
Jetstar	193	181	142	78.5	151	83.4	12	6.2
Qantas	613	601	549	91.3	541	90.0	12	2.0
Tigerair	83	82	64	78.0	63	76.8	1	1.2
Virgin Australia	540	532	483	90.8	467	87.8	8	1.5
All Airlines	1 429	1 396	1 238	88.7	1 222	87.5	33	2.3
Brisbane-Townsville								
Jetstar	56	56	51	91.1	50	89.3	0	0.0
Qantas	152	152	135	88.8	143	94.1	0	0.0
Virgin Australia	158	158	146	92.4	141	89.2	0	0.0
All Airlines	366	366	332	90.7	334	91.3	0	0.0
Broome-Perth								
Qantas	36	36	34	94.4	36	100.0	0	0.0
QantasLink	49	49	47	95.9	47	95.9	0	0.0
Virgin Australia	29	29	26	89.7	26	89.7	0	0.0
Virgin Australia Regional Airlines	22	22	16	72.7	15	68.2	0	0.0
All Airlines	136	136	123	90.4	124	91.2	0	0.0

	<i>Sectors</i>		<i>Departures On Time</i>		<i>Arrivals On Time</i>		<i>Cancellations</i>	
	<i>Sched.</i>	<i>Flown</i>	<i>No.</i>	<i>%</i>	<i>No.</i>	<i>%</i>	<i>No.</i>	<i>%</i>
Bundaberg-Brisbane								
QantasLink	123	123	110	89.4	104	84.6	0	0.0
Virgin Australia Regional Airlines	39	39	35	89.7	36	92.3	0	0.0
All Airlines	162	162	145	89.5	140	86.4	0	0.0
Cairns-Brisbane								
Jetstar	110	110	101	91.8	105	95.5	0	0.0
Qantas	120	119	105	88.2	103	86.6	1	0.8
QantasLink	4	4	4	100.0	4	100.0	0	0.0
Tigerair	27	27	19	70.4	17	63.0	0	0.0
Virgin Australia	139	139	127	91.4	128	92.1	0	0.0
All Airlines	400	399	356	89.2	357	89.5	1	0.3
Cairns-Melbourne								
Jetstar	116	114	86	75.4	85	74.6	2	1.7
Qantas	31	31	26	83.9	28	90.3	0	0.0
Tigerair	46	46	40	87.0	41	89.1	0	0.0
Virgin Australia	32	32	27	84.4	27	84.4	0	0.0
All Airlines	225	223	179	80.3	181	81.2	2	0.9
Cairns-Sydney								
Jetstar	112	111	99	89.2	96	86.5	1	0.9
Qantas	75	75	61	81.3	61	81.3	0	0.0
Tigerair	31	31	26	83.9	27	87.1	0	0.0
Virgin Australia	90	90	83	92.2	84	93.3	0	0.0
All Airlines	308	307	269	87.6	268	87.3	1	0.3
Canberra-Adelaide								
Qantas	50	50	48	96.0	48	96.0	0	0.0
QantasLink	16	16	15	93.8	15	93.8	0	0.0
Virgin Australia	27	27	25	92.6	24	88.9	0	0.0
All Airlines	93	93	88	94.6	87	93.5	0	0.0
Canberra-Brisbane								
Qantas	46	46	45	97.8	45	97.8	0	0.0
QantasLink	122	121	105	86.8	104	86.0	1	0.8
Virgin Australia	94	93	85	91.4	85	91.4	1	1.1
All Airlines	262	260	235	90.4	234	90.0	2	0.8
Canberra-Melbourne								
Qantas	203	203	190	93.6	187	92.1	0	0.0
QantasLink	89	87	75	86.2	74	85.1	2	2.2
Virgin Australia	182	180	160	88.9	157	87.2	2	1.1
All Airlines	474	470	425	90.4	418	88.9	4	0.8
Canberra-Sydney								
Qantas	22	22	18	81.8	17	77.3	0	0.0
QantasLink	541	519	466	89.8	467	90.0	22	4.1
Virgin Australia	54	53	49	92.5	49	92.5	1	1.9
Virgin Australia Regional Airlines	256	245	217	88.6	223	91.0	11	4.3
All Airlines	873	839	750	89.4	756	90.1	34	3.9
Coffs Harbour-Sydney								
QantasLink	159	158	134	84.8	133	84.2	1	0.6
Tigerair	13	13	10	76.9	10	76.9	0	0.0
Virgin Australia	62	61	57	93.4	57	93.4	1	1.6
All Airlines	234	232	201	86.6	200	86.2	2	0.9
Darwin-Brisbane								
Jetstar	26	25	20	80.0	22	88.0	1	3.8
Qantas	49	48	41	85.4	37	77.1	1	2.0
Tigerair	21	21	21	100.0	20	95.2	0	0.0
Virgin Australia	31	31	22	71.0	20	64.5	0	0.0
All Airlines	127	125	104	83.2	99	79.2	2	1.6

	<i>Sectors</i>		<i>Departures On Time</i>		<i>Arrivals On Time</i>		<i>Cancellations</i>	
	<i>Sched.</i>	<i>Flown</i>	<i>No.</i>	<i>%</i>	<i>No.</i>	<i>%</i>	<i>No.</i>	<i>%</i>
Darwin-Melbourne								
Jetstar	30	30	22	73.3	24	80.0	0	0.0
Qantas	31	31	26	83.9	23	74.2	0	0.0
Virgin Australia	31	30	26	86.7	24	80.0	1	3.2
All Airlines	92	91	74	81.3	71	78.0	1	1.1
Darwin-Perth								
Qantas	41	41	40	97.6	41	100.0	0	0.0
Virgin Australia	27	27	25	92.6	24	88.9	0	0.0
All Airlines	68	68	65	95.6	65	95.6	0	0.0
Darwin-Sydney								
Jetstar	30	28	21	75.0	23	82.1	2	6.7
Qantas	57	57	47	82.5	41	71.9	0	0.0
Virgin Australia	31	31	26	83.9	24	77.4	0	0.0
All Airlines	118	116	94	81.0	88	75.9	2	1.7
Dubbo-Sydney								
QantasLink	129	129	110	85.3	108	83.7	0	0.0
Regional Express	162	160	144	90.0	136	85.0	2	1.2
All Airlines	291	289	254	87.9	244	84.4	2	0.7
Emerald-Brisbane								
QantasLink	157	157	137	87.3	127	80.9	0	0.0
Virgin Australia Regional Airlines	85	85	75	88.2	74	87.1	0	0.0
All Airlines	242	242	212	87.6	201	83.1	0	0.0
Geraldton-Perth								
QantasLink	54	54	51	94.4	52	96.3	0	0.0
Virgin Australia Regional Airlines	98	97	88	90.7	84	86.6	1	1.0
All Airlines	152	151	139	92.1	136	90.1	1	0.7
Gladstone-Brisbane								
QantasLink	238	229	207	90.4	191	83.4	9	3.8
Virgin Australia	2	2	1	50.0	1	50.0	0	0.0
Virgin Australia Regional Airlines	156	156	125	80.1	118	75.6	0	0.0
All Airlines	396	387	333	86.0	310	80.1	9	2.3
Gold Coast-Adelaide								
Jetstar	39	39	36	92.3	39	100.0	0	0.0
Virgin Australia	31	31	30	96.8	28	90.3	0	0.0
All Airlines	70	70	66	94.3	67	95.7	0	0.0
Gold Coast-Melbourne								
Jetstar	244	243	216	88.9	215	88.5	1	0.4
Tigerair	75	75	45	60.0	50	66.7	0	0.0
Virgin Australia	182	182	160	87.9	159	87.4	0	0.0
All Airlines	501	500	421	84.2	424	84.8	1	0.2
Gold Coast-Sydney								
Jetstar	387	375	319	85.1	324	86.4	12	3.1
Qantas	93	93	76	81.7	78	83.9	0	0.0
Tigerair	95	95	77	81.1	75	78.9	0	0.0
Virgin Australia	253	252	216	85.7	218	86.5	1	0.4
All Airlines	828	815	688	84.4	695	85.3	13	1.6
Hamilton Island-Brisbane								
Jetstar	12	12	11	91.7	11	91.7	0	0.0
Virgin Australia	31	31	28	90.3	29	93.5	0	0.0
All Airlines	43	43	39	90.7	40	93.0	0	0.0

	<i>Sectors</i>		<i>Departures On Time</i>		<i>Arrivals On Time</i>		<i>Cancellations</i>	
	<i>Sched.</i>	<i>Flown</i>	<i>No.</i>	<i>%</i>	<i>No.</i>	<i>%</i>	<i>No.</i>	<i>%</i>
Hamilton Island-Melbourne								
Jetstar	22	22	12	54.5	14	63.6	0	0.0
Virgin Australia	17	17	17	100.0	14	82.4	0	0.0
All Airlines	39	39	29	74.4	28	71.8	0	0.0
Hamilton Island-Sydney								
Jetstar	31	31	22	71.0	23	74.2	0	0.0
Qantas	13	13	9	69.2	10	76.9	0	0.0
Virgin Australia	31	31	27	87.1	29	93.5	0	0.0
All Airlines	75	75	58	77.3	62	82.7	0	0.0
Hobart-Brisbane								
Jetstar	31	31	22	71.0	24	77.4	0	0.0
Virgin Australia	31	31	21	67.7	24	77.4	0	0.0
All Airlines	62	62	43	69.4	48	77.4	0	0.0
Hobart-Melbourne								
Jetstar	180	178	148	83.1	146	82.0	2	1.1
QantasLink	123	123	76	61.8	70	56.9	0	0.0
Tigerair	31	31	18	58.1	16	51.6	0	0.0
Virgin Australia	146	146	124	84.9	121	82.9	0	0.0
All Airlines	480	478	366	76.6	353	73.8	2	0.4
Hobart-Sydney								
Jetstar	78	77	63	81.8	58	75.3	1	1.3
QantasLink	31	31	26	83.9	23	74.2	0	0.0
Virgin Australia	62	62	46	74.2	52	83.9	0	0.0
All Airlines	171	170	135	79.4	133	78.2	1	0.6
Kalgoorlie-Perth								
Qantas	22	22	22	100.0	22	100.0	0	0.0
QantasLink	63	63	60	95.2	57	90.5	0	0.0
Virgin Australia	41	41	38	92.7	38	92.7	0	0.0
Virgin Australia Regional Airlines	17	17	12	70.6	12	70.6	0	0.0
All Airlines	143	143	132	92.3	129	90.2	0	0.0
Karratha-Perth								
Qantas	125	124	116	93.5	117	94.4	1	0.8
QantasLink	93	91	83	91.2	85	93.4	2	2.2
Virgin Australia	72	72	70	97.2	68	94.4	0	0.0
Virgin Australia Regional Airlines	19	19	15	78.9	17	89.5	0	0.0
All Airlines	309	306	284	92.8	287	93.8	3	1.0
Launceston-Melbourne								
Jetstar	112	111	82	73.9	82	73.9	1	0.9
QantasLink	124	123	103	83.7	96	78.0	1	0.8
Virgin Australia	120	120	111	92.5	107	89.2	0	0.0
All Airlines	356	354	296	83.6	285	80.5	2	0.6
Launceston-Sydney								
Jetstar	56	56	35	62.5	41	73.2	0	0.0
Virgin Australia	31	31	21	67.7	23	74.2	0	0.0
All Airlines	87	87	56	64.4	64	73.6	0	0.0
Mackay-Brisbane								
Jetstar	61	61	52	85.2	53	86.9	0	0.0
QantasLink	112	109	101	92.7	102	93.6	3	2.7
Virgin Australia	162	162	145	89.5	142	87.7	0	0.0
All Airlines	335	332	298	89.8	297	89.5	3	0.9

	<i>Sectors</i>		<i>Departures On Time</i>		<i>Arrivals On Time</i>		<i>Cancellations</i>	
	<i>Sched.</i>	<i>Flown</i>	<i>No.</i>	<i>%</i>	<i>No.</i>	<i>%</i>	<i>No.</i>	<i>%</i>
Melbourne-Adelaide								
Jetstar	113	112	95	84.8	93	83.0	1	0.9
Qantas	298	298	271	90.9	270	90.6	0	0.0
Tigerair	79	79	69	87.3	67	84.8	0	0.0
Virgin Australia	280	279	249	89.2	241	86.4	1	0.4
All Airlines	770	768	684	89.1	671	87.4	2	0.3
Melbourne-Brisbane								
Jetstar	126	123	87	70.7	97	78.9	3	2.4
Qantas	440	439	382	87.0	379	86.3	1	0.2
Tigerair	131	131	103	78.6	96	73.3	0	0.0
Virgin Australia	399	396	355	89.6	349	88.1	3	0.8
All Airlines	1 096	1 089	927	85.1	921	84.6	7	0.6
Melbourne-Cairns								
Jetstar	113	111	94	84.7	99	89.2	2	1.8
Qantas	31	31	26	83.9	27	87.1	0	0.0
Tigerair	46	46	42	91.3	43	93.5	0	0.0
Virgin Australia	32	32	29	90.6	28	87.5	0	0.0
All Airlines	222	220	191	86.8	197	89.5	2	0.9
Melbourne-Canberra								
Qantas	203	203	184	90.6	187	92.1	0	0.0
QantasLink	89	86	75	87.2	70	81.4	3	3.4
Virgin Australia	182	180	164	91.1	161	89.4	2	1.1
All Airlines	474	469	423	90.2	418	89.1	5	1.1
Melbourne-Darwin								
Jetstar	30	30	22	73.3	25	83.3	0	0.0
Qantas	31	31	29	93.5	27	87.1	0	0.0
Virgin Australia	31	30	28	93.3	27	90.0	1	3.2
All Airlines	92	91	79	86.8	79	86.8	1	1.1
Melbourne-Gold Coast								
Jetstar	244	243	211	86.8	216	88.9	1	0.4
Tigerair	75	75	60	80.0	52	69.3	0	0.0
Virgin Australia	182	182	155	85.2	161	88.5	0	0.0
All Airlines	501	500	426	85.2	429	85.8	1	0.2
Melbourne-Hamilton Island								
Jetstar	23	23	17	73.9	20	87.0	0	0.0
Virgin Australia	17	17	17	100.0	16	94.1	0	0.0
All Airlines	40	40	34	85.0	36	90.0	0	0.0
Melbourne-Hobart								
Jetstar	179	177	149	84.2	154	87.0	2	1.1
QantasLink	123	123	58	47.2	56	45.5	0	0.0
Tigerair	31	31	21	67.7	20	64.5	0	0.0
Virgin Australia	146	146	125	85.6	119	81.5	0	0.0
All Airlines	479	477	353	74.0	349	73.2	2	0.4
Melbourne-Launceston								
Jetstar	112	111	92	82.9	93	83.8	1	0.9
QantasLink	124	124	106	85.5	95	76.6	0	0.0
Virgin Australia	120	120	107	89.2	105	87.5	0	0.0
All Airlines	356	355	305	85.9	293	82.5	1	0.3
Melbourne-Mildura								
QantasLink	89	89	78	87.6	75	84.3	0	0.0
Regional Express	88	88	77	87.5	77	87.5	0	0.0
Virgin Australia	31	31	23	74.2	24	77.4	0	0.0
All Airlines	208	208	178	85.6	176	84.6	0	0.0

	<i>Sectors</i>		<i>Departures On Time</i>		<i>Arrivals On Time</i>		<i>Cancellations</i>	
	<i>Sched.</i>	<i>Flown</i>	<i>No.</i>	<i>%</i>	<i>No.</i>	<i>%</i>	<i>No.</i>	<i>%</i>
Melbourne-Newcastle								
Jetstar	108	108	89	82.4	93	86.1	0	0.0
Virgin Australia	31	31	26	83.9	27	87.1	0	0.0
All Airlines	139	139	115	82.7	120	86.3	0	0.0
Melbourne-Perth								
Jetstar	86	81	67	82.7	68	84.0	5	5.8
Qantas	228	228	192	84.2	201	88.2	0	0.0
Tigerair	62	62	49	79.0	46	74.2	0	0.0
Virgin Australia	143	143	120	83.9	115	80.4	0	0.0
All Airlines	519	514	428	83.3	430	83.7	5	1.0
Melbourne-Sunshine Coast								
Jetstar	87	87	74	85.1	72	82.8	0	0.0
Virgin Australia	32	32	26	81.3	29	90.6	0	0.0
All Airlines	119	119	100	84.0	101	84.9	0	0.0
Melbourne-Sydney								
Jetstar	335	326	239	73.3	238	73.0	9	2.7
Qantas	962	935	811	86.7	792	84.7	27	2.8
Tigerair	228	225	178	79.1	172	76.4	3	1.3
Virgin Australia	805	774	696	89.9	676	87.3	31	3.9
All Airlines	2 330	2 260	1 924	85.1	1 878	83.1	70	3.0
Mildura-Melbourne								
QantasLink	89	89	82	92.1	80	89.9	0	0.0
Regional Express	89	89	80	89.9	75	84.3	0	0.0
Virgin Australia	31	31	24	77.4	24	77.4	0	0.0
All Airlines	209	209	186	89.0	179	85.6	0	0.0
Moranbah-Brisbane								
QantasLink	130	127	111	87.4	110	86.6	3	2.3
Virgin Australia Regional Airlines	89	88	79	89.8	76	86.4	1	1.1
All Airlines	219	215	190	88.4	186	86.5	4	1.8
Mount Isa-Brisbane								
Qantas	58	57	55	96.5	53	93.0	1	1.7
Virgin Australia	23	23	22	95.7	22	95.7	0	0.0
All Airlines	81	80	77	96.3	75	93.8	1	1.2
Newcastle-Brisbane								
Jetstar	91	91	71	78.0	71	78.0	0	0.0
QantasLink	73	72	54	75.0	58	80.6	1	1.4
Virgin Australia	85	85	76	89.4	72	84.7	0	0.0
All Airlines	249	248	201	81.0	201	81.0	1	0.4
Newcastle-Melbourne								
Jetstar	108	105	100	95.2	96	91.4	3	2.8
Virgin Australia	31	31	23	74.2	25	80.6	0	0.0
All Airlines	139	136	123	90.4	121	89.0	3	2.2
Newman-Perth								
Qantas	122	116	111	95.7	115	99.1	6	4.9
QantasLink	39	38	37	97.4	38	100.0	1	2.6
Virgin Australia	33	33	31	93.9	31	93.9	0	0.0
Virgin Australia Regional Airlines	4	4	3	75.0	4	100.0	0	0.0
All Airlines	198	191	182	95.3	188	98.4	7	3.5
Perth-Adelaide								
Jetstar	32	32	26	81.3	25	78.1	0	0.0
Qantas	122	122	112	91.8	116	95.1	0	0.0
Virgin Australia	67	66	59	89.4	62	93.9	1	1.5
All Airlines	221	220	197	89.5	203	92.3	1	0.5

	<i>Sectors</i>		<i>Departures On Time</i>		<i>Arrivals On Time</i>		<i>Cancellations</i>	
	<i>Sched.</i>	<i>Flown</i>	<i>No.</i>	<i>%</i>	<i>No.</i>	<i>%</i>	<i>No.</i>	<i>%</i>
Perth-Brisbane								
Qantas	134	134	119	88.8	100	74.6	0	0.0
Virgin Australia	99	99	83	83.8	85	85.9	0	0.0
All Airlines	233	233	202	86.7	185	79.4	0	0.0
Perth-Broome								
Qantas	36	36	35	97.2	33	91.7	0	0.0
QantasLink	49	49	47	95.9	48	98.0	0	0.0
Virgin Australia	29	29	27	93.1	28	96.6	0	0.0
Virgin Australia Regional Airlines	18	18	18	100.0	18	100.0	0	0.0
All Airlines	132	132	127	96.2	127	96.2	0	0.0
Perth-Darwin								
Qantas	40	40	40	100.0	39	97.5	0	0.0
Virgin Australia	27	27	24	88.9	24	88.9	0	0.0
All Airlines	67	67	64	95.5	63	94.0	0	0.0
Perth-Geraldton								
QantasLink	54	54	48	88.9	49	90.7	0	0.0
Virgin Australia Regional Airlines	94	94	82	87.2	83	88.3	0	0.0
All Airlines	148	148	130	87.8	132	89.2	0	0.0
Perth-Kalgoorlie								
Qantas	22	22	22	100.0	22	100.0	0	0.0
QantasLink	63	63	59	93.7	59	93.7	0	0.0
Virgin Australia	42	42	40	95.2	40	95.2	0	0.0
Virgin Australia Regional Airlines	17	17	11	64.7	12	70.6	0	0.0
All Airlines	144	144	132	91.7	133	92.4	0	0.0
Perth-Karratha								
Qantas	125	125	124	99.2	122	97.6	0	0.0
QantasLink	92	91	79	86.8	82	90.1	1	1.1
Virgin Australia	72	72	69	95.8	70	97.2	0	0.0
Virgin Australia Regional Airlines	19	19	16	84.2	16	84.2	0	0.0
All Airlines	308	307	288	93.8	290	94.5	1	0.3
Perth-Melbourne								
Jetstar	86	80	59	73.8	61	76.3	6	7.0
Qantas	229	229	206	90.0	209	91.3	0	0.0
Tigerair	63	63	47	74.6	47	74.6	0	0.0
Virgin Australia	143	141	118	83.7	121	85.8	2	1.4
All Airlines	521	513	430	83.8	438	85.4	8	1.5
Perth-Newman								
Qantas	122	116	112	96.6	112	96.6	6	4.9
QantasLink	39	38	37	97.4	37	97.4	1	2.6
Virgin Australia	33	33	30	90.9	30	90.9	0	0.0
Virgin Australia Regional Airlines	4	4	4	100.0	4	100.0	0	0.0
All Airlines	198	191	183	95.8	183	95.8	7	3.5
Perth-Port Hedland								
Qantas	120	116	114	98.3	114	98.3	4	3.3
QantasLink	47	47	44	93.6	44	93.6	0	0.0
Virgin Australia	46	45	42	93.3	41	91.1	1	2.2
All Airlines	213	208	200	96.2	199	95.7	5	2.3
Perth-Sydney								
Jetstar	31	30	24	80.0	23	76.7	1	3.2
Qantas	210	210	180	85.7	183	87.1	0	0.0
Tigerair	25	25	23	92.0	23	92.0	0	0.0
Virgin Australia	119	118	100	84.7	111	94.1	1	0.8
All Airlines	385	383	327	85.4	340	88.8	2	0.5

	<i>Sectors</i>		<i>Departures On Time</i>		<i>Arrivals On Time</i>		<i>Cancellations</i>	
	<i>Sched.</i>	<i>Flown</i>	<i>No.</i>	<i>%</i>	<i>No.</i>	<i>%</i>	<i>No.</i>	<i>%</i>
Port Hedland-Perth								
Qantas	120	116	104	89.7	113	97.4	4	3.3
QantasLink	47	47	43	91.5	44	93.6	0	0.0
Virgin Australia	46	45	36	80.0	37	82.2	1	2.2
All Airlines	213	208	183	88.0	194	93.3	5	2.3
Port Lincoln-Adelaide								
QantasLink	103	103	95	92.2	95	92.2	0	0.0
Regional Express	214	214	204	95.3	204	95.3	0	0.0
All Airlines	317	317	299	94.3	299	94.3	0	0.0
Port Macquarie-Sydney								
QantasLink	140	139	102	73.4	87	62.6	1	0.7
Virgin Australia Regional Airlines	62	62	51	82.3	46	74.2	0	0.0
All Airlines	202	201	153	76.1	133	66.2	1	0.5
Proserpine-Brisbane								
Jetstar	31	31	29	93.5	29	93.5	0	0.0
Virgin Australia	54	54	47	87.0	46	85.2	0	0.0
All Airlines	85	85	76	89.4	75	88.2	0	0.0
Rockhampton-Brisbane								
QantasLink	202	202	166	82.2	157	77.7	0	0.0
Virgin Australia	107	106	98	92.5	94	88.7	1	0.9
Virgin Australia Regional Airlines	112	110	100	90.9	101	91.8	2	1.8
All Airlines	421	418	364	87.1	352	84.2	3	0.7
Sunshine Coast-Melbourne								
Jetstar	86	84	63	75.0	69	82.1	2	2.3
Virgin Australia	32	32	27	84.4	27	84.4	0	0.0
All Airlines	118	116	90	77.6	96	82.8	2	1.7
Sunshine Coast-Sydney								
Jetstar	111	111	92	82.9	94	84.7	0	0.0
Virgin Australia	31	31	28	90.3	25	80.6	0	0.0
All Airlines	142	142	120	84.5	119	83.8	0	0.0
Sydney-Adelaide								
Jetstar	135	135	104	77.0	108	80.0	0	0.0
Qantas	249	249	227	91.2	226	90.8	0	0.0
QantasLink	23	23	20	87.0	19	82.6	0	0.0
Tigerair	28	28	25	89.3	26	92.9	0	0.0
Virgin Australia	174	173	164	94.8	161	93.1	1	0.6
All Airlines	609	608	540	88.8	540	88.8	1	0.2
Sydney-Albury								
QantasLink	97	96	81	84.4	78	81.3	1	1.0
Regional Express	114	114	100	87.7	98	86.0	0	0.0
Virgin Australia Regional Airlines	62	62	54	87.1	51	82.3	0	0.0
All Airlines	273	272	235	86.4	227	83.5	1	0.4
Sydney-Armidale								
QantasLink	139	139	122	87.8	118	84.9	0	0.0
Regional Express	80	80	68	85.0	69	86.3	0	0.0
All Airlines	219	219	190	86.8	187	85.4	0	0.0
Sydney-Ayers Rock								
Jetstar	32	32	27	84.4	28	87.5	0	0.0
Virgin Australia	31	31	27	87.1	28	90.3	0	0.0
All Airlines	63	63	54	85.7	56	88.9	0	0.0

	<i>Sectors</i>		<i>Departures On Time</i>		<i>Arrivals On Time</i>		<i>Cancellations</i>	
	<i>Sched.</i>	<i>Flown</i>	<i>No.</i>	<i>%</i>	<i>No.</i>	<i>%</i>	<i>No.</i>	<i>%</i>
Sydney-Ballina								
Jetstar	72	72	51	70.8	53	73.6	0	0.0
Regional Express	30	30	28	93.3	27	90.0	0	0.0
Virgin Australia	31	31	26	83.9	26	83.9	0	0.0
All Airlines	133	133	105	78.9	106	79.7	0	0.0
Sydney-Brisbane								
Jetstar	193	179	138	77.1	142	79.3	14	7.3
Qantas	613	604	525	86.9	492	81.5	9	1.5
Tigerair	83	82	70	85.4	63	76.8	1	1.2
Virgin Australia	543	533	475	89.1	459	86.1	10	1.8
All Airlines	1 432	1 398	1 208	86.4	1 156	82.7	34	2.4
Sydney-Cairns								
Jetstar	113	111	99	89.2	103	92.8	2	1.8
Qantas	75	75	62	82.7	67	89.3	0	0.0
Tigerair	31	31	28	90.3	28	90.3	0	0.0
Virgin Australia	90	90	81	90.0	81	90.0	0	0.0
All Airlines	309	307	270	87.9	279	90.9	2	0.6
Sydney-Canberra								
Qantas	21	21	20	95.2	16	76.2	0	0.0
QantasLink	540	524	460	87.8	450	85.9	16	3.0
Virgin Australia	53	53	49	92.5	50	94.3	0	0.0
Virgin Australia Regional Airlines	256	245	218	89.0	216	88.2	11	4.3
All Airlines	870	843	747	88.6	732	86.8	27	3.1
Sydney-Coffs Harbour								
QantasLink	159	159	138	86.8	142	89.3	0	0.0
Tigerair	13	13	10	76.9	10	76.9	0	0.0
Virgin Australia	62	61	58	95.1	59	96.7	1	1.6
All Airlines	234	233	206	88.4	211	90.6	1	0.4
Sydney-Darwin								
Jetstar	31	29	24	82.8	26	89.7	2	6.5
Qantas	57	57	42	73.7	50	87.7	0	0.0
Virgin Australia	31	31	29	93.5	28	90.3	0	0.0
All Airlines	119	117	95	81.2	104	88.9	2	1.7
Sydney-Dubbo								
QantasLink	129	129	109	84.5	109	84.5	0	0.0
Regional Express	156	156	139	89.1	137	87.8	0	0.0
All Airlines	285	285	248	87.0	246	86.3	0	0.0
Sydney-Gold Coast								
Jetstar	387	375	312	83.2	316	84.3	12	3.1
Qantas	93	93	86	92.5	86	92.5	0	0.0
Tigerair	95	95	84	88.4	79	83.2	0	0.0
Virgin Australia	252	251	221	88.0	221	88.0	1	0.4
All Airlines	827	814	703	86.4	702	86.2	13	1.6
Sydney-Hamilton Island								
Jetstar	31	31	21	67.7	23	74.2	0	0.0
Qantas	13	13	10	76.9	13	100.0	0	0.0
Virgin Australia	31	31	28	90.3	28	90.3	0	0.0
All Airlines	75	75	59	78.7	64	85.3	0	0.0
Sydney-Hobart								
Jetstar	77	77	63	81.8	69	89.6	0	0.0
QantasLink	31	31	28	90.3	28	90.3	0	0.0
Virgin Australia	62	62	53	85.5	52	83.9	0	0.0
All Airlines	170	170	144	84.7	149	87.6	0	0.0

	<i>Sectors</i>		<i>Departures On Time</i>		<i>Arrivals On Time</i>		<i>Cancellations</i>	
	<i>Sched.</i>	<i>Flown</i>	<i>No.</i>	<i>%</i>	<i>No.</i>	<i>%</i>	<i>No.</i>	<i>%</i>
Sydney-Launceston								
Jetstar	56	56	40	71.4	43	76.8	0	0.0
Virgin Australia	31	31	29	93.5	28	90.3	0	0.0
All Airlines	87	87	69	79.3	71	81.6	0	0.0
Sydney-Melbourne								
Jetstar	334	325	253	77.8	241	74.2	9	2.7
Qantas	963	934	810	86.7	771	82.5	29	3.0
Tigerair	229	226	162	71.7	158	69.9	3	1.3
Virgin Australia	807	777	689	88.7	664	85.5	30	3.7
All Airlines	2 333	2 262	1 914	84.6	1 834	81.1	71	3.0
Sydney-Perth								
Jetstar	31	30	24	80.0	26	86.7	1	3.2
Qantas	213	213	165	77.5	190	89.2	0	0.0
Tigerair	27	27	25	92.6	22	81.5	0	0.0
Virgin Australia	119	117	96	82.1	96	82.1	2	1.7
All Airlines	390	387	310	80.1	334	86.3	3	0.8
Sydney-Port Macquarie								
QantasLink	139	139	122	87.8	108	77.7	0	0.0
Virgin Australia Regional Airlines	62	62	53	85.5	52	83.9	0	0.0
All Airlines	201	201	175	87.1	160	79.6	0	0.0
Sydney-Sunshine Coast								
Jetstar	111	111	96	86.5	99	89.2	0	0.0
Virgin Australia	31	31	28	90.3	27	87.1	0	0.0
All Airlines	142	142	124	87.3	126	88.7	0	0.0
Sydney-Townsville								
Jetstar	25	25	24	96.0	24	96.0	0	0.0
Virgin Australia	31	31	26	83.9	28	90.3	0	0.0
All Airlines	56	56	50	89.3	52	92.9	0	0.0
Sydney-Wagga Wagga								
QantasLink	116	116	97	83.6	96	82.8	0	0.0
Regional Express	138	138	126	91.3	124	89.9	0	0.0
All Airlines	254	254	223	87.8	220	86.6	0	0.0
Townsville-Brisbane								
Jetstar	56	56	49	87.5	45	80.4	0	0.0
Qantas	152	152	145	95.4	138	90.8	0	0.0
Virgin Australia	158	158	139	88.0	142	89.9	0	0.0
All Airlines	366	366	333	91.0	325	88.8	0	0.0
Townsville-Sydney								
Jetstar	25	25	24	96.0	24	96.0	0	0.0
Virgin Australia	31	31	28	90.3	27	87.1	0	0.0
All Airlines	56	56	52	92.9	51	91.1	0	0.0
Wagga Wagga-Sydney								
QantasLink	116	116	98	84.5	103	88.8	0	0.0
Regional Express	139	138	127	92.0	121	87.7	1	0.7
All Airlines	255	254	225	88.6	224	88.2	1	0.4

Airports

On time performance is reported for all routes where the passenger load averages over 8000 passengers per month, and where two or more airlines operate in competition. The following data reports by airport against flights operated on those routes only.

Airport	Departures			Arrivals		
	Sectors Flown	On Time		Sectors Flown	On Time	
		No.	%		No.	%
Adelaide						
Jetstar	347	297	85.6	349	295	84.5
Qantas	829	734	88.5	831	765	92.1
QantasLink	142	124	87.3	142	129	90.8
Regional Express	214	205	95.8	214	204	95.3
Tigerair	130	113	86.9	131	115	87.8
Virgin Australia	690	627	90.9	692	620	89.6
All Airlines	2 352	2 100	89.3	2 359	2 128	90.2
Relates to services to and from Brisbane, Canberra, Gold Coast, Melbourne, Perth, Port Lincoln and Sydney.						
Albury						
QantasLink	96	86	89.6	96	78	81.3
Regional Express	113	107	94.7	114	98	86.0
Virgin Australia Regional Airlines	62	53	85.5	62	51	82.3
All Airlines	271	246	90.8	272	227	83.5
Relates to services to and from Sydney only.						
Armidale						
QantasLink	139	117	84.2	139	118	84.9
Regional Express	80	72	90.0	80	69	86.3
All Airlines	219	189	86.3	219	187	85.4
Relates to services to and from Sydney only.						
Ayers Rock						
Jetstar	31	26	83.9	32	28	87.5
Virgin Australia	31	30	96.8	31	28	90.3
All Airlines	62	56	90.3	63	56	88.9
Relates to services to and from Sydney only.						
Ballina						
Jetstar	71	47	66.2	72	53	73.6
Regional Express	26	20	76.9	30	27	90.0
Virgin Australia	31	25	80.6	31	26	83.9
All Airlines	128	92	71.9	133	106	79.7
Relates to services to and from Sydney only.						
Brisbane						
Jetstar	752	632	84.0	750	628	83.7
Qantas	1 711	1 530	89.4	1 711	1 446	84.5
QantasLink	1 158	1 040	89.8	1 144	957	83.7
Tigerair	285	229	80.4	285	219	76.8
Virgin Australia	2 059	1 851	89.9	2 059	1 805	87.7
Virgin Australia Regional Airlines	482	421	87.3	478	405	84.7
All Airlines	6 447	5 703	88.5	6 427	5 460	85.0
Relates to services to and from Adelaide, Bundaberg, Cairns, Canberra, Darwin, Emerald, Gladstone, Hamilton Island, Hobart, Mackay, Melbourne, Moranbah, Mount Isa, Newcastle, Perth, Proserpine, Rockhampton, Sydney and Townsville.						

Airport	Departures			Arrivals		
	Sectors Flown	On Time		Sectors Flown	On Time	
		No.	%		No.	%
Broome						
Qantas	36	34	94.4	36	33	91.7
QantasLink	49	47	95.9	49	48	98.0
Virgin Australia	29	26	89.7	29	28	96.6
Virgin Australia Regional Airlines	22	16	72.7	18	18	100.0
All Airlines	136	123	90.4	132	127	96.2
Relates to services to and from Perth only.						
Bundaberg						
QantasLink	123	110	89.4	123	107	87.0
Virgin Australia Regional Airlines	39	35	89.7	39	39	100.0
All Airlines	162	145	89.5	162	146	90.1
Relates to services to and from Brisbane only.						
Cairns						
Jetstar	335	286	85.4	332	297	89.5
Qantas	225	192	85.3	226	205	90.7
QantasLink	4	4	100.0	4	3	75.0
Tigerair	104	85	81.7	104	95	91.3
Virgin Australia	261	237	90.8	261	235	90.0
All Airlines	929	804	86.5	927	835	90.1
Relates to services to and from Brisbane, Melbourne and Sydney.						
Canberra						
Qantas	321	301	93.8	320	294	91.9
QantasLink	743	661	89.0	747	646	86.5
Virgin Australia	353	319	90.4	354	321	90.7
Virgin Australia Regional Airlines	245	217	88.6	245	216	88.2
All Airlines	1 662	1 498	90.1	1 666	1 477	88.7
Relates to services to and from Adelaide, Brisbane, Melbourne and Sydney.						
Coffs Harbour						
QantasLink	158	134	84.8	159	142	89.3
Tigerair	13	10	76.9	13	10	76.9
Virgin Australia	61	57	93.4	61	59	96.7
All Airlines	232	201	86.6	233	211	90.6
Relates to services to and from Sydney only.						
Darwin						
Jetstar	83	63	75.9	84	73	86.9
Qantas	177	154	87.0	176	162	92.0
Tigerair	21	21	100.0	21	20	95.2
Virgin Australia	119	99	83.2	119	106	89.1
All Airlines	400	337	84.3	400	361	90.3
Relates to services to and from Brisbane, Melbourne, Perth and Sydney.						
Dubbo						
QantasLink	129	110	85.3	129	109	84.5
Regional Express	160	144	90.0	156	137	87.8
All Airlines	289	254	87.9	285	246	86.3
Relates to services to and from Sydney only.						

Airport	Departures			Arrivals		
	Sectors Flown	On Time		Sectors Flown	On Time	
		No.	%		No.	%
Emerald						
QantasLink	157	137	87.3	157	138	87.9
Virgin Australia Regional Airlines	85	75	88.2	85	73	85.9
All Airlines	242	212	87.6	242	211	87.2
Relates to services to and from Brisbane only.						
Geraldton						
QantasLink	54	51	94.4	54	49	90.7
Virgin Australia Regional Airlines	97	88	90.7	94	83	88.3
All Airlines	151	139	92.1	148	132	89.2
Relates to services to and from Perth only.						
Gladstone						
QantasLink	229	207	90.4	215	189	87.9
Virgin Australia	2	1	50.0	2	1	50.0
Virgin Australia Regional Airlines	156	125	80.1	156	132	84.6
All Airlines	387	333	86.0	373	322	86.3
Relates to services to and from Brisbane only.						
Gold Coast						
Jetstar	657	571	86.9	656	568	86.6
Qantas	93	76	81.7	93	86	92.5
Tigerair	170	122	71.8	170	131	77.1
Virgin Australia	465	406	87.3	463	412	89.0
All Airlines	1 385	1 175	84.8	1 382	1 197	86.6
Relates to services to and from Adelaide, Melbourne and Sydney.						
Hamilton Island						
Jetstar	65	45	69.2	66	55	83.3
Qantas	13	9	69.2	13	13	100.0
Virgin Australia	79	72	91.1	79	72	91.1
All Airlines	157	126	80.3	158	140	88.6
Relates to services to and from Brisbane, Melbourne and Sydney.						
Hobart						
Jetstar	286	233	81.5	284	249	87.7
QantasLink	154	102	66.2	154	84	54.5
Tigerair	31	18	58.1	31	20	64.5
Virgin Australia	239	191	79.9	239	197	82.4
All Airlines	710	544	76.6	708	550	77.7
Relates to services to and from Brisbane, Melbourne and Sydney.						
Kalgoorlie						
Qantas	22	22	100.0	22	22	100.0
QantasLink	63	60	95.2	63	59	93.7
Virgin Australia	41	38	92.7	42	40	95.2
Virgin Australia Regional Airlines	17	12	70.6	17	12	70.6
All Airlines	143	132	92.3	144	133	92.4
Relates to services to and from Perth only.						
Karratha						
Qantas	124	116	93.5	125	122	97.6
QantasLink	91	83	91.2	91	82	90.1
Virgin Australia	72	70	97.2	72	70	97.2
Virgin Australia Regional Airlines	19	15	78.9	19	16	84.2
All Airlines	306	284	92.8	307	290	94.5
Relates to services to and from Perth only.						

Airport	Departures			Arrivals		
	Sectors Flown	On Time		Sectors Flown	On Time	
		No.	%		No.	%
Launceston						
Jetstar	167	117	70.1	167	136	81.4
QantasLink	123	103	83.7	124	95	76.6
Virgin Australia	151	132	87.4	151	133	88.1
All Airlines	441	352	79.8	442	364	82.4
Relates to services to and from Melbourne and Sydney.						
Mackay						
Jetstar	61	52	85.2	60	53	88.3
QantasLink	109	101	92.7	111	105	94.6
Virgin Australia	162	145	89.5	162	148	91.4
All Airlines	332	298	89.8	333	306	91.9
Relates to services to and from Brisbane only.						
Melbourne						
Jetstar	1 532	1 236	80.7	1 529	1 230	80.4
Qantas	2 165	1 895	87.5	2 165	1 889	87.3
QantasLink	422	317	75.1	422	320	75.8
Regional Express	88	77	87.5	89	75	84.3
Tigerair	649	522	80.4	650	475	73.1
Virgin Australia	2 393	2 120	88.6	2 395	2 026	84.6
All Airlines	7 249	6 167	85.1	7 250	6 015	83.0
Relates to services to and from Adelaide, Brisbane, Cairns, Canberra, Darwin, Gold Coast, Hamilton Island, Hobart, Launceston, Mildura, Newcastle, Perth, Sunshine Coast and Sydney.						
Mildura						
QantasLink	89	82	92.1	89	75	84.3
Regional Express	89	80	89.9	88	77	87.5
Virgin Australia	31	24	77.4	31	24	77.4
All Airlines	209	186	89.0	208	176	84.6
Relates to services to and from Melbourne only.						
Moranbah						
QantasLink	127	111	87.4	131	126	96.2
Virgin Australia Regional Airlines	88	79	89.8	89	86	96.6
All Airlines	215	190	88.4	220	212	96.4
Relates to services to and from Brisbane only.						
Mount Isa						
Qantas	57	55	96.5	58	54	93.1
Virgin Australia	23	22	95.7	23	22	95.7
All Airlines	80	77	96.3	81	76	93.8
Relates to services to and from Brisbane only.						
Newcastle						
Jetstar	196	171	87.2	199	177	88.9
QantasLink	72	54	75.0	72	58	80.6
Virgin Australia	116	99	85.3	116	103	88.8
All Airlines	384	324	84.4	387	338	87.3
Relates to services to and from Brisbane and Melbourne.						

Airport	Departures			Arrivals		
	Sectors	On Time		Sectors	On Time	
	Flown	No.	%	Flown	No.	%
Newman						
Qantas	116	111	95.7	116	112	96.6
QantasLink	38	37	97.4	38	37	97.4
Virgin Australia	33	31	93.9	33	30	90.9
Virgin Australia Regional Airlines	4	3	75.0	4	4	100.0
All Airlines	191	182	95.3	191	183	95.8
Relates to services to and from Perth only.						
Perth						
Jetstar	142	109	76.8	143	123	86.0
Qantas	1 150	1 064	92.5	1 146	1 070	93.4
QantasLink	342	314	91.8	342	323	94.4
Tigerair	88	70	79.5	89	68	76.4
Virgin Australia	672	592	88.1	670	564	84.2
Virgin Australia Regional Airlines	152	131	86.2	159	132	83.0
All Airlines	2 546	2 280	89.6	2 549	2 280	89.4
Relates to services to and from Adelaide, Brisbane, Broome, Darwin, Geraldton, Kalgoorlie, Karratha, Melbourne, Newman, Port Hedland and Sydney.						
Port Hedland						
Qantas	116	104	89.7	116	114	98.3
QantasLink	47	43	91.5	47	44	93.6
Virgin Australia	45	36	80.0	45	41	91.1
All Airlines	208	183	88.0	208	199	95.7
Relates to services to and from Perth only.						
Port Lincoln						
QantasLink	103	95	92.2	103	95	92.2
Regional Express	214	204	95.3	214	204	95.3
All Airlines	317	299	94.3	317	299	94.3
Relates to services to and from Adelaide only.						
Port Macquarie						
QantasLink	139	102	73.4	139	108	77.7
Virgin Australia Regional Airlines	62	51	82.3	62	52	83.9
All Airlines	201	153	76.1	201	160	79.6
Relates to services to and from Sydney only.						
Proserpine						
Jetstar	31	29	93.5	31	29	93.5
Virgin Australia	54	47	87.0	54	48	88.9
All Airlines	85	76	89.4	85	77	90.6
Relates to services to and from Brisbane only.						
Rockhampton						
QantasLink	202	166	82.2	224	195	87.1
Virgin Australia	106	98	92.5	106	94	88.7
Virgin Australia Regional Airlines	110	100	90.9	113	92	81.4
All Airlines	418	364	87.1	443	381	86.0
Relates to services to and from Brisbane only.						

<i>Airport</i>	<i>Departures</i>			<i>Arrivals</i>		
	<i>Sectors Flown</i>	<i>On Time</i>		<i>Sectors Flown</i>	<i>On Time</i>	
		<i>No.</i>	<i>%</i>		<i>No.</i>	<i>%</i>
Sunshine Coast						
Jetstar	195	155	79.5	198	171	86.4
Virgin Australia	63	55	87.3	63	56	88.9
All Airlines	258	210	81.4	261	227	87.0
Relates to services to and from Melbourne and Sydney.						
Sydney						
Jetstar	1 588	1 276	80.4	1 587	1 271	80.1
Qantas	2 259	1 947	86.2	2 260	1 954	86.5
QantasLink	1 356	1 177	86.8	1 350	1 142	84.6
Regional Express	518	461	89.0	517	430	83.2
Tigerair	502	404	80.5	499	395	79.2
Virgin Australia	2 334	2 079	89.1	2 332	2 056	88.2
Virgin Australia Regional Airlines	369	325	88.1	369	317	85.9
All Airlines	8 926	7 669	85.9	8 914	7 565	84.9
Relates to services to and from Adelaide, Albury, Armidale, Ayers Rock, Ballina, Brisbane, Cairns, Canberra, Coffs Harbour, Darwin, Dubbo, Gold Coast, Hamilton Island, Hobart, Launceston, Melbourne, Perth, Port Macquarie, Sunshine Coast, Townsville and Wagga Wagga.						
Townsville						
Jetstar	81	73	90.1	81	74	91.4
Qantas	152	145	95.4	152	143	94.1
Virgin Australia	189	167	88.4	189	169	89.4
All Airlines	422	385	91.2	422	386	91.5
Relates to services to and from Brisbane and Sydney.						
Wagga Wagga						
QantasLink	116	98	84.5	116	96	82.8
Regional Express	138	127	92.0	138	124	89.9
All Airlines	254	225	88.6	254	220	86.6
Relates to services to and from Sydney only.						

Definitions

On time departure A flight departure is counted as "on time" if it departs the gate before 15 minutes after the scheduled departure time shown in the carriers' schedule.

On time arrival A flight arrival is counted as "on time" if it arrived at the gate before 15 minutes after the scheduled arrival time shown in the carriers' schedule.
Neither diverted nor cancelled flights count as on time.

Cancellation A flight removed from service within 7 days of scheduled departure is regarded as a cancellation.

On time departure percentage The percentage of on time departures is measured against the number of departures *operated* on any particular sector.

On time arrival percentage The percentage of on time arrivals is measured against the number of arrivals *operated* on any particular sector.

Cancellation percentage The percentage of cancellations is measured against the number of services *scheduled* on any particular sector.
