



Australian Government

Department of Infrastructure and Regional Development

Bureau of Infrastructure, Transport and Regional Economics

STATISTICAL REPORT



Aviation

Domestic airline on time performance
October 2013

© Commonwealth of Australia 2013

ISSN: 1832-0759

Ownership of intellectual property rights in this publication

Unless otherwise noted, copyright (and any other intellectual property rights, if any) in this publication is owned by the Commonwealth of Australia (referred to below as the Commonwealth).

Disclaimer

The material contained in this publication is made available on the understanding that the Commonwealth is not providing professional advice, and that users exercise their own skill and care with respect to its use, and seek independent advice if necessary.

The Commonwealth makes no representations or warranties as to the contents or accuracy of the information contained in this publication. To the extent permitted by law, the Commonwealth disclaims liability to any person or organisation in respect of anything done, or omitted to be done, in reliance upon information contained in this publication.

Creative Commons licence

With the exception of (a) the Coat of Arms; and (b) the Department of Infrastructure and Regional Development's photos and graphics, copyright in this publication is licensed under a Creative Commons Attribution 3.0 Australia Licence.

Creative Commons Attribution 3.0 Australia Licence is a standard form licence agreement that allows you to copy, communicate and adapt this publication provided that you attribute the work to the Commonwealth and abide by the other licence terms. A summary of the licence terms is available from <http://creativecommons.org/licenses/by/3.0/au/deed.en>. The full licence terms are available from <http://creativecommons.org/licenses/by/3.0/au/legalcode>.

Use of the Coat of Arms

The Department of the Prime Minister and Cabinet sets the terms under which the Coat of Arms is used. Please refer to the Department's Commonwealth Coat of Arms and Government branding web page <http://www.dpmmc.gov.au/guidelines/index.cfm#brand> and, in particular, the Guidelines on the use of the Commonwealth Coat of Arms publication.

An appropriate citation for this report is:

Bureau of Infrastructure, Transport and Regional Economics (BITRE), 2013, Domestic airline on time performance, Statistical Report, BITRE, Canberra ACT.

Contact us

This publication is available in PDF format. All other rights are reserved, including in relation to any Departmental logos or trade marks which may exist. For enquiries regarding the licence and any use of this publication, please contact:

Bureau of Infrastructure, Transport and Regional Economics (BITRE)
Department of Infrastructure and Regional Development
GPO Box 501, Canberra ACT 2601, Australia
Telephone: (international) +61 2 6274 7210
Fax: (international) +61 2 6274 6855
Email: bitre@infrastructure.gov.au
Website: www.bitre.gov.au

Inquiries

Should you require additional information about the statistics contained in this publication:

Telephone (02) 6274 7790 or Facsimile (02) 6274 7727

Electronic mail: AVSTATS@infrastructure.gov.au

Web site: <http://www.bitre.gov.au/statistics/aviation/otphome.aspx>

Foreword

The Bureau of Infrastructure, Transport and Regional Economics (BITRE) monitors the punctuality and reliability of major domestic airlines operating between Australian airports. The purpose of this is to allow for evaluation of overall industry and individual airline performance, so that consumers of air travel can make informed decisions.

The following domestic airlines currently report this information monthly to the BITRE: Jetstar, Qantas, QantasLink, Regional Express, Tigerair, Virgin Australia and Virgin Australia Regional Airlines. Data has been gathered since November 2003, although some airlines commenced reporting at a later date, including Jetstar which first reported in May 2004, MacAir in July 2005 and Tigerair in April 2008. MacAir ceased operations in February 2009 and data was not received for December 2008 onwards. Virgin Blue was rebranded as Virgin Australia in May 2011 and Tiger Airways was rebranded as Tigerair in July 2013 and time series data in Microsoft Excel spreadsheet format on the BITRE website have been revised to reflect these changes. Virgin Australia Regional Airlines commenced operations in May 2013. It was formed after the acquisition of Skywest by Virgin Australia and represents a combination of operations previously reported under Skywest and Virgin Australia – ATR/F100 Operations. Services operated by Skywest on behalf of Virgin Australia using ATR/F100 aircraft commenced in November 2011 and were shown separately as Virgin Australia – ATR/F100 Operations until April 2013.

Information presented in this report is for Australian domestic routes for which the passenger load averaged 8 000 or more passengers per month over the previous six months and where two or more airlines operated in competition on those routes. There were 62 routes that met this definition in October 2013. Over time, routes which meet these criteria change as airline networks and traffic levels vary.

Participating airlines report their overall monthly network performance where this is possible.

Total industry figures encompass all services operated by reporting airlines only. These airlines collectively carried over 95 per cent of total domestic passengers (regular public transport only) in 2012.

The method of capturing on time performance varies between airlines utilising different recording systems. Jetstar and Qantas jet aircraft use Aircraft Communication Addressing and Reporting System (ACARS) to electronically measure on time performance. Regional Express, Tigerair, Virgin Australia, Virgin Australia Regional Airlines and the Qantas non-jet fleet record on time performance manually using records from pilots, gate agents and/or ground crews.

After initial data is collected, aggregate reports are audited internally by participating airlines prior to publication.

Reports and detailed time series data in Microsoft Excel spreadsheet format are available from the BITRE website at: <http://www.bitre.gov.au/statistics/aviation/otphome.aspx>.

Contents

	Page
Industry performance	1
Individual routes	9
Airports	21
Definitions	27

Industry performance

For October 2013, on time performance over all routes operated by participating airlines (Jetstar, Qantas, QantasLink, Regional Express, Tigerair, Virgin Australia and Virgin Australia Regional Airlines) averaged 79.4 per cent for on time departures and 77.1 per cent for on time arrivals. Cancellations represented 1.9 per cent of all scheduled flights. The equivalent figures for October 2012 were 83.4 per cent for departures, 80.7 per cent for arrivals and 1.2 per cent for cancellations.

This month's figures were below the long term average performance for all routes (83.6 per cent for departures and 82.1 per cent for arrivals). The rate of cancellations was above the long term average of 1.3 per cent.

Of the major domestic airlines, Qantas achieved the highest level of on time departures for October 2013 at 85.8 per cent, followed by Virgin Australia at 76.2 per cent, Jetstar at 71.3 per cent and Tigerair at 67.4 per cent. The regional airlines were led by Regional Express at 87.1 per cent, followed by Virgin Australia Regional Airlines at 85.1 per cent and QantasLink at 77.9 per cent.

Qantas also achieved the highest on time arrivals among the major domestic airlines at 85.3 per cent, followed by Virgin Australia at 72.8 per cent, Jetstar at 71.9 per cent and Tigerair at 62.0 per cent. Regional Express was the best performing regional airline for on time arrivals at 84.2 per cent, followed by Virgin Australia Regional Airlines at 82.5 per cent and QantasLink at 74.0 per cent.

Tigerair had the highest percentage of cancellations (5.1 per cent) during the month, followed by QantasLink (2.5 per cent), Jetstar (2.4 per cent), Virgin Australia (2.0 per cent), Qantas (1.4 per cent), Virgin Australia Regional Airlines (0.6 per cent) and Regional Express (0.5 per cent).

Of the 62 routes which met the criteria for on time performance reporting in October 2013, the Adelaide-Port Lincoln route had the highest percentage of on time departures (96.5 per cent) while the Launceston-Sydney route had the lowest percentage of on time departures (57.0 per cent). The Perth-Port Hedland route had the highest percentage of on time arrivals (95.2 per cent) while the Port Macquarie-Sydney route had the lowest percentage of on time arrivals (47.0 per cent).

Cancellations were highest on the Sunshine Coast-Melbourne route at 8.8 per cent, followed by Melbourne-Sunshine Coast at 7.4 per cent, Moranbah-Brisbane at 5.0 per cent, Sydney-Canberra at 4.8 per cent and Canberra-Sydney, Karratha-Perth and Perth-Karratha at 4.6 per cent.

Port Lincoln Airport recorded the highest percentage of on time departures (95.9 per cent) and Port Hedland Airport recorded the highest percentage of on time arrivals (95.2 per cent). Port Macquarie Airport recorded the lowest percentage of on time departures (58.5 per cent) and Albury Airport recorded the lowest percentage of on time arrivals (60.2 per cent). These figures only refer to reported routes and do not cover all flights at these airports.

Table 1 On time performance for October 2013 — Total Industry

	<i>Sectors</i>		<i>Departures On Time</i>		<i>Arrivals On Time</i>		<i>Cancellations</i>	
	<i>Scheduled</i>	<i>Flown</i>	<i>No.</i>	<i>%</i>	<i>No.</i>	<i>%</i>	<i>No.</i>	<i>%</i>
Jetstar	7 283	7 111	5 073	71.3	5 113	71.9	172	2.4
Qantas	11 008	10 854	9 312	85.8	9 256	85.3	154	1.4
QantasLink	10 185	9 926	7 731	77.9	7 345	74.0	259	2.5
Regional Express	5 774	5 743	5 003	87.1	4 834	84.2	31	0.5
Tigerair	1 797	1 706	1 149	67.4	1 058	62.0	91	5.1
Virgin Australia	11 620	11 388	8 678	76.2	8 288	72.8	232	2.0
Virgin Australia Regional Airlines	2 710	2 695	2 293	85.1	2 223	82.5	15	0.6
All Airlines	50 377	49 423	39 239	79.4	38 117	77.1	954	1.9

Total airline network data (including routes not shown in this report).

Table 2 Top ten routes for on time performance for October 2013 (participating airlines only)

<i>Departures</i>		<i>Arrivals</i>	
<i>Route</i>	<i>On Time (%)</i>	<i>Route</i>	<i>On Time (%)</i>
Adelaide-Port Lincoln	96.5	Perth-Port Hedland	95.2
Perth-Karratha	96.1	Perth-Karratha	94.9
Port Lincoln-Adelaide	95.9	Perth-Newman	94.4
Perth-Newman	94.4	Adelaide-Port Lincoln	93.9
Perth-Port Hedland	94.3	Port Lincoln-Adelaide	93.6
Karratha-Perth	94.0	Darwin-Perth	93.1
Perth-Broome	92.9	Brisbane-Mount Isa	92.6
Newman-Perth	92.6	Karratha-Perth	92.5
Brisbane-Mount Isa	92.6	Port Hedland-Perth	92.1
Port Hedland-Perth	92.1	Perth-Broome	91.5

Table 3 Top ten airports for on time performance for October 2013 (participating airlines and reported routes only)

<i>Departures</i>		<i>Arrivals</i>	
<i>Airport</i>	<i>On Time (%)</i>	<i>Airport</i>	<i>On Time (%)</i>
Port Lincoln	95.9	Port Hedland	95.2
Karratha	94.0	Karratha	94.9
Newman	92.6	Newman	94.4
Port Hedland	92.1	Port Lincoln	93.9
Mount Isa	91.4	Mount Isa	92.6
Geraldton	90.6	Broome	91.5
Kalgoorlie	86.5	Kalgoorlie	89.6
Perth	86.3	Hamilton Island	88.0
Townsville	86.0	Townsville	87.2
Mildura	84.6	Bundaberg	86.8

Total industry on time performance

Figure 1 On time performance (by month from October 2010)—Total Industry

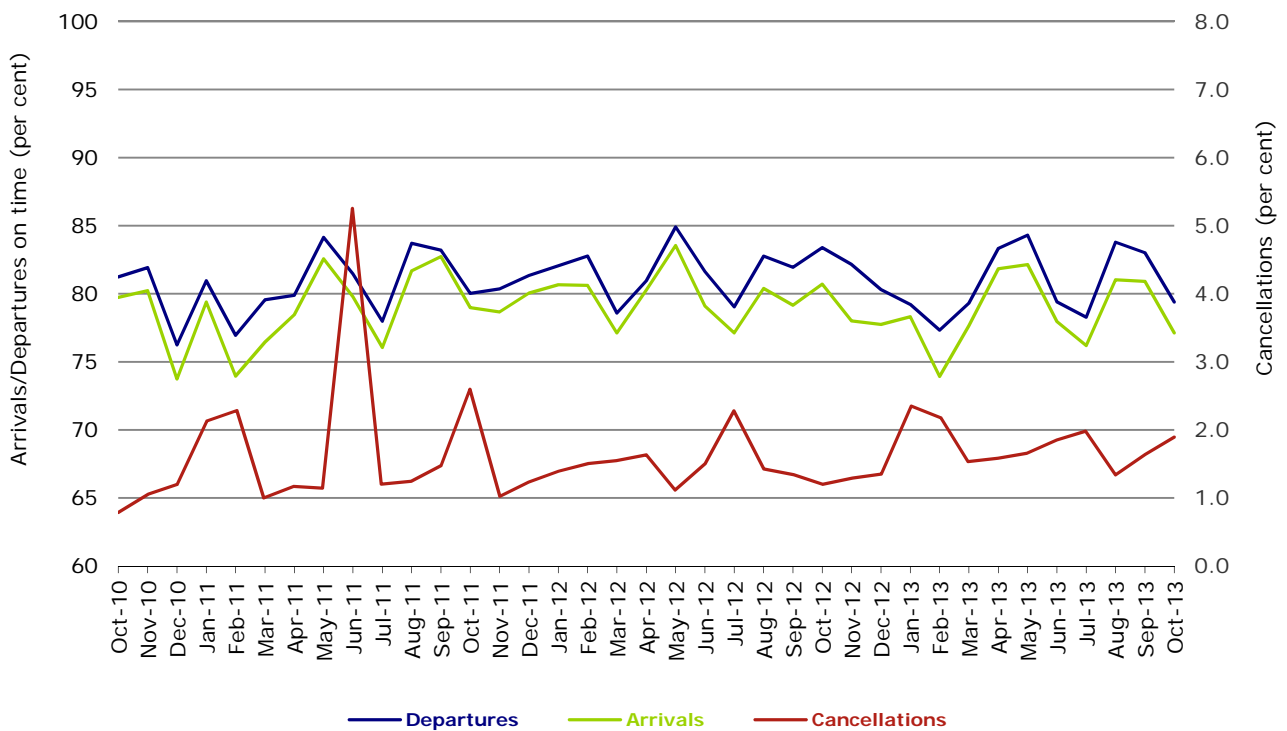
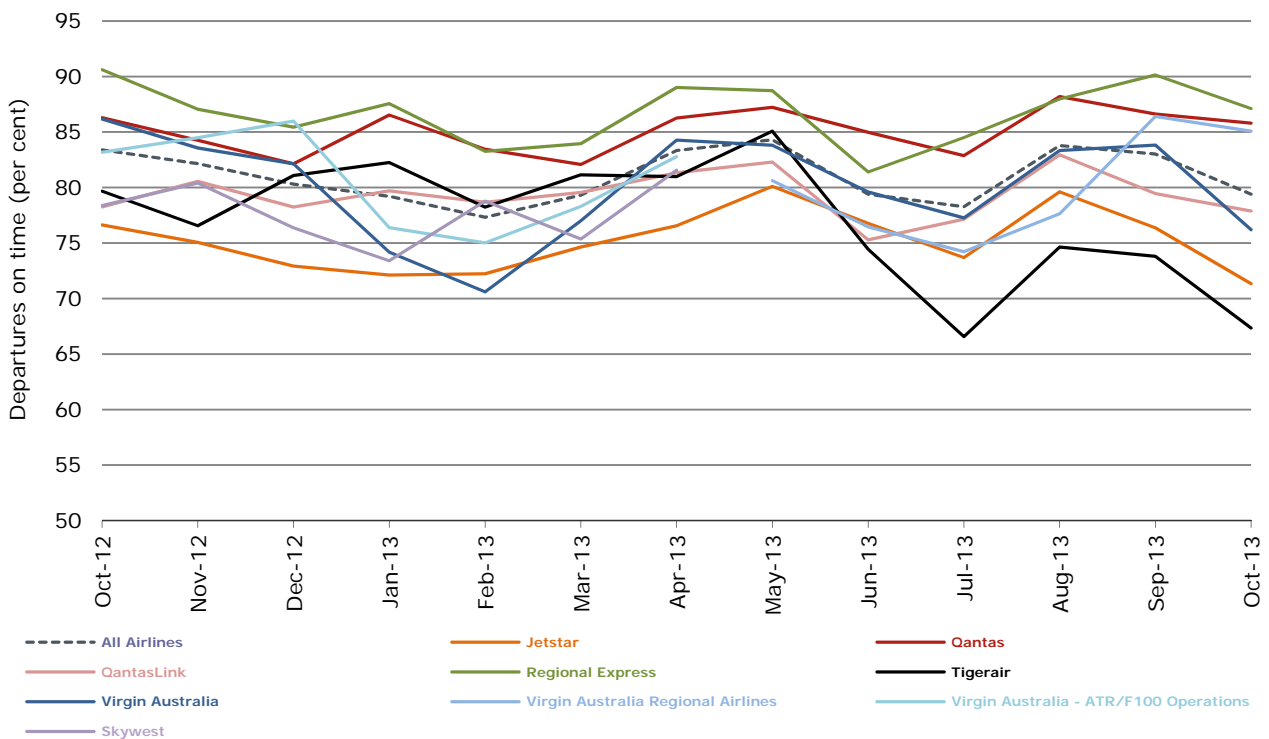
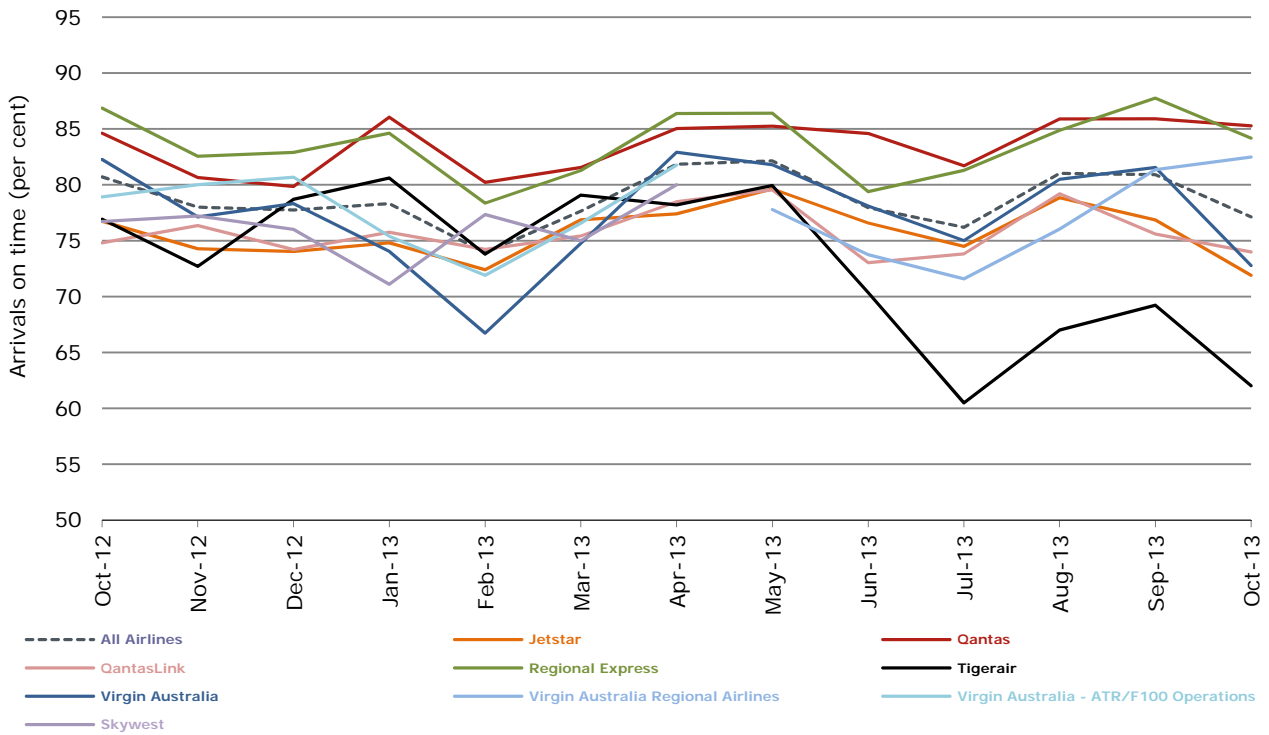


Figure 2 Departures on time (by month from October 2012)



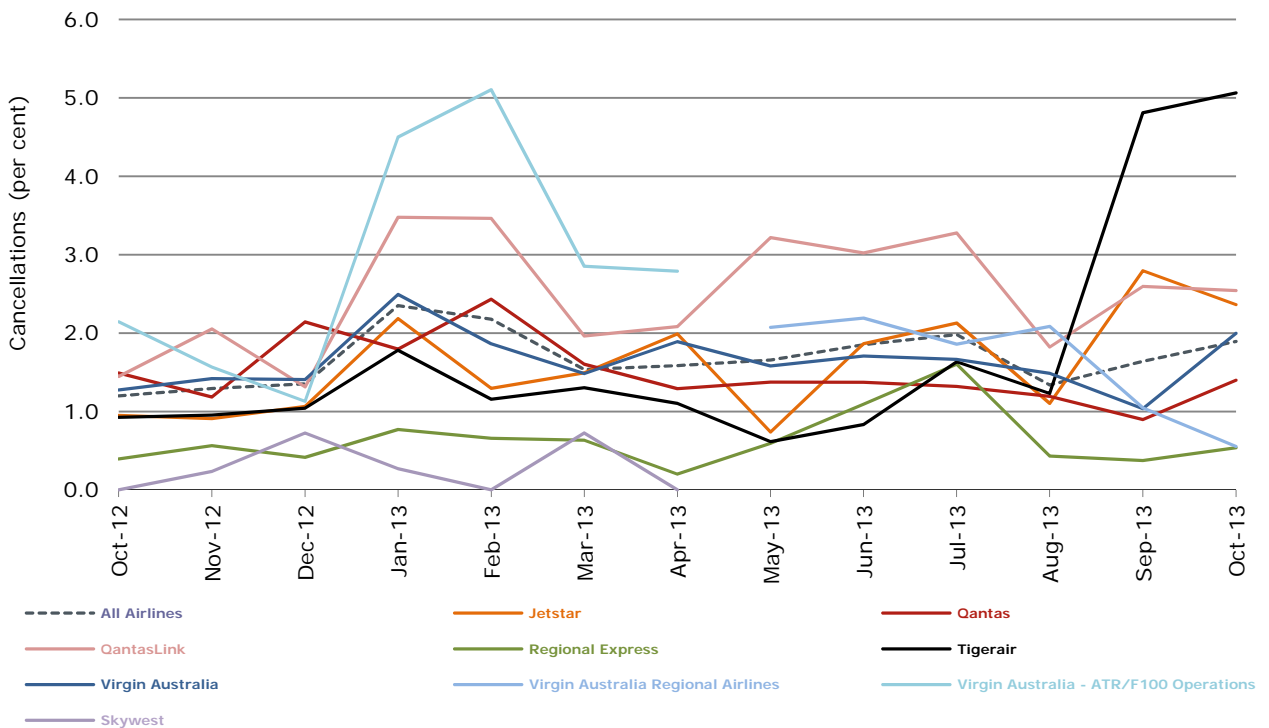
Virgin Australia Regional Airlines commenced operations in May 2013. It was formed after the acquisition of Skywest by Virgin Australia and represents a combination of operations previously reported under Skywest and Virgin Australia – ATR/F100 Operations.

Figure 3 Arrivals on time (by month from October 2012)



Virgin Australia Regional Airlines commenced operations in May 2013. It was formed after the acquisition of Skywest by Virgin Australia and represents a combination of operations previously reported under Skywest and Virgin Australia – ATR/F100 Operations.

Figure 4 Cancellations (by month from October 2012)



Virgin Australia Regional Airlines commenced operations in May 2013. It was formed after the acquisition of Skywest by Virgin Australia and represents a combination of operations previously reported under Skywest and Virgin Australia – ATR/F100 Operations.

Major domestic airlines on time performance

Figure 5 On time performance (by month from October 2010)—Jetstar

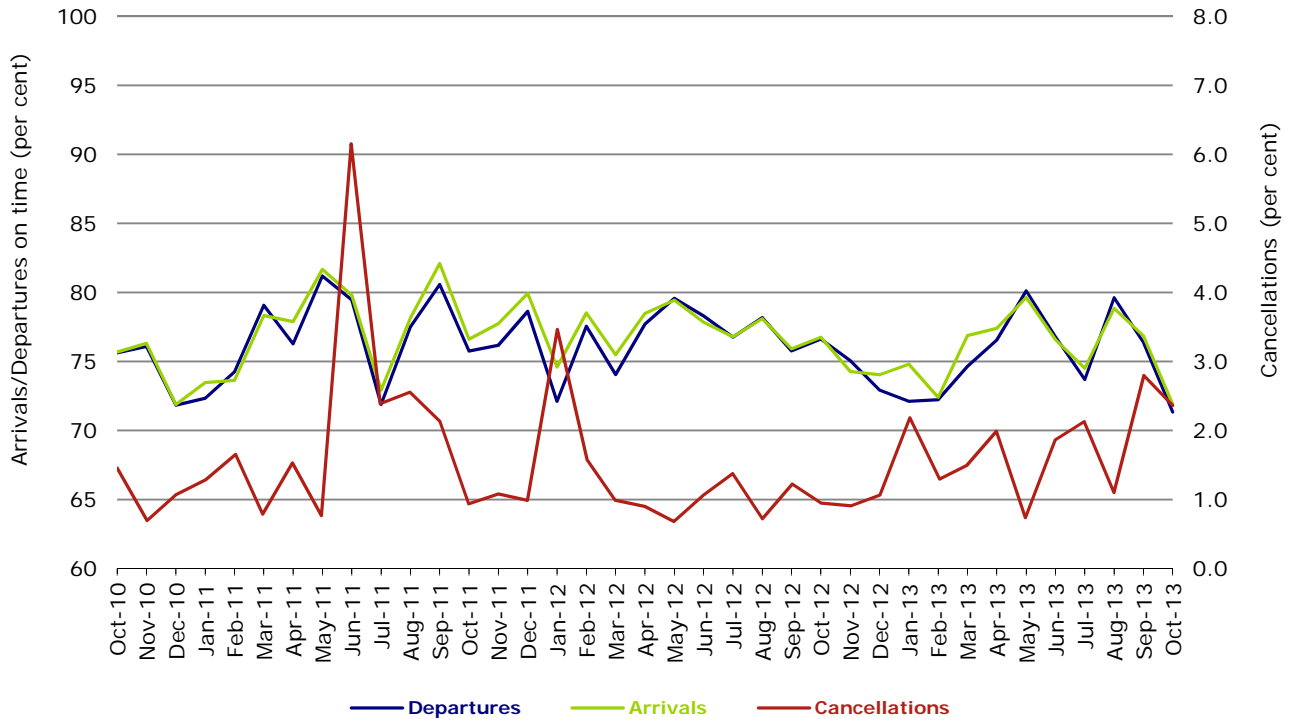


Figure 6 On time performance (by month from October 2010)—Qantas

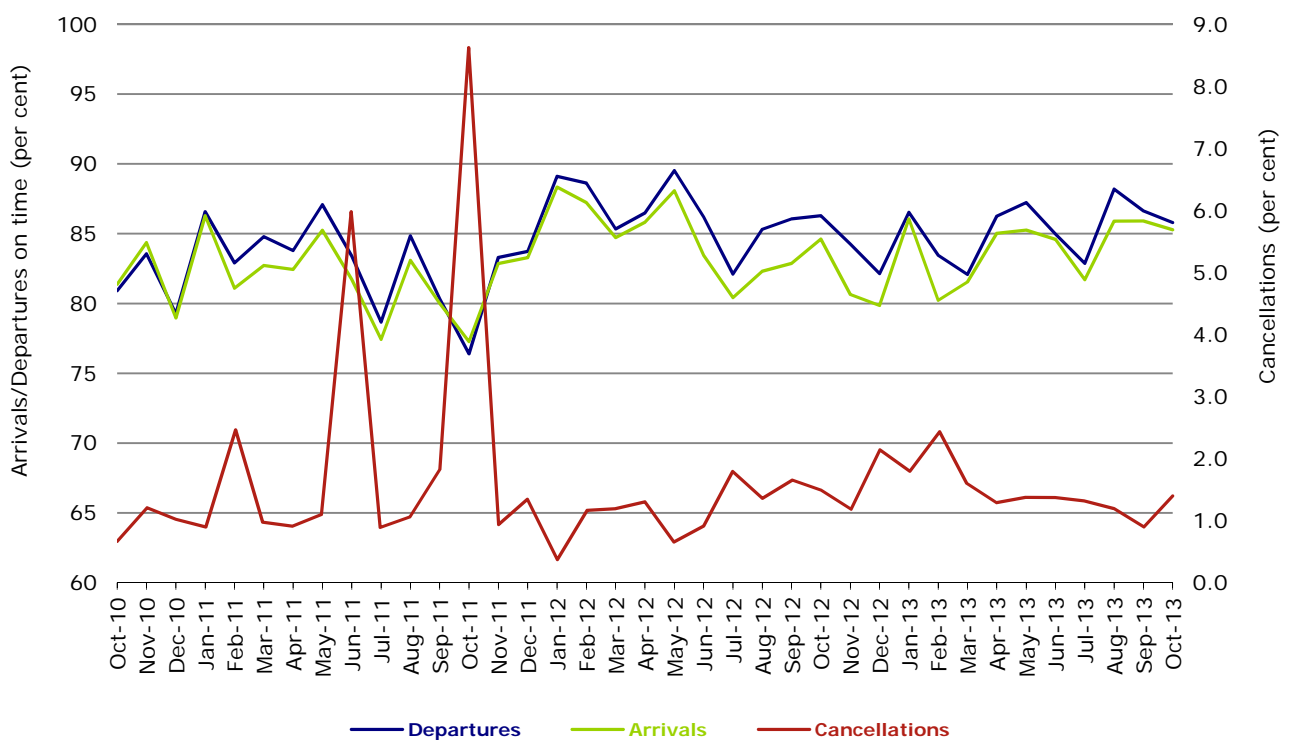
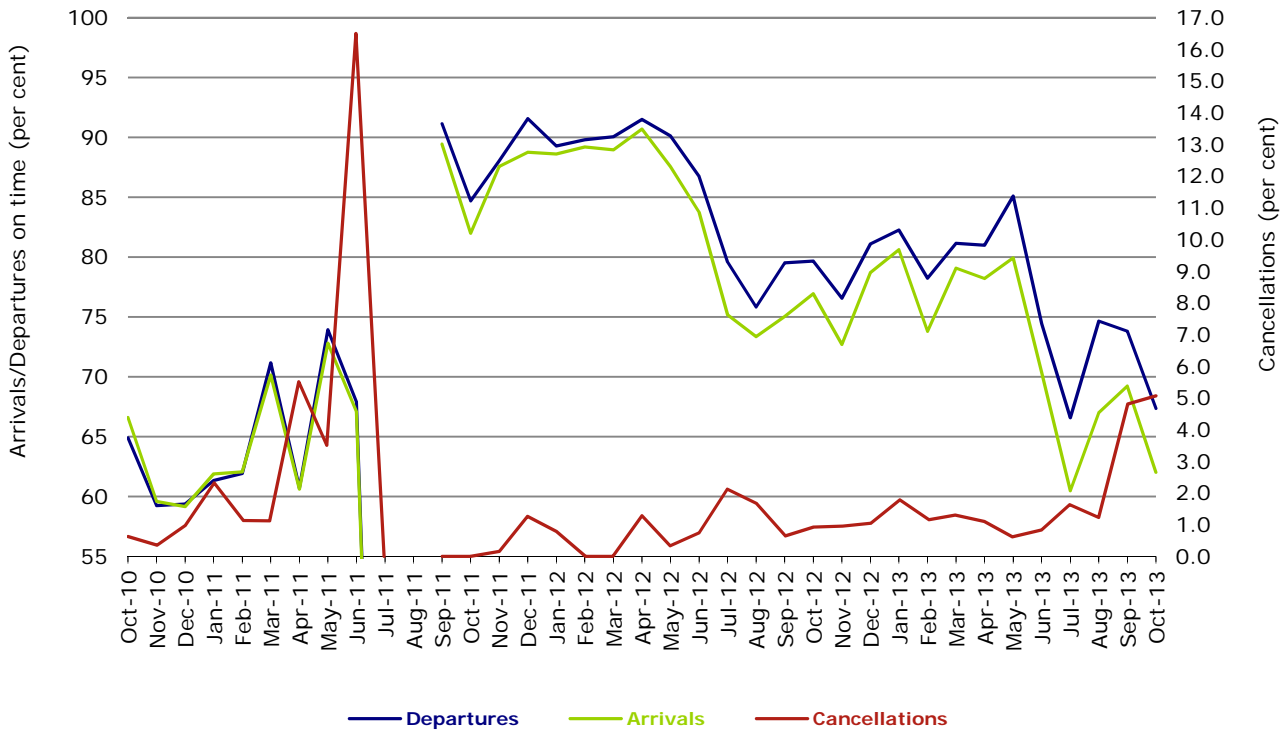
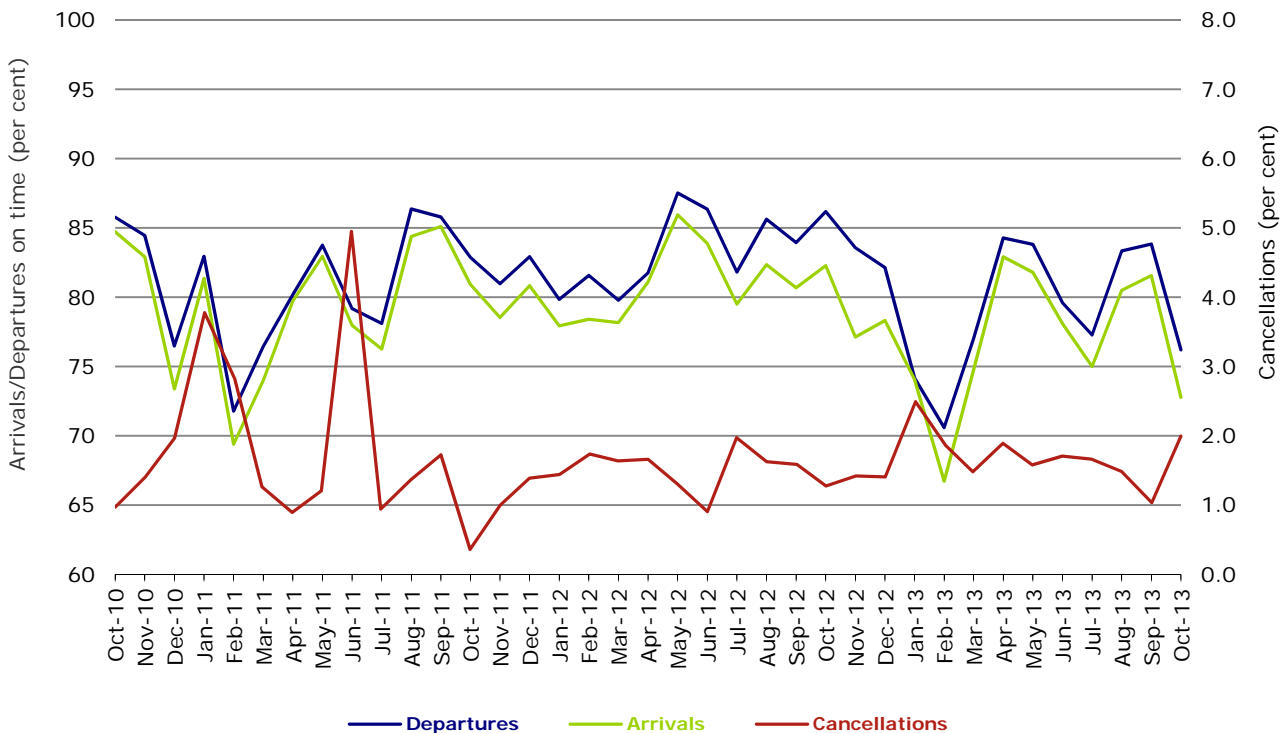


Figure 7 On time performance (by month from October 2010)—Tigerair



No data for Tigerair for July 2011 as it was grounded by CASA from 2/7/2011 to 11/8/2011.

Figure 8 On time performance (by month from October 2010)—Virgin Australia



Major regional airlines on time performance

Figure 9 On time performance (by month from October 2010)—QantasLink

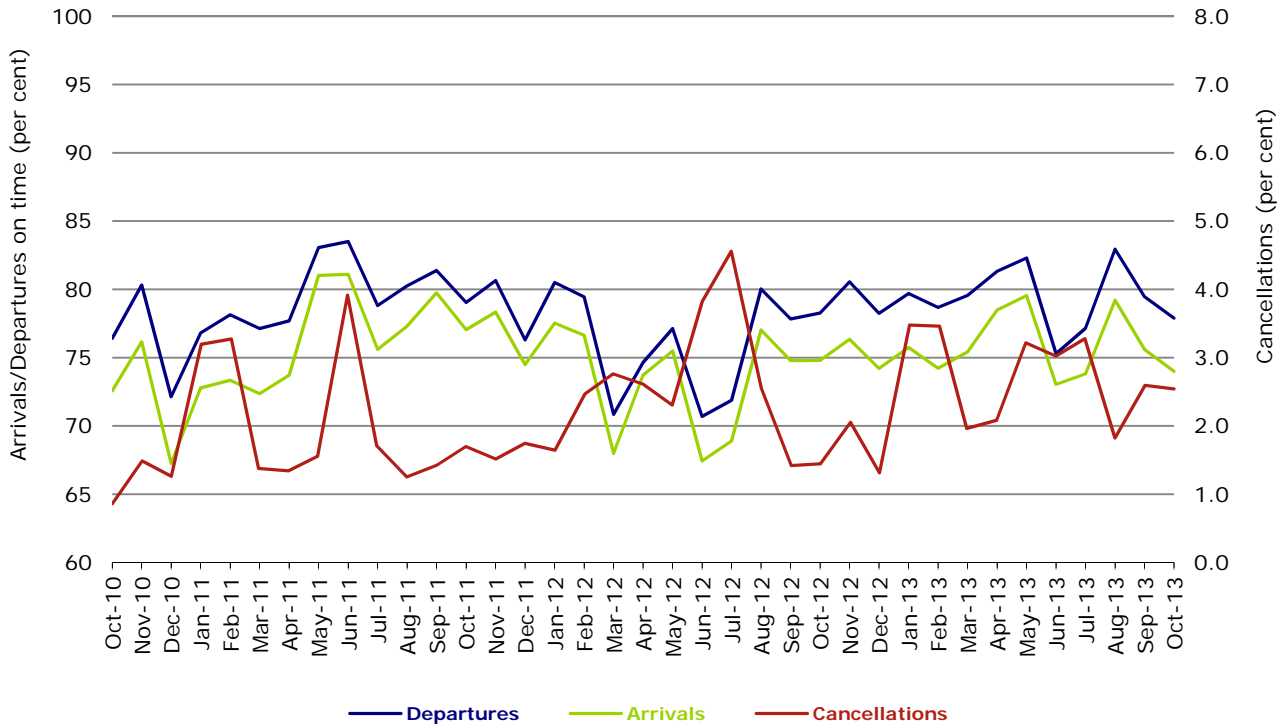


Figure 10 On time performance (by month from October 2010)—Regional Express

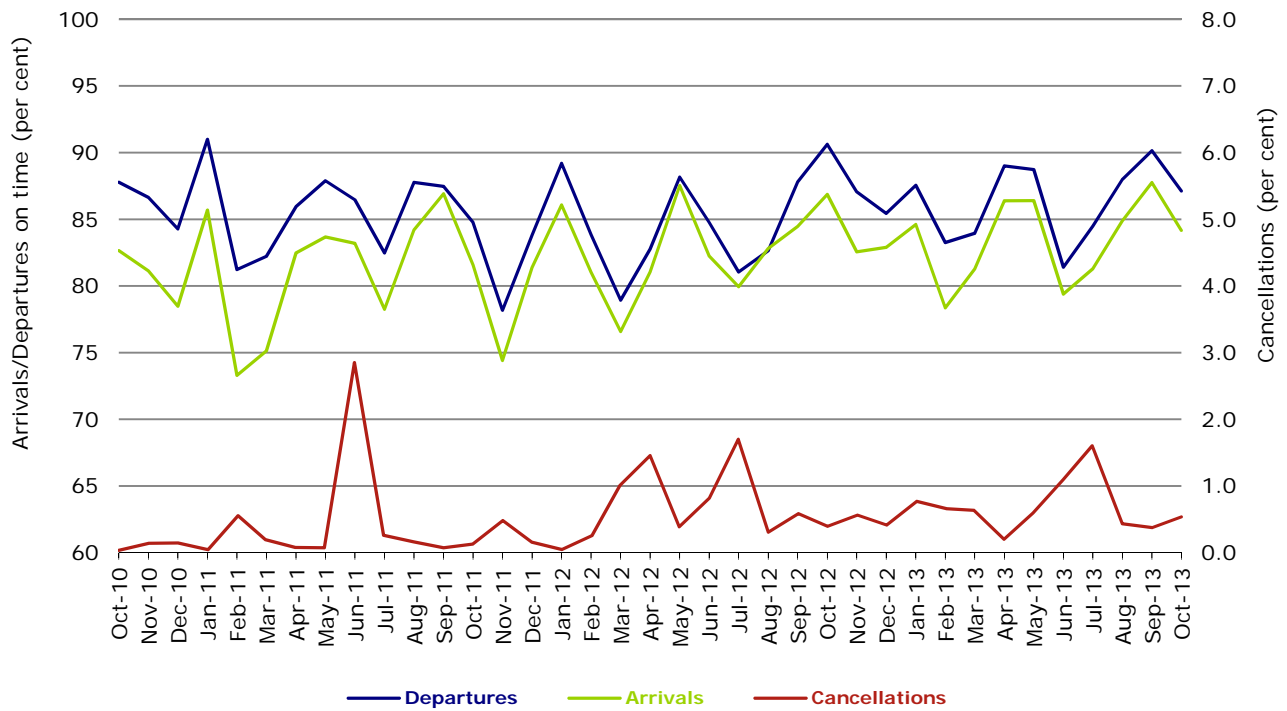
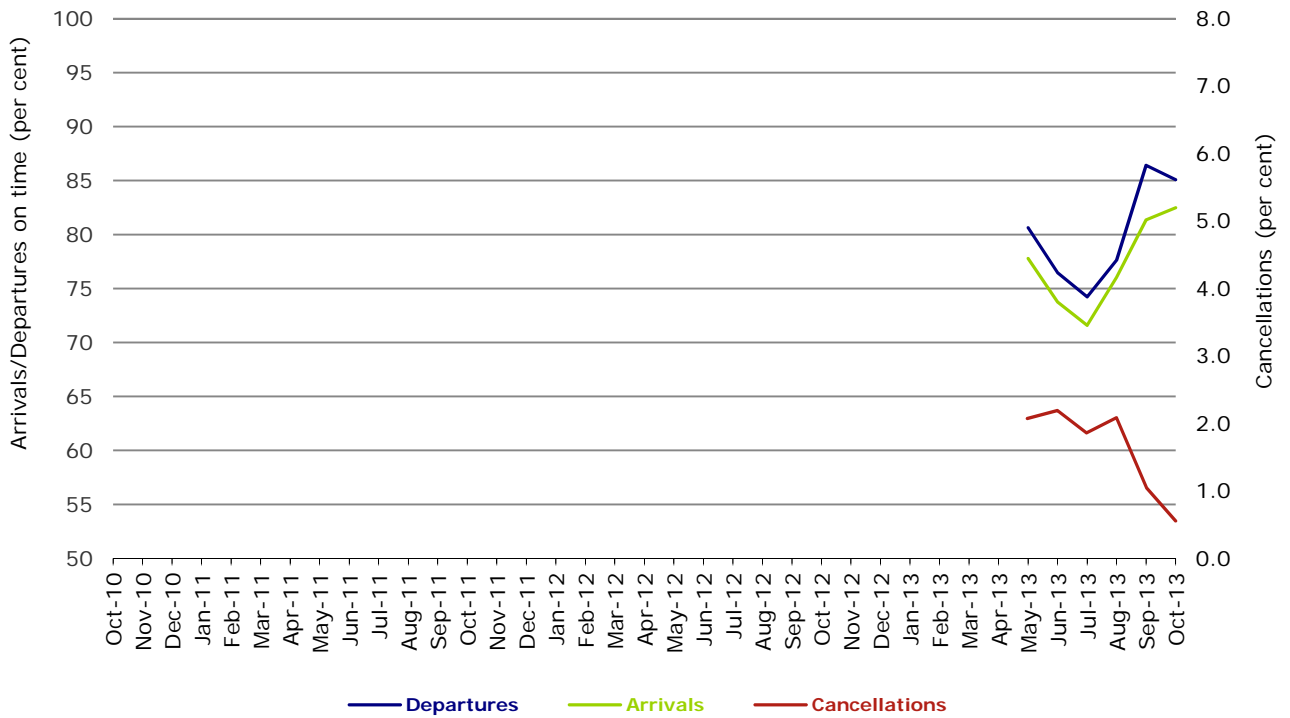


Figure 11 On time performance (by month from October 2010)
Virgin Australia Regional Airlines



Virgin Australia Regional Airlines commenced operations in May 2013. It was formed after the acquisition of Skywest by Virgin Australia and represents a combination of operations previously reported under Skywest and Virgin Australia – ATR/F100 Operations.

Individual routes

On time performance is reported for all routes where the passenger load averages over 8000 passengers per month over the previous six months, and where two or more airlines operate in competition on those routes. There are now 62 routes which meet this definition. Over time, however, routes which meet this definition may change as airline networks and traffic levels vary.

	<i>Sectors</i>		<i>Departures On Time</i>		<i>Arrivals On Time</i>		<i>Cancellations</i>	
	<i>Sched.</i>	<i>Flown</i>	<i>No.</i>	<i>%</i>	<i>No.</i>	<i>%</i>	<i>No.</i>	<i>%</i>
Adelaide-Brisbane								
Jetstar	31	31	28	90.3	28	90.3	0	0.0
Qantas	110	110	94	85.5	96	87.3	0	0.0
Virgin Australia	113	112	87	77.7	93	83.0	1	0.9
All Airlines	254	253	209	82.6	217	85.8	1	0.4
Adelaide-Canberra								
Qantas	46	46	44	95.7	44	95.7	0	0.0
QantasLink	23	20	9	45.0	11	55.0	3	13.0
Virgin Australia	27	27	24	88.9	25	92.6	0	0.0
All Airlines	96	93	77	82.8	80	86.0	3	3.1
Adelaide-Gold Coast								
Jetstar	36	36	28	77.8	30	83.3	0	0.0
Virgin Australia	30	30	28	93.3	29	96.7	0	0.0
All Airlines	66	66	56	84.8	59	89.4	0	0.0
Adelaide-Melbourne								
Jetstar	90	88	62	70.5	63	71.6	2	2.2
Qantas	302	301	255	84.7	259	86.0	1	0.3
QantasLink	18	18	15	83.3	16	88.9	0	0.0
Tigerair	71	64	41	64.1	41	64.1	7	9.9
Virgin Australia	285	277	191	69.0	208	75.1	8	2.8
All Airlines	766	748	564	75.4	587	78.5	18	2.3
Adelaide-Perth								
Jetstar	37	36	25	69.4	20	55.6	1	2.7
Qantas	116	116	101	87.1	105	90.5	0	0.0
Virgin Australia	66	66	58	87.9	46	69.7	0	0.0
All Airlines	219	218	184	84.4	171	78.4	1	0.5
Adelaide-Port Lincoln								
QantasLink	102	102	97	95.1	93	91.2	0	0.0
Regional Express	214	212	206	97.2	202	95.3	2	0.9
All Airlines	316	314	303	96.5	295	93.9	2	0.6
Adelaide-Sydney								
Jetstar	118	116	59	50.9	63	54.3	2	1.7
Qantas	278	278	236	84.9	240	86.3	0	0.0
Virgin Australia	169	167	131	78.4	139	83.2	2	1.2
All Airlines	565	561	426	75.9	442	78.8	4	0.7
Albury-Sydney								
QantasLink	116	116	48	41.4	55	47.4	0	0.0
Regional Express	113	111	91	82.0	90	81.1	2	1.8
Virgin Australia Regional Airlines	62	62	48	77.4	42	67.7	0	0.0
All Airlines	291	289	187	64.7	187	64.7	2	0.7
Alice Springs-Melbourne								
Qantas	31	31	18	58.1	25	80.6	0	0.0
Tigerair	19	19	12	63.2	11	57.9	0	0.0
All Airlines	50	50	30	60.0	36	72.0	0	0.0

	<i>Sectors</i>		<i>Departures On Time</i>		<i>Arrivals On Time</i>		<i>Cancellations</i>	
	<i>Sched.</i>	<i>Flown</i>	<i>No.</i>	<i>%</i>	<i>No.</i>	<i>%</i>	<i>No.</i>	<i>%</i>
Alice Springs-Sydney								
Qantas	31	31	16	51.6	21	67.7	0	0.0
Tigerair	19	19	13	68.4	10	52.6	0	0.0
All Airlines	50	50	29	58.0	31	62.0	0	0.0
Ayers Rock-Sydney								
Jetstar	18	18	12	66.7	7	38.9	0	0.0
Virgin Australia	31	31	22	71.0	26	83.9	0	0.0
All Airlines	49	49	34	69.4	33	67.3	0	0.0
Ballina-Sydney								
Jetstar	74	73	47	64.4	46	63.0	1	1.4
Regional Express	23	23	12	52.2	11	47.8	0	0.0
Virgin Australia	31	31	21	67.7	19	61.3	0	0.0
All Airlines	128	127	80	63.0	76	59.8	1	0.8
Brisbane-Adelaide								
Jetstar	31	31	28	90.3	27	87.1	0	0.0
Qantas	110	110	94	85.5	97	88.2	0	0.0
Virgin Australia	114	114	83	72.8	64	56.1	0	0.0
All Airlines	255	255	205	80.4	188	73.7	0	0.0
Brisbane-Bundaberg								
QantasLink	122	121	106	87.6	104	86.0	1	0.8
Virgin Australia Regional Airlines	31	31	28	90.3	28	90.3	0	0.0
All Airlines	153	152	134	88.2	132	86.8	1	0.7
Brisbane-Cairns								
Jetstar	122	120	95	79.2	105	87.5	2	1.6
Qantas	120	120	109	90.8	111	92.5	0	0.0
QantasLink	4	4	3	75.0	4	100.0	0	0.0
Virgin Australia	171	170	135	79.4	131	77.1	1	0.6
All Airlines	417	414	342	82.6	351	84.8	3	0.7
Brisbane-Canberra								
Qantas	143	143	130	90.9	128	89.5	0	0.0
QantasLink	22	22	20	90.9	16	72.7	0	0.0
Virgin Australia	96	96	75	78.1	73	76.0	0	0.0
All Airlines	261	261	225	86.2	217	83.1	0	0.0
Brisbane-Darwin								
Jetstar	7	7	4	57.1	4	57.1	0	0.0
Qantas	31	31	28	90.3	30	96.8	0	0.0
Virgin Australia	31	31	21	67.7	22	71.0	0	0.0
All Airlines	69	69	53	76.8	56	81.2	0	0.0
Brisbane-Emerald								
QantasLink	195	186	171	91.9	154	82.8	9	4.6
Virgin Australia Regional Airlines	108	108	96	88.9	92	85.2	0	0.0
All Airlines	303	294	267	90.8	246	83.7	9	3.0
Brisbane-Gladstone								
QantasLink	229	226	196	86.7	193	85.4	3	1.3
Virgin Australia	11	10	8	80.0	8	80.0	1	9.1
Virgin Australia Regional Airlines	142	142	117	82.4	117	82.4	0	0.0
All Airlines	382	378	321	84.9	318	84.1	4	1.0
Brisbane-Hamilton Island								
Jetstar	16	16	15	93.8	15	93.8	0	0.0
Virgin Australia	31	31	26	83.9	26	83.9	0	0.0
All Airlines	47	47	41	87.2	41	87.2	0	0.0

	<i>Sectors</i>		<i>Departures On Time</i>		<i>Arrivals On Time</i>		<i>Cancellations</i>	
	<i>Sched.</i>	<i>Flown</i>	<i>No.</i>	<i>%</i>	<i>No.</i>	<i>%</i>	<i>No.</i>	<i>%</i>
Brisbane-Mackay								
Jetstar	121	116	91	78.4	97	83.6	5	4.1
QantasLink	115	113	98	86.7	100	88.5	2	1.7
Virgin Australia	163	161	120	74.5	117	72.7	2	1.2
All Airlines	399	390	309	79.2	314	80.5	9	2.3
Brisbane-Melbourne								
Jetstar	119	116	78	67.2	82	70.7	3	2.5
Qantas	434	432	373	86.3	345	79.9	2	0.5
Tigerair	100	86	51	59.3	46	53.5	14	14.0
Virgin Australia	406	395	306	77.5	232	58.7	11	2.7
All Airlines	1 059	1 029	808	78.5	705	68.5	30	2.8
Brisbane-Moranbah								
QantasLink	171	160	142	88.8	149	93.1	11	6.4
Virgin Australia Regional Airlines	77	77	67	87.0	55	71.4	0	0.0
All Airlines	248	237	209	88.2	204	86.1	11	4.4
Brisbane-Mount Isa								
Qantas	58	58	56	96.6	56	96.6	0	0.0
Virgin Australia	23	23	19	82.6	19	82.6	0	0.0
All Airlines	81	81	75	92.6	75	92.6	0	0.0
Brisbane-Newcastle								
Jetstar	117	114	101	88.6	95	83.3	3	2.6
QantasLink	73	68	48	70.6	26	38.2	5	6.8
Virgin Australia	85	84	73	86.9	72	85.7	1	1.2
All Airlines	275	266	222	83.5	193	72.6	9	3.3
Brisbane-Perth								
Jetstar	29	29	21	72.4	21	72.4	0	0.0
Qantas	130	130	102	78.5	121	93.1	0	0.0
Virgin Australia	92	92	62	67.4	30	32.6	0	0.0
All Airlines	251	251	185	73.7	172	68.5	0	0.0
Brisbane-Proserpine								
Jetstar	31	31	26	83.9	26	83.9	0	0.0
Virgin Australia	54	52	44	84.6	45	86.5	2	3.7
All Airlines	85	83	70	84.3	71	85.5	2	2.4
Brisbane-Rockhampton								
QantasLink	223	220	191	86.8	189	85.9	3	1.3
Virgin Australia	105	105	74	70.5	83	79.0	0	0.0
Virgin Australia Regional Airlines	124	122	100	82.0	102	83.6	2	1.6
All Airlines	452	447	365	81.7	374	83.7	5	1.1
Brisbane-Sydney								
Jetstar	141	132	92	69.7	90	68.2	9	6.4
Qantas	633	618	505	81.7	471	76.2	15	2.4
Tigerair	77	74	40	54.1	35	47.3	3	3.9
Virgin Australia	570	546	432	79.1	404	74.0	24	4.2
All Airlines	1 421	1 370	1 069	78.0	1 000	73.0	51	3.6
Brisbane-Townsville								
Jetstar	31	31	26	83.9	31	100.0	0	0.0
Qantas	152	152	129	84.9	140	92.1	0	0.0
Virgin Australia	168	166	139	83.7	135	81.3	2	1.2
All Airlines	351	349	294	84.2	306	87.7	2	0.6

	<i>Sectors</i>		<i>Departures On Time</i>		<i>Arrivals On Time</i>		<i>Cancellations</i>	
	<i>Sched.</i>	<i>Flown</i>	<i>No.</i>	<i>%</i>	<i>No.</i>	<i>%</i>	<i>No.</i>	<i>%</i>
Broome-Perth								
Qantas	33	33	18	54.5	29	87.9	0	0.0
QantasLink	56	56	51	91.1	52	92.9	0	0.0
Virgin Australia	35	33	31	93.9	31	93.9	2	5.7
Virgin Australia Regional Airlines	18	18	10	55.6	12	66.7	0	0.0
All Airlines	142	140	110	78.6	124	88.6	2	1.4
Bundaberg-Brisbane								
QantasLink	122	121	101	83.5	91	75.2	1	0.8
Virgin Australia Regional Airlines	31	31	26	83.9	26	83.9	0	0.0
All Airlines	153	152	127	83.6	117	77.0	1	0.7
Cairns-Brisbane								
Jetstar	120	118	100	84.7	87	73.7	2	1.7
Qantas	120	120	112	93.3	108	90.0	0	0.0
QantasLink	4	4	4	100.0	4	100.0	0	0.0
Virgin Australia	171	170	131	77.1	122	71.8	1	0.6
All Airlines	415	412	347	84.2	321	77.9	3	0.7
Cairns-Melbourne								
Jetstar	111	110	84	76.4	83	75.5	1	0.9
Qantas	31	31	23	74.2	26	83.9	0	0.0
Tigerair	47	45	33	73.3	31	68.9	2	4.3
Virgin Australia	35	35	22	62.9	19	54.3	0	0.0
All Airlines	224	221	162	73.3	159	71.9	3	1.3
Cairns-Sydney								
Jetstar	104	103	82	79.6	76	73.8	1	1.0
Qantas	76	76	59	77.6	60	78.9	0	0.0
Tigerair	33	33	23	69.7	21	63.6	0	0.0
Virgin Australia	91	91	63	69.2	66	72.5	0	0.0
All Airlines	304	303	227	74.9	223	73.6	1	0.3
Cairns-Townsville								
QantasLink	193	190	166	87.4	164	86.3	3	1.6
Virgin Australia Regional Airlines	27	27	26	96.3	25	92.6	0	0.0
All Airlines	220	217	192	88.5	189	87.1	3	1.4
Canberra-Adelaide								
Qantas	50	50	43	86.0	41	82.0	0	0.0
QantasLink	23	21	14	66.7	10	47.6	2	8.7
Virgin Australia	27	27	24	88.9	23	85.2	0	0.0
All Airlines	100	98	81	82.7	74	75.5	2	2.0
Canberra-Brisbane								
Qantas	143	143	131	91.6	137	95.8	0	0.0
QantasLink	22	21	10	47.6	13	61.9	1	4.5
Virgin Australia	96	94	81	86.2	81	86.2	2	2.1
All Airlines	261	258	222	86.0	231	89.5	3	1.1
Canberra-Melbourne								
Qantas	266	261	245	93.9	238	91.2	5	1.9
QantasLink	40	37	23	62.2	20	54.1	3	7.5
Virgin Australia	179	177	139	78.5	130	73.4	2	1.1
All Airlines	485	475	407	85.7	388	81.7	10	2.1
Canberra-Sydney								
Qantas	159	155	137	88.4	138	89.0	4	2.5
QantasLink	415	385	299	77.7	312	81.0	30	7.2
Virgin Australia	54	52	43	82.7	44	84.6	2	3.7
Virgin Australia Regional Airlines	258	253	226	89.3	223	88.1	5	1.9
All Airlines	886	845	705	83.4	717	84.9	41	4.6

	<i>Sectors</i>		<i>Departures On Time</i>		<i>Arrivals On Time</i>		<i>Cancellations</i>	
	<i>Sched.</i>	<i>Flown</i>	<i>No.</i>	<i>%</i>	<i>No.</i>	<i>%</i>	<i>No.</i>	<i>%</i>
Coffs Harbour-Sydney								
QantasLink	156	156	94	60.3	92	59.0	0	0.0
Tigerair	21	20	16	80.0	16	80.0	1	4.8
Virgin Australia	62	62	48	77.4	50	80.6	0	0.0
All Airlines	239	238	158	66.4	158	66.4	1	0.4
Darwin-Brisbane								
Jetstar	6	6	1	16.7	2	33.3	0	0.0
Qantas	31	31	25	80.6	21	67.7	0	0.0
Virgin Australia	31	31	20	64.5	24	77.4	0	0.0
All Airlines	68	68	46	67.6	47	69.1	0	0.0
Darwin-Melbourne								
Jetstar	31	31	21	67.7	22	71.0	0	0.0
Qantas	18	18	14	77.8	14	77.8	0	0.0
Virgin Australia	31	30	26	86.7	25	83.3	1	3.2
All Airlines	80	79	61	77.2	61	77.2	1	1.3
Darwin-Perth								
Qantas	31	31	21	67.7	27	87.1	0	0.0
Virgin Australia	27	27	27	100.0	27	100.0	0	0.0
All Airlines	58	58	48	82.8	54	93.1	0	0.0
Darwin-Sydney								
Jetstar	27	27	16	59.3	21	77.8	0	0.0
Qantas	53	53	42	79.2	42	79.2	0	0.0
Virgin Australia	31	31	19	61.3	16	51.6	0	0.0
All Airlines	111	111	77	69.4	79	71.2	0	0.0
Dubbo-Sydney								
QantasLink	129	127	72	56.7	67	52.8	2	1.6
Regional Express	160	158	128	81.0	128	81.0	2	1.3
All Airlines	289	285	200	70.2	195	68.4	4	1.4
Emerald-Brisbane								
QantasLink	195	186	151	81.2	145	78.0	9	4.6
Virgin Australia Regional Airlines	108	107	92	86.0	94	87.9	1	0.9
All Airlines	303	293	243	82.9	239	81.6	10	3.3
Geraldton-Perth								
QantasLink	63	62	58	93.5	57	91.9	1	1.6
Virgin Australia Regional Airlines	97	97	86	88.7	79	81.4	0	0.0
All Airlines	160	159	144	90.6	136	85.5	1	0.6
Gladstone-Brisbane								
QantasLink	252	248	201	81.0	180	72.6	4	1.6
Virgin Australia	6	6	0	0.0	0	0.0	0	0.0
Virgin Australia Regional Airlines	142	142	123	86.6	115	81.0	0	0.0
All Airlines	400	396	324	81.8	295	74.5	4	1.0
Gold Coast-Adelaide								
Jetstar	36	36	29	80.6	32	88.9	0	0.0
Virgin Australia	30	30	27	90.0	27	90.0	0	0.0
All Airlines	66	66	56	84.8	59	89.4	0	0.0
Gold Coast-Melbourne								
Jetstar	216	213	159	74.6	151	70.9	3	1.4
Tigerair	88	87	40	46.0	31	35.6	1	1.1
Virgin Australia	176	175	125	71.4	107	61.1	1	0.6
All Airlines	480	475	324	68.2	289	60.8	5	1.0

	<i>Sectors</i>		<i>Departures On Time</i>		<i>Arrivals On Time</i>		<i>Cancellations</i>	
	<i>Sched.</i>	<i>Flown</i>	<i>No.</i>	<i>%</i>	<i>No.</i>	<i>%</i>	<i>No.</i>	<i>%</i>
Gold Coast-Sydney								
Jetstar	355	339	246	72.6	250	73.7	16	4.5
Qantas	93	93	78	83.9	76	81.7	0	0.0
Tigerair	61	58	38	65.5	35	60.3	3	4.9
Virgin Australia	329	320	243	75.9	250	78.1	9	2.7
All Airlines	838	810	605	74.7	611	75.4	28	3.3
Hamilton Island-Brisbane								
Jetstar	16	16	14	87.5	13	81.3	0	0.0
Virgin Australia	31	31	27	87.1	28	90.3	0	0.0
All Airlines	47	47	41	87.2	41	87.2	0	0.0
Hamilton Island-Sydney								
Jetstar	31	31	20	64.5	19	61.3	0	0.0
Virgin Australia	31	31	27	87.1	26	83.9	0	0.0
All Airlines	62	62	47	75.8	45	72.6	0	0.0
Hobart-Melbourne								
Jetstar	171	170	116	68.2	113	66.5	1	0.6
Qantas	62	62	49	79.0	50	80.6	0	0.0
QantasLink	31	31	29	93.5	21	67.7	0	0.0
Tigerair	31	31	18	58.1	13	41.9	0	0.0
Virgin Australia	145	144	93	64.6	96	66.7	1	0.7
All Airlines	440	438	305	69.6	293	66.9	2	0.5
Hobart-Sydney								
Jetstar	82	80	47	58.8	52	65.0	2	2.4
Qantas	31	31	26	83.9	24	77.4	0	0.0
Virgin Australia	62	61	42	68.9	48	78.7	1	1.6
All Airlines	175	172	115	66.9	124	72.1	3	1.7
Kalgoorlie-Perth								
Qantas	63	61	54	88.5	57	93.4	2	3.2
QantasLink	26	24	20	83.3	20	83.3	2	7.7
Virgin Australia	43	42	36	85.7	32	76.2	1	2.3
Virgin Australia Regional Airlines	14	14	12	85.7	10	71.4	0	0.0
All Airlines	146	141	122	86.5	119	84.4	5	3.4
Karratha-Perth								
Qantas	191	183	177	96.7	177	96.7	8	4.2
QantasLink	70	64	63	98.4	62	96.9	6	8.6
Virgin Australia	89	87	74	85.1	70	80.5	2	2.2
All Airlines	350	334	314	94.0	309	92.5	16	4.6
Launceston-Melbourne								
Jetstar	129	129	81	62.8	73	56.6	0	0.0
QantasLink	123	120	78	65.0	66	55.0	3	2.4
Virgin Australia	121	121	89	73.6	77	63.6	0	0.0
All Airlines	373	370	248	67.0	216	58.4	3	0.8
Launceston-Sydney								
Jetstar	56	55	26	47.3	31	56.4	1	1.8
Virgin Australia	31	31	23	74.2	24	77.4	0	0.0
All Airlines	87	86	49	57.0	55	64.0	1	1.1
Mackay-Brisbane								
Jetstar	122	117	92	78.6	83	70.9	5	4.1
QantasLink	115	113	101	89.4	103	91.2	2	1.7
Virgin Australia	163	161	132	82.0	124	77.0	2	1.2
All Airlines	400	391	325	83.1	310	79.3	9	2.3

	<i>Sectors</i>		<i>Departures On Time</i>		<i>Arrivals On Time</i>		<i>Cancellations</i>	
	<i>Sched.</i>	<i>Flown</i>	<i>No.</i>	<i>%</i>	<i>No.</i>	<i>%</i>	<i>No.</i>	<i>%</i>
Melbourne-Adelaide								
Jetstar	89	88	63	71.6	61	69.3	1	1.1
Qantas	302	301	257	85.4	259	86.0	1	0.3
QantasLink	18	18	16	88.9	13	72.2	0	0.0
Tigerair	71	64	50	78.1	40	62.5	7	9.9
Virgin Australia	285	279	209	74.9	192	68.8	6	2.1
All Airlines	765	750	595	79.3	565	75.3	15	2.0
Melbourne-Alice Springs								
Qantas	31	31	27	87.1	26	83.9	0	0.0
Tigerair	19	19	14	73.7	12	63.2	0	0.0
All Airlines	50	50	41	82.0	38	76.0	0	0.0
Melbourne-Brisbane								
Jetstar	117	113	61	54.0	70	61.9	4	3.4
Qantas	435	432	356	82.4	350	81.0	3	0.7
Tigerair	100	87	50	57.5	52	59.8	13	13.0
Virgin Australia	406	396	278	70.2	263	66.4	10	2.5
All Airlines	1 058	1 028	745	72.5	735	71.5	30	2.8
Melbourne-Cairns								
Jetstar	109	108	76	70.4	88	81.5	1	0.9
Qantas	31	31	27	87.1	25	80.6	0	0.0
Tigerair	47	46	41	89.1	38	82.6	1	2.1
Virgin Australia	35	35	21	60.0	24	68.6	0	0.0
All Airlines	222	220	165	75.0	175	79.5	2	0.9
Melbourne-Canberra								
Qantas	266	262	231	88.2	239	91.2	4	1.5
QantasLink	39	36	29	80.6	24	66.7	3	7.7
Virgin Australia	179	177	121	68.4	118	66.7	2	1.1
All Airlines	484	475	381	80.2	381	80.2	9	1.9
Melbourne-Darwin								
Jetstar	31	31	24	77.4	25	80.6	0	0.0
Qantas	18	18	18	100.0	14	77.8	0	0.0
Virgin Australia	31	31	27	87.1	21	67.7	0	0.0
All Airlines	80	80	69	86.3	60	75.0	0	0.0
Melbourne-Gold Coast								
Jetstar	220	217	139	64.1	145	66.8	3	1.4
Tigerair	88	87	48	55.2	42	48.3	1	1.1
Virgin Australia	176	176	109	61.9	123	69.9	0	0.0
All Airlines	484	480	296	61.7	310	64.6	4	0.8
Melbourne-Hobart								
Jetstar	169	169	122	72.2	123	72.8	0	0.0
Qantas	62	62	55	88.7	53	85.5	0	0.0
QantasLink	31	30	17	56.7	16	53.3	1	3.2
Tigerair	31	31	19	61.3	20	64.5	0	0.0
Virgin Australia	145	144	95	66.0	92	63.9	1	0.7
All Airlines	438	436	308	70.6	304	69.7	2	0.5
Melbourne-Launceston								
Jetstar	130	130	88	67.7	96	73.8	0	0.0
QantasLink	123	121	77	63.6	72	59.5	2	1.6
Virgin Australia	121	121	87	71.9	85	70.2	0	0.0
All Airlines	374	372	252	67.7	253	68.0	2	0.5
Melbourne-Mildura								
QantasLink	89	89	73	82.0	59	66.3	0	0.0
Regional Express	88	88	82	93.2	76	86.4	0	0.0
Virgin Australia	31	31	25	80.6	23	74.2	0	0.0
All Airlines	208	208	180	86.5	158	76.0	0	0.0

	<i>Sectors</i>		<i>Departures On Time</i>		<i>Arrivals On Time</i>		<i>Cancellations</i>	
	<i>Sched.</i>	<i>Flown</i>	<i>No.</i>	<i>%</i>	<i>No.</i>	<i>%</i>	<i>No.</i>	<i>%</i>
Melbourne-Newcastle								
Jetstar	110	105	67	63.8	73	69.5	5	4.5
Virgin Australia	31	30	25	83.3	24	80.0	1	3.2
All Airlines	141	135	92	68.1	97	71.9	6	4.3
Melbourne-Perth								
Jetstar	86	81	59	72.8	53	65.4	5	5.8
Qantas	226	226	179	79.2	196	86.7	0	0.0
Tigerair	58	58	46	79.3	31	53.4	0	0.0
Virgin Australia	140	140	120	85.7	104	74.3	0	0.0
All Airlines	510	505	404	80.0	384	76.0	5	1.0
Melbourne-Sunshine Coast								
Jetstar	74	74	52	70.3	55	74.3	0	0.0
Tigerair	31	21	21	100.0	19	90.5	10	32.3
Virgin Australia	31	31	23	74.2	24	77.4	0	0.0
All Airlines	136	126	96	76.2	98	77.8	10	7.4
Melbourne-Sydney								
Jetstar	321	302	169	56.0	191	63.2	19	5.9
Qantas	939	903	769	85.2	764	84.6	36	3.8
Tigerair	206	201	132	65.7	149	74.1	5	2.4
Virgin Australia	814	776	531	68.4	527	67.9	38	4.7
All Airlines	2 280	2 182	1 601	73.4	1 631	74.7	98	4.3
Mildura-Melbourne								
QantasLink	89	89	68	76.4	69	77.5	0	0.0
Regional Express	88	88	87	98.9	81	92.0	0	0.0
Virgin Australia	31	31	21	67.7	24	77.4	0	0.0
All Airlines	208	208	176	84.6	174	83.7	0	0.0
Moranbah-Brisbane								
QantasLink	163	151	129	85.4	123	81.5	12	7.4
Virgin Australia Regional Airlines	77	77	57	74.0	35	45.5	0	0.0
All Airlines	240	228	186	81.6	158	69.3	12	5.0
Mount Isa-Brisbane								
Qantas	58	58	54	93.1	51	87.9	0	0.0
Virgin Australia	23	23	20	87.0	18	78.3	0	0.0
All Airlines	81	81	74	91.4	69	85.2	0	0.0
Newcastle-Brisbane								
Jetstar	117	115	88	76.5	87	75.7	2	1.7
QantasLink	73	68	32	47.1	35	51.5	5	6.8
Virgin Australia	86	84	59	70.2	53	63.1	2	2.3
All Airlines	276	267	179	67.0	175	65.5	9	3.3
Newcastle-Melbourne								
Jetstar	110	106	76	71.7	74	69.8	4	3.6
Virgin Australia	31	30	13	43.3	11	36.7	1	3.2
All Airlines	141	136	89	65.4	85	62.5	5	3.5
Newman-Perth								
Qantas	139	138	131	94.9	128	92.8	1	0.7
QantasLink	35	34	32	94.1	31	91.2	1	2.9
Virgin Australia	49	48	42	87.5	36	75.0	1	2.0
Virgin Australia Regional Airlines	10	10	8	80.0	6	60.0	0	0.0
All Airlines	233	230	213	92.6	201	87.4	3	1.3
Perth-Adelaide								
Jetstar	37	37	21	56.8	26	70.3	0	0.0
Qantas	120	120	97	80.8	109	90.8	0	0.0
Virgin Australia	66	65	57	87.7	60	92.3	1	1.5
All Airlines	223	222	175	78.8	195	87.8	1	0.4

	<i>Sectors</i>		<i>Departures On Time</i>		<i>Arrivals On Time</i>		<i>Cancellations</i>	
	<i>Sched.</i>	<i>Flown</i>	<i>No.</i>	<i>%</i>	<i>No.</i>	<i>%</i>	<i>No.</i>	<i>%</i>
Perth-Brisbane								
Jetstar	30	30	16	53.3	20	66.7	0	0.0
Qantas	130	130	117	90.0	109	83.8	0	0.0
Virgin Australia	92	92	82	89.1	81	88.0	0	0.0
All Airlines	252	252	215	85.3	210	83.3	0	0.0
Perth-Broome								
Qantas	33	33	31	93.9	29	87.9	0	0.0
QantasLink	56	56	54	96.4	54	96.4	0	0.0
Virgin Australia	36	34	32	94.1	32	94.1	2	5.6
Virgin Australia Regional Airlines	18	18	14	77.8	14	77.8	0	0.0
All Airlines	143	141	131	92.9	129	91.5	2	1.4
Perth-Darwin								
Qantas	31	31	26	83.9	25	80.6	0	0.0
Virgin Australia	27	27	27	100.0	27	100.0	0	0.0
All Airlines	58	58	53	91.4	52	89.7	0	0.0
Perth-Geraldton								
QantasLink	63	62	54	87.1	51	82.3	1	1.6
Virgin Australia Regional Airlines	97	97	87	89.7	87	89.7	0	0.0
All Airlines	160	159	141	88.7	138	86.8	1	0.6
Perth-Kalgoorlie								
Qantas	63	61	52	85.2	54	88.5	2	3.2
QantasLink	26	25	23	92.0	23	92.0	1	3.8
Virgin Australia	44	44	39	88.6	39	88.6	0	0.0
Virgin Australia Regional Airlines	14	14	13	92.9	13	92.9	0	0.0
All Airlines	147	144	127	88.2	129	89.6	3	2.0
Perth-Karratha								
Qantas	191	184	178	96.7	177	96.2	7	3.7
QantasLink	70	63	60	95.2	60	95.2	7	10.0
Virgin Australia	89	87	83	95.4	80	92.0	2	2.2
All Airlines	350	334	321	96.1	317	94.9	16	4.6
Perth-Melbourne								
Jetstar	84	78	44	56.4	56	71.8	6	7.1
Qantas	227	226	186	82.3	194	85.8	1	0.4
Tigerair	58	58	32	55.2	35	60.3	0	0.0
Virgin Australia	139	139	122	87.8	124	89.2	0	0.0
All Airlines	508	501	384	76.6	409	81.6	7	1.4
Perth-Newman								
Qantas	139	138	132	95.7	133	96.4	1	0.7
QantasLink	35	35	34	97.1	33	94.3	0	0.0
Virgin Australia	49	48	43	89.6	43	89.6	1	2.0
Virgin Australia Regional Airlines	10	10	9	90.0	9	90.0	0	0.0
All Airlines	233	231	218	94.4	218	94.4	2	0.9
Perth-Port Hedland								
Qantas	133	132	126	95.5	127	96.2	1	0.8
QantasLink	43	43	41	95.3	42	97.7	0	0.0
Virgin Australia	54	54	49	90.7	49	90.7	0	0.0
All Airlines	230	229	216	94.3	218	95.2	1	0.4
Perth-Sydney								
Jetstar	42	40	18	45.0	26	65.0	2	4.8
Qantas	210	210	176	83.8	184	87.6	0	0.0
Virgin Australia	118	118	102	86.4	106	89.8	0	0.0
All Airlines	370	368	296	80.4	316	85.9	2	0.5

	<i>Sectors</i>		<i>Departures On Time</i>		<i>Arrivals On Time</i>		<i>Cancellations</i>	
	<i>Sched.</i>	<i>Flown</i>	<i>No.</i>	<i>%</i>	<i>No.</i>	<i>%</i>	<i>No.</i>	<i>%</i>
Port Hedland-Perth								
Qantas	133	132	124	93.9	126	95.5	1	0.8
QantasLink	43	43	39	90.7	41	95.3	0	0.0
Virgin Australia	54	54	48	88.9	44	81.5	0	0.0
All Airlines	230	229	211	92.1	211	92.1	1	0.4
Port Lincoln-Adelaide								
QantasLink	102	102	96	94.1	94	92.2	0	0.0
Regional Express	214	212	205	96.7	200	94.3	2	0.9
All Airlines	316	314	301	95.9	294	93.6	2	0.6
Port Macquarie-Sydney								
QantasLink	139	138	76	55.1	59	42.8	1	0.7
Virgin Australia Regional Airlines	62	62	41	66.1	35	56.5	0	0.0
All Airlines	201	200	117	58.5	94	47.0	1	0.5
Proserpine-Brisbane								
Jetstar	31	31	24	77.4	24	77.4	0	0.0
Virgin Australia	54	52	42	80.8	31	59.6	2	3.7
All Airlines	85	83	66	79.5	55	66.3	2	2.4
Rockhampton-Brisbane								
QantasLink	200	197	167	84.8	161	81.7	3	1.5
Virgin Australia	105	104	78	75.0	64	61.5	1	1.0
Virgin Australia Regional Airlines	124	122	112	91.8	111	91.0	2	1.6
All Airlines	429	423	357	84.4	336	79.4	6	1.4
Sunshine Coast-Melbourne								
Jetstar	74	72	43	59.7	43	59.7	2	2.7
Tigerair	31	21	19	90.5	16	76.2	10	32.3
Virgin Australia	31	31	10	32.3	4	12.9	0	0.0
All Airlines	136	124	72	58.1	63	50.8	12	8.8
Sunshine Coast-Sydney								
Jetstar	113	110	75	68.2	74	67.3	3	2.7
Virgin Australia	36	35	24	68.6	20	57.1	1	2.8
All Airlines	149	145	99	68.3	94	64.8	4	2.7
Sydney-Adelaide								
Jetstar	117	115	72	62.6	70	60.9	2	1.7
Qantas	270	270	223	82.6	212	78.5	0	0.0
Virgin Australia	168	166	110	66.3	111	66.9	2	1.2
All Airlines	555	551	405	73.5	393	71.3	4	0.7
Sydney-Albury								
QantasLink	116	116	61	52.6	37	31.9	0	0.0
Regional Express	112	111	90	81.1	88	79.3	1	0.9
Virgin Australia Regional Airlines	62	62	50	80.6	49	79.0	0	0.0
All Airlines	290	289	201	69.6	174	60.2	1	0.3
Sydney-Alice Springs								
Qantas	31	31	24	77.4	25	80.6	0	0.0
Tigerair	19	19	15	78.9	15	78.9	0	0.0
All Airlines	50	50	39	78.0	40	80.0	0	0.0
Sydney-Ayers Rock								
Jetstar	19	19	15	78.9	14	73.7	0	0.0
Virgin Australia	31	31	26	83.9	23	74.2	0	0.0
All Airlines	50	50	41	82.0	37	74.0	0	0.0

	<i>Sectors</i>		<i>Departures On Time</i>		<i>Arrivals On Time</i>		<i>Cancellations</i>	
	<i>Sched.</i>	<i>Flown</i>	<i>No.</i>	<i>%</i>	<i>No.</i>	<i>%</i>	<i>No.</i>	<i>%</i>
Sydney-Ballina								
Jetstar	73	73	56	76.7	55	75.3	0	0.0
Regional Express	25	25	16	64.0	15	60.0	0	0.0
Virgin Australia	31	31	24	77.4	24	77.4	0	0.0
All Airlines	129	129	96	74.4	94	72.9	0	0.0
Sydney-Brisbane								
Jetstar	142	134	94	70.1	86	64.2	8	5.6
Qantas	603	590	489	82.9	463	78.5	13	2.2
Tigerair	77	75	48	64.0	40	53.3	2	2.6
Virgin Australia	571	546	422	77.3	398	72.9	25	4.4
All Airlines	1 393	1 345	1 053	78.3	987	73.4	48	3.4
Sydney-Cairns								
Jetstar	106	105	86	81.9	92	87.6	1	0.9
Qantas	76	76	63	82.9	68	89.5	0	0.0
Tigerair	33	33	26	78.8	25	75.8	0	0.0
Virgin Australia	91	91	68	74.7	69	75.8	0	0.0
All Airlines	306	305	243	79.7	254	83.3	1	0.3
Sydney-Canberra								
Qantas	163	157	132	84.1	127	80.9	6	3.7
QantasLink	416	385	269	69.9	285	74.0	31	7.5
Virgin Australia	54	53	49	92.5	50	94.3	1	1.9
Virgin Australia Regional Airlines	258	253	210	83.0	211	83.4	5	1.9
All Airlines	891	848	660	77.8	673	79.4	43	4.8
Sydney-Coffs Harbour								
QantasLink	156	156	106	67.9	93	59.6	0	0.0
Tigerair	21	20	16	80.0	16	80.0	1	4.8
Virgin Australia	62	62	53	85.5	52	83.9	0	0.0
All Airlines	239	238	175	73.5	161	67.6	1	0.4
Sydney-Darwin								
Jetstar	27	27	23	85.2	24	88.9	0	0.0
Qantas	54	54	43	79.6	45	83.3	0	0.0
Virgin Australia	31	31	25	80.6	24	77.4	0	0.0
All Airlines	112	112	91	81.3	93	83.0	0	0.0
Sydney-Dubbo								
QantasLink	129	128	88	68.8	66	51.6	1	0.8
Regional Express	156	153	129	84.3	127	83.0	3	1.9
All Airlines	285	281	217	77.2	193	68.7	4	1.4
Sydney-Gold Coast								
Jetstar	360	347	265	76.4	264	76.1	13	3.6
Qantas	93	93	83	89.2	85	91.4	0	0.0
Tigerair	61	58	43	74.1	42	72.4	3	4.9
Virgin Australia	328	320	256	80.0	251	78.4	8	2.4
All Airlines	842	818	647	79.1	642	78.5	24	2.9
Sydney-Hamilton Island								
Jetstar	30	30	22	73.3	27	90.0	0	0.0
Virgin Australia	31	31	26	83.9	27	87.1	0	0.0
All Airlines	61	61	48	78.7	54	88.5	0	0.0
Sydney-Hobart								
Jetstar	82	81	59	72.8	60	74.1	1	1.2
Qantas	31	31	27	87.1	26	83.9	0	0.0
Virgin Australia	62	62	53	85.5	52	83.9	0	0.0
All Airlines	175	174	139	79.9	138	79.3	1	0.6

	<i>Sectors</i>		<i>Departures On Time</i>		<i>Arrivals On Time</i>		<i>Cancellations</i>	
	<i>Sched.</i>	<i>Flown</i>	<i>No.</i>	<i>%</i>	<i>No.</i>	<i>%</i>	<i>No.</i>	<i>%</i>
Sydney-Launceston								
Jetstar	56	56	38	67.9	33	58.9	0	0.0
Virgin Australia	31	31	27	87.1	27	87.1	0	0.0
All Airlines	87	87	65	74.7	60	69.0	0	0.0
Sydney-Melbourne								
Jetstar	322	302	215	71.2	193	63.9	20	6.2
Qantas	940	908	780	85.9	718	79.1	32	3.4
Tigerair	207	202	155	76.7	137	67.8	5	2.4
Virgin Australia	815	776	568	73.2	508	65.5	39	4.8
All Airlines	2 284	2 188	1 718	78.5	1 556	71.1	96	4.2
Sydney-Perth								
Jetstar	42	41	33	80.5	27	65.9	1	2.4
Qantas	213	213	170	79.8	176	82.6	0	0.0
Virgin Australia	118	118	93	78.8	75	63.6	0	0.0
All Airlines	373	372	296	79.6	278	74.7	1	0.3
Sydney-Port Macquarie								
QantasLink	139	138	93	67.4	74	53.6	1	0.7
Virgin Australia Regional Airlines	62	62	50	80.6	51	82.3	0	0.0
All Airlines	201	200	143	71.5	125	62.5	1	0.5
Sydney-Sunshine Coast								
Jetstar	112	110	82	74.5	86	78.2	2	1.8
Virgin Australia	36	36	27	75.0	27	75.0	0	0.0
All Airlines	148	146	109	74.7	113	77.4	2	1.4
Sydney-Townsville								
Jetstar	29	29	26	89.7	27	93.1	0	0.0
Virgin Australia	31	31	27	87.1	24	77.4	0	0.0
All Airlines	60	60	53	88.3	51	85.0	0	0.0
Sydney-Wagga Wagga								
QantasLink	115	115	76	66.1	51	44.3	0	0.0
Regional Express	140	139	127	91.4	123	88.5	1	0.7
All Airlines	255	254	203	79.9	174	68.5	1	0.4
Townsville-Brisbane								
Jetstar	31	31	24	77.4	21	67.7	0	0.0
Qantas	152	152	143	94.1	138	90.8	0	0.0
Virgin Australia	168	166	139	83.7	131	78.9	2	1.2
All Airlines	351	349	306	87.7	290	83.1	2	0.6
Townsville-Cairns								
QantasLink	193	187	157	84.0	161	86.1	6	3.1
Virgin Australia Regional Airlines	27	27	27	100.0	27	100.0	0	0.0
All Airlines	220	214	184	86.0	188	87.9	6	2.7
Townsville-Sydney								
Jetstar	28	28	20	71.4	18	64.3	0	0.0
Virgin Australia	31	30	24	80.0	26	86.7	1	3.2
All Airlines	59	58	44	75.9	44	75.9	1	1.7
Wagga Wagga-Sydney								
QantasLink	115	115	63	54.8	63	54.8	0	0.0
Regional Express	138	137	120	87.6	117	85.4	1	0.7
All Airlines	253	252	183	72.6	180	71.4	1	0.4

Airports

On time performance is reported for all routes where the passenger load averages over 8000 passengers per month, and where two or more airlines operate in competition. The following data reports by airport against flights operated on those routes only.

Airport	Departures			Arrivals		
	Sectors	On Time		Sectors	On Time	
	Flown	No.	%	Flown	No.	%
Adelaide						
Jetstar	307	202	65.8	307	216	70.4
Qantas	851	730	85.8	851	718	84.4
QantasLink	140	121	86.4	141	117	83.0
Regional Express	212	206	97.2	212	200	94.3
Tigerair	64	41	64.1	64	40	62.5
Virgin Australia	679	519	76.4	681	477	70.0
All Airlines	2 253	1 819	80.7	2 256	1 768	78.4
Relates to services to and from Brisbane, Canberra, Gold Coast, Melbourne, Perth, Port Lincoln and Sydney.						
Albury						
QantasLink	116	48	41.4	116	37	31.9
Regional Express	111	91	82.0	111	88	79.3
Virgin Australia Regional Airlines	62	48	77.4	62	49	79.0
All Airlines	289	187	64.7	289	174	60.2
Relates to services to and from Sydney only.						
Alice Springs						
Qantas	62	34	54.8	62	51	82.3
Tigerair	38	25	65.8	38	27	71.1
All Airlines	100	59	59.0	100	78	78.0
Relates to services to and from Melbourne and Sydney.						
Ayers Rock						
Jetstar	18	12	66.7	19	14	73.7
Virgin Australia	31	22	71.0	31	23	74.2
All Airlines	49	34	69.4	50	37	74.0
Relates to services to and from Sydney only.						
Ballina						
Jetstar	73	47	64.4	73	55	75.3
Regional Express	23	12	52.2	25	15	60.0
Virgin Australia	31	21	67.7	31	24	77.4
All Airlines	127	80	63.0	129	94	72.9
Relates to services to and from Sydney only.						
Brisbane						
Jetstar	743	577	77.7	742	521	70.2
Qantas	1 794	1 526	85.1	1 766	1 473	83.4
QantasLink	1 120	975	87.1	1 109	855	77.1
Tigerair	160	91	56.9	162	92	56.8
Virgin Australia	2 076	1 617	77.9	2 068	1 511	73.1
Virgin Australia Regional Airlines	480	408	85.0	479	381	79.5
All Airlines	6 373	5 194	81.5	6 326	4 833	76.4
Relates to services to and from Adelaide, Bundaberg, Cairns, Canberra, Darwin, Emerald, Gladstone, Hamilton Island, Mackay, Melbourne, Moranbah, Mount Isa, Newcastle, Perth, Proserpine, Rockhampton, Sydney and Townsville.						

Airport	Departures			Arrivals		
	Sectors Flown	On Time		Sectors Flown	On Time	
		No.	%		No.	%
Broome						
Qantas	33	18	54.5	33	29	87.9
QantasLink	56	51	91.1	56	54	96.4
Virgin Australia	33	31	93.9	34	32	94.1
Virgin Australia Regional Airlines	18	10	55.6	18	14	77.8
All Airlines	140	110	78.6	141	129	91.5
Relates to services to and from Perth only.						
Bundaberg						
QantasLink	121	101	83.5	121	104	86.0
Virgin Australia Regional Airlines	31	26	83.9	31	28	90.3
All Airlines	152	127	83.6	152	132	86.8
Relates to services to and from Brisbane only.						
Cairns						
Jetstar	331	266	80.4	333	285	85.6
Qantas	227	194	85.5	227	204	89.9
QantasLink	194	170	87.6	191	165	86.4
Tigerair	78	56	71.8	79	63	79.7
Virgin Australia	296	216	73.0	296	224	75.7
Virgin Australia Regional Airlines	27	26	96.3	27	27	100.0
All Airlines	1 153	928	80.5	1 153	968	84.0
Relates to services to and from Brisbane, Melbourne, Sydney and Townsville.						
Canberra						
Qantas	609	556	91.3	608	538	88.5
QantasLink	464	346	74.6	463	336	72.6
Virgin Australia	350	287	82.0	353	266	75.4
Virgin Australia Regional Airlines	253	226	89.3	253	211	83.4
All Airlines	1 676	1 415	84.4	1 677	1 351	80.6
Relates to services to and from Adelaide, Brisbane, Melbourne and Sydney.						
Coffs Harbour						
QantasLink	156	94	60.3	156	93	59.6
Tigerair	20	16	80.0	20	16	80.0
Virgin Australia	62	48	77.4	62	52	83.9
All Airlines	238	158	66.4	238	161	67.6
Relates to services to and from Sydney only.						
Darwin						
Jetstar	64	38	59.4	65	53	81.5
Qantas	133	102	76.7	134	114	85.1
Virgin Australia	119	92	77.3	120	94	78.3
All Airlines	316	232	73.4	319	261	81.8
Relates to services to and from Brisbane, Melbourne, Perth and Sydney.						
Dubbo						
QantasLink	127	72	56.7	128	66	51.6
Regional Express	158	128	81.0	153	127	83.0
All Airlines	285	200	70.2	281	193	68.7
Relates to services to and from Sydney only.						

Airport	Departures			Arrivals		
	Sectors Flown	On Time		Sectors Flown	On Time	
		No.	%		No.	%
Emerald						
QantasLink	186	151	81.2	186	154	82.8
Virgin Australia Regional Airlines	107	92	86.0	108	92	85.2
All Airlines	293	243	82.9	294	246	83.7
Relates to services to and from Brisbane only.						
Geraldton						
QantasLink	62	58	93.5	62	51	82.3
Virgin Australia Regional Airlines	97	86	88.7	97	87	89.7
All Airlines	159	144	90.6	159	138	86.8
Relates to services to and from Perth only.						
Gladstone						
QantasLink	248	201	81.0	226	193	85.4
Virgin Australia	6	0	0.0	10	8	80.0
Virgin Australia Regional Airlines	142	123	86.6	142	117	82.4
All Airlines	396	324	81.8	378	318	84.1
Relates to services to and from Brisbane only.						
Gold Coast						
Jetstar	588	434	73.8	600	439	73.2
Qantas	93	78	83.9	93	85	91.4
Tigerair	145	78	53.8	145	84	57.9
Virgin Australia	525	395	75.2	526	403	76.6
All Airlines	1 351	985	72.9	1 364	1 011	74.1
Relates to services to and from Adelaide, Melbourne and Sydney.						
Hamilton Island						
Jetstar	47	34	72.3	46	42	91.3
Virgin Australia	62	54	87.1	62	53	85.5
All Airlines	109	88	80.7	108	95	88.0
Relates to services to and from Brisbane and Sydney.						
Hobart						
Jetstar	250	163	65.2	250	183	73.2
Qantas	93	75	80.6	93	79	84.9
QantasLink	31	29	93.5	30	16	53.3
Tigerair	31	18	58.1	31	20	64.5
Virgin Australia	205	135	65.9	206	144	69.9
All Airlines	610	420	68.9	610	442	72.5
Relates to services to and from Melbourne and Sydney.						
Kalgoorlie						
Qantas	61	54	88.5	61	54	88.5
QantasLink	24	20	83.3	25	23	92.0
Virgin Australia	42	36	85.7	44	39	88.6
Virgin Australia Regional Airlines	14	12	85.7	14	13	92.9
All Airlines	141	122	86.5	144	129	89.6
Relates to services to and from Perth only.						

Airport	Departures			Arrivals		
	Sectors Flown	On Time		Sectors Flown	On Time	
		No.	%		No.	%
Karratha						
Qantas	183	177	96.7	184	177	96.2
QantasLink	64	63	98.4	63	60	95.2
Virgin Australia	87	74	85.1	87	80	92.0
All Airlines	334	314	94.0	334	317	94.9
Relates to services to and from Perth only.						
Launceston						
Jetstar	184	107	58.2	186	129	69.4
QantasLink	120	78	65.0	121	72	59.5
Virgin Australia	152	112	73.7	152	112	73.7
All Airlines	456	297	65.1	459	313	68.2
Relates to services to and from Melbourne and Sydney.						
Mackay						
Jetstar	117	92	78.6	116	97	83.6
QantasLink	113	101	89.4	113	100	88.5
Virgin Australia	161	132	82.0	161	117	72.7
All Airlines	391	325	83.1	390	314	80.5
Relates to services to and from Brisbane only.						
Melbourne						
Jetstar	1 418	920	64.9	1 415	953	67.3
Qantas	2 266	1 919	84.7	2 270	1 869	82.3
QantasLink	294	212	72.1	295	192	65.1
Regional Express	88	82	93.2	88	81	92.0
Tigerair	614	421	68.6	613	361	58.9
Virgin Australia	2 367	1 671	70.6	2 361	1 565	66.3
All Airlines	7 047	5 225	74.1	7 042	5 021	71.3
Relates to services to and from Adelaide, Alice Springs, Brisbane, Cairns, Canberra, Darwin, Gold Coast, Hobart, Launceston, Mildura, Newcastle, Perth, Sunshine Coast and Sydney.						
Mildura						
QantasLink	89	68	76.4	89	59	66.3
Regional Express	88	87	98.9	88	76	86.4
Virgin Australia	31	21	67.7	31	23	74.2
All Airlines	208	176	84.6	208	158	76.0
Relates to services to and from Melbourne only.						
Moranbah						
QantasLink	151	129	85.4	160	149	93.1
Virgin Australia Regional Airlines	77	57	74.0	77	55	71.4
All Airlines	228	186	81.6	237	204	86.1
Relates to services to and from Brisbane only.						
Mount Isa						
Qantas	58	54	93.1	58	56	96.6
Virgin Australia	23	20	87.0	23	19	82.6
All Airlines	81	74	91.4	81	75	92.6
Relates to services to and from Brisbane only.						

Airport	Departures			Arrivals		
	Sectors	On Time		Sectors	On Time	
	Flown	No.	%	Flown	No.	%
Newcastle						
Jetstar	221	164	74.2	219	168	76.7
QantasLink	68	32	47.1	68	26	38.2
Virgin Australia	114	72	63.2	114	96	84.2
All Airlines	403	268	66.5	401	290	72.3
Relates to services to and from Brisbane and Melbourne.						
Newman						
Qantas	138	131	94.9	138	133	96.4
QantasLink	34	32	94.1	35	33	94.3
Virgin Australia	48	42	87.5	48	43	89.6
Virgin Australia Regional Airlines	10	8	80.0	10	9	90.0
All Airlines	230	213	92.6	231	218	94.4
Relates to services to and from Perth only.						
Perth						
Jetstar	185	99	53.5	187	121	64.7
Qantas	1 265	1 121	88.6	1 263	1 142	90.4
QantasLink	284	266	93.7	283	263	92.9
Tigerair	58	32	55.2	58	31	53.4
Virgin Australia	708	636	89.8	707	495	70.0
Virgin Australia Regional Airlines	139	123	88.5	139	107	77.0
All Airlines	2 639	2 277	86.3	2 637	2 159	81.9
Relates to services to and from Adelaide, Brisbane, Broome, Darwin, Geraldton, Kalgoorlie, Karratha, Melbourne, Newman, Port Hedland and Sydney.						
Port Hedland						
Qantas	132	124	93.9	132	127	96.2
QantasLink	43	39	90.7	43	42	97.7
Virgin Australia	54	48	88.9	54	49	90.7
All Airlines	229	211	92.1	229	218	95.2
Relates to services to and from Perth only.						
Port Lincoln						
QantasLink	102	96	94.1	102	93	91.2
Regional Express	212	205	96.7	212	202	95.3
All Airlines	314	301	95.9	314	295	93.9
Relates to services to and from Adelaide only.						
Port Macquarie						
QantasLink	138	76	55.1	138	74	53.6
Virgin Australia Regional Airlines	62	41	66.1	62	51	82.3
All Airlines	200	117	58.5	200	125	62.5
Relates to services to and from Sydney only.						
Proserpine						
Jetstar	31	24	77.4	31	26	83.9
Virgin Australia	52	42	80.8	52	45	86.5
All Airlines	83	66	79.5	83	71	85.5
Relates to services to and from Brisbane only.						

Airport	Departures			Arrivals		
	Sectors	On Time		Sectors	On Time	
	Flown	No.	%	Flown	No.	%
Rockhampton						
QantasLink	197	167	84.8	220	189	85.9
Virgin Australia	104	78	75.0	105	83	79.0
Virgin Australia Regional Airlines	122	112	91.8	122	102	83.6
All Airlines	423	357	84.4	447	374	83.7
Relates to services to and from Brisbane only.						
Sunshine Coast						
Jetstar	182	118	64.8	184	141	76.6
Tigerair	21	19	90.5	21	19	90.5
Virgin Australia	66	34	51.5	67	51	76.1
All Airlines	269	171	63.6	272	211	77.6
Relates to services to and from Melbourne and Sydney.						
Sydney						
Jetstar	1 469	1 086	73.9	1 454	964	66.3
Qantas	2 423	2 034	83.9	2 448	2 020	82.5
QantasLink	1 038	693	66.8	1 037	648	62.5
Regional Express	428	362	84.6	429	346	80.7
Tigerair	407	303	74.4	405	266	65.7
Virgin Australia	2 416	1 854	76.7	2 413	1 791	74.2
Virgin Australia Regional Airlines	377	310	82.2	377	300	79.6
All Airlines	8 558	6 642	77.6	8 563	6 335	74.0
Relates to services to and from Adelaide, Albury, Alice Springs, Ayers Rock, Ballina, Brisbane, Cairns, Canberra, Coffs Harbour, Darwin, Dubbo, Gold Coast, Hamilton Island, Hobart, Launceston, Melbourne, Perth, Port Macquarie, Sunshine Coast, Townsville and Wagga Wagga.						
Townsville						
Jetstar	59	44	74.6	60	58	96.7
Qantas	152	143	94.1	152	140	92.1
QantasLink	187	157	84.0	190	164	86.3
Virgin Australia	196	163	83.2	197	159	80.7
Virgin Australia Regional Airlines	27	27	100.0	27	25	92.6
All Airlines	621	534	86.0	626	546	87.2
Relates to services to and from Brisbane, Cairns and Sydney.						
Wagga Wagga						
QantasLink	115	63	54.8	115	51	44.3
Regional Express	137	120	87.6	139	123	88.5
All Airlines	252	183	72.6	254	174	68.5
Relates to services to and from Sydney only.						

Definitions

On time departure A flight departure is counted as "on time" if it departs the gate before 15 minutes after the scheduled departure time shown in the carriers' schedule.

On time arrival A flight arrival is counted as "on time" if it arrived at the gate before 15 minutes after the scheduled arrival time shown in the carriers' schedule.
Neither diverted nor cancelled flights count as on time.

Cancellation A flight removed from service within 7 days of scheduled departure is regarded as a cancellation.

On time departure percentage The percentage of on time departures is measured against the number of departures *operated* on any particular sector.

On time arrival percentage The percentage of on time arrivals is measured against the number of arrivals *operated* on any particular sector.

Cancellation percentage The percentage of cancellations is measured against the number of services *scheduled* on any particular sector.
