



Australian Government

Department of Infrastructure and Transport

Bureau of Infrastructure, Transport and Regional Economics

STATISTICAL REPORT



Aviation

Domestic airline on time performance
October 2012

© Commonwealth of Australia 2012

ISSN: 1832-0759

Ownership of intellectual property rights in this publication

Unless otherwise noted, copyright (and any other intellectual property rights, if any) in this publication is owned by the Commonwealth of Australia (referred to below as the Commonwealth).

Disclaimer

The material contained in this publication is made available on the understanding that the Commonwealth is not providing professional advice, and that users exercise their own skill and care with respect to its use, and seek independent advice if necessary.

The Commonwealth makes no representations or warranties as to the contents or accuracy of the information contained in this publication. To the extent permitted by law, the Commonwealth disclaims liability to any person or organisation in respect of anything done, or omitted to be done, in reliance upon information contained in this publication.

Creative Commons licence

With the exception of (a) the Coat of Arms; and (b) the Department of Infrastructure's photos and graphics, copyright in this publication is licensed under a Creative Commons Attribution 3.0 Australia Licence.

Creative Commons Attribution 3.0 Australia Licence is a standard form licence agreement that allows you to copy, communicate and adapt this publication provided that you attribute the work to the Commonwealth and abide by the other licence terms. A summary of the licence terms is available from <http://creativecommons.org/licenses/by/3.0/au/deed.en>. The full licence terms are available from <http://creativecommons.org/licenses/by/3.0/au/legalcode>.

Use of the Coat of Arms

The Department of the Prime Minister and Cabinet sets the terms under which the Coat of Arms is used. Please refer to the Department's Commonwealth Coat of Arms and Government branding web page <http://www.dpmmc.gov.au/guidelines/index.cfm#brand> and, in particular, the Guidelines on the use of the Commonwealth Coat of Arms publication.

An appropriate citation for this report is:

Bureau of Infrastructure, Transport and Regional Economics (BITRE), 2012, Domestic airline on time performance, Statistical Report, BITRE, Canberra ACT.

Contact us

This publication is available in PDF format. All other rights are reserved, including in relation to any Departmental logos or trade marks which may exist. For enquiries regarding the licence and any use of this publication, please contact:

Bureau of Infrastructure, Transport and Regional Economics (BITRE)
Department of Infrastructure and Transport
GPO Box 501, Canberra ACT 2601, Australia
Telephone: (international) +61 2 6274 7210
Fax: (international) +61 2 6274 6855
Email: bitre@infrastructure.gov.au
Website: www.bitre.gov.au

Inquiries

Should you require additional information about the statistics contained in this publication:

Telephone (02) 6274 7790 or Facsimile (02) 6274 7727

Electronic mail: AVSTATS@infrastructure.gov.au

Web site: <http://www.bitre.gov.au/statistics/aviation/otphome.aspx>

Foreword

The Bureau of Infrastructure, Transport and Regional Economics (BITRE) monitors the punctuality and reliability of major domestic airlines operating between Australian airports. The purpose of this is to allow for evaluation of overall industry and individual airline performance, so that consumers of air travel can make informed decisions.

The following domestic airlines report this information monthly to the BITRE: Jetstar, Qantas, QantasLink, Regional Express, Skywest Airlines, Tiger Airways, Virgin Australia and Virgin Australia – ATR/F100 Operations. Data has been gathered since November 2003, although some airlines commenced reporting at a later date, including Jetstar which first reported in May 2004, MacAir in July 2005 and Tiger Airways in April 2008. MacAir ceased operations in February 2009 and data was not received for December 2008 onwards. Virgin Blue was rebranded as Virgin Australia in May 2011 and time series data in Microsoft Excel spreadsheet format on the BITRE website has been revised to reflect this. Services operated by Skywest on behalf of Virgin Australia using ATR/F100 aircraft commenced in November 2011 and are shown separately as Virgin Australia – ATR/F100 Operations.

Information presented in this report is for Australian domestic routes for which the passenger load averaged 8 000 or more passengers per month over the previous six months and where two or more airlines operated in competition on those routes. There were 57 routes that met this definition in October 2012. Over time, routes which meet these criteria change as airline networks and traffic levels vary.

Participating airlines report their overall monthly network performance where this is possible.

Total industry figures encompass all services operated by reporting airlines only. These airlines collectively carried over 95 per cent of total domestic passengers (regular public transport only) in 2011.

The method of capturing on time performance varies between airlines utilising different recording systems. Jetstar and Qantas jet aircraft use Aircraft Communication Addressing and Reporting System (ACARS) to electronically measure on time performance. Regional Express, Skywest, Tiger Airways, Virgin Australia, Virgin Australia – ATR/F100 Operations and the Qantas non-jet fleet record on time performance manually using records from pilots, gate agents and/or ground crews.

After initial data is collected, aggregate reports are audited internally by participating airlines prior to publication.

Reports and detailed time series data in Microsoft Excel spreadsheet format are available from the BITRE website at: <http://www.bitre.gov.au/statistics/aviation/otphome.aspx>.

Contents

	Page
Industry performance	1
Individual routes	9
Airports	20
Definitions	26

Industry performance

For October 2012, on time performance over all routes operated by participating airlines (Jetstar, Qantas, QantasLink, Regional Express, Skywest Airlines, Tiger Airways, Virgin Australia and Virgin Australia – ATR/F100 Operations) averaged 83.4 per cent for on time departures, and 80.8 per cent for on time arrivals. Cancellations represented 1.2 per cent of all scheduled flights. The equivalent figures for October 2011 were 80.0 per cent for departures, 79.0 per cent for arrivals and 2.6 per cent for cancellations.

The long term average performance for all routes since reporting commenced in November 2003 is 83.9 per cent for on time departures and 82.5 per cent for on time arrivals. Cancellations average 1.3 per cent of all scheduled flights.

Of the major domestic airlines, Qantas achieved the highest level of on time departures for October 2012 at 86.3 per cent, followed by Virgin Australia at 86.2 per cent, Tiger Airways at 79.7 per cent and Jetstar at 76.6 per cent. The regional airlines were led by Regional Express at 90.6 per cent, followed by Virgin Australia – ATR/F100 Operations at 83.2 per cent, QantasLink at 78.4 per cent and Skywest also at 78.4 per cent.

Qantas also achieved the highest on time arrivals among the major domestic airlines at 84.6 per cent, followed by Virgin Australia at 82.3 per cent, Tiger Airways at 76.9 per cent and Jetstar at 76.7 per cent. Regional Express was the best performing regional airline for on time arrivals at 86.9 per cent, followed by Virgin Australia – ATR/F100 Operations at 78.9 per cent, Skywest at 76.7 per cent and QantasLink at 75.1 per cent.

Virgin Australia – ATR/F100 Operations had the highest percentage of cancellations for October 2012 at 2.1 per cent, while Skywest had no cancellations.

Of the 57 routes which met the criteria for on time performance reporting in October 2012, the Darwin-Sydney route had the highest percentage of on time departures (96.4 per cent) and the Hamilton Island-Sydney route had the lowest percentage of on time departures (48.4 per cent). The Sydney-Darwin route had the highest percentage of on time arrivals (97.3 per cent) and the Geraldton-Perth route had the lowest percentage of on time arrivals (56.1 per cent).

Cancellations were highest on the Perth-Newman and Newman-Perth routes at 3.8 per cent, followed by Sydney-Melbourne at 3.5 per cent, Karratha-Perth at 3.4 per cent, Melbourne-Sydney at 3.2 per cent and Perth-Karratha at 3.1 per cent.

Port Lincoln Airport recorded the highest percentage of on time departures (94.6 per cent) and the highest percentage of on time arrivals (91.7 per cent). Hamilton Island Airport recorded the lowest percentage of on time departures (55.5 per cent) and Port Macquarie Airport recorded the lowest percentage of on time arrivals (68.5 per cent). These figures only refer to reported routes and do not cover all flights at these airports.

Table 1 On time performance for October 2012 — Total Industry

	<i>Sectors</i>		<i>Departures On Time</i>		<i>Arrivals On Time</i>		<i>Cancellations</i>	
	<i>Scheduled</i>	<i>Flown</i>	<i>No.</i>	<i>%</i>	<i>No.</i>	<i>%</i>	<i>No.</i>	<i>%</i>
Jetstar	6 742	6 678	5 117	76.6	5 125	76.7	64	0.9
Qantas	10 934	10 771	9 294	86.3	9 114	84.6	163	1.5
QantasLink	9 585	9 463	7 423	78.4	7 107	75.1	122	1.3
Regional Express	5 833	5 810	5 265	90.6	5 047	86.9	23	0.4
Skywest	962	962	754	78.4	738	76.7	0	0.0
Tiger Airways	1 514	1 500	1 195	79.7	1 154	76.9	14	0.9
Virgin Australia	11 611	11 463	9 878	86.2	9 431	82.3	148	1.3
Virgin Australia - ATR/F100 Operations	1 585	1 551	1 290	83.2	1 224	78.9	34	2.1
All Airlines	48 766	48 198	40 216	83.4	38 940	80.8	568	1.2

Total airline network data (including routes not shown in this report).

Table 2 Top ten routes for on time performance for October 2012 (participating airlines only)

<i>Departures</i>		<i>Arrivals</i>	
<i>Route</i>	<i>On Time (%)</i>	<i>Route</i>	<i>On Time</i>
Darwin-Sydney	96.4	Sydney-Darwin	97.3
Adelaide-Gold Coast	95.3	Darwin-Sydney	94.6
Adelaide-Port Lincoln	94.9	Adelaide-Gold Coast	93.8
Port Lincoln-Adelaide	94.6	Darwin-Perth	93.1
Perth-Port Hedland	93.8	Adelaide-Canberra	92.5
Sydney-Darwin	92.9	Canberra-Adelaide	91.7
Melbourne-Mildura	92.8	Adelaide-Port Lincoln	91.7
Canberra-Melbourne	92.4	Port Lincoln-Adelaide	91.7
Mildura-Melbourne	91.3	Melbourne-Canberra	91.6
Adelaide-Canberra	91.3	Melbourne-Newcastle	91.5

Table 3 Top ten airports for on time performance for October 2012 (participating airlines and reported routes only)

<i>Departures</i>		<i>Arrivals</i>	
<i>Airport</i>	<i>On Time (%)</i>	<i>Airport</i>	<i>On Time</i>
Port Lincoln	94.6	Port Lincoln	91.7
Mildura	91.3	Newman	90.5
Adelaide	89.8	Port Hedland	90.5
Canberra	88.6	Darwin	88.7
Ayers Rock	87.1	Adelaide	88.4
Darwin	86.9	Ballina	87.4
Melbourne	86.5	Ayers Rock	87.1
Port Hedland	86.3	Karratha	86.8
Newman	85.6	Mildura	86.1
Dubbo	85.1	Hobart	86.0

Total industry on time performance

Figure 1 On time performance (by month from October 2009)—Total Industry

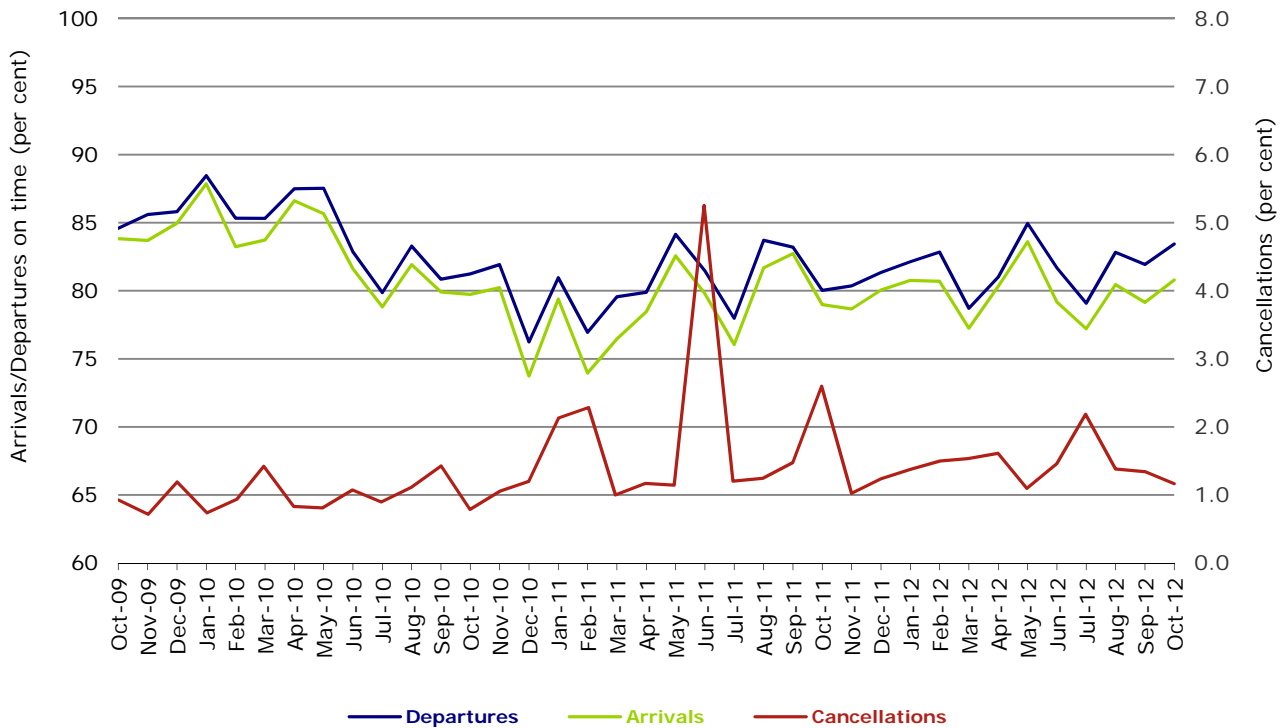
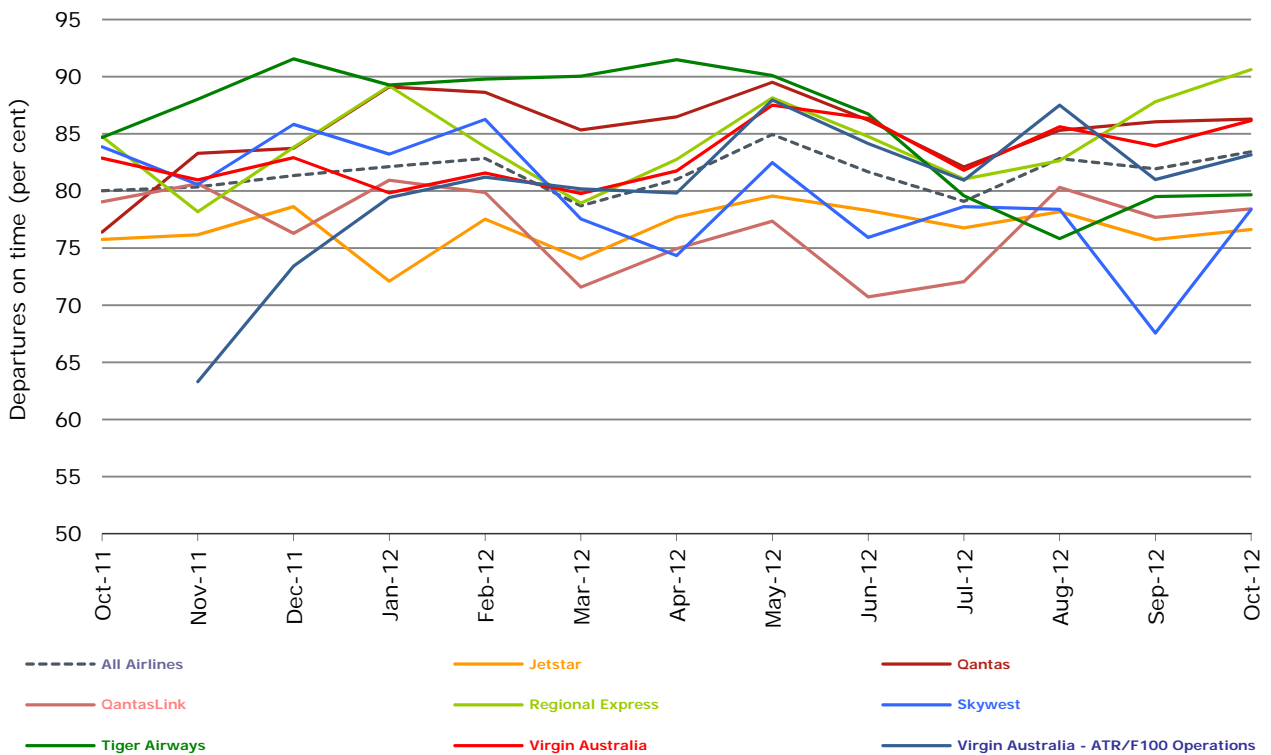
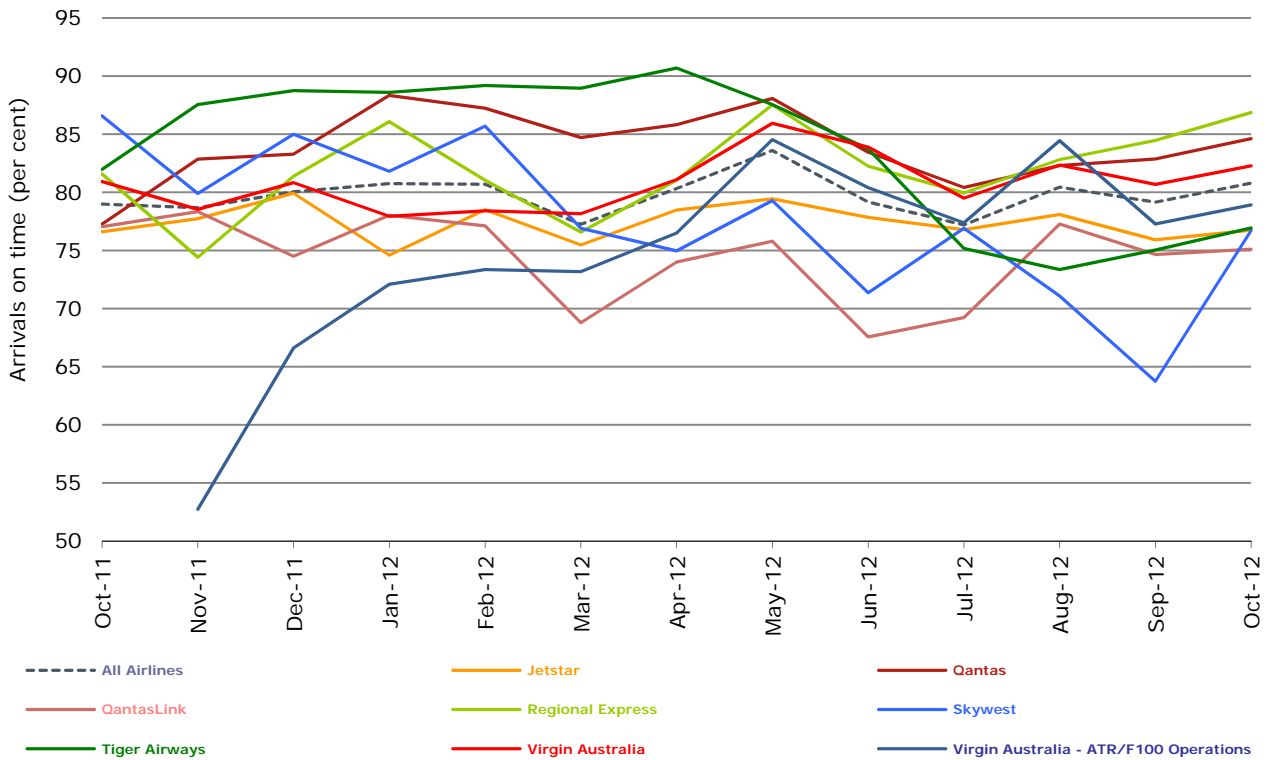


Figure 2 Departures on time (by month from October 2011)



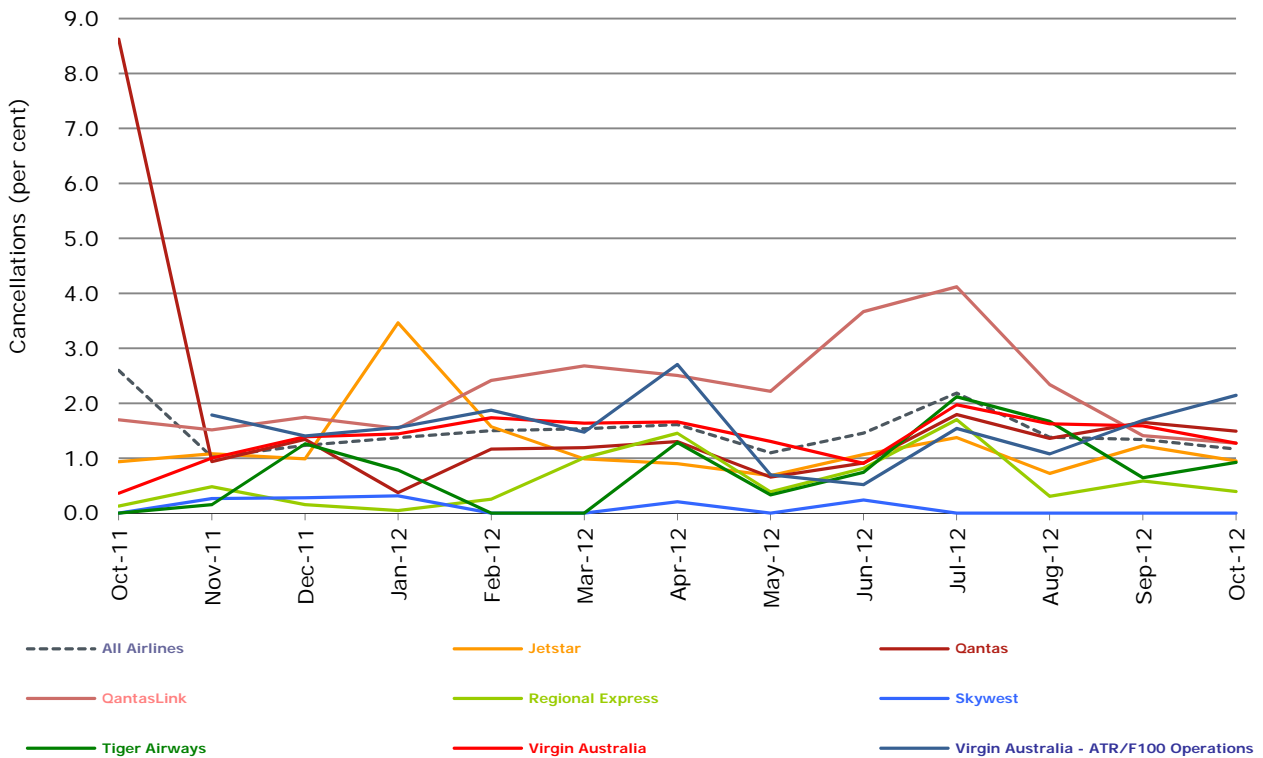
Virgin Australia - ATR/F100 Operations commenced in November 2011.

Figure 3 Arrivals on time (by month from October 2011)



Virgin Australia - ATR/F100 Operations commenced in November 2011.

Figure 4 Cancellations (by month from October 2011)



Virgin Australia - ATR/F100 Operations commenced in November 2011.

Major domestic airlines on time performance

Figure 5 On time performance (by month from October 2009)—Jetstar

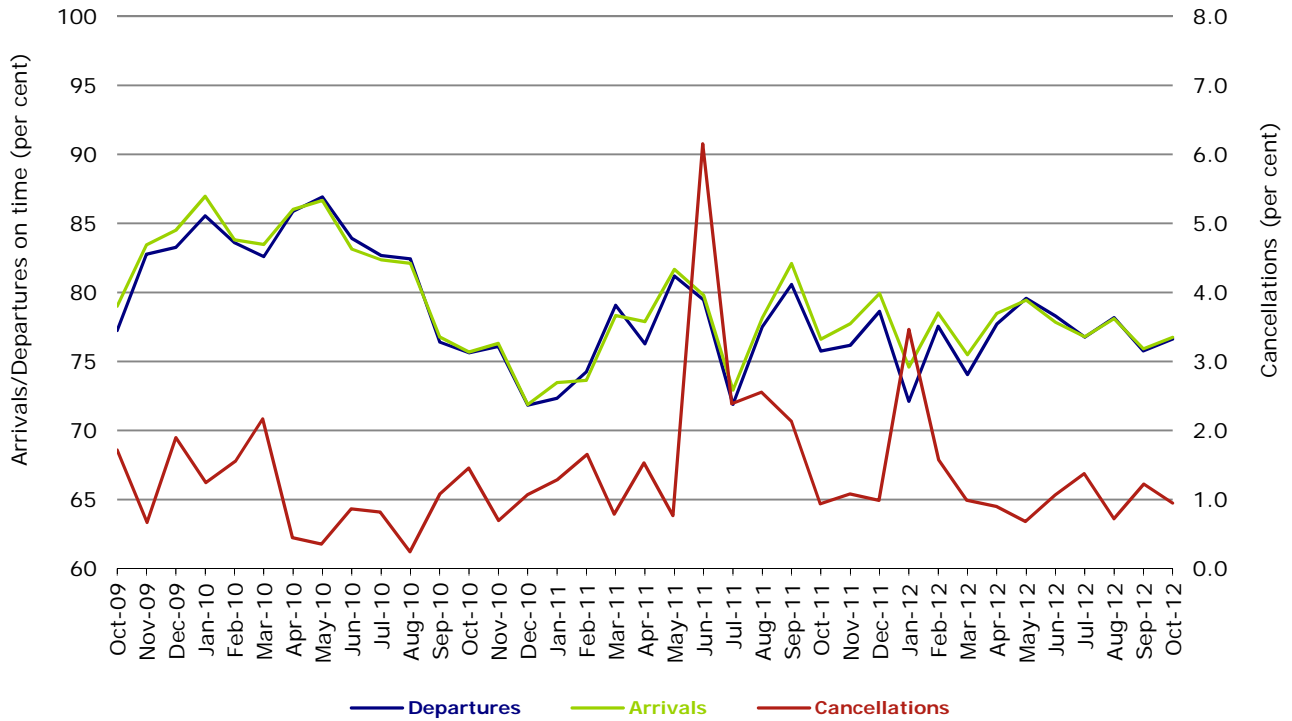


Figure 6 On time performance (by month from October 2009)—Qantas

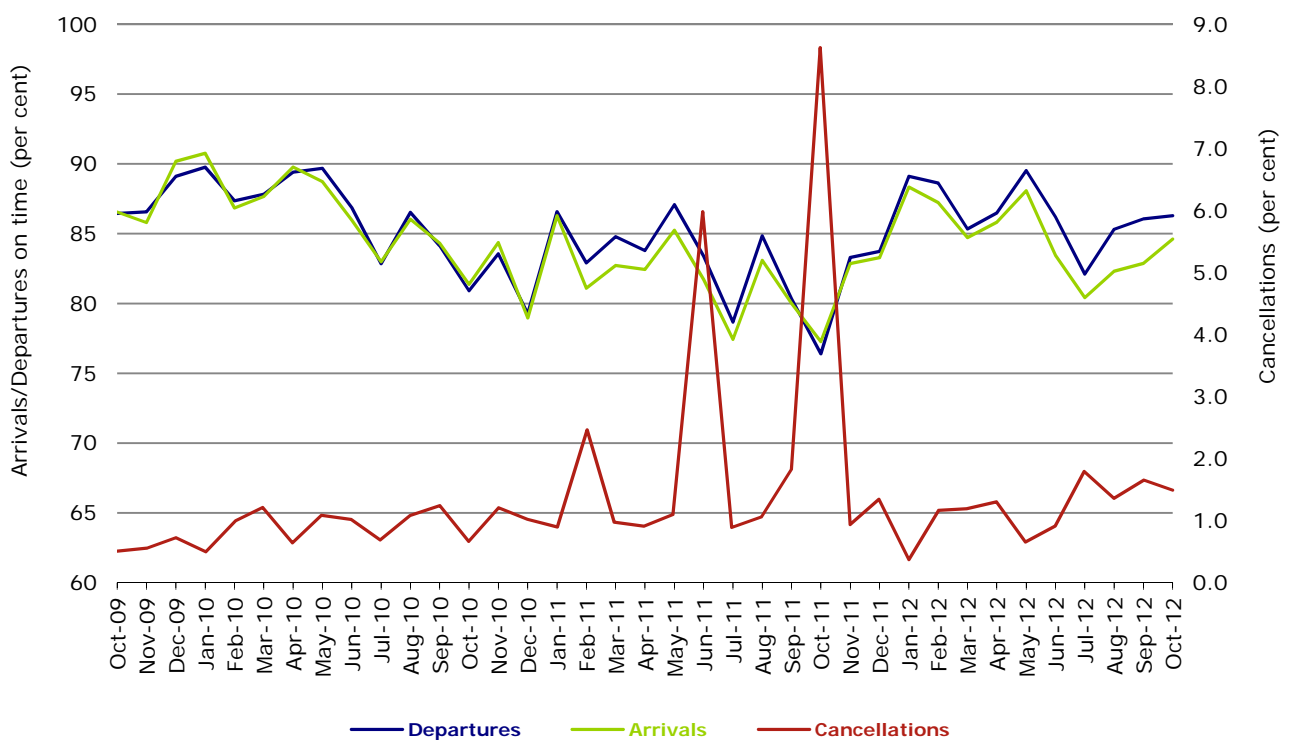
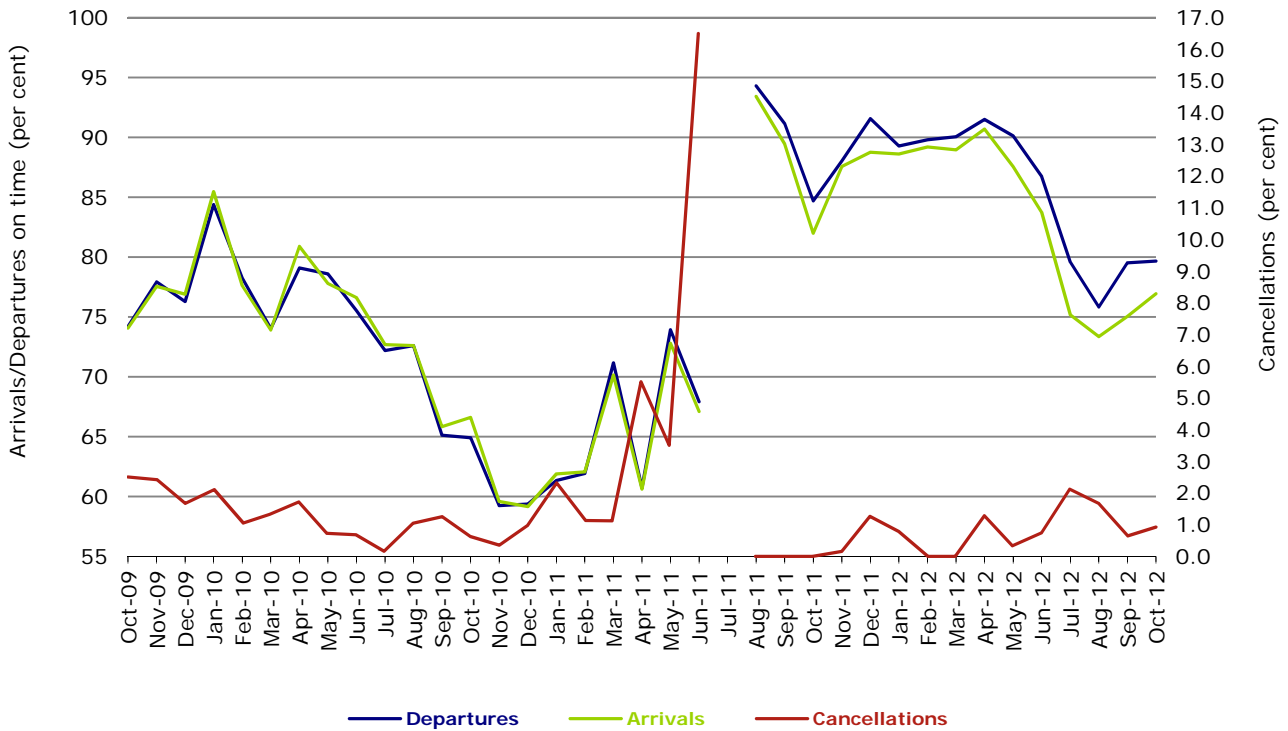
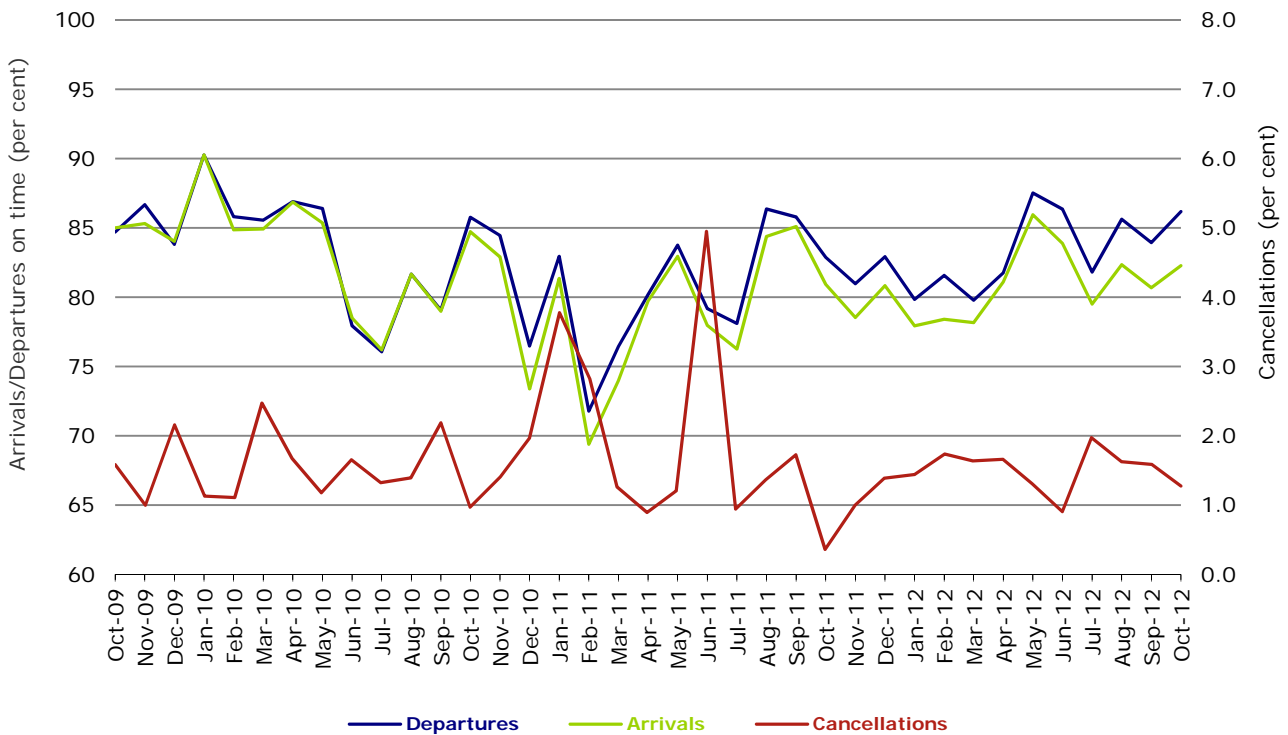


Figure 7 On time performance (by month from October 2009)—Tiger Airways



No data for Tiger Airways for July 2011 as it was grounded by CASA from 2/7/2011 to 11/8/2011.

Figure 8 On time performance (by month from October 2009)—Virgin Australia



Major regional airlines on time performance

Figure 9 On time performance (by month from October 2009)—QantasLink

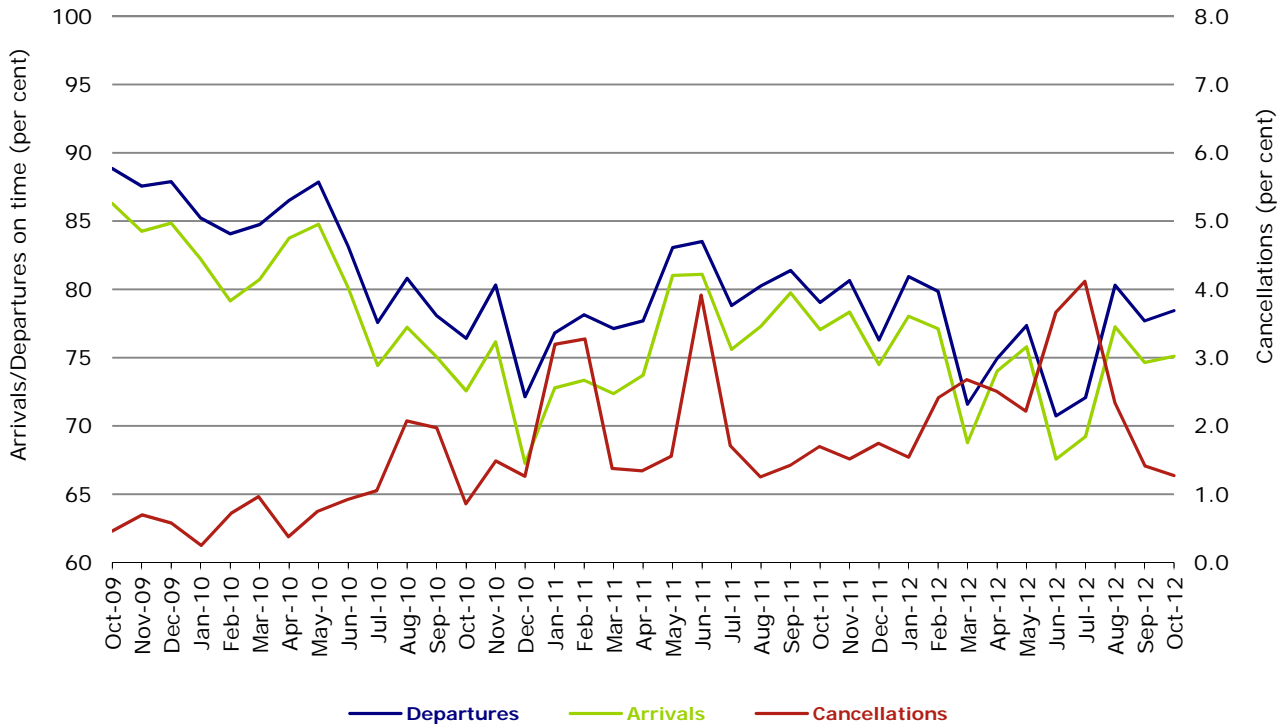


Figure 10 On time performance (by month from October 2009)—Regional Express

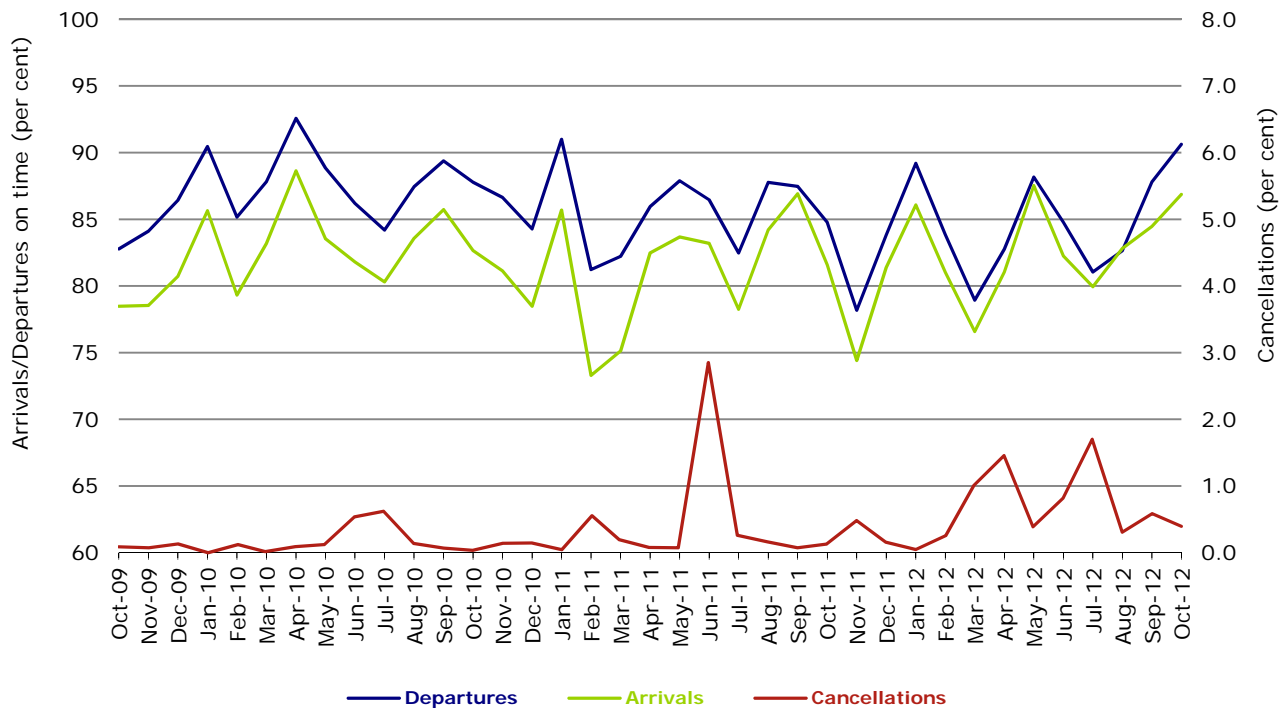


Figure 11 On time performance (by month from October 2009)—Skywest

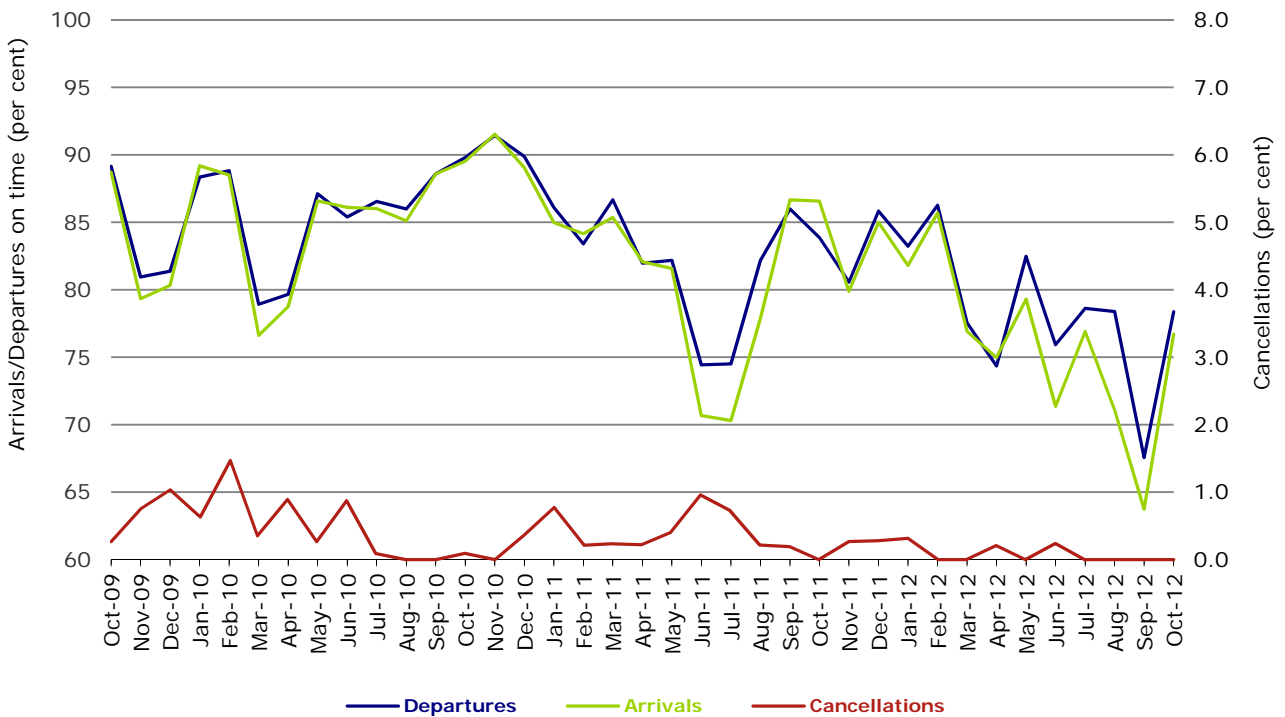
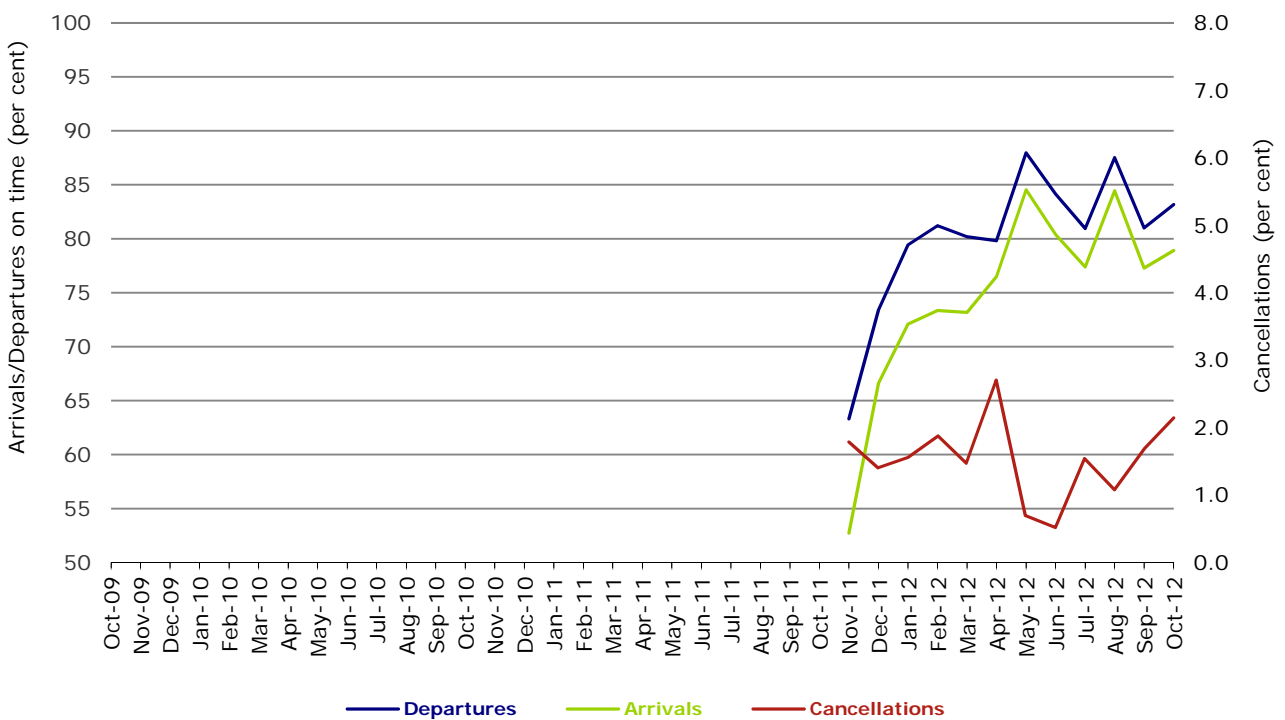


Figure 12 On time performance (by month from October 2009)
Virgin Australia - ATR/F100 Operations



Virgin Australia - ATR/F100 Operations commenced in November 2011.

Individual routes

On time performance is reported for all routes where the passenger load averages over 8000 passengers per month over the previous six months, and where two or more airlines operate in competition on those routes. There are now 57 routes which meet this definition. Over time, however, routes which meet this definition may change as airline networks and traffic levels vary.

	<i>Sectors</i>		<i>Departures On Time</i>		<i>Arrivals On Time</i>		<i>Cancellations</i>	
	<i>Sched.</i>	<i>Flown</i>	<i>No.</i>	<i>%</i>	<i>No.</i>	<i>%</i>	<i>No.</i>	<i>%</i>
Adelaide-Brisbane								
Jetstar	30	30	27	90.0	24	80.0	0	0.0
Qantas	109	109	93	85.3	77	70.6	0	0.0
Virgin Australia	120	118	108	91.5	101	85.6	2	1.7
All Airlines	259	257	228	88.7	202	78.6	2	0.8
Adelaide-Canberra								
Qantas	50	50	46	92.0	47	94.0	0	0.0
QantasLink	3	3	2	66.7	3	100.0	0	0.0
Virgin Australia	27	27	25	92.6	24	88.9	0	0.0
All Airlines	80	80	73	91.3	74	92.5	0	0.0
Adelaide-Gold Coast								
Jetstar	33	33	32	97.0	31	93.9	0	0.0
Virgin Australia	31	31	29	93.5	29	93.5	0	0.0
All Airlines	64	64	61	95.3	60	93.8	0	0.0
Adelaide-Melbourne								
Jetstar	88	87	64	73.6	62	71.3	1	1.1
Qantas	305	303	265	87.5	278	91.7	2	0.7
QantasLink	18	17	17	100.0	17	100.0	1	5.6
Virgin Australia	290	288	275	95.5	268	93.1	2	0.7
All Airlines	701	695	621	89.4	625	89.9	6	0.9
Adelaide-Perth								
Jetstar	37	37	25	67.6	23	62.2	0	0.0
Qantas	116	116	107	92.2	109	94.0	0	0.0
Virgin Australia	63	63	56	88.9	55	87.3	0	0.0
All Airlines	216	216	188	87.0	187	86.6	0	0.0
Adelaide-Port Lincoln								
QantasLink	102	102	99	97.1	96	94.1	0	0.0
Regional Express	211	210	197	93.8	190	90.5	1	0.5
All Airlines	313	312	296	94.9	286	91.7	1	0.3
Adelaide-Sydney								
Jetstar	88	88	67	76.1	63	71.6	0	0.0
Qantas	281	281	253	90.0	256	91.1	0	0.0
Virgin Australia	178	177	162	91.5	156	88.1	1	0.6
All Airlines	547	546	482	88.3	475	87.0	1	0.2
Albury-Sydney								
QantasLink	120	119	85	71.4	88	73.9	1	0.8
Regional Express	115	115	101	87.8	97	84.3	0	0.0
Virgin Australia	44	41	38	92.7	34	82.9	3	6.8
Virgin Australia - ATR/F100 Operations	18	18	14	77.8	12	66.7	0	0.0
All Airlines	297	293	238	81.2	231	78.8	4	1.3
Ayers Rock-Sydney								
Qantas	31	31	27	87.1	27	87.1	0	0.0
Virgin Australia	31	31	27	87.1	27	87.1	0	0.0
All Airlines	62	62	54	87.1	54	87.1	0	0.0

	<i>Sectors</i>		<i>Departures On Time</i>		<i>Arrivals On Time</i>		<i>Cancellations</i>	
	<i>Sched.</i>	<i>Flown</i>	<i>No.</i>	<i>%</i>	<i>No.</i>	<i>%</i>	<i>No.</i>	<i>%</i>
Ballina-Sydney								
Jetstar	57	57	40	70.2	40	70.2	0	0.0
Regional Express	25	25	21	84.0	18	72.0	0	0.0
Virgin Australia	31	31	24	77.4	25	80.6	0	0.0
All Airlines	113	113	85	75.2	83	73.5	0	0.0
Brisbane-Adelaide								
Jetstar	30	30	28	93.3	27	90.0	0	0.0
Qantas	109	109	84	77.1	100	91.7	0	0.0
Virgin Australia	121	119	98	82.4	103	86.6	2	1.7
All Airlines	260	258	210	81.4	230	89.1	2	0.8
Brisbane-Cairns								
Jetstar	114	113	85	75.2	84	74.3	1	0.9
Qantas	120	120	90	75.0	99	82.5	0	0.0
Virgin Australia	148	147	131	89.1	118	80.3	1	0.7
Virgin Australia - ATR/F100 Operations	26	26	24	92.3	23	88.5	0	0.0
All Airlines	408	406	330	81.3	324	79.8	2	0.5
Brisbane-Canberra								
Qantas	147	146	128	87.7	129	88.4	1	0.7
QantasLink	22	22	18	81.8	16	72.7	0	0.0
Virgin Australia	97	95	86	90.5	81	85.3	2	2.1
All Airlines	266	263	232	88.2	226	85.9	3	1.1
Brisbane-Darwin								
Jetstar	2	2	1	50.0	2	100.0	0	0.0
Qantas	31	31	29	93.5	28	90.3	0	0.0
Virgin Australia	31	31	27	87.1	25	80.6	0	0.0
All Airlines	64	64	57	89.1	55	85.9	0	0.0
Brisbane-Emerald								
QantasLink	203	197	163	82.7	154	78.2	6	3.0
Virgin Australia - ATR/F100 Operations	80	80	70	87.5	69	86.3	0	0.0
All Airlines	283	277	233	84.1	223	80.5	6	2.1
Brisbane-Gladstone								
QantasLink	161	161	115	71.4	105	65.2	0	0.0
Virgin Australia - ATR/F100 Operations	126	121	109	90.1	107	88.4	5	4.0
All Airlines	287	282	224	79.4	212	75.2	5	1.7
Brisbane-Hamilton Island								
Jetstar	17	17	11	64.7	12	70.6	0	0.0
Virgin Australia	31	31	30	96.8	27	87.1	0	0.0
All Airlines	48	48	41	85.4	39	81.3	0	0.0
Brisbane-Mackay								
Jetstar	116	116	81	69.8	93	80.2	0	0.0
QantasLink	54	54	34	63.0	32	59.3	0	0.0
Virgin Australia	173	172	143	83.1	136	79.1	1	0.6
All Airlines	343	342	258	75.4	261	76.3	1	0.3
Brisbane-Melbourne								
Jetstar	103	102	72	70.6	80	78.4	1	1.0
Qantas	426	425	332	78.1	344	80.9	1	0.2
Tiger Airways	94	94	59	62.8	64	68.1	0	0.0
Virgin Australia	384	379	327	86.3	314	82.8	5	1.3
All Airlines	1 007	1 000	790	79.0	802	80.2	7	0.7
Brisbane-Newcastle								
Jetstar	116	116	100	86.2	101	87.1	0	0.0
QantasLink	73	71	52	73.2	34	47.9	2	2.7
Virgin Australia - ATR/F100 Operations	62	61	53	86.9	44	72.1	1	1.6
All Airlines	251	248	205	82.7	179	72.2	3	1.2

	<i>Sectors</i>		<i>Departures On Time</i>		<i>Arrivals On Time</i>		<i>Cancellations</i>	
	<i>Sched.</i>	<i>Flown</i>	<i>No.</i>	<i>%</i>	<i>No.</i>	<i>%</i>	<i>No.</i>	<i>%</i>
Brisbane-Perth								
Jetstar	31	31	22	71.0	26	83.9	0	0.0
Qantas	124	124	81	65.3	101	81.5	0	0.0
Virgin Australia	85	85	67	78.8	53	62.4	0	0.0
All Airlines	240	240	170	70.8	180	75.0	0	0.0
Brisbane-Proserpine								
Jetstar	30	30	26	86.7	23	76.7	0	0.0
Virgin Australia	31	31	27	87.1	27	87.1	0	0.0
Virgin Australia - ATR/F100 Operations	23	23	23	100.0	21	91.3	0	0.0
All Airlines	84	84	76	90.5	71	84.5	0	0.0
Brisbane-Rockhampton								
QantasLink	163	161	105	65.2	109	67.7	2	1.2
Virgin Australia	83	81	68	84.0	66	81.5	2	2.4
Virgin Australia - ATR/F100 Operations	122	121	89	73.6	95	78.5	1	0.8
All Airlines	368	363	262	72.2	270	74.4	5	1.4
Brisbane-Sydney								
Jetstar	104	101	65	64.4	70	69.3	3	2.9
Qantas	616	602	495	82.2	488	81.1	14	2.3
Tiger Airways	104	102	65	63.7	66	64.7	2	1.9
Virgin Australia	567	553	469	84.8	446	80.7	14	2.5
All Airlines	1 391	1 358	1 094	80.6	1 070	78.8	33	2.4
Brisbane-Townsville								
Jetstar	29	29	13	44.8	20	69.0	0	0.0
Qantas	154	154	125	81.2	124	80.5	0	0.0
Virgin Australia	174	174	150	86.2	135	77.6	0	0.0
All Airlines	357	357	288	80.7	279	78.2	0	0.0
Broome-Perth								
Qantas	28	28	15	53.6	19	67.9	0	0.0
QantasLink	53	53	43	81.1	45	84.9	0	0.0
Skywest	22	22	17	77.3	15	68.2	0	0.0
Virgin Australia	35	33	30	90.9	24	72.7	2	5.7
All Airlines	138	136	105	77.2	103	75.7	2	1.4
Cairns-Brisbane								
Jetstar	112	111	100	90.1	87	78.4	1	0.9
Qantas	120	119	107	89.9	87	73.1	1	0.8
Virgin Australia	149	148	129	87.2	113	76.4	1	0.7
Virgin Australia - ATR/F100 Operations	26	26	20	76.9	18	69.2	0	0.0
All Airlines	407	404	356	88.1	305	75.5	3	0.7
Cairns-Melbourne								
Jetstar	97	96	70	72.9	74	77.1	1	1.0
Qantas	31	31	22	71.0	24	77.4	0	0.0
Tiger Airways	42	42	36	85.7	39	92.9	0	0.0
Virgin Australia	35	35	17	48.6	19	54.3	0	0.0
All Airlines	205	204	145	71.1	156	76.5	1	0.5
Cairns-Sydney								
Jetstar	110	110	87	79.1	79	71.8	0	0.0
Qantas	77	77	66	85.7	67	87.0	0	0.0
Virgin Australia	93	93	87	93.5	86	92.5	0	0.0
All Airlines	280	280	240	85.7	232	82.9	0	0.0
Cairns-Townsville								
QantasLink	193	188	164	87.2	162	86.2	5	2.6
Virgin Australia - ATR/F100 Operations	27	27	25	92.6	25	92.6	0	0.0
All Airlines	220	215	189	87.9	187	87.0	5	2.3

	<i>Sectors</i>		<i>Departures On Time</i>		<i>Arrivals On Time</i>		<i>Cancellations</i>	
	<i>Sched.</i>	<i>Flown</i>	<i>No.</i>	<i>%</i>	<i>No.</i>	<i>%</i>	<i>No.</i>	<i>%</i>
Canberra-Adelaide								
Qantas	54	54	51	94.4	52	96.3	0	0.0
QantasLink	3	3	2	66.7	2	66.7	0	0.0
Virgin Australia	27	27	23	85.2	23	85.2	0	0.0
All Airlines	84	84	76	90.5	77	91.7	0	0.0
Canberra-Brisbane								
Qantas	147	145	130	89.7	112	77.2	2	1.4
QantasLink	22	22	16	72.7	16	72.7	0	0.0
Virgin Australia	98	94	92	97.9	80	85.1	4	4.1
All Airlines	267	261	238	91.2	208	79.7	6	2.2
Canberra-Melbourne								
Qantas	268	267	251	94.0	249	93.3	1	0.4
QantasLink	39	38	33	86.8	29	76.3	1	2.6
Virgin Australia	183	181	165	91.2	163	90.1	2	1.1
All Airlines	490	486	449	92.4	441	90.7	4	0.8
Canberra-Sydney								
Qantas	171	165	155	93.9	154	93.3	6	3.5
QantasLink	408	403	328	81.4	315	78.2	5	1.2
Virgin Australia	96	91	80	87.9	71	78.0	5	5.2
Virgin Australia - ATR/F100 Operations	185	177	151	85.3	148	83.6	8	4.3
All Airlines	860	836	714	85.4	688	82.3	24	2.8
Coffs Harbour-Sydney								
QantasLink	148	148	102	68.9	108	73.0	0	0.0
Virgin Australia	62	62	58	93.5	54	87.1	0	0.0
All Airlines	210	210	160	76.2	162	77.1	0	0.0
Darwin-Brisbane								
Jetstar	2	2	1	50.0	2	100.0	0	0.0
Qantas	31	31	23	74.2	18	58.1	0	0.0
Virgin Australia	31	31	22	71.0	25	80.6	0	0.0
All Airlines	64	64	46	71.9	45	70.3	0	0.0
Darwin-Melbourne								
Jetstar	3	3	2	66.7	2	66.7	0	0.0
Qantas	15	15	12	80.0	14	93.3	0	0.0
Virgin Australia	31	31	28	90.3	27	87.1	0	0.0
All Airlines	49	49	42	85.7	43	87.8	0	0.0
Darwin-Perth								
Qantas	31	31	23	74.2	28	90.3	0	0.0
Virgin Australia	27	27	27	100.0	26	96.3	0	0.0
All Airlines	58	58	50	86.2	54	93.1	0	0.0
Darwin-Sydney								
Jetstar	27	27	25	92.6	24	88.9	0	0.0
Qantas	54	54	52	96.3	52	96.3	0	0.0
Virgin Australia	31	31	31	100.0	30	96.8	0	0.0
All Airlines	112	112	108	96.4	106	94.6	0	0.0
Dubbo-Sydney								
QantasLink	114	114	84	73.7	76	66.7	0	0.0
Regional Express	176	175	162	92.6	151	86.3	1	0.6
All Airlines	290	289	246	85.1	227	78.5	1	0.3
Emerald-Brisbane								
QantasLink	203	197	153	77.7	134	68.0	6	3.0
Virgin Australia - ATR/F100 Operations	80	80	71	88.8	66	82.5	0	0.0
All Airlines	283	277	224	80.9	200	72.2	6	2.1

	<i>Sectors</i>		<i>Departures On Time</i>		<i>Arrivals On Time</i>		<i>Cancellations</i>	
	<i>Sched.</i>	<i>Flown</i>	<i>No.</i>	<i>%</i>	<i>No.</i>	<i>%</i>	<i>No.</i>	<i>%</i>
Geraldton-Perth								
QantasLink	54	54	33	61.1	27	50.0	0	0.0
Skywest	85	85	59	69.4	51	60.0	0	0.0
All Airlines	139	139	92	66.2	78	56.1	0	0.0
Gladstone-Brisbane								
QantasLink	184	184	124	67.4	98	53.3	0	0.0
Virgin Australia - ATR/F100 Operations	126	120	105	87.5	93	77.5	6	4.8
All Airlines	310	304	229	75.3	191	62.8	6	1.9
Gold Coast-Adelaide								
Jetstar	33	33	29	87.9	32	97.0	0	0.0
Virgin Australia	31	31	27	87.1	25	80.6	0	0.0
All Airlines	64	64	56	87.5	57	89.1	0	0.0
Gold Coast-Melbourne								
Jetstar	212	212	166	78.3	152	71.7	0	0.0
Tiger Airways	87	87	51	58.6	52	59.8	0	0.0
Virgin Australia	212	212	177	83.5	190	89.6	0	0.0
All Airlines	511	511	394	77.1	394	77.1	0	0.0
Gold Coast-Sydney								
Jetstar	344	340	270	79.4	269	79.1	4	1.2
Qantas	12	12	9	75.0	7	58.3	0	0.0
Tiger Airways	100	99	78	78.8	70	70.7	1	1.0
Virgin Australia	355	348	297	85.3	295	84.8	7	2.0
All Airlines	811	799	654	81.9	641	80.2	12	1.5
Hamilton Island-Brisbane								
Jetstar	17	17	10	58.8	12	70.6	0	0.0
Virgin Australia	31	31	21	67.7	23	74.2	0	0.0
All Airlines	48	48	31	64.6	35	72.9	0	0.0
Hamilton Island-Sydney								
Jetstar	31	31	12	38.7	17	54.8	0	0.0
Virgin Australia	31	31	18	58.1	19	61.3	0	0.0
All Airlines	62	62	30	48.4	36	58.1	0	0.0
Hobart-Melbourne								
Jetstar	156	156	125	80.1	117	75.0	0	0.0
Qantas	63	63	57	90.5	57	90.5	0	0.0
QantasLink	2	2	2	100.0	2	100.0	0	0.0
Virgin Australia	165	164	139	84.8	143	87.2	1	0.6
All Airlines	386	385	323	83.9	319	82.9	1	0.3
Hobart-Sydney								
Jetstar	83	82	67	81.7	68	82.9	1	1.2
Qantas	31	31	26	83.9	27	87.1	0	0.0
Virgin Australia	61	61	42	68.9	47	77.0	0	0.0
All Airlines	175	174	135	77.6	142	81.6	1	0.6
Kalgoorlie-Perth								
Qantas	72	72	58	80.6	59	81.9	0	0.0
QantasLink	18	17	15	88.2	12	70.6	1	5.6
Skywest	58	58	34	58.6	30	51.7	0	0.0
All Airlines	148	147	107	72.8	101	68.7	1	0.7
Karratha-Perth								
Qantas	196	189	163	86.2	162	85.7	7	3.6
QantasLink	72	69	60	87.0	59	85.5	3	4.2
Virgin Australia	53	52	40	76.9	28	53.8	1	1.9
All Airlines	321	310	263	84.8	249	80.3	11	3.4

	<i>Sectors</i>		<i>Departures On Time</i>		<i>Arrivals On Time</i>		<i>Cancellations</i>	
	<i>Sched.</i>	<i>Flown</i>	<i>No.</i>	<i>%</i>	<i>No.</i>	<i>%</i>	<i>No.</i>	<i>%</i>
Launceston-Melbourne								
Jetstar	120	117	92	78.6	87	74.4	3	2.5
QantasLink	81	78	62	79.5	60	76.9	3	3.7
Virgin Australia	134	134	114	85.1	116	86.6	0	0.0
All Airlines	335	329	268	81.5	263	79.9	6	1.8
Launceston-Sydney								
Jetstar	30	30	23	76.7	23	76.7	0	0.0
Virgin Australia	31	31	22	71.0	24	77.4	0	0.0
All Airlines	61	61	45	73.8	47	77.0	0	0.0
Mackay-Brisbane								
Jetstar	117	117	90	76.9	84	71.8	0	0.0
QantasLink	54	54	37	68.5	36	66.7	0	0.0
Virgin Australia	173	172	148	86.0	135	78.5	1	0.6
All Airlines	344	343	275	80.2	255	74.3	1	0.3
Melbourne-Adelaide								
Jetstar	87	87	70	80.5	70	80.5	0	0.0
Qantas	305	305	278	91.1	272	89.2	0	0.0
QantasLink	18	18	16	88.9	16	88.9	0	0.0
Virgin Australia	290	288	269	93.4	262	91.0	2	0.7
All Airlines	700	698	633	90.7	620	88.8	2	0.3
Melbourne-Brisbane								
Jetstar	104	104	70	67.3	56	53.8	0	0.0
Qantas	426	424	379	89.4	311	73.3	2	0.5
Tiger Airways	94	94	89	94.7	71	75.5	0	0.0
Virgin Australia	381	377	329	87.3	271	71.9	4	1.0
All Airlines	1 005	999	867	86.8	709	71.0	6	0.6
Melbourne-Cairns								
Jetstar	96	96	78	81.3	80	83.3	0	0.0
Qantas	31	31	28	90.3	27	87.1	0	0.0
Tiger Airways	42	42	39	92.9	39	92.9	0	0.0
Virgin Australia	35	35	31	88.6	29	82.9	0	0.0
All Airlines	204	204	176	86.3	175	85.8	0	0.0
Melbourne-Canberra								
Qantas	268	266	243	91.4	247	92.9	2	0.7
QantasLink	39	38	34	89.5	33	86.8	1	2.6
Virgin Australia	183	182	162	89.0	165	90.7	1	0.5
All Airlines	490	486	439	90.3	445	91.6	4	0.8
Melbourne-Darwin								
Jetstar	3	3	3	100.0	3	100.0	0	0.0
Qantas	15	15	12	80.0	14	93.3	0	0.0
Virgin Australia	31	31	29	93.5	27	87.1	0	0.0
All Airlines	49	49	44	89.8	44	89.8	0	0.0
Melbourne-Gold Coast								
Jetstar	212	211	152	72.0	155	73.5	1	0.5
Tiger Airways	87	87	72	82.8	62	71.3	0	0.0
Virgin Australia	212	212	193	91.0	193	91.0	0	0.0
All Airlines	511	510	417	81.8	410	80.4	1	0.2
Melbourne-Hobart								
Jetstar	155	155	128	82.6	130	83.9	0	0.0
Qantas	62	62	55	88.7	51	82.3	0	0.0
QantasLink	3	3	0	0.0	1	33.3	0	0.0
Virgin Australia	165	165	145	87.9	148	89.7	0	0.0
All Airlines	385	385	328	85.2	330	85.7	0	0.0

	<i>Sectors</i>		<i>Departures On Time</i>		<i>Arrivals On Time</i>		<i>Cancellations</i>	
	<i>Sched.</i>	<i>Flown</i>	<i>No.</i>	<i>%</i>	<i>No.</i>	<i>%</i>	<i>No.</i>	<i>%</i>
Melbourne-Launceston								
Jetstar	120	117	97	82.9	97	82.9	3	2.5
QantasLink	80	77	65	84.4	58	75.3	3	3.8
Virgin Australia	134	134	121	90.3	121	90.3	0	0.0
All Airlines	334	328	283	86.3	276	84.1	6	1.8
Melbourne-Mildura								
QantasLink	89	89	83	93.3	72	80.9	0	0.0
Regional Express	88	88	82	93.2	80	90.9	0	0.0
Virgin Australia	31	31	28	90.3	27	87.1	0	0.0
All Airlines	208	208	193	92.8	179	86.1	0	0.0
Melbourne-Newcastle								
Jetstar	111	111	95	85.6	100	90.1	0	0.0
Virgin Australia	31	31	29	93.5	30	96.8	0	0.0
All Airlines	142	142	124	87.3	130	91.5	0	0.0
Melbourne-Perth								
Jetstar	85	81	54	66.7	41	50.6	4	4.7
Qantas	224	221	184	83.3	184	83.3	3	1.3
Tiger Airways	92	92	85	92.4	85	92.4	0	0.0
Virgin Australia	145	144	124	86.1	85	59.0	1	0.7
All Airlines	546	538	447	83.1	395	73.4	8	1.5
Melbourne-Sunshine Coast								
Jetstar	63	63	50	79.4	49	77.8	0	0.0
Virgin Australia	31	30	27	90.0	28	93.3	1	3.2
All Airlines	94	93	77	82.8	77	82.8	1	1.1
Melbourne-Sydney								
Jetstar	314	301	194	64.5	215	71.4	13	4.1
Qantas	921	883	790	89.5	788	89.2	38	4.1
Tiger Airways	237	233	194	83.3	203	87.1	4	1.7
Virgin Australia	818	799	724	90.6	689	86.2	19	2.3
All Airlines	2 290	2 216	1 902	85.8	1 895	85.5	74	3.2
Mildura-Melbourne								
QantasLink	89	89	80	89.9	77	86.5	0	0.0
Regional Express	88	88	83	94.3	82	93.2	0	0.0
Virgin Australia	31	31	27	87.1	26	83.9	0	0.0
All Airlines	208	208	190	91.3	185	88.9	0	0.0
Newcastle-Brisbane								
Jetstar	115	115	99	86.1	88	76.5	0	0.0
QantasLink	73	70	36	51.4	29	41.4	3	4.1
Virgin Australia - ATR/F100 Operations	62	61	41	67.2	30	49.2	1	1.6
All Airlines	250	246	176	71.5	147	59.8	4	1.6
Newcastle-Melbourne								
Jetstar	110	110	95	86.4	94	85.5	0	0.0
Virgin Australia	31	31	26	83.9	27	87.1	0	0.0
All Airlines	141	141	121	85.8	121	85.8	0	0.0
Newman-Perth								
Qantas	154	147	127	86.4	119	81.0	7	4.5
QantasLink	24	23	21	91.3	20	87.0	1	4.2
Virgin Australia	31	31	24	77.4	22	71.0	0	0.0
All Airlines	209	201	172	85.6	161	80.1	8	3.8
Perth-Adelaide								
Jetstar	38	37	16	43.2	19	51.4	1	2.6
Qantas	116	116	93	80.2	96	82.8	0	0.0
Virgin Australia	62	62	59	95.2	60	96.8	0	0.0
All Airlines	216	215	168	78.1	175	81.4	1	0.5

	<i>Sectors</i>		<i>Departures On Time</i>		<i>Arrivals On Time</i>		<i>Cancellations</i>	
	<i>Sched.</i>	<i>Flown</i>	<i>No.</i>	<i>%</i>	<i>No.</i>	<i>%</i>	<i>No.</i>	<i>%</i>
Perth-Brisbane								
Jetstar	30	30	13	43.3	16	53.3	0	0.0
Qantas	124	124	96	77.4	71	57.3	0	0.0
Virgin Australia	86	86	72	83.7	57	66.3	0	0.0
All Airlines	240	240	181	75.4	144	60.0	0	0.0
Perth-Broome								
Qantas	30	30	22	73.3	20	66.7	0	0.0
QantasLink	53	53	44	83.0	39	73.6	0	0.0
Skywest	22	22	9	40.9	11	50.0	0	0.0
Virgin Australia	34	34	32	94.1	34	100.0	0	0.0
All Airlines	139	139	107	77.0	104	74.8	0	0.0
Perth-Darwin								
Qantas	31	31	22	71.0	22	71.0	0	0.0
Virgin Australia	27	27	20	74.1	21	77.8	0	0.0
All Airlines	58	58	42	72.4	43	74.1	0	0.0
Perth-Geraldton								
QantasLink	54	54	39	72.2	38	70.4	0	0.0
Skywest	84	84	65	77.4	57	67.9	0	0.0
All Airlines	138	138	104	75.4	95	68.8	0	0.0
Perth-Kalgoorlie								
Qantas	72	72	64	88.9	63	87.5	0	0.0
QantasLink	18	18	17	94.4	17	94.4	0	0.0
Skywest	58	58	43	74.1	37	63.8	0	0.0
All Airlines	148	148	124	83.8	117	79.1	0	0.0
Perth-Karratha								
Qantas	196	189	168	88.9	169	89.4	7	3.6
QantasLink	72	69	64	92.8	60	87.0	3	4.2
Virgin Australia	53	53	41	77.4	41	77.4	0	0.0
All Airlines	321	311	273	87.8	270	86.8	10	3.1
Perth-Melbourne								
Jetstar	86	82	43	52.4	49	59.8	4	4.7
Qantas	225	223	182	81.6	198	88.8	2	0.9
Tiger Airways	94	94	80	85.1	78	83.0	0	0.0
Virgin Australia	145	144	127	88.2	109	75.7	1	0.7
All Airlines	550	543	432	79.6	434	79.9	7	1.3
Perth-Newman								
Qantas	153	146	130	89.0	133	91.1	7	4.6
QantasLink	24	23	21	91.3	21	91.3	1	4.2
Virgin Australia	31	31	27	87.1	27	87.1	0	0.0
All Airlines	208	200	178	89.0	181	90.5	8	3.8
Perth-Port Hedland								
Qantas	129	125	117	93.6	112	89.6	4	3.1
QantasLink	47	46	44	95.7	43	93.5	1	2.1
Virgin Australia	72	70	65	92.9	63	90.0	2	2.8
All Airlines	248	241	226	93.8	218	90.5	7	2.8
Perth-Sydney								
Jetstar	47	47	29	61.7	39	83.0	0	0.0
Qantas	209	209	168	80.4	173	82.8	0	0.0
Virgin Australia	120	120	107	89.2	105	87.5	0	0.0
All Airlines	376	376	304	80.9	317	84.3	0	0.0

	<i>Sectors</i>		<i>Departures On Time</i>		<i>Arrivals On Time</i>		<i>Cancellations</i>	
	<i>Sched.</i>	<i>Flown</i>	<i>No.</i>	<i>%</i>	<i>No.</i>	<i>%</i>	<i>No.</i>	<i>%</i>
Port Hedland-Perth								
Qantas	129	123	102	82.9	105	85.4	6	4.7
QantasLink	47	46	45	97.8	46	100.0	1	2.1
Virgin Australia	72	72	61	84.7	50	69.4	0	0.0
All Airlines	248	241	208	86.3	201	83.4	7	2.8
Port Lincoln-Adelaide								
QantasLink	102	102	100	98.0	100	98.0	0	0.0
Regional Express	211	210	195	92.9	186	88.6	1	0.5
All Airlines	313	312	295	94.6	286	91.7	1	0.3
Port Macquarie-Sydney								
QantasLink	139	139	93	66.9	92	66.2	0	0.0
Virgin Australia - ATR/F100 Operations	62	61	42	68.9	33	54.1	1	1.6
All Airlines	201	200	135	67.5	125	62.5	1	0.5
Proserpine-Brisbane								
Jetstar	31	31	23	74.2	24	77.4	0	0.0
Virgin Australia	31	31	26	83.9	20	64.5	0	0.0
Virgin Australia - ATR/F100 Operations	23	23	20	87.0	15	65.2	0	0.0
All Airlines	85	85	69	81.2	59	69.4	0	0.0
Rockhampton-Brisbane								
QantasLink	140	136	93	68.4	82	60.3	4	2.9
Virgin Australia	83	81	65	80.2	58	71.6	2	2.4
Virgin Australia - ATR/F100 Operations	122	120	109	90.8	106	88.3	2	1.6
All Airlines	345	337	267	79.2	246	73.0	8	2.3
Sunshine Coast-Melbourne								
Jetstar	65	65	42	64.6	41	63.1	0	0.0
Virgin Australia	31	30	24	80.0	26	86.7	1	3.2
All Airlines	96	95	66	69.5	67	70.5	1	1.0
Sunshine Coast-Sydney								
Jetstar	99	99	77	77.8	75	75.8	0	0.0
Virgin Australia	35	35	26	74.3	25	71.4	0	0.0
All Airlines	134	134	103	76.9	100	74.6	0	0.0
Sydney-Adelaide								
Jetstar	88	88	70	79.5	78	88.6	0	0.0
Qantas	276	276	247	89.5	249	90.2	0	0.0
Virgin Australia	177	177	144	81.4	148	83.6	0	0.0
All Airlines	541	541	461	85.2	475	87.8	0	0.0
Sydney-Albury								
QantasLink	120	120	72	60.0	67	55.8	0	0.0
Regional Express	115	115	100	87.0	96	83.5	0	0.0
Virgin Australia	43	42	29	69.0	32	76.2	1	2.3
Virgin Australia - ATR/F100 Operations	18	18	15	83.3	12	66.7	0	0.0
All Airlines	296	295	216	73.2	207	70.2	1	0.3
Sydney-Ayers Rock								
Qantas	31	31	27	87.1	29	93.5	0	0.0
Virgin Australia	31	31	23	74.2	25	80.6	0	0.0
All Airlines	62	62	50	80.6	54	87.1	0	0.0
Sydney-Ballina								
Jetstar	57	57	46	80.7	47	82.5	0	0.0
Regional Express	31	31	30	96.8	30	96.8	0	0.0
Virgin Australia	31	31	27	87.1	27	87.1	0	0.0
All Airlines	119	119	103	86.6	104	87.4	0	0.0

	<i>Sectors</i>		<i>Departures On Time</i>		<i>Arrivals On Time</i>		<i>Cancellations</i>	
	<i>Sched.</i>	<i>Flown</i>	<i>No.</i>	<i>%</i>	<i>No.</i>	<i>%</i>	<i>No.</i>	<i>%</i>
Sydney-Brisbane								
Jetstar	103	100	84	84.0	69	69.0	3	2.9
Qantas	616	611	544	89.0	443	72.5	5	0.8
Tiger Airways	104	102	84	82.4	60	58.8	2	1.9
Virgin Australia	571	556	469	84.4	392	70.5	15	2.6
All Airlines	1 394	1 369	1 181	86.3	964	70.4	25	1.8
Sydney-Cairns								
Jetstar	110	109	88	80.7	90	82.6	1	0.9
Qantas	77	77	66	85.7	68	88.3	0	0.0
Virgin Australia	93	93	67	72.0	68	73.1	0	0.0
All Airlines	280	279	221	79.2	226	81.0	1	0.4
Sydney-Canberra								
Qantas	175	173	159	91.9	154	89.0	2	1.1
QantasLink	408	404	300	74.3	286	70.8	4	1.0
Virgin Australia	95	90	69	76.7	77	85.6	5	5.3
Virgin Australia - ATR/F100 Operations	185	177	129	72.9	131	74.0	8	4.3
All Airlines	863	844	657	77.8	648	76.8	19	2.2
Sydney-Coffs Harbour								
QantasLink	148	148	96	64.9	98	66.2	0	0.0
Virgin Australia	62	62	59	95.2	58	93.5	0	0.0
All Airlines	210	210	155	73.8	156	74.3	0	0.0
Sydney-Darwin								
Jetstar	27	27	27	100.0	27	100.0	0	0.0
Qantas	54	54	47	87.0	52	96.3	0	0.0
Virgin Australia	31	31	30	96.8	30	96.8	0	0.0
All Airlines	112	112	104	92.9	109	97.3	0	0.0
Sydney-Dubbo								
QantasLink	114	114	79	69.3	84	73.7	0	0.0
Regional Express	177	176	157	89.2	155	88.1	1	0.6
All Airlines	291	290	236	81.4	239	82.4	1	0.3
Sydney-Gold Coast								
Jetstar	345	341	265	77.7	265	77.7	4	1.2
Qantas	12	12	12	100.0	12	100.0	0	0.0
Tiger Airways	99	99	76	76.8	83	83.8	0	0.0
Virgin Australia	353	347	299	86.2	298	85.9	6	1.7
All Airlines	809	799	652	81.6	658	82.4	10	1.2
Sydney-Hamilton Island								
Jetstar	31	31	18	58.1	19	61.3	0	0.0
Virgin Australia	31	31	21	67.7	22	71.0	0	0.0
All Airlines	62	62	39	62.9	41	66.1	0	0.0
Sydney-Hobart								
Jetstar	83	82	71	86.6	74	90.2	1	1.2
Qantas	31	31	29	93.5	29	93.5	0	0.0
Virgin Australia	61	61	44	72.1	48	78.7	0	0.0
All Airlines	175	174	144	82.8	151	86.8	1	0.6
Sydney-Launceston								
Jetstar	30	30	25	83.3	26	86.7	0	0.0
Virgin Australia	31	31	24	77.4	24	77.4	0	0.0
All Airlines	61	61	49	80.3	50	82.0	0	0.0

	<i>Sectors</i>		<i>Departures On Time</i>		<i>Arrivals On Time</i>		<i>Cancellations</i>	
	<i>Sched.</i>	<i>Flown</i>	<i>No.</i>	<i>%</i>	<i>No.</i>	<i>%</i>	<i>No.</i>	<i>%</i>
Sydney-Melbourne								
Jetstar	312	300	222	74.0	228	76.0	12	3.8
Qantas	918	877	787	89.7	758	86.4	41	4.5
Tiger Airways	238	233	187	80.3	182	78.1	5	2.1
Virgin Australia	815	793	674	85.0	687	86.6	22	2.7
All Airlines	2 283	2 203	1 870	84.9	1 855	84.2	80	3.5
Sydney-Perth								
Jetstar	46	46	38	82.6	37	80.4	0	0.0
Qantas	209	208	174	83.7	186	89.4	1	0.5
Virgin Australia	120	120	104	86.7	90	75.0	0	0.0
All Airlines	375	374	316	84.5	313	83.7	1	0.3
Sydney-Port Macquarie								
QantasLink	139	139	88	63.3	92	66.2	0	0.0
Virgin Australia - ATR/F100 Operations	61	61	49	80.3	45	73.8	0	0.0
All Airlines	200	200	137	68.5	137	68.5	0	0.0
Sydney-Sunshine Coast								
Jetstar	98	98	81	82.7	83	84.7	0	0.0
Virgin Australia	35	35	32	91.4	30	85.7	0	0.0
All Airlines	133	133	113	85.0	113	85.0	0	0.0
Sydney-Townsville								
Jetstar	30	30	27	90.0	27	90.0	0	0.0
Virgin Australia	31	31	23	74.2	21	67.7	0	0.0
All Airlines	61	61	50	82.0	48	78.7	0	0.0
Sydney-Wagga Wagga								
QantasLink	116	116	88	75.9	66	56.9	0	0.0
Regional Express	123	122	112	91.8	105	86.1	1	0.8
All Airlines	239	238	200	84.0	171	71.8	1	0.4
Townsville-Brisbane								
Jetstar	29	29	19	65.5	18	62.1	0	0.0
Qantas	154	153	134	87.6	125	81.7	1	0.6
Virgin Australia	175	174	149	85.6	129	74.1	1	0.6
All Airlines	358	356	302	84.8	272	76.4	2	0.6
Townsville-Cairns								
QantasLink	193	187	155	82.9	147	78.6	6	3.1
Virgin Australia - ATR/F100 Operations	27	27	25	92.6	25	92.6	0	0.0
All Airlines	220	214	180	84.1	172	80.4	6	2.7
Townsville-Sydney								
Jetstar	30	30	24	80.0	25	83.3	0	0.0
Virgin Australia	31	31	20	64.5	19	61.3	0	0.0
All Airlines	61	61	44	72.1	44	72.1	0	0.0
Wagga Wagga-Sydney								
QantasLink	117	115	85	73.9	88	76.5	2	1.7
Regional Express	123	122	110	90.2	102	83.6	1	0.8
All Airlines	240	237	195	82.3	190	80.2	3	1.3

Airports

On time performance is reported for all routes where the passenger load averages over 8000 passengers per month, and where two or more airlines operate in competition. The following data reports by airport against flights operated on those routes only.

Airport	Departures			Arrivals		
	Sectors	On Time		Sectors	On Time	
	Flown	No.	%	Flown	No.	%
Adelaide						
Jetstar	275	215	78.2	275	226	82.2
Qantas	859	764	88.9	860	769	89.4
QantasLink	122	118	96.7	123	118	95.9
Regional Express	210	197	93.8	210	186	88.6
Virgin Australia	704	655	93.0	704	621	88.2
All Airlines	2 170	1 949	89.8	2 172	1 920	88.4
Relates to services to and from Brisbane, Canberra, Gold Coast, Melbourne, Perth, Port Lincoln and Sydney.						
Albury						
QantasLink	119	85	71.4	120	67	55.8
Regional Express	115	101	87.8	115	96	83.5
Virgin Australia	41	38	92.7	42	32	76.2
Virgin Australia - ATR/F100 Operations	18	14	77.8	18	12	66.7
All Airlines	293	238	81.2	295	207	70.2
Relates to services to and from Sydney only.						
Ayers Rock						
Qantas	31	27	87.1	31	29	93.5
Virgin Australia	31	27	87.1	31	25	80.6
All Airlines	62	54	87.1	62	54	87.1
Relates to services to and from Sydney only.						
Ballina						
Jetstar	57	40	70.2	57	47	82.5
Regional Express	25	21	84.0	31	30	96.8
Virgin Australia	31	24	77.4	31	27	87.1
All Airlines	113	85	75.2	119	104	87.4
Relates to services to and from Sydney only.						
Brisbane						
Jetstar	687	504	73.4	686	480	70.0
Qantas	1 711	1 364	79.7	1 716	1 244	72.5
QantasLink	666	487	73.1	663	395	59.6
Tiger Airways	196	124	63.3	196	131	66.8
Virgin Australia	1 898	1 623	85.5	1 899	1 404	73.9
Virgin Australia - ATR/F100 Operations	432	368	85.2	430	328	76.3
All Airlines	5 590	4 470	80.0	5 590	3 982	71.2
Relates to services to and from Adelaide, Cairns, Canberra, Darwin, Emerald, Gladstone, Hamilton Island, Mackay, Melbourne, Newcastle, Perth, Proserpine, Rockhampton, Sydney and Townsville.						

Airport	Departures			Arrivals		
	Sectors	On Time		Sectors	On Time	
	Flown	No.	%	Flown	No.	%
Broome						
Qantas	28	15	53.6	30	20	66.7
QantasLink	53	43	81.1	53	39	73.6
Skywest	22	17	77.3	22	11	50.0
Virgin Australia	33	30	90.9	34	34	100.0
All Airlines	136	105	77.2	139	104	74.8
Relates to services to and from Perth only.						
Cairns						
Jetstar	317	257	81.1	318	254	79.9
Qantas	227	195	85.9	228	194	85.1
QantasLink	188	164	87.2	187	147	78.6
Tiger Airways	42	36	85.7	42	39	92.9
Virgin Australia	276	233	84.4	275	215	78.2
Virgin Australia - ATR/F100 Operations	53	45	84.9	53	48	90.6
All Airlines	1 103	930	84.3	1 103	897	81.3
Relates to services to and from Brisbane, Melbourne, Sydney and Townsville.						
Canberra						
Qantas	631	587	93.0	635	577	90.9
QantasLink	466	379	81.3	467	338	72.4
Virgin Australia	393	360	91.6	394	347	88.1
Virgin Australia - ATR/F100 Operations	177	151	85.3	177	131	74.0
All Airlines	1 667	1 477	88.6	1 673	1 393	83.3
Relates to services to and from Adelaide, Brisbane, Melbourne and Sydney.						
Coffs Harbour						
QantasLink	148	102	68.9	148	98	66.2
Virgin Australia	62	58	93.5	62	58	93.5
All Airlines	210	160	76.2	210	156	74.3
Relates to services to and from Sydney only.						
Darwin						
Jetstar	32	28	87.5	32	32	100.0
Qantas	131	110	84.0	131	116	88.5
Virgin Australia	120	108	90.0	120	103	85.8
All Airlines	283	246	86.9	283	251	88.7
Relates to services to and from Brisbane, Melbourne, Perth and Sydney.						
Dubbo						
QantasLink	114	84	73.7	114	84	73.7
Regional Express	175	162	92.6	176	155	88.1
All Airlines	289	246	85.1	290	239	82.4
Relates to services to and from Sydney only.						
Emerald						
QantasLink	197	153	77.7	197	154	78.2
Virgin Australia - ATR/F100 Operations	80	71	88.8	80	69	86.3
All Airlines	277	224	80.9	277	223	80.5
Relates to services to and from Brisbane only.						

Airport	Departures			Arrivals		
	Sectors Flown	On Time		Sectors Flown	On Time	
		No.	%		No.	%
Geraldton						
QantasLink	54	33	61.1	54	38	70.4
Skywest	85	59	69.4	84	57	67.9
All Airlines	139	92	66.2	138	95	68.8
Relates to services to and from Perth only.						
Gladstone						
QantasLink	184	124	67.4	161	105	65.2
Virgin Australia - ATR/F100 Operations	120	105	87.5	121	107	88.4
All Airlines	304	229	75.3	282	212	75.2
Relates to services to and from Brisbane only.						
Gold Coast						
Jetstar	585	465	79.5	585	451	77.1
Qantas	12	9	75.0	12	12	100.0
Tiger Airways	186	129	69.4	186	145	78.0
Virgin Australia	591	501	84.8	590	520	88.1
All Airlines	1 374	1 104	80.3	1 373	1 128	82.2
Relates to services to and from Adelaide, Melbourne and Sydney.						
Hamilton Island						
Jetstar	48	22	45.8	48	31	64.6
Virgin Australia	62	39	62.9	62	49	79.0
All Airlines	110	61	55.5	110	80	72.7
Relates to services to and from Brisbane and Sydney.						
Hobart						
Jetstar	238	192	80.7	237	204	86.1
Qantas	94	83	88.3	93	80	86.0
QantasLink	2	2	100.0	3	1	33.3
Virgin Australia	225	181	80.4	226	196	86.7
All Airlines	559	458	81.9	559	481	86.0
Relates to services to and from Melbourne and Sydney.						
Kalgoorlie						
Qantas	72	58	80.6	72	63	87.5
QantasLink	17	15	88.2	18	17	94.4
Skywest	58	34	58.6	58	37	63.8
All Airlines	147	107	72.8	148	117	79.1
Relates to services to and from Perth only.						
Karratha						
Qantas	189	163	86.2	189	169	89.4
QantasLink	69	60	87.0	69	60	87.0
Virgin Australia	52	40	76.9	53	41	77.4
All Airlines	310	263	84.8	311	270	86.8
Relates to services to and from Perth only.						

Airport	Departures			Arrivals		
	Sectors Flown	On Time		Sectors Flown	On Time	
		No.	%		No.	%
Launceston						
Jetstar	147	115	78.2	147	123	83.7
QantasLink	78	62	79.5	77	58	75.3
Virgin Australia	165	136	82.4	165	145	87.9
All Airlines	390	313	80.3	389	326	83.8
Relates to services to and from Melbourne and Sydney.						
Mackay						
Jetstar	117	90	76.9	116	93	80.2
QantasLink	54	37	68.5	54	32	59.3
Virgin Australia	172	148	86.0	172	136	79.1
All Airlines	343	275	80.2	342	261	76.3
Relates to services to and from Brisbane only.						
Melbourne						
Jetstar	1 329	991	74.6	1 330	986	74.1
Qantas	2 207	1 969	89.2	2 204	1 922	87.2
QantasLink	225	198	88.0	224	185	82.6
Regional Express	88	82	93.2	88	82	93.2
Tiger Airways	548	479	87.4	550	415	75.5
Virgin Australia	2 459	2 211	89.9	2 453	2 115	86.2
All Airlines	6 856	5 930	86.5	6 849	5 705	83.3
Relates to services to and from Adelaide, Brisbane, Cairns, Canberra, Darwin, Gold Coast, Hobart, Launceston, Mildura, Newcastle, Perth, Sunshine Coast and Sydney.						
Mildura						
QantasLink	89	80	89.9	89	72	80.9
Regional Express	88	83	94.3	88	80	90.9
Virgin Australia	31	27	87.1	31	27	87.1
All Airlines	208	190	91.3	208	179	86.1
Relates to services to and from Melbourne only.						
Newcastle						
Jetstar	225	194	86.2	227	201	88.5
QantasLink	70	36	51.4	71	34	47.9
Virgin Australia	31	26	83.9	31	30	96.8
Virgin Australia - ATR/F100 Operations	61	41	67.2	61	44	72.1
All Airlines	387	297	76.7	390	309	79.2
Relates to services to and from Brisbane and Melbourne.						
Newman						
Qantas	147	127	86.4	146	133	91.1
QantasLink	23	21	91.3	23	21	91.3
Virgin Australia	31	24	77.4	31	27	87.1
All Airlines	201	172	85.6	200	181	90.5
Relates to services to and from Perth only.						

Airport	Departures			Arrivals		
	Sectors Flown	On Time		Sectors Flown	On Time	
		No.	%		No.	%
Perth						
Jetstar	196	101	51.5	195	127	65.1
Qantas	1 265	1 062	84.0	1 259	1 072	85.1
QantasLink	263	229	87.1	262	209	79.8
Skywest	164	117	71.3	165	96	58.2
Tiger Airways	94	80	85.1	92	85	92.4
Virgin Australia	627	550	87.7	627	433	69.1
All Airlines	2 609	2 139	82.0	2 600	2 022	77.8
Relates to services to and from Adelaide, Brisbane, Broome, Darwin, Geraldton, Kalgoorlie, Karratha, Melbourne, Newman, Port Hedland and Sydney.						
Port Hedland						
Qantas	123	102	82.9	125	112	89.6
QantasLink	46	45	97.8	46	43	93.5
Virgin Australia	72	61	84.7	70	63	90.0
All Airlines	241	208	86.3	241	218	90.5
Relates to services to and from Perth only.						
Port Lincoln						
QantasLink	102	100	98.0	102	96	94.1
Regional Express	210	195	92.9	210	190	90.5
All Airlines	312	295	94.6	312	286	91.7
Relates to services to and from Adelaide only.						
Port Macquarie						
QantasLink	139	93	66.9	139	92	66.2
Virgin Australia - ATR/F100 Operations	61	42	68.9	61	45	73.8
All Airlines	200	135	67.5	200	137	68.5
Relates to services to and from Sydney only.						
Proserpine						
Jetstar	31	23	74.2	30	23	76.7
Virgin Australia	31	26	83.9	31	27	87.1
Virgin Australia - ATR/F100 Operations	23	20	87.0	23	21	91.3
All Airlines	85	69	81.2	84	71	84.5
Relates to services to and from Brisbane only.						
Rockhampton						
QantasLink	136	93	68.4	161	109	67.7
Virgin Australia	81	65	80.2	81	66	81.5
Virgin Australia - ATR/F100 Operations	120	109	90.8	121	95	78.5
All Airlines	337	267	79.2	363	270	74.4
Relates to services to and from Brisbane only.						
Sunshine Coast						
Jetstar	164	119	72.6	161	132	82.0
Virgin Australia	65	50	76.9	65	58	89.2
All Airlines	229	169	73.8	226	190	84.1
Relates to services to and from Melbourne and Sydney.						

<i>Airport</i>	<i>Departures</i>			<i>Arrivals</i>		
	<i>Sectors</i>	<i>On Time</i>		<i>Sectors</i>	<i>On Time</i>	
	<i>Flown</i>	<i>No.</i>	<i>%</i>	<i>Flown</i>	<i>No.</i>	<i>%</i>
Sydney						
Jetstar	1 339	1 062	79.3	1 343	1 007	75.0
Qantas	2 350	2 092	89.0	2 345	2 039	87.0
QantasLink	1 041	723	69.5	1 038	767	73.9
Regional Express	444	399	89.9	437	368	84.2
Tiger Airways	434	347	80.0	434	339	78.1
Virgin Australia	2 562	2 138	83.5	2 566	2 152	83.9
Virgin Australia - ATR/F100 Operations	256	193	75.4	256	193	75.4
All Airlines	8 426	6 954	82.5	8 419	6 865	81.5
Relates to services to and from Adelaide, Albury, Ayers Rock, Ballina, Brisbane, Cairns, Canberra, Coffs Harbour, Darwin, Dubbo, Gold Coast, Hamilton Island, Hobart, Launceston, Melbourne, Perth, Port Macquarie, Sunshine Coast, Townsville and Wagga Wagga.						
Townsville						
Jetstar	59	43	72.9	59	47	79.7
Qantas	153	134	87.6	154	124	80.5
QantasLink	187	155	82.9	188	162	86.2
Virgin Australia	205	169	82.4	205	156	76.1
Virgin Australia - ATR/F100 Operations	27	25	92.6	27	25	92.6
All Airlines	631	526	83.4	633	514	81.2
Relates to services to and from Brisbane, Cairns and Sydney.						
Wagga Wagga						
QantasLink	115	85	73.9	116	66	56.9
Regional Express	122	110	90.2	122	105	86.1
All Airlines	237	195	82.3	238	171	71.8
Relates to services to and from Sydney only.						

Definitions

On time departure A flight departure is counted as "on time" if it departs the gate within 15 minutes of the scheduled departure time shown in the carriers' schedule.

On time arrival A flight arrival is counted as "on time" if it arrived at the gate within 15 minutes of the scheduled arrival time shown in the carriers' schedule.
Neither diverted nor cancelled flights count as on time.

Cancellation A flight removed from service within 7 days of scheduled departure is regarded as a cancellation.

On time departure percentage The percentage of on time departures is measured against the number of departures *operated* on any particular sector.

On time arrival percentage The percentage of on time arrivals is measured against the number of arrivals *operated* on any particular sector.

Cancellation percentage The percentage of cancellations is measured against the number of services *scheduled* on any particular sector.
