



Australian Government

Department of Infrastructure, Transport,
Regional Development and Local Government
Bureau of Infrastructure, Transport and Regional Economics



bitre

AVIATION STATISTICS

Airline
On Time Performance

October 2008—OTP 66

© Commonwealth of Australia 2008

ISSN 1832-0759

This work is copyright and the data contained in this publication should not be reproduced or used in any form without acknowledgement.

Enquiries

Bureau of Infrastructure, Transport and Regional Economics
GPO Box 501
Canberra ACT 2601

Telephone: 02 6274 7210

Facsimile: 02 6274 7727

Website: www.bitre.gov.au

Email: avstats@infrastructure.gov.au

This publication, including a spreadsheet of the time-series data, can be downloaded from the BITRE website:

<http://www.bitre.gov.au/info.aspx?ResourceId=214&NodeId=104>.

Disclaimers

BITRE seeks to publish its work to the highest professional standards. However, it cannot accept responsibility for any consequences arising from the use of information herein. Readers should rely on their own skill and judgment in applying any information or analysis to particular issues or circumstances.

Foreword

The Bureau of Infrastructure, Transport and Regional Economics (BITRE) reports on domestic aviation on time performance of the following participating Australian domestic airlines: Jetstar, MacAir, Qantas, QantasLink, Regional Express, Skywest Airlines, Tiger Airways and Virgin Blue.

Reporting commenced in November 2003, except for Jetstar which commenced reporting in May 2004, MacAir which commenced reporting in July 2005, and Tiger Airways which commenced reporting in April 2008.

The purpose of collecting this information is to monitor overall industry and individual airline performance on punctuality, and to allow consumers of air travel to make informed decisions when planning air travel.

On time performance is reported for all routes where the passenger load averaged 8000 or more passengers per month over the previous six months, and where two or more airlines operated in competition on those routes. As of October 2008, following the introduction of the Perth–Karratha service by Virgin Blue, there are 48 routes that meet this definition. Over time, however, routes which meet these criteria may change as airline networks and traffic levels vary.

The participating airlines also report overall monthly network performance, except for MacAir which only supplies total network data because it does not operate on competitive routes.

Total industry figures refer to all services operated by reporting airlines only. These airlines collectively carried over 95 per cent of total domestic passengers (regular public transport only) in 2007.

The method of capturing on time performance varies between airlines utilising different recording systems. Jetstar and Qantas jet aircraft use Aircraft Communication Addressing and Reporting System (ACARS) to electronically measure on time performance. MacAir, Regional Express, Skywest, Tiger Airways, Virgin Blue and the Qantas non-jet fleet record on time performance manually using records from pilots, gate agents and/or ground crews.

Reports are published monthly on the BITRE web site. After collection of initial data, aggregate reports are subject to internal audit by participating airlines prior to publication. The target date for publication is within six weeks of the end of the reporting period. The report for October 2008 includes comparable data for the total industry for previous months.

Information on the total network for the month ending 31 October 2008 is presented on Page 1.

On time performance reporting was provided for 48 different routes covering 30 airports for October 2008. Detailed information on the performance of these routes is included in the tables beginning on Page 9, while detailed information on performance by airport is included from Page 21. The definitions can be found on Page 27.

Detailed time series data is available in Microsoft Excel spreadsheet format from the BITRE website at <http://www.bitre.gov.au/info.aspx?ResourceId=214&NodeId=104>.

Contents

	Page
Industry performance	1
Individual routes	9
Airports	21
Definitions.....	27

Industry performance

For the month ending 31 October 2008, airline on time performance over all routes operated by participating airlines (Jetstar, MacAir, Qantas, QantasLink, Regional Express, Skywest Airlines, Tiger Airways, and Virgin Blue) averaged 77.5 per cent for on time departures, and 76.4 per cent for on time arrivals. Cancellations for October 2008 represented 1.5 per cent of all scheduled flights. On time performance figures decreased in October when compared with those for September, and were below those for October 2007. The equivalent figures for October 2007 were 81.2 per cent for departures, 78.8 per cent for arrivals and 1.3 per cent for cancellations.

The long term average performance for all routes since reporting commenced in November 2003 is 85.1 per cent for on time departures and 83.9 per cent for on time arrivals. Cancellations average 1.1 per cent of all scheduled flights.

Of the major domestic airlines, Tiger Airways achieved the highest level of on time departures for October 2008 at 85.9 per cent, while Virgin Blue achieved 76.7 per cent, Qantas 76.3 per cent, and Jetstar 75.4 per cent. Skywest was the best performing regional airline with 82.0 per cent departures on time, followed by QantasLink (80.2 per cent), MacAir (78.7 per cent) and Regional Express (77.4 per cent).

Tiger Airways was also the best performing major domestic airline for on time arrivals at 86.9 per cent, with Jetstar at 77.2 per cent, Qantas at 76.1 per cent, and Virgin Blue at 74.9 per cent. Skywest was also the best performing regional airlines for on time arrivals at 80.6 per cent, followed by QantasLink (79.2 per cent), MacAir (77.6 per cent) and Regional Express (72.6 per cent).

MacAir had the highest percentage of cancellations for October 2008 at 5.2 per cent, followed by Virgin Blue with 1.8 per cent, Qantas with 1.7 per cent, QantasLink with 1.3 per cent, Skywest with 1.2 per cent, Regional Express with 1.1 per cent, Tiger with 0.7 per cent, and Jetstar with 0.5 per cent.

Of the 48 routes which meet the criteria for on time performance reporting, the Brisbane–Hamilton Island route had the highest percentage of on time departures (93.5 per cent), while the Gold Coast–Adelaide route had the lowest (54.8 per cent). On time arrivals were highest on the Brisbane–Hamilton Island route (96.8 per cent), and lowest on the Ballina–Sydney route (50.3 per cent).

Cancellations were highest on the Canberra–Sydney route with 6.4 per cent, followed by Sydney–Canberra with 6.0 per cent, Melbourne–Sydney with 4.4 per cent, Sydney–Melbourne with 4.0 per cent, Kalgoorlie–Perth with 3.9 per cent, and Perth–Kalgoorlie, Broome–Perth and Perth–Broome all with 3.8 per cent.

Hamilton Island Airport recorded the highest percentage of on time departures (93.5 per cent), and Broome Airport recorded the lowest (62.3 per cent). Hamilton Island Airport also recorded the highest percentage of on time arrivals (96.8 per cent), while Wagga Wagga Airport recorded the lowest (58.1 per cent).

Table 1 On time performance for October 2008—Total Industry

	<i>Sectors</i>		<i>Departures On Time</i>		<i>Arrivals On Time</i>		<i>Cancellations</i>	
	<i>Scheduled</i>	<i>Flown</i>	<i>No.</i>	<i>%</i>	<i>No.</i>	<i>%</i>	<i>No.</i>	<i>%</i>
Jetstar	5 125	5 098	3 844	75.4	3 936	77.2	27	0.5
MacAir	1 148	1 088	856	78.7	844	77.6	60	5.2
Qantas	11 085	10 897	8 314	76.3	8 289	76.1	188	1.7
QantasLink	7 985	7 878	6 320	80.2	6 236	79.2	107	1.3
Regional Express	5 619	5 560	4 302	77.4	4 036	72.6	59	1.1
Skywest	1 179	1 165	955	82.0	939	80.6	14	1.2
Tiger Airways	808	802	689	85.9	697	86.9	6	0.7
Virgin Blue	11 876	11 660	8 947	76.7	8 730	74.9	216	1.8
All Airlines	44 825	44 148	34 227	77.5	33 707	76.4	677	1.5

Note: 1. Total airline network data (including routes not shown in this report).

2. Tiger Airways began reporting in April 2008.

Table 2 Top ten routes for on time performance for October 2008 (participating airlines only)

<i>Departures</i>		<i>Arrivals</i>	
<i>Route</i>	<i>On Time (%)</i>	<i>Route</i>	<i>On Time (%)</i>
Brisbane-Hamilton Island	93.5	Brisbane-Hamilton Island	96.8
Hamilton Island-Brisbane	93.5	Melbourne-Alice Springs	93.2
Sydney-Hervey Bay	91.8	Sydney-Townsville	92.3
Melbourne-Alice Springs	90.9	Hamilton Island-Brisbane	91.9
Adelaide-Canberra	90.1	Sydney-Hervey Bay	91.8
Hervey Bay-Sydney	89.8	Adelaide-Canberra	90.1
Melbourne-Mildura	89.3	Melbourne-Maroochydore	89.9
Townsville-Sydney	88.7	Canberra-Adelaide	88.2
Townsville-Brisbane	88.7	Mildura-Melbourne	88.2
Canberra-Melbourne	88.6	Brisbane-Townsville	87.6

Table 3 Top ten airports for on time performance for October 2008 (participating airlines and reported routes only)

<i>Departures</i>		<i>Arrivals</i>	
<i>Airport</i>	<i>On Time (%)</i>	<i>Airport</i>	<i>On Time (%)</i>
Hamilton Island	93.5	Hamilton Island	96.8
Hervey Bay	89.8	Alice Springs	93.2
Townsville	88.7	Hervey Bay	91.8
Mildura	87.3	Townsville	88.1
Hobart	84.5	Proserpine	85.5
Canberra	83.9	Mildura	83.6
Rockhampton	83.7	Rockhampton	82.0
Launceston	83.4	Canberra	81.5
Cairns	82.2	Launceston	81.3
Adelaide	81.3	Cairns	80.9

Total industry on time performance

Figure 1 On time performance (by month from October 2005)—Total Industry

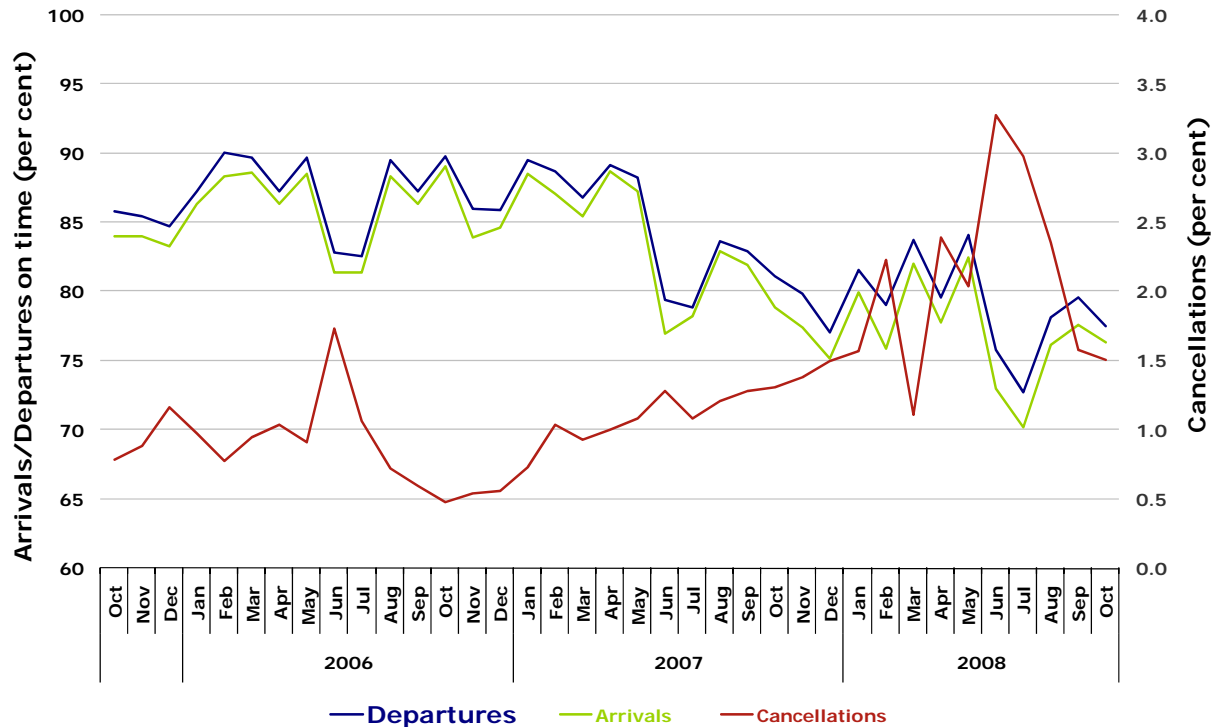


Figure 2 Departures on time (by month from October 2007)

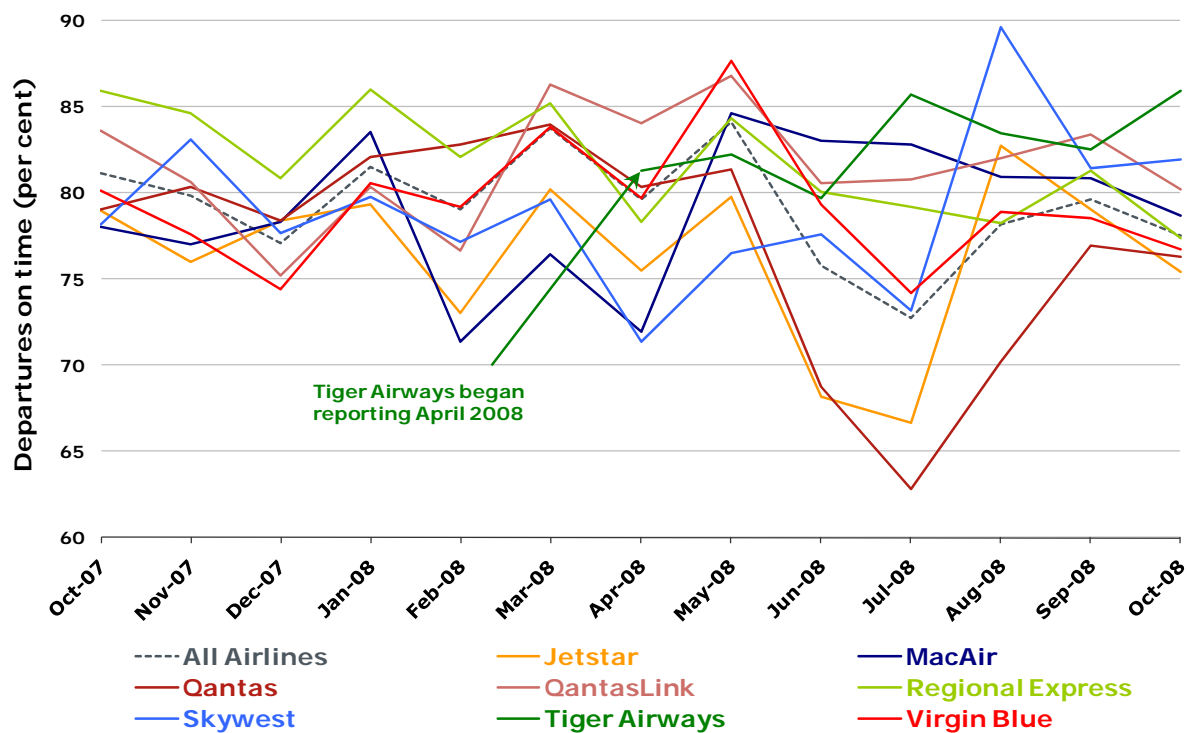


Figure 3 Arrivals on time (by month from October 2007)

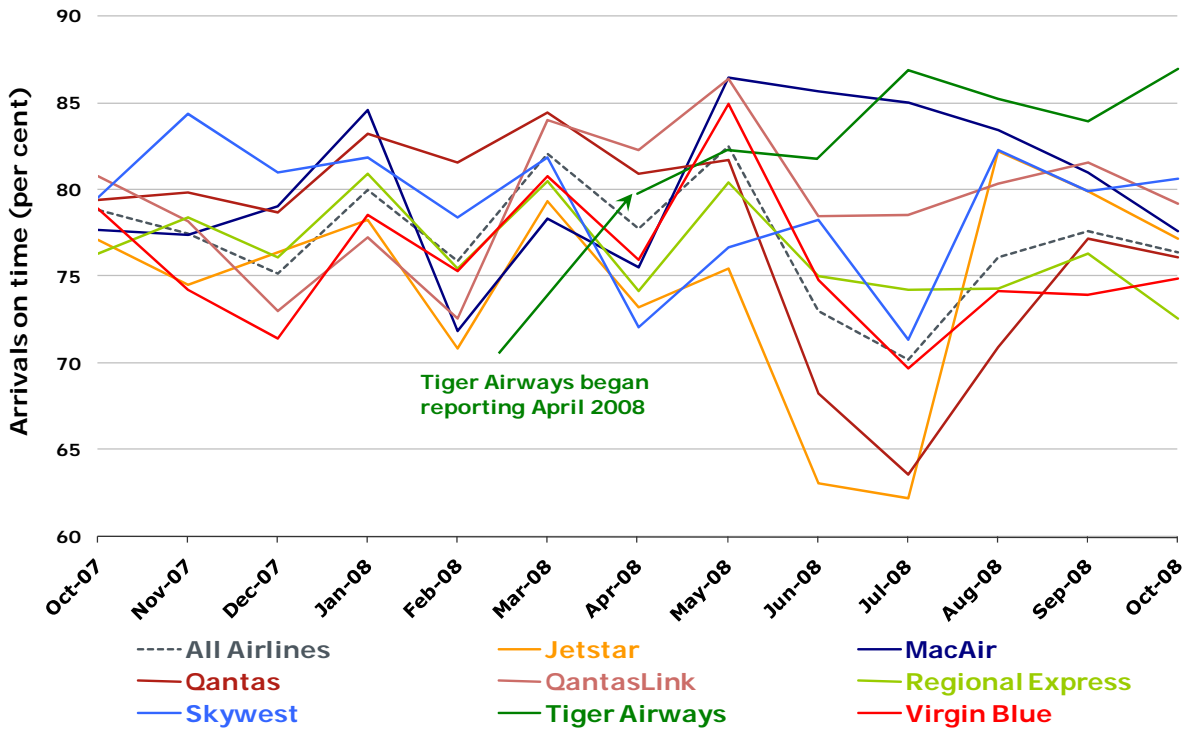
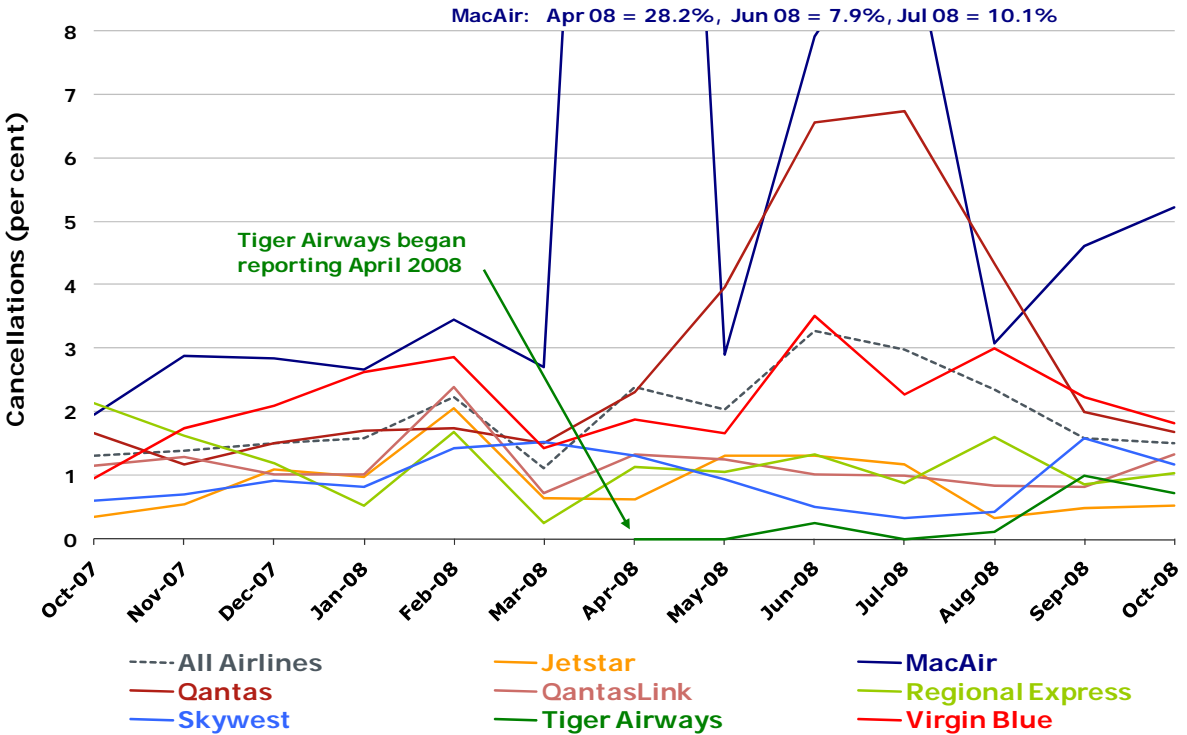


Figure 4 Cancellations (by month from October 2007)



Major domestic airlines on time performance

Figure 5 On time performance (by month from October 2005)—Jetstar

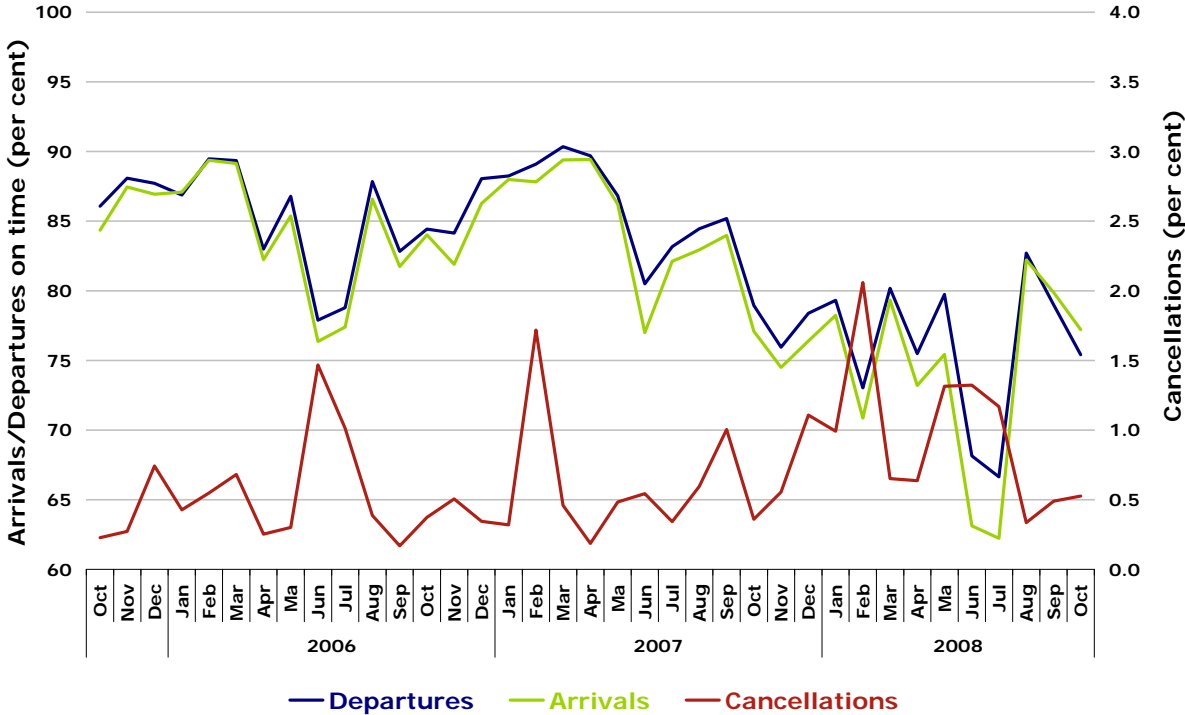


Figure 6 On time performance (by month from October 2005)—Qantas

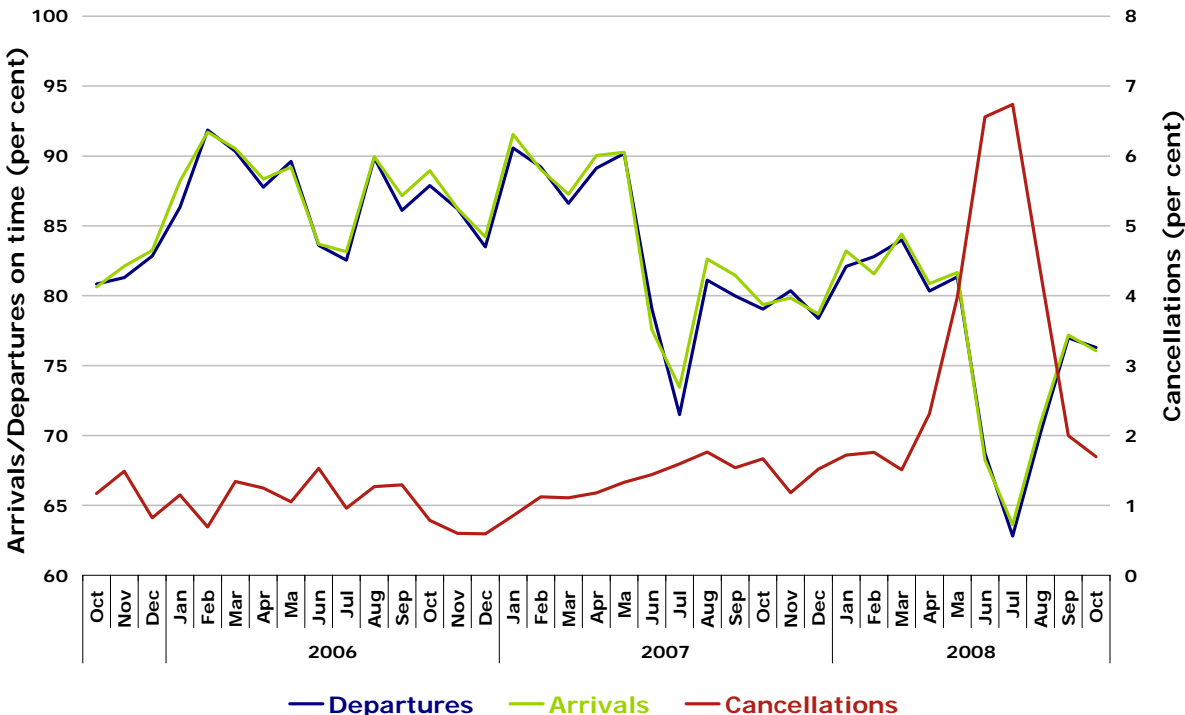


Figure 7 On time performance (by month from October 2005)—Tiger Airways

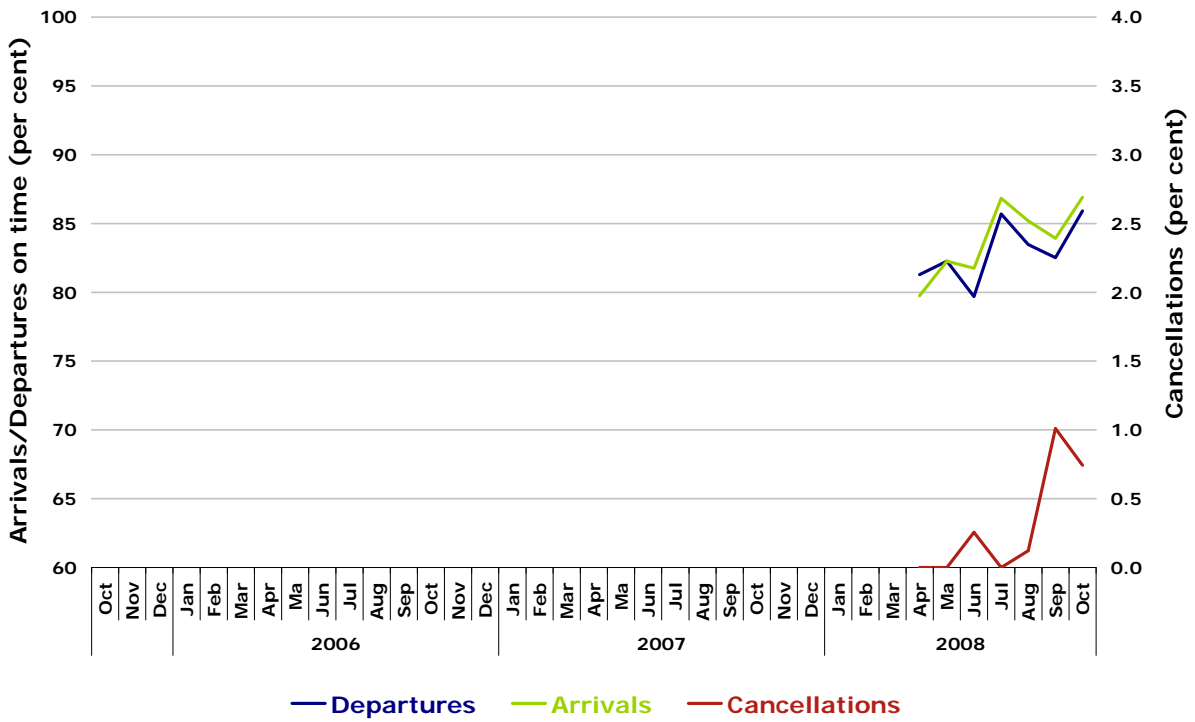
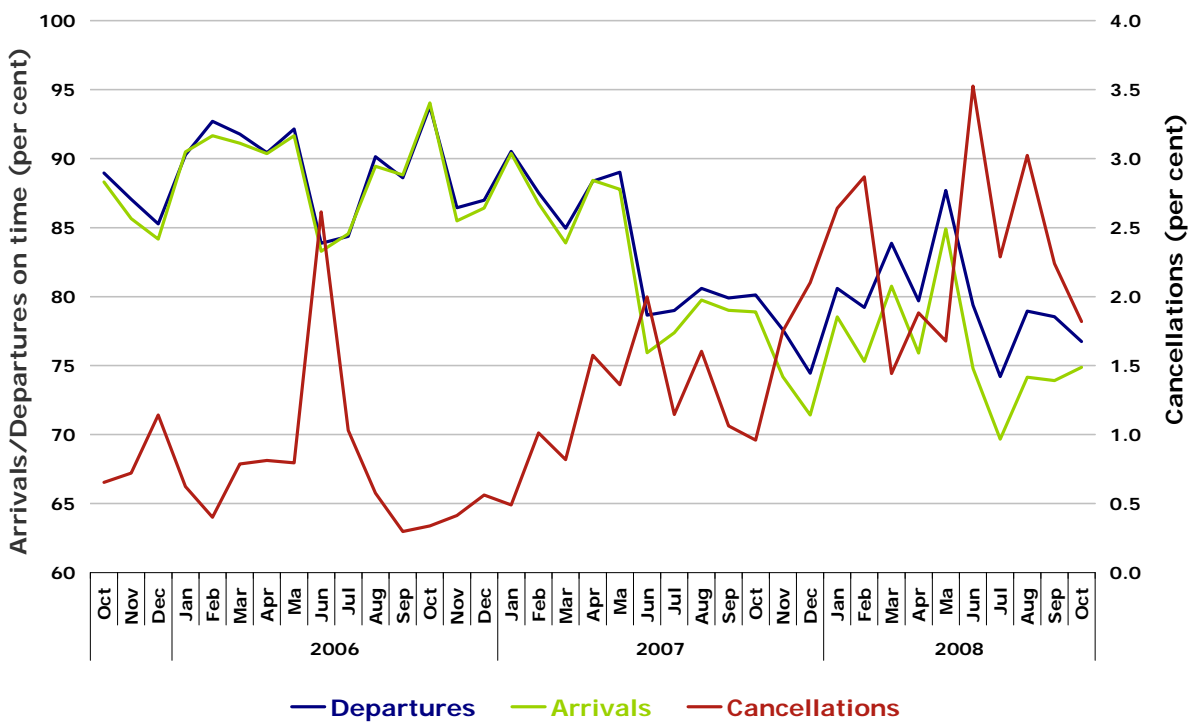


Figure 8 On time performance (by month from October 2005)—Virgin Blue



Major regional airlines on time performance

Figure 9 On time performance (by month from October 2005)—MacAir

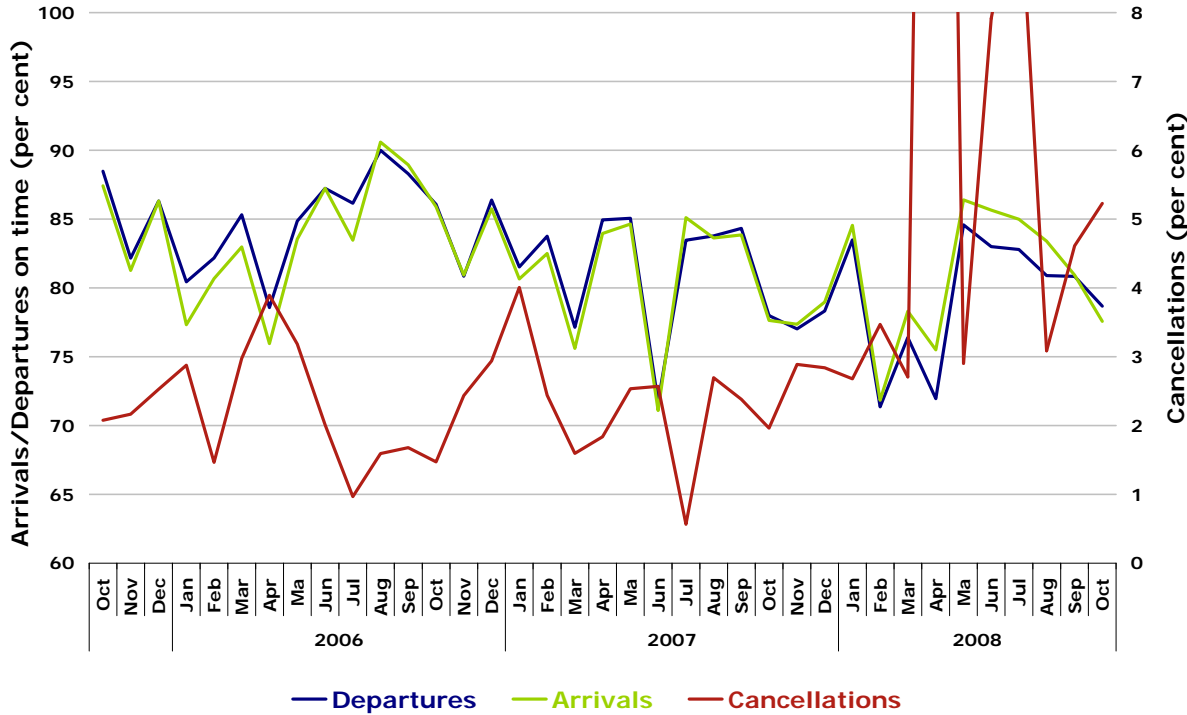


Figure 10 On time performance (by month from October 2005)—QantasLink

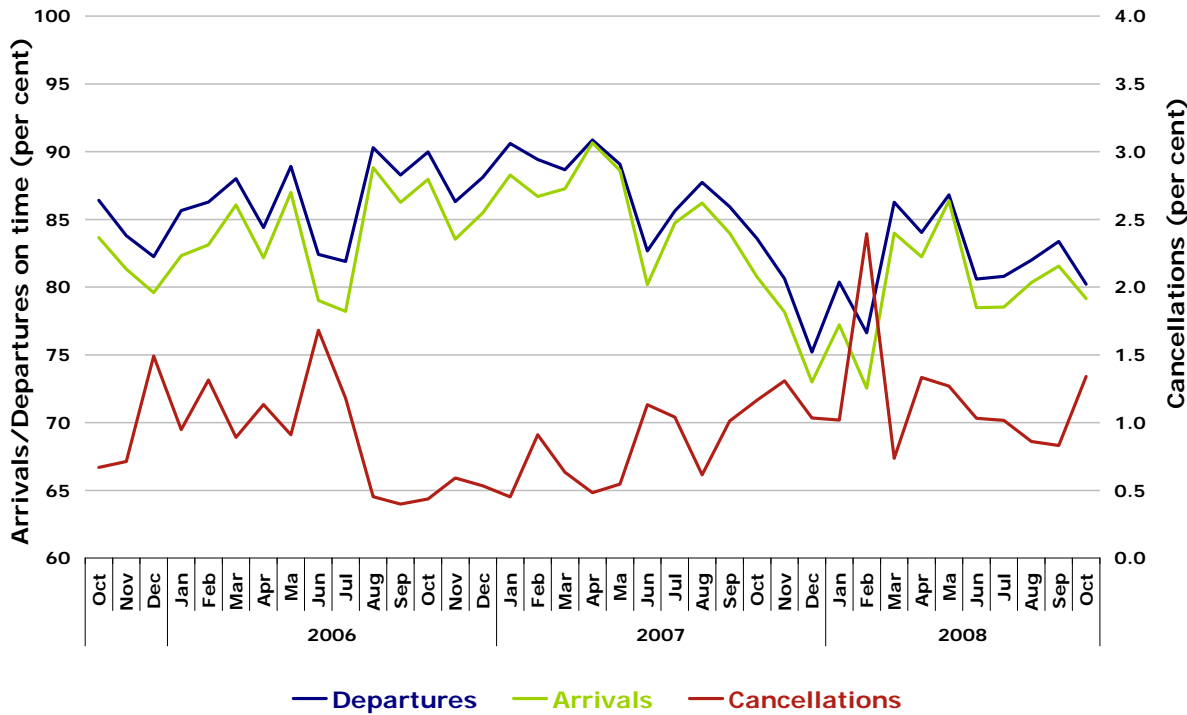


Figure 11 On time performance (by month from October 2005)—Regional Express

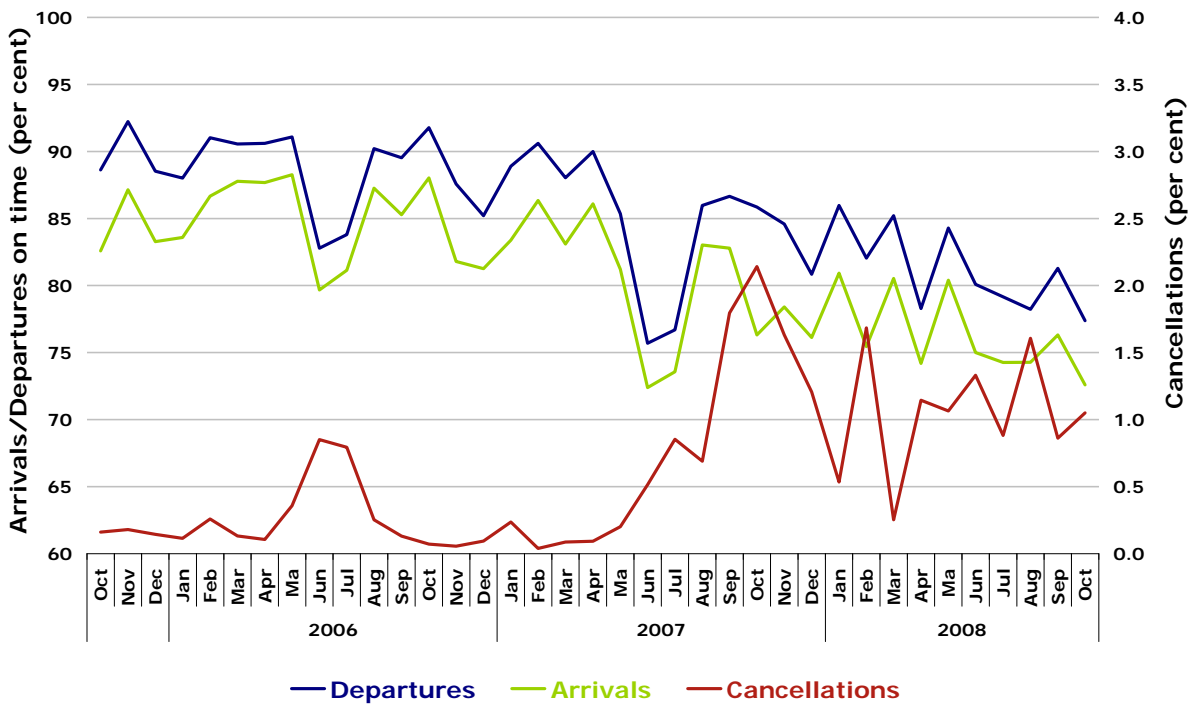
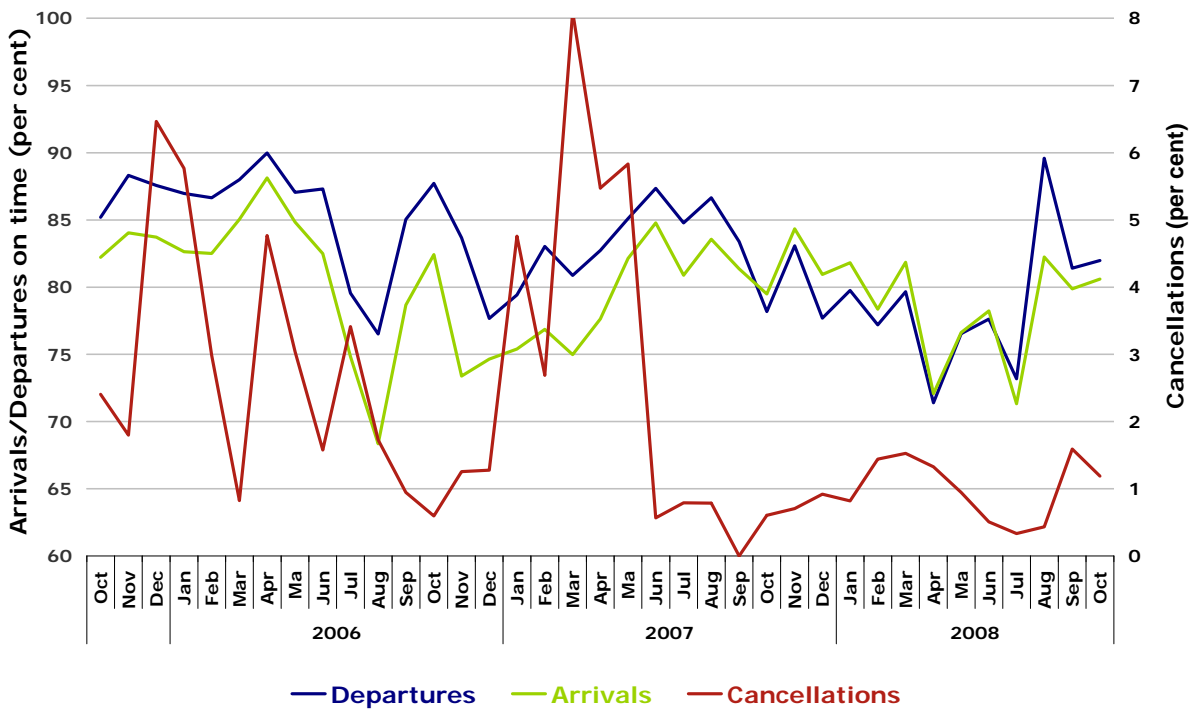


Figure 12 On time performance (by month from October 2005)—Skywest



Individual routes

On time performance is reported for all routes where the passenger load averages over 8000 passengers per month over the previous six months, and where two or more airlines operate in competition on those routes. There are now 48 routes which meet this definition. Over time, however, routes which meet this definition may change as airline networks and traffic levels vary.

	<i>Sectors</i>		<i>Departures On Time</i>		<i>Arrivals On Time</i>		<i>Cancellations</i>	
	<i>Sched.</i>	<i>Flown</i>	<i>No.</i>	<i>%</i>	<i>No.</i>	<i>%</i>	<i>No.</i>	<i>%</i>
Adelaide-Brisbane								
Jetstar	27	27	18	66.7	21	77.8	0	0.0
Qantas	89	89	73	82.0	76	85.4	0	0.0
Virgin Blue	121	120	90	75.0	100	83.3	1	0.8
All Airlines	237	236	181	76.7	197	83.5	1	0.4
Adelaide-Canberra								
Qantas	50	50	48	96.0	47	94.0	0	0.0
Virgin Blue	31	31	25	80.6	26	83.9	0	0.0
All Airlines	81	81	73	90.1	73	90.1	0	0.0
Adelaide-Gold Coast								
Jetstar	30	30	27	90.0	27	90.0	0	0.0
Virgin Blue	31	31	23	74.2	24	77.4	0	0.0
All Airlines	61	61	50	82.0	51	83.6	0	0.0
Adelaide-Melbourne								
Qantas	388	385	339	88.1	348	90.4	3	0.8
Tiger Airways	74	73	61	83.6	62	84.9	1	1.4
Virgin Blue	303	297	233	78.5	233	78.5	6	2.0
All Airlines	765	755	633	83.8	643	85.2	10	1.3
Adelaide-Perth								
Qantas	147	146	117	80.1	120	82.2	1	0.7
Virgin Blue	75	73	62	84.9	58	79.5	2	2.7
All Airlines	222	219	179	81.7	178	81.3	3	1.4
Adelaide-Sydney								
Jetstar	31	30	13	43.3	17	56.7	1	3.2
Qantas	322	320	269	84.1	255	79.7	2	0.6
Virgin Blue	155	155	111	71.6	117	75.5	0	0.0
All Airlines	508	505	393	77.8	389	77.0	3	0.6
Albury-Sydney								
QantasLink	118	118	85	72.0	81	68.6	0	0.0
Regional Express	117	115	92	80.0	89	77.4	2	1.7
Virgin Blue	58	58	42	72.4	37	63.8	0	0.0
All Airlines	293	291	219	75.3	207	71.1	2	0.7

	<i>Sectors</i>		<i>Departures On Time</i>		<i>Arrivals On Time</i>		<i>Cancellations</i>	
	<i>Sched.</i>	<i>Flown</i>	<i>No.</i>	<i>%</i>	<i>No.</i>	<i>%</i>	<i>No.</i>	<i>%</i>
Alice Springs-Melbourne								
Qantas	31	31	17	54.8	19	61.3	0	0.0
Tiger Airways	13	13	12	92.3	12	92.3	0	0.0
All Airlines	44	44	29	65.9	31	70.5	0	0.0
Ballina-Sydney								
Jetstar	31	31	26	83.9	23	74.2	0	0.0
Regional Express	93	92	47	51.1	35	38.0	1	1.1
Virgin Blue	32	32	25	78.1	20	62.5	0	0.0
All Airlines	156	155	98	63.2	78	50.3	1	0.6
Brisbane-Adelaide								
Jetstar	27	26	20	76.9	23	88.5	1	3.7
Qantas	89	89	71	79.8	76	85.4	0	0.0
Virgin Blue	123	122	102	83.6	87	71.3	1	0.8
All Airlines	239	237	193	81.4	186	78.5	2	0.8
Brisbane-Cairns								
Jetstar	107	107	88	82.2	88	82.2	0	0.0
Qantas	124	124	97	78.2	107	86.3	0	0.0
Virgin Blue	126	126	112	88.9	113	89.7	0	0.0
All Airlines	357	357	297	83.2	308	86.3	0	0.0
Brisbane-Canberra								
Qantas	147	147	124	84.4	131	89.1	0	0.0
QantasLink	8	8	7	87.5	7	87.5	0	0.0
Virgin Blue	152	150	119	79.3	108	72.0	2	1.3
All Airlines	307	305	250	82.0	246	80.7	2	0.7
Brisbane-Darwin								
Jetstar	27	27	22	81.5	21	77.8	0	0.0
Qantas	31	31	22	71.0	23	74.2	0	0.0
Virgin Blue	33	32	15	46.9	17	53.1	1	3.0
All Airlines	91	90	59	65.6	61	67.8	1	1.1
Brisbane-Hamilton Island								
Jetstar	31	31	28	90.3	29	93.5	0	0.0
Virgin Blue	31	31	30	96.8	31	100.0	0	0.0
All Airlines	62	62	58	93.5	60	96.8	0	0.0
Brisbane-Mackay								
Jetstar	93	93	80	86.0	81	87.1	0	0.0
QantasLink	58	58	47	81.0	45	77.6	0	0.0
Virgin Blue	151	151	114	75.5	106	70.2	0	0.0
All Airlines	302	302	241	79.8	232	76.8	0	0.0
Brisbane-Melbourne								
Qantas	466	463	367	79.3	376	81.2	3	0.6
Virgin Blue	387	382	340	89.0	332	86.9	5	1.3
All Airlines	853	845	707	83.7	708	83.8	8	0.9

	<i>Sectors</i>		<i>Departures On Time</i>		<i>Arrivals On Time</i>		<i>Cancellations</i>	
	<i>Sched.</i>	<i>Flown</i>	<i>No.</i>	<i>%</i>	<i>No.</i>	<i>%</i>	<i>No.</i>	<i>%</i>
Brisbane-Newcastle								
Jetstar	124	124	86	69.4	92	74.2	0	0.0
QantasLink	73	70	57	81.4	45	64.3	3	4.1
Virgin Blue	49	49	41	83.7	42	85.7	0	0.0
All Airlines	246	243	184	75.7	179	73.7	3	1.2
Brisbane-Perth								
Qantas	124	124	76	61.3	87	70.2	0	0.0
Virgin Blue	62	62	49	79.0	36	58.1	0	0.0
All Airlines	186	186	125	67.2	123	66.1	0	0.0
Brisbane-Proserpine								
Jetstar	31	31	25	80.6	27	87.1	0	0.0
Virgin Blue	31	31	23	74.2	26	83.9	0	0.0
All Airlines	62	62	48	77.4	53	85.5	0	0.0
Brisbane-Rockhampton								
Jetstar	31	31	29	93.5	30	96.8	0	0.0
QantasLink	181	179	146	81.6	146	81.6	2	1.1
Virgin Blue	155	152	127	83.6	121	79.6	3	1.9
All Airlines	367	362	302	83.4	297	82.0	5	1.4
Brisbane-Sydney								
Qantas	720	703	517	73.5	443	63.0	17	2.4
Virgin Blue	613	596	449	75.3	386	64.8	17	2.8
All Airlines	1 333	1 299	966	74.4	829	63.8	34	2.6
Brisbane-Townsville								
Jetstar	61	61	49	80.3	53	86.9	0	0.0
Qantas	166	166	135	81.3	146	88.0	0	0.0
Virgin Blue	151	151	134	88.7	132	87.4	0	0.0
All Airlines	378	378	318	84.1	331	87.6	0	0.0
Broome-Perth								
Qantas	31	29	20	69.0	23	79.3	2	6.5
QantasLink	51	50	41	82.0	43	86.0	1	2.0
Skywest	32	32	22	68.8	19	59.4	0	0.0
Virgin Blue	46	43	13	30.2	18	41.9	3	6.5
All Airlines	160	154	96	62.3	103	66.9	6	3.8
Cairns-Brisbane								
Jetstar	107	107	89	83.2	88	82.2	0	0.0
Qantas	124	124	106	85.5	111	89.5	0	0.0
Virgin Blue	126	126	105	83.3	102	81.0	0	0.0
All Airlines	357	357	300	84.0	301	84.3	0	0.0
Cairns-Melbourne								
Jetstar	47	47	38	80.9	35	74.5	0	0.0
Qantas	31	31	18	58.1	23	74.2	0	0.0
Virgin Blue	65	65	52	80.0	47	72.3	0	0.0
All Airlines	143	143	108	75.5	105	73.4	0	0.0

	<i>Sectors</i>		<i>Departures On Time</i>		<i>Arrivals On Time</i>		<i>Cancellations</i>	
	<i>Sched.</i>	<i>Flown</i>	<i>No.</i>	<i>%</i>	<i>No.</i>	<i>%</i>	<i>No.</i>	<i>%</i>
Cairns-Sydney								
Jetstar	56	56	46	82.1	46	82.1	0	0.0
Qantas	110	110	86	78.2	90	81.8	0	0.0
Virgin Blue	108	108	96	88.9	90	83.3	0	0.0
All Airlines	274	274	228	83.2	226	82.5	0	0.0
Canberra-Adelaide								
Qantas	54	54	49	90.7	49	90.7	0	0.0
Virgin Blue	31	31	26	83.9	26	83.9	0	0.0
All Airlines	85	85	75	88.2	75	88.2	0	0.0
Canberra-Brisbane								
Qantas	147	147	129	87.8	124	84.4	0	0.0
QantasLink	8	8	4	50.0	4	50.0	0	0.0
Virgin Blue	152	149	117	78.5	116	77.9	3	2.0
All Airlines	307	304	250	82.2	244	80.3	3	1.0
Canberra-Melbourne								
Qantas	285	276	242	87.7	238	86.2	9	3.2
QantasLink	38	37	34	91.9	33	89.2	1	2.6
Tiger Airways	59	58	52	89.7	51	87.9	1	1.7
Virgin Blue	187	182	162	89.0	156	85.7	5	2.7
All Airlines	569	553	490	88.6	478	86.4	16	2.8
Canberra-Sydney								
Qantas	208	200	166	83.0	158	79.0	8	3.8
QantasLink	453	419	333	79.5	311	74.2	34	7.5
Virgin Blue	216	202	166	82.2	159	78.7	14	6.5
All Airlines	877	821	665	81.0	628	76.5	56	6.4
Coffs Harbour-Sydney								
QantasLink	121	121	76	62.8	72	59.5	0	0.0
Virgin Blue	62	61	50	82.0	46	75.4	1	1.6
All Airlines	183	182	126	69.2	118	64.8	1	0.5
Darwin-Brisbane								
Jetstar	27	27	17	63.0	21	77.8	0	0.0
Qantas	31	31	17	54.8	18	58.1	0	0.0
Virgin Blue	32	31	16	51.6	18	58.1	1	3.1
All Airlines	90	89	50	56.2	57	64.0	1	1.1
Darwin-Melbourne								
Jetstar	62	62	50	80.6	51	82.3	0	0.0
Tiger Airways	15	15	10	66.7	15	100.0	0	0.0
All Airlines	77	77	60	77.9	66	85.7	0	0.0
Dubbo-Sydney								
QantasLink	89	89	76	85.4	55	61.8	0	0.0
Regional Express	161	159	106	66.7	98	61.6	2	1.2
All Airlines	250	248	182	73.4	153	61.7	2	0.8

	<i>Sectors</i>		<i>Departures On Time</i>		<i>Arrivals On Time</i>		<i>Cancellations</i>	
	<i>Sched.</i>	<i>Flown</i>	<i>No.</i>	<i>%</i>	<i>No.</i>	<i>%</i>	<i>No.</i>	<i>%</i>
Gold Coast-Adelaide								
Jetstar	31	31	12	38.7	13	41.9	0	0.0
Virgin Blue	31	31	22	71.0	20	64.5	0	0.0
All Airlines	62	62	34	54.8	33	53.2	0	0.0
Gold Coast-Melbourne								
Jetstar	188	188	140	74.5	136	72.3	0	0.0
Tiger Airways	88	88	79	89.8	77	87.5	0	0.0
Virgin Blue	158	157	128	81.5	99	63.1	1	0.6
All Airlines	434	433	347	80.1	312	72.1	1	0.2
Gold Coast-Sydney								
Jetstar	270	270	164	60.7	136	50.4	0	0.0
Virgin Blue	338	330	261	79.1	239	72.4	8	2.4
All Airlines	608	600	425	70.8	375	62.5	8	1.3
Hamilton Island-Brisbane								
Jetstar	31	31	27	87.1	27	87.1	0	0.0
Virgin Blue	31	31	31	100.0	30	96.8	0	0.0
All Airlines	62	62	58	93.5	57	91.9	0	0.0
Hervey Bay-Sydney								
Jetstar	18	18	17	94.4	17	94.4	0	0.0
Virgin Blue	31	31	27	87.1	24	77.4	0	0.0
All Airlines	49	49	44	89.8	41	83.7	0	0.0
Hobart-Melbourne								
Jetstar	153	152	134	88.2	137	90.1	1	0.7
Qantas	62	62	58	93.5	53	85.5	0	0.0
Tiger Airways	31	31	27	87.1	28	90.3	0	0.0
Virgin Blue	155	155	127	81.9	128	82.6	0	0.0
All Airlines	401	400	346	86.5	346	86.5	1	0.2
Hobart-Sydney								
Jetstar	51	50	40	80.0	38	76.0	1	2.0
Qantas	31	31	26	83.9	25	80.6	0	0.0
Virgin Blue	62	62	47	75.8	43	69.4	0	0.0
All Airlines	144	143	113	79.0	106	74.1	1	0.7
Kalgoorlie-Perth								
Qantas	65	63	53	84.1	55	87.3	2	3.1
QantasLink	25	25	24	96.0	24	96.0	0	0.0
Skywest	39	36	20	55.6	18	50.0	3	7.7
All Airlines	129	124	97	78.2	97	78.2	5	3.9
Karratha-Perth								
Qantas	127	124	92	74.2	89	71.8	3	2.4
QantasLink	38	37	32	86.5	32	86.5	1	2.6
Virgin Blue	19	18	11	61.1	12	66.7	1	5.3
All Airlines	184	179	135	75.4	133	74.3	5	2.7

	<i>Sectors</i>		<i>Departures On Time</i>		<i>Arrivals On Time</i>		<i>Cancellations</i>	
	<i>Sched.</i>	<i>Flown</i>	<i>No.</i>	<i>%</i>	<i>No.</i>	<i>%</i>	<i>No.</i>	<i>%</i>
Launceston-Melbourne								
Jetstar	91	91	69	75.8	70	76.9	0	0.0
QantasLink	62	61	53	86.9	42	68.9	1	1.6
Tiger Airways	31	30	29	96.7	29	96.7	1	3.2
Virgin Blue	125	125	110	88.0	107	85.6	0	0.0
All Airlines	309	307	261	85.0	248	80.8	2	0.6
Launceston-Sydney								
Jetstar	31	30	21	70.0	26	86.7	1	3.2
Virgin Blue	31	31	25	80.6	25	80.6	0	0.0
All Airlines	62	61	46	75.4	51	83.6	1	1.6
Mackay-Brisbane								
Jetstar	93	93	78	83.9	77	82.8	0	0.0
QantasLink	58	58	49	84.5	54	93.1	0	0.0
Virgin Blue	151	151	118	78.1	119	78.8	0	0.0
All Airlines	302	302	245	81.1	250	82.8	0	0.0
Maroochydore-Melbourne								
Jetstar	62	62	46	74.2	46	74.2	0	0.0
Tiger Airways	15	15	11	73.3	12	80.0	0	0.0
Virgin Blue	32	31	24	77.4	20	64.5	1	3.1
All Airlines	109	108	81	75.0	78	72.2	1	0.9
Maroochydore-Sydney								
Jetstar	93	92	53	57.6	57	62.0	1	1.1
Virgin Blue	63	63	36	57.1	34	54.0	0	0.0
All Airlines	156	155	89	57.4	91	58.7	1	0.6
Melbourne-Adelaide								
Qantas	384	381	326	85.6	333	87.4	3	0.8
Tiger Airways	74	73	63	86.3	63	86.3	1	1.4
Virgin Blue	303	298	217	72.8	212	71.1	5	1.7
All Airlines	761	752	606	80.6	608	80.9	9	1.2
Melbourne-Alice Springs								
Qantas	31	31	27	87.1	28	90.3	0	0.0
Tiger Airways	13	13	13	100.0	13	100.0	0	0.0
All Airlines	44	44	40	90.9	41	93.2	0	0.0
Melbourne-Brisbane								
Qantas	460	458	389	84.9	395	86.2	2	0.4
Virgin Blue	387	383	327	85.4	333	86.9	4	1.0
All Airlines	847	841	716	85.1	728	86.6	6	0.7
Melbourne-Cairns								
Jetstar	47	47	41	87.2	44	93.6	0	0.0
Qantas	31	31	23	74.2	24	77.4	0	0.0
Virgin Blue	65	65	38	58.5	41	63.1	0	0.0
All Airlines	143	143	102	71.3	109	76.2	0	0.0

	<i>Sectors</i>		<i>Departures On Time</i>		<i>Arrivals On Time</i>		<i>Cancellations</i>	
	<i>Sched.</i>	<i>Flown</i>	<i>No.</i>	<i>%</i>	<i>No.</i>	<i>%</i>	<i>No.</i>	<i>%</i>
Melbourne-Canberra								
Qantas	285	276	230	83.3	239	86.6	9	3.2
QantasLink	38	37	35	94.6	35	94.6	1	2.6
Tiger Airways	59	58	49	84.5	49	84.5	1	1.7
Virgin Blue	186	182	157	86.3	160	87.9	4	2.2
All Airlines	568	553	471	85.2	483	87.3	15	2.6
Melbourne-Darwin								
Jetstar	62	62	42	67.7	42	67.7	0	0.0
Tiger Airways	14	14	14	100.0	12	85.7	0	0.0
All Airlines	76	76	56	73.7	54	71.1	0	0.0
Melbourne-Gold Coast								
Jetstar	188	188	149	79.3	161	85.6	0	0.0
Tiger Airways	88	88	75	85.2	78	88.6	0	0.0
Virgin Blue	158	157	119	75.8	123	78.3	1	0.6
All Airlines	434	433	343	79.2	362	83.6	1	0.2
Melbourne-Hobart								
Jetstar	153	152	125	82.2	133	87.5	1	0.7
Qantas	62	62	44	71.0	42	67.7	0	0.0
Tiger Airways	31	31	26	83.9	26	83.9	0	0.0
Virgin Blue	155	155	126	81.3	128	82.6	0	0.0
All Airlines	401	400	321	80.3	329	82.3	1	0.2
Melbourne-Launceston								
Jetstar	91	91	71	78.0	75	82.4	0	0.0
QantasLink	62	61	47	77.0	49	80.3	1	1.6
Tiger Airways	31	30	29	96.7	29	96.7	1	3.2
Virgin Blue	125	125	100	80.0	101	80.8	0	0.0
All Airlines	309	307	247	80.5	254	82.7	2	0.6
Melbourne-Maroochydore								
Jetstar	62	62	52	83.9	57	91.9	0	0.0
Tiger Airways	15	15	12	80.0	13	86.7	0	0.0
Virgin Blue	32	32	26	81.3	28	87.5	0	0.0
All Airlines	109	109	90	82.6	98	89.9	0	0.0
Melbourne-Mildura								
QantasLink	116	116	99	85.3	88	75.9	0	0.0
Regional Express	109	109	104	95.4	100	91.7	0	0.0
Virgin Blue	19	19	15	78.9	16	84.2	0	0.0
All Airlines	244	244	218	89.3	204	83.6	0	0.0
Melbourne-Newcastle								
Jetstar	92	92	58	63.0	62	67.4	0	0.0
Virgin Blue	31	31	29	93.5	28	90.3	0	0.0
All Airlines	123	123	87	70.7	90	73.2	0	0.0

	<i>Sectors</i>		<i>Departures</i>		<i>Arrivals</i>		<i>Cancellations</i>	
	<i>Sched.</i>	<i>Flown</i>	<i>No.</i>	<i>%</i>	<i>No.</i>	<i>%</i>	<i>No.</i>	<i>%</i>
Melbourne-Perth								
Qantas	213	213	122	57.3	131	61.5	0	0.0
Tiger Airways	44	44	42	95.5	42	95.5	0	0.0
Virgin Blue	124	124	105	84.7	102	82.3	0	0.0
All Airlines	381	381	269	70.6	275	72.2	0	0.0
Melbourne-Sydney								
Qantas	1 028	980	734	74.9	665	67.9	48	4.7
Virgin Blue	889	852	595	69.8	596	70.0	37	4.2
All Airlines	1 917	1 832	1 329	72.5	1 261	68.8	85	4.4
Mildura-Melbourne								
QantasLink	116	116	99	85.3	103	88.8	0	0.0
Regional Express	110	110	103	93.6	100	90.9	0	0.0
Virgin Blue	19	19	12	63.2	13	68.4	0	0.0
All Airlines	245	245	214	87.3	216	88.2	0	0.0
Newcastle-Brisbane								
Jetstar	124	124	88	71.0	86	69.4	0	0.0
QantasLink	73	70	53	75.7	53	75.7	3	4.1
Virgin Blue	49	49	44	89.8	44	89.8	0	0.0
All Airlines	246	243	185	76.1	183	75.3	3	1.2
Newcastle-Melbourne								
Jetstar	92	92	61	66.3	62	67.4	0	0.0
Virgin Blue	31	31	26	83.9	27	87.1	0	0.0
All Airlines	123	123	87	70.7	89	72.4	0	0.0
Perth-Adelaide								
Qantas	147	146	114	78.1	112	76.7	1	0.7
Virgin Blue	72	70	56	80.0	59	84.3	2	2.8
All Airlines	219	216	170	78.7	171	79.2	3	1.4
Perth-Brisbane								
Qantas	124	124	75	60.5	73	58.9	0	0.0
Virgin Blue	62	62	51	82.3	53	85.5	0	0.0
All Airlines	186	186	126	67.7	126	67.7	0	0.0
Perth-Broome								
Qantas	31	29	24	82.8	23	79.3	2	6.5
QantasLink	51	50	42	84.0	40	80.0	1	2.0
Skywest	32	32	25	78.1	24	75.0	0	0.0
Virgin Blue	46	43	24	55.8	24	55.8	3	6.5
All Airlines	160	154	115	74.7	111	72.1	6	3.8
Perth-Kalgoorlie								
Qantas	65	63	48	76.2	49	77.8	2	3.1
QantasLink	24	24	22	91.7	23	95.8	0	0.0
Skywest	41	38	32	84.2	26	68.4	3	7.3
All Airlines	130	125	102	81.6	98	78.4	5	3.8

	<i>Sectors</i>		<i>Departures On Time</i>		<i>Arrivals On Time</i>		<i>Cancellations</i>	
	<i>Sched.</i>	<i>Flown</i>	<i>No.</i>	<i>%</i>	<i>No.</i>	<i>%</i>	<i>No.</i>	<i>%</i>
Perth-Karratha								
Qantas	127	124	101	81.5	95	76.6	3	2.4
QantasLink	38	37	34	91.9	33	89.2	1	2.6
Virgin Blue	19	18	16	88.9	14	77.8	1	5.3
All Airlines	184	179	151	84.4	142	79.3	5	2.7
Perth-Melbourne								
Qantas	213	212	123	58.0	121	57.1	1	0.5
Tiger Airways	45	45	27	60.0	26	57.8	0	0.0
Virgin Blue	124	124	86	69.4	87	70.2	0	0.0
All Airlines	382	381	236	61.9	234	61.4	1	0.3
Perth-Sydney								
Qantas	187	187	122	65.2	115	61.5	0	0.0
Virgin Blue	155	155	121	78.1	134	86.5	0	0.0
All Airlines	342	342	243	71.1	249	72.8	0	0.0
Port Macquarie-Sydney								
QantasLink	117	117	82	70.1	77	65.8	0	0.0
Virgin Blue	63	61	38	62.3	29	47.5	2	3.2
All Airlines	180	178	120	67.4	106	59.6	2	1.1
Proserpine-Brisbane								
Jetstar	31	31	24	77.4	25	80.6	0	0.0
Virgin Blue	31	31	23	74.2	24	77.4	0	0.0
All Airlines	62	62	47	75.8	49	79.0	0	0.0
Rockhampton-Brisbane								
Jetstar	31	31	30	96.8	29	93.5	0	0.0
QantasLink	156	154	133	86.4	131	85.1	2	1.3
Virgin Blue	155	152	119	78.3	117	77.0	3	1.9
All Airlines	342	337	282	83.7	277	82.2	5	1.5
Sydney-Adelaide								
Jetstar	31	31	30	96.8	30	96.8	0	0.0
Qantas	320	320	241	75.3	253	79.1	0	0.0
Virgin Blue	155	154	113	73.4	86	55.8	1	0.6
All Airlines	506	505	384	76.0	369	73.1	1	0.2
Sydney-Albury								
QantasLink	118	118	82	69.5	77	65.3	0	0.0
Regional Express	117	115	74	64.3	66	57.4	2	1.7
Virgin Blue	58	58	46	79.3	44	75.9	0	0.0
All Airlines	293	291	202	69.4	187	64.3	2	0.7
Sydney-Ballina								
Jetstar	31	31	23	74.2	26	83.9	0	0.0
Regional Express	93	93	60	64.5	57	61.3	0	0.0
Virgin Blue	32	32	25	78.1	26	81.3	0	0.0
All Airlines	156	156	108	69.2	109	69.9	0	0.0

	<i>Sectors</i>		<i>Departures On Time</i>		<i>Arrivals On Time</i>		<i>Cancellations</i>	
	<i>Sched.</i>	<i>Flown</i>	<i>No.</i>	<i>%</i>	<i>No.</i>	<i>%</i>	<i>No.</i>	<i>%</i>
Sydney-Brisbane								
Qantas	725	704	514	73.0	550	78.1	21	2.9
Virgin Blue	611	597	378	63.3	425	71.2	14	2.3
All Airlines	1 336	1 301	892	68.6	975	74.9	35	2.6
Sydney-Cairns								
Jetstar	56	56	51	91.1	53	94.6	0	0.0
Qantas	110	110	65	59.1	74	67.3	0	0.0
Virgin Blue	108	108	90	83.3	82	75.9	0	0.0
All Airlines	274	274	206	75.2	209	76.3	0	0.0
Sydney-Canberra								
Qantas	212	206	156	75.7	162	78.6	6	2.8
QantasLink	453	419	338	80.7	319	76.1	34	7.5
Virgin Blue	215	202	154	76.2	156	77.2	13	6.0
All Airlines	880	827	648	78.4	637	77.0	53	6.0
Sydney-Coffs Harbour								
QantasLink	121	121	88	72.7	79	65.3	0	0.0
Virgin Blue	63	62	49	79.0	53	85.5	1	1.6
All Airlines	184	183	137	74.9	132	72.1	1	0.5
Sydney-Dubbo								
QantasLink	89	89	73	82.0	71	79.8	0	0.0
Regional Express	166	164	106	64.6	96	58.5	2	1.2
All Airlines	255	253	179	70.8	167	66.0	2	0.8
Sydney-Gold Coast								
Jetstar	271	271	189	69.7	202	74.5	0	0.0
Virgin Blue	338	331	253	76.4	271	81.9	7	2.1
All Airlines	609	602	442	73.4	473	78.6	7	1.1
Sydney-Hervey Bay								
Jetstar	18	18	17	94.4	17	94.4	0	0.0
Virgin Blue	31	31	28	90.3	28	90.3	0	0.0
All Airlines	49	49	45	91.8	45	91.8	0	0.0
Sydney-Hobart								
Jetstar	51	50	42	84.0	42	84.0	1	2.0
Qantas	31	31	28	90.3	28	90.3	0	0.0
Virgin Blue	62	62	34	54.8	29	46.8	0	0.0
All Airlines	144	143	104	72.7	99	69.2	1	0.7
Sydney-Launceston								
Jetstar	31	30	20	66.7	20	66.7	1	3.2
Virgin Blue	31	31	28	90.3	25	80.6	0	0.0
All Airlines	62	61	48	78.7	45	73.8	1	1.6

	<i>Sectors</i>		<i>Departures On Time</i>		<i>Arrivals On Time</i>		<i>Cancellations</i>	
	<i>Sched.</i>	<i>Flown</i>	<i>No.</i>	<i>%</i>	<i>No.</i>	<i>%</i>	<i>No.</i>	<i>%</i>
Sydney-Maroochydore								
Jetstar	93	92	52	56.5	59	64.1	1	1.1
Virgin Blue	63	63	36	57.1	39	61.9	0	0.0
All Airlines	156	155	88	56.8	98	63.2	1	0.6
Sydney-Melbourne								
Qantas	1 022	982	652	66.4	627	63.8	40	3.9
Virgin Blue	888	852	595	69.8	566	66.4	36	4.1
All Airlines	1 910	1 834	1 247	68.0	1 193	65.0	76	4.0
Sydney-Perth								
Qantas	187	187	110	58.8	114	61.0	0	0.0
Virgin Blue	155	155	113	72.9	76	49.0	0	0.0
All Airlines	342	342	223	65.2	190	55.6	0	0.0
Sydney-Port Macquarie								
QantasLink	116	116	90	77.6	76	65.5	0	0.0
Virgin Blue	62	62	48	77.4	45	72.6	0	0.0
All Airlines	178	178	138	77.5	121	68.0	0	0.0
Sydney-Townsville								
Jetstar	21	21	18	85.7	19	90.5	0	0.0
Virgin Blue	31	31	28	90.3	29	93.5	0	0.0
All Airlines	52	52	46	88.5	48	92.3	0	0.0
Sydney-Wagga Wagga								
QantasLink	116	116	84	72.4	67	57.8	0	0.0
Regional Express	133	132	92	69.7	77	58.3	1	0.8
All Airlines	249	248	176	71.0	144	58.1	1	0.4
Townsville-Brisbane								
Jetstar	62	62	52	83.9	53	85.5	0	0.0
Qantas	166	166	150	90.4	142	85.5	0	0.0
Virgin Blue	151	151	134	88.7	136	90.1	0	0.0
All Airlines	379	379	336	88.7	331	87.3	0	0.0
Townsville-Sydney								
Jetstar	22	22	19	86.4	20	90.9	0	0.0
Virgin Blue	31	31	28	90.3	26	83.9	0	0.0
All Airlines	53	53	47	88.7	46	86.8	0	0.0
Wagga Wagga-Sydney								
QantasLink	116	116	82	70.7	76	65.5	0	0.0
Regional Express	134	133	87	65.4	83	62.4	1	0.7
All Airlines	250	249	169	67.9	159	63.9	1	0.4

Airports

On time performance is reported for all routes where the passenger load averages over 8 000 passengers per month, and where two or more airlines operate in competition. The following data reports by airport against flights operated on those routes only.

<i>Airport</i>	<i>Departures</i>			<i>Arrivals</i>		
	<i>Sectors Flown</i>	<i>No.</i>	<i>On Time %</i>	<i>Sectors Flown</i>	<i>No.</i>	<i>On Time %</i>
Adelaide						
Jetstar	87	58	66.7	88	66	75.0
Qantas	990	846	85.5	990	823	83.1
Tiger Airways	73	61	83.6	73	63	86.3
Virgin Blue	707	544	76.9	706	490	69.4
All Airlines	1 857	1 509	81.3	1 857	1 442	77.7
Relates to services to and from Brisbane, Canberra, Gold Coast, Melbourne, Perth and Sydney.						
Albury						
QantasLink	118	85	72.0	118	77	65.3
Regional Express	115	92	80.0	115	66	57.4
Virgin Blue	58	42	72.4	58	44	75.9
All Airlines	291	219	75.3	291	187	64.3
Relates to services to and from Sydney only.						
Alice Springs						
Qantas	31	17	54.8	31	28	90.3
Tiger Airways	13	12	92.3	13	13	100.0
All Airlines	44	29	65.9	44	41	93.2
Relates to services to and from Melbourne only.						
Ballina						
Jetstar	31	26	83.9	31	26	83.9
Regional Express	92	47	51.1	93	57	61.3
Virgin Blue	32	25	78.1	32	26	81.3
All Airlines	155	98	63.2	156	109	69.9
Relates to services to and from Sydney only.						
Brisbane						
Jetstar	531	427	80.4	533	427	80.1
Qantas	1 847	1 409	76.3	1 843	1 489	80.8
QantasLink	315	257	81.6	290	242	83.4
Virgin Blue	2 035	1 655	81.3	2 033	1 617	79.5
All Airlines	4 728	3 748	79.3	4 699	3 775	80.3
Relates to services to and from Adelaide, Cairns, Canberra, Darwin, Hamilton Island, Mackay, Melbourne, Newcastle, Perth, Proserpine, Rockhampton, Sydney and Townsville.						

<i>Airport</i>	<i>Departures</i>			<i>Arrivals</i>		
	<i>Sectors Flown</i>	<i>On Time</i>		<i>Sectors Flown</i>	<i>On Time</i>	
		<i>No.</i>	<i>%</i>		<i>No.</i>	<i>%</i>
Broome						
Qantas	29	20	69.0	29	23	79.3
QantasLink	50	41	82.0	50	40	80.0
Skywest	32	22	68.8	32	24	75.0
Virgin Blue	43	13	30.2	43	24	55.8
All Airlines	154	96	62.3	154	111	72.1
Relates to services to and from Perth only.						
Cairns						
Jetstar	210	173	82.4	210	185	88.1
Qantas	265	210	79.2	265	205	77.4
Virgin Blue	299	253	84.6	299	236	78.9
All Airlines	774	636	82.2	774	626	80.9
Relates to services to and from Brisbane, Melbourne and Sydney.						
Canberra						
Qantas	677	586	86.6	679	579	85.3
QantasLink	464	371	80.0	464	361	77.8
Tiger Airways	58	52	89.7	58	49	84.5
Virgin Blue	564	471	83.5	565	450	79.6
All Airlines	1 763	1 480	83.9	1 766	1 439	81.5
Relates to services to and from Adelaide, Brisbane, Melbourne and Sydney.						
Coffs Harbour						
QantasLink	121	76	62.8	121	79	65.3
Virgin Blue	61	50	82.0	62	53	85.5
All Airlines	182	126	69.2	183	132	72.1
Relates to services to and from Sydney only.						
Darwin						
Jetstar	89	67	75.3	89	63	70.8
Qantas	31	17	54.8	31	23	74.2
Tiger Airways	15	10	66.7	14	12	85.7
Virgin Blue	31	16	51.6	32	17	53.1
All Airlines	166	110	66.3	166	115	69.3
Relates to services to and from Brisbane and Melbourne.						
Dubbo						
QantasLink	89	76	85.4	89	71	79.8
Regional Express	159	106	66.7	164	96	58.5
All Airlines	248	182	73.4	253	167	66.0
Relates to services to and from Sydney only.						
Gold Coast						
Jetstar	489	316	64.6	489	390	79.8
Tiger Airways	88	79	89.8	88	78	88.6
Virgin Blue	518	411	79.3	519	418	80.5
All Airlines	1 095	806	73.6	1 096	886	80.8
Relates to services to and from Adelaide, Melbourne and Sydney.						

<i>Airport</i>	<i>Departures</i>			<i>Arrivals</i>		
	<i>Sectors</i>	<i>On Time</i>		<i>Sectors</i>	<i>On Time</i>	
	<i>Flown</i>	<i>No.</i>	<i>%</i>	<i>Flown</i>	<i>No.</i>	<i>%</i>
Hamilton Island						
Jetstar	31	27	87.1	31	29	93.5
Virgin Blue	31	31	100.0	31	31	100.0
All Airlines	62	58	93.5	62	60	96.8
Relates to services to and from Brisbane only.						
Hervey Bay						
Jetstar	18	17	94.4	18	17	94.4
Virgin Blue	31	27	87.1	31	28	90.3
All Airlines	49	44	89.8	49	45	91.8
Relates to services to and from Sydney only.						
Hobart						
Jetstar	202	174	86.1	202	175	86.6
Qantas	93	84	90.3	93	70	75.3
Tiger Airways	31	27	87.1	31	26	83.9
Virgin Blue	217	174	80.2	217	157	72.4
All Airlines	543	459	84.5	543	428	78.8
Relates to services to and from Melbourne and Sydney.						
Kalgoorlie						
Qantas	63	53	84.1	63	49	77.8
QantasLink	25	24	96.0	24	23	95.8
Skywest	36	20	55.6	38	26	68.4
All Airlines	124	97	78.2	125	98	78.4
Relates to services to and from Perth only.						
Karratha						
Qantas	124	92	74.2	124	95	76.6
QantasLink	37	32	86.5	37	33	89.2
Virgin Blue	18	11	61.1	18	14	77.8
All Airlines	179	135	75.4	179	142	79.3
Relates to services to and from Perth only.						
Launceston						
Jetstar	121	90	74.4	121	95	78.5
QantasLink	61	53	86.9	61	49	80.3
Tiger Airways	30	29	96.7	30	29	96.7
Virgin Blue	156	135	86.5	156	126	80.8
All Airlines	368	307	83.4	368	299	81.3
Relates to services to and from Melbourne and Sydney.						
Mackay						
Jetstar	93	78	83.9	93	81	87.1
QantasLink	58	49	84.5	58	45	77.6
Virgin Blue	151	118	78.1	151	106	70.2
All Airlines	302	245	81.1	302	232	76.8
Relates to services to and from Brisbane only.						

<i>Airport</i>	<i>Departures</i>			<i>Arrivals</i>		
	<i>Sectors</i>	<i>On Time</i>		<i>Sectors</i>	<i>On Time</i>	
	<i>Flown</i>	<i>No.</i>	<i>%</i>	<i>Flown</i>	<i>No.</i>	<i>%</i>
Maroochydore						
Jetstar	154	99	64.3	154	116	75.3
Tiger Airways	15	11	73.3	15	13	86.7
Virgin Blue	94	60	63.8	95	67	70.5
All Airlines	263	170	64.6	264	196	74.2
Relates to services to and from Melbourne and Sydney.						
Melbourne						
Jetstar	694	538	77.5	694	537	77.4
Qantas	2 432	1 895	77.9	2 442	1 805	73.9
QantasLink	214	181	84.6	214	178	83.2
Regional Express	109	104	95.4	110	100	90.9
Tiger Airways	366	323	88.3	368	312	84.8
Virgin Blue	2 423	1 854	76.5	2 420	1 815	75.0
All Airlines	6 238	4 895	78.5	6 248	4 747	76.0
Relates to services to and from Adelaide, Alice Springs, Brisbane, Cairns, Canberra, Darwin, Gold Coast, Hobart, Launceston, Maroochydore, Mildura, Newcastle, Perth and Sydney.						
Mildura						
QantasLink	116	99	85.3	116	88	75.9
Regional Express	110	103	93.6	109	100	91.7
All Airlines	245	214	87.3	244	204	83.6
Relates to services to and from Melbourne only.						
Newcastle						
Jetstar	216	149	69.0	216	154	71.3
QantasLink	70	53	75.7	70	45	64.3
Virgin Blue	80	70	87.5	80	70	87.5
All Airlines	366	272	74.3	366	269	73.5
Relates to services to and from Brisbane and Melbourne.						
Perth						
Qantas	885	607	68.6	886	619	69.9
QantasLink	111	98	88.3	112	99	88.4
Skywest	70	57	81.4	68	37	54.4
Tiger Airways	45	27	60.0	44	42	95.5
Virgin Blue	472	354	75.0	475	302	63.6
All Airlines	1 583	1 143	72.2	1 585	1 099	69.3
Relates to services to and from Adelaide, Brisbane, Broome, Kalgoorlie, Melbourne, and Sydney.						
Port Macquarie						
QantasLink	117	82	70.1	116	76	65.5
Virgin Blue	61	38	62.3	62	45	72.6
All Airlines	178	120	67.4	178	121	68.0
Relates to services to and from Sydney only.						
Proserpine						
Jetstar	31	24	77.4	31	27	87.1
Virgin Blue	31	23	74.2	31	26	83.9
All Airlines	62	47	75.8	62	53	85.5
Relates to services to and from Brisbane only.						

<i>Airport</i>	<i>Departures</i>			<i>Arrivals</i>		
	<i>Sectors</i>	<i>On Time</i>		<i>Sectors</i>	<i>On Time</i>	
	<i>Flown</i>	<i>No.</i>	<i>%</i>	<i>Flown</i>	<i>No.</i>	<i>%</i>
Rockhampton						
Jetstar	31	30	96.8	31	30	96.8
QantasLink	154	133	86.4	179	146	81.6
Virgin Blue	152	119	78.3	152	121	79.6
All Airlines	337	282	83.7	362	297	82.0
Relates to services to and from Brisbane only.						
Sydney						
Jetstar	600	442	73.7	599	380	63.4
Qantas	2 540	1 766	69.5	2 531	1 751	69.2
QantasLink	979	755	77.1	980	672	68.6
Regional Express	504	332	65.9	499	305	61.1
Virgin Blue	2 831	2 018	71.3	2 828	2 005	70.9
All Airlines	7 454	5 313	71.3	7 437	5 113	68.8
Relates to services to and from Adelaide, Albury, Ballina, Brisbane, Cairns, Canberra, Coffs Harbour, Dubbo, Gold Coast, Hervey Bay, Hobart, Launceston, Maroochydore, Melbourne, Perth, Port Macquarie, Townsville and Wagga Wagga.						
Townsville						
Jetstar	84	71	84.5	82	72	87.8
Qantas	166	150	90.4	166	146	88.0
Virgin Blue	182	162	89.0	182	161	88.5
All Airlines	432	383	88.7	430	379	88.1
Relates to services to and from Brisbane and Sydney.						
Wagga Wagga						
QantasLink	116	82	70.7	116	67	57.8
Regional Express	133	87	65.4	132	77	58.3
All Airlines	249	169	67.9	248	144	58.1
Relates to services to and from Sydney only.						

Definitions

On time departure A flight departure is counted as "on time" if it departs the gate within 15 minutes of the scheduled departure time shown in the carriers' schedule.

On time arrival A flight arrival is counted as "on time" if it arrived at the gate within 15 minutes of the scheduled arrival time shown in the carriers' schedule.
Neither diverted nor cancelled flights count as on time.

Cancellation A flight is regarded as a cancellation if it is cancelled or rescheduled less than 7 days prior to its scheduled departure time.

On time departure percentage The percentage of on time departures is measured against the number of departures *operated* on any particular sector.

On time arrival percentage The percentage of on time arrivals is measured against the number of arrivals *operated* on any particular sector.

Cancellation percentage The percentage of cancellations is measured against the number of services *scheduled* on any particular sector.
