



**Australian Government**

**Department of Infrastructure and Regional Development**

Bureau of Infrastructure, Transport and Regional Economics

STATISTICAL REPORT



## Aviation

Domestic airline on time performance  
November 2014

© Commonwealth of Australia 2014

ISSN: 1832-0759

### **Ownership of intellectual property rights in this publication**

Unless otherwise noted, copyright (and any other intellectual property rights, if any) in this publication is owned by the Commonwealth of Australia (referred to below as the Commonwealth).

### **Disclaimer**

The material contained in this publication is made available on the understanding that the Commonwealth is not providing professional advice, and that users exercise their own skill and care with respect to its use, and seek independent advice if necessary.

The Commonwealth makes no representations or warranties as to the contents or accuracy of the information contained in this publication. To the extent permitted by law, the Commonwealth disclaims liability to any person or organisation in respect of anything done, or omitted to be done, in reliance upon information contained in this publication.

### **Creative Commons licence**

With the exception of (a) the Coat of Arms; and (b) the Department of Infrastructure and Regional Development's photos and graphics, copyright in this publication is licensed under a Creative Commons Attribution 3.0 Australia Licence.

Creative Commons Attribution 3.0 Australia Licence is a standard form licence agreement that allows you to copy, communicate and adapt this publication provided that you attribute the work to the Commonwealth and abide by the other licence terms. A summary of the licence terms is available from <http://creativecommons.org/licenses/by/3.0/au/deed.en>. The full licence terms are available from <http://creativecommons.org/licenses/by/3.0/au/legalcode>.

### **Use of the Coat of Arms**

The Department of the Prime Minister and Cabinet sets the terms under which the Coat of Arms is used. Please refer to the Department's Commonwealth Coat of Arms and Government branding web page <http://www.dpmmc.gov.au/guidelines/index.cfm#brand> and, in particular, the Guidelines on the use of the Commonwealth Coat of Arms publication.

An appropriate citation for this report is:

Bureau of Infrastructure, Transport and Regional Economics (BITRE), 2014, Domestic airline on time performance, Statistical Report, BITRE, Canberra ACT.

### **Contact us**

This publication is available in PDF format. All other rights are reserved, including in relation to any Departmental logos or trade marks which may exist. For enquiries regarding the licence and any use of this publication, please contact:

Bureau of Infrastructure, Transport and Regional Economics (BITRE)  
Department of Infrastructure and Regional Development  
GPO Box 501, Canberra ACT 2601, Australia  
Telephone: (international) +61 2 6274 7210  
Fax: (international) +61 2 6274 6855  
Email: [bitre@infrastructure.gov.au](mailto:bitre@infrastructure.gov.au)  
Website: [www.bitre.gov.au](http://www.bitre.gov.au)

### **Inquiries**

Should you require additional information about the statistics contained in this publication:

Telephone (02) 6274 7790 or Facsimile (02) 6274 7727

Electronic mail: [AVSTATS@infrastructure.gov.au](mailto:AVSTATS@infrastructure.gov.au)

Web site: <http://www.bitre.gov.au/statistics/aviation/otphome.aspx>

# Foreword

The Bureau of Infrastructure, Transport and Regional Economics (BITRE) monitors the punctuality and reliability of major domestic airlines operating between Australian airports. The purpose of this is to allow for evaluation of overall industry and individual airline performance, so that consumers of air travel can make informed decisions.

The following domestic airlines currently report this information monthly to the BITRE: Jetstar, Qantas, QantasLink, Regional Express, Tigerair, Virgin Australia and Virgin Australia Regional Airlines. Data has been gathered since November 2003, although some airlines commenced reporting at a later date, including Jetstar which first reported in May 2004, MacAir in July 2005 and Tigerair in April 2008. MacAir ceased operations in February 2009 and data was not received for December 2008 onwards. Virgin Blue was rebranded as Virgin Australia in May 2011 and Tiger Airways was rebranded as Tigerair in July 2013 and time series data in Microsoft Excel spreadsheet format on the BITRE website have been revised to reflect these changes. Virgin Australia Regional Airlines commenced operations in May 2013. It was formed after the acquisition of Skywest by Virgin Australia and represents a combination of operations previously reported under Skywest and Virgin Australia – ATR/F100 Operations. Services operated by Skywest on behalf of Virgin Australia using ATR/F100 aircraft commenced in November 2011 and were shown separately as Virgin Australia – ATR/F100 Operations until April 2013.

Information presented in this report is for Australian domestic routes for which the passenger load averaged 8 000 or more passengers per month over the previous six months and where two or more airlines operated in competition on those routes. There were 62 routes that met this definition in November 2014. Over time, routes which meet these criteria change as airline networks and traffic levels vary.

Participating airlines report their overall monthly network performance where this is possible.

Total industry figures encompass all services operated by reporting airlines only. These airlines collectively carried over 95 per cent of total domestic passengers (regular public transport only) in 2013.

The method of capturing on time performance varies between airlines utilising different recording systems. Jetstar and Qantas jet aircraft use Aircraft Communication Addressing and Reporting System (ACARS) to electronically measure on time performance. Regional Express, Tigerair, Virgin Australia, Virgin Australia Regional Airlines and the Qantas non-jet fleet record on time performance manually using records from pilots, gate agents and/or ground crews.

After initial data is collected, aggregate reports are audited internally by participating airlines prior to publication.

Reports and detailed time series data in Microsoft Excel spreadsheet format are available from the BITRE website at: <http://www.bitre.gov.au/statistics/aviation/otphome.aspx>.



# Contents

	Page
Industry performance .....	1
Individual routes .....	9
Airports .....	21
Definitions .....	27



# Industry performance

For November 2014, on time performance over all routes operated by participating airlines (Jetstar, Qantas, QantasLink, Regional Express, Tigerair, Virgin Australia and Virgin Australia Regional Airlines) averaged 87.3 per cent for on time departures and 85.2 per cent for on time arrivals. Cancellations represented 1.2 per cent of all scheduled flights. The equivalent figures for November 2013 were 81.1 per cent for departures, 78.2 per cent for arrivals and 1.6 per cent for cancellations.

This month's figures were better than the long term average performance for all routes (83.8 per cent for departures and 82.3 per cent for arrivals). The rate of cancellations was below the long term average of 1.3 per cent.

Of the major domestic airlines, Virgin Australia achieved the highest level of on time departures for November 2014 at 89.0 per cent, followed by Qantas at 86.7 per cent, Jetstar at 83.3 per cent and Tigerair at 82.9 per cent. The regional airlines were led by Regional Express at 90.4 per cent, followed by Virgin Australia Regional Airlines at 89.6 per cent and QantasLink at 87.1 per cent.

Virgin Australia also achieved the highest on time arrivals among the major domestic airlines at 86.1 per cent, followed by Qantas at 85.3 per cent, Jetstar at 83.1 per cent and Tigerair at 79.5 per cent. Regional Express was the best performing regional airline for on time arrivals at 87.2 per cent, followed by Virgin Australia Regional Airlines at 87.0 per cent and QantasLink at 85.0 per cent.

QantasLink had the highest percentage of cancellations (2.5 per cent) during the month, followed by Virgin Australia (1.2 per cent), Qantas (0.9 per cent), Tigerair (0.8 per cent), Jetstar (0.7 per cent), Virgin Australia Regional Airlines (also 0.7 per cent) and Regional Express (0.3 per cent).

Of the 62 routes which met the criteria for on time performance reporting in November 2014, the Adelaide-Gold Coast route had the highest percentage of on time departures (100.0 per cent) and the highest percentage of on time arrivals (98.3 per cent). The Hobart-Brisbane route had the lowest percentage of on time departures (63.3 per cent) and the lowest percentage of on time arrivals (65.0 per cent).

Cancellations were highest on the Moranbah-Brisbane route at 4.8 per cent, followed by the Brisbane-Moranbah route at 4.2 per cent, the Perth-Port Hedland and Port Hedland-Perth routes at 4.1 per cent and the Karratha-Perth and Perth-Karratha routes at 3.9 per cent.

Mount Isa airport recorded the highest percentage of on time departures (95.9 per cent) and the highest percentage of on time arrivals (97.3 per cent). Port Macquarie Airport recorded the lowest percentage of on time departures (74.7 per cent) and the lowest percentage of on time arrivals (75.9 per cent). These figures only refer to reported routes and do not cover all flights at these airports.

Table 1 On time performance for November 2014 — Total Industry

	<i>Sectors</i>		<i>Departures On Time</i>		<i>Arrivals On Time</i>		<i>Cancellations</i>	
	<i>Scheduled</i>	<i>Flown</i>	<i>No.</i>	<i>%</i>	<i>No.</i>	<i>%</i>	<i>No.</i>	<i>%</i>
Jetstar	6 710	6 662	5 550	83.3	5 539	83.1	48	0.7
Qantas	9 211	9 132	7 919	86.7	7 787	85.3	79	0.9
QantasLink	10 161	9 909	8 628	87.1	8 420	85.0	252	2.5
Regional Express	5 426	5 412	4 894	90.4	4 717	87.2	14	0.3
Tigerair	1 901	1 886	1 564	82.9	1 500	79.5	15	0.8
Virgin Australia	10 441	10 318	9 183	89.0	8 888	86.1	123	1.2
Virgin Australia Regional Airlines	2 509	2 492	2 234	89.6	2 169	87.0	17	0.7
All Airlines	46 359	45 811	39 972	87.3	39 020	85.2	548	1.2

Total airline network data (including routes not shown in this report).

Table 2 Top ten routes for on time performance for November 2014 (participating airlines only)

<i>Departures</i>		<i>Arrivals</i>	
<i>Route</i>	<i>On Time (%)</i>	<i>Route</i>	<i>On Time (%)</i>
Adelaide-Gold Coast	100.0	Adelaide-Gold Coast	98.3
Brisbane-Mount Isa	97.3	Brisbane-Mount Isa	97.3
Mount Isa-Brisbane	95.9	Brisbane-Hamilton Island	97.0
Perth-Darwin	95.2	Perth-Darwin	96.8
Gold Coast-Adelaide	94.9	Sydney-Ayers Rock	95.0
Melbourne-Hamilton Island	94.9	Melbourne-Hamilton Island	94.9
Sydney-Hamilton Island	94.5	Mount Isa-Brisbane	94.6
Mildura-Melbourne	93.9	Sydney-Hamilton Island	94.5
Hamilton Island-Brisbane	93.8	Newman-Perth	93.4
Sydney-Ayers Rock	93.3	Melbourne-Sunshine Coast	93.3

Table 3 Top ten airports for on time performance for November 2014 (participating airlines and reported routes only)

<i>Departures</i>		<i>Arrivals</i>	
<i>Airport</i>	<i>On Time (%)</i>	<i>Airport</i>	<i>On Time (%)</i>
Mount Isa	95.9	Mount Isa	97.3
Mildura	93.9	Hamilton Island	95.2
Newman	92.8	Ayers Rock	95.0
Port Lincoln	92.7	Proserpine	92.5
Karratha	92.6	Karratha	91.9
Geraldton	92.5	Moranbah	91.8
Ayers Rock	91.7	Port Lincoln	91.7
Canberra	90.4	Newman	91.7
Townsville	90.2	Port Hedland	90.8
Dubbo	90.1	Bundaberg	90.7



## Total industry on time performance

Figure 1 On time performance (by month from November 2011)—Total Industry

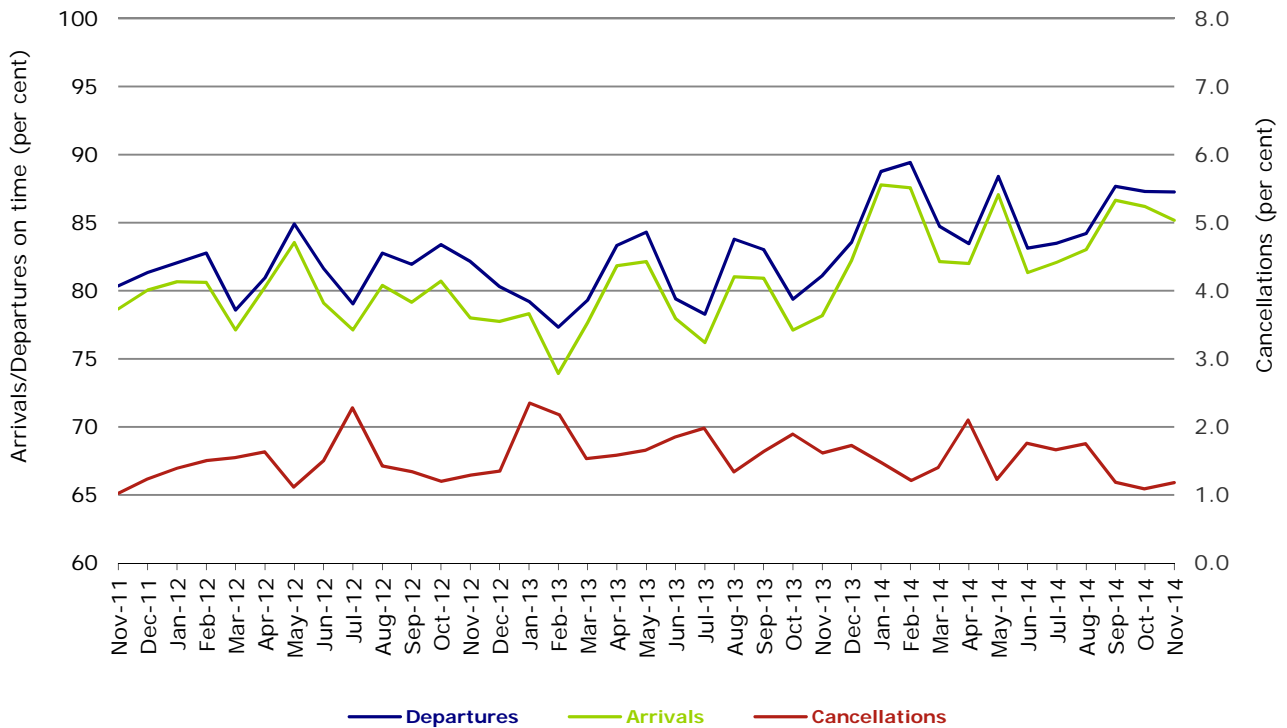


Figure 2 Departures on time (by month from November 2013)

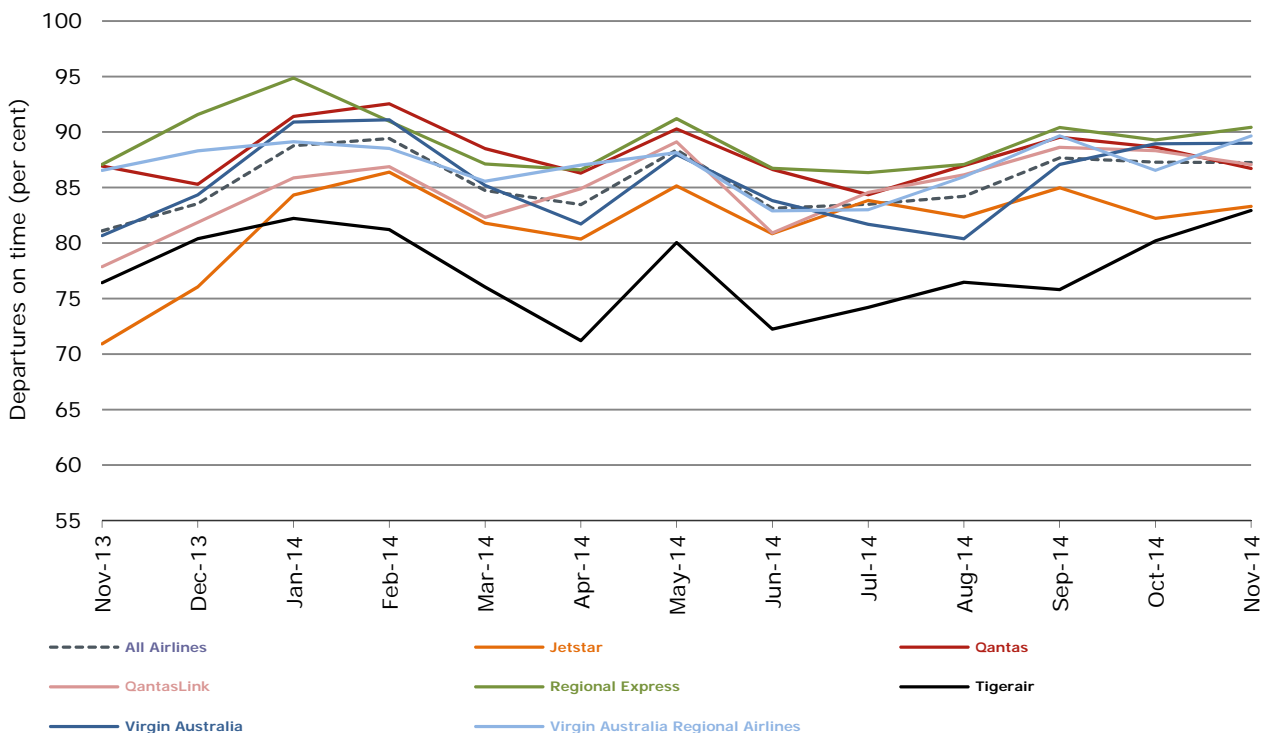


Figure 3 Arrivals on time (by month from November 2013)

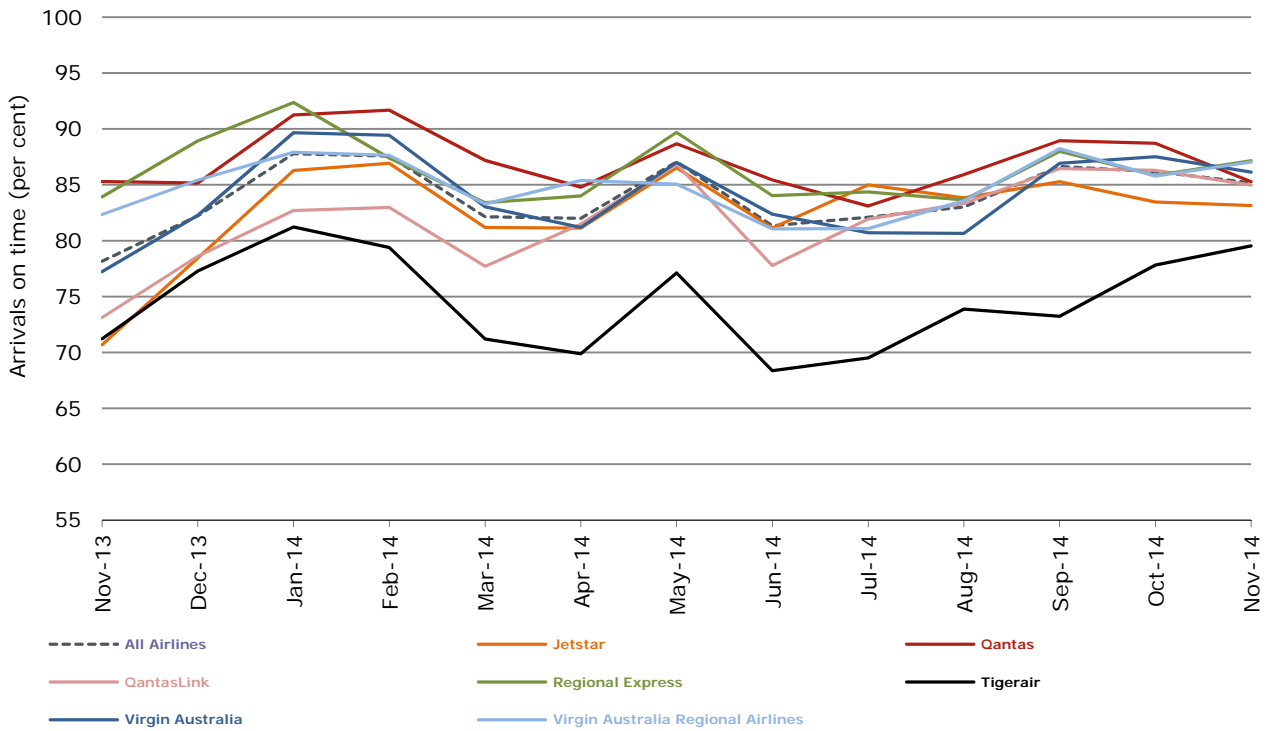
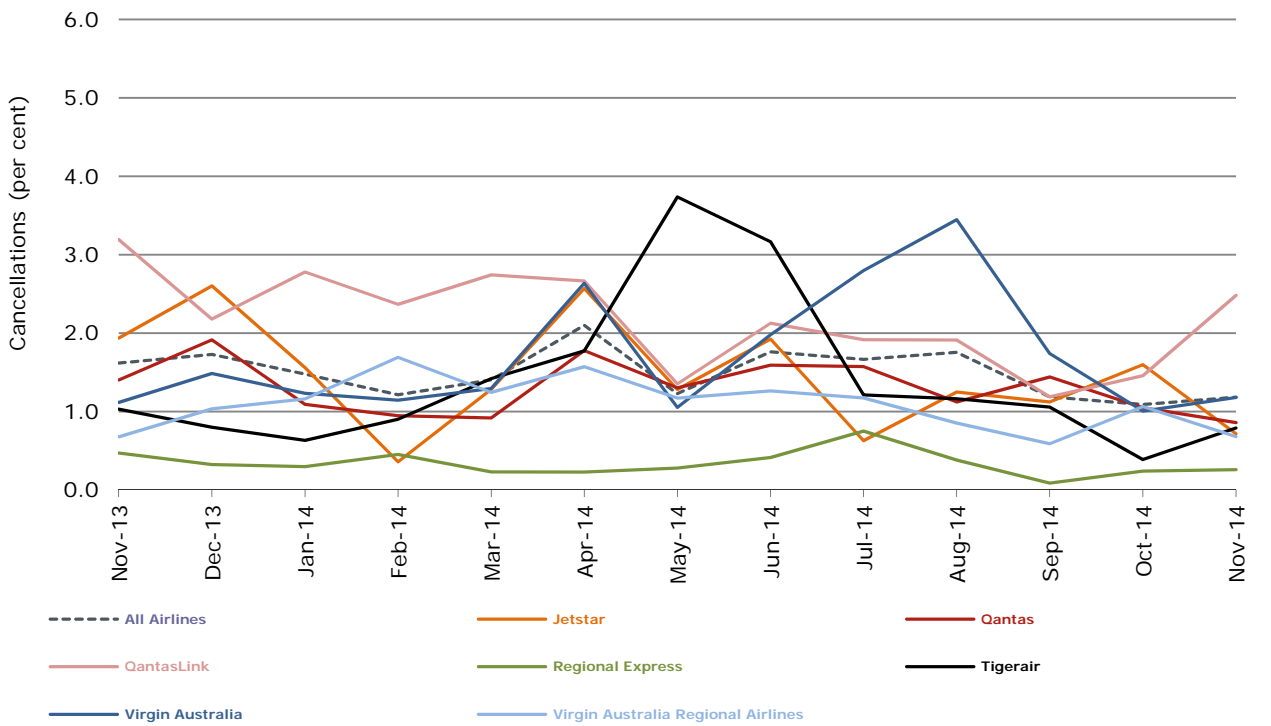


Figure 4 Cancellations (by month from November 2013)



## Major domestic airlines on time performance

Figure 5 On time performance (by month from November 2011)—Jetstar

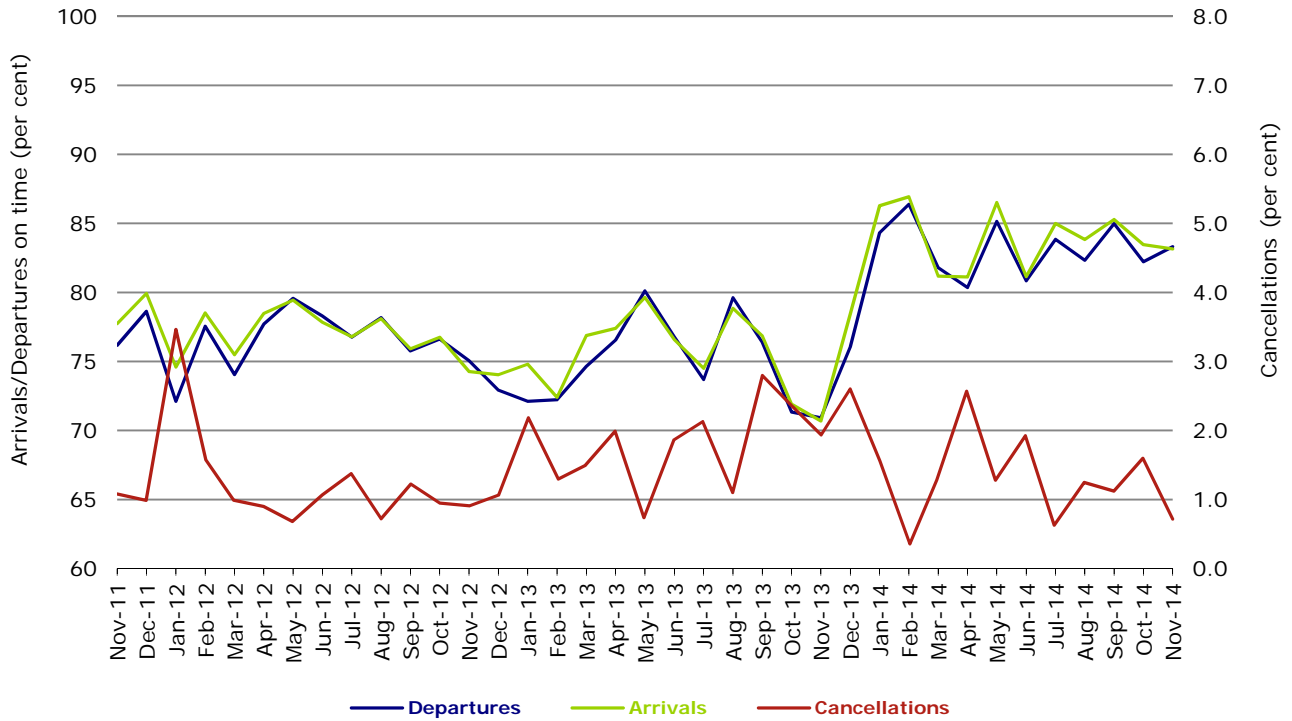


Figure 6 On time performance (by month from November 2011)—Qantas

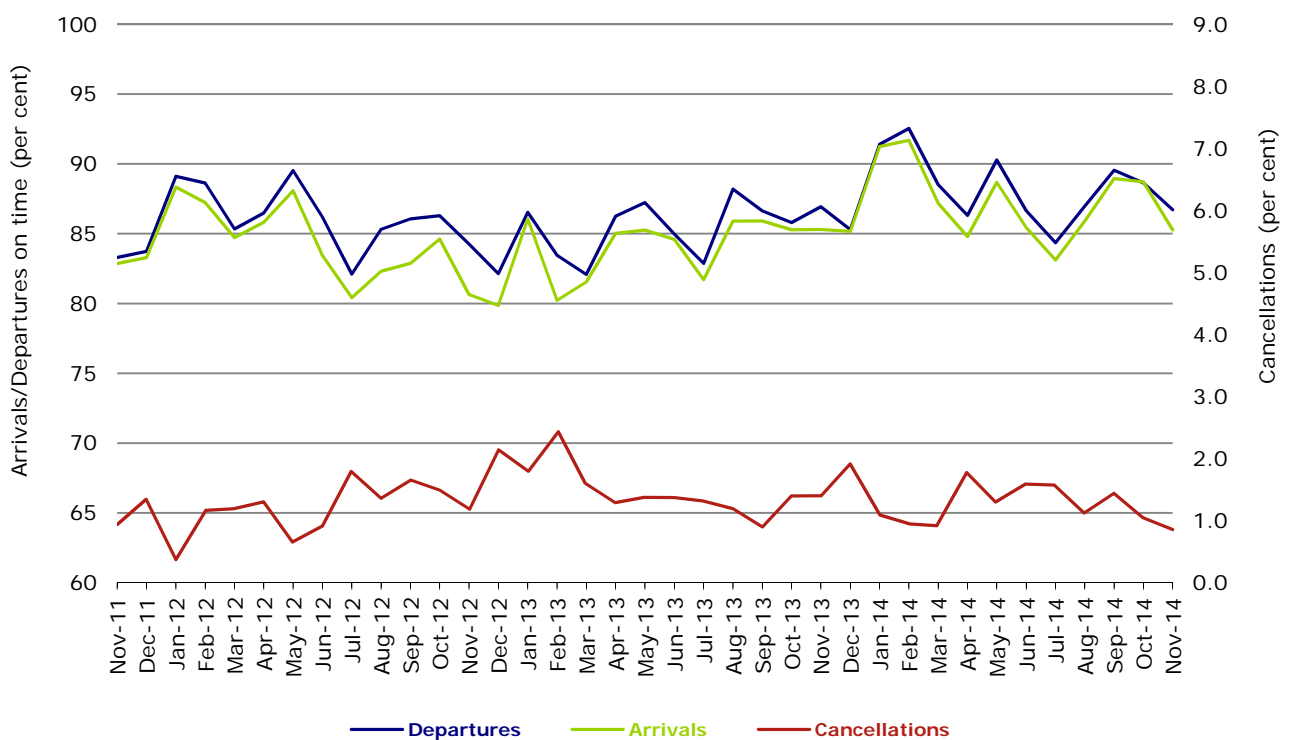


Figure 7 On time performance (by month from November 2011)—Tigerair

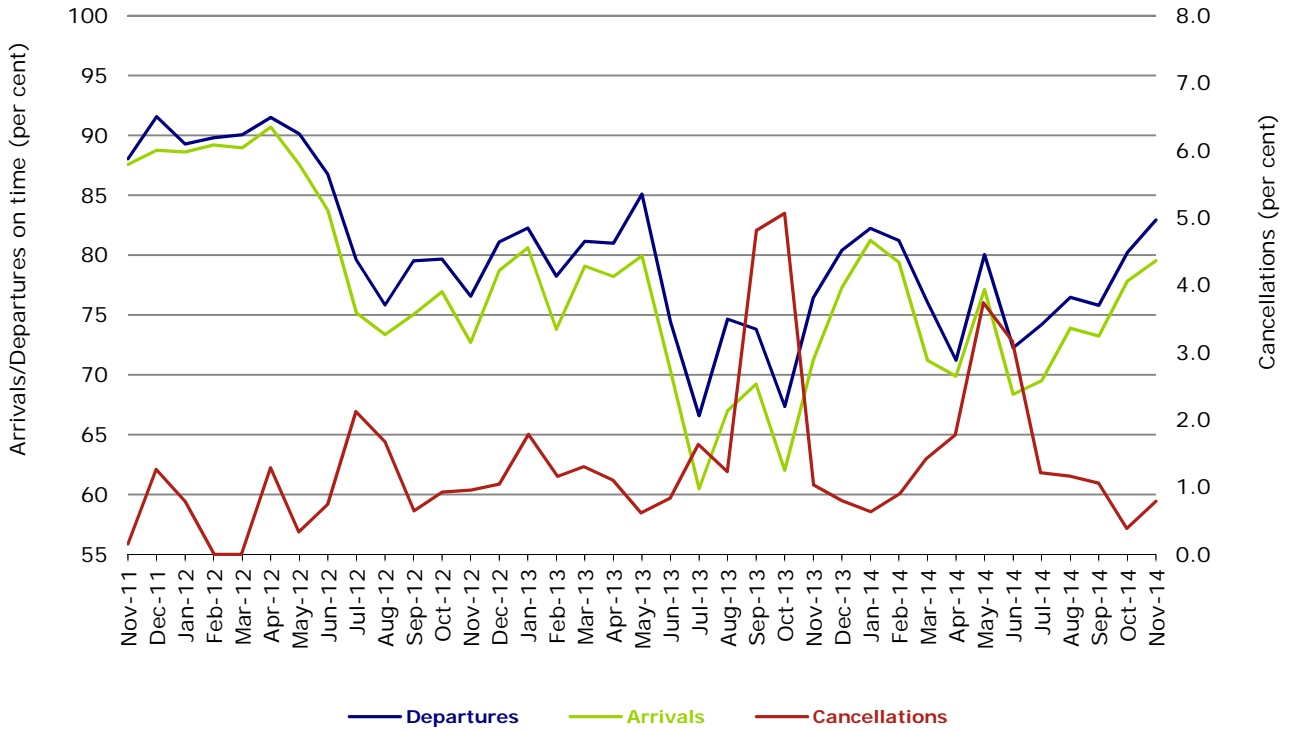
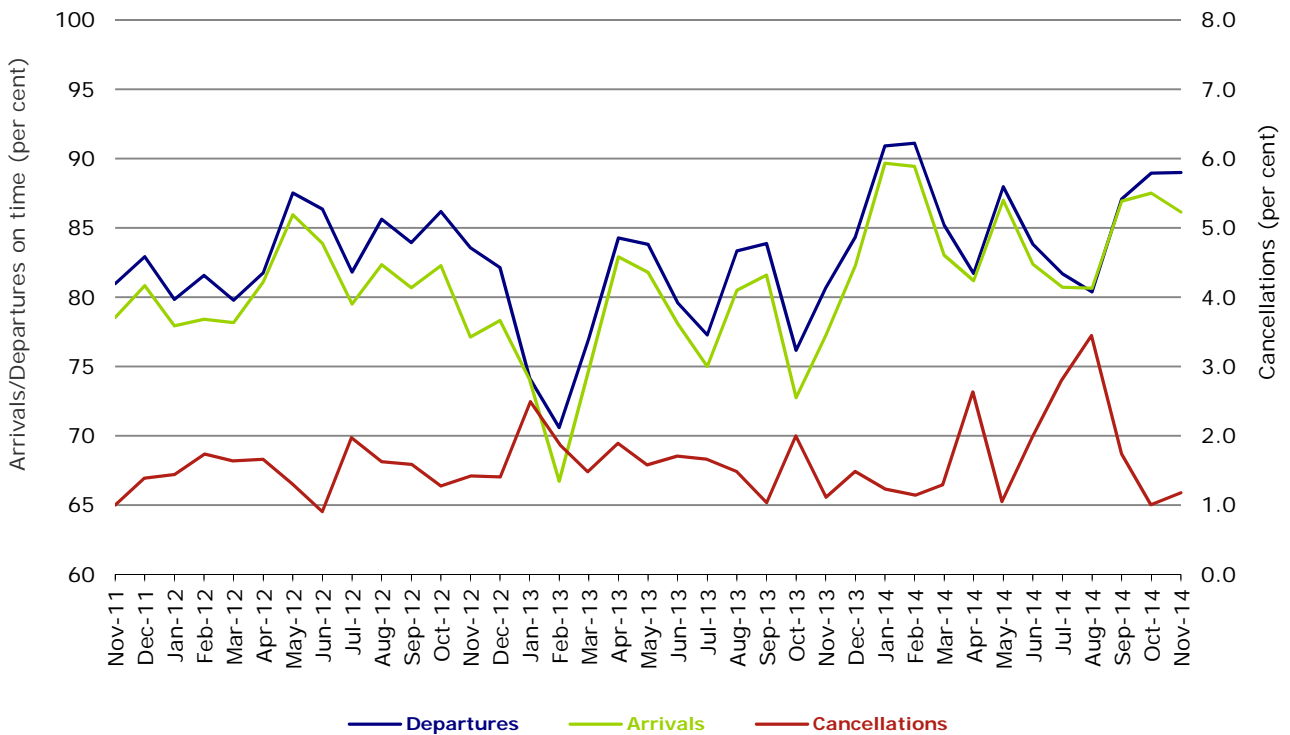


Figure 8 On time performance (by month from November 2011)—Virgin Australia



## Major regional airlines on time performance

Figure 9 On time performance (by month from November 2011)—QantasLink

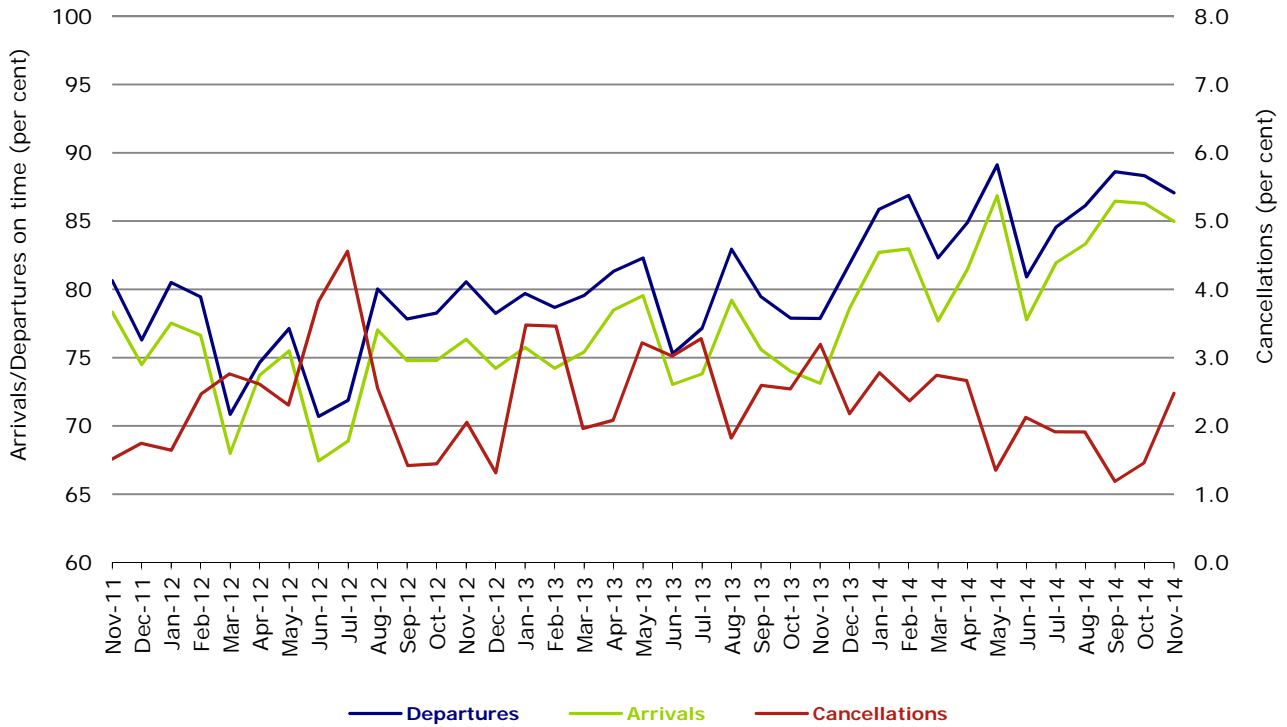


Figure 10 On time performance (by month from November 2011)—Regional Express

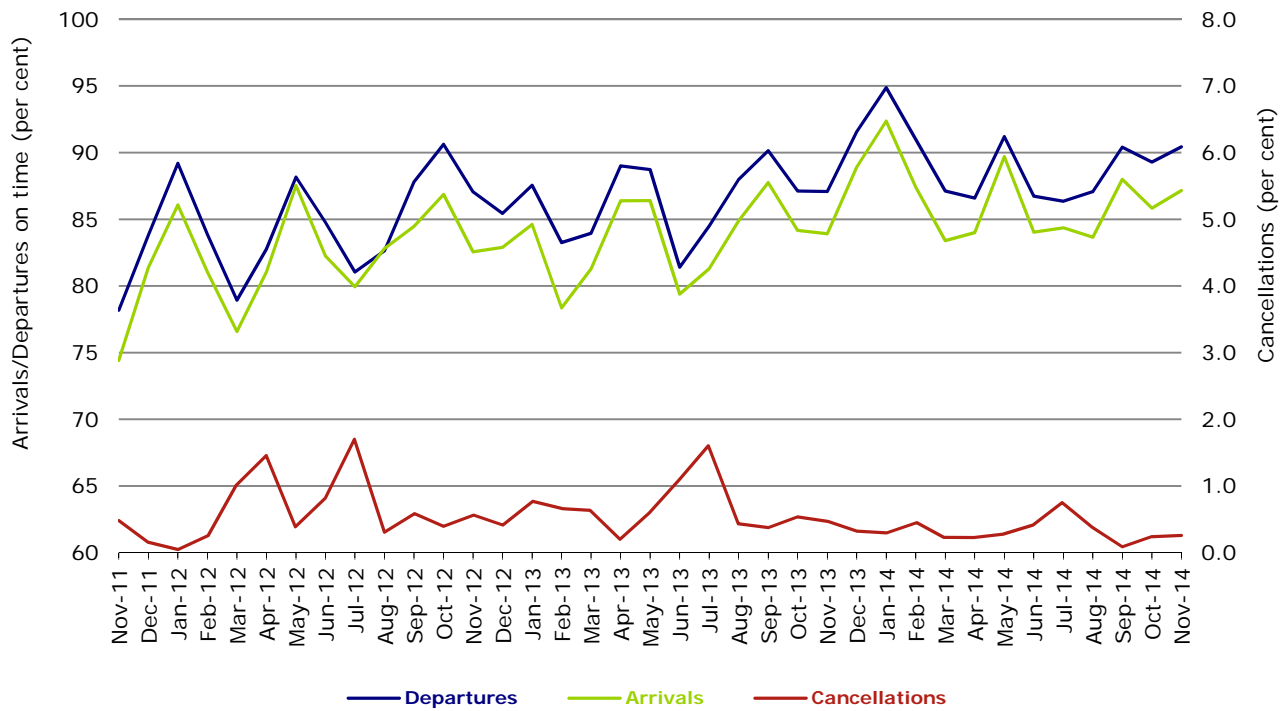
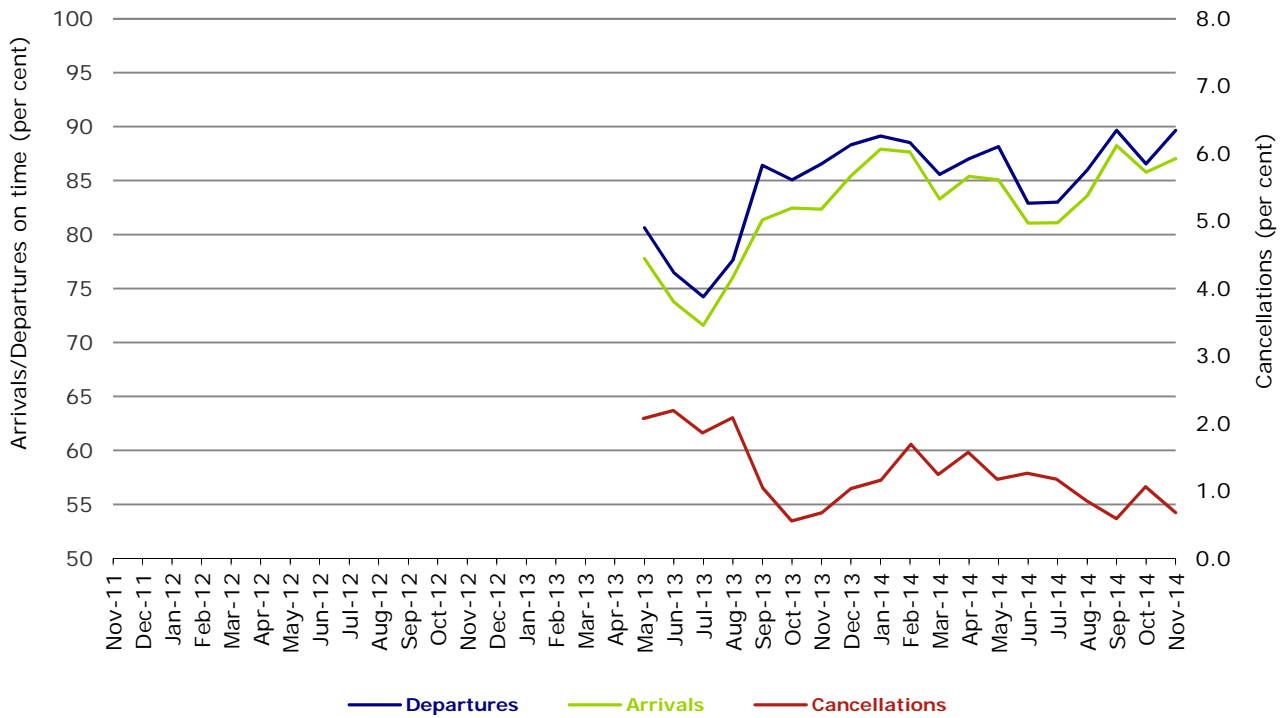


Figure 11 On time performance (by month from November 2011)  
Virgin Australia Regional Airlines



Virgin Australia Regional Airlines commenced operations in May 2013. It was formed after the acquisition of Skywest by Virgin Australia and represents a combination of operations previously reported under Skywest and Virgin Australia – ATR/F100 Operations.

## Individual routes

On time performance is reported for all routes where the passenger load averages over 8000 passengers per month over the previous six months, and where two or more airlines operate in competition on those routes. There are now 62 routes which meet this definition. Over time, however, routes which meet this definition may change as airline networks and traffic levels vary.

	<i>Sectors</i>		<i>Departures On Time</i>		<i>Arrivals On Time</i>		<i>Cancellations</i>	
	<i>Sched.</i>	<i>Flown</i>	<i>No.</i>	<i>%</i>	<i>No.</i>	<i>%</i>	<i>No.</i>	<i>%</i>
<b>Adelaide-Brisbane</b>								
Jetstar	30	30	26	86.7	28	93.3	0	0.0
Qantas	105	105	94	89.5	98	93.3	0	0.0
Tigerair	21	21	18	85.7	18	85.7	0	0.0
Virgin Australia	107	107	100	93.5	100	93.5	0	0.0
All Airlines	263	263	238	90.5	244	92.8	0	0.0
<b>Adelaide-Canberra</b>								
Qantas	45	45	41	91.1	40	88.9	0	0.0
QantasLink	18	18	16	88.9	16	88.9	0	0.0
Virgin Australia	24	24	22	91.7	22	91.7	0	0.0
All Airlines	87	87	79	90.8	78	89.7	0	0.0
<b>Adelaide-Gold Coast</b>								
Jetstar	29	29	29	100.0	28	96.6	0	0.0
Virgin Australia	30	30	30	100.0	30	100.0	0	0.0
All Airlines	59	59	59	100.0	58	98.3	0	0.0
<b>Adelaide-Melbourne</b>								
Jetstar	86	86	77	89.5	77	89.5	0	0.0
Qantas	284	284	239	84.2	250	88.0	0	0.0
Tigerair	71	70	57	81.4	60	85.7	1	1.4
Virgin Australia	264	263	236	89.7	232	88.2	1	0.4
All Airlines	705	703	609	86.6	619	88.1	2	0.3
<b>Adelaide-Perth</b>								
Jetstar	30	30	23	76.7	22	73.3	0	0.0
Qantas	110	110	94	85.5	93	84.5	0	0.0
Virgin Australia	64	63	57	90.5	55	87.3	1	1.6
All Airlines	204	203	174	85.7	170	83.7	1	0.5
<b>Adelaide-Port Lincoln</b>								
QantasLink	97	96	82	85.4	85	88.5	1	1.0
Regional Express	206	206	198	96.1	192	93.2	0	0.0
All Airlines	303	302	280	92.7	277	91.7	1	0.3
<b>Adelaide-Sydney</b>								
Jetstar	102	102	78	76.5	83	81.4	0	0.0
Qantas	239	239	194	81.2	202	84.5	0	0.0
QantasLink	20	16	14	87.5	11	68.8	4	20.0
Tigerair	26	26	18	69.2	21	80.8	0	0.0
Virgin Australia	164	164	155	94.5	156	95.1	0	0.0
All Airlines	551	547	459	83.9	473	86.5	4	0.7
<b>Albury-Sydney</b>								
QantasLink	90	90	80	88.9	77	85.6	0	0.0
Regional Express	104	104	92	88.5	90	86.5	0	0.0
Virgin Australia Regional Airlines	60	60	55	91.7	50	83.3	0	0.0
All Airlines	254	254	227	89.4	217	85.4	0	0.0
<b>Armidale-Sydney</b>								
QantasLink	128	122	95	77.9	100	82.0	6	4.7
Regional Express	73	72	62	86.1	53	73.6	1	1.4
All Airlines	201	194	157	80.9	153	78.9	7	3.5

	<i>Sectors</i>		<i>Departures On Time</i>		<i>Arrivals On Time</i>		<i>Cancellations</i>	
	<i>Sched.</i>	<i>Flown</i>	<i>No.</i>	<i>%</i>	<i>No.</i>	<i>%</i>	<i>No.</i>	<i>%</i>
<b>Ayers Rock-Sydney</b>								
Jetstar	30	30	28	93.3	26	86.7	0	0.0
Virgin Australia	30	30	27	90.0	28	93.3	0	0.0
All Airlines	60	60	55	91.7	54	90.0	0	0.0
<b>Ballina-Sydney</b>								
Jetstar	60	60	48	80.0	50	83.3	0	0.0
Regional Express	25	25	19	76.0	16	64.0	0	0.0
Virgin Australia	30	30	26	86.7	27	90.0	0	0.0
All Airlines	115	115	93	80.9	93	80.9	0	0.0
<b>Brisbane-Adelaide</b>								
Jetstar	30	30	28	93.3	30	100.0	0	0.0
Qantas	105	105	95	90.5	91	86.7	0	0.0
Tigerair	22	22	18	81.8	14	63.6	0	0.0
Virgin Australia	107	107	97	90.7	100	93.5	0	0.0
All Airlines	264	264	238	90.2	235	89.0	0	0.0
<b>Brisbane-Bundaberg</b>								
QantasLink	113	112	98	87.5	100	89.3	1	0.9
Virgin Australia Regional Airlines	39	39	38	97.4	37	94.9	0	0.0
All Airlines	152	151	136	90.1	137	90.7	1	0.7
<b>Brisbane-Cairns</b>								
Jetstar	90	90	73	81.1	77	85.6	0	0.0
Qantas	115	115	105	91.3	108	93.9	0	0.0
QantasLink	5	5	4	80.0	5	100.0	0	0.0
Tigerair	24	24	22	91.7	21	87.5	0	0.0
Virgin Australia	131	131	111	84.7	110	84.0	0	0.0
All Airlines	365	365	315	86.3	321	87.9	0	0.0
<b>Brisbane-Canberra</b>								
Qantas	22	22	22	100.0	21	95.5	0	0.0
QantasLink	135	134	123	91.8	125	93.3	1	0.7
Virgin Australia	88	88	75	85.2	72	81.8	0	0.0
All Airlines	245	244	220	90.2	218	89.3	1	0.4
<b>Brisbane-Darwin</b>								
Jetstar	18	18	15	83.3	16	88.9	0	0.0
Qantas	44	44	41	93.2	41	93.2	0	0.0
Tigerair	16	16	16	100.0	15	93.8	0	0.0
Virgin Australia	30	30	27	90.0	24	80.0	0	0.0
All Airlines	108	108	99	91.7	96	88.9	0	0.0
<b>Brisbane-Emerald</b>								
QantasLink	142	139	129	92.8	123	88.5	3	2.1
Virgin Australia Regional Airlines	80	80	74	92.5	72	90.0	0	0.0
All Airlines	222	219	203	92.7	195	89.0	3	1.4
<b>Brisbane-Gladstone</b>								
QantasLink	209	202	183	90.6	183	90.6	7	3.3
Virgin Australia	8	8	7	87.5	7	87.5	0	0.0
Virgin Australia Regional Airlines	137	136	122	89.7	121	89.0	1	0.7
All Airlines	354	346	312	90.2	311	89.9	8	2.3
<b>Brisbane-Hamilton Island</b>								
Jetstar	1	1	0	0.0	0	0.0	0	0.0
QantasLink	3	3	3	100.0	3	100.0	0	0.0
Virgin Australia	29	29	27	93.1	29	100.0	0	0.0
All Airlines	33	33	30	90.9	32	97.0	0	0.0



	<i>Sectors</i>		<i>Departures On Time</i>		<i>Arrivals On Time</i>		<i>Cancellations</i>	
	<i>Sched.</i>	<i>Flown</i>	<i>No.</i>	<i>%</i>	<i>No.</i>	<i>%</i>	<i>No.</i>	<i>%</i>
<b>Brisbane-Hobart</b>								
Jetstar	30	30	26	86.7	25	83.3	0	0.0
Virgin Australia	30	30	29	96.7	24	80.0	0	0.0
All Airlines	60	60	55	91.7	49	81.7	0	0.0
<b>Brisbane-Mackay</b>								
Jetstar	58	58	42	72.4	43	74.1	0	0.0
QantasLink	105	103	94	91.3	96	93.2	2	1.9
Virgin Australia	151	150	134	89.3	140	93.3	1	0.7
All Airlines	314	311	270	86.8	279	89.7	3	1.0
<b>Brisbane-Melbourne</b>								
Jetstar	129	127	102	80.3	103	81.1	2	1.6
Qantas	421	418	367	87.8	350	83.7	3	0.7
Tigerair	121	121	105	86.8	101	83.5	0	0.0
Virgin Australia	371	364	317	87.1	270	74.2	7	1.9
All Airlines	1 042	1 030	891	86.5	824	80.0	12	1.2
<b>Brisbane-Moranbah</b>								
QantasLink	120	112	99	88.4	101	90.2	8	6.7
Virgin Australia Regional Airlines	71	71	64	90.1	67	94.4	0	0.0
All Airlines	191	183	163	89.1	168	91.8	8	4.2
<b>Brisbane-Mount Isa</b>								
Qantas	55	55	54	98.2	54	98.2	0	0.0
Virgin Australia	20	20	19	95.0	19	95.0	0	0.0
All Airlines	75	75	73	97.3	73	97.3	0	0.0
<b>Brisbane-Newcastle</b>								
Jetstar	88	88	74	84.1	78	88.6	0	0.0
QantasLink	65	64	56	87.5	51	79.7	1	1.5
Virgin Australia	80	80	71	88.8	67	83.8	0	0.0
All Airlines	233	232	201	86.6	196	84.5	1	0.4
<b>Brisbane-Perth</b>								
Qantas	120	120	92	76.7	92	76.7	0	0.0
Virgin Australia	93	93	70	75.3	62	66.7	0	0.0
All Airlines	213	213	162	76.1	154	72.3	0	0.0
<b>Brisbane-Proserpine</b>								
Jetstar	30	30	24	80.0	25	83.3	0	0.0
Virgin Australia	50	50	48	96.0	49	98.0	0	0.0
All Airlines	80	80	72	90.0	74	92.5	0	0.0
<b>Brisbane-Rockhampton</b>								
QantasLink	216	212	189	89.2	190	89.6	4	1.9
Virgin Australia	102	99	87	87.9	89	89.9	3	2.9
Virgin Australia Regional Airlines	97	95	85	89.5	87	91.6	2	2.1
All Airlines	415	406	361	88.9	366	90.1	9	2.2
<b>Brisbane-Sydney</b>								
Jetstar	157	149	102	68.5	104	69.8	8	5.1
Qantas	575	565	485	85.8	475	84.1	10	1.7
Tigerair	79	77	63	81.8	66	85.7	2	2.5
Virgin Australia	500	495	450	90.9	418	84.4	5	1.0
All Airlines	1 311	1 286	1 100	85.5	1 063	82.7	25	1.9
<b>Brisbane-Townsville</b>								
Jetstar	43	43	39	90.7	39	90.7	0	0.0
Qantas	144	144	122	84.7	125	86.8	0	0.0
Virgin Australia	145	142	129	90.8	123	86.6	3	2.1
All Airlines	332	329	290	88.1	287	87.2	3	0.9

	<i>Sectors</i>		<i>Departures On Time</i>		<i>Arrivals On Time</i>		<i>Cancellations</i>	
	<i>Sched.</i>	<i>Flown</i>	<i>No.</i>	<i>%</i>	<i>No.</i>	<i>%</i>	<i>No.</i>	<i>%</i>
<b>Broome-Perth</b>								
Qantas	34	34	32	94.1	31	91.2	0	0.0
QantasLink	46	45	43	95.6	41	91.1	1	2.2
Virgin Australia	25	24	22	91.7	22	91.7	1	4.0
Virgin Australia Regional Airlines	21	21	14	66.7	14	66.7	0	0.0
All Airlines	126	124	111	89.5	108	87.1	2	1.6
<b>Bundaberg-Brisbane</b>								
QantasLink	113	113	97	85.8	89	78.8	0	0.0
Virgin Australia Regional Airlines	38	38	35	92.1	34	89.5	0	0.0
All Airlines	151	151	132	87.4	123	81.5	0	0.0
<b>Cairns-Brisbane</b>								
Jetstar	90	90	85	94.4	78	86.7	0	0.0
Qantas	115	115	102	88.7	98	85.2	0	0.0
QantasLink	5	5	5	100.0	4	80.0	0	0.0
Tigerair	24	24	19	79.2	14	58.3	0	0.0
Virgin Australia	131	131	113	86.3	116	88.5	0	0.0
All Airlines	365	365	324	88.8	310	84.9	0	0.0
<b>Cairns-Melbourne</b>								
Jetstar	73	73	60	82.2	60	82.2	0	0.0
Qantas	30	30	23	76.7	25	83.3	0	0.0
Tigerair	30	30	21	70.0	18	60.0	0	0.0
Virgin Australia	30	30	23	76.7	24	80.0	0	0.0
All Airlines	163	163	127	77.9	127	77.9	0	0.0
<b>Cairns-Sydney</b>								
Jetstar	60	59	55	93.2	51	86.4	1	1.7
Qantas	73	73	51	69.9	44	60.3	0	0.0
Tigerair	30	30	23	76.7	22	73.3	0	0.0
Virgin Australia	85	84	77	91.7	80	95.2	1	1.2
All Airlines	248	246	206	83.7	197	80.1	2	0.8
<b>Canberra-Adelaide</b>								
Qantas	45	45	41	91.1	42	93.3	0	0.0
QantasLink	18	18	18	100.0	17	94.4	0	0.0
Virgin Australia	24	24	21	87.5	22	91.7	0	0.0
All Airlines	87	87	80	92.0	81	93.1	0	0.0
<b>Canberra-Brisbane</b>								
Qantas	22	22	22	100.0	22	100.0	0	0.0
QantasLink	134	134	113	84.3	111	82.8	0	0.0
Virgin Australia	89	88	82	93.2	80	90.9	1	1.1
All Airlines	245	244	217	88.9	213	87.3	1	0.4
<b>Canberra-Melbourne</b>								
Qantas	175	175	162	92.6	162	92.6	0	0.0
QantasLink	83	81	73	90.1	73	90.1	2	2.4
Virgin Australia	154	154	138	89.6	134	87.0	0	0.0
Virgin Australia Regional Airlines	21	21	21	100.0	17	81.0	0	0.0
All Airlines	433	431	394	91.4	386	89.6	2	0.5
<b>Canberra-Sydney</b>								
QantasLink	507	486	428	88.1	427	87.9	21	4.1
Virgin Australia	30	27	25	92.6	25	92.6	3	10.0
Virgin Australia Regional Airlines	262	259	242	93.4	244	94.2	3	1.1
All Airlines	799	772	695	90.0	696	90.2	27	3.4
<b>Coffs Harbour-Sydney</b>								
QantasLink	148	145	123	84.8	121	83.4	3	2.0
Tigerair	13	13	10	76.9	10	76.9	0	0.0
Virgin Australia	60	60	56	93.3	58	96.7	0	0.0
All Airlines	221	218	189	86.7	189	86.7	3	1.4

	<i>Sectors</i>		<i>Departures On Time</i>		<i>Arrivals On Time</i>		<i>Cancellations</i>	
	<i>Sched.</i>	<i>Flown</i>	<i>No.</i>	<i>%</i>	<i>No.</i>	<i>%</i>	<i>No.</i>	<i>%</i>
<b>Darwin-Brisbane</b>								
Jetstar	18	18	15	83.3	17	94.4	0	0.0
Qantas	44	44	37	84.1	37	84.1	0	0.0
Tigerair	16	16	14	87.5	13	81.3	0	0.0
Virgin Australia	30	29	24	82.8	18	62.1	1	3.3
All Airlines	108	107	90	84.1	85	79.4	1	0.9
<b>Darwin-Melbourne</b>								
Jetstar	25	25	19	76.0	16	64.0	0	0.0
Qantas	30	30	23	76.7	25	83.3	0	0.0
Virgin Australia	30	30	25	83.3	23	76.7	0	0.0
All Airlines	85	85	67	78.8	64	75.3	0	0.0
<b>Darwin-Perth</b>								
Qantas	38	38	35	92.1	34	89.5	0	0.0
Virgin Australia	25	24	19	79.2	18	75.0	1	4.0
All Airlines	63	62	54	87.1	52	83.9	1	1.6
<b>Darwin-Sydney</b>								
Jetstar	25	25	15	60.0	18	72.0	0	0.0
Qantas	51	51	49	96.1	47	92.2	0	0.0
Virgin Australia	30	30	23	76.7	26	86.7	0	0.0
All Airlines	106	106	87	82.1	91	85.8	0	0.0
<b>Dubbo-Sydney</b>								
QantasLink	122	121	106	87.6	103	85.1	1	0.8
Regional Express	136	132	122	92.4	109	82.6	4	2.9
All Airlines	258	253	228	90.1	212	83.8	5	1.9
<b>Emerald-Brisbane</b>								
QantasLink	142	138	114	82.6	112	81.2	4	2.8
Virgin Australia Regional Airlines	80	78	69	88.5	69	88.5	2	2.5
All Airlines	222	216	183	84.7	181	83.8	6	2.7
<b>Geraldton-Perth</b>								
QantasLink	43	41	37	90.2	37	90.2	2	4.7
Virgin Australia Regional Airlines	92	92	86	93.5	86	93.5	0	0.0
All Airlines	135	133	123	92.5	123	92.5	2	1.5
<b>Gladstone-Brisbane</b>								
QantasLink	225	219	192	87.7	180	82.2	6	2.7
Virgin Australia	8	8	6	75.0	4	50.0	0	0.0
Virgin Australia Regional Airlines	136	136	117	86.0	102	75.0	0	0.0
All Airlines	369	363	315	86.8	286	78.8	6	1.6
<b>Gold Coast-Adelaide</b>								
Jetstar	29	29	27	93.1	27	93.1	0	0.0
Virgin Australia	30	30	29	96.7	28	93.3	0	0.0
All Airlines	59	59	56	94.9	55	93.2	0	0.0
<b>Gold Coast-Melbourne</b>								
Jetstar	197	197	180	91.4	181	91.9	0	0.0
Tigerair	74	74	51	68.9	50	67.6	0	0.0
Virgin Australia	181	181	161	89.0	155	85.6	0	0.0
All Airlines	452	452	392	86.7	386	85.4	0	0.0
<b>Gold Coast-Sydney</b>								
Jetstar	306	302	271	89.7	270	89.4	4	1.3
Qantas	90	90	75	83.3	80	88.9	0	0.0
Tigerair	84	83	65	78.3	67	80.7	1	1.2
Virgin Australia	243	241	203	84.2	201	83.4	2	0.8
All Airlines	723	716	614	85.8	618	86.3	7	1.0

	<i>Sectors</i>		<i>Departures On Time</i>		<i>Arrivals On Time</i>		<i>Cancellations</i>	
	<i>Sched.</i>	<i>Flown</i>	<i>No.</i>	<i>%</i>	<i>No.</i>	<i>%</i>	<i>No.</i>	<i>%</i>
<b>Hamilton Island-Brisbane</b>								
QantasLink	3	3	3	100.0	3	100.0	0	0.0
Virgin Australia	29	29	27	93.1	26	89.7	0	0.0
All Airlines	32	32	30	93.8	29	90.6	0	0.0
<b>Hamilton Island-Melbourne</b>								
Jetstar	22	22	17	77.3	17	77.3	0	0.0
Virgin Australia	17	17	14	82.4	14	82.4	0	0.0
All Airlines	39	39	31	79.5	31	79.5	0	0.0
<b>Hamilton Island-Sydney</b>								
Jetstar	30	30	26	86.7	26	86.7	0	0.0
Qantas	14	14	7	50.0	8	57.1	0	0.0
Virgin Australia	30	30	29	96.7	28	93.3	0	0.0
All Airlines	74	74	62	83.8	62	83.8	0	0.0
<b>Hobart-Brisbane</b>								
Jetstar	30	30	21	70.0	18	60.0	0	0.0
Virgin Australia	30	30	17	56.7	21	70.0	0	0.0
All Airlines	60	60	38	63.3	39	65.0	0	0.0
<b>Hobart-Melbourne</b>								
Jetstar	172	171	141	82.5	140	81.9	1	0.6
QantasLink	120	116	72	62.1	69	59.5	4	3.3
Tigerair	30	30	21	70.0	19	63.3	0	0.0
Virgin Australia	141	141	116	82.3	115	81.6	0	0.0
All Airlines	463	458	350	76.4	343	74.9	5	1.1
<b>Hobart-Sydney</b>								
Jetstar	73	73	57	78.1	56	76.7	0	0.0
QantasLink	28	28	22	78.6	17	60.7	0	0.0
Virgin Australia	60	60	53	88.3	54	90.0	0	0.0
All Airlines	161	161	132	82.0	127	78.9	0	0.0
<b>Kalgoorlie-Perth</b>								
Qantas	20	20	17	85.0	16	80.0	0	0.0
QantasLink	58	57	50	87.7	48	84.2	1	1.7
Virgin Australia	36	33	26	78.8	25	75.8	3	8.3
Virgin Australia Regional Airlines	19	19	15	78.9	15	78.9	0	0.0
All Airlines	133	129	108	83.7	104	80.6	4	3.0
<b>Karratha-Perth</b>								
Qantas	113	108	98	90.7	100	92.6	5	4.4
QantasLink	86	81	76	93.8	77	95.1	5	5.8
Virgin Australia	66	65	63	96.9	60	92.3	1	1.5
Virgin Australia Regional Airlines	17	17	14	82.4	15	88.2	0	0.0
All Airlines	282	271	251	92.6	252	93.0	11	3.9
<b>Launceston-Melbourne</b>								
Jetstar	142	141	113	80.1	107	75.9	1	0.7
QantasLink	120	115	103	89.6	95	82.6	5	4.2
Virgin Australia	97	95	88	92.6	79	83.2	2	2.1
Virgin Australia Regional Airlines	3	3	1	33.3	0	0.0	0	0.0
All Airlines	362	354	305	86.2	281	79.4	8	2.2
<b>Launceston-Sydney</b>								
Jetstar	60	59	40	67.8	42	71.2	1	1.7
Virgin Australia	30	30	24	80.0	26	86.7	0	0.0
All Airlines	90	89	64	71.9	68	76.4	1	1.1

	<i>Sectors</i>		<i>Departures On Time</i>		<i>Arrivals On Time</i>		<i>Cancellations</i>	
	<i>Sched.</i>	<i>Flown</i>	<i>No.</i>	<i>%</i>	<i>No.</i>	<i>%</i>	<i>No.</i>	<i>%</i>
<b>Mackay-Brisbane</b>								
Jetstar	58	58	38	65.5	37	63.8	0	0.0
QantasLink	104	103	96	93.2	93	90.3	1	1.0
Virgin Australia	151	150	141	94.0	137	91.3	1	0.7
All Airlines	313	311	275	88.4	267	85.9	2	0.6
<b>Melbourne-Adelaide</b>								
Jetstar	86	86	74	86.0	69	80.2	0	0.0
Qantas	284	284	257	90.5	247	87.0	0	0.0
Tigerair	72	70	67	95.7	62	88.6	2	2.8
Virgin Australia	264	263	234	89.0	218	82.9	1	0.4
All Airlines	706	703	632	89.9	596	84.8	3	0.4
<b>Melbourne-Brisbane</b>								
Jetstar	129	128	94	73.4	98	76.6	1	0.8
Qantas	422	416	369	88.7	344	82.7	6	1.4
Tigerair	121	121	105	86.8	93	76.9	0	0.0
Virgin Australia	368	362	317	87.6	292	80.7	6	1.6
All Airlines	1 040	1 027	885	86.2	827	80.5	13	1.3
<b>Melbourne-Cairns</b>								
Jetstar	73	73	57	78.1	57	78.1	0	0.0
Qantas	30	30	27	90.0	26	86.7	0	0.0
Tigerair	30	30	28	93.3	28	93.3	0	0.0
Virgin Australia	30	30	27	90.0	25	83.3	0	0.0
All Airlines	163	163	139	85.3	136	83.4	0	0.0
<b>Melbourne-Canberra</b>								
Qantas	175	175	160	91.4	161	92.0	0	0.0
QantasLink	81	78	68	87.2	68	87.2	3	3.7
Virgin Australia	154	154	141	91.6	136	88.3	0	0.0
Virgin Australia Regional Airlines	21	20	15	75.0	9	45.0	1	4.8
All Airlines	431	427	384	89.9	374	87.6	4	0.9
<b>Melbourne-Darwin</b>								
Jetstar	23	23	19	82.6	18	78.3	0	0.0
Qantas	30	30	29	96.7	25	83.3	0	0.0
Virgin Australia	30	30	27	90.0	25	83.3	0	0.0
All Airlines	83	83	75	90.4	68	81.9	0	0.0
<b>Melbourne-Gold Coast</b>								
Jetstar	197	197	167	84.8	175	88.8	0	0.0
Tigerair	74	74	64	86.5	58	78.4	0	0.0
Virgin Australia	181	181	164	90.6	163	90.1	0	0.0
All Airlines	452	452	395	87.4	396	87.6	0	0.0
<b>Melbourne-Hamilton Island</b>								
Jetstar	22	22	20	90.9	21	95.5	0	0.0
Virgin Australia	17	17	17	100.0	16	94.1	0	0.0
All Airlines	39	39	37	94.9	37	94.9	0	0.0
<b>Melbourne-Hobart</b>								
Jetstar	172	171	146	85.4	149	87.1	1	0.6
QantasLink	120	117	60	51.3	54	46.2	3	2.5
Tigerair	30	30	22	73.3	21	70.0	0	0.0
Virgin Australia	141	141	118	83.7	117	83.0	0	0.0
All Airlines	463	459	346	75.4	341	74.3	4	0.9
<b>Melbourne-Launceston</b>								
Jetstar	142	142	129	90.8	124	87.3	0	0.0
QantasLink	120	115	103	89.6	90	78.3	5	4.2
Virgin Australia	97	95	79	83.2	76	80.0	2	2.1
Virgin Australia Regional Airlines	3	3	1	33.3	2	66.7	0	0.0
All Airlines	362	355	312	87.9	292	82.3	7	1.9

	<i>Sectors</i>		<i>Departures On Time</i>		<i>Arrivals On Time</i>		<i>Cancellations</i>	
	<i>Sched.</i>	<i>Flown</i>	<i>No.</i>	<i>%</i>	<i>No.</i>	<i>%</i>	<i>No.</i>	<i>%</i>
<b>Melbourne-Mildura</b>								
QantasLink	85	85	74	87.1	69	81.2	0	0.0
Regional Express	82	82	81	98.8	77	93.9	0	0.0
Virgin Australia	30	30	27	90.0	26	86.7	0	0.0
All Airlines	197	197	182	92.4	172	87.3	0	0.0
<b>Melbourne-Newcastle</b>								
Jetstar	95	94	80	85.1	75	79.8	1	1.1
Virgin Australia	30	30	28	93.3	25	83.3	0	0.0
All Airlines	125	124	108	87.1	100	80.6	1	0.8
<b>Melbourne-Perth</b>								
Jetstar	75	75	66	88.0	61	81.3	0	0.0
Qantas	213	212	175	82.5	152	71.7	1	0.5
Tigerair	60	60	55	91.7	47	78.3	0	0.0
Virgin Australia	130	129	115	89.1	110	85.3	1	0.8
All Airlines	478	476	411	86.3	370	77.7	2	0.4
<b>Melbourne-Sunshine Coast</b>								
Jetstar	74	74	70	94.6	70	94.6	0	0.0
Virgin Australia	32	31	27	87.1	28	90.3	1	3.1
All Airlines	106	105	97	92.4	98	93.3	1	0.9
<b>Melbourne-Sydney</b>								
Jetstar	332	327	247	75.5	251	76.8	5	1.5
Qantas	892	881	774	87.9	741	84.1	11	1.2
Tigerair	216	214	174	81.3	169	79.0	2	0.9
Virgin Australia	747	726	657	90.5	627	86.4	21	2.8
All Airlines	2 187	2 148	1 852	86.2	1 788	83.2	39	1.8
<b>Mildura-Melbourne</b>								
QantasLink	85	85	80	94.1	78	91.8	0	0.0
Regional Express	82	82	79	96.3	78	95.1	0	0.0
Virgin Australia	30	30	26	86.7	26	86.7	0	0.0
All Airlines	197	197	185	93.9	182	92.4	0	0.0
<b>Moranbah-Brisbane</b>								
QantasLink	117	108	90	83.3	86	79.6	9	7.7
Virgin Australia Regional Airlines	71	71	65	91.5	57	80.3	0	0.0
All Airlines	188	179	155	86.6	143	79.9	9	4.8
<b>Mount Isa-Brisbane</b>								
Qantas	55	54	52	96.3	51	94.4	1	1.8
Virgin Australia	20	20	19	95.0	19	95.0	0	0.0
All Airlines	75	74	71	95.9	70	94.6	1	1.3
<b>Newcastle-Brisbane</b>								
Jetstar	88	87	65	74.7	63	72.4	1	1.1
QantasLink	65	65	49	75.4	45	69.2	0	0.0
Virgin Australia	80	79	61	77.2	62	78.5	1	1.3
All Airlines	233	231	175	75.8	170	73.6	2	0.9
<b>Newcastle-Melbourne</b>								
Jetstar	95	95	86	90.5	79	83.2	0	0.0
Virgin Australia	31	30	20	66.7	19	63.3	1	3.2
All Airlines	126	125	106	84.8	98	78.4	1	0.8
<b>Newman-Perth</b>								
Qantas	83	80	74	92.5	74	92.5	3	3.6
QantasLink	58	56	52	92.9	53	94.6	2	3.4
Virgin Australia	27	26	24	92.3	24	92.3	1	3.7
Virgin Australia Regional Airlines	5	5	5	100.0	5	100.0	0	0.0
All Airlines	173	167	155	92.8	156	93.4	6	3.5

	<i>Sectors</i>		<i>Departures On Time</i>		<i>Arrivals On Time</i>		<i>Cancellations</i>	
	<i>Sched.</i>	<i>Flown</i>	<i>No.</i>	<i>%</i>	<i>No.</i>	<i>%</i>	<i>No.</i>	<i>%</i>
<b>Perth-Adelaide</b>								
Jetstar	30	29	18	62.1	18	62.1	1	3.3
Qantas	113	113	105	92.9	107	94.7	0	0.0
Virgin Australia	64	63	57	90.5	58	92.1	1	1.6
All Airlines	207	205	180	87.8	183	89.3	2	1.0
<b>Perth-Brisbane</b>								
Qantas	120	120	98	81.7	97	80.8	0	0.0
Virgin Australia	93	93	83	89.2	81	87.1	0	0.0
All Airlines	213	213	181	85.0	178	83.6	0	0.0
<b>Perth-Broome</b>								
Qantas	34	34	34	100.0	33	97.1	0	0.0
QantasLink	46	44	41	93.2	41	93.2	2	4.3
Virgin Australia	25	24	23	95.8	22	91.7	1	4.0
Virgin Australia Regional Airlines	16	16	11	68.8	10	62.5	0	0.0
All Airlines	121	118	109	92.4	106	89.8	3	2.5
<b>Perth-Darwin</b>								
Qantas	38	38	37	97.4	38	100.0	0	0.0
Virgin Australia	25	25	23	92.0	23	92.0	0	0.0
All Airlines	63	63	60	95.2	61	96.8	0	0.0
<b>Perth-Geraldton</b>								
QantasLink	43	41	35	85.4	36	87.8	2	4.7
Virgin Australia Regional Airlines	89	89	84	94.4	80	89.9	0	0.0
All Airlines	132	130	119	91.5	116	89.2	2	1.5
<b>Perth-Kalgoorlie</b>								
Qantas	20	20	18	90.0	17	85.0	0	0.0
QantasLink	59	57	53	93.0	52	91.2	2	3.4
Virgin Australia	34	33	27	81.8	28	84.8	1	2.9
Virgin Australia Regional Airlines	20	20	14	70.0	12	60.0	0	0.0
All Airlines	133	130	112	86.2	109	83.8	3	2.3
<b>Perth-Karratha</b>								
Qantas	113	109	98	89.9	100	91.7	4	3.5
QantasLink	86	80	74	92.5	73	91.3	6	7.0
Virgin Australia	66	65	61	93.8	61	93.8	1	1.5
Virgin Australia Regional Airlines	17	17	15	88.2	15	88.2	0	0.0
All Airlines	282	271	248	91.5	249	91.9	11	3.9
<b>Perth-Melbourne</b>								
Jetstar	75	75	58	77.3	59	78.7	0	0.0
Qantas	213	213	177	83.1	190	89.2	0	0.0
Tigerair	59	59	46	78.0	50	84.7	0	0.0
Virgin Australia	130	129	121	93.8	119	92.2	1	0.8
All Airlines	477	476	402	84.5	418	87.8	1	0.2
<b>Perth-Newman</b>								
Qantas	83	80	72	90.0	72	90.0	3	3.6
QantasLink	59	57	55	96.5	53	93.0	2	3.4
Virgin Australia	27	26	24	92.3	24	92.3	1	3.7
Virgin Australia Regional Airlines	5	5	5	100.0	5	100.0	0	0.0
All Airlines	174	168	156	92.9	154	91.7	6	3.4
<b>Perth-Port Hedland</b>								
Qantas	105	100	92	92.0	90	90.0	5	4.8
QantasLink	48	46	42	91.3	41	89.1	2	4.2
Virgin Australia	40	39	36	92.3	37	94.9	1	2.5
All Airlines	193	185	170	91.9	168	90.8	8	4.1

	<i>Sectors</i>		<i>Departures On Time</i>		<i>Arrivals On Time</i>		<i>Cancellations</i>	
	<i>Sched.</i>	<i>Flown</i>	<i>No.</i>	<i>%</i>	<i>No.</i>	<i>%</i>	<i>No.</i>	<i>%</i>
<b>Perth-Sydney</b>								
Jetstar	30	30	27	90.0	28	93.3	0	0.0
Qantas	198	198	164	82.8	177	89.4	0	0.0
Tigerair	24	23	20	87.0	20	87.0	1	4.2
Virgin Australia	113	112	107	95.5	109	97.3	1	0.9
All Airlines	365	363	318	87.6	334	92.0	2	0.5
<b>Port Hedland-Perth</b>								
Qantas	105	100	88	88.0	90	90.0	5	4.8
QantasLink	48	46	41	89.1	42	91.3	2	4.2
Virgin Australia	40	39	35	89.7	35	89.7	1	2.5
All Airlines	193	185	164	88.6	167	90.3	8	4.1
<b>Port Lincoln-Adelaide</b>								
QantasLink	97	96	88	91.7	83	86.5	1	1.0
Regional Express	205	205	191	93.2	191	93.2	0	0.0
All Airlines	302	301	279	92.7	274	91.0	1	0.3
<b>Port Macquarie-Sydney</b>								
QantasLink	129	126	88	69.8	81	64.3	3	2.3
Virgin Australia Regional Airlines	60	60	51	85.0	46	76.7	0	0.0
All Airlines	189	186	139	74.7	127	68.3	3	1.6
<b>Proserpine-Brisbane</b>								
Jetstar	30	30	26	86.7	25	83.3	0	0.0
Virgin Australia	50	50	45	90.0	43	86.0	0	0.0
All Airlines	80	80	71	88.8	68	85.0	0	0.0
<b>Rockhampton-Brisbane</b>								
QantasLink	196	192	164	85.4	147	76.6	4	2.0
Virgin Australia	102	99	92	92.9	86	86.9	3	2.9
Virgin Australia Regional Airlines	98	95	91	95.8	88	92.6	3	3.1
All Airlines	396	386	347	89.9	321	83.2	10	2.5
<b>Sunshine Coast-Melbourne</b>								
Jetstar	74	73	63	86.3	62	84.9	1	1.4
Virgin Australia	32	31	26	83.9	25	80.6	1	3.1
All Airlines	106	104	89	85.6	87	83.7	2	1.9
<b>Sunshine Coast-Sydney</b>								
Jetstar	103	102	82	80.4	79	77.5	1	1.0
Virgin Australia	30	30	29	96.7	28	93.3	0	0.0
All Airlines	133	132	111	84.1	107	81.1	1	0.8
<b>Sydney-Adelaide</b>								
Jetstar	103	102	76	74.5	72	70.6	1	1.0
Qantas	234	234	191	81.6	180	76.9	0	0.0
QantasLink	20	16	15	93.8	14	87.5	4	20.0
Tigerair	26	26	23	88.5	19	73.1	0	0.0
Virgin Australia	164	164	150	91.5	147	89.6	0	0.0
All Airlines	547	542	455	83.9	432	79.7	5	0.9
<b>Sydney-Albury</b>								
QantasLink	90	90	73	81.1	75	83.3	0	0.0
Regional Express	104	104	91	87.5	91	87.5	0	0.0
Virgin Australia Regional Airlines	60	60	56	93.3	55	91.7	0	0.0
All Airlines	254	254	220	86.6	221	87.0	0	0.0
<b>Sydney-Armidale</b>								
QantasLink	130	126	104	82.5	98	77.8	4	3.1
Regional Express	71	71	63	88.7	63	88.7	0	0.0
All Airlines	201	197	167	84.8	161	81.7	4	2.0



	<i>Sectors</i>		<i>Departures On Time</i>		<i>Arrivals On Time</i>		<i>Cancellations</i>	
	<i>Sched.</i>	<i>Flown</i>	<i>No.</i>	<i>%</i>	<i>No.</i>	<i>%</i>	<i>No.</i>	<i>%</i>
<b>Sydney-Ayers Rock</b>								
Jetstar	30	30	29	96.7	29	96.7	0	0.0
Virgin Australia	30	30	27	90.0	28	93.3	0	0.0
All Airlines	60	60	56	93.3	57	95.0	0	0.0
<b>Sydney-Ballina</b>								
Jetstar	60	60	57	95.0	54	90.0	0	0.0
Regional Express	24	24	21	87.5	21	87.5	0	0.0
Virgin Australia	30	30	28	93.3	27	90.0	0	0.0
All Airlines	114	114	106	93.0	102	89.5	0	0.0
<b>Sydney-Brisbane</b>								
Jetstar	158	150	96	64.0	99	66.0	8	5.1
Qantas	572	562	466	82.9	452	80.4	10	1.7
Tigerair	79	78	61	78.2	63	80.8	1	1.3
Virgin Australia	505	497	424	85.3	404	81.3	8	1.6
All Airlines	1 314	1 287	1 047	81.4	1 018	79.1	27	2.1
<b>Sydney-Cairns</b>								
Jetstar	60	60	55	91.7	57	95.0	0	0.0
Qantas	73	73	61	83.6	57	78.1	0	0.0
Tigerair	30	30	27	90.0	26	86.7	0	0.0
Virgin Australia	85	84	75	89.3	72	85.7	1	1.2
All Airlines	248	247	218	88.3	212	85.8	1	0.4
<b>Sydney-Canberra</b>								
QantasLink	509	489	427	87.3	414	84.7	20	3.9
Virgin Australia	27	27	26	96.3	25	92.6	0	0.0
Virgin Australia Regional Airlines	262	260	232	89.2	230	88.5	2	0.8
All Airlines	798	776	685	88.3	669	86.2	22	2.8
<b>Sydney-Coffs Harbour</b>								
QantasLink	148	146	122	83.6	130	89.0	2	1.4
Tigerair	13	13	11	84.6	11	84.6	0	0.0
Virgin Australia	60	60	57	95.0	57	95.0	0	0.0
All Airlines	221	219	190	86.8	198	90.4	2	0.9
<b>Sydney-Darwin</b>								
Jetstar	26	26	20	76.9	19	73.1	0	0.0
Qantas	51	51	36	70.6	42	82.4	0	0.0
Virgin Australia	30	30	30	100.0	27	90.0	0	0.0
All Airlines	107	107	86	80.4	88	82.2	0	0.0
<b>Sydney-Dubbo</b>								
QantasLink	122	121	101	83.5	99	81.8	1	0.8
Regional Express	139	135	120	88.9	125	92.6	4	2.9
All Airlines	261	256	221	86.3	224	87.5	5	1.9
<b>Sydney-Gold Coast</b>								
Jetstar	306	303	278	91.7	279	92.1	3	1.0
Qantas	90	90	82	91.1	82	91.1	0	0.0
Tigerair	85	84	71	84.5	68	81.0	1	1.2
Virgin Australia	243	241	208	86.3	204	84.6	2	0.8
All Airlines	724	718	639	89.0	633	88.2	6	0.8
<b>Sydney-Hamilton Island</b>								
Jetstar	29	29	27	93.1	27	93.1	0	0.0
Qantas	14	14	12	85.7	12	85.7	0	0.0
Virgin Australia	30	30	30	100.0	30	100.0	0	0.0
All Airlines	73	73	69	94.5	69	94.5	0	0.0

	<i>Sectors</i>		<i>Departures On Time</i>		<i>Arrivals On Time</i>		<i>Cancellations</i>	
	<i>Sched.</i>	<i>Flown</i>	<i>No.</i>	<i>%</i>	<i>No.</i>	<i>%</i>	<i>No.</i>	<i>%</i>
<b>Sydney-Hobart</b>								
Jetstar	74	74	68	91.9	69	93.2	0	0.0
QantasLink	28	28	22	78.6	19	67.9	0	0.0
Virgin Australia	60	60	60	100.0	56	93.3	0	0.0
All Airlines	162	162	150	92.6	144	88.9	0	0.0
<b>Sydney-Launceston</b>								
Jetstar	60	60	50	83.3	50	83.3	0	0.0
Virgin Australia	30	30	30	100.0	30	100.0	0	0.0
All Airlines	90	90	80	88.9	80	88.9	0	0.0
<b>Sydney-Melbourne</b>								
Jetstar	332	328	265	80.8	270	82.3	4	1.2
Qantas	890	879	764	86.9	751	85.4	11	1.2
Tigerair	216	212	170	80.2	159	75.0	4	1.9
Virgin Australia	742	722	630	87.3	613	84.9	20	2.7
All Airlines	2 180	2 141	1 829	85.4	1 793	83.7	39	1.8
<b>Sydney-Perth</b>								
Jetstar	30	30	25	83.3	22	73.3	0	0.0
Qantas	203	203	161	79.3	151	74.4	0	0.0
Tigerair	25	25	24	96.0	21	84.0	0	0.0
Virgin Australia	113	112	99	88.4	97	86.6	1	0.9
All Airlines	371	370	309	83.5	291	78.6	1	0.3
<b>Sydney-Port Macquarie</b>								
QantasLink	130	127	103	81.1	92	72.4	3	2.3
Virgin Australia Regional Airlines	60	60	53	88.3	50	83.3	0	0.0
All Airlines	190	187	156	83.4	142	75.9	3	1.6
<b>Sydney-Sunshine Coast</b>								
Jetstar	103	103	84	81.6	85	82.5	0	0.0
Virgin Australia	30	30	30	100.0	30	100.0	0	0.0
All Airlines	133	133	114	85.7	115	86.5	0	0.0
<b>Sydney-Townsville</b>								
Jetstar	18	18	14	77.8	15	83.3	0	0.0
Virgin Australia	30	30	27	90.0	26	86.7	0	0.0
All Airlines	48	48	41	85.4	41	85.4	0	0.0
<b>Sydney-Wagga Wagga</b>								
QantasLink	110	109	86	78.9	86	78.9	1	0.9
Regional Express	131	131	121	92.4	122	93.1	0	0.0
All Airlines	241	240	207	86.3	208	86.7	1	0.4
<b>Townsville-Brisbane</b>								
Jetstar	43	43	37	86.0	35	81.4	0	0.0
Qantas	144	144	133	92.4	129	89.6	0	0.0
Virgin Australia	145	142	132	93.0	129	90.8	3	2.1
All Airlines	332	329	302	91.8	293	89.1	3	0.9
<b>Townsville-Sydney</b>								
Jetstar	18	18	14	77.8	13	72.2	0	0.0
Virgin Australia	30	30	24	80.0	25	83.3	0	0.0
All Airlines	48	48	38	79.2	38	79.2	0	0.0
<b>Wagga Wagga-Sydney</b>								
QantasLink	110	109	83	76.1	88	80.7	1	0.9
Regional Express	132	132	120	90.9	112	84.8	0	0.0
All Airlines	242	241	203	84.2	200	83.0	1	0.4

# Airports

On time performance is reported for all routes where the passenger load averages over 8000 passengers per month, and where two or more airlines operate in competition. The following data reports by airport against flights operated on those routes only.

Airport	Departures			Arrivals		
	Sectors	On Time		Sectors	On Time	
	Flown	No.	%	Flown	No.	%
<b>Adelaide</b>						
Jetstar	277	233	84.1	276	216	78.3
Qantas	783	662	84.5	781	667	85.4
QantasLink	130	112	86.2	130	114	87.7
Regional Express	206	198	96.1	205	191	93.2
Tigerair	117	93	79.5	118	95	80.5
Virgin Australia	651	600	92.2	651	573	88.0
All Airlines	2 164	1 898	87.7	2 161	1 856	85.9
Relates to services to and from Brisbane, Canberra, Gold Coast, Melbourne, Perth, Port Lincoln and Sydney.						
<b>Albury</b>						
QantasLink	90	80	88.9	90	75	83.3
Regional Express	104	92	88.5	104	91	87.5
Virgin Australia Regional Airlines	60	55	91.7	60	55	91.7
All Airlines	254	227	89.4	254	221	87.0
Relates to services to and from Sydney only.						
<b>Armidale</b>						
QantasLink	122	95	77.9	126	98	77.8
Regional Express	72	62	86.1	71	63	88.7
All Airlines	194	157	80.9	197	161	81.7
Relates to services to and from Sydney only.						
<b>Ayers Rock</b>						
Jetstar	30	28	93.3	30	29	96.7
Virgin Australia	30	27	90.0	30	28	93.3
All Airlines	60	55	91.7	60	57	95.0
Relates to services to and from Sydney only.						
<b>Ballina</b>						
Jetstar	60	48	80.0	60	54	90.0
Regional Express	25	19	76.0	24	21	87.5
Virgin Australia	30	26	86.7	30	27	90.0
All Airlines	115	93	80.9	114	102	89.5
Relates to services to and from Sydney only.						
<b>Brisbane</b>						
Jetstar	664	525	79.1	664	498	75.0
Qantas	1 588	1 383	87.1	1 582	1 328	83.9
QantasLink	1 086	978	90.1	1 080	870	80.6
Tigerair	260	224	86.2	260	201	77.3
Virgin Australia	1 916	1 698	88.6	1 914	1 618	84.5
Virgin Australia Regional Airlines	421	383	91.0	418	350	83.7
All Airlines	5 935	5 191	87.5	5 918	4 865	82.2
Relates to services to and from Adelaide, Bundaberg, Cairns, Canberra, Darwin, Emerald, Gladstone, Hamilton Island, Hobart, Mackay, Melbourne, Moranbah, Mount Isa, Newcastle, Perth, Proserpine, Rockhampton, Sydney and Townsville.						

Airport	Departures			Arrivals		
	Sectors Flown	On Time		Sectors Flown	On Time	
		No.	%		No.	%
<b>Broome</b>						
Qantas	34	32	94.1	34	33	97.1
QantasLink	45	43	95.6	44	41	93.2
Virgin Australia	24	22	91.7	24	22	91.7
Virgin Australia Regional Airlines	21	14	66.7	16	10	62.5
All Airlines	124	111	89.5	118	106	89.8
Relates to services to and from Perth only.						
<b>Bundaberg</b>						
QantasLink	113	97	85.8	112	100	89.3
Virgin Australia Regional Airlines	38	35	92.1	39	37	94.9
All Airlines	151	132	87.4	151	137	90.7
Relates to services to and from Brisbane only.						
<b>Cairns</b>						
Jetstar	222	200	90.1	223	191	85.7
Qantas	218	176	80.7	218	191	87.6
QantasLink	5	5	100.0	5	5	100.0
Tigerair	84	63	75.0	84	75	89.3
Virgin Australia	245	213	86.9	245	207	84.5
All Airlines	774	657	84.9	775	669	86.3
Relates to services to and from Brisbane, Melbourne and Sydney.						
<b>Canberra</b>						
Qantas	242	225	93.0	242	222	91.7
QantasLink	719	632	87.9	719	623	86.6
Virgin Australia	293	266	90.8	293	255	87.0
Virgin Australia Regional Airlines	280	263	93.9	280	239	85.4
All Airlines	1 534	1 386	90.4	1 534	1 339	87.3
Relates to services to and from Adelaide, Brisbane, Melbourne and Sydney.						
<b>Coffs Harbour</b>						
QantasLink	145	123	84.8	146	130	89.0
Tigerair	13	10	76.9	13	11	84.6
Virgin Australia	60	56	93.3	60	57	95.0
All Airlines	218	189	86.7	219	198	90.4
Relates to services to and from Sydney only.						
<b>Darwin</b>						
Jetstar	68	49	72.1	67	53	79.1
Qantas	163	144	88.3	163	146	89.6
Tigerair	16	14	87.5	16	15	93.8
Virgin Australia	113	91	80.5	115	99	86.1
All Airlines	360	298	82.8	361	313	86.7
Relates to services to and from Brisbane, Melbourne, Perth and Sydney.						
<b>Dubbo</b>						
QantasLink	121	106	87.6	121	99	81.8
Regional Express	132	122	92.4	135	125	92.6
All Airlines	253	228	90.1	256	224	87.5
Relates to services to and from Sydney only.						

Airport	Departures			Arrivals		
	Sectors Flown	On Time		Sectors Flown	On Time	
		No.	%		No.	%
<b>Emerald</b>						
QantasLink	138	114	82.6	139	123	88.5
Virgin Australia Regional Airlines	78	69	88.5	80	72	90.0
All Airlines	216	183	84.7	219	195	89.0
Relates to services to and from Brisbane only.						
<b>Geraldton</b>						
QantasLink	41	37	90.2	41	36	87.8
Virgin Australia Regional Airlines	92	86	93.5	89	80	89.9
All Airlines	133	123	92.5	130	116	89.2
Relates to services to and from Perth only.						
<b>Gladstone</b>						
QantasLink	219	192	87.7	202	183	90.6
Virgin Australia	8	6	75.0	8	7	87.5
Virgin Australia Regional Airlines	136	117	86.0	136	121	89.0
All Airlines	363	315	86.8	346	311	89.9
Relates to services to and from Brisbane only.						
<b>Gold Coast</b>						
Jetstar	528	478	90.5	529	482	91.1
Qantas	90	75	83.3	90	82	91.1
Tigerair	157	116	73.9	158	126	79.7
Virgin Australia	452	393	86.9	452	397	87.8
All Airlines	1 227	1 062	86.6	1 229	1 087	88.4
Relates to services to and from Adelaide, Melbourne and Sydney.						
<b>Hamilton Island</b>						
Jetstar	52	43	82.7	52	48	92.3
Qantas	14	7	50.0	14	12	85.7
QantasLink	3	3	100.0	3	3	100.0
Virgin Australia	76	70	92.1	76	75	98.7
All Airlines	145	123	84.8	145	138	95.2
Relates to services to and from Brisbane, Melbourne and Sydney.						
<b>Hobart</b>						
Jetstar	274	219	79.9	275	243	88.4
QantasLink	144	94	65.3	145	73	50.3
Tigerair	30	21	70.0	30	21	70.0
Virgin Australia	231	186	80.5	231	197	85.3
All Airlines	679	520	76.6	681	534	78.4
Relates to services to and from Brisbane, Melbourne and Sydney.						
<b>Kalgoorlie</b>						
Qantas	20	17	85.0	20	17	85.0
QantasLink	57	50	87.7	57	52	91.2
Virgin Australia	33	26	78.8	33	28	84.8
Virgin Australia Regional Airlines	19	15	78.9	20	12	60.0
All Airlines	129	108	83.7	130	109	83.8
Relates to services to and from Perth only.						

Airport	Departures			Arrivals		
	Sectors Flown	On Time		Sectors Flown	On Time	
		No.	%		No.	%
<b>Karratha</b>						
Qantas	108	98	90.7	109	100	91.7
QantasLink	81	76	93.8	80	73	91.3
Virgin Australia	65	63	96.9	65	61	93.8
Virgin Australia Regional Airlines	17	14	82.4	17	15	88.2
All Airlines	271	251	92.6	271	249	91.9
Relates to services to and from Perth only.						
<b>Launceston</b>						
Jetstar	200	153	76.5	202	174	86.1
QantasLink	115	103	89.6	115	90	78.3
Virgin Australia	125	112	89.6	125	106	84.8
Virgin Australia Regional Airlines	3	1	33.3	3	2	66.7
All Airlines	443	369	83.3	445	372	83.6
Relates to services to and from Melbourne and Sydney.						
<b>Mackay</b>						
Jetstar	58	38	65.5	58	43	74.1
QantasLink	103	96	93.2	103	96	93.2
Virgin Australia	150	141	94.0	150	140	93.3
All Airlines	311	275	88.4	311	279	89.7
Relates to services to and from Brisbane only.						
<b>Melbourne</b>						
Jetstar	1 412	1 169	82.8	1 413	1 171	82.9
Qantas	2 028	1 791	88.3	2 029	1 753	86.4
QantasLink	395	305	77.2	397	315	79.3
Regional Express	82	81	98.8	82	78	95.1
Tigerair	599	515	86.0	596	457	76.7
Virgin Australia	2 219	1 978	89.1	2 217	1 848	83.4
Virgin Australia Regional Airlines	23	16	69.6	24	17	70.8
All Airlines	6 758	5 855	86.6	6 758	5 639	83.4
Relates to services to and from Adelaide, Brisbane, Cairns, Canberra, Darwin, Gold Coast, Hamilton Island, Hobart, Launceston, Mildura, Newcastle, Perth, Sunshine Coast and Sydney.						
<b>Mildura</b>						
QantasLink	85	80	94.1	85	69	81.2
Regional Express	82	79	96.3	82	77	93.9
Virgin Australia	30	26	86.7	30	26	86.7
All Airlines	197	185	93.9	197	172	87.3
Relates to services to and from Melbourne only.						
<b>Moranbah</b>						
QantasLink	108	90	83.3	112	101	90.2
Virgin Australia Regional Airlines	71	65	91.5	71	67	94.4
All Airlines	179	155	86.6	183	168	91.8
Relates to services to and from Brisbane only.						
<b>Mount Isa</b>						
Qantas	54	52	96.3	55	54	98.2
Virgin Australia	20	19	95.0	20	19	95.0
All Airlines	74	71	95.9	75	73	97.3
Relates to services to and from Brisbane only.						

Airport	Departures			Arrivals		
	Sectors	On Time		Sectors	On Time	
	Flown	No.	%	Flown	No.	%
<b>Newcastle</b>						
Jetstar	182	151	83.0	182	153	84.1
QantasLink	65	49	75.4	64	51	79.7
Virgin Australia	109	81	74.3	110	92	83.6
All Airlines	356	281	78.9	356	296	83.1
Relates to services to and from Brisbane and Melbourne.						
<b>Newman</b>						
Qantas	80	74	92.5	80	72	90.0
QantasLink	56	52	92.9	57	53	93.0
Virgin Australia	26	24	92.3	26	24	92.3
Virgin Australia Regional Airlines	5	5	100.0	5	5	100.0
All Airlines	167	155	92.8	168	154	91.7
Relates to services to and from Perth only.						
<b>Perth</b>						
Jetstar	134	103	76.9	135	105	77.8
Qantas	1 025	895	87.3	1 025	833	81.3
QantasLink	325	300	92.3	326	298	91.4
Tigerair	82	66	80.5	85	68	80.0
Virgin Australia	609	562	92.3	608	508	83.6
Virgin Australia Regional Airlines	147	129	87.8	154	135	87.7
All Airlines	2 322	2 055	88.5	2 333	1 947	83.5
Relates to services to and from Adelaide, Brisbane, Broome, Darwin, Geraldton, Kalgoorlie, Karratha, Melbourne, Newman, Port Hedland and Sydney.						
<b>Port Hedland</b>						
Qantas	100	88	88.0	100	90	90.0
QantasLink	46	41	89.1	46	41	89.1
Virgin Australia	39	35	89.7	39	37	94.9
All Airlines	185	164	88.6	185	168	90.8
Relates to services to and from Perth only.						
<b>Port Lincoln</b>						
QantasLink	96	88	91.7	96	85	88.5
Regional Express	205	191	93.2	206	192	93.2
All Airlines	301	279	92.7	302	277	91.7
Relates to services to and from Adelaide only.						
<b>Port Macquarie</b>						
QantasLink	126	88	69.8	127	92	72.4
Virgin Australia Regional Airlines	60	51	85.0	60	50	83.3
All Airlines	186	139	74.7	187	142	75.9
Relates to services to and from Sydney only.						
<b>Proserpine</b>						
Jetstar	30	26	86.7	30	25	83.3
Virgin Australia	50	45	90.0	50	49	98.0
All Airlines	80	71	88.8	80	74	92.5
Relates to services to and from Brisbane only.						

Airport	Departures			Arrivals		
	Sectors	On Time		Sectors	On Time	
	Flown	No.	%	Flown	No.	%
<b>Rockhampton</b>						
QantasLink	192	164	85.4	212	190	89.6
Virgin Australia	99	92	92.9	99	89	89.9
Virgin Australia Regional Airlines	95	91	95.8	95	87	91.6
All Airlines	386	347	89.9	406	366	90.1
Relates to services to and from Brisbane only.						
<b>Sunshine Coast</b>						
Jetstar	175	145	82.9	177	155	87.6
Virgin Australia	61	55	90.2	61	58	95.1
All Airlines	236	200	84.7	238	213	89.5
Relates to services to and from Melbourne and Sydney.						
<b>Sydney</b>						
Jetstar	1 373	1 144	83.3	1 366	1 097	80.3
Qantas	2 106	1 773	84.2	2 111	1 774	84.0
QantasLink	1 252	1 053	84.1	1 243	1 025	82.5
Regional Express	465	416	89.5	465	380	81.7
Tigerair	468	387	82.7	466	375	80.5
Virgin Australia	2 177	1 931	88.7	2 179	1 916	87.9
Virgin Australia Regional Airlines	380	341	89.7	379	340	89.7
All Airlines	8 221	7 045	85.7	8 209	6 907	84.1
Relates to services to and from Adelaide, Albury, Armidale, Ayers Rock, Ballina, Brisbane, Cairns, Canberra, Coffs Harbour, Darwin, Dubbo, Gold Coast, Hamilton Island, Hobart, Launceston, Melbourne, Perth, Port Macquarie, Sunshine Coast, Townsville and Wagga Wagga.						
<b>Townsville</b>						
Jetstar	61	51	83.6	61	54	88.5
Qantas	144	133	92.4	144	125	86.8
Virgin Australia	172	156	90.7	172	149	86.6
All Airlines	377	340	90.2	377	328	87.0
Relates to services to and from Brisbane and Sydney.						
<b>Wagga Wagga</b>						
QantasLink	109	83	76.1	109	86	78.9
Regional Express	132	120	90.9	131	122	93.1
All Airlines	241	203	84.2	240	208	86.7
Relates to services to and from Sydney only.						



## Definitions

---

On time departure                      A flight departure is counted as "on time" if it departs the gate before 15 minutes after the scheduled departure time shown in the carriers' schedule.

---

On time arrival                         A flight arrival is counted as "on time" if it arrived at the gate before 15 minutes after the scheduled arrival time shown in the carriers' schedule.  
Neither diverted nor cancelled flights count as on time.

---

Cancellation                            A flight removed from service within 7 days of scheduled departure is regarded as a cancellation.

---

On time departure percentage                      The percentage of on time departures is measured against the number of departures *operated* on any particular sector.

---

On time arrival percentage                         The percentage of on time arrivals is measured against the number of arrivals *operated* on any particular sector.

---

Cancellation percentage                      The percentage of cancellations is measured against the number of services *scheduled* on any particular sector.

---