



Australian Government

Department of Infrastructure and Regional Development

Bureau of Infrastructure, Transport and Regional Economics

STATISTICAL REPORT



Aviation

Domestic airline on time performance
November 2013

© Commonwealth of Australia 2013

ISSN: 1832-0759

Ownership of intellectual property rights in this publication

Unless otherwise noted, copyright (and any other intellectual property rights, if any) in this publication is owned by the Commonwealth of Australia (referred to below as the Commonwealth).

Disclaimer

The material contained in this publication is made available on the understanding that the Commonwealth is not providing professional advice, and that users exercise their own skill and care with respect to its use, and seek independent advice if necessary.

The Commonwealth makes no representations or warranties as to the contents or accuracy of the information contained in this publication. To the extent permitted by law, the Commonwealth disclaims liability to any person or organisation in respect of anything done, or omitted to be done, in reliance upon information contained in this publication.

Creative Commons licence

With the exception of (a) the Coat of Arms; and (b) the Department of Infrastructure and Regional Development's photos and graphics, copyright in this publication is licensed under a Creative Commons Attribution 3.0 Australia Licence.

Creative Commons Attribution 3.0 Australia Licence is a standard form licence agreement that allows you to copy, communicate and adapt this publication provided that you attribute the work to the Commonwealth and abide by the other licence terms. A summary of the licence terms is available from <http://creativecommons.org/licenses/by/3.0/au/deed.en>. The full licence terms are available from <http://creativecommons.org/licenses/by/3.0/au/legalcode>.

Use of the Coat of Arms

The Department of the Prime Minister and Cabinet sets the terms under which the Coat of Arms is used. Please refer to the Department's Commonwealth Coat of Arms and Government branding web page <http://www.dpmmc.gov.au/guidelines/index.cfm#brand> and, in particular, the Guidelines on the use of the Commonwealth Coat of Arms publication.

An appropriate citation for this report is:

Bureau of Infrastructure, Transport and Regional Economics (BITRE), 2013, Domestic airline on time performance, Statistical Report, BITRE, Canberra ACT.

Contact us

This publication is available in PDF format. All other rights are reserved, including in relation to any Departmental logos or trade marks which may exist. For enquiries regarding the licence and any use of this publication, please contact:

Bureau of Infrastructure, Transport and Regional Economics (BITRE)
Department of Infrastructure and Regional Development
GPO Box 501, Canberra ACT 2601, Australia
Telephone: (international) +61 2 6274 7210
Fax: (international) +61 2 6274 6855
Email: bitre@infrastructure.gov.au
Website: www.bitre.gov.au

Inquiries

Should you require additional information about the statistics contained in this publication:

Telephone (02) 6274 7790 or Facsimile (02) 6274 7727

Electronic mail: AVSTATS@infrastructure.gov.au

Web site: <http://www.bitre.gov.au/statistics/aviation/otphome.aspx>

Foreword

The Bureau of Infrastructure, Transport and Regional Economics (BITRE) monitors the punctuality and reliability of major domestic airlines operating between Australian airports. The purpose of this is to allow for evaluation of overall industry and individual airline performance, so that consumers of air travel can make informed decisions.

The following domestic airlines currently report this information monthly to the BITRE: Jetstar, Qantas, QantasLink, Regional Express, Tigerair, Virgin Australia and Virgin Australia Regional Airlines. Data has been gathered since November 2003, although some airlines commenced reporting at a later date, including Jetstar which first reported in May 2004, MacAir in July 2005 and Tigerair in April 2008. MacAir ceased operations in February 2009 and data was not received for December 2008 onwards. Virgin Blue was rebranded as Virgin Australia in May 2011 and Tiger Airways was rebranded as Tigerair in July 2013 and time series data in Microsoft Excel spreadsheet format on the BITRE website have been revised to reflect these changes. Virgin Australia Regional Airlines commenced operations in May 2013. It was formed after the acquisition of Skywest by Virgin Australia and represents a combination of operations previously reported under Skywest and Virgin Australia – ATR/F100 Operations. Services operated by Skywest on behalf of Virgin Australia using ATR/F100 aircraft commenced in November 2011 and were shown separately as Virgin Australia – ATR/F100 Operations until April 2013.

Information presented in this report is for Australian domestic routes for which the passenger load averaged 8 000 or more passengers per month over the previous six months and where two or more airlines operated in competition on those routes. There were 62 routes that met this definition in November 2013. Over time, routes which meet these criteria change as airline networks and traffic levels vary.

Participating airlines report their overall monthly network performance where this is possible.

Total industry figures encompass all services operated by reporting airlines only. These airlines collectively carried over 95 per cent of total domestic passengers (regular public transport only) in 2012.

The method of capturing on time performance varies between airlines utilising different recording systems. Jetstar and Qantas jet aircraft use Aircraft Communication Addressing and Reporting System (ACARS) to electronically measure on time performance. Regional Express, Tigerair, Virgin Australia, Virgin Australia Regional Airlines and the Qantas non-jet fleet record on time performance manually using records from pilots, gate agents and/or ground crews.

After initial data is collected, aggregate reports are audited internally by participating airlines prior to publication.

Reports and detailed time series data in Microsoft Excel spreadsheet format are available from the BITRE website at: <http://www.bitre.gov.au/statistics/aviation/otphome.aspx>.

Contents

	Page
Industry performance	1
Individual routes	9
Airports	21
Definitions	27

Industry performance

For November 2013, on time performance over all routes operated by participating airlines (Jetstar, Qantas, QantasLink, Regional Express, Tigerair, Virgin Australia and Virgin Australia Regional Airlines) averaged 81.1 per cent for on time departures and 78.2 per cent for on time arrivals. Cancellations represented 1.6 per cent of all scheduled flights. The equivalent figures for November 2012 were 82.2 per cent for departures, 78.0 per cent for arrivals and 1.3 per cent for cancellations.

This month's figures were below the long term average performance for all routes (83.5 per cent for departures and 82.0 per cent for arrivals). The rate of cancellations was above the long term average of 1.3 per cent.

Of the major domestic airlines, Qantas achieved the highest level of on time departures for November 2013 at 86.9 per cent, followed by Virgin Australia at 80.7 per cent, Tigerair at 76.4 per cent and Jetstar at 70.9 per cent. The regional airlines were led by Regional Express at 87.1 per cent, followed by Virgin Australia Regional Airlines at 86.5 per cent and QantasLink at 77.9 per cent.

Qantas also achieved the highest on time arrivals among the major domestic airlines at 85.3 per cent, followed by Virgin Australia at 77.2 per cent, Tigerair at 71.2 per cent and Jetstar at 70.7 per cent. Regional Express was the best performing regional airline for on time arrivals at 83.9 per cent, followed by Virgin Australia Regional Airlines at 82.3 per cent and QantasLink at 73.1 per cent.

QantasLink had the highest percentage of cancellations (3.2 per cent) during the month, followed by Jetstar (1.9 per cent), Qantas (1.4 per cent), Virgin Australia (1.1 per cent), Tigerair (1.0 per cent), Virgin Australia Regional Airlines (0.7 per cent) and Regional Express (0.5 per cent).

Of the 62 routes which met the criteria for on time performance reporting in November 2013, the Perth-Port Hedland route had the highest percentage of on time departures (96.2 per cent) and the highest percentage of on time arrivals (97.2 per cent). The Ballina-Sydney route had the lowest percentage of on time departures (60.7 per cent) and the Port Macquarie-Sydney route had the lowest percentage of on time arrivals (55.3 per cent).

Cancellations were highest on the Brisbane-Canberra route at 7.7 per cent, followed by Canberra-Brisbane at 7.4 per cent, Brisbane-Moranbah at 7.1 per cent, Moranbah-Brisbane at 6.4 per cent and Brisbane-Emerald and Emerald-Brisbane at 5.5 per cent.

Karratha Airport recorded the highest percentage of on time departures (96.0 per cent) and Port Hedland Airport recorded the highest percentage of on time arrivals (97.2 per cent). Ballina Airport recorded the lowest percentage of on time departures (60.7 per cent) and Port Macquarie Airport recorded the lowest percentage of on time arrivals (61.7 per cent). These figures only refer to reported routes and do not cover all flights at these airports.

Table 1 On time performance for November 2013 — Total Industry

	<i>Sectors</i>		<i>Departures On Time</i>		<i>Arrivals On Time</i>		<i>Cancellations</i>	
	<i>Scheduled</i>	<i>Flown</i>	<i>No.</i>	<i>%</i>	<i>No.</i>	<i>%</i>	<i>No.</i>	<i>%</i>
Jetstar	6 456	6 331	4 490	70.9	4 475	70.7	125	1.9
Qantas	10 555	10 407	9 047	86.9	8 877	85.3	148	1.4
QantasLink	9 737	9 426	7 340	77.9	6 892	73.1	311	3.2
Regional Express	5 540	5 514	4 802	87.1	4 627	83.9	26	0.5
Tigerair	1 650	1 633	1 248	76.4	1 163	71.2	17	1.0
Virgin Australia	10 836	10 715	8 644	80.7	8 275	77.2	121	1.1
Virgin Australia Regional Airlines	2 515	2 498	2 162	86.5	2 057	82.3	17	0.7
All Airlines	47 289	46 524	37 733	81.1	36 366	78.2	765	1.6

Total airline network data (including routes not shown in this report).

Table 2 Top ten routes for on time performance for November 2013 (participating airlines only)

<i>Departures</i>		<i>Arrivals</i>	
<i>Route</i>	<i>On Time (%)</i>	<i>Route</i>	<i>On Time (%)</i>
Perth-Port Hedland	96.2	Perth-Port Hedland	97.2
Perth-Karratha	96.0	Perth-Karratha	96.9
Karratha-Perth	96.0	Perth-Adelaide	95.7
Adelaide-Port Lincoln	95.7	Adelaide-Port Lincoln	95.3
Kalgoorlie-Perth	95.1	Karratha-Perth	95.0
Port Lincoln-Adelaide	95.0	Port Lincoln-Adelaide	94.7
Perth-Geraldton	94.6	Perth-Darwin	94.5
Perth-Darwin	94.5	Perth-Broome	94.5
Perth-Kalgoorlie	94.4	Perth-Kalgoorlie	94.4
Geraldton-Perth	94.1	Kalgoorlie-Perth	94.4

Table 3 Top ten airports for on time performance for November 2013 (participating airlines and reported routes only)

<i>Departures</i>		<i>Arrivals</i>	
<i>Airport</i>	<i>On Time (%)</i>	<i>Airport</i>	<i>On Time (%)</i>
Karratha	96.0	Port Hedland	97.2
Kalgoorlie	95.1	Karratha	96.9
Port Lincoln	95.0	Port Lincoln	95.3
Geraldton	94.1	Broome	94.5
Newman	93.4	Kalgoorlie	94.4
Port Hedland	93.0	Newman	93.5
Perth	90.9	Geraldton	92.6
Adelaide	87.1	Perth	87.1
Mildura	85.4	Adelaide	86.0
Broome	85.2	Mildura	84.9

Total industry on time performance

Figure 1 On time performance (by month from November 2010)—Total Industry

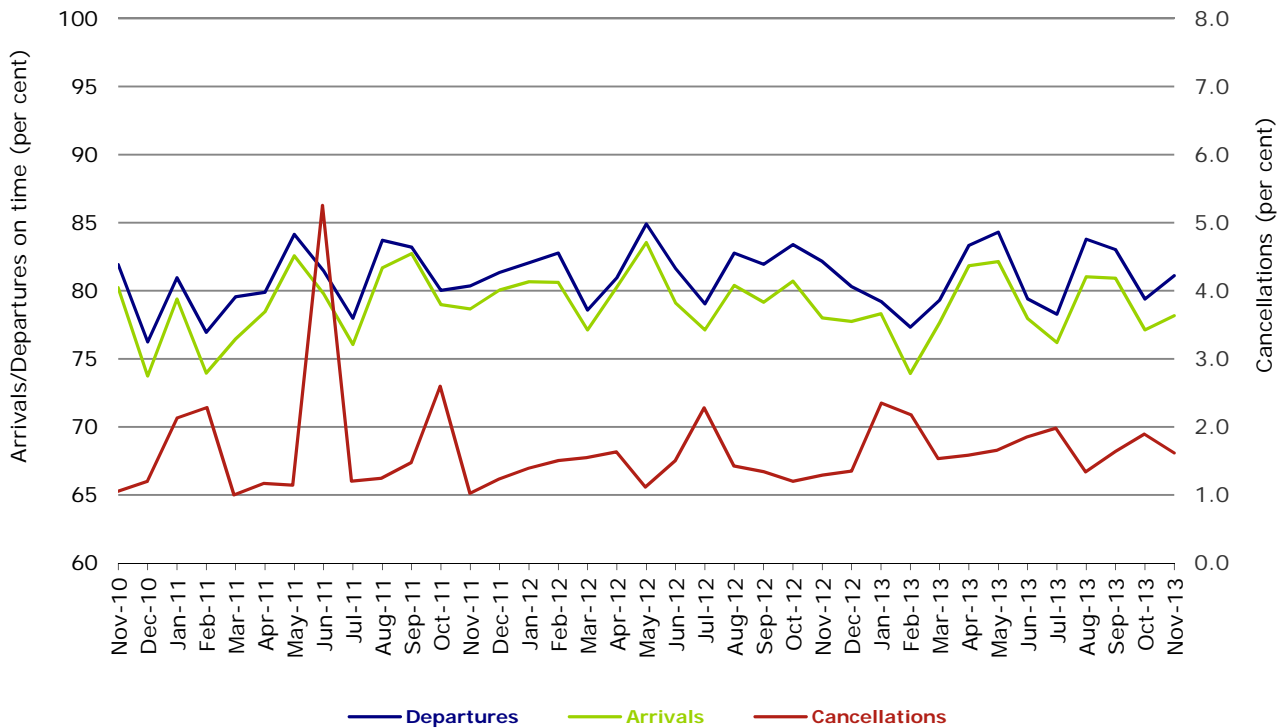
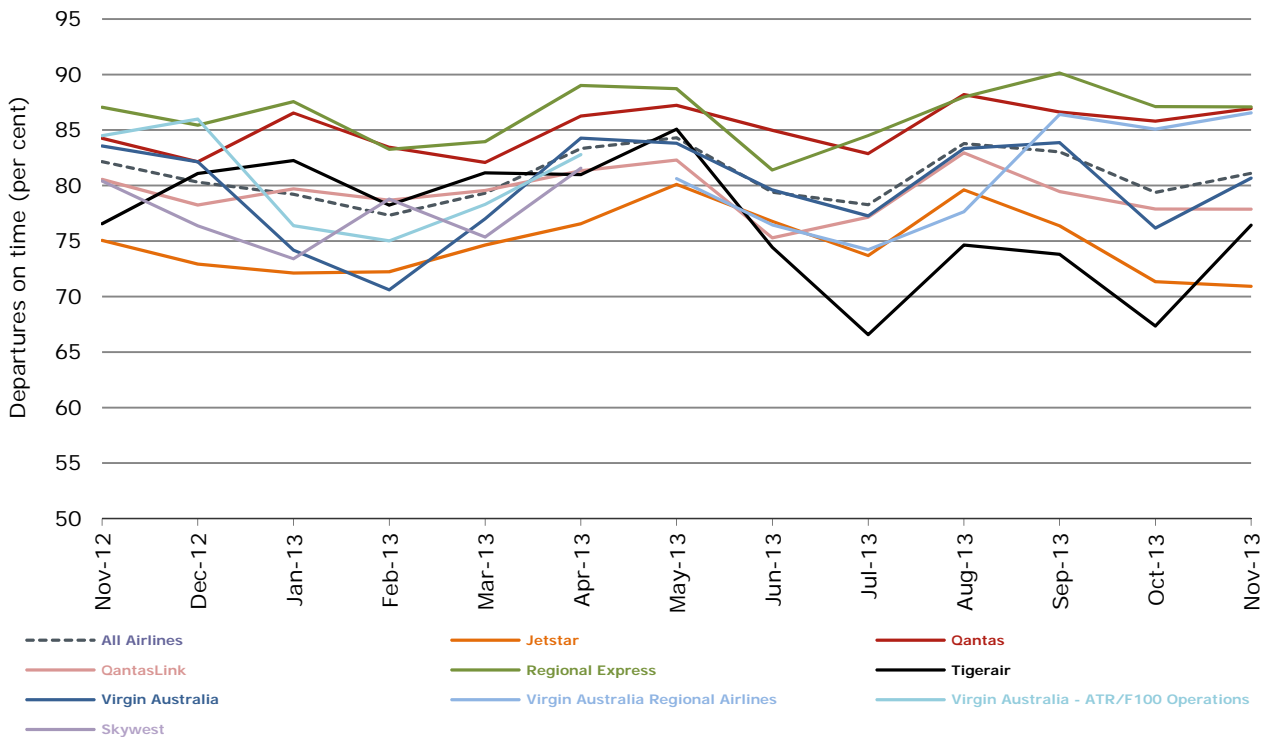
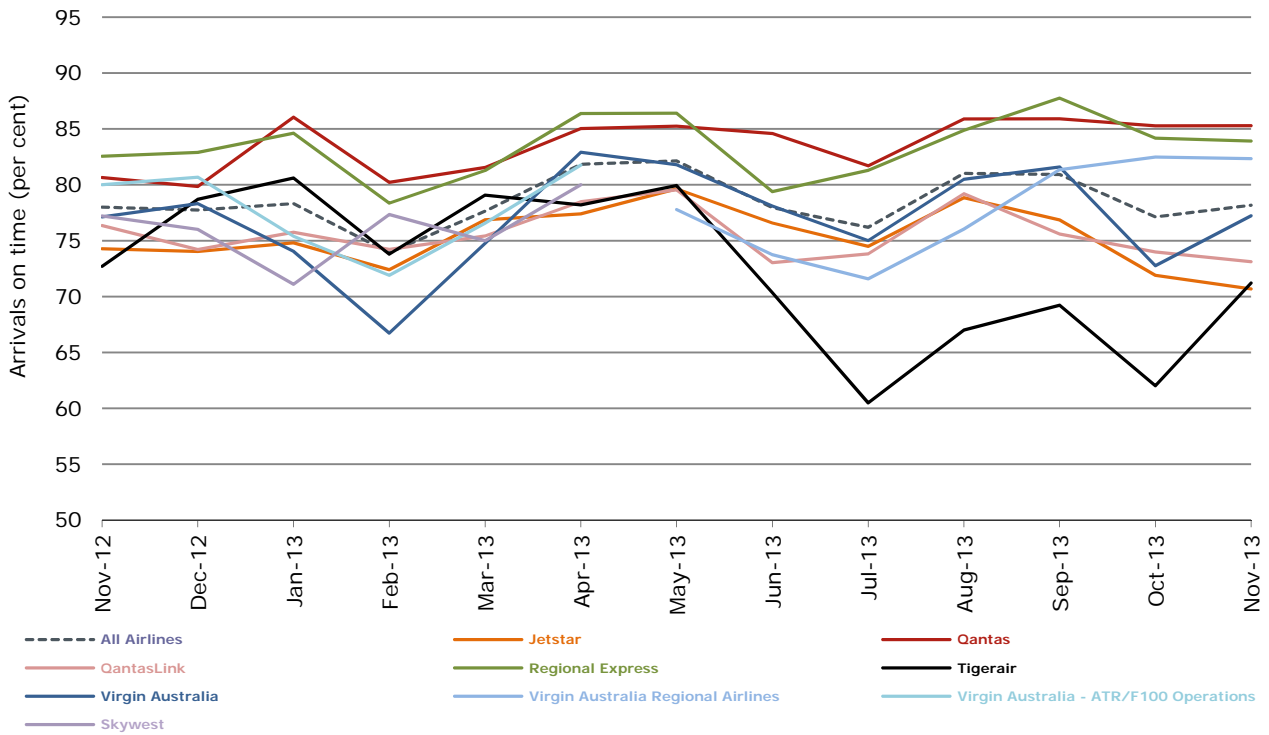


Figure 2 Departures on time (by month from November 2012)



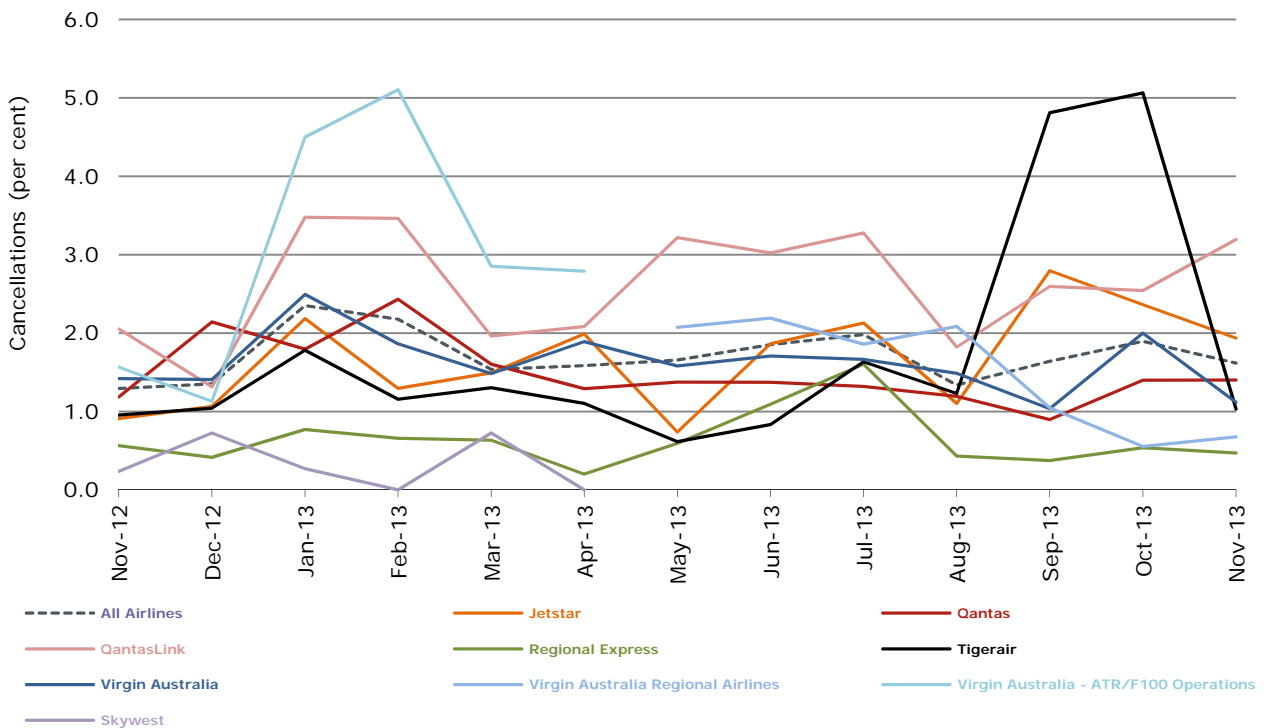
Virgin Australia Regional Airlines commenced operations in May 2013. It was formed after the acquisition of Skywest by Virgin Australia and represents a combination of operations previously reported under Skywest and Virgin Australia – ATR/F100 Operations.

Figure 3 Arrivals on time (by month from November 2012)



Virgin Australia Regional Airlines commenced operations in May 2013. It was formed after the acquisition of Skywest by Virgin Australia and represents a combination of operations previously reported under Skywest and Virgin Australia – ATR/F100 Operations.

Figure 4 Cancellations (by month from November 2012)



Virgin Australia Regional Airlines commenced operations in May 2013. It was formed after the acquisition of Skywest by Virgin Australia and represents a combination of operations previously reported under Skywest and Virgin Australia – ATR/F100 Operations.

Major domestic airlines on time performance

Figure 5 On time performance (by month from November 2010)—Jetstar

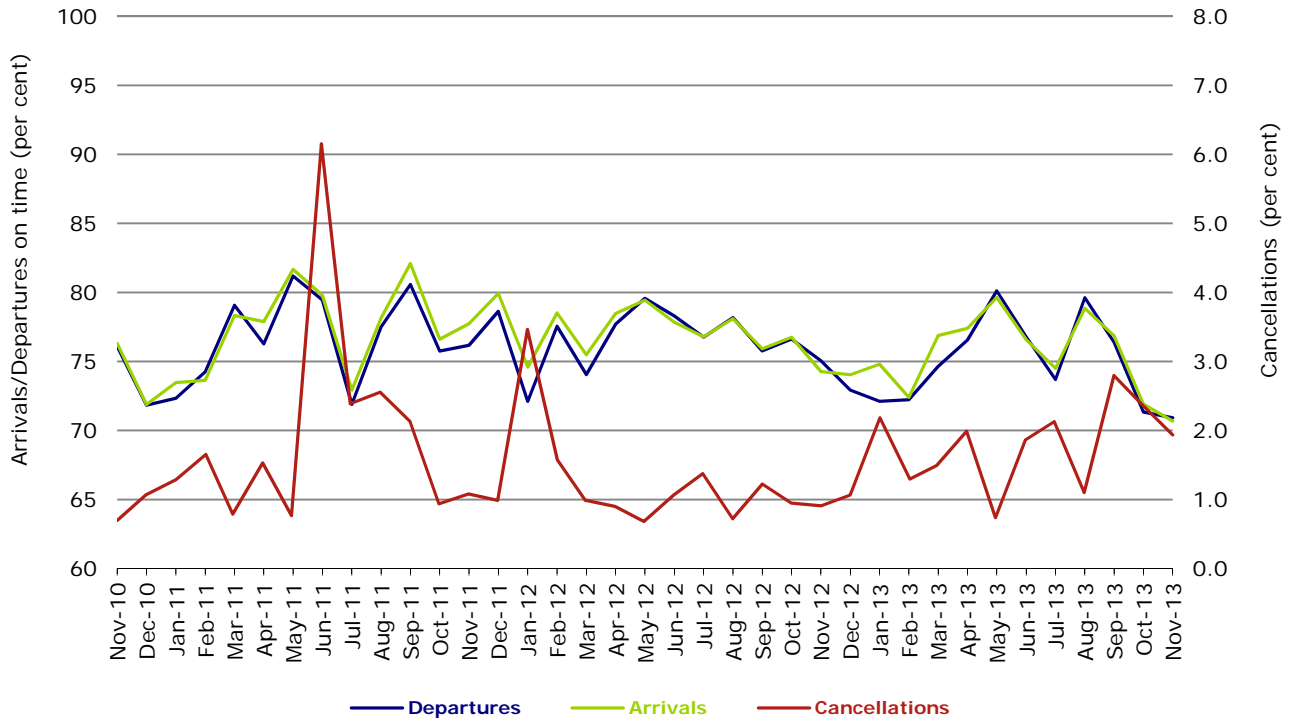


Figure 6 On time performance (by month from November 2010)—Qantas

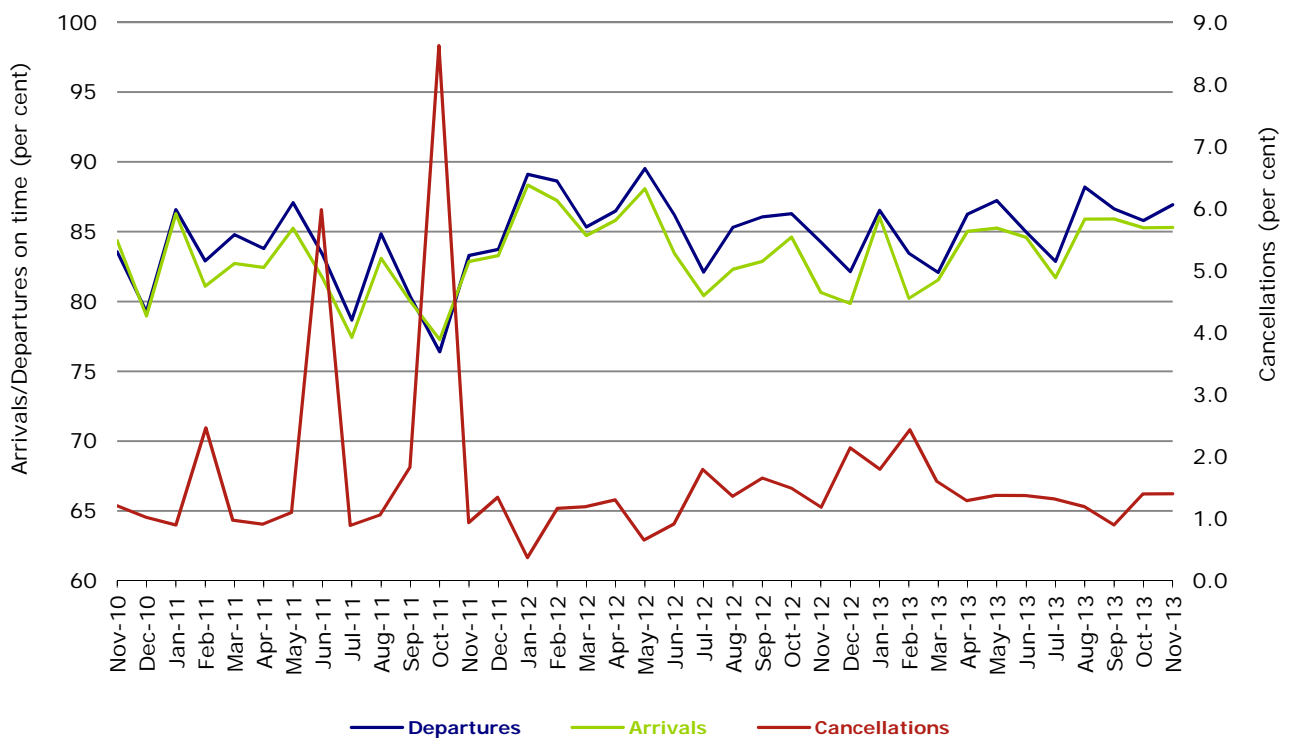
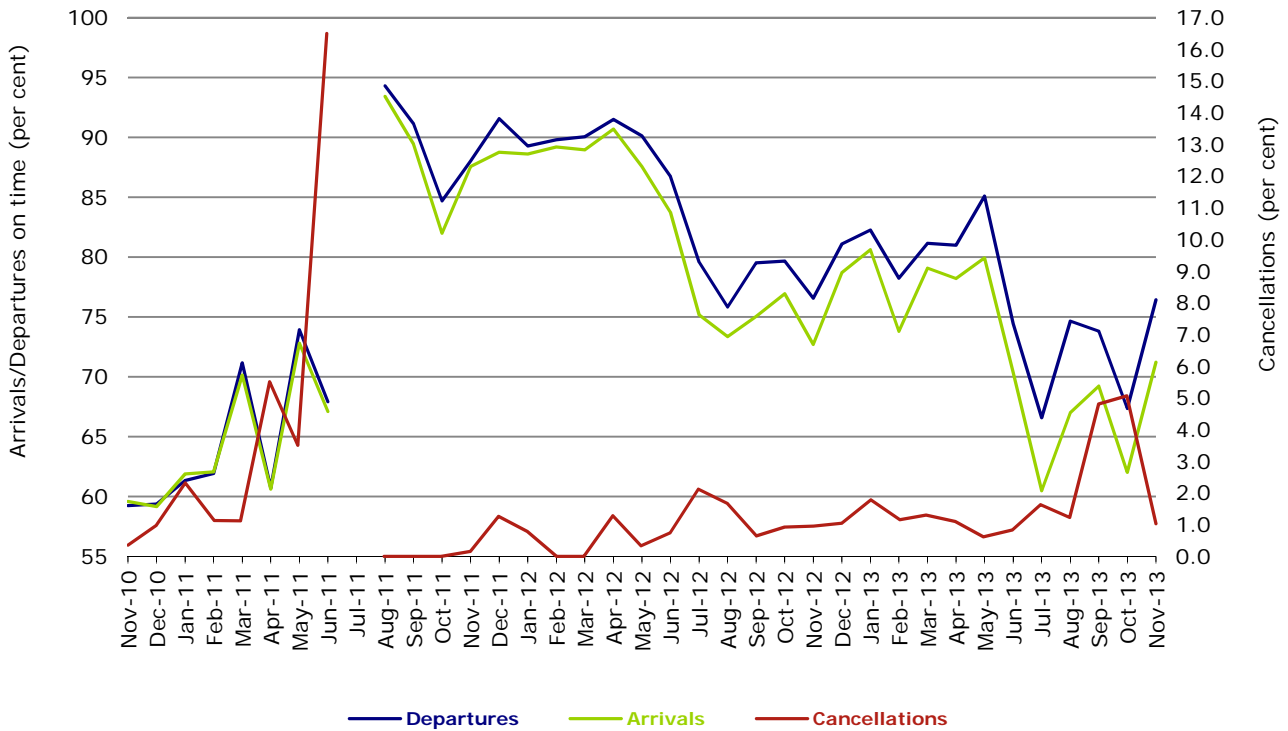
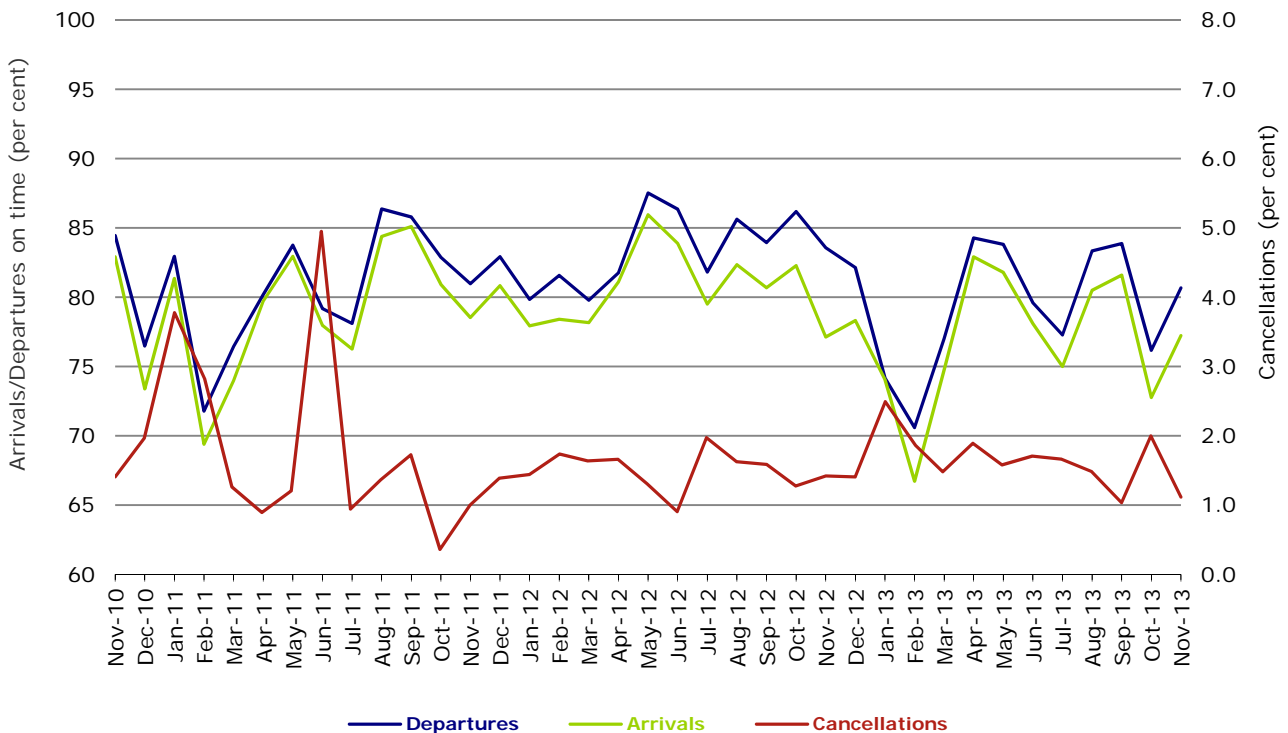


Figure 7 On time performance (by month from November 2010)—Tigerair



No data for Tigerair for July 2011 as it was grounded by CASA from 2/7/2011 to 11/8/2011.

Figure 8 On time performance (by month from November 2010)—Virgin Australia



Major regional airlines on time performance

Figure 9 On time performance (by month from November 2010)—QantasLink

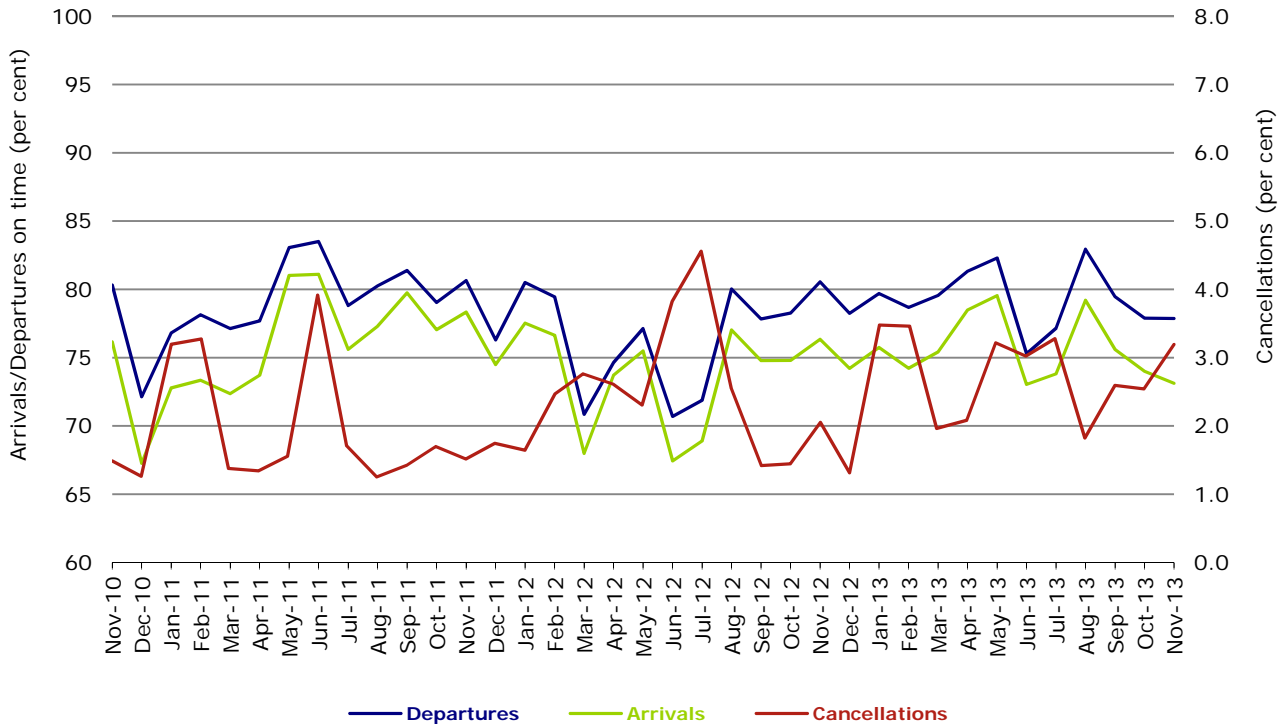


Figure 10 On time performance (by month from November 2010)—Regional Express

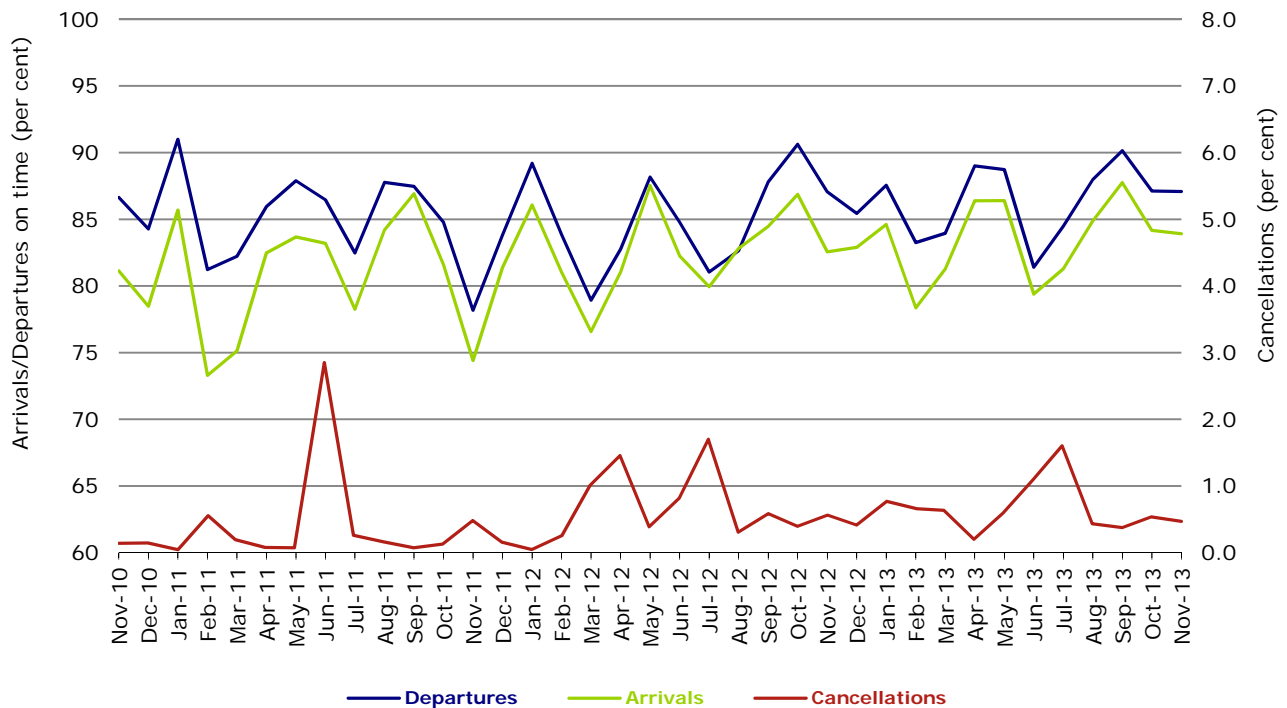
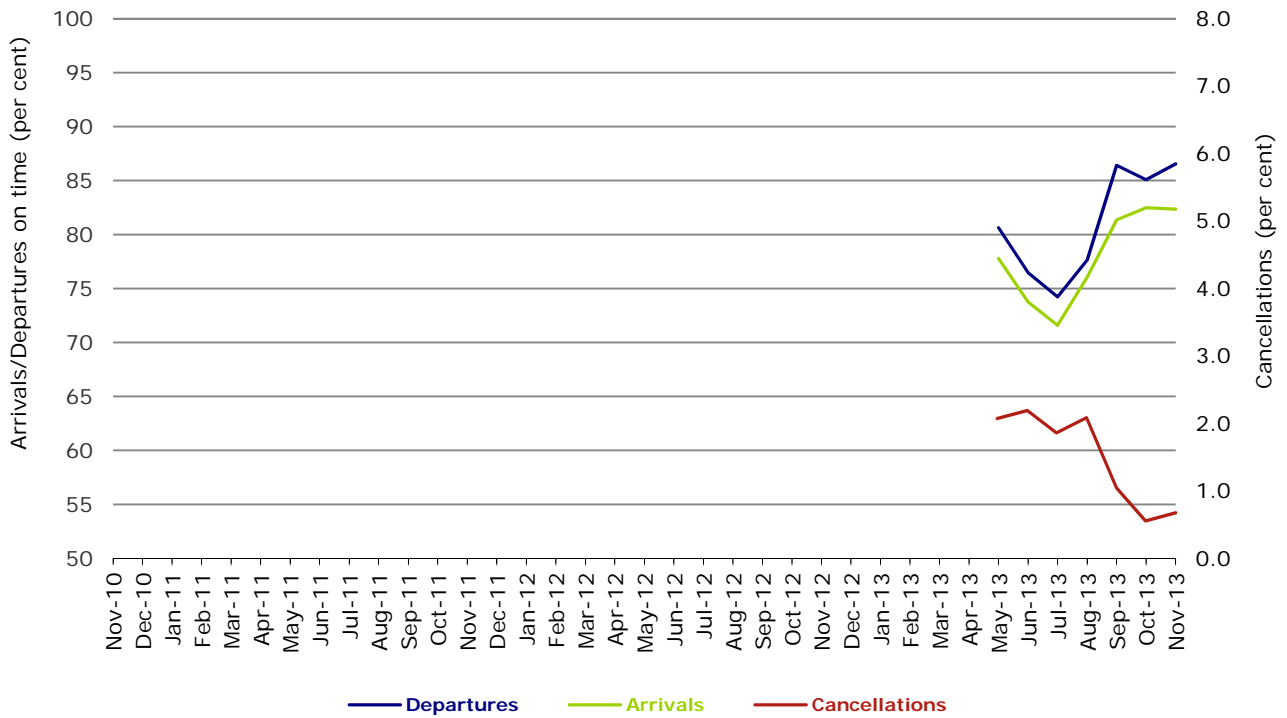


Figure 11 On time performance (by month from November 2010)
Virgin Australia Regional Airlines



Virgin Australia Regional Airlines commenced operations in May 2013. It was formed after the acquisition of Skywest by Virgin Australia and represents a combination of operations previously reported under Skywest and Virgin Australia – ATR/F100 Operations.

Individual routes

On time performance is reported for all routes where the passenger load averages over 8000 passengers per month over the previous six months, and where two or more airlines operate in competition on those routes. There are now 62 routes which meet this definition. Over time, however, routes which meet this definition may change as airline networks and traffic levels vary.

	<i>Sectors</i>		<i>Departures On Time</i>		<i>Arrivals On Time</i>		<i>Cancellations</i>	
	<i>Sched.</i>	<i>Flown</i>	<i>No.</i>	<i>%</i>	<i>No.</i>	<i>%</i>	<i>No.</i>	<i>%</i>
Adelaide-Brisbane								
Jetstar	30	30	29	96.7	30	100.0	0	0.0
Qantas	106	106	93	87.7	92	86.8	0	0.0
Virgin Australia	108	108	89	82.4	87	80.6	0	0.0
All Airlines	244	244	211	86.5	209	85.7	0	0.0
Adelaide-Canberra								
Qantas	46	46	44	95.7	45	97.8	0	0.0
QantasLink	21	21	13	61.9	14	66.7	0	0.0
Virgin Australia	25	25	24	96.0	23	92.0	0	0.0
All Airlines	92	92	81	88.0	82	89.1	0	0.0
Adelaide-Gold Coast								
Jetstar	30	30	18	60.0	19	63.3	0	0.0
Virgin Australia	30	30	30	100.0	30	100.0	0	0.0
All Airlines	60	60	48	80.0	49	81.7	0	0.0
Adelaide-Melbourne								
Jetstar	77	77	66	85.7	63	81.8	0	0.0
Qantas	284	284	247	87.0	254	89.4	0	0.0
QantasLink	17	16	12	75.0	13	81.3	1	5.9
Tigerair	73	73	61	83.6	57	78.1	0	0.0
Virgin Australia	262	262	223	85.1	231	88.2	0	0.0
All Airlines	713	712	609	85.5	618	86.8	1	0.1
Adelaide-Perth								
Jetstar	29	29	23	79.3	23	79.3	0	0.0
Qantas	110	110	99	90.0	100	90.9	0	0.0
Virgin Australia	62	62	58	93.5	58	93.5	0	0.0
All Airlines	201	201	180	89.6	181	90.0	0	0.0
Adelaide-Port Lincoln								
QantasLink	98	96	91	94.8	90	93.8	2	2.0
Regional Express	205	205	197	96.1	197	96.1	0	0.0
All Airlines	303	301	288	95.7	287	95.3	2	0.7
Adelaide-Sydney								
Jetstar	88	84	62	73.8	60	71.4	4	4.5
Qantas	267	266	228	85.7	227	85.3	1	0.4
Virgin Australia	158	156	135	86.5	130	83.3	2	1.3
All Airlines	513	506	425	84.0	417	82.4	7	1.4
Albury-Sydney								
QantasLink	111	111	80	72.1	67	60.4	0	0.0
Regional Express	111	111	103	92.8	94	84.7	0	0.0
Virgin Australia Regional Airlines	60	60	46	76.7	40	66.7	0	0.0
All Airlines	282	282	229	81.2	201	71.3	0	0.0
Alice Springs-Melbourne								
Qantas	30	30	23	76.7	26	86.7	0	0.0
Tigerair	17	17	13	76.5	15	88.2	0	0.0
All Airlines	47	47	36	76.6	41	87.2	0	0.0

	<i>Sectors</i>		<i>Departures On Time</i>		<i>Arrivals On Time</i>		<i>Cancellations</i>	
	<i>Sched.</i>	<i>Flown</i>	<i>No.</i>	<i>%</i>	<i>No.</i>	<i>%</i>	<i>No.</i>	<i>%</i>
Alice Springs-Sydney								
Qantas	30	30	18	60.0	24	80.0	0	0.0
Tigerair	17	17	16	94.1	15	88.2	0	0.0
All Airlines	47	47	34	72.3	39	83.0	0	0.0
Ayers Rock-Sydney								
Jetstar	17	17	9	52.9	7	41.2	0	0.0
Virgin Australia	30	29	25	86.2	27	93.1	1	3.3
All Airlines	47	46	34	73.9	34	73.9	1	2.1
Ballina-Sydney								
Jetstar	60	58	34	58.6	39	67.2	2	3.3
Regional Express	20	19	13	68.4	10	52.6	1	5.0
Virgin Australia	30	30	18	60.0	17	56.7	0	0.0
All Airlines	110	107	65	60.7	66	61.7	3	2.7
Brisbane-Adelaide								
Jetstar	30	30	30	100.0	30	100.0	0	0.0
Qantas	106	106	87	82.1	86	81.1	0	0.0
Virgin Australia	109	109	89	81.7	82	75.2	0	0.0
All Airlines	245	245	206	84.1	198	80.8	0	0.0
Brisbane-Bundaberg								
QantasLink	116	114	91	79.8	92	80.7	2	1.7
Virgin Australia Regional Airlines	30	30	27	90.0	27	90.0	0	0.0
All Airlines	146	144	118	81.9	119	82.6	2	1.4
Brisbane-Cairns								
Jetstar	96	93	71	76.3	72	77.4	3	3.1
Qantas	115	115	102	88.7	99	86.1	0	0.0
QantasLink	5	5	5	100.0	5	100.0	0	0.0
Virgin Australia	149	148	120	81.1	114	77.0	1	0.7
All Airlines	365	361	298	82.5	290	80.3	4	1.1
Brisbane-Canberra								
Qantas	132	120	104	86.7	107	89.2	12	9.1
QantasLink	47	38	27	71.1	27	71.1	9	19.1
Virgin Australia	94	94	78	83.0	75	79.8	0	0.0
All Airlines	273	252	209	82.9	209	82.9	21	7.7
Brisbane-Darwin								
Qantas	30	30	29	96.7	28	93.3	0	0.0
Virgin Australia	30	29	20	69.0	17	58.6	1	3.3
All Airlines	60	59	49	83.1	45	76.3	1	1.7
Brisbane-Emerald								
QantasLink	178	163	142	87.1	107	65.6	15	8.4
Virgin Australia Regional Airlines	96	96	87	90.6	73	76.0	0	0.0
All Airlines	274	259	229	88.4	180	69.5	15	5.5
Brisbane-Gladstone								
QantasLink	218	209	175	83.7	161	77.0	9	4.1
Virgin Australia	2	2	1	50.0	1	50.0	0	0.0
Virgin Australia Regional Airlines	129	128	108	84.4	102	79.7	1	0.8
All Airlines	349	339	284	83.8	264	77.9	10	2.9
Brisbane-Hamilton Island								
Jetstar	18	18	16	88.9	16	88.9	0	0.0
Virgin Australia	30	30	25	83.3	23	76.7	0	0.0
All Airlines	48	48	41	85.4	39	81.3	0	0.0

	<i>Sectors</i>		<i>Departures On Time</i>		<i>Arrivals On Time</i>		<i>Cancellations</i>	
	<i>Sched.</i>	<i>Flown</i>	<i>No.</i>	<i>%</i>	<i>No.</i>	<i>%</i>	<i>No.</i>	<i>%</i>
Brisbane-Mackay								
Jetstar	93	88	52	59.1	53	60.2	5	5.4
QantasLink	111	107	95	88.8	91	85.0	4	3.6
Virgin Australia	149	147	109	74.1	100	68.0	2	1.3
All Airlines	353	342	256	74.9	244	71.3	11	3.1
Brisbane-Melbourne								
Jetstar	120	117	64	54.7	63	53.8	3	2.5
Qantas	426	424	357	84.2	339	80.0	2	0.5
Tigerair	87	87	51	58.6	52	59.8	0	0.0
Virgin Australia	385	381	299	78.5	267	70.1	4	1.0
All Airlines	1 018	1 009	771	76.4	721	71.5	9	0.9
Brisbane-Moranbah								
QantasLink	155	140	118	84.3	120	85.7	15	9.7
Virgin Australia Regional Airlines	71	70	62	88.6	43	61.4	1	1.4
All Airlines	226	210	180	85.7	163	77.6	16	7.1
Brisbane-Mount Isa								
Qantas	55	55	49	89.1	45	81.8	0	0.0
Virgin Australia	21	21	20	95.2	19	90.5	0	0.0
All Airlines	76	76	69	90.8	64	84.2	0	0.0
Brisbane-Newcastle								
Jetstar	119	116	90	77.6	93	80.2	3	2.5
QantasLink	67	64	50	78.1	29	45.3	3	4.5
Virgin Australia	79	79	66	83.5	67	84.8	0	0.0
All Airlines	265	259	206	79.5	189	73.0	6	2.3
Brisbane-Perth								
Jetstar	26	26	24	92.3	19	73.1	0	0.0
Qantas	137	137	115	83.9	108	78.8	0	0.0
Virgin Australia	90	88	60	68.2	43	48.9	2	2.2
All Airlines	253	251	199	79.3	170	67.7	2	0.8
Brisbane-Proserpine								
Jetstar	30	30	20	66.7	22	73.3	0	0.0
Virgin Australia	47	47	41	87.2	38	80.9	0	0.0
All Airlines	77	77	61	79.2	60	77.9	0	0.0
Brisbane-Rockhampton								
QantasLink	213	205	162	79.0	158	77.1	8	3.8
Virgin Australia	97	96	71	74.0	76	79.2	1	1.0
Virgin Australia Regional Airlines	116	115	97	84.3	96	83.5	1	0.9
All Airlines	426	416	330	79.3	330	79.3	10	2.3
Brisbane-Sydney								
Jetstar	131	122	85	69.7	85	69.7	9	6.9
Qantas	614	598	484	80.9	464	77.6	16	2.6
Tigerair	72	70	47	67.1	42	60.0	2	2.8
Virgin Australia	531	517	424	82.0	393	76.0	14	2.6
All Airlines	1 348	1 307	1 040	79.6	984	75.3	41	3.0
Brisbane-Townsville								
Jetstar	30	30	21	70.0	20	66.7	0	0.0
Qantas	145	145	118	81.4	112	77.2	0	0.0
Virgin Australia	153	151	121	80.1	101	66.9	2	1.3
All Airlines	328	326	260	79.8	233	71.5	2	0.6

	<i>Sectors</i>		<i>Departures On Time</i>		<i>Arrivals On Time</i>		<i>Cancellations</i>	
	<i>Sched.</i>	<i>Flown</i>	<i>No.</i>	<i>%</i>	<i>No.</i>	<i>%</i>	<i>No.</i>	<i>%</i>
Broome-Perth								
Qantas	30	30	25	83.3	26	86.7	0	0.0
QantasLink	56	55	50	90.9	50	90.9	1	1.8
Virgin Australia	30	30	26	86.7	25	83.3	0	0.0
Virgin Australia Regional Airlines	13	13	8	61.5	9	69.2	0	0.0
All Airlines	129	128	109	85.2	110	85.9	1	0.8
Bundaberg-Brisbane								
QantasLink	116	114	86	75.4	75	65.8	2	1.7
Virgin Australia Regional Airlines	30	30	25	83.3	25	83.3	0	0.0
All Airlines	146	144	111	77.1	100	69.4	2	1.4
Cairns-Brisbane								
Jetstar	97	96	78	81.3	74	77.1	1	1.0
Qantas	116	115	97	84.3	95	82.6	1	0.9
QantasLink	4	4	4	100.0	4	100.0	0	0.0
Virgin Australia	149	148	118	79.7	115	77.7	1	0.7
All Airlines	366	363	297	81.8	288	79.3	3	0.8
Cairns-Melbourne								
Jetstar	73	73	47	64.4	49	67.1	0	0.0
Qantas	30	30	24	80.0	26	86.7	0	0.0
Tigerair	38	38	31	81.6	27	71.1	0	0.0
Virgin Australia	35	35	26	74.3	27	77.1	0	0.0
All Airlines	176	176	128	72.7	129	73.3	0	0.0
Cairns-Sydney								
Jetstar	59	58	50	86.2	49	84.5	1	1.7
Qantas	60	60	47	78.3	53	88.3	0	0.0
Tigerair	30	30	22	73.3	21	70.0	0	0.0
Virgin Australia	86	86	68	79.1	73	84.9	0	0.0
All Airlines	235	234	187	79.9	196	83.8	1	0.4
Cairns-Townsville								
QantasLink	182	177	156	88.1	155	87.6	5	2.7
Virgin Australia Regional Airlines	24	24	24	100.0	22	91.7	0	0.0
All Airlines	206	201	180	89.6	177	88.1	5	2.4
Canberra-Adelaide								
Qantas	48	48	44	91.7	45	93.8	0	0.0
QantasLink	21	21	14	66.7	14	66.7	0	0.0
Virgin Australia	25	25	24	96.0	24	96.0	0	0.0
All Airlines	94	94	82	87.2	83	88.3	0	0.0
Canberra-Brisbane								
Qantas	133	121	104	86.0	104	86.0	12	9.0
QantasLink	45	37	22	59.5	21	56.8	8	17.8
Virgin Australia	94	94	82	87.2	78	83.0	0	0.0
All Airlines	272	252	208	82.5	203	80.6	20	7.4
Canberra-Melbourne								
Qantas	249	242	221	91.3	222	91.7	7	2.8
QantasLink	49	44	35	79.5	25	56.8	5	10.2
Virgin Australia	169	166	129	77.7	128	77.1	3	1.8
All Airlines	467	452	385	85.2	375	83.0	15	3.2
Canberra-Sydney								
Qantas	158	157	141	89.8	136	86.6	1	0.6
QantasLink	399	371	284	76.5	284	76.5	28	7.0
Virgin Australia	49	49	46	93.9	42	85.7	0	0.0
Virgin Australia Regional Airlines	248	245	216	88.2	204	83.3	3	1.2
All Airlines	854	822	687	83.6	666	81.0	32	3.7

	<i>Sectors</i>		<i>Departures On Time</i>		<i>Arrivals On Time</i>		<i>Cancellations</i>	
	<i>Sched.</i>	<i>Flown</i>	<i>No.</i>	<i>%</i>	<i>No.</i>	<i>%</i>	<i>No.</i>	<i>%</i>
Coffs Harbour-Sydney								
QantasLink	149	146	89	61.0	94	64.4	3	2.0
Tigerair	26	25	20	80.0	19	76.0	1	3.8
Virgin Australia	60	58	47	81.0	47	81.0	2	3.3
All Airlines	235	229	156	68.1	160	69.9	6	2.6
Darwin-Brisbane								
Qantas	31	31	24	77.4	26	83.9	0	0.0
Virgin Australia	31	29	16	55.2	19	65.5	2	6.5
All Airlines	62	60	40	66.7	45	75.0	2	3.2
Darwin-Melbourne								
Jetstar	30	30	19	63.3	23	76.7	0	0.0
Qantas	23	23	17	73.9	20	87.0	0	0.0
Virgin Australia	30	29	29	100.0	28	96.6	1	3.3
All Airlines	83	82	65	79.3	71	86.6	1	1.2
Darwin-Perth								
Qantas	30	30	25	83.3	26	86.7	0	0.0
Virgin Australia	25	25	25	100.0	24	96.0	0	0.0
All Airlines	55	55	50	90.9	50	90.9	0	0.0
Darwin-Sydney								
Jetstar	26	25	13	52.0	17	68.0	1	3.8
Qantas	52	52	43	82.7	42	80.8	0	0.0
Virgin Australia	30	30	25	83.3	22	73.3	0	0.0
All Airlines	108	107	81	75.7	81	75.7	1	0.9
Dubbo-Sydney								
QantasLink	123	122	75	61.5	66	54.1	1	0.8
Regional Express	156	154	135	87.7	117	76.0	2	1.3
All Airlines	279	276	210	76.1	183	66.3	3	1.1
Emerald-Brisbane								
QantasLink	178	163	104	63.8	106	65.0	15	8.4
Virgin Australia Regional Airlines	96	96	68	70.8	70	72.9	0	0.0
All Airlines	274	259	172	66.4	176	68.0	15	5.5
Geraldton-Perth								
QantasLink	60	60	54	90.0	54	90.0	0	0.0
Virgin Australia Regional Airlines	94	93	90	96.8	89	95.7	1	1.1
All Airlines	154	153	144	94.1	143	93.5	1	0.6
Gladstone-Brisbane								
QantasLink	239	228	168	73.7	148	64.9	11	4.6
Virgin Australia	2	2	1	50.0	1	50.0	0	0.0
Virgin Australia Regional Airlines	130	129	109	84.5	103	79.8	1	0.8
All Airlines	371	359	278	77.4	252	70.2	12	3.2
Gold Coast-Adelaide								
Jetstar	30	30	21	70.0	19	63.3	0	0.0
Virgin Australia	30	30	29	96.7	29	96.7	0	0.0
All Airlines	60	60	50	83.3	48	80.0	0	0.0
Gold Coast-Melbourne								
Jetstar	181	181	141	77.9	128	70.7	0	0.0
Tigerair	82	82	44	53.7	42	51.2	0	0.0
Virgin Australia	170	168	136	81.0	135	80.4	2	1.2
All Airlines	433	431	321	74.5	305	70.8	2	0.5

	<i>Sectors</i>		<i>Departures On Time</i>		<i>Arrivals On Time</i>		<i>Cancellations</i>	
	<i>Sched.</i>	<i>Flown</i>	<i>No.</i>	<i>%</i>	<i>No.</i>	<i>%</i>	<i>No.</i>	<i>%</i>
Gold Coast-Sydney								
Jetstar	310	294	185	62.9	184	62.6	16	5.2
Qantas	91	90	77	85.6	74	82.2	1	1.1
Tigerair	52	50	33	66.0	21	42.0	2	3.8
Virgin Australia	302	297	238	80.1	233	78.5	5	1.7
All Airlines	755	731	533	72.9	512	70.0	24	3.2
Hamilton Island-Brisbane								
Jetstar	18	18	15	83.3	15	83.3	0	0.0
Virgin Australia	30	30	23	76.7	23	76.7	0	0.0
All Airlines	48	48	38	79.2	38	79.2	0	0.0
Hamilton Island-Sydney								
Jetstar	30	30	18	60.0	17	56.7	0	0.0
Virgin Australia	30	30	25	83.3	24	80.0	0	0.0
All Airlines	60	60	43	71.7	41	68.3	0	0.0
Hobart-Melbourne								
Jetstar	172	172	116	67.4	116	67.4	0	0.0
Qantas	60	60	56	93.3	54	90.0	0	0.0
QantasLink	30	30	25	83.3	20	66.7	0	0.0
Tigerair	30	30	20	66.7	21	70.0	0	0.0
Virgin Australia	142	141	114	80.9	111	78.7	1	0.7
All Airlines	434	433	331	76.4	322	74.4	1	0.2
Hobart-Sydney								
Jetstar	73	72	40	55.6	47	65.3	1	1.4
Qantas	30	30	27	90.0	28	93.3	0	0.0
Virgin Australia	59	59	46	78.0	48	81.4	0	0.0
All Airlines	162	161	113	70.2	123	76.4	1	0.6
Kalgoorlie-Perth								
Qantas	60	60	60	100.0	60	100.0	0	0.0
QantasLink	24	24	24	100.0	24	100.0	0	0.0
Virgin Australia	47	47	41	87.2	40	85.1	0	0.0
Virgin Australia Regional Airlines	11	11	10	90.9	10	90.9	0	0.0
All Airlines	142	142	135	95.1	134	94.4	0	0.0
Karratha-Perth								
Qantas	183	177	175	98.9	176	99.4	6	3.3
QantasLink	63	61	57	93.4	56	91.8	2	3.2
Virgin Australia	84	83	76	91.6	73	88.0	1	1.2
All Airlines	330	321	308	96.0	305	95.0	9	2.7
Launceston-Melbourne								
Jetstar	141	138	98	71.0	92	66.7	3	2.1
QantasLink	120	118	94	79.7	88	74.6	2	1.7
Virgin Australia	116	116	96	82.8	89	76.7	0	0.0
All Airlines	377	372	288	77.4	269	72.3	5	1.3
Launceston-Sydney								
Jetstar	60	59	37	62.7	34	57.6	1	1.7
Virgin Australia	29	28	25	89.3	24	85.7	1	3.4
All Airlines	89	87	62	71.3	58	66.7	2	2.2
Mackay-Brisbane								
Jetstar	93	87	44	50.6	45	51.7	6	6.5
QantasLink	113	108	92	85.2	87	80.6	5	4.4
Virgin Australia	149	148	112	75.7	110	74.3	1	0.7
All Airlines	355	343	248	72.3	242	70.6	12	3.4

	<i>Sectors</i>		<i>Departures On Time</i>		<i>Arrivals On Time</i>		<i>Cancellations</i>	
	<i>Sched.</i>	<i>Flown</i>	<i>No.</i>	<i>%</i>	<i>No.</i>	<i>%</i>	<i>No.</i>	<i>%</i>
Melbourne-Adelaide								
Jetstar	76	76	60	78.9	60	78.9	0	0.0
Qantas	284	284	253	89.1	250	88.0	0	0.0
QantasLink	17	17	14	82.4	15	88.2	0	0.0
Tigerair	73	73	64	87.7	61	83.6	0	0.0
Virgin Australia	262	262	224	85.5	216	82.4	0	0.0
All Airlines	712	712	615	86.4	602	84.6	0	0.0
Melbourne-Alice Springs								
Qantas	30	30	26	86.7	27	90.0	0	0.0
Tigerair	17	17	14	82.4	12	70.6	0	0.0
All Airlines	47	47	40	85.1	39	83.0	0	0.0
Melbourne-Brisbane								
Jetstar	119	117	49	41.9	57	48.7	2	1.7
Qantas	427	425	377	88.7	335	78.8	2	0.5
Tigerair	86	86	62	72.1	50	58.1	0	0.0
Virgin Australia	385	381	300	78.7	263	69.0	4	1.0
All Airlines	1 017	1 009	788	78.1	705	69.9	8	0.8
Melbourne-Cairns								
Jetstar	74	74	48	64.9	52	70.3	0	0.0
Qantas	30	30	28	93.3	28	93.3	0	0.0
Tigerair	37	37	36	97.3	31	83.8	0	0.0
Virgin Australia	35	35	26	74.3	29	82.9	0	0.0
All Airlines	176	176	138	78.4	140	79.5	0	0.0
Melbourne-Canberra								
Qantas	249	242	223	92.1	222	91.7	7	2.8
QantasLink	49	44	40	90.9	36	81.8	5	10.2
Virgin Australia	169	167	129	77.2	122	73.1	2	1.2
All Airlines	467	453	392	86.5	380	83.9	14	3.0
Melbourne-Darwin								
Jetstar	30	30	23	76.7	19	63.3	0	0.0
Qantas	23	23	22	95.7	21	91.3	0	0.0
Virgin Australia	30	29	29	100.0	24	82.8	1	3.3
All Airlines	83	82	74	90.2	64	78.0	1	1.2
Melbourne-Gold Coast								
Jetstar	182	181	121	66.9	129	71.3	1	0.5
Tigerair	82	82	63	76.8	55	67.1	0	0.0
Virgin Australia	170	168	125	74.4	126	75.0	2	1.2
All Airlines	434	431	309	71.7	310	71.9	3	0.7
Melbourne-Hobart								
Jetstar	172	172	123	71.5	124	72.1	0	0.0
Qantas	60	60	57	95.0	58	96.7	0	0.0
QantasLink	30	30	19	63.3	21	70.0	0	0.0
Tigerair	30	30	22	73.3	21	70.0	0	0.0
Virgin Australia	142	141	112	79.4	111	78.7	1	0.7
All Airlines	434	433	333	76.9	335	77.4	1	0.2
Melbourne-Launceston								
Jetstar	140	138	103	74.6	105	76.1	2	1.4
QantasLink	120	118	94	79.7	87	73.7	2	1.7
Virgin Australia	116	116	86	74.1	83	71.6	0	0.0
All Airlines	376	372	283	76.1	275	73.9	4	1.1
Melbourne-Mildura								
QantasLink	85	85	70	82.4	66	77.6	0	0.0
Regional Express	84	84	77	91.7	76	90.5	0	0.0
Virgin Australia	30	30	27	90.0	27	90.0	0	0.0
All Airlines	199	199	174	87.4	169	84.9	0	0.0

	<i>Sectors</i>		<i>Departures On Time</i>		<i>Arrivals On Time</i>		<i>Cancellations</i>	
	<i>Sched.</i>	<i>Flown</i>	<i>No.</i>	<i>%</i>	<i>No.</i>	<i>%</i>	<i>No.</i>	<i>%</i>
Melbourne-Newcastle								
Jetstar	103	103	73	70.9	70	68.0	0	0.0
Virgin Australia	30	30	25	83.3	26	86.7	0	0.0
All Airlines	133	133	98	73.7	96	72.2	0	0.0
Melbourne-Perth								
Jetstar	77	75	64	85.3	68	90.7	2	2.6
Qantas	214	213	168	78.9	165	77.5	1	0.5
Tigerair	55	55	49	89.1	50	90.9	0	0.0
Virgin Australia	126	126	106	84.1	115	91.3	0	0.0
All Airlines	472	469	387	82.5	398	84.9	3	0.6
Melbourne-Sunshine Coast								
Jetstar	58	57	45	78.9	48	84.2	1	1.7
Tigerair	30	30	25	83.3	24	80.0	0	0.0
Virgin Australia	30	30	28	93.3	27	90.0	0	0.0
All Airlines	118	117	98	83.8	99	84.6	1	0.8
Melbourne-Sydney								
Jetstar	309	302	217	71.9	208	68.9	7	2.3
Qantas	923	905	799	88.3	735	81.2	18	2.0
Tigerair	173	171	127	74.3	125	73.1	2	1.2
Virgin Australia	745	736	590	80.2	519	70.5	9	1.2
All Airlines	2 150	2 114	1 733	82.0	1 587	75.1	36	1.7
Mildura-Melbourne								
QantasLink	85	85	72	84.7	67	78.8	0	0.0
Regional Express	84	84	75	89.3	75	89.3	0	0.0
Virgin Australia	30	30	23	76.7	25	83.3	0	0.0
All Airlines	199	199	170	85.4	167	83.9	0	0.0
Moranbah-Brisbane								
QantasLink	147	134	104	77.6	102	76.1	13	8.8
Virgin Australia Regional Airlines	71	70	50	71.4	30	42.9	1	1.4
All Airlines	218	204	154	75.5	132	64.7	14	6.4
Mount Isa-Brisbane								
Qantas	55	55	43	78.2	46	83.6	0	0.0
Virgin Australia	21	21	20	95.2	19	90.5	0	0.0
All Airlines	76	76	63	82.9	65	85.5	0	0.0
Newcastle-Brisbane								
Jetstar	119	118	82	69.5	78	66.1	1	0.8
QantasLink	68	63	30	47.6	29	46.0	5	7.4
Virgin Australia	79	77	52	67.5	48	62.3	2	2.5
All Airlines	266	258	164	63.6	155	60.1	8	3.0
Newcastle-Melbourne								
Jetstar	103	103	71	68.9	64	62.1	0	0.0
Virgin Australia	30	30	10	33.3	13	43.3	0	0.0
All Airlines	133	133	81	60.9	77	57.9	0	0.0
Newman-Perth								
Qantas	124	118	110	93.2	109	92.4	6	4.8
QantasLink	35	34	33	97.1	33	97.1	1	2.9
Virgin Australia	37	35	32	91.4	31	88.6	2	5.4
Virgin Australia Regional Airlines	10	9	8	88.9	9	100.0	1	10.0
All Airlines	206	196	183	93.4	182	92.9	10	4.9
Perth-Adelaide								
Jetstar	30	30	27	90.0	27	90.0	0	0.0
Qantas	115	115	108	93.9	111	96.5	0	0.0
Virgin Australia	63	63	57	90.5	61	96.8	0	0.0
All Airlines	208	208	192	92.3	199	95.7	0	0.0

	<i>Sectors</i>		<i>Departures On Time</i>		<i>Arrivals On Time</i>		<i>Cancellations</i>	
	<i>Sched.</i>	<i>Flown</i>	<i>No.</i>	<i>%</i>	<i>No.</i>	<i>%</i>	<i>No.</i>	<i>%</i>
Perth-Brisbane								
Jetstar	26	26	18	69.2	21	80.8	0	0.0
Qantas	137	137	126	92.0	126	92.0	0	0.0
Virgin Australia	90	90	76	84.4	76	84.4	0	0.0
All Airlines	253	253	220	87.0	223	88.1	0	0.0
Perth-Broome								
Qantas	30	30	28	93.3	29	96.7	0	0.0
QantasLink	56	55	53	96.4	53	96.4	1	1.8
Virgin Australia	30	30	28	93.3	28	93.3	0	0.0
Virgin Australia Regional Airlines	12	12	10	83.3	10	83.3	0	0.0
All Airlines	128	127	119	93.7	120	94.5	1	0.8
Perth-Darwin								
Qantas	30	30	28	93.3	28	93.3	0	0.0
Virgin Australia	25	25	24	96.0	24	96.0	0	0.0
All Airlines	55	55	52	94.5	52	94.5	0	0.0
Perth-Geraldton								
QantasLink	60	60	53	88.3	52	86.7	0	0.0
Virgin Australia Regional Airlines	89	89	88	98.9	86	96.6	0	0.0
All Airlines	149	149	141	94.6	138	92.6	0	0.0
Perth-Kalgoorlie								
Qantas	60	60	59	98.3	59	98.3	0	0.0
QantasLink	25	25	25	100.0	25	100.0	0	0.0
Virgin Australia	47	47	41	87.2	41	87.2	0	0.0
Virgin Australia Regional Airlines	12	12	11	91.7	11	91.7	0	0.0
All Airlines	144	144	136	94.4	136	94.4	0	0.0
Perth-Karratha								
Qantas	183	178	172	96.6	175	98.3	5	2.7
QantasLink	63	61	58	95.1	58	95.1	2	3.2
Virgin Australia	84	83	79	95.2	79	95.2	1	1.2
All Airlines	330	322	309	96.0	312	96.9	8	2.4
Perth-Melbourne								
Jetstar	78	74	57	77.0	54	73.0	4	5.1
Qantas	215	213	177	83.1	185	86.9	2	0.9
Tigerair	56	56	51	91.1	47	83.9	0	0.0
Virgin Australia	126	126	110	87.3	110	87.3	0	0.0
All Airlines	475	469	395	84.2	396	84.4	6	1.3
Perth-Newman								
Qantas	124	119	113	95.0	111	93.3	5	4.0
QantasLink	35	34	32	94.1	33	97.1	1	2.9
Virgin Australia	37	36	33	91.7	33	91.7	1	2.7
Virgin Australia Regional Airlines	10	10	9	90.0	9	90.0	0	0.0
All Airlines	206	199	187	94.0	186	93.5	7	3.4
Perth-Port Hedland								
Qantas	122	120	118	98.3	120	100.0	2	1.6
QantasLink	43	41	39	95.1	39	95.1	2	4.7
Virgin Australia	51	51	47	92.2	47	92.2	0	0.0
All Airlines	216	212	204	96.2	206	97.2	4	1.9
Perth-Sydney								
Jetstar	39	38	27	71.1	28	73.7	1	2.6
Qantas	198	198	174	87.9	182	91.9	0	0.0
Virgin Australia	111	110	101	91.8	99	90.0	1	0.9
All Airlines	348	346	302	87.3	309	89.3	2	0.6

	<i>Sectors</i>		<i>Departures On Time</i>		<i>Arrivals On Time</i>		<i>Cancellations</i>	
	<i>Sched.</i>	<i>Flown</i>	<i>No.</i>	<i>%</i>	<i>No.</i>	<i>%</i>	<i>No.</i>	<i>%</i>
Port Hedland-Perth								
Qantas	122	120	116	96.7	118	98.3	2	1.6
QantasLink	43	42	37	88.1	38	90.5	1	2.3
Virgin Australia	51	51	45	88.2	43	84.3	0	0.0
All Airlines	216	213	198	93.0	199	93.4	3	1.4
Port Lincoln-Adelaide								
QantasLink	99	98	94	95.9	93	94.9	1	1.0
Regional Express	205	205	194	94.6	194	94.6	0	0.0
All Airlines	304	303	288	95.0	287	94.7	1	0.3
Port Macquarie-Sydney								
QantasLink	132	130	76	58.5	66	50.8	2	1.5
Virgin Australia Regional Airlines	60	58	43	74.1	38	65.5	2	3.3
All Airlines	192	188	119	63.3	104	55.3	4	2.1
Proserpine-Brisbane								
Jetstar	30	30	22	73.3	23	76.7	0	0.0
Virgin Australia	47	46	32	69.6	27	58.7	1	2.1
All Airlines	77	76	54	71.1	50	65.8	1	1.3
Rockhampton-Brisbane								
QantasLink	192	183	135	73.8	121	66.1	9	4.7
Virgin Australia	97	95	71	74.7	61	64.2	2	2.1
Virgin Australia Regional Airlines	116	116	103	88.8	98	84.5	0	0.0
All Airlines	405	394	309	78.4	280	71.1	11	2.7
Sunshine Coast-Melbourne								
Jetstar	59	58	39	67.2	42	72.4	1	1.7
Tigerair	30	30	23	76.7	23	76.7	0	0.0
Virgin Australia	30	30	17	56.7	20	66.7	0	0.0
All Airlines	119	118	79	66.9	85	72.0	1	0.8
Sunshine Coast-Sydney								
Jetstar	102	100	71	71.0	68	68.0	2	2.0
Virgin Australia	34	34	27	79.4	25	73.5	0	0.0
All Airlines	136	134	98	73.1	93	69.4	2	1.5
Sydney-Adelaide								
Jetstar	87	85	73	85.9	67	78.8	2	2.3
Qantas	261	261	222	85.1	218	83.5	0	0.0
Virgin Australia	158	156	122	78.2	125	80.1	2	1.3
All Airlines	506	502	417	83.1	410	81.7	4	0.8
Sydney-Albury								
QantasLink	111	111	76	68.5	71	64.0	0	0.0
Regional Express	111	111	90	81.1	93	83.8	0	0.0
Virgin Australia Regional Airlines	60	60	48	80.0	49	81.7	0	0.0
All Airlines	282	282	214	75.9	213	75.5	0	0.0
Sydney-Alice Springs								
Qantas	30	30	24	80.0	24	80.0	0	0.0
Tigerair	17	17	16	94.1	16	94.1	0	0.0
All Airlines	47	47	40	85.1	40	85.1	0	0.0
Sydney-Ayers Rock								
Jetstar	17	17	11	64.7	13	76.5	0	0.0
Virgin Australia	30	29	26	89.7	25	86.2	1	3.3
All Airlines	47	46	37	80.4	38	82.6	1	2.1

	<i>Sectors</i>		<i>Departures On Time</i>		<i>Arrivals On Time</i>		<i>Cancellations</i>	
	<i>Sched.</i>	<i>Flown</i>	<i>No.</i>	<i>%</i>	<i>No.</i>	<i>%</i>	<i>No.</i>	<i>%</i>
Sydney-Ballina								
Jetstar	59	58	41	70.7	44	75.9	1	1.7
Regional Express	24	24	18	75.0	18	75.0	0	0.0
Virgin Australia	30	30	23	76.7	22	73.3	0	0.0
All Airlines	113	112	82	73.2	84	75.0	1	0.9
Sydney-Brisbane								
Jetstar	132	126	78	61.9	80	63.5	6	4.5
Qantas	585	570	463	81.2	419	73.5	15	2.6
Tigerair	73	71	52	73.2	40	56.3	2	2.7
Virgin Australia	530	513	415	80.9	358	69.8	17	3.2
All Airlines	1 320	1 280	1 008	78.8	897	70.1	40	3.0
Sydney-Cairns								
Jetstar	59	58	37	63.8	40	69.0	1	1.7
Qantas	60	60	51	85.0	51	85.0	0	0.0
Tigerair	30	30	29	96.7	26	86.7	0	0.0
Virgin Australia	85	85	66	77.6	62	72.9	0	0.0
All Airlines	234	233	183	78.5	179	76.8	1	0.4
Sydney-Canberra								
Qantas	159	158	144	91.1	140	88.6	1	0.6
QantasLink	400	374	260	69.5	286	76.5	26	6.5
Virgin Australia	50	50	49	98.0	50	100.0	0	0.0
Virgin Australia Regional Airlines	245	242	205	84.7	202	83.5	3	1.2
All Airlines	854	824	658	79.9	678	82.3	30	3.5
Sydney-Coffs Harbour								
QantasLink	149	145	110	75.9	90	62.1	4	2.7
Tigerair	26	25	20	80.0	21	84.0	1	3.8
Virgin Australia	60	59	49	83.1	49	83.1	1	1.7
All Airlines	235	229	179	78.2	160	69.9	6	2.6
Sydney-Darwin								
Jetstar	26	25	17	68.0	16	64.0	1	3.8
Qantas	51	51	39	76.5	33	64.7	0	0.0
Virgin Australia	30	30	25	83.3	24	80.0	0	0.0
All Airlines	107	106	81	76.4	73	68.9	1	0.9
Sydney-Dubbo								
QantasLink	122	121	86	71.1	66	54.5	1	0.8
Regional Express	150	150	128	85.3	129	86.0	0	0.0
All Airlines	272	271	214	79.0	195	72.0	1	0.4
Sydney-Gold Coast								
Jetstar	312	296	185	62.5	175	59.1	16	5.1
Qantas	91	90	83	92.2	84	93.3	1	1.1
Tigerair	52	51	38	74.5	39	76.5	1	1.9
Virgin Australia	303	296	256	86.5	238	80.4	7	2.3
All Airlines	758	733	562	76.7	536	73.1	25	3.3
Sydney-Hamilton Island								
Jetstar	29	29	21	72.4	24	82.8	0	0.0
Virgin Australia	30	30	26	86.7	26	86.7	0	0.0
All Airlines	59	59	47	79.7	50	84.7	0	0.0
Sydney-Hobart								
Jetstar	73	72	47	65.3	46	63.9	1	1.4
Qantas	30	30	28	93.3	28	93.3	0	0.0
Virgin Australia	59	59	52	88.1	54	91.5	0	0.0
All Airlines	162	161	127	78.9	128	79.5	1	0.6

	<i>Sectors</i>		<i>Departures On Time</i>		<i>Arrivals On Time</i>		<i>Cancellations</i>	
	<i>Sched.</i>	<i>Flown</i>	<i>No.</i>	<i>%</i>	<i>No.</i>	<i>%</i>	<i>No.</i>	<i>%</i>
Sydney-Launceston								
Jetstar	60	59	44	74.6	43	72.9	1	1.7
Virgin Australia	29	29	27	93.1	26	89.7	0	0.0
All Airlines	89	88	71	80.7	69	78.4	1	1.1
Sydney-Melbourne								
Jetstar	309	302	232	76.8	230	76.2	7	2.3
Qantas	922	903	769	85.2	759	84.1	19	2.1
Tigerair	173	171	128	74.9	122	71.3	2	1.2
Virgin Australia	744	734	539	73.4	548	74.7	10	1.3
All Airlines	2 148	2 110	1 668	79.1	1 659	78.6	38	1.8
Sydney-Perth								
Jetstar	39	38	25	65.8	27	71.1	1	2.6
Qantas	201	201	164	81.6	170	84.6	0	0.0
Virgin Australia	111	111	90	81.1	91	82.0	0	0.0
All Airlines	351	350	279	79.7	288	82.3	1	0.3
Sydney-Port Macquarie								
QantasLink	132	130	88	67.7	67	51.5	2	1.5
Virgin Australia Regional Airlines	60	58	47	81.0	49	84.5	2	3.3
All Airlines	192	188	135	71.8	116	61.7	4	2.1
Sydney-Sunshine Coast								
Jetstar	103	102	84	82.4	84	82.4	1	1.0
Virgin Australia	34	34	28	82.4	28	82.4	0	0.0
All Airlines	137	136	112	82.4	112	82.4	1	0.7
Sydney-Townsville								
Jetstar	21	21	16	76.2	16	76.2	0	0.0
Virgin Australia	29	29	25	86.2	18	62.1	0	0.0
All Airlines	50	50	41	82.0	34	68.0	0	0.0
Sydney-Wagga Wagga								
QantasLink	110	109	82	75.2	68	62.4	1	0.9
Regional Express	135	135	120	88.9	124	91.9	0	0.0
All Airlines	245	244	202	82.8	192	78.7	1	0.4
Townsville-Brisbane								
Jetstar	30	30	18	60.0	18	60.0	0	0.0
Qantas	145	144	122	84.7	125	86.8	1	0.7
Virgin Australia	153	152	105	69.1	108	71.1	1	0.7
All Airlines	328	326	245	75.2	251	77.0	2	0.6
Townsville-Cairns								
QantasLink	184	175	135	77.1	139	79.4	9	4.9
Virgin Australia Regional Airlines	24	24	24	100.0	23	95.8	0	0.0
All Airlines	208	199	159	79.9	162	81.4	9	4.3
Townsville-Sydney								
Jetstar	21	21	15	71.4	16	76.2	0	0.0
Virgin Australia	29	28	16	57.1	18	64.3	1	3.4
All Airlines	50	49	31	63.3	34	69.4	1	2.0
Wagga Wagga-Sydney								
QantasLink	111	110	77	70.0	70	63.6	1	0.9
Regional Express	136	136	118	86.8	113	83.1	0	0.0
All Airlines	247	246	195	79.3	183	74.4	1	0.4

Airports

On time performance is reported for all routes where the passenger load averages over 8000 passengers per month, and where two or more airlines operate in competition. The following data reports by airport against flights operated on those routes only.

Airport	Departures			Arrivals		
	Sectors	On Time		Sectors	On Time	
	Flown	No.	%	Flown	No.	%
Adelaide						
Jetstar	250	198	79.2	251	203	80.9
Qantas	812	711	87.6	814	710	87.2
QantasLink	133	116	87.2	136	122	89.7
Regional Express	205	197	96.1	205	194	94.6
Tigerair	73	61	83.6	73	61	83.6
Virgin Australia	643	559	86.9	645	537	83.3
All Airlines	2 116	1 842	87.1	2 124	1 827	86.0
Relates to services to and from Brisbane, Canberra, Gold Coast, Melbourne, Perth, Port Lincoln and Sydney.						
Albury						
QantasLink	111	80	72.1	111	71	64.0
Regional Express	111	103	92.8	111	93	83.8
Virgin Australia Regional Airlines	60	46	76.7	60	49	81.7
All Airlines	282	229	81.2	282	213	75.5
Relates to services to and from Sydney only.						
Alice Springs						
Qantas	60	41	68.3	60	51	85.0
Tigerair	34	29	85.3	34	28	82.4
All Airlines	94	70	74.5	94	79	84.0
Relates to services to and from Melbourne and Sydney.						
Ayers Rock						
Jetstar	17	9	52.9	17	13	76.5
Virgin Australia	29	25	86.2	29	25	86.2
All Airlines	46	34	73.9	46	38	82.6
Relates to services to and from Sydney only.						
Ballina						
Jetstar	58	34	58.6	58	44	75.9
Regional Express	19	13	68.4	24	18	75.0
Virgin Australia	30	18	60.0	30	22	73.3
All Airlines	107	65	60.7	112	84	75.0
Relates to services to and from Sydney only.						
Brisbane						
Jetstar	670	473	70.6	678	441	65.0
Qantas	1 730	1 445	83.5	1 704	1 368	80.3
QantasLink	1 045	865	82.8	1 034	693	67.0
Tigerair	157	98	62.4	157	90	57.3
Virgin Australia	1 939	1 544	79.6	1 934	1 393	72.0
Virgin Australia Regional Airlines	439	381	86.8	441	326	73.9
All Airlines	5 980	4 806	80.4	5 948	4 311	72.5
Relates to services to and from Adelaide, Bundaberg, Cairns, Canberra, Darwin, Emerald, Gladstone, Hamilton Island, Mackay, Melbourne, Moranbah, Mount Isa, Newcastle, Perth, Proserpine, Rockhampton, Sydney and Townsville.						

Airport	Departures			Arrivals		
	Sectors Flown	On Time		Sectors Flown	On Time	
		No.	%		No.	%
Broome						
Qantas	30	25	83.3	30	29	96.7
QantasLink	55	50	90.9	55	53	96.4
Virgin Australia	30	26	86.7	30	28	93.3
Virgin Australia Regional Airlines	13	8	61.5	12	10	83.3
All Airlines	128	109	85.2	127	120	94.5
Relates to services to and from Perth only.						
Bundaberg						
QantasLink	114	86	75.4	114	92	80.7
Virgin Australia Regional Airlines	30	25	83.3	30	27	90.0
All Airlines	144	111	77.1	144	119	82.6
Relates to services to and from Brisbane only.						
Cairns						
Jetstar	227	175	77.1	225	164	72.9
Qantas	205	168	82.0	205	178	86.8
QantasLink	181	160	88.4	180	144	80.0
Tigerair	68	53	77.9	67	57	85.1
Virgin Australia	269	212	78.8	268	205	76.5
Virgin Australia Regional Airlines	24	24	100.0	24	23	95.8
All Airlines	974	792	81.3	969	771	79.6
Relates to services to and from Brisbane, Melbourne, Sydney and Townsville.						
Canberra						
Qantas	568	510	89.8	566	514	90.8
QantasLink	473	355	75.1	477	363	76.1
Virgin Australia	334	281	84.1	336	270	80.4
Virgin Australia Regional Airlines	245	216	88.2	242	202	83.5
All Airlines	1 620	1 362	84.1	1 621	1 349	83.2
Relates to services to and from Adelaide, Brisbane, Melbourne and Sydney.						
Coffs Harbour						
QantasLink	146	89	61.0	145	90	62.1
Tigerair	25	20	80.0	25	21	84.0
Virgin Australia	58	47	81.0	59	49	83.1
All Airlines	229	156	68.1	229	160	69.9
Relates to services to and from Sydney only.						
Darwin						
Jetstar	55	32	58.2	55	35	63.6
Qantas	136	109	80.1	134	110	82.1
Virgin Australia	113	95	84.1	113	89	78.8
All Airlines	304	236	77.6	302	234	77.5
Relates to services to and from Brisbane, Melbourne, Perth and Sydney.						
Dubbo						
QantasLink	122	75	61.5	121	66	54.5
Regional Express	154	135	87.7	150	129	86.0
All Airlines	276	210	76.1	271	195	72.0
Relates to services to and from Sydney only.						

Airport	Departures			Arrivals		
	Sectors Flown	On Time		Sectors Flown	On Time	
		No.	%		No.	%
Emerald						
QantasLink	163	104	63.8	163	107	65.6
Virgin Australia Regional Airlines	96	68	70.8	96	73	76.0
All Airlines	259	172	66.4	259	180	69.5
Relates to services to and from Brisbane only.						
Geraldton						
QantasLink	60	54	90.0	60	52	86.7
Virgin Australia Regional Airlines	93	90	96.8	89	86	96.6
All Airlines	153	144	94.1	149	138	92.6
Relates to services to and from Perth only.						
Gladstone						
QantasLink	228	168	73.7	209	161	77.0
Virgin Australia	2	1	50.0	2	1	50.0
Virgin Australia Regional Airlines	129	109	84.5	128	102	79.7
All Airlines	359	278	77.4	339	264	77.9
Relates to services to and from Brisbane only.						
Gold Coast						
Jetstar	505	347	68.7	507	323	63.7
Qantas	90	77	85.6	90	84	93.3
Tigerair	132	77	58.3	133	94	70.7
Virgin Australia	495	403	81.4	494	394	79.8
All Airlines	1 222	904	74.0	1 224	895	73.1
Relates to services to and from Adelaide, Melbourne and Sydney.						
Hamilton Island						
Jetstar	48	33	68.8	47	40	85.1
Virgin Australia	60	48	80.0	60	49	81.7
All Airlines	108	81	75.0	107	89	83.2
Relates to services to and from Brisbane and Sydney.						
Hobart						
Jetstar	244	156	63.9	244	170	69.7
Qantas	90	83	92.2	90	86	95.6
QantasLink	30	25	83.3	30	21	70.0
Tigerair	30	20	66.7	30	21	70.0
Virgin Australia	200	160	80.0	200	165	82.5
All Airlines	594	444	74.7	594	463	77.9
Relates to services to and from Melbourne and Sydney.						
Kalgoorlie						
Qantas	60	60	100.0	60	59	98.3
QantasLink	24	24	100.0	25	25	100.0
Virgin Australia	47	41	87.2	47	41	87.2
Virgin Australia Regional Airlines	11	10	90.9	12	11	91.7
All Airlines	142	135	95.1	144	136	94.4
Relates to services to and from Perth only.						

Airport	Departures			Arrivals		
	Sectors	On Time		Sectors	On Time	
	Flown	No.	%	Flown	No.	%
Karratha						
Qantas	177	175	98.9	178	175	98.3
QantasLink	61	57	93.4	61	58	95.1
Virgin Australia	83	76	91.6	83	79	95.2
All Airlines	321	308	96.0	322	312	96.9
Relates to services to and from Perth only.						
Launceston						
Jetstar	197	135	68.5	197	148	75.1
QantasLink	118	94	79.7	118	87	73.7
Virgin Australia	144	121	84.0	145	109	75.2
All Airlines	459	350	76.3	460	344	74.8
Relates to services to and from Melbourne and Sydney.						
Mackay						
Jetstar	87	44	50.6	88	53	60.2
QantasLink	108	92	85.2	107	91	85.0
Virgin Australia	148	112	75.7	147	100	68.0
All Airlines	343	248	72.3	342	244	71.3
Relates to services to and from Brisbane only.						
Melbourne						
Jetstar	1 325	926	69.9	1 325	924	69.7
Qantas	2 212	1 953	88.3	2 209	1 885	85.3
QantasLink	294	237	80.6	293	213	72.7
Regional Express	84	77	91.7	84	75	89.3
Tigerair	581	462	79.5	584	406	69.5
Virgin Australia	2 251	1 807	80.3	2 248	1 732	77.0
All Airlines	6 747	5 462	81.0	6 743	5 235	77.6
Relates to services to and from Adelaide, Alice Springs, Brisbane, Cairns, Canberra, Darwin, Gold Coast, Hobart, Launceston, Mildura, Newcastle, Perth, Sunshine Coast and Sydney.						
Mildura						
QantasLink	85	72	84.7	85	66	77.6
Regional Express	84	75	89.3	84	76	90.5
Virgin Australia	30	23	76.7	30	27	90.0
All Airlines	199	170	85.4	199	169	84.9
Relates to services to and from Melbourne only.						
Moranbah						
QantasLink	134	104	77.6	140	120	85.7
Virgin Australia Regional Airlines	70	50	71.4	70	43	61.4
All Airlines	204	154	75.5	210	163	77.6
Relates to services to and from Brisbane only.						
Mount Isa						
Qantas	55	43	78.2	55	45	81.8
Virgin Australia	21	20	95.2	21	19	90.5
All Airlines	76	63	82.9	76	64	84.2
Relates to services to and from Brisbane only.						

Airport	Departures			Arrivals		
	Sectors	On Time		Sectors	On Time	
	Flown	No.	%	Flown	No.	%
Newcastle						
Jetstar	221	153	69.2	219	163	74.4
QantasLink	63	30	47.6	64	29	45.3
Virgin Australia	107	62	57.9	109	93	85.3
All Airlines	391	245	62.7	392	285	72.7
Relates to services to and from Brisbane and Melbourne.						
Newman						
Qantas	118	110	93.2	119	111	93.3
QantasLink	34	33	97.1	34	33	97.1
Virgin Australia	35	32	91.4	36	33	91.7
Virgin Australia Regional Airlines	9	8	88.9	10	9	90.0
All Airlines	196	183	93.4	199	186	93.5
Relates to services to and from Perth only.						
Perth						
Jetstar	168	129	76.8	168	137	81.5
Qantas	1 200	1 103	91.9	1 196	1 058	88.5
QantasLink	276	260	94.2	276	255	92.4
Tigerair	56	51	91.1	55	50	90.9
Virgin Australia	661	596	90.2	658	543	82.5
Virgin Australia Regional Airlines	123	118	95.9	126	117	92.9
All Airlines	2 484	2 257	90.9	2 479	2 160	87.1
Relates to services to and from Adelaide, Brisbane, Broome, Darwin, Geraldton, Kalgoorlie, Karratha, Melbourne, Newman, Port Hedland and Sydney.						
Port Hedland						
Qantas	120	116	96.7	120	120	100.0
QantasLink	42	37	88.1	41	39	95.1
Virgin Australia	51	45	88.2	51	47	92.2
All Airlines	213	198	93.0	212	206	97.2
Relates to services to and from Perth only.						
Port Lincoln						
QantasLink	98	94	95.9	96	90	93.8
Regional Express	205	194	94.6	205	197	96.1
All Airlines	303	288	95.0	301	287	95.3
Relates to services to and from Adelaide only.						
Port Macquarie						
QantasLink	130	76	58.5	130	67	51.5
Virgin Australia Regional Airlines	58	43	74.1	58	49	84.5
All Airlines	188	119	63.3	188	116	61.7
Relates to services to and from Sydney only.						
Proserpine						
Jetstar	30	22	73.3	30	22	73.3
Virgin Australia	46	32	69.6	47	38	80.9
All Airlines	76	54	71.1	77	60	77.9
Relates to services to and from Brisbane only.						

Airport	Departures			Arrivals		
	Sectors Flown	On Time		Sectors Flown	On Time	
		No.	%		No.	%
Rockhampton						
QantasLink	183	135	73.8	205	158	77.1
Virgin Australia	95	71	74.7	96	76	79.2
Virgin Australia Regional Airlines	116	103	88.8	115	96	83.5
All Airlines	394	309	78.4	416	330	79.3
Relates to services to and from Brisbane only.						
Sunshine Coast						
Jetstar	158	110	69.6	159	132	83.0
Tigerair	30	23	76.7	30	24	80.0
Virgin Australia	64	44	68.8	64	55	85.9
All Airlines	252	177	70.2	253	211	83.4
Relates to services to and from Melbourne and Sydney.						
Sydney						
Jetstar	1 288	911	70.7	1 280	859	67.1
Qantas	2 354	1 987	84.4	2 386	1 965	82.4
QantasLink	990	702	70.9	990	647	65.4
Regional Express	420	356	84.8	420	334	79.5
Tigerair	365	283	77.5	363	243	66.9
Virgin Australia	2 274	1 818	79.9	2 277	1 741	76.5
Virgin Australia Regional Airlines	360	300	83.3	363	282	77.7
All Airlines	8 051	6 357	79.0	8 079	6 071	75.1
Relates to services to and from Adelaide, Albury, Alice Springs, Ayers Rock, Ballina, Brisbane, Cairns, Canberra, Coffs Harbour, Darwin, Dubbo, Gold Coast, Hamilton Island, Hobart, Launceston, Melbourne, Perth, Port Macquarie, Sunshine Coast, Townsville and Wagga Wagga.						
Townsville						
Jetstar	51	33	64.7	51	36	70.6
Qantas	144	122	84.7	145	112	77.2
QantasLink	175	135	77.1	177	155	87.6
Virgin Australia	180	121	67.2	180	119	66.1
Virgin Australia Regional Airlines	24	24	100.0	24	22	91.7
All Airlines	574	435	75.8	577	444	76.9
Relates to services to and from Brisbane, Cairns and Sydney.						
Wagga Wagga						
QantasLink	110	77	70.0	109	68	62.4
Regional Express	136	118	86.8	135	124	91.9
All Airlines	246	195	79.3	244	192	78.7
Relates to services to and from Sydney only.						

Definitions

On time departure A flight departure is counted as "on time" if it departs the gate before 15 minutes after the scheduled departure time shown in the carriers' schedule.

On time arrival A flight arrival is counted as "on time" if it arrived at the gate before 15 minutes after the scheduled arrival time shown in the carriers' schedule.
Neither diverted nor cancelled flights count as on time.

Cancellation A flight removed from service within 7 days of scheduled departure is regarded as a cancellation.

On time departure percentage The percentage of on time departures is measured against the number of departures *operated* on any particular sector.

On time arrival percentage The percentage of on time arrivals is measured against the number of arrivals *operated* on any particular sector.

Cancellation percentage The percentage of cancellations is measured against the number of services *scheduled* on any particular sector.
