



Australian Government

Department of Infrastructure and Transport

Bureau of Infrastructure, Transport and Regional Economics

STATISTICAL REPORT



Aviation

Domestic airline on time performance
November 2012

© Commonwealth of Australia 2012

ISSN: 1832-0759

Ownership of intellectual property rights in this publication

Unless otherwise noted, copyright (and any other intellectual property rights, if any) in this publication is owned by the Commonwealth of Australia (referred to below as the Commonwealth).

Disclaimer

The material contained in this publication is made available on the understanding that the Commonwealth is not providing professional advice, and that users exercise their own skill and care with respect to its use, and seek independent advice if necessary.

The Commonwealth makes no representations or warranties as to the contents or accuracy of the information contained in this publication. To the extent permitted by law, the Commonwealth disclaims liability to any person or organisation in respect of anything done, or omitted to be done, in reliance upon information contained in this publication.

Creative Commons licence

With the exception of (a) the Coat of Arms; and (b) the Department of Infrastructure's photos and graphics, copyright in this publication is licensed under a Creative Commons Attribution 3.0 Australia Licence.

Creative Commons Attribution 3.0 Australia Licence is a standard form licence agreement that allows you to copy, communicate and adapt this publication provided that you attribute the work to the Commonwealth and abide by the other licence terms. A summary of the licence terms is available from <http://creativecommons.org/licenses/by/3.0/au/deed.en>. The full licence terms are available from <http://creativecommons.org/licenses/by/3.0/au/legalcode>.

Use of the Coat of Arms

The Department of the Prime Minister and Cabinet sets the terms under which the Coat of Arms is used. Please refer to the Department's Commonwealth Coat of Arms and Government branding web page <http://www.dpmmc.gov.au/guidelines/index.cfm#brand> and, in particular, the Guidelines on the use of the Commonwealth Coat of Arms publication.

An appropriate citation for this report is:

Bureau of Infrastructure, Transport and Regional Economics (BITRE), 2012, Domestic airline on time performance, Statistical Report, BITRE, Canberra ACT.

Contact us

This publication is available in PDF format. All other rights are reserved, including in relation to any Departmental logos or trade marks which may exist. For enquiries regarding the licence and any use of this publication, please contact:

Bureau of Infrastructure, Transport and Regional Economics (BITRE)
Department of Infrastructure and Transport
GPO Box 501, Canberra ACT 2601, Australia
Telephone: (international) +61 2 6274 7210
Fax: (international) +61 2 6274 6855
Email: bitre@infrastructure.gov.au
Website: www.bitre.gov.au

Inquiries

Should you require additional information about the statistics contained in this publication:

Telephone (02) 6274 7790 or Facsimile (02) 6274 7727

Electronic mail: AVSTATS@infrastructure.gov.au

Web site: <http://www.bitre.gov.au/statistics/aviation/otphome.aspx>

Foreword

The Bureau of Infrastructure, Transport and Regional Economics (BITRE) monitors the punctuality and reliability of major domestic airlines operating between Australian airports. The purpose of this is to allow for evaluation of overall industry and individual airline performance, so that consumers of air travel can make informed decisions.

The following domestic airlines report this information monthly to the BITRE: Jetstar, Qantas, QantasLink, Regional Express, Skywest Airlines, Tiger Airways, Virgin Australia and Virgin Australia – ATR/F100 Operations. Data has been gathered since November 2003, although some airlines commenced reporting at a later date, including Jetstar which first reported in May 2004, MacAir in July 2005 and Tiger Airways in April 2008. MacAir ceased operations in February 2009 and data was not received for December 2008 onwards. Virgin Blue was rebranded as Virgin Australia in May 2011 and time series data in Microsoft Excel spreadsheet format on the BITRE website has been revised to reflect this. Services operated by Skywest on behalf of Virgin Australia using ATR/F100 aircraft commenced in November 2011 and are shown separately as Virgin Australia – ATR/F100 Operations.

Information presented in this report is for Australian domestic routes for which the passenger load averaged 8 000 or more passengers per month over the previous six months and where two or more airlines operated in competition on those routes. There were 58 routes that met this definition in November 2012. Over time, routes which meet these criteria change as airline networks and traffic levels vary.

Participating airlines report their overall monthly network performance where this is possible.

Total industry figures encompass all services operated by reporting airlines only. These airlines collectively carried over 95 per cent of total domestic passengers (regular public transport only) in 2011.

The method of capturing on time performance varies between airlines utilising different recording systems. Jetstar and Qantas jet aircraft use Aircraft Communication Addressing and Reporting System (ACARS) to electronically measure on time performance. Regional Express, Skywest, Tiger Airways, Virgin Australia, Virgin Australia – ATR/F100 Operations and the Qantas non-jet fleet record on time performance manually using records from pilots, gate agents and/or ground crews.

After initial data is collected, aggregate reports are audited internally by participating airlines prior to publication.

Reports and detailed time series data in Microsoft Excel spreadsheet format are available from the BITRE website at: <http://www.bitre.gov.au/statistics/aviation/otphome.aspx>.

Contents

	Page
Industry performance	1
Individual routes	9
Airports	20
Definitions	26

Industry performance

For November 2012, on time performance over all routes operated by participating airlines (Jetstar, Qantas, QantasLink, Regional Express, Skywest Airlines, Tiger Airways, Virgin Australia and Virgin Australia – ATR/F100 Operations) averaged 82.1 per cent for on time departures, and 78.0 per cent for on time arrivals. Cancellations represented 1.3 per cent of all scheduled flights. The equivalent figures for November 2011 were 80.4 per cent for departures, 78.7 per cent for arrivals and 1.0 per cent for cancellations.

The long term average performance for all routes since reporting commenced in November 2003 is 83.9 per cent for on time departures and 82.5 per cent for on time arrivals. Cancellations average 1.3 per cent of all scheduled flights.

Of the major domestic airlines, Qantas achieved the highest level of on time departures for November 2012 at 84.3 per cent, followed by Virgin Australia at 83.6 per cent, Tiger Airways at 76.6 per cent and Jetstar at 75.1 per cent. The regional airlines were led by Regional Express at 87.1 per cent, followed by Virgin Australia – ATR/F100 Operations at 84.5 per cent, QantasLink at 80.5 per cent and Skywest at 80.4 per cent.

Qantas also achieved the highest on time arrivals among the major domestic airlines at 80.6 per cent, followed by Virgin Australia at 77.1 per cent, Jetstar at 74.3 per cent and Tiger Airways at 72.7 per cent. Regional Express was the best performing regional airline for on time arrivals at 82.6 per cent, followed by Virgin Australia – ATR/F100 Operations at 80.0 per cent, Skywest at 77.2 per cent and QantasLink at 76.3 per cent.

QantasLink had the highest percentage of cancellations for November 2012 at 1.9 per cent, while Skywest had the lowest percentage of cancellations at 0.2 per cent.

Of the 58 routes which met the criteria for on time performance reporting in November 2012, the Brisbane-Mount Isa route had the highest percentage of on time departures (93.6 per cent) and the Launceston-Sydney route had the lowest percentage of on time departures (58.2 per cent). The Adelaide-Gold Coast route had the highest percentage of on time arrivals (93.3 per cent) and the Ballina-Sydney route had the lowest percentage of on time arrivals (49.0 per cent).

Cancellations were highest on the Canberra-Sydney route at 3.9 per cent, followed by Emerald-Brisbane at 3.7 per cent, Sydney-Canberra at 3.6 per cent, Brisbane-Emerald at 3.4 per cent and Brisbane-Gladstone at 3.2 per cent.

Mildura Airport recorded the highest percentage of on time departures (93.1 per cent) and Ayers Rock Airport recorded the lowest percentage of on time departures (60.0 per cent). Mount Isa Airport recorded the highest percentage of on time arrivals (88.5 per cent) and Albury Airport recorded the lowest percentage of on time arrivals (66.6 per cent). These figures only refer to reported routes and do not cover all flights at these airports.

Table 1 On time performance for November 2012 — Total Industry

	<i>Sectors</i>		<i>Departures On Time</i>		<i>Arrivals On Time</i>		<i>Cancellations</i>	
	<i>Scheduled</i>	<i>Flown</i>	<i>No.</i>	<i>%</i>	<i>No.</i>	<i>%</i>	<i>No.</i>	<i>%</i>
Jetstar	6 272	6 215	4 665	75.1	4 616	74.3	57	0.9
Qantas	10 631	10 505	8 851	84.3	8 472	80.6	126	1.2
QantasLink	9 404	9 226	7 428	80.5	7 043	76.3	178	1.9
Regional Express	5 679	5 647	4 916	87.1	4 662	82.6	32	0.6
Skywest	849	847	681	80.4	654	77.2	2	0.2
Tiger Airways	1 572	1 557	1 192	76.6	1 132	72.7	15	1.0
Virgin Australia	11 054	10 897	9 106	83.6	8 405	77.1	157	1.4
Virgin Australia - ATR/F100 Operations	1 788	1 760	1 487	84.5	1 408	80.0	28	1.6
All Airlines	47 249	46 654	38 326	82.1	36 392	78.0	595	1.3

Total airline network data (including routes not shown in this report).

Table 2 Top ten routes for on time performance for November 2012 (participating airlines only)

<i>Departures</i>		<i>Arrivals</i>	
<i>Route</i>	<i>On Time (%)</i>	<i>Route</i>	<i>On Time</i>
Brisbane-Mount Isa	93.6	Adelaide-Gold Coast	93.3
Mildura-Melbourne	93.1	Adelaide-Canberra	90.4
Perth-Port Hedland	92.5	Darwin-Melbourne	90.4
Adelaide-Gold Coast	91.7	Mildura-Melbourne	89.7
Gold Coast-Adelaide	91.7	Port Lincoln-Adelaide	88.5
Adelaide-Port Lincoln	90.8	Brisbane-Mount Isa	88.5
Melbourne-Canberra	90.1	Ayers Rock-Sydney	88.3
Cairns-Brisbane	89.7	Sydney-Townsville	88.2
Brisbane-Emerald	89.5	Brisbane-Emerald	88.2
Melbourne-Mildura	89.1	Brisbane-Cairns	88.0

Table 3 Top ten airports for on time performance for November 2012 (participating airlines and reported routes only)

<i>Departures</i>		<i>Arrivals</i>	
<i>Airport</i>	<i>On Time (%)</i>	<i>Airport</i>	<i>On Time</i>
Mildura	93.1	Mount Isa	88.5
Port Lincoln	88.5	Emerald	88.2
Emerald	88.5	Sunshine Coast	86.3
Mount Isa	87.2	Port Lincoln	86.2
Rockhampton	86.4	Port Hedland	85.9
Darwin	85.4	Proserpine	85.4
Adelaide	85.3	Mildura	84.7
Townsville	84.9	Cairns	84.4
Canberra	84.8	Rockhampton	84.4
Port Hedland	84.6	Newman	83.5

Total industry on time performance

Figure 1 On time performance (by month from November 2009)—Total Industry

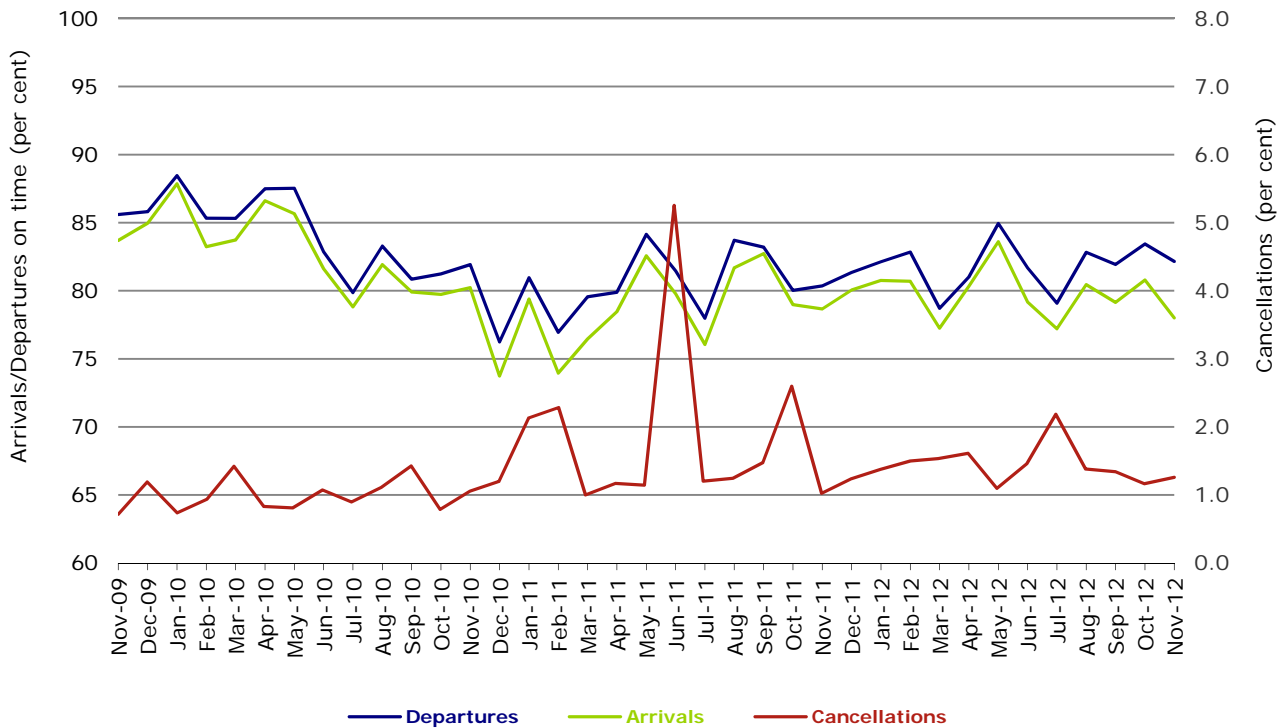


Figure 2 Departures on time (by month from November 2011)

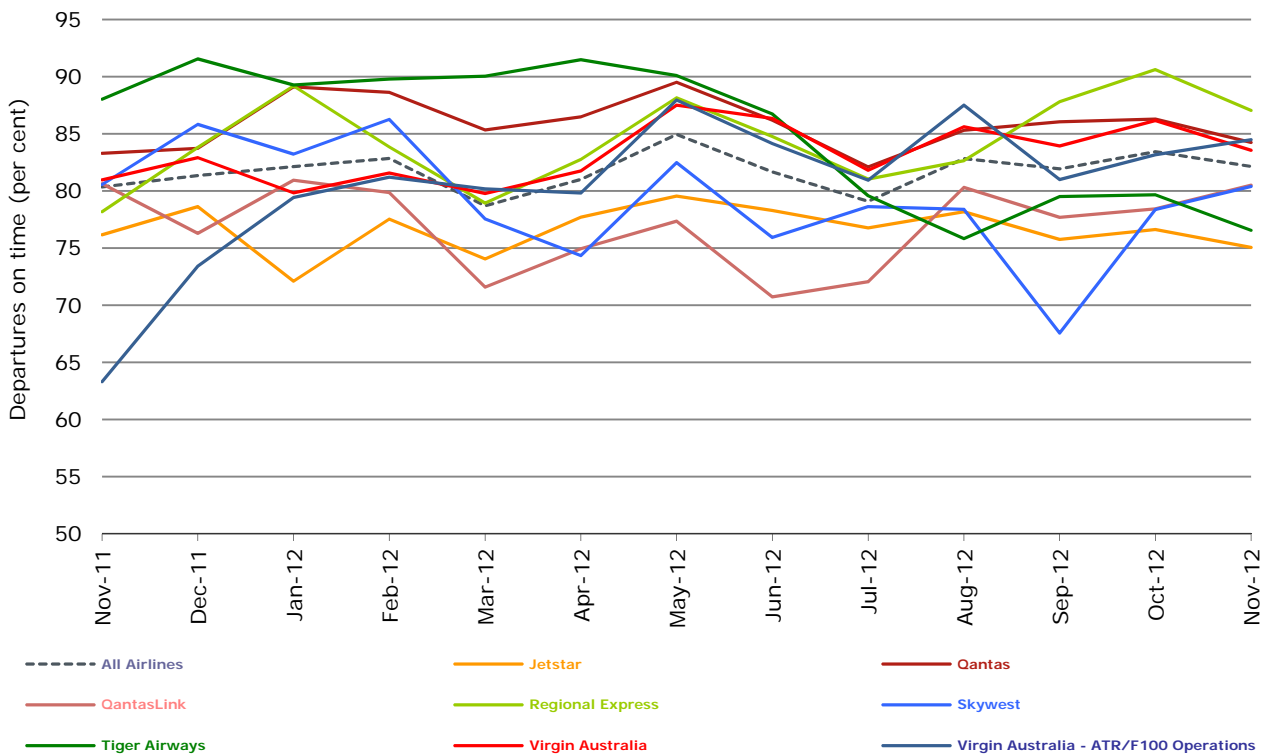


Figure 3 Arrivals on time (by month from November 2011)

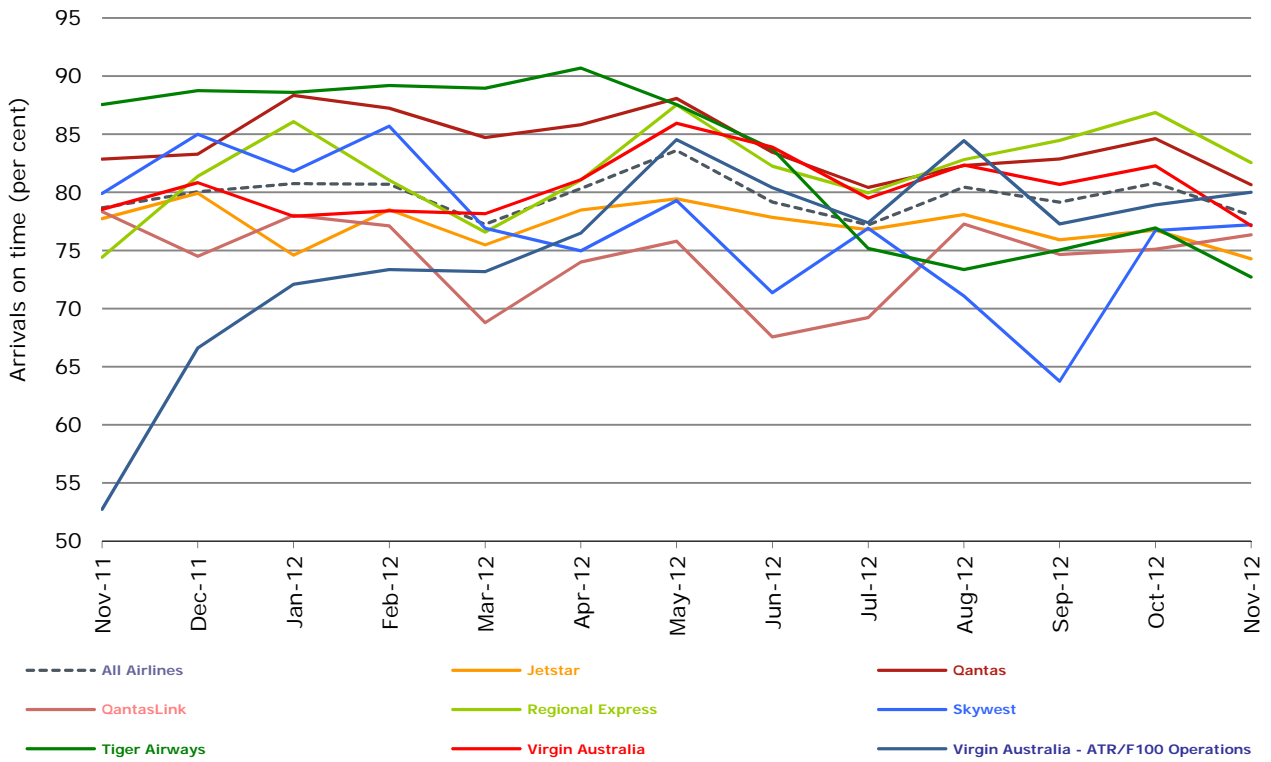
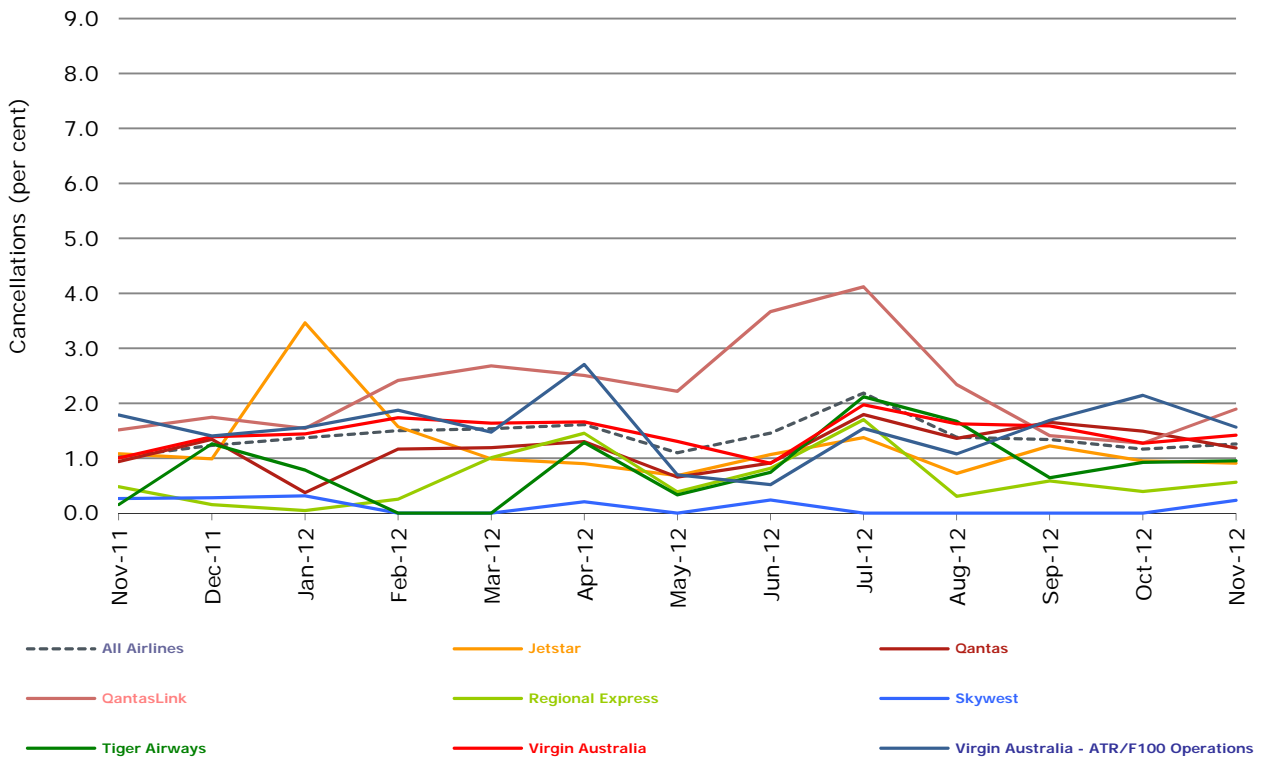


Figure 4 Cancellations (by month from November 2011)



Major domestic airlines on time performance

Figure 5 On time performance (by month from November 2009)—Jetstar

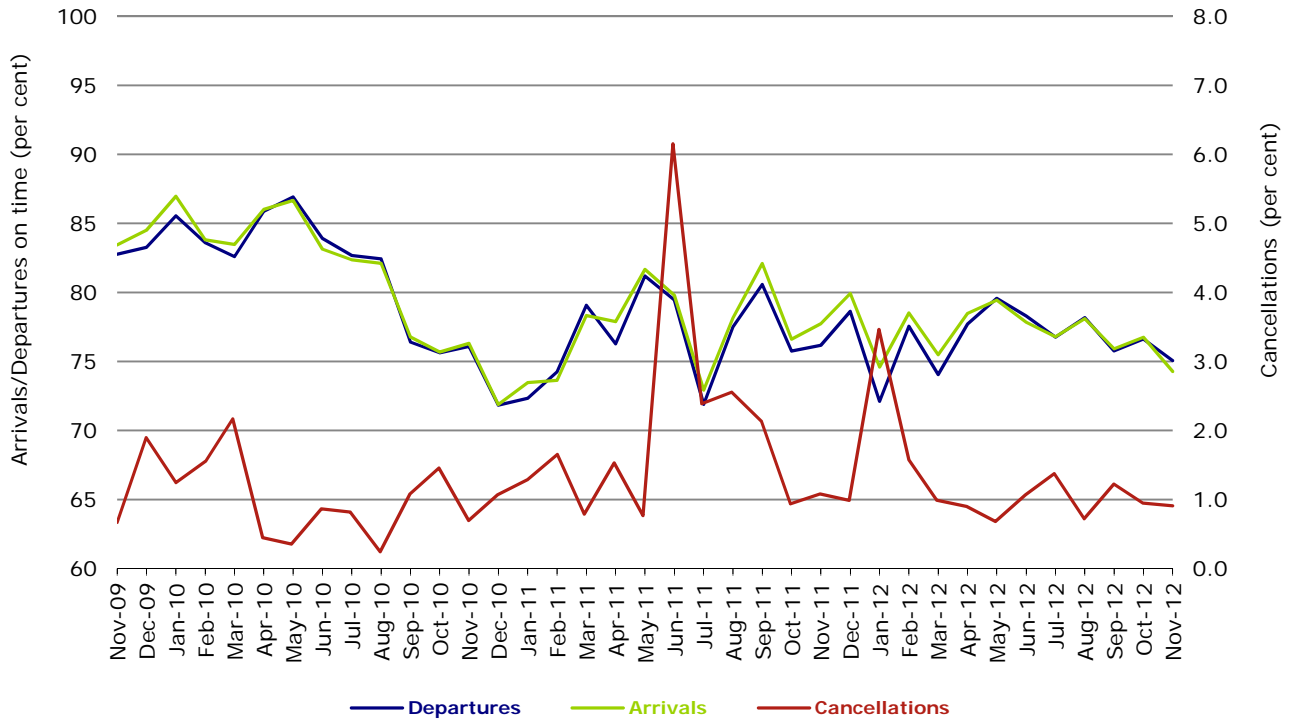


Figure 6 On time performance (by month from November 2009)—Qantas

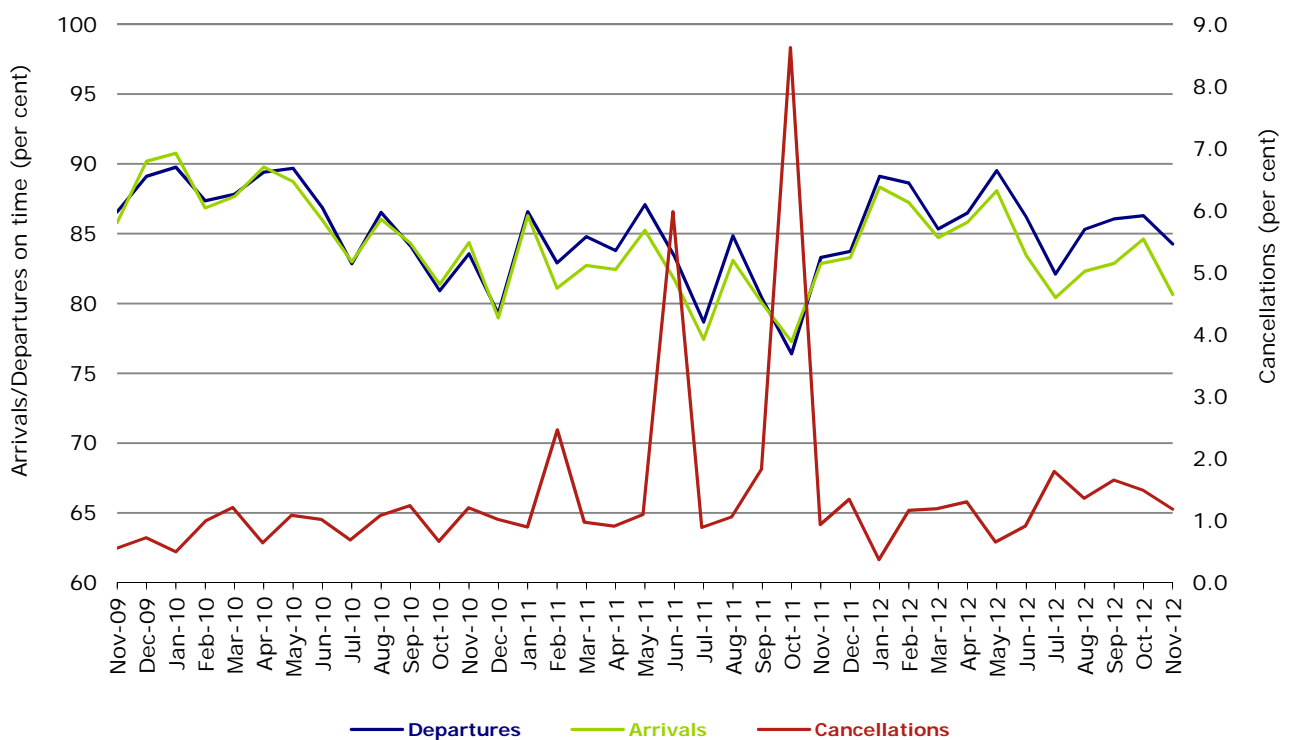
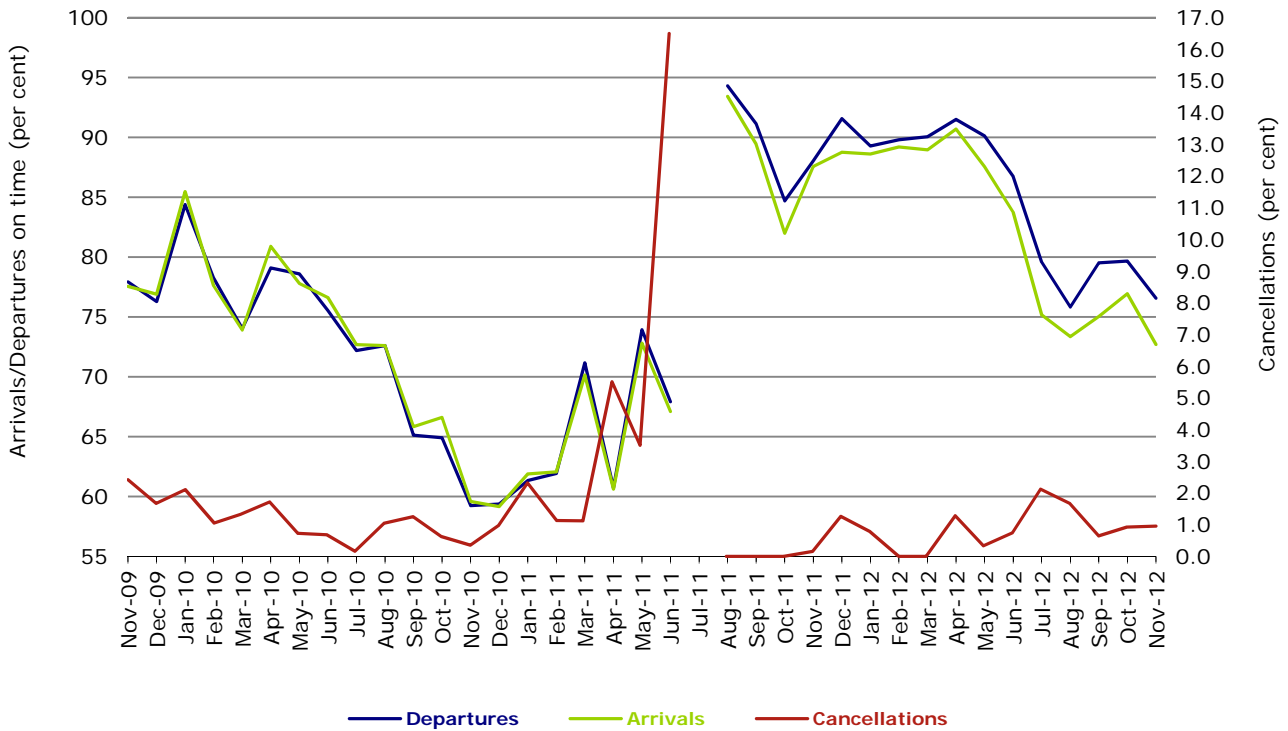
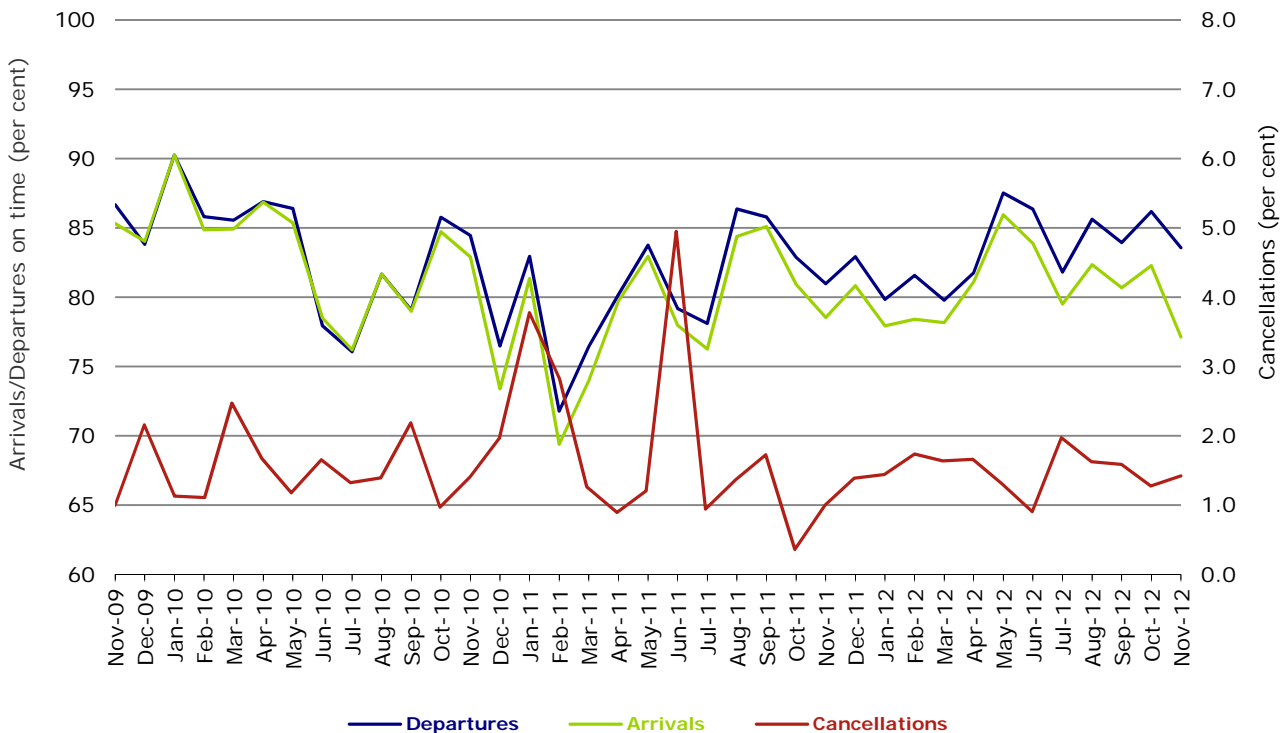


Figure 7 On time performance (by month from November 2009)—Tiger Airways



No data for Tiger Airways for July 2011 as it was grounded by CASA from 2/7/2011 to 11/8/2011.

Figure 8 On time performance (by month from November 2009)—Virgin Australia



Major regional airlines on time performance

Figure 9 On time performance (by month from November 2009)—QantasLink

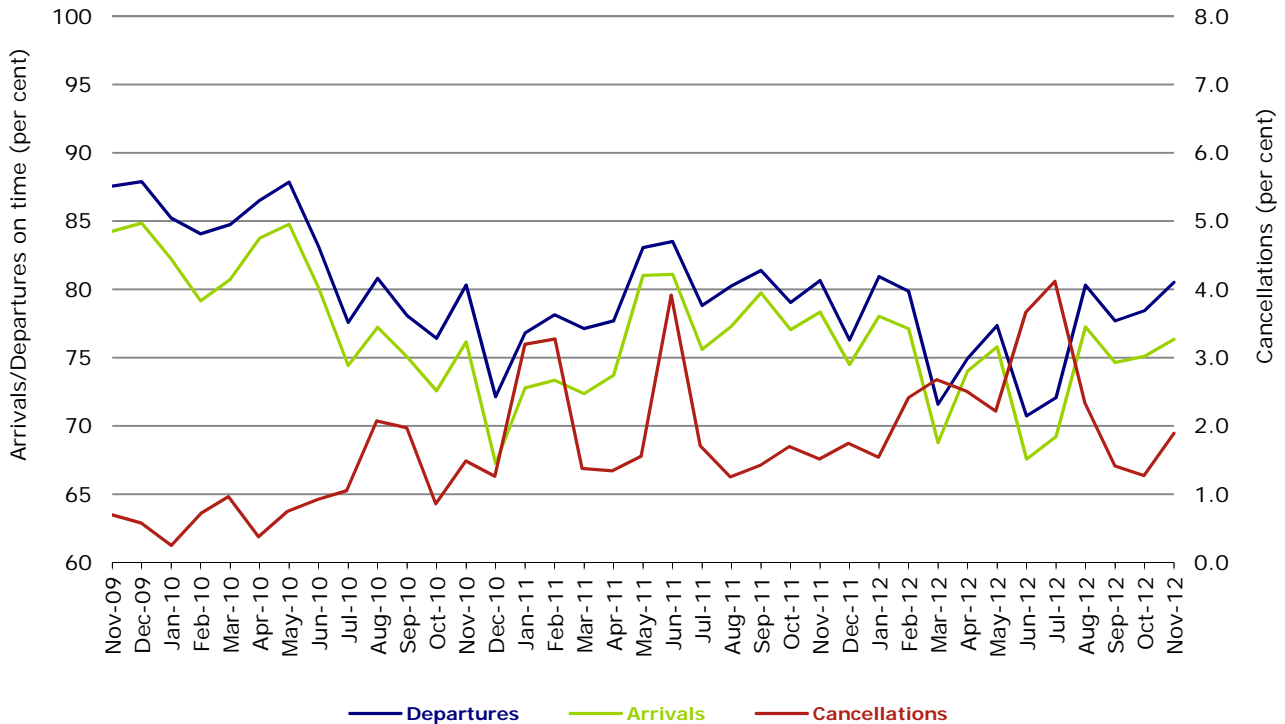


Figure 10 On time performance (by month from November 2009)—Regional Express

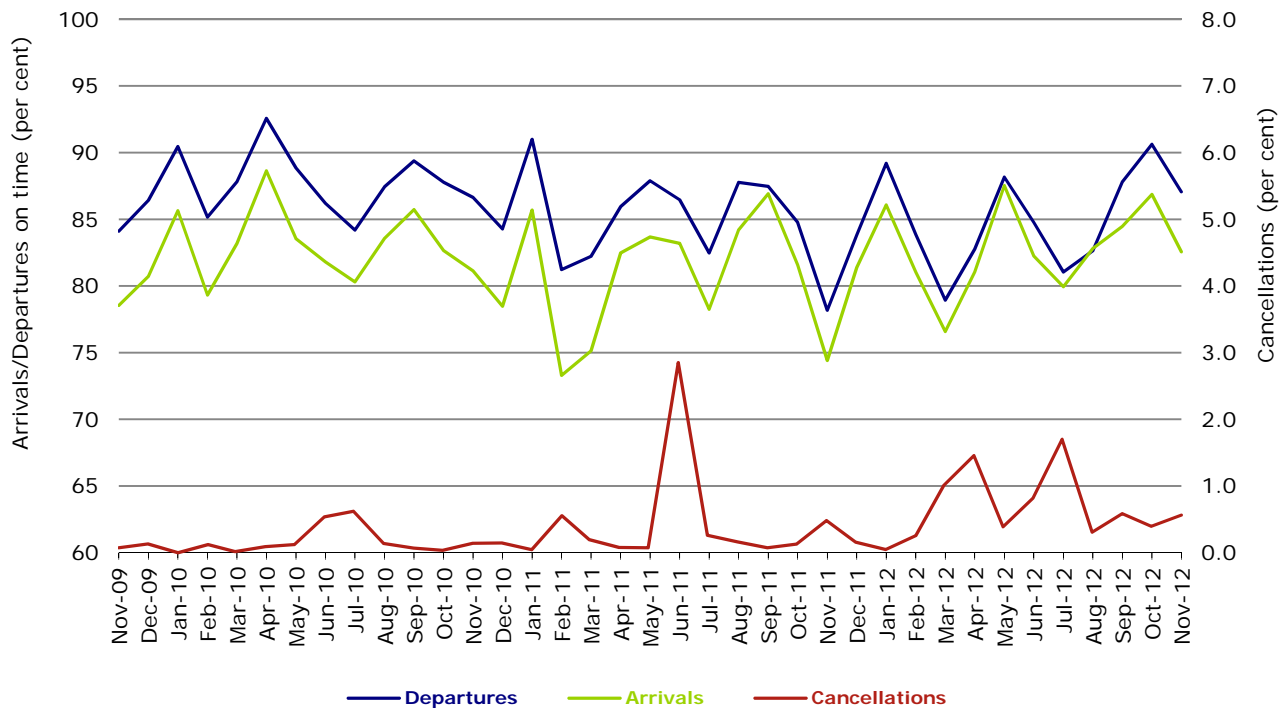


Figure 11 On time performance (by month from November 2009)—Skywest

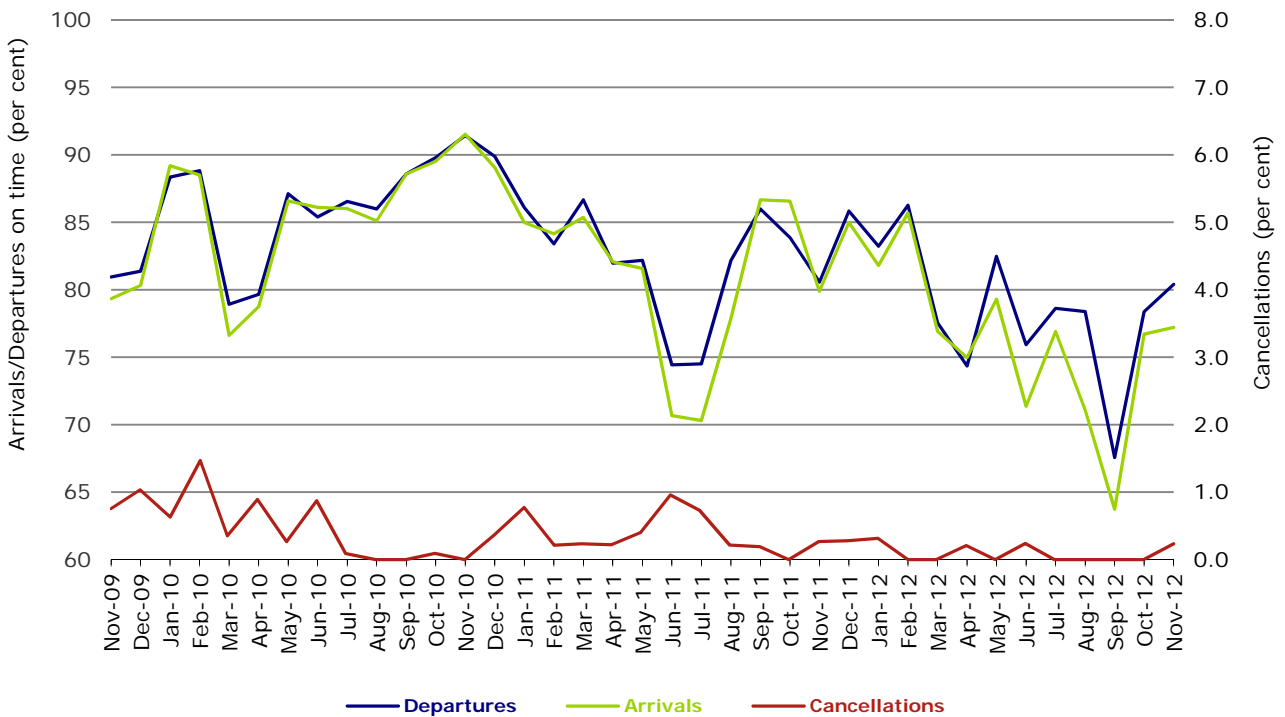
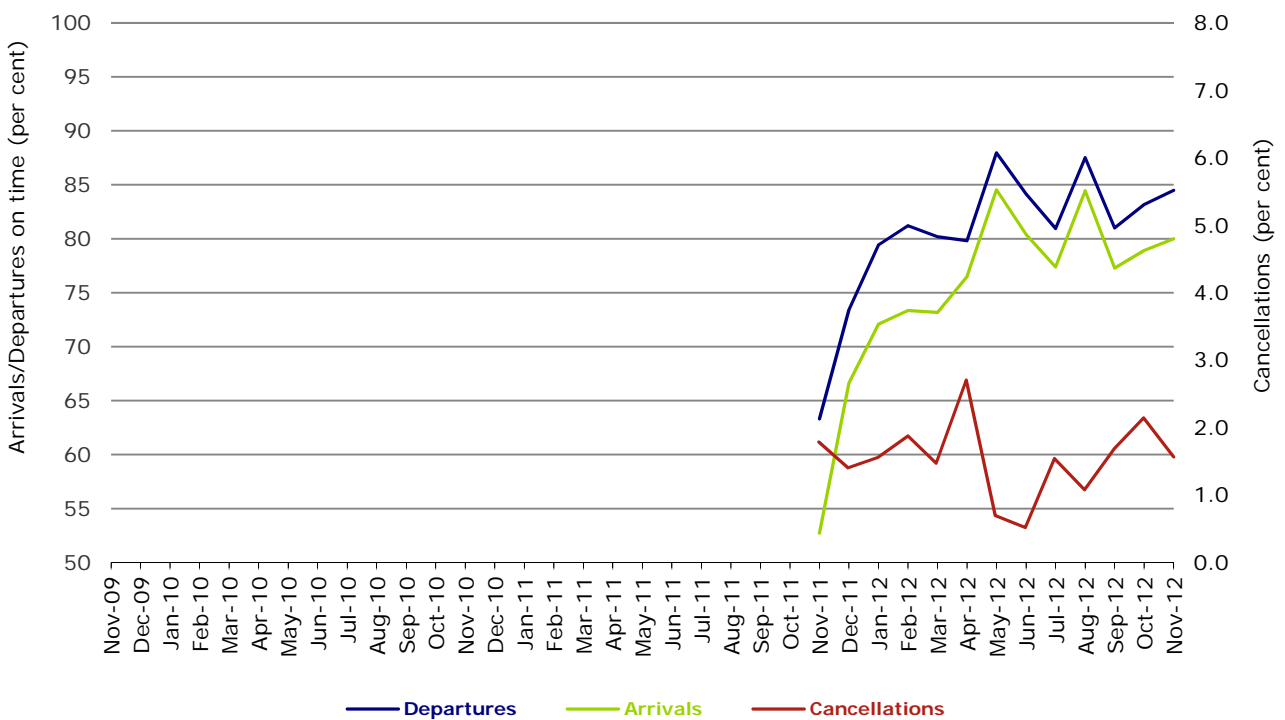


Figure 12 On time performance (by month from November 2009) Virgin Australia - ATR/F100 Operations



Virgin Australia - ATR/F100 Operations commenced in November 2011.

Individual routes

On time performance is reported for all routes where the passenger load averages over 8000 passengers per month over the previous six months, and where two or more airlines operate in competition on those routes. There are now 58 routes which meet this definition. Over time, however, routes which meet this definition may change as airline networks and traffic levels vary.

	<i>Sectors</i>		<i>Departures On Time</i>		<i>Arrivals On Time</i>		<i>Cancellations</i>	
	<i>Sched.</i>	<i>Flown</i>	<i>No.</i>	<i>%</i>	<i>No.</i>	<i>%</i>	<i>No.</i>	<i>%</i>
Adelaide-Brisbane								
Jetstar	30	30	28	93.3	28	93.3	0	0.0
Qantas	106	106	89	84.0	92	86.8	0	0.0
Virgin Australia	116	115	102	88.7	97	84.3	1	0.9
All Airlines	252	251	219	87.3	217	86.5	1	0.4
Adelaide-Canberra								
Qantas	48	48	46	95.8	47	97.9	0	0.0
QantasLink	22	21	12	57.1	15	71.4	1	4.5
Virgin Australia	26	25	23	92.0	23	92.0	1	3.8
All Airlines	96	94	81	86.2	85	90.4	2	2.1
Adelaide-Gold Coast								
Jetstar	30	30	25	83.3	26	86.7	0	0.0
Virgin Australia	30	30	30	100.0	30	100.0	0	0.0
All Airlines	60	60	55	91.7	56	93.3	0	0.0
Adelaide-Melbourne								
Jetstar	79	76	52	68.4	58	76.3	3	3.8
Qantas	294	292	232	79.5	254	87.0	2	0.7
QantasLink	16	16	15	93.8	14	87.5	0	0.0
Tiger Airways	46	46	36	78.3	36	78.3	0	0.0
Virgin Australia	279	275	252	91.6	248	90.2	4	1.4
All Airlines	714	705	587	83.3	610	86.5	9	1.3
Adelaide-Perth								
Jetstar	30	30	21	70.0	17	56.7	0	0.0
Qantas	111	111	98	88.3	92	82.9	0	0.0
Virgin Australia	60	60	52	86.7	50	83.3	0	0.0
All Airlines	201	201	171	85.1	159	79.1	0	0.0
Adelaide-Port Lincoln								
QantasLink	100	98	80	81.6	76	77.6	2	2.0
Regional Express	209	207	197	95.2	187	90.3	2	1.0
All Airlines	309	305	277	90.8	263	86.2	4	1.3
Adelaide-Sydney								
Jetstar	103	103	80	77.7	75	72.8	0	0.0
Qantas	276	276	235	85.1	235	85.1	0	0.0
Virgin Australia	170	169	141	83.4	133	78.7	1	0.6
All Airlines	549	548	456	83.2	443	80.8	1	0.2
Albury-Sydney								
QantasLink	116	116	70	60.3	68	58.6	0	0.0
Regional Express	111	111	97	87.4	92	82.9	0	0.0
Virgin Australia - ATR/F100 Operations	60	60	47	78.3	34	56.7	0	0.0
All Airlines	287	287	214	74.6	194	67.6	0	0.0
Ayers Rock-Sydney								
Qantas	30	30	22	73.3	29	96.7	0	0.0
Virgin Australia	31	30	14	46.7	24	80.0	1	3.2
All Airlines	61	60	36	60.0	53	88.3	1	1.6

	<i>Sectors</i>		<i>Departures On Time</i>		<i>Arrivals On Time</i>		<i>Cancellations</i>	
	<i>Sched.</i>	<i>Flown</i>	<i>No.</i>	<i>%</i>	<i>No.</i>	<i>%</i>	<i>No.</i>	<i>%</i>
Ballina-Sydney								
Jetstar	44	44	27	61.4	23	52.3	0	0.0
Regional Express	24	24	13	54.2	7	29.2	0	0.0
Virgin Australia	30	30	23	76.7	18	60.0	0	0.0
All Airlines	98	98	63	64.3	48	49.0	0	0.0
Brisbane-Adelaide								
Jetstar	30	30	30	100.0	30	100.0	0	0.0
Qantas	106	106	82	77.4	80	75.5	0	0.0
Virgin Australia	116	114	90	78.9	89	78.1	2	1.7
All Airlines	252	250	202	80.8	199	79.6	2	0.8
Brisbane-Cairns								
Jetstar	89	89	71	79.8	74	83.1	0	0.0
Qantas	117	117	100	85.5	105	89.7	0	0.0
Virgin Australia	139	138	125	90.6	124	89.9	1	0.7
Virgin Australia - ATR/F100 Operations	24	24	21	87.5	21	87.5	0	0.0
All Airlines	369	368	317	86.1	324	88.0	1	0.3
Brisbane-Canberra								
Qantas	142	141	122	86.5	119	84.4	1	0.7
QantasLink	21	20	16	80.0	17	85.0	1	4.8
Virgin Australia	94	94	70	74.5	61	64.9	0	0.0
All Airlines	257	255	208	81.6	197	77.3	2	0.8
Brisbane-Darwin								
Qantas	30	30	28	93.3	27	90.0	0	0.0
Virgin Australia	30	30	24	80.0	24	80.0	0	0.0
All Airlines	60	60	52	86.7	51	85.0	0	0.0
Brisbane-Emerald								
QantasLink	193	187	165	88.2	160	85.6	6	3.1
Virgin Australia - ATR/F100 Operations	104	100	92	92.0	93	93.0	4	3.8
All Airlines	297	287	257	89.5	253	88.2	10	3.4
Brisbane-Gladstone								
QantasLink	156	152	121	79.6	118	77.6	4	2.6
Virgin Australia - ATR/F100 Operations	126	121	108	89.3	108	89.3	5	4.0
All Airlines	282	273	229	83.9	226	82.8	9	3.2
Brisbane-Hamilton Island								
Jetstar	18	18	6	33.3	15	83.3	0	0.0
Virgin Australia	30	30	26	86.7	25	83.3	0	0.0
All Airlines	48	48	32	66.7	40	83.3	0	0.0
Brisbane-Mackay								
Jetstar	90	89	62	69.7	70	78.7	1	1.1
QantasLink	52	52	43	82.7	39	75.0	0	0.0
Virgin Australia	168	167	137	82.0	141	84.4	1	0.6
All Airlines	310	308	242	78.6	250	81.2	2	0.6
Brisbane-Melbourne								
Jetstar	101	100	64	64.0	65	65.0	1	1.0
Qantas	405	404	333	82.4	308	76.2	1	0.2
Tiger Airways	89	89	52	58.4	49	55.1	0	0.0
Virgin Australia	371	370	314	84.9	282	76.2	1	0.3
All Airlines	966	963	763	79.2	704	73.1	3	0.3
Brisbane-Mount Isa								
Qantas	56	56	53	94.6	51	91.1	0	0.0
Virgin Australia	22	22	20	90.9	18	81.8	0	0.0
All Airlines	78	78	73	93.6	69	88.5	0	0.0

	<i>Sectors</i>		<i>Departures On Time</i>		<i>Arrivals On Time</i>		<i>Cancellations</i>	
	<i>Sched.</i>	<i>Flown</i>	<i>No.</i>	<i>%</i>	<i>No.</i>	<i>%</i>	<i>No.</i>	<i>%</i>
Brisbane-Newcastle								
Jetstar	116	116	99	85.3	96	82.8	0	0.0
QantasLink	72	66	57	86.4	38	57.6	6	8.3
Virgin Australia - ATR/F100 Operations	75	75	69	92.0	65	86.7	0	0.0
All Airlines	263	257	225	87.5	199	77.4	6	2.3
Brisbane-Perth								
Jetstar	25	25	19	76.0	18	72.0	0	0.0
Qantas	120	120	78	65.0	62	51.7	0	0.0
Virgin Australia	82	82	61	74.4	38	46.3	0	0.0
All Airlines	227	227	158	69.6	118	52.0	0	0.0
Brisbane-Proserpine								
Jetstar	30	30	19	63.3	21	70.0	0	0.0
Virgin Australia	30	30	27	90.0	28	93.3	0	0.0
Virgin Australia - ATR/F100 Operations	22	22	21	95.5	21	95.5	0	0.0
All Airlines	82	82	67	81.7	70	85.4	0	0.0
Brisbane-Rockhampton								
QantasLink	149	148	116	78.4	121	81.8	1	0.7
Virgin Australia	78	77	69	89.6	69	89.6	1	1.3
Virgin Australia - ATR/F100 Operations	135	134	108	80.6	113	84.3	1	0.7
All Airlines	362	359	293	81.6	303	84.4	3	0.8
Brisbane-Sydney								
Jetstar	94	92	60	65.2	60	65.2	2	2.1
Qantas	582	570	479	84.0	433	76.0	12	2.1
Tiger Airways	113	111	86	77.5	82	73.9	2	1.8
Virgin Australia	555	536	458	85.4	394	73.5	19	3.4
All Airlines	1 344	1 309	1 083	82.7	969	74.0	35	2.6
Brisbane-Townsville								
Jetstar	30	30	20	66.7	20	66.7	0	0.0
Qantas	143	143	114	79.7	117	81.8	0	0.0
Virgin Australia	163	161	129	80.1	130	80.7	2	1.2
All Airlines	336	334	263	78.7	267	79.9	2	0.6
Broome-Perth								
Qantas	26	26	18	69.2	19	73.1	0	0.0
QantasLink	56	56	46	82.1	46	82.1	0	0.0
Skywest	14	14	12	85.7	10	71.4	0	0.0
Virgin Australia	30	30	22	73.3	21	70.0	0	0.0
All Airlines	126	126	98	77.8	96	76.2	0	0.0
Cairns-Brisbane								
Jetstar	89	89	72	80.9	63	70.8	0	0.0
Qantas	116	116	108	93.1	87	75.0	0	0.0
Virgin Australia	139	139	130	93.5	105	75.5	0	0.0
Virgin Australia - ATR/F100 Operations	24	24	20	83.3	17	70.8	0	0.0
All Airlines	368	368	330	89.7	272	73.9	0	0.0
Cairns-Melbourne								
Jetstar	80	80	62	77.5	56	70.0	0	0.0
Qantas	30	30	23	76.7	23	76.7	0	0.0
Tiger Airways	18	18	11	61.1	13	72.2	0	0.0
Virgin Australia	34	34	20	58.8	11	32.4	0	0.0
All Airlines	162	162	116	71.6	103	63.6	0	0.0
Cairns-Sydney								
Jetstar	63	63	53	84.1	47	74.6	0	0.0
Qantas	69	69	53	76.8	53	76.8	0	0.0
Virgin Australia	90	90	78	86.7	76	84.4	0	0.0
All Airlines	222	222	184	82.9	176	79.3	0	0.0

	<i>Sectors</i>		<i>Departures On Time</i>		<i>Arrivals On Time</i>		<i>Cancellations</i>	
	<i>Sched.</i>	<i>Flown</i>	<i>No.</i>	<i>%</i>	<i>No.</i>	<i>%</i>	<i>No.</i>	<i>%</i>
Cairns-Townsville								
QantasLink	185	183	160	87.4	154	84.2	2	1.1
Virgin Australia - ATR/F100 Operations	26	26	21	80.8	21	80.8	0	0.0
All Airlines	211	209	181	86.6	175	83.7	2	0.9
Canberra-Adelaide								
Qantas	52	52	48	92.3	48	92.3	0	0.0
QantasLink	22	22	14	63.6	13	59.1	0	0.0
Virgin Australia	26	26	23	88.5	23	88.5	0	0.0
All Airlines	100	100	85	85.0	84	84.0	0	0.0
Canberra-Brisbane								
Qantas	142	142	126	88.7	122	85.9	0	0.0
QantasLink	21	20	16	80.0	16	80.0	1	4.8
Virgin Australia	94	93	75	80.6	67	72.0	1	1.1
All Airlines	257	255	217	85.1	205	80.4	2	0.8
Canberra-Melbourne								
Qantas	261	258	231	89.5	231	89.5	3	1.1
QantasLink	38	38	29	76.3	24	63.2	0	0.0
Virgin Australia	182	180	157	87.2	161	89.4	2	1.1
All Airlines	481	476	417	87.6	416	87.4	5	1.0
Canberra-Sydney								
Qantas	166	163	149	91.4	153	93.9	3	1.8
QantasLink	399	374	289	77.3	267	71.4	25	6.3
Virgin Australia	74	73	65	89.0	59	80.8	1	1.4
Virgin Australia - ATR/F100 Operations	202	198	168	84.8	160	80.8	4	2.0
All Airlines	841	808	671	83.0	639	79.1	33	3.9
Coffs Harbour-Sydney								
QantasLink	142	141	94	66.7	94	66.7	1	0.7
Virgin Australia	60	57	51	89.5	48	84.2	3	5.0
All Airlines	202	198	145	73.2	142	71.7	4	2.0
Darwin-Brisbane								
Qantas	30	30	26	86.7	25	83.3	0	0.0
Virgin Australia	30	30	25	83.3	23	76.7	0	0.0
All Airlines	60	60	51	85.0	48	80.0	0	0.0
Darwin-Melbourne								
Jetstar	10	10	6	60.0	7	70.0	0	0.0
Qantas	12	12	7	58.3	10	83.3	0	0.0
Virgin Australia	30	30	29	96.7	30	100.0	0	0.0
All Airlines	52	52	42	80.8	47	90.4	0	0.0
Darwin-Perth								
Qantas	30	30	24	80.0	24	80.0	0	0.0
Virgin Australia	26	26	24	92.3	24	92.3	0	0.0
All Airlines	56	56	48	85.7	48	85.7	0	0.0
Darwin-Sydney								
Jetstar	23	23	19	82.6	20	87.0	0	0.0
Qantas	60	60	56	93.3	56	93.3	0	0.0
Virgin Australia	30	29	23	79.3	12	41.4	1	3.3
All Airlines	113	112	98	87.5	88	78.6	1	0.9
Dubbo-Sydney								
QantasLink	108	107	77	72.0	62	57.9	1	0.9
Regional Express	176	175	148	84.6	138	78.9	1	0.6
All Airlines	284	282	225	79.8	200	70.9	2	0.7

	<i>Sectors</i>		<i>Departures On Time</i>		<i>Arrivals On Time</i>		<i>Cancellations</i>	
	<i>Sched.</i>	<i>Flown</i>	<i>No.</i>	<i>%</i>	<i>No.</i>	<i>%</i>	<i>No.</i>	<i>%</i>
Emerald-Brisbane								
QantasLink	193	186	159	85.5	136	73.1	7	3.6
Virgin Australia - ATR/F100 Operations	104	100	94	94.0	90	90.0	4	3.8
All Airlines	297	286	253	88.5	226	79.0	11	3.7
Geraldton-Perth								
QantasLink	52	52	39	75.0	32	61.5	0	0.0
Skywest	80	80	59	73.8	57	71.3	0	0.0
All Airlines	132	132	98	74.2	89	67.4	0	0.0
Gladstone-Brisbane								
QantasLink	174	172	137	79.7	108	62.8	2	1.1
Virgin Australia - ATR/F100 Operations	126	121	111	91.7	94	77.7	5	4.0
All Airlines	300	293	248	84.6	202	68.9	7	2.3
Gold Coast-Adelaide								
Jetstar	30	30	26	86.7	26	86.7	0	0.0
Virgin Australia	30	30	29	96.7	25	83.3	0	0.0
All Airlines	60	60	55	91.7	51	85.0	0	0.0
Gold Coast-Melbourne								
Jetstar	216	215	177	82.3	160	74.4	1	0.5
Tiger Airways	75	75	49	65.3	45	60.0	0	0.0
Virgin Australia	190	190	159	83.7	157	82.6	0	0.0
All Airlines	481	480	385	80.2	362	75.4	1	0.2
Gold Coast-Sydney								
Jetstar	287	276	214	77.5	207	75.0	11	3.8
Qantas	90	90	80	88.9	62	68.9	0	0.0
Tiger Airways	82	80	50	62.5	42	52.5	2	2.4
Virgin Australia	333	323	267	82.7	256	79.3	10	3.0
All Airlines	792	769	611	79.5	567	73.7	23	2.9
Hamilton Island-Brisbane								
Jetstar	18	18	15	83.3	15	83.3	0	0.0
Virgin Australia	30	30	18	60.0	14	46.7	0	0.0
All Airlines	48	48	33	68.8	29	60.4	0	0.0
Hamilton Island-Sydney								
Jetstar	30	30	21	70.0	18	60.0	0	0.0
Virgin Australia	30	30	17	56.7	13	43.3	0	0.0
All Airlines	60	60	38	63.3	31	51.7	0	0.0
Hobart-Melbourne								
Jetstar	174	173	115	66.5	109	63.0	1	0.6
Qantas	60	60	51	85.0	48	80.0	0	0.0
QantasLink	30	30	25	83.3	21	70.0	0	0.0
Tiger Airways	60	60	50	83.3	47	78.3	0	0.0
Virgin Australia	157	156	128	82.1	130	83.3	1	0.6
All Airlines	481	479	369	77.0	355	74.1	2	0.4
Hobart-Sydney								
Jetstar	74	74	55	74.3	58	78.4	0	0.0
Qantas	30	30	26	86.7	27	90.0	0	0.0
Virgin Australia	60	59	37	62.7	36	61.0	1	1.7
All Airlines	164	163	118	72.4	121	74.2	1	0.6
Kalgoorlie-Perth								
Qantas	70	69	58	84.1	60	87.0	1	1.4
QantasLink	16	16	14	87.5	12	75.0	0	0.0
Skywest	61	61	43	70.5	40	65.6	0	0.0
All Airlines	147	146	115	78.8	112	76.7	1	0.7

	<i>Sectors</i>		<i>Departures On Time</i>		<i>Arrivals On Time</i>		<i>Cancellations</i>	
	<i>Sched.</i>	<i>Flown</i>	<i>No.</i>	<i>%</i>	<i>No.</i>	<i>%</i>	<i>No.</i>	<i>%</i>
Karratha-Perth								
Qantas	188	186	169	90.9	164	88.2	2	1.1
QantasLink	70	65	51	78.5	52	80.0	5	7.1
Virgin Australia	52	52	33	63.5	27	51.9	0	0.0
All Airlines	310	303	253	83.5	243	80.2	7	2.3
Launceston-Melbourne								
Jetstar	143	140	99	70.7	98	70.0	3	2.1
QantasLink	120	116	95	81.9	90	77.6	4	3.3
Virgin Australia	130	130	116	89.2	115	88.5	0	0.0
All Airlines	393	386	310	80.3	303	78.5	7	1.8
Launceston-Sydney								
Jetstar	49	49	26	53.1	27	55.1	0	0.0
Virgin Australia	30	30	20	66.7	25	83.3	0	0.0
All Airlines	79	79	46	58.2	52	65.8	0	0.0
Mackay-Brisbane								
Jetstar	90	89	63	70.8	57	64.0	1	1.1
QantasLink	52	52	40	76.9	35	67.3	0	0.0
Virgin Australia	168	167	146	87.4	136	81.4	1	0.6
All Airlines	310	308	249	80.8	228	74.0	2	0.6
Melbourne-Adelaide								
Jetstar	77	77	66	85.7	62	80.5	0	0.0
Qantas	294	292	257	88.0	246	84.2	2	0.7
QantasLink	16	16	9	56.3	8	50.0	0	0.0
Tiger Airways	46	46	38	82.6	37	80.4	0	0.0
Virgin Australia	279	277	249	89.9	229	82.7	2	0.7
All Airlines	712	708	619	87.4	582	82.2	4	0.6
Melbourne-Brisbane								
Jetstar	98	97	66	68.0	49	50.5	1	1.0
Qantas	405	404	352	87.1	298	73.8	1	0.2
Tiger Airways	89	89	78	87.6	64	71.9	0	0.0
Virgin Australia	367	365	324	88.8	273	74.8	2	0.5
All Airlines	959	955	820	85.9	684	71.6	4	0.4
Melbourne-Cairns								
Jetstar	78	78	68	87.2	69	88.5	0	0.0
Qantas	30	30	26	86.7	25	83.3	0	0.0
Tiger Airways	18	18	15	83.3	14	77.8	0	0.0
Virgin Australia	34	34	28	82.4	26	76.5	0	0.0
All Airlines	160	160	137	85.6	134	83.8	0	0.0
Melbourne-Canberra								
Qantas	261	258	234	90.7	229	88.8	3	1.1
QantasLink	38	38	34	89.5	27	71.1	0	0.0
Virgin Australia	182	180	161	89.4	159	88.3	2	1.1
All Airlines	481	476	429	90.1	415	87.2	5	1.0
Melbourne-Darwin								
Jetstar	10	10	7	70.0	6	60.0	0	0.0
Qantas	12	12	9	75.0	8	66.7	0	0.0
Virgin Australia	30	29	27	93.1	21	72.4	1	3.3
All Airlines	52	51	43	84.3	35	68.6	1	1.9
Melbourne-Gold Coast								
Jetstar	216	215	169	78.6	177	82.3	1	0.5
Tiger Airways	75	75	65	86.7	62	82.7	0	0.0
Virgin Australia	190	189	163	86.2	166	87.8	1	0.5
All Airlines	481	479	397	82.9	405	84.6	2	0.4

	<i>Sectors</i>		<i>Departures On Time</i>		<i>Arrivals On Time</i>		<i>Cancellations</i>	
	<i>Sched.</i>	<i>Flown</i>	<i>No.</i>	<i>%</i>	<i>No.</i>	<i>%</i>	<i>No.</i>	<i>%</i>
Melbourne-Hobart								
Jetstar	174	173	111	64.2	113	65.3	1	0.6
Qantas	60	60	53	88.3	52	86.7	0	0.0
QantasLink	30	30	21	70.0	17	56.7	0	0.0
Tiger Airways	60	60	51	85.0	49	81.7	0	0.0
Virgin Australia	156	156	135	86.5	132	84.6	0	0.0
All Airlines	480	479	371	77.5	363	75.8	1	0.2
Melbourne-Launceston								
Jetstar	142	139	111	79.9	108	77.7	3	2.1
QantasLink	120	118	99	83.9	94	79.7	2	1.7
Virgin Australia	130	130	112	86.2	113	86.9	0	0.0
All Airlines	392	387	322	83.2	315	81.4	5	1.3
Melbourne-Mildura								
QantasLink	86	86	76	88.4	69	80.2	0	0.0
Regional Express	86	86	79	91.9	76	88.4	0	0.0
Virgin Australia	30	30	25	83.3	26	86.7	0	0.0
All Airlines	202	202	180	89.1	171	84.7	0	0.0
Melbourne-Newcastle								
Jetstar	108	108	82	75.9	83	76.9	0	0.0
Virgin Australia	29	29	26	89.7	24	82.8	0	0.0
All Airlines	137	137	108	78.8	107	78.1	0	0.0
Melbourne-Perth								
Jetstar	74	74	57	77.0	49	66.2	0	0.0
Qantas	217	217	166	76.5	136	62.7	0	0.0
Tiger Airways	73	73	66	90.4	64	87.7	0	0.0
Virgin Australia	139	138	118	85.5	56	40.6	1	0.7
All Airlines	503	502	407	81.1	305	60.8	1	0.2
Melbourne-Sunshine Coast								
Jetstar	60	60	47	78.3	52	86.7	0	0.0
Virgin Australia	30	30	27	90.0	25	83.3	0	0.0
All Airlines	90	90	74	82.2	77	85.6	0	0.0
Melbourne-Sydney								
Jetstar	304	299	203	67.9	230	76.9	5	1.6
Qantas	890	857	730	85.2	689	80.4	33	3.7
Tiger Airways	230	226	177	78.3	185	81.9	4	1.7
Virgin Australia	796	770	674	87.5	583	75.7	26	3.3
All Airlines	2 220	2 152	1 784	82.9	1 687	78.4	68	3.1
Mildura-Melbourne								
QantasLink	86	86	80	93.0	75	87.2	0	0.0
Regional Express	87	87	83	95.4	81	93.1	0	0.0
Virgin Australia	30	30	26	86.7	26	86.7	0	0.0
All Airlines	203	203	189	93.1	182	89.7	0	0.0
Mount Isa-Brisbane								
Qantas	56	56	50	89.3	50	89.3	0	0.0
Virgin Australia	22	22	18	81.8	18	81.8	0	0.0
All Airlines	78	78	68	87.2	68	87.2	0	0.0
Newcastle-Brisbane								
Jetstar	116	116	93	80.2	88	75.9	0	0.0
QantasLink	70	66	38	57.6	33	50.0	4	5.7
Virgin Australia - ATR/F100 Operations	75	75	66	88.0	58	77.3	0	0.0
All Airlines	261	257	197	76.7	179	69.6	4	1.5

	<i>Sectors</i>		<i>Departures On Time</i>		<i>Arrivals On Time</i>		<i>Cancellations</i>	
	<i>Sched.</i>	<i>Flown</i>	<i>No.</i>	<i>%</i>	<i>No.</i>	<i>%</i>	<i>No.</i>	<i>%</i>
Newcastle-Melbourne								
Jetstar	109	109	84	77.1	80	73.4	0	0.0
Virgin Australia	29	29	25	86.2	24	82.8	0	0.0
All Airlines	138	138	109	79.0	104	75.4	0	0.0
Newman-Perth								
Qantas	135	131	105	80.2	101	77.1	4	3.0
QantasLink	27	27	22	81.5	23	85.2	0	0.0
Virgin Australia	36	35	26	74.3	21	60.0	1	2.8
All Airlines	198	193	153	79.3	145	75.1	5	2.5
Perth-Adelaide								
Jetstar	31	29	14	48.3	17	58.6	2	6.5
Qantas	111	111	83	74.8	99	89.2	0	0.0
Virgin Australia	60	60	56	93.3	57	95.0	0	0.0
All Airlines	202	200	153	76.5	173	86.5	2	1.0
Perth-Brisbane								
Jetstar	25	25	14	56.0	16	64.0	0	0.0
Qantas	120	120	85	70.8	88	73.3	0	0.0
Virgin Australia	82	82	67	81.7	61	74.4	0	0.0
All Airlines	227	227	166	73.1	165	72.7	0	0.0
Perth-Broome								
Qantas	26	26	21	80.8	21	80.8	0	0.0
QantasLink	56	56	48	85.7	44	78.6	0	0.0
Skywest	8	8	5	62.5	7	87.5	0	0.0
Virgin Australia	30	30	25	83.3	23	76.7	0	0.0
All Airlines	120	120	99	82.5	95	79.2	0	0.0
Perth-Darwin								
Qantas	30	30	23	76.7	23	76.7	0	0.0
Virgin Australia	26	26	25	96.2	24	92.3	0	0.0
All Airlines	56	56	48	85.7	47	83.9	0	0.0
Perth-Geraldton								
QantasLink	52	52	40	76.9	38	73.1	0	0.0
Skywest	80	80	63	78.8	59	73.8	0	0.0
All Airlines	132	132	103	78.0	97	73.5	0	0.0
Perth-Kalgoorlie								
Qantas	70	69	60	87.0	60	87.0	1	1.4
QantasLink	16	16	13	81.3	13	81.3	0	0.0
Skywest	55	55	43	78.2	41	74.5	0	0.0
All Airlines	141	140	116	82.9	114	81.4	1	0.7
Perth-Karratha								
Qantas	188	186	169	90.9	162	87.1	2	1.1
QantasLink	70	65	56	86.2	52	80.0	5	7.1
Virgin Australia	52	52	38	73.1	37	71.2	0	0.0
All Airlines	310	303	263	86.8	251	82.8	7	2.3
Perth-Melbourne								
Jetstar	74	72	41	56.9	51	70.8	2	2.7
Qantas	218	218	165	75.7	181	83.0	0	0.0
Tiger Airways	73	72	59	81.9	59	81.9	1	1.4
Virgin Australia	138	137	119	86.9	109	79.6	1	0.7
All Airlines	503	499	384	77.0	400	80.2	4	0.8
Perth-Newman								
Qantas	135	132	117	88.6	111	84.1	3	2.2
QantasLink	29	27	27	100.0	26	96.3	2	6.9
Virgin Australia	35	35	28	80.0	25	71.4	0	0.0
All Airlines	199	194	172	88.7	162	83.5	5	2.5

	<i>Sectors</i>		<i>Departures On Time</i>		<i>Arrivals On Time</i>		<i>Cancellations</i>	
	<i>Sched.</i>	<i>Flown</i>	<i>No.</i>	<i>%</i>	<i>No.</i>	<i>%</i>	<i>No.</i>	<i>%</i>
Perth-Port Hedland								
Qantas	128	126	118	93.7	108	85.7	2	1.6
QantasLink	42	42	41	97.6	41	97.6	0	0.0
Virgin Australia	74	73	64	87.7	58	79.5	1	1.4
All Airlines	244	241	223	92.5	207	85.9	3	1.2
Perth-Sydney								
Jetstar	39	39	20	51.3	25	64.1	0	0.0
Qantas	197	196	154	78.6	173	88.3	1	0.5
Virgin Australia	116	116	98	84.5	102	87.9	0	0.0
All Airlines	352	351	272	77.5	300	85.5	1	0.3
Port Hedland-Perth								
Qantas	128	126	104	82.5	97	77.0	2	1.6
QantasLink	42	42	41	97.6	40	95.2	0	0.0
Virgin Australia	74	73	59	80.8	50	68.5	1	1.4
All Airlines	244	241	204	84.6	187	77.6	3	1.2
Port Lincoln-Adelaide								
QantasLink	100	98	85	86.7	85	86.7	2	2.0
Regional Express	209	207	185	89.4	185	89.4	2	1.0
All Airlines	309	305	270	88.5	270	88.5	4	1.3
Port Macquarie-Sydney								
QantasLink	136	132	96	72.7	98	74.2	4	2.9
Virgin Australia - ATR/F100 Operations	60	60	48	80.0	40	66.7	0	0.0
All Airlines	196	192	144	75.0	138	71.9	4	2.0
Proserpine-Brisbane								
Jetstar	30	30	21	70.0	18	60.0	0	0.0
Virgin Australia	30	30	27	90.0	16	53.3	0	0.0
Virgin Australia - ATR/F100 Operations	22	22	20	90.9	11	50.0	0	0.0
All Airlines	82	82	68	82.9	45	54.9	0	0.0
Rockhampton-Brisbane								
QantasLink	130	129	102	79.1	86	66.7	1	0.8
Virgin Australia	78	77	69	89.6	49	63.6	1	1.3
Virgin Australia - ATR/F100 Operations	135	133	122	91.7	113	85.0	2	1.5
All Airlines	343	339	293	86.4	248	73.2	4	1.2
Sunshine Coast-Melbourne								
Jetstar	58	58	46	79.3	39	67.2	0	0.0
Virgin Australia	30	30	24	80.0	22	73.3	0	0.0
All Airlines	88	88	70	79.5	61	69.3	0	0.0
Sunshine Coast-Sydney								
Jetstar	104	104	81	77.9	76	73.1	0	0.0
Virgin Australia	34	34	26	76.5	21	61.8	0	0.0
All Airlines	138	138	107	77.5	97	70.3	0	0.0
Sydney-Adelaide								
Jetstar	103	103	87	84.5	85	82.5	0	0.0
Qantas	272	272	232	85.3	223	82.0	0	0.0
Virgin Australia	170	170	134	78.8	124	72.9	0	0.0
All Airlines	545	545	453	83.1	432	79.3	0	0.0
Sydney-Albury								
QantasLink	116	116	71	61.2	68	58.6	0	0.0
Regional Express	111	111	89	80.2	84	75.7	0	0.0
Virgin Australia - ATR/F100 Operations	60	60	39	65.0	39	65.0	0	0.0
All Airlines	287	287	199	69.3	191	66.6	0	0.0

	<i>Sectors</i>		<i>Departures On Time</i>		<i>Arrivals On Time</i>		<i>Cancellations</i>	
	<i>Sched.</i>	<i>Flown</i>	<i>No.</i>	<i>%</i>	<i>No.</i>	<i>%</i>	<i>No.</i>	<i>%</i>
Sydney-Ayers Rock								
Qantas	30	30	27	90.0	26	86.7	0	0.0
Virgin Australia	30	30	23	76.7	16	53.3	0	0.0
All Airlines	60	60	50	83.3	42	70.0	0	0.0
Sydney-Ballina								
Jetstar	44	44	37	84.1	35	79.5	0	0.0
Regional Express	29	29	24	82.8	21	72.4	0	0.0
Virgin Australia	30	30	26	86.7	26	86.7	0	0.0
All Airlines	103	103	87	84.5	82	79.6	0	0.0
Sydney-Brisbane								
Jetstar	93	93	74	79.6	68	73.1	0	0.0
Qantas	582	574	484	84.3	413	72.0	8	1.4
Tiger Airways	113	113	98	86.7	86	76.1	0	0.0
Virgin Australia	559	540	424	78.5	375	69.4	19	3.4
All Airlines	1 347	1 320	1 080	81.8	942	71.4	27	2.0
Sydney-Cairns								
Jetstar	65	65	42	64.6	47	72.3	0	0.0
Qantas	70	70	58	82.9	57	81.4	0	0.0
Virgin Australia	91	90	65	72.2	71	78.9	1	1.1
All Airlines	226	225	165	73.3	175	77.8	1	0.4
Sydney-Canberra								
Qantas	169	166	145	87.3	138	83.1	3	1.8
QantasLink	398	375	273	72.8	260	69.3	23	5.8
Virgin Australia	74	73	66	90.4	65	89.0	1	1.4
Virgin Australia - ATR/F100 Operations	202	199	150	75.4	147	73.9	3	1.5
All Airlines	843	813	634	78.0	610	75.0	30	3.6
Sydney-Coffs Harbour								
QantasLink	142	140	97	69.3	94	67.1	2	1.4
Virgin Australia	60	57	52	91.2	52	91.2	3	5.0
All Airlines	202	197	149	75.6	146	74.1	5	2.5
Sydney-Darwin								
Jetstar	23	23	22	95.7	20	87.0	0	0.0
Qantas	60	60	49	81.7	50	83.3	0	0.0
Virgin Australia	30	30	25	83.3	22	73.3	0	0.0
All Airlines	113	113	96	85.0	92	81.4	0	0.0
Sydney-Dubbo								
QantasLink	109	108	75	69.4	80	74.1	1	0.9
Regional Express	174	173	147	85.0	145	83.8	1	0.6
All Airlines	283	281	222	79.0	225	80.1	2	0.7
Sydney-Gold Coast								
Jetstar	285	277	223	80.5	219	79.1	8	2.8
Qantas	90	90	84	93.3	85	94.4	0	0.0
Tiger Airways	82	80	48	60.0	52	65.0	2	2.4
Virgin Australia	333	325	243	74.8	249	76.6	8	2.4
All Airlines	790	772	598	77.5	605	78.4	18	2.3
Sydney-Hamilton Island								
Jetstar	30	30	22	73.3	22	73.3	0	0.0
Virgin Australia	30	30	23	76.7	25	83.3	0	0.0
All Airlines	60	60	45	75.0	47	78.3	0	0.0
Sydney-Hobart								
Jetstar	74	74	58	78.4	59	79.7	0	0.0
Qantas	30	30	27	90.0	26	86.7	0	0.0
Virgin Australia	60	59	39	66.1	41	69.5	1	1.7
All Airlines	164	163	124	76.1	126	77.3	1	0.6

	<i>Sectors</i>		<i>Departures On Time</i>		<i>Arrivals On Time</i>		<i>Cancellations</i>	
	<i>Sched.</i>	<i>Flown</i>	<i>No.</i>	<i>%</i>	<i>No.</i>	<i>%</i>	<i>No.</i>	<i>%</i>
Sydney-Launceston								
Jetstar	49	49	43	87.8	36	73.5	0	0.0
Virgin Australia	30	30	24	80.0	22	73.3	0	0.0
All Airlines	79	79	67	84.8	58	73.4	0	0.0
Sydney-Melbourne								
Jetstar	303	298	233	78.2	233	78.2	5	1.7
Qantas	891	856	732	85.5	700	81.8	35	3.9
Tiger Airways	230	226	163	72.1	146	64.6	4	1.7
Virgin Australia	792	767	629	82.0	615	80.2	25	3.2
All Airlines	2 216	2 147	1 757	81.8	1 694	78.9	69	3.1
Sydney-Perth								
Jetstar	39	39	30	76.9	25	64.1	0	0.0
Qantas	196	195	146	74.9	112	57.4	1	0.5
Virgin Australia	116	116	94	81.0	53	45.7	0	0.0
All Airlines	351	350	270	77.1	190	54.3	1	0.3
Sydney-Port Macquarie								
QantasLink	135	131	97	74.0	95	72.5	4	3.0
Virgin Australia - ATR/F100 Operations	60	60	43	71.7	39	65.0	0	0.0
All Airlines	195	191	140	73.3	134	70.2	4	2.1
Sydney-Sunshine Coast								
Jetstar	102	102	85	83.3	89	87.3	0	0.0
Virgin Australia	34	34	27	79.4	29	85.3	0	0.0
All Airlines	136	136	112	82.4	118	86.8	0	0.0
Sydney-Townsville								
Jetstar	21	21	18	85.7	18	85.7	0	0.0
Virgin Australia	30	30	26	86.7	27	90.0	0	0.0
All Airlines	51	51	44	86.3	45	88.2	0	0.0
Sydney-Wagga Wagga								
QantasLink	113	112	84	75.0	75	67.0	1	0.9
Regional Express	119	119	108	90.8	100	84.0	0	0.0
All Airlines	232	231	192	83.1	175	75.8	1	0.4
Townsville-Brisbane								
Jetstar	30	30	20	66.7	19	63.3	0	0.0
Qantas	143	143	129	90.2	115	80.4	0	0.0
Virgin Australia	163	161	135	83.9	108	67.1	2	1.2
All Airlines	336	334	284	85.0	242	72.5	2	0.6
Townsville-Cairns								
QantasLink	186	184	158	85.9	157	85.3	2	1.1
Virgin Australia - ATR/F100 Operations	26	26	22	84.6	23	88.5	0	0.0
All Airlines	212	210	180	85.7	180	85.7	2	0.9
Townsville-Sydney								
Jetstar	22	22	20	90.9	18	81.8	0	0.0
Virgin Australia	30	30	22	73.3	13	43.3	0	0.0
All Airlines	52	52	42	80.8	31	59.6	0	0.0
Wagga Wagga-Sydney								
QantasLink	112	112	86	76.8	82	73.2	0	0.0
Regional Express	119	119	106	89.1	99	83.2	0	0.0
All Airlines	231	231	192	83.1	181	78.4	0	0.0

Airports

On time performance is reported for all routes where the passenger load averages over 8000 passengers per month, and where two or more airlines operate in competition. The following data reports by airport against flights operated on those routes only.

Airport	Departures			Arrivals		
	Sectors	On Time		Sectors	On Time	
	Flown	No.	%	Flown	No.	%
Adelaide						
Jetstar	269	206	76.6	269	220	81.8
Qantas	833	700	84.0	833	696	83.6
QantasLink	135	107	79.3	136	106	77.9
Regional Express	207	197	95.2	207	185	89.4
Tiger Airways	46	36	78.3	46	37	80.4
Virgin Australia	674	600	89.0	677	547	80.8
All Airlines	2 164	1 846	85.3	2 168	1 791	82.6
Relates to services to and from Brisbane, Canberra, Gold Coast, Melbourne, Perth, Port Lincoln and Sydney.						
Albury						
QantasLink	116	70	60.3	116	68	58.6
Regional Express	111	97	87.4	111	84	75.7
Virgin Australia - ATR/F100 Operations	60	47	78.3	60	39	65.0
All Airlines	287	214	74.6	287	191	66.6
Relates to services to and from Sydney only.						
Ayers Rock						
Qantas	30	22	73.3	30	26	86.7
Virgin Australia	30	14	46.7	30	16	53.3
All Airlines	60	36	60.0	60	42	70.0
Relates to services to and from Sydney only.						
Ballina						
Jetstar	44	27	61.4	44	35	79.5
Regional Express	24	13	54.2	29	21	72.4
Virgin Australia	30	23	76.7	30	26	86.7
All Airlines	98	63	64.3	103	82	79.6
Relates to services to and from Sydney only.						
Brisbane						
Jetstar	619	450	72.7	617	421	68.2
Qantas	1 687	1 389	82.3	1 691	1 290	76.3
QantasLink	625	518	82.9	625	414	66.2
Tiger Airways	200	138	69.0	202	150	74.3
Virgin Australia	1 851	1 550	83.7	1 851	1 342	72.5
Virgin Australia - ATR/F100 Operations	476	419	88.0	475	383	80.6
All Airlines	5 458	4 464	81.8	5 461	4 000	73.2
Relates to services to and from Adelaide, Cairns, Canberra, Darwin, Emerald, Gladstone, Hamilton Island, Mackay, Melbourne, Mount Isa, Newcastle, Perth, Proserpine, Rockhampton, Sydney and Townsville.						

Airport	Departures			Arrivals		
	Sectors	On Time		Sectors	On Time	
	Flown	No.	%	Flown	No.	%
Broome						
Qantas	26	18	69.2	26	21	80.8
QantasLink	56	46	82.1	56	44	78.6
Skywest	14	12	85.7	8	7	87.5
Virgin Australia	30	22	73.3	30	23	76.7
All Airlines	126	98	77.8	120	95	79.2
Relates to services to and from Perth only.						
Cairns						
Jetstar	232	187	80.6	232	190	81.9
Qantas	215	184	85.6	217	187	86.2
QantasLink	183	160	87.4	184	157	85.3
Tiger Airways	18	11	61.1	18	14	77.8
Virgin Australia	263	228	86.7	262	221	84.4
Virgin Australia - ATR/F100 Operations	50	41	82.0	50	44	88.0
All Airlines	961	811	84.4	963	813	84.4
Relates to services to and from Brisbane, Melbourne, Sydney and Townsville.						
Canberra						
Qantas	615	554	90.1	613	533	86.9
QantasLink	454	348	76.7	454	319	70.3
Virgin Australia	372	320	86.0	372	308	82.8
Virgin Australia - ATR/F100 Operations	198	168	84.8	199	147	73.9
All Airlines	1 639	1 390	84.8	1 638	1 307	79.8
Relates to services to and from Adelaide, Brisbane, Melbourne and Sydney.						
Coffs Harbour						
QantasLink	141	94	66.7	140	94	67.1
Virgin Australia	57	51	89.5	57	52	91.2
All Airlines	198	145	73.2	197	146	74.1
Relates to services to and from Sydney only.						
Darwin						
Jetstar	33	25	75.8	33	26	78.8
Qantas	132	113	85.6	132	108	81.8
Virgin Australia	115	101	87.8	115	91	79.1
All Airlines	280	239	85.4	280	225	80.4
Relates to services to and from Brisbane, Melbourne, Perth and Sydney.						
Dubbo						
QantasLink	107	77	72.0	108	80	74.1
Regional Express	175	148	84.6	173	145	83.8
All Airlines	282	225	79.8	281	225	80.1
Relates to services to and from Sydney only.						
Emerald						
QantasLink	186	159	85.5	187	160	85.6
Virgin Australia - ATR/F100 Operations	100	94	94.0	100	93	93.0
All Airlines	286	253	88.5	287	253	88.2
Relates to services to and from Brisbane only.						

Airport	Departures			Arrivals		
	Sectors	On Time		Sectors	On Time	
	Flown	No.	%	Flown	No.	%
Geraldton						
QantasLink	52	39	75.0	52	38	73.1
Skywest	80	59	73.8	80	59	73.8
All Airlines	132	98	74.2	132	97	73.5
Relates to services to and from Perth only.						
Gladstone						
QantasLink	172	137	79.7	152	118	77.6
Virgin Australia - ATR/F100 Operations	121	111	91.7	121	108	89.3
All Airlines	293	248	84.6	273	226	82.8
Relates to services to and from Brisbane only.						
Gold Coast						
Jetstar	521	417	80.0	522	422	80.8
Qantas	90	80	88.9	90	85	94.4
Tiger Airways	155	99	63.9	155	114	73.5
Virgin Australia	543	455	83.8	544	445	81.8
All Airlines	1 309	1 051	80.3	1 311	1 066	81.3
Relates to services to and from Adelaide, Melbourne and Sydney.						
Hamilton Island						
Jetstar	48	36	75.0	48	37	77.1
Virgin Australia	60	35	58.3	60	50	83.3
All Airlines	108	71	65.7	108	87	80.6
Relates to services to and from Brisbane and Sydney.						
Hobart						
Jetstar	247	170	68.8	247	172	69.6
Qantas	90	77	85.6	90	78	86.7
QantasLink	30	25	83.3	30	17	56.7
Tiger Airways	60	50	83.3	60	49	81.7
Virgin Australia	215	165	76.7	215	173	80.5
All Airlines	642	487	75.9	642	489	76.2
Relates to services to and from Melbourne and Sydney.						
Kalgoorlie						
Qantas	69	58	84.1	69	60	87.0
QantasLink	16	14	87.5	16	13	81.3
Skywest	61	43	70.5	55	41	74.5
All Airlines	146	115	78.8	140	114	81.4
Relates to services to and from Perth only.						
Karratha						
Qantas	186	169	90.9	186	162	87.1
QantasLink	65	51	78.5	65	52	80.0
Virgin Australia	52	33	63.5	52	37	71.2
All Airlines	303	253	83.5	303	251	82.8
Relates to services to and from Perth only.						

Airport	Departures			Arrivals		
	Sectors Flown	On Time		Sectors Flown	On Time	
		No.	%		No.	%
Launceston						
Jetstar	189	125	66.1	188	144	76.6
QantasLink	116	95	81.9	118	94	79.7
Virgin Australia	160	136	85.0	160	135	84.4
All Airlines	465	356	76.6	466	373	80.0
Relates to services to and from Melbourne and Sydney.						
Mackay						
Jetstar	89	63	70.8	89	70	78.7
QantasLink	52	40	76.9	52	39	75.0
Virgin Australia	167	146	87.4	167	141	84.4
All Airlines	308	249	80.8	308	250	81.2
Relates to services to and from Brisbane only.						
Melbourne						
Jetstar	1 330	987	74.2	1 331	956	71.8
Qantas	2 130	1 827	85.8	2 130	1 755	82.4
QantasLink	288	239	83.0	286	224	78.3
Regional Express	86	79	91.9	87	81	93.1
Tiger Airways	587	490	83.5	586	395	67.4
Virgin Australia	2 357	2 069	87.8	2 358	1 930	81.8
All Airlines	6 778	5 691	84.0	6 778	5 341	78.8
Relates to services to and from Adelaide, Brisbane, Cairns, Canberra, Darwin, Gold Coast, Hobart, Launceston, Mildura, Newcastle, Perth, Sunshine Coast and Sydney.						
Mildura						
QantasLink	86	80	93.0	86	69	80.2
Regional Express	87	83	95.4	86	76	88.4
Virgin Australia	30	26	86.7	30	26	86.7
All Airlines	203	189	93.1	202	171	84.7
Relates to services to and from Melbourne only.						
Mount Isa						
Qantas	56	50	89.3	56	51	91.1
Virgin Australia	22	18	81.8	22	18	81.8
All Airlines	78	68	87.2	78	69	88.5
Relates to services to and from Brisbane only.						
Newcastle						
Jetstar	225	177	78.7	224	179	79.9
QantasLink	66	38	57.6	66	38	57.6
Virgin Australia	29	25	86.2	29	24	82.8
Virgin Australia - ATR/F100 Operations	75	66	88.0	75	65	86.7
All Airlines	395	306	77.5	394	306	77.7
Relates to services to and from Brisbane and Melbourne.						
Newman						
Qantas	131	105	80.2	132	111	84.1
QantasLink	27	22	81.5	27	26	96.3
Virgin Australia	35	26	74.3	35	25	71.4
All Airlines	193	153	79.3	194	162	83.5
Relates to services to and from Perth only.						

Airport	Departures			Arrivals		
	Sectors Flown	On Time		Sectors Flown	On Time	
		No.	%		No.	%
Perth						
Jetstar	165	89	53.9	168	109	64.9
Qantas	1 214	995	82.0	1 211	867	71.6
QantasLink	258	225	87.2	258	205	79.5
Skywest	143	111	77.6	155	107	69.0
Tiger Airways	72	59	81.9	73	64	87.7
Virgin Australia	611	520	85.1	612	340	55.6
All Airlines	2 463	1 999	81.2	2 477	1 692	68.3
Relates to services to and from Adelaide, Brisbane, Broome, Darwin, Geraldton, Kalgoorlie, Karratha, Melbourne, Newman, Port Hedland and Sydney.						
Port Hedland						
Qantas	126	104	82.5	126	108	85.7
QantasLink	42	41	97.6	42	41	97.6
Virgin Australia	73	59	80.8	73	58	79.5
All Airlines	241	204	84.6	241	207	85.9
Relates to services to and from Perth only.						
Port Lincoln						
QantasLink	98	85	86.7	98	76	77.6
Regional Express	207	185	89.4	207	187	90.3
All Airlines	305	270	88.5	305	263	86.2
Relates to services to and from Adelaide only.						
Port Macquarie						
QantasLink	132	96	72.7	131	95	72.5
Virgin Australia - ATR/F100 Operations	60	48	80.0	60	39	65.0
All Airlines	192	144	75.0	191	134	70.2
Relates to services to and from Sydney only.						
Proserpine						
Jetstar	30	21	70.0	30	21	70.0
Virgin Australia	30	27	90.0	30	28	93.3
Virgin Australia - ATR/F100 Operations	22	20	90.9	22	21	95.5
All Airlines	82	68	82.9	82	70	85.4
Relates to services to and from Brisbane only.						
Rockhampton						
QantasLink	129	102	79.1	148	121	81.8
Virgin Australia	77	69	89.6	77	69	89.6
Virgin Australia - ATR/F100 Operations	133	122	91.7	134	113	84.3
All Airlines	339	293	86.4	359	303	84.4
Relates to services to and from Brisbane only.						
Sunshine Coast						
Jetstar	162	127	78.4	162	141	87.0
Virgin Australia	64	50	78.1	64	54	84.4
All Airlines	226	177	78.3	226	195	86.3
Relates to services to and from Melbourne and Sydney.						

<i>Airport</i>	<i>Departures</i>			<i>Arrivals</i>		
	<i>Sectors</i>	<i>On Time</i>		<i>Sectors</i>	<i>On Time</i>	
	<i>Flown</i>	<i>No.</i>	<i>%</i>	<i>Flown</i>	<i>No.</i>	<i>%</i>
Sydney						
Jetstar	1 218	974	80.0	1 218	884	72.6
Qantas	2 343	1 984	84.7	2 341	1 910	81.6
QantasLink	982	697	71.0	982	671	68.3
Regional Express	432	368	85.2	429	336	78.3
Tiger Airways	419	309	73.7	417	309	74.1
Virgin Australia	2 411	1 920	79.6	2 406	1 813	75.4
Virgin Australia - ATR/F100 Operations	319	232	72.7	318	234	73.6
All Airlines	8 124	6 484	79.8	8 111	6 157	75.9
Relates to services to and from Adelaide, Albury, Ayers Rock, Ballina, Brisbane, Cairns, Canberra, Coffs Harbour, Darwin, Dubbo, Gold Coast, Hamilton Island, Hobart, Launceston, Melbourne, Perth, Port Macquarie, Sunshine Coast, Townsville and Wagga Wagga.						
Townsville						
Jetstar	52	40	76.9	51	38	74.5
Qantas	143	129	90.2	143	117	81.8
QantasLink	184	158	85.9	183	154	84.2
Virgin Australia	191	157	82.2	191	157	82.2
Virgin Australia - ATR/F100 Operations	26	22	84.6	26	21	80.8
All Airlines	596	506	84.9	594	487	82.0
Relates to services to and from Brisbane, Cairns and Sydney.						
Wagga Wagga						
QantasLink	112	86	76.8	112	75	67.0
Regional Express	119	106	89.1	119	100	84.0
All Airlines	231	192	83.1	231	175	75.8
Relates to services to and from Sydney only.						

Definitions

On time departure A flight departure is counted as "on time" if it departs the gate within 15 minutes of the scheduled departure time shown in the carriers' schedule.

On time arrival A flight arrival is counted as "on time" if it arrived at the gate within 15 minutes of the scheduled arrival time shown in the carriers' schedule.
Neither diverted nor cancelled flights count as on time.

Cancellation A flight removed from service within 7 days of scheduled departure is regarded as a cancellation.

On time departure percentage The percentage of on time departures is measured against the number of departures *operated* on any particular sector.

On time arrival percentage The percentage of on time arrivals is measured against the number of arrivals *operated* on any particular sector.

Cancellation percentage The percentage of cancellations is measured against the number of services *scheduled* on any particular sector.
