



Australian Government

Department of Infrastructure, Regional Development and Cities

Bureau of Infrastructure, Transport and Regional Economics

STATISTICAL REPORT



Aviation

Domestic airline on time performance
May 2018

Ownership of intellectual property rights in this publication

Unless otherwise noted, copyright (and any other intellectual property rights, if any) in this publication is owned by the Commonwealth of Australia (referred to below as the Commonwealth).

Disclaimer

The material contained in this publication is made available on the understanding that the Commonwealth is not providing professional advice, and that users exercise their own skill and care with respect to its use, and seek independent advice if necessary.

The Commonwealth makes no representations or warranties as to the contents or accuracy of the information contained in this publication. To the extent permitted by law, the Commonwealth disclaims liability to any person or organisation in respect of anything done, or omitted to be done, in reliance upon information contained in this publication.

Creative Commons licence

With the exception of (a) the Coat of Arms; and (b) the Department of Infrastructure, Regional Development and Cities' photos and graphics, copyright in this publication is licensed under a Creative Commons Attribution 3.0 Australia Licence.

Creative Commons Attribution 3.0 Australia Licence is a standard form licence agreement that allows you to copy, communicate and adapt this publication provided that you attribute the work to the Commonwealth and abide by the other licence terms. A summary of the licence terms is available from <http://creativecommons.org/licenses/by/3.0/au/deed.en>. The full licence terms are available from <http://creativecommons.org/licenses/by/3.0/au/legalcode>.

Use of the Coat of Arms

The Department of the Prime Minister and Cabinet sets the terms under which the Coat of Arms is used. Please refer to the Department's Commonwealth Coat of Arms and Government branding web page <http://www.dPMC.gov.au/guidelines/index.cfm#brand> and, in particular, the Guidelines on the use of the Commonwealth Coat of Arms publication.

An appropriate citation for this report is:

Bureau of Infrastructure, Transport and Regional Economics (BITRE), 2018, Domestic airline on time performance, Statistical Report, BITRE, Canberra ACT.

Contact us

This publication is available in PDF format. All other rights are reserved, including in relation to any Departmental logos or trade marks which may exist. For enquiries regarding the licence and any use of this publication, please contact:

Bureau of Infrastructure, Transport and Regional Economics (BITRE)
Department of Infrastructure, Regional Development and Cities
GPO Box 501, Canberra ACT 2601, Australia
Telephone: (international) +61 2 6274 7210
Fax: (international) +61 2 6274 6855
Email: bitre@infrastructure.gov.au
Website: www.bitre.gov.au

Inquiries

Should you require additional information about the statistics contained in this publication:

Telephone (02) 6274 7790 or Facsimile (02) 6274 7727

Electronic mail: AVSTATS@infrastructure.gov.au

Web site: <http://www.bitre.gov.au/statistics/aviation/otphome.aspx>

Foreword

The Bureau of Infrastructure, Transport and Regional Economics (BITRE) monitors the punctuality and reliability of major domestic airlines operating between Australian airports. The purpose of this is to allow for evaluation of overall industry and individual airline performance, so that consumers of air travel can make informed decisions.

The following domestic airlines currently report this information monthly to the BITRE: Jetstar, Qantas, QantasLink, Regional Express, Tigerair Australia, Virgin Australia and Virgin Australia Regional Airlines. Data has been gathered since November 2003, although some airlines commenced reporting at a later date, including Jetstar which first reported in May 2004, MacAir in July 2005, Tigerair Australia in April 2008 and Virgin Australia Regional Airlines in May 2013. MacAir ceased operations in February 2009 and data was not received for December 2008 onwards. Virgin Blue was rebranded as Virgin Australia in May 2011 and Tiger Airways was rebranded as Tigerair Australia in July 2013 and time series data in Microsoft Excel spreadsheet format on the BITRE website have been revised to reflect these changes. Services operated by Skywest on behalf of Virgin Australia using ATR/F100 aircraft commenced in November 2011 and were shown separately as Virgin Australia – ATR/F100 Operations. Virgin Australia Regional Airlines commenced operations in May 2013. It was formed after the acquisition of Skywest by Virgin Australia and represented a combination of operations previously reported under Skywest and Virgin Australia – ATR/F100 Operations. In January 2016, Virgin Australia transferred their ATR fleet from Virgin Australia Regional Airlines to Virgin Australia.

Information presented in this report is for Australian domestic routes for which the passenger load averaged 8 000 or more passengers per month over the previous six months and where two or more airlines operated in competition on those routes. There were 66 routes that met this definition in May 2018. Over time, routes which meet these criteria change as airline networks and traffic levels vary.

Participating airlines report their overall monthly network performance where this is possible.

Total industry figures encompass all services operated by reporting airlines only. These airlines collectively carried over 95 per cent of total domestic passengers (regular public transport only) in 2017.

The method of capturing on time performance varies between airlines utilising different recording systems. Jetstar and Qantas jet aircraft use Aircraft Communication Addressing and Reporting System (ACARS) to electronically measure on time performance. Regional Express, Tigerair Australia, Virgin Australia, Virgin Australia Regional Airlines and the Qantas non-jet fleet record on time performance manually using records from pilots, gate agents and/or ground crews.

After initial data is collected, aggregate reports are audited internally by participating airlines prior to publication.

Reports and detailed time series data in Microsoft Excel spreadsheet format are available from the BITRE website at: <http://www.bitre.gov.au/statistics/aviation/otphome.aspx>.

Contents

	Page
Industry performance	1
Individual routes	10
Airports.....	24
Definitions	30

Industry performance

For May 2018, on time performance over all routes operated by participating airlines (Jetstar, Qantas, QantasLink, Regional Express, Tigerair Australia, Virgin Australia and Virgin Australia Regional Airlines) averaged 84.7 per cent for on time arrivals and 85.0 per cent for on time departures. Cancellations represented 1.4 per cent of all scheduled flights. The equivalent figures for May 2017 were 87.5 per cent for on time arrivals, 87.4 per cent for on time departures and 1.0 per cent for cancellations.

This month's on time arrivals figure was higher than the long term average performance for all routes (82.7 per cent) and the on time departures figure was also higher than the long term average (84.0 per cent). The rate of cancellations was the same as the long term average of 1.4 per cent.

Virgin Australia achieved the highest on time arrivals among the major domestic airlines at 87.9 per cent followed by Qantas at 83.8 per cent, Jetstar at 80.3 per cent and Tigerair Australia at 73.1 per cent. Of the regional airlines, QantasLink recorded 90.0 per cent for on time arrivals, followed by Regional Express at 80.7 per cent and Virgin Australia Regional Airlines at 77.7 per cent. The Qantas network (Qantas and QantasLink combined operations) recorded 87.0 per cent for on time arrivals while the Virgin Australia network (Virgin Australia and Virgin Australia Regional Airlines combined operations) recorded 87.2 per cent.

Virgin Australia also achieved the highest level of on time departures among the major domestic airlines for May 2018 at 89.2 per cent, followed by Qantas at 82.8 per cent, Jetstar at 77.8 per cent and Tigerair Australia at 74.9 per cent. Of the regional airlines, QantasLink recorded 89.9 per cent for on time departures, followed by Regional Express at 83.4 per cent and Virgin Australia Regional Airlines at 80.9 per cent. The Qantas network recorded 86.5 per cent for on time departures while the Virgin Australia network recorded 88.7 per cent.

Tigerair Australia recorded the highest percentage of cancellations (3.5 per cent) during the month, followed by Virgin Australia Regional Airlines (2.5 per cent), Qantas (1.8 per cent), Jetstar (1.5 per cent), QantasLink and Virgin Australia (both at 1.2 per cent) and Regional Express (0.7 per cent).

Airlines' on time performance varies across the routes they serve. Individual route data by specific airline for 66 routes are shown on pages 10-23.

Of the 66 routes which met the criteria for on time performance reporting in May 2018, the Darwin-Alice Springs route had the highest percentage of on time arrivals (97.6 per cent) and the highest percentage of on time departures (98.8 per cent). The Brisbane-Mount Isa route had the lowest percentage of on time arrivals (55.3 per cent) and the Townsville-Melbourne route had the lowest percentage of on time departures (51.2 per cent).

Cancellations were highest on the Sydney-Melbourne route at 4.8 per cent, followed by the Melbourne-Sydney route at 4.7 per cent, the Geraldton-Perth route at 3.0 per cent, the Broome-Perth route at 2.9 per cent and the Brisbane-Sydney and Canberra-Sydney routes at 2.7 per cent.

Emerald Airport recorded the highest percentage of on time arrivals (96.2 per cent) and the highest percentage of on time departures (also 96.2 per cent). Mount Isa Airport recorded the lowest percentage of on time arrivals (55.3 per cent) and Sunshine Coast Airport recorded the lowest percentage of on time departures (73.4 per cent). These figures only refer to reported routes and do not cover all flights at these airports.

Table 1 On time performance for May 2018 — Total Industry

	Sectors		Arrivals On Time		Departures On Time		Cancellations	
	Scheduled	Flown	No.	%	No.	%	No.	%
Jetstar	6 271	6 174	4 956	80.3	4 804	77.8	97	1.5
Qantas	9 160	8 994	7 535	83.8	7 451	82.8	166	1.8
QantasLink	9 959	9 835	8 855	90.0	8 845	89.9	124	1.2
Regional Express	6 272	6 229	5 027	80.7	5 197	83.4	43	0.7
Tigerair Australia	2 142	2 067	1 511	73.1	1 548	74.9	75	3.5
Virgin Australia	11 639	11 496	10 102	87.9	10 253	89.2	143	1.2
Virgin Australia Regional Airlines	810	790	614	77.7	639	80.9	20	2.5
All Airlines	46 253	45 585	38 600	84.7	38 737	85.0	668	1.4
Qantas - all QF designated services	19 119	18 829	16 390	87.0	16 296	86.5	290	1.5
Virgin Australia - all VA designated services	12 449	12 286	10 716	87.2	10 892	88.7	163	1.3

Total airline network data (including routes not shown in this report).

Airlines' on time performance varies across the routes they serve. Individual route data by specific airline for 66 routes are shown on pages 10-23.

Table 2 Top ten routes for on time performance for May 2018 (participating airlines only)

Arrivals		Departures	
Route	On Time (%)	Route	On Time (%)
Darwin-Alice Springs	97.6	Darwin-Alice Springs	98.8
Canberra-Adelaide	97.1	Adelaide-Canberra	97.1
Cairns-Townsville	96.9	Emerald-Brisbane	96.2
Hamilton Island-Brisbane	96.7	Brisbane-Hobart	95.9
Bundaberg-Brisbane	96.3	Canberra-Adelaide	95.7
Brisbane-Emerald	96.2	Cairns-Townsville	95.6
Townsville-Cairns	95.6	Alice Springs-Darwin	95.2
Emerald-Brisbane	95.6	Townsville-Cairns	95.0
Alice Springs-Darwin	95.2	Adelaide-Gold Coast	94.7
Perth-Darwin	95.2	Sydney-Launceston	94.6

Table 3 Top ten airports for on time performance for May 2018 (participating airlines and reported routes only)

Arrivals		Departures	
Airport	On Time (%)	Airport	On Time (%)
Emerald	96.2	Emerald	96.2
Gladstone	92.6	Bundaberg	94.1
Port Hedland	92.6	Gladstone	93.1
Bundaberg	91.9	Alice Springs	92.8
Newman	91.7	Kalgoorlie	91.0
Proserpine	91.3	Port Hedland	90.9
Port Lincoln	91.0	Port Lincoln	90.7
Kalgoorlie	91.0	Hamilton Island	90.6
Mackay	89.7	Mackay	90.5
Tamworth	89.5	Rockhampton	90.2

Total industry on time performance

Figure 1 On time performance (by month from May 2015)—Total Industry

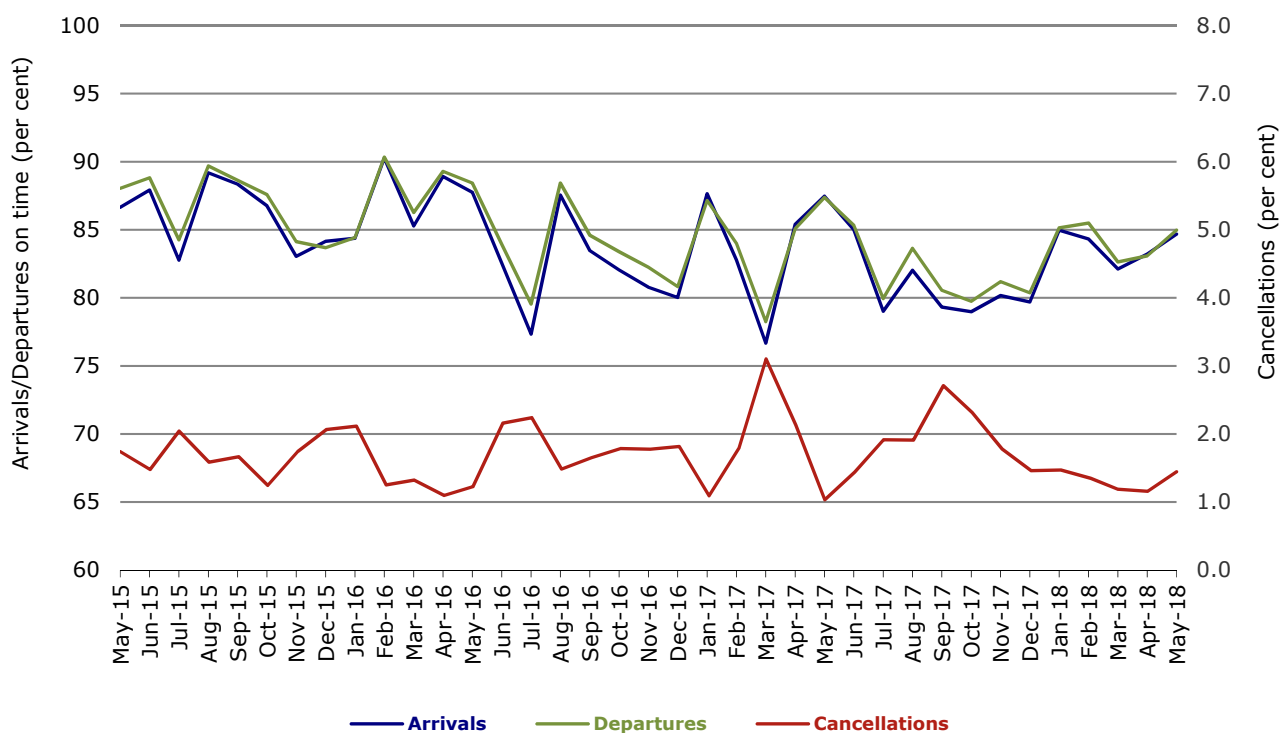


Figure 2 Arrivals on time (by month from May 2017)

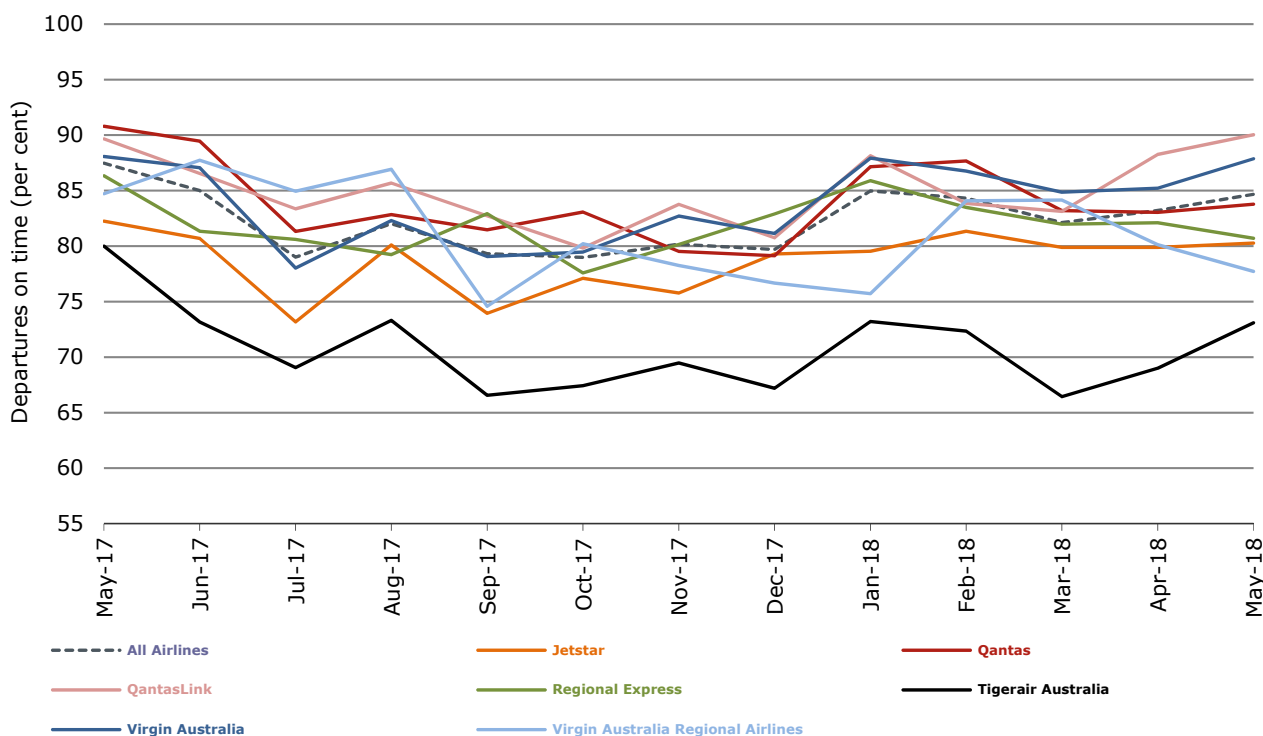


Figure 3 Departures on time (by month from May 2017)

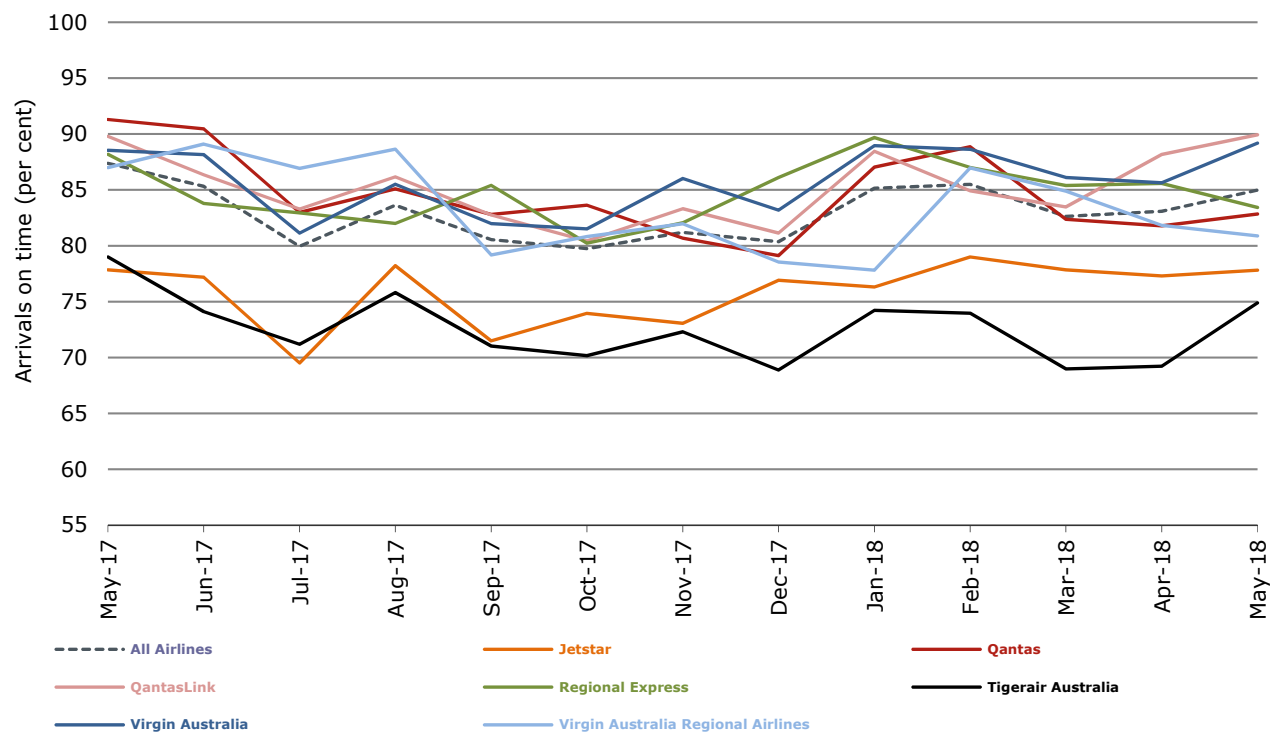
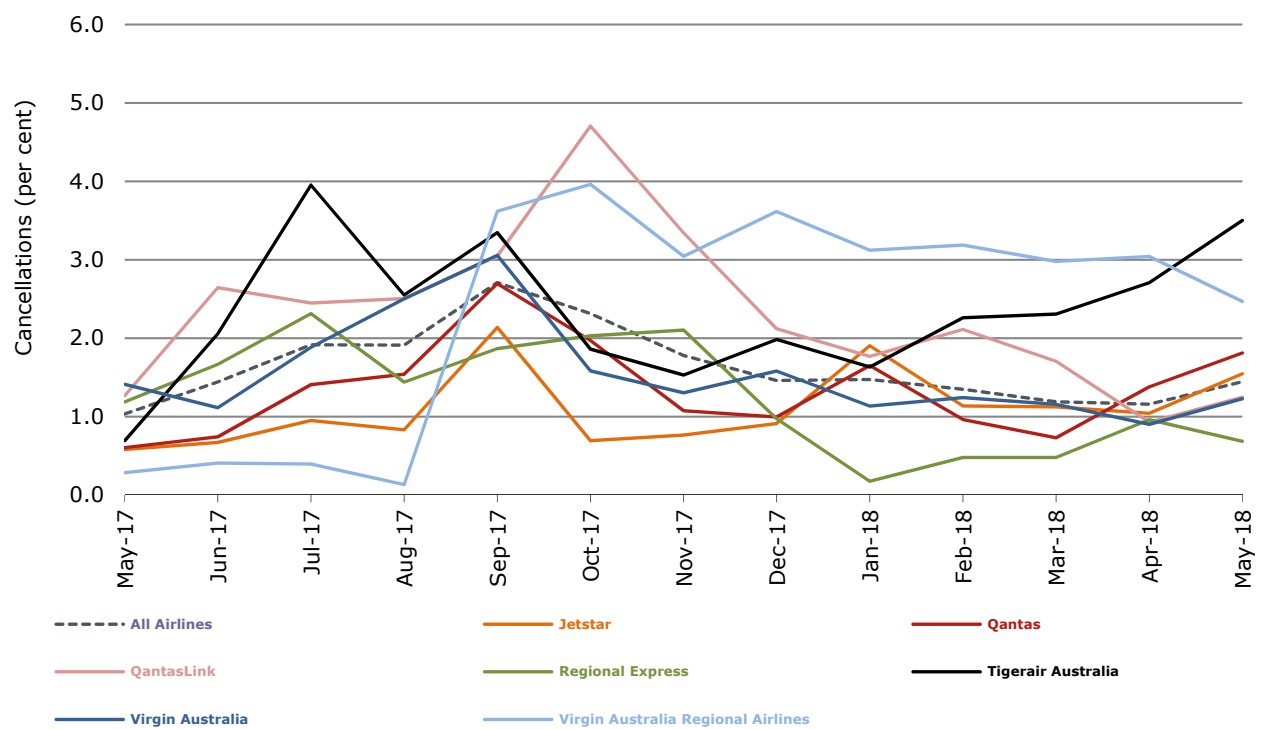


Figure 4 Cancellations (by month from May 2017)



Major domestic airlines on time performance

Figure 5 On time performance (by month from May 2015)—Jetstar

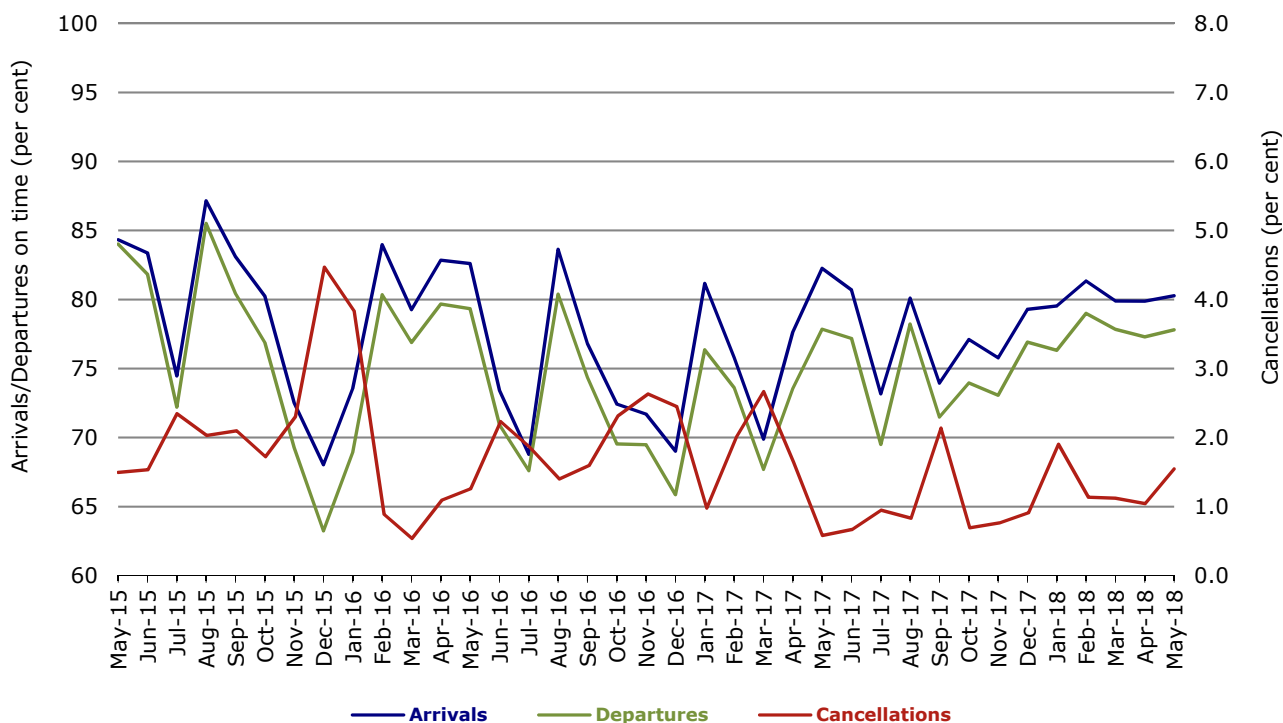


Figure 6 On time performance (by month from May 2015)—Qantas

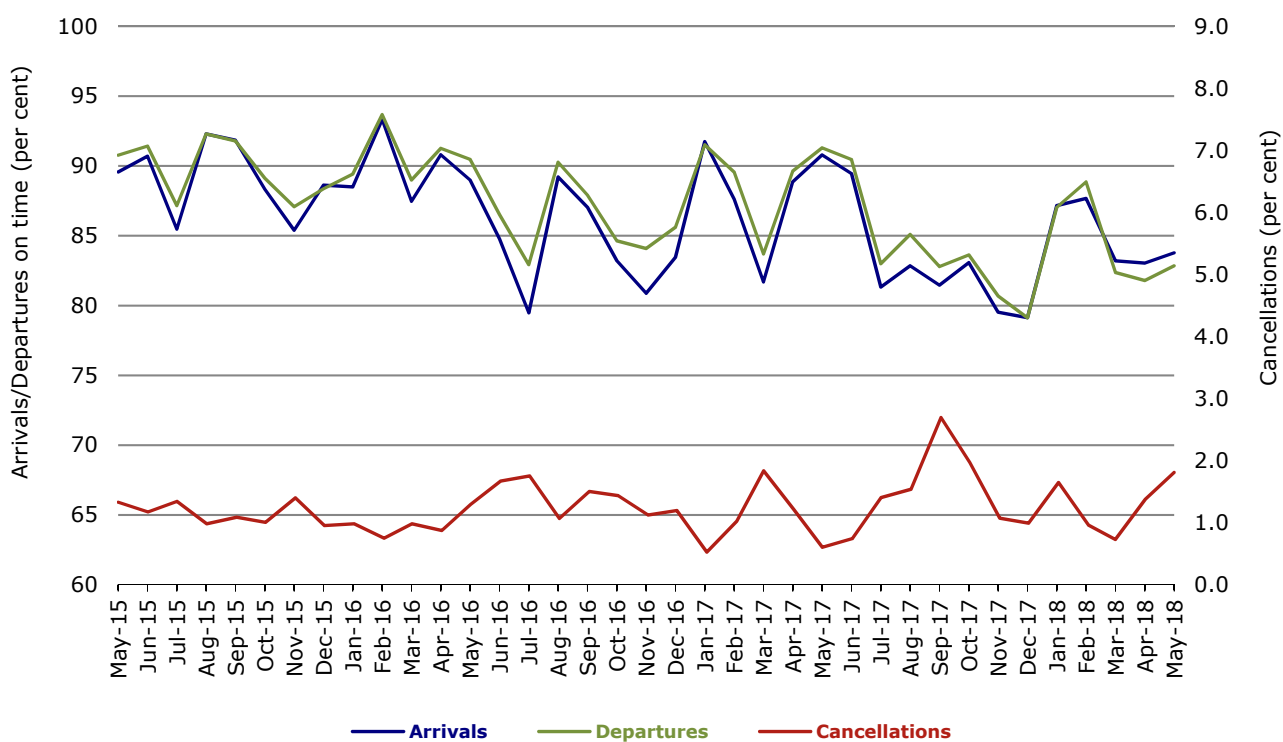


Figure 7 On time performance (by month from May 2015)—Tigerair Australia

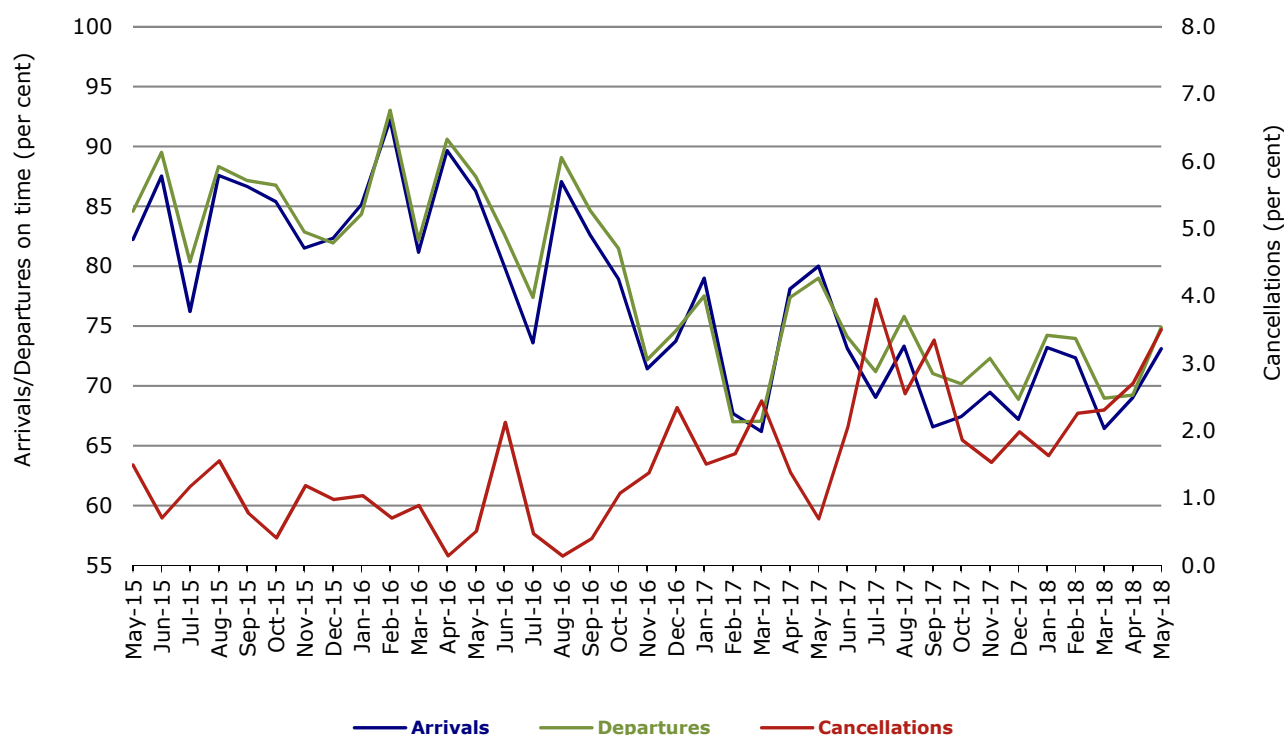
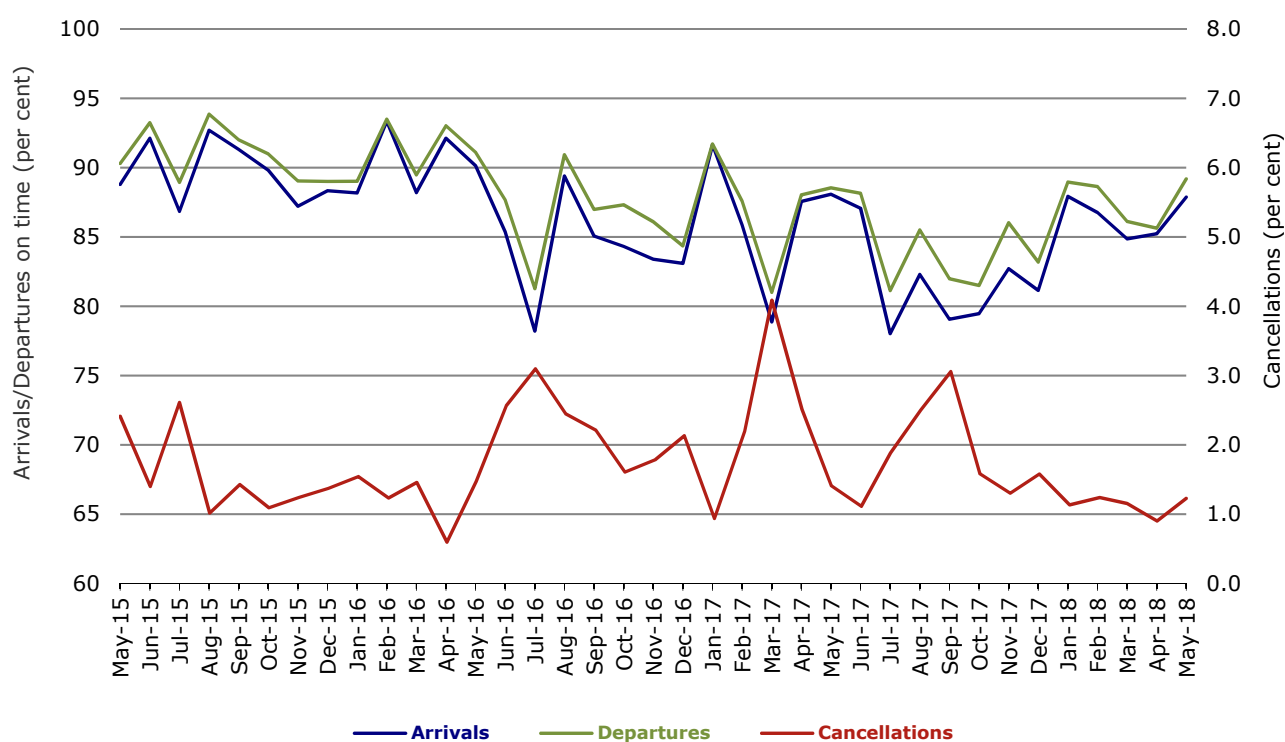


Figure 8 On time performance (by month from May 2015)—Virgin Australia



In January 2016, Virgin Australia transferred their ATR fleet from Virgin Australia Regional Airlines to Virgin Australia.

Major regional airlines on time performance

Figure 9 On time performance (by month from May 2015)—QantasLink

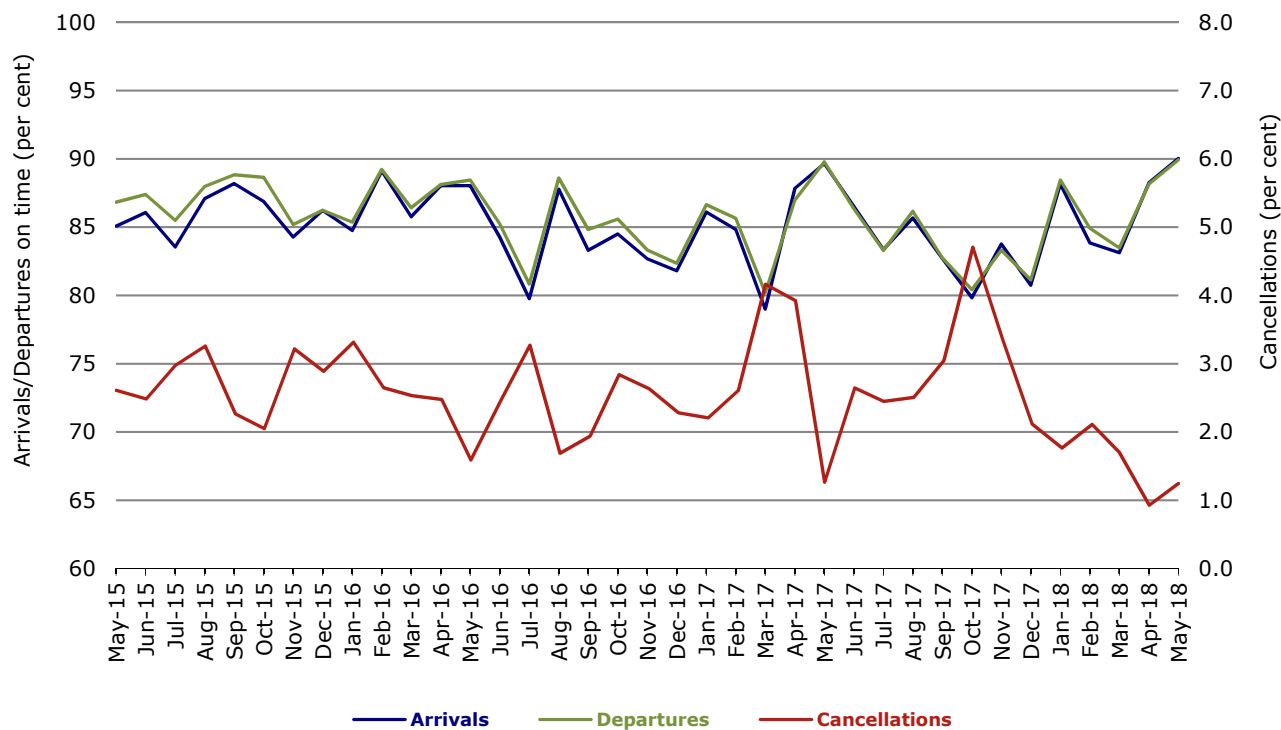


Figure 10 On time performance (by month from May 2015)—Regional Express

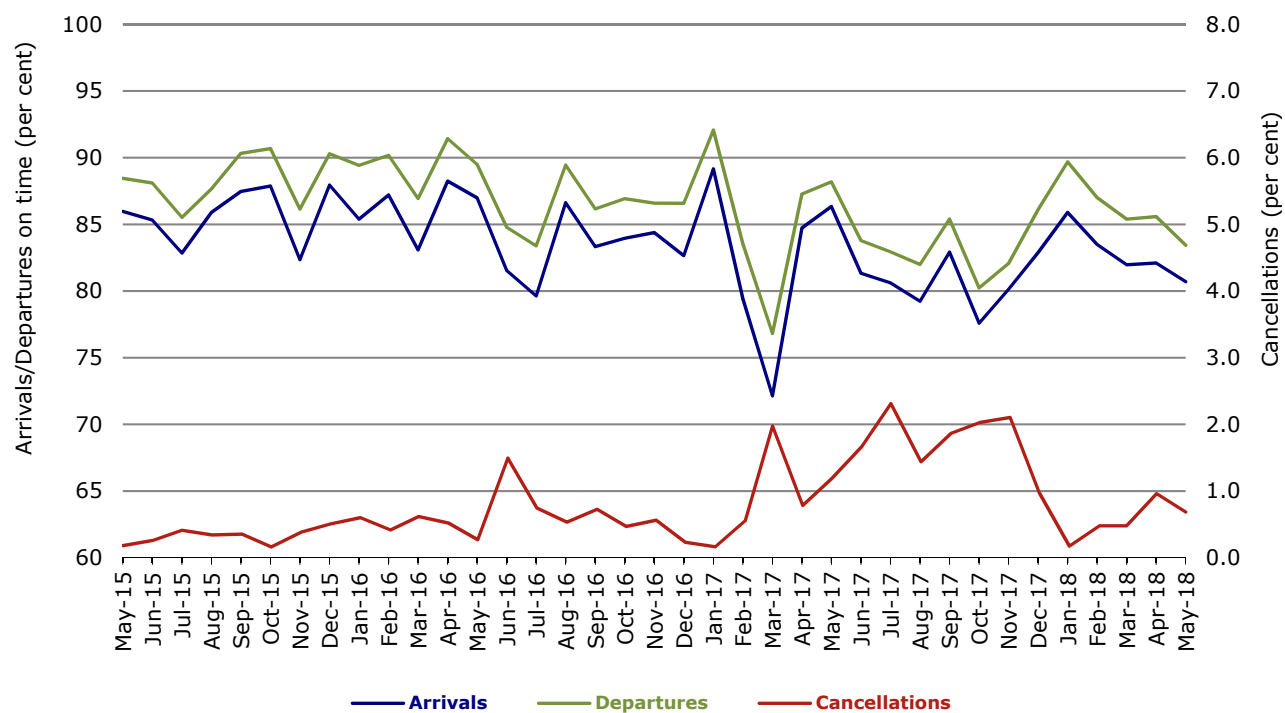
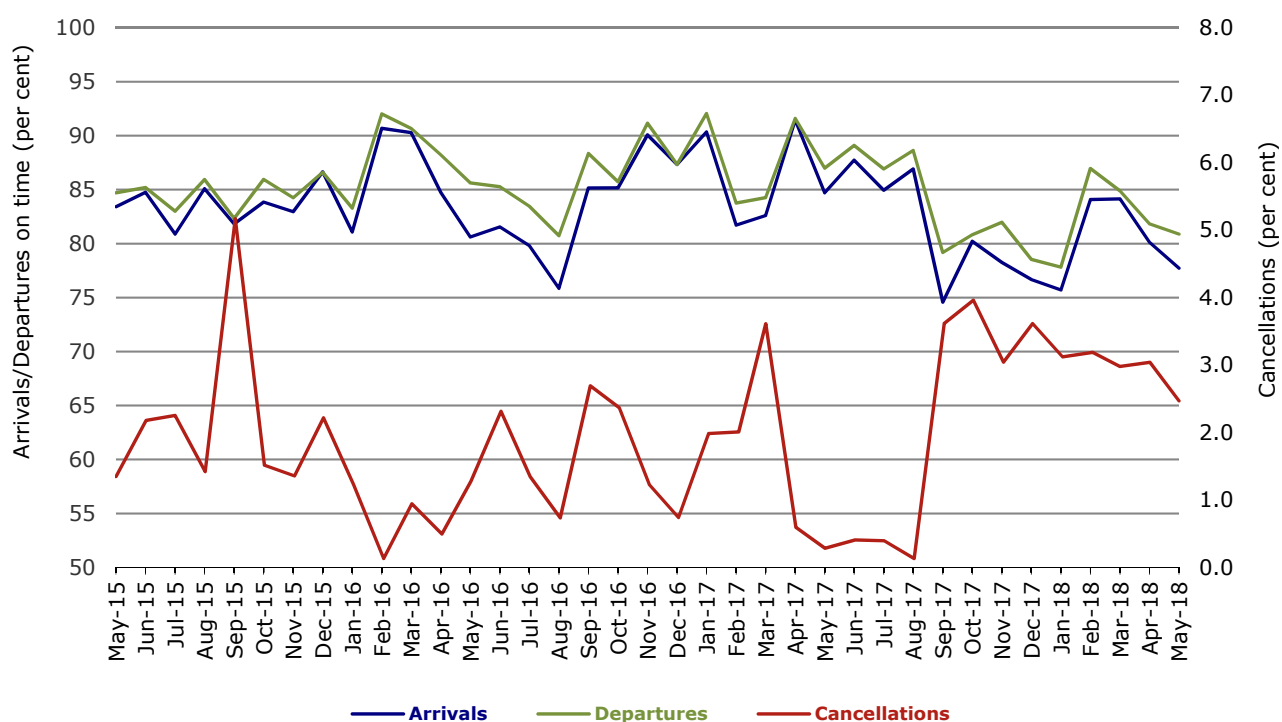


Figure 11 On time performance (by month from May 2015)
Virgin Australia Regional Airlines



In January 2016, Virgin Australia transferred their ATR fleet from Virgin Australia Regional Airlines to Virgin Australia.

Individual routes

On time performance is reported for all routes where the passenger load averages over 8000 passengers per month over the previous six months, and where two or more airlines operate in competition on those routes. There are now 66 routes which meet this definition. Over time, however, routes which meet this definition may change as airline networks and traffic levels vary.

	Sectors		Arrivals On Time		Departures On Time		Cancellations	
	Sched.	Flown	No.	%	No.	%	No.	%
Adelaide-Alice Springs								
Qantas	31	31	27	87.1	27	87.1	0	0.0
Virgin Australia	6	6	5	83.3	4	66.7	0	0.0
Virgin Australia Regional Airlines	17	17	9	52.9	10	58.8	0	0.0
All Airlines	54	54	41	75.9	41	75.9	0	0.0
Adelaide-Brisbane								
Jetstar	21	21	16	76.2	18	85.7	0	0.0
Qantas	62	62	52	83.9	54	87.1	0	0.0
QantasLink	55	55	49	89.1	51	92.7	0	0.0
Tigerair Australia	22	21	16	76.2	18	85.7	1	4.5
Virgin Australia	103	103	97	94.2	95	92.2	0	0.0
All Airlines	263	262	230	87.8	236	90.1	1	0.4
Adelaide-Canberra								
Qantas	43	43	39	90.7	41	95.3	0	0.0
Virgin Australia	27	27	27	100.0	27	100.0	0	0.0
All Airlines	70	70	66	94.3	68	97.1	0	0.0
Adelaide-Gold Coast								
Jetstar	27	26	24	92.3	24	92.3	1	3.7
Virgin Australia	31	31	30	96.8	30	96.8	0	0.0
All Airlines	58	57	54	94.7	54	94.7	1	1.7
Adelaide-Melbourne								
Jetstar	93	86	78	90.7	71	82.6	7	7.5
Qantas	288	288	245	85.1	247	85.8	0	0.0
Tigerair Australia	63	61	48	78.7	47	77.0	2	3.2
Virgin Australia	274	271	229	84.5	245	90.4	3	1.1
All Airlines	718	706	600	85.0	610	86.4	12	1.7
Adelaide-Perth								
Jetstar	27	27	22	81.5	22	81.5	0	0.0
Qantas	103	103	99	96.1	93	90.3	0	0.0
QantasLink	8	8	8	100.0	8	100.0	0	0.0
Virgin Australia	48	48	48	100.0	45	93.8	0	0.0
Virgin Australia Regional Airlines	27	25	21	84.0	21	84.0	2	7.4
All Airlines	213	211	198	93.8	189	89.6	2	0.9
Adelaide-Port Lincoln								
QantasLink	110	110	101	91.8	104	94.5	0	0.0
Regional Express	182	180	163	90.6	169	93.9	2	1.1
All Airlines	292	290	264	91.0	273	94.1	2	0.7
Adelaide-Sydney								
Jetstar	79	78	59	75.6	59	75.6	1	1.3
Qantas	235	233	193	82.8	212	91.0	2	0.9
QantasLink	30	29	21	72.4	21	72.4	1	3.3
Tigerair Australia	40	39	17	43.6	18	46.2	1	2.5
Virgin Australia	156	156	125	80.1	136	87.2	0	0.0
All Airlines	540	535	415	77.6	446	83.4	5	0.9

	Sectors		Arrivals On Time		Departures On Time		Cancellations	
	Sched.	Flown	No.	%	No.	%	No.	%
Albury-Sydney								
QantasLink	99	96	81	84.4	81	84.4	3	3.0
Regional Express	103	103	81	78.6	84	81.6	0	0.0
Virgin Australia	58	57	45	78.9	45	78.9	1	1.7
All Airlines	260	256	207	80.9	210	82.0	4	1.5
Alice Springs-Adelaide								
Qantas	31	31	29	93.5	28	90.3	0	0.0
Virgin Australia	6	6	6	100.0	6	100.0	0	0.0
Virgin Australia Regional Airlines	17	17	13	76.5	14	82.4	0	0.0
All Airlines	54	54	48	88.9	48	88.9	0	0.0
Alice Springs-Darwin								
QantasLink	62	62	61	98.4	61	98.4	0	0.0
Virgin Australia	5	5	5	100.0	5	100.0	0	0.0
Virgin Australia Regional Airlines	18	17	14	82.4	14	82.4	1	5.6
All Airlines	85	84	80	95.2	80	95.2	1	1.2
Armidale-Sydney								
QantasLink	118	118	101	85.6	100	84.7	0	0.0
Regional Express	75	75	52	69.3	57	76.0	0	0.0
All Airlines	193	193	153	79.3	157	81.3	0	0.0
Ayers Rock-Sydney								
Jetstar	31	31	21	67.7	21	67.7	0	0.0
Virgin Australia	31	31	28	90.3	25	80.6	0	0.0
All Airlines	62	62	49	79.0	46	74.2	0	0.0
Ballina-Sydney								
Jetstar	70	70	50	71.4	46	65.7	0	0.0
Regional Express	27	27	20	74.1	21	77.8	0	0.0
Virgin Australia	31	31	27	87.1	28	90.3	0	0.0
All Airlines	128	128	97	75.8	95	74.2	0	0.0
Brisbane-Adelaide								
Jetstar	21	21	21	100.0	17	81.0	0	0.0
Qantas	69	69	69	100.0	59	85.5	0	0.0
QantasLink	55	55	51	92.7	49	89.1	0	0.0
Tigerair Australia	22	21	19	90.5	20	95.2	1	4.5
Virgin Australia	98	98	91	92.9	88	89.8	0	0.0
All Airlines	265	264	251	95.1	233	88.3	1	0.4
Brisbane-Bundaberg								
QantasLink	105	105	98	93.3	98	93.3	0	0.0
Virgin Australia	31	31	27	87.1	28	90.3	0	0.0
All Airlines	136	136	125	91.9	126	92.6	0	0.0
Brisbane-Cairns								
Jetstar	81	78	67	85.9	65	83.3	3	3.7
Qantas	70	70	66	94.3	65	92.9	0	0.0
QantasLink	54	54	45	83.3	42	77.8	0	0.0
Tigerair Australia	26	25	22	88.0	24	96.0	1	3.8
Virgin Australia	124	124	110	88.7	112	90.3	0	0.0
All Airlines	355	351	310	88.3	308	87.7	4	1.1
Brisbane-Canberra								
Qantas	19	19	18	94.7	19	100.0	0	0.0
QantasLink	138	137	121	88.3	121	88.3	1	0.7
Tigerair Australia	14	14	10	71.4	9	64.3	0	0.0
Virgin Australia	104	104	96	92.3	97	93.3	0	0.0
All Airlines	275	274	245	89.4	246	89.8	1	0.4

	Sectors		Arrivals On Time		Departures On Time		Cancellations	
	Sched.	Flown	No.	%	No.	%	No.	%
Brisbane-Darwin								
Jetstar	22	22	20	90.9	21	95.5	0	0.0
Qantas	49	49	42	85.7	38	77.6	0	0.0
Tigerair Australia	14	14	10	71.4	12	85.7	0	0.0
Virgin Australia	31	31	25	80.6	28	90.3	0	0.0
All Airlines	116	116	97	83.6	99	85.3	0	0.0
Brisbane-Emerald								
QantasLink	103	103	99	96.1	98	95.1	0	0.0
Virgin Australia	55	55	53	96.4	51	92.7	0	0.0
All Airlines	158	158	152	96.2	149	94.3	0	0.0
Brisbane-Gladstone								
QantasLink	127	126	114	90.5	114	90.5	1	0.8
Virgin Australia	78	78	75	96.2	76	97.4	0	0.0
All Airlines	205	204	189	92.6	190	93.1	1	0.5
Brisbane-Hamilton Island								
QantasLink	31	30	27	90.0	26	86.7	1	3.2
Virgin Australia	31	31	26	83.9	29	93.5	0	0.0
All Airlines	62	61	53	86.9	55	90.2	1	1.6
Brisbane-Hobart								
Jetstar	18	18	17	94.4	17	94.4	0	0.0
Virgin Australia	31	31	27	87.1	30	96.8	0	0.0
All Airlines	49	49	44	89.8	47	95.9	0	0.0
Brisbane-Mackay								
Jetstar	32	32	23	71.9	25	78.1	0	0.0
QantasLink	120	117	110	94.0	112	95.7	3	2.5
Virgin Australia	143	143	129	90.2	133	93.0	0	0.0
All Airlines	295	292	262	89.7	270	92.5	3	1.0
Brisbane-Melbourne								
Jetstar	103	102	92	90.2	77	75.5	1	1.0
Qantas	407	404	356	88.1	336	83.2	3	0.7
Tigerair Australia	117	111	82	73.9	77	69.4	6	5.1
Virgin Australia	372	365	327	89.6	326	89.3	7	1.9
All Airlines	999	982	857	87.3	816	83.1	17	1.7
Brisbane-Mount Isa								
QantasLink	57	57	25	43.9	49	86.0	0	0.0
Virgin Australia	19	19	17	89.5	17	89.5	0	0.0
All Airlines	76	76	42	55.3	66	86.8	0	0.0
Brisbane-Newcastle								
Jetstar	79	79	57	72.2	56	70.9	0	0.0
QantasLink	49	48	45	93.8	44	91.7	1	2.0
Virgin Australia	89	89	78	87.6	81	91.0	0	0.0
All Airlines	217	216	180	83.3	181	83.8	1	0.5
Brisbane-Perth								
Qantas	142	142	124	87.3	103	72.5	0	0.0
Virgin Australia	112	112	101	90.2	90	80.4	0	0.0
All Airlines	254	254	225	88.6	193	76.0	0	0.0
Brisbane-Proserpine								
Jetstar	26	26	24	92.3	23	88.5	0	0.0
Virgin Australia	31	31	28	90.3	28	90.3	0	0.0
All Airlines	57	57	52	91.2	51	89.5	0	0.0

	Sectors		Arrivals On Time		Departures On Time		Cancellations	
	Sched.	Flown	No.	%	No.	%	No.	%
Brisbane-Rockhampton								
QantasLink	181	178	157	88.2	160	89.9	3	1.7
Virgin Australia	153	153	134	87.6	143	93.5	0	0.0
All Airlines	334	331	291	87.9	303	91.5	3	0.9
Brisbane-Sydney								
Jetstar	163	153	114	74.5	103	67.3	10	6.1
Qantas	633	622	517	83.1	503	80.9	11	1.7
QantasLink	4	4	4	100.0	4	100.0	0	0.0
Tigerair Australia	97	93	72	77.4	71	76.3	4	4.1
Virgin Australia	530	517	456	88.2	461	89.2	13	2.5
All Airlines	1 427	1 389	1 163	83.7	1 142	82.2	38	2.7
Brisbane-Townsville								
Jetstar	62	62	45	72.6	50	80.6	0	0.0
Qantas	79	79	64	81.0	60	75.9	0	0.0
QantasLink	65	64	57	89.1	60	93.8	1	1.5
Virgin Australia	138	137	120	87.6	118	86.1	1	0.7
All Airlines	344	342	286	83.6	288	84.2	2	0.6
Broome-Perth								
Qantas	2	2	1	50.0	1	50.0	0	0.0
QantasLink	84	81	71	87.7	74	91.4	3	3.6
Virgin Australia	5	5	3	60.0	3	60.0	0	0.0
Virgin Australia Regional Airlines	82	80	68	85.0	67	83.8	2	2.4
All Airlines	173	168	143	85.1	145	86.3	5	2.9
Bundaberg-Brisbane								
QantasLink	105	105	102	97.1	99	94.3	0	0.0
Virgin Australia	31	31	29	93.5	29	93.5	0	0.0
All Airlines	136	136	131	96.3	128	94.1	0	0.0
Cairns-Brisbane								
Jetstar	82	80	74	92.5	71	88.8	2	2.4
Qantas	70	70	66	94.3	65	92.9	0	0.0
QantasLink	54	53	46	86.8	45	84.9	1	1.9
Tigerair Australia	26	25	23	92.0	19	76.0	1	3.8
Virgin Australia	124	124	113	91.1	106	85.5	0	0.0
All Airlines	356	352	322	91.5	306	86.9	4	1.1
Cairns-Melbourne								
Jetstar	97	95	80	84.2	80	84.2	2	2.1
Qantas	34	34	25	73.5	19	55.9	0	0.0
Tigerair Australia	42	40	32	80.0	30	75.0	2	4.8
Virgin Australia	31	31	24	77.4	21	67.7	0	0.0
All Airlines	204	200	161	80.5	150	75.0	4	2.0
Cairns-Sydney								
Jetstar	75	74	64	86.5	60	81.1	1	1.3
Qantas	73	73	66	90.4	67	91.8	0	0.0
Tigerair Australia	42	39	27	69.2	25	64.1	3	7.1
Virgin Australia	77	77	67	87.0	67	87.0	0	0.0
All Airlines	267	263	224	85.2	219	83.3	4	1.5
Cairns-Townsville								
QantasLink	138	137	132	96.4	130	94.9	1	0.7
Regional Express	23	23	23	100.0	23	100.0	0	0.0
All Airlines	161	160	155	96.9	153	95.6	1	0.6

	Sectors		Arrivals On Time		Departures On Time		Cancellations	
	Sched.	Flown	No.	%	No.	%	No.	%
Canberra-Adelaide								
Qantas	43	43	41	95.3	41	95.3	0	0.0
Virgin Australia	27	27	27	100.0	26	96.3	0	0.0
All Airlines	70	70	68	97.1	67	95.7	0	0.0
Canberra-Brisbane								
Qantas	23	22	22	100.0	21	95.5	1	4.3
QantasLink	134	133	118	88.7	117	88.0	1	0.7
Tigerair Australia	14	14	11	78.6	9	64.3	0	0.0
Virgin Australia	103	103	94	91.3	94	91.3	0	0.0
All Airlines	274	272	245	90.1	241	88.6	2	0.7
Canberra-Melbourne								
Qantas	247	246	233	94.7	235	95.5	1	0.4
QantasLink	44	41	37	90.2	37	90.2	3	6.8
Tigerair Australia	31	31	23	74.2	26	83.9	0	0.0
Virgin Australia	169	169	144	85.2	151	89.3	0	0.0
All Airlines	491	487	437	89.7	449	92.2	4	0.8
Canberra-Sydney								
Qantas	23	23	23	100.0	22	95.7	0	0.0
QantasLink	469	455	406	89.2	400	87.9	14	3.0
Virgin Australia	262	256	221	86.3	221	86.3	6	2.3
All Airlines	754	734	650	88.6	643	87.6	20	2.7
Coffs Harbour-Sydney								
QantasLink	130	129	116	89.9	114	88.4	1	0.8
Tigerair Australia	12	12	7	58.3	8	66.7	0	0.0
Virgin Australia	54	54	45	83.3	48	88.9	0	0.0
All Airlines	196	195	168	86.2	170	87.2	1	0.5
Darwin-Alice Springs								
QantasLink	62	62	61	98.4	62	100.0	0	0.0
Virgin Australia	5	5	5	100.0	5	100.0	0	0.0
Virgin Australia Regional Airlines	17	16	15	93.8	15	93.8	1	5.9
All Airlines	84	83	81	97.6	82	98.8	1	1.2
Darwin-Brisbane								
Jetstar	22	22	20	90.9	18	81.8	0	0.0
Qantas	49	48	45	93.8	38	79.2	1	2.0
Tigerair Australia	14	14	12	85.7	12	85.7	0	0.0
Virgin Australia	31	31	30	96.8	22	71.0	0	0.0
All Airlines	116	115	107	93.0	90	78.3	1	0.9
Darwin-Melbourne								
Jetstar	26	26	22	84.6	15	57.7	0	0.0
Qantas	31	30	18	60.0	22	73.3	1	3.2
Virgin Australia	31	31	29	93.5	29	93.5	0	0.0
All Airlines	88	87	69	79.3	66	75.9	1	1.1
Darwin-Perth								
Qantas	31	31	28	90.3	28	90.3	0	0.0
Virgin Australia	26	26	21	80.8	21	80.8	0	0.0
Virgin Australia Regional Airlines	5	5	3	60.0	3	60.0	0	0.0
All Airlines	62	62	52	83.9	52	83.9	0	0.0
Darwin-Sydney								
Jetstar	18	18	16	88.9	13	72.2	0	0.0
Qantas	48	48	35	72.9	27	56.3	0	0.0
Virgin Australia	31	31	25	80.6	26	83.9	0	0.0
All Airlines	97	97	76	78.4	66	68.0	0	0.0

	Sectors		Arrivals On Time		Departures On Time		Cancellations	
	Sched.	Flown	No.	%	No.	%	No.	%
Dubbo-Sydney								
QantasLink	107	106	94	88.7	94	88.7	1	0.9
Regional Express	137	136	105	77.2	110	80.9	1	0.7
All Airlines	244	242	199	82.2	204	84.3	2	0.8
Emerald-Brisbane								
QantasLink	103	103	97	94.2	98	95.1	0	0.0
Virgin Australia	55	55	54	98.2	54	98.2	0	0.0
All Airlines	158	158	151	95.6	152	96.2	0	0.0
Geraldton-Perth								
QantasLink	49	47	43	91.5	45	95.7	2	4.1
Virgin Australia Regional Airlines	52	51	40	78.4	41	80.4	1	1.9
All Airlines	101	98	83	84.7	86	87.8	3	3.0
Gladstone-Brisbane								
QantasLink	127	126	116	92.1	115	91.3	1	0.8
Virgin Australia	78	77	73	94.8	74	96.1	1	1.3
All Airlines	205	203	189	93.1	189	93.1	2	1.0
Gold Coast-Adelaide								
Jetstar	26	26	25	96.2	23	88.5	0	0.0
Virgin Australia	31	31	29	93.5	29	93.5	0	0.0
All Airlines	57	57	54	94.7	52	91.2	0	0.0
Gold Coast-Melbourne								
Jetstar	168	167	154	92.2	143	85.6	1	0.6
Qantas	31	31	24	77.4	17	54.8	0	0.0
Tigerair Australia	62	60	46	76.7	42	70.0	2	3.2
Virgin Australia	163	161	142	88.2	131	81.4	2	1.2
All Airlines	424	419	366	87.4	333	79.5	5	1.2
Gold Coast-Sydney								
Jetstar	247	244	210	86.1	207	84.8	3	1.2
Qantas	85	85	70	82.4	69	81.2	0	0.0
QantasLink	8	8	4	50.0	4	50.0	0	0.0
Tigerair Australia	86	81	62	76.5	60	74.1	5	5.8
Virgin Australia	243	240	202	84.2	201	83.8	3	1.2
All Airlines	669	658	548	83.3	541	82.2	11	1.6
Hamilton Island-Brisbane								
QantasLink	31	30	29	96.7	27	90.0	1	3.2
Virgin Australia	31	31	30	96.8	29	93.5	0	0.0
All Airlines	62	61	59	96.7	56	91.8	1	1.6
Hamilton Island-Sydney								
Jetstar	17	17	12	70.6	12	70.6	0	0.0
Qantas	4	4	4	100.0	4	100.0	0	0.0
QantasLink	22	22	21	95.5	21	95.5	0	0.0
Virgin Australia	24	23	22	95.7	22	95.7	1	4.2
All Airlines	67	66	59	89.4	59	89.4	1	1.5
Hobart-Brisbane								
Jetstar	17	17	15	88.2	14	82.4	0	0.0
Virgin Australia	31	31	21	67.7	24	77.4	0	0.0
All Airlines	48	48	36	75.0	38	79.2	0	0.0

	Sectors		Arrivals On Time		Departures On Time		Cancellations	
	Sched.	Flown	No.	%	No.	%	No.	%
Hobart-Melbourne								
Jetstar	142	140	85	60.7	87	62.1	2	1.4
Qantas	115	115	101	87.8	107	93.0	0	0.0
Tigerair Australia	34	33	21	63.6	22	66.7	1	2.9
Virgin Australia	138	137	116	84.7	118	86.1	1	0.7
All Airlines	429	425	323	76.0	334	78.6	4	0.9
Hobart-Sydney								
Jetstar	52	52	40	76.9	35	67.3	0	0.0
Qantas	4	4	4	100.0	4	100.0	0	0.0
QantasLink	58	57	45	78.9	48	84.2	1	1.7
Virgin Australia	70	70	60	85.7	59	84.3	0	0.0
All Airlines	184	183	149	81.4	146	79.8	1	0.5
Kalgoorlie-Perth								
Qantas	9	9	9	100.0	8	88.9	0	0.0
QantasLink	75	75	71	94.7	70	93.3	0	0.0
Virgin Australia	38	38	36	94.7	36	94.7	0	0.0
Virgin Australia Regional Airlines	34	33	27	81.8	27	81.8	1	2.9
All Airlines	156	155	143	92.3	141	91.0	1	0.6
Karratha-Perth								
Qantas	15	14	14	100.0	14	100.0	1	6.7
QantasLink	180	176	159	90.3	155	88.1	4	2.2
Virgin Australia	13	13	8	61.5	10	76.9	0	0.0
Virgin Australia Regional Airlines	67	65	45	69.2	47	72.3	2	3.0
All Airlines	275	268	226	84.3	226	84.3	7	2.5
Launceston-Melbourne								
Jetstar	93	93	62	66.7	61	65.6	0	0.0
QantasLink	111	109	94	86.2	99	90.8	2	1.8
Virgin Australia	95	95	83	87.4	89	93.7	0	0.0
All Airlines	299	297	239	80.5	249	83.8	2	0.7
Launceston-Sydney								
Jetstar	27	27	21	77.8	21	77.8	0	0.0
Virgin Australia	27	27	24	88.9	22	81.5	0	0.0
All Airlines	54	54	45	83.3	43	79.6	0	0.0
Mackay-Brisbane								
Jetstar	32	32	27	84.4	20	62.5	0	0.0
QantasLink	114	111	105	94.6	104	93.7	3	2.6
Virgin Australia	142	142	137	96.5	134	94.4	0	0.0
All Airlines	288	285	269	94.4	258	90.5	3	1.0
Melbourne-Adelaide								
Jetstar	93	86	69	80.2	67	77.9	7	7.5
Qantas	288	288	244	84.7	240	83.3	0	0.0
Tigerair Australia	63	61	49	80.3	50	82.0	2	3.2
Virgin Australia	266	263	245	93.2	248	94.3	3	1.1
All Airlines	710	698	607	87.0	605	86.7	12	1.7
Melbourne-Brisbane								
Jetstar	103	102	71	69.6	73	71.6	1	1.0
Qantas	414	410	320	78.0	308	75.1	4	1.0
Tigerair Australia	117	111	89	80.2	87	78.4	6	5.1
Virgin Australia	370	362	321	88.7	335	92.5	8	2.2
All Airlines	1 004	985	801	81.3	803	81.5	19	1.9

	Sectors		Arrivals On Time		Departures On Time		Cancellations	
	Sched.	Flown	No.	%	No.	%	No.	%
Melbourne-Cairns								
Jetstar	97	95	77	81.1	73	76.8	2	2.1
Qantas	34	34	20	58.8	20	58.8	0	0.0
Tigerair Australia	42	40	33	82.5	39	97.5	2	4.8
Virgin Australia	31	31	24	77.4	26	83.9	0	0.0
All Airlines	204	200	154	77.0	158	79.0	4	2.0
Melbourne-Canberra								
Qantas	251	249	219	88.0	221	88.8	2	0.8
QantasLink	44	42	38	90.5	38	90.5	2	4.5
Tigerair Australia	31	31	28	90.3	27	87.1	0	0.0
Virgin Australia	167	167	145	86.8	151	90.4	0	0.0
All Airlines	493	489	430	87.9	437	89.4	4	0.8
Melbourne-Darwin								
Jetstar	26	26	16	61.5	19	73.1	0	0.0
Qantas	31	31	26	83.9	25	80.6	0	0.0
Virgin Australia	31	31	24	77.4	27	87.1	0	0.0
All Airlines	88	88	66	75.0	71	80.7	0	0.0
Melbourne-Gold Coast								
Jetstar	168	167	144	86.2	150	89.8	1	0.6
Qantas	31	31	19	61.3	23	74.2	0	0.0
Tigerair Australia	62	60	49	81.7	49	81.7	2	3.2
Virgin Australia	164	162	142	87.7	145	89.5	2	1.2
All Airlines	425	420	354	84.3	367	87.4	5	1.2
Melbourne-Hobart								
Jetstar	142	141	103	73.0	109	77.3	1	0.7
Qantas	115	115	97	84.3	103	89.6	0	0.0
Tigerair Australia	34	33	24	72.7	29	87.9	1	2.9
Virgin Australia	138	137	118	86.1	126	92.0	1	0.7
All Airlines	429	426	342	80.3	367	86.2	3	0.7
Melbourne-Launceston								
Jetstar	93	93	76	81.7	76	81.7	0	0.0
QantasLink	111	109	94	86.2	93	85.3	2	1.8
Virgin Australia	93	93	81	87.1	85	91.4	0	0.0
All Airlines	297	295	251	85.1	254	86.1	2	0.7
Melbourne-Mildura								
QantasLink	98	97	93	95.9	94	96.9	1	1.0
Regional Express	82	82	66	80.5	69	84.1	0	0.0
Virgin Australia	31	31	26	83.9	27	87.1	0	0.0
All Airlines	211	210	185	88.1	190	90.5	1	0.5
Melbourne-Newcastle								
Jetstar	111	110	83	75.5	80	72.7	1	0.9
Virgin Australia	33	33	31	93.9	32	97.0	0	0.0
All Airlines	144	143	114	79.7	112	78.3	1	0.7
Melbourne-Perth								
Jetstar	40	40	35	87.5	33	82.5	0	0.0
Qantas	200	199	172	86.4	148	74.4	1	0.5
Tigerair Australia	47	47	39	83.0	34	72.3	0	0.0
Virgin Australia	130	129	120	93.0	101	78.3	1	0.8
All Airlines	417	415	366	88.2	316	76.1	2	0.5

	Sectors		Arrivals On Time		Departures On Time		Cancellations	
	Sched.	Flown	No.	%	No.	%	No.	%
Melbourne-Sunshine Coast								
Jetstar	62	62	52	83.9	53	85.5	0	0.0
Virgin Australia	53	53	47	88.7	49	92.5	0	0.0
All Airlines	115	115	99	86.1	102	88.7	0	0.0
Melbourne-Sydney								
Jetstar	372	357	261	73.1	272	76.2	15	4.0
Qantas	1 027	966	772	79.9	771	79.8	61	5.9
Tigerair Australia	246	237	155	65.4	165	69.6	9	3.7
Virgin Australia	783	755	650	86.1	682	90.3	28	3.6
All Airlines	2 428	2 315	1 838	79.4	1 890	81.6	113	4.7
Melbourne-Townsville								
Jetstar	27	27	17	63.0	18	66.7	0	0.0
Tigerair Australia	14	14	11	78.6	11	78.6	0	0.0
All Airlines	41	41	28	68.3	29	70.7	0	0.0
Mildura-Melbourne								
QantasLink	98	97	89	91.8	92	94.8	1	1.0
Regional Express	82	82	58	70.7	64	78.0	0	0.0
Virgin Australia	31	31	28	90.3	27	87.1	0	0.0
All Airlines	211	210	175	83.3	183	87.1	1	0.5
Mount Isa-Brisbane								
QantasLink	57	57	50	87.7	39	68.4	0	0.0
Virgin Australia	19	19	16	84.2	17	89.5	0	0.0
All Airlines	76	76	66	86.8	56	73.7	0	0.0
Newcastle-Brisbane								
Jetstar	79	79	62	78.5	63	79.7	0	0.0
QantasLink	49	48	46	95.8	44	91.7	1	2.0
Virgin Australia	88	88	81	92.0	80	90.9	0	0.0
All Airlines	216	215	189	87.9	187	87.0	1	0.5
Newcastle-Melbourne								
Jetstar	111	109	84	77.1	81	74.3	2	1.8
Virgin Australia	33	33	28	84.8	30	90.9	0	0.0
All Airlines	144	142	112	78.9	111	78.2	2	1.4
Newman-Perth								
Qantas	35	35	35	100.0	35	100.0	0	0.0
QantasLink	103	102	97	95.1	89	87.3	1	1.0
Virgin Australia	19	19	18	94.7	18	94.7	0	0.0
Virgin Australia Regional Airlines	23	22	17	77.3	17	77.3	1	4.3
All Airlines	180	178	167	93.8	159	89.3	2	1.1
Perth-Adelaide								
Jetstar	27	27	20	74.1	19	70.4	0	0.0
Qantas	108	108	90	83.3	98	90.7	0	0.0
QantasLink	8	8	5	62.5	8	100.0	0	0.0
Virgin Australia	48	48	40	83.3	45	93.8	0	0.0
Virgin Australia Regional Airlines	27	25	15	60.0	25	100.0	2	7.4
All Airlines	218	216	170	78.7	195	90.3	2	0.9
Perth-Brisbane								
Qantas	143	143	117	81.8	132	92.3	0	0.0
Virgin Australia	110	110	96	87.3	103	93.6	0	0.0
All Airlines	253	253	213	84.2	235	92.9	0	0.0

	Sectors		Arrivals On Time		Departures On Time		Cancellations	
	Sched.	Flown	No.	%	No.	%	No.	%
Perth-Broome								
Qantas	2	2	1	50.0	1	50.0	0	0.0
QantasLink	84	81	77	95.1	76	93.8	3	3.6
Virgin Australia	5	5	3	60.0	3	60.0	0	0.0
Virgin Australia Regional Airlines	81	80	67	83.8	69	86.3	1	1.2
All Airlines	172	168	148	88.1	149	88.7	4	2.3
Perth-Darwin								
Qantas	31	31	30	96.8	28	90.3	0	0.0
Virgin Australia	26	26	26	100.0	24	92.3	0	0.0
Virgin Australia Regional Airlines	5	5	3	60.0	2	40.0	0	0.0
All Airlines	62	62	59	95.2	54	87.1	0	0.0
Perth-Geraldton								
QantasLink	49	48	45	93.8	44	91.7	1	2.0
Virgin Australia Regional Airlines	52	52	41	78.8	41	78.8	0	0.0
All Airlines	101	100	86	86.0	85	85.0	1	1.0
Perth-Kalgoorlie								
Qantas	9	9	9	100.0	8	88.9	0	0.0
QantasLink	75	75	66	88.0	65	86.7	0	0.0
Virgin Australia	38	38	38	100.0	38	100.0	0	0.0
Virgin Australia Regional Airlines	34	33	28	84.8	30	90.9	1	2.9
All Airlines	156	155	141	91.0	141	91.0	1	0.6
Perth-Karratha								
Qantas	15	14	14	100.0	14	100.0	1	6.7
QantasLink	180	178	165	92.7	158	88.8	2	1.1
Virgin Australia	13	13	9	69.2	10	76.9	0	0.0
Virgin Australia Regional Airlines	66	65	53	81.5	56	86.2	1	1.5
All Airlines	274	270	241	89.3	238	88.1	4	1.5
Perth-Melbourne								
Jetstar	40	39	33	84.6	29	74.4	1	2.5
Qantas	205	204	158	77.5	179	87.7	1	0.5
Tigerair Australia	48	48	34	70.8	41	85.4	0	0.0
Virgin Australia	130	129	104	80.6	122	94.6	1	0.8
All Airlines	423	420	329	78.3	371	88.3	3	0.7
Perth-Newman								
Qantas	35	35	35	100.0	35	100.0	0	0.0
QantasLink	104	104	94	90.4	96	92.3	0	0.0
Virgin Australia	19	19	19	100.0	19	100.0	0	0.0
Virgin Australia Regional Airlines	23	22	17	77.3	18	81.8	1	4.3
All Airlines	181	180	165	91.7	168	93.3	1	0.6
Perth-Port Hedland								
Qantas	34	34	34	100.0	34	100.0	0	0.0
QantasLink	103	101	90	89.1	88	87.1	2	1.9
Virgin Australia	28	28	28	100.0	28	100.0	0	0.0
Virgin Australia Regional Airlines	26	26	23	88.5	23	88.5	0	0.0
All Airlines	191	189	175	92.6	173	91.5	2	1.0
Perth-Sydney								
Jetstar	31	30	24	80.0	25	83.3	1	3.2
Qantas	202	201	156	77.6	174	86.6	1	0.5
Tigerair Australia	27	26	22	84.6	24	92.3	1	3.7
Virgin Australia	120	120	102	85.0	107	89.2	0	0.0
All Airlines	380	377	304	80.6	330	87.5	3	0.8

	Sectors		Arrivals On Time		Departures On Time		Cancellations	
	Sched.	Flown	No.	%	No.	%	No.	%
Port Hedland-Perth								
Qantas	34	34	33	97.1	31	91.2	0	0.0
QantasLink	103	99	89	89.9	89	89.9	4	3.9
Virgin Australia	28	28	27	96.4	27	96.4	0	0.0
Virgin Australia Regional Airlines	26	26	23	88.5	23	88.5	0	0.0
All Airlines	191	187	172	92.0	170	90.9	4	2.1
Port Lincoln-Adelaide								
QantasLink	110	108	100	92.6	99	91.7	2	1.8
Regional Express	183	181	156	86.2	163	90.1	2	1.1
All Airlines	293	289	256	88.6	262	90.7	4	1.4
Port Macquarie-Sydney								
QantasLink	104	104	90	86.5	87	83.7	0	0.0
Virgin Australia	62	61	50	82.0	45	73.8	1	1.6
All Airlines	166	165	140	84.8	132	80.0	1	0.6
Proserpine-Brisbane								
Jetstar	26	26	20	76.9	20	76.9	0	0.0
Virgin Australia	31	31	28	90.3	27	87.1	0	0.0
All Airlines	57	57	48	84.2	47	82.5	0	0.0
Proserpine-Sydney								
Jetstar	14	14	13	92.9	12	85.7	0	0.0
Tigerair Australia	22	22	15	68.2	17	77.3	0	0.0
All Airlines	36	36	28	77.8	29	80.6	0	0.0
Rockhampton-Brisbane								
QantasLink	185	184	155	84.2	160	87.0	1	0.5
Virgin Australia	153	153	146	95.4	144	94.1	0	0.0
All Airlines	338	337	301	89.3	304	90.2	1	0.3
Sunshine Coast-Melbourne								
Jetstar	62	62	45	72.6	38	61.3	0	0.0
Virgin Australia	53	53	40	75.5	39	73.6	0	0.0
All Airlines	115	115	85	73.9	77	67.0	0	0.0
Sunshine Coast-Sydney								
Jetstar	93	93	73	78.5	69	74.2	0	0.0
QantasLink	35	34	26	76.5	26	76.5	1	2.9
Virgin Australia	45	44	35	79.5	38	86.4	1	2.2
All Airlines	173	171	134	78.4	133	77.8	2	1.2
Sydney-Adelaide								
Jetstar	79	78	59	75.6	49	62.8	1	1.3
Qantas	221	219	198	90.4	186	84.9	2	0.9
QantasLink	30	29	23	79.3	22	75.9	1	3.3
Tigerair Australia	40	39	23	59.0	21	53.8	1	2.5
Virgin Australia	170	170	154	90.6	154	90.6	0	0.0
All Airlines	540	535	457	85.4	432	80.7	5	0.9
Sydney-Albury								
QantasLink	99	96	80	83.3	80	83.3	3	3.0
Regional Express	103	103	79	76.7	79	76.7	0	0.0
Virgin Australia	58	57	44	77.2	48	84.2	1	1.7
All Airlines	260	256	203	79.3	207	80.9	4	1.5
Sydney-Armidale								
QantasLink	117	117	106	90.6	104	88.9	0	0.0
Regional Express	76	76	64	84.2	63	82.9	0	0.0
All Airlines	193	193	170	88.1	167	86.5	0	0.0

	Sectors		Arrivals On Time		Departures On Time		Cancellations	
	Sched.	Flown	No.	%	No.	%	No.	%
Sydney-Ayers Rock								
Jetstar	31	31	24	77.4	25	80.6	0	0.0
Virgin Australia	31	31	29	93.5	29	93.5	0	0.0
All Airlines	62	62	53	85.5	54	87.1	0	0.0
Sydney-Ballina								
Jetstar	70	70	61	87.1	58	82.9	0	0.0
Regional Express	27	27	23	85.2	20	74.1	0	0.0
Virgin Australia	31	31	29	93.5	29	93.5	0	0.0
All Airlines	128	128	113	88.3	107	83.6	0	0.0
Sydney-Brisbane								
Jetstar	162	153	119	77.8	117	76.5	9	5.6
Qantas	630	621	490	78.9	506	81.5	9	1.4
QantasLink	8	8	8	100.0	8	100.0	0	0.0
Tigerair Australia	97	93	72	77.4	77	82.8	4	4.1
Virgin Australia	529	518	455	87.8	465	89.8	11	2.1
All Airlines	1 426	1 393	1 144	82.1	1 173	84.2	33	2.3
Sydney-Cairns								
Jetstar	74	73	63	86.3	62	84.9	1	1.4
Qantas	73	73	68	93.2	65	89.0	0	0.0
Tigerair Australia	42	40	29	72.5	33	82.5	2	4.8
Virgin Australia	76	76	67	88.2	66	86.8	0	0.0
All Airlines	265	262	227	86.6	226	86.3	3	1.1
Sydney-Canberra								
Qantas	23	23	23	100.0	23	100.0	0	0.0
QantasLink	466	455	393	86.4	401	88.1	11	2.4
Virgin Australia	261	254	221	87.0	217	85.4	7	2.7
All Airlines	750	732	637	87.0	641	87.6	18	2.4
Sydney-Coffs Harbour								
QantasLink	130	129	117	90.7	114	88.4	1	0.8
Tigerair Australia	12	12	7	58.3	10	83.3	0	0.0
Virgin Australia	54	54	50	92.6	51	94.4	0	0.0
All Airlines	196	195	174	89.2	175	89.7	1	0.5
Sydney-Darwin								
Jetstar	18	18	15	83.3	16	88.9	0	0.0
Qantas	49	49	35	71.4	31	63.3	0	0.0
Virgin Australia	31	31	26	83.9	27	87.1	0	0.0
All Airlines	98	98	76	77.6	74	75.5	0	0.0
Sydney-Dubbo								
QantasLink	107	107	89	83.2	88	82.2	0	0.0
Regional Express	135	135	121	89.6	115	85.2	0	0.0
All Airlines	242	242	210	86.8	203	83.9	0	0.0
Sydney-Gold Coast								
Jetstar	247	244	213	87.3	214	87.7	3	1.2
Qantas	85	85	65	76.5	65	76.5	0	0.0
QantasLink	8	8	5	62.5	5	62.5	0	0.0
Tigerair Australia	85	81	63	77.8	69	85.2	4	4.7
Virgin Australia	242	239	203	84.9	206	86.2	3	1.2
All Airlines	667	657	549	83.6	559	85.1	10	1.5

	Sectors		Arrivals On Time		Departures On Time		Cancellations	
	Sched.	Flown	No.	%	No.	%	No.	%
Sydney-Hamilton Island								
Jetstar	17	17	13	76.5	12	70.6	0	0.0
Qantas	4	4	4	100.0	4	100.0	0	0.0
QantasLink	22	22	20	90.9	19	86.4	0	0.0
Virgin Australia	24	23	21	91.3	21	91.3	1	4.2
All Airlines	67	66	58	87.9	56	84.8	1	1.5
Sydney-Hobart								
Jetstar	52	52	41	78.8	39	75.0	0	0.0
Qantas	4	4	4	100.0	4	100.0	0	0.0
QantasLink	58	57	47	82.5	45	78.9	1	1.7
Virgin Australia	70	70	61	87.1	66	94.3	0	0.0
All Airlines	184	183	153	83.6	154	84.2	1	0.5
Sydney-Launceston								
Jetstar	27	27	25	92.6	27	100.0	0	0.0
Virgin Australia	29	29	26	89.7	26	89.7	0	0.0
All Airlines	56	56	51	91.1	53	94.6	0	0.0
Sydney-Melbourne								
Jetstar	372	358	283	79.1	276	77.1	14	3.8
Qantas	1 036	973	755	77.6	750	77.1	63	6.1
Tigerair Australia	246	237	148	62.4	160	67.5	9	3.7
Virgin Australia	770	740	608	82.2	650	87.8	30	3.9
All Airlines	2 424	2 308	1 794	77.7	1 836	79.5	116	4.8
Sydney-Perth								
Jetstar	31	30	27	90.0	24	80.0	1	3.2
Qantas	210	210	186	88.6	157	74.8	0	0.0
Tigerair Australia	27	26	24	92.3	20	76.9	1	3.7
Virgin Australia	120	120	109	90.8	92	76.7	0	0.0
All Airlines	388	386	346	89.6	293	75.9	2	0.5
Sydney-Port Macquarie								
QantasLink	104	104	89	85.6	90	86.5	0	0.0
Virgin Australia	62	61	52	85.2	48	78.7	1	1.6
All Airlines	166	165	141	85.5	138	83.6	1	0.6
Sydney-Proserpine								
Jetstar	13	13	13	100.0	13	100.0	0	0.0
Tigerair Australia	22	22	19	86.4	19	86.4	0	0.0
All Airlines	35	35	32	91.4	32	91.4	0	0.0
Sydney-Sunshine Coast								
Jetstar	93	93	76	81.7	73	78.5	0	0.0
QantasLink	35	35	27	77.1	26	74.3	0	0.0
Virgin Australia	45	44	37	84.1	38	86.4	1	2.2
All Airlines	173	172	140	81.4	137	79.7	1	0.6
Sydney-Tamworth								
QantasLink	120	117	103	88.0	106	90.6	3	2.5
Virgin Australia	54	54	50	92.6	50	92.6	0	0.0
All Airlines	174	171	153	89.5	156	91.2	3	1.7
Sydney-Townsville								
Jetstar	22	22	18	81.8	19	86.4	0	0.0
Virgin Australia	22	21	19	90.5	19	90.5	1	4.5
All Airlines	44	43	37	86.0	38	88.4	1	2.3

	Sectors		Arrivals On Time		Departures On Time		Cancellations	
	Sched.	Flown	No.	%	No.	%	No.	%
Sydney-Wagga Wagga								
QantasLink	97	95	85	89.5	79	83.2	2	2.1
Regional Express	131	131	114	87.0	113	86.3	0	0.0
All Airlines	228	226	199	88.1	192	85.0	2	0.9
Tamworth-Sydney								
QantasLink	120	116	102	87.9	104	89.7	4	3.3
Virgin Australia	54	54	46	85.2	48	88.9	0	0.0
All Airlines	174	170	148	87.1	152	89.4	4	2.3
Townsville-Brisbane								
Jetstar	62	62	44	71.0	38	61.3	0	0.0
Qantas	79	79	72	91.1	73	92.4	0	0.0
QantasLink	65	64	59	92.2	59	92.2	1	1.5
Virgin Australia	137	136	133	97.8	130	95.6	1	0.7
All Airlines	343	341	308	90.3	300	88.0	2	0.6
Townsville-Cairns								
QantasLink	139	138	131	94.9	130	94.2	1	0.7
Regional Express	22	21	21	100.0	21	100.0	1	4.5
All Airlines	161	159	152	95.6	151	95.0	2	1.2
Townsville-Melbourne								
Jetstar	27	27	14	51.9	11	40.7	0	0.0
Tigerair Australia	14	14	10	71.4	10	71.4	0	0.0
All Airlines	41	41	24	58.5	21	51.2	0	0.0
Townsville-Sydney								
Jetstar	22	22	20	90.9	16	72.7	0	0.0
Virgin Australia	22	21	18	85.7	19	90.5	1	4.5
All Airlines	44	43	38	88.4	35	81.4	1	2.3
Wagga Wagga-Sydney								
QantasLink	97	95	81	85.3	81	85.3	2	2.1
Regional Express	130	130	103	79.2	107	82.3	0	0.0
All Airlines	227	225	184	81.8	188	83.6	2	0.9

Airports

On time performance is reported for all routes where the passenger load averages over 8000 passengers per month, and where two or more airlines operate in competition. The following data reports by airport against flights operated on those routes only. This month, 8 major city airports and 32 regional city airports are covered.

Airport	Arrivals			Departures		
	Sectors	On Time		Sectors	On Time	
	Flown	No.	%	Flown	No.	%
Adelaide						
Jetstar	238	194	81.5	238	194	81.5
Qantas	758	671	88.5	760	674	88.7
QantasLink	200	179	89.5	202	184	91.1
Regional Express	181	156	86.2	180	169	93.9
Tigerair Australia	121	91	75.2	121	83	68.6
Virgin Australia	643	592	92.1	642	582	90.7
Virgin Australia Regional Airlines	42	28	66.7	42	31	73.8
All Airlines	2 183	1 911	87.5	2 185	1 917	87.7
Relates to services to and from Alice Springs, Brisbane, Canberra, Gold Coast, Melbourne, Perth, Port Lincoln and Sydney.						
Albury						
QantasLink	96	80	83.3	96	81	84.4
Regional Express	103	79	76.7	103	84	81.6
Virgin Australia	57	44	77.2	57	45	78.9
All Airlines	256	203	79.3	256	210	82.0
Relates to services to and from Sydney only.						
Alice Springs						
Qantas	31	27	87.1	31	28	90.3
QantasLink	62	61	98.4	62	61	98.4
Virgin Australia	11	10	90.9	11	11	100.0
Virgin Australia Regional Airlines	33	24	72.7	34	28	82.4
All Airlines	137	122	89.1	138	128	92.8
Relates to services to and from Adelaide and Darwin.						
Armidale						
QantasLink	117	106	90.6	118	100	84.7
Regional Express	76	64	84.2	75	57	76.0
All Airlines	193	170	88.1	193	157	81.3
Relates to services to and from Sydney only.						
Ayers Rock						
Jetstar	31	24	77.4	31	21	67.7
Virgin Australia	31	29	93.5	31	25	80.6
All Airlines	62	53	85.5	62	46	74.2
Relates to services to and from Sydney only.						
Ballina						
Jetstar	70	61	87.1	70	46	65.7
Regional Express	27	23	85.2	27	21	77.8
Virgin Australia	31	29	93.5	31	28	90.3
All Airlines	128	113	88.3	128	95	74.2
Relates to services to and from Sydney only.						

Airport	Arrivals			Departures		
	Sectors	On Time		Sectors	On Time	
	Flown	No.	%	Flown	No.	%
Brisbane						
Jetstar	594	468	78.8	593	454	76.6
Qantas	1 455	1 184	81.4	1 454	1 183	81.4
QantasLink	1 077	980	91.0	1 078	977	90.6
Tigerair Australia	278	223	80.2	278	213	76.6
Virgin Australia	2 145	1 954	91.1	2 149	1 936	90.1
All Airlines	5 549	4 809	86.7	5 552	4 763	85.8

Relates to services to and from Adelaide, Bundaberg, Cairns, Canberra, Darwin, Emerald, Gladstone, Hamilton Island, Hobart, Mackay, Melbourne, Mount Isa, Newcastle, Perth, Proserpine, Rockhampton, Sydney and Townsville.

Broome

Qantas	2	1	50.0	2	1	50.0
QantasLink	81	77	95.1	81	74	91.4
Virgin Australia	5	3	60.0	5	3	60.0
Virgin Australia Regional Airlines	80	67	83.8	80	67	83.8
All Airlines	168	148	88.1	168	145	86.3

Relates to services to and from Perth only.

Bundaberg

QantasLink	105	98	93.3	105	99	94.3
Virgin Australia	31	27	87.1	31	29	93.5
All Airlines	136	125	91.9	136	128	94.1

Relates to services to and from Brisbane only.

Cairns

Jetstar	246	207	84.1	249	211	84.7
Qantas	177	154	87.0	177	151	85.3
QantasLink	192	176	91.7	190	175	92.1
Regional Express	21	21	100.0	23	23	100.0
Tigerair Australia	105	84	80.0	104	74	71.2
Virgin Australia	231	201	87.0	232	194	83.6
All Airlines	972	843	86.7	975	828	84.9

Relates to services to and from Brisbane, Melbourne, Sydney and Townsville.

Canberra

Qantas	334	299	89.5	334	319	95.5
QantasLink	634	552	87.1	629	554	88.1
Tigerair Australia	45	38	84.4	45	35	77.8
Virgin Australia	552	489	88.6	555	492	88.6
All Airlines	1 565	1 378	88.1	1 563	1 400	89.6

Relates to services to and from Adelaide, Brisbane, Melbourne and Sydney.

Coffs Harbour

QantasLink	129	117	90.7	129	114	88.4
Tigerair Australia	12	7	58.3	12	8	66.7
Virgin Australia	54	50	92.6	54	48	88.9
All Airlines	195	174	89.2	195	170	87.2

Relates to services to and from Sydney only.

Airport	Arrivals			Departures		
	Sectors	On Time		Sectors	On Time	
	Flown	No.	%	Flown	No.	%
Darwin						
Jetstar	66	51	77.3	66	46	69.7
Qantas	160	133	83.1	157	115	73.2
QantasLink	62	61	98.4	62	62	100.0
Tigerair Australia	14	10	71.4	14	12	85.7
Virgin Australia	124	106	85.5	124	103	83.1
Virgin Australia Regional Airlines	22	17	77.3	21	18	85.7
All Airlines	448	378	84.4	444	356	80.2
Relates to services to and from Alice Springs, Brisbane, Melbourne, Perth and Sydney.						
Dubbo						
QantasLink	107	89	83.2	106	94	88.7
Regional Express	135	121	89.6	136	110	80.9
All Airlines	242	210	86.8	242	204	84.3
Relates to services to and from Sydney only.						
Emerald						
QantasLink	103	99	96.1	103	98	95.1
Virgin Australia	55	53	96.4	55	54	98.2
All Airlines	158	152	96.2	158	152	96.2
Relates to services to and from Brisbane only.						
Geraldton						
QantasLink	48	45	93.8	47	45	95.7
Virgin Australia Regional Airlines	52	41	78.8	51	41	80.4
All Airlines	100	86	86.0	98	86	87.8
Relates to services to and from Perth only.						
Gladstone						
QantasLink	126	114	90.5	126	115	91.3
Virgin Australia	78	75	96.2	77	74	96.1
All Airlines	204	189	92.6	203	189	93.1
Relates to services to and from Brisbane only.						
Gold Coast						
Jetstar	437	381	87.2	437	373	85.4
Qantas	116	84	72.4	116	86	74.1
QantasLink	8	5	62.5	8	4	50.0
Tigerair Australia	141	112	79.4	141	102	72.3
Virgin Australia	432	375	86.8	432	361	83.6
All Airlines	1 134	957	84.4	1 134	926	81.7
Relates to services to and from Adelaide, Melbourne and Sydney.						
Hamilton Island						
Jetstar	17	13	76.5	17	12	70.6
Qantas	4	4	100.0	4	4	100.0
QantasLink	52	47	90.4	52	48	92.3
Virgin Australia	54	47	87.0	54	51	94.4
All Airlines	127	111	87.4	127	115	90.6
Relates to services to and from Brisbane and Sydney.						

Airport	Arrivals			Departures		
	Sectors Flown	On Time		Sectors Flown	On Time	
		No.	%		No.	%
Hobart						
Jetstar	211	161	76.3	209	136	65.1
Qantas	119	101	84.9	119	111	93.3
QantasLink	57	47	82.5	57	48	84.2
Tigerair Australia	33	24	72.7	33	22	66.7
Virgin Australia	238	206	86.6	238	201	84.5
All Airlines	658	539	81.9	656	518	79.0
Relates to services to and from Brisbane, Melbourne and Sydney.						
Kalgoorlie						
Qantas	9	9	100.0	9	8	88.9
QantasLink	75	66	88.0	75	70	93.3
Virgin Australia	38	38	100.0	38	36	94.7
Virgin Australia Regional Airlines	33	28	84.8	33	27	81.8
All Airlines	155	141	91.0	155	141	91.0
Relates to services to and from Perth only.						
Karratha						
Qantas	14	14	100.0	14	14	100.0
QantasLink	178	165	92.7	176	155	88.1
Virgin Australia	13	9	69.2	13	10	76.9
Virgin Australia Regional Airlines	65	53	81.5	65	47	72.3
All Airlines	270	241	89.3	268	226	84.3
Relates to services to and from Perth only.						
Launceston						
Jetstar	120	101	84.2	120	82	68.3
QantasLink	109	94	86.2	109	99	90.8
Virgin Australia	122	107	87.7	122	111	91.0
All Airlines	351	302	86.0	351	292	83.2
Relates to services to and from Melbourne and Sydney.						
Mackay						
Jetstar	32	23	71.9	32	20	62.5
QantasLink	117	110	94.0	111	104	93.7
Virgin Australia	143	129	90.2	142	134	94.4
All Airlines	292	262	89.7	285	258	90.5
Relates to services to and from Brisbane only.						
Melbourne						
Jetstar	1 304	1 032	79.1	1 306	1 023	78.3
Qantas	2 325	1 915	82.4	2 323	1 859	80.0
QantasLink	247	220	89.1	248	225	90.7
Regional Express	82	58	70.7	82	69	84.1
Tigerair Australia	635	444	69.9	634	491	77.4
Virgin Australia	2 246	1 902	84.7	2 247	2 034	90.5
All Airlines	6 839	5 571	81.5	6 840	5 701	83.3
Relates to services to and from Adelaide, Brisbane, Cairns, Canberra, Darwin, Gold Coast, Hobart, Launceston, Mildura, Newcastle, Perth, Sunshine Coast, Sydney and Townsville.						
Mildura						
QantasLink	97	93	95.9	97	92	94.8
Regional Express	82	66	80.5	82	64	78.0
Virgin Australia	31	26	83.9	31	27	87.1
All Airlines	210	185	88.1	210	183	87.1
Relates to services to and from Melbourne only.						

Airport	Arrivals			Departures		
	Sectors Flown	On Time		Sectors Flown	On Time	
		No.	%		No.	%
Mount Isa						
QantasLink	57	25	43.9	57	39	68.4
Virgin Australia	19	17	89.5	19	17	89.5
All Airlines	76	42	55.3	76	56	73.7
Relates to services to and from Brisbane only.						
Newcastle						
Jetstar	189	140	74.1	188	144	76.6
QantasLink	48	45	93.8	48	44	91.7
Virgin Australia	122	109	89.3	121	110	90.9
All Airlines	359	294	81.9	357	298	83.5
Relates to services to and from Brisbane and Melbourne.						
Newman						
Qantas	35	35	100.0	35	35	100.0
QantasLink	104	94	90.4	102	89	87.3
Virgin Australia	19	19	100.0	19	18	94.7
Virgin Australia Regional Airlines	22	17	77.3	22	17	77.3
All Airlines	180	165	91.7	178	159	89.3
Relates to services to and from Perth only.						
Perth						
Jetstar	97	84	86.6	96	73	76.0
Qantas	779	701	90.0	781	703	90.0
QantasLink	588	538	91.5	595	535	89.9
Tigerair Australia	73	63	86.3	74	65	87.8
Virgin Australia	538	491	91.3	536	499	93.1
Virgin Australia Regional Airlines	307	244	79.5	308	264	85.7
All Airlines	2 382	2 121	89.0	2 390	2 139	89.5
Relates to services to and from Adelaide, Brisbane, Broome, Darwin, Geraldton, Kalgoorlie, Karratha, Melbourne, Newman, Port Hedland and Sydney.						
Port Hedland						
Qantas	34	34	100.0	34	31	91.2
QantasLink	101	90	89.1	99	89	89.9
Virgin Australia	28	28	100.0	28	27	96.4
Virgin Australia Regional Airlines	26	23	88.5	26	23	88.5
All Airlines	189	175	92.6	187	170	90.9
Relates to services to and from Perth only.						
Port Lincoln						
QantasLink	110	101	91.8	108	99	91.7
Regional Express	180	163	90.6	181	163	90.1
All Airlines	290	264	91.0	289	262	90.7
Relates to services to and from Adelaide only.						
Port Macquarie						
QantasLink	104	89	85.6	104	87	83.7
Virgin Australia	61	52	85.2	61	45	73.8
All Airlines	165	141	85.5	165	132	80.0
Relates to services to and from Sydney only.						

Airport	Arrivals			Departures		
	Sectors	On Time		Sectors	On Time	
	Flown	No.	%	Flown	No.	%
Proserpine						
Jetstar	39	37	94.9	40	32	80.0
Tigerair Australia	22	19	86.4	22	17	77.3
Virgin Australia	31	28	90.3	31	27	87.1
All Airlines	92	84	91.3	93	76	81.7
Relates to services to and from Brisbane and Sydney.						
Rockhampton						
QantasLink	178	157	88.2	184	160	87.0
Virgin Australia	153	134	87.6	153	144	94.1
All Airlines	331	291	87.9	337	304	90.2
Relates to services to and from Brisbane only.						
Sunshine Coast						
Jetstar	155	128	82.6	155	107	69.0
QantasLink	35	27	77.1	34	26	76.5
Virgin Australia	97	84	86.6	97	77	79.4
All Airlines	287	239	83.3	286	210	73.4
Relates to services to and from Melbourne and Sydney.						
Sydney						
Jetstar	1 280	998	78.0	1 279	1 024	80.1
Qantas	2 259	1 840	81.5	2 261	1 791	79.2
QantasLink	1 373	1 192	86.8	1 379	1 187	86.1
Regional Express	471	361	76.6	472	390	82.6
Tigerair Australia	549	377	68.7	550	409	74.4
Virgin Australia	2 625	2 248	85.6	2 623	2 302	87.8
All Airlines	8 557	7 016	82.0	8 564	7 103	82.9
Relates to services to and from Adelaide, Albury, Armidale, Ayers Rock, Ballina, Brisbane, Cairns, Canberra, Coffs Harbour, Darwin, Dubbo, Gold Coast, Hamilton Island, Hobart, Launceston, Melbourne, Perth, Port Macquarie, Proserpine, Sunshine Coast, Tamworth, Townsville and Wagga Wagga.						
Tamworth						
QantasLink	117	103	88.0	116	104	89.7
Virgin Australia	54	50	92.6	54	48	88.9
All Airlines	171	153	89.5	170	152	89.4
Relates to services to and from Sydney only.						
Townsville						
Jetstar	111	80	72.1	111	65	58.6
Qantas	79	64	81.0	79	73	92.4
QantasLink	201	189	94.0	202	189	93.6
Regional Express	23	23	100.0	21	21	100.0
Tigerair Australia	14	11	78.6	14	10	71.4
Virgin Australia	158	139	88.0	157	149	94.9
All Airlines	586	506	86.3	584	507	86.8
Relates to services to and from Brisbane, Cairns, Melbourne and Sydney.						
Wagga Wagga						
QantasLink	95	85	89.5	95	81	85.3
Regional Express	131	114	87.0	130	107	82.3
All Airlines	226	199	88.1	225	188	83.6
Relates to services to and from Sydney only.						

Definitions

On time arrival	A flight arrival is counted as "on time" if it arrived at the gate before 15 minutes after the scheduled arrival time shown in the carriers' schedule. Neither diverted nor cancelled flights count as on time.
On time departure	A flight departure is counted as "on time" if it departs the gate before 15 minutes after the scheduled departure time shown in the carriers' schedule.
Cancellation	A flight removed from service within 7 days of scheduled departure is regarded as a cancellation.
On time departure percentage	The percentage of on time departures is measured against the number of departures <i>operated</i> on any particular sector.
On time arrival percentage	The percentage of on time arrivals is measured against the number of arrivals <i>operated</i> on any particular sector.
Cancellation percentage	The percentage of cancellations is measured against the number of services <i>scheduled</i> on any particular sector.
