



**Australian Government**

**Department of Infrastructure and Regional Development**

Bureau of Infrastructure, Transport and Regional Economics

STATISTICAL REPORT



## Aviation

Domestic airline on time performance  
May 2016

© Commonwealth of Australia 2016

ISSN: 1832-0759

### **Ownership of intellectual property rights in this publication**

Unless otherwise noted, copyright (and any other intellectual property rights, if any) in this publication is owned by the Commonwealth of Australia (referred to below as the Commonwealth).

### **Disclaimer**

The material contained in this publication is made available on the understanding that the Commonwealth is not providing professional advice, and that users exercise their own skill and care with respect to its use, and seek independent advice if necessary.

The Commonwealth makes no representations or warranties as to the contents or accuracy of the information contained in this publication. To the extent permitted by law, the Commonwealth disclaims liability to any person or organisation in respect of anything done, or omitted to be done, in reliance upon information contained in this publication.

### **Creative Commons licence**

With the exception of (a) the Coat of Arms; and (b) the Department of Infrastructure and Regional Development's photos and graphics, copyright in this publication is licensed under a Creative Commons Attribution 3.0 Australia Licence.

Creative Commons Attribution 3.0 Australia Licence is a standard form licence agreement that allows you to copy, communicate and adapt this publication provided that you attribute the work to the Commonwealth and abide by the other licence terms. A summary of the licence terms is available from <http://creativecommons.org/licenses/by/3.0/au/deed.en>. The full licence terms are available from <http://creativecommons.org/licenses/by/3.0/au/legalcode>.

### **Use of the Coat of Arms**

The Department of the Prime Minister and Cabinet sets the terms under which the Coat of Arms is used. Please refer to the Department's Commonwealth Coat of Arms and Government branding web page <http://www.dpmmc.gov.au/guidelines/index.cfm#brand> and, in particular, the Guidelines on the use of the Commonwealth Coat of Arms publication.

An appropriate citation for this report is:

Bureau of Infrastructure, Transport and Regional Economics (BITRE), 2016, Domestic airline on time performance, Statistical Report, BITRE, Canberra ACT.

### **Contact us**

This publication is available in PDF format. All other rights are reserved, including in relation to any Departmental logos or trade marks which may exist. For enquiries regarding the licence and any use of this publication, please contact:

Bureau of Infrastructure, Transport and Regional Economics (BITRE)  
Department of Infrastructure and Regional Development  
GPO Box 501, Canberra ACT 2601, Australia  
Telephone: (international) +61 2 6274 7210  
Fax: (international) +61 2 6274 6855  
Email: [bitre@infrastructure.gov.au](mailto:bitre@infrastructure.gov.au)  
Website: [www.bitre.gov.au](http://www.bitre.gov.au)

### **Inquiries**

Should you require additional information about the statistics contained in this publication:

Telephone (02) 6274 7790 or Facsimile (02) 6274 7727

Electronic mail: [AVSTATS@infrastructure.gov.au](mailto:AVSTATS@infrastructure.gov.au)

Web site: <http://www.bitre.gov.au/statistics/aviation/otphome.aspx>

# Foreword

The Bureau of Infrastructure, Transport and Regional Economics (BITRE) monitors the punctuality and reliability of major domestic airlines operating between Australian airports. The purpose of this is to allow for evaluation of overall industry and individual airline performance, so that consumers of air travel can make informed decisions.

The following domestic airlines currently report this information monthly to the BITRE: Jetstar, Qantas, QantasLink, Regional Express, Tigerair Australia, Virgin Australia and Virgin Australia Regional Airlines. Data has been gathered since November 2003, although some airlines commenced reporting at a later date, including Jetstar which first reported in May 2004, MacAir in July 2005, Tigerair Australia in April 2008 and Virgin Australia Regional Airlines in May 2013. MacAir ceased operations in February 2009 and data was not received for December 2008 onwards. Virgin Blue was rebranded as Virgin Australia in May 2011 and Tiger Airways was rebranded as Tigerair Australia in July 2013 and time series data in Microsoft Excel spreadsheet format on the BITRE website have been revised to reflect these changes. Services operated by Skywest on behalf of Virgin Australia using ATR/F100 aircraft commenced in November 2011 and were shown separately as Virgin Australia – ATR/F100 Operations. Virgin Australia Regional Airlines commenced operations in May 2013. It was formed after the acquisition of Skywest by Virgin Australia and represented a combination of operations previously reported under Skywest and Virgin Australia – ATR/F100 Operations. In January 2016, Virgin Australia transferred their ATR fleet from Virgin Australia Regional Airlines to Virgin Australia.

Information presented in this report is for Australian domestic routes for which the passenger load averaged 8 000 or more passengers per month over the previous six months and where two or more airlines operated in competition on those routes. There were 66 routes that met this definition in May 2016. Over time, routes which meet these criteria change as airline networks and traffic levels vary.

Participating airlines report their overall monthly network performance where this is possible.

Total industry figures encompass all services operated by reporting airlines only. These airlines collectively carried over 95 per cent of total domestic passengers (regular public transport only) in 2015.

The method of capturing on time performance varies between airlines utilising different recording systems. Jetstar and Qantas jet aircraft use Aircraft Communication Addressing and Reporting System (ACARS) to electronically measure on time performance. Regional Express, Tigerair Australia, Virgin Australia, Virgin Australia Regional Airlines and the Qantas non-jet fleet record on time performance manually using records from pilots, gate agents and/or ground crews.

After initial data is collected, aggregate reports are audited internally by participating airlines prior to publication.

Reports and detailed time series data in Microsoft Excel spreadsheet format are available from the BITRE website at: <http://www.bitre.gov.au/statistics/aviation/otphome.aspx>.



# Contents

	Page
Industry performance .....	1
Individual routes .....	10
Airports .....	23
Definitions .....	29



## Industry performance

For May 2016, on time performance over all routes operated by participating airlines (Jetstar, Qantas, QantasLink, Regional Express, Tigerair Australia, Virgin Australia and Virgin Australia Regional Airlines) averaged 87.8 per cent for on time arrivals and 88.4 per cent for on time departures. Cancellations represented 1.2 per cent of all scheduled flights. The equivalent figures for May 2015 were 86.6 per cent for arrivals, 88.0 per cent for departures and 1.7 per cent for cancellations.

This month's on time arrivals figure was better than the long term average performance for all routes (82.8 per cent) and the on time departures figure was also better than the long term average (84.2 per cent). The rate of cancellations was lower than the long term average of 1.4 per cent.

Virgin Australia achieved the highest on time arrivals among the major domestic airlines at 90.1 per cent followed by Qantas at 89.0 per cent, Tigerair Australia at 86.3 per cent and Jetstar at 82.6 per cent. QantasLink was the best performing regional airline for on time arrivals at 88.0 per cent, followed by Regional Express at 87.0 per cent and Virgin Australia Regional Airlines at 80.6 per cent. The Qantas network (Qantas and QantasLink combined operations) recorded 88.5 per cent for on time arrivals while the Virgin Australia network (Virgin Australia and Virgin Australia Regional Airlines combined operations) recorded 89.7 per cent.

Virgin Australia also achieved the highest level of on time departures for May 2016 at 91.1 per cent, followed by Qantas at 90.5 per cent, Tigerair Australia at 87.5 per cent and Jetstar at 79.3 per cent. Of the regional airlines, Regional Express recorded 89.5 per cent followed by QantasLink at 88.4 per cent and Virgin Australia Regional Airlines at 85.6 per cent. The Qantas network recorded 89.4 per cent for on time departures while the Virgin Australia network recorded 90.8 per cent.

QantasLink had the highest percentage of cancellations (1.6 per cent) during the month, followed by Virgin Australia (1.5 per cent), Qantas, Virgin Australia Regional Airlines and Jetstar (all at 1.3 per cent), Tigerair Australia (0.5 per cent) and Regional Express (0.3 per cent).

Airlines' on time performance varies across the routes they serve. Individual route data by specific airline for 66 routes are shown on pages 10-22.

Of the 66 routes which met the criteria for on time performance reporting in May 2016, the Melbourne-Hamilton Island route had the highest percentage of on time arrivals (100.0 per cent) and the Canberra-Adelaide route had the highest percentage of on time departures (98.6 per cent). The Sydney-Perth route had the lowest percentage of on time arrivals (72.9 per cent) and the Sunshine Coast-Sydney route had the lowest percentage of on time departures (70.5 per cent).

Cancellations were highest on the Alice Springs-Adelaide, Canberra-Sydney and Karratha-Perth routes (all at 4.3 per cent), followed by the Sydney-Canberra route at 3.7 per cent, the Perth-

Karratha route at 3.5 per cent, the Moranbah-Brisbane route at 3.4 per cent and the Port Hedland-Perth route at 3.1 per cent.

Mount Isa Airport recorded the highest percentage of on time arrivals (98.7 per cent) and Gladstone Airport recorded the highest percentage of on time departures (94.8 per cent). Armidale Airport recorded the lowest percentage of on time arrivals (74.3 per cent) and Sunshine Coast Airport recorded the lowest percentage of on time departures (71.9 per cent). These figures only refer to reported routes and do not cover all flights at these airports.



Table 1 On time performance for May 2016 — Total Industry

	<i>Sectors</i>		<i>Arrivals On Time</i>		<i>Departures On Time</i>		<i>Cancellations</i>	
	<i>Scheduled</i>	<i>Flown</i>	<i>No.</i>	<i>%</i>	<i>No.</i>	<i>%</i>	<i>No.</i>	<i>%</i>
Jetstar	6 117	6 040	4 989	82.6	4 792	79.3	77	1.3
Qantas	9 039	8 922	7 940	89.0	8 072	90.5	117	1.3
QantasLink	10 502	10 335	9 099	88.0	9 141	88.4	167	1.6
Regional Express	6 664	6 646	5 781	87.0	5 948	89.5	18	0.3
Tigerair Australia	1 967	1 957	1 688	86.3	1 712	87.5	10	0.5
Virgin Australia	12 548	12 363	11 144	90.1	11 264	91.1	185	1.5
Virgin Australia Regional Airlines	627	619	499	80.6	530	85.6	8	1.3
All Airlines	47 464	46 882	41 140	87.8	41 459	88.4	582	1.2
Qantas - all QF designated services	19 541	19 257	17 039	88.5	17 213	89.4	284	1.5
Virgin Australia - all VA designated services	13 175	12 982	11 643	89.7	11 794	90.8	193	1.5

Total airline network data (including routes not shown in this report).

In January 2016, Virgin Australia transferred their ATR fleet from Virgin Australia Regional Airlines to Virgin Australia.

Airlines' on time performance varies across the routes they serve. Individual route data by specific airline for 66 routes are shown on pages 10-22.

Table 2 Top ten routes for on time performance for May 2016 (participating airlines only)

<i>Arrivals</i>		<i>Departures</i>	
<i>Route</i>	<i>On Time (%)</i>	<i>Route</i>	<i>On Time (%)</i>
Melbourne-Hamilton Island	100.0	Canberra-Adelaide	98.6
Brisbane-Mount Isa	98.7	Brisbane-Mount Isa	97.3
Canberra-Adelaide	97.1	Cairns-Townsville	95.7
Gladstone-Brisbane	97.1	Adelaide-Alice Springs	95.6
Rockhampton-Brisbane	96.3	Brisbane-Darwin	95.3
Brisbane-Darwin	96.3	Darwin-Alice Springs	95.3
Proserpine-Brisbane	96.2	Townsville-Brisbane	94.9
Townsville-Brisbane	96.1	Canberra-Brisbane	94.8
Cairns-Townsville	95.7	Gladstone-Brisbane	94.8
Emerald-Brisbane	95.5	Cairns-Brisbane	94.8

Table 3 Top ten airports for on time performance for May 2016 (participating airlines and reported routes only)

<i>Arrivals</i>		<i>Departures</i>	
<i>Airport</i>	<i>On Time (%)</i>	<i>Airport</i>	<i>On Time (%)</i>
Mount Isa	98.7	Gladstone	94.8
Townsville	95.2	Newman	94.7
Gladstone	95.2	Mount Isa	94.6
Newman	94.7	Bundaberg	94.5
Bundaberg	94.5	Proserpine	94.3
Rockhampton	93.7	Townsville	94.0
Alice Springs	93.6	Rockhampton	93.9
Mackay	92.8	Mackay	92.8
Brisbane	92.5	Emerald	92.5
Proserpine	92.5	Brisbane	92.3

## Total industry on time performance

Figure 1 On time performance (by month from May 2013)—Total Industry

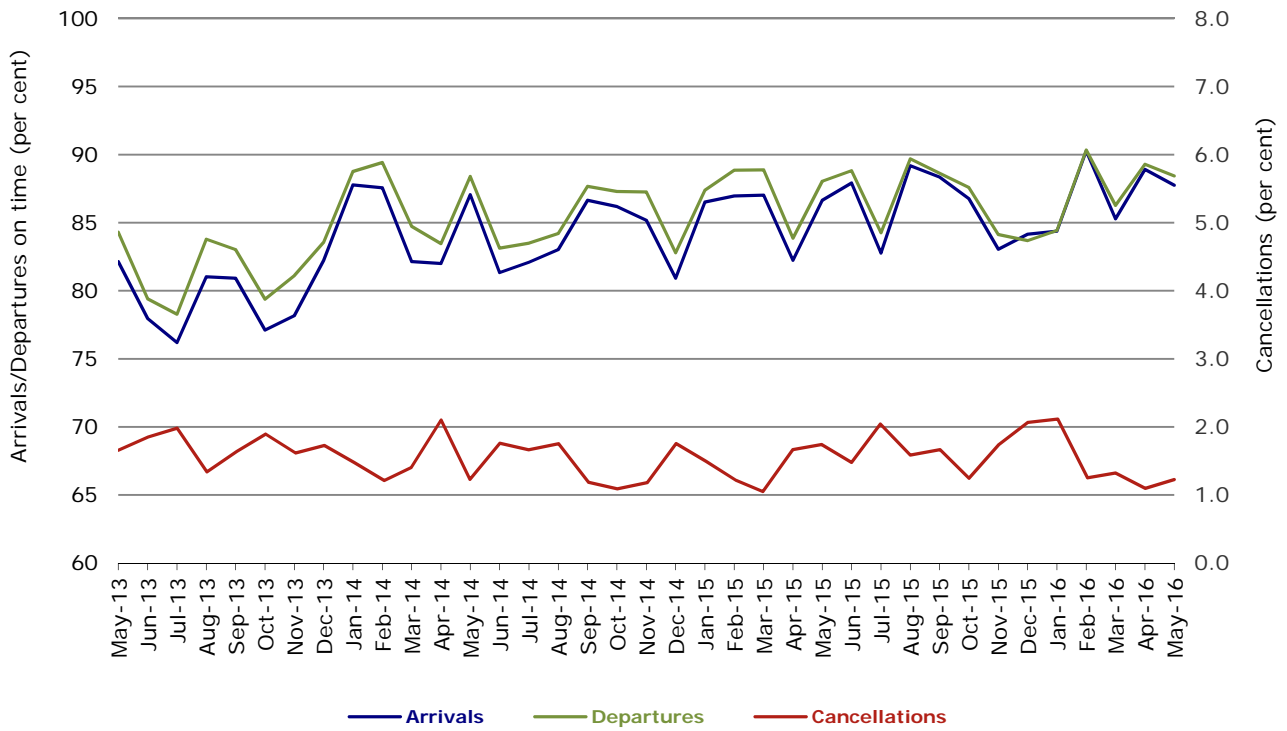


Figure 2 Arrivals on time (by month from May 2015)

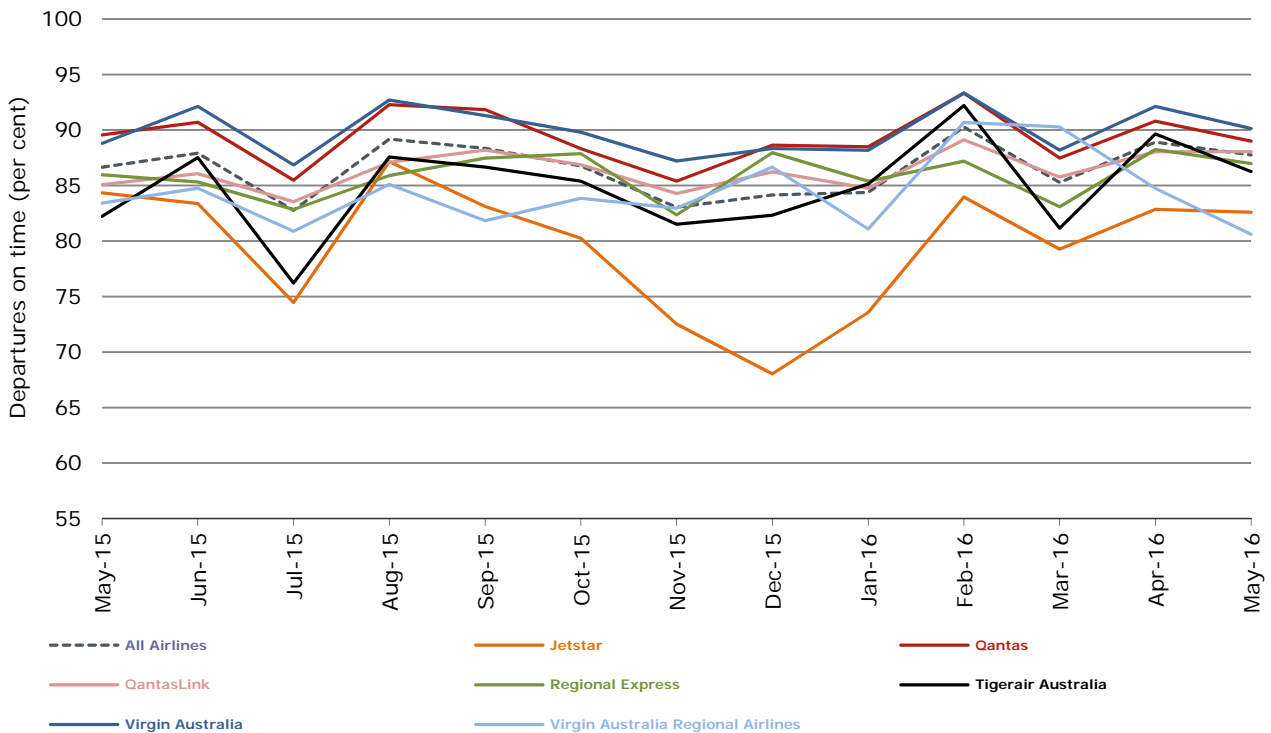


Figure 3 Departures on time (by month from May 2015)

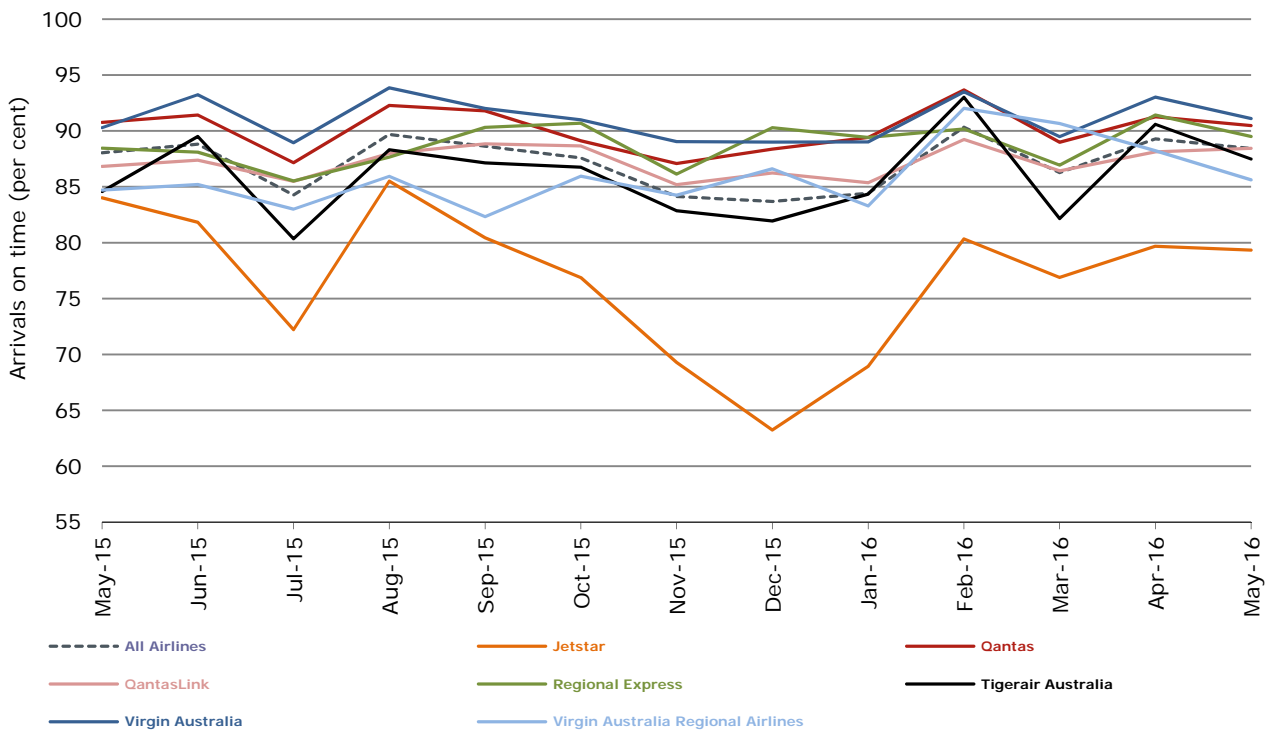
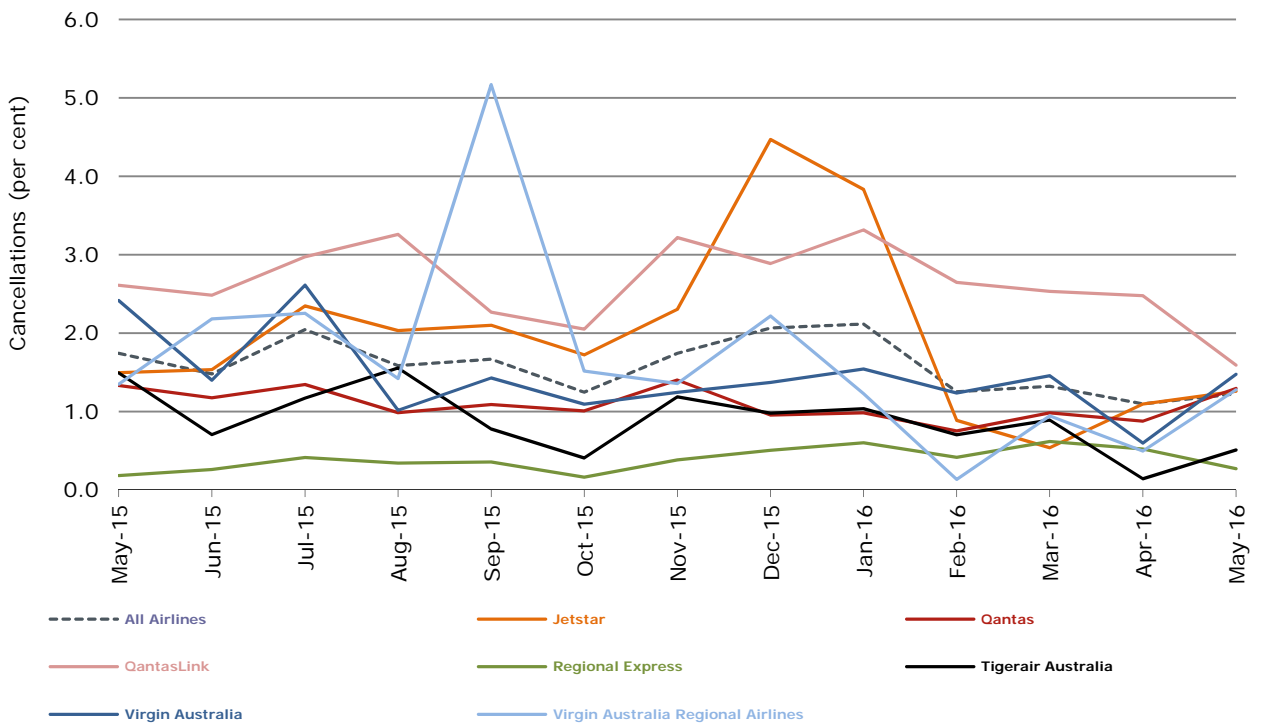


Figure 4 Cancellations (by month from May 2015)



## Major domestic airlines on time performance

Figure 5 On time performance (by month from May 2013)—Jetstar

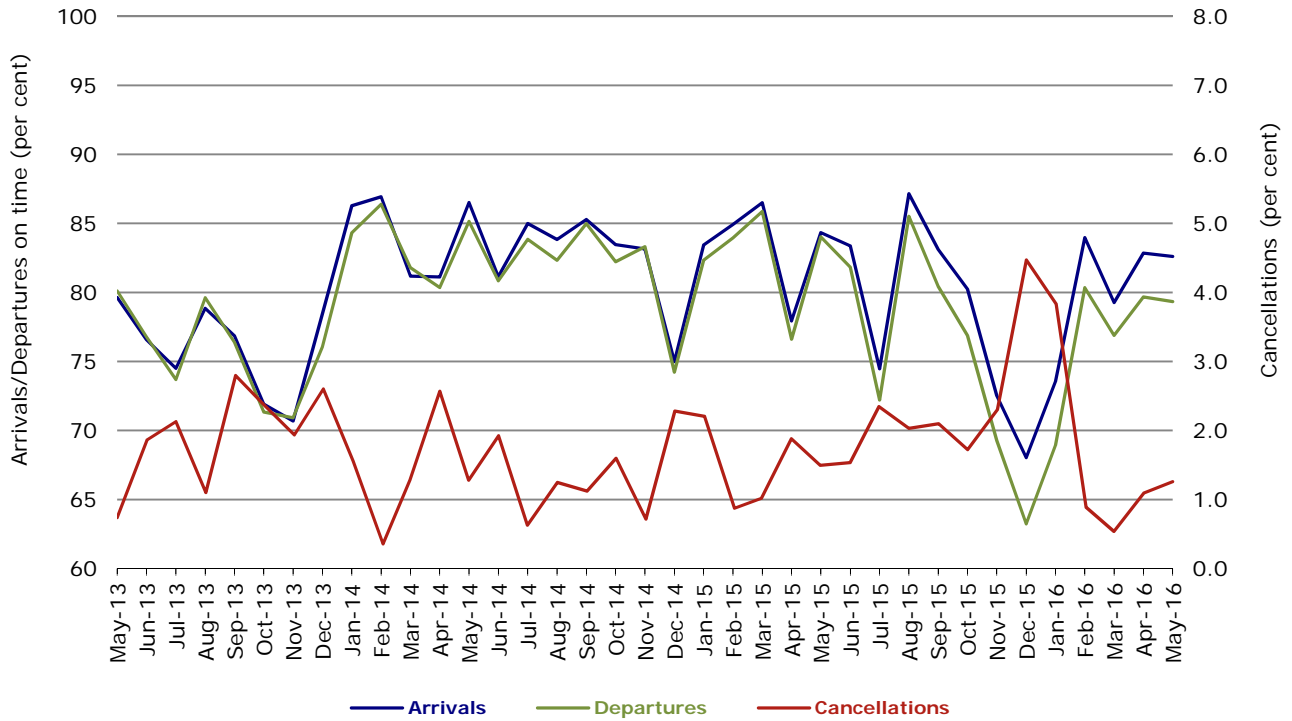


Figure 6 On time performance (by month from May 2013)—Qantas

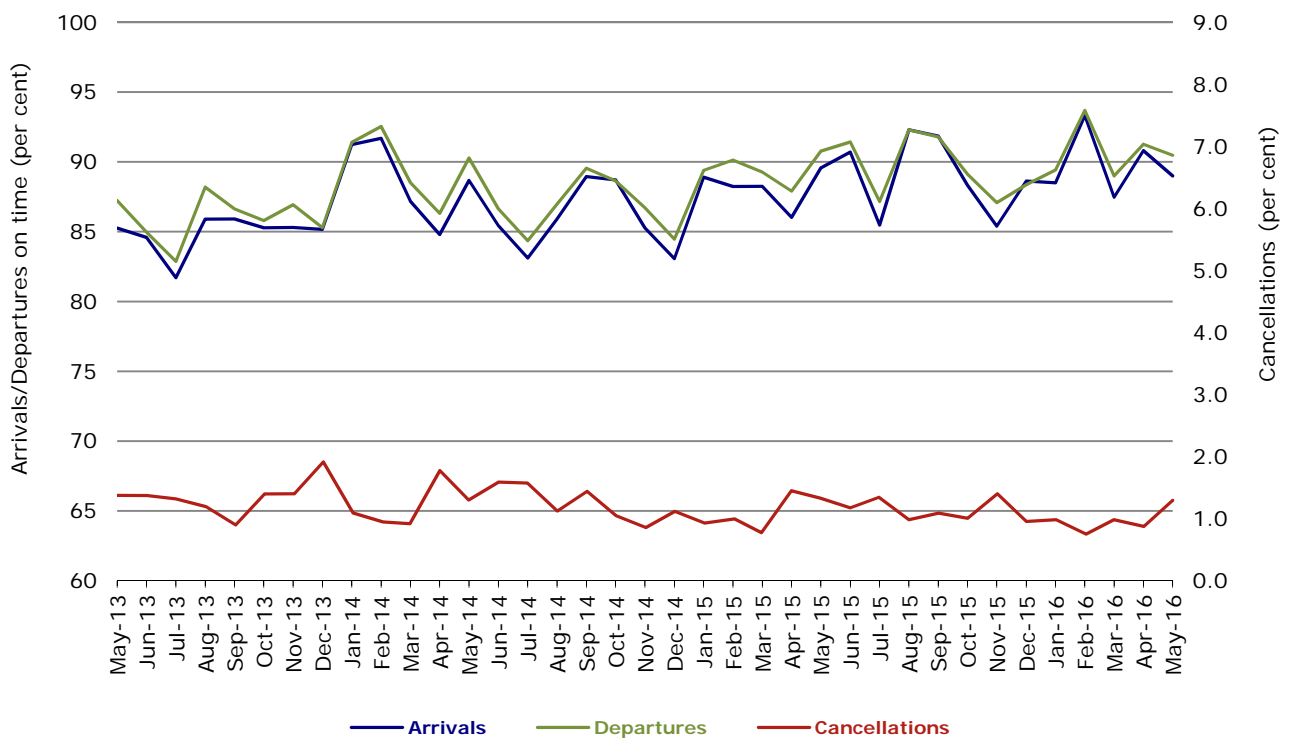


Figure 7 On time performance (by month from May 2013)—Tigerair Australia

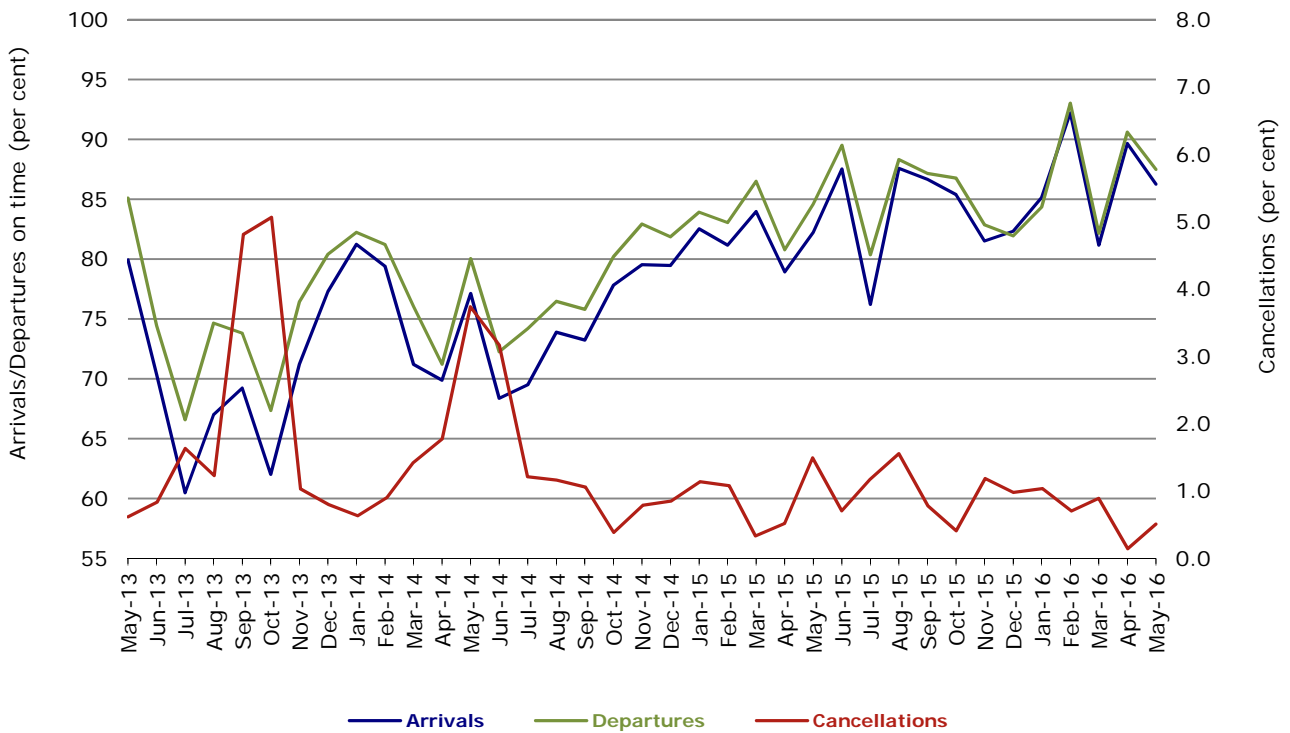
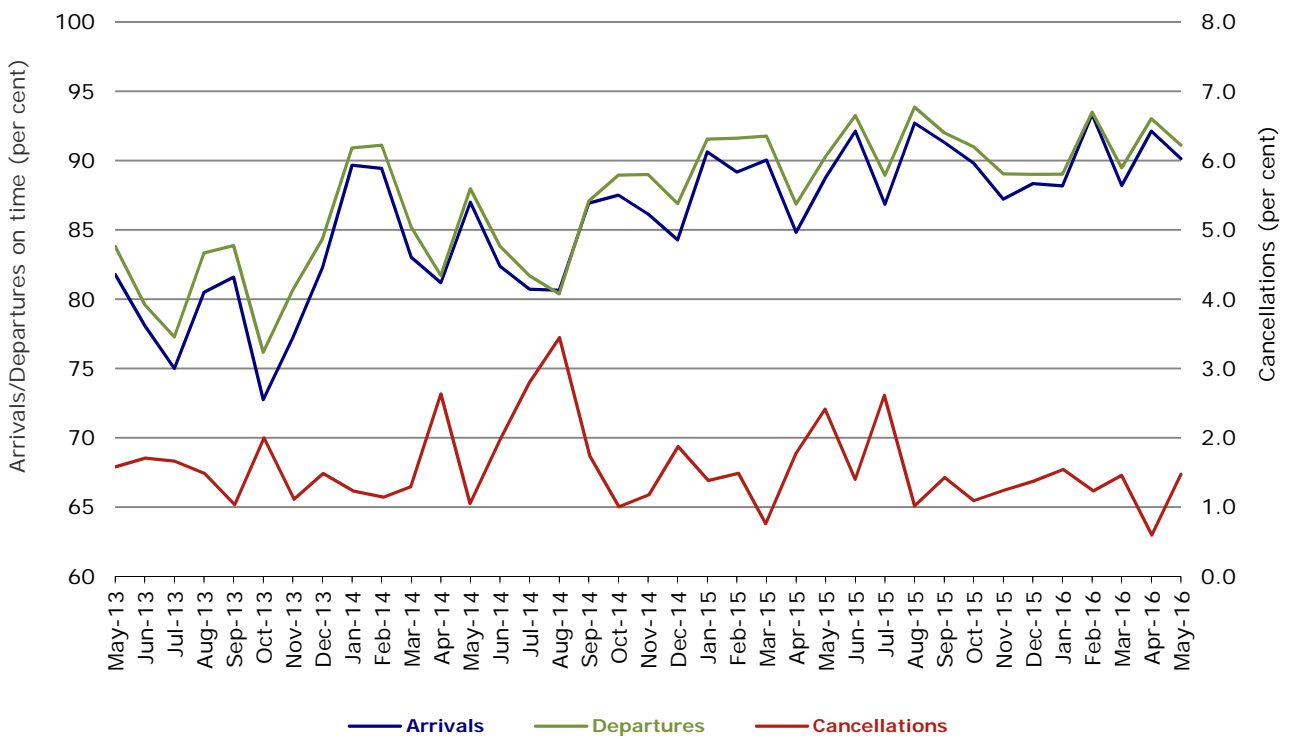


Figure 8 On time performance (by month from May 2013)—Virgin Australia



In January 2016, Virgin Australia transferred their ATR fleet from Virgin Australia Regional Airlines to Virgin Australia.

## Major regional airlines on time performance

Figure 9 On time performance (by month from May 2013)—QantasLink

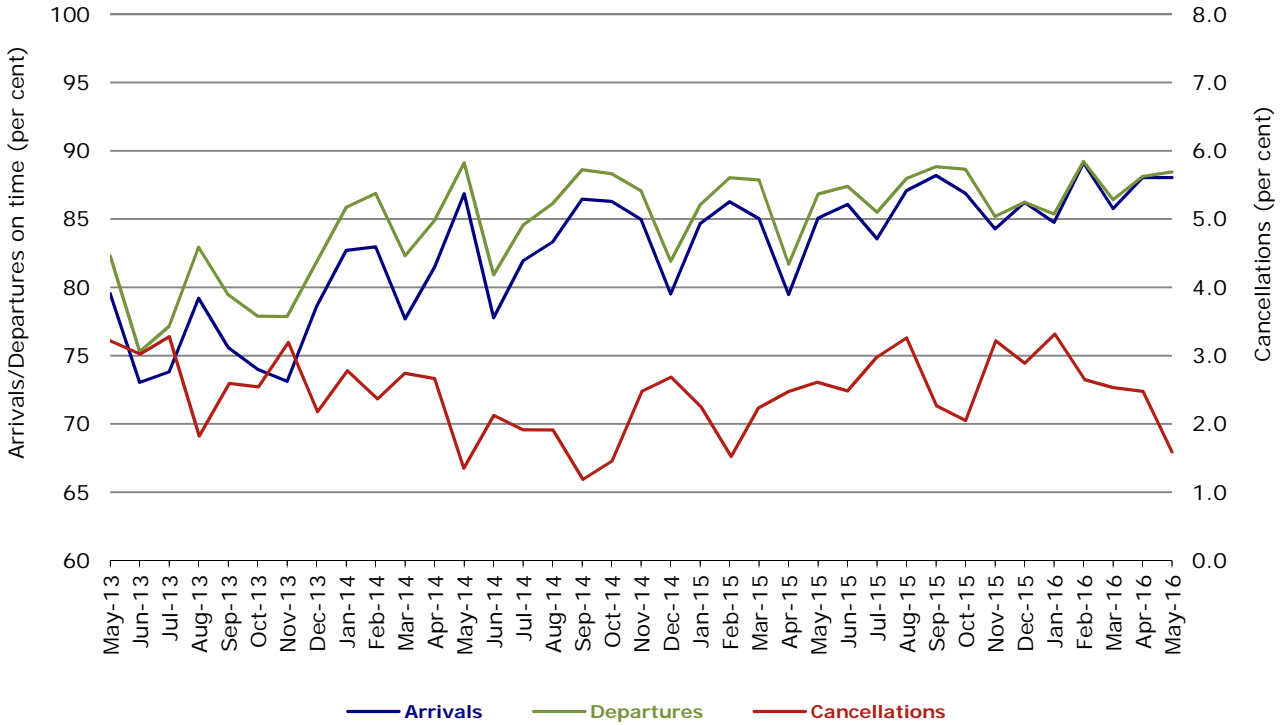


Figure 10 On time performance (by month from May 2013)—Regional Express

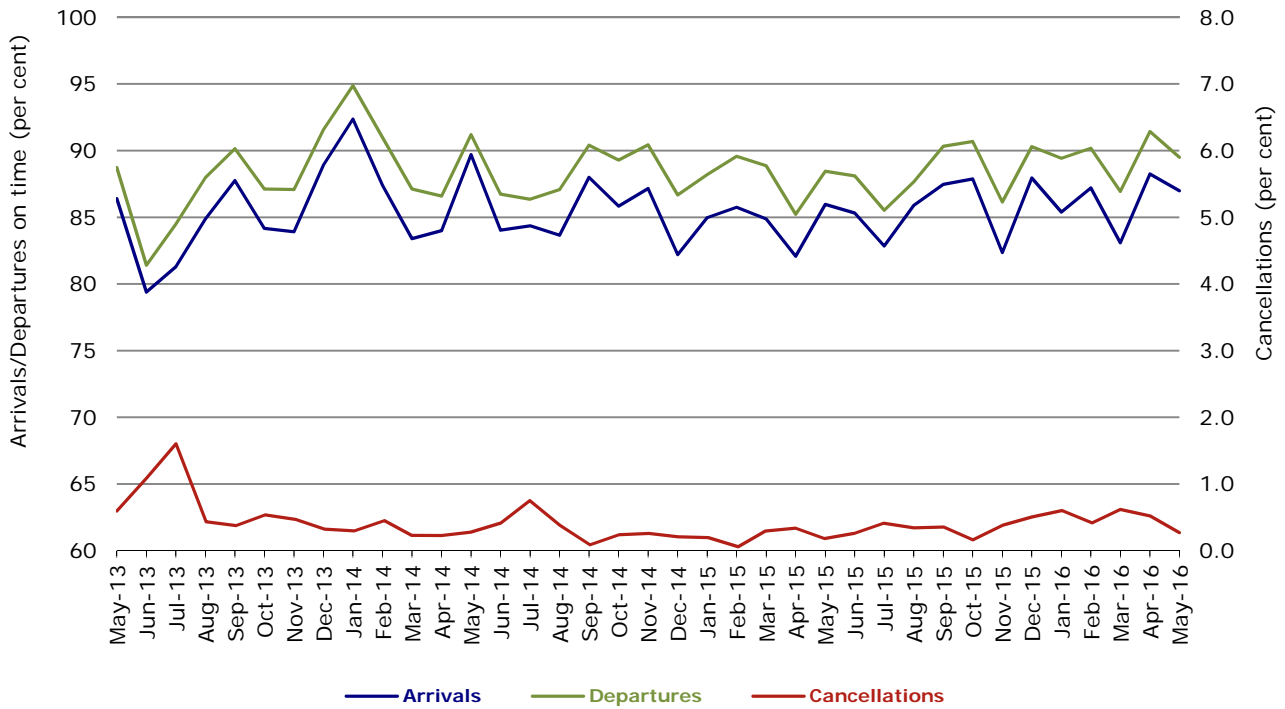
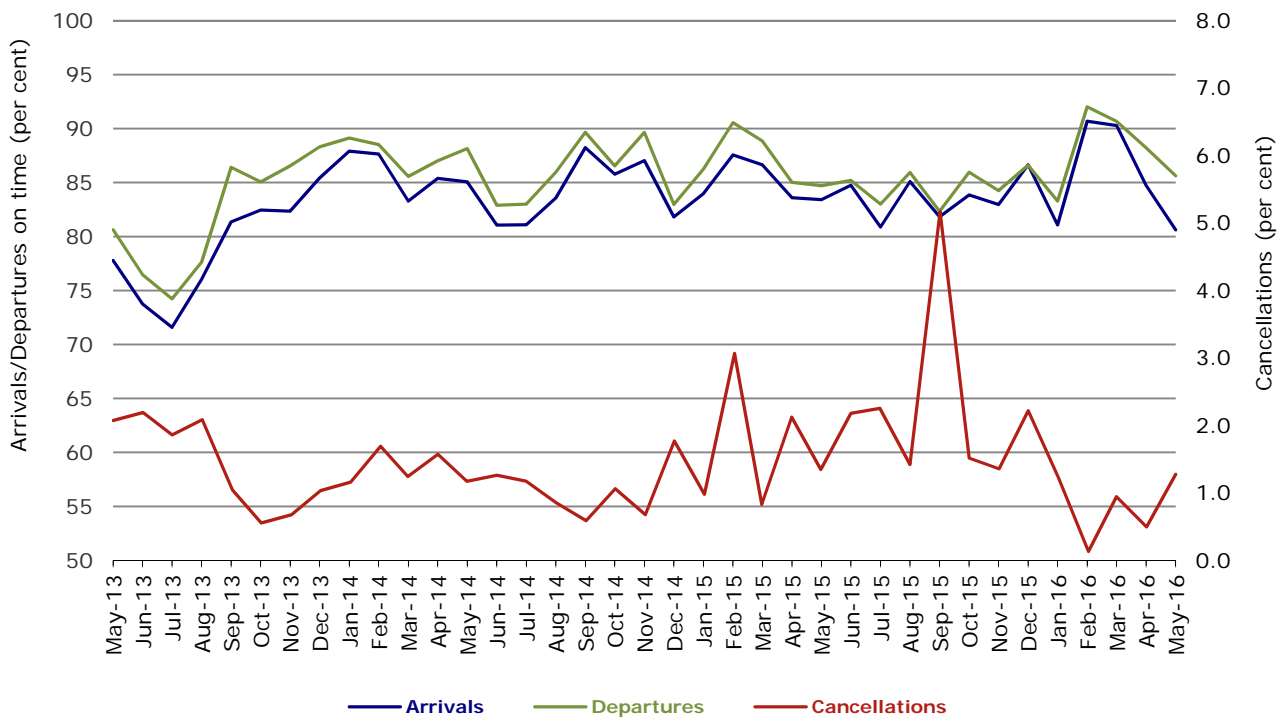


Figure 11 On time performance (by month from May 2013)  
Virgin Australia Regional Airlines



Virgin Australia Regional Airlines commenced operations in May 2013. It was formed after the acquisition of Skywest by Virgin Australia and represented a combination of operations previously reported under Skywest and Virgin Australia – ATR/F100 Operations. In January 2016, Virgin Australia transferred their ATR fleet from Virgin Australia Regional Airlines to Virgin Australia.

## Individual routes

On time performance is reported for all routes where the passenger load averages over 8000 passengers per month over the previous six months, and where two or more airlines operate in competition on those routes. There are now 66 routes which meet this definition. Over time, however, routes which meet this definition may change as airline networks and traffic levels vary.

	<i>Sectors</i>		<i>Arrivals On Time</i>		<i>Departures On Time</i>		<i>Cancellations</i>	
	<i>Sched.</i>	<i>Flown</i>	<i>No.</i>	<i>%</i>	<i>No.</i>	<i>%</i>	<i>No.</i>	<i>%</i>
<b>Adelaide-Alice Springs</b>								
Qantas	31	30	28	93.3	29	96.7	1	3.2
Virgin Australia	15	15	13	86.7	14	93.3	0	0.0
All Airlines	46	45	41	91.1	43	95.6	1	2.2
<b>Adelaide-Brisbane</b>								
Jetstar	22	22	22	100.0	21	95.5	0	0.0
Qantas	107	107	98	91.6	101	94.4	0	0.0
Tigerair Australia	20	20	18	90.0	17	85.0	0	0.0
Virgin Australia	116	116	109	94.0	103	88.8	0	0.0
All Airlines	265	265	247	93.2	242	91.3	0	0.0
<b>Adelaide-Canberra</b>								
Qantas	43	43	39	90.7	40	93.0	0	0.0
Virgin Australia	27	26	25	96.2	24	92.3	1	3.7
All Airlines	70	69	64	92.8	64	92.8	1	1.4
<b>Adelaide-Gold Coast</b>								
Jetstar	30	30	25	83.3	23	76.7	0	0.0
Virgin Australia	31	31	29	93.5	29	93.5	0	0.0
All Airlines	61	61	54	88.5	52	85.2	0	0.0
<b>Adelaide-Melbourne</b>								
Jetstar	103	101	82	81.2	70	69.3	2	1.9
Qantas	275	274	248	90.5	246	89.8	1	0.4
Tigerair Australia	72	71	57	80.3	58	81.7	1	1.4
Virgin Australia	281	278	251	90.3	253	91.0	3	1.1
All Airlines	731	724	638	88.1	627	86.6	7	1.0
<b>Adelaide-Perth</b>								
Jetstar	29	29	25	86.2	24	82.8	0	0.0
Qantas	103	102	86	84.3	91	89.2	1	1.0
Virgin Australia	72	71	55	77.5	59	83.1	1	1.4
All Airlines	204	202	166	82.2	174	86.1	2	1.0
<b>Adelaide-Port Lincoln</b>								
QantasLink	111	109	97	89.0	97	89.0	2	1.8
Regional Express	215	214	195	91.1	204	95.3	1	0.5
All Airlines	326	323	292	90.4	301	93.2	3	0.9
<b>Adelaide-Sydney</b>								
Jetstar	84	83	68	81.9	58	69.9	1	1.2
Qantas	229	226	203	89.8	199	88.1	3	1.3
QantasLink	27	24	20	83.3	20	83.3	3	11.1
Tigerair Australia	41	41	31	75.6	26	63.4	0	0.0
Virgin Australia	167	165	150	90.9	145	87.9	2	1.2
All Airlines	548	539	472	87.6	448	83.1	9	1.6
<b>Albury-Sydney</b>								
QantasLink	110	108	92	85.2	94	87.0	2	1.8
Regional Express	111	111	101	91.0	99	89.2	0	0.0
Virgin Australia	62	61	49	80.3	51	83.6	1	1.6
All Airlines	283	280	242	86.4	244	87.1	3	1.1



	<i>Sectors</i>		<i>Arrivals On Time</i>		<i>Departures On Time</i>		<i>Cancellations</i>	
	<i>Sched.</i>	<i>Flown</i>	<i>No.</i>	<i>%</i>	<i>No.</i>	<i>%</i>	<i>No.</i>	<i>%</i>
<b>Alice Springs-Adelaide</b>								
Qantas	31	30	24	80.0	25	83.3	1	3.2
Virgin Australia	15	14	13	92.9	13	92.9	1	6.7
All Airlines	46	44	37	84.1	38	86.4	2	4.3
<b>Alice Springs-Darwin</b>								
QantasLink	52	51	47	92.2	48	94.1	1	1.9
Virgin Australia	13	13	11	84.6	11	84.6	0	0.0
All Airlines	65	64	58	90.6	59	92.2	1	1.5
<b>Armidale-Sydney</b>								
QantasLink	122	121	93	76.9	91	75.2	1	0.8
Regional Express	77	76	59	77.6	63	82.9	1	1.3
All Airlines	199	197	152	77.2	154	78.2	2	1.0
<b>Ayers Rock-Sydney</b>								
Jetstar	31	31	27	87.1	25	80.6	0	0.0
Virgin Australia	31	30	28	93.3	25	83.3	1	3.2
All Airlines	62	61	55	90.2	50	82.0	1	1.6
<b>Ballina-Sydney</b>								
Jetstar	69	69	49	71.0	49	71.0	0	0.0
Regional Express	26	26	17	65.4	21	80.8	0	0.0
Virgin Australia	31	30	27	90.0	28	93.3	1	3.2
All Airlines	126	125	93	74.4	98	78.4	1	0.8
<b>Brisbane-Adelaide</b>								
Jetstar	22	22	19	86.4	20	90.9	0	0.0
Qantas	107	107	99	92.5	100	93.5	0	0.0
Tigerair Australia	20	20	18	90.0	19	95.0	0	0.0
Virgin Australia	116	116	111	95.7	112	96.6	0	0.0
All Airlines	265	265	247	93.2	251	94.7	0	0.0
<b>Brisbane-Bundaberg</b>								
QantasLink	134	134	128	95.5	127	94.8	0	0.0
Virgin Australia	31	31	28	90.3	28	90.3	0	0.0
All Airlines	165	165	156	94.5	155	93.9	0	0.0
<b>Brisbane-Cairns</b>								
Jetstar	79	78	72	92.3	64	82.1	1	1.3
Qantas	120	120	114	95.0	105	87.5	0	0.0
QantasLink	4	4	3	75.0	3	75.0	0	0.0
Tigerair Australia	27	27	26	96.3	25	92.6	0	0.0
Virgin Australia	137	137	132	96.4	128	93.4	0	0.0
All Airlines	367	366	347	94.8	325	88.8	1	0.3
<b>Brisbane-Canberra</b>								
Qantas	26	26	26	100.0	25	96.2	0	0.0
QantasLink	128	128	124	96.9	125	97.7	0	0.0
Virgin Australia	98	98	88	89.8	88	89.8	0	0.0
All Airlines	252	252	238	94.4	238	94.4	0	0.0
<b>Brisbane-Darwin</b>								
Jetstar	22	22	21	95.5	20	90.9	0	0.0
Qantas	39	39	36	92.3	37	94.9	0	0.0
Tigerair Australia	15	15	15	100.0	15	100.0	0	0.0
Virgin Australia	31	31	31	100.0	30	96.8	0	0.0
All Airlines	107	107	103	96.3	102	95.3	0	0.0
<b>Brisbane-Emerald</b>								
QantasLink	139	137	126	92.0	129	94.2	2	1.4
Virgin Australia	64	64	50	78.1	57	89.1	0	0.0
All Airlines	203	201	176	87.6	186	92.5	2	1.0

	<i>Sectors</i>		<i>Arrivals On Time</i>		<i>Departures On Time</i>		<i>Cancellations</i>	
	<i>Sched.</i>	<i>Flown</i>	<i>No.</i>	<i>%</i>	<i>No.</i>	<i>%</i>	<i>No.</i>	<i>%</i>
<b>Brisbane-Gladstone</b>								
QantasLink	182	180	170	94.4	172	95.6	2	1.1
Virgin Australia	131	130	125	96.2	118	90.8	1	0.8
All Airlines	313	310	295	95.2	290	93.5	3	1.0
<b>Brisbane-Hamilton Island</b>								
QantasLink	31	31	29	93.5	29	93.5	0	0.0
Virgin Australia	32	32	30	93.8	29	90.6	0	0.0
All Airlines	63	63	59	93.7	58	92.1	0	0.0
<b>Brisbane-Hobart</b>								
Jetstar	22	22	21	95.5	21	95.5	0	0.0
Virgin Australia	31	31	27	87.1	23	74.2	0	0.0
All Airlines	53	53	48	90.6	44	83.0	0	0.0
<b>Brisbane-Mackay</b>								
Jetstar	43	43	34	79.1	32	74.4	0	0.0
QantasLink	108	107	103	96.3	103	96.3	1	0.9
Virgin Australia	157	157	148	94.3	148	94.3	0	0.0
All Airlines	308	307	285	92.8	283	92.2	1	0.3
<b>Brisbane-Melbourne</b>								
Jetstar	99	97	82	84.5	75	77.3	2	2.0
Qantas	412	408	378	92.6	384	94.1	4	1.0
Tigerair Australia	105	105	94	89.5	94	89.5	0	0.0
Virgin Australia	383	377	335	88.9	356	94.4	6	1.6
All Airlines	999	987	889	90.1	909	92.1	12	1.2
<b>Brisbane-Moranbah</b>								
QantasLink	113	108	97	89.8	101	93.5	5	4.4
Virgin Australia	66	66	61	92.4	62	93.9	0	0.0
All Airlines	179	174	158	90.8	163	93.7	5	2.8
<b>Brisbane-Mount Isa</b>								
Qantas	25	25	25	100.0	25	100.0	0	0.0
QantasLink	32	32	31	96.9	30	93.8	0	0.0
Virgin Australia	18	18	18	100.0	18	100.0	0	0.0
All Airlines	75	75	74	98.7	73	97.3	0	0.0
<b>Brisbane-Newcastle</b>								
Jetstar	72	71	63	88.7	64	90.1	1	1.4
QantasLink	92	92	88	95.7	88	95.7	0	0.0
Virgin Australia	93	92	87	94.6	88	95.7	1	1.1
All Airlines	257	255	238	93.3	240	94.1	2	0.8
<b>Brisbane-Perth</b>								
Qantas	126	126	96	76.2	112	88.9	0	0.0
Virgin Australia	111	111	95	85.6	101	91.0	0	0.0
All Airlines	237	237	191	80.6	213	89.9	0	0.0
<b>Brisbane-Proserpine</b>								
Jetstar	22	22	19	86.4	18	81.8	0	0.0
Virgin Australia	31	31	30	96.8	30	96.8	0	0.0
All Airlines	53	53	49	92.5	48	90.6	0	0.0
<b>Brisbane-Rockhampton</b>								
QantasLink	188	188	176	93.6	174	92.6	0	0.0
Virgin Australia	197	192	180	93.8	178	92.7	5	2.5
All Airlines	385	380	356	93.7	352	92.6	5	1.3

	<i>Sectors</i>		<i>Arrivals On Time</i>		<i>Departures On Time</i>		<i>Cancellations</i>	
	<i>Sched.</i>	<i>Flown</i>	<i>No.</i>	<i>%</i>	<i>No.</i>	<i>%</i>	<i>No.</i>	<i>%</i>
<b>Brisbane-Sydney</b>								
Jetstar	159	157	132	84.1	126	80.3	2	1.3
Qantas	594	586	545	93.0	545	93.0	8	1.3
Tigerair Australia	97	95	86	90.5	87	91.6	2	2.1
Virgin Australia	545	537	498	92.7	499	92.9	8	1.5
All Airlines	1 395	1 375	1 261	91.7	1 257	91.4	20	1.4
<b>Brisbane-Townsville</b>								
Jetstar	49	49	45	91.8	48	98.0	0	0.0
Qantas	139	139	135	97.1	133	95.7	0	0.0
Virgin Australia	146	146	138	94.5	135	92.5	0	0.0
All Airlines	334	334	318	95.2	316	94.6	0	0.0
<b>Broome-Perth</b>								
Qantas	30	30	26	86.7	25	83.3	0	0.0
QantasLink	55	54	47	87.0	46	85.2	1	1.8
Virgin Australia Regional Airlines	58	58	38	65.5	43	74.1	0	0.0
All Airlines	143	142	111	78.2	114	80.3	1	0.7
<b>Bundaberg-Brisbane</b>								
QantasLink	134	134	128	95.5	128	95.5	0	0.0
Virgin Australia	31	31	28	90.3	28	90.3	0	0.0
All Airlines	165	165	156	94.5	156	94.5	0	0.0
<b>Cairns-Brisbane</b>								
Jetstar	79	78	74	94.9	73	93.6	1	1.3
Qantas	119	119	112	94.1	111	93.3	0	0.0
QantasLink	5	5	4	80.0	4	80.0	0	0.0
Tigerair Australia	27	27	26	96.3	26	96.3	0	0.0
Virgin Australia	137	137	132	96.4	133	97.1	0	0.0
All Airlines	367	366	348	95.1	347	94.8	1	0.3
<b>Cairns-Melbourne</b>								
Jetstar	88	88	67	76.1	67	76.1	0	0.0
Qantas	36	36	30	83.3	28	77.8	0	0.0
Tigerair Australia	31	31	25	80.6	26	83.9	0	0.0
Virgin Australia	31	31	27	87.1	27	87.1	0	0.0
All Airlines	186	186	149	80.1	148	79.6	0	0.0
<b>Cairns-Sydney</b>								
Jetstar	86	84	80	95.2	82	97.6	2	2.3
Qantas	76	76	68	89.5	67	88.2	0	0.0
Tigerair Australia	28	28	26	92.9	24	85.7	0	0.0
Virgin Australia	88	88	78	88.6	80	90.9	0	0.0
All Airlines	278	276	252	91.3	253	91.7	2	0.7
<b>Cairns-Townsville</b>								
QantasLink	147	147	139	94.6	139	94.6	0	0.0
Regional Express	60	60	59	98.3	59	98.3	0	0.0
All Airlines	207	207	198	95.7	198	95.7	0	0.0
<b>Canberra-Adelaide</b>								
Qantas	43	43	43	100.0	43	100.0	0	0.0
Virgin Australia	27	26	24	92.3	25	96.2	1	3.7
All Airlines	70	69	67	97.1	68	98.6	1	1.4
<b>Canberra-Brisbane</b>								
Qantas	26	26	25	96.2	25	96.2	0	0.0
QantasLink	128	128	118	92.2	122	95.3	0	0.0
Virgin Australia	98	98	88	89.8	92	93.9	0	0.0
All Airlines	252	252	231	91.7	239	94.8	0	0.0

	<i>Sectors</i>		<i>Arrivals On Time</i>		<i>Departures On Time</i>		<i>Cancellations</i>	
	<i>Sched.</i>	<i>Flown</i>	<i>No.</i>	<i>%</i>	<i>No.</i>	<i>%</i>	<i>No.</i>	<i>%</i>
<b>Canberra-Melbourne</b>								
Qantas	200	198	185	93.4	190	96.0	2	1.0
QantasLink	78	78	64	82.1	62	79.5	0	0.0
Virgin Australia	196	190	162	85.3	175	92.1	6	3.1
All Airlines	474	466	411	88.2	427	91.6	8	1.7
<b>Canberra-Sydney</b>								
QantasLink	484	463	390	84.2	378	81.6	21	4.3
Virgin Australia	303	290	266	91.7	264	91.0	13	4.3
All Airlines	787	753	656	87.1	642	85.3	34	4.3
<b>Coffs Harbour-Sydney</b>								
QantasLink	155	153	121	79.1	121	79.1	2	1.3
Tigerair Australia	14	14	13	92.9	13	92.9	0	0.0
Virgin Australia	62	61	57	93.4	57	93.4	1	1.6
All Airlines	231	228	191	83.8	191	83.8	3	1.3
<b>Darwin-Alice Springs</b>								
QantasLink	52	51	49	96.1	49	96.1	1	1.9
Virgin Australia	13	13	12	92.3	12	92.3	0	0.0
All Airlines	65	64	61	95.3	61	95.3	1	1.5
<b>Darwin-Brisbane</b>								
Jetstar	22	22	18	81.8	20	90.9	0	0.0
Qantas	39	39	37	94.9	35	89.7	0	0.0
Tigerair Australia	15	15	14	93.3	15	100.0	0	0.0
Virgin Australia	31	31	27	87.1	27	87.1	0	0.0
All Airlines	107	107	96	89.7	97	90.7	0	0.0
<b>Darwin-Melbourne</b>								
Jetstar	26	26	20	76.9	17	65.4	0	0.0
Qantas	31	31	28	90.3	28	90.3	0	0.0
Virgin Australia	31	31	25	80.6	24	77.4	0	0.0
All Airlines	88	88	73	83.0	69	78.4	0	0.0
<b>Darwin-Perth</b>								
Qantas	31	31	29	93.5	29	93.5	0	0.0
Virgin Australia	31	31	27	87.1	27	87.1	0	0.0
All Airlines	62	62	56	90.3	56	90.3	0	0.0
<b>Darwin-Sydney</b>								
Jetstar	22	21	17	81.0	17	81.0	1	4.5
Qantas	46	46	40	87.0	34	73.9	0	0.0
Virgin Australia	31	31	24	77.4	25	80.6	0	0.0
All Airlines	99	98	81	82.7	76	77.6	1	1.0
<b>Dubbo-Sydney</b>								
QantasLink	129	128	112	87.5	103	80.5	1	0.8
Regional Express	159	159	140	88.1	141	88.7	0	0.0
All Airlines	288	287	252	87.8	244	85.0	1	0.3
<b>Emerald-Brisbane</b>								
QantasLink	139	136	130	95.6	125	91.9	3	2.2
Virgin Australia	64	64	61	95.3	60	93.8	0	0.0
All Airlines	203	200	191	95.5	185	92.5	3	1.5
<b>Geraldton-Perth</b>								
QantasLink	48	47	42	89.4	42	89.4	1	2.1
Virgin Australia Regional Airlines	57	57	50	87.7	50	87.7	0	0.0
All Airlines	105	104	92	88.5	92	88.5	1	1.0

	<i>Sectors</i>		<i>Arrivals On Time</i>		<i>Departures On Time</i>		<i>Cancellations</i>	
	<i>Sched.</i>	<i>Flown</i>	<i>No.</i>	<i>%</i>	<i>No.</i>	<i>%</i>	<i>No.</i>	<i>%</i>
<b>Gladstone-Brisbane</b>								
QantasLink	182	181	176	97.2	169	93.4	1	0.5
Virgin Australia	130	128	124	96.9	124	96.9	2	1.5
All Airlines	312	309	300	97.1	293	94.8	3	1.0
<b>Gold Coast-Adelaide</b>								
Jetstar	31	31	24	77.4	27	87.1	0	0.0
Virgin Australia	32	32	28	87.5	29	90.6	0	0.0
All Airlines	63	63	52	82.5	56	88.9	0	0.0
<b>Gold Coast-Melbourne</b>								
Jetstar	151	149	123	82.6	114	76.5	2	1.3
Qantas	31	31	27	87.1	27	87.1	0	0.0
Tigerair Australia	70	70	61	87.1	66	94.3	0	0.0
Virgin Australia	180	179	159	88.8	158	88.3	1	0.6
All Airlines	432	429	370	86.2	365	85.1	3	0.7
<b>Gold Coast-Sydney</b>								
Jetstar	254	250	212	84.8	207	82.8	4	1.6
Qantas	86	86	79	91.9	80	93.0	0	0.0
QantasLink	12	12	8	66.7	7	58.3	0	0.0
Tigerair Australia	97	97	84	86.6	80	82.5	0	0.0
Virgin Australia	259	257	242	94.2	242	94.2	2	0.8
All Airlines	708	702	625	89.0	616	87.7	6	0.8
<b>Hamilton Island-Brisbane</b>								
QantasLink	31	31	29	93.5	29	93.5	0	0.0
Virgin Australia	32	32	29	90.6	29	90.6	0	0.0
All Airlines	63	63	58	92.1	58	92.1	0	0.0
<b>Hamilton Island-Melbourne</b>								
Qantas	13	13	13	100.0	13	100.0	0	0.0
Virgin Australia	23	23	21	91.3	21	91.3	0	0.0
All Airlines	36	36	34	94.4	34	94.4	0	0.0
<b>Hamilton Island-Sydney</b>								
Jetstar	18	18	13	72.2	11	61.1	0	0.0
Qantas	10	10	10	100.0	10	100.0	0	0.0
QantasLink	12	12	9	75.0	9	75.0	0	0.0
Virgin Australia	31	30	28	93.3	27	90.0	1	3.2
All Airlines	71	70	60	85.7	57	81.4	1	1.4
<b>Hobart-Brisbane</b>								
Jetstar	21	21	20	95.2	20	95.2	0	0.0
Virgin Australia	31	31	24	77.4	26	83.9	0	0.0
All Airlines	52	52	44	84.6	46	88.5	0	0.0
<b>Hobart-Melbourne</b>								
Jetstar	154	152	98	64.5	97	63.8	2	1.3
QantasLink	137	133	107	80.5	112	84.2	4	2.9
Tigerair Australia	31	31	25	80.6	25	80.6	0	0.0
Virgin Australia	147	147	129	87.8	131	89.1	0	0.0
All Airlines	469	463	359	77.5	365	78.8	6	1.3
<b>Hobart-Sydney</b>								
Jetstar	51	51	36	70.6	33	64.7	0	0.0
QantasLink	57	57	48	84.2	49	86.0	0	0.0
Virgin Australia	62	62	52	83.9	51	82.3	0	0.0
All Airlines	170	170	136	80.0	133	78.2	0	0.0

	<i>Sectors</i>		<i>Arrivals On Time</i>		<i>Departures On Time</i>		<i>Cancellations</i>	
	<i>Sched.</i>	<i>Flown</i>	<i>No.</i>	<i>%</i>	<i>No.</i>	<i>%</i>	<i>No.</i>	<i>%</i>
<b>Kalgoorlie-Perth</b>								
Qantas	6	5	4	80.0	4	80.0	1	16.7
QantasLink	73	73	64	87.7	64	87.7	0	0.0
Virgin Australia	34	34	30	88.2	29	85.3	0	0.0
Virgin Australia Regional Airlines	29	29	25	86.2	27	93.1	0	0.0
All Airlines	142	141	123	87.2	124	87.9	1	0.7
<b>Karratha-Perth</b>								
Qantas	43	39	37	94.9	36	92.3	4	9.3
QantasLink	168	162	148	91.4	149	92.0	6	3.6
Virgin Australia	6	6	6	100.0	5	83.3	0	0.0
Virgin Australia Regional Airlines	64	62	49	79.0	55	88.7	2	3.1
All Airlines	281	269	240	89.2	245	91.1	12	4.3
<b>Launceston-Melbourne</b>								
Jetstar	98	98	75	76.5	71	72.4	0	0.0
QantasLink	120	117	100	85.5	102	87.2	3	2.5
Virgin Australia	95	95	83	87.4	86	90.5	0	0.0
All Airlines	313	310	258	83.2	259	83.5	3	1.0
<b>Launceston-Sydney</b>								
Jetstar	31	31	28	90.3	26	83.9	0	0.0
Virgin Australia	31	31	26	83.9	26	83.9	0	0.0
All Airlines	62	62	54	87.1	52	83.9	0	0.0
<b>Mackay-Brisbane</b>								
Jetstar	43	42	37	88.1	30	71.4	1	2.3
QantasLink	107	106	102	96.2	102	96.2	1	0.9
Virgin Australia	157	157	149	94.9	151	96.2	0	0.0
All Airlines	307	305	288	94.4	283	92.8	2	0.7
<b>Melbourne-Adelaide</b>								
Jetstar	103	101	65	64.4	68	67.3	2	1.9
Qantas	275	275	249	90.5	255	92.7	0	0.0
Tigerair Australia	72	71	65	91.5	67	94.4	1	1.4
Virgin Australia	281	278	246	88.5	249	89.6	3	1.1
All Airlines	731	725	625	86.2	639	88.1	6	0.8
<b>Melbourne-Brisbane</b>								
Jetstar	99	98	78	79.6	71	72.4	1	1.0
Qantas	415	411	376	91.5	371	90.3	4	1.0
Tigerair Australia	105	105	98	93.3	94	89.5	0	0.0
Virgin Australia	384	379	330	87.1	332	87.6	5	1.3
All Airlines	1 003	993	882	88.8	868	87.4	10	1.0
<b>Melbourne-Cairns</b>								
Jetstar	88	88	61	69.3	59	67.0	0	0.0
Qantas	36	36	31	86.1	30	83.3	0	0.0
Tigerair Australia	31	31	28	90.3	31	100.0	0	0.0
Virgin Australia	31	31	28	90.3	28	90.3	0	0.0
All Airlines	186	186	148	79.6	148	79.6	0	0.0
<b>Melbourne-Canberra</b>								
Qantas	200	198	186	93.9	186	93.9	2	1.0
QantasLink	79	77	63	81.8	64	83.1	2	2.5
Virgin Australia	197	192	167	87.0	164	85.4	5	2.5
All Airlines	476	467	416	89.1	414	88.7	9	1.9
<b>Melbourne-Darwin</b>								
Jetstar	26	26	20	76.9	20	76.9	0	0.0
Qantas	31	31	28	90.3	29	93.5	0	0.0
Virgin Australia	31	31	22	71.0	28	90.3	0	0.0
All Airlines	88	88	70	79.5	77	87.5	0	0.0

	<i>Sectors</i>		<i>Arrivals On Time</i>		<i>Departures On Time</i>		<i>Cancellations</i>	
	<i>Sched.</i>	<i>Flown</i>	<i>No.</i>	<i>%</i>	<i>No.</i>	<i>%</i>	<i>No.</i>	<i>%</i>
<b>Melbourne-Gold Coast</b>								
Jetstar	151	149	116	77.9	112	75.2	2	1.3
Qantas	31	31	28	90.3	27	87.1	0	0.0
Tigerair Australia	70	70	68	97.1	66	94.3	0	0.0
Virgin Australia	181	180	162	90.0	160	88.9	1	0.6
All Airlines	433	430	374	87.0	365	84.9	3	0.7
<b>Melbourne-Hamilton Island</b>								
Qantas	13	13	13	100.0	12	92.3	0	0.0
Virgin Australia	23	23	23	100.0	21	91.3	0	0.0
All Airlines	36	36	36	100.0	33	91.7	0	0.0
<b>Melbourne-Hobart</b>								
Jetstar	154	152	119	78.3	118	77.6	2	1.3
QantasLink	137	133	119	89.5	123	92.5	4	2.9
Tigerair Australia	31	31	26	83.9	26	83.9	0	0.0
Virgin Australia	147	147	131	89.1	136	92.5	0	0.0
All Airlines	469	463	395	85.3	403	87.0	6	1.3
<b>Melbourne-Launceston</b>								
Jetstar	98	98	83	84.7	86	87.8	0	0.0
QantasLink	120	117	97	82.9	102	87.2	3	2.5
Virgin Australia	95	95	86	90.5	88	92.6	0	0.0
All Airlines	313	310	266	85.8	276	89.0	3	1.0
<b>Melbourne-Mildura</b>								
QantasLink	97	96	84	87.5	83	86.5	1	1.0
Regional Express	89	89	76	85.4	79	88.8	0	0.0
Virgin Australia	31	31	27	87.1	29	93.5	0	0.0
All Airlines	217	216	187	86.6	191	88.4	1	0.5
<b>Melbourne-Newcastle</b>								
Jetstar	102	102	81	79.4	76	74.5	0	0.0
Virgin Australia	31	31	28	90.3	29	93.5	0	0.0
All Airlines	133	133	109	82.0	105	78.9	0	0.0
<b>Melbourne-Perth</b>								
Jetstar	42	40	31	77.5	32	80.0	2	4.8
Qantas	181	179	128	71.5	152	84.9	2	1.1
Tigerair Australia	49	49	36	73.5	44	89.8	0	0.0
Virgin Australia	131	131	113	86.3	119	90.8	0	0.0
All Airlines	403	399	308	77.2	347	87.0	4	1.0
<b>Melbourne-Sunshine Coast</b>								
Jetstar	67	64	55	85.9	54	84.4	3	4.5
Virgin Australia	39	39	34	87.2	35	89.7	0	0.0
All Airlines	106	103	89	86.4	89	86.4	3	2.8
<b>Melbourne-Sydney</b>								
Jetstar	331	325	264	81.2	242	74.5	6	1.8
Qantas	967	937	841	89.8	825	88.0	30	3.1
Tigerair Australia	233	231	198	85.7	186	80.5	2	0.9
Virgin Australia	795	763	692	90.7	689	90.3	32	4.0
All Airlines	2 326	2 256	1 995	88.4	1 942	86.1	70	3.0
<b>Mildura-Melbourne</b>								
QantasLink	97	96	84	87.5	85	88.5	1	1.0
Regional Express	89	88	79	89.8	84	95.5	1	1.1
Virgin Australia	31	31	27	87.1	26	83.9	0	0.0
All Airlines	217	215	190	88.4	195	90.7	2	0.9

	<i>Sectors</i>		<i>Arrivals On Time</i>		<i>Departures On Time</i>		<i>Cancellations</i>	
	<i>Sched.</i>	<i>Flown</i>	<i>No.</i>	<i>%</i>	<i>No.</i>	<i>%</i>	<i>No.</i>	<i>%</i>
<b>Moranbah-Brisbane</b>								
QantasLink	108	103	97	94.2	94	91.3	5	4.6
Virgin Australia	66	65	60	92.3	59	90.8	1	1.5
All Airlines	174	168	157	93.5	153	91.1	6	3.4
<b>Mount Isa-Brisbane</b>								
Qantas	25	25	24	96.0	23	92.0	0	0.0
QantasLink	32	32	30	93.8	31	96.9	0	0.0
Virgin Australia	17	17	16	94.1	16	94.1	0	0.0
All Airlines	74	74	70	94.6	70	94.6	0	0.0
<b>Newcastle-Brisbane</b>								
Jetstar	72	71	64	90.1	65	91.5	1	1.4
QantasLink	91	90	87	96.7	84	93.3	1	1.1
Virgin Australia	93	91	86	94.5	85	93.4	2	2.2
All Airlines	256	252	237	94.0	234	92.9	4	1.6
<b>Newcastle-Melbourne</b>								
Jetstar	102	102	87	85.3	85	83.3	0	0.0
Virgin Australia	31	31	27	87.1	28	90.3	0	0.0
All Airlines	133	133	114	85.7	113	85.0	0	0.0
<b>Newman-Perth</b>								
Qantas	76	74	71	95.9	71	95.9	2	2.6
QantasLink	74	73	71	97.3	70	95.9	1	1.4
Virgin Australia	22	22	18	81.8	19	86.4	0	0.0
Virgin Australia Regional Airlines	20	20	18	90.0	19	95.0	0	0.0
All Airlines	192	189	178	94.2	179	94.7	3	1.6
<b>Perth-Adelaide</b>								
Jetstar	29	28	23	82.1	21	75.0	1	3.4
Qantas	106	105	96	91.4	97	92.4	1	0.9
Virgin Australia	71	69	63	91.3	60	87.0	2	2.8
All Airlines	206	202	182	90.1	178	88.1	4	1.9
<b>Perth-Brisbane</b>								
Qantas	123	123	109	88.6	115	93.5	0	0.0
Virgin Australia	111	111	102	91.9	106	95.5	0	0.0
All Airlines	234	234	211	90.2	221	94.4	0	0.0
<b>Perth-Broome</b>								
Qantas	30	30	27	90.0	26	86.7	0	0.0
QantasLink	55	54	45	83.3	45	83.3	1	1.8
Virgin Australia Regional Airlines	58	58	45	77.6	51	87.9	0	0.0
All Airlines	143	142	117	82.4	122	85.9	1	0.7
<b>Perth-Darwin</b>								
Qantas	31	31	30	96.8	30	96.8	0	0.0
Virgin Australia	31	31	28	90.3	27	87.1	0	0.0
All Airlines	62	62	58	93.5	57	91.9	0	0.0
<b>Perth-Geraldton</b>								
QantasLink	48	47	42	89.4	43	91.5	1	2.1
Virgin Australia Regional Airlines	57	57	51	89.5	52	91.2	0	0.0
All Airlines	105	104	93	89.4	95	91.3	1	1.0
<b>Perth-Kalgoorlie</b>								
Qantas	6	5	4	80.0	4	80.0	1	16.7
QantasLink	75	75	65	86.7	63	84.0	0	0.0
Virgin Australia	33	33	32	97.0	32	97.0	0	0.0
Virgin Australia Regional Airlines	29	29	26	89.7	27	93.1	0	0.0
All Airlines	143	142	127	89.4	126	88.7	1	0.7



	<i>Sectors</i>		<i>Arrivals On Time</i>		<i>Departures On Time</i>		<i>Cancellations</i>	
	<i>Sched.</i>	<i>Flown</i>	<i>No.</i>	<i>%</i>	<i>No.</i>	<i>%</i>	<i>No.</i>	<i>%</i>
<b>Perth-Karratha</b>								
Qantas	43	42	35	83.3	36	85.7	1	2.3
QantasLink	170	161	147	91.3	152	94.4	9	5.3
Virgin Australia	6	6	6	100.0	6	100.0	0	0.0
Virgin Australia Regional Airlines	64	64	48	75.0	56	87.5	0	0.0
All Airlines	283	273	236	86.4	250	91.6	10	3.5
<b>Perth-Melbourne</b>								
Jetstar	42	40	29	72.5	22	55.0	2	4.8
Qantas	180	178	166	93.3	155	87.1	2	1.1
Tigerair Australia	49	49	38	77.6	37	75.5	0	0.0
Virgin Australia	131	131	120	91.6	120	91.6	0	0.0
All Airlines	402	398	353	88.7	334	83.9	4	1.0
<b>Perth-Newman</b>								
Qantas	76	76	71	93.4	73	96.1	0	0.0
QantasLink	75	74	71	95.9	69	93.2	1	1.3
Virgin Australia	22	22	22	100.0	21	95.5	0	0.0
Virgin Australia Regional Airlines	18	18	16	88.9	16	88.9	0	0.0
All Airlines	191	190	180	94.7	179	94.2	1	0.5
<b>Perth-Port Hedland</b>								
Qantas	72	72	71	98.6	70	97.2	0	0.0
QantasLink	70	65	46	70.8	56	86.2	5	7.1
Virgin Australia	39	39	35	89.7	36	92.3	0	0.0
Virgin Australia Regional Airlines	14	14	12	85.7	14	100.0	0	0.0
All Airlines	195	190	164	86.3	176	92.6	5	2.6
<b>Perth-Sydney</b>								
Jetstar	31	30	28	93.3	18	60.0	1	3.2
Qantas	188	186	171	91.9	157	84.4	2	1.1
Tigerair Australia	21	21	21	100.0	21	100.0	0	0.0
Virgin Australia	119	119	110	92.4	106	89.1	0	0.0
All Airlines	359	356	330	92.7	302	84.8	3	0.8
<b>Port Hedland-Perth</b>								
Qantas	72	72	68	94.4	69	95.8	0	0.0
QantasLink	70	65	54	83.1	50	76.9	5	7.1
Virgin Australia	39	38	36	94.7	36	94.7	1	2.6
Virgin Australia Regional Airlines	15	15	10	66.7	13	86.7	0	0.0
All Airlines	196	190	168	88.4	168	88.4	6	3.1
<b>Port Lincoln-Adelaide</b>								
QantasLink	110	107	97	90.7	96	89.7	3	2.7
Regional Express	215	214	192	89.7	196	91.6	1	0.5
All Airlines	325	321	289	90.0	292	91.0	4	1.2
<b>Port Macquarie-Sydney</b>								
QantasLink	138	138	98	71.0	102	73.9	0	0.0
Virgin Australia	62	61	48	78.7	49	80.3	1	1.6
All Airlines	200	199	146	73.4	151	75.9	1	0.5
<b>Proserpine-Brisbane</b>								
Jetstar	22	22	21	95.5	21	95.5	0	0.0
Virgin Australia	31	31	30	96.8	29	93.5	0	0.0
All Airlines	53	53	51	96.2	50	94.3	0	0.0
<b>Rockhampton-Brisbane</b>								
QantasLink	188	188	179	95.2	176	93.6	0	0.0
Virgin Australia	196	191	186	97.4	180	94.2	5	2.6
All Airlines	384	379	365	96.3	356	93.9	5	1.3

	<i>Sectors</i>		<i>Arrivals On Time</i>		<i>Departures On Time</i>		<i>Cancellations</i>	
	<i>Sched.</i>	<i>Flown</i>	<i>No.</i>	<i>%</i>	<i>No.</i>	<i>%</i>	<i>No.</i>	<i>%</i>
<b>Sunshine Coast-Melbourne</b>								
Jetstar	67	64	41	64.1	42	65.6	3	4.5
Virgin Australia	39	39	36	92.3	34	87.2	0	0.0
All Airlines	106	103	77	74.8	76	73.8	3	2.8
<b>Sunshine Coast-Sydney</b>								
Jetstar	84	82	62	75.6	49	59.8	2	2.4
QantasLink	26	26	19	73.1	20	76.9	0	0.0
Virgin Australia	31	31	29	93.5	29	93.5	0	0.0
All Airlines	141	139	110	79.1	98	70.5	2	1.4
<b>Sydney-Adelaide</b>								
Jetstar	84	83	62	74.7	60	72.3	1	1.2
Qantas	227	222	191	86.0	201	90.5	5	2.2
QantasLink	27	25	20	80.0	21	84.0	2	7.4
Tigerair Australia	41	41	29	70.7	34	82.9	0	0.0
Virgin Australia	167	166	146	88.0	154	92.8	1	0.6
All Airlines	546	537	448	83.4	470	87.5	9	1.6
<b>Sydney-Albury</b>								
QantasLink	110	108	89	82.4	97	89.8	2	1.8
Regional Express	111	111	91	82.0	98	88.3	0	0.0
Virgin Australia	62	62	54	87.1	54	87.1	0	0.0
All Airlines	283	281	234	83.3	249	88.6	2	0.7
<b>Sydney-Armidale</b>								
QantasLink	123	122	87	71.3	90	73.8	1	0.8
Regional Express	80	80	63	78.8	62	77.5	0	0.0
All Airlines	203	202	150	74.3	152	75.2	1	0.5
<b>Sydney-Ayers Rock</b>								
Jetstar	31	31	27	87.1	28	90.3	0	0.0
Virgin Australia	31	30	27	90.0	29	96.7	1	3.2
All Airlines	62	61	54	88.5	57	93.4	1	1.6
<b>Sydney-Ballina</b>								
Jetstar	69	69	57	82.6	56	81.2	0	0.0
Regional Express	27	27	23	85.2	23	85.2	0	0.0
Virgin Australia	31	30	27	90.0	28	93.3	1	3.2
All Airlines	127	126	107	84.9	107	84.9	1	0.8
<b>Sydney-Brisbane</b>								
Jetstar	154	152	133	87.5	131	86.2	2	1.3
Qantas	575	569	506	88.9	521	91.6	6	1.0
Tigerair Australia	97	95	88	92.6	90	94.7	2	2.1
Virgin Australia	547	538	502	93.3	506	94.1	9	1.6
All Airlines	1 373	1 354	1 229	90.8	1 248	92.2	19	1.4
<b>Sydney-Cairns</b>								
Jetstar	86	84	79	94.0	78	92.9	2	2.3
Qantas	76	76	66	86.8	63	82.9	0	0.0
Tigerair Australia	28	28	27	96.4	28	100.0	0	0.0
Virgin Australia	89	89	84	94.4	83	93.3	0	0.0
All Airlines	279	277	256	92.4	252	91.0	2	0.7
<b>Sydney-Canberra</b>								
QantasLink	482	467	367	78.6	380	81.4	15	3.1
Virgin Australia	306	292	247	84.6	250	85.6	14	4.6
All Airlines	788	759	614	80.9	630	83.0	29	3.7

	<i>Sectors</i>		<i>Arrivals On Time</i>		<i>Departures On Time</i>		<i>Cancellations</i>	
	<i>Sched.</i>	<i>Flown</i>	<i>No.</i>	<i>%</i>	<i>No.</i>	<i>%</i>	<i>No.</i>	<i>%</i>
<b>Sydney-Coffs Harbour</b>								
QantasLink	155	153	123	80.4	122	79.7	2	1.3
Tigerair Australia	14	14	13	92.9	13	92.9	0	0.0
Virgin Australia	62	61	58	95.1	58	95.1	1	1.6
All Airlines	231	228	194	85.1	193	84.6	3	1.3
<b>Sydney-Darwin</b>								
Jetstar	22	22	22	100.0	20	90.9	0	0.0
Qantas	46	46	40	87.0	42	91.3	0	0.0
Virgin Australia	31	31	25	80.6	25	80.6	0	0.0
All Airlines	99	99	87	87.9	87	87.9	0	0.0
<b>Sydney-Dubbo</b>								
QantasLink	130	129	100	77.5	97	75.2	1	0.8
Regional Express	158	158	141	89.2	142	89.9	0	0.0
All Airlines	288	287	241	84.0	239	83.3	1	0.3
<b>Sydney-Gold Coast</b>								
Jetstar	254	250	213	85.2	210	84.0	4	1.6
Qantas	86	86	80	93.0	79	91.9	0	0.0
QantasLink	12	12	9	75.0	9	75.0	0	0.0
Tigerair Australia	97	97	82	84.5	87	89.7	0	0.0
Virgin Australia	259	257	240	93.4	241	93.8	2	0.8
All Airlines	708	702	624	88.9	626	89.2	6	0.8
<b>Sydney-Hamilton Island</b>								
Jetstar	18	18	14	77.8	13	72.2	0	0.0
Qantas	10	10	10	100.0	10	100.0	0	0.0
QantasLink	12	12	7	58.3	8	66.7	0	0.0
Virgin Australia	31	31	30	96.8	30	96.8	0	0.0
All Airlines	71	71	61	85.9	61	85.9	0	0.0
<b>Sydney-Hobart</b>								
Jetstar	51	51	39	76.5	39	76.5	0	0.0
QantasLink	58	58	47	81.0	47	81.0	0	0.0
Virgin Australia	62	62	56	90.3	56	90.3	0	0.0
All Airlines	171	171	142	83.0	142	83.0	0	0.0
<b>Sydney-Launceston</b>								
Jetstar	31	31	30	96.8	31	100.0	0	0.0
Virgin Australia	31	31	27	87.1	27	87.1	0	0.0
All Airlines	62	62	57	91.9	58	93.5	0	0.0
<b>Sydney-Melbourne</b>								
Jetstar	332	326	249	76.4	240	73.6	6	1.8
Qantas	966	935	769	82.2	846	90.5	31	3.2
Tigerair Australia	233	231	187	81.0	202	87.4	2	0.9
Virgin Australia	794	763	645	84.5	687	90.0	31	3.9
All Airlines	2 325	2 255	1 850	82.0	1 975	87.6	70	3.0
<b>Sydney-Perth</b>								
Jetstar	31	31	26	83.9	29	93.5	0	0.0
Qantas	194	192	122	63.5	153	79.7	2	1.0
Tigerair Australia	22	22	20	90.9	21	95.5	0	0.0
Virgin Australia	120	120	98	81.7	109	90.8	0	0.0
All Airlines	367	365	266	72.9	312	85.5	2	0.5
<b>Sydney-Port Macquarie</b>								
QantasLink	137	137	105	76.6	116	84.7	0	0.0
Virgin Australia	62	62	50	80.6	52	83.9	0	0.0
All Airlines	199	199	155	77.9	168	84.4	0	0.0

	<i>Sectors</i>		<i>Arrivals On Time</i>		<i>Departures On Time</i>		<i>Cancellations</i>	
	<i>Sched.</i>	<i>Flown</i>	<i>No.</i>	<i>%</i>	<i>No.</i>	<i>%</i>	<i>No.</i>	<i>%</i>
<b>Sydney-Sunshine Coast</b>								
Jetstar	84	82	61	74.4	59	72.0	2	2.4
QantasLink	27	27	20	74.1	21	77.8	0	0.0
Virgin Australia	31	31	29	93.5	30	96.8	0	0.0
All Airlines	142	140	110	78.6	110	78.6	2	1.4
<b>Sydney-Tamworth</b>								
QantasLink	159	155	128	82.6	135	87.1	4	2.5
Virgin Australia	27	27	21	77.8	23	85.2	0	0.0
All Airlines	186	182	149	81.9	158	86.8	4	2.2
<b>Sydney-Townsville</b>								
Jetstar	22	22	20	90.9	19	86.4	0	0.0
Virgin Australia	22	21	20	95.2	20	95.2	1	4.5
All Airlines	44	43	40	93.0	39	90.7	1	2.3
<b>Sydney-Wagga Wagga</b>								
QantasLink	115	114	83	72.8	93	81.6	1	0.9
Regional Express	141	141	132	93.6	134	95.0	0	0.0
All Airlines	256	255	215	84.3	227	89.0	1	0.4
<b>Tamworth-Sydney</b>								
QantasLink	158	154	124	80.5	126	81.8	4	2.5
Virgin Australia	27	27	18	66.7	22	81.5	0	0.0
All Airlines	185	181	142	78.5	148	81.8	4	2.2
<b>Townsville-Brisbane</b>								
Jetstar	49	49	46	93.9	43	87.8	0	0.0
Qantas	139	139	135	97.1	136	97.8	0	0.0
Virgin Australia	146	146	140	95.9	138	94.5	0	0.0
All Airlines	334	334	321	96.1	317	94.9	0	0.0
<b>Townsville-Cairns</b>								
QantasLink	145	144	134	93.1	134	93.1	1	0.7
Regional Express	60	60	59	98.3	59	98.3	0	0.0
All Airlines	205	204	193	94.6	193	94.6	1	0.5
<b>Townsville-Sydney</b>								
Jetstar	22	22	18	81.8	16	72.7	0	0.0
Virgin Australia	22	21	18	85.7	20	95.2	1	4.5
All Airlines	44	43	36	83.7	36	83.7	1	2.3
<b>Wagga Wagga-Sydney</b>								
QantasLink	115	114	91	79.8	88	77.2	1	0.9
Regional Express	141	141	130	92.2	129	91.5	0	0.0
All Airlines	256	255	221	86.7	217	85.1	1	0.4

# Airports

On time performance is reported for all routes where the passenger load averages over 8000 passengers per month, and where two or more airlines operate in competition. The following data reports by airport against flights operated on those routes only. This month, 8 major city airports and 33 regional city airports are covered.

Airport	Arrivals			Departures		
	Sectors	On Time		Sectors	On Time	
	Flown	No.	%	Flown	No.	%
<b>Adelaide</b>						
Jetstar	265	193	72.8	265	196	74.0
Qantas	782	702	89.8	782	706	90.3
QantasLink	132	117	88.6	133	117	88.0
Regional Express	214	192	89.7	214	204	95.3
Tigerair Australia	132	112	84.8	132	101	76.5
Virgin Australia	701	631	90.0	702	627	89.3
All Airlines	2 226	1 947	87.5	2 228	1 951	87.6
Relates to services to and from Alice Springs, Brisbane, Canberra, Gold Coast, Melbourne, Perth, Port Lincoln and Sydney.						
<b>Albury</b>						
QantasLink	108	89	82.4	108	94	87.0
Regional Express	111	91	82.0	111	99	89.2
Virgin Australia	62	54	87.1	61	51	83.6
All Airlines	281	234	83.3	280	244	87.1
Relates to services to and from Sydney only.						
<b>Alice Springs</b>						
Qantas	30	28	93.3	30	25	83.3
QantasLink	51	49	96.1	51	48	94.1
Virgin Australia	28	25	89.3	27	24	88.9
All Airlines	109	102	93.6	108	97	89.8
Relates to services to and from Adelaide and Darwin.						
<b>Armidale</b>						
QantasLink	122	87	71.3	121	91	75.2
Regional Express	80	63	78.8	76	63	82.9
All Airlines	202	150	74.3	197	154	78.2
Relates to services to and from Sydney only.						
<b>Ayers Rock</b>						
Jetstar	31	27	87.1	31	25	80.6
Virgin Australia	30	27	90.0	30	25	83.3
All Airlines	61	54	88.5	61	50	82.0
Relates to services to and from Sydney only.						
<b>Ballina</b>						
Jetstar	69	57	82.6	69	49	71.0
Regional Express	27	23	85.2	26	21	80.8
Virgin Australia	30	27	90.0	30	28	93.3
All Airlines	126	107	84.9	125	98	78.4
Relates to services to and from Sydney only.						

Airport	Arrivals			Departures		
	Sectors	On Time		Sectors	On Time	
	Flown	No.	%	Flown	No.	%
<b>Brisbane</b>						
Jetstar	577	513	88.9	583	488	83.7
Qantas	1 558	1 422	91.3	1 576	1 466	93.0
QantasLink	1 134	1 080	95.2	1 141	1 081	94.7
Tigerair Australia	262	244	93.1	262	240	91.6
Virgin Australia	2 394	2 223	92.9	2 397	2 228	92.9
All Airlines	5 925	5 482	92.5	5 959	5 503	92.3

Relates to services to and from Adelaide, Bundaberg, Cairns, Canberra, Darwin, Emerald, Gladstone, Hamilton Island, Hobart, Mackay, Melbourne, Moranbah, Mount Isa, Newcastle, Perth, Proserpine, Rockhampton, Sydney and Townsville.

#### Broome

Qantas	30	27	90.0	30	25	83.3
QantasLink	54	45	83.3	54	46	85.2
Virgin Australia Regional Airlines	58	45	77.6	58	43	74.1
All Airlines	142	117	82.4	142	114	80.3

Relates to services to and from Perth only.

#### Bundaberg

QantasLink	134	128	95.5	134	128	95.5
Virgin Australia	31	28	90.3	31	28	90.3
All Airlines	165	156	94.5	165	156	94.5

Relates to services to and from Brisbane only.

#### Cairns

Jetstar	250	212	84.8	250	222	88.8
Qantas	232	211	90.9	231	206	89.2
QantasLink	148	137	92.6	152	143	94.1
Regional Express	60	59	98.3	60	59	98.3
Tigerair Australia	86	81	94.2	86	76	88.4
Virgin Australia	257	244	94.9	256	240	93.8
All Airlines	1 033	944	91.4	1 035	946	91.4

Relates to services to and from Brisbane, Melbourne, Sydney and Townsville.

#### Canberra

Qantas	267	251	94.0	267	258	96.6
QantasLink	672	554	82.4	669	562	84.0
Virgin Australia	608	527	86.7	604	556	92.1
All Airlines	1 547	1 332	86.1	1 540	1 376	89.4

Relates to services to and from Adelaide, Brisbane, Melbourne and Sydney.

#### Coffs Harbour

QantasLink	153	123	80.4	153	121	79.1
Tigerair Australia	14	13	92.9	14	13	92.9
Virgin Australia	61	58	95.1	61	57	93.4
All Airlines	228	194	85.1	228	191	83.8

Relates to services to and from Sydney only.

#### Darwin

Jetstar	70	63	90.0	69	54	78.3
Qantas	147	134	91.2	147	126	85.7
QantasLink	51	47	92.2	51	49	96.1
Tigerair Australia	15	15	100.0	15	15	100.0
Virgin Australia	137	117	85.4	137	115	83.9
All Airlines	420	376	89.5	419	359	85.7

Relates to services to and from Alice Springs, Brisbane, Melbourne, Perth and Sydney.

Airport	Arrivals			Departures		
	Sectors Flown	On Time		Sectors Flown	On Time	
		No.	%		No.	%
<b>Dubbo</b>						
QantasLink	129	100	77.5	128	103	80.5
Regional Express	158	141	89.2	159	141	88.7
All Airlines	287	241	84.0	287	244	85.0
Relates to services to and from Sydney only.						
<b>Emerald</b>						
QantasLink	137	126	92.0	136	125	91.9
Virgin Australia	64	50	78.1	64	60	93.8
All Airlines	201	176	87.6	200	185	92.5
Relates to services to and from Brisbane only.						
<b>Geraldton</b>						
QantasLink	47	42	89.4	47	42	89.4
Virgin Australia Regional Airlines	57	51	89.5	57	50	87.7
All Airlines	104	93	89.4	104	92	88.5
Relates to services to and from Perth only.						
<b>Gladstone</b>						
QantasLink	180	170	94.4	181	169	93.4
Virgin Australia	130	125	96.2	128	124	96.9
All Airlines	310	295	95.2	309	293	94.8
Relates to services to and from Brisbane only.						
<b>Gold Coast</b>						
Jetstar	429	354	82.5	430	348	80.9
Qantas	117	108	92.3	117	107	91.5
QantasLink	12	9	75.0	12	7	58.3
Tigerair Australia	167	150	89.8	167	146	87.4
Virgin Australia	468	431	92.1	468	429	91.7
All Airlines	1 193	1 052	88.2	1 194	1 037	86.9
Relates to services to and from Adelaide, Melbourne and Sydney.						
<b>Hamilton Island</b>						
Jetstar	18	14	77.8	18	11	61.1
Qantas	23	23	100.0	23	23	100.0
QantasLink	43	36	83.7	43	38	88.4
Virgin Australia	86	83	96.5	85	77	90.6
All Airlines	170	156	91.8	169	149	88.2
Relates to services to and from Brisbane, Melbourne and Sydney.						
<b>Hobart</b>						
Jetstar	225	179	79.6	224	150	67.0
QantasLink	191	166	86.9	190	161	84.7
Tigerair Australia	31	26	83.9	31	25	80.6
Virgin Australia	240	214	89.2	240	208	86.7
All Airlines	687	585	85.2	685	544	79.4
Relates to services to and from Brisbane, Melbourne and Sydney.						
<b>Kalgoorlie</b>						
Qantas	5	4	80.0	5	4	80.0
QantasLink	75	65	86.7	73	64	87.7
Virgin Australia	33	32	97.0	34	29	85.3
Virgin Australia Regional Airlines	29	26	89.7	29	27	93.1
All Airlines	142	127	89.4	141	124	87.9
Relates to services to and from Perth only.						

Airport	Arrivals			Departures		
	Sectors	On Time		Sectors	On Time	
	Flown	No.	%	Flown	No.	%
<b>Karratha</b>						
Qantas	42	35	83.3	39	36	92.3
QantasLink	161	147	91.3	162	149	92.0
Virgin Australia	6	6	100.0	6	5	83.3
Virgin Australia Regional Airlines	64	48	75.0	62	55	88.7
All Airlines	273	236	86.4	269	245	91.1
Relates to services to and from Perth only.						
<b>Launceston</b>						
Jetstar	129	113	87.6	129	97	75.2
QantasLink	117	97	82.9	117	102	87.2
Virgin Australia	126	113	89.7	126	112	88.9
All Airlines	372	323	86.8	372	311	83.6
Relates to services to and from Melbourne and Sydney.						
<b>Mackay</b>						
Jetstar	43	34	79.1	42	30	71.4
QantasLink	107	103	96.3	106	102	96.2
Virgin Australia	157	148	94.3	157	151	96.2
All Airlines	307	285	92.8	305	283	92.8
Relates to services to and from Brisbane only.						
<b>Melbourne</b>						
Jetstar	1 243	953	76.7	1 243	938	75.5
Qantas	2 104	1 844	87.6	2 111	1 887	89.4
QantasLink	424	355	83.7	423	372	87.9
Regional Express	88	79	89.8	89	79	88.8
Tigerair Australia	588	487	82.8	588	514	87.4
Virgin Australia	2 346	2 047	87.3	2 351	2 107	89.6
All Airlines	6 793	5 765	84.9	6 805	5 897	86.7
Relates to services to and from Adelaide, Brisbane, Cairns, Canberra, Darwin, Gold Coast, Hamilton Island, Hobart, Launceston, Mildura, Newcastle, Perth, Sunshine Coast and Sydney.						
<b>Mildura</b>						
QantasLink	96	84	87.5	96	85	88.5
Regional Express	89	76	85.4	88	84	95.5
Virgin Australia	31	27	87.1	31	26	83.9
All Airlines	216	187	86.6	215	195	90.7
Relates to services to and from Melbourne only.						
<b>Moranbah</b>						
QantasLink	108	97	89.8	103	94	91.3
Virgin Australia	66	61	92.4	65	59	90.8
All Airlines	174	158	90.8	168	153	91.1
Relates to services to and from Brisbane only.						
<b>Mount Isa</b>						
Qantas	25	25	100.0	25	23	92.0
QantasLink	32	31	96.9	32	31	96.9
Virgin Australia	18	18	100.0	17	16	94.1
All Airlines	75	74	98.7	74	70	94.6
Relates to services to and from Brisbane only.						



Airport	Arrivals			Departures		
	Sectors	On Time		Sectors	On Time	
	Flown	No.	%	Flown	No.	%
<b>Newcastle</b>						
Jetstar	173	144	83.2	173	150	86.7
QantasLink	92	88	95.7	90	84	93.3
Virgin Australia	123	115	93.5	122	113	92.6
All Airlines	388	347	89.4	385	347	90.1
Relates to services to and from Brisbane and Melbourne.						
<b>Newman</b>						
Qantas	76	71	93.4	74	71	95.9
QantasLink	74	71	95.9	73	70	95.9
Virgin Australia	22	22	100.0	22	19	86.4
Virgin Australia Regional Airlines	18	16	88.9	20	19	95.0
All Airlines	190	180	94.7	189	179	94.7
Relates to services to and from Perth only.						
<b>Perth</b>						
Jetstar	100	82	82.0	98	61	62.2
Qantas	850	667	78.5	848	763	90.0
QantasLink	474	426	89.9	476	428	89.9
Tigerair Australia	71	56	78.9	70	58	82.9
Virgin Australia	564	478	84.8	561	514	91.6
Virgin Australia Regional Airlines	241	190	78.8	240	216	90.0
All Airlines	2 300	1 899	82.6	2 293	2 040	89.0
Relates to services to and from Adelaide, Brisbane, Broome, Darwin, Geraldton, Kalgoorlie, Karratha, Melbourne, Newman, Port Hedland and Sydney.						
<b>Port Hedland</b>						
Qantas	72	71	98.6	72	69	95.8
QantasLink	65	46	70.8	65	50	76.9
Virgin Australia	39	35	89.7	38	36	94.7
Virgin Australia Regional Airlines	14	12	85.7	15	13	86.7
All Airlines	190	164	86.3	190	168	88.4
Relates to services to and from Perth only.						
<b>Port Lincoln</b>						
QantasLink	109	97	89.0	107	96	89.7
Regional Express	214	195	91.1	214	196	91.6
All Airlines	323	292	90.4	321	292	91.0
Relates to services to and from Adelaide only.						
<b>Port Macquarie</b>						
QantasLink	137	105	76.6	138	102	73.9
Virgin Australia	62	50	80.6	61	49	80.3
All Airlines	199	155	77.9	199	151	75.9
Relates to services to and from Sydney only.						
<b>Proserpine</b>						
Jetstar	22	19	86.4	22	21	95.5
Virgin Australia	31	30	96.8	31	29	93.5
All Airlines	53	49	92.5	53	50	94.3
Relates to services to and from Brisbane only.						

Airport	Arrivals			Departures		
	Sectors Flown	On Time		Sectors Flown	On Time	
		No.	%		No.	%
<b>Rockhampton</b>						
QantasLink	188	176	93.6	188	176	93.6
Virgin Australia	192	180	93.8	191	180	94.2
All Airlines	380	356	93.7	379	356	93.9
Relates to services to and from Brisbane only.						
<b>Sunshine Coast</b>						
Jetstar	146	116	79.5	146	91	62.3
QantasLink	27	20	74.1	26	20	76.9
Virgin Australia	70	63	90.0	70	63	90.0
All Airlines	243	199	81.9	242	174	71.9
Relates to services to and from Melbourne and Sydney.						
<b>Sydney</b>						
Jetstar	1 254	1 034	82.5	1 252	1 013	80.9
Qantas	2 153	1 957	90.9	2 136	1 915	89.7
QantasLink	1 510	1 225	81.1	1 519	1 236	81.4
Regional Express	513	447	87.1	517	459	88.8
Tigerair Australia	527	459	87.1	528	475	90.0
Virgin Australia	2 695	2 440	90.5	2 704	2 462	91.1
All Airlines	8 652	7 562	87.4	8 656	7 560	87.3
Relates to services to and from Adelaide, Albury, Armidale, Ayers Rock, Ballina, Brisbane, Cairns, Canberra, Coffs Harbour, Darwin, Dubbo, Gold Coast, Hamilton Island, Hobart, Launceston, Melbourne, Perth, Port Macquarie, Sunshine Coast, Tamworth, Townsville and Wagga Wagga.						
<b>Tamworth</b>						
QantasLink	155	128	82.6	154	126	81.8
Virgin Australia	27	21	77.8	27	22	81.5
All Airlines	182	149	81.9	181	148	81.8
Relates to services to and from Sydney only.						
<b>Townsville</b>						
Jetstar	71	65	91.5	71	59	83.1
Qantas	139	135	97.1	139	136	97.8
QantasLink	147	139	94.6	144	134	93.1
Regional Express	60	59	98.3	60	59	98.3
Virgin Australia	167	158	94.6	167	158	94.6
All Airlines	584	556	95.2	581	546	94.0
Relates to services to and from Brisbane, Cairns and Sydney.						
<b>Wagga Wagga</b>						
QantasLink	114	83	72.8	114	88	77.2
Regional Express	141	132	93.6	141	129	91.5
All Airlines	255	215	84.3	255	217	85.1
Relates to services to and from Sydney only.						

## Definitions

---

On time arrival	A flight arrival is counted as "on time" if it arrived at the gate before 15 minutes after the scheduled arrival time shown in the carriers' schedule. Neither diverted nor cancelled flights count as on time.
On time departure	A flight departure is counted as "on time" if it departs the gate before 15 minutes after the scheduled departure time shown in the carriers' schedule.
Cancellation	A flight removed from service within 7 days of scheduled departure is regarded as a cancellation.
On time departure percentage	The percentage of on time departures is measured against the number of departures <i>operated</i> on any particular sector.
On time arrival percentage	The percentage of on time arrivals is measured against the number of arrivals <i>operated</i> on any particular sector.
Cancellation percentage	The percentage of cancellations is measured against the number of services <i>scheduled</i> on any particular sector.

---