



Australian Government

Department of Infrastructure and Regional Development

Bureau of Infrastructure, Transport and Regional Economics

STATISTICAL REPORT



Aviation

Domestic airline on time performance
May 2015

© Commonwealth of Australia 2015

ISSN: 1832-0759

Ownership of intellectual property rights in this publication

Unless otherwise noted, copyright (and any other intellectual property rights, if any) in this publication is owned by the Commonwealth of Australia (referred to below as the Commonwealth).

Disclaimer

The material contained in this publication is made available on the understanding that the Commonwealth is not providing professional advice, and that users exercise their own skill and care with respect to its use, and seek independent advice if necessary.

The Commonwealth makes no representations or warranties as to the contents or accuracy of the information contained in this publication. To the extent permitted by law, the Commonwealth disclaims liability to any person or organisation in respect of anything done, or omitted to be done, in reliance upon information contained in this publication.

Creative Commons licence

With the exception of (a) the Coat of Arms; and (b) the Department of Infrastructure and Regional Development's photos and graphics, copyright in this publication is licensed under a Creative Commons Attribution 3.0 Australia Licence.

Creative Commons Attribution 3.0 Australia Licence is a standard form licence agreement that allows you to copy, communicate and adapt this publication provided that you attribute the work to the Commonwealth and abide by the other licence terms. A summary of the licence terms is available from <http://creativecommons.org/licenses/by/3.0/au/deed.en>. The full licence terms are available from <http://creativecommons.org/licenses/by/3.0/au/legalcode>.

Use of the Coat of Arms

The Department of the Prime Minister and Cabinet sets the terms under which the Coat of Arms is used. Please refer to the Department's Commonwealth Coat of Arms and Government branding web page <http://www.dpmmc.gov.au/guidelines/index.cfm#brand> and, in particular, the Guidelines on the use of the Commonwealth Coat of Arms publication.

An appropriate citation for this report is:

Bureau of Infrastructure, Transport and Regional Economics (BITRE), 2015, Domestic airline on time performance, Statistical Report, BITRE, Canberra ACT.

Contact us

This publication is available in PDF format. All other rights are reserved, including in relation to any Departmental logos or trade marks which may exist. For enquiries regarding the licence and any use of this publication, please contact:

Bureau of Infrastructure, Transport and Regional Economics (BITRE)
Department of Infrastructure and Regional Development
GPO Box 501, Canberra ACT 2601, Australia
Telephone: (international) +61 2 6274 7210
Fax: (international) +61 2 6274 6855
Email: bitre@infrastructure.gov.au
Website: www.bitre.gov.au

Inquiries

Should you require additional information about the statistics contained in this publication:

Telephone (02) 6274 7790 or Facsimile (02) 6274 7727

Electronic mail: AVSTATS@infrastructure.gov.au

Web site: <http://www.bitre.gov.au/statistics/aviation/otphome.aspx>

Foreword

The Bureau of Infrastructure, Transport and Regional Economics (BITRE) monitors the punctuality and reliability of major domestic airlines operating between Australian airports. The purpose of this is to allow for evaluation of overall industry and individual airline performance, so that consumers of air travel can make informed decisions.

The following domestic airlines currently report this information monthly to the BITRE: Jetstar, Qantas, QantasLink, Regional Express, Tigerair, Virgin Australia and Virgin Australia Regional Airlines. Data has been gathered since November 2003, although some airlines commenced reporting at a later date, including Jetstar which first reported in May 2004, MacAir in July 2005 and Tigerair in April 2008. MacAir ceased operations in February 2009 and data was not received for December 2008 onwards. Virgin Blue was rebranded as Virgin Australia in May 2011 and Tiger Airways was rebranded as Tigerair in July 2013 and time series data in Microsoft Excel spreadsheet format on the BITRE website have been revised to reflect these changes. Virgin Australia Regional Airlines commenced operations in May 2013. It was formed after the acquisition of Skywest by Virgin Australia and represents a combination of operations previously reported under Skywest and Virgin Australia – ATR/F100 Operations. Services operated by Skywest on behalf of Virgin Australia using ATR/F100 aircraft commenced in November 2011 and were shown separately as Virgin Australia – ATR/F100 Operations until April 2013.

Information presented in this report is for Australian domestic routes for which the passenger load averaged 8 000 or more passengers per month over the previous six months and where two or more airlines operated in competition on those routes. There were 62 routes that met this definition in May 2015. Over time, routes which meet these criteria change as airline networks and traffic levels vary.

Participating airlines report their overall monthly network performance where this is possible.

Total industry figures encompass all services operated by reporting airlines only. These airlines collectively carried over 95 per cent of total domestic passengers (regular public transport only) in 2014.

The method of capturing on time performance varies between airlines utilising different recording systems. Jetstar and Qantas jet aircraft use Aircraft Communication Addressing and Reporting System (ACARS) to electronically measure on time performance. Regional Express, Tigerair, Virgin Australia, Virgin Australia Regional Airlines and the Qantas non-jet fleet record on time performance manually using records from pilots, gate agents and/or ground crews.

After initial data is collected, aggregate reports are audited internally by participating airlines prior to publication.

Reports and detailed time series data in Microsoft Excel spreadsheet format are available from the BITRE website at: <http://www.bitre.gov.au/statistics/aviation/otphome.aspx>.

Contents

	Page
Industry performance	1
Individual routes	10
Airports	22
Definitions	28

Industry performance

For May 2015, on time performance over all routes operated by participating airlines (Jetstar, Qantas, QantasLink, Regional Express, Tigerair, Virgin Australia and Virgin Australia Regional Airlines) averaged 86.6 per cent for on time arrivals and 88.0 per cent for on time departures. Cancellations represented 1.7 per cent of all scheduled flights. The equivalent figures for May 2014 were 87.1 per cent for arrivals, 88.4 per cent for departures and 1.2 per cent for cancellations.

This month's figures were above the long term average performance for all routes (82.4 per cent for arrivals and 83.9 per cent for departures). The rate of cancellations was higher than the long term average of 1.3 per cent.

Qantas achieved the highest on time arrivals among the major domestic airlines at 89.6 per cent, followed by Virgin Australia at 88.8 per cent, Jetstar at 84.3 per cent and Tigerair at 82.2 per cent. Regional Express was the best performing regional airline for on time arrivals at 86.0 per cent, followed by QantasLink at 85.1 per cent and Virgin Australia Regional Airlines at 83.4 per cent. The Qantas network (Qantas and QantasLink combined operations) recorded 87.3 per cent for on time arrivals while the Virgin Australia network (Virgin Australia and Virgin Australia Regional Airlines combined operations) recorded 87.8 per cent.

Qantas also achieved the highest level of on time departures for May 2015 at 90.8 per cent, followed by Virgin Australia at 90.3 per cent, Tigerair at 84.6 per cent and Jetstar at 84.0 per cent. The regional airlines were led by Regional Express at 88.5 per cent, followed by QantasLink at 86.8 per cent and Virgin Australia Regional Airlines at 84.7 per cent. The Qantas network recorded 88.7 per cent for on time departures while the Virgin Australia network recorded 89.2 per cent.

QantasLink had the highest percentage of cancellations (2.6 per cent) during the month, followed by Virgin Australia (2.4 per cent), Jetstar (1.5 per cent), Tigerair (also 1.5 per cent), Virgin Australia Regional Airlines (1.3 per cent), Qantas (also 1.3 per cent) and Regional Express (0.2 per cent).

Airlines' on time performance varies across the routes they serve. Individual route data by specific airline for 62 routes are shown on pages 10-21.

Of the 62 routes which met the criteria for on time performance reporting in May 2015, the Perth-Darwin route had the highest percentage of on time arrivals (100.0 per cent) and the highest percentage of on time departures (98.6 per cent). The Port Macquarie-Sydney route had the lowest percentage of on time arrivals (64.5 per cent) and the Hamilton Island-Sydney route had the lowest percentage of on time departures (69.0 per cent).

Cancellations were highest on the Canberra-Sydney route at 5.5 per cent, followed by the Sydney-Canberra route at 5.0 per cent, the Sydney-Melbourne route at 4.8 per cent, the Melbourne-Sydney route at 4.5 per cent and the Brisbane-Rockhampton route at 4.3 per cent.

Newman Airport recorded the highest percentage of on time arrivals (97.8 per cent) and the highest percentage of on time departures (97.2 per cent). Ayers Rock Airport recorded the lowest percentage of on time arrivals (69.4 per cent) and Port Macquarie Airport recorded the

lowest percentage of on time departures (72.1 per cent). These figures only refer to reported routes and do not cover all flights at these airports.

Table 1 On time performance for May 2015 — Total Industry

	<i>Sectors</i>		<i>Arrivals On Time</i>		<i>Departures On Time</i>		<i>Cancellations</i>	
	<i>Scheduled</i>	<i>Flown</i>	<i>No.</i>	<i>%</i>	<i>No.</i>	<i>%</i>	<i>No.</i>	<i>%</i>
Jetstar	6 423	6 327	5 336	84.3	5 316	84.0	96	1.5
Qantas	9 680	9 551	8 554	89.6	8 669	90.8	129	1.3
QantasLink	10 385	10 114	8 605	85.1	8 782	86.8	271	2.6
Regional Express	6 055	6 044	5 196	86.0	5 346	88.5	11	0.2
Tigerair	1 942	1 913	1 573	82.2	1 618	84.6	29	1.5
Virgin Australia	11 098	10 830	9 616	88.8	9 779	90.3	268	2.4
Virgin Australia Regional Airlines	2 598	2 563	2 138	83.4	2 171	84.7	35	1.3
All Airlines	48 181	47 342	41 018	86.6	41 681	88.0	839	1.7
Qantas - all QF designated services	20 065	19 665	17 159	87.3	17 451	88.7	400	2.0
Virgin Australia - all VA designated services	13 696	13 393	11 754	87.8	11 950	89.2	303	2.2

Total airline network data (including routes not shown in this report).

Airlines' on time performance varies across the routes they serve. Individual route data by specific airline for 62 routes are shown on pages 10-21.

Table 2 Top ten routes for on time performance for May 2015 (participating airlines only)

<i>Arrivals</i>		<i>Departures</i>	
<i>Route</i>	<i>On Time (%)</i>	<i>Route</i>	<i>On Time (%)</i>
Perth-Darwin	100.0	Perth-Darwin	98.6
Mount Isa-Brisbane	98.3	Perth-Newman	98.3
Perth-Newman	97.8	Adelaide-Canberra	97.2
Port Hedland-Perth	97.4	Newman-Perth	97.2
Adelaide-Gold Coast	96.7	Adelaide-Gold Coast	96.7
Newman-Perth	96.6	Gold Coast-Adelaide	96.7
Adelaide-Canberra	95.8	Brisbane-Mount Isa	96.6
Sydney-Launceston	95.8	Port Hedland-Perth	96.4
Canberra-Adelaide	94.4	Brisbane-Hamilton Island	96.0
Perth-Port Hedland	93.8	Perth-Karratha	95.6

Table 3 Top ten airports for on time performance for May 2015 (participating airlines and reported routes only)

<i>Arrivals</i>		<i>Departures</i>	
<i>Airport</i>	<i>On Time (%)</i>	<i>Airport</i>	<i>On Time (%)</i>
Newman	97.8	Newman	97.2
Port Hedland	93.8	Port Hedland	96.4
Mount Isa	93.1	Geraldton	93.1
Proserpine	92.4	Mackay	92.0
Geraldton	91.4	Port Lincoln	91.2
Karratha	91.2	Proserpine	91.1
Mackay	91.0	Karratha	90.8
Townsville	91.0	Kalgoorlie	90.6
Gladstone	90.8	Perth	90.4
Sunshine Coast	90.4	Adelaide	90.0

Total industry on time performance

Figure 1 On time performance (by month from May 2012)—Total Industry

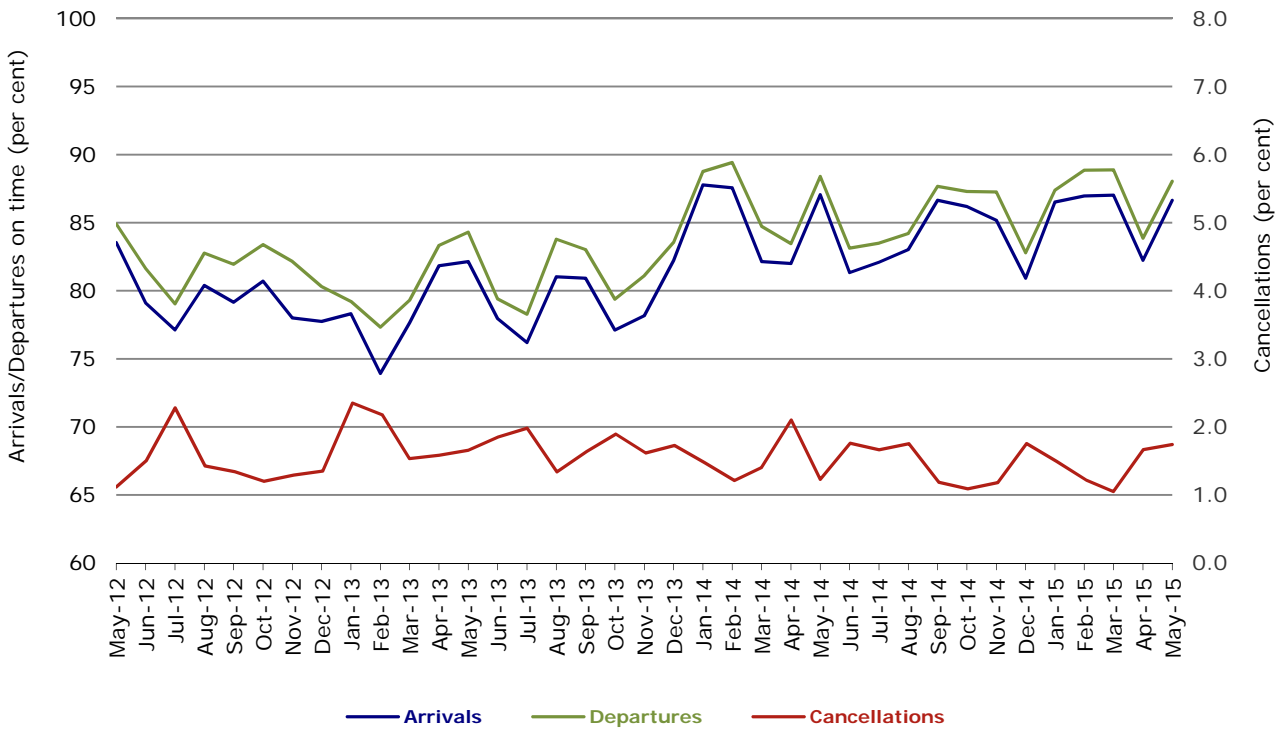


Figure 2 Arrivals on time (by month from May 2014)

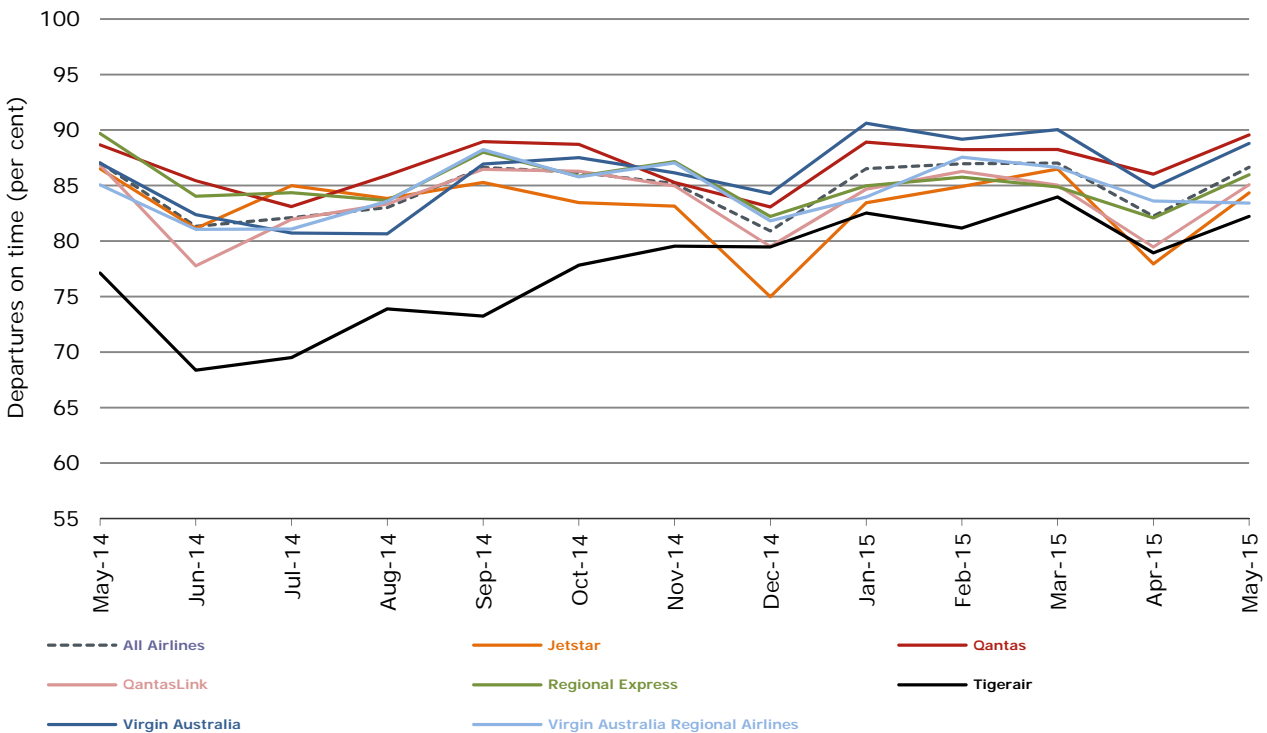


Figure 3 Departures on time (by month from May 2014)

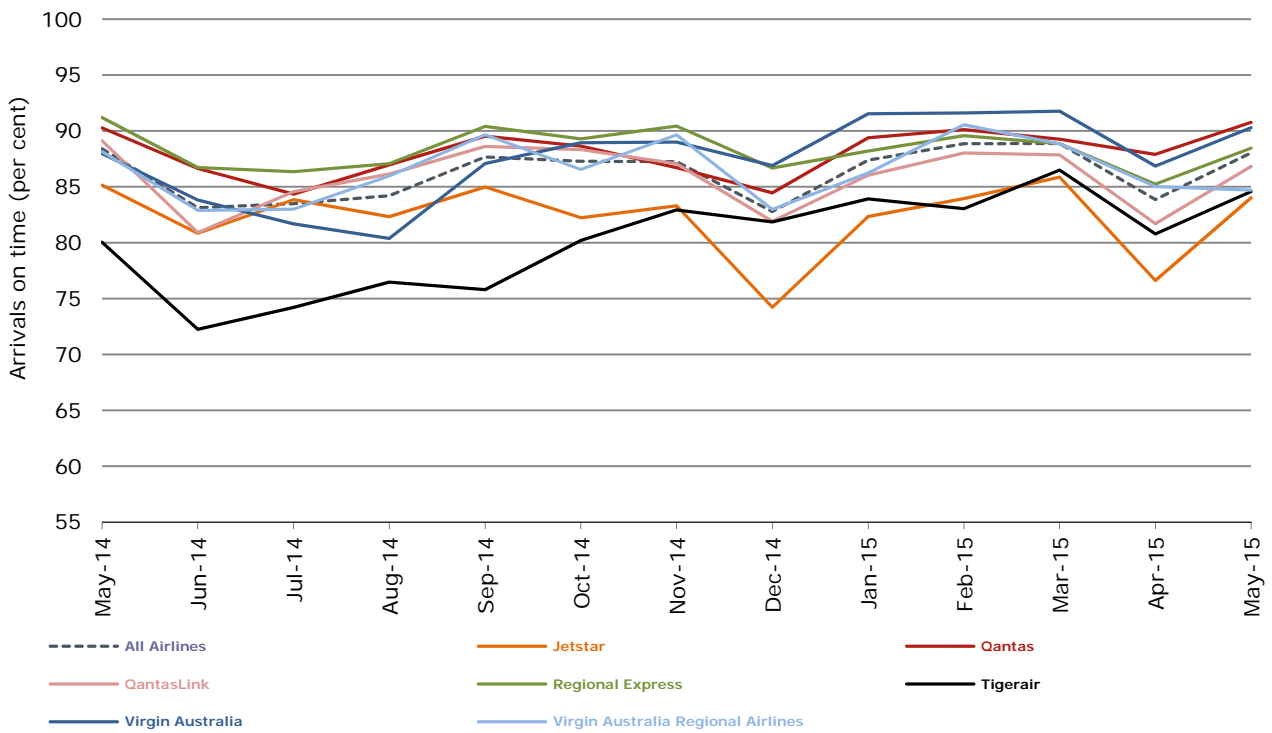
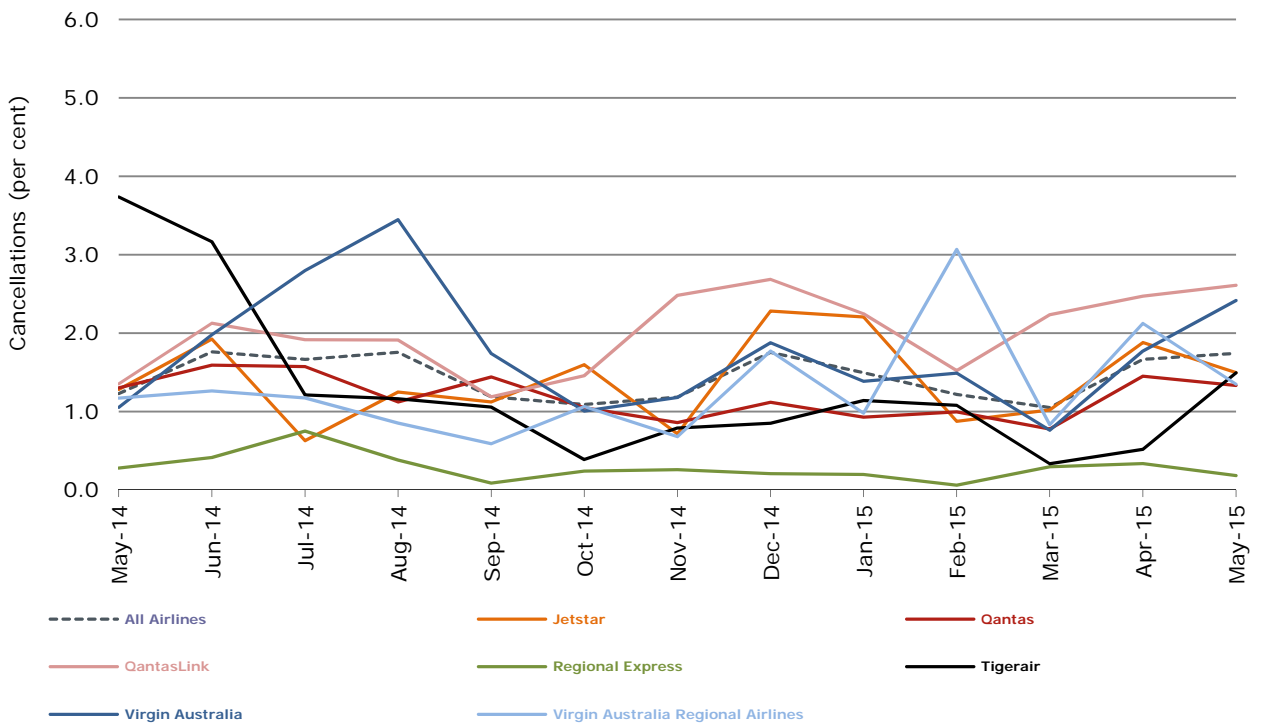


Figure 4 Cancellations (by month from May 2014)



Major domestic airlines on time performance

Figure 5 On time performance (by month from May 2012)—Jetstar

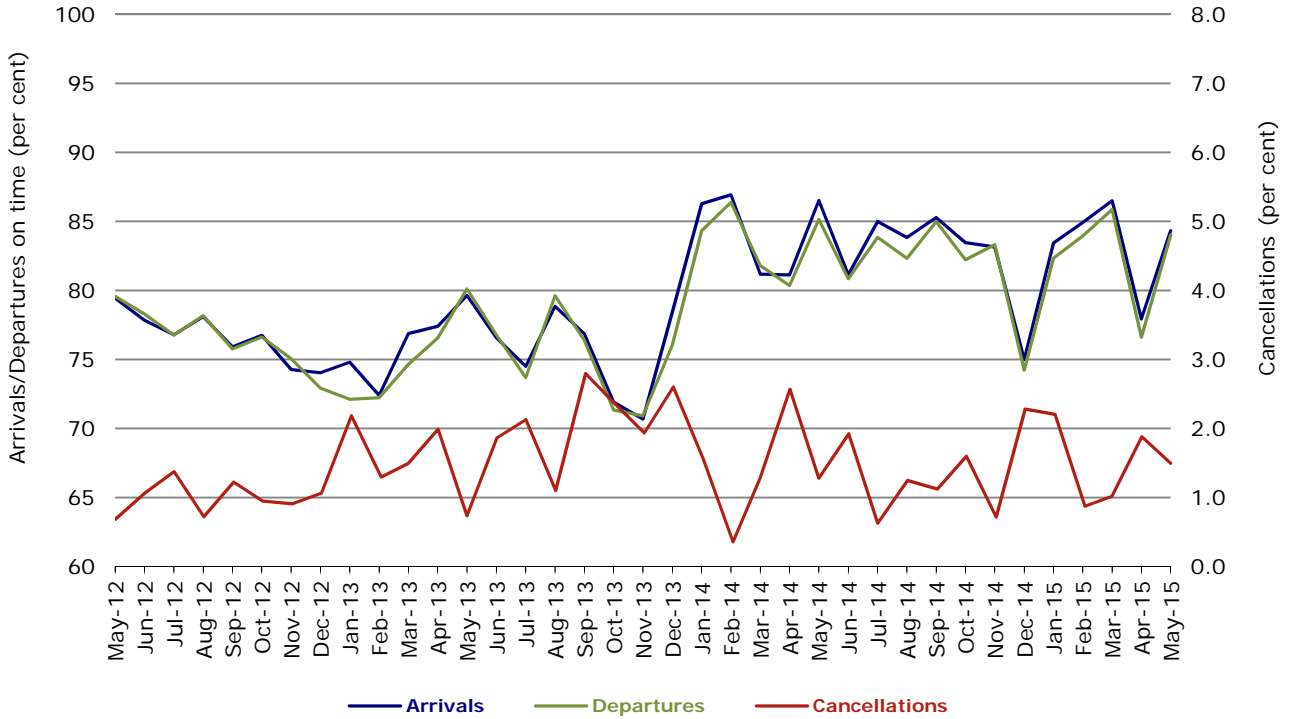


Figure 6 On time performance (by month from May 2012)—Qantas

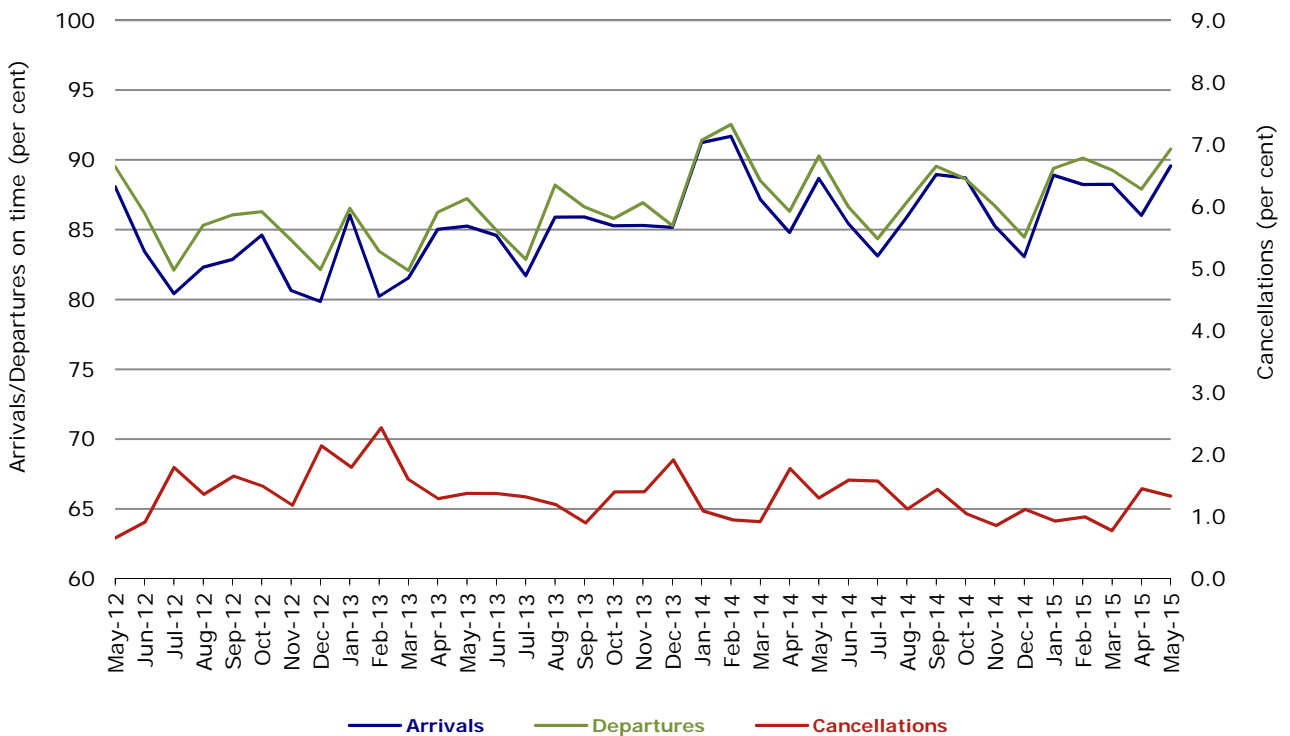


Figure 7 On time performance (by month from May 2012)—Tigerair

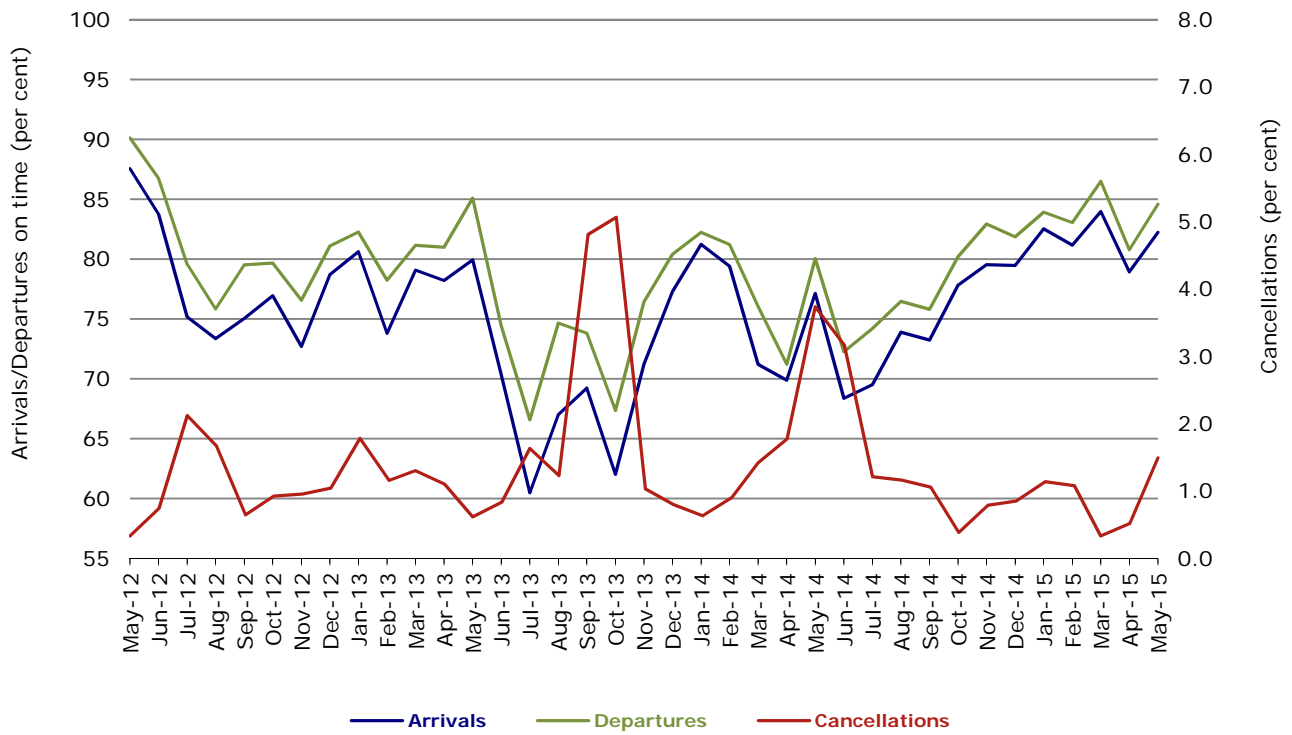
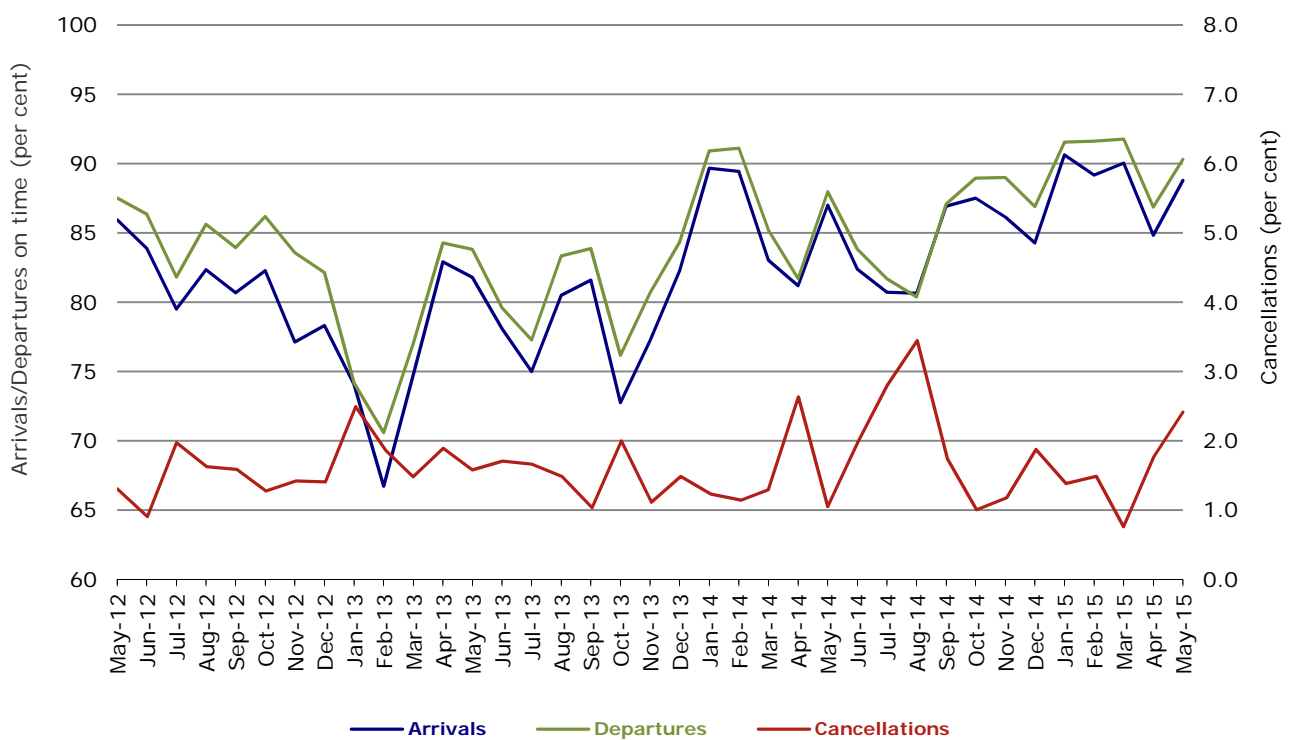


Figure 8 On time performance (by month from May 2012)—Virgin Australia



Major regional airlines on time performance

Figure 9 On time performance (by month from May 2012)—QantasLink

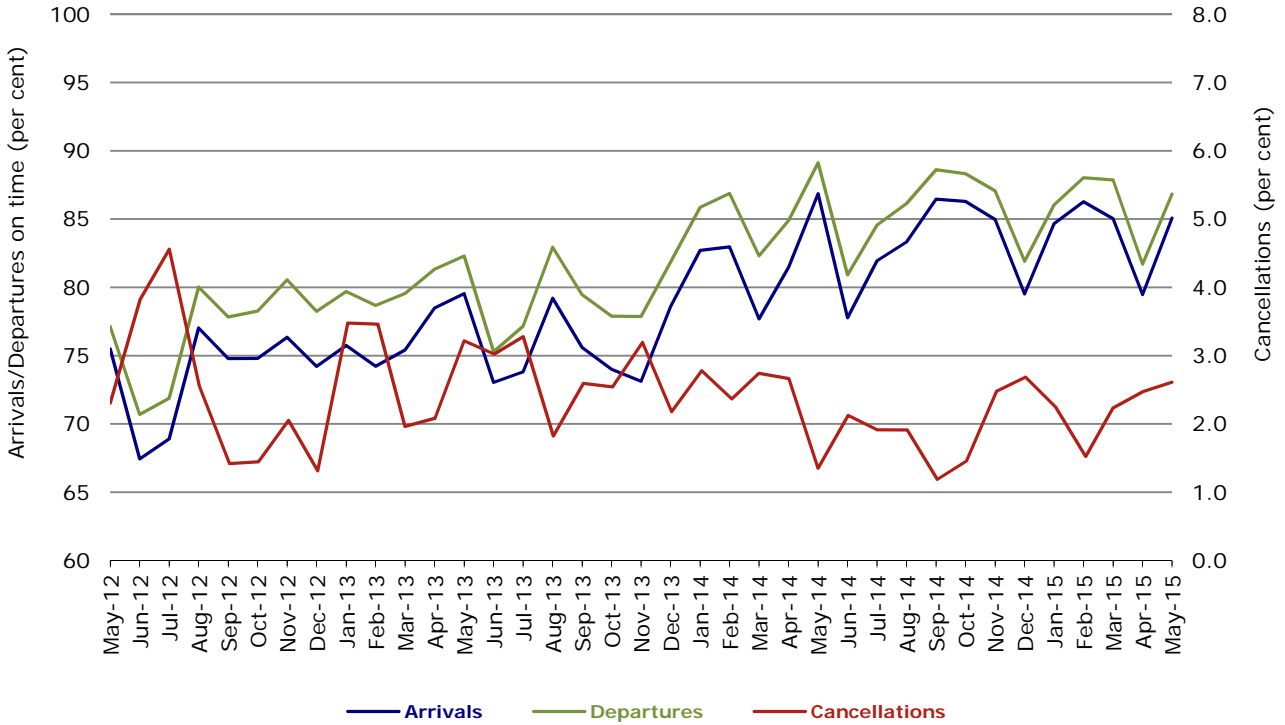


Figure 10 On time performance (by month from May 2012)—Regional Express

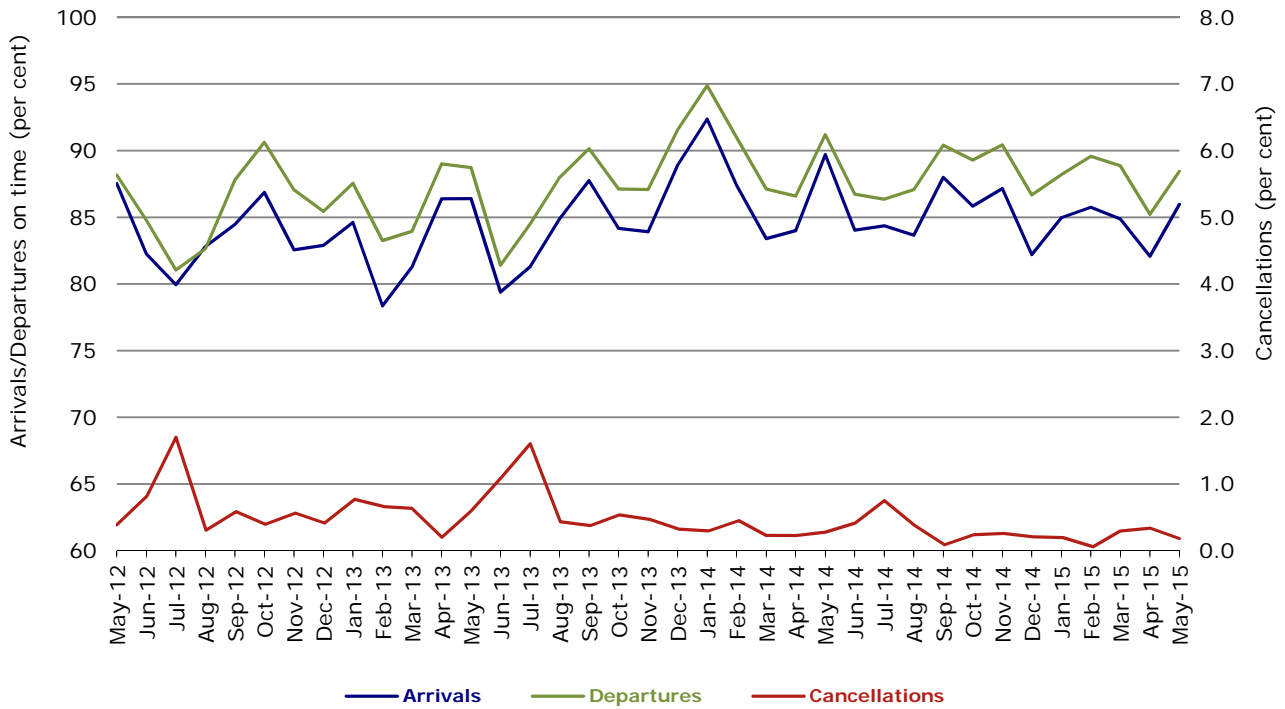
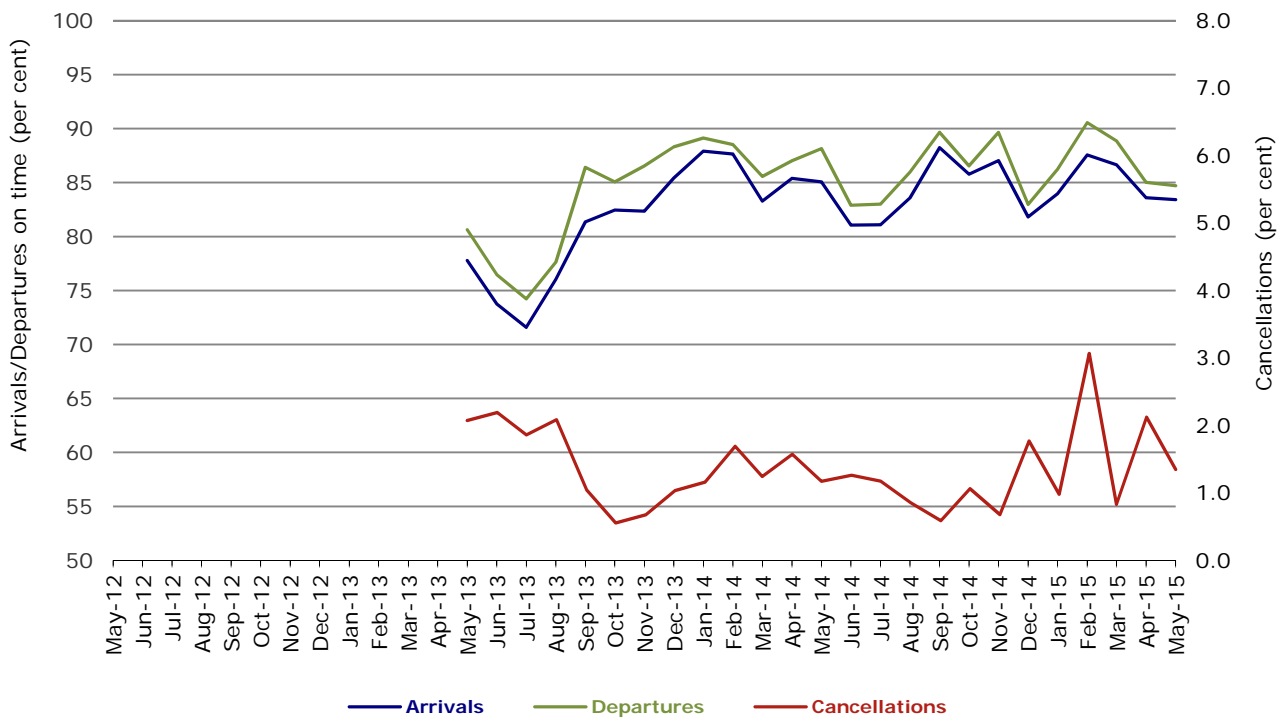


Figure 11 On time performance (by month from May 2012)
Virgin Australia Regional Airlines



Virgin Australia Regional Airlines commenced operations in May 2013. It was formed after the acquisition of Skywest by Virgin Australia and represents a combination of operations previously reported under Skywest and Virgin Australia – ATR/F100 Operations.

Individual routes

On time performance is reported for all routes where the passenger load averages over 8000 passengers per month over the previous six months, and where two or more airlines operate in competition on those routes. There are now 62 routes which meet this definition. Over time, however, routes which meet this definition may change as airline networks and traffic levels vary.

	<i>Sectors</i>		<i>Arrivals On Time</i>		<i>Departures On Time</i>		<i>Cancellations</i>	
	<i>Sched.</i>	<i>Flown</i>	<i>No.</i>	<i>%</i>	<i>No.</i>	<i>%</i>	<i>No.</i>	<i>%</i>
Adelaide-Brisbane								
Jetstar	23	23	23	100.0	22	95.7	0	0.0
Qantas	109	109	94	86.2	102	93.6	0	0.0
Tigerair	22	22	20	90.9	20	90.9	0	0.0
Virgin Australia	113	111	101	91.0	101	91.0	2	1.8
All Airlines	267	265	238	89.8	245	92.5	2	0.7
Adelaide-Canberra								
Qantas	46	46	44	95.7	45	97.8	0	0.0
Virgin Australia	26	26	25	96.2	25	96.2	0	0.0
All Airlines	72	72	69	95.8	70	97.2	0	0.0
Adelaide-Gold Coast								
Jetstar	31	31	29	93.5	29	93.5	0	0.0
Virgin Australia	30	29	29	100.0	29	100.0	1	3.3
All Airlines	61	60	58	96.7	58	96.7	1	1.6
Adelaide-Melbourne								
Jetstar	102	97	80	82.5	69	71.1	5	4.9
Qantas	299	298	285	95.6	273	91.6	1	0.3
Tigerair	64	64	51	79.7	50	78.1	0	0.0
Virgin Australia	290	287	258	89.9	255	88.9	3	1.0
All Airlines	755	746	674	90.3	647	86.7	9	1.2
Adelaide-Perth								
Jetstar	31	31	24	77.4	22	71.0	0	0.0
Qantas	114	114	105	92.1	110	96.5	0	0.0
Virgin Australia	75	73	62	84.9	69	94.5	2	2.7
All Airlines	220	218	191	87.6	201	92.2	2	0.9
Adelaide-Port Lincoln								
QantasLink	117	117	99	84.6	104	88.9	0	0.0
Regional Express	216	215	192	89.3	200	93.0	1	0.5
All Airlines	333	332	291	87.7	304	91.6	1	0.3
Adelaide-Sydney								
Jetstar	111	111	93	83.8	96	86.5	0	0.0
Qantas	249	248	222	89.5	228	91.9	1	0.4
QantasLink	21	18	13	72.2	13	72.2	3	14.3
Tigerair	27	27	26	96.3	25	92.6	0	0.0
Virgin Australia	174	172	152	88.4	156	90.7	2	1.1
All Airlines	582	576	506	87.8	518	89.9	6	1.0
Albury-Sydney								
QantasLink	93	93	72	77.4	74	79.6	0	0.0
Regional Express	109	109	98	89.9	103	94.5	0	0.0
Virgin Australia Regional Airlines	62	62	50	80.6	51	82.3	0	0.0
All Airlines	264	264	220	83.3	228	86.4	0	0.0
Armidale-Sydney								
QantasLink	135	129	95	73.6	93	72.1	6	4.4
Regional Express	77	76	57	75.0	65	85.5	1	1.3
All Airlines	212	205	152	74.1	158	77.1	7	3.3

	<i>Sectors</i>		<i>Arrivals On Time</i>		<i>Departures On Time</i>		<i>Cancellations</i>	
	<i>Sched.</i>	<i>Flown</i>	<i>No.</i>	<i>%</i>	<i>No.</i>	<i>%</i>	<i>No.</i>	<i>%</i>
Ayers Rock-Sydney								
Jetstar	31	31	25	80.6	24	77.4	0	0.0
Virgin Australia	31	31	29	93.5	23	74.2	0	0.0
All Airlines	62	62	54	87.1	47	75.8	0	0.0
Ballina-Sydney								
Jetstar	62	62	47	75.8	46	74.2	0	0.0
Regional Express	25	25	23	92.0	23	92.0	0	0.0
Virgin Australia	31	31	29	93.5	29	93.5	0	0.0
All Airlines	118	118	99	83.9	98	83.1	0	0.0
Brisbane-Adelaide								
Jetstar	23	23	22	95.7	23	100.0	0	0.0
Qantas	109	109	101	92.7	101	92.7	0	0.0
Tigerair	22	22	19	86.4	19	86.4	0	0.0
Virgin Australia	113	111	98	88.3	106	95.5	2	1.8
All Airlines	267	265	240	90.6	249	94.0	2	0.7
Brisbane-Bundaberg								
QantasLink	134	133	111	83.5	115	86.5	1	0.7
Virgin Australia Regional Airlines	40	40	34	85.0	35	87.5	0	0.0
All Airlines	174	173	145	83.8	150	86.7	1	0.6
Brisbane-Cairns								
Jetstar	72	71	60	84.5	62	87.3	1	1.4
Qantas	119	119	108	90.8	105	88.2	0	0.0
QantasLink	5	5	4	80.0	4	80.0	0	0.0
Tigerair	27	27	23	85.2	24	88.9	0	0.0
Virgin Australia	137	136	125	91.9	126	92.6	1	0.7
All Airlines	360	358	320	89.4	321	89.7	2	0.6
Brisbane-Canberra								
Qantas	26	26	24	92.3	25	96.2	0	0.0
QantasLink	127	126	114	90.5	116	92.1	1	0.8
Virgin Australia	96	95	83	87.4	83	87.4	1	1.0
All Airlines	249	247	221	89.5	224	90.7	2	0.8
Brisbane-Darwin								
Jetstar	23	22	19	86.4	19	86.4	1	4.3
Qantas	44	44	37	84.1	42	95.5	0	0.0
Tigerair	16	16	13	81.3	15	93.8	0	0.0
Virgin Australia	31	31	30	96.8	31	100.0	0	0.0
All Airlines	114	113	99	87.6	107	94.7	1	0.9
Brisbane-Emerald								
QantasLink	139	136	110	80.9	121	89.0	3	2.2
Virgin Australia Regional Airlines	79	79	58	73.4	66	83.5	0	0.0
All Airlines	218	215	168	78.1	187	87.0	3	1.4
Brisbane-Gladstone								
QantasLink	211	206	192	93.2	190	92.2	5	2.4
Virgin Australia	6	6	5	83.3	5	83.3	0	0.0
Virgin Australia Regional Airlines	147	145	127	87.6	126	86.9	2	1.4
All Airlines	364	357	324	90.8	321	89.9	7	1.9
Brisbane-Hamilton Island								
QantasLink	19	19	14	73.7	17	89.5	0	0.0
Virgin Australia	31	31	30	96.8	31	100.0	0	0.0
All Airlines	50	50	44	88.0	48	96.0	0	0.0
Brisbane-Hobart								
Jetstar	34	34	21	61.8	30	88.2	0	0.0
Virgin Australia	31	31	27	87.1	29	93.5	0	0.0
All Airlines	65	65	48	73.8	59	90.8	0	0.0

	<i>Sectors</i>		<i>Arrivals On Time</i>		<i>Departures On Time</i>		<i>Cancellations</i>	
	<i>Sched.</i>	<i>Flown</i>	<i>No.</i>	<i>%</i>	<i>No.</i>	<i>%</i>	<i>No.</i>	<i>%</i>
Brisbane-Mackay								
Jetstar	62	62	55	88.7	51	82.3	0	0.0
QantasLink	109	107	100	93.5	98	91.6	2	1.8
Virgin Australia	157	155	140	90.3	141	91.0	2	1.3
All Airlines	328	324	295	91.0	290	89.5	4	1.2
Brisbane-Melbourne								
Jetstar	111	108	92	85.2	84	77.8	3	2.7
Qantas	427	425	379	89.2	391	92.0	2	0.5
Tigerair	100	97	77	79.4	79	81.4	3	3.0
Virgin Australia	405	392	331	84.4	357	91.1	13	3.2
All Airlines	1 043	1 022	879	86.0	911	89.1	21	2.0
Brisbane-Moranbah								
QantasLink	118	115	99	86.1	106	92.2	3	2.5
Virgin Australia Regional Airlines	72	72	60	83.3	61	84.7	0	0.0
All Airlines	190	187	159	85.0	167	89.3	3	1.6
Brisbane-Mount Isa								
Qantas	37	37	34	91.9	35	94.6	0	0.0
Virgin Australia	21	21	20	95.2	21	100.0	0	0.0
All Airlines	58	58	54	93.1	56	96.6	0	0.0
Brisbane-Newcastle								
Jetstar	76	76	68	89.5	70	92.1	0	0.0
QantasLink	78	76	61	80.3	63	82.9	2	2.6
Virgin Australia	83	82	75	91.5	75	91.5	1	1.2
All Airlines	237	234	204	87.2	208	88.9	3	1.3
Brisbane-Perth								
Qantas	126	126	92	73.0	108	85.7	0	0.0
Virgin Australia	109	108	89	82.4	89	82.4	1	0.9
All Airlines	235	234	181	77.4	197	84.2	1	0.4
Brisbane-Proserpine								
Jetstar	27	27	23	85.2	23	85.2	0	0.0
Virgin Australia	52	52	50	96.2	51	98.1	0	0.0
All Airlines	79	79	73	92.4	74	93.7	0	0.0
Brisbane-Rockhampton								
QantasLink	203	192	165	85.9	172	89.6	11	5.4
Virgin Australia	107	105	94	89.5	97	92.4	2	1.9
Virgin Australia Regional Airlines	104	99	85	85.9	85	85.9	5	4.8
All Airlines	414	396	344	86.9	354	89.4	18	4.3
Brisbane-Sydney								
Jetstar	169	162	124	76.5	124	76.5	7	4.1
Qantas	608	596	543	91.1	559	93.8	12	2.0
Tigerair	96	95	83	87.4	82	86.3	1	1.0
Virgin Australia	566	539	472	87.6	485	90.0	27	4.8
All Airlines	1 439	1 392	1 222	87.8	1 250	89.8	47	3.3
Brisbane-Townsville								
Jetstar	62	62	59	95.2	60	96.8	0	0.0
Qantas	150	150	139	92.7	138	92.0	0	0.0
Virgin Australia	156	151	134	88.7	136	90.1	5	3.2
All Airlines	368	363	332	91.5	334	92.0	5	1.4
Broome-Perth								
Qantas	38	37	35	94.6	30	81.1	1	2.6
QantasLink	46	46	45	97.8	41	89.1	0	0.0
Virgin Australia	12	12	12	100.0	11	91.7	0	0.0
Virgin Australia Regional Airlines	33	33	16	48.5	19	57.6	0	0.0
All Airlines	129	128	108	84.4	101	78.9	1	0.8

	<i>Sectors</i>		<i>Arrivals On Time</i>		<i>Departures On Time</i>		<i>Cancellations</i>	
	<i>Sched.</i>	<i>Flown</i>	<i>No.</i>	<i>%</i>	<i>No.</i>	<i>%</i>	<i>No.</i>	<i>%</i>
Bundaberg-Brisbane								
QantasLink	134	133	113	85.0	113	85.0	1	0.7
Virgin Australia Regional Airlines	39	39	35	89.7	33	84.6	0	0.0
All Airlines	173	172	148	86.0	146	84.9	1	0.6
Cairns-Brisbane								
Jetstar	72	72	63	87.5	58	80.6	0	0.0
Qantas	119	118	110	93.2	104	88.1	1	0.8
QantasLink	5	5	5	100.0	5	100.0	0	0.0
Tigerair	27	27	23	85.2	23	85.2	0	0.0
Virgin Australia	137	136	124	91.2	123	90.4	1	0.7
All Airlines	360	358	325	90.8	313	87.4	2	0.6
Cairns-Melbourne								
Jetstar	85	85	69	81.2	68	80.0	0	0.0
Qantas	31	31	29	93.5	29	93.5	0	0.0
Tigerair	25	25	15	60.0	17	68.0	0	0.0
Virgin Australia	31	31	27	87.1	27	87.1	0	0.0
All Airlines	172	172	140	81.4	141	82.0	0	0.0
Cairns-Sydney								
Jetstar	89	89	79	88.8	80	89.9	0	0.0
Qantas	76	76	70	92.1	70	92.1	0	0.0
Tigerair	26	26	22	84.6	22	84.6	0	0.0
Virgin Australia	93	93	86	92.5	83	89.2	0	0.0
All Airlines	284	284	257	90.5	255	89.8	0	0.0
Canberra-Adelaide								
Qantas	46	46	44	95.7	43	93.5	0	0.0
Virgin Australia	26	26	24	92.3	24	92.3	0	0.0
All Airlines	72	72	68	94.4	67	93.1	0	0.0
Canberra-Brisbane								
Qantas	26	26	24	92.3	24	92.3	0	0.0
QantasLink	127	126	109	86.5	110	87.3	1	0.8
Virgin Australia	97	94	77	81.9	82	87.2	3	3.1
All Airlines	250	246	210	85.4	216	87.8	4	1.6
Canberra-Melbourne								
Qantas	185	185	176	95.1	177	95.7	0	0.0
QantasLink	83	82	70	85.4	73	89.0	1	1.2
Virgin Australia	156	155	138	89.0	139	89.7	1	0.6
Virgin Australia Regional Airlines	30	29	20	69.0	24	82.8	1	3.3
All Airlines	454	451	404	89.6	413	91.6	3	0.7
Canberra-Sydney								
QantasLink	516	478	403	84.3	400	83.7	38	7.4
Virgin Australia	22	22	18	81.8	18	81.8	0	0.0
Virgin Australia Regional Airlines	284	277	241	87.0	233	84.1	7	2.5
All Airlines	822	777	662	85.2	651	83.8	45	5.5
Coffs Harbour-Sydney								
QantasLink	154	153	105	68.6	117	76.5	1	0.6
Tigerair	14	14	12	85.7	13	92.9	0	0.0
Virgin Australia	61	60	55	91.7	53	88.3	1	1.6
All Airlines	229	227	172	75.8	183	80.6	2	0.9
Darwin-Brisbane								
Jetstar	23	22	21	95.5	20	90.9	1	4.3
Qantas	44	44	40	90.9	36	81.8	0	0.0
Tigerair	16	16	15	93.8	14	87.5	0	0.0
Virgin Australia	31	31	25	80.6	24	77.4	0	0.0
All Airlines	114	113	101	89.4	94	83.2	1	0.9

	<i>Sectors</i>		<i>Arrivals On Time</i>		<i>Departures On Time</i>		<i>Cancellations</i>	
	<i>Sched.</i>	<i>Flown</i>	<i>No.</i>	<i>%</i>	<i>No.</i>	<i>%</i>	<i>No.</i>	<i>%</i>
Darwin-Melbourne								
Jetstar	23	23	21	91.3	19	82.6	0	0.0
Qantas	31	31	31	100.0	29	93.5	0	0.0
Virgin Australia	31	31	26	83.9	20	64.5	0	0.0
All Airlines	85	85	78	91.8	68	80.0	0	0.0
Darwin-Perth								
Qantas	39	39	37	94.9	38	97.4	0	0.0
Virgin Australia	31	31	28	90.3	26	83.9	0	0.0
All Airlines	70	70	65	92.9	64	91.4	0	0.0
Darwin-Sydney								
Jetstar	23	23	14	60.9	12	52.2	0	0.0
Qantas	49	49	40	81.6	38	77.6	0	0.0
Virgin Australia	31	31	25	80.6	23	74.2	0	0.0
All Airlines	103	103	79	76.7	73	70.9	0	0.0
Dubbo-Sydney								
QantasLink	126	125	92	73.6	93	74.4	1	0.8
Regional Express	151	151	130	86.1	134	88.7	0	0.0
All Airlines	277	276	222	80.4	227	82.2	1	0.4
Emerald-Brisbane								
QantasLink	140	136	112	82.4	112	82.4	4	2.9
Virgin Australia Regional Airlines	79	79	71	89.9	70	88.6	0	0.0
All Airlines	219	215	183	85.1	182	84.7	4	1.8
Geraldton-Perth								
QantasLink	52	52	47	90.4	47	90.4	0	0.0
Virgin Australia Regional Airlines	92	92	84	91.3	87	94.6	0	0.0
All Airlines	144	144	131	91.0	134	93.1	0	0.0
Gladstone-Brisbane								
QantasLink	207	203	185	91.1	186	91.6	4	1.9
Virgin Australia	6	6	5	83.3	5	83.3	0	0.0
Virgin Australia Regional Airlines	147	145	120	82.8	123	84.8	2	1.4
All Airlines	360	354	310	87.6	314	88.7	6	1.7
Gold Coast-Adelaide								
Jetstar	31	31	28	90.3	29	93.5	0	0.0
Virgin Australia	30	29	25	86.2	29	100.0	1	3.3
All Airlines	61	60	53	88.3	58	96.7	1	1.6
Gold Coast-Melbourne								
Jetstar	160	160	145	90.6	142	88.8	0	0.0
Tigerair	75	73	44	60.3	52	71.2	2	2.7
Virgin Australia	180	177	164	92.7	159	89.8	3	1.7
All Airlines	415	410	353	86.1	353	86.1	5	1.2
Gold Coast-Sydney								
Jetstar	267	265	224	84.5	227	85.7	2	0.7
Qantas	88	88	81	92.0	83	94.3	0	0.0
QantasLink	5	5	5	100.0	5	100.0	0	0.0
Tigerair	101	99	84	84.8	83	83.8	2	2.0
Virgin Australia	252	244	217	88.9	215	88.1	8	3.2
All Airlines	713	701	611	87.2	613	87.4	12	1.7
Hamilton Island-Brisbane								
QantasLink	19	19	15	78.9	11	57.9	0	0.0
Virgin Australia	31	31	30	96.8	30	96.8	0	0.0
All Airlines	50	50	45	90.0	41	82.0	0	0.0

	<i>Sectors</i>		<i>Arrivals On Time</i>		<i>Departures On Time</i>		<i>Cancellations</i>	
	<i>Sched.</i>	<i>Flown</i>	<i>No.</i>	<i>%</i>	<i>No.</i>	<i>%</i>	<i>No.</i>	<i>%</i>
Hamilton Island-Melbourne								
Jetstar	14	14	13	92.9	12	85.7	0	0.0
Virgin Australia	13	13	12	92.3	12	92.3	0	0.0
All Airlines	27	27	25	92.6	24	88.9	0	0.0
Hamilton Island-Sydney								
Jetstar	18	18	13	72.2	13	72.2	0	0.0
Qantas	9	9	5	55.6	4	44.4	0	0.0
Virgin Australia	31	31	26	83.9	23	74.2	0	0.0
All Airlines	58	58	44	75.9	40	69.0	0	0.0
Hobart-Brisbane								
Jetstar	34	34	22	64.7	33	97.1	0	0.0
Virgin Australia	31	31	26	83.9	26	83.9	0	0.0
All Airlines	65	65	48	73.8	59	90.8	0	0.0
Hobart-Melbourne								
Jetstar	155	152	120	78.9	124	81.6	3	1.9
Qantas	2	2	2	100.0	2	100.0	0	0.0
QantasLink	121	120	109	90.8	111	92.5	1	0.8
Tigerair	28	28	18	64.3	20	71.4	0	0.0
Virgin Australia	149	148	127	85.8	128	86.5	1	0.7
All Airlines	455	450	376	83.6	385	85.6	5	1.1
Hobart-Sydney								
Jetstar	53	53	50	94.3	51	96.2	0	0.0
QantasLink	31	31	23	74.2	23	74.2	0	0.0
Virgin Australia	62	62	51	82.3	52	83.9	0	0.0
All Airlines	146	146	124	84.9	126	86.3	0	0.0
Kalgoorlie-Perth								
Qantas	21	21	18	85.7	18	85.7	0	0.0
QantasLink	62	62	60	96.8	58	93.5	0	0.0
Virgin Australia	27	26	25	96.2	25	96.2	1	3.7
Virgin Australia Regional Airlines	30	30	26	86.7	25	83.3	0	0.0
All Airlines	140	139	129	92.8	126	90.6	1	0.7
Karratha-Perth								
Qantas	104	103	99	96.1	94	91.3	1	1.0
QantasLink	108	108	104	96.3	105	97.2	0	0.0
Virgin Australia	62	60	53	88.3	52	86.7	2	3.2
Virgin Australia Regional Airlines	22	22	16	72.7	15	68.2	0	0.0
All Airlines	296	293	272	92.8	266	90.8	3	1.0
Launceston-Melbourne								
Jetstar	124	121	100	82.6	98	81.0	3	2.4
QantasLink	119	108	94	87.0	99	91.7	11	9.2
Virgin Australia	95	95	87	91.6	90	94.7	0	0.0
Virgin Australia Regional Airlines	5	5	4	80.0	4	80.0	0	0.0
All Airlines	343	329	285	86.6	291	88.4	14	4.1
Launceston-Sydney								
Jetstar	41	41	35	85.4	34	82.9	0	0.0
Virgin Australia	31	31	23	74.2	25	80.6	0	0.0
All Airlines	72	72	58	80.6	59	81.9	0	0.0
Mackay-Brisbane								
Jetstar	62	62	56	90.3	53	85.5	0	0.0
QantasLink	109	106	99	93.4	102	96.2	3	2.8
Virgin Australia	157	155	143	92.3	142	91.6	2	1.3
All Airlines	328	323	298	92.3	297	92.0	5	1.5

	<i>Sectors</i>		<i>Arrivals On Time</i>		<i>Departures On Time</i>		<i>Cancellations</i>	
	<i>Sched.</i>	<i>Flown</i>	<i>No.</i>	<i>%</i>	<i>No.</i>	<i>%</i>	<i>No.</i>	<i>%</i>
Melbourne-Adelaide								
Jetstar	102	98	70	71.4	76	77.6	4	3.9
Qantas	299	299	267	89.3	270	90.3	0	0.0
Tigerair	64	64	54	84.4	55	85.9	0	0.0
Virgin Australia	289	285	266	93.3	266	93.3	4	1.4
All Airlines	754	746	657	88.1	667	89.4	8	1.1
Melbourne-Brisbane								
Jetstar	111	110	91	82.7	88	80.0	1	0.9
Qantas	428	426	388	91.1	393	92.3	2	0.5
Tigerair	100	98	80	81.6	79	80.6	2	2.0
Virgin Australia	403	385	352	91.4	362	94.0	18	4.5
All Airlines	1 042	1 019	911	89.4	922	90.5	23	2.2
Melbourne-Cairns								
Jetstar	85	85	70	82.4	69	81.2	0	0.0
Qantas	31	31	29	93.5	24	77.4	0	0.0
Tigerair	25	25	19	76.0	23	92.0	0	0.0
Virgin Australia	31	31	28	90.3	29	93.5	0	0.0
All Airlines	172	172	146	84.9	145	84.3	0	0.0
Melbourne-Canberra								
Qantas	185	185	168	90.8	173	93.5	0	0.0
QantasLink	83	82	71	86.6	75	91.5	1	1.2
Virgin Australia	156	155	144	92.9	142	91.6	1	0.6
Virgin Australia Regional Airlines	30	29	21	72.4	21	72.4	1	3.3
All Airlines	454	451	404	89.6	411	91.1	3	0.7
Melbourne-Darwin								
Jetstar	23	23	20	87.0	20	87.0	0	0.0
Qantas	31	31	30	96.8	31	100.0	0	0.0
Virgin Australia	31	31	28	90.3	28	90.3	0	0.0
All Airlines	85	85	78	91.8	79	92.9	0	0.0
Melbourne-Gold Coast								
Jetstar	160	159	128	80.5	127	79.9	1	0.6
Tigerair	75	73	59	80.8	62	84.9	2	2.7
Virgin Australia	180	177	165	93.2	166	93.8	3	1.7
All Airlines	415	409	352	86.1	355	86.8	6	1.4
Melbourne-Hamilton Island								
Jetstar	14	14	12	85.7	12	85.7	0	0.0
Virgin Australia	13	13	12	92.3	13	100.0	0	0.0
All Airlines	27	27	24	88.9	25	92.6	0	0.0
Melbourne-Hobart								
Jetstar	155	155	138	89.0	135	87.1	0	0.0
Qantas	2	2	2	100.0	2	100.0	0	0.0
QantasLink	121	121	105	86.8	103	85.1	0	0.0
Tigerair	28	28	20	71.4	23	82.1	0	0.0
Virgin Australia	149	148	133	89.9	134	90.5	1	0.7
All Airlines	455	454	398	87.7	397	87.4	1	0.2
Melbourne-Launceston								
Jetstar	124	121	109	90.1	109	90.1	3	2.4
QantasLink	119	109	99	90.8	102	93.6	10	8.4
Virgin Australia	95	94	79	84.0	86	91.5	1	1.1
Virgin Australia Regional Airlines	5	5	4	80.0	4	80.0	0	0.0
All Airlines	343	329	291	88.4	301	91.5	14	4.1

	<i>Sectors</i>		<i>Arrivals On Time</i>		<i>Departures On Time</i>		<i>Cancellations</i>	
	<i>Sched.</i>	<i>Flown</i>	<i>No.</i>	<i>%</i>	<i>No.</i>	<i>%</i>	<i>No.</i>	<i>%</i>
Melbourne-Mildura								
QantasLink	88	88	76	86.4	81	92.0	0	0.0
Regional Express	88	88	80	90.9	81	92.0	0	0.0
Virgin Australia	31	31	29	93.5	29	93.5	0	0.0
All Airlines	207	207	185	89.4	191	92.3	0	0.0
Melbourne-Newcastle								
Jetstar	111	111	104	93.7	100	90.1	0	0.0
Virgin Australia	31	31	26	83.9	27	87.1	0	0.0
All Airlines	142	142	130	91.5	127	89.4	0	0.0
Melbourne-Perth								
Jetstar	59	54	48	88.9	48	88.9	5	8.5
Qantas	222	222	185	83.3	185	83.3	0	0.0
Tigerair	53	52	38	73.1	37	71.2	1	1.9
Virgin Australia	135	135	114	84.4	113	83.7	0	0.0
All Airlines	469	463	385	83.2	383	82.7	6	1.3
Melbourne-Sunshine Coast								
Jetstar	58	57	50	87.7	47	82.5	1	1.7
Virgin Australia	31	29	28	96.6	29	100.0	2	6.5
All Airlines	89	86	78	90.7	76	88.4	3	3.4
Melbourne-Sydney								
Jetstar	341	325	274	84.3	260	80.0	16	4.7
Qantas	1 009	963	851	88.4	853	88.6	46	4.6
Tigerair	245	239	207	86.6	206	86.2	6	2.4
Virgin Australia	814	774	704	91.0	702	90.7	40	4.9
All Airlines	2 409	2 301	2 036	88.5	2 021	87.8	108	4.5
Mildura-Melbourne								
QantasLink	88	87	74	85.1	74	85.1	1	1.1
Regional Express	87	87	66	75.9	74	85.1	0	0.0
Virgin Australia	31	31	29	93.5	29	93.5	0	0.0
All Airlines	206	205	169	82.4	177	86.3	1	0.5
Moranbah-Brisbane								
QantasLink	114	112	103	92.0	101	90.2	2	1.8
Virgin Australia Regional Airlines	72	72	62	86.1	61	84.7	0	0.0
All Airlines	186	184	165	89.7	162	88.0	2	1.1
Mount Isa-Brisbane								
Qantas	37	37	36	97.3	32	86.5	0	0.0
Virgin Australia	21	21	21	100.0	20	95.2	0	0.0
All Airlines	58	58	57	98.3	52	89.7	0	0.0
Newcastle-Brisbane								
Jetstar	76	76	65	85.5	66	86.8	0	0.0
QantasLink	78	76	60	78.9	61	80.3	2	2.6
Virgin Australia	83	82	72	87.8	72	87.8	1	1.2
All Airlines	237	234	197	84.2	199	85.0	3	1.3
Newcastle-Melbourne								
Jetstar	111	110	96	87.3	96	87.3	1	0.9
Virgin Australia	31	30	26	86.7	25	83.3	1	3.2
All Airlines	142	140	122	87.1	121	86.4	2	1.4
Newman-Perth								
Qantas	81	81	79	97.5	79	97.5	0	0.0
QantasLink	66	65	63	96.9	64	98.5	1	1.5
Virgin Australia	27	26	24	92.3	24	92.3	1	3.7
Virgin Australia Regional Airlines	5	5	5	100.0	5	100.0	0	0.0
All Airlines	179	177	171	96.6	172	97.2	2	1.1

	<i>Sectors</i>		<i>Arrivals On Time</i>		<i>Departures On Time</i>		<i>Cancellations</i>	
	<i>Sched.</i>	<i>Flown</i>	<i>No.</i>	<i>%</i>	<i>No.</i>	<i>%</i>	<i>No.</i>	<i>%</i>
Perth-Adelaide								
Jetstar	31	31	23	74.2	24	77.4	0	0.0
Qantas	118	118	112	94.9	112	94.9	0	0.0
Virgin Australia	77	75	69	92.0	67	89.3	2	2.6
All Airlines	226	224	204	91.1	203	90.6	2	0.9
Perth-Brisbane								
Qantas	127	127	115	90.6	115	90.6	0	0.0
Virgin Australia	109	108	92	85.2	97	89.8	1	0.9
All Airlines	236	235	207	88.1	212	90.2	1	0.4
Perth-Broome								
Qantas	38	37	34	91.9	36	97.3	1	2.6
QantasLink	46	46	42	91.3	41	89.1	0	0.0
Virgin Australia	12	12	11	91.7	11	91.7	0	0.0
Virgin Australia Regional Airlines	28	28	19	67.9	25	89.3	0	0.0
All Airlines	124	123	106	86.2	113	91.9	1	0.8
Perth-Darwin								
Qantas	38	38	38	100.0	37	97.4	0	0.0
Virgin Australia	31	31	31	100.0	31	100.0	0	0.0
All Airlines	69	69	69	100.0	68	98.6	0	0.0
Perth-Geraldton								
QantasLink	52	52	48	92.3	49	94.2	0	0.0
Virgin Australia Regional Airlines	87	87	79	90.8	79	90.8	0	0.0
All Airlines	139	139	127	91.4	128	92.1	0	0.0
Perth-Kalgoorlie								
Qantas	21	21	19	90.5	19	90.5	0	0.0
QantasLink	62	62	56	90.3	58	93.5	0	0.0
Virgin Australia	27	26	26	100.0	24	92.3	1	3.7
Virgin Australia Regional Airlines	30	30	19	63.3	20	66.7	0	0.0
All Airlines	140	139	120	86.3	121	87.1	1	0.7
Perth-Karratha								
Qantas	104	104	101	97.1	100	96.2	0	0.0
QantasLink	109	108	103	95.4	107	99.1	1	0.9
Virgin Australia	62	60	51	85.0	55	91.7	2	3.2
Virgin Australia Regional Airlines	22	22	13	59.1	19	86.4	0	0.0
All Airlines	297	294	268	91.2	281	95.6	3	1.0
Perth-Melbourne								
Jetstar	59	54	49	90.7	49	90.7	5	8.5
Qantas	223	223	201	90.1	190	85.2	0	0.0
Tigerair	53	52	37	71.2	43	82.7	1	1.9
Virgin Australia	135	133	112	84.2	115	86.5	2	1.5
All Airlines	470	462	399	86.4	397	85.9	8	1.7
Perth-Newman								
Qantas	81	81	80	98.8	80	98.8	0	0.0
QantasLink	66	66	65	98.5	65	98.5	0	0.0
Virgin Australia	27	26	24	92.3	25	96.2	1	3.7
Virgin Australia Regional Airlines	5	5	5	100.0	5	100.0	0	0.0
All Airlines	179	178	174	97.8	175	98.3	1	0.6
Perth-Port Hedland								
Qantas	106	104	100	96.2	99	95.2	2	1.9
QantasLink	47	46	40	87.0	42	91.3	1	2.1
Virgin Australia	42	42	40	95.2	41	97.6	0	0.0
All Airlines	195	192	180	93.8	182	94.8	3	1.5

	<i>Sectors</i>		<i>Arrivals On Time</i>		<i>Departures On Time</i>		<i>Cancellations</i>	
	<i>Sched.</i>	<i>Flown</i>	<i>No.</i>	<i>%</i>	<i>No.</i>	<i>%</i>	<i>No.</i>	<i>%</i>
Perth-Sydney								
Jetstar	31	31	24	77.4	20	64.5	0	0.0
Qantas	207	207	188	90.8	174	84.1	0	0.0
Tigerair	22	21	20	95.2	18	85.7	1	4.5
Virgin Australia	117	116	109	94.0	105	90.5	1	0.9
All Airlines	377	375	341	90.9	317	84.5	2	0.5
Port Hedland-Perth								
Qantas	106	104	103	99.0	102	98.1	2	1.9
QantasLink	47	46	44	95.7	43	93.5	1	2.1
Virgin Australia	42	42	40	95.2	40	95.2	0	0.0
All Airlines	195	192	187	97.4	185	96.4	3	1.5
Port Lincoln-Adelaide								
QantasLink	117	117	106	90.6	105	89.7	0	0.0
Regional Express	216	214	196	91.6	197	92.1	2	0.9
All Airlines	333	331	302	91.2	302	91.2	2	0.6
Port Macquarie-Sydney								
QantasLink	136	135	70	51.9	86	63.7	1	0.7
Virgin Australia Regional Airlines	62	62	57	91.9	56	90.3	0	0.0
All Airlines	198	197	127	64.5	142	72.1	1	0.5
Proserpine-Brisbane								
Jetstar	27	27	23	85.2	22	81.5	0	0.0
Virgin Australia	52	52	49	94.2	50	96.2	0	0.0
All Airlines	79	79	72	91.1	72	91.1	0	0.0
Rockhampton-Brisbane								
QantasLink	202	193	152	78.8	159	82.4	9	4.5
Virgin Australia	107	105	94	89.5	91	86.7	2	1.9
Virgin Australia Regional Airlines	104	99	82	82.8	81	81.8	5	4.8
All Airlines	413	397	328	82.6	331	83.4	16	3.9
Sunshine Coast-Melbourne								
Jetstar	57	56	43	76.8	44	78.6	1	1.8
Virgin Australia	31	29	28	96.6	28	96.6	2	6.5
All Airlines	88	85	71	83.5	72	84.7	3	3.4
Sunshine Coast-Sydney								
Jetstar	93	92	78	84.8	76	82.6	1	1.1
Virgin Australia	31	30	29	96.7	29	96.7	1	3.2
All Airlines	124	122	107	87.7	105	86.1	2	1.6
Sydney-Adelaide								
Jetstar	111	111	90	81.1	89	80.2	0	0.0
Qantas	244	244	219	89.8	227	93.0	0	0.0
QantasLink	21	18	13	72.2	15	83.3	3	14.3
Tigerair	27	27	25	92.6	26	96.3	0	0.0
Virgin Australia	174	173	147	85.0	159	91.9	1	0.6
All Airlines	577	573	494	86.2	516	90.1	4	0.7
Sydney-Albury								
QantasLink	93	93	77	82.8	78	83.9	0	0.0
Regional Express	110	110	89	80.9	94	85.5	0	0.0
Virgin Australia Regional Airlines	62	62	52	83.9	52	83.9	0	0.0
All Airlines	265	265	218	82.3	224	84.5	0	0.0
Sydney-Armidale								
QantasLink	135	130	94	72.3	101	77.7	5	3.7
Regional Express	77	77	65	84.4	66	85.7	0	0.0
All Airlines	212	207	159	76.8	167	80.7	5	2.4

	<i>Sectors</i>		<i>Arrivals On Time</i>		<i>Departures On Time</i>		<i>Cancellations</i>	
	<i>Sched.</i>	<i>Flown</i>	<i>No.</i>	<i>%</i>	<i>No.</i>	<i>%</i>	<i>No.</i>	<i>%</i>
Sydney-Ayers Rock								
Jetstar	31	31	21	67.7	27	87.1	0	0.0
Virgin Australia	31	31	22	71.0	28	90.3	0	0.0
All Airlines	62	62	43	69.4	55	88.7	0	0.0
Sydney-Ballina								
Jetstar	62	62	49	79.0	47	75.8	0	0.0
Regional Express	26	26	23	88.5	24	92.3	0	0.0
Virgin Australia	31	31	31	100.0	30	96.8	0	0.0
All Airlines	119	119	103	86.6	101	84.9	0	0.0
Sydney-Brisbane								
Jetstar	169	162	123	75.9	124	76.5	7	4.1
Qantas	606	595	518	87.1	545	91.6	11	1.8
Tigerair	96	95	80	84.2	85	89.5	1	1.0
Virgin Australia	567	544	470	86.4	498	91.5	23	4.1
All Airlines	1 438	1 396	1 191	85.3	1 252	89.7	42	2.9
Sydney-Cairns								
Jetstar	89	89	79	88.8	82	92.1	0	0.0
Qantas	76	76	65	85.5	71	93.4	0	0.0
Tigerair	26	26	21	80.8	25	96.2	0	0.0
Virgin Australia	93	93	85	91.4	84	90.3	0	0.0
All Airlines	284	284	250	88.0	262	92.3	0	0.0
Sydney-Canberra								
QantasLink	515	482	389	80.7	388	80.5	33	6.4
Virgin Australia	22	22	20	90.9	20	90.9	0	0.0
Virgin Australia Regional Airlines	285	277	249	89.9	247	89.2	8	2.8
All Airlines	822	781	658	84.3	655	83.9	41	5.0
Sydney-Coffs Harbour								
QantasLink	154	153	122	79.7	119	77.8	1	0.6
Tigerair	14	14	13	92.9	14	100.0	0	0.0
Virgin Australia	61	60	54	90.0	56	93.3	1	1.6
All Airlines	229	227	189	83.3	189	83.3	2	0.9
Sydney-Darwin								
Jetstar	23	23	15	65.2	17	73.9	0	0.0
Qantas	49	49	35	71.4	35	71.4	0	0.0
Virgin Australia	31	31	25	80.6	28	90.3	0	0.0
All Airlines	103	103	75	72.8	80	77.7	0	0.0
Sydney-Dubbo								
QantasLink	126	125	90	72.0	85	68.0	1	0.8
Regional Express	150	150	132	88.0	131	87.3	0	0.0
All Airlines	276	275	222	80.7	216	78.5	1	0.4
Sydney-Gold Coast								
Jetstar	268	266	235	88.3	235	88.3	2	0.7
Qantas	88	88	88	100.0	86	97.7	0	0.0
QantasLink	5	5	5	100.0	5	100.0	0	0.0
Tigerair	100	99	83	83.8	87	87.9	1	1.0
Virgin Australia	252	244	218	89.3	221	90.6	8	3.2
All Airlines	713	702	629	89.6	634	90.3	11	1.5
Sydney-Hamilton Island								
Jetstar	18	18	13	72.2	14	77.8	0	0.0
Qantas	9	9	5	55.6	9	100.0	0	0.0
Virgin Australia	31	31	25	80.6	27	87.1	0	0.0
All Airlines	58	58	43	74.1	50	86.2	0	0.0

	<i>Sectors</i>		<i>Arrivals On Time</i>		<i>Departures On Time</i>		<i>Cancellations</i>	
	<i>Sched.</i>	<i>Flown</i>	<i>No.</i>	<i>%</i>	<i>No.</i>	<i>%</i>	<i>No.</i>	<i>%</i>
Sydney-Hobart								
Jetstar	53	53	53	100.0	49	92.5	0	0.0
QantasLink	31	31	23	74.2	27	87.1	0	0.0
Virgin Australia	62	62	57	91.9	59	95.2	0	0.0
All Airlines	146	146	133	91.1	135	92.5	0	0.0
Sydney-Launceston								
Jetstar	41	41	38	92.7	36	87.8	0	0.0
Virgin Australia	31	31	31	100.0	30	96.8	0	0.0
All Airlines	72	72	69	95.8	66	91.7	0	0.0
Sydney-Melbourne								
Jetstar	341	325	272	83.7	273	84.0	16	4.7
Qantas	1 008	962	824	85.7	869	90.3	46	4.6
Tigerair	244	238	202	84.9	205	86.1	6	2.5
Virgin Australia	814	767	652	85.0	684	89.2	47	5.8
All Airlines	2 407	2 292	1 950	85.1	2 031	88.6	115	4.8
Sydney-Perth								
Jetstar	31	31	26	83.9	29	93.5	0	0.0
Qantas	212	212	156	73.6	180	84.9	0	0.0
Tigerair	22	22	21	95.5	21	95.5	0	0.0
Virgin Australia	117	116	92	79.3	103	88.8	1	0.9
All Airlines	382	381	295	77.4	333	87.4	1	0.3
Sydney-Port Macquarie								
QantasLink	135	134	87	64.9	109	81.3	1	0.7
Virgin Australia Regional Airlines	62	62	52	83.9	54	87.1	0	0.0
All Airlines	197	196	139	70.9	163	83.2	1	0.5
Sydney-Sunshine Coast								
Jetstar	94	93	82	88.2	80	86.0	1	1.1
Virgin Australia	31	30	29	96.7	29	96.7	1	3.2
All Airlines	125	123	111	90.2	109	88.6	2	1.6
Sydney-Townsville								
Jetstar	22	22	21	95.5	21	95.5	0	0.0
Virgin Australia	28	28	23	82.1	26	92.9	0	0.0
All Airlines	50	50	44	88.0	47	94.0	0	0.0
Sydney-Wagga Wagga								
QantasLink	115	115	88	76.5	88	76.5	0	0.0
Regional Express	138	138	128	92.8	128	92.8	0	0.0
All Airlines	253	253	216	85.4	216	85.4	0	0.0
Townsville-Brisbane								
Jetstar	62	61	53	86.9	52	85.2	1	1.6
Qantas	150	150	139	92.7	139	92.7	0	0.0
Virgin Australia	156	151	140	92.7	131	86.8	5	3.2
All Airlines	368	362	332	91.7	322	89.0	6	1.6
Townsville-Sydney								
Jetstar	22	22	18	81.8	16	72.7	0	0.0
Virgin Australia	29	29	22	75.9	20	69.0	0	0.0
All Airlines	51	51	40	78.4	36	70.6	0	0.0
Wagga Wagga-Sydney								
QantasLink	115	115	90	78.3	91	79.1	0	0.0
Regional Express	139	139	124	89.2	129	92.8	0	0.0
All Airlines	254	254	214	84.3	220	86.6	0	0.0

Airports

On time performance is reported for all routes where the passenger load averages over 8000 passengers per month, and where two or more airlines operate in competition. The following data reports by airport against flights operated on those routes only. This month, 8 major city airports and 31 regional city airports are covered.

Airport	Arrivals			Departures		
	Sectors	On Time		Sectors	On Time	
	Flown	No.	%	Flown	No.	%
Adelaide						
Jetstar	294	233	79.3	293	238	81.2
Qantas	816	743	91.1	815	758	93.0
QantasLink	135	119	88.1	135	117	86.7
Regional Express	214	196	91.6	215	200	93.0
Tigerair	113	98	86.7	113	95	84.1
Virgin Australia	699	629	90.0	698	635	91.0
All Airlines	2 271	2 018	88.9	2 269	2 043	90.0
Relates to services to and from Brisbane, Canberra, Gold Coast, Melbourne, Perth, Port Lincoln and Sydney.						
Albury						
QantasLink	93	77	82.8	93	74	79.6
Regional Express	110	89	80.9	109	103	94.5
Virgin Australia Regional Airlines	62	52	83.9	62	51	82.3
All Airlines	265	218	82.3	264	228	86.4
Relates to services to and from Sydney only.						
Armidale						
QantasLink	130	94	72.3	129	93	72.1
Regional Express	77	65	84.4	76	65	85.5
All Airlines	207	159	76.8	205	158	77.1
Relates to services to and from Sydney only.						
Ayers Rock						
Jetstar	31	21	67.7	31	24	77.4
Virgin Australia	31	22	71.0	31	23	74.2
All Airlines	62	43	69.4	62	47	75.8
Relates to services to and from Sydney only.						
Ballina						
Jetstar	62	49	79.0	62	46	74.2
Regional Express	26	23	88.5	25	23	92.0
Virgin Australia	31	31	100.0	31	29	93.5
All Airlines	119	103	86.6	118	98	83.1
Relates to services to and from Sydney only.						
Brisbane						
Jetstar	649	540	83.2	647	546	84.4
Qantas	1 632	1 464	89.7	1 632	1 504	92.2
QantasLink	1 109	953	85.9	1 115	1 002	89.9
Tigerair	258	218	84.5	257	219	85.2
Virgin Australia	2 043	1 821	89.1	2 046	1 863	91.1
Virgin Australia Regional Airlines	434	370	85.3	435	373	85.7
All Airlines	6 125	5 366	87.6	6 132	5 507	89.8
Relates to services to and from Adelaide, Bundaberg, Cairns, Canberra, Darwin, Emerald, Gladstone, Hamilton Island, Hobart, Mackay, Melbourne, Moranbah, Mount Isa, Newcastle, Perth, Proserpine, Rockhampton, Sydney and Townsville.						

Airport	Arrivals			Departures		
	Sectors Flown	On Time		Sectors Flown	On Time	
		No.	%		No.	%
Broome						
Qantas	37	34	91.9	37	30	81.1
QantasLink	46	42	91.3	46	41	89.1
Virgin Australia	12	11	91.7	12	11	91.7
Virgin Australia Regional Airlines	28	19	67.9	33	19	57.6
All Airlines	123	106	86.2	128	101	78.9
Relates to services to and from Perth only.						
Bundaberg						
QantasLink	133	111	83.5	133	113	85.0
Virgin Australia Regional Airlines	40	34	85.0	39	33	84.6
All Airlines	173	145	83.8	172	146	84.9
Relates to services to and from Brisbane only.						
Cairns						
Jetstar	245	209	85.3	246	206	83.7
Qantas	226	202	89.4	225	203	90.2
QantasLink	5	4	80.0	5	5	100.0
Tigerair	78	63	80.8	78	62	79.5
Virgin Australia	260	238	91.5	260	233	89.6
All Airlines	814	716	88.0	814	709	87.1
Relates to services to and from Brisbane, Melbourne and Sydney.						
Canberra						
Qantas	257	236	91.8	257	244	94.9
QantasLink	690	574	83.2	686	583	85.0
Virgin Australia	298	272	91.3	297	263	88.6
Virgin Australia Regional Airlines	306	270	88.2	306	257	84.0
All Airlines	1 551	1 352	87.2	1 546	1 347	87.1
Relates to services to and from Adelaide, Brisbane, Melbourne and Sydney.						
Coffs Harbour						
QantasLink	153	122	79.7	153	117	76.5
Tigerair	14	13	92.9	14	13	92.9
Virgin Australia	60	54	90.0	60	53	88.3
All Airlines	227	189	83.3	227	183	80.6
Relates to services to and from Sydney only.						
Darwin						
Jetstar	68	54	79.4	68	51	75.0
Qantas	162	140	86.4	163	141	86.5
Tigerair	16	13	81.3	16	14	87.5
Virgin Australia	124	114	91.9	124	93	75.0
All Airlines	370	321	86.8	371	299	80.6
Relates to services to and from Brisbane, Melbourne, Perth and Sydney.						
Dubbo						
QantasLink	125	90	72.0	125	93	74.4
Regional Express	150	132	88.0	151	134	88.7
All Airlines	275	222	80.7	276	227	82.2
Relates to services to and from Sydney only.						

Airport	Arrivals			Departures		
	Sectors	On Time		Sectors	On Time	
	Flown	No.	%	Flown	No.	%
Emerald						
QantasLink	136	110	80.9	136	112	82.4
Virgin Australia Regional Airlines	79	58	73.4	79	70	88.6
All Airlines	215	168	78.1	215	182	84.7
Relates to services to and from Brisbane only.						
Geraldton						
QantasLink	52	48	92.3	52	47	90.4
Virgin Australia Regional Airlines	87	79	90.8	92	87	94.6
All Airlines	139	127	91.4	144	134	93.1
Relates to services to and from Perth only.						
Gladstone						
QantasLink	206	192	93.2	203	186	91.6
Virgin Australia	6	5	83.3	6	5	83.3
Virgin Australia Regional Airlines	145	127	87.6	145	123	84.8
All Airlines	357	324	90.8	354	314	88.7
Relates to services to and from Brisbane only.						
Gold Coast						
Jetstar	456	392	86.0	456	398	87.3
Qantas	88	88	100.0	88	83	94.3
QantasLink	5	5	100.0	5	5	100.0
Tigerair	172	142	82.6	172	135	78.5
Virgin Australia	450	412	91.6	450	403	89.6
All Airlines	1 171	1 039	88.7	1 171	1 024	87.4
Relates to services to and from Adelaide, Melbourne and Sydney.						
Hamilton Island						
Jetstar	32	25	78.1	32	25	78.1
Qantas	9	5	55.6	9	4	44.4
QantasLink	19	14	73.7	19	11	57.9
Virgin Australia	75	67	89.3	75	65	86.7
All Airlines	135	111	82.2	135	105	77.8
Relates to services to and from Brisbane, Melbourne and Sydney.						
Hobart						
Jetstar	242	212	87.6	239	208	87.0
Qantas	2	2	100.0	2	2	100.0
QantasLink	152	128	84.2	151	134	88.7
Tigerair	28	20	71.4	28	20	71.4
Virgin Australia	241	217	90.0	241	206	85.5
All Airlines	665	579	87.1	661	570	86.2
Relates to services to and from Brisbane, Melbourne and Sydney.						
Kalgoorlie						
Qantas	21	19	90.5	21	18	85.7
QantasLink	62	56	90.3	62	58	93.5
Virgin Australia	26	26	100.0	26	25	96.2
Virgin Australia Regional Airlines	30	19	63.3	30	25	83.3
All Airlines	139	120	86.3	139	126	90.6
Relates to services to and from Perth only.						

Airport	Arrivals			Departures		
	Sectors Flown	On Time		Sectors Flown	On Time	
		No.	%		No.	%
Karratha						
Qantas	104	101	97.1	103	94	91.3
QantasLink	108	103	95.4	108	105	97.2
Virgin Australia	60	51	85.0	60	52	86.7
Virgin Australia Regional Airlines	22	13	59.1	22	15	68.2
All Airlines	294	268	91.2	293	266	90.8
Relates to services to and from Perth only.						
Launceston						
Jetstar	162	147	90.7	162	132	81.5
QantasLink	109	99	90.8	108	99	91.7
Virgin Australia	125	110	88.0	126	115	91.3
Virgin Australia Regional Airlines	5	4	80.0	5	4	80.0
All Airlines	401	360	89.8	401	350	87.3
Relates to services to and from Melbourne and Sydney.						
Mackay						
Jetstar	62	55	88.7	62	53	85.5
QantasLink	107	100	93.5	106	102	96.2
Virgin Australia	155	140	90.3	155	142	91.6
All Airlines	324	295	91.0	323	297	92.0
Relates to services to and from Brisbane only.						
Melbourne						
Jetstar	1 305	1 100	84.3	1 312	1 091	83.2
Qantas	2 157	1 927	89.3	2 159	1 931	89.4
QantasLink	397	347	87.4	400	361	90.3
Regional Express	87	66	75.9	88	81	92.0
Tigerair	577	444	76.9	579	485	83.8
Virgin Australia	2 319	2 017	87.0	2 319	2 126	91.7
Virgin Australia Regional Airlines	34	24	70.6	34	25	73.5
All Airlines	6 876	5 925	86.2	6 891	6 100	88.5
Relates to services to and from Adelaide, Brisbane, Cairns, Canberra, Darwin, Gold Coast, Hamilton Island, Hobart, Launceston, Mildura, Newcastle, Perth, Sunshine Coast and Sydney.						
Mildura						
QantasLink	88	76	86.4	87	74	85.1
Regional Express	88	80	90.9	87	74	85.1
Virgin Australia	31	29	93.5	31	29	93.5
All Airlines	207	185	89.4	205	177	86.3
Relates to services to and from Melbourne only.						
Moranbah						
QantasLink	115	99	86.1	112	101	90.2
Virgin Australia Regional Airlines	72	60	83.3	72	61	84.7
All Airlines	187	159	85.0	184	162	88.0
Relates to services to and from Brisbane only.						
Mount Isa						
Qantas	37	34	91.9	37	32	86.5
Virgin Australia	21	20	95.2	21	20	95.2
All Airlines	58	54	93.1	58	52	89.7
Relates to services to and from Brisbane only.						

Airport	Arrivals			Departures		
	Sectors Flown	On Time		Sectors Flown	On Time	
		No.	%		No.	%
Newcastle						
Jetstar	187	172	92.0	186	162	87.1
QantasLink	76	61	80.3	76	61	80.3
Virgin Australia	113	101	89.4	112	97	86.6
All Airlines	376	334	88.8	374	320	85.6
Relates to services to and from Brisbane and Melbourne.						
Newman						
Qantas	81	80	98.8	81	79	97.5
QantasLink	66	65	98.5	65	64	98.5
Virgin Australia	26	24	92.3	26	24	92.3
Virgin Australia Regional Airlines	5	5	100.0	5	5	100.0
All Airlines	178	174	97.8	177	172	97.2
Relates to services to and from Perth only.						
Perth						
Jetstar	116	98	84.5	116	93	80.2
Qantas	1 059	909	85.8	1 060	962	90.8
QantasLink	379	363	95.8	380	362	95.3
Tigerair	74	59	79.7	73	61	83.6
Virgin Australia	629	539	85.7	629	571	90.8
Virgin Australia Regional Airlines	182	147	80.8	172	148	86.0
All Airlines	2 439	2 115	86.7	2 430	2 197	90.4
Relates to services to and from Adelaide, Brisbane, Broome, Darwin, Geraldton, Kalgoorlie, Karratha, Melbourne, Newman, Port Hedland and Sydney.						
Port Hedland						
Qantas	104	100	96.2	104	102	98.1
QantasLink	46	40	87.0	46	43	93.5
Virgin Australia	42	40	95.2	42	40	95.2
All Airlines	192	180	93.8	192	185	96.4
Relates to services to and from Perth only.						
Port Lincoln						
QantasLink	117	99	84.6	117	105	89.7
Regional Express	215	192	89.3	214	197	92.1
All Airlines	332	291	87.7	331	302	91.2
Relates to services to and from Adelaide only.						
Port Macquarie						
QantasLink	134	87	64.9	135	86	63.7
Virgin Australia Regional Airlines	62	52	83.9	62	56	90.3
All Airlines	196	139	70.9	197	142	72.1
Relates to services to and from Sydney only.						
Proserpine						
Jetstar	27	23	85.2	27	22	81.5
Virgin Australia	52	50	96.2	52	50	96.2
All Airlines	79	73	92.4	79	72	91.1
Relates to services to and from Brisbane only.						

<i>Airport</i>	<i>Arrivals</i>			<i>Departures</i>		
	<i>Sectors</i>	<i>On Time</i>		<i>Sectors</i>	<i>On Time</i>	
	<i>Flown</i>	<i>No.</i>	<i>%</i>	<i>Flown</i>	<i>No.</i>	<i>%</i>
Rockhampton						
QantasLink	192	165	85.9	193	159	82.4
Virgin Australia	105	94	89.5	105	91	86.7
Virgin Australia Regional Airlines	99	85	85.9	99	81	81.8
All Airlines	396	344	86.9	397	331	83.4
Relates to services to and from Brisbane only.						
Sunshine Coast						
Jetstar	150	132	88.0	148	120	81.1
Virgin Australia	59	57	96.6	59	57	96.6
All Airlines	209	189	90.4	207	177	85.5
Relates to services to and from Melbourne and Sydney.						
Sydney						
Jetstar	1 325	1 098	82.9	1 327	1 123	84.6
Qantas	2 236	2 000	89.4	2 235	2 022	90.5
QantasLink	1 282	968	75.5	1 286	1 015	78.9
Regional Express	500	432	86.4	501	443	88.4
Tigerair	521	454	87.1	521	463	88.9
Virgin Australia	2 296	2 047	89.2	2 294	2 082	90.8
Virgin Australia Regional Airlines	401	348	86.8	401	353	88.0
All Airlines	8 561	7 347	85.8	8 565	7 501	87.6
Relates to services to and from Adelaide, Albury, Armidale, Ayers Rock, Ballina, Brisbane, Cairns, Canberra, Coffs Harbour, Darwin, Dubbo, Gold Coast, Hamilton Island, Hobart, Launceston, Melbourne, Perth, Port Macquarie, Sunshine Coast, Townsville and Wagga Wagga.						
Townsville						
Jetstar	84	80	95.2	83	68	81.9
Qantas	150	139	92.7	150	139	92.7
Virgin Australia	179	157	87.7	180	151	83.9
All Airlines	413	376	91.0	413	358	86.7
Relates to services to and from Brisbane and Sydney.						
Wagga Wagga						
QantasLink	115	88	76.5	115	91	79.1
Regional Express	138	128	92.8	139	129	92.8
All Airlines	253	216	85.4	254	220	86.6
Relates to services to and from Sydney only.						

Definitions

On time arrival	A flight arrival is counted as "on time" if it arrived at the gate before 15 minutes after the scheduled arrival time shown in the carriers' schedule. Neither diverted nor cancelled flights count as on time.
On time departure	A flight departure is counted as "on time" if it departs the gate before 15 minutes after the scheduled departure time shown in the carriers' schedule.
Cancellation	A flight removed from service within 7 days of scheduled departure is regarded as a cancellation.
On time departure percentage	The percentage of on time departures is measured against the number of departures <i>operated</i> on any particular sector.
On time arrival percentage	The percentage of on time arrivals is measured against the number of arrivals <i>operated</i> on any particular sector.
Cancellation percentage	The percentage of cancellations is measured against the number of services <i>scheduled</i> on any particular sector.
