



Australian Government

Department of Infrastructure and Regional Development

Bureau of Infrastructure, Transport and Regional Economics

STATISTICAL REPORT



Aviation

Domestic airline on time performance
May 2014

© Commonwealth of Australia 2014

ISSN: 1832-0759

Ownership of intellectual property rights in this publication

Unless otherwise noted, copyright (and any other intellectual property rights, if any) in this publication is owned by the Commonwealth of Australia (referred to below as the Commonwealth).

Disclaimer

The material contained in this publication is made available on the understanding that the Commonwealth is not providing professional advice, and that users exercise their own skill and care with respect to its use, and seek independent advice if necessary.

The Commonwealth makes no representations or warranties as to the contents or accuracy of the information contained in this publication. To the extent permitted by law, the Commonwealth disclaims liability to any person or organisation in respect of anything done, or omitted to be done, in reliance upon information contained in this publication.

Creative Commons licence

With the exception of (a) the Coat of Arms; and (b) the Department of Infrastructure and Regional Development's photos and graphics, copyright in this publication is licensed under a Creative Commons Attribution 3.0 Australia Licence.

Creative Commons Attribution 3.0 Australia Licence is a standard form licence agreement that allows you to copy, communicate and adapt this publication provided that you attribute the work to the Commonwealth and abide by the other licence terms. A summary of the licence terms is available from <http://creativecommons.org/licenses/by/3.0/au/deed.en>. The full licence terms are available from <http://creativecommons.org/licenses/by/3.0/au/legalcode>.

Use of the Coat of Arms

The Department of the Prime Minister and Cabinet sets the terms under which the Coat of Arms is used. Please refer to the Department's Commonwealth Coat of Arms and Government branding web page <http://www.dpmmc.gov.au/guidelines/index.cfm#brand> and, in particular, the Guidelines on the use of the Commonwealth Coat of Arms publication.

An appropriate citation for this report is:

Bureau of Infrastructure, Transport and Regional Economics (BITRE), 2014, Domestic airline on time performance, Statistical Report, BITRE, Canberra ACT.

Contact us

This publication is available in PDF format. All other rights are reserved, including in relation to any Departmental logos or trade marks which may exist. For enquiries regarding the licence and any use of this publication, please contact:

Bureau of Infrastructure, Transport and Regional Economics (BITRE)
Department of Infrastructure and Regional Development
GPO Box 501, Canberra ACT 2601, Australia
Telephone: (international) +61 2 6274 7210
Fax: (international) +61 2 6274 6855
Email: bitre@infrastructure.gov.au
Website: www.bitre.gov.au

Inquiries

Should you require additional information about the statistics contained in this publication:

Telephone (02) 6274 7790 or Facsimile (02) 6274 7727

Electronic mail: AVSTATS@infrastructure.gov.au

Web site: <http://www.bitre.gov.au/statistics/aviation/otphome.aspx>

Foreword

The Bureau of Infrastructure, Transport and Regional Economics (BITRE) monitors the punctuality and reliability of major domestic airlines operating between Australian airports. The purpose of this is to allow for evaluation of overall industry and individual airline performance, so that consumers of air travel can make informed decisions.

The following domestic airlines currently report this information monthly to the BITRE: Jetstar, Qantas, QantasLink, Regional Express, Tigerair, Virgin Australia and Virgin Australia Regional Airlines. Data has been gathered since November 2003, although some airlines commenced reporting at a later date, including Jetstar which first reported in May 2004, MacAir in July 2005 and Tigerair in April 2008. MacAir ceased operations in February 2009 and data was not received for December 2008 onwards. Virgin Blue was rebranded as Virgin Australia in May 2011 and Tiger Airways was rebranded as Tigerair in July 2013 and time series data in Microsoft Excel spreadsheet format on the BITRE website have been revised to reflect these changes. Virgin Australia Regional Airlines commenced operations in May 2013. It was formed after the acquisition of Skywest by Virgin Australia and represents a combination of operations previously reported under Skywest and Virgin Australia – ATR/F100 Operations. Services operated by Skywest on behalf of Virgin Australia using ATR/F100 aircraft commenced in November 2011 and were shown separately as Virgin Australia – ATR/F100 Operations until April 2013.

Information presented in this report is for Australian domestic routes for which the passenger load averaged 8 000 or more passengers per month over the previous six months and where two or more airlines operated in competition on those routes. There were 63 routes that met this definition in May 2014. Over time, routes which meet these criteria change as airline networks and traffic levels vary.

Participating airlines report their overall monthly network performance where this is possible.

Total industry figures encompass all services operated by reporting airlines only. These airlines collectively carried over 95 per cent of total domestic passengers (regular public transport only) in 2013.

The method of capturing on time performance varies between airlines utilising different recording systems. Jetstar and Qantas jet aircraft use Aircraft Communication Addressing and Reporting System (ACARS) to electronically measure on time performance. Regional Express, Tigerair, Virgin Australia, Virgin Australia Regional Airlines and the Qantas non-jet fleet record on time performance manually using records from pilots, gate agents and/or ground crews.

After initial data is collected, aggregate reports are audited internally by participating airlines prior to publication.

Reports and detailed time series data in Microsoft Excel spreadsheet format are available from the BITRE website at: <http://www.bitre.gov.au/statistics/aviation/otphome.aspx>.

Contents

	Page
Industry performance	1
Individual routes	9
Airports	21
Definitions	27

Industry performance

For May 2014, on time performance over all routes operated by participating airlines (Jetstar, Qantas, QantasLink, Regional Express, Tigerair, Virgin Australia and Virgin Australia Regional Airlines) averaged 88.4 per cent for on time departures and 87.1 per cent for on time arrivals. Cancellations represented 1.2 per cent of all scheduled flights. The equivalent figures for May 2013 were 84.3 per cent for departures, 82.1 per cent for arrivals and 1.7 per cent for cancellations.

This month's figures were significantly better than the long term average performance for all routes (83.7 per cent for departures and 82.2 per cent for arrivals). The rate of cancellations was below the long term average of 1.3 per cent.

Of the major domestic airlines, Qantas achieved the highest level of on time departures for May 2014 at 90.3 per cent, followed by Virgin Australia at 88.0 per cent, Jetstar at 85.1 per cent and Tigerair at 80.0 per cent. The regional airlines were led by Regional Express at 91.2 per cent, followed by QantasLink at 89.1 per cent and Virgin Australia Regional Airlines at 88.1 per cent.

Qantas also achieved the highest on time arrivals among the major domestic airlines at 88.7 per cent, followed by Virgin Australia at 87.0 per cent, Jetstar at 86.5 per cent and Tigerair at 77.1 per cent. Regional Express was the best performing regional airline for on time arrivals at 89.7 per cent, followed by QantasLink at 86.9 per cent and Virgin Australia Regional Airlines at 85.1 per cent.

Tigerair had the highest percentage of cancellations (3.7 per cent) during the month, followed by QantasLink (1.4 per cent), Qantas (1.3 per cent), Jetstar (also 1.3 per cent), Virgin Australia Regional Airlines (1.2 per cent), Virgin Australia (1.1 per cent) and Regional Express (0.3 per cent).

Of the 63 routes which met the criteria for on time performance reporting in May 2014, the Sydney-Ayers Rock route had the highest percentage of on time departures (98.0 per cent) and the Brisbane-Proserpine route had the highest percentage of on time arrivals (97.5 per cent). The Sunshine Coast-Melbourne route had the lowest percentage of on time departures (73.2 per cent) and the Alice Springs-Melbourne route had the lowest percentage of on time arrivals (71.1 per cent).

Cancellations were highest on the Darwin-Sydney and Brisbane-Darwin routes at 4.3 per cent, followed by Darwin-Brisbane at 3.6 per cent, Canberra-Sydney at 3.3 per cent and Darwin-Melbourne, Melbourne-Darwin and Melbourne-Sydney at 3.2 per cent.

Port Lincoln Airport recorded the highest percentage of on time departures (95.0 per cent) and Proserpine Airport recorded the highest percentage of on time arrivals (97.5 per cent). Alice Springs Airport recorded the lowest percentage of on time departures (80.9 per cent) and Perth Airport recorded the lowest percentage of on time arrivals (81.9 per cent). These figures only refer to reported routes and do not cover all flights at these airports.

Table 1 On time performance for May 2014 — Total Industry

	<i>Sectors</i>		<i>Departures On Time</i>		<i>Arrivals On Time</i>		<i>Cancellations</i>	
	<i>Scheduled</i>	<i>Flown</i>	<i>No.</i>	<i>%</i>	<i>No.</i>	<i>%</i>	<i>No.</i>	<i>%</i>
Jetstar	6 329	6 248	5 320	85.1	5 405	86.5	81	1.3
Qantas	9 918	9 789	8 837	90.3	8 680	88.7	129	1.3
QantasLink	10 724	10 579	9 428	89.1	9 188	86.9	145	1.4
Regional Express	5 742	5 726	5 222	91.2	5 136	89.7	16	0.3
Tigerair	2 061	1 984	1 588	80.0	1 530	77.1	77	3.7
Virgin Australia	11 033	10 917	9 604	88.0	9 498	87.0	116	1.1
Virgin Australia Regional Airlines	2 561	2 531	2 231	88.1	2 153	85.1	30	1.2
All Airlines	48 368	47 774	42 230	88.4	41 590	87.1	594	1.2

Total airline network data (including routes not shown in this report).

Table 2 Top ten routes for on time performance for May 2014 (participating airlines only)

<i>Departures</i>		<i>Arrivals</i>	
<i>Route</i>	<i>On Time (%)</i>	<i>Route</i>	<i>On Time (%)</i>
Sydney-Ayers Rock	98.0	Brisbane-Proserpine	97.5
Melbourne-Hamilton Island	97.0	Sydney-Hamilton Island	96.2
Adelaide-Port Lincoln	96.5	Perth-Adelaide	95.7
Brisbane-Proserpine	96.3	Adelaide-Gold Coast	94.9
Sydney-Alice Springs	95.9	Perth-Sydney	94.9
Adelaide-Brisbane	95.5	Brisbane-Adelaide	94.4
Brisbane-Darwin	95.5	Sydney-Sunshine Coast	94.3
Port Lincoln-Adelaide	95.0	Newcastle-Melbourne	94.2
Gold Coast-Adelaide	94.9	Sydney-Alice Springs	93.9
Brisbane-Emerald	94.9	Darwin-Sydney	93.6

Table 3 Top ten airports for on time performance for May 2014 (participating airlines and reported routes only)

<i>Departures</i>		<i>Arrivals</i>	
<i>Airport</i>	<i>On Time (%)</i>	<i>Airport</i>	<i>On Time (%)</i>
Port Lincoln	95.0	Proserpine	97.5
Ayers Rock	93.9	Kalgoorlie	93.2
Newman	92.5	Moranbah	92.9
Proserpine	92.5	Gladstone	92.5
Kalgoorlie	92.4	Mount Isa	92.4
Dubbo	92.4	Mildura	92.2
Mildura	91.3	Port Lincoln	92.1
Bundaberg	90.8	Newman	92.0
Adelaide	89.9	Ayers Rock	91.8
Perth	89.9	Port Hedland	91.8

Total industry on time performance

Figure 1 On time performance (by month from May 2011)—Total Industry

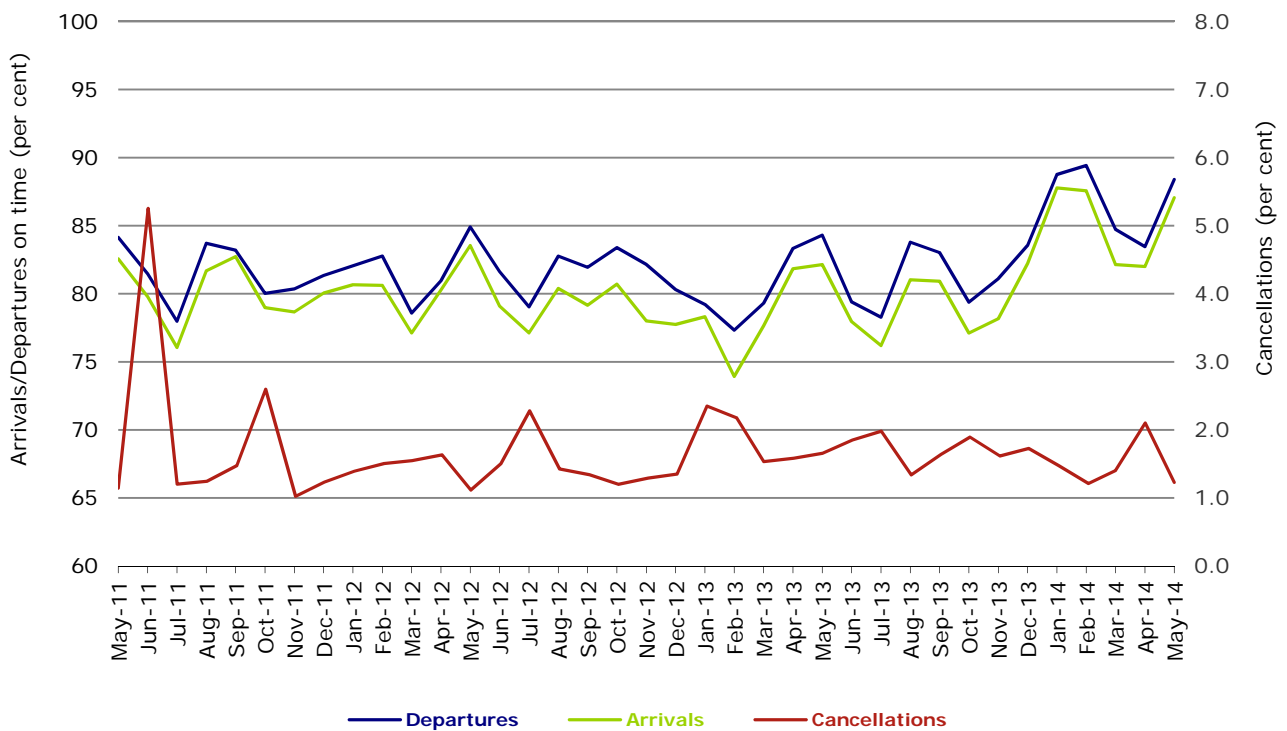


Figure 2 Departures on time (by month from May 2013)

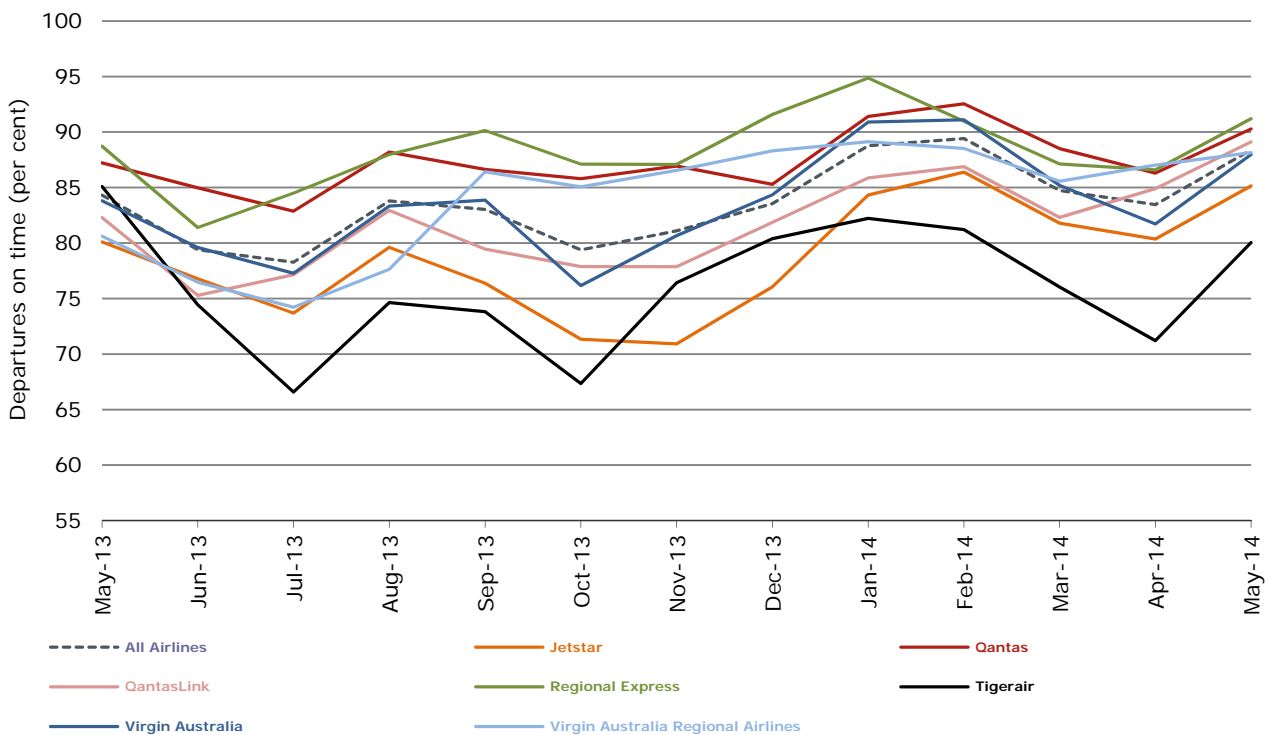


Figure 3 Arrivals on time (by month from May 2013)

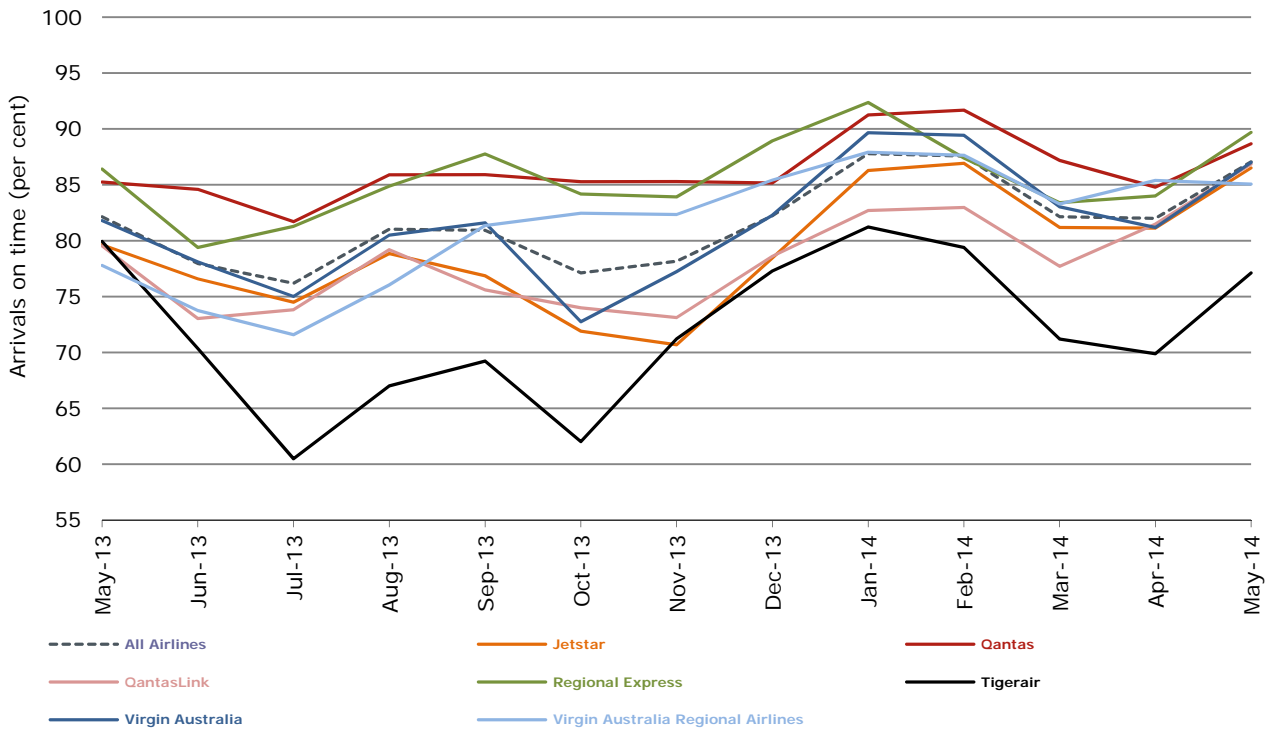
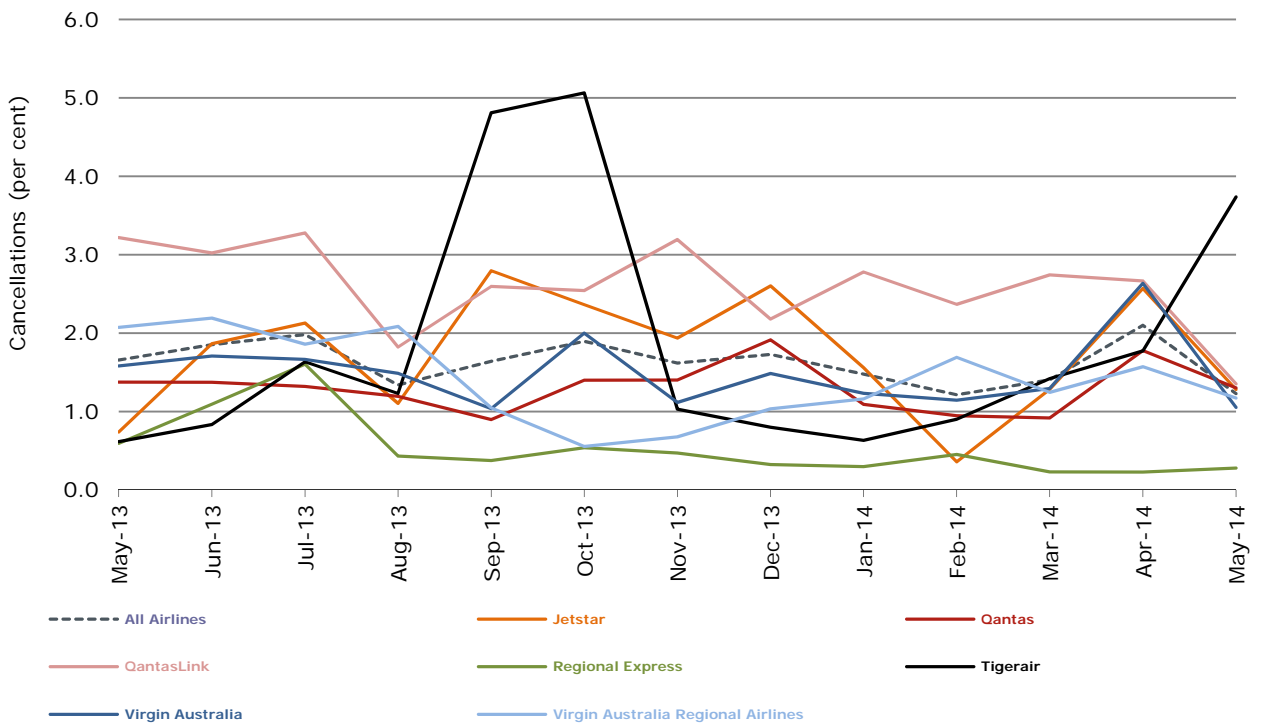


Figure 4 Cancellations (by month from May 2013)



Major domestic airlines on time performance

Figure 5 On time performance (by month from May 2011)—Jetstar

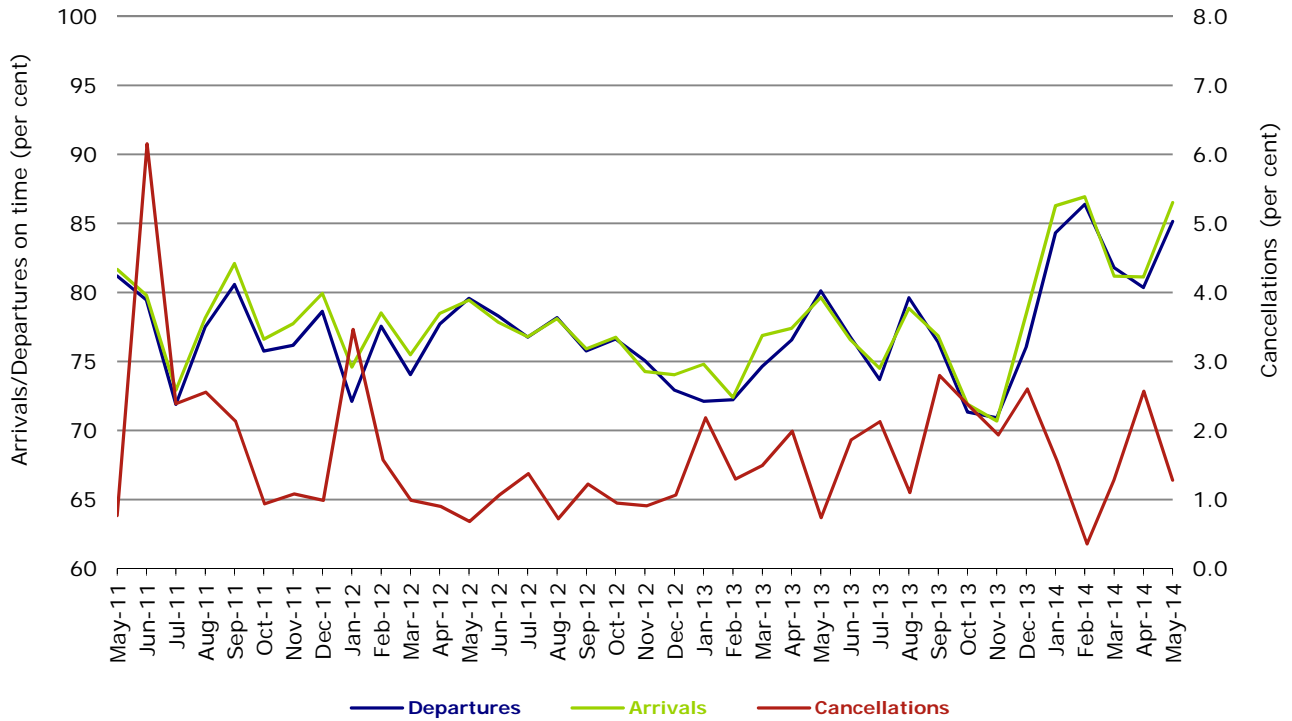


Figure 6 On time performance (by month from May 2011)—Qantas

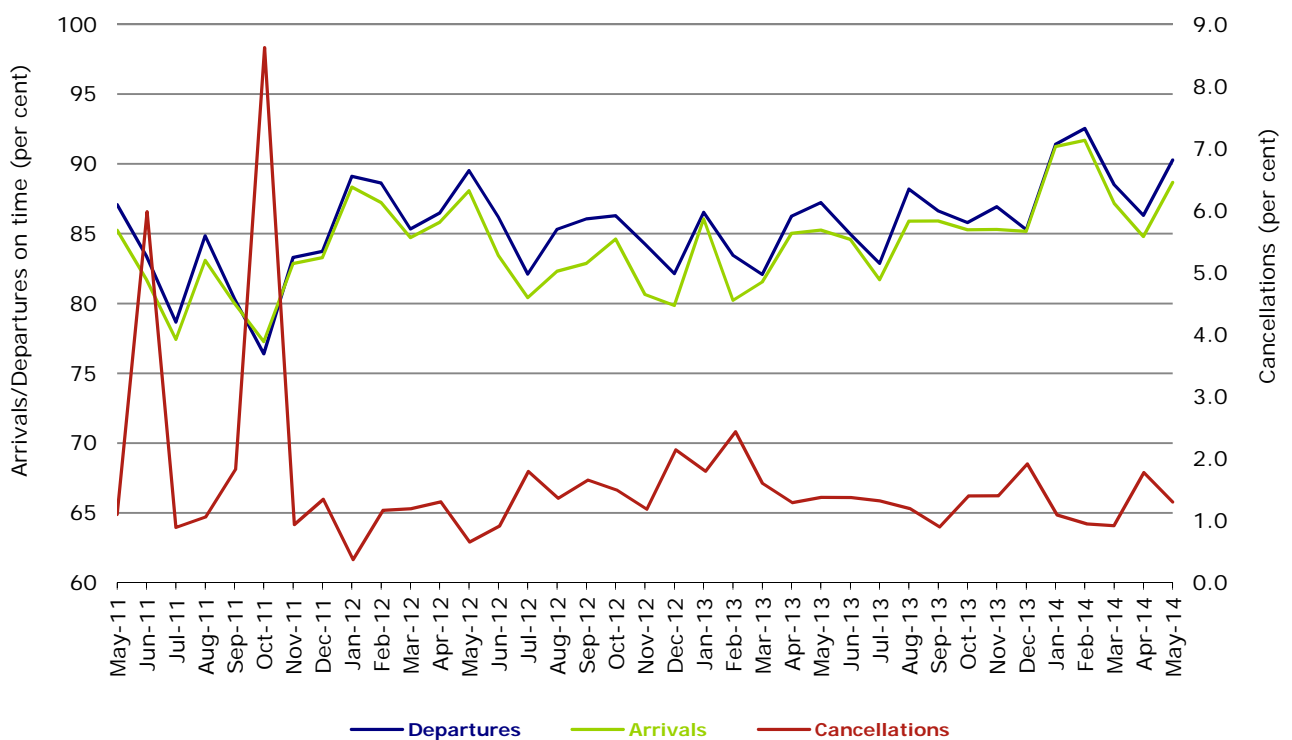
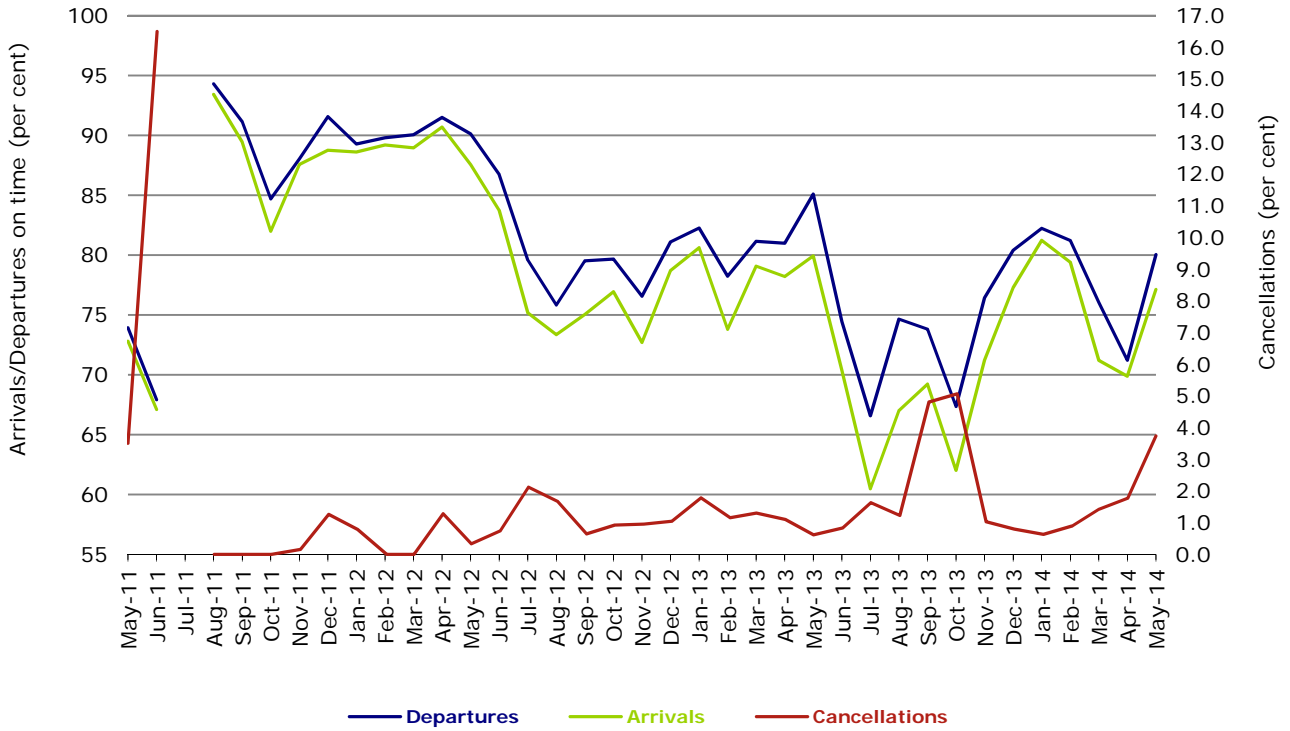
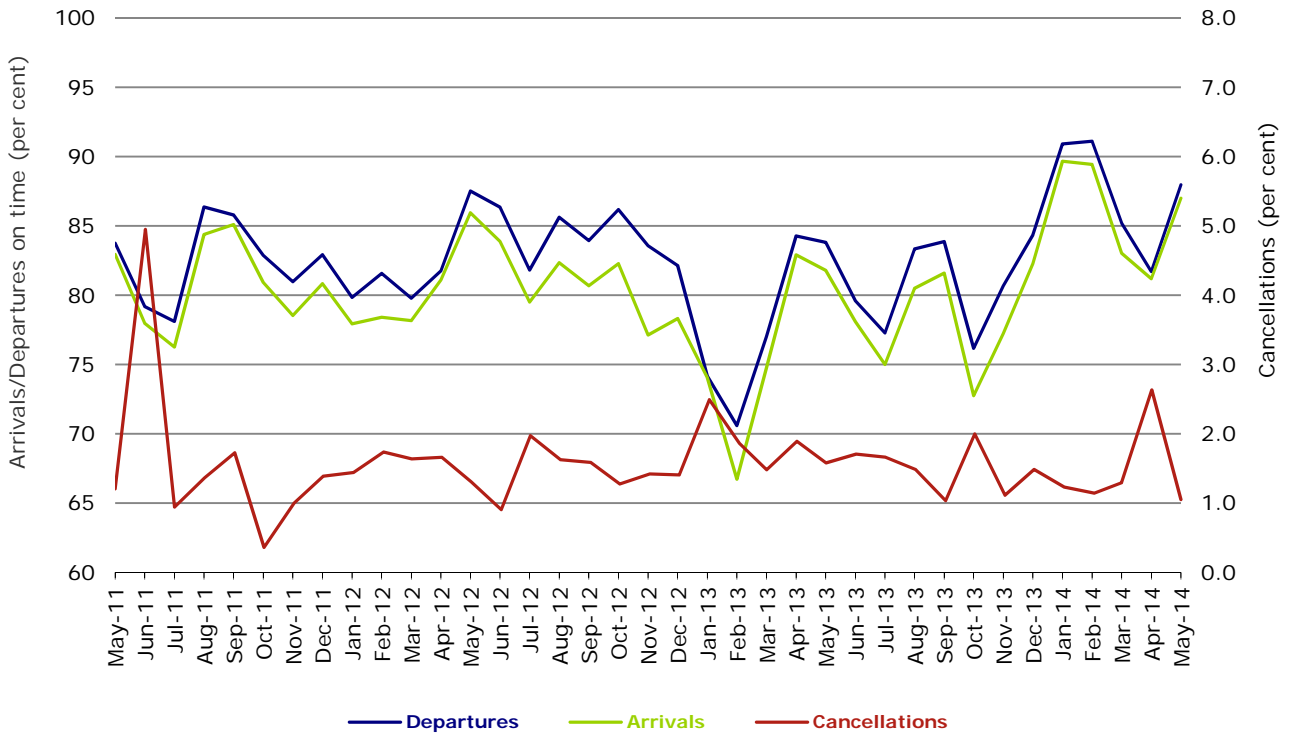


Figure 7 On time performance (by month from May 2011)—Tigerair



No data for Tigerair for July 2011 as it was grounded by CASA from 2/7/2011 to 11/8/2011.

Figure 8 On time performance (by month from May 2011)—Virgin Australia



Major regional airlines on time performance

Figure 9 On time performance (by month from May 2011)—QantasLink

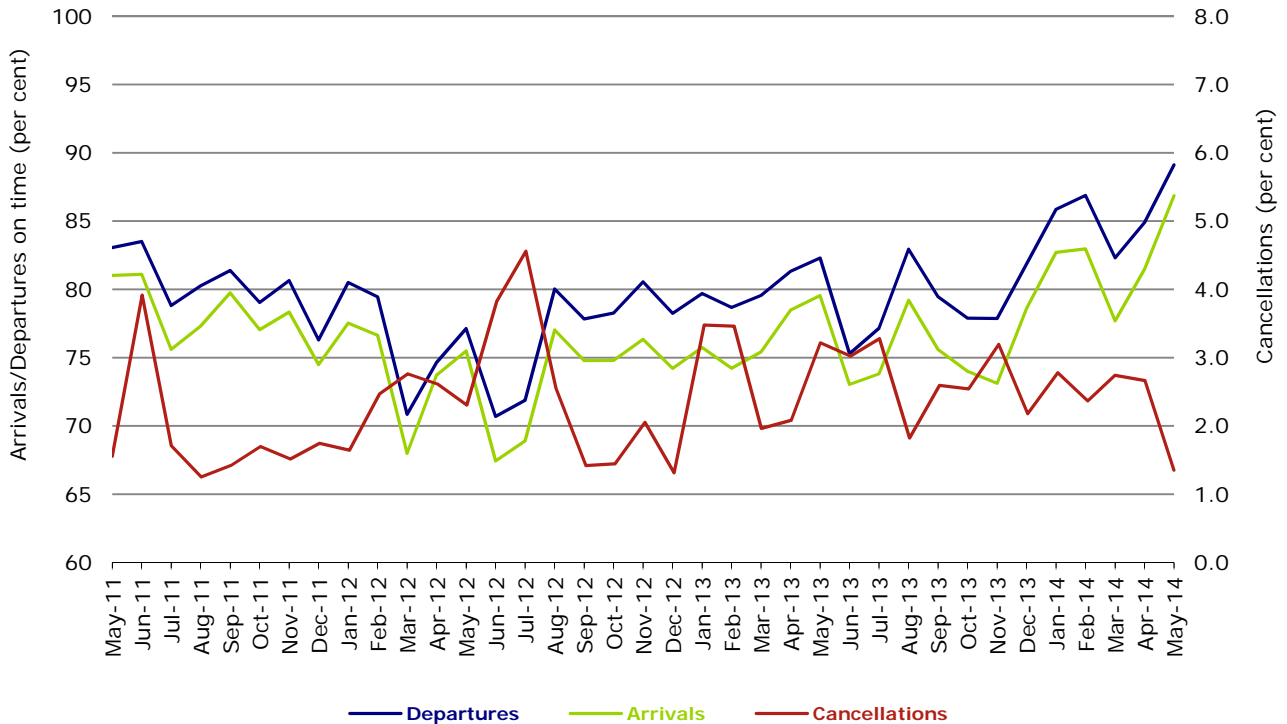


Figure 10 On time performance (by month from May 2011)—Regional Express

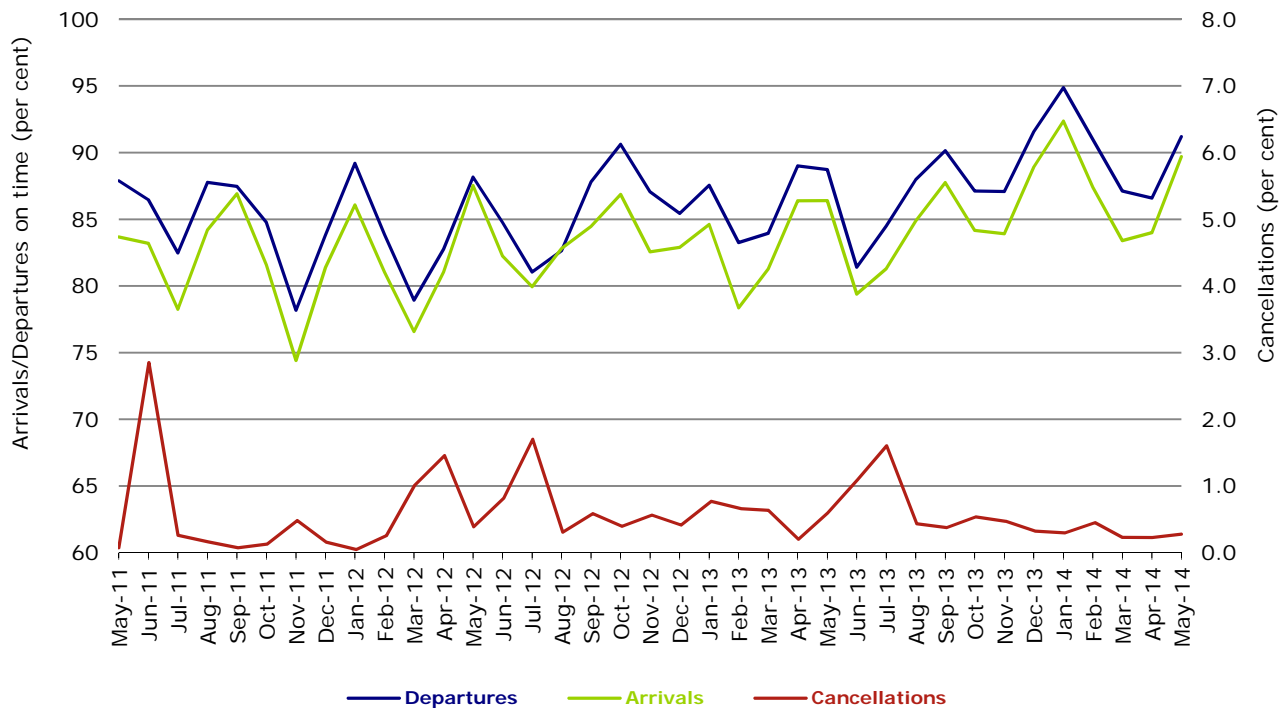
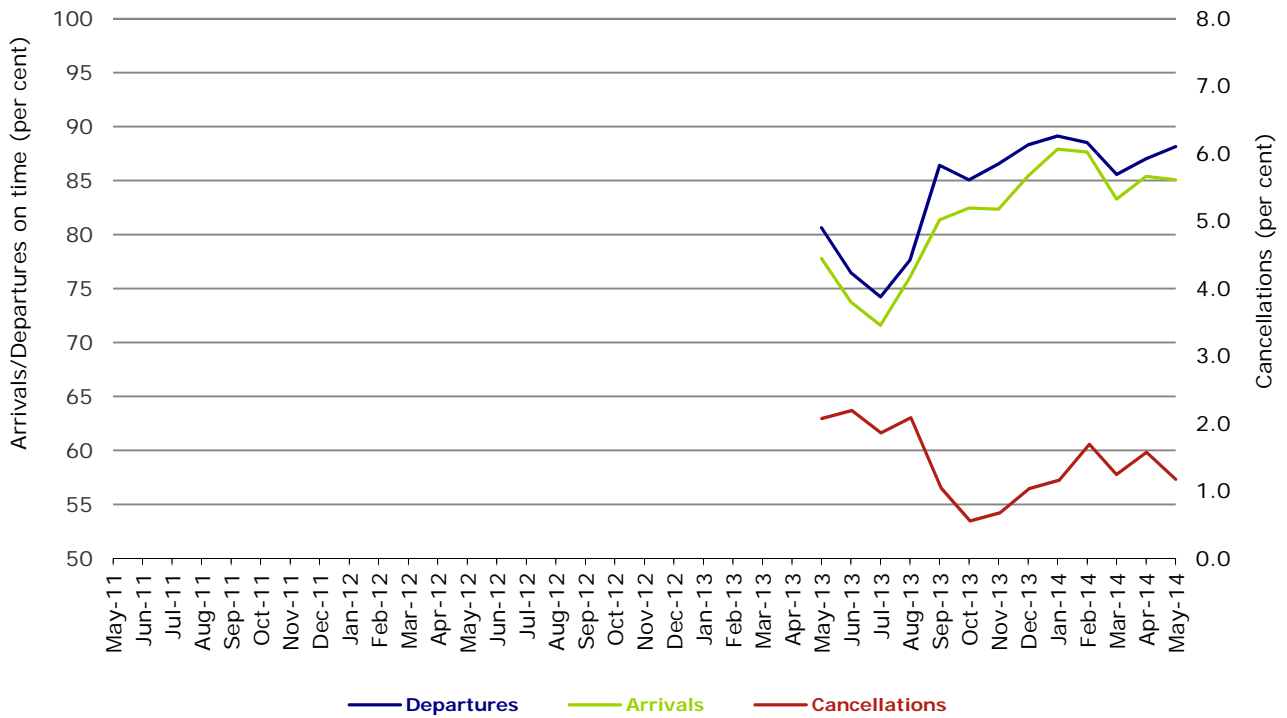


Figure 11 On time performance (by month from May 2011)
Virgin Australia Regional Airlines



Virgin Australia Regional Airlines commenced operations in May 2013. It was formed after the acquisition of Skywest by Virgin Australia and represents a combination of operations previously reported under Skywest and Virgin Australia – ATR/F100 Operations.

Individual routes

On time performance is reported for all routes where the passenger load averages over 8000 passengers per month over the previous six months, and where two or more airlines operate in competition on those routes. There are now 63 routes which meet this definition. Over time, however, routes which meet this definition may change as airline networks and traffic levels vary.

	<i>Sectors</i>		<i>Departures On Time</i>		<i>Arrivals On Time</i>		<i>Cancellations</i>	
	<i>Sched.</i>	<i>Flown</i>	<i>No.</i>	<i>%</i>	<i>No.</i>	<i>%</i>	<i>No.</i>	<i>%</i>
Adelaide-Brisbane								
Jetstar	23	23	22	95.7	20	87.0	0	0.0
Qantas	106	106	103	97.2	93	87.7	0	0.0
Tigerair	25	25	25	100.0	25	100.0	0	0.0
Virgin Australia	112	112	104	92.9	97	86.6	0	0.0
All Airlines	266	266	254	95.5	235	88.3	0	0.0
Adelaide-Canberra								
Qantas	44	44	40	90.9	42	95.5	0	0.0
QantasLink	22	21	16	76.2	18	85.7	1	4.5
Virgin Australia	27	27	24	88.9	24	88.9	0	0.0
All Airlines	93	92	80	87.0	84	91.3	1	1.1
Adelaide-Gold Coast								
Jetstar	28	28	27	96.4	27	96.4	0	0.0
Virgin Australia	31	31	28	90.3	29	93.5	0	0.0
All Airlines	59	59	55	93.2	56	94.9	0	0.0
Adelaide-Melbourne								
Jetstar	115	115	98	85.2	89	77.4	0	0.0
Qantas	280	280	246	87.9	253	90.4	0	0.0
QantasLink	17	16	15	93.8	14	87.5	1	5.9
Tigerair	66	63	55	87.3	53	84.1	3	4.5
Virgin Australia	283	277	244	88.1	233	84.1	6	2.1
All Airlines	761	751	658	87.6	642	85.5	10	1.3
Adelaide-Perth								
Jetstar	31	31	29	93.5	29	93.5	0	0.0
Qantas	111	111	96	86.5	93	83.8	0	0.0
Virgin Australia	63	63	58	92.1	60	95.2	0	0.0
All Airlines	205	205	183	89.3	182	88.8	0	0.0
Adelaide-Port Lincoln								
QantasLink	102	100	98	98.0	97	97.0	2	2.0
Regional Express	216	216	207	95.8	194	89.8	0	0.0
All Airlines	318	316	305	96.5	291	92.1	2	0.6
Adelaide-Sydney								
Jetstar	113	110	75	68.2	79	71.8	3	2.7
Qantas	242	241	221	91.7	228	94.6	1	0.4
QantasLink	22	22	16	72.7	16	72.7	0	0.0
Tigerair	30	30	27	90.0	27	90.0	0	0.0
Virgin Australia	167	166	156	94.0	161	97.0	1	0.6
All Airlines	574	569	495	87.0	511	89.8	5	0.9
Albury-Sydney								
QantasLink	115	115	88	76.5	87	75.7	0	0.0
Regional Express	113	112	106	94.6	105	93.8	1	0.9
Virgin Australia Regional Airlines	62	60	49	81.7	48	80.0	2	3.2
All Airlines	290	287	243	84.7	240	83.6	3	1.0
Alice Springs-Melbourne								
Qantas	31	31	22	71.0	22	71.0	0	0.0
Tigerair	14	14	13	92.9	10	71.4	0	0.0
All Airlines	45	45	35	77.8	32	71.1	0	0.0

	<i>Sectors</i>		<i>Departures On Time</i>		<i>Arrivals On Time</i>		<i>Cancellations</i>	
	<i>Sched.</i>	<i>Flown</i>	<i>No.</i>	<i>%</i>	<i>No.</i>	<i>%</i>	<i>No.</i>	<i>%</i>
Alice Springs-Sydney								
Qantas	31	31	29	93.5	30	96.8	0	0.0
Tigerair	18	18	12	66.7	12	66.7	0	0.0
All Airlines	49	49	41	83.7	42	85.7	0	0.0
Ayers Rock-Sydney								
Jetstar	18	18	17	94.4	13	72.2	0	0.0
Virgin Australia	31	31	29	93.5	30	96.8	0	0.0
All Airlines	49	49	46	93.9	43	87.8	0	0.0
Ballina-Sydney								
Jetstar	54	53	46	86.8	46	86.8	1	1.9
Regional Express	25	25	18	72.0	19	76.0	0	0.0
Virgin Australia	31	31	28	90.3	29	93.5	0	0.0
All Airlines	110	109	92	84.4	94	86.2	1	0.9
Brisbane-Adelaide								
Jetstar	23	23	22	95.7	23	100.0	0	0.0
Qantas	106	106	98	92.5	102	96.2	0	0.0
Tigerair	25	25	23	92.0	24	96.0	0	0.0
Virgin Australia	112	112	97	86.6	102	91.1	0	0.0
All Airlines	266	266	240	90.2	251	94.4	0	0.0
Brisbane-Bundaberg								
QantasLink	124	124	117	94.4	114	91.9	0	0.0
Virgin Australia Regional Airlines	39	39	32	82.1	31	79.5	0	0.0
All Airlines	163	163	149	91.4	145	89.0	0	0.0
Brisbane-Cairns								
Jetstar	73	73	65	89.0	61	83.6	0	0.0
Qantas	119	119	106	89.1	107	89.9	0	0.0
QantasLink	5	5	5	100.0	4	80.0	0	0.0
Tigerair	31	31	19	61.3	18	58.1	0	0.0
Virgin Australia	133	133	119	89.5	118	88.7	0	0.0
All Airlines	361	361	314	87.0	308	85.3	0	0.0
Brisbane-Canberra								
Qantas	44	44	40	90.9	40	90.9	0	0.0
QantasLink	113	113	94	83.2	98	86.7	0	0.0
Virgin Australia	92	92	81	88.0	83	90.2	0	0.0
All Airlines	249	249	215	86.3	221	88.8	0	0.0
Brisbane-Darwin								
Jetstar	31	30	29	96.7	27	90.0	1	3.2
Qantas	48	47	44	93.6	42	89.4	1	2.1
Tigerair	29	26	25	96.2	24	92.3	3	10.3
Virgin Australia	31	30	29	96.7	28	93.3	1	3.2
All Airlines	139	133	127	95.5	121	91.0	6	4.3
Brisbane-Emerald								
QantasLink	152	151	149	98.7	136	90.1	1	0.7
Virgin Australia Regional Airlines	83	83	73	88.0	67	80.7	0	0.0
All Airlines	235	234	222	94.9	203	86.8	1	0.4
Brisbane-Gladstone								
QantasLink	218	216	202	93.5	199	92.1	2	0.9
Virgin Australia Regional Airlines	144	143	133	93.0	133	93.0	1	0.7
All Airlines	362	359	335	93.3	332	92.5	3	0.8
Brisbane-Hamilton Island								
Jetstar	17	17	13	76.5	13	76.5	0	0.0
Virgin Australia	31	31	28	90.3	29	93.5	0	0.0
All Airlines	48	48	41	85.4	42	87.5	0	0.0

	<i>Sectors</i>		<i>Departures On Time</i>		<i>Arrivals On Time</i>		<i>Cancellations</i>	
	<i>Sched.</i>	<i>Flown</i>	<i>No.</i>	<i>%</i>	<i>No.</i>	<i>%</i>	<i>No.</i>	<i>%</i>
Brisbane-Hobart								
Jetstar	23	23	23	100.0	23	100.0	0	0.0
Virgin Australia	31	31	27	87.1	27	87.1	0	0.0
All Airlines	54	54	50	92.6	50	92.6	0	0.0
Brisbane-Mackay								
Jetstar	57	57	51	89.5	50	87.7	0	0.0
QantasLink	110	110	103	93.6	100	90.9	0	0.0
Virgin Australia	141	141	133	94.3	128	90.8	0	0.0
All Airlines	308	308	287	93.2	278	90.3	0	0.0
Brisbane-Melbourne								
Jetstar	121	118	98	83.1	104	88.1	3	2.5
Qantas	419	414	358	86.5	371	89.6	5	1.2
Tigerair	121	116	80	69.0	74	63.8	5	4.1
Virgin Australia	366	361	312	86.4	288	79.8	5	1.4
All Airlines	1 027	1 009	848	84.0	837	83.0	18	1.8
Brisbane-Moranbah								
QantasLink	141	137	127	92.7	126	92.0	4	2.8
Virgin Australia Regional Airlines	90	89	87	97.8	84	94.4	1	1.1
All Airlines	231	226	214	94.7	210	92.9	5	2.2
Brisbane-Mount Isa								
Qantas	57	57	54	94.7	54	94.7	0	0.0
Virgin Australia	22	22	19	86.4	19	86.4	0	0.0
All Airlines	79	79	73	92.4	73	92.4	0	0.0
Brisbane-Newcastle								
Jetstar	98	98	88	89.8	94	95.9	0	0.0
QantasLink	70	69	66	95.7	54	78.3	1	1.4
Virgin Australia	79	79	74	93.7	75	94.9	0	0.0
All Airlines	247	246	228	92.7	223	90.7	1	0.4
Brisbane-Perth								
Jetstar	18	18	16	88.9	17	94.4	0	0.0
Qantas	128	128	104	81.3	77	60.2	0	0.0
Virgin Australia	88	88	66	75.0	74	84.1	0	0.0
All Airlines	234	234	186	79.5	168	71.8	0	0.0
Brisbane-Proserpine								
Jetstar	27	27	27	100.0	27	100.0	0	0.0
Virgin Australia	53	53	50	94.3	51	96.2	0	0.0
All Airlines	80	80	77	96.3	78	97.5	0	0.0
Brisbane-Rockhampton								
QantasLink	224	224	204	91.1	203	90.6	0	0.0
Virgin Australia	102	102	90	88.2	92	90.2	0	0.0
Virgin Australia Regional Airlines	116	112	91	81.3	84	75.0	4	3.4
All Airlines	442	438	385	87.9	379	86.5	4	0.9
Brisbane-Sydney								
Jetstar	160	153	128	83.7	134	87.6	7	4.4
Qantas	609	598	536	89.6	541	90.5	11	1.8
Tigerair	104	98	64	65.3	68	69.4	6	5.8
Virgin Australia	534	525	466	88.8	468	89.1	9	1.7
All Airlines	1 407	1 374	1 194	86.9	1 211	88.1	33	2.3
Brisbane-Townsville								
Jetstar	54	54	43	79.6	45	83.3	0	0.0
Qantas	150	150	130	86.7	132	88.0	0	0.0
Virgin Australia	158	156	146	93.6	143	91.7	2	1.3
All Airlines	362	360	319	88.6	320	88.9	2	0.6

	<i>Sectors</i>		<i>Departures On Time</i>		<i>Arrivals On Time</i>		<i>Cancellations</i>	
	<i>Sched.</i>	<i>Flown</i>	<i>No.</i>	<i>%</i>	<i>No.</i>	<i>%</i>	<i>No.</i>	<i>%</i>
Broome-Perth								
Qantas	35	35	31	88.6	30	85.7	0	0.0
QantasLink	53	52	46	88.5	46	88.5	1	1.9
Virgin Australia	57	57	43	75.4	43	75.4	0	0.0
Virgin Australia Regional Airlines	18	18	14	77.8	12	66.7	0	0.0
All Airlines	163	162	134	82.7	131	80.9	1	0.6
Bundaberg-Brisbane								
QantasLink	124	124	118	95.2	110	88.7	0	0.0
Virgin Australia Regional Airlines	39	39	30	76.9	29	74.4	0	0.0
All Airlines	163	163	148	90.8	139	85.3	0	0.0
Cairns-Brisbane								
Jetstar	74	73	66	90.4	68	93.2	1	1.4
Qantas	120	120	105	87.5	104	86.7	0	0.0
QantasLink	4	4	4	100.0	4	100.0	0	0.0
Tigerair	31	31	18	58.1	18	58.1	0	0.0
Virgin Australia	133	133	108	81.2	112	84.2	0	0.0
All Airlines	362	361	301	83.4	306	84.8	1	0.3
Cairns-Melbourne								
Jetstar	79	79	71	89.9	72	91.1	0	0.0
Qantas	31	31	23	74.2	25	80.6	0	0.0
Tigerair	40	35	29	82.9	27	77.1	5	12.5
Virgin Australia	31	31	24	77.4	27	87.1	0	0.0
All Airlines	181	176	147	83.5	151	85.8	5	2.8
Cairns-Sydney								
Jetstar	91	88	78	88.6	84	95.5	3	3.3
Qantas	63	63	57	90.5	59	93.7	0	0.0
Tigerair	27	27	20	74.1	22	81.5	0	0.0
Virgin Australia	84	83	78	94.0	79	95.2	1	1.2
All Airlines	265	261	233	89.3	244	93.5	4	1.5
Canberra-Adelaide								
Qantas	44	44	43	97.7	43	97.7	0	0.0
QantasLink	22	22	16	72.7	18	81.8	0	0.0
Virgin Australia	27	27	23	85.2	25	92.6	0	0.0
All Airlines	93	93	82	88.2	86	92.5	0	0.0
Canberra-Brisbane								
Qantas	44	44	43	97.7	42	95.5	0	0.0
QantasLink	113	113	92	81.4	83	73.5	0	0.0
Virgin Australia	92	92	77	83.7	74	80.4	0	0.0
All Airlines	249	249	212	85.1	199	79.9	0	0.0
Canberra-Melbourne								
Qantas	177	177	166	93.8	165	93.2	0	0.0
QantasLink	118	113	95	84.1	97	85.8	5	4.2
Virgin Australia	179	178	151	84.8	147	82.6	1	0.6
All Airlines	474	468	412	88.0	409	87.4	6	1.3
Canberra-Sydney								
Qantas	25	25	24	96.0	25	100.0	0	0.0
QantasLink	536	512	451	88.1	456	89.1	24	4.5
Virgin Australia	53	51	42	82.4	41	80.4	2	3.8
Virgin Australia Regional Airlines	252	249	231	92.8	234	94.0	3	1.2
All Airlines	866	837	748	89.4	756	90.3	29	3.3
Coffs Harbour-Sydney								
QantasLink	155	155	129	83.2	136	87.7	0	0.0
Tigerair	13	13	11	84.6	11	84.6	0	0.0
Virgin Australia	57	56	47	83.9	48	85.7	1	1.8
All Airlines	225	224	187	83.5	195	87.1	1	0.4

	<i>Sectors</i>		<i>Departures On Time</i>		<i>Arrivals On Time</i>		<i>Cancellations</i>	
	<i>Sched.</i>	<i>Flown</i>	<i>No.</i>	<i>%</i>	<i>No.</i>	<i>%</i>	<i>No.</i>	<i>%</i>
Darwin-Brisbane								
Jetstar	31	30	29	96.7	30	100.0	1	3.2
Qantas	48	47	36	76.6	34	72.3	1	2.1
Tigerair	27	26	25	96.2	25	96.2	1	3.7
Virgin Australia	31	29	23	79.3	18	62.1	2	6.5
All Airlines	137	132	113	85.6	107	81.1	5	3.6
Darwin-Melbourne								
Jetstar	31	30	22	73.3	28	93.3	1	3.2
Qantas	31	30	21	70.0	21	70.0	1	3.2
Virgin Australia	31	30	24	80.0	23	76.7	1	3.2
All Airlines	93	90	67	74.4	72	80.0	3	3.2
Darwin-Perth								
Qantas	36	35	34	97.1	34	97.1	1	2.8
Virgin Australia	26	26	22	84.6	23	88.5	0	0.0
All Airlines	62	61	56	91.8	57	93.4	1	1.6
Darwin-Sydney								
Jetstar	26	24	20	83.3	23	95.8	2	7.7
Qantas	58	57	55	96.5	56	98.2	1	1.7
Virgin Australia	31	29	25	86.2	24	82.8	2	6.5
All Airlines	115	110	100	90.9	103	93.6	5	4.3
Dubbo-Sydney								
QantasLink	127	127	111	87.4	110	86.6	0	0.0
Regional Express	161	161	155	96.3	152	94.4	0	0.0
All Airlines	288	288	266	92.4	262	91.0	0	0.0
Emerald-Brisbane								
QantasLink	152	151	135	89.4	135	89.4	1	0.7
Virgin Australia Regional Airlines	83	83	73	88.0	76	91.6	0	0.0
All Airlines	235	234	208	88.9	211	90.2	1	0.4
Geraldton-Perth								
QantasLink	53	53	50	94.3	47	88.7	0	0.0
Virgin Australia Regional Airlines	98	97	79	81.4	76	78.4	1	1.0
All Airlines	151	150	129	86.0	123	82.0	1	0.7
Gladstone-Brisbane								
QantasLink	235	233	198	85.0	197	84.5	2	0.9
Virgin Australia Regional Airlines	145	144	131	91.0	122	84.7	1	0.7
All Airlines	380	377	329	87.3	319	84.6	3	0.8
Gold Coast-Adelaide								
Jetstar	28	28	27	96.4	27	96.4	0	0.0
Virgin Australia	31	31	29	93.5	27	87.1	0	0.0
All Airlines	59	59	56	94.9	54	91.5	0	0.0
Gold Coast-Melbourne								
Jetstar	182	182	150	82.4	157	86.3	0	0.0
Tigerair	58	56	37	66.1	39	69.6	2	3.4
Virgin Australia	177	176	154	87.5	157	89.2	1	0.6
All Airlines	417	414	341	82.4	353	85.3	3	0.7
Gold Coast-Sydney								
Jetstar	273	269	233	86.6	238	88.5	4	1.5
Qantas	88	88	83	94.3	81	92.0	0	0.0
Tigerair	61	59	52	88.1	54	91.5	2	3.3
Virgin Australia	296	292	268	91.8	266	91.1	4	1.4
All Airlines	718	708	636	89.8	639	90.3	10	1.4

	<i>Sectors</i>		<i>Departures On Time</i>		<i>Arrivals On Time</i>		<i>Cancellations</i>	
	<i>Sched.</i>	<i>Flown</i>	<i>No.</i>	<i>%</i>	<i>No.</i>	<i>%</i>	<i>No.</i>	<i>%</i>
Hamilton Island-Brisbane								
Jetstar	18	18	13	72.2	13	72.2	0	0.0
Virgin Australia	31	31	29	93.5	29	93.5	0	0.0
All Airlines	49	49	42	85.7	42	85.7	0	0.0
Hamilton Island-Melbourne								
Jetstar	18	18	17	94.4	17	94.4	0	0.0
Virgin Australia	14	13	9	69.2	12	92.3	1	7.1
All Airlines	32	31	26	83.9	29	93.5	1	3.1
Hamilton Island-Sydney								
Jetstar	22	22	17	77.3	18	81.8	0	0.0
Virgin Australia	31	31	29	93.5	30	96.8	0	0.0
All Airlines	53	53	46	86.8	48	90.6	0	0.0
Hobart-Brisbane								
Jetstar	23	23	18	78.3	16	69.6	0	0.0
Virgin Australia	31	31	23	74.2	23	74.2	0	0.0
All Airlines	54	54	41	75.9	39	72.2	0	0.0
Hobart-Melbourne								
Jetstar	154	153	123	80.4	126	82.4	1	0.6
Qantas	62	62	59	95.2	58	93.5	0	0.0
QantasLink	31	31	29	93.5	25	80.6	0	0.0
Tigerair	27	27	14	51.9	11	40.7	0	0.0
Virgin Australia	128	128	111	86.7	112	87.5	0	0.0
All Airlines	402	401	336	83.8	332	82.8	1	0.2
Hobart-Sydney								
Jetstar	50	49	39	79.6	36	73.5	1	2.0
QantasLink	31	31	24	77.4	25	80.6	0	0.0
Virgin Australia	57	57	48	84.2	48	84.2	0	0.0
All Airlines	138	137	111	81.0	109	79.6	1	0.7
Kalgoorlie-Perth								
Qantas	48	47	45	95.7	44	93.6	1	2.1
QantasLink	41	41	38	92.7	34	82.9	0	0.0
Virgin Australia	47	47	41	87.2	41	87.2	0	0.0
Virgin Australia Regional Airlines	10	10	10	100.0	9	90.0	0	0.0
All Airlines	146	145	134	92.4	128	88.3	1	0.7
Karratha-Perth								
Qantas	166	161	148	91.9	144	89.4	5	3.0
QantasLink	71	69	62	89.9	54	78.3	2	2.8
Virgin Australia	83	83	67	80.7	65	78.3	0	0.0
All Airlines	320	313	277	88.5	263	84.0	7	2.2
Launceston-Melbourne								
Jetstar	119	118	98	83.1	101	85.6	1	0.8
QantasLink	124	123	113	91.9	113	91.9	1	0.8
Virgin Australia	119	119	109	91.6	101	84.9	0	0.0
All Airlines	362	360	320	88.9	315	87.5	2	0.6
Launceston-Sydney								
Jetstar	40	40	30	75.0	35	87.5	0	0.0
Virgin Australia	31	31	26	83.9	27	87.1	0	0.0
All Airlines	71	71	56	78.9	62	87.3	0	0.0
Mackay-Brisbane								
Jetstar	57	57	44	77.2	46	80.7	0	0.0
QantasLink	111	111	97	87.4	98	88.3	0	0.0
Virgin Australia	141	141	128	90.8	128	90.8	0	0.0
All Airlines	309	309	269	87.1	272	88.0	0	0.0

	<i>Sectors</i>		<i>Departures On Time</i>		<i>Arrivals On Time</i>		<i>Cancellations</i>	
	<i>Sched.</i>	<i>Flown</i>	<i>No.</i>	<i>%</i>	<i>No.</i>	<i>%</i>	<i>No.</i>	<i>%</i>
Melbourne-Adelaide								
Jetstar	115	115	91	79.1	94	81.7	0	0.0
Qantas	280	280	260	92.9	250	89.3	0	0.0
QantasLink	17	16	16	100.0	16	100.0	1	5.9
Tigerair	65	62	57	91.9	55	88.7	3	4.6
Virgin Australia	282	278	252	90.6	256	92.1	4	1.4
All Airlines	759	751	676	90.0	671	89.3	8	1.1
Melbourne-Alice Springs								
Qantas	31	31	29	93.5	25	80.6	0	0.0
Tigerair	14	14	13	92.9	11	78.6	0	0.0
All Airlines	45	45	42	93.3	36	80.0	0	0.0
Melbourne-Brisbane								
Jetstar	120	117	91	77.8	93	79.5	3	2.5
Qantas	419	415	359	86.5	336	81.0	4	1.0
Tigerair	122	117	84	71.8	71	60.7	5	4.1
Virgin Australia	364	360	291	80.8	282	78.3	4	1.1
All Airlines	1 025	1 009	825	81.8	782	77.5	16	1.6
Melbourne-Cairns								
Jetstar	79	79	71	89.9	66	83.5	0	0.0
Qantas	31	31	27	87.1	22	71.0	0	0.0
Tigerair	40	36	29	80.6	32	88.9	4	10.0
Virgin Australia	31	31	28	90.3	20	64.5	0	0.0
All Airlines	181	177	155	87.6	140	79.1	4	2.2
Melbourne-Canberra								
Qantas	177	177	168	94.9	165	93.2	0	0.0
QantasLink	118	115	103	89.6	87	75.7	3	2.5
Virgin Australia	179	178	151	84.8	152	85.4	1	0.6
All Airlines	474	470	422	89.8	404	86.0	4	0.8
Melbourne-Darwin								
Jetstar	31	30	28	93.3	26	86.7	1	3.2
Qantas	31	30	25	83.3	25	83.3	1	3.2
Virgin Australia	31	30	28	93.3	25	83.3	1	3.2
All Airlines	93	90	81	90.0	76	84.4	3	3.2
Melbourne-Gold Coast								
Jetstar	183	183	153	83.6	145	79.2	0	0.0
Tigerair	58	56	44	78.6	39	69.6	2	3.4
Virgin Australia	177	176	149	84.7	151	85.8	1	0.6
All Airlines	418	415	346	83.4	335	80.7	3	0.7
Melbourne-Hamilton Island								
Jetstar	19	19	19	100.0	18	94.7	0	0.0
Virgin Australia	14	14	13	92.9	11	78.6	0	0.0
All Airlines	33	33	32	97.0	29	87.9	0	0.0
Melbourne-Hobart								
Jetstar	155	154	129	83.8	133	86.4	1	0.6
Qantas	62	62	58	93.5	58	93.5	0	0.0
QantasLink	31	30	24	80.0	25	83.3	1	3.2
Tigerair	27	27	20	74.1	14	51.9	0	0.0
Virgin Australia	128	128	111	86.7	105	82.0	0	0.0
All Airlines	403	401	342	85.3	335	83.5	2	0.5
Melbourne-Launceston								
Jetstar	119	118	107	90.7	107	90.7	1	0.8
QantasLink	124	123	118	95.9	110	89.4	1	0.8
Virgin Australia	119	119	101	84.9	100	84.0	0	0.0
All Airlines	362	360	326	90.6	317	88.1	2	0.6

	<i>Sectors</i>		<i>Departures On Time</i>		<i>Arrivals On Time</i>		<i>Cancellations</i>	
	<i>Sched.</i>	<i>Flown</i>	<i>No.</i>	<i>%</i>	<i>No.</i>	<i>%</i>	<i>No.</i>	<i>%</i>
Melbourne-Mildura								
QantasLink	88	87	81	93.1	78	89.7	1	1.1
Regional Express	88	88	85	96.6	84	95.5	0	0.0
Virgin Australia	31	31	28	90.3	28	90.3	0	0.0
All Airlines	207	206	194	94.2	190	92.2	1	0.5
Melbourne-Newcastle								
Jetstar	107	107	93	86.9	93	86.9	0	0.0
Virgin Australia	31	31	30	96.8	31	100.0	0	0.0
All Airlines	138	138	123	89.1	124	89.9	0	0.0
Melbourne-Perth								
Jetstar	73	72	61	84.7	63	87.5	1	1.4
Qantas	220	219	186	84.9	161	73.5	1	0.5
Tigerair	63	60	50	83.3	48	80.0	3	4.8
Virgin Australia	133	132	101	76.5	109	82.6	1	0.8
All Airlines	489	483	398	82.4	381	78.9	6	1.2
Melbourne-Sunshine Coast								
Jetstar	48	48	34	70.8	36	75.0	0	0.0
Tigerair	18	18	16	88.9	16	88.9	0	0.0
Virgin Australia	31	31	28	90.3	26	83.9	0	0.0
All Airlines	97	97	78	80.4	78	80.4	0	0.0
Melbourne-Sydney								
Jetstar	327	319	262	82.1	267	83.7	8	2.4
Qantas	929	896	812	90.6	805	89.8	33	3.6
Tigerair	234	223	183	82.1	190	85.2	11	4.7
Virgin Australia	775	755	692	91.7	682	90.3	20	2.6
All Airlines	2 265	2 193	1 949	88.9	1 944	88.6	72	3.2
Mildura-Melbourne								
QantasLink	88	87	80	92.0	77	88.5	1	1.1
Regional Express	88	88	80	90.9	78	88.6	0	0.0
Virgin Australia	31	31	28	90.3	28	90.3	0	0.0
All Airlines	207	206	188	91.3	183	88.8	1	0.5
Moranbah-Brisbane								
QantasLink	135	132	114	86.4	114	86.4	3	2.2
Virgin Australia Regional Airlines	90	89	82	92.1	80	89.9	1	1.1
All Airlines	225	221	196	88.7	194	87.8	4	1.8
Mount Isa-Brisbane								
Qantas	57	57	50	87.7	48	84.2	0	0.0
Virgin Australia	22	22	19	86.4	19	86.4	0	0.0
All Airlines	79	79	69	87.3	67	84.8	0	0.0
Newcastle-Brisbane								
Jetstar	100	100	83	83.0	84	84.0	0	0.0
QantasLink	71	70	59	84.3	56	80.0	1	1.4
Virgin Australia	79	79	71	89.9	71	89.9	0	0.0
All Airlines	250	249	213	85.5	211	84.7	1	0.4
Newcastle-Melbourne								
Jetstar	107	107	98	91.6	100	93.5	0	0.0
Virgin Australia	31	31	31	100.0	30	96.8	0	0.0
All Airlines	138	138	129	93.5	130	94.2	0	0.0
Newman-Perth								
Qantas	128	124	115	92.7	112	90.3	4	3.1
QantasLink	26	26	25	96.2	25	96.2	0	0.0
Virgin Australia	35	35	32	91.4	30	85.7	0	0.0
Virgin Australia Regional Airlines	16	16	14	87.5	12	75.0	0	0.0
All Airlines	205	201	186	92.5	179	89.1	4	2.0

	<i>Sectors</i>		<i>Departures On Time</i>		<i>Arrivals On Time</i>		<i>Cancellations</i>	
	<i>Sched.</i>	<i>Flown</i>	<i>No.</i>	<i>%</i>	<i>No.</i>	<i>%</i>	<i>No.</i>	<i>%</i>
Perth-Adelaide								
Jetstar	31	30	22	73.3	25	83.3	1	3.2
Qantas	117	117	109	93.2	115	98.3	0	0.0
Virgin Australia	63	62	61	98.4	60	96.8	1	1.6
All Airlines	211	209	192	91.9	200	95.7	2	0.9
Perth-Brisbane								
Jetstar	18	18	15	83.3	15	83.3	0	0.0
Qantas	129	129	117	90.7	108	83.7	0	0.0
Virgin Australia	88	88	81	92.0	75	85.2	0	0.0
All Airlines	235	235	213	90.6	198	84.3	0	0.0
Perth-Broome								
Qantas	35	35	34	97.1	34	97.1	0	0.0
QantasLink	53	52	45	86.5	47	90.4	1	1.9
Virgin Australia	57	57	51	89.5	49	86.0	0	0.0
Virgin Australia Regional Airlines	14	14	13	92.9	12	85.7	0	0.0
All Airlines	159	158	143	90.5	142	89.9	1	0.6
Perth-Darwin								
Qantas	36	35	35	100.0	35	100.0	1	2.8
Virgin Australia	26	26	20	76.9	19	73.1	0	0.0
All Airlines	62	61	55	90.2	54	88.5	1	1.6
Perth-Geraldton								
QantasLink	53	53	50	94.3	48	90.6	0	0.0
Virgin Australia Regional Airlines	92	91	81	89.0	75	82.4	1	1.1
All Airlines	145	144	131	91.0	123	85.4	1	0.7
Perth-Kalgoorlie								
Qantas	48	47	45	95.7	45	95.7	1	2.1
QantasLink	42	42	40	95.2	40	95.2	0	0.0
Virgin Australia	48	48	40	83.3	42	87.5	0	0.0
Virgin Australia Regional Airlines	10	10	10	100.0	10	100.0	0	0.0
All Airlines	148	147	135	91.8	137	93.2	1	0.7
Perth-Karratha								
Qantas	166	164	157	95.7	154	93.9	2	1.2
QantasLink	71	69	63	91.3	62	89.9	2	2.8
Virgin Australia	84	84	71	84.5	74	88.1	0	0.0
All Airlines	321	317	291	91.8	290	91.5	4	1.2
Perth-Melbourne								
Jetstar	74	72	57	79.2	57	79.2	2	2.7
Qantas	221	219	187	85.4	199	90.9	2	0.9
Tigerair	62	60	49	81.7	38	63.3	2	3.2
Virgin Australia	133	132	111	84.1	112	84.8	1	0.8
All Airlines	490	483	404	83.6	406	84.1	7	1.4
Perth-Newman								
Qantas	128	124	117	94.4	114	91.9	4	3.1
QantasLink	26	26	25	96.2	24	92.3	0	0.0
Virgin Australia	35	35	34	97.1	33	94.3	0	0.0
Virgin Australia Regional Airlines	16	16	14	87.5	14	87.5	0	0.0
All Airlines	205	201	190	94.5	185	92.0	4	2.0
Perth-Port Hedland								
Qantas	110	110	102	92.7	101	91.8	0	0.0
QantasLink	45	45	41	91.1	42	93.3	0	0.0
Virgin Australia	53	53	50	94.3	48	90.6	0	0.0
All Airlines	208	208	193	92.8	191	91.8	0	0.0

	<i>Sectors</i>		<i>Departures On Time</i>		<i>Arrivals On Time</i>		<i>Cancellations</i>	
	<i>Sched.</i>	<i>Flown</i>	<i>No.</i>	<i>%</i>	<i>No.</i>	<i>%</i>	<i>No.</i>	<i>%</i>
Perth-Sydney								
Jetstar	31	30	27	90.0	29	96.7	1	3.2
Qantas	198	198	178	89.9	191	96.5	0	0.0
Tigerair	27	26	22	84.6	23	88.5	1	3.7
Virgin Australia	115	115	102	88.7	107	93.0	0	0.0
All Airlines	371	369	329	89.2	350	94.9	2	0.5
Port Hedland-Perth								
Qantas	110	108	95	88.0	87	80.6	2	1.8
QantasLink	45	45	40	88.9	40	88.9	0	0.0
Virgin Australia	53	53	46	86.8	42	79.2	0	0.0
All Airlines	208	206	181	87.9	169	82.0	2	1.0
Port Lincoln-Adelaide								
QantasLink	103	101	100	99.0	98	97.0	2	1.9
Regional Express	217	217	202	93.1	195	89.9	0	0.0
All Airlines	320	318	302	95.0	293	92.1	2	0.6
Port Macquarie-Sydney								
QantasLink	138	136	114	83.8	109	80.1	2	1.4
Virgin Australia Regional Airlines	62	62	55	88.7	54	87.1	0	0.0
All Airlines	200	198	169	85.4	163	82.3	2	1.0
Proserpine-Brisbane								
Jetstar	27	27	26	96.3	26	96.3	0	0.0
Virgin Australia	53	53	48	90.6	47	88.7	0	0.0
All Airlines	80	80	74	92.5	73	91.3	0	0.0
Rockhampton-Brisbane								
QantasLink	203	203	165	81.3	159	78.3	0	0.0
Virgin Australia	102	102	86	84.3	88	86.3	0	0.0
Virgin Australia Regional Airlines	117	113	100	88.5	98	86.7	4	3.4
All Airlines	422	418	351	84.0	345	82.5	4	0.9
Sunshine Coast-Melbourne								
Jetstar	48	48	33	68.8	35	72.9	0	0.0
Tigerair	18	18	15	83.3	15	83.3	0	0.0
Virgin Australia	31	31	23	74.2	26	83.9	0	0.0
All Airlines	97	97	71	73.2	76	78.4	0	0.0
Sunshine Coast-Sydney								
Jetstar	92	90	84	93.3	85	94.4	2	2.2
Virgin Australia	31	31	24	77.4	26	83.9	0	0.0
All Airlines	123	121	108	89.3	111	91.7	2	1.6
Sydney-Adelaide								
Jetstar	113	112	85	75.9	91	81.3	1	0.9
Qantas	237	237	220	92.8	224	94.5	0	0.0
QantasLink	22	22	14	63.6	16	72.7	0	0.0
Tigerair	30	30	28	93.3	28	93.3	0	0.0
Virgin Australia	167	166	153	92.2	156	94.0	1	0.6
All Airlines	569	567	500	88.2	515	90.8	2	0.4
Sydney-Albury								
QantasLink	115	115	96	83.5	86	74.8	0	0.0
Regional Express	115	114	101	88.6	101	88.6	1	0.9
Virgin Australia Regional Airlines	62	59	52	88.1	52	88.1	3	4.8
All Airlines	292	288	249	86.5	239	83.0	4	1.4
Sydney-Alice Springs								
Qantas	31	31	31	100.0	31	100.0	0	0.0
Tigerair	18	18	16	88.9	15	83.3	0	0.0
All Airlines	49	49	47	95.9	46	93.9	0	0.0

	<i>Sectors</i>		<i>Departures On Time</i>		<i>Arrivals On Time</i>		<i>Cancellations</i>	
	<i>Sched.</i>	<i>Flown</i>	<i>No.</i>	<i>%</i>	<i>No.</i>	<i>%</i>	<i>No.</i>	<i>%</i>
Sydney-Ayers Rock								
Jetstar	18	18	17	94.4	17	94.4	0	0.0
Virgin Australia	31	31	31	100.0	28	90.3	0	0.0
All Airlines	49	49	48	98.0	45	91.8	0	0.0
Sydney-Ballina								
Jetstar	53	53	48	90.6	47	88.7	0	0.0
Regional Express	30	30	26	86.7	27	90.0	0	0.0
Virgin Australia	31	31	29	93.5	28	90.3	0	0.0
All Airlines	114	114	103	90.4	102	89.5	0	0.0
Sydney-Brisbane								
Jetstar	160	153	121	79.1	125	81.7	7	4.4
Qantas	582	571	495	86.7	454	79.5	11	1.9
Tigerair	104	98	69	70.4	65	66.3	6	5.8
Virgin Australia	533	523	461	88.1	435	83.2	10	1.9
All Airlines	1 379	1 345	1 146	85.2	1 079	80.2	34	2.5
Sydney-Cairns								
Jetstar	90	88	78	88.6	83	94.3	2	2.2
Qantas	63	63	58	92.1	59	93.7	0	0.0
Tigerair	27	27	23	85.2	20	74.1	0	0.0
Virgin Australia	84	83	76	91.6	73	88.0	1	1.2
All Airlines	264	261	235	90.0	235	90.0	3	1.1
Sydney-Canberra								
Qantas	25	25	24	96.0	23	92.0	0	0.0
QantasLink	535	515	451	87.6	452	87.8	20	3.7
Virgin Australia	55	53	43	81.1	43	81.1	2	3.6
Virgin Australia Regional Airlines	253	249	231	92.8	227	91.2	4	1.6
All Airlines	868	842	749	89.0	745	88.5	26	3.0
Sydney-Coffs Harbour								
QantasLink	155	155	136	87.7	132	85.2	0	0.0
Tigerair	13	13	11	84.6	11	84.6	0	0.0
Virgin Australia	57	56	46	82.1	47	83.9	1	1.8
All Airlines	225	224	193	86.2	190	84.8	1	0.4
Sydney-Darwin								
Jetstar	26	25	24	96.0	23	92.0	1	3.8
Qantas	57	56	52	92.9	48	85.7	1	1.8
Virgin Australia	31	30	29	96.7	24	80.0	1	3.2
All Airlines	114	111	105	94.6	95	85.6	3	2.6
Sydney-Dubbo								
QantasLink	126	126	111	88.1	102	81.0	0	0.0
Regional Express	157	157	144	91.7	150	95.5	0	0.0
All Airlines	283	283	255	90.1	252	89.0	0	0.0
Sydney-Gold Coast								
Jetstar	271	269	243	90.3	242	90.0	2	0.7
Qantas	88	88	86	97.7	86	97.7	0	0.0
Tigerair	61	60	55	91.7	53	88.3	1	1.6
Virgin Australia	296	292	255	87.3	254	87.0	4	1.4
All Airlines	716	709	639	90.1	635	89.6	7	1.0
Sydney-Hamilton Island								
Jetstar	22	22	19	86.4	21	95.5	0	0.0
Virgin Australia	31	31	29	93.5	30	96.8	0	0.0
All Airlines	53	53	48	90.6	51	96.2	0	0.0

	<i>Sectors</i>		<i>Departures On Time</i>		<i>Arrivals On Time</i>		<i>Cancellations</i>	
	<i>Sched.</i>	<i>Flown</i>	<i>No.</i>	<i>%</i>	<i>No.</i>	<i>%</i>	<i>No.</i>	<i>%</i>
Sydney-Hobart								
Jetstar	48	48	42	87.5	43	89.6	0	0.0
QantasLink	31	31	26	83.9	23	74.2	0	0.0
Virgin Australia	57	57	52	91.2	50	87.7	0	0.0
All Airlines	136	136	120	88.2	116	85.3	0	0.0
Sydney-Launceston								
Jetstar	41	41	31	75.6	33	80.5	0	0.0
Virgin Australia	31	31	27	87.1	27	87.1	0	0.0
All Airlines	72	72	58	80.6	60	83.3	0	0.0
Sydney-Melbourne								
Jetstar	327	319	267	83.7	267	83.7	8	2.4
Qantas	929	897	825	92.0	822	91.6	32	3.4
Tigerair	233	222	188	84.7	187	84.2	11	4.7
Virgin Australia	776	756	664	87.8	638	84.4	20	2.6
All Airlines	2 265	2 194	1 944	88.6	1 914	87.2	71	3.1
Sydney-Perth								
Jetstar	31	30	27	90.0	29	96.7	1	3.2
Qantas	202	202	170	84.2	143	70.8	0	0.0
Tigerair	26	25	23	92.0	20	80.0	1	3.8
Virgin Australia	115	115	96	83.5	101	87.8	0	0.0
All Airlines	374	372	316	84.9	293	78.8	2	0.5
Sydney-Port Macquarie								
QantasLink	137	135	118	87.4	112	83.0	2	1.5
Virgin Australia Regional Airlines	62	62	57	91.9	54	87.1	0	0.0
All Airlines	199	197	175	88.8	166	84.3	2	1.0
Sydney-Sunshine Coast								
Jetstar	92	92	89	96.7	89	96.7	0	0.0
Virgin Australia	31	31	26	83.9	27	87.1	0	0.0
All Airlines	123	123	115	93.5	116	94.3	0	0.0
Sydney-Townsville								
Jetstar	22	22	21	95.5	19	86.4	0	0.0
Virgin Australia	29	29	27	93.1	25	86.2	0	0.0
All Airlines	51	51	48	94.1	44	86.3	0	0.0
Sydney-Wagga Wagga								
QantasLink	114	114	101	88.6	92	80.7	0	0.0
Regional Express	139	139	132	95.0	130	93.5	0	0.0
All Airlines	253	253	233	92.1	222	87.7	0	0.0
Townsville-Brisbane								
Jetstar	54	54	35	64.8	35	64.8	0	0.0
Qantas	150	150	138	92.0	135	90.0	0	0.0
Virgin Australia	159	157	143	91.1	149	94.9	2	1.3
All Airlines	363	361	316	87.5	319	88.4	2	0.6
Townsville-Sydney								
Jetstar	23	23	18	78.3	20	87.0	0	0.0
Virgin Australia	29	29	24	82.8	26	89.7	0	0.0
All Airlines	52	52	42	80.8	46	88.5	0	0.0
Wagga Wagga-Sydney								
QantasLink	115	115	95	82.6	98	85.2	0	0.0
Regional Express	141	141	134	95.0	131	92.9	0	0.0
All Airlines	256	256	229	89.5	229	89.5	0	0.0

Airports

On time performance is reported for all routes where the passenger load averages over 8000 passengers per month, and where two or more airlines operate in competition. The following data reports by airport against flights operated on those routes only.

Airport	Departures			Arrivals		
	Sectors	On Time		Sectors	On Time	
	Flown	No.	%	Flown	No.	%
Adelaide						
Jetstar	307	251	81.8	308	260	84.4
Qantas	782	706	90.3	784	734	93.6
QantasLink	159	145	91.2	161	148	91.9
Regional Express	216	207	95.8	217	195	89.9
Tigerair	118	107	90.7	117	107	91.5
Virgin Australia	676	614	90.8	676	626	92.6
All Airlines	2 258	2 030	89.9	2 263	2 070	91.5
Relates to services to and from Brisbane, Canberra, Gold Coast, Melbourne, Perth, Port Lincoln and Sydney.						
Albury						
QantasLink	115	88	76.5	115	86	74.8
Regional Express	112	106	94.6	114	101	88.6
Virgin Australia Regional Airlines	60	49	81.7	59	52	88.1
All Airlines	287	243	84.7	288	239	83.0
Relates to services to and from Sydney only.						
Alice Springs						
Qantas	62	51	82.3	62	56	90.3
Tigerair	32	25	78.1	32	26	81.3
All Airlines	94	76	80.9	94	82	87.2
Relates to services to and from Melbourne and Sydney.						
Ayers Rock						
Jetstar	18	17	94.4	18	17	94.4
Virgin Australia	31	29	93.5	31	28	90.3
All Airlines	49	46	93.9	49	45	91.8
Relates to services to and from Sydney only.						
Ballina						
Jetstar	53	46	86.8	53	47	88.7
Regional Express	25	18	72.0	30	27	90.0
Virgin Australia	31	28	90.3	31	28	90.3
All Airlines	109	92	84.4	114	102	89.5
Relates to services to and from Sydney only.						
Brisbane						
Jetstar	691	603	87.3	693	571	82.4
Qantas	1 663	1 470	88.4	1 639	1 354	82.6
QantasLink	1 149	1 067	92.9	1 141	956	83.8
Tigerair	296	211	71.3	297	204	68.7
Virgin Australia	1 956	1 737	88.8	1 953	1 647	84.3
Virgin Australia Regional Airlines	466	416	89.3	468	405	86.5
All Airlines	6 221	5 504	88.5	6 191	5 137	83.0
Relates to services to and from Adelaide, Bundaberg, Cairns, Canberra, Darwin, Emerald, Gladstone, Hamilton Island, Hobart, Mackay, Melbourne, Moranbah, Mount Isa, Newcastle, Perth, Proserpine, Rockhampton, Sydney and Townsville.						

Airport	Departures			Arrivals		
	Sectors	On Time		Sectors	On Time	
	Flown	No.	%	Flown	No.	%
Broome						
Qantas	35	31	88.6	35	34	97.1
QantasLink	52	46	88.5	52	47	90.4
Virgin Australia	57	43	75.4	57	49	86.0
Virgin Australia Regional Airlines	18	14	77.8	14	12	85.7
All Airlines	162	134	82.7	158	142	89.9
Relates to services to and from Perth only.						
Bundaberg						
QantasLink	124	118	95.2	124	114	91.9
Virgin Australia Regional Airlines	39	30	76.9	39	31	79.5
All Airlines	163	148	90.8	163	145	89.0
Relates to services to and from Brisbane only.						
Cairns						
Jetstar	240	215	89.6	240	210	87.5
Qantas	214	185	86.4	213	188	88.3
QantasLink	4	4	100.0	5	4	80.0
Tigerair	93	67	72.0	94	70	74.5
Virgin Australia	247	210	85.0	247	211	85.4
All Airlines	798	681	85.3	799	683	85.5
Relates to services to and from Brisbane, Melbourne and Sydney.						
Canberra						
Qantas	290	276	95.2	290	270	93.1
QantasLink	760	654	86.1	764	655	85.7
Virgin Australia	348	293	84.2	350	302	86.3
Virgin Australia Regional Airlines	249	231	92.8	249	227	91.2
All Airlines	1 647	1 454	88.3	1 653	1 454	88.0
Relates to services to and from Adelaide, Brisbane, Melbourne and Sydney.						
Coffs Harbour						
QantasLink	155	129	83.2	155	132	85.2
Tigerair	13	11	84.6	13	11	84.6
Virgin Australia	56	47	83.9	56	47	83.9
All Airlines	224	187	83.5	224	190	84.8
Relates to services to and from Sydney only.						
Darwin						
Jetstar	84	71	84.5	85	76	89.4
Qantas	169	146	86.4	168	150	89.3
Tigerair	26	25	96.2	26	24	92.3
Virgin Australia	114	94	82.5	116	96	82.8
All Airlines	393	336	85.5	395	346	87.6
Relates to services to and from Brisbane, Melbourne, Perth and Sydney.						
Dubbo						
QantasLink	127	111	87.4	126	102	81.0
Regional Express	161	155	96.3	157	150	95.5
All Airlines	288	266	92.4	283	252	89.0
Relates to services to and from Sydney only.						
Emerald						
QantasLink	151	135	89.4	151	136	90.1
Virgin Australia Regional Airlines	83	73	88.0	83	67	80.7
All Airlines	234	208	88.9	234	203	86.8
Relates to services to and from Brisbane only.						

Airport	Departures			Arrivals		
	Sectors	On Time		Sectors	On Time	
	Flown	No.	%	Flown	No.	%
Geraldton						
QantasLink	53	50	94.3	53	48	90.6
Virgin Australia Regional Airlines	97	79	81.4	91	75	82.4
All Airlines	150	129	86.0	144	123	85.4
Relates to services to and from Perth only.						
Gladstone						
QantasLink	233	198	85.0	216	199	92.1
Virgin Australia Regional Airlines	144	131	91.0	143	133	93.0
All Airlines	377	329	87.3	359	332	92.5
Relates to services to and from Brisbane only.						
Gold Coast						
Jetstar	479	410	85.6	480	414	86.3
Qantas	88	83	94.3	88	86	97.7
Tigerair	115	89	77.4	116	92	79.3
Virgin Australia	499	451	90.4	499	434	87.0
All Airlines	1 181	1 033	87.5	1 183	1 026	86.7
Relates to services to and from Adelaide, Melbourne and Sydney.						
Hamilton Island						
Jetstar	58	47	81.0	58	52	89.7
Virgin Australia	75	67	89.3	76	70	92.1
All Airlines	133	114	85.7	134	122	91.0
Relates to services to and from Brisbane, Melbourne and Sydney.						
Hobart						
Jetstar	225	180	80.0	225	199	88.4
Qantas	62	59	95.2	62	58	93.5
QantasLink	62	53	85.5	61	48	78.7
Tigerair	27	14	51.9	27	14	51.9
Virgin Australia	216	182	84.3	216	182	84.3
All Airlines	592	488	82.4	591	501	84.8
Relates to services to and from Brisbane, Melbourne and Sydney.						
Kalgoorlie						
Qantas	47	45	95.7	47	45	95.7
QantasLink	41	38	92.7	42	40	95.2
Virgin Australia	47	41	87.2	48	42	87.5
Virgin Australia Regional Airlines	10	10	100.0	10	10	100.0
All Airlines	145	134	92.4	147	137	93.2
Relates to services to and from Perth only.						
Karratha						
Qantas	161	148	91.9	164	154	93.9
QantasLink	69	62	89.9	69	62	89.9
Virgin Australia	83	67	80.7	84	74	88.1
All Airlines	313	277	88.5	317	290	91.5
Relates to services to and from Perth only.						
Launceston						
Jetstar	158	128	81.0	159	140	88.1
QantasLink	123	113	91.9	123	110	89.4
Virgin Australia	150	135	90.0	150	127	84.7
All Airlines	431	376	87.2	432	377	87.3
Relates to services to and from Melbourne and Sydney.						

Airport	Departures			Arrivals		
	Sectors	On Time		Sectors	On Time	
	Flown	No.	%	Flown	No.	%
Mackay						
Jetstar	57	44	77.2	57	50	87.7
QantasLink	111	97	87.4	110	100	90.9
Virgin Australia	141	128	90.8	141	128	90.8
All Airlines	309	269	87.1	308	278	90.3
Relates to services to and from Brisbane only.						
Melbourne						
Jetstar	1 361	1 139	83.7	1 359	1 153	84.8
Qantas	2 141	1 924	89.9	2 141	1 936	90.4
QantasLink	371	342	92.2	370	326	88.1
Regional Express	88	85	96.6	88	78	88.6
Tigerair	613	496	80.9	611	454	74.3
Virgin Australia	2 294	2 003	87.3	2 294	1 934	84.3
All Airlines	6 868	5 989	87.2	6 863	5 881	85.7
Relates to services to and from Adelaide, Alice Springs, Brisbane, Cairns, Canberra, Darwin, Gold Coast, Hobart, Launceston, Mildura, Newcastle, Perth, Sunshine Coast and Sydney.						
Mildura						
QantasLink	87	80	92.0	87	78	89.7
Regional Express	88	80	90.9	88	84	95.5
Virgin Australia	31	28	90.3	31	28	90.3
All Airlines	206	188	91.3	206	190	92.2
Relates to services to and from Melbourne only.						
Moranbah						
QantasLink	132	114	86.4	137	126	92.0
Virgin Australia Regional Airlines	89	82	92.1	89	84	94.4
All Airlines	221	196	88.7	226	210	92.9
Relates to services to and from Brisbane only.						
Mount Isa						
Qantas	57	50	87.7	57	54	94.7
Virgin Australia	22	19	86.4	22	19	86.4
All Airlines	79	69	87.3	79	73	92.4
Relates to services to and from Brisbane only.						
Newcastle						
Jetstar	207	181	87.4	205	187	91.2
QantasLink	70	59	84.3	69	54	78.3
Virgin Australia	110	102	92.7	110	106	96.4
All Airlines	387	342	88.4	384	347	90.4
Relates to services to and from Brisbane and Melbourne.						
Newman						
Qantas	124	115	92.7	124	114	91.9
QantasLink	26	25	96.2	26	24	92.3
Virgin Australia	35	32	91.4	35	33	94.3
Virgin Australia Regional Airlines	16	14	87.5	16	14	87.5
All Airlines	201	186	92.5	201	185	92.0
Relates to services to and from Perth only.						

<i>Airport</i>	<i>Departures</i>			<i>Arrivals</i>		
	<i>Sectors</i>	<i>On Time</i>		<i>Sectors</i>	<i>On Time</i>	
	<i>Flown</i>	<i>No.</i>	<i>%</i>	<i>Flown</i>	<i>No.</i>	<i>%</i>
Perth						
Jetstar	150	121	80.7	151	138	91.4
Qantas	1 178	1 081	91.8	1 170	925	79.1
QantasLink	287	264	92.0	286	246	86.0
Tigerair	86	71	82.6	85	68	80.0
Virgin Australia	700	621	88.7	699	588	84.1
Virgin Australia Regional Airlines	131	118	90.1	141	109	77.3
All Airlines	2 532	2 276	89.9	2 532	2 074	81.9
Relates to services to and from Adelaide, Brisbane, Broome, Darwin, Geraldton, Kalgoorlie, Karratha, Melbourne, Newman, Port Hedland and Sydney.						
Port Hedland						
Qantas	108	95	88.0	110	101	91.8
QantasLink	45	40	88.9	45	42	93.3
Virgin Australia	53	46	86.8	53	48	90.6
All Airlines	206	181	87.9	208	191	91.8
Relates to services to and from Perth only.						
Port Lincoln						
QantasLink	101	100	99.0	100	97	97.0
Regional Express	217	202	93.1	216	194	89.8
All Airlines	318	302	95.0	316	291	92.1
Relates to services to and from Adelaide only.						
Port Macquarie						
QantasLink	136	114	83.8	135	112	83.0
Virgin Australia Regional Airlines	62	55	88.7	62	54	87.1
All Airlines	198	169	85.4	197	166	84.3
Relates to services to and from Sydney only.						
Proserpine						
Jetstar	27	26	96.3	27	27	100.0
Virgin Australia	53	48	90.6	53	51	96.2
All Airlines	80	74	92.5	80	78	97.5
Relates to services to and from Brisbane only.						
Rockhampton						
QantasLink	203	165	81.3	224	203	90.6
Virgin Australia	102	86	84.3	102	92	90.2
Virgin Australia Regional Airlines	113	100	88.5	112	84	75.0
All Airlines	418	351	84.0	438	379	86.5
Relates to services to and from Brisbane only.						
Sunshine Coast						
Jetstar	138	117	84.8	140	125	89.3
Tigerair	18	15	83.3	18	16	88.9
Virgin Australia	62	47	75.8	62	53	85.5
All Airlines	218	179	82.1	220	194	88.2
Relates to services to and from Melbourne and Sydney.						

<i>Airport</i>	<i>Departures</i>			<i>Arrivals</i>		
	<i>Sectors</i>	<i>On Time</i>		<i>Sectors</i>	<i>On Time</i>	
	<i>Flown</i>	<i>No.</i>	<i>%</i>	<i>Flown</i>	<i>No.</i>	<i>%</i>
Sydney						
Jetstar	1 292	1 112	86.1	1 288	1 107	85.9
Qantas	2 170	1 961	90.4	2 197	2 016	91.8
QantasLink	1 213	1 053	86.8	1 213	1 037	85.5
Regional Express	440	403	91.6	439	407	92.7
Tigerair	493	413	83.8	494	407	82.4
Virgin Australia	2 315	2 044	88.3	2 313	2 092	90.4
Virgin Australia Regional Airlines	370	340	91.9	371	336	90.6
All Airlines	8 293	7 326	88.3	8 315	7 402	89.0

Relates to services to and from Adelaide, Albury, Alice Springs, Ayers Rock, Ballina, Brisbane, Cairns, Canberra, Coffs Harbour, Darwin, Dubbo, Gold Coast, Hamilton Island, Hobart, Launceston, Melbourne, Perth, Port Macquarie, Sunshine Coast, Townsville and Wagga Wagga.

Townsville

Jetstar	77	53	68.8	76	64	84.2
Qantas	150	138	92.0	150	132	88.0
Virgin Australia	186	167	89.8	185	168	90.8
All Airlines	413	358	86.7	411	364	88.6

Relates to services to and from Brisbane and Sydney.

Wagga Wagga

QantasLink	115	95	82.6	114	92	80.7
Regional Express	141	134	95.0	139	130	93.5
All Airlines	256	229	89.5	253	222	87.7

Relates to services to and from Sydney only.

Definitions

On time departure A flight departure is counted as "on time" if it departs the gate before 15 minutes after the scheduled departure time shown in the carriers' schedule.

On time arrival A flight arrival is counted as "on time" if it arrived at the gate before 15 minutes after the scheduled arrival time shown in the carriers' schedule.
Neither diverted nor cancelled flights count as on time.

Cancellation A flight removed from service within 7 days of scheduled departure is regarded as a cancellation.

On time departure percentage The percentage of on time departures is measured against the number of departures *operated* on any particular sector.

On time arrival percentage The percentage of on time arrivals is measured against the number of arrivals *operated* on any particular sector.

Cancellation percentage The percentage of cancellations is measured against the number of services *scheduled* on any particular sector.
