



**Australian Government**

**Department of Infrastructure and Transport**

Bureau of Infrastructure, Transport and Regional Economics

STATISTICAL REPORT



# Aviation

Domestic airline on time performance  
May 2013

© Commonwealth of Australia 2013

ISSN: 1832-0759

### **Ownership of intellectual property rights in this publication**

Unless otherwise noted, copyright (and any other intellectual property rights, if any) in this publication is owned by the Commonwealth of Australia (referred to below as the Commonwealth).

### **Disclaimer**

The material contained in this publication is made available on the understanding that the Commonwealth is not providing professional advice, and that users exercise their own skill and care with respect to its use, and seek independent advice if necessary.

The Commonwealth makes no representations or warranties as to the contents or accuracy of the information contained in this publication. To the extent permitted by law, the Commonwealth disclaims liability to any person or organisation in respect of anything done, or omitted to be done, in reliance upon information contained in this publication.

### **Creative Commons licence**

With the exception of (a) the Coat of Arms; and (b) the Department of Infrastructure's photos and graphics, copyright in this publication is licensed under a Creative Commons Attribution 3.0 Australia Licence.

Creative Commons Attribution 3.0 Australia Licence is a standard form licence agreement that allows you to copy, communicate and adapt this publication provided that you attribute the work to the Commonwealth and abide by the other licence terms. A summary of the licence terms is available from <http://creativecommons.org/licenses/by/3.0/au/deed.en>. The full licence terms are available from <http://creativecommons.org/licenses/by/3.0/au/legalcode>.

### **Use of the Coat of Arms**

The Department of the Prime Minister and Cabinet sets the terms under which the Coat of Arms is used. Please refer to the Department's Commonwealth Coat of Arms and Government branding web page <http://www.dpmmc.gov.au/guidelines/index.cfm#brand> and, in particular, the Guidelines on the use of the Commonwealth Coat of Arms publication.

An appropriate citation for this report is:

Bureau of Infrastructure, Transport and Regional Economics (BITRE), 2013, Domestic airline on time performance, Statistical Report, BITRE, Canberra ACT.

### **Contact us**

This publication is available in PDF format. All other rights are reserved, including in relation to any Departmental logos or trade marks which may exist. For enquiries regarding the licence and any use of this publication, please contact:

Bureau of Infrastructure, Transport and Regional Economics (BITRE)  
Department of Infrastructure and Transport  
GPO Box 501, Canberra ACT 2601, Australia  
Telephone: (international) +61 2 6274 7210  
Fax: (international) +61 2 6274 6855  
Email: [bitre@infrastructure.gov.au](mailto:bitre@infrastructure.gov.au)  
Website: [www.bitre.gov.au](http://www.bitre.gov.au)

### **Inquiries**

Should you require additional information about the statistics contained in this publication:

Telephone (02) 6274 7790 or Facsimile (02) 6274 7727

Electronic mail: [AVSTATS@infrastructure.gov.au](mailto:AVSTATS@infrastructure.gov.au)

Web site: <http://www.bitre.gov.au/statistics/aviation/otphome.aspx>

# Foreword

The Bureau of Infrastructure, Transport and Regional Economics (BITRE) monitors the punctuality and reliability of major domestic airlines operating between Australian airports. The purpose of this is to allow for evaluation of overall industry and individual airline performance, so that consumers of air travel can make informed decisions.

The following domestic airlines currently report this information monthly to the BITRE: Jetstar, Qantas, QantasLink, Regional Express, Tiger Airways, Virgin Australia and Virgin Australia Regional Airlines. Data has been gathered since November 2003, although some airlines commenced reporting at a later date, including Jetstar which first reported in May 2004, MacAir in July 2005 and Tiger Airways in April 2008. MacAir ceased operations in February 2009 and data was not received for December 2008 onwards. Virgin Blue was rebranded as Virgin Australia in May 2011 and time series data in Microsoft Excel spreadsheet format on the BITRE website has been revised to reflect this. Virgin Australia Regional Airlines commenced operations in May 2013. It was formed after the acquisition of Skywest by Virgin Australia and represents a combination of operations previously reported under Skywest and Virgin Australia – ATR/F100 Operations. Services operated by Skywest on behalf of Virgin Australia using ATR/F100 aircraft commenced in November 2011 and were shown separately as Virgin Australia – ATR/F100 Operations until April 2013.

Information presented in this report is for Australian domestic routes for which the passenger load averaged 8 000 or more passengers per month over the previous six months and where two or more airlines operated in competition on those routes. There were 58 routes that met this definition in May 2013. Over time, routes which meet these criteria change as airline networks and traffic levels vary.

Participating airlines report their overall monthly network performance where this is possible.

Total industry figures encompass all services operated by reporting airlines only. These airlines collectively carried over 95 per cent of total domestic passengers (regular public transport only) in 2012.

The method of capturing on time performance varies between airlines utilising different recording systems. Jetstar and Qantas jet aircraft use Aircraft Communication Addressing and Reporting System (ACARS) to electronically measure on time performance. Regional Express, Tiger Airways, Virgin Australia, Virgin Australia Regional Airlines and the Qantas non-jet fleet record on time performance manually using records from pilots, gate agents and/or ground crews.

After initial data is collected, aggregate reports are audited internally by participating airlines prior to publication.

Reports and detailed time series data in Microsoft Excel spreadsheet format are available from the BITRE website at: <http://www.bitre.gov.au/statistics/aviation/otphome.aspx>.



# Contents

	Page
Industry performance .....	1
Individual routes .....	9
Airports .....	21
Definitions .....	27



## Industry performance

For May 2013, on time performance over all routes operated by participating airlines (Jetstar, Qantas, QantasLink, Regional Express, Tiger Airways, Virgin Australia and Virgin Australia Regional Airlines) averaged 84.3 per cent for on time departures, and 82.1 per cent for on time arrivals. Cancellations represented 1.8 per cent of all scheduled flights. The equivalent figures for May 2012 were 84.9 per cent for departures, 83.5 per cent for arrivals and 1.1 per cent for cancellations.

This month's on time departures figure was above the long term average performance for all routes since the collection began of 83.7 per cent. This month's on time arrivals figure was slightly below the long term average of 82.3 per cent. The rate of cancellations was worse than the long term average of 1.3 per cent.

Of the major domestic airlines, Qantas achieved the highest level of on time departures for May 2013 at 87.2 per cent, followed by Tiger Airways at 85.1 per cent, Virgin Australia at 83.8 per cent and Jetstar at 80.1 per cent. The regional airlines were led by Regional Express at 88.7 per cent, followed by QantasLink at 82.3 per cent and Virgin Australia Regional Airlines at 80.6 per cent.

Qantas also achieved the highest on time arrivals among the major domestic airlines at 85.3 per cent, followed by Virgin Australia at 81.8 per cent, Tiger Airways at 79.9 per cent and Jetstar at 79.6 per cent. Regional Express was the best performing regional airline for on time arrivals at 86.4 per cent, followed by QantasLink at 79.5 per cent and Virgin Australia Regional Airlines at 77.8 per cent.

QantasLink had the highest percentage of cancellations (3.2 per cent) during the month, followed by Virgin Australia and Virgin Australia Regional Airlines (both at 2.1 per cent), Qantas (1.4 per cent), Jetstar (0.7 per cent) and Tiger Airways and Regional Express (both at 0.6 per cent).

Of the 58 routes which met the criteria for on time performance reporting in May 2013, the Adelaide-Gold Coast route had the highest percentage of on time departures (93.5 per cent) and the highest percentage of on time arrivals (98.4 per cent). The Launceston-Sydney route had the lowest percentage of on time departures (65.3 per cent) and the Newcastle-Brisbane route had the lowest percentage of on time arrivals (63.5 per cent).

Cancellations were highest on the Gladstone-Brisbane route at 8.6 per cent, followed by Brisbane-Gladstone at 7.4 per cent, Canberra-Sydney at 6.0 per cent, Sydney-Canberra at 5.6 per cent and Emerald-Brisbane at 5.1 per cent.

Port Lincoln Airport recorded the highest percentage of on time departures (92.3 per cent) and the highest percentage of on time arrivals (91.3 per cent). Port Macquarie Airport recorded the lowest percentage of on time departures (70.4 per cent) and the lowest percentage of on time arrivals (70.7 per cent). These figures only refer to reported routes and do not cover all flights at these airports.

Table 1 On time performance for May 2013 — Total Industry

	<i>Sectors</i>		<i>Departures On Time</i>		<i>Arrivals On Time</i>		<i>Cancellations</i>	
	<i>Scheduled</i>	<i>Flown</i>	<i>No.</i>	<i>%</i>	<i>No.</i>	<i>%</i>	<i>No.</i>	<i>%</i>
Jetstar	5 561	5 520	4 422	80.1	4 396	79.6	41	0.7
Qantas	10 837	10 688	9 323	87.2	9 112	85.3	149	1.4
QantasLink	10 040	9 717	7 997	82.3	7 729	79.5	323	3.2
Regional Express	5 897	5 862	5 201	88.7	5 065	86.4	35	0.6
Tiger Airways	1 464	1 455	1 238	85.1	1 163	79.9	9	0.6
Virgin Australia	11 332	11 089	9 294	83.8	9 070	81.8	243	2.1
Virgin Australia Regional Airlines	2 799	2 741	2 210	80.6	2 132	77.8	58	2.1
All Airlines	47 930	47 072	39 685	84.3	38 667	82.1	858	1.8

Total airline network data (including routes not shown in this report).

Virgin Australia Regional Airlines commenced operations in May 2013. It was formed after the acquisition of Skywest by Virgin Australia and represents a combination of operations previously reported under Skywest and Virgin Australia – ATR/F100 Operations.

Table 2 Top ten routes for on time performance for May 2013 (participating airlines only)

<i>Departures</i>		<i>Arrivals</i>	
<i>Route</i>	<i>On Time (%)</i>	<i>Route</i>	<i>On Time</i>
Adelaide-Gold Coast	93.5	Adelaide-Gold Coast	98.4
Gold Coast-Adelaide	93.4	Perth-Adelaide	96.7
Adelaide-Port Lincoln	92.6	Darwin-Perth	96.6
Perth-Kalgoorlie	92.6	Adelaide-Canberra	94.9
Port Lincoln-Adelaide	92.3	Perth-Darwin	93.1
Perth-Port Hedland	91.8	Melbourne-Cairns	92.9
Adelaide-Canberra	91.8	Port Lincoln-Adelaide	91.7
Perth-Darwin	91.4	Adelaide-Port Lincoln	91.3
Melbourne-Cairns	91.0	Canberra-Adelaide	91.2
Brisbane-Emerald	90.7	Brisbane-Adelaide	90.2

Table 3 Top ten airports for on time performance for May 2013 (participating airlines and reported routes only)

<i>Departures</i>		<i>Arrivals</i>	
<i>Airport</i>	<i>On Time (%)</i>	<i>Airport</i>	<i>On Time</i>
Port Lincoln	92.3	Port Lincoln	91.3
Kalgoorlie	90.1	Mount Isa	90.1
Adelaide	89.0	Adelaide	90.0
Ballina	88.9	Kalgoorlie	89.9
Perth	88.4	Ballina	87.9
Proserpine	88.2	Port Hedland	87.6
Wagga Wagga	86.8	Newman	86.7
Cairns	86.5	Karratha	86.6
Mount Isa	86.4	Cairns	86.5
Mildura	86.2	Townsville	86.4



## Total industry on time performance

Figure 1 On time performance (by month from May 2010)—Total Industry

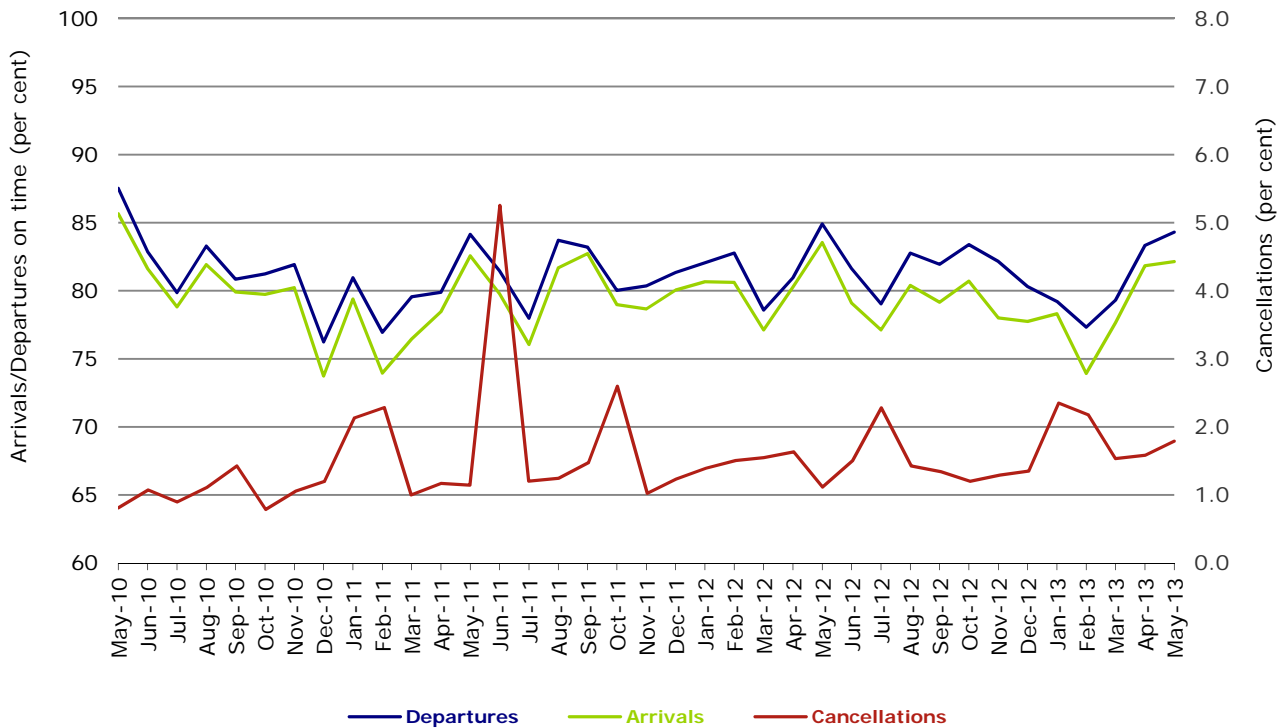
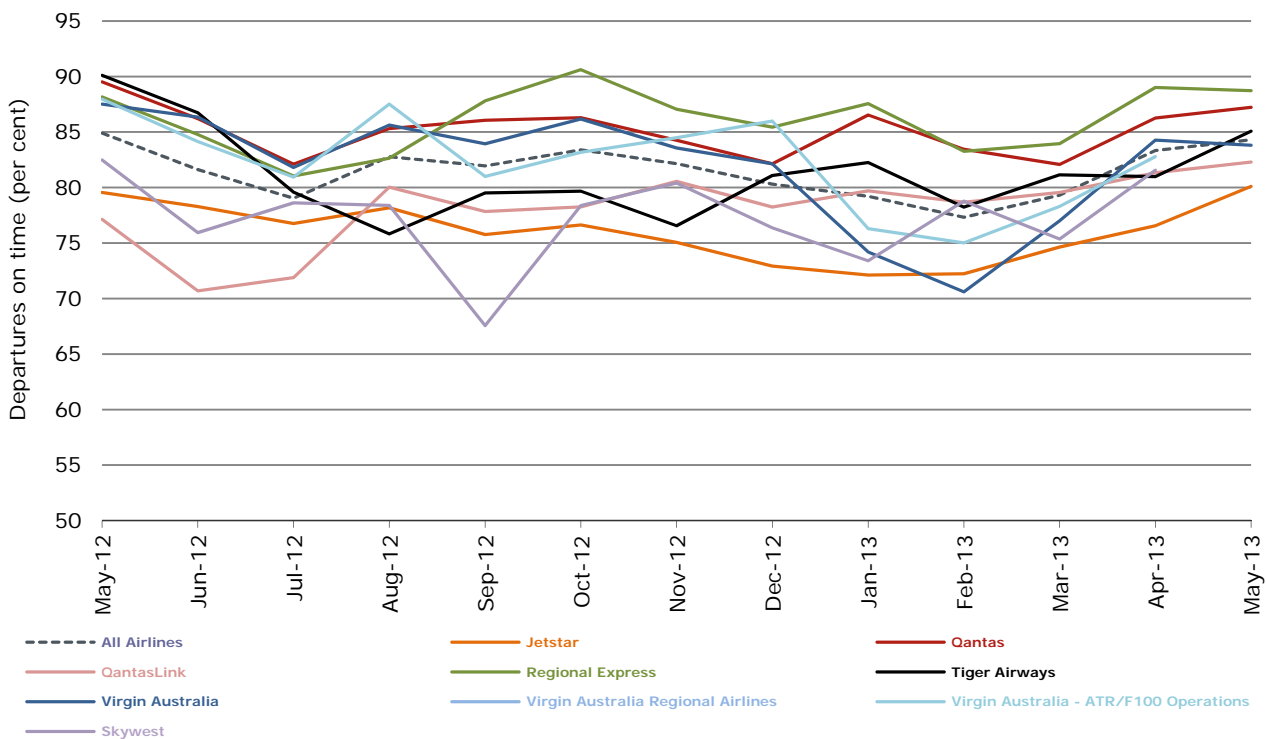
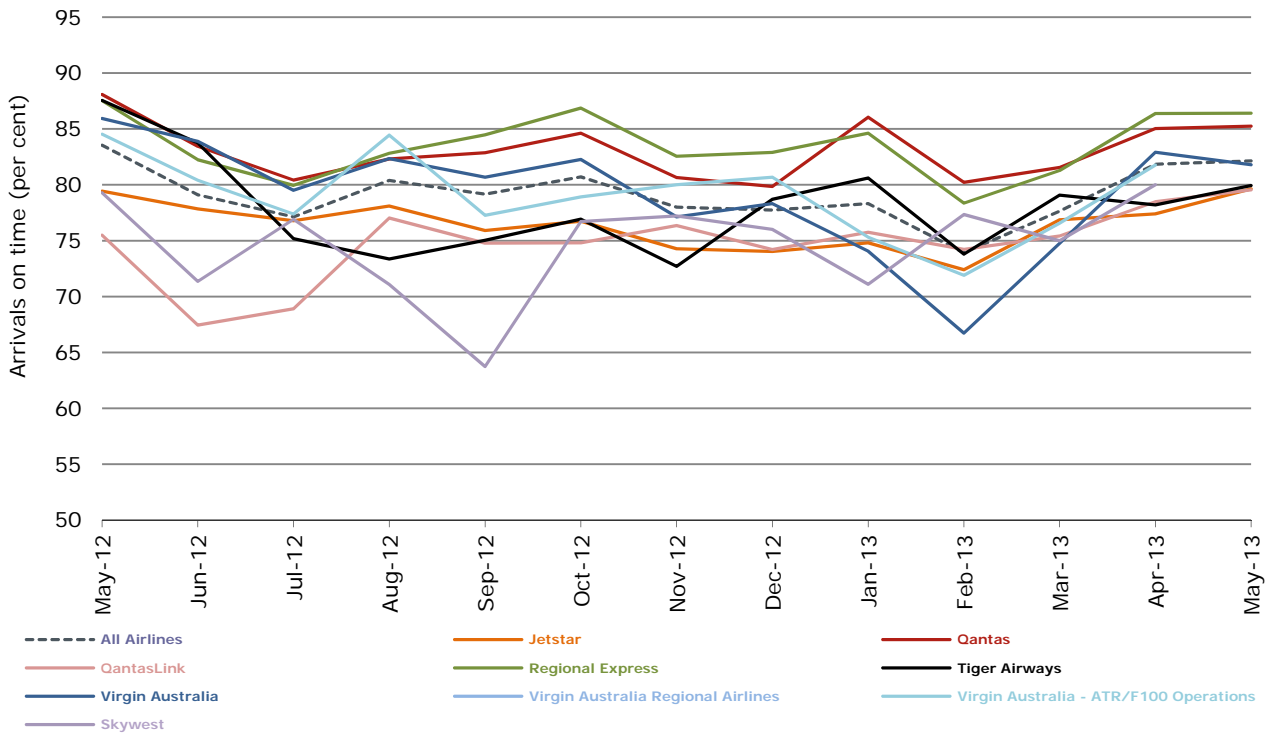


Figure 2 Departures on time (by month from May 2012)



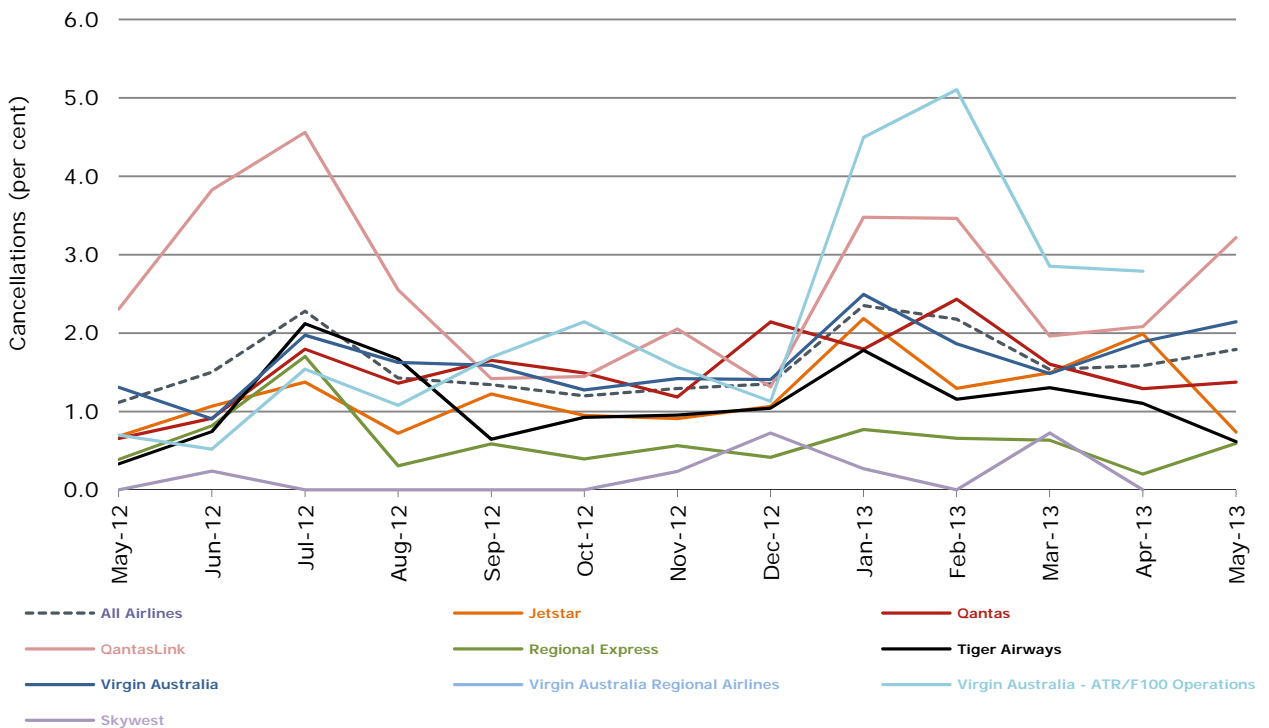
Virgin Australia Regional Airlines commenced operations in May 2013. It was formed after the acquisition of Skywest by Virgin Australia and represents a combination of operations previously reported under Skywest and Virgin Australia – ATR/F100 Operations. More than one data point is required for a line to appear on the chart.

Figure 3 Arrivals on time (by month from May 2012)



Virgin Australia Regional Airlines commenced operations in May 2013. It was formed after the acquisition of Skywest by Virgin Australia and represents a combination of operations previously reported under Skywest and Virgin Australia – ATR/F100 Operations. More than one data point is required for a line to appear on the chart.

Figure 4 Cancellations (by month from May 2012)



Virgin Australia Regional Airlines commenced operations in May 2013. It was formed after the acquisition of Skywest by Virgin Australia and represents a combination of operations previously reported under Skywest and Virgin Australia – ATR/F100 Operations. More than one data point is required for a line to appear on the chart.

## Major domestic airlines on time performance

Figure 5 On time performance (by month from May 2010)—Jetstar

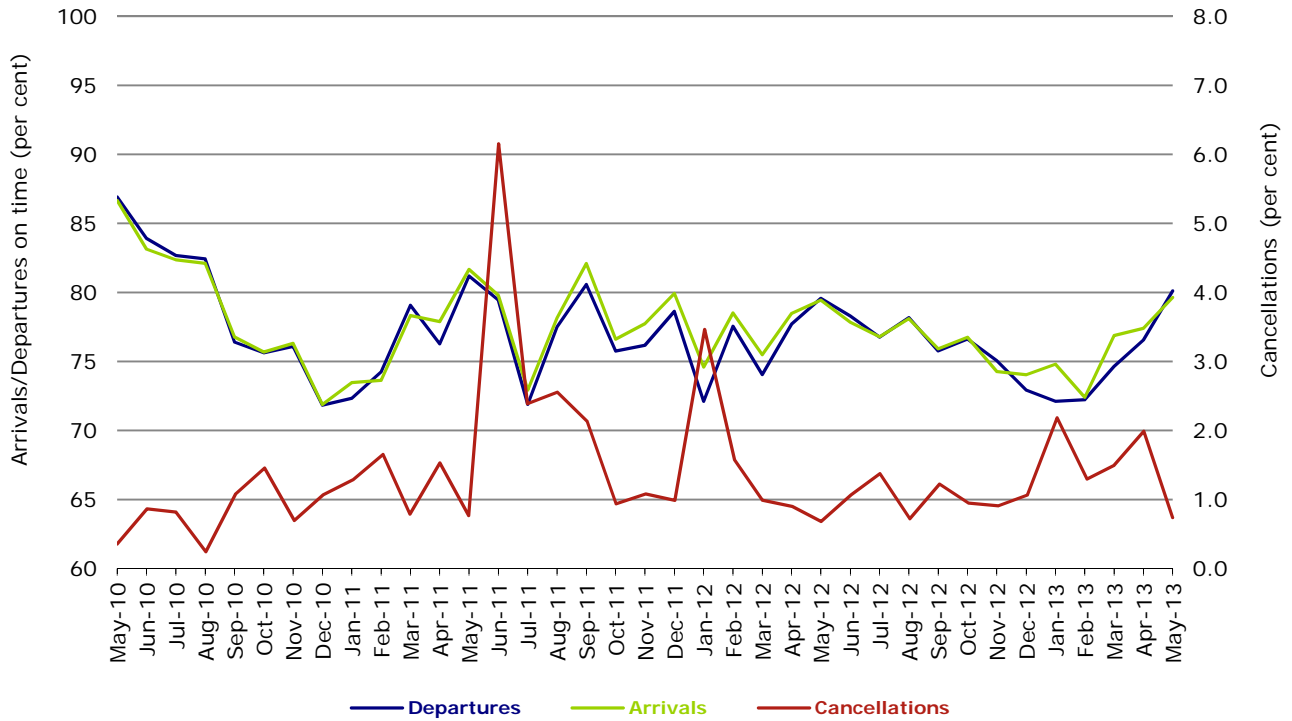


Figure 6 On time performance (by month from May 2010)—Qantas

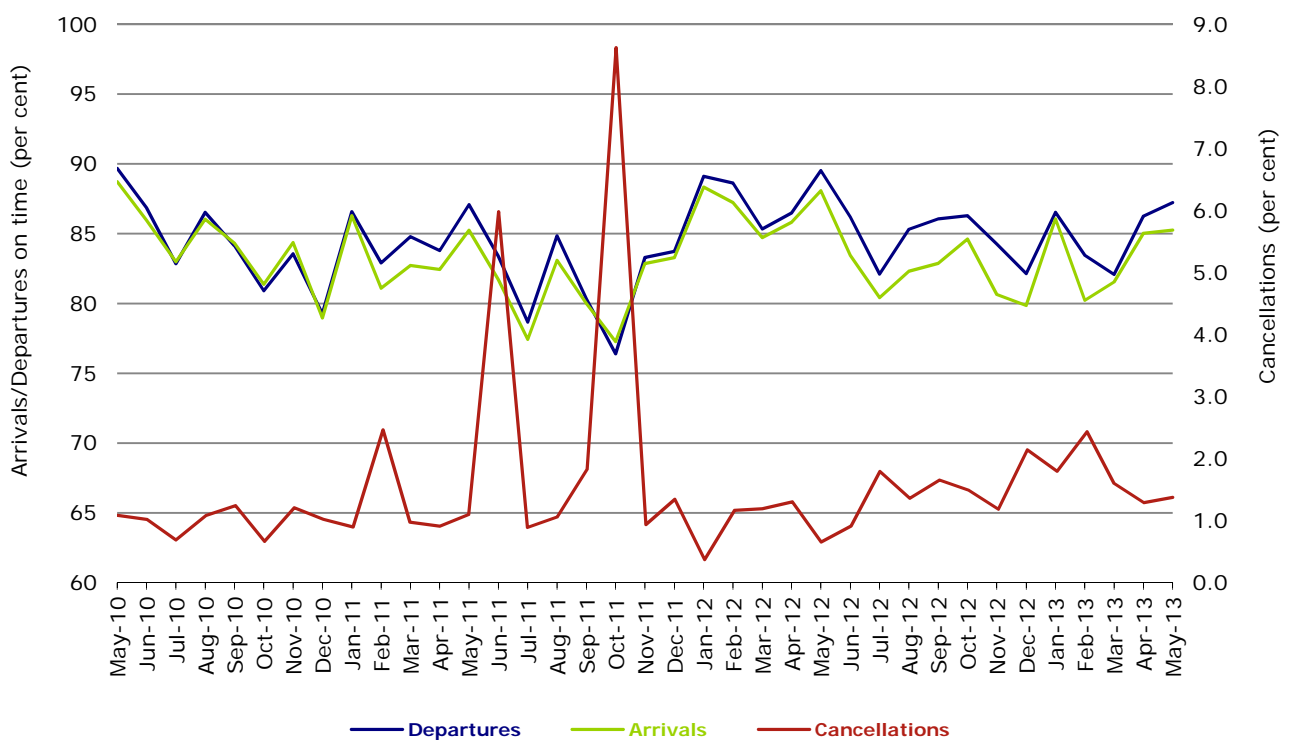
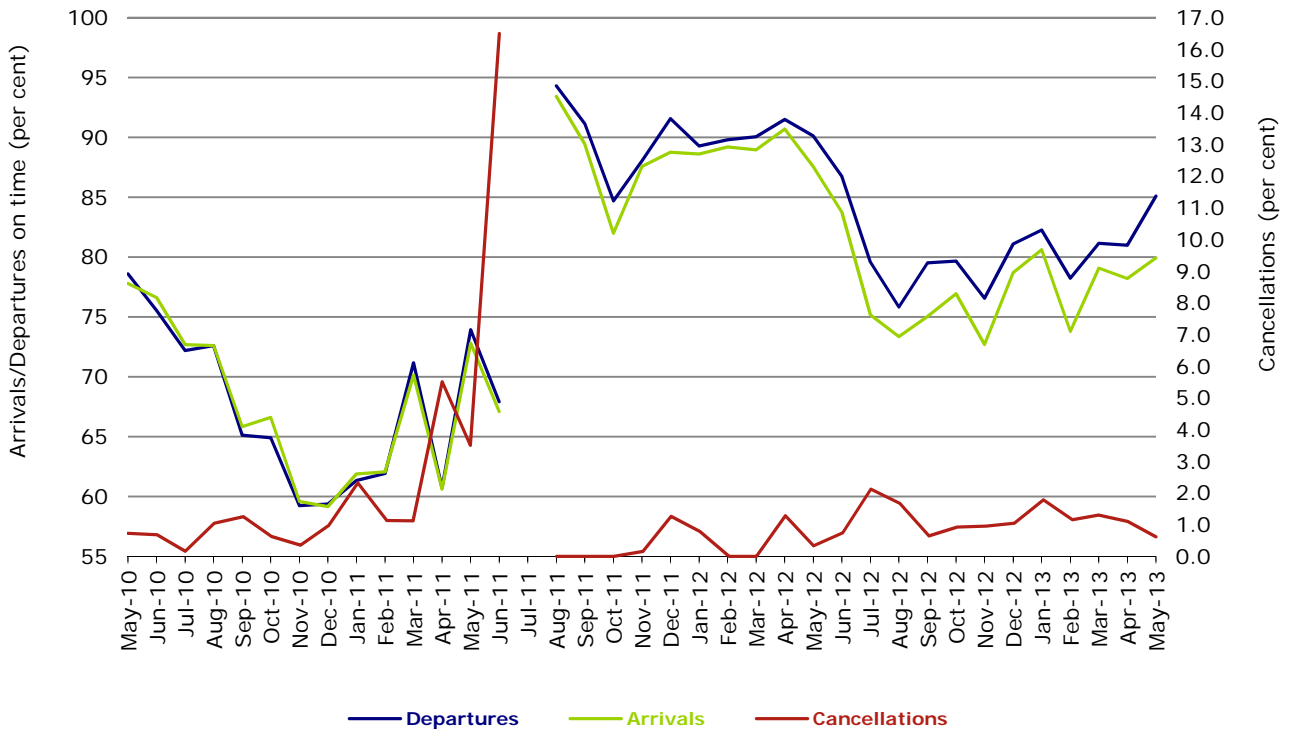
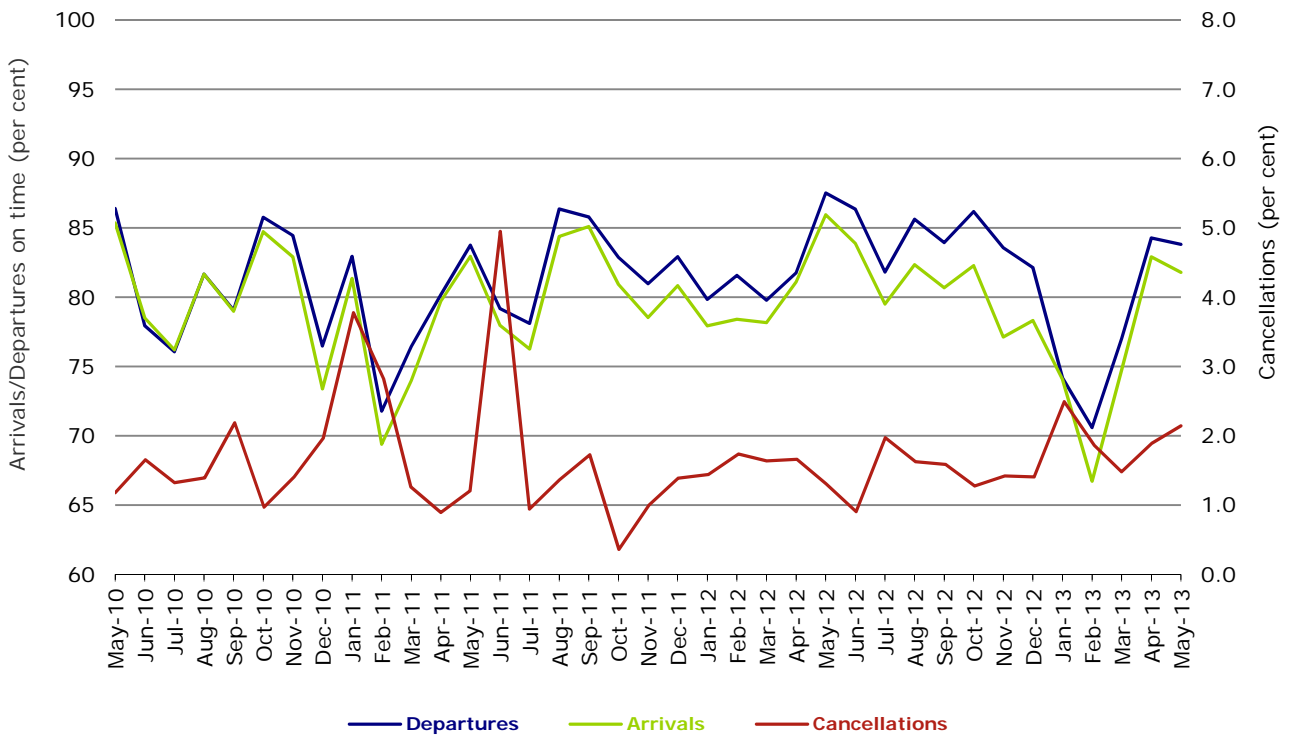


Figure 7 On time performance (by month from May 2010)—Tiger Airways



No data for Tiger Airways for July 2011 as it was grounded by CASA from 2/7/2011 to 11/8/2011.

Figure 8 On time performance (by month from May 2010)—Virgin Australia



## Major regional airlines on time performance

Figure 9 On time performance (by month from May 2010)—QantasLink

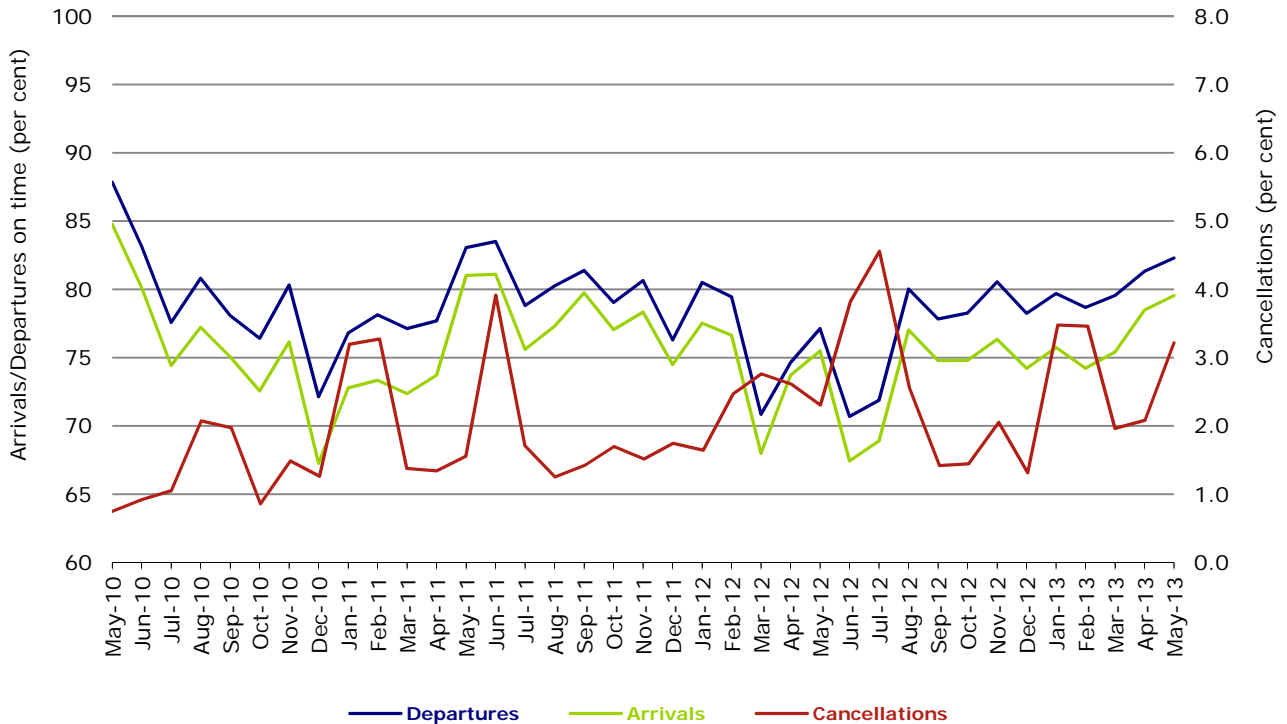


Figure 10 On time performance (by month from May 2010)—Regional Express

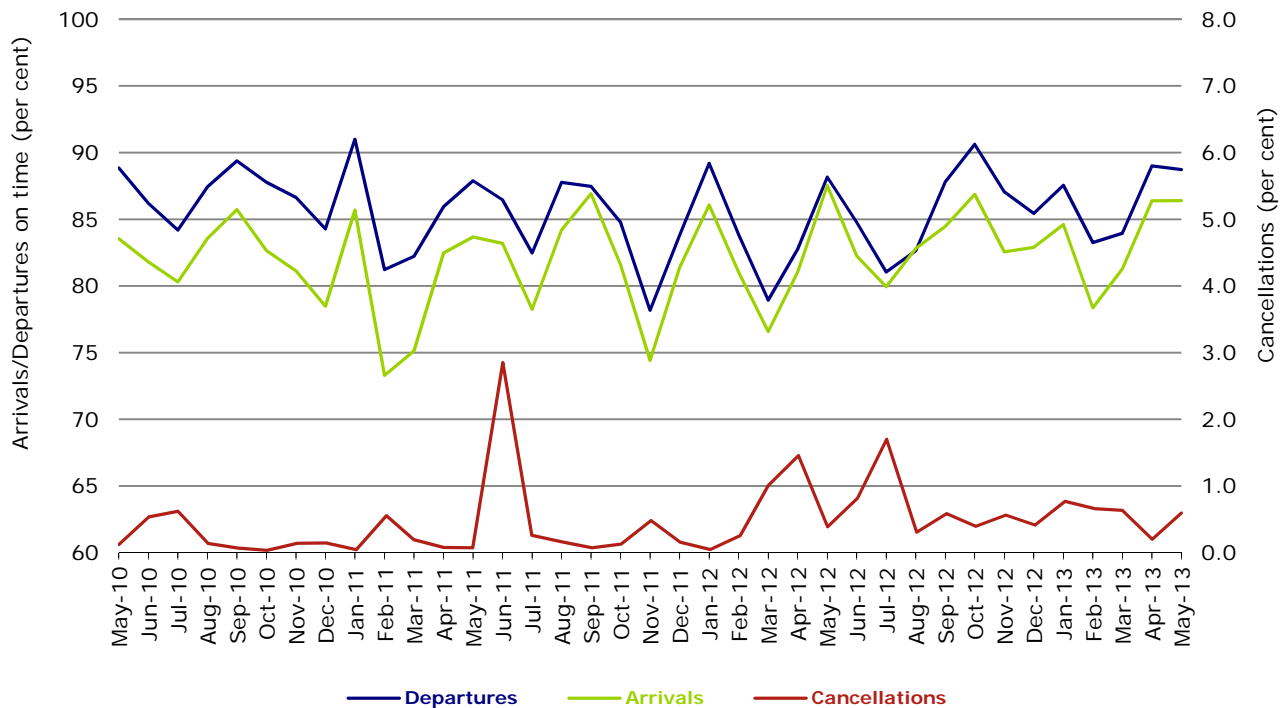
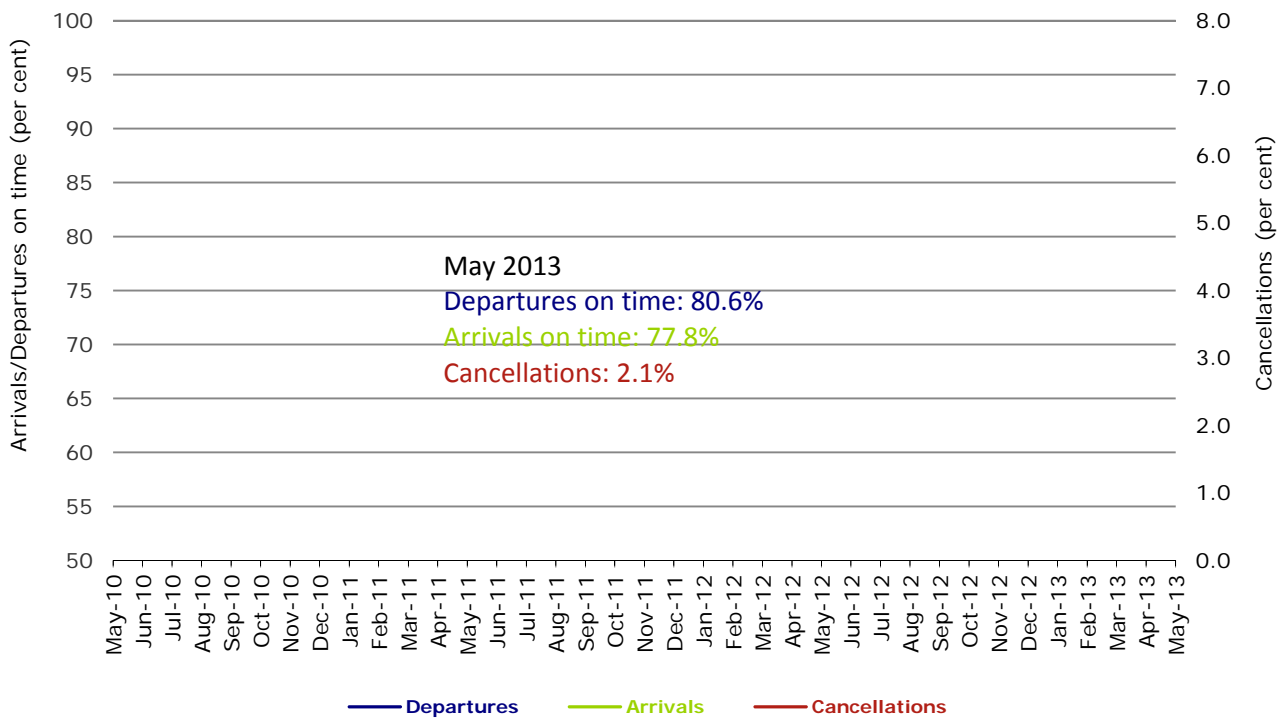


Figure 11 On time performance (by month from May 2010)  
Virgin Australia Regional Airlines



Virgin Australia Regional Airlines commenced operations in May 2013. It was formed after the acquisition of Skywest by Virgin Australia and represents a combination of operations previously reported under Skywest and Virgin Australia – ATR/F100 Operations. More than one data point is required for a line to appear on the chart.

## Individual routes

On time performance is reported for all routes where the passenger load averages over 8000 passengers per month over the previous six months, and where two or more airlines operate in competition on those routes. There are now 5, routes which meet this definition. Over time, however, routes which meet this definition may change as airline networks and traffic levels vary.

	<i>Sectors</i>		<i>Departures On Time</i>		<i>Arrivals On Time</i>		<i>Cancellations</i>	
	<i>Sched.</i>	<i>Flown</i>	<i>No.</i>	<i>%</i>	<i>No.</i>	<i>%</i>	<i>No.</i>	<i>%</i>
<b>Adelaide-Brisbane</b>								
Jetstar	27	27	21	77.8	18	66.7	0	0.0
Qantas	105	105	94	89.5	88	83.8	0	0.0
Virgin Australia	115	114	102	89.5	91	79.8	1	0.9
All Airlines	247	246	217	88.2	197	80.1	1	0.4
<b>Adelaide-Canberra</b>								
Qantas	49	49	48	98.0	48	98.0	0	0.0
QantasLink	23	23	18	78.3	20	87.0	0	0.0
Virgin Australia	27	26	24	92.3	25	96.2	1	3.7
All Airlines	99	98	90	91.8	93	94.9	1	1.0
<b>Adelaide-Gold Coast</b>								
Jetstar	31	31	28	90.3	31	100.0	0	0.0
Virgin Australia	31	31	30	96.8	30	96.8	0	0.0
All Airlines	62	62	58	93.5	61	98.4	0	0.0
<b>Adelaide-Melbourne</b>								
Jetstar	79	79	65	82.3	59	74.7	0	0.0
Qantas	288	285	255	89.5	259	90.9	3	1.0
QantasLink	17	16	13	81.3	13	81.3	1	5.9
Tiger Airways	53	52	47	90.4	41	78.8	1	1.9
Virgin Australia	279	275	258	93.8	256	93.1	4	1.4
All Airlines	716	707	638	90.2	628	88.8	9	1.3
<b>Adelaide-Perth</b>								
Jetstar	31	31	20	64.5	19	61.3	0	0.0
Qantas	112	112	96	85.7	95	84.8	0	0.0
Virgin Australia	63	63	53	84.1	54	85.7	0	0.0
All Airlines	206	206	169	82.0	168	81.6	0	0.0
<b>Adelaide-Port Lincoln</b>								
QantasLink	96	93	81	87.1	81	87.1	3	3.1
Regional Express	219	219	208	95.0	204	93.2	0	0.0
All Airlines	315	312	289	92.6	285	91.3	3	1.0
<b>Adelaide-Sydney</b>								
Jetstar	89	87	72	82.8	71	81.6	2	2.2
Qantas	270	268	239	89.2	241	89.9	2	0.7
Virgin Australia	172	171	148	86.5	149	87.1	1	0.6
All Airlines	531	526	459	87.3	461	87.6	5	0.9
<b>Albury-Sydney</b>								
QantasLink	116	114	67	58.8	67	58.8	2	1.7
Regional Express	115	113	100	88.5	96	85.0	2	1.7
Virgin Australia Regional Airlines	61	60	42	70.0	46	76.7	1	1.6
All Airlines	292	287	209	72.8	209	72.8	5	1.7
<b>Ayers Rock-Sydney</b>								
Qantas	31	31	25	80.6	27	87.1	0	0.0
Virgin Australia	31	31	20	64.5	21	67.7	0	0.0
All Airlines	62	62	45	72.6	48	77.4	0	0.0

	<i>Sectors</i>		<i>Departures On Time</i>		<i>Arrivals On Time</i>		<i>Cancellations</i>	
	<i>Sched.</i>	<i>Flown</i>	<i>No.</i>	<i>%</i>	<i>No.</i>	<i>%</i>	<i>No.</i>	<i>%</i>
<b>Ballina-Sydney</b>								
Jetstar	54	54	47	87.0	45	83.3	0	0.0
Regional Express	24	24	21	87.5	19	79.2	0	0.0
Virgin Australia	31	30	28	93.3	28	93.3	1	3.2
All Airlines	109	108	96	88.9	92	85.2	1	0.9
<b>Brisbane-Adelaide</b>								
Jetstar	26	26	25	96.2	23	88.5	0	0.0
Qantas	105	105	85	81.0	92	87.6	0	0.0
Virgin Australia	115	115	107	93.0	107	93.0	0	0.0
All Airlines	246	246	217	88.2	222	90.2	0	0.0
<b>Brisbane-Cairns</b>								
Jetstar	83	83	65	78.3	65	78.3	0	0.0
Qantas	113	113	95	84.1	100	88.5	0	0.0
QantasLink	4	4	4	100.0	4	100.0	0	0.0
Virgin Australia	172	170	140	82.4	148	87.1	2	1.2
All Airlines	372	370	304	82.2	317	85.7	2	0.5
<b>Brisbane-Canberra</b>								
Qantas	144	143	119	83.2	123	86.0	1	0.7
QantasLink	21	21	17	81.0	17	81.0	0	0.0
Virgin Australia	102	102	86	84.3	87	85.3	0	0.0
All Airlines	267	266	222	83.5	227	85.3	1	0.4
<b>Brisbane-Darwin</b>								
Qantas	31	31	24	77.4	25	80.6	0	0.0
Virgin Australia	31	31	24	77.4	23	74.2	0	0.0
All Airlines	62	62	48	77.4	48	77.4	0	0.0
<b>Brisbane-Emerald</b>								
QantasLink	189	180	164	91.1	159	88.3	9	4.8
Virgin Australia Regional Airlines	103	99	89	89.9	82	82.8	4	3.9
All Airlines	292	279	253	90.7	241	86.4	13	4.5
<b>Brisbane-Gladstone</b>								
QantasLink	234	222	204	91.9	201	90.5	12	5.1
Virgin Australia	12	3	2	66.7	1	33.3	9	75.0
Virgin Australia Regional Airlines	148	140	105	75.0	106	75.7	8	5.4
All Airlines	394	365	311	85.2	308	84.4	29	7.4
<b>Brisbane-Hamilton Island</b>								
Jetstar	17	17	16	94.1	16	94.1	0	0.0
Virgin Australia	31	31	26	83.9	26	83.9	0	0.0
All Airlines	48	48	42	87.5	42	87.5	0	0.0
<b>Brisbane-Mackay</b>								
Jetstar	93	93	68	73.1	74	79.6	0	0.0
QantasLink	112	112	100	89.3	100	89.3	0	0.0
Virgin Australia	170	169	147	87.0	145	85.8	1	0.6
All Airlines	375	374	315	84.2	319	85.3	1	0.3
<b>Brisbane-Melbourne</b>								
Jetstar	81	81	63	77.8	71	87.7	0	0.0
Qantas	421	418	360	86.1	366	87.6	3	0.7
Tiger Airways	84	84	63	75.0	64	76.2	0	0.0
Virgin Australia	376	370	305	82.4	280	75.7	6	1.6
All Airlines	962	953	791	83.0	781	82.0	9	0.9
<b>Brisbane-Mount Isa</b>								
Qantas	58	58	54	93.1	54	93.1	0	0.0
Virgin Australia	23	23	19	82.6	19	82.6	0	0.0
All Airlines	81	81	73	90.1	73	90.1	0	0.0



	<i>Sectors</i>		<i>Departures On Time</i>		<i>Arrivals On Time</i>		<i>Cancellations</i>	
	<i>Sched.</i>	<i>Flown</i>	<i>No.</i>	<i>%</i>	<i>No.</i>	<i>%</i>	<i>No.</i>	<i>%</i>
<b>Brisbane-Newcastle</b>								
Jetstar	99	99	76	76.8	74	74.7	0	0.0
QantasLink	73	73	56	76.7	42	57.5	0	0.0
Virgin Australia	83	83	67	80.7	66	79.5	0	0.0
All Airlines	255	255	199	78.0	182	71.4	0	0.0
<b>Brisbane-Perth</b>								
Jetstar	22	22	18	81.8	17	77.3	0	0.0
Qantas	121	121	89	73.6	102	84.3	0	0.0
Virgin Australia	89	89	71	79.8	70	78.7	0	0.0
All Airlines	232	232	178	76.7	189	81.5	0	0.0
<b>Brisbane-Proserpine</b>								
Jetstar	27	27	20	74.1	16	59.3	0	0.0
Virgin Australia	49	49	45	91.8	44	89.8	0	0.0
All Airlines	76	76	65	85.5	60	78.9	0	0.0
<b>Brisbane-Rockhampton</b>								
QantasLink	214	205	174	84.9	169	82.4	9	4.2
Virgin Australia	110	110	87	79.1	92	83.6	0	0.0
Virgin Australia Regional Airlines	113	113	97	85.8	96	85.0	0	0.0
All Airlines	437	428	358	83.6	357	83.4	9	2.1
<b>Brisbane-Sydney</b>								
Jetstar	94	92	54	58.7	57	62.0	2	2.1
Qantas	604	593	466	78.6	467	78.8	11	1.8
Tiger Airways	62	61	43	70.5	43	70.5	1	1.6
Virgin Australia	568	543	444	81.8	430	79.2	25	4.4
All Airlines	1 328	1 289	1 007	78.1	997	77.3	39	2.9
<b>Brisbane-Townsville</b>								
Jetstar	31	31	25	80.6	27	87.1	0	0.0
Qantas	153	153	140	91.5	138	90.2	0	0.0
Virgin Australia	171	171	129	75.4	140	81.9	0	0.0
All Airlines	355	355	294	82.8	305	85.9	0	0.0
<b>Broome-Perth</b>								
Qantas	28	28	14	50.0	20	71.4	0	0.0
QantasLink	58	57	52	91.2	52	91.2	1	1.7
Virgin Australia	62	62	53	85.5	58	93.5	0	0.0
Virgin Australia Regional Airlines	23	23	8	34.8	6	26.1	0	0.0
All Airlines	171	170	127	74.7	136	80.0	1	0.6
<b>Cairns-Brisbane</b>								
Jetstar	87	87	70	80.5	54	62.1	0	0.0
Qantas	113	113	101	89.4	87	77.0	0	0.0
QantasLink	4	4	4	100.0	4	100.0	0	0.0
Virgin Australia	170	170	138	81.2	130	76.5	0	0.0
All Airlines	374	374	313	83.7	275	73.5	0	0.0
<b>Cairns-Melbourne</b>								
Jetstar	63	63	56	88.9	54	85.7	0	0.0
Qantas	31	31	27	87.1	26	83.9	0	0.0
Tiger Airways	31	31	29	93.5	25	80.6	0	0.0
Virgin Australia	31	31	25	80.6	24	77.4	0	0.0
All Airlines	156	156	137	87.8	129	82.7	0	0.0
<b>Cairns-Sydney</b>								
Jetstar	82	82	68	82.9	64	78.0	0	0.0
Qantas	79	78	73	93.6	74	94.9	1	1.3
Tiger Airways	31	31	23	74.2	24	77.4	0	0.0
Virgin Australia	87	86	79	91.9	72	83.7	1	1.1
All Airlines	279	277	243	87.7	234	84.5	2	0.7

	<i>Sectors</i>		<i>Departures On Time</i>		<i>Arrivals On Time</i>		<i>Cancellations</i>	
	<i>Sched.</i>	<i>Flown</i>	<i>No.</i>	<i>%</i>	<i>No.</i>	<i>%</i>	<i>No.</i>	<i>%</i>
<b>Cairns-Townsville</b>								
QantasLink	189	184	163	88.6	162	88.0	5	2.6
Virgin Australia Regional Airlines	28	27	25	92.6	25	92.6	1	3.6
All Airlines	217	211	188	89.1	187	88.6	6	2.8
<b>Canberra-Adelaide</b>								
Qantas	53	53	47	88.7	49	92.5	0	0.0
QantasLink	23	23	19	82.6	19	82.6	0	0.0
Virgin Australia	27	26	25	96.2	25	96.2	1	3.7
All Airlines	103	102	91	89.2	93	91.2	1	1.0
<b>Canberra-Brisbane</b>								
Qantas	144	144	135	93.8	122	84.7	0	0.0
QantasLink	21	21	16	76.2	15	71.4	0	0.0
Virgin Australia	102	102	85	83.3	80	78.4	0	0.0
All Airlines	267	267	236	88.4	217	81.3	0	0.0
<b>Canberra-Melbourne</b>								
Qantas	272	264	241	91.3	243	92.0	8	2.9
QantasLink	39	38	35	92.1	30	78.9	1	2.6
Virgin Australia	182	180	144	80.0	146	81.1	2	1.1
All Airlines	493	482	420	87.1	419	86.9	11	2.2
<b>Canberra-Sydney</b>								
Qantas	171	168	146	86.9	141	83.9	3	1.8
QantasLink	417	390	313	80.3	308	79.0	27	6.5
Virgin Australia	66	53	43	81.1	44	83.0	13	19.7
Virgin Australia Regional Airlines	258	246	216	87.8	207	84.1	12	4.7
All Airlines	912	857	718	83.8	700	81.7	55	6.0
<b>Coffs Harbour-Sydney</b>								
QantasLink	157	154	107	69.5	117	76.0	3	1.9
Tiger Airways	22	21	20	95.2	20	95.2	1	4.5
Virgin Australia	58	57	44	77.2	45	78.9	1	1.7
All Airlines	237	232	171	73.7	182	78.4	5	2.1
<b>Darwin-Brisbane</b>								
Qantas	31	30	19	63.3	18	60.0	1	3.2
Virgin Australia	31	31	22	71.0	25	80.6	0	0.0
All Airlines	62	61	41	67.2	43	70.5	1	1.6
<b>Darwin-Melbourne</b>								
Jetstar	10	10	4	40.0	5	50.0	0	0.0
Qantas	12	12	9	75.0	10	83.3	0	0.0
Virgin Australia	30	30	28	93.3	27	90.0	0	0.0
All Airlines	52	52	41	78.8	42	80.8	0	0.0
<b>Darwin-Perth</b>								
Qantas	31	31	25	80.6	29	93.5	0	0.0
Virgin Australia	27	27	27	100.0	27	100.0	0	0.0
All Airlines	58	58	52	89.7	56	96.6	0	0.0
<b>Darwin-Sydney</b>								
Jetstar	24	23	16	69.6	17	73.9	1	4.2
Qantas	54	54	38	70.4	47	87.0	0	0.0
Virgin Australia	31	30	23	76.7	25	83.3	1	3.2
All Airlines	109	107	77	72.0	89	83.2	2	1.8
<b>Dubbo-Sydney</b>								
QantasLink	129	128	81	63.3	76	59.4	1	0.8
Regional Express	163	162	150	92.6	142	87.7	1	0.6
All Airlines	292	290	231	79.7	218	75.2	2	0.7

	<i>Sectors</i>		<i>Departures On Time</i>		<i>Arrivals On Time</i>		<i>Cancellations</i>	
	<i>Sched.</i>	<i>Flown</i>	<i>No.</i>	<i>%</i>	<i>No.</i>	<i>%</i>	<i>No.</i>	<i>%</i>
<b>Emerald-Brisbane</b>								
QantasLink	189	179	154	86.0	147	82.1	10	5.3
Virgin Australia Regional Airlines	104	99	83	83.8	85	85.9	5	4.8
All Airlines	293	278	237	85.3	232	83.5	15	5.1
<b>Geraldton-Perth</b>								
QantasLink	54	54	44	81.5	44	81.5	0	0.0
Virgin Australia Regional Airlines	91	91	76	83.5	75	82.4	0	0.0
All Airlines	145	145	120	82.8	119	82.1	0	0.0
<b>Gladstone-Brisbane</b>								
QantasLink	256	241	212	88.0	195	80.9	15	5.9
Virgin Australia	14	3	2	66.7	2	66.7	11	78.6
Virgin Australia Regional Airlines	150	140	107	76.4	102	72.9	10	6.7
All Airlines	420	384	321	83.6	299	77.9	36	8.6
<b>Gold Coast-Adelaide</b>								
Jetstar	31	31	29	93.5	28	90.3	0	0.0
Virgin Australia	30	30	28	93.3	27	90.0	0	0.0
All Airlines	61	61	57	93.4	55	90.2	0	0.0
<b>Gold Coast-Melbourne</b>								
Jetstar	155	154	132	85.7	132	85.7	1	0.6
Tiger Airways	48	48	37	77.1	31	64.6	0	0.0
Virgin Australia	160	160	143	89.4	144	90.0	0	0.0
All Airlines	363	362	312	86.2	307	84.8	1	0.3
<b>Gold Coast-Sydney</b>								
Jetstar	241	235	182	77.4	186	79.1	6	2.5
Qantas	93	92	76	82.6	76	82.6	1	1.1
Tiger Airways	44	44	35	79.5	33	75.0	0	0.0
Virgin Australia	292	285	232	81.4	231	81.1	7	2.4
All Airlines	670	656	525	80.0	526	80.2	14	2.1
<b>Hamilton Island-Brisbane</b>								
Jetstar	17	17	15	88.2	12	70.6	0	0.0
Virgin Australia	31	30	26	86.7	27	90.0	1	3.2
All Airlines	48	47	41	87.2	39	83.0	1	2.1
<b>Hamilton Island-Sydney</b>								
Jetstar	22	22	20	90.9	20	90.9	0	0.0
Virgin Australia	31	31	22	71.0	23	74.2	0	0.0
All Airlines	53	53	42	79.2	43	81.1	0	0.0
<b>Hobart-Melbourne</b>								
Jetstar	135	134	109	81.3	113	84.3	1	0.7
Qantas	62	62	60	96.8	58	93.5	0	0.0
QantasLink	31	31	30	96.8	28	90.3	0	0.0
Tiger Airways	31	31	23	74.2	23	74.2	0	0.0
Virgin Australia	136	136	113	83.1	115	84.6	0	0.0
All Airlines	395	394	335	85.0	337	85.5	1	0.3
<b>Hobart-Sydney</b>								
Jetstar	49	49	37	75.5	37	75.5	0	0.0
Qantas	31	31	24	77.4	25	80.6	0	0.0
Virgin Australia	59	59	46	78.0	49	83.1	0	0.0
All Airlines	139	139	107	77.0	111	79.9	0	0.0
<b>Kalgoorlie-Perth</b>								
Qantas	64	64	61	95.3	58	90.6	0	0.0
QantasLink	25	25	21	84.0	20	80.0	0	0.0
Virgin Australia Regional Airlines	63	63	55	87.3	53	84.1	0	0.0
All Airlines	152	152	137	90.1	131	86.2	0	0.0

	<i>Sectors</i>		<i>Departures On Time</i>		<i>Arrivals On Time</i>		<i>Cancellations</i>	
	<i>Sched.</i>	<i>Flown</i>	<i>No.</i>	<i>%</i>	<i>No.</i>	<i>%</i>	<i>No.</i>	<i>%</i>
<b>Karratha-Perth</b>								
Qantas	196	190	162	85.3	170	89.5	6	3.1
QantasLink	68	62	54	87.1	54	87.1	6	8.8
Virgin Australia	54	53	46	86.8	46	86.8	1	1.9
All Airlines	318	305	262	85.9	270	88.5	13	4.1
<b>Launceston-Melbourne</b>								
Jetstar	103	102	79	77.5	74	72.5	1	1.0
QantasLink	114	109	95	87.2	96	88.1	5	4.4
Virgin Australia	118	118	103	87.3	92	78.0	0	0.0
All Airlines	335	329	277	84.2	262	79.6	6	1.8
<b>Launceston-Sydney</b>								
Jetstar	40	40	26	65.0	27	67.5	0	0.0
Virgin Australia	32	32	21	65.6	20	62.5	0	0.0
All Airlines	72	72	47	65.3	47	65.3	0	0.0
<b>Mackay-Brisbane</b>								
Jetstar	93	93	58	62.4	46	49.5	0	0.0
QantasLink	112	112	98	87.5	96	85.7	0	0.0
Virgin Australia	170	169	133	78.7	124	73.4	1	0.6
All Airlines	375	374	289	77.3	266	71.1	1	0.3
<b>Melbourne-Adelaide</b>								
Jetstar	81	81	69	85.2	63	77.8	0	0.0
Qantas	288	285	260	91.2	257	90.2	3	1.0
QantasLink	17	16	15	93.8	15	93.8	1	5.9
Tiger Airways	53	53	53	100.0	50	94.3	0	0.0
Virgin Australia	279	278	242	87.1	249	89.6	1	0.4
All Airlines	718	713	639	89.6	634	88.9	5	0.7
<b>Melbourne-Brisbane</b>								
Jetstar	80	80	57	71.3	40	50.0	0	0.0
Qantas	421	418	375	89.7	322	77.0	3	0.7
Tiger Airways	84	84	67	79.8	58	69.0	0	0.0
Virgin Australia	375	367	297	80.9	257	70.0	8	2.1
All Airlines	960	949	796	83.9	677	71.3	11	1.1
<b>Melbourne-Cairns</b>								
Jetstar	63	63	55	87.3	57	90.5	0	0.0
Qantas	31	31	27	87.1	28	90.3	0	0.0
Tiger Airways	31	31	31	100.0	31	100.0	0	0.0
Virgin Australia	31	31	29	93.5	29	93.5	0	0.0
All Airlines	156	156	142	91.0	145	92.9	0	0.0
<b>Melbourne-Canberra</b>								
Qantas	272	264	239	90.5	240	90.9	8	2.9
QantasLink	39	37	36	97.3	29	78.4	2	5.1
Virgin Australia	182	180	152	84.4	151	83.9	2	1.1
All Airlines	493	481	427	88.8	420	87.3	12	2.4
<b>Melbourne-Darwin</b>								
Jetstar	9	9	5	55.6	6	66.7	0	0.0
Qantas	12	12	9	75.0	9	75.0	0	0.0
Virgin Australia	31	31	30	96.8	26	83.9	0	0.0
All Airlines	52	52	44	84.6	41	78.8	0	0.0
<b>Melbourne-Gold Coast</b>								
Jetstar	155	155	107	69.0	117	75.5	0	0.0
Tiger Airways	48	48	41	85.4	38	79.2	0	0.0
Virgin Australia	161	161	133	82.6	133	82.6	0	0.0
All Airlines	364	364	281	77.2	288	79.1	0	0.0

	<i>Sectors</i>		<i>Departures On Time</i>		<i>Arrivals On Time</i>		<i>Cancellations</i>	
	<i>Sched.</i>	<i>Flown</i>	<i>No.</i>	<i>%</i>	<i>No.</i>	<i>%</i>	<i>No.</i>	<i>%</i>
<b>Melbourne-Hobart</b>								
Jetstar	134	134	115	85.8	118	88.1	0	0.0
Qantas	62	62	59	95.2	58	93.5	0	0.0
QantasLink	31	31	27	87.1	25	80.6	0	0.0
Tiger Airways	31	31	27	87.1	25	80.6	0	0.0
Virgin Australia	135	135	113	83.7	108	80.0	0	0.0
All Airlines	393	393	341	86.8	334	85.0	0	0.0
<b>Melbourne-Launceston</b>								
Jetstar	103	102	93	91.2	86	84.3	1	1.0
QantasLink	114	109	98	89.9	91	83.5	5	4.4
Virgin Australia	118	118	103	87.3	106	89.8	0	0.0
All Airlines	335	329	294	89.4	283	86.0	6	1.8
<b>Melbourne-Mildura</b>								
QantasLink	89	89	76	85.4	71	79.8	0	0.0
Regional Express	89	89	85	95.5	84	94.4	0	0.0
Virgin Australia	31	31	24	77.4	24	77.4	0	0.0
All Airlines	209	209	185	88.5	179	85.6	0	0.0
<b>Melbourne-Newcastle</b>								
Jetstar	97	97	85	87.6	84	86.6	0	0.0
Virgin Australia	31	31	28	90.3	26	83.9	0	0.0
All Airlines	128	128	113	88.3	110	85.9	0	0.0
<b>Melbourne-Perth</b>								
Jetstar	75	75	69	92.0	68	90.7	0	0.0
Qantas	223	223	202	90.6	185	83.0	0	0.0
Tiger Airways	50	50	48	96.0	48	96.0	0	0.0
Virgin Australia	149	148	130	87.8	126	85.1	1	0.7
All Airlines	497	496	449	90.5	427	86.1	1	0.2
<b>Melbourne-Sunshine Coast</b>								
Jetstar	49	49	24	49.0	34	69.4	0	0.0
Tiger Airways	18	18	18	100.0	17	94.4	0	0.0
Virgin Australia	31	31	27	87.1	26	83.9	0	0.0
All Airlines	98	98	69	70.4	77	78.6	0	0.0
<b>Melbourne-Sydney</b>								
Jetstar	279	273	194	71.1	198	72.5	6	2.2
Qantas	904	866	760	87.8	734	84.8	38	4.2
Tiger Airways	181	180	157	87.2	159	88.3	1	0.6
Virgin Australia	825	792	663	83.7	651	82.2	33	4.0
All Airlines	2 189	2 111	1 774	84.0	1 742	82.5	78	3.6
<b>Mildura-Melbourne</b>								
QantasLink	89	89	74	83.1	69	77.5	0	0.0
Regional Express	90	90	84	93.3	77	85.6	0	0.0
Virgin Australia	31	31	23	74.2	24	77.4	0	0.0
All Airlines	210	210	181	86.2	170	81.0	0	0.0
<b>Mount Isa-Brisbane</b>								
Qantas	58	58	53	91.4	49	84.5	0	0.0
Virgin Australia	23	23	17	73.9	12	52.2	0	0.0
All Airlines	81	81	70	86.4	61	75.3	0	0.0
<b>Newcastle-Brisbane</b>								
Jetstar	99	99	84	84.8	79	79.8	0	0.0
QantasLink	73	73	34	46.6	35	47.9	0	0.0
Virgin Australia	83	83	60	72.3	48	57.8	0	0.0
All Airlines	255	255	178	69.8	162	63.5	0	0.0

	<i>Sectors</i>		<i>Departures On Time</i>		<i>Arrivals On Time</i>		<i>Cancellations</i>	
	<i>Sched.</i>	<i>Flown</i>	<i>No.</i>	<i>%</i>	<i>No.</i>	<i>%</i>	<i>No.</i>	<i>%</i>
<b>Newcastle-Melbourne</b>								
Jetstar	97	97	86	88.7	81	83.5	0	0.0
Virgin Australia	31	31	20	64.5	23	74.2	0	0.0
All Airlines	128	128	106	82.8	104	81.3	0	0.0
<b>Newman-Perth</b>								
Qantas	135	135	118	87.4	117	86.7	0	0.0
QantasLink	36	35	32	91.4	33	94.3	1	2.8
Virgin Australia	41	41	29	70.7	31	75.6	0	0.0
Virgin Australia Regional Airlines	13	11	7	63.6	8	72.7	2	15.4
All Airlines	225	222	186	83.8	189	85.1	3	1.3
<b>Perth-Adelaide</b>								
Jetstar	31	31	28	90.3	28	90.3	0	0.0
Qantas	117	116	99	85.3	112	96.6	1	0.9
Virgin Australia	64	64	63	98.4	64	100.0	0	0.0
All Airlines	212	211	190	90.0	204	96.7	1	0.5
<b>Perth-Brisbane</b>								
Jetstar	22	22	15	68.2	19	86.4	0	0.0
Qantas	121	121	112	92.6	108	89.3	0	0.0
Virgin Australia	89	89	80	89.9	72	80.9	0	0.0
All Airlines	232	232	207	89.2	199	85.8	0	0.0
<b>Perth-Broome</b>								
Qantas	28	28	25	89.3	23	82.1	0	0.0
QantasLink	58	57	53	93.0	50	87.7	1	1.7
Virgin Australia	62	62	58	93.5	56	90.3	0	0.0
Virgin Australia Regional Airlines	23	23	18	78.3	17	73.9	0	0.0
All Airlines	171	170	154	90.6	146	85.9	1	0.6
<b>Perth-Darwin</b>								
Qantas	31	31	27	87.1	27	87.1	0	0.0
Virgin Australia	27	27	26	96.3	27	100.0	0	0.0
All Airlines	58	58	53	91.4	54	93.1	0	0.0
<b>Perth-Geraldton</b>								
QantasLink	54	54	45	83.3	42	77.8	0	0.0
Virgin Australia Regional Airlines	92	92	83	90.2	79	85.9	0	0.0
All Airlines	146	146	128	87.7	121	82.9	0	0.0
<b>Perth-Kalgoorlie</b>								
Qantas	64	64	62	96.9	61	95.3	0	0.0
QantasLink	25	25	23	92.0	23	92.0	0	0.0
Virgin Australia Regional Airlines	60	60	53	88.3	50	83.3	0	0.0
All Airlines	149	149	138	92.6	134	89.9	0	0.0
<b>Perth-Karratha</b>								
Qantas	196	191	167	87.4	163	85.3	5	2.6
QantasLink	68	62	59	95.2	57	91.9	6	8.8
Virgin Australia	54	54	51	94.4	46	85.2	0	0.0
All Airlines	318	307	277	90.2	266	86.6	11	3.5
<b>Perth-Melbourne</b>								
Jetstar	75	75	56	74.7	56	74.7	0	0.0
Qantas	223	223	196	87.9	208	93.3	0	0.0
Tiger Airways	50	50	46	92.0	38	76.0	0	0.0
Virgin Australia	149	148	138	93.2	140	94.6	1	0.7
All Airlines	497	496	436	87.9	442	89.1	1	0.2

	<i>Sectors</i>		<i>Departures On Time</i>		<i>Arrivals On Time</i>		<i>Cancellations</i>	
	<i>Sched.</i>	<i>Flown</i>	<i>No.</i>	<i>%</i>	<i>No.</i>	<i>%</i>	<i>No.</i>	<i>%</i>
<b>Perth-Newman</b>								
Qantas	135	135	124	91.9	119	88.1	0	0.0
QantasLink	36	35	33	94.3	33	94.3	1	2.8
Virgin Australia	41	41	38	92.7	38	92.7	0	0.0
Virgin Australia Regional Airlines	17	15	7	46.7	6	40.0	2	11.8
All Airlines	229	226	202	89.4	196	86.7	3	1.3
<b>Perth-Port Hedland</b>								
Qantas	134	134	122	91.0	115	85.8	0	0.0
QantasLink	43	43	39	90.7	37	86.0	0	0.0
Virgin Australia	59	56	53	94.6	52	92.9	3	5.1
All Airlines	236	233	214	91.8	204	87.6	3	1.3
<b>Perth-Sydney</b>								
Jetstar	40	39	24	61.5	28	71.8	1	2.5
Qantas	201	201	172	85.6	185	92.0	0	0.0
Virgin Australia	120	120	93	77.5	99	82.5	0	0.0
All Airlines	361	360	289	80.3	312	86.7	1	0.3
<b>Port Hedland-Perth</b>								
Qantas	134	134	114	85.1	114	85.1	0	0.0
QantasLink	43	42	36	85.7	37	88.1	1	2.3
Virgin Australia	59	56	43	76.8	45	80.4	3	5.1
All Airlines	236	232	193	83.2	196	84.5	4	1.7
<b>Port Lincoln-Adelaide</b>								
QantasLink	96	94	83	88.3	83	88.3	2	2.1
Regional Express	219	218	205	94.0	203	93.1	1	0.5
All Airlines	315	312	288	92.3	286	91.7	3	1.0
<b>Port Macquarie-Sydney</b>								
QantasLink	141	138	95	68.8	92	66.7	3	2.1
Virgin Australia Regional Airlines	62	61	45	73.8	43	70.5	1	1.6
All Airlines	203	199	140	70.4	135	67.8	4	2.0
<b>Proserpine-Brisbane</b>								
Jetstar	27	27	24	88.9	20	74.1	0	0.0
Virgin Australia	49	49	43	87.8	29	59.2	0	0.0
All Airlines	76	76	67	88.2	49	64.5	0	0.0
<b>Rockhampton-Brisbane</b>								
QantasLink	193	183	155	84.7	148	80.9	10	5.2
Virgin Australia	110	110	86	78.2	81	73.6	0	0.0
Virgin Australia Regional Airlines	113	113	98	86.7	90	79.6	0	0.0
All Airlines	416	406	339	83.5	319	78.6	10	2.4
<b>Sunshine Coast-Melbourne</b>								
Jetstar	49	49	30	61.2	32	65.3	0	0.0
Tiger Airways	18	18	17	94.4	16	88.9	0	0.0
Virgin Australia	31	31	19	61.3	24	77.4	0	0.0
All Airlines	98	98	66	67.3	72	73.5	0	0.0
<b>Sunshine Coast-Sydney</b>								
Jetstar	87	86	72	83.7	73	84.9	1	1.1
Virgin Australia	32	32	25	78.1	26	81.3	0	0.0
All Airlines	119	118	97	82.2	99	83.9	1	0.8
<b>Sydney-Adelaide</b>								
Jetstar	88	86	72	83.7	73	84.9	2	2.3
Qantas	261	261	224	85.8	229	87.7	0	0.0
Virgin Australia	171	170	150	88.2	149	87.6	1	0.6
All Airlines	520	517	446	86.3	451	87.2	3	0.6

	<i>Sectors</i>		<i>Departures On Time</i>		<i>Arrivals On Time</i>		<i>Cancellations</i>	
	<i>Sched.</i>	<i>Flown</i>	<i>No.</i>	<i>%</i>	<i>No.</i>	<i>%</i>	<i>No.</i>	<i>%</i>
<b>Sydney-Albury</b>								
QantasLink	116	115	76	66.1	74	64.3	1	0.9
Regional Express	115	113	95	84.1	93	82.3	2	1.7
Virgin Australia Regional Airlines	60	60	46	76.7	44	73.3	0	0.0
All Airlines	291	288	217	75.3	211	73.3	3	1.0
<b>Sydney-Ayers Rock</b>								
Qantas	31	31	26	83.9	23	74.2	0	0.0
Virgin Australia	31	31	23	74.2	21	67.7	0	0.0
All Airlines	62	62	49	79.0	44	71.0	0	0.0
<b>Sydney-Ballina</b>								
Jetstar	54	54	41	75.9	50	92.6	0	0.0
Regional Express	31	31	27	87.1	24	77.4	0	0.0
Virgin Australia	31	31	29	93.5	28	90.3	0	0.0
All Airlines	116	116	97	83.6	102	87.9	0	0.0
<b>Sydney-Brisbane</b>								
Jetstar	91	90	74	82.2	57	63.3	1	1.1
Qantas	580	574	485	84.5	400	69.7	6	1.0
Tiger Airways	62	61	49	80.3	36	59.0	1	1.6
Virgin Australia	565	540	461	85.4	406	75.2	25	4.4
All Airlines	1 298	1 265	1 069	84.5	899	71.1	33	2.5
<b>Sydney-Cairns</b>								
Jetstar	84	84	63	75.0	67	79.8	0	0.0
Qantas	79	79	70	88.6	72	91.1	0	0.0
Tiger Airways	31	31	28	90.3	28	90.3	0	0.0
Virgin Australia	87	86	73	84.9	76	88.4	1	1.1
All Airlines	281	280	234	83.6	243	86.8	1	0.4
<b>Sydney-Canberra</b>								
Qantas	175	171	157	91.8	153	89.5	4	2.3
QantasLink	416	391	301	77.0	301	77.0	25	6.0
Virgin Australia	64	53	48	90.6	47	88.7	11	17.2
Virgin Australia Regional Airlines	259	248	216	87.1	212	85.5	11	4.2
All Airlines	914	863	722	83.7	713	82.6	51	5.6
<b>Sydney-Coffs Harbour</b>								
QantasLink	157	155	120	77.4	111	71.6	2	1.3
Tiger Airways	22	21	19	90.5	19	90.5	1	4.5
Virgin Australia	58	57	44	77.2	45	78.9	1	1.7
All Airlines	237	233	183	78.5	175	75.1	4	1.7
<b>Sydney-Darwin</b>								
Jetstar	26	26	20	76.9	21	80.8	0	0.0
Qantas	54	54	44	81.5	36	66.7	0	0.0
Virgin Australia	31	31	26	83.9	19	61.3	0	0.0
All Airlines	111	111	90	81.1	76	68.5	0	0.0
<b>Sydney-Dubbo</b>								
QantasLink	129	128	84	65.6	75	58.6	1	0.8
Regional Express	160	160	138	86.3	137	85.6	0	0.0
All Airlines	289	288	222	77.1	212	73.6	1	0.3
<b>Sydney-Gold Coast</b>								
Jetstar	239	234	203	86.8	205	87.6	5	2.1
Qantas	93	93	77	82.8	78	83.9	0	0.0
Tiger Airways	44	44	37	84.1	38	86.4	0	0.0
Virgin Australia	292	285	226	79.3	227	79.6	7	2.4
All Airlines	668	656	543	82.8	548	83.5	12	1.8



	<i>Sectors</i>		<i>Departures On Time</i>		<i>Arrivals On Time</i>		<i>Cancellations</i>	
	<i>Sched.</i>	<i>Flown</i>	<i>No.</i>	<i>%</i>	<i>No.</i>	<i>%</i>	<i>No.</i>	<i>%</i>
<b>Sydney-Hamilton Island</b>								
Jetstar	22	22	20	90.9	20	90.9	0	0.0
Virgin Australia	31	31	25	80.6	24	77.4	0	0.0
All Airlines	53	53	45	84.9	44	83.0	0	0.0
<b>Sydney-Hobart</b>								
Jetstar	49	49	45	91.8	43	87.8	0	0.0
Qantas	31	31	23	74.2	21	67.7	0	0.0
Virgin Australia	60	60	51	85.0	55	91.7	0	0.0
All Airlines	140	140	119	85.0	119	85.0	0	0.0
<b>Sydney-Launceston</b>								
Jetstar	40	40	31	77.5	30	75.0	0	0.0
Virgin Australia	32	32	23	71.9	22	68.8	0	0.0
All Airlines	72	72	54	75.0	52	72.2	0	0.0
<b>Sydney-Melbourne</b>								
Jetstar	280	274	207	75.5	230	83.9	6	2.1
Qantas	906	865	782	90.4	763	88.2	41	4.5
Tiger Airways	181	180	161	89.4	156	86.7	1	0.6
Virgin Australia	824	790	677	85.7	665	84.2	34	4.1
All Airlines	2 191	2 109	1 827	86.6	1 814	86.0	82	3.7
<b>Sydney-Perth</b>								
Jetstar	40	40	30	75.0	30	75.0	0	0.0
Qantas	206	206	174	84.5	147	71.4	0	0.0
Virgin Australia	120	120	98	81.7	98	81.7	0	0.0
All Airlines	366	366	302	82.5	275	75.1	0	0.0
<b>Sydney-Port Macquarie</b>								
QantasLink	139	137	112	81.8	103	75.2	2	1.4
Virgin Australia Regional Airlines	62	61	43	70.5	37	60.7	1	1.6
All Airlines	201	198	155	78.3	140	70.7	3	1.5
<b>Sydney-Sunshine Coast</b>								
Jetstar	86	86	78	90.7	79	91.9	0	0.0
Virgin Australia	32	32	25	78.1	26	81.3	0	0.0
All Airlines	118	118	103	87.3	105	89.0	0	0.0
<b>Sydney-Townsville</b>								
Jetstar	22	22	21	95.5	21	95.5	0	0.0
Virgin Australia	31	31	24	77.4	22	71.0	0	0.0
All Airlines	53	53	45	84.9	43	81.1	0	0.0
<b>Sydney-Wagga Wagga</b>								
QantasLink	116	113	89	78.8	86	76.1	3	2.6
Regional Express	144	144	130	90.3	129	89.6	0	0.0
All Airlines	260	257	219	85.2	215	83.7	3	1.2
<b>Townsville-Brisbane</b>								
Jetstar	31	31	23	74.2	18	58.1	0	0.0
Qantas	153	153	145	94.8	133	86.9	0	0.0
Virgin Australia	172	172	136	79.1	121	70.3	0	0.0
All Airlines	356	356	304	85.4	272	76.4	0	0.0
<b>Townsville-Cairns</b>								
QantasLink	191	187	150	80.2	151	80.7	4	2.1
Virgin Australia Regional Airlines	27	27	26	96.3	26	96.3	0	0.0
All Airlines	218	214	176	82.2	177	82.7	4	1.8
<b>Townsville-Sydney</b>								
Jetstar	22	22	18	81.8	18	81.8	0	0.0
Virgin Australia	31	31	19	61.3	20	64.5	0	0.0
All Airlines	53	53	37	69.8	38	71.7	0	0.0

	<i>Sectors</i>		<i>Departures On Time</i>		<i>Arrivals On Time</i>		<i>Cancellations</i>	
	<i>Sched.</i>	<i>Flown</i>	<i>No.</i>	<i>%</i>	<i>No.</i>	<i>%</i>	<i>No.</i>	<i>%</i>
<b>Wagga Wagga-Sydney</b>								
QantasLink	116	113	93	82.3	84	74.3	3	2.6
Regional Express	144	144	130	90.3	123	85.4	0	0.0
All Airlines	260	257	223	86.8	207	80.5	3	1.2

# Airports

On time performance is reported for all routes where the passenger load averages over 8000 passengers per month, and where two or more airlines operate in competition. The following data reports by airport against flights operated on those routes only.

Airport	Departures			Arrivals		
	Sectors	On Time		Sectors	On Time	
	Flown	No.	%	Flown	No.	%
<b>Adelaide</b>						
Jetstar	255	206	80.8	255	215	84.3
Qantas	819	732	89.4	820	739	90.1
QantasLink	132	112	84.8	133	117	88.0
Regional Express	219	208	95.0	218	203	93.1
Tiger Airways	52	47	90.4	53	50	94.3
Virgin Australia	680	615	90.4	683	621	90.9
All Airlines	2 157	1 920	89.0	2 162	1 945	90.0
Relates to services to and from Brisbane, Canberra, Gold Coast, Melbourne, Perth, Port Lincoln and Sydney.						
<b>Albury</b>						
QantasLink	114	67	58.8	115	74	64.3
Regional Express	113	100	88.5	113	93	82.3
Virgin Australia Regional Airlines	60	42	70.0	60	44	73.3
All Airlines	287	209	72.8	288	211	73.3
Relates to services to and from Sydney only.						
<b>Ayers Rock</b>						
Qantas	31	25	80.6	31	23	74.2
Virgin Australia	31	20	64.5	31	21	67.7
All Airlines	62	45	72.6	62	44	71.0
Relates to services to and from Sydney only.						
<b>Ballina</b>						
Jetstar	54	47	87.0	54	50	92.6
Regional Express	24	21	87.5	31	24	77.4
Virgin Australia	30	28	93.3	31	28	90.3
All Airlines	108	96	88.9	116	102	87.9
Relates to services to and from Sydney only.						
<b>Brisbane</b>						
Jetstar	571	430	75.3	573	363	63.4
Qantas	1 735	1 432	82.5	1 716	1 327	77.3
QantasLink	817	719	88.0	813	640	78.7
Tiger Airways	145	106	73.1	145	94	64.8
Virgin Australia	2 059	1 699	82.5	2 052	1 505	73.3
Virgin Australia Regional Airlines	352	291	82.7	352	277	78.7
All Airlines	5 679	4 677	82.4	5 651	4 206	74.4
Relates to services to and from Adelaide, Cairns, Canberra, Darwin, Emerald, Gladstone, Hamilton Island, Mackay, Melbourne, Mount Isa, Newcastle, Perth, Proserpine, Rockhampton, Sydney and Townsville.						

Airport	Departures			Arrivals		
	Sectors Flown	On Time		Sectors Flown	On Time	
		No.	%		No.	%
<b>Broome</b>						
Qantas	28	14	50.0	28	23	82.1
QantasLink	57	52	91.2	57	50	87.7
Virgin Australia	62	53	85.5	62	56	90.3
Virgin Australia Regional Airlines	23	8	34.8	23	17	73.9
All Airlines	170	127	74.7	170	146	85.9
Relates to services to and from Perth only.						
<b>Cairns</b>						
Jetstar	232	194	83.6	230	189	82.2
Qantas	222	201	90.5	223	200	89.7
QantasLink	188	167	88.8	191	155	81.2
Tiger Airways	62	52	83.9	62	59	95.2
Virgin Australia	287	242	84.3	287	253	88.2
Virgin Australia Regional Airlines	27	25	92.6	27	26	96.3
All Airlines	1 018	881	86.5	1 020	882	86.5
Relates to services to and from Brisbane, Melbourne, Sydney and Townsville.						
<b>Canberra</b>						
Qantas	629	569	90.5	627	564	90.0
QantasLink	472	383	81.1	472	367	77.8
Virgin Australia	361	297	82.3	361	310	85.9
Virgin Australia Regional Airlines	246	216	87.8	248	212	85.5
All Airlines	1 708	1 465	85.8	1 708	1 453	85.1
Relates to services to and from Adelaide, Brisbane, Melbourne and Sydney.						
<b>Coffs Harbour</b>						
QantasLink	154	107	69.5	155	111	71.6
Tiger Airways	21	20	95.2	21	19	90.5
Virgin Australia	57	44	77.2	57	45	78.9
All Airlines	232	171	73.7	233	175	75.1
Relates to services to and from Sydney only.						
<b>Darwin</b>						
Jetstar	33	20	60.6	35	27	77.1
Qantas	127	91	71.7	128	97	75.8
Virgin Australia	118	100	84.7	120	95	79.2
All Airlines	278	211	75.9	283	219	77.4
Relates to services to and from Brisbane, Melbourne, Perth and Sydney.						
<b>Dubbo</b>						
QantasLink	128	81	63.3	128	75	58.6
Regional Express	162	150	92.6	160	137	85.6
All Airlines	290	231	79.7	288	212	73.6
Relates to services to and from Sydney only.						
<b>Emerald</b>						
QantasLink	179	154	86.0	180	159	88.3
Virgin Australia Regional Airlines	99	83	83.8	99	82	82.8
All Airlines	278	237	85.3	279	241	86.4
Relates to services to and from Brisbane only.						

Airport	Departures			Arrivals		
	Sectors Flown	On Time		Sectors Flown	On Time	
		No.	%		No.	%
<b>Geraldton</b>						
QantasLink	54	44	81.5	54	42	77.8
Virgin Australia Regional Airlines	91	76	83.5	92	79	85.9
All Airlines	145	120	82.8	146	121	82.9
Relates to services to and from Perth only.						
<b>Gladstone</b>						
QantasLink	241	212	88.0	222	201	90.5
Virgin Australia	3	2	66.7	3	1	33.3
Virgin Australia Regional Airlines	140	107	76.4	140	106	75.7
All Airlines	384	321	83.6	365	308	84.4
Relates to services to and from Brisbane only.						
<b>Gold Coast</b>						
Jetstar	420	343	81.7	420	353	84.0
Qantas	92	76	82.6	93	78	83.9
Tiger Airways	92	72	78.3	92	76	82.6
Virgin Australia	475	403	84.8	477	390	81.8
All Airlines	1 079	894	82.9	1 082	897	82.9
Relates to services to and from Adelaide, Melbourne and Sydney.						
<b>Hamilton Island</b>						
Jetstar	39	35	89.7	39	36	92.3
Virgin Australia	61	48	78.7	62	50	80.6
All Airlines	100	83	83.0	101	86	85.1
Relates to services to and from Brisbane and Sydney.						
<b>Hobart</b>						
Jetstar	183	146	79.8	183	161	88.0
Qantas	93	84	90.3	93	79	84.9
QantasLink	31	30	96.8	31	25	80.6
Tiger Airways	31	23	74.2	31	25	80.6
Virgin Australia	195	159	81.5	195	163	83.6
All Airlines	533	442	82.9	533	453	85.0
Relates to services to and from Melbourne and Sydney.						
<b>Kalgoorlie</b>						
Qantas	64	61	95.3	64	61	95.3
QantasLink	25	21	84.0	25	23	92.0
Virgin Australia Regional Airlines	63	55	87.3	60	50	83.3
All Airlines	152	137	90.1	149	134	89.9
Relates to services to and from Perth only.						
<b>Karratha</b>						
Qantas	190	162	85.3	191	163	85.3
QantasLink	62	54	87.1	62	57	91.9
Virgin Australia	53	46	86.8	54	46	85.2
All Airlines	305	262	85.9	307	266	86.6
Relates to services to and from Perth only.						

Airport	Departures			Arrivals		
	Sectors Flown	On Time		Sectors Flown	On Time	
		No.	%		No.	%
<b>Launceston</b>						
Jetstar	142	105	73.9	142	116	81.7
QantasLink	109	95	87.2	109	91	83.5
Virgin Australia	150	124	82.7	150	128	85.3
All Airlines	401	324	80.8	401	335	83.5
Relates to services to and from Melbourne and Sydney.						
<b>Mackay</b>						
Jetstar	93	58	62.4	93	74	79.6
QantasLink	112	98	87.5	112	100	89.3
Virgin Australia	169	133	78.7	169	145	85.8
All Airlines	374	289	77.3	374	319	85.3
Relates to services to and from Brisbane only.						
<b>Melbourne</b>						
Jetstar	1 118	873	78.1	1 118	907	81.1
Qantas	2 161	1 931	89.4	2 160	1 933	89.5
QantasLink	282	252	89.4	283	236	83.4
Regional Express	89	85	95.5	90	77	85.6
Tiger Airways	495	442	89.3	494	394	79.8
Virgin Australia	2 334	1 971	84.4	2 331	1 960	84.1
All Airlines	6 479	5 554	85.7	6 476	5 507	85.0
Relates to services to and from Adelaide, Brisbane, Cairns, Canberra, Darwin, Gold Coast, Hobart, Launceston, Mildura, Newcastle, Perth, Sunshine Coast and Sydney.						
<b>Mildura</b>						
QantasLink	89	74	83.1	89	71	79.8
Regional Express	90	84	93.3	89	84	94.4
Virgin Australia	31	23	74.2	31	24	77.4
All Airlines	210	181	86.2	209	179	85.6
Relates to services to and from Melbourne only.						
<b>Mount Isa</b>						
Qantas	58	53	91.4	58	54	93.1
Virgin Australia	23	17	73.9	23	19	82.6
All Airlines	81	70	86.4	81	73	90.1
Relates to services to and from Brisbane only.						
<b>Newcastle</b>						
Jetstar	196	170	86.7	196	158	80.6
QantasLink	73	34	46.6	73	42	57.5
Virgin Australia	114	80	70.2	114	92	80.7
All Airlines	383	284	74.2	383	292	76.2
Relates to services to and from Brisbane and Melbourne.						
<b>Newman</b>						
Qantas	135	118	87.4	135	119	88.1
QantasLink	35	32	91.4	35	33	94.3
Virgin Australia	41	29	70.7	41	38	92.7
Virgin Australia Regional Airlines	11	7	63.6	15	6	40.0
All Airlines	222	186	83.8	226	196	86.7
Relates to services to and from Perth only.						

Airport	Departures			Arrivals		
	Sectors Flown	On Time		Sectors Flown	On Time	
		No.	%		No.	%
<b>Perth</b>						
Jetstar	167	123	73.7	168	134	79.8
Qantas	1 244	1 106	88.9	1 244	1 037	83.4
QantasLink	276	252	91.3	275	240	87.3
Tiger Airways	50	46	92.0	50	48	96.0
Virgin Australia	661	600	90.8	659	555	84.2
Virgin Australia Regional Airlines	190	161	84.7	188	142	75.5
All Airlines	2 588	2 288	88.4	2 584	2 156	83.4
Relates to services to and from Adelaide, Brisbane, Broome, Darwin, Geraldton, Kalgoorlie, Karratha, Melbourne, Newman, Port Hedland and Sydney.						
<b>Port Hedland</b>						
Qantas	134	114	85.1	134	115	85.8
QantasLink	42	36	85.7	43	37	86.0
Virgin Australia	56	43	76.8	56	52	92.9
All Airlines	232	193	83.2	233	204	87.6
Relates to services to and from Perth only.						
<b>Port Lincoln</b>						
QantasLink	94	83	88.3	93	81	87.1
Regional Express	218	205	94.0	219	204	93.2
All Airlines	312	288	92.3	312	285	91.3
Relates to services to and from Adelaide only.						
<b>Port Macquarie</b>						
QantasLink	138	95	68.8	137	103	75.2
Virgin Australia Regional Airlines	61	45	73.8	61	37	60.7
All Airlines	199	140	70.4	198	140	70.7
Relates to services to and from Sydney only.						
<b>Proserpine</b>						
Jetstar	27	24	88.9	27	16	59.3
Virgin Australia	49	43	87.8	49	44	89.8
All Airlines	76	67	88.2	76	60	78.9
Relates to services to and from Brisbane only.						
<b>Rockhampton</b>						
QantasLink	183	155	84.7	205	169	82.4
Virgin Australia	110	86	78.2	110	92	83.6
Virgin Australia Regional Airlines	113	98	86.7	113	96	85.0
All Airlines	406	339	83.5	428	357	83.4
Relates to services to and from Brisbane only.						
<b>Sunshine Coast</b>						
Jetstar	135	102	75.6	135	113	83.7
Tiger Airways	18	17	94.4	18	17	94.4
Virgin Australia	63	44	69.8	63	52	82.5
All Airlines	216	163	75.5	216	182	84.3
Relates to services to and from Melbourne and Sydney.						

Airport	Departures			Arrivals		
	Sectors	On Time		Sectors	On Time	
	Flown	No.	%	Flown	No.	%
<b>Sydney</b>						
Jetstar	1 107	905	81.8	1 104	841	76.2
Qantas	2 365	2 062	87.2	2 382	2 017	84.7
QantasLink	1 039	782	75.3	1 037	744	71.7
Regional Express	448	390	87.1	443	380	85.8
Tiger Airways	337	294	87.2	337	279	82.8
Virgin Australia	2 380	2 003	84.2	2 383	1 933	81.1
Virgin Australia Regional Airlines	369	305	82.7	367	296	80.7
All Airlines	8 045	6 741	83.8	8 053	6 490	80.6

Relates to services to and from Adelaide, Albury, Ayers Rock, Ballina, Brisbane, Cairns, Canberra, Coffs Harbour, Darwin, Dubbo, Gold Coast, Hamilton Island, Hobart, Launceston, Melbourne, Perth, Port Macquarie, Sunshine Coast, Townsville and Wagga Wagga.

#### Townsville

Jetstar	53	41	77.4	53	48	90.6
Qantas	153	145	94.8	153	138	90.2
QantasLink	187	150	80.2	184	162	88.0
Virgin Australia	203	155	76.4	202	162	80.2
Virgin Australia Regional Airlines	27	26	96.3	27	25	92.6
All Airlines	623	517	83.0	619	535	86.4

Relates to services to and from Brisbane, Cairns and Sydney.

#### Wagga Wagga

QantasLink	113	93	82.3	113	86	76.1
Regional Express	144	130	90.3	144	129	89.6
All Airlines	257	223	86.8	257	215	83.7

Relates to services to and from Sydney only.



## Definitions

---

On time departure                      A flight departure is counted as "on time" if it departs the gate within 15 minutes of the scheduled departure time shown in the carriers' schedule.

---

On time arrival                         A flight arrival is counted as "on time" if it arrived at the gate within 15 minutes of the scheduled arrival time shown in the carriers' schedule.  
Neither diverted nor cancelled flights count as on time.

---

Cancellation                            A flight removed from service within 7 days of scheduled departure is regarded as a cancellation.

---

On time departure percentage                      The percentage of on time departures is measured against the number of departures *operated* on any particular sector.

---

On time arrival percentage                         The percentage of on time arrivals is measured against the number of arrivals *operated* on any particular sector.

---

Cancellation percentage                      The percentage of cancellations is measured against the number of services *scheduled* on any particular sector.

---