

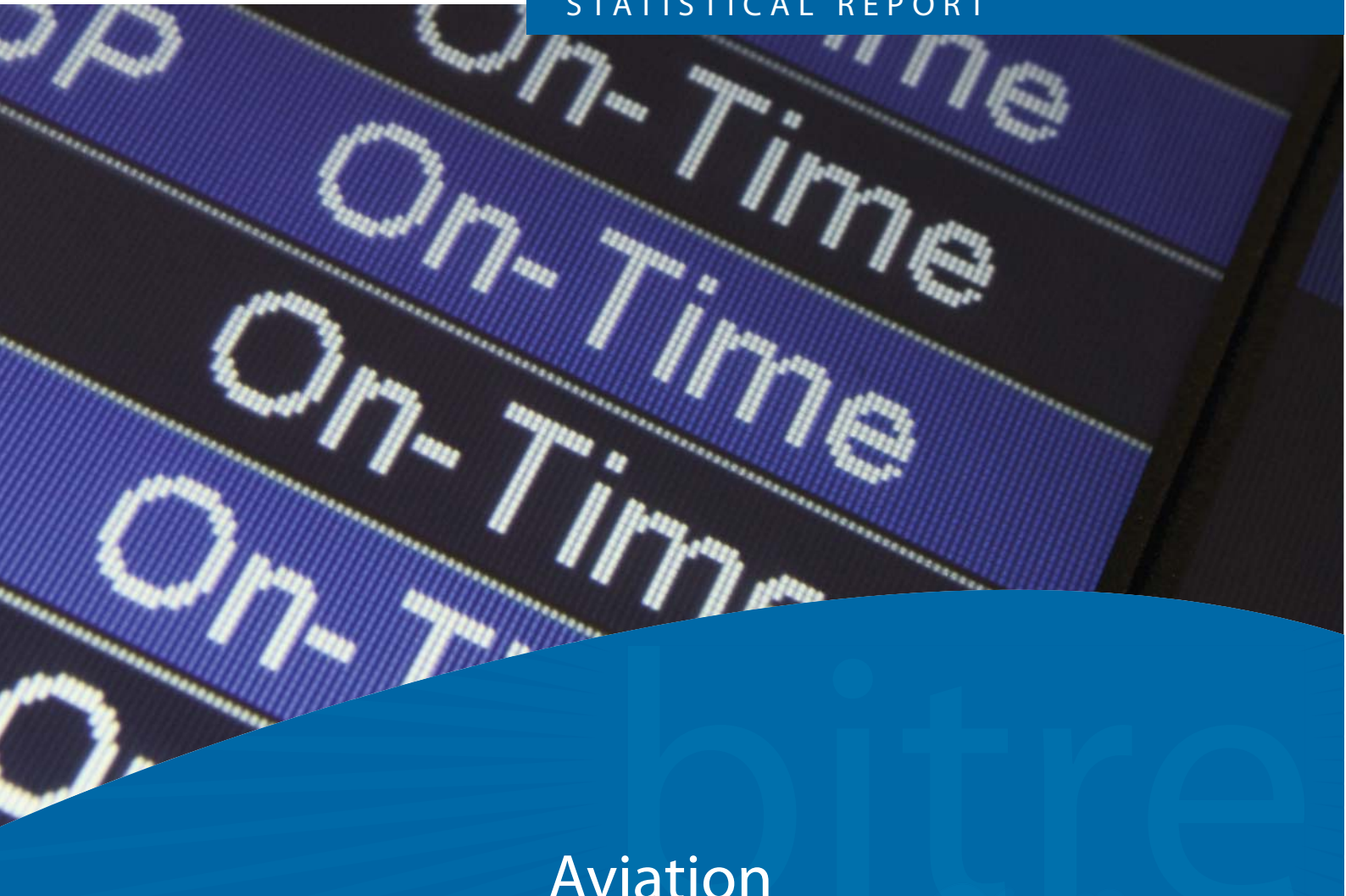


Australian Government

Department of Infrastructure and Transport

Bureau of Infrastructure, Transport and Regional Economics

STATISTICAL REPORT



Aviation

Domestic airline on time performance
May 2012

© Commonwealth of Australia 2012

ISSN: 1832-0759

Ownership of intellectual property rights in this publication

Unless otherwise noted, copyright (and any other intellectual property rights, if any) in this publication is owned by the Commonwealth of Australia (referred to below as the Commonwealth).

Disclaimer

The material contained in this publication is made available on the understanding that the Commonwealth is not providing professional advice, and that users exercise their own skill and care with respect to its use, and seek independent advice if necessary.

The Commonwealth makes no representations or warranties as to the contents or accuracy of the information contained in this publication. To the extent permitted by law, the Commonwealth disclaims liability to any person or organisation in respect of anything done, or omitted to be done, in reliance upon information contained in this publication.

Creative Commons licence

With the exception of (a) the Coat of Arms; and (b) the Department of Infrastructure's photos and graphics, copyright in this publication is licensed under a Creative Commons Attribution 3.0 Australia Licence.

Creative Commons Attribution 3.0 Australia Licence is a standard form licence agreement that allows you to copy, communicate and adapt this publication provided that you attribute the work to the Commonwealth and abide by the other licence terms. A summary of the licence terms is available from <http://creativecommons.org/licenses/by/3.0/au/deed.en>. The full licence terms are available from <http://creativecommons.org/licenses/by/3.0/au/legalcode>.

Use of the Coat of Arms

The Department of the Prime Minister and Cabinet sets the terms under which the Coat of Arms is used. Please refer to the Department's Commonwealth Coat of Arms and Government branding web page <http://www.dpmmc.gov.au/guidelines/index.cfm#brand> and, in particular, the Guidelines on the use of the Commonwealth Coat of Arms publication.

An appropriate citation for this report is:

Bureau of Infrastructure, Transport and Regional Economics (BITRE), 2012, Domestic airline on time performance, Statistical Report, BITRE, Canberra ACT.

Contact us

This publication is available in PDF format. All other rights are reserved, including in relation to any Departmental logos or trade marks which may exist. For enquiries regarding the licence and any use of this publication, please contact:

Bureau of Infrastructure, Transport and Regional Economics (BITRE)
Department of Infrastructure and Transport
GPO Box 501, Canberra ACT 2601, Australia
Telephone: (international) +61 2 6274 7210
Fax: (international) +61 2 6274 6855
Email: bitre@infrastructure.gov.au
Website: www.bitre.gov.au

Inquiries

Should you require additional information about the statistics contained in this publication:

Telephone (02) 6274 7790 or Facsimile (02) 6274 7727

Electronic mail: AVSTATS@infrastructure.gov.au

Web site: <http://www.bitre.gov.au/statistics/aviation/otphome.aspx>

Foreword

The Bureau of Infrastructure, Transport and Regional Economics (BITRE) monitors the punctuality and reliability of major domestic airlines operating between Australian airports. The purpose of this is to allow for evaluation of overall industry and individual airline performance, so that consumers of air travel can make informed decisions.

The following domestic airlines report this data monthly to the BITRE: Jetstar, Qantas, QantasLink, Regional Express, Skywest Airlines, Tiger Airways, and Virgin Australia. Data has been gathered since November 2003, although some airlines commenced reporting at a later date, including Jetstar which first reported in May 2004, MacAir in July 2005 and Tiger Airways in April 2008. MacAir ceased operations in February 2009 and data was not received for December 2008 onwards. Virgin Blue was rebranded as Virgin Australia in May 2011 and time series data in Microsoft Excel spreadsheet format on the BITRE website has been revised to reflect this. Services operated by Skywest on behalf of Virgin Australia using ATR/F100 aircraft commenced in November 2011 and are shown separately as Virgin Australia – ATR/F100 Operations.

Information presented in this report is for Australian domestic routes for which the passenger load averaged 8 000 or more passengers per month over the previous six months and where two or more airlines operated in competition on those routes. There were 56 routes that met this definition in May 2012. Over time, routes which meet these criteria change as airline networks and traffic levels vary.

Participating airlines report their overall monthly network performance where this is possible.

Total industry figures encompass all services operated by reporting airlines only. These airlines collectively carried over 95 per cent of total domestic passengers (regular public transport only) in 2011.

The method of capturing on time performance varies between airlines utilising different recording systems. Jetstar and Qantas jet aircraft use Aircraft Communication Addressing and Reporting System (ACARS) to electronically measure on time performance. Regional Express, Skywest, Tiger Airways, Virgin Australia, Virgin Australia – ATR/F100 Operations and the Qantas non-jet fleet record on time performance manually using records from pilots, gate agents and/or ground crews.

After initial data is collected, aggregate reports are audited internally by participating airlines prior to publication.

Reports and detailed time series data in Microsoft Excel spreadsheet format are available from the BITRE website at: <http://www.bitre.gov.au/statistics/aviation/otphome.aspx>.

Contents

	Page
Industry performance	1
Individual routes	9
Airports	20
Definitions	26

Industry performance

For May 2012, on time performance over all routes operated by participating airlines (Jetstar, Qantas, QantasLink, Regional Express, Skywest Airlines, Tiger Airways, Virgin Australia and Virgin Australia – ATR/F100 Operations) averaged 84.9 per cent for on time departures, and 83.6 per cent for on time arrivals. Cancellations represented 1.1 per cent of all scheduled flights. The equivalent figures for May 2011 were 84.1 per cent for departures, 82.6 per cent for arrivals and 1.1 per cent for cancellations.

The long term average performance for all routes since reporting commenced in November 2003 is 84.0 per cent for on time departures and 82.7 per cent for on time arrivals. Cancellations average 1.2 per cent of all scheduled flights.

Tiger Airways operated on a reduced schedule with 900 sectors flown in May 2012 compared to 1 872 in May 2011.

Of the major domestic airlines, Tiger Airways achieved the highest level of on time departures for May 2012 at 90.1 per cent, followed by Qantas at 89.5 per cent, Virgin Australia at 87.5 per cent and Jetstar at 79.6 per cent. The regional airlines were led by Regional Express at 88.2 per cent, followed by Virgin Australia – ATR/F100 Operations at 88.0 per cent, Skywest at 82.5 per cent and QantasLink at 77.4 per cent.

Qantas achieved the highest on time arrivals among the major domestic airlines at 88.1 per cent, followed by Tiger Airways at 87.6 per cent, Virgin Australia at 85.9 per cent and Jetstar at 79.4 per cent. Regional Express was the best performing regional airline for on time arrivals at 87.5 per cent, followed by Virgin Australia – ATR/F100 Operations at 84.5 per cent, Skywest at 79.3 per cent and QantasLink at 75.8 per cent.

QantasLink had the highest percentage of cancellations for May 2012 at 2.2 per cent, while Skywest had no cancellations.

Of the 56 routes which met the criteria for on time performance reporting in May 2012, the Melbourne-Darwin route had the highest percentage of on time departures (97.7 per cent) and the Darwin-Brisbane route had the lowest percentage of on time departures (53.2 per cent). The Darwin-Melbourne route had the highest percentage of on time arrivals (100.0 per cent) and the Townsville-Cairns route had the lowest percentage of on time arrivals (58.9 per cent).

Cancellations were highest on the Canberra-Sydney route at 4.5 per cent, followed by Sydney-Canberra at 4.1 per cent, Perth-Broome at 3.5 per cent, Perth-Port Hedland at 3.1 per cent and Broome-Perth at 3.0 per cent.

Ayers Rock Airport recorded the highest percentage of on time departures (96.8 per cent) and the highest percentage of on time arrivals (also 96.8 per cent). Kalgoorlie Airport recorded the lowest percentage of on time departures (70.8 per cent) and Geraldton Airport recorded the lowest percentage of on time arrivals (69.2 per cent). These figures only refer to reported routes and do not cover all flights at these airports.

Table 1 On time performance for May 2012 — Total Industry

	<i>Sectors</i>		<i>Departures On Time</i>		<i>Arrivals On Time</i>		<i>Cancellations</i>	
	<i>Scheduled</i>	<i>Flown</i>	<i>No.</i>	<i>%</i>	<i>No.</i>	<i>%</i>	<i>No.</i>	<i>%</i>
Jetstar	5 572	5 534	4 403	79.6	4 396	79.4	38	0.7
Qantas	10 208	10 141	9 078	89.5	8 932	88.1	67	0.7
QantasLink	9 425	9 216	7 129	77.4	6 985	75.8	209	2.2
Regional Express	5 672	5 650	4 981	88.2	4 945	87.5	22	0.4
Skywest	879	879	725	82.5	697	79.3	0	0.0
Tiger Airways	903	900	811	90.1	788	87.6	3	0.3
Virgin Australia	11 554	11 403	9 979	87.5	9 800	85.9	151	1.3
Virgin Australia - ATR/F100 Operations	1 146	1 138	1 001	88.0	962	84.5	8	0.7
All Airlines	45 359	44 861	38 107	84.9	37 505	83.6	498	1.1

Total airline network data (including routes not shown in this report).

Table 2 Top ten routes for on time performance for May 2012 (participating airlines only)

<i>Departures</i>		<i>Arrivals</i>	
<i>Route</i>	<i>On Time (%)</i>	<i>Route</i>	<i>On Time (%)</i>
Melbourne-Darwin	97.7	Darwin-Melbourne	100.0
Ayers Rock-Sydney	96.8	Ayers Rock-Sydney	98.4
Darwin-Perth	96.6	Sydney-Ayers Rock	96.8
Canberra-Adelaide	96.3	Brisbane-Adelaide	96.4
Brisbane-Proserpine	96.1	Canberra-Adelaide	96.3
Adelaide-Canberra	96.0	Adelaide-Canberra	96.0
Darwin-Melbourne	95.5	Adelaide-Gold Coast	93.1
Canberra-Brisbane	93.9	Cairns-Sydney	93.1
Perth-Darwin	93.1	Brisbane-Canberra	93.1
Adelaide-Sydney	92.4	Adelaide-Sydney	92.2

Table 3 Top ten airports for on time performance for May 2012 (participating airlines and reported routes only)

<i>Departures</i>		<i>Arrivals</i>	
<i>Airport</i>	<i>On Time (%)</i>	<i>Airport</i>	<i>On Time (%)</i>
Ayers Rock	96.8	Ayers Rock	96.8
Port Lincoln	90.7	Adelaide	90.9
Adelaide	90.5	Port Hedland	90.0
Wagga Wagga	89.5	Port Lincoln	88.4
Melbourne	89.2	Melbourne	87.3
Canberra	86.5	Karratha	86.9
Karratha	86.2	Emerald	86.3
Mildura	86.2	Broome	86.0
Sydney	85.6	Proserpine	85.7
Brisbane	85.5	Sunshine Coast	85.1

Total industry on time performance

Figure 1 On time performance (by month from May 2009)—Total Industry

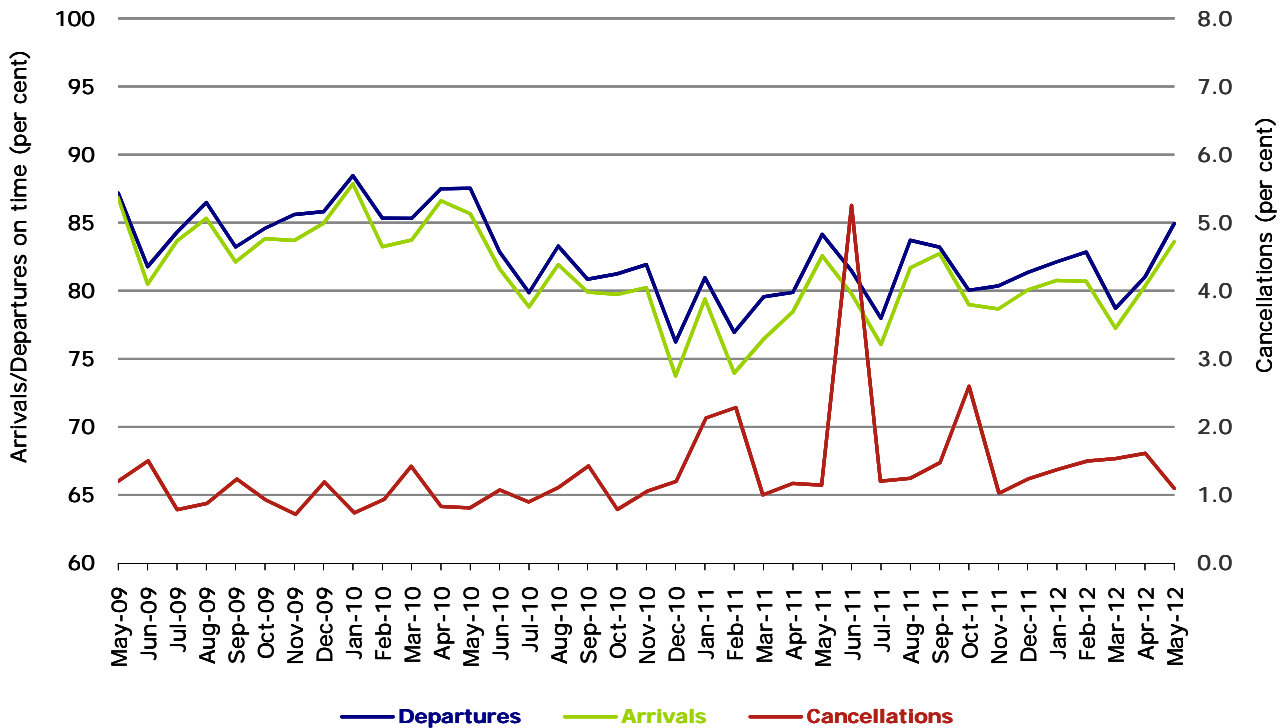
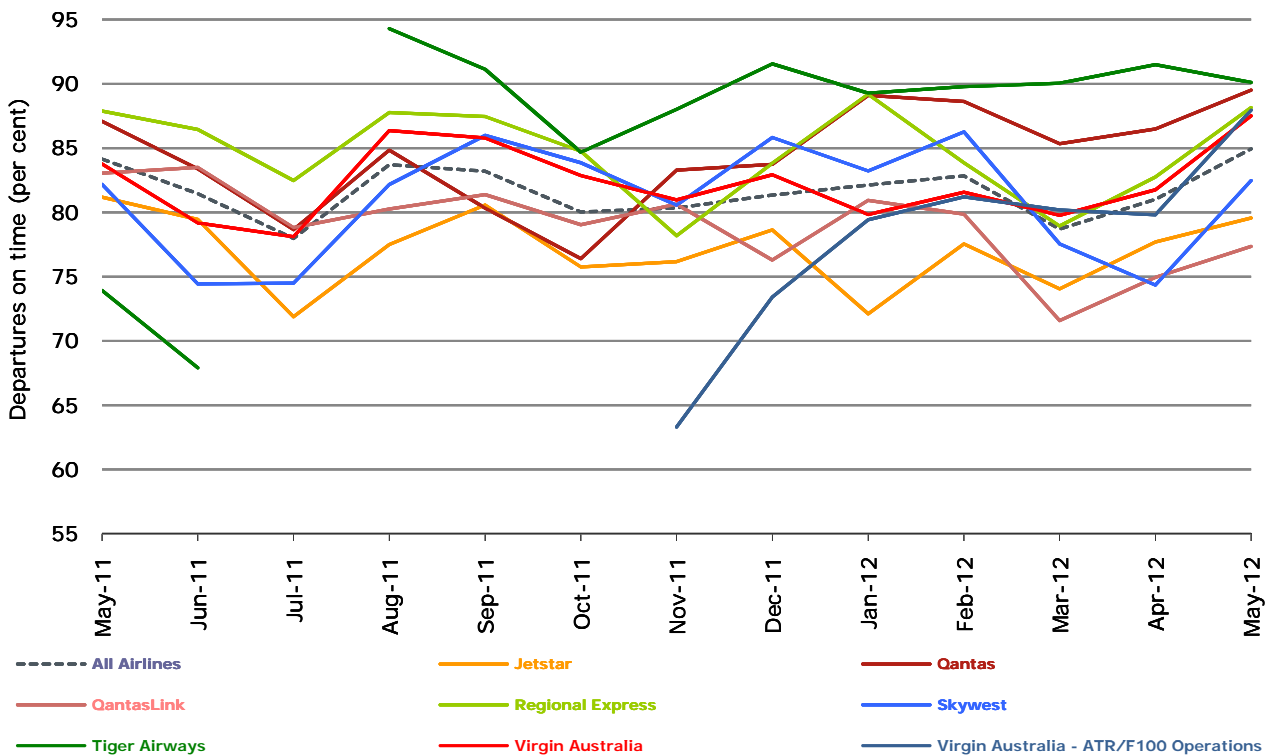


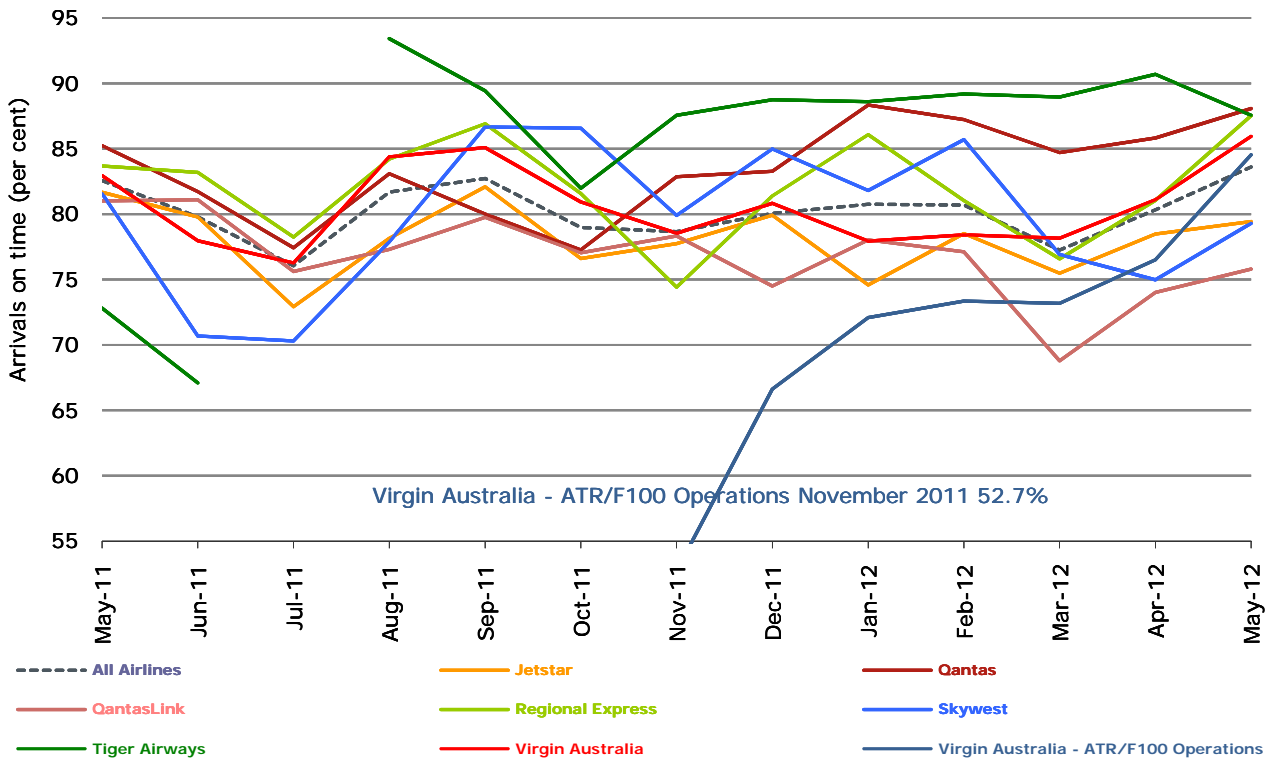
Figure 2 Departures on time (by month from May 2011)



No data for Tiger Airways for July 2011 as it was grounded by CASA from 2/7/2011 to 11/8/2011.

Virgin Australia - ATR/F100 Operations commenced in November 2011.

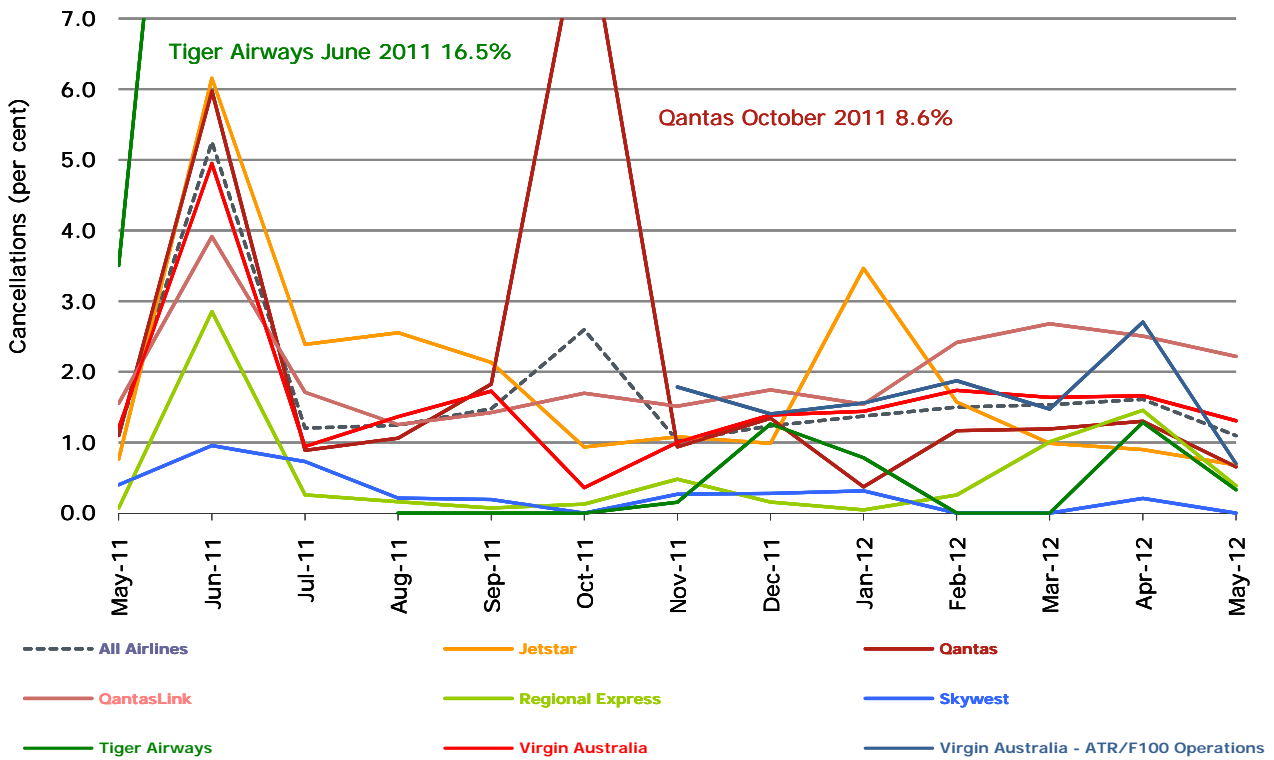
Figure 3 Arrivals on time (by month from May 2011)



No data for Tiger Airways for July 2011 as it was grounded by CASA from 2/7/2011 to 11/8/2011.

Virgin Australia - ATR/F100 Operations commenced in November 2011.

Figure 4 Cancellations (by month from May 2011)



No data for Tiger Airways for July 2011 as it was grounded by CASA from 2/7/2011 to 11/8/2011.

Virgin Australia - ATR/F100 Operations commenced in November 2011.

Major domestic airlines on time performance

Figure 5 On time performance (by month from May 2009)—Jetstar

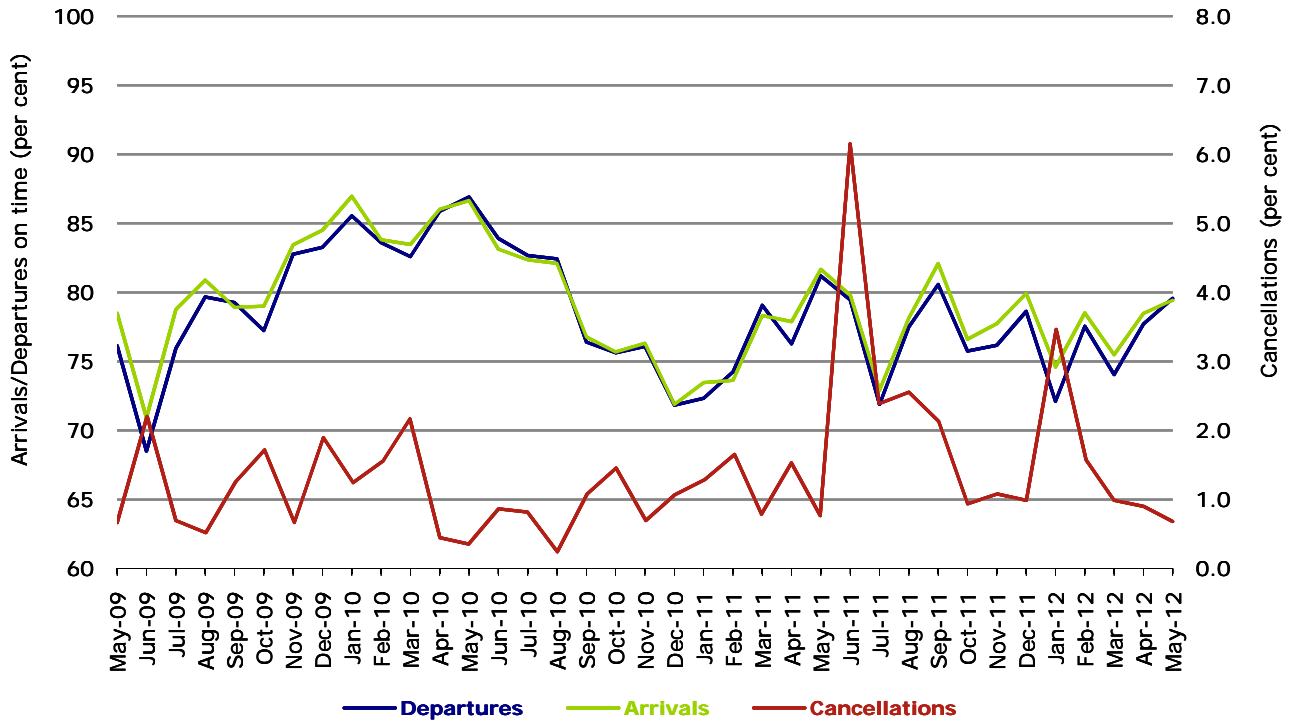


Figure 6 On time performance (by month from May 2009)—Qantas

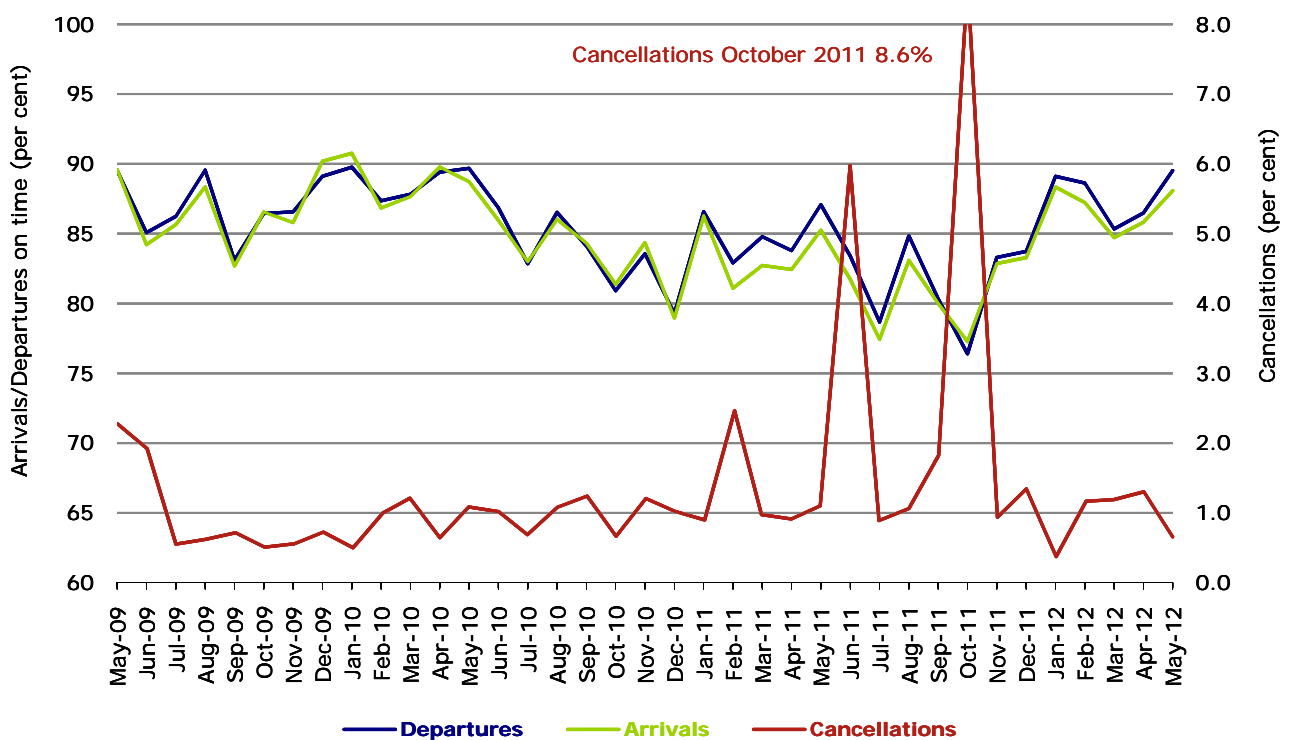
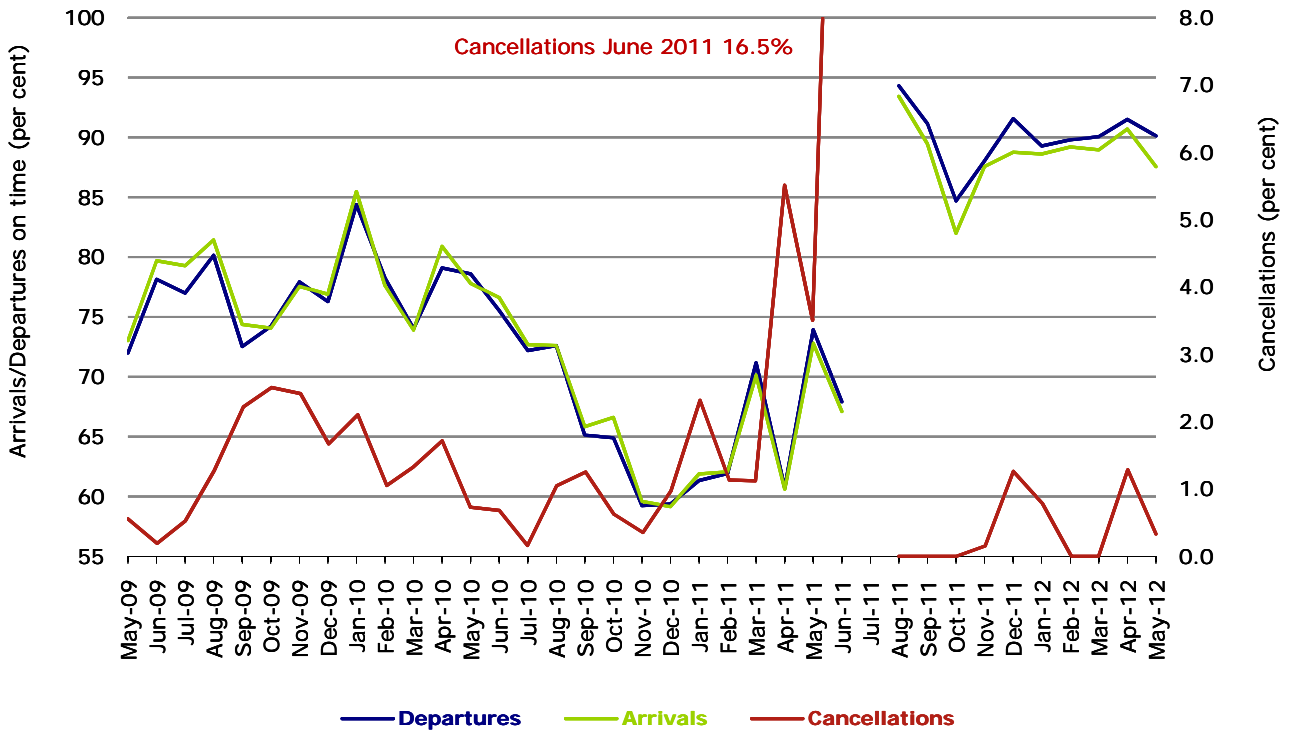
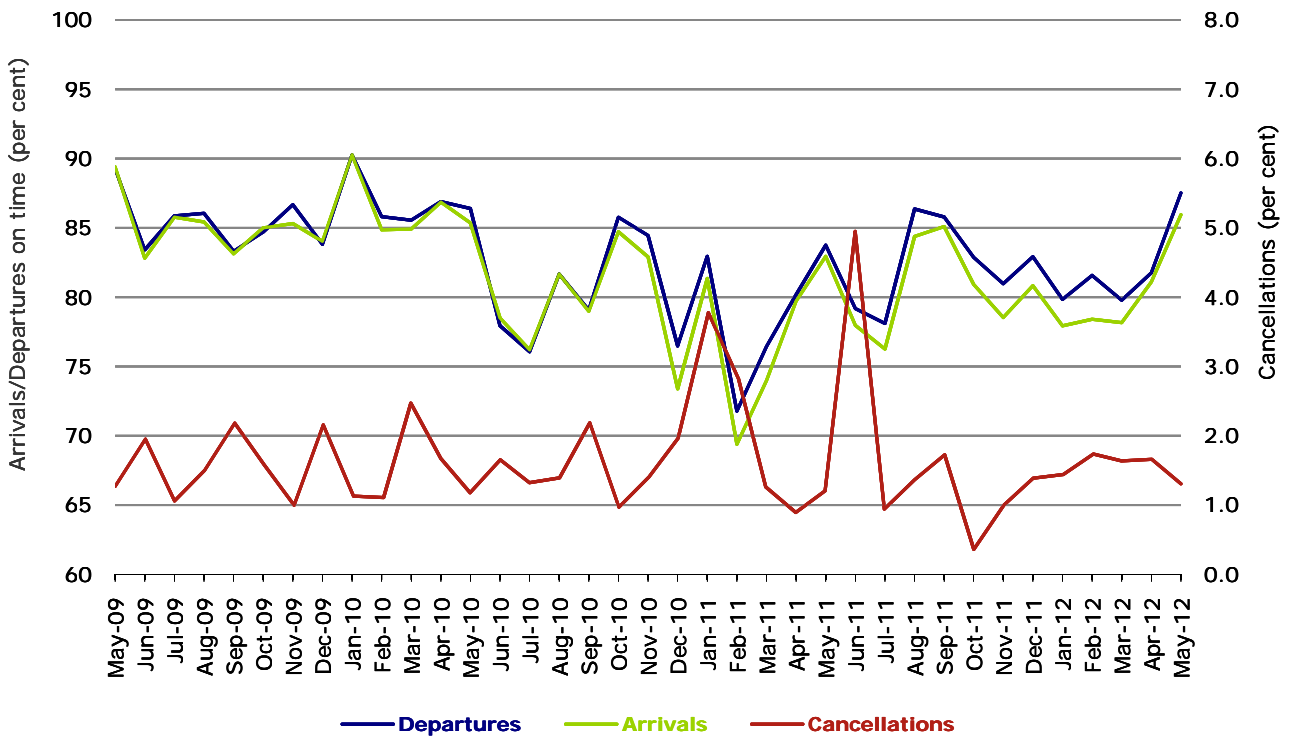


Figure 7 On time performance (by month from May 2009)—Tiger Airways



No data for Tiger Airways for July 2011 as it was grounded by CASA from 2/7/2011 to 11/8/2011.

Figure 8 On time performance (by month from May 2009)—Virgin Australia



Major regional airlines on time performance

Figure 9 On time performance (by month from May 2009)—QantasLink

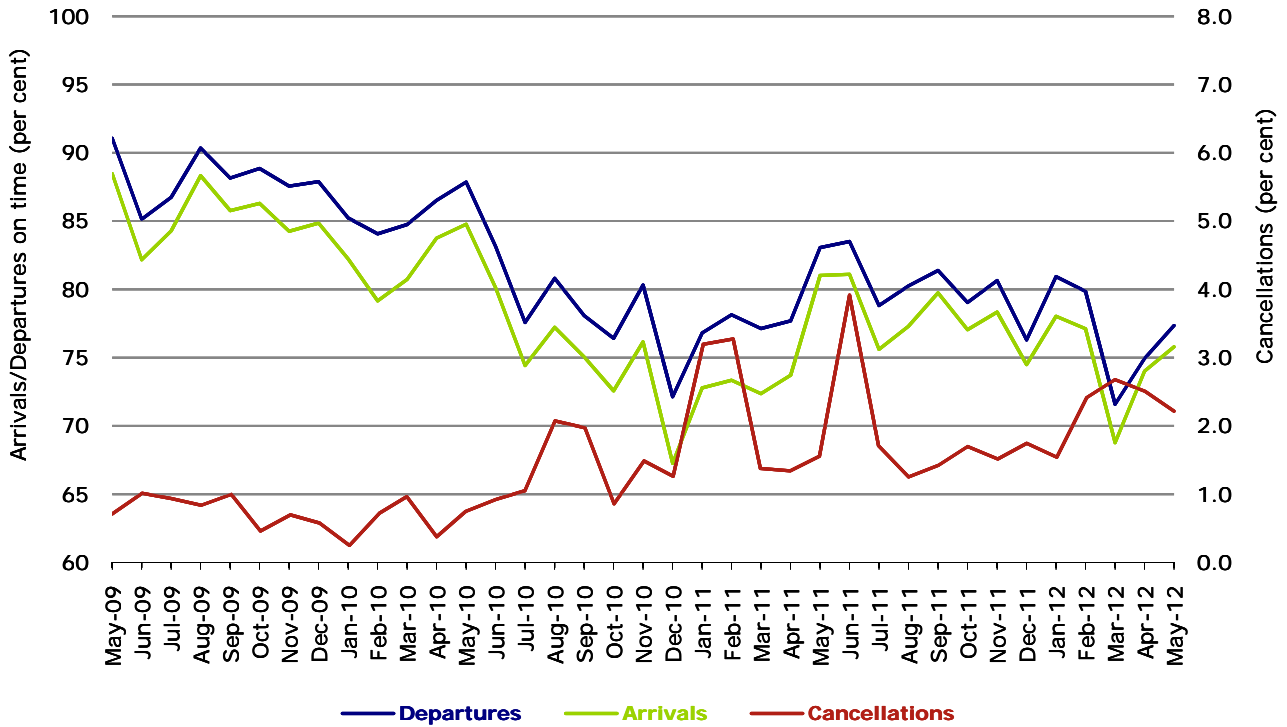


Figure 10 On time performance (by month from May 2009)—Regional Express

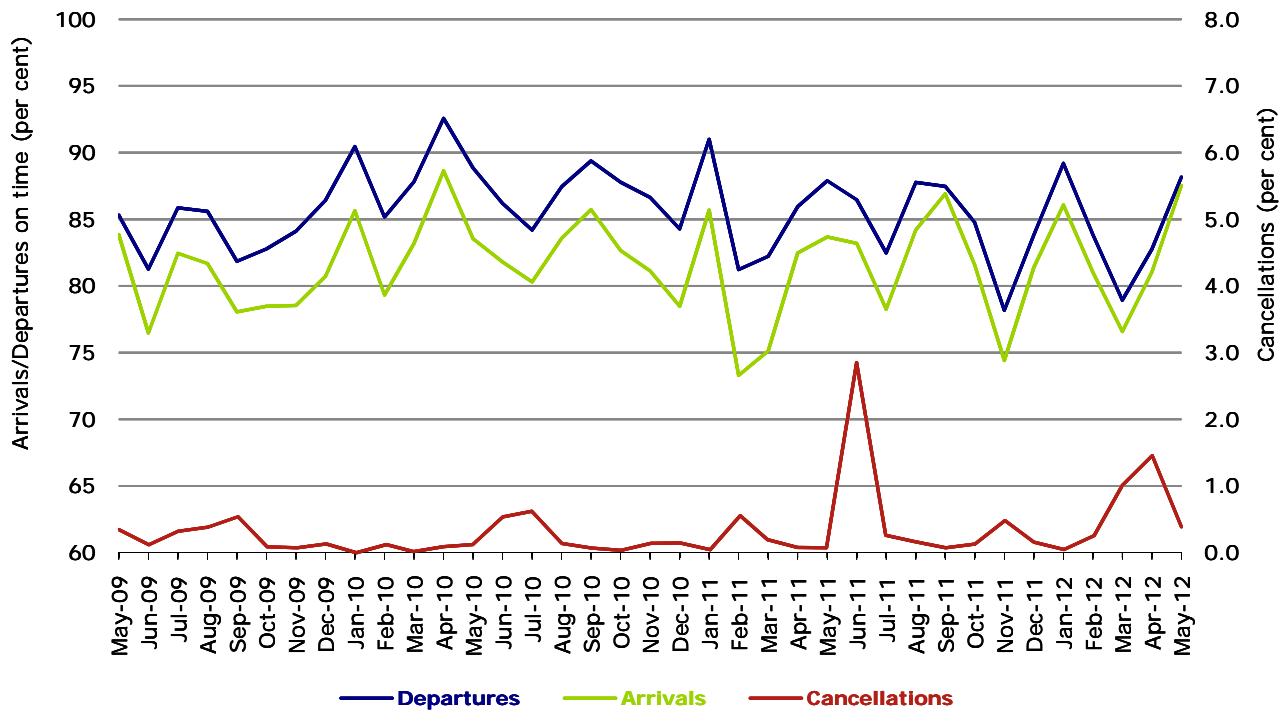


Figure 11 On time performance (by month from May 2009)—Skywest

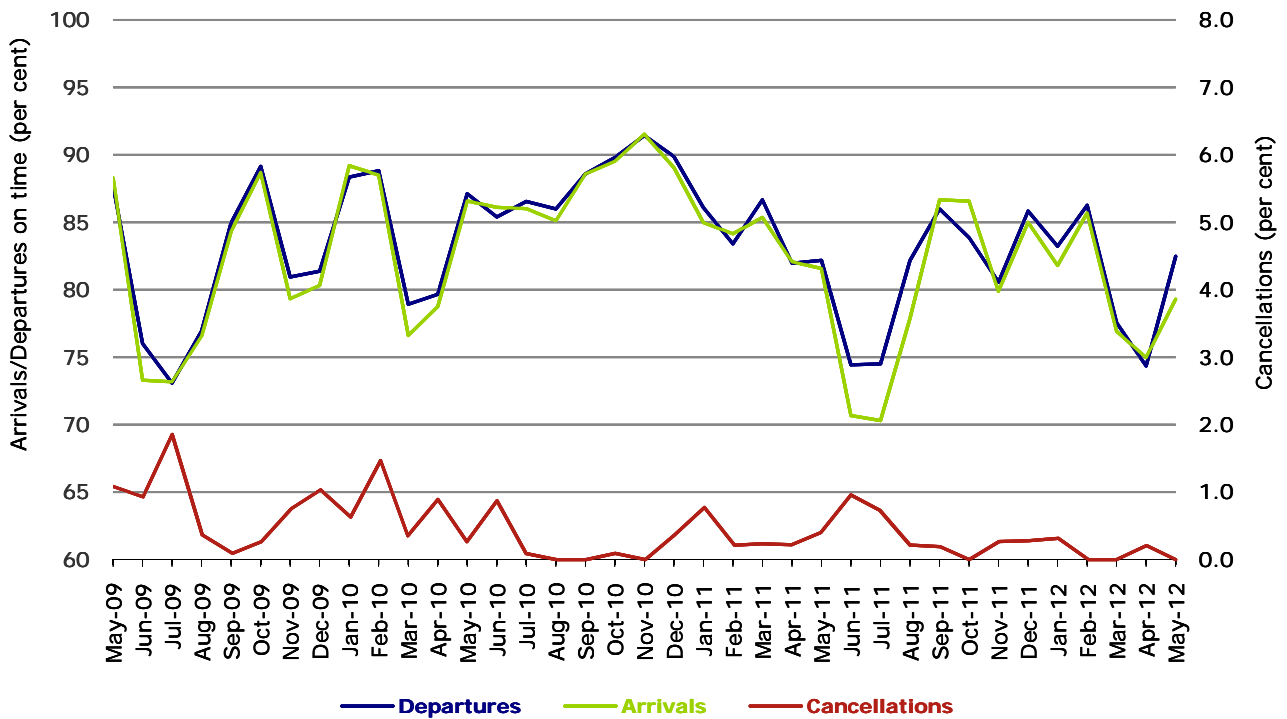
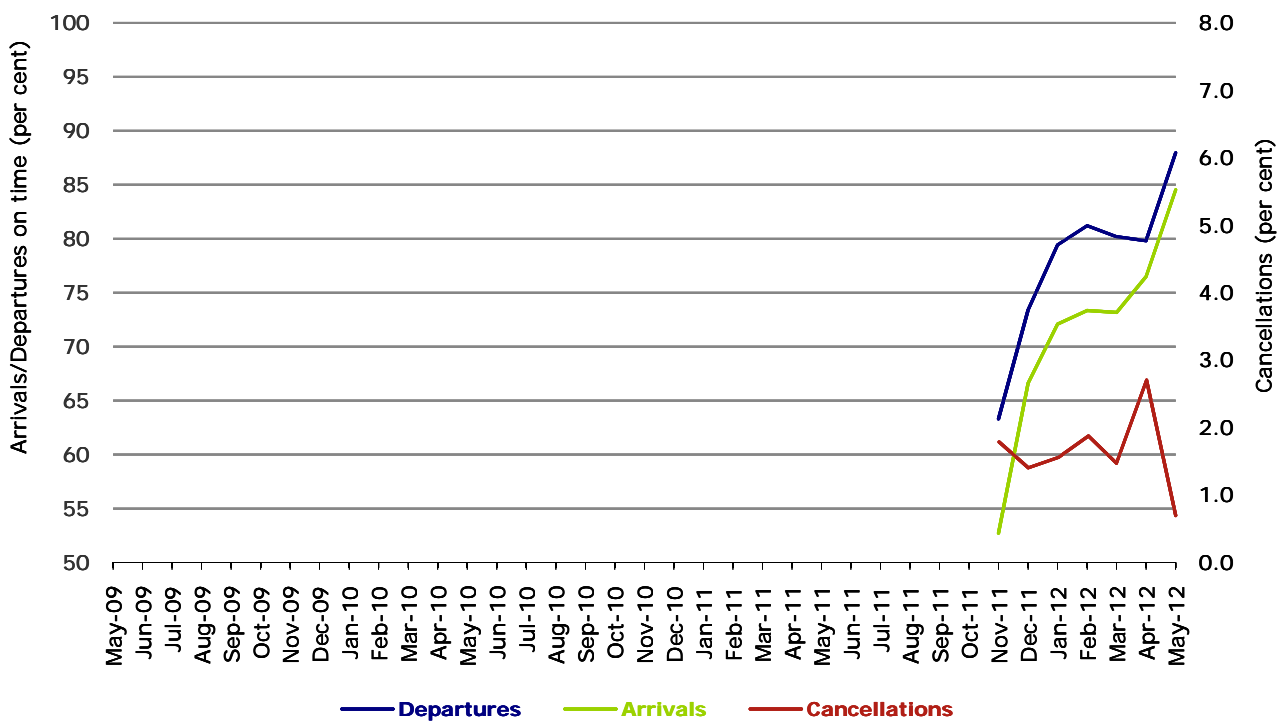


Figure 11 On time performance (by month from May 2009)
Virgin Australia - ATR/F100 Operations



Virgin Australia - ATR/F100 Operations commenced in November 2011.

Individual routes

On time performance is reported for all routes where the passenger load averages over 8000 passengers per month over the previous six months, and where two or more airlines operate in competition on those routes. There are now 56 routes which meet this definition. Over time, however, routes which meet this definition may change as airline networks and traffic levels vary.

	<i>Sectors</i>		<i>Departures On Time</i>		<i>Arrivals On Time</i>		<i>Cancellations</i>	
	<i>Sched.</i>	<i>Flown</i>	<i>No.</i>	<i>%</i>	<i>No.</i>	<i>%</i>	<i>No.</i>	<i>%</i>
Adelaide-Brisbane								
Jetstar	28	28	25	89.3	26	92.9	0	0.0
Qantas	104	104	96	92.3	91	87.5	0	0.0
Virgin Australia	93	92	79	85.9	85	92.4	1	1.1
All Airlines	225	224	200	89.3	202	90.2	1	0.4
Adelaide-Canberra								
Qantas	50	50	48	96.0	48	96.0	0	0.0
Virgin Australia	26	25	24	96.0	24	96.0	1	3.8
All Airlines	76	75	72	96.0	72	96.0	1	1.3
Adelaide-Gold Coast								
Jetstar	27	27	24	88.9	24	88.9	0	0.0
Virgin Australia	31	31	29	93.5	30	96.8	0	0.0
All Airlines	58	58	53	91.4	54	93.1	0	0.0
Adelaide-Melbourne								
Jetstar	78	76	51	67.1	56	73.7	2	2.6
Qantas	277	276	254	92.0	253	91.7	1	0.4
QantasLink	18	18	14	77.8	14	77.8	0	0.0
Virgin Australia	290	287	267	93.0	267	93.0	3	1.0
All Airlines	663	657	586	89.2	590	89.8	6	0.9
Adelaide-Perth								
Jetstar	31	31	20	64.5	24	77.4	0	0.0
Qantas	102	102	96	94.1	94	92.2	0	0.0
Virgin Australia	62	59	53	89.8	55	93.2	3	4.8
All Airlines	195	192	169	88.0	173	90.1	3	1.5
Adelaide-Port Lincoln								
QantasLink	102	99	93	93.9	92	92.9	3	2.9
Regional Express	203	202	182	90.1	174	86.1	1	0.5
All Airlines	305	301	275	91.4	266	88.4	4	1.3
Adelaide-Sydney								
Jetstar	77	76	61	80.3	60	78.9	1	1.3
Qantas	259	259	250	96.5	249	96.1	0	0.0
Virgin Australia	177	175	160	91.4	161	92.0	2	1.1
All Airlines	513	510	471	92.4	470	92.2	3	0.6
Albury-Sydney								
QantasLink	120	119	79	66.4	78	65.5	1	0.8
Regional Express	113	113	100	88.5	100	88.5	0	0.0
Virgin Australia	58	52	46	88.5	45	86.5	6	10.3
All Airlines	291	284	225	79.2	223	78.5	7	2.4
Ayers Rock-Sydney								
Qantas	31	31	30	96.8	31	100.0	0	0.0
Virgin Australia	31	31	30	96.8	30	96.8	0	0.0
All Airlines	62	62	60	96.8	61	98.4	0	0.0

	<i>Sectors</i>		<i>Departures On Time</i>		<i>Arrivals On Time</i>		<i>Cancellations</i>	
	<i>Sched.</i>	<i>Flown</i>	<i>No.</i>	<i>%</i>	<i>No.</i>	<i>%</i>	<i>No.</i>	<i>%</i>
Ballina-Sydney								
Jetstar	40	40	26	65.0	25	62.5	0	0.0
Regional Express	25	24	21	87.5	21	87.5	1	4.0
Virgin Australia	31	30	25	83.3	24	80.0	1	3.2
All Airlines	96	94	72	76.6	70	74.5	2	2.1
Brisbane-Adelaide								
Jetstar	27	27	26	96.3	26	96.3	0	0.0
Qantas	104	104	94	90.4	100	96.2	0	0.0
Virgin Australia	93	93	83	89.2	90	96.8	0	0.0
All Airlines	224	224	203	90.6	216	96.4	0	0.0
Brisbane-Cairns								
Jetstar	99	97	93	95.9	80	82.5	2	2.0
Qantas	113	113	95	84.1	100	88.5	0	0.0
Virgin Australia	144	144	118	81.9	119	82.6	0	0.0
Virgin Australia - ATR/F100 Operations	27	27	23	85.2	17	63.0	0	0.0
All Airlines	383	381	329	86.4	316	82.9	2	0.5
Brisbane-Canberra								
Qantas	140	140	129	92.1	135	96.4	0	0.0
QantasLink	22	20	14	70.0	16	80.0	2	9.1
Virgin Australia	102	100	89	89.0	91	91.0	2	2.0
All Airlines	264	260	232	89.2	242	93.1	4	1.5
Brisbane-Darwin								
Qantas	31	31	25	80.6	24	77.4	0	0.0
Virgin Australia	31	31	18	58.1	16	51.6	0	0.0
All Airlines	62	62	43	69.4	40	64.5	0	0.0
Brisbane-Emerald								
QantasLink	179	175	152	86.9	147	84.0	4	2.2
Virgin Australia - ATR/F100 Operations	73	73	67	91.8	67	91.8	0	0.0
All Airlines	252	248	219	88.3	214	86.3	4	1.6
Brisbane-Gladstone								
QantasLink	181	176	132	75.0	138	78.4	5	2.8
Virgin Australia - ATR/F100 Operations	81	81	76	93.8	74	91.4	0	0.0
All Airlines	262	257	208	80.9	212	82.5	5	1.9
Brisbane-Hamilton Island								
Jetstar	14	14	11	78.6	11	78.6	0	0.0
Virgin Australia	31	31	29	93.5	27	87.1	0	0.0
All Airlines	45	45	40	88.9	38	84.4	0	0.0
Brisbane-Mackay								
Jetstar	108	108	88	81.5	93	86.1	0	0.0
QantasLink	81	81	67	82.7	59	72.8	0	0.0
Virgin Australia	172	171	148	86.5	137	80.1	1	0.6
All Airlines	361	360	303	84.2	289	80.3	1	0.3
Brisbane-Melbourne								
Jetstar	94	94	65	69.1	77	81.9	0	0.0
Qantas	348	348	299	85.9	320	92.0	0	0.0
Tiger Airways	79	79	61	77.2	66	83.5	0	0.0
Virgin Australia	373	369	331	89.7	343	93.0	4	1.1
All Airlines	894	890	756	84.9	806	90.6	4	0.4
Brisbane-Newcastle								
Jetstar	107	107	89	83.2	88	82.2	0	0.0
QantasLink	73	71	42	59.2	30	42.3	2	2.7
Virgin Australia - ATR/F100 Operations	58	58	56	96.6	52	89.7	0	0.0
All Airlines	238	236	187	79.2	170	72.0	2	0.8

	<i>Sectors</i>		<i>Departures On Time</i>		<i>Arrivals On Time</i>		<i>Cancellations</i>	
	<i>Sched.</i>	<i>Flown</i>	<i>No.</i>	<i>%</i>	<i>No.</i>	<i>%</i>	<i>No.</i>	<i>%</i>
Brisbane-Perth								
Jetstar	25	25	18	72.0	16	64.0	0	0.0
Qantas	108	108	90	83.3	93	86.1	0	0.0
Virgin Australia	71	71	62	87.3	65	91.5	0	0.0
All Airlines	204	204	170	83.3	174	85.3	0	0.0
Brisbane-Proserpine								
Jetstar	23	23	23	100.0	21	91.3	0	0.0
Virgin Australia	31	31	29	93.5	27	87.1	0	0.0
Virgin Australia - ATR/F100 Operations	23	23	22	95.7	18	78.3	0	0.0
All Airlines	77	77	74	96.1	66	85.7	0	0.0
Brisbane-Rockhampton								
QantasLink	204	203	156	76.8	166	81.8	1	0.5
Virgin Australia	108	107	95	88.8	95	88.8	1	0.9
Virgin Australia - ATR/F100 Operations	70	70	65	92.9	62	88.6	0	0.0
All Airlines	382	380	316	83.2	323	85.0	2	0.5
Brisbane-Sydney								
Jetstar	109	108	81	75.0	69	63.9	1	0.9
Qantas	517	515	457	88.7	475	92.2	2	0.4
Virgin Australia	580	573	499	87.1	511	89.2	7	1.2
All Airlines	1 206	1 196	1 037	86.7	1 055	88.2	10	0.8
Brisbane-Townsville								
Jetstar	31	31	26	83.9	27	87.1	0	0.0
Qantas	134	134	118	88.1	119	88.8	0	0.0
Virgin Australia	173	172	148	86.0	148	86.0	1	0.6
All Airlines	338	337	292	86.6	294	87.2	1	0.3
Broome-Perth								
Qantas	57	57	48	84.2	47	82.5	0	0.0
QantasLink	27	27	23	85.2	23	85.2	0	0.0
Skywest	22	22	16	72.7	10	45.5	0	0.0
Virgin Australia	63	58	45	77.6	44	75.9	5	7.9
All Airlines	169	164	132	80.5	124	75.6	5	3.0
Cairns-Brisbane								
Jetstar	103	101	97	96.0	96	95.0	2	1.9
Qantas	113	113	101	89.4	99	87.6	0	0.0
Virgin Australia	144	144	129	89.6	131	91.0	0	0.0
Virgin Australia - ATR/F100 Operations	27	27	16	59.3	21	77.8	0	0.0
All Airlines	387	385	343	89.1	347	90.1	2	0.5
Cairns-Melbourne								
Jetstar	60	60	46	76.7	50	83.3	0	0.0
Qantas	31	31	24	77.4	27	87.1	0	0.0
Tiger Airways	31	31	23	74.2	23	74.2	0	0.0
Virgin Australia	35	35	24	68.6	29	82.9	0	0.0
All Airlines	157	157	117	74.5	129	82.2	0	0.0
Cairns-Sydney								
Jetstar	52	52	44	84.6	45	86.5	0	0.0
Qantas	91	91	80	87.9	90	98.9	0	0.0
Virgin Australia	89	89	75	84.3	81	91.0	0	0.0
All Airlines	232	232	199	85.8	216	93.1	0	0.0
Cairns-Townsville								
QantasLink	193	191	148	77.5	138	72.3	2	1.0
Virgin Australia	19	18	16	88.9	16	88.9	1	5.3
All Airlines	212	209	164	78.5	154	73.7	3	1.4

	<i>Sectors</i>		<i>Departures On Time</i>		<i>Arrivals On Time</i>		<i>Cancellations</i>	
	<i>Sched.</i>	<i>Flown</i>	<i>No.</i>	<i>%</i>	<i>No.</i>	<i>%</i>	<i>No.</i>	<i>%</i>
Canberra-Adelaide								
Qantas	54	54	54	100.0	53	98.1	0	0.0
Virgin Australia	27	26	23	88.5	24	92.3	1	3.7
All Airlines	81	80	77	96.3	77	96.3	1	1.2
Canberra-Brisbane								
Qantas	140	140	139	99.3	126	90.0	0	0.0
QantasLink	22	20	14	70.0	14	70.0	2	9.1
Virgin Australia	102	101	92	91.1	78	77.2	1	1.0
All Airlines	264	261	245	93.9	218	83.5	3	1.1
Canberra-Melbourne								
Qantas	265	264	242	91.7	238	90.2	1	0.4
QantasLink	39	34	27	79.4	26	76.5	5	12.8
Virgin Australia	173	171	146	85.4	147	86.0	2	1.2
All Airlines	477	469	415	88.5	411	87.6	8	1.7
Canberra-Sydney								
Qantas	156	156	144	92.3	145	92.9	0	0.0
QantasLink	410	378	281	74.3	268	70.9	32	7.8
Virgin Australia	100	99	86	86.9	84	84.8	1	1.0
Virgin Australia - ATR/F100 Operations	151	147	128	87.1	130	88.4	4	2.6
All Airlines	817	780	639	81.9	627	80.4	37	4.5
Coffs Harbour-Sydney								
QantasLink	147	144	103	71.5	113	78.5	3	2.0
Virgin Australia	58	55	44	80.0	47	85.5	3	5.2
All Airlines	205	199	147	73.9	160	80.4	6	2.9
Darwin-Brisbane								
Qantas	31	31	14	45.2	22	71.0	0	0.0
Virgin Australia	31	31	19	61.3	24	77.4	0	0.0
All Airlines	62	62	33	53.2	46	74.2	0	0.0
Darwin-Melbourne								
Qantas	13	13	11	84.6	13	100.0	0	0.0
Virgin Australia	31	31	31	100.0	31	100.0	0	0.0
All Airlines	44	44	42	95.5	44	100.0	0	0.0
Darwin-Perth								
Qantas	31	31	29	93.5	27	87.1	0	0.0
Virgin Australia	27	27	27	100.0	26	96.3	0	0.0
All Airlines	58	58	56	96.6	53	91.4	0	0.0
Dubbo-Sydney								
QantasLink	112	112	75	67.0	73	65.2	0	0.0
Regional Express	176	174	155	89.1	159	91.4	2	1.1
All Airlines	288	286	230	80.4	232	81.1	2	0.7
Emerald-Brisbane								
QantasLink	179	174	139	79.9	144	82.8	5	2.8
Virgin Australia - ATR/F100 Operations	73	73	70	95.9	69	94.5	0	0.0
All Airlines	252	247	209	84.6	213	86.2	5	2.0
Geraldton-Perth								
QantasLink	54	54	35	64.8	23	42.6	0	0.0
Skywest	95	95	72	75.8	69	72.6	0	0.0
All Airlines	149	149	107	71.8	92	61.7	0	0.0
Gladstone-Brisbane								
QantasLink	204	200	149	74.5	140	70.0	4	2.0
Virgin Australia - ATR/F100 Operations	81	81	74	91.4	71	87.7	0	0.0
All Airlines	285	281	223	79.4	211	75.1	4	1.4

	<i>Sectors</i>		<i>Departures On Time</i>		<i>Arrivals On Time</i>		<i>Cancellations</i>	
	<i>Sched.</i>	<i>Flown</i>	<i>No.</i>	<i>%</i>	<i>No.</i>	<i>%</i>	<i>No.</i>	<i>%</i>
Gold Coast-Adelaide								
Jetstar	27	27	23	85.2	24	88.9	0	0.0
Virgin Australia	30	30	28	93.3	28	93.3	0	0.0
All Airlines	57	57	51	89.5	52	91.2	0	0.0
Gold Coast-Melbourne								
Jetstar	182	181	135	74.6	142	78.5	1	0.5
Tiger Airways	65	65	57	87.7	53	81.5	0	0.0
Virgin Australia	191	189	167	88.4	178	94.2	2	1.0
All Airlines	438	435	359	82.5	373	85.7	3	0.7
Gold Coast-Sydney								
Jetstar	297	293	226	77.1	229	78.2	4	1.3
Virgin Australia	319	313	286	91.4	288	92.0	6	1.9
All Airlines	616	606	512	84.5	517	85.3	10	1.6
Hamilton Island-Brisbane								
Jetstar	14	14	11	78.6	12	85.7	0	0.0
Virgin Australia	31	31	28	90.3	28	90.3	0	0.0
All Airlines	45	45	39	86.7	40	88.9	0	0.0
Hamilton Island-Sydney								
Jetstar	31	31	22	71.0	22	71.0	0	0.0
Virgin Australia	31	31	21	67.7	24	77.4	0	0.0
All Airlines	62	62	43	69.4	46	74.2	0	0.0
Hobart-Melbourne								
Jetstar	137	137	105	76.6	108	78.8	0	0.0
Qantas	62	62	61	98.4	61	98.4	0	0.0
Virgin Australia	137	137	107	78.1	108	78.8	0	0.0
All Airlines	336	336	273	81.3	277	82.4	0	0.0
Hobart-Sydney								
Jetstar	54	53	43	81.1	40	75.5	1	1.9
Qantas	31	31	26	83.9	26	83.9	0	0.0
Virgin Australia	62	62	47	75.8	48	77.4	0	0.0
All Airlines	147	146	116	79.5	114	78.1	1	0.7
Kalgoorlie-Perth								
Qantas	64	64	44	68.8	47	73.4	0	0.0
QantasLink	17	16	14	87.5	13	81.3	1	5.9
Skywest	16	16	10	62.5	5	31.3	0	0.0
All Airlines	97	96	68	70.8	65	67.7	1	1.0
Karratha-Perth								
Qantas	248	242	207	85.5	180	74.4	6	2.4
QantasLink	17	17	16	94.1	16	94.1	0	0.0
Virgin Australia	55	53	46	86.8	32	60.4	2	3.6
All Airlines	320	312	269	86.2	228	73.1	8	2.5
Launceston-Melbourne								
Jetstar	93	93	68	73.1	68	73.1	0	0.0
QantasLink	76	73	56	76.7	52	71.2	3	3.9
Virgin Australia	138	135	122	90.4	119	88.1	3	2.2
All Airlines	307	301	246	81.7	239	79.4	6	2.0
Launceston-Sydney								
Jetstar	31	31	25	80.6	24	77.4	0	0.0
Virgin Australia	31	31	25	80.6	25	80.6	0	0.0
All Airlines	62	62	50	80.6	49	79.0	0	0.0

	<i>Sectors</i>		<i>Departures On Time</i>		<i>Arrivals On Time</i>		<i>Cancellations</i>	
	<i>Sched.</i>	<i>Flown</i>	<i>No.</i>	<i>%</i>	<i>No.</i>	<i>%</i>	<i>No.</i>	<i>%</i>
Mackay-Brisbane								
Jetstar	110	109	85	78.0	81	74.3	1	0.9
QantasLink	81	80	59	73.8	66	82.5	1	1.2
Virgin Australia	173	172	145	84.3	140	81.4	1	0.6
All Airlines	364	361	289	80.1	287	79.5	3	0.8
Melbourne-Adelaide								
Jetstar	77	77	67	87.0	64	83.1	0	0.0
Qantas	277	277	261	94.2	259	93.5	0	0.0
QantasLink	18	18	12	66.7	12	66.7	0	0.0
Virgin Australia	290	287	260	90.6	269	93.7	3	1.0
All Airlines	662	659	600	91.0	604	91.7	3	0.5
Melbourne-Brisbane								
Jetstar	93	93	72	77.4	63	67.7	0	0.0
Qantas	349	349	320	91.7	275	78.8	0	0.0
Tiger Airways	79	79	73	92.4	65	82.3	0	0.0
Virgin Australia	373	370	343	92.7	307	83.0	3	0.8
All Airlines	894	891	808	90.7	710	79.7	3	0.3
Melbourne-Cairns								
Jetstar	60	60	48	80.0	45	75.0	0	0.0
Qantas	31	31	29	93.5	26	83.9	0	0.0
Tiger Airways	31	31	28	90.3	24	77.4	0	0.0
Virgin Australia	35	35	33	94.3	27	77.1	0	0.0
All Airlines	157	157	138	87.9	122	77.7	0	0.0
Melbourne-Canberra								
Qantas	265	264	241	91.3	240	90.9	1	0.4
QantasLink	39	34	31	91.2	25	73.5	5	12.8
Virgin Australia	174	173	151	87.3	147	85.0	1	0.6
All Airlines	478	471	423	89.8	412	87.5	7	1.5
Melbourne-Darwin								
Qantas	13	13	12	92.3	12	92.3	0	0.0
Virgin Australia	31	31	31	100.0	27	87.1	0	0.0
All Airlines	44	44	43	97.7	39	88.6	0	0.0
Melbourne-Gold Coast								
Jetstar	182	181	138	76.2	139	76.8	1	0.5
Tiger Airways	65	65	62	95.4	58	89.2	0	0.0
Virgin Australia	190	189	164	86.8	165	87.3	1	0.5
All Airlines	437	435	364	83.7	362	83.2	2	0.5
Melbourne-Hobart								
Jetstar	137	137	118	86.1	115	83.9	0	0.0
Qantas	62	62	57	91.9	52	83.9	0	0.0
Virgin Australia	137	137	114	83.2	110	80.3	0	0.0
All Airlines	336	336	289	86.0	277	82.4	0	0.0
Melbourne-Launceston								
Jetstar	93	93	78	83.9	77	82.8	0	0.0
QantasLink	76	73	60	82.2	48	65.8	3	3.9
Virgin Australia	137	137	123	89.8	123	89.8	0	0.0
All Airlines	306	303	261	86.1	248	81.8	3	1.0
Melbourne-Mildura								
QantasLink	89	86	69	80.2	64	74.4	3	3.4
Regional Express	93	93	89	95.7	87	93.5	0	0.0
Virgin Australia	31	31	26	83.9	25	80.6	0	0.0
All Airlines	213	210	184	87.6	176	83.8	3	1.4

	<i>Sectors</i>		<i>Departures On Time</i>		<i>Arrivals On Time</i>		<i>Cancellations</i>	
	<i>Sched.</i>	<i>Flown</i>	<i>No.</i>	<i>%</i>	<i>No.</i>	<i>%</i>	<i>No.</i>	<i>%</i>
Melbourne-Newcastle								
Jetstar	97	97	79	81.4	79	81.4	0	0.0
Virgin Australia	31	31	29	93.5	29	93.5	0	0.0
All Airlines	128	128	108	84.4	108	84.4	0	0.0
Melbourne-Perth								
Jetstar	79	77	60	77.9	58	75.3	2	2.5
Qantas	202	202	183	90.6	177	87.6	0	0.0
Tiger Airways	65	65	62	95.4	62	95.4	0	0.0
Virgin Australia	151	151	137	90.7	132	87.4	0	0.0
All Airlines	497	495	442	89.3	429	86.7	2	0.4
Melbourne-Sunshine Coast								
Jetstar	43	43	29	67.4	28	65.1	0	0.0
Virgin Australia	31	31	30	96.8	29	93.5	0	0.0
All Airlines	74	74	59	79.7	57	77.0	0	0.0
Melbourne-Sydney								
Jetstar	218	216	162	75.0	166	76.9	2	0.9
Qantas	873	856	795	92.9	759	88.7	17	1.9
Tiger Airways	212	211	199	94.3	200	94.8	1	0.5
Virgin Australia	832	809	738	91.2	698	86.3	23	2.8
All Airlines	2 135	2 092	1 894	90.5	1 823	87.1	43	2.0
Mildura-Melbourne								
QantasLink	89	86	70	81.4	64	74.4	3	3.4
Regional Express	93	93	85	91.4	85	91.4	0	0.0
Virgin Australia	31	31	26	83.9	27	87.1	0	0.0
All Airlines	213	210	181	86.2	176	83.8	3	1.4
Newcastle-Brisbane								
Jetstar	107	107	93	86.9	90	84.1	0	0.0
QantasLink	73	69	40	58.0	41	59.4	4	5.5
Virgin Australia - ATR/F100 Operations	58	58	49	84.5	44	75.9	0	0.0
All Airlines	238	234	182	77.8	175	74.8	4	1.7
Newcastle-Melbourne								
Jetstar	98	98	78	79.6	76	77.6	0	0.0
Virgin Australia	31	31	29	93.5	28	90.3	0	0.0
All Airlines	129	129	107	82.9	104	80.6	0	0.0
Newman-Perth								
Qantas	111	111	86	77.5	74	66.7	0	0.0
QantasLink	26	26	21	80.8	21	80.8	0	0.0
Virgin Australia	32	32	25	78.1	24	75.0	0	0.0
All Airlines	169	169	132	78.1	119	70.4	0	0.0
Perth-Adelaide								
Jetstar	32	31	19	61.3	19	61.3	1	3.1
Qantas	102	102	80	78.4	84	82.4	0	0.0
Virgin Australia	62	59	53	89.8	50	84.7	3	4.8
All Airlines	196	192	152	79.2	153	79.7	4	2.0
Perth-Brisbane								
Jetstar	25	25	9	36.0	11	44.0	0	0.0
Qantas	108	108	87	80.6	77	71.3	0	0.0
Virgin Australia	71	71	63	88.7	53	74.6	0	0.0
All Airlines	204	204	159	77.9	141	69.1	0	0.0

	<i>Sectors</i>		<i>Departures On Time</i>		<i>Arrivals On Time</i>		<i>Cancellations</i>	
	<i>Sched.</i>	<i>Flown</i>	<i>No.</i>	<i>%</i>	<i>No.</i>	<i>%</i>	<i>No.</i>	<i>%</i>
Perth-Broome								
Qantas	57	57	44	77.2	50	87.7	0	0.0
QantasLink	27	27	26	96.3	26	96.3	0	0.0
Skywest	22	22	16	72.7	16	72.7	0	0.0
Virgin Australia	64	58	46	79.3	49	84.5	6	9.4
All Airlines	170	164	132	80.5	141	86.0	6	3.5
Perth-Darwin								
Qantas	31	31	29	93.5	29	93.5	0	0.0
Virgin Australia	27	27	25	92.6	23	85.2	0	0.0
All Airlines	58	58	54	93.1	52	89.7	0	0.0
Perth-Geraldton								
QantasLink	54	54	31	57.4	35	64.8	0	0.0
Skywest	89	89	67	75.3	64	71.9	0	0.0
All Airlines	143	143	98	68.5	99	69.2	0	0.0
Perth-Kalgoorlie								
Qantas	64	64	51	79.7	49	76.6	0	0.0
QantasLink	17	17	15	88.2	15	88.2	0	0.0
Skywest	16	16	13	81.3	12	75.0	0	0.0
All Airlines	97	97	79	81.4	76	78.4	0	0.0
Perth-Karratha								
Qantas	248	243	202	83.1	210	86.4	5	2.0
QantasLink	17	17	15	88.2	15	88.2	0	0.0
Virgin Australia	54	53	43	81.1	47	88.7	1	1.9
All Airlines	319	313	260	83.1	272	86.9	6	1.9
Perth-Melbourne								
Jetstar	77	76	49	64.5	44	57.9	1	1.3
Qantas	202	200	168	84.0	177	88.5	2	1.0
Tiger Airways	64	64	55	85.9	39	60.9	0	0.0
Virgin Australia	151	151	138	91.4	101	66.9	0	0.0
All Airlines	494	491	410	83.5	361	73.5	3	0.6
Perth-Newman								
Qantas	111	111	91	82.0	93	83.8	0	0.0
QantasLink	26	26	18	69.2	20	76.9	0	0.0
Virgin Australia	32	32	30	93.8	28	87.5	0	0.0
All Airlines	169	169	139	82.2	141	83.4	0	0.0
Perth-Port Hedland								
Qantas	138	133	117	88.0	120	90.2	5	3.6
QantasLink	24	24	21	87.5	21	87.5	0	0.0
Virgin Australia	65	63	58	92.1	57	90.5	2	3.1
All Airlines	227	220	196	89.1	198	90.0	7	3.1
Perth-Sydney								
Jetstar	45	42	29	69.0	31	73.8	3	6.7
Qantas	201	201	165	82.1	161	80.1	0	0.0
Virgin Australia	142	142	125	88.0	79	55.6	0	0.0
All Airlines	388	385	319	82.9	271	70.4	3	0.8
Port Hedland-Perth								
Qantas	138	133	105	78.9	86	64.7	5	3.6
QantasLink	24	24	23	95.8	23	95.8	0	0.0
Virgin Australia	64	64	55	85.9	48	75.0	0	0.0
All Airlines	226	221	183	82.8	157	71.0	5	2.2
Port Lincoln-Adelaide								
QantasLink	102	100	94	94.0	94	94.0	2	2.0
Regional Express	203	202	180	89.1	178	88.1	1	0.5
All Airlines	305	302	274	90.7	272	90.1	3	1.0

	<i>Sectors</i>		<i>Departures On Time</i>		<i>Arrivals On Time</i>		<i>Cancellations</i>	
	<i>Sched.</i>	<i>Flown</i>	<i>No.</i>	<i>%</i>	<i>No.</i>	<i>%</i>	<i>No.</i>	<i>%</i>
Port Macquarie-Sydney								
QantasLink	140	138	103	74.6	106	76.8	2	1.4
Virgin Australia - ATR/F100 Operations	59	59	48	81.4	47	79.7	0	0.0
All Airlines	199	197	151	76.6	153	77.7	2	1.0
Proserpine-Brisbane								
Jetstar	22	22	19	86.4	19	86.4	0	0.0
Virgin Australia	31	31	25	80.6	24	77.4	0	0.0
Virgin Australia - ATR/F100 Operations	23	23	20	87.0	18	78.3	0	0.0
All Airlines	76	76	64	84.2	61	80.3	0	0.0
Rockhampton-Brisbane								
QantasLink	181	178	132	74.2	139	78.1	3	1.7
Virgin Australia	108	107	93	86.9	95	88.8	1	0.9
Virgin Australia - ATR/F100 Operations	70	70	63	90.0	64	91.4	0	0.0
All Airlines	359	355	288	81.1	298	83.9	4	1.1
Sunshine Coast-Melbourne								
Jetstar	43	43	20	46.5	24	55.8	0	0.0
Virgin Australia	31	31	24	77.4	27	87.1	0	0.0
All Airlines	74	74	44	59.5	51	68.9	0	0.0
Sunshine Coast-Sydney								
Jetstar	93	92	81	88.0	81	88.0	1	1.1
Virgin Australia	35	35	29	82.9	27	77.1	0	0.0
All Airlines	128	127	110	86.6	108	85.0	1	0.8
Sydney-Adelaide								
Jetstar	76	76	62	81.6	63	82.9	0	0.0
Qantas	255	255	239	93.7	242	94.9	0	0.0
Virgin Australia	177	177	145	81.9	160	90.4	0	0.0
All Airlines	508	508	446	87.8	465	91.5	0	0.0
Sydney-Albury								
QantasLink	120	119	71	59.7	71	59.7	1	0.8
Regional Express	113	112	92	82.1	87	77.7	1	0.9
Virgin Australia	58	53	46	86.8	45	84.9	5	8.6
All Airlines	291	284	209	73.6	203	71.5	7	2.4
Sydney-Ayers Rock								
Qantas	31	31	31	100.0	31	100.0	0	0.0
Virgin Australia	31	31	26	83.9	29	93.5	0	0.0
All Airlines	62	62	57	91.9	60	96.8	0	0.0
Sydney-Ballina								
Jetstar	40	40	29	72.5	30	75.0	0	0.0
Regional Express	29	29	21	72.4	21	72.4	0	0.0
Virgin Australia	31	30	27	90.0	27	90.0	1	3.2
All Airlines	100	99	77	77.8	78	78.8	1	1.0
Sydney-Brisbane								
Jetstar	107	107	95	88.8	87	81.3	0	0.0
Qantas	517	515	471	91.5	419	81.4	2	0.4
Virgin Australia	578	572	510	89.2	476	83.2	6	1.0
All Airlines	1 202	1 194	1 076	90.1	982	82.2	8	0.7
Sydney-Cairns								
Jetstar	52	52	47	90.4	45	86.5	0	0.0
Qantas	91	91	84	92.3	82	90.1	0	0.0
Virgin Australia	89	89	66	74.2	62	69.7	0	0.0
All Airlines	232	232	197	84.9	189	81.5	0	0.0

	<i>Sectors</i>		<i>Departures On Time</i>		<i>Arrivals On Time</i>		<i>Cancellations</i>	
	<i>Sched.</i>	<i>Flown</i>	<i>No.</i>	<i>%</i>	<i>No.</i>	<i>%</i>	<i>No.</i>	<i>%</i>
Sydney-Canberra								
Qantas	160	160	154	96.3	149	93.1	0	0.0
QantasLink	410	382	266	69.6	255	66.8	28	6.8
Virgin Australia	100	98	79	80.6	79	80.6	2	2.0
Virgin Australia - ATR/F100 Operations	151	147	122	83.0	113	76.9	4	2.6
All Airlines	821	787	621	78.9	596	75.7	34	4.1
Sydney-Coffs Harbour								
QantasLink	147	145	106	73.1	101	69.7	2	1.4
Virgin Australia	58	55	43	78.2	45	81.8	3	5.2
All Airlines	205	200	149	74.5	146	73.0	5	2.4
Sydney-Dubbo								
QantasLink	112	112	75	67.0	76	67.9	0	0.0
Regional Express	177	175	148	84.6	165	94.3	2	1.1
All Airlines	289	287	223	77.7	241	84.0	2	0.7
Sydney-Gold Coast								
Jetstar	297	293	233	79.5	231	78.8	4	1.3
Virgin Australia	319	313	279	89.1	275	87.9	6	1.9
All Airlines	616	606	512	84.5	506	83.5	10	1.6
Sydney-Hamilton Island								
Jetstar	31	31	29	93.5	25	80.6	0	0.0
Virgin Australia	31	31	28	90.3	23	74.2	0	0.0
All Airlines	62	62	57	91.9	48	77.4	0	0.0
Sydney-Hobart								
Jetstar	53	53	46	86.8	46	86.8	0	0.0
Qantas	31	31	31	100.0	31	100.0	0	0.0
Virgin Australia	62	62	49	79.0	52	83.9	0	0.0
All Airlines	146	146	126	86.3	129	88.4	0	0.0
Sydney-Launceston								
Jetstar	31	31	26	83.9	26	83.9	0	0.0
Virgin Australia	31	31	30	96.8	30	96.8	0	0.0
All Airlines	62	62	56	90.3	56	90.3	0	0.0
Sydney-Melbourne								
Jetstar	218	213	151	70.9	180	84.5	5	2.3
Qantas	874	856	822	96.0	810	94.6	18	2.1
Tiger Airways	212	210	191	91.0	198	94.3	2	0.9
Virgin Australia	830	811	733	90.4	737	90.9	19	2.3
All Airlines	2 134	2 090	1 897	90.8	1 925	92.1	44	2.1
Sydney-Perth								
Jetstar	44	42	36	85.7	35	83.3	2	4.5
Qantas	201	201	168	83.6	162	80.6	0	0.0
Virgin Australia	142	142	107	75.4	120	84.5	0	0.0
All Airlines	387	385	311	80.8	317	82.3	2	0.5
Sydney-Port Macquarie								
QantasLink	139	138	105	76.1	101	73.2	1	0.7
Virgin Australia - ATR/F100 Operations	59	59	46	78.0	43	72.9	0	0.0
All Airlines	198	197	151	76.6	144	73.1	1	0.5
Sydney-Sunshine Coast								
Jetstar	93	93	84	90.3	83	89.2	0	0.0
Virgin Australia	35	35	33	94.3	32	91.4	0	0.0
All Airlines	128	128	117	91.4	115	89.8	0	0.0

	<i>Sectors</i>		<i>Departures On Time</i>		<i>Arrivals On Time</i>		<i>Cancellations</i>	
	<i>Sched.</i>	<i>Flown</i>	<i>No.</i>	<i>%</i>	<i>No.</i>	<i>%</i>	<i>No.</i>	<i>%</i>
Sydney-Townsville								
Jetstar	21	21	19	90.5	17	81.0	0	0.0
Virgin Australia	31	31	27	87.1	23	74.2	0	0.0
All Airlines	52	52	46	88.5	40	76.9	0	0.0
Sydney-Wagga Wagga								
QantasLink	116	116	87	75.0	80	69.0	0	0.0
Regional Express	121	121	105	86.8	106	87.6	0	0.0
All Airlines	237	237	192	81.0	186	78.5	0	0.0
Townsville-Brisbane								
Jetstar	31	30	23	76.7	24	80.0	1	3.2
Qantas	134	134	125	93.3	123	91.8	0	0.0
Virgin Australia	174	173	150	86.7	142	82.1	1	0.6
All Airlines	339	337	298	88.4	289	85.8	2	0.6
Townsville-Cairns								
QantasLink	193	191	138	72.3	111	58.1	2	1.0
Virgin Australia	19	18	14	77.8	12	66.7	1	5.3
All Airlines	212	209	152	72.7	123	58.9	3	1.4
Townsville-Sydney								
Jetstar	21	21	11	52.4	12	57.1	0	0.0
Virgin Australia	31	31	19	61.3	22	71.0	0	0.0
All Airlines	52	52	30	57.7	34	65.4	0	0.0
Wagga Wagga-Sydney								
QantasLink	116	116	98	84.5	93	80.2	0	0.0
Regional Express	121	121	114	94.2	110	90.9	0	0.0
All Airlines	237	237	212	89.5	203	85.7	0	0.0

Airports

On time performance is reported for all routes where the passenger load averages over 8000 passengers per month, and where two or more airlines operate in competition. The following data reports by airport against flights operated on those routes only.

Airport	Departures			Arrivals		
	Sectors	On Time		Sectors	On Time	
	Flown	No.	%	Flown	No.	%
Adelaide						
Jetstar	238	181	76.1	238	196	82.4
Qantas	791	744	94.1	792	738	93.2
QantasLink	117	107	91.5	118	106	89.8
Regional Express	202	182	90.1	202	178	88.1
Virgin Australia	669	612	91.5	672	621	92.4
All Airlines	2 017	1 826	90.5	2 022	1 839	90.9
Relates to services to and from Brisbane, Canberra, Gold Coast, Melbourne, Perth, Port Lincoln and Sydney.						
Albury						
QantasLink	119	79	66.4	119	71	59.7
Regional Express	113	100	88.5	112	87	77.7
Virgin Australia	52	46	88.5	53	45	84.9
All Airlines	284	225	79.2	284	203	71.5
Relates to services to and from Sydney only.						
Ayers Rock						
Qantas	31	30	96.8	31	31	100.0
Virgin Australia	31	30	96.8	31	29	93.5
All Airlines	62	60	96.8	62	60	96.8
Relates to services to and from Sydney only.						
Ballina						
Jetstar	40	26	65.0	40	30	75.0
Regional Express	24	21	87.5	29	21	72.4
Virgin Australia	30	25	83.3	30	27	90.0
All Airlines	94	72	76.6	99	78	78.8
Relates to services to and from Sydney only.						
Brisbane						
Jetstar	634	520	82.0	636	509	80.0
Qantas	1 493	1 307	87.5	1 494	1 232	82.5
QantasLink	726	563	77.5	721	544	75.5
Tiger Airways	79	61	77.2	79	65	82.3
Virgin Australia	1 893	1 649	87.1	1 895	1 583	83.5
Virgin Australia - ATR/F100 Operations	332	309	93.1	332	287	86.4
All Airlines	5 157	4 409	85.5	5 157	4 220	81.8
Relates to services to and from Adelaide, Cairns, Canberra, Darwin, Emerald, Gladstone, Hamilton Island, Mackay, Melbourne, Newcastle, Perth, Proserpine, Rockhampton, Sydney and Townsville.						

Airport	Departures			Arrivals		
	Sectors Flown	On Time		Sectors Flown	On Time	
		No.	%		No.	%
Broome						
Qantas	57	48	84.2	57	50	87.7
QantasLink	27	23	85.2	27	26	96.3
Skywest	22	16	72.7	22	16	72.7
Virgin Australia	58	45	77.6	58	49	84.5
All Airlines	164	132	80.5	164	141	86.0
Relates to services to and from Perth only.						
Cairns						
Jetstar	213	187	87.8	209	170	81.3
Qantas	235	205	87.2	235	208	88.5
QantasLink	191	148	77.5	191	111	58.1
Tiger Airways	31	23	74.2	31	24	77.4
Virgin Australia	286	244	85.3	286	220	76.9
Virgin Australia - ATR/F100 Operations	27	16	59.3	27	17	63.0
All Airlines	983	823	83.7	979	750	76.6
Relates to services to and from Brisbane, Melbourne, Sydney and Townsville.						
Canberra						
Qantas	614	579	94.3	614	572	93.2
QantasLink	432	322	74.5	436	296	67.9
Virgin Australia	397	347	87.4	396	341	86.1
Virgin Australia - ATR/F100 Operations	147	128	87.1	147	113	76.9
All Airlines	1 590	1 376	86.5	1 593	1 322	83.0
Relates to services to and from Adelaide, Brisbane, Melbourne and Sydney.						
Coffs Harbour						
QantasLink	144	103	71.5	145	101	69.7
Virgin Australia	55	44	80.0	55	45	81.8
All Airlines	199	147	73.9	200	146	73.0
Relates to services to and from Sydney only.						
Darwin						
Qantas	75	54	72.0	75	65	86.7
Virgin Australia	89	77	86.5	89	66	74.2
All Airlines	164	131	79.9	164	131	79.9
Relates to services to and from Brisbane, Melbourne and Perth.						
Dubbo						
QantasLink	112	75	67.0	112	76	67.9
Regional Express	174	155	89.1	175	165	94.3
All Airlines	286	230	80.4	287	241	84.0
Relates to services to and from Sydney only.						
Emerald						
QantasLink	174	139	79.9	175	147	84.0
Virgin Australia - ATR/F100 Operations	73	70	95.9	73	67	91.8
All Airlines	247	209	84.6	248	214	86.3
Relates to services to and from Brisbane only.						

Airport	Departures			Arrivals		
	Sectors Flown	On Time		Sectors Flown	On Time	
		No.	%		No.	%
Geraldton						
QantasLink	54	35	64.8	54	35	64.8
Skywest	95	72	75.8	89	64	71.9
All Airlines	149	107	71.8	143	99	69.2
Relates to services to and from Perth only.						
Gladstone						
QantasLink	200	149	74.5	176	138	78.4
Virgin Australia - ATR/F100 Operations	81	74	91.4	81	74	91.4
All Airlines	281	223	79.4	257	212	82.5
Relates to services to and from Brisbane only.						
Gold Coast						
Jetstar	501	384	76.6	501	394	78.6
Tiger Airways	65	57	87.7	65	58	89.2
Virgin Australia	532	481	90.4	533	470	88.2
All Airlines	1 098	922	84.0	1 099	922	83.9
Relates to services to and from Adelaide, Melbourne and Sydney.						
Hamilton Island						
Jetstar	45	33	73.3	45	36	80.0
Virgin Australia	62	49	79.0	62	50	80.6
All Airlines	107	82	76.6	107	86	80.4
Relates to services to and from Brisbane and Sydney.						
Hobart						
Jetstar	190	148	77.9	190	161	84.7
Qantas	93	87	93.5	93	83	89.2
Virgin Australia	199	154	77.4	199	162	81.4
All Airlines	482	389	80.7	482	406	84.2
Relates to services to and from Melbourne and Sydney.						
Kalgoorlie						
Qantas	64	44	68.8	64	49	76.6
QantasLink	16	14	87.5	17	15	88.2
Skywest	16	10	62.5	16	12	75.0
All Airlines	96	68	70.8	97	76	78.4
Relates to services to and from Perth only.						
Karratha						
Qantas	242	207	85.5	243	210	86.4
QantasLink	17	16	94.1	17	15	88.2
Virgin Australia	53	46	86.8	53	47	88.7
All Airlines	312	269	86.2	313	272	86.9
Relates to services to and from Perth only.						
Launceston						
Jetstar	124	93	75.0	124	103	83.1
QantasLink	73	56	76.7	73	48	65.8
Virgin Australia	166	147	88.6	168	153	91.1
All Airlines	363	296	81.5	365	304	83.3
Relates to services to and from Melbourne and Sydney.						

Airport	Departures			Arrivals		
	Sectors	On Time		Sectors	On Time	
	Flown	No.	%	Flown	No.	%
Mackay						
Jetstar	109	85	78.0	108	93	86.1
QantasLink	80	59	73.8	81	59	72.8
Virgin Australia	172	145	84.3	171	137	80.1
All Airlines	361	289	80.1	360	289	80.3
Relates to services to and from Brisbane only.						
Melbourne						
Jetstar	1 074	851	79.2	1 071	825	77.0
Qantas	2 054	1 898	92.4	2 050	1 899	92.6
QantasLink	211	172	81.5	211	156	73.9
Regional Express	93	89	95.7	93	85	91.4
Tiger Airways	451	424	94.0	449	379	84.4
Virgin Australia	2 412	2 179	90.3	2 409	2 142	88.9
All Airlines	6 295	5 613	89.2	6 283	5 486	87.3
Relates to services to and from Adelaide, Brisbane, Cairns, Canberra, Darwin, Gold Coast, Hobart, Launceston, Mildura, Newcastle, Perth, Sunshine Coast and Sydney.						
Mildura						
QantasLink	86	70	81.4	86	64	74.4
Regional Express	93	85	91.4	93	87	93.5
Virgin Australia	31	26	83.9	31	25	80.6
All Airlines	210	181	86.2	210	176	83.8
Relates to services to and from Melbourne only.						
Newcastle						
Jetstar	205	171	83.4	204	167	81.9
QantasLink	69	40	58.0	71	30	42.3
Virgin Australia	31	29	93.5	31	29	93.5
Virgin Australia - ATR/F100 Operations	58	49	84.5	58	52	89.7
All Airlines	363	289	79.6	364	278	76.4
Relates to services to and from Brisbane and Melbourne.						
Newman						
Qantas	111	86	77.5	111	93	83.8
QantasLink	26	21	80.8	26	20	76.9
Virgin Australia	32	25	78.1	32	28	87.5
All Airlines	169	132	78.1	169	141	83.4
Relates to services to and from Perth only.						
Perth						
Jetstar	174	106	60.9	175	133	76.0
Qantas	1 250	1 034	82.7	1 251	987	78.9
QantasLink	165	126	76.4	164	119	72.6
Skywest	127	96	75.6	133	84	63.2
Tiger Airways	64	55	85.9	65	62	95.4
Virgin Australia	656	581	88.6	657	546	83.1
All Airlines	2 436	1 998	82.0	2 445	1 931	79.0
Relates to services to and from Adelaide, Brisbane, Broome, Darwin, Geraldton, Kalgoorlie, Karratha, Melbourne, Newman, Port Hedland and Sydney.						

Airport	Departures			Arrivals		
	Sectors	On Time		Sectors	On Time	
	Flown	No.	%	Flown	No.	%
Port Hedland						
Qantas	133	105	78.9	133	120	90.2
QantasLink	24	23	95.8	24	21	87.5
Virgin Australia	64	55	85.9	63	57	90.5
All Airlines	221	183	82.8	220	198	90.0
Relates to services to and from Perth only.						
Port Lincoln						
QantasLink	100	94	94.0	99	92	92.9
Regional Express	202	180	89.1	202	174	86.1
All Airlines	302	274	90.7	301	266	88.4
Relates to services to and from Adelaide only.						
Port Macquarie						
QantasLink	138	103	74.6	138	101	73.2
Virgin Australia - ATR/F100 Operations	59	48	81.4	59	43	72.9
All Airlines	197	151	76.6	197	144	73.1
Relates to services to and from Sydney only.						
Proserpine						
Jetstar	22	19	86.4	23	21	91.3
Virgin Australia	31	25	80.6	31	27	87.1
Virgin Australia - ATR/F100 Operations	23	20	87.0	23	18	78.3
All Airlines	76	64	84.2	77	66	85.7
Relates to services to and from Brisbane only.						
Rockhampton						
QantasLink	178	132	74.2	203	166	81.8
Virgin Australia	107	93	86.9	107	95	88.8
Virgin Australia - ATR/F100 Operations	70	63	90.0	70	62	88.6
All Airlines	355	288	81.1	380	323	85.0
Relates to services to and from Brisbane only.						
Sunshine Coast						
Jetstar	135	101	74.8	136	111	81.6
Virgin Australia	66	53	80.3	66	61	92.4
All Airlines	201	154	76.6	202	172	85.1
Relates to services to and from Melbourne and Sydney.						
Sydney						
Jetstar	1 052	857	81.5	1 055	804	76.2
Qantas	2 140	2 000	93.5	2 140	1 936	90.5
QantasLink	1 012	710	70.2	1 007	731	72.6
Regional Express	437	366	83.8	432	390	90.3
Tiger Airways	210	191	91.0	211	200	94.8
Virgin Australia	2 561	2 228	87.0	2 558	2 194	85.8
Virgin Australia - ATR/F100 Operations	206	168	81.6	206	177	85.9
All Airlines	7 618	6 520	85.6	7 609	6 432	84.5
Relates to services to and from Adelaide, Albury, Ayers Rock, Ballina, Brisbane, Cairns, Canberra, Coffs Harbour, Dubbo, Gold Coast, Hamilton Island, Hobart, Launceston, Melbourne, Perth, Port Macquarie, Sunshine Coast, Townsville and Wagga Wagga.						

<i>Airport</i>	<i>Departures</i>			<i>Arrivals</i>		
	<i>Sectors</i>	<i>On Time</i>		<i>Sectors</i>	<i>On Time</i>	
	<i>Flown</i>	<i>No.</i>	<i>%</i>	<i>Flown</i>	<i>No.</i>	<i>%</i>
Townsville						
Jetstar	51	34	66.7	52	44	84.6
Qantas	134	125	93.3	134	119	88.8
QantasLink	191	138	72.3	191	138	72.3
Virgin Australia	222	183	82.4	221	187	84.6
All Airlines	598	480	80.3	598	488	81.6
Relates to services to and from Brisbane, Cairns and Sydney.						
Wagga Wagga						
QantasLink	116	98	84.5	116	80	69.0
Regional Express	121	114	94.2	121	106	87.6
All Airlines	237	212	89.5	237	186	78.5
Relates to services to and from Sydney only.						

Definitions

On time departure A flight departure is counted as "on time" if it departs the gate within 15 minutes of the scheduled departure time shown in the carriers' schedule.

On time arrival A flight arrival is counted as "on time" if it arrived at the gate within 15 minutes of the scheduled arrival time shown in the carriers' schedule.
Neither diverted nor cancelled flights count as on time.

Cancellation A flight removed from service within 7 days of scheduled departure is regarded as a cancellation.

On time departure percentage The percentage of on time departures is measured against the number of departures *operated* on any particular sector.

On time arrival percentage The percentage of on time arrivals is measured against the number of arrivals *operated* on any particular sector.

Cancellation percentage The percentage of cancellations is measured against the number of services *scheduled* on any particular sector.
