



Australian Government

Department of Infrastructure, Transport,  
Regional Development and Local Government  
Bureau of Infrastructure, Transport and Regional Economics



bitre

AVIATION STATISTICS

Airline  
On Time Performance

May 2009—OTP 74

© Commonwealth of Australia 2009

ISSN 1832-0759

This work is copyright and the data contained in this publication should not be reproduced or used in any form without acknowledgement.

#### Enquiries

Bureau of Infrastructure, Transport and Regional Economics  
GPO Box 501  
Canberra ACT 2601

Telephone: 02 6274 7790

Facsimile: 02 6274 7727

Website: [www.bitre.gov.au](http://www.bitre.gov.au)

Email: [avstats@infrastructure.gov.au](mailto:avstats@infrastructure.gov.au)

This publication, including a spreadsheet of the time-series data, can be downloaded from the BITRE website: <http://www.bitre.gov.au/info.aspx?ResourceId=214&NodeId=104>.

#### Disclaimers

BITRE seeks to publish its work to the highest professional standards. However, it cannot accept responsibility for any consequences arising from the use of information herein. Readers should rely on their own skill and judgment in applying any information or analysis to particular issues or circumstances.

# Foreword

The Bureau of Infrastructure, Transport and Regional Economics (BITRE) monitors the punctuality and reliability of major domestic airlines operating between Australian airports. The purpose of this is to allow for evaluation of overall industry and individual airline performance, so that consumers of air travel can make informed decisions.

The following domestic airlines report this data monthly to the BITRE: Jetstar, Qantas, QantasLink, Regional Express, Skywest Airlines, Tiger Airways, and Virgin Blue. Data has been gathered since November 2003, although some airlines commenced reporting since then, including Jetstar which first reported in May 2004, MacAir in July 2005 and Tiger Airways in April 2008. MacAir ceased operations in February 2009 and data was not received for December 2008 onwards.

Information presented in this report is for Australian domestic routes for which the passenger load averaged 8000 or more passengers per month over the previous six months, *and* where two or more airlines operated in competition on those routes. There were 49 routes that met this definition in May 2009. Over time, routes which meet these criteria change as airline networks and traffic levels vary.

Participating airlines report their overall monthly network performance where this is possible.

Total industry figures encompass all services operated by reporting airlines only. These airlines collectively carried over 95 per cent of total domestic passengers (regular public transport only) in 2008.

The method of capturing on time performance varies between airlines utilising different recording systems. Jetstar and Qantas jet aircraft use Aircraft Communication Addressing and Reporting System (ACARS) to electronically measure on time performance. Regional Express, Skywest, Tiger Airways, Virgin Blue and the Qantas non-jet fleet record on time performance manually using records from pilots, gate agents and/or ground crews.

After initial data is collected, aggregate reports are audited internally by participating airlines prior to publication.

Reports and detailed time series data in Microsoft Excel spreadsheet format are available from the BITRE website at: <http://www.bitre.gov.au/info.aspx?ResourceId=214&NodeId=104>.



# Contents

	Page
Industry performance .....	1
Individual routes .....	9
Airports .....	21
Definitions .....	27



## Industry performance

For May 2009, on time performance over all routes operated by participating airlines (Jetstar, Qantas, QantasLink, Regional Express, Skywest Airlines, Tiger Airways and Virgin Blue) averaged 87.2 per cent for on time departures, and 86.9 per cent for on time arrivals. Cancellations represented 1.2 per cent of all scheduled flights. The equivalent figures for May 2008 were 84.1 per cent for departures, 82.5 per cent for arrivals and 2.0 per cent for cancellations.

The long term average performance for all routes since reporting commenced in November 2003 is 84.9 per cent for on time departures and 83.7 per cent for on time arrivals. Cancellations average 1.2 per cent of all scheduled flights.

Of the major domestic airlines, Qantas achieved the highest level of on time departures for May 2009 at 89.5 per cent, followed by Virgin Blue at 89.3 per cent, Jetstar at 76.1 per cent and Tiger Airways at 72.0 per cent. The regional airlines were led by QantasLink at 91.1 per cent, followed by Skywest at 87.7 per cent and Regional Express at 85.3 per cent.

Qantas also achieved the highest on time arrivals among the major domestic airlines at 89.6 per cent, followed by Virgin Blue at 89.4 per cent, Jetstar at 78.5 per cent and Tiger Airways at 73.0 per cent. QantasLink was the best performing regional airline for on time arrivals at 88.5 per cent, followed by Skywest at 88.3 per cent and Regional Express at 83.8 per cent.

Qantas had the highest percentage of cancellations for May 2009 at 2.3 per cent, while Regional Express had the lowest at 0.3 per cent.

Of the 49 routes which met the criteria for on time performance reporting in May 2009, the Sydney-Hervey Bay route had the highest percentage of on time departures (98.0 per cent), while the Alice Springs-Melbourne route had the lowest (61.4 per cent). On time arrivals were highest on the Sydney-Adelaide route (96.4 per cent) and lowest on the Brisbane-Darwin route (53.2 per cent).

Cancellations were highest on the Melbourne-Sydney route at 4.8 per cent, followed by Sydney-Melbourne at 4.6 per cent, Brisbane-Sydney at 3.7 per cent, Sydney-Brisbane at 3.6 per cent and Melbourne-Brisbane at 2.8 per cent.

Port Macquarie Airport recorded the highest percentage of on time departures (94.0 per cent), while Alice Springs Airport recorded the lowest (61.4 per cent). Newman Airport recorded the highest percentage of on time arrivals (96.0 per cent), while Darwin Airport recorded the lowest (53.2 per cent).

Table 1 On time performance for May 2009 — Total Industry

	<i>Sectors</i>		<i>Departures On Time</i>		<i>Arrivals On Time</i>		<i>Cancellations</i>	
	<i>Scheduled</i>	<i>Flown</i>	<i>No.</i>	<i>%</i>	<i>No.</i>	<i>%</i>	<i>No.</i>	<i>%</i>
Jetstar	4 662	4 631	3 526	76.1	3 635	78.5	31	0.7
Qantas	10 044	9 815	8 786	89.5	8 793	89.6	229	2.3
QantasLink	7 725	7 670	6 985	91.1	6 786	88.5	55	0.7
Regional Express	5 203	5 185	4 423	85.3	4 347	83.8	18	0.3
Skywest	1 062	1 050	921	87.7	927	88.3	12	1.1
Tiger Airways	1 077	1 071	771	72.0	782	73.0	6	0.6
Virgin Blue	11 407	11 262	10 052	89.3	10 068	89.4	145	1.3
All Airlines	41 180	40 684	35 464	87.2	35 338	86.9	496	1.2

1. Total airline network data (including routes not shown in this report).

Table 2 Top ten routes for on time performance for May 2009 (participating airlines only)

<i>Departures</i>		<i>Arrivals</i>	
<i>Route</i>	<i>On Time (%)</i>	<i>Route</i>	<i>On Time (%)</i>
Sydney-Hervey Bay	98.0	Sydney-Adelaide	96.4
Perth-Newman	96.8	Perth-Newman	96.0
Adelaide-Sydney	94.8	Sydney-Hervey Bay	95.9
Perth-Karratha	94.7	Brisbane-Adelaide	94.7
Sydney-Port Macquarie	94.6	Port Macquarie-Sydney	94.6
Townsville-Sydney	94.3	Sydney-Port Macquarie	94.6
Canberra-Brisbane	94.3	Townsville-Sydney	94.3
Port Macquarie-Sydney	94.0	Cairns-Brisbane	94.1
Hervey Bay-Sydney	93.9	Hervey Bay-Sydney	93.9
Canberra-Sydney	93.2	Brisbane-Melbourne	93.8

Table 3 Top ten airports for on time performance for May 2009 (participating airlines and reported routes only)

<i>Departures</i>		<i>Arrivals</i>	
<i>Airport</i>	<i>On Time (%)</i>	<i>Airport</i>	<i>On Time (%)</i>
Port Macquarie	94.0	Newman	96.0
Hervey Bay	93.9	Hervey Bay	95.9
Rockhampton	91.6	Port Macquarie	94.6
Canberra	91.4	Karratha	93.5
Karratha	91.2	Dubbo	90.9
Townsville	90.5	Rockhampton	90.1
Dubbo	90.5	Mildura	89.7
Perth	89.5	Kalgoorlie	89.7
Wagga Wagga	89.0	Coffs Harbour	89.2
Kalgoorlie	88.8	Canberra	89.2

## Total industry on time performance

Figure 1 On time performance (by month from May 2006)—Total Industry

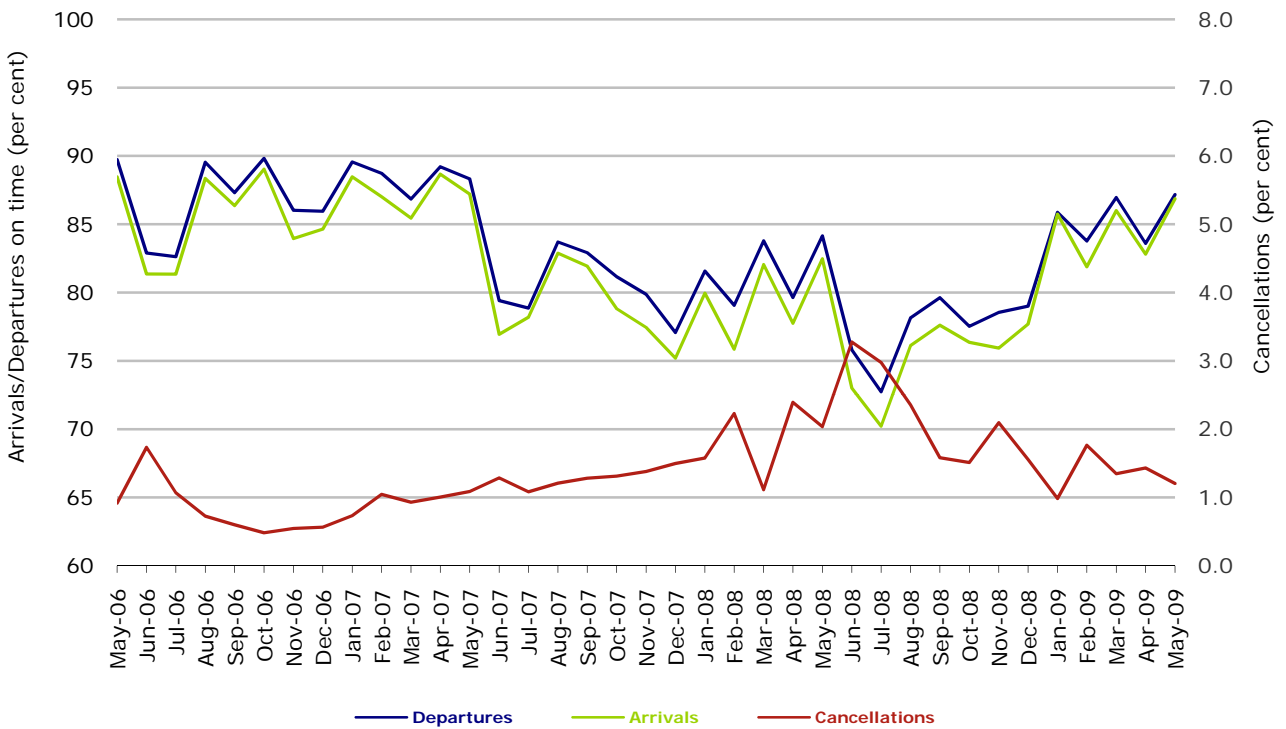
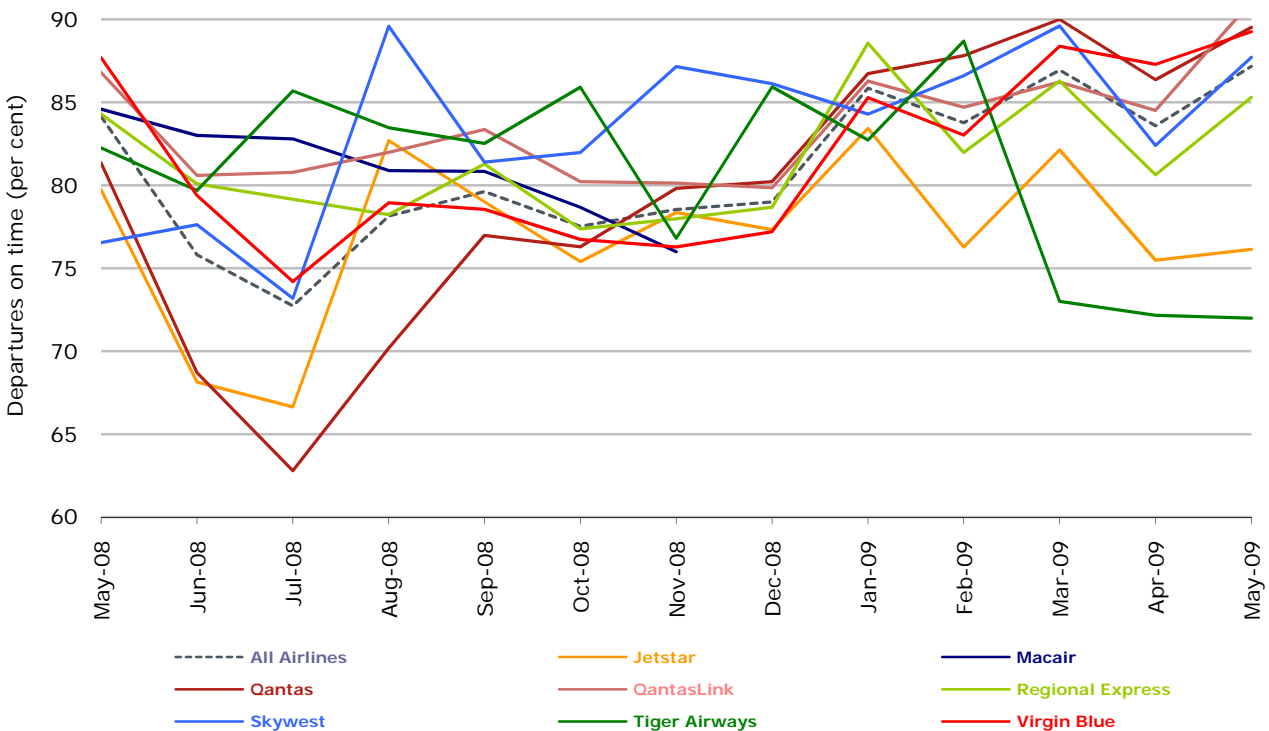
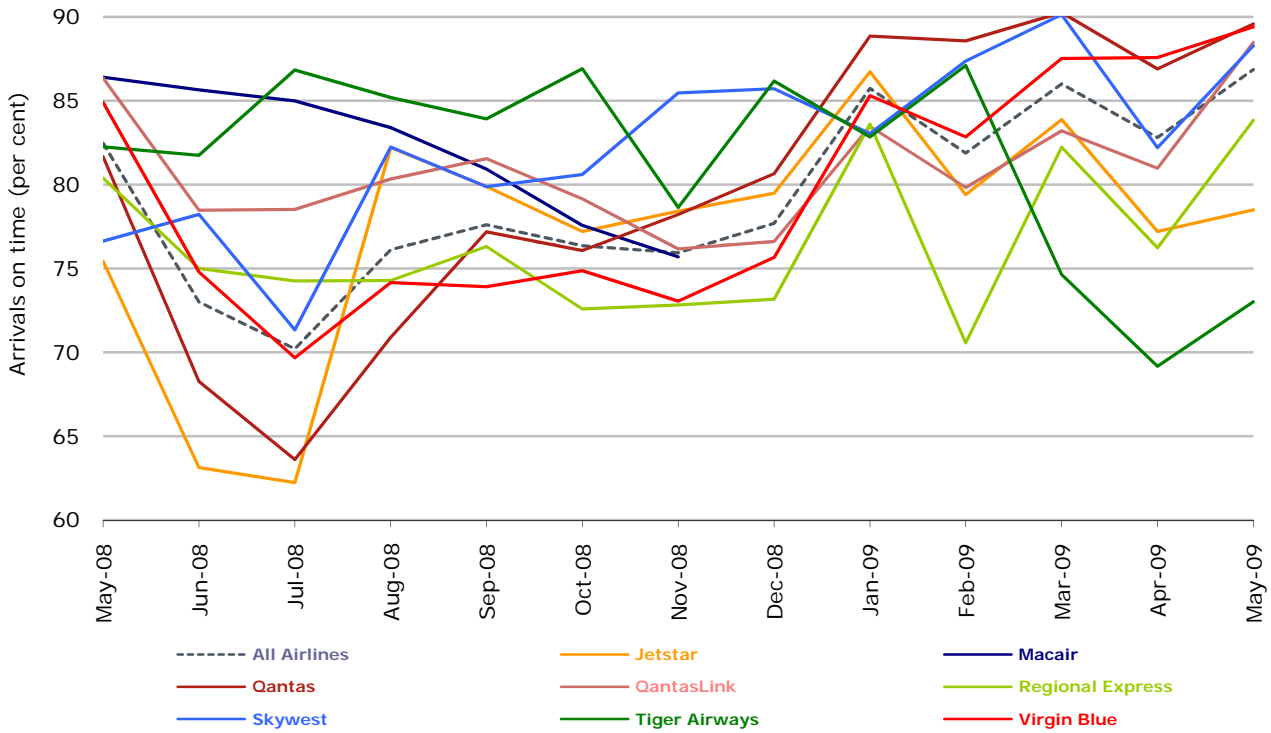


Figure 2 Departures on time (by month from May 2008)



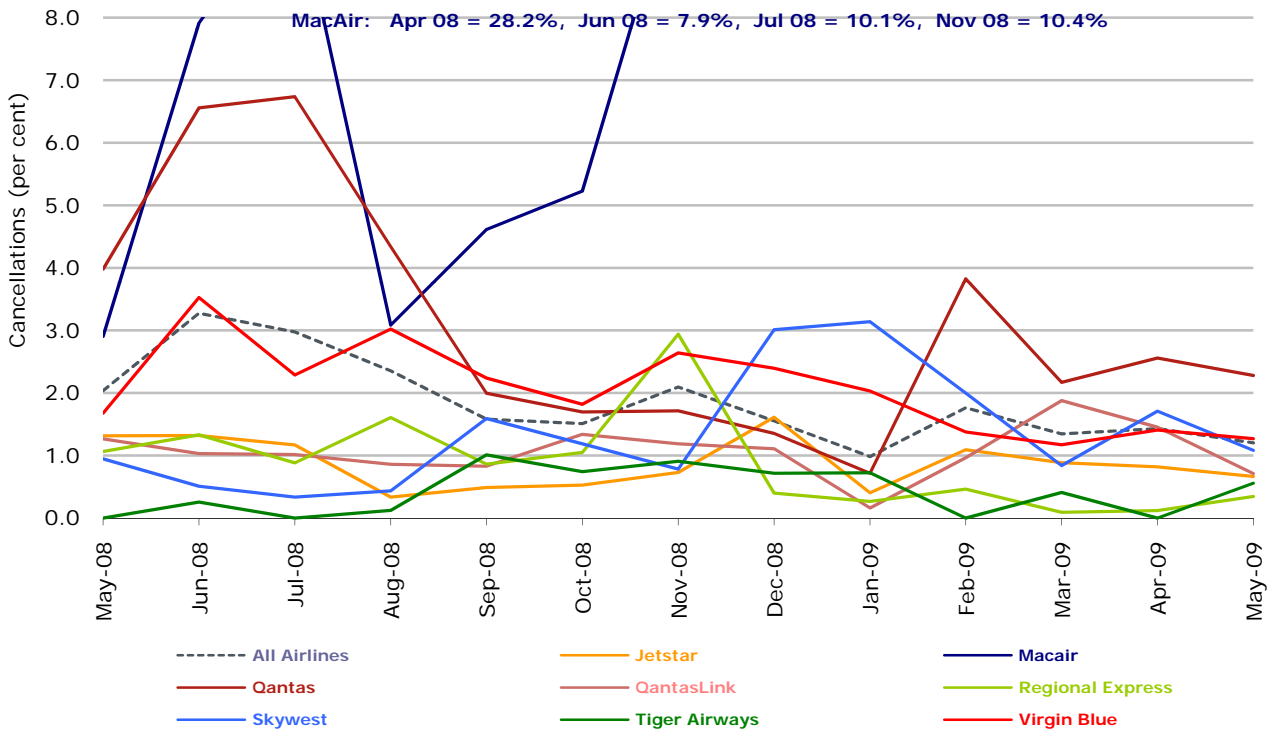
No data received from MacAir for December 2008 and onwards. Operations ceased in February 2009.

Figure 3 Arrivals on time (by month from May 2008)



No data received from MacAir for December 2008 and onwards. Operations ceased in February 2009.

Figure 4 Cancellations (by month from May 2008)



No data received from MacAir for December 2008 and onwards. Operations ceased in February 2009.

## Major domestic airlines on time performance

Figure 5 On time performance (by month from May 2006)—Jetstar

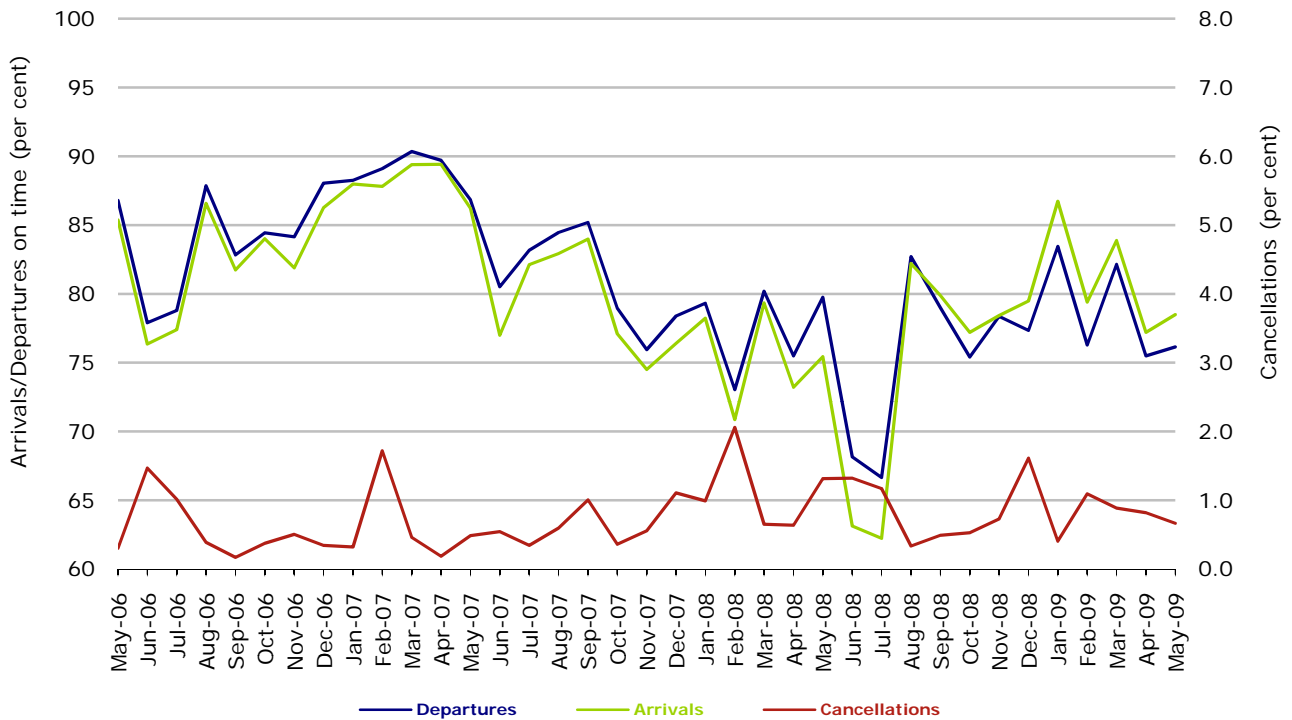


Figure 6 On time performance (by month from May 2006)—Qantas

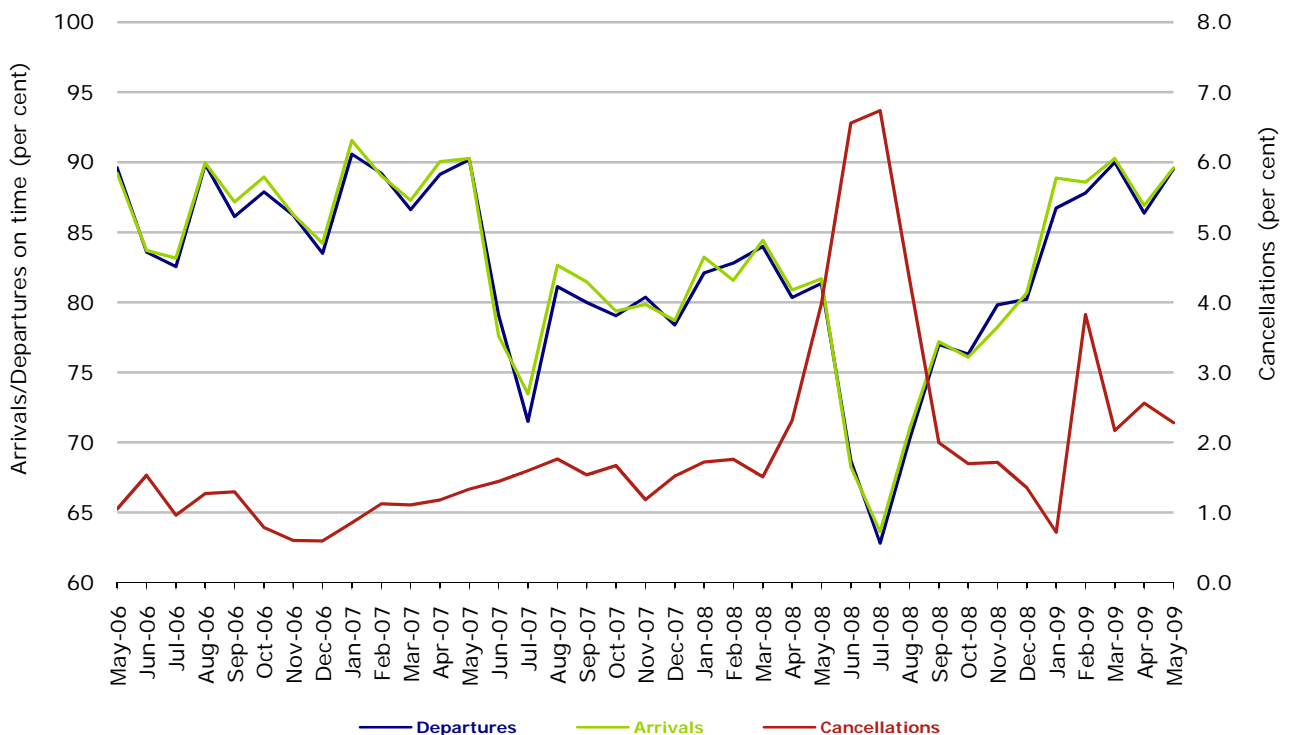
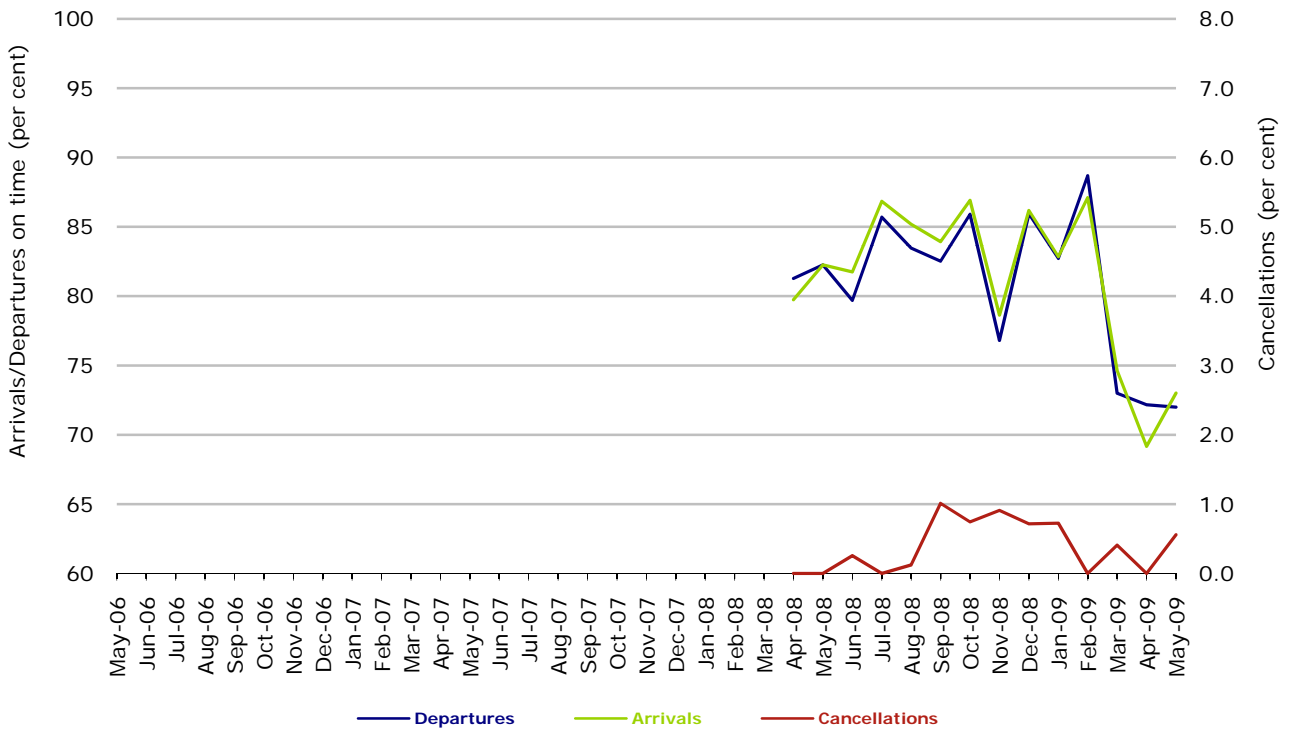
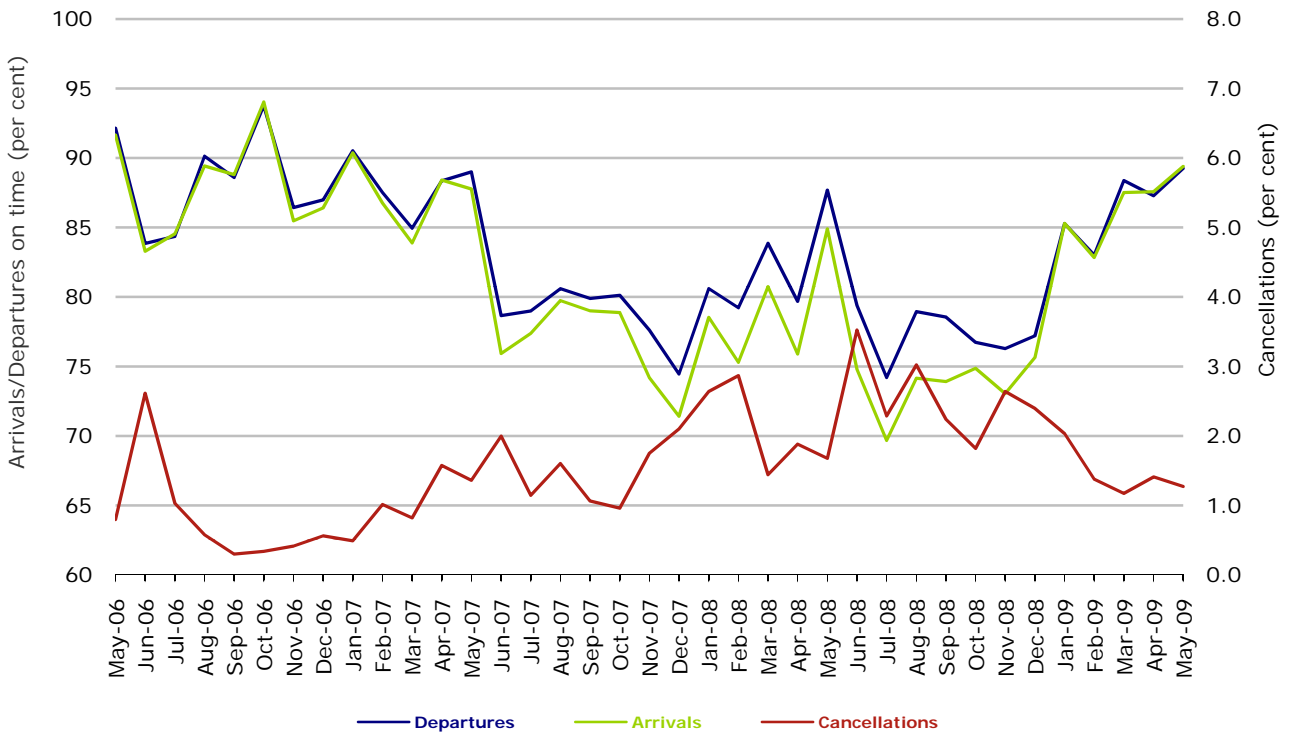


Figure 7 On time performance (by month from May 2006)—Tiger Airways



Tiger Airways began reporting in April 2008.

Figure 8 On time performance (by month from May 2006)—Virgin Blue



## Major regional airlines on time performance

Figure 9 On time performance (by month from May 2006)—QantasLink

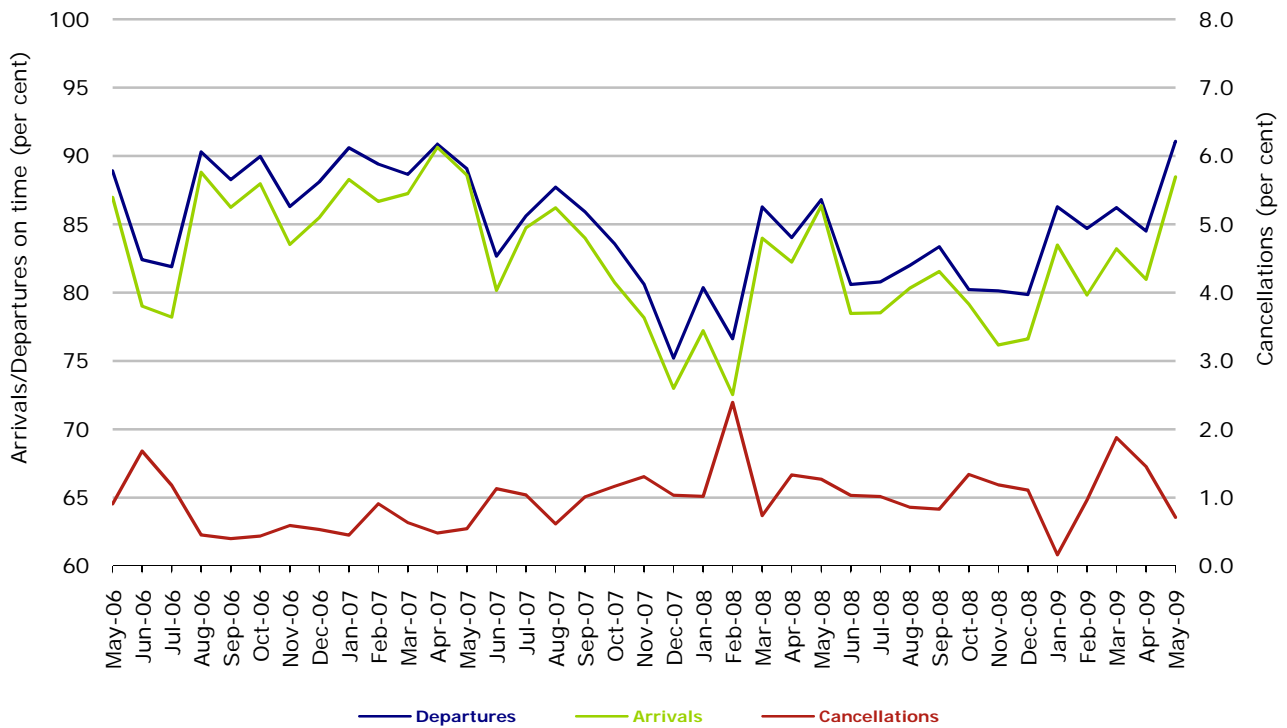


Figure 10 On time performance (by month from May 2006)—Regional Express

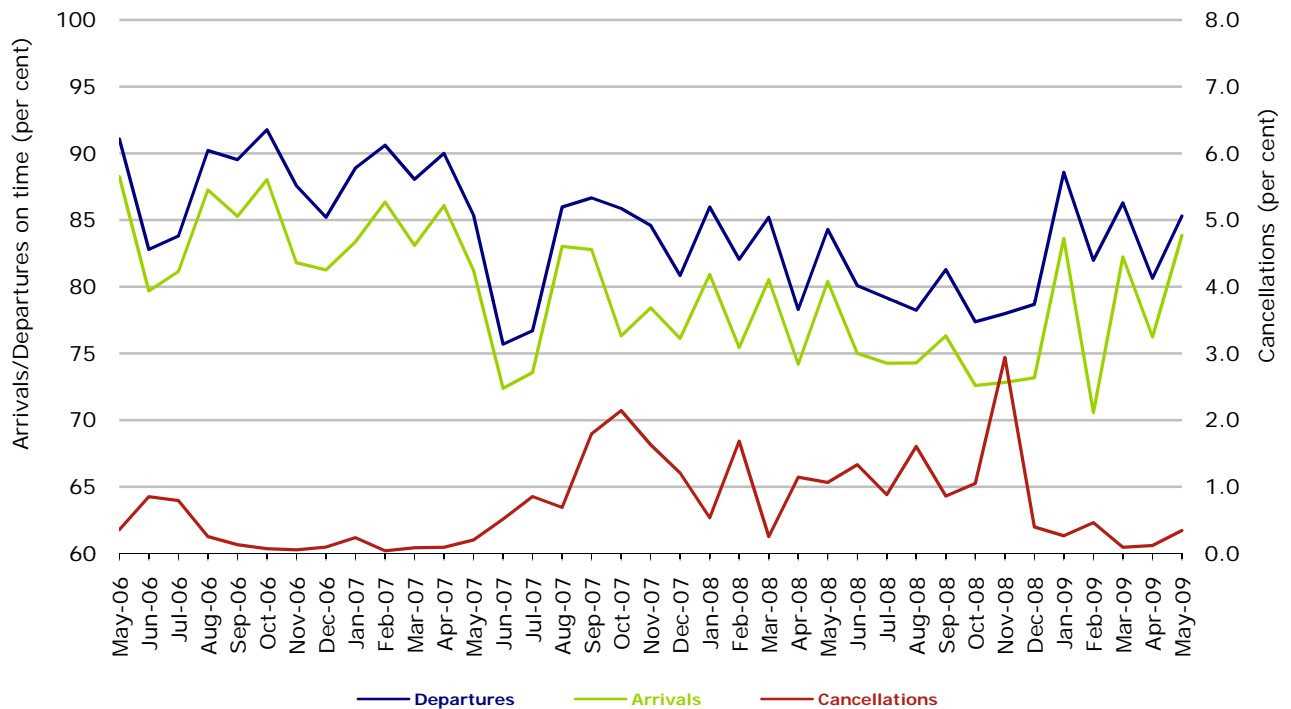
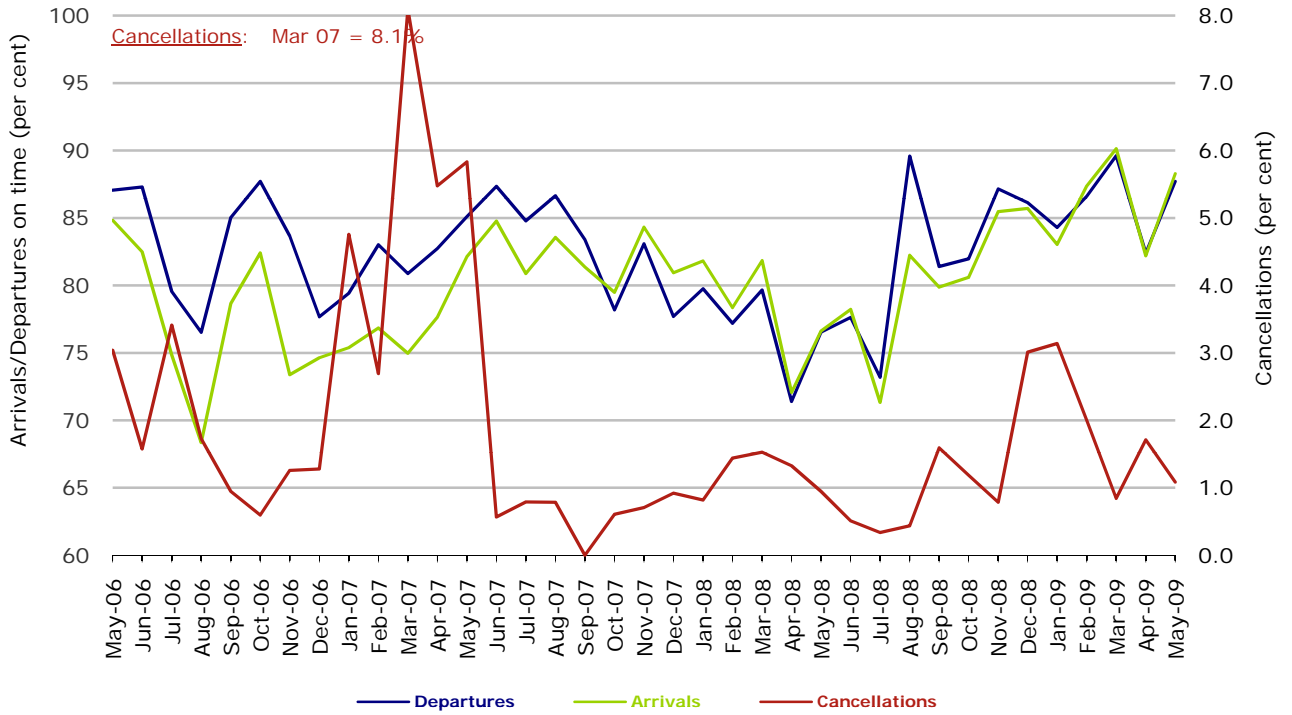


Figure 11 On time performance (by month from May 2006)—Skywest



## Individual routes

On time performance is reported for all routes where the passenger load averages over 8000 passengers per month over the previous six months, and where two or more airlines operate in competition on those routes. There are now 49 routes which meet this definition. Over time, however, routes which meet this definition may change as airline networks and traffic levels vary.

	<i>Sectors</i>		<i>Departures On Time</i>		<i>Arrivals On Time</i>		<i>Cancellations</i>	
	<i>Sched.</i>	<i>Flown</i>	<i>No.</i>	<i>%</i>	<i>No.</i>	<i>%</i>	<i>No.</i>	<i>%</i>
<b>Adelaide-Brisbane</b>								
Jetstar	27	27	16	59.3	16	59.3	0	0.0
Qantas	88	88	84	95.5	81	92.0	0	0.0
Virgin Blue	95	94	86	91.5	79	84.0	1	1.1
All Airlines	210	209	186	89.0	176	84.2	1	0.5
<b>Adelaide-Canberra</b>								
Qantas	47	46	36	78.3	35	76.1	1	2.1
Tiger Airways	18	18	10	55.6	11	61.1	0	0.0
Virgin Blue	31	31	28	90.3	28	90.3	0	0.0
All Airlines	96	95	74	77.9	74	77.9	1	1.0
<b>Adelaide-Gold Coast</b>								
Jetstar	31	31	29	93.5	30	96.8	0	0.0
Tiger Airways	31	31	24	77.4	22	71.0	0	0.0
Virgin Blue	31	31	28	90.3	28	90.3	0	0.0
All Airlines	93	93	81	87.1	80	86.0	0	0.0
<b>Adelaide-Melbourne</b>								
Jetstar	49	49	15	30.6	13	26.5	0	0.0
Qantas	326	324	295	91.0	283	87.3	2	0.6
Tiger Airways	86	86	49	57.0	49	57.0	0	0.0
Virgin Blue	258	253	231	91.3	231	91.3	5	1.9
All Airlines	719	712	590	82.9	576	80.9	7	1.0
<b>Adelaide-Perth</b>								
Jetstar	31	31	29	93.5	27	87.1	0	0.0
Qantas	124	122	108	88.5	115	94.3	2	1.6
Tiger Airways	31	31	29	93.5	29	93.5	0	0.0
Virgin Blue	67	67	57	85.1	60	89.6	0	0.0
All Airlines	253	251	223	88.8	231	92.0	2	0.8
<b>Adelaide-Sydney</b>								
Jetstar	23	23	22	95.7	22	95.7	0	0.0
Qantas	280	278	265	95.3	253	91.0	2	0.7
Virgin Blue	147	145	136	93.8	134	92.4	2	1.4
All Airlines	450	446	423	94.8	409	91.7	4	0.9

	<i>Sectors</i>		<i>Departures On Time</i>		<i>Arrivals On Time</i>		<i>Cancellations</i>	
	<i>Sched.</i>	<i>Flown</i>	<i>No.</i>	<i>%</i>	<i>No.</i>	<i>%</i>	<i>No.</i>	<i>%</i>
<b>Albury-Sydney</b>								
QantasLink	106	106	95	89.6	86	81.1	0	0.0
Regional Express	116	116	101	87.1	100	86.2	0	0.0
Virgin Blue	62	61	54	88.5	57	93.4	1	1.6
All Airlines	284	283	250	88.3	243	85.9	1	0.4
<b>Alice Springs-Melbourne</b>								
Qantas	31	31	19	61.3	24	77.4	0	0.0
Tiger Airways	13	13	8	61.5	10	76.9	0	0.0
All Airlines	44	44	27	61.4	34	77.3	0	0.0
<b>Ballina-Sydney</b>								
Jetstar	30	30	25	83.3	27	90.0	0	0.0
Regional Express	87	86	62	72.1	62	72.1	1	1.1
Virgin Blue	35	35	28	80.0	28	80.0	0	0.0
All Airlines	152	151	115	76.2	117	77.5	1	0.7
<b>Brisbane-Adelaide</b>								
Jetstar	27	27	18	66.7	20	74.1	0	0.0
Qantas	88	88	85	96.6	87	98.9	0	0.0
Virgin Blue	95	94	89	94.7	91	96.8	1	1.1
All Airlines	210	209	192	91.9	198	94.7	1	0.5
<b>Brisbane-Cairns</b>								
Jetstar	92	92	77	83.7	77	83.7	0	0.0
Qantas	124	124	115	92.7	119	96.0	0	0.0
Virgin Blue	124	124	114	91.9	115	92.7	0	0.0
All Airlines	340	340	306	90.0	311	91.5	0	0.0
<b>Brisbane-Canberra</b>								
Qantas	145	145	133	91.7	136	93.8	0	0.0
QantasLink	10	10	10	100.0	10	100.0	0	0.0
Virgin Blue	126	126	113	89.7	115	91.3	0	0.0
All Airlines	281	281	256	91.1	261	92.9	0	0.0
<b>Brisbane-Darwin</b>								
Jetstar	49	49	36	73.5	18	36.7	0	0.0
Qantas	31	31	25	80.6	18	58.1	0	0.0
Virgin Blue	31	31	25	80.6	23	74.2	0	0.0
All Airlines	111	111	86	77.5	59	53.2	0	0.0
<b>Brisbane-Hamilton Island</b>								
Jetstar	31	31	28	90.3	26	83.9	0	0.0
Virgin Blue	31	31	28	90.3	27	87.1	0	0.0
All Airlines	62	62	56	90.3	53	85.5	0	0.0
<b>Brisbane-Mackay</b>								
Jetstar	76	76	52	68.4	56	73.7	0	0.0
QantasLink	57	57	51	89.5	49	86.0	0	0.0
Virgin Blue	140	140	132	94.3	127	90.7	0	0.0
All Airlines	273	273	235	86.1	232	85.0	0	0.0

	<i>Sectors</i>		<i>Departures On Time</i>		<i>Arrivals On Time</i>		<i>Cancellations</i>	
	<i>Sched.</i>	<i>Flown</i>	<i>No.</i>	<i>%</i>	<i>No.</i>	<i>%</i>	<i>No.</i>	<i>%</i>
<b>Brisbane-Melbourne</b>								
Qantas	419	406	368	90.6	388	95.6	13	3.1
Virgin Blue	337	331	306	92.4	303	91.5	6	1.8
All Airlines	756	737	674	91.5	691	93.8	19	2.5
<b>Brisbane-Newcastle</b>								
Jetstar	110	110	84	76.4	88	80.0	0	0.0
QantasLink	67	67	60	89.6	52	77.6	0	0.0
Virgin Blue	48	48	44	91.7	42	87.5	0	0.0
All Airlines	225	225	188	83.6	182	80.9	0	0.0
<b>Brisbane-Perth</b>								
Qantas	124	124	107	86.3	114	91.9	0	0.0
Virgin Blue	62	62	60	96.8	57	91.9	0	0.0
All Airlines	186	186	167	89.8	171	91.9	0	0.0
<b>Brisbane-Proserpine</b>								
Jetstar	31	31	24	77.4	26	83.9	0	0.0
Virgin Blue	31	31	28	90.3	27	87.1	0	0.0
All Airlines	62	62	52	83.9	53	85.5	0	0.0
<b>Brisbane-Rockhampton</b>								
Jetstar	31	31	25	80.6	28	90.3	0	0.0
QantasLink	176	176	162	92.0	163	92.6	0	0.0
Virgin Blue	148	147	130	88.4	128	87.1	1	0.7
All Airlines	355	354	317	89.5	319	90.1	1	0.3
<b>Brisbane-Sydney</b>								
Jetstar	66	61	49	80.3	49	80.3	5	7.6
Qantas	590	562	500	89.0	518	92.2	28	4.7
Virgin Blue	548	536	467	87.1	458	85.4	12	2.2
All Airlines	1,204	1,159	1,016	87.7	1,025	88.4	45	3.7
<b>Brisbane-Townsville</b>								
Jetstar	49	49	34	69.4	35	71.4	0	0.0
Qantas	156	153	136	88.9	136	88.9	3	1.9
Virgin Blue	147	146	139	95.2	136	93.2	1	0.7
All Airlines	352	348	309	88.8	307	88.2	4	1.1
<b>Broome-Perth</b>								
Qantas	18	18	14	77.8	14	77.8	0	0.0
QantasLink	65	65	52	80.0	53	81.5	0	0.0
Skywest	25	25	19	76.0	16	64.0	0	0.0
Virgin Blue	48	47	39	83.0	40	85.1	1	2.1
All Airlines	156	155	124	80.0	123	79.4	1	0.6
<b>Cairns-Brisbane</b>								
Jetstar	92	92	81	88.0	84	91.3	0	0.0
Qantas	124	124	118	95.2	119	96.0	0	0.0
Virgin Blue	124	124	115	92.7	117	94.4	0	0.0
All Airlines	340	340	314	92.4	320	94.1	0	0.0

	<i>Sectors</i>		<i>Departures On Time</i>		<i>Arrivals On Time</i>		<i>Cancellations</i>	
	<i>Sched.</i>	<i>Flown</i>	<i>No.</i>	<i>%</i>	<i>No.</i>	<i>%</i>	<i>No.</i>	<i>%</i>
<b>Cairns-Melbourne</b>								
Jetstar	30	30	25	83.3	26	86.7	0	0.0
Qantas	31	31	17	54.8	27	87.1	0	0.0
Virgin Blue	37	37	28	75.7	30	81.1	0	0.0
All Airlines	98	98	70	71.4	83	84.7	0	0.0
<b>Cairns-Sydney</b>								
Jetstar	31	31	28	90.3	30	96.8	0	0.0
Qantas	86	86	79	91.9	81	94.2	0	0.0
Virgin Blue	72	72	63	87.5	66	91.7	0	0.0
All Airlines	189	189	170	89.9	177	93.7	0	0.0
<b>Canberra-Adelaide</b>								
Qantas	52	51	48	94.1	49	96.1	1	1.9
Tiger Airways	18	18	11	61.1	10	55.6	0	0.0
Virgin Blue	31	31	25	80.6	25	80.6	0	0.0
All Airlines	101	100	84	84.0	84	84.0	1	1.0
<b>Canberra-Brisbane</b>								
Qantas	144	143	139	97.2	132	92.3	1	0.7
QantasLink	10	10	10	100.0	10	100.0	0	0.0
Virgin Blue	128	127	115	90.6	111	87.4	1	0.8
All Airlines	282	280	264	94.3	253	90.4	2	0.7
<b>Canberra-Melbourne</b>								
Qantas	261	254	226	89.0	221	87.0	7	2.7
QantasLink	41	37	36	97.3	35	94.6	4	9.8
Tiger Airways	62	62	46	74.2	46	74.2	0	0.0
Virgin Blue	178	178	162	91.0	161	90.4	0	0.0
All Airlines	542	531	470	88.5	463	87.2	11	2.0
<b>Canberra-Sydney</b>								
Qantas	208	206	194	94.2	187	90.8	2	1.0
QantasLink	409	393	356	90.6	343	87.3	16	3.9
Virgin Blue	225	222	215	96.8	211	95.0	3	1.3
All Airlines	842	821	765	93.2	741	90.3	21	2.5
<b>Coffs Harbour-Sydney</b>								
QantasLink	124	124	111	89.5	109	87.9	0	0.0
Virgin Blue	62	62	54	87.1	59	95.2	0	0.0
All Airlines	186	186	165	88.7	168	90.3	0	0.0
<b>Darwin-Brisbane</b>								
Jetstar	49	49	37	75.5	44	89.8	0	0.0
Qantas	31	31	14	45.2	17	54.8	0	0.0
Virgin Blue	31	31	23	74.2	29	93.5	0	0.0
All Airlines	111	111	74	66.7	90	81.1	0	0.0
<b>Dubbo-Sydney</b>								
QantasLink	105	105	104	99.0	98	93.3	0	0.0
Regional Express	169	169	144	85.2	147	87.0	0	0.0
All Airlines	274	274	248	90.5	245	89.4	0	0.0

	<i>Sectors</i>		<i>Departures On Time</i>		<i>Arrivals On Time</i>		<i>Cancellations</i>	
	<i>Sched.</i>	<i>Flown</i>	<i>No.</i>	<i>%</i>	<i>No.</i>	<i>%</i>	<i>No.</i>	<i>%</i>
<b>Gold Coast-Adelaide</b>								
Jetstar	31	31	28	90.3	28	90.3	0	0.0
Tiger Airways	31	31	21	67.7	23	74.2	0	0.0
Virgin Blue	31	31	27	87.1	28	90.3	0	0.0
All Airlines	93	93	76	81.7	79	84.9	0	0.0
<b>Gold Coast-Melbourne</b>								
Jetstar	168	168	138	82.1	143	85.1	0	0.0
Tiger Airways	94	93	66	71.0	69	74.2	1	1.1
Virgin Blue	155	154	134	87.0	145	94.2	1	0.6
All Airlines	417	415	338	81.4	357	86.0	2	0.5
<b>Gold Coast-Newcastle</b>								
Jetstar	30	30	21	70.0	21	70.0	0	0.0
Virgin Blue	14	14	14	100.0	14	100.0	0	0.0
All Airlines	44	44	35	79.5	35	79.5	0	0.0
<b>Gold Coast-Sydney</b>								
Jetstar	234	234	179	76.5	174	74.4	0	0.0
Virgin Blue	360	358	336	93.9	338	94.4	2	0.6
All Airlines	594	592	515	87.0	512	86.5	2	0.3
<b>Hamilton Island-Brisbane</b>								
Jetstar	31	31	25	80.6	27	87.1	0	0.0
Virgin Blue	31	31	28	90.3	28	90.3	0	0.0
All Airlines	62	62	53	85.5	55	88.7	0	0.0
<b>Hervey Bay-Sydney</b>								
Jetstar	18	18	16	88.9	16	88.9	0	0.0
Virgin Blue	31	31	30	96.8	30	96.8	0	0.0
All Airlines	49	49	46	93.9	46	93.9	0	0.0
<b>Hobart-Melbourne</b>								
Jetstar	116	116	62	53.4	69	59.5	0	0.0
Qantas	62	62	55	88.7	54	87.1	0	0.0
Tiger Airways	31	31	22	71.0	22	71.0	0	0.0
Virgin Blue	125	124	102	82.3	106	85.5	1	0.8
All Airlines	334	333	241	72.4	251	75.4	1	0.3
<b>Hobart-Sydney</b>								
Jetstar	49	49	37	75.5	41	83.7	0	0.0
Qantas	31	31	26	83.9	28	90.3	0	0.0
Virgin Blue	62	62	56	90.3	57	91.9	0	0.0
All Airlines	142	142	119	83.8	126	88.7	0	0.0
<b>Kalgoorlie-Perth</b>								
Qantas	26	24	23	95.8	24	100.0	2	7.7
QantasLink	78	78	67	85.9	66	84.6	0	0.0
Skywest	24	23	21	91.3	21	91.3	1	4.2
All Airlines	128	125	111	88.8	111	88.8	3	2.3

	<i>Sectors</i>		<i>Departures On Time</i>		<i>Arrivals On Time</i>		<i>Cancellations</i>	
	<i>Sched.</i>	<i>Flown</i>	<i>No.</i>	<i>%</i>	<i>No.</i>	<i>%</i>	<i>No.</i>	<i>%</i>
<b>Karratha-Perth</b>								
Qantas	139	139	129	92.8	126	90.6	0	0.0
QantasLink	39	39	37	94.9	37	94.9	0	0.0
Skywest	19	19	13	68.4	13	68.4	0	0.0
Virgin Blue	52	52	48	92.3	46	88.5	0	0.0
All Airlines	249	249	227	91.2	222	89.2	0	0.0
<b>Launceston-Melbourne</b>								
Jetstar	72	72	46	63.9	57	79.2	0	0.0
QantasLink	62	62	57	91.9	52	83.9	0	0.0
Tiger Airways	31	30	25	83.3	26	86.7	1	3.2
Virgin Blue	124	124	108	87.1	106	85.5	0	0.0
All Airlines	289	288	236	81.9	241	83.7	1	0.3
<b>Launceston-Sydney</b>								
Jetstar	31	31	22	71.0	24	77.4	0	0.0
Virgin Blue	31	31	30	96.8	30	96.8	0	0.0
All Airlines	62	62	52	83.9	54	87.1	0	0.0
<b>Mackay-Brisbane</b>								
Jetstar	76	76	51	67.1	52	68.4	0	0.0
QantasLink	57	57	49	86.0	52	91.2	0	0.0
Virgin Blue	140	140	133	95.0	132	94.3	0	0.0
All Airlines	273	273	233	85.3	236	86.4	0	0.0
<b>Maroochydore-Melbourne</b>								
Jetstar	62	62	35	56.5	41	66.1	0	0.0
Tiger Airways	18	18	15	83.3	14	77.8	0	0.0
Virgin Blue	35	34	29	85.3	30	88.2	1	2.9
All Airlines	115	114	79	69.3	85	74.6	1	0.9
<b>Maroochydore-Sydney</b>								
Jetstar	85	85	77	90.6	76	89.4	0	0.0
Virgin Blue	45	43	33	76.7	38	88.4	2	4.4
All Airlines	130	128	110	85.9	114	89.1	2	1.5
<b>Melbourne-Adelaide</b>								
Jetstar	49	49	45	91.8	47	95.9	0	0.0
Qantas	320	318	270	84.9	286	89.9	2	0.6
Tiger Airways	86	86	47	54.7	47	54.7	0	0.0
Virgin Blue	257	252	223	88.5	230	91.3	5	1.9
All Airlines	712	705	585	83.0	610	86.5	7	1.0
<b>Melbourne-Alice Springs</b>								
Qantas	31	31	25	80.6	24	77.4	0	0.0
Tiger Airways	13	13	10	76.9	10	76.9	0	0.0
All Airlines	44	44	35	79.5	34	77.3	0	0.0
<b>Melbourne-Brisbane</b>								
Qantas	417	404	367	90.8	362	89.6	13	3.1
Virgin Blue	338	330	291	88.2	293	88.8	8	2.4
All Airlines	755	734	658	89.6	655	89.2	21	2.8

	<i>Sectors</i>		<i>Departures On Time</i>		<i>Arrivals On Time</i>		<i>Cancellations</i>	
	<i>Sched.</i>	<i>Flown</i>	<i>No.</i>	<i>%</i>	<i>No.</i>	<i>%</i>	<i>No.</i>	<i>%</i>
<b>Melbourne-Cairns</b>								
Jetstar	30	30	24	80.0	25	83.3	0	0.0
Qantas	31	31	21	67.7	23	74.2	0	0.0
Virgin Blue	37	37	28	75.7	26	70.3	0	0.0
All Airlines	98	98	73	74.5	74	75.5	0	0.0
<b>Melbourne-Canberra</b>								
Qantas	260	253	227	89.7	226	89.3	7	2.7
QantasLink	41	37	35	94.6	34	91.9	4	9.8
Tiger Airways	62	62	46	74.2	49	79.0	0	0.0
Virgin Blue	174	173	147	85.0	147	85.0	1	0.6
All Airlines	537	525	455	86.7	456	86.9	12	2.2
<b>Melbourne-Gold Coast</b>								
Jetstar	168	168	135	80.4	141	83.9	0	0.0
Tiger Airways	94	93	71	76.3	68	73.1	1	1.1
Virgin Blue	155	155	137	88.4	131	84.5	0	0.0
All Airlines	417	416	343	82.5	340	81.7	1	0.2
<b>Melbourne-Hobart</b>								
Jetstar	116	116	76	65.5	83	71.6	0	0.0
Qantas	62	62	54	87.1	52	83.9	0	0.0
Tiger Airways	31	31	26	83.9	23	74.2	0	0.0
Virgin Blue	124	124	104	83.9	99	79.8	0	0.0
All Airlines	333	333	260	78.1	257	77.2	0	0.0
<b>Melbourne-Launceston</b>								
Jetstar	72	72	49	68.1	56	77.8	0	0.0
QantasLink	62	61	56	91.8	53	86.9	1	1.6
Tiger Airways	31	30	25	83.3	25	83.3	1	3.2
Virgin Blue	124	124	102	82.3	107	86.3	0	0.0
All Airlines	289	287	232	80.8	241	84.0	2	0.7
<b>Melbourne-Maroochydore</b>								
Jetstar	62	62	43	69.4	45	72.6	0	0.0
Tiger Airways	18	18	17	94.4	16	88.9	0	0.0
Virgin Blue	35	34	30	88.2	28	82.4	1	2.9
All Airlines	115	114	90	78.9	89	78.1	1	0.9
<b>Melbourne-Mildura</b>								
QantasLink	100	100	91	91.0	88	88.0	0	0.0
Regional Express	92	92	85	92.4	83	90.2	0	0.0
Virgin Blue	31	31	29	93.5	29	93.5	0	0.0
All Airlines	223	223	205	91.9	200	89.7	0	0.0
<b>Melbourne-Newcastle</b>								
Jetstar	75	75	43	57.3	53	70.7	0	0.0
Virgin Blue	31	31	28	90.3	29	93.5	0	0.0
All Airlines	106	106	71	67.0	82	77.4	0	0.0

	<i>Sectors</i>		<i>Departures On Time</i>		<i>Arrivals On Time</i>		<i>Cancellations</i>	
	<i>Sched.</i>	<i>Flown</i>	<i>No.</i>	<i>%</i>	<i>No.</i>	<i>%</i>	<i>No.</i>	<i>%</i>
<b>Melbourne-Perth</b>								
Jetstar	49	48	37	77.1	37	77.1	1	2.0
Qantas	186	186	152	81.7	170	91.4	0	0.0
Tiger Airways	62	61	39	63.9	48	78.7	1	1.6
Virgin Blue	124	124	114	91.9	112	90.3	0	0.0
All Airlines	421	419	342	81.6	367	87.6	2	0.5
<b>Melbourne-Sydney</b>								
Jetstar	13	13	7	53.8	8	61.5	0	0.0
Qantas	906	854	761	89.1	767	89.8	52	5.7
Virgin Blue	738	711	609	85.7	608	85.5	27	3.7
All Airlines	1,657	1,578	1,377	87.3	1,383	87.6	79	4.8
<b>Mildura-Melbourne</b>								
QantasLink	100	100	87	87.0	79	79.0	0	0.0
Regional Express	92	92	81	88.0	81	88.0	0	0.0
Virgin Blue	31	31	27	87.1	27	87.1	0	0.0
All Airlines	223	223	195	87.4	187	83.9	0	0.0
<b>Newcastle-Brisbane</b>								
Jetstar	110	110	76	69.1	79	71.8	0	0.0
QantasLink	67	66	55	83.3	55	83.3	1	1.5
Virgin Blue	48	48	43	89.6	43	89.6	0	0.0
All Airlines	225	224	174	77.7	177	79.0	1	0.4
<b>Newcastle-Gold Coast</b>								
Jetstar	31	31	21	67.7	22	71.0	0	0.0
Virgin Blue	14	14	14	100.0	14	100.0	0	0.0
All Airlines	45	45	35	77.8	36	80.0	0	0.0
<b>Newcastle-Melbourne</b>								
Jetstar	75	75	57	76.0	61	81.3	0	0.0
Virgin Blue	31	30	28	93.3	28	93.3	1	3.2
All Airlines	106	105	85	81.0	89	84.8	1	0.9
<b>Newman-Perth</b>								
QantasLink	90	90	82	91.1	82	91.1	0	0.0
Virgin Blue	35	34	26	76.5	26	76.5	1	2.9
All Airlines	125	124	108	87.1	108	87.1	1	0.8
<b>Perth-Adelaide</b>								
Jetstar	31	31	28	90.3	8	25.8	0	0.0
Qantas	125	123	121	98.4	99	80.5	2	1.6
Tiger Airways	31	31	28	90.3	29	93.5	0	0.0
Virgin Blue	67	67	57	85.1	59	88.1	0	0.0
All Airlines	254	252	234	92.9	195	77.4	2	0.8
<b>Perth-Brisbane</b>								
Qantas	124	124	112	90.3	103	83.1	0	0.0
Virgin Blue	62	62	60	96.8	51	82.3	0	0.0
All Airlines	186	186	172	92.5	154	82.8	0	0.0

	<i>Sectors</i>		<i>Departures On Time</i>		<i>Arrivals On Time</i>		<i>Cancellations</i>	
	<i>Sched.</i>	<i>Flown</i>	<i>No.</i>	<i>%</i>	<i>No.</i>	<i>%</i>	<i>No.</i>	<i>%</i>
<b>Perth-Broome</b>								
Qantas	18	18	15	83.3	14	77.8	0	0.0
QantasLink	64	64	52	81.3	56	87.5	0	0.0
Skywest	25	25	19	76.0	18	72.0	0	0.0
Virgin Blue	48	48	40	83.3	41	85.4	0	0.0
All Airlines	155	155	126	81.3	129	83.2	0	0.0
<b>Perth-Kalgoorlie</b>								
Qantas	26	24	24	100.0	24	100.0	2	7.7
QantasLink	79	79	67	84.8	68	86.1	0	0.0
Skywest	24	23	20	87.0	21	91.3	1	4.2
All Airlines	129	126	111	88.1	113	89.7	3	2.3
<b>Perth-Karratha</b>								
Qantas	138	138	131	94.9	130	94.2	0	0.0
QantasLink	39	39	36	92.3	36	92.3	0	0.0
Skywest	18	18	16	88.9	14	77.8	0	0.0
Virgin Blue	53	52	51	98.1	51	98.1	1	1.9
All Airlines	248	247	234	94.7	231	93.5	1	0.4
<b>Perth-Melbourne</b>								
Jetstar	49	48	28	58.3	28	58.3	1	2.0
Qantas	186	186	163	87.6	154	82.8	0	0.0
Tiger Airways	61	60	46	76.7	46	76.7	1	1.6
Virgin Blue	124	124	120	96.8	113	91.1	0	0.0
All Airlines	420	418	357	85.4	341	81.6	2	0.5
<b>Perth-Newman</b>								
QantasLink	90	90	86	95.6	86	95.6	0	0.0
Virgin Blue	35	35	35	100.0	34	97.1	0	0.0
All Airlines	125	125	121	96.8	120	96.0	0	0.0
<b>Perth-Sydney</b>								
Qantas	208	206	178	86.4	151	73.3	2	1.0
Virgin Blue	151	150	136	90.7	139	92.7	1	0.7
All Airlines	359	356	314	88.2	290	81.5	3	0.8
<b>Port Macquarie-Sydney</b>								
QantasLink	106	106	103	97.2	101	95.3	0	0.0
Virgin Blue	62	62	55	88.7	58	93.5	0	0.0
All Airlines	168	168	158	94.0	159	94.6	0	0.0
<b>Proserpine-Brisbane</b>								
Jetstar	31	31	24	77.4	25	80.6	0	0.0
Virgin Blue	31	31	24	77.4	26	83.9	0	0.0
All Airlines	62	62	48	77.4	51	82.3	0	0.0
<b>Rockhampton-Brisbane</b>								
Jetstar	31	31	27	87.1	27	87.1	0	0.0
QantasLink	155	155	148	95.5	146	94.2	0	0.0
Virgin Blue	148	147	130	88.4	131	89.1	1	0.7
All Airlines	334	333	305	91.6	304	91.3	1	0.3

	<i>Sectors</i>		<i>Departures On Time</i>		<i>Arrivals On Time</i>		<i>Cancellations</i>	
	<i>Sched.</i>	<i>Flown</i>	<i>No.</i>	<i>%</i>	<i>No.</i>	<i>%</i>	<i>No.</i>	<i>%</i>
<b>Sydney-Adelaide</b>								
Jetstar	23	23	23	100.0	23	100.0	0	0.0
Qantas	280	279	252	90.3	266	95.3	1	0.4
Virgin Blue	147	145	135	93.1	142	97.9	2	1.4
All Airlines	450	447	410	91.7	431	96.4	3	0.7
<b>Sydney-Albury</b>								
QantasLink	106	106	97	91.5	93	87.7	0	0.0
Regional Express	117	117	87	74.4	92	78.6	0	0.0
Virgin Blue	62	62	55	88.7	55	88.7	0	0.0
All Airlines	285	285	239	83.9	240	84.2	0	0.0
<b>Sydney-Ballina</b>								
Jetstar	31	31	27	87.1	29	93.5	0	0.0
Regional Express	87	87	74	85.1	73	83.9	0	0.0
Virgin Blue	35	35	29	82.9	30	85.7	0	0.0
All Airlines	153	153	130	85.0	132	86.3	0	0.0
<b>Sydney-Brisbane</b>								
Jetstar	66	61	46	75.4	56	91.8	5	7.6
Qantas	593	568	506	89.1	514	90.5	25	4.2
Virgin Blue	547	534	445	83.3	465	87.1	13	2.4
All Airlines	1,206	1,163	997	85.7	1,035	89.0	43	3.6
<b>Sydney-Cairns</b>								
Jetstar	31	31	28	90.3	28	90.3	0	0.0
Qantas	86	86	78	90.7	78	90.7	0	0.0
Virgin Blue	71	71	62	87.3	64	90.1	0	0.0
All Airlines	188	188	168	89.4	170	90.4	0	0.0
<b>Sydney-Canberra</b>								
Qantas	213	213	195	91.5	195	91.5	0	0.0
QantasLink	409	395	365	92.4	350	88.6	14	3.4
Virgin Blue	229	226	212	93.8	212	93.8	3	1.3
All Airlines	851	834	772	92.6	757	90.8	17	2.0
<b>Sydney-Coffs Harbour</b>								
QantasLink	124	124	113	91.1	109	87.9	0	0.0
Virgin Blue	62	62	57	91.9	57	91.9	0	0.0
All Airlines	186	186	170	91.4	166	89.2	0	0.0
<b>Sydney-Dubbo</b>								
QantasLink	105	105	103	98.1	103	98.1	0	0.0
Regional Express	169	169	143	84.6	146	86.4	0	0.0
All Airlines	274	274	246	89.8	249	90.9	0	0.0
<b>Sydney-Gold Coast</b>								
Jetstar	235	235	188	80.0	194	82.6	0	0.0
Virgin Blue	361	361	336	93.1	335	92.8	0	0.0
All Airlines	596	596	524	87.9	529	88.8	0	0.0

	<i>Sectors</i>		<i>Departures On Time</i>		<i>Arrivals On Time</i>		<i>Cancellations</i>	
	<i>Sched.</i>	<i>Flown</i>	<i>No.</i>	<i>%</i>	<i>No.</i>	<i>%</i>	<i>No.</i>	<i>%</i>
<b>Sydney-Hervey Bay</b>								
Jetstar	18	18	17	94.4	17	94.4	0	0.0
Virgin Blue	31	31	31	100.0	30	96.8	0	0.0
All Airlines	49	49	48	98.0	47	95.9	0	0.0
<b>Sydney-Hobart</b>								
Jetstar	49	49	45	91.8	44	89.8	0	0.0
Qantas	31	31	28	90.3	27	87.1	0	0.0
Virgin Blue	62	62	53	85.5	54	87.1	0	0.0
All Airlines	142	142	126	88.7	125	88.0	0	0.0
<b>Sydney-Launceston</b>								
Jetstar	31	31	24	77.4	24	77.4	0	0.0
Virgin Blue	31	31	27	87.1	31	100.0	0	0.0
All Airlines	62	62	51	82.3	55	88.7	0	0.0
<b>Sydney-Maroochydore</b>								
Jetstar	85	85	78	91.8	78	91.8	0	0.0
Virgin Blue	45	43	39	90.7	37	86.0	2	4.4
All Airlines	130	128	117	91.4	115	89.8	2	1.5
<b>Sydney-Melbourne</b>								
Jetstar	13	13	12	92.3	11	84.6	0	0.0
Qantas	895	844	750	88.9	721	85.4	51	5.7
Virgin Blue	735	710	611	86.1	612	86.2	25	3.4
All Airlines	1,643	1,567	1,373	87.6	1,344	85.8	76	4.6
<b>Sydney-Perth</b>								
Qantas	208	208	178	85.6	191	91.8	0	0.0
Virgin Blue	151	151	135	89.4	134	88.7	0	0.0
All Airlines	359	359	313	87.2	325	90.5	0	0.0
<b>Sydney-Port Macquarie</b>								
QantasLink	106	106	102	96.2	101	95.3	0	0.0
Virgin Blue	62	62	57	91.9	58	93.5	0	0.0
All Airlines	168	168	159	94.6	159	94.6	0	0.0
<b>Sydney-Townsville</b>								
Jetstar	22	22	20	90.9	20	90.9	0	0.0
Virgin Blue	31	31	28	90.3	29	93.5	0	0.0
All Airlines	53	53	48	90.6	49	92.5	0	0.0
<b>Sydney-Wagga Wagga</b>								
QantasLink	135	135	129	95.6	124	91.9	0	0.0
Regional Express	137	137	118	86.1	111	81.0	0	0.0
All Airlines	272	272	247	90.8	235	86.4	0	0.0
<b>Townsville-Brisbane</b>								
Jetstar	49	49	32	65.3	38	77.6	0	0.0
Qantas	156	153	139	90.8	145	94.8	3	1.9
Virgin Blue	147	146	142	97.3	142	97.3	1	0.7
All Airlines	352	348	313	89.9	325	93.4	4	1.1

	<i>Sectors</i>		<i>Departures On Time</i>		<i>Arrivals On Time</i>		<i>Cancellations</i>	
	<i>Sched.</i>	<i>Flown</i>	<i>No.</i>	<i>%</i>	<i>No.</i>	<i>%</i>	<i>No.</i>	<i>%</i>
<b>Townsville-Sydney</b>								
Jetstar	22	22	20	90.9	21	95.5	0	0.0
Virgin Blue	31	31	30	96.8	29	93.5	0	0.0
All Airlines	53	53	50	94.3	50	94.3	0	0.0
<b>Wagga Wagga-Sydney</b>								
QantasLink	135	135	129	95.6	123	91.1	0	0.0
Regional Express	137	137	113	82.5	102	74.5	0	0.0
All Airlines	272	272	242	89.0	225	82.7	0	0.0

# Airports

On time performance is reported for all routes where the passenger load averages over 8000 passengers per month, and where two or more airlines operate in competition. The following data reports by airport against flights operated on those routes only.

Airport	Departures			Arrivals		
	Sectors	On Time		Sectors	On Time	
	Flown	No.	%	Flown	No.	%
<b>Adelaide</b>						
Jetstar	161	111	68.9	161	126	78.3
Qantas	858	788	91.8	859	787	91.6
Tiger Airways	166	112	67.5	166	109	65.7
Virgin Blue	621	566	91.1	620	575	92.7
All Airlines	1 806	1 577	87.3	1 806	1 597	88.4
Relates to services to and from Brisbane, Canberra, Gold Coast, Melbourne, Perth and Sydney.						
<b>Albury</b>						
QantasLink	106	95	89.6	106	93	87.7
Regional Express	116	101	87.1	117	92	78.6
Virgin Blue	61	54	88.5	62	55	88.7
All Airlines	283	250	88.3	285	240	84.2
Relates to services to and from Sydney only.						
<b>Alice Springs</b>						
Qantas	31	19	61.3	31	24	77.4
Tiger Airways	13	8	61.5	13	10	76.9
All Airlines	44	27	61.4	44	34	77.3
Relates to services to and from Melbourne only						
<b>Ballina</b>						
Jetstar	30	25	83.3	31	29	93.5
Regional Express	86	62	72.1	87	73	83.9
Virgin Blue	35	28	80.0	35	30	85.7
All Airlines	151	115	76.2	153	132	86.3
Relates to services to and from Sydney only.						
<b>Brisbane</b>						
Jetstar	557	427	76.7	557	448	80.4
Qantas	1 633	1 469	90.0	1 635	1 473	90.1
QantasLink	310	283	91.3	288	263	91.3
Virgin Blue	1 847	1 675	90.7	1 845	1 647	89.3
All Airlines	4 347	3 854	88.7	4 325	3 831	88.6
Relates to services to and from Adelaide, Cairns, Canberra, Darwin, Hamilton Island, Mackay, Melbourne, Newcastle, Perth, Proserpine, Rockhampton, Sydney and Townsville.						

Airport	Departures			Arrivals		
	Sectors Flown	On Time No.	On Time %	Sectors Flown	On Time No.	On Time %
<b>Broome</b>						
Qantas	18	14	77.8	18	14	77.8
QantasLink	65	52	80.0	64	56	87.5
Skywest	25	19	76.0	25	18	72.0
Virgin Blue	47	39	83.0	48	41	85.4
All Airlines	155	124	80.0	155	129	83.2
Relates to services to and from Perth only.						
<b>Cairns</b>						
Jetstar	153	134	87.6	153	130	85.0
Qantas	241	214	88.8	241	220	91.3
Virgin Blue	233	206	88.4	232	205	88.4
All Airlines	627	554	88.4	626	555	88.7
Relates to services to and from Brisbane, Melbourne and Sydney.						
<b>Canberra</b>						
Qantas	654	607	92.8	657	592	90.1
QantasLink	440	402	91.4	442	394	89.1
Tiger Airways	80	57	71.3	80	60	75.0
Virgin Blue	558	517	92.7	556	502	90.3
All Airlines	1 732	1 583	91.4	1 735	1 548	89.2
Relates to services to and from Adelaide, Brisbane, Melbourne and Sydney.						
<b>Coffs Harbour</b>						
QantasLink	124	111	89.5	124	109	87.9
Virgin Blue	62	54	87.1	62	57	91.9
All Airlines	186	165	88.7	186	166	89.2
Relates to services to and from Sydney only.						
<b>Darwin</b>						
Jetstar	49	37	75.5	49	18	36.7
Qantas	31	14	45.2	31	18	58.1
Virgin Blue	31	23	74.2	31	23	74.2
All Airlines	111	74	66.7	111	59	53.2
Relates to services to and from Brisbane.						
<b>Dubbo</b>						
QantasLink	105	104	99.0	105	103	98.1
Regional Express	169	144	85.2	169	146	86.4
All Airlines	274	248	90.5	274	249	90.9
Relates to services to and from Sydney only.						
<b>Gold Coast</b>						
Jetstar	463	366	79.0	465	387	83.2
Tiger Airways	124	87	70.2	124	90	72.6
Virgin Blue	557	511	91.7	561	508	90.6
All Airlines	1 144	964	84.3	1 150	985	85.7
Relates to services to and from Adelaide, Melbourne, Newcastle and Sydney.						

Airport	Departures			Arrivals		
	Sectors	On Time		Sectors	On Time	
	Flown	No.	%	Flown	No.	%
<b>Hamilton Island</b>						
Jetstar	31	25	80.6	31	26	83.9
Virgin Blue	31	28	90.3	31	27	87.1
All Airlines	62	53	85.5	62	53	85.5
Relates to services to and from Brisbane only.						
<b>Hervey Bay</b>						
Jetstar	18	16	88.9	18	17	94.4
Virgin Blue	31	30	96.8	31	30	96.8
All Airlines	49	46	93.9	49	47	95.9
Relates to services to and from Sydney only.						
<b>Hobart</b>						
Jetstar	165	99	60.0	165	127	77.0
Qantas	93	81	87.1	93	79	84.9
Tiger Airways	31	22	71.0	31	23	74.2
Virgin Blue	186	158	84.9	186	153	82.3
All Airlines	475	360	75.8	475	382	80.4
Relates to services to and from Melbourne and Sydney.						
<b>Kalgoorlie</b>						
Qantas	24	23	95.8	24	24	100.0
QantasLink	78	67	85.9	79	68	86.1
Skywest	23	21	91.3	23	21	91.3
All Airlines	125	111	88.8	126	113	89.7
Relates to services to and from Perth only.						
<b>Karratha</b>						
Qantas	139	129	92.8	138	130	94.2
QantasLink	39	37	94.9	39	36	92.3
Skywest	19	13	68.4	18	14	77.8
Virgin Blue	52	48	92.3	52	51	98.1
All Airlines	249	227	91.2	247	231	93.5
Relates to services to and from Perth only.						
<b>Launceston</b>						
Jetstar	103	68	66.0	103	80	77.7
QantasLink	62	57	91.9	61	53	86.9
Tiger Airways	30	25	83.3	30	25	83.3
Virgin Blue	155	138	89.0	155	138	89.0
All Airlines	350	288	82.3	349	296	84.8
Relates to services to and from Melbourne and Sydney.						

Airport	Departures			Arrivals		
	Sectors Flown	On Time No.	On Time %	Sectors Flown	On Time No.	On Time %
<b>Mackay</b>						
Jetstar	76	51	67.1	76	56	73.7
QantasLink	57	49	86.0	57	49	86.0
Virgin Blue	140	133	95.0	140	127	90.7
All Airlines	273	233	85.3	273	232	85.0
Relates to services to and from Brisbane only.						
<b>Maroochydore</b>						
Jetstar	147	112	76.2	147	123	83.7
Tiger Airways	18	15	83.3	18	16	88.9
Virgin Blue	77	62	80.5	77	65	84.4
All Airlines	242	189	78.1	242	204	84.3
Relates to services to and from Melbourne and Sydney.						
<b>Melbourne</b>						
Jetstar	633	459	72.5	633	449	70.9
Qantas	2 139	1 877	87.8	2 138	1 872	87.6
QantasLink	198	182	91.9	199	166	83.4
Regional Express	92	85	92.4	92	81	88.0
Tiger Airways	394	281	71.3	393	282	71.8
Virgin Blue	2 126	1 842	86.6	2 130	1 892	88.8
All Airlines	5 582	4 726	84.7	5 585	4 742	84.9
Relates to services to and from Adelaide, Alice Springs, Brisbane, Cairns, Canberra, Gold Coast, Hobart, Launceston, Maroochydore, Mildura, Newcastle, Perth and Sydney.						
<b>Mildura</b>						
QantasLink	100	87	87.0	100	88	88.0
Regional Express	92	81	88.0	92	83	90.2
Virgin Blue	31	27	87.1	31	29	93.5
All Airlines	223	195	87.4	223	200	89.7
Relates to services to and from Melbourne only.						
<b>Newcastle</b>						
Jetstar	216	154	71.3	215	162	75.3
QantasLink	66	55	83.3	67	52	77.6
Virgin Blue	92	85	92.4	93	85	91.4
All Airlines	374	294	78.6	375	299	79.7
Relates to services to and from Brisbane, Gold Coast and Melbourne.						
<b>Newman</b>						
QantasLink	90	82	91.1	90	86	95.6
Virgin Blue	34	26	76.5	35	34	97.1
All Airlines	124	108	87.1	125	120	96.0
Relates to services to and from Perth only.						

<i>Airport</i>	<i>Departures</i>			<i>Arrivals</i>		
	<i>Sectors Flown</i>	<i>On Time</i>		<i>Sectors Flown</i>	<i>On Time</i>	
		<i>No.</i>	<i>%</i>		<i>No.</i>	<i>%</i>
<b>Perth</b>						
Jetstar	79	56	70.9	79	64	81.0
Qantas	819	744	90.8	821	754	91.8
QantasLink	272	241	88.6	272	238	87.5
Skywest	66	55	83.3	67	50	74.6
Tiger Airways	91	74	81.3	92	77	83.7
Virgin Blue	538	499	92.8	537	475	88.5
All Airlines	1 865	1 669	89.5	1 868	1 658	88.8
Relates to services to and from Adelaide, Brisbane, Broome, Kalgoorlie, Karratha, Melbourne, Newman, and Sydney.						
<b>Port Macquarie</b>						
QantasLink	106	103	97.2	106	101	95.3
Virgin Blue	62	55	88.7	62	58	93.5
All Airlines	168	158	94.0	168	159	94.6
Relates to services to and from Sydney only.						
<b>Proserpine</b>						
Jetstar	31	24	77.4	31	26	83.9
Virgin Blue	31	24	77.4	31	27	87.1
All Airlines	62	48	77.4	62	53	85.5
Relates to services to and from Brisbane only.						
<b>Rockhampton</b>						
Jetstar	31	27	87.1	31	28	90.3
QantasLink	155	148	95.5	176	163	92.6
Virgin Blue	147	130	88.4	147	128	87.1
All Airlines	333	305	91.6	354	319	90.1
Relates to services to and from Brisbane only.						
<b>Sydney</b>						
Jetstar	599	508	84.8	597	488	81.7
Qantas	2 229	1 987	89.1	2 223	1 985	89.3
QantasLink	971	909	93.6	969	860	88.8
Regional Express	510	422	82.7	508	411	80.9
Virgin Blue	2 617	2 312	88.3	2 612	2 340	89.6
All Airlines	6 926	6 138	88.6	6 909	6 084	88.1
Relates to services to and from Adelaide, Albury, Ballina, Brisbane, Cairns, Canberra, Coffs Harbour, Dubbo, Gold Coast, Hervey Bay, Hobart, Launceston, Maroochydore, Melbourne, Perth, Port Macquarie, Townsville and Wagga Wagga.						
<b>Townsville</b>						
Jetstar	71	52	73.2	71	55	77.5
Qantas	153	139	90.8	153	136	88.9
Virgin Blue	177	172	97.2	177	165	93.2
All Airlines	401	363	90.5	401	356	88.8
Relates to services to and from Brisbane and Sydney.						

<i>Airport</i>	<i>Departures</i>			<i>Arrivals</i>		
	<i>Sectors</i>	<i>On Time</i>		<i>Sectors</i>	<i>On Time</i>	
	<i>Flown</i>	<i>No.</i>	<i>%</i>	<i>Flown</i>	<i>No.</i>	<i>%</i>
<b>Wagga Wagga</b>						
QantasLink	135	129	95.6	135	124	91.9
Regional Express	137	113	82.5	137	111	81.0
All Airlines	272	242	89.0	272	235	86.4

Relates to services to and from Sydney only.

## Definitions

---

On time departure                      A flight departure is counted as "on time" if it departs the gate within 15 minutes of the scheduled departure time shown in the carriers' schedule.

---

On time arrival                         A flight arrival is counted as "on time" if it arrived at the gate within 15 minutes of the scheduled arrival time shown in the carriers' schedule.  
Neither diverted nor cancelled flights count as on time.

---

Cancellation                            A flight is regarded as a cancellation if it is cancelled or rescheduled less than 7 days prior to its scheduled departure time.

---

On time departure percentage                      The percentage of on time departures is measured against the number of departures *operated* on any particular sector.

---

On time arrival percentage                         The percentage of on time arrivals is measured against the number of arrivals *operated* on any particular sector.

---

Cancellation percentage                      The percentage of cancellations is measured against the number of services *scheduled* on any particular sector.

---