



Australian Government

Department of Infrastructure and Regional Development

Bureau of Infrastructure, Transport and Regional Economics

STATISTICAL REPORT



Aviation

Domestic airline on time performance
March 2017

© Commonwealth of Australia 2017

ISSN: 1832-0759

Ownership of intellectual property rights in this publication

Unless otherwise noted, copyright (and any other intellectual property rights, if any) in this publication is owned by the Commonwealth of Australia (referred to below as the Commonwealth).

Disclaimer

The material contained in this publication is made available on the understanding that the Commonwealth is not providing professional advice, and that users exercise their own skill and care with respect to its use, and seek independent advice if necessary.

The Commonwealth makes no representations or warranties as to the contents or accuracy of the information contained in this publication. To the extent permitted by law, the Commonwealth disclaims liability to any person or organisation in respect of anything done, or omitted to be done, in reliance upon information contained in this publication.

Creative Commons licence

With the exception of (a) the Coat of Arms; and (b) the Department of Infrastructure and Regional Development's photos and graphics, copyright in this publication is licensed under a Creative Commons Attribution 3.0 Australia Licence.

Creative Commons Attribution 3.0 Australia Licence is a standard form licence agreement that allows you to copy, communicate and adapt this publication provided that you attribute the work to the Commonwealth and abide by the other licence terms. A summary of the licence terms is available from <http://creativecommons.org/licenses/by/3.0/au/deed.en>. The full licence terms are available from <http://creativecommons.org/licenses/by/3.0/au/legalcode>.

Use of the Coat of Arms

The Department of the Prime Minister and Cabinet sets the terms under which the Coat of Arms is used. Please refer to the Department's Commonwealth Coat of Arms and Government branding web page <http://www.dpmmc.gov.au/guidelines/index.cfm#brand> and, in particular, the Guidelines on the use of the Commonwealth Coat of Arms publication.

An appropriate citation for this report is:

Bureau of Infrastructure, Transport and Regional Economics (BITRE), 2017, Domestic airline on time performance, Statistical Report, BITRE, Canberra ACT.

Contact us

This publication is available in PDF format. All other rights are reserved, including in relation to any Departmental logos or trade marks which may exist. For enquiries regarding the licence and any use of this publication, please contact:

Bureau of Infrastructure, Transport and Regional Economics (BITRE)
Department of Infrastructure and Regional Development
GPO Box 501, Canberra ACT 2601, Australia
Telephone: (international) +61 2 6274 7210
Fax: (international) +61 2 6274 6855
Email: bitre@infrastructure.gov.au
Website: www.bitre.gov.au

Inquiries

Should you require additional information about the statistics contained in this publication:

Telephone (02) 6274 7790 or Facsimile (02) 6274 7727

Electronic mail: AVSTATS@infrastructure.gov.au

Web site: <http://www.bitre.gov.au/statistics/aviation/otphome.aspx>

Foreword

The Bureau of Infrastructure, Transport and Regional Economics (BITRE) monitors the punctuality and reliability of major domestic airlines operating between Australian airports. The purpose of this is to allow for evaluation of overall industry and individual airline performance, so that consumers of air travel can make informed decisions.

The following domestic airlines currently report this information monthly to the BITRE: Jetstar, Qantas, QantasLink, Regional Express, Tigerair Australia, Virgin Australia and Virgin Australia Regional Airlines. Data has been gathered since November 2003, although some airlines commenced reporting at a later date, including Jetstar which first reported in May 2004, MacAir in July 2005, Tigerair Australia in April 2008 and Virgin Australia Regional Airlines in May 2013. MacAir ceased operations in February 2009 and data was not received for December 2008 onwards. Virgin Blue was rebranded as Virgin Australia in May 2011 and Tiger Airways was rebranded as Tigerair Australia in July 2013 and time series data in Microsoft Excel spreadsheet format on the BITRE website have been revised to reflect these changes. Services operated by Skywest on behalf of Virgin Australia using ATR/F100 aircraft commenced in November 2011 and were shown separately as Virgin Australia – ATR/F100 Operations. Virgin Australia Regional Airlines commenced operations in May 2013. It was formed after the acquisition of Skywest by Virgin Australia and represented a combination of operations previously reported under Skywest and Virgin Australia – ATR/F100 Operations. In January 2016, Virgin Australia transferred their ATR fleet from Virgin Australia Regional Airlines to Virgin Australia.

Information presented in this report is for Australian domestic routes for which the passenger load averaged 8 000 or more passengers per month over the previous six months and where two or more airlines operated in competition on those routes. There were 66 routes that met this definition in March 2017. Over time, routes which meet these criteria change as airline networks and traffic levels vary.

Participating airlines report their overall monthly network performance where this is possible.

Total industry figures encompass all services operated by reporting airlines only. These airlines collectively carried over 95 per cent of total domestic passengers (regular public transport only) in 2016.

The method of capturing on time performance varies between airlines utilising different recording systems. Jetstar and Qantas jet aircraft use Aircraft Communication Addressing and Reporting System (ACARS) to electronically measure on time performance. Regional Express, Tigerair Australia, Virgin Australia, Virgin Australia Regional Airlines and the Qantas non-jet fleet record on time performance manually using records from pilots, gate agents and/or ground crews.

After initial data is collected, aggregate reports are audited internally by participating airlines prior to publication.

Reports and detailed time series data in Microsoft Excel spreadsheet format are available from the BITRE website at: <http://www.bitre.gov.au/statistics/aviation/otphome.aspx>.

Contents

	Page
Industry performance	1
Individual routes	10
Airports	23
Definitions	30

Industry performance

For March 2017, on time performance over all routes operated by participating airlines (Jetstar, Qantas, QantasLink, Regional Express, Tigerair Australia, Virgin Australia and Virgin Australia Regional Airlines) averaged 76.7 per cent for on time arrivals and 78.3 per cent for on time departures. Cancellations represented 3.1 per cent of all scheduled flights. The equivalent figures for March 2016 were 85.3 per cent for on time arrivals, 86.3 per cent for on time departures and 1.3 per cent for cancellations.

This month's on time arrivals figure was significantly lower than the long term average performance for all routes (82.7 per cent) and the on time departures figure was also lower than the long term average (84.1 per cent). The rate of cancellations was higher than the long term average of 1.4 per cent.

Qantas achieved the highest on time arrivals among the major domestic airlines at 81.7 per cent followed by Virgin Australia at 78.9 per cent, Jetstar at 69.9 per cent and Tigerair Australia at 66.2 per cent. Of the regional airlines, Virgin Australia Regional Airlines recorded 82.6 per cent for on time arrivals, followed by QantasLink at 79.0 per cent and Regional Express at 72.1 per cent. The Qantas network (Qantas and QantasLink combined operations) recorded 80.3 per cent for on time arrivals while the Virgin Australia network (Virgin Australia and Virgin Australia Regional Airlines combined operations) recorded 79.1 per cent.

Qantas also achieved the highest level of on time departures for March 2017 at 83.7 per cent, followed by Virgin Australia at 81.0 per cent, Jetstar at 67.7 per cent and Tigerair Australia at 67.0 per cent. Of the regional airlines, Virgin Australia Regional Airlines recorded 84.3 per cent, followed by QantasLink at 80.2 per cent and Regional Express at 76.8 per cent. The Qantas network recorded 81.8 per cent for on time departures while the Virgin Australia network recorded 81.2 per cent.

QantasLink recorded the highest percentage of cancellations (4.2 per cent) during the month, followed by Virgin Australia (4.1 per cent), Virgin Australia Regional Airlines (3.6 per cent), Jetstar (2.7 per cent), Tigerair Australia (2.4 per cent), Regional Express (2.0 per cent) and Qantas (1.8 per cent).

Airlines' on time performance varies across the routes they serve. Individual route data by specific airline for 66 routes are shown on pages 10-22.

Of the 66 routes which met the criteria for on time performance reporting in March 2017, the Adelaide-Alice Springs route had the highest percentage of on time arrivals (95.6 per cent) and the Darwin-Alice Springs route had the highest percentage of on time departures (95.4 per cent). The Dubbo-Sydney route had the lowest percentage of on time arrivals (53.0 per cent) and the Sunshine Coast-Melbourne route had the lowest percentage of on time departures (50.9 per cent).

Cancellations were highest on the Sydney-Hamilton Island route at 21.3 per cent, followed by the Brisbane-Proserpine route at 20.3 per cent, the Brisbane-Hamilton Island and Proserpine-Brisbane routes at 20.0 per cent, the Hamilton Island-Brisbane route at 19.7 per

cent and the Hamilton Island-Sydney route at 19.2 per cent. These high cancellation rates are most likely due to Cyclone Debbie which hit this region of Queensland in late March 2017.

Alice Springs Airport recorded the highest percentage of on time arrivals (95.5 per cent) and Port Lincoln Airport recorded the highest percentage of on time departures (92.3 per cent). Armidale Airport recorded the lowest percentage of on time arrivals (57.5 per cent) and Ballina Airport recorded the lowest percentage of on time departures (54.3 per cent). These figures only refer to reported routes and do not cover all flights at these airports.

Table 1 On time performance for March 2017 — Total Industry

	<i>Sectors</i>		<i>Arrivals On Time</i>		<i>Departures On Time</i>		<i>Cancellations</i>	
	<i>Scheduled</i>	<i>Flown</i>	<i>No.</i>	<i>%</i>	<i>No.</i>	<i>%</i>	<i>No.</i>	<i>%</i>
Jetstar	7 011	6 824	4 769	69.9	4 620	67.7	187	2.7
Qantas	9 312	9 141	7 467	81.7	7 651	83.7	171	1.8
QantasLink	10 757	10 309	8 144	79.0	8 267	80.2	448	4.2
Regional Express	6 785	6 651	4 798	72.1	5 109	76.8	134	2.0
Tigerair Australia	2 292	2 236	1 480	66.2	1 499	67.0	56	2.4
Virgin Australia	12 405	11 898	9 384	78.9	9 638	81.0	507	4.1
Virgin Australia Regional Airlines	692	667	551	82.6	562	84.3	25	3.6
All Airlines	49 254	47 726	36 593	76.7	37 346	78.3	1 528	3.1
Qantas - all QF designated services	20 069	19 450	15 611	80.3	15 918	81.8	619	3.1
Virgin Australia - all VA designated services	13 097	12 565	9 935	79.1	10 200	81.2	532	4.1

Total airline network data (including routes not shown in this report).

Airlines' on time performance varies across the routes they serve. Individual route data by specific airline for 66 routes are shown on pages 10-22.

Table 2 Top ten routes for on time performance for March 2017 (participating airlines only)

<i>Arrivals</i>		<i>Departures</i>	
<i>Route</i>	<i>On Time (%)</i>	<i>Route</i>	<i>On Time (%)</i>
Adelaide-Alice Springs	95.6	Darwin-Alice Springs	95.4
Darwin-Alice Springs	95.4	Adelaide-Port Lincoln	94.1
Perth-Adelaide	93.0	Melbourne-Hamilton Island	93.8
Sydney-Ayers Rock	91.5	Perth-Newman	93.6
Alice Springs-Adelaide	91.3	Adelaide-Alice Springs	93.3
Perth-Kalgoorlie	91.1	Port Lincoln-Adelaide	92.3
Port Lincoln-Adelaide	91.0	Adelaide-Gold Coast	92.1
Kalgoorlie-Perth	91.0	Newman-Perth	91.9
Adelaide-Port Lincoln	91.0	Perth-Adelaide	90.9
Perth-Newman	90.6	Melbourne-Darwin	90.6

Table 3 Top ten airports for on time performance for March 2017 (participating airlines and reported routes only)

<i>Arrivals</i>		<i>Departures</i>	
<i>Airport</i>	<i>On Time (%)</i>	<i>Airport</i>	<i>On Time (%)</i>
Alice Springs	95.5	Port Lincoln	92.3
Ayers Rock	91.5	Newman	91.9
Kalgoorlie	91.1	Kalgoorlie	90.3
Port Lincoln	91.0	Perth	88.3
Newman	90.6	Mount Isa	87.8
Mount Isa	89.2	Alice Springs	87.4
Broome	88.5	Darwin	85.5
Karratha	87.5	Karratha	85.4
Adelaide	84.8	Geraldton	85.4
Perth	83.8	Port Hedland	85.4

Total industry on time performance

Figure 1 On time performance (by month from March 2014)—Total Industry

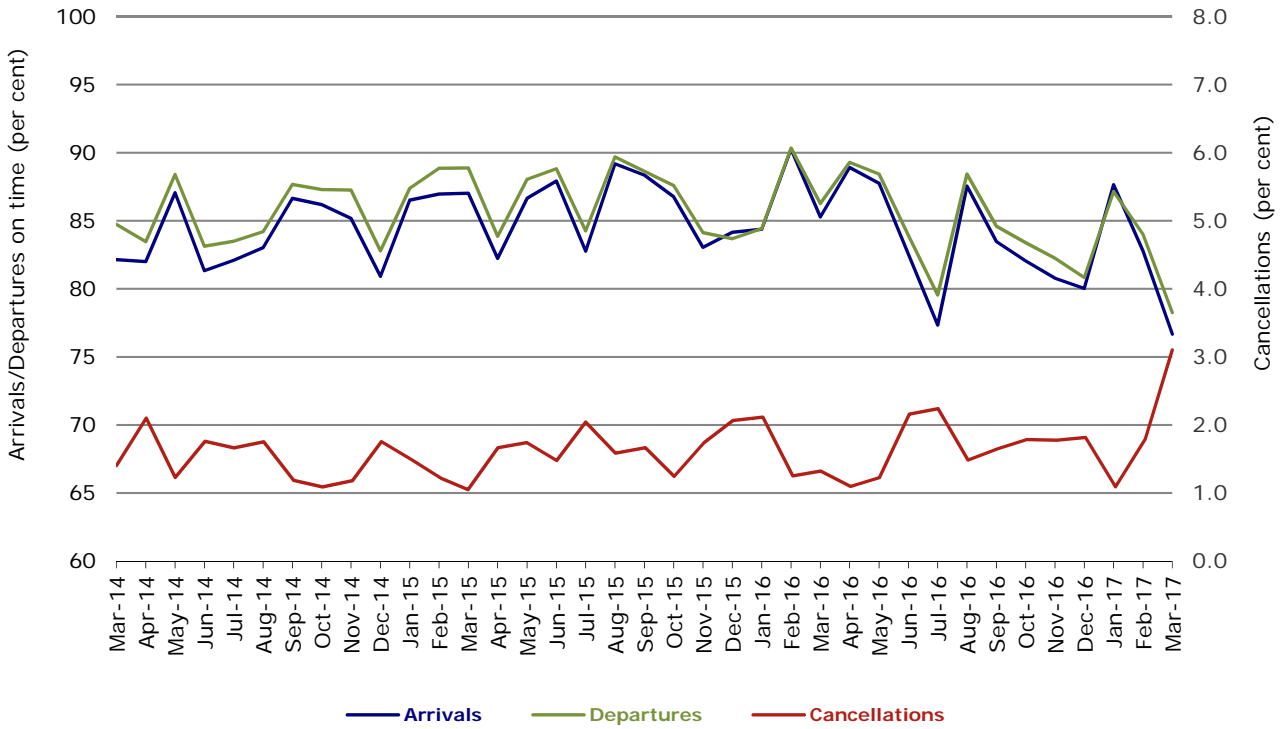


Figure 2 Arrivals on time (by month from March 2016)

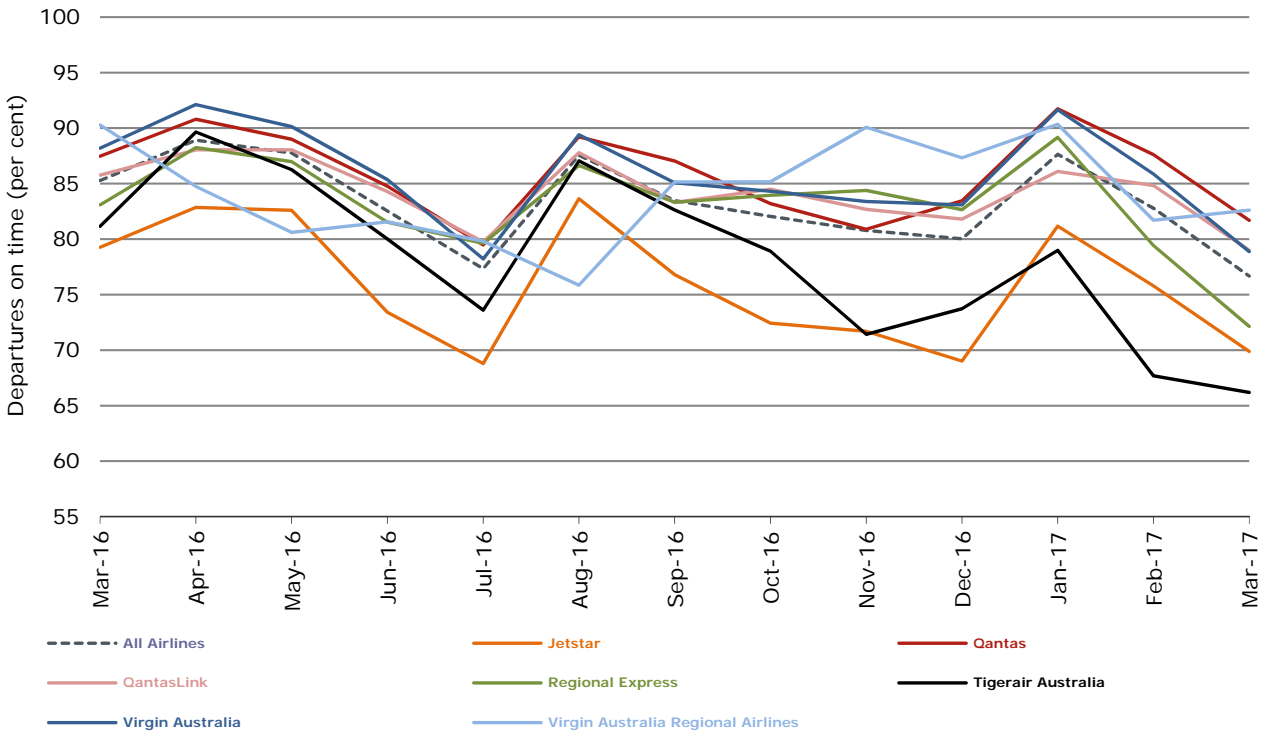


Figure 3 Departures on time (by month from March 2016)

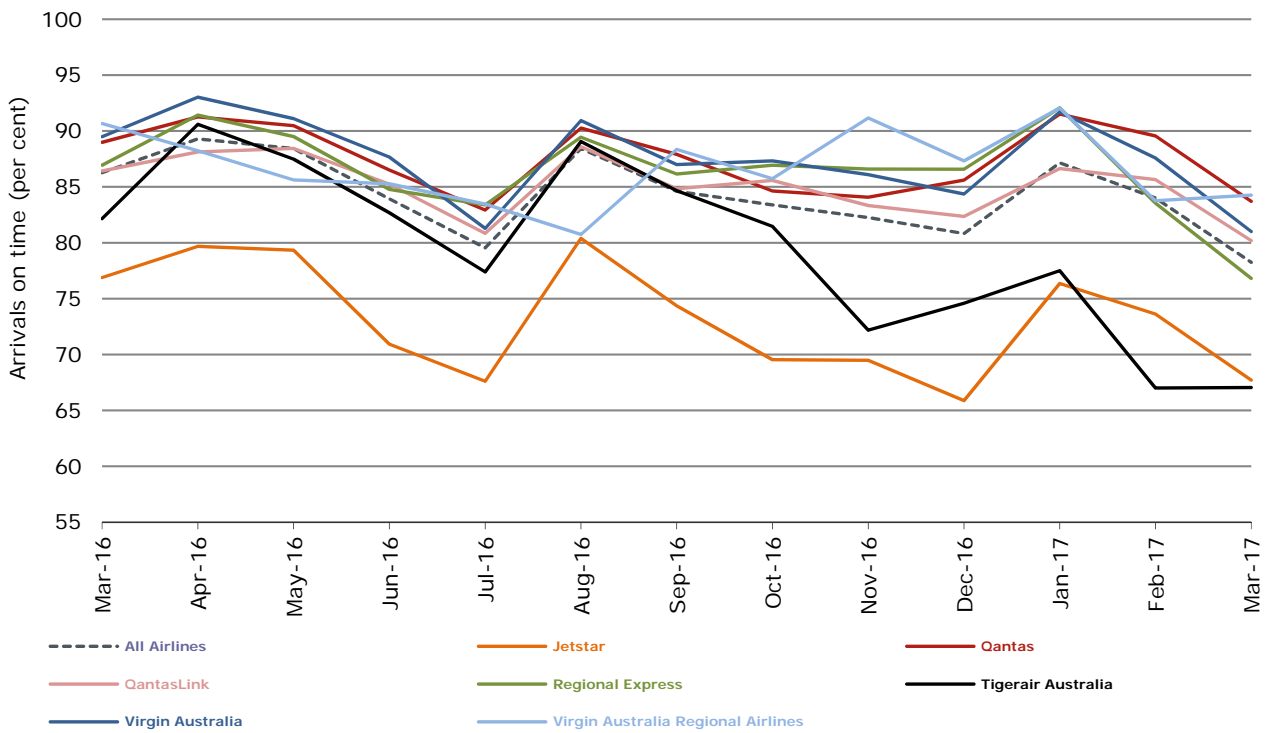
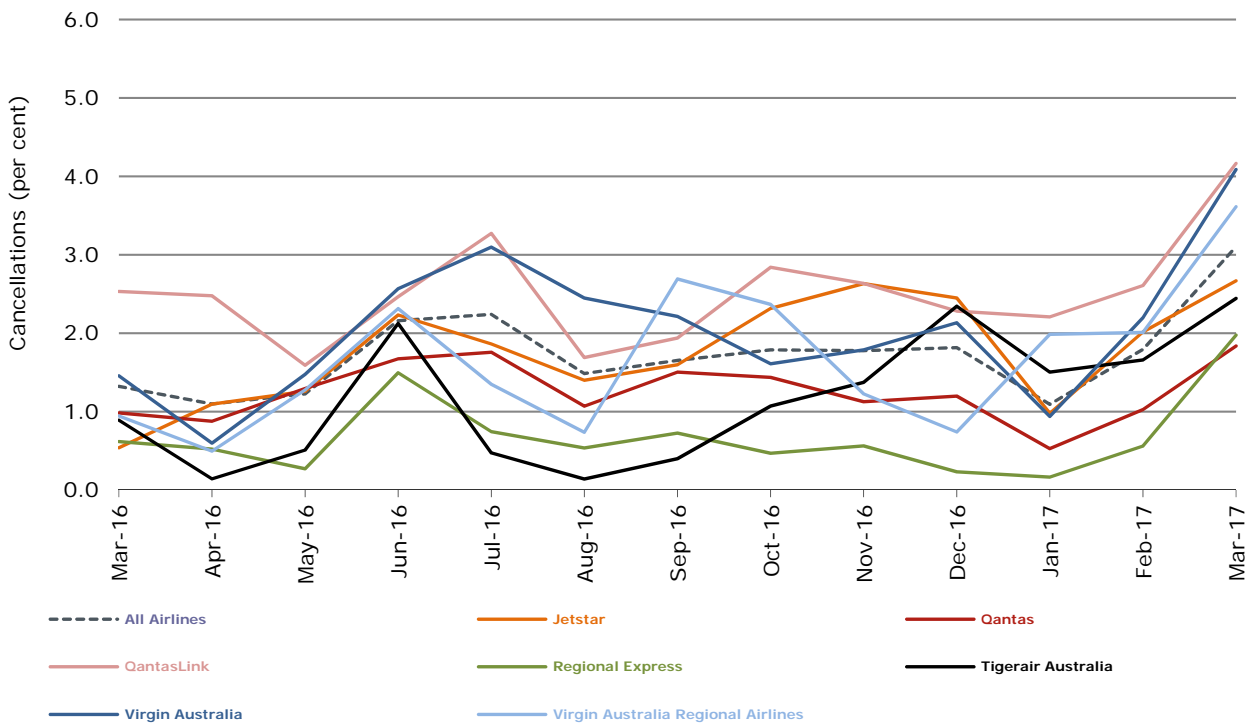


Figure 4 Cancellations (by month from March 2016)



Major domestic airlines on time performance

Figure 5 On time performance (by month from March 2014)—Jetstar

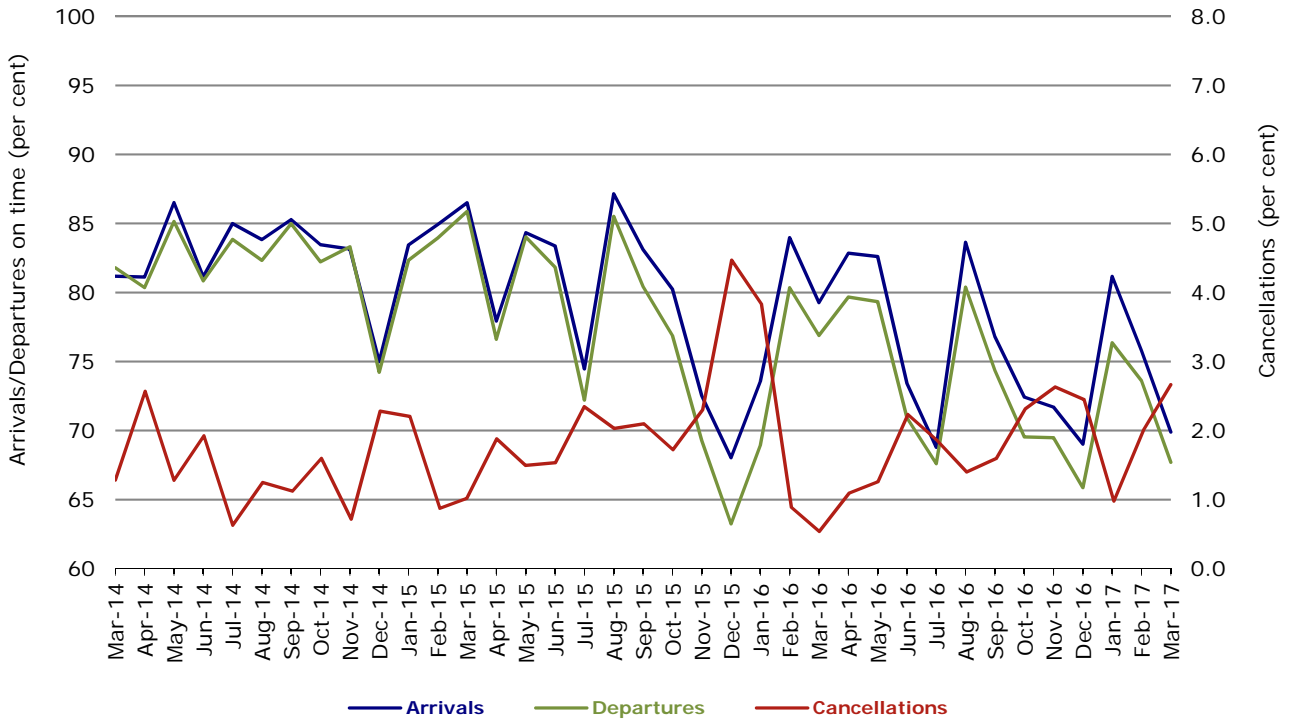


Figure 6 On time performance (by month from March 2014)—Qantas

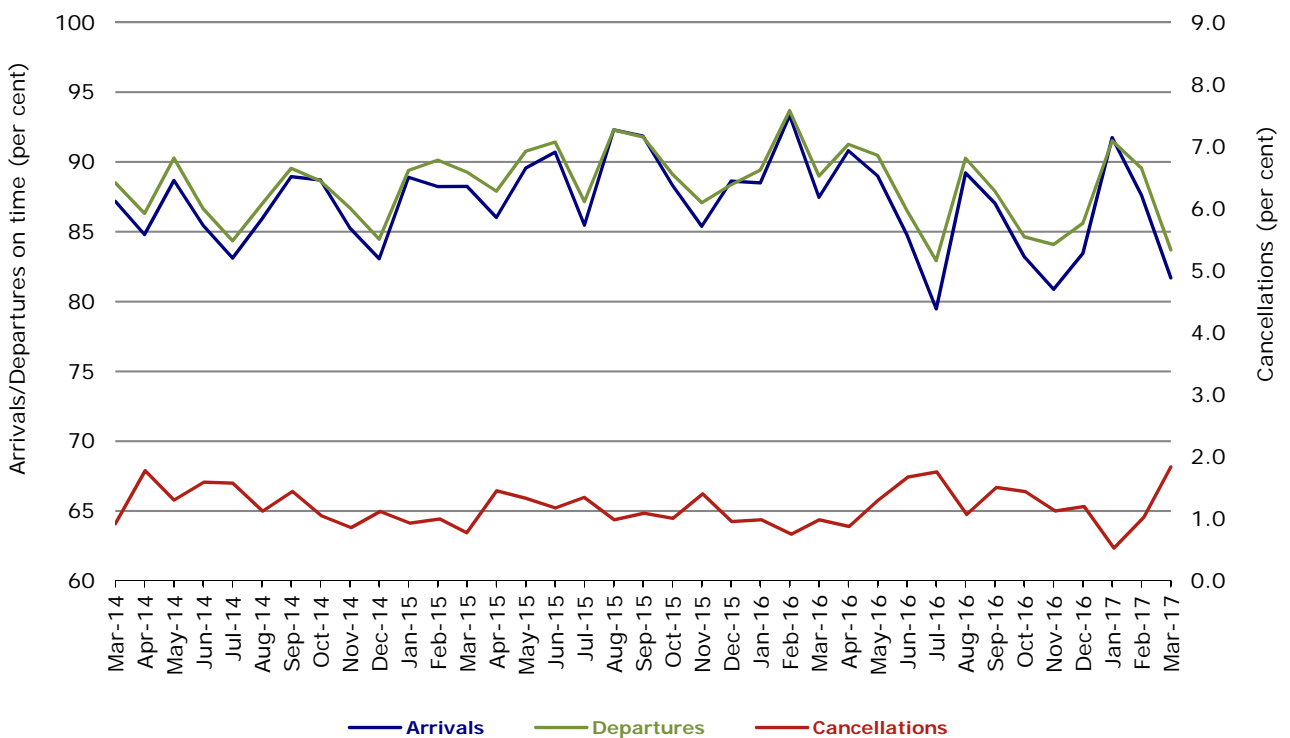


Figure 7 On time performance (by month from March 2014)—Tigerair Australia

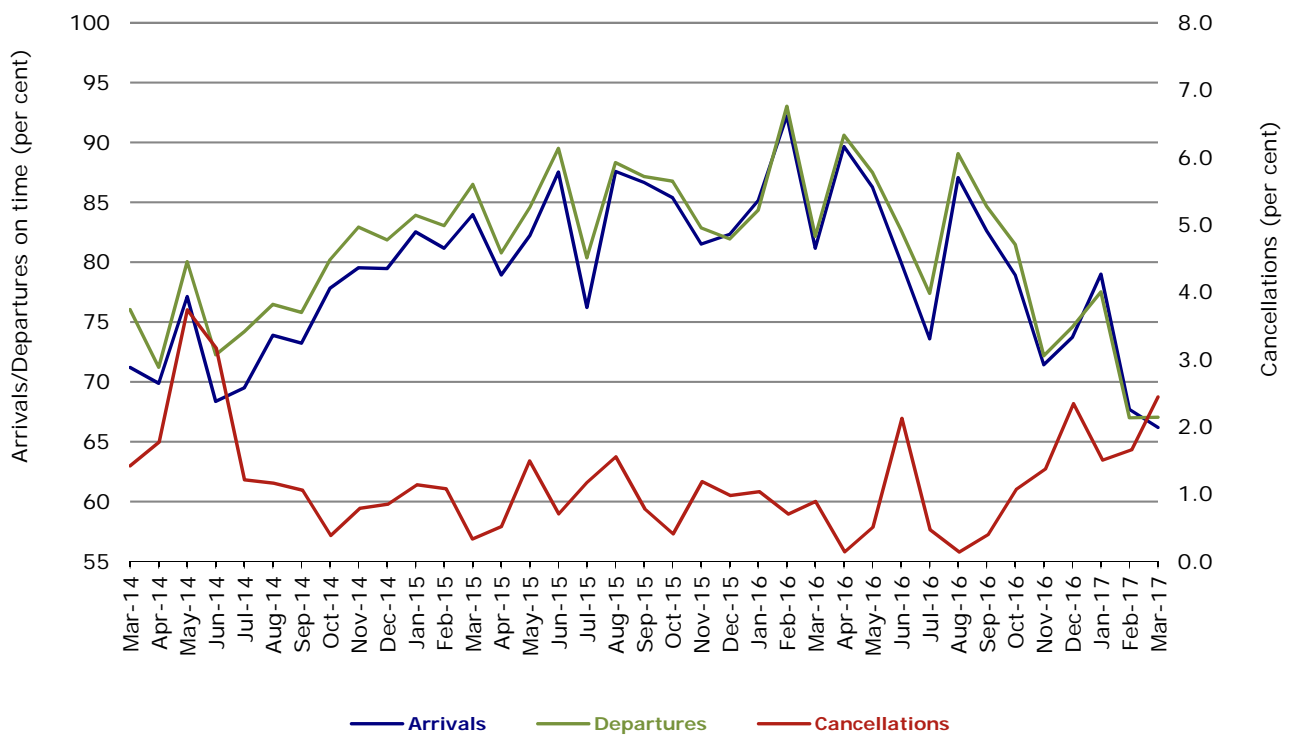
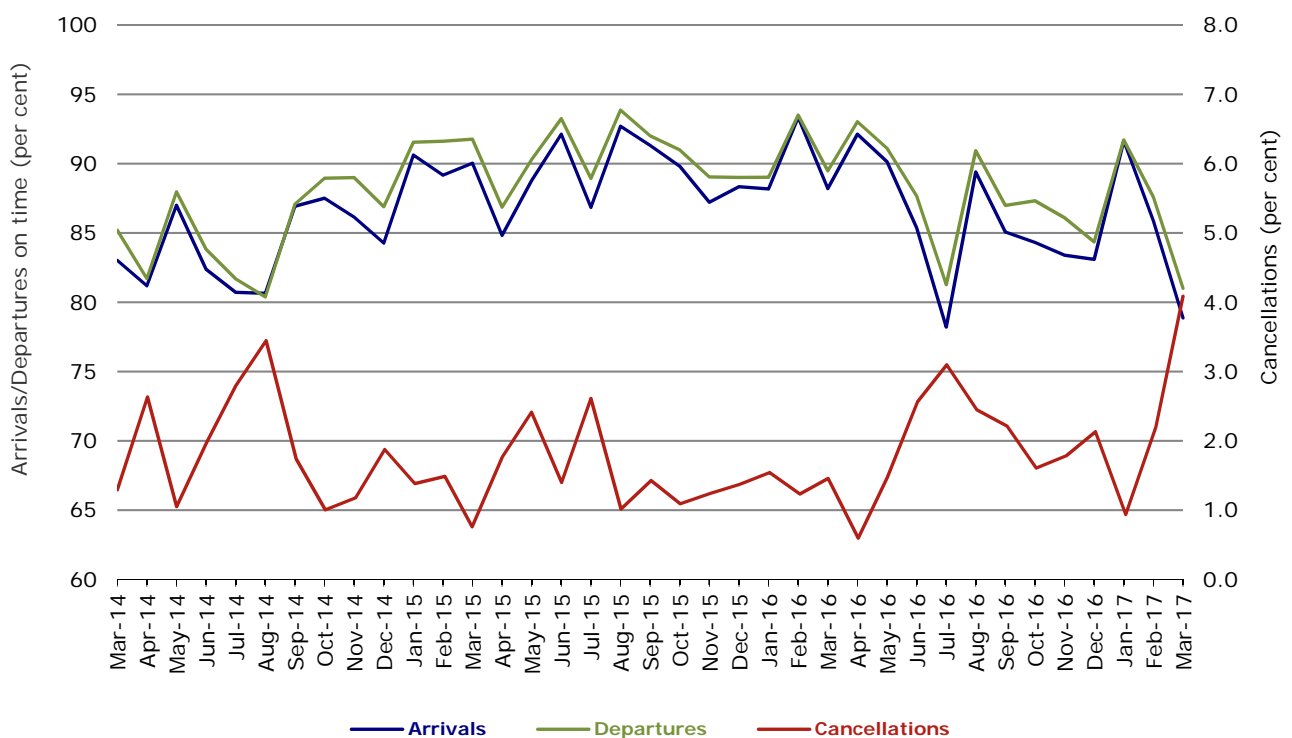


Figure 8 On time performance (by month from March 2014)—Virgin Australia



In January 2016, Virgin Australia transferred their ATR fleet from Virgin Australia Regional Airlines to Virgin Australia.

Major regional airlines on time performance

Figure 9 On time performance (by month from March 2014)—QantasLink

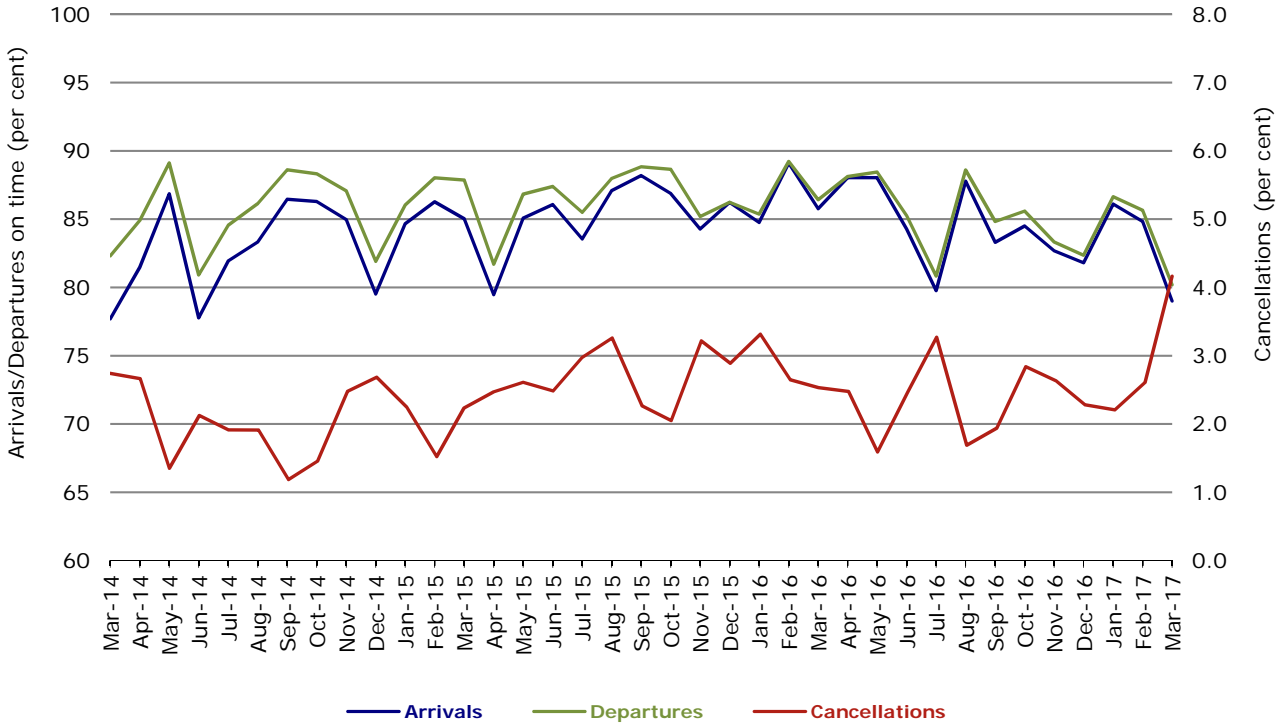


Figure 10 On time performance (by month from March 2014)—Regional Express

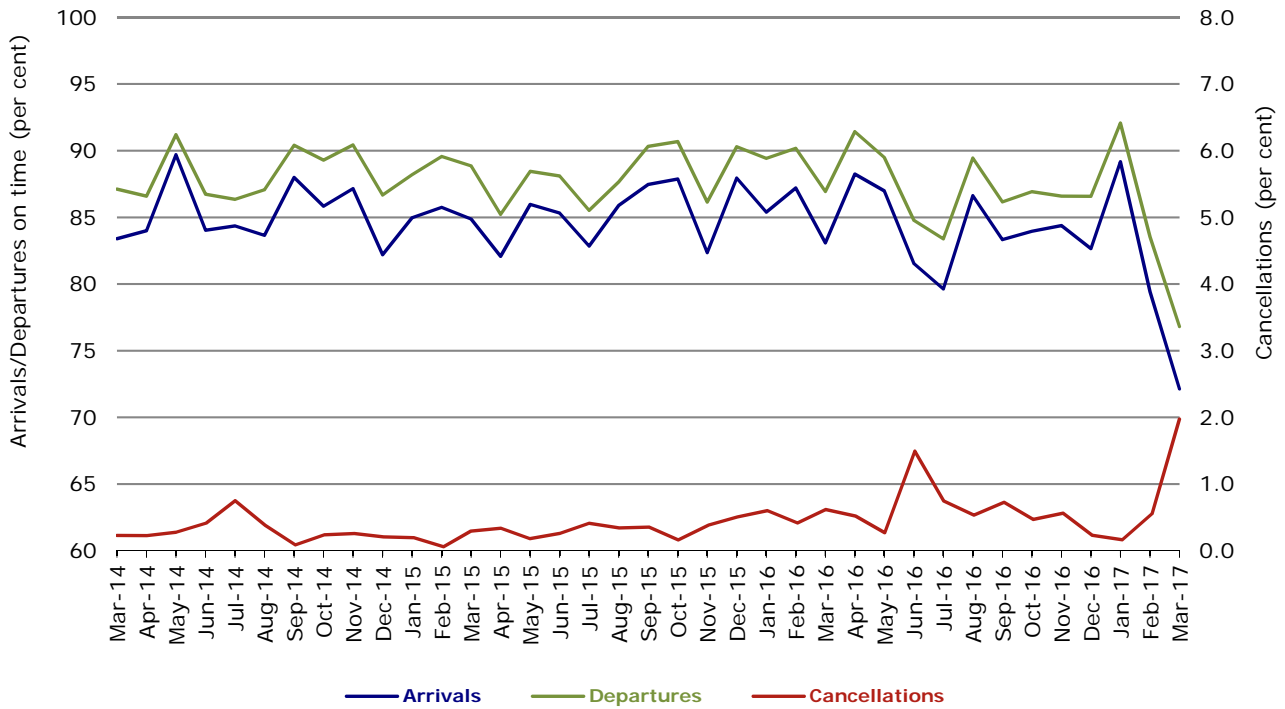
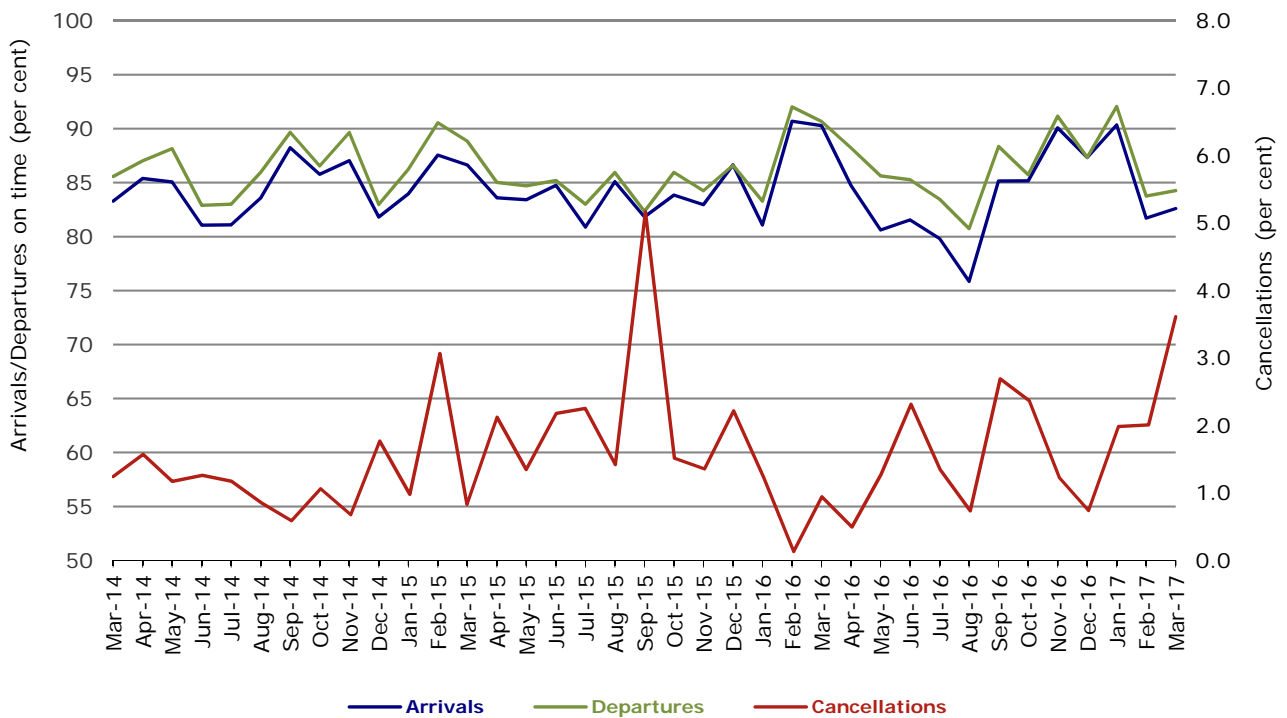


Figure 11 On time performance (by month from March 2014)
Virgin Australia Regional Airlines



In January 2016, Virgin Australia transferred their ATR fleet from Virgin Australia Regional Airlines to Virgin Australia.

Individual routes

On time performance is reported for all routes where the passenger load averages over 8000 passengers per month over the previous six months, and where two or more airlines operate in competition on those routes. There are now 66 routes which meet this definition. Over time, however, routes which meet this definition may change as airline networks and traffic levels vary.

	<i>Sectors</i>		<i>Arrivals On Time</i>		<i>Departures On Time</i>		<i>Cancellations</i>	
	<i>Sched.</i>	<i>Flown</i>	<i>No.</i>	<i>%</i>	<i>No.</i>	<i>%</i>	<i>No.</i>	<i>%</i>
Adelaide-Alice Springs								
Qantas	31	31	31	100.0	30	96.8	0	0.0
Virgin Australia	14	14	12	85.7	12	85.7	0	0.0
All Airlines	45	45	43	95.6	42	93.3	0	0.0
Adelaide-Brisbane								
Jetstar	27	27	19	70.4	19	70.4	0	0.0
Qantas	103	102	94	92.2	94	92.2	1	1.0
QantasLink	25	25	20	80.0	21	84.0	0	0.0
Tigerair Australia	28	28	20	71.4	21	75.0	0	0.0
Virgin Australia	113	113	100	88.5	102	90.3	0	0.0
All Airlines	296	295	253	85.8	257	87.1	1	0.3
Adelaide-Canberra								
Qantas	50	50	47	94.0	47	94.0	0	0.0
Virgin Australia	27	26	20	76.9	20	76.9	1	3.7
All Airlines	77	76	67	88.2	67	88.2	1	1.3
Adelaide-Gold Coast								
Jetstar	32	32	29	90.6	29	90.6	0	0.0
Virgin Australia	31	31	25	80.6	29	93.5	0	0.0
All Airlines	63	63	54	85.7	58	92.1	0	0.0
Adelaide-Melbourne								
Jetstar	114	112	75	67.0	76	67.9	2	1.8
Qantas	293	291	239	82.1	250	85.9	2	0.7
Tigerair Australia	72	70	46	65.7	48	68.6	2	2.8
Virgin Australia	288	276	216	78.3	210	76.1	12	4.2
All Airlines	767	749	576	76.9	584	78.0	18	2.3
Adelaide-Perth								
Jetstar	28	26	24	92.3	23	88.5	2	7.1
Qantas	94	94	86	91.5	86	91.5	0	0.0
QantasLink	27	25	23	92.0	23	92.0	2	7.4
Virgin Australia	75	74	63	85.1	66	89.2	1	1.3
All Airlines	224	219	196	89.5	198	90.4	5	2.2
Adelaide-Port Lincoln								
QantasLink	109	108	104	96.3	106	98.1	1	0.9
Regional Express	217	215	190	88.4	198	92.1	2	0.9
All Airlines	326	323	294	91.0	304	94.1	3	0.9
Adelaide-Sydney								
Jetstar	121	116	80	69.0	83	71.6	5	4.1
Qantas	244	244	189	77.5	217	88.9	0	0.0
QantasLink	25	23	22	95.7	23	100.0	2	8.0
Tigerair Australia	49	49	26	53.1	28	57.1	0	0.0
Virgin Australia	178	176	134	76.1	143	81.3	2	1.1
All Airlines	617	608	451	74.2	494	81.3	9	1.5
Albury-Sydney								
QantasLink	112	109	73	67.0	78	71.6	3	2.7
Regional Express	116	111	73	65.8	82	73.9	5	4.3
Virgin Australia	62	62	47	75.8	49	79.0	0	0.0
All Airlines	290	282	193	68.4	209	74.1	8	2.8

	<i>Sectors</i>		<i>Arrivals On Time</i>		<i>Departures On Time</i>		<i>Cancellations</i>	
	<i>Sched.</i>	<i>Flown</i>	<i>No.</i>	<i>%</i>	<i>No.</i>	<i>%</i>	<i>No.</i>	<i>%</i>
Alice Springs-Adelaide								
Qantas	32	32	31	96.9	30	93.8	0	0.0
Virgin Australia	14	14	11	78.6	11	78.6	0	0.0
All Airlines	46	46	42	91.3	41	89.1	0	0.0
Alice Springs-Darwin								
QantasLink	51	51	45	88.2	44	86.3	0	0.0
Virgin Australia	14	14	12	85.7	12	85.7	0	0.0
All Airlines	65	65	57	87.7	56	86.2	0	0.0
Armidale-Sydney								
QantasLink	122	118	67	56.8	60	50.8	4	3.3
Regional Express	81	80	42	52.5	48	60.0	1	1.2
All Airlines	203	198	109	55.1	108	54.5	5	2.5
Ayers Rock-Sydney								
Jetstar	28	28	24	85.7	25	89.3	0	0.0
Virgin Australia	31	31	20	64.5	19	61.3	0	0.0
All Airlines	59	59	44	74.6	44	74.6	0	0.0
Ballina-Sydney								
Jetstar	83	81	52	64.2	44	54.3	2	2.4
Regional Express	28	26	8	30.8	11	42.3	2	7.1
Virgin Australia	31	31	23	74.2	20	64.5	0	0.0
All Airlines	142	138	83	60.1	75	54.3	4	2.8
Brisbane-Adelaide								
Jetstar	27	27	23	85.2	23	85.2	0	0.0
Qantas	103	102	96	94.1	91	89.2	1	1.0
QantasLink	25	25	22	88.0	21	84.0	0	0.0
Tigerair Australia	28	28	23	82.1	20	71.4	0	0.0
Virgin Australia	117	117	106	90.6	99	84.6	0	0.0
All Airlines	300	299	270	90.3	254	84.9	1	0.3
Brisbane-Bundaberg								
QantasLink	133	127	96	75.6	94	74.0	6	4.5
Virgin Australia	31	30	25	83.3	24	80.0	1	3.2
All Airlines	164	157	121	77.1	118	75.2	7	4.3
Brisbane-Cairns								
Jetstar	97	96	81	84.4	73	76.0	1	1.0
Qantas	114	114	93	81.6	89	78.1	0	0.0
QantasLink	4	4	2	50.0	2	50.0	0	0.0
Tigerair Australia	37	37	28	75.7	28	75.7	0	0.0
Virgin Australia	133	133	115	86.5	110	82.7	0	0.0
All Airlines	385	384	319	83.1	302	78.6	1	0.3
Brisbane-Canberra								
Qantas	43	43	37	86.0	39	90.7	0	0.0
QantasLink	113	110	85	77.3	76	69.1	3	2.7
Virgin Australia	99	99	81	81.8	83	83.8	0	0.0
All Airlines	255	252	203	80.6	198	78.6	3	1.2
Brisbane-Darwin								
Jetstar	18	18	13	72.2	11	61.1	0	0.0
Qantas	44	44	39	88.6	37	84.1	0	0.0
Tigerair Australia	22	21	16	76.2	16	76.2	1	4.5
Virgin Australia	31	31	24	77.4	26	83.9	0	0.0
All Airlines	115	114	92	80.7	90	78.9	1	0.9
Brisbane-Emerald								
QantasLink	119	115	86	74.8	86	74.8	4	3.4
Virgin Australia	76	74	70	94.6	70	94.6	2	2.6
All Airlines	195	189	156	82.5	156	82.5	6	3.1

	<i>Sectors</i>		<i>Arrivals On Time</i>		<i>Departures On Time</i>		<i>Cancellations</i>	
	<i>Sched.</i>	<i>Flown</i>	<i>No.</i>	<i>%</i>	<i>No.</i>	<i>%</i>	<i>No.</i>	<i>%</i>
Brisbane-Gladstone								
QantasLink	146	143	95	66.4	103	72.0	3	2.1
Virgin Australia	90	88	63	71.6	65	73.9	2	2.2
All Airlines	236	231	158	68.4	168	72.7	5	2.1
Brisbane-Hamilton Island								
QantasLink	40	32	24	75.0	26	81.3	8	20.0
Virgin Australia	30	24	19	79.2	21	87.5	6	20.0
All Airlines	70	56	43	76.8	47	83.9	14	20.0
Brisbane-Hobart								
Jetstar	30	30	26	86.7	26	86.7	0	0.0
Virgin Australia	31	31	27	87.1	27	87.1	0	0.0
All Airlines	61	61	53	86.9	53	86.9	0	0.0
Brisbane-Mackay								
Jetstar	44	39	20	51.3	19	48.7	5	11.4
QantasLink	112	99	79	79.8	82	82.8	13	11.6
Virgin Australia	138	120	97	80.8	100	83.3	18	13.0
All Airlines	294	258	196	76.0	201	77.9	36	12.2
Brisbane-Melbourne								
Jetstar	106	102	79	77.5	75	73.5	4	3.8
Qantas	428	424	368	86.8	365	86.1	4	0.9
Tigerair Australia	126	125	96	76.8	94	75.2	1	0.8
Virgin Australia	413	388	321	82.7	317	81.7	25	6.1
All Airlines	1 073	1 039	864	83.2	851	81.9	34	3.2
Brisbane-Moranbah								
QantasLink	82	74	54	73.0	61	82.4	8	9.8
Virgin Australia	68	62	53	85.5	54	87.1	6	8.8
All Airlines	150	136	107	78.7	115	84.6	14	9.3
Brisbane-Mount Isa								
QantasLink	56	56	51	91.1	49	87.5	0	0.0
Virgin Australia	18	18	15	83.3	17	94.4	0	0.0
All Airlines	74	74	66	89.2	66	89.2	0	0.0
Brisbane-Newcastle								
Jetstar	80	80	52	65.0	49	61.3	0	0.0
QantasLink	99	93	76	81.7	76	81.7	6	6.1
Virgin Australia	90	89	76	85.4	75	84.3	1	1.1
All Airlines	269	262	204	77.9	200	76.3	7	2.6
Brisbane-Perth								
Qantas	137	136	114	83.8	113	83.1	1	0.7
Virgin Australia	110	110	98	89.1	88	80.0	0	0.0
All Airlines	247	246	212	86.2	201	81.7	1	0.4
Brisbane-Proserpine								
Jetstar	27	22	17	77.3	16	72.7	5	18.5
Tigerair Australia	6	3	3	100.0	3	100.0	3	50.0
Virgin Australia	31	26	22	84.6	22	84.6	5	16.1
All Airlines	64	51	42	82.4	41	80.4	13	20.3
Brisbane-Rockhampton								
QantasLink	197	193	155	80.3	163	84.5	4	2.0
Virgin Australia	157	154	120	77.9	126	81.8	3	1.9
All Airlines	354	347	275	79.3	289	83.3	7	2.0

	<i>Sectors</i>		<i>Arrivals On Time</i>		<i>Departures On Time</i>		<i>Cancellations</i>	
	<i>Sched.</i>	<i>Flown</i>	<i>No.</i>	<i>%</i>	<i>No.</i>	<i>%</i>	<i>No.</i>	<i>%</i>
Brisbane-Sydney								
Jetstar	166	157	100	63.7	103	65.6	9	5.4
Qantas	649	637	512	80.4	530	83.2	12	1.8
Tigerair Australia	104	101	65	64.4	68	67.3	3	2.9
Virgin Australia	547	516	394	76.4	419	81.2	31	5.7
All Airlines	1 466	1 411	1 071	75.9	1 120	79.4	55	3.8
Brisbane-Townsville								
Jetstar	35	32	30	93.8	29	90.6	3	8.6
Qantas	74	68	56	82.4	54	79.4	6	8.1
QantasLink	80	74	63	85.1	61	82.4	6	7.5
Virgin Australia	152	142	112	78.9	116	81.7	10	6.6
All Airlines	341	316	261	82.6	260	82.3	25	7.3
Broome-Perth								
Qantas	1	1	1	100.0	1	100.0	0	0.0
QantasLink	84	82	75	91.5	72	87.8	2	2.4
Virgin Australia	5	5	5	100.0	4	80.0	0	0.0
Virgin Australia Regional Airlines	43	42	31	73.8	30	71.4	1	2.3
All Airlines	133	130	112	86.2	107	82.3	3	2.3
Bundaberg-Brisbane								
QantasLink	133	127	95	74.8	106	83.5	6	4.5
Virgin Australia	31	30	22	73.3	20	66.7	1	3.2
All Airlines	164	157	117	74.5	126	80.3	7	4.3
Cairns-Brisbane								
Jetstar	96	95	78	82.1	78	82.1	1	1.0
Qantas	114	114	103	90.4	100	87.7	0	0.0
QantasLink	4	4	2	50.0	2	50.0	0	0.0
Tigerair Australia	37	37	26	70.3	27	73.0	0	0.0
Virgin Australia	132	131	116	88.5	113	86.3	1	0.8
All Airlines	383	381	325	85.3	320	84.0	2	0.5
Cairns-Melbourne								
Jetstar	78	78	60	76.9	60	76.9	0	0.0
Qantas	36	36	28	77.8	29	80.6	0	0.0
Tigerair Australia	34	34	23	67.6	23	67.6	0	0.0
Virgin Australia	31	31	23	74.2	24	77.4	0	0.0
All Airlines	179	179	134	74.9	136	76.0	0	0.0
Cairns-Sydney								
Jetstar	88	82	66	80.5	69	84.1	6	6.8
Qantas	73	73	59	80.8	55	75.3	0	0.0
Tigerair Australia	44	43	26	60.5	33	76.7	1	2.3
Virgin Australia	87	87	68	78.2	65	74.7	0	0.0
All Airlines	292	285	219	76.8	222	77.9	7	2.4
Cairns-Townsville								
QantasLink	147	138	123	89.1	123	89.1	9	6.1
Regional Express	49	40	34	85.0	34	85.0	9	18.4
All Airlines	196	178	157	88.2	157	88.2	18	9.2
Canberra-Adelaide								
Qantas	50	50	48	96.0	47	94.0	0	0.0
Virgin Australia	27	27	21	77.8	20	74.1	0	0.0
All Airlines	77	77	69	89.6	67	87.0	0	0.0
Canberra-Brisbane								
Qantas	44	44	43	97.7	43	97.7	0	0.0
QantasLink	112	108	85	78.7	82	75.9	4	3.6
Virgin Australia	98	98	85	86.7	84	85.7	0	0.0
All Airlines	254	250	213	85.2	209	83.6	4	1.6

	<i>Sectors</i>		<i>Arrivals On Time</i>		<i>Departures On Time</i>		<i>Cancellations</i>	
	<i>Sched.</i>	<i>Flown</i>	<i>No.</i>	<i>%</i>	<i>No.</i>	<i>%</i>	<i>No.</i>	<i>%</i>
Canberra-Melbourne								
Qantas	212	212	190	89.6	184	86.8	0	0.0
QantasLink	96	90	68	75.6	67	74.4	6	6.3
Tigerair Australia	31	31	18	58.1	15	48.4	0	0.0
Virgin Australia	176	169	143	84.6	140	82.8	7	4.0
All Airlines	515	502	419	83.5	406	80.9	13	2.5
Canberra-Sydney								
Qantas	35	34	27	79.4	29	85.3	1	2.9
QantasLink	450	428	344	80.4	353	82.5	22	4.9
Virgin Australia	280	264	200	75.8	212	80.3	16	5.7
All Airlines	765	726	571	78.7	594	81.8	39	5.1
Coffs Harbour-Sydney								
QantasLink	157	155	99	63.9	105	67.7	2	1.3
Tigerair Australia	13	13	7	53.8	7	53.8	0	0.0
Virgin Australia	58	57	45	78.9	47	82.5	1	1.7
All Airlines	228	225	151	67.1	159	70.7	3	1.3
Darwin-Alice Springs								
QantasLink	51	51	50	98.0	50	98.0	0	0.0
Virgin Australia	14	14	12	85.7	12	85.7	0	0.0
All Airlines	65	65	62	95.4	62	95.4	0	0.0
Darwin-Brisbane								
Jetstar	18	17	11	64.7	10	58.8	1	5.6
Qantas	44	44	37	84.1	37	84.1	0	0.0
Tigerair Australia	22	21	20	95.2	19	90.5	1	4.5
Virgin Australia	31	31	20	64.5	28	90.3	0	0.0
All Airlines	115	113	88	77.9	94	83.2	2	1.7
Darwin-Melbourne								
Jetstar	23	23	17	73.9	18	78.3	0	0.0
Qantas	31	31	26	83.9	28	90.3	0	0.0
Virgin Australia	31	31	26	83.9	26	83.9	0	0.0
All Airlines	85	85	69	81.2	72	84.7	0	0.0
Darwin-Perth								
Qantas	31	31	28	90.3	27	87.1	0	0.0
Virgin Australia	31	31	26	83.9	25	80.6	0	0.0
All Airlines	62	62	54	87.1	52	83.9	0	0.0
Darwin-Sydney								
Jetstar	20	20	15	75.0	17	85.0	0	0.0
Qantas	39	39	24	61.5	30	76.9	0	0.0
Virgin Australia	31	31	22	71.0	28	90.3	0	0.0
All Airlines	90	90	61	67.8	75	83.3	0	0.0
Dubbo-Sydney								
QantasLink	129	126	72	57.1	87	69.0	3	2.3
Regional Express	164	153	76	49.7	100	65.4	11	6.7
All Airlines	293	279	148	53.0	187	67.0	14	4.8
Emerald-Brisbane								
QantasLink	120	116	79	68.1	78	67.2	4	3.3
Virgin Australia	78	75	69	92.0	71	94.7	3	3.8
All Airlines	198	191	148	77.5	149	78.0	7	3.5
Geraldton-Perth								
QantasLink	47	46	41	89.1	40	87.0	1	2.1
Virgin Australia Regional Airlines	59	57	48	84.2	48	84.2	2	3.4
All Airlines	106	103	89	86.4	88	85.4	3	2.8

	<i>Sectors</i>		<i>Arrivals On Time</i>		<i>Departures On Time</i>		<i>Cancellations</i>	
	<i>Sched.</i>	<i>Flown</i>	<i>No.</i>	<i>%</i>	<i>No.</i>	<i>%</i>	<i>No.</i>	<i>%</i>
Gladstone-Brisbane								
QantasLink	146	143	104	72.7	99	69.2	3	2.1
Virgin Australia	89	87	66	75.9	68	78.2	2	2.2
All Airlines	235	230	170	73.9	167	72.6	5	2.1
Gold Coast-Adelaide								
Jetstar	32	32	27	84.4	27	84.4	0	0.0
Virgin Australia	31	31	25	80.6	20	64.5	0	0.0
All Airlines	63	63	52	82.5	47	74.6	0	0.0
Gold Coast-Melbourne								
Jetstar	162	159	113	71.1	95	59.7	3	1.9
Qantas	31	31	19	61.3	15	48.4	0	0.0
Tigerair Australia	70	69	42	60.9	33	47.8	1	1.4
Virgin Australia	187	183	145	79.2	131	71.6	4	2.1
All Airlines	450	442	319	72.2	274	62.0	8	1.8
Gold Coast-Sydney								
Jetstar	296	285	196	68.8	184	64.6	11	3.7
Qantas	96	96	76	79.2	75	78.1	0	0.0
QantasLink	12	9	6	66.7	5	55.6	3	25.0
Tigerair Australia	113	110	67	60.9	62	56.4	3	2.7
Virgin Australia	255	240	168	70.0	156	65.0	15	5.9
All Airlines	772	740	513	69.3	482	65.1	32	4.1
Hamilton Island-Brisbane								
QantasLink	40	31	23	74.2	24	77.4	9	22.5
Virgin Australia	31	26	18	69.2	18	69.2	5	16.1
All Airlines	71	57	41	71.9	42	73.7	14	19.7
Hamilton Island-Melbourne								
Qantas	18	16	14	87.5	14	87.5	2	11.1
Virgin Australia	20	18	15	83.3	13	72.2	2	10.0
All Airlines	38	34	29	85.3	27	79.4	4	10.5
Hamilton Island-Sydney								
Jetstar	22	18	12	66.7	10	55.6	4	18.2
Qantas	19	16	14	87.5	13	81.3	3	15.8
QantasLink	6	3	2	66.7	2	66.7	3	50.0
Virgin Australia	31	26	16	61.5	11	42.3	5	16.1
All Airlines	78	63	44	69.8	36	57.1	15	19.2
Hobart-Brisbane								
Jetstar	29	29	23	79.3	23	79.3	0	0.0
Virgin Australia	31	31	25	80.6	26	83.9	0	0.0
All Airlines	60	60	48	80.0	49	81.7	0	0.0
Hobart-Melbourne								
Jetstar	199	197	116	58.9	111	56.3	2	1.0
QantasLink	147	145	125	86.2	127	87.6	2	1.4
Tigerair Australia	31	31	17	54.8	15	48.4	0	0.0
Virgin Australia	146	146	114	78.1	118	80.8	0	0.0
All Airlines	523	519	372	71.7	371	71.5	4	0.8
Hobart-Sydney								
Jetstar	91	90	50	55.6	52	57.8	1	1.1
QantasLink	58	57	32	56.1	47	82.5	1	1.7
Virgin Australia	62	61	47	77.0	48	78.7	1	1.6
All Airlines	211	208	129	62.0	147	70.7	3	1.4

	<i>Sectors</i>		<i>Arrivals On Time</i>		<i>Departures On Time</i>		<i>Cancellations</i>	
	<i>Sched.</i>	<i>Flown</i>	<i>No.</i>	<i>%</i>	<i>No.</i>	<i>%</i>	<i>No.</i>	<i>%</i>
Kalgoorlie-Perth								
Qantas	4	4	4	100.0	4	100.0	0	0.0
QantasLink	81	80	74	92.5	72	90.0	1	1.2
Virgin Australia	33	32	29	90.6	30	93.8	1	3.0
Virgin Australia Regional Airlines	29	29	25	86.2	25	86.2	0	0.0
All Airlines	147	145	132	91.0	131	90.3	2	1.4
Karratha-Perth								
Qantas	16	16	16	100.0	16	100.0	0	0.0
QantasLink	178	171	142	83.0	147	86.0	7	3.9
Virgin Australia	7	7	7	100.0	7	100.0	0	0.0
Virgin Australia Regional Airlines	81	74	57	77.0	59	79.7	7	8.6
All Airlines	282	268	222	82.8	229	85.4	14	5.0
Launceston-Melbourne								
Jetstar	151	146	89	61.0	85	58.2	5	3.3
QantasLink	120	117	93	79.5	92	78.6	3	2.5
Virgin Australia	97	97	86	88.7	89	91.8	0	0.0
All Airlines	368	360	268	74.4	266	73.9	8	2.2
Launceston-Sydney								
Jetstar	59	58	28	48.3	29	50.0	1	1.7
Virgin Australia	31	31	21	67.7	24	77.4	0	0.0
All Airlines	90	89	49	55.1	53	59.6	1	1.1
Mackay-Brisbane								
Jetstar	44	38	19	50.0	15	39.5	6	13.6
QantasLink	112	97	76	78.4	75	77.3	15	13.4
Virgin Australia	138	120	98	81.7	100	83.3	18	13.0
All Airlines	294	255	193	75.7	190	74.5	39	13.3
Melbourne-Adelaide								
Jetstar	115	114	54	47.4	55	48.2	1	0.9
Qantas	294	292	262	89.7	264	90.4	2	0.7
Tigerair Australia	72	70	56	80.0	52	74.3	2	2.8
Virgin Australia	282	269	219	81.4	225	83.6	13	4.6
All Airlines	763	745	591	79.3	596	80.0	18	2.4
Melbourne-Brisbane								
Jetstar	106	104	81	77.9	79	76.0	2	1.9
Qantas	429	424	337	79.5	354	83.5	5	1.2
Tigerair Australia	127	126	91	72.2	93	73.8	1	0.8
Virgin Australia	400	373	293	78.6	332	89.0	27	6.8
All Airlines	1 062	1 027	802	78.1	858	83.5	35	3.3
Melbourne-Cairns								
Jetstar	78	78	61	78.2	54	69.2	0	0.0
Qantas	36	36	31	86.1	28	77.8	0	0.0
Tigerair Australia	34	34	26	76.5	27	79.4	0	0.0
Virgin Australia	31	31	27	87.1	28	90.3	0	0.0
All Airlines	179	179	145	81.0	137	76.5	0	0.0
Melbourne-Canberra								
Qantas	211	211	189	89.6	188	89.1	0	0.0
QantasLink	96	88	67	76.1	69	78.4	8	8.3
Tigerair Australia	31	31	21	67.7	25	80.6	0	0.0
Virgin Australia	175	168	141	83.9	151	89.9	7	4.0
All Airlines	513	498	418	83.9	433	86.9	15	2.9
Melbourne-Darwin								
Jetstar	23	23	21	91.3	18	78.3	0	0.0
Qantas	31	31	29	93.5	31	100.0	0	0.0
Virgin Australia	31	31	26	83.9	28	90.3	0	0.0
All Airlines	85	85	76	89.4	77	90.6	0	0.0

	<i>Sectors</i>		<i>Arrivals On Time</i>		<i>Departures On Time</i>		<i>Cancellations</i>	
	<i>Sched.</i>	<i>Flown</i>	<i>No.</i>	<i>%</i>	<i>No.</i>	<i>%</i>	<i>No.</i>	<i>%</i>
Melbourne-Gold Coast								
Jetstar	162	160	108	67.5	113	70.6	2	1.2
Qantas	31	31	18	58.1	24	77.4	0	0.0
Tigerair Australia	70	69	41	59.4	48	69.6	1	1.4
Virgin Australia	187	183	146	79.8	157	85.8	4	2.1
All Airlines	450	443	313	70.7	342	77.2	7	1.6
Melbourne-Hamilton Island								
Qantas	18	15	14	93.3	14	93.3	3	16.7
Virgin Australia	20	17	13	76.5	16	94.1	3	15.0
All Airlines	38	32	27	84.4	30	93.8	6	15.8
Melbourne-Hobart								
Jetstar	200	198	139	70.2	140	70.7	2	1.0
QantasLink	147	145	121	83.4	120	82.8	2	1.4
Tigerair Australia	31	31	19	61.3	20	64.5	0	0.0
Virgin Australia	146	146	127	87.0	127	87.0	0	0.0
All Airlines	524	520	406	78.1	407	78.3	4	0.8
Melbourne-Launceston								
Jetstar	152	148	108	73.0	104	70.3	4	2.6
QantasLink	120	117	95	81.2	96	82.1	3	2.5
Virgin Australia	98	98	80	81.6	86	87.8	0	0.0
All Airlines	370	363	283	78.0	286	78.8	7	1.9
Melbourne-Mildura								
QantasLink	99	99	83	83.8	76	76.8	0	0.0
Regional Express	86	86	71	82.6	71	82.6	0	0.0
Virgin Australia	31	31	26	83.9	26	83.9	0	0.0
All Airlines	216	216	180	83.3	173	80.1	0	0.0
Melbourne-Newcastle								
Jetstar	103	103	67	65.0	70	68.0	0	0.0
Virgin Australia	33	32	26	81.3	30	93.8	1	3.0
All Airlines	136	135	93	68.9	100	74.1	1	0.7
Melbourne-Perth								
Jetstar	60	59	48	81.4	50	84.7	1	1.7
Qantas	205	205	155	75.6	165	80.5	0	0.0
Tigerair Australia	51	50	37	74.0	38	76.0	1	2.0
Virgin Australia	146	143	101	70.6	110	76.9	3	2.1
All Airlines	462	457	341	74.6	363	79.4	5	1.1
Melbourne-Sunshine Coast								
Jetstar	75	74	52	70.3	54	73.0	1	1.3
Virgin Australia	40	39	24	61.5	29	74.4	1	2.5
All Airlines	115	113	76	67.3	83	73.5	2	1.7
Melbourne-Sydney								
Jetstar	395	386	204	52.8	238	61.7	9	2.3
Qantas	1 056	1 004	706	70.3	820	81.7	52	4.9
Tigerair Australia	250	243	131	53.9	148	60.9	7	2.8
Virgin Australia	822	761	534	70.2	614	80.7	61	7.4
All Airlines	2 523	2 394	1 575	65.8	1 820	76.0	129	5.1
Mildura-Melbourne								
QantasLink	99	99	77	77.8	79	79.8	0	0.0
Regional Express	87	87	62	71.3	65	74.7	0	0.0
Virgin Australia	31	31	24	77.4	27	87.1	0	0.0
All Airlines	217	217	163	75.1	171	78.8	0	0.0

	<i>Sectors</i>		<i>Arrivals On Time</i>		<i>Departures On Time</i>		<i>Cancellations</i>	
	<i>Sched.</i>	<i>Flown</i>	<i>No.</i>	<i>%</i>	<i>No.</i>	<i>%</i>	<i>No.</i>	<i>%</i>
Moranbah-Brisbane								
QantasLink	78	70	48	68.6	52	74.3	8	10.3
Virgin Australia	68	61	48	78.7	55	90.2	7	10.3
All Airlines	146	131	96	73.3	107	81.7	15	10.3
Mount Isa-Brisbane								
QantasLink	57	55	47	85.5	49	89.1	2	3.5
Virgin Australia	19	19	11	57.9	16	84.2	0	0.0
All Airlines	76	74	58	78.4	65	87.8	2	2.6
Newcastle-Brisbane								
Jetstar	80	80	52	65.0	53	66.3	0	0.0
QantasLink	99	93	70	75.3	73	78.5	6	6.1
Virgin Australia	89	88	74	84.1	77	87.5	1	1.1
All Airlines	268	261	196	75.1	203	77.8	7	2.6
Newcastle-Melbourne								
Jetstar	103	101	66	65.3	65	64.4	2	1.9
Virgin Australia	33	32	23	71.9	21	65.6	1	3.0
All Airlines	136	133	89	66.9	86	64.7	3	2.2
Newman-Perth								
Qantas	64	63	60	95.2	60	95.2	1	1.6
QantasLink	73	68	59	86.8	62	91.2	5	6.8
Virgin Australia	14	14	13	92.9	13	92.9	0	0.0
Virgin Australia Regional Airlines	27	27	23	85.2	23	85.2	0	0.0
All Airlines	178	172	155	90.1	158	91.9	6	3.4
Perth-Adelaide								
Jetstar	28	26	22	84.6	21	80.8	2	7.1
Qantas	100	100	93	93.0	91	91.0	0	0.0
QantasLink	27	25	25	100.0	25	100.0	2	7.4
Virgin Australia	80	79	74	93.7	72	91.1	1	1.3
All Airlines	235	230	214	93.0	209	90.9	5	2.1
Perth-Brisbane								
Qantas	134	134	122	91.0	120	89.6	0	0.0
Virgin Australia	112	111	97	87.4	96	86.5	1	0.9
All Airlines	246	245	219	89.4	216	88.2	1	0.4
Perth-Broome								
Qantas	1	1	1	100.0	1	100.0	0	0.0
QantasLink	88	82	75	91.5	74	90.2	6	6.8
Virgin Australia	5	5	5	100.0	5	100.0	0	0.0
Virgin Australia Regional Airlines	43	43	35	81.4	37	86.0	0	0.0
All Airlines	137	131	116	88.5	117	89.3	6	4.4
Perth-Darwin								
Qantas	31	31	25	80.6	29	93.5	0	0.0
Virgin Australia	31	31	26	83.9	27	87.1	0	0.0
All Airlines	62	62	51	82.3	56	90.3	0	0.0
Perth-Geraldton								
QantasLink	47	46	38	82.6	38	82.6	1	2.1
Virgin Australia Regional Airlines	59	58	49	84.5	47	81.0	1	1.7
All Airlines	106	104	87	83.7	85	81.7	2	1.9
Perth-Kalgoorlie								
Qantas	4	4	4	100.0	4	100.0	0	0.0
QantasLink	82	80	72	90.0	71	88.8	2	2.4
Virgin Australia	34	33	31	93.9	32	97.0	1	2.9
Virgin Australia Regional Airlines	29	29	26	89.7	25	86.2	0	0.0
All Airlines	149	146	133	91.1	132	90.4	3	2.0

	<i>Sectors</i>		<i>Arrivals On Time</i>		<i>Departures On Time</i>		<i>Cancellations</i>	
	<i>Sched.</i>	<i>Flown</i>	<i>No.</i>	<i>%</i>	<i>No.</i>	<i>%</i>	<i>No.</i>	<i>%</i>
Perth-Karratha								
Qantas	16	16	15	93.8	16	100.0	0	0.0
QantasLink	179	175	150	85.7	156	89.1	4	2.2
Virgin Australia	7	7	7	100.0	7	100.0	0	0.0
Virgin Australia Regional Airlines	81	74	66	89.2	67	90.5	7	8.6
All Airlines	283	272	238	87.5	246	90.4	11	3.9
Perth-Melbourne								
Jetstar	60	59	46	78.0	39	66.1	1	1.7
Qantas	206	206	179	86.9	188	91.3	0	0.0
Tigerair Australia	50	49	39	79.6	40	81.6	1	2.0
Virgin Australia	143	140	115	82.1	119	85.0	3	2.1
All Airlines	459	454	379	83.5	386	85.0	5	1.1
Perth-Newman								
Qantas	64	63	60	95.2	59	93.7	1	1.6
QantasLink	73	67	58	86.6	62	92.5	6	8.2
Virgin Australia	14	14	13	92.9	14	100.0	0	0.0
Virgin Australia Regional Airlines	27	27	24	88.9	25	92.6	0	0.0
All Airlines	178	171	155	90.6	160	93.6	7	3.9
Perth-Port Hedland								
Qantas	38	37	36	97.3	36	97.3	1	2.6
QantasLink	100	97	72	74.2	87	89.7	3	3.0
Virgin Australia	21	21	17	81.0	17	81.0	0	0.0
Virgin Australia Regional Airlines	33	32	25	78.1	27	84.4	1	3.0
All Airlines	192	187	150	80.2	167	89.3	5	2.6
Perth-Sydney								
Jetstar	31	31	26	83.9	25	80.6	0	0.0
Qantas	214	214	175	81.8	184	86.0	0	0.0
Tigerair Australia	28	27	22	81.5	24	88.9	1	3.6
Virgin Australia	119	118	96	81.4	106	89.8	1	0.8
All Airlines	392	390	319	81.8	339	86.9	2	0.5
Port Hedland-Perth								
Qantas	39	37	32	86.5	33	89.2	2	5.1
QantasLink	100	95	84	88.4	82	86.3	5	5.0
Virgin Australia	21	21	17	81.0	17	81.0	0	0.0
Virgin Australia Regional Airlines	33	32	25	78.1	26	81.3	1	3.0
All Airlines	193	185	158	85.4	158	85.4	8	4.1
Port Lincoln-Adelaide								
QantasLink	109	108	105	97.2	105	97.2	1	0.9
Regional Express	218	216	190	88.0	194	89.8	2	0.9
All Airlines	327	324	295	91.0	299	92.3	3	0.9
Port Macquarie-Sydney								
QantasLink	140	133	79	59.4	75	56.4	7	5.0
Virgin Australia	58	57	39	68.4	42	73.7	1	1.7
All Airlines	198	190	118	62.1	117	61.6	8	4.0
Proserpine-Brisbane								
Jetstar	28	23	15	65.2	14	60.9	5	17.9
Tigerair Australia	6	3	3	100.0	3	100.0	3	50.0
Virgin Australia	31	26	22	84.6	20	76.9	5	16.1
All Airlines	65	52	40	76.9	37	71.2	13	20.0
Rockhampton-Brisbane								
QantasLink	197	193	150	77.7	162	83.9	4	2.0
Virgin Australia	157	155	119	76.8	122	78.7	2	1.3
All Airlines	354	348	269	77.3	284	81.6	6	1.7

	<i>Sectors</i>		<i>Arrivals On Time</i>		<i>Departures On Time</i>		<i>Cancellations</i>	
	<i>Sched.</i>	<i>Flown</i>	<i>No.</i>	<i>%</i>	<i>No.</i>	<i>%</i>	<i>No.</i>	<i>%</i>
Sunshine Coast-Melbourne								
Jetstar	74	71	45	63.4	32	45.1	3	4.1
Virgin Australia	40	39	27	69.2	24	61.5	1	2.5
All Airlines	114	110	72	65.5	56	50.9	4	3.5
Sunshine Coast-Sydney								
Jetstar	101	99	60	60.6	52	52.5	2	2.0
QantasLink	35	32	25	78.1	26	81.3	3	8.6
Virgin Australia	36	36	28	77.8	28	77.8	0	0.0
All Airlines	172	167	113	67.7	106	63.5	5	2.9
Sydney-Adelaide								
Jetstar	120	115	86	74.8	77	67.0	5	4.2
Qantas	239	239	202	84.5	186	77.8	0	0.0
QantasLink	25	23	23	100.0	21	91.3	2	8.0
Tigerair Australia	49	49	34	69.4	26	53.1	0	0.0
Virgin Australia	175	174	143	82.2	141	81.0	1	0.6
All Airlines	608	600	488	81.3	451	75.2	8	1.3
Sydney-Albury								
QantasLink	112	108	74	68.5	71	65.7	4	3.6
Regional Express	112	108	76	70.4	79	73.1	4	3.6
Virgin Australia	62	62	50	80.6	48	77.4	0	0.0
All Airlines	286	278	200	71.9	198	71.2	8	2.8
Sydney-Armidale								
QantasLink	122	121	63	52.1	66	54.5	1	0.8
Regional Express	80	79	52	65.8	51	64.6	1	1.3
All Airlines	202	200	115	57.5	117	58.5	2	1.0
Sydney-Ayers Rock								
Jetstar	28	28	27	96.4	25	89.3	0	0.0
Virgin Australia	31	31	27	87.1	25	80.6	0	0.0
All Airlines	59	59	54	91.5	50	84.7	0	0.0
Sydney-Ballina								
Jetstar	83	83	59	71.1	62	74.7	0	0.0
Regional Express	28	27	14	51.9	19	70.4	1	3.6
Virgin Australia	31	31	21	67.7	21	67.7	0	0.0
All Airlines	142	141	94	66.7	102	72.3	1	0.7
Sydney-Brisbane								
Jetstar	167	158	100	63.3	92	58.2	9	5.4
Qantas	650	639	493	77.2	532	83.3	11	1.7
Tigerair Australia	104	101	71	70.3	74	73.3	3	2.9
Virgin Australia	565	537	375	69.8	398	74.1	28	5.0
All Airlines	1 486	1 435	1 039	72.4	1 096	76.4	51	3.4
Sydney-Cairns								
Jetstar	88	84	69	82.1	70	83.3	4	4.5
Qantas	73	73	63	86.3	63	86.3	0	0.0
Tigerair Australia	44	43	37	86.0	35	81.4	1	2.3
Virgin Australia	86	86	65	75.6	71	82.6	0	0.0
All Airlines	291	286	234	81.8	239	83.6	5	1.7
Sydney-Canberra								
Qantas	36	35	28	80.0	28	80.0	1	2.8
QantasLink	452	431	351	81.4	331	76.8	21	4.6
Virgin Australia	279	262	204	77.9	195	74.4	17	6.1
All Airlines	767	728	583	80.1	554	76.1	39	5.1

	<i>Sectors</i>		<i>Arrivals On Time</i>		<i>Departures On Time</i>		<i>Cancellations</i>	
	<i>Sched.</i>	<i>Flown</i>	<i>No.</i>	<i>%</i>	<i>No.</i>	<i>%</i>	<i>No.</i>	<i>%</i>
Sydney-Coffs Harbour								
QantasLink	157	155	111	71.6	112	72.3	2	1.3
Tigerair Australia	13	13	9	69.2	9	69.2	0	0.0
Virgin Australia	58	57	48	84.2	51	89.5	1	1.7
All Airlines	228	225	168	74.7	172	76.4	3	1.3
Sydney-Darwin								
Jetstar	20	20	18	90.0	16	80.0	0	0.0
Qantas	40	40	30	75.0	27	67.5	0	0.0
Virgin Australia	31	31	25	80.6	26	83.9	0	0.0
All Airlines	91	91	73	80.2	69	75.8	0	0.0
Sydney-Dubbo								
QantasLink	129	125	81	64.8	84	67.2	4	3.1
Regional Express	162	155	120	77.4	115	74.2	7	4.3
All Airlines	291	280	201	71.8	199	71.1	11	3.8
Sydney-Gold Coast								
Jetstar	297	287	207	72.1	202	70.4	10	3.4
Qantas	96	96	78	81.3	81	84.4	0	0.0
QantasLink	12	9	6	66.7	9	100.0	3	25.0
Tigerair Australia	113	110	74	67.3	82	74.5	3	2.7
Virgin Australia	255	242	175	72.3	184	76.0	13	5.1
All Airlines	773	744	540	72.6	558	75.0	29	3.8
Sydney-Hamilton Island								
Jetstar	21	16	12	75.0	11	68.8	5	23.8
Qantas	17	15	14	93.3	11	73.3	2	11.8
QantasLink	6	3	2	66.7	3	100.0	3	50.0
Virgin Australia	31	25	14	56.0	20	80.0	6	19.4
All Airlines	75	59	42	71.2	45	76.3	16	21.3
Sydney-Hobart								
Jetstar	89	89	71	79.8	67	75.3	0	0.0
QantasLink	58	57	50	87.7	45	78.9	1	1.7
Virgin Australia	62	61	56	91.8	55	90.2	1	1.6
All Airlines	209	207	177	85.5	167	80.7	2	1.0
Sydney-Launceston								
Jetstar	57	57	46	80.7	41	71.9	0	0.0
Virgin Australia	31	31	29	93.5	27	87.1	0	0.0
All Airlines	88	88	75	85.2	68	77.3	0	0.0
Sydney-Melbourne								
Jetstar	395	384	237	61.7	214	55.7	11	2.8
Qantas	1 059	1 009	771	76.4	765	75.8	50	4.7
Tigerair Australia	249	243	140	57.6	133	54.7	6	2.4
Virgin Australia	807	743	573	77.1	568	76.4	64	7.9
All Airlines	2 510	2 379	1 721	72.3	1 680	70.6	131	5.2
Sydney-Perth								
Jetstar	31	31	27	87.1	27	87.1	0	0.0
Qantas	213	213	169	79.3	164	77.0	0	0.0
Tigerair Australia	27	27	25	92.6	23	85.2	0	0.0
Virgin Australia	119	116	97	83.6	84	72.4	3	2.5
All Airlines	390	387	318	82.2	298	77.0	3	0.8
Sydney-Port Macquarie								
QantasLink	139	132	80	60.6	85	64.4	7	5.0
Virgin Australia	58	58	43	74.1	43	74.1	0	0.0
All Airlines	197	190	123	64.7	128	67.4	7	3.6

	<i>Sectors</i>		<i>Arrivals On Time</i>		<i>Departures On Time</i>		<i>Cancellations</i>	
	<i>Sched.</i>	<i>Flown</i>	<i>No.</i>	<i>%</i>	<i>No.</i>	<i>%</i>	<i>No.</i>	<i>%</i>
Sydney-Sunshine Coast								
Jetstar	101	100	72	72.0	68	68.0	1	1.0
QantasLink	35	33	27	81.8	28	84.8	2	5.7
Virgin Australia	36	36	31	86.1	31	86.1	0	0.0
All Airlines	172	169	130	76.9	127	75.1	3	1.7
Sydney-Tamworth								
QantasLink	161	154	110	71.4	107	69.5	7	4.3
Virgin Australia	43	43	31	72.1	32	74.4	0	0.0
All Airlines	204	197	141	71.6	139	70.6	7	3.4
Sydney-Townsville								
Jetstar	20	19	9	47.4	8	42.1	1	5.0
Virgin Australia	31	29	21	72.4	22	75.9	2	6.5
All Airlines	51	48	30	62.5	30	62.5	3	5.9
Sydney-Wagga Wagga								
QantasLink	116	115	80	69.6	80	69.6	1	0.9
Regional Express	146	142	111	78.2	111	78.2	4	2.7
All Airlines	262	257	191	74.3	191	74.3	5	1.9
Tamworth-Sydney								
QantasLink	161	154	108	70.1	111	72.1	7	4.3
Virgin Australia	43	43	34	79.1	35	81.4	0	0.0
All Airlines	204	197	142	72.1	146	74.1	7	3.4
Townsville-Brisbane								
Jetstar	35	32	26	81.3	25	78.1	3	8.6
Qantas	74	68	64	94.1	61	89.7	6	8.1
QantasLink	80	73	53	72.6	59	80.8	7	8.8
Virgin Australia	152	140	119	85.0	117	83.6	12	7.9
All Airlines	341	313	262	83.7	262	83.7	28	8.2
Townsville-Cairns								
QantasLink	147	137	119	86.9	116	84.7	10	6.8
Regional Express	48	40	36	90.0	38	95.0	8	16.7
All Airlines	195	177	155	87.6	154	87.0	18	9.2
Townsville-Sydney								
Jetstar	21	18	9	50.0	9	50.0	3	14.3
Virgin Australia	31	29	22	75.9	21	72.4	2	6.5
All Airlines	52	47	31	66.0	30	63.8	5	9.6
Wagga Wagga-Sydney								
QantasLink	116	114	83	72.8	88	77.2	2	1.7
Regional Express	141	139	76	54.7	98	70.5	2	1.4
All Airlines	257	253	159	62.8	186	73.5	4	1.6

Airports

On time performance is reported for all routes where the passenger load averages over 8000 passengers per month, and where two or more airlines operate in competition. The following data reports by airport against flights operated on those routes only. This month, 8 major city airports and 33 regional city airports are covered.

Airport	Arrivals			Departures		
	Sectors	On Time		Sectors	On Time	
	Flown	No.	%	Flown	No.	%
Adelaide						
Jetstar	314	212	67.5	313	230	73.5
Qantas	815	732	89.8	812	724	89.2
QantasLink	181	175	96.7	181	173	95.6
Regional Express	216	190	88.0	215	198	92.1
Tigerair Australia	147	113	76.9	147	97	66.0
Virgin Australia	711	599	84.2	710	582	82.0
All Airlines	2 384	2 021	84.8	2 378	2 004	84.3
Relates to services to and from Alice Springs, Brisbane, Canberra, Gold Coast, Melbourne, Perth, Port Lincoln and Sydney.						
Albury						
QantasLink	108	74	68.5	109	78	71.6
Regional Express	108	76	70.4	111	82	73.9
Virgin Australia	62	50	80.6	62	49	79.0
All Airlines	278	200	71.9	282	209	74.1
Relates to services to and from Sydney only.						
Alice Springs						
Qantas	31	31	100.0	32	30	93.8
QantasLink	51	50	98.0	51	44	86.3
Virgin Australia	28	24	85.7	28	23	82.1
All Airlines	110	105	95.5	111	97	87.4
Relates to services to and from Adelaide and Darwin.						
Armidale						
QantasLink	121	63	52.1	118	60	50.8
Regional Express	79	52	65.8	80	48	60.0
All Airlines	200	115	57.5	198	108	54.5
Relates to services to and from Sydney only.						
Ayers Rock						
Jetstar	28	27	96.4	28	25	89.3
Virgin Australia	31	27	87.1	31	19	61.3
All Airlines	59	54	91.5	59	44	74.6
Relates to services to and from Sydney only.						
Ballina						
Jetstar	83	59	71.1	81	44	54.3
Regional Express	27	14	51.9	26	11	42.3
Virgin Australia	31	21	67.7	31	20	64.5
All Airlines	141	94	66.7	138	75	54.3
Relates to services to and from Sydney only.						

Airport	Arrivals			Departures		
	Sectors	On Time		Sectors	On Time	
	Flown	No.	%	Flown	No.	%
Brisbane						
Jetstar	603	424	70.3	603	424	70.3
Qantas	1 569	1 293	82.4	1 568	1 318	84.1
QantasLink	1 135	852	75.1	1 145	900	78.6
Tigerair Australia	316	231	73.1	315	229	72.7
Virgin Australia	2 252	1 777	78.9	2 252	1 859	82.5
All Airlines	5 875	4 577	77.9	5 883	4 730	80.4

Relates to services to and from Adelaide, Bundaberg, Cairns, Canberra, Darwin, Emerald, Gladstone, Hamilton Island, Hobart, Mackay, Melbourne, Moranbah, Mount Isa, Newcastle, Perth, Proserpine, Rockhampton, Sydney and Townsville.

Broome

Qantas	1	1	100.0	1	1	100.0
QantasLink	82	75	91.5	82	72	87.8
Virgin Australia	5	5	100.0	5	4	80.0
Virgin Australia Regional Airlines	43	35	81.4	42	30	71.4
All Airlines	131	116	88.5	130	107	82.3

Relates to services to and from Perth only.

Bundaberg

QantasLink	127	96	75.6	127	106	83.5
Virgin Australia	30	25	83.3	30	20	66.7
All Airlines	157	121	77.1	157	126	80.3

Relates to services to and from Brisbane only.

Cairns

Jetstar	258	211	81.8	255	207	81.2
Qantas	223	187	83.9	223	184	82.5
QantasLink	141	121	85.8	142	125	88.0
Regional Express	40	36	90.0	40	34	85.0
Tigerair Australia	114	91	79.8	114	83	72.8
Virgin Australia	250	207	82.8	249	202	81.1
All Airlines	1 026	853	83.1	1 023	835	81.6

Relates to services to and from Brisbane, Melbourne, Sydney and Townsville.

Canberra

Qantas	339	301	88.8	340	303	89.1
QantasLink	629	503	80.0	626	502	80.2
Tigerair Australia	31	21	67.7	31	15	48.4
Virgin Australia	555	446	80.4	558	456	81.7
All Airlines	1 554	1 271	81.8	1 555	1 276	82.1

Relates to services to and from Adelaide, Brisbane, Melbourne and Sydney.

Coffs Harbour

QantasLink	155	111	71.6	155	105	67.7
Tigerair Australia	13	9	69.2	13	7	53.8
Virgin Australia	57	48	84.2	57	47	82.5
All Airlines	225	168	74.7	225	159	70.7

Relates to services to and from Sydney only.

Airport	Arrivals			Departures		
	Sectors	On Time		Sectors	On Time	
	Flown	No.	%	Flown	No.	%
Darwin						
Jetstar	61	52	85.2	60	45	75.0
Qantas	146	123	84.2	145	122	84.1
QantasLink	51	45	88.2	51	50	98.0
Tigerair Australia	21	16	76.2	21	19	90.5
Virgin Australia	138	113	81.9	138	119	86.2
All Airlines	417	349	83.7	415	355	85.5
Relates to services to and from Alice Springs, Brisbane, Melbourne, Perth and Sydney.						
Dubbo						
QantasLink	125	81	64.8	126	87	69.0
Regional Express	155	120	77.4	153	100	65.4
All Airlines	280	201	71.8	279	187	67.0
Relates to services to and from Sydney only.						
Emerald						
QantasLink	115	86	74.8	116	78	67.2
Virgin Australia	74	70	94.6	75	71	94.7
All Airlines	189	156	82.5	191	149	78.0
Relates to services to and from Brisbane only.						
Geraldton						
QantasLink	46	38	82.6	46	40	87.0
Virgin Australia Regional Airlines	58	49	84.5	57	48	84.2
All Airlines	104	87	83.7	103	88	85.4
Relates to services to and from Perth only.						
Gladstone						
QantasLink	143	95	66.4	143	99	69.2
Virgin Australia	88	63	71.6	87	68	78.2
All Airlines	231	158	68.4	230	167	72.6
Relates to services to and from Brisbane only.						
Gold Coast						
Jetstar	479	344	71.8	476	306	64.3
Qantas	127	96	75.6	127	90	70.9
QantasLink	9	6	66.7	9	5	55.6
Tigerair Australia	179	115	64.2	179	95	53.1
Virgin Australia	456	346	75.9	454	307	67.6
All Airlines	1 250	907	72.6	1 245	803	64.5
Relates to services to and from Adelaide, Melbourne and Sydney.						
Hamilton Island						
Jetstar	16	12	75.0	18	10	55.6
Qantas	30	28	93.3	32	27	84.4
QantasLink	35	26	74.3	34	26	76.5
Virgin Australia	66	46	69.7	70	42	60.0
All Airlines	147	112	76.2	154	105	68.2
Relates to services to and from Brisbane, Melbourne and Sydney.						

Airport	Arrivals			Departures		
	Sectors	On Time		Sectors	On Time	
	Flown	No.	%	Flown	No.	%
Hobart						
Jetstar	317	236	74.4	316	186	58.9
QantasLink	202	171	84.7	202	174	86.1
Tigerair Australia	31	19	61.3	31	15	48.4
Virgin Australia	238	210	88.2	238	192	80.7
All Airlines	788	636	80.7	787	567	72.0

Relates to services to and from Brisbane, Melbourne and Sydney.

Kalgoorlie

Qantas	4	4	100.0	4	4	100.0
QantasLink	80	72	90.0	80	72	90.0
Virgin Australia	33	31	93.9	32	30	93.8
Virgin Australia Regional Airlines	29	26	89.7	29	25	86.2
All Airlines	146	133	91.1	145	131	90.3

Relates to services to and from Perth only.

Karratha

Qantas	16	15	93.8	16	16	100.0
QantasLink	175	150	85.7	171	147	86.0
Virgin Australia	7	7	100.0	7	7	100.0
Virgin Australia Regional Airlines	74	66	89.2	74	59	79.7
All Airlines	272	238	87.5	268	229	85.4

Relates to services to and from Perth only.

Launceston

Jetstar	205	154	75.1	204	114	55.9
QantasLink	117	95	81.2	117	92	78.6
Virgin Australia	129	109	84.5	128	113	88.3
All Airlines	451	358	79.4	449	319	71.0

Relates to services to and from Melbourne and Sydney.

Mackay

Jetstar	39	20	51.3	38	15	39.5
QantasLink	99	79	79.8	97	75	77.3
Virgin Australia	120	97	80.8	120	100	83.3
All Airlines	258	196	76.0	255	190	74.5

Relates to services to and from Brisbane only.

Melbourne

Jetstar	1 432	943	65.9	1 447	975	67.4
Qantas	2 256	1 834	81.3	2 249	1 888	83.9
QantasLink	451	363	80.5	449	361	80.4
Regional Express	87	62	71.3	86	71	82.6
Tigerair Australia	652	421	64.6	654	451	69.0
Virgin Australia	2 324	1 851	79.6	2 322	1 959	84.4
All Airlines	7 202	5 474	76.0	7 207	5 705	79.2

Relates to services to and from Adelaide, Brisbane, Cairns, Canberra, Darwin, Gold Coast, Hamilton Island, Hobart, Launceston, Mildura, Newcastle, Perth, Sunshine Coast and Sydney.

Mildura

QantasLink	99	83	83.8	99	79	79.8
Regional Express	86	71	82.6	87	65	74.7
Virgin Australia	31	26	83.9	31	27	87.1
All Airlines	216	180	83.3	217	171	78.8

Relates to services to and from Melbourne only.

Airport	Arrivals			Departures		
	Sectors Flown	On Time		Sectors Flown	On Time	
		No.	%		No.	%
Moranbah						
QantasLink	74	54	73.0	70	52	74.3
Virgin Australia	62	53	85.5	61	55	90.2
All Airlines	136	107	78.7	131	107	81.7
Relates to services to and from Brisbane only.						
Mount Isa						
QantasLink	56	51	91.1	55	49	89.1
Virgin Australia	18	15	83.3	19	16	84.2
All Airlines	74	66	89.2	74	65	87.8
Relates to services to and from Brisbane only.						
Newcastle						
Jetstar	183	119	65.0	181	118	65.2
QantasLink	93	76	81.7	93	73	78.5
Virgin Australia	121	102	84.3	120	98	81.7
All Airlines	397	297	74.8	394	289	73.4
Relates to services to and from Brisbane and Melbourne.						
Newman						
Qantas	63	60	95.2	63	60	95.2
QantasLink	67	58	86.6	68	62	91.2
Virgin Australia	14	13	92.9	14	13	92.9
Virgin Australia Regional Airlines	27	24	88.9	27	23	85.2
All Airlines	171	155	90.6	172	158	91.9
Relates to services to and from Perth only.						
Perth						
Jetstar	116	99	85.3	116	85	73.3
Qantas	800	665	83.1	806	728	90.3
QantasLink	567	498	87.8	572	513	89.7
Tigerair Australia	77	62	80.5	76	64	84.2
Virgin Australia	553	456	82.5	559	495	88.6
Virgin Australia Regional Airlines	261	209	80.1	263	228	86.7
All Airlines	2 374	1 989	83.8	2 392	2 113	88.3
Relates to services to and from Adelaide, Brisbane, Broome, Darwin, Geraldton, Kalgoorlie, Karratha, Melbourne, Newman, Port Hedland and Sydney.						
Port Hedland						
Qantas	37	36	97.3	37	33	89.2
QantasLink	97	72	74.2	95	82	86.3
Virgin Australia	21	17	81.0	21	17	81.0
Virgin Australia Regional Airlines	32	25	78.1	32	26	81.3
All Airlines	187	150	80.2	185	158	85.4
Relates to services to and from Perth only.						
Port Lincoln						
QantasLink	108	104	96.3	108	105	97.2
Regional Express	215	190	88.4	216	194	89.8
All Airlines	323	294	91.0	324	299	92.3
Relates to services to and from Adelaide only.						

Airport	Arrivals			Departures		
	Sectors Flown	On Time		Sectors Flown	On Time	
		No.	%		No.	%
Port Macquarie						
QantasLink	132	80	60.6	133	75	56.4
Virgin Australia	58	43	74.1	57	42	73.7
All Airlines	190	123	64.7	190	117	61.6
Relates to services to and from Sydney only.						
Proserpine						
Jetstar	22	17	77.3	23	14	60.9
Tigerair Australia	3	3	100.0	3	3	100.0
Virgin Australia	26	22	84.6	26	20	76.9
All Airlines	51	42	82.4	52	37	71.2
Relates to services to and from Brisbane only.						
Rockhampton						
QantasLink	193	155	80.3	193	162	83.9
Virgin Australia	154	120	77.9	155	122	78.7
All Airlines	347	275	79.3	348	284	81.6
Relates to services to and from Brisbane only.						
Sunshine Coast						
Jetstar	174	124	71.3	170	84	49.4
QantasLink	33	27	81.8	32	26	81.3
Virgin Australia	75	55	73.3	75	52	69.3
All Airlines	282	206	73.0	277	162	58.5
Relates to services to and from Melbourne and Sydney.						
Sydney						
Jetstar	1 469	922	62.8	1 471	980	66.6
Qantas	2 357	1 782	75.6	2 359	1 857	78.7
QantasLink	1 461	1 012	69.3	1 466	1 042	71.1
Regional Express	509	275	54.0	511	375	73.4
Tigerair Australia	586	344	58.7	586	382	65.2
Virgin Australia	2 657	1 958	73.7	2 655	2 042	76.9
All Airlines	9 039	6 293	69.6	9 048	6 678	73.8
Relates to services to and from Adelaide, Albury, Armidale, Ayers Rock, Ballina, Brisbane, Cairns, Canberra, Coffs Harbour, Darwin, Dubbo, Gold Coast, Hamilton Island, Hobart, Launceston, Melbourne, Perth, Port Macquarie, Sunshine Coast, Tamworth, Townsville and Wagga Wagga.						
Tamworth						
QantasLink	154	110	71.4	154	111	72.1
Virgin Australia	43	31	72.1	43	35	81.4
All Airlines	197	141	71.6	197	146	74.1
Relates to services to and from Sydney only.						
Townsville						
Jetstar	51	39	76.5	50	34	68.0
Qantas	68	56	82.4	68	61	89.7
QantasLink	212	186	87.7	210	175	83.3
Regional Express	40	34	85.0	40	38	95.0
Virgin Australia	171	133	77.8	169	138	81.7
All Airlines	542	448	82.7	537	446	83.1
Relates to services to and from Brisbane, Cairns and Sydney.						

<i>Airport</i>	<i>Arrivals</i>			<i>Departures</i>		
	<i>Sectors</i>	<i>On Time</i>		<i>Sectors</i>	<i>On Time</i>	
	<i>Flown</i>	<i>No.</i>	<i>%</i>	<i>Flown</i>	<i>No.</i>	<i>%</i>
Wagga Wagga						
QantasLink	115	80	69.6	114	88	77.2
Regional Express	142	111	78.2	139	98	70.5
All Airlines	257	191	74.3	253	186	73.5

Relates to services to and from Sydney only.

Definitions

On time arrival	A flight arrival is counted as "on time" if it arrived at the gate before 15 minutes after the scheduled arrival time shown in the carriers' schedule. Neither diverted nor cancelled flights count as on time.
On time departure	A flight departure is counted as "on time" if it departs the gate before 15 minutes after the scheduled departure time shown in the carriers' schedule.
Cancellation	A flight removed from service within 7 days of scheduled departure is regarded as a cancellation.
On time departure percentage	The percentage of on time departures is measured against the number of departures <i>operated</i> on any particular sector.
On time arrival percentage	The percentage of on time arrivals is measured against the number of arrivals <i>operated</i> on any particular sector.
Cancellation percentage	The percentage of cancellations is measured against the number of services <i>scheduled</i> on any particular sector.
