



Australian Government

Department of Infrastructure and Regional Development

Bureau of Infrastructure, Transport and Regional Economics

STATISTICAL REPORT



Aviation

Domestic airline on time performance
March 2015

© Commonwealth of Australia 2015

ISSN: 1832-0759

Ownership of intellectual property rights in this publication

Unless otherwise noted, copyright (and any other intellectual property rights, if any) in this publication is owned by the Commonwealth of Australia (referred to below as the Commonwealth).

Disclaimer

The material contained in this publication is made available on the understanding that the Commonwealth is not providing professional advice, and that users exercise their own skill and care with respect to its use, and seek independent advice if necessary.

The Commonwealth makes no representations or warranties as to the contents or accuracy of the information contained in this publication. To the extent permitted by law, the Commonwealth disclaims liability to any person or organisation in respect of anything done, or omitted to be done, in reliance upon information contained in this publication.

Creative Commons licence

With the exception of (a) the Coat of Arms; and (b) the Department of Infrastructure and Regional Development's photos and graphics, copyright in this publication is licensed under a Creative Commons Attribution 3.0 Australia Licence.

Creative Commons Attribution 3.0 Australia Licence is a standard form licence agreement that allows you to copy, communicate and adapt this publication provided that you attribute the work to the Commonwealth and abide by the other licence terms. A summary of the licence terms is available from <http://creativecommons.org/licenses/by/3.0/au/deed.en>. The full licence terms are available from <http://creativecommons.org/licenses/by/3.0/au/legalcode>.

Use of the Coat of Arms

The Department of the Prime Minister and Cabinet sets the terms under which the Coat of Arms is used. Please refer to the Department's Commonwealth Coat of Arms and Government branding web page <http://www.dpmmc.gov.au/guidelines/index.cfm#brand> and, in particular, the Guidelines on the use of the Commonwealth Coat of Arms publication.

An appropriate citation for this report is:

Bureau of Infrastructure, Transport and Regional Economics (BITRE), 2015, Domestic airline on time performance, Statistical Report, BITRE, Canberra ACT.

Contact us

This publication is available in PDF format. All other rights are reserved, including in relation to any Departmental logos or trade marks which may exist. For enquiries regarding the licence and any use of this publication, please contact:

Bureau of Infrastructure, Transport and Regional Economics (BITRE)
Department of Infrastructure and Regional Development
GPO Box 501, Canberra ACT 2601, Australia
Telephone: (international) +61 2 6274 7210
Fax: (international) +61 2 6274 6855
Email: bitre@infrastructure.gov.au
Website: www.bitre.gov.au

Inquiries

Should you require additional information about the statistics contained in this publication:

Telephone (02) 6274 7790 or Facsimile (02) 6274 7727

Electronic mail: AVSTATS@infrastructure.gov.au

Web site: <http://www.bitre.gov.au/statistics/aviation/otphome.aspx>

Foreword

The Bureau of Infrastructure, Transport and Regional Economics (BITRE) monitors the punctuality and reliability of major domestic airlines operating between Australian airports. The purpose of this is to allow for evaluation of overall industry and individual airline performance, so that consumers of air travel can make informed decisions.

The following domestic airlines currently report this information monthly to the BITRE: Jetstar, Qantas, QantasLink, Regional Express, Tigerair, Virgin Australia and Virgin Australia Regional Airlines. Data has been gathered since November 2003, although some airlines commenced reporting at a later date, including Jetstar which first reported in May 2004, MacAir in July 2005 and Tigerair in April 2008. MacAir ceased operations in February 2009 and data was not received for December 2008 onwards. Virgin Blue was rebranded as Virgin Australia in May 2011 and Tiger Airways was rebranded as Tigerair in July 2013 and time series data in Microsoft Excel spreadsheet format on the BITRE website have been revised to reflect these changes. Virgin Australia Regional Airlines commenced operations in May 2013. It was formed after the acquisition of Skywest by Virgin Australia and represents a combination of operations previously reported under Skywest and Virgin Australia – ATR/F100 Operations. Services operated by Skywest on behalf of Virgin Australia using ATR/F100 aircraft commenced in November 2011 and were shown separately as Virgin Australia – ATR/F100 Operations until April 2013.

Information presented in this report is for Australian domestic routes for which the passenger load averaged 8 000 or more passengers per month over the previous six months and where two or more airlines operated in competition on those routes. There were 62 routes that met this definition in March 2015. Over time, routes which meet these criteria change as airline networks and traffic levels vary.

Participating airlines report their overall monthly network performance where this is possible.

Total industry figures encompass all services operated by reporting airlines only. These airlines collectively carried over 95 per cent of total domestic passengers (regular public transport only) in 2014.

The method of capturing on time performance varies between airlines utilising different recording systems. Jetstar and Qantas jet aircraft use Aircraft Communication Addressing and Reporting System (ACARS) to electronically measure on time performance. Regional Express, Tigerair, Virgin Australia, Virgin Australia Regional Airlines and the Qantas non-jet fleet record on time performance manually using records from pilots, gate agents and/or ground crews.

After initial data is collected, aggregate reports are audited internally by participating airlines prior to publication.

Reports and detailed time series data in Microsoft Excel spreadsheet format are available from the BITRE website at: <http://www.bitre.gov.au/statistics/aviation/otphome.aspx>.

Contents

	Page
Industry performance	1
Individual routes	9
Airports	21
Definitions	27

Industry performance

For March 2015, on time performance over all routes operated by participating airlines (Jetstar, Qantas, QantasLink, Regional Express, Tigerair, Virgin Australia and Virgin Australia Regional Airlines) averaged 88.9 per cent for on time departures and 87.0 per cent for on time arrivals. Cancellations represented 1.0 per cent of all scheduled flights. The equivalent figures for March 2014 were 84.7 per cent for departures, 82.1 per cent for arrivals and 1.4 per cent for cancellations.

This month's figures were above the long term average performance for all routes (83.9 per cent for departures and 82.4 per cent for arrivals). The rate of cancellations was lower than the long term average of 1.3 per cent.

Of the major domestic airlines, Virgin Australia achieved the highest level of on time departures for March 2015 at 91.8 per cent, followed by Qantas at 89.3 per cent, Tigerair at 86.5 per cent and Jetstar at 85.9 per cent. The regional airlines were led by Regional Express at 88.9 per cent, followed by Virgin Australia Regional Airlines at 88.8 per cent and QantasLink at 87.9 per cent.

Virgin Australia also achieved the highest on time arrivals among the major domestic airlines at 90.0 per cent, followed by Qantas at 88.2 per cent, Jetstar at 86.5 per cent and Tigerair at 84.0 per cent. Virgin Australia Regional Airlines was the best performing regional airline for on time arrivals at 86.6 per cent, followed by QantasLink at 85.0 per cent and Regional Express at 84.9 per cent.

QantasLink had the highest percentage of cancellations (2.2 per cent) during the month, followed by Jetstar (1.0 per cent), Virgin Australia Regional Airlines, Qantas and Virgin Australia (all on 0.8 per cent) and Tigerair and Regional Express (both on 0.3 per cent).

Of the 62 routes which met the criteria for on time performance reporting in March 2015, the Sydney-Hamilton Island route had the highest percentage of on time departures (98.3 per cent) and the Darwin-Perth route had the highest percentage of on time arrivals (98.5 per cent). The Hobart-Brisbane route had the lowest percentage of on time departures (65.5 per cent) and the Port Macquarie-Sydney route had the lowest percentage of on time arrivals (68.0 per cent).

Cancellations were highest on the Canberra-Sydney route at 4.1 per cent, followed by the Karratha-Perth route at 3.9 per cent, the Perth-Karratha and Sydney-Canberra routes at 3.6 per cent and the Ayers Rock-Sydney route at 3.4 per cent.

Proserpine Airport recorded the highest percentage of on time departures (97.5 per cent) and Ayers Rock Airport recorded the highest percentage of on time arrivals (96.6 per cent). Hobart Airport recorded the lowest percentage of on time departures (78.1 per cent) and Port Macquarie Airport recorded the lowest percentage of on time arrivals (75.0 per cent). These figures only refer to reported routes and do not cover all flights at these airports.

Table 1 On time performance for March 2015 — Total Industry

	<i>Sectors</i>		<i>Departures On Time</i>		<i>Arrivals On Time</i>		<i>Cancellations</i>	
	<i>Scheduled</i>	<i>Flown</i>	<i>No.</i>	<i>%</i>	<i>No.</i>	<i>%</i>	<i>No.</i>	<i>%</i>
Jetstar	6 576	6 509	5 589	85.9	5 630	86.5	67	1.0
Qantas	9 800	9 724	8 680	89.3	8 581	88.2	76	0.8
QantasLink	10 788	10 547	9 267	87.9	8 968	85.0	241	2.2
Regional Express	6 103	6 085	5 407	88.9	5 165	84.9	18	0.3
Tigerair	2 102	2 095	1 812	86.5	1 759	84.0	7	0.3
Virgin Australia	11 036	10 952	10 050	91.8	9 860	90.0	84	0.8
Virgin Australia Regional Airlines	2 648	2 626	2 333	88.8	2 275	86.6	22	0.8
All Airlines	49 053	48 538	43 138	88.9	42 238	87.0	515	1.0

Total airline network data (including routes not shown in this report).

Table 2 Top ten routes for on time performance for March 2015 (participating airlines only)

<i>Departures</i>		<i>Arrivals</i>	
<i>Route</i>	<i>On Time (%)</i>	<i>Route</i>	<i>On Time (%)</i>
Sydney-Hamilton Island	98.3	Darwin-Perth	98.5
Proserpine-Brisbane	97.5	Adelaide-Gold Coast	96.9
Darwin-Perth	97.0	Port Hedland-Perth	96.6
Newman-Perth	96.9	Sydney-Ayers Rock	96.6
Port Hedland-Perth	96.1	Newman-Perth	96.3
Mount Isa-Brisbane	96.1	Townsville-Brisbane	96.3
Perth-Port Hedland	95.6	Proserpine-Brisbane	96.3
Adelaide-Canberra	95.4	Brisbane-Mount Isa	96.1
Brisbane-Adelaide	95.4	Mount Isa-Brisbane	96.1
Gold Coast-Adelaide	95.2	Brisbane-Darwin	95.7

Table 3 Top ten airports for on time performance for March 2015 (participating airlines and reported routes only)

<i>Departures</i>		<i>Arrivals</i>	
<i>Airport</i>	<i>On Time (%)</i>	<i>Airport</i>	<i>On Time (%)</i>
Proserpine	97.5	Ayers Rock	96.6
Newman	96.9	Mount Isa	96.1
Port Hedland	96.1	Moranbah	95.5
Mount Isa	96.1	Mackay	93.9
Karratha	93.8	Proserpine	93.8
Mackay	93.6	Newman	93.7
Townsville	93.4	Kalgoorlie	92.9
Kalgoorlie	92.9	Port Hedland	92.7
Mildura	92.2	Darwin	92.3
Albury	92.1	Hamilton Island	92.2

Total industry on time performance

Figure 1 On time performance (by month from March 2012)—Total Industry

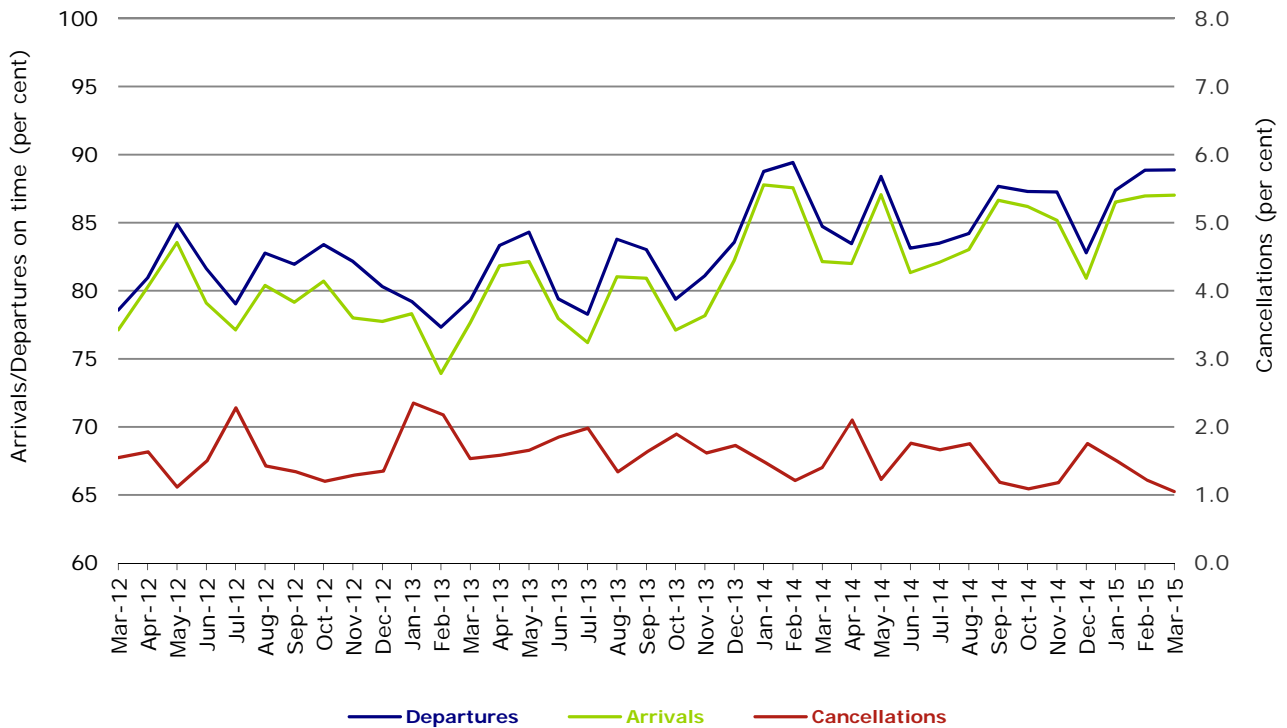


Figure 2 Departures on time (by month from March 2014)

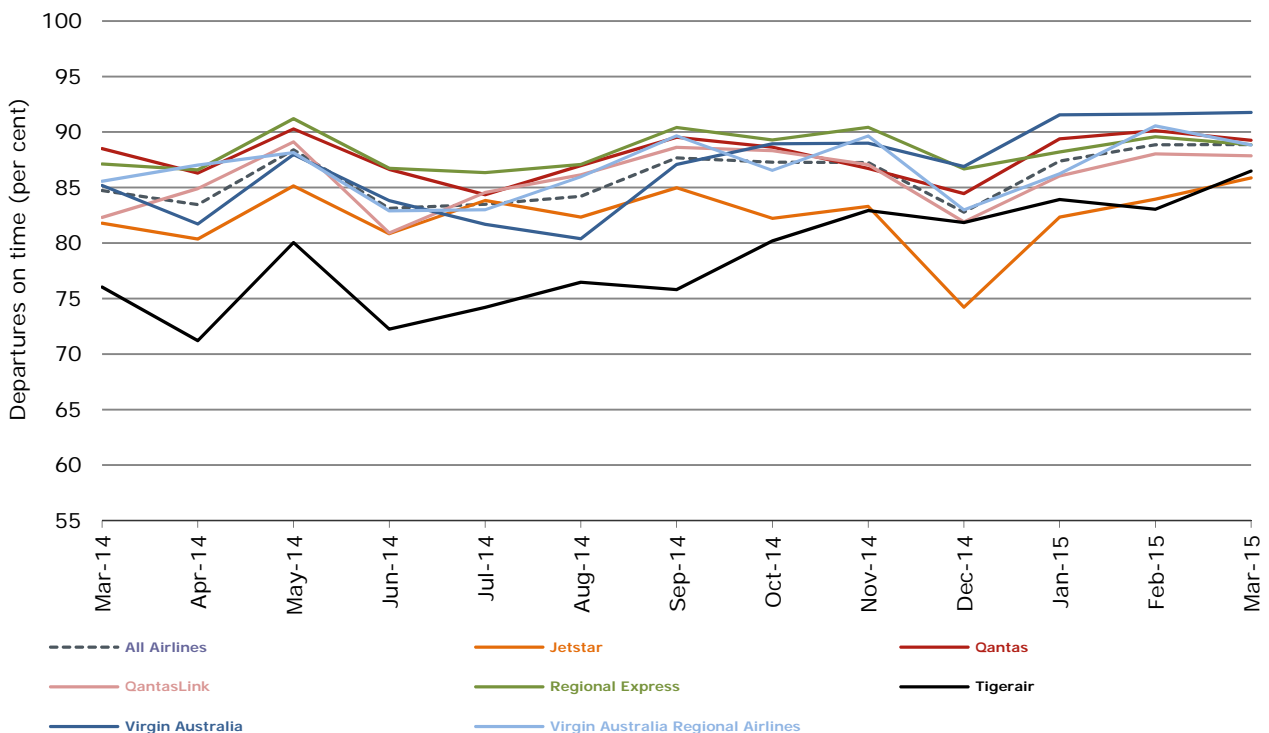


Figure 3 Arrivals on time (by month from March 2014)

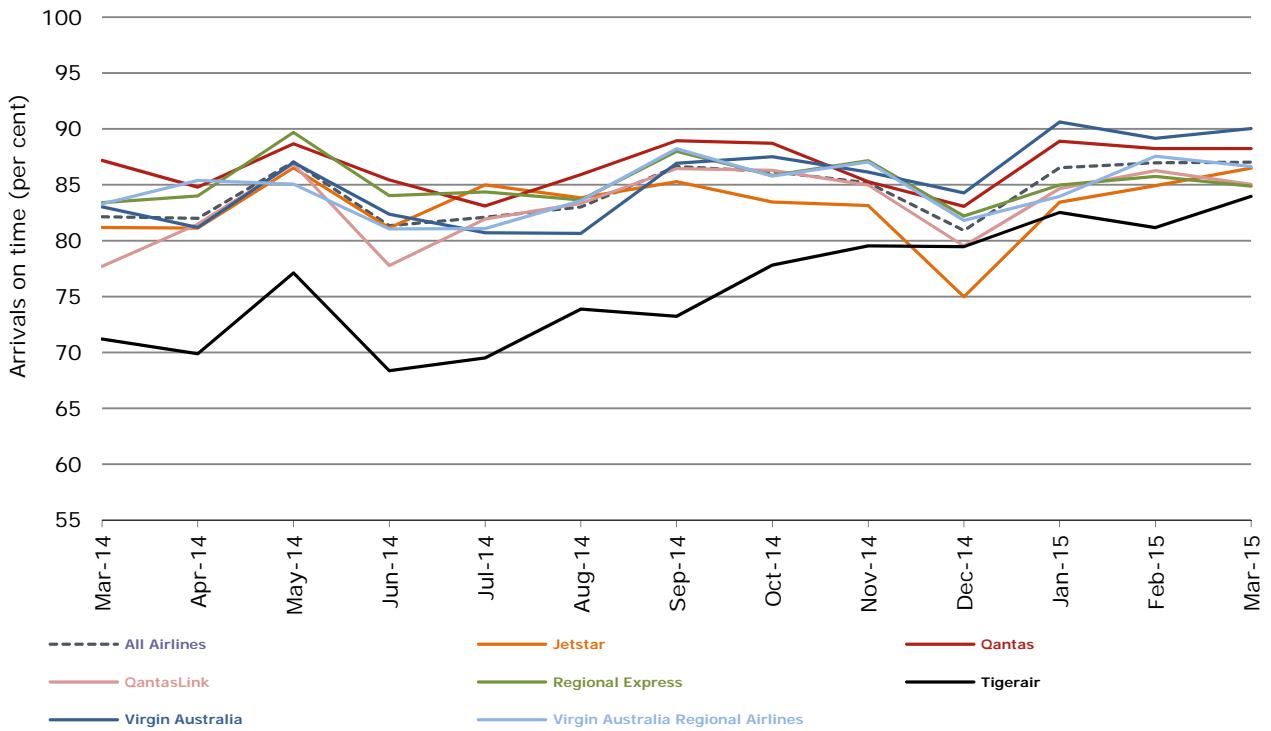
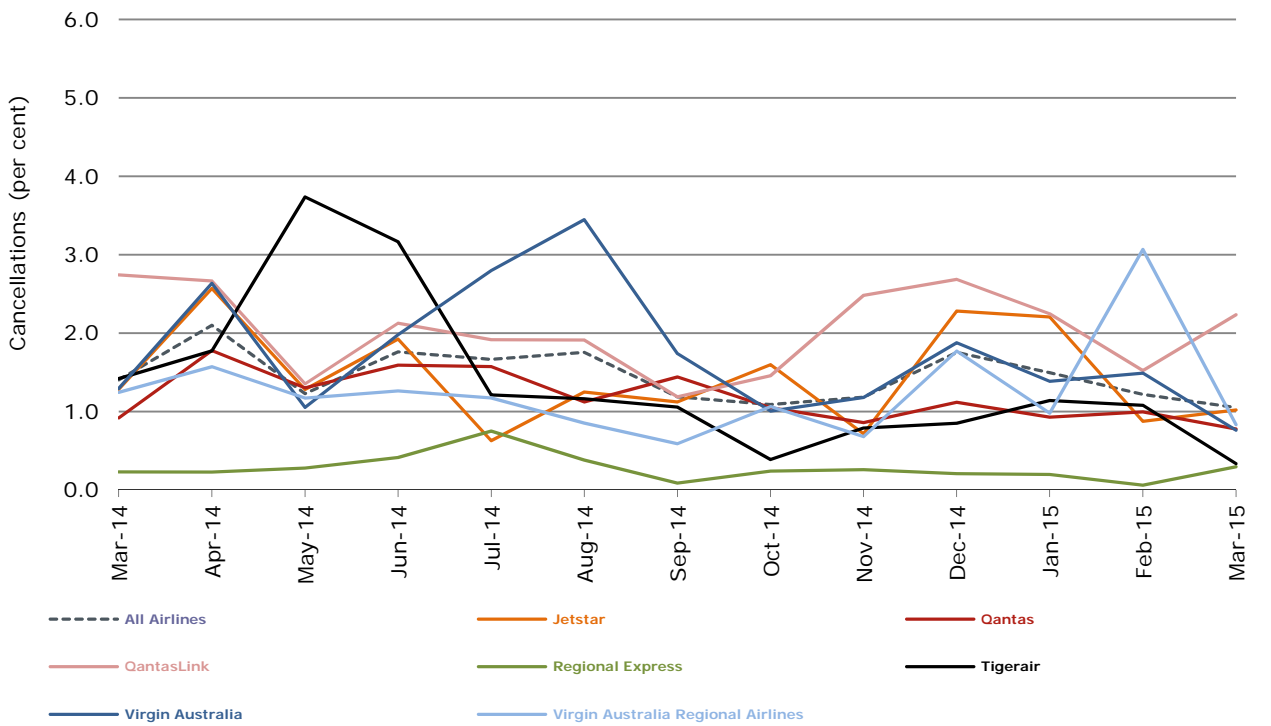


Figure 4 Cancellations (by month from March 2014)



Major domestic airlines on time performance

Figure 5 On time performance (by month from March 2012)—Jetstar

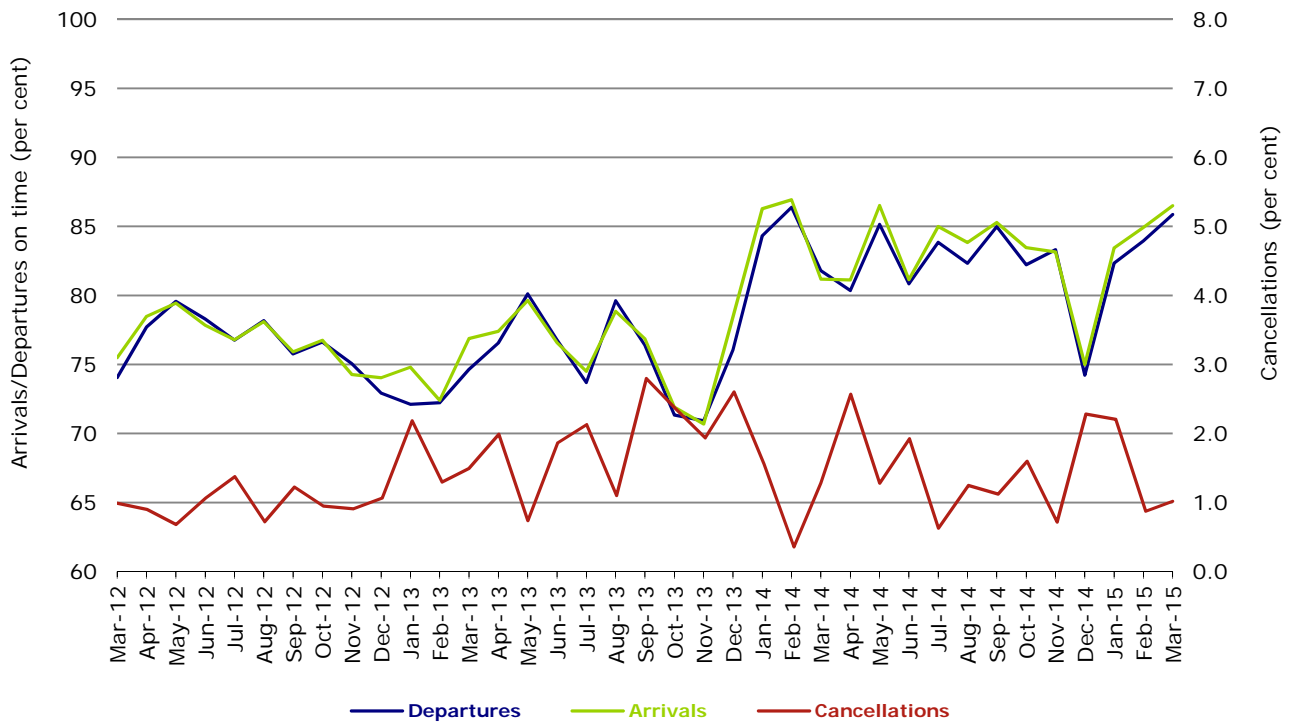


Figure 6 On time performance (by month from March 2012)—Qantas

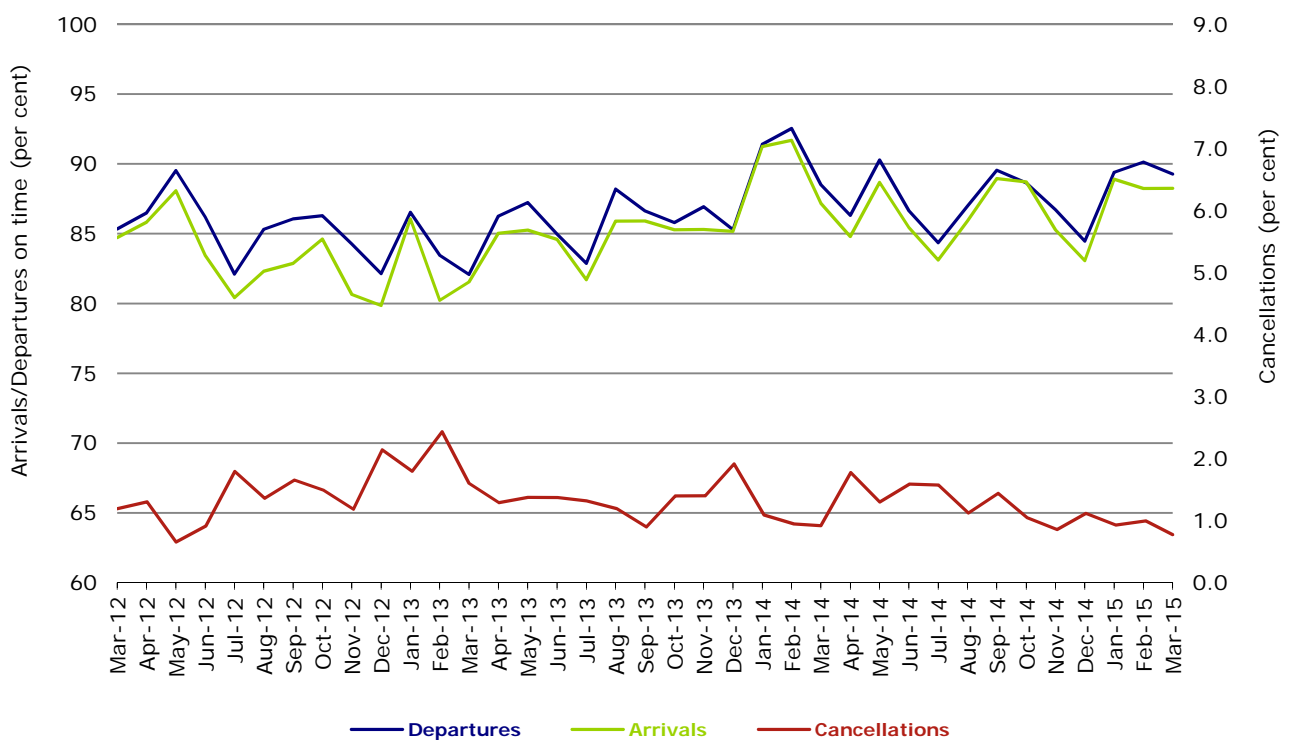


Figure 7 On time performance (by month from March 2012)—Tigerair

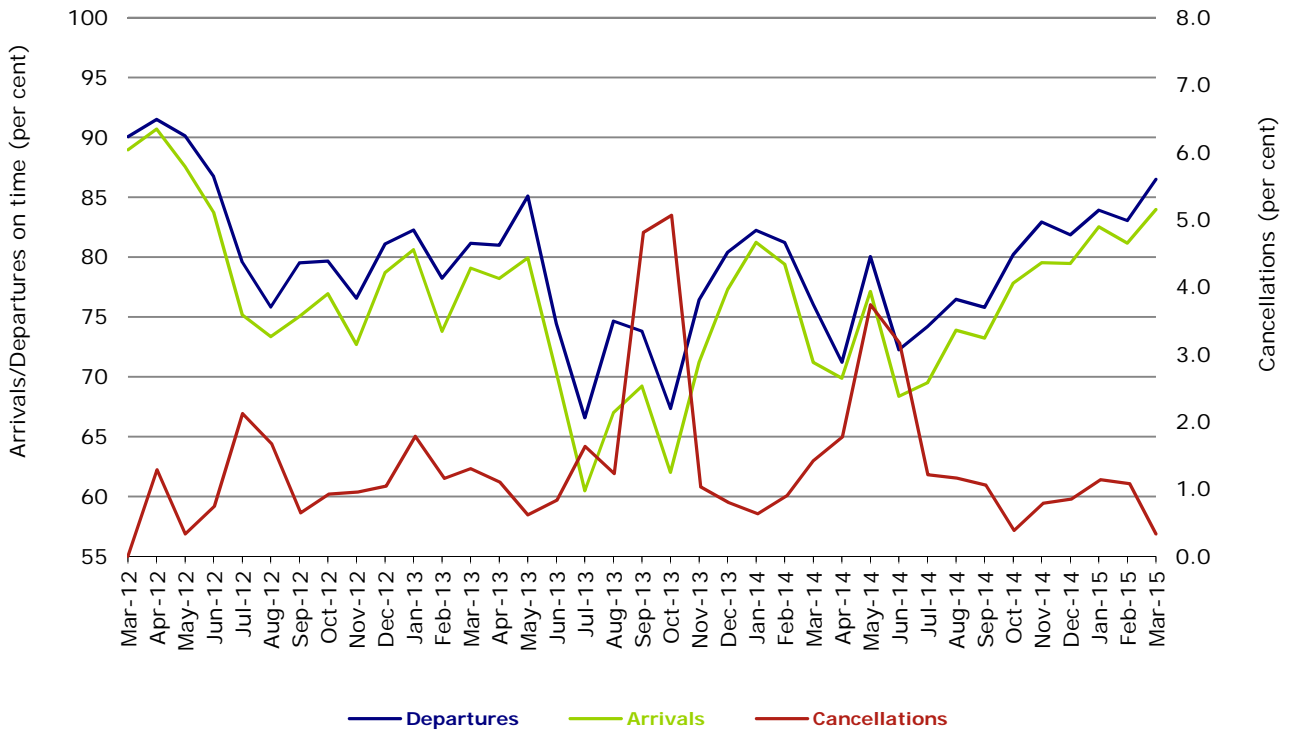
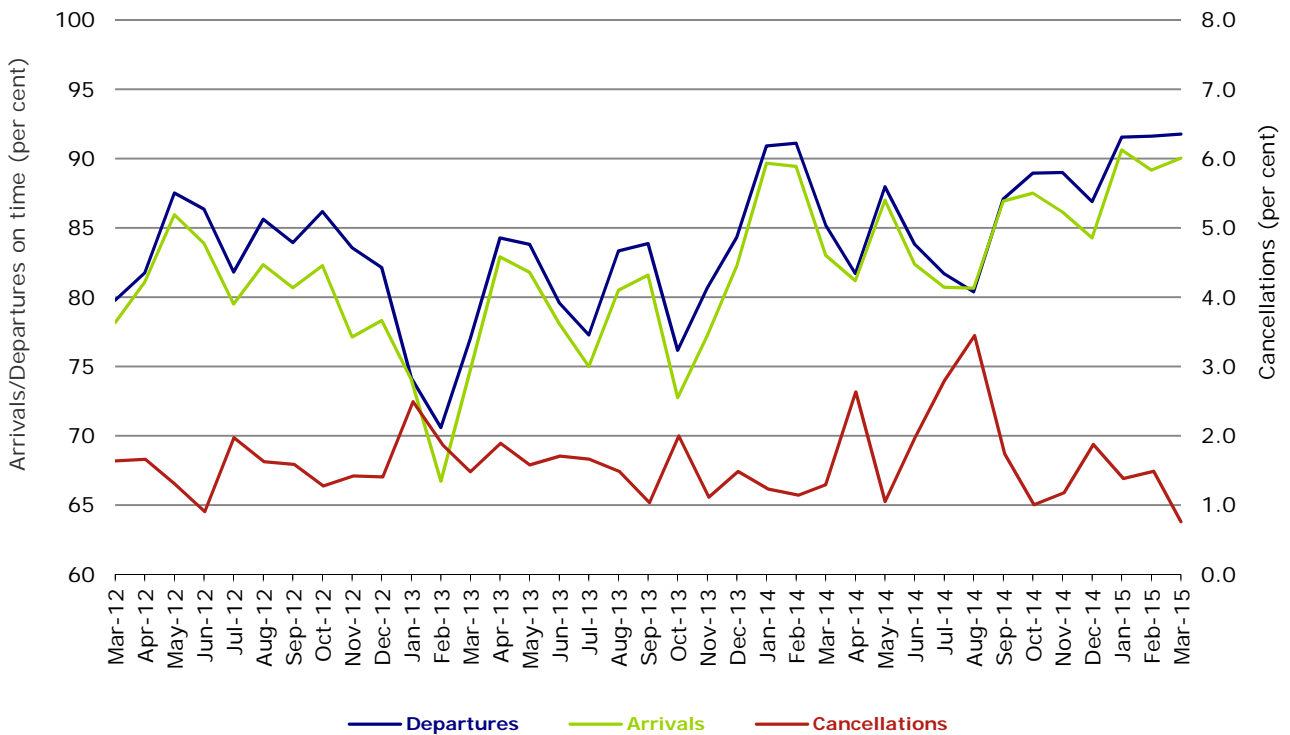


Figure 8 On time performance (by month from March 2012)—Virgin Australia



Major regional airlines on time performance

Figure 9 On time performance (by month from March 2012)—QantasLink

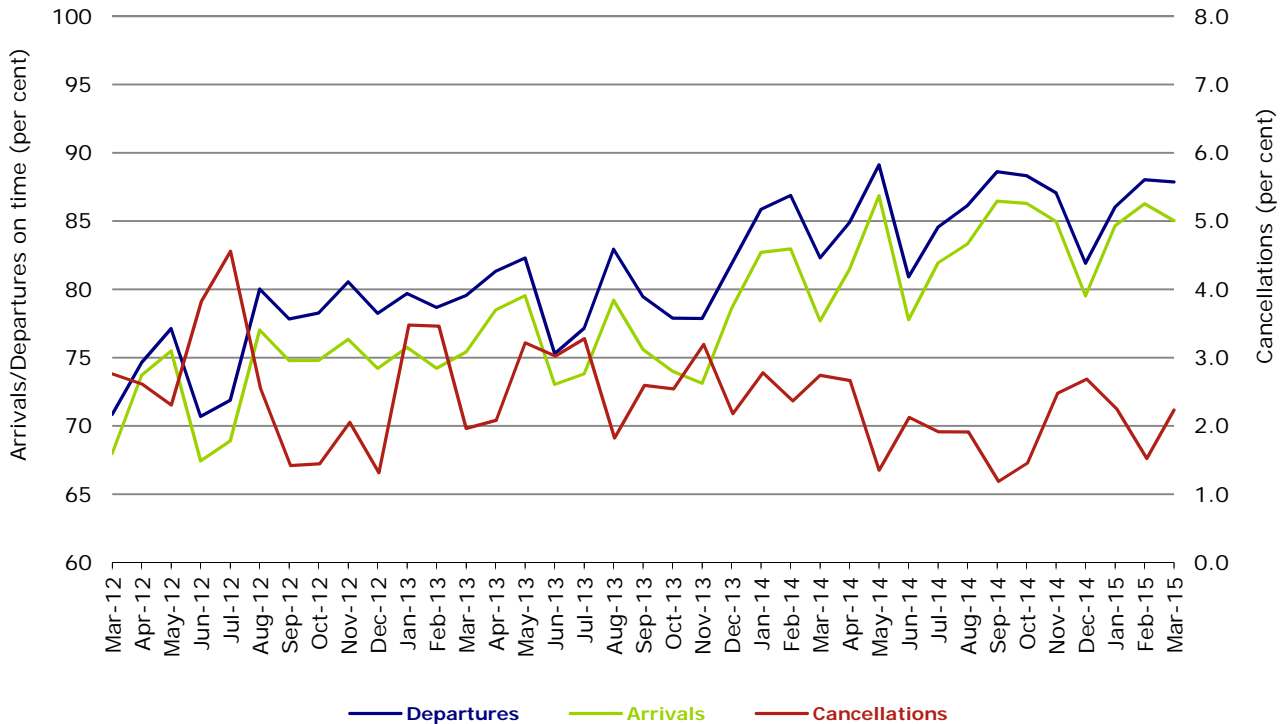


Figure 10 On time performance (by month from March 2012)—Regional Express

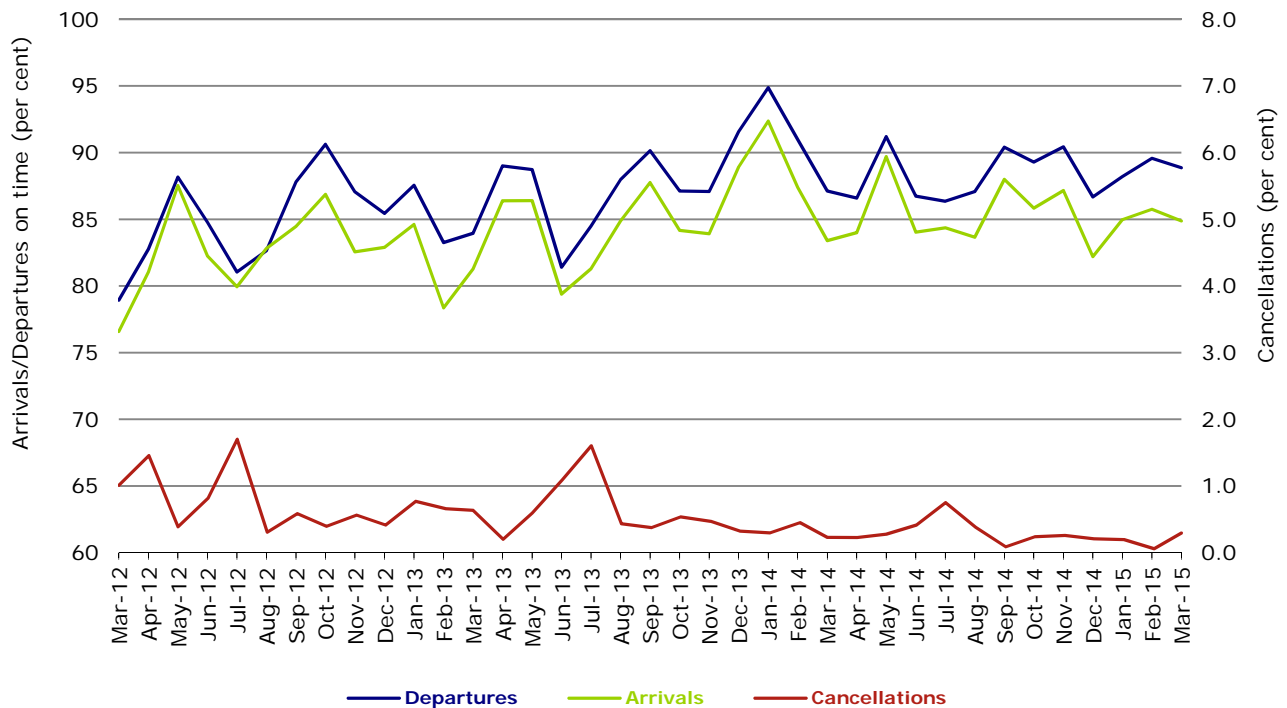
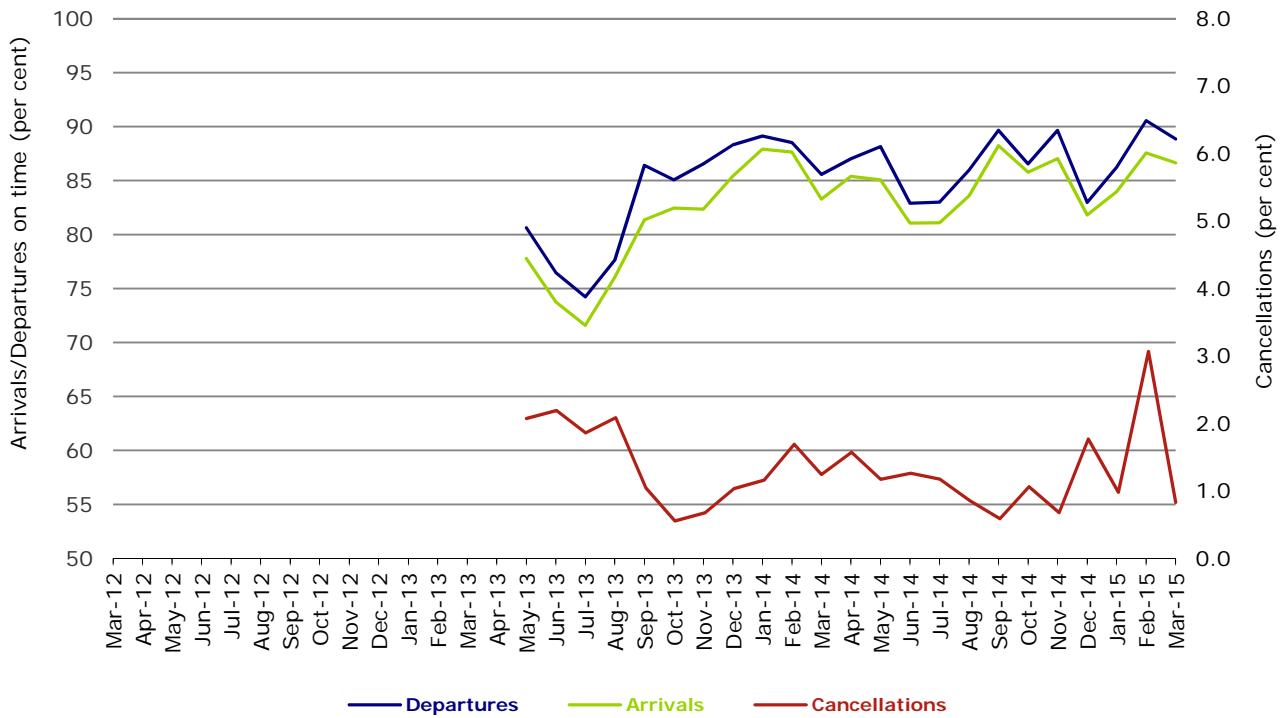


Figure 11 On time performance (by month from March 2012)
Virgin Australia Regional Airlines



Virgin Australia Regional Airlines commenced operations in May 2013. It was formed after the acquisition of Skywest by Virgin Australia and represents a combination of operations previously reported under Skywest and Virgin Australia – ATR/F100 Operations.

Individual routes

On time performance is reported for all routes where the passenger load averages over 8000 passengers per month over the previous six months, and where two or more airlines operate in competition on those routes. There are now 62 routes which meet this definition. Over time, however, routes which meet this definition may change as airline networks and traffic levels vary.

	<i>Sectors</i>		<i>Departures On Time</i>		<i>Arrivals On Time</i>		<i>Cancellations</i>	
	<i>Sched.</i>	<i>Flown</i>	<i>No.</i>	<i>%</i>	<i>No.</i>	<i>%</i>	<i>No.</i>	<i>%</i>
Adelaide-Brisbane								
Jetstar	25	25	22	88.0	25	100.0	0	0.0
Qantas	111	111	104	93.7	104	93.7	0	0.0
Tigerair	27	27	25	92.6	26	96.3	0	0.0
Virgin Australia	116	116	110	94.8	111	95.7	0	0.0
All Airlines	279	279	261	93.5	266	95.3	0	0.0
Adelaide-Canberra								
Qantas	44	44	44	100.0	44	100.0	0	0.0
QantasLink	16	16	14	87.5	14	87.5	0	0.0
Virgin Australia	27	27	25	92.6	25	92.6	0	0.0
All Airlines	87	87	83	95.4	83	95.4	0	0.0
Adelaide-Gold Coast								
Jetstar	33	33	30	90.9	31	93.9	0	0.0
Virgin Australia	31	31	29	93.5	31	100.0	0	0.0
All Airlines	64	64	59	92.2	62	96.9	0	0.0
Adelaide-Melbourne								
Jetstar	105	105	96	91.4	97	92.4	0	0.0
Qantas	295	295	259	87.8	271	91.9	0	0.0
Tigerair	80	80	73	91.3	73	91.3	0	0.0
Virgin Australia	277	277	255	92.1	261	94.2	0	0.0
All Airlines	757	757	683	90.2	702	92.7	0	0.0
Adelaide-Perth								
Jetstar	33	33	29	87.9	30	90.9	0	0.0
Qantas	116	116	107	92.2	105	90.5	0	0.0
Virgin Australia	72	72	67	93.1	67	93.1	0	0.0
All Airlines	221	221	203	91.9	202	91.4	0	0.0
Adelaide-Port Lincoln								
QantasLink	103	102	85	83.3	85	83.3	1	1.0
Regional Express	214	213	199	93.4	194	91.1	1	0.5
All Airlines	317	315	284	90.2	279	88.6	2	0.6
Adelaide-Sydney								
Jetstar	117	116	104	89.7	104	89.7	1	0.9
Qantas	247	247	222	89.9	225	91.1	0	0.0
QantasLink	21	20	15	75.0	15	75.0	1	4.8
Tigerair	31	31	27	87.1	26	83.9	0	0.0
Virgin Australia	174	174	159	91.4	158	90.8	0	0.0
All Airlines	590	588	527	89.6	528	89.8	2	0.3
Albury-Sydney								
QantasLink	93	93	83	89.2	81	87.1	0	0.0
Regional Express	111	111	103	92.8	95	85.6	0	0.0
Virgin Australia Regional Airlines	62	62	59	95.2	51	82.3	0	0.0
All Airlines	266	266	245	92.1	227	85.3	0	0.0
Armidale-Sydney								
QantasLink	137	135	110	81.5	108	80.0	2	1.5
Regional Express	79	79	66	83.5	55	69.6	0	0.0
All Airlines	216	214	176	82.2	163	76.2	2	0.9

	<i>Sectors</i>		<i>Departures On Time</i>		<i>Arrivals On Time</i>		<i>Cancellations</i>	
	<i>Sched.</i>	<i>Flown</i>	<i>No.</i>	<i>%</i>	<i>No.</i>	<i>%</i>	<i>No.</i>	<i>%</i>
Ayers Rock-Sydney								
Jetstar	28	27	23	85.2	19	70.4	1	3.6
Virgin Australia	31	30	27	90.0	27	90.0	1	3.2
All Airlines	59	57	50	87.7	46	80.7	2	3.4
Ballina-Sydney								
Jetstar	65	64	53	82.8	48	75.0	1	1.5
Regional Express	25	25	15	60.0	13	52.0	0	0.0
Virgin Australia	31	31	29	93.5	28	90.3	0	0.0
All Airlines	121	120	97	80.8	89	74.2	1	0.8
Brisbane-Adelaide								
Jetstar	26	26	25	96.2	25	96.2	0	0.0
Qantas	111	111	105	94.6	99	89.2	0	0.0
Tigerair	27	27	26	96.3	24	88.9	0	0.0
Virgin Australia	117	117	112	95.7	111	94.9	0	0.0
All Airlines	281	281	268	95.4	259	92.2	0	0.0
Brisbane-Bundaberg								
QantasLink	125	125	107	85.6	106	84.8	0	0.0
Virgin Australia Regional Airlines	41	41	37	90.2	37	90.2	0	0.0
All Airlines	166	166	144	86.7	143	86.1	0	0.0
Brisbane-Cairns								
Jetstar	95	94	84	89.4	88	93.6	1	1.1
Qantas	120	120	112	93.3	117	97.5	0	0.0
QantasLink	4	4	4	100.0	4	100.0	0	0.0
Tigerair	31	31	29	93.5	29	93.5	0	0.0
Virgin Australia	135	135	126	93.3	128	94.8	0	0.0
All Airlines	385	384	355	92.4	366	95.3	1	0.3
Brisbane-Canberra								
Qantas	26	26	25	96.2	26	100.0	0	0.0
QantasLink	142	137	128	93.4	125	91.2	5	3.5
Virgin Australia	93	93	84	90.3	85	91.4	0	0.0
All Airlines	261	256	237	92.6	236	92.2	5	1.9
Brisbane-Darwin								
Jetstar	19	19	16	84.2	18	94.7	0	0.0
Qantas	47	47	46	97.9	47	100.0	0	0.0
Tigerair	20	20	18	90.0	19	95.0	0	0.0
Virgin Australia	31	31	28	90.3	28	90.3	0	0.0
All Airlines	117	117	108	92.3	112	95.7	0	0.0
Brisbane-Emerald								
QantasLink	147	146	137	93.8	131	89.7	1	0.7
Virgin Australia Regional Airlines	84	84	78	92.9	76	90.5	0	0.0
All Airlines	231	230	215	93.5	207	90.0	1	0.4
Brisbane-Gladstone								
QantasLink	219	214	198	92.5	194	90.7	5	2.3
Virgin Australia	8	8	8	100.0	8	100.0	0	0.0
Virgin Australia Regional Airlines	148	147	132	89.8	126	85.7	1	0.7
All Airlines	375	369	338	91.6	328	88.9	6	1.6
Brisbane-Hamilton Island								
QantasLink	18	18	17	94.4	17	94.4	0	0.0
Virgin Australia	31	31	29	93.5	29	93.5	0	0.0
All Airlines	49	49	46	93.9	46	93.9	0	0.0
Brisbane-Hobart								
Jetstar	27	27	24	88.9	24	88.9	0	0.0
Virgin Australia	31	31	29	93.5	28	90.3	0	0.0
All Airlines	58	58	53	91.4	52	89.7	0	0.0

	<i>Sectors</i>		<i>Departures On Time</i>		<i>Arrivals On Time</i>		<i>Cancellations</i>	
	<i>Sched.</i>	<i>Flown</i>	<i>No.</i>	<i>%</i>	<i>No.</i>	<i>%</i>	<i>No.</i>	<i>%</i>
Brisbane-Mackay								
Jetstar	60	60	48	80.0	53	88.3	0	0.0
QantasLink	111	111	103	92.8	104	93.7	0	0.0
Virgin Australia	159	159	147	92.5	153	96.2	0	0.0
All Airlines	330	330	298	90.3	310	93.9	0	0.0
Brisbane-Melbourne								
Jetstar	116	113	91	80.5	95	84.1	3	2.6
Qantas	434	431	395	91.6	380	88.2	3	0.7
Tigerair	121	121	106	87.6	100	82.6	0	0.0
Virgin Australia	406	404	386	95.5	347	85.9	2	0.5
All Airlines	1 077	1 069	978	91.5	922	86.2	8	0.7
Brisbane-Moranbah								
QantasLink	131	126	116	92.1	119	94.4	5	3.8
Virgin Australia Regional Airlines	75	75	66	88.0	73	97.3	0	0.0
All Airlines	206	201	182	90.5	192	95.5	5	2.4
Brisbane-Mount Isa								
Qantas	55	55	53	96.4	53	96.4	0	0.0
Virgin Australia	22	22	20	90.9	21	95.5	0	0.0
All Airlines	77	77	73	94.8	74	96.1	0	0.0
Brisbane-Newcastle								
Jetstar	79	79	68	86.1	70	88.6	0	0.0
QantasLink	72	72	63	87.5	51	70.8	0	0.0
Virgin Australia	84	84	81	96.4	81	96.4	0	0.0
All Airlines	235	235	212	90.2	202	86.0	0	0.0
Brisbane-Perth								
Qantas	124	124	106	85.5	107	86.3	0	0.0
Virgin Australia	107	107	88	82.2	92	86.0	0	0.0
All Airlines	231	231	194	84.0	199	86.1	0	0.0
Brisbane-Proserpine								
Jetstar	27	27	23	85.2	22	81.5	0	0.0
Virgin Australia	53	53	53	100.0	53	100.0	0	0.0
All Airlines	80	80	76	95.0	75	93.8	0	0.0
Brisbane-Rockhampton								
QantasLink	222	219	192	87.7	195	89.0	3	1.4
Virgin Australia	97	96	87	90.6	87	90.6	1	1.0
Virgin Australia Regional Airlines	114	114	99	86.8	101	88.6	0	0.0
All Airlines	433	429	378	88.1	383	89.3	4	0.9
Brisbane-Sydney								
Jetstar	165	163	138	84.7	134	82.2	2	1.2
Qantas	599	591	540	91.4	513	86.8	8	1.3
Tigerair	94	94	89	94.7	87	92.6	0	0.0
Virgin Australia	545	536	498	92.9	479	89.4	9	1.7
All Airlines	1 403	1 384	1 265	91.4	1 213	87.6	19	1.4
Brisbane-Townsville								
Jetstar	42	42	39	92.9	40	95.2	0	0.0
Qantas	151	151	141	93.4	140	92.7	0	0.0
Virgin Australia	156	156	143	91.7	142	91.0	0	0.0
All Airlines	349	349	323	92.6	322	92.3	0	0.0
Broome-Perth								
Qantas	26	26	22	84.6	25	96.2	0	0.0
QantasLink	58	57	54	94.7	53	93.0	1	1.7
Virgin Australia	8	8	6	75.0	7	87.5	0	0.0
Virgin Australia Regional Airlines	39	39	24	61.5	26	66.7	0	0.0
All Airlines	131	130	106	81.5	111	85.4	1	0.8

	<i>Sectors</i>		<i>Departures On Time</i>		<i>Arrivals On Time</i>		<i>Cancellations</i>	
	<i>Sched.</i>	<i>Flown</i>	<i>No.</i>	<i>%</i>	<i>No.</i>	<i>%</i>	<i>No.</i>	<i>%</i>
Bundaberg-Brisbane								
QantasLink	125	125	108	86.4	104	83.2	0	0.0
Virgin Australia Regional Airlines	41	41	38	92.7	38	92.7	0	0.0
All Airlines	166	166	146	88.0	142	85.5	0	0.0
Cairns-Brisbane								
Jetstar	95	94	91	96.8	87	92.6	1	1.1
Qantas	119	118	111	94.1	108	91.5	1	0.8
QantasLink	5	5	5	100.0	5	100.0	0	0.0
Tigerair	31	31	28	90.3	26	83.9	0	0.0
Virgin Australia	135	135	128	94.8	125	92.6	0	0.0
All Airlines	385	383	363	94.8	351	91.6	2	0.5
Cairns-Melbourne								
Jetstar	61	61	52	85.2	51	83.6	0	0.0
Qantas	31	31	27	87.1	28	90.3	0	0.0
Tigerair	31	31	24	77.4	21	67.7	0	0.0
Virgin Australia	31	31	28	90.3	28	90.3	0	0.0
All Airlines	154	154	131	85.1	128	83.1	0	0.0
Cairns-Sydney								
Jetstar	81	81	77	95.1	71	87.7	0	0.0
Qantas	72	72	55	76.4	57	79.2	0	0.0
Tigerair	31	31	29	93.5	26	83.9	0	0.0
Virgin Australia	89	89	86	96.6	86	96.6	0	0.0
All Airlines	273	273	247	90.5	240	87.9	0	0.0
Canberra-Adelaide								
Qantas	44	44	40	90.9	39	88.6	0	0.0
QantasLink	16	16	11	68.8	11	68.8	0	0.0
Virgin Australia	27	27	26	96.3	26	96.3	0	0.0
All Airlines	87	87	77	88.5	76	87.4	0	0.0
Canberra-Brisbane								
Qantas	26	26	25	96.2	25	96.2	0	0.0
QantasLink	142	135	123	91.1	122	90.4	7	4.9
Virgin Australia	93	92	83	90.2	83	90.2	1	1.1
All Airlines	261	253	231	91.3	230	90.9	8	3.1
Canberra-Melbourne								
Qantas	185	185	171	92.4	171	92.4	0	0.0
QantasLink	87	83	76	91.6	75	90.4	4	4.6
Virgin Australia	157	155	140	90.3	140	90.3	2	1.3
Virgin Australia Regional Airlines	31	30	28	93.3	20	66.7	1	3.2
All Airlines	460	453	415	91.6	406	89.6	7	1.5
Canberra-Sydney								
QantasLink	530	503	450	89.5	448	89.1	27	5.1
Virgin Australia	23	23	18	78.3	18	78.3	0	0.0
Virgin Australia Regional Airlines	284	277	259	93.5	256	92.4	7	2.5
All Airlines	837	803	727	90.5	722	89.9	34	4.1
Coffs Harbour-Sydney								
QantasLink	154	154	132	85.7	126	81.8	0	0.0
Tigerair	14	13	8	61.5	9	69.2	1	7.1
Virgin Australia	61	60	54	90.0	54	90.0	1	1.6
All Airlines	229	227	194	85.5	189	83.3	2	0.9
Darwin-Brisbane								
Jetstar	19	19	16	84.2	17	89.5	0	0.0
Qantas	47	47	45	95.7	46	97.9	0	0.0
Tigerair	21	21	20	95.2	19	90.5	0	0.0
Virgin Australia	31	31	29	93.5	21	67.7	0	0.0
All Airlines	118	118	110	93.2	103	87.3	0	0.0

	<i>Sectors</i>		<i>Departures On Time</i>		<i>Arrivals On Time</i>		<i>Cancellations</i>	
	<i>Sched.</i>	<i>Flown</i>	<i>No.</i>	<i>%</i>	<i>No.</i>	<i>%</i>	<i>No.</i>	<i>%</i>
Darwin-Melbourne								
Jetstar	23	23	19	82.6	20	87.0	0	0.0
Qantas	27	27	21	77.8	22	81.5	0	0.0
Virgin Australia	31	31	29	93.5	23	74.2	0	0.0
All Airlines	81	81	69	85.2	65	80.2	0	0.0
Darwin-Perth								
Qantas	36	36	36	100.0	36	100.0	0	0.0
Virgin Australia	31	31	29	93.5	30	96.8	0	0.0
All Airlines	67	67	65	97.0	66	98.5	0	0.0
Darwin-Sydney								
Jetstar	19	19	13	68.4	13	68.4	0	0.0
Qantas	36	36	30	83.3	28	77.8	0	0.0
Virgin Australia	31	31	28	90.3	27	87.1	0	0.0
All Airlines	86	86	71	82.6	68	79.1	0	0.0
Dubbo-Sydney								
QantasLink	129	127	105	82.7	106	83.5	2	1.6
Regional Express	159	158	143	90.5	129	81.6	1	0.6
All Airlines	288	285	248	87.0	235	82.5	3	1.0
Emerald-Brisbane								
QantasLink	147	146	131	89.7	126	86.3	1	0.7
Virgin Australia Regional Airlines	84	84	77	91.7	76	90.5	0	0.0
All Airlines	231	230	208	90.4	202	87.8	1	0.4
Geraldton-Perth								
QantasLink	52	50	47	94.0	48	96.0	2	3.8
Virgin Australia Regional Airlines	97	97	87	89.7	88	90.7	0	0.0
All Airlines	149	147	134	91.2	136	92.5	2	1.3
Gladstone-Brisbane								
QantasLink	235	226	199	88.1	203	89.8	9	3.8
Virgin Australia	8	8	7	87.5	8	100.0	0	0.0
Virgin Australia Regional Airlines	147	146	125	85.6	118	80.8	1	0.7
All Airlines	390	380	331	87.1	329	86.6	10	2.6
Gold Coast-Adelaide								
Jetstar	32	32	30	93.8	28	87.5	0	0.0
Virgin Australia	31	31	30	96.8	29	93.5	0	0.0
All Airlines	63	63	60	95.2	57	90.5	0	0.0
Gold Coast-Melbourne								
Jetstar	170	168	147	87.5	156	92.9	2	1.2
Tigerair	82	82	64	78.0	63	76.8	0	0.0
Virgin Australia	184	184	170	92.4	164	89.1	0	0.0
All Airlines	436	434	381	87.8	383	88.2	2	0.5
Gold Coast-Sydney								
Jetstar	294	288	251	87.2	249	86.5	6	2.0
Qantas	93	93	77	82.8	81	87.1	0	0.0
Tigerair	116	115	102	88.7	98	85.2	1	0.9
Virgin Australia	252	247	216	87.4	218	88.3	5	2.0
All Airlines	755	743	646	86.9	646	86.9	12	1.6
Hamilton Island-Brisbane								
QantasLink	18	18	14	77.8	17	94.4	0	0.0
Virgin Australia	31	31	29	93.5	28	90.3	0	0.0
All Airlines	49	49	43	87.8	45	91.8	0	0.0

	<i>Sectors</i>		<i>Departures On Time</i>		<i>Arrivals On Time</i>		<i>Cancellations</i>	
	<i>Sched.</i>	<i>Flown</i>	<i>No.</i>	<i>%</i>	<i>No.</i>	<i>%</i>	<i>No.</i>	<i>%</i>
Hamilton Island-Melbourne								
Jetstar	17	17	15	88.2	16	94.1	0	0.0
Virgin Australia	17	17	13	76.5	13	76.5	0	0.0
All Airlines	34	34	28	82.4	29	85.3	0	0.0
Hamilton Island-Sydney								
Jetstar	19	18	17	94.4	16	88.9	1	5.3
Qantas	9	9	8	88.9	7	77.8	0	0.0
Virgin Australia	30	30	28	93.3	28	93.3	0	0.0
All Airlines	58	57	53	93.0	51	89.5	1	1.7
Hobart-Brisbane								
Jetstar	27	27	19	70.4	20	74.1	0	0.0
Virgin Australia	31	31	19	61.3	23	74.2	0	0.0
All Airlines	58	58	38	65.5	43	74.1	0	0.0
Hobart-Melbourne								
Jetstar	190	190	154	81.1	157	82.6	0	0.0
Qantas	2	2	1	50.0	2	100.0	0	0.0
QantasLink	122	119	84	70.6	82	68.9	3	2.5
Tigerair	31	31	18	58.1	18	58.1	0	0.0
Virgin Australia	146	146	126	86.3	125	85.6	0	0.0
All Airlines	491	488	383	78.5	384	78.7	3	0.6
Hobart-Sydney								
Jetstar	65	64	52	81.3	52	81.3	1	1.5
Qantas	2	2	0	0.0	1	50.0	0	0.0
QantasLink	33	33	28	84.8	27	81.8	0	0.0
Virgin Australia	62	62	51	82.3	50	80.6	0	0.0
All Airlines	162	161	131	81.4	130	80.7	1	0.6
Kalgoorlie-Perth								
Qantas	24	24	24	100.0	23	95.8	0	0.0
QantasLink	61	59	56	94.9	57	96.6	2	3.3
Virgin Australia	40	40	38	95.0	39	97.5	0	0.0
Virgin Australia Regional Airlines	18	18	13	72.2	13	72.2	0	0.0
All Airlines	143	141	131	92.9	132	93.6	2	1.4
Karratha-Perth								
Qantas	110	103	98	95.1	99	96.1	7	6.4
QantasLink	108	104	96	92.3	94	90.4	4	3.7
Virgin Australia	68	67	62	92.5	59	88.1	1	1.5
Virgin Australia Regional Airlines	18	18	18	100.0	17	94.4	0	0.0
All Airlines	304	292	274	93.8	269	92.1	12	3.9
Launceston-Melbourne								
Jetstar	128	127	106	83.5	106	83.5	1	0.8
QantasLink	124	124	108	87.1	106	85.5	0	0.0
Virgin Australia	94	94	82	87.2	77	81.9	0	0.0
Virgin Australia Regional Airlines	5	5	3	60.0	3	60.0	0	0.0
All Airlines	351	350	299	85.4	292	83.4	1	0.3
Launceston-Sydney								
Jetstar	60	60	51	85.0	50	83.3	0	0.0
Virgin Australia	31	31	24	77.4	24	77.4	0	0.0
All Airlines	91	91	75	82.4	74	81.3	0	0.0
Mackay-Brisbane								
Jetstar	60	60	49	81.7	51	85.0	0	0.0
QantasLink	110	110	106	96.4	104	94.5	0	0.0
Virgin Australia	159	158	152	96.2	153	96.8	1	0.6
All Airlines	329	328	307	93.6	308	93.9	1	0.3

	<i>Sectors</i>		<i>Departures On Time</i>		<i>Arrivals On Time</i>		<i>Cancellations</i>	
	<i>Sched.</i>	<i>Flown</i>	<i>No.</i>	<i>%</i>	<i>No.</i>	<i>%</i>	<i>No.</i>	<i>%</i>
Melbourne-Adelaide								
Jetstar	106	105	93	88.6	91	86.7	1	0.9
Qantas	295	295	274	92.9	264	89.5	0	0.0
Tigerair	80	80	74	92.5	71	88.8	0	0.0
Virgin Australia	279	279	251	90.0	246	88.2	0	0.0
All Airlines	760	759	692	91.2	672	88.5	1	0.1
Melbourne-Brisbane								
Jetstar	115	113	86	76.1	93	82.3	2	1.7
Qantas	435	431	392	91.0	383	88.9	4	0.9
Tigerair	121	121	101	83.5	104	86.0	0	0.0
Virgin Australia	402	398	371	93.2	359	90.2	4	1.0
All Airlines	1 073	1 063	950	89.4	939	88.3	10	0.9
Melbourne-Cairns								
Jetstar	61	61	46	75.4	52	85.2	0	0.0
Qantas	31	31	28	90.3	28	90.3	0	0.0
Tigerair	31	31	30	96.8	29	93.5	0	0.0
Virgin Australia	31	31	28	90.3	28	90.3	0	0.0
All Airlines	154	154	132	85.7	137	89.0	0	0.0
Melbourne-Canberra								
Qantas	185	185	167	90.3	166	89.7	0	0.0
QantasLink	87	81	68	84.0	65	80.2	6	6.9
Virgin Australia	157	155	144	92.9	143	92.3	2	1.3
Virgin Australia Regional Airlines	32	31	21	67.7	22	71.0	1	3.1
All Airlines	461	452	400	88.5	396	87.6	9	2.0
Melbourne-Darwin								
Jetstar	23	23	21	91.3	22	95.7	0	0.0
Qantas	27	27	24	88.9	23	85.2	0	0.0
Virgin Australia	31	31	27	87.1	30	96.8	0	0.0
All Airlines	81	81	72	88.9	75	92.6	0	0.0
Melbourne-Gold Coast								
Jetstar	171	171	134	78.4	143	83.6	0	0.0
Tigerair	82	82	73	89.0	68	82.9	0	0.0
Virgin Australia	184	184	169	91.8	170	92.4	0	0.0
All Airlines	437	437	376	86.0	381	87.2	0	0.0
Melbourne-Hamilton Island								
Jetstar	17	17	17	100.0	17	100.0	0	0.0
Virgin Australia	17	17	15	88.2	13	76.5	0	0.0
All Airlines	34	34	32	94.1	30	88.2	0	0.0
Melbourne-Hobart								
Jetstar	190	190	156	82.1	160	84.2	0	0.0
Qantas	2	2	2	100.0	2	100.0	0	0.0
QantasLink	122	119	75	63.0	71	59.7	3	2.5
Tigerair	31	31	21	67.7	18	58.1	0	0.0
Virgin Australia	146	146	130	89.0	124	84.9	0	0.0
All Airlines	491	488	384	78.7	375	76.8	3	0.6
Melbourne-Launceston								
Jetstar	128	127	110	86.6	108	85.0	1	0.8
QantasLink	124	124	112	90.3	100	80.6	0	0.0
Virgin Australia	94	94	83	88.3	79	84.0	0	0.0
Virgin Australia Regional Airlines	5	5	4	80.0	3	60.0	0	0.0
All Airlines	351	350	309	88.3	290	82.9	1	0.3

	<i>Sectors</i>		<i>Departures On Time</i>		<i>Arrivals On Time</i>		<i>Cancellations</i>	
	<i>Sched.</i>	<i>Flown</i>	<i>No.</i>	<i>%</i>	<i>No.</i>	<i>%</i>	<i>No.</i>	<i>%</i>
Melbourne-Mildura								
QantasLink	89	89	75	84.3	73	82.0	0	0.0
Regional Express	85	85	80	94.1	79	92.9	0	0.0
Virgin Australia	31	31	30	96.8	29	93.5	0	0.0
All Airlines	205	205	185	90.2	181	88.3	0	0.0
Melbourne-Newcastle								
Jetstar	92	92	78	84.8	79	85.9	0	0.0
Virgin Australia	33	33	32	97.0	31	93.9	0	0.0
All Airlines	125	125	110	88.0	110	88.0	0	0.0
Melbourne-Perth								
Jetstar	70	68	61	89.7	62	91.2	2	2.9
Qantas	225	225	180	80.0	152	67.6	0	0.0
Tigerair	59	58	53	91.4	49	84.5	1	1.7
Virgin Australia	142	142	125	88.0	113	79.6	0	0.0
All Airlines	496	493	419	85.0	376	76.3	3	0.6
Melbourne-Sunshine Coast								
Jetstar	61	60	50	83.3	57	95.0	1	1.6
Virgin Australia	31	31	29	93.5	28	90.3	0	0.0
All Airlines	92	91	79	86.8	85	93.4	1	1.1
Melbourne-Sydney								
Jetstar	346	341	274	80.4	266	78.0	5	1.4
Qantas	1 072	1 053	904	85.8	871	82.7	19	1.8
Tigerair	224	223	177	79.4	171	76.7	1	0.4
Virgin Australia	816	800	742	92.8	707	88.4	16	2.0
All Airlines	2 458	2 417	2 097	86.8	2 015	83.4	41	1.7
Mildura-Melbourne								
QantasLink	89	89	80	89.9	79	88.8	0	0.0
Regional Express	85	85	79	92.9	77	90.6	0	0.0
Virgin Australia	31	31	30	96.8	30	96.8	0	0.0
All Airlines	205	205	189	92.2	186	90.7	0	0.0
Moranbah-Brisbane								
QantasLink	126	121	112	92.6	112	92.6	5	4.0
Virgin Australia Regional Airlines	75	75	68	90.7	65	86.7	0	0.0
All Airlines	201	196	180	91.8	177	90.3	5	2.5
Mount Isa-Brisbane								
Qantas	55	54	51	94.4	51	94.4	1	1.8
Virgin Australia	22	22	22	100.0	22	100.0	0	0.0
All Airlines	77	76	73	96.1	73	96.1	1	1.3
Newcastle-Brisbane								
Jetstar	79	79	70	88.6	68	86.1	0	0.0
QantasLink	71	71	50	70.4	57	80.3	0	0.0
Virgin Australia	84	84	80	95.2	79	94.0	0	0.0
All Airlines	234	234	200	85.5	204	87.2	0	0.0
Newcastle-Melbourne								
Jetstar	92	92	87	94.6	84	91.3	0	0.0
Virgin Australia	33	33	28	84.8	27	81.8	0	0.0
All Airlines	125	125	115	92.0	111	88.8	0	0.0
Newman-Perth								
Qantas	89	89	89	100.0	88	98.9	0	0.0
QantasLink	67	67	62	92.5	63	94.0	0	0.0
Virgin Australia	30	30	30	100.0	29	96.7	0	0.0
Virgin Australia Regional Airlines	5	5	4	80.0	4	80.0	0	0.0
All Airlines	191	191	185	96.9	184	96.3	0	0.0

	<i>Sectors</i>		<i>Departures On Time</i>		<i>Arrivals On Time</i>		<i>Cancellations</i>	
	<i>Sched.</i>	<i>Flown</i>	<i>No.</i>	<i>%</i>	<i>No.</i>	<i>%</i>	<i>No.</i>	<i>%</i>
Perth-Adelaide								
Jetstar	33	33	30	90.9	30	90.9	0	0.0
Qantas	119	119	111	93.3	113	95.0	0	0.0
Virgin Australia	71	71	66	93.0	68	95.8	0	0.0
All Airlines	223	223	207	92.8	211	94.6	0	0.0
Perth-Brisbane								
Qantas	124	124	116	93.5	113	91.1	0	0.0
Virgin Australia	108	108	100	92.6	105	97.2	0	0.0
All Airlines	232	232	216	93.1	218	94.0	0	0.0
Perth-Broome								
Qantas	26	26	25	96.2	24	92.3	0	0.0
QantasLink	58	57	53	93.0	51	89.5	1	1.7
Virgin Australia	8	8	7	87.5	7	87.5	0	0.0
Virgin Australia Regional Airlines	32	32	27	84.4	22	68.8	0	0.0
All Airlines	124	123	112	91.1	104	84.6	1	0.8
Perth-Darwin								
Qantas	36	36	34	94.4	35	97.2	0	0.0
Virgin Australia	31	31	28	90.3	27	87.1	0	0.0
All Airlines	67	67	62	92.5	62	92.5	0	0.0
Perth-Geraldton								
QantasLink	52	50	45	90.0	46	92.0	2	3.8
Virgin Australia Regional Airlines	93	93	84	90.3	81	87.1	0	0.0
All Airlines	145	143	129	90.2	127	88.8	2	1.4
Perth-Kalgoorlie								
Qantas	24	24	24	100.0	24	100.0	0	0.0
QantasLink	60	59	57	96.6	56	94.9	1	1.7
Virgin Australia	39	39	39	100.0	38	97.4	0	0.0
Virgin Australia Regional Airlines	18	18	12	66.7	12	66.7	0	0.0
All Airlines	141	140	132	94.3	130	92.9	1	0.7
Perth-Karratha								
Qantas	110	104	102	98.1	99	95.2	6	5.5
QantasLink	109	104	93	89.4	94	90.4	5	4.6
Virgin Australia	68	68	67	98.5	62	91.2	0	0.0
Virgin Australia Regional Airlines	18	18	17	94.4	15	83.3	0	0.0
All Airlines	305	294	279	94.9	270	91.8	11	3.6
Perth-Melbourne								
Jetstar	69	67	56	83.6	59	88.1	2	2.9
Qantas	224	224	181	80.8	198	88.4	0	0.0
Tigerair	60	59	51	86.4	53	89.8	1	1.7
Virgin Australia	142	142	129	90.8	130	91.5	0	0.0
All Airlines	495	492	417	84.8	440	89.4	3	0.6
Perth-Newman								
Qantas	89	89	87	97.8	85	95.5	0	0.0
QantasLink	67	67	61	91.0	61	91.0	0	0.0
Virgin Australia	30	30	28	93.3	28	93.3	0	0.0
Virgin Australia Regional Airlines	5	5	5	100.0	5	100.0	0	0.0
All Airlines	191	191	181	94.8	179	93.7	0	0.0
Perth-Port Hedland								
Qantas	114	114	109	95.6	108	94.7	0	0.0
QantasLink	49	47	44	93.6	42	89.4	2	4.1
Virgin Australia	44	44	43	97.7	40	90.9	0	0.0
All Airlines	207	205	196	95.6	190	92.7	2	1.0

	<i>Sectors</i>		<i>Departures On Time</i>		<i>Arrivals On Time</i>		<i>Cancellations</i>	
	<i>Sched.</i>	<i>Flown</i>	<i>No.</i>	<i>%</i>	<i>No.</i>	<i>%</i>	<i>No.</i>	<i>%</i>
Perth-Sydney								
Jetstar	31	31	23	74.2	28	90.3	0	0.0
Qantas	206	206	179	86.9	187	90.8	0	0.0
Tigerair	26	26	23	88.5	24	92.3	0	0.0
Virgin Australia	118	117	110	94.0	109	93.2	1	0.8
All Airlines	381	380	335	88.2	348	91.6	1	0.3
Port Hedland-Perth								
Qantas	114	114	109	95.6	110	96.5	0	0.0
QantasLink	49	47	46	97.9	46	97.9	2	4.1
Virgin Australia	44	44	42	95.5	42	95.5	0	0.0
All Airlines	207	205	197	96.1	198	96.6	2	1.0
Port Lincoln-Adelaide								
QantasLink	102	101	88	87.1	84	83.2	1	1.0
Regional Express	212	210	195	92.9	191	91.0	2	0.9
All Airlines	314	311	283	91.0	275	88.4	3	1.0
Port Macquarie-Sydney								
QantasLink	137	135	104	77.0	82	60.7	2	1.5
Virgin Australia Regional Airlines	62	62	55	88.7	52	83.9	0	0.0
All Airlines	199	197	159	80.7	134	68.0	2	1.0
Proserpine-Brisbane								
Jetstar	27	27	26	96.3	25	92.6	0	0.0
Virgin Australia	53	53	52	98.1	52	98.1	0	0.0
All Airlines	80	80	78	97.5	77	96.3	0	0.0
Rockhampton-Brisbane								
QantasLink	202	199	162	81.4	153	76.9	3	1.5
Virgin Australia	97	96	90	93.8	90	93.8	1	1.0
Virgin Australia Regional Airlines	114	113	105	92.9	101	89.4	1	0.9
All Airlines	413	408	357	87.5	344	84.3	5	1.2
Sunshine Coast-Melbourne								
Jetstar	61	60	52	86.7	53	88.3	1	1.6
Virgin Australia	31	31	28	90.3	27	87.1	0	0.0
All Airlines	92	91	80	87.9	80	87.9	1	1.1
Sunshine Coast-Sydney								
Jetstar	88	86	73	84.9	75	87.2	2	2.3
Virgin Australia	31	31	29	93.5	29	93.5	0	0.0
All Airlines	119	117	102	87.2	104	88.9	2	1.7
Sydney-Adelaide								
Jetstar	118	117	106	90.6	104	88.9	1	0.8
Qantas	244	244	205	84.0	203	83.2	0	0.0
QantasLink	21	20	16	80.0	15	75.0	1	4.8
Tigerair	31	31	27	87.1	26	83.9	0	0.0
Virgin Australia	175	175	158	90.3	156	89.1	0	0.0
All Airlines	589	587	512	87.2	504	85.9	2	0.3
Sydney-Albury								
QantasLink	93	93	78	83.9	81	87.1	0	0.0
Regional Express	111	111	98	88.3	100	90.1	0	0.0
Virgin Australia Regional Airlines	62	62	58	93.5	59	95.2	0	0.0
All Airlines	266	266	234	88.0	240	90.2	0	0.0
Sydney-Armidale								
QantasLink	138	136	108	79.4	107	78.7	2	1.4
Regional Express	80	80	69	86.3	66	82.5	0	0.0
All Airlines	218	216	177	81.9	173	80.1	2	0.9

	<i>Sectors</i>		<i>Departures On Time</i>		<i>Arrivals On Time</i>		<i>Cancellations</i>	
	<i>Sched.</i>	<i>Flown</i>	<i>No.</i>	<i>%</i>	<i>No.</i>	<i>%</i>	<i>No.</i>	<i>%</i>
Sydney-Ayers Rock								
Jetstar	28	27	25	92.6	27	100.0	1	3.6
Virgin Australia	31	31	29	93.5	29	93.5	0	0.0
All Airlines	59	58	54	93.1	56	96.6	1	1.7
Sydney-Ballina								
Jetstar	66	65	56	86.2	57	87.7	1	1.5
Regional Express	26	26	24	92.3	22	84.6	0	0.0
Virgin Australia	31	31	30	96.8	30	96.8	0	0.0
All Airlines	123	122	110	90.2	109	89.3	1	0.8
Sydney-Brisbane								
Jetstar	164	162	125	77.2	125	77.2	2	1.2
Qantas	598	590	502	85.1	492	83.4	8	1.3
Tigerair	95	95	91	95.8	87	91.6	0	0.0
Virgin Australia	555	543	483	89.0	474	87.3	12	2.2
All Airlines	1 412	1 390	1 201	86.4	1 178	84.7	22	1.6
Sydney-Cairns								
Jetstar	81	81	73	90.1	74	91.4	0	0.0
Qantas	72	72	64	88.9	62	86.1	0	0.0
Tigerair	31	31	30	96.8	27	87.1	0	0.0
Virgin Australia	90	90	83	92.2	82	91.1	0	0.0
All Airlines	274	274	250	91.2	245	89.4	0	0.0
Sydney-Canberra								
QantasLink	529	506	437	86.4	438	86.6	23	4.3
Virgin Australia	23	23	22	95.7	20	87.0	0	0.0
Virgin Australia Regional Airlines	285	278	260	93.5	261	93.9	7	2.5
All Airlines	837	807	719	89.1	719	89.1	30	3.6
Sydney-Coffs Harbour								
QantasLink	155	154	125	81.2	132	85.7	1	0.6
Tigerair	15	14	9	64.3	8	57.1	1	6.7
Virgin Australia	61	60	54	90.0	54	90.0	1	1.6
All Airlines	231	228	188	82.5	194	85.1	3	1.3
Sydney-Darwin								
Jetstar	19	19	16	84.2	15	78.9	0	0.0
Qantas	36	36	26	72.2	31	86.1	0	0.0
Virgin Australia	31	31	30	96.8	29	93.5	0	0.0
All Airlines	86	86	72	83.7	75	87.2	0	0.0
Sydney-Dubbo								
QantasLink	130	128	102	79.7	98	76.6	2	1.5
Regional Express	159	158	145	91.8	144	91.1	1	0.6
All Airlines	289	286	247	86.4	242	84.6	3	1.0
Sydney-Gold Coast								
Jetstar	293	288	254	88.2	252	87.5	5	1.7
Qantas	93	93	85	91.4	86	92.5	0	0.0
Tigerair	115	115	105	91.3	102	88.7	0	0.0
Virgin Australia	252	250	220	88.0	221	88.4	2	0.8
All Airlines	753	746	664	89.0	661	88.6	7	0.9
Sydney-Hamilton Island								
Jetstar	19	18	17	94.4	16	88.9	1	5.3
Qantas	9	9	9	100.0	9	100.0	0	0.0
Virgin Australia	31	31	31	100.0	29	93.5	0	0.0
All Airlines	59	58	57	98.3	54	93.1	1	1.7

	<i>Sectors</i>		<i>Departures On Time</i>		<i>Arrivals On Time</i>		<i>Cancellations</i>	
	<i>Sched.</i>	<i>Flown</i>	<i>No.</i>	<i>%</i>	<i>No.</i>	<i>%</i>	<i>No.</i>	<i>%</i>
Sydney-Hobart								
Jetstar	66	65	59	90.8	58	89.2	1	1.5
Qantas	2	2	1	50.0	0	0.0	0	0.0
QantasLink	33	33	27	81.8	27	81.8	0	0.0
Virgin Australia	62	62	58	93.5	55	88.7	0	0.0
All Airlines	163	162	145	89.5	140	86.4	1	0.6
Sydney-Launceston								
Jetstar	60	60	55	91.7	55	91.7	0	0.0
Virgin Australia	31	31	28	90.3	27	87.1	0	0.0
All Airlines	91	91	83	91.2	82	90.1	0	0.0
Sydney-Melbourne								
Jetstar	346	340	277	81.5	284	83.5	6	1.7
Qantas	1 070	1 051	930	88.5	918	87.3	19	1.8
Tigerair	224	223	176	78.9	179	80.3	1	0.4
Virgin Australia	812	795	721	90.7	702	88.3	17	2.1
All Airlines	2 452	2 409	2 104	87.3	2 083	86.5	43	1.8
Sydney-Perth								
Jetstar	32	32	26	81.3	24	75.0	0	0.0
Qantas	212	212	175	82.5	174	82.1	0	0.0
Tigerair	27	27	27	100.0	24	88.9	0	0.0
Virgin Australia	120	119	107	89.9	106	89.1	1	0.8
All Airlines	391	390	335	85.9	328	84.1	1	0.3
Sydney-Port Macquarie								
QantasLink	137	134	108	80.6	92	68.7	3	2.2
Virgin Australia Regional Airlines	62	62	55	88.7	55	88.7	0	0.0
All Airlines	199	196	163	83.2	147	75.0	3	1.5
Sydney-Sunshine Coast								
Jetstar	89	87	75	86.2	77	88.5	2	2.2
Virgin Australia	31	31	31	100.0	30	96.8	0	0.0
All Airlines	120	118	106	89.8	107	90.7	2	1.7
Sydney-Townsville								
Jetstar	18	18	13	72.2	14	77.8	0	0.0
Virgin Australia	29	29	27	93.1	27	93.1	0	0.0
All Airlines	47	47	40	85.1	41	87.2	0	0.0
Sydney-Wagga Wagga								
QantasLink	116	116	95	81.9	94	81.0	0	0.0
Regional Express	142	142	135	95.1	134	94.4	0	0.0
All Airlines	258	258	230	89.1	228	88.4	0	0.0
Townsville-Brisbane								
Jetstar	42	42	38	90.5	39	92.9	0	0.0
Qantas	151	151	144	95.4	147	97.4	0	0.0
Virgin Australia	155	155	146	94.2	149	96.1	0	0.0
All Airlines	348	348	328	94.3	335	96.3	0	0.0
Townsville-Sydney								
Jetstar	18	18	13	72.2	12	66.7	0	0.0
Virgin Australia	29	29	28	96.6	27	93.1	0	0.0
All Airlines	47	47	41	87.2	39	83.0	0	0.0
Wagga Wagga-Sydney								
QantasLink	115	115	97	84.3	94	81.7	0	0.0
Regional Express	141	141	129	91.5	117	83.0	0	0.0
All Airlines	256	256	226	88.3	211	82.4	0	0.0

Airports

On time performance is reported for all routes where the passenger load averages over 8000 passengers per month, and where two or more airlines operate in competition. The following data reports by airport against flights operated on those routes only. This month, 8 major city airports and 31 regional city airports are covered.

Airport	Departures			Arrivals		
	Sectors	On Time		Sectors	On Time	
	Flown	No.	%	Flown	No.	%
Adelaide						
Jetstar	312	281	90.1	313	278	88.8
Qantas	813	736	90.5	813	718	88.3
QantasLink	138	114	82.6	137	110	80.3
Regional Express	213	199	93.4	210	191	91.0
Tigerair	138	125	90.6	138	121	87.7
Virgin Australia	697	645	92.5	700	636	90.9
All Airlines	2 311	2 100	90.9	2 311	2 054	88.9
Relates to services to and from Brisbane, Canberra, Gold Coast, Melbourne, Perth, Port Lincoln and Sydney.						
Albury						
QantasLink	93	83	89.2	93	81	87.1
Regional Express	111	103	92.8	111	100	90.1
Virgin Australia Regional Airlines	62	59	95.2	62	59	95.2
All Airlines	266	245	92.1	266	240	90.2
Relates to services to and from Sydney only.						
Armidale						
QantasLink	135	110	81.5	136	107	78.7
Regional Express	79	66	83.5	80	66	82.5
All Airlines	214	176	82.2	216	173	80.1
Relates to services to and from Sydney only.						
Ayers Rock						
Jetstar	27	23	85.2	27	27	100.0
Virgin Australia	30	27	90.0	31	29	93.5
All Airlines	57	50	87.7	58	56	96.6
Relates to services to and from Sydney only.						
Ballina						
Jetstar	64	53	82.8	65	57	87.7
Regional Express	25	15	60.0	26	22	84.6
Virgin Australia	31	29	93.5	31	30	96.8
All Airlines	120	97	80.8	122	109	89.3
Relates to services to and from Sydney only.						
Brisbane						
Jetstar	650	556	85.5	648	550	84.9
Qantas	1 656	1 523	92.0	1 652	1 469	88.9
QantasLink	1 172	1 065	90.9	1 156	1 003	86.8
Tigerair	293	268	91.5	295	262	88.8
Virgin Australia	2 063	1 919	93.0	2 061	1 882	91.3
Virgin Australia Regional Airlines	461	412	89.4	459	398	86.7
All Airlines	6 295	5 743	91.2	6 271	5 564	88.7
Relates to services to and from Adelaide, Bundaberg, Cairns, Canberra, Darwin, Emerald, Gladstone, Hamilton Island, Hobart, Mackay, Melbourne, Moranbah, Mount Isa, Newcastle, Perth, Proserpine, Rockhampton, Sydney and Townsville.						

Airport	Departures			Arrivals		
	Sectors Flown	On Time		Sectors Flown	On Time	
		No.	%		No.	%
Broome						
Qantas	26	22	84.6	26	24	92.3
QantasLink	57	54	94.7	57	51	89.5
Virgin Australia	8	6	75.0	8	7	87.5
Virgin Australia Regional Airlines	39	24	61.5	32	22	68.8
All Airlines	130	106	81.5	123	104	84.6
Relates to services to and from Perth only.						
Bundaberg						
QantasLink	125	108	86.4	125	106	84.8
Virgin Australia Regional Airlines	41	38	92.7	41	37	90.2
All Airlines	166	146	88.0	166	143	86.1
Relates to services to and from Brisbane only.						
Cairns						
Jetstar	236	220	93.2	236	214	90.7
Qantas	221	193	87.3	223	207	92.8
QantasLink	5	5	100.0	4	4	100.0
Tigerair	93	81	87.1	93	85	91.4
Virgin Australia	255	242	94.9	256	238	93.0
All Airlines	810	741	91.5	812	748	92.1
Relates to services to and from Brisbane, Melbourne and Sydney.						
Canberra						
Qantas	255	236	92.5	255	236	92.5
QantasLink	737	660	89.6	740	642	86.8
Virgin Australia	297	267	89.9	298	273	91.6
Virgin Australia Regional Airlines	307	287	93.5	309	283	91.6
All Airlines	1 596	1 450	90.9	1 602	1 434	89.5
Relates to services to and from Adelaide, Brisbane, Melbourne and Sydney.						
Coffs Harbour						
QantasLink	154	132	85.7	154	132	85.7
Tigerair	13	8	61.5	14	8	57.1
Virgin Australia	60	54	90.0	60	54	90.0
All Airlines	227	194	85.5	228	194	85.1
Relates to services to and from Sydney only.						
Darwin						
Jetstar	61	48	78.7	61	55	90.2
Qantas	146	132	90.4	146	136	93.2
Tigerair	21	20	95.2	20	19	95.0
Virgin Australia	124	115	92.7	124	114	91.9
All Airlines	352	315	89.5	351	324	92.3
Relates to services to and from Brisbane, Melbourne, Perth and Sydney.						
Dubbo						
QantasLink	127	105	82.7	128	98	76.6
Regional Express	158	143	90.5	158	144	91.1
All Airlines	285	248	87.0	286	242	84.6
Relates to services to and from Sydney only.						

Airport	Departures			Arrivals		
	Sectors	On Time		Sectors	On Time	
	Flown	No.	%	Flown	No.	%
Emerald						
QantasLink	146	131	89.7	146	131	89.7
Virgin Australia Regional Airlines	84	77	91.7	84	76	90.5
All Airlines	230	208	90.4	230	207	90.0
Relates to services to and from Brisbane only.						
Geraldton						
QantasLink	50	47	94.0	50	46	92.0
Virgin Australia Regional Airlines	97	87	89.7	93	81	87.1
All Airlines	147	134	91.2	143	127	88.8
Relates to services to and from Perth only.						
Gladstone						
QantasLink	226	199	88.1	214	194	90.7
Virgin Australia	8	7	87.5	8	8	100.0
Virgin Australia Regional Airlines	146	125	85.6	147	126	85.7
All Airlines	380	331	87.1	369	328	88.9
Relates to services to and from Brisbane only.						
Gold Coast						
Jetstar	488	428	87.7	492	426	86.6
Qantas	93	77	82.8	93	86	92.5
Tigerair	197	166	84.3	197	170	86.3
Virgin Australia	462	416	90.0	465	422	90.8
All Airlines	1 240	1 087	87.7	1 247	1 104	88.5
Relates to services to and from Adelaide, Melbourne and Sydney.						
Hamilton Island						
Jetstar	35	32	91.4	35	33	94.3
Qantas	9	8	88.9	9	9	100.0
QantasLink	18	14	77.8	18	17	94.4
Virgin Australia	78	70	89.7	79	71	89.9
All Airlines	140	124	88.6	141	130	92.2
Relates to services to and from Brisbane, Melbourne and Sydney.						
Hobart						
Jetstar	281	225	80.1	282	242	85.8
Qantas	4	1	25.0	4	2	50.0
QantasLink	152	112	73.7	152	98	64.5
Tigerair	31	18	58.1	31	18	58.1
Virgin Australia	239	196	82.0	239	207	86.6
All Airlines	707	552	78.1	708	567	80.1
Relates to services to and from Brisbane, Melbourne and Sydney.						
Kalgoorlie						
Qantas	24	24	100.0	24	24	100.0
QantasLink	59	56	94.9	59	56	94.9
Virgin Australia	40	38	95.0	39	38	97.4
Virgin Australia Regional Airlines	18	13	72.2	18	12	66.7
All Airlines	141	131	92.9	140	130	92.9
Relates to services to and from Perth only.						

Airport	Departures			Arrivals		
	Sectors	On Time		Sectors	On Time	
	Flown	No.	%	Flown	No.	%
Karratha						
Qantas	103	98	95.1	104	99	95.2
QantasLink	104	96	92.3	104	94	90.4
Virgin Australia	67	62	92.5	68	62	91.2
Virgin Australia Regional Airlines	18	18	100.0	18	15	83.3
All Airlines	292	274	93.8	294	270	91.8
Relates to services to and from Perth only.						
Launceston						
Jetstar	187	157	84.0	187	163	87.2
QantasLink	124	108	87.1	124	100	80.6
Virgin Australia	125	106	84.8	125	106	84.8
Virgin Australia Regional Airlines	5	3	60.0	5	3	60.0
All Airlines	441	374	84.8	441	372	84.4
Relates to services to and from Melbourne and Sydney.						
Mackay						
Jetstar	60	49	81.7	60	53	88.3
QantasLink	110	106	96.4	111	104	93.7
Virgin Australia	158	152	96.2	159	153	96.2
All Airlines	328	307	93.6	330	310	93.9
Relates to services to and from Brisbane only.						
Melbourne						
Jetstar	1 368	1 126	82.3	1 363	1 178	86.4
Qantas	2 249	1 971	87.6	2 246	1 990	88.6
QantasLink	413	330	79.9	415	342	82.4
Regional Express	85	80	94.1	85	77	90.6
Tigerair	626	529	84.5	627	507	80.9
Virgin Australia	2 372	2 176	91.7	2 371	2 094	88.3
Virgin Australia Regional Airlines	36	25	69.4	35	23	65.7
All Airlines	7 149	6 237	87.2	7 142	6 211	87.0
Relates to services to and from Adelaide, Brisbane, Cairns, Canberra, Darwin, Gold Coast, Hamilton Island, Hobart, Launceston, Mildura, Newcastle, Perth, Sunshine Coast and Sydney.						
Mildura						
QantasLink	89	80	89.9	89	73	82.0
Regional Express	85	79	92.9	85	79	92.9
Virgin Australia	31	30	96.8	31	29	93.5
All Airlines	205	189	92.2	205	181	88.3
Relates to services to and from Melbourne only.						
Moranbah						
QantasLink	121	112	92.6	126	119	94.4
Virgin Australia Regional Airlines	75	68	90.7	75	73	97.3
All Airlines	196	180	91.8	201	192	95.5
Relates to services to and from Brisbane only.						
Mount Isa						
Qantas	54	51	94.4	55	53	96.4
Virgin Australia	22	22	100.0	22	21	95.5
All Airlines	76	73	96.1	77	74	96.1
Relates to services to and from Brisbane only.						

Airport	Departures			Arrivals		
	Sectors	On Time		Sectors	On Time	
	Flown	No.	%	Flown	No.	%
Newcastle						
Jetstar	171	157	91.8	171	149	87.1
QantasLink	71	50	70.4	72	51	70.8
Virgin Australia	117	108	92.3	117	112	95.7
All Airlines	359	315	87.7	360	312	86.7
Relates to services to and from Brisbane and Melbourne.						
Newman						
Qantas	89	89	100.0	89	85	95.5
QantasLink	67	62	92.5	67	61	91.0
Virgin Australia	30	30	100.0	30	28	93.3
Virgin Australia Regional Airlines	5	4	80.0	5	5	100.0
All Airlines	191	185	96.9	191	179	93.7
Relates to services to and from Perth only.						
Perth						
Jetstar	131	109	83.2	133	116	87.2
Qantas	1 066	968	90.8	1 069	919	86.0
QantasLink	384	353	91.9	384	361	94.0
Tigerair	85	74	87.1	85	73	85.9
Virgin Australia	658	617	93.8	660	584	88.5
Virgin Australia Regional Airlines	166	145	87.3	177	148	83.6
All Airlines	2 490	2 266	91.0	2 508	2 201	87.8
Relates to services to and from Adelaide, Brisbane, Broome, Darwin, Geraldton, Kalgoorlie, Karratha, Melbourne, Newman, Port Hedland and Sydney.						
Port Hedland						
Qantas	114	109	95.6	114	108	94.7
QantasLink	47	46	97.9	47	42	89.4
Virgin Australia	44	42	95.5	44	40	90.9
All Airlines	205	197	96.1	205	190	92.7
Relates to services to and from Perth only.						
Port Lincoln						
QantasLink	101	88	87.1	102	85	83.3
Regional Express	210	195	92.9	213	194	91.1
All Airlines	311	283	91.0	315	279	88.6
Relates to services to and from Adelaide only.						
Port Macquarie						
QantasLink	135	104	77.0	134	92	68.7
Virgin Australia Regional Airlines	62	55	88.7	62	55	88.7
All Airlines	197	159	80.7	196	147	75.0
Relates to services to and from Sydney only.						
Proserpine						
Jetstar	27	26	96.3	27	22	81.5
Virgin Australia	53	52	98.1	53	53	100.0
All Airlines	80	78	97.5	80	75	93.8
Relates to services to and from Brisbane only.						

Airport	Departures			Arrivals		
	Sectors	On Time		Sectors	On Time	
	Flown	No.	%	Flown	No.	%
Rockhampton						
QantasLink	199	162	81.4	219	195	89.0
Virgin Australia	96	90	93.8	96	87	90.6
Virgin Australia Regional Airlines	113	105	92.9	114	101	88.6
All Airlines	408	357	87.5	429	383	89.3
Relates to services to and from Brisbane only.						
Sunshine Coast						
Jetstar	146	125	85.6	147	134	91.2
Virgin Australia	62	57	91.9	62	58	93.5
All Airlines	208	182	87.5	209	192	91.9
Relates to services to and from Melbourne and Sydney.						
Sydney						
Jetstar	1 379	1 177	85.4	1 376	1 137	82.6
Qantas	2 309	1 997	86.5	2 309	1 970	85.3
QantasLink	1 320	1 096	83.0	1 315	1 087	82.7
Regional Express	517	471	91.1	514	409	79.6
Tigerair	536	465	86.8	533	441	82.7
Virgin Australia	2 332	2 112	90.6	2 321	2 069	89.1
Virgin Australia Regional Airlines	402	373	92.8	401	359	89.5
All Airlines	8 795	7 691	87.4	8 769	7 472	85.2
Relates to services to and from Adelaide, Albury, Armidale, Ayers Rock, Ballina, Brisbane, Cairns, Canberra, Coffs Harbour, Darwin, Dubbo, Gold Coast, Hamilton Island, Hobart, Launceston, Melbourne, Perth, Port Macquarie, Sunshine Coast, Townsville and Wagga Wagga.						
Townsville						
Jetstar	60	51	85.0	60	54	90.0
Qantas	151	144	95.4	151	140	92.7
Virgin Australia	184	174	94.6	185	169	91.4
All Airlines	395	369	93.4	396	363	91.7
Relates to services to and from Brisbane and Sydney.						
Wagga Wagga						
QantasLink	115	97	84.3	116	94	81.0
Regional Express	141	129	91.5	142	134	94.4
All Airlines	256	226	88.3	258	228	88.4
Relates to services to and from Sydney only.						

Definitions

On time departure A flight departure is counted as "on time" if it departs the gate before 15 minutes after the scheduled departure time shown in the carriers' schedule.

On time arrival A flight arrival is counted as "on time" if it arrived at the gate before 15 minutes after the scheduled arrival time shown in the carriers' schedule.
Neither diverted nor cancelled flights count as on time.

Cancellation A flight removed from service within 7 days of scheduled departure is regarded as a cancellation.

On time departure percentage The percentage of on time departures is measured against the number of departures *operated* on any particular sector.

On time arrival percentage The percentage of on time arrivals is measured against the number of arrivals *operated* on any particular sector.

Cancellation percentage The percentage of cancellations is measured against the number of services *scheduled* on any particular sector.
