



Australian Government

Department of Infrastructure and Regional Development

Bureau of Infrastructure, Transport and Regional Economics

STATISTICAL REPORT



Aviation

Domestic airline on time performance
March 2014

© Commonwealth of Australia 2014

ISSN: 1832-0759

Ownership of intellectual property rights in this publication

Unless otherwise noted, copyright (and any other intellectual property rights, if any) in this publication is owned by the Commonwealth of Australia (referred to below as the Commonwealth).

Disclaimer

The material contained in this publication is made available on the understanding that the Commonwealth is not providing professional advice, and that users exercise their own skill and care with respect to its use, and seek independent advice if necessary.

The Commonwealth makes no representations or warranties as to the contents or accuracy of the information contained in this publication. To the extent permitted by law, the Commonwealth disclaims liability to any person or organisation in respect of anything done, or omitted to be done, in reliance upon information contained in this publication.

Creative Commons licence

With the exception of (a) the Coat of Arms; and (b) the Department of Infrastructure and Regional Development's photos and graphics, copyright in this publication is licensed under a Creative Commons Attribution 3.0 Australia Licence.

Creative Commons Attribution 3.0 Australia Licence is a standard form licence agreement that allows you to copy, communicate and adapt this publication provided that you attribute the work to the Commonwealth and abide by the other licence terms. A summary of the licence terms is available from <http://creativecommons.org/licenses/by/3.0/au/deed.en>. The full licence terms are available from <http://creativecommons.org/licenses/by/3.0/au/legalcode>.

Use of the Coat of Arms

The Department of the Prime Minister and Cabinet sets the terms under which the Coat of Arms is used. Please refer to the Department's Commonwealth Coat of Arms and Government branding web page <http://www.dpmmc.gov.au/guidelines/index.cfm#brand> and, in particular, the Guidelines on the use of the Commonwealth Coat of Arms publication.

An appropriate citation for this report is:

Bureau of Infrastructure, Transport and Regional Economics (BITRE), 2014, Domestic airline on time performance, Statistical Report, BITRE, Canberra ACT.

Contact us

This publication is available in PDF format. All other rights are reserved, including in relation to any Departmental logos or trade marks which may exist. For enquiries regarding the licence and any use of this publication, please contact:

Bureau of Infrastructure, Transport and Regional Economics (BITRE)
Department of Infrastructure and Regional Development
GPO Box 501, Canberra ACT 2601, Australia
Telephone: (international) +61 2 6274 7210
Fax: (international) +61 2 6274 6855
Email: bitre@infrastructure.gov.au
Website: www.bitre.gov.au

Inquiries

Should you require additional information about the statistics contained in this publication:

Telephone (02) 6274 7790 or Facsimile (02) 6274 7727

Electronic mail: AVSTATS@infrastructure.gov.au

Web site: <http://www.bitre.gov.au/statistics/aviation/otphome.aspx>

Foreword

The Bureau of Infrastructure, Transport and Regional Economics (BITRE) monitors the punctuality and reliability of major domestic airlines operating between Australian airports. The purpose of this is to allow for evaluation of overall industry and individual airline performance, so that consumers of air travel can make informed decisions.

The following domestic airlines currently report this information monthly to the BITRE: Jetstar, Qantas, QantasLink, Regional Express, Tigerair, Virgin Australia and Virgin Australia Regional Airlines. Data has been gathered since November 2003, although some airlines commenced reporting at a later date, including Jetstar which first reported in May 2004, MacAir in July 2005 and Tigerair in April 2008. MacAir ceased operations in February 2009 and data was not received for December 2008 onwards. Virgin Blue was rebranded as Virgin Australia in May 2011 and Tiger Airways was rebranded as Tigerair in July 2013 and time series data in Microsoft Excel spreadsheet format on the BITRE website have been revised to reflect these changes. Virgin Australia Regional Airlines commenced operations in May 2013. It was formed after the acquisition of Skywest by Virgin Australia and represents a combination of operations previously reported under Skywest and Virgin Australia – ATR/F100 Operations. Services operated by Skywest on behalf of Virgin Australia using ATR/F100 aircraft commenced in November 2011 and were shown separately as Virgin Australia – ATR/F100 Operations until April 2013.

Information presented in this report is for Australian domestic routes for which the passenger load averaged 8 000 or more passengers per month over the previous six months and where two or more airlines operated in competition on those routes. There were 63 routes that met this definition in March 2014. Over time, routes which meet these criteria change as airline networks and traffic levels vary.

Participating airlines report their overall monthly network performance where this is possible.

Total industry figures encompass all services operated by reporting airlines only. These airlines collectively carried over 95 per cent of total domestic passengers (regular public transport only) in 2013.

The method of capturing on time performance varies between airlines utilising different recording systems. Jetstar and Qantas jet aircraft use Aircraft Communication Addressing and Reporting System (ACARS) to electronically measure on time performance. Regional Express, Tigerair, Virgin Australia, Virgin Australia Regional Airlines and the Qantas non-jet fleet record on time performance manually using records from pilots, gate agents and/or ground crews.

After initial data is collected, aggregate reports are audited internally by participating airlines prior to publication.

Reports and detailed time series data in Microsoft Excel spreadsheet format are available from the BITRE website at: <http://www.bitre.gov.au/statistics/aviation/otphome.aspx>.

Contents

	Page
Industry performance	1
Individual routes	9
Airports	21
Definitions	27

Industry performance

For March 2014, on time performance over all routes operated by participating airlines (Jetstar, Qantas, QantasLink, Regional Express, Tigerair, Virgin Australia and Virgin Australia Regional Airlines) averaged 84.7 per cent for on time departures and 82.1 per cent for on time arrivals. Cancellations represented 1.4 per cent of all scheduled flights. The equivalent figures for March 2013 were 79.3 per cent for departures, 77.6 per cent for arrivals and 1.5 per cent for cancellations.

This month's departures on time figure was better than the long term average performance for all routes (83.6 per cent) and arrivals on time figure was the same as the long term average (82.1 per cent). The rate of cancellations was above the long term average of 1.3 per cent.

Of the major domestic airlines, Qantas achieved the highest level of on time departures for March 2014 at 88.5 per cent, followed by Virgin Australia at 85.2 per cent, Jetstar at 81.8 per cent and Tigerair at 76.0 per cent. The regional airlines were led by Regional Express at 87.1 per cent, followed by Virgin Australia Regional Airlines at 85.6 per cent and QantasLink at 82.3 per cent.

Qantas also achieved the highest on time arrivals among the major domestic airlines at 87.2 per cent, followed by Virgin Australia at 83.0 per cent, Jetstar at 81.2 per cent and Tigerair at 71.2 per cent. Regional Express was the best performing regional airline for on time arrivals at 83.4 per cent, followed by Virgin Australia Regional Airlines at 83.3 per cent and QantasLink at 77.7 per cent.

QantasLink had the highest percentage of cancellations (2.7 per cent) during the month, followed by Tigerair (1.4 per cent), Virgin Australia (1.3 per cent), Jetstar (also 1.3 per cent), Virgin Australia Regional Airlines (1.2 per cent), Qantas (0.9 per cent) and Regional Express (0.2 per cent).

Of the 63 routes which met the criteria for on time performance reporting in March 2014, the Perth-Karratha route had the highest percentage of on time departures (96.8 per cent) and the Darwin-Melbourne route had the highest percentage of on time arrivals (97.8 per cent). The Port Macquarie-Sydney route had the lowest percentage of on time departures (63.6 per cent) and the lowest percentage of on time arrivals (54.9 per cent).

Cancellations were highest on the Hamilton Island-Melbourne route at 11.4 per cent, followed by Melbourne-Hamilton Island at 8.6 per cent, Brisbane-Hamilton Island and Hamilton Island-Brisbane at 7.7 per cent and Hamilton Island-Sydney at 7.5 per cent.

Newman Airport recorded the highest percentage of on time departures (96.3 per cent) and Port Hedland Airport recorded the highest percentage of on time arrivals (97.7 per cent). Port Macquarie Airport recorded the lowest percentage of on time departures (63.6 per cent) and the lowest percentage of on time arrivals (65.3 per cent). These figures only refer to reported routes and do not cover all flights at these airports.

Table 1 On time performance for March 2014 — Total Industry

	<i>Sectors</i>		<i>Departures On Time</i>		<i>Arrivals On Time</i>		<i>Cancellations</i>	
	<i>Scheduled</i>	<i>Flown</i>	<i>No.</i>	<i>%</i>	<i>No.</i>	<i>%</i>	<i>No.</i>	<i>%</i>
Jetstar	6 708	6 622	5 416	81.8	5 376	81.2	86	1.3
Qantas	10 243	10 149	8 983	88.5	8 848	87.2	94	0.9
QantasLink	10 469	10 182	8 381	82.3	7 911	77.7	287	2.7
Regional Express	5 656	5 643	4 916	87.1	4 706	83.4	13	0.2
Tigerair	1 761	1 736	1 320	76.0	1 236	71.2	25	1.4
Virgin Australia	10 902	10 761	9 168	85.2	8 935	83.0	141	1.3
Virgin Australia Regional Airlines	2 574	2 542	2 175	85.6	2 117	83.3	32	1.2
All Airlines	48 313	47 635	40 359	84.7	39 129	82.1	678	1.4

Total airline network data (including routes not shown in this report).

Table 2 Top ten routes for on time performance for March 2014 (participating airlines only)

<i>Departures</i>		<i>Arrivals</i>	
<i>Route</i>	<i>On Time (%)</i>	<i>Route</i>	<i>On Time (%)</i>
Perth-Karratha	96.8	Darwin-Melbourne	97.8
Perth-Port Hedland	96.7	Perth-Port Hedland	97.7
Newman-Perth	96.3	Perth-Newman	96.9
Port Hedland-Perth	95.8	Newman-Perth	96.3
Perth-Kalgoorlie	95.7	Port Hedland-Perth	96.3
Karratha-Perth	95.6	Perth-Kalgoorlie	95.7
Perth-Geraldton	95.2	Perth-Karratha	95.6
Perth-Newman	94.8	Karratha-Perth	94.9
Brisbane-Hamilton Island	93.8	Adelaide-Perth	93.8
Darwin-Perth	93.7	Perth-Adelaide	92.8

Table 3 Top ten airports for on time performance for March 2014 (participating airlines and reported routes only)

<i>Departures</i>		<i>Arrivals</i>	
<i>Airport</i>	<i>On Time (%)</i>	<i>Airport</i>	<i>On Time (%)</i>
Newman	96.3	Port Hedland	97.7
Port Hedland	95.8	Newman	96.9
Karratha	95.6	Kalgoorlie	95.7
Kalgoorlie	92.8	Karratha	95.6
Perth	92.5	Geraldton	92.5
Broome	92.1	Mount Isa	91.0
Geraldton	92.1	Broome	90.5
Port Lincoln	89.1	Perth	90.2
Mount Isa	88.5	Port Lincoln	89.0
Darwin	88.3	Darwin	88.2

Total industry on time performance

Figure 1 On time performance (by month from March 2011)—Total Industry

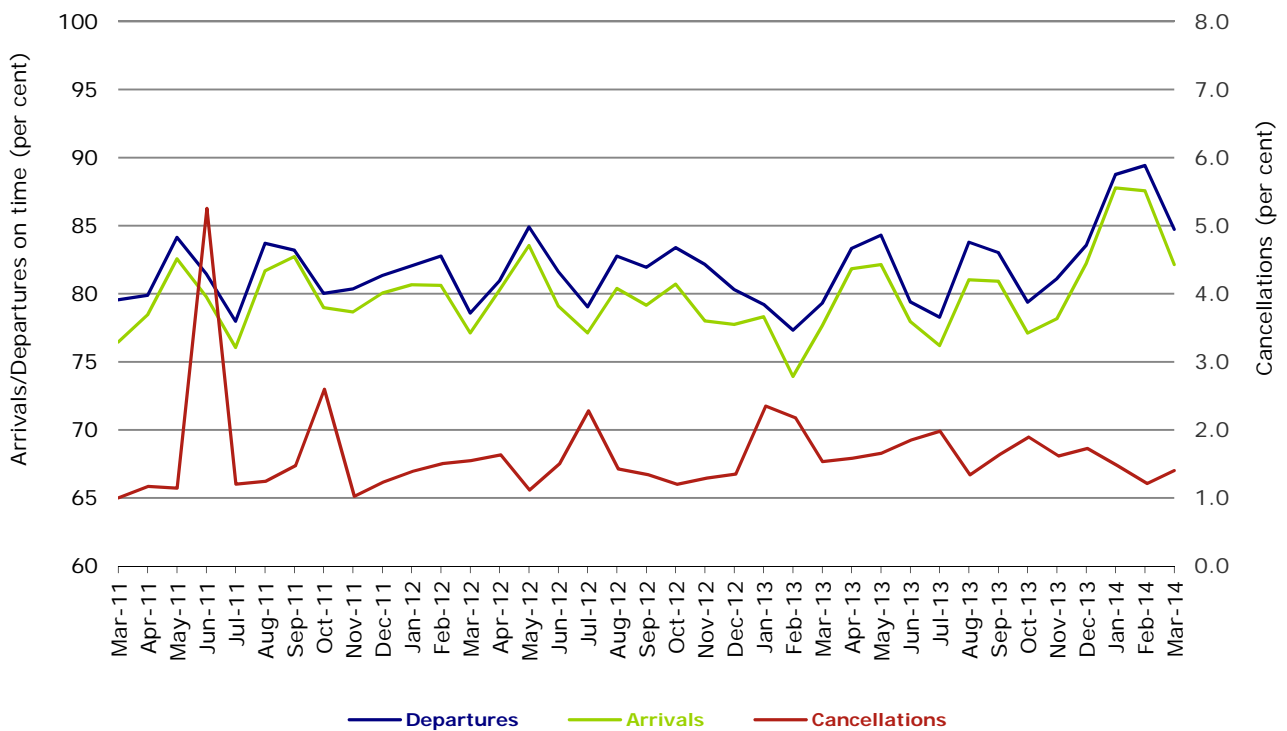
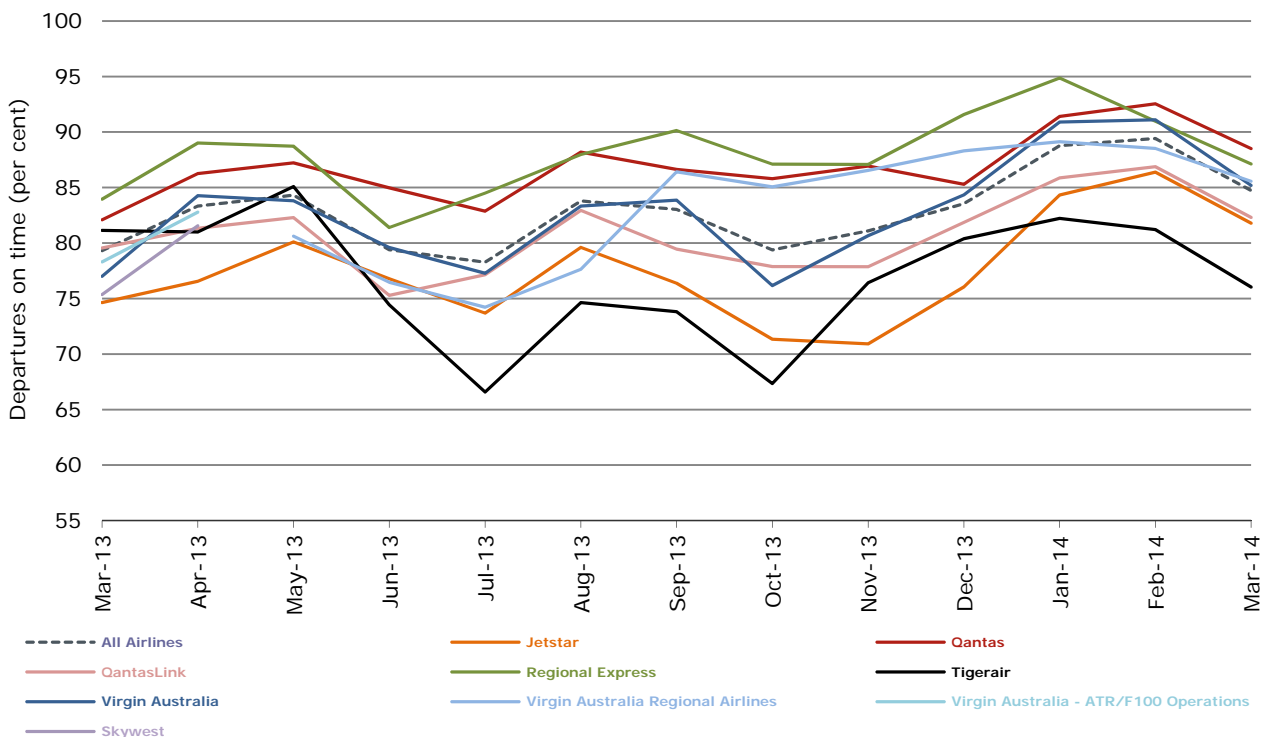
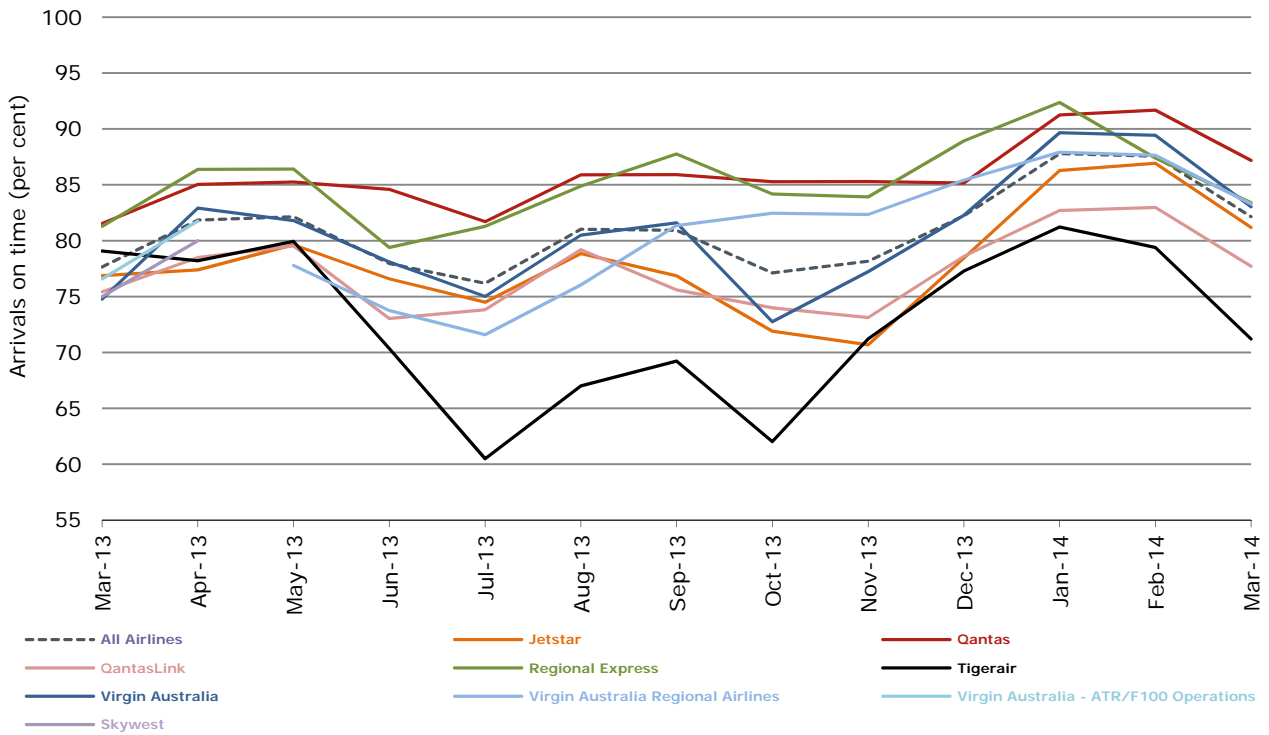


Figure 2 Departures on time (by month from March 2013)



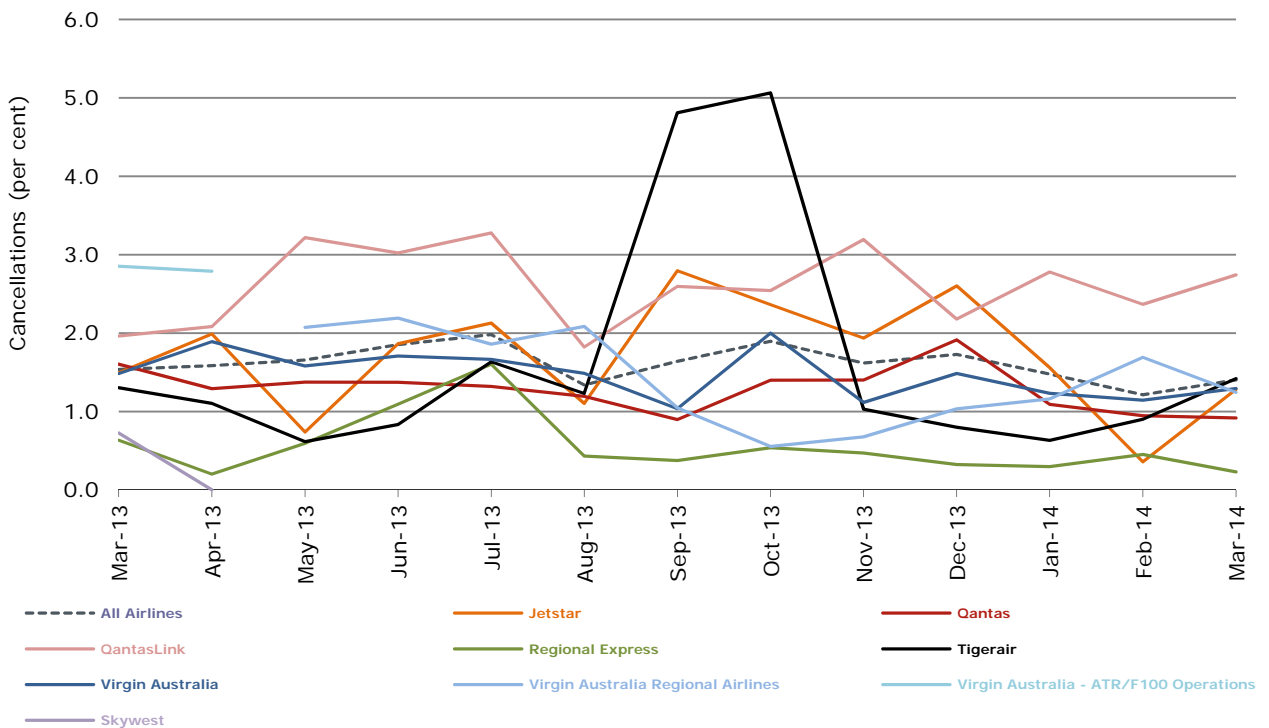
Virgin Australia Regional Airlines commenced operations in May 2013. It was formed after the acquisition of Skywest by Virgin Australia and represents a combination of operations previously reported under Skywest and Virgin Australia – ATR/F100 Operations.

Figure 3 Arrivals on time (by month from March 2013)



Virgin Australia Regional Airlines commenced operations in May 2013. It was formed after the acquisition of Skywest by Virgin Australia and represents a combination of operations previously reported under Skywest and Virgin Australia – ATR/F100 Operations.

Figure 4 Cancellations (by month from March 2013)



Virgin Australia Regional Airlines commenced operations in May 2013. It was formed after the acquisition of Skywest by Virgin Australia and represents a combination of operations previously reported under Skywest and Virgin Australia – ATR/F100 Operations.

Major domestic airlines on time performance

Figure 5 On time performance (by month from March 2011)—Jetstar

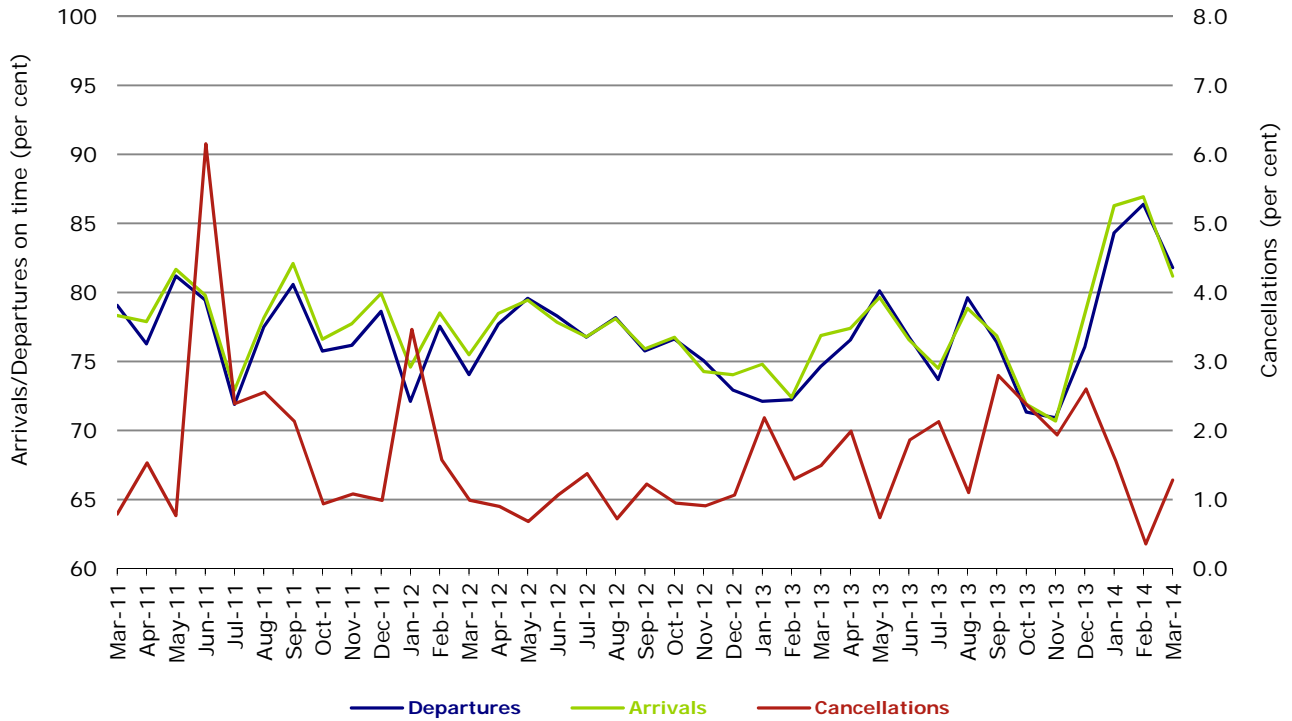


Figure 6 On time performance (by month from March 2011)—Qantas

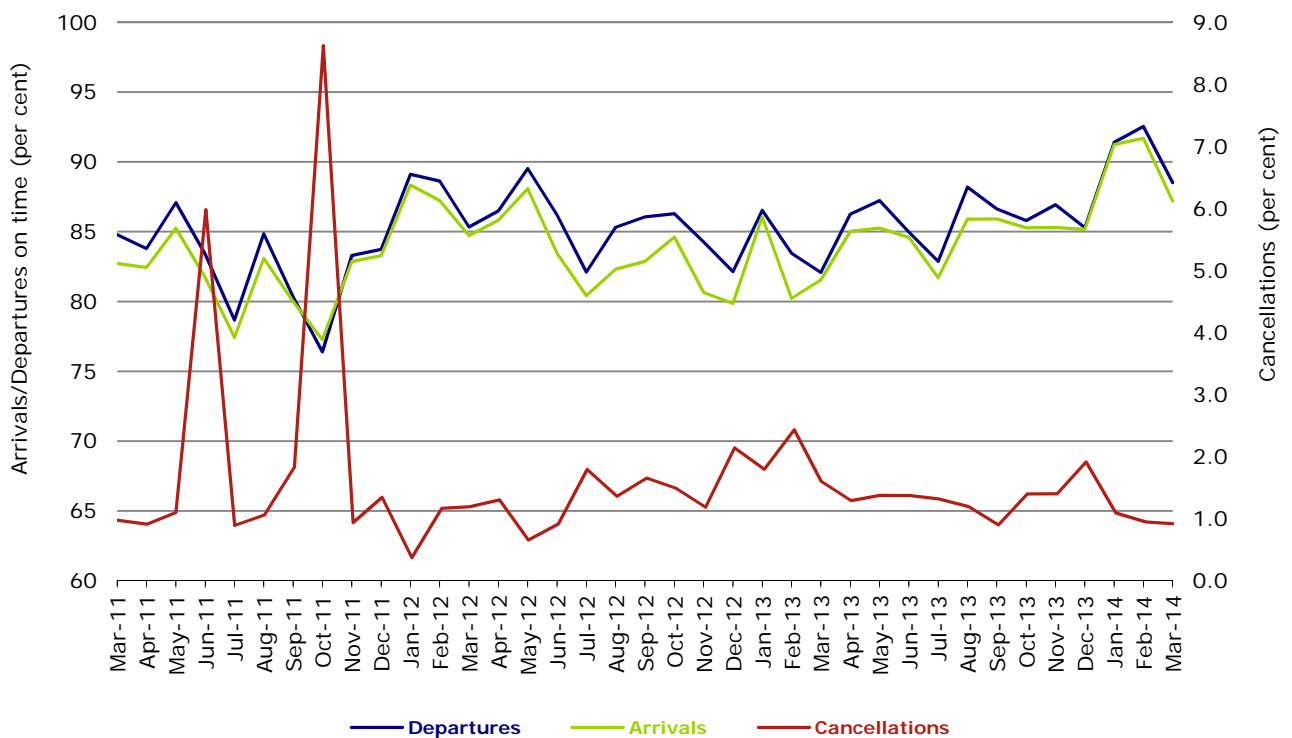
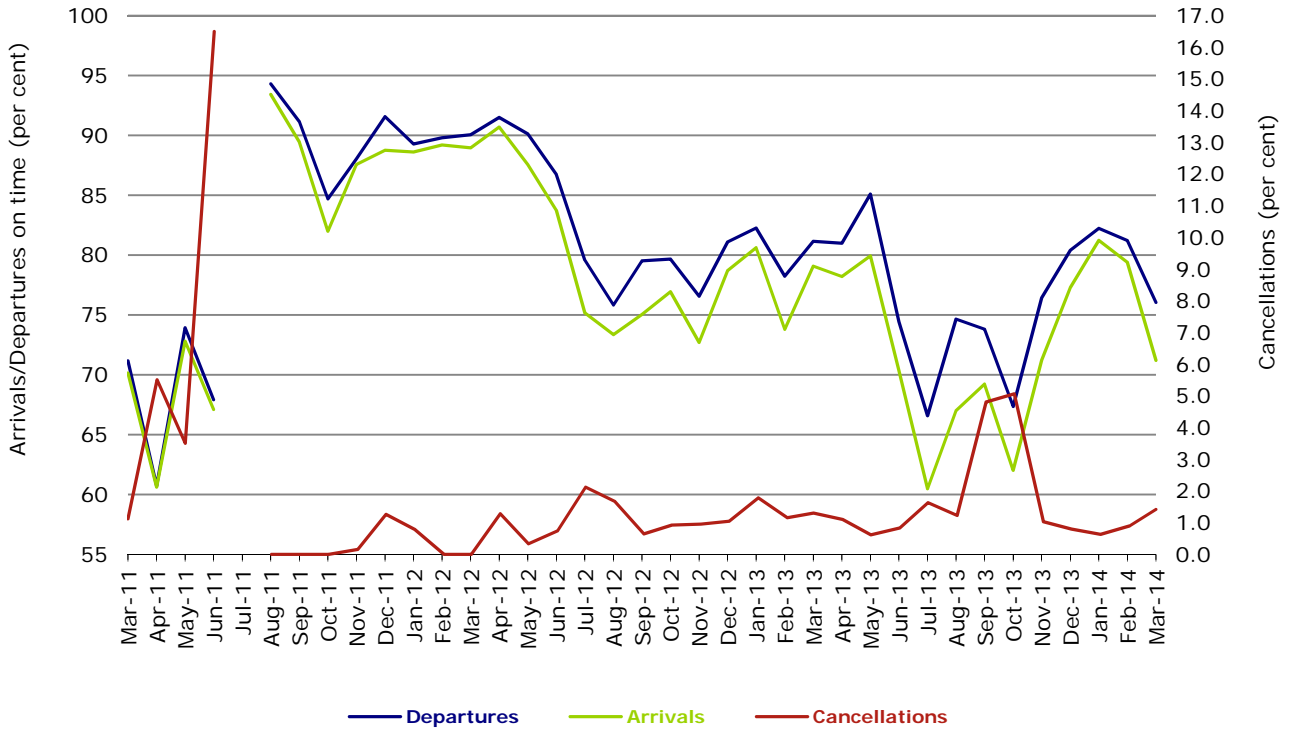
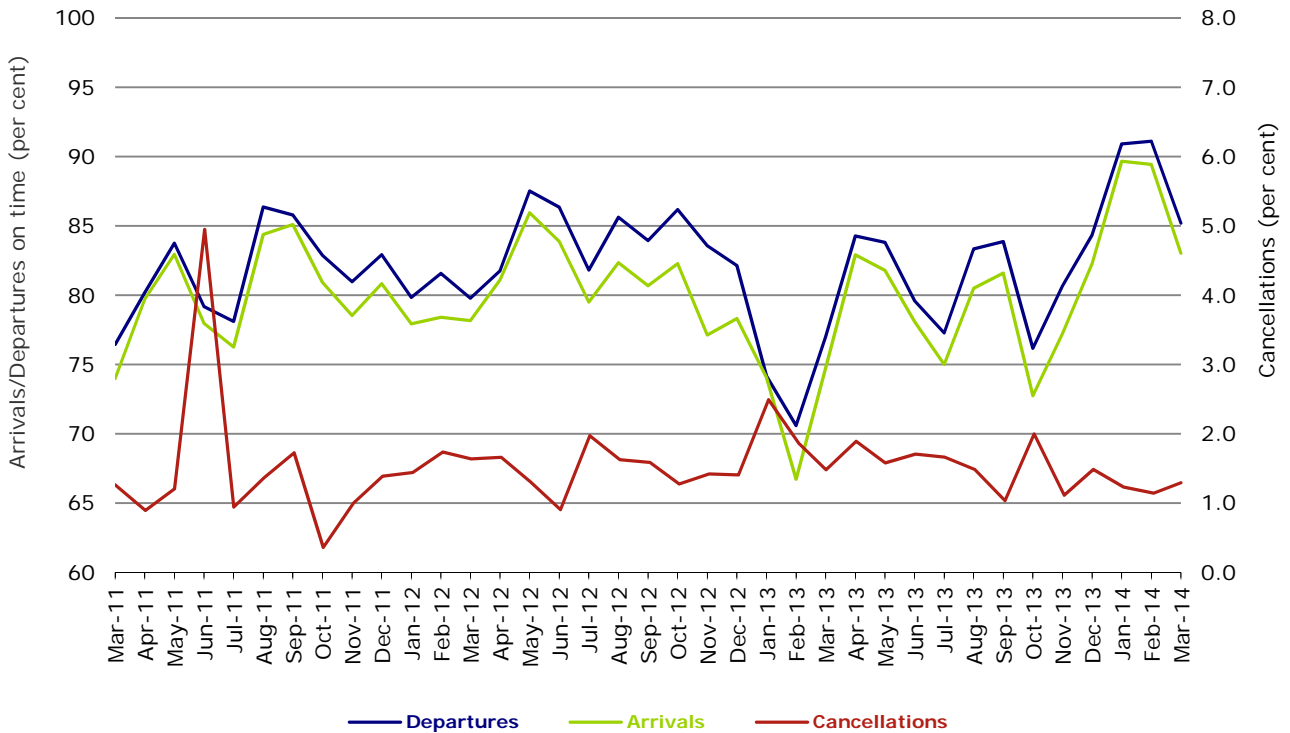


Figure 7 On time performance (by month from March 2011)—Tigerair



No data for Tigerair for July 2011 as it was grounded by CASA from 2/7/2011 to 11/8/2011.

Figure 8 On time performance (by month from March 2011)—Virgin Australia



Major regional airlines on time performance

Figure 9 On time performance (by month from March 2011)—QantasLink

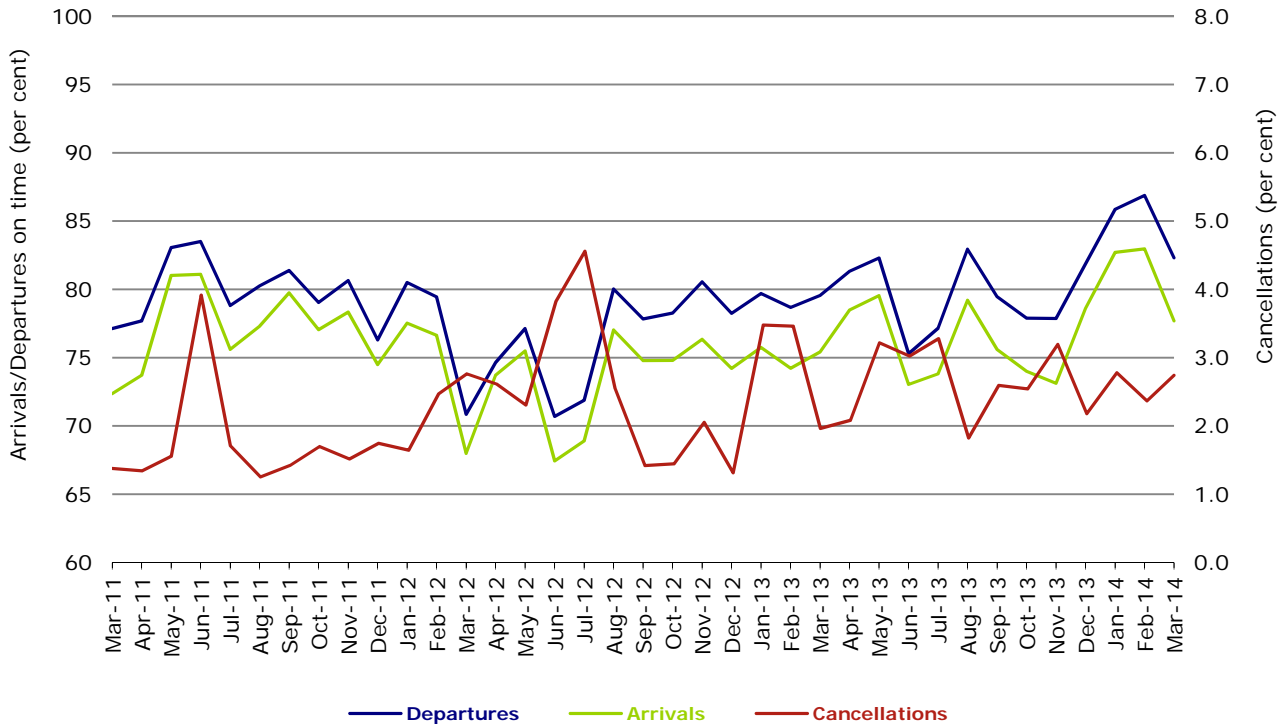


Figure 10 On time performance (by month from March 2011)—Regional Express

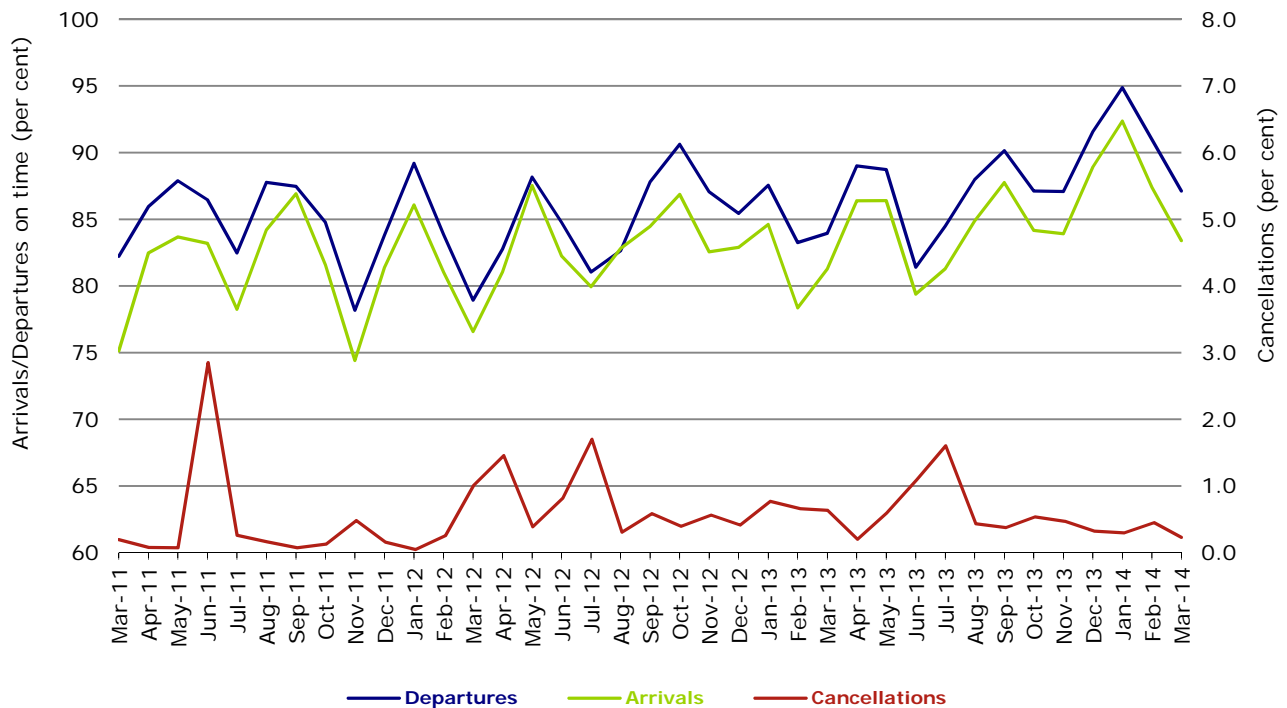
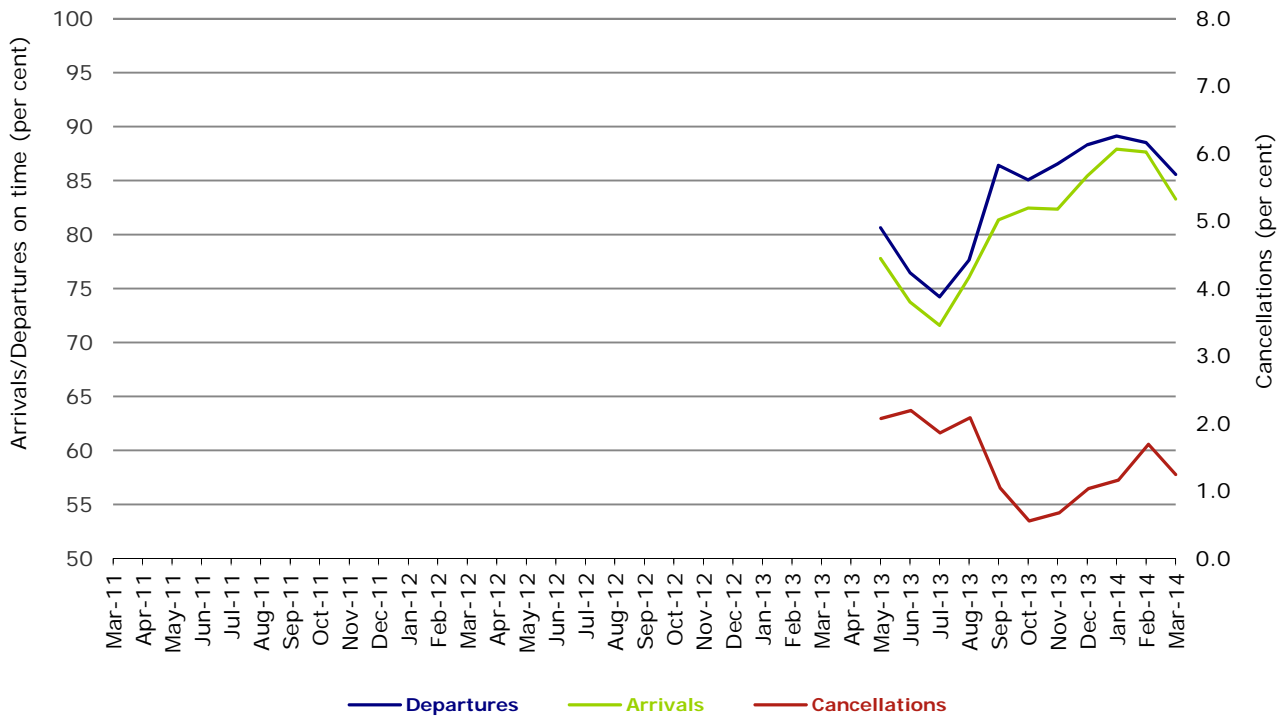


Figure 11 On time performance (by month from March 2011)
Virgin Australia Regional Airlines



Virgin Australia Regional Airlines commenced operations in May 2013. It was formed after the acquisition of Skywest by Virgin Australia and represents a combination of operations previously reported under Skywest and Virgin Australia – ATR/F100 Operations.

Individual routes

On time performance is reported for all routes where the passenger load averages over 8000 passengers per month over the previous six months, and where two or more airlines operate in competition on those routes. There are now 63 routes which meet this definition. Over time, however, routes which meet this definition may change as airline networks and traffic levels vary.

	<i>Sectors</i>		<i>Departures On Time</i>		<i>Arrivals On Time</i>		<i>Cancellations</i>	
	<i>Sched.</i>	<i>Flown</i>	<i>No.</i>	<i>%</i>	<i>No.</i>	<i>%</i>	<i>No.</i>	<i>%</i>
Adelaide-Brisbane								
Jetstar	31	31	28	90.3	29	93.5	0	0.0
Qantas	109	109	92	84.4	91	83.5	0	0.0
Tigerair	18	18	16	88.9	16	88.9	0	0.0
Virgin Australia	109	109	100	91.7	95	87.2	0	0.0
All Airlines	267	267	236	88.4	231	86.5	0	0.0
Adelaide-Canberra								
Qantas	47	47	44	93.6	43	91.5	0	0.0
QantasLink	21	21	12	57.1	12	57.1	0	0.0
Virgin Australia	26	26	25	96.2	25	96.2	0	0.0
All Airlines	94	94	81	86.2	80	85.1	0	0.0
Adelaide-Gold Coast								
Jetstar	32	32	26	81.3	26	81.3	0	0.0
Virgin Australia	31	31	29	93.5	30	96.8	0	0.0
All Airlines	63	63	55	87.3	56	88.9	0	0.0
Adelaide-Melbourne								
Jetstar	88	86	68	79.1	65	75.6	2	2.3
Qantas	290	290	254	87.6	261	90.0	0	0.0
QantasLink	18	17	16	94.1	16	94.1	1	5.6
Tigerair	76	75	56	74.7	53	70.7	1	1.3
Virgin Australia	275	274	240	87.6	240	87.6	1	0.4
All Airlines	747	742	634	85.4	635	85.6	5	0.7
Adelaide-Perth								
Jetstar	32	32	26	81.3	28	87.5	0	0.0
Qantas	114	113	107	94.7	110	97.3	1	0.9
Virgin Australia	63	63	54	85.7	57	90.5	0	0.0
All Airlines	209	208	187	89.9	195	93.8	1	0.5
Adelaide-Port Lincoln								
QantasLink	101	100	89	89.0	88	88.0	1	1.0
Regional Express	210	210	197	93.8	188	89.5	0	0.0
All Airlines	311	310	286	92.3	276	89.0	1	0.3
Adelaide-Sydney								
Jetstar	114	114	93	81.6	94	82.5	0	0.0
Qantas	265	264	230	87.1	229	86.7	1	0.4
Tigerair	21	21	18	85.7	18	85.7	0	0.0
Virgin Australia	170	170	153	90.0	147	86.5	0	0.0
All Airlines	570	569	494	86.8	488	85.8	1	0.2
Albury-Sydney								
QantasLink	114	114	84	73.7	73	64.0	0	0.0
Regional Express	114	114	100	87.7	95	83.3	0	0.0
Virgin Australia Regional Airlines	62	62	53	85.5	45	72.6	0	0.0
All Airlines	290	290	237	81.7	213	73.4	0	0.0
Alice Springs-Melbourne								
Qantas	31	31	22	71.0	26	83.9	0	0.0
Tigerair	17	17	11	64.7	12	70.6	0	0.0
All Airlines	48	48	33	68.8	38	79.2	0	0.0

	<i>Sectors</i>		<i>Departures On Time</i>		<i>Arrivals On Time</i>		<i>Cancellations</i>	
	<i>Sched.</i>	<i>Flown</i>	<i>No.</i>	<i>%</i>	<i>No.</i>	<i>%</i>	<i>No.</i>	<i>%</i>
Alice Springs-Sydney								
Qantas	31	31	19	61.3	25	80.6	0	0.0
Tigerair	18	18	17	94.4	15	83.3	0	0.0
All Airlines	49	49	36	73.5	40	81.6	0	0.0
Ayers Rock-Sydney								
Jetstar	17	17	11	64.7	9	52.9	0	0.0
Virgin Australia	33	33	24	72.7	28	84.8	0	0.0
All Airlines	50	50	35	70.0	37	74.0	0	0.0
Ballina-Sydney								
Jetstar	44	43	28	65.1	26	60.5	1	2.3
Regional Express	28	28	16	57.1	17	60.7	0	0.0
Virgin Australia	31	30	25	83.3	23	76.7	1	3.2
All Airlines	103	101	69	68.3	66	65.3	2	1.9
Brisbane-Adelaide								
Jetstar	30	30	28	93.3	29	96.7	0	0.0
Qantas	109	109	94	86.2	97	89.0	0	0.0
Tigerair	18	18	17	94.4	17	94.4	0	0.0
Virgin Australia	109	109	92	84.4	90	82.6	0	0.0
All Airlines	266	266	231	86.8	233	87.6	0	0.0
Brisbane-Bundaberg								
QantasLink	118	118	95	80.5	94	79.7	0	0.0
Virgin Australia Regional Airlines	41	41	34	82.9	34	82.9	0	0.0
All Airlines	159	159	129	81.1	128	80.5	0	0.0
Brisbane-Cairns								
Jetstar	87	86	74	86.0	75	87.2	1	1.1
Qantas	119	119	101	84.9	102	85.7	0	0.0
QantasLink	5	5	5	100.0	5	100.0	0	0.0
Virgin Australia	134	133	110	82.7	102	76.7	1	0.7
All Airlines	345	343	290	84.5	284	82.8	2	0.6
Brisbane-Canberra								
Qantas	44	44	42	95.5	42	95.5	0	0.0
QantasLink	121	120	100	83.3	98	81.7	1	0.8
Virgin Australia	92	92	74	80.4	76	82.6	0	0.0
All Airlines	257	256	216	84.4	216	84.4	1	0.4
Brisbane-Darwin								
Jetstar	2	2	1	50.0	1	50.0	0	0.0
Qantas	46	46	42	91.3	40	87.0	0	0.0
Virgin Australia	31	31	25	80.6	26	83.9	0	0.0
All Airlines	79	79	68	86.1	67	84.8	0	0.0
Brisbane-Emerald								
QantasLink	161	155	138	89.0	114	73.5	6	3.7
Virgin Australia Regional Airlines	94	93	84	90.3	73	78.5	1	1.1
All Airlines	255	248	222	89.5	187	75.4	7	2.7
Brisbane-Gladstone								
QantasLink	215	207	186	89.9	174	84.1	8	3.7
Virgin Australia Regional Airlines	142	141	112	79.4	99	70.2	1	0.7
All Airlines	357	348	298	85.6	273	78.4	9	2.5
Brisbane-Hamilton Island								
Jetstar	20	18	16	88.9	16	88.9	2	10.0
Virgin Australia	32	30	29	96.7	25	83.3	2	6.3
All Airlines	52	48	45	93.8	41	85.4	4	7.7

	<i>Sectors</i>		<i>Departures On Time</i>		<i>Arrivals On Time</i>		<i>Cancellations</i>	
	<i>Sched.</i>	<i>Flown</i>	<i>No.</i>	<i>%</i>	<i>No.</i>	<i>%</i>	<i>No.</i>	<i>%</i>
Brisbane-Hobart								
Jetstar	31	31	29	93.5	29	93.5	0	0.0
Virgin Australia	31	31	26	83.9	23	74.2	0	0.0
All Airlines	62	62	55	88.7	52	83.9	0	0.0
Brisbane-Mackay								
Jetstar	94	89	72	80.9	68	76.4	5	5.3
QantasLink	109	107	97	90.7	94	87.9	2	1.8
Virgin Australia	143	143	113	79.0	107	74.8	0	0.0
All Airlines	346	339	282	83.2	269	79.4	7	2.0
Brisbane-Melbourne								
Jetstar	106	104	74	71.2	80	76.9	2	1.9
Qantas	434	433	370	85.5	364	84.1	1	0.2
Tigerair	87	87	47	54.0	56	64.4	0	0.0
Virgin Australia	363	361	301	83.4	289	80.1	2	0.6
All Airlines	990	985	792	80.4	789	80.1	5	0.5
Brisbane-Moranbah								
QantasLink	147	138	116	84.1	113	81.9	9	6.1
Virgin Australia Regional Airlines	91	90	75	83.3	79	87.8	1	1.1
All Airlines	238	228	191	83.8	192	84.2	10	4.2
Brisbane-Mount Isa								
Qantas	57	57	53	93.0	54	94.7	0	0.0
Virgin Australia	21	21	16	76.2	17	81.0	0	0.0
All Airlines	78	78	69	88.5	71	91.0	0	0.0
Brisbane-Newcastle								
Jetstar	109	108	98	90.7	93	86.1	1	0.9
QantasLink	70	65	52	80.0	42	64.6	5	7.1
Virgin Australia	78	78	61	78.2	60	76.9	0	0.0
All Airlines	257	251	211	84.1	195	77.7	6	2.3
Brisbane-Perth								
Jetstar	17	17	17	100.0	15	88.2	0	0.0
Qantas	138	136	115	84.6	117	86.0	2	1.4
Virgin Australia	88	88	62	70.5	62	70.5	0	0.0
All Airlines	243	241	194	80.5	194	80.5	2	0.8
Brisbane-Proserpine								
Jetstar	31	31	21	67.7	23	74.2	0	0.0
Virgin Australia	48	48	46	95.8	46	95.8	0	0.0
All Airlines	79	79	67	84.8	69	87.3	0	0.0
Brisbane-Rockhampton								
QantasLink	220	211	169	80.1	166	78.7	9	4.1
Virgin Australia	107	105	85	81.0	86	81.9	2	1.9
Virgin Australia Regional Airlines	118	110	87	79.1	86	78.2	8	6.8
All Airlines	445	426	341	80.0	338	79.3	19	4.3
Brisbane-Sydney								
Jetstar	131	127	100	78.7	102	80.3	4	3.1
Qantas	626	612	539	88.1	533	87.1	14	2.2
Tigerair	80	80	58	72.5	60	75.0	0	0.0
Virgin Australia	516	510	456	89.4	460	90.2	6	1.2
All Airlines	1 353	1 329	1 153	86.8	1 155	86.9	24	1.8
Brisbane-Townsville								
Jetstar	30	30	27	90.0	26	86.7	0	0.0
Qantas	149	149	129	86.6	130	87.2	0	0.0
Virgin Australia	154	153	129	84.3	123	80.4	1	0.6
All Airlines	333	332	285	85.8	279	84.0	1	0.3

	<i>Sectors</i>		<i>Departures On Time</i>		<i>Arrivals On Time</i>		<i>Cancellations</i>	
	<i>Sched.</i>	<i>Flown</i>	<i>No.</i>	<i>%</i>	<i>No.</i>	<i>%</i>	<i>No.</i>	<i>%</i>
Broome-Perth								
Qantas	30	30	28	93.3	29	96.7	0	0.0
QantasLink	57	57	54	94.7	52	91.2	0	0.0
Virgin Australia	26	26	23	88.5	24	92.3	0	0.0
Virgin Australia Regional Airlines	13	13	11	84.6	11	84.6	0	0.0
All Airlines	126	126	116	92.1	116	92.1	0	0.0
Bundaberg-Brisbane								
QantasLink	118	118	97	82.2	92	78.0	0	0.0
Virgin Australia Regional Airlines	40	40	31	77.5	29	72.5	0	0.0
All Airlines	158	158	128	81.0	121	76.6	0	0.0
Cairns-Brisbane								
Jetstar	89	88	75	85.2	74	84.1	1	1.1
Qantas	119	119	107	89.9	108	90.8	0	0.0
QantasLink	5	5	4	80.0	3	60.0	0	0.0
Virgin Australia	134	133	110	82.7	111	83.5	1	0.7
All Airlines	347	345	296	85.8	296	85.8	2	0.6
Cairns-Melbourne								
Jetstar	76	76	63	82.9	69	90.8	0	0.0
Qantas	31	31	25	80.6	25	80.6	0	0.0
Tigerair	18	17	10	58.8	10	58.8	1	5.6
Virgin Australia	31	31	19	61.3	22	71.0	0	0.0
All Airlines	156	155	117	75.5	126	81.3	1	0.6
Cairns-Sydney								
Jetstar	66	66	60	90.9	59	89.4	0	0.0
Qantas	62	62	50	80.6	55	88.7	0	0.0
Tigerair	18	18	12	66.7	13	72.2	0	0.0
Virgin Australia	80	79	66	83.5	76	96.2	1	1.3
All Airlines	226	225	188	83.6	203	90.2	1	0.4
Canberra-Adelaide								
Qantas	47	47	45	95.7	45	95.7	0	0.0
QantasLink	21	21	14	66.7	15	71.4	0	0.0
Virgin Australia	26	26	22	84.6	23	88.5	0	0.0
All Airlines	94	94	81	86.2	83	88.3	0	0.0
Canberra-Brisbane								
Qantas	44	44	42	95.5	42	95.5	0	0.0
QantasLink	121	120	94	78.3	93	77.5	1	0.8
Virgin Australia	92	92	77	83.7	76	82.6	0	0.0
All Airlines	257	256	213	83.2	211	82.4	1	0.4
Canberra-Melbourne								
Qantas	213	210	187	89.0	185	88.1	3	1.4
QantasLink	85	83	63	75.9	59	71.1	2	2.4
Virgin Australia	173	169	138	81.7	140	82.8	4	2.3
All Airlines	471	462	388	84.0	384	83.1	9	1.9
Canberra-Sydney								
Qantas	73	72	65	90.3	66	91.7	1	1.4
QantasLink	497	462	375	81.2	372	80.5	35	7.0
Virgin Australia	54	53	44	83.0	43	81.1	1	1.9
Virgin Australia Regional Airlines	241	237	212	89.5	206	86.9	4	1.7
All Airlines	865	824	696	84.5	687	83.4	41	4.7
Coffs Harbour-Sydney								
QantasLink	153	153	117	76.5	120	78.4	0	0.0
Tigerair	14	13	7	53.8	6	46.2	1	7.1
Virgin Australia	61	58	50	86.2	47	81.0	3	4.9
All Airlines	228	224	174	77.7	173	77.2	4	1.8

	<i>Sectors</i>		<i>Departures On Time</i>		<i>Arrivals On Time</i>		<i>Cancellations</i>	
	<i>Sched.</i>	<i>Flown</i>	<i>No.</i>	<i>%</i>	<i>No.</i>	<i>%</i>	<i>No.</i>	<i>%</i>
Darwin-Brisbane								
Jetstar	2	2	1	50.0	1	50.0	0	0.0
Qantas	46	46	37	80.4	39	84.8	0	0.0
Virgin Australia	31	31	26	83.9	26	83.9	0	0.0
All Airlines	79	79	64	81.0	66	83.5	0	0.0
Darwin-Melbourne								
Jetstar	31	31	27	87.1	30	96.8	0	0.0
Qantas	29	29	27	93.1	29	100.0	0	0.0
Virgin Australia	31	31	30	96.8	30	96.8	0	0.0
All Airlines	91	91	84	92.3	89	97.8	0	0.0
Darwin-Perth								
Qantas	37	37	36	97.3	35	94.6	0	0.0
Virgin Australia	26	26	23	88.5	23	88.5	0	0.0
All Airlines	63	63	59	93.7	58	92.1	0	0.0
Darwin-Sydney								
Jetstar	31	31	26	83.9	26	83.9	0	0.0
Qantas	37	37	35	94.6	35	94.6	0	0.0
Virgin Australia	31	31	25	80.6	25	80.6	0	0.0
All Airlines	99	99	86	86.9	86	86.9	0	0.0
Dubbo-Sydney								
QantasLink	127	126	101	80.2	88	69.8	1	0.8
Regional Express	161	159	135	84.9	130	81.8	2	1.2
All Airlines	288	285	236	82.8	218	76.5	3	1.0
Emerald-Brisbane								
QantasLink	161	155	113	72.9	113	72.9	6	3.7
Virgin Australia Regional Airlines	94	93	79	84.9	79	84.9	1	1.1
All Airlines	255	248	192	77.4	192	77.4	7	2.7
Geraldton-Perth								
QantasLink	55	55	53	96.4	52	94.5	0	0.0
Virgin Australia Regional Airlines	96	96	86	89.6	83	86.5	0	0.0
All Airlines	151	151	139	92.1	135	89.4	0	0.0
Gladstone-Brisbane								
QantasLink	236	225	191	84.9	182	80.9	11	4.7
Virgin Australia Regional Airlines	142	139	101	72.7	98	70.5	3	2.1
All Airlines	378	364	292	80.2	280	76.9	14	3.7
Gold Coast-Adelaide								
Jetstar	32	32	26	81.3	26	81.3	0	0.0
Virgin Australia	31	31	28	90.3	28	90.3	0	0.0
All Airlines	63	63	54	85.7	54	85.7	0	0.0
Gold Coast-Melbourne								
Jetstar	202	202	173	85.6	174	86.1	0	0.0
Tigerair	59	58	28	48.3	29	50.0	1	1.7
Virgin Australia	178	176	142	80.7	147	83.5	2	1.1
All Airlines	439	436	343	78.7	350	80.3	3	0.7
Gold Coast-Sydney								
Jetstar	376	364	296	81.3	305	83.8	12	3.2
Qantas	93	93	87	93.5	89	95.7	0	0.0
Tigerair	54	53	45	84.9	44	83.0	1	1.9
Virgin Australia	311	301	258	85.7	267	88.7	10	3.2
All Airlines	834	811	686	84.6	705	86.9	23	2.8

	<i>Sectors</i>		<i>Departures On Time</i>		<i>Arrivals On Time</i>		<i>Cancellations</i>	
	<i>Sched.</i>	<i>Flown</i>	<i>No.</i>	<i>%</i>	<i>No.</i>	<i>%</i>	<i>No.</i>	<i>%</i>
Hamilton Island-Brisbane								
Jetstar	20	18	16	88.9	16	88.9	2	10.0
Virgin Australia	32	30	25	83.3	27	90.0	2	6.3
All Airlines	52	48	41	85.4	43	89.6	4	7.7
Hamilton Island-Melbourne								
Jetstar	22	19	15	78.9	17	89.5	3	13.6
Virgin Australia	13	12	11	91.7	11	91.7	1	7.7
All Airlines	35	31	26	83.9	28	90.3	4	11.4
Hamilton Island-Sydney								
Jetstar	22	20	14	70.0	14	70.0	2	9.1
Virgin Australia	31	29	24	82.8	27	93.1	2	6.5
All Airlines	53	49	38	77.6	41	83.7	4	7.5
Hobart-Brisbane								
Jetstar	31	31	28	90.3	28	90.3	0	0.0
Virgin Australia	31	31	18	58.1	19	61.3	0	0.0
All Airlines	62	62	46	74.2	47	75.8	0	0.0
Hobart-Melbourne								
Jetstar	198	198	155	78.3	147	74.2	0	0.0
Qantas	62	62	55	88.7	55	88.7	0	0.0
QantasLink	31	30	28	93.3	22	73.3	1	3.2
Tigerair	31	31	14	45.2	12	38.7	0	0.0
Virgin Australia	140	140	120	85.7	120	85.7	0	0.0
All Airlines	462	461	372	80.7	356	77.2	1	0.2
Hobart-Sydney								
Jetstar	94	93	68	73.1	70	75.3	1	1.1
Qantas	31	31	27	87.1	26	83.9	0	0.0
Virgin Australia	58	58	50	86.2	49	84.5	0	0.0
All Airlines	183	182	145	79.7	145	79.7	1	0.5
Kalgoorlie-Perth								
Qantas	44	44	42	95.5	42	95.5	0	0.0
QantasLink	44	42	39	92.9	39	92.9	2	4.5
Virgin Australia	39	39	36	92.3	35	89.7	0	0.0
Virgin Australia Regional Airlines	15	14	12	85.7	12	85.7	1	6.7
All Airlines	142	139	129	92.8	128	92.1	3	2.1
Karratha-Perth								
Qantas	171	166	159	95.8	159	95.8	5	2.9
QantasLink	65	63	62	98.4	62	98.4	2	3.1
Virgin Australia	89	87	81	93.1	79	90.8	2	2.2
All Airlines	325	316	302	95.6	300	94.9	9	2.8
Launceston-Melbourne								
Jetstar	133	133	102	76.7	99	74.4	0	0.0
QantasLink	124	122	104	85.2	104	85.2	2	1.6
Virgin Australia	118	115	92	80.0	87	75.7	3	2.5
All Airlines	375	370	298	80.5	290	78.4	5	1.3
Launceston-Sydney								
Jetstar	63	62	47	75.8	46	74.2	1	1.6
Virgin Australia	31	31	23	74.2	23	74.2	0	0.0
All Airlines	94	93	70	75.3	69	74.2	1	1.1
Mackay-Brisbane								
Jetstar	94	89	60	67.4	64	71.9	5	5.3
QantasLink	109	107	91	85.0	93	86.9	2	1.8
Virgin Australia	143	142	120	84.5	123	86.6	1	0.7
All Airlines	346	338	271	80.2	280	82.8	8	2.3

	<i>Sectors</i>		<i>Departures On Time</i>		<i>Arrivals On Time</i>		<i>Cancellations</i>	
	<i>Sched.</i>	<i>Flown</i>	<i>No.</i>	<i>%</i>	<i>No.</i>	<i>%</i>	<i>No.</i>	<i>%</i>
Melbourne-Adelaide								
Jetstar	85	85	74	87.1	68	80.0	0	0.0
Qantas	290	290	264	91.0	259	89.3	0	0.0
QantasLink	18	18	16	88.9	17	94.4	0	0.0
Tigerair	76	75	68	90.7	59	78.7	1	1.3
Virgin Australia	276	275	233	84.7	227	82.5	1	0.4
All Airlines	745	743	655	88.2	630	84.8	2	0.3
Melbourne-Alice Springs								
Qantas	31	31	26	83.9	26	83.9	0	0.0
Tigerair	17	17	15	88.2	13	76.5	0	0.0
All Airlines	48	48	41	85.4	39	81.3	0	0.0
Melbourne-Brisbane								
Jetstar	107	105	72	68.6	71	67.6	2	1.9
Qantas	434	430	383	89.1	334	77.7	4	0.9
Tigerair	87	87	63	72.4	46	52.9	0	0.0
Virgin Australia	364	359	314	87.5	263	73.3	5	1.4
All Airlines	992	981	832	84.8	714	72.8	11	1.1
Melbourne-Cairns								
Jetstar	76	76	64	84.2	62	81.6	0	0.0
Qantas	31	31	29	93.5	25	80.6	0	0.0
Tigerair	18	17	17	100.0	15	88.2	1	5.6
Virgin Australia	31	31	25	80.6	18	58.1	0	0.0
All Airlines	156	155	135	87.1	120	77.4	1	0.6
Melbourne-Canberra								
Qantas	214	214	200	93.5	192	89.7	0	0.0
QantasLink	85	82	64	78.0	52	63.4	3	3.5
Virgin Australia	173	169	130	76.9	131	77.5	4	2.3
All Airlines	472	465	394	84.7	375	80.6	7	1.5
Melbourne-Darwin								
Jetstar	31	31	27	87.1	26	83.9	0	0.0
Qantas	29	29	27	93.1	26	89.7	0	0.0
Virgin Australia	31	31	31	100.0	31	100.0	0	0.0
All Airlines	91	91	85	93.4	83	91.2	0	0.0
Melbourne-Gold Coast								
Jetstar	202	202	171	84.7	163	80.7	0	0.0
Tigerair	59	59	51	86.4	37	62.7	0	0.0
Virgin Australia	178	176	143	81.3	132	75.0	2	1.1
All Airlines	439	437	365	83.5	332	76.0	2	0.5
Melbourne-Hamilton Island								
Jetstar	22	20	17	85.0	17	85.0	2	9.1
Virgin Australia	13	12	11	91.7	11	91.7	1	7.7
All Airlines	35	32	28	87.5	28	87.5	3	8.6
Melbourne-Hobart								
Jetstar	199	199	162	81.4	164	82.4	0	0.0
Qantas	62	62	57	91.9	57	91.9	0	0.0
QantasLink	31	30	25	83.3	24	80.0	1	3.2
Tigerair	31	31	19	61.3	21	67.7	0	0.0
Virgin Australia	140	140	122	87.1	120	85.7	0	0.0
All Airlines	463	462	385	83.3	386	83.5	1	0.2
Melbourne-Launceston								
Jetstar	132	132	114	86.4	111	84.1	0	0.0
QantasLink	124	122	108	88.5	97	79.5	2	1.6
Virgin Australia	118	115	92	80.0	92	80.0	3	2.5
All Airlines	374	369	314	85.1	300	81.3	5	1.3

	<i>Sectors</i>		<i>Departures On Time</i>		<i>Arrivals On Time</i>		<i>Cancellations</i>	
	<i>Sched.</i>	<i>Flown</i>	<i>No.</i>	<i>%</i>	<i>No.</i>	<i>%</i>	<i>No.</i>	<i>%</i>
Melbourne-Mildura								
QantasLink	88	88	74	84.1	68	77.3	0	0.0
Regional Express	84	84	77	91.7	75	89.3	0	0.0
Virgin Australia	31	31	29	93.5	29	93.5	0	0.0
All Airlines	203	203	180	88.7	172	84.7	0	0.0
Melbourne-Newcastle								
Jetstar	99	99	82	82.8	80	80.8	0	0.0
Virgin Australia	31	31	29	93.5	28	90.3	0	0.0
All Airlines	130	130	111	85.4	108	83.1	0	0.0
Melbourne-Perth								
Jetstar	80	79	70	88.6	70	88.6	1	1.3
Qantas	222	222	181	81.5	190	85.6	0	0.0
Tigerair	70	70	59	84.3	62	88.6	0	0.0
Virgin Australia	131	130	112	86.2	117	90.0	1	0.8
All Airlines	503	501	422	84.2	439	87.6	2	0.4
Melbourne-Sunshine Coast								
Jetstar	65	65	57	87.7	53	81.5	0	0.0
Tigerair	31	30	25	83.3	21	70.0	1	3.2
Virgin Australia	31	30	25	83.3	22	73.3	1	3.2
All Airlines	127	125	107	85.6	96	76.8	2	1.6
Melbourne-Sydney								
Jetstar	304	299	229	76.6	222	74.2	5	1.6
Qantas	937	921	814	88.4	750	81.4	16	1.7
Tigerair	219	214	163	76.2	158	73.8	5	2.3
Virgin Australia	759	745	649	87.1	592	79.5	14	1.8
All Airlines	2 219	2 179	1 855	85.1	1 722	79.0	40	1.8
Mildura-Melbourne								
QantasLink	88	88	72	81.8	71	80.7	0	0.0
Regional Express	83	83	70	84.3	67	80.7	0	0.0
Virgin Australia	31	31	29	93.5	29	93.5	0	0.0
All Airlines	202	202	171	84.7	167	82.7	0	0.0
Moranbah-Brisbane								
QantasLink	143	133	104	78.2	101	75.9	10	7.0
Virgin Australia Regional Airlines	91	90	79	87.8	76	84.4	1	1.1
All Airlines	234	223	183	82.1	177	79.4	11	4.7
Mount Isa-Brisbane								
Qantas	57	57	52	91.2	54	94.7	0	0.0
Virgin Australia	21	21	17	81.0	17	81.0	0	0.0
All Airlines	78	78	69	88.5	71	91.0	0	0.0
Newcastle-Brisbane								
Jetstar	109	108	91	84.3	87	80.6	1	0.9
QantasLink	70	66	40	60.6	36	54.5	4	5.7
Virgin Australia	79	78	57	73.1	50	64.1	1	1.3
All Airlines	258	252	188	74.6	173	68.7	6	2.3
Newcastle-Melbourne								
Jetstar	102	102	80	78.4	78	76.5	0	0.0
Virgin Australia	31	31	29	93.5	28	90.3	0	0.0
All Airlines	133	133	109	82.0	106	79.7	0	0.0
Newman-Perth								
Qantas	118	115	110	95.7	110	95.7	3	2.5
QantasLink	37	36	34	94.4	34	94.4	1	2.7
Virgin Australia	32	31	31	100.0	31	100.0	1	3.1
Virgin Australia Regional Airlines	8	8	8	100.0	8	100.0	0	0.0
All Airlines	195	190	183	96.3	183	96.3	5	2.6

	<i>Sectors</i>		<i>Departures On Time</i>		<i>Arrivals On Time</i>		<i>Cancellations</i>	
	<i>Sched.</i>	<i>Flown</i>	<i>No.</i>	<i>%</i>	<i>No.</i>	<i>%</i>	<i>No.</i>	<i>%</i>
Perth-Adelaide								
Jetstar	31	30	28	93.3	27	90.0	1	3.2
Qantas	117	117	108	92.3	109	93.2	0	0.0
Virgin Australia	62	61	58	95.1	57	93.4	1	1.6
All Airlines	210	208	194	93.3	193	92.8	2	1.0
Perth-Brisbane								
Jetstar	18	18	16	88.9	16	88.9	0	0.0
Qantas	137	136	120	88.2	124	91.2	1	0.7
Virgin Australia	88	88	85	96.6	80	90.9	0	0.0
All Airlines	243	242	221	91.3	220	90.9	1	0.4
Perth-Broome								
Qantas	30	30	27	90.0	28	93.3	0	0.0
QantasLink	57	57	54	94.7	51	89.5	0	0.0
Virgin Australia	26	26	26	100.0	26	100.0	0	0.0
Virgin Australia Regional Airlines	13	13	9	69.2	9	69.2	0	0.0
All Airlines	126	126	116	92.1	114	90.5	0	0.0
Perth-Darwin								
Qantas	37	37	37	100.0	35	94.6	0	0.0
Virgin Australia	26	26	22	84.6	21	80.8	0	0.0
All Airlines	63	63	59	93.7	56	88.9	0	0.0
Perth-Geraldton								
QantasLink	55	55	54	98.2	53	96.4	0	0.0
Virgin Australia Regional Airlines	92	92	86	93.5	83	90.2	0	0.0
All Airlines	147	147	140	95.2	136	92.5	0	0.0
Perth-Kalgoorlie								
Qantas	44	44	43	97.7	43	97.7	0	0.0
QantasLink	44	42	41	97.6	41	97.6	2	4.5
Virgin Australia	39	39	36	92.3	36	92.3	0	0.0
Virgin Australia Regional Airlines	14	14	13	92.9	13	92.9	0	0.0
All Airlines	141	139	133	95.7	133	95.7	2	1.4
Perth-Karratha								
Qantas	171	167	160	95.8	160	95.8	4	2.3
QantasLink	65	63	62	98.4	61	96.8	2	3.1
Virgin Australia	89	87	85	97.7	82	94.3	2	2.2
All Airlines	325	317	307	96.8	303	95.6	8	2.5
Perth-Melbourne								
Jetstar	81	79	64	81.0	59	74.7	2	2.5
Qantas	222	220	188	85.5	187	85.0	2	0.9
Tigerair	72	71	59	83.1	47	66.2	1	1.4
Virgin Australia	132	132	121	91.7	116	87.9	0	0.0
All Airlines	507	502	432	86.1	409	81.5	5	1.0
Perth-Newman								
Qantas	118	116	108	93.1	112	96.6	2	1.7
QantasLink	37	36	34	94.4	34	94.4	1	2.7
Virgin Australia	32	32	32	100.0	32	100.0	0	0.0
Virgin Australia Regional Airlines	8	8	8	100.0	8	100.0	0	0.0
All Airlines	195	192	182	94.8	186	96.9	3	1.5
Perth-Port Hedland								
Qantas	119	118	115	97.5	115	97.5	1	0.8
QantasLink	46	44	44	100.0	44	100.0	2	4.3
Virgin Australia	52	52	48	92.3	50	96.2	0	0.0
All Airlines	217	214	207	96.7	209	97.7	3	1.4

	<i>Sectors</i>		<i>Departures On Time</i>		<i>Arrivals On Time</i>		<i>Cancellations</i>	
	<i>Sched.</i>	<i>Flown</i>	<i>No.</i>	<i>%</i>	<i>No.</i>	<i>%</i>	<i>No.</i>	<i>%</i>
Perth-Sydney								
Jetstar	40	39	33	84.6	30	76.9	1	2.5
Qantas	207	207	188	90.8	187	90.3	0	0.0
Tigerair	27	26	25	96.2	22	84.6	1	3.7
Virgin Australia	114	113	107	94.7	104	92.0	1	0.9
All Airlines	388	385	353	91.7	343	89.1	3	0.8
Port Hedland-Perth								
Qantas	119	118	113	95.8	115	97.5	1	0.8
QantasLink	46	45	43	95.6	43	95.6	1	2.2
Virgin Australia	52	51	49	96.1	48	94.1	1	1.9
All Airlines	217	214	205	95.8	206	96.3	3	1.4
Port Lincoln-Adelaide								
QantasLink	101	100	88	88.0	86	86.0	1	1.0
Regional Express	211	211	189	89.6	187	88.6	0	0.0
All Airlines	312	311	277	89.1	273	87.8	1	0.3
Port Macquarie-Sydney								
QantasLink	134	133	76	57.1	64	48.1	1	0.7
Virgin Australia Regional Airlines	62	62	48	77.4	43	69.4	0	0.0
All Airlines	196	195	124	63.6	107	54.9	1	0.5
Proserpine-Brisbane								
Jetstar	31	31	23	74.2	23	74.2	0	0.0
Virgin Australia	51	48	41	85.4	38	79.2	3	5.9
All Airlines	82	79	64	81.0	61	77.2	3	3.7
Rockhampton-Brisbane								
QantasLink	200	191	146	76.4	146	76.4	9	4.5
Virgin Australia	107	104	83	79.8	75	72.1	3	2.8
Virgin Australia Regional Airlines	116	108	99	91.7	98	90.7	8	6.9
All Airlines	423	403	328	81.4	319	79.2	20	4.7
Sunshine Coast-Melbourne								
Jetstar	65	65	54	83.1	53	81.5	0	0.0
Tigerair	31	30	21	70.0	23	76.7	1	3.2
Virgin Australia	31	29	21	72.4	19	65.5	2	6.5
All Airlines	127	124	96	77.4	95	76.6	3	2.4
Sunshine Coast-Sydney								
Jetstar	93	93	74	79.6	72	77.4	0	0.0
Virgin Australia	35	34	27	79.4	28	82.4	1	2.9
All Airlines	128	127	101	79.5	100	78.7	1	0.8
Sydney-Adelaide								
Jetstar	113	113	96	85.0	96	85.0	0	0.0
Qantas	261	261	230	88.1	233	89.3	0	0.0
Tigerair	21	21	20	95.2	18	85.7	0	0.0
Virgin Australia	170	170	147	86.5	150	88.2	0	0.0
All Airlines	565	565	493	87.3	497	88.0	0	0.0
Sydney-Albury								
QantasLink	114	114	82	71.9	76	66.7	0	0.0
Regional Express	114	114	96	84.2	94	82.5	0	0.0
Virgin Australia Regional Airlines	62	62	51	82.3	53	85.5	0	0.0
All Airlines	290	290	229	79.0	223	76.9	0	0.0
Sydney-Alice Springs								
Qantas	31	31	28	90.3	28	90.3	0	0.0
Tigerair	18	18	15	83.3	17	94.4	0	0.0
All Airlines	49	49	43	87.8	45	91.8	0	0.0

	<i>Sectors</i>		<i>Departures On Time</i>		<i>Arrivals On Time</i>		<i>Cancellations</i>	
	<i>Sched.</i>	<i>Flown</i>	<i>No.</i>	<i>%</i>	<i>No.</i>	<i>%</i>	<i>No.</i>	<i>%</i>
Sydney-Ayers Rock								
Jetstar	18	18	14	77.8	16	88.9	0	0.0
Virgin Australia	32	32	28	87.5	26	81.3	0	0.0
All Airlines	50	50	42	84.0	42	84.0	0	0.0
Sydney-Ballina								
Jetstar	43	43	35	81.4	30	69.8	0	0.0
Regional Express	32	32	27	84.4	25	78.1	0	0.0
Virgin Australia	31	30	25	83.3	24	80.0	1	3.2
All Airlines	106	105	87	82.9	79	75.2	1	0.9
Sydney-Brisbane								
Jetstar	129	125	95	76.0	94	75.2	4	3.1
Qantas	597	587	482	82.1	446	76.0	10	1.7
Tigerair	81	81	67	82.7	56	69.1	0	0.0
Virgin Australia	519	508	414	81.5	390	76.8	11	2.1
All Airlines	1 326	1 301	1 058	81.3	986	75.8	25	1.9
Sydney-Cairns								
Jetstar	66	66	59	89.4	57	86.4	0	0.0
Qantas	62	62	53	85.5	52	83.9	0	0.0
Tigerair	18	18	17	94.4	15	83.3	0	0.0
Virgin Australia	80	79	69	87.3	61	77.2	1	1.3
All Airlines	226	225	198	88.0	185	82.2	1	0.4
Sydney-Canberra								
Qantas	74	73	65	89.0	61	83.6	1	1.4
QantasLink	497	465	386	83.0	381	81.9	32	6.4
Virgin Australia	53	53	47	88.7	48	90.6	0	0.0
Virgin Australia Regional Airlines	242	239	199	83.3	200	83.7	3	1.2
All Airlines	866	830	697	84.0	690	83.1	36	4.2
Sydney-Coffs Harbour								
QantasLink	153	153	134	87.6	114	74.5	0	0.0
Tigerair	14	13	7	53.8	7	53.8	1	7.1
Virgin Australia	60	58	52	89.7	52	89.7	2	3.3
All Airlines	227	224	193	86.2	173	77.2	3	1.3
Sydney-Darwin								
Jetstar	31	31	26	83.9	27	87.1	0	0.0
Qantas	36	36	33	91.7	31	86.1	0	0.0
Virgin Australia	31	31	30	96.8	28	90.3	0	0.0
All Airlines	98	98	89	90.8	86	87.8	0	0.0
Sydney-Dubbo								
QantasLink	127	126	93	73.8	77	61.1	1	0.8
Regional Express	155	155	128	82.6	127	81.9	0	0.0
All Airlines	282	281	221	78.6	204	72.6	1	0.4
Sydney-Gold Coast								
Jetstar	372	360	302	83.9	300	83.3	12	3.2
Qantas	93	93	86	92.5	90	96.8	0	0.0
Tigerair	54	54	48	88.9	46	85.2	0	0.0
Virgin Australia	312	304	270	88.8	255	83.9	8	2.6
All Airlines	831	811	706	87.1	691	85.2	20	2.4
Sydney-Hamilton Island								
Jetstar	21	20	16	80.0	13	65.0	1	4.8
Virgin Australia	31	30	26	86.7	24	80.0	1	3.2
All Airlines	52	50	42	84.0	37	74.0	2	3.8

	<i>Sectors</i>		<i>Departures On Time</i>		<i>Arrivals On Time</i>		<i>Cancellations</i>	
	<i>Sched.</i>	<i>Flown</i>	<i>No.</i>	<i>%</i>	<i>No.</i>	<i>%</i>	<i>No.</i>	<i>%</i>
Sydney-Hobart								
Jetstar	95	94	69	73.4	74	78.7	1	1.1
Qantas	31	31	27	87.1	29	93.5	0	0.0
Virgin Australia	58	58	51	87.9	53	91.4	0	0.0
All Airlines	184	183	147	80.3	156	85.2	1	0.5
Sydney-Launceston								
Jetstar	61	61	48	78.7	52	85.2	0	0.0
Virgin Australia	31	31	24	77.4	23	74.2	0	0.0
All Airlines	92	92	72	78.3	75	81.5	0	0.0
Sydney-Melbourne								
Jetstar	303	299	242	80.9	240	80.3	4	1.3
Qantas	935	914	798	87.3	774	84.7	21	2.2
Tigerair	218	212	150	70.8	140	66.0	6	2.8
Virgin Australia	760	747	624	83.5	614	82.2	13	1.7
All Airlines	2 216	2 172	1 814	83.5	1 768	81.4	44	2.0
Sydney-Perth								
Jetstar	38	38	30	78.9	35	92.1	0	0.0
Qantas	212	212	173	81.6	182	85.8	0	0.0
Tigerair	26	26	21	80.8	22	84.6	0	0.0
Virgin Australia	114	113	86	76.1	96	85.0	1	0.9
All Airlines	390	389	310	79.7	335	86.1	1	0.3
Sydney-Port Macquarie								
QantasLink	135	134	100	74.6	73	54.5	1	0.7
Virgin Australia Regional Airlines	62	62	55	88.7	55	88.7	0	0.0
All Airlines	197	196	155	79.1	128	65.3	1	0.5
Sydney-Sunshine Coast								
Jetstar	94	94	84	89.4	85	90.4	0	0.0
Virgin Australia	35	35	30	85.7	30	85.7	0	0.0
All Airlines	129	129	114	88.4	115	89.1	0	0.0
Sydney-Townsville								
Jetstar	18	18	15	83.3	15	83.3	0	0.0
Virgin Australia	23	22	19	86.4	16	72.7	1	4.3
All Airlines	41	40	34	85.0	31	77.5	1	2.4
Sydney-Wagga Wagga								
QantasLink	114	114	96	84.2	84	73.7	0	0.0
Regional Express	139	139	128	92.1	127	91.4	0	0.0
All Airlines	253	253	224	88.5	211	83.4	0	0.0
Townsville-Brisbane								
Jetstar	31	31	26	83.9	27	87.1	0	0.0
Qantas	149	149	135	90.6	136	91.3	0	0.0
Virgin Australia	154	153	126	82.4	129	84.3	1	0.6
All Airlines	334	333	287	86.2	292	87.7	1	0.3
Townsville-Sydney								
Jetstar	18	18	15	83.3	15	83.3	0	0.0
Virgin Australia	23	22	16	72.7	18	81.8	1	4.3
All Airlines	41	40	31	77.5	33	82.5	1	2.4
Wagga Wagga-Sydney								
QantasLink	114	114	83	72.8	79	69.3	0	0.0
Regional Express	138	138	130	94.2	118	85.5	0	0.0
All Airlines	252	252	213	84.5	197	78.2	0	0.0

Airports

On time performance is reported for all routes where the passenger load averages over 8000 passengers per month, and where two or more airlines operate in competition. The following data reports by airport against flights operated on those routes only.

Airport	Departures			Arrivals		
	Sectors	On Time		Sectors	On Time	
	Flown	No.	%	Flown	No.	%
Adelaide						
Jetstar	295	241	81.7	290	246	84.8
Qantas	823	727	88.3	824	743	90.2
QantasLink	138	117	84.8	139	118	84.9
Regional Express	210	197	93.8	211	187	88.6
Tigerair	114	90	78.9	114	94	82.5
Virgin Australia	673	601	89.3	672	575	85.6
All Airlines	2 253	1 973	87.6	2 250	1 963	87.2
Relates to services to and from Brisbane, Canberra, Gold Coast, Melbourne, Perth, Port Lincoln and Sydney.						
Albury						
QantasLink	114	84	73.7	114	76	66.7
Regional Express	114	100	87.7	114	94	82.5
Virgin Australia Regional Airlines	62	53	85.5	62	53	85.5
All Airlines	290	237	81.7	290	223	76.9
Relates to services to and from Sydney only.						
Alice Springs						
Qantas	62	41	66.1	62	54	87.1
Tigerair	35	28	80.0	35	30	85.7
All Airlines	97	69	71.1	97	84	86.6
Relates to services to and from Melbourne and Sydney.						
Ayers Rock						
Jetstar	17	11	64.7	18	16	88.9
Virgin Australia	33	24	72.7	32	26	81.3
All Airlines	50	35	70.0	50	42	84.0
Relates to services to and from Sydney only.						
Ballina						
Jetstar	43	28	65.1	43	30	69.8
Regional Express	28	16	57.1	32	25	78.1
Virgin Australia	30	25	83.3	30	24	80.0
All Airlines	101	69	68.3	105	79	75.2
Relates to services to and from Sydney only.						
Brisbane						
Jetstar	673	557	82.8	677	530	78.3
Qantas	1 705	1 485	87.1	1 677	1 374	81.9
QantasLink	1 126	958	85.1	1 120	859	76.7
Tigerair	185	122	65.9	186	118	63.4
Virgin Australia	1 933	1 625	84.1	1 927	1 519	78.8
Virgin Australia Regional Airlines	475	392	82.5	470	380	80.9
All Airlines	6 097	5 139	84.3	6 057	4 780	78.9
Relates to services to and from Adelaide, Bundaberg, Cairns, Canberra, Darwin, Emerald, Gladstone, Hamilton Island, Hobart, Mackay, Melbourne, Moranbah, Mount Isa, Newcastle, Perth, Proserpine, Rockhampton, Sydney and Townsville.						

Airport	Departures			Arrivals		
	Sectors Flown	On Time		Sectors Flown	On Time	
		No.	%		No.	%
Broome						
Qantas	30	28	93.3	30	28	93.3
QantasLink	57	54	94.7	57	51	89.5
Virgin Australia	26	23	88.5	26	26	100.0
Virgin Australia Regional Airlines	13	11	84.6	13	9	69.2
All Airlines	126	116	92.1	126	114	90.5
Relates to services to and from Perth only.						
Bundaberg						
QantasLink	118	97	82.2	118	94	79.7
Virgin Australia Regional Airlines	40	31	77.5	41	34	82.9
All Airlines	158	128	81.0	159	128	80.5
Relates to services to and from Brisbane only.						
Cairns						
Jetstar	230	198	86.1	228	194	85.1
Qantas	212	182	85.8	212	179	84.4
QantasLink	5	4	80.0	5	5	100.0
Tigerair	35	22	62.9	35	30	85.7
Virgin Australia	243	195	80.2	243	181	74.5
All Airlines	725	601	82.9	723	589	81.5
Relates to services to and from Brisbane, Melbourne and Sydney.						
Canberra						
Qantas	373	339	90.9	378	338	89.4
QantasLink	686	546	79.6	688	543	78.9
Virgin Australia	340	281	82.6	340	280	82.4
Virgin Australia Regional Airlines	237	212	89.5	239	200	83.7
All Airlines	1 636	1 378	84.2	1 645	1 361	82.7
Relates to services to and from Adelaide, Brisbane, Melbourne and Sydney.						
Coffs Harbour						
QantasLink	153	117	76.5	153	114	74.5
Tigerair	13	7	53.8	13	7	53.8
Virgin Australia	58	50	86.2	58	52	89.7
All Airlines	224	174	77.7	224	173	77.2
Relates to services to and from Sydney only.						
Darwin						
Jetstar	64	54	84.4	64	54	84.4
Qantas	149	135	90.6	148	132	89.2
Virgin Australia	119	104	87.4	119	106	89.1
All Airlines	332	293	88.3	331	292	88.2
Relates to services to and from Brisbane, Melbourne, Perth and Sydney.						
Dubbo						
QantasLink	126	101	80.2	126	77	61.1
Regional Express	159	135	84.9	155	127	81.9
All Airlines	285	236	82.8	281	204	72.6
Relates to services to and from Sydney only.						
Emerald						
QantasLink	155	113	72.9	155	114	73.5
Virgin Australia Regional Airlines	93	79	84.9	93	73	78.5
All Airlines	248	192	77.4	248	187	75.4
Relates to services to and from Brisbane only.						

Airport	Departures			Arrivals		
	Sectors Flown	On Time		Sectors Flown	On Time	
		No.	%		No.	%
Geraldton						
QantasLink	55	53	96.4	55	53	96.4
Virgin Australia Regional Airlines	96	86	89.6	92	83	90.2
All Airlines	151	139	92.1	147	136	92.5
Relates to services to and from Perth only.						
Gladstone						
QantasLink	225	191	84.9	207	174	84.1
Virgin Australia Regional Airlines	139	101	72.7	141	99	70.2
All Airlines	364	292	80.2	348	273	78.4
Relates to services to and from Brisbane only.						
Gold Coast						
Jetstar	598	495	82.8	594	489	82.3
Qantas	93	87	93.5	93	90	96.8
Tigerair	111	73	65.8	113	83	73.5
Virgin Australia	508	428	84.3	511	417	81.6
All Airlines	1 310	1 083	82.7	1 311	1 079	82.3
Relates to services to and from Adelaide, Melbourne and Sydney.						
Hamilton Island						
Jetstar	57	45	78.9	58	46	79.3
Virgin Australia	71	60	84.5	72	60	83.3
All Airlines	128	105	82.0	130	106	81.5
Relates to services to and from Brisbane, Melbourne and Sydney.						
Hobart						
Jetstar	322	251	78.0	324	267	82.4
Qantas	93	82	88.2	93	86	92.5
QantasLink	30	28	93.3	30	24	80.0
Tigerair	31	14	45.2	31	21	67.7
Virgin Australia	229	188	82.1	229	196	85.6
All Airlines	705	563	79.9	707	594	84.0
Relates to services to and from Brisbane, Melbourne and Sydney.						
Kalgoorlie						
Qantas	44	42	95.5	44	43	97.7
QantasLink	42	39	92.9	42	41	97.6
Virgin Australia	39	36	92.3	39	36	92.3
Virgin Australia Regional Airlines	14	12	85.7	14	13	92.9
All Airlines	139	129	92.8	139	133	95.7
Relates to services to and from Perth only.						
Karratha						
Qantas	166	159	95.8	167	160	95.8
QantasLink	63	62	98.4	63	61	96.8
Virgin Australia	87	81	93.1	87	82	94.3
All Airlines	316	302	95.6	317	303	95.6
Relates to services to and from Perth only.						
Launceston						
Jetstar	195	149	76.4	193	163	84.5
QantasLink	122	104	85.2	122	97	79.5
Virgin Australia	146	115	78.8	146	115	78.8
All Airlines	463	368	79.5	461	375	81.3
Relates to services to and from Melbourne and Sydney.						

Airport	Departures			Arrivals		
	Sectors	On Time		Sectors	On Time	
	Flown	No.	%	Flown	No.	%
Mackay						
Jetstar	89	60	67.4	89	68	76.4
QantasLink	107	91	85.0	107	94	87.9
Virgin Australia	142	120	84.5	143	107	74.8
All Airlines	338	271	80.2	339	269	79.4
Relates to services to and from Brisbane only.						
Melbourne						
Jetstar	1 392	1 139	81.8	1 394	1 111	79.7
Qantas	2 230	1 981	88.8	2 220	1 906	85.9
QantasLink	340	287	84.4	340	272	80.0
Regional Express	84	77	91.7	83	67	80.7
Tigerair	600	480	80.0	598	382	63.9
Virgin Australia	2 275	1 945	85.5	2 279	1 892	83.0
All Airlines	6 921	5 909	85.4	6 914	5 630	81.4
Relates to services to and from Adelaide, Alice Springs, Brisbane, Cairns, Canberra, Darwin, Gold Coast, Hobart, Launceston, Mildura, Newcastle, Perth, Sunshine Coast and Sydney.						
Mildura						
QantasLink	88	72	81.8	88	68	77.3
Regional Express	83	70	84.3	84	75	89.3
Virgin Australia	31	29	93.5	31	29	93.5
All Airlines	202	171	84.7	203	172	84.7
Relates to services to and from Melbourne only.						
Moranbah						
QantasLink	133	104	78.2	138	113	81.9
Virgin Australia Regional Airlines	90	79	87.8	90	79	87.8
All Airlines	223	183	82.1	228	192	84.2
Relates to services to and from Brisbane only.						
Mount Isa						
Qantas	57	52	91.2	57	54	94.7
Virgin Australia	21	17	81.0	21	17	81.0
All Airlines	78	69	88.5	78	71	91.0
Relates to services to and from Brisbane only.						
Newcastle						
Jetstar	210	171	81.4	207	173	83.6
QantasLink	66	40	60.6	65	42	64.6
Virgin Australia	109	86	78.9	109	88	80.7
All Airlines	385	297	77.1	381	303	79.5
Relates to services to and from Brisbane and Melbourne.						
Newman						
Qantas	115	110	95.7	116	112	96.6
QantasLink	36	34	94.4	36	34	94.4
Virgin Australia	31	31	100.0	32	32	100.0
Virgin Australia Regional Airlines	8	8	100.0	8	8	100.0
All Airlines	190	183	96.3	192	186	96.9
Relates to services to and from Perth only.						

Airport	Departures			Arrivals		
	Sectors	On Time		Sectors	On Time	
	Flown	No.	%	Flown	No.	%
Perth						
Jetstar	166	141	84.9	166	148	89.2
Qantas	1 192	1 094	91.8	1 193	1 089	91.3
QantasLink	297	289	97.3	298	282	94.6
Tigerair	97	84	86.6	96	84	87.5
Virgin Australia	656	620	94.5	654	572	87.5
Virgin Australia Regional Airlines	127	116	91.3	131	114	87.0
All Airlines	2 535	2 344	92.5	2 538	2 289	90.2
Relates to services to and from Adelaide, Brisbane, Broome, Darwin, Geraldton, Kalgoorlie, Karratha, Melbourne, Newman, Port Hedland and Sydney.						
Port Hedland						
Qantas	118	113	95.8	118	115	97.5
QantasLink	45	43	95.6	44	44	100.0
Virgin Australia	51	49	96.1	52	50	96.2
All Airlines	214	205	95.8	214	209	97.7
Relates to services to and from Perth only.						
Port Lincoln						
QantasLink	100	88	88.0	100	88	88.0
Regional Express	211	189	89.6	210	188	89.5
All Airlines	311	277	89.1	310	276	89.0
Relates to services to and from Adelaide only.						
Port Macquarie						
QantasLink	133	76	57.1	134	73	54.5
Virgin Australia Regional Airlines	62	48	77.4	62	55	88.7
All Airlines	195	124	63.6	196	128	65.3
Relates to services to and from Sydney only.						
Proserpine						
Jetstar	31	23	74.2	31	23	74.2
Virgin Australia	48	41	85.4	48	46	95.8
All Airlines	79	64	81.0	79	69	87.3
Relates to services to and from Brisbane only.						
Rockhampton						
QantasLink	191	146	76.4	211	166	78.7
Virgin Australia	104	83	79.8	105	86	81.9
Virgin Australia Regional Airlines	108	99	91.7	110	86	78.2
All Airlines	403	328	81.4	426	338	79.3
Relates to services to and from Brisbane only.						
Sunshine Coast						
Jetstar	158	128	81.0	159	138	86.8
Tigerair	30	21	70.0	30	21	70.0
Virgin Australia	63	48	76.2	65	52	80.0
All Airlines	251	197	78.5	254	211	83.1
Relates to services to and from Melbourne and Sydney.						

<i>Airport</i>	<i>Departures</i>			<i>Arrivals</i>		
	<i>Sectors</i>	<i>On Time</i>		<i>Sectors</i>	<i>On Time</i>	
	<i>Flown</i>	<i>No.</i>	<i>%</i>	<i>Flown</i>	<i>No.</i>	<i>%</i>
Sydney						
Jetstar	1 380	1 131	82.0	1 386	1 090	78.6
Qantas	2 300	1 975	85.9	2 330	1 995	85.6
QantasLink	1 106	891	80.6	1 102	796	72.2
Regional Express	440	379	86.1	439	360	82.0
Tigerair	443	345	77.9	443	336	75.8
Virgin Australia	2 301	1 942	84.4	2 297	1 957	85.2
Virgin Australia Regional Airlines	363	305	84.0	361	294	81.4
All Airlines	8 333	6 968	83.6	8 358	6 828	81.7

Relates to services to and from Adelaide, Albury, Alice Springs, Ayers Rock, Ballina, Brisbane, Cairns, Canberra, Coffs Harbour, Darwin, Dubbo, Gold Coast, Hamilton Island, Hobart, Launceston, Melbourne, Perth, Port Macquarie, Sunshine Coast, Townsville and Wagga Wagga.

Townsville

Jetstar	49	41	83.7	48	41	85.4
Qantas	149	135	90.6	149	130	87.2
Virgin Australia	175	142	81.1	175	139	79.4
All Airlines	373	318	85.3	372	310	83.3

Relates to services to and from Brisbane and Sydney.

Wagga Wagga

QantasLink	114	83	72.8	114	84	73.7
Regional Express	138	130	94.2	139	127	91.4
All Airlines	252	213	84.5	253	211	83.4

Relates to services to and from Sydney only.

Definitions

On time departure A flight departure is counted as "on time" if it departs the gate before 15 minutes after the scheduled departure time shown in the carriers' schedule.

On time arrival A flight arrival is counted as "on time" if it arrived at the gate before 15 minutes after the scheduled arrival time shown in the carriers' schedule.
Neither diverted nor cancelled flights count as on time.

Cancellation A flight removed from service within 7 days of scheduled departure is regarded as a cancellation.

On time departure percentage The percentage of on time departures is measured against the number of departures *operated* on any particular sector.

On time arrival percentage The percentage of on time arrivals is measured against the number of arrivals *operated* on any particular sector.

Cancellation percentage The percentage of cancellations is measured against the number of services *scheduled* on any particular sector.
