



Australian Government

Department of Infrastructure and Transport

Bureau of Infrastructure, Transport and Regional Economics

STATISTICAL REPORT



Aviation

Domestic airline on time performance
March 2013

© Commonwealth of Australia 2013

ISSN: 1832-0759

Ownership of intellectual property rights in this publication

Unless otherwise noted, copyright (and any other intellectual property rights, if any) in this publication is owned by the Commonwealth of Australia (referred to below as the Commonwealth).

Disclaimer

The material contained in this publication is made available on the understanding that the Commonwealth is not providing professional advice, and that users exercise their own skill and care with respect to its use, and seek independent advice if necessary.

The Commonwealth makes no representations or warranties as to the contents or accuracy of the information contained in this publication. To the extent permitted by law, the Commonwealth disclaims liability to any person or organisation in respect of anything done, or omitted to be done, in reliance upon information contained in this publication.

Creative Commons licence

With the exception of (a) the Coat of Arms; and (b) the Department of Infrastructure's photos and graphics, copyright in this publication is licensed under a Creative Commons Attribution 3.0 Australia Licence.

Creative Commons Attribution 3.0 Australia Licence is a standard form licence agreement that allows you to copy, communicate and adapt this publication provided that you attribute the work to the Commonwealth and abide by the other licence terms. A summary of the licence terms is available from <http://creativecommons.org/licenses/by/3.0/au/deed.en>. The full licence terms are available from <http://creativecommons.org/licenses/by/3.0/au/legalcode>.

Use of the Coat of Arms

The Department of the Prime Minister and Cabinet sets the terms under which the Coat of Arms is used. Please refer to the Department's Commonwealth Coat of Arms and Government branding web page <http://www.dpmmc.gov.au/guidelines/index.cfm#brand> and, in particular, the Guidelines on the use of the Commonwealth Coat of Arms publication.

An appropriate citation for this report is:

Bureau of Infrastructure, Transport and Regional Economics (BITRE), 2013, Domestic airline on time performance, Statistical Report, BITRE, Canberra ACT.

Contact us

This publication is available in PDF format. All other rights are reserved, including in relation to any Departmental logos or trade marks which may exist. For enquiries regarding the licence and any use of this publication, please contact:

Bureau of Infrastructure, Transport and Regional Economics (BITRE)
Department of Infrastructure and Transport
GPO Box 501, Canberra ACT 2601, Australia
Telephone: (international) +61 2 6274 7210
Fax: (international) +61 2 6274 6855
Email: bitre@infrastructure.gov.au
Website: www.bitre.gov.au

Inquiries

Should you require additional information about the statistics contained in this publication:

Telephone (02) 6274 7790 or Facsimile (02) 6274 7727

Electronic mail: AVSTATS@infrastructure.gov.au

Web site: <http://www.bitre.gov.au/statistics/aviation/otphome.aspx>

Foreword

The Bureau of Infrastructure, Transport and Regional Economics (BITRE) monitors the punctuality and reliability of major domestic airlines operating between Australian airports. The purpose of this is to allow for evaluation of overall industry and individual airline performance, so that consumers of air travel can make informed decisions.

The following domestic airlines report this information monthly to the BITRE: Jetstar, Qantas, QantasLink, Regional Express, Skywest Airlines, Tiger Airways, Virgin Australia and Virgin Australia – ATR/F100 Operations. Data has been gathered since November 2003, although some airlines commenced reporting at a later date, including Jetstar which first reported in May 2004, MacAir in July 2005 and Tiger Airways in April 2008. MacAir ceased operations in February 2009 and data was not received for December 2008 onwards. Virgin Blue was rebranded as Virgin Australia in May 2011 and time series data in Microsoft Excel spreadsheet format on the BITRE website has been revised to reflect this. Services operated by Skywest on behalf of Virgin Australia using ATR/F100 aircraft commenced in November 2011 and are shown separately as Virgin Australia – ATR/F100 Operations.

Information presented in this report is for Australian domestic routes for which the passenger load averaged 8 000 or more passengers per month over the previous six months and where two or more airlines operated in competition on those routes. There were 58 routes that met this definition in March 2013. Over time, routes which meet these criteria change as airline networks and traffic levels vary.

Participating airlines report their overall monthly network performance where this is possible.

Total industry figures encompass all services operated by reporting airlines only. These airlines collectively carried over 95 per cent of total domestic passengers (regular public transport only) in 2012.

The method of capturing on time performance varies between airlines utilising different recording systems. Jetstar and Qantas jet aircraft use Aircraft Communication Addressing and Reporting System (ACARS) to electronically measure on time performance. Regional Express, Skywest, Tiger Airways, Virgin Australia, Virgin Australia – ATR/F100 Operations and the Qantas non-jet fleet record on time performance manually using records from pilots, gate agents and/or ground crews.

After initial data is collected, aggregate reports are audited internally by participating airlines prior to publication.

Reports and detailed time series data in Microsoft Excel spreadsheet format are available from the BITRE website at: <http://www.bitre.gov.au/statistics/aviation/otphome.aspx>.

Contents

	Page
Industry performance	1
Individual routes	9
Airports	21
Definitions	27

Industry performance

For March 2013, on time performance over all routes operated by participating airlines (Jetstar, Qantas, QantasLink, Regional Express, Skywest Airlines, Tiger Airways, Virgin Australia and Virgin Australia – ATR/F100 Operations) averaged 79.3 per cent for on time departures, and 77.6 per cent for on time arrivals. Cancellations represented 1.5 per cent of all scheduled flights. The equivalent figures for March 2012 were 78.6 per cent for departures, 77.1 per cent for arrivals and 1.5 per cent for cancellations.

This month's figures were below the long term average performance for all routes since the collection began (83.7 per cent for departures and 82.3 per cent for arrivals). The rate of cancellations was also worse than the long term average of 1.3 per cent.

Of the major domestic airlines, Qantas achieved the highest level of on time departures for March 2013 at 82.1 per cent, followed by Tiger Airways at 81.1 per cent, Virgin Australia at 77.0 per cent and Jetstar at 74.6 per cent. The regional airlines were led by Regional Express at 84.0 per cent, followed by QantasLink at 79.6 per cent, Virgin Australia – ATR/F100 Operations at 78.3 per cent and Skywest at 75.4 per cent.

Qantas also achieved the highest on time arrivals among the major domestic airlines at 81.5 per cent, followed by Tiger Airways at 79.1 per cent, Jetstar at 76.9 per cent and Virgin Australia at 74.8 per cent. Regional Express was the best performing regional airline for on time arrivals at 81.3 per cent, followed by Virgin Australia – ATR/F100 Operations at 76.6 per cent, QantasLink at 75.4 per cent and Skywest at 75.0 per cent.

Virgin Australia – ATR/F100 Operations had the highest percentage of cancellations (2.9 per cent) during the month, followed by QantasLink (2.0 per cent), Qantas (1.6 per cent), Jetstar and Virgin Australia (both on 1.5 per cent), Tiger Airways (1.3 per cent), Skywest (0.7 per cent) and Regional Express (0.6 per cent).

Of the 58 routes which met the criteria for on time performance reporting in March 2013, the Mount Isa-Brisbane route had the highest percentage of on time departures (96.2 per cent) and the Brisbane-Mount Isa route had the highest percentage of on time arrivals (97.4 per cent). The Launceston-Sydney route had the lowest percentage of on time departures (63.9 per cent) and the Port Macquarie-Sydney route had the lowest percentage of on time arrivals (also 63.9 per cent).

Cancellations were highest on the Emerald-Brisbane route at 4.8 per cent, followed by Gladstone-Brisbane at 4.2 per cent, Gold Coast-Sydney at 3.6 per cent and Brisbane-Emerald and Rockhampton-Brisbane both at 3.4 per cent.

Mount Isa Airport recorded the highest percentage of on time departures (96.2 per cent) and the highest percentage of on time arrivals (97.4 per cent). Coffs Harbour Airport recorded the lowest percentage of on time departures (67.7 per cent) and Port Macquarie Airport recorded the lowest percentage of on time arrivals (67.2 per cent). These figures only refer to reported routes and do not cover all flights at these airports.

Table 1 On time performance for March 2013 — Total Industry

	<i>Sectors</i>		<i>Departures On Time</i>		<i>Arrivals On Time</i>		<i>Cancellations</i>	
	<i>Scheduled</i>	<i>Flown</i>	<i>No.</i>	<i>%</i>	<i>No.</i>	<i>%</i>	<i>No.</i>	<i>%</i>
Jetstar	6 233	6 140	4 583	74.6	4 720	76.9	93	1.5
Qantas	10 541	10 372	8 514	82.1	8 458	81.5	169	1.6
QantasLink	9 731	9 540	7 590	79.6	7 195	75.4	191	2.0
Regional Express	5 520	5 485	4 605	84.0	4 458	81.3	35	0.6
Skywest	826	820	618	75.4	615	75.0	6	0.7
Tiger Airways	1 612	1 591	1 291	81.1	1 258	79.1	21	1.3
Virgin Australia	11 539	11 368	8 754	77.0	8 500	74.8	171	1.5
Virgin Australia - ATR/F100 Operations	1 542	1 498	1 173	78.3	1 147	76.6	44	2.9
All Airlines	47 544	46 814	37 128	79.3	36 351	77.6	730	1.5

Total airline network data (including routes not shown in this report).

Table 2 Top ten routes for on time performance for March 2013 (participating airlines only)

<i>Departures</i>		<i>Arrivals</i>	
<i>Route</i>	<i>On Time (%)</i>	<i>Route</i>	<i>On Time</i>
Mount Isa-Brisbane	96.2	Brisbane-Mount Isa	97.4
Mildura-Melbourne	93.5	Mount Isa-Brisbane	92.3
Melbourne-Mildura	91.0	Mildura-Melbourne	91.5
Adelaide-Port Lincoln	89.9	Darwin-Perth	91.2
Cairns-Townsville	89.8	Adelaide-Gold Coast	90.0
Darwin-Perth	89.5	Melbourne-Mildura	89.5
Melbourne-Darwin	88.7	Brisbane-Adelaide	89.4
Brisbane-Mount Isa	88.5	Port Lincoln-Adelaide	88.5
Brisbane-Proserpine	88.2	Cairns-Townsville	88.3
Brisbane-Emerald	87.9	Sydney-Sunshine Coast	88.1

Table 3 Top ten airports for on time performance for March 2013 (participating airlines and reported routes only)

<i>Departures</i>		<i>Arrivals</i>	
<i>Airport</i>	<i>On Time (%)</i>	<i>Airport</i>	<i>On Time</i>
Mount Isa	96.2	Mount Isa	97.4
Mildura	93.5	Mildura	89.5
Port Lincoln	87.5	Port Hedland	86.8
Port Hedland	86.4	Port Lincoln	86.5
Karratha	84.9	Newman	86.5
Kalgoorlie	84.6	Broome	86.0
Emerald	83.0	Kalgoorlie	85.4
Darwin	82.8	Sunshine Coast	85.0
Adelaide	82.0	Darwin	84.8
Cairns	81.9	Emerald	83.9

Total industry on time performance

Figure 1 On time performance (by month from March 2010)—Total Industry

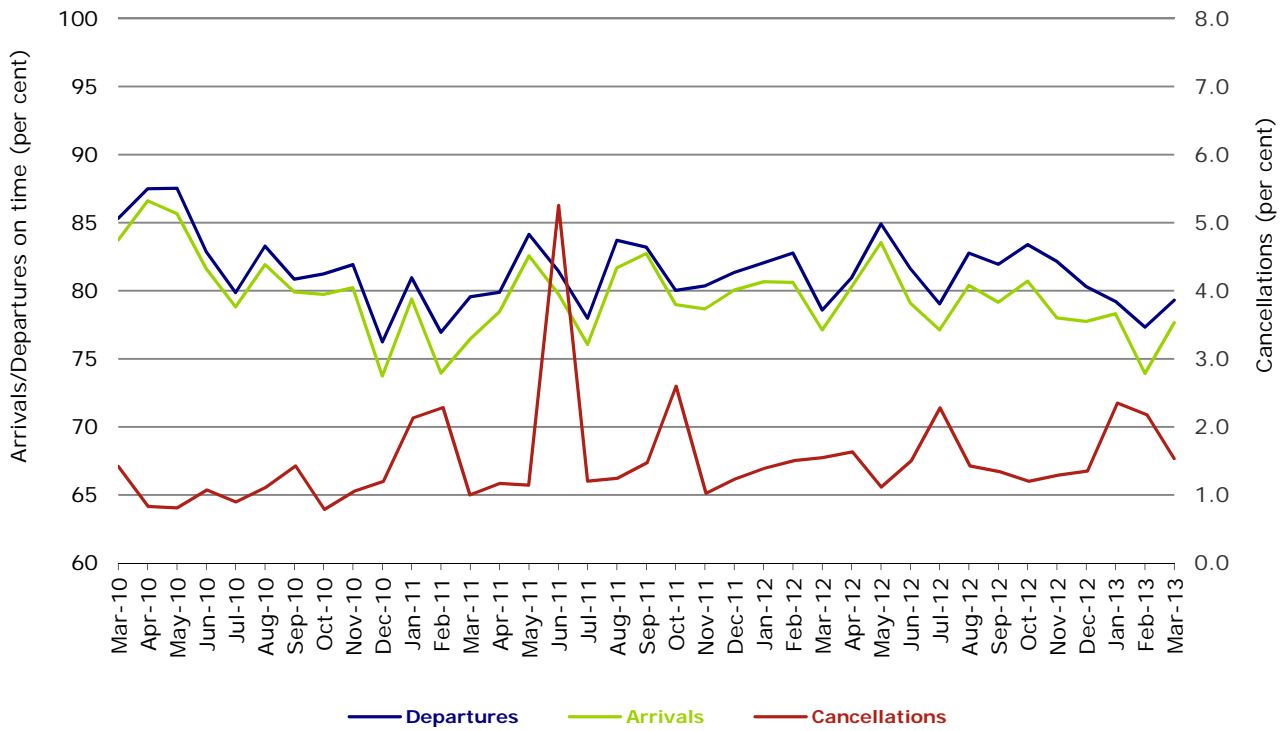


Figure 2 Departures on time (by month from March 2012)

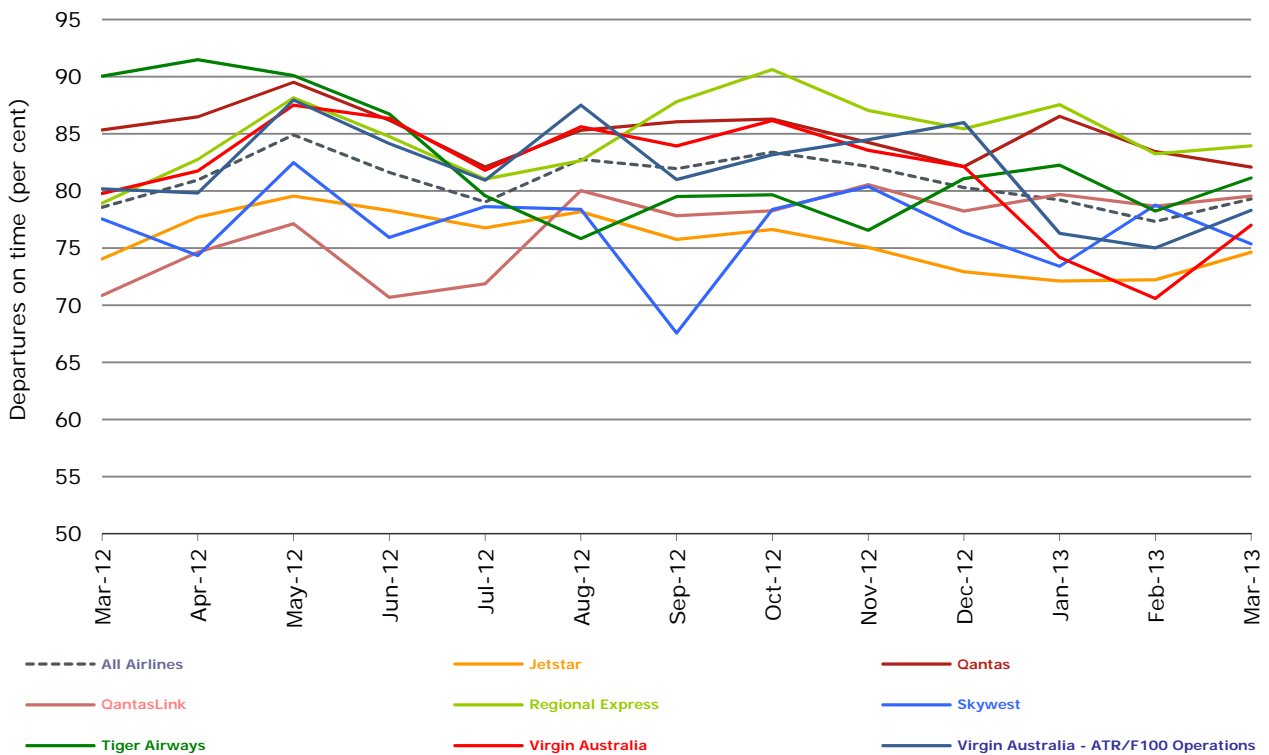


Figure 3 Arrivals on time (by month from March 2012)

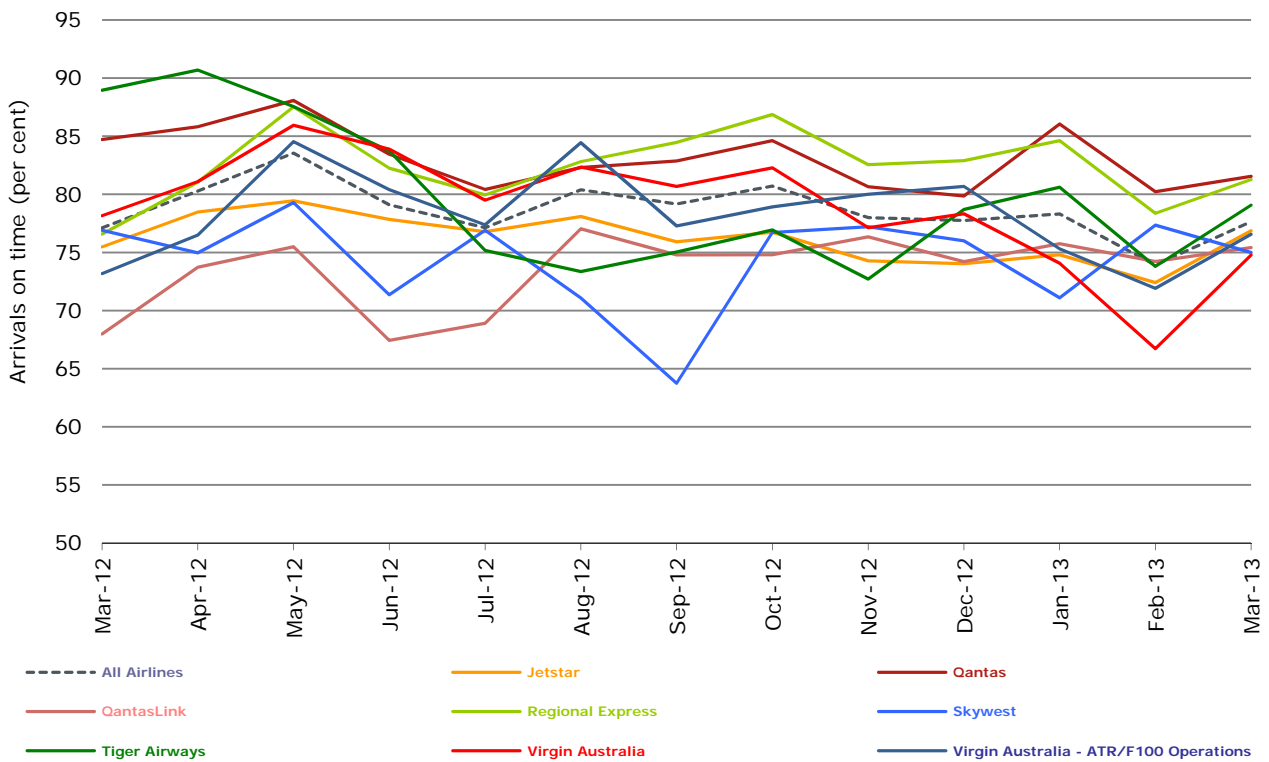
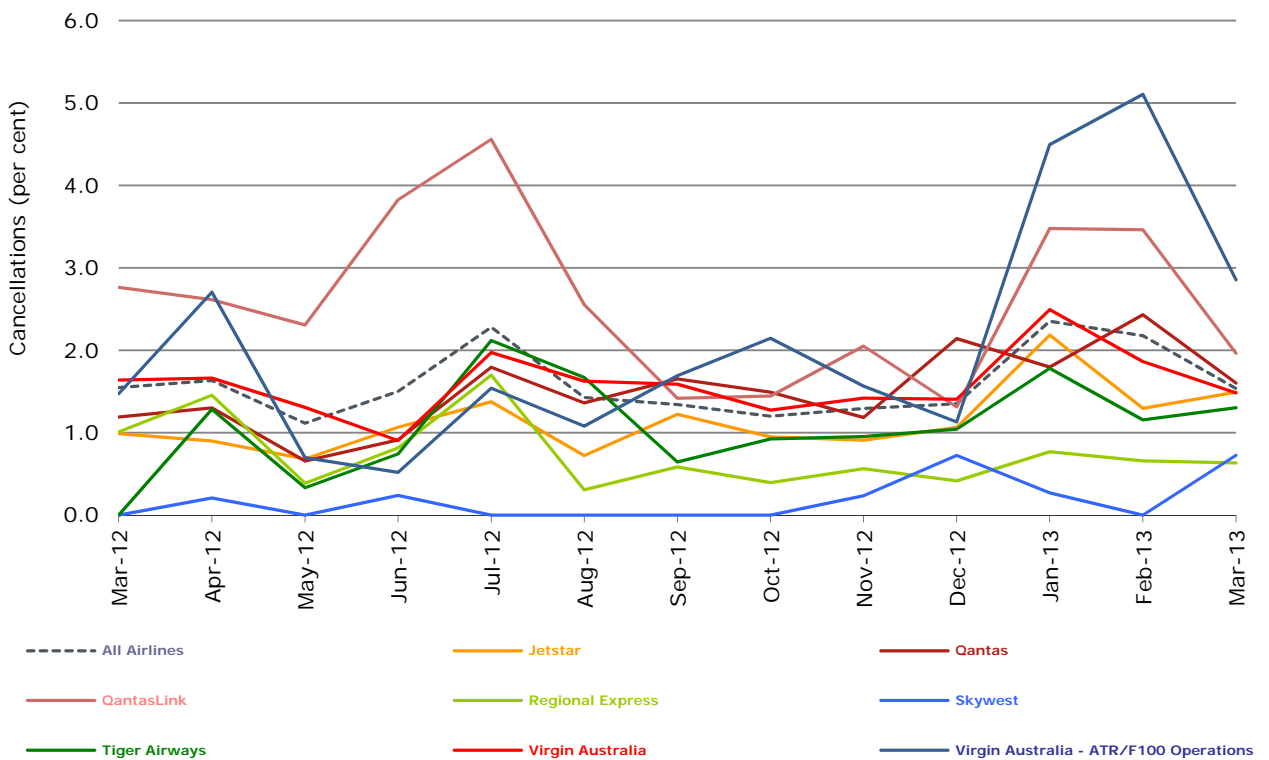


Figure 4 Cancellations (by month from March 2012)



Major domestic airlines on time performance

Figure 5 On time performance (by month from March 2010)—Jetstar

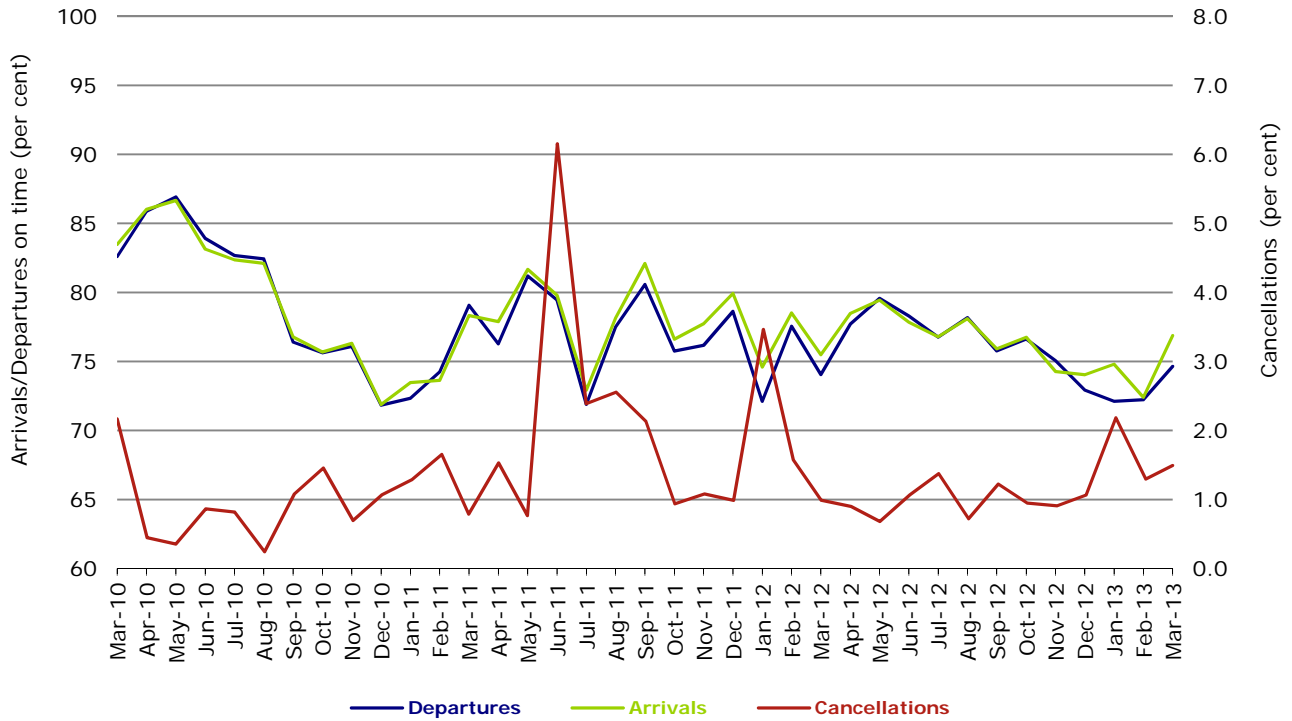


Figure 6 On time performance (by month from March 2010)—Qantas

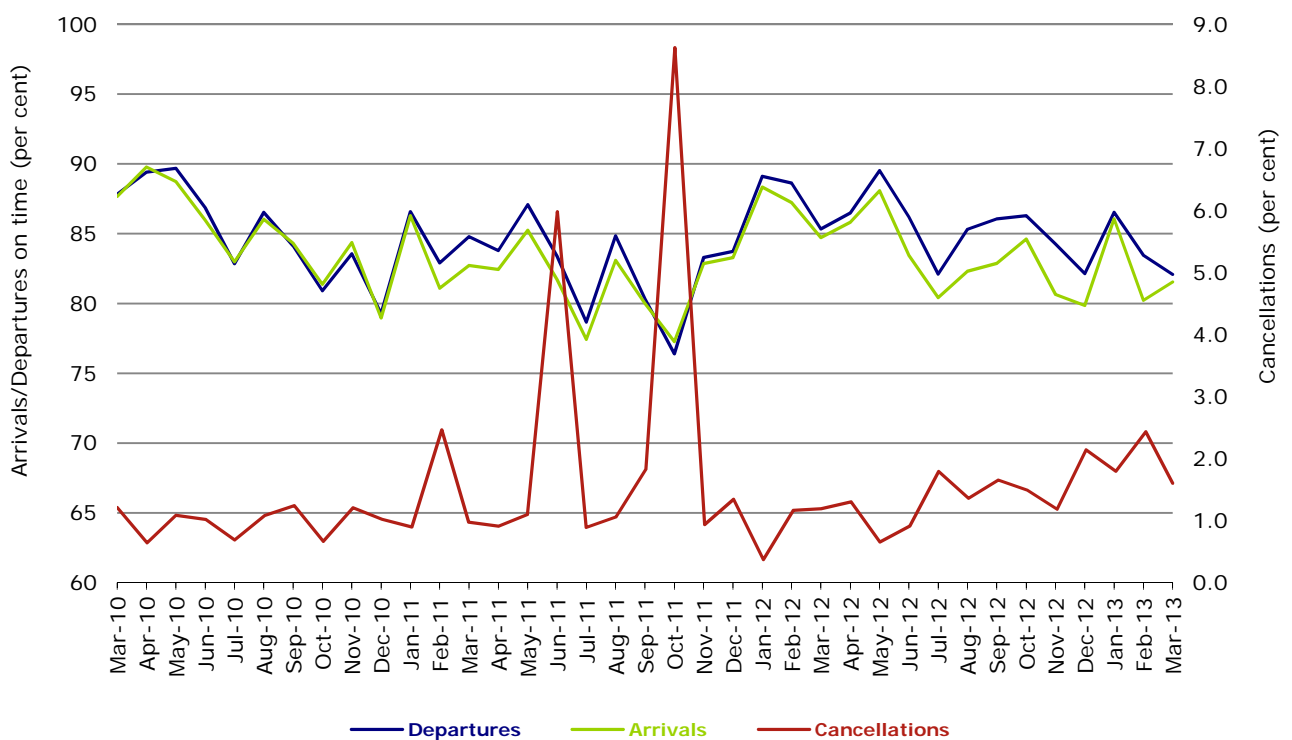
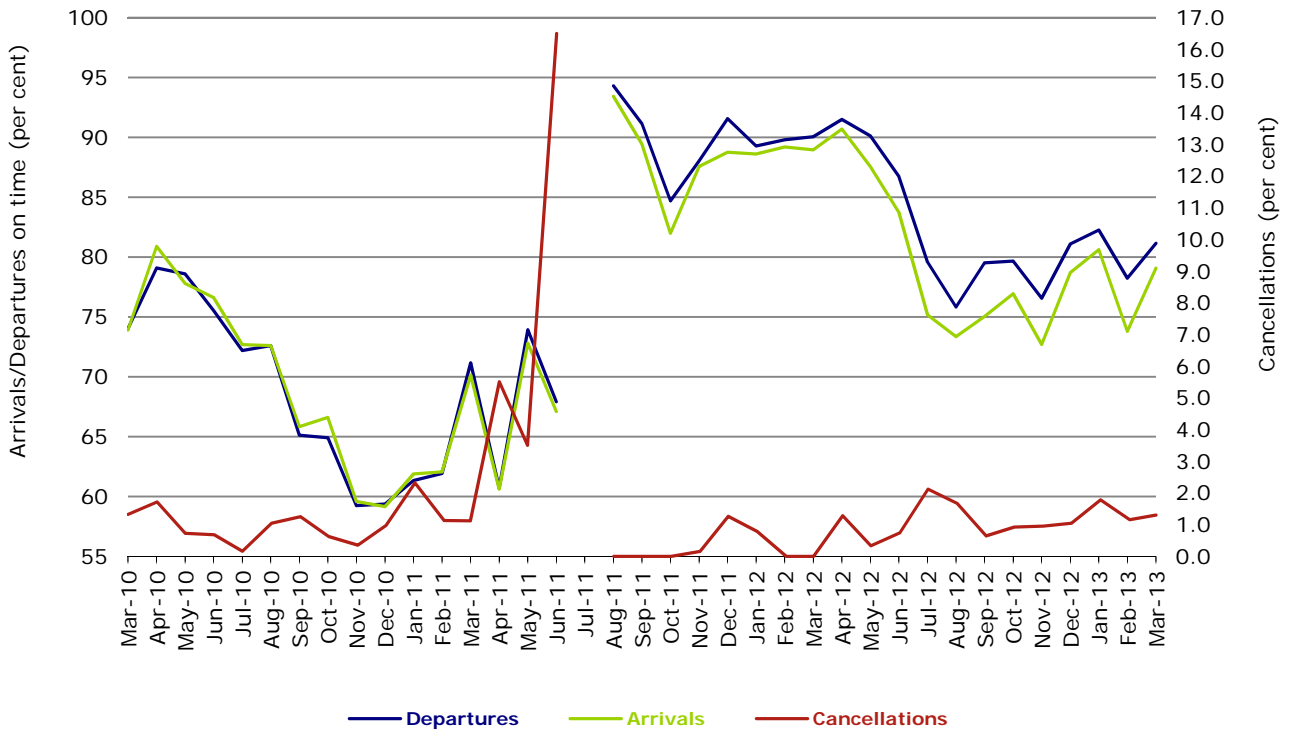
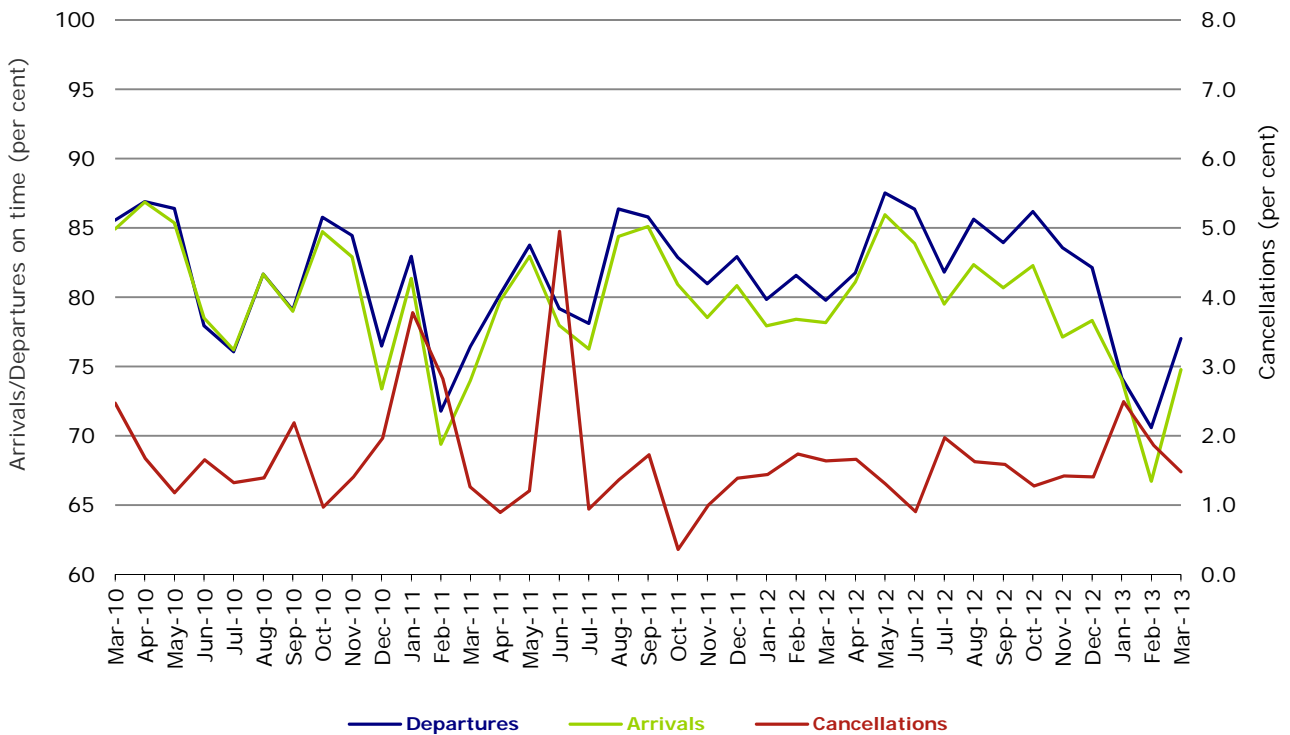


Figure 7 On time performance (by month from March 2010)—Tiger Airways



No data for Tiger Airways for July 2011 as it was grounded by CASA from 2/7/2011 to 11/8/2011.

Figure 8 On time performance (by month from March 2010)—Virgin Australia



Major regional airlines on time performance

Figure 9 On time performance (by month from March 2010)—QantasLink

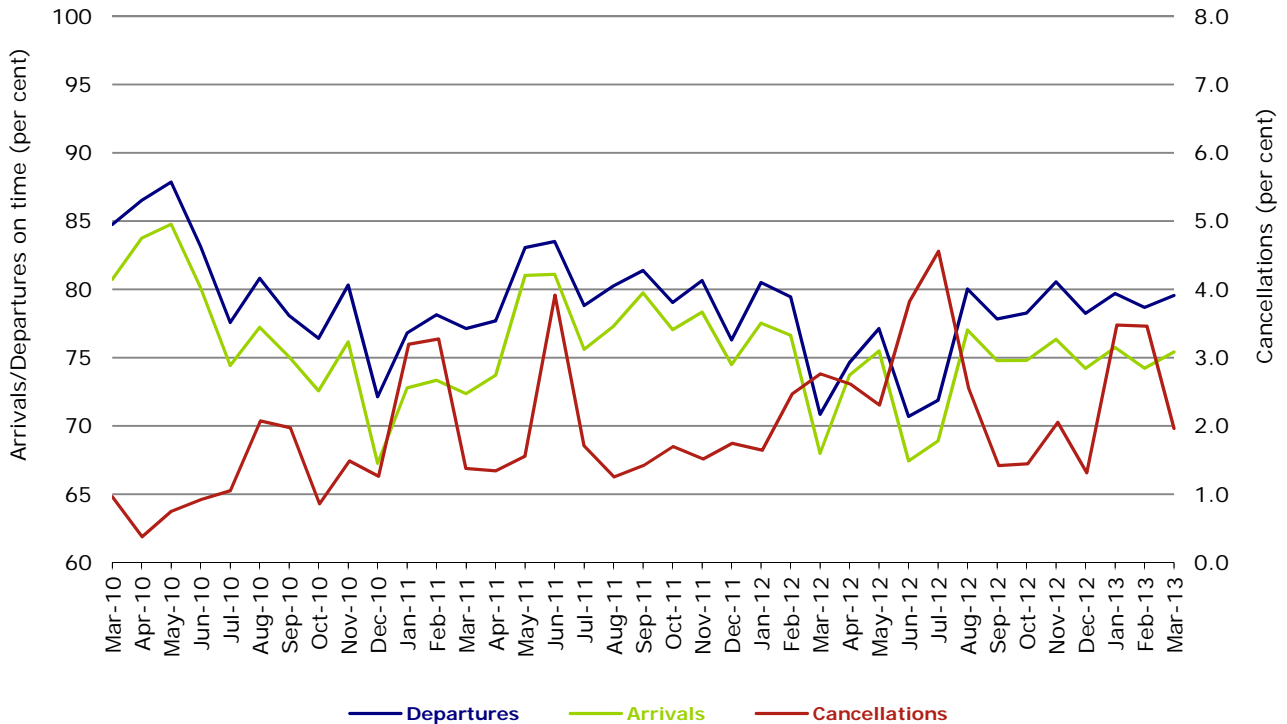


Figure 10 On time performance (by month from March 2010)—Regional Express

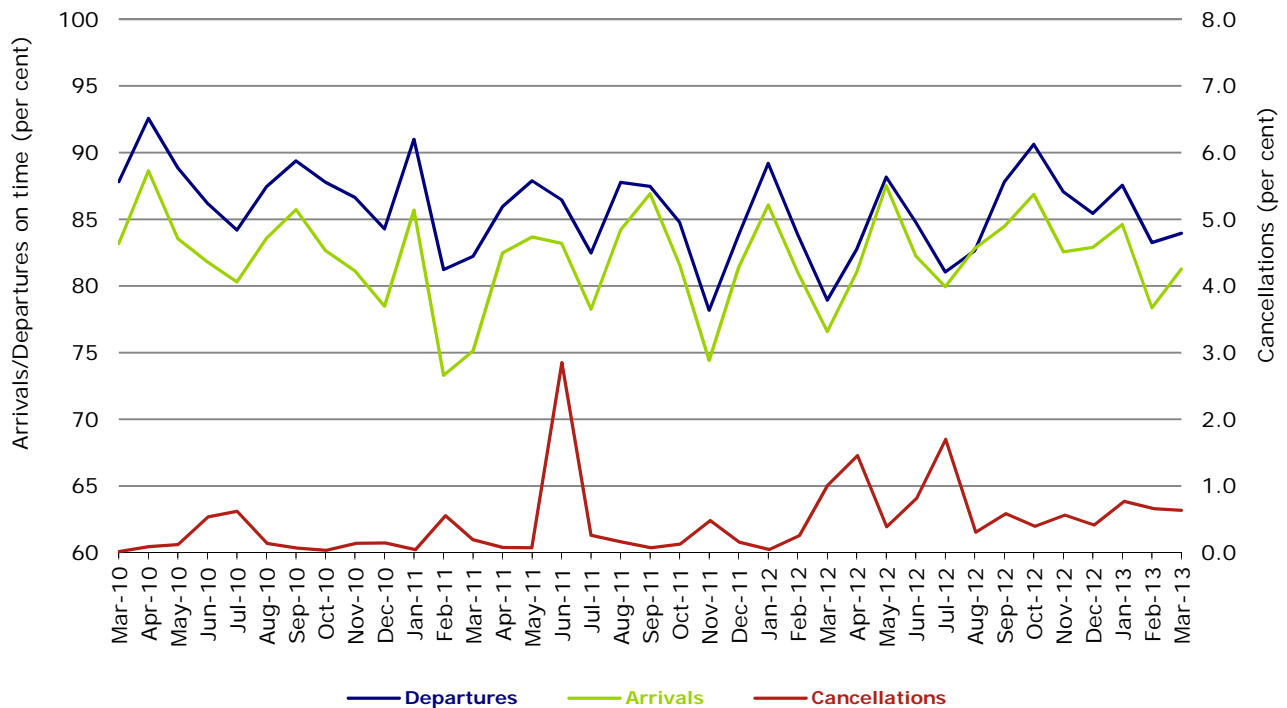


Figure 11 On time performance (by month from March 2010)—Skywest

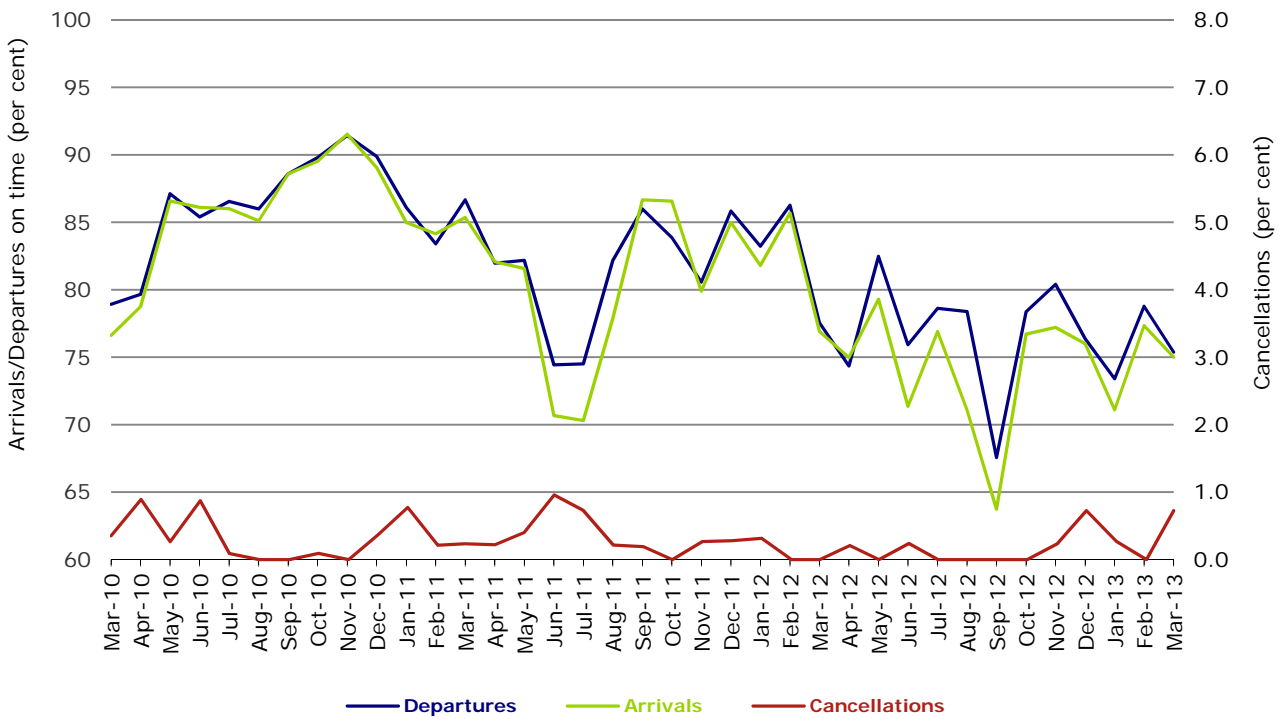
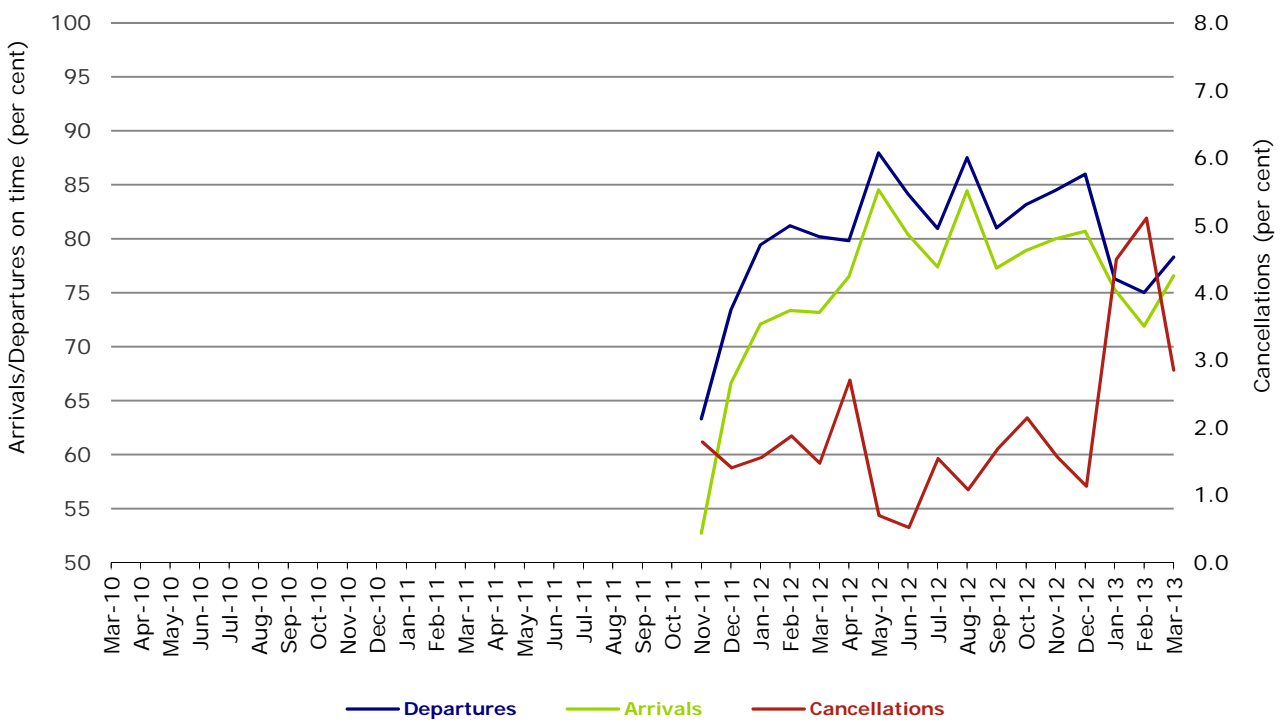


Figure 12 On time performance (by month from March 2010) Virgin Australia - ATR/F100 Operations



Virgin Australia - ATR/F100 Operations commenced in November 2011.

Individual routes

On time performance is reported for all routes where the passenger load averages over 8000 passengers per month over the previous six months, and where two or more airlines operate in competition on those routes. There are now 58 routes which meet this definition. Over time, however, routes which meet this definition may change as airline networks and traffic levels vary.

	<i>Sectors</i>		<i>Departures On Time</i>		<i>Arrivals On Time</i>		<i>Cancellations</i>	
	<i>Sched.</i>	<i>Flown</i>	<i>No.</i>	<i>%</i>	<i>No.</i>	<i>%</i>	<i>No.</i>	<i>%</i>
Adelaide-Brisbane								
Jetstar	32	32	28	87.5	29	90.6	0	0.0
Qantas	106	106	88	83.0	87	82.1	0	0.0
Virgin Australia	118	118	99	83.9	98	83.1	0	0.0
All Airlines	256	256	215	84.0	214	83.6	0	0.0
Adelaide-Canberra								
Qantas	47	46	39	84.8	42	91.3	1	2.1
QantasLink	21	21	10	47.6	12	57.1	0	0.0
Virgin Australia	26	26	23	88.5	23	88.5	0	0.0
All Airlines	94	93	72	77.4	77	82.8	1	1.1
Adelaide-Gold Coast								
Jetstar	30	30	23	76.7	26	86.7	0	0.0
Virgin Australia	31	30	28	93.3	28	93.3	1	3.2
All Airlines	61	60	51	85.0	54	90.0	1	1.6
Adelaide-Melbourne								
Jetstar	98	97	64	66.0	70	72.2	1	1.0
Qantas	300	298	248	83.2	265	88.9	2	0.7
QantasLink	18	18	17	94.4	15	83.3	0	0.0
Tiger Airways	65	63	54	85.7	56	88.9	2	3.1
Virgin Australia	282	281	249	88.6	238	84.7	1	0.4
All Airlines	763	757	632	83.5	644	85.1	6	0.8
Adelaide-Perth								
Jetstar	36	36	22	61.1	19	52.8	0	0.0
Qantas	111	111	92	82.9	89	80.2	0	0.0
Virgin Australia	62	62	45	72.6	46	74.2	0	0.0
All Airlines	209	209	159	76.1	154	73.7	0	0.0
Adelaide-Port Lincoln								
QantasLink	97	97	86	88.7	82	84.5	0	0.0
Regional Express	200	200	181	90.5	175	87.5	0	0.0
All Airlines	297	297	267	89.9	257	86.5	0	0.0
Adelaide-Sydney								
Jetstar	95	92	57	62.0	66	71.7	3	3.2
Qantas	288	285	238	83.5	234	82.1	3	1.0
Virgin Australia	175	171	130	76.0	124	72.5	4	2.3
All Airlines	558	548	425	77.6	424	77.4	10	1.8
Albury-Sydney								
QantasLink	114	114	72	63.2	71	62.3	0	0.0
Regional Express	109	109	86	78.9	80	73.4	0	0.0
Virgin Australia - ATR/F100 Operations	62	61	50	82.0	40	65.6	1	1.6
All Airlines	285	284	208	73.2	191	67.3	1	0.4
Ayers Rock-Sydney								
Qantas	31	31	27	87.1	27	87.1	0	0.0
Virgin Australia	31	31	22	71.0	25	80.6	0	0.0
All Airlines	62	62	49	79.0	52	83.9	0	0.0

	<i>Sectors</i>		<i>Departures On Time</i>		<i>Arrivals On Time</i>		<i>Cancellations</i>	
	<i>Sched.</i>	<i>Flown</i>	<i>No.</i>	<i>%</i>	<i>No.</i>	<i>%</i>	<i>No.</i>	<i>%</i>
Ballina-Sydney								
Jetstar	48	47	32	68.1	31	66.0	1	2.1
Regional Express	28	28	19	67.9	19	67.9	0	0.0
Virgin Australia	31	30	23	76.7	22	73.3	1	3.2
All Airlines	107	105	74	70.5	72	68.6	2	1.9
Brisbane-Adelaide								
Jetstar	31	31	31	100.0	31	100.0	0	0.0
Qantas	106	105	93	88.6	96	91.4	1	0.9
Virgin Australia	119	118	95	80.5	100	84.7	1	0.8
All Airlines	256	254	219	86.2	227	89.4	2	0.8
Brisbane-Cairns								
Jetstar	93	92	73	79.3	81	88.0	1	1.1
Qantas	111	111	81	73.0	85	76.6	0	0.0
QantasLink	5	5	5	100.0	5	100.0	0	0.0
Virgin Australia	164	161	143	88.8	140	87.0	3	1.8
All Airlines	373	369	302	81.8	311	84.3	4	1.1
Brisbane-Canberra								
Qantas	142	142	125	88.0	130	91.5	0	0.0
QantasLink	22	22	18	81.8	17	77.3	0	0.0
Virgin Australia	97	97	71	73.2	69	71.1	0	0.0
All Airlines	261	261	214	82.0	216	82.8	0	0.0
Brisbane-Darwin								
Qantas	31	31	24	77.4	28	90.3	0	0.0
Virgin Australia	31	31	24	77.4	24	77.4	0	0.0
All Airlines	62	62	48	77.4	52	83.9	0	0.0
Brisbane-Emerald								
QantasLink	184	178	160	89.9	148	83.1	6	3.3
Virgin Australia - ATR/F100 Operations	106	102	86	84.3	87	85.3	4	3.8
All Airlines	290	280	246	87.9	235	83.9	10	3.4
Brisbane-Gladstone								
QantasLink	234	227	190	83.7	183	80.6	7	3.0
Virgin Australia - ATR/F100 Operations	123	121	94	77.7	90	74.4	2	1.6
All Airlines	357	348	284	81.6	273	78.4	9	2.5
Brisbane-Hamilton Island								
Jetstar	19	19	7	36.8	15	78.9	0	0.0
Virgin Australia	32	32	29	90.6	27	84.4	0	0.0
All Airlines	51	51	36	70.6	42	82.4	0	0.0
Brisbane-Mackay								
Jetstar	90	90	66	73.3	67	74.4	0	0.0
QantasLink	109	109	94	86.2	91	83.5	0	0.0
Virgin Australia	170	167	136	81.4	129	77.2	3	1.8
All Airlines	369	366	296	80.9	287	78.4	3	0.8
Brisbane-Melbourne								
Jetstar	84	83	59	71.1	66	79.5	1	1.2
Qantas	420	411	344	83.7	355	86.4	9	2.1
Tiger Airways	87	87	55	63.2	60	69.0	0	0.0
Virgin Australia	383	376	291	77.4	286	76.1	7	1.8
All Airlines	974	957	749	78.3	767	80.1	17	1.7
Brisbane-Mount Isa								
Qantas	57	57	49	86.0	56	98.2	0	0.0
Virgin Australia	21	21	20	95.2	20	95.2	0	0.0
All Airlines	78	78	69	88.5	76	97.4	0	0.0

	<i>Sectors</i>		<i>Departures On Time</i>		<i>Arrivals On Time</i>		<i>Cancellations</i>	
	<i>Sched.</i>	<i>Flown</i>	<i>No.</i>	<i>%</i>	<i>No.</i>	<i>%</i>	<i>No.</i>	<i>%</i>
Brisbane-Newcastle								
Jetstar	116	116	95	81.9	99	85.3	0	0.0
QantasLink	68	66	50	75.8	31	47.0	2	2.9
Virgin Australia	83	81	71	87.7	70	86.4	2	2.4
All Airlines	267	263	216	82.1	200	76.0	4	1.5
Brisbane-Perth								
Jetstar	19	19	18	94.7	17	89.5	0	0.0
Qantas	118	118	85	72.0	90	76.3	0	0.0
Virgin Australia	86	86	63	73.3	53	61.6	0	0.0
All Airlines	223	223	166	74.4	160	71.7	0	0.0
Brisbane-Proserpine								
Jetstar	34	34	26	76.5	26	76.5	0	0.0
Virgin Australia	51	51	49	96.1	44	86.3	0	0.0
All Airlines	85	85	75	88.2	70	82.4	0	0.0
Brisbane-Rockhampton								
QantasLink	213	207	165	79.7	161	77.8	6	2.8
Virgin Australia	91	91	76	83.5	69	75.8	0	0.0
Virgin Australia - ATR/F100 Operations	124	120	98	81.7	99	82.5	4	3.2
All Airlines	428	418	339	81.1	329	78.7	10	2.3
Brisbane-Sydney								
Jetstar	101	95	56	58.9	65	68.4	6	5.9
Qantas	617	603	463	76.8	459	76.1	14	2.3
Tiger Airways	82	78	61	78.2	61	78.2	4	4.9
Virgin Australia	561	543	418	77.0	419	77.2	18	3.2
All Airlines	1 361	1 319	998	75.7	1 004	76.1	42	3.1
Brisbane-Townsville								
Jetstar	31	31	24	77.4	24	77.4	0	0.0
Qantas	153	152	123	80.9	126	82.9	1	0.7
Virgin Australia	161	161	116	72.0	112	69.6	0	0.0
All Airlines	345	344	263	76.5	262	76.2	1	0.3
Broome-Perth								
Qantas	26	26	23	88.5	23	88.5	0	0.0
QantasLink	58	58	49	84.5	50	86.2	0	0.0
Skywest	14	14	8	57.1	9	64.3	0	0.0
Virgin Australia	31	31	20	64.5	20	64.5	0	0.0
All Airlines	129	129	100	77.5	102	79.1	0	0.0
Cairns-Brisbane								
Jetstar	95	94	69	73.4	73	77.7	1	1.1
Qantas	111	111	94	84.7	91	82.0	0	0.0
QantasLink	5	5	5	100.0	5	100.0	0	0.0
Virgin Australia	164	161	131	81.4	133	82.6	3	1.8
All Airlines	375	371	299	80.6	302	81.4	4	1.1
Cairns-Melbourne								
Jetstar	69	68	54	79.4	55	80.9	1	1.4
Qantas	31	31	22	71.0	24	77.4	0	0.0
Tiger Airways	19	19	18	94.7	18	94.7	0	0.0
Virgin Australia	36	36	24	66.7	26	72.2	0	0.0
All Airlines	155	154	118	76.6	123	79.9	1	0.6
Cairns-Sydney								
Jetstar	66	66	52	78.8	51	77.3	0	0.0
Qantas	66	66	55	83.3	55	83.3	0	0.0
Virgin Australia	93	93	74	79.6	77	82.8	0	0.0
All Airlines	225	225	181	80.4	183	81.3	0	0.0

	<i>Sectors</i>		<i>Departures On Time</i>		<i>Arrivals On Time</i>		<i>Cancellations</i>	
	<i>Sched.</i>	<i>Flown</i>	<i>No.</i>	<i>%</i>	<i>No.</i>	<i>%</i>	<i>No.</i>	<i>%</i>
Cairns-Townsville								
QantasLink	186	181	163	90.1	161	89.0	5	2.7
Virgin Australia - ATR/F100 Operations	26	24	21	87.5	20	83.3	2	7.7
All Airlines	212	205	184	89.8	181	88.3	7	3.3
Canberra-Adelaide								
Qantas	52	52	48	92.3	48	92.3	0	0.0
QantasLink	21	21	14	66.7	11	52.4	0	0.0
Virgin Australia	26	26	22	84.6	22	84.6	0	0.0
All Airlines	99	99	84	84.8	81	81.8	0	0.0
Canberra-Brisbane								
Qantas	142	141	129	91.5	119	84.4	1	0.7
QantasLink	22	22	16	72.7	14	63.6	0	0.0
Virgin Australia	97	97	74	76.3	71	73.2	0	0.0
All Airlines	261	260	219	84.2	204	78.5	1	0.4
Canberra-Melbourne								
Qantas	253	252	222	88.1	222	88.1	1	0.4
QantasLink	41	41	33	80.5	32	78.0	0	0.0
Virgin Australia	184	184	138	75.0	146	79.3	0	0.0
All Airlines	478	477	393	82.4	400	83.9	1	0.2
Canberra-Sydney								
Qantas	154	153	132	86.3	127	83.0	1	0.6
QantasLink	402	389	295	75.8	271	69.7	13	3.2
Virgin Australia	74	74	57	77.0	54	73.0	0	0.0
Virgin Australia - ATR/F100 Operations	207	203	153	75.4	152	74.9	4	1.9
All Airlines	837	819	637	77.8	604	73.7	18	2.2
Coffs Harbour-Sydney								
QantasLink	141	141	88	62.4	99	70.2	0	0.0
Tiger Airways	18	18	16	88.9	15	83.3	0	0.0
Virgin Australia	62	61	45	73.8	45	73.8	1	1.6
All Airlines	221	220	149	67.7	159	72.3	1	0.5
Darwin-Brisbane								
Qantas	31	31	24	77.4	26	83.9	0	0.0
Virgin Australia	31	31	23	74.2	25	80.6	0	0.0
All Airlines	62	62	47	75.8	51	82.3	0	0.0
Darwin-Melbourne								
Jetstar	9	8	6	75.0	7	87.5	1	11.1
Qantas	14	14	12	85.7	11	78.6	0	0.0
Virgin Australia	31	31	28	90.3	28	90.3	0	0.0
All Airlines	54	53	46	86.8	46	86.8	1	1.9
Darwin-Perth								
Qantas	31	31	25	80.6	27	87.1	0	0.0
Virgin Australia	26	26	26	100.0	25	96.2	0	0.0
All Airlines	57	57	51	89.5	52	91.2	0	0.0
Darwin-Sydney								
Jetstar	30	30	22	73.3	21	70.0	0	0.0
Qantas	35	35	32	91.4	29	82.9	0	0.0
Virgin Australia	31	31	24	77.4	22	71.0	0	0.0
All Airlines	96	96	78	81.3	72	75.0	0	0.0
Dubbo-Sydney								
QantasLink	110	110	68	61.8	59	53.6	0	0.0
Regional Express	171	168	128	76.2	125	74.4	3	1.8
All Airlines	281	278	196	70.5	184	66.2	3	1.1

	<i>Sectors</i>		<i>Departures On Time</i>		<i>Arrivals On Time</i>		<i>Cancellations</i>	
	<i>Sched.</i>	<i>Flown</i>	<i>No.</i>	<i>%</i>	<i>No.</i>	<i>%</i>	<i>No.</i>	<i>%</i>
Emerald-Brisbane								
QantasLink	184	177	142	80.2	123	69.5	7	3.8
Virgin Australia - ATR/F100 Operations	106	99	87	87.9	80	80.8	7	6.6
All Airlines	290	276	229	83.0	203	73.6	14	4.8
Geraldton-Perth								
QantasLink	52	52	39	75.0	38	73.1	0	0.0
Skywest	83	83	68	81.9	67	80.7	0	0.0
All Airlines	135	135	107	79.3	105	77.8	0	0.0
Gladstone-Brisbane								
QantasLink	255	246	196	79.7	179	72.8	9	3.5
Virgin Australia - ATR/F100 Operations	123	116	91	78.4	80	69.0	7	5.7
All Airlines	378	362	287	79.3	259	71.5	16	4.2
Gold Coast-Adelaide								
Jetstar	32	32	25	78.1	24	75.0	0	0.0
Virgin Australia	31	30	26	86.7	25	83.3	1	3.2
All Airlines	63	62	51	82.3	49	79.0	1	1.6
Gold Coast-Melbourne								
Jetstar	179	177	137	77.4	141	79.7	2	1.1
Tiger Airways	79	78	56	71.8	59	75.6	1	1.3
Virgin Australia	199	196	138	70.4	153	78.1	3	1.5
All Airlines	457	451	331	73.4	353	78.3	6	1.3
Gold Coast-Sydney								
Jetstar	285	271	199	73.4	197	72.7	14	4.9
Qantas	93	93	74	79.6	77	82.8	0	0.0
Tiger Airways	64	63	40	63.5	36	57.1	1	1.6
Virgin Australia	343	330	222	67.3	225	68.2	13	3.8
All Airlines	785	757	535	70.7	535	70.7	28	3.6
Hamilton Island-Brisbane								
Jetstar	19	19	13	68.4	14	73.7	0	0.0
Virgin Australia	32	32	22	68.8	22	68.8	0	0.0
All Airlines	51	51	35	68.6	36	70.6	0	0.0
Hamilton Island-Sydney								
Jetstar	22	22	15	68.2	16	72.7	0	0.0
Virgin Australia	31	30	21	70.0	22	73.3	1	3.2
All Airlines	53	52	36	69.2	38	73.1	1	1.9
Hobart-Melbourne								
Jetstar	190	186	125	67.2	122	65.6	4	2.1
Qantas	62	62	56	90.3	55	88.7	0	0.0
QantasLink	31	31	29	93.5	19	61.3	0	0.0
Tiger Airways	41	40	35	87.5	32	80.0	1	2.4
Virgin Australia	164	164	115	70.1	122	74.4	0	0.0
All Airlines	488	483	360	74.5	350	72.5	5	1.0
Hobart-Sydney								
Jetstar	97	97	60	61.9	70	72.2	0	0.0
Qantas	31	31	24	77.4	25	80.6	0	0.0
Virgin Australia	62	62	43	69.4	45	72.6	0	0.0
All Airlines	190	190	127	66.8	140	73.7	0	0.0
Kalgoorlie-Perth								
Qantas	54	52	49	94.2	49	94.2	2	3.7
QantasLink	35	35	32	91.4	32	91.4	0	0.0
Skywest	56	56	40	71.4	32	57.1	0	0.0
All Airlines	145	143	121	84.6	113	79.0	2	1.4

	<i>Sectors</i>		<i>Departures On Time</i>		<i>Arrivals On Time</i>		<i>Cancellations</i>	
	<i>Sched.</i>	<i>Flown</i>	<i>No.</i>	<i>%</i>	<i>No.</i>	<i>%</i>	<i>No.</i>	<i>%</i>
Karratha-Perth								
Qantas	181	175	145	82.9	144	82.3	6	3.3
QantasLink	64	64	59	92.2	56	87.5	0	0.0
Virgin Australia	52	52	43	82.7	35	67.3	0	0.0
All Airlines	297	291	247	84.9	235	80.8	6	2.0
Launceston-Melbourne								
Jetstar	135	134	104	77.6	112	83.6	1	0.7
QantasLink	122	120	99	82.5	96	80.0	2	1.6
Virgin Australia	137	137	110	80.3	114	83.2	0	0.0
All Airlines	394	391	313	80.1	322	82.4	3	0.8
Launceston-Sydney								
Jetstar	67	66	46	69.7	47	71.2	1	1.5
Virgin Australia	31	31	16	51.6	20	64.5	0	0.0
All Airlines	98	97	62	63.9	67	69.1	1	1.0
Mackay-Brisbane								
Jetstar	91	90	63	70.0	62	68.9	1	1.1
QantasLink	109	108	95	88.0	93	86.1	1	0.9
Virgin Australia	170	164	136	82.9	126	76.8	6	3.5
All Airlines	370	362	294	81.2	281	77.6	8	2.2
Melbourne-Adelaide								
Jetstar	96	96	78	81.3	76	79.2	0	0.0
Qantas	300	297	256	86.2	252	84.8	3	1.0
QantasLink	18	18	16	88.9	13	72.2	0	0.0
Tiger Airways	64	63	57	90.5	54	85.7	1	1.6
Virgin Australia	282	282	225	79.8	220	78.0	0	0.0
All Airlines	760	756	632	83.6	615	81.3	4	0.5
Melbourne-Brisbane								
Jetstar	82	79	43	54.4	50	63.3	3	3.7
Qantas	421	411	346	84.2	302	73.5	10	2.4
Tiger Airways	86	86	66	76.7	57	66.3	0	0.0
Virgin Australia	377	372	287	77.2	246	66.1	5	1.3
All Airlines	966	948	742	78.3	655	69.1	18	1.9
Melbourne-Cairns								
Jetstar	69	69	55	79.7	56	81.2	0	0.0
Qantas	31	31	26	83.9	24	77.4	0	0.0
Tiger Airways	19	19	19	100.0	19	100.0	0	0.0
Virgin Australia	36	36	29	80.6	32	88.9	0	0.0
All Airlines	155	155	129	83.2	131	84.5	0	0.0
Melbourne-Canberra								
Qantas	253	251	220	87.6	218	86.9	2	0.8
QantasLink	41	41	38	92.7	27	65.9	0	0.0
Virgin Australia	184	184	150	81.5	145	78.8	0	0.0
All Airlines	478	476	408	85.7	390	81.9	2	0.4
Melbourne-Darwin								
Jetstar	9	8	8	100.0	8	100.0	1	11.1
Qantas	14	14	11	78.6	12	85.7	0	0.0
Virgin Australia	31	31	28	90.3	26	83.9	0	0.0
All Airlines	54	53	47	88.7	46	86.8	1	1.9
Melbourne-Gold Coast								
Jetstar	179	177	137	77.4	140	79.1	2	1.1
Tiger Airways	79	79	64	81.0	63	79.7	0	0.0
Virgin Australia	199	199	148	74.4	137	68.8	0	0.0
All Airlines	457	455	349	76.7	340	74.7	2	0.4

	<i>Sectors</i>		<i>Departures On Time</i>		<i>Arrivals On Time</i>		<i>Cancellations</i>	
	<i>Sched.</i>	<i>Flown</i>	<i>No.</i>	<i>%</i>	<i>No.</i>	<i>%</i>	<i>No.</i>	<i>%</i>
Melbourne-Hobart								
Jetstar	191	188	132	70.2	134	71.3	3	1.6
Qantas	62	62	56	90.3	57	91.9	0	0.0
QantasLink	31	31	24	77.4	25	80.6	0	0.0
Tiger Airways	41	40	35	87.5	36	90.0	1	2.4
Virgin Australia	164	164	123	75.0	120	73.2	0	0.0
All Airlines	489	485	370	76.3	372	76.7	4	0.8
Melbourne-Launceston								
Jetstar	133	132	114	86.4	112	84.8	1	0.8
QantasLink	122	119	107	89.9	98	82.4	3	2.5
Virgin Australia	137	137	108	78.8	106	77.4	0	0.0
All Airlines	392	388	329	84.8	316	81.4	4	1.0
Melbourne-Mildura								
QantasLink	88	88	80	90.9	78	88.6	0	0.0
Regional Express	81	81	74	91.4	74	91.4	0	0.0
Virgin Australia	31	31	28	90.3	27	87.1	0	0.0
All Airlines	200	200	182	91.0	179	89.5	0	0.0
Melbourne-Newcastle								
Jetstar	105	105	87	82.9	81	77.1	0	0.0
Virgin Australia	31	31	24	77.4	26	83.9	0	0.0
All Airlines	136	136	111	81.6	107	78.7	0	0.0
Melbourne-Perth								
Jetstar	78	77	68	88.3	60	77.9	1	1.3
Qantas	211	211	177	83.9	151	71.6	0	0.0
Tiger Airways	71	71	62	87.3	64	90.1	0	0.0
Virgin Australia	140	140	112	80.0	85	60.7	0	0.0
All Airlines	500	499	419	84.0	360	72.1	1	0.2
Melbourne-Sunshine Coast								
Jetstar	53	53	46	86.8	45	84.9	0	0.0
Tiger Airways	3	3	2	66.7	2	66.7	0	0.0
Virgin Australia	31	31	27	87.1	23	74.2	0	0.0
All Airlines	87	87	75	86.2	70	80.5	0	0.0
Melbourne-Sydney								
Jetstar	305	298	205	68.8	212	71.1	7	2.3
Qantas	862	827	653	79.0	602	72.8	35	4.1
Tiger Airways	238	234	196	83.8	188	80.3	4	1.7
Virgin Australia	789	769	558	72.6	516	67.1	20	2.5
All Airlines	2 194	2 128	1 612	75.8	1 518	71.3	66	3.0
Mildura-Melbourne								
QantasLink	88	88	83	94.3	80	90.9	0	0.0
Regional Express	82	82	77	93.9	79	96.3	0	0.0
Virgin Australia	31	31	28	90.3	25	80.6	0	0.0
All Airlines	201	201	188	93.5	184	91.5	0	0.0
Mount Isa-Brisbane								
Qantas	57	57	55	96.5	55	96.5	0	0.0
Virgin Australia	21	21	20	95.2	17	81.0	0	0.0
All Airlines	78	78	75	96.2	72	92.3	0	0.0
Newcastle-Brisbane								
Jetstar	117	117	91	77.8	87	74.4	0	0.0
QantasLink	68	67	27	40.3	22	32.8	1	1.5
Virgin Australia	83	81	69	85.2	63	77.8	2	2.4
All Airlines	268	265	187	70.6	172	64.9	3	1.1

	<i>Sectors</i>		<i>Departures On Time</i>		<i>Arrivals On Time</i>		<i>Cancellations</i>	
	<i>Sched.</i>	<i>Flown</i>	<i>No.</i>	<i>%</i>	<i>No.</i>	<i>%</i>	<i>No.</i>	<i>%</i>
Newcastle-Melbourne								
Jetstar	105	105	72	68.6	74	70.5	0	0.0
Virgin Australia	31	31	18	58.1	22	71.0	0	0.0
All Airlines	136	136	90	66.2	96	70.6	0	0.0
Newman-Perth								
Qantas	126	124	101	81.5	100	80.6	2	1.6
QantasLink	24	24	24	100.0	24	100.0	0	0.0
Skywest	11	11	8	72.7	7	63.6	0	0.0
Virgin Australia	34	34	23	67.6	21	61.8	0	0.0
All Airlines	195	193	156	80.8	152	78.8	2	1.0
Perth-Adelaide								
Jetstar	36	36	21	58.3	26	72.2	0	0.0
Qantas	112	112	77	68.8	93	83.0	0	0.0
Virgin Australia	62	62	55	88.7	58	93.5	0	0.0
All Airlines	210	210	153	72.9	177	84.3	0	0.0
Perth-Brisbane								
Jetstar	19	19	15	78.9	15	78.9	0	0.0
Qantas	118	118	89	75.4	92	78.0	0	0.0
Virgin Australia	86	86	73	84.9	65	75.6	0	0.0
All Airlines	223	223	177	79.4	172	77.1	0	0.0
Perth-Broome								
Qantas	26	26	24	92.3	23	88.5	0	0.0
QantasLink	58	56	48	85.7	48	85.7	2	3.4
Skywest	8	8	7	87.5	7	87.5	0	0.0
Virgin Australia	31	31	24	77.4	26	83.9	0	0.0
All Airlines	123	121	103	85.1	104	86.0	2	1.6
Perth-Darwin								
Qantas	31	31	27	87.1	25	80.6	0	0.0
Virgin Australia	26	26	18	69.2	20	76.9	0	0.0
All Airlines	57	57	45	78.9	45	78.9	0	0.0
Perth-Geraldton								
QantasLink	52	52	40	76.9	37	71.2	0	0.0
Skywest	83	83	62	74.7	61	73.5	0	0.0
All Airlines	135	135	102	75.6	98	72.6	0	0.0
Perth-Kalgoorlie								
Qantas	54	52	49	94.2	51	98.1	2	3.7
QantasLink	35	35	31	88.6	31	88.6	0	0.0
Skywest	57	57	42	73.7	41	71.9	0	0.0
All Airlines	146	144	122	84.7	123	85.4	2	1.4
Perth-Karratha								
Qantas	181	175	140	80.0	137	78.3	6	3.3
QantasLink	64	64	60	93.8	58	90.6	0	0.0
Virgin Australia	52	52	48	92.3	49	94.2	0	0.0
All Airlines	297	291	248	85.2	244	83.8	6	2.0
Perth-Melbourne								
Jetstar	78	78	50	64.1	57	73.1	0	0.0
Qantas	211	211	169	80.1	179	84.8	0	0.0
Tiger Airways	71	71	63	88.7	60	84.5	0	0.0
Virgin Australia	139	139	122	87.8	121	87.1	0	0.0
All Airlines	499	499	404	81.0	417	83.6	0	0.0

	<i>Sectors</i>		<i>Departures On Time</i>		<i>Arrivals On Time</i>		<i>Cancellations</i>	
	<i>Sched.</i>	<i>Flown</i>	<i>No.</i>	<i>%</i>	<i>No.</i>	<i>%</i>	<i>No.</i>	<i>%</i>
Perth-Newman								
Qantas	126	124	106	85.5	106	85.5	2	1.6
QantasLink	24	24	24	100.0	24	100.0	0	0.0
Skywest	11	11	8	72.7	8	72.7	0	0.0
Virgin Australia	34	34	31	91.2	29	85.3	0	0.0
All Airlines	195	193	169	87.6	167	86.5	2	1.0
Perth-Port Hedland								
Qantas	120	116	101	87.1	100	86.2	4	3.3
QantasLink	42	40	38	95.0	38	95.0	2	4.8
Virgin Australia	73	72	61	84.7	60	83.3	1	1.4
All Airlines	235	228	200	87.7	198	86.8	7	3.0
Perth-Sydney								
Jetstar	41	40	24	60.0	29	72.5	1	2.4
Qantas	213	212	163	76.9	180	84.9	1	0.5
Virgin Australia	118	117	96	82.1	98	83.8	1	0.8
All Airlines	372	369	283	76.7	307	83.2	3	0.8
Port Hedland-Perth								
Qantas	120	116	96	82.8	93	80.2	4	3.3
QantasLink	42	40	40	100.0	39	97.5	2	4.8
Virgin Australia	73	72	61	84.7	55	76.4	1	1.4
All Airlines	235	228	197	86.4	187	82.0	7	3.0
Port Lincoln-Adelaide								
QantasLink	97	97	86	88.7	87	89.7	0	0.0
Regional Express	199	199	173	86.9	175	87.9	0	0.0
All Airlines	296	296	259	87.5	262	88.5	0	0.0
Port Macquarie-Sydney								
QantasLink	132	130	86	66.2	81	62.3	2	1.5
Virgin Australia - ATR/F100 Operations	62	61	44	72.1	41	67.2	1	1.6
All Airlines	194	191	130	68.1	122	63.9	3	1.5
Proserpine-Brisbane								
Jetstar	31	31	21	67.7	23	74.2	0	0.0
Virgin Australia	51	50	42	84.0	32	64.0	1	2.0
All Airlines	82	81	63	77.8	55	67.9	1	1.2
Rockhampton-Brisbane								
QantasLink	192	184	138	75.0	122	66.3	8	4.2
Virgin Australia	94	91	63	69.2	49	53.8	3	3.2
Virgin Australia - ATR/F100 Operations	122	119	96	80.7	97	81.5	3	2.5
All Airlines	408	394	297	75.4	268	68.0	14	3.4
Sunshine Coast-Melbourne								
Jetstar	53	53	35	66.0	35	66.0	0	0.0
Tiger Airways	3	3	2	66.7	3	100.0	0	0.0
Virgin Australia	31	30	19	63.3	21	70.0	1	3.2
All Airlines	87	86	56	65.1	59	68.6	1	1.1
Sunshine Coast-Sydney								
Jetstar	92	91	73	80.2	76	83.5	1	1.1
Virgin Australia	36	33	26	78.8	23	69.7	3	8.3
All Airlines	128	124	99	79.8	99	79.8	4	3.1
Sydney-Adelaide								
Jetstar	96	92	64	69.6	68	73.9	4	4.2
Qantas	282	281	226	80.4	240	85.4	1	0.4
Virgin Australia	175	174	126	72.4	141	81.0	1	0.6
All Airlines	553	547	416	76.1	449	82.1	6	1.1

	<i>Sectors</i>		<i>Departures On Time</i>		<i>Arrivals On Time</i>		<i>Cancellations</i>	
	<i>Sched.</i>	<i>Flown</i>	<i>No.</i>	<i>%</i>	<i>No.</i>	<i>%</i>	<i>No.</i>	<i>%</i>
Sydney-Albury								
QantasLink	114	114	75	65.8	78	68.4	0	0.0
Regional Express	107	106	85	80.2	88	83.0	1	0.9
Virgin Australia - ATR/F100 Operations	62	61	54	88.5	52	85.2	1	1.6
All Airlines	283	281	214	76.2	218	77.6	2	0.7
Sydney-Ayers Rock								
Qantas	31	31	26	83.9	28	90.3	0	0.0
Virgin Australia	31	31	18	58.1	20	64.5	0	0.0
All Airlines	62	62	44	71.0	48	77.4	0	0.0
Sydney-Ballina								
Jetstar	49	48	40	83.3	38	79.2	1	2.0
Regional Express	33	33	27	81.8	25	75.8	0	0.0
Virgin Australia	31	30	24	80.0	24	80.0	1	3.2
All Airlines	113	111	91	82.0	87	78.4	2	1.8
Sydney-Brisbane								
Jetstar	98	95	67	70.5	63	66.3	3	3.1
Qantas	588	573	452	78.9	411	71.7	15	2.6
Tiger Airways	82	81	65	80.2	57	70.4	1	1.2
Virgin Australia	566	545	407	74.7	374	68.6	21	3.7
All Airlines	1 334	1 294	991	76.6	905	69.9	40	3.0
Sydney-Cairns								
Jetstar	65	65	45	69.2	55	84.6	0	0.0
Qantas	66	66	56	84.8	58	87.9	0	0.0
Virgin Australia	93	93	65	69.9	70	75.3	0	0.0
All Airlines	224	224	166	74.1	183	81.7	0	0.0
Sydney-Canberra								
Qantas	158	156	128	82.1	130	83.3	2	1.3
QantasLink	402	391	288	73.7	279	71.4	11	2.7
Virgin Australia	75	74	61	82.4	60	81.1	1	1.3
Virgin Australia - ATR/F100 Operations	207	203	134	66.0	151	74.4	4	1.9
All Airlines	842	824	611	74.2	620	75.2	18	2.1
Sydney-Coffs Harbour								
QantasLink	141	141	98	69.5	91	64.5	0	0.0
Tiger Airways	18	18	16	88.9	16	88.9	0	0.0
Virgin Australia	62	61	46	75.4	47	77.0	1	1.6
All Airlines	221	220	160	72.7	154	70.0	1	0.5
Sydney-Darwin								
Jetstar	30	30	26	86.7	27	90.0	0	0.0
Qantas	36	36	31	86.1	33	91.7	0	0.0
Virgin Australia	31	31	21	67.7	25	80.6	0	0.0
All Airlines	97	97	78	80.4	85	87.6	0	0.0
Sydney-Dubbo								
QantasLink	110	110	81	73.6	79	71.8	0	0.0
Regional Express	168	167	136	81.4	141	84.4	1	0.6
All Airlines	278	277	217	78.3	220	79.4	1	0.4
Sydney-Gold Coast								
Jetstar	285	271	205	75.6	204	75.3	14	4.9
Qantas	93	93	82	88.2	83	89.2	0	0.0
Tiger Airways	64	63	44	69.8	45	71.4	1	1.6
Virgin Australia	343	332	236	71.1	218	65.7	11	3.2
All Airlines	785	759	567	74.7	550	72.5	26	3.3

	<i>Sectors</i>		<i>Departures On Time</i>		<i>Arrivals On Time</i>		<i>Cancellations</i>	
	<i>Sched.</i>	<i>Flown</i>	<i>No.</i>	<i>%</i>	<i>No.</i>	<i>%</i>	<i>No.</i>	<i>%</i>
Sydney-Hamilton Island								
Jetstar	22	22	16	72.7	16	72.7	0	0.0
Virgin Australia	31	31	21	67.7	21	67.7	0	0.0
All Airlines	53	53	37	69.8	37	69.8	0	0.0
Sydney-Hobart								
Jetstar	97	97	73	75.3	82	84.5	0	0.0
Qantas	31	31	26	83.9	23	74.2	0	0.0
Virgin Australia	62	62	49	79.0	52	83.9	0	0.0
All Airlines	190	190	148	77.9	157	82.6	0	0.0
Sydney-Launceston								
Jetstar	66	66	54	81.8	56	84.8	0	0.0
Virgin Australia	31	31	22	71.0	20	64.5	0	0.0
All Airlines	97	97	76	78.4	76	78.4	0	0.0
Sydney-Melbourne								
Jetstar	303	296	223	75.3	232	78.4	7	2.3
Qantas	861	827	672	81.3	681	82.3	34	3.9
Tiger Airways	238	234	195	83.3	189	80.8	4	1.7
Virgin Australia	782	761	570	74.9	576	75.7	21	2.7
All Airlines	2 184	2 118	1 660	78.4	1 678	79.2	66	3.0
Sydney-Perth								
Jetstar	40	40	34	85.0	33	82.5	0	0.0
Qantas	213	212	149	70.3	156	73.6	1	0.5
Virgin Australia	119	119	84	70.6	80	67.2	0	0.0
All Airlines	372	371	267	72.0	269	72.5	1	0.3
Sydney-Port Macquarie								
QantasLink	132	130	90	69.2	93	71.5	2	1.5
Virgin Australia - ATR/F100 Operations	62	62	43	69.4	36	58.1	0	0.0
All Airlines	194	192	133	69.3	129	67.2	2	1.0
Sydney-Sunshine Coast								
Jetstar	92	92	83	90.2	86	93.5	0	0.0
Virgin Australia	36	34	26	76.5	25	73.5	2	5.6
All Airlines	128	126	109	86.5	111	88.1	2	1.6
Sydney-Townsville								
Jetstar	17	17	15	88.2	15	88.2	0	0.0
Virgin Australia	31	31	24	77.4	24	77.4	0	0.0
All Airlines	48	48	39	81.3	39	81.3	0	0.0
Sydney-Wagga Wagga								
QantasLink	109	109	87	79.8	81	74.3	0	0.0
Regional Express	116	116	85	73.3	86	74.1	0	0.0
All Airlines	225	225	172	76.4	167	74.2	0	0.0
Townsville-Brisbane								
Jetstar	31	31	21	67.7	23	74.2	0	0.0
Qantas	153	151	136	90.1	132	87.4	2	1.3
Virgin Australia	161	161	128	79.5	102	63.4	0	0.0
All Airlines	345	343	285	83.1	257	74.9	2	0.6
Townsville-Cairns								
QantasLink	186	183	142	77.6	143	78.1	3	1.6
Virgin Australia - ATR/F100 Operations	26	24	22	91.7	21	87.5	2	7.7
All Airlines	212	207	164	79.2	164	79.2	5	2.4
Townsville-Sydney								
Jetstar	18	18	16	88.9	15	83.3	0	0.0
Virgin Australia	31	31	20	64.5	18	58.1	0	0.0
All Airlines	49	49	36	73.5	33	67.3	0	0.0

	<i>Sectors</i>		<i>Departures On Time</i>		<i>Arrivals On Time</i>		<i>Cancellations</i>	
	<i>Sched.</i>	<i>Flown</i>	<i>No.</i>	<i>%</i>	<i>No.</i>	<i>%</i>	<i>No.</i>	<i>%</i>
Wagga Wagga-Sydney								
QantasLink	109	109	85	78.0	75	68.8	0	0.0
Regional Express	115	115	88	76.5	81	70.4	0	0.0
All Airlines	224	224	173	77.2	156	69.6	0	0.0

Airports

On time performance is reported for all routes where the passenger load averages over 8000 passengers per month, and where two or more airlines operate in competition. The following data reports by airport against flights operated on those routes only.

Airport	Departures			Arrivals		
	Sectors	On Time		Sectors	On Time	
	Flown	No.	%	Flown	No.	%
Adelaide						
Jetstar	287	194	67.6	287	225	78.4
Qantas	846	705	83.3	847	729	86.1
QantasLink	136	113	83.1	136	111	81.6
Regional Express	200	181	90.5	199	175	87.9
Tiger Airways	63	54	85.7	63	54	85.7
Virgin Australia	688	574	83.4	692	566	81.8
All Airlines	2 220	1 821	82.0	2 224	1 860	83.6
Relates to services to and from Brisbane, Canberra, Gold Coast, Melbourne, Perth, Port Lincoln and Sydney.						
Albury						
QantasLink	114	72	63.2	114	78	68.4
Regional Express	109	86	78.9	106	88	83.0
Virgin Australia - ATR/F100 Operations	61	50	82.0	61	52	85.2
All Airlines	284	208	73.2	281	218	77.6
Relates to services to and from Sydney only.						
Ayers Rock						
Qantas	31	27	87.1	31	28	90.3
Virgin Australia	31	22	71.0	31	20	64.5
All Airlines	62	49	79.0	62	48	77.4
Relates to services to and from Sydney only.						
Ballina						
Jetstar	47	32	68.1	48	38	79.2
Regional Express	28	19	67.9	33	25	75.8
Virgin Australia	30	23	76.7	30	24	80.0
All Airlines	105	74	70.5	111	87	78.4
Relates to services to and from Sydney only.						
Brisbane						
Jetstar	610	455	74.6	607	439	72.3
Qantas	1 730	1 387	80.2	1 699	1 315	77.4
QantasLink	814	682	83.8	809	558	69.0
Tiger Airways	165	116	70.3	167	114	68.3
Virgin Australia	2 016	1 602	79.5	2 010	1 423	70.8
Virgin Australia - ATR/F100 Operations	343	278	81.0	334	257	76.9
All Airlines	5 678	4 520	79.6	5 626	4 106	73.0
Relates to services to and from Adelaide, Cairns, Canberra, Darwin, Emerald, Gladstone, Hamilton Island, Mackay, Melbourne, Mount Isa, Newcastle, Perth, Proserpine, Rockhampton, Sydney and Townsville.						

Airport	Departures			Arrivals		
	Sectors Flown	On Time		Sectors Flown	On Time	
		No.	%		No.	%
Broome						
Qantas	26	23	88.5	26	23	88.5
QantasLink	58	49	84.5	56	48	85.7
Skywest	14	8	57.1	8	7	87.5
Virgin Australia	31	20	64.5	31	26	83.9
All Airlines	129	100	77.5	121	104	86.0
Relates to services to and from Perth only.						
Cairns						
Jetstar	228	175	76.8	226	192	85.0
Qantas	208	171	82.2	208	167	80.3
QantasLink	186	168	90.3	188	148	78.7
Tiger Airways	19	18	94.7	19	19	100.0
Virgin Australia	290	229	79.0	290	242	83.4
Virgin Australia - ATR/F100 Operations	24	21	87.5	24	21	87.5
All Airlines	955	782	81.9	955	789	82.6
Relates to services to and from Brisbane, Melbourne, Sydney and Townsville.						
Canberra						
Qantas	598	531	88.8	595	520	87.4
QantasLink	473	358	75.7	475	335	70.5
Virgin Australia	381	291	76.4	381	297	78.0
Virgin Australia - ATR/F100 Operations	203	153	75.4	203	151	74.4
All Airlines	1 655	1 333	80.5	1 654	1 303	78.8
Relates to services to and from Adelaide, Brisbane, Melbourne and Sydney.						
Coffs Harbour						
QantasLink	141	88	62.4	141	91	64.5
Tiger Airways	18	16	88.9	18	16	88.9
Virgin Australia	61	45	73.8	61	47	77.0
All Airlines	220	149	67.7	220	154	70.0
Relates to services to and from Sydney only.						
Darwin						
Jetstar	38	28	73.7	38	35	92.1
Qantas	111	93	83.8	112	98	87.5
Virgin Australia	119	101	84.9	119	95	79.8
All Airlines	268	222	82.8	269	228	84.8
Relates to services to and from Brisbane, Melbourne, Perth and Sydney.						
Dubbo						
QantasLink	110	68	61.8	110	79	71.8
Regional Express	168	128	76.2	167	141	84.4
All Airlines	278	196	70.5	277	220	79.4
Relates to services to and from Sydney only.						
Emerald						
QantasLink	177	142	80.2	178	148	83.1
Virgin Australia - ATR/F100 Operations	99	87	87.9	102	87	85.3
All Airlines	276	229	83.0	280	235	83.9
Relates to services to and from Brisbane only.						

Airport	Departures			Arrivals		
	Sectors Flown	On Time		Sectors Flown	On Time	
		No.	%		No.	%
Geraldton						
QantasLink	52	39	75.0	52	37	71.2
Skywest	83	68	81.9	83	61	73.5
All Airlines	135	107	79.3	135	98	72.6
Relates to services to and from Perth only.						
Gladstone						
QantasLink	246	196	79.7	227	183	80.6
Virgin Australia - ATR/F100 Operations	116	91	78.4	121	90	74.4
All Airlines	362	287	79.3	348	273	78.4
Relates to services to and from Brisbane only.						
Gold Coast						
Jetstar	480	361	75.2	478	370	77.4
Qantas	93	74	79.6	93	83	89.2
Tiger Airways	141	96	68.1	142	108	76.1
Virgin Australia	556	386	69.4	561	383	68.3
All Airlines	1 270	917	72.2	1 274	944	74.1
Relates to services to and from Adelaide, Melbourne and Sydney.						
Hamilton Island						
Jetstar	41	28	68.3	41	31	75.6
Virgin Australia	62	43	69.4	63	48	76.2
All Airlines	103	71	68.9	104	79	76.0
Relates to services to and from Brisbane and Sydney.						
Hobart						
Jetstar	283	185	65.4	285	216	75.8
Qantas	93	80	86.0	93	80	86.0
QantasLink	31	29	93.5	31	25	80.6
Tiger Airways	40	35	87.5	40	36	90.0
Virgin Australia	226	158	69.9	226	172	76.1
All Airlines	673	487	72.4	675	529	78.4
Relates to services to and from Melbourne and Sydney.						
Kalgoorlie						
Qantas	52	49	94.2	52	51	98.1
QantasLink	35	32	91.4	35	31	88.6
Skywest	56	40	71.4	57	41	71.9
All Airlines	143	121	84.6	144	123	85.4
Relates to services to and from Perth only.						
Karratha						
Qantas	175	145	82.9	175	137	78.3
QantasLink	64	59	92.2	64	58	90.6
Virgin Australia	52	43	82.7	52	49	94.2
All Airlines	291	247	84.9	291	244	83.8
Relates to services to and from Perth only.						

Airport	Departures			Arrivals		
	Sectors Flown	On Time		Sectors Flown	On Time	
		No.	%		No.	%
Launceston						
Jetstar	200	150	75.0	198	168	84.8
QantasLink	120	99	82.5	119	98	82.4
Virgin Australia	168	126	75.0	168	126	75.0
All Airlines	488	375	76.8	485	392	80.8
Relates to services to and from Melbourne and Sydney.						
Mackay						
Jetstar	90	63	70.0	90	67	74.4
QantasLink	108	95	88.0	109	91	83.5
Virgin Australia	164	136	82.9	167	129	77.2
All Airlines	362	294	81.2	366	287	78.4
Relates to services to and from Brisbane only.						
Melbourne						
Jetstar	1 282	973	75.9	1 285	971	75.6
Qantas	2 104	1 745	82.9	2 106	1 792	85.1
QantasLink	297	265	89.2	298	242	81.2
Regional Express	81	74	91.4	82	79	96.3
Tiger Airways	595	501	84.2	595	477	80.2
Virgin Australia	2 407	1 847	76.7	2 397	1 878	78.3
All Airlines	6 766	5 405	79.9	6 763	5 439	80.4
Relates to services to and from Adelaide, Brisbane, Cairns, Canberra, Darwin, Gold Coast, Hobart, Launceston, Mildura, Newcastle, Perth, Sunshine Coast and Sydney.						
Mildura						
QantasLink	88	83	94.3	88	78	88.6
Regional Express	82	77	93.9	81	74	91.4
Virgin Australia	31	28	90.3	31	27	87.1
All Airlines	201	188	93.5	200	179	89.5
Relates to services to and from Melbourne only.						
Mount Isa						
Qantas	57	55	96.5	57	56	98.2
Virgin Australia	21	20	95.2	21	20	95.2
All Airlines	78	75	96.2	78	76	97.4
Relates to services to and from Brisbane only.						
Newcastle						
Jetstar	222	163	73.4	221	180	81.4
QantasLink	67	27	40.3	66	31	47.0
Virgin Australia	112	87	77.7	112	96	85.7
All Airlines	401	277	69.1	399	307	76.9
Relates to services to and from Brisbane and Melbourne.						
Newman						
Qantas	124	101	81.5	124	106	85.5
QantasLink	24	24	100.0	24	24	100.0
Skywest	11	8	72.7	11	8	72.7
Virgin Australia	34	23	67.6	34	29	85.3
All Airlines	193	156	80.8	193	167	86.5
Relates to services to and from Perth only.						

Airport	Departures			Arrivals		
	Sectors	On Time		Sectors	On Time	
	Flown	No.	%	Flown	No.	%
Perth						
Jetstar	173	110	63.6	172	129	75.0
Qantas	1 177	945	80.3	1 176	922	78.4
QantasLink	271	241	88.9	273	239	87.5
Skywest	159	119	74.8	164	115	70.1
Tiger Airways	71	63	88.7	71	64	90.1
Virgin Australia	619	528	85.3	622	420	67.5
All Airlines	2 470	2 006	81.2	2 478	1 889	76.2
Relates to services to and from Adelaide, Brisbane, Broome, Darwin, Geraldton, Kalgoorlie, Karratha, Melbourne, Newman, Port Hedland and Sydney.						
Port Hedland						
Qantas	116	96	82.8	116	100	86.2
QantasLink	40	40	100.0	40	38	95.0
Virgin Australia	72	61	84.7	72	60	83.3
All Airlines	228	197	86.4	228	198	86.8
Relates to services to and from Perth only.						
Port Lincoln						
QantasLink	97	86	88.7	97	82	84.5
Regional Express	199	173	86.9	200	175	87.5
All Airlines	296	259	87.5	297	257	86.5
Relates to services to and from Adelaide only.						
Port Macquarie						
QantasLink	130	86	66.2	130	93	71.5
Virgin Australia - ATR/F100 Operations	61	44	72.1	62	36	58.1
All Airlines	191	130	68.1	192	129	67.2
Relates to services to and from Sydney only.						
Proserpine						
Jetstar	31	21	67.7	34	26	76.5
Virgin Australia	50	42	84.0	51	44	86.3
All Airlines	81	63	77.8	85	70	82.4
Relates to services to and from Brisbane only.						
Rockhampton						
QantasLink	184	138	75.0	207	161	77.8
Virgin Australia	91	63	69.2	91	69	75.8
Virgin Australia - ATR/F100 Operations	119	96	80.7	120	99	82.5
All Airlines	394	297	75.4	418	329	78.7
Relates to services to and from Brisbane only.						
Sunshine Coast						
Jetstar	144	108	75.0	145	131	90.3
Tiger Airways	3	2	66.7	3	2	66.7
Virgin Australia	63	45	71.4	65	48	73.8
All Airlines	210	155	73.8	213	181	85.0
Relates to services to and from Melbourne and Sydney.						

Airport	Departures			Arrivals		
	Sectors	On Time		Sectors	On Time	
	Flown	No.	%	Flown	No.	%
Sydney						
Jetstar	1 231	945	76.8	1 233	896	72.7
Qantas	2 306	1 848	80.1	2 336	1 815	77.7
QantasLink	995	719	72.3	993	656	66.1
Regional Express	422	333	78.9	420	305	72.6
Tiger Airways	396	320	80.8	393	300	76.3
Virgin Australia	2 440	1 800	73.8	2 437	1 755	72.0
Virgin Australia - ATR/F100 Operations	326	231	70.9	325	233	71.7
All Airlines	8 116	6 196	76.3	8 137	5 960	73.2

Relates to services to and from Adelaide, Albury, Ayers Rock, Ballina, Brisbane, Cairns, Canberra, Coffs Harbour, Darwin, Dubbo, Gold Coast, Hamilton Island, Hobart, Launceston, Melbourne, Perth, Port Macquarie, Sunshine Coast, Townsville and Wagga Wagga.

Townsville

Jetstar	49	37	75.5	48	39	81.3
Qantas	151	136	90.1	152	126	82.9
QantasLink	183	142	77.6	181	161	89.0
Virgin Australia	192	148	77.1	192	136	70.8
Virgin Australia - ATR/F100 Operations	24	22	91.7	24	20	83.3
All Airlines	599	485	81.0	597	482	80.7

Relates to services to and from Brisbane, Cairns and Sydney.

Wagga Wagga

QantasLink	109	85	78.0	109	81	74.3
Regional Express	115	88	76.5	116	86	74.1
All Airlines	224	173	77.2	225	167	74.2

Relates to services to and from Sydney only.

Definitions

On time departure A flight departure is counted as "on time" if it departs the gate within 15 minutes of the scheduled departure time shown in the carriers' schedule.

On time arrival A flight arrival is counted as "on time" if it arrived at the gate within 15 minutes of the scheduled arrival time shown in the carriers' schedule.
Neither diverted nor cancelled flights count as on time.

Cancellation A flight removed from service within 7 days of scheduled departure is regarded as a cancellation.

On time departure percentage The percentage of on time departures is measured against the number of departures *operated* on any particular sector.

On time arrival percentage The percentage of on time arrivals is measured against the number of arrivals *operated* on any particular sector.

Cancellation percentage The percentage of cancellations is measured against the number of services *scheduled* on any particular sector.
