



Australian Government

Department of Infrastructure and Transport

Bureau of Infrastructure, Transport and Regional Economics

STATISTICAL REPORT



Aviation

Domestic airline on time performance
March 2012

© Commonwealth of Australia 2012

ISSN: 1832-0759

Ownership of intellectual property rights in this publication

Unless otherwise noted, copyright (and any other intellectual property rights, if any) in this publication is owned by the Commonwealth of Australia (referred to below as the Commonwealth).

Disclaimer

The material contained in this publication is made available on the understanding that the Commonwealth is not providing professional advice, and that users exercise their own skill and care with respect to its use, and seek independent advice if necessary.

The Commonwealth makes no representations or warranties as to the contents or accuracy of the information contained in this publication. To the extent permitted by law, the Commonwealth disclaims liability to any person or organisation in respect of anything done, or omitted to be done, in reliance upon information contained in this publication.

Creative Commons licence

With the exception of (a) the Coat of Arms; and (b) the Department of Infrastructure's photos and graphics, copyright in this publication is licensed under a Creative Commons Attribution 3.0 Australia Licence.

Creative Commons Attribution 3.0 Australia Licence is a standard form licence agreement that allows you to copy, communicate and adapt this publication provided that you attribute the work to the Commonwealth and abide by the other licence terms. A summary of the licence terms is available from <http://creativecommons.org/licenses/by/3.0/au/deed.en>. The full licence terms are available from <http://creativecommons.org/licenses/by/3.0/au/legalcode>.

Use of the Coat of Arms

The Department of the Prime Minister and Cabinet sets the terms under which the Coat of Arms is used. Please refer to the Department's Commonwealth Coat of Arms and Government branding web page <http://www.dpmmc.gov.au/guidelines/index.cfm#brand> and, in particular, the Guidelines on the use of the Commonwealth Coat of Arms publication.

An appropriate citation for this report is:

Bureau of Infrastructure, Transport and Regional Economics (BITRE), 2012, Domestic airline on time performance, Statistical Report, BITRE, Canberra ACT.

Contact us

This publication is available in PDF format. All other rights are reserved, including in relation to any Departmental logos or trade marks which may exist. For enquiries regarding the licence and any use of this publication, please contact:

Bureau of Infrastructure, Transport and Regional Economics (BITRE)
Department of Infrastructure and Transport
GPO Box 501, Canberra ACT 2601, Australia
Telephone: (international) +61 2 6274 7210
Fax: (international) +61 2 6274 6855
Email: bitre@infrastructure.gov.au
Website: www.bitre.gov.au

Inquiries

Should you require additional information about the statistics contained in this publication:

Telephone (02) 6274 7790 or Facsimile (02) 6274 7727

Electronic mail: AVSTATS@infrastructure.gov.au

Web site: <http://www.bitre.gov.au/statistics/aviation/otphome.aspx>

Foreword

The Bureau of Infrastructure, Transport and Regional Economics (BITRE) monitors the punctuality and reliability of major domestic airlines operating between Australian airports. The purpose of this is to allow for evaluation of overall industry and individual airline performance, so that consumers of air travel can make informed decisions.

The following domestic airlines report this data monthly to the BITRE: Jetstar, Qantas, QantasLink, Regional Express, Skywest Airlines, Tiger Airways, and Virgin Australia. Data has been gathered since November 2003, although some airlines commenced reporting at a later date, including Jetstar which first reported in May 2004, MacAir in July 2005 and Tiger Airways in April 2008. MacAir ceased operations in February 2009 and data was not received for December 2008 onwards. Virgin Blue was rebranded as Virgin Australia in May 2011 and time series data in Microsoft Excel spreadsheet format on the BITRE website has been revised to reflect this. Services operated by Skywest on behalf of Virgin Australia using ATR/F100 aircraft commenced in November 2011 and are shown separately as Virgin Australia – ATR/F100 Operations.

Information presented in this report is for Australian domestic routes for which the passenger load averaged 8 000 or more passengers per month over the previous six months and where two or more airlines operated in competition on those routes. There were 55 routes that met this definition in March 2012. Over time, routes which meet these criteria change as airline networks and traffic levels vary.

Participating airlines report their overall monthly network performance where this is possible.

Total industry figures encompass all services operated by reporting airlines only. These airlines collectively carried over 95 per cent of total domestic passengers (regular public transport only) in 2011.

The method of capturing on time performance varies between airlines utilising different recording systems. Jetstar and Qantas jet aircraft use Aircraft Communication Addressing and Reporting System (ACARS) to electronically measure on time performance. Regional Express, Skywest, Tiger Airways, Virgin Australia, Virgin Australia – ATR/F100 Operations and the Qantas non-jet fleet record on time performance manually using records from pilots, gate agents and/or ground crews.

After initial data is collected, aggregate reports are audited internally by participating airlines prior to publication.

Reports and detailed time series data in Microsoft Excel spreadsheet format are available from the BITRE website at: <http://www.bitre.gov.au/statistics/aviation/otphome.aspx>.

Contents

	Page
Industry performance	1
Individual routes	9
Airports	20
Definitions	26

Industry performance

For March 2012, on time performance over all routes operated by participating airlines (Jetstar, Qantas, QantasLink, Regional Express, Skywest Airlines, Tiger Airways, Virgin Australia and Virgin Australia – ATR/F100 Operations) averaged 78.7 per cent for on time departures, and 77.3 per cent for on time arrivals. Cancellations represented 1.5 per cent of all scheduled flights. The equivalent figures for March 2011 were 79.6 per cent for departures, 76.4 per cent for arrivals and 1.0 per cent for cancellations.

The long term average performance for all routes since reporting commenced in November 2003 is 84.1 per cent for on time departures and 82.7 per cent for on time arrivals. Cancellations average 1.2 per cent of all scheduled flights.

Tiger Airways operated on a reduced schedule with 824 sectors flown in March 2012 compared to 1 675 in March 2011.

Of the major domestic airlines, Tiger Airways achieved the highest level of on time departures for March 2012 at 90.0 per cent, followed by Qantas at 85.3 per cent, Virgin Australia at 79.8 per cent and Jetstar at 74.1 per cent. The regional airlines were led by Virgin Australia – ATR/F100 Operations at 80.2 per cent, followed by Regional Express at 78.9 per cent, Skywest at 77.6 per cent and QantasLink at 71.6 per cent.

Tiger Airways also achieved the highest on time arrivals among the major domestic airlines at 89.0 per cent, followed by Qantas at 84.7 per cent, Virgin Australia at 78.2 per cent and Jetstar at 75.5 per cent. Skywest was the best performing regional airline for on time arrivals at 76.9 per cent, followed by Regional Express at 76.6 per cent, Virgin Australia – ATR/F100 Operations at 73.2 per cent and QantasLink at 68.8 per cent.

QantasLink had the highest percentage of cancellations for March 2012 at 2.7 per cent, while Skywest and Tiger Airways had no cancellations.

Of the 55 routes which met the criteria for on time performance reporting in March 2012, the Perth-Port Hedland route had the highest percentage of on time departures (93.4 per cent) and the Sydney-Townsville route had the lowest percentage of on time departures (59.3 per cent). The Melbourne-Darwin route had the highest percentage of on time arrivals (93.8 per cent) and the Ballina-Sydney route had the lowest percentage of on time arrivals (52.3 per cent).

Cancellations were highest on the Canberra-Sydney route at 6.5 per cent, followed by Sunshine Coast-Melbourne at 5.8 per cent, Karratha-Perth at 5.6 per cent, Sunshine Coast-Sydney at 5.5 per cent and Port Hedland-Perth at 5.4 per cent.

Port Lincoln Airport recorded the highest percentage of on time departures (88.5 per cent) and Port Hedland Airport recorded the highest percentage of on time arrivals (91.1 per cent). Coffs Harbour Airport recorded the lowest percentage of on time departures (60.2 per cent) and the lowest percentage of on time arrivals (65.9 per cent). These figures only refer to reported routes and do not cover all flights at these airports.

Table 1 On time performance for March 2012 — Total Industry

	<i>Sectors</i>		<i>Departures On Time</i>		<i>Arrivals On Time</i>		<i>Cancellations</i>	
	<i>Scheduled</i>	<i>Flown</i>	<i>No.</i>	<i>%</i>	<i>No.</i>	<i>%</i>	<i>No.</i>	<i>%</i>
Jetstar	5 660	5 604	4 150	74.1	4 230	75.5	56	1.0
Qantas	10 493	10 368	8 848	85.3	8 783	84.7	125	1.2
QantasLink	9 630	9 372	6 709	71.6	6 446	68.8	258	2.7
Regional Express	5 746	5 688	4 490	78.9	4 356	76.6	58	1.0
Skywest	784	784	608	77.6	603	76.9	0	0.0
Tiger Airways	824	824	742	90.0	733	89.0	0	0.0
Virgin Australia	12 022	11 825	9 434	79.8	9 243	78.2	197	1.6
Virgin Australia - ATR/F100 Operations	1 086	1 070	858	80.2	783	73.2	16	1.5
All Airlines	46 245	45 535	35 839	78.7	35 177	77.3	710	1.5

Total airline network data (including routes not shown in this report).

Table 2 Top ten routes for on time performance for March 2012 (participating airlines only)

<i>Departures</i>		<i>Arrivals</i>	
<i>Route</i>	<i>On Time (%)</i>	<i>Route</i>	<i>On Time (%)</i>
Perth-Port Hedland	93.4	Melbourne-Darwin	93.8
Melbourne-Darwin	91.7	Adelaide-Gold Coast	93.4
Adelaide-Port Lincoln	91.0	Gold Coast-Adelaide	91.9
Gold Coast-Adelaide	90.3	Perth-Port Hedland	91.1
Perth-Newman	90.3	Perth-Newman	90.3
Adelaide-Gold Coast	90.2	Darwin-Perth	90.3
Hamilton Island-Brisbane	89.6	Port Hedland-Perth	90.0
Cairns-Melbourne	89.1	Cairns-Melbourne	90.0
Adelaide-Canberra	88.8	Hamilton Island-Brisbane	89.6
Melbourne-Brisbane	88.6	Perth-Adelaide	89.4

Table 3 Top ten airports for on time performance for March 2012 (participating airlines and reported routes only)

<i>Departures</i>		<i>Arrivals</i>	
<i>Airport</i>	<i>On Time (%)</i>	<i>Airport</i>	<i>On Time (%)</i>
Port Lincoln	88.5	Port Hedland	91.1
Mildura	88.2	Newman	90.3
Port Hedland	87.7	Port Lincoln	88.1
Perth	85.3	Darwin	85.5
Adelaide	85.2	Adelaide	85.3
Cairns	83.3	Kalgoorlie	84.5
Melbourne	83.1	Karratha	83.6
Kalgoorlie	81.7	Perth	83.1
Newman	81.3	Melbourne	82.9
Darwin	80.2	Proserpine	82.5

Total industry on time performance

Figure 1 On time performance (by month from March 2009)—Total Industry

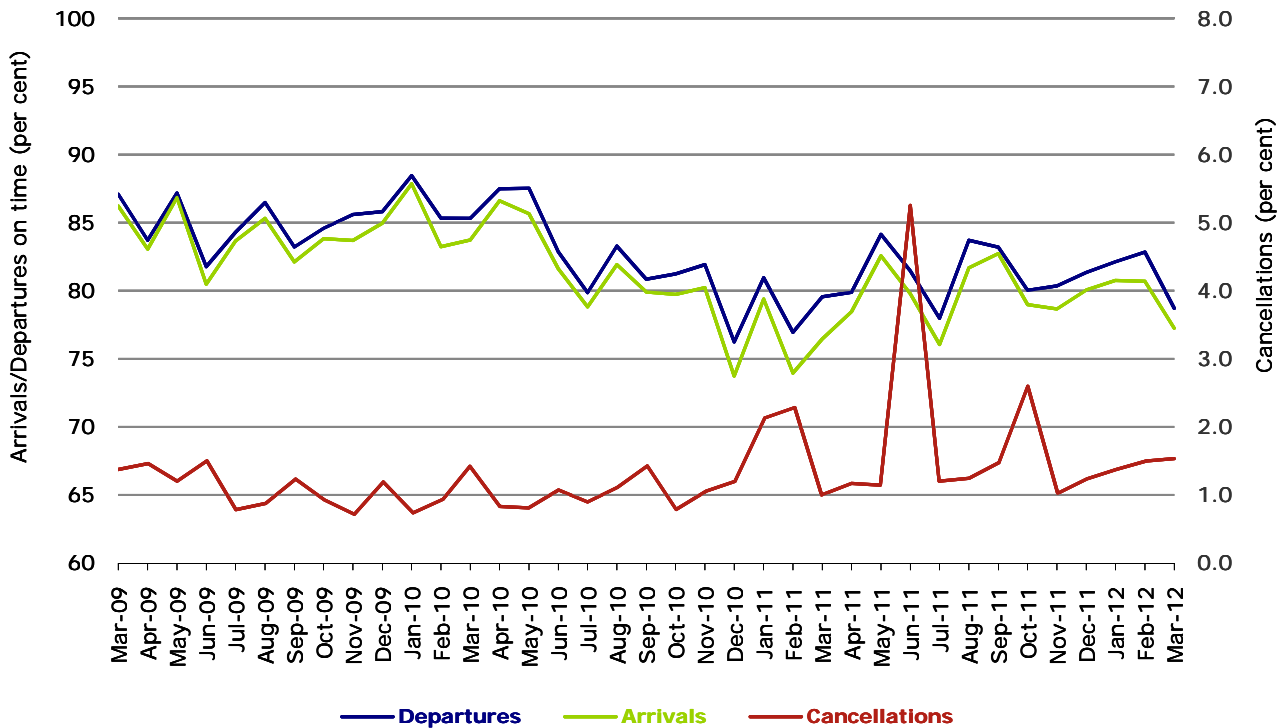
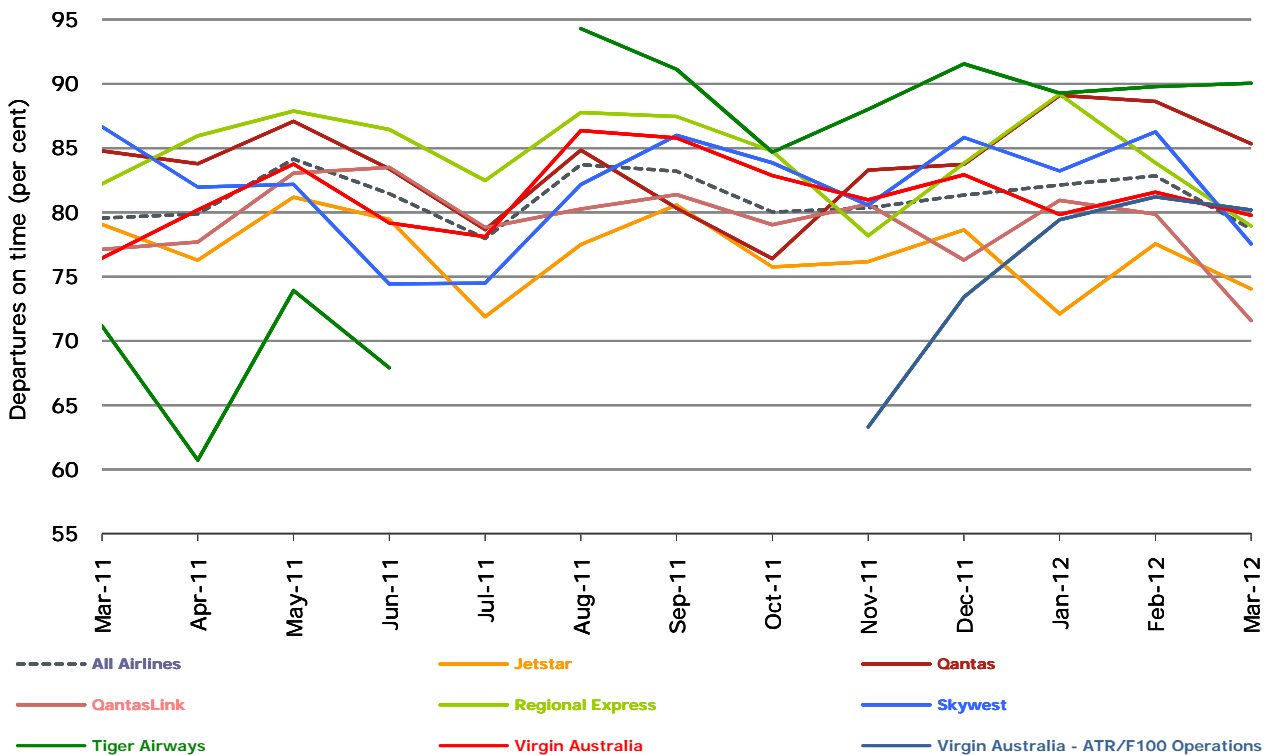


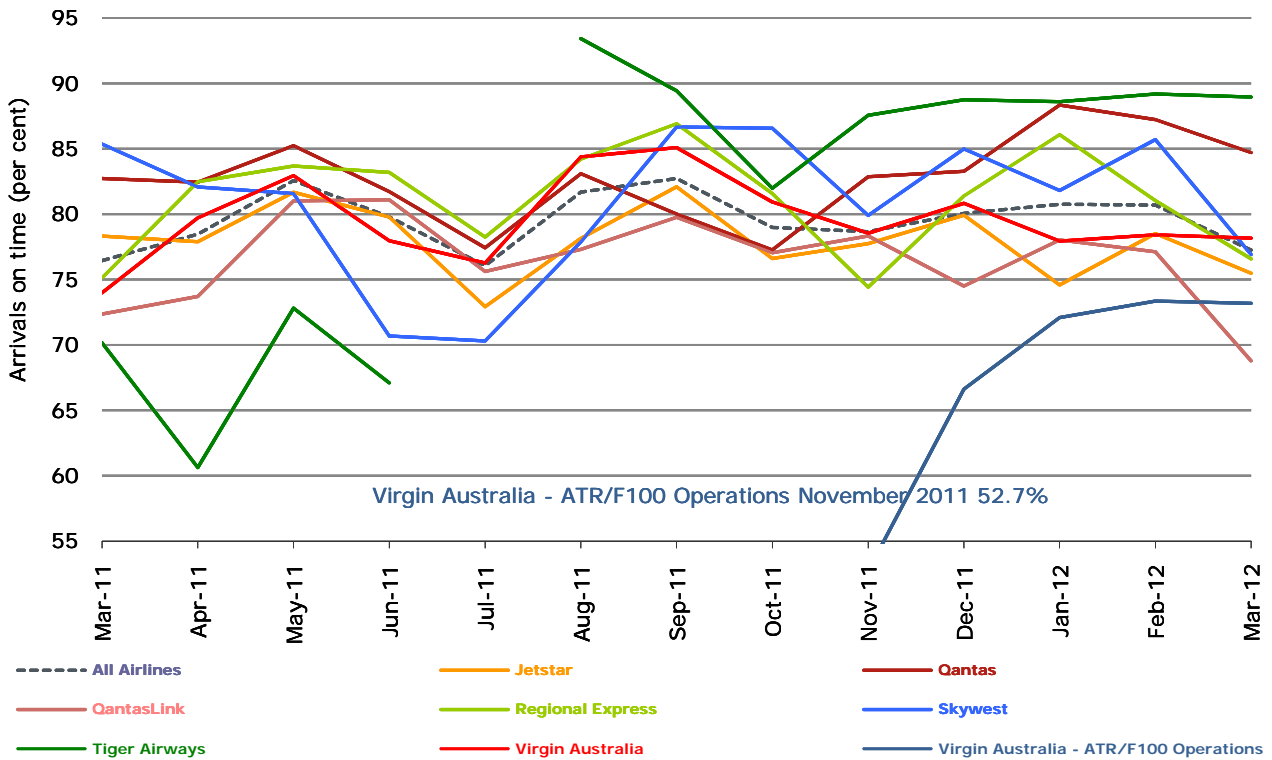
Figure 2 Departures on time (by month from March 2011)



No data for Tiger Airways for July 2011 as it was grounded by CASA from 2/7/2011 to 11/8/2011.

Virgin Australia - ATR/F100 Operations commenced in November 2011.

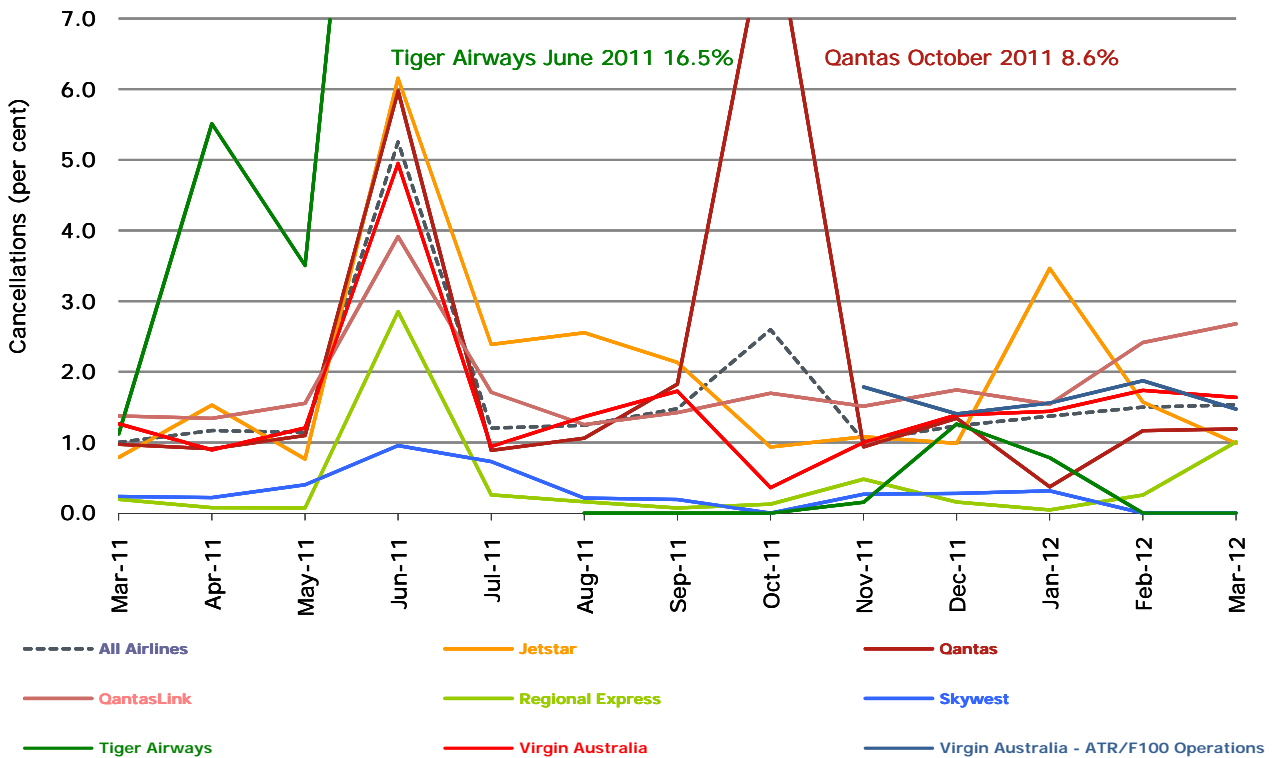
Figure 3 Arrivals on time (by month from March 2011)



No data for Tiger Airways for July 2011 as it was grounded by CASA from 2/7/2011 to 11/8/2011.

Virgin Australia - ATR/F100 Operations commenced in November 2011.

Figure 4 Cancellations (by month from March 2011)



No data for Tiger Airways for July 2011 as it was grounded by CASA from 2/7/2011 to 11/8/2011.

Virgin Australia - ATR/F100 Operations commenced in November 2011.

Major domestic airlines on time performance

Figure 5 On time performance (by month from March 2009)—Jetstar

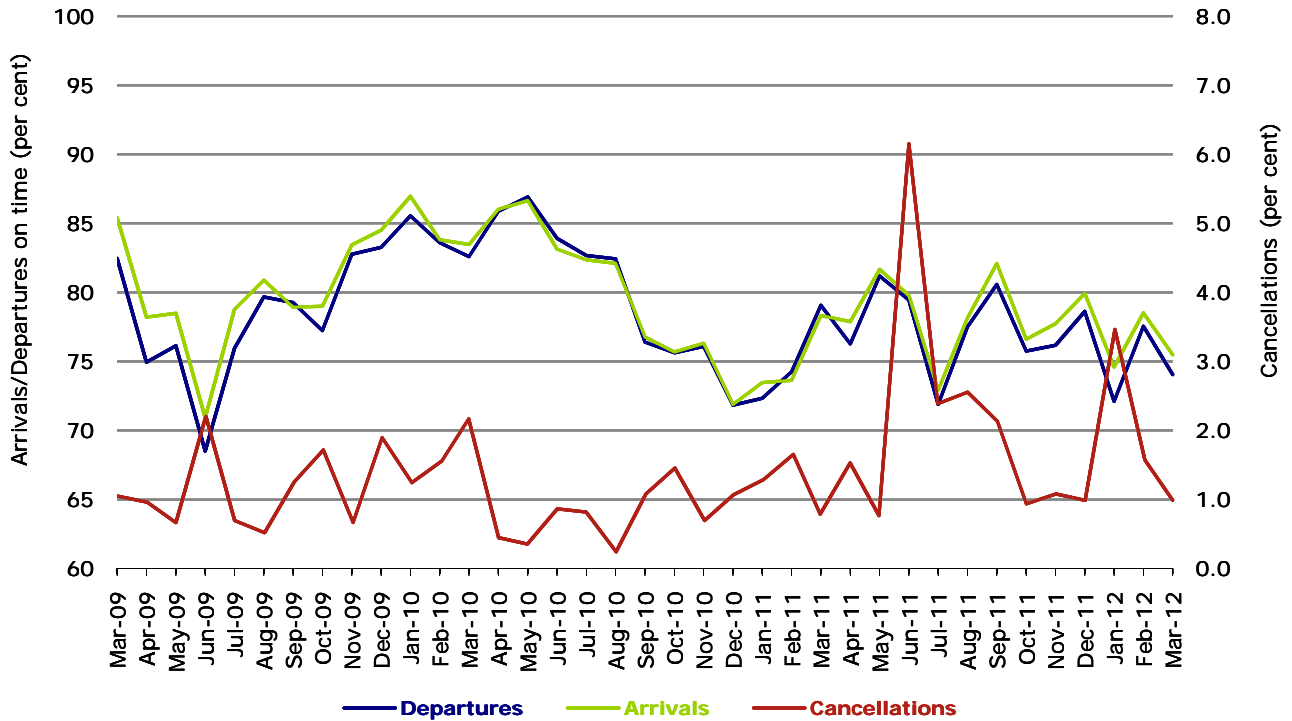


Figure 6 On time performance (by month from March 2009)—Qantas

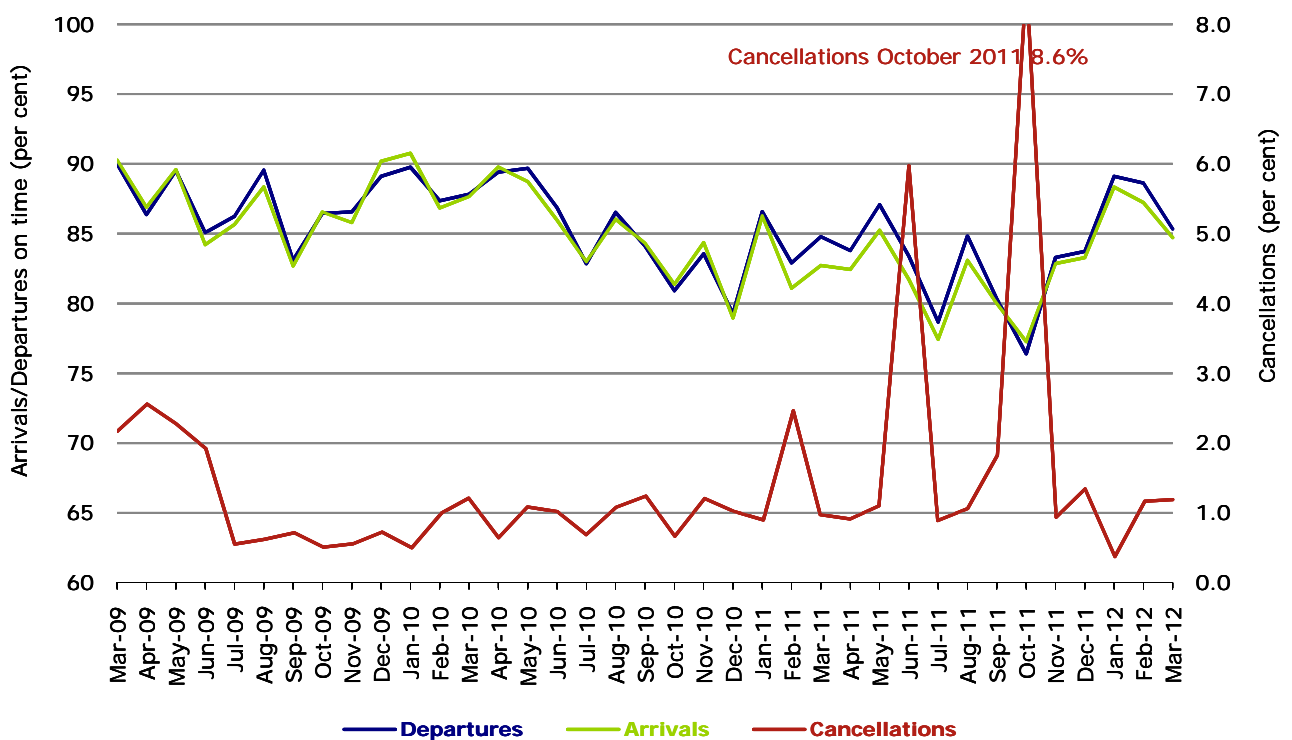
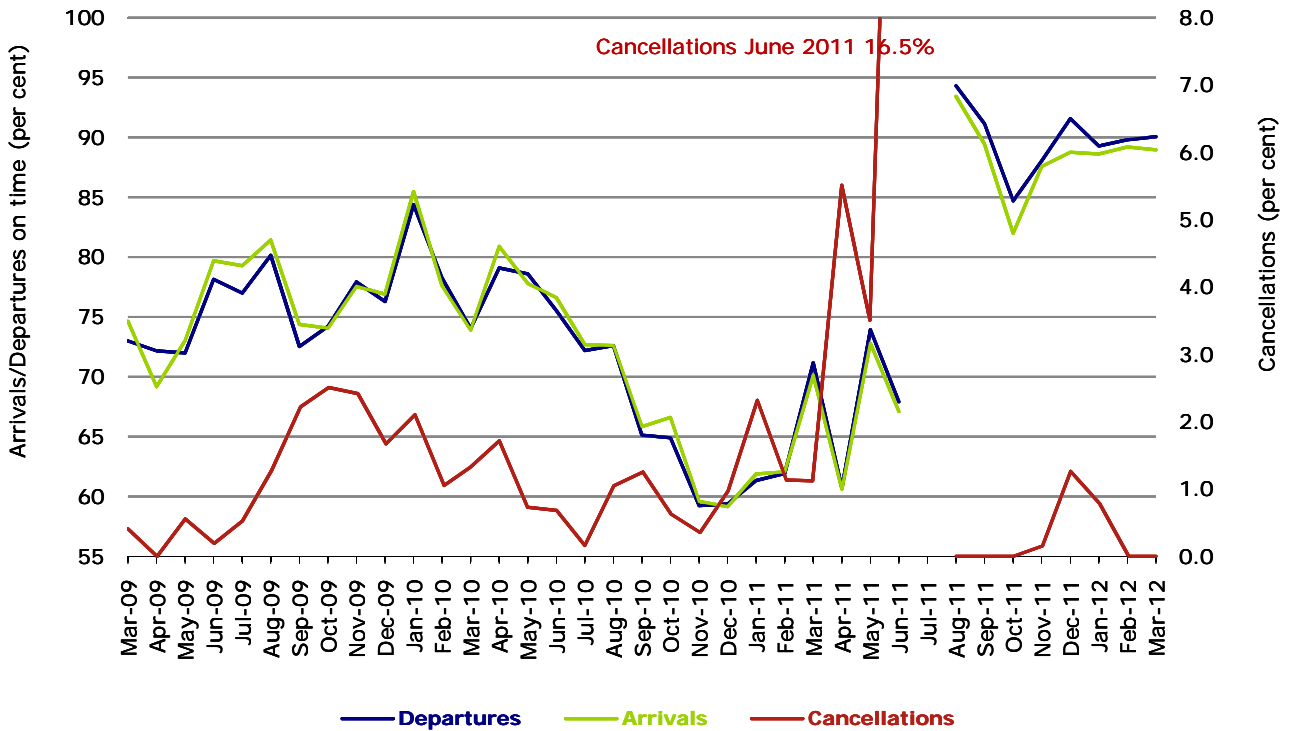
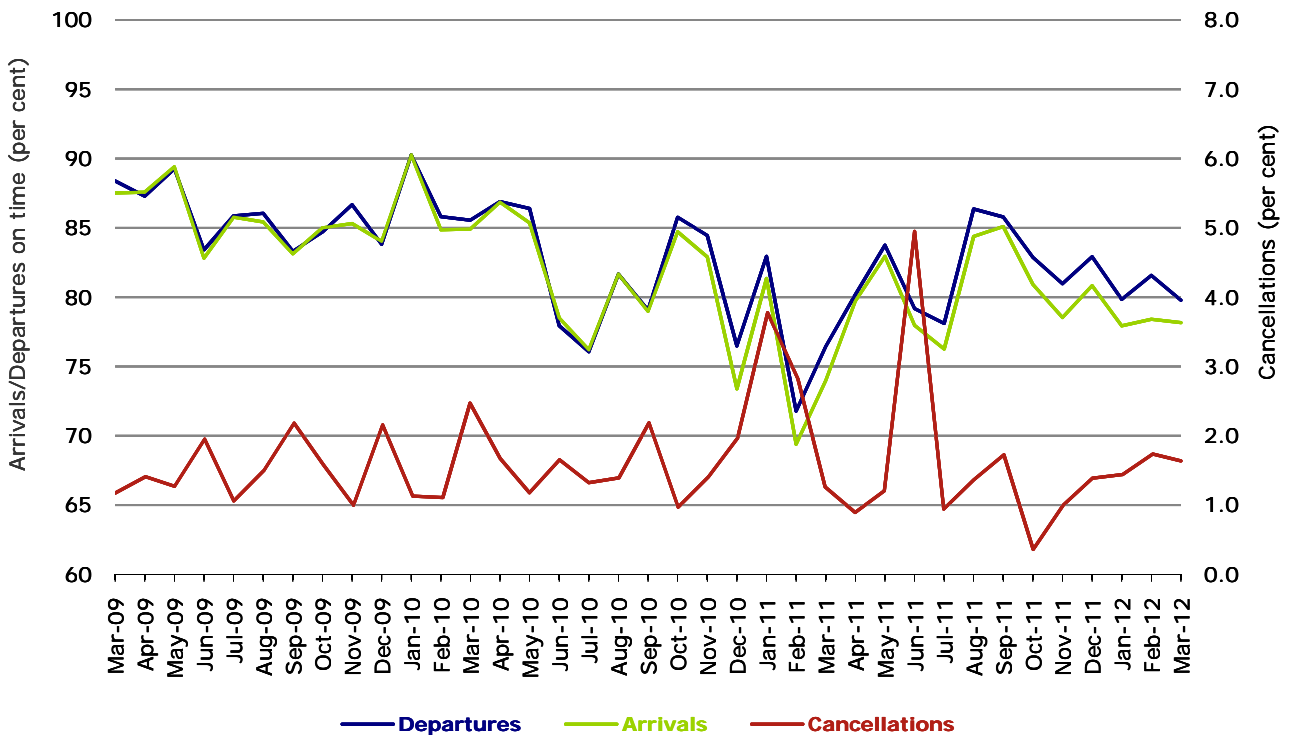


Figure 7 On time performance (by month from March 2009)—Tiger Airways



No data for Tiger Airways for July 2011 as it was grounded by CASA from 2/7/2011 to 11/8/2011.

Figure 8 On time performance (by month from March 2009)—Virgin Australia



Major regional airlines on time performance

Figure 9 On time performance (by month from March 2009)—QantasLink

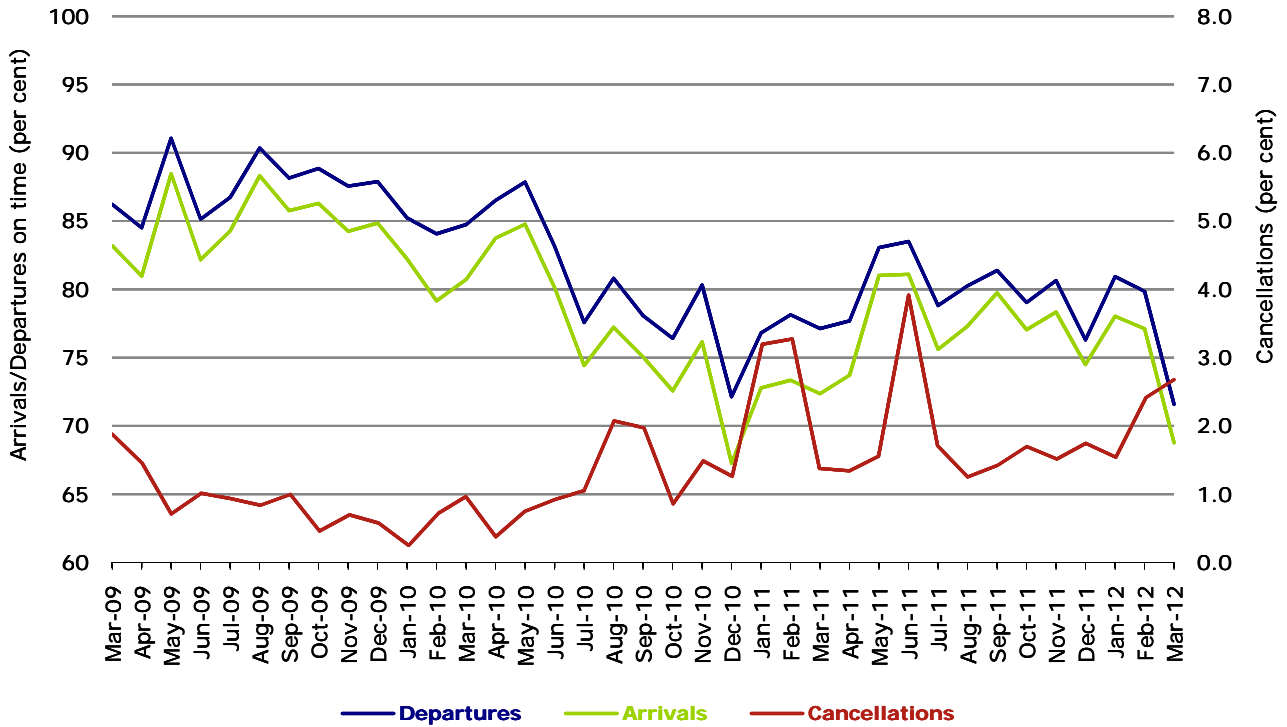


Figure 10 On time performance (by month from March 2009)—Regional Express

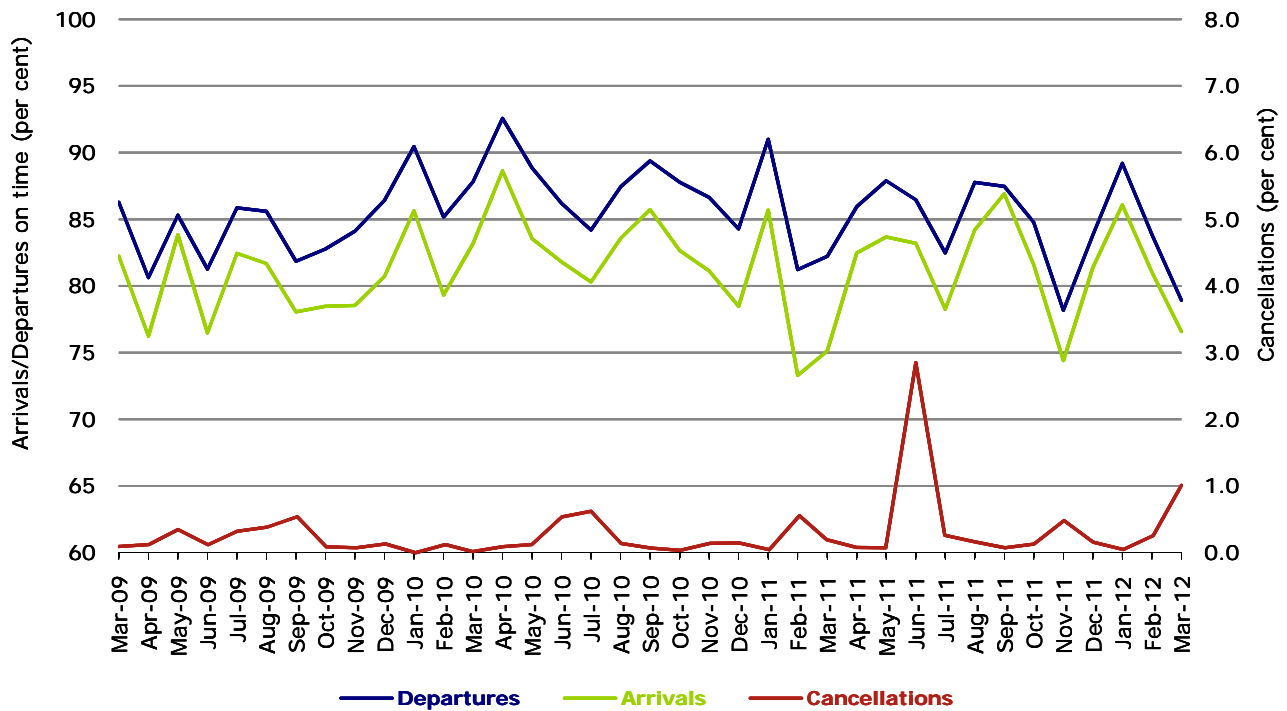


Figure 11 On time performance (by month from March 2009)—Skywest

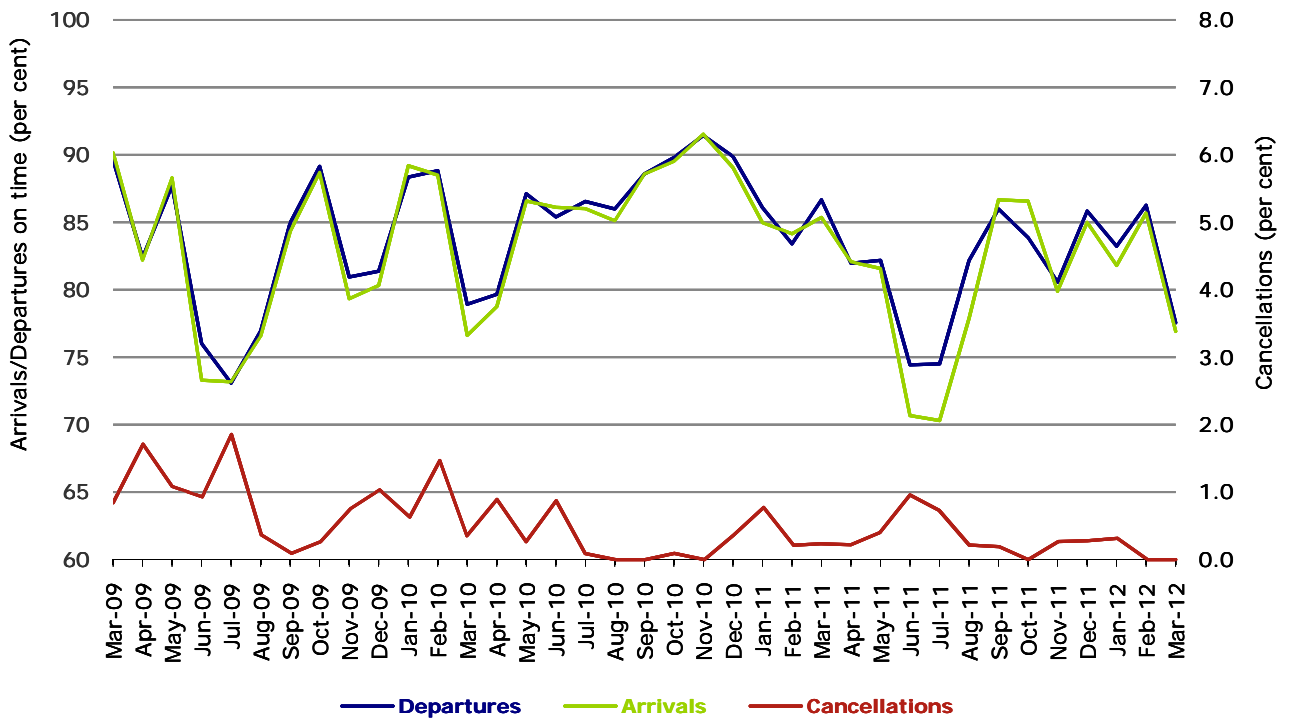
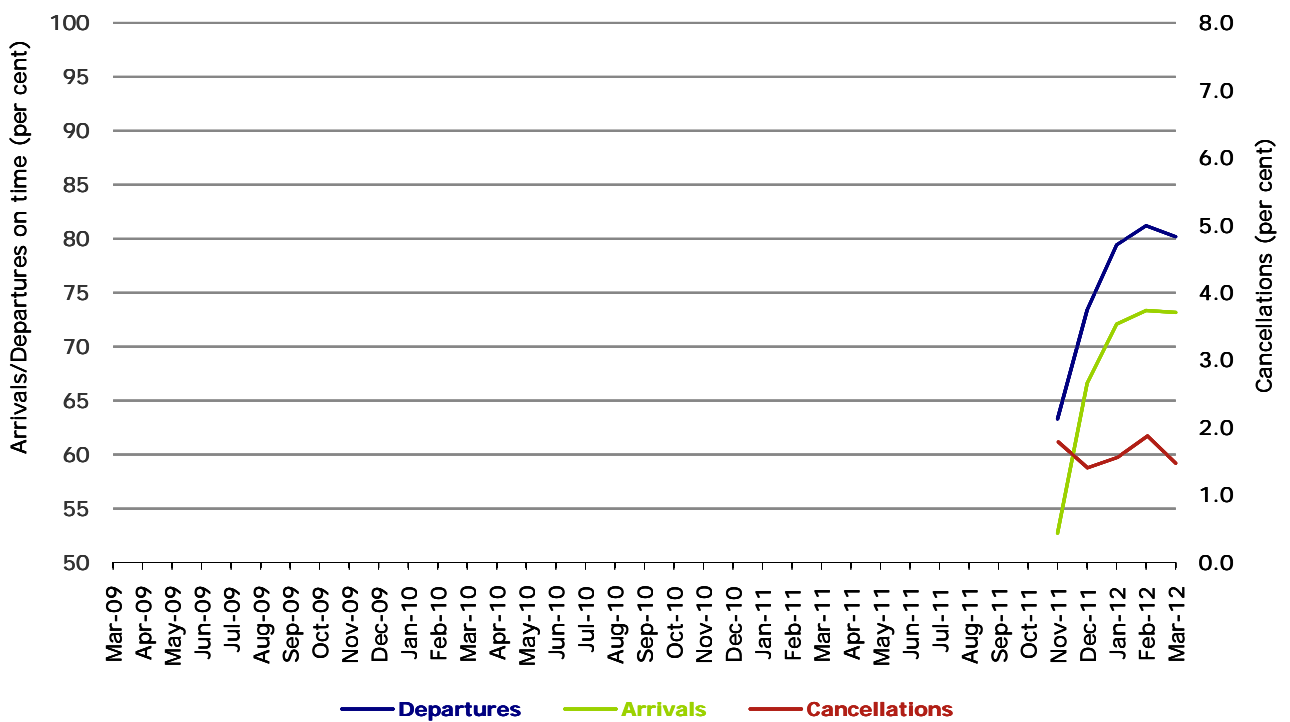


Figure 11 On time performance (by month from March 2009)
Virgin Australia - ATR/F100 Operations



Virgin Australia - ATR/F100 Operations commenced in November 2011.

Individual routes

On time performance is reported for all routes where the passenger load averages over 8000 passengers per month over the previous six months, and where two or more airlines operate in competition on those routes. There are now 55 routes which meet this definition. Over time, however, routes which meet this definition may change as airline networks and traffic levels vary.

	Sectors		Departures On Time		Arrivals On Time		Cancellations	
	Sched.	Flown	No.	%	No.	%	No.	%
Adelaide-Brisbane								
Jetstar	30	30	26	86.7	26	86.7	0	0.0
Qantas	110	110	102	92.7	102	92.7	0	0.0
Virgin Australia	104	104	88	84.6	84	80.8	0	0.0
All Airlines	244	244	216	88.5	212	86.9	0	0.0
Adelaide-Canberra								
Qantas	49	49	44	89.8	41	83.7	0	0.0
Virgin Australia	31	31	27	87.1	27	87.1	0	0.0
All Airlines	80	80	71	88.8	68	85.0	0	0.0
Adelaide-Gold Coast								
Jetstar	32	30	24	80.0	27	90.0	2	6.3
Virgin Australia	31	31	31	100.0	30	96.8	0	0.0
All Airlines	63	61	55	90.2	57	93.4	2	3.2
Adelaide-Melbourne								
Jetstar	77	77	61	79.2	62	80.5	0	0.0
Qantas	305	304	259	85.2	268	88.2	1	0.3
QantasLink	17	17	14	82.4	14	82.4	0	0.0
Virgin Australia	302	301	277	92.0	270	89.7	1	0.3
All Airlines	701	699	611	87.4	614	87.8	2	0.3
Adelaide-Perth								
Jetstar	31	31	18	58.1	26	83.9	0	0.0
Qantas	113	113	96	85.0	104	92.0	0	0.0
Virgin Australia	62	62	46	74.2	50	80.6	0	0.0
All Airlines	206	206	160	77.7	180	87.4	0	0.0
Adelaide-Port Lincoln								
QantasLink	102	100	93	93.0	87	87.0	2	2.0
Regional Express	212	211	190	90.0	187	88.6	1	0.5
All Airlines	314	311	283	91.0	274	88.1	3	1.0
Adelaide-Sydney								
Jetstar	83	82	57	69.5	57	69.5	1	1.2
Qantas	283	282	233	82.6	239	84.8	1	0.4
Virgin Australia	155	155	120	77.4	124	80.0	0	0.0
All Airlines	521	519	410	79.0	420	80.9	2	0.4
Albury-Sydney								
QantasLink	120	120	55	45.8	65	54.2	0	0.0
Regional Express	118	117	77	65.8	77	65.8	1	0.8
Virgin Australia	61	61	49	80.3	50	82.0	0	0.0
All Airlines	299	298	181	60.7	192	64.4	1	0.3
Ayers Rock-Sydney								
Qantas	31	31	28	90.3	30	96.8	0	0.0
Virgin Australia	32	32	21	65.6	26	81.3	0	0.0
All Airlines	63	63	49	77.8	56	88.9	0	0.0

	<i>Sectors</i>		<i>Departures</i>		<i>Arrivals</i>		<i>Cancellations</i>	
	<i>Sched.</i>	<i>Flown</i>	<i>On Time</i>		<i>On Time</i>			
			<i>No.</i>	<i>%</i>	<i>No.</i>	<i>%</i>	<i>No.</i>	<i>%</i>
Ballina-Sydney								
Jetstar	32	31	22	71.0	16	51.6	1	3.1
Regional Express	46	46	22	47.8	19	41.3	0	0.0
Virgin Australia	31	30	21	70.0	21	70.0	1	3.2
All Airlines	109	107	65	60.7	56	52.3	2	1.8
Brisbane-Adelaide								
Jetstar	30	30	28	93.3	29	96.7	0	0.0
Qantas	110	110	92	83.6	93	84.5	0	0.0
Virgin Australia	104	104	87	83.7	91	87.5	0	0.0
All Airlines	244	244	207	84.8	213	87.3	0	0.0
Brisbane-Cairns								
Jetstar	88	88	64	72.7	61	69.3	0	0.0
Qantas	116	116	90	77.6	95	81.9	0	0.0
Virgin Australia	150	149	129	86.6	127	85.2	1	0.7
Virgin Australia - ATR/F100 Operations	26	26	24	92.3	22	84.6	0	0.0
All Airlines	380	379	307	81.0	305	80.5	1	0.3
Brisbane-Canberra								
Qantas	141	141	125	88.7	123	87.2	0	0.0
QantasLink	22	21	15	71.4	15	71.4	1	4.5
Virgin Australia	124	124	108	87.1	102	82.3	0	0.0
All Airlines	287	286	248	86.7	240	83.9	1	0.3
Brisbane-Darwin								
Qantas	31	31	28	90.3	27	87.1	0	0.0
Virgin Australia	31	31	22	71.0	21	67.7	0	0.0
All Airlines	62	62	50	80.6	48	77.4	0	0.0
Brisbane-Gladstone								
QantasLink	205	201	135	67.2	135	67.2	4	2.0
Virgin Australia - ATR/F100 Operations	74	74	64	86.5	62	83.8	0	0.0
All Airlines	279	275	199	72.4	197	71.6	4	1.4
Brisbane-Hamilton Island								
Jetstar	19	19	8	42.1	15	78.9	0	0.0
Virgin Australia	31	31	28	90.3	27	87.1	0	0.0
All Airlines	50	50	36	72.0	42	84.0	0	0.0
Brisbane-Mackay								
Jetstar	100	100	68	68.0	71	71.0	0	0.0
QantasLink	101	98	68	69.4	63	64.3	3	3.0
Virgin Australia	172	171	147	86.0	142	83.0	1	0.6
All Airlines	373	369	283	76.7	276	74.8	4	1.1
Brisbane-Melbourne								
Jetstar	80	80	57	71.3	58	72.5	0	0.0
Qantas	412	407	351	86.2	358	88.0	5	1.2
Tiger Airways	94	94	78	83.0	83	88.3	0	0.0
Virgin Australia	401	392	335	85.5	347	88.5	9	2.2
All Airlines	987	973	821	84.4	846	86.9	14	1.4
Brisbane-Newcastle								
Jetstar	111	111	79	71.2	80	72.1	0	0.0
QantasLink	70	69	50	72.5	37	53.6	1	1.4
Virgin Australia - ATR/F100 Operations	62	62	49	79.0	48	77.4	0	0.0
All Airlines	243	242	178	73.6	165	68.2	1	0.4

	<i>Sectors</i>		<i>Departures</i>		<i>Arrivals</i>		<i>Cancellations</i>	
	<i>Sched.</i>	<i>Flown</i>	<i>On Time</i>		<i>On Time</i>			
			<i>No.</i>	<i>%</i>	<i>No.</i>	<i>%</i>		
Brisbane-Perth								
Jetstar	24	24	18	75.0	22	91.7	0	0.0
Qantas	119	117	90	76.9	89	76.1	2	1.7
Virgin Australia	76	76	64	84.2	68	89.5	0	0.0
All Airlines	219	217	172	79.3	179	82.5	2	0.9
Brisbane-Proserpine								
Jetstar	29	29	20	69.0	20	69.0	0	0.0
Virgin Australia	31	30	28	93.3	26	86.7	1	3.2
Virgin Australia - ATR/F100 Operations	22	21	20	95.2	20	95.2	1	4.5
All Airlines	82	80	68	85.0	66	82.5	2	2.4
Brisbane-Rockhampton								
QantasLink	212	210	159	75.7	158	75.2	2	0.9
Virgin Australia	88	88	74	84.1	73	83.0	0	0.0
Virgin Australia - ATR/F100 Operations	94	92	81	88.0	83	90.2	2	2.1
All Airlines	394	390	314	80.5	314	80.5	4	1.0
Brisbane-Sydney								
Jetstar	103	102	61	59.8	67	65.7	1	1.0
Qantas	593	586	468	79.9	471	80.4	7	1.2
Virgin Australia	606	593	427	72.0	421	71.0	13	2.1
All Airlines	1 302	1 281	956	74.6	959	74.9	21	1.6
Brisbane-Townsville								
Jetstar	31	31	20	64.5	24	77.4	0	0.0
Qantas	137	137	122	89.1	120	87.6	0	0.0
Virgin Australia	169	169	138	81.7	142	84.0	0	0.0
All Airlines	337	337	280	83.1	286	84.9	0	0.0
Broome-Perth								
Qantas	27	27	19	70.4	23	85.2	0	0.0
QantasLink	53	48	30	62.5	35	72.9	5	9.4
Skywest	12	12	4	33.3	1	8.3	0	0.0
Virgin Australia	37	36	29	80.6	30	83.3	1	2.7
All Airlines	129	123	82	66.7	89	72.4	6	4.7
Cairns-Brisbane								
Jetstar	88	88	68	77.3	67	76.1	0	0.0
Qantas	116	115	102	88.7	96	83.5	1	0.9
Virgin Australia	150	149	133	89.3	127	85.2	1	0.7
Virgin Australia - ATR/F100 Operations	26	26	20	76.9	19	73.1	0	0.0
All Airlines	380	378	323	85.4	309	81.7	2	0.5
Cairns-Melbourne								
Jetstar	44	43	37	86.0	38	88.4	1	2.3
Qantas	31	31	29	93.5	29	93.5	0	0.0
Virgin Australia	36	36	32	88.9	32	88.9	0	0.0
All Airlines	111	110	98	89.1	99	90.0	1	0.9
Cairns-Sydney								
Jetstar	45	43	35	81.4	34	79.1	2	4.4
Qantas	94	93	81	87.1	84	90.3	1	1.1
Virgin Australia	93	90	74	82.2	75	83.3	3	3.2
All Airlines	232	226	190	84.1	193	85.4	6	2.6
Cairns-Townsville								
QantasLink	188	185	139	75.1	121	65.4	3	1.6
Virgin Australia	31	30	24	80.0	23	76.7	1	3.2
All Airlines	219	215	163	75.8	144	67.0	4	1.8

	<i>Sectors</i>		<i>Departures</i>		<i>Arrivals</i>		<i>Cancellations</i>	
	<i>Sched.</i>	<i>Flown</i>	<i>No.</i>	<i>%</i>	<i>No.</i>	<i>%</i>	<i>No.</i>	<i>%</i>
Canberra-Adelaide								
Qantas	53	53	49	92.5	48	90.6	0	0.0
Virgin Australia	31	31	24	77.4	26	83.9	0	0.0
All Airlines	84	84	73	86.9	74	88.1	0	0.0
Canberra-Brisbane								
Qantas	141	140	127	90.7	121	86.4	1	0.7
QantasLink	22	20	11	55.0	10	50.0	2	9.1
Virgin Australia	125	124	113	91.1	112	90.3	1	0.8
All Airlines	288	284	251	88.4	243	85.6	4	1.4
Canberra-Melbourne								
Qantas	266	263	226	85.9	226	85.9	3	1.1
QantasLink	40	37	32	86.5	30	81.1	3	7.5
Virgin Australia	172	169	136	80.5	129	76.3	3	1.7
All Airlines	478	469	394	84.0	385	82.1	9	1.9
Canberra-Sydney								
Qantas	167	164	134	81.7	138	84.1	3	1.8
QantasLink	407	370	233	63.0	208	56.2	37	9.1
Virgin Australia	143	130	102	78.5	93	71.5	13	9.1
Virgin Australia - ATR/F100 Operations	124	122	81	66.4	55	45.1	2	1.6
All Airlines	841	786	550	70.0	494	62.8	55	6.5
Coffs Harbour-Sydney								
QantasLink	146	146	80	54.8	96	65.8	0	0.0
Virgin Australia	62	60	44	73.3	45	75.0	2	3.2
All Airlines	208	206	124	60.2	141	68.4	2	1.0
Darwin-Brisbane								
Jetstar	1	1	1	100.0	1	100.0	0	0.0
Qantas	31	31	24	77.4	24	77.4	0	0.0
Virgin Australia	31	31	20	64.5	23	74.2	0	0.0
All Airlines	63	63	45	71.4	48	76.2	0	0.0
Darwin-Melbourne								
Jetstar	3	3	3	100.0	2	66.7	0	0.0
Qantas	13	13	10	76.9	11	84.6	0	0.0
Virgin Australia	31	31	28	90.3	27	87.1	0	0.0
All Airlines	47	47	41	87.2	40	85.1	0	0.0
Darwin-Perth								
Qantas	31	31	26	83.9	30	96.8	0	0.0
Virgin Australia	31	31	26	83.9	26	83.9	0	0.0
All Airlines	62	62	52	83.9	56	90.3	0	0.0
Dubbo-Sydney								
QantasLink	111	111	75	67.6	60	54.1	0	0.0
Regional Express	178	174	111	63.8	108	62.1	4	2.2
All Airlines	289	285	186	65.3	168	58.9	4	1.4
Geraldton-Perth								
QantasLink	53	52	35	67.3	27	51.9	1	1.9
Skywest	83	83	60	72.3	56	67.5	0	0.0
All Airlines	136	135	95	70.4	83	61.5	1	0.7
Gladstone-Brisbane								
QantasLink	227	221	127	57.5	117	52.9	6	2.6
Virgin Australia - ATR/F100 Operations	74	71	63	88.7	60	84.5	3	4.1
All Airlines	301	292	190	65.1	177	60.6	9	3.0

	<i>Sectors</i>		<i>Departures</i>		<i>Arrivals</i>		<i>Cancellations</i>	
	<i>Sched.</i>	<i>Flown</i>	<i>On Time</i>		<i>On Time</i>		<i>No.</i>	<i>%</i>
			<i>No.</i>	<i>%</i>	<i>No.</i>	<i>%</i>		
Gold Coast-Adelaide								
Jetstar	31	31	26	83.9	26	83.9	0	0.0
Virgin Australia	31	31	30	96.8	31	100.0	0	0.0
All Airlines	62	62	56	90.3	57	91.9	0	0.0
Gold Coast-Melbourne								
Jetstar	225	220	177	80.5	179	81.4	5	2.2
Tiger Airways	76	76	65	85.5	65	85.5	0	0.0
Virgin Australia	216	215	179	83.3	188	87.4	1	0.5
All Airlines	517	511	421	82.4	432	84.5	6	1.2
Gold Coast-Sydney								
Jetstar	279	277	203	73.3	214	77.3	2	0.7
Virgin Australia	367	352	220	62.5	218	61.9	15	4.1
All Airlines	646	629	423	67.2	432	68.7	17	2.6
Hamilton Island-Brisbane								
Jetstar	18	18	14	77.8	16	88.9	0	0.0
Virgin Australia	31	30	29	96.7	27	90.0	1	3.2
All Airlines	49	48	43	89.6	43	89.6	1	2.0
Hamilton Island-Sydney								
Jetstar	32	31	22	71.0	23	74.2	1	3.1
Virgin Australia	31	31	22	71.0	23	74.2	0	0.0
All Airlines	63	62	44	71.0	46	74.2	1	1.6
Hobart-Melbourne								
Jetstar	173	170	109	64.1	114	67.1	3	1.7
Qantas	69	69	67	97.1	67	97.1	0	0.0
Virgin Australia	138	137	113	82.5	111	81.0	1	0.7
All Airlines	380	376	289	76.9	292	77.7	4	1.1
Hobart-Sydney								
Jetstar	60	59	42	71.2	44	74.6	1	1.7
Qantas	31	31	22	71.0	21	67.7	0	0.0
Virgin Australia	62	62	35	56.5	38	61.3	0	0.0
All Airlines	153	152	99	65.1	103	67.8	1	0.7
Kalgoorlie-Perth								
Qantas	67	66	57	86.4	60	90.9	1	1.5
QantasLink	17	15	12	80.0	13	86.7	2	11.8
Skywest	12	12	7	58.3	4	33.3	0	0.0
All Airlines	96	93	76	81.7	77	82.8	3	3.1
Karratha-Perth								
Qantas	198	187	155	82.9	162	86.6	11	5.6
QantasLink	63	58	46	79.3	47	81.0	5	7.9
Virgin Australia	61	59	40	67.8	38	64.4	2	3.3
All Airlines	322	304	241	79.3	247	81.3	18	5.6
Launceston-Melbourne								
Jetstar	104	104	66	63.5	72	69.2	0	0.0
QantasLink	76	76	50	65.8	53	69.7	0	0.0
Virgin Australia	138	138	113	81.9	107	77.5	0	0.0
All Airlines	318	318	229	72.0	232	73.0	0	0.0
Launceston-Sydney								
Jetstar	40	40	33	82.5	33	82.5	0	0.0
Virgin Australia	31	31	16	51.6	16	51.6	0	0.0
All Airlines	71	71	49	69.0	49	69.0	0	0.0

	<i>Sectors</i>		<i>Departures</i>		<i>Arrivals</i>		<i>Cancellations</i>	
	<i>Sched.</i>	<i>Flown</i>	<i>On Time</i>		<i>On Time</i>			
			<i>No.</i>	<i>%</i>	<i>No.</i>	<i>%</i>	<i>No.</i>	<i>%</i>
Mackay-Brisbane								
Jetstar	99	99	54	54.5	61	61.6	0	0.0
QantasLink	102	99	63	63.6	52	52.5	3	2.9
Virgin Australia	172	170	143	84.1	127	74.7	2	1.2
All Airlines	373	368	260	70.7	240	65.2	5	1.3
Melbourne-Adelaide								
Jetstar	75	75	60	80.0	55	73.3	0	0.0
Qantas	306	305	276	90.5	271	88.9	1	0.3
QantasLink	17	16	12	75.0	11	68.8	1	5.9
Virgin Australia	301	300	262	87.3	260	86.7	1	0.3
All Airlines	699	696	610	87.6	597	85.8	3	0.4
Melbourne-Brisbane								
Jetstar	83	83	58	69.9	60	72.3	0	0.0
Qantas	414	412	373	90.5	326	79.1	2	0.5
Tiger Airways	94	94	91	96.8	83	88.3	0	0.0
Virgin Australia	400	394	349	88.6	314	79.7	6	1.5
All Airlines	991	983	871	88.6	783	79.7	8	0.8
Melbourne-Cairns								
Jetstar	44	44	39	88.6	41	93.2	0	0.0
Qantas	31	31	29	93.5	29	93.5	0	0.0
Virgin Australia	36	36	29	80.6	27	75.0	0	0.0
All Airlines	111	111	97	87.4	97	87.4	0	0.0
Melbourne-Canberra								
Qantas	265	263	239	90.9	232	88.2	2	0.8
QantasLink	40	37	32	86.5	27	73.0	3	7.5
Virgin Australia	173	172	139	80.8	135	78.5	1	0.6
All Airlines	478	472	410	86.9	394	83.5	6	1.3
Melbourne-Darwin								
Jetstar	4	4	3	75.0	4	100.0	0	0.0
Qantas	13	13	10	76.9	10	76.9	0	0.0
Virgin Australia	31	31	31	100.0	31	100.0	0	0.0
All Airlines	48	48	44	91.7	45	93.8	0	0.0
Melbourne-Gold Coast								
Jetstar	223	219	174	79.5	171	78.1	4	1.8
Tiger Airways	76	76	71	93.4	66	86.8	0	0.0
Virgin Australia	216	215	174	80.9	172	80.0	1	0.5
All Airlines	515	510	419	82.2	409	80.2	5	1.0
Melbourne-Hobart								
Jetstar	173	170	116	68.2	121	71.2	3	1.7
Qantas	69	69	58	84.1	58	84.1	0	0.0
Virgin Australia	138	138	114	82.6	111	80.4	0	0.0
All Airlines	380	377	288	76.4	290	76.9	3	0.8
Melbourne-Launceston								
Jetstar	104	104	71	68.3	71	68.3	0	0.0
QantasLink	76	76	63	82.9	52	68.4	0	0.0
Virgin Australia	138	138	110	79.7	109	79.0	0	0.0
All Airlines	318	318	244	76.7	232	73.0	0	0.0
Melbourne-Mildura								
QantasLink	88	88	65	73.9	59	67.0	0	0.0
Regional Express	92	92	87	94.6	85	92.4	0	0.0
Virgin Australia	31	31	25	80.6	23	74.2	0	0.0
All Airlines	211	211	177	83.9	167	79.1	0	0.0

	<i>Sectors</i>		<i>Departures</i>		<i>Arrivals</i>		<i>Cancellations</i>	
	<i>Sched.</i>	<i>Flown</i>	<i>On Time</i>		<i>On Time</i>		<i>No.</i>	<i>%</i>
			<i>No.</i>	<i>%</i>	<i>No.</i>	<i>%</i>		
Melbourne-Newcastle								
Jetstar	98	97	73	75.3	74	76.3	1	1.0
Virgin Australia	31	31	26	83.9	25	80.6	0	0.0
All Airlines	129	128	99	77.3	99	77.3	1	0.8
Melbourne-Perth								
Jetstar	75	74	58	78.4	61	82.4	1	1.3
Qantas	220	220	187	85.0	192	87.3	0	0.0
Tiger Airways	62	62	56	90.3	58	93.5	0	0.0
Virgin Australia	155	155	136	87.7	139	89.7	0	0.0
All Airlines	512	511	437	85.5	450	88.1	1	0.2
Melbourne-Sunshine Coast								
Jetstar	51	50	29	58.0	34	68.0	1	2.0
Virgin Australia	31	31	24	77.4	21	67.7	0	0.0
All Airlines	82	81	53	65.4	55	67.9	1	1.2
Melbourne-Sydney								
Jetstar	224	221	133	60.2	133	60.2	3	1.3
Qantas	906	886	727	82.1	674	76.1	20	2.2
Tiger Airways	180	180	162	90.0	166	92.2	0	0.0
Virgin Australia	868	842	691	82.1	634	75.3	26	3.0
All Airlines	2 178	2 129	1 713	80.5	1 607	75.5	49	2.2
Mildura-Melbourne								
QantasLink	88	88	76	86.4	71	80.7	0	0.0
Regional Express	92	92	85	92.4	84	91.3	0	0.0
Virgin Australia	31	31	25	80.6	26	83.9	0	0.0
All Airlines	211	211	186	88.2	181	85.8	0	0.0
Newcastle-Brisbane								
Jetstar	110	110	82	74.5	82	74.5	0	0.0
QantasLink	71	70	38	54.3	34	48.6	1	1.4
Virgin Australia - ATR/F100 Operations	62	62	47	75.8	42	67.7	0	0.0
All Airlines	243	242	167	69.0	158	65.3	1	0.4
Newcastle-Melbourne								
Jetstar	97	96	78	81.3	76	79.2	1	1.0
Virgin Australia	31	31	21	67.7	22	71.0	0	0.0
All Airlines	128	127	99	78.0	98	77.2	1	0.8
Newman-Perth								
Qantas	69	69	53	76.8	58	84.1	0	0.0
QantasLink	57	56	49	87.5	52	92.9	1	1.8
Virgin Australia	32	30	24	80.0	24	80.0	2	6.3
All Airlines	158	155	126	81.3	134	86.5	3	1.9
Perth-Adelaide								
Jetstar	31	31	24	77.4	25	80.6	0	0.0
Qantas	114	114	95	83.3	101	88.6	0	0.0
Virgin Australia	62	62	57	91.9	59	95.2	0	0.0
All Airlines	207	207	176	85.0	185	89.4	0	0.0
Perth-Brisbane								
Jetstar	23	23	9	39.1	15	65.2	0	0.0
Qantas	119	118	97	82.2	103	87.3	1	0.8
Virgin Australia	76	76	73	96.1	69	90.8	0	0.0
All Airlines	218	217	179	82.5	187	86.2	1	0.5

	<i>Sectors</i>		<i>Departures</i>		<i>Arrivals</i>		<i>Cancellations</i>	
	<i>Sched.</i>	<i>Flown</i>	<i>On Time</i>		<i>On Time</i>			
			<i>No.</i>	<i>%</i>	<i>No.</i>	<i>%</i>	<i>No.</i>	<i>%</i>
Perth-Broome								
Qantas	27	27	23	85.2	22	81.5	0	0.0
QantasLink	53	50	40	80.0	35	70.0	3	5.7
Skywest	9	9	1	11.1	1	11.1	0	0.0
Virgin Australia	37	36	33	91.7	32	88.9	1	2.7
All Airlines	126	122	97	79.5	90	73.8	4	3.2
Perth-Darwin								
Qantas	31	31	27	87.1	27	87.1	0	0.0
Virgin Australia	31	31	26	83.9	27	87.1	0	0.0
All Airlines	62	62	53	85.5	54	87.1	0	0.0
Perth-Geraldton								
QantasLink	53	53	32	60.4	37	69.8	0	0.0
Skywest	86	86	68	79.1	65	75.6	0	0.0
All Airlines	139	139	100	71.9	102	73.4	0	0.0
Perth-Kalgoorlie								
Qantas	67	66	63	95.5	62	93.9	1	1.5
QantasLink	18	17	14	82.4	14	82.4	1	5.6
Skywest	14	14	7	50.0	6	42.9	0	0.0
All Airlines	99	97	84	86.6	82	84.5	2	2.0
Perth-Karratha								
Qantas	198	188	167	88.8	173	92.0	10	5.1
QantasLink	62	57	52	91.2	45	78.9	5	8.1
Virgin Australia	60	59	35	59.3	36	61.0	1	1.7
All Airlines	320	304	254	83.6	254	83.6	16	5.0
Perth-Melbourne								
Jetstar	75	74	56	75.7	61	82.4	1	1.3
Qantas	218	218	180	82.6	189	86.7	0	0.0
Tiger Airways	62	62	57	91.9	53	85.5	0	0.0
Virgin Australia	155	155	146	94.2	142	91.6	0	0.0
All Airlines	510	509	439	86.2	445	87.4	1	0.2
Perth-Newman								
Qantas	69	69	63	91.3	63	91.3	0	0.0
QantasLink	57	56	50	89.3	51	91.1	1	1.8
Virgin Australia	31	30	27	90.0	26	86.7	1	3.2
All Airlines	157	155	140	90.3	140	90.3	2	1.3
Perth-Port Hedland								
Qantas	113	107	101	94.4	100	93.5	6	5.3
QantasLink	36	34	30	88.2	29	85.3	2	5.6
Virgin Australia	74	72	68	94.4	65	90.3	2	2.7
All Airlines	223	213	199	93.4	194	91.1	10	4.5
Perth-Sydney								
Jetstar	41	40	35	87.5	37	92.5	1	2.4
Qantas	216	213	174	81.7	180	84.5	3	1.4
Virgin Australia	151	151	142	94.0	118	78.1	0	0.0
All Airlines	408	404	351	86.9	335	82.9	4	1.0
Port Hedland-Perth								
Qantas	113	106	95	89.6	98	92.5	7	6.2
QantasLink	36	33	28	84.8	31	93.9	3	8.3
Virgin Australia	74	72	62	86.1	61	84.7	2	2.7
All Airlines	223	211	185	87.7	190	90.0	12	5.4

	<i>Sectors</i>		<i>Departures</i>		<i>Arrivals</i>		<i>Cancellations</i>	
	<i>Sched.</i>	<i>Flown</i>	<i>On Time</i>		<i>On Time</i>			
			<i>No.</i>	<i>%</i>	<i>No.</i>	<i>%</i>		
Port Lincoln-Adelaide								
QantasLink	103	102	91	89.2	90	88.2	1	1.0
Regional Express	213	210	185	88.1	184	87.6	3	1.4
All Airlines	316	312	276	88.5	274	87.8	4	1.3
Port Macquarie-Sydney								
QantasLink	137	136	86	63.2	78	57.4	1	0.7
Virgin Australia - ATR/F100 Operations	62	62	49	79.0	39	62.9	0	0.0
All Airlines	199	198	135	68.2	117	59.1	1	0.5
Proserpine-Brisbane								
Jetstar	31	31	19	61.3	17	54.8	0	0.0
Virgin Australia	31	30	26	86.7	25	83.3	1	3.2
Virgin Australia - ATR/F100 Operations	22	21	20	95.2	14	66.7	1	4.5
All Airlines	84	82	65	79.3	56	68.3	2	2.4
Rockhampton-Brisbane								
QantasLink	190	189	132	69.8	125	66.1	1	0.5
Virgin Australia	89	88	72	81.8	65	73.9	1	1.1
Virgin Australia - ATR/F100 Operations	93	91	83	91.2	82	90.1	2	2.2
All Airlines	372	368	287	78.0	272	73.9	4	1.1
Sunshine Coast-Melbourne								
Jetstar	55	52	31	59.6	30	57.7	3	5.5
Virgin Australia	31	29	18	62.1	19	65.5	2	6.5
All Airlines	86	81	49	60.5	49	60.5	5	5.8
Sunshine Coast-Sydney								
Jetstar	92	89	64	71.9	67	75.3	3	3.3
Virgin Australia	36	32	27	84.4	25	78.1	4	11.1
All Airlines	128	121	91	75.2	92	76.0	7	5.5
Sydney-Adelaide								
Jetstar	81	81	66	81.5	68	84.0	0	0.0
Qantas	278	277	244	88.1	239	86.3	1	0.4
Virgin Australia	155	155	103	66.5	100	64.5	0	0.0
All Airlines	514	513	413	80.5	407	79.3	1	0.2
Sydney-Albury								
QantasLink	119	119	64	53.8	67	56.3	0	0.0
Regional Express	118	117	79	67.5	79	67.5	1	0.8
Virgin Australia	62	62	50	80.6	54	87.1	0	0.0
All Airlines	299	298	193	64.8	200	67.1	1	0.3
Sydney-Ayers Rock								
Qantas	31	31	24	77.4	27	87.1	0	0.0
Virgin Australia	31	31	18	58.1	17	54.8	0	0.0
All Airlines	62	62	42	67.7	44	71.0	0	0.0
Sydney-Ballina								
Jetstar	32	31	30	96.8	27	87.1	1	3.1
Regional Express	47	47	34	72.3	27	57.4	0	0.0
Virgin Australia	31	31	28	90.3	26	83.9	0	0.0
All Airlines	110	109	92	84.4	80	73.4	1	0.9
Sydney-Brisbane								
Jetstar	104	104	82	78.8	75	72.1	0	0.0
Qantas	592	584	490	83.9	464	79.5	8	1.4
Virgin Australia	607	593	417	70.3	410	69.1	14	2.3
All Airlines	1 303	1 281	989	77.2	949	74.1	22	1.7

	<i>Sectors</i>		<i>Departures</i>		<i>Arrivals</i>		<i>Cancellations</i>	
	<i>Sched.</i>	<i>Flown</i>	<i>On Time</i>		<i>On Time</i>			
			<i>No.</i>	<i>%</i>	<i>No.</i>	<i>%</i>	<i>No.</i>	<i>%</i>
Sydney-Cairns								
Jetstar	44	43	34	79.1	37	86.0	1	2.3
Qantas	94	94	79	84.0	82	87.2	0	0.0
Virgin Australia	93	93	55	59.1	61	65.6	0	0.0
All Airlines	231	230	168	73.0	180	78.3	1	0.4
Sydney-Canberra								
Qantas	170	169	148	87.6	142	84.0	1	0.6
QantasLink	406	373	228	61.1	223	59.8	33	8.1
Virgin Australia	143	135	106	78.5	100	74.1	8	5.6
Virgin Australia - ATR/F100 Operations	124	122	82	67.2	69	56.6	2	1.6
All Airlines	843	799	564	70.6	534	66.8	44	5.2
Sydney-Coffs Harbour								
QantasLink	145	144	88	61.1	90	62.5	1	0.7
Virgin Australia	63	61	42	68.9	45	73.8	2	3.2
All Airlines	208	205	130	63.4	135	65.9	3	1.4
Sydney-Dubbo								
QantasLink	110	110	81	73.6	85	77.3	0	0.0
Regional Express	178	175	124	70.9	129	73.7	3	1.7
All Airlines	288	285	205	71.9	214	75.1	3	1.0
Sydney-Gold Coast								
Jetstar	279	277	213	76.9	214	77.3	2	0.7
Virgin Australia	367	355	248	69.9	245	69.0	12	3.3
All Airlines	646	632	461	72.9	459	72.6	14	2.2
Sydney-Hamilton Island								
Jetstar	30	30	26	86.7	26	86.7	0	0.0
Virgin Australia	31	31	20	64.5	18	58.1	0	0.0
All Airlines	61	61	46	75.4	44	72.1	0	0.0
Sydney-Hobart								
Jetstar	61	60	52	86.7	52	86.7	1	1.6
Qantas	31	31	30	96.8	30	96.8	0	0.0
Virgin Australia	62	62	36	58.1	41	66.1	0	0.0
All Airlines	154	153	118	77.1	123	80.4	1	0.6
Sydney-Launceston								
Jetstar	40	40	34	85.0	33	82.5	0	0.0
Virgin Australia	30	30	17	56.7	15	50.0	0	0.0
All Airlines	70	70	51	72.9	48	68.6	0	0.0
Sydney-Melbourne								
Jetstar	222	220	167	75.9	156	70.9	2	0.9
Qantas	907	886	754	85.1	740	83.5	21	2.3
Tiger Airways	180	180	162	90.0	159	88.3	0	0.0
Virgin Australia	866	839	654	77.9	667	79.5	27	3.1
All Airlines	2 175	2 125	1 737	81.7	1 722	81.0	50	2.3
Sydney-Perth								
Jetstar	40	39	38	97.4	37	94.9	1	2.5
Qantas	214	213	170	79.8	169	79.3	1	0.5
Virgin Australia	150	149	122	81.9	118	79.2	1	0.7
All Airlines	404	401	330	82.3	324	80.8	3	0.7

	<i>Sectors</i>		<i>Departures</i>		<i>Arrivals</i>		<i>Cancellations</i>	
	<i>Sched.</i>	<i>Flown</i>	<i>On Time</i>		<i>On Time</i>			
			<i>No.</i>	<i>%</i>	<i>No.</i>	<i>%</i>	<i>No.</i>	<i>%</i>
Sydney-Port Macquarie								
QantasLink	137	136	96	70.6	92	67.6	1	0.7
Virgin Australia - ATR/F100 Operations	62	62	46	74.2	39	62.9	0	0.0
All Airlines	199	198	142	71.7	131	66.2	1	0.5
Sydney-Sunshine Coast								
Jetstar	88	87	67	77.0	65	74.7	1	1.1
Virgin Australia	36	33	27	81.8	27	81.8	3	8.3
All Airlines	124	120	94	78.3	92	76.7	4	3.2
Sydney-Townsville								
Jetstar	23	23	17	73.9	20	87.0	0	0.0
Virgin Australia	31	31	15	48.4	13	41.9	0	0.0
All Airlines	54	54	32	59.3	33	61.1	0	0.0
Sydney-Wagga Wagga								
QantasLink	114	112	74	66.1	73	65.2	2	1.8
Regional Express	123	121	97	80.2	99	81.8	2	1.6
All Airlines	237	233	171	73.4	172	73.8	4	1.7
Townsville-Brisbane								
Jetstar	31	31	18	58.1	23	74.2	0	0.0
Qantas	137	137	123	89.8	125	91.2	0	0.0
Virgin Australia	169	168	145	86.3	137	81.5	1	0.6
All Airlines	337	336	286	85.1	285	84.8	1	0.3
Townsville-Cairns								
QantasLink	190	183	106	57.9	97	53.0	7	3.7
Virgin Australia	31	31	26	83.9	25	80.6	0	0.0
All Airlines	221	214	132	61.7	122	57.0	7	3.2
Townsville-Sydney								
Jetstar	24	24	19	79.2	18	75.0	0	0.0
Virgin Australia	31	31	16	51.6	16	51.6	0	0.0
All Airlines	55	55	35	63.6	34	61.8	0	0.0
Wagga Wagga-Sydney								
QantasLink	115	113	72	63.7	57	50.4	2	1.7
Regional Express	124	121	93	76.9	87	71.9	3	2.4
All Airlines	239	234	165	70.5	144	61.5	5	2.1

Airports

On time performance is reported for all routes where the passenger load averages over 8000 passengers per month, and where two or more airlines operate in competition. The following data reports by airport against flights operated on those routes only.

Airport	Departures			Arrivals		
	Sectors	On Time		Sectors	On Time	
	Flown	No.	%	Flown	No.	%
Adelaide						
Jetstar	250	186	74.4	248	203	81.9
Qantas	858	734	85.5	859	752	87.5
QantasLink	117	107	91.5	118	101	85.6
Regional Express	211	190	90.0	210	184	87.6
Virgin Australia	684	589	86.1	683	567	83.0
All Airlines	2 120	1 806	85.2	2 118	1 807	85.3
Relates to services to and from Brisbane, Canberra, Gold Coast, Melbourne, Perth Port Lincoln and Sydney.						
Albury						
QantasLink	120	55	45.8	119	67	56.3
Regional Express	117	77	65.8	117	79	67.5
Virgin Australia	61	49	80.3	62	54	87.1
All Airlines	298	181	60.7	298	200	67.1
Relates to services to and from Sydney only.						
Ayers Rock						
Qantas	31	28	90.3	31	27	87.1
Virgin Australia	32	21	65.6	31	17	54.8
All Airlines	63	49	77.8	62	44	71.0
Relates to services to and from Sydney only.						
Ballina						
Jetstar	31	22	71.0	31	27	87.1
Regional Express	46	22	47.8	47	27	57.4
Virgin Australia	30	21	70.0	31	26	83.9
All Airlines	107	65	60.7	109	80	73.4
Relates to services to and from Sydney only.						
Brisbane						
Jetstar	614	423	68.9	618	443	71.7
Qantas	1 645	1 366	83.0	1 647	1 361	82.6
QantasLink	599	427	71.3	599	338	56.4
Tiger Airways	94	78	83.0	94	83	88.3
Virgin Australia	1 958	1 587	81.1	1 957	1 520	77.7
Virgin Australia - ATR/F100 Operations	275	238	86.5	271	217	80.1
All Airlines	5 185	4 119	79.4	5 186	3 962	76.4
Relates to services to and from Adelaide, Cairns, Canberra, Darwin, Hamilton Island, Gladstone, Mackay, Melbourne, Newcastle, Perth, Proserpine, Rockhampton, Sydney and Townsville.						

Airport	Departures			Arrivals		
	Sectors	On Time		Sectors	On Time	
	Flown	No.	%	Flown	No.	%
Broome						
Qantas	27	19	70.4	27	22	81.5
QantasLink	48	30	62.5	50	35	70.0
Skywest	12	4	33.3	9	1	11.1
Virgin Australia	36	29	80.6	36	32	88.9
All Airlines	123	82	66.7	122	90	73.8
Relates to services to and from Perth only.						
Cairns						
Jetstar	174	140	80.5	175	139	79.4
Qantas	239	212	88.7	241	206	85.5
QantasLink	185	139	75.1	183	97	53.0
Virgin Australia	305	263	86.2	309	240	77.7
Virgin Australia - ATR/F100 Operations	26	20	76.9	26	22	84.6
All Airlines	929	774	83.3	934	704	75.4
Relates to services to and from Brisbane, Melbourne, Sydney and Townsville.						
Canberra						
Qantas	620	536	86.5	622	538	86.5
QantasLink	427	276	64.6	431	265	61.5
Virgin Australia	454	375	82.6	462	364	78.8
Virgin Australia - ATR/F100 Operations	122	81	66.4	122	69	56.6
All Airlines	1 623	1 268	78.1	1 637	1 236	75.5
Relates to services to and from Adelaide, Brisbane, Melbourne and Sydney.						
Coffs Harbour						
QantasLink	146	80	54.8	144	90	62.5
Virgin Australia	60	44	73.3	61	45	73.8
All Airlines	206	124	60.2	205	135	65.9
Relates to services to and from Sydney only.						
Darwin						
Jetstar	4	4	100.0	4	4	100.0
Qantas	75	60	80.0	75	64	85.3
Virgin Australia	93	74	79.6	93	79	84.9
All Airlines	172	138	80.2	172	147	85.5
Relates to services to and from Brisbane, Melbourne and Perth.						
Dubbo						
QantasLink	111	75	67.6	110	85	77.3
Regional Express	174	111	63.8	175	129	73.7
All Airlines	285	186	65.3	285	214	75.1
Relates to services to and from Sydney only.						
Geraldton						
QantasLink	52	35	67.3	53	37	69.8
Skywest	83	60	72.3	86	65	75.6
All Airlines	135	95	70.4	139	102	73.4
Relates to services to and from Perth only.						

Airport	Departures			Arrivals		
	Sectors Flown	On Time		Sectors Flown	On Time	
		No.	%		No.	%
Gladstone						
QantasLink	221	127	57.5	201	135	67.2
Virgin Australia - ATR/F100 Operations	71	63	88.7	74	62	83.8
All Airlines	292	190	65.1	275	197	71.6
Relates to services to and from Brisbane only.						
Gold Coast						
Jetstar	528	406	76.9	526	412	78.3
Tiger Airways	76	65	85.5	76	66	86.8
Virgin Australia	598	429	71.7	601	447	74.4
All Airlines	1 202	900	74.9	1 203	925	76.9
Relates to services to and from Adelaide, Melbourne and Sydney.						
Hamilton Island						
Jetstar	49	36	73.5	49	41	83.7
Virgin Australia	61	51	83.6	62	45	72.6
All Airlines	110	87	79.1	111	86	77.5
Relates to services to and from Brisbane and Sydney.						
Hobart						
Jetstar	229	151	65.9	230	173	75.2
Qantas	100	89	89.0	100	88	88.0
Virgin Australia	199	148	74.4	200	152	76.0
All Airlines	528	388	73.5	530	413	77.9
Relates to services to and from Melbourne and Sydney.						
Kalgoorlie						
Qantas	66	57	86.4	66	62	93.9
QantasLink	15	12	80.0	17	14	82.4
Skywest	12	7	58.3	14	6	42.9
All Airlines	93	76	81.7	97	82	84.5
Relates to services to and from Perth only.						
Karratha						
Qantas	187	155	82.9	188	173	92.0
QantasLink	58	46	79.3	57	45	78.9
Virgin Australia	59	40	67.8	59	36	61.0
All Airlines	304	241	79.3	304	254	83.6
Relates to services to and from Perth only.						
Launceston						
Jetstar	144	99	68.8	144	104	72.2
QantasLink	76	50	65.8	76	52	68.4
Virgin Australia	169	129	76.3	168	124	73.8
All Airlines	389	278	71.5	388	280	72.2
Relates to services to and from Melbourne and Sydney.						
Mackay						
Jetstar	99	54	54.5	100	71	71.0
QantasLink	99	63	63.6	98	63	64.3
Virgin Australia	170	143	84.1	171	142	83.0
All Airlines	368	260	70.7	369	276	74.8
Relates to services to and from Brisbane only.						

Airport	Departures			Arrivals		
	Sectors	On Time		Sectors	On Time	
	Flown	No.	%	Flown	No.	%
Melbourne						
Jetstar	1 141	814	71.3	1 139	848	74.5
Qantas	2 199	1 899	86.4	2 191	1 888	86.2
QantasLink	217	172	79.3	218	168	77.1
Regional Express	92	87	94.6	92	84	91.3
Tiger Airways	412	380	92.2	412	360	87.4
Virgin Australia	2 514	2 110	83.9	2 504	2 087	83.3
All Airlines	6 575	5 462	83.1	6 556	5 435	82.9
Relates to services to and from Adelaide, Brisbane, Cairns, Canberra, Darwin, Gold Coast, Hobart, Launceston, Mildura, Newcastle, Perth, Sunshine Coast and Sydney.						
Mildura						
QantasLink	88	76	86.4	88	59	67.0
Regional Express	92	85	92.4	92	85	92.4
Virgin Australia	31	25	80.6	31	23	74.2
All Airlines	211	186	88.2	211	167	79.1
Relates to services to and from Melbourne only.						
Newcastle						
Jetstar	206	160	77.7	208	154	74.0
QantasLink	70	38	54.3	69	37	53.6
Virgin Australia	31	21	67.7	31	25	80.6
Virgin Australia - ATR/F100 Operations	62	47	75.8	62	48	77.4
All Airlines	369	266	72.1	370	264	71.4
Relates to services to and from Brisbane and Melbourne.						
Newman						
Qantas	69	53	76.8	69	63	91.3
QantasLink	56	49	87.5	56	51	91.1
Virgin Australia	30	24	80.0	30	26	86.7
All Airlines	155	126	81.3	155	140	90.3
Relates to services to and from Perth only.						
Perth						
Jetstar	168	124	73.8	168	146	86.9
Qantas	1 151	990	86.0	1 149	985	85.7
QantasLink	267	218	81.6	262	205	78.2
Skywest	109	76	69.7	107	61	57.0
Tiger Airways	62	57	91.9	62	58	93.5
Virgin Australia	672	607	90.3	670	554	82.7
All Airlines	2 429	2 072	85.3	2 418	2 009	83.1
Relates to services to and from Adelaide, Brisbane, Broome, Darwin, Geraldton, Kalgoorlie, Karratha, Melbourne, Newman, Port Hedland and Sydney.						
Port Hedland						
Qantas	106	95	89.6	107	100	93.5
QantasLink	33	28	84.8	34	29	85.3
Virgin Australia	72	62	86.1	72	65	90.3
All Airlines	211	185	87.7	213	194	91.1
Relates to services to and from Perth only.						

Airport	Departures			Arrivals		
	Sectors Flown	On Time		Sectors Flown	On Time	
		No.	%		No.	%
Port Lincoln						
QantasLink	102	91	89.2	100	87	87.0
Regional Express	210	185	88.1	211	187	88.6
All Airlines	312	276	88.5	311	274	88.1
Relates to services to and from Adelaide only.						
Port Macquarie						
QantasLink	136	86	63.2	136	92	67.6
Virgin Australia - ATR/F100 Operations	62	49	79.0	62	39	62.9
All Airlines	198	135	68.2	198	131	66.2
Relates to services to and from Sydney only.						
Proserpine						
Jetstar	31	19	61.3	29	20	69.0
Virgin Australia	30	26	86.7	30	26	86.7
Virgin Australia - ATR/F100 Operations	21	20	95.2	21	20	95.2
All Airlines	82	65	79.3	80	66	82.5
Relates to services to and from Brisbane only.						
Rockhampton						
QantasLink	189	132	69.8	210	158	75.2
Virgin Australia	88	72	81.8	88	73	83.0
Virgin Australia - ATR/F100 Operations	91	83	91.2	92	83	90.2
All Airlines	368	287	78.0	390	314	80.5
Relates to services to and from Brisbane only.						
Sunshine Coast						
Jetstar	141	95	67.4	137	99	72.3
Virgin Australia	61	45	73.8	64	48	75.0
All Airlines	202	140	69.3	201	147	73.1
Relates to services to and from Melbourne and Sydney.						
Sydney						
Jetstar	1 035	826	79.8	1 039	743	71.5
Qantas	2 285	1 939	84.9	2 286	1 837	80.4
QantasLink	994	631	63.5	996	564	56.6
Regional Express	460	334	72.6	458	291	63.5
Tiger Airways	180	162	90.0	180	166	92.2
Virgin Australia	2 691	1 958	72.8	2 683	1 943	72.4
Virgin Australia - ATR/F100 Operations	184	128	69.6	184	94	51.1
All Airlines	7 829	5 978	76.4	7 826	5 638	72.0
Relates to services to and from Adelaide, Albury, Ayers Rock, Ballina, Brisbane, Cairns, Canberra, Coffs Harbour, Dubbo, Gold Coast, Hamilton Island, Hobart, Launceston, Melbourne, Perth, Port Macquarie, Sunshine Coast, Townsville and Wagga Wagga.						
Townsville						
Jetstar	55	37	67.3	54	44	81.5
Qantas	137	123	89.8	137	120	87.6
QantasLink	183	106	57.9	185	121	65.4
Virgin Australia	230	187	81.3	230	178	77.4
All Airlines	605	453	74.9	606	463	76.4
Relates to services to and from Brisbane, Cairns and Sydney.						

<i>Airport</i>	<i>Departures</i>			<i>Arrivals</i>		
	<i>Sectors</i>	<i>On Time</i>		<i>Sectors</i>	<i>On Time</i>	
	<i>Flown</i>	<i>No.</i>	<i>%</i>	<i>Flown</i>	<i>No.</i>	<i>%</i>
Wagga Wagga						
QantasLink	113	72	63.7	112	73	65.2
Regional Express	121	93	76.9	121	99	81.8
All Airlines	234	165	70.5	233	172	73.8

Relates to services to and from Sydney only.

Definitions

On time departure A flight departure is counted as "on time" if it departs the gate within 15 minutes of the scheduled departure time shown in the carriers' schedule.

On time arrival A flight arrival is counted as "on time" if it arrived at the gate within 15 minutes of the scheduled arrival time shown in the carriers' schedule.
Neither diverted nor cancelled flights count as on time.

Cancellation A flight removed from service within 7 days of scheduled departure is regarded as a cancellation.

On time departure percentage The percentage of on time departures is measured against the number of departures *operated* on any particular sector.

On time arrival percentage The percentage of on time arrivals is measured against the number of arrivals *operated* on any particular sector.

Cancellation percentage The percentage of cancellations is measured against the number of services *scheduled* on any particular sector.
