



Australian Government

Department of Infrastructure, Transport,
Regional Development and Local Government
Bureau of Infrastructure, Transport and Regional Economics



bitre

AVIATION STATISTICS

Airline
On Time Performance

March 2009—OTP 72

© Commonwealth of Australia 2009

ISSN 1832-0759

This work is copyright and the data contained in this publication should not be reproduced or used in any form without acknowledgement.

Enquiries

Bureau of Infrastructure, Transport and Regional Economics
GPO Box 501
Canberra ACT 2601

Telephone: 02 6274 7790

Facsimile: 02 6274 7727

Website: www.bitre.gov.au

Email: avstats@infrastructure.gov.au

This publication, including a spreadsheet of the time-series data, can be downloaded from the BITRE website: <http://www.bitre.gov.au/info.aspx?ResourceId=214&NodeId=104>.

Disclaimers

BITRE seeks to publish its work to the highest professional standards. However, it cannot accept responsibility for any consequences arising from the use of information herein. Readers should rely on their own skill and judgment in applying any information or analysis to particular issues or circumstances.

Foreword

The Bureau of Infrastructure, Transport and Regional Economics (BITRE) monitors the punctuality and reliability of major domestic airlines operating between Australian airports. The purpose of this is to allow for evaluation of overall industry and individual airline performance, so that consumers of air travel can make informed decisions.

The following domestic airlines report this data monthly to the BITRE: Jetstar, Qantas, QantasLink, Regional Express, Skywest Airlines, Tiger Airways, and Virgin Blue. Data has been gathered since November 2003, although some airlines commenced reporting since then, including Jetstar which first reported in May 2004, MacAir in July 2005 and Tiger Airways in April 2008. MacAir ceased operations in February 2009 and data was not received for December 2008 onwards.

Information presented in this report is for Australian domestic routes for which the passenger load averaged 8000 or more passengers per month over the previous six months, *and* where two or more airlines operated in competition on those routes. There were 49 routes that met this definition in March 2009. Over time, routes which meet these criteria change as airline networks and traffic levels vary.

Participating airlines report their overall monthly network performance where this is possible.

Total industry figures encompass all services operated by reporting airlines only. These airlines collectively carried over 95 per cent of total domestic passengers (regular public transport only) in 2008.

The method of capturing on time performance varies between airlines utilising different recording systems. Jetstar and Qantas jet aircraft use Aircraft Communication Addressing and Reporting System (ACARS) to electronically measure on time performance. Regional Express, Skywest, Tiger Airways, Virgin Blue and the Qantas non-jet fleet record on time performance manually using records from pilots, gate agents and/or ground crews.

After initial data is collected, aggregate reports are audited internally by participating airlines prior to publication.

Reports and detailed time series data in Microsoft Excel spreadsheet format are available from the BITRE website at: <http://www.bitre.gov.au/info.aspx?ResourceId=214&NodeId=104>.

Contents

	Page
Industry performance	1
Individual routes	9
Airports	21
Definitions	27

Industry performance

For March 2009, on time performance over all routes operated by participating airlines (Jetstar, Qantas, QantasLink, Regional Express, Skywest Airlines, Tiger Airways and Virgin Blue) averaged 86.9 per cent for on time departures, and 86.0 per cent for on time arrivals. Cancellations represented 1.3 per cent of all scheduled flights. The equivalent figures for March 2008 were 83.8 per cent for departures, 82.0 per cent for arrivals and 1.1 per cent for cancellations.

The long term average performance for all routes since reporting commenced in November 2003 is 84.9 per cent for on time departures and 83.7 per cent for on time arrivals. Cancellations average 1.2 per cent of all scheduled flights.

Of the major domestic airlines, Qantas achieved the highest level of on time departures for March 2009 at 90.0 per cent, followed by Virgin Blue at 88.4 per cent, Jetstar at 82.1 per cent and Tiger Airways at 73.0 per cent. The regional airlines were led by Skywest at 89.6 per cent, Regional Express at 86.3 per cent and QantasLink at 86.2 per cent.

Qantas also achieved the highest on time arrivals among the major domestic airlines at 90.3 per cent, followed by Virgin Blue at 87.5 per cent, Jetstar at 83.9 per cent and Tiger Airways at 74.6 per cent. Skywest was the best performing regional airline for on time arrivals at 90.1 per cent, followed by QantasLink at 83.2 per cent and Regional Express at 82.2 per cent.

Qantas had the highest percentage of cancellations for March 2009 at 2.2 per cent, while Regional Express recorded a cancellation rate of 0.1 per cent.

Of the 49 routes which met the criteria for on time performance reporting in March 2009, the Townsville-Sydney route had the highest percentage of on time departures (96.2 per cent), while the Launceston-Sydney route had the lowest (66.1 per cent). On time arrivals were highest on the Cairns-Sydney route (96.3 per cent) and lowest on the Ballina-Sydney route (74.1 per cent).

Cancellations were highest on the Perth-Karratha route at 9.7 per cent, followed by Karratha-Perth at 9.1 per cent, Maroochydore-Melbourne at 5.1 per cent, Maroochydore-Sydney at 5.0 per cent and Newman-Perth at 4.7 per cent.

Townsville Airport recorded the highest percentage of on time departures (93.2 per cent), while Ballina Airport recorded the lowest (76.9 per cent). Townsville Airport also recorded the highest percentage of on time arrivals (93.9 per cent), while Coffs Harbour Airport recorded the lowest (75.0 per cent).

Table 1 On time performance for March 2009 — Total Industry

	<i>Sectors</i>		<i>Departures On Time</i>		<i>Arrivals On Time</i>		<i>Cancellations</i>	
	<i>Scheduled</i>	<i>Flown</i>	<i>No.</i>	<i>%</i>	<i>No.</i>	<i>%</i>	<i>No.</i>	<i>%</i>
Jetstar	5 762	5 711	4 691	82.1	4 790	83.9	51	0.9
Qantas	10 517	10 289	9 260	90.0	9 287	90.3	228	2.2
QantasLink	7 877	7 729	6 664	86.2	6 431	83.2	148	1.9
Regional Express	5 415	5 410	4 668	86.3	4 449	82.2	5	0.1
Skywest	951	943	845	89.6	850	90.1	8	0.8
Tiger Airways	978	974	711	73.0	727	74.6	4	0.4
Virgin Blue	11 593	11 457	10 126	88.4	10 027	87.5	136	1.2
All Airlines	43 093	42 513	36 965	86.9	36 561	86.0	580	1.3

1. Total airline network data (including routes not shown in this report).
2. Tiger Airways began reporting in April 2008.

Table 2 Top ten routes for on time performance for March 2009 (participating airlines only)

<i>Departures</i>		<i>Arrivals</i>	
<i>Route</i>	<i>On Time (%)</i>	<i>Route</i>	<i>On Time (%)</i>
Townsville-Sydney	96.2	Cairns-Sydney	96.3
Cairns-Sydney	94.9	Hobart-Sydney	94.8
Adelaide-Sydney	92.9	Sydney-Adelaide	94.7
Canberra-Brisbane	92.9	Sydney-Townsville	94.4
Cairns-Brisbane	92.8	Sydney-Cairns	94.0
Townsville-Brisbane	92.7	Brisbane-Townsville	93.8
Sydney-Townsville	92.6	Cairns-Brisbane	93.7
Sydney-Adelaide	92.2	Townsville-Brisbane	93.5
Sydney-Cairns	92.1	Alice Springs-Melbourne	93.2
Brisbane-Melbourne	92.1	Townsville-Sydney	92.5

Table 3 Top ten airports for on time performance for March 2009 (participating airlines and reported routes only)

<i>Departures</i>		<i>Arrivals</i>	
<i>Airport</i>	<i>On Time (%)</i>	<i>Airport</i>	<i>On Time (%)</i>
Townsville	93.2	Townsville	93.9
Cairns	91.7	Hervey Bay	91.8
Canberra	90.4	Hamilton Island	91.7
Proserpine	90.3	Cairns	90.5
Darwin	90.2	Proserpine	90.3
Kalgoorlie	89.7	Kalgoorlie	89.8
Karratha	89.6	Hobart	89.5
Dubbo	89.5	Dubbo	89.2
Wagga Wagga	89.4	Brisbane	88.4
Hobart	88.5	Adelaide	88.2

Total industry on time performance

Figure 1 On time performance (by month from March 2006)—Total Industry

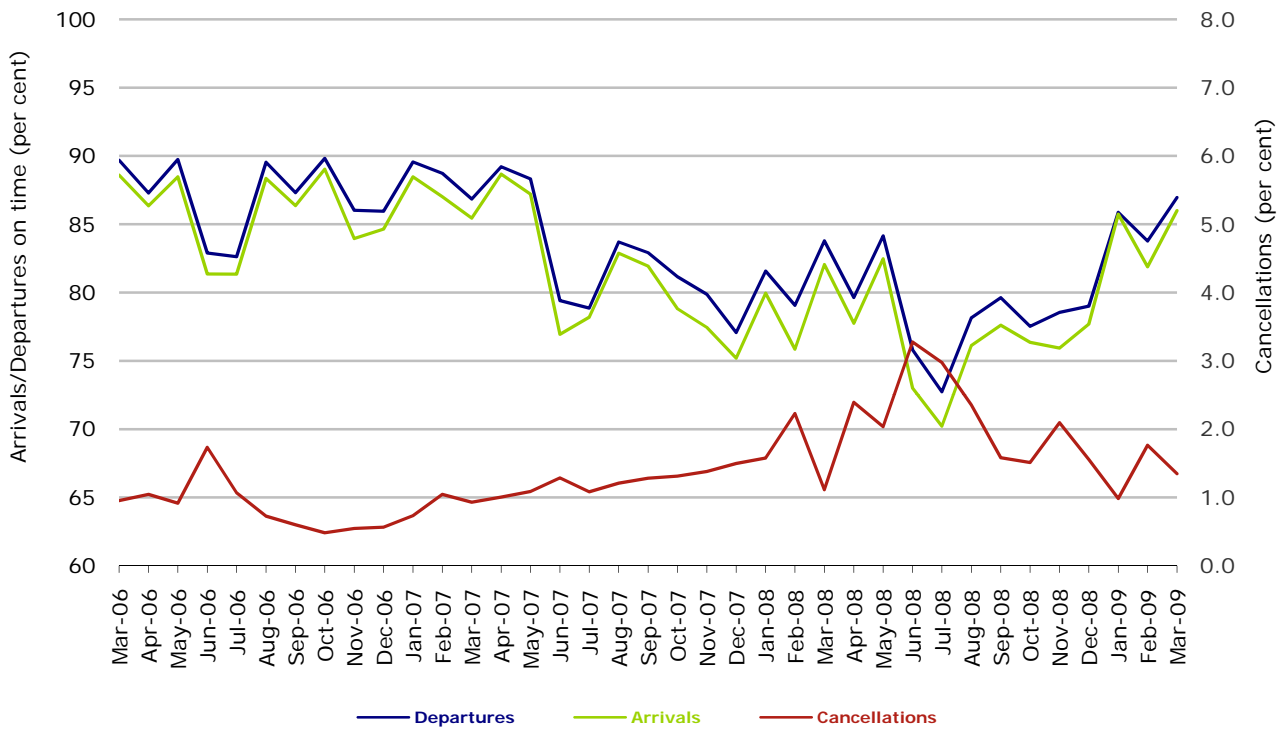
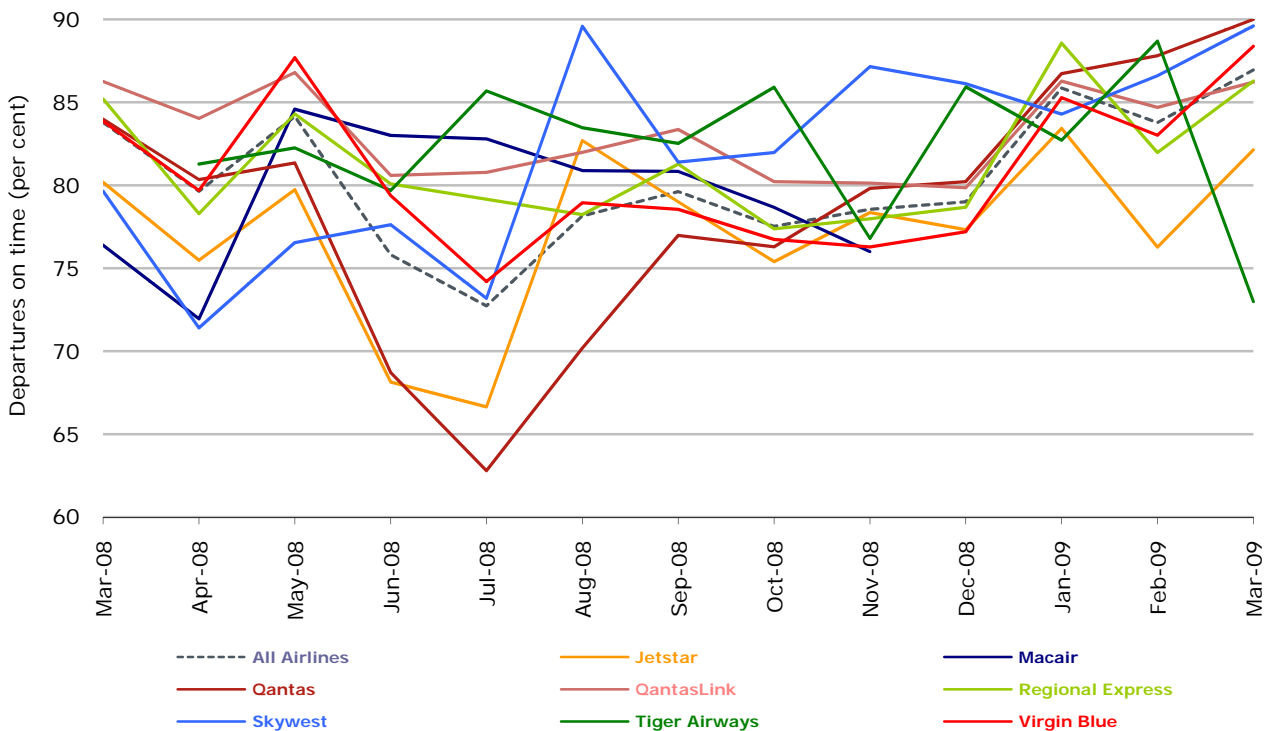
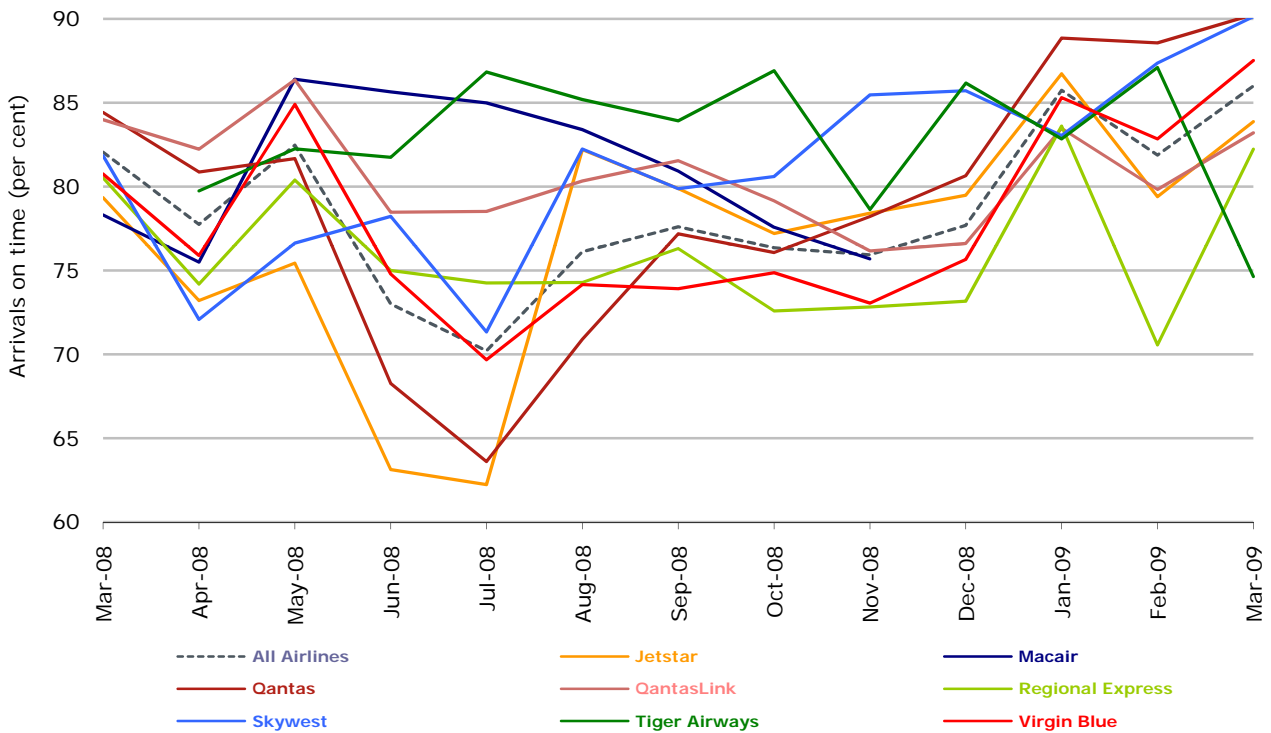


Figure 2 Departures on time (by month from March 2008)



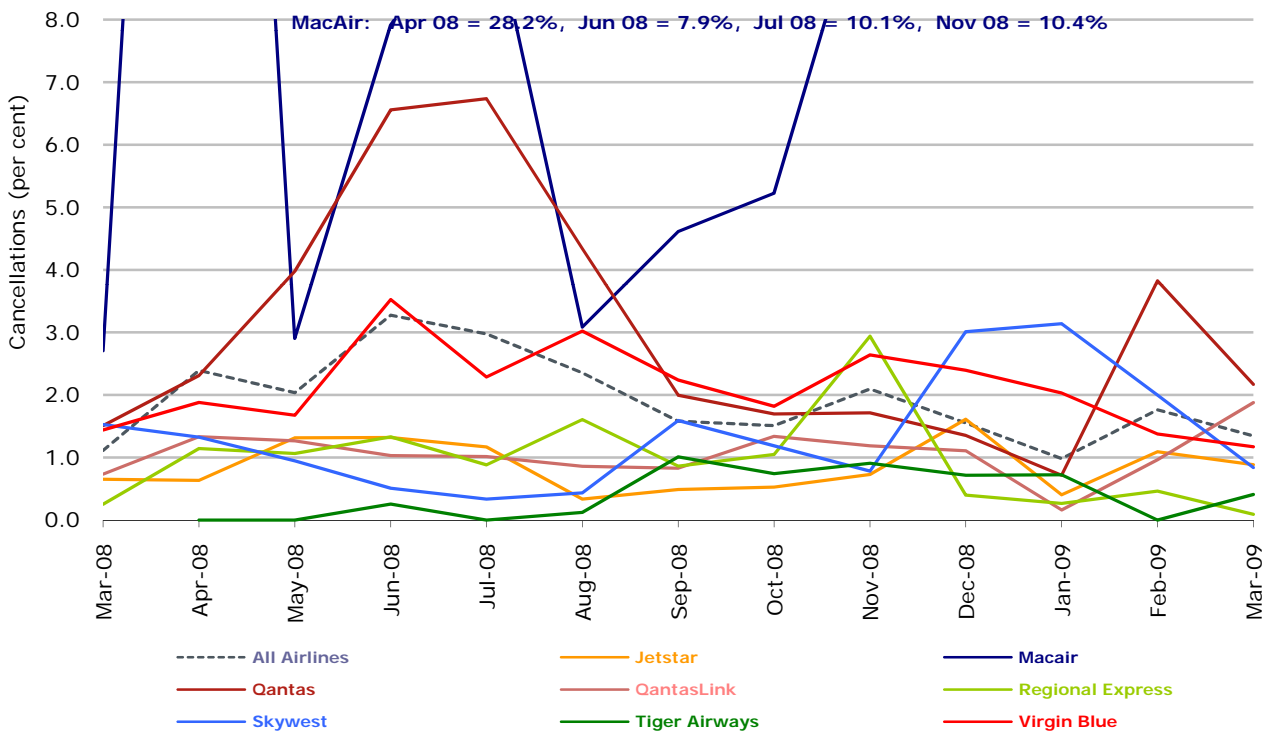
No data received from MacAir for December 2008 and onwards. Operations ceased in February 2009. Tiger Airways began reporting in April 2008.

Figure 3 Arrivals on time (by month from March 2008)



No data received from MacAir for December 2008 and onwards. Operations ceased in February 2009. Tiger Airways began reporting in April 2008.

Figure 4 Cancellations (by month from March 2008)



No data received from MacAir for December 2008 and onwards. Operations ceased in February 2009. Tiger Airways began reporting in April 2008.

Major domestic airlines on time performance

Figure 5 On time performance (by month from March 2006)—Jetstar

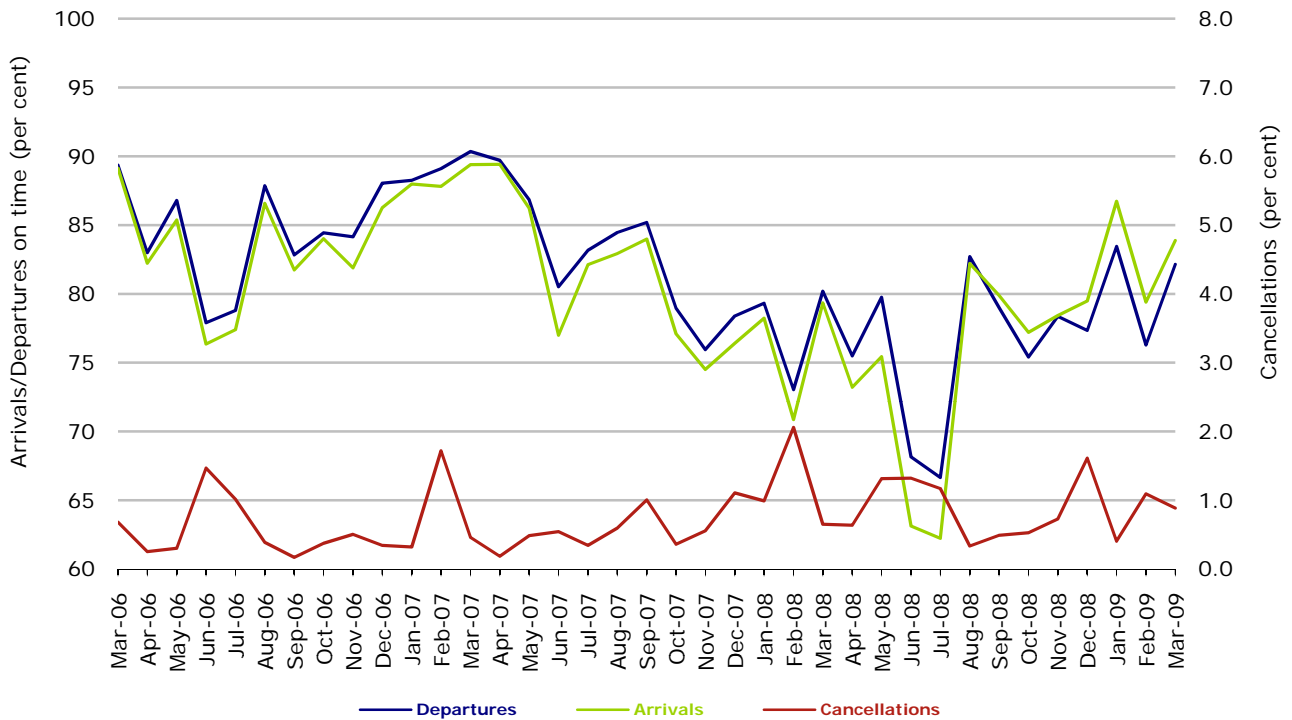


Figure 6 On time performance (by month from March 2006)—Qantas

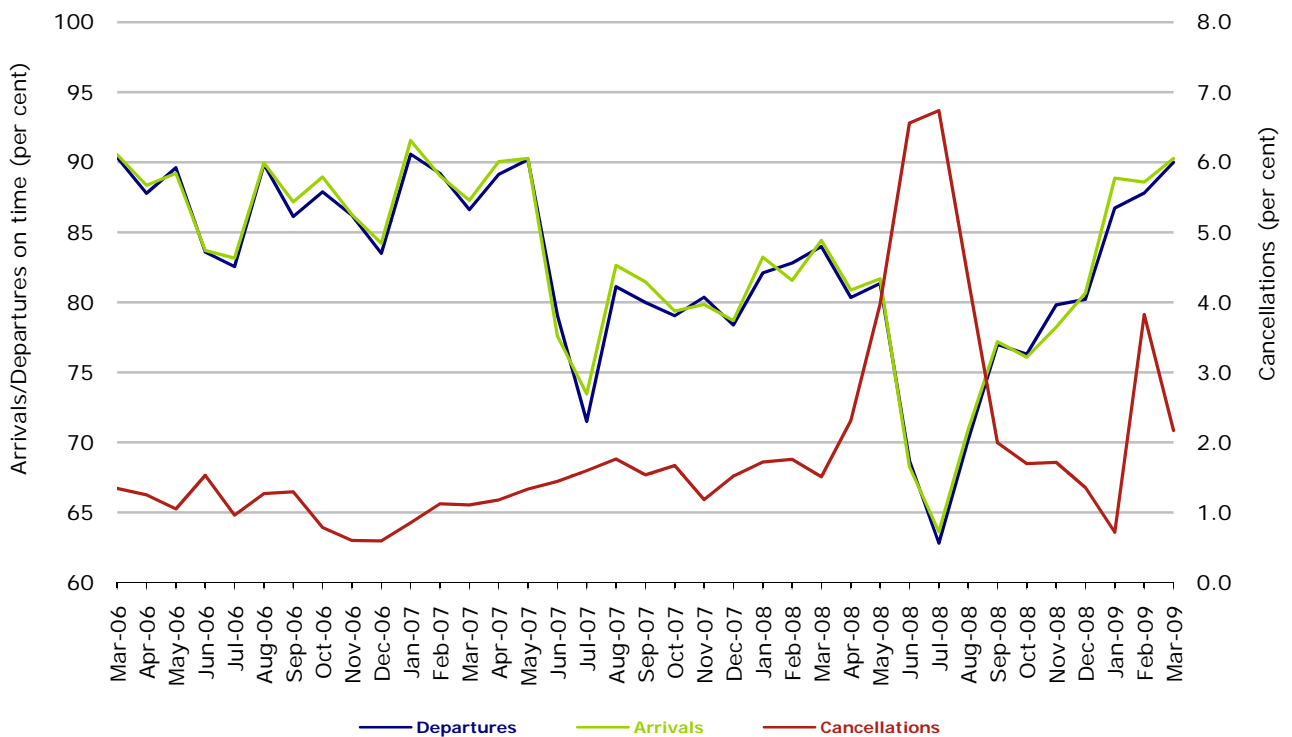
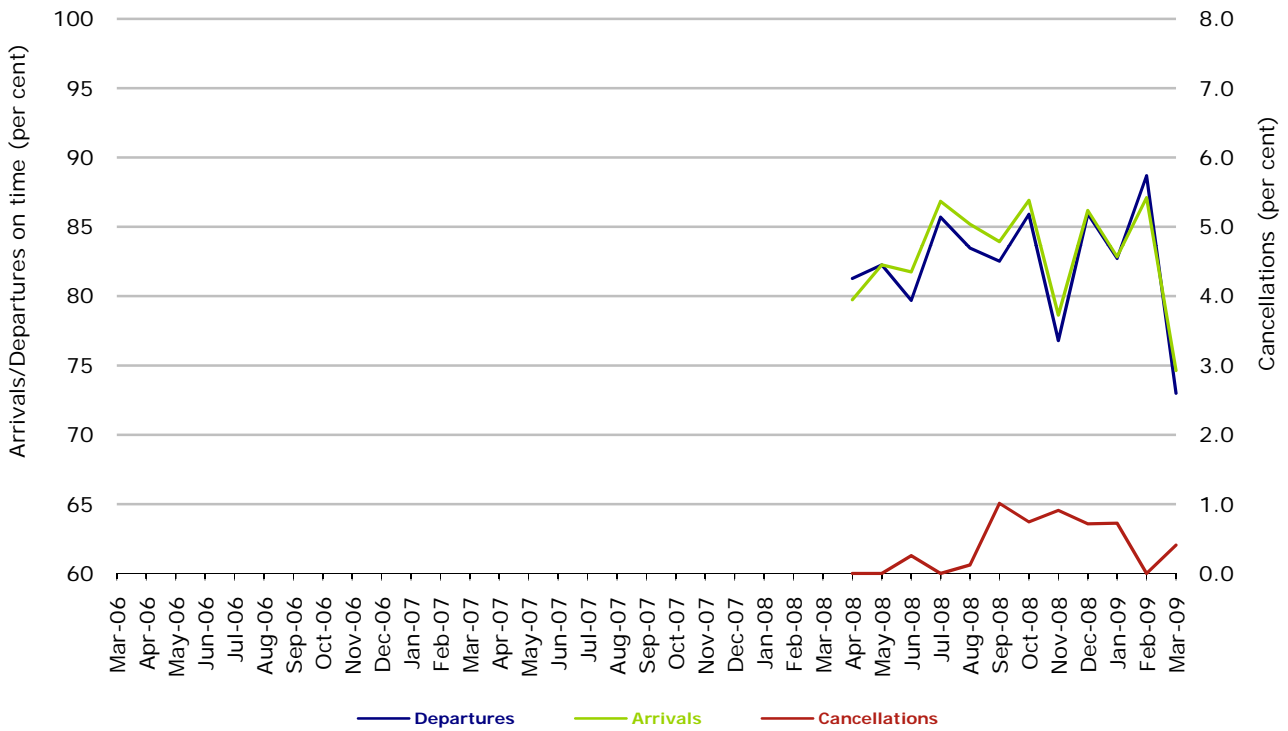
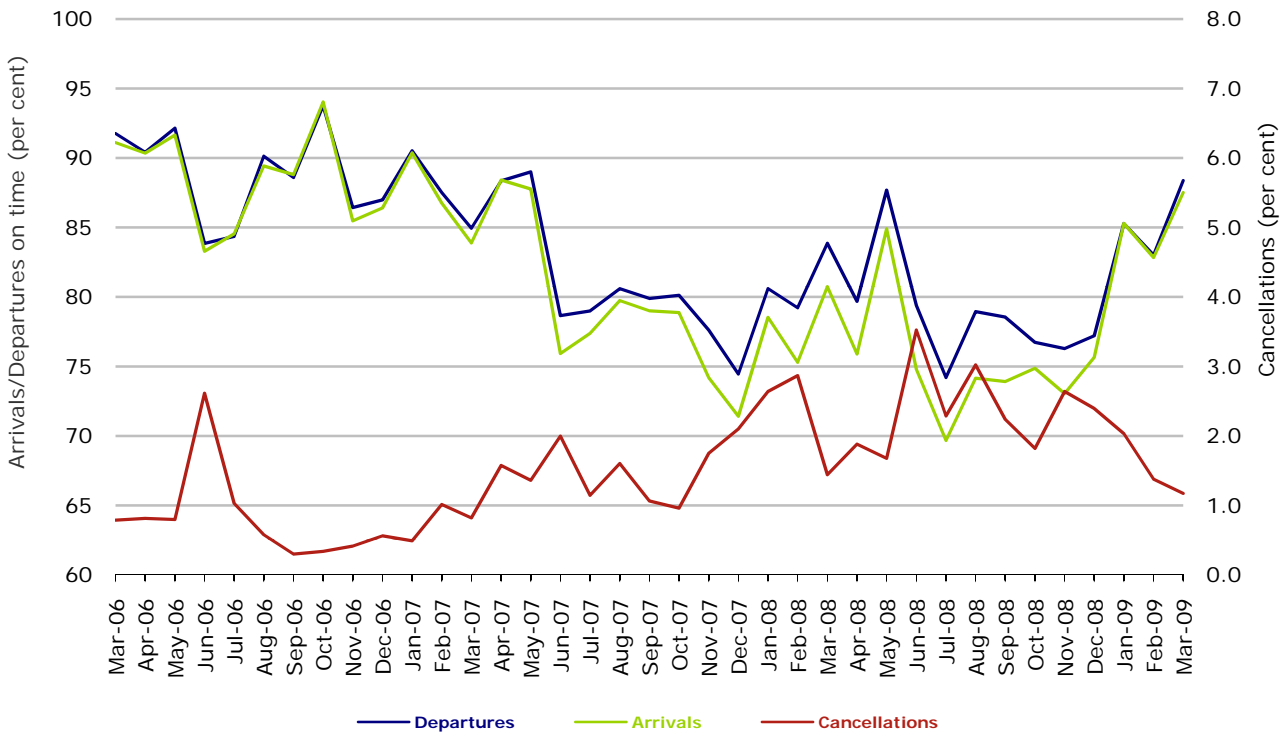


Figure 7 On time performance (by month from March 2006)—Tiger Airways



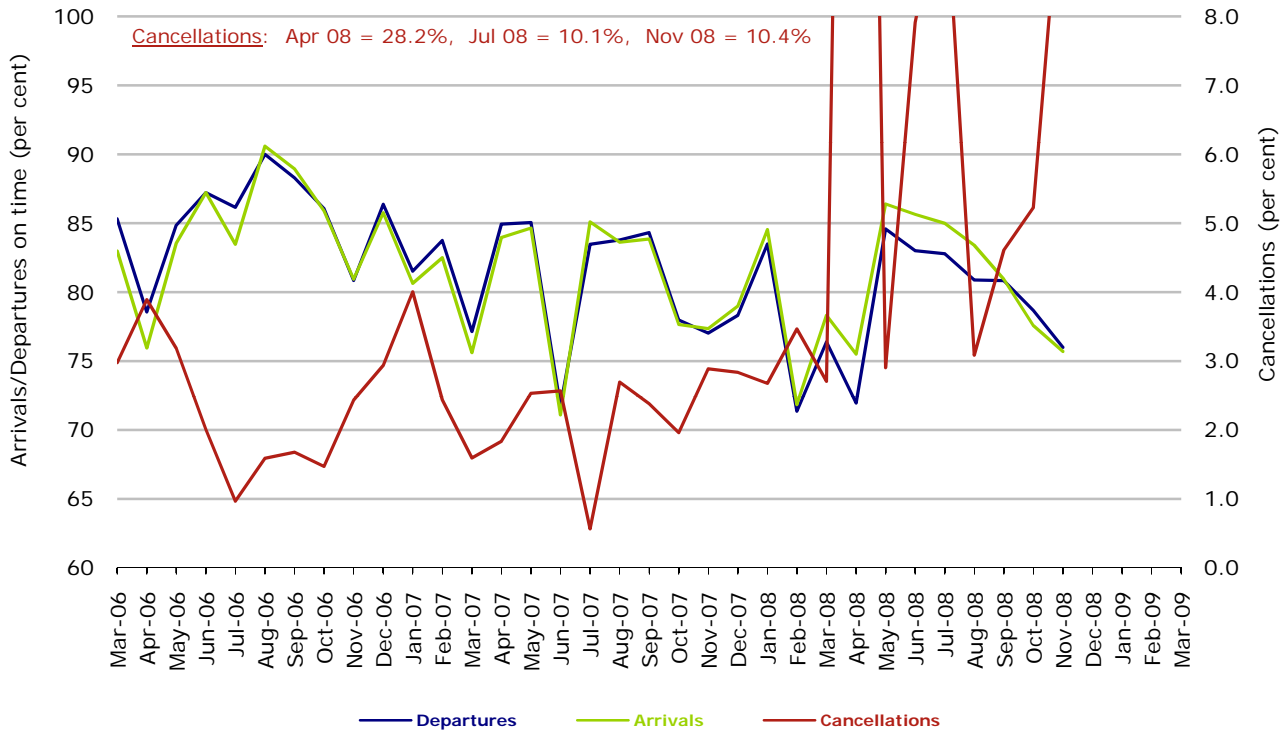
Tiger Airways began reporting in April 2008.

Figure 8 On time performance (by month from March 2006)—Virgin Blue



Major regional airlines on time performance

Figure 9 On time performance (by month from March 2006)—MacAir



No data received from MacAir for December 2008 and onwards. Operations ceased in February 2009.

Figure 10 On time performance (by month from March 2006)—QantasLink

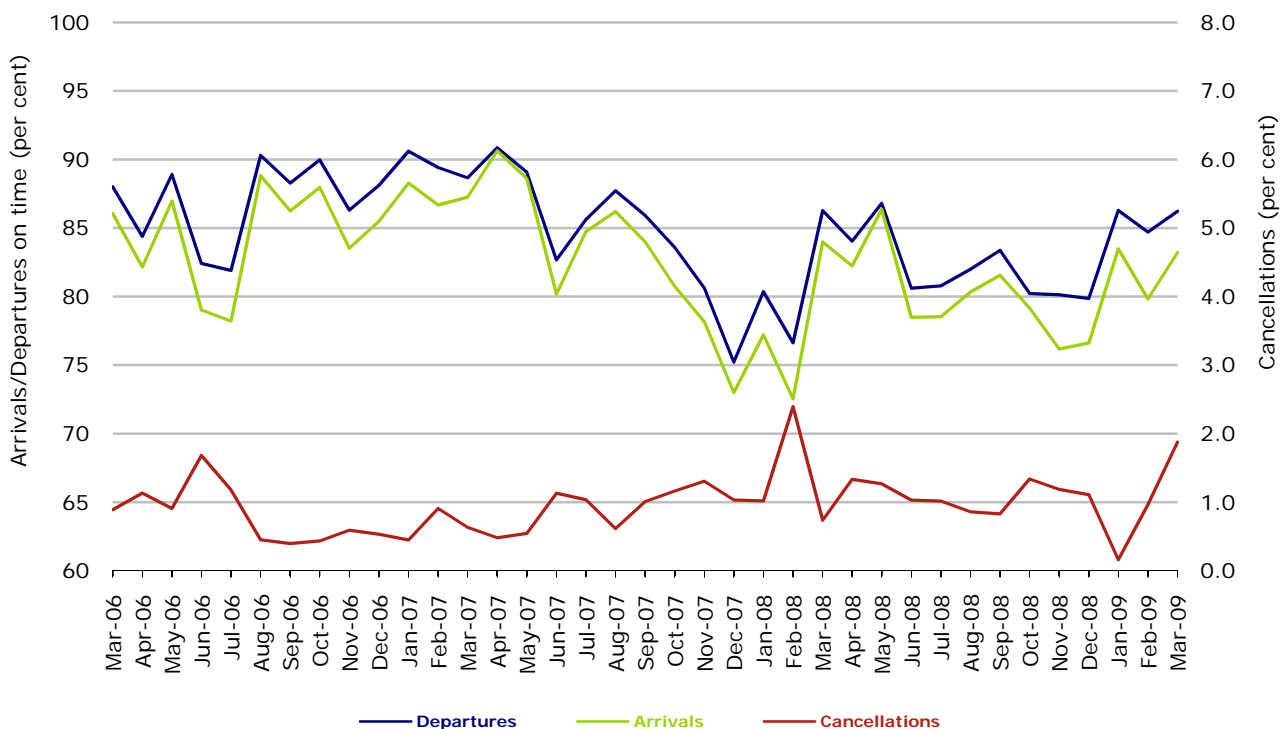


Figure 11 On time performance (by month from March 2006)—Regional Express

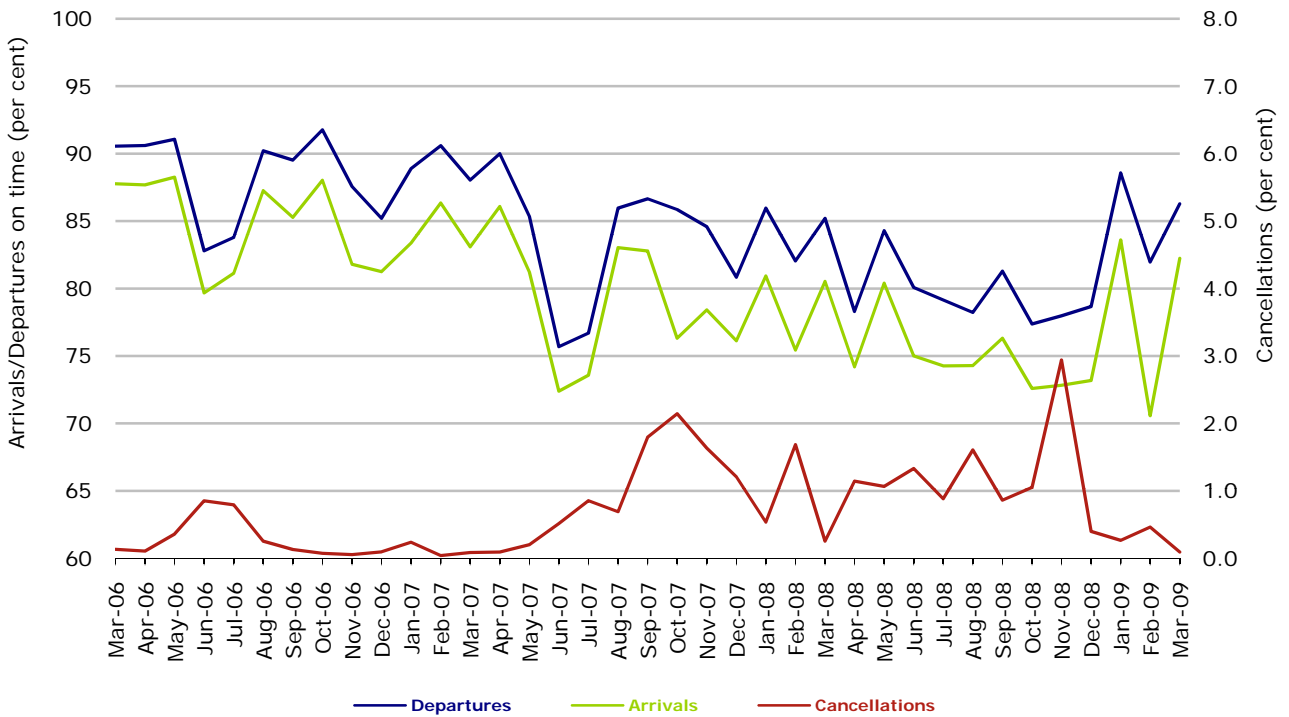
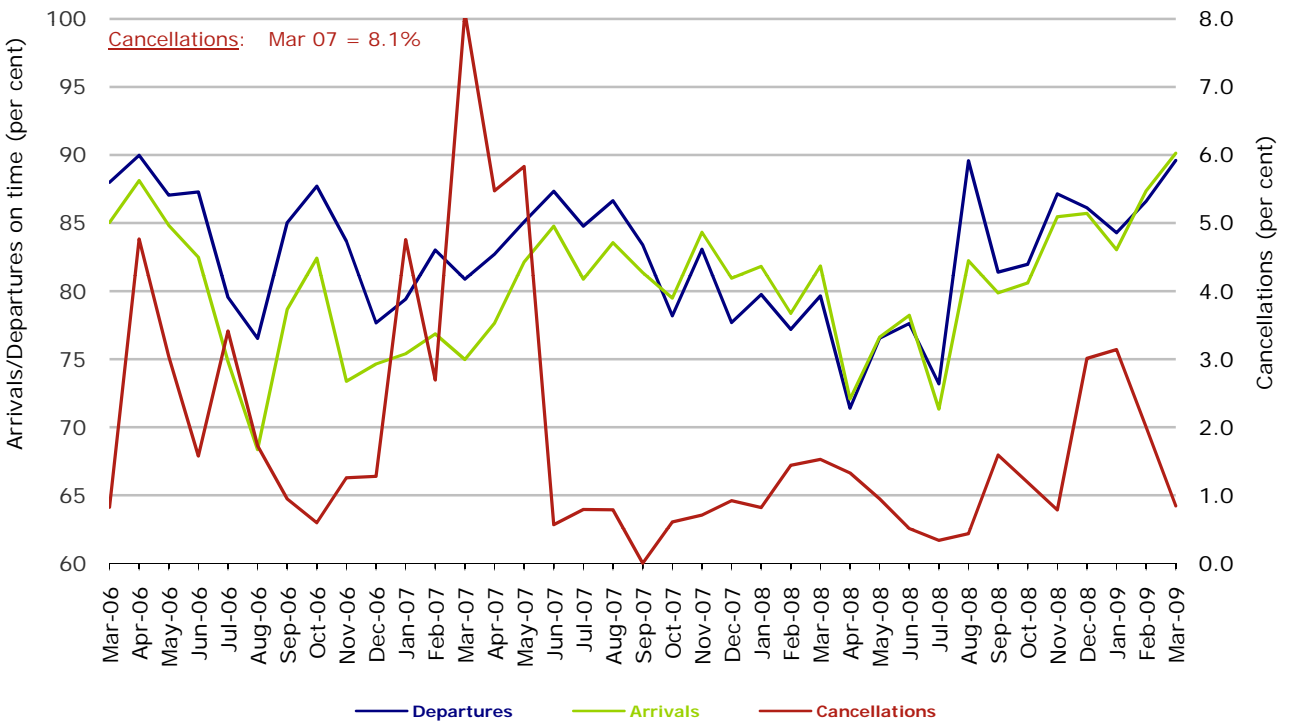


Figure 12 On time performance (by month from March 2006)—Skywest



Individual routes

On time performance is reported for all routes where the passenger load averages over 8000 passengers per month over the previous six months, and where two or more airlines operate in competition on those routes. There are now 49 routes which meet this definition. Over time, however, routes which meet this definition may change as airline networks and traffic levels vary.

	<i>Sectors</i>		<i>Departures On Time</i>		<i>Arrivals On Time</i>		<i>Cancellations</i>	
	<i>Sched.</i>	<i>Flown</i>	<i>No.</i>	<i>%</i>	<i>No.</i>	<i>%</i>	<i>No.</i>	<i>%</i>
Adelaide-Brisbane								
Jetstar	31	31	26	83.9	24	77.4	0	0.0
Qantas	89	89	83	93.3	83	93.3	0	0.0
Virgin Blue	113	113	102	90.3	99	87.6	0	0.0
All Airlines	233	233	211	90.6	206	88.4	0	0.0
Adelaide-Canberra								
Qantas	50	50	43	86.0	45	90.0	0	0.0
Tiger Airways	3	3	0	0.0	0	0.0	0	0.0
Virgin Blue	31	31	19	61.3	22	71.0	0	0.0
All Airlines	84	84	62	73.8	67	79.8	0	0.0
Adelaide-Gold Coast								
Jetstar	31	31	24	77.4	25	80.6	0	0.0
Tiger Airways	31	31	27	87.1	29	93.5	0	0.0
Virgin Blue	31	30	24	80.0	23	76.7	1	3.2
All Airlines	93	92	75	81.5	77	83.7	1	1.1
Adelaide-Melbourne								
Jetstar	49	48	19	39.6	22	45.8	1	2.0
Qantas	364	361	332	92.0	329	91.1	3	0.8
Tiger Airways	75	75	48	64.0	48	64.0	0	0.0
Virgin Blue	288	285	250	87.7	250	87.7	3	1.0
All Airlines	776	769	649	84.4	649	84.4	7	0.9
Adelaide-Perth								
Qantas	143	143	130	90.9	134	93.7	0	0.0
Tiger Airways	30	30	28	93.3	26	86.7	0	0.0
Virgin Blue	63	62	53	85.5	53	85.5	1	1.6
All Airlines	236	235	211	89.8	213	90.6	1	0.4
Adelaide-Sydney								
Jetstar	31	31	30	96.8	28	90.3	0	0.0
Qantas	313	308	293	95.1	285	92.5	5	1.6
Virgin Blue	155	154	135	87.7	134	87.0	1	0.6
All Airlines	499	493	458	92.9	447	90.7	6	1.2
Albury-Sydney								
QantasLink	118	118	103	87.3	98	83.1	0	0.0
Regional Express	118	118	98	83.1	96	81.4	0	0.0
Virgin Blue	58	58	52	89.7	51	87.9	0	0.0
All Airlines	294	294	253	86.1	245	83.3	0	0.0

	<i>Sectors</i>		<i>Departures On Time</i>		<i>Arrivals On Time</i>		<i>Cancellations</i>	
	<i>Sched.</i>	<i>Flown</i>	<i>No.</i>	<i>%</i>	<i>No.</i>	<i>%</i>	<i>No.</i>	<i>%</i>
Alice Springs-Melbourne								
Qantas	31	31	26	83.9	28	90.3	0	0.0
Tiger Airways	13	13	11	84.6	13	100.0	0	0.0
All Airlines	44	44	37	84.1	41	93.2	0	0.0
Ballina-Sydney								
Jetstar	31	31	24	77.4	25	80.6	0	0.0
Regional Express	81	81	56	69.1	54	66.7	0	0.0
Virgin Blue	31	31	30	96.8	27	87.1	0	0.0
All Airlines	143	143	110	76.9	106	74.1	0	0.0
Brisbane-Adelaide								
Jetstar	31	31	25	80.6	26	83.9	0	0.0
Qantas	89	89	83	93.3	82	92.1	0	0.0
Virgin Blue	113	112	101	90.2	102	91.1	1	0.9
All Airlines	233	232	209	90.1	210	90.5	1	0.4
Brisbane-Cairns								
Jetstar	84	84	71	84.5	77	91.7	0	0.0
Qantas	124	124	113	91.1	115	92.7	0	0.0
Virgin Blue	124	124	111	89.5	113	91.1	0	0.0
All Airlines	332	332	295	88.9	305	91.9	0	0.0
Brisbane-Canberra								
Qantas	147	146	132	90.4	134	91.8	1	0.7
QantasLink	9	9	8	88.9	7	77.8	0	0.0
Virgin Blue	137	137	121	88.3	119	86.9	0	0.0
All Airlines	293	292	261	89.4	260	89.0	1	0.3
Brisbane-Darwin								
Jetstar	30	30	20	66.7	23	76.7	0	0.0
Qantas	31	31	29	93.5	29	93.5	0	0.0
Virgin Blue	31	31	26	83.9	25	80.6	0	0.0
All Airlines	92	92	75	81.5	77	83.7	0	0.0
Brisbane-Hamilton Island								
Jetstar	31	30	24	80.0	27	90.0	1	3.2
Virgin Blue	31	30	28	93.3	28	93.3	1	3.2
All Airlines	62	60	52	86.7	55	91.7	2	3.2
Brisbane-Mackay								
Jetstar	80	76	66	86.8	67	88.2	4	5.0
QantasLink	58	56	52	92.9	53	94.6	2	3.4
Virgin Blue	146	143	126	88.1	120	83.9	3	2.1
All Airlines	284	275	244	88.7	240	87.3	9	3.2
Brisbane-Melbourne								
Qantas	435	424	387	91.3	396	93.4	11	2.5
Virgin Blue	364	363	338	93.1	315	86.8	1	0.3
All Airlines	799	787	725	92.1	711	90.3	12	1.5

	<i>Sectors</i>		<i>Departures On Time</i>		<i>Arrivals On Time</i>		<i>Cancellations</i>	
	<i>Sched.</i>	<i>Flown</i>	<i>No.</i>	<i>%</i>	<i>No.</i>	<i>%</i>	<i>No.</i>	<i>%</i>
Brisbane-Newcastle								
Jetstar	107	107	90	84.1	95	88.8	0	0.0
QantasLink	71	68	49	72.1	45	66.2	3	4.2
Virgin Blue	49	48	43	89.6	44	91.7	1	2.0
All Airlines	227	223	182	81.6	184	82.5	4	1.8
Brisbane-Perth								
Qantas	124	124	106	85.5	110	88.7	0	0.0
Virgin Blue	62	62	60	96.8	52	83.9	0	0.0
All Airlines	186	186	166	89.2	162	87.1	0	0.0
Brisbane-Proserpine								
Jetstar	31	31	26	83.9	27	87.1	0	0.0
Virgin Blue	31	31	27	87.1	29	93.5	0	0.0
All Airlines	62	62	53	85.5	56	90.3	0	0.0
Brisbane-Rockhampton								
Jetstar	31	31	28	90.3	30	96.8	0	0.0
QantasLink	168	164	139	84.8	140	85.4	4	2.4
Virgin Blue	155	154	136	88.3	127	82.5	1	0.6
All Airlines	354	349	303	86.8	297	85.1	5	1.4
Brisbane-Sydney								
Jetstar	62	57	48	84.2	51	89.5	5	8.1
Qantas	595	572	505	88.3	494	86.4	23	3.9
Virgin Blue	576	568	485	85.4	472	83.1	8	1.4
All Airlines	1,233	1,197	1,038	86.7	1,017	85.0	36	2.9
Brisbane-Townsville								
Jetstar	60	56	42	75.0	50	89.3	4	6.7
Qantas	160	159	147	92.5	152	95.6	1	0.6
Virgin Blue	155	155	142	91.6	145	93.5	0	0.0
All Airlines	375	370	331	89.5	347	93.8	5	1.3
Broome-Perth								
Qantas	13	13	8	61.5	11	84.6	0	0.0
QantasLink	63	61	51	83.6	51	83.6	2	3.2
Skywest	26	25	20	80.0	20	80.0	1	3.8
Virgin Blue	51	49	38	77.6	40	81.6	2	3.9
All Airlines	153	148	117	79.1	122	82.4	5	3.3
Cairns-Brisbane								
Jetstar	84	84	77	91.7	79	94.0	0	0.0
Qantas	124	124	116	93.5	117	94.4	0	0.0
Virgin Blue	124	124	115	92.7	115	92.7	0	0.0
All Airlines	332	332	308	92.8	311	93.7	0	0.0
Cairns-Melbourne								
Jetstar	31	31	29	93.5	26	83.9	0	0.0
Qantas	31	31	24	77.4	28	90.3	0	0.0
Virgin Blue	63	63	51	81.0	56	88.9	0	0.0
All Airlines	125	125	104	83.2	110	88.0	0	0.0

	<i>Sectors</i>		<i>Departures On Time</i>		<i>Arrivals On Time</i>		<i>Cancellations</i>	
	<i>Sched.</i>	<i>Flown</i>	<i>No.</i>	<i>%</i>	<i>No.</i>	<i>%</i>	<i>No.</i>	<i>%</i>
Cairns-Sydney								
Jetstar	31	31	28	90.3	30	96.8	0	0.0
Qantas	96	96	92	95.8	93	96.9	0	0.0
Virgin Blue	88	88	84	95.5	84	95.5	0	0.0
All Airlines	215	215	204	94.9	207	96.3	0	0.0
Canberra-Adelaide								
Qantas	53	53	49	92.5	51	96.2	0	0.0
Tiger Airways	3	3	0	0.0	0	0.0	0	0.0
Virgin Blue	31	31	29	93.5	28	90.3	0	0.0
All Airlines	87	87	78	89.7	79	90.8	0	0.0
Canberra-Brisbane								
Qantas	147	147	137	93.2	136	92.5	0	0.0
QantasLink	9	9	8	88.9	8	88.9	0	0.0
Virgin Blue	138	138	128	92.8	126	91.3	0	0.0
All Airlines	294	294	273	92.9	270	91.8	0	0.0
Canberra-Melbourne								
Qantas	264	264	243	92.0	244	92.4	0	0.0
QantasLink	38	35	30	85.7	28	80.0	3	7.9
Tiger Airways	56	55	40	72.7	40	72.7	1	1.8
Virgin Blue	163	162	144	88.9	142	87.7	1	0.6
All Airlines	521	516	457	88.6	454	88.0	5	1.0
Canberra-Sydney								
Qantas	210	208	200	96.2	199	95.7	2	1.0
QantasLink	418	401	351	87.5	345	86.0	17	4.1
Virgin Blue	237	229	209	91.3	209	91.3	8	3.4
All Airlines	865	838	760	90.7	753	89.9	27	3.1
Coffs Harbour-Sydney								
QantasLink	119	118	90	76.3	88	74.6	1	0.8
Virgin Blue	62	62	56	90.3	53	85.5	0	0.0
All Airlines	181	180	146	81.1	141	78.3	1	0.6
Darwin-Brisbane								
Jetstar	30	30	28	93.3	28	93.3	0	0.0
Qantas	31	31	28	90.3	28	90.3	0	0.0
Virgin Blue	31	31	27	87.1	29	93.5	0	0.0
All Airlines	92	92	83	90.2	85	92.4	0	0.0
Dubbo-Sydney								
QantasLink	88	88	83	94.3	77	87.5	0	0.0
Regional Express	169	169	147	87.0	140	82.8	0	0.0
All Airlines	257	257	230	89.5	217	84.4	0	0.0
Gold Coast-Adelaide								
Jetstar	31	31	24	77.4	24	77.4	0	0.0
Tiger Airways	31	31	23	74.2	25	80.6	0	0.0
Virgin Blue	31	30	22	73.3	25	83.3	1	3.2
All Airlines	93	92	69	75.0	74	80.4	1	1.1

	<i>Sectors</i>		<i>Departures On Time</i>		<i>Arrivals On Time</i>		<i>Cancellations</i>	
	<i>Sched.</i>	<i>Flown</i>	<i>No.</i>	<i>%</i>	<i>No.</i>	<i>%</i>	<i>No.</i>	<i>%</i>
Gold Coast-Melbourne								
Jetstar	174	174	126	72.4	135	77.6	0	0.0
Tiger Airways	87	87	65	74.7	67	77.0	0	0.0
Virgin Blue	155	154	133	86.4	125	81.2	1	0.6
All Airlines	416	415	324	78.1	327	78.8	1	0.2
Gold Coast-Newcastle								
Jetstar	31	31	22	71.0	26	83.9	0	0.0
Virgin Blue	13	13	13	100.0	13	100.0	0	0.0
All Airlines	44	44	35	79.5	39	88.6	0	0.0
Gold Coast-Sydney								
Jetstar	278	278	225	80.9	230	82.7	0	0.0
Virgin Blue	318	315	287	91.1	286	90.8	3	0.9
All Airlines	596	593	512	86.3	516	87.0	3	0.5
Hamilton Island-Brisbane								
Jetstar	31	30	25	83.3	27	90.0	1	3.2
Virgin Blue	31	30	28	93.3	28	93.3	1	3.2
All Airlines	62	60	53	88.3	55	91.7	2	3.2
Hervey Bay-Sydney								
Jetstar	18	18	16	88.9	16	88.9	0	0.0
Virgin Blue	31	31	27	87.1	28	90.3	0	0.0
All Airlines	49	49	43	87.8	44	89.8	0	0.0
Hobart-Melbourne								
Jetstar	125	125	106	84.8	112	89.6	0	0.0
Qantas	62	62	59	95.2	60	96.8	0	0.0
Tiger Airways	31	31	19	61.3	19	61.3	0	0.0
Virgin Blue	141	141	132	93.6	130	92.2	0	0.0
All Airlines	359	359	316	88.0	321	89.4	0	0.0
Hobart-Sydney								
Jetstar	62	62	55	88.7	58	93.5	0	0.0
Qantas	31	31	25	80.6	29	93.5	0	0.0
Virgin Blue	62	62	59	95.2	60	96.8	0	0.0
All Airlines	155	155	139	89.7	147	94.8	0	0.0
Kalgoorlie-Perth								
Qantas	36	35	32	91.4	31	88.6	1	2.8
QantasLink	69	67	59	88.1	60	89.6	2	2.9
Skywest	25	24	22	91.7	22	91.7	1	4.0
All Airlines	130	126	113	89.7	113	89.7	4	3.1
Karratha-Perth								
Qantas	157	145	135	93.1	132	91.0	12	7.6
QantasLink	38	28	26	92.9	24	85.7	10	26.3
Skywest	16	16	14	87.5	14	87.5	0	0.0
Virgin Blue	53	51	40	78.4	38	74.5	2	3.8
All Airlines	264	240	215	89.6	208	86.7	24	9.1

	<i>Sectors</i>		<i>Departures On Time</i>		<i>Arrivals On Time</i>		<i>Cancellations</i>	
	<i>Sched.</i>	<i>Flown</i>	<i>No.</i>	<i>%</i>	<i>No.</i>	<i>%</i>	<i>No.</i>	<i>%</i>
Launceston-Melbourne								
Jetstar	93	93	85	91.4	86	92.5	0	0.0
QantasLink	62	62	53	85.5	48	77.4	0	0.0
Tiger Airways	25	25	16	64.0	16	64.0	0	0.0
Virgin Blue	124	123	107	87.0	107	87.0	1	0.8
All Airlines	304	303	261	86.1	257	84.8	1	0.3
Launceston-Sydney								
Jetstar	31	31	12	38.7	21	67.7	0	0.0
Virgin Blue	31	31	29	93.5	30	96.8	0	0.0
All Airlines	62	62	41	66.1	51	82.3	0	0.0
Mackay-Brisbane								
Jetstar	80	76	59	77.6	60	78.9	4	5.0
QantasLink	57	55	50	90.9	53	96.4	2	3.5
Virgin Blue	147	142	120	84.5	120	84.5	5	3.4
All Airlines	284	273	229	83.9	233	85.3	11	3.9
Maroochydore-Melbourne								
Jetstar	49	48	41	85.4	42	87.5	1	2.0
Tiger Airways	15	15	9	60.0	10	66.7	0	0.0
Virgin Blue	34	30	26	86.7	25	83.3	4	11.8
All Airlines	98	93	76	81.7	77	82.8	5	5.1
Maroochydore-Sydney								
Jetstar	80	79	62	78.5	69	87.3	1	1.3
Virgin Blue	59	53	44	83.0	47	88.7	6	10.2
All Airlines	139	132	106	80.3	116	87.9	7	5.0
Melbourne-Adelaide								
Jetstar	48	48	46	95.8	40	83.3	0	0.0
Qantas	366	362	329	90.9	325	89.8	4	1.1
Tiger Airways	75	75	49	65.3	48	64.0	0	0.0
Virgin Blue	288	286	247	86.4	237	82.9	2	0.7
All Airlines	777	771	671	87.0	650	84.3	6	0.8
Melbourne-Alice Springs								
Qantas	31	31	28	90.3	28	90.3	0	0.0
Tiger Airways	13	13	9	69.2	9	69.2	0	0.0
All Airlines	44	44	37	84.1	37	84.1	0	0.0
Melbourne-Brisbane								
Qantas	434	425	379	89.2	381	89.6	9	2.1
Virgin Blue	363	362	324	89.5	323	89.2	1	0.3
All Airlines	797	787	703	89.3	704	89.5	10	1.3
Melbourne-Cairns								
Jetstar	31	31	29	93.5	27	87.1	0	0.0
Qantas	31	31	25	80.6	25	80.6	0	0.0
Virgin Blue	63	63	55	87.3	49	77.8	0	0.0
All Airlines	125	125	109	87.2	101	80.8	0	0.0

	<i>Sectors</i>		<i>Departures On Time</i>		<i>Arrivals On Time</i>		<i>Cancellations</i>	
	<i>Sched.</i>	<i>Flown</i>	<i>No.</i>	<i>%</i>	<i>No.</i>	<i>%</i>	<i>No.</i>	<i>%</i>
Melbourne-Canberra								
Qantas	264	264	243	92.0	247	93.6	0	0.0
QantasLink	38	34	31	91.2	31	91.2	4	10.5
Tiger Airways	56	55	37	67.3	40	72.7	1	1.8
Virgin Blue	163	162	142	87.7	146	90.1	1	0.6
All Airlines	521	515	453	88.0	464	90.1	6	1.2
Melbourne-Gold Coast								
Jetstar	174	174	142	81.6	142	81.6	0	0.0
Tiger Airways	87	87	66	75.9	69	79.3	0	0.0
Virgin Blue	155	154	130	84.4	130	84.4	1	0.6
All Airlines	416	415	338	81.4	341	82.2	1	0.2
Melbourne-Hobart								
Jetstar	125	125	106	84.8	112	89.6	0	0.0
Qantas	62	62	57	91.9	57	91.9	0	0.0
Tiger Airways	31	31	22	71.0	22	71.0	0	0.0
Virgin Blue	141	141	128	90.8	131	92.9	0	0.0
All Airlines	359	359	313	87.2	322	89.7	0	0.0
Melbourne-Launceston								
Jetstar	93	93	88	94.6	86	92.5	0	0.0
QantasLink	63	62	51	82.3	53	85.5	1	1.6
Tiger Airways	25	25	16	64.0	16	64.0	0	0.0
Virgin Blue	124	124	103	83.1	105	84.7	0	0.0
All Airlines	305	304	258	84.9	260	85.5	1	0.3
Melbourne-Maroochydore								
Jetstar	49	49	41	83.7	45	91.8	0	0.0
Tiger Airways	15	15	10	66.7	10	66.7	0	0.0
Virgin Blue	34	31	30	96.8	30	96.8	3	8.8
All Airlines	98	95	81	85.3	85	89.5	3	3.1
Melbourne-Mildura								
QantasLink	105	105	86	81.9	76	72.4	0	0.0
Regional Express	92	92	84	91.3	82	89.1	0	0.0
Virgin Blue	31	31	25	80.6	22	71.0	0	0.0
All Airlines	228	228	195	85.5	180	78.9	0	0.0
Melbourne-Newcastle								
Jetstar	93	93	74	79.6	79	84.9	0	0.0
Virgin Blue	31	31	30	96.8	31	100.0	0	0.0
All Airlines	124	124	104	83.9	110	88.7	0	0.0
Melbourne-Perth								
Jetstar	62	62	52	83.9	50	80.6	0	0.0
Qantas	216	216	179	82.9	172	79.6	0	0.0
Tiger Airways	61	61	44	72.1	40	65.6	0	0.0
Virgin Blue	124	124	114	91.9	91	73.4	0	0.0
All Airlines	463	463	389	84.0	353	76.2	0	0.0

	<i>Sectors</i>		<i>Departures On Time</i>		<i>Arrivals On Time</i>		<i>Cancellations</i>	
	<i>Sched.</i>	<i>Flown</i>	<i>No.</i>	<i>%</i>	<i>No.</i>	<i>%</i>	<i>No.</i>	<i>%</i>
Melbourne-Sydney								
Jetstar	13	13	5	38.5	7	53.8	0	0.0
Qantas	950	895	799	89.3	807	90.2	55	5.8
Virgin Blue	822	806	703	87.2	707	87.7	16	1.9
All Airlines	1,785	1,714	1,507	87.9	1,521	88.7	71	4.0
Mildura-Melbourne								
QantasLink	105	105	81	77.1	87	82.9	0	0.0
Regional Express	91	91	84	92.3	83	91.2	0	0.0
Virgin Blue	31	31	24	77.4	24	77.4	0	0.0
All Airlines	227	227	189	83.3	194	85.5	0	0.0
Newcastle-Brisbane								
Jetstar	107	107	88	82.2	89	83.2	0	0.0
QantasLink	70	67	51	76.1	50	74.6	3	4.3
Virgin Blue	49	48	47	97.9	46	95.8	1	2.0
All Airlines	226	222	186	83.8	185	83.3	4	1.8
Newcastle-Gold Coast								
Jetstar	31	31	24	77.4	25	80.6	0	0.0
Virgin Blue	13	13	13	100.0	13	100.0	0	0.0
All Airlines	44	44	37	84.1	38	86.4	0	0.0
Newcastle-Melbourne								
Jetstar	93	93	70	75.3	82	88.2	0	0.0
Virgin Blue	31	31	31	100.0	31	100.0	0	0.0
All Airlines	124	124	101	81.5	113	91.1	0	0.0
Newman-Perth								
QantasLink	94	92	79	85.9	80	87.0	2	2.1
Virgin Blue	35	31	27	87.1	27	87.1	4	11.4
All Airlines	129	123	106	86.2	107	87.0	6	4.7
Perth-Adelaide								
Qantas	143	142	129	90.8	125	88.0	1	0.7
Tiger Airways	30	30	24	80.0	26	86.7	0	0.0
Virgin Blue	62	61	56	91.8	53	86.9	1	1.6
All Airlines	235	233	209	89.7	204	87.6	2	0.9
Perth-Brisbane								
Qantas	125	125	98	78.4	97	77.6	0	0.0
Virgin Blue	62	62	56	90.3	56	90.3	0	0.0
All Airlines	187	187	154	82.4	153	81.8	0	0.0
Perth-Broome								
Qantas	13	13	8	61.5	10	76.9	0	0.0
QantasLink	63	61	54	88.5	56	91.8	2	3.2
Skywest	23	22	20	90.9	19	86.4	1	4.3
Virgin Blue	51	50	40	80.0	39	78.0	1	2.0
All Airlines	150	146	122	83.6	124	84.9	4	2.7

	<i>Sectors</i>		<i>Departures On Time</i>		<i>Arrivals On Time</i>		<i>Cancellations</i>	
	<i>Sched.</i>	<i>Flown</i>	<i>No.</i>	<i>%</i>	<i>No.</i>	<i>%</i>	<i>No.</i>	<i>%</i>
Perth-Kalgoorlie								
Qantas	36	35	34	97.1	33	94.3	1	2.8
QantasLink	70	68	61	89.7	61	89.7	2	2.9
Skywest	25	24	20	83.3	20	83.3	1	4.0
All Airlines	131	127	115	90.6	114	89.8	4	3.1
Perth-Karratha								
Qantas	159	147	129	87.8	133	90.5	12	7.5
QantasLink	38	28	24	85.7	24	85.7	10	26.3
Skywest	19	19	12	63.2	12	63.2	0	0.0
Virgin Blue	53	49	38	77.6	40	81.6	4	7.5
All Airlines	269	243	203	83.5	209	86.0	26	9.7
Perth-Melbourne								
Jetstar	62	62	43	69.4	53	85.5	0	0.0
Qantas	215	214	174	81.3	188	87.9	1	0.5
Tiger Airways	61	61	36	59.0	39	63.9	0	0.0
Virgin Blue	125	125	119	95.2	112	89.6	0	0.0
All Airlines	463	462	372	80.5	392	84.8	1	0.2
Perth-Newman								
QantasLink	94	92	81	88.0	80	87.0	2	2.1
Virgin Blue	32	31	28	90.3	28	90.3	1	3.1
All Airlines	126	123	109	88.6	108	87.8	3	2.4
Perth-Sydney								
Qantas	213	213	177	83.1	183	85.9	0	0.0
Virgin Blue	156	156	140	89.7	143	91.7	0	0.0
All Airlines	369	369	317	85.9	326	88.3	0	0.0
Port Macquarie-Sydney								
QantasLink	112	112	91	81.3	88	78.6	0	0.0
Virgin Blue	62	62	56	90.3	54	87.1	0	0.0
All Airlines	174	174	147	84.5	142	81.6	0	0.0
Proserpine-Brisbane								
Jetstar	31	31	27	87.1	26	83.9	0	0.0
Virgin Blue	31	31	29	93.5	30	96.8	0	0.0
All Airlines	62	62	56	90.3	56	90.3	0	0.0
Rockhampton-Brisbane								
Jetstar	31	31	27	87.1	28	90.3	0	0.0
QantasLink	146	140	124	88.6	113	80.7	6	4.1
Virgin Blue	155	154	128	83.1	131	85.1	1	0.6
All Airlines	332	325	279	85.8	272	83.7	7	2.1
Sydney-Adelaide								
Jetstar	31	31	30	96.8	31	100.0	0	0.0
Qantas	309	304	278	91.4	294	96.7	5	1.6
Virgin Blue	155	154	143	92.9	138	89.6	1	0.6
All Airlines	495	489	451	92.2	463	94.7	6	1.2

	<i>Sectors</i>		<i>Departures On Time</i>		<i>Arrivals On Time</i>		<i>Cancellations</i>	
	<i>Sched.</i>	<i>Flown</i>	<i>No.</i>	<i>%</i>	<i>No.</i>	<i>%</i>	<i>No.</i>	<i>%</i>
Sydney-Albury								
QantasLink	119	119	95	79.8	93	78.2	0	0.0
Regional Express	118	118	102	86.4	98	83.1	0	0.0
Virgin Blue	58	58	50	86.2	52	89.7	0	0.0
All Airlines	295	295	247	83.7	243	82.4	0	0.0
Sydney-Ballina								
Jetstar	31	31	27	87.1	27	87.1	0	0.0
Regional Express	83	83	61	73.5	60	72.3	0	0.0
Virgin Blue	31	31	30	96.8	30	96.8	0	0.0
All Airlines	145	145	118	81.4	117	80.7	0	0.0
Sydney-Brisbane								
Jetstar	62	58	50	86.2	53	91.4	4	6.5
Qantas	596	576	513	89.1	515	89.4	20	3.4
Virgin Blue	575	567	471	83.1	480	84.7	8	1.4
All Airlines	1,233	1,201	1,034	86.1	1,048	87.3	32	2.6
Sydney-Cairns								
Jetstar	31	31	30	96.8	31	100.0	0	0.0
Qantas	96	96	88	91.7	88	91.7	0	0.0
Virgin Blue	89	89	81	91.0	84	94.4	0	0.0
All Airlines	216	216	199	92.1	203	94.0	0	0.0
Sydney-Canberra								
Qantas	215	212	205	96.7	201	94.8	3	1.4
QantasLink	420	403	323	80.1	311	77.2	17	4.0
Virgin Blue	237	231	212	91.8	211	91.3	6	2.5
All Airlines	872	846	740	87.5	723	85.5	26	3.0
Sydney-Coffs Harbour								
QantasLink	120	118	96	81.4	81	68.6	2	1.7
Virgin Blue	62	62	58	93.5	54	87.1	0	0.0
All Airlines	182	180	154	85.6	135	75.0	2	1.1
Sydney-Dubbo								
QantasLink	89	89	82	92.1	84	94.4	0	0.0
Regional Express	170	170	150	88.2	147	86.5	0	0.0
All Airlines	259	259	232	89.6	231	89.2	0	0.0
Sydney-Gold Coast								
Jetstar	279	279	226	81.0	243	87.1	0	0.0
Virgin Blue	318	315	283	89.8	291	92.4	3	0.9
All Airlines	597	594	509	85.7	534	89.9	3	0.5
Sydney-Hervey Bay								
Jetstar	18	18	18	100.0	18	100.0	0	0.0
Virgin Blue	31	31	26	83.9	27	87.1	0	0.0
All Airlines	49	49	44	89.8	45	91.8	0	0.0

	<i>Sectors</i>		<i>Departures On Time</i>		<i>Arrivals On Time</i>		<i>Cancellations</i>	
	<i>Sched.</i>	<i>Flown</i>	<i>No.</i>	<i>%</i>	<i>No.</i>	<i>%</i>	<i>No.</i>	<i>%</i>
Sydney-Hobart								
Jetstar	62	62	57	91.9	57	91.9	0	0.0
Qantas	31	31	29	93.5	31	100.0	0	0.0
Virgin Blue	62	62	53	85.5	50	80.6	0	0.0
All Airlines	155	155	139	89.7	138	89.0	0	0.0
Sydney-Launceston								
Jetstar	31	31	18	58.1	20	64.5	0	0.0
Virgin Blue	31	31	29	93.5	30	96.8	0	0.0
All Airlines	62	62	47	75.8	50	80.6	0	0.0
Sydney-Maroochydore								
Jetstar	80	80	70	87.5	70	87.5	0	0.0
Virgin Blue	59	54	47	87.0	46	85.2	5	8.5
All Airlines	139	134	117	87.3	116	86.6	5	3.6
Sydney-Melbourne								
Jetstar	14	14	7	50.0	8	57.1	0	0.0
Qantas	950	893	807	90.4	782	87.6	57	6.0
Virgin Blue	820	804	712	88.6	701	87.2	16	2.0
All Airlines	1,784	1,711	1,526	89.2	1,491	87.1	73	4.1
Sydney-Perth								
Qantas	213	213	183	85.9	170	79.8	0	0.0
Virgin Blue	155	155	136	87.7	132	85.2	0	0.0
All Airlines	368	368	319	86.7	302	82.1	0	0.0
Sydney-Port Macquarie								
QantasLink	112	112	88	78.6	83	74.1	0	0.0
Virgin Blue	62	62	53	85.5	56	90.3	0	0.0
All Airlines	174	174	141	81.0	139	79.9	0	0.0
Sydney-Townsville								
Jetstar	23	23	22	95.7	22	95.7	0	0.0
Virgin Blue	31	31	28	90.3	29	93.5	0	0.0
All Airlines	54	54	50	92.6	51	94.4	0	0.0
Sydney-Wagga Wagga								
QantasLink	116	116	106	91.4	98	84.5	0	0.0
Regional Express	130	130	106	81.5	94	72.3	0	0.0
All Airlines	246	246	212	86.2	192	78.0	0	0.0
Townsville-Brisbane								
Jetstar	61	57	47	82.5	49	86.0	4	6.6
Qantas	160	159	153	96.2	154	96.9	1	0.6
Virgin Blue	155	155	144	92.9	144	92.9	0	0.0
All Airlines	376	371	344	92.7	347	93.5	5	1.3
Townsville-Sydney								
Jetstar	22	22	21	95.5	21	95.5	0	0.0
Virgin Blue	31	31	30	96.8	28	90.3	0	0.0
All Airlines	53	53	51	96.2	49	92.5	0	0.0

	<i>Sectors</i>		<i>Departures On Time</i>		<i>Arrivals On Time</i>		<i>Cancellations</i>	
	<i>Sched.</i>	<i>Flown</i>	<i>No.</i>	<i>%</i>	<i>No.</i>	<i>%</i>	<i>No.</i>	<i>%</i>
Wagga Wagga-Sydney								
QantasLink	115	115	106	92.2	102	88.7	0	0.0
Regional Express	131	131	114	87.0	104	79.4	0	0.0
All Airlines	246	246	220	89.4	206	83.7	0	0.0

Airports

On time performance is reported for all routes where the passenger load averages over 8000 passengers per month, and where two or more airlines operate in competition. The following data reports by airport against flights operated on those routes only.

Airport	Departures			Arrivals		
	Sectors	On Time		Sectors	On Time	
	Flown	No.	%	Flown	No.	%
Adelaide						
Jetstar	141	99	70.2	141	121	85.8
Qantas	951	881	92.6	950	877	92.3
Tiger Airways	139	103	74.1	139	99	71.2
Virgin Blue	675	583	86.4	674	583	86.5
All Airlines	1 906	1 666	87.4	1 904	1 680	88.2
Relates to services to and from Brisbane, Canberra, Gold Coast, Melbourne, Perth and Sydney.						
Albury						
QantasLink	118	103	87.3	119	93	78.2
Regional Express	118	98	83.1	118	98	83.1
Virgin Blue	58	52	89.7	58	52	89.7
All Airlines	294	253	86.1	295	243	82.4
Relates to services to and from Sydney only.						
Alice Springs						
Qantas	31	26	83.9	31	28	90.3
Tiger Airways	13	11	84.6	13	9	69.2
All Airlines	44	37	84.1	44	37	84.1
Relates to services to and from Melbourne only						
Ballina						
Jetstar	31	24	77.4	31	27	87.1
Regional Express	81	56	69.1	83	60	72.3
Virgin Blue	31	30	96.8	31	30	96.8
All Airlines	143	110	76.9	145	117	80.7
Relates to services to and from Sydney only.						
Brisbane						
Jetstar	533	440	82.6	535	463	86.5
Qantas	1 669	1 502	90.0	1 676	1 511	90.2
QantasLink	297	248	83.5	271	224	82.7
Virgin Blue	1 958	1 744	89.1	1 957	1 727	88.2
All Airlines	4 457	3 934	88.3	4 439	3 925	88.4
Relates to services to and from Adelaide, Cairns, Canberra, Darwin, Hamilton Island, Mackay, Melbourne, Newcastle, Perth, Proserpine, Rockhampton, Sydney and Townsville.						

Airport	Departures			Arrivals		
	Sectors Flown	On Time No.	On Time %	Sectors Flown	On Time No.	On Time %
Broome						
Qantas	13	8	61.5	13	10	76.9
QantasLink	61	51	83.6	61	56	91.8
Skywest	25	20	80.0	22	19	86.4
Virgin Blue	49	38	77.6	50	39	78.0
All Airlines	148	117	79.1	146	124	84.9
Relates to services to and from Perth only.						
Cairns						
Jetstar	146	134	91.8	146	135	92.5
Qantas	251	232	92.4	251	228	90.8
Virgin Blue	275	250	90.9	276	246	89.1
All Airlines	672	616	91.7	673	609	90.5
Relates to services to and from Brisbane, Melbourne and Sydney.						
Canberra						
Qantas	672	629	93.6	672	627	93.3
QantasLink	445	389	87.4	446	349	78.3
Tiger Airways	58	40	69.0	58	40	69.0
Virgin Blue	560	510	91.1	561	498	88.8
All Airlines	1 735	1 568	90.4	1 737	1 514	87.2
Relates to services to and from Adelaide, Brisbane, Melbourne and Sydney.						
Coffs Harbour						
QantasLink	118	90	76.3	118	81	68.6
Virgin Blue	62	56	90.3	62	54	87.1
All Airlines	180	146	81.1	180	135	75.0
Relates to services to and from Sydney only.						
Darwin						
Jetstar	30	28	93.3	30	23	76.7
Qantas	31	28	90.3	31	29	93.5
Virgin Blue	31	27	87.1	31	25	80.6
All Airlines	92	83	90.2	92	77	83.7
Relates to services to and from Brisbane.						
Dubbo						
QantasLink	88	83	94.3	89	84	94.4
Regional Express	169	147	87.0	170	147	86.5
All Airlines	257	230	89.5	259	231	89.2
Relates to services to and from Sydney only.						
Gold Coast						
Jetstar	514	397	77.2	515	435	84.5
Tiger Airways	118	88	74.6	118	98	83.1
Virgin Blue	512	455	88.9	512	457	89.3
All Airlines	1 144	940	82.2	1 145	990	86.5
Relates to services to and from Adelaide, Melbourne, Newcastle and Sydney.						

Airport	Departures			Arrivals		
	Sectors	On Time		Sectors	On Time	
	Flown	No.	%	Flown	No.	%
Hamilton Island						
Jetstar	30	25	83.3	30	27	90.0
Virgin Blue	30	28	93.3	30	28	93.3
All Airlines	60	53	88.3	60	55	91.7
Relates to services to and from Brisbane only.						
Hervey Bay						
Jetstar	18	16	88.9	18	18	100.0
Virgin Blue	31	27	87.1	31	27	87.1
All Airlines	49	43	87.8	49	45	91.8
Relates to services to and from Sydney only.						
Hobart						
Jetstar	187	161	86.1	187	169	90.4
Qantas	93	84	90.3	93	88	94.6
Tiger Airways	31	19	61.3	31	22	71.0
Virgin Blue	203	191	94.1	203	181	89.2
All Airlines	514	455	88.5	514	460	89.5
Relates to services to and from Melbourne and Sydney.						
Kalgoorlie						
Qantas	35	32	91.4	35	33	94.3
QantasLink	67	59	88.1	68	61	89.7
Skywest	24	22	91.7	24	20	83.3
All Airlines	126	113	89.7	127	114	89.8
Relates to services to and from Perth only.						
Karratha						
Qantas	145	135	93.1	147	133	90.5
QantasLink	28	26	92.9	28	24	85.7
Skywest	16	14	87.5	19	12	63.2
Virgin Blue	51	40	78.4	49	40	81.6
All Airlines	240	215	89.6	243	209	86.0
Relates to services to and from Perth only.						
Launceston						
Jetstar	124	97	78.2	124	106	85.5
QantasLink	62	53	85.5	62	53	85.5
Tiger Airways	25	16	64.0	25	16	64.0
Virgin Blue	154	136	88.3	155	135	87.1
All Airlines	365	302	82.7	366	310	84.7
Relates to services to and from Melbourne and Sydney.						

Airport	Departures			Arrivals		
	Sectors	On Time		Sectors	On Time	
	Flown	No.	%	Flown	No.	%
Mackay						
Jetstar	76	59	77.6	76	67	88.2
QantasLink	55	50	90.9	56	53	94.6
Virgin Blue	142	120	84.5	143	120	83.9
All Airlines	273	229	83.9	275	240	87.3
Relates to services to and from Brisbane only.						
Maroochydore						
Jetstar	127	103	81.1	129	115	89.1
Tiger Airways	15	9	60.0	15	10	66.7
Virgin Blue	83	70	84.3	85	76	89.4
All Airlines	225	182	80.9	229	201	87.8
Relates to services to and from Melbourne and Sydney.						
Melbourne						
Jetstar	688	583	84.7	688	566	82.3
Qantas	2 286	2 039	89.2	2 280	2 055	90.1
QantasLink	201	168	83.6	202	163	80.7
Regional Express	92	84	91.3	91	83	91.2
Tiger Airways	362	253	69.9	362	252	69.6
Virgin Blue	2 315	2 031	87.7	2 312	2 018	87.3
All Airlines	5 944	5 158	86.8	5 935	5 137	86.6
Relates to services to and from Adelaide, Alice Springs, Brisbane, Cairns, Canberra, Gold Coast, Hobart, Launceston, Maroochydore, Mildura, Newcastle, Perth and Sydney.						
Mildura						
QantasLink	105	81	77.1	105	76	72.4
Regional Express	91	84	92.3	92	82	89.1
Virgin Blue	31	24	77.4	31	22	71.0
All Airlines	227	189	83.3	228	180	78.9
Relates to services to and from Melbourne only.						
Newcastle						
Jetstar	231	182	78.8	231	200	86.6
QantasLink	67	51	76.1	68	45	66.2
Virgin Blue	92	91	98.9	92	88	95.7
All Airlines	390	324	83.1	391	333	85.2
Relates to services to and from Brisbane, Gold Coast and Melbourne.						
Newman						
QantasLink	92	79	85.9	92	80	87.0
Virgin Blue	31	27	87.1	31	28	90.3
All Airlines	123	106	86.2	123	108	87.8
Relates to services to and from Perth only.						

<i>Airport</i>	<i>Departures</i>			<i>Arrivals</i>		
	<i>Sectors Flown</i>	<i>On Time</i>		<i>Sectors Flown</i>	<i>On Time</i>	
		<i>No.</i>	<i>%</i>		<i>No.</i>	<i>%</i>
Perth						
Jetstar	62	43	69.4	62	50	80.6
Qantas	889	749	84.3	889	760	85.5
QantasLink	249	220	88.4	248	215	86.7
Skywest	65	52	80.0	65	56	86.2
Tiger Airways	91	60	65.9	91	66	72.5
Virgin Blue	534	477	89.3	534	433	81.1
All Airlines	1 890	1 601	84.7	1 889	1 580	83.6
Relates to services to and from Adelaide, Brisbane, Broome, Kalgoorlie, Karratha, Melbourne, Newman, and Sydney.						
Port Macquarie						
QantasLink	112	91	81.3	112	83	74.1
Virgin Blue	62	56	90.3	62	56	90.3
All Airlines	174	147	84.5	174	139	79.9
Relates to services to and from Sydney only.						
Proserpine						
Jetstar	31	27	87.1	31	27	87.1
Virgin Blue	31	29	93.5	31	29	93.5
All Airlines	62	56	90.3	62	56	90.3
Relates to services to and from Brisbane only.						
Rockhampton						
Jetstar	31	27	87.1	31	30	96.8
QantasLink	140	124	88.6	164	140	85.4
Virgin Blue	154	128	83.1	154	127	82.5
All Airlines	325	279	85.8	349	297	85.1
Relates to services to and from Brisbane only.						
Sydney						
Jetstar	658	555	84.3	653	556	85.1
Qantas	2 325	2 103	90.5	2 323	2 090	90.0
QantasLink	957	790	82.5	952	798	83.8
Regional Express	501	419	83.6	499	394	79.0
Virgin Blue	2 737	2 412	88.1	2 737	2 413	88.2
All Airlines	7 178	6 279	87.5	7 164	6 251	87.3
Relates to services to and from Adelaide, Albury, Ballina, Brisbane, Cairns, Canberra, Coffs Harbour, Dubbo, Gold Coast, Hervey Bay, Hobart, Launceston, Maroochydore, Melbourne, Perth, Port Macquarie, Townsville and Wagga Wagga.						
Townsville						
Jetstar	79	68	86.1	79	72	91.1
Qantas	159	153	96.2	159	152	95.6
Virgin Blue	186	174	93.5	186	174	93.5
All Airlines	424	395	93.2	424	398	93.9
Relates to services to and from Brisbane and Sydney.						

<i>Airport</i>	<i>Departures</i>			<i>Arrivals</i>		
	<i>Sectors</i>	<i>On Time</i>		<i>Sectors</i>	<i>On Time</i>	
	<i>Flown</i>	<i>No.</i>	<i>%</i>	<i>Flown</i>	<i>No.</i>	<i>%</i>
Wagga Wagga						
QantasLink	115	106	92.2	116	98	84.5
Regional Express	131	114	87.0	130	94	72.3
All Airlines	246	220	89.4	246	192	78.0

Relates to services to and from Sydney only.

Definitions

On time departure A flight departure is counted as "on time" if it departs the gate within 15 minutes of the scheduled departure time shown in the carriers' schedule.

On time arrival A flight arrival is counted as "on time" if it arrived at the gate within 15 minutes of the scheduled arrival time shown in the carriers' schedule.
Neither diverted nor cancelled flights count as on time.

Cancellation A flight is regarded as a cancellation if it is cancelled or rescheduled less than 7 days prior to its scheduled departure time.

On time departure percentage The percentage of on time departures is measured against the number of departures *operated* on any particular sector.

On time arrival percentage The percentage of on time arrivals is measured against the number of arrivals *operated* on any particular sector.

Cancellation percentage The percentage of cancellations is measured against the number of services *scheduled* on any particular sector.
