



Australian Government

Department of Infrastructure and Regional Development

Bureau of Infrastructure, Transport and Regional Economics

STATISTICAL REPORT



Aviation

Domestic airline on time performance
June 2016

© Commonwealth of Australia 2016

ISSN: 1832-0759

Ownership of intellectual property rights in this publication

Unless otherwise noted, copyright (and any other intellectual property rights, if any) in this publication is owned by the Commonwealth of Australia (referred to below as the Commonwealth).

Disclaimer

The material contained in this publication is made available on the understanding that the Commonwealth is not providing professional advice, and that users exercise their own skill and care with respect to its use, and seek independent advice if necessary.

The Commonwealth makes no representations or warranties as to the contents or accuracy of the information contained in this publication. To the extent permitted by law, the Commonwealth disclaims liability to any person or organisation in respect of anything done, or omitted to be done, in reliance upon information contained in this publication.

Creative Commons licence

With the exception of (a) the Coat of Arms; and (b) the Department of Infrastructure and Regional Development's photos and graphics, copyright in this publication is licensed under a Creative Commons Attribution 3.0 Australia Licence.

Creative Commons Attribution 3.0 Australia Licence is a standard form licence agreement that allows you to copy, communicate and adapt this publication provided that you attribute the work to the Commonwealth and abide by the other licence terms. A summary of the licence terms is available from <http://creativecommons.org/licenses/by/3.0/au/deed.en>. The full licence terms are available from <http://creativecommons.org/licenses/by/3.0/au/legalcode>.

Use of the Coat of Arms

The Department of the Prime Minister and Cabinet sets the terms under which the Coat of Arms is used. Please refer to the Department's Commonwealth Coat of Arms and Government branding web page <http://www.dpmmc.gov.au/guidelines/index.cfm#brand> and, in particular, the Guidelines on the use of the Commonwealth Coat of Arms publication.

An appropriate citation for this report is:

Bureau of Infrastructure, Transport and Regional Economics (BITRE), 2016, Domestic airline on time performance, Statistical Report, BITRE, Canberra ACT.

Contact us

This publication is available in PDF format. All other rights are reserved, including in relation to any Departmental logos or trade marks which may exist. For enquiries regarding the licence and any use of this publication, please contact:

Bureau of Infrastructure, Transport and Regional Economics (BITRE)
Department of Infrastructure and Regional Development
GPO Box 501, Canberra ACT 2601, Australia
Telephone: (international) +61 2 6274 7210
Fax: (international) +61 2 6274 6855
Email: bitre@infrastructure.gov.au
Website: www.bitre.gov.au

Inquiries

Should you require additional information about the statistics contained in this publication:

Telephone (02) 6274 7790 or Facsimile (02) 6274 7727

Electronic mail: AVSTATS@infrastructure.gov.au

Web site: <http://www.bitre.gov.au/statistics/aviation/otphome.aspx>

Foreword

The Bureau of Infrastructure, Transport and Regional Economics (BITRE) monitors the punctuality and reliability of major domestic airlines operating between Australian airports. The purpose of this is to allow for evaluation of overall industry and individual airline performance, so that consumers of air travel can make informed decisions.

The following domestic airlines currently report this information monthly to the BITRE: Jetstar, Qantas, QantasLink, Regional Express, Tigerair Australia, Virgin Australia and Virgin Australia Regional Airlines. Data has been gathered since November 2003, although some airlines commenced reporting at a later date, including Jetstar which first reported in May 2004, MacAir in July 2005, Tigerair Australia in April 2008 and Virgin Australia Regional Airlines in May 2013. MacAir ceased operations in February 2009 and data was not received for December 2008 onwards. Virgin Blue was rebranded as Virgin Australia in May 2011 and Tiger Airways was rebranded as Tigerair Australia in July 2013 and time series data in Microsoft Excel spreadsheet format on the BITRE website have been revised to reflect these changes. Services operated by Skywest on behalf of Virgin Australia using ATR/F100 aircraft commenced in November 2011 and were shown separately as Virgin Australia – ATR/F100 Operations. Virgin Australia Regional Airlines commenced operations in May 2013. It was formed after the acquisition of Skywest by Virgin Australia and represented a combination of operations previously reported under Skywest and Virgin Australia – ATR/F100 Operations. In January 2016, Virgin Australia transferred their ATR fleet from Virgin Australia Regional Airlines to Virgin Australia.

Information presented in this report is for Australian domestic routes for which the passenger load averaged 8 000 or more passengers per month over the previous six months and where two or more airlines operated in competition on those routes. There were 66 routes that met this definition in June 2016. Over time, routes which meet these criteria change as airline networks and traffic levels vary.

Participating airlines report their overall monthly network performance where this is possible.

Total industry figures encompass all services operated by reporting airlines only. These airlines collectively carried over 95 per cent of total domestic passengers (regular public transport only) in 2015.

The method of capturing on time performance varies between airlines utilising different recording systems. Jetstar and Qantas jet aircraft use Aircraft Communication Addressing and Reporting System (ACARS) to electronically measure on time performance. Regional Express, Tigerair Australia, Virgin Australia, Virgin Australia Regional Airlines and the Qantas non-jet fleet record on time performance manually using records from pilots, gate agents and/or ground crews.

After initial data is collected, aggregate reports are audited internally by participating airlines prior to publication.

Reports and detailed time series data in Microsoft Excel spreadsheet format are available from the BITRE website at: <http://www.bitre.gov.au/statistics/aviation/otphome.aspx>.

Contents

	Page
Industry performance	1
Individual routes	10
Airports	23
Definitions	29

Industry performance

For June 2016, on time performance over all routes operated by participating airlines (Jetstar, Qantas, QantasLink, Regional Express, Tigerair Australia, Virgin Australia and Virgin Australia Regional Airlines) averaged 82.5 per cent for on time arrivals and 83.9 per cent for on time departures. Cancellations represented 2.2 per cent of all scheduled flights. The equivalent figures for June 2015 were 87.9 per cent for arrivals, 88.8 per cent for departures and 1.5 per cent for cancellations.

This month's on time arrivals figure was lower than the long term average performance for all routes (82.8 per cent) and the on time departures figure was also lower than the long term average (84.2 per cent). The rate of cancellations was higher than the long term average of 1.4 per cent.

Virgin Australia achieved the highest on time arrivals among the major domestic airlines at 85.4 per cent followed by Qantas at 84.8 per cent, Tigerair Australia at 80.0 per cent and Jetstar at 73.4 per cent. QantasLink was the best performing regional airline for on time arrivals at 84.3 per cent, followed by Virgin Australia Regional Airlines at 81.6 per cent and Regional Express at 81.5 per cent. The Qantas network (Qantas and QantasLink combined operations) recorded 84.5 per cent for on time arrivals while the Virgin Australia network (Virgin Australia and Virgin Australia Regional Airlines combined operations) recorded 85.2 per cent.

Virgin Australia also achieved the highest level of on time departures for June 2016 at 87.7 per cent, followed by Qantas at 86.5 per cent, Tigerair Australia at 82.7 per cent and Jetstar at 70.9 per cent. Of the regional airlines, Virgin Australia Regional Airlines and QantasLink recorded 85.3 per cent followed by Regional Express at 84.8 per cent. The Qantas network recorded 85.8 per cent for on time departures while the Virgin Australia network recorded 87.6 per cent.

Virgin Australia had the highest percentage of cancellations (2.6 per cent) during the month, followed by QantasLink (2.5 per cent), Virgin Australia Regional Airlines (2.3 per cent), Jetstar (2.2 per cent), Tigerair Australia (2.1 per cent), Qantas (1.7 per cent) and Regional Express (1.5 per cent).

Airlines' on time performance varies across the routes they serve. Individual route data by specific airline for 66 routes are shown on pages 10-22.

Of the 66 routes which met the criteria for on time performance reporting in June 2016, the Brisbane-Mount Isa and Mount Isa-Brisbane routes had the highest percentage of on time arrivals (95.9 per cent) and the Brisbane-Mount Isa route had the highest percentage of on time departures (95.9 per cent). The Sunshine Coast-Sydney route had the lowest percentage of on time arrivals (65.7 per cent) and the Ayers Rock-Sydney route had the lowest percentage of on time departures (61.7 per cent).

Cancellations were highest on the Brisbane-Moranbah route at 8.4 per cent, followed by the Sunshine Coast-Sydney and Moranbah-Brisbane routes at 6.9 per cent, the Armidale-Sydney

route at 5.7 per cent, the Sydney-Sunshine Coast route at 5.6 per cent and the Sydney-Melbourne route at 5.4 per cent.

Mount Isa Airport recorded the highest percentage of on time arrivals (95.9 per cent) and the highest percentage of on time departures (94.6 per cent). Ayers Rock Airport recorded the lowest percentage of on time arrivals (68.3 per cent) and the lowest percentage of on time departures (61.7 per cent). These figures only refer to reported routes and do not cover all flights at these airports.

Table 1 On time performance for June 2016 — Total Industry

	<i>Sectors</i>		<i>Arrivals On Time</i>		<i>Departures On Time</i>		<i>Cancellations</i>	
	<i>Scheduled</i>	<i>Flown</i>	<i>No.</i>	<i>%</i>	<i>No.</i>	<i>%</i>	<i>No.</i>	<i>%</i>
Jetstar	6 494	6 349	4 661	73.4	4 503	70.9	145	2.2
Qantas	8 852	8 704	7 379	84.8	7 530	86.5	148	1.7
QantasLink	10 222	9 970	8 403	84.3	8 500	85.3	252	2.5
Regional Express	6 289	6 195	5 051	81.5	5 252	84.8	94	1.5
Tigerair Australia	2 024	1 981	1 585	80.0	1 638	82.7	43	2.1
Virgin Australia	11 960	11 653	9 948	85.4	10 216	87.7	307	2.6
Virgin Australia Regional Airlines	605	591	482	81.6	504	85.3	14	2.3
All Airlines	46 446	45 443	37 509	82.5	38 143	83.9	1 003	2.2
Qantas - all QF designated services	19 074	18 674	15 782	84.5	16 030	85.8	400	2.1
Virgin Australia - all VA designated services	12 565	12 244	10 430	85.2	10 720	87.6	321	2.6

Total airline network data (including routes not shown in this report).

In January 2016, Virgin Australia transferred their ATR fleet from Virgin Australia Regional Airlines to Virgin Australia.

Airlines' on time performance varies across the routes they serve. Individual route data by specific airline for 66 routes are shown on pages 10-22.

Table 2 Top ten routes for on time performance for June 2016 (participating airlines only)

<i>Arrivals</i>		<i>Departures</i>	
<i>Route</i>	<i>On Time (%)</i>	<i>Route</i>	<i>On Time (%)</i>
Brisbane-Mount Isa	95.9	Brisbane-Mount Isa	95.9
Mount Isa-Brisbane	95.9	Alice Springs-Darwin	95.8
Alice Springs-Darwin	95.8	Adelaide-Alice Springs	95.5
Townsville-Cairns	94.9	Mount Isa-Brisbane	94.6
Adelaide-Gold Coast	93.5	Adelaide-Port Lincoln	94.5
Geraldton-Perth	93.2	Newman-Perth	94.5
Cairns-Townsville	93.0	Townsville-Cairns	94.4
Adelaide-Port Lincoln	92.9	Brisbane-Emerald	93.6
Newman-Perth	92.9	Perth-Newman	93.4
Brisbane-Darwin	92.7	Cairns-Townsville	93.0

Table 3 Top ten airports for on time performance for June 2016 (participating airlines and reported routes only)

<i>Arrivals</i>		<i>Departures</i>	
<i>Airport</i>	<i>On Time (%)</i>	<i>Airport</i>	<i>On Time (%)</i>
Mount Isa	95.9	Mount Isa	94.6
Port Lincoln	92.9	Newman	94.5
Proserpine	92.5	Emerald	91.7
Newman	92.3	Port Lincoln	91.3
Townsville	90.9	Moranbah	90.2
Bundaberg	90.7	Bundaberg	90.1
Alice Springs	90.4	Townsville	89.7
Moranbah	90.2	Gladstone	89.6
Emerald	89.7	Port Hedland	89.1
Geraldton	88.5	Alice Springs	88.8

Total industry on time performance

Figure 1 On time performance (by month from June 2013)—Total Industry

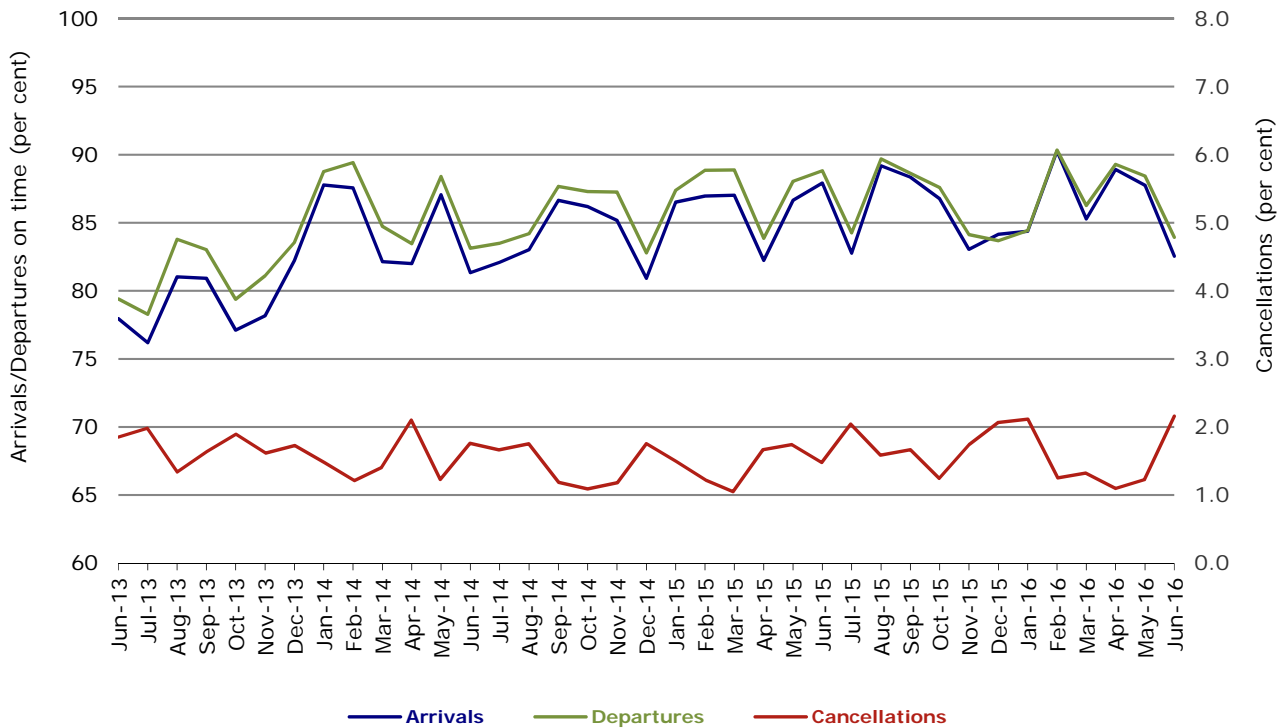


Figure 2 Arrivals on time (by month from June 2015)

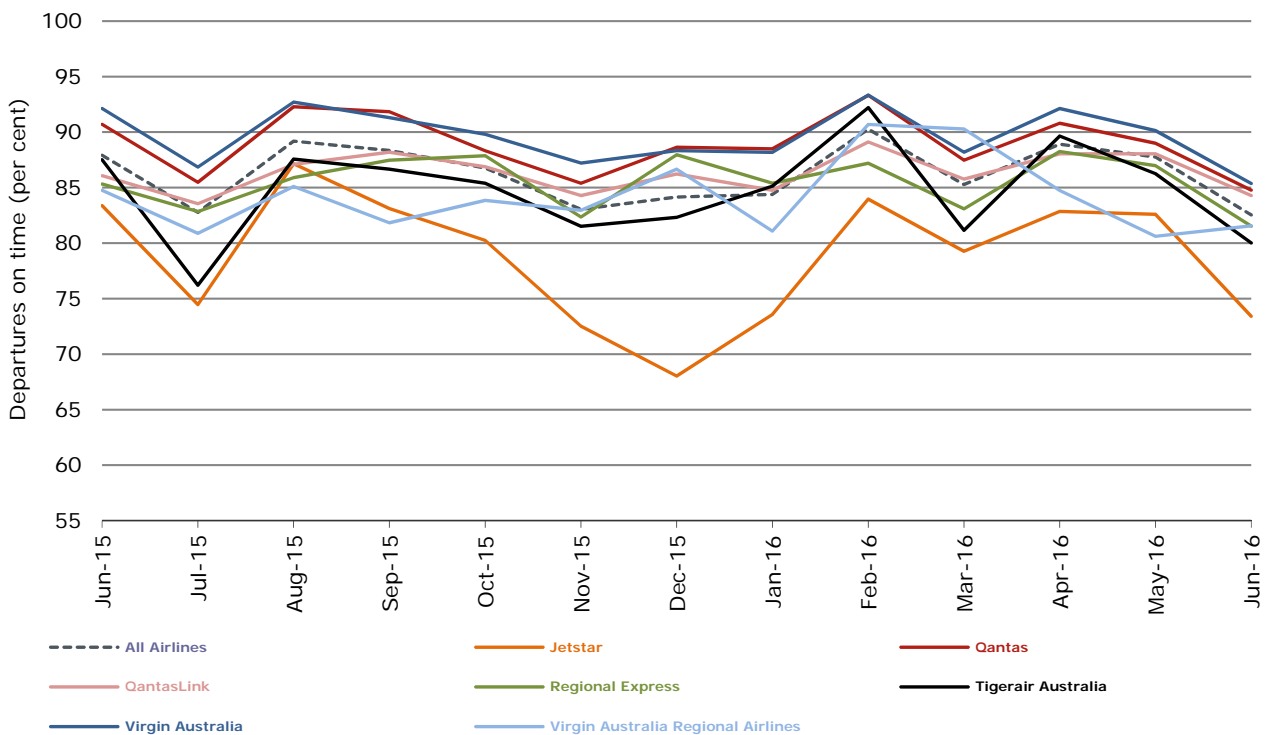


Figure 3 Departures on time (by month from June 2015)

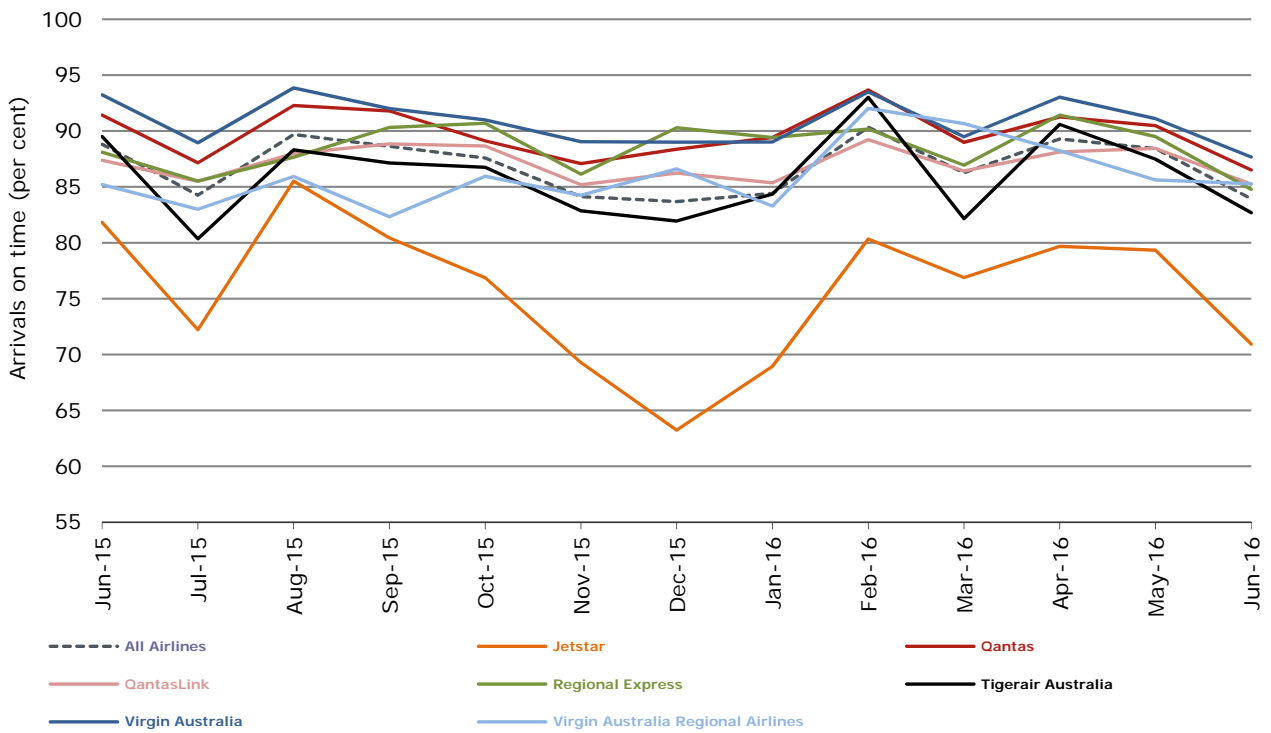
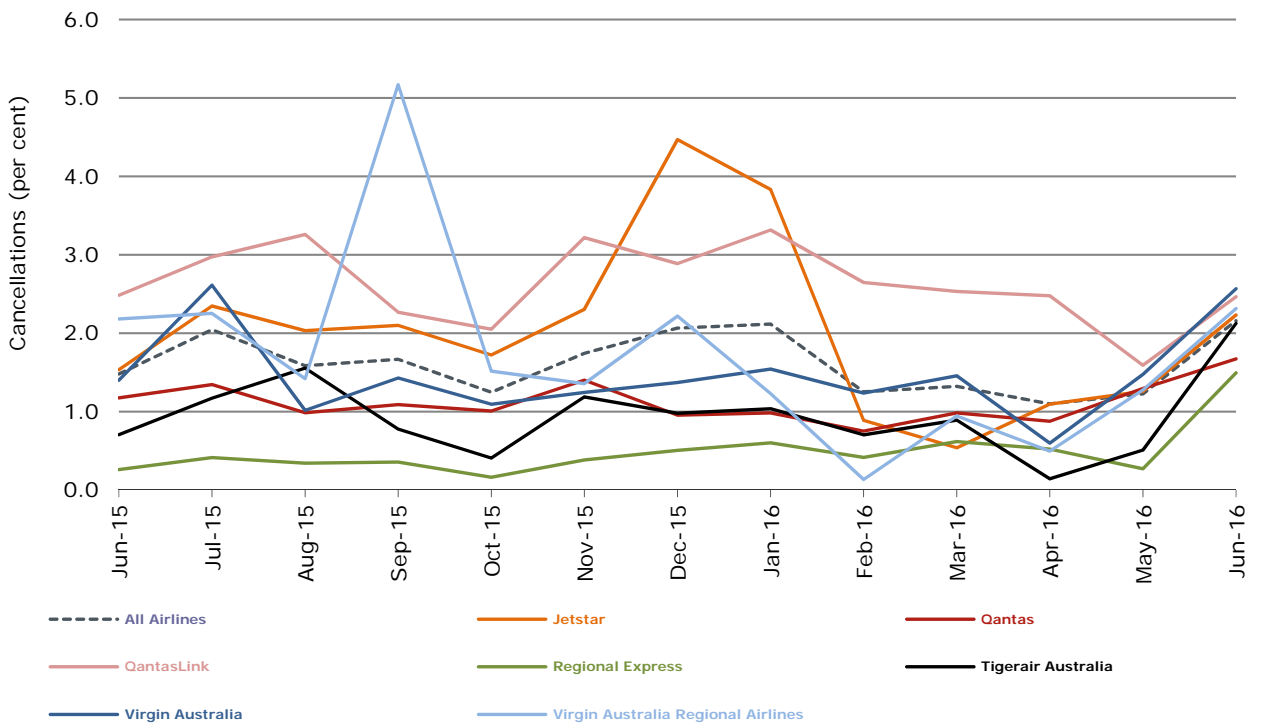


Figure 4 Cancellations (by month from June 2015)



Major domestic airlines on time performance

Figure 5 On time performance (by month from June 2013)—Jetstar

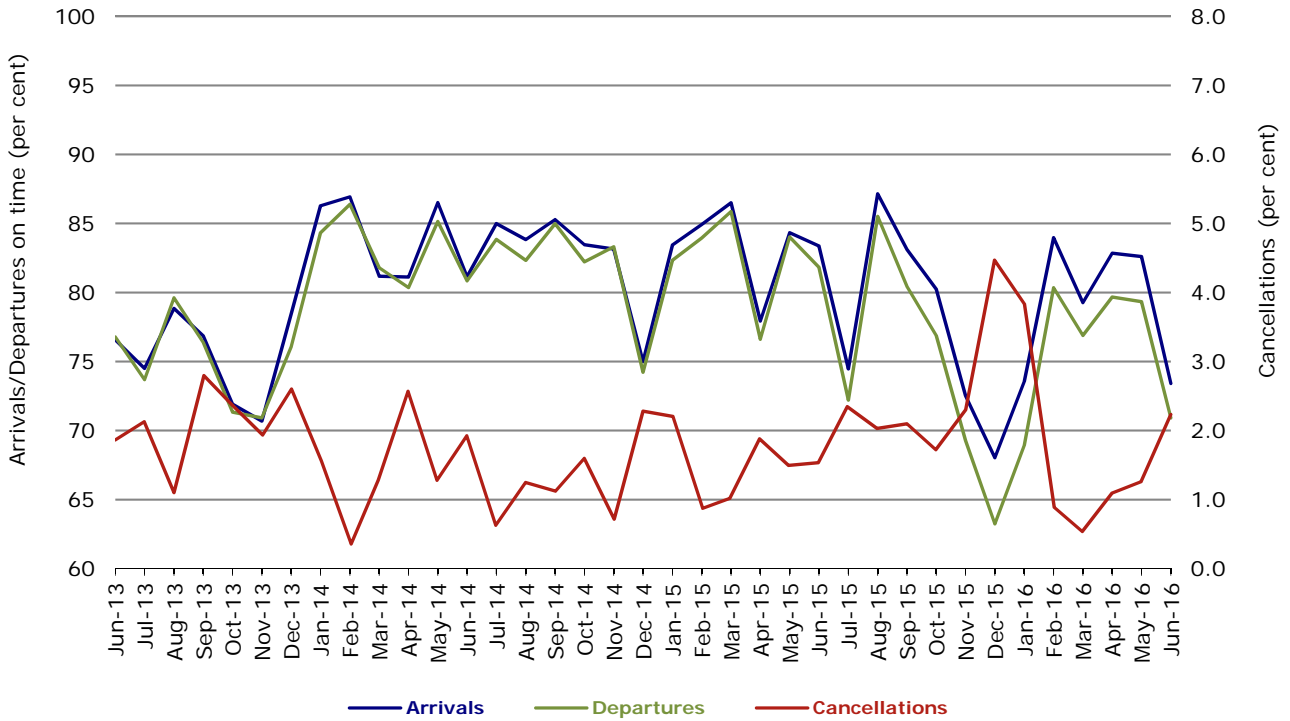


Figure 6 On time performance (by month from June 2013)—Qantas

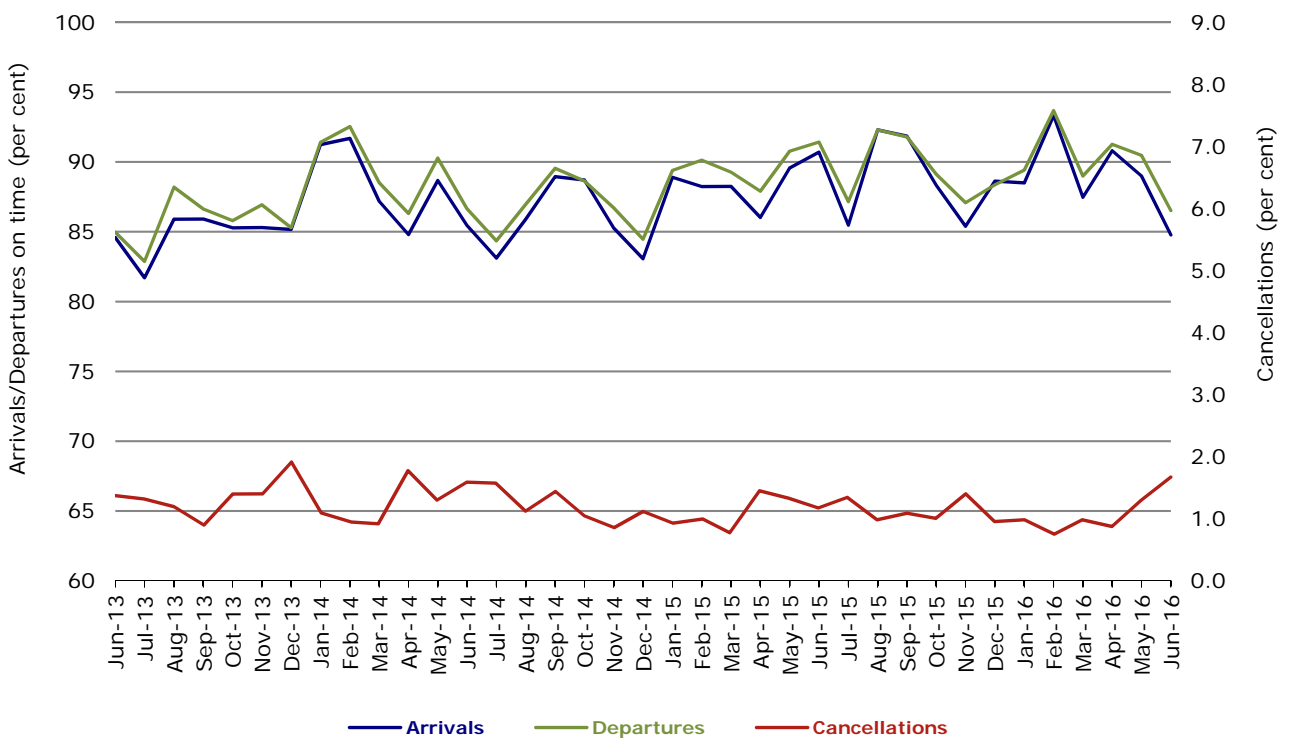


Figure 7 On time performance (by month from June 2013)—Tigerair Australia

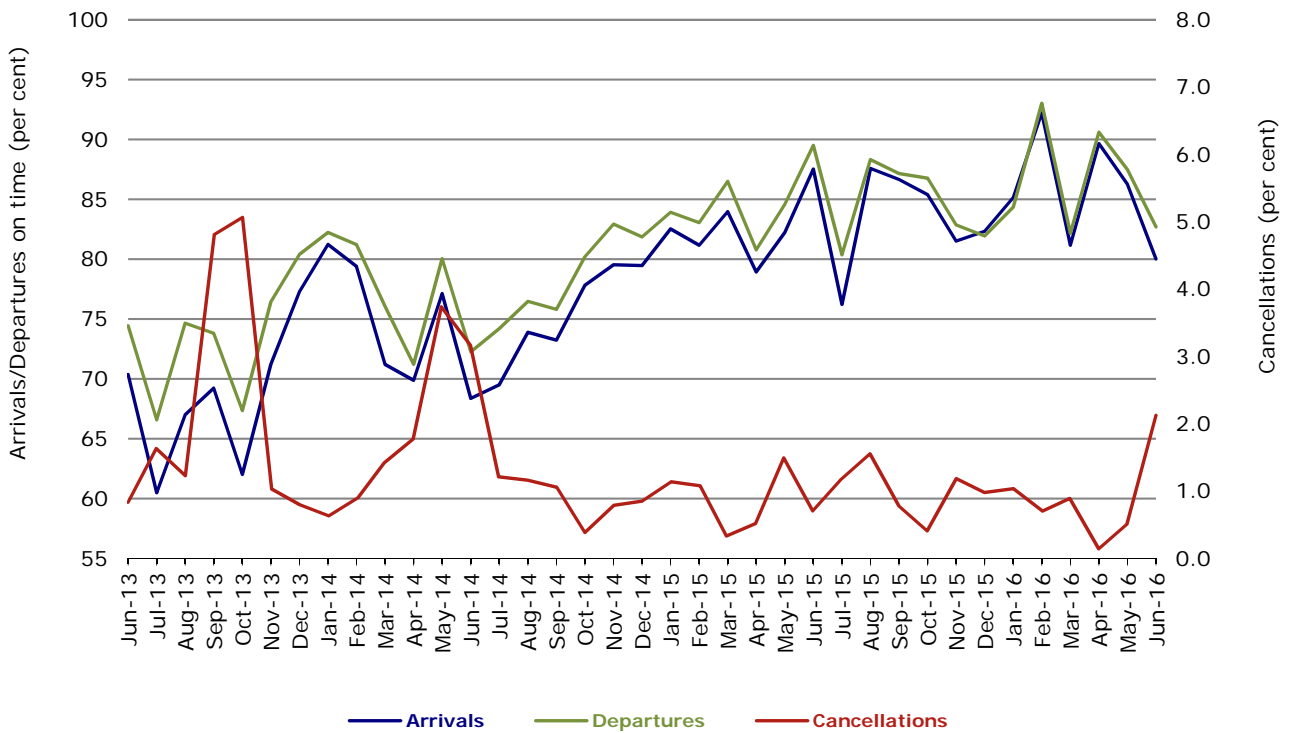
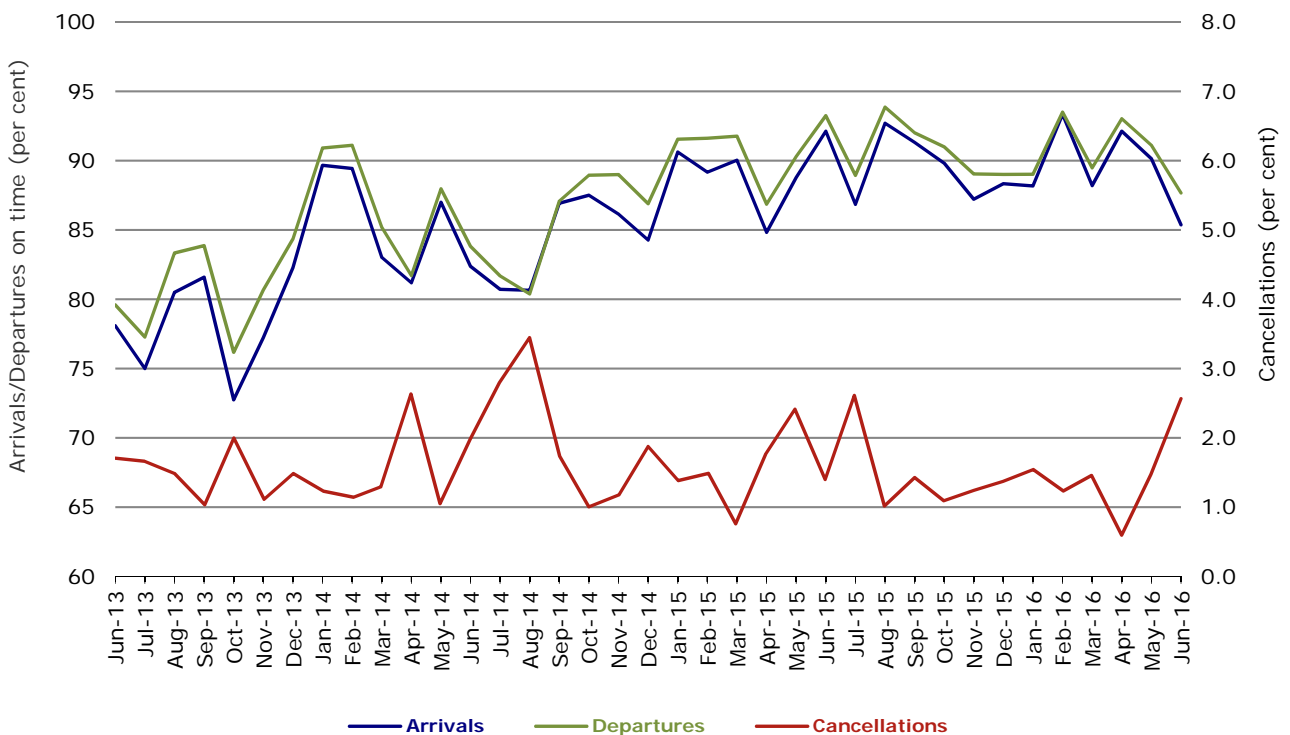


Figure 8 On time performance (by month from June 2013)—Virgin Australia



In January 2016, Virgin Australia transferred their ATR fleet from Virgin Australia Regional Airlines to Virgin Australia.

Major regional airlines on time performance

Figure 9 On time performance (by month from June 2013)—QantasLink

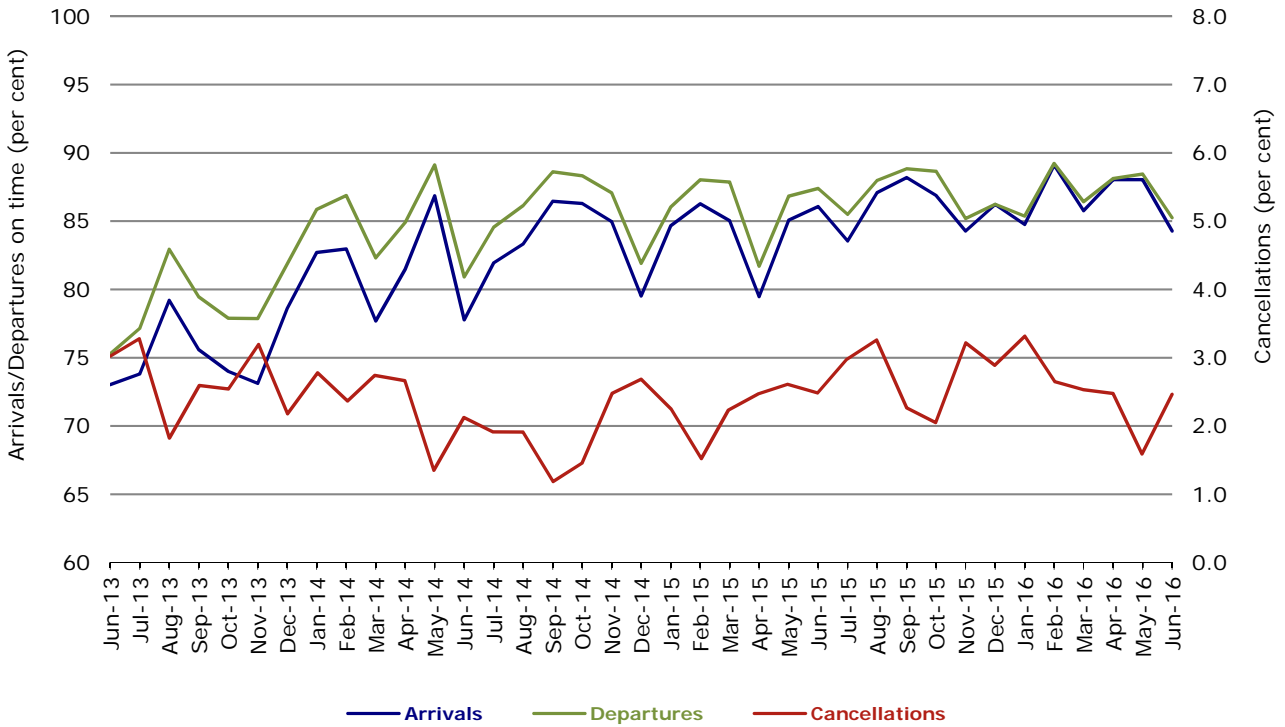


Figure 10 On time performance (by month from June 2013)—Regional Express

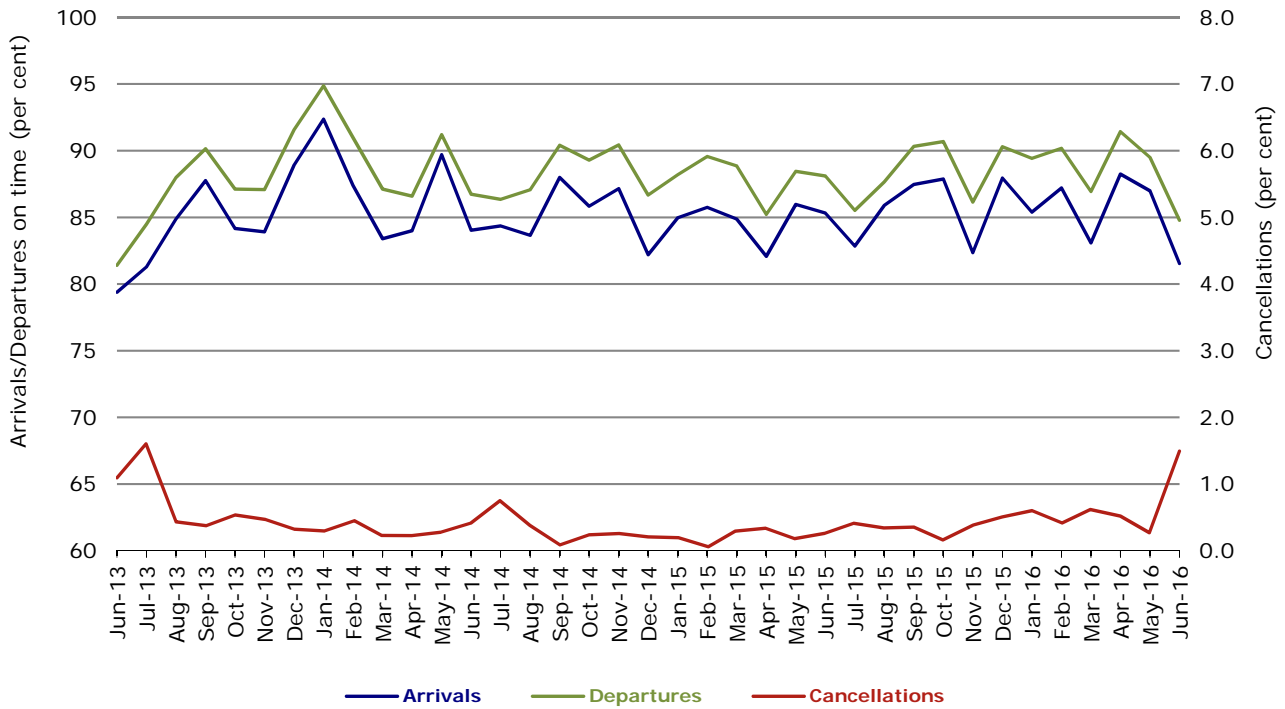
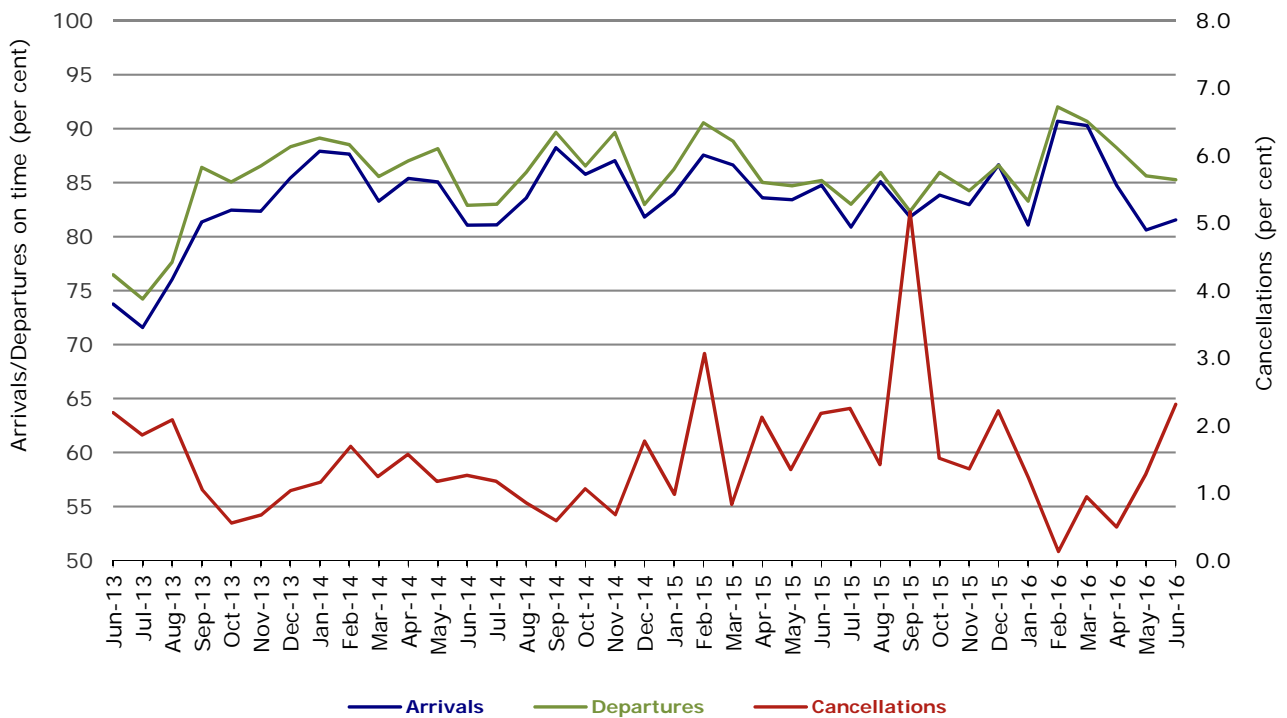


Figure 11 On time performance (by month from June 2013)
Virgin Australia Regional Airlines



Virgin Australia Regional Airlines commenced operations in May 2013. It was formed after the acquisition of Skywest by Virgin Australia and represented a combination of operations previously reported under Skywest and Virgin Australia – ATR/F100 Operations. In January 2016, Virgin Australia transferred their ATR fleet from Virgin Australia Regional Airlines to Virgin Australia.

Individual routes

On time performance is reported for all routes where the passenger load averages over 8000 passengers per month over the previous six months, and where two or more airlines operate in competition on those routes. There are now 66 routes which meet this definition. Over time, however, routes which meet this definition may change as airline networks and traffic levels vary.

	<i>Sectors</i>		<i>Arrivals On Time</i>		<i>Departures On Time</i>		<i>Cancellations</i>	
	<i>Sched.</i>	<i>Flown</i>	<i>No.</i>	<i>%</i>	<i>No.</i>	<i>%</i>	<i>No.</i>	<i>%</i>
Adelaide-Alice Springs								
Qantas	30	30	28	93.3	29	96.7	0	0.0
Virgin Australia	14	14	12	85.7	13	92.9	0	0.0
All Airlines	44	44	40	90.9	42	95.5	0	0.0
Adelaide-Brisbane								
Jetstar	21	21	19	90.5	19	90.5	0	0.0
Qantas	107	107	97	90.7	99	92.5	0	0.0
Tigerair Australia	19	19	17	89.5	16	84.2	0	0.0
Virgin Australia	104	104	97	93.3	93	89.4	0	0.0
All Airlines	251	251	230	91.6	227	90.4	0	0.0
Adelaide-Canberra								
Qantas	38	38	35	92.1	32	84.2	0	0.0
Virgin Australia	26	26	24	92.3	23	88.5	0	0.0
All Airlines	64	64	59	92.2	55	85.9	0	0.0
Adelaide-Gold Coast								
Jetstar	32	32	29	90.6	26	81.3	0	0.0
Virgin Australia	30	30	29	96.7	29	96.7	0	0.0
All Airlines	62	62	58	93.5	55	88.7	0	0.0
Adelaide-Melbourne								
Jetstar	98	93	67	72.0	54	58.1	5	5.1
Qantas	264	262	226	86.3	231	88.2	2	0.8
Tigerair Australia	72	71	53	74.6	57	80.3	1	1.4
Virgin Australia	265	261	234	89.7	228	87.4	4	1.5
All Airlines	699	687	580	84.4	570	83.0	12	1.7
Adelaide-Perth								
Jetstar	29	29	26	89.7	27	93.1	0	0.0
Qantas	107	107	88	82.2	97	90.7	0	0.0
Virgin Australia	67	67	52	77.6	60	89.6	0	0.0
All Airlines	203	203	166	81.8	184	90.6	0	0.0
Adelaide-Port Lincoln								
QantasLink	107	107	99	92.5	99	92.5	0	0.0
Regional Express	207	204	190	93.1	195	95.6	3	1.4
All Airlines	314	311	289	92.9	294	94.5	3	1.0
Adelaide-Sydney								
Jetstar	88	86	64	74.4	65	75.6	2	2.3
Qantas	219	216	193	89.4	199	92.1	3	1.4
QantasLink	29	28	24	85.7	23	82.1	1	3.4
Tigerair Australia	42	41	36	87.8	32	78.0	1	2.4
Virgin Australia	143	141	126	89.4	124	87.9	2	1.4
All Airlines	521	512	443	86.5	443	86.5	9	1.7
Albury-Sydney								
QantasLink	107	106	80	75.5	77	72.6	1	0.9
Regional Express	101	100	88	88.0	87	87.0	1	1.0
Virgin Australia	60	59	43	72.9	47	79.7	1	1.7
All Airlines	268	265	211	79.6	211	79.6	3	1.1

	<i>Sectors</i>		<i>Arrivals On Time</i>		<i>Departures On Time</i>		<i>Cancellations</i>	
	<i>Sched.</i>	<i>Flown</i>	<i>No.</i>	<i>%</i>	<i>No.</i>	<i>%</i>	<i>No.</i>	<i>%</i>
Alice Springs-Adelaide								
Qantas	30	30	23	76.7	21	70.0	0	0.0
Virgin Australia	14	14	12	85.7	13	92.9	0	0.0
All Airlines	44	44	35	79.5	34	77.3	0	0.0
Alice Springs-Darwin								
QantasLink	58	58	57	98.3	57	98.3	0	0.0
Virgin Australia	14	14	12	85.7	12	85.7	0	0.0
All Airlines	72	72	69	95.8	69	95.8	0	0.0
Armidale-Sydney								
QantasLink	119	110	82	74.5	79	71.8	9	7.6
Regional Express	75	73	57	78.1	59	80.8	2	2.7
All Airlines	194	183	139	76.0	138	75.4	11	5.7
Ayers Rock-Sydney								
Jetstar	30	30	21	70.0	19	63.3	0	0.0
Virgin Australia	30	30	27	90.0	18	60.0	0	0.0
All Airlines	60	60	48	80.0	37	61.7	0	0.0
Ballina-Sydney								
Jetstar	74	73	58	79.5	52	71.2	1	1.4
Regional Express	25	24	17	70.8	18	75.0	1	4.0
Virgin Australia	30	29	28	96.6	28	96.6	1	3.3
All Airlines	129	126	103	81.7	98	77.8	3	2.3
Brisbane-Adelaide								
Jetstar	21	21	19	90.5	20	95.2	0	0.0
Qantas	107	107	96	89.7	100	93.5	0	0.0
Tigerair Australia	19	19	16	84.2	16	84.2	0	0.0
Virgin Australia	104	104	83	79.8	87	83.7	0	0.0
All Airlines	251	251	214	85.3	223	88.8	0	0.0
Brisbane-Bundaberg								
QantasLink	132	132	121	91.7	120	90.9	0	0.0
Virgin Australia	30	30	26	86.7	25	83.3	0	0.0
All Airlines	162	162	147	90.7	145	89.5	0	0.0
Brisbane-Cairns								
Jetstar	86	85	70	82.4	66	77.6	1	1.2
Qantas	121	121	111	91.7	101	83.5	0	0.0
QantasLink	8	8	4	50.0	4	50.0	0	0.0
Tigerair Australia	30	30	26	86.7	26	86.7	0	0.0
Virgin Australia	129	129	117	90.7	115	89.1	0	0.0
All Airlines	374	373	328	87.9	312	83.6	1	0.3
Brisbane-Canberra								
Qantas	26	26	25	96.2	25	96.2	0	0.0
QantasLink	108	108	92	85.2	91	84.3	0	0.0
Virgin Australia	93	93	85	91.4	82	88.2	0	0.0
All Airlines	227	227	202	89.0	198	87.2	0	0.0
Brisbane-Darwin								
Jetstar	23	23	20	87.0	18	78.3	0	0.0
Qantas	48	48	47	97.9	45	93.8	0	0.0
Tigerair Australia	22	22	20	90.9	22	100.0	0	0.0
Virgin Australia	31	31	28	90.3	26	83.9	0	0.0
All Airlines	124	124	115	92.7	111	89.5	0	0.0
Brisbane-Emerald								
QantasLink	136	135	114	84.4	122	90.4	1	0.7
Virgin Australia	68	68	68	100.0	68	100.0	0	0.0
All Airlines	204	203	182	89.7	190	93.6	1	0.5

	<i>Sectors</i>		<i>Arrivals On Time</i>		<i>Departures On Time</i>		<i>Cancellations</i>	
	<i>Sched.</i>	<i>Flown</i>	<i>No.</i>	<i>%</i>	<i>No.</i>	<i>%</i>	<i>No.</i>	<i>%</i>
Brisbane-Gladstone								
QantasLink	187	179	154	86.0	163	91.1	8	4.3
Virgin Australia	128	127	113	89.0	117	92.1	1	0.8
All Airlines	315	306	267	87.3	280	91.5	9	2.9
Brisbane-Hamilton Island								
QantasLink	29	29	26	89.7	24	82.8	0	0.0
Virgin Australia	30	29	25	86.2	27	93.1	1	3.3
All Airlines	59	58	51	87.9	51	87.9	1	1.7
Brisbane-Hobart								
Jetstar	23	23	19	82.6	19	82.6	0	0.0
Virgin Australia	30	30	28	93.3	28	93.3	0	0.0
All Airlines	53	53	47	88.7	47	88.7	0	0.0
Brisbane-Mackay								
Jetstar	47	47	39	83.0	41	87.2	0	0.0
QantasLink	104	101	84	83.2	86	85.1	3	2.9
Virgin Australia	153	149	127	85.2	127	85.2	4	2.6
All Airlines	304	297	250	84.2	254	85.5	7	2.3
Brisbane-Melbourne								
Jetstar	108	103	90	87.4	74	71.8	5	4.6
Qantas	397	394	321	81.5	333	84.5	3	0.8
Tigerair Australia	119	118	94	79.7	100	84.7	1	0.8
Virgin Australia	377	367	294	80.1	333	90.7	10	2.7
All Airlines	1 001	982	799	81.4	840	85.5	19	1.9
Brisbane-Moranbah								
QantasLink	113	98	91	92.9	90	91.8	15	13.3
Virgin Australia	66	66	57	86.4	61	92.4	0	0.0
All Airlines	179	164	148	90.2	151	92.1	15	8.4
Brisbane-Mount Isa								
Qantas	28	28	27	96.4	28	100.0	0	0.0
QantasLink	28	28	27	96.4	27	96.4	0	0.0
Virgin Australia	18	18	17	94.4	16	88.9	0	0.0
All Airlines	74	74	71	95.9	71	95.9	0	0.0
Brisbane-Newcastle								
Jetstar	76	74	55	74.3	57	77.0	2	2.6
QantasLink	96	95	86	90.5	86	90.5	1	1.0
Virgin Australia	88	86	70	81.4	71	82.6	2	2.3
All Airlines	260	255	211	82.7	214	83.9	5	1.9
Brisbane-Perth								
Qantas	122	122	89	73.0	103	84.4	0	0.0
Virgin Australia	108	108	63	58.3	96	88.9	0	0.0
All Airlines	230	230	152	66.1	199	86.5	0	0.0
Brisbane-Proserpine								
Jetstar	23	23	20	87.0	20	87.0	0	0.0
Virgin Australia	30	30	29	96.7	27	90.0	0	0.0
All Airlines	53	53	49	92.5	47	88.7	0	0.0
Brisbane-Rockhampton								
QantasLink	187	187	161	86.1	168	89.8	0	0.0
Virgin Australia	192	187	165	88.2	163	87.2	5	2.6
All Airlines	379	374	326	87.2	331	88.5	5	1.3

	<i>Sectors</i>		<i>Arrivals On Time</i>		<i>Departures On Time</i>		<i>Cancellations</i>	
	<i>Sched.</i>	<i>Flown</i>	<i>No.</i>	<i>%</i>	<i>No.</i>	<i>%</i>	<i>No.</i>	<i>%</i>
Brisbane-Sydney								
Jetstar	169	163	121	74.2	116	71.2	6	3.6
Qantas	571	565	488	86.4	502	88.8	6	1.1
Tigerair Australia	95	91	74	81.3	75	82.4	4	4.2
Virgin Australia	525	504	446	88.5	448	88.9	21	4.0
All Airlines	1 360	1 323	1 129	85.3	1 141	86.2	37	2.7
Brisbane-Townsville								
Jetstar	47	47	39	83.0	41	87.2	0	0.0
Qantas	116	116	107	92.2	104	89.7	0	0.0
QantasLink	26	26	22	84.6	21	80.8	0	0.0
Virgin Australia	140	138	127	92.0	124	89.9	2	1.4
All Airlines	329	327	295	90.2	290	88.7	2	0.6
Broome-Perth								
Qantas	30	30	22	73.3	21	70.0	0	0.0
QantasLink	52	52	46	88.5	46	88.5	0	0.0
Virgin Australia	4	4	3	75.0	3	75.0	0	0.0
Virgin Australia Regional Airlines	51	51	36	70.6	40	78.4	0	0.0
All Airlines	137	137	107	78.1	110	80.3	0	0.0
Bundaberg-Brisbane								
QantasLink	132	132	121	91.7	120	90.9	0	0.0
Virgin Australia	30	30	26	86.7	26	86.7	0	0.0
All Airlines	162	162	147	90.7	146	90.1	0	0.0
Cairns-Brisbane								
Jetstar	86	85	74	87.1	70	82.4	1	1.2
Qantas	121	121	110	90.9	111	91.7	0	0.0
QantasLink	8	8	4	50.0	4	50.0	0	0.0
Tigerair Australia	30	30	26	86.7	26	86.7	0	0.0
Virgin Australia	129	129	117	90.7	118	91.5	0	0.0
All Airlines	374	373	331	88.7	329	88.2	1	0.3
Cairns-Melbourne								
Jetstar	95	95	60	63.2	61	64.2	0	0.0
Qantas	37	37	28	75.7	28	75.7	0	0.0
Tigerair Australia	38	38	28	73.7	29	76.3	0	0.0
Virgin Australia	33	33	28	84.8	28	84.8	0	0.0
All Airlines	203	203	144	70.9	146	71.9	0	0.0
Cairns-Sydney								
Jetstar	99	97	80	82.5	82	84.5	2	2.0
Qantas	76	76	67	88.2	61	80.3	0	0.0
Tigerair Australia	36	36	30	83.3	33	91.7	0	0.0
Virgin Australia	86	86	74	86.0	76	88.4	0	0.0
All Airlines	297	295	251	85.1	252	85.4	2	0.7
Cairns-Townsville								
QantasLink	142	141	127	90.1	127	90.1	1	0.7
Regional Express	74	74	73	98.6	73	98.6	0	0.0
All Airlines	216	215	200	93.0	200	93.0	1	0.5
Canberra-Adelaide								
Qantas	38	38	34	89.5	33	86.8	0	0.0
Virgin Australia	26	26	23	88.5	24	92.3	0	0.0
All Airlines	64	64	57	89.1	57	89.1	0	0.0
Canberra-Brisbane								
Qantas	26	26	25	96.2	24	92.3	0	0.0
QantasLink	108	108	87	80.6	89	82.4	0	0.0
Virgin Australia	93	93	79	84.9	80	86.0	0	0.0
All Airlines	227	227	191	84.1	193	85.0	0	0.0

	<i>Sectors</i>		<i>Arrivals On Time</i>		<i>Departures On Time</i>		<i>Cancellations</i>	
	<i>Sched.</i>	<i>Flown</i>	<i>No.</i>	<i>%</i>	<i>No.</i>	<i>%</i>	<i>No.</i>	<i>%</i>
Canberra-Melbourne								
Qantas	191	189	171	90.5	173	91.5	2	1.0
QantasLink	63	61	50	82.0	51	83.6	2	3.2
Virgin Australia	177	173	139	80.3	144	83.2	4	2.3
All Airlines	431	423	360	85.1	368	87.0	8	1.9
Canberra-Sydney								
QantasLink	446	426	357	83.8	358	84.0	20	4.5
Virgin Australia	290	275	243	88.4	237	86.2	15	5.2
All Airlines	736	701	600	85.6	595	84.9	35	4.8
Coffs Harbour-Sydney								
QantasLink	151	146	111	76.0	110	75.3	5	3.3
Tigerair Australia	12	12	10	83.3	10	83.3	0	0.0
Virgin Australia	59	58	53	91.4	53	91.4	1	1.7
All Airlines	222	216	174	80.6	173	80.1	6	2.7
Darwin-Alice Springs								
QantasLink	58	56	49	87.5	49	87.5	2	3.4
Virgin Australia	14	14	14	100.0	14	100.0	0	0.0
All Airlines	72	70	63	90.0	63	90.0	2	2.8
Darwin-Brisbane								
Jetstar	23	23	19	82.6	19	82.6	0	0.0
Qantas	48	48	46	95.8	45	93.8	0	0.0
Tigerair Australia	22	22	21	95.5	22	100.0	0	0.0
Virgin Australia	31	31	26	83.9	26	83.9	0	0.0
All Airlines	124	124	112	90.3	112	90.3	0	0.0
Darwin-Melbourne								
Jetstar	27	27	18	66.7	14	51.9	0	0.0
Qantas	35	35	31	88.6	30	85.7	0	0.0
Virgin Australia	30	30	28	93.3	25	83.3	0	0.0
All Airlines	92	92	77	83.7	69	75.0	0	0.0
Darwin-Perth								
Qantas	38	38	35	92.1	35	92.1	0	0.0
Virgin Australia	30	30	26	86.7	27	90.0	0	0.0
All Airlines	68	68	61	89.7	62	91.2	0	0.0
Darwin-Sydney								
Jetstar	24	24	21	87.5	18	75.0	0	0.0
Qantas	59	59	49	83.1	45	76.3	0	0.0
Virgin Australia	30	30	21	70.0	17	56.7	0	0.0
All Airlines	113	113	91	80.5	80	70.8	0	0.0
Dubbo-Sydney								
QantasLink	125	122	96	78.7	100	82.0	3	2.4
Regional Express	149	146	122	83.6	127	87.0	3	2.0
All Airlines	274	268	218	81.3	227	84.7	6	2.2
Emerald-Brisbane								
QantasLink	136	134	120	89.6	117	87.3	2	1.5
Virgin Australia	71	71	70	98.6	71	100.0	0	0.0
All Airlines	207	205	190	92.7	188	91.7	2	1.0
Geraldton-Perth								
QantasLink	48	48	45	93.8	41	85.4	0	0.0
Virgin Australia Regional Airlines	56	55	51	92.7	50	90.9	1	1.8
All Airlines	104	103	96	93.2	91	88.3	1	1.0

	<i>Sectors</i>		<i>Arrivals On Time</i>		<i>Departures On Time</i>		<i>Cancellations</i>	
	<i>Sched.</i>	<i>Flown</i>	<i>No.</i>	<i>%</i>	<i>No.</i>	<i>%</i>	<i>No.</i>	<i>%</i>
Gladstone-Brisbane								
QantasLink	187	180	163	90.6	160	88.9	7	3.7
Virgin Australia	128	127	114	89.8	115	90.6	1	0.8
All Airlines	315	307	277	90.2	275	89.6	8	2.5
Gold Coast-Adelaide								
Jetstar	32	32	26	81.3	30	93.8	0	0.0
Virgin Australia	30	30	22	73.3	27	90.0	0	0.0
All Airlines	62	62	48	77.4	57	91.9	0	0.0
Gold Coast-Melbourne								
Jetstar	175	173	132	76.3	119	68.8	2	1.1
Qantas	30	30	25	83.3	23	76.7	0	0.0
Tigerair Australia	76	75	55	73.3	59	78.7	1	1.3
Virgin Australia	171	165	127	77.0	131	79.4	6	3.5
All Airlines	452	443	339	76.5	332	74.9	9	2.0
Gold Coast-Sydney								
Jetstar	267	263	200	76.0	196	74.5	4	1.5
Qantas	84	84	77	91.7	77	91.7	0	0.0
QantasLink	15	15	12	80.0	13	86.7	0	0.0
Tigerair Australia	90	86	70	81.4	67	77.9	4	4.4
Virgin Australia	243	234	196	83.8	199	85.0	9	3.7
All Airlines	699	682	555	81.4	552	80.9	17	2.4
Hamilton Island-Brisbane								
QantasLink	29	29	26	89.7	24	82.8	0	0.0
Virgin Australia	30	29	26	89.7	25	86.2	1	3.3
All Airlines	59	58	52	89.7	49	84.5	1	1.7
Hamilton Island-Melbourne								
Qantas	12	12	9	75.0	8	66.7	0	0.0
Virgin Australia	21	20	18	90.0	17	85.0	1	4.8
All Airlines	33	32	27	84.4	25	78.1	1	3.0
Hamilton Island-Sydney								
Jetstar	20	20	13	65.0	10	50.0	0	0.0
Qantas	9	9	7	77.8	8	88.9	0	0.0
QantasLink	12	12	7	58.3	7	58.3	0	0.0
Virgin Australia	30	29	27	93.1	25	86.2	1	3.3
All Airlines	71	70	54	77.1	50	71.4	1	1.4
Hobart-Brisbane								
Jetstar	23	23	19	82.6	19	82.6	0	0.0
Virgin Australia	30	30	22	73.3	23	76.7	0	0.0
All Airlines	53	53	41	77.4	42	79.2	0	0.0
Hobart-Melbourne								
Jetstar	156	155	94	60.6	96	61.9	1	0.6
QantasLink	141	139	105	75.5	112	80.6	2	1.4
Tigerair Australia	32	32	27	84.4	27	84.4	0	0.0
Virgin Australia	135	134	108	80.6	114	85.1	1	0.7
All Airlines	464	460	334	72.6	349	75.9	4	0.9
Hobart-Sydney								
Jetstar	59	58	43	74.1	35	60.3	1	1.7
QantasLink	56	55	46	83.6	50	90.9	1	1.8
Virgin Australia	59	59	47	79.7	50	84.7	0	0.0
All Airlines	174	172	136	79.1	135	78.5	2	1.1

	<i>Sectors</i>		<i>Arrivals On Time</i>		<i>Departures On Time</i>		<i>Cancellations</i>	
	<i>Sched.</i>	<i>Flown</i>	<i>No.</i>	<i>%</i>	<i>No.</i>	<i>%</i>	<i>No.</i>	<i>%</i>
Kalgoorlie-Perth								
Qantas	5	4	4	100.0	4	100.0	1	20.0
QantasLink	78	76	60	78.9	60	78.9	2	2.6
Virgin Australia	32	31	28	90.3	28	90.3	1	3.1
Virgin Australia Regional Airlines	28	28	25	89.3	25	89.3	0	0.0
All Airlines	143	139	117	84.2	117	84.2	4	2.8
Karratha-Perth								
Qantas	47	43	41	95.3	40	93.0	4	8.5
QantasLink	148	148	125	84.5	126	85.1	0	0.0
Virgin Australia	5	5	5	100.0	4	80.0	0	0.0
Virgin Australia Regional Airlines	63	58	40	69.0	46	79.3	5	7.9
All Airlines	263	254	211	83.1	216	85.0	9	3.4
Launceston-Melbourne								
Jetstar	109	106	61	57.5	62	58.5	3	2.8
QantasLink	116	110	92	83.6	90	81.8	6	5.2
Virgin Australia	91	89	77	86.5	83	93.3	2	2.2
All Airlines	316	305	230	75.4	235	77.0	11	3.5
Launceston-Sydney								
Jetstar	33	33	22	66.7	21	63.6	0	0.0
Virgin Australia	30	30	23	76.7	24	80.0	0	0.0
All Airlines	63	63	45	71.4	45	71.4	0	0.0
Mackay-Brisbane								
Jetstar	47	47	42	89.4	38	80.9	0	0.0
QantasLink	103	101	79	78.2	78	77.2	2	1.9
Virgin Australia	152	148	133	89.9	133	89.9	4	2.6
All Airlines	302	296	254	85.8	249	84.1	6	2.0
Melbourne-Adelaide								
Jetstar	98	96	51	53.1	50	52.1	2	2.0
Qantas	264	262	221	84.4	228	87.0	2	0.8
Tigerair Australia	72	71	62	87.3	64	90.1	1	1.4
Virgin Australia	265	261	241	92.3	238	91.2	4	1.5
All Airlines	699	690	575	83.3	580	84.1	9	1.3
Melbourne-Brisbane								
Jetstar	107	104	70	67.3	65	62.5	3	2.8
Qantas	395	391	325	83.1	338	86.4	4	1.0
Tigerair Australia	119	118	95	80.5	100	84.7	1	0.8
Virgin Australia	377	367	304	82.8	324	88.3	10	2.7
All Airlines	998	980	794	81.0	827	84.4	18	1.8
Melbourne-Cairns								
Jetstar	96	96	57	59.4	46	47.9	0	0.0
Qantas	37	37	33	89.2	32	86.5	0	0.0
Tigerair Australia	39	39	33	84.6	38	97.4	0	0.0
Virgin Australia	33	33	27	81.8	29	87.9	0	0.0
All Airlines	205	205	150	73.2	145	70.7	0	0.0
Melbourne-Canberra								
Qantas	191	190	169	88.9	167	87.9	1	0.5
QantasLink	63	59	47	79.7	47	79.7	4	6.3
Virgin Australia	177	172	147	85.5	151	87.8	5	2.8
All Airlines	431	421	363	86.2	365	86.7	10	2.3
Melbourne-Darwin								
Jetstar	27	27	19	70.4	19	70.4	0	0.0
Qantas	35	35	31	88.6	30	85.7	0	0.0
Virgin Australia	30	30	21	70.0	23	76.7	0	0.0
All Airlines	92	92	71	77.2	72	78.3	0	0.0

	<i>Sectors</i>		<i>Arrivals On Time</i>		<i>Departures On Time</i>		<i>Cancellations</i>	
	<i>Sched.</i>	<i>Flown</i>	<i>No.</i>	<i>%</i>	<i>No.</i>	<i>%</i>	<i>No.</i>	<i>%</i>
Melbourne-Gold Coast								
Jetstar	175	173	108	62.4	116	67.1	2	1.1
Qantas	30	30	24	80.0	26	86.7	0	0.0
Tigerair Australia	76	75	64	85.3	70	93.3	1	1.3
Virgin Australia	171	166	131	78.9	137	82.5	5	2.9
All Airlines	452	444	327	73.6	349	78.6	8	1.8
Melbourne-Hamilton Island								
Qantas	12	12	10	83.3	9	75.0	0	0.0
Virgin Australia	21	20	18	90.0	18	90.0	1	4.8
All Airlines	33	32	28	87.5	27	84.4	1	3.0
Melbourne-Hobart								
Jetstar	156	156	110	70.5	111	71.2	0	0.0
QantasLink	141	138	117	84.8	121	87.7	3	2.1
Tigerair Australia	32	32	28	87.5	28	87.5	0	0.0
Virgin Australia	135	134	117	87.3	121	90.3	1	0.7
All Airlines	464	460	372	80.9	381	82.8	4	0.9
Melbourne-Launceston								
Jetstar	110	107	75	70.1	80	74.8	3	2.7
QantasLink	116	110	90	81.8	93	84.5	6	5.2
Virgin Australia	91	90	75	83.3	81	90.0	1	1.1
All Airlines	317	307	240	78.2	254	82.7	10	3.2
Melbourne-Mildura								
QantasLink	94	93	76	81.7	77	82.8	1	1.1
Regional Express	81	81	65	80.2	67	82.7	0	0.0
Virgin Australia	30	30	22	73.3	25	83.3	0	0.0
All Airlines	205	204	163	79.9	169	82.8	1	0.5
Melbourne-Newcastle								
Jetstar	109	105	80	76.2	75	71.4	4	3.7
Virgin Australia	30	29	24	82.8	26	89.7	1	3.3
All Airlines	139	134	104	77.6	101	75.4	5	3.6
Melbourne-Perth								
Jetstar	61	61	49	80.3	49	80.3	0	0.0
Qantas	193	193	143	74.1	155	80.3	0	0.0
Tigerair Australia	48	47	36	76.6	35	74.5	1	2.1
Virgin Australia	122	122	94	77.0	102	83.6	0	0.0
All Airlines	424	423	322	76.1	341	80.6	1	0.2
Melbourne-Sunshine Coast								
Jetstar	78	78	61	78.2	57	73.1	0	0.0
Virgin Australia	39	38	33	86.8	35	92.1	1	2.6
All Airlines	117	116	94	81.0	92	79.3	1	0.9
Melbourne-Sydney								
Jetstar	338	324	219	67.6	210	64.8	14	4.1
Qantas	913	862	702	81.4	711	82.5	51	5.6
Tigerair Australia	228	220	162	73.6	162	73.6	8	3.5
Virgin Australia	763	717	603	84.1	612	85.4	46	6.0
All Airlines	2 242	2 123	1 686	79.4	1 695	79.8	119	5.3
Mildura-Melbourne								
QantasLink	94	93	81	87.1	80	86.0	1	1.1
Regional Express	81	81	49	60.5	55	67.9	0	0.0
Virgin Australia	30	30	24	80.0	21	70.0	0	0.0
All Airlines	205	204	154	75.5	156	76.5	1	0.5

	<i>Sectors</i>		<i>Arrivals On Time</i>		<i>Departures On Time</i>		<i>Cancellations</i>	
	<i>Sched.</i>	<i>Flown</i>	<i>No.</i>	<i>%</i>	<i>No.</i>	<i>%</i>	<i>No.</i>	<i>%</i>
Moranbah-Brisbane								
QantasLink	109	97	87	89.7	86	88.7	12	11.0
Virgin Australia	66	66	61	92.4	61	92.4	0	0.0
All Airlines	175	163	148	90.8	147	90.2	12	6.9
Mount Isa-Brisbane								
Qantas	28	28	28	100.0	27	96.4	0	0.0
QantasLink	28	28	27	96.4	27	96.4	0	0.0
Virgin Australia	18	18	16	88.9	16	88.9	0	0.0
All Airlines	74	74	71	95.9	70	94.6	0	0.0
Newcastle-Brisbane								
Jetstar	76	75	62	82.7	62	82.7	1	1.3
QantasLink	96	94	88	93.6	88	93.6	2	2.1
Virgin Australia	88	86	70	81.4	71	82.6	2	2.3
All Airlines	260	255	220	86.3	221	86.7	5	1.9
Newcastle-Melbourne								
Jetstar	108	105	69	65.7	69	65.7	3	2.8
Virgin Australia	30	29	25	86.2	24	82.8	1	3.3
All Airlines	138	134	94	70.1	93	69.4	4	2.9
Newman-Perth								
Qantas	76	76	71	93.4	72	94.7	0	0.0
QantasLink	68	67	62	92.5	62	92.5	1	1.5
Virgin Australia	19	18	17	94.4	18	100.0	1	5.3
Virgin Australia Regional Airlines	21	21	19	90.5	20	95.2	0	0.0
All Airlines	184	182	169	92.9	172	94.5	2	1.1
Perth-Adelaide								
Jetstar	30	27	23	85.2	20	74.1	3	10.0
Qantas	112	112	106	94.6	100	89.3	0	0.0
Virgin Australia	67	67	61	91.0	60	89.6	0	0.0
All Airlines	209	206	190	92.2	180	87.4	3	1.4
Perth-Brisbane								
Qantas	124	124	113	91.1	109	87.9	0	0.0
Virgin Australia	108	108	96	88.9	97	89.8	0	0.0
All Airlines	232	232	209	90.1	206	88.8	0	0.0
Perth-Broome								
Qantas	30	30	25	83.3	24	80.0	0	0.0
QantasLink	52	52	48	92.3	48	92.3	0	0.0
Virgin Australia	4	4	3	75.0	3	75.0	0	0.0
Virgin Australia Regional Airlines	51	51	42	82.4	44	86.3	0	0.0
All Airlines	137	137	118	86.1	119	86.9	0	0.0
Perth-Darwin								
Qantas	39	39	33	84.6	32	82.1	0	0.0
Virgin Australia	30	30	27	90.0	28	93.3	0	0.0
All Airlines	69	69	60	87.0	60	87.0	0	0.0
Perth-Geraldton								
QantasLink	48	48	43	89.6	44	91.7	0	0.0
Virgin Australia Regional Airlines	56	56	49	87.5	49	87.5	0	0.0
All Airlines	104	104	92	88.5	93	89.4	0	0.0
Perth-Kalgoorlie								
Qantas	5	4	4	100.0	4	100.0	1	20.0
QantasLink	77	76	60	78.9	62	81.6	1	1.3
Virgin Australia	32	31	28	90.3	29	93.5	1	3.1
Virgin Australia Regional Airlines	28	28	22	78.6	25	89.3	0	0.0
All Airlines	142	139	114	82.0	120	86.3	3	2.1

	<i>Sectors</i>		<i>Arrivals On Time</i>		<i>Departures On Time</i>		<i>Cancellations</i>	
	<i>Sched.</i>	<i>Flown</i>	<i>No.</i>	<i>%</i>	<i>No.</i>	<i>%</i>	<i>No.</i>	<i>%</i>
Perth-Karratha								
Qantas	47	43	40	93.0	39	90.7	4	8.5
QantasLink	151	151	125	82.8	128	84.8	0	0.0
Virgin Australia	5	5	5	100.0	5	100.0	0	0.0
Virgin Australia Regional Airlines	63	58	43	74.1	48	82.8	5	7.9
All Airlines	266	257	213	82.9	220	85.6	9	3.4
Perth-Melbourne								
Jetstar	60	59	50	84.7	37	62.7	1	1.7
Qantas	193	193	166	86.0	159	82.4	0	0.0
Tigerair Australia	46	45	33	73.3	29	64.4	1	2.2
Virgin Australia	122	121	110	90.9	107	88.4	1	0.8
All Airlines	421	418	359	85.9	332	79.4	3	0.7
Perth-Newman								
Qantas	76	76	70	92.1	72	94.7	0	0.0
QantasLink	68	67	62	92.5	62	92.5	1	1.5
Virgin Australia	19	19	18	94.7	18	94.7	0	0.0
Virgin Australia Regional Airlines	21	21	19	90.5	19	90.5	0	0.0
All Airlines	184	183	169	92.3	171	93.4	1	0.5
Perth-Port Hedland								
Qantas	59	58	54	93.1	54	93.1	1	1.7
QantasLink	77	76	57	75.0	66	86.8	1	1.3
Virgin Australia	37	37	35	94.6	34	91.9	0	0.0
Virgin Australia Regional Airlines	15	15	13	86.7	14	93.3	0	0.0
All Airlines	188	186	159	85.5	168	90.3	2	1.1
Perth-Sydney								
Jetstar	30	30	26	86.7	17	56.7	0	0.0
Qantas	201	200	177	88.5	164	82.0	1	0.5
Tigerair Australia	18	18	17	94.4	15	83.3	0	0.0
Virgin Australia	113	113	102	90.3	99	87.6	0	0.0
All Airlines	362	361	322	89.2	295	81.7	1	0.3
Port Hedland-Perth								
Qantas	59	58	54	93.1	53	91.4	1	1.7
QantasLink	74	73	63	86.3	62	84.9	1	1.4
Virgin Australia	37	37	36	97.3	36	97.3	0	0.0
Virgin Australia Regional Airlines	15	15	12	80.0	12	80.0	0	0.0
All Airlines	185	183	165	90.2	163	89.1	2	1.1
Port Lincoln-Adelaide								
QantasLink	107	107	98	91.6	98	91.6	0	0.0
Regional Express	207	203	174	85.7	185	91.1	4	1.9
All Airlines	314	310	272	87.7	283	91.3	4	1.3
Port Macquarie-Sydney								
QantasLink	133	131	98	74.8	98	74.8	2	1.5
Virgin Australia	59	57	50	87.7	50	87.7	2	3.4
All Airlines	192	188	148	78.7	148	78.7	4	2.1
Proserpine-Brisbane								
Jetstar	23	23	18	78.3	18	78.3	0	0.0
Virgin Australia	30	30	26	86.7	26	86.7	0	0.0
All Airlines	53	53	44	83.0	44	83.0	0	0.0
Rockhampton-Brisbane								
QantasLink	190	187	160	85.6	157	84.0	3	1.6
Virgin Australia	192	185	172	93.0	171	92.4	7	3.6
All Airlines	382	372	332	89.2	328	88.2	10	2.6

	<i>Sectors</i>		<i>Arrivals On Time</i>		<i>Departures On Time</i>		<i>Cancellations</i>	
	<i>Sched.</i>	<i>Flown</i>	<i>No.</i>	<i>%</i>	<i>No.</i>	<i>%</i>	<i>No.</i>	<i>%</i>
Sunshine Coast-Melbourne								
Jetstar	78	78	52	66.7	46	59.0	0	0.0
Virgin Australia	39	38	30	78.9	28	73.7	1	2.6
All Airlines	117	116	82	70.7	74	63.8	1	0.9
Sunshine Coast-Sydney								
Jetstar	88	80	42	52.5	40	50.0	8	9.1
QantasLink	26	26	20	76.9	21	80.8	0	0.0
Virgin Australia	30	28	26	92.9	26	92.9	2	6.7
All Airlines	144	134	88	65.7	87	64.9	10	6.9
Sydney-Adelaide								
Jetstar	88	86	63	73.3	58	67.4	2	2.3
Qantas	214	211	179	84.8	187	88.6	3	1.4
QantasLink	29	28	22	78.6	24	85.7	1	3.4
Tigerair Australia	42	41	34	82.9	37	90.2	1	2.4
Virgin Australia	143	141	112	79.4	121	85.8	2	1.4
All Airlines	516	507	410	80.9	427	84.2	9	1.7
Sydney-Albury								
QantasLink	107	106	78	73.6	80	75.5	1	0.9
Regional Express	99	98	80	81.6	83	84.7	1	1.0
Virgin Australia	60	59	49	83.1	53	89.8	1	1.7
All Airlines	266	263	207	78.7	216	82.1	3	1.1
Sydney-Armidale								
QantasLink	119	116	75	64.7	93	80.2	3	2.5
Regional Express	74	73	62	84.9	65	89.0	1	1.4
All Airlines	193	189	137	72.5	158	83.6	4	2.1
Sydney-Ayers Rock								
Jetstar	30	30	22	73.3	27	90.0	0	0.0
Virgin Australia	30	30	19	63.3	26	86.7	0	0.0
All Airlines	60	60	41	68.3	53	88.3	0	0.0
Sydney-Ballina								
Jetstar	75	74	61	82.4	62	83.8	1	1.3
Regional Express	26	26	21	80.8	21	80.8	0	0.0
Virgin Australia	30	29	28	96.6	29	100.0	1	3.3
All Airlines	131	129	110	85.3	112	86.8	2	1.5
Sydney-Brisbane								
Jetstar	163	159	119	74.8	119	74.8	4	2.5
Qantas	555	550	443	80.5	477	86.7	5	0.9
Tigerair Australia	96	92	75	81.5	81	88.0	4	4.2
Virgin Australia	525	502	411	81.9	432	86.1	23	4.4
All Airlines	1 339	1 303	1 048	80.4	1 109	85.1	36	2.7
Sydney-Cairns								
Jetstar	99	98	81	82.7	79	80.6	1	1.0
Qantas	77	77	64	83.1	65	84.4	0	0.0
Tigerair Australia	35	35	33	94.3	34	97.1	0	0.0
Virgin Australia	86	86	79	91.9	79	91.9	0	0.0
All Airlines	297	296	257	86.8	257	86.8	1	0.3
Sydney-Canberra								
QantasLink	446	428	349	81.5	351	82.0	18	4.0
Virgin Australia	290	275	243	88.4	242	88.0	15	5.2
All Airlines	736	703	592	84.2	593	84.4	33	4.5

	<i>Sectors</i>		<i>Arrivals On Time</i>		<i>Departures On Time</i>		<i>Cancellations</i>	
	<i>Sched.</i>	<i>Flown</i>	<i>No.</i>	<i>%</i>	<i>No.</i>	<i>%</i>	<i>No.</i>	<i>%</i>
Sydney-Coffs Harbour								
QantasLink	151	148	113	76.4	115	77.7	3	2.0
Tigerair Australia	12	12	11	91.7	11	91.7	0	0.0
Virgin Australia	59	58	52	89.7	51	87.9	1	1.7
All Airlines	222	218	176	80.7	177	81.2	4	1.8
Sydney-Darwin								
Jetstar	24	24	17	70.8	22	91.7	0	0.0
Qantas	60	60	47	78.3	50	83.3	0	0.0
Virgin Australia	30	30	24	80.0	26	86.7	0	0.0
All Airlines	114	114	88	77.2	98	86.0	0	0.0
Sydney-Dubbo								
QantasLink	125	122	95	77.9	93	76.2	3	2.4
Regional Express	148	146	124	84.9	128	87.7	2	1.4
All Airlines	273	268	219	81.7	221	82.5	5	1.8
Sydney-Gold Coast								
Jetstar	267	264	205	77.7	206	78.0	3	1.1
Qantas	84	84	75	89.3	72	85.7	0	0.0
QantasLink	15	15	12	80.0	13	86.7	0	0.0
Tigerair Australia	91	86	70	81.4	75	87.2	5	5.5
Virgin Australia	243	234	195	83.3	203	86.8	9	3.7
All Airlines	700	683	557	81.6	569	83.3	17	2.4
Sydney-Hamilton Island								
Jetstar	20	20	14	70.0	17	85.0	0	0.0
Qantas	9	9	8	88.9	8	88.9	0	0.0
QantasLink	13	12	8	66.7	9	75.0	1	7.7
Virgin Australia	30	29	27	93.1	28	96.6	1	3.3
All Airlines	72	70	57	81.4	62	88.6	2	2.8
Sydney-Hobart								
Jetstar	59	58	42	72.4	39	67.2	1	1.7
QantasLink	56	56	41	73.2	41	73.2	0	0.0
Virgin Australia	59	59	53	89.8	52	88.1	0	0.0
All Airlines	174	173	136	78.6	132	76.3	1	0.6
Sydney-Launceston								
Jetstar	33	33	28	84.8	28	84.8	0	0.0
Virgin Australia	30	30	27	90.0	28	93.3	0	0.0
All Airlines	63	63	55	87.3	56	88.9	0	0.0
Sydney-Melbourne								
Jetstar	338	321	211	65.7	205	63.9	17	5.0
Qantas	914	862	678	78.7	733	85.0	52	5.7
Tigerair Australia	229	221	164	74.2	172	77.8	8	3.5
Virgin Australia	762	717	592	82.6	632	88.1	45	5.9
All Airlines	2 243	2 121	1 645	77.6	1 742	82.1	122	5.4
Sydney-Perth								
Jetstar	30	30	24	80.0	27	90.0	0	0.0
Qantas	205	204	151	74.0	171	83.8	1	0.5
Tigerair Australia	19	19	15	78.9	17	89.5	0	0.0
Virgin Australia	113	112	77	68.8	100	89.3	1	0.9
All Airlines	367	365	267	73.2	315	86.3	2	0.5
Sydney-Port Macquarie								
QantasLink	134	132	101	76.5	106	80.3	2	1.5
Virgin Australia	59	57	48	84.2	50	87.7	2	3.4
All Airlines	193	189	149	78.8	156	82.5	4	2.1

	<i>Sectors</i>		<i>Arrivals On Time</i>		<i>Departures On Time</i>		<i>Cancellations</i>	
	<i>Sched.</i>	<i>Flown</i>	<i>No.</i>	<i>%</i>	<i>No.</i>	<i>%</i>	<i>No.</i>	<i>%</i>
Sydney-Sunshine Coast								
Jetstar	88	82	55	67.1	51	62.2	6	6.8
QantasLink	26	26	16	61.5	18	69.2	0	0.0
Virgin Australia	30	28	25	89.3	26	92.9	2	6.7
All Airlines	144	136	96	70.6	95	69.9	8	5.6
Sydney-Tamworth								
QantasLink	155	150	115	76.7	122	81.3	5	3.2
Virgin Australia	26	25	23	92.0	23	92.0	1	3.8
All Airlines	181	175	138	78.9	145	82.9	6	3.3
Sydney-Townsville								
Jetstar	23	23	19	82.6	19	82.6	0	0.0
Virgin Australia	20	20	18	90.0	19	95.0	0	0.0
All Airlines	43	43	37	86.0	38	88.4	0	0.0
Sydney-Wagga Wagga								
QantasLink	112	109	82	75.2	85	78.0	3	2.7
Regional Express	132	132	111	84.1	117	88.6	0	0.0
All Airlines	244	241	193	80.1	202	83.8	3	1.2
Tamworth-Sydney								
QantasLink	154	150	118	78.7	116	77.3	4	2.6
Virgin Australia	26	25	22	88.0	23	92.0	1	3.8
All Airlines	180	175	140	80.0	139	79.4	5	2.8
Townsville-Brisbane								
Jetstar	47	47	39	83.0	37	78.7	0	0.0
Qantas	116	116	102	87.9	104	89.7	0	0.0
QantasLink	26	26	21	80.8	21	80.8	0	0.0
Virgin Australia	139	136	126	92.6	126	92.6	3	2.2
All Airlines	328	325	288	88.6	288	88.6	3	0.9
Townsville-Cairns								
QantasLink	142	140	129	92.1	128	91.4	2	1.4
Regional Express	74	74	74	100.0	74	100.0	0	0.0
All Airlines	216	214	203	94.9	202	94.4	2	0.9
Townsville-Sydney								
Jetstar	23	23	17	73.9	15	65.2	0	0.0
Virgin Australia	20	20	15	75.0	17	85.0	0	0.0
All Airlines	43	43	32	74.4	32	74.4	0	0.0
Wagga Wagga-Sydney								
QantasLink	112	109	89	81.7	90	82.6	3	2.7
Regional Express	127	127	106	83.5	111	87.4	0	0.0
All Airlines	239	236	195	82.6	201	85.2	3	1.3

Airports

On time performance is reported for all routes where the passenger load averages over 8000 passengers per month, and where two or more airlines operate in competition. The following data reports by airport against flights operated on those routes only. This month, 8 major city airports and 33 regional city airports are covered.

Airport	Arrivals			Departures		
	Sectors	On Time		Sectors	On Time	
	Flown	No.	%	Flown	No.	%
Adelaide						
Jetstar	262	182	69.5	261	191	73.2
Qantas	760	659	86.7	760	687	90.4
QantasLink	135	120	88.9	135	122	90.4
Regional Express	203	174	85.7	204	195	95.6
Tigerair Australia	131	112	85.5	131	105	80.2
Virgin Australia	643	554	86.2	643	570	88.6
All Airlines	2 134	1 801	84.4	2 134	1 870	87.6
Relates to services to and from Alice Springs, Brisbane, Canberra, Gold Coast, Melbourne, Perth, Port Lincoln and Sydney.						
Albury						
QantasLink	106	78	73.6	106	77	72.6
Regional Express	98	80	81.6	100	87	87.0
Virgin Australia	59	49	83.1	59	47	79.7
All Airlines	263	207	78.7	265	211	79.6
Relates to services to and from Sydney only.						
Alice Springs						
Qantas	30	28	93.3	30	21	70.0
QantasLink	56	49	87.5	58	57	98.3
Virgin Australia	28	26	92.9	28	25	89.3
All Airlines	114	103	90.4	116	103	88.8
Relates to services to and from Adelaide and Darwin.						
Armidale						
QantasLink	116	75	64.7	110	79	71.8
Regional Express	73	62	84.9	73	59	80.8
All Airlines	189	137	72.5	183	138	75.4
Relates to services to and from Sydney only.						
Ayers Rock						
Jetstar	30	22	73.3	30	19	63.3
Virgin Australia	30	19	63.3	30	18	60.0
All Airlines	60	41	68.3	60	37	61.7
Relates to services to and from Sydney only.						
Ballina						
Jetstar	74	61	82.4	73	52	71.2
Regional Express	26	21	80.8	24	18	75.0
Virgin Australia	29	28	96.6	29	28	96.6
All Airlines	129	110	85.3	126	98	77.8
Relates to services to and from Sydney only.						

Airport	Arrivals			Departures		
	Sectors Flown	On Time		Sectors Flown	On Time	
		No.	%		No.	%
Brisbane						
Jetstar	607	481	79.2	609	472	77.5
Qantas	1 511	1 289	85.3	1 527	1 341	87.8
QantasLink	1 124	983	87.5	1 126	1 002	89.0
Tigerair Australia	281	234	83.3	280	239	85.4
Virgin Australia	2 290	1 992	87.0	2 294	2 041	89.0
All Airlines	5 813	4 979	85.7	5 836	5 095	87.3

Relates to services to and from Adelaide, Bundaberg, Cairns, Canberra, Darwin, Emerald, Gladstone, Hamilton Island, Hobart, Mackay, Melbourne, Moranbah, Mount Isa, Newcastle, Perth, Proserpine, Rockhampton, Sydney and Townsville.

Broome

Qantas	30	25	83.3	30	21	70.0
QantasLink	52	48	92.3	52	46	88.5
Virgin Australia	4	3	75.0	4	3	75.0
Virgin Australia Regional Airlines	51	42	82.4	51	40	78.4
All Airlines	137	118	86.1	137	110	80.3

Relates to services to and from Perth only.

Bundaberg

QantasLink	132	121	91.7	132	120	90.9
Virgin Australia	30	26	86.7	30	26	86.7
All Airlines	162	147	90.7	162	146	90.1

Relates to services to and from Brisbane only.

Cairns

Jetstar	279	208	74.6	277	213	76.9
Qantas	235	208	88.5	234	200	85.5
QantasLink	148	133	89.9	149	131	87.9
Regional Express	74	74	100.0	74	73	98.6
Tigerair Australia	104	92	88.5	104	88	84.6
Virgin Australia	248	223	89.9	248	222	89.5
All Airlines	1 088	938	86.2	1 086	927	85.4

Relates to services to and from Brisbane, Melbourne, Sydney and Townsville.

Canberra

Qantas	254	229	90.2	253	230	90.9
QantasLink	595	488	82.0	595	498	83.7
Virgin Australia	566	499	88.2	567	485	85.5
All Airlines	1 415	1 216	85.9	1 415	1 213	85.7

Relates to services to and from Adelaide, Brisbane, Melbourne and Sydney.

Coffs Harbour

QantasLink	148	113	76.4	146	110	75.3
Tigerair Australia	12	11	91.7	12	10	83.3
Virgin Australia	58	52	89.7	58	53	91.4
All Airlines	218	176	80.7	216	173	80.1

Relates to services to and from Sydney only.

Darwin

Jetstar	74	56	75.7	74	51	68.9
Qantas	182	158	86.8	180	155	86.1
QantasLink	58	57	98.3	56	49	87.5
Tigerair Australia	22	20	90.9	22	22	100.0
Virgin Australia	135	112	83.0	135	109	80.7
All Airlines	471	403	85.6	467	386	82.7

Relates to services to and from Alice Springs, Brisbane, Melbourne, Perth and Sydney.

Airport	Arrivals			Departures		
	Sectors Flown	On Time		Sectors Flown	On Time	
		No.	%		No.	%
Dubbo						
QantasLink	122	95	77.9	122	100	82.0
Regional Express	146	124	84.9	146	127	87.0
All Airlines	268	219	81.7	268	227	84.7
Relates to services to and from Sydney only.						
Emerald						
QantasLink	135	114	84.4	134	117	87.3
Virgin Australia	68	68	100.0	71	71	100.0
All Airlines	203	182	89.7	205	188	91.7
Relates to services to and from Brisbane only.						
Geraldton						
QantasLink	48	43	89.6	48	41	85.4
Virgin Australia Regional Airlines	56	49	87.5	55	50	90.9
All Airlines	104	92	88.5	103	91	88.3
Relates to services to and from Perth only.						
Gladstone						
QantasLink	179	154	86.0	180	160	88.9
Virgin Australia	127	113	89.0	127	115	90.6
All Airlines	306	267	87.3	307	275	89.6
Relates to services to and from Brisbane only.						
Gold Coast						
Jetstar	469	342	72.9	468	345	73.7
Qantas	114	99	86.8	114	100	87.7
QantasLink	15	12	80.0	15	13	86.7
Tigerair Australia	161	134	83.2	161	126	78.3
Virgin Australia	430	355	82.6	429	357	83.2
All Airlines	1 189	942	79.2	1 187	941	79.3
Relates to services to and from Adelaide, Melbourne and Sydney.						
Hamilton Island						
Jetstar	20	14	70.0	20	10	50.0
Qantas	21	18	85.7	21	16	76.2
QantasLink	41	34	82.9	41	31	75.6
Virgin Australia	78	70	89.7	78	67	85.9
All Airlines	160	136	85.0	160	124	77.5
Relates to services to and from Brisbane, Melbourne and Sydney.						
Hobart						
Jetstar	237	171	72.2	236	150	63.6
QantasLink	194	158	81.4	194	162	83.5
Tigerair Australia	32	28	87.5	32	27	84.4
Virgin Australia	223	198	88.8	223	187	83.9
All Airlines	686	555	80.9	685	526	76.8
Relates to services to and from Brisbane, Melbourne and Sydney.						
Kalgoorlie						
Qantas	4	4	100.0	4	4	100.0
QantasLink	76	60	78.9	76	60	78.9
Virgin Australia	31	28	90.3	31	28	90.3
Virgin Australia Regional Airlines	28	22	78.6	28	25	89.3
All Airlines	139	114	82.0	139	117	84.2
Relates to services to and from Perth only.						

Airport	Arrivals			Departures		
	Sectors Flown	On Time		Sectors Flown	On Time	
		No.	%		No.	%
Karratha						
Qantas	43	40	93.0	43	40	93.0
QantasLink	151	125	82.8	148	126	85.1
Virgin Australia	5	5	100.0	5	4	80.0
Virgin Australia Regional Airlines	58	43	74.1	58	46	79.3
All Airlines	257	213	82.9	254	216	85.0
Relates to services to and from Perth only.						
Launceston						
Jetstar	140	103	73.6	139	83	59.7
QantasLink	110	90	81.8	110	90	81.8
Virgin Australia	120	102	85.0	119	107	89.9
All Airlines	370	295	79.7	368	280	76.1
Relates to services to and from Melbourne and Sydney.						
Mackay						
Jetstar	47	39	83.0	47	38	80.9
QantasLink	101	84	83.2	101	78	77.2
Virgin Australia	149	127	85.2	148	133	89.9
All Airlines	297	250	84.2	296	249	84.1
Relates to services to and from Brisbane only.						
Melbourne						
Jetstar	1 315	904	68.7	1 327	878	66.2
Qantas	2 014	1 655	82.2	2 012	1 696	84.3
QantasLink	403	328	81.4	400	338	84.5
Regional Express	81	49	60.5	81	67	82.7
Tigerair Australia	600	454	75.7	602	497	82.6
Virgin Australia	2 207	1 834	83.1	2 209	1 922	87.0
All Airlines	6 620	5 224	78.9	6 631	5 398	81.4
Relates to services to and from Adelaide, Brisbane, Cairns, Canberra, Darwin, Gold Coast, Hamilton Island, Hobart, Launceston, Mildura, Newcastle, Perth, Sunshine Coast and Sydney.						
Mildura						
QantasLink	93	76	81.7	93	80	86.0
Regional Express	81	65	80.2	81	55	67.9
Virgin Australia	30	22	73.3	30	21	70.0
All Airlines	204	163	79.9	204	156	76.5
Relates to services to and from Melbourne only.						
Moranbah						
QantasLink	98	91	92.9	97	86	88.7
Virgin Australia	66	57	86.4	66	61	92.4
All Airlines	164	148	90.2	163	147	90.2
Relates to services to and from Brisbane only.						
Mount Isa						
Qantas	28	27	96.4	28	27	96.4
QantasLink	28	27	96.4	28	27	96.4
Virgin Australia	18	17	94.4	18	16	88.9
All Airlines	74	71	95.9	74	70	94.6
Relates to services to and from Brisbane only.						

Airport	Arrivals			Departures		
	Sectors Flown	On Time		Sectors Flown	On Time	
		No.	%		No.	%
Newcastle						
Jetstar	179	135	75.4	180	131	72.8
QantasLink	95	86	90.5	94	88	93.6
Virgin Australia	115	94	81.7	115	95	82.6
All Airlines	389	315	81.0	389	314	80.7
Relates to services to and from Brisbane and Melbourne.						
Newman						
Qantas	76	70	92.1	76	72	94.7
QantasLink	67	62	92.5	67	62	92.5
Virgin Australia	19	18	94.7	18	18	100.0
Virgin Australia Regional Airlines	21	19	90.5	21	20	95.2
All Airlines	183	169	92.3	182	172	94.5
Relates to services to and from Perth only.						
Perth						
Jetstar	120	99	82.5	116	74	63.8
Qantas	875	698	79.8	879	757	86.1
QantasLink	464	401	86.4	470	410	87.2
Tigerair Australia	66	51	77.3	63	44	69.8
Virgin Australia	534	401	75.1	535	480	89.7
Virgin Australia Regional Airlines	228	183	80.3	229	199	86.9
All Airlines	2 287	1 833	80.1	2 292	1 964	85.7
Relates to services to and from Adelaide, Brisbane, Broome, Darwin, Geraldton, Kalgoorlie, Karratha, Melbourne, Newman, Port Hedland and Sydney.						
Port Hedland						
Qantas	58	54	93.1	58	53	91.4
QantasLink	76	57	75.0	73	62	84.9
Virgin Australia	37	35	94.6	37	36	97.3
Virgin Australia Regional Airlines	15	13	86.7	15	12	80.0
All Airlines	186	159	85.5	183	163	89.1
Relates to services to and from Perth only.						
Port Lincoln						
QantasLink	107	99	92.5	107	98	91.6
Regional Express	204	190	93.1	203	185	91.1
All Airlines	311	289	92.9	310	283	91.3
Relates to services to and from Adelaide only.						
Port Macquarie						
QantasLink	132	101	76.5	131	98	74.8
Virgin Australia	57	48	84.2	57	50	87.7
All Airlines	189	149	78.8	188	148	78.7
Relates to services to and from Sydney only.						
Proserpine						
Jetstar	23	20	87.0	23	18	78.3
Virgin Australia	30	29	96.7	30	26	86.7
All Airlines	53	49	92.5	53	44	83.0
Relates to services to and from Brisbane only.						

Airport	Arrivals			Departures		
	Sectors	On Time		Sectors	On Time	
	Flown	No.	%	Flown	No.	%
Rockhampton						
QantasLink	187	161	86.1	187	157	84.0
Virgin Australia	187	165	88.2	185	171	92.4
All Airlines	374	326	87.2	372	328	88.2
Relates to services to and from Brisbane only.						
Sunshine Coast						
Jetstar	160	116	72.5	158	86	54.4
QantasLink	26	16	61.5	26	21	80.8
Virgin Australia	66	58	87.9	66	54	81.8
All Airlines	252	190	75.4	250	161	64.4
Relates to services to and from Melbourne and Sydney.						
Sydney						
Jetstar	1 304	947	72.6	1 302	959	73.7
Qantas	2 071	1 760	85.0	2 057	1 763	85.7
QantasLink	1 436	1 140	79.4	1 448	1 150	79.4
Regional Express	470	390	83.0	475	414	87.2
Tigerair Australia	504	399	79.2	506	427	84.4
Virgin Australia	2 524	2 172	86.1	2 521	2 220	88.1
All Airlines	8 309	6 808	81.9	8 309	6 933	83.4
Relates to services to and from Adelaide, Albury, Armidale, Ayers Rock, Ballina, Brisbane, Cairns, Canberra, Coffs Harbour, Darwin, Dubbo, Gold Coast, Hamilton Island, Hobart, Launceston, Melbourne, Perth, Port Macquarie, Sunshine Coast, Tamworth, Townsville and Wagga Wagga.						
Tamworth						
QantasLink	150	115	76.7	150	116	77.3
Virgin Australia	25	23	92.0	25	23	92.0
All Airlines	175	138	78.9	175	139	79.4
Relates to services to and from Sydney only.						
Townsville						
Jetstar	70	58	82.9	70	52	74.3
Qantas	116	107	92.2	116	104	89.7
QantasLink	167	149	89.2	166	149	89.8
Regional Express	74	73	98.6	74	74	100.0
Virgin Australia	158	145	91.8	156	143	91.7
All Airlines	585	532	90.9	582	522	89.7
Relates to services to and from Brisbane, Cairns and Sydney.						
Wagga Wagga						
QantasLink	109	82	75.2	109	90	82.6
Regional Express	132	111	84.1	127	111	87.4
All Airlines	241	193	80.1	236	201	85.2
Relates to services to and from Sydney only.						

Definitions

On time arrival	A flight arrival is counted as "on time" if it arrived at the gate before 15 minutes after the scheduled arrival time shown in the carriers' schedule. Neither diverted nor cancelled flights count as on time.
On time departure	A flight departure is counted as "on time" if it departs the gate before 15 minutes after the scheduled departure time shown in the carriers' schedule.
Cancellation	A flight removed from service within 7 days of scheduled departure is regarded as a cancellation.
On time departure percentage	The percentage of on time departures is measured against the number of departures <i>operated</i> on any particular sector.
On time arrival percentage	The percentage of on time arrivals is measured against the number of arrivals <i>operated</i> on any particular sector.
Cancellation percentage	The percentage of cancellations is measured against the number of services <i>scheduled</i> on any particular sector.
