



**Australian Government**

**Department of Infrastructure and Regional Development**

Bureau of Infrastructure, Transport and Regional Economics

STATISTICAL REPORT



## Aviation

Domestic airline on time performance  
June 2015

© Commonwealth of Australia 2015

ISSN: 1832-0759

### **Ownership of intellectual property rights in this publication**

Unless otherwise noted, copyright (and any other intellectual property rights, if any) in this publication is owned by the Commonwealth of Australia (referred to below as the Commonwealth).

### **Disclaimer**

The material contained in this publication is made available on the understanding that the Commonwealth is not providing professional advice, and that users exercise their own skill and care with respect to its use, and seek independent advice if necessary.

The Commonwealth makes no representations or warranties as to the contents or accuracy of the information contained in this publication. To the extent permitted by law, the Commonwealth disclaims liability to any person or organisation in respect of anything done, or omitted to be done, in reliance upon information contained in this publication.

### **Creative Commons licence**

With the exception of (a) the Coat of Arms; and (b) the Department of Infrastructure and Regional Development's photos and graphics, copyright in this publication is licensed under a Creative Commons Attribution 3.0 Australia Licence.

Creative Commons Attribution 3.0 Australia Licence is a standard form licence agreement that allows you to copy, communicate and adapt this publication provided that you attribute the work to the Commonwealth and abide by the other licence terms. A summary of the licence terms is available from <http://creativecommons.org/licenses/by/3.0/au/deed.en>. The full licence terms are available from <http://creativecommons.org/licenses/by/3.0/au/legalcode>.

### **Use of the Coat of Arms**

The Department of the Prime Minister and Cabinet sets the terms under which the Coat of Arms is used. Please refer to the Department's Commonwealth Coat of Arms and Government branding web page <http://www.dpmmc.gov.au/guidelines/index.cfm#brand> and, in particular, the Guidelines on the use of the Commonwealth Coat of Arms publication.

An appropriate citation for this report is:

Bureau of Infrastructure, Transport and Regional Economics (BITRE), 2015, Domestic airline on time performance, Statistical Report, BITRE, Canberra ACT.

### **Contact us**

This publication is available in PDF format. All other rights are reserved, including in relation to any Departmental logos or trade marks which may exist. For enquiries regarding the licence and any use of this publication, please contact:

Bureau of Infrastructure, Transport and Regional Economics (BITRE)  
Department of Infrastructure and Regional Development  
GPO Box 501, Canberra ACT 2601, Australia  
Telephone: (international) +61 2 6274 7210  
Fax: (international) +61 2 6274 6855  
Email: [bitre@infrastructure.gov.au](mailto:bitre@infrastructure.gov.au)  
Website: [www.bitre.gov.au](http://www.bitre.gov.au)

### **Inquiries**

Should you require additional information about the statistics contained in this publication:

Telephone (02) 6274 7790 or Facsimile (02) 6274 7727

Electronic mail: [AVSTATS@infrastructure.gov.au](mailto:AVSTATS@infrastructure.gov.au)

Web site: <http://www.bitre.gov.au/statistics/aviation/otphome.aspx>

# Foreword

The Bureau of Infrastructure, Transport and Regional Economics (BITRE) monitors the punctuality and reliability of major domestic airlines operating between Australian airports. The purpose of this is to allow for evaluation of overall industry and individual airline performance, so that consumers of air travel can make informed decisions.

The following domestic airlines currently report this information monthly to the BITRE: Jetstar, Qantas, QantasLink, Regional Express, Tigerair, Virgin Australia and Virgin Australia Regional Airlines. Data has been gathered since November 2003, although some airlines commenced reporting at a later date, including Jetstar which first reported in May 2004, MacAir in July 2005 and Tigerair in April 2008. MacAir ceased operations in February 2009 and data was not received for December 2008 onwards. Virgin Blue was rebranded as Virgin Australia in May 2011 and Tiger Airways was rebranded as Tigerair in July 2013 and time series data in Microsoft Excel spreadsheet format on the BITRE website have been revised to reflect these changes. Virgin Australia Regional Airlines commenced operations in May 2013. It was formed after the acquisition of Skywest by Virgin Australia and represents a combination of operations previously reported under Skywest and Virgin Australia – ATR/F100 Operations. Services operated by Skywest on behalf of Virgin Australia using ATR/F100 aircraft commenced in November 2011 and were shown separately as Virgin Australia – ATR/F100 Operations until April 2013.

Information presented in this report is for Australian domestic routes for which the passenger load averaged 8 000 or more passengers per month over the previous six months and where two or more airlines operated in competition on those routes. There were 64 routes that met this definition in June 2015. Over time, routes which meet these criteria change as airline networks and traffic levels vary.

Participating airlines report their overall monthly network performance where this is possible.

Total industry figures encompass all services operated by reporting airlines only. These airlines collectively carried over 95 per cent of total domestic passengers (regular public transport only) in 2014.

The method of capturing on time performance varies between airlines utilising different recording systems. Jetstar and Qantas jet aircraft use Aircraft Communication Addressing and Reporting System (ACARS) to electronically measure on time performance. Regional Express, Tigerair, Virgin Australia, Virgin Australia Regional Airlines and the Qantas non-jet fleet record on time performance manually using records from pilots, gate agents and/or ground crews.

After initial data is collected, aggregate reports are audited internally by participating airlines prior to publication.

Reports and detailed time series data in Microsoft Excel spreadsheet format are available from the BITRE website at: <http://www.bitre.gov.au/statistics/aviation/otphome.aspx>.



# Contents

	Page
Industry performance .....	1
Individual routes .....	10
Airports .....	23
Definitions .....	29



## Industry performance

For June 2015, on time performance over all routes operated by participating airlines (Jetstar, Qantas, QantasLink, Regional Express, Tigerair, Virgin Australia and Virgin Australia Regional Airlines) averaged 87.9 per cent for on time arrivals and 88.8 per cent for on time departures. Cancellations represented 1.5 per cent of all scheduled flights. The equivalent figures for June 2014 were 81.3 per cent for arrivals, 83.1 per cent for departures and 1.8 per cent for cancellations.

This month's figures were above the long term average performance for all routes (82.5 per cent for arrivals and 84.0 per cent for departures). The rate of cancellations was higher than the long term average of 1.3 per cent.

Virgin Australia achieved the highest on time arrivals among the major domestic airlines at 92.1 per cent, followed by Qantas at 90.7 per cent, Tigerair at 87.5 per cent and Jetstar at 83.4 per cent. QantasLink was the best performing regional airline for on time arrivals at 86.1 per cent, followed by Regional Express at 85.3 per cent and Virgin Australia Regional Airlines at 84.8 per cent. The Qantas network (Qantas and QantasLink combined operations) recorded 88.3 per cent for on time arrivals while the Virgin Australia network (Virgin Australia and Virgin Australia Regional Airlines combined operations) recorded 90.7 per cent.

Virgin Australia also achieved the highest level of on time departures for June 2015 at 93.2 per cent, followed by Qantas at 91.4 per cent, Tigerair at 89.5 per cent and Jetstar at 81.8 per cent. The regional airlines were led by Regional Express at 88.1 per cent, followed by QantasLink at 87.4 per cent and Virgin Australia Regional Airlines at 85.2 per cent. The Qantas network recorded 89.4 per cent for on time departures while the Virgin Australia network recorded 91.7 per cent.

QantasLink had the highest percentage of cancellations (2.5 per cent) during the month, followed by Virgin Australia Regional Airlines (2.2 per cent), Jetstar (1.5 per cent), Virgin Australia (1.4 per cent), Qantas (1.2 per cent), Tigerair (0.7 per cent) and Regional Express (0.3 per cent).

Airlines' on time performance varies across the routes they serve. Individual route data by specific airline for 64 routes are shown on pages 10-22.

Of the 64 routes which met the criteria for on time performance reporting in June 2015, the Canberra-Adelaide route had the highest percentage of on time arrivals (100.0 per cent) and the Melbourne-Hamilton Island route had the highest percentage of on time departures (also 100.0 per cent). The Darwin-Sydney route had the lowest percentage of on time arrivals (70.7 per cent) and the lowest percentage of on time departures (also 70.7 per cent).

Cancellations were highest on the Canberra-Sydney route at 5.1 per cent, followed by the Sydney-Canberra route at 4.6 per cent, the Launceston-Melbourne route at 4.5 per cent, the Gladstone-Brisbane route at 4.3 per cent and the Melbourne-Launceston and Brisbane-Gladstone routes at 3.9 per cent.

Port Hedland Airport recorded the highest percentage of on time arrivals (94.7 per cent) and Newman Airport recorded the highest percentage of on time departures (96.7 per cent). Albury Airport recorded the lowest percentage of on time arrivals (75.4 per cent) and Broome Airport

recorded the lowest percentage of on time departures (73.0 per cent). These figures only refer to reported routes and do not cover all flights at these airports.



Table 1 On time performance for June 2015 — Total Industry

	<i>Sectors</i>		<i>Arrivals On Time</i>		<i>Departures On Time</i>		<i>Cancellations</i>	
	<i>Scheduled</i>	<i>Flown</i>	<i>No.</i>	<i>%</i>	<i>No.</i>	<i>%</i>	<i>No.</i>	<i>%</i>
Jetstar	6 651	6 549	5 460	83.4	5 359	81.8	102	1.5
Qantas	9 623	9 510	8 626	90.7	8 694	91.4	113	1.2
QantasLink	10 149	9 897	8 518	86.1	8 649	87.4	252	2.5
Regional Express	5 765	5 750	4 906	85.3	5 066	88.1	15	0.3
Tigerair	1 985	1 971	1 725	87.5	1 764	89.5	14	0.7
Virgin Australia	10 791	10 640	9 802	92.1	9 921	93.2	151	1.4
Virgin Australia Regional Airlines	2 522	2 467	2 091	84.8	2 102	85.2	55	2.2
All Airlines	47 486	46 784	41 128	87.9	41 555	88.8	702	1.5
Qantas - all QF designated services	19 772	19 407	17 144	88.3	17 343	89.4	365	1.8
Virgin Australia - all VA designated services	13 313	13 107	11 893	90.7	12 023	91.7	206	1.5

Total airline network data (including routes not shown in this report).

Airlines' on time performance varies across the routes they serve. Individual route data by specific airline for 62 routes are shown on pages 10-21.

Table 2 Top ten routes for on time performance for June 2015 (participating airlines only)

<i>Arrivals</i>		<i>Departures</i>	
<i>Route</i>	<i>On Time (%)</i>	<i>Route</i>	<i>On Time (%)</i>
Canberra-Adelaide	100.0	Melbourne-Hamilton Island	100.0
Alice Springs-Adelaide	97.7	Adelaide-Gold Coast	98.4
Gold Coast-Adelaide	96.8	Perth-Darwin	97.1
Ayers Rock-Sydney	96.7	Gold Coast-Adelaide	96.8
Adelaide-Perth	96.3	Newman-Perth	96.7
Adelaide-Canberra	95.9	Perth-Karratha	96.6
Port Hedland-Perth	95.7	Karratha-Perth	96.6
Newman-Perth	95.7	Canberra-Adelaide	95.9
Brisbane-Adelaide	95.4	Perth-Port Hedland	95.8
Perth-Adelaide	95.4	Adelaide-Port Lincoln	95.4

Table 3 Top ten airports for on time performance for June 2015 (participating airlines and reported routes only)

<i>Arrivals</i>		<i>Departures</i>	
<i>Airport</i>	<i>On Time (%)</i>	<i>Airport</i>	<i>On Time (%)</i>
Port Hedland	94.7	Newman	96.7
Newman	94.6	Karratha	96.6
Karratha	94.3	Port Hedland	95.2
Adelaide	94.2	Adelaide	94.7
Kalgoorlie	93.5	Perth	94.3
Perth	92.6	Port Lincoln	93.7
Port Lincoln	92.4	Alice Springs	93.1
Alice Springs	92.2	Mount Isa	91.7
Mount Isa	91.7	Geraldton	90.8
Geraldton	91.3	Kalgoorlie	90.6

## Total industry on time performance

Figure 1 On time performance (by month from June 2012)—Total Industry

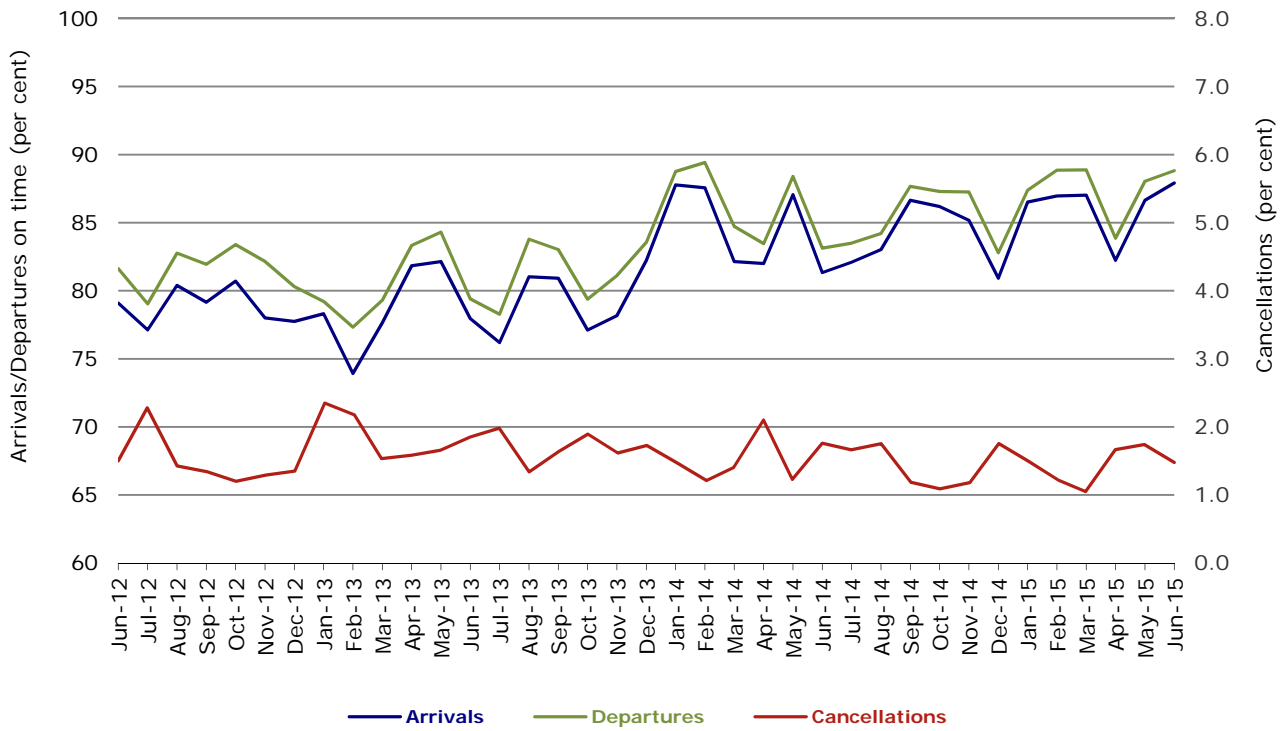


Figure 2 Arrivals on time (by month from June 2014)

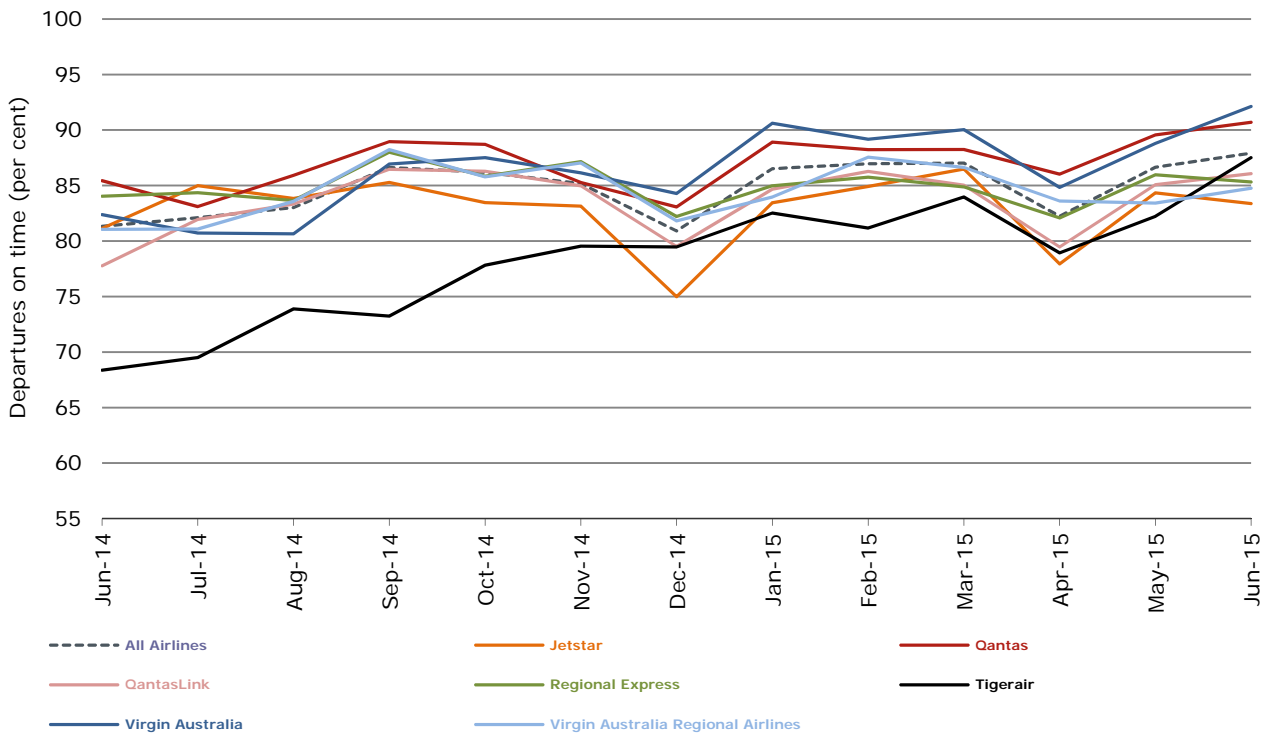


Figure 3 Departures on time (by month from June 2014)

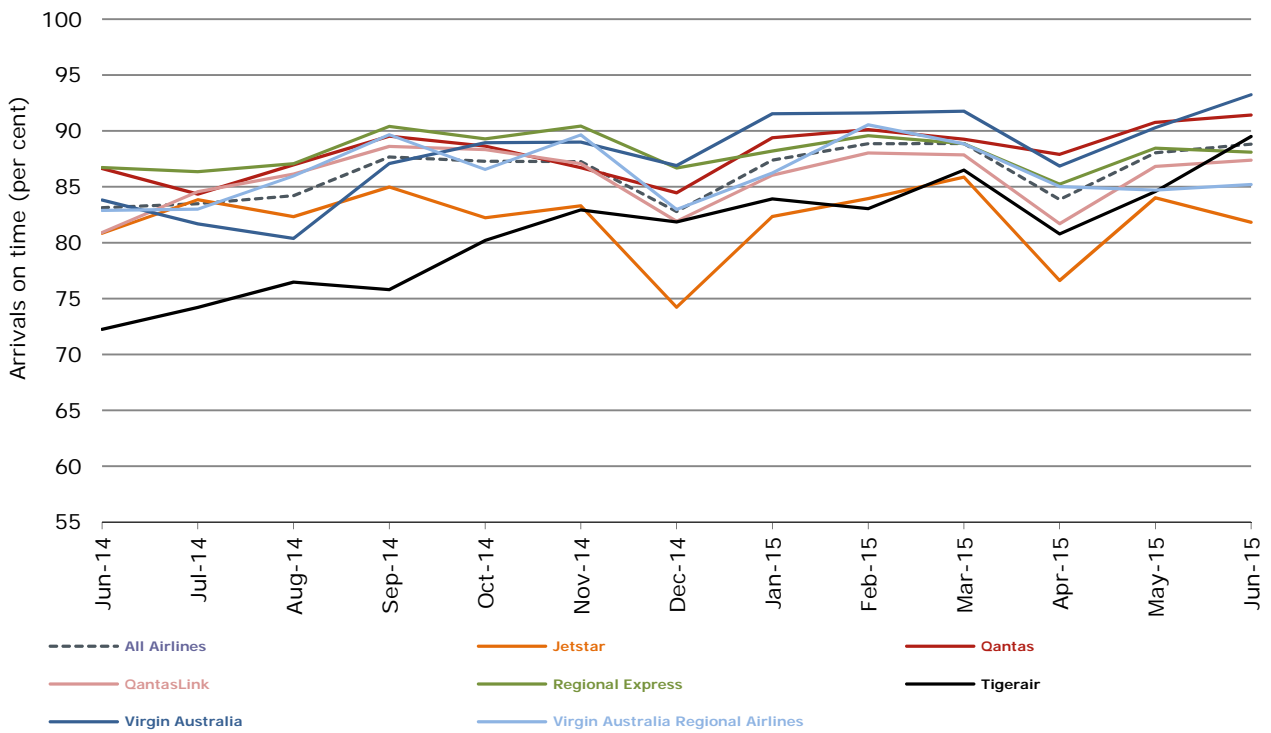
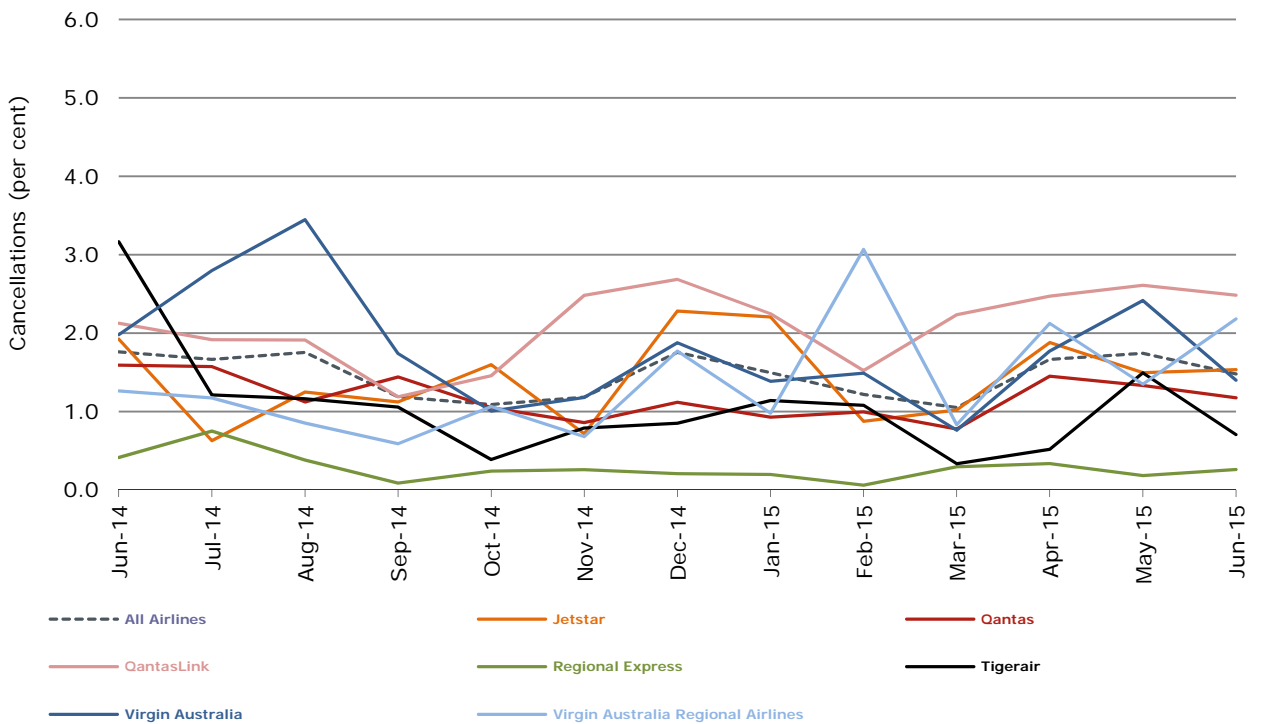


Figure 4 Cancellations (by month from June 2014)



## Major domestic airlines on time performance

Figure 5 On time performance (by month from June 2012)—Jetstar

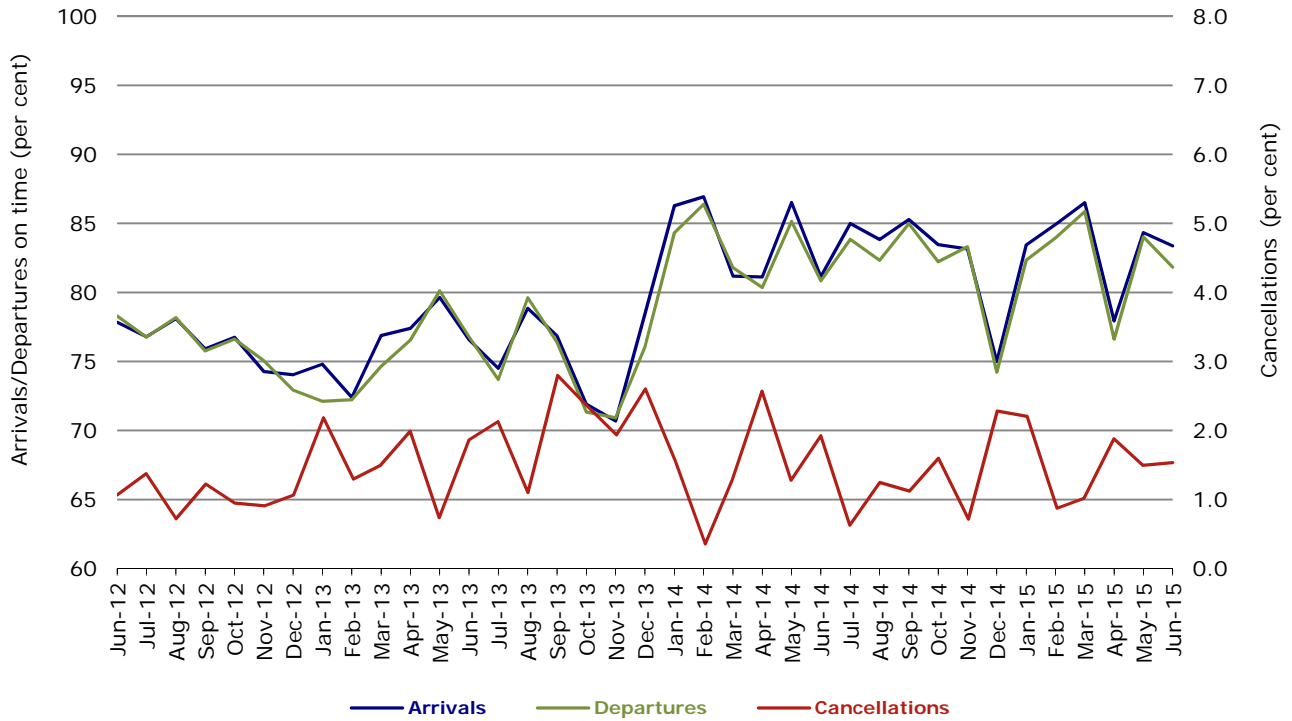


Figure 6 On time performance (by month from June 2012)—Qantas

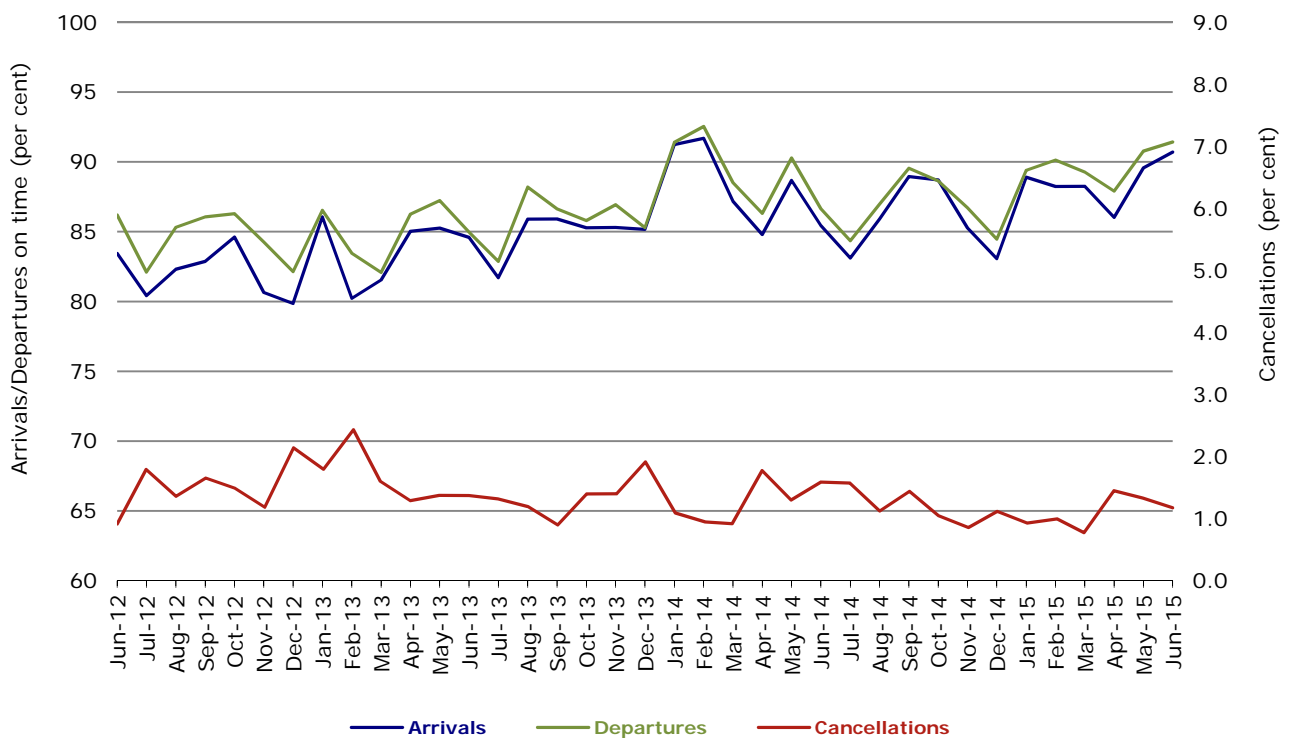


Figure 7 On time performance (by month from June 2012)—Tigerair

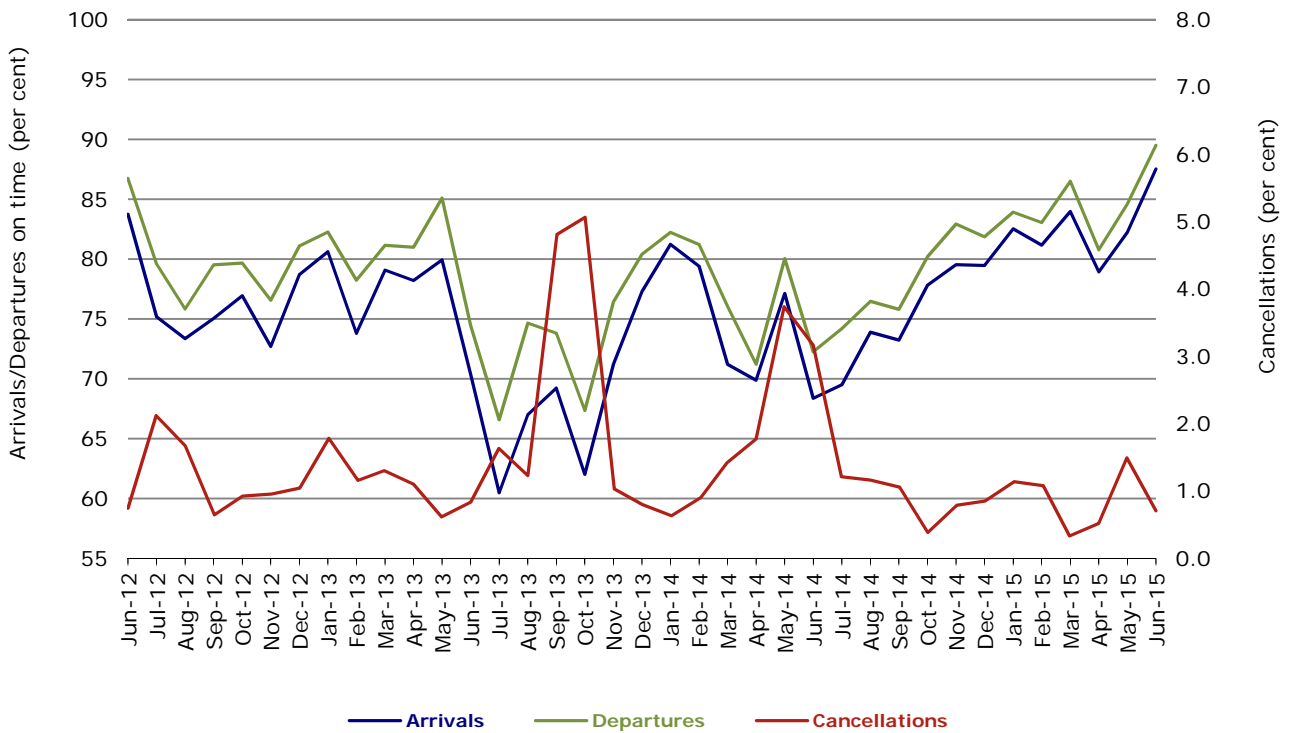
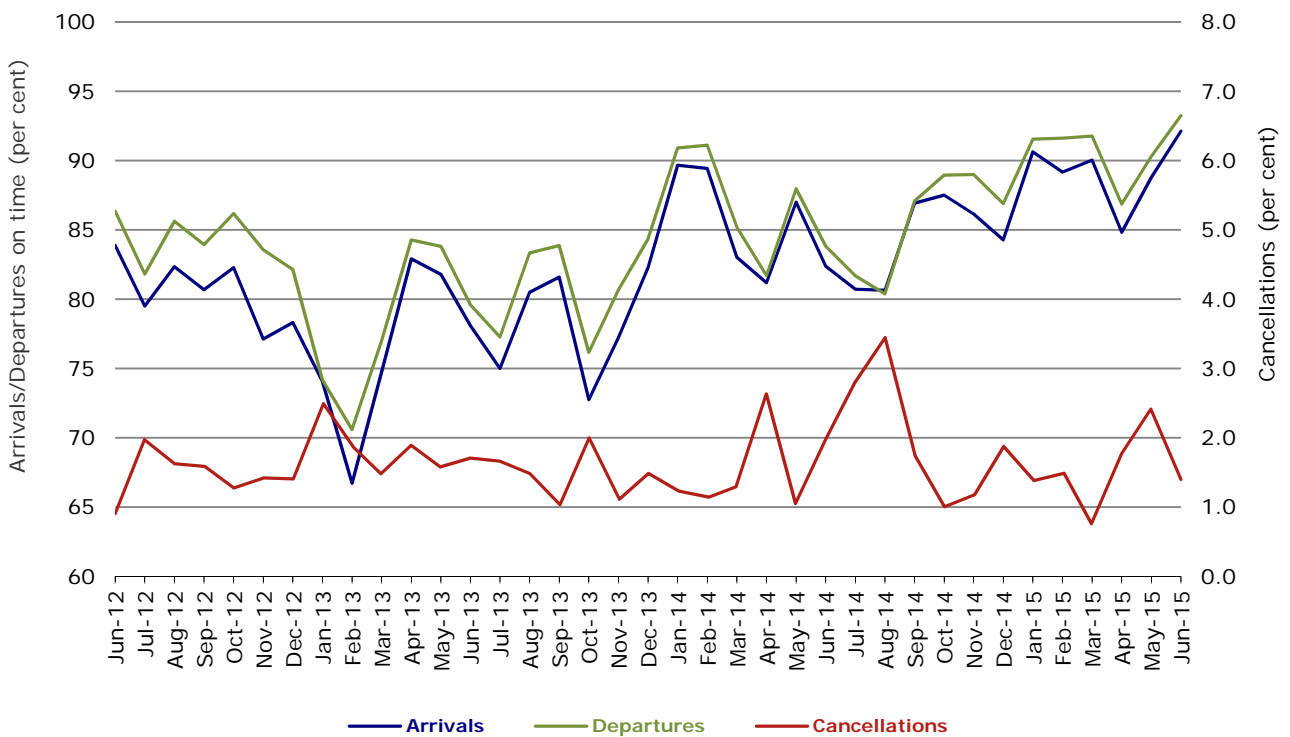


Figure 8 On time performance (by month from June 2012)—Virgin Australia



## Major regional airlines on time performance

Figure 9 On time performance (by month from June 2012)—QantasLink

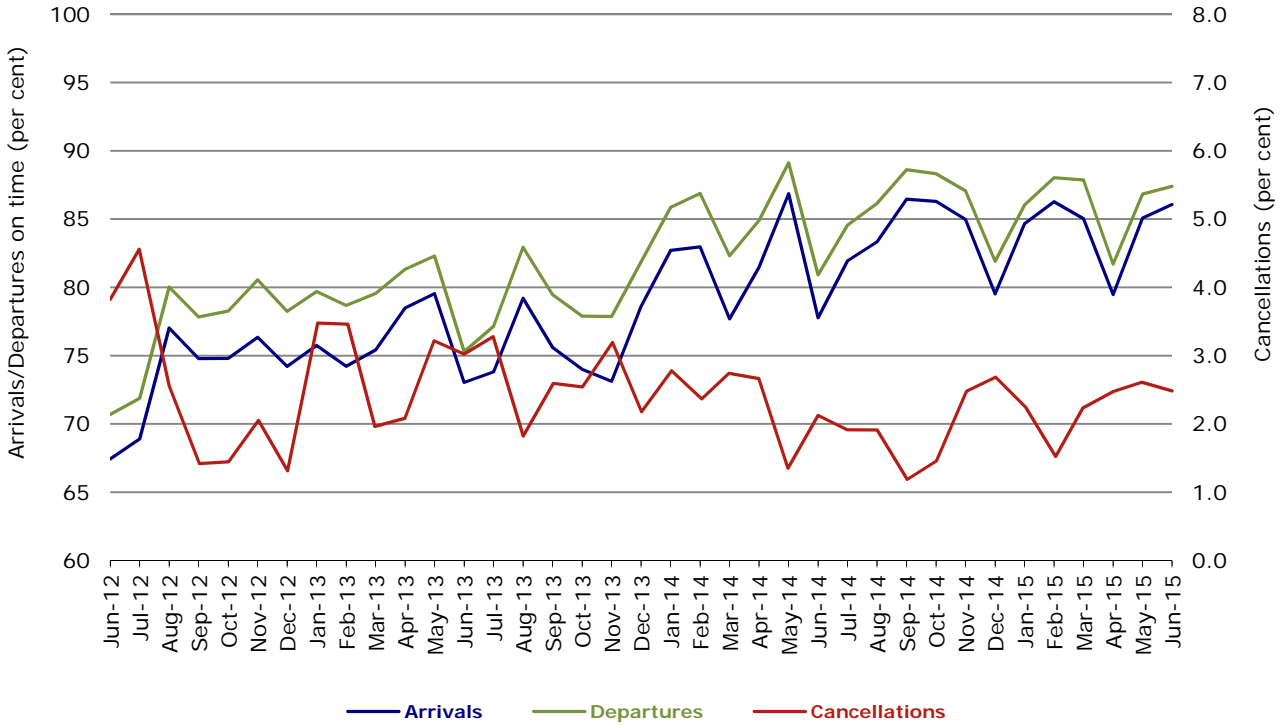


Figure 10 On time performance (by month from June 2012)—Regional Express

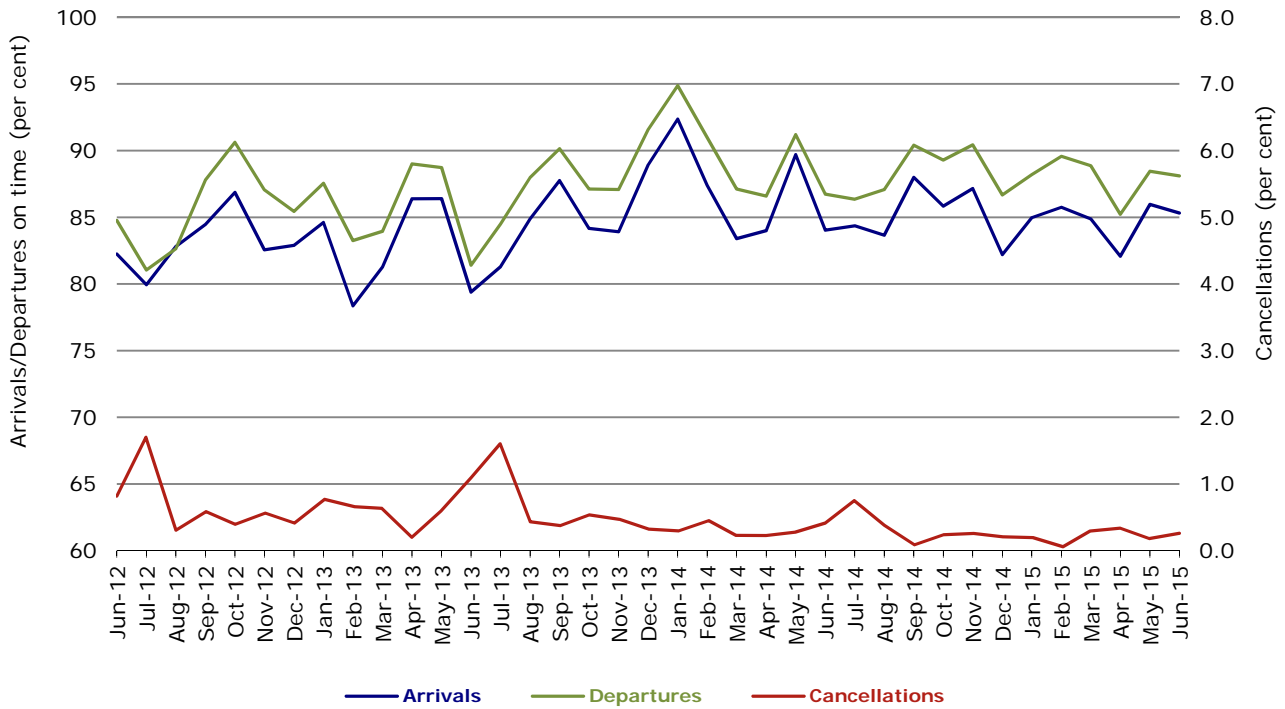
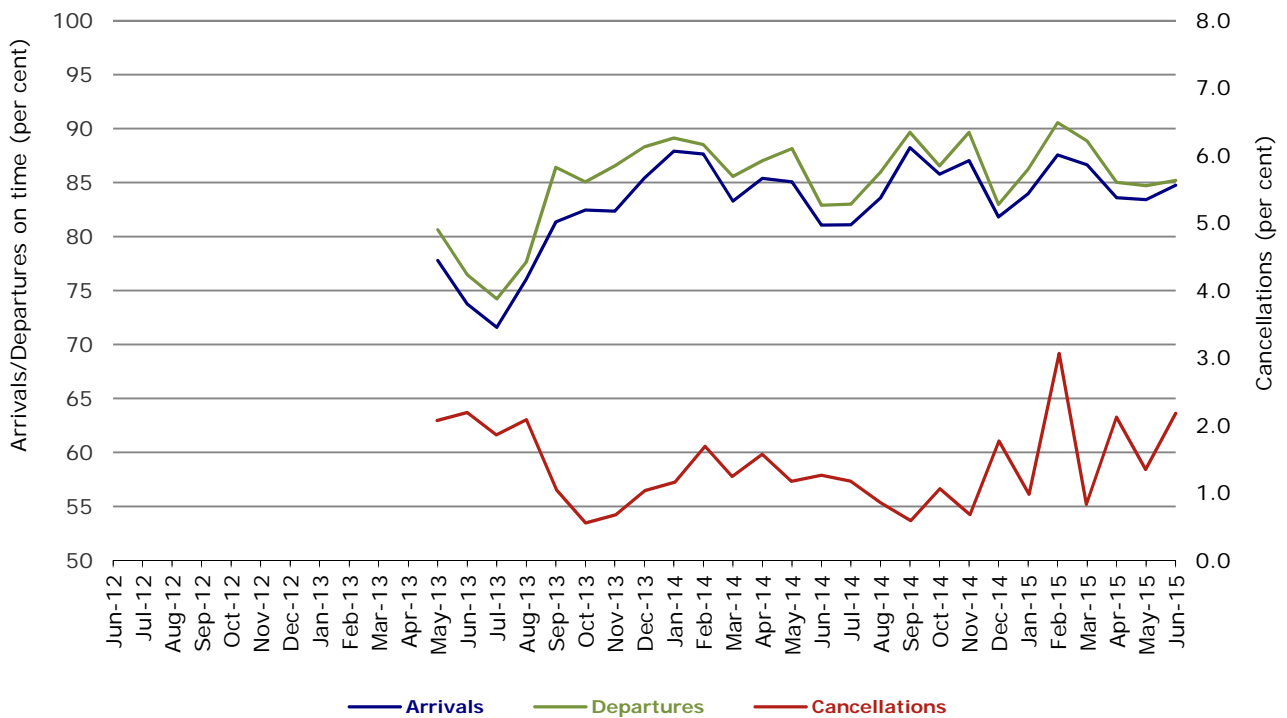


Figure 11 On time performance (by month from June 2012)  
Virgin Australia Regional Airlines



Virgin Australia Regional Airlines commenced operations in May 2013. It was formed after the acquisition of Skywest by Virgin Australia and represents a combination of operations previously reported under Skywest and Virgin Australia – ATR/F100 Operations.

## Individual routes

On time performance is reported for all routes where the passenger load averages over 8000 passengers per month over the previous six months, and where two or more airlines operate in competition on those routes. There are now 64 routes which meet this definition. Over time, however, routes which meet this definition may change as airline networks and traffic levels vary.

	<i>Sectors</i>		<i>Arrivals On Time</i>		<i>Departures On Time</i>		<i>Cancellations</i>	
	<i>Sched.</i>	<i>Flown</i>	<i>No.</i>	<i>%</i>	<i>No.</i>	<i>%</i>	<i>No.</i>	<i>%</i>
<b>Adelaide-Alice Springs</b>								
Qantas	30	30	28	93.3	27	90.0	0	0.0
Virgin Australia	13	13	13	100.0	13	100.0	0	0.0
All Airlines	43	43	41	95.3	40	93.0	0	0.0
<b>Adelaide-Brisbane</b>								
Jetstar	21	21	21	100.0	21	100.0	0	0.0
Qantas	107	107	93	86.9	98	91.6	0	0.0
Tigerair	22	22	22	100.0	22	100.0	0	0.0
Virgin Australia	112	111	102	91.9	103	92.8	1	0.9
All Airlines	262	261	238	91.2	244	93.5	1	0.4
<b>Adelaide-Canberra</b>								
Qantas	47	47	44	93.6	43	91.5	0	0.0
Virgin Australia	26	26	26	100.0	26	100.0	0	0.0
All Airlines	73	73	70	95.9	69	94.5	0	0.0
<b>Adelaide-Gold Coast</b>								
Jetstar	32	32	28	87.5	31	96.9	0	0.0
Virgin Australia	30	30	30	100.0	30	100.0	0	0.0
All Airlines	62	62	58	93.5	61	98.4	0	0.0
<b>Adelaide-Melbourne</b>								
Jetstar	102	97	83	85.6	81	83.5	5	4.9
Qantas	291	291	271	93.1	278	95.5	0	0.0
Tigerair	61	61	58	95.1	57	93.4	0	0.0
Virgin Australia	285	280	264	94.3	268	95.7	5	1.8
All Airlines	739	729	676	92.7	684	93.8	10	1.4
<b>Adelaide-Perth</b>								
Jetstar	32	32	30	93.8	30	93.8	0	0.0
Qantas	111	111	108	97.3	105	94.6	0	0.0
Virgin Australia	71	71	68	95.8	69	97.2	0	0.0
All Airlines	214	214	206	96.3	204	95.3	0	0.0
<b>Adelaide-Port Lincoln</b>								
QantasLink	107	106	95	89.6	99	93.4	1	0.9
Regional Express	199	198	186	93.9	191	96.5	1	0.5
All Airlines	306	304	281	92.4	290	95.4	2	0.7
<b>Adelaide-Sydney</b>								
Jetstar	114	112	98	87.5	101	90.2	2	1.8
Qantas	235	234	219	93.6	226	96.6	1	0.4
QantasLink	20	20	18	90.0	18	90.0	0	0.0
Tigerair	29	29	28	96.6	29	100.0	0	0.0
Virgin Australia	166	166	161	97.0	161	97.0	0	0.0
All Airlines	564	561	524	93.4	535	95.4	3	0.5
<b>Albury-Sydney</b>								
QantasLink	90	85	62	72.9	67	78.8	5	5.6
Regional Express	101	100	86	86.0	87	87.0	1	1.0
Virgin Australia Regional Airlines	60	60	43	71.7	43	71.7	0	0.0
All Airlines	251	245	191	78.0	197	80.4	6	2.4



	<i>Sectors</i>		<i>Arrivals On Time</i>		<i>Departures On Time</i>		<i>Cancellations</i>	
	<i>Sched.</i>	<i>Flown</i>	<i>No.</i>	<i>%</i>	<i>No.</i>	<i>%</i>	<i>No.</i>	<i>%</i>
<b>Alice Springs-Adelaide</b>								
Qantas	30	30	29	96.7	27	90.0	0	0.0
Virgin Australia	13	13	13	100.0	12	92.3	0	0.0
All Airlines	43	43	42	97.7	39	90.7	0	0.0
<b>Alice Springs-Darwin</b>								
QantasLink	60	60	55	91.7	57	95.0	0	0.0
Virgin Australia	13	13	12	92.3	12	92.3	0	0.0
All Airlines	73	73	67	91.8	69	94.5	0	0.0
<b>Armidale-Sydney</b>								
QantasLink	134	130	110	84.6	104	80.0	4	3.0
Regional Express	76	75	59	78.7	64	85.3	1	1.3
All Airlines	210	205	169	82.4	168	82.0	5	2.4
<b>Ayers Rock-Sydney</b>								
Jetstar	30	30	29	96.7	28	93.3	0	0.0
Virgin Australia	30	30	29	96.7	26	86.7	0	0.0
All Airlines	60	60	58	96.7	54	90.0	0	0.0
<b>Ballina-Sydney</b>								
Jetstar	67	67	53	79.1	51	76.1	0	0.0
Regional Express	25	25	22	88.0	22	88.0	0	0.0
Virgin Australia	30	30	29	96.7	28	93.3	0	0.0
All Airlines	122	122	104	85.2	101	82.8	0	0.0
<b>Brisbane-Adelaide</b>								
Jetstar	21	21	21	100.0	21	100.0	0	0.0
Qantas	107	107	99	92.5	97	90.7	0	0.0
Tigerair	22	22	22	100.0	22	100.0	0	0.0
Virgin Australia	112	111	107	96.4	106	95.5	1	0.9
All Airlines	262	261	249	95.4	246	94.3	1	0.4
<b>Brisbane-Bundaberg</b>								
QantasLink	133	131	106	80.9	114	87.0	2	1.5
Virgin Australia Regional Airlines	38	38	33	86.8	33	86.8	0	0.0
All Airlines	171	169	139	82.2	147	87.0	2	1.2
<b>Brisbane-Cairns</b>								
Jetstar	91	91	70	76.9	72	79.1	0	0.0
Qantas	116	116	100	86.2	98	84.5	0	0.0
QantasLink	4	4	4	100.0	4	100.0	0	0.0
Tigerair	30	30	24	80.0	24	80.0	0	0.0
Virgin Australia	131	131	121	92.4	123	93.9	0	0.0
All Airlines	372	372	319	85.8	321	86.3	0	0.0
<b>Brisbane-Canberra</b>								
Qantas	26	26	24	92.3	26	100.0	0	0.0
QantasLink	124	122	99	81.1	95	77.9	2	1.6
Virgin Australia	93	93	87	93.5	88	94.6	0	0.0
All Airlines	243	241	210	87.1	209	86.7	2	0.8
<b>Brisbane-Darwin</b>								
Jetstar	26	26	23	88.5	24	92.3	0	0.0
Qantas	48	48	32	66.7	42	87.5	0	0.0
Tigerair	24	24	16	66.7	19	79.2	0	0.0
Virgin Australia	30	30	27	90.0	27	90.0	0	0.0
All Airlines	128	128	98	76.6	112	87.5	0	0.0
<b>Brisbane-Emerald</b>								
QantasLink	144	137	109	79.6	115	83.9	7	4.9
Virgin Australia Regional Airlines	74	74	57	77.0	62	83.8	0	0.0
All Airlines	218	211	166	78.7	177	83.9	7	3.2

	<i>Sectors</i>		<i>Arrivals On Time</i>		<i>Departures On Time</i>		<i>Cancellations</i>	
	<i>Sched.</i>	<i>Flown</i>	<i>No.</i>	<i>%</i>	<i>No.</i>	<i>%</i>	<i>No.</i>	<i>%</i>
<b>Brisbane-Gladstone</b>								
QantasLink	206	196	176	89.8	183	93.4	10	4.9
Virgin Australia	7	7	7	100.0	7	100.0	0	0.0
Virgin Australia Regional Airlines	143	139	123	88.5	124	89.2	4	2.8
All Airlines	356	342	306	89.5	314	91.8	14	3.9
<b>Brisbane-Hamilton Island</b>								
QantasLink	17	17	13	76.5	15	88.2	0	0.0
Virgin Australia	30	30	27	90.0	27	90.0	0	0.0
All Airlines	47	47	40	85.1	42	89.4	0	0.0
<b>Brisbane-Hobart</b>								
Jetstar	28	28	28	100.0	27	96.4	0	0.0
Virgin Australia	30	30	27	90.0	27	90.0	0	0.0
All Airlines	58	58	55	94.8	54	93.1	0	0.0
<b>Brisbane-Mackay</b>								
Jetstar	60	60	53	88.3	54	90.0	0	0.0
QantasLink	108	104	92	88.5	93	89.4	4	3.7
Virgin Australia	144	144	127	88.2	130	90.3	0	0.0
All Airlines	312	308	272	88.3	277	89.9	4	1.3
<b>Brisbane-Melbourne</b>								
Jetstar	111	108	89	82.4	79	73.1	3	2.7
Qantas	435	432	399	92.4	391	90.5	3	0.7
Tigerair	115	114	95	83.3	96	84.2	1	0.9
Virgin Australia	392	382	342	89.5	356	93.2	10	2.6
All Airlines	1 053	1 036	925	89.3	922	89.0	17	1.6
<b>Brisbane-Moranbah</b>								
QantasLink	122	116	99	85.3	105	90.5	6	4.9
Virgin Australia Regional Airlines	72	72	59	81.9	61	84.7	0	0.0
All Airlines	194	188	158	84.0	166	88.3	6	3.1
<b>Brisbane-Mount Isa</b>								
Qantas	38	38	36	94.7	36	94.7	0	0.0
Virgin Australia	22	22	19	86.4	19	86.4	0	0.0
All Airlines	60	60	55	91.7	55	91.7	0	0.0
<b>Brisbane-Newcastle</b>								
Jetstar	75	75	70	93.3	70	93.3	0	0.0
QantasLink	78	78	66	84.6	65	83.3	0	0.0
Virgin Australia	81	81	72	88.9	72	88.9	0	0.0
All Airlines	234	234	208	88.9	207	88.5	0	0.0
<b>Brisbane-Perth</b>								
Qantas	129	129	120	93.0	104	80.6	0	0.0
Virgin Australia	108	108	96	88.9	92	85.2	0	0.0
All Airlines	237	237	216	91.1	196	82.7	0	0.0
<b>Brisbane-Proserpine</b>								
Jetstar	26	26	18	69.2	20	76.9	0	0.0
Virgin Australia	52	52	50	96.2	50	96.2	0	0.0
All Airlines	78	78	68	87.2	70	89.7	0	0.0
<b>Brisbane-Rockhampton</b>								
QantasLink	188	185	158	85.4	162	87.6	3	1.6
Virgin Australia	108	107	103	96.3	100	93.5	1	0.9
Virgin Australia Regional Airlines	89	86	67	77.9	66	76.7	3	3.4
All Airlines	385	378	328	86.8	328	86.8	7	1.8

	<i>Sectors</i>		<i>Arrivals On Time</i>		<i>Departures On Time</i>		<i>Cancellations</i>	
	<i>Sched.</i>	<i>Flown</i>	<i>No.</i>	<i>%</i>	<i>No.</i>	<i>%</i>	<i>No.</i>	<i>%</i>
<b>Brisbane-Sydney</b>								
Jetstar	182	180	143	79.4	142	78.9	2	1.1
Qantas	604	590	553	93.7	555	94.1	14	2.3
Tigerair	90	90	76	84.4	75	83.3	0	0.0
Virgin Australia	551	541	511	94.5	510	94.3	10	1.8
All Airlines	1 427	1 401	1 283	91.6	1 282	91.5	26	1.8
<b>Brisbane-Townsville</b>								
Jetstar	60	60	55	91.7	55	91.7	0	0.0
Qantas	145	145	126	86.9	126	86.9	0	0.0
Virgin Australia	152	152	136	89.5	138	90.8	0	0.0
All Airlines	357	357	317	88.8	319	89.4	0	0.0
<b>Broome-Perth</b>								
Qantas	34	34	24	70.6	17	50.0	0	0.0
QantasLink	48	48	43	89.6	42	87.5	0	0.0
Virgin Australia	17	16	15	93.8	15	93.8	1	5.9
Virgin Australia Regional Airlines	24	24	14	58.3	15	62.5	0	0.0
All Airlines	123	122	96	78.7	89	73.0	1	0.8
<b>Bundaberg-Brisbane</b>								
QantasLink	133	131	107	81.7	116	88.5	2	1.5
Virgin Australia Regional Airlines	39	39	34	87.2	35	89.7	0	0.0
All Airlines	172	170	141	82.9	151	88.8	2	1.2
<b>Cairns-Brisbane</b>								
Jetstar	91	91	72	79.1	63	69.2	0	0.0
Qantas	116	116	93	80.2	95	81.9	0	0.0
QantasLink	4	4	4	100.0	4	100.0	0	0.0
Tigerair	30	30	21	70.0	24	80.0	0	0.0
Virgin Australia	131	131	119	90.8	116	88.5	0	0.0
All Airlines	372	372	309	83.1	302	81.2	0	0.0
<b>Cairns-Melbourne</b>								
Jetstar	96	96	71	74.0	63	65.6	0	0.0
Qantas	38	38	32	84.2	29	76.3	0	0.0
Tigerair	32	32	27	84.4	27	84.4	0	0.0
Virgin Australia	34	34	32	94.1	31	91.2	0	0.0
All Airlines	200	200	162	81.0	150	75.0	0	0.0
<b>Cairns-Sydney</b>								
Jetstar	94	94	80	85.1	76	80.9	0	0.0
Qantas	73	73	62	84.9	66	90.4	0	0.0
Tigerair	30	30	25	83.3	21	70.0	0	0.0
Virgin Australia	89	89	82	92.1	80	89.9	0	0.0
All Airlines	286	286	249	87.1	243	85.0	0	0.0
<b>Canberra-Adelaide</b>								
Qantas	47	47	47	100.0	44	93.6	0	0.0
Virgin Australia	26	26	26	100.0	26	100.0	0	0.0
All Airlines	73	73	73	100.0	70	95.9	0	0.0
<b>Canberra-Brisbane</b>								
Qantas	26	26	23	88.5	21	80.8	0	0.0
QantasLink	124	123	90	73.2	94	76.4	1	0.8
Virgin Australia	93	93	74	79.6	82	88.2	0	0.0
All Airlines	243	242	187	77.3	197	81.4	1	0.4
<b>Canberra-Melbourne</b>								
Qantas	182	182	170	93.4	170	93.4	0	0.0
QantasLink	84	82	69	84.1	71	86.6	2	2.4
Virgin Australia	152	151	138	91.4	140	92.7	1	0.7
Virgin Australia Regional Airlines	28	25	22	88.0	23	92.0	3	10.7
All Airlines	446	440	399	90.7	404	91.8	6	1.3

	<i>Sectors</i>		<i>Arrivals On Time</i>		<i>Departures On Time</i>		<i>Cancellations</i>	
	<i>Sched.</i>	<i>Flown</i>	<i>No.</i>	<i>%</i>	<i>No.</i>	<i>%</i>	<i>No.</i>	<i>%</i>
<b>Canberra-Sydney</b>								
QantasLink	491	465	412	88.6	410	88.2	26	5.3
Virgin Australia	27	25	24	96.0	24	96.0	2	7.4
Virgin Australia Regional Airlines	271	259	231	89.2	227	87.6	12	4.4
All Airlines	789	749	667	89.1	661	88.3	40	5.1
<b>Coffs Harbour-Sydney</b>								
QantasLink	149	145	120	82.8	118	81.4	4	2.7
Tigerair	13	13	12	92.3	12	92.3	0	0.0
Virgin Australia	58	58	57	98.3	57	98.3	0	0.0
All Airlines	220	216	189	87.5	187	86.6	4	1.8
<b>Darwin-Alice Springs</b>								
QantasLink	60	60	53	88.3	54	90.0	0	0.0
Virgin Australia	13	13	13	100.0	13	100.0	0	0.0
All Airlines	73	73	66	90.4	67	91.8	0	0.0
<b>Darwin-Brisbane</b>								
Jetstar	26	26	25	96.2	23	88.5	0	0.0
Qantas	48	48	34	70.8	28	58.3	0	0.0
Tigerair	23	23	19	82.6	18	78.3	0	0.0
Virgin Australia	30	30	26	86.7	27	90.0	0	0.0
All Airlines	127	127	104	81.9	96	75.6	0	0.0
<b>Darwin-Melbourne</b>								
Jetstar	26	25	17	68.0	16	64.0	1	3.8
Qantas	30	30	27	90.0	24	80.0	0	0.0
Virgin Australia	30	30	26	86.7	24	80.0	0	0.0
All Airlines	86	85	70	82.4	64	75.3	1	1.2
<b>Darwin-Perth</b>								
Qantas	38	38	33	86.8	35	92.1	0	0.0
Virgin Australia	30	30	24	80.0	26	86.7	0	0.0
All Airlines	68	68	57	83.8	61	89.7	0	0.0
<b>Darwin-Sydney</b>								
Jetstar	30	30	17	56.7	15	50.0	0	0.0
Qantas	56	56	49	87.5	48	85.7	0	0.0
Virgin Australia	30	30	16	53.3	19	63.3	0	0.0
All Airlines	116	116	82	70.7	82	70.7	0	0.0
<b>Dubbo-Sydney</b>								
QantasLink	126	124	101	81.5	94	75.8	2	1.6
Regional Express	146	146	134	91.8	138	94.5	0	0.0
All Airlines	272	270	235	87.0	232	85.9	2	0.7
<b>Emerald-Brisbane</b>								
QantasLink	144	137	109	79.6	106	77.4	7	4.9
Virgin Australia Regional Airlines	74	73	60	82.2	61	83.6	1	1.4
All Airlines	218	210	169	80.5	167	79.5	8	3.7
<b>Geraldton-Perth</b>								
QantasLink	52	52	46	88.5	46	88.5	0	0.0
Virgin Australia Regional Airlines	90	90	82	91.1	83	92.2	0	0.0
All Airlines	142	142	128	90.1	129	90.8	0	0.0
<b>Gladstone-Brisbane</b>								
QantasLink	202	193	170	88.1	174	90.2	9	4.5
Virgin Australia	7	7	6	85.7	6	85.7	0	0.0
Virgin Australia Regional Airlines	143	137	117	85.4	118	86.1	6	4.2
All Airlines	352	337	293	86.9	298	88.4	15	4.3

	<i>Sectors</i>		<i>Arrivals On Time</i>		<i>Departures On Time</i>		<i>Cancellations</i>	
	<i>Sched.</i>	<i>Flown</i>	<i>No.</i>	<i>%</i>	<i>No.</i>	<i>%</i>	<i>No.</i>	<i>%</i>
<b>Gold Coast-Adelaide</b>								
Jetstar	32	32	31	96.9	31	96.9	0	0.0
Virgin Australia	30	30	29	96.7	29	96.7	0	0.0
All Airlines	62	62	60	96.8	60	96.8	0	0.0
<b>Gold Coast-Melbourne</b>								
Jetstar	197	195	170	87.2	159	81.5	2	1.0
Tigerair	72	72	58	80.6	59	81.9	0	0.0
Virgin Australia	179	177	168	94.9	157	88.7	2	1.1
All Airlines	448	444	396	89.2	375	84.5	4	0.9
<b>Gold Coast-Sydney</b>								
Jetstar	276	269	226	84.0	222	82.5	7	2.5
Qantas	87	87	83	95.4	84	96.6	0	0.0
QantasLink	3	3	3	100.0	2	66.7	0	0.0
Tigerair	101	101	89	88.1	92	91.1	0	0.0
Virgin Australia	247	245	229	93.5	231	94.3	2	0.8
All Airlines	714	705	630	89.4	631	89.5	9	1.3
<b>Hamilton Island-Brisbane</b>								
QantasLink	17	17	17	100.0	13	76.5	0	0.0
Virgin Australia	30	30	26	86.7	25	83.3	0	0.0
All Airlines	47	47	43	91.5	38	80.9	0	0.0
<b>Hamilton Island-Melbourne</b>								
Jetstar	15	15	15	100.0	14	93.3	0	0.0
Virgin Australia	17	17	14	82.4	14	82.4	0	0.0
All Airlines	32	32	29	90.6	28	87.5	0	0.0
<b>Hamilton Island-Sydney</b>								
Jetstar	22	22	21	95.5	21	95.5	0	0.0
Qantas	8	8	7	87.5	7	87.5	0	0.0
Virgin Australia	30	30	26	86.7	24	80.0	0	0.0
All Airlines	60	60	54	90.0	52	86.7	0	0.0
<b>Hobart-Brisbane</b>								
Jetstar	28	28	24	85.7	24	85.7	0	0.0
Virgin Australia	30	29	23	79.3	22	75.9	1	3.3
All Airlines	58	57	47	82.5	46	80.7	1	1.7
<b>Hobart-Melbourne</b>								
Jetstar	155	153	116	75.8	118	77.1	2	1.3
Qantas	6	6	5	83.3	5	83.3	0	0.0
QantasLink	114	112	94	83.9	95	84.8	2	1.8
Tigerair	30	30	27	90.0	27	90.0	0	0.0
Virgin Australia	139	138	126	91.3	129	93.5	1	0.7
All Airlines	444	439	368	83.8	374	85.2	5	1.1
<b>Hobart-Sydney</b>								
Jetstar	52	52	39	75.0	38	73.1	0	0.0
QantasLink	34	33	27	81.8	29	87.9	1	2.9
Virgin Australia	60	60	57	95.0	56	93.3	0	0.0
All Airlines	146	145	123	84.8	123	84.8	1	0.7
<b>Kalgoorlie-Perth</b>								
Qantas	23	23	22	95.7	22	95.7	0	0.0
QantasLink	59	59	53	89.8	55	93.2	0	0.0
Virgin Australia	24	24	22	91.7	22	91.7	0	0.0
Virgin Australia Regional Airlines	32	32	27	84.4	26	81.3	0	0.0
All Airlines	138	138	124	89.9	125	90.6	0	0.0

	<i>Sectors</i>		<i>Arrivals On Time</i>		<i>Departures On Time</i>		<i>Cancellations</i>	
	<i>Sched.</i>	<i>Flown</i>	<i>No.</i>	<i>%</i>	<i>No.</i>	<i>%</i>	<i>No.</i>	<i>%</i>
<b>Karratha-Perth</b>								
Qantas	105	104	102	98.1	103	99.0	1	1.0
QantasLink	111	109	101	92.7	106	97.2	2	1.8
Virgin Australia	63	61	60	98.4	57	93.4	2	3.2
Virgin Australia Regional Airlines	21	21	18	85.7	19	90.5	0	0.0
All Airlines	300	295	281	95.3	285	96.6	5	1.7
<b>Launceston-Melbourne</b>								
Jetstar	122	113	97	85.8	94	83.2	9	7.4
QantasLink	116	111	98	88.3	97	87.4	5	4.3
Virgin Australia	91	90	80	88.9	84	93.3	1	1.1
Virgin Australia Regional Airlines	2	2	2	100.0	2	100.0	0	0.0
All Airlines	331	316	277	87.7	277	87.7	15	4.5
<b>Launceston-Sydney</b>								
Jetstar	36	35	31	88.6	31	88.6	1	2.8
Virgin Australia	30	30	26	86.7	26	86.7	0	0.0
All Airlines	66	65	57	87.7	57	87.7	1	1.5
<b>Mackay-Brisbane</b>								
Jetstar	60	59	50	84.7	46	78.0	1	1.7
QantasLink	108	103	98	95.1	94	91.3	5	4.6
Virgin Australia	144	143	128	89.5	126	88.1	1	0.7
All Airlines	312	305	276	90.5	266	87.2	7	2.2
<b>Melbourne-Adelaide</b>								
Jetstar	102	98	75	76.5	74	75.5	4	3.9
Qantas	291	291	277	95.2	271	93.1	0	0.0
Tigerair	61	61	59	96.7	59	96.7	0	0.0
Virgin Australia	286	281	266	94.7	265	94.3	5	1.7
All Airlines	740	731	677	92.6	669	91.5	9	1.2
<b>Melbourne-Brisbane</b>								
Jetstar	111	110	83	75.5	83	75.5	1	0.9
Qantas	426	425	365	85.9	384	90.4	1	0.2
Tigerair	116	115	92	80.0	96	83.5	1	0.9
Virgin Australia	393	383	332	86.7	360	94.0	10	2.5
All Airlines	1 046	1 033	872	84.4	923	89.4	13	1.2
<b>Melbourne-Cairns</b>								
Jetstar	96	96	68	70.8	67	69.8	0	0.0
Qantas	38	38	31	81.6	26	68.4	0	0.0
Tigerair	32	32	31	96.9	32	100.0	0	0.0
Virgin Australia	34	34	30	88.2	32	94.1	0	0.0
All Airlines	200	200	160	80.0	157	78.5	0	0.0
<b>Melbourne-Canberra</b>								
Qantas	182	181	169	93.4	170	93.9	1	0.5
QantasLink	84	82	73	89.0	72	87.8	2	2.4
Virgin Australia	151	150	141	94.0	142	94.7	1	0.7
Virgin Australia Regional Airlines	28	25	20	80.0	22	88.0	3	10.7
All Airlines	445	438	403	92.0	406	92.7	7	1.6
<b>Melbourne-Darwin</b>								
Jetstar	26	26	21	80.8	18	69.2	0	0.0
Qantas	30	30	26	86.7	28	93.3	0	0.0
Virgin Australia	30	30	29	96.7	29	96.7	0	0.0
All Airlines	86	86	76	88.4	75	87.2	0	0.0
<b>Melbourne-Gold Coast</b>								
Jetstar	197	196	154	78.6	152	77.6	1	0.5
Tigerair	71	71	61	85.9	66	93.0	0	0.0
Virgin Australia	179	178	164	92.1	168	94.4	1	0.6
All Airlines	447	445	379	85.2	386	86.7	2	0.4

	<i>Sectors</i>		<i>Arrivals On Time</i>		<i>Departures On Time</i>		<i>Cancellations</i>	
	<i>Sched.</i>	<i>Flown</i>	<i>No.</i>	<i>%</i>	<i>No.</i>	<i>%</i>	<i>No.</i>	<i>%</i>
<b>Melbourne-Hamilton Island</b>								
Jetstar	14	14	14	100.0	14	100.0	0	0.0
Virgin Australia	17	17	14	82.4	17	100.0	0	0.0
All Airlines	31	31	28	90.3	31	100.0	0	0.0
<b>Melbourne-Hobart</b>								
Jetstar	155	153	124	81.0	119	77.8	2	1.3
Qantas	6	6	6	100.0	6	100.0	0	0.0
QantasLink	114	113	96	85.0	98	86.7	1	0.9
Tigerair	30	30	27	90.0	28	93.3	0	0.0
Virgin Australia	140	140	131	93.6	135	96.4	0	0.0
All Airlines	445	442	384	86.9	386	87.3	3	0.7
<b>Melbourne-Launceston</b>								
Jetstar	122	114	93	81.6	93	81.6	8	6.6
QantasLink	116	112	96	85.7	97	86.6	4	3.4
Virgin Australia	90	89	79	88.8	82	92.1	1	1.1
Virgin Australia Regional Airlines	2	2	2	100.0	2	100.0	0	0.0
All Airlines	330	317	270	85.2	274	86.4	13	3.9
<b>Melbourne-Mildura</b>								
QantasLink	86	86	76	88.4	79	91.9	0	0.0
Regional Express	83	83	71	85.5	72	86.7	0	0.0
Virgin Australia	30	30	27	90.0	29	96.7	0	0.0
All Airlines	199	199	174	87.4	180	90.5	0	0.0
<b>Melbourne-Newcastle</b>								
Jetstar	107	107	99	92.5	95	88.8	0	0.0
Virgin Australia	32	32	30	93.8	30	93.8	0	0.0
All Airlines	139	139	129	92.8	125	89.9	0	0.0
<b>Melbourne-Perth</b>								
Jetstar	66	60	53	88.3	47	78.3	6	9.1
Qantas	220	220	208	94.5	191	86.8	0	0.0
Tigerair	51	51	44	86.3	46	90.2	0	0.0
Virgin Australia	121	120	114	95.0	104	86.7	1	0.8
All Airlines	458	451	419	92.9	388	86.0	7	1.5
<b>Melbourne-Sunshine Coast</b>								
Jetstar	63	63	49	77.8	49	77.8	0	0.0
Virgin Australia	34	34	31	91.2	28	82.4	0	0.0
All Airlines	97	97	80	82.5	77	79.4	0	0.0
<b>Melbourne-Sydney</b>								
Jetstar	335	324	253	78.1	252	77.8	11	3.3
Qantas	997	962	869	90.3	887	92.2	35	3.5
Tigerair	237	232	208	89.7	207	89.2	5	2.1
Virgin Australia	786	753	706	93.8	719	95.5	33	4.2
All Airlines	2 355	2 271	2 036	89.7	2 065	90.9	84	3.6
<b>Mildura-Melbourne</b>								
QantasLink	86	85	76	89.4	77	90.6	1	1.2
Regional Express	83	82	63	76.8	68	82.9	1	1.2
Virgin Australia	30	30	26	86.7	26	86.7	0	0.0
All Airlines	199	197	165	83.8	171	86.8	2	1.0
<b>Moranbah-Brisbane</b>								
QantasLink	117	112	101	90.2	95	84.8	5	4.3
Virgin Australia Regional Airlines	72	72	55	76.4	57	79.2	0	0.0
All Airlines	189	184	156	84.8	152	82.6	5	2.6

	<i>Sectors</i>		<i>Arrivals On Time</i>		<i>Departures On Time</i>		<i>Cancellations</i>	
	<i>Sched.</i>	<i>Flown</i>	<i>No.</i>	<i>%</i>	<i>No.</i>	<i>%</i>	<i>No.</i>	<i>%</i>
<b>Mount Isa-Brisbane</b>								
Qantas	38	38	35	92.1	36	94.7	0	0.0
Virgin Australia	22	22	20	90.9	19	86.4	0	0.0
All Airlines	60	60	55	91.7	55	91.7	0	0.0
<b>Newcastle-Brisbane</b>								
Jetstar	75	75	68	90.7	71	94.7	0	0.0
QantasLink	78	78	65	83.3	68	87.2	0	0.0
Virgin Australia	81	81	65	80.2	68	84.0	0	0.0
All Airlines	234	234	198	84.6	207	88.5	0	0.0
<b>Newcastle-Melbourne</b>								
Jetstar	107	107	97	90.7	96	89.7	0	0.0
Virgin Australia	32	31	30	96.8	29	93.5	1	3.1
All Airlines	139	138	127	92.0	125	90.6	1	0.7
<b>Newman-Perth</b>								
Qantas	89	88	84	95.5	85	96.6	1	1.1
QantasLink	65	65	64	98.5	64	98.5	0	0.0
Virgin Australia	27	27	25	92.6	26	96.3	0	0.0
Virgin Australia Regional Airlines	4	4	3	75.0	3	75.0	0	0.0
All Airlines	185	184	176	95.7	178	96.7	1	0.5
<b>Perth-Adelaide</b>								
Jetstar	32	32	28	87.5	29	90.6	0	0.0
Qantas	115	115	110	95.7	109	94.8	0	0.0
Virgin Australia	70	70	69	98.6	68	97.1	0	0.0
All Airlines	217	217	207	95.4	206	94.9	0	0.0
<b>Perth-Brisbane</b>								
Qantas	128	128	94	73.4	119	93.0	0	0.0
Virgin Australia	108	108	99	91.7	105	97.2	0	0.0
All Airlines	236	236	193	81.8	224	94.9	0	0.0
<b>Perth-Broome</b>								
Qantas	34	34	31	91.2	30	88.2	0	0.0
QantasLink	48	48	45	93.8	46	95.8	0	0.0
Virgin Australia	17	17	17	100.0	16	94.1	0	0.0
Virgin Australia Regional Airlines	23	23	17	73.9	18	78.3	0	0.0
All Airlines	122	122	110	90.2	110	90.2	0	0.0
<b>Perth-Darwin</b>								
Qantas	39	39	37	94.9	38	97.4	0	0.0
Virgin Australia	30	30	26	86.7	29	96.7	0	0.0
All Airlines	69	69	63	91.3	67	97.1	0	0.0
<b>Perth-Geraldton</b>								
QantasLink	52	52	47	90.4	48	92.3	0	0.0
Virgin Australia Regional Airlines	86	86	79	91.9	79	91.9	0	0.0
All Airlines	138	138	126	91.3	127	92.0	0	0.0
<b>Perth-Kalgoorlie</b>								
Qantas	23	23	22	95.7	22	95.7	0	0.0
QantasLink	59	59	57	96.6	57	96.6	0	0.0
Virgin Australia	24	24	23	95.8	23	95.8	0	0.0
Virgin Australia Regional Airlines	32	32	27	84.4	27	84.4	0	0.0
All Airlines	138	138	129	93.5	129	93.5	0	0.0
<b>Perth-Karratha</b>								
Qantas	105	104	102	98.1	101	97.1	1	1.0
QantasLink	111	110	105	95.5	107	97.3	1	0.9
Virgin Australia	63	61	56	91.8	60	98.4	2	3.2
Virgin Australia Regional Airlines	21	21	16	76.2	18	85.7	0	0.0
All Airlines	300	296	279	94.3	286	96.6	4	1.3



	<i>Sectors</i>		<i>Arrivals On Time</i>		<i>Departures On Time</i>		<i>Cancellations</i>	
	<i>Sched.</i>	<i>Flown</i>	<i>No.</i>	<i>%</i>	<i>No.</i>	<i>%</i>	<i>No.</i>	<i>%</i>
<b>Perth-Melbourne</b>								
Jetstar	65	59	51	86.4	50	84.7	6	9.2
Qantas	220	220	197	89.5	202	91.8	0	0.0
Tigerair	52	51	45	88.2	47	92.2	1	1.9
Virgin Australia	121	120	109	90.8	117	97.5	1	0.8
All Airlines	458	450	402	89.3	416	92.4	8	1.7
<b>Perth-Newman</b>								
Qantas	89	89	83	93.3	84	94.4	0	0.0
QantasLink	65	65	63	96.9	63	96.9	0	0.0
Virgin Australia	27	27	25	92.6	25	92.6	0	0.0
Virgin Australia Regional Airlines	4	4	4	100.0	4	100.0	0	0.0
All Airlines	185	185	175	94.6	176	95.1	0	0.0
<b>Perth-Port Hedland</b>								
Qantas	110	108	103	95.4	104	96.3	2	1.8
QantasLink	38	38	35	92.1	36	94.7	0	0.0
Virgin Australia	45	44	42	95.5	42	95.5	1	2.2
All Airlines	193	190	180	94.7	182	95.8	3	1.6
<b>Perth-Sydney</b>								
Jetstar	30	29	23	79.3	23	79.3	1	3.3
Qantas	202	202	174	86.1	194	96.0	0	0.0
Tigerair	24	24	22	91.7	24	100.0	0	0.0
Virgin Australia	108	108	102	94.4	102	94.4	0	0.0
All Airlines	364	363	321	88.4	343	94.5	1	0.3
<b>Port Hedland-Perth</b>								
Qantas	110	108	107	99.1	105	97.2	2	1.8
QantasLink	38	37	36	97.3	36	97.3	1	2.6
Virgin Australia	44	43	37	86.0	38	88.4	1	2.3
All Airlines	192	188	180	95.7	179	95.2	4	2.1
<b>Port Lincoln-Adelaide</b>								
QantasLink	107	106	96	90.6	96	90.6	1	0.9
Regional Express	198	197	185	93.9	188	95.4	1	0.5
All Airlines	305	303	281	92.7	284	93.7	2	0.7
<b>Port Macquarie-Sydney</b>								
QantasLink	134	133	89	66.9	102	76.7	1	0.7
Virgin Australia Regional Airlines	60	60	49	81.7	51	85.0	0	0.0
All Airlines	194	193	138	71.5	153	79.3	1	0.5
<b>Proserpine-Brisbane</b>								
Jetstar	26	25	18	72.0	18	72.0	1	3.8
Virgin Australia	52	52	50	96.2	49	94.2	0	0.0
All Airlines	78	77	68	88.3	67	87.0	1	1.3
<b>Rockhampton-Brisbane</b>								
QantasLink	187	183	147	80.3	152	83.1	4	2.1
Virgin Australia	108	106	99	93.4	100	94.3	2	1.9
Virgin Australia Regional Airlines	88	83	70	84.3	68	81.9	5	5.7
All Airlines	383	372	316	84.9	320	86.0	11	2.9
<b>Sunshine Coast-Melbourne</b>								
Jetstar	63	63	47	74.6	42	66.7	0	0.0
Virgin Australia	34	34	31	91.2	31	91.2	0	0.0
All Airlines	97	97	78	80.4	73	75.3	0	0.0
<b>Sunshine Coast-Sydney</b>								
Jetstar	94	93	80	86.0	78	83.9	1	1.1
Virgin Australia	30	30	28	93.3	28	93.3	0	0.0
All Airlines	124	123	108	87.8	106	86.2	1	0.8

	<i>Sectors</i>		<i>Arrivals On Time</i>		<i>Departures On Time</i>		<i>Cancellations</i>	
	<i>Sched.</i>	<i>Flown</i>	<i>No.</i>	<i>%</i>	<i>No.</i>	<i>%</i>	<i>No.</i>	<i>%</i>
<b>Sydney-Adelaide</b>								
Jetstar	114	111	98	88.3	98	88.3	3	2.6
Qantas	232	231	220	95.2	220	95.2	1	0.4
QantasLink	20	20	18	90.0	16	80.0	0	0.0
Tigerair	29	29	29	100.0	28	96.6	0	0.0
Virgin Australia	167	167	163	97.6	161	96.4	0	0.0
All Airlines	562	558	528	94.6	523	93.7	4	0.7
<b>Sydney-Albury</b>								
QantasLink	90	87	65	74.7	67	77.0	3	3.3
Regional Express	101	101	80	79.2	85	84.2	0	0.0
Virgin Australia Regional Airlines	60	60	42	70.0	46	76.7	0	0.0
All Airlines	251	248	187	75.4	198	79.8	3	1.2
<b>Sydney-Armidale</b>								
QantasLink	134	131	106	80.9	106	80.9	3	2.2
Regional Express	75	75	71	94.7	69	92.0	0	0.0
All Airlines	209	206	177	85.9	175	85.0	3	1.4
<b>Sydney-Ayers Rock</b>								
Jetstar	30	30	28	93.3	27	90.0	0	0.0
Virgin Australia	30	30	26	86.7	28	93.3	0	0.0
All Airlines	60	60	54	90.0	55	91.7	0	0.0
<b>Sydney-Ballina</b>								
Jetstar	67	67	56	83.6	58	86.6	0	0.0
Regional Express	25	25	24	96.0	24	96.0	0	0.0
Virgin Australia	30	30	30	100.0	30	100.0	0	0.0
All Airlines	122	122	110	90.2	112	91.8	0	0.0
<b>Sydney-Brisbane</b>								
Jetstar	182	178	136	76.4	143	80.3	4	2.2
Qantas	614	600	508	84.7	546	91.0	14	2.3
Tigerair	90	90	79	87.8	84	93.3	0	0.0
Virgin Australia	551	541	492	90.9	516	95.4	10	1.8
All Airlines	1 437	1 409	1 215	86.2	1 289	91.5	28	1.9
<b>Sydney-Cairns</b>								
Jetstar	94	94	80	85.1	77	81.9	0	0.0
Qantas	73	73	69	94.5	69	94.5	0	0.0
Tigerair	30	30	25	83.3	28	93.3	0	0.0
Virgin Australia	89	89	79	88.8	80	89.9	0	0.0
All Airlines	286	286	253	88.5	254	88.8	0	0.0
<b>Sydney-Canberra</b>								
QantasLink	491	467	407	87.2	403	86.3	24	4.9
Virgin Australia	28	26	26	100.0	25	96.2	2	7.1
Virgin Australia Regional Airlines	269	259	230	88.8	226	87.3	10	3.7
All Airlines	788	752	663	88.2	654	87.0	36	4.6
<b>Sydney-Coffs Harbour</b>								
QantasLink	149	145	116	80.0	117	80.7	4	2.7
Tigerair	13	13	12	92.3	12	92.3	0	0.0
Virgin Australia	58	58	57	98.3	57	98.3	0	0.0
All Airlines	220	216	185	85.6	186	86.1	4	1.8
<b>Sydney-Darwin</b>								
Jetstar	30	30	19	63.3	22	73.3	0	0.0
Qantas	56	56	46	82.1	43	76.8	0	0.0
Virgin Australia	30	30	21	70.0	27	90.0	0	0.0
All Airlines	116	116	86	74.1	92	79.3	0	0.0

	<i>Sectors</i>		<i>Arrivals On Time</i>		<i>Departures On Time</i>		<i>Cancellations</i>	
	<i>Sched.</i>	<i>Flown</i>	<i>No.</i>	<i>%</i>	<i>No.</i>	<i>%</i>	<i>No.</i>	<i>%</i>
<b>Sydney-Dubbo</b>								
QantasLink	126	124	97	78.2	94	75.8	2	1.6
Regional Express	144	144	137	95.1	132	91.7	0	0.0
All Airlines	270	268	234	87.3	226	84.3	2	0.7
<b>Sydney-Gold Coast</b>								
Jetstar	276	271	225	83.0	232	85.6	5	1.8
Qantas	87	87	87	100.0	87	100.0	0	0.0
QantasLink	3	3	2	66.7	1	33.3	0	0.0
Tigerair	101	101	92	91.1	97	96.0	0	0.0
Virgin Australia	247	245	228	93.1	231	94.3	2	0.8
All Airlines	714	707	634	89.7	648	91.7	7	1.0
<b>Sydney-Hamilton Island</b>								
Jetstar	22	22	21	95.5	21	95.5	0	0.0
Qantas	8	8	7	87.5	8	100.0	0	0.0
Virgin Australia	30	30	25	83.3	27	90.0	0	0.0
All Airlines	60	60	53	88.3	56	93.3	0	0.0
<b>Sydney-Hobart</b>								
Jetstar	52	52	44	84.6	42	80.8	0	0.0
QantasLink	34	33	30	90.9	30	90.9	1	2.9
Virgin Australia	60	60	59	98.3	58	96.7	0	0.0
All Airlines	146	145	133	91.7	130	89.7	1	0.7
<b>Sydney-Launceston</b>								
Jetstar	36	35	32	91.4	29	82.9	1	2.8
Virgin Australia	30	30	27	90.0	26	86.7	0	0.0
All Airlines	66	65	59	90.8	55	84.6	1	1.5
<b>Sydney-Melbourne</b>								
Jetstar	335	326	264	81.0	253	77.6	9	2.7
Qantas	989	953	860	90.2	863	90.6	36	3.6
Tigerair	236	231	204	88.3	209	90.5	5	2.1
Virgin Australia	788	753	697	92.6	711	94.4	35	4.4
All Airlines	2 348	2 263	2 025	89.5	2 036	90.0	85	3.6
<b>Sydney-Perth</b>								
Jetstar	31	31	28	90.3	27	87.1	0	0.0
Qantas	206	206	195	94.7	187	90.8	0	0.0
Tigerair	24	24	21	87.5	23	95.8	0	0.0
Virgin Australia	108	108	104	96.3	101	93.5	0	0.0
All Airlines	369	369	348	94.3	338	91.6	0	0.0
<b>Sydney-Port Macquarie</b>								
QantasLink	134	133	102	76.7	118	88.7	1	0.7
Virgin Australia Regional Airlines	60	58	47	81.0	47	81.0	2	3.3
All Airlines	194	191	149	78.0	165	86.4	3	1.5
<b>Sydney-Sunshine Coast</b>								
Jetstar	95	94	83	88.3	79	84.0	1	1.1
Virgin Australia	30	30	27	90.0	28	93.3	0	0.0
All Airlines	125	124	110	88.7	107	86.3	1	0.8
<b>Sydney-Townsville</b>								
Jetstar	26	26	25	96.2	23	88.5	0	0.0
Virgin Australia	26	26	24	92.3	24	92.3	0	0.0
All Airlines	52	52	49	94.2	47	90.4	0	0.0
<b>Sydney-Wagga Wagga</b>								
QantasLink	112	112	88	78.6	87	77.7	0	0.0
Regional Express	133	133	115	86.5	117	88.0	0	0.0
All Airlines	245	245	203	82.9	204	83.3	0	0.0

	<i>Sectors</i>		<i>Arrivals On Time</i>		<i>Departures On Time</i>		<i>Cancellations</i>	
	<i>Sched.</i>	<i>Flown</i>	<i>No.</i>	<i>%</i>	<i>No.</i>	<i>%</i>	<i>No.</i>	<i>%</i>
<b>Townsville-Brisbane</b>								
Jetstar	60	60	50	83.3	50	83.3	0	0.0
Qantas	145	145	135	93.1	134	92.4	0	0.0
Virgin Australia	152	152	135	88.8	130	85.5	0	0.0
All Airlines	357	357	320	89.6	314	88.0	0	0.0
<b>Townsville-Sydney</b>								
Jetstar	26	26	22	84.6	22	84.6	0	0.0
Virgin Australia	26	26	19	73.1	20	76.9	0	0.0
All Airlines	52	52	41	78.8	42	80.8	0	0.0
<b>Wagga Wagga-Sydney</b>								
QantasLink	112	112	88	78.6	84	75.0	0	0.0
Regional Express	133	133	112	84.2	120	90.2	0	0.0
All Airlines	245	245	200	81.6	204	83.3	0	0.0

## Airports

On time performance is reported for all routes where the passenger load averages over 8000 passengers per month, and where two or more airlines operate in competition. The following data reports by airport against flights operated on those routes only. This month, 8 major city airports and 32 regional city airports are covered.

Airport	Arrivals			Departures		
	Sectors	On Time		Sectors	On Time	
	Flown	No.	%	Flown	No.	%
<b>Adelaide</b>						
Jetstar	294	253	86.1	294	264	89.8
Qantas	821	782	95.2	820	777	94.8
QantasLink	126	114	90.5	126	117	92.9
Regional Express	197	185	93.9	198	191	96.5
Tigerair	112	110	98.2	112	108	96.4
Virgin Australia	698	673	96.4	697	670	96.1
All Airlines	2 248	2 117	94.2	2 247	2 127	94.7
Relates to services to and from Alice Springs, Brisbane, Canberra, Gold Coast, Melbourne, Perth, Port Lincoln and Sydney.						
<b>Albury</b>						
QantasLink	87	65	74.7	85	67	78.8
Regional Express	101	80	79.2	100	87	87.0
Virgin Australia Regional Airlines	60	42	70.0	60	43	71.7
All Airlines	248	187	75.4	245	197	80.4
Relates to services to and from Sydney only.						
<b>Alice Springs</b>						
Qantas	30	28	93.3	30	27	90.0
QantasLink	60	53	88.3	60	57	95.0
Virgin Australia	26	26	100.0	26	24	92.3
All Airlines	116	107	92.2	116	108	93.1
Relates to services to and from Adelaide and Darwin.						
<b>Armidale</b>						
QantasLink	131	106	80.9	130	104	80.0
Regional Express	75	71	94.7	75	64	85.3
All Airlines	206	177	85.9	205	168	82.0
Relates to services to and from Sydney only.						
<b>Ayers Rock</b>						
Jetstar	30	28	93.3	30	28	93.3
Virgin Australia	30	26	86.7	30	26	86.7
All Airlines	60	54	90.0	60	54	90.0
Relates to services to and from Sydney only.						
<b>Ballina</b>						
Jetstar	67	56	83.6	67	51	76.1
Regional Express	25	24	96.0	25	22	88.0
Virgin Australia	30	30	100.0	30	28	93.3
All Airlines	122	110	90.2	122	101	82.8
Relates to services to and from Sydney only.						

Airport	Arrivals			Departures		
	Sectors Flown	On Time		Sectors Flown	On Time	
		No.	%		No.	%
<b>Brisbane</b>						
Jetstar	673	547	81.3	675	564	83.6
Qantas	1 633	1 380	84.5	1 631	1 475	90.4
QantasLink	1 081	908	84.0	1 090	951	87.2
Tigerair	280	233	83.2	280	236	84.3
Virgin Australia	2 019	1 796	89.0	2 021	1 872	92.6
Virgin Australia Regional Airlines	404	336	83.2	409	346	84.6
All Airlines	6 090	5 200	85.4	6 106	5 444	89.2

Relates to services to and from Adelaide, Bundaberg, Cairns, Canberra, Darwin, Emerald, Gladstone, Hamilton Island, Hobart, Mackay, Melbourne, Moranbah, Mount Isa, Newcastle, Perth, Proserpine, Rockhampton, Sydney and Townsville.

#### Broome

Qantas	34	31	91.2	34	17	50.0
QantasLink	48	45	93.8	48	42	87.5
Virgin Australia	17	17	100.0	16	15	93.8
Virgin Australia Regional Airlines	23	17	73.9	24	15	62.5
All Airlines	122	110	90.2	122	89	73.0

Relates to services to and from Perth only.

#### Bundaberg

QantasLink	131	106	80.9	131	116	88.5
Virgin Australia Regional Airlines	38	33	86.8	39	35	89.7
All Airlines	169	139	82.2	170	151	88.8

Relates to services to and from Brisbane only.

#### Cairns

Jetstar	281	218	77.6	281	202	71.9
Qantas	227	200	88.1	227	190	83.7
QantasLink	4	4	100.0	4	4	100.0
Tigerair	92	80	87.0	92	72	78.3
Virgin Australia	254	230	90.6	254	227	89.4
All Airlines	858	732	85.3	858	695	81.0

Relates to services to and from Brisbane, Melbourne and Sydney.

#### Canberra

Qantas	254	237	93.3	255	235	92.2
QantasLink	671	579	86.3	670	575	85.8
Virgin Australia	295	280	94.9	295	272	92.2
Virgin Australia Regional Airlines	284	250	88.0	284	250	88.0
All Airlines	1 504	1 346	89.5	1 504	1 332	88.6

Relates to services to and from Adelaide, Brisbane, Melbourne and Sydney.

#### Coffs Harbour

QantasLink	145	116	80.0	145	118	81.4
Tigerair	13	12	92.3	13	12	92.3
Virgin Australia	58	57	98.3	58	57	98.3
All Airlines	216	185	85.6	216	187	86.6

Relates to services to and from Sydney only.

Airport	Arrivals			Departures		
	Sectors	On Time		Sectors	On Time	
	Flown	No.	%	Flown	No.	%
<b>Darwin</b>						
Jetstar	82	63	76.8	81	54	66.7
Qantas	173	141	81.5	172	135	78.5
QantasLink	60	55	91.7	60	54	90.0
Tigerair	24	16	66.7	23	18	78.3
Virgin Australia	133	115	86.5	133	109	82.0
All Airlines	472	390	82.6	469	370	78.9
Relates to services to and from Alice Springs, Brisbane, Melbourne, Perth and Sydney.						
<b>Dubbo</b>						
QantasLink	124	97	78.2	124	94	75.8
Regional Express	144	137	95.1	146	138	94.5
All Airlines	268	234	87.3	270	232	85.9
Relates to services to and from Sydney only.						
<b>Emerald</b>						
QantasLink	137	109	79.6	137	106	77.4
Virgin Australia Regional Airlines	74	57	77.0	73	61	83.6
All Airlines	211	166	78.7	210	167	79.5
Relates to services to and from Brisbane only.						
<b>Geraldton</b>						
QantasLink	52	47	90.4	52	46	88.5
Virgin Australia Regional Airlines	86	79	91.9	90	83	92.2
All Airlines	138	126	91.3	142	129	90.8
Relates to services to and from Perth only.						
<b>Gladstone</b>						
QantasLink	196	176	89.8	193	174	90.2
Virgin Australia	7	7	100.0	7	6	85.7
Virgin Australia Regional Airlines	139	123	88.5	137	118	86.1
All Airlines	342	306	89.5	337	298	88.4
Relates to services to and from Brisbane only.						
<b>Gold Coast</b>						
Jetstar	499	407	81.6	496	412	83.1
Qantas	87	87	100.0	87	84	96.6
QantasLink	3	2	66.7	3	2	66.7
Tigerair	172	153	89.0	173	151	87.3
Virgin Australia	453	422	93.2	452	417	92.3
All Airlines	1 214	1 071	88.2	1 211	1 066	88.0
Relates to services to and from Adelaide, Melbourne and Sydney.						
<b>Hamilton Island</b>						
Jetstar	36	35	97.2	37	35	94.6
Qantas	8	7	87.5	8	7	87.5
QantasLink	17	13	76.5	17	13	76.5
Virgin Australia	77	66	85.7	77	63	81.8
All Airlines	138	121	87.7	139	118	84.9
Relates to services to and from Brisbane, Melbourne and Sydney.						

Airport	Arrivals			Departures		
	Sectors Flown	On Time		Sectors Flown	On Time	
		No.	%		No.	%
<b>Hobart</b>						
Jetstar	233	196	84.1	233	180	77.3
Qantas	6	6	100.0	6	5	83.3
QantasLink	146	126	86.3	145	124	85.5
Tigerair	30	27	90.0	30	27	90.0
Virgin Australia	230	217	94.3	227	207	91.2
All Airlines	645	572	88.7	641	543	84.7
Relates to services to and from Brisbane, Melbourne and Sydney.						
<b>Kalgoorlie</b>						
Qantas	23	22	95.7	23	22	95.7
QantasLink	59	57	96.6	59	55	93.2
Virgin Australia	24	23	95.8	24	22	91.7
Virgin Australia Regional Airlines	32	27	84.4	32	26	81.3
All Airlines	138	129	93.5	138	125	90.6
Relates to services to and from Perth only.						
<b>Karratha</b>						
Qantas	104	102	98.1	104	103	99.0
QantasLink	110	105	95.5	109	106	97.2
Virgin Australia	61	56	91.8	61	57	93.4
Virgin Australia Regional Airlines	21	16	76.2	21	19	90.5
All Airlines	296	279	94.3	295	285	96.6
Relates to services to and from Perth only.						
<b>Launceston</b>						
Jetstar	149	125	83.9	148	125	84.5
QantasLink	112	96	85.7	111	97	87.4
Virgin Australia	119	106	89.1	120	110	91.7
Virgin Australia Regional Airlines	2	2	100.0	2	2	100.0
All Airlines	382	329	86.1	381	334	87.7
Relates to services to and from Melbourne and Sydney.						
<b>Mackay</b>						
Jetstar	60	53	88.3	59	46	78.0
QantasLink	104	92	88.5	103	94	91.3
Virgin Australia	144	127	88.2	143	126	88.1
All Airlines	308	272	88.3	305	266	87.2
Relates to services to and from Brisbane only.						
<b>Melbourne</b>						
Jetstar	1 357	1 117	82.3	1 361	1 063	78.1
Qantas	2 152	1 961	91.1	2 153	1 963	91.2
QantasLink	390	337	86.4	393	346	88.0
Regional Express	82	63	76.8	83	72	86.7
Tigerair	591	514	87.0	592	534	90.2
Virgin Australia	2 267	2 083	91.9	2 271	2 140	94.2
Virgin Australia Regional Airlines	27	24	88.9	27	24	88.9
All Airlines	6 866	6 099	88.8	6 880	6 142	89.3
Relates to services to and from Adelaide, Brisbane, Cairns, Canberra, Darwin, Gold Coast, Hamilton Island, Hobart, Launceston, Mildura, Newcastle, Perth, Sunshine Coast and Sydney.						



Airport	Arrivals			Departures		
	Sectors Flown	On Time		Sectors Flown	On Time	
		No.	%		No.	%
<b>Mildura</b>						
QantasLink	86	76	88.4	85	77	90.6
Regional Express	83	71	85.5	82	68	82.9
Virgin Australia	30	27	90.0	30	26	86.7
All Airlines	199	174	87.4	197	171	86.8
Relates to services to and from Melbourne only.						
<b>Moranbah</b>						
QantasLink	116	99	85.3	112	95	84.8
Virgin Australia Regional Airlines	72	59	81.9	72	57	79.2
All Airlines	188	158	84.0	184	152	82.6
Relates to services to and from Brisbane only.						
<b>Mount Isa</b>						
Qantas	38	36	94.7	38	36	94.7
Virgin Australia	22	19	86.4	22	19	86.4
All Airlines	60	55	91.7	60	55	91.7
Relates to services to and from Brisbane only.						
<b>Newcastle</b>						
Jetstar	182	169	92.9	182	167	91.8
QantasLink	78	66	84.6	78	68	87.2
Virgin Australia	113	102	90.3	112	97	86.6
All Airlines	373	337	90.3	372	332	89.2
Relates to services to and from Brisbane and Melbourne.						
<b>Newman</b>						
Qantas	89	83	93.3	88	85	96.6
QantasLink	65	63	96.9	65	64	98.5
Virgin Australia	27	25	92.6	27	26	96.3
Virgin Australia Regional Airlines	4	4	100.0	4	3	75.0
All Airlines	185	175	94.6	184	178	96.7
Relates to services to and from Perth only.						
<b>Perth</b>						
Jetstar	123	111	90.2	120	102	85.0
Qantas	1 061	1 003	94.5	1 062	1 003	94.4
QantasLink	370	343	92.7	372	357	96.0
Tigerair	75	65	86.7	75	71	94.7
Virgin Australia	608	565	92.9	609	587	96.4
Virgin Australia Regional Airlines	171	144	84.2	166	146	88.0
All Airlines	2 408	2 231	92.6	2 404	2 266	94.3
Relates to services to and from Adelaide, Brisbane, Broome, Darwin, Geraldton, Kalgoorlie, Karratha, Melbourne, Newman, Port Hedland and Sydney.						
<b>Port Hedland</b>						
Qantas	108	103	95.4	108	105	97.2
QantasLink	38	35	92.1	37	36	97.3
Virgin Australia	44	42	95.5	43	38	88.4
All Airlines	190	180	94.7	188	179	95.2
Relates to services to and from Perth only.						

Airport	Arrivals			Departures		
	Sectors	On Time		Sectors	On Time	
	Flown	No.	%	Flown	No.	%
<b>Port Lincoln</b>						
QantasLink	106	95	89.6	106	96	90.6
Regional Express	198	186	93.9	197	188	95.4
All Airlines	304	281	92.4	303	284	93.7
Relates to services to and from Adelaide only.						
<b>Port Macquarie</b>						
QantasLink	133	102	76.7	133	102	76.7
Virgin Australia Regional Airlines	58	47	81.0	60	51	85.0
All Airlines	191	149	78.0	193	153	79.3
Relates to services to and from Sydney only.						
<b>Proserpine</b>						
Jetstar	26	18	69.2	25	18	72.0
Virgin Australia	52	50	96.2	52	49	94.2
All Airlines	78	68	87.2	77	67	87.0
Relates to services to and from Brisbane only.						
<b>Rockhampton</b>						
QantasLink	185	158	85.4	183	152	83.1
Virgin Australia	107	103	96.3	106	100	94.3
Virgin Australia Regional Airlines	86	67	77.9	83	68	81.9
All Airlines	378	328	86.8	372	320	86.0
Relates to services to and from Brisbane only.						
<b>Sunshine Coast</b>						
Jetstar	157	132	84.1	156	120	76.9
Virgin Australia	64	58	90.6	64	59	92.2
All Airlines	221	190	86.0	220	179	81.4
Relates to services to and from Melbourne and Sydney.						
<b>Sydney</b>						
Jetstar	1 363	1 115	81.8	1 367	1 131	82.7
Qantas	2 212	2 016	91.1	2 214	2 023	91.4
QantasLink	1 250	1 030	82.4	1 255	1 039	82.8
Regional Express	479	413	86.2	478	427	89.3
Tigerair	519	460	88.6	518	481	92.9
Virgin Australia	2 251	2 102	93.4	2 253	2 130	94.5
Virgin Australia Regional Airlines	379	323	85.2	377	319	84.6
All Airlines	8 453	7 459	88.2	8 462	7 550	89.2
Relates to services to and from Adelaide, Albury, Armidale, Ayers Rock, Ballina, Brisbane, Cairns, Canberra, Coffs Harbour, Darwin, Dubbo, Gold Coast, Hamilton Island, Hobart, Launceston, Melbourne, Perth, Port Macquarie, Sunshine Coast, Townsville and Wagga Wagga.						
<b>Townsville</b>						
Jetstar	86	80	93.0	86	72	83.7
Qantas	145	126	86.9	145	134	92.4
Virgin Australia	178	160	89.9	178	150	84.3
All Airlines	409	366	89.5	409	356	87.0
Relates to services to and from Brisbane and Sydney.						
<b>Wagga Wagga</b>						
QantasLink	112	88	78.6	112	84	75.0
Regional Express	133	115	86.5	133	120	90.2
All Airlines	245	203	82.9	245	204	83.3
Relates to services to and from Sydney only.						

## Definitions

---

On time arrival	A flight arrival is counted as "on time" if it arrived at the gate before 15 minutes after the scheduled arrival time shown in the carriers' schedule. Neither diverted nor cancelled flights count as on time.
On time departure	A flight departure is counted as "on time" if it departs the gate before 15 minutes after the scheduled departure time shown in the carriers' schedule.
Cancellation	A flight removed from service within 7 days of scheduled departure is regarded as a cancellation.
On time departure percentage	The percentage of on time departures is measured against the number of departures <i>operated</i> on any particular sector.
On time arrival percentage	The percentage of on time arrivals is measured against the number of arrivals <i>operated</i> on any particular sector.
Cancellation percentage	The percentage of cancellations is measured against the number of services <i>scheduled</i> on any particular sector.

---