



Australian Government

Department of Infrastructure and Regional Development

Bureau of Infrastructure, Transport and Regional Economics

STATISTICAL REPORT



Aviation

Domestic airline on time performance
June 2014

© Commonwealth of Australia 2014

ISSN: 1832-0759

Ownership of intellectual property rights in this publication

Unless otherwise noted, copyright (and any other intellectual property rights, if any) in this publication is owned by the Commonwealth of Australia (referred to below as the Commonwealth).

Disclaimer

The material contained in this publication is made available on the understanding that the Commonwealth is not providing professional advice, and that users exercise their own skill and care with respect to its use, and seek independent advice if necessary.

The Commonwealth makes no representations or warranties as to the contents or accuracy of the information contained in this publication. To the extent permitted by law, the Commonwealth disclaims liability to any person or organisation in respect of anything done, or omitted to be done, in reliance upon information contained in this publication.

Creative Commons licence

With the exception of (a) the Coat of Arms; and (b) the Department of Infrastructure and Regional Development's photos and graphics, copyright in this publication is licensed under a Creative Commons Attribution 3.0 Australia Licence.

Creative Commons Attribution 3.0 Australia Licence is a standard form licence agreement that allows you to copy, communicate and adapt this publication provided that you attribute the work to the Commonwealth and abide by the other licence terms. A summary of the licence terms is available from <http://creativecommons.org/licenses/by/3.0/au/deed.en>. The full licence terms are available from <http://creativecommons.org/licenses/by/3.0/au/legalcode>.

Use of the Coat of Arms

The Department of the Prime Minister and Cabinet sets the terms under which the Coat of Arms is used. Please refer to the Department's Commonwealth Coat of Arms and Government branding web page <http://www.dpmmc.gov.au/guidelines/index.cfm#brand> and, in particular, the Guidelines on the use of the Commonwealth Coat of Arms publication.

An appropriate citation for this report is:

Bureau of Infrastructure, Transport and Regional Economics (BITRE), 2014, Domestic airline on time performance, Statistical Report, BITRE, Canberra ACT.

Contact us

This publication is available in PDF format. All other rights are reserved, including in relation to any Departmental logos or trade marks which may exist. For enquiries regarding the licence and any use of this publication, please contact:

Bureau of Infrastructure, Transport and Regional Economics (BITRE)
Department of Infrastructure and Regional Development
GPO Box 501, Canberra ACT 2601, Australia
Telephone: (international) +61 2 6274 7210
Fax: (international) +61 2 6274 6855
Email: bitre@infrastructure.gov.au
Website: www.bitre.gov.au

Inquiries

Should you require additional information about the statistics contained in this publication:

Telephone (02) 6274 7790 or Facsimile (02) 6274 7727

Electronic mail: AVSTATS@infrastructure.gov.au

Web site: <http://www.bitre.gov.au/statistics/aviation/otphome.aspx>

Foreword

The Bureau of Infrastructure, Transport and Regional Economics (BITRE) monitors the punctuality and reliability of major domestic airlines operating between Australian airports. The purpose of this is to allow for evaluation of overall industry and individual airline performance, so that consumers of air travel can make informed decisions.

The following domestic airlines currently report this information monthly to the BITRE: Jetstar, Qantas, QantasLink, Regional Express, Tigerair, Virgin Australia and Virgin Australia Regional Airlines. Data has been gathered since November 2003, although some airlines commenced reporting at a later date, including Jetstar which first reported in May 2004, MacAir in July 2005 and Tigerair in April 2008. MacAir ceased operations in February 2009 and data was not received for December 2008 onwards. Virgin Blue was rebranded as Virgin Australia in May 2011 and Tiger Airways was rebranded as Tigerair in July 2013 and time series data in Microsoft Excel spreadsheet format on the BITRE website have been revised to reflect these changes. Virgin Australia Regional Airlines commenced operations in May 2013. It was formed after the acquisition of Skywest by Virgin Australia and represents a combination of operations previously reported under Skywest and Virgin Australia – ATR/F100 Operations. Services operated by Skywest on behalf of Virgin Australia using ATR/F100 aircraft commenced in November 2011 and were shown separately as Virgin Australia – ATR/F100 Operations until April 2013.

Information presented in this report is for Australian domestic routes for which the passenger load averaged 8 000 or more passengers per month over the previous six months and where two or more airlines operated in competition on those routes. There were 63 routes that met this definition in June 2014. Over time, routes which meet these criteria change as airline networks and traffic levels vary.

Participating airlines report their overall monthly network performance where this is possible.

Total industry figures encompass all services operated by reporting airlines only. These airlines collectively carried over 95 per cent of total domestic passengers (regular public transport only) in 2013.

The method of capturing on time performance varies between airlines utilising different recording systems. Jetstar and Qantas jet aircraft use Aircraft Communication Addressing and Reporting System (ACARS) to electronically measure on time performance. Regional Express, Tigerair, Virgin Australia, Virgin Australia Regional Airlines and the Qantas non-jet fleet record on time performance manually using records from pilots, gate agents and/or ground crews.

After initial data is collected, aggregate reports are audited internally by participating airlines prior to publication.

Reports and detailed time series data in Microsoft Excel spreadsheet format are available from the BITRE website at: <http://www.bitre.gov.au/statistics/aviation/otphome.aspx>.

Contents

	Page
Industry performance	1
Individual routes	9
Airports	21
Definitions	27

Industry performance

For June 2014, on time performance over all routes operated by participating airlines (Jetstar, Qantas, QantasLink, Regional Express, Tigerair, Virgin Australia and Virgin Australia Regional Airlines) averaged 83.1 per cent for on time departures and 81.3 per cent for on time arrivals. Cancellations represented 1.8 per cent of all scheduled flights. The equivalent figures for June 2013 were 79.4 per cent for departures, 78.0 per cent for arrivals and 1.9 per cent for cancellations.

This month's figures were below the long term average performance for all routes (83.7 per cent for departures and 82.2 per cent for arrivals). The rate of cancellations was above the long term average of 1.3 per cent.

Of the major domestic airlines, Qantas achieved the highest level of on time departures for June 2014 at 86.6 per cent, followed by Virgin Australia at 83.8 per cent, Jetstar at 80.8 per cent and Tigerair at 72.3 per cent. The regional airlines were led by Regional Express at 86.7 per cent, followed by Virgin Australia Regional Airlines at 82.9 per cent and QantasLink at 80.9 per cent.

Qantas also achieved the highest on time arrivals among the major domestic airlines at 85.4 per cent, followed by Virgin Australia at 82.4 per cent, Jetstar at 81.1 per cent and Tigerair at 68.4 per cent. Regional Express was the best performing regional airline for on time arrivals at 84.0 per cent, followed by Virgin Australia Regional Airlines at 81.1 per cent and QantasLink at 77.8 per cent.

Tigerair had the highest percentage of cancellations (3.2 per cent) during the month, followed by QantasLink (2.1 per cent), Virgin Australia (2.0 per cent), Jetstar (1.9 per cent), Qantas (1.6 per cent), Virgin Australia Regional Airlines (1.3 per cent) and Regional Express (0.4 per cent).

Of the 63 routes which met the criteria for on time performance reporting in June 2014, the Perth-Port Hedland route had the highest percentage of on time departures (97.0 per cent) and the Gold Coast-Adelaide route had the highest percentage of on time arrivals (96.6 per cent). The Townsville-Sydney route had the lowest percentage of on time departures (48.9 per cent) and the Melbourne-Sunshine Coast route had the lowest percentage of on time arrivals (64.4 per cent).

Cancellations were highest on the Canberra-Sydney route at 5.3 per cent, followed by Sydney-Canberra at 5.2 per cent, Sydney-Melbourne at 4.9 per cent, Melbourne-Sydney at 4.8 per cent and Moranbah-Brisbane at 4.6 per cent.

Newman Airport recorded the highest percentage of on time departures (95.2 per cent) and Port Hedland Airport recorded the highest percentage of on time arrivals (96.4 per cent). Alice Springs Airport recorded the lowest percentage of on time departures (63.4 per cent) and Hobart Airport recorded the lowest percentage of on time arrivals (74.3 per cent). These figures only refer to reported routes and do not cover all flights at these airports.

Table 1 On time performance for June 2014 — Total Industry

	<i>Sectors</i>		<i>Departures On Time</i>		<i>Arrivals On Time</i>		<i>Cancellations</i>	
	<i>Scheduled</i>	<i>Flown</i>	<i>No.</i>	<i>%</i>	<i>No.</i>	<i>%</i>	<i>No.</i>	<i>%</i>
Jetstar	6 444	6 320	5 109	80.8	5 128	81.1	124	1.9
Qantas	9 430	9 280	8 040	86.6	7 929	85.4	150	1.6
QantasLink	10 447	10 225	8 273	80.9	7 952	77.8	222	2.1
Regional Express	5 320	5 298	4 595	86.7	4 452	84.0	22	0.4
Tigerair	1 991	1 928	1 393	72.3	1 318	68.4	63	3.2
Virgin Australia	10 760	10 547	8 841	83.8	8 688	82.4	213	2.0
Virgin Australia Regional Airlines	2 534	2 502	2 074	82.9	2 028	81.1	32	1.3
All Airlines	46 926	46 100	38 325	83.1	37 495	81.3	826	1.8

Total airline network data (including routes not shown in this report).

Table 2 Top ten routes for on time performance for June 2014 (participating airlines only)

<i>Departures</i>		<i>Arrivals</i>	
<i>Route</i>	<i>On Time (%)</i>	<i>Route</i>	<i>On Time (%)</i>
Perth-Port Hedland	97.0	Gold Coast-Adelaide	96.6
Melbourne-Hamilton Island	96.8	Perth-Port Hedland	96.4
Sydney-Sunshine Coast	95.8	Perth-Darwin	95.0
Brisbane-Hamilton Island	95.7	Sydney-Sunshine Coast	95.0
Newman-Perth	95.2	Newman-Perth	94.7
Perth-Darwin	95.0	Perth-Newman	94.7
Gold Coast-Adelaide	94.8	Perth-Kalgoorlie	94.1
Perth-Adelaide	94.0	Perth-Adelaide	94.0
Adelaide-Port Lincoln	93.6	Sydney-Ayers Rock	93.8
Brisbane-Mount Isa	93.5	Perth-Karratha	93.7

Table 3 Top ten airports for on time performance for June 2014 (participating airlines and reported routes only)

<i>Departures</i>		<i>Arrivals</i>	
<i>Airport</i>	<i>On Time (%)</i>	<i>Airport</i>	<i>On Time (%)</i>
Newman	95.2	Port Hedland	96.4
Port Hedland	91.9	Newman	94.7
Port Lincoln	91.9	Kalgoorlie	94.1
Karratha	91.2	Ayers Rock	93.8
Perth	89.7	Karratha	93.7
Kalgoorlie	89.0	Mount Isa	93.5
Mount Isa	88.3	Port Lincoln	91.3
Ayers Rock	87.8	Proserpine	90.9
Adelaide	87.2	Coffs Harbour	90.8
Geraldton	86.8	Broome	89.6

Total industry on time performance

Figure 1 On time performance (by month from June 2011)—Total Industry

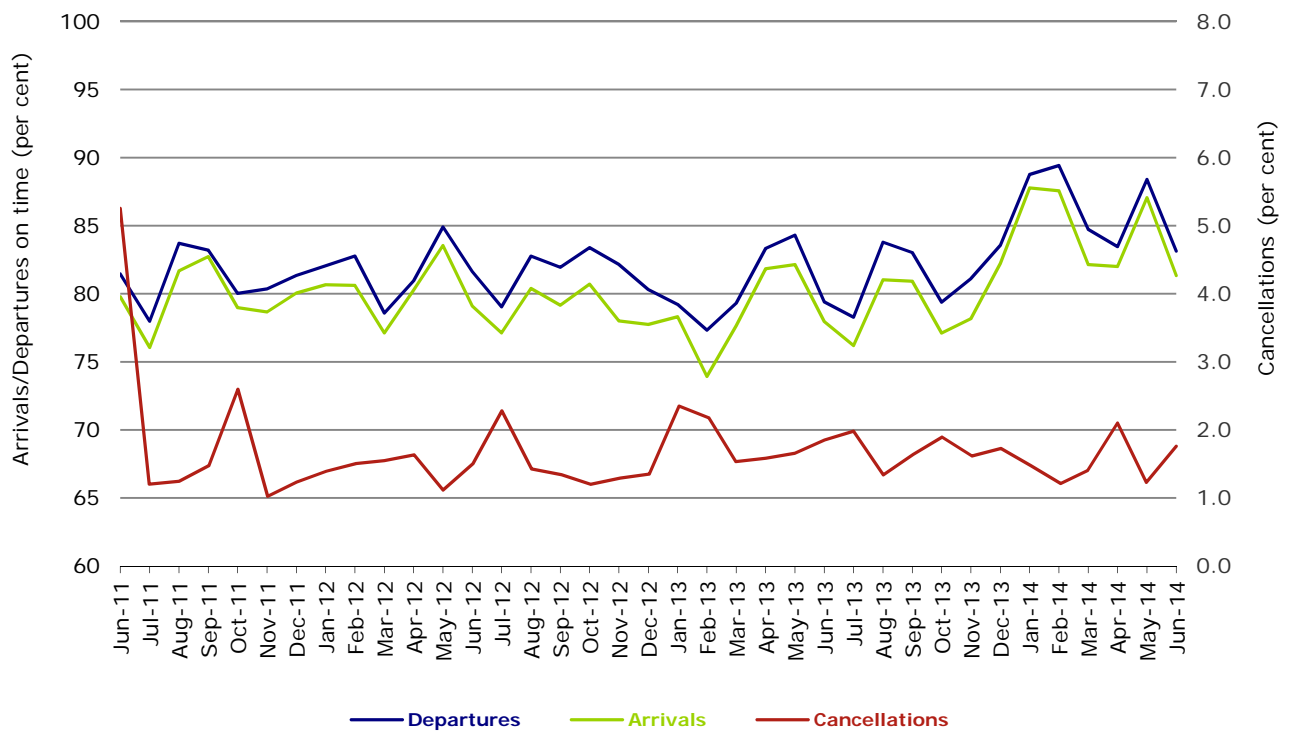


Figure 2 Departures on time (by month from June 2013)

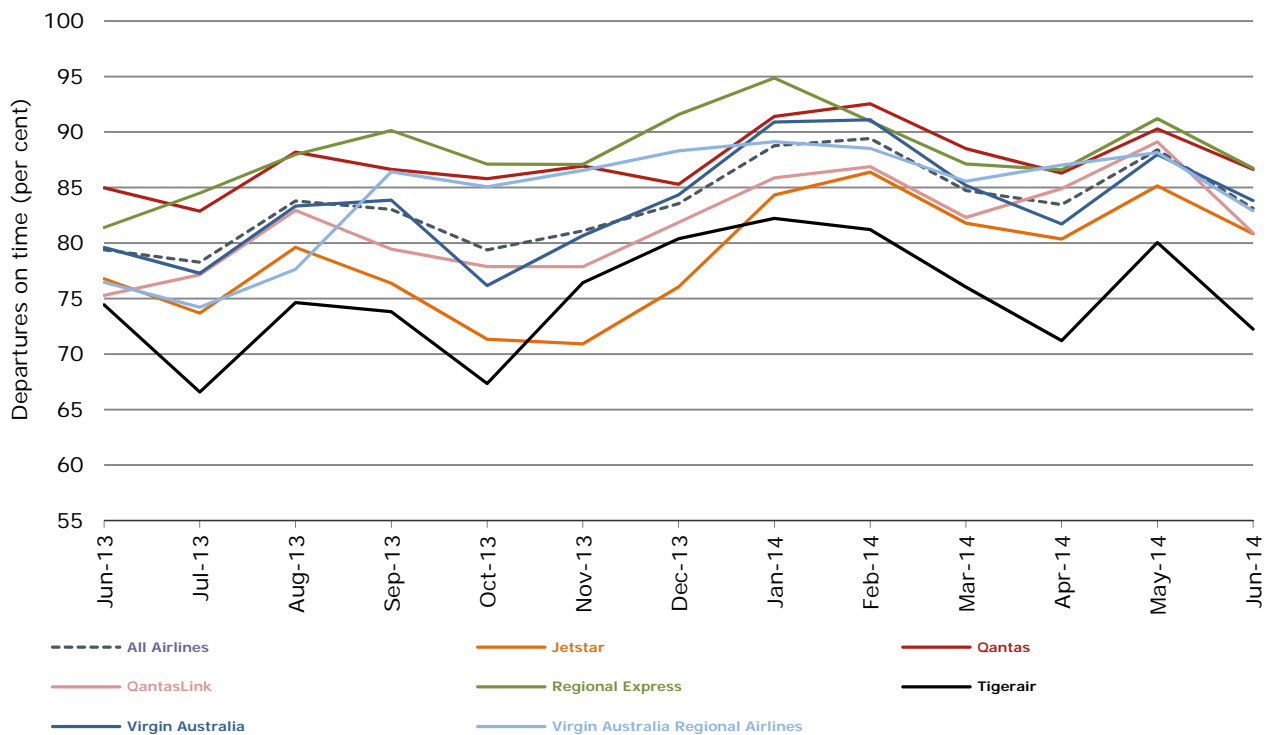


Figure 3 Arrivals on time (by month from June 2013)

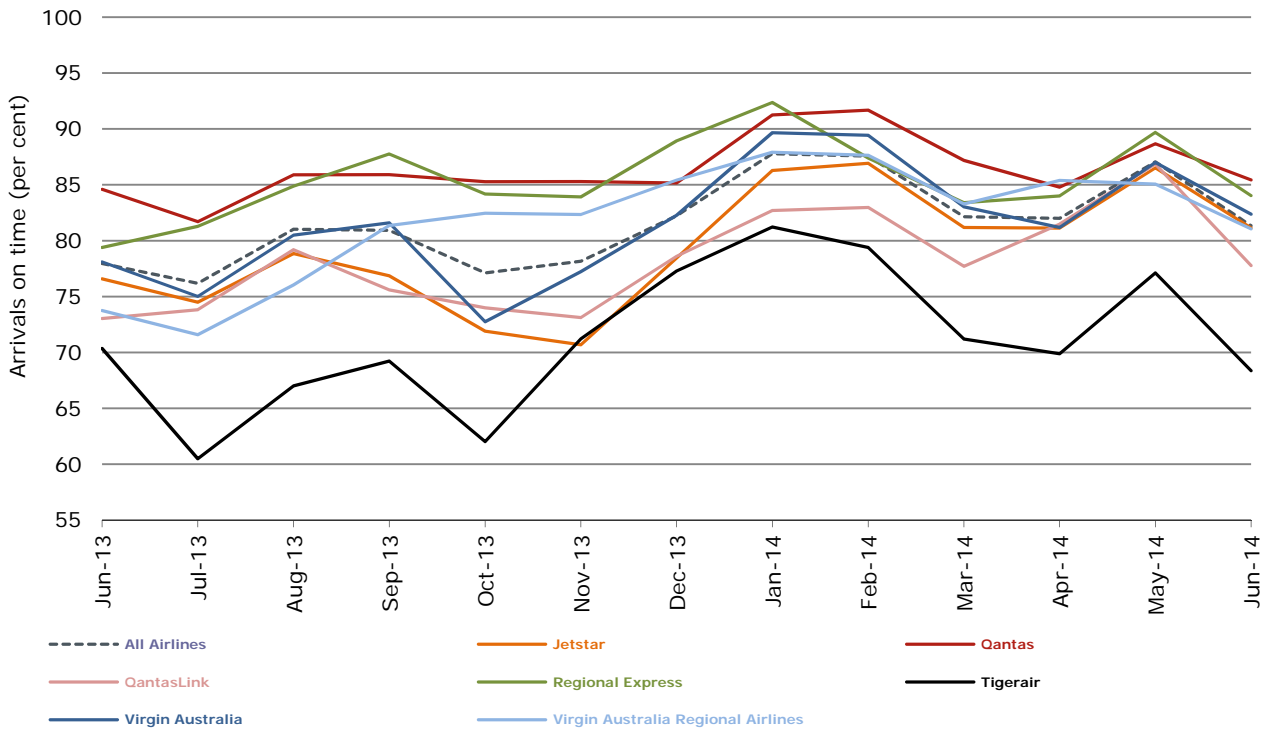
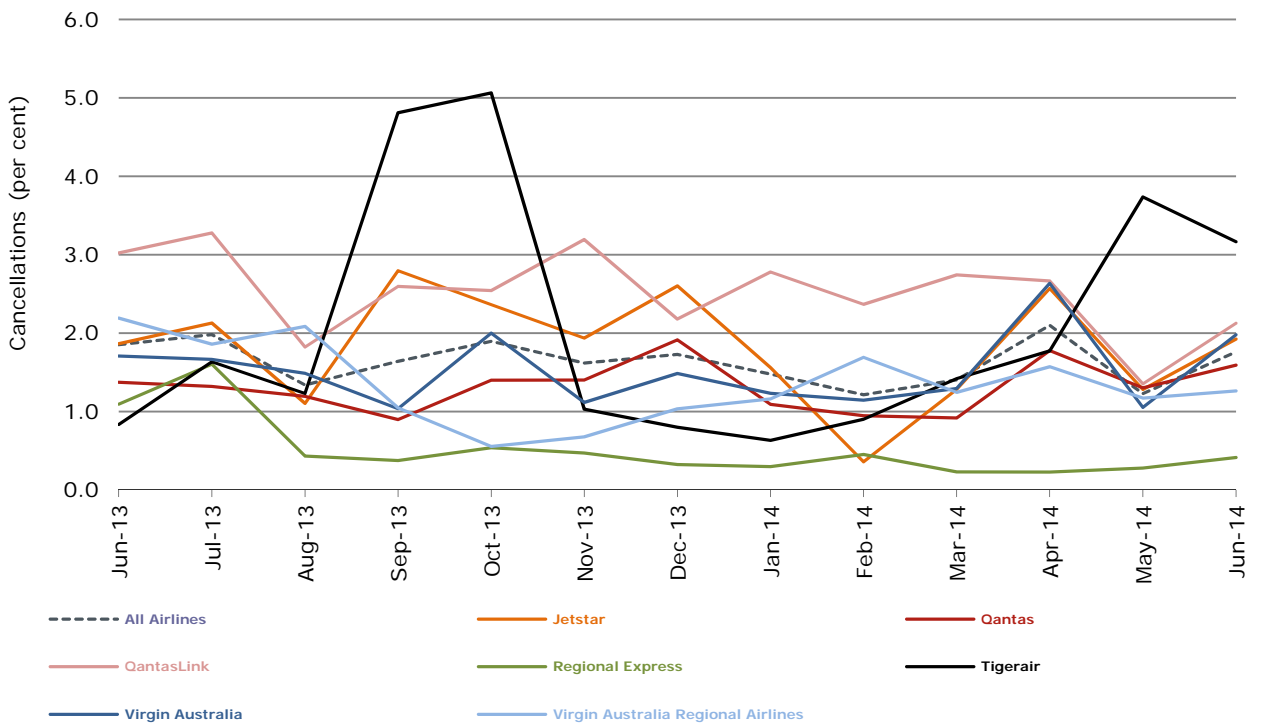


Figure 4 Cancellations (by month from June 2013)



Major domestic airlines on time performance

Figure 5 On time performance (by month from June 2011)—Jetstar

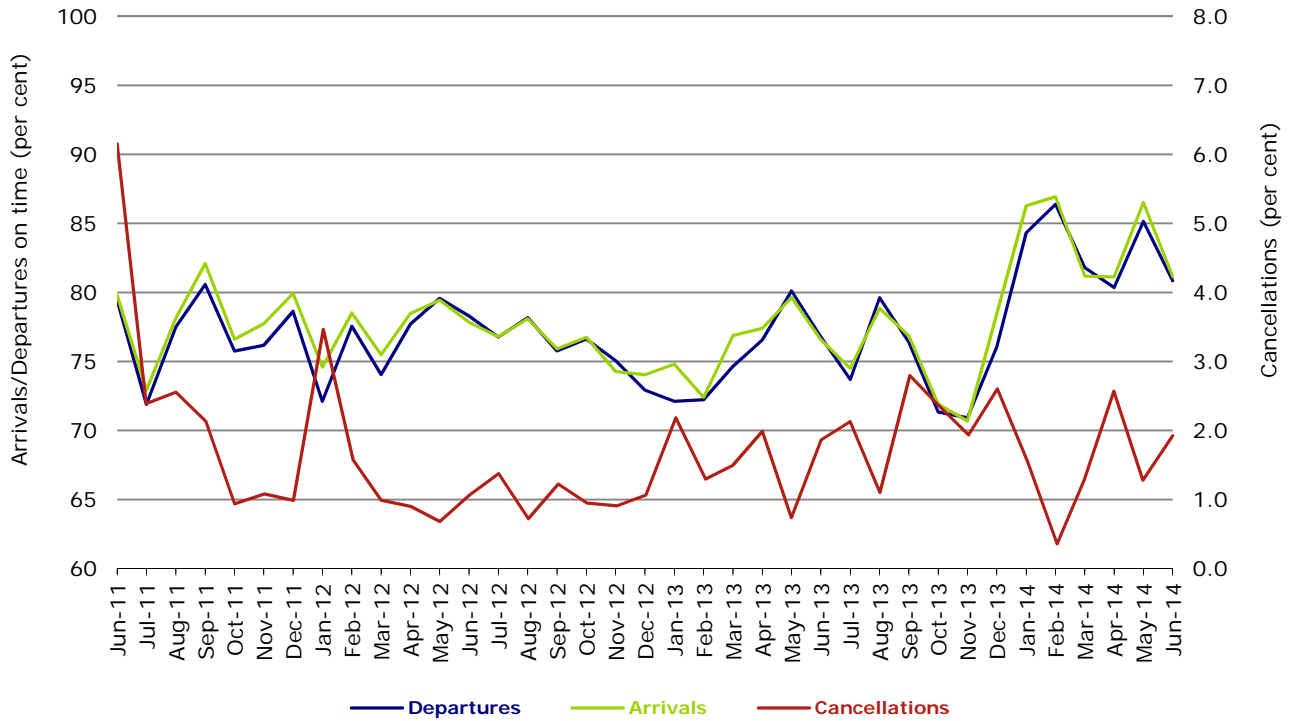


Figure 6 On time performance (by month from June 2011)—Qantas

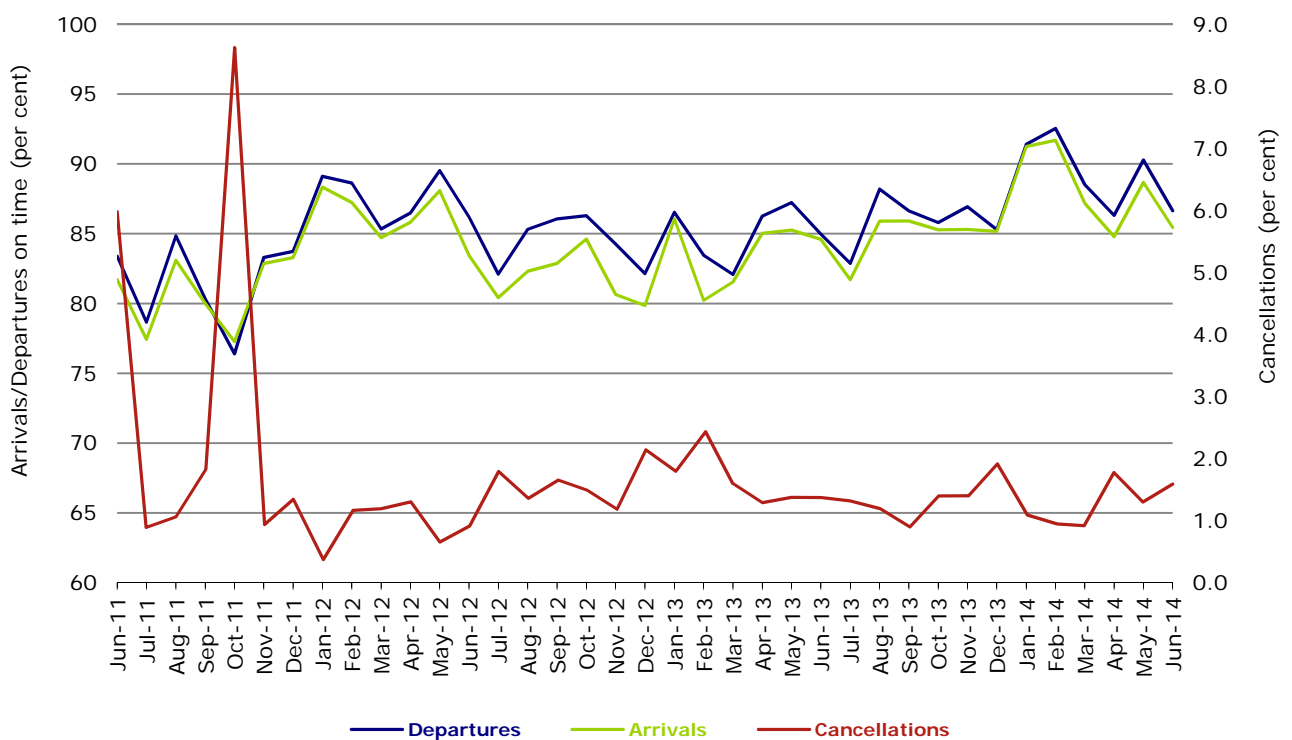
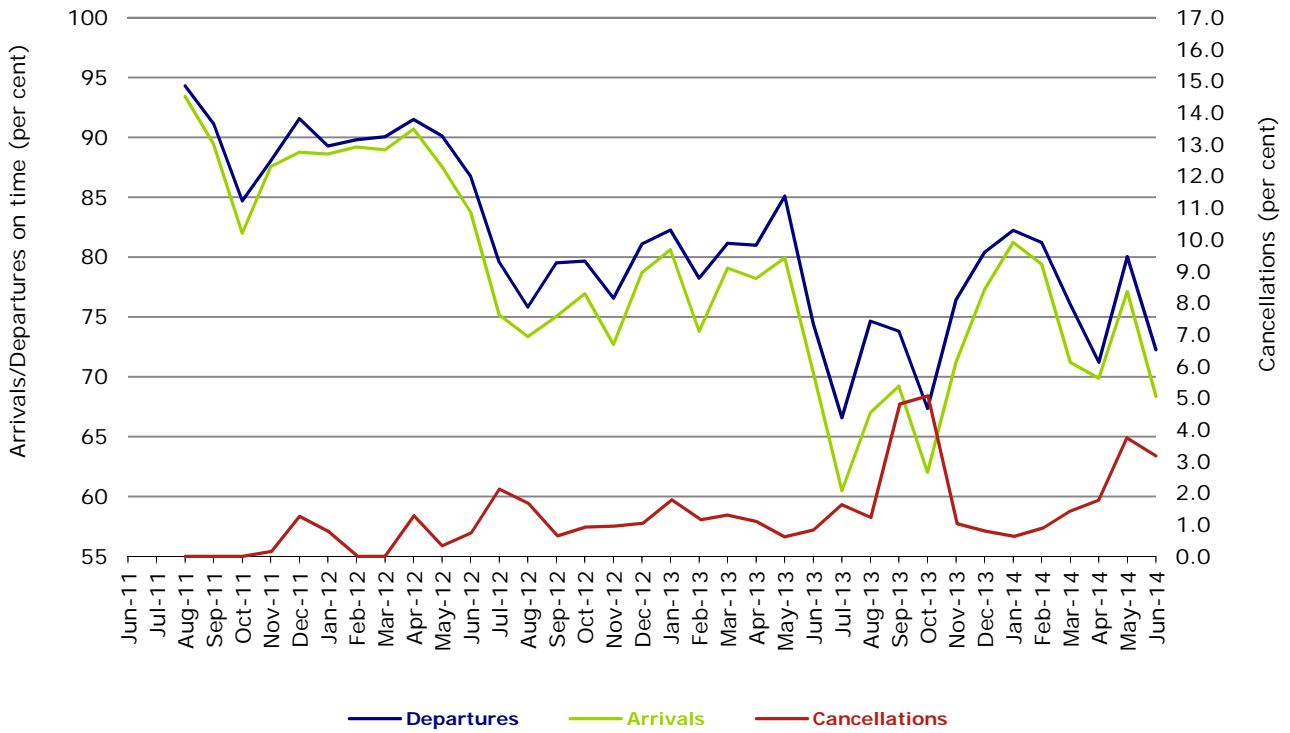
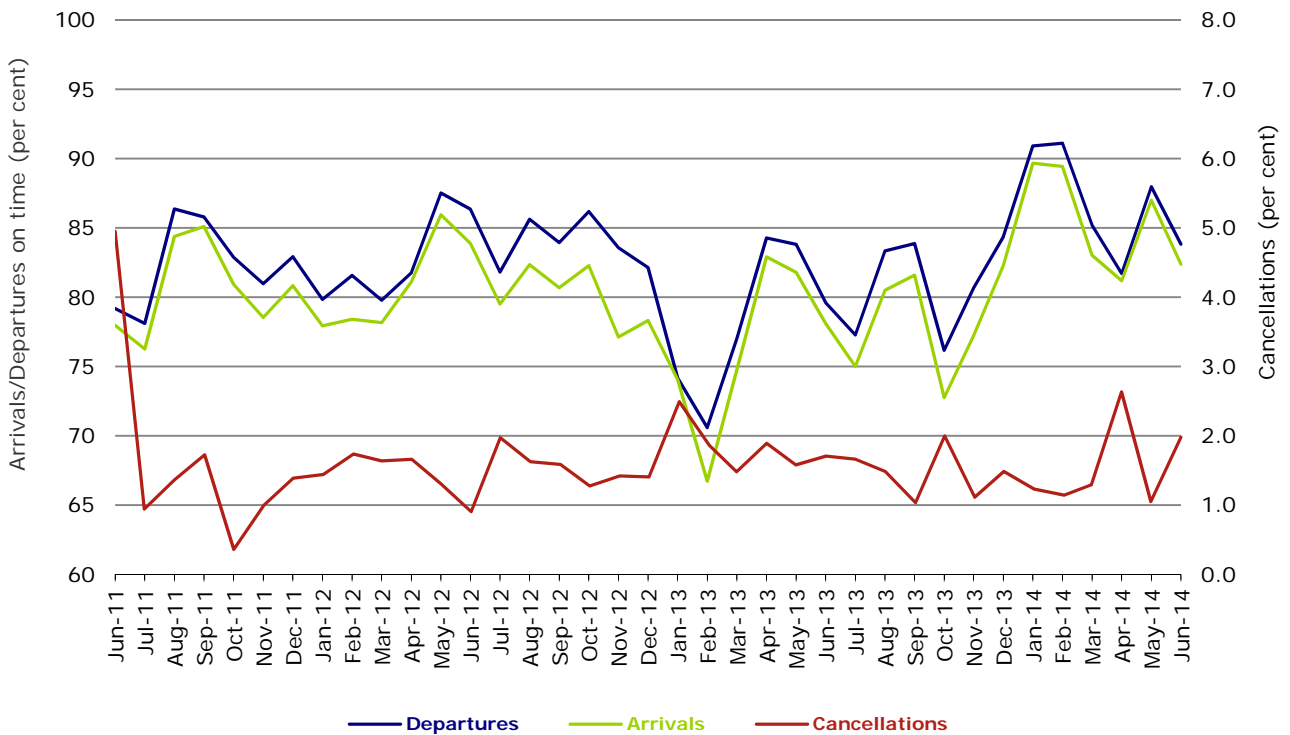


Figure 7 On time performance (by month from June 2011)—Tigerair



No data for Tigerair for July 2011 as it was grounded by CASA from 2/7/2011 to 11/8/2011.

Figure 8 On time performance (by month from June 2011)—Virgin Australia



Major regional airlines on time performance

Figure 9 On time performance (by month from June 2011)—QantasLink

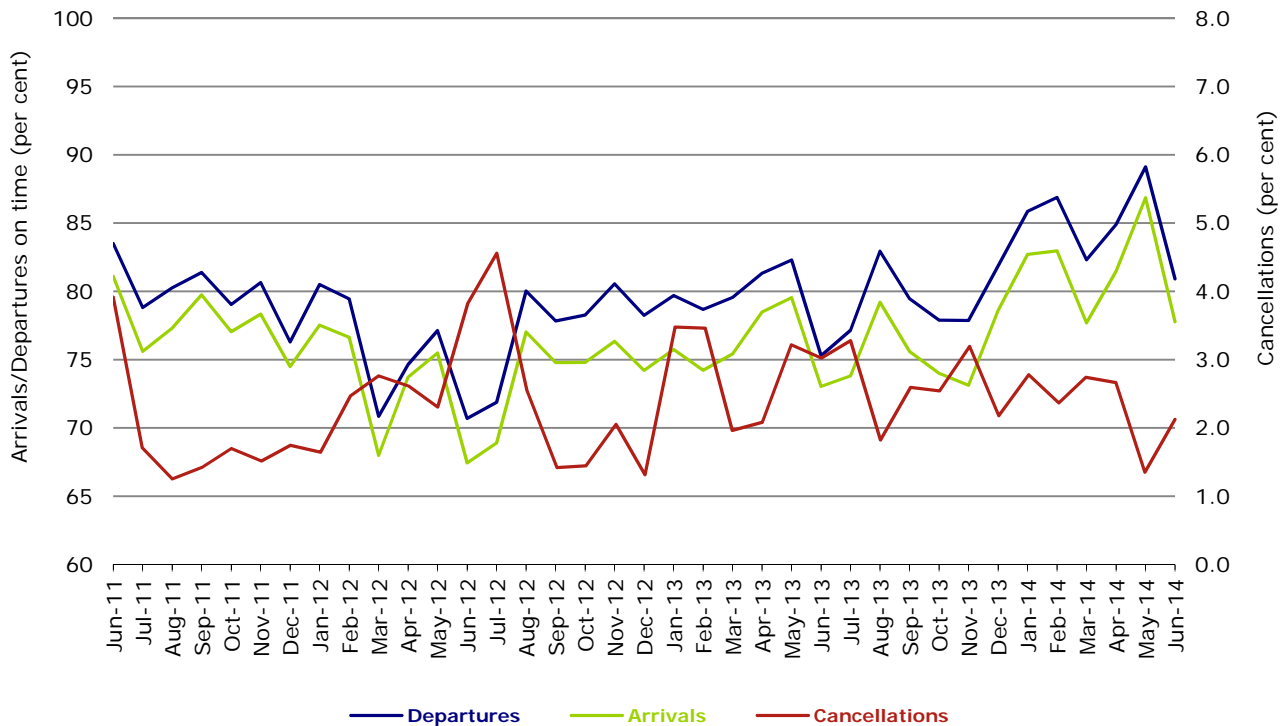


Figure 10 On time performance (by month from June 2011)—Regional Express

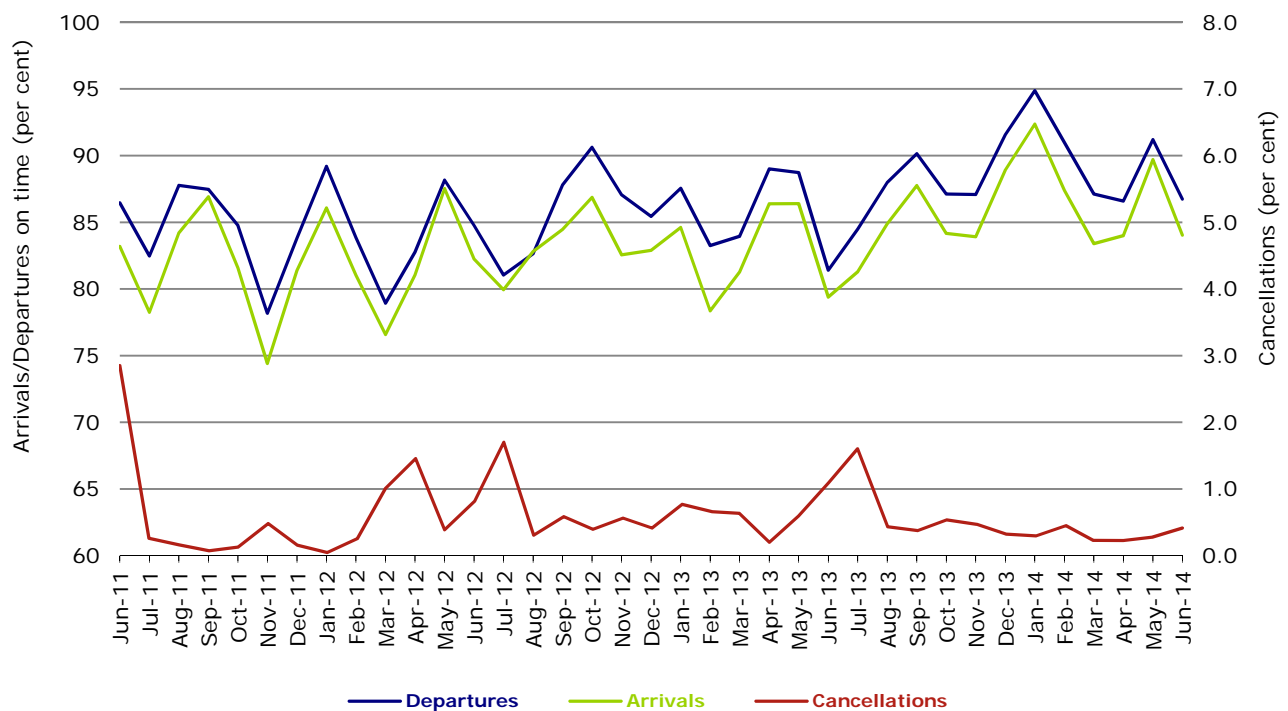
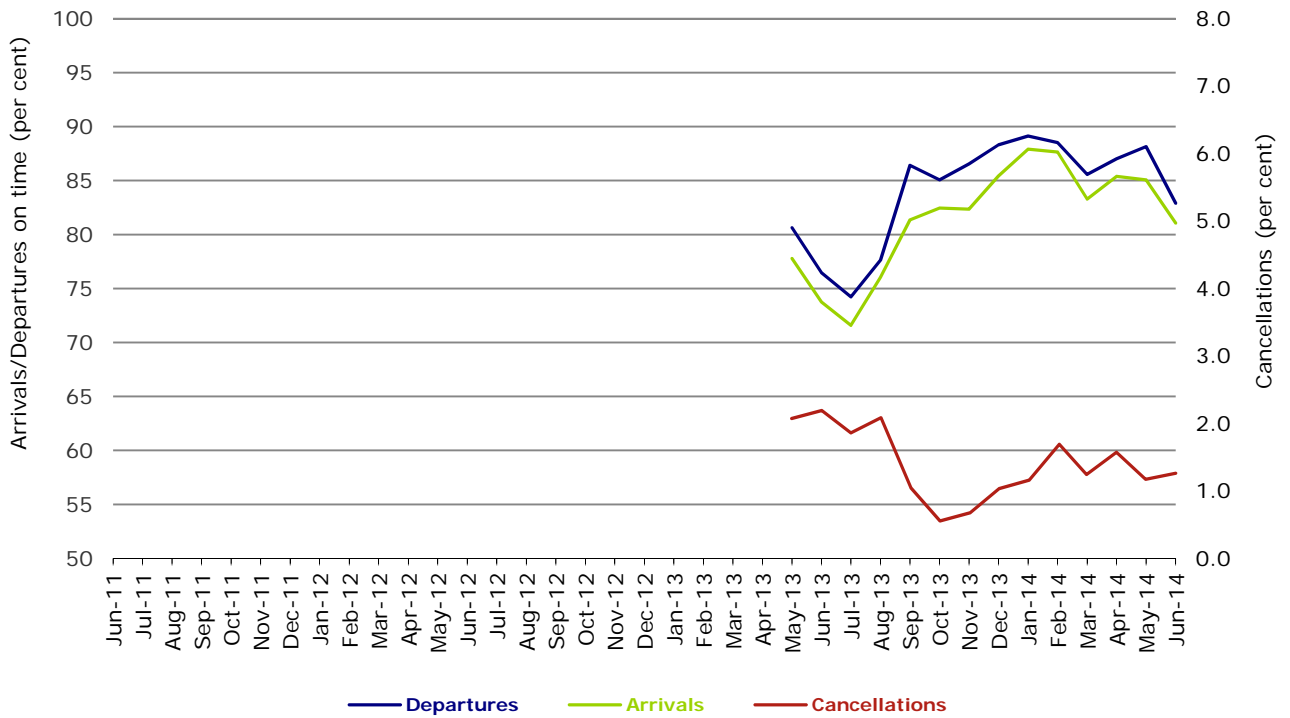


Figure 11 On time performance (by month from June 2011)
Virgin Australia Regional Airlines



Virgin Australia Regional Airlines commenced operations in May 2013. It was formed after the acquisition of Skywest by Virgin Australia and represents a combination of operations previously reported under Skywest and Virgin Australia – ATR/F100 Operations.

Individual routes

On time performance is reported for all routes where the passenger load averages over 8000 passengers per month over the previous six months, and where two or more airlines operate in competition on those routes. There are now 63 routes which meet this definition. Over time, however, routes which meet this definition may change as airline networks and traffic levels vary.

	<i>Sectors</i>		<i>Departures On Time</i>		<i>Arrivals On Time</i>		<i>Cancellations</i>	
	<i>Sched.</i>	<i>Flown</i>	<i>No.</i>	<i>%</i>	<i>No.</i>	<i>%</i>	<i>No.</i>	<i>%</i>
Adelaide-Brisbane								
Jetstar	23	23	20	87.0	20	87.0	0	0.0
Qantas	100	100	93	93.0	90	90.0	0	0.0
Tigerair	24	24	23	95.8	23	95.8	0	0.0
Virgin Australia	111	108	101	93.5	98	90.7	3	2.7
All Airlines	258	255	237	92.9	231	90.6	3	1.2
Adelaide-Canberra								
Qantas	44	44	40	90.9	38	86.4	0	0.0
QantasLink	21	21	14	66.7	17	81.0	0	0.0
Virgin Australia	26	26	26	100.0	25	96.2	0	0.0
All Airlines	91	91	80	87.9	80	87.9	0	0.0
Adelaide-Gold Coast								
Jetstar	28	28	25	89.3	24	85.7	0	0.0
Virgin Australia	31	31	30	96.8	31	100.0	0	0.0
All Airlines	59	59	55	93.2	55	93.2	0	0.0
Adelaide-Melbourne								
Jetstar	104	103	81	78.6	76	73.8	1	1.0
Qantas	269	269	231	85.9	230	85.5	0	0.0
QantasLink	17	17	14	82.4	14	82.4	0	0.0
Tigerair	63	61	48	78.7	44	72.1	2	3.2
Virgin Australia	279	273	238	87.2	234	85.7	6	2.2
All Airlines	732	723	612	84.6	598	82.7	9	1.2
Adelaide-Perth								
Jetstar	31	31	26	83.9	25	80.6	0	0.0
Qantas	105	105	90	85.7	94	89.5	0	0.0
Virgin Australia	61	60	47	78.3	57	95.0	1	1.6
All Airlines	197	196	163	83.2	176	89.8	1	0.5
Adelaide-Port Lincoln								
QantasLink	99	97	83	85.6	79	81.4	2	2.0
Regional Express	201	201	196	97.5	193	96.0	0	0.0
All Airlines	300	298	279	93.6	272	91.3	2	0.7
Adelaide-Sydney								
Jetstar	119	114	76	66.7	75	65.8	5	4.2
Qantas	236	236	219	92.8	225	95.3	0	0.0
QantasLink	20	18	10	55.6	13	72.2	2	10.0
Tigerair	28	27	25	92.6	25	92.6	1	3.6
Virgin Australia	165	163	146	89.6	152	93.3	2	1.2
All Airlines	568	558	476	85.3	490	87.8	10	1.8
Albury-Sydney								
QantasLink	113	111	85	76.6	84	75.7	2	1.8
Regional Express	105	103	93	90.3	91	88.3	2	1.9
Virgin Australia Regional Airlines	60	60	46	76.7	44	73.3	0	0.0
All Airlines	278	274	224	81.8	219	79.9	4	1.4
Alice Springs-Melbourne								
Qantas	30	30	21	70.0	23	76.7	0	0.0
Tigerair	16	16	10	62.5	10	62.5	0	0.0
All Airlines	46	46	31	67.4	33	71.7	0	0.0

	<i>Sectors</i>		<i>Departures On Time</i>		<i>Arrivals On Time</i>		<i>Cancellations</i>	
	<i>Sched.</i>	<i>Flown</i>	<i>No.</i>	<i>%</i>	<i>No.</i>	<i>%</i>	<i>No.</i>	<i>%</i>
Alice Springs-Sydney								
Qantas	30	30	18	60.0	23	76.7	0	0.0
Tigerair	17	17	10	58.8	11	64.7	0	0.0
All Airlines	47	47	28	59.6	34	72.3	0	0.0
Ayers Rock-Sydney								
Jetstar	20	19	17	89.5	15	78.9	1	5.0
Virgin Australia	30	30	26	86.7	28	93.3	0	0.0
All Airlines	50	49	43	87.8	43	87.8	1	2.0
Ballina-Sydney								
Jetstar	55	55	38	69.1	41	74.5	0	0.0
Regional Express	24	24	19	79.2	18	75.0	0	0.0
Virgin Australia	30	29	23	79.3	24	82.8	1	3.3
All Airlines	109	108	80	74.1	83	76.9	1	0.9
Brisbane-Adelaide								
Jetstar	21	21	19	90.5	19	90.5	0	0.0
Qantas	100	100	88	88.0	89	89.0	0	0.0
Tigerair	24	24	20	83.3	19	79.2	0	0.0
Virgin Australia	111	110	98	89.1	94	85.5	1	0.9
All Airlines	256	255	225	88.2	221	86.7	1	0.4
Brisbane-Bundaberg								
QantasLink	118	118	107	90.7	105	89.0	0	0.0
Virgin Australia Regional Airlines	40	40	31	77.5	32	80.0	0	0.0
All Airlines	158	158	138	87.3	137	86.7	0	0.0
Brisbane-Cairns								
Jetstar	88	88	77	87.5	68	77.3	0	0.0
Qantas	116	116	88	75.9	89	76.7	0	0.0
QantasLink	4	4	4	100.0	3	75.0	0	0.0
Tigerair	30	29	17	58.6	14	48.3	1	3.3
Virgin Australia	129	129	108	83.7	108	83.7	0	0.0
All Airlines	367	366	294	80.3	282	77.0	1	0.3
Brisbane-Canberra								
Qantas	48	48	39	81.3	41	85.4	0	0.0
QantasLink	113	112	88	78.6	88	78.6	1	0.9
Virgin Australia	93	93	78	83.9	76	81.7	0	0.0
All Airlines	254	253	205	81.0	205	81.0	1	0.4
Brisbane-Darwin								
Jetstar	31	30	24	80.0	19	63.3	1	3.2
Qantas	47	47	37	78.7	32	68.1	0	0.0
Tigerair	27	27	27	100.0	18	66.7	0	0.0
Virgin Australia	31	31	25	80.6	21	67.7	0	0.0
All Airlines	136	135	113	83.7	90	66.7	1	0.7
Brisbane-Emerald								
QantasLink	147	147	131	89.1	107	72.8	0	0.0
Virgin Australia Regional Airlines	82	82	74	90.2	65	79.3	0	0.0
All Airlines	229	229	205	89.5	172	75.1	0	0.0
Brisbane-Gladstone								
QantasLink	211	210	186	88.6	176	83.8	1	0.5
Virgin Australia Regional Airlines	144	144	117	81.3	114	79.2	0	0.0
All Airlines	355	354	303	85.6	290	81.9	1	0.3
Brisbane-Hamilton Island								
Jetstar	17	17	17	100.0	17	100.0	0	0.0
Virgin Australia	29	29	27	93.1	26	89.7	0	0.0
All Airlines	46	46	44	95.7	43	93.5	0	0.0

	<i>Sectors</i>		<i>Departures On Time</i>		<i>Arrivals On Time</i>		<i>Cancellations</i>	
	<i>Sched.</i>	<i>Flown</i>	<i>No.</i>	<i>%</i>	<i>No.</i>	<i>%</i>	<i>No.</i>	<i>%</i>
Brisbane-Hobart								
Jetstar	29	29	26	89.7	23	79.3	0	0.0
Virgin Australia	30	30	25	83.3	26	86.7	0	0.0
All Airlines	59	59	51	86.4	49	83.1	0	0.0
Brisbane-Mackay								
Jetstar	60	60	51	85.0	52	86.7	0	0.0
QantasLink	107	105	98	93.3	96	91.4	2	1.9
Virgin Australia	136	136	120	88.2	113	83.1	0	0.0
All Airlines	303	301	269	89.4	261	86.7	2	0.7
Brisbane-Melbourne								
Jetstar	109	106	76	71.7	79	74.5	3	2.8
Qantas	397	396	312	78.8	309	78.0	1	0.3
Tigerair	105	103	70	68.0	64	62.1	2	1.9
Virgin Australia	358	351	292	83.2	258	73.5	7	2.0
All Airlines	969	956	750	78.5	710	74.3	13	1.3
Brisbane-Moranbah								
QantasLink	132	126	114	90.5	107	84.9	6	4.5
Virgin Australia Regional Airlines	90	89	72	80.9	76	85.4	1	1.1
All Airlines	222	215	186	86.5	183	85.1	7	3.2
Brisbane-Mount Isa								
Qantas	56	56	53	94.6	54	96.4	0	0.0
Virgin Australia	21	21	19	90.5	18	85.7	0	0.0
All Airlines	77	77	72	93.5	72	93.5	0	0.0
Brisbane-Newcastle								
Jetstar	97	97	85	87.6	84	86.6	0	0.0
QantasLink	68	67	56	83.6	45	67.2	1	1.5
Virgin Australia	76	76	66	86.8	67	88.2	0	0.0
All Airlines	241	240	207	86.3	196	81.7	1	0.4
Brisbane-Perth								
Jetstar	21	21	18	85.7	18	85.7	0	0.0
Qantas	120	120	100	83.3	105	87.5	0	0.0
Virgin Australia	86	86	68	79.1	74	86.0	0	0.0
All Airlines	227	227	186	81.9	197	86.8	0	0.0
Brisbane-Proserpine								
Jetstar	26	26	26	100.0	26	100.0	0	0.0
Virgin Australia	51	51	45	88.2	44	86.3	0	0.0
All Airlines	77	77	71	92.2	70	90.9	0	0.0
Brisbane-Rockhampton								
QantasLink	216	210	166	79.0	164	78.1	6	2.8
Virgin Australia	98	98	78	79.6	80	81.6	0	0.0
Virgin Australia Regional Airlines	112	108	89	82.4	83	76.9	4	3.6
All Airlines	426	416	333	80.0	327	78.6	10	2.3
Brisbane-Sydney								
Jetstar	156	151	112	74.2	125	82.8	5	3.2
Qantas	589	571	491	86.0	497	87.0	18	3.1
Tigerair	89	89	54	60.7	51	57.3	0	0.0
Virgin Australia	525	507	436	86.0	434	85.6	18	3.4
All Airlines	1 359	1 318	1 093	82.9	1 107	84.0	41	3.0
Brisbane-Townsville								
Jetstar	51	51	45	88.2	43	84.3	0	0.0
Qantas	148	148	127	85.8	128	86.5	0	0.0
Virgin Australia	154	153	136	88.9	130	85.0	1	0.6
All Airlines	353	352	308	87.5	301	85.5	1	0.3

	<i>Sectors</i>		<i>Departures On Time</i>		<i>Arrivals On Time</i>		<i>Cancellations</i>	
	<i>Sched.</i>	<i>Flown</i>	<i>No.</i>	<i>%</i>	<i>No.</i>	<i>%</i>	<i>No.</i>	<i>%</i>
Broome-Perth								
Qantas	34	34	25	73.5	30	88.2	0	0.0
QantasLink	51	49	43	87.8	43	87.8	2	3.9
Virgin Australia	51	50	43	86.0	43	86.0	1	2.0
Virgin Australia Regional Airlines	24	23	20	87.0	10	43.5	1	4.2
All Airlines	160	156	131	84.0	126	80.8	4	2.5
Bundaberg-Brisbane								
QantasLink	119	119	103	86.6	101	84.9	0	0.0
Virgin Australia Regional Airlines	39	39	28	71.8	31	79.5	0	0.0
All Airlines	158	158	131	82.9	132	83.5	0	0.0
Cairns-Brisbane								
Jetstar	90	89	76	85.4	80	89.9	1	1.1
Qantas	115	115	89	77.4	84	73.0	0	0.0
QantasLink	5	5	5	100.0	5	100.0	0	0.0
Tigerair	30	29	14	48.3	15	51.7	1	3.3
Virgin Australia	129	129	100	77.5	103	79.8	0	0.0
All Airlines	369	367	284	77.4	287	78.2	2	0.5
Cairns-Melbourne								
Jetstar	85	85	63	74.1	63	74.1	0	0.0
Qantas	30	30	19	63.3	22	73.3	0	0.0
Tigerair	36	36	21	58.3	22	61.1	0	0.0
Virgin Australia	34	34	19	55.9	20	58.8	0	0.0
All Airlines	185	185	122	65.9	127	68.6	0	0.0
Cairns-Sydney								
Jetstar	98	96	78	81.3	86	89.6	2	2.0
Qantas	74	74	61	82.4	68	91.9	0	0.0
Tigerair	34	34	16	47.1	29	85.3	0	0.0
Virgin Australia	82	82	70	85.4	75	91.5	0	0.0
All Airlines	288	286	225	78.7	258	90.2	2	0.7
Canberra-Adelaide								
Qantas	44	44	38	86.4	38	86.4	0	0.0
QantasLink	21	21	12	57.1	12	57.1	0	0.0
Virgin Australia	26	26	26	100.0	24	92.3	0	0.0
All Airlines	91	91	76	83.5	74	81.3	0	0.0
Canberra-Brisbane								
Qantas	48	47	42	89.4	44	93.6	1	2.1
QantasLink	113	112	84	75.0	83	74.1	1	0.9
Virgin Australia	94	93	77	82.8	73	78.5	1	1.1
All Airlines	255	252	203	80.6	200	79.4	3	1.2
Canberra-Melbourne								
Qantas	172	170	145	85.3	146	85.9	2	1.2
QantasLink	108	104	74	71.2	70	67.3	4	3.7
Virgin Australia	177	174	126	72.4	122	70.1	3	1.7
All Airlines	457	448	345	77.0	338	75.4	9	2.0
Canberra-Sydney								
Qantas	25	23	20	87.0	21	91.3	2	8.0
QantasLink	512	479	386	80.6	389	81.2	33	6.4
Virgin Australia	51	49	44	89.8	44	89.8	2	3.9
Virgin Australia Regional Airlines	241	234	202	86.3	206	88.0	7	2.9
All Airlines	829	785	652	83.1	660	84.1	44	5.3
Coffs Harbour-Sydney								
QantasLink	150	149	112	75.2	118	79.2	1	0.7
Tigerair	14	13	10	76.9	9	69.2	1	7.1
Virgin Australia	56	55	49	89.1	51	92.7	1	1.8
All Airlines	220	217	171	78.8	178	82.0	3	1.4

	<i>Sectors</i>		<i>Departures On Time</i>		<i>Arrivals On Time</i>		<i>Cancellations</i>	
	<i>Sched.</i>	<i>Flown</i>	<i>No.</i>	<i>%</i>	<i>No.</i>	<i>%</i>	<i>No.</i>	<i>%</i>
Darwin-Brisbane								
Jetstar	31	30	22	73.3	26	86.7	1	3.2
Qantas	47	47	25	53.2	27	57.4	0	0.0
Tigerair	27	26	24	92.3	24	92.3	1	3.7
Virgin Australia	31	31	17	54.8	13	41.9	0	0.0
All Airlines	136	134	88	65.7	90	67.2	2	1.5
Darwin-Melbourne								
Jetstar	30	30	18	60.0	22	73.3	0	0.0
Qantas	30	30	18	60.0	18	60.0	0	0.0
Virgin Australia	30	30	25	83.3	25	83.3	0	0.0
All Airlines	90	90	61	67.8	65	72.2	0	0.0
Darwin-Perth								
Qantas	34	34	28	82.4	30	88.2	0	0.0
Virgin Australia	26	26	24	92.3	20	76.9	0	0.0
All Airlines	60	60	52	86.7	50	83.3	0	0.0
Darwin-Sydney								
Jetstar	30	30	19	63.3	29	96.7	0	0.0
Qantas	59	59	45	76.3	49	83.1	0	0.0
Virgin Australia	30	30	18	60.0	24	80.0	0	0.0
All Airlines	119	119	82	68.9	102	85.7	0	0.0
Dubbo-Sydney								
QantasLink	123	123	98	79.7	97	78.9	0	0.0
Regional Express	151	150	126	84.0	124	82.7	1	0.7
All Airlines	274	273	224	82.1	221	81.0	1	0.4
Emerald-Brisbane								
QantasLink	146	145	104	71.7	103	71.0	1	0.7
Virgin Australia Regional Airlines	82	81	71	87.7	70	86.4	1	1.2
All Airlines	228	226	175	77.4	173	76.5	2	0.9
Geraldton-Perth								
QantasLink	51	51	47	92.2	45	88.2	0	0.0
Virgin Australia Regional Airlines	94	93	78	83.9	75	80.6	1	1.1
All Airlines	145	144	125	86.8	120	83.3	1	0.7
Gladstone-Brisbane								
QantasLink	228	227	182	80.2	166	73.1	1	0.4
Virgin Australia Regional Airlines	143	143	113	79.0	108	75.5	0	0.0
All Airlines	371	370	295	79.7	274	74.1	1	0.3
Gold Coast-Adelaide								
Jetstar	28	28	26	92.9	26	92.9	0	0.0
Virgin Australia	30	30	29	96.7	30	100.0	0	0.0
All Airlines	58	58	55	94.8	56	96.6	0	0.0
Gold Coast-Melbourne								
Jetstar	212	210	170	81.0	170	81.0	2	0.9
Tigerair	66	64	42	65.6	37	57.8	2	3.0
Virgin Australia	174	173	131	75.7	139	80.3	1	0.6
All Airlines	452	447	343	76.7	346	77.4	5	1.1
Gold Coast-Sydney								
Jetstar	263	252	218	86.5	224	88.9	11	4.2
Qantas	83	83	73	88.0	76	91.6	0	0.0
Tigerair	50	48	30	62.5	32	66.7	2	4.0
Virgin Australia	301	293	255	87.0	264	90.1	8	2.7
All Airlines	697	676	576	85.2	596	88.2	21	3.0

	<i>Sectors</i>		<i>Departures On Time</i>		<i>Arrivals On Time</i>		<i>Cancellations</i>	
	<i>Sched.</i>	<i>Flown</i>	<i>No.</i>	<i>%</i>	<i>No.</i>	<i>%</i>	<i>No.</i>	<i>%</i>
Hamilton Island-Brisbane								
Jetstar	18	18	16	88.9	16	88.9	0	0.0
Virgin Australia	30	28	25	89.3	23	82.1	2	6.7
All Airlines	48	46	41	89.1	39	84.8	2	4.2
Hamilton Island-Melbourne								
Jetstar	18	18	18	100.0	18	100.0	0	0.0
Virgin Australia	15	14	10	71.4	11	78.6	1	6.7
All Airlines	33	32	28	87.5	29	90.6	1	3.0
Hamilton Island-Sydney								
Jetstar	27	26	20	76.9	20	76.9	1	3.7
Virgin Australia	30	29	22	75.9	23	79.3	1	3.3
All Airlines	57	55	42	76.4	43	78.2	2	3.5
Hobart-Brisbane								
Jetstar	30	30	11	36.7	15	50.0	0	0.0
Virgin Australia	30	30	25	83.3	26	86.7	0	0.0
All Airlines	60	60	36	60.0	41	68.3	0	0.0
Hobart-Melbourne								
Jetstar	151	150	116	77.3	118	78.7	1	0.7
QantasLink	115	112	56	50.0	53	47.3	3	2.6
Tigerair	26	26	12	46.2	10	38.5	0	0.0
Virgin Australia	128	127	103	81.1	103	81.1	1	0.8
All Airlines	420	415	287	69.2	284	68.4	5	1.2
Hobart-Sydney								
Jetstar	52	50	37	74.0	36	72.0	2	3.8
QantasLink	36	36	30	83.3	24	66.7	0	0.0
Virgin Australia	56	56	49	87.5	47	83.9	0	0.0
All Airlines	144	142	116	81.7	107	75.4	2	1.4
Kalgoorlie-Perth								
Qantas	47	46	43	93.5	43	93.5	1	2.1
QantasLink	35	35	31	88.6	31	88.6	0	0.0
Virgin Australia	47	46	41	89.1	40	87.0	1	2.1
Virgin Australia Regional Airlines	9	9	6	66.7	7	77.8	0	0.0
All Airlines	138	136	121	89.0	121	89.0	2	1.4
Karratha-Perth								
Qantas	142	134	125	93.3	124	92.5	8	5.6
QantasLink	76	74	68	91.9	65	87.8	2	2.6
Virgin Australia	65	64	57	89.1	59	92.2	1	1.5
Virgin Australia Regional Airlines	13	13	10	76.9	9	69.2	0	0.0
All Airlines	296	285	260	91.2	257	90.2	11	3.7
Launceston-Melbourne								
Jetstar	127	124	92	74.2	92	74.2	3	2.4
QantasLink	120	118	94	79.7	89	75.4	2	1.7
Virgin Australia	119	116	99	85.3	99	85.3	3	2.5
All Airlines	366	358	285	79.6	280	78.2	8	2.2
Launceston-Sydney								
Jetstar	48	48	36	75.0	39	81.3	0	0.0
Virgin Australia	30	30	23	76.7	22	73.3	0	0.0
All Airlines	78	78	59	75.6	61	78.2	0	0.0
Mackay-Brisbane								
Jetstar	60	60	46	76.7	50	83.3	0	0.0
QantasLink	106	104	93	89.4	92	88.5	2	1.9
Virgin Australia	136	136	111	81.6	110	80.9	0	0.0
All Airlines	302	300	250	83.3	252	84.0	2	0.7

	<i>Sectors</i>		<i>Departures On Time</i>		<i>Arrivals On Time</i>		<i>Cancellations</i>	
	<i>Sched.</i>	<i>Flown</i>	<i>No.</i>	<i>%</i>	<i>No.</i>	<i>%</i>	<i>No.</i>	<i>%</i>
Melbourne-Adelaide								
Jetstar	105	105	76	72.4	81	77.1	0	0.0
Qantas	269	269	240	89.2	235	87.4	0	0.0
QantasLink	17	17	14	82.4	15	88.2	0	0.0
Tigerair	63	61	50	82.0	50	82.0	2	3.2
Virgin Australia	281	276	231	83.7	227	82.2	5	1.8
All Airlines	735	728	611	83.9	608	83.5	7	1.0
Melbourne-Alice Springs								
Qantas	30	30	24	80.0	22	73.3	0	0.0
Tigerair	16	16	16	100.0	12	75.0	0	0.0
All Airlines	46	46	40	87.0	34	73.9	0	0.0
Melbourne-Brisbane								
Jetstar	108	106	65	61.3	70	66.0	2	1.9
Qantas	399	399	322	80.7	298	74.7	0	0.0
Tigerair	105	103	73	70.9	64	62.1	2	1.9
Virgin Australia	359	350	274	78.3	260	74.3	9	2.5
All Airlines	971	958	734	76.6	692	72.2	13	1.3
Melbourne-Cairns								
Jetstar	85	85	71	83.5	62	72.9	0	0.0
Qantas	30	30	23	76.7	19	63.3	0	0.0
Tigerair	35	35	29	82.9	23	65.7	0	0.0
Virgin Australia	34	34	27	79.4	21	61.8	0	0.0
All Airlines	184	184	150	81.5	125	67.9	0	0.0
Melbourne-Canberra								
Qantas	172	171	150	87.7	150	87.7	1	0.6
QantasLink	109	105	73	69.5	66	62.9	4	3.7
Virgin Australia	178	175	131	74.9	129	73.7	3	1.7
All Airlines	459	451	354	78.5	345	76.5	8	1.7
Melbourne-Darwin								
Jetstar	30	30	25	83.3	23	76.7	0	0.0
Qantas	30	30	23	76.7	20	66.7	0	0.0
Virgin Australia	30	30	29	96.7	27	90.0	0	0.0
All Airlines	90	90	77	85.6	70	77.8	0	0.0
Melbourne-Gold Coast								
Jetstar	211	209	161	77.0	146	69.9	2	0.9
Tigerair	66	64	48	75.0	45	70.3	2	3.0
Virgin Australia	174	173	134	77.5	135	78.0	1	0.6
All Airlines	451	446	343	76.9	326	73.1	5	1.1
Melbourne-Hamilton Island								
Jetstar	17	17	17	100.0	16	94.1	0	0.0
Virgin Australia	14	14	13	92.9	12	85.7	0	0.0
All Airlines	31	31	30	96.8	28	90.3	0	0.0
Melbourne-Hobart								
Jetstar	150	149	123	82.6	129	86.6	1	0.7
QantasLink	115	112	42	37.5	37	33.0	3	2.6
Tigerair	26	26	15	57.7	12	46.2	0	0.0
Virgin Australia	128	127	111	87.4	102	80.3	1	0.8
All Airlines	419	414	291	70.3	280	67.6	5	1.2
Melbourne-Launceston								
Jetstar	126	123	96	78.0	94	76.4	3	2.4
QantasLink	120	118	98	83.1	85	72.0	2	1.7
Virgin Australia	118	115	100	87.0	92	80.0	3	2.5
All Airlines	364	356	294	82.6	271	76.1	8	2.2

	<i>Sectors</i>		<i>Departures On Time</i>		<i>Arrivals On Time</i>		<i>Cancellations</i>	
	<i>Sched.</i>	<i>Flown</i>	<i>No.</i>	<i>%</i>	<i>No.</i>	<i>%</i>	<i>No.</i>	<i>%</i>
Melbourne-Mildura								
QantasLink	86	86	67	77.9	54	62.8	0	0.0
Regional Express	82	82	80	97.6	77	93.9	0	0.0
Virgin Australia	30	30	19	63.3	18	60.0	0	0.0
All Airlines	198	198	166	83.8	149	75.3	0	0.0
Melbourne-Newcastle								
Jetstar	102	101	82	81.2	83	82.2	1	1.0
Virgin Australia	30	30	22	73.3	24	80.0	0	0.0
All Airlines	132	131	104	79.4	107	81.7	1	0.8
Melbourne-Perth								
Jetstar	78	77	70	90.9	69	89.6	1	1.3
Qantas	203	202	155	76.7	170	84.2	1	0.5
Tigerair	59	54	41	75.9	43	79.6	5	8.5
Virgin Australia	133	131	102	77.9	105	80.2	2	1.5
All Airlines	473	464	368	79.3	387	83.4	9	1.9
Melbourne-Sunshine Coast								
Jetstar	50	50	38	76.0	35	70.0	0	0.0
Tigerair	24	24	17	70.8	14	58.3	0	0.0
Virgin Australia	30	30	22	73.3	18	60.0	0	0.0
All Airlines	104	104	77	74.0	67	64.4	0	0.0
Melbourne-Sydney								
Jetstar	301	283	215	76.0	228	80.6	18	6.0
Qantas	885	843	728	86.4	722	85.6	42	4.7
Tigerair	231	222	156	70.3	157	70.7	9	3.9
Virgin Australia	757	722	599	83.0	595	82.4	35	4.6
All Airlines	2 174	2 070	1 698	82.0	1 702	82.2	104	4.8
Mildura-Melbourne								
QantasLink	86	86	61	70.9	56	65.1	0	0.0
Regional Express	83	83	69	83.1	62	74.7	0	0.0
Virgin Australia	30	30	18	60.0	18	60.0	0	0.0
All Airlines	199	199	148	74.4	136	68.3	0	0.0
Moranbah-Brisbane								
QantasLink	128	120	94	78.3	93	77.5	8	6.3
Virgin Australia Regional Airlines	90	88	73	83.0	76	86.4	2	2.2
All Airlines	218	208	167	80.3	169	81.3	10	4.6
Mount Isa-Brisbane								
Qantas	56	56	49	87.5	51	91.1	0	0.0
Virgin Australia	21	21	19	90.5	18	85.7	0	0.0
All Airlines	77	77	68	88.3	69	89.6	0	0.0
Newcastle-Brisbane								
Jetstar	96	96	85	88.5	81	84.4	0	0.0
QantasLink	67	66	45	68.2	45	68.2	1	1.5
Virgin Australia	76	76	60	78.9	57	75.0	0	0.0
All Airlines	239	238	190	79.8	183	76.9	1	0.4
Newcastle-Melbourne								
Jetstar	101	100	83	83.0	86	86.0	1	1.0
Virgin Australia	30	29	21	72.4	24	82.8	1	3.3
All Airlines	131	129	104	80.6	110	85.3	2	1.5
Newman-Perth								
Qantas	127	125	124	99.2	122	97.6	2	1.6
QantasLink	26	26	24	92.3	24	92.3	0	0.0
Virgin Australia	29	29	23	79.3	24	82.8	0	0.0
Virgin Australia Regional Airlines	9	9	9	100.0	9	100.0	0	0.0
All Airlines	191	189	180	95.2	179	94.7	2	1.0

	<i>Sectors</i>		<i>Departures On Time</i>		<i>Arrivals On Time</i>		<i>Cancellations</i>	
	<i>Sched.</i>	<i>Flown</i>	<i>No.</i>	<i>%</i>	<i>No.</i>	<i>%</i>	<i>No.</i>	<i>%</i>
Perth-Adelaide								
Jetstar	31	31	25	80.6	24	77.4	0	0.0
Qantas	108	108	103	95.4	104	96.3	0	0.0
Virgin Australia	61	60	59	98.3	59	98.3	1	1.6
All Airlines	200	199	187	94.0	187	94.0	1	0.5
Perth-Brisbane								
Jetstar	19	19	11	57.9	10	52.6	0	0.0
Qantas	119	119	109	91.6	100	84.0	0	0.0
Virgin Australia	86	86	77	89.5	70	81.4	0	0.0
All Airlines	224	224	197	87.9	180	80.4	0	0.0
Perth-Broome								
Qantas	34	34	29	85.3	29	85.3	0	0.0
QantasLink	51	50	47	94.0	47	94.0	1	2.0
Virgin Australia	52	51	46	90.2	45	88.2	1	1.9
Virgin Australia Regional Airlines	20	19	14	73.7	17	89.5	1	5.0
All Airlines	157	154	136	88.3	138	89.6	3	1.9
Perth-Darwin								
Qantas	34	34	32	94.1	32	94.1	0	0.0
Virgin Australia	26	26	25	96.2	25	96.2	0	0.0
All Airlines	60	60	57	95.0	57	95.0	0	0.0
Perth-Geraldton								
QantasLink	51	51	49	96.1	49	96.1	0	0.0
Virgin Australia Regional Airlines	90	89	78	87.6	75	84.3	1	1.1
All Airlines	141	140	127	90.7	124	88.6	1	0.7
Perth-Kalgoorlie								
Qantas	47	47	44	93.6	45	95.7	0	0.0
QantasLink	34	34	34	100.0	33	97.1	0	0.0
Virgin Australia	46	45	38	84.4	41	91.1	1	2.2
Virgin Australia Regional Airlines	9	9	8	88.9	8	88.9	0	0.0
All Airlines	136	135	124	91.9	127	94.1	1	0.7
Perth-Karratha								
Qantas	142	137	129	94.2	132	96.4	5	3.5
QantasLink	75	73	69	94.5	67	91.8	2	2.7
Virgin Australia	65	64	59	92.2	60	93.8	1	1.5
Virgin Australia Regional Airlines	13	13	10	76.9	10	76.9	0	0.0
All Airlines	295	287	267	93.0	269	93.7	8	2.7
Perth-Melbourne								
Jetstar	76	75	53	70.7	50	66.7	1	1.3
Qantas	203	202	178	88.1	171	84.7	1	0.5
Tigerair	58	53	34	64.2	39	73.6	5	8.6
Virgin Australia	134	132	118	89.4	110	83.3	2	1.5
All Airlines	471	462	383	82.9	370	80.1	9	1.9
Perth-Newman								
Qantas	127	125	123	98.4	123	98.4	2	1.6
QantasLink	25	25	23	92.0	23	92.0	0	0.0
Virgin Australia	29	29	22	75.9	23	79.3	0	0.0
Virgin Australia Regional Airlines	9	9	6	66.7	9	100.0	0	0.0
All Airlines	190	188	174	92.6	178	94.7	2	1.1
Perth-Port Hedland								
Qantas	118	118	116	98.3	115	97.5	0	0.0
QantasLink	38	38	34	89.5	34	89.5	0	0.0
Virgin Australia	42	41	41	100.0	41	100.0	1	2.4
All Airlines	198	197	191	97.0	190	96.4	1	0.5

	<i>Sectors</i>		<i>Departures On Time</i>		<i>Arrivals On Time</i>		<i>Cancellations</i>	
	<i>Sched.</i>	<i>Flown</i>	<i>No.</i>	<i>%</i>	<i>No.</i>	<i>%</i>	<i>No.</i>	<i>%</i>
Perth-Sydney								
Jetstar	29	26	15	57.7	15	57.7	3	10.3
Qantas	186	185	167	90.3	164	88.6	1	0.5
Tigerair	25	21	18	85.7	18	85.7	4	16.0
Virgin Australia	110	110	99	90.0	104	94.5	0	0.0
All Airlines	350	342	299	87.4	301	88.0	8	2.3
Port Hedland-Perth								
Qantas	118	118	108	91.5	109	92.4	0	0.0
QantasLink	39	39	33	84.6	33	84.6	0	0.0
Virgin Australia	42	41	41	100.0	39	95.1	1	2.4
All Airlines	199	198	182	91.9	181	91.4	1	0.5
Port Lincoln-Adelaide								
QantasLink	98	96	82	85.4	82	85.4	2	2.0
Regional Express	201	201	191	95.0	187	93.0	0	0.0
All Airlines	299	297	273	91.9	269	90.6	2	0.7
Port Macquarie-Sydney								
QantasLink	132	131	97	74.0	82	62.6	1	0.8
Virgin Australia Regional Airlines	60	60	46	76.7	44	73.3	0	0.0
All Airlines	192	191	143	74.9	126	66.0	1	0.5
Proserpine-Brisbane								
Jetstar	26	26	26	100.0	26	100.0	0	0.0
Virgin Australia	51	51	40	78.4	43	84.3	0	0.0
All Airlines	77	77	66	85.7	69	89.6	0	0.0
Rockhampton-Brisbane								
QantasLink	195	189	141	74.6	137	72.5	6	3.1
Virgin Australia	98	98	80	81.6	80	81.6	0	0.0
Virgin Australia Regional Airlines	108	104	88	84.6	86	82.7	4	3.7
All Airlines	401	391	309	79.0	303	77.5	10	2.5
Sunshine Coast-Melbourne								
Jetstar	50	50	33	66.0	34	68.0	0	0.0
Tigerair	24	24	16	66.7	16	66.7	0	0.0
Virgin Australia	30	30	19	63.3	21	70.0	0	0.0
All Airlines	104	104	68	65.4	71	68.3	0	0.0
Sunshine Coast-Sydney								
Jetstar	90	90	79	87.8	80	88.9	0	0.0
Virgin Australia	30	29	24	82.8	27	93.1	1	3.3
All Airlines	120	119	103	86.6	107	89.9	1	0.8
Sydney-Adelaide								
Jetstar	118	113	85	75.2	85	75.2	5	4.2
Qantas	232	232	217	93.5	210	90.5	0	0.0
QantasLink	20	18	13	72.2	10	55.6	2	10.0
Tigerair	28	27	25	92.6	24	88.9	1	3.6
Virgin Australia	165	164	142	86.6	146	89.0	1	0.6
All Airlines	563	554	482	87.0	475	85.7	9	1.6
Sydney-Albury								
QantasLink	113	111	88	79.3	87	78.4	2	1.8
Regional Express	105	103	90	87.4	91	88.3	2	1.9
Virgin Australia Regional Airlines	60	60	49	81.7	45	75.0	0	0.0
All Airlines	278	274	227	82.8	223	81.4	4	1.4
Sydney-Alice Springs								
Qantas	30	30	24	80.0	25	83.3	0	0.0
Tigerair	17	17	15	88.2	13	76.5	0	0.0
All Airlines	47	47	39	83.0	38	80.9	0	0.0

	<i>Sectors</i>		<i>Departures On Time</i>		<i>Arrivals On Time</i>		<i>Cancellations</i>	
	<i>Sched.</i>	<i>Flown</i>	<i>No.</i>	<i>%</i>	<i>No.</i>	<i>%</i>	<i>No.</i>	<i>%</i>
Sydney-Ayers Rock								
Jetstar	19	18	18	100.0	18	100.0	1	5.3
Virgin Australia	30	30	26	86.7	27	90.0	0	0.0
All Airlines	49	48	44	91.7	45	93.8	1	2.0
Sydney-Ballina								
Jetstar	55	55	42	76.4	41	74.5	0	0.0
Regional Express	28	28	24	85.7	26	92.9	0	0.0
Virgin Australia	30	29	25	86.2	23	79.3	1	3.3
All Airlines	113	112	91	81.3	90	80.4	1	0.9
Sydney-Brisbane								
Jetstar	154	149	118	79.2	117	78.5	5	3.2
Qantas	557	539	460	85.3	420	77.9	18	3.2
Tigerair	90	90	68	75.6	54	60.0	0	0.0
Virgin Australia	525	509	426	83.7	407	80.0	16	3.0
All Airlines	1 326	1 287	1 072	83.3	998	77.5	39	2.9
Sydney-Cairns								
Jetstar	97	96	87	90.6	79	82.3	1	1.0
Qantas	74	74	68	91.9	68	91.9	0	0.0
Tigerair	34	34	31	91.2	21	61.8	0	0.0
Virgin Australia	82	82	74	90.2	63	76.8	0	0.0
All Airlines	287	286	260	90.9	231	80.8	1	0.3
Sydney-Canberra								
Qantas	26	25	23	92.0	21	84.0	1	3.8
QantasLink	512	480	392	81.7	374	77.9	32	6.3
Virgin Australia	51	48	42	87.5	41	85.4	3	5.9
Virgin Australia Regional Airlines	243	236	195	82.6	192	81.4	7	2.9
All Airlines	832	789	652	82.6	628	79.6	43	5.2
Sydney-Coffs Harbour								
QantasLink	150	149	129	86.6	135	90.6	1	0.7
Tigerair	14	13	10	76.9	11	84.6	1	7.1
Virgin Australia	56	55	51	92.7	51	92.7	1	1.8
All Airlines	220	217	190	87.6	197	90.8	3	1.4
Sydney-Darwin								
Jetstar	30	30	29	96.7	23	76.7	0	0.0
Qantas	60	60	49	81.7	47	78.3	0	0.0
Virgin Australia	30	30	25	83.3	19	63.3	0	0.0
All Airlines	120	120	103	85.8	89	74.2	0	0.0
Sydney-Dubbo								
QantasLink	124	124	97	78.2	96	77.4	0	0.0
Regional Express	146	146	119	81.5	125	85.6	0	0.0
All Airlines	270	270	216	80.0	221	81.9	0	0.0
Sydney-Gold Coast								
Jetstar	263	255	229	89.8	227	89.0	8	3.0
Qantas	83	83	79	95.2	80	96.4	0	0.0
Tigerair	49	47	36	76.6	34	72.3	2	4.1
Virgin Australia	301	292	252	86.3	245	83.9	9	3.0
All Airlines	696	677	596	88.0	586	86.6	19	2.7
Sydney-Hamilton Island								
Jetstar	27	26	20	76.9	20	76.9	1	3.7
Virgin Australia	30	30	27	90.0	25	83.3	0	0.0
All Airlines	57	56	47	83.9	45	80.4	1	1.8

	<i>Sectors</i>		<i>Departures On Time</i>		<i>Arrivals On Time</i>		<i>Cancellations</i>	
	<i>Sched.</i>	<i>Flown</i>	<i>No.</i>	<i>%</i>	<i>No.</i>	<i>%</i>	<i>No.</i>	<i>%</i>
Sydney-Hobart								
Jetstar	51	50	44	88.0	46	92.0	1	2.0
QantasLink	36	36	32	88.9	31	86.1	0	0.0
Virgin Australia	56	56	51	91.1	51	91.1	0	0.0
All Airlines	143	142	127	89.4	128	90.1	1	0.7
Sydney-Launceston								
Jetstar	47	47	41	87.2	38	80.9	0	0.0
Virgin Australia	30	30	25	83.3	24	80.0	0	0.0
All Airlines	77	77	66	85.7	62	80.5	0	0.0
Sydney-Melbourne								
Jetstar	301	283	231	81.6	223	78.8	18	6.0
Qantas	885	843	756	89.7	711	84.3	42	4.7
Tigerair	231	221	160	72.4	154	69.7	10	4.3
Virgin Australia	757	720	602	83.6	553	76.8	37	4.9
All Airlines	2 174	2 067	1 749	84.6	1 641	79.4	107	4.9
Sydney-Perth								
Jetstar	27	26	23	88.5	22	84.6	1	3.7
Qantas	191	191	160	83.8	159	83.2	0	0.0
Tigerair	26	22	19	86.4	19	86.4	4	15.4
Virgin Australia	110	109	94	86.2	98	89.9	1	0.9
All Airlines	354	348	296	85.1	298	85.6	6	1.7
Sydney-Port Macquarie								
QantasLink	132	131	112	85.5	97	74.0	1	0.8
Virgin Australia Regional Airlines	60	60	50	83.3	51	85.0	0	0.0
All Airlines	192	191	162	84.8	148	77.5	1	0.5
Sydney-Sunshine Coast								
Jetstar	90	90	86	95.6	85	94.4	0	0.0
Virgin Australia	30	29	28	96.6	28	96.6	1	3.3
All Airlines	120	119	114	95.8	113	95.0	1	0.8
Sydney-Townsville								
Jetstar	23	22	19	86.4	15	68.2	1	4.3
Virgin Australia	26	25	21	84.0	17	68.0	1	3.8
All Airlines	49	47	40	85.1	32	68.1	2	4.1
Sydney-Wagga Wagga								
QantasLink	112	111	91	82.0	86	77.5	1	0.9
Regional Express	133	132	116	87.9	115	87.1	1	0.8
All Airlines	245	243	207	85.2	201	82.7	2	0.8
Townsville-Brisbane								
Jetstar	51	51	37	72.5	40	78.4	0	0.0
Qantas	148	148	131	88.5	121	81.8	0	0.0
Virgin Australia	154	153	124	81.0	128	83.7	1	0.6
All Airlines	353	352	292	83.0	289	82.1	1	0.3
Townsville-Sydney								
Jetstar	23	22	12	54.5	17	77.3	1	4.3
Virgin Australia	26	25	11	44.0	18	72.0	1	3.8
All Airlines	49	47	23	48.9	35	74.5	2	4.1
Wagga Wagga-Sydney								
QantasLink	111	110	82	74.5	86	78.2	1	0.9
Regional Express	130	129	113	87.6	112	86.8	1	0.8
All Airlines	241	239	195	81.6	198	82.8	2	0.8

Airports

On time performance is reported for all routes where the passenger load averages over 8000 passengers per month, and where two or more airlines operate in competition. The following data reports by airport against flights operated on those routes only.

Airport	Departures			Arrivals		
	Sectors	On Time		Sectors	On Time	
	Flown	No.	%	Flown	No.	%
Adelaide						
Jetstar	299	228	76.3	298	235	78.9
Qantas	754	673	89.3	753	676	89.8
QantasLink	153	121	79.1	152	119	78.3
Regional Express	201	196	97.5	201	187	93.0
Tigerair	112	96	85.7	112	93	83.0
Virgin Australia	661	588	89.0	666	580	87.1
All Airlines	2 180	1 902	87.2	2 182	1 890	86.6
Relates to services to and from Brisbane, Canberra, Gold Coast, Melbourne, Perth, Port Lincoln and Sydney.						
Albury						
QantasLink	111	85	76.6	111	87	78.4
Regional Express	103	93	90.3	103	91	88.3
Virgin Australia Regional Airlines	60	46	76.7	60	45	75.0
All Airlines	274	224	81.8	274	223	81.4
Relates to services to and from Sydney only.						
Alice Springs						
Qantas	60	39	65.0	60	47	78.3
Tigerair	33	20	60.6	33	25	75.8
All Airlines	93	59	63.4	93	72	77.4
Relates to services to and from Melbourne and Sydney.						
Ayers Rock						
Jetstar	19	17	89.5	18	18	100.0
Virgin Australia	30	26	86.7	30	27	90.0
All Airlines	49	43	87.8	48	45	93.8
Relates to services to and from Sydney only.						
Ballina						
Jetstar	55	38	69.1	55	41	74.5
Regional Express	24	19	79.2	28	26	92.9
Virgin Australia	29	23	79.3	29	23	79.3
All Airlines	108	80	74.1	112	90	80.4
Relates to services to and from Sydney only.						
Brisbane						
Jetstar	697	576	82.6	697	551	79.1
Qantas	1 602	1 335	83.3	1 570	1 235	78.7
QantasLink	1 099	950	86.4	1 087	825	75.9
Tigerair	272	188	69.1	272	180	66.2
Virgin Australia	1 901	1 621	85.3	1 899	1 509	79.5
Virgin Australia Regional Airlines	463	383	82.7	455	371	81.5
All Airlines	6 034	5 053	83.7	5 980	4 671	78.1
Relates to services to and from Adelaide, Bundaberg, Cairns, Canberra, Darwin, Emerald, Gladstone, Hamilton Island, Hobart, Mackay, Melbourne, Moranbah, Mount Isa, Newcastle, Perth, Proserpine, Rockhampton, Sydney and Townsville.						

Airport	Departures			Arrivals		
	Sectors Flown	On Time		Sectors Flown	On Time	
		No.	%		No.	%
Broome						
Qantas	34	25	73.5	34	29	85.3
QantasLink	49	43	87.8	50	47	94.0
Virgin Australia	50	43	86.0	51	45	88.2
Virgin Australia Regional Airlines	23	20	87.0	19	17	89.5
All Airlines	156	131	84.0	154	138	89.6
Relates to services to and from Perth only.						
Bundaberg						
QantasLink	119	103	86.6	118	105	89.0
Virgin Australia Regional Airlines	39	28	71.8	40	32	80.0
All Airlines	158	131	82.9	158	137	86.7
Relates to services to and from Brisbane only.						
Cairns						
Jetstar	270	217	80.4	269	209	77.7
Qantas	219	169	77.2	220	176	80.0
QantasLink	5	5	100.0	4	3	75.0
Tigerair	99	51	51.5	98	58	59.2
Virgin Australia	245	189	77.1	245	192	78.4
All Airlines	838	631	75.3	836	638	76.3
Relates to services to and from Brisbane, Melbourne and Sydney.						
Canberra						
Qantas	284	245	86.3	288	250	86.8
QantasLink	716	556	77.7	718	545	75.9
Virgin Australia	342	273	79.8	342	271	79.2
Virgin Australia Regional Airlines	234	202	86.3	236	192	81.4
All Airlines	1 576	1 276	81.0	1 584	1 258	79.4
Relates to services to and from Adelaide, Brisbane, Melbourne and Sydney.						
Coffs Harbour						
QantasLink	149	112	75.2	149	135	90.6
Tigerair	13	10	76.9	13	11	84.6
Virgin Australia	55	49	89.1	55	51	92.7
All Airlines	217	171	78.8	217	197	90.8
Relates to services to and from Sydney only.						
Darwin						
Jetstar	90	59	65.6	90	65	72.2
Qantas	170	116	68.2	171	131	76.6
Tigerair	26	24	92.3	27	18	66.7
Virgin Australia	117	84	71.8	117	92	78.6
All Airlines	403	283	70.2	405	306	75.6
Relates to services to and from Brisbane, Melbourne, Perth and Sydney.						
Dubbo						
QantasLink	123	98	79.7	124	96	77.4
Regional Express	150	126	84.0	146	125	85.6
All Airlines	273	224	82.1	270	221	81.9
Relates to services to and from Sydney only.						
Emerald						
QantasLink	145	104	71.7	147	107	72.8
Virgin Australia Regional Airlines	81	71	87.7	82	65	79.3
All Airlines	226	175	77.4	229	172	75.1
Relates to services to and from Brisbane only.						

Airport	Departures			Arrivals		
	Sectors	On Time		Sectors	On Time	
	Flown	No.	%	Flown	No.	%
Geraldton						
QantasLink	51	47	92.2	51	49	96.1
Virgin Australia Regional Airlines	93	78	83.9	89	75	84.3
All Airlines	144	125	86.8	140	124	88.6
Relates to services to and from Perth only.						
Gladstone						
QantasLink	227	182	80.2	210	176	83.8
Virgin Australia Regional Airlines	143	113	79.0	144	114	79.2
All Airlines	370	295	79.7	354	290	81.9
Relates to services to and from Brisbane only.						
Gold Coast						
Jetstar	490	414	84.5	492	397	80.7
Qantas	83	73	88.0	83	80	96.4
Tigerair	112	72	64.3	111	79	71.2
Virgin Australia	496	415	83.7	496	411	82.9
All Airlines	1 181	974	82.5	1 182	967	81.8
Relates to services to and from Adelaide, Melbourne and Sydney.						
Hamilton Island						
Jetstar	62	54	87.1	60	53	88.3
Virgin Australia	71	57	80.3	73	63	86.3
All Airlines	133	111	83.5	133	116	87.2
Relates to services to and from Brisbane, Melbourne and Sydney.						
Hobart						
Jetstar	230	164	71.3	228	198	86.8
QantasLink	148	86	58.1	148	68	45.9
Tigerair	26	12	46.2	26	12	46.2
Virgin Australia	213	177	83.1	213	179	84.0
All Airlines	617	439	71.2	615	457	74.3
Relates to services to and from Brisbane, Melbourne and Sydney.						
Kalgoorlie						
Qantas	46	43	93.5	47	45	95.7
QantasLink	35	31	88.6	34	33	97.1
Virgin Australia	46	41	89.1	45	41	91.1
Virgin Australia Regional Airlines	9	6	66.7	9	8	88.9
All Airlines	136	121	89.0	135	127	94.1
Relates to services to and from Perth only.						
Karratha						
Qantas	134	125	93.3	137	132	96.4
QantasLink	74	68	91.9	73	67	91.8
Virgin Australia	64	57	89.1	64	60	93.8
Virgin Australia Regional Airlines	13	10	76.9	13	10	76.9
All Airlines	285	260	91.2	287	269	93.7
Relates to services to and from Perth only.						
Launceston						
Jetstar	172	128	74.4	170	132	77.6
QantasLink	118	94	79.7	118	85	72.0
Virgin Australia	146	122	83.6	145	116	80.0
All Airlines	436	344	78.9	433	333	76.9
Relates to services to and from Melbourne and Sydney.						

Airport	Departures			Arrivals		
	Sectors	On Time		Sectors	On Time	
	Flown	No.	%	Flown	No.	%
Mackay						
Jetstar	60	46	76.7	60	52	86.7
QantasLink	104	93	89.4	105	96	91.4
Virgin Australia	136	111	81.6	136	113	83.1
All Airlines	300	250	83.3	301	261	86.7
Relates to services to and from Brisbane only.						
Melbourne						
Jetstar	1 335	1 039	77.8	1 334	1 031	77.3
Qantas	1 974	1 665	84.3	1 970	1 630	82.7
QantasLink	438	294	67.1	437	282	64.5
Regional Express	82	80	97.6	83	62	74.7
Tigerair	605	445	73.6	604	396	65.6
Virgin Australia	2 237	1 814	81.1	2 233	1 737	77.8
All Airlines	6 671	5 337	80.0	6 661	5 138	77.1
Relates to services to and from Adelaide, Alice Springs, Brisbane, Cairns, Canberra, Darwin, Gold Coast, Hobart, Launceston, Mildura, Newcastle, Perth, Sunshine Coast and Sydney.						
Mildura						
QantasLink	86	61	70.9	86	54	62.8
Regional Express	83	69	83.1	82	77	93.9
Virgin Australia	30	18	60.0	30	18	60.0
All Airlines	199	148	74.4	198	149	75.3
Relates to services to and from Melbourne only.						
Moranbah						
QantasLink	120	94	78.3	126	107	84.9
Virgin Australia Regional Airlines	88	73	83.0	89	76	85.4
All Airlines	208	167	80.3	215	183	85.1
Relates to services to and from Brisbane only.						
Mount Isa						
Qantas	56	49	87.5	56	54	96.4
Virgin Australia	21	19	90.5	21	18	85.7
All Airlines	77	68	88.3	77	72	93.5
Relates to services to and from Brisbane only.						
Newcastle						
Jetstar	196	168	85.7	198	167	84.3
QantasLink	66	45	68.2	67	45	67.2
Virgin Australia	105	81	77.1	106	91	85.8
All Airlines	367	294	80.1	371	303	81.7
Relates to services to and from Brisbane and Melbourne.						
Newman						
Qantas	125	124	99.2	125	123	98.4
QantasLink	26	24	92.3	25	23	92.0
Virgin Australia	29	23	79.3	29	23	79.3
Virgin Australia Regional Airlines	9	9	100.0	9	9	100.0
All Airlines	189	180	95.2	188	178	94.7
Relates to services to and from Perth only.						

Airport	Departures			Arrivals		
	Sectors	On Time		Sectors	On Time	
	Flown	No.	%	Flown	No.	%
Perth						
Jetstar	151	104	68.9	155	134	86.5
Qantas	1 109	1 030	92.9	1 109	986	88.9
QantasLink	271	256	94.5	274	241	88.0
Tigerair	74	52	70.3	76	62	81.6
Virgin Australia	644	584	90.7	642	559	87.1
Virgin Australia Regional Airlines	139	116	83.5	147	110	74.8
All Airlines	2 388	2 142	89.7	2 403	2 092	87.1
Relates to services to and from Adelaide, Brisbane, Broome, Darwin, Geraldton, Kalgoorlie, Karratha, Melbourne, Newman, Port Hedland and Sydney.						
Port Hedland						
Qantas	118	108	91.5	118	115	97.5
QantasLink	39	33	84.6	38	34	89.5
Virgin Australia	41	41	100.0	41	41	100.0
All Airlines	198	182	91.9	197	190	96.4
Relates to services to and from Perth only.						
Port Lincoln						
QantasLink	96	82	85.4	97	79	81.4
Regional Express	201	191	95.0	201	193	96.0
All Airlines	297	273	91.9	298	272	91.3
Relates to services to and from Adelaide only.						
Port Macquarie						
QantasLink	131	97	74.0	131	97	74.0
Virgin Australia Regional Airlines	60	46	76.7	60	51	85.0
All Airlines	191	143	74.9	191	148	77.5
Relates to services to and from Sydney only.						
Proserpine						
Jetstar	26	26	100.0	26	26	100.0
Virgin Australia	51	40	78.4	51	44	86.3
All Airlines	77	66	85.7	77	70	90.9
Relates to services to and from Brisbane only.						
Rockhampton						
QantasLink	189	141	74.6	210	164	78.1
Virgin Australia	98	80	81.6	98	80	81.6
Virgin Australia Regional Airlines	104	88	84.6	108	83	76.9
All Airlines	391	309	79.0	416	327	78.6
Relates to services to and from Brisbane only.						
Sunshine Coast						
Jetstar	140	112	80.0	140	120	85.7
Tigerair	24	16	66.7	24	14	58.3
Virgin Australia	59	43	72.9	59	46	78.0
All Airlines	223	171	76.7	223	180	80.7
Relates to services to and from Melbourne and Sydney.						

<i>Airport</i>	<i>Departures</i>			<i>Arrivals</i>		
	<i>Sectors</i>	<i>On Time</i>		<i>Sectors</i>	<i>On Time</i>	
	<i>Flown</i>	<i>No.</i>	<i>%</i>	<i>Flown</i>	<i>No.</i>	<i>%</i>
Sydney						
Jetstar	1 260	1 072	85.1	1 262	1 030	81.6
Qantas	2 077	1 836	88.4	2 104	1 845	87.7
QantasLink	1 160	954	82.2	1 157	893	77.2
Regional Express	409	349	85.3	406	345	85.0
Tigerair	471	364	77.3	471	332	70.5
Virgin Australia	2 238	1 911	85.4	2 239	1 932	86.3
Virgin Australia Regional Airlines	356	294	82.6	354	294	83.1
All Airlines	7 971	6 780	85.1	7 993	6 671	83.5

Relates to services to and from Adelaide, Albury, Alice Springs, Ayers Rock, Ballina, Brisbane, Cairns, Canberra, Coffs Harbour, Darwin, Dubbo, Gold Coast, Hamilton Island, Hobart, Launceston, Melbourne, Perth, Port Macquarie, Sunshine Coast, Townsville and Wagga Wagga.

Townsville

Jetstar	73	49	67.1	73	58	79.5
Qantas	148	131	88.5	148	128	86.5
Virgin Australia	178	135	75.8	178	147	82.6
All Airlines	399	315	78.9	399	333	83.5

Relates to services to and from Brisbane and Sydney.

Wagga Wagga

QantasLink	110	82	74.5	111	86	77.5
Regional Express	129	113	87.6	132	115	87.1
All Airlines	239	195	81.6	243	201	82.7

Relates to services to and from Sydney only.

Definitions

On time departure A flight departure is counted as "on time" if it departs the gate before 15 minutes after the scheduled departure time shown in the carriers' schedule.

On time arrival A flight arrival is counted as "on time" if it arrived at the gate before 15 minutes after the scheduled arrival time shown in the carriers' schedule.
Neither diverted nor cancelled flights count as on time.

Cancellation A flight removed from service within 7 days of scheduled departure is regarded as a cancellation.

On time departure percentage The percentage of on time departures is measured against the number of departures *operated* on any particular sector.

On time arrival percentage The percentage of on time arrivals is measured against the number of arrivals *operated* on any particular sector.

Cancellation percentage The percentage of cancellations is measured against the number of services *scheduled* on any particular sector.
