



**Australian Government**

**Department of Infrastructure and Transport**

Bureau of Infrastructure, Transport and Regional Economics

STATISTICAL REPORT



# Aviation

Domestic airline on time performance  
June 2013

© Commonwealth of Australia 2013

ISSN: 1832-0759

### **Ownership of intellectual property rights in this publication**

Unless otherwise noted, copyright (and any other intellectual property rights, if any) in this publication is owned by the Commonwealth of Australia (referred to below as the Commonwealth).

### **Disclaimer**

The material contained in this publication is made available on the understanding that the Commonwealth is not providing professional advice, and that users exercise their own skill and care with respect to its use, and seek independent advice if necessary.

The Commonwealth makes no representations or warranties as to the contents or accuracy of the information contained in this publication. To the extent permitted by law, the Commonwealth disclaims liability to any person or organisation in respect of anything done, or omitted to be done, in reliance upon information contained in this publication.

### **Creative Commons licence**

With the exception of (a) the Coat of Arms; and (b) the Department of Infrastructure's photos and graphics, copyright in this publication is licensed under a Creative Commons Attribution 3.0 Australia Licence.

Creative Commons Attribution 3.0 Australia Licence is a standard form licence agreement that allows you to copy, communicate and adapt this publication provided that you attribute the work to the Commonwealth and abide by the other licence terms. A summary of the licence terms is available from <http://creativecommons.org/licenses/by/3.0/au/deed.en>. The full licence terms are available from <http://creativecommons.org/licenses/by/3.0/au/legalcode>.

### **Use of the Coat of Arms**

The Department of the Prime Minister and Cabinet sets the terms under which the Coat of Arms is used. Please refer to the Department's Commonwealth Coat of Arms and Government branding web page <http://www.dpmmc.gov.au/guidelines/index.cfm#brand> and, in particular, the Guidelines on the use of the Commonwealth Coat of Arms publication.

An appropriate citation for this report is:

Bureau of Infrastructure, Transport and Regional Economics (BITRE), 2013, Domestic airline on time performance, Statistical Report, BITRE, Canberra ACT.

### **Contact us**

This publication is available in PDF format. All other rights are reserved, including in relation to any Departmental logos or trade marks which may exist. For enquiries regarding the licence and any use of this publication, please contact:

Bureau of Infrastructure, Transport and Regional Economics (BITRE)  
Department of Infrastructure and Transport  
GPO Box 501, Canberra ACT 2601, Australia  
Telephone: (international) +61 2 6274 7210  
Fax: (international) +61 2 6274 6855  
Email: [bitre@infrastructure.gov.au](mailto:bitre@infrastructure.gov.au)  
Website: [www.bitre.gov.au](http://www.bitre.gov.au)

### **Inquiries**

Should you require additional information about the statistics contained in this publication:

Telephone (02) 6274 7790 or Facsimile (02) 6274 7727

Electronic mail: [AVSTATS@infrastructure.gov.au](mailto:AVSTATS@infrastructure.gov.au)

Web site: <http://www.bitre.gov.au/statistics/aviation/otphome.aspx>

# Foreword

The Bureau of Infrastructure, Transport and Regional Economics (BITRE) monitors the punctuality and reliability of major domestic airlines operating between Australian airports. The purpose of this is to allow for evaluation of overall industry and individual airline performance, so that consumers of air travel can make informed decisions.

The following domestic airlines currently report this information monthly to the BITRE: Jetstar, Qantas, QantasLink, Regional Express, Tiger Airways, Virgin Australia and Virgin Australia Regional Airlines. Data has been gathered since November 2003, although some airlines commenced reporting at a later date, including Jetstar which first reported in May 2004, MacAir in July 2005 and Tiger Airways in April 2008. MacAir ceased operations in February 2009 and data was not received for December 2008 onwards. Virgin Blue was rebranded as Virgin Australia in May 2011 and time series data in Microsoft Excel spreadsheet format on the BITRE website has been revised to reflect this. Virgin Australia Regional Airlines commenced operations in May 2013. It was formed after the acquisition of Skywest by Virgin Australia and represents a combination of operations previously reported under Skywest and Virgin Australia – ATR/F100 Operations. Services operated by Skywest on behalf of Virgin Australia using ATR/F100 aircraft commenced in November 2011 and were shown separately as Virgin Australia – ATR/F100 Operations until April 2013.

Information presented in this report is for Australian domestic routes for which the passenger load averaged 8 000 or more passengers per month over the previous six months and where two or more airlines operated in competition on those routes. There were 58 routes that met this definition in June 2013. Over time, routes which meet these criteria change as airline networks and traffic levels vary.

Participating airlines report their overall monthly network performance where this is possible.

Total industry figures encompass all services operated by reporting airlines only. These airlines collectively carried over 95 per cent of total domestic passengers (regular public transport only) in 2012.

The method of capturing on time performance varies between airlines utilising different recording systems. Jetstar and Qantas jet aircraft use Aircraft Communication Addressing and Reporting System (ACARS) to electronically measure on time performance. Regional Express, Tiger Airways, Virgin Australia, Virgin Australia Regional Airlines and the Qantas non-jet fleet record on time performance manually using records from pilots, gate agents and/or ground crews.

After initial data is collected, aggregate reports are audited internally by participating airlines prior to publication.

Reports and detailed time series data in Microsoft Excel spreadsheet format are available from the BITRE website at: <http://www.bitre.gov.au/statistics/aviation/otphome.aspx>.



# Contents

	Page
Industry performance .....	1
Individual routes .....	9
Airports .....	21
Definitions .....	27



## Industry performance

For June 2013, on time performance over all routes operated by participating airlines (Jetstar, Qantas, QantasLink, Regional Express, Tiger Airways, Virgin Australia and Virgin Australia Regional Airlines) averaged 79.4 per cent for on time departures and 78.0 per cent for on time arrivals. Cancellations represented 1.9 per cent of all scheduled flights. The equivalent figures for June 2012 were 81.6 per cent for departures, 79.1 per cent for arrivals and 1.5 per cent for cancellations.

This month's figures were worse than the long term average performance for all routes since the collection began (83.7 per cent for departures and 82.2 per cent for arrivals). The rate of cancellations was also worse than the long term average of 1.3 per cent.

Of the major domestic airlines, Qantas achieved the highest level of on time departures for June 2013 at 85.0 per cent, followed by Virgin Australia at 79.6 per cent, Jetstar at 76.8 per cent and Tiger Airways at 74.4 per cent. The regional airlines were led by Regional Express at 81.4 per cent, followed by Virgin Australia Regional Airlines at 76.5 per cent and QantasLink at 75.3 per cent.

Qantas also achieved the highest on time arrivals among the major domestic airlines at 84.6 per cent, followed by Virgin Australia at 78.1 per cent, Jetstar at 76.6 per cent and Tiger Airways at 70.4 per cent. Regional Express was the best performing regional airline for on time arrivals at 79.4 per cent, followed by Virgin Australia Regional Airlines at 73.8 per cent and QantasLink at 73.0 per cent.

QantasLink had the highest percentage of cancellations (3.0 per cent) during the month, followed by Virgin Australia Regional Airlines (2.2 per cent), Jetstar (1.9 per cent) Virgin Australia (1.7 per cent), Qantas (1.4 per cent), Regional Express (1.1 per cent) and Tiger Airways (0.8 per cent).

Of the 58 routes which met the criteria for on time performance reporting in June 2013, the Perth-Darwin route had the highest percentage of on time departures (94.5 per cent) while the Darwin-Brisbane route had the lowest percentage of on time departures (41.7 per cent). The Adelaide-Port Lincoln route had the highest percentage of on time arrivals (92.4 per cent) while the Townsville-Sydney route had the lowest percentage of on time arrivals (52.8 per cent).

Cancellations were highest on the Karratha-Perth route at 6.5 per cent, followed by Perth-Karratha at 6.2 per cent, Emerald-Brisbane at 4.8 per cent, Port Hedland-Perth at 4.7 per cent and Sydney-Melbourne at 4.3 per cent.

Port Lincoln Airport recorded the highest percentage of on time departures (91.7 per cent) and the highest percentage of on time arrivals (92.4 per cent). Ayers Rock Airport recorded the lowest percentage of on time departures (60.6 per cent) and Port Macquarie Airport recorded the lowest percentage of on time arrivals (59.1 per cent). These figures only refer to reported routes and do not cover all flights at these airports.

Table 1 On time performance for June 2013 — Total Industry

	<i>Sectors</i>		<i>Departures On Time</i>		<i>Arrivals On Time</i>		<i>Cancellations</i>	
	<i>Scheduled</i>	<i>Flown</i>	<i>No.</i>	<i>%</i>	<i>No.</i>	<i>%</i>	<i>No.</i>	<i>%</i>
Jetstar	6 113	5 999	4 606	76.8	4 594	76.6	114	1.9
Qantas	10 194	10 054	8 543	85.0	8 505	84.6	140	1.4
QantasLink	9 396	9 112	6 860	75.3	6 655	73.0	284	3.0
Regional Express	5 214	5 157	4 198	81.4	4 094	79.4	57	1.1
Tiger Airways	1 558	1 545	1 150	74.4	1 087	70.4	13	0.8
Virgin Australia	10 483	10 304	8 202	79.6	8 047	78.1	179	1.7
Virgin Australia Regional Airlines	2 602	2 545	1 946	76.5	1 877	73.8	57	2.2
All Airlines	45 560	44 716	35 505	79.4	34 859	78.0	844	1.9

Total airline network data (including routes not shown in this report).

Virgin Australia Regional Airlines commenced operations in May 2013. It was formed after the acquisition of Skywest by Virgin Australia and represents a combination of operations previously reported under Skywest and Virgin Australia – ATR/F100 Operations.

Table 2 Top ten routes for on time performance for June 2013 (participating airlines only)

<i>Departures</i>		<i>Arrivals</i>	
<i>Route</i>	<i>On Time (%)</i>	<i>Route</i>	<i>On Time (%)</i>
Perth-Darwin	94.5	Adelaide-Port Lincoln	92.4
Brisbane-Mount Isa	93.3	Adelaide-Gold Coast	92.1
Adelaide-Port Lincoln	92.8	Perth-Karratha	91.9
Perth-Karratha	91.9	Darwin-Perth	90.9
Port Lincoln-Adelaide	91.7	Perth-Adelaide	90.6
Adelaide-Gold Coast	90.5	Perth-Port Hedland	90.6
Perth-Port Hedland	90.1	Port Lincoln-Adelaide	90.0
Adelaide-Melbourne	89.7	Adelaide-Canberra	89.8
Karratha-Perth	89.7	Gold Coast-Adelaide	89.4
Brisbane-Hamilton Island	89.6	Cairns-Townsville	89.4

Table 3 Top ten airports for on time performance for June 2013 (participating airlines and reported routes only)

<i>Departures</i>		<i>Arrivals</i>	
<i>Airport</i>	<i>On Time (%)</i>	<i>Airport</i>	<i>On Time (%)</i>
Port Lincoln	91.7	Port Lincoln	92.4
Karratha	89.7	Karratha	91.9
Adelaide	87.3	Port Hedland	90.6
Kalgoorlie	86.9	Newman	88.4
Port Hedland	86.6	Geraldton	88.2
Perth	86.0	Adelaide	87.6
Mildura	85.1	Kalgoorlie	87.6
Geraldton	84.4	Mildura	87.2
Newman	82.9	Broome	86.2
Melbourne	82.3	Ballina	85.1



## Total industry on time performance

Figure 1 On time performance (by month from June 2010)—Total Industry

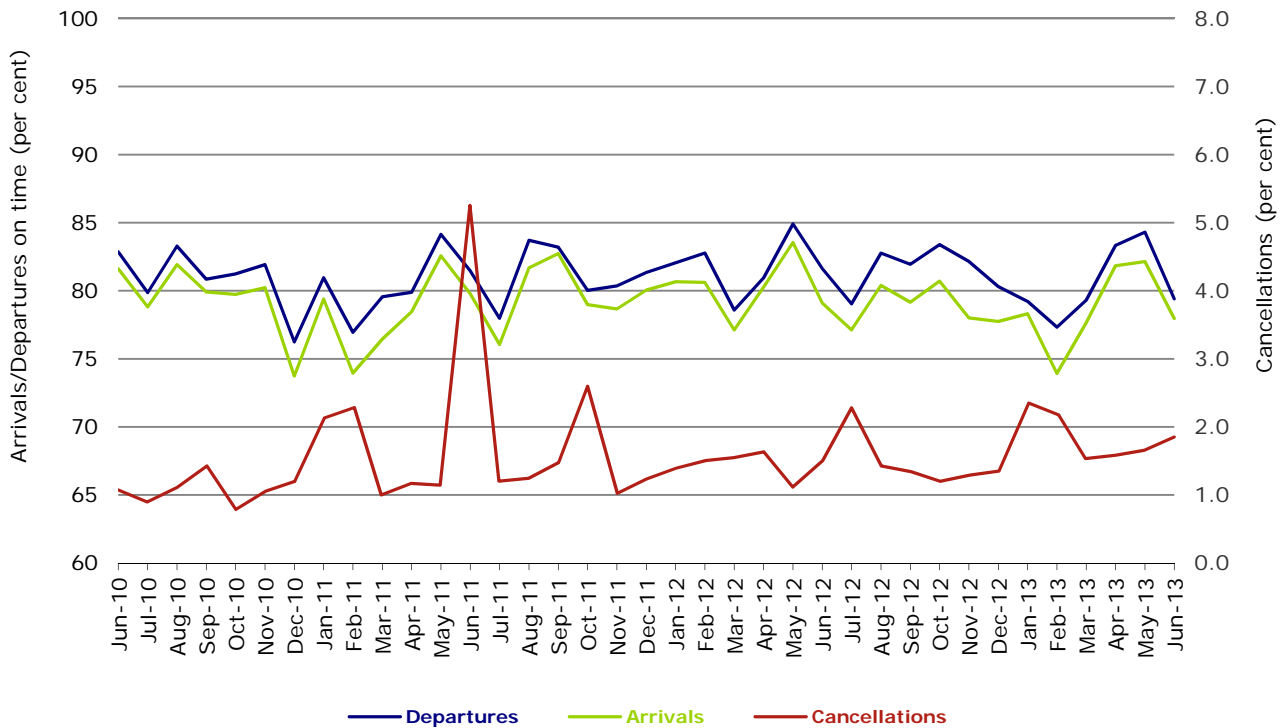
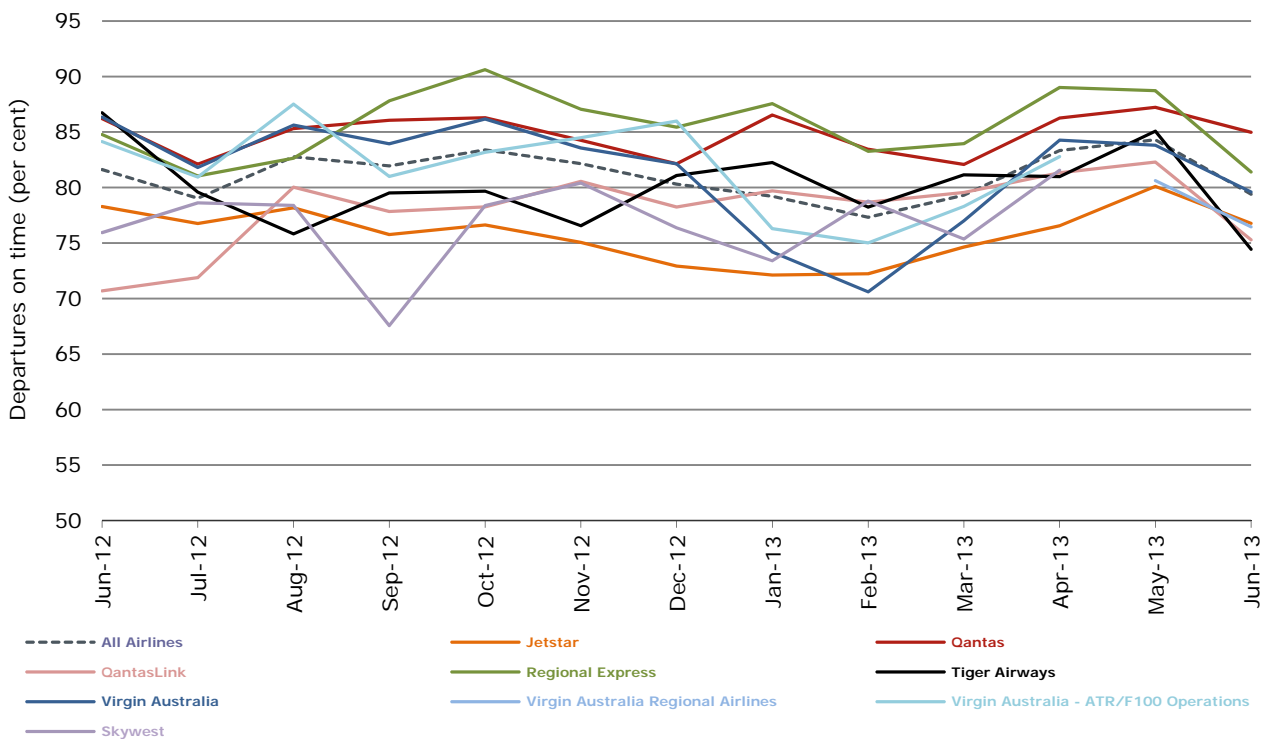
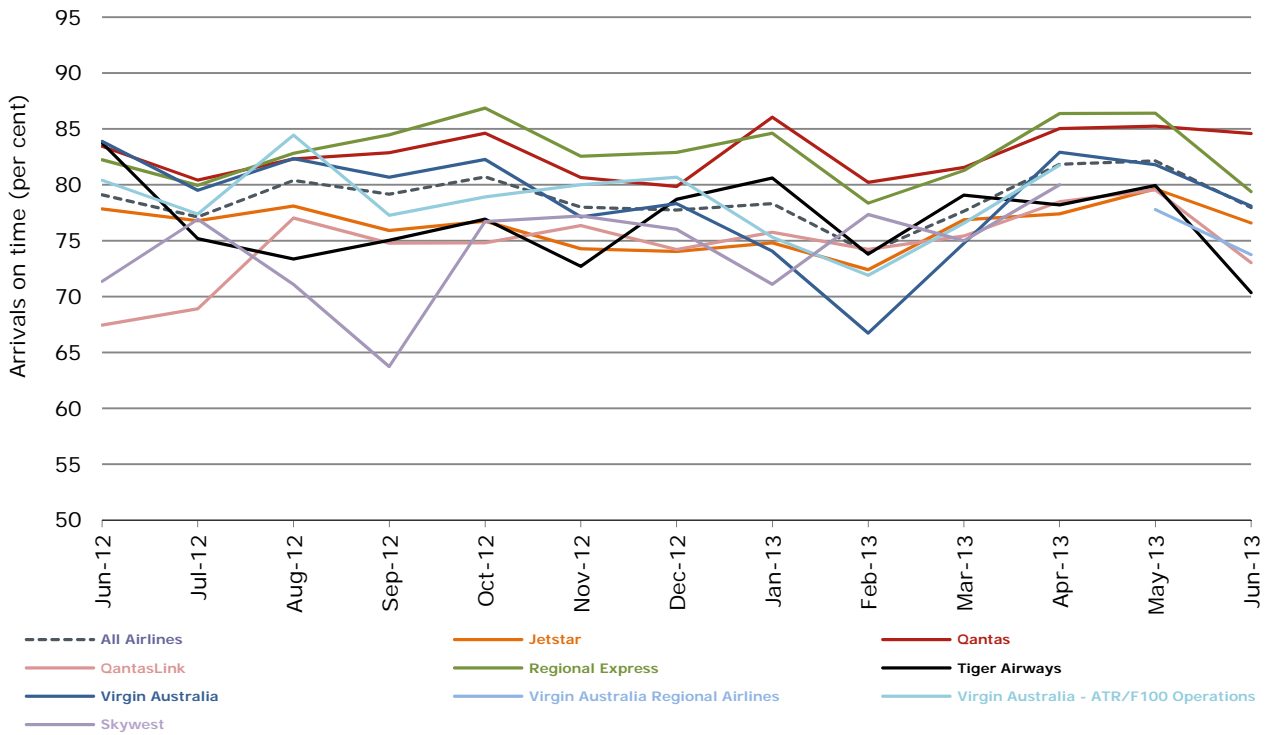


Figure 2 Departures on time (by month from June 2012)



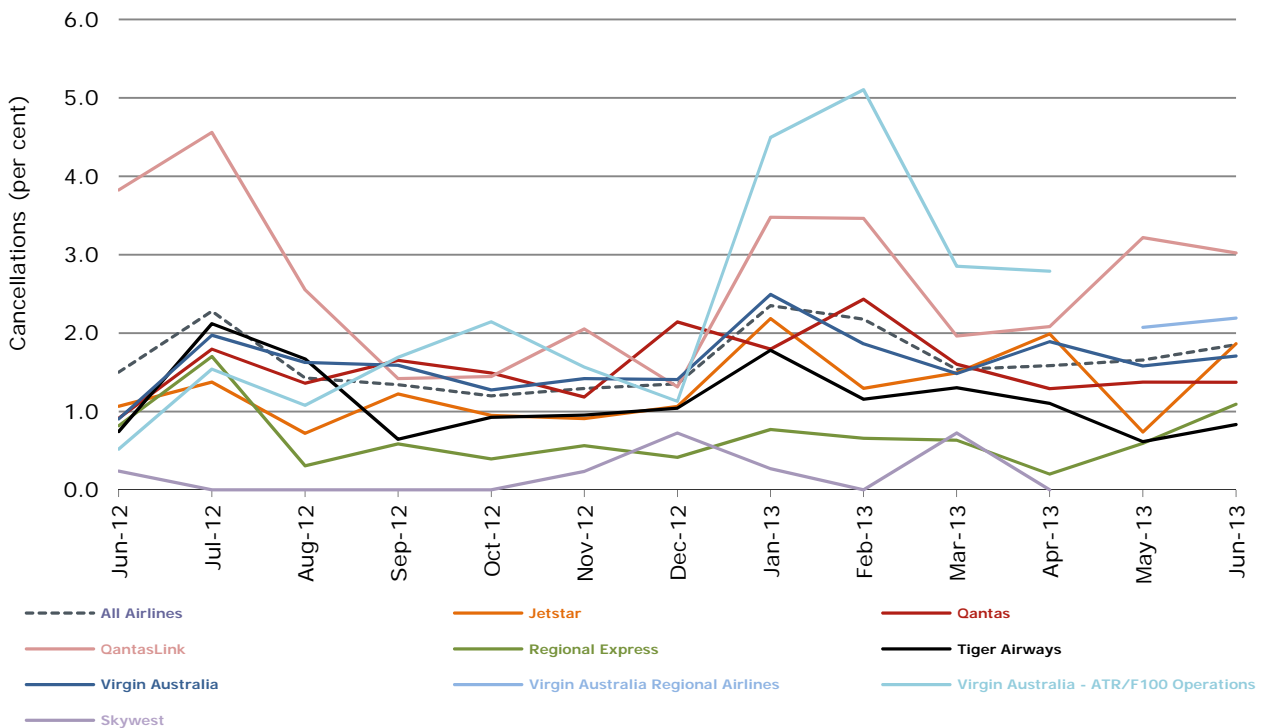
Virgin Australia Regional Airlines commenced operations in May 2013. It was formed after the acquisition of Skywest by Virgin Australia and represents a combination of operations previously reported under Skywest and Virgin Australia – ATR/F100 Operations.

Figure 3 Arrivals on time (by month from June 2012)



Virgin Australia Regional Airlines commenced operations in May 2013. It was formed after the acquisition of Skywest by Virgin Australia and represents a combination of operations previously reported under Skywest and Virgin Australia – ATR/F100 Operations.

Figure 4 Cancellations (by month from June 2012)



Virgin Australia Regional Airlines commenced operations in May 2013. It was formed after the acquisition of Skywest by Virgin Australia and represents a combination of operations previously reported under Skywest and Virgin Australia – ATR/F100 Operations.

## Major domestic airlines on time performance

Figure 5 On time performance (by month from June 2010)—Jetstar

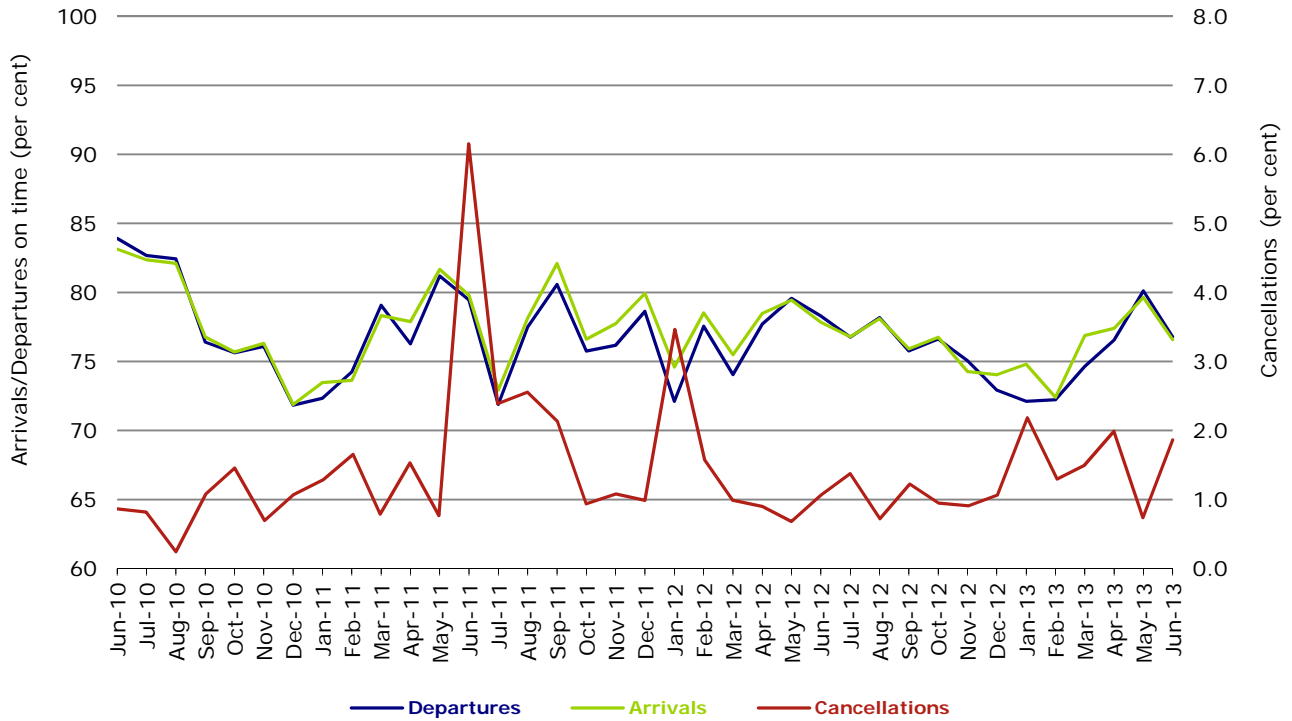


Figure 6 On time performance (by month from June 2010)—Qantas

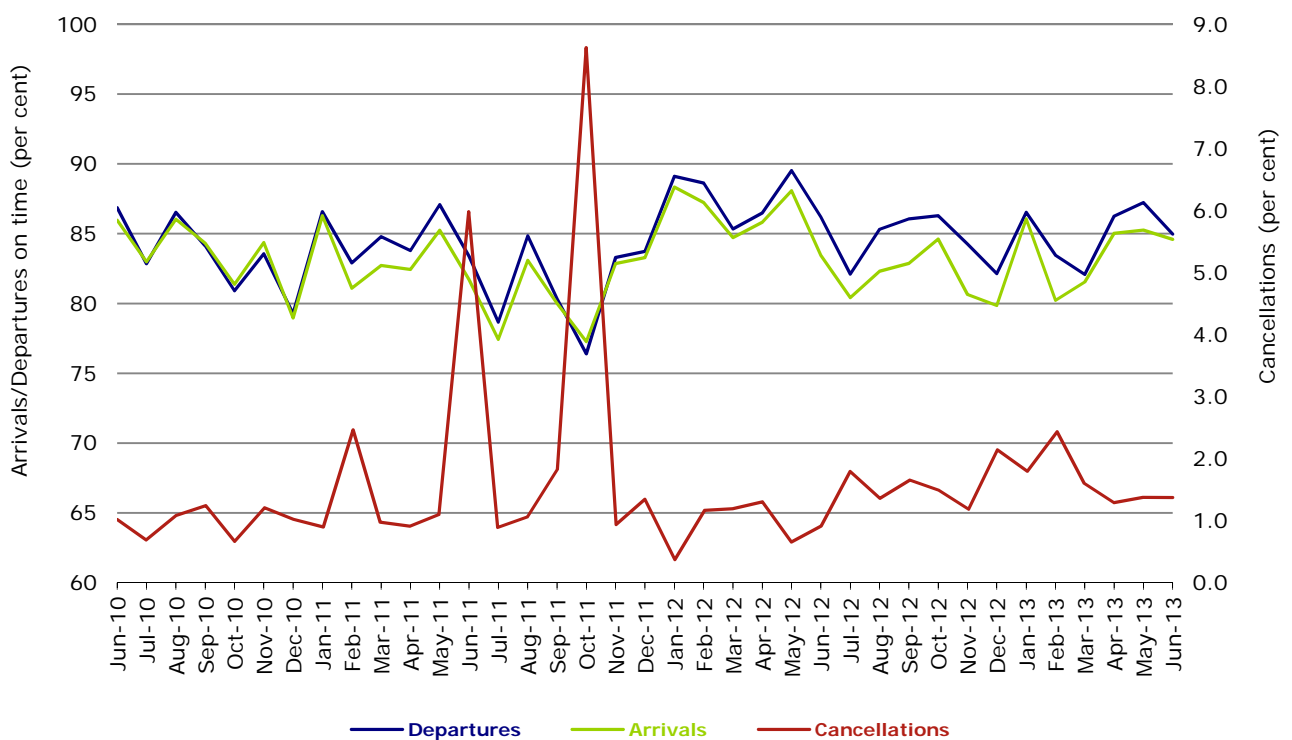
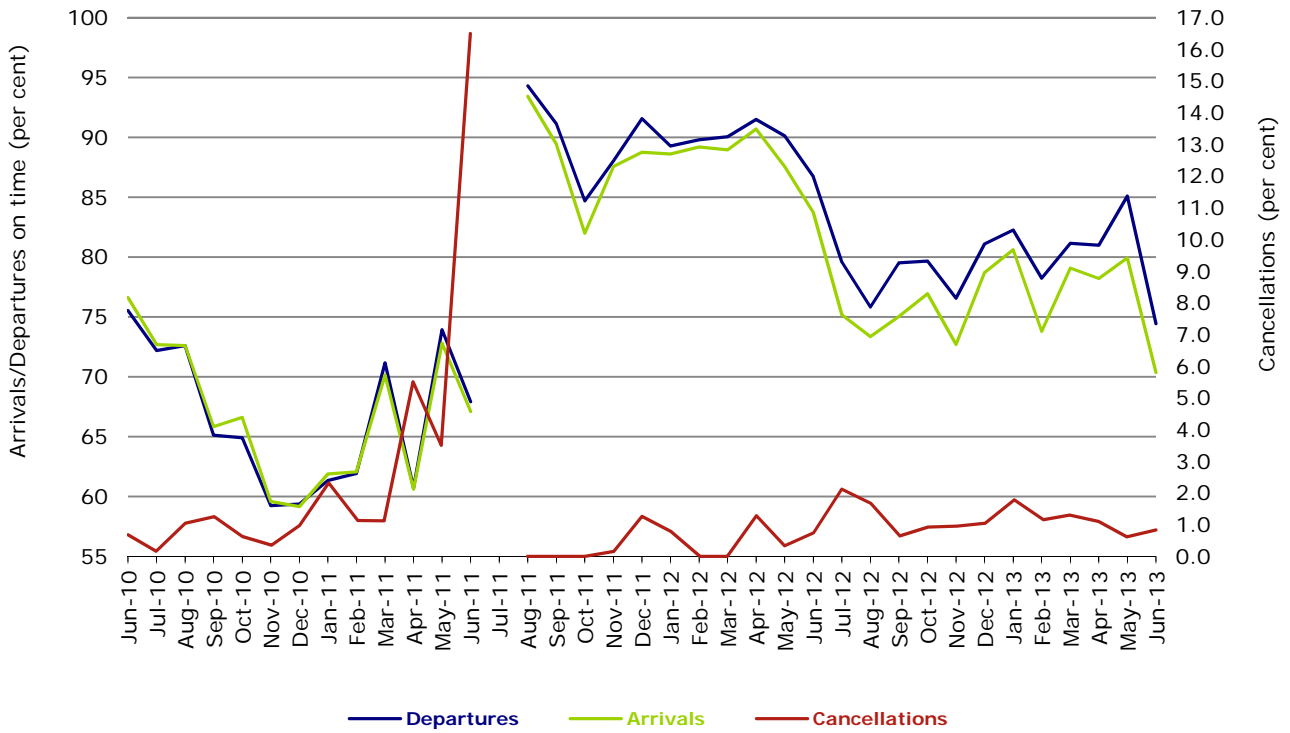
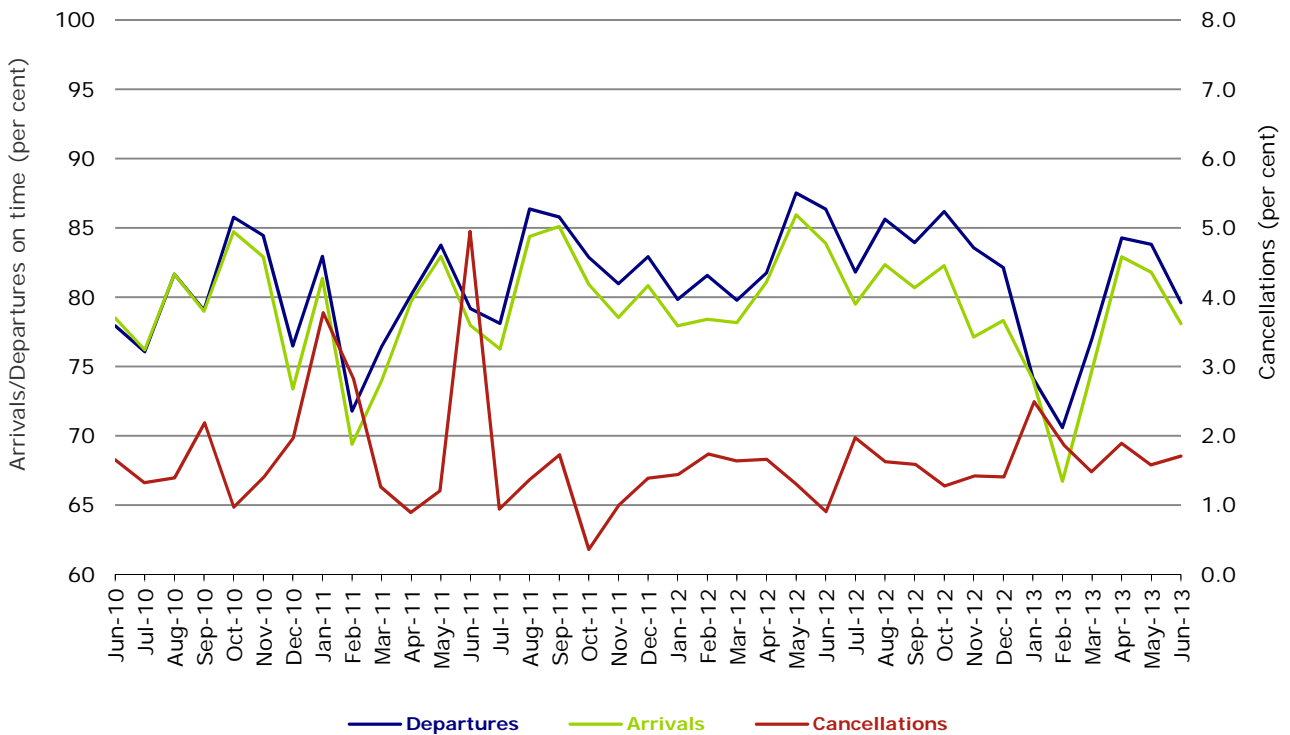


Figure 7 On time performance (by month from June 2010)—Tiger Airways



No data for Tiger Airways for July 2011 as it was grounded by CASA from 2/7/2011 to 11/8/2011.

Figure 8 On time performance (by month from June 2010)—Virgin Australia



## Major regional airlines on time performance

Figure 9 On time performance (by month from June 2010)—QantasLink

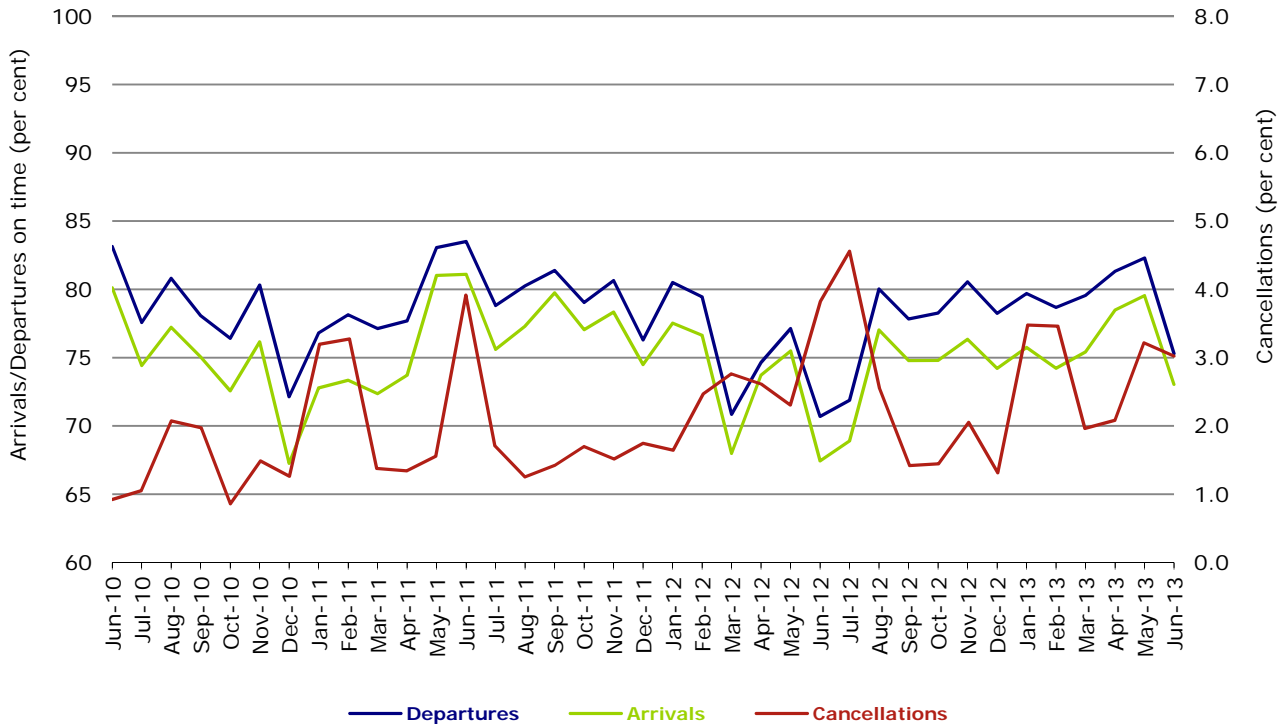


Figure 10 On time performance (by month from June 2010)—Regional Express

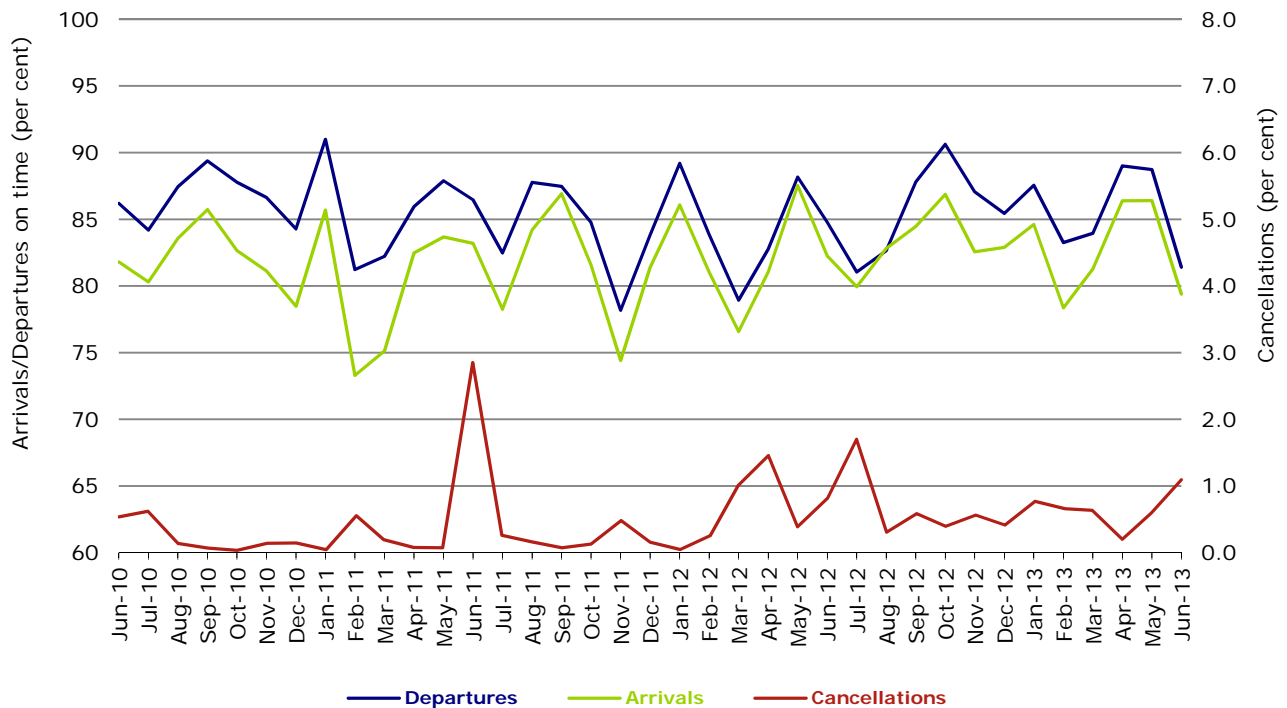
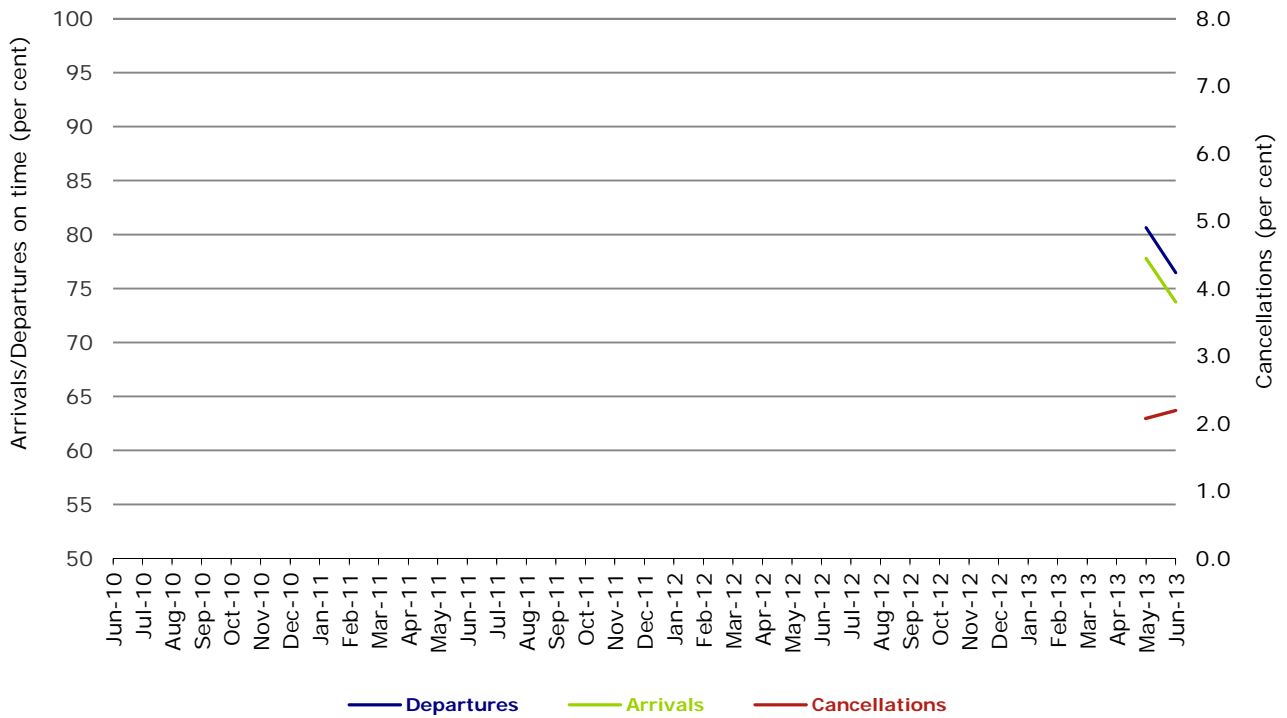


Figure 11 On time performance (by month from June 2010)  
Virgin Australia Regional Airlines



Virgin Australia Regional Airlines commenced operations in May 2013. It was formed after the acquisition of Skywest by Virgin Australia and represents a combination of operations previously reported under Skywest and Virgin Australia – ATR/F100 Operations.

## Individual routes

On time performance is reported for all routes where the passenger load averages over 8000 passengers per month over the previous six months, and where two or more airlines operate in competition on those routes. There are now 58 routes which meet this definition. Over time, however, routes which meet this definition may change as airline networks and traffic levels vary.

	<i>Sectors</i>		<i>Departures On Time</i>		<i>Arrivals On Time</i>		<i>Cancellations</i>	
	<i>Sched.</i>	<i>Flown</i>	<i>No.</i>	<i>%</i>	<i>No.</i>	<i>%</i>	<i>No.</i>	<i>%</i>
<b>Adelaide-Brisbane</b>								
Jetstar	26	26	16	61.5	13	50.0	0	0.0
Qantas	100	100	84	84.0	75	75.0	0	0.0
Virgin Australia	107	106	98	92.5	87	82.1	1	0.9
All Airlines	233	232	198	85.3	175	75.4	1	0.4
<b>Adelaide-Canberra</b>								
Qantas	44	44	39	88.6	41	93.2	0	0.0
QantasLink	20	20	11	55.0	15	75.0	0	0.0
Virgin Australia	25	24	23	95.8	23	95.8	1	4.0
All Airlines	89	88	73	83.0	79	89.8	1	1.1
<b>Adelaide-Gold Coast</b>								
Jetstar	34	34	29	85.3	29	85.3	0	0.0
Virgin Australia	30	29	28	96.6	29	100.0	1	3.3
All Airlines	64	63	57	90.5	58	92.1	1	1.6
<b>Adelaide-Melbourne</b>								
Jetstar	81	81	73	90.1	68	84.0	0	0.0
Qantas	269	267	242	90.6	244	91.4	2	0.7
QantasLink	18	17	14	82.4	14	82.4	1	5.6
Tiger Airways	52	52	43	82.7	38	73.1	0	0.0
Virgin Australia	260	256	232	90.6	229	89.5	4	1.5
All Airlines	680	673	604	89.7	593	88.1	7	1.0
<b>Adelaide-Perth</b>								
Jetstar	36	35	25	71.4	25	71.4	1	2.8
Qantas	100	100	82	82.0	91	91.0	0	0.0
Virgin Australia	55	55	45	81.8	49	89.1	0	0.0
All Airlines	191	190	152	80.0	165	86.8	1	0.5
<b>Adelaide-Port Lincoln</b>								
QantasLink	91	90	83	92.2	82	91.1	1	1.1
Regional Express	201	200	186	93.0	186	93.0	1	0.5
All Airlines	292	290	269	92.8	268	92.4	2	0.7
<b>Adelaide-Sydney</b>								
Jetstar	103	98	72	73.5	71	72.4	5	4.9
Qantas	248	248	224	90.3	229	92.3	0	0.0
Virgin Australia	156	154	128	83.1	131	85.1	2	1.3
All Airlines	507	500	424	84.8	431	86.2	7	1.4
<b>Albury-Sydney</b>								
QantasLink	110	107	52	48.6	50	46.7	3	2.7
Regional Express	105	105	80	76.2	77	73.3	0	0.0
Virgin Australia Regional Airlines	59	58	44	75.9	37	63.8	1	1.7
All Airlines	274	270	176	65.2	164	60.7	4	1.5
<b>Ayers Rock-Sydney</b>								
Qantas	3	3	2	66.7	2	66.7	0	0.0
Virgin Australia	30	30	18	60.0	23	76.7	0	0.0
All Airlines	33	33	20	60.6	25	75.8	0	0.0

	<i>Sectors</i>		<i>Departures On Time</i>		<i>Arrivals On Time</i>		<i>Cancellations</i>	
	<i>Sched.</i>	<i>Flown</i>	<i>No.</i>	<i>%</i>	<i>No.</i>	<i>%</i>	<i>No.</i>	<i>%</i>
<b>Ballina-Sydney</b>								
Jetstar	62	62	44	71.0	39	62.9	0	0.0
Regional Express	26	26	17	65.4	14	53.8	0	0.0
Virgin Australia	30	30	27	90.0	26	86.7	0	0.0
All Airlines	118	118	88	74.6	79	66.9	0	0.0
<b>Brisbane-Adelaide</b>								
Jetstar	27	27	24	88.9	24	88.9	0	0.0
Qantas	100	100	70	70.0	80	80.0	0	0.0
Virgin Australia	107	107	88	82.2	92	86.0	0	0.0
All Airlines	234	234	182	77.8	196	83.8	0	0.0
<b>Brisbane-Cairns</b>								
Jetstar	100	100	70	70.0	70	70.0	0	0.0
Qantas	115	115	83	72.2	93	80.9	0	0.0
QantasLink	5	5	5	100.0	4	80.0	0	0.0
Virgin Australia	157	155	114	73.5	120	77.4	2	1.3
All Airlines	377	375	272	72.5	287	76.5	2	0.5
<b>Brisbane-Canberra</b>								
Qantas	140	140	128	91.4	125	89.3	0	0.0
QantasLink	22	21	18	85.7	18	85.7	1	4.5
Virgin Australia	98	97	77	79.4	79	81.4	1	1.0
All Airlines	260	258	223	86.4	222	86.0	2	0.8
<b>Brisbane-Darwin</b>								
Qantas	30	30	19	63.3	19	63.3	0	0.0
Virgin Australia	30	30	18	60.0	14	46.7	0	0.0
All Airlines	60	60	37	61.7	33	55.0	0	0.0
<b>Brisbane-Emerald</b>								
QantasLink	175	169	147	87.0	127	75.1	6	3.4
Virgin Australia Regional Airlines	95	93	76	81.7	65	69.9	2	2.1
All Airlines	270	262	223	85.1	192	73.3	8	3.0
<b>Brisbane-Gladstone</b>								
QantasLink	219	211	184	87.2	179	84.8	8	3.7
Virgin Australia	3	3	2	66.7	2	66.7	0	0.0
Virgin Australia Regional Airlines	136	135	83	61.5	84	62.2	1	0.7
All Airlines	358	349	269	77.1	265	75.9	9	2.5
<b>Brisbane-Hamilton Island</b>								
Jetstar	18	18	15	83.3	15	83.3	0	0.0
Virgin Australia	30	30	28	93.3	26	86.7	0	0.0
All Airlines	48	48	43	89.6	41	85.4	0	0.0
<b>Brisbane-Mackay</b>								
Jetstar	96	95	74	77.9	74	77.9	1	1.0
QantasLink	105	105	86	81.9	82	78.1	0	0.0
Virgin Australia	154	154	112	72.7	110	71.4	0	0.0
All Airlines	355	354	272	76.8	266	75.1	1	0.3
<b>Brisbane-Melbourne</b>								
Jetstar	90	89	69	77.5	72	80.9	1	1.1
Qantas	404	404	338	83.7	336	83.2	0	0.0
Tiger Airways	84	83	56	67.5	51	61.4	1	1.2
Virgin Australia	356	348	269	77.3	252	72.4	8	2.2
All Airlines	934	924	732	79.2	711	76.9	10	1.1
<b>Brisbane-Mount Isa</b>								
Qantas	55	55	51	92.7	45	81.8	0	0.0
Virgin Australia	20	20	19	95.0	17	85.0	0	0.0
All Airlines	75	75	70	93.3	62	82.7	0	0.0



	<i>Sectors</i>		<i>Departures On Time</i>		<i>Arrivals On Time</i>		<i>Cancellations</i>	
	<i>Sched.</i>	<i>Flown</i>	<i>No.</i>	<i>%</i>	<i>No.</i>	<i>%</i>	<i>No.</i>	<i>%</i>
<b>Brisbane-Newcastle</b>								
Jetstar	105	104	81	77.9	78	75.0	1	1.0
QantasLink	65	64	43	67.2	26	40.6	1	1.5
Virgin Australia	68	68	53	77.9	51	75.0	0	0.0
All Airlines	238	236	177	75.0	155	65.7	2	0.8
<b>Brisbane-Perth</b>								
Jetstar	25	25	21	84.0	21	84.0	0	0.0
Qantas	115	115	91	79.1	105	91.3	0	0.0
Virgin Australia	85	85	69	81.2	66	77.6	0	0.0
All Airlines	225	225	181	80.4	192	85.3	0	0.0
<b>Brisbane-Proserpine</b>								
Jetstar	26	26	15	57.7	12	46.2	0	0.0
Virgin Australia	43	43	35	81.4	33	76.7	0	0.0
All Airlines	69	69	50	72.5	45	65.2	0	0.0
<b>Brisbane-Rockhampton</b>								
QantasLink	205	199	162	81.4	155	77.9	6	2.9
Virgin Australia	92	92	65	70.7	65	70.7	0	0.0
Virgin Australia Regional Airlines	116	112	81	72.3	83	74.1	4	3.4
All Airlines	413	403	308	76.4	303	75.2	10	2.4
<b>Brisbane-Sydney</b>								
Jetstar	104	98	70	71.4	69	70.4	6	5.8
Qantas	598	584	470	80.5	461	78.9	14	2.3
Tiger Airways	60	60	30	50.0	30	50.0	0	0.0
Virgin Australia	529	517	399	77.2	389	75.2	12	2.3
All Airlines	1 291	1 259	969	77.0	949	75.4	32	2.5
<b>Brisbane-Townsville</b>								
Jetstar	30	30	23	76.7	24	80.0	0	0.0
Qantas	146	146	118	80.8	119	81.5	0	0.0
Virgin Australia	157	156	114	73.1	122	78.2	1	0.6
All Airlines	333	332	255	76.8	265	79.8	1	0.3
<b>Broome-Perth</b>								
Qantas	32	32	19	59.4	24	75.0	0	0.0
QantasLink	51	47	40	85.1	42	89.4	4	7.8
Virgin Australia	59	57	43	75.4	46	80.7	2	3.4
Virgin Australia Regional Airlines	21	21	11	52.4	8	38.1	0	0.0
All Airlines	163	157	113	72.0	120	76.4	6	3.7
<b>Cairns-Brisbane</b>								
Jetstar	102	102	67	65.7	62	60.8	0	0.0
Qantas	115	114	92	80.7	77	67.5	1	0.9
QantasLink	5	5	5	100.0	5	100.0	0	0.0
Virgin Australia	157	155	113	72.9	102	65.8	2	1.3
All Airlines	379	376	277	73.7	246	65.4	3	0.8
<b>Cairns-Melbourne</b>								
Jetstar	88	88	74	84.1	79	89.8	0	0.0
Qantas	30	30	18	60.0	22	73.3	0	0.0
Tiger Airways	37	37	23	62.2	20	54.1	0	0.0
Virgin Australia	30	30	18	60.0	25	83.3	0	0.0
All Airlines	185	185	133	71.9	146	78.9	0	0.0
<b>Cairns-Sydney</b>								
Jetstar	93	91	78	85.7	74	81.3	2	2.2
Qantas	78	78	61	78.2	68	87.2	0	0.0
Tiger Airways	30	30	15	50.0	17	56.7	0	0.0
Virgin Australia	82	82	70	85.4	73	89.0	0	0.0
All Airlines	283	281	224	79.7	232	82.6	2	0.7

	<i>Sectors</i>		<i>Departures On Time</i>		<i>Arrivals On Time</i>		<i>Cancellations</i>	
	<i>Sched.</i>	<i>Flown</i>	<i>No.</i>	<i>%</i>	<i>No.</i>	<i>%</i>	<i>No.</i>	<i>%</i>
<b>Cairns-Townsville</b>								
QantasLink	178	174	154	88.5	156	89.7	4	2.2
Virgin Australia Regional Airlines	25	24	23	95.8	21	87.5	1	4.0
All Airlines	203	198	177	89.4	177	89.4	5	2.5
<b>Canberra-Adelaide</b>								
Qantas	49	49	48	98.0	48	98.0	0	0.0
QantasLink	20	20	13	65.0	12	60.0	0	0.0
Virgin Australia	25	24	22	91.7	22	91.7	1	4.0
All Airlines	94	93	83	89.2	82	88.2	1	1.1
<b>Canberra-Brisbane</b>								
Qantas	140	139	125	89.9	116	83.5	1	0.7
QantasLink	22	21	15	71.4	15	71.4	1	4.5
Virgin Australia	98	98	63	64.3	65	66.3	0	0.0
All Airlines	260	258	203	78.7	196	76.0	2	0.8
<b>Canberra-Melbourne</b>								
Qantas	243	240	216	90.0	216	90.0	3	1.2
QantasLink	40	39	28	71.8	26	66.7	1	2.5
Virgin Australia	170	167	133	79.6	130	77.8	3	1.8
All Airlines	453	446	377	84.5	372	83.4	7	1.5
<b>Canberra-Sydney</b>								
Qantas	150	149	132	88.6	124	83.2	1	0.7
QantasLink	394	372	260	69.9	268	72.0	22	5.6
Virgin Australia	49	48	39	81.3	37	77.1	1	2.0
Virgin Australia Regional Airlines	237	226	183	81.0	167	73.9	11	4.6
All Airlines	830	795	614	77.2	596	75.0	35	4.2
<b>Coffs Harbour-Sydney</b>								
QantasLink	148	148	93	62.8	100	67.6	0	0.0
Tiger Airways	22	22	17	77.3	17	77.3	0	0.0
Virgin Australia	55	55	44	80.0	47	85.5	0	0.0
All Airlines	225	225	154	68.4	164	72.9	0	0.0
<b>Darwin-Brisbane</b>								
Qantas	30	30	11	36.7	15	50.0	0	0.0
Virgin Australia	30	30	14	46.7	20	66.7	0	0.0
All Airlines	60	60	25	41.7	35	58.3	0	0.0
<b>Darwin-Melbourne</b>								
Jetstar	10	10	0	0.0	3	30.0	0	0.0
Qantas	14	14	9	64.3	11	78.6	0	0.0
Virgin Australia	30	30	29	96.7	30	100.0	0	0.0
All Airlines	54	54	38	70.4	44	81.5	0	0.0
<b>Darwin-Perth</b>								
Qantas	30	30	23	76.7	27	90.0	0	0.0
Virgin Australia	25	25	22	88.0	23	92.0	0	0.0
All Airlines	55	55	45	81.8	50	90.9	0	0.0
<b>Darwin-Sydney</b>								
Jetstar	29	29	20	69.0	23	79.3	0	0.0
Qantas	52	51	35	68.6	45	88.2	1	1.9
Virgin Australia	30	30	20	66.7	24	80.0	0	0.0
All Airlines	111	110	75	68.2	92	83.6	1	0.9
<b>Dubbo-Sydney</b>								
QantasLink	122	119	60	50.4	49	41.2	3	2.5
Regional Express	148	144	119	82.6	113	78.5	4	2.7
All Airlines	270	263	179	68.1	162	61.6	7	2.6

	<i>Sectors</i>		<i>Departures On Time</i>		<i>Arrivals On Time</i>		<i>Cancellations</i>	
	<i>Sched.</i>	<i>Flown</i>	<i>No.</i>	<i>%</i>	<i>No.</i>	<i>%</i>	<i>No.</i>	<i>%</i>
<b>Emerald-Brisbane</b>								
QantasLink	175	166	124	74.7	118	71.1	9	5.1
Virgin Australia Regional Airlines	95	91	66	72.5	73	80.2	4	4.2
All Airlines	270	257	190	73.9	191	74.3	13	4.8
<b>Geraldton-Perth</b>								
QantasLink	51	50	41	82.0	42	84.0	1	2.0
Virgin Australia Regional Airlines	93	91	78	85.7	72	79.1	2	2.2
All Airlines	144	141	119	84.4	114	80.9	3	2.1
<b>Gladstone-Brisbane</b>								
QantasLink	239	230	190	82.6	170	73.9	9	3.8
Virgin Australia	3	3	1	33.3	2	66.7	0	0.0
Virgin Australia Regional Airlines	136	135	76	56.3	73	54.1	1	0.7
All Airlines	378	368	267	72.6	245	66.6	10	2.6
<b>Gold Coast-Adelaide</b>								
Jetstar	36	36	29	80.6	30	83.3	0	0.0
Virgin Australia	31	30	30	100.0	29	96.7	1	3.2
All Airlines	67	66	59	89.4	59	89.4	1	1.5
<b>Gold Coast-Melbourne</b>								
Jetstar	174	171	147	86.0	143	83.6	3	1.7
Tiger Airways	61	61	47	77.0	41	67.2	0	0.0
Virgin Australia	156	155	131	84.5	131	84.5	1	0.6
All Airlines	391	387	325	84.0	315	81.4	4	1.0
<b>Gold Coast-Sydney</b>								
Jetstar	280	269	208	77.3	200	74.3	11	3.9
Qantas	90	90	80	88.9	82	91.1	0	0.0
Tiger Airways	39	39	25	64.1	25	64.1	0	0.0
Virgin Australia	294	288	223	77.4	231	80.2	6	2.0
All Airlines	703	686	536	78.1	538	78.4	17	2.4
<b>Hamilton Island-Brisbane</b>								
Jetstar	18	18	14	77.8	14	77.8	0	0.0
Virgin Australia	30	30	26	86.7	25	83.3	0	0.0
All Airlines	48	48	40	83.3	39	81.3	0	0.0
<b>Hamilton Island-Sydney</b>								
Jetstar	28	28	19	67.9	23	82.1	0	0.0
Virgin Australia	30	30	23	76.7	25	83.3	0	0.0
All Airlines	58	58	42	72.4	48	82.8	0	0.0
<b>Hobart-Melbourne</b>								
Jetstar	139	139	106	76.3	112	80.6	0	0.0
Qantas	60	60	58	96.7	55	91.7	0	0.0
QantasLink	30	30	25	83.3	18	60.0	0	0.0
Tiger Airways	30	30	20	66.7	22	73.3	0	0.0
Virgin Australia	127	127	102	80.3	104	81.9	0	0.0
All Airlines	386	386	311	80.6	311	80.6	0	0.0
<b>Hobart-Sydney</b>								
Jetstar	56	56	38	67.9	36	64.3	0	0.0
Qantas	30	30	27	90.0	26	86.7	0	0.0
Virgin Australia	53	52	41	78.8	43	82.7	1	1.9
All Airlines	139	138	106	76.8	105	76.1	1	0.7
<b>Kalgoorlie-Perth</b>								
Qantas	58	58	50	86.2	52	89.7	0	0.0
QantasLink	26	25	24	96.0	22	88.0	1	3.8
Virgin Australia Regional Airlines	54	54	45	83.3	39	72.2	0	0.0
All Airlines	138	137	119	86.9	113	82.5	1	0.7

	<i>Sectors</i>		<i>Departures On Time</i>		<i>Arrivals On Time</i>		<i>Cancellations</i>	
	<i>Sched.</i>	<i>Flown</i>	<i>No.</i>	<i>%</i>	<i>No.</i>	<i>%</i>	<i>No.</i>	<i>%</i>
<b>Karratha-Perth</b>								
Qantas	185	178	158	88.8	159	89.3	7	3.8
QantasLink	56	45	41	91.1	37	82.2	11	19.6
Virgin Australia	50	49	45	91.8	46	93.9	1	2.0
All Airlines	291	272	244	89.7	242	89.0	19	6.5
<b>Launceston-Melbourne</b>								
Jetstar	112	106	79	74.5	70	66.0	6	5.4
QantasLink	107	102	91	89.2	85	83.3	5	4.7
Virgin Australia	109	107	85	79.4	85	79.4	2	1.8
All Airlines	328	315	255	81.0	240	76.2	13	4.0
<b>Launceston-Sydney</b>								
Jetstar	47	46	32	69.6	32	69.6	1	2.1
Virgin Australia	30	30	16	53.3	17	56.7	0	0.0
All Airlines	77	76	48	63.2	49	64.5	1	1.3
<b>Mackay-Brisbane</b>								
Jetstar	97	96	51	53.1	49	51.0	1	1.0
QantasLink	105	105	77	73.3	83	79.0	0	0.0
Virgin Australia	154	154	111	72.1	95	61.7	0	0.0
All Airlines	356	355	239	67.3	227	63.9	1	0.3
<b>Melbourne-Adelaide</b>								
Jetstar	78	78	64	82.1	65	83.3	0	0.0
Qantas	269	268	237	88.4	245	91.4	1	0.4
QantasLink	18	18	17	94.4	18	100.0	0	0.0
Tiger Airways	52	52	44	84.6	44	84.6	0	0.0
Virgin Australia	261	256	212	82.8	217	84.8	5	1.9
All Airlines	678	672	574	85.4	589	87.6	6	0.9
<b>Melbourne-Brisbane</b>								
Jetstar	89	88	58	65.9	44	50.0	1	1.1
Qantas	404	404	348	86.1	318	78.7	0	0.0
Tiger Airways	85	84	64	76.2	53	63.1	1	1.2
Virgin Australia	356	347	257	74.1	217	62.5	9	2.5
All Airlines	934	923	727	78.8	632	68.5	11	1.2
<b>Melbourne-Cairns</b>								
Jetstar	88	88	68	77.3	70	79.5	0	0.0
Qantas	30	30	21	70.0	22	73.3	0	0.0
Tiger Airways	36	36	30	83.3	28	77.8	0	0.0
Virgin Australia	30	30	27	90.0	27	90.0	0	0.0
All Airlines	184	184	146	79.3	147	79.9	0	0.0
<b>Melbourne-Canberra</b>								
Qantas	243	241	220	91.3	216	89.6	2	0.8
QantasLink	40	39	30	76.9	27	69.2	1	2.5
Virgin Australia	170	168	137	81.5	129	76.8	2	1.2
All Airlines	453	448	387	86.4	372	83.0	5	1.1
<b>Melbourne-Darwin</b>								
Jetstar	10	10	5	50.0	6	60.0	0	0.0
Qantas	14	14	10	71.4	11	78.6	0	0.0
Virgin Australia	30	30	23	76.7	22	73.3	0	0.0
All Airlines	54	54	38	70.4	39	72.2	0	0.0
<b>Melbourne-Gold Coast</b>								
Jetstar	177	175	129	73.7	140	80.0	2	1.1
Tiger Airways	61	61	57	93.4	53	86.9	0	0.0
Virgin Australia	155	154	119	77.3	124	80.5	1	0.6
All Airlines	393	390	305	78.2	317	81.3	3	0.8

	<i>Sectors</i>		<i>Departures On Time</i>		<i>Arrivals On Time</i>		<i>Cancellations</i>	
	<i>Sched.</i>	<i>Flown</i>	<i>No.</i>	<i>%</i>	<i>No.</i>	<i>%</i>	<i>No.</i>	<i>%</i>
<b>Melbourne-Hobart</b>								
Jetstar	137	136	114	83.8	112	82.4	1	0.7
Qantas	60	60	59	98.3	58	96.7	0	0.0
QantasLink	30	30	20	66.7	18	60.0	0	0.0
Tiger Airways	30	30	23	76.7	22	73.3	0	0.0
Virgin Australia	127	127	108	85.0	105	82.7	0	0.0
All Airlines	384	383	324	84.6	315	82.2	1	0.3
<b>Melbourne-Launceston</b>								
Jetstar	111	106	88	83.0	89	84.0	5	4.5
QantasLink	107	101	90	89.1	84	83.2	6	5.6
Virgin Australia	109	107	83	77.6	85	79.4	2	1.8
All Airlines	327	314	261	83.1	258	82.2	13	4.0
<b>Melbourne-Mildura</b>								
QantasLink	85	85	76	89.4	72	84.7	0	0.0
Regional Express	81	81	76	93.8	76	93.8	0	0.0
Virgin Australia	30	30	22	73.3	23	76.7	0	0.0
All Airlines	196	196	174	88.8	171	87.2	0	0.0
<b>Melbourne-Newcastle</b>								
Jetstar	102	102	77	75.5	77	75.5	0	0.0
Virgin Australia	30	29	20	69.0	18	62.1	1	3.3
All Airlines	132	131	97	74.0	95	72.5	1	0.8
<b>Melbourne-Perth</b>								
Jetstar	76	75	61	81.3	66	88.0	1	1.3
Qantas	203	200	165	82.5	180	90.0	3	1.5
Tiger Airways	62	60	46	76.7	48	80.0	2	3.2
Virgin Australia	141	141	115	81.6	111	78.7	0	0.0
All Airlines	482	476	387	81.3	405	85.1	6	1.2
<b>Melbourne-Sunshine Coast</b>								
Jetstar	54	54	31	57.4	38	70.4	0	0.0
Tiger Airways	30	30	27	90.0	24	80.0	0	0.0
Virgin Australia	30	29	20	69.0	22	75.9	1	3.3
All Airlines	114	113	78	69.0	84	74.3	1	0.9
<b>Melbourne-Sydney</b>								
Jetstar	285	269	200	74.3	203	75.5	16	5.6
Qantas	849	815	719	88.2	686	84.2	34	4.0
Tiger Airways	200	197	152	77.2	159	80.7	3	1.5
Virgin Australia	741	707	592	83.7	556	78.6	34	4.6
All Airlines	2 075	1 988	1 663	83.7	1 604	80.7	87	4.2
<b>Mildura-Melbourne</b>								
QantasLink	85	85	76	89.4	72	84.7	0	0.0
Regional Express	81	80	70	87.5	68	85.0	1	1.2
Virgin Australia	30	30	20	66.7	21	70.0	0	0.0
All Airlines	196	195	166	85.1	161	82.6	1	0.5
<b>Mount Isa-Brisbane</b>								
Qantas	55	55	41	74.5	41	74.5	0	0.0
Virgin Australia	20	20	15	75.0	14	70.0	0	0.0
All Airlines	75	75	56	74.7	55	73.3	0	0.0
<b>Newcastle-Brisbane</b>								
Jetstar	103	102	76	74.5	70	68.6	1	1.0
QantasLink	65	64	26	40.6	28	43.8	1	1.5
Virgin Australia	68	68	45	66.2	35	51.5	0	0.0
All Airlines	236	234	147	62.8	133	56.8	2	0.8

	<i>Sectors</i>		<i>Departures On Time</i>		<i>Arrivals On Time</i>		<i>Cancellations</i>	
	<i>Sched.</i>	<i>Flown</i>	<i>No.</i>	<i>%</i>	<i>No.</i>	<i>%</i>	<i>No.</i>	<i>%</i>
<b>Newcastle-Melbourne</b>								
Jetstar	102	102	75	73.5	75	73.5	0	0.0
Virgin Australia	30	29	14	48.3	16	55.2	1	3.3
All Airlines	132	131	89	67.9	91	69.5	1	0.8
<b>Newman-Perth</b>								
Qantas	124	123	99	80.5	97	78.9	1	0.8
QantasLink	31	29	26	89.7	27	93.1	2	6.5
Virgin Australia	36	36	32	88.9	31	86.1	0	0.0
Virgin Australia Regional Airlines	14	11	8	72.7	8	72.7	3	21.4
All Airlines	205	199	165	82.9	163	81.9	6	2.9
<b>Perth-Adelaide</b>								
Jetstar	34	34	30	88.2	31	91.2	0	0.0
Qantas	104	104	86	82.7	91	87.5	0	0.0
Virgin Australia	55	54	50	92.6	52	96.3	1	1.8
All Airlines	193	192	166	86.5	174	90.6	1	0.5
<b>Perth-Brisbane</b>								
Jetstar	27	27	13	48.1	23	85.2	0	0.0
Qantas	115	113	94	83.2	90	79.6	2	1.7
Virgin Australia	85	85	74	87.1	74	87.1	0	0.0
All Airlines	227	225	181	80.4	187	83.1	2	0.9
<b>Perth-Broome</b>								
Qantas	32	32	25	78.1	27	84.4	0	0.0
QantasLink	51	47	41	87.2	42	89.4	4	7.8
Virgin Australia	59	58	49	84.5	53	91.4	1	1.7
Virgin Australia Regional Airlines	22	22	18	81.8	15	68.2	0	0.0
All Airlines	164	159	133	83.6	137	86.2	5	3.0
<b>Perth-Darwin</b>								
Qantas	30	30	28	93.3	26	86.7	0	0.0
Virgin Australia	25	25	24	96.0	23	92.0	0	0.0
All Airlines	55	55	52	94.5	49	89.1	0	0.0
<b>Perth-Geraldton</b>								
QantasLink	52	51	44	86.3	44	86.3	1	1.9
Virgin Australia Regional Airlines	96	93	81	87.1	83	89.2	3	3.1
All Airlines	148	144	125	86.8	127	88.2	4	2.7
<b>Perth-Kalgoorlie</b>								
Qantas	58	58	51	87.9	51	87.9	0	0.0
QantasLink	26	25	22	88.0	23	92.0	1	3.8
Virgin Australia Regional Airlines	54	54	48	88.9	46	85.2	0	0.0
All Airlines	138	137	121	88.3	120	87.6	1	0.7
<b>Perth-Karratha</b>								
Qantas	185	178	164	92.1	162	91.0	7	3.8
QantasLink	56	45	40	88.9	41	91.1	11	19.6
Virgin Australia	50	50	47	94.0	48	96.0	0	0.0
All Airlines	291	273	251	91.9	251	91.9	18	6.2
<b>Perth-Melbourne</b>								
Jetstar	77	74	57	77.0	54	73.0	3	3.9
Qantas	203	199	169	84.9	178	89.4	4	2.0
Tiger Airways	62	59	45	76.3	44	74.6	3	4.8
Virgin Australia	141	141	121	85.8	128	90.8	0	0.0
All Airlines	483	473	392	82.9	404	85.4	10	2.1

	<i>Sectors</i>		<i>Departures On Time</i>		<i>Arrivals On Time</i>		<i>Cancellations</i>	
	<i>Sched.</i>	<i>Flown</i>	<i>No.</i>	<i>%</i>	<i>No.</i>	<i>%</i>	<i>No.</i>	<i>%</i>
<b>Perth-Newman</b>								
Qantas	124	123	104	84.6	108	87.8	1	0.8
QantasLink	31	29	26	89.7	26	89.7	2	6.5
Virgin Australia	36	36	33	91.7	33	91.7	0	0.0
Virgin Australia Regional Airlines	14	11	6	54.5	9	81.8	3	21.4
All Airlines	205	199	169	84.9	176	88.4	6	2.9
<b>Perth-Port Hedland</b>								
Qantas	117	115	100	87.0	101	87.8	2	1.7
QantasLink	43	39	38	97.4	38	97.4	4	9.3
Virgin Australia	50	48	44	91.7	44	91.7	2	4.0
All Airlines	210	202	182	90.1	183	90.6	8	3.8
<b>Perth-Sydney</b>								
Jetstar	41	41	26	63.4	30	73.2	0	0.0
Qantas	188	188	166	88.3	169	89.9	0	0.0
Virgin Australia	112	112	101	90.2	100	89.3	0	0.0
All Airlines	341	341	293	85.9	299	87.7	0	0.0
<b>Port Hedland-Perth</b>								
Qantas	118	114	93	81.6	95	83.3	4	3.4
QantasLink	43	39	38	97.4	39	100.0	4	9.3
Virgin Australia	50	48	43	89.6	43	89.6	2	4.0
All Airlines	211	201	174	86.6	177	88.1	10	4.7
<b>Port Lincoln-Adelaide</b>								
QantasLink	91	90	81	90.0	81	90.0	1	1.1
Regional Express	201	200	185	92.5	180	90.0	1	0.5
All Airlines	292	290	266	91.7	261	90.0	2	0.7
<b>Port Macquarie-Sydney</b>								
QantasLink	129	125	73	58.4	74	59.2	4	3.1
Virgin Australia Regional Airlines	60	58	47	81.0	47	81.0	2	3.3
All Airlines	189	183	120	65.6	121	66.1	6	3.2
<b>Proserpine-Brisbane</b>								
Jetstar	27	27	16	59.3	15	55.6	0	0.0
Virgin Australia	43	43	27	62.8	24	55.8	0	0.0
All Airlines	70	70	43	61.4	39	55.7	0	0.0
<b>Rockhampton-Brisbane</b>								
QantasLink	185	177	132	74.6	124	70.1	8	4.3
Virgin Australia	92	92	55	59.8	55	59.8	0	0.0
Virgin Australia Regional Airlines	116	112	89	79.5	88	78.6	4	3.4
All Airlines	393	381	276	72.4	267	70.1	12	3.1
<b>Sunshine Coast-Melbourne</b>								
Jetstar	54	54	33	61.1	36	66.7	0	0.0
Tiger Airways	30	30	22	73.3	19	63.3	0	0.0
Virgin Australia	30	29	15	51.7	19	65.5	1	3.3
All Airlines	114	113	70	61.9	74	65.5	1	0.9
<b>Sunshine Coast-Sydney</b>								
Jetstar	97	95	82	86.3	82	86.3	2	2.1
Virgin Australia	31	31	23	74.2	23	74.2	0	0.0
All Airlines	128	126	105	83.3	105	83.3	2	1.6
<b>Sydney-Adelaide</b>								
Jetstar	103	98	78	79.6	76	77.6	5	4.9
Qantas	239	239	210	87.9	215	90.0	0	0.0
Virgin Australia	154	153	132	86.3	133	86.9	1	0.6
All Airlines	496	490	420	85.7	424	86.5	6	1.2

	<i>Sectors</i>		<i>Departures On Time</i>		<i>Arrivals On Time</i>		<i>Cancellations</i>	
	<i>Sched.</i>	<i>Flown</i>	<i>No.</i>	<i>%</i>	<i>No.</i>	<i>%</i>	<i>No.</i>	<i>%</i>
<b>Sydney-Albury</b>								
QantasLink	110	109	56	51.4	50	45.9	1	0.9
Regional Express	104	104	76	73.1	77	74.0	0	0.0
Virgin Australia Regional Airlines	59	59	47	79.7	42	71.2	0	0.0
All Airlines	273	272	179	65.8	169	62.1	1	0.4
<b>Sydney-Ayers Rock</b>								
Qantas	3	3	3	100.0	2	66.7	0	0.0
Virgin Australia	30	30	24	80.0	21	70.0	0	0.0
All Airlines	33	33	27	81.8	23	69.7	0	0.0
<b>Sydney-Ballina</b>								
Jetstar	62	62	41	66.1	51	82.3	0	0.0
Regional Express	29	29	23	79.3	23	79.3	0	0.0
Virgin Australia	30	30	30	100.0	29	96.7	0	0.0
All Airlines	121	121	94	77.7	103	85.1	0	0.0
<b>Sydney-Brisbane</b>								
Jetstar	101	98	80	81.6	66	67.3	3	3.0
Qantas	570	560	472	84.3	391	69.8	10	1.8
Tiger Airways	60	60	44	73.3	24	40.0	0	0.0
Virgin Australia	531	514	405	78.8	346	67.3	17	3.2
All Airlines	1 262	1 232	1 001	81.3	827	67.1	30	2.4
<b>Sydney-Cairns</b>								
Jetstar	93	92	81	88.0	78	84.8	1	1.1
Qantas	78	78	64	82.1	68	87.2	0	0.0
Tiger Airways	30	30	23	76.7	19	63.3	0	0.0
Virgin Australia	82	82	61	74.4	67	81.7	0	0.0
All Airlines	283	282	229	81.2	232	82.3	1	0.4
<b>Sydney-Canberra</b>								
Qantas	155	154	139	90.3	138	89.6	1	0.6
QantasLink	395	374	250	66.8	265	70.9	21	5.3
Virgin Australia	49	49	42	85.7	42	85.7	0	0.0
Virgin Australia Regional Airlines	237	226	180	79.6	181	80.1	11	4.6
All Airlines	836	803	611	76.1	626	78.0	33	3.9
<b>Sydney-Coffs Harbour</b>								
QantasLink	148	148	95	64.2	88	59.5	0	0.0
Tiger Airways	22	22	16	72.7	15	68.2	0	0.0
Virgin Australia	55	55	41	74.5	44	80.0	0	0.0
All Airlines	225	225	152	67.6	147	65.3	0	0.0
<b>Sydney-Darwin</b>								
Jetstar	30	30	26	86.7	24	80.0	0	0.0
Qantas	52	52	43	82.7	40	76.9	0	0.0
Virgin Australia	30	30	24	80.0	19	63.3	0	0.0
All Airlines	112	112	93	83.0	83	74.1	0	0.0
<b>Sydney-Dubbo</b>								
QantasLink	122	119	70	58.8	64	53.8	3	2.5
Regional Express	141	140	106	75.7	111	79.3	1	0.7
All Airlines	263	259	176	68.0	175	67.6	4	1.5
<b>Sydney-Gold Coast</b>								
Jetstar	280	269	221	82.2	216	80.3	11	3.9
Qantas	90	90	83	92.2	84	93.3	0	0.0
Tiger Airways	39	39	28	71.8	28	71.8	0	0.0
Virgin Australia	295	290	223	76.9	219	75.5	5	1.7
All Airlines	704	688	555	80.7	547	79.5	16	2.3



	<i>Sectors</i>		<i>Departures On Time</i>		<i>Arrivals On Time</i>		<i>Cancellations</i>	
	<i>Sched.</i>	<i>Flown</i>	<i>No.</i>	<i>%</i>	<i>No.</i>	<i>%</i>	<i>No.</i>	<i>%</i>
<b>Sydney-Hamilton Island</b>								
Jetstar	28	28	26	92.9	25	89.3	0	0.0
Virgin Australia	30	30	24	80.0	23	76.7	0	0.0
All Airlines	58	58	50	86.2	48	82.8	0	0.0
<b>Sydney-Hobart</b>								
Jetstar	57	57	45	78.9	44	77.2	0	0.0
Qantas	30	30	27	90.0	29	96.7	0	0.0
Virgin Australia	53	52	44	84.6	44	84.6	1	1.9
All Airlines	140	139	116	83.5	117	84.2	1	0.7
<b>Sydney-Launceston</b>								
Jetstar	46	45	33	73.3	34	75.6	1	2.2
Virgin Australia	30	30	17	56.7	17	56.7	0	0.0
All Airlines	76	75	50	66.7	51	68.0	1	1.3
<b>Sydney-Melbourne</b>								
Jetstar	288	270	195	72.2	212	78.5	18	6.3
Qantas	847	813	724	89.1	723	88.9	34	4.0
Tiger Airways	200	197	154	78.2	149	75.6	3	1.5
Virgin Australia	740	705	582	82.6	583	82.7	35	4.7
All Airlines	2 075	1 985	1 655	83.4	1 667	84.0	90	4.3
<b>Sydney-Perth</b>								
Jetstar	39	39	30	76.9	31	79.5	0	0.0
Qantas	193	193	151	78.2	170	88.1	0	0.0
Virgin Australia	112	112	91	81.3	96	85.7	0	0.0
All Airlines	344	344	272	79.1	297	86.3	0	0.0
<b>Sydney-Port Macquarie</b>								
QantasLink	130	126	81	64.3	70	55.6	4	3.1
Virgin Australia Regional Airlines	60	60	43	71.7	40	66.7	0	0.0
All Airlines	190	186	124	66.7	110	59.1	4	2.1
<b>Sydney-Sunshine Coast</b>								
Jetstar	96	94	84	89.4	85	90.4	2	2.1
Virgin Australia	31	31	25	80.6	26	83.9	0	0.0
All Airlines	127	125	109	87.2	111	88.8	2	1.6
<b>Sydney-Townsville</b>								
Jetstar	24	24	18	75.0	19	79.2	0	0.0
Virgin Australia	30	30	22	73.3	21	70.0	0	0.0
All Airlines	54	54	40	74.1	40	74.1	0	0.0
<b>Sydney-Wagga Wagga</b>								
QantasLink	110	110	61	55.5	57	51.8	0	0.0
Regional Express	130	129	112	86.8	109	84.5	1	0.8
All Airlines	240	239	173	72.4	166	69.5	1	0.4
<b>Townsville-Brisbane</b>								
Jetstar	31	31	21	67.7	19	61.3	0	0.0
Qantas	146	146	128	87.7	121	82.9	0	0.0
Virgin Australia	157	156	124	79.5	111	71.2	1	0.6
All Airlines	334	333	273	82.0	251	75.4	1	0.3
<b>Townsville-Cairns</b>								
QantasLink	177	172	142	82.6	139	80.8	5	2.8
Virgin Australia Regional Airlines	25	24	23	95.8	23	95.8	1	4.0
All Airlines	202	196	165	84.2	162	82.7	6	3.0
<b>Townsville-Sydney</b>								
Jetstar	23	23	14	60.9	15	65.2	0	0.0
Virgin Australia	30	30	15	50.0	13	43.3	0	0.0
All Airlines	53	53	29	54.7	28	52.8	0	0.0

	<i>Sectors</i>		<i>Departures On Time</i>		<i>Arrivals On Time</i>		<i>Cancellations</i>	
	<i>Sched.</i>	<i>Flown</i>	<i>No.</i>	<i>%</i>	<i>No.</i>	<i>%</i>	<i>No.</i>	<i>%</i>
<b>Wagga Wagga-Sydney</b>								
QantasLink	110	110	60	54.5	60	54.5	0	0.0
Regional Express	128	127	112	88.2	112	88.2	1	0.8
All Airlines	238	237	172	72.6	172	72.6	1	0.4

# Airports

On time performance is reported for all routes where the passenger load averages over 8000 passengers per month, and where two or more airlines operate in competition. The following data reports by airport against flights operated on those routes only.

Airport	Departures			Arrivals		
	Sectors	On Time		Sectors	On Time	
	Flown	No.	%	Flown	No.	%
<b>Adelaide</b>						
Jetstar	274	215	78.5	273	226	82.8
Qantas	759	671	88.4	760	679	89.3
QantasLink	127	108	85.0	128	111	86.7
Regional Express	200	186	93.0	200	180	90.0
Tiger Airways	52	43	82.7	52	44	84.6
Virgin Australia	624	554	88.8	624	545	87.3
All Airlines	2 036	1 777	87.3	2 037	1 785	87.6
Relates to services to and from Brisbane, Canberra, Gold Coast, Melbourne, Perth, Port Lincoln and Sydney.						
<b>Albury</b>						
QantasLink	107	52	48.6	109	50	45.9
Regional Express	105	80	76.2	104	77	74.0
Virgin Australia Regional Airlines	58	44	75.9	59	42	71.2
All Airlines	270	176	65.2	272	169	62.1
Relates to services to and from Sydney only.						
<b>Ayers Rock</b>						
Qantas	3	2	66.7	3	2	66.7
Virgin Australia	30	18	60.0	30	21	70.0
All Airlines	33	20	60.6	33	23	69.7
Relates to services to and from Sydney only.						
<b>Ballina</b>						
Jetstar	62	44	71.0	62	51	82.3
Regional Express	26	17	65.4	29	23	79.3
Virgin Australia	30	27	90.0	30	29	96.7
All Airlines	118	88	74.6	121	103	85.1
Relates to services to and from Sydney only.						
<b>Brisbane</b>						
Jetstar	612	462	75.5	615	375	61.0
Qantas	1 689	1 368	81.0	1 661	1 244	74.9
QantasLink	774	645	83.3	768	543	70.7
Tiger Airways	143	86	60.1	144	77	53.5
Virgin Australia	1 905	1 462	76.7	1 901	1 272	66.9
Virgin Australia Regional Airlines	340	240	70.6	338	234	69.2
All Airlines	5 463	4 263	78.0	5 427	3 745	69.0
Relates to services to and from Adelaide, Cairns, Canberra, Darwin, Emerald, Gladstone, Hamilton Island, Mackay, Melbourne, Mount Isa, Newcastle, Perth, Proserpine, Rockhampton, Sydney and Townsville.						

Airport	Departures			Arrivals		
	Sectors Flown	On Time		Sectors Flown	On Time	
		No.	%		No.	%
<b>Broome</b>						
Qantas	32	19	59.4	32	27	84.4
QantasLink	47	40	85.1	47	42	89.4
Virgin Australia	57	43	75.4	58	53	91.4
Virgin Australia Regional Airlines	21	11	52.4	22	15	68.2
All Airlines	157	113	72.0	159	137	86.2
Relates to services to and from Perth only.						
<b>Cairns</b>						
Jetstar	281	219	77.9	280	218	77.9
Qantas	222	171	77.0	223	183	82.1
QantasLink	179	159	88.8	177	143	80.8
Tiger Airways	67	38	56.7	66	47	71.2
Virgin Australia	267	201	75.3	267	214	80.1
Virgin Australia Regional Airlines	24	23	95.8	24	23	95.8
All Airlines	1 040	811	78.0	1 037	828	79.8
Relates to services to and from Brisbane, Melbourne, Sydney and Townsville.						
<b>Canberra</b>						
Qantas	577	521	90.3	579	520	89.8
QantasLink	452	316	69.9	454	325	71.6
Virgin Australia	337	257	76.3	338	273	80.8
Virgin Australia Regional Airlines	226	183	81.0	226	181	80.1
All Airlines	1 592	1 277	80.2	1 597	1 299	81.3
Relates to services to and from Adelaide, Brisbane, Melbourne and Sydney.						
<b>Coffs Harbour</b>						
QantasLink	148	93	62.8	148	88	59.5
Tiger Airways	22	17	77.3	22	15	68.2
Virgin Australia	55	44	80.0	55	44	80.0
All Airlines	225	154	68.4	225	147	65.3
Relates to services to and from Sydney only.						
<b>Darwin</b>						
Jetstar	39	20	51.3	40	30	75.0
Qantas	125	78	62.4	126	96	76.2
Virgin Australia	115	85	73.9	115	78	67.8
All Airlines	279	183	65.6	281	204	72.6
Relates to services to and from Brisbane, Melbourne, Perth and Sydney.						
<b>Dubbo</b>						
QantasLink	119	60	50.4	119	64	53.8
Regional Express	144	119	82.6	140	111	79.3
All Airlines	263	179	68.1	259	175	67.6
Relates to services to and from Sydney only.						
<b>Emerald</b>						
QantasLink	166	124	74.7	169	127	75.1
Virgin Australia Regional Airlines	91	66	72.5	93	65	69.9
All Airlines	257	190	73.9	262	192	73.3
Relates to services to and from Brisbane only.						

Airport	Departures			Arrivals		
	Sectors Flown	On Time		Sectors Flown	On Time	
		No.	%		No.	%
<b>Geraldton</b>						
QantasLink	50	41	82.0	51	44	86.3
Virgin Australia Regional Airlines	91	78	85.7	93	83	89.2
All Airlines	141	119	84.4	144	127	88.2
Relates to services to and from Perth only.						
<b>Gladstone</b>						
QantasLink	230	190	82.6	211	179	84.8
Virgin Australia	3	1	33.3	3	2	66.7
Virgin Australia Regional Airlines	135	76	56.3	135	84	62.2
All Airlines	368	267	72.6	349	265	75.9
Relates to services to and from Brisbane only.						
<b>Gold Coast</b>						
Jetstar	476	384	80.7	478	385	80.5
Qantas	90	80	88.9	90	84	93.3
Tiger Airways	100	72	72.0	100	81	81.0
Virgin Australia	473	384	81.2	473	372	78.6
All Airlines	1 139	920	80.8	1 141	922	80.8
Relates to services to and from Adelaide, Melbourne and Sydney.						
<b>Hamilton Island</b>						
Jetstar	46	33	71.7	46	40	87.0
Virgin Australia	60	49	81.7	60	49	81.7
All Airlines	106	82	77.4	106	89	84.0
Relates to services to and from Brisbane and Sydney.						
<b>Hobart</b>						
Jetstar	195	144	73.8	193	156	80.8
Qantas	90	85	94.4	90	87	96.7
QantasLink	30	25	83.3	30	18	60.0
Tiger Airways	30	20	66.7	30	22	73.3
Virgin Australia	179	143	79.9	179	149	83.2
All Airlines	524	417	79.6	522	432	82.8
Relates to services to and from Melbourne and Sydney.						
<b>Kalgoorlie</b>						
Qantas	58	50	86.2	58	51	87.9
QantasLink	25	24	96.0	25	23	92.0
Virgin Australia Regional Airlines	54	45	83.3	54	46	85.2
All Airlines	137	119	86.9	137	120	87.6
Relates to services to and from Perth only.						
<b>Karratha</b>						
Qantas	178	158	88.8	178	162	91.0
QantasLink	45	41	91.1	45	41	91.1
Virgin Australia	49	45	91.8	50	48	96.0
All Airlines	272	244	89.7	273	251	91.9
Relates to services to and from Perth only.						

Airport	Departures			Arrivals		
	Sectors	On Time		Sectors	On Time	
	Flown	No.	%	Flown	No.	%
<b>Launceston</b>						
Jetstar	152	111	73.0	151	123	81.5
QantasLink	102	91	89.2	101	84	83.2
Virgin Australia	137	101	73.7	137	102	74.5
All Airlines	391	303	77.5	389	309	79.4
Relates to services to and from Melbourne and Sydney.						
<b>Mackay</b>						
Jetstar	96	51	53.1	95	74	77.9
QantasLink	105	77	73.3	105	82	78.1
Virgin Australia	154	111	72.1	154	110	71.4
All Airlines	355	239	67.3	354	266	75.1
Relates to services to and from Brisbane only.						
<b>Melbourne</b>						
Jetstar	1 181	895	75.8	1 184	924	78.0
Qantas	2 032	1 779	87.5	2 027	1 785	88.1
QantasLink	273	233	85.3	273	215	78.8
Regional Express	81	76	93.8	80	68	85.0
Tiger Airways	550	443	80.5	549	384	69.9
Virgin Australia	2 155	1 735	80.5	2 154	1 753	81.4
All Airlines	6 272	5 161	82.3	6 267	5 129	81.8
Relates to services to and from Adelaide, Brisbane, Cairns, Canberra, Darwin, Gold Coast, Hobart, Launceston, Mildura, Newcastle, Perth, Sunshine Coast and Sydney.						
<b>Mildura</b>						
QantasLink	85	76	89.4	85	72	84.7
Regional Express	80	70	87.5	81	76	93.8
Virgin Australia	30	20	66.7	30	23	76.7
All Airlines	195	166	85.1	196	171	87.2
Relates to services to and from Melbourne only.						
<b>Mount Isa</b>						
Qantas	55	41	74.5	55	45	81.8
Virgin Australia	20	15	75.0	20	17	85.0
All Airlines	75	56	74.7	75	62	82.7
Relates to services to and from Brisbane only.						
<b>Newcastle</b>						
Jetstar	204	151	74.0	206	155	75.2
QantasLink	64	26	40.6	64	26	40.6
Virgin Australia	97	59	60.8	97	69	71.1
All Airlines	365	236	64.7	367	250	68.1
Relates to services to and from Brisbane and Melbourne.						
<b>Newman</b>						
Qantas	123	99	80.5	123	108	87.8
QantasLink	29	26	89.7	29	26	89.7
Virgin Australia	36	32	88.9	36	33	91.7
Virgin Australia Regional Airlines	11	8	72.7	11	9	81.8
All Airlines	199	165	82.9	199	176	88.4
Relates to services to and from Perth only.						

Airport	Departures			Arrivals		
	Sectors	On Time		Sectors	On Time	
	Flown	No.	%	Flown	No.	%
<b>Perth</b>						
Jetstar	176	126	71.6	174	143	82.2
Qantas	1 140	987	86.6	1 143	1 000	87.5
QantasLink	236	211	89.4	235	209	88.9
Tiger Airways	59	45	76.3	60	48	80.0
Virgin Australia	609	543	89.2	608	511	84.0
Virgin Australia Regional Airlines	180	153	85.0	177	127	71.8
All Airlines	2 400	2 065	86.0	2 397	2 038	85.0
Relates to services to and from Adelaide, Brisbane, Broome, Darwin, Geraldton, Kalgoorlie, Karratha, Melbourne, Newman, Port Hedland and Sydney.						
<b>Port Hedland</b>						
Qantas	114	93	81.6	115	101	87.8
QantasLink	39	38	97.4	39	38	97.4
Virgin Australia	48	43	89.6	48	44	91.7
All Airlines	201	174	86.6	202	183	90.6
Relates to services to and from Perth only.						
<b>Port Lincoln</b>						
QantasLink	90	81	90.0	90	82	91.1
Regional Express	200	185	92.5	200	186	93.0
All Airlines	290	266	91.7	290	268	92.4
Relates to services to and from Adelaide only.						
<b>Port Macquarie</b>						
QantasLink	125	73	58.4	126	70	55.6
Virgin Australia Regional Airlines	58	47	81.0	60	40	66.7
All Airlines	183	120	65.6	186	110	59.1
Relates to services to and from Sydney only.						
<b>Proserpine</b>						
Jetstar	27	16	59.3	26	12	46.2
Virgin Australia	43	27	62.8	43	33	76.7
All Airlines	70	43	61.4	69	45	65.2
Relates to services to and from Brisbane only.						
<b>Rockhampton</b>						
QantasLink	177	132	74.6	199	155	77.9
Virgin Australia	92	55	59.8	92	65	70.7
Virgin Australia Regional Airlines	112	89	79.5	112	83	74.1
All Airlines	381	276	72.4	403	303	75.2
Relates to services to and from Brisbane only.						
<b>Sunshine Coast</b>						
Jetstar	149	115	77.2	148	123	83.1
Tiger Airways	30	22	73.3	30	24	80.0
Virgin Australia	60	38	63.3	60	48	80.0
All Airlines	239	175	73.2	238	195	81.9
Relates to services to and from Melbourne and Sydney.						

Airport	Departures			Arrivals		
	Sectors	On Time		Sectors	On Time	
	Flown	No.	%	Flown	No.	%
<b>Sydney</b>						
Jetstar	1 206	958	79.4	1 205	897	74.4
Qantas	2 212	1 916	86.6	2 236	1 892	84.6
QantasLink	986	613	62.2	981	601	61.3
Regional Express	402	317	78.9	402	316	78.6
Tiger Airways	348	265	76.1	348	248	71.3
Virgin Australia	2 223	1 787	80.4	2 226	1 758	79.0
Virgin Australia Regional Airlines	345	270	78.3	342	251	73.4
All Airlines	7 722	6 126	79.3	7 740	5 963	77.0

Relates to services to and from Adelaide, Albury, Ayers Rock, Ballina, Brisbane, Cairns, Canberra, Coffs Harbour, Darwin, Dubbo, Gold Coast, Hamilton Island, Hobart, Launceston, Melbourne, Perth, Port Macquarie, Sunshine Coast, Townsville and Wagga Wagga.

#### Townsville

Jetstar	54	35	64.8	54	43	79.6
Qantas	146	128	87.7	146	119	81.5
QantasLink	172	142	82.6	174	156	89.7
Virgin Australia	186	139	74.7	186	143	76.9
Virgin Australia Regional Airlines	24	23	95.8	24	21	87.5
All Airlines	582	467	80.2	584	482	82.5

Relates to services to and from Brisbane, Cairns and Sydney.

#### Wagga Wagga

QantasLink	110	60	54.5	110	57	51.8
Regional Express	127	112	88.2	129	109	84.5
All Airlines	237	172	72.6	239	166	69.5

Relates to services to and from Sydney only.



## Definitions

---

On time departure                      A flight departure is counted as "on time" if it departs the gate within 15 minutes of the scheduled departure time shown in the carriers' schedule.

---

On time arrival                         A flight arrival is counted as "on time" if it arrived at the gate within 15 minutes of the scheduled arrival time shown in the carriers' schedule.  
Neither diverted nor cancelled flights count as on time.

---

Cancellation                            A flight removed from service within 7 days of scheduled departure is regarded as a cancellation.

---

On time departure percentage                      The percentage of on time departures is measured against the number of departures *operated* on any particular sector.

---

On time arrival percentage                         The percentage of on time arrivals is measured against the number of arrivals *operated* on any particular sector.

---

Cancellation percentage                      The percentage of cancellations is measured against the number of services *scheduled* on any particular sector.

---