



Australian Government

Department of Infrastructure and Transport

Bureau of Infrastructure, Transport and Regional Economics

STATISTICAL REPORT



Aviation

Domestic airline on time performance
June 2012

© Commonwealth of Australia 2012

ISSN: 1832-0759

Ownership of intellectual property rights in this publication

Unless otherwise noted, copyright (and any other intellectual property rights, if any) in this publication is owned by the Commonwealth of Australia (referred to below as the Commonwealth).

Disclaimer

The material contained in this publication is made available on the understanding that the Commonwealth is not providing professional advice, and that users exercise their own skill and care with respect to its use, and seek independent advice if necessary.

The Commonwealth makes no representations or warranties as to the contents or accuracy of the information contained in this publication. To the extent permitted by law, the Commonwealth disclaims liability to any person or organisation in respect of anything done, or omitted to be done, in reliance upon information contained in this publication.

Creative Commons licence

With the exception of (a) the Coat of Arms; and (b) the Department of Infrastructure's photos and graphics, copyright in this publication is licensed under a Creative Commons Attribution 3.0 Australia Licence.

Creative Commons Attribution 3.0 Australia Licence is a standard form licence agreement that allows you to copy, communicate and adapt this publication provided that you attribute the work to the Commonwealth and abide by the other licence terms. A summary of the licence terms is available from <http://creativecommons.org/licenses/by/3.0/au/deed.en>. The full licence terms are available from <http://creativecommons.org/licenses/by/3.0/au/legalcode>.

Use of the Coat of Arms

The Department of the Prime Minister and Cabinet sets the terms under which the Coat of Arms is used. Please refer to the Department's Commonwealth Coat of Arms and Government branding web page <http://www.dpmmc.gov.au/guidelines/index.cfm#brand> and, in particular, the Guidelines on the use of the Commonwealth Coat of Arms publication.

An appropriate citation for this report is:

Bureau of Infrastructure, Transport and Regional Economics (BITRE), 2012, Domestic airline on time performance, Statistical Report, BITRE, Canberra ACT.

Contact us

This publication is available in PDF format. All other rights are reserved, including in relation to any Departmental logos or trade marks which may exist. For enquiries regarding the licence and any use of this publication, please contact:

Bureau of Infrastructure, Transport and Regional Economics (BITRE)
Department of Infrastructure and Transport
GPO Box 501, Canberra ACT 2601, Australia
Telephone: (international) +61 2 6274 7210
Fax: (international) +61 2 6274 6855
Email: bitre@infrastructure.gov.au
Website: www.bitre.gov.au

Inquiries

Should you require additional information about the statistics contained in this publication:

Telephone (02) 6274 7790 or Facsimile (02) 6274 7727

Electronic mail: AVSTATS@infrastructure.gov.au

Web site: <http://www.bitre.gov.au/statistics/aviation/otphome.aspx>

Foreword

The Bureau of Infrastructure, Transport and Regional Economics (BITRE) monitors the punctuality and reliability of major domestic airlines operating between Australian airports. The purpose of this is to allow for evaluation of overall industry and individual airline performance, so that consumers of air travel can make informed decisions.

The following domestic airlines report this data monthly to the BITRE: Jetstar, Qantas, QantasLink, Regional Express, Skywest Airlines, Tiger Airways, and Virgin Australia. Data has been gathered since November 2003, although some airlines commenced reporting at a later date, including Jetstar which first reported in May 2004, MacAir in July 2005 and Tiger Airways in April 2008. MacAir ceased operations in February 2009 and data was not received for December 2008 onwards. Virgin Blue was rebranded as Virgin Australia in May 2011 and time series data in Microsoft Excel spreadsheet format on the BITRE website has been revised to reflect this. Services operated by Skywest on behalf of Virgin Australia using ATR/F100 aircraft commenced in November 2011 and are shown separately as Virgin Australia – ATR/F100 Operations.

Information presented in this report is for Australian domestic routes for which the passenger load averaged 8 000 or more passengers per month over the previous six months and where two or more airlines operated in competition on those routes. There were 56 routes that met this definition in June 2012. Over time, routes which meet these criteria change as airline networks and traffic levels vary.

Participating airlines report their overall monthly network performance where this is possible.

Total industry figures encompass all services operated by reporting airlines only. These airlines collectively carried over 95 per cent of total domestic passengers (regular public transport only) in 2011.

The method of capturing on time performance varies between airlines utilising different recording systems. Jetstar and Qantas jet aircraft use Aircraft Communication Addressing and Reporting System (ACARS) to electronically measure on time performance. Regional Express, Skywest, Tiger Airways, Virgin Australia, Virgin Australia – ATR/F100 Operations and the Qantas non-jet fleet record on time performance manually using records from pilots, gate agents and/or ground crews.

After initial data is collected, aggregate reports are audited internally by participating airlines prior to publication.

Reports and detailed time series data in Microsoft Excel spreadsheet format are available from the BITRE website at: <http://www.bitre.gov.au/statistics/aviation/otphome.aspx>.

Contents

	Page
Industry performance	1
Individual routes	9
Airports	20
Definitions	26

Industry performance

For June 2012, on time performance over all routes operated by participating airlines (Jetstar, Qantas, QantasLink, Regional Express, Skywest Airlines, Tiger Airways, Virgin Australia and Virgin Australia – ATR/F100 Operations) averaged 81.7 per cent for on time departures, and 79.2 per cent for on time arrivals. Cancellations represented 1.5 per cent of all scheduled flights. The equivalent figures for June 2011 were 81.5 per cent for departures, 79.8 per cent for arrivals and 5.3 per cent for cancellations. In June 2011, on time performance and cancellations in particular were impacted by the volcanic ash cloud from Chile.

The long term average performance for all routes since reporting commenced in November 2003 is 84.0 per cent for on time departures and 82.7 per cent for on time arrivals. Cancellations average 1.2 per cent of all scheduled flights.

Tiger Airways operated on a reduced schedule with 935 sectors flown in June 2012 compared to an average of 1 725 sectors flown per month for January to May 2011.

Of the major domestic airlines, Tiger Airways achieved the highest level of on time departures for June 2012 at 86.7 per cent, followed by Virgin Australia at 86.3 per cent, Qantas at 86.2 per cent and Jetstar at 78.3 per cent. The regional airlines were led by Regional Express at 84.8 per cent, followed by Virgin Australia – ATR/F100 Operations at 84.1 per cent, Skywest at 75.9 per cent and QantasLink at 70.7 per cent.

Virgin Australia achieved the highest on time arrivals among the major domestic airlines at 83.9 per cent, followed by Tiger Airways at 83.7 per cent, Qantas at 83.5 per cent and Jetstar at 77.8 per cent. Regional Express was the best performing regional airline for on time arrivals at 82.2 per cent, followed by Virgin Australia – ATR/F100 Operations at 80.4 per cent, Skywest at 71.4 per cent and QantasLink at 67.6 per cent.

QantasLink had the highest percentage of cancellations for June 2012 at 3.7 per cent, while Skywest had the lowest percentage of cancellations at 0.2 per cent.

Of the 56 routes which met the criteria for on time performance reporting in June 2012, the Adelaide-Gold Coast route had the highest percentage of on time departures (96.4 per cent) and the Townsville-Sydney route had the lowest percentage of on time departures (51.9 per cent). The Adelaide-Gold Coast route also had the highest percentage of on time arrivals (96.4 per cent) and the Townsville-Cairns route had the lowest percentage of on time arrivals (50.3 per cent).

Cancellations were highest on the Canberra-Sydney route at 4.8 per cent, followed by Port Hedland-Perth at 4.7 per cent, Port Lincoln-Adelaide at 4.0 per cent, Townsville-Cairns also at 4.0 per cent and Sydney-Canberra at 3.7 per cent.

Ayers Rock Airport recorded the highest percentage of on time departures (93.3 per cent) and Kalgoorlie Airport recorded the lowest percentage of on time departures (59.6 per cent). Adelaide Airport recorded the highest percentage of on time arrivals (89.1 per cent) and Coffs Harbour Airport recorded the lowest percentage of on time arrivals (62.3 per cent). These figures only refer to reported routes and do not cover all flights at these airports.

Table 1 On time performance for June 2012 — Total Industry

	<i>Sectors</i>		<i>Departures On Time</i>		<i>Arrivals On Time</i>		<i>Cancellations</i>	
	<i>Scheduled</i>	<i>Flown</i>	<i>No.</i>	<i>%</i>	<i>No.</i>	<i>%</i>	<i>No.</i>	<i>%</i>
Jetstar	5 629	5 569	4 360	78.3	4 335	77.8	60	1.1
Qantas	9 629	9 541	8 224	86.2	7 962	83.5	88	0.9
QantasLink	8 865	8 540	6 040	70.7	5 770	67.6	325	3.7
Regional Express	5 264	5 221	4 426	84.8	4 294	82.2	43	0.8
Skywest	833	831	631	75.9	593	71.4	2	0.2
Tiger Airways	942	935	811	86.7	783	83.7	7	0.7
Virgin Australia	10 820	10 722	9 258	86.3	8 994	83.9	98	0.9
Virgin Australia - ATR/F100 Operations	1 154	1 148	966	84.1	923	80.4	6	0.5
All Airlines	43 136	42 507	34 716	81.7	33 654	79.2	629	1.5

Total airline network data (including routes not shown in this report).

Table 2 Top ten routes for on time performance for June 2012 (participating airlines only)

<i>Departures</i>		<i>Arrivals</i>	
<i>Route</i>	<i>On Time (%)</i>	<i>Route</i>	<i>On Time</i>
Adelaide-Gold Coast	96.4	Adelaide-Gold Coast	96.4
Gold Coast-Adelaide	94.6	Gold Coast-Adelaide	96.4
Ayers Rock-Sydney	93.3	Canberra-Adelaide	93.3
Sydney-Sunshine Coast	92.7	Ayers Rock-Sydney	93.3
Melbourne-Adelaide	92.5	Adelaide-Canberra	92.9
Adelaide-Sydney	91.8	Brisbane-Adelaide	92.5
Melbourne-Canberra	90.7	Sydney-Sunshine Coast	91.9
Canberra-Adelaide	90.7	Adelaide-Sydney	91.1
Brisbane-Proserpine	90.5	Cairns-Sydney	90.9
Canberra-Melbourne	90.4	Sydney-Adelaide	90.9

Table 3 Top ten airports for on time performance for June 2012 (participating airlines and reported routes only)

<i>Departures</i>		<i>Arrivals</i>	
<i>Airport</i>	<i>On Time (%)</i>	<i>Airport</i>	<i>On Time</i>
Ayers Rock	93.3	Adelaide	89.1
Adelaide	89.9	Launceston	88.0
Melbourne	88.0	Melbourne	85.1
Mildura	87.5	Ayers Rock	85.0
Port Lincoln	87.1	Port Lincoln	84.8
Launceston	86.5	Sunshine Coast	84.2
Cairns	84.5	Proserpine	83.8
Sydney	82.9	Mildura	83.0
Canberra	82.9	Gold Coast	82.7
Brisbane	82.6	Emerald	81.2

Total industry on time performance

Figure 1 On time performance (by month from June 2009)—Total Industry

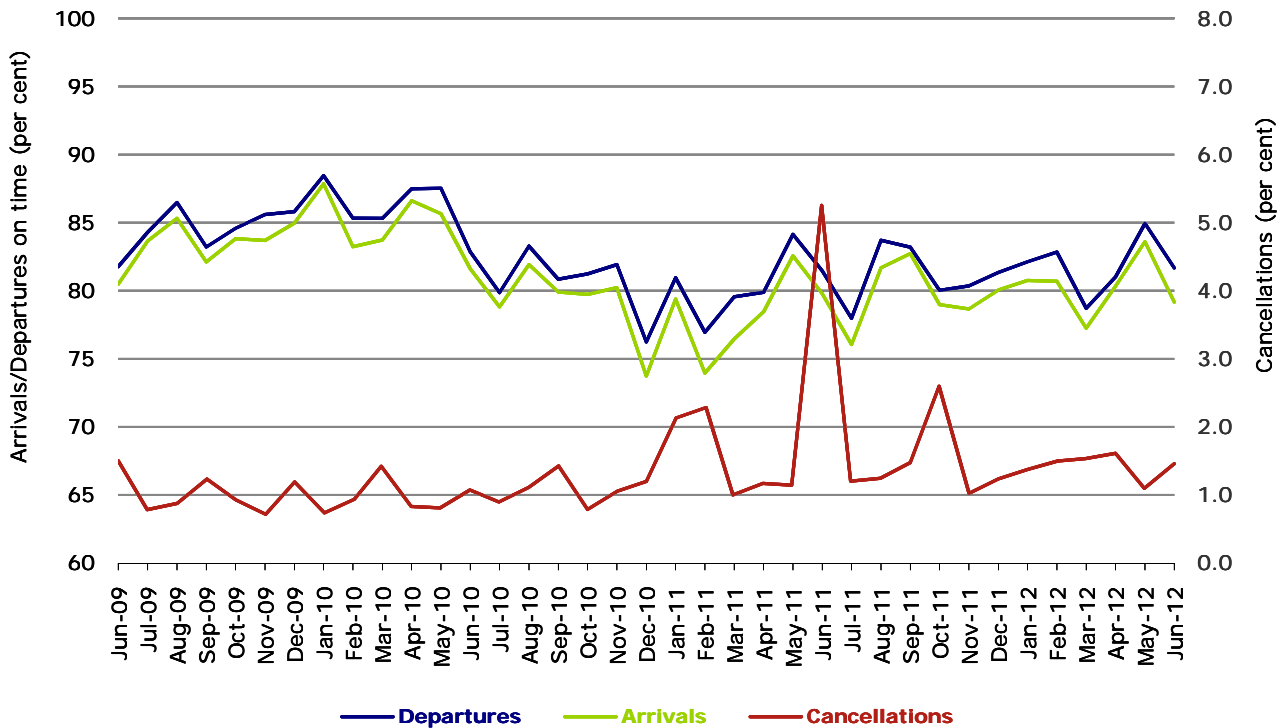
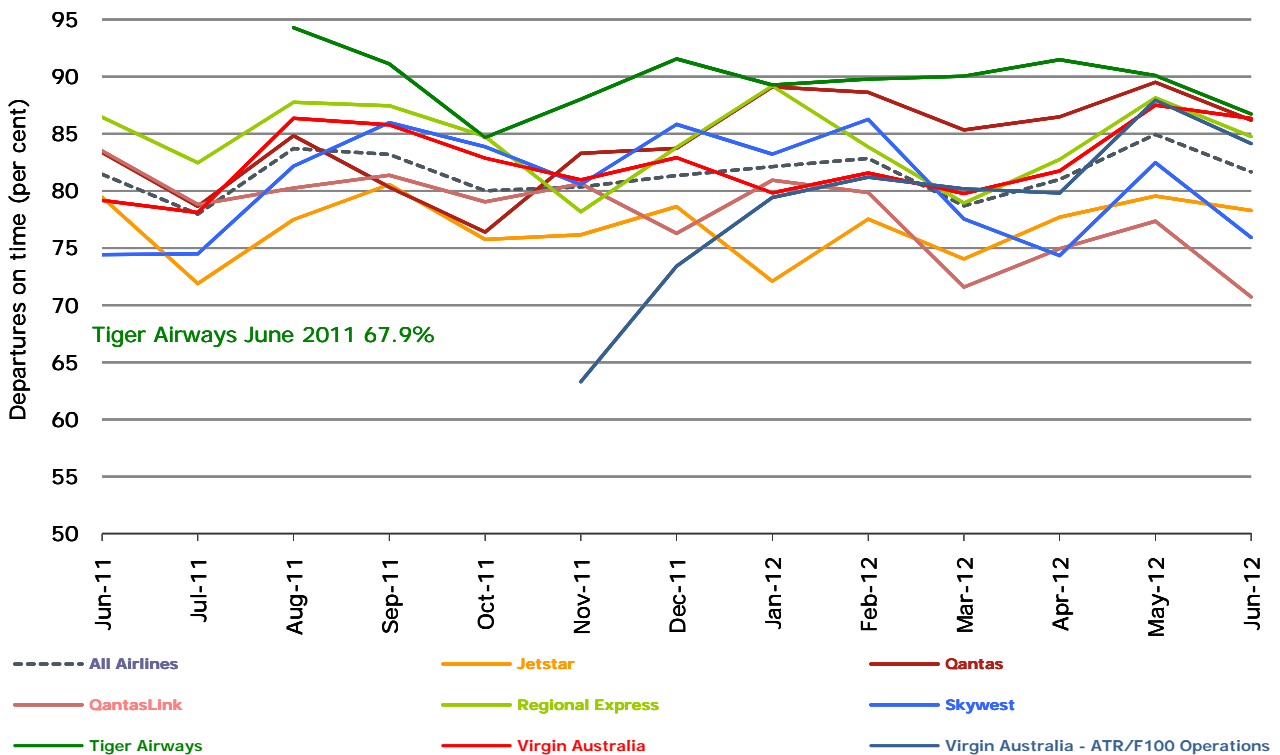


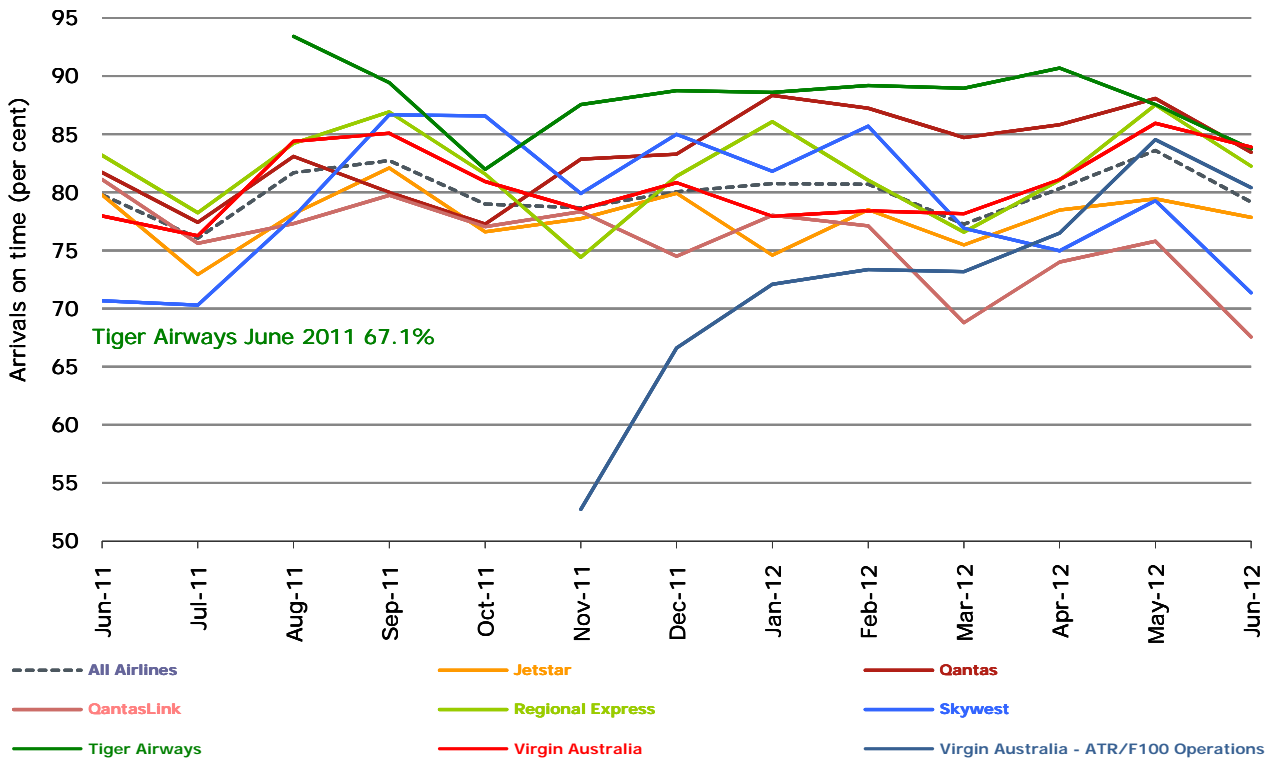
Figure 2 Departures on time (by month from June 2011)



No data for Tiger Airways for July 2011 as it was grounded by CASA from 2/7/2011 to 11/8/2011.

Virgin Australia - ATR/F100 Operations commenced in November 2011.

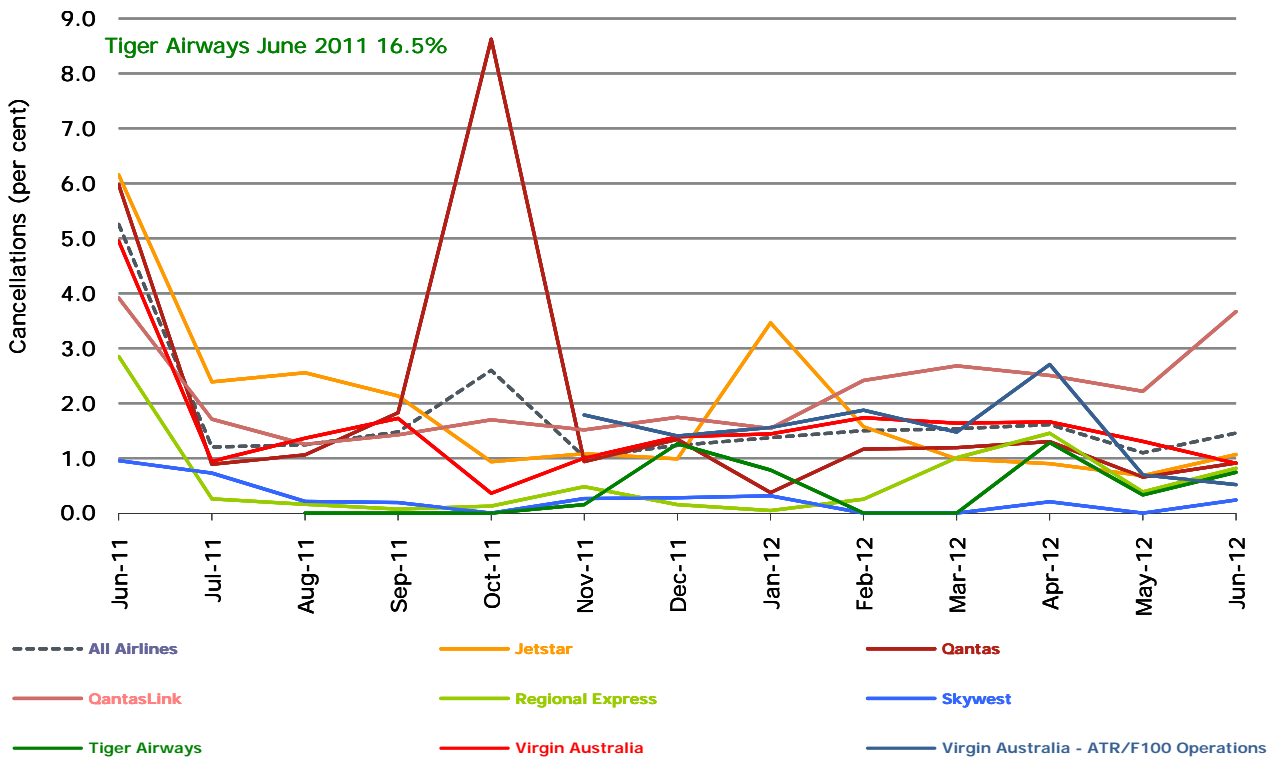
Figure 3 Arrivals on time (by month from June 2011)



No data for Tiger Airways for July 2011 as it was grounded by CASA from 2/7/2011 to 11/8/2011.

Virgin Australia - ATR/F100 Operations commenced in November 2011.

Figure 4 Cancellations (by month from June 2011)



No data for Tiger Airways for July 2011 as it was grounded by CASA from 2/7/2011 to 11/8/2011.

Virgin Australia - ATR/F100 Operations commenced in November 2011.

Major domestic airlines on time performance

Figure 5 On time performance (by month from June 2009)—Jetstar

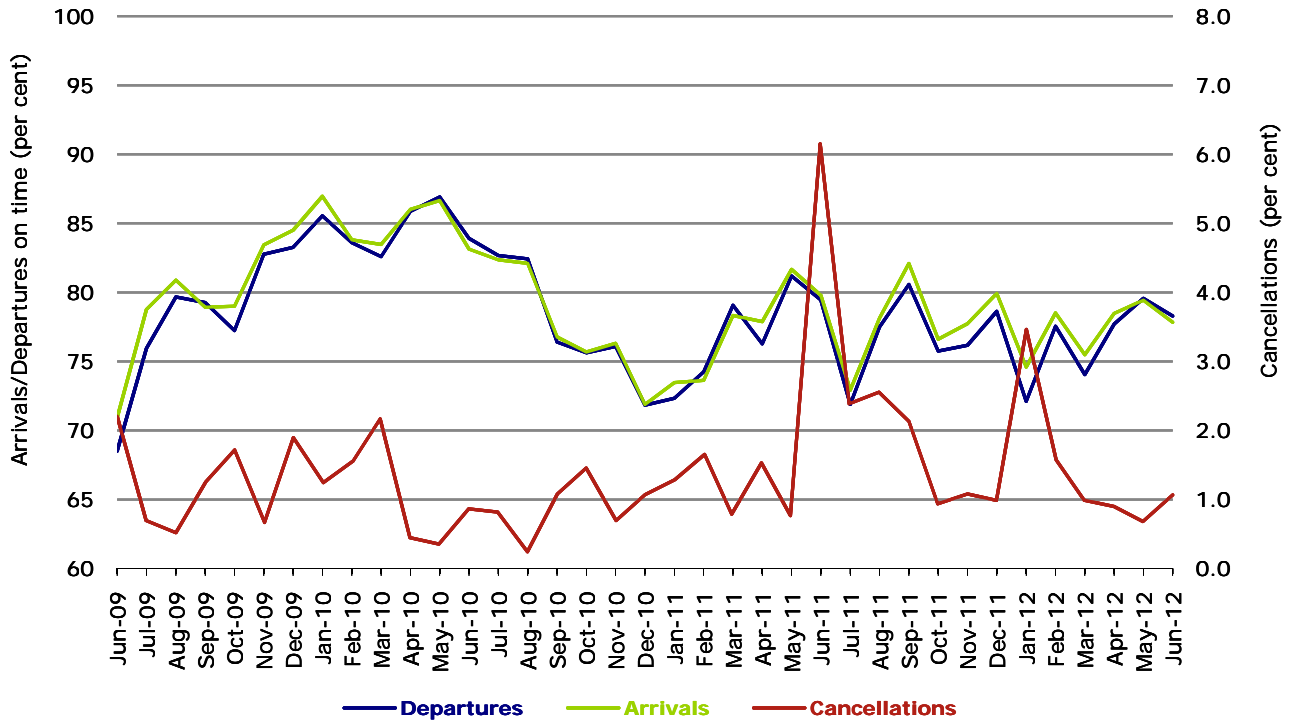


Figure 6 On time performance (by month from June 2009)—Qantas

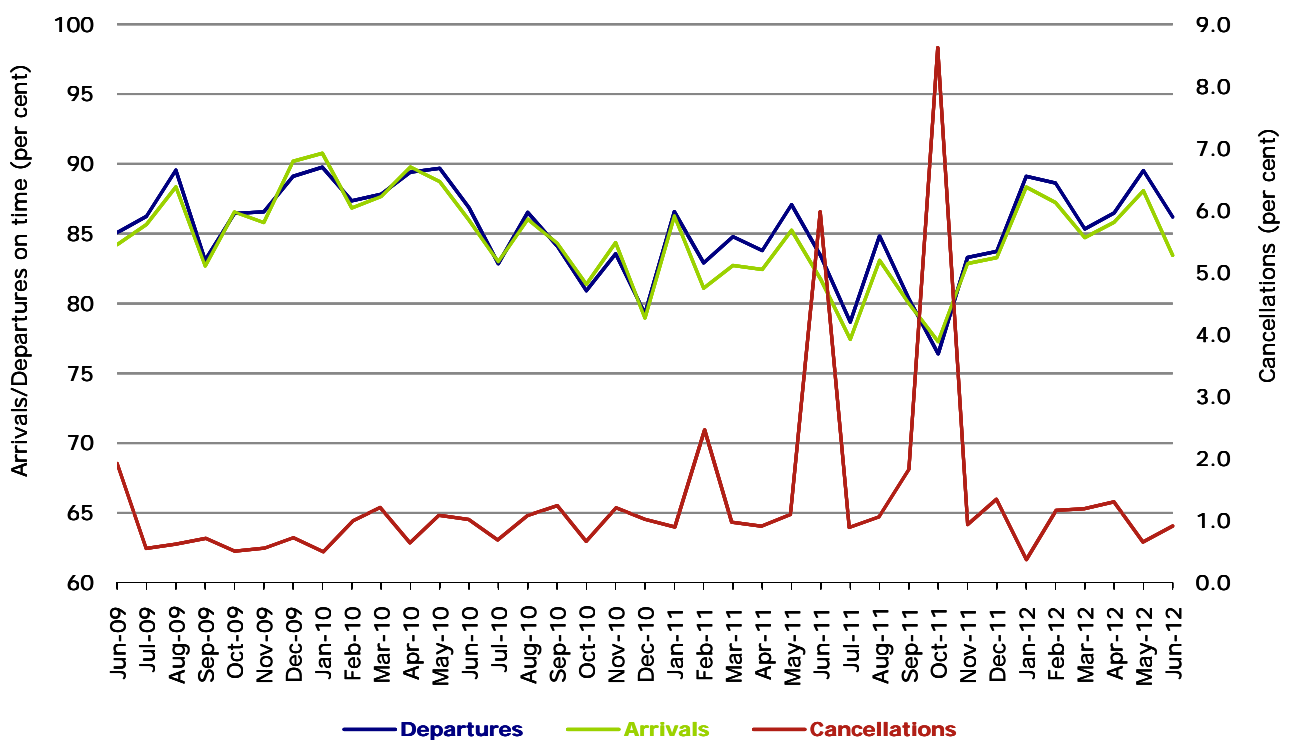
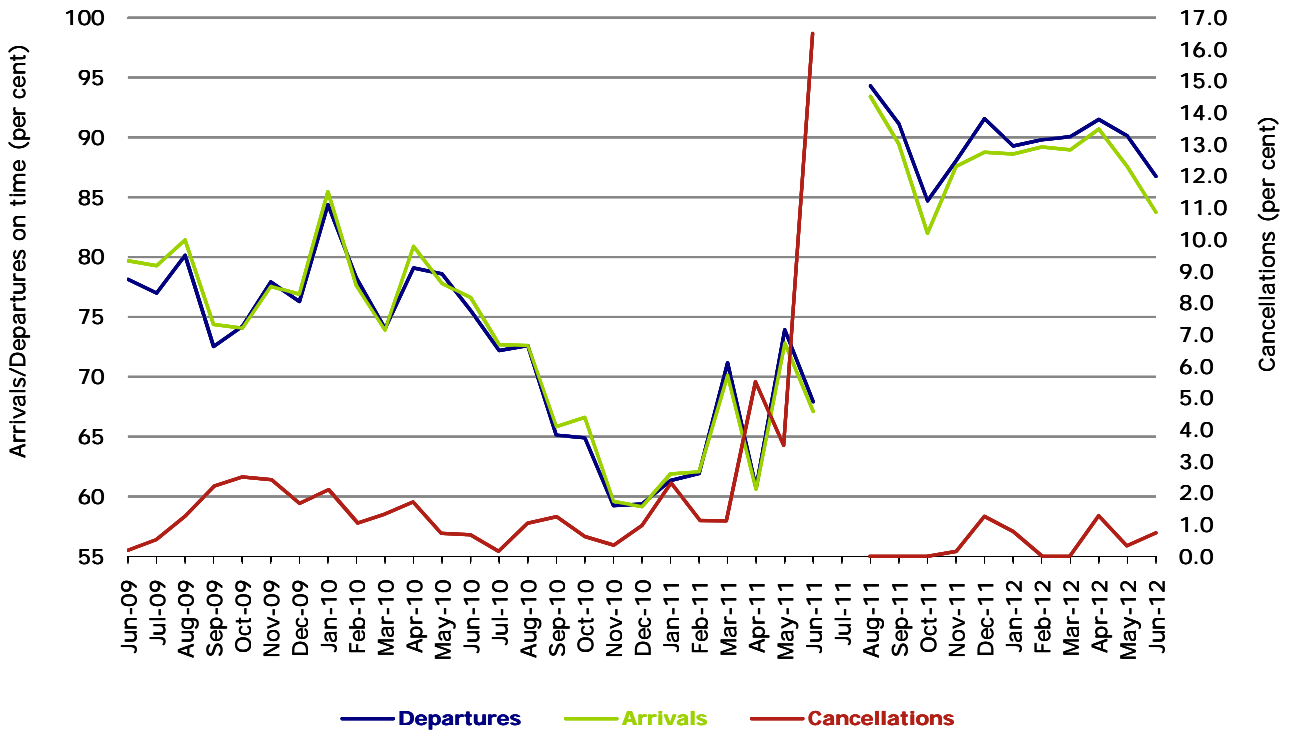
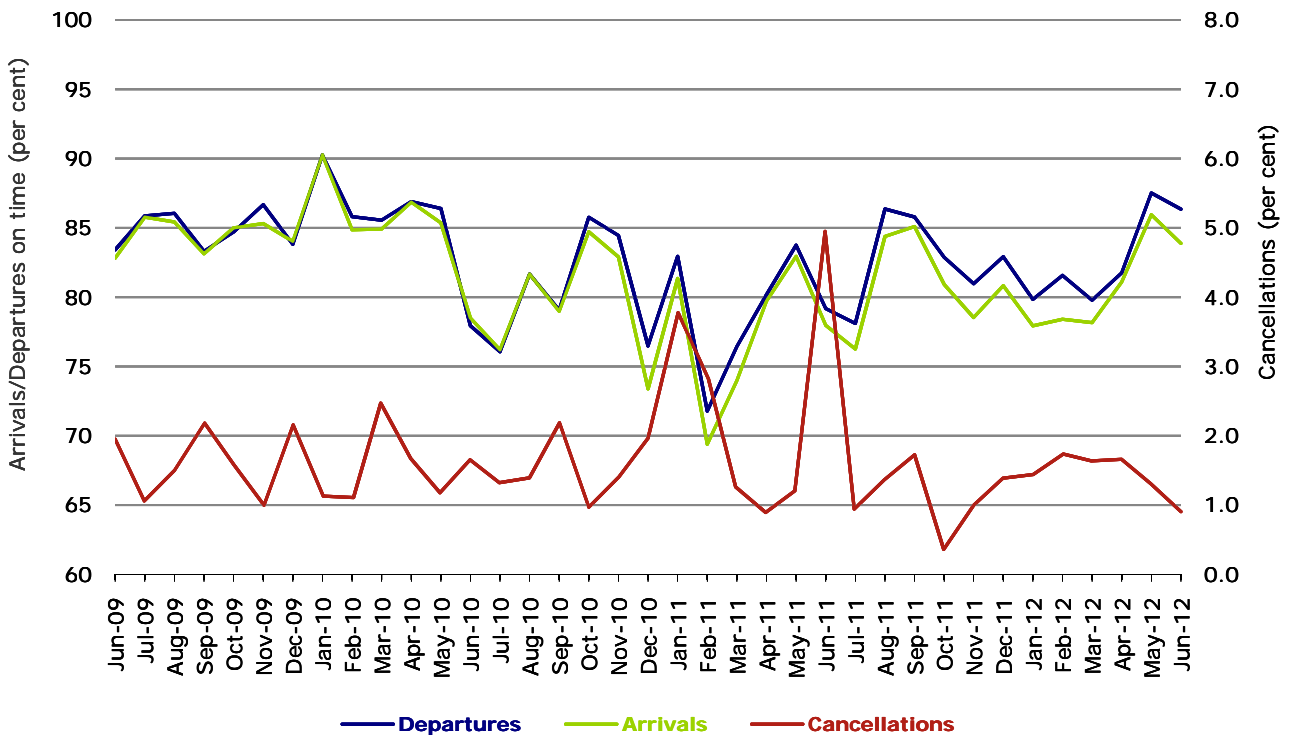


Figure 7 On time performance (by month from June 2009)—Tiger Airways



No data for Tiger Airways for July 2011 as it was grounded by CASA from 2/7/2011 to 11/8/2011.

Figure 8 On time performance (by month from June 2009)—Virgin Australia



Major regional airlines on time performance

Figure 9 On time performance (by month from June 2009)—QantasLink

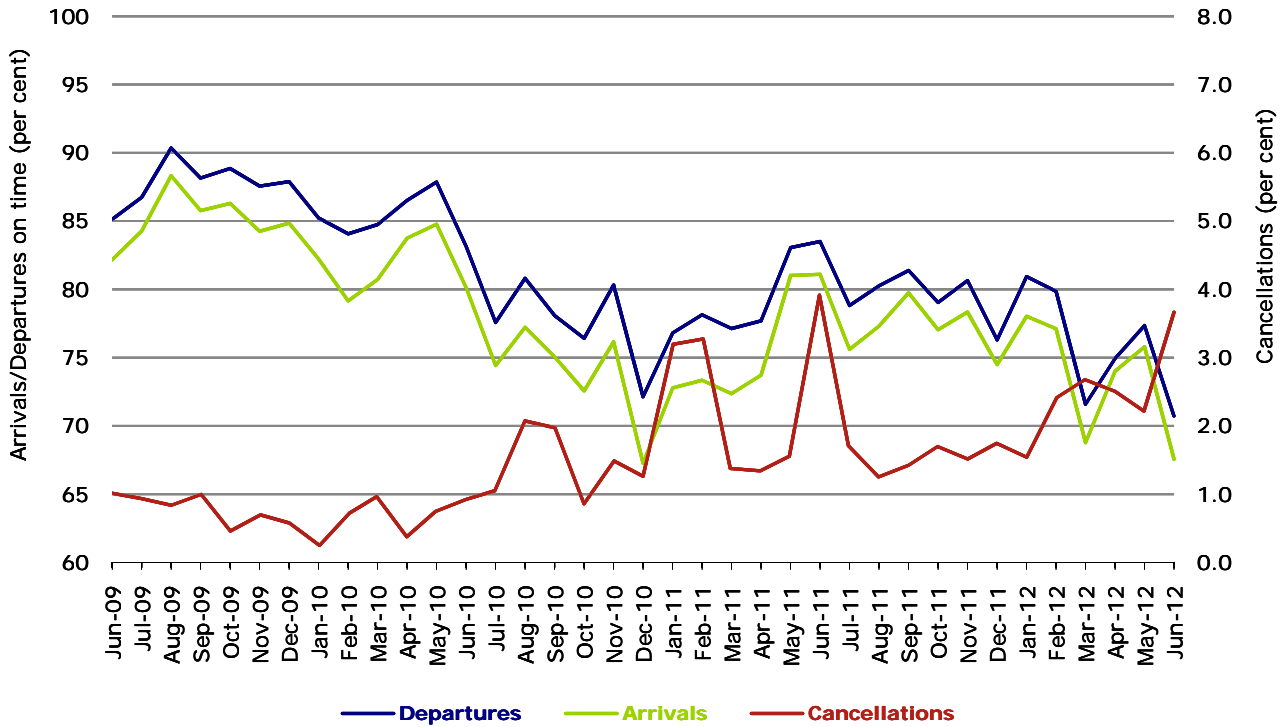


Figure 10 On time performance (by month from June 2009)—Regional Express

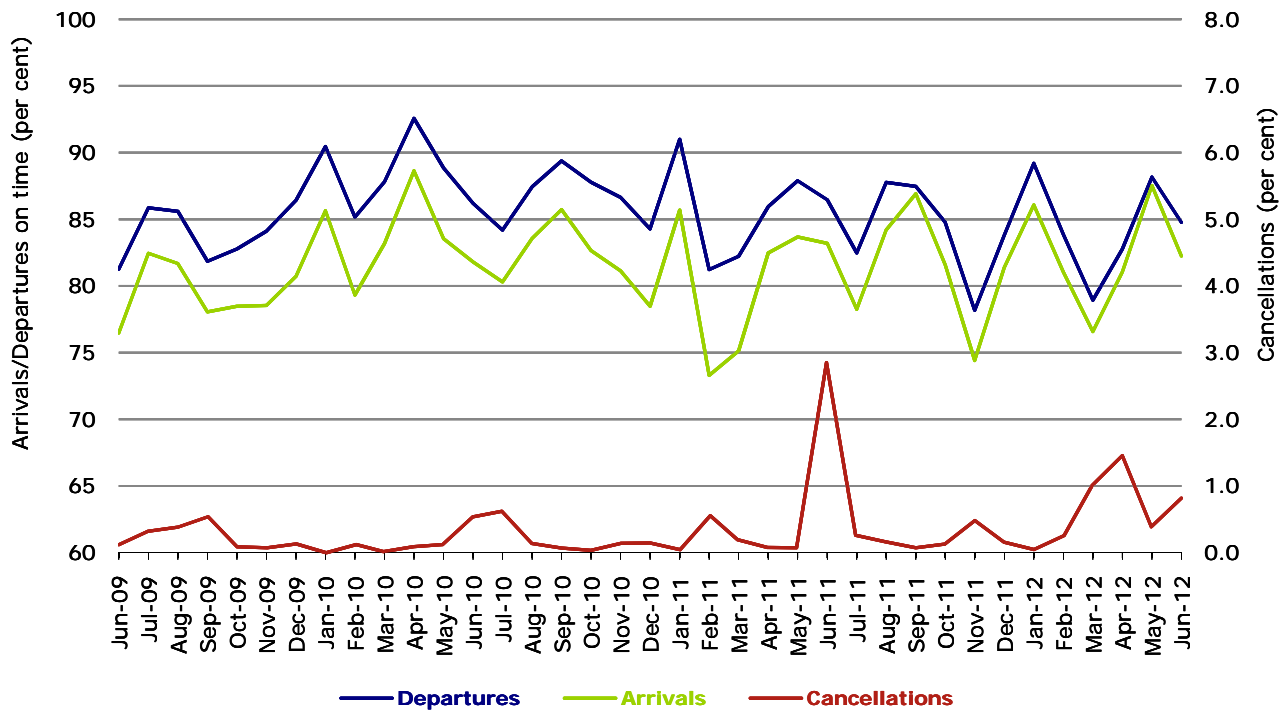


Figure 11 On time performance (by month from June 2009)—Skywest

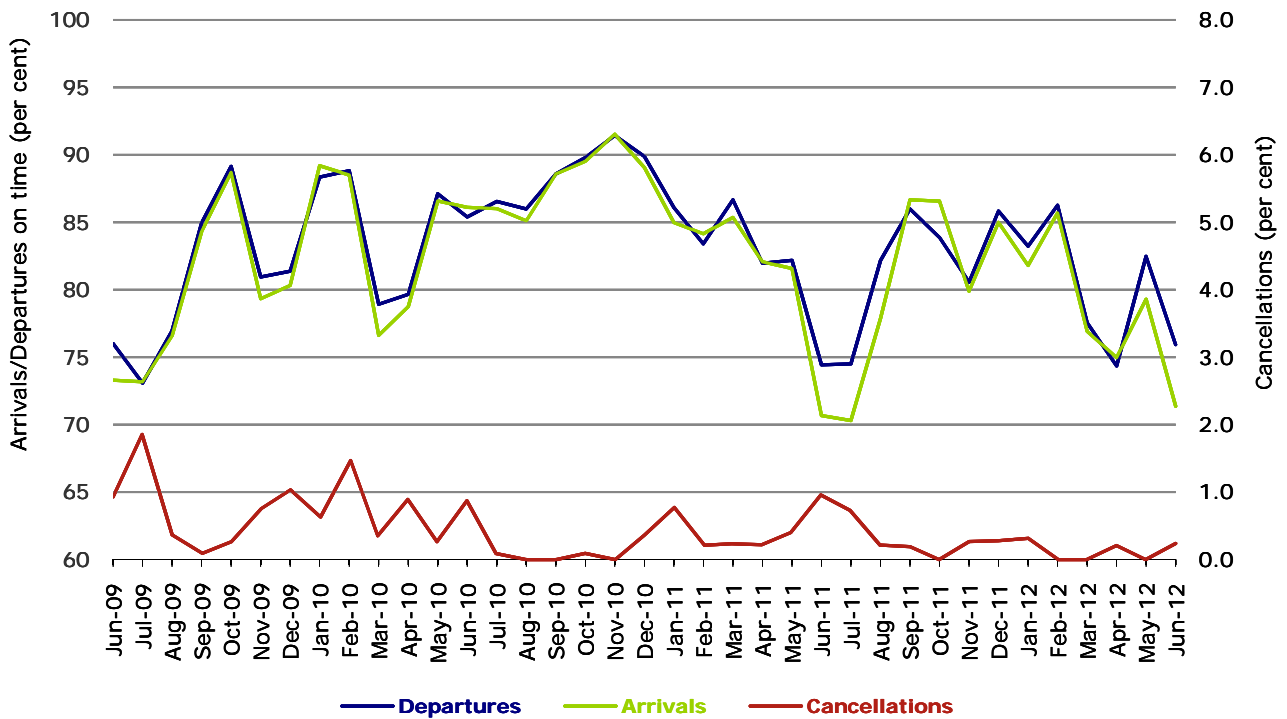
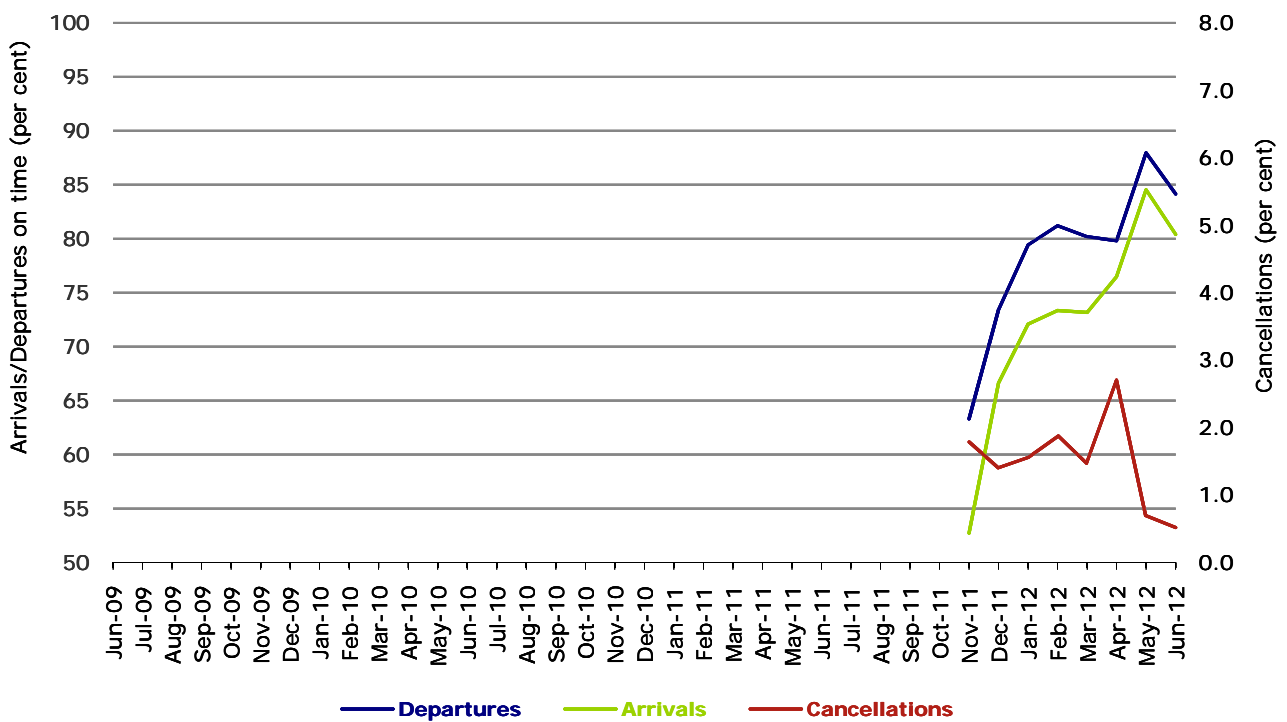


Figure 11 On time performance (by month from June 2009)
Virgin Australia - ATR/F100 Operations



Virgin Australia - ATR/F100 Operations commenced in November 2011.

Individual routes

On time performance is reported for all routes where the passenger load averages over 8000 passengers per month over the previous six months, and where two or more airlines operate in competition on those routes. There are now 56 routes which meet this definition. Over time, however, routes which meet this definition may change as airline networks and traffic levels vary.

	<i>Sectors</i>		<i>Departures On Time</i>		<i>Arrivals On Time</i>		<i>Cancellations</i>	
	<i>Sched.</i>	<i>Flown</i>	<i>No.</i>	<i>%</i>	<i>No.</i>	<i>%</i>	<i>No.</i>	<i>%</i>
Adelaide-Brisbane								
Jetstar	26	26	23	88.5	21	80.8	0	0.0
Qantas	98	98	90	91.8	84	85.7	0	0.0
Virgin Australia	90	90	79	87.8	84	93.3	0	0.0
All Airlines	214	214	192	89.7	189	88.3	0	0.0
Adelaide-Canberra								
Qantas	46	46	41	89.1	43	93.5	0	0.0
Virgin Australia	24	24	21	87.5	22	91.7	0	0.0
All Airlines	70	70	62	88.6	65	92.9	0	0.0
Adelaide-Gold Coast								
Jetstar	27	27	25	92.6	25	92.6	0	0.0
Virgin Australia	30	29	29	100.0	29	100.0	1	3.3
All Airlines	57	56	54	96.4	54	96.4	1	1.8
Adelaide-Melbourne								
Jetstar	80	79	53	67.1	53	67.1	1	1.3
Qantas	259	259	230	88.8	235	90.7	0	0.0
QantasLink	17	16	14	87.5	14	87.5	1	5.9
Virgin Australia	276	275	257	93.5	257	93.5	1	0.4
All Airlines	632	629	554	88.1	559	88.9	3	0.5
Adelaide-Perth								
Jetstar	34	34	27	79.4	24	70.6	0	0.0
Qantas	101	101	93	92.1	84	83.2	0	0.0
Virgin Australia	60	60	56	93.3	49	81.7	0	0.0
All Airlines	195	195	176	90.3	157	80.5	0	0.0
Adelaide-Port Lincoln								
QantasLink	97	91	80	87.9	79	86.8	6	6.2
Regional Express	200	198	179	90.4	166	83.8	2	1.0
All Airlines	297	289	259	89.6	245	84.8	8	2.7
Adelaide-Sydney								
Jetstar	77	77	68	88.3	69	89.6	0	0.0
Qantas	249	248	237	95.6	230	92.7	1	0.4
Virgin Australia	161	160	140	87.5	143	89.4	1	0.6
All Airlines	487	485	445	91.8	442	91.1	2	0.4
Albury-Sydney								
QantasLink	116	115	70	60.9	66	57.4	1	0.9
Regional Express	102	101	74	73.3	73	72.3	1	1.0
Virgin Australia	55	53	42	79.2	45	84.9	2	3.6
All Airlines	273	269	186	69.1	184	68.4	4	1.5
Ayers Rock-Sydney								
Qantas	30	30	28	93.3	28	93.3	0	0.0
Virgin Australia	30	30	28	93.3	28	93.3	0	0.0
All Airlines	60	60	56	93.3	56	93.3	0	0.0

	<i>Sectors</i>		<i>Departures On Time</i>		<i>Arrivals On Time</i>		<i>Cancellations</i>	
	<i>Sched.</i>	<i>Flown</i>	<i>No.</i>	<i>%</i>	<i>No.</i>	<i>%</i>	<i>No.</i>	<i>%</i>
Ballina-Sydney								
Jetstar	34	34	25	73.5	21	61.8	0	0.0
Regional Express	25	25	13	52.0	13	52.0	0	0.0
Virgin Australia	30	29	21	72.4	18	62.1	1	3.3
All Airlines	89	88	59	67.0	52	59.1	1	1.1
Brisbane-Adelaide								
Jetstar	26	26	23	88.5	23	88.5	0	0.0
Qantas	98	98	81	82.7	91	92.9	0	0.0
Virgin Australia	90	90	78	86.7	84	93.3	0	0.0
All Airlines	214	214	182	85.0	198	92.5	0	0.0
Brisbane-Cairns								
Jetstar	97	97	79	81.4	77	79.4	0	0.0
Qantas	105	105	84	80.0	84	80.0	0	0.0
Virgin Australia	134	134	113	84.3	114	85.1	0	0.0
Virgin Australia - ATR/F100 Operations	25	25	23	92.0	14	56.0	0	0.0
All Airlines	361	361	299	82.8	289	80.1	0	0.0
Brisbane-Canberra								
Qantas	128	128	110	85.9	112	87.5	0	0.0
QantasLink	21	20	13	65.0	14	70.0	1	4.8
Virgin Australia	94	94	82	87.2	85	90.4	0	0.0
All Airlines	243	242	205	84.7	211	87.2	1	0.4
Brisbane-Darwin								
Qantas	30	30	26	86.7	27	90.0	0	0.0
Virgin Australia	30	30	24	80.0	21	70.0	0	0.0
All Airlines	60	60	50	83.3	48	80.0	0	0.0
Brisbane-Emerald								
QantasLink	190	183	152	83.1	141	77.0	7	3.7
Virgin Australia - ATR/F100 Operations	67	67	61	91.0	62	92.5	0	0.0
All Airlines	257	250	213	85.2	203	81.2	7	2.7
Brisbane-Gladstone								
QantasLink	159	152	104	68.4	102	67.1	7	4.4
Virgin Australia - ATR/F100 Operations	112	111	99	89.2	99	89.2	1	0.9
All Airlines	271	263	203	77.2	201	76.4	8	3.0
Brisbane-Hamilton Island								
Jetstar	17	17	17	100.0	16	94.1	0	0.0
Virgin Australia	31	31	25	80.6	25	80.6	0	0.0
All Airlines	48	48	42	87.5	41	85.4	0	0.0
Brisbane-Mackay								
Jetstar	104	104	84	80.8	89	85.6	0	0.0
QantasLink	47	46	36	78.3	34	73.9	1	2.1
Virgin Australia	164	163	133	81.6	121	74.2	1	0.6
All Airlines	315	313	253	80.8	244	78.0	2	0.6
Brisbane-Melbourne								
Jetstar	93	93	70	75.3	80	86.0	0	0.0
Qantas	334	332	280	84.3	295	88.9	2	0.6
Tiger Airways	78	78	58	74.4	64	82.1	0	0.0
Virgin Australia	341	339	299	88.2	300	88.5	2	0.6
All Airlines	846	842	707	84.0	739	87.8	4	0.5
Brisbane-Newcastle								
Jetstar	108	108	87	80.6	89	82.4	0	0.0
QantasLink	67	66	44	66.7	36	54.5	1	1.5
Virgin Australia - ATR/F100 Operations	55	55	47	85.5	41	74.5	0	0.0
All Airlines	230	229	178	77.7	166	72.5	1	0.4

	<i>Sectors</i>		<i>Departures On Time</i>		<i>Arrivals On Time</i>		<i>Cancellations</i>	
	<i>Sched.</i>	<i>Flown</i>	<i>No.</i>	<i>%</i>	<i>No.</i>	<i>%</i>	<i>No.</i>	<i>%</i>
Brisbane-Perth								
Jetstar	28	27	22	81.5	22	81.5	1	3.6
Qantas	104	104	77	74.0	83	79.8	0	0.0
Virgin Australia	69	69	61	88.4	50	72.5	0	0.0
All Airlines	201	200	160	80.0	155	77.5	1	0.5
Brisbane-Proserpine								
Jetstar	24	24	22	91.7	21	87.5	0	0.0
Virgin Australia	30	30	26	86.7	27	90.0	0	0.0
Virgin Australia - ATR/F100 Operations	20	20	19	95.0	14	70.0	0	0.0
All Airlines	74	74	67	90.5	62	83.8	0	0.0
Brisbane-Rockhampton								
QantasLink	149	146	100	68.5	101	69.2	3	2.0
Virgin Australia	99	98	93	94.9	90	91.8	1	1.0
Virgin Australia - ATR/F100 Operations	69	69	60	87.0	53	76.8	0	0.0
All Airlines	317	313	253	80.8	244	78.0	4	1.3
Brisbane-Sydney								
Jetstar	101	99	64	64.6	60	60.6	2	2.0
Qantas	490	487	415	85.2	410	84.2	3	0.6
Virgin Australia	542	538	456	84.8	449	83.5	4	0.7
All Airlines	1 133	1 124	935	83.2	919	81.8	9	0.8
Brisbane-Townsville								
Jetstar	30	30	23	76.7	24	80.0	0	0.0
Qantas	130	130	105	80.8	102	78.5	0	0.0
Virgin Australia	164	164	137	83.5	141	86.0	0	0.0
All Airlines	324	324	265	81.8	267	82.4	0	0.0
Broome-Perth								
Qantas	53	53	26	49.1	23	43.4	0	0.0
QantasLink	28	26	21	80.8	19	73.1	2	7.1
Skywest	20	20	5	25.0	10	50.0	0	0.0
Virgin Australia	60	60	46	76.7	44	73.3	0	0.0
All Airlines	161	159	98	61.6	96	60.4	2	1.2
Cairns-Brisbane								
Jetstar	96	96	91	94.8	93	96.9	0	0.0
Qantas	106	106	93	87.7	80	75.5	0	0.0
Virgin Australia	134	133	118	88.7	114	85.7	1	0.7
Virgin Australia - ATR/F100 Operations	25	25	11	44.0	19	76.0	0	0.0
All Airlines	361	360	313	86.9	306	85.0	1	0.3
Cairns-Melbourne								
Jetstar	67	65	44	67.7	49	75.4	2	3.0
Qantas	30	30	26	86.7	27	90.0	0	0.0
Tiger Airways	30	30	26	86.7	26	86.7	0	0.0
Virgin Australia	35	35	31	88.6	30	85.7	0	0.0
All Airlines	162	160	127	79.4	132	82.5	2	1.2
Cairns-Sydney								
Jetstar	64	64	53	82.8	52	81.3	0	0.0
Qantas	91	91	89	97.8	90	98.9	0	0.0
Virgin Australia	86	86	75	87.2	77	89.5	0	0.0
All Airlines	241	241	217	90.0	219	90.9	0	0.0
Cairns-Townsville								
QantasLink	181	176	134	76.1	121	68.8	5	2.8
Virgin Australia	16	15	13	86.7	13	86.7	1	6.3
All Airlines	197	191	147	77.0	134	70.2	6	3.0

	<i>Sectors</i>		<i>Departures On Time</i>		<i>Arrivals On Time</i>		<i>Cancellations</i>	
	<i>Sched.</i>	<i>Flown</i>	<i>No.</i>	<i>%</i>	<i>No.</i>	<i>%</i>	<i>No.</i>	<i>%</i>
Canberra-Adelaide								
Qantas	51	51	48	94.1	49	96.1	0	0.0
Virgin Australia	24	24	20	83.3	21	87.5	0	0.0
All Airlines	75	75	68	90.7	70	93.3	0	0.0
Canberra-Brisbane								
Qantas	128	128	114	89.1	99	77.3	0	0.0
QantasLink	21	20	10	50.0	11	55.0	1	4.8
Virgin Australia	94	94	87	92.6	70	74.5	0	0.0
All Airlines	243	242	211	87.2	180	74.4	1	0.4
Canberra-Melbourne								
Qantas	232	231	215	93.1	210	90.9	1	0.4
QantasLink	39	35	28	80.0	26	74.3	4	10.3
Virgin Australia	152	151	134	88.7	137	90.7	1	0.7
All Airlines	423	417	377	90.4	373	89.4	6	1.4
Canberra-Sydney								
Qantas	132	130	116	89.2	110	84.6	2	1.5
QantasLink	393	362	235	64.9	214	59.1	31	7.9
Virgin Australia	80	79	70	88.6	63	79.7	1	1.3
Virgin Australia - ATR/F100 Operations	144	142	122	85.9	121	85.2	2	1.4
All Airlines	749	713	543	76.2	508	71.2	36	4.8
Coffs Harbour-Sydney								
QantasLink	141	139	76	54.7	79	56.8	2	1.4
Virgin Australia	55	54	43	79.6	45	83.3	1	1.8
All Airlines	196	193	119	61.7	124	64.2	3	1.5
Darwin-Brisbane								
Qantas	30	30	20	66.7	26	86.7	0	0.0
Virgin Australia	30	30	23	76.7	25	83.3	0	0.0
All Airlines	60	60	43	71.7	51	85.0	0	0.0
Darwin-Melbourne								
Qantas	13	13	8	61.5	6	46.2	0	0.0
Virgin Australia	30	30	30	100.0	28	93.3	0	0.0
All Airlines	43	43	38	88.4	34	79.1	0	0.0
Darwin-Perth								
Qantas	30	30	22	73.3	24	80.0	0	0.0
Virgin Australia	25	25	25	100.0	25	100.0	0	0.0
All Airlines	55	55	47	85.5	49	89.1	0	0.0
Dubbo-Sydney								
QantasLink	107	107	74	69.2	61	57.0	0	0.0
Regional Express	165	162	143	88.3	143	88.3	3	1.8
All Airlines	272	269	217	80.7	204	75.8	3	1.1
Emerald-Brisbane								
QantasLink	190	183	138	75.4	136	74.3	7	3.7
Virgin Australia - ATR/F100 Operations	67	67	63	94.0	62	92.5	0	0.0
All Airlines	257	250	201	80.4	198	79.2	7	2.7
Geraldton-Perth								
QantasLink	51	50	31	62.0	19	38.0	1	2.0
Skywest	84	84	58	69.0	53	63.1	0	0.0
All Airlines	135	134	89	66.4	72	53.7	1	0.7
Gladstone-Brisbane								
QantasLink	180	172	108	62.8	102	59.3	8	4.4
Virgin Australia - ATR/F100 Operations	112	110	99	90.0	97	88.2	2	1.8
All Airlines	292	282	207	73.4	199	70.6	10	3.4

	<i>Sectors</i>		<i>Departures On Time</i>		<i>Arrivals On Time</i>		<i>Cancellations</i>	
	<i>Sched.</i>	<i>Flown</i>	<i>No.</i>	<i>%</i>	<i>No.</i>	<i>%</i>	<i>No.</i>	<i>%</i>
Gold Coast-Adelaide								
Jetstar	27	27	25	92.6	25	92.6	0	0.0
Virgin Australia	30	29	28	96.6	29	100.0	1	3.3
All Airlines	57	56	53	94.6	54	96.4	1	1.8
Gold Coast-Melbourne								
Jetstar	191	189	143	75.7	146	77.2	2	1.0
Tiger Airways	61	61	41	67.2	39	63.9	0	0.0
Virgin Australia	188	185	163	88.1	170	91.9	3	1.6
All Airlines	440	435	347	79.8	355	81.6	5	1.1
Gold Coast-Sydney								
Jetstar	301	294	231	78.6	234	79.6	7	2.3
Virgin Australia	304	301	256	85.0	264	87.7	3	1.0
All Airlines	605	595	487	81.8	498	83.7	10	1.7
Hamilton Island-Brisbane								
Jetstar	17	17	17	100.0	16	94.1	0	0.0
Virgin Australia	31	30	24	80.0	24	80.0	1	3.2
All Airlines	48	47	41	87.2	40	85.1	1	2.1
Hamilton Island-Sydney								
Jetstar	29	29	20	69.0	17	58.6	0	0.0
Virgin Australia	30	29	23	79.3	22	75.9	1	3.3
All Airlines	59	58	43	74.1	39	67.2	1	1.7
Hobart-Melbourne								
Jetstar	130	130	100	76.9	98	75.4	0	0.0
Qantas	60	59	56	94.9	55	93.2	1	1.7
Virgin Australia	132	132	108	81.8	113	85.6	0	0.0
All Airlines	322	321	264	82.2	266	82.9	1	0.3
Hobart-Sydney								
Jetstar	53	53	41	77.4	37	69.8	0	0.0
Qantas	30	30	27	90.0	25	83.3	0	0.0
Virgin Australia	60	59	40	67.8	40	67.8	1	1.7
All Airlines	143	142	108	76.1	102	71.8	1	0.7
Kalgoorlie-Perth								
Qantas	60	60	36	60.0	35	58.3	0	0.0
QantasLink	16	16	11	68.8	10	62.5	0	0.0
Skywest	18	18	9	50.0	4	22.2	0	0.0
All Airlines	94	94	56	59.6	49	52.1	0	0.0
Karratha-Perth								
Qantas	233	226	176	77.9	161	71.2	7	3.0
QantasLink	17	15	12	80.0	13	86.7	2	11.8
Virgin Australia	51	50	35	70.0	29	58.0	1	2.0
All Airlines	301	291	223	76.6	203	69.8	10	3.3
Launceston-Melbourne								
Jetstar	93	93	81	87.1	78	83.9	0	0.0
QantasLink	73	70	65	92.9	60	85.7	3	4.1
Virgin Australia	132	132	118	89.4	117	88.6	0	0.0
All Airlines	298	295	264	89.5	255	86.4	3	1.0
Launceston-Sydney								
Jetstar	30	30	22	73.3	21	70.0	0	0.0
Virgin Australia	30	30	21	70.0	22	73.3	0	0.0
All Airlines	60	60	43	71.7	43	71.7	0	0.0

	<i>Sectors</i>		<i>Departures On Time</i>		<i>Arrivals On Time</i>		<i>Cancellations</i>	
	<i>Sched.</i>	<i>Flown</i>	<i>No.</i>	<i>%</i>	<i>No.</i>	<i>%</i>	<i>No.</i>	<i>%</i>
Mackay-Brisbane								
Jetstar	105	105	84	80.0	70	66.7	0	0.0
QantasLink	48	47	32	68.1	36	76.6	1	2.1
Virgin Australia	164	163	135	82.8	116	71.2	1	0.6
All Airlines	317	315	251	79.7	222	70.5	2	0.6
Melbourne-Adelaide								
Jetstar	81	81	70	86.4	65	80.2	0	0.0
Qantas	259	259	247	95.4	235	90.7	0	0.0
QantasLink	17	16	11	68.8	12	75.0	1	5.9
Virgin Australia	276	274	255	93.1	250	91.2	2	0.7
All Airlines	633	630	583	92.5	562	89.2	3	0.5
Melbourne-Brisbane								
Jetstar	93	93	70	75.3	57	61.3	0	0.0
Qantas	335	334	307	91.9	259	77.5	1	0.3
Tiger Airways	82	82	75	91.5	61	74.4	0	0.0
Virgin Australia	342	340	304	89.4	278	81.8	2	0.6
All Airlines	852	849	756	89.0	655	77.1	3	0.4
Melbourne-Cairns								
Jetstar	66	64	51	79.7	53	82.8	2	3.0
Qantas	30	30	27	90.0	27	90.0	0	0.0
Tiger Airways	30	30	30	100.0	28	93.3	0	0.0
Virgin Australia	35	35	30	85.7	29	82.9	0	0.0
All Airlines	161	159	138	86.8	137	86.2	2	1.2
Melbourne-Canberra								
Qantas	232	232	215	92.7	211	90.9	0	0.0
QantasLink	39	35	32	91.4	27	77.1	4	10.3
Virgin Australia	152	152	133	87.5	131	86.2	0	0.0
All Airlines	423	419	380	90.7	369	88.1	4	0.9
Melbourne-Darwin								
Qantas	13	13	9	69.2	9	69.2	0	0.0
Virgin Australia	30	30	29	96.7	26	86.7	0	0.0
All Airlines	43	43	38	88.4	35	81.4	0	0.0
Melbourne-Gold Coast								
Jetstar	191	189	143	75.7	136	72.0	2	1.0
Tiger Airways	61	61	55	90.2	51	83.6	0	0.0
Virgin Australia	188	185	157	84.9	160	86.5	3	1.6
All Airlines	440	435	355	81.6	347	79.8	5	1.1
Melbourne-Hobart								
Jetstar	130	130	98	75.4	101	77.7	0	0.0
Qantas	60	60	48	80.0	42	70.0	0	0.0
Virgin Australia	132	132	118	89.4	110	83.3	0	0.0
All Airlines	322	322	264	82.0	253	78.6	0	0.0
Melbourne-Launceston								
Jetstar	93	93	84	90.3	83	89.2	0	0.0
QantasLink	73	72	66	91.7	59	81.9	1	1.4
Virgin Australia	132	132	117	88.6	123	93.2	0	0.0
All Airlines	298	297	267	89.9	265	89.2	1	0.3
Melbourne-Mildura								
QantasLink	85	84	71	84.5	62	73.8	1	1.2
Regional Express	86	86	81	94.2	77	89.5	0	0.0
Virgin Australia	30	30	28	93.3	27	90.0	0	0.0
All Airlines	201	200	180	90.0	166	83.0	1	0.5

	<i>Sectors</i>		<i>Departures On Time</i>		<i>Arrivals On Time</i>		<i>Cancellations</i>	
	<i>Sched.</i>	<i>Flown</i>	<i>No.</i>	<i>%</i>	<i>No.</i>	<i>%</i>	<i>No.</i>	<i>%</i>
Melbourne-Newcastle								
Jetstar	91	90	79	87.8	77	85.6	1	1.1
Virgin Australia	30	30	26	86.7	26	86.7	0	0.0
All Airlines	121	120	105	87.5	103	85.8	1	0.8
Melbourne-Perth								
Jetstar	80	79	58	73.4	52	65.8	1	1.3
Qantas	187	187	159	85.0	160	85.6	0	0.0
Tiger Airways	77	76	71	93.4	67	88.2	1	1.3
Virgin Australia	147	147	130	88.4	114	77.6	0	0.0
All Airlines	491	489	418	85.5	393	80.4	2	0.4
Melbourne-Sunshine Coast								
Jetstar	50	49	28	57.1	30	61.2	1	2.0
Virgin Australia	30	30	28	93.3	27	90.0	0	0.0
All Airlines	80	79	56	70.9	57	72.2	1	1.3
Melbourne-Sydney								
Jetstar	222	216	154	71.3	151	69.9	6	2.7
Qantas	815	793	730	92.1	692	87.3	22	2.7
Tiger Airways	221	219	199	90.9	202	92.2	2	0.9
Virgin Australia	747	727	656	90.2	627	86.2	20	2.7
All Airlines	2 005	1 955	1 739	89.0	1 672	85.5	50	2.5
Mildura-Melbourne								
QantasLink	85	84	67	79.8	64	76.2	1	1.2
Regional Express	86	86	80	93.0	77	89.5	0	0.0
Virgin Australia	30	30	28	93.3	28	93.3	0	0.0
All Airlines	201	200	175	87.5	169	84.5	1	0.5
Newcastle-Brisbane								
Jetstar	107	107	86	80.4	79	73.8	0	0.0
QantasLink	68	66	29	43.9	32	48.5	2	2.9
Virgin Australia - ATR/F100 Operations	55	55	36	65.5	29	52.7	0	0.0
All Airlines	230	228	151	66.2	140	61.4	2	0.9
Newcastle-Melbourne								
Jetstar	90	89	83	93.3	83	93.3	1	1.1
Virgin Australia	30	30	20	66.7	24	80.0	0	0.0
All Airlines	120	119	103	86.6	107	89.9	1	0.8
Newman-Perth								
Qantas	108	108	73	67.6	65	60.2	0	0.0
QantasLink	18	17	16	94.1	15	88.2	1	5.6
Virgin Australia	29	29	20	69.0	15	51.7	0	0.0
All Airlines	155	154	109	70.8	95	61.7	1	0.6
Perth-Adelaide								
Jetstar	34	34	17	50.0	22	64.7	0	0.0
Qantas	101	100	76	76.0	85	85.0	1	1.0
Virgin Australia	60	60	51	85.0	55	91.7	0	0.0
All Airlines	195	194	144	74.2	162	83.5	1	0.5
Perth-Brisbane								
Jetstar	26	26	10	38.5	21	80.8	0	0.0
Qantas	104	104	76	73.1	69	66.3	0	0.0
Virgin Australia	69	69	64	92.8	64	92.8	0	0.0
All Airlines	199	199	150	75.4	154	77.4	0	0.0

	<i>Sectors</i>		<i>Departures On Time</i>		<i>Arrivals On Time</i>		<i>Cancellations</i>	
	<i>Sched.</i>	<i>Flown</i>	<i>No.</i>	<i>%</i>	<i>No.</i>	<i>%</i>	<i>No.</i>	<i>%</i>
Perth-Broome								
Qantas	53	53	36	67.9	39	73.6	0	0.0
QantasLink	28	26	19	73.1	20	76.9	2	7.1
Skywest	22	22	14	63.6	15	68.2	0	0.0
Virgin Australia	60	60	48	80.0	48	80.0	0	0.0
All Airlines	163	161	117	72.7	122	75.8	2	1.2
Perth-Darwin								
Qantas	30	30	22	73.3	23	76.7	0	0.0
Virgin Australia	25	25	23	92.0	21	84.0	0	0.0
All Airlines	55	55	45	81.8	44	80.0	0	0.0
Perth-Geraldton								
QantasLink	51	50	31	62.0	34	68.0	1	2.0
Skywest	84	84	55	65.5	54	64.3	0	0.0
All Airlines	135	134	86	64.2	88	65.7	1	0.7
Perth-Kalgoorlie								
Qantas	60	60	43	71.7	39	65.0	0	0.0
QantasLink	17	17	15	88.2	14	82.4	0	0.0
Skywest	18	18	15	83.3	13	72.2	0	0.0
All Airlines	95	95	73	76.8	66	69.5	0	0.0
Perth-Karratha								
Qantas	233	227	192	84.6	179	78.9	6	2.6
QantasLink	17	15	13	86.7	12	80.0	2	11.8
Virgin Australia	51	50	42	84.0	41	82.0	1	2.0
All Airlines	301	292	247	84.6	232	79.5	9	3.0
Perth-Melbourne								
Jetstar	81	80	54	67.5	47	58.8	1	1.2
Qantas	188	186	150	80.6	158	84.9	2	1.1
Tiger Airways	81	80	63	78.8	56	70.0	1	1.2
Virgin Australia	146	145	123	84.8	100	69.0	1	0.7
All Airlines	496	491	390	79.4	361	73.5	5	1.0
Perth-Newman								
Qantas	108	108	87	80.6	87	80.6	0	0.0
QantasLink	18	17	14	82.4	14	82.4	1	5.6
Virgin Australia	30	29	21	72.4	22	75.9	1	3.3
All Airlines	156	154	122	79.2	123	79.9	2	1.3
Perth-Port Hedland								
Qantas	129	125	104	83.2	93	74.4	4	3.1
QantasLink	27	25	22	88.0	23	92.0	2	7.4
Virgin Australia	59	59	51	86.4	52	88.1	0	0.0
All Airlines	215	209	177	84.7	168	80.4	6	2.8
Perth-Sydney								
Jetstar	44	44	26	59.1	32	72.7	0	0.0
Qantas	192	192	140	72.9	138	71.9	0	0.0
Virgin Australia	138	138	108	78.3	113	81.9	0	0.0
All Airlines	374	374	274	73.3	283	75.7	0	0.0
Port Hedland-Perth								
Qantas	129	124	82	66.1	82	66.1	5	3.9
QantasLink	27	23	20	87.0	22	95.7	4	14.8
Virgin Australia	59	58	40	69.0	33	56.9	1	1.7
All Airlines	215	205	142	69.3	137	66.8	10	4.7
Port Lincoln-Adelaide								
QantasLink	98	88	77	87.5	75	85.2	10	10.2
Regional Express	200	198	172	86.9	167	84.3	2	1.0
All Airlines	298	286	249	87.1	242	84.6	12	4.0

	<i>Sectors</i>		<i>Departures On Time</i>		<i>Arrivals On Time</i>		<i>Cancellations</i>	
	<i>Sched.</i>	<i>Flown</i>	<i>No.</i>	<i>%</i>	<i>No.</i>	<i>%</i>	<i>No.</i>	<i>%</i>
Port Macquarie-Sydney								
QantasLink	132	130	87	66.9	86	66.2	2	1.5
Virgin Australia - ATR/F100 Operations	55	55	43	78.2	44	80.0	0	0.0
All Airlines	187	185	130	70.3	130	70.3	2	1.1
Proserpine-Brisbane								
Jetstar	25	25	23	92.0	23	92.0	0	0.0
Virgin Australia	30	30	23	76.7	21	70.0	0	0.0
Virgin Australia - ATR/F100 Operations	20	20	13	65.0	11	55.0	0	0.0
All Airlines	75	75	59	78.7	55	73.3	0	0.0
Rockhampton-Brisbane								
QantasLink	128	124	86	69.4	81	65.3	4	3.1
Virgin Australia	99	98	90	91.8	89	90.8	1	1.0
Virgin Australia - ATR/F100 Operations	69	69	56	81.2	50	72.5	0	0.0
All Airlines	296	291	232	79.7	220	75.6	5	1.7
Sunshine Coast-Melbourne								
Jetstar	51	50	22	44.0	27	54.0	1	2.0
Virgin Australia	30	29	20	69.0	25	86.2	1	3.3
All Airlines	81	79	42	53.2	52	65.8	2	2.5
Sunshine Coast-Sydney								
Jetstar	94	91	73	80.2	75	82.4	3	3.2
Virgin Australia	35	34	30	88.2	31	91.2	1	2.9
All Airlines	129	125	103	82.4	106	84.8	4	3.1
Sydney-Adelaide								
Jetstar	77	77	70	90.9	70	90.9	0	0.0
Qantas	244	244	227	93.0	229	93.9	0	0.0
Virgin Australia	161	161	131	81.4	139	86.3	0	0.0
All Airlines	482	482	428	88.8	438	90.9	0	0.0
Sydney-Albury								
QantasLink	115	114	63	55.3	66	57.9	1	0.9
Regional Express	102	101	68	67.3	69	68.3	1	1.0
Virgin Australia	55	54	43	79.6	40	74.1	1	1.8
All Airlines	272	269	174	64.7	175	65.1	3	1.1
Sydney-Ayers Rock								
Qantas	30	30	26	86.7	29	96.7	0	0.0
Virgin Australia	30	30	26	86.7	22	73.3	0	0.0
All Airlines	60	60	52	86.7	51	85.0	0	0.0
Sydney-Ballina								
Jetstar	33	33	28	84.8	28	84.8	0	0.0
Regional Express	28	28	21	75.0	19	67.9	0	0.0
Virgin Australia	30	30	29	96.7	24	80.0	0	0.0
All Airlines	91	91	78	85.7	71	78.0	0	0.0
Sydney-Brisbane								
Jetstar	102	100	88	88.0	71	71.0	2	2.0
Qantas	490	489	438	89.6	358	73.2	1	0.2
Virgin Australia	542	536	484	90.3	424	79.1	6	1.1
All Airlines	1 134	1 125	1 010	89.8	853	75.8	9	0.8
Sydney-Cairns								
Jetstar	63	63	52	82.5	54	85.7	0	0.0
Qantas	91	91	84	92.3	91	100.0	0	0.0
Virgin Australia	86	86	69	80.2	70	81.4	0	0.0
All Airlines	240	240	205	85.4	215	89.6	0	0.0

	<i>Sectors</i>		<i>Departures On Time</i>		<i>Arrivals On Time</i>		<i>Cancellations</i>	
	<i>Sched.</i>	<i>Flown</i>	<i>No.</i>	<i>%</i>	<i>No.</i>	<i>%</i>	<i>No.</i>	<i>%</i>
Sydney-Canberra								
Qantas	135	135	124	91.9	125	92.6	0	0.0
QantasLink	392	365	198	54.2	192	52.6	27	6.9
Virgin Australia	80	80	65	81.3	70	87.5	0	0.0
Virgin Australia - ATR/F100 Operations	144	143	122	85.3	121	84.6	1	0.7
All Airlines	751	723	509	70.4	508	70.3	28	3.7
Sydney-Coffs Harbour								
QantasLink	140	137	84	61.3	75	54.7	3	2.1
Virgin Australia	55	54	46	85.2	44	81.5	1	1.8
All Airlines	195	191	130	68.1	119	62.3	4	2.1
Sydney-Dubbo								
QantasLink	106	106	68	64.2	67	63.2	0	0.0
Regional Express	163	161	140	87.0	143	88.8	2	1.2
All Airlines	269	267	208	77.9	210	78.7	2	0.7
Sydney-Gold Coast								
Jetstar	302	296	249	84.1	243	82.1	6	2.0
Virgin Australia	303	301	268	89.0	256	85.0	2	0.7
All Airlines	605	597	517	86.6	499	83.6	8	1.3
Sydney-Hamilton Island								
Jetstar	29	29	20	69.0	20	69.0	0	0.0
Virgin Australia	30	30	26	86.7	24	80.0	0	0.0
All Airlines	59	59	46	78.0	44	74.6	0	0.0
Sydney-Hobart								
Jetstar	53	53	45	84.9	48	90.6	0	0.0
Qantas	30	30	28	93.3	29	96.7	0	0.0
Virgin Australia	60	60	35	58.3	41	68.3	0	0.0
All Airlines	143	143	108	75.5	118	82.5	0	0.0
Sydney-Launceston								
Jetstar	30	30	23	76.7	24	80.0	0	0.0
Virgin Australia	30	30	26	86.7	25	83.3	0	0.0
All Airlines	60	60	49	81.7	49	81.7	0	0.0
Sydney-Melbourne								
Jetstar	220	214	139	65.0	166	77.6	6	2.7
Qantas	815	791	737	93.2	707	89.4	24	2.9
Tiger Airways	221	218	193	88.5	189	86.7	3	1.4
Virgin Australia	748	731	644	88.1	629	86.0	17	2.3
All Airlines	2 004	1 954	1 713	87.7	1 691	86.5	50	2.5
Sydney-Perth								
Jetstar	43	43	39	90.7	31	72.1	0	0.0
Qantas	191	191	163	85.3	156	81.7	0	0.0
Virgin Australia	138	137	105	76.6	92	67.2	1	0.7
All Airlines	372	371	307	82.7	279	75.2	1	0.3
Sydney-Port Macquarie								
QantasLink	132	130	81	62.3	87	66.9	2	1.5
Virgin Australia - ATR/F100 Operations	55	55	43	78.2	38	69.1	0	0.0
All Airlines	187	185	124	67.0	125	67.6	2	1.1
Sydney-Sunshine Coast								
Jetstar	92	89	82	92.1	82	92.1	3	3.3
Virgin Australia	35	35	33	94.3	32	91.4	0	0.0
All Airlines	127	124	115	92.7	114	91.9	3	2.4

	<i>Sectors</i>		<i>Departures On Time</i>		<i>Arrivals On Time</i>		<i>Cancellations</i>	
	<i>Sched.</i>	<i>Flown</i>	<i>No.</i>	<i>%</i>	<i>No.</i>	<i>%</i>	<i>No.</i>	<i>%</i>
Sydney-Townsville								
Jetstar	24	24	19	79.2	18	75.0	0	0.0
Virgin Australia	30	30	23	76.7	24	80.0	0	0.0
All Airlines	54	54	42	77.8	42	77.8	0	0.0
Sydney-Wagga Wagga								
QantasLink	110	110	67	60.9	59	53.6	0	0.0
Regional Express	116	115	103	89.6	100	87.0	1	0.9
All Airlines	226	225	170	75.6	159	70.7	1	0.4
Townsville-Brisbane								
Jetstar	30	30	19	63.3	17	56.7	0	0.0
Qantas	130	130	107	82.3	107	82.3	0	0.0
Virgin Australia	164	164	146	89.0	130	79.3	0	0.0
All Airlines	324	324	272	84.0	254	78.4	0	0.0
Townsville-Cairns								
QantasLink	183	176	108	61.4	85	48.3	7	3.8
Virgin Australia	16	15	11	73.3	11	73.3	1	6.3
All Airlines	199	191	119	62.3	96	50.3	8	4.0
Townsville-Sydney								
Jetstar	24	24	16	66.7	13	54.2	0	0.0
Virgin Australia	30	30	12	40.0	17	56.7	0	0.0
All Airlines	54	54	28	51.9	30	55.6	0	0.0
Wagga Wagga-Sydney								
QantasLink	111	111	71	64.0	63	56.8	0	0.0
Regional Express	116	115	104	90.4	98	85.2	1	0.9
All Airlines	227	226	175	77.4	161	71.2	1	0.4

Airports

On time performance is reported for all routes where the passenger load averages over 8000 passengers per month, and where two or more airlines operate in competition. The following data reports by airport against flights operated on those routes only.

Airport	Departures			Arrivals		
	Sectors	On Time		Sectors	On Time	
	Flown	No.	%	Flown	No.	%
Adelaide						
Jetstar	243	196	80.7	245	205	83.7
Qantas	752	691	91.9	752	689	91.6
QantasLink	107	94	87.9	104	87	83.7
Regional Express	198	179	90.4	198	167	84.3
Virgin Australia	638	582	91.2	638	578	90.6
All Airlines	1 938	1 742	89.9	1 937	1 726	89.1
Relates to services to and from Brisbane, Canberra, Gold Coast, Melbourne, Perth, Port Lincoln and Sydney.						
Albury						
QantasLink	115	70	60.9	114	66	57.9
Regional Express	101	74	73.3	101	69	68.3
Virgin Australia	53	42	79.2	54	40	74.1
All Airlines	269	186	69.1	269	175	65.1
Relates to services to and from Sydney only.						
Ayers Rock						
Qantas	30	28	93.3	30	29	96.7
Virgin Australia	30	28	93.3	30	22	73.3
All Airlines	60	56	93.3	60	51	85.0
Relates to services to and from Sydney only.						
Ballina						
Jetstar	34	25	73.5	33	28	84.8
Regional Express	25	13	52.0	28	19	67.9
Virgin Australia	29	21	72.4	30	24	80.0
All Airlines	88	59	67.0	91	71	78.0
Relates to services to and from Sydney only.						
Brisbane						
Jetstar	625	491	78.6	625	468	74.9
Qantas	1 414	1 178	83.3	1 419	1 082	76.3
QantasLink	613	449	73.2	612	398	65.0
Tiger Airways	78	58	74.4	82	61	74.4
Virgin Australia	1 780	1 527	85.8	1 777	1 439	81.0
Virgin Australia - ATR/F100 Operations	347	309	89.0	346	268	77.5
All Airlines	4 857	4 012	82.6	4 861	3 716	76.4
Relates to services to and from Adelaide, Cairns, Canberra, Darwin, Emerald, Gladstone, Hamilton Island, Mackay, Melbourne, Newcastle, Perth, Proserpine, Rockhampton, Sydney and Townsville.						

Airport	Departures			Arrivals		
	Sectors	On Time		Sectors	On Time	
	Flown	No.	%	Flown	No.	%
Broome						
Qantas	53	26	49.1	53	39	73.6
QantasLink	26	21	80.8	26	20	76.9
Skywest	20	5	25.0	22	15	68.2
Virgin Australia	60	46	76.7	60	48	80.0
All Airlines	159	98	61.6	161	122	75.8
Relates to services to and from Perth only.						
Cairns						
Jetstar	225	188	83.6	224	184	82.1
Qantas	227	208	91.6	226	202	89.4
QantasLink	176	134	76.1	176	85	48.3
Tiger Airways	30	26	86.7	30	28	93.3
Virgin Australia	269	237	88.1	270	224	83.0
Virgin Australia - ATR/F100 Operations	25	11	44.0	25	14	56.0
All Airlines	952	804	84.5	951	737	77.5
Relates to services to and from Brisbane, Melbourne, Sydney and Townsville.						
Canberra						
Qantas	540	493	91.3	541	491	90.8
QantasLink	417	273	65.5	420	233	55.5
Virgin Australia	348	311	89.4	350	308	88.0
Virgin Australia - ATR/F100 Operations	142	122	85.9	143	121	84.6
All Airlines	1 447	1 199	82.9	1 454	1 153	79.3
Relates to services to and from Adelaide, Brisbane, Melbourne and Sydney.						
Coffs Harbour						
QantasLink	139	76	54.7	137	75	54.7
Virgin Australia	54	43	79.6	54	44	81.5
All Airlines	193	119	61.7	191	119	62.3
Relates to services to and from Sydney only.						
Darwin						
Qantas	73	50	68.5	73	59	80.8
Virgin Australia	85	78	91.8	85	68	80.0
All Airlines	158	128	81.0	158	127	80.4
Relates to services to and from Brisbane, Melbourne and Perth.						
Dubbo						
QantasLink	107	74	69.2	106	67	63.2
Regional Express	162	143	88.3	161	143	88.8
All Airlines	269	217	80.7	267	210	78.7
Relates to services to and from Sydney only.						
Emerald						
QantasLink	183	138	75.4	183	141	77.0
Virgin Australia - ATR/F100 Operations	67	63	94.0	67	62	92.5
All Airlines	250	201	80.4	250	203	81.2
Relates to services to and from Brisbane only.						

Airport	Departures			Arrivals		
	Sectors Flown	On Time		Sectors Flown	On Time	
		No.	%		No.	%
Geraldton						
QantasLink	50	31	62.0	50	34	68.0
Skywest	84	58	69.0	84	54	64.3
All Airlines	134	89	66.4	134	88	65.7
Relates to services to and from Perth only.						
Gladstone						
QantasLink	172	108	62.8	152	102	67.1
Virgin Australia - ATR/F100 Operations	110	99	90.0	111	99	89.2
All Airlines	282	207	73.4	263	201	76.4
Relates to services to and from Brisbane only.						
Gold Coast						
Jetstar	510	399	78.2	512	404	78.9
Tiger Airways	61	41	67.2	61	51	83.6
Virgin Australia	515	447	86.8	515	445	86.4
All Airlines	1 086	887	81.7	1 088	900	82.7
Relates to services to and from Adelaide, Melbourne and Sydney.						
Hamilton Island						
Jetstar	46	37	80.4	46	36	78.3
Virgin Australia	59	47	79.7	61	49	80.3
All Airlines	105	84	80.0	107	85	79.4
Relates to services to and from Brisbane and Sydney.						
Hobart						
Jetstar	183	141	77.0	183	149	81.4
Qantas	89	83	93.3	90	71	78.9
Virgin Australia	191	148	77.5	192	151	78.6
All Airlines	463	372	80.3	465	371	79.8
Relates to services to and from Melbourne and Sydney.						
Kalgoorlie						
Qantas	60	36	60.0	60	39	65.0
QantasLink	16	11	68.8	17	14	82.4
Skywest	18	9	50.0	18	13	72.2
All Airlines	94	56	59.6	95	66	69.5
Relates to services to and from Perth only.						
Karratha						
Qantas	226	176	77.9	227	179	78.9
QantasLink	15	12	80.0	15	12	80.0
Virgin Australia	50	35	70.0	50	41	82.0
All Airlines	291	223	76.6	292	232	79.5
Relates to services to and from Perth only.						
Launceston						
Jetstar	123	103	83.7	123	107	87.0
QantasLink	70	65	92.9	72	59	81.9
Virgin Australia	162	139	85.8	162	148	91.4
All Airlines	355	307	86.5	357	314	88.0
Relates to services to and from Melbourne and Sydney.						

Airport	Departures			Arrivals		
	Sectors	On Time		Sectors	On Time	
	Flown	No.	%	Flown	No.	%
Mackay						
Jetstar	105	84	80.0	104	89	85.6
QantasLink	47	32	68.1	46	34	73.9
Virgin Australia	163	135	82.8	163	121	74.2
All Airlines	315	251	79.7	313	244	78.0
Relates to services to and from Brisbane only.						
Melbourne						
Jetstar	1 084	835	77.0	1 082	827	76.4
Qantas	1 908	1 742	91.3	1 901	1 693	89.1
QantasLink	207	180	87.0	205	164	80.0
Regional Express	86	81	94.2	86	77	89.5
Tiger Airways	468	430	91.9	467	374	80.1
Virgin Australia	2 244	2 011	89.6	2 244	1 958	87.3
All Airlines	5 997	5 279	88.0	5 985	5 093	85.1
Relates to services to and from Adelaide, Brisbane, Cairns, Canberra, Darwin, Gold Coast, Hobart, Launceston, Mildura, Newcastle, Perth, Sunshine Coast and Sydney.						
Mildura						
QantasLink	84	67	79.8	84	62	73.8
Regional Express	86	80	93.0	86	77	89.5
Virgin Australia	30	28	93.3	30	27	90.0
All Airlines	200	175	87.5	200	166	83.0
Relates to services to and from Melbourne only.						
Newcastle						
Jetstar	196	169	86.2	198	166	83.8
QantasLink	66	29	43.9	66	36	54.5
Virgin Australia	30	20	66.7	30	26	86.7
Virgin Australia - ATR/F100 Operations	55	36	65.5	55	41	74.5
All Airlines	347	254	73.2	349	269	77.1
Relates to services to and from Brisbane and Melbourne.						
Newman						
Qantas	108	73	67.6	108	87	80.6
QantasLink	17	16	94.1	17	14	82.4
Virgin Australia	29	20	69.0	29	22	75.9
All Airlines	154	109	70.8	154	123	79.9
Relates to services to and from Perth only.						
Perth						
Jetstar	184	107	58.2	183	129	70.5
Qantas	1 185	926	78.1	1 184	873	73.7
QantasLink	150	114	76.0	147	98	66.7
Skywest	124	84	67.7	122	67	54.9
Tiger Airways	80	63	78.8	76	67	88.2
Virgin Australia	635	531	83.6	635	451	71.0
All Airlines	2 358	1 825	77.4	2 347	1 685	71.8
Relates to services to and from Adelaide, Brisbane, Broome, Darwin, Geraldton, Kalgoorlie, Karratha, Melbourne, Newman, Port Hedland and Sydney.						

Airport	Departures			Arrivals		
	Sectors Flown	On Time		Sectors Flown	On Time	
		No.	%		No.	%
Port Hedland						
Qantas	124	82	66.1	125	93	74.4
QantasLink	23	20	87.0	25	23	92.0
Virgin Australia	58	40	69.0	59	52	88.1
All Airlines	205	142	69.3	209	168	80.4
Relates to services to and from Perth only.						
Port Lincoln						
QantasLink	88	77	87.5	91	79	86.8
Regional Express	198	172	86.9	198	166	83.8
All Airlines	286	249	87.1	289	245	84.8
Relates to services to and from Adelaide only.						
Port Macquarie						
QantasLink	130	87	66.9	130	87	66.9
Virgin Australia - ATR/F100 Operations	55	43	78.2	55	38	69.1
All Airlines	185	130	70.3	185	125	67.6
Relates to services to and from Sydney only.						
Proserpine						
Jetstar	25	23	92.0	24	21	87.5
Virgin Australia	30	23	76.7	30	27	90.0
Virgin Australia - ATR/F100 Operations	20	13	65.0	20	14	70.0
All Airlines	75	59	78.7	74	62	83.8
Relates to services to and from Brisbane only.						
Rockhampton						
QantasLink	124	86	69.4	146	101	69.2
Virgin Australia	98	90	91.8	98	90	91.8
Virgin Australia - ATR/F100 Operations	69	56	81.2	69	53	76.8
All Airlines	291	232	79.7	313	244	78.0
Relates to services to and from Brisbane only.						
Sunshine Coast						
Jetstar	141	95	67.4	138	112	81.2
Virgin Australia	63	50	79.4	65	59	90.8
All Airlines	204	145	71.1	203	171	84.2
Relates to services to and from Melbourne and Sydney.						
Sydney						
Jetstar	1 051	854	81.3	1 055	782	74.1
Qantas	2 001	1 827	91.3	2 001	1 723	86.1
QantasLink	962	561	58.3	964	569	59.0
Regional Express	405	332	82.0	403	327	81.1
Tiger Airways	218	193	88.5	219	202	92.2
Virgin Australia	2 385	2 053	86.1	2 377	2 004	84.3
Virgin Australia - ATR/F100 Operations	198	165	83.3	197	165	83.8
All Airlines	7 220	5 985	82.9	7 216	5 772	80.0
Relates to services to and from Adelaide, Albury, Ayers Rock, Ballina, Brisbane, Cairns, Canberra, Coffs Harbour, Dubbo, Gold Coast, Hamilton Island, Hobart, Launceston, Melbourne, Perth, Port Macquarie, Sunshine Coast, Townsville and Wagga Wagga.						

<i>Airport</i>	<i>Departures</i>			<i>Arrivals</i>		
	<i>Sectors</i>	<i>On Time</i>		<i>Sectors</i>	<i>On Time</i>	
	<i>Flown</i>	<i>No.</i>	<i>%</i>	<i>Flown</i>	<i>No.</i>	<i>%</i>
Townsville						
Jetstar	54	35	64.8	54	42	77.8
Qantas	130	107	82.3	130	102	78.5
QantasLink	176	108	61.4	176	121	68.8
Virgin Australia	209	169	80.9	209	178	85.2
All Airlines	569	419	73.6	569	443	77.9
Relates to services to and from Brisbane, Cairns and Sydney.						
Wagga Wagga						
QantasLink	111	71	64.0	110	59	53.6
Regional Express	115	104	90.4	115	100	87.0
All Airlines	226	175	77.4	225	159	70.7
Relates to services to and from Sydney only.						

Definitions

On time departure A flight departure is counted as "on time" if it departs the gate within 15 minutes of the scheduled departure time shown in the carriers' schedule.

On time arrival A flight arrival is counted as "on time" if it arrived at the gate within 15 minutes of the scheduled arrival time shown in the carriers' schedule.
Neither diverted nor cancelled flights count as on time.

Cancellation A flight removed from service within 7 days of scheduled departure is regarded as a cancellation.

On time departure percentage The percentage of on time departures is measured against the number of departures *operated* on any particular sector.

On time arrival percentage The percentage of on time arrivals is measured against the number of arrivals *operated* on any particular sector.

Cancellation percentage The percentage of cancellations is measured against the number of services *scheduled* on any particular sector.
