



Australian Government

Department of Infrastructure, Transport,
Regional Development and Local Government
Bureau of Infrastructure, Transport and Regional Economics



AVIATION STATISTICS

Airline On Time Performance

June 2009—OTP 75

© Commonwealth of Australia 2009

ISSN 1832-0759

This work is copyright and the data contained in this publication should not be reproduced or used in any form without acknowledgement.

Enquiries

Bureau of Infrastructure, Transport and Regional Economics
GPO Box 501
Canberra ACT 2601

Telephone: 02 6274 7790

Facsimile: 02 6274 7727

Website: www.bitre.gov.au

Email: avstats@infrastructure.gov.au

This publication, including a spreadsheet of the time-series data, can be downloaded from the BITRE website: <http://www.bitre.gov.au/info.aspx?ResourceId=214&NodeId=104>.

Disclaimers

BITRE seeks to publish its work to the highest professional standards. However, it cannot accept responsibility for any consequences arising from the use of information herein. Readers should rely on their own skill and judgment in applying any information or analysis to particular issues or circumstances.

Foreword

The Bureau of Infrastructure, Transport and Regional Economics (BITRE) monitors the punctuality and reliability of major domestic airlines operating between Australian airports. The purpose of this is to allow for evaluation of overall industry and individual airline performance, so that consumers of air travel can make informed decisions.

The following domestic airlines report this data monthly to the BITRE: Jetstar, Qantas, QantasLink, Regional Express, Skywest Airlines, Tiger Airways, and Virgin Blue. Data has been gathered since November 2003, although some airlines commenced reporting since then, including Jetstar which first reported in May 2004, MacAir in July 2005 and Tiger Airways in April 2008. MacAir ceased operations in February 2009 and data was not received for December 2008 onwards.

Information presented in this report is for Australian domestic routes for which the passenger load averaged 8000 or more passengers per month over the previous six months, *and* where two or more airlines operated in competition on those routes. There were 50 routes that met this definition in June 2009. Over time, routes which meet these criteria change as airline networks and traffic levels vary.

Participating airlines report their overall monthly network performance where this is possible.

Total industry figures encompass all services operated by reporting airlines only. These airlines collectively carried over 95 per cent of total domestic passengers (regular public transport only) in 2008.

The method of capturing on time performance varies between airlines utilising different recording systems. Jetstar and Qantas jet aircraft use Aircraft Communication Addressing and Reporting System (ACARS) to electronically measure on time performance. Regional Express, Skywest, Tiger Airways, Virgin Blue and the Qantas non-jet fleet record on time performance manually using records from pilots, gate agents and/or ground crews.

After initial data is collected, aggregate reports are audited internally by participating airlines prior to publication.

Reports and detailed time series data in Microsoft Excel spreadsheet format are available from the BITRE website at: <http://www.bitre.gov.au/info.aspx?ResourceId=214&NodeId=104>.

Contents

	Page
Industry performance	1
Individual routes	9
Airports	21
Definitions	27

Industry performance

For June 2009, on time performance over all routes operated by participating airlines (Jetstar, Qantas, QantasLink, Regional Express, Skywest Airlines, Tiger Airways and Virgin Blue) averaged 81.8 per cent for on time departures, and 80.5 per cent for on time arrivals. Cancellations represented 1.5 per cent of all scheduled flights. The equivalent figures for June 2008 were 75.8 per cent for departures, 73.0 per cent for arrivals and 3.3 per cent for cancellations.

The long term average performance for all routes since reporting commenced in November 2003 is 84.9 per cent for on time departures and 83.7 per cent for on time arrivals. Cancellations average 1.2 per cent of all scheduled flights.

Of the major domestic airlines, Qantas achieved the highest level of on time departures for June 2009 at 85.1 per cent, followed by Virgin Blue at 83.4 per cent, Tiger Airways at 78.1 per cent and Jetstar at 68.5 per cent. The regional airlines were led by QantasLink at 85.1 per cent, followed by Regional Express at 81.3 per cent and Skywest at 76.0 per cent.

Qantas also achieved the highest on time arrivals among the major domestic airlines at 84.2 per cent, followed by Virgin Blue at 82.8 per cent, Tiger Airways at 79.7 per cent and Jetstar at 70.9 per cent. QantasLink was the best performing regional airline for on time arrivals at 82.2 per cent, followed by Regional Express at 76.5 per cent and Skywest at 73.3 per cent.

Jetstar had the highest percentage of cancellations for June 2009 at 2.2 per cent, while Regional Express had the lowest at 0.1 per cent.

Of the 50 routes which met the criteria for on time performance reporting in June 2009, the Perth-Newman route had the highest percentage of on time departures (94.4 per cent), while the Melbourne-Maroochydore route had the lowest (64.0 per cent). On time arrivals were highest on the Perth-Brisbane route (96.7 per cent) and lowest on the Brisbane-Perth route (61.1 per cent).

Cancellations were highest on the Kalgoorlie-Perth and Perth-Kalgoorlie routes at 7.2 per cent, followed by Gold Coast-Sydney at 5.2 per cent, Sydney-Gold Coast at 4.9 per cent and Melbourne-Sydney at 4.7 per cent.

Canberra Airport recorded the highest percentage of on time departures (88.3 per cent), while Darwin Airport recorded the lowest (66.1 per cent). Newman Airport recorded the highest percentage of on time arrivals (94.4 per cent), while Darwin Airport recorded the lowest (67.0 per cent).

Table 1 On time performance for June 2009 — Total Industry

	<i>Sectors</i>		<i>Departures On Time</i>		<i>Arrivals On Time</i>		<i>Cancellations</i>	
	<i>Scheduled</i>	<i>Flown</i>	<i>No.</i>	<i>%</i>	<i>No.</i>	<i>%</i>	<i>No.</i>	<i>%</i>
Jetstar	4 803	4 697	3 218	68.5	3 331	70.9	106	2.2
Qantas	9 831	9 642	8 203	85.1	8 120	84.2	189	1.9
QantasLink	7 500	7 424	6 320	85.1	6 100	82.2	76	1.0
Regional Express	4 996	4 990	4 055	81.3	3 816	76.5	6	0.1
Skywest	1 077	1 067	811	76.0	782	73.3	10	0.9
Tiger Airways	1 036	1 034	808	78.1	824	79.7	2	0.2
Virgin Blue	11 015	10 800	9 009	83.4	8 944	82.8	215	2.0
All Airlines	40 258	39 654	32 424	81.8	31 917	80.5	604	1.5

1. Total airline network data (including routes not shown in this report).

Table 2 Top ten routes for on time performance for June 2009 (participating airlines only)

<i>Departures</i>		<i>Arrivals</i>	
<i>Route</i>	<i>On Time (%)</i>	<i>Route</i>	<i>On Time (%)</i>
Perth-Newman	94.4	Perth-Brisbane	96.7
Sydney-Townsville	92.3	Perth-Newman	94.4
Canberra-Sydney	89.6	Cairns-Sydney	92.6
Adelaide-Perth	89.6	Canberra-Adelaide	90.8
Canberra-Adelaide	88.8	Adelaide-Alice Springs	90.7
Sydney-Maroochydore	88.7	Alice Springs-Adelaide	90.7
Townsville-Sydney	88.5	Cairns-Brisbane	90.4
Alice Springs-Adelaide	88.4	Sydney-Townsville	90.4
Canberra-Brisbane	88.3	Canberra-Sydney	88.9
Sydney-Canberra	87.4	Adelaide-Sydney	88.0

Table 3 Top ten airports for on time performance for June 2009 (participating airlines and reported routes only)

<i>Departures</i>		<i>Arrivals</i>	
<i>Airport</i>	<i>On Time (%)</i>	<i>Airport</i>	<i>On Time (%)</i>
Canberra	88.3	Newman	94.4
Newman	87.1	Kalgoorlie	87.9
Cairns	85.6	Alice Springs	86.0
Kalgoorlie	83.6	Hamilton Island	85.0
Adelaide	83.5	Canberra	84.0
Sydney	83.4	Cairns	84.0
Hamilton Island	83.3	Townsville	83.7
Coffs Harbour	82.8	Adelaide	83.7
Townsville	82.7	Brisbane	83.6
Karratha	82.4	Sydney	82.3

Total industry on time performance

Figure 1 On time performance (by month from June 2006)—Total Industry

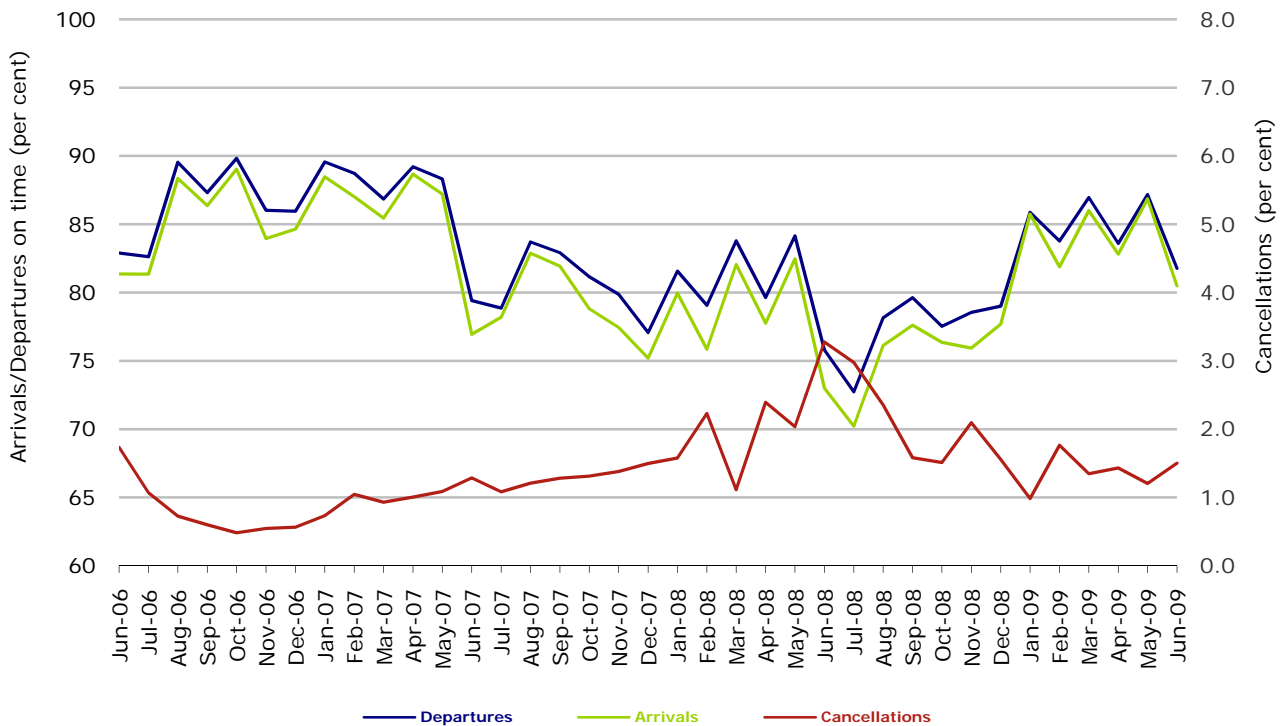
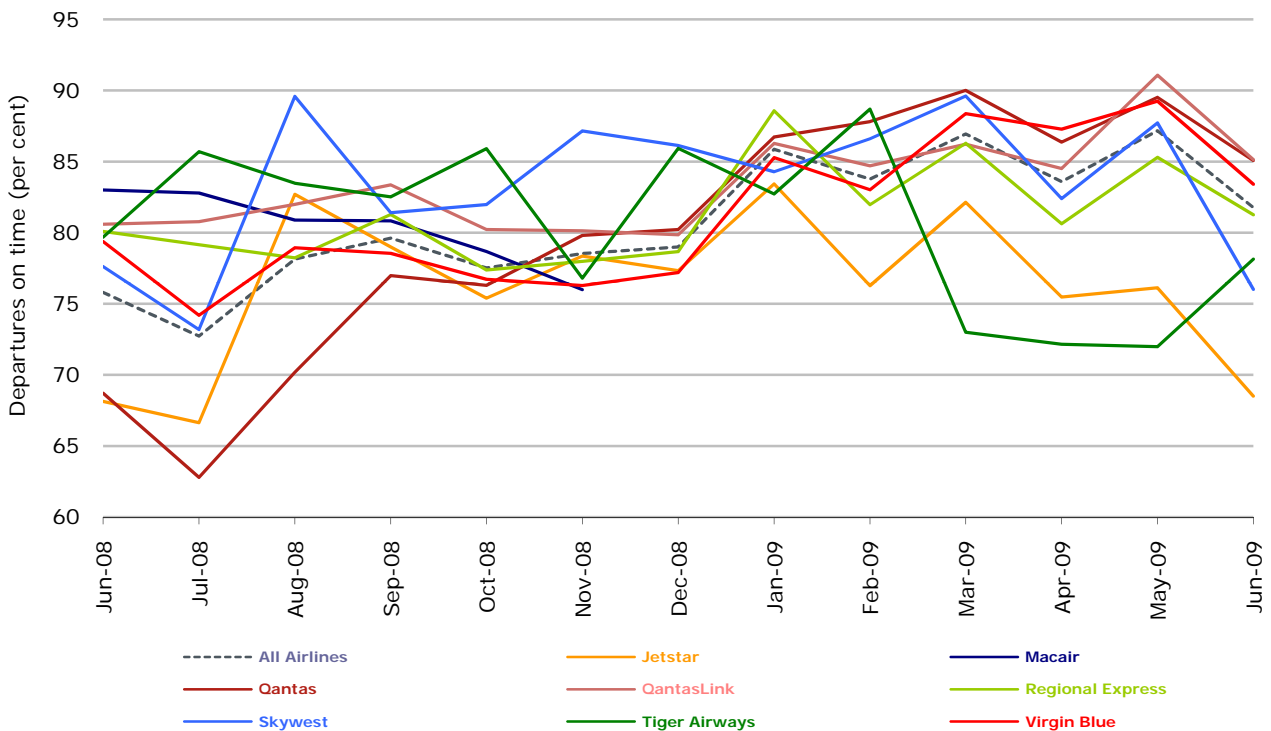
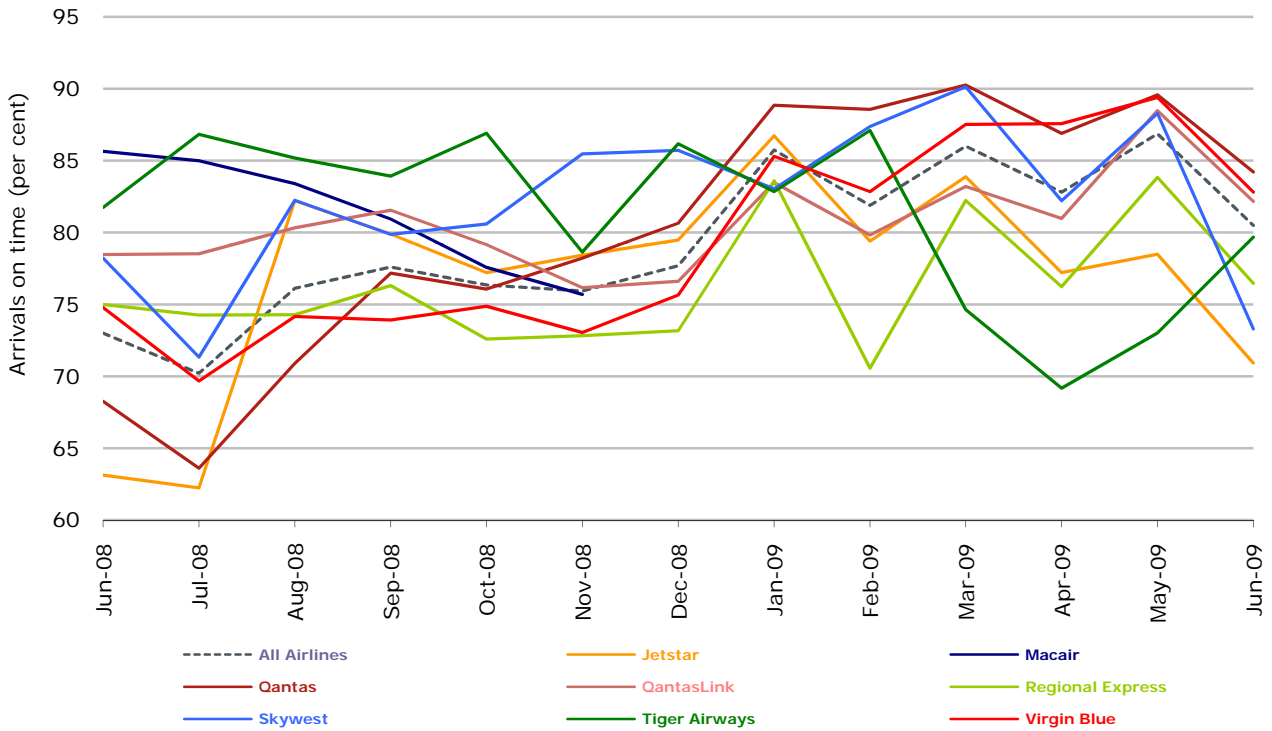


Figure 2 Departures on time (by month from June 2008)



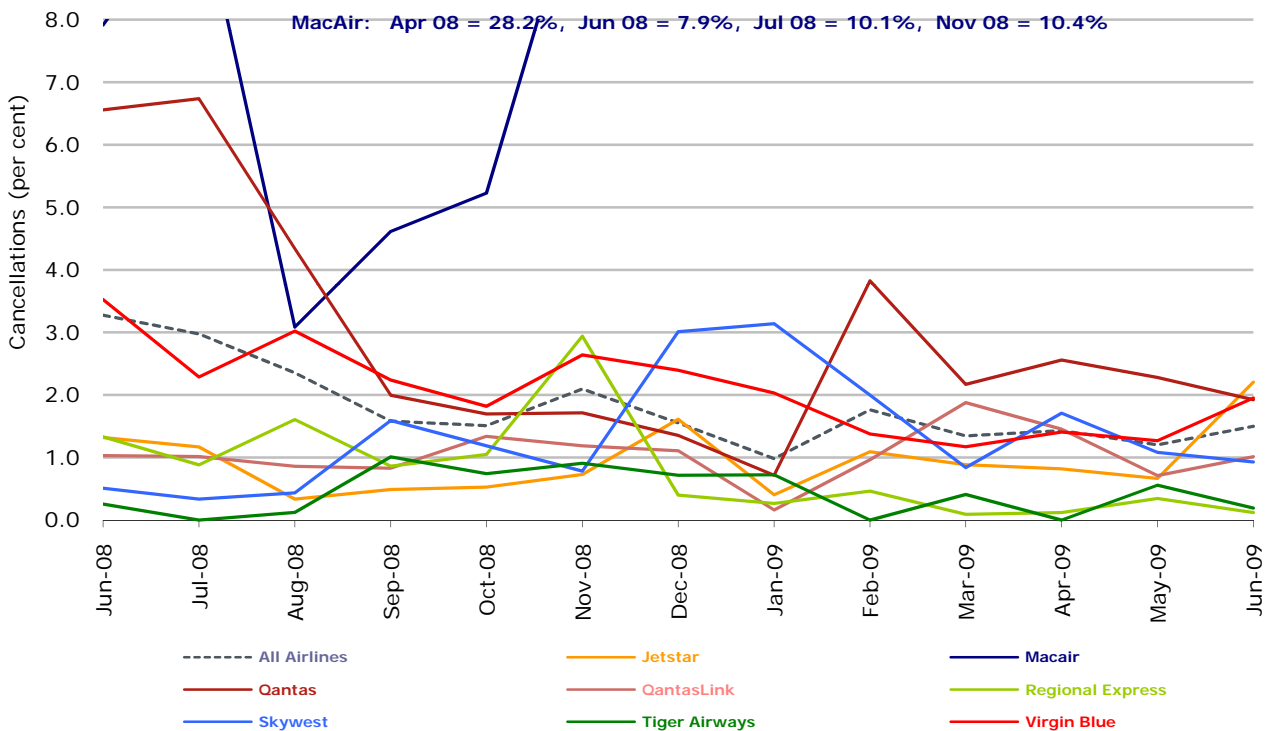
No data received from MacAir for December 2008 and onwards. Operations ceased in February 2009.

Figure 3 Arrivals on time (by month from June 2008)



No data received from MacAir for December 2008 and onwards. Operations ceased in February 2009.

Figure 4 Cancellations (by month from June 2008)



No data received from MacAir for December 2008 and onwards. Operations ceased in February 2009.

Major domestic airlines on time performance

Figure 5 On time performance (by month from June 2006)—Jetstar

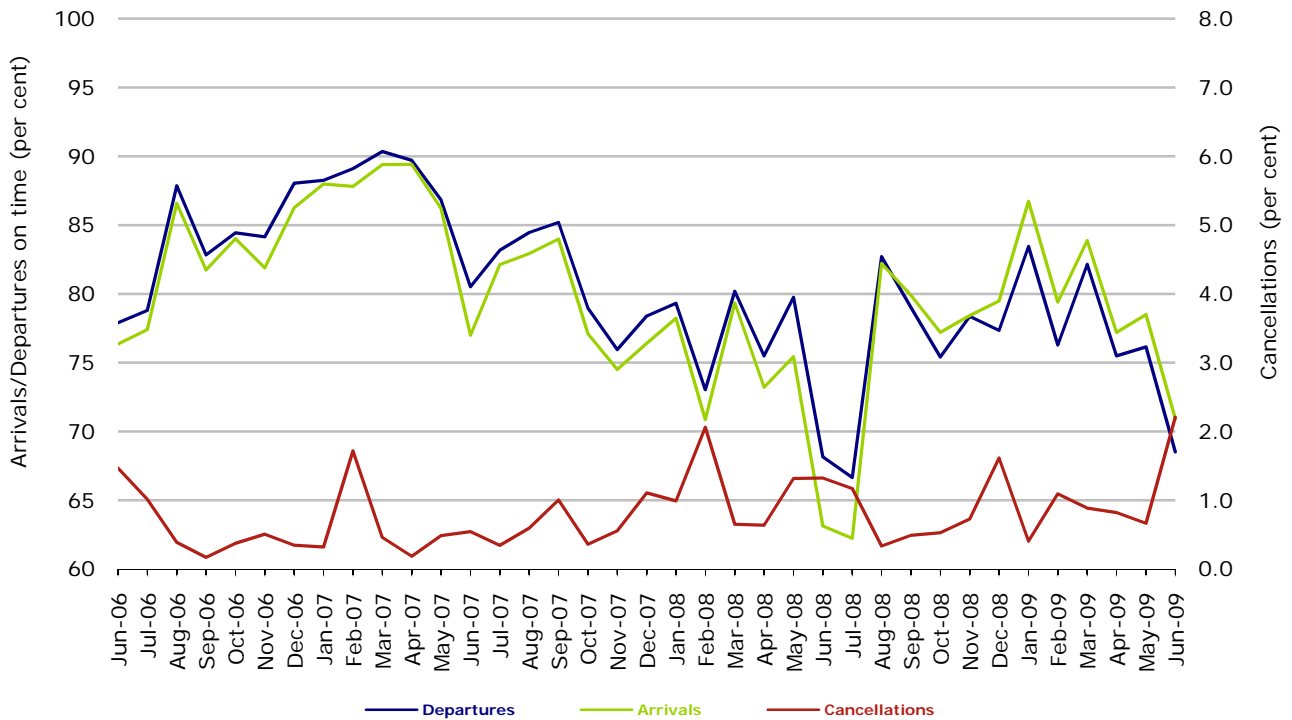


Figure 6 On time performance (by month from June 2006)—Qantas

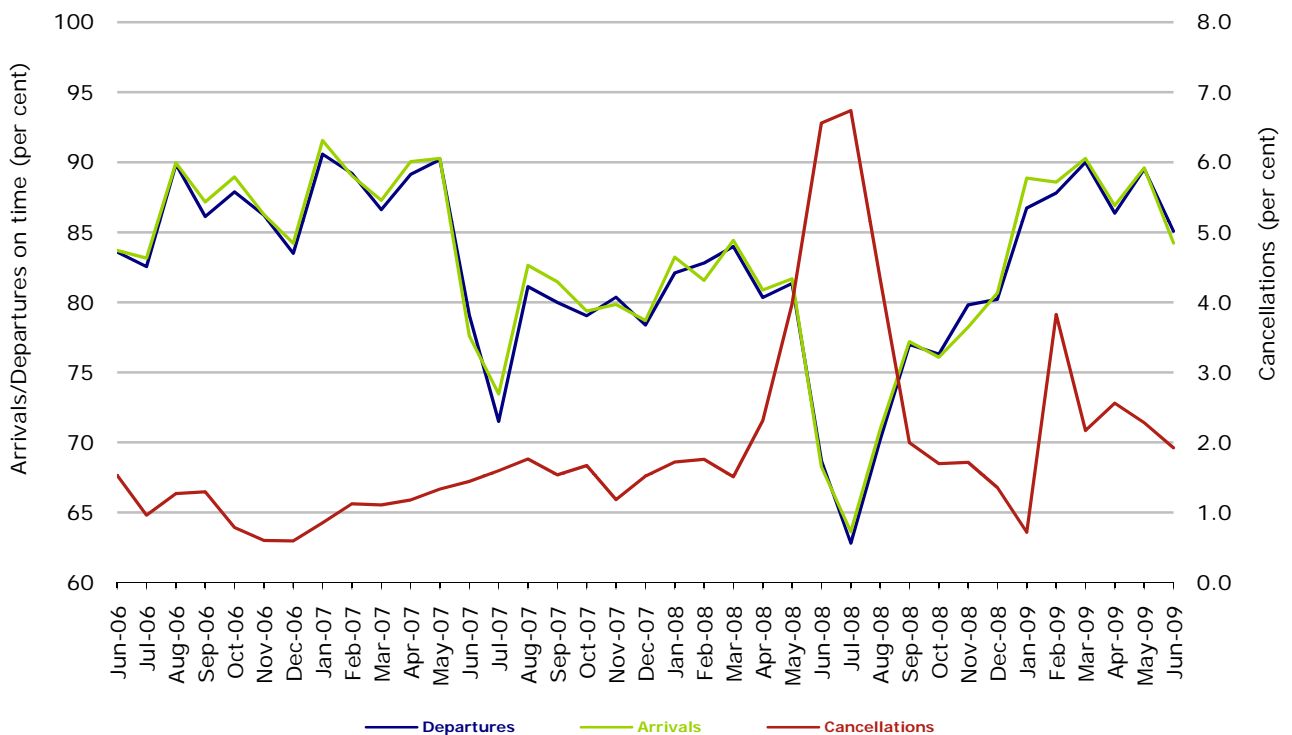
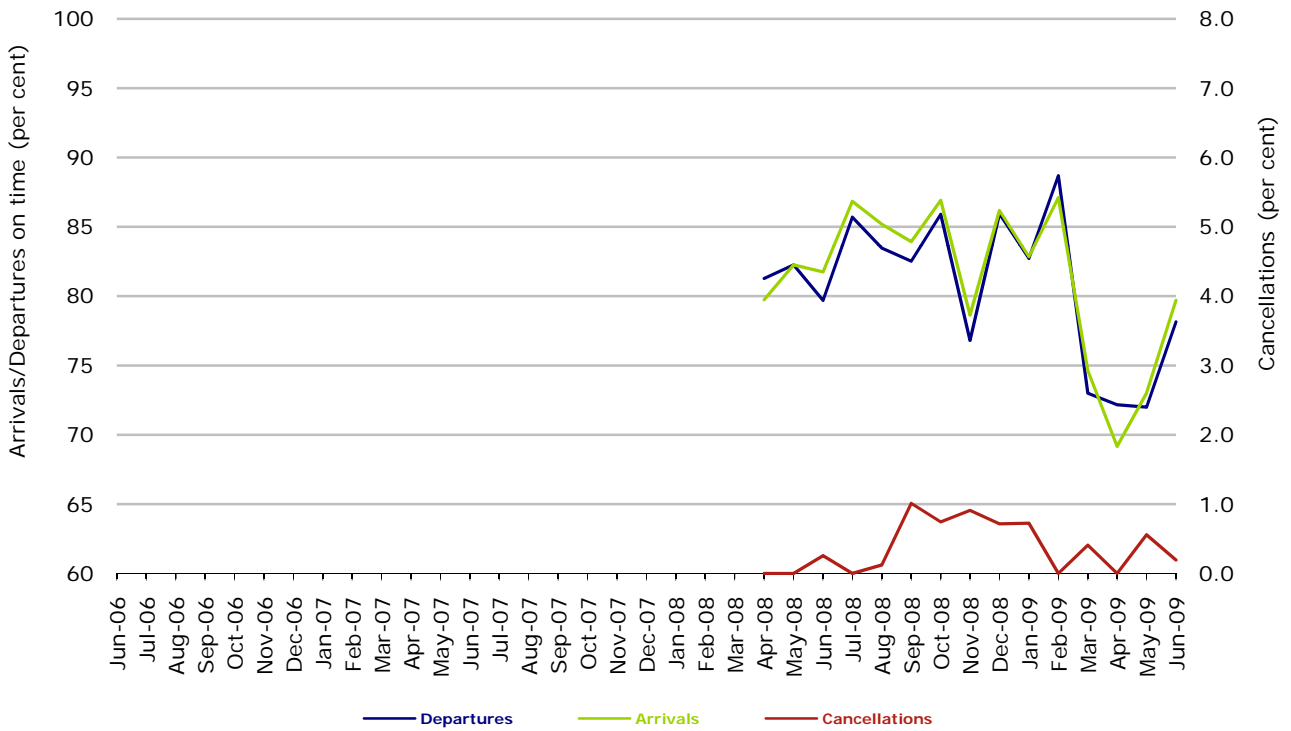
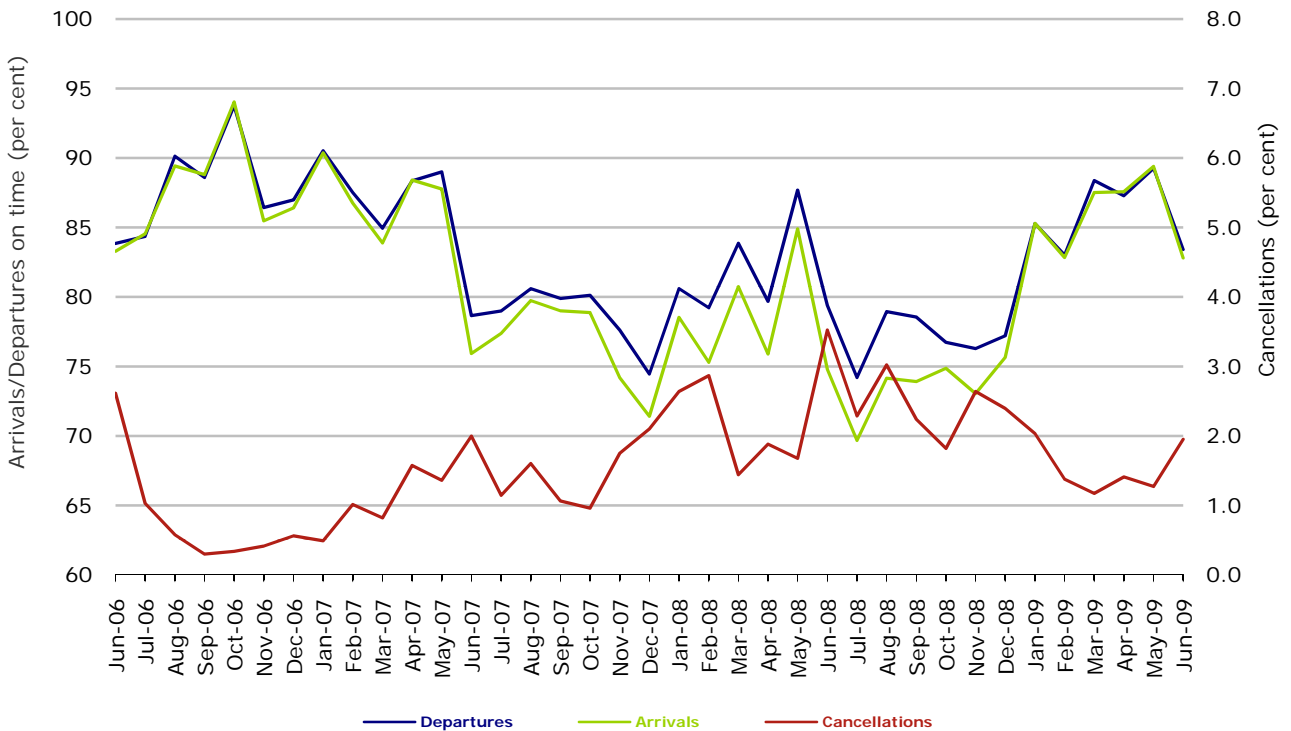


Figure 7 On time performance (by month from June 2006)—Tiger Airways



Tiger Airways began reporting in April 2008.

Figure 8 On time performance (by month from June 2006)—Virgin Blue



Major regional airlines on time performance

Figure 9 On time performance (by month from June 2006)—QantasLink

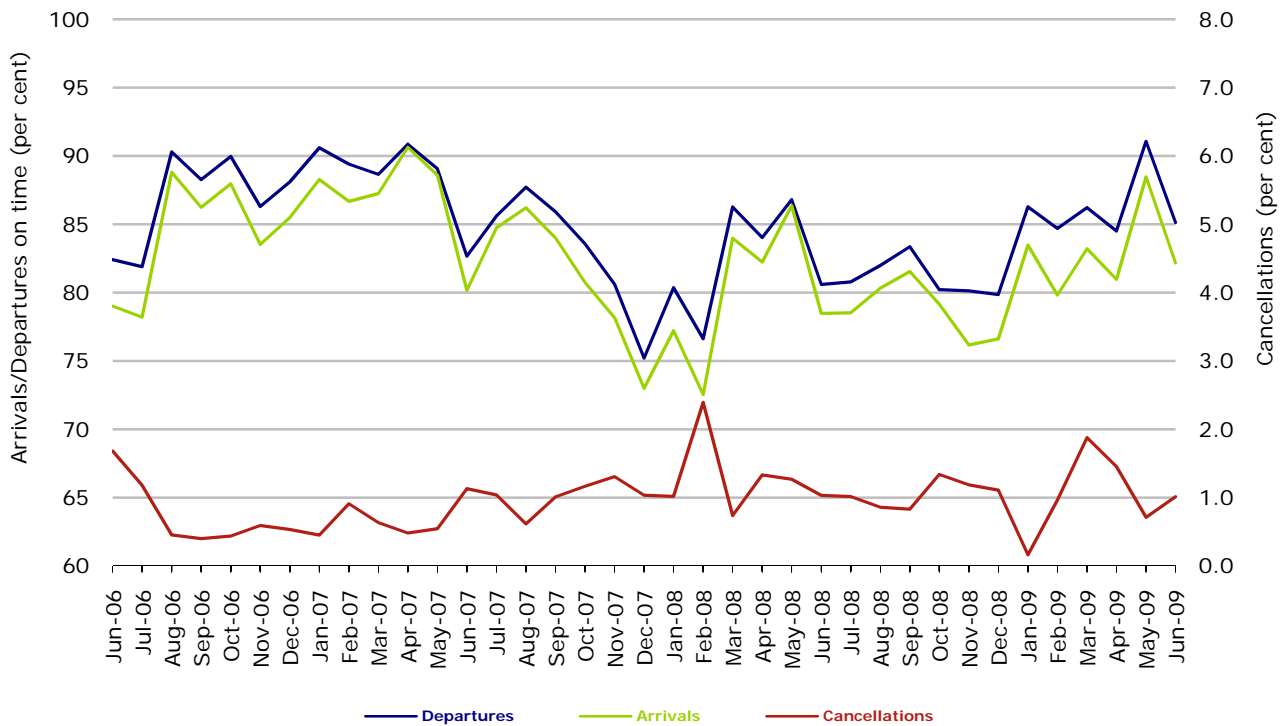


Figure 10 On time performance (by month from June 2006)—Regional Express

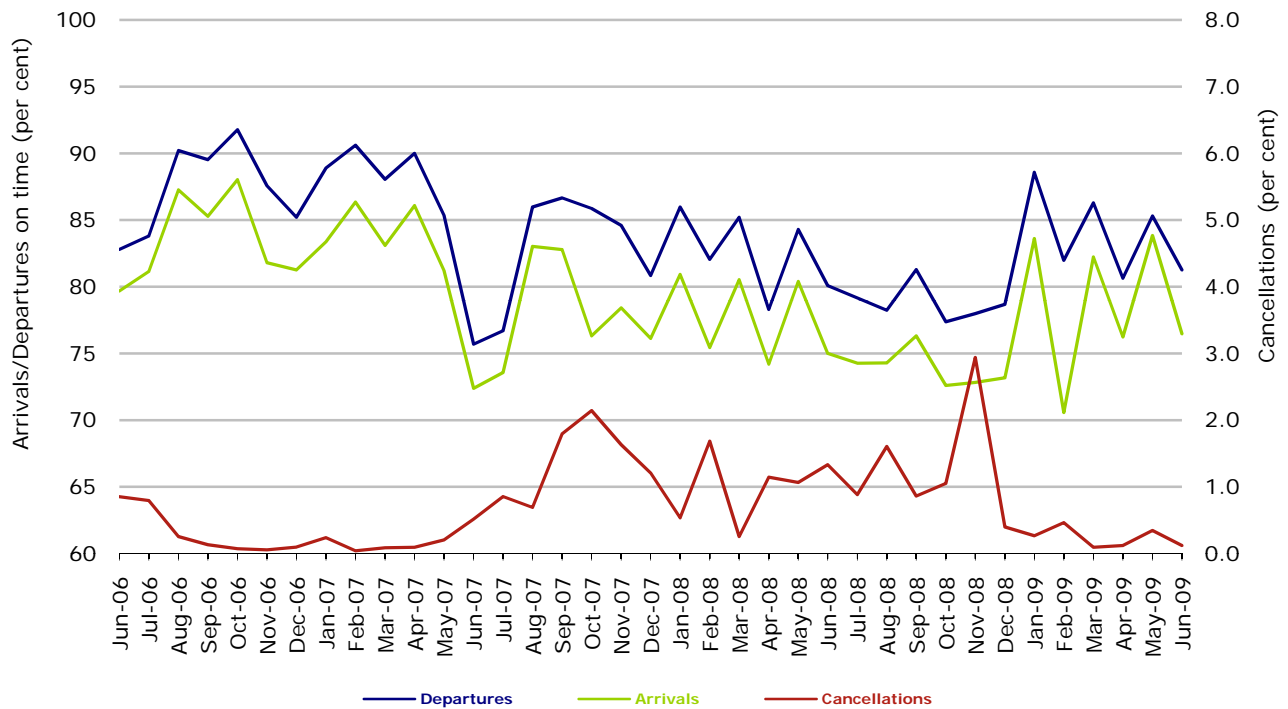
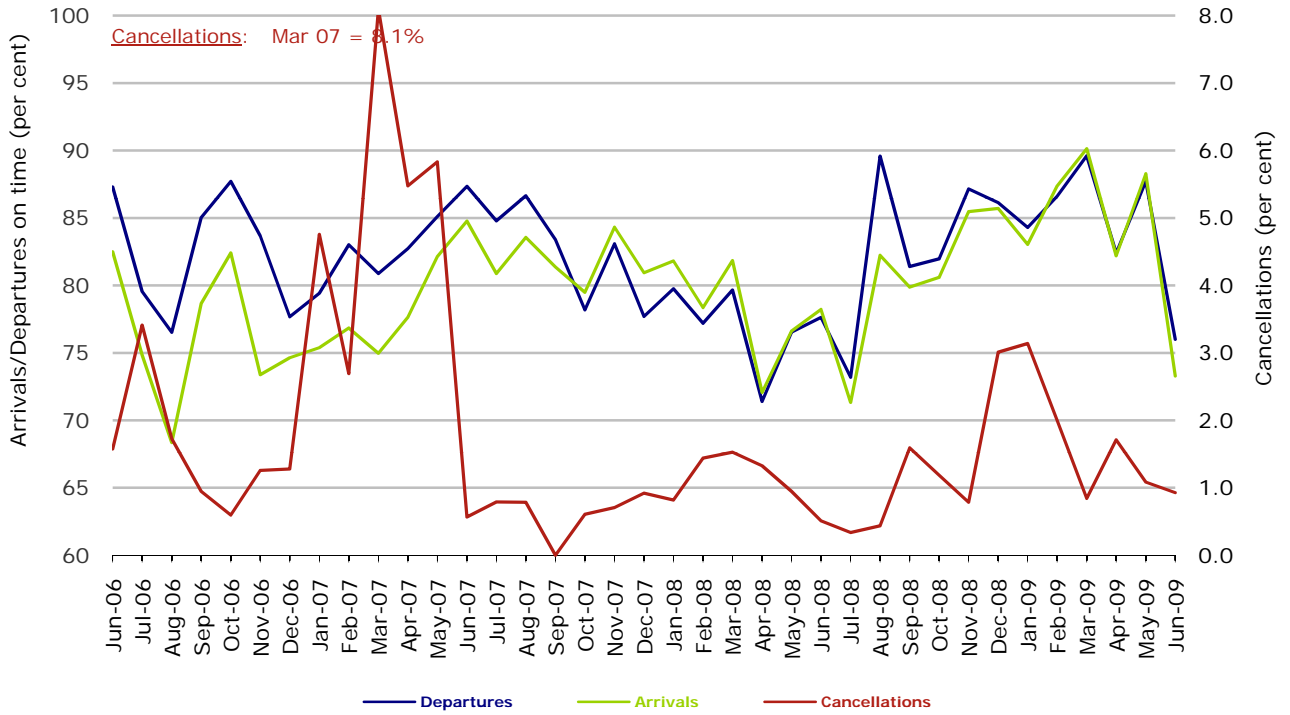


Figure 11 On time performance (by month from June 2006)—Skywest



Individual routes

On time performance is reported for all routes where the passenger load averages over 8000 passengers per month over the previous six months, and where two or more airlines operate in competition on those routes. There are now 50 routes which meet this definition. Over time, however, routes which meet this definition may change as airline networks and traffic levels vary.

	<i>Sectors</i>		<i>Departures</i>		<i>Arrivals</i>		<i>Cancellations</i>	
	<i>Sched.</i>	<i>Flown</i>	<i>No.</i>	<i>%</i>	<i>No.</i>	<i>%</i>	<i>No.</i>	<i>%</i>
Adelaide-Alice Springs								
Qantas	30	30	24	80.0	26	86.7	0	0.0
Tiger Airways	13	13	13	100.0	13	100.0	0	0.0
All Airlines	43	43	37	86.0	39	90.7	0	0.0
Adelaide-Brisbane								
Jetstar	30	30	15	50.0	17	56.7	0	0.0
Qantas	86	86	79	91.9	74	86.0	0	0.0
Virgin Blue	90	89	68	76.4	74	83.1	1	1.1
All Airlines	206	205	162	79.0	165	80.5	1	0.5
Adelaide-Canberra								
Qantas	48	48	41	85.4	40	83.3	0	0.0
Tiger Airways	17	17	12	70.6	14	82.4	0	0.0
Virgin Blue	30	30	25	83.3	26	86.7	0	0.0
All Airlines	95	95	78	82.1	80	84.2	0	0.0
Adelaide-Gold Coast								
Jetstar	30	30	21	70.0	23	76.7	0	0.0
Tiger Airways	30	30	25	83.3	26	86.7	0	0.0
Virgin Blue	30	29	24	82.8	25	86.2	1	3.3
All Airlines	90	89	70	78.7	74	83.1	1	1.1
Adelaide-Melbourne								
Jetstar	47	46	20	43.5	24	52.2	1	2.1
Qantas	303	299	251	83.9	241	80.6	4	1.3
Tiger Airways	81	81	59	72.8	58	71.6	0	0.0
Virgin Blue	233	233	203	87.1	204	87.6	0	0.0
All Airlines	664	659	533	80.9	527	80.0	5	0.8
Adelaide-Perth								
Jetstar	30	30	27	90.0	19	63.3	0	0.0
Qantas	116	116	102	87.9	84	72.4	0	0.0
Tiger Airways	30	30	30	100.0	30	100.0	0	0.0
Virgin Blue	65	64	56	87.5	50	78.1	1	1.5
All Airlines	241	240	215	89.6	183	76.3	1	0.4
Adelaide-Sydney								
Jetstar	30	29	25	86.2	28	96.6	1	3.3
Qantas	275	270	243	90.0	240	88.9	5	1.8
Virgin Blue	142	141	115	81.6	119	84.4	1	0.7
All Airlines	447	440	383	87.0	387	88.0	7	1.6

	<i>Sectors</i>		<i>Departures On Time</i>		<i>Arrivals On Time</i>		<i>Cancellations</i>	
	<i>Sched.</i>	<i>Flown</i>	<i>No.</i>	<i>%</i>	<i>No.</i>	<i>%</i>	<i>No.</i>	<i>%</i>
Albury-Sydney								
QantasLink	104	103	78	75.7	79	76.7	1	1.0
Regional Express	111	111	88	79.3	84	75.7	0	0.0
Virgin Blue	61	59	46	78.0	48	81.4	2	3.3
All Airlines	276	273	212	77.7	211	77.3	3	1.1
Alice Springs-Adelaide								
Qantas	30	30	25	83.3	26	86.7	0	0.0
Tiger Airways	13	13	13	100.0	13	100.0	0	0.0
All Airlines	43	43	38	88.4	39	90.7	0	0.0
Alice Springs-Melbourne								
Qantas	30	30	19	63.3	20	66.7	0	0.0
Tiger Airways	13	13	12	92.3	13	100.0	0	0.0
All Airlines	43	43	31	72.1	33	76.7	0	0.0
Ballina-Sydney								
Jetstar	30	30	22	73.3	20	66.7	0	0.0
Regional Express	76	76	52	68.4	43	56.6	0	0.0
Virgin Blue	34	34	27	79.4	27	79.4	0	0.0
All Airlines	140	140	101	72.1	90	64.3	0	0.0
Brisbane-Adelaide								
Jetstar	30	30	21	70.0	17	56.7	0	0.0
Qantas	86	86	75	87.2	77	89.5	0	0.0
Virgin Blue	90	90	72	80.0	64	71.1	0	0.0
All Airlines	206	206	168	81.6	158	76.7	0	0.0
Brisbane-Cairns								
Jetstar	96	96	69	71.9	70	72.9	0	0.0
Qantas	120	120	101	84.2	107	89.2	0	0.0
Virgin Blue	120	119	109	91.6	108	90.8	1	0.8
All Airlines	336	335	279	83.3	285	85.1	1	0.3
Brisbane-Canberra								
Qantas	139	138	123	89.1	123	89.1	1	0.7
QantasLink	8	8	8	100.0	8	100.0	0	0.0
Virgin Blue	120	118	90	76.3	91	77.1	2	1.7
All Airlines	267	264	221	83.7	222	84.1	3	1.1
Brisbane-Darwin								
Jetstar	55	55	41	74.5	31	56.4	0	0.0
Qantas	30	30	26	86.7	24	80.0	0	0.0
Virgin Blue	30	30	24	80.0	22	73.3	0	0.0
All Airlines	115	115	91	79.1	77	67.0	0	0.0
Brisbane-Hamilton Island								
Jetstar	30	30	22	73.3	23	76.7	0	0.0
Virgin Blue	30	30	28	93.3	28	93.3	0	0.0
All Airlines	60	60	50	83.3	51	85.0	0	0.0

	<i>Sectors</i>		<i>Departures On Time</i>		<i>Arrivals On Time</i>		<i>Cancellations</i>	
	<i>Sched.</i>	<i>Flown</i>	<i>No.</i>	<i>%</i>	<i>No.</i>	<i>%</i>	<i>No.</i>	<i>%</i>
Brisbane-Mackay								
Jetstar	82	82	54	65.9	56	68.3	0	0.0
QantasLink	77	77	64	83.1	60	77.9	0	0.0
Virgin Blue	137	136	115	84.6	114	83.8	1	0.7
All Airlines	296	295	233	79.0	230	78.0	1	0.3
Brisbane-Melbourne								
Qantas	407	402	341	84.8	353	87.8	5	1.2
Virgin Blue	326	320	286	89.4	273	85.3	6	1.8
All Airlines	733	722	627	86.8	626	86.7	11	1.5
Brisbane-Newcastle								
Jetstar	104	103	77	74.8	85	82.5	1	1.0
QantasLink	68	68	58	85.3	52	76.5	0	0.0
Virgin Blue	48	48	43	89.6	40	83.3	0	0.0
All Airlines	220	219	178	81.3	177	80.8	1	0.5
Brisbane-Perth								
Qantas	120	120	93	77.5	81	67.5	0	0.0
Virgin Blue	60	60	50	83.3	29	48.3	0	0.0
All Airlines	180	180	143	79.4	110	61.1	0	0.0
Brisbane-Proserpine								
Jetstar	30	30	22	73.3	22	73.3	0	0.0
Virgin Blue	30	30	25	83.3	26	86.7	0	0.0
All Airlines	60	60	47	78.3	48	80.0	0	0.0
Brisbane-Rockhampton								
Jetstar	30	30	19	63.3	20	66.7	0	0.0
QantasLink	170	170	137	80.6	134	78.8	0	0.0
Virgin Blue	145	143	114	79.7	115	80.4	2	1.4
All Airlines	345	343	270	78.7	269	78.4	2	0.6
Brisbane-Sydney								
Jetstar	87	80	53	66.3	58	72.5	7	8.0
Qantas	570	541	474	87.6	467	86.3	29	5.1
Virgin Blue	531	515	403	78.3	370	71.8	16	3.0
All Airlines	1,188	1,136	930	81.9	895	78.8	52	4.4
Brisbane-Townsville								
Jetstar	49	49	28	57.1	33	67.3	0	0.0
Qantas	144	144	125	86.8	125	86.8	0	0.0
Virgin Blue	142	142	116	81.7	119	83.8	0	0.0
All Airlines	335	335	269	80.3	277	82.7	0	0.0
Broome-Perth								
Qantas	20	20	11	55.0	12	60.0	0	0.0
QantasLink	61	61	46	75.4	44	72.1	0	0.0
Skywest	26	26	15	57.7	8	30.8	0	0.0
Virgin Blue	60	59	42	71.2	40	67.8	1	1.7
All Airlines	167	166	114	68.7	104	62.7	1	0.6

	<i>Sectors</i>		<i>Departures On Time</i>		<i>Arrivals On Time</i>		<i>Cancellations</i>	
	<i>Sched.</i>	<i>Flown</i>	<i>No.</i>	<i>%</i>	<i>No.</i>	<i>%</i>	<i>No.</i>	<i>%</i>
Cairns-Brisbane								
Jetstar	96	96	76	79.2	83	86.5	0	0.0
Qantas	120	120	106	88.3	112	93.3	0	0.0
Virgin Blue	120	119	109	91.6	108	90.8	1	0.8
All Airlines	336	335	291	86.9	303	90.4	1	0.3
Cairns-Melbourne								
Jetstar	30	30	23	76.7	20	66.7	0	0.0
Qantas	30	30	22	73.3	21	70.0	0	0.0
Virgin Blue	30	30	25	83.3	23	76.7	0	0.0
All Airlines	90	90	70	77.8	64	71.1	0	0.0
Cairns-Sydney								
Jetstar	29	28	22	78.6	26	92.9	1	3.4
Qantas	96	96	87	90.6	90	93.8	0	0.0
Virgin Blue	64	64	55	85.9	58	90.6	0	0.0
All Airlines	189	188	164	87.2	174	92.6	1	0.5
Canberra-Adelaide								
Qantas	52	51	48	94.1	49	96.1	1	1.9
Tiger Airways	17	17	14	82.4	14	82.4	0	0.0
Virgin Blue	30	30	25	83.3	26	86.7	0	0.0
All Airlines	99	98	87	88.8	89	90.8	1	1.0
Canberra-Brisbane								
Qantas	139	138	126	91.3	122	88.4	1	0.7
QantasLink	8	8	7	87.5	7	87.5	0	0.0
Virgin Blue	120	118	100	84.7	97	82.2	2	1.7
All Airlines	267	264	233	88.3	226	85.6	3	1.1
Canberra-Melbourne								
Qantas	257	251	219	87.3	216	86.1	6	2.3
QantasLink	38	37	34	91.9	33	89.2	1	2.6
Tiger Airways	60	59	47	79.7	46	78.0	1	1.7
Virgin Blue	176	169	145	85.8	147	87.0	7	4.0
All Airlines	531	516	445	86.2	442	85.7	15	2.8
Canberra-Sydney								
Qantas	201	197	176	89.3	171	86.8	4	2.0
QantasLink	397	379	338	89.2	333	87.9	18	4.5
Virgin Blue	224	214	194	90.7	198	92.5	10	4.5
All Airlines	822	790	708	89.6	702	88.9	32	3.9
Coffs Harbour-Sydney								
QantasLink	120	120	97	80.8	92	76.7	0	0.0
Virgin Blue	60	60	52	86.7	52	86.7	0	0.0
All Airlines	180	180	149	82.8	144	80.0	0	0.0

	<i>Sectors</i>		<i>Departures On Time</i>		<i>Arrivals On Time</i>		<i>Cancellations</i>	
	<i>Sched.</i>	<i>Flown</i>	<i>No.</i>	<i>%</i>	<i>No.</i>	<i>%</i>	<i>No.</i>	<i>%</i>
Darwin-Brisbane								
Jetstar	55	55	40	72.7	51	92.7	0	0.0
Qantas	30	30	16	53.3	25	83.3	0	0.0
Virgin Blue	30	30	20	66.7	24	80.0	0	0.0
All Airlines	115	115	76	66.1	100	87.0	0	0.0
Dubbo-Sydney								
QantasLink	103	102	90	88.2	86	84.3	1	1.0
Regional Express	159	159	119	74.8	119	74.8	0	0.0
All Airlines	262	261	209	80.1	205	78.5	1	0.4
Gold Coast-Adelaide								
Jetstar	30	30	23	76.7	21	70.0	0	0.0
Tiger Airways	30	30	26	86.7	26	86.7	0	0.0
Virgin Blue	30	29	24	82.8	24	82.8	1	3.3
All Airlines	90	89	73	82.0	71	79.8	1	1.1
Gold Coast-Melbourne								
Jetstar	169	162	112	69.1	112	69.1	7	4.1
Tiger Airways	90	90	72	80.0	74	82.2	0	0.0
Virgin Blue	150	150	134	89.3	129	86.0	0	0.0
All Airlines	409	402	318	79.1	315	78.4	7	1.7
Gold Coast-Newcastle								
Jetstar	30	30	21	70.0	22	73.3	0	0.0
Virgin Blue	12	12	12	100.0	12	100.0	0	0.0
All Airlines	42	42	33	78.6	34	81.0	0	0.0
Gold Coast-Sydney								
Jetstar	248	224	143	63.8	135	60.3	24	9.7
Virgin Blue	352	345	309	89.6	310	89.9	7	2.0
All Airlines	600	569	452	79.4	445	78.2	31	5.2
Hamilton Island-Brisbane								
Jetstar	30	30	22	73.3	23	76.7	0	0.0
Virgin Blue	30	30	28	93.3	28	93.3	0	0.0
All Airlines	60	60	50	83.3	51	85.0	0	0.0
Hervey Bay-Sydney								
Jetstar	17	17	8	47.1	8	47.1	0	0.0
Virgin Blue	30	30	27	90.0	27	90.0	0	0.0
All Airlines	47	47	35	74.5	35	74.5	0	0.0
Hobart-Melbourne								
Jetstar	127	122	58	47.5	69	56.6	5	3.9
Qantas	60	60	57	95.0	57	95.0	0	0.0
Tiger Airways	30	30	25	83.3	25	83.3	0	0.0
Virgin Blue	120	120	106	88.3	109	90.8	0	0.0
All Airlines	337	332	246	74.1	260	78.3	5	1.5

	<i>Sectors</i>		<i>Departures On Time</i>		<i>Arrivals On Time</i>		<i>Cancellations</i>	
	<i>Sched.</i>	<i>Flown</i>	<i>No.</i>	<i>%</i>	<i>No.</i>	<i>%</i>	<i>No.</i>	<i>%</i>
Hobart-Sydney								
Jetstar	47	47	24	51.1	32	68.1	0	0.0
Qantas	30	30	23	76.7	25	83.3	0	0.0
Virgin Blue	60	60	52	86.7	54	90.0	0	0.0
All Airlines	137	137	99	72.3	111	81.0	0	0.0
Kalgoorlie-Perth								
Qantas	28	26	21	80.8	22	84.6	2	7.1
QantasLink	73	67	55	82.1	55	82.1	6	8.2
Skywest	24	23	21	91.3	16	69.6	1	4.2
All Airlines	125	116	97	83.6	93	80.2	9	7.2
Karratha-Perth								
Qantas	146	142	124	87.3	112	78.9	4	2.7
QantasLink	34	33	29	87.9	29	87.9	1	2.9
Skywest	23	23	14	60.9	12	52.2	0	0.0
Virgin Blue	52	52	39	75.0	28	53.8	0	0.0
All Airlines	255	250	206	82.4	181	72.4	5	2.0
Launceston-Melbourne								
Jetstar	85	83	37	44.6	46	55.4	2	2.4
QantasLink	59	59	47	79.7	38	64.4	0	0.0
Tiger Airways	30	30	26	86.7	27	90.0	0	0.0
Virgin Blue	121	117	100	85.5	98	83.8	4	3.3
All Airlines	295	289	210	72.7	209	72.3	6	2.0
Launceston-Sydney								
Jetstar	30	29	17	58.6	20	69.0	1	3.3
Virgin Blue	30	30	25	83.3	25	83.3	0	0.0
All Airlines	60	59	42	71.2	45	76.3	1	1.7
Mackay-Brisbane								
Jetstar	82	82	54	65.9	56	68.3	0	0.0
QantasLink	77	77	60	77.9	59	76.6	0	0.0
Virgin Blue	137	136	118	86.8	117	86.0	1	0.7
All Airlines	296	295	232	78.6	232	78.6	1	0.3
Maroochydore-Melbourne								
Jetstar	59	58	25	43.1	29	50.0	1	1.7
Tiger Airways	17	17	17	100.0	17	100.0	0	0.0
Virgin Blue	34	34	28	82.4	29	85.3	0	0.0
All Airlines	110	109	70	64.2	75	68.8	1	0.9
Maroochydore-Sydney								
Jetstar	77	76	65	85.5	64	84.2	1	1.3
Virgin Blue	38	38	31	81.6	32	84.2	0	0.0
All Airlines	115	114	96	84.2	96	84.2	1	0.9

	<i>Sectors</i>		<i>Departures On Time</i>		<i>Arrivals On Time</i>		<i>Cancellations</i>	
	<i>Sched.</i>	<i>Flown</i>	<i>No.</i>	<i>%</i>	<i>No.</i>	<i>%</i>	<i>No.</i>	<i>%</i>
Melbourne-Adelaide								
Jetstar	47	47	41	87.2	41	87.2	0	0.0
Qantas	303	299	248	82.9	244	81.6	4	1.3
Tiger Airways	81	81	50	61.7	56	69.1	0	0.0
Virgin Blue	232	231	191	82.7	194	84.0	1	0.4
All Airlines	663	658	530	80.5	535	81.3	5	0.8
Melbourne-Alice Springs								
Qantas	30	30	22	73.3	23	76.7	0	0.0
Tiger Airways	13	13	12	92.3	12	92.3	0	0.0
All Airlines	43	43	34	79.1	35	81.4	0	0.0
Melbourne-Brisbane								
Qantas	402	397	343	86.4	342	86.1	5	1.2
Virgin Blue	326	318	258	81.1	271	85.2	8	2.5
All Airlines	728	715	601	84.1	613	85.7	13	1.8
Melbourne-Cairns								
Jetstar	30	30	23	76.7	22	73.3	0	0.0
Qantas	30	30	23	76.7	23	76.7	0	0.0
Virgin Blue	30	30	25	83.3	21	70.0	0	0.0
All Airlines	90	90	71	78.9	66	73.3	0	0.0
Melbourne-Canberra								
Qantas	257	253	217	85.8	220	87.0	4	1.6
QantasLink	38	37	30	81.1	30	81.1	1	2.6
Tiger Airways	60	59	44	74.6	47	79.7	1	1.7
Virgin Blue	172	169	131	77.5	131	77.5	3	1.7
All Airlines	527	518	422	81.5	428	82.6	9	1.7
Melbourne-Gold Coast								
Jetstar	168	163	116	71.2	125	76.7	5	3.0
Tiger Airways	90	90	70	77.8	69	76.7	0	0.0
Virgin Blue	150	150	132	88.0	131	87.3	0	0.0
All Airlines	408	403	318	78.9	325	80.6	5	1.2
Melbourne-Hobart								
Jetstar	127	122	71	58.2	72	59.0	5	3.9
Qantas	60	60	52	86.7	48	80.0	0	0.0
Tiger Airways	30	30	25	83.3	24	80.0	0	0.0
Virgin Blue	120	120	106	88.3	101	84.2	0	0.0
All Airlines	337	332	254	76.5	245	73.8	5	1.5
Melbourne-Launceston								
Jetstar	85	82	38	46.3	40	48.8	3	3.5
QantasLink	60	59	49	83.1	41	69.5	1	1.7
Tiger Airways	30	30	26	86.7	25	83.3	0	0.0
Virgin Blue	120	119	98	82.4	94	79.0	1	0.8
All Airlines	295	290	211	72.8	200	69.0	5	1.7

	<i>Sectors</i>		<i>Departures On Time</i>		<i>Arrivals On Time</i>		<i>Cancellations</i>	
	<i>Sched.</i>	<i>Flown</i>	<i>No.</i>	<i>%</i>	<i>No.</i>	<i>%</i>	<i>No.</i>	<i>%</i>
Melbourne-Maroochydore								
Jetstar	60	60	27	45.0	31	51.7	0	0.0
Tiger Airways	17	17	17	100.0	17	100.0	0	0.0
Virgin Blue	34	34	27	79.4	29	85.3	0	0.0
All Airlines	111	111	71	64.0	77	69.4	0	0.0
Melbourne-Mildura								
QantasLink	99	99	79	79.8	73	73.7	0	0.0
Regional Express	88	88	75	85.2	72	81.8	0	0.0
Virgin Blue	31	30	27	90.0	26	86.7	1	3.2
All Airlines	218	217	181	83.4	171	78.8	1	0.5
Melbourne-Newcastle								
Jetstar	80	76	47	61.8	53	69.7	4	5.0
Virgin Blue	30	30	30	100.0	30	100.0	0	0.0
All Airlines	110	106	77	72.6	83	78.3	4	3.6
Melbourne-Perth								
Jetstar	53	52	34	65.4	24	46.2	1	1.9
Qantas	179	179	140	78.2	133	74.3	0	0.0
Tiger Airways	60	60	42	70.0	35	58.3	0	0.0
Virgin Blue	120	120	108	90.0	91	75.8	0	0.0
All Airlines	412	411	324	78.8	283	68.9	1	0.2
Melbourne-Sydney								
Jetstar	13	13	8	61.5	9	69.2	0	0.0
Qantas	881	846	717	84.8	714	84.4	35	4.0
Virgin Blue	708	668	539	80.7	555	83.1	40	5.6
All Airlines	1,602	1,527	1,264	82.8	1,278	83.7	75	4.7
Mildura-Melbourne								
QantasLink	99	99	76	76.8	72	72.7	0	0.0
Regional Express	88	88	73	83.0	73	83.0	0	0.0
Virgin Blue	30	30	25	83.3	25	83.3	0	0.0
All Airlines	217	217	174	80.2	170	78.3	0	0.0
Newcastle-Brisbane								
Jetstar	104	103	71	68.9	70	68.0	1	1.0
QantasLink	68	68	58	85.3	54	79.4	0	0.0
Virgin Blue	48	48	41	85.4	41	85.4	0	0.0
All Airlines	220	219	170	77.6	165	75.3	1	0.5
Newcastle-Gold Coast								
Jetstar	30	30	22	73.3	22	73.3	0	0.0
Virgin Blue	12	12	12	100.0	11	91.7	0	0.0
All Airlines	42	42	34	81.0	33	78.6	0	0.0

	<i>Sectors</i>		<i>Departures On Time</i>		<i>Arrivals On Time</i>		<i>Cancellations</i>	
	<i>Sched.</i>	<i>Flown</i>	<i>No.</i>	<i>%</i>	<i>No.</i>	<i>%</i>	<i>No.</i>	<i>%</i>
Newcastle-Melbourne								
Jetstar	76	76	57	75.0	60	78.9	0	0.0
Virgin Blue	30	30	29	96.7	29	96.7	0	0.0
All Airlines	106	106	86	81.1	89	84.0	0	0.0
Newman-Perth								
QantasLink	90	90	81	90.0	76	84.4	0	0.0
Virgin Blue	34	34	27	79.4	26	76.5	0	0.0
All Airlines	124	124	108	87.1	102	82.3	0	0.0
Perth-Adelaide								
Jetstar	30	29	21	72.4	20	69.0	1	3.3
Qantas	116	116	102	87.9	101	87.1	0	0.0
Tiger Airways	30	30	27	90.0	28	93.3	0	0.0
Virgin Blue	64	64	48	75.0	59	92.2	0	0.0
All Airlines	240	239	198	82.8	208	87.0	1	0.4
Perth-Brisbane								
Qantas	120	120	101	84.2	116	96.7	0	0.0
Virgin Blue	60	60	54	90.0	58	96.7	0	0.0
All Airlines	180	180	155	86.1	174	96.7	0	0.0
Perth-Broome								
Qantas	20	20	15	75.0	16	80.0	0	0.0
QantasLink	61	61	49	80.3	47	77.0	0	0.0
Skywest	25	25	19	76.0	18	72.0	0	0.0
Virgin Blue	60	60	43	71.7	44	73.3	0	0.0
All Airlines	166	166	126	75.9	125	75.3	0	0.0
Perth-Kalgoorlie								
Qantas	28	26	25	96.2	24	92.3	2	7.1
QantasLink	73	67	56	83.6	58	86.6	6	8.2
Skywest	24	23	20	87.0	20	87.0	1	4.2
All Airlines	125	116	101	87.1	102	87.9	9	7.2
Perth-Karratha								
Qantas	147	142	119	83.8	122	85.9	5	3.4
QantasLink	34	33	30	90.9	28	84.8	1	2.9
Skywest	23	23	19	82.6	14	60.9	0	0.0
Virgin Blue	52	52	42	80.8	39	75.0	0	0.0
All Airlines	256	250	210	84.0	203	81.2	6	2.3
Perth-Melbourne								
Jetstar	53	52	19	36.5	28	53.8	1	1.9
Qantas	179	179	131	73.2	138	77.1	0	0.0
Tiger Airways	60	60	35	58.3	40	66.7	0	0.0
Virgin Blue	120	120	105	87.5	110	91.7	0	0.0
All Airlines	412	411	290	70.6	316	76.9	1	0.2

	<i>Sectors</i>		<i>Departures On Time</i>		<i>Arrivals On Time</i>		<i>Cancellations</i>	
	<i>Sched.</i>	<i>Flown</i>	<i>No.</i>	<i>%</i>	<i>No.</i>	<i>%</i>	<i>No.</i>	<i>%</i>
Perth-Newman								
QantasLink	90	90	84	93.3	84	93.3	0	0.0
Virgin Blue	34	34	33	97.1	33	97.1	0	0.0
All Airlines	124	124	117	94.4	117	94.4	0	0.0
Perth-Sydney								
Qantas	200	196	153	78.1	155	79.1	4	2.0
Virgin Blue	146	145	118	81.4	139	95.9	1	0.7
All Airlines	346	341	271	79.5	294	86.2	5	1.4
Port Macquarie-Sydney								
QantasLink	104	104	87	83.7	85	81.7	0	0.0
Virgin Blue	60	60	46	76.7	47	78.3	0	0.0
All Airlines	164	164	133	81.1	132	80.5	0	0.0
Proserpine-Brisbane								
Jetstar	30	30	23	76.7	23	76.7	0	0.0
Virgin Blue	30	30	25	83.3	25	83.3	0	0.0
All Airlines	60	60	48	80.0	48	80.0	0	0.0
Rockhampton-Brisbane								
Jetstar	30	30	17	56.7	20	66.7	0	0.0
QantasLink	148	148	117	79.1	118	79.7	0	0.0
Virgin Blue	147	141	116	82.3	118	83.7	6	4.1
All Airlines	325	319	250	78.4	256	80.3	6	1.8
Sydney-Adelaide								
Jetstar	30	29	25	86.2	26	89.7	1	3.3
Qantas	272	269	232	86.2	232	86.2	3	1.1
Virgin Blue	142	141	122	86.5	125	88.7	1	0.7
All Airlines	444	439	379	86.3	383	87.2	5	1.1
Sydney-Albury								
QantasLink	104	103	84	81.6	79	76.7	1	1.0
Regional Express	109	109	81	74.3	78	71.6	0	0.0
Virgin Blue	60	60	48	80.0	48	80.0	0	0.0
All Airlines	273	272	213	78.3	205	75.4	1	0.4
Sydney-Ballina								
Jetstar	30	30	25	83.3	26	86.7	0	0.0
Regional Express	77	77	53	68.8	51	66.2	0	0.0
Virgin Blue	34	34	25	73.5	26	76.5	0	0.0
All Airlines	141	141	103	73.0	103	73.0	0	0.0
Sydney-Brisbane								
Jetstar	87	80	63	78.8	66	82.5	7	8.0
Qantas	575	547	466	85.2	469	85.7	28	4.9
Virgin Blue	531	516	375	72.7	403	78.1	15	2.8
All Airlines	1,193	1,143	904	79.1	938	82.1	50	4.2

	<i>Sectors</i>		<i>Departures On Time</i>		<i>Arrivals On Time</i>		<i>Cancellations</i>	
	<i>Sched.</i>	<i>Flown</i>	<i>No.</i>	<i>%</i>	<i>No.</i>	<i>%</i>	<i>No.</i>	<i>%</i>
Sydney-Cairns								
Jetstar	30	28	25	89.3	23	82.1	2	6.7
Qantas	96	96	78	81.3	87	90.6	0	0.0
Virgin Blue	64	64	46	71.9	54	84.4	0	0.0
All Airlines	190	188	149	79.3	164	87.2	2	1.1
Sydney-Canberra								
Qantas	204	202	179	88.6	179	88.6	2	1.0
QantasLink	397	380	336	88.4	318	83.7	17	4.3
Virgin Blue	230	220	186	84.5	184	83.6	10	4.3
All Airlines	831	802	701	87.4	681	84.9	29	3.5
Sydney-Coffs Harbour								
QantasLink	120	120	99	82.5	93	77.5	0	0.0
Virgin Blue	60	60	52	86.7	54	90.0	0	0.0
All Airlines	180	180	151	83.9	147	81.7	0	0.0
Sydney-Dubbo								
QantasLink	103	102	95	93.1	91	89.2	1	1.0
Regional Express	159	159	124	78.0	115	72.3	0	0.0
All Airlines	262	261	219	83.9	206	78.9	1	0.4
Sydney-Gold Coast								
Jetstar	246	224	155	69.2	161	71.9	22	8.9
Virgin Blue	351	344	299	86.9	311	90.4	7	2.0
All Airlines	597	568	454	79.9	472	83.1	29	4.9
Sydney-Hervey Bay								
Jetstar	17	17	8	47.1	8	47.1	0	0.0
Virgin Blue	30	30	26	86.7	27	90.0	0	0.0
All Airlines	47	47	34	72.3	35	74.5	0	0.0
Sydney-Hobart								
Jetstar	47	47	38	80.9	36	76.6	0	0.0
Qantas	30	30	29	96.7	30	100.0	0	0.0
Virgin Blue	60	60	48	80.0	51	85.0	0	0.0
All Airlines	137	137	115	83.9	117	85.4	0	0.0
Sydney-Launceston								
Jetstar	30	30	22	73.3	21	70.0	0	0.0
Virgin Blue	30	30	24	80.0	25	83.3	0	0.0
All Airlines	60	60	46	76.7	46	76.7	0	0.0
Sydney-Maroochydore								
Jetstar	77	77	68	88.3	67	87.0	0	0.0
Virgin Blue	38	38	34	89.5	32	84.2	0	0.0
All Airlines	115	115	102	88.7	99	86.1	0	0.0

	<i>Sectors</i>		<i>Departures On Time</i>		<i>Arrivals On Time</i>		<i>Cancellations</i>	
	<i>Sched.</i>	<i>Flown</i>	<i>No.</i>	<i>%</i>	<i>No.</i>	<i>%</i>	<i>No.</i>	<i>%</i>
Sydney-Melbourne								
Jetstar	14	14	12	85.7	12	85.7	0	0.0
Qantas	877	844	748	88.6	703	83.3	33	3.8
Virgin Blue	704	665	568	85.4	536	80.6	39	5.5
All Airlines	1,595	1,523	1,328	87.2	1,251	82.1	72	4.5
Sydney-Perth								
Qantas	199	197	156	79.2	140	71.1	2	1.0
Virgin Blue	146	145	119	82.1	90	62.1	1	0.7
All Airlines	345	342	275	80.4	230	67.3	3	0.9
Sydney-Port Macquarie								
QantasLink	104	104	92	88.5	87	83.7	0	0.0
Virgin Blue	60	60	46	76.7	44	73.3	0	0.0
All Airlines	164	164	138	84.1	131	79.9	0	0.0
Sydney-Townsville								
Jetstar	22	22	20	90.9	20	90.9	0	0.0
Virgin Blue	30	30	28	93.3	27	90.0	0	0.0
All Airlines	52	52	48	92.3	47	90.4	0	0.0
Sydney-Wagga Wagga								
QantasLink	132	132	120	90.9	108	81.8	0	0.0
Regional Express	134	134	109	81.3	97	72.4	0	0.0
All Airlines	266	266	229	86.1	205	77.1	0	0.0
Townsville-Brisbane								
Jetstar	49	49	26	53.1	33	67.3	0	0.0
Qantas	144	144	128	88.9	129	89.6	0	0.0
Virgin Blue	142	142	120	84.5	117	82.4	0	0.0
All Airlines	335	335	274	81.8	279	83.3	0	0.0
Townsville-Sydney								
Jetstar	22	22	19	86.4	20	90.9	0	0.0
Virgin Blue	30	30	27	90.0	25	83.3	0	0.0
All Airlines	52	52	46	88.5	45	86.5	0	0.0
Wagga Wagga-Sydney								
QantasLink	132	131	110	84.0	111	84.7	1	0.8
Regional Express	136	136	108	79.4	105	77.2	0	0.0
All Airlines	268	267	218	81.6	216	80.9	1	0.4

Airports

On time performance is reported for all routes where the passenger load averages over 8000 passengers per month, and where two or more airlines operate in competition. The following data reports by airport against flights operated on those routes only.

Airport	Departures			Arrivals		
	Sectors	On Time		Sectors	On Time	
	Flown	No.	%	Flown	No.	%
Adelaide						
Jetstar	165	108	65.5	165	125	75.8
Qantas	849	740	87.2	851	729	85.7
Tiger Airways	171	139	81.3	171	137	80.1
Virgin Blue	586	491	83.8	585	492	84.1
All Airlines	1 771	1 478	83.5	1 772	1 483	83.7
Relates to services to and from Alice Springs, Brisbane, Canberra, Gold Coast, Melbourne, Perth and Sydney.						
Albury						
QantasLink	103	78	75.7	103	79	76.7
Regional Express	111	88	79.3	109	78	71.6
Virgin Blue	59	46	78.0	60	48	80.0
All Airlines	273	212	77.7	272	205	75.4
Relates to services to and from Sydney only.						
Alice Springs						
Qantas	60	44	73.3	60	49	81.7
Tiger Airways	26	25	96.2	26	25	96.2
All Airlines	86	69	80.2	86	74	86.0
Relates to services to and from Adelaide and Melbourne.						
Ballina						
Jetstar	30	22	73.3	30	26	86.7
Regional Express	76	52	68.4	77	51	66.2
Virgin Blue	34	27	79.4	34	26	76.5
All Airlines	140	101	72.1	141	103	73.0
Relates to services to and from Sydney only.						
Brisbane						
Jetstar	585	406	69.4	585	442	75.6
Qantas	1 581	1 358	85.9	1 582	1 389	87.8
QantasLink	323	267	82.7	301	238	79.1
Virgin Blue	1 781	1 475	82.8	1 777	1 481	83.3
All Airlines	4 270	3 506	82.1	4 245	3 550	83.6
Relates to services to and from Adelaide, Cairns, Canberra, Darwin, Hamilton Island, Mackay, Melbourne, Newcastle, Perth, Proserpine, Rockhampton, Sydney and Townsville.						

Airport	Departures			Arrivals		
	Sectors	On Time		Sectors	On Time	
	Flown	No.	%	Flown	No.	%
Broome						
Qantas	20	11	55.0	20	16	80.0
QantasLink	61	46	75.4	61	47	77.0
Skywest	26	15	57.7	25	18	72.0
Virgin Blue	59	42	71.2	60	44	73.3
All Airlines	166	114	68.7	166	125	75.3
Relates to services to and from Perth only.						
Cairns						
Jetstar	154	121	78.6	154	115	74.7
Qantas	246	215	87.4	246	217	88.2
Virgin Blue	213	189	88.7	213	183	85.9
All Airlines	613	525	85.6	613	515	84.0
Relates to services to and from Brisbane, Melbourne and Sydney.						
Canberra						
Qantas	637	569	89.3	641	562	87.7
QantasLink	424	379	89.4	425	356	83.8
Tiger Airways	76	61	80.3	76	61	80.3
Virgin Blue	531	464	87.4	537	432	80.4
All Airlines	1 668	1 473	88.3	1 679	1 411	84.0
Relates to services to and from Adelaide, Brisbane, Melbourne and Sydney.						
Coffs Harbour						
QantasLink	120	97	80.8	120	93	77.5
Virgin Blue	60	52	86.7	60	54	90.0
All Airlines	180	149	82.8	180	147	81.7
Relates to services to and from Sydney only.						
Darwin						
Jetstar	55	40	72.7	55	31	56.4
Qantas	30	16	53.3	30	24	80.0
Virgin Blue	30	20	66.7	30	22	73.3
All Airlines	115	76	66.1	115	77	67.0
Relates to services to and from Brisbane only.						
Dubbo						
QantasLink	102	90	88.2	102	91	89.2
Regional Express	159	119	74.8	159	115	72.3
All Airlines	261	209	80.1	261	206	78.9
Relates to services to and from Sydney only.						
Gold Coast						
Jetstar	446	299	67.0	447	331	74.0
Tiger Airways	120	98	81.7	120	95	79.2
Virgin Blue	536	479	89.4	535	478	89.3
All Airlines	1 102	876	79.5	1 102	904	82.0
Relates to services to and from Adelaide, Melbourne, Newcastle and Sydney.						

Airport	Departures			Arrivals		
	Sectors	On Time		Sectors	On Time	
	Flown	No.	%	Flown	No.	%
Hamilton Island						
Jetstar	30	22	73.3	30	23	76.7
Virgin Blue	30	28	93.3	30	28	93.3
All Airlines	60	50	83.3	60	51	85.0
Relates to services to and from Brisbane only.						
Hervey Bay						
Jetstar	17	8	47.1	17	8	47.1
Virgin Blue	30	27	90.0	30	27	90.0
All Airlines	47	35	74.5	47	35	74.5
Relates to services to and from Sydney only.						
Hobart						
Jetstar	169	82	48.5	169	108	63.9
Qantas	90	80	88.9	90	78	86.7
Tiger Airways	30	25	83.3	30	24	80.0
Virgin Blue	180	158	87.8	180	152	84.4
All Airlines	469	345	73.6	469	362	77.2
Relates to services to and from Melbourne and Sydney.						
Kalgoorlie						
Qantas	26	21	80.8	26	24	92.3
QantasLink	67	55	82.1	67	58	86.6
Skywest	23	21	91.3	23	20	87.0
All Airlines	116	97	83.6	116	102	87.9
Relates to services to and from Perth only.						
Karratha						
Qantas	142	124	87.3	142	122	85.9
QantasLink	33	29	87.9	33	28	84.8
Skywest	23	14	60.9	23	14	60.9
Virgin Blue	52	39	75.0	52	39	75.0
All Airlines	250	206	82.4	250	203	81.2
Relates to services to and from Perth only.						
Launceston						
Jetstar	112	54	48.2	112	61	54.5
QantasLink	59	47	79.7	59	41	69.5
Tiger Airways	30	26	86.7	30	25	83.3
Virgin Blue	147	125	85.0	149	119	79.9
All Airlines	348	252	72.4	350	246	70.3
Relates to services to and from Melbourne and Sydney.						

Airport	Departures			Arrivals		
	Sectors Flown	On Time No.	On Time %	Sectors Flown	On Time No.	On Time %
Mackay						
Jetstar	82	54	65.9	82	56	68.3
QantasLink	77	60	77.9	77	60	77.9
Virgin Blue	136	118	86.8	136	114	83.8
All Airlines	295	232	78.6	295	230	78.0
Relates to services to and from Brisbane only.						
Maroochydore						
Jetstar	134	90	67.2	137	98	71.5
Tiger Airways	17	17	100.0	17	17	100.0
Virgin Blue	72	59	81.9	72	61	84.7
All Airlines	223	166	74.4	226	176	77.9
Relates to services to and from Melbourne and Sydney.						
Melbourne						
Jetstar	645	405	62.8	643	400	62.2
Qantas	2 094	1 762	84.1	2 095	1 749	83.5
QantasLink	195	158	81.0	195	143	73.3
Regional Express	88	75	85.2	88	73	83.0
Tiger Airways	380	286	75.3	380	300	78.9
Virgin Blue	2 019	1 672	82.8	2 018	1 712	84.8
All Airlines	5 421	4 358	80.4	5 419	4 377	80.8
Relates to services to and from Adelaide, Alice Springs, Brisbane, Cairns, Canberra, Gold Coast, Hobart, Launceston, Maroochydore, Mildura, Newcastle, Perth and Sydney.						
Mildura						
QantasLink	99	76	76.8	99	73	73.7
Regional Express	88	73	83.0	88	72	81.8
Virgin Blue	30	25	83.3	30	26	86.7
All Airlines	217	174	80.2	217	171	78.8
Relates to services to and from Melbourne only.						
Newcastle						
Jetstar	209	150	71.8	209	160	76.6
QantasLink	68	58	85.3	68	52	76.5
Virgin Blue	90	82	91.1	90	82	91.1
All Airlines	367	290	79.0	367	294	80.1
Relates to services to and from Brisbane, Gold Coast and Melbourne.						
Newman						
QantasLink	90	81	90.0	90	84	93.3
Virgin Blue	34	27	79.4	34	33	97.1
All Airlines	124	108	87.1	124	117	94.4
Relates to services to and from Perth only.						

Airport	Departures			Arrivals		
	Sectors Flown	On Time No.	On Time %	Sectors Flown	On Time No.	On Time %
Perth						
Jetstar	81	40	49.4	82	43	52.4
Qantas	799	646	80.9	800	584	73.0
QantasLink	251	219	87.3	251	204	81.3
Skywest	71	58	81.7	72	36	50.0
Tiger Airways	90	62	68.9	90	65	72.2
Virgin Blue	535	443	82.8	534	354	66.3
All Airlines	1 827	1 468	80.4	1 829	1 286	70.3
Relates to services to and from Adelaide, Brisbane, Broome, Kalgoorlie, Karratha, Melbourne, Newman, and Sydney.						
Port Macquarie						
QantasLink	104	87	83.7	104	87	83.7
Virgin Blue	60	46	76.7	60	44	73.3
All Airlines	164	133	81.1	164	131	79.9
Relates to services to and from Sydney only.						
Proserpine						
Jetstar	30	23	76.7	30	22	73.3
Virgin Blue	30	25	83.3	30	26	86.7
All Airlines	60	48	80.0	60	48	80.0
Relates to services to and from Brisbane only.						
Rockhampton						
Jetstar	30	17	56.7	30	20	66.7
QantasLink	148	117	79.1	170	134	78.8
Virgin Blue	141	116	82.3	143	115	80.4
All Airlines	319	250	78.4	343	269	78.4
Relates to services to and from Brisbane only.						
Sydney						
Jetstar	598	461	77.1	595	420	70.6
Qantas	2 185	1 888	86.4	2 176	1 862	85.6
QantasLink	941	826	87.8	939	786	83.7
Regional Express	479	367	76.6	482	351	72.8
Virgin Blue	2 497	2 046	81.9	2 493	2 086	83.7
All Airlines	6 700	5 588	83.4	6 685	5 505	82.3
Relates to services to and from Adelaide, Albury, Ballina, Brisbane, Cairns, Canberra, Coffs Harbour, Dubbo, Gold Coast, Hervey Bay, Hobart, Launceston, Maroochydore, Melbourne, Perth, Port Macquarie, Townsville and Wagga Wagga.						
Townsville						
Jetstar	71	45	63.4	71	53	74.6
Qantas	144	128	88.9	144	125	86.8
Virgin Blue	172	147	85.5	172	146	84.9
All Airlines	387	320	82.7	387	324	83.7
Relates to services to and from Brisbane and Sydney.						

<i>Airport</i>	<i>Departures</i>			<i>Arrivals</i>		
	<i>Sectors</i>	<i>On Time</i>		<i>Sectors</i>	<i>On Time</i>	
	<i>Flown</i>	<i>No.</i>	<i>%</i>	<i>Flown</i>	<i>No.</i>	<i>%</i>
Wagga Wagga						
QantasLink	131	110	84.0	132	108	81.8
Regional Express	136	108	79.4	134	97	72.4
All Airlines	267	218	81.6	266	205	77.1

Relates to services to and from Sydney only.

Definitions

On time departure A flight departure is counted as "on time" if it departs the gate within 15 minutes of the scheduled departure time shown in the carriers' schedule.

On time arrival A flight arrival is counted as "on time" if it arrived at the gate within 15 minutes of the scheduled arrival time shown in the carriers' schedule.
Neither diverted nor cancelled flights count as on time.

Cancellation A flight is regarded as a cancellation if it is cancelled or rescheduled less than 7 days prior to its scheduled departure time.

On time departure percentage The percentage of on time departures is measured against the number of departures *operated* on any particular sector.

On time arrival percentage The percentage of on time arrivals is measured against the number of arrivals *operated* on any particular sector.

Cancellation percentage The percentage of cancellations is measured against the number of services *scheduled* on any particular sector.
