



Australian Government

Department of Infrastructure and Regional Development

Bureau of Infrastructure, Transport and Regional Economics

STATISTICAL REPORT



Aviation

Domestic airline on time performance
July 2017

© Commonwealth of Australia 2017

ISSN: 1832-0759

Ownership of intellectual property rights in this publication

Unless otherwise noted, copyright (and any other intellectual property rights, if any) in this publication is owned by the Commonwealth of Australia (referred to below as the Commonwealth).

Disclaimer

The material contained in this publication is made available on the understanding that the Commonwealth is not providing professional advice, and that users exercise their own skill and care with respect to its use, and seek independent advice if necessary.

The Commonwealth makes no representations or warranties as to the contents or accuracy of the information contained in this publication. To the extent permitted by law, the Commonwealth disclaims liability to any person or organisation in respect of anything done, or omitted to be done, in reliance upon information contained in this publication.

Creative Commons licence

With the exception of (a) the Coat of Arms; and (b) the Department of Infrastructure and Regional Development's photos and graphics, copyright in this publication is licensed under a Creative Commons Attribution 3.0 Australia Licence.

Creative Commons Attribution 3.0 Australia Licence is a standard form licence agreement that allows you to copy, communicate and adapt this publication provided that you attribute the work to the Commonwealth and abide by the other licence terms. A summary of the licence terms is available from <http://creativecommons.org/licenses/by/3.0/au/deed.en>. The full licence terms are available from <http://creativecommons.org/licenses/by/3.0/au/legalcode>.

Use of the Coat of Arms

The Department of the Prime Minister and Cabinet sets the terms under which the Coat of Arms is used. Please refer to the Department's Commonwealth Coat of Arms and Government branding web page <http://www.dpmmc.gov.au/guidelines/index.cfm#brand> and, in particular, the Guidelines on the use of the Commonwealth Coat of Arms publication.

An appropriate citation for this report is:

Bureau of Infrastructure, Transport and Regional Economics (BITRE), 2017, Domestic airline on time performance, Statistical Report, BITRE, Canberra ACT.

Contact us

This publication is available in PDF format. All other rights are reserved, including in relation to any Departmental logos or trade marks which may exist. For enquiries regarding the licence and any use of this publication, please contact:

Bureau of Infrastructure, Transport and Regional Economics (BITRE)
Department of Infrastructure and Regional Development
GPO Box 501, Canberra ACT 2601, Australia
Telephone: (international) +61 2 6274 7210
Fax: (international) +61 2 6274 6855
Email: bitre@infrastructure.gov.au
Website: www.bitre.gov.au

Inquiries

Should you require additional information about the statistics contained in this publication:

Telephone (02) 6274 7790 or Facsimile (02) 6274 7727

Electronic mail: AVSTATS@infrastructure.gov.au

Web site: <http://www.bitre.gov.au/statistics/aviation/otphome.aspx>

Foreword

The Bureau of Infrastructure, Transport and Regional Economics (BITRE) monitors the punctuality and reliability of major domestic airlines operating between Australian airports. The purpose of this is to allow for evaluation of overall industry and individual airline performance, so that consumers of air travel can make informed decisions.

The following domestic airlines currently report this information monthly to the BITRE: Jetstar, Qantas, QantasLink, Regional Express, Tigerair Australia, Virgin Australia and Virgin Australia Regional Airlines. Data has been gathered since November 2003, although some airlines commenced reporting at a later date, including Jetstar which first reported in May 2004, MacAir in July 2005, Tigerair Australia in April 2008 and Virgin Australia Regional Airlines in May 2013. MacAir ceased operations in February 2009 and data was not received for December 2008 onwards. Virgin Blue was rebranded as Virgin Australia in May 2011 and Tiger Airways was rebranded as Tigerair Australia in July 2013 and time series data in Microsoft Excel spreadsheet format on the BITRE website have been revised to reflect these changes. Services operated by Skywest on behalf of Virgin Australia using ATR/F100 aircraft commenced in November 2011 and were shown separately as Virgin Australia – ATR/F100 Operations. Virgin Australia Regional Airlines commenced operations in May 2013. It was formed after the acquisition of Skywest by Virgin Australia and represented a combination of operations previously reported under Skywest and Virgin Australia – ATR/F100 Operations. In January 2016, Virgin Australia transferred their ATR fleet from Virgin Australia Regional Airlines to Virgin Australia.

Information presented in this report is for Australian domestic routes for which the passenger load averaged 8 000 or more passengers per month over the previous six months and where two or more airlines operated in competition on those routes. There were 65 routes that met this definition in July 2017. Over time, routes which meet these criteria change as airline networks and traffic levels vary.

Participating airlines report their overall monthly network performance where this is possible.

Total industry figures encompass all services operated by reporting airlines only. These airlines collectively carried over 95 per cent of total domestic passengers (regular public transport only) in 2016.

The method of capturing on time performance varies between airlines utilising different recording systems. Jetstar and Qantas jet aircraft use Aircraft Communication Addressing and Reporting System (ACARS) to electronically measure on time performance. Regional Express, Tigerair Australia, Virgin Australia, Virgin Australia Regional Airlines and the Qantas non-jet fleet record on time performance manually using records from pilots, gate agents and/or ground crews.

After initial data is collected, aggregate reports are audited internally by participating airlines prior to publication.

Reports and detailed time series data in Microsoft Excel spreadsheet format are available from the BITRE website at: <http://www.bitre.gov.au/statistics/aviation/otphome.aspx>.

Contents

	Page
Industry performance	1
Individual routes	10
Airports	23
Definitions	30

Industry performance

For July 2017, on time performance over all routes operated by participating airlines (Jetstar, Qantas, QantasLink, Regional Express, Tigerair Australia, Virgin Australia and Virgin Australia Regional Airlines) averaged 79.0 per cent for on time arrivals and 79.9 per cent for on time departures. Cancellations represented 1.9 per cent of all scheduled flights. The equivalent figures for July 2016 were 77.3 per cent for on time arrivals, 79.5 per cent for on time departures and 2.2 per cent for cancellations.

This month's on time arrivals figure was lower than the long term average performance for all routes (82.8 per cent) and the on time departures figure was also lower than the long term average (84.1 per cent). The rate of cancellations was higher than the long term average of 1.4 per cent.

Qantas achieved the highest on time arrivals among the major domestic airlines at 81.3 per cent followed by Virgin Australia at 78.0 per cent, Jetstar at 73.2 per cent and Tigerair Australia at 69.1 per cent. Of the regional airlines, Virgin Australia Regional Airlines recorded 84.9 per cent for on time arrivals, followed by QantasLink at 83.4 per cent and Regional Express at 80.6 per cent. The Qantas network (Qantas and QantasLink combined operations) recorded 82.4 per cent for on time arrivals while the Virgin Australia network (Virgin Australia and Virgin Australia Regional Airlines combined operations) recorded 78.4 per cent.

Qantas also achieved the highest level of on time departures among the major domestic airlines for July 2017 at 83.0 per cent, followed by Virgin Australia at 81.1 per cent, Tigerair Australia at 71.2 per cent and Jetstar at 69.5 per cent. Of the regional airlines, Virgin Australia Regional Airlines recorded 86.9 per cent, followed by QantasLink at 83.3 per cent and Regional Express at 82.9 per cent. The Qantas network recorded 83.2 per cent for on time departures while the Virgin Australia network recorded 81.5 per cent.

Tigerair Australia recorded the highest percentage of cancellations (4.0 per cent) during the month, followed by QantasLink (2.4 per cent), Regional Express (2.3 per cent), Virgin Australia (1.9 per cent), Qantas (1.4 per cent), Jetstar (0.9 per cent) and Virgin Australia Regional Airlines (0.4 per cent).

Airlines' on time performance varies across the routes they serve. Individual route data by specific airline for 65 routes are shown on pages 10-22.

Of the 65 routes which met the criteria for on time performance reporting in July 2017, the Townsville-Cairns route had the highest percentage of on time arrivals (96.7 per cent) and the Cairns-Townsville and Townsville-Cairns routes recorded the highest percentage of on time departures (both 97.3 per cent). The Brisbane-Perth route had the lowest percentage of on time arrivals (44.6 per cent) and the Ayers Rock-Sydney route had the lowest percentage of on time departures (40.3 per cent).

Cancellations were highest on the Armidale-Sydney route at 5.0 per cent, followed by the Sydney-Wagga Wagga route at 4.3 per cent, the Melbourne-Sydney and Sydney-Canberra

routes at 4.2 percent, the Sydney-Armidale route at 4.0 per cent and the Canberra-Sydney, Wagga Wagga-Sydney and Sydney-Melbourne routes at 3.9 per cent.

Kalgoorlie Airport recorded the highest percentage of on time arrivals (93.8 per cent) and the highest percentage of on time departures (95.8 per cent). Ayers Rock Airport recorded the lowest percentage of on time arrivals (50.0 per cent) and the lowest percentage of on time departures (40.3 per cent). These figures only refer to reported routes and do not cover all flights at these airports.

Table 1 On time performance for July 2017 — Total Industry

	<i>Sectors</i>		<i>Arrivals On Time</i>		<i>Departures On Time</i>		<i>Cancellations</i>	
	<i>Scheduled</i>	<i>Flown</i>	<i>No.</i>	<i>%</i>	<i>No.</i>	<i>%</i>	<i>No.</i>	<i>%</i>
Jetstar	7 586	7 514	5 498	73.2	5 223	69.5	72	0.9
Qantas	9 238	9 108	7 407	81.3	7 559	83.0	130	1.4
QantasLink	10 535	10 277	8 567	83.4	8 560	83.3	258	2.4
Regional Express	6 573	6 421	5 176	80.6	5 326	82.9	152	2.3
Tigerair Australia	2 631	2 527	1 745	69.1	1 799	71.2	104	4.0
Virgin Australia	11 841	11 618	9 065	78.0	9 426	81.1	223	1.9
Virgin Australia Regional Airlines	760	757	643	84.9	658	86.9	3	0.4
All Airlines	49 164	48 222	38 101	79.0	38 551	79.9	942	1.9
Qantas - all QF designated services	19 773	19 385	15 974	82.4	16 119	83.2	388	2.0
Virgin Australia - all VA designated services	12 601	12 375	9 708	78.4	10 084	81.5	226	1.8

Total airline network data (including routes not shown in this report).

Airlines' on time performance varies across the routes they serve. Individual route data by specific airline for 65 routes are shown on pages 10-22.

Table 2 Top ten routes for on time performance for July 2017 (participating airlines only)

<i>Arrivals</i>		<i>Departures</i>	
<i>Route</i>	<i>On Time (%)</i>	<i>Route</i>	<i>On Time (%)</i>
Townsville-Cairns	96.7	Cairns-Townsville	97.3
Cairns-Townsville	95.7	Townsville-Cairns	97.3
Adelaide-Gold Coast	95.2	Kalgoorlie-Perth	95.8
Darwin-Alice Springs	94.6	Darwin-Alice Springs	94.6
Perth-Kalgoorlie	93.8	Perth-Kalgoorlie	93.8
Perth-Sydney	92.9	Brisbane-Mount Isa	93.2
Kalgoorlie-Perth	92.3	Gold Coast-Adelaide	90.3
Brisbane-Hamilton Island	91.0	Mount Isa-Brisbane	90.1
Hamilton Island-Brisbane	91.0	Perth-Port Hedland	89.6
Perth-Brisbane	90.6	Adelaide-Port Lincoln	89.6

Table 3 Top ten airports for on time performance for July 2017 (participating airlines and reported routes only)

<i>Arrivals</i>		<i>Departures</i>	
<i>Airport</i>	<i>On Time (%)</i>	<i>Airport</i>	<i>On Time (%)</i>
Kalgoorlie	93.8	Kalgoorlie	95.8
Karratha	88.8	Mount Isa	90.1
Port Hedland	88.5	Port Hedland	88.9
Newman	88.3	Karratha	87.6
Alice Springs	87.3	Coffs Harbour	87.6
Coffs Harbour	87.1	Newman	86.8
Townsville	86.4	Tamworth	86.1
Mount Isa	86.3	Geraldton	85.7
Hamilton Island	86.2	Newcastle	85.3
Broome	86.1	Townsville	84.9

Total industry on time performance

Figure 1 On time performance (by month from July 2014)—Total Industry

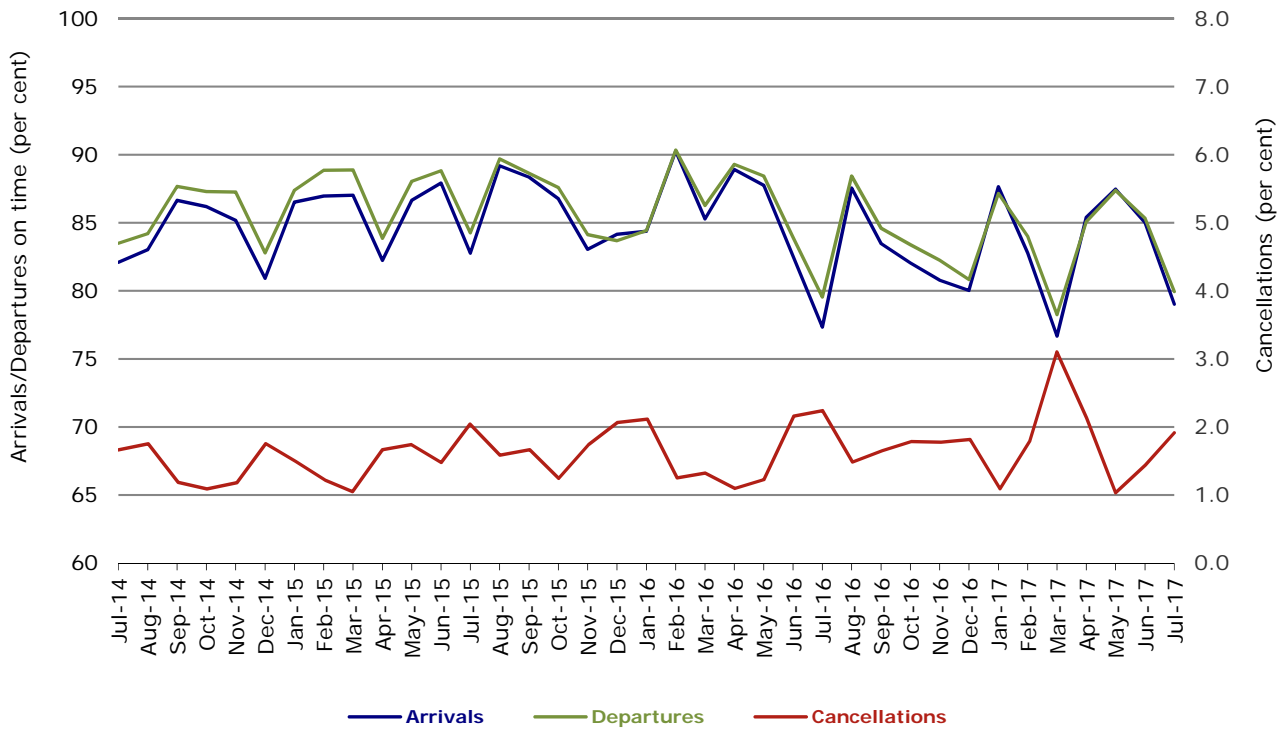


Figure 2 Arrivals on time (by month from July 2016)

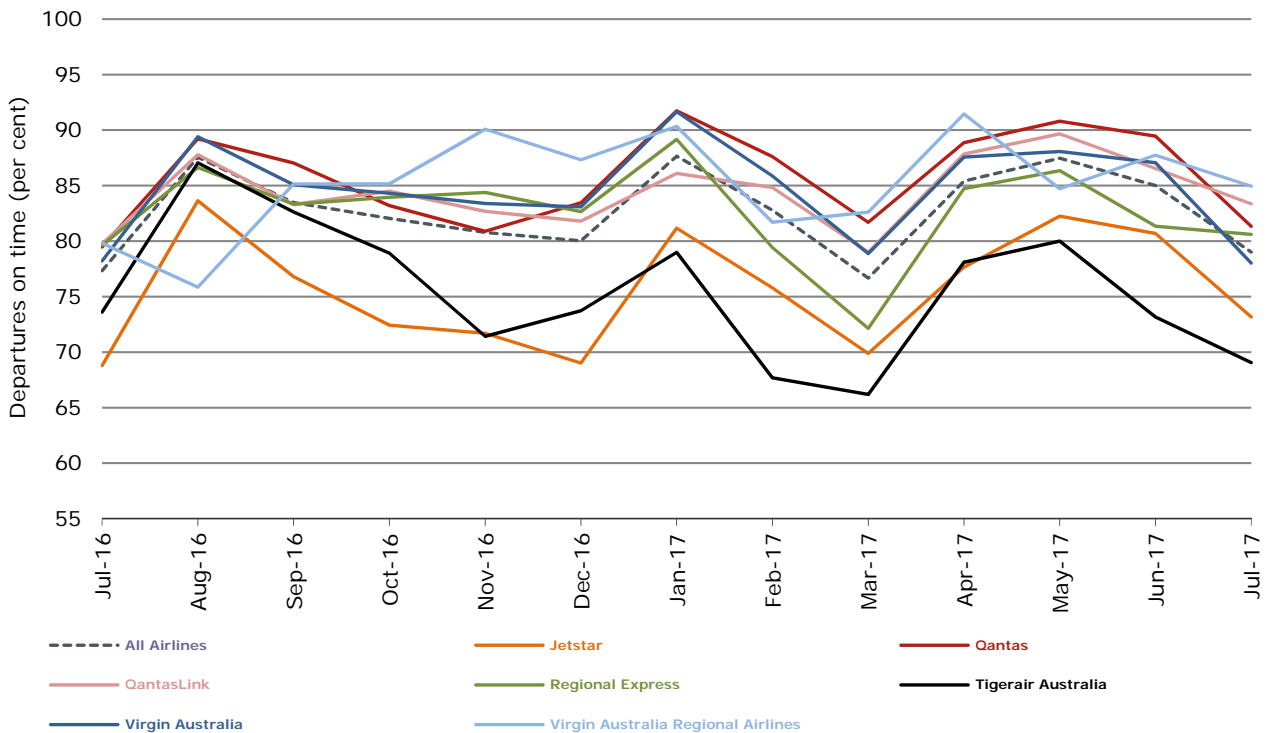


Figure 3 Departures on time (by month from July 2016)

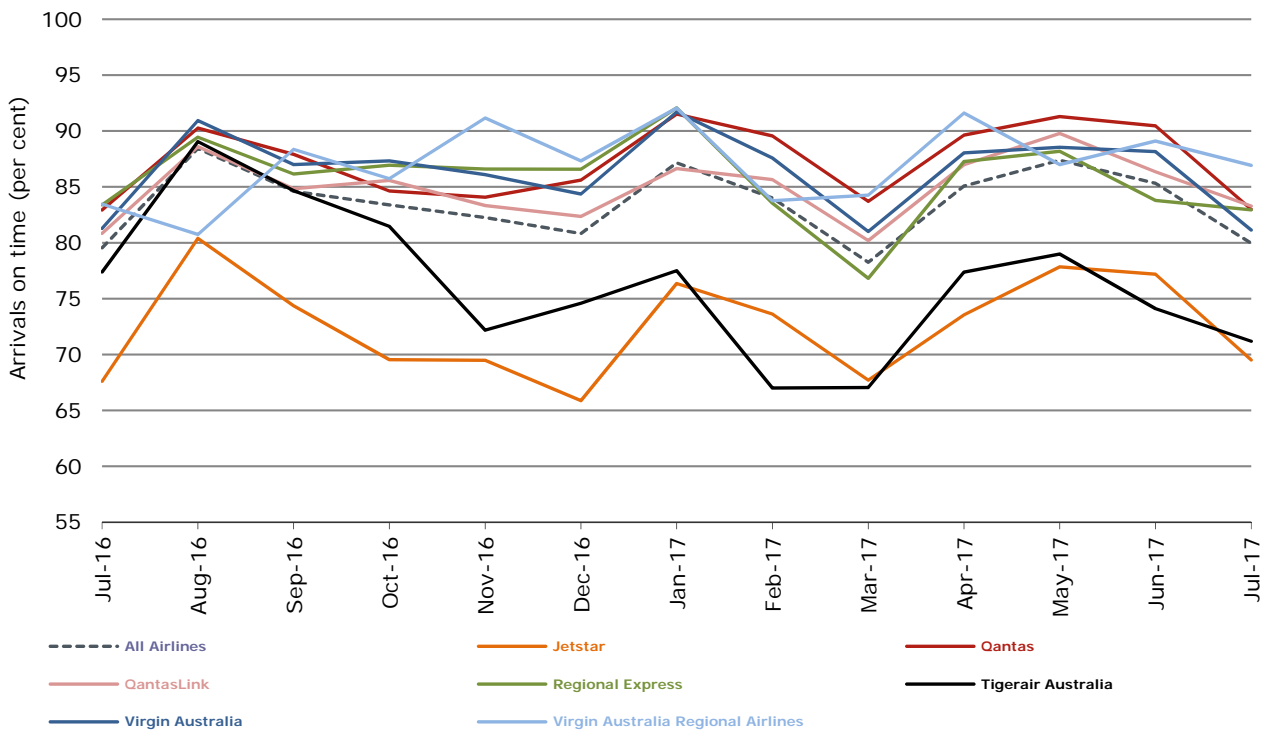
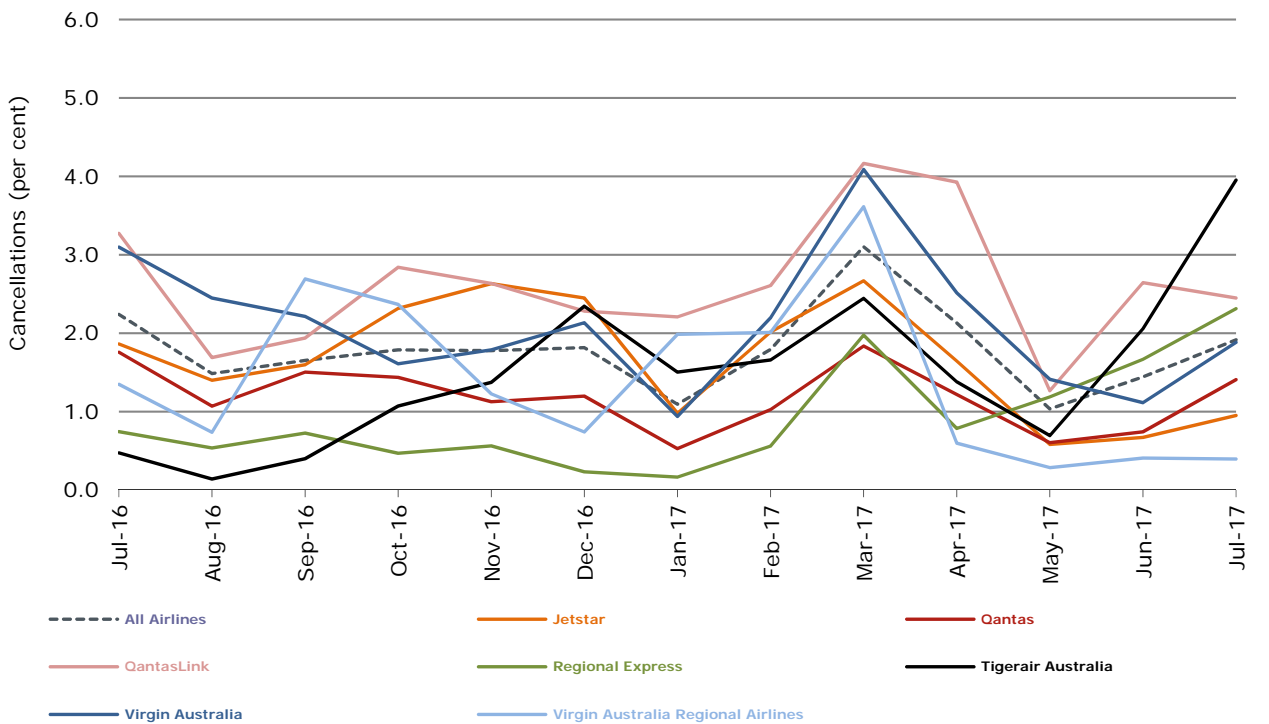


Figure 4 Cancellations (by month from July 2016)



Major domestic airlines on time performance

Figure 5 On time performance (by month from July 2014)—Jetstar

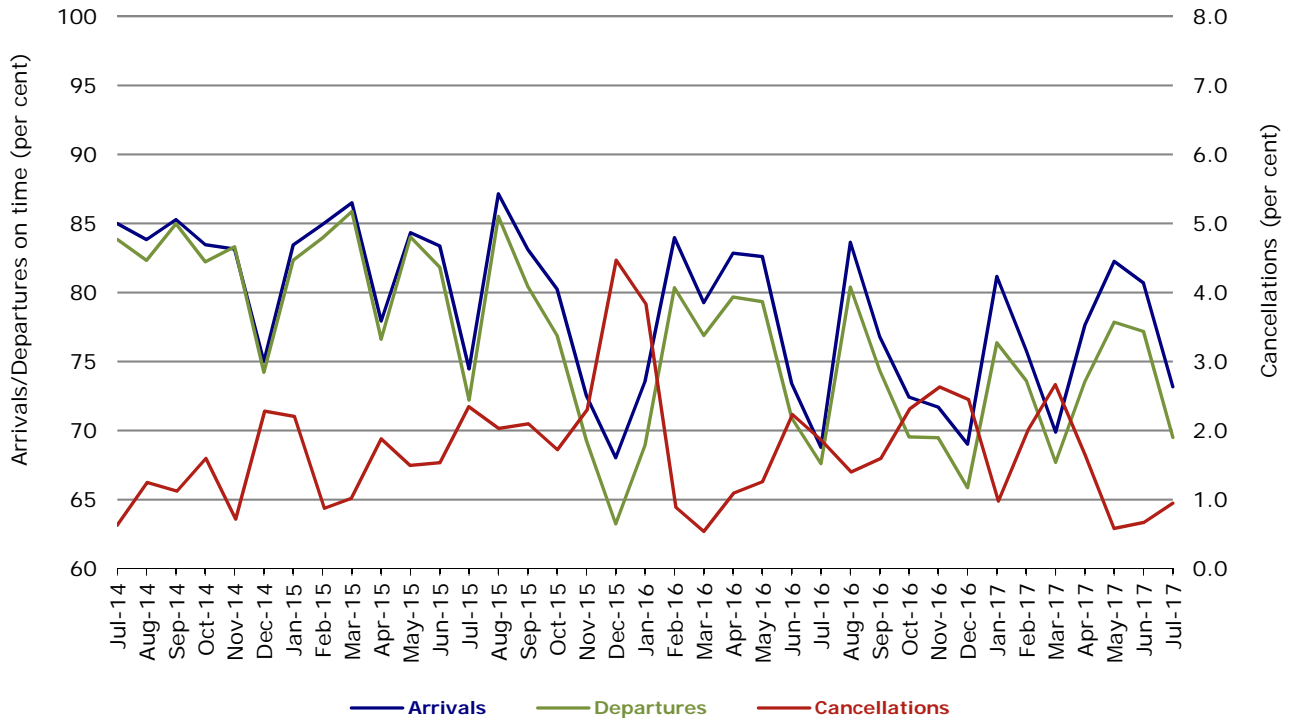


Figure 6 On time performance (by month from July 2014)—Qantas

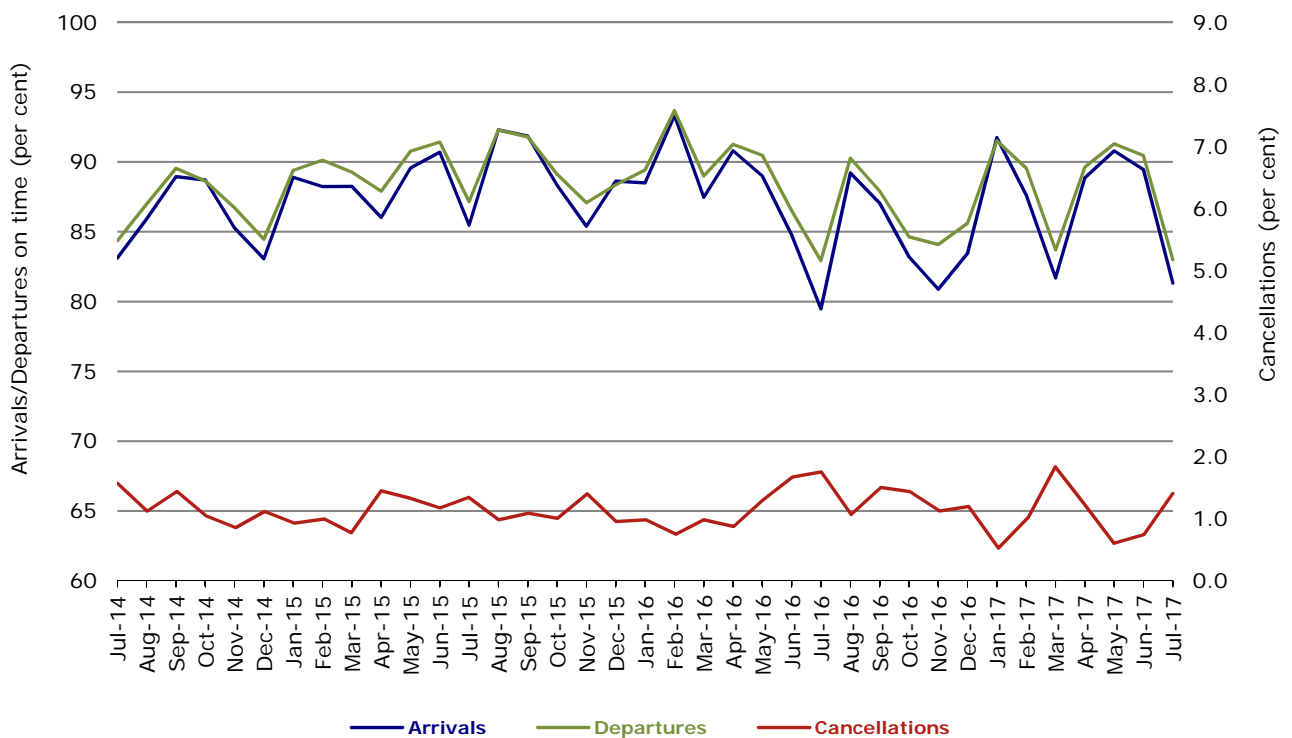


Figure 7 On time performance (by month from July 2014)—Tigerair Australia

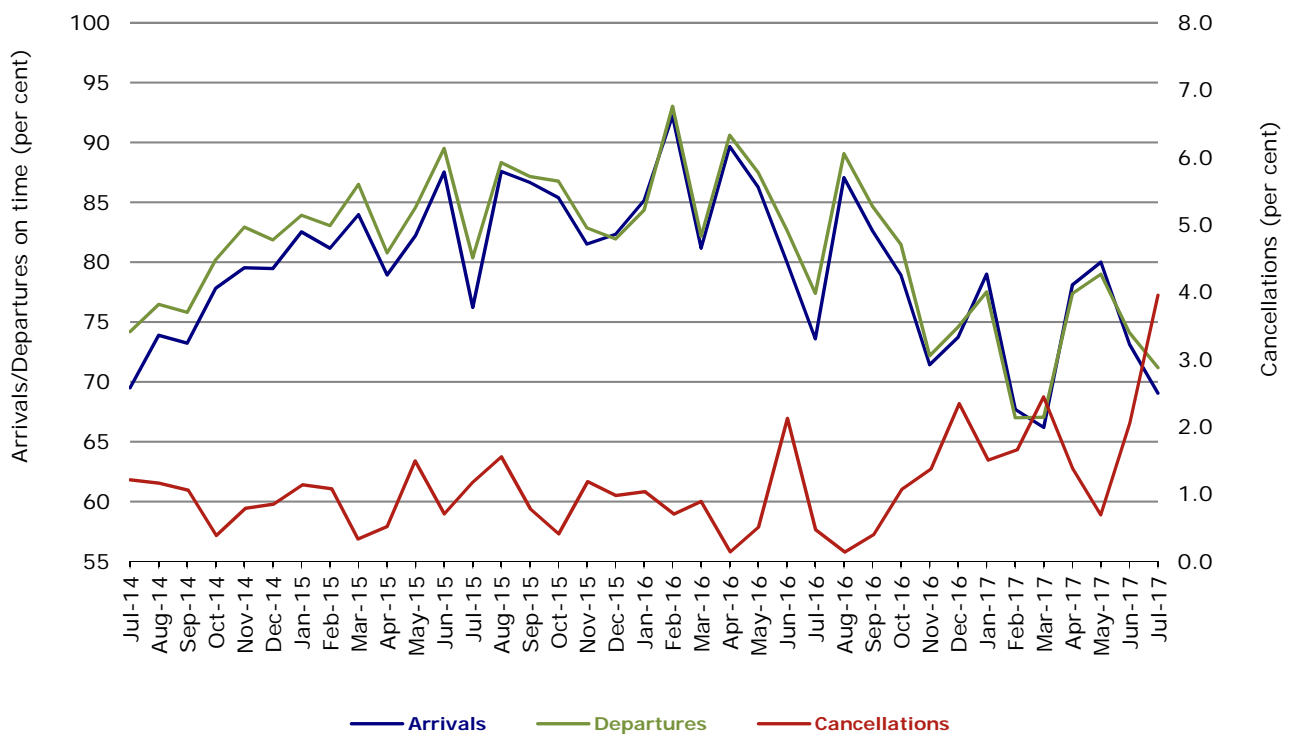
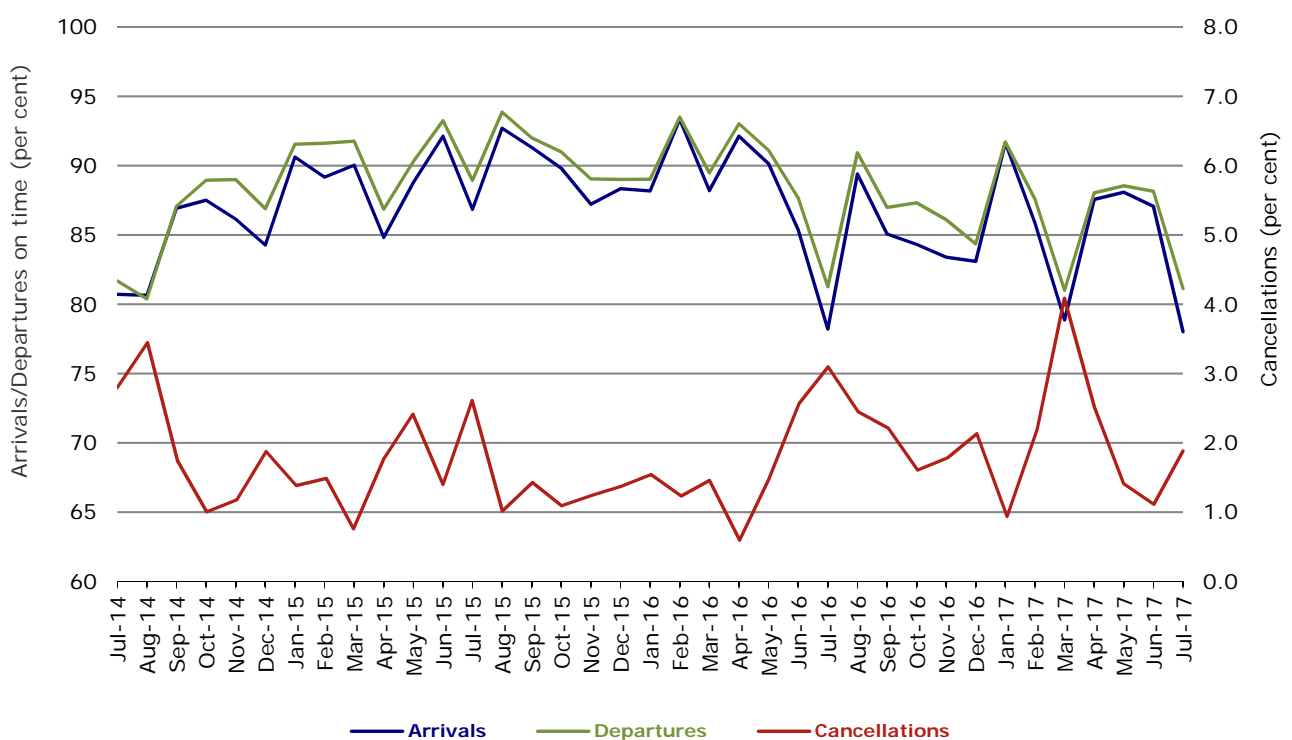


Figure 8 On time performance (by month from July 2014)—Virgin Australia



In January 2016, Virgin Australia transferred their ATR fleet from Virgin Australia Regional Airlines to Virgin Australia.

Major regional airlines on time performance

Figure 9 On time performance (by month from July 2014)—QantasLink

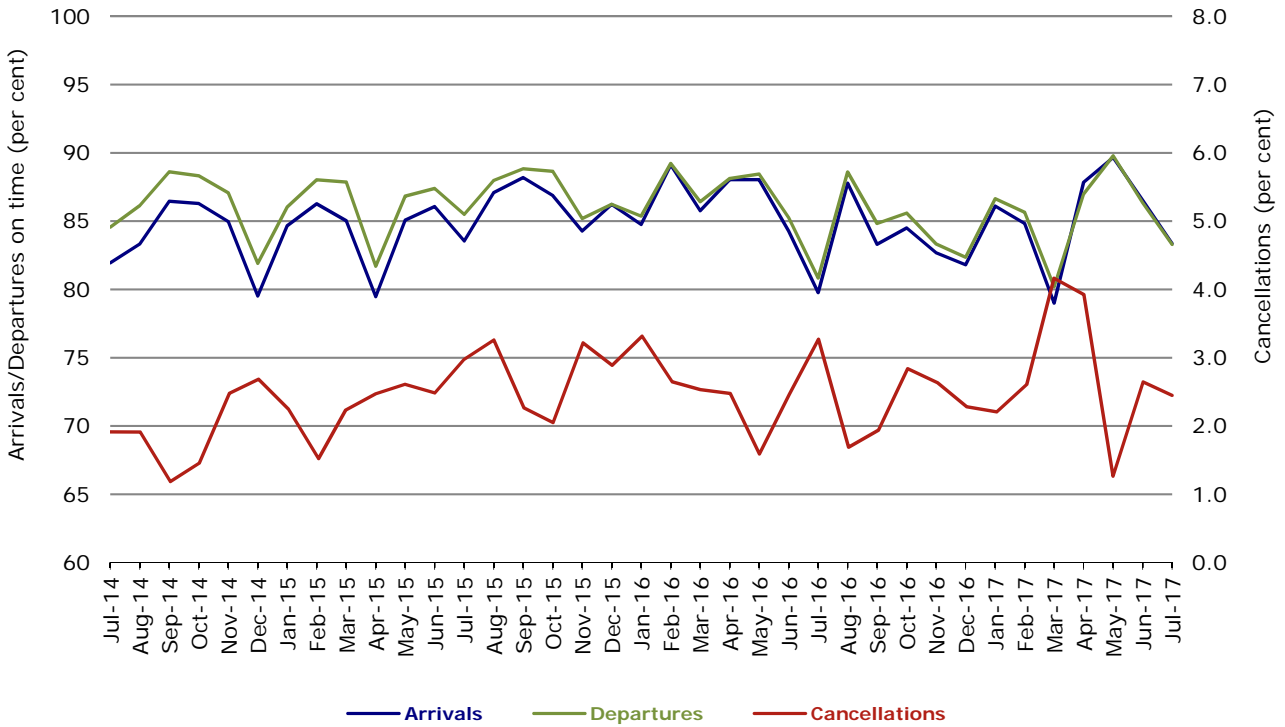


Figure 10 On time performance (by month from July 2014)—Regional Express

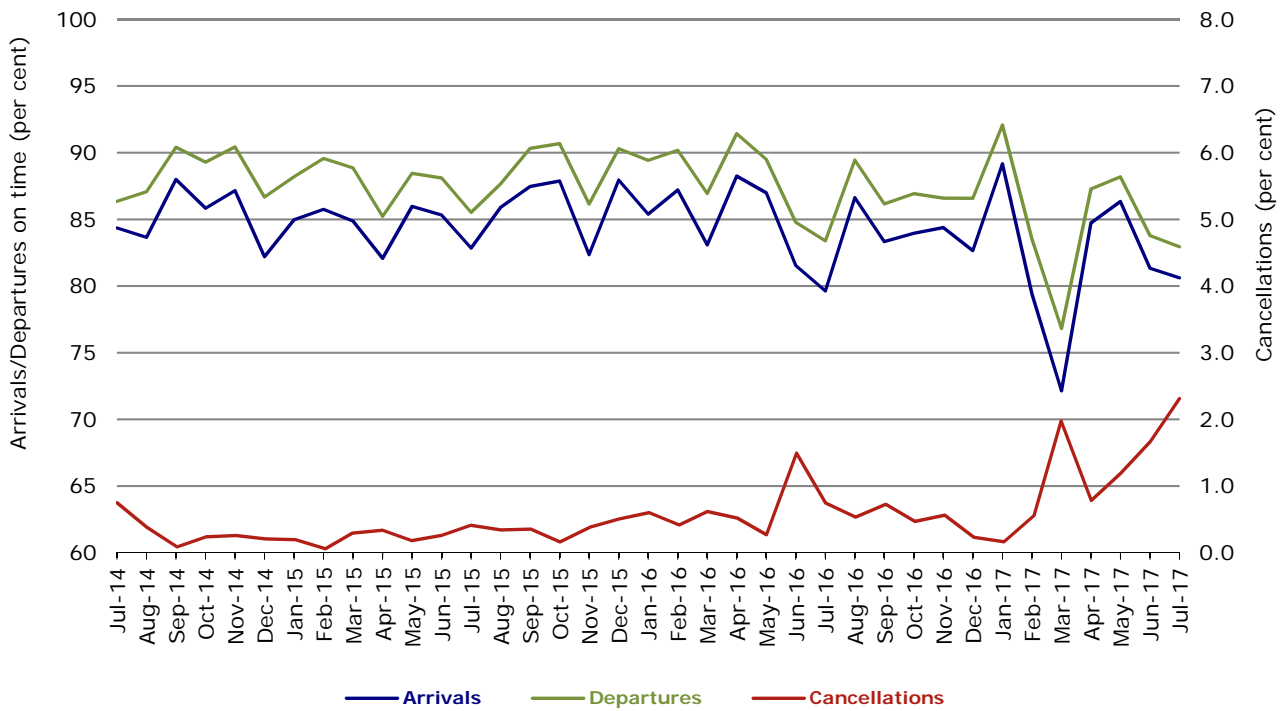
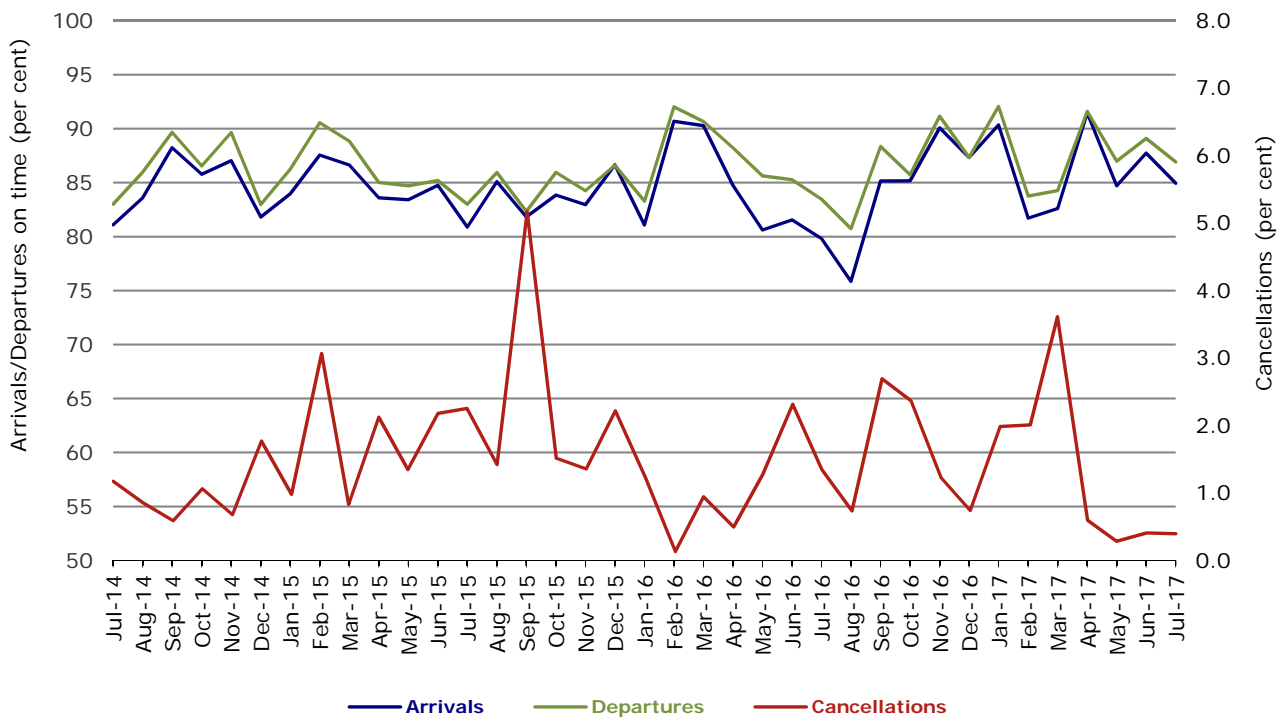


Figure 11 On time performance (by month from July 2014)
Virgin Australia Regional Airlines



In January 2016, Virgin Australia transferred their ATR fleet from Virgin Australia Regional Airlines to Virgin Australia.

Individual routes

On time performance is reported for all routes where the passenger load averages over 8000 passengers per month over the previous six months, and where two or more airlines operate in competition on those routes. There are now 65 routes which meet this definition. Over time, however, routes which meet this definition may change as airline networks and traffic levels vary.

	<i>Sectors</i>		<i>Arrivals On Time</i>		<i>Departures On Time</i>		<i>Cancellations</i>	
	<i>Sched.</i>	<i>Flown</i>	<i>No.</i>	<i>%</i>	<i>No.</i>	<i>%</i>	<i>No.</i>	<i>%</i>
Adelaide-Alice Springs								
Qantas	31	31	22	71.0	20	64.5	0	0.0
Virgin Australia	13	13	11	84.6	11	84.6	0	0.0
All Airlines	44	44	33	75.0	31	70.5	0	0.0
Adelaide-Brisbane								
Jetstar	29	29	14	48.3	8	27.6	0	0.0
Qantas	96	96	84	87.5	76	79.2	0	0.0
QantasLink	30	29	23	79.3	24	82.8	1	3.3
Tigerair Australia	27	27	18	66.7	18	66.7	0	0.0
Virgin Australia	105	103	87	84.5	75	72.8	2	1.9
All Airlines	287	284	226	79.6	201	70.8	3	1.0
Adelaide-Canberra								
Qantas	47	47	42	89.4	41	87.2	0	0.0
Virgin Australia	26	26	23	88.5	21	80.8	0	0.0
All Airlines	73	73	65	89.0	62	84.9	0	0.0
Adelaide-Gold Coast								
Jetstar	31	31	30	96.8	25	80.6	0	0.0
Virgin Australia	31	31	29	93.5	28	90.3	0	0.0
All Airlines	62	62	59	95.2	53	85.5	0	0.0
Adelaide-Melbourne								
Jetstar	109	107	77	72.0	63	58.9	2	1.8
Qantas	284	282	251	89.0	239	84.8	2	0.7
Tigerair Australia	78	75	41	54.7	43	57.3	3	3.8
Virgin Australia	276	274	223	81.4	216	78.8	2	0.7
All Airlines	747	738	592	80.2	561	76.0	9	1.2
Adelaide-Perth								
Jetstar	27	27	16	59.3	17	63.0	0	0.0
Qantas	92	92	78	84.8	80	87.0	0	0.0
QantasLink	30	26	17	65.4	24	92.3	4	13.3
Virgin Australia	61	60	49	81.7	53	88.3	1	1.6
All Airlines	210	205	160	78.0	174	84.9	5	2.4
Adelaide-Port Lincoln								
QantasLink	107	104	92	88.5	94	90.4	3	2.8
Regional Express	218	212	176	83.0	189	89.2	6	2.8
All Airlines	325	316	268	84.8	283	89.6	9	2.8
Adelaide-Sydney								
Jetstar	110	106	88	83.0	83	78.3	4	3.6
Qantas	231	230	208	90.4	201	87.4	1	0.4
QantasLink	28	27	21	77.8	13	48.1	1	3.6
Tigerair Australia	48	47	27	57.4	25	53.2	1	2.1
Virgin Australia	156	155	131	84.5	121	78.1	1	0.6
All Airlines	573	565	475	84.1	443	78.4	8	1.4
Albury-Sydney								
QantasLink	109	108	84	77.8	78	72.2	1	0.9
Regional Express	107	103	91	88.3	91	88.3	4	3.7
Virgin Australia	59	57	41	71.9	40	70.2	2	3.4
All Airlines	275	268	216	80.6	209	78.0	7	2.5

	<i>Sectors</i>		<i>Arrivals On Time</i>		<i>Departures On Time</i>		<i>Cancellations</i>	
	<i>Sched.</i>	<i>Flown</i>	<i>No.</i>	<i>%</i>	<i>No.</i>	<i>%</i>	<i>No.</i>	<i>%</i>
Alice Springs-Adelaide								
Qantas	31	31	27	87.1	22	71.0	0	0.0
Virgin Australia	13	13	11	84.6	10	76.9	0	0.0
All Airlines	44	44	38	86.4	32	72.7	0	0.0
Alice Springs-Darwin								
QantasLink	62	61	55	90.2	57	93.4	1	1.6
Virgin Australia	13	13	10	76.9	9	69.2	0	0.0
All Airlines	75	74	65	87.8	66	89.2	1	1.3
Armidale-Sydney								
QantasLink	123	117	87	74.4	89	76.1	6	4.9
Regional Express	79	75	52	69.3	53	70.7	4	5.1
All Airlines	202	192	139	72.4	142	74.0	10	5.0
Ayers Rock-Sydney								
Jetstar	31	31	25	80.6	12	38.7	0	0.0
Virgin Australia	31	31	24	77.4	13	41.9	0	0.0
All Airlines	62	62	49	79.0	25	40.3	0	0.0
Ballina-Sydney								
Jetstar	84	84	61	72.6	59	70.2	0	0.0
Regional Express	25	23	19	82.6	20	87.0	2	8.0
Virgin Australia	34	34	22	64.7	24	70.6	0	0.0
All Airlines	143	141	102	72.3	103	73.0	2	1.4
Brisbane-Adelaide								
Jetstar	29	29	15	51.7	18	62.1	0	0.0
Qantas	96	95	76	80.0	87	91.6	1	1.0
QantasLink	30	29	17	58.6	27	93.1	1	3.3
Tigerair Australia	28	28	23	82.1	25	89.3	0	0.0
Virgin Australia	102	100	58	58.0	83	83.0	2	2.0
All Airlines	285	281	189	67.3	240	85.4	4	1.4
Brisbane-Bundaberg								
QantasLink	135	132	115	87.1	112	84.8	3	2.2
Virgin Australia	31	31	25	80.6	27	87.1	0	0.0
All Airlines	166	163	140	85.9	139	85.3	3	1.8
Brisbane-Cairns								
Jetstar	118	116	95	81.9	83	71.6	2	1.7
Qantas	131	130	123	94.6	117	90.0	1	0.8
QantasLink	5	5	4	80.0	5	100.0	0	0.0
Tigerair Australia	48	46	40	87.0	39	84.8	2	4.2
Virgin Australia	126	124	110	88.7	100	80.6	2	1.6
All Airlines	428	421	372	88.4	344	81.7	7	1.6
Brisbane-Canberra								
Qantas	26	26	23	88.5	23	88.5	0	0.0
QantasLink	126	125	94	75.2	103	82.4	1	0.8
Virgin Australia	106	104	85	81.7	90	86.5	2	1.9
All Airlines	258	255	202	79.2	216	84.7	3	1.2
Brisbane-Darwin								
Jetstar	31	31	27	87.1	27	87.1	0	0.0
Qantas	48	48	45	93.8	45	93.8	0	0.0
Tigerair Australia	23	21	16	76.2	16	76.2	2	8.7
Virgin Australia	31	31	28	90.3	23	74.2	0	0.0
All Airlines	133	131	116	88.5	111	84.7	2	1.5
Brisbane-Emerald								
QantasLink	117	117	91	77.8	94	80.3	0	0.0
Virgin Australia	52	51	48	94.1	48	94.1	1	1.9
All Airlines	169	168	139	82.7	142	84.5	1	0.6

	<i>Sectors</i>		<i>Arrivals On Time</i>		<i>Departures On Time</i>		<i>Cancellations</i>	
	<i>Sched.</i>	<i>Flown</i>	<i>No.</i>	<i>%</i>	<i>No.</i>	<i>%</i>	<i>No.</i>	<i>%</i>
Brisbane-Gladstone								
QantasLink	147	146	118	80.8	112	76.7	1	0.7
Virgin Australia	81	81	69	85.2	71	87.7	0	0.0
All Airlines	228	227	187	82.4	183	80.6	1	0.4
Brisbane-Hamilton Island								
QantasLink	38	36	32	88.9	31	86.1	2	5.3
Virgin Australia	31	31	29	93.5	28	90.3	0	0.0
All Airlines	69	67	61	91.0	59	88.1	2	2.9
Brisbane-Hobart								
Jetstar	26	26	24	92.3	22	84.6	0	0.0
Virgin Australia	31	31	25	80.6	25	80.6	0	0.0
All Airlines	57	57	49	86.0	47	82.5	0	0.0
Brisbane-Mackay								
Jetstar	47	46	32	69.6	26	56.5	1	2.1
QantasLink	109	108	86	79.6	85	78.7	1	0.9
Virgin Australia	133	131	118	90.1	114	87.0	2	1.5
All Airlines	289	285	236	82.8	225	78.9	4	1.4
Brisbane-Melbourne								
Jetstar	142	137	86	62.8	87	63.5	5	3.5
Qantas	424	419	319	76.1	360	85.9	5	1.2
Tigerair Australia	133	127	84	66.1	101	79.5	6	4.5
Virgin Australia	390	381	220	57.7	326	85.6	9	2.3
All Airlines	1 089	1 064	709	66.6	874	82.1	25	2.3
Brisbane-Moranbah								
QantasLink	77	75	57	76.0	63	84.0	2	2.6
Virgin Australia	56	56	48	85.7	50	89.3	0	0.0
All Airlines	133	131	105	80.2	113	86.3	2	1.5
Brisbane-Mount Isa								
QantasLink	56	56	48	85.7	52	92.9	0	0.0
Virgin Australia	17	17	15	88.2	16	94.1	0	0.0
All Airlines	73	73	63	86.3	68	93.2	0	0.0
Brisbane-Newcastle								
Jetstar	91	90	77	85.6	77	85.6	1	1.1
QantasLink	90	87	66	75.9	70	80.5	3	3.3
Virgin Australia	87	86	77	89.5	82	95.3	1	1.1
All Airlines	268	263	220	83.7	229	87.1	5	1.9
Brisbane-Perth								
Qantas	132	131	70	53.4	110	84.0	1	0.8
Tigerair Australia	21	20	13	65.0	16	80.0	1	4.8
Virgin Australia	109	109	33	30.3	83	76.1	0	0.0
All Airlines	262	260	116	44.6	209	80.4	2	0.8
Brisbane-Proserpine								
Jetstar	37	37	27	73.0	25	67.6	0	0.0
Tigerair Australia	18	17	16	94.1	16	94.1	1	5.6
Virgin Australia	31	31	26	83.9	25	80.6	0	0.0
All Airlines	86	85	69	81.2	66	77.6	1	1.2
Brisbane-Rockhampton								
QantasLink	184	184	140	76.1	144	78.3	0	0.0
Virgin Australia	142	142	87	61.3	101	71.1	0	0.0
All Airlines	326	326	227	69.6	245	75.2	0	0.0

	<i>Sectors</i>		<i>Arrivals On Time</i>		<i>Departures On Time</i>		<i>Cancellations</i>	
	<i>Sched.</i>	<i>Flown</i>	<i>No.</i>	<i>%</i>	<i>No.</i>	<i>%</i>	<i>No.</i>	<i>%</i>
Brisbane-Sydney								
Jetstar	196	194	138	71.1	135	69.6	2	1.0
Qantas	641	629	518	82.4	538	85.5	12	1.9
Tigerair Australia	108	104	66	63.5	72	69.2	4	3.7
Virgin Australia	539	521	419	80.4	437	83.9	18	3.3
All Airlines	1 484	1 448	1 141	78.8	1 182	81.6	36	2.4
Brisbane-Townsville								
Jetstar	48	48	31	64.6	33	68.8	0	0.0
Qantas	75	74	69	93.2	66	89.2	1	1.3
QantasLink	74	71	58	81.7	55	77.5	3	4.1
Virgin Australia	145	144	124	86.1	121	84.0	1	0.7
All Airlines	342	337	282	83.7	275	81.6	5	1.5
Broome-Perth								
Qantas	21	21	18	85.7	14	66.7	0	0.0
QantasLink	66	66	50	75.8	51	77.3	0	0.0
Virgin Australia	7	7	6	85.7	5	71.4	0	0.0
Virgin Australia Regional Airlines	72	72	52	72.2	54	75.0	0	0.0
All Airlines	166	166	126	75.9	124	74.7	0	0.0
Bundaberg-Brisbane								
QantasLink	135	134	108	80.6	111	82.8	1	0.7
Virgin Australia	31	31	24	77.4	23	74.2	0	0.0
All Airlines	166	165	132	80.0	134	81.2	1	0.6
Cairns-Brisbane								
Jetstar	118	117	101	86.3	92	78.6	1	0.8
Qantas	131	131	116	88.5	117	89.3	0	0.0
QantasLink	5	5	5	100.0	5	100.0	0	0.0
Tigerair Australia	48	46	40	87.0	39	84.8	2	4.2
Virgin Australia	125	123	108	87.8	105	85.4	2	1.6
All Airlines	427	422	370	87.7	358	84.8	5	1.2
Cairns-Melbourne								
Jetstar	127	127	89	70.1	88	69.3	0	0.0
Qantas	50	50	27	54.0	31	62.0	0	0.0
Tigerair Australia	53	51	25	49.0	27	52.9	2	3.8
Virgin Australia	36	36	20	55.6	19	52.8	0	0.0
All Airlines	266	264	161	61.0	165	62.5	2	0.8
Cairns-Sydney								
Jetstar	113	112	100	89.3	95	84.8	1	0.9
Qantas	90	90	72	80.0	70	77.8	0	0.0
Tigerair Australia	46	45	30	66.7	29	64.4	1	2.2
Virgin Australia	87	87	72	82.8	69	79.3	0	0.0
All Airlines	336	334	274	82.0	263	78.7	2	0.6
Cairns-Townsville								
QantasLink	145	145	142	97.9	142	97.9	0	0.0
Regional Express	43	42	37	88.1	40	95.2	1	2.3
All Airlines	188	187	179	95.7	182	97.3	1	0.5
Canberra-Adelaide								
Qantas	47	47	44	93.6	44	93.6	0	0.0
Virgin Australia	26	26	19	73.1	20	76.9	0	0.0
All Airlines	73	73	63	86.3	64	87.7	0	0.0
Canberra-Brisbane								
Qantas	26	26	24	92.3	23	88.5	0	0.0
QantasLink	126	123	102	82.9	101	82.1	3	2.4
Virgin Australia	106	104	86	82.7	87	83.7	2	1.9
All Airlines	258	253	212	83.8	211	83.4	5	1.9

	<i>Sectors</i>		<i>Arrivals On Time</i>		<i>Departures On Time</i>		<i>Cancellations</i>	
	<i>Sched.</i>	<i>Flown</i>	<i>No.</i>	<i>%</i>	<i>No.</i>	<i>%</i>	<i>No.</i>	<i>%</i>
Canberra-Melbourne								
Qantas	204	202	181	89.6	186	92.1	2	1.0
QantasLink	94	90	78	86.7	85	94.4	4	4.3
Tigerair Australia	36	35	16	45.7	17	48.6	1	2.8
Virgin Australia	175	165	133	80.6	144	87.3	10	5.7
All Airlines	509	492	408	82.9	432	87.8	17	3.3
Canberra-Sydney								
QantasLink	497	478	406	84.9	395	82.6	19	3.8
Virgin Australia	263	252	213	84.5	204	81.0	11	4.2
All Airlines	760	730	619	84.8	599	82.1	30	3.9
Coffs Harbour-Sydney								
QantasLink	151	147	130	88.4	131	89.1	4	2.6
Tigerair Australia	13	13	9	69.2	9	69.2	0	0.0
Virgin Australia	52	49	40	81.6	43	87.8	3	5.8
All Airlines	216	209	179	85.6	183	87.6	7	3.2
Darwin-Alice Springs								
QantasLink	62	61	58	95.1	58	95.1	1	1.6
Virgin Australia	13	13	12	92.3	12	92.3	0	0.0
All Airlines	75	74	70	94.6	70	94.6	1	1.3
Darwin-Brisbane								
Jetstar	31	31	26	83.9	21	67.7	0	0.0
Qantas	48	48	42	87.5	34	70.8	0	0.0
Tigerair Australia	22	20	18	90.0	16	80.0	2	9.1
Virgin Australia	31	31	23	74.2	24	77.4	0	0.0
All Airlines	132	130	109	83.8	95	73.1	2	1.5
Darwin-Melbourne								
Jetstar	31	31	20	64.5	12	38.7	0	0.0
Qantas	39	39	31	79.5	20	51.3	0	0.0
Virgin Australia	32	32	28	87.5	28	87.5	0	0.0
All Airlines	102	102	79	77.5	60	58.8	0	0.0
Darwin-Perth								
Qantas	40	40	36	90.0	34	85.0	0	0.0
Virgin Australia	26	26	16	61.5	16	61.5	0	0.0
All Airlines	66	66	52	78.8	50	75.8	0	0.0
Darwin-Sydney								
Jetstar	31	31	21	67.7	13	41.9	0	0.0
Qantas	67	67	55	82.1	46	68.7	0	0.0
Virgin Australia	31	31	19	61.3	19	61.3	0	0.0
All Airlines	129	129	95	73.6	78	60.5	0	0.0
Dubbo-Sydney								
QantasLink	123	119	90	75.6	87	73.1	4	3.3
Regional Express	156	155	130	83.9	136	87.7	1	0.6
All Airlines	279	274	220	80.3	223	81.4	5	1.8
Emerald-Brisbane								
QantasLink	117	116	93	80.2	88	75.9	1	0.9
Virgin Australia	52	51	47	92.2	47	92.2	1	1.9
All Airlines	169	167	140	83.8	135	80.8	2	1.2
Geraldton-Perth								
QantasLink	46	46	43	93.5	41	89.1	0	0.0
Virgin Australia Regional Airlines	52	52	45	86.5	43	82.7	0	0.0
All Airlines	98	98	88	89.8	84	85.7	0	0.0

	<i>Sectors</i>		<i>Arrivals On Time</i>		<i>Departures On Time</i>		<i>Cancellations</i>	
	<i>Sched.</i>	<i>Flown</i>	<i>No.</i>	<i>%</i>	<i>No.</i>	<i>%</i>	<i>No.</i>	<i>%</i>
Gladstone-Brisbane								
QantasLink	146	144	124	86.1	118	81.9	2	1.4
Virgin Australia	82	82	69	84.1	72	87.8	0	0.0
All Airlines	228	226	193	85.4	190	84.1	2	0.9
Gold Coast-Adelaide								
Jetstar	31	31	22	71.0	29	93.5	0	0.0
Virgin Australia	31	31	16	51.6	27	87.1	0	0.0
All Airlines	62	62	38	61.3	56	90.3	0	0.0
Gold Coast-Melbourne								
Jetstar	216	216	154	71.3	158	73.1	0	0.0
Qantas	31	31	25	80.6	26	83.9	0	0.0
Tigerair Australia	91	91	61	67.0	72	79.1	0	0.0
Virgin Australia	185	184	122	66.3	141	76.6	1	0.5
All Airlines	523	522	362	69.3	397	76.1	1	0.2
Gold Coast-Sydney								
Jetstar	298	296	203	68.6	205	69.3	2	0.7
Qantas	95	95	79	83.2	83	87.4	0	0.0
QantasLink	24	24	10	41.7	15	62.5	0	0.0
Tigerair Australia	120	117	66	56.4	70	59.8	3	2.5
Virgin Australia	256	251	181	72.1	183	72.9	5	2.0
All Airlines	793	783	539	68.8	556	71.0	10	1.3
Hamilton Island-Brisbane								
QantasLink	38	36	32	88.9	30	83.3	2	5.3
Virgin Australia	31	31	29	93.5	28	90.3	0	0.0
All Airlines	69	67	61	91.0	58	86.6	2	2.9
Hamilton Island-Sydney								
Jetstar	30	30	21	70.0	23	76.7	0	0.0
Qantas	13	13	12	92.3	12	92.3	0	0.0
QantasLink	18	17	14	82.4	14	82.4	1	5.6
Virgin Australia	17	17	14	82.4	14	82.4	0	0.0
All Airlines	78	77	61	79.2	63	81.8	1	1.3
Hobart-Brisbane								
Jetstar	27	27	19	70.4	17	63.0	0	0.0
Virgin Australia	31	31	19	61.3	20	64.5	0	0.0
All Airlines	58	58	38	65.5	37	63.8	0	0.0
Hobart-Melbourne								
Jetstar	170	170	92	54.1	88	51.8	0	0.0
QantasLink	133	128	101	78.9	101	78.9	5	3.8
Tigerair Australia	31	31	22	71.0	22	71.0	0	0.0
Virgin Australia	142	141	106	75.2	109	77.3	1	0.7
All Airlines	476	470	321	68.3	320	68.1	6	1.3
Hobart-Sydney								
Jetstar	73	73	61	83.6	55	75.3	0	0.0
QantasLink	57	57	39	68.4	42	73.7	0	0.0
Virgin Australia	72	72	60	83.3	62	86.1	0	0.0
All Airlines	202	202	160	79.2	159	78.7	0	0.0
Kalgoorlie-Perth								
Qantas	13	13	13	100.0	13	100.0	0	0.0
QantasLink	70	70	64	91.4	66	94.3	0	0.0
Virgin Australia	25	23	20	87.0	21	91.3	2	8.0
Virgin Australia Regional Airlines	37	37	35	94.6	37	100.0	0	0.0
All Airlines	145	143	132	92.3	137	95.8	2	1.4

	<i>Sectors</i>		<i>Arrivals On Time</i>		<i>Departures On Time</i>		<i>Cancellations</i>	
	<i>Sched.</i>	<i>Flown</i>	<i>No.</i>	<i>%</i>	<i>No.</i>	<i>%</i>	<i>No.</i>	<i>%</i>
Karratha-Perth								
Qantas	17	17	17	100.0	17	100.0	0	0.0
QantasLink	167	164	147	89.6	144	87.8	3	1.8
Virgin Australia Regional Airlines	70	69	55	79.7	58	84.1	1	1.4
All Airlines	254	250	219	87.6	219	87.6	4	1.6
Launceston-Melbourne								
Jetstar	120	119	77	64.7	75	63.0	1	0.8
QantasLink	119	113	90	79.6	89	78.8	6	5.0
Virgin Australia	93	91	72	79.1	78	85.7	2	2.2
All Airlines	332	323	239	74.0	242	74.9	9	2.7
Launceston-Sydney								
Jetstar	39	38	25	65.8	23	60.5	1	2.6
Virgin Australia	31	31	22	71.0	19	61.3	0	0.0
All Airlines	70	69	47	68.1	42	60.9	1	1.4
Mackay-Brisbane								
Jetstar	47	45	36	80.0	24	53.3	2	4.3
QantasLink	109	108	85	78.7	85	78.7	1	0.9
Virgin Australia	133	131	117	89.3	113	86.3	2	1.5
All Airlines	289	284	238	83.8	222	78.2	5	1.7
Melbourne-Adelaide								
Jetstar	109	107	64	59.8	75	70.1	2	1.8
Qantas	284	284	240	84.5	254	89.4	0	0.0
Tigerair Australia	78	75	56	74.7	61	81.3	3	3.8
Virgin Australia	266	265	211	79.6	213	80.4	1	0.4
All Airlines	737	731	571	78.1	603	82.5	6	0.8
Melbourne-Brisbane								
Jetstar	143	140	94	67.1	71	50.7	3	2.1
Qantas	431	426	383	89.9	361	84.7	5	1.2
Tigerair Australia	133	127	98	77.2	92	72.4	6	4.5
Virgin Australia	394	385	323	83.9	320	83.1	9	2.3
All Airlines	1 101	1 078	898	83.3	844	78.3	23	2.1
Melbourne-Cairns								
Jetstar	129	129	83	64.3	82	63.6	0	0.0
Qantas	50	50	34	68.0	34	68.0	0	0.0
Tigerair Australia	53	51	33	64.7	35	68.6	2	3.8
Virgin Australia	36	36	26	72.2	30	83.3	0	0.0
All Airlines	268	266	176	66.2	181	68.0	2	0.7
Melbourne-Canberra								
Qantas	204	202	177	87.6	175	86.6	2	1.0
QantasLink	95	90	79	87.8	77	85.6	5	5.3
Tigerair Australia	36	36	25	69.4	24	66.7	0	0.0
Virgin Australia	176	166	132	79.5	134	80.7	10	5.7
All Airlines	511	494	413	83.6	410	83.0	17	3.3
Melbourne-Darwin								
Jetstar	31	31	17	54.8	26	83.9	0	0.0
Qantas	39	39	28	71.8	32	82.1	0	0.0
Virgin Australia	32	32	16	50.0	21	65.6	0	0.0
All Airlines	102	102	61	59.8	79	77.5	0	0.0
Melbourne-Gold Coast								
Jetstar	217	217	161	74.2	145	66.8	0	0.0
Qantas	31	31	29	93.5	27	87.1	0	0.0
Tigerair Australia	91	91	78	85.7	74	81.3	0	0.0
Virgin Australia	185	184	158	85.9	153	83.2	1	0.5
All Airlines	524	523	426	81.5	399	76.3	1	0.2

	<i>Sectors</i>		<i>Arrivals On Time</i>		<i>Departures On Time</i>		<i>Cancellations</i>	
	<i>Sched.</i>	<i>Flown</i>	<i>No.</i>	<i>%</i>	<i>No.</i>	<i>%</i>	<i>No.</i>	<i>%</i>
Melbourne-Hobart								
Jetstar	170	170	123	72.4	122	71.8	0	0.0
QantasLink	133	127	98	77.2	102	80.3	6	4.5
Tigerair Australia	31	31	23	74.2	24	77.4	0	0.0
Virgin Australia	142	141	106	75.2	117	83.0	1	0.7
All Airlines	476	469	350	74.6	365	77.8	7	1.5
Melbourne-Launceston								
Jetstar	119	118	81	68.6	78	66.1	1	0.8
QantasLink	119	113	86	76.1	90	79.6	6	5.0
Virgin Australia	94	92	67	72.8	70	76.1	2	2.1
All Airlines	332	323	234	72.4	238	73.7	9	2.7
Melbourne-Mildura								
QantasLink	96	95	84	88.4	82	86.3	1	1.0
Regional Express	88	88	78	88.6	80	90.9	0	0.0
Virgin Australia	31	31	19	61.3	23	74.2	0	0.0
All Airlines	215	214	181	84.6	185	86.4	1	0.5
Melbourne-Newcastle								
Jetstar	115	114	89	78.1	66	57.9	1	0.9
Virgin Australia	31	31	24	77.4	23	74.2	0	0.0
All Airlines	146	145	113	77.9	89	61.4	1	0.7
Melbourne-Perth								
Jetstar	51	49	35	71.4	37	75.5	2	3.9
Qantas	194	194	120	61.9	139	71.6	0	0.0
Tigerair Australia	56	51	37	72.5	43	84.3	5	8.9
Virgin Australia	131	130	78	60.0	85	65.4	1	0.8
All Airlines	432	424	270	63.7	304	71.7	8	1.9
Melbourne-Sunshine Coast								
Jetstar	97	97	80	82.5	67	69.1	0	0.0
Virgin Australia	50	50	42	84.0	37	74.0	0	0.0
All Airlines	147	147	122	83.0	104	70.7	0	0.0
Melbourne-Sydney								
Jetstar	374	362	260	71.8	237	65.5	12	3.2
Qantas	1 021	977	810	82.9	786	80.5	44	4.3
Tigerair Australia	278	262	177	67.6	162	61.8	16	5.8
Virgin Australia	766	735	621	84.5	603	82.0	31	4.0
All Airlines	2 439	2 336	1 868	80.0	1 788	76.5	103	4.2
Mildura-Melbourne								
QantasLink	96	95	83	87.4	85	89.5	1	1.0
Regional Express	87	86	69	80.2	75	87.2	1	1.1
Virgin Australia	31	31	19	61.3	20	64.5	0	0.0
All Airlines	214	212	171	80.7	180	84.9	2	0.9
Moranbah-Brisbane								
QantasLink	73	71	58	81.7	53	74.6	2	2.7
Virgin Australia	56	55	49	89.1	49	89.1	1	1.8
All Airlines	129	126	107	84.9	102	81.0	3	2.3
Mount Isa-Brisbane								
QantasLink	56	55	51	92.7	51	92.7	1	1.8
Virgin Australia	16	16	11	68.8	13	81.3	0	0.0
All Airlines	72	71	62	87.3	64	90.1	1	1.4
Newcastle-Brisbane								
Jetstar	91	91	86	94.5	85	93.4	0	0.0
QantasLink	90	86	72	83.7	73	84.9	4	4.4
Virgin Australia	88	87	77	88.5	76	87.4	1	1.1
All Airlines	269	264	235	89.0	234	88.6	5	1.9

	<i>Sectors</i>		<i>Arrivals On Time</i>		<i>Departures On Time</i>		<i>Cancellations</i>	
	<i>Sched.</i>	<i>Flown</i>	<i>No.</i>	<i>%</i>	<i>No.</i>	<i>%</i>	<i>No.</i>	<i>%</i>
Newcastle-Melbourne								
Jetstar	115	114	85	74.6	92	80.7	1	0.9
Virgin Australia	31	31	19	61.3	23	74.2	0	0.0
All Airlines	146	145	104	71.7	115	79.3	1	0.7
Newman-Perth								
Qantas	59	58	52	89.7	53	91.4	1	1.7
QantasLink	68	64	52	81.3	51	79.7	4	5.9
Virgin Australia	15	15	12	80.0	12	80.0	0	0.0
Virgin Australia Regional Airlines	23	22	21	95.5	22	100.0	1	4.3
All Airlines	165	159	137	86.2	138	86.8	6	3.6
Perth-Adelaide								
Jetstar	27	27	17	63.0	13	48.1	0	0.0
Qantas	95	95	89	93.7	87	91.6	0	0.0
QantasLink	30	26	25	96.2	24	92.3	4	13.3
Virgin Australia	60	59	52	88.1	51	86.4	1	1.7
All Airlines	212	207	183	88.4	175	84.5	5	2.4
Perth-Brisbane								
Qantas	127	127	114	89.8	102	80.3	0	0.0
Tigerair Australia	22	21	19	90.5	13	61.9	1	4.5
Virgin Australia	108	108	99	91.7	91	84.3	0	0.0
All Airlines	257	256	232	90.6	206	80.5	1	0.4
Perth-Broome								
Qantas	21	21	16	76.2	16	76.2	0	0.0
QantasLink	66	66	57	86.4	52	78.8	0	0.0
Virgin Australia	7	7	7	100.0	6	85.7	0	0.0
Virgin Australia Regional Airlines	72	72	63	87.5	65	90.3	0	0.0
All Airlines	166	166	143	86.1	139	83.7	0	0.0
Perth-Darwin								
Qantas	40	40	35	87.5	38	95.0	0	0.0
Virgin Australia	26	26	19	73.1	18	69.2	0	0.0
All Airlines	66	66	54	81.8	56	84.8	0	0.0
Perth-Geraldton								
QantasLink	46	46	41	89.1	41	89.1	0	0.0
Virgin Australia Regional Airlines	52	52	40	76.9	42	80.8	0	0.0
All Airlines	98	98	81	82.7	83	84.7	0	0.0
Perth-Kalgoorlie								
Qantas	13	13	12	92.3	11	84.6	0	0.0
QantasLink	70	70	66	94.3	66	94.3	0	0.0
Virgin Australia	24	24	21	87.5	22	91.7	0	0.0
Virgin Australia Regional Airlines	37	37	36	97.3	36	97.3	0	0.0
All Airlines	144	144	135	93.8	135	93.8	0	0.0
Perth-Karratha								
Qantas	17	17	17	100.0	17	100.0	0	0.0
QantasLink	167	165	147	89.1	143	86.7	2	1.2
Virgin Australia Regional Airlines	69	68	58	85.3	63	92.6	1	1.4
All Airlines	253	250	222	88.8	223	89.2	3	1.2
Perth-Melbourne								
Jetstar	51	48	36	75.0	22	45.8	3	5.9
Qantas	193	193	167	86.5	153	79.3	0	0.0
Tigerair Australia	56	51	40	78.4	34	66.7	5	8.9
Virgin Australia	130	130	105	80.8	97	74.6	0	0.0
All Airlines	430	422	348	82.5	306	72.5	8	1.9

	<i>Sectors</i>		<i>Arrivals On Time</i>		<i>Departures On Time</i>		<i>Cancellations</i>	
	<i>Sched.</i>	<i>Flown</i>	<i>No.</i>	<i>%</i>	<i>No.</i>	<i>%</i>	<i>No.</i>	<i>%</i>
Perth-Newman								
Qantas	59	59	51	86.4	53	89.8	0	0.0
QantasLink	68	65	56	86.2	55	84.6	3	4.4
Virgin Australia	15	15	14	93.3	14	93.3	0	0.0
Virgin Australia Regional Airlines	23	23	22	95.7	22	95.7	0	0.0
All Airlines	165	162	143	88.3	144	88.9	3	1.8
Perth-Port Hedland								
Qantas	29	29	26	89.7	25	86.2	0	0.0
QantasLink	105	102	85	83.3	88	86.3	3	2.9
Virgin Australia	11	11	11	100.0	11	100.0	0	0.0
Virgin Australia Regional Airlines	41	41	40	97.6	40	97.6	0	0.0
All Airlines	186	183	162	88.5	164	89.6	3	1.6
Perth-Sydney								
Jetstar	29	28	19	67.9	1	3.6	1	3.4
Qantas	211	210	198	94.3	165	78.6	1	0.5
Tigerair Australia	27	23	22	95.7	18	78.3	4	14.8
Virgin Australia	119	118	113	95.8	92	78.0	1	0.8
All Airlines	386	379	352	92.9	276	72.8	7	1.8
Port Hedland-Perth								
Qantas	29	28	26	92.9	27	96.4	1	3.4
QantasLink	105	100	82	82.0	84	84.0	5	4.8
Virgin Australia	11	11	10	90.9	11	100.0	0	0.0
Virgin Australia Regional Airlines	41	41	38	92.7	38	92.7	0	0.0
All Airlines	186	180	156	86.7	160	88.9	6	3.2
Port Lincoln-Adelaide								
QantasLink	106	103	86	83.5	86	83.5	3	2.8
Regional Express	219	211	174	82.5	179	84.8	8	3.7
All Airlines	325	314	260	82.8	265	84.4	11	3.4
Port Macquarie-Sydney								
QantasLink	130	127	89	70.1	80	63.0	3	2.3
Virgin Australia	58	58	49	84.5	48	82.8	0	0.0
All Airlines	188	185	138	74.6	128	69.2	3	1.6
Proserpine-Brisbane								
Jetstar	37	37	27	73.0	28	75.7	0	0.0
Tigerair Australia	18	17	16	94.1	16	94.1	1	5.6
Virgin Australia	31	31	25	80.6	24	77.4	0	0.0
All Airlines	86	85	68	80.0	68	80.0	1	1.2
Rockhampton-Brisbane								
QantasLink	184	183	142	77.6	144	78.7	1	0.5
Virgin Australia	142	142	106	74.6	92	64.8	0	0.0
All Airlines	326	325	248	76.3	236	72.6	1	0.3
Sunshine Coast-Melbourne								
Jetstar	98	98	49	50.0	57	58.2	0	0.0
Virgin Australia	50	50	24	48.0	34	68.0	0	0.0
All Airlines	148	148	73	49.3	91	61.5	0	0.0
Sunshine Coast-Sydney								
Jetstar	109	108	69	63.9	62	57.4	1	0.9
QantasLink	36	36	25	69.4	29	80.6	0	0.0
Virgin Australia	40	40	26	65.0	32	80.0	0	0.0
All Airlines	185	184	120	65.2	123	66.8	1	0.5

	<i>Sectors</i>		<i>Arrivals On Time</i>		<i>Departures On Time</i>		<i>Cancellations</i>	
	<i>Sched.</i>	<i>Flown</i>	<i>No.</i>	<i>%</i>	<i>No.</i>	<i>%</i>	<i>No.</i>	<i>%</i>
Sydney-Adelaide								
Jetstar	111	108	79	73.1	86	79.6	3	2.7
Qantas	227	227	174	76.7	188	82.8	0	0.0
QantasLink	28	27	16	59.3	21	77.8	1	3.6
Tigerair Australia	47	46	35	76.1	39	84.8	1	2.1
Virgin Australia	168	168	107	63.7	139	82.7	0	0.0
All Airlines	581	576	411	71.4	473	82.1	5	0.9
Sydney-Albury								
QantasLink	109	108	77	71.3	79	73.1	1	0.9
Regional Express	109	104	75	72.1	75	72.1	5	4.6
Virgin Australia	59	57	41	71.9	41	71.9	2	3.4
All Airlines	277	269	193	71.7	195	72.5	8	2.9
Sydney-Armidale								
QantasLink	123	118	86	72.9	85	72.0	5	4.1
Regional Express	79	76	55	72.4	52	68.4	3	3.8
All Airlines	202	194	141	72.7	137	70.6	8	4.0
Sydney-Ayers Rock								
Jetstar	31	31	16	51.6	23	74.2	0	0.0
Virgin Australia	31	31	15	48.4	29	93.5	0	0.0
All Airlines	62	62	31	50.0	52	83.9	0	0.0
Sydney-Ballina								
Jetstar	84	84	68	81.0	68	81.0	0	0.0
Regional Express	26	26	21	80.8	21	80.8	0	0.0
Virgin Australia	34	34	24	70.6	25	73.5	0	0.0
All Airlines	144	144	113	78.5	114	79.2	0	0.0
Sydney-Brisbane								
Jetstar	197	197	153	77.7	145	73.6	0	0.0
Qantas	640	627	499	79.6	532	84.8	13	2.0
Tigerair Australia	109	105	77	73.3	86	81.9	4	3.7
Virgin Australia	531	511	411	80.4	409	80.0	20	3.8
All Airlines	1 477	1 440	1 140	79.2	1 172	81.4	37	2.5
Sydney-Cairns								
Jetstar	113	112	88	78.6	85	75.9	1	0.9
Qantas	89	89	77	86.5	74	83.1	0	0.0
Tigerair Australia	46	46	34	73.9	37	80.4	0	0.0
Virgin Australia	87	87	76	87.4	76	87.4	0	0.0
All Airlines	335	334	275	82.3	272	81.4	1	0.3
Sydney-Canberra								
QantasLink	498	477	397	83.2	386	80.9	21	4.2
Virgin Australia	263	252	207	82.1	203	80.6	11	4.2
All Airlines	761	729	604	82.9	589	80.8	32	4.2
Sydney-Coffs Harbour								
QantasLink	151	147	128	87.1	116	78.9	4	2.6
Tigerair Australia	13	13	9	69.2	9	69.2	0	0.0
Virgin Australia	52	49	45	91.8	45	91.8	3	5.8
All Airlines	216	209	182	87.1	170	81.3	7	3.2
Sydney-Darwin								
Jetstar	31	31	20	64.5	22	71.0	0	0.0
Qantas	67	67	52	77.6	58	86.6	0	0.0
Virgin Australia	31	31	25	80.6	26	83.9	0	0.0
All Airlines	129	129	97	75.2	106	82.2	0	0.0

	<i>Sectors</i>		<i>Arrivals On Time</i>		<i>Departures On Time</i>		<i>Cancellations</i>	
	<i>Sched.</i>	<i>Flown</i>	<i>No.</i>	<i>%</i>	<i>No.</i>	<i>%</i>	<i>No.</i>	<i>%</i>
Sydney-Dubbo								
QantasLink	123	120	83	69.2	85	70.8	3	2.4
Regional Express	155	153	127	83.0	122	79.7	2	1.3
All Airlines	278	273	210	76.9	207	75.8	5	1.8
Sydney-Gold Coast								
Jetstar	298	297	220	74.1	200	67.3	1	0.3
Qantas	95	95	79	83.2	75	78.9	0	0.0
QantasLink	24	24	15	62.5	16	66.7	0	0.0
Tigerair Australia	120	117	83	70.9	82	70.1	3	2.5
Virgin Australia	256	251	177	70.5	184	73.3	5	2.0
All Airlines	793	784	574	73.2	557	71.0	9	1.1
Sydney-Hamilton Island								
Jetstar	30	30	27	90.0	26	86.7	0	0.0
Qantas	13	13	12	92.3	12	92.3	0	0.0
QantasLink	18	18	10	55.6	11	61.1	0	0.0
Virgin Australia	17	17	15	88.2	15	88.2	0	0.0
All Airlines	78	78	64	82.1	64	82.1	0	0.0
Sydney-Hobart								
Jetstar	73	73	64	87.7	65	89.0	0	0.0
QantasLink	57	57	41	71.9	39	68.4	0	0.0
Virgin Australia	71	71	64	90.1	66	93.0	0	0.0
All Airlines	201	201	169	84.1	170	84.6	0	0.0
Sydney-Launceston								
Jetstar	38	38	31	81.6	29	76.3	0	0.0
Virgin Australia	31	31	28	90.3	26	83.9	0	0.0
All Airlines	69	69	59	85.5	55	79.7	0	0.0
Sydney-Melbourne								
Jetstar	374	363	248	68.3	267	73.6	11	2.9
Qantas	1 024	989	693	70.1	799	80.8	35	3.4
Tigerair Australia	278	262	145	55.3	168	64.1	16	5.8
Virgin Australia	762	730	524	71.8	625	85.6	32	4.2
All Airlines	2 438	2 344	1 610	68.7	1 859	79.3	94	3.9
Sydney-Perth								
Jetstar	29	28	15	53.6	19	67.9	1	3.4
Qantas	212	211	130	61.6	163	77.3	1	0.5
Tigerair Australia	27	23	14	60.9	18	78.3	4	14.8
Virgin Australia	119	119	58	48.7	93	78.2	0	0.0
All Airlines	387	381	217	57.0	293	76.9	6	1.6
Sydney-Port Macquarie								
QantasLink	130	127	92	72.4	90	70.9	3	2.3
Virgin Australia	58	58	51	87.9	49	84.5	0	0.0
All Airlines	188	185	143	77.3	139	75.1	3	1.6
Sydney-Sunshine Coast								
Jetstar	109	108	82	75.9	76	70.4	1	0.9
QantasLink	36	36	26	72.2	25	69.4	0	0.0
Virgin Australia	40	40	37	92.5	38	95.0	0	0.0
All Airlines	185	184	145	78.8	139	75.5	1	0.5
Sydney-Tamworth								
QantasLink	155	150	129	86.0	127	84.7	5	3.2
Virgin Australia	52	52	43	82.7	43	82.7	0	0.0
All Airlines	207	202	172	85.1	170	84.2	5	2.4

	<i>Sectors</i>		<i>Arrivals On Time</i>		<i>Departures On Time</i>		<i>Cancellations</i>	
	<i>Sched.</i>	<i>Flown</i>	<i>No.</i>	<i>%</i>	<i>No.</i>	<i>%</i>	<i>No.</i>	<i>%</i>
Sydney-Townsville								
Jetstar	31	31	19	61.3	22	71.0	0	0.0
Virgin Australia	27	27	23	85.2	23	85.2	0	0.0
All Airlines	58	58	42	72.4	45	77.6	0	0.0
Sydney-Wagga Wagga								
QantasLink	114	110	86	78.2	86	78.2	4	3.5
Regional Express	139	132	103	78.0	106	80.3	7	5.0
All Airlines	253	242	189	78.1	192	79.3	11	4.3
Tamworth-Sydney								
QantasLink	155	150	127	84.7	126	84.0	5	3.2
Virgin Australia	52	52	45	86.5	48	92.3	0	0.0
All Airlines	207	202	172	85.1	174	86.1	5	2.4
Townsville-Brisbane								
Jetstar	48	48	34	70.8	30	62.5	0	0.0
Qantas	75	74	63	85.1	65	87.8	1	1.3
QantasLink	74	71	55	77.5	56	78.9	3	4.1
Virgin Australia	146	144	130	90.3	127	88.2	2	1.4
All Airlines	343	337	282	83.7	278	82.5	6	1.7
Townsville-Cairns								
QantasLink	141	141	138	97.9	138	97.9	0	0.0
Regional Express	42	42	39	92.9	40	95.2	0	0.0
All Airlines	183	183	177	96.7	178	97.3	0	0.0
Townsville-Sydney								
Jetstar	31	31	24	77.4	15	48.4	0	0.0
Virgin Australia	27	27	21	77.8	20	74.1	0	0.0
All Airlines	58	58	45	77.6	35	60.3	0	0.0
Wagga Wagga-Sydney								
QantasLink	114	110	90	81.8	88	80.0	4	3.5
Regional Express	141	135	107	79.3	113	83.7	6	4.3
All Airlines	255	245	197	80.4	201	82.0	10	3.9

Airports

On time performance is reported for all routes where the passenger load averages over 8000 passengers per month, and where two or more airlines operate in competition. The following data reports by airport against flights operated on those routes only. This month, 8 major city airports and 33 regional city airports are covered.

Airport	Arrivals			Departures		
	Sectors	On Time		Sectors	On Time	
	Flown	No.	%	Flown	No.	%
Adelaide						
Jetstar	302	197	65.2	300	196	65.3
Qantas	779	650	83.4	778	657	84.4
QantasLink	185	144	77.8	186	155	83.3
Regional Express	211	174	82.5	212	189	89.2
Tigerair Australia	149	114	76.5	149	86	57.7
Virgin Australia	662	474	71.6	662	525	79.3
All Airlines	2 288	1 753	76.6	2 287	1 808	79.1
Relates to services to and from Alice Springs, Brisbane, Canberra, Gold Coast, Melbourne, Perth, Port Lincoln and Sydney.						
Albury						
QantasLink	108	77	71.3	108	78	72.2
Regional Express	104	75	72.1	103	91	88.3
Virgin Australia	57	41	71.9	57	40	70.2
All Airlines	269	193	71.7	268	209	78.0
Relates to services to and from Sydney only.						
Alice Springs						
Qantas	31	22	71.0	31	22	71.0
QantasLink	61	58	95.1	61	57	93.4
Virgin Australia	26	23	88.5	26	19	73.1
All Airlines	118	103	87.3	118	98	83.1
Relates to services to and from Adelaide and Darwin.						
Armidale						
QantasLink	118	86	72.9	117	89	76.1
Regional Express	76	55	72.4	75	53	70.7
All Airlines	194	141	72.7	192	142	74.0
Relates to services to and from Sydney only.						
Ayers Rock						
Jetstar	31	16	51.6	31	12	38.7
Virgin Australia	31	15	48.4	31	13	41.9
All Airlines	62	31	50.0	62	25	40.3
Relates to services to and from Sydney only.						
Ballina						
Jetstar	84	68	81.0	84	59	70.2
Regional Express	26	21	80.8	23	20	87.0
Virgin Australia	34	24	70.6	34	24	70.6
All Airlines	144	113	78.5	141	103	73.0
Relates to services to and from Sydney only.						

Airport	Arrivals			Departures		
	Sectors Flown	On Time		Sectors Flown	On Time	
		No.	%		No.	%
Brisbane						
Jetstar	762	590	77.4	754	533	70.7
Qantas	1 555	1 325	85.2	1 552	1 346	86.7
QantasLink	1 161	950	81.8	1 171	953	81.4
Tigerair Australia	363	286	78.8	363	285	78.5
Virgin Australia	2 197	1 840	83.8	2 202	1 850	84.0
All Airlines	6 038	4 991	82.7	6 042	4 967	82.2

Relates to services to and from Adelaide, Bundaberg, Cairns, Canberra, Darwin, Emerald, Gladstone, Hamilton Island, Hobart, Mackay, Melbourne, Moranbah, Mount Isa, Newcastle, Perth, Proserpine, Rockhampton, Sydney and Townsville.

Broome

Qantas	21	16	76.2	21	14	66.7
QantasLink	66	57	86.4	66	51	77.3
Virgin Australia	7	7	100.0	7	5	71.4
Virgin Australia Regional Airlines	72	63	87.5	72	54	75.0
All Airlines	166	143	86.1	166	124	74.7

Relates to services to and from Perth only.

Bundaberg

QantasLink	132	115	87.1	134	111	82.8
Virgin Australia	31	25	80.6	31	23	74.2
All Airlines	163	140	85.9	165	134	81.2

Relates to services to and from Brisbane only.

Cairns

Jetstar	357	266	74.5	356	275	77.2
Qantas	269	234	87.0	271	218	80.4
QantasLink	146	142	97.3	150	147	98.0
Regional Express	42	39	92.9	42	40	95.2
Tigerair Australia	143	107	74.8	142	95	66.9
Virgin Australia	247	212	85.8	246	193	78.5
All Airlines	1 204	1 000	83.1	1 207	968	80.2

Relates to services to and from Brisbane, Melbourne, Sydney and Townsville.

Canberra

Qantas	275	242	88.0	275	253	92.0
QantasLink	692	570	82.4	691	581	84.1
Tigerair Australia	36	25	69.4	35	17	48.6
Virgin Australia	548	447	81.6	547	455	83.2
All Airlines	1 551	1 284	82.8	1 548	1 306	84.4

Relates to services to and from Adelaide, Brisbane, Melbourne and Sydney.

Coffs Harbour

QantasLink	147	128	87.1	147	131	89.1
Tigerair Australia	13	9	69.2	13	9	69.2
Virgin Australia	49	45	91.8	49	43	87.8
All Airlines	209	182	87.1	209	183	87.6

Relates to services to and from Sydney only.

Airport	Arrivals			Departures		
	Sectors	On Time		Sectors	On Time	
	Flown	No.	%	Flown	No.	%
Darwin						
Jetstar	93	64	68.8	93	46	49.5
Qantas	194	160	82.5	194	134	69.1
QantasLink	61	55	90.2	61	58	95.1
Tigerair Australia	21	16	76.2	20	16	80.0
Virgin Australia	133	98	73.7	133	99	74.4
All Airlines	502	393	78.3	501	353	70.5
Relates to services to and from Alice Springs, Brisbane, Melbourne, Perth and Sydney.						
Dubbo						
QantasLink	120	83	69.2	119	87	73.1
Regional Express	153	127	83.0	155	136	87.7
All Airlines	273	210	76.9	274	223	81.4
Relates to services to and from Sydney only.						
Emerald						
QantasLink	117	91	77.8	116	88	75.9
Virgin Australia	51	48	94.1	51	47	92.2
All Airlines	168	139	82.7	167	135	80.8
Relates to services to and from Brisbane only.						
Geraldton						
QantasLink	46	41	89.1	46	41	89.1
Virgin Australia Regional Airlines	52	40	76.9	52	43	82.7
All Airlines	98	81	82.7	98	84	85.7
Relates to services to and from Perth only.						
Gladstone						
QantasLink	146	118	80.8	144	118	81.9
Virgin Australia	81	69	85.2	82	72	87.8
All Airlines	227	187	82.4	226	190	84.1
Relates to services to and from Brisbane only.						
Gold Coast						
Jetstar	545	411	75.4	543	392	72.2
Qantas	126	108	85.7	126	109	86.5
QantasLink	24	15	62.5	24	15	62.5
Tigerair Australia	208	161	77.4	208	142	68.3
Virgin Australia	466	364	78.1	466	351	75.3
All Airlines	1 369	1 059	77.4	1 367	1 009	73.8
Relates to services to and from Adelaide, Melbourne and Sydney.						
Hamilton Island						
Jetstar	30	27	90.0	30	23	76.7
Qantas	13	12	92.3	13	12	92.3
QantasLink	54	42	77.8	53	44	83.0
Virgin Australia	48	44	91.7	48	42	87.5
All Airlines	145	125	86.2	144	121	84.0
Relates to services to and from Brisbane and Sydney.						

Airport	Arrivals			Departures		
	Sectors Flown	On Time		Sectors Flown	On Time	
		No.	%		No.	%
Hobart						
Jetstar	269	211	78.4	270	160	59.3
QantasLink	184	139	75.5	185	143	77.3
Tigerair Australia	31	23	74.2	31	22	71.0
Virgin Australia	243	195	80.2	244	191	78.3
All Airlines	727	568	78.1	730	516	70.7

Relates to services to and from Brisbane, Melbourne and Sydney.

Kalgoorlie

Qantas	13	12	92.3	13	13	100.0
QantasLink	70	66	94.3	70	66	94.3
Virgin Australia	24	21	87.5	23	21	91.3
Virgin Australia Regional Airlines	37	36	97.3	37	37	100.0
All Airlines	144	135	93.8	143	137	95.8

Relates to services to and from Perth only.

Karratha

Qantas	17	17	100.0	17	17	100.0
QantasLink	165	147	89.1	164	144	87.8
Virgin Australia Regional Airlines	68	58	85.3	69	58	84.1
All Airlines	250	222	88.8	250	219	87.6

Relates to services to and from Perth only.

Launceston

Jetstar	156	112	71.8	157	98	62.4
QantasLink	113	86	76.1	113	89	78.8
Virgin Australia	123	95	77.2	122	97	79.5
All Airlines	392	293	74.7	392	284	72.4

Relates to services to and from Melbourne and Sydney.

Mackay

Jetstar	46	32	69.6	45	24	53.3
QantasLink	108	86	79.6	108	85	78.7
Virgin Australia	131	118	90.1	131	113	86.3
All Airlines	285	236	82.8	284	222	78.2

Relates to services to and from Brisbane only.

Melbourne

Jetstar	1 530	1 013	66.2	1 534	1 006	65.6
Qantas	2 205	1 694	76.8	2 203	1 808	82.1
QantasLink	426	352	82.6	425	351	82.6
Regional Express	86	69	80.2	88	80	90.9
Tigerair Australia	723	434	60.0	724	515	71.1
Virgin Australia	2 276	1 615	71.0	2 278	1 829	80.3
All Airlines	7 246	5 177	71.4	7 252	5 589	77.1

Relates to services to and from Adelaide, Brisbane, Cairns, Canberra, Darwin, Gold Coast, Hobart, Launceston, Mildura, Newcastle, Perth, Sunshine Coast and Sydney.

Mildura

QantasLink	95	84	88.4	95	85	89.5
Regional Express	88	78	88.6	86	75	87.2
Virgin Australia	31	19	61.3	31	20	64.5
All Airlines	214	181	84.6	212	180	84.9

Relates to services to and from Melbourne only.

Airport	Arrivals			Departures		
	Sectors Flown	On Time		Sectors Flown	On Time	
		No.	%		No.	%
Moranbah						
QantasLink	75	57	76.0	71	53	74.6
Virgin Australia	56	48	85.7	55	49	89.1
All Airlines	131	105	80.2	126	102	81.0
Relates to services to and from Brisbane only.						
Mount Isa						
QantasLink	56	48	85.7	55	51	92.7
Virgin Australia	17	15	88.2	16	13	81.3
All Airlines	73	63	86.3	71	64	90.1
Relates to services to and from Brisbane only.						
Newcastle						
Jetstar	204	166	81.4	205	177	86.3
QantasLink	87	66	75.9	86	73	84.9
Virgin Australia	117	101	86.3	118	99	83.9
All Airlines	408	333	81.6	409	349	85.3
Relates to services to and from Brisbane and Melbourne.						
Newman						
Qantas	59	51	86.4	58	53	91.4
QantasLink	65	56	86.2	64	51	79.7
Virgin Australia	15	14	93.3	15	12	80.0
Virgin Australia Regional Airlines	23	22	95.7	22	22	100.0
All Airlines	162	143	88.3	159	138	86.8
Relates to services to and from Perth only.						
Perth						
Jetstar	104	66	63.5	103	36	35.0
Qantas	805	560	69.6	804	667	83.0
QantasLink	536	455	84.9	540	469	86.9
Tigerair Australia	94	64	68.1	95	65	68.4
Virgin Australia	500	282	56.4	498	402	80.7
Virgin Australia Regional Airlines	293	246	84.0	293	268	91.5
All Airlines	2 332	1 673	71.7	2 333	1 907	81.7
Relates to services to and from Adelaide, Brisbane, Broome, Darwin, Geraldton, Kalgoorlie, Karratha, Melbourne, Newman, Port Hedland and Sydney.						
Port Hedland						
Qantas	29	26	89.7	28	27	96.4
QantasLink	102	85	83.3	100	84	84.0
Virgin Australia	11	11	100.0	11	11	100.0
Virgin Australia Regional Airlines	41	40	97.6	41	38	92.7
All Airlines	183	162	88.5	180	160	88.9
Relates to services to and from Perth only.						
Port Lincoln						
QantasLink	104	92	88.5	103	86	83.5
Regional Express	212	176	83.0	211	179	84.8
All Airlines	316	268	84.8	314	265	84.4
Relates to services to and from Adelaide only.						

Airport	Arrivals			Departures		
	Sectors Flown	On Time		Sectors Flown	On Time	
		No.	%		No.	%
Port Macquarie						
QantasLink	127	92	72.4	127	80	63.0
Virgin Australia	58	51	87.9	58	48	82.8
All Airlines	185	143	77.3	185	128	69.2
Relates to services to and from Sydney only.						
Proserpine						
Jetstar	37	27	73.0	37	28	75.7
Tigerair Australia	17	16	94.1	17	16	94.1
Virgin Australia	31	26	83.9	31	24	77.4
All Airlines	85	69	81.2	85	68	80.0
Relates to services to and from Brisbane only.						
Rockhampton						
QantasLink	184	140	76.1	183	144	78.7
Virgin Australia	142	87	61.3	142	92	64.8
All Airlines	326	227	69.6	325	236	72.6
Relates to services to and from Brisbane only.						
Sunshine Coast						
Jetstar	205	162	79.0	206	119	57.8
QantasLink	36	26	72.2	36	29	80.6
Virgin Australia	90	79	87.8	90	66	73.3
All Airlines	331	267	80.7	332	214	64.5
Relates to services to and from Melbourne and Sydney.						
Sydney						
Jetstar	1 524	1 115	73.2	1 531	1 133	74.0
Qantas	2 311	1 952	84.5	2 318	1 901	82.0
QantasLink	1 517	1 212	79.9	1 519	1 166	76.8
Regional Express	491	399	81.3	491	376	76.6
Tigerair Australia	611	397	65.0	612	439	71.7
Virgin Australia	2 618	2 133	81.5	2 616	2 155	82.4
All Airlines	9 072	7 208	79.5	9 087	7 170	78.9
Relates to services to and from Adelaide, Albury, Armidale, Ayers Rock, Ballina, Brisbane, Cairns, Canberra, Coffs Harbour, Darwin, Dubbo, Gold Coast, Hamilton Island, Hobart, Launceston, Melbourne, Perth, Port Macquarie, Sunshine Coast, Tamworth, Townsville and Wagga Wagga.						
Tamworth						
QantasLink	150	129	86.0	150	126	84.0
Virgin Australia	52	43	82.7	52	48	92.3
All Airlines	202	172	85.1	202	174	86.1
Relates to services to and from Sydney only.						
Townsville						
Jetstar	79	50	63.3	79	45	57.0
Qantas	74	69	93.2	74	65	87.8
QantasLink	216	200	92.6	212	194	91.5
Regional Express	42	37	88.1	42	40	95.2
Virgin Australia	171	147	86.0	171	147	86.0
All Airlines	582	503	86.4	578	491	84.9
Relates to services to and from Brisbane, Cairns and Sydney.						

<i>Airport</i>	<i>Arrivals</i>			<i>Departures</i>		
	<i>Sectors</i>	<i>On Time</i>		<i>Sectors</i>	<i>On Time</i>	
	<i>Flown</i>	<i>No.</i>	<i>%</i>	<i>Flown</i>	<i>No.</i>	<i>%</i>
Wagga Wagga						
QantasLink	110	86	78.2	110	88	80.0
Regional Express	132	103	78.0	135	113	83.7
All Airlines	242	189	78.1	245	201	82.0

Relates to services to and from Sydney only.

Definitions

On time arrival	A flight arrival is counted as "on time" if it arrived at the gate before 15 minutes after the scheduled arrival time shown in the carriers' schedule. Neither diverted nor cancelled flights count as on time.
On time departure	A flight departure is counted as "on time" if it departs the gate before 15 minutes after the scheduled departure time shown in the carriers' schedule.
Cancellation	A flight removed from service within 7 days of scheduled departure is regarded as a cancellation.
On time departure percentage	The percentage of on time departures is measured against the number of departures <i>operated</i> on any particular sector.
On time arrival percentage	The percentage of on time arrivals is measured against the number of arrivals <i>operated</i> on any particular sector.
Cancellation percentage	The percentage of cancellations is measured against the number of services <i>scheduled</i> on any particular sector.
