



**Australian Government**

**Department of Infrastructure and Regional Development**

Bureau of Infrastructure, Transport and Regional Economics

STATISTICAL REPORT



## Aviation

Domestic airline on time performance  
July 2016

© Commonwealth of Australia 2016

ISSN: 1832-0759

### **Ownership of intellectual property rights in this publication**

Unless otherwise noted, copyright (and any other intellectual property rights, if any) in this publication is owned by the Commonwealth of Australia (referred to below as the Commonwealth).

### **Disclaimer**

The material contained in this publication is made available on the understanding that the Commonwealth is not providing professional advice, and that users exercise their own skill and care with respect to its use, and seek independent advice if necessary.

The Commonwealth makes no representations or warranties as to the contents or accuracy of the information contained in this publication. To the extent permitted by law, the Commonwealth disclaims liability to any person or organisation in respect of anything done, or omitted to be done, in reliance upon information contained in this publication.

### **Creative Commons licence**

With the exception of (a) the Coat of Arms; and (b) the Department of Infrastructure and Regional Development's photos and graphics, copyright in this publication is licensed under a Creative Commons Attribution 3.0 Australia Licence.

Creative Commons Attribution 3.0 Australia Licence is a standard form licence agreement that allows you to copy, communicate and adapt this publication provided that you attribute the work to the Commonwealth and abide by the other licence terms. A summary of the licence terms is available from <http://creativecommons.org/licenses/by/3.0/au/deed.en>. The full licence terms are available from <http://creativecommons.org/licenses/by/3.0/au/legalcode>.

### **Use of the Coat of Arms**

The Department of the Prime Minister and Cabinet sets the terms under which the Coat of Arms is used. Please refer to the Department's Commonwealth Coat of Arms and Government branding web page <http://www.dpmmc.gov.au/guidelines/index.cfm#brand> and, in particular, the Guidelines on the use of the Commonwealth Coat of Arms publication.

An appropriate citation for this report is:

Bureau of Infrastructure, Transport and Regional Economics (BITRE), 2016, Domestic airline on time performance, Statistical Report, BITRE, Canberra ACT.

### **Contact us**

This publication is available in PDF format. All other rights are reserved, including in relation to any Departmental logos or trade marks which may exist. For enquiries regarding the licence and any use of this publication, please contact:

Bureau of Infrastructure, Transport and Regional Economics (BITRE)  
Department of Infrastructure and Regional Development  
GPO Box 501, Canberra ACT 2601, Australia  
Telephone: (international) +61 2 6274 7210  
Fax: (international) +61 2 6274 6855  
Email: [bitre@infrastructure.gov.au](mailto:bitre@infrastructure.gov.au)  
Website: [www.bitre.gov.au](http://www.bitre.gov.au)

### **Inquiries**

Should you require additional information about the statistics contained in this publication:

Telephone (02) 6274 7790 or Facsimile (02) 6274 7727

Electronic mail: [AVSTATS@infrastructure.gov.au](mailto:AVSTATS@infrastructure.gov.au)

Web site: <http://www.bitre.gov.au/statistics/aviation/otphome.aspx>

# Foreword

The Bureau of Infrastructure, Transport and Regional Economics (BITRE) monitors the punctuality and reliability of major domestic airlines operating between Australian airports. The purpose of this is to allow for evaluation of overall industry and individual airline performance, so that consumers of air travel can make informed decisions.

The following domestic airlines currently report this information monthly to the BITRE: Jetstar, Qantas, QantasLink, Regional Express, Tigerair Australia, Virgin Australia and Virgin Australia Regional Airlines. Data has been gathered since November 2003, although some airlines commenced reporting at a later date, including Jetstar which first reported in May 2004, MacAir in July 2005, Tigerair Australia in April 2008 and Virgin Australia Regional Airlines in May 2013. MacAir ceased operations in February 2009 and data was not received for December 2008 onwards. Virgin Blue was rebranded as Virgin Australia in May 2011 and Tiger Airways was rebranded as Tigerair Australia in July 2013 and time series data in Microsoft Excel spreadsheet format on the BITRE website have been revised to reflect these changes. Services operated by Skywest on behalf of Virgin Australia using ATR/F100 aircraft commenced in November 2011 and were shown separately as Virgin Australia – ATR/F100 Operations. Virgin Australia Regional Airlines commenced operations in May 2013. It was formed after the acquisition of Skywest by Virgin Australia and represented a combination of operations previously reported under Skywest and Virgin Australia – ATR/F100 Operations. In January 2016, Virgin Australia transferred their ATR fleet from Virgin Australia Regional Airlines to Virgin Australia.

Information presented in this report is for Australian domestic routes for which the passenger load averaged 8 000 or more passengers per month over the previous six months and where two or more airlines operated in competition on those routes. There were 66 routes that met this definition in July 2016. Over time, routes which meet these criteria change as airline networks and traffic levels vary.

Participating airlines report their overall monthly network performance where this is possible.

Total industry figures encompass all services operated by reporting airlines only. These airlines collectively carried over 95 per cent of total domestic passengers (regular public transport only) in 2015.

The method of capturing on time performance varies between airlines utilising different recording systems. Jetstar and Qantas jet aircraft use Aircraft Communication Addressing and Reporting System (ACARS) to electronically measure on time performance. Regional Express, Tigerair Australia, Virgin Australia, Virgin Australia Regional Airlines and the Qantas non-jet fleet record on time performance manually using records from pilots, gate agents and/or ground crews.

After initial data is collected, aggregate reports are audited internally by participating airlines prior to publication.

Reports and detailed time series data in Microsoft Excel spreadsheet format are available from the BITRE website at: <http://www.bitre.gov.au/statistics/aviation/otphome.aspx>.



# Contents

	Page
Industry performance .....	1
Individual routes .....	10
Airports .....	23
Definitions .....	29



## Industry performance

For July 2016, on time performance over all routes operated by participating airlines (Jetstar, Qantas, QantasLink, Regional Express, Tigerair Australia, Virgin Australia and Virgin Australia Regional Airlines) averaged 77.3 per cent for on time arrivals and 79.5 per cent for on time departures. Cancellations represented 2.2 per cent of all scheduled flights. The equivalent figures for July 2015 were 82.8 per cent for arrivals, 84.3 per cent for departures and 2.0 per cent for cancellations.

This month's on time arrivals figure was lower than the long term average performance for all routes (82.7 per cent) and the on time departures figure was also lower than the long term average (84.2 per cent). The rate of cancellations was higher than the long term average of 1.4 per cent.

Qantas achieved the highest on time arrivals among the major domestic airlines at 79.5 per cent followed by Virgin Australia at 78.2 per cent, Tigerair Australia at 73.6 per cent and Jetstar at 68.8 per cent. Of the regional airlines, Virgin Australia Regional Airlines and QantasLink recorded 79.8 per cent for on time arrivals, followed by Regional Express at 79.6 per cent. The Qantas network (Qantas and QantasLink combined operations) recorded 79.6 per cent for on time arrivals while the Virgin Australia network (Virgin Australia and Virgin Australia Regional Airlines combined operations) recorded 78.3 per cent.

Qantas also achieved the highest level of on time departures for July 2016 at 82.9 per cent, followed by Virgin Australia at 81.3 per cent, Tigerair Australia at 77.4 per cent and Jetstar at 67.6 per cent. Of the regional airlines, Virgin Australia Regional Airlines recorded 83.5 per cent, followed by Regional Express at 83.4 per cent and QantasLink at 80.8 per cent. The Qantas network recorded 81.8 per cent for on time departures while the Virgin Australia network recorded 81.4 per cent.

QantasLink had the highest percentage of cancellations (3.3 per cent) during the month, followed by Virgin Australia (3.1 per cent), Jetstar (1.9 per cent), Qantas (1.8 per cent), Virgin Australia Regional Airlines (1.3 per cent), Regional Express (0.7 per cent) and Tigerair Australia (0.5 per cent).

Airlines' on time performance varies across the routes they serve. Individual route data by specific airline for 66 routes are shown on pages 10-22.

Of the 66 routes which met the criteria for on time performance reporting in July 2016, the Mount Isa-Brisbane route had the highest percentage of on time arrivals (93.2 per cent) and the Brisbane-Mount Isa route had the highest percentage of on time departures (94.5 per cent). The Newcastle-Melbourne route had the lowest percentage of on time arrivals (58.4 per cent) and the Ayers Rock-Sydney route had the lowest percentage of on time departures (54.1 per cent).

Cancellations were highest on the Brisbane-Moranbah route at 9.9 per cent, followed by the Moranbah-Brisbane route at 8.9 per cent, the Canberra-Sydney route at 6.4 per cent, the

Melbourne-Sydney route at 6.2 per cent and the Sydney-Melbourne and Sydney-Canberra routes at 5.9 per cent.

Newman Airport recorded the highest percentage of on time arrivals (93.0 per cent) and Mount Isa Airport recorded the highest percentage of on time departures (91.9 per cent). Ayers Rock Airport recorded the lowest percentage of on time arrivals (62.9 per cent) and the lowest percentage of on time departures (54.1 per cent). These figures only refer to reported routes and do not cover all flights at these airports.



Table 1 On time performance for July 2016 — Total Industry

	<i>Sectors</i>		<i>Arrivals On Time</i>		<i>Departures On Time</i>		<i>Cancellations</i>	
	<i>Scheduled</i>	<i>Flown</i>	<i>No.</i>	<i>%</i>	<i>No.</i>	<i>%</i>	<i>No.</i>	<i>%</i>
Jetstar	7 574	7 433	5 113	68.8	5 025	67.6	141	1.9
Qantas	9 398	9 233	7 338	79.5	7 657	82.9	165	1.8
QantasLink	10 574	10 228	8 158	79.8	8 268	80.8	346	3.3
Regional Express	6 579	6 530	5 200	79.6	5 445	83.4	49	0.7
Tigerair Australia	2 333	2 322	1 709	73.6	1 797	77.4	11	0.5
Virgin Australia	12 913	12 513	9 787	78.2	10 170	81.3	400	3.1
Virgin Australia Regional Airlines	668	659	526	79.8	550	83.5	9	1.3
All Airlines	50 039	48 918	37 831	77.3	38 912	79.5	1 121	2.2
Qantas - all QF designated services	19 972	19 461	15 496	79.6	15 925	81.8	511	2.6
Virgin Australia - all VA designated services	13 581	13 172	10 313	78.3	10 720	81.4	409	3.0

Total airline network data (including routes not shown in this report).

Airlines' on time performance varies across the routes they serve. Individual route data by specific airline for 66 routes are shown on pages 10-22.

Table 2 Top ten routes for on time performance for July 2016 (participating airlines only)

<i>Arrivals</i>		<i>Departures</i>	
<i>Route</i>	<i>On Time (%)</i>	<i>Route</i>	<i>On Time (%)</i>
Mount Isa-Brisbane	93.2	Brisbane-Mount Isa	94.5
Perth-Darwin	93.1	Brisbane-Hobart	93.3
Perth-Newman	93.0	Darwin-Alice Springs	93.2
Darwin-Perth	91.8	Perth-Newman	92.4
Brisbane-Mount Isa	91.8	Brisbane-Emerald	92.0
Hamilton Island-Melbourne	91.7	Mount Isa-Brisbane	91.9
Port Hedland-Perth	90.7	Perth-Karratha	91.8
Darwin-Alice Springs	90.5	Port Hedland-Perth	91.8
Perth-Adelaide	90.1	Melbourne-Hamilton Island	91.7
Perth-Karratha	90.0	Canberra-Adelaide	91.2

Table 3 Top ten airports for on time performance for July 2016 (participating airlines and reported routes only)

<i>Arrivals</i>		<i>Departures</i>	
<i>Airport</i>	<i>On Time (%)</i>	<i>Airport</i>	<i>On Time (%)</i>
Newman	93.0	Mount Isa	91.9
Mount Isa	91.8	Port Hedland	91.8
Karratha	90.0	Karratha	90.6
Kalgoorlie	87.9	Newman	88.2
Geraldton	87.3	Port Lincoln	86.7
Alice Springs	87.2	Kalgoorlie	86.5
Port Hedland	87.0	Emerald	86.0
Broome	86.7	Geraldton	84.3
Port Lincoln	86.1	Gladstone	83.8
Emerald	85.6	Perth	83.7

## Total industry on time performance

Figure 1 On time performance (by month from July 2013)—Total Industry

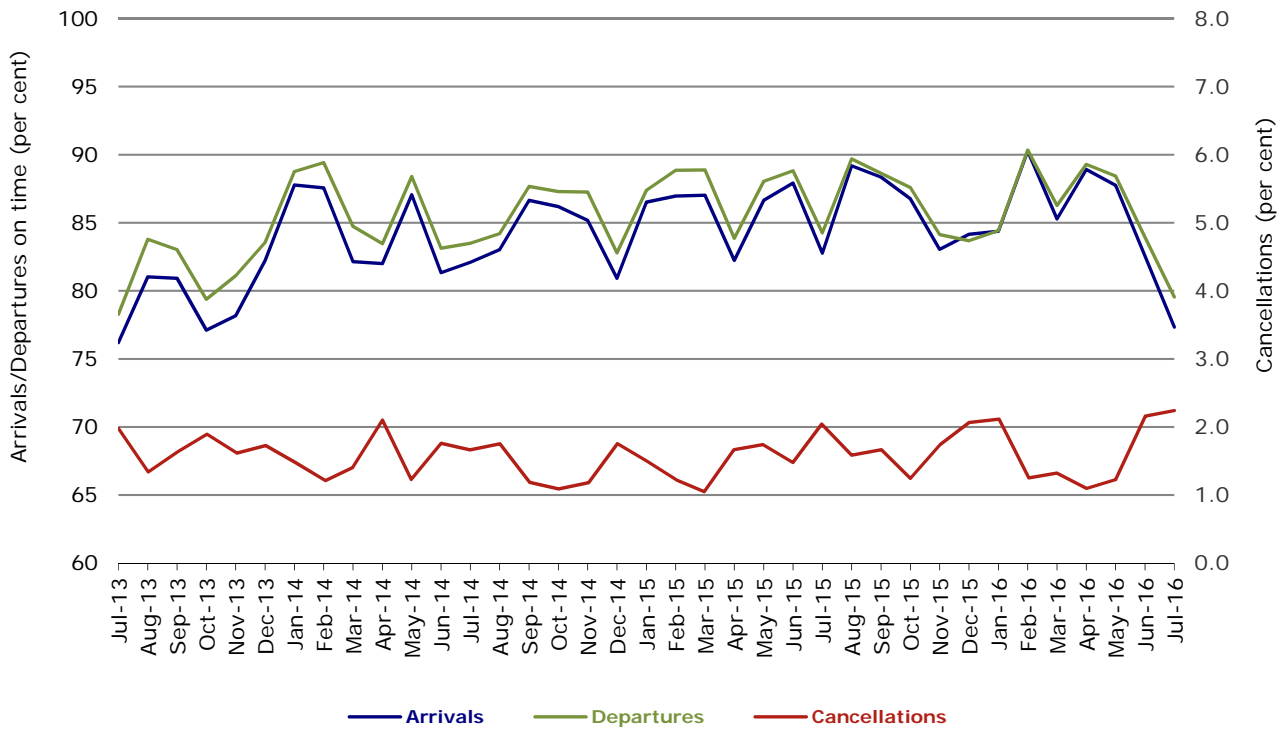


Figure 2 Arrivals on time (by month from July 2015)

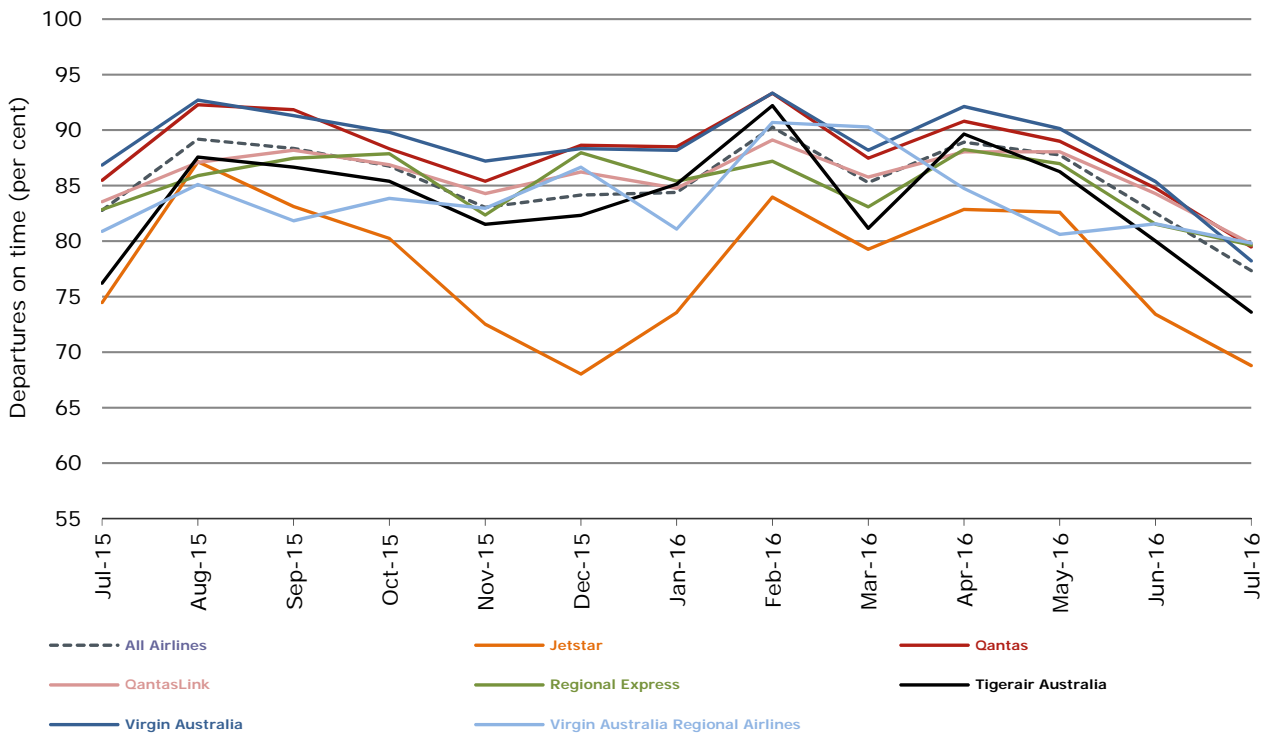


Figure 3 Departures on time (by month from July 2015)

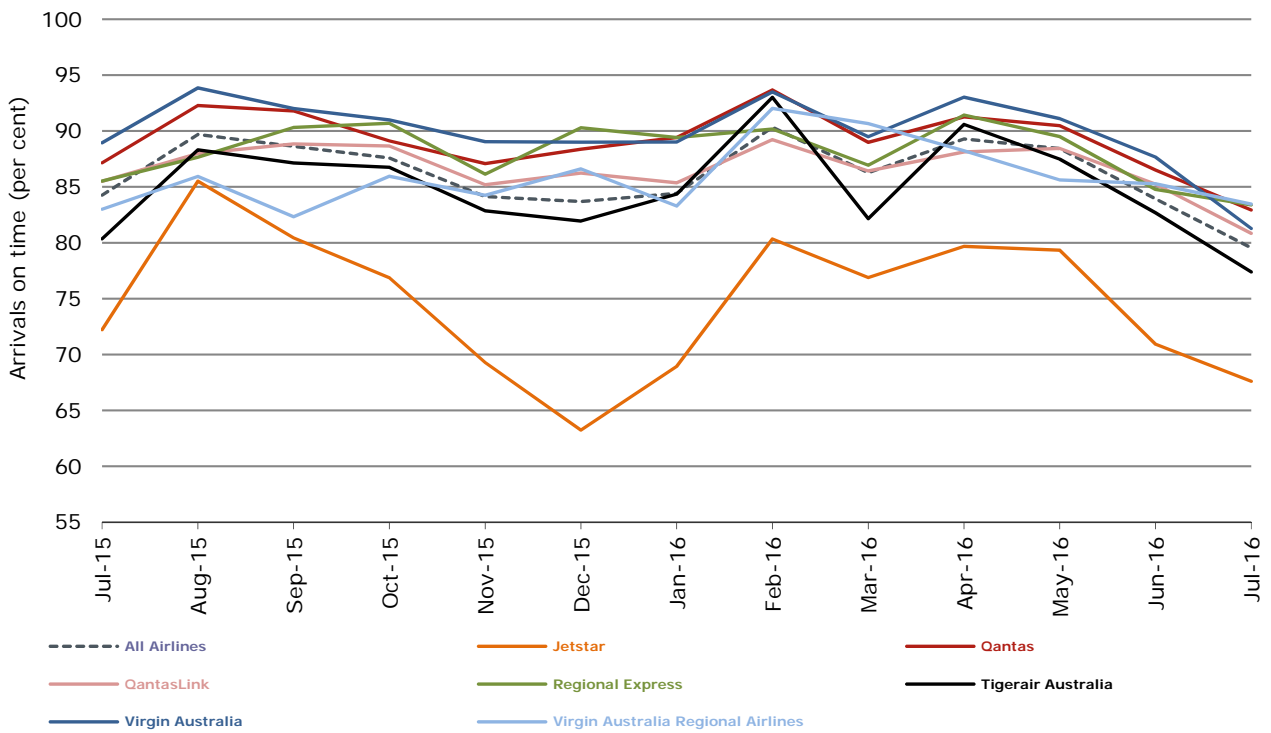
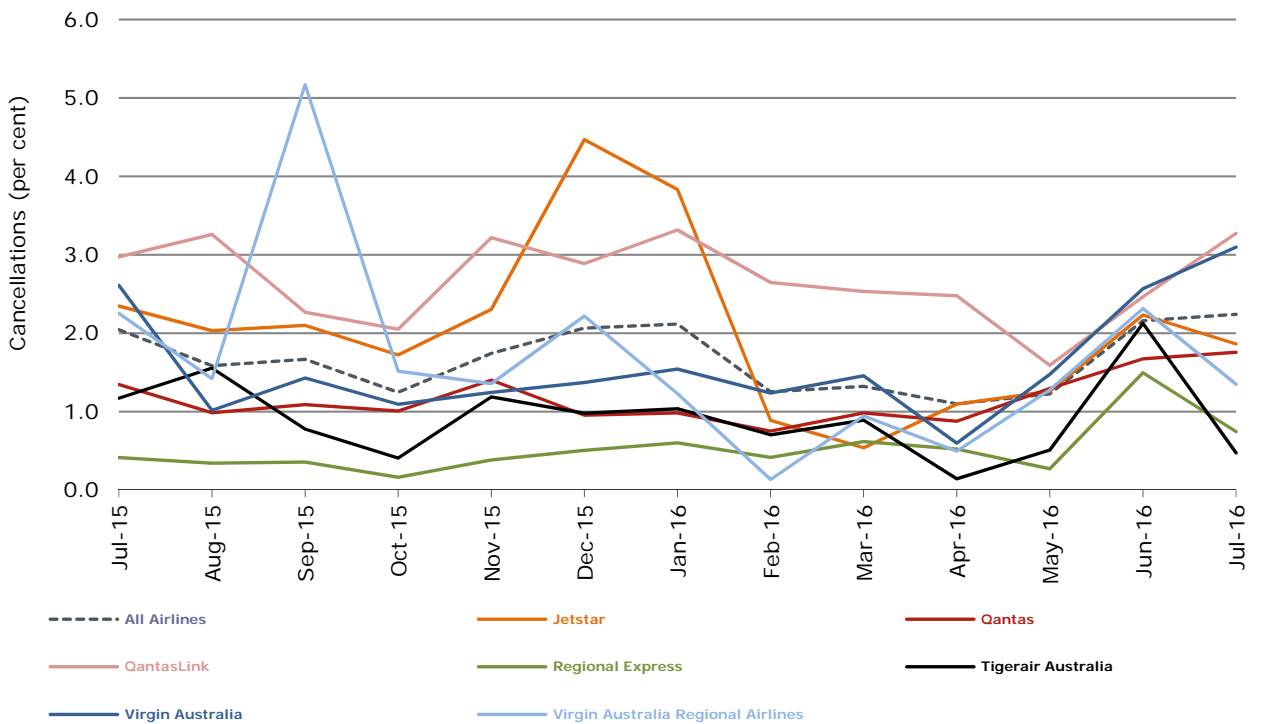


Figure 4 Cancellations (by month from July 2015)



## Major domestic airlines on time performance

Figure 5 On time performance (by month from July 2013)—Jetstar

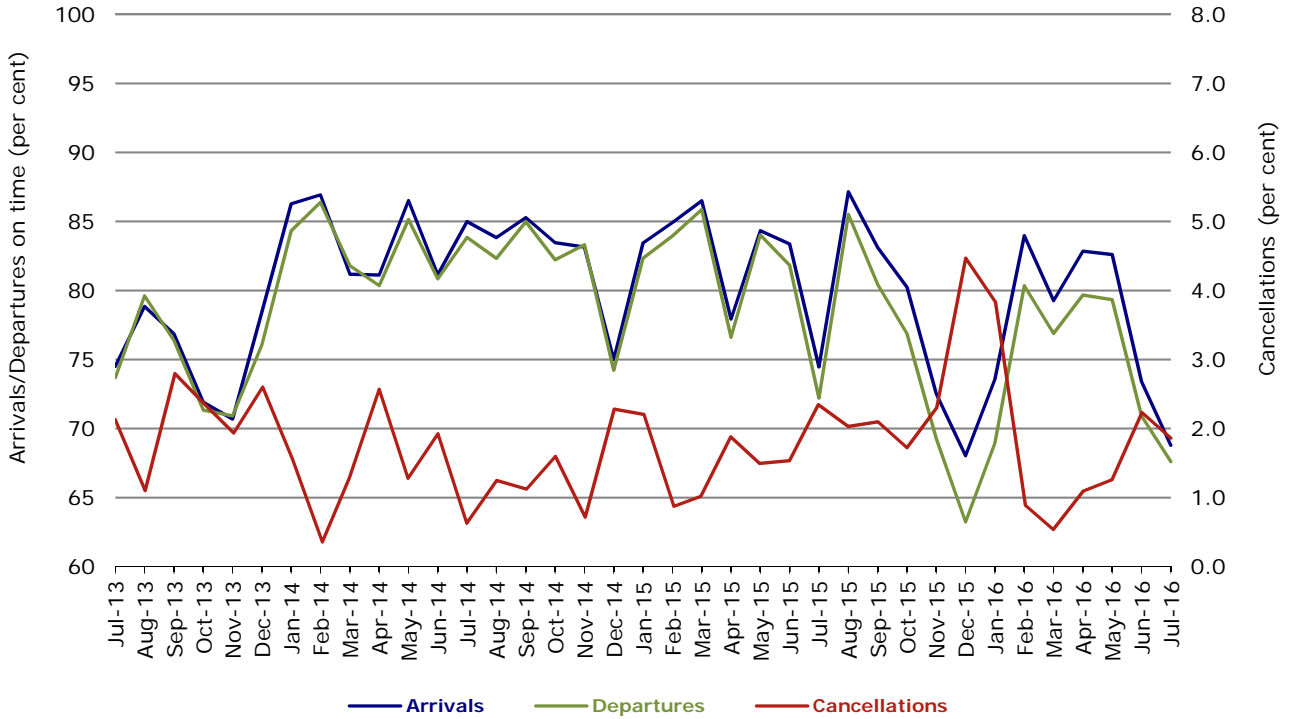


Figure 6 On time performance (by month from July 2013)—Qantas

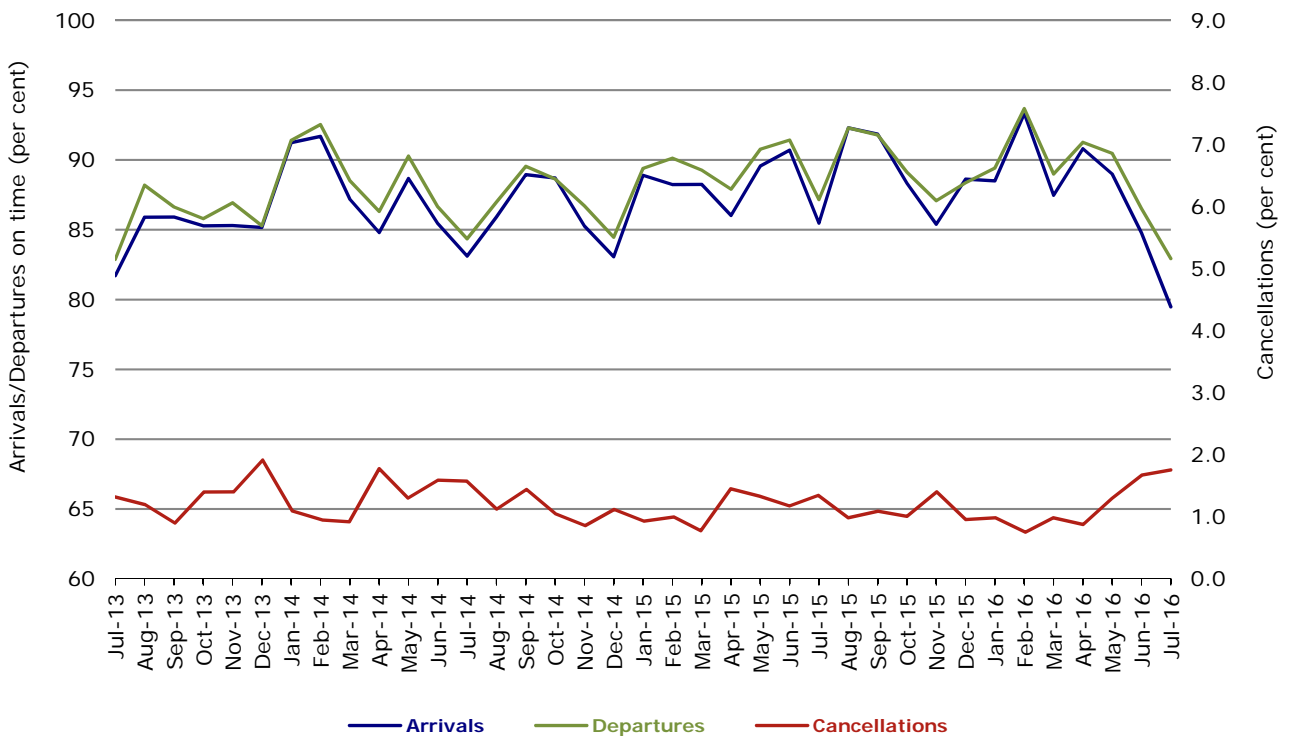


Figure 7 On time performance (by month from July 2013)—Tigerair Australia

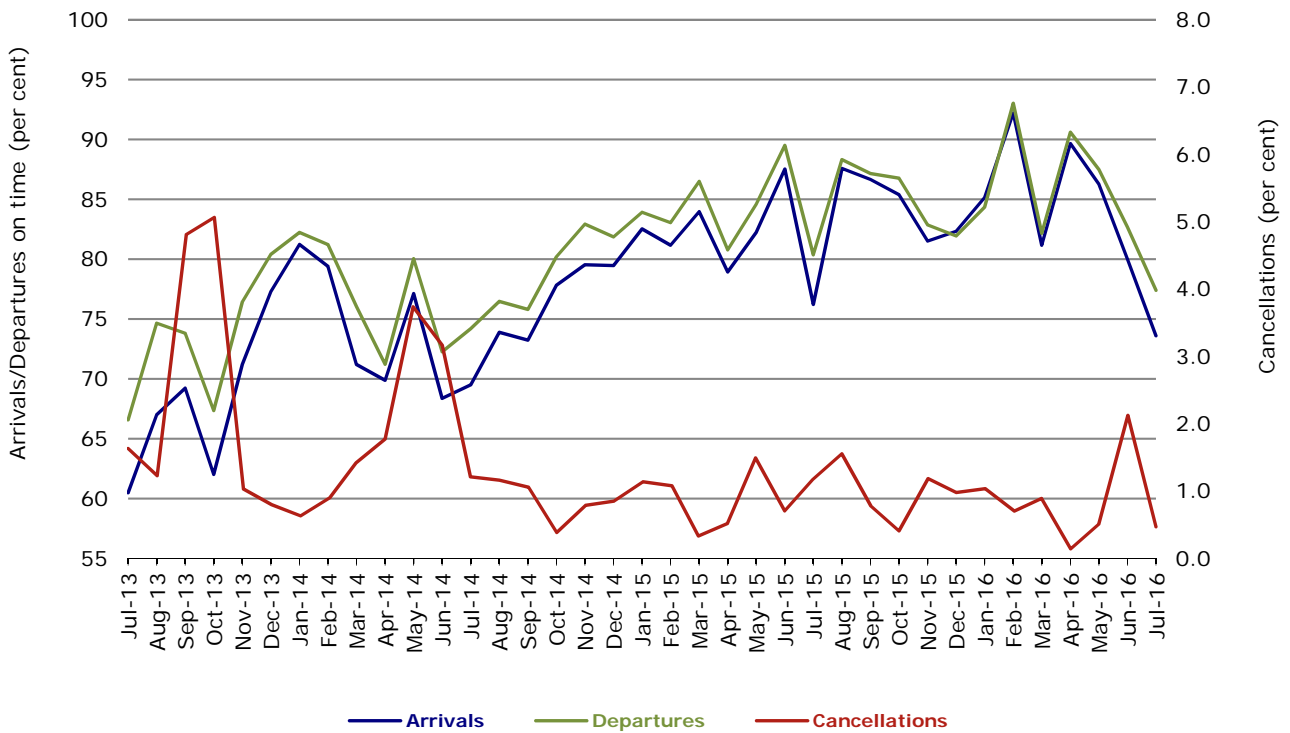
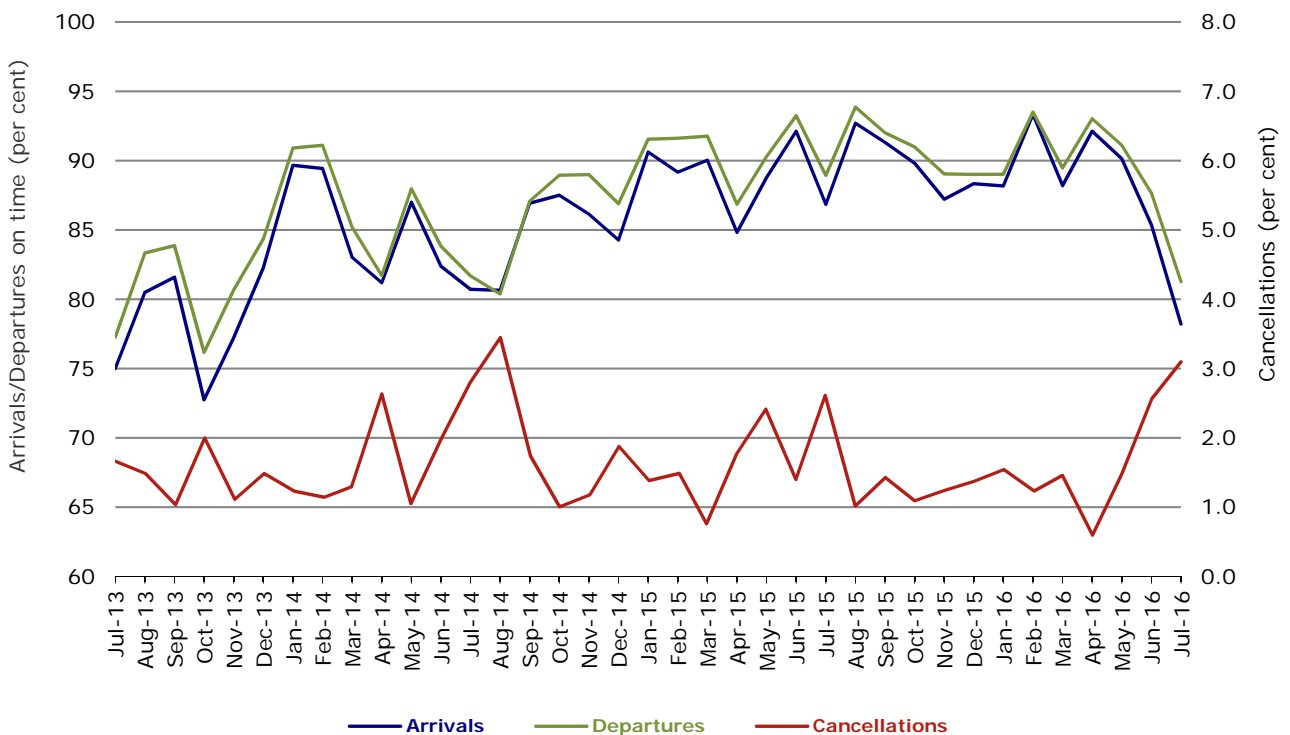


Figure 8 On time performance (by month from July 2013)—Virgin Australia



In January 2016, Virgin Australia transferred their ATR fleet from Virgin Australia Regional Airlines to Virgin Australia.

## Major regional airlines on time performance

Figure 9 On time performance (by month from July 2013)—QantasLink

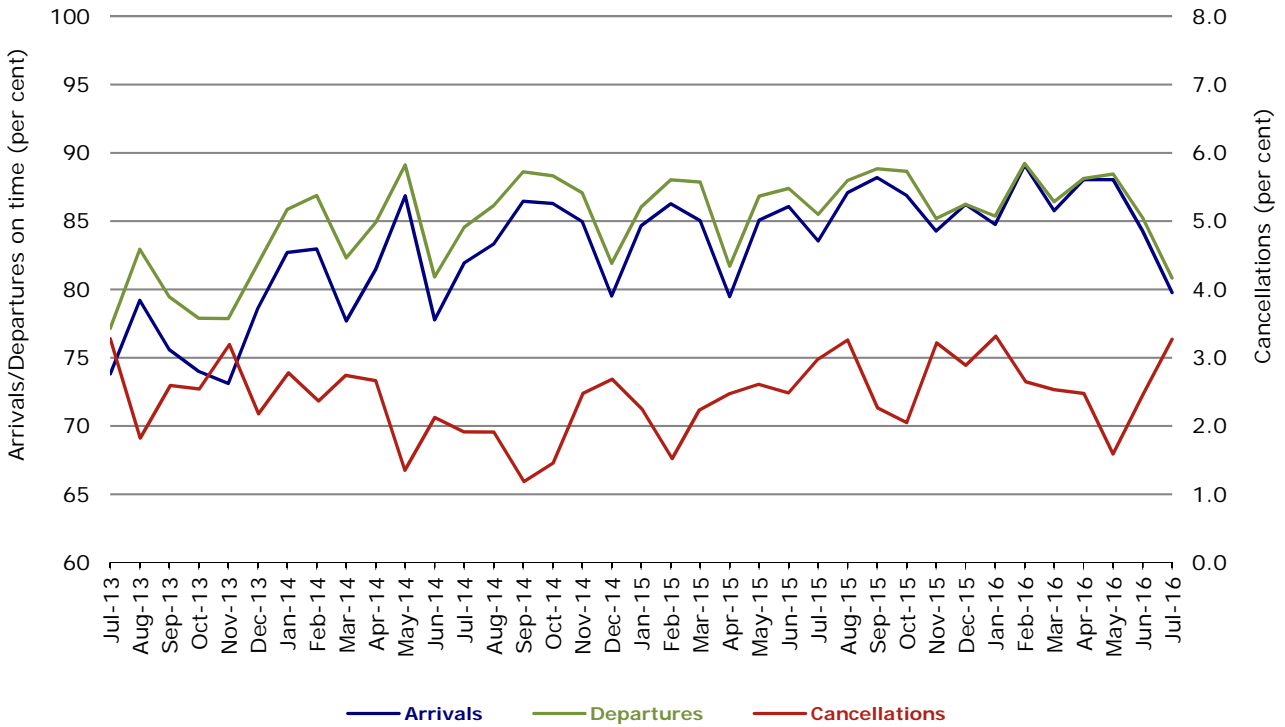


Figure 10 On time performance (by month from July 2013)—Regional Express

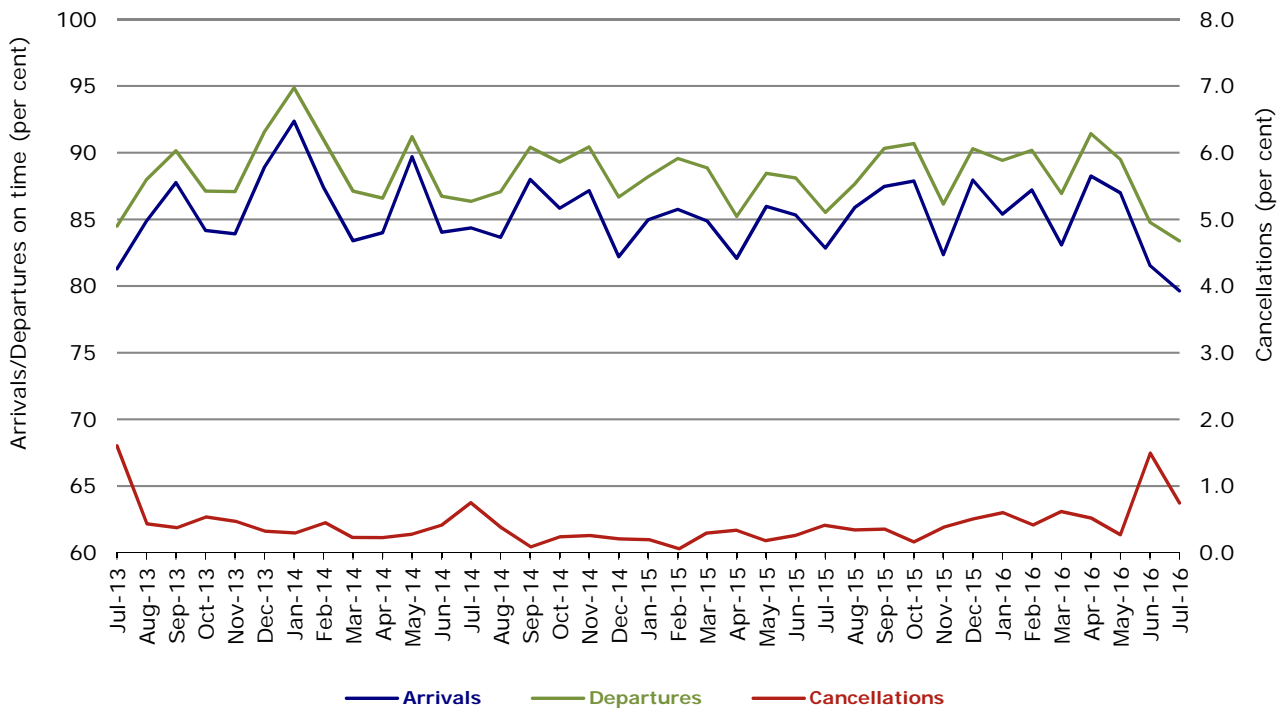
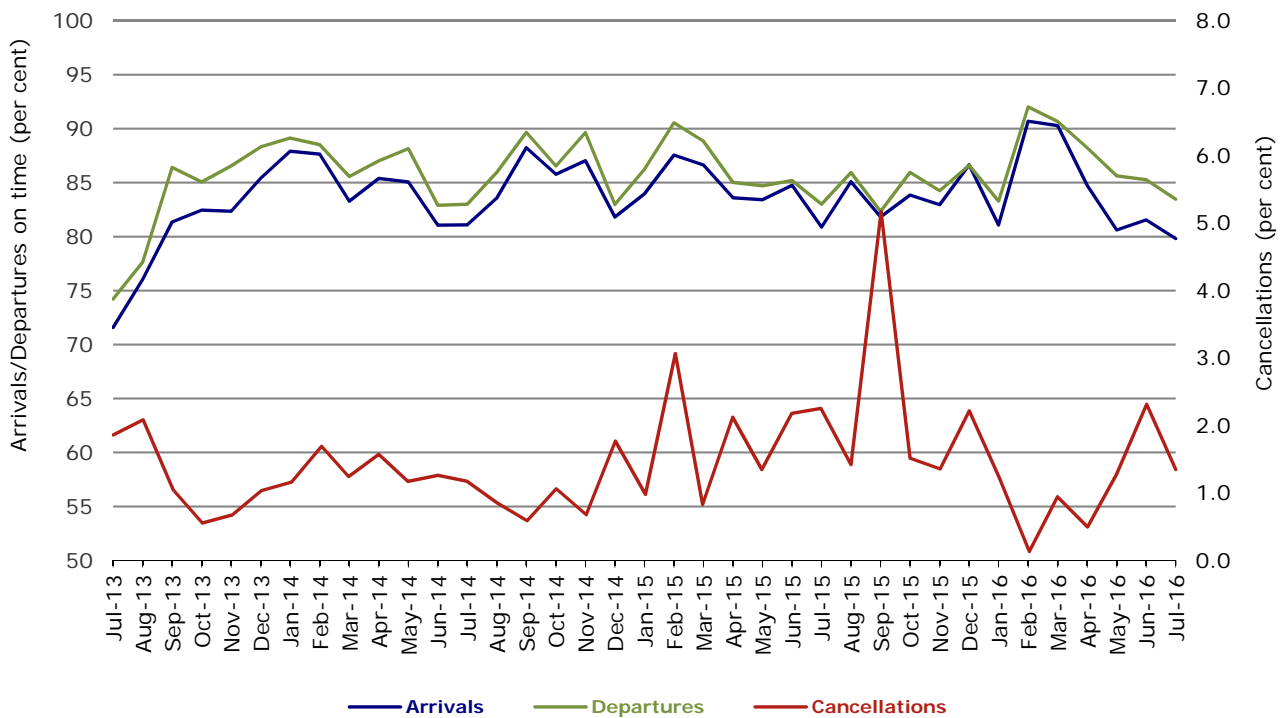


Figure 11 On time performance (by month from July 2013)  
Virgin Australia Regional Airlines



Virgin Australia Regional Airlines commenced operations in May 2013. It was formed after the acquisition of Skywest by Virgin Australia and represented a combination of operations previously reported under Skywest and Virgin Australia – ATR/F100 Operations. In January 2016, Virgin Australia transferred their ATR fleet from Virgin Australia Regional Airlines to Virgin Australia.

## Individual routes

On time performance is reported for all routes where the passenger load averages over 8000 passengers per month over the previous six months, and where two or more airlines operate in competition on those routes. There are now 66 routes which meet this definition. Over time, however, routes which meet this definition may change as airline networks and traffic levels vary.

	<i>Sectors</i>		<i>Arrivals On Time</i>		<i>Departures On Time</i>		<i>Cancellations</i>	
	<i>Sched.</i>	<i>Flown</i>	<i>No.</i>	<i>%</i>	<i>No.</i>	<i>%</i>	<i>No.</i>	<i>%</i>
<b>Adelaide-Alice Springs</b>								
Qantas	31	31	26	83.9	27	87.1	0	0.0
Virgin Australia	12	12	9	75.0	10	83.3	0	0.0
All Airlines	43	43	35	81.4	37	86.0	0	0.0
<b>Adelaide-Brisbane</b>								
Jetstar	29	29	23	79.3	26	89.7	0	0.0
Qantas	115	115	101	87.8	107	93.0	0	0.0
Tigerair Australia	25	25	17	68.0	14	56.0	0	0.0
Virgin Australia	117	117	100	85.5	89	76.1	0	0.0
All Airlines	286	286	241	84.3	236	82.5	0	0.0
<b>Adelaide-Canberra</b>								
Qantas	43	43	36	83.7	34	79.1	0	0.0
Virgin Australia	26	25	23	92.0	23	92.0	1	3.8
All Airlines	69	68	59	86.8	57	83.8	1	1.4
<b>Adelaide-Gold Coast</b>								
Jetstar	39	38	31	81.6	28	73.7	1	2.6
Virgin Australia	31	31	30	96.8	30	96.8	0	0.0
All Airlines	70	69	61	88.4	58	84.1	1	1.4
<b>Adelaide-Melbourne</b>								
Jetstar	103	100	64	64.0	53	53.0	3	2.9
Qantas	295	294	252	85.7	249	84.7	1	0.3
Tigerair Australia	80	79	61	77.2	62	78.5	1	1.3
Virgin Australia	299	296	222	75.0	218	73.6	3	1.0
All Airlines	777	769	599	77.9	582	75.7	8	1.0
<b>Adelaide-Perth</b>								
Jetstar	31	30	19	63.3	19	63.3	1	3.2
Qantas	112	112	92	82.1	100	89.3	0	0.0
Virgin Australia	76	75	56	74.7	68	90.7	1	1.3
All Airlines	219	217	167	77.0	187	86.2	2	0.9
<b>Adelaide-Port Lincoln</b>								
QantasLink	111	108	99	91.7	97	89.8	3	2.7
Regional Express	211	208	173	83.2	185	88.9	3	1.4
All Airlines	322	316	272	86.1	282	89.2	6	1.9
<b>Adelaide-Sydney</b>								
Jetstar	97	93	62	66.7	59	63.4	4	4.1
Qantas	225	224	191	85.3	194	86.6	1	0.4
QantasLink	30	29	20	69.0	18	62.1	1	3.3
Tigerair Australia	48	47	28	59.6	27	57.4	1	2.1
Virgin Australia	170	167	138	82.6	134	80.2	3	1.8
All Airlines	570	560	439	78.4	432	77.1	10	1.8
<b>Albury-Sydney</b>								
QantasLink	110	103	71	68.9	74	71.8	7	6.4
Regional Express	106	106	81	76.4	85	80.2	0	0.0
Virgin Australia	62	60	35	58.3	34	56.7	2	3.2
All Airlines	278	269	187	69.5	193	71.7	9	3.2



	<i>Sectors</i>		<i>Arrivals On Time</i>		<i>Departures On Time</i>		<i>Cancellations</i>	
	<i>Sched.</i>	<i>Flown</i>	<i>No.</i>	<i>%</i>	<i>No.</i>	<i>%</i>	<i>No.</i>	<i>%</i>
<b>Alice Springs-Adelaide</b>								
Qantas	31	30	19	63.3	18	60.0	1	3.2
Virgin Australia	12	12	10	83.3	9	75.0	0	0.0
All Airlines	43	42	29	69.0	27	64.3	1	2.3
<b>Alice Springs-Darwin</b>								
QantasLink	62	62	55	88.7	55	88.7	0	0.0
Virgin Australia	12	12	8	66.7	9	75.0	0	0.0
All Airlines	74	74	63	85.1	64	86.5	0	0.0
<b>Armidale-Sydney</b>								
QantasLink	119	114	74	64.9	74	64.9	5	4.2
Regional Express	77	76	59	77.6	62	81.6	1	1.3
All Airlines	196	190	133	70.0	136	71.6	6	3.1
<b>Ayers Rock-Sydney</b>								
Jetstar	31	30	17	56.7	17	56.7	1	3.2
Virgin Australia	31	31	21	67.7	16	51.6	0	0.0
All Airlines	62	61	38	62.3	33	54.1	1	1.6
<b>Ballina-Sydney</b>								
Jetstar	83	83	54	65.1	55	66.3	0	0.0
Regional Express	25	25	15	60.0	16	64.0	0	0.0
Virgin Australia	34	34	27	79.4	26	76.5	0	0.0
All Airlines	142	142	96	67.6	97	68.3	0	0.0
<b>Brisbane-Adelaide</b>								
Jetstar	29	29	24	82.8	26	89.7	0	0.0
Qantas	115	115	98	85.2	104	90.4	0	0.0
Tigerair Australia	25	25	16	64.0	17	68.0	0	0.0
Virgin Australia	117	116	95	81.9	100	86.2	1	0.9
All Airlines	286	285	233	81.8	247	86.7	1	0.3
<b>Brisbane-Bundaberg</b>								
QantasLink	131	130	105	80.8	105	80.8	1	0.8
Virgin Australia	31	31	26	83.9	27	87.1	0	0.0
All Airlines	162	161	131	81.4	132	82.0	1	0.6
<b>Brisbane-Cairns</b>								
Jetstar	107	107	77	72.0	75	70.1	0	0.0
Qantas	128	128	109	85.2	108	84.4	0	0.0
QantasLink	10	10	9	90.0	7	70.0	0	0.0
Tigerair Australia	31	31	21	67.7	23	74.2	0	0.0
Virgin Australia	139	139	119	85.6	118	84.9	0	0.0
All Airlines	415	415	335	80.7	331	79.8	0	0.0
<b>Brisbane-Canberra</b>								
Qantas	26	26	25	96.2	25	96.2	0	0.0
QantasLink	127	127	105	82.7	103	81.1	0	0.0
Virgin Australia	97	96	87	90.6	88	91.7	1	1.0
All Airlines	250	249	217	87.1	216	86.7	1	0.4
<b>Brisbane-Darwin</b>								
Jetstar	31	31	23	74.2	24	77.4	0	0.0
Qantas	47	47	44	93.6	45	95.7	0	0.0
Tigerair Australia	28	28	22	78.6	22	78.6	0	0.0
Virgin Australia	31	31	28	90.3	29	93.5	0	0.0
All Airlines	137	137	117	85.4	120	87.6	0	0.0
<b>Brisbane-Emerald</b>								
QantasLink	136	127	101	79.5	113	89.0	9	6.6
Virgin Australia	74	74	71	95.9	72	97.3	0	0.0
All Airlines	210	201	172	85.6	185	92.0	9	4.3

	<i>Sectors</i>		<i>Arrivals On Time</i>		<i>Departures On Time</i>		<i>Cancellations</i>	
	<i>Sched.</i>	<i>Flown</i>	<i>No.</i>	<i>%</i>	<i>No.</i>	<i>%</i>	<i>No.</i>	<i>%</i>
<b>Brisbane-Gladstone</b>								
QantasLink	195	185	144	77.8	161	87.0	10	5.1
Virgin Australia	132	124	112	90.3	113	91.1	8	6.1
All Airlines	327	309	256	82.8	274	88.7	18	5.5
<b>Brisbane-Hamilton Island</b>								
QantasLink	32	32	22	68.8	23	71.9	0	0.0
Virgin Australia	31	31	30	96.8	31	100.0	0	0.0
All Airlines	63	63	52	82.5	54	85.7	0	0.0
<b>Brisbane-Hobart</b>								
Jetstar	29	29	28	96.6	29	100.0	0	0.0
Virgin Australia	31	31	25	80.6	27	87.1	0	0.0
All Airlines	60	60	53	88.3	56	93.3	0	0.0
<b>Brisbane-Mackay</b>								
Jetstar	50	49	35	71.4	36	73.5	1	2.0
QantasLink	106	106	89	84.0	94	88.7	0	0.0
Virgin Australia	151	144	118	81.9	118	81.9	7	4.6
All Airlines	307	299	242	80.9	248	82.9	8	2.6
<b>Brisbane-Melbourne</b>								
Jetstar	135	132	92	69.7	85	64.4	3	2.2
Qantas	429	428	333	77.8	371	86.7	1	0.2
Tigerair Australia	136	136	94	69.1	103	75.7	0	0.0
Virgin Australia	412	395	282	71.4	334	84.6	17	4.1
All Airlines	1 112	1 091	801	73.4	893	81.9	21	1.9
<b>Brisbane-Moranbah</b>								
QantasLink	109	94	78	83.0	83	88.3	15	13.8
Virgin Australia	63	61	48	78.7	46	75.4	2	3.2
All Airlines	172	155	126	81.3	129	83.2	17	9.9
<b>Brisbane-Mount Isa</b>								
Qantas	25	25	23	92.0	25	100.0	0	0.0
QantasLink	32	32	28	87.5	28	87.5	0	0.0
Virgin Australia	16	16	16	100.0	16	100.0	0	0.0
All Airlines	73	73	67	91.8	69	94.5	0	0.0
<b>Brisbane-Newcastle</b>								
Jetstar	93	89	62	69.7	61	68.5	4	4.3
QantasLink	95	93	75	80.6	78	83.9	2	2.1
Virgin Australia	88	88	72	81.8	75	85.2	0	0.0
All Airlines	276	270	209	77.4	214	79.3	6	2.2
<b>Brisbane-Perth</b>								
Qantas	132	132	104	78.8	107	81.1	0	0.0
Virgin Australia	109	109	72	66.1	81	74.3	0	0.0
All Airlines	241	241	176	73.0	188	78.0	0	0.0
<b>Brisbane-Proserpine</b>								
Jetstar	31	31	19	61.3	22	71.0	0	0.0
Virgin Australia	31	31	23	74.2	22	71.0	0	0.0
All Airlines	62	62	42	67.7	44	71.0	0	0.0
<b>Brisbane-Rockhampton</b>								
QantasLink	192	190	149	78.4	160	84.2	2	1.0
Virgin Australia	197	188	156	83.0	157	83.5	9	4.6
All Airlines	389	378	305	80.7	317	83.9	11	2.8

	<i>Sectors</i>		<i>Arrivals On Time</i>		<i>Departures On Time</i>		<i>Cancellations</i>	
	<i>Sched.</i>	<i>Flown</i>	<i>No.</i>	<i>%</i>	<i>No.</i>	<i>%</i>	<i>No.</i>	<i>%</i>
<b>Brisbane-Sydney</b>								
Jetstar	188	180	126	70.0	118	65.6	8	4.3
Qantas	618	613	502	81.9	528	86.1	5	0.8
Tigerair Australia	106	106	70	66.0	75	70.8	0	0.0
Virgin Australia	574	555	458	82.5	479	86.3	19	3.3
All Airlines	1 486	1 454	1 156	79.5	1 200	82.5	32	2.2
<b>Brisbane-Townsville</b>								
Jetstar	49	49	35	71.4	38	77.6	0	0.0
Qantas	90	90	72	80.0	71	78.9	0	0.0
QantasLink	57	57	47	82.5	50	87.7	0	0.0
Virgin Australia	147	145	128	88.3	129	89.0	2	1.4
All Airlines	343	341	282	82.7	288	84.5	2	0.6
<b>Broome-Perth</b>								
Qantas	29	29	24	82.8	24	82.8	0	0.0
QantasLink	52	51	42	82.4	41	80.4	1	1.9
Virgin Australia	11	11	10	90.9	8	72.7	0	0.0
Virgin Australia Regional Airlines	60	60	37	61.7	45	75.0	0	0.0
All Airlines	152	151	113	74.8	118	78.1	1	0.7
<b>Bundaberg-Brisbane</b>								
QantasLink	131	129	110	85.3	106	82.2	2	1.5
Virgin Australia	31	31	26	83.9	25	80.6	0	0.0
All Airlines	162	160	136	85.0	131	81.9	2	1.2
<b>Cairns-Brisbane</b>								
Jetstar	107	106	85	80.2	77	72.6	1	0.9
Qantas	128	128	112	87.5	114	89.1	0	0.0
QantasLink	10	10	9	90.0	9	90.0	0	0.0
Tigerair Australia	31	31	22	71.0	22	71.0	0	0.0
Virgin Australia	139	139	118	84.9	112	80.6	0	0.0
All Airlines	415	414	346	83.6	334	80.7	1	0.2
<b>Cairns-Melbourne</b>								
Jetstar	121	121	76	62.8	67	55.4	0	0.0
Qantas	49	49	28	57.1	26	53.1	0	0.0
Tigerair Australia	46	46	30	65.2	28	60.9	0	0.0
Virgin Australia	37	37	22	59.5	22	59.5	0	0.0
All Airlines	253	253	156	61.7	143	56.5	0	0.0
<b>Cairns-Sydney</b>								
Jetstar	121	118	95	80.5	82	69.5	3	2.5
Qantas	86	86	68	79.1	60	69.8	0	0.0
Tigerair Australia	44	44	32	72.7	26	59.1	0	0.0
Virgin Australia	96	96	75	78.1	74	77.1	0	0.0
All Airlines	347	344	270	78.5	242	70.3	3	0.9
<b>Cairns-Townsville</b>								
QantasLink	145	143	122	85.3	122	85.3	2	1.4
Regional Express	69	66	65	98.5	65	98.5	3	4.3
All Airlines	214	209	187	89.5	187	89.5	5	2.3
<b>Canberra-Adelaide</b>								
Qantas	43	43	37	86.0	40	93.0	0	0.0
Virgin Australia	26	25	19	76.0	22	88.0	1	3.8
All Airlines	69	68	56	82.4	62	91.2	1	1.4
<b>Canberra-Brisbane</b>								
Qantas	26	26	24	92.3	24	92.3	0	0.0
QantasLink	127	126	102	81.0	106	84.1	1	0.8
Virgin Australia	97	96	76	79.2	87	90.6	1	1.0
All Airlines	250	248	202	81.5	217	87.5	2	0.8

	<i>Sectors</i>		<i>Arrivals On Time</i>		<i>Departures On Time</i>		<i>Cancellations</i>	
	<i>Sched.</i>	<i>Flown</i>	<i>No.</i>	<i>%</i>	<i>No.</i>	<i>%</i>	<i>No.</i>	<i>%</i>
<b>Canberra-Melbourne</b>								
Qantas	206	202	171	84.7	175	86.6	4	1.9
QantasLink	79	77	51	66.2	55	71.4	2	2.5
Virgin Australia	191	177	131	74.0	142	80.2	14	7.3
All Airlines	476	456	353	77.4	372	81.6	20	4.2
<b>Canberra-Sydney</b>								
QantasLink	480	453	366	80.8	365	80.6	27	5.6
Virgin Australia	301	278	209	75.2	214	77.0	23	7.6
All Airlines	781	731	575	78.7	579	79.2	50	6.4
<b>Coffs Harbour-Sydney</b>								
QantasLink	153	146	116	79.5	120	82.2	7	4.6
Tigerair Australia	15	15	14	93.3	14	93.3	0	0.0
Virgin Australia	62	60	49	81.7	50	83.3	2	3.2
All Airlines	230	221	179	81.0	184	83.3	9	3.9
<b>Darwin-Alice Springs</b>								
QantasLink	62	62	56	90.3	58	93.5	0	0.0
Virgin Australia	12	12	11	91.7	11	91.7	0	0.0
All Airlines	74	74	67	90.5	69	93.2	0	0.0
<b>Darwin-Brisbane</b>								
Jetstar	31	31	24	77.4	22	71.0	0	0.0
Qantas	47	47	40	85.1	38	80.9	0	0.0
Tigerair Australia	28	28	21	75.0	23	82.1	0	0.0
Virgin Australia	31	31	20	64.5	27	87.1	0	0.0
All Airlines	137	137	105	76.6	110	80.3	0	0.0
<b>Darwin-Melbourne</b>								
Jetstar	31	31	23	74.2	19	61.3	0	0.0
Qantas	39	39	35	89.7	32	82.1	0	0.0
Virgin Australia	32	31	24	77.4	26	83.9	1	3.1
All Airlines	102	101	82	81.2	77	76.2	1	1.0
<b>Darwin-Perth</b>								
Qantas	40	40	38	95.0	36	90.0	0	0.0
Virgin Australia	33	33	29	87.9	30	90.9	0	0.0
All Airlines	73	73	67	91.8	66	90.4	0	0.0
<b>Darwin-Sydney</b>								
Jetstar	31	30	25	83.3	25	83.3	1	3.2
Qantas	70	70	55	78.6	50	71.4	0	0.0
Virgin Australia	31	31	21	67.7	22	71.0	0	0.0
All Airlines	132	131	101	77.1	97	74.0	1	0.8
<b>Dubbo-Sydney</b>								
QantasLink	126	122	81	66.4	79	64.8	4	3.2
Regional Express	156	154	124	80.5	131	85.1	2	1.3
All Airlines	282	276	205	74.3	210	76.1	6	2.1
<b>Emerald-Brisbane</b>								
QantasLink	136	126	102	81.0	100	79.4	10	7.4
Virgin Australia	74	74	69	93.2	72	97.3	0	0.0
All Airlines	210	200	171	85.5	172	86.0	10	4.8
<b>Geraldton-Perth</b>								
QantasLink	48	48	44	91.7	45	93.8	0	0.0
Virgin Australia Regional Airlines	56	54	42	77.8	41	75.9	2	3.6
All Airlines	104	102	86	84.3	86	84.3	2	1.9

	<i>Sectors</i>		<i>Arrivals On Time</i>		<i>Departures On Time</i>		<i>Cancellations</i>	
	<i>Sched.</i>	<i>Flown</i>	<i>No.</i>	<i>%</i>	<i>No.</i>	<i>%</i>	<i>No.</i>	<i>%</i>
<b>Gladstone-Brisbane</b>								
QantasLink	195	185	151	81.6	152	82.2	10	5.1
Virgin Australia	132	124	105	84.7	107	86.3	8	6.1
All Airlines	327	309	256	82.8	259	83.8	18	5.5
<b>Gold Coast-Adelaide</b>								
Jetstar	39	39	29	74.4	34	87.2	0	0.0
Virgin Australia	31	30	22	73.3	27	90.0	1	3.2
All Airlines	70	69	51	73.9	61	88.4	1	1.4
<b>Gold Coast-Melbourne</b>								
Jetstar	224	221	147	66.5	151	68.3	3	1.3
Qantas	31	31	21	67.7	24	77.4	0	0.0
Tigerair Australia	89	89	69	77.5	72	80.9	0	0.0
Virgin Australia	193	190	128	67.4	128	67.4	3	1.6
All Airlines	537	531	365	68.7	375	70.6	6	1.1
<b>Gold Coast-Sydney</b>								
Jetstar	307	302	228	75.5	220	72.8	5	1.6
Qantas	93	93	79	84.9	78	83.9	0	0.0
QantasLink	22	20	15	75.0	16	80.0	2	9.1
Tigerair Australia	119	119	88	73.9	92	77.3	0	0.0
Virgin Australia	264	258	201	77.9	208	80.6	6	2.3
All Airlines	805	792	611	77.1	614	77.5	13	1.6
<b>Hamilton Island-Brisbane</b>								
QantasLink	32	31	22	71.0	20	64.5	1	3.1
Virgin Australia	31	31	27	87.1	27	87.1	0	0.0
All Airlines	63	62	49	79.0	47	75.8	1	1.6
<b>Hamilton Island-Melbourne</b>								
Qantas	15	15	14	93.3	14	93.3	0	0.0
Virgin Australia	22	21	19	90.5	17	81.0	1	4.5
All Airlines	37	36	33	91.7	31	86.1	1	2.7
<b>Hamilton Island-Sydney</b>								
Jetstar	31	31	14	45.2	11	35.5	0	0.0
Qantas	12	12	9	75.0	8	66.7	0	0.0
QantasLink	17	17	11	64.7	11	64.7	0	0.0
Virgin Australia	31	31	25	80.6	20	64.5	0	0.0
All Airlines	91	91	59	64.8	50	54.9	0	0.0
<b>Hobart-Brisbane</b>								
Jetstar	28	28	26	92.9	25	89.3	0	0.0
Virgin Australia	31	31	24	77.4	21	67.7	0	0.0
All Airlines	59	59	50	84.7	46	78.0	0	0.0
<b>Hobart-Melbourne</b>								
Jetstar	178	171	88	51.5	96	56.1	7	3.9
QantasLink	145	141	105	74.5	117	83.0	4	2.8
Tigerair Australia	32	32	26	81.3	27	84.4	0	0.0
Virgin Australia	149	145	114	78.6	121	83.4	4	2.7
All Airlines	504	489	333	68.1	361	73.8	15	3.0
<b>Hobart-Sydney</b>								
Jetstar	76	76	52	68.4	45	59.2	0	0.0
QantasLink	57	54	46	85.2	47	87.0	3	5.3
Virgin Australia	62	59	47	79.7	47	79.7	3	4.8
All Airlines	195	189	145	76.7	139	73.5	6	3.1

	<i>Sectors</i>		<i>Arrivals On Time</i>		<i>Departures On Time</i>		<i>Cancellations</i>	
	<i>Sched.</i>	<i>Flown</i>	<i>No.</i>	<i>%</i>	<i>No.</i>	<i>%</i>	<i>No.</i>	<i>%</i>
<b>Kalgoorlie-Perth</b>								
Qantas	6	6	4	66.7	4	66.7	0	0.0
QantasLink	74	74	67	90.5	66	89.2	0	0.0
Virgin Australia	30	30	25	83.3	25	83.3	0	0.0
Virgin Australia Regional Airlines	31	31	26	83.9	27	87.1	0	0.0
All Airlines	141	141	122	86.5	122	86.5	0	0.0
<b>Karratha-Perth</b>								
Qantas	42	39	38	97.4	36	92.3	3	7.1
QantasLink	160	156	146	93.6	146	93.6	4	2.5
Virgin Australia	9	9	7	77.8	8	88.9	0	0.0
Virgin Australia Regional Airlines	64	63	48	76.2	52	82.5	1	1.6
All Airlines	275	267	239	89.5	242	90.6	8	2.9
<b>Launceston-Melbourne</b>								
Jetstar	121	120	71	59.2	70	58.3	1	0.8
QantasLink	119	110	82	74.5	87	79.1	9	7.6
Virgin Australia	100	100	79	79.0	86	86.0	0	0.0
All Airlines	340	330	232	70.3	243	73.6	10	2.9
<b>Launceston-Sydney</b>								
Jetstar	42	42	26	61.9	29	69.0	0	0.0
Virgin Australia	31	31	23	74.2	23	74.2	0	0.0
All Airlines	73	73	49	67.1	52	71.2	0	0.0
<b>Mackay-Brisbane</b>								
Jetstar	49	48	28	58.3	26	54.2	1	2.0
QantasLink	107	107	86	80.4	78	72.9	0	0.0
Virgin Australia	153	145	123	84.8	121	83.4	8	5.2
All Airlines	309	300	237	79.0	225	75.0	9	2.9
<b>Melbourne-Adelaide</b>								
Jetstar	103	101	44	43.6	59	58.4	2	1.9
Qantas	295	295	229	77.6	248	84.1	0	0.0
Tigerair Australia	80	79	65	82.3	69	87.3	1	1.3
Virgin Australia	298	295	228	77.3	236	80.0	3	1.0
All Airlines	776	770	566	73.5	612	79.5	6	0.8
<b>Melbourne-Brisbane</b>								
Jetstar	135	132	84	63.6	84	63.6	3	2.2
Qantas	431	431	340	78.9	348	80.7	0	0.0
Tigerair Australia	137	137	105	76.6	101	73.7	0	0.0
Virgin Australia	412	394	321	81.5	332	84.3	18	4.4
All Airlines	1 115	1 094	850	77.7	865	79.1	21	1.9
<b>Melbourne-Cairns</b>								
Jetstar	121	121	61	50.4	70	57.9	0	0.0
Qantas	49	49	34	69.4	37	75.5	0	0.0
Tigerair Australia	46	46	32	69.6	38	82.6	0	0.0
Virgin Australia	37	37	27	73.0	30	81.1	0	0.0
All Airlines	253	253	154	60.9	175	69.2	0	0.0
<b>Melbourne-Canberra</b>								
Qantas	206	204	171	83.8	176	86.3	2	1.0
QantasLink	79	76	49	64.5	52	68.4	3	3.8
Virgin Australia	191	177	146	82.5	147	83.1	14	7.3
All Airlines	476	457	366	80.1	375	82.1	19	4.0
<b>Melbourne-Darwin</b>								
Jetstar	31	31	26	83.9	25	80.6	0	0.0
Qantas	39	39	35	89.7	36	92.3	0	0.0
Virgin Australia	32	32	23	71.9	23	71.9	0	0.0
All Airlines	102	102	84	82.4	84	82.4	0	0.0

	<i>Sectors</i>		<i>Arrivals On Time</i>		<i>Departures On Time</i>		<i>Cancellations</i>	
	<i>Sched.</i>	<i>Flown</i>	<i>No.</i>	<i>%</i>	<i>No.</i>	<i>%</i>	<i>No.</i>	<i>%</i>
<b>Melbourne-Gold Coast</b>								
Jetstar	225	222	146	65.8	148	66.7	3	1.3
Qantas	31	31	25	80.6	24	77.4	0	0.0
Tigerair Australia	89	89	78	87.6	83	93.3	0	0.0
Virgin Australia	193	189	145	76.7	149	78.8	4	2.1
All Airlines	538	531	394	74.2	404	76.1	7	1.3
<b>Melbourne-Hamilton Island</b>								
Qantas	15	15	14	93.3	15	100.0	0	0.0
Virgin Australia	22	21	18	85.7	18	85.7	1	4.5
All Airlines	37	36	32	88.9	33	91.7	1	2.7
<b>Melbourne-Hobart</b>								
Jetstar	180	174	105	60.3	108	62.1	6	3.3
QantasLink	145	140	118	84.3	124	88.6	5	3.4
Tigerair Australia	32	32	27	84.4	28	87.5	0	0.0
Virgin Australia	149	145	117	80.7	120	82.8	4	2.7
All Airlines	506	491	367	74.7	380	77.4	15	3.0
<b>Melbourne-Launceston</b>								
Jetstar	121	120	75	62.5	77	64.2	1	0.8
QantasLink	119	110	79	71.8	85	77.3	9	7.6
Virgin Australia	100	100	86	86.0	91	91.0	0	0.0
All Airlines	340	330	240	72.7	253	76.7	10	2.9
<b>Melbourne-Mildura</b>								
QantasLink	97	95	77	81.1	78	82.1	2	2.1
Regional Express	87	87	66	75.9	70	80.5	0	0.0
Virgin Australia	31	31	22	71.0	24	77.4	0	0.0
All Airlines	215	213	165	77.5	172	80.8	2	0.9
<b>Melbourne-Newcastle</b>								
Jetstar	118	117	87	74.4	76	65.0	1	0.8
Virgin Australia	31	31	25	80.6	25	80.6	0	0.0
All Airlines	149	148	112	75.7	101	68.2	1	0.7
<b>Melbourne-Perth</b>								
Jetstar	53	53	40	75.5	47	88.7	0	0.0
Qantas	190	190	131	68.9	152	80.0	0	0.0
Tigerair Australia	61	60	40	66.7	54	90.0	1	1.6
Virgin Australia	144	143	83	58.0	101	70.6	1	0.7
All Airlines	448	446	294	65.9	354	79.4	2	0.4
<b>Melbourne-Sunshine Coast</b>								
Jetstar	97	97	85	87.6	82	84.5	0	0.0
Virgin Australia	43	42	33	78.6	36	85.7	1	2.3
All Airlines	140	139	118	84.9	118	84.9	1	0.7
<b>Melbourne-Sydney</b>								
Jetstar	380	361	232	64.3	215	59.6	19	5.0
Qantas	997	926	731	78.9	743	80.2	71	7.1
Tigerair Australia	243	240	183	76.3	181	75.4	3	1.2
Virgin Australia	824	766	617	80.5	627	81.9	58	7.0
All Airlines	2 444	2 293	1 763	76.9	1 766	77.0	151	6.2
<b>Mildura-Melbourne</b>								
QantasLink	97	95	75	78.9	77	81.1	2	2.1
Regional Express	87	87	66	75.9	67	77.0	0	0.0
Virgin Australia	31	31	23	74.2	22	71.0	0	0.0
All Airlines	215	213	164	77.0	166	77.9	2	0.9

	<i>Sectors</i>		<i>Arrivals On Time</i>		<i>Departures On Time</i>		<i>Cancellations</i>	
	<i>Sched.</i>	<i>Flown</i>	<i>No.</i>	<i>%</i>	<i>No.</i>	<i>%</i>	<i>No.</i>	<i>%</i>
<b>Moranbah-Brisbane</b>								
QantasLink	105	92	76	82.6	77	83.7	13	12.4
Virgin Australia	63	61	47	77.0	48	78.7	2	3.2
All Airlines	168	153	123	80.4	125	81.7	15	8.9
<b>Mount Isa-Brisbane</b>								
Qantas	25	25	24	96.0	23	92.0	0	0.0
QantasLink	32	32	29	90.6	29	90.6	0	0.0
Virgin Australia	17	17	16	94.1	16	94.1	0	0.0
All Airlines	74	74	69	93.2	68	91.9	0	0.0
<b>Newcastle-Brisbane</b>								
Jetstar	93	89	68	76.4	68	76.4	4	4.3
QantasLink	95	94	80	85.1	72	76.6	1	1.1
Virgin Australia	87	87	68	78.2	72	82.8	0	0.0
All Airlines	275	270	216	80.0	212	78.5	5	1.8
<b>Newcastle-Melbourne</b>								
Jetstar	118	118	67	56.8	72	61.0	0	0.0
Virgin Australia	31	31	20	64.5	26	83.9	0	0.0
All Airlines	149	149	87	58.4	98	65.8	0	0.0
<b>Newman-Perth</b>								
Qantas	69	68	63	92.6	64	94.1	1	1.4
QantasLink	67	63	56	88.9	57	90.5	4	6.0
Virgin Australia	11	11	8	72.7	8	72.7	0	0.0
Virgin Australia Regional Airlines	27	27	19	70.4	20	74.1	0	0.0
All Airlines	174	169	146	86.4	149	88.2	5	2.9
<b>Perth-Adelaide</b>								
Jetstar	31	30	22	73.3	18	60.0	1	3.2
Qantas	116	116	110	94.8	104	89.7	0	0.0
Virgin Australia	77	76	68	89.5	64	84.2	1	1.3
All Airlines	224	222	200	90.1	186	83.8	2	0.9
<b>Perth-Brisbane</b>								
Qantas	127	127	114	89.8	115	90.6	0	0.0
Virgin Australia	109	109	91	83.5	92	84.4	0	0.0
All Airlines	236	236	205	86.9	207	87.7	0	0.0
<b>Perth-Broome</b>								
Qantas	29	29	25	86.2	24	82.8	0	0.0
QantasLink	52	50	46	92.0	46	92.0	2	3.8
Virgin Australia	11	11	11	100.0	11	100.0	0	0.0
Virgin Australia Regional Airlines	60	60	48	80.0	49	81.7	0	0.0
All Airlines	152	150	130	86.7	130	86.7	2	1.3
<b>Perth-Darwin</b>								
Qantas	39	39	36	92.3	34	87.2	0	0.0
Virgin Australia	33	33	31	93.9	31	93.9	0	0.0
All Airlines	72	72	67	93.1	65	90.3	0	0.0
<b>Perth-Geraldton</b>								
QantasLink	48	48	43	89.6	42	87.5	0	0.0
Virgin Australia Regional Airlines	56	54	46	85.2	47	87.0	2	3.6
All Airlines	104	102	89	87.3	89	87.3	2	1.9
<b>Perth-Kalgoorlie</b>								
Qantas	5	5	4	80.0	4	80.0	0	0.0
QantasLink	74	74	67	90.5	63	85.1	0	0.0
Virgin Australia	30	30	27	90.0	27	90.0	0	0.0
Virgin Australia Regional Airlines	31	31	25	80.6	27	87.1	0	0.0
All Airlines	140	140	123	87.9	121	86.4	0	0.0



	<i>Sectors</i>		<i>Arrivals On Time</i>		<i>Departures On Time</i>		<i>Cancellations</i>	
	<i>Sched.</i>	<i>Flown</i>	<i>No.</i>	<i>%</i>	<i>No.</i>	<i>%</i>	<i>No.</i>	<i>%</i>
<b>Perth-Karratha</b>								
Qantas	42	40	36	90.0	36	90.0	2	4.8
QantasLink	159	157	145	92.4	144	91.7	2	1.3
Virgin Australia	9	9	9	100.0	9	100.0	0	0.0
Virgin Australia Regional Airlines	64	63	52	82.5	58	92.1	1	1.6
All Airlines	274	269	242	90.0	247	91.8	5	1.8
<b>Perth-Melbourne</b>								
Jetstar	54	54	40	74.1	26	48.1	0	0.0
Qantas	191	191	165	86.4	160	83.8	0	0.0
Tigerair Australia	61	60	45	75.0	38	63.3	1	1.6
Virgin Australia	144	144	120	83.3	108	75.0	0	0.0
All Airlines	450	449	370	82.4	332	73.9	1	0.2
<b>Perth-Newman</b>								
Qantas	69	69	67	97.1	67	97.1	0	0.0
QantasLink	69	65	60	92.3	59	90.8	4	5.8
Virgin Australia	11	11	11	100.0	11	100.0	0	0.0
Virgin Australia Regional Airlines	27	27	22	81.5	22	81.5	0	0.0
All Airlines	176	172	160	93.0	159	92.4	4	2.3
<b>Perth-Port Hedland</b>								
Qantas	56	56	53	94.6	52	92.9	0	0.0
QantasLink	79	76	60	78.9	64	84.2	3	3.8
Virgin Australia	29	29	28	96.6	28	96.6	0	0.0
Virgin Australia Regional Airlines	23	23	19	82.6	21	91.3	0	0.0
All Airlines	187	184	160	87.0	165	89.7	3	1.6
<b>Perth-Sydney</b>								
Jetstar	31	31	24	77.4	10	32.3	0	0.0
Qantas	205	204	181	88.7	158	77.5	1	0.5
Tigerair Australia	28	28	27	96.4	23	82.1	0	0.0
Virgin Australia	119	117	105	89.7	96	82.1	2	1.7
All Airlines	383	380	337	88.7	287	75.5	3	0.8
<b>Port Hedland-Perth</b>								
Qantas	56	56	53	94.6	52	92.9	0	0.0
QantasLink	74	74	66	89.2	67	90.5	0	0.0
Virgin Australia	29	29	27	93.1	28	96.6	0	0.0
Virgin Australia Regional Airlines	23	23	19	82.6	20	87.0	0	0.0
All Airlines	182	182	165	90.7	167	91.8	0	0.0
<b>Port Lincoln-Adelaide</b>								
QantasLink	111	108	97	89.8	97	89.8	3	2.7
Regional Express	213	208	168	80.8	177	85.1	5	2.3
All Airlines	324	316	265	83.9	274	86.7	8	2.5
<b>Port Macquarie-Sydney</b>								
QantasLink	134	132	70	53.0	78	59.1	2	1.5
Virgin Australia	62	61	43	70.5	46	75.4	1	1.6
All Airlines	196	193	113	58.5	124	64.2	3	1.5
<b>Proserpine-Brisbane</b>								
Jetstar	31	31	23	74.2	20	64.5	0	0.0
Virgin Australia	31	31	22	71.0	21	67.7	0	0.0
All Airlines	62	62	45	72.6	41	66.1	0	0.0
<b>Rockhampton-Brisbane</b>								
QantasLink	192	190	145	76.3	147	77.4	2	1.0
Virgin Australia	197	188	159	84.6	157	83.5	9	4.6
All Airlines	389	378	304	80.4	304	80.4	11	2.8

	<i>Sectors</i>		<i>Arrivals On Time</i>		<i>Departures On Time</i>		<i>Cancellations</i>	
	<i>Sched.</i>	<i>Flown</i>	<i>No.</i>	<i>%</i>	<i>No.</i>	<i>%</i>	<i>No.</i>	<i>%</i>
<b>Sunshine Coast-Melbourne</b>								
Jetstar	97	97	59	60.8	64	66.0	0	0.0
Virgin Australia	43	42	28	66.7	28	66.7	1	2.3
All Airlines	140	139	87	62.6	92	66.2	1	0.7
<b>Sunshine Coast-Sydney</b>								
Jetstar	111	108	68	63.0	57	52.8	3	2.7
QantasLink	30	30	23	76.7	24	80.0	0	0.0
Virgin Australia	34	34	22	64.7	25	73.5	0	0.0
All Airlines	175	172	113	65.7	106	61.6	3	1.7
<b>Sydney-Adelaide</b>								
Jetstar	97	94	60	63.8	65	69.1	3	3.1
Qantas	220	218	159	72.9	186	85.3	2	0.9
QantasLink	30	29	17	58.6	22	75.9	1	3.3
Tigerair Australia	47	47	29	61.7	38	80.9	0	0.0
Virgin Australia	170	168	118	70.2	144	85.7	2	1.2
All Airlines	564	556	383	68.9	455	81.8	8	1.4
<b>Sydney-Albury</b>								
QantasLink	110	103	75	72.8	76	73.8	7	6.4
Regional Express	107	105	79	75.2	82	78.1	2	1.9
Virgin Australia	62	61	34	55.7	36	59.0	1	1.6
All Airlines	279	269	188	69.9	194	72.1	10	3.6
<b>Sydney-Armidale</b>								
QantasLink	118	117	70	59.8	81	69.2	1	0.8
Regional Express	77	77	61	79.2	62	80.5	0	0.0
All Airlines	195	194	131	67.5	143	73.7	1	0.5
<b>Sydney-Ayers Rock</b>								
Jetstar	31	31	19	61.3	29	93.5	0	0.0
Virgin Australia	31	31	20	64.5	26	83.9	0	0.0
All Airlines	62	62	39	62.9	55	88.7	0	0.0
<b>Sydney-Ballina</b>								
Jetstar	83	83	66	79.5	71	85.5	0	0.0
Regional Express	24	24	22	91.7	20	83.3	0	0.0
Virgin Australia	34	34	27	79.4	28	82.4	0	0.0
All Airlines	141	141	115	81.6	119	84.4	0	0.0
<b>Sydney-Brisbane</b>								
Jetstar	187	179	125	69.8	119	66.5	8	4.3
Qantas	620	616	460	74.7	505	82.0	4	0.6
Tigerair Australia	105	105	72	68.6	84	80.0	0	0.0
Virgin Australia	576	553	419	75.8	445	80.5	23	4.0
All Airlines	1 488	1 453	1 076	74.1	1 153	79.4	35	2.4
<b>Sydney-Cairns</b>								
Jetstar	121	118	82	69.5	86	72.9	3	2.5
Qantas	85	85	60	70.6	65	76.5	0	0.0
Tigerair Australia	44	44	30	68.2	38	86.4	0	0.0
Virgin Australia	96	96	78	81.3	82	85.4	0	0.0
All Airlines	346	343	250	72.9	271	79.0	3	0.9
<b>Sydney-Canberra</b>								
QantasLink	475	452	336	74.3	340	75.2	23	4.8
Virgin Australia	301	278	207	74.5	212	76.3	23	7.6
All Airlines	776	730	543	74.4	552	75.6	46	5.9

	<i>Sectors</i>		<i>Arrivals On Time</i>		<i>Departures On Time</i>		<i>Cancellations</i>	
	<i>Sched.</i>	<i>Flown</i>	<i>No.</i>	<i>%</i>	<i>No.</i>	<i>%</i>	<i>No.</i>	<i>%</i>
<b>Sydney-Coffs Harbour</b>								
QantasLink	154	146	111	76.0	115	78.8	8	5.2
Tigerair Australia	15	15	14	93.3	14	93.3	0	0.0
Virgin Australia	62	60	51	85.0	51	85.0	2	3.2
All Airlines	231	221	176	79.6	180	81.4	10	4.3
<b>Sydney-Darwin</b>								
Jetstar	31	31	23	74.2	26	83.9	0	0.0
Qantas	70	70	51	72.9	46	65.7	0	0.0
Virgin Australia	31	31	23	74.2	27	87.1	0	0.0
All Airlines	132	132	97	73.5	99	75.0	0	0.0
<b>Sydney-Dubbo</b>								
QantasLink	126	122	72	59.0	68	55.7	4	3.2
Regional Express	154	153	137	89.5	136	88.9	1	0.6
All Airlines	280	275	209	76.0	204	74.2	5	1.8
<b>Sydney-Gold Coast</b>								
Jetstar	307	301	227	75.4	219	72.8	6	2.0
Qantas	93	93	79	84.9	76	81.7	0	0.0
QantasLink	22	20	15	75.0	17	85.0	2	9.1
Tigerair Australia	119	119	100	84.0	103	86.6	0	0.0
Virgin Australia	264	258	206	79.8	209	81.0	6	2.3
All Airlines	805	791	627	79.3	624	78.9	14	1.7
<b>Sydney-Hamilton Island</b>								
Jetstar	31	31	15	48.4	23	74.2	0	0.0
Qantas	12	12	8	66.7	10	83.3	0	0.0
QantasLink	17	17	12	70.6	13	76.5	0	0.0
Virgin Australia	31	31	23	74.2	29	93.5	0	0.0
All Airlines	91	91	58	63.7	75	82.4	0	0.0
<b>Sydney-Hobart</b>								
Jetstar	76	76	56	73.7	54	71.1	0	0.0
QantasLink	57	56	42	75.0	44	78.6	1	1.8
Virgin Australia	62	59	50	84.7	53	89.8	3	4.8
All Airlines	195	191	148	77.5	151	79.1	4	2.1
<b>Sydney-Launceston</b>								
Jetstar	42	42	38	90.5	37	88.1	0	0.0
Virgin Australia	31	31	25	80.6	22	71.0	0	0.0
All Airlines	73	73	63	86.3	59	80.8	0	0.0
<b>Sydney-Melbourne</b>								
Jetstar	379	360	199	55.3	207	57.5	19	5.0
Qantas	996	930	618	66.5	742	79.8	66	6.6
Tigerair Australia	243	240	160	66.7	178	74.2	3	1.2
Virgin Australia	821	764	513	67.1	595	77.9	57	6.9
All Airlines	2 439	2 294	1 490	65.0	1 722	75.1	145	5.9
<b>Sydney-Perth</b>								
Jetstar	31	31	17	54.8	25	80.6	0	0.0
Qantas	203	203	136	67.0	152	74.9	0	0.0
Tigerair Australia	28	28	21	75.0	25	89.3	0	0.0
Virgin Australia	119	118	75	63.6	95	80.5	1	0.8
All Airlines	381	380	249	65.5	297	78.2	1	0.3
<b>Sydney-Port Macquarie</b>								
QantasLink	134	133	87	65.4	88	66.2	1	0.7
Virgin Australia	62	61	43	70.5	41	67.2	1	1.6
All Airlines	196	194	130	67.0	129	66.5	2	1.0

	<i>Sectors</i>		<i>Arrivals On Time</i>		<i>Departures On Time</i>		<i>Cancellations</i>	
	<i>Sched.</i>	<i>Flown</i>	<i>No.</i>	<i>%</i>	<i>No.</i>	<i>%</i>	<i>No.</i>	<i>%</i>
<b>Sydney-Sunshine Coast</b>								
Jetstar	111	109	75	68.8	71	65.1	2	1.8
QantasLink	30	30	21	70.0	22	73.3	0	0.0
Virgin Australia	34	34	27	79.4	31	91.2	0	0.0
All Airlines	175	173	123	71.1	124	71.7	2	1.1
<b>Sydney-Tamworth</b>								
QantasLink	157	146	98	67.1	98	67.1	11	7.0
Virgin Australia	51	51	39	76.5	39	76.5	0	0.0
All Airlines	208	197	137	69.5	137	69.5	11	5.3
<b>Sydney-Townsville</b>								
Jetstar	31	31	26	83.9	24	77.4	0	0.0
Virgin Australia	33	33	22	66.7	26	78.8	0	0.0
All Airlines	64	64	48	75.0	50	78.1	0	0.0
<b>Sydney-Wagga Wagga</b>								
QantasLink	114	110	78	70.9	79	71.8	4	3.5
Regional Express	143	143	118	82.5	128	89.5	0	0.0
All Airlines	257	253	196	77.5	207	81.8	4	1.6
<b>Tamworth-Sydney</b>								
QantasLink	157	146	108	74.0	104	71.2	11	7.0
Virgin Australia	50	49	38	77.6	41	83.7	1	2.0
All Airlines	207	195	146	74.9	145	74.4	12	5.8
<b>Townsville-Brisbane</b>								
Jetstar	49	49	34	69.4	30	61.2	0	0.0
Qantas	90	90	67	74.4	74	82.2	0	0.0
QantasLink	57	57	45	78.9	45	78.9	0	0.0
Virgin Australia	148	146	132	90.4	126	86.3	2	1.4
All Airlines	344	342	278	81.3	275	80.4	2	0.6
<b>Townsville-Cairns</b>								
QantasLink	145	143	124	86.7	123	86.0	2	1.4
Regional Express	69	65	60	92.3	61	93.8	4	5.8
All Airlines	214	208	184	88.5	184	88.5	6	2.8
<b>Townsville-Sydney</b>								
Jetstar	31	31	22	71.0	16	51.6	0	0.0
Virgin Australia	33	33	23	69.7	20	60.6	0	0.0
All Airlines	64	64	45	70.3	36	56.3	0	0.0
<b>Wagga Wagga-Sydney</b>								
QantasLink	114	110	85	77.3	79	71.8	4	3.5
Regional Express	143	143	111	77.6	119	83.2	0	0.0
All Airlines	257	253	196	77.5	198	78.3	4	1.6

## Airports

On time performance is reported for all routes where the passenger load averages over 8000 passengers per month, and where two or more airlines operate in competition. The following data reports by airport against flights operated on those routes only. This month, 8 major city airports and 33 regional city airports are covered.

Airport	Arrivals			Departures		
	Sectors	On Time		Sectors	On Time	
	Flown	No.	%	Flown	No.	%
<b>Adelaide</b>						
Jetstar	293	179	61.1	290	185	63.8
Qantas	817	652	79.8	819	711	86.8
QantasLink	137	114	83.2	137	115	83.9
Regional Express	208	168	80.8	208	185	88.9
Tigerair Australia	151	110	72.8	151	103	68.2
Virgin Australia	722	560	77.6	723	572	79.1
All Airlines	2 328	1 783	76.6	2 328	1 871	80.4
Relates to services to and from Alice Springs, Brisbane, Canberra, Gold Coast, Melbourne, Perth, Port Lincoln and Sydney.						
<b>Albury</b>						
QantasLink	103	75	72.8	103	74	71.8
Regional Express	105	79	75.2	106	85	80.2
Virgin Australia	61	34	55.7	60	34	56.7
All Airlines	269	188	69.9	269	193	71.7
Relates to services to and from Sydney only.						
<b>Alice Springs</b>						
Qantas	31	26	83.9	30	18	60.0
QantasLink	62	56	90.3	62	55	88.7
Virgin Australia	24	20	83.3	24	18	75.0
All Airlines	117	102	87.2	116	91	78.4
Relates to services to and from Adelaide and Darwin.						
<b>Armidale</b>						
QantasLink	117	70	59.8	114	74	64.9
Regional Express	77	61	79.2	76	62	81.6
All Airlines	194	131	67.5	190	136	71.6
Relates to services to and from Sydney only.						
<b>Ayers Rock</b>						
Jetstar	31	19	61.3	30	17	56.7
Virgin Australia	31	20	64.5	31	16	51.6
All Airlines	62	39	62.9	61	33	54.1
Relates to services to and from Sydney only.						
<b>Ballina</b>						
Jetstar	83	66	79.5	83	55	66.3
Regional Express	24	22	91.7	25	16	64.0
Virgin Australia	34	27	79.4	34	26	76.5
All Airlines	141	115	81.6	142	97	68.3
Relates to services to and from Sydney only.						

Airport	Arrivals			Departures		
	Sectors	On Time		Sectors	On Time	
	Flown	No.	%	Flown	No.	%
<b>Brisbane</b>						
Jetstar	722	520	72.0	726	514	70.8
Qantas	1 605	1 282	79.9	1 604	1 384	86.3
QantasLink	1 179	957	81.2	1 183	1 005	85.0
Tigerair Australia	326	237	72.7	326	240	73.6
Virgin Australia	2 405	1 963	81.6	2 405	2 062	85.7
All Airlines	6 237	4 959	79.5	6 244	5 205	83.4

Relates to services to and from Adelaide, Bundaberg, Cairns, Canberra, Darwin, Emerald, Gladstone, Hamilton Island, Hobart, Mackay, Melbourne, Moranbah, Mount Isa, Newcastle, Perth, Proserpine, Rockhampton, Sydney and Townsville.

#### Broome

Qantas	29	25	86.2	29	24	82.8
QantasLink	50	46	92.0	51	41	80.4
Virgin Australia	11	11	100.0	11	8	72.7
Virgin Australia Regional Airlines	60	48	80.0	60	45	75.0
All Airlines	150	130	86.7	151	118	78.1

Relates to services to and from Perth only.

#### Bundaberg

QantasLink	130	105	80.8	129	106	82.2
Virgin Australia	31	26	83.9	31	25	80.6
All Airlines	161	131	81.4	160	131	81.9

Relates to services to and from Brisbane only.

#### Cairns

Jetstar	346	220	63.6	345	226	65.5
Qantas	262	203	77.5	263	200	76.0
QantasLink	153	133	86.9	153	131	85.6
Regional Express	65	60	92.3	66	65	98.5
Tigerair Australia	121	83	68.6	121	76	62.8
Virgin Australia	272	224	82.4	272	208	76.5
All Airlines	1 219	923	75.7	1 220	906	74.3

Relates to services to and from Brisbane, Melbourne, Sydney and Townsville.

#### Canberra

Qantas	273	232	85.0	271	239	88.2
QantasLink	655	490	74.8	656	526	80.2
Virgin Australia	576	463	80.4	576	465	80.7
All Airlines	1 504	1 185	78.8	1 503	1 230	81.8

Relates to services to and from Adelaide, Brisbane, Melbourne and Sydney.

#### Coffs Harbour

QantasLink	146	111	76.0	146	120	82.2
Tigerair Australia	15	14	93.3	15	14	93.3
Virgin Australia	60	51	85.0	60	50	83.3
All Airlines	221	176	79.6	221	184	83.3

Relates to services to and from Sydney only.

#### Darwin

Jetstar	93	72	77.4	92	66	71.7
Qantas	195	166	85.1	196	156	79.6
QantasLink	62	55	88.7	62	58	93.5
Tigerair Australia	28	22	78.6	28	23	82.1
Virgin Australia	139	113	81.3	138	116	84.1
All Airlines	517	428	82.8	516	419	81.2

Relates to services to and from Alice Springs, Brisbane, Melbourne, Perth and Sydney.

Airport	Arrivals			Departures		
	Sectors Flown	On Time		Sectors Flown	On Time	
		No.	%		No.	%
<b>Dubbo</b>						
QantasLink	122	72	59.0	122	79	64.8
Regional Express	153	137	89.5	154	131	85.1
All Airlines	275	209	76.0	276	210	76.1
Relates to services to and from Sydney only.						
<b>Emerald</b>						
QantasLink	127	101	79.5	126	100	79.4
Virgin Australia	74	71	95.9	74	72	97.3
All Airlines	201	172	85.6	200	172	86.0
Relates to services to and from Brisbane only.						
<b>Geraldton</b>						
QantasLink	48	43	89.6	48	45	93.8
Virgin Australia Regional Airlines	54	46	85.2	54	41	75.9
All Airlines	102	89	87.3	102	86	84.3
Relates to services to and from Perth only.						
<b>Gladstone</b>						
QantasLink	185	144	77.8	185	152	82.2
Virgin Australia	124	112	90.3	124	107	86.3
All Airlines	309	256	82.8	309	259	83.8
Relates to services to and from Brisbane only.						
<b>Gold Coast</b>						
Jetstar	561	404	72.0	562	405	72.1
Qantas	124	104	83.9	124	102	82.3
QantasLink	20	15	75.0	20	16	80.0
Tigerair Australia	208	178	85.6	208	164	78.8
Virgin Australia	478	381	79.7	478	363	75.9
All Airlines	1 391	1 082	77.8	1 392	1 050	75.4
Relates to services to and from Adelaide, Melbourne and Sydney.						
<b>Hamilton Island</b>						
Jetstar	31	15	48.4	31	11	35.5
Qantas	27	22	81.5	27	22	81.5
QantasLink	49	34	69.4	48	31	64.6
Virgin Australia	83	71	85.5	83	64	77.1
All Airlines	190	142	74.7	189	128	67.7
Relates to services to and from Brisbane, Melbourne and Sydney.						
<b>Hobart</b>						
Jetstar	279	189	67.7	275	166	60.4
QantasLink	196	160	81.6	195	164	84.1
Tigerair Australia	32	27	84.4	32	27	84.4
Virgin Australia	235	192	81.7	235	189	80.4
All Airlines	742	568	76.5	737	546	74.1
Relates to services to and from Brisbane, Melbourne and Sydney.						
<b>Kalgoorlie</b>						
Qantas	5	4	80.0	6	4	66.7
QantasLink	74	67	90.5	74	66	89.2
Virgin Australia	30	27	90.0	30	25	83.3
Virgin Australia Regional Airlines	31	25	80.6	31	27	87.1
All Airlines	140	123	87.9	141	122	86.5
Relates to services to and from Perth only.						

Airport	Arrivals			Departures		
	Sectors Flown	On Time		Sectors Flown	On Time	
		No.	%		No.	%
<b>Karratha</b>						
Qantas	40	36	90.0	39	36	92.3
QantasLink	157	145	92.4	156	146	93.6
Virgin Australia	9	9	100.0	9	8	88.9
Virgin Australia Regional Airlines	63	52	82.5	63	52	82.5
All Airlines	269	242	90.0	267	242	90.6
Relates to services to and from Perth only.						
<b>Launceston</b>						
Jetstar	162	113	69.8	162	99	61.1
QantasLink	110	79	71.8	110	87	79.1
Virgin Australia	131	111	84.7	131	109	83.2
All Airlines	403	303	75.2	403	295	73.2
Relates to services to and from Melbourne and Sydney.						
<b>Mackay</b>						
Jetstar	49	35	71.4	48	26	54.2
QantasLink	106	89	84.0	107	78	72.9
Virgin Australia	144	118	81.9	145	121	83.4
All Airlines	299	242	80.9	300	225	75.0
Relates to services to and from Brisbane only.						
<b>Melbourne</b>						
Jetstar	1 525	926	60.7	1 529	991	64.8
Qantas	2 179	1 637	75.1	2 180	1 779	81.6
QantasLink	423	313	74.0	421	339	80.5
Regional Express	87	66	75.9	87	70	80.5
Tigerair Australia	682	485	71.1	683	554	81.1
Virgin Australia	2 404	1 725	71.8	2 403	1 959	81.5
All Airlines	7 300	5 152	70.6	7 303	5 692	77.9
Relates to services to and from Adelaide, Brisbane, Cairns, Canberra, Darwin, Gold Coast, Hamilton Island, Hobart, Launceston, Mildura, Newcastle, Perth, Sunshine Coast and Sydney.						
<b>Mildura</b>						
QantasLink	95	77	81.1	95	77	81.1
Regional Express	87	66	75.9	87	67	77.0
Virgin Australia	31	22	71.0	31	22	71.0
All Airlines	213	165	77.5	213	166	77.9
Relates to services to and from Melbourne only.						
<b>Moranbah</b>						
QantasLink	94	78	83.0	92	77	83.7
Virgin Australia	61	48	78.7	61	48	78.7
All Airlines	155	126	81.3	153	125	81.7
Relates to services to and from Brisbane only.						
<b>Mount Isa</b>						
Qantas	25	23	92.0	25	23	92.0
QantasLink	32	28	87.5	32	29	90.6
Virgin Australia	16	16	100.0	17	16	94.1
All Airlines	73	67	91.8	74	68	91.9
Relates to services to and from Brisbane only.						



Airport	Arrivals			Departures		
	Sectors	On Time		Sectors	On Time	
	Flown	No.	%	Flown	No.	%
<b>Newcastle</b>						
Jetstar	206	149	72.3	207	140	67.6
QantasLink	93	75	80.6	94	72	76.6
Virgin Australia	119	97	81.5	118	98	83.1
All Airlines	418	321	76.8	419	310	74.0
Relates to services to and from Brisbane and Melbourne.						
<b>Newman</b>						
Qantas	69	67	97.1	68	64	94.1
QantasLink	65	60	92.3	63	57	90.5
Virgin Australia	11	11	100.0	11	8	72.7
Virgin Australia Regional Airlines	27	22	81.5	27	20	74.1
All Airlines	172	160	93.0	169	149	88.2
Relates to services to and from Perth only.						
<b>Perth</b>						
Jetstar	114	76	66.7	115	54	47.0
Qantas	875	683	78.1	876	754	86.1
QantasLink	466	421	90.3	470	418	88.9
Tigerair Australia	88	61	69.3	88	61	69.3
Virgin Australia	568	392	69.0	569	477	83.8
Virgin Australia Regional Airlines	258	191	74.0	258	224	86.8
All Airlines	2 369	1 824	77.0	2 376	1 988	83.7
Relates to services to and from Adelaide, Brisbane, Broome, Darwin, Geraldton, Kalgoorlie, Karratha, Melbourne, Newman, Port Hedland and Sydney.						
<b>Port Hedland</b>						
Qantas	56	53	94.6	56	52	92.9
QantasLink	76	60	78.9	74	67	90.5
Virgin Australia	29	28	96.6	29	28	96.6
Virgin Australia Regional Airlines	23	19	82.6	23	20	87.0
All Airlines	184	160	87.0	182	167	91.8
Relates to services to and from Perth only.						
<b>Port Lincoln</b>						
QantasLink	108	99	91.7	108	97	89.8
Regional Express	208	173	83.2	208	177	85.1
All Airlines	316	272	86.1	316	274	86.7
Relates to services to and from Adelaide only.						
<b>Port Macquarie</b>						
QantasLink	133	87	65.4	132	78	59.1
Virgin Australia	61	43	70.5	61	46	75.4
All Airlines	194	130	67.0	193	124	64.2
Relates to services to and from Sydney only.						
<b>Proserpine</b>						
Jetstar	31	19	61.3	31	20	64.5
Virgin Australia	31	23	74.2	31	21	67.7
All Airlines	62	42	67.7	62	41	66.1
Relates to services to and from Brisbane only.						

Airport	Arrivals			Departures		
	Sectors	On Time		Sectors	On Time	
	Flown	No.	%	Flown	No.	%
<b>Rockhampton</b>						
QantasLink	190	149	78.4	190	147	77.4
Virgin Australia	188	156	83.0	188	157	83.5
All Airlines	378	305	80.7	378	304	80.4
Relates to services to and from Brisbane only.						
<b>Sunshine Coast</b>						
Jetstar	206	160	77.7	205	121	59.0
QantasLink	30	21	70.0	30	24	80.0
Virgin Australia	76	60	78.9	76	53	69.7
All Airlines	312	241	77.2	311	198	63.7
Relates to services to and from Melbourne and Sydney.						
<b>Sydney</b>						
Jetstar	1 516	1 045	68.9	1 517	1 056	69.6
Qantas	2 228	1 816	81.5	2 227	1 782	80.0
QantasLink	1 476	1 086	73.6	1 481	1 063	71.8
Regional Express	504	390	77.4	502	428	85.3
Tigerair Australia	599	442	73.8	598	480	80.3
Virgin Australia	2 751	2 177	79.1	2 752	2 191	79.6
All Airlines	9 074	6 956	76.7	9 077	7 000	77.1
Relates to services to and from Adelaide, Albury, Armidale, Ayers Rock, Ballina, Brisbane, Cairns, Canberra, Coffs Harbour, Darwin, Dubbo, Gold Coast, Hamilton Island, Hobart, Launceston, Melbourne, Perth, Port Macquarie, Sunshine Coast, Tamworth, Townsville and Wagga Wagga.						
<b>Tamworth</b>						
QantasLink	146	98	67.1	146	104	71.2
Virgin Australia	51	39	76.5	49	41	83.7
All Airlines	197	137	69.5	195	145	74.4
Relates to services to and from Sydney only.						
<b>Townsville</b>						
Jetstar	80	61	76.3	80	46	57.5
Qantas	90	72	80.0	90	74	82.2
QantasLink	200	169	84.5	200	168	84.0
Regional Express	66	65	98.5	65	61	93.8
Virgin Australia	178	150	84.3	179	146	81.6
All Airlines	614	517	84.2	614	495	80.6
Relates to services to and from Brisbane, Cairns and Sydney.						
<b>Wagga Wagga</b>						
QantasLink	110	78	70.9	110	79	71.8
Regional Express	143	118	82.5	143	119	83.2
All Airlines	253	196	77.5	253	198	78.3
Relates to services to and from Sydney only.						

## Definitions

---

On time arrival	A flight arrival is counted as "on time" if it arrived at the gate before 15 minutes after the scheduled arrival time shown in the carriers' schedule. Neither diverted nor cancelled flights count as on time.
On time departure	A flight departure is counted as "on time" if it departs the gate before 15 minutes after the scheduled departure time shown in the carriers' schedule.
Cancellation	A flight removed from service within 7 days of scheduled departure is regarded as a cancellation.
On time departure percentage	The percentage of on time departures is measured against the number of departures <i>operated</i> on any particular sector.
On time arrival percentage	The percentage of on time arrivals is measured against the number of arrivals <i>operated</i> on any particular sector.
Cancellation percentage	The percentage of cancellations is measured against the number of services <i>scheduled</i> on any particular sector.

---