



Australian Government

Department of Infrastructure and Regional Development

Bureau of Infrastructure, Transport and Regional Economics

STATISTICAL REPORT



Aviation

Domestic airline on time performance
July 2014

© Commonwealth of Australia 2014

ISSN: 1832-0759

Ownership of intellectual property rights in this publication

Unless otherwise noted, copyright (and any other intellectual property rights, if any) in this publication is owned by the Commonwealth of Australia (referred to below as the Commonwealth).

Disclaimer

The material contained in this publication is made available on the understanding that the Commonwealth is not providing professional advice, and that users exercise their own skill and care with respect to its use, and seek independent advice if necessary.

The Commonwealth makes no representations or warranties as to the contents or accuracy of the information contained in this publication. To the extent permitted by law, the Commonwealth disclaims liability to any person or organisation in respect of anything done, or omitted to be done, in reliance upon information contained in this publication.

Creative Commons licence

With the exception of (a) the Coat of Arms; and (b) the Department of Infrastructure and Regional Development's photos and graphics, copyright in this publication is licensed under a Creative Commons Attribution 3.0 Australia Licence.

Creative Commons Attribution 3.0 Australia Licence is a standard form licence agreement that allows you to copy, communicate and adapt this publication provided that you attribute the work to the Commonwealth and abide by the other licence terms. A summary of the licence terms is available from <http://creativecommons.org/licenses/by/3.0/au/deed.en>. The full licence terms are available from <http://creativecommons.org/licenses/by/3.0/au/legalcode>.

Use of the Coat of Arms

The Department of the Prime Minister and Cabinet sets the terms under which the Coat of Arms is used. Please refer to the Department's Commonwealth Coat of Arms and Government branding web page <http://www.dpmmc.gov.au/guidelines/index.cfm#brand> and, in particular, the Guidelines on the use of the Commonwealth Coat of Arms publication.

An appropriate citation for this report is:

Bureau of Infrastructure, Transport and Regional Economics (BITRE), 2014, Domestic airline on time performance, Statistical Report, BITRE, Canberra ACT.

Contact us

This publication is available in PDF format. All other rights are reserved, including in relation to any Departmental logos or trade marks which may exist. For enquiries regarding the licence and any use of this publication, please contact:

Bureau of Infrastructure, Transport and Regional Economics (BITRE)
Department of Infrastructure and Regional Development
GPO Box 501, Canberra ACT 2601, Australia
Telephone: (international) +61 2 6274 7210
Fax: (international) +61 2 6274 6855
Email: bitre@infrastructure.gov.au
Website: www.bitre.gov.au

Inquiries

Should you require additional information about the statistics contained in this publication:

Telephone (02) 6274 7790 or Facsimile (02) 6274 7727

Electronic mail: AVSTATS@infrastructure.gov.au

Web site: <http://www.bitre.gov.au/statistics/aviation/otphome.aspx>

Foreword

The Bureau of Infrastructure, Transport and Regional Economics (BITRE) monitors the punctuality and reliability of major domestic airlines operating between Australian airports. The purpose of this is to allow for evaluation of overall industry and individual airline performance, so that consumers of air travel can make informed decisions.

The following domestic airlines currently report this information monthly to the BITRE: Jetstar, Qantas, QantasLink, Regional Express, Tigerair, Virgin Australia and Virgin Australia Regional Airlines. Data has been gathered since November 2003, although some airlines commenced reporting at a later date, including Jetstar which first reported in May 2004, MacAir in July 2005 and Tigerair in April 2008. MacAir ceased operations in February 2009 and data was not received for December 2008 onwards. Virgin Blue was rebranded as Virgin Australia in May 2011 and Tiger Airways was rebranded as Tigerair in July 2013 and time series data in Microsoft Excel spreadsheet format on the BITRE website have been revised to reflect these changes. Virgin Australia Regional Airlines commenced operations in May 2013. It was formed after the acquisition of Skywest by Virgin Australia and represents a combination of operations previously reported under Skywest and Virgin Australia – ATR/F100 Operations. Services operated by Skywest on behalf of Virgin Australia using ATR/F100 aircraft commenced in November 2011 and were shown separately as Virgin Australia – ATR/F100 Operations until April 2013.

Information presented in this report is for Australian domestic routes for which the passenger load averaged 8 000 or more passengers per month over the previous six months and where two or more airlines operated in competition on those routes. There were 64 routes that met this definition in July 2014. Over time, routes which meet these criteria change as airline networks and traffic levels vary.

Participating airlines report their overall monthly network performance where this is possible.

Total industry figures encompass all services operated by reporting airlines only. These airlines collectively carried over 95 per cent of total domestic passengers (regular public transport only) in 2013.

The method of capturing on time performance varies between airlines utilising different recording systems. Jetstar and Qantas jet aircraft use Aircraft Communication Addressing and Reporting System (ACARS) to electronically measure on time performance. Regional Express, Tigerair, Virgin Australia, Virgin Australia Regional Airlines and the Qantas non-jet fleet record on time performance manually using records from pilots, gate agents and/or ground crews.

After initial data is collected, aggregate reports are audited internally by participating airlines prior to publication.

Reports and detailed time series data in Microsoft Excel spreadsheet format are available from the BITRE website at: <http://www.bitre.gov.au/statistics/aviation/otphome.aspx>.

Contents

	Page
Industry performance	1
Individual routes	9
Airports	22
Definitions	28

Industry performance

For July 2014, on time performance over all routes operated by participating airlines (Jetstar, Qantas, QantasLink, Regional Express, Tigerair, Virgin Australia and Virgin Australia Regional Airlines) averaged 83.5 per cent for on time departures and 82.1 per cent for on time arrivals. Cancellations represented 1.7 per cent of all scheduled flights. The equivalent figures for July 2013 were 78.3 per cent for departures, 76.2 per cent for arrivals and 2.0 per cent for cancellations.

This month's figures were close to the long term average performance for all routes (83.7 per cent for departures and 82.2 per cent for arrivals). The rate of cancellations was above the long term average of 1.3 per cent.

Of the major domestic airlines, Qantas achieved the highest level of on time departures for July 2014 at 84.4 per cent, followed by Jetstar at 83.8 per cent, Virgin Australia at 81.7 per cent and Tigerair at 74.2 per cent. The regional airlines were led by Regional Express at 86.3 per cent, followed by QantasLink at 84.6 per cent and Virgin Australia Regional Airlines at 83.0 per cent.

Jetstar achieved the highest on time arrivals among the major domestic airlines at 85.0 per cent, followed by Qantas at 83.1 per cent, Virgin Australia at 80.7 per cent and Tigerair at 69.5 per cent. Regional Express was the best performing regional airline for on time arrivals at 84.4 per cent, followed by QantasLink at 81.9 per cent and Virgin Australia Regional Airlines at 81.1 per cent.

Virgin Australia had the highest percentage of cancellations (2.8 per cent) during the month, followed by QantasLink (1.9 per cent), Qantas (1.6 per cent), Tigerair (1.2 per cent), Virgin Australia Regional Airlines (also 1.2 per cent), Regional Express (0.7 per cent) and Jetstar (0.6 per cent).

Of the 64 routes which met the criteria for on time performance reporting in July 2014, the Hamilton Island-Brisbane route had the highest percentage of on time departures (97.9 per cent) and the Hamilton Island-Brisbane and Brisbane-Hamilton Island routes had the highest percentage of on time arrivals (both at 97.9 per cent). The Alice Springs-Melbourne route had the lowest percentage of on time departures (48.8 per cent) and the lowest percentage of on time arrivals (51.2 per cent).

Cancellations were highest on the Melbourne-Sydney route at 5.6 per cent, followed by Sydney-Melbourne at 5.4 per cent, Canberra-Sydney at 5.3 per cent, Sydney-Canberra at 4.4 per cent, Adelaide-Canberra at 4.3 per cent and Canberra-Adelaide also at 4.3 per cent.

Port Hedland and Port Lincoln airports recorded the highest percentage of on time departures (both at 91.0 per cent) and Port Hedland Airport recorded the highest percentage of on time arrivals (95.3 per cent). Alice Springs Airport recorded the lowest percentage of on time departures (58.1 per cent) and the lowest percentage of on time arrivals (74.4 per cent). These figures only refer to reported routes and do not cover all flights at these airports.

Table 1 On time performance for July 2014 — Total Industry

	<i>Sectors</i>		<i>Departures On Time</i>		<i>Arrivals On Time</i>		<i>Cancellations</i>	
	<i>Scheduled</i>	<i>Flown</i>	<i>No.</i>	<i>%</i>	<i>No.</i>	<i>%</i>	<i>No.</i>	<i>%</i>
Jetstar	7 174	7 129	5 977	83.8	6 059	85.0	45	0.6
Qantas	9 791	9 637	8 129	84.4	8 009	83.1	154	1.6
QantasLink	10 966	10 756	9 095	84.6	8 814	81.9	210	1.9
Regional Express	5 868	5 824	5 029	86.3	4 913	84.4	44	0.7
Tigerair	1 899	1 876	1 392	74.2	1 304	69.5	23	1.2
Virgin Australia	11 545	11 222	9 167	81.7	9 058	80.7	323	2.8
Virgin Australia Regional Airlines	2 643	2 612	2 168	83.0	2 118	81.1	31	1.2
All Airlines	49 886	49 056	40 957	83.5	40 275	82.1	830	1.7

Total airline network data (including routes not shown in this report).

Table 2 Top ten routes for on time performance for July 2014 (participating airlines only)

<i>Departures</i>		<i>Arrivals</i>	
<i>Route</i>	<i>On Time (%)</i>	<i>Route</i>	<i>On Time (%)</i>
Hamilton Island-Brisbane	97.9	Brisbane-Hamilton Island	97.9
Brisbane-Mount Isa	96.3	Hamilton Island-Brisbane	97.9
Brisbane-Hamilton Island	95.7	Perth-Port Hedland	95.3
Perth-Port Hedland	94.3	Proserpine-Brisbane	94.0
Sydney-Alice Springs	93.0	Sydney-Sunshine Coast	93.5
Sydney-Townsville	92.7	Adelaide-Canberra	93.3
Gold Coast-Adelaide	92.5	Perth-Adelaide	93.3
Sydney-Hobart	92.5	Brisbane-Bundaberg	93.1
Brisbane-Bundaberg	92.5	Brisbane-Moranbah	92.8
Brisbane-Moranbah	92.4	Brisbane-Proserpine	92.8

Table 3 Top ten airports for on time performance for July 2014 (participating airlines and reported routes only)

<i>Departures</i>		<i>Arrivals</i>	
<i>Airport</i>	<i>On Time (%)</i>	<i>Airport</i>	<i>On Time (%)</i>
Port Hedland	91.0	Port Hedland	95.3
Port Lincoln	91.0	Bundaberg	93.1
Newman	90.8	Moranbah	92.8
Proserpine	90.4	Proserpine	92.8
Moranbah	88.9	Port Lincoln	89.8
Bundaberg	88.8	Coffs Harbour	89.8
Dubbo	87.6	Mackay	89.7
Coffs Harbour	87.1	Ballina	89.5
Gold Coast	86.9	Karratha	88.9
Geraldton	86.7	Mount Isa	88.9

Total industry on time performance

Figure 1 On time performance (by month from July 2011)—Total Industry

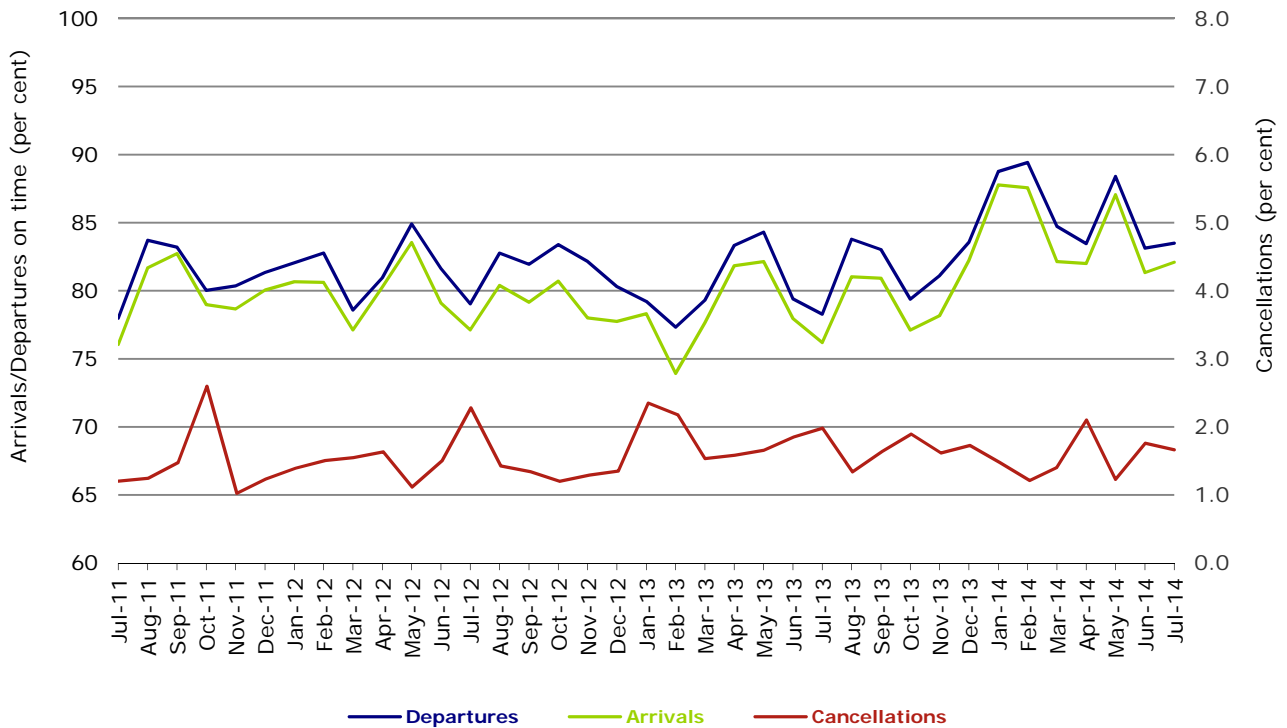


Figure 2 Departures on time (by month from July 2013)

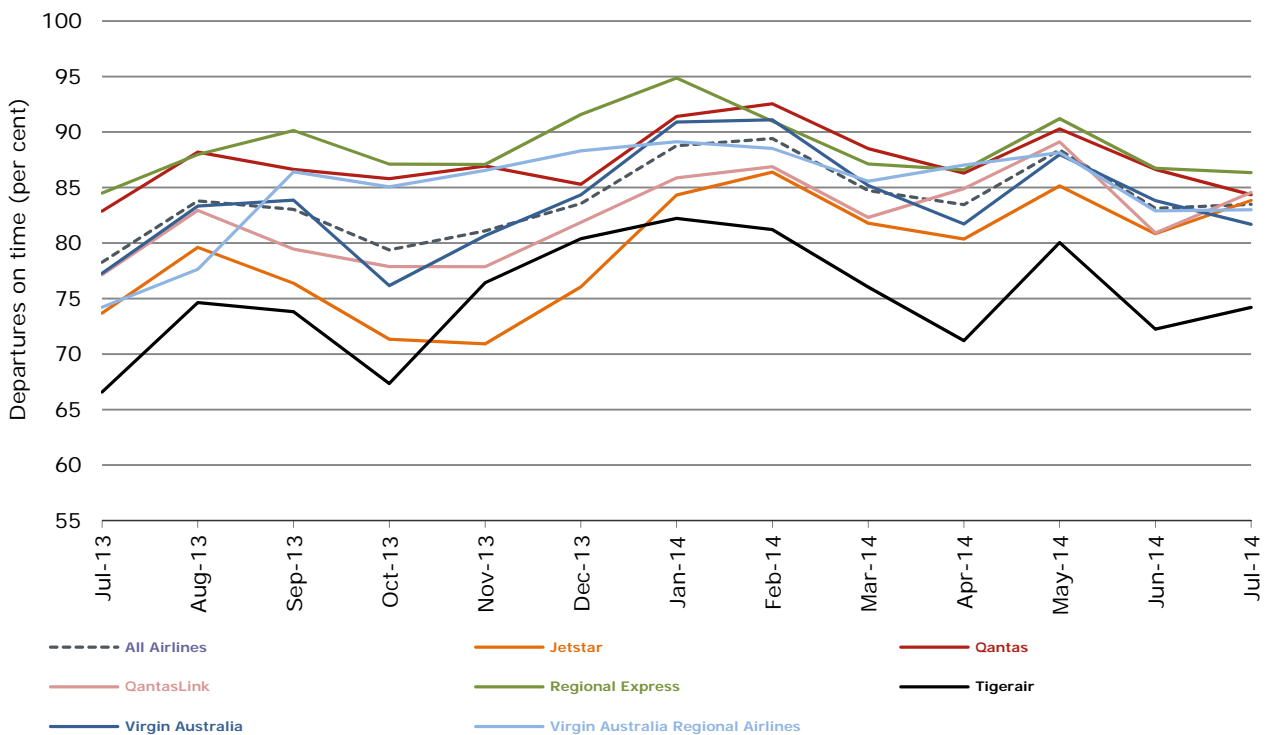


Figure 3 Arrivals on time (by month from July 2013)

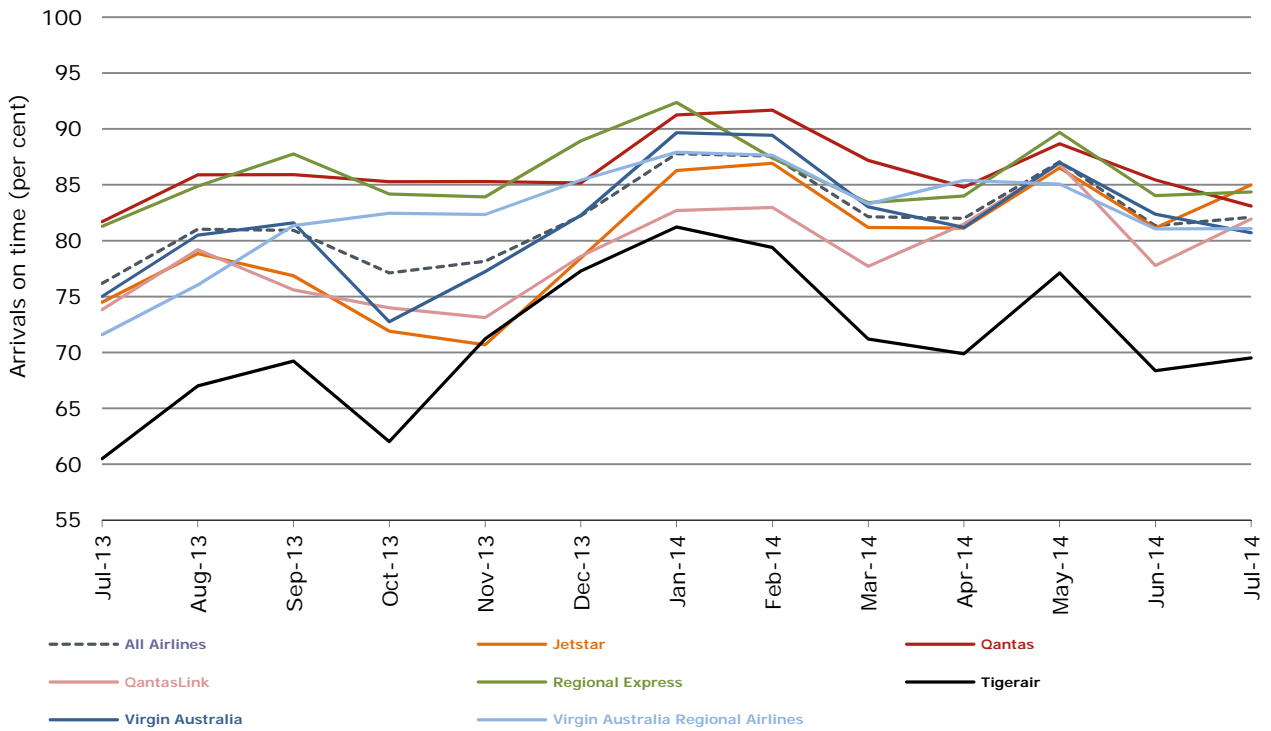
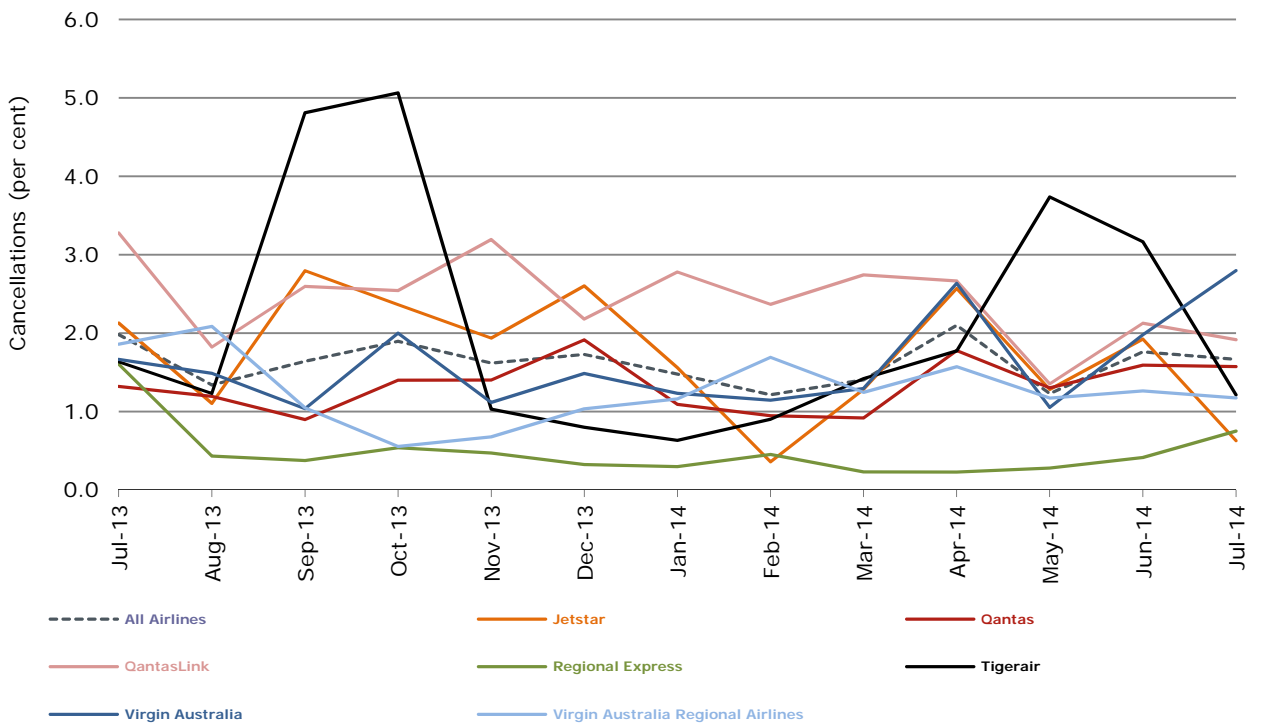


Figure 4 Cancellations (by month from July 2013)



Major domestic airlines on time performance

Figure 5 On time performance (by month from July 2011)—Jetstar

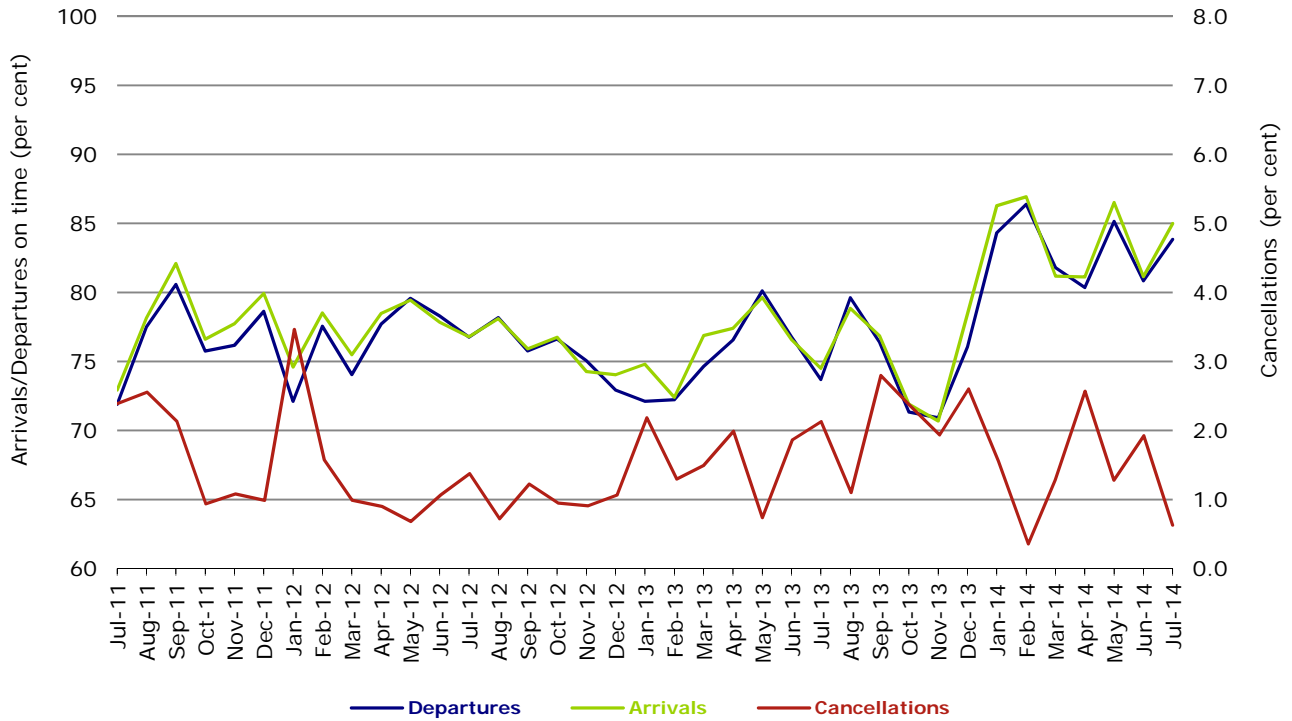


Figure 6 On time performance (by month from July 2011)—Qantas

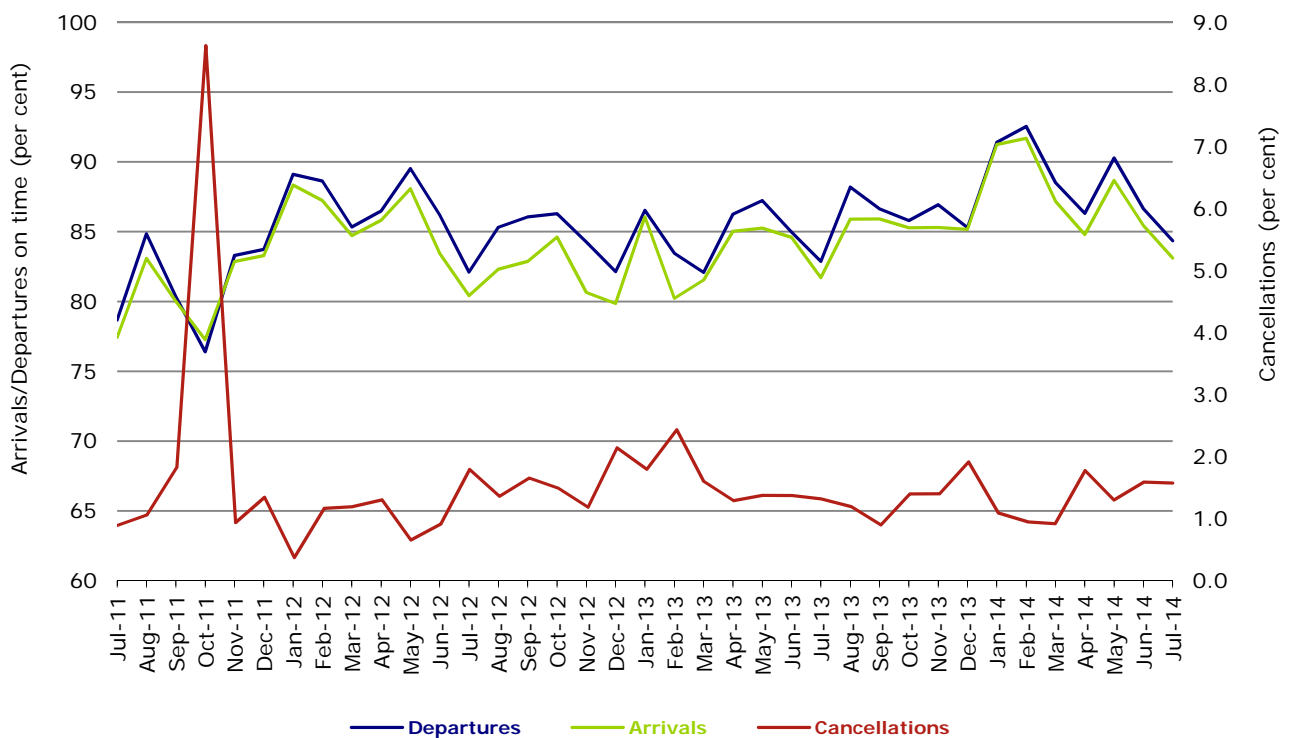
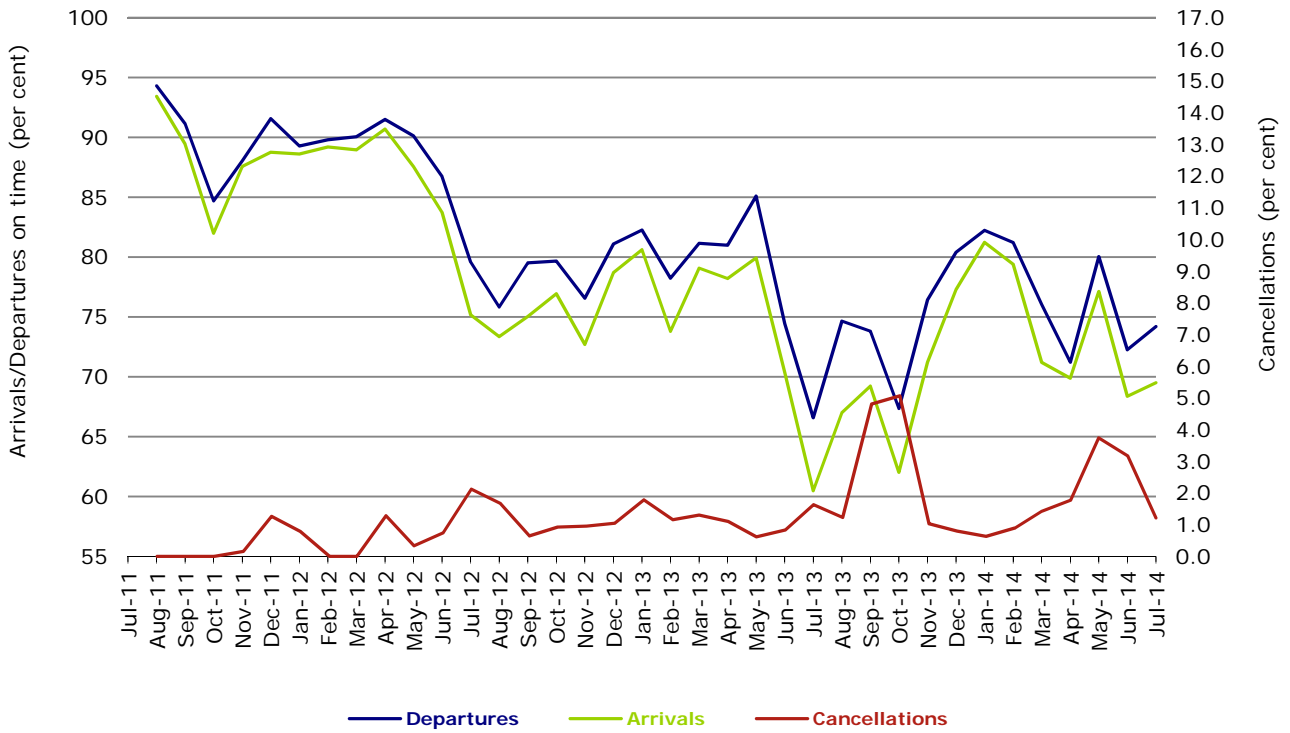
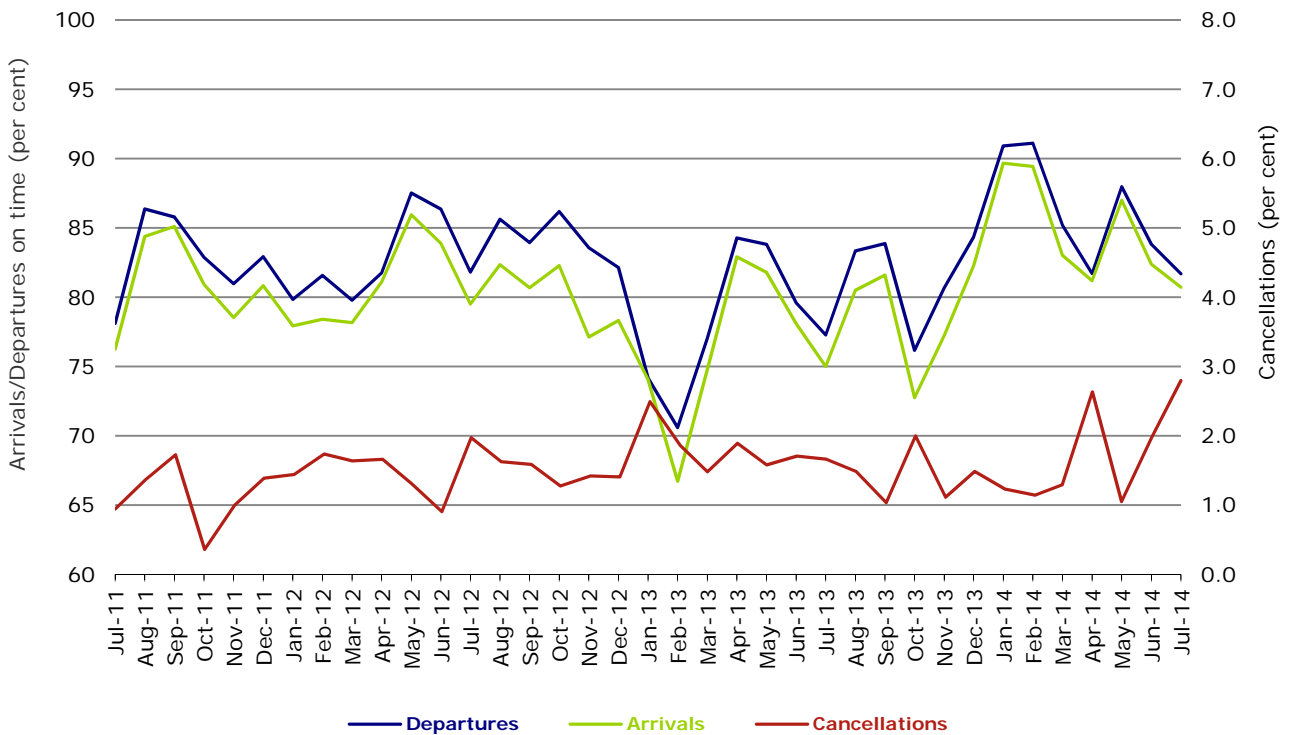


Figure 7 On time performance (by month from July 2011)—Tigerair



No data for Tigerair for July 2011 as it was grounded by CASA from 2/7/2011 to 11/8/2011.

Figure 8 On time performance (by month from July 2011)—Virgin Australia



Major regional airlines on time performance

Figure 9 On time performance (by month from July 2011)—QantasLink

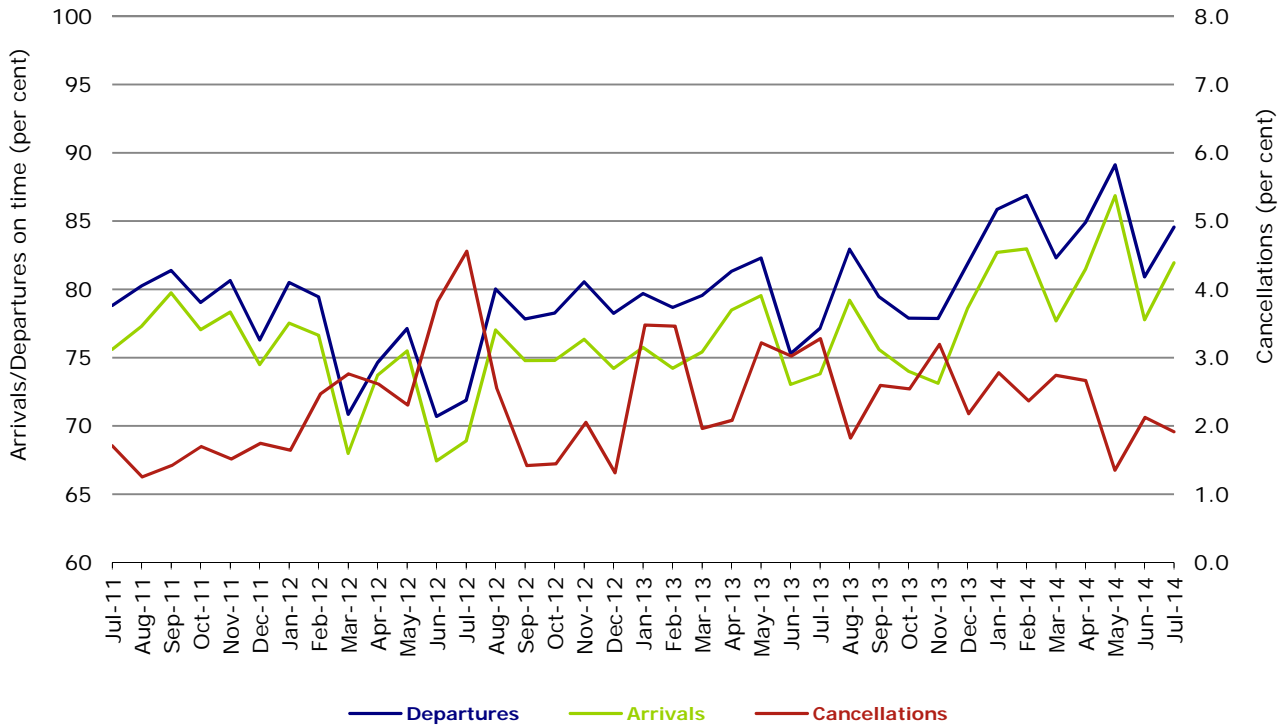


Figure 10 On time performance (by month from July 2011)—Regional Express

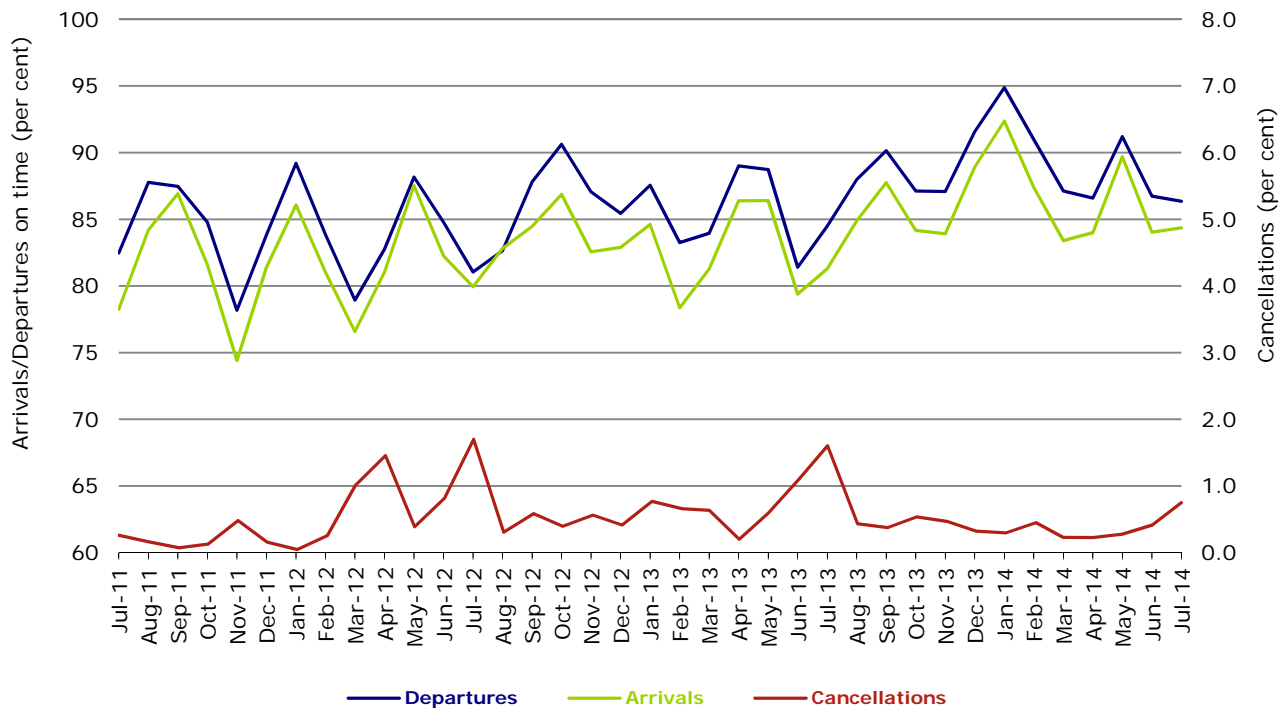
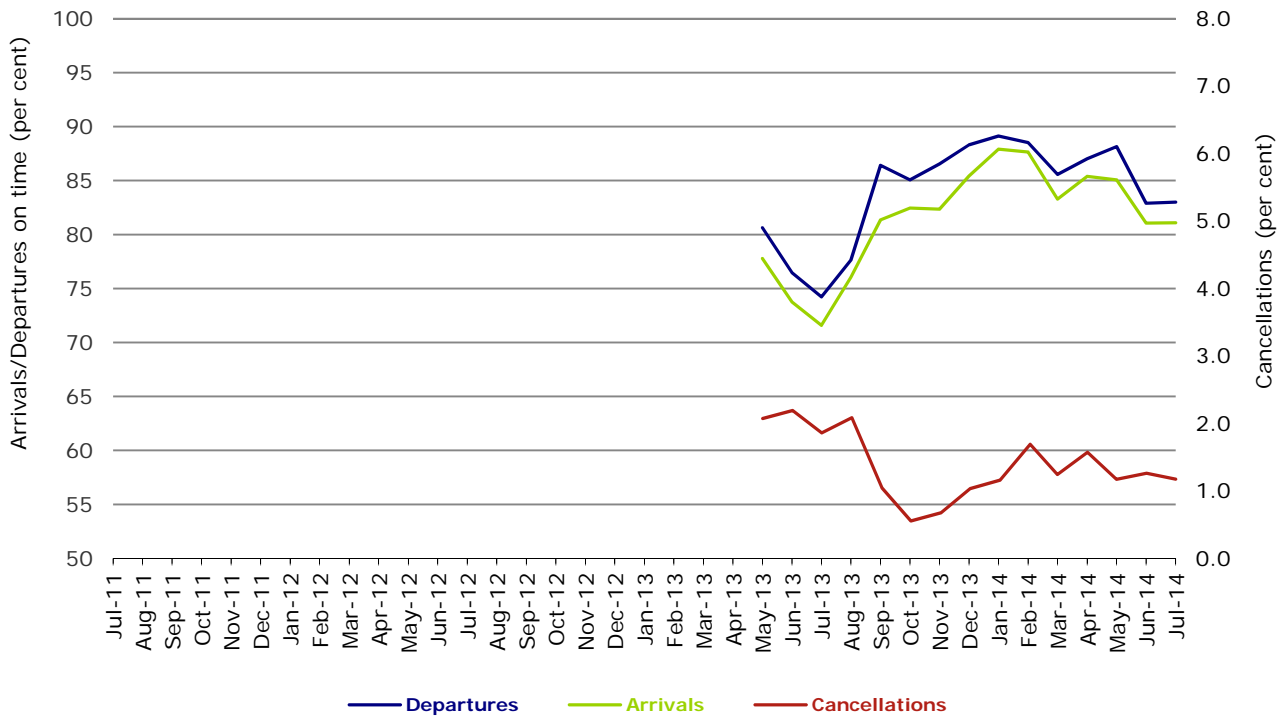


Figure 11 On time performance (by month from July 2011)
Virgin Australia Regional Airlines



Virgin Australia Regional Airlines commenced operations in May 2013. It was formed after the acquisition of Skywest by Virgin Australia and represents a combination of operations previously reported under Skywest and Virgin Australia – ATR/F100 Operations.

Individual routes

On time performance is reported for all routes where the passenger load averages over 8000 passengers per month over the previous six months, and where two or more airlines operate in competition on those routes. There are now 64 routes which meet this definition. Over time, however, routes which meet this definition may change as airline networks and traffic levels vary.

	<i>Sectors</i>		<i>Departures On Time</i>		<i>Arrivals On Time</i>		<i>Cancellations</i>	
	<i>Sched.</i>	<i>Flown</i>	<i>No.</i>	<i>%</i>	<i>No.</i>	<i>%</i>	<i>No.</i>	<i>%</i>
Adelaide-Brisbane								
Jetstar	26	26	22	84.6	24	92.3	0	0.0
Qantas	109	109	100	91.7	101	92.7	0	0.0
Tigerair	24	24	22	91.7	22	91.7	0	0.0
Virgin Australia	116	115	97	84.3	104	90.4	1	0.9
All Airlines	275	274	241	88.0	251	91.6	1	0.4
Adelaide-Canberra								
Qantas	44	44	42	95.5	43	97.7	0	0.0
QantasLink	23	20	13	65.0	15	75.0	3	13.0
Virgin Australia	27	26	26	100.0	26	100.0	1	3.7
All Airlines	94	90	81	90.0	84	93.3	4	4.3
Adelaide-Gold Coast								
Jetstar	36	36	30	83.3	32	88.9	0	0.0
Virgin Australia	31	31	28	90.3	29	93.5	0	0.0
All Airlines	67	67	58	86.6	61	91.0	0	0.0
Adelaide-Melbourne								
Jetstar	117	115	89	77.4	84	73.0	2	1.7
Qantas	286	284	241	84.9	239	84.2	2	0.7
QantasLink	18	17	15	88.2	14	82.4	1	5.6
Tigerair	63	62	47	75.8	43	69.4	1	1.6
Virgin Australia	290	280	216	77.1	217	77.5	10	3.4
All Airlines	774	758	608	80.2	597	78.8	16	2.1
Adelaide-Perth								
Jetstar	36	36	33	91.7	30	83.3	0	0.0
Qantas	115	115	99	86.1	95	82.6	0	0.0
Virgin Australia	66	66	56	84.8	57	86.4	0	0.0
All Airlines	217	217	188	86.6	182	83.9	0	0.0
Adelaide-Port Lincoln								
QantasLink	98	96	86	89.6	85	88.5	2	2.0
Regional Express	218	218	204	93.6	197	90.4	0	0.0
All Airlines	316	314	290	92.4	282	89.8	2	0.6
Adelaide-Sydney								
Jetstar	121	120	75	62.5	82	68.3	1	0.8
Qantas	242	240	210	87.5	224	93.3	2	0.8
QantasLink	23	23	9	39.1	14	60.9	0	0.0
Tigerair	28	28	21	75.0	25	89.3	0	0.0
Virgin Australia	170	170	142	83.5	155	91.2	0	0.0
All Airlines	584	581	457	78.7	500	86.1	3	0.5
Albury-Sydney								
QantasLink	120	118	83	70.3	85	72.0	2	1.7
Regional Express	115	115	97	84.3	99	86.1	0	0.0
Virgin Australia Regional Airlines	62	61	47	77.0	45	73.8	1	1.6
All Airlines	297	294	227	77.2	229	77.9	3	1.0
Alice Springs-Melbourne								
Qantas	31	31	15	48.4	16	51.6	0	0.0
Tigerair	12	12	6	50.0	6	50.0	0	0.0
All Airlines	43	43	21	48.8	22	51.2	0	0.0

	<i>Sectors</i>		<i>Departures On Time</i>		<i>Arrivals On Time</i>		<i>Cancellations</i>	
	<i>Sched.</i>	<i>Flown</i>	<i>No.</i>	<i>%</i>	<i>No.</i>	<i>%</i>	<i>No.</i>	<i>%</i>
Alice Springs-Sydney								
Qantas	31	31	21	67.7	28	90.3	0	0.0
Tigerair	12	12	8	66.7	10	83.3	0	0.0
All Airlines	43	43	29	67.4	38	88.4	0	0.0
Armidale-Sydney								
QantasLink	137	137	105	76.6	110	80.3	0	0.0
Regional Express	81	80	69	86.3	60	75.0	1	1.2
All Airlines	218	217	174	80.2	170	78.3	1	0.5
Ayers Rock-Sydney								
Jetstar	30	30	24	80.0	23	76.7	0	0.0
Virgin Australia	31	31	22	71.0	28	90.3	0	0.0
All Airlines	61	61	46	75.4	51	83.6	0	0.0
Ballina-Sydney								
Jetstar	71	71	59	83.1	60	84.5	0	0.0
Regional Express	25	25	23	92.0	21	84.0	0	0.0
Virgin Australia	31	30	27	90.0	27	90.0	1	3.2
All Airlines	127	126	109	86.5	108	85.7	1	0.8
Brisbane-Adelaide								
Jetstar	24	24	24	100.0	23	95.8	0	0.0
Qantas	109	109	94	86.2	92	84.4	0	0.0
Tigerair	24	24	21	87.5	20	83.3	0	0.0
Virgin Australia	116	116	91	78.4	70	60.3	0	0.0
All Airlines	273	273	230	84.2	205	75.1	0	0.0
Brisbane-Bundaberg								
QantasLink	122	121	113	93.4	114	94.2	1	0.8
Virgin Australia Regional Airlines	39	39	35	89.7	35	89.7	0	0.0
All Airlines	161	160	148	92.5	149	93.1	1	0.6
Brisbane-Cairns								
Jetstar	124	124	111	89.5	109	87.9	0	0.0
Qantas	120	120	99	82.5	103	85.8	0	0.0
QantasLink	4	4	4	100.0	4	100.0	0	0.0
Tigerair	28	28	9	32.1	12	42.9	0	0.0
Virgin Australia	137	136	115	84.6	122	89.7	1	0.7
All Airlines	413	412	338	82.0	350	85.0	1	0.2
Brisbane-Canberra								
Qantas	52	52	45	86.5	44	84.6	0	0.0
QantasLink	115	115	90	78.3	82	71.3	0	0.0
Virgin Australia	97	97	86	88.7	84	86.6	0	0.0
All Airlines	264	264	221	83.7	210	79.5	0	0.0
Brisbane-Darwin								
Jetstar	29	29	29	100.0	27	93.1	0	0.0
Qantas	50	50	40	80.0	41	82.0	0	0.0
Tigerair	26	26	26	100.0	23	88.5	0	0.0
Virgin Australia	31	31	25	80.6	25	80.6	0	0.0
All Airlines	136	136	120	88.2	116	85.3	0	0.0
Brisbane-Emerald								
QantasLink	156	154	141	91.6	122	79.2	2	1.3
Virgin Australia Regional Airlines	85	85	78	91.8	63	74.1	0	0.0
All Airlines	241	239	219	91.6	185	77.4	2	0.8
Brisbane-Gladstone								
QantasLink	218	215	201	93.5	195	90.7	3	1.4
Virgin Australia	1	1	1	100.0	1	100.0	0	0.0
Virgin Australia Regional Airlines	155	155	123	79.4	123	79.4	0	0.0
All Airlines	374	371	325	87.6	319	86.0	3	0.8

	<i>Sectors</i>		<i>Departures On Time</i>		<i>Arrivals On Time</i>		<i>Cancellations</i>	
	<i>Sched.</i>	<i>Flown</i>	<i>No.</i>	<i>%</i>	<i>No.</i>	<i>%</i>	<i>No.</i>	<i>%</i>
Brisbane-Hamilton Island								
Jetstar	16	16	15	93.8	16	100.0	0	0.0
Virgin Australia	31	31	30	96.8	30	96.8	0	0.0
All Airlines	47	47	45	95.7	46	97.9	0	0.0
Brisbane-Hobart								
Jetstar	29	29	29	100.0	28	96.6	0	0.0
Virgin Australia	31	31	26	83.9	20	64.5	0	0.0
All Airlines	60	60	55	91.7	48	80.0	0	0.0
Brisbane-Mackay								
Jetstar	59	59	57	96.6	58	98.3	0	0.0
QantasLink	110	109	94	86.2	97	89.0	1	0.9
Virgin Australia	156	151	130	86.1	131	86.8	5	3.2
All Airlines	325	319	281	88.1	286	89.7	6	1.8
Brisbane-Melbourne								
Jetstar	102	102	82	80.4	82	80.4	0	0.0
Qantas	431	429	352	82.1	315	73.4	2	0.5
Tigerair	115	114	84	73.7	66	57.9	1	0.9
Virgin Australia	403	390	311	79.7	226	57.9	13	3.2
All Airlines	1 051	1 035	829	80.1	689	66.6	16	1.5
Brisbane-Moranbah								
QantasLink	135	130	124	95.4	122	93.8	5	3.7
Virgin Australia Regional Airlines	94	93	82	88.2	85	91.4	1	1.1
All Airlines	229	223	206	92.4	207	92.8	6	2.6
Brisbane-Mount Isa								
Qantas	58	58	56	96.6	52	89.7	0	0.0
Virgin Australia	23	23	22	95.7	20	87.0	0	0.0
All Airlines	81	81	78	96.3	72	88.9	0	0.0
Brisbane-Newcastle								
Jetstar	108	108	104	96.3	103	95.4	0	0.0
QantasLink	73	71	59	83.1	45	63.4	2	2.7
Virgin Australia	85	85	77	90.6	76	89.4	0	0.0
All Airlines	266	264	240	90.9	224	84.8	2	0.8
Brisbane-Perth								
Qantas	127	126	100	79.4	97	77.0	1	0.8
Virgin Australia	89	87	56	64.4	60	69.0	2	2.2
All Airlines	216	213	156	73.2	157	73.7	3	1.4
Brisbane-Proserpine								
Jetstar	30	30	27	90.0	27	90.0	0	0.0
Virgin Australia	54	53	49	92.5	50	94.3	1	1.9
All Airlines	84	83	76	91.6	77	92.8	1	1.2
Brisbane-Rockhampton								
QantasLink	225	223	195	87.4	186	83.4	2	0.9
Virgin Australia	106	102	92	90.2	91	89.2	4	3.8
Virgin Australia Regional Airlines	119	118	89	75.4	90	76.3	1	0.8
All Airlines	450	443	376	84.9	367	82.8	7	1.6
Brisbane-Sydney								
Jetstar	174	169	141	83.4	145	85.8	5	2.9
Qantas	620	608	532	87.5	522	85.9	12	1.9
Tigerair	81	81	54	66.7	56	69.1	0	0.0
Virgin Australia	575	555	472	85.0	460	82.9	20	3.5
All Airlines	1 450	1 413	1 199	84.9	1 183	83.7	37	2.6

	<i>Sectors</i>		<i>Departures On Time</i>		<i>Arrivals On Time</i>		<i>Cancellations</i>	
	<i>Sched.</i>	<i>Flown</i>	<i>No.</i>	<i>%</i>	<i>No.</i>	<i>%</i>	<i>No.</i>	<i>%</i>
Brisbane-Townsville								
Jetstar	54	54	53	98.1	52	96.3	0	0.0
Qantas	151	151	125	82.8	128	84.8	0	0.0
Virgin Australia	166	163	132	81.0	146	89.6	3	1.8
All Airlines	371	368	310	84.2	326	88.6	3	0.8
Broome-Perth								
Qantas	35	35	20	57.1	24	68.6	0	0.0
QantasLink	50	50	40	80.0	39	78.0	0	0.0
Virgin Australia	51	50	28	56.0	27	54.0	1	2.0
Virgin Australia Regional Airlines	22	22	13	59.1	6	27.3	0	0.0
All Airlines	158	157	101	64.3	96	61.1	1	0.6
Bundaberg-Brisbane								
QantasLink	122	121	109	90.1	106	87.6	1	0.8
Virgin Australia Regional Airlines	40	40	34	85.0	32	80.0	0	0.0
All Airlines	162	161	143	88.8	138	85.7	1	0.6
Cairns-Brisbane								
Jetstar	124	124	114	91.9	115	92.7	0	0.0
Qantas	120	120	99	82.5	97	80.8	0	0.0
QantasLink	4	4	4	100.0	4	100.0	0	0.0
Tigerair	28	28	9	32.1	9	32.1	0	0.0
Virgin Australia	136	135	118	87.4	115	85.2	1	0.7
All Airlines	412	411	344	83.7	340	82.7	1	0.2
Cairns-Melbourne								
Jetstar	111	111	89	80.2	93	83.8	0	0.0
Qantas	31	31	14	45.2	21	67.7	0	0.0
Tigerair	50	49	30	61.2	27	55.1	1	2.0
Virgin Australia	36	36	21	58.3	17	47.2	0	0.0
All Airlines	228	227	154	67.8	158	69.6	1	0.4
Cairns-Sydney								
Jetstar	108	107	90	84.1	97	90.7	1	0.9
Qantas	74	74	58	78.4	64	86.5	0	0.0
Tigerair	35	34	27	79.4	29	85.3	1	2.9
Virgin Australia	93	93	74	79.6	85	91.4	0	0.0
All Airlines	310	308	249	80.8	275	89.3	2	0.6
Canberra-Adelaide								
Qantas	44	44	40	90.9	40	90.9	0	0.0
QantasLink	23	20	13	65.0	10	50.0	3	13.0
Virgin Australia	27	26	25	96.2	25	96.2	1	3.7
All Airlines	94	90	78	86.7	75	83.3	4	4.3
Canberra-Brisbane								
Qantas	52	52	48	92.3	49	94.2	0	0.0
QantasLink	115	115	88	76.5	87	75.7	0	0.0
Virgin Australia	97	97	78	80.4	79	81.4	0	0.0
All Airlines	264	264	214	81.1	215	81.4	0	0.0
Canberra-Melbourne								
Qantas	189	187	168	89.8	157	84.0	2	1.1
QantasLink	114	110	79	71.8	70	63.6	4	3.5
Virgin Australia	186	181	151	83.4	142	78.5	5	2.7
All Airlines	489	478	398	83.3	369	77.2	11	2.2
Canberra-Sydney								
Qantas	14	12	11	91.7	10	83.3	2	14.3
QantasLink	543	508	415	81.7	417	82.1	35	6.4
Virgin Australia	53	53	41	77.4	41	77.4	0	0.0
Virgin Australia Regional Airlines	252	243	216	88.9	221	90.9	9	3.6
All Airlines	862	816	683	83.7	689	84.4	46	5.3

	<i>Sectors</i>		<i>Departures On Time</i>		<i>Arrivals On Time</i>		<i>Cancellations</i>	
	<i>Sched.</i>	<i>Flown</i>	<i>No.</i>	<i>%</i>	<i>No.</i>	<i>%</i>	<i>No.</i>	<i>%</i>
Coffs Harbour-Sydney								
QantasLink	156	154	132	85.7	133	86.4	2	1.3
Tigerair	12	11	10	90.9	10	90.9	1	8.3
Virgin Australia	62	60	54	90.0	56	93.3	2	3.2
All Airlines	230	225	196	87.1	199	88.4	5	2.2
Darwin-Brisbane								
Jetstar	30	30	27	90.0	29	96.7	0	0.0
Qantas	50	50	34	68.0	34	68.0	0	0.0
Tigerair	26	26	25	96.2	20	76.9	0	0.0
Virgin Australia	31	30	18	60.0	12	40.0	1	3.2
All Airlines	137	136	104	76.5	95	69.9	1	0.7
Darwin-Melbourne								
Jetstar	30	30	14	46.7	27	90.0	0	0.0
Qantas	31	31	13	41.9	16	51.6	0	0.0
Virgin Australia	31	31	22	71.0	25	80.6	0	0.0
All Airlines	92	92	49	53.3	68	73.9	0	0.0
Darwin-Perth								
Qantas	35	35	27	77.1	29	82.9	0	0.0
Virgin Australia	28	28	21	75.0	21	75.0	0	0.0
All Airlines	63	63	48	76.2	50	79.4	0	0.0
Darwin-Sydney								
Jetstar	32	30	12	40.0	17	56.7	2	6.3
Qantas	62	62	45	72.6	53	85.5	0	0.0
Virgin Australia	31	31	13	41.9	20	64.5	0	0.0
All Airlines	125	123	70	56.9	90	73.2	2	1.6
Dubbo-Sydney								
QantasLink	128	128	108	84.4	108	84.4	0	0.0
Regional Express	164	163	147	90.2	142	87.1	1	0.6
All Airlines	292	291	255	87.6	250	85.9	1	0.3
Emerald-Brisbane								
QantasLink	156	154	125	81.2	132	85.7	2	1.3
Virgin Australia Regional Airlines	85	85	74	87.1	78	91.8	0	0.0
All Airlines	241	239	199	83.3	210	87.9	2	0.8
Geraldton-Perth								
QantasLink	53	52	50	96.2	50	96.2	1	1.9
Virgin Australia Regional Airlines	98	98	80	81.6	72	73.5	0	0.0
All Airlines	151	150	130	86.7	122	81.3	1	0.7
Gladstone-Brisbane								
QantasLink	236	234	205	87.6	197	84.2	2	0.8
Virgin Australia	1	1	1	100.0	1	100.0	0	0.0
Virgin Australia Regional Airlines	155	155	125	80.6	118	76.1	0	0.0
All Airlines	392	390	331	84.9	316	81.0	2	0.5
Gold Coast-Adelaide								
Jetstar	36	36	35	97.2	32	88.9	0	0.0
Virgin Australia	31	31	27	87.1	25	80.6	0	0.0
All Airlines	67	67	62	92.5	57	85.1	0	0.0
Gold Coast-Melbourne								
Jetstar	233	230	202	87.8	185	80.4	3	1.3
Tigerair	65	63	40	63.5	33	52.4	2	3.1
Virgin Australia	178	174	137	78.7	124	71.3	4	2.2
All Airlines	476	467	379	81.2	342	73.2	9	1.9

	<i>Sectors</i>		<i>Departures On Time</i>		<i>Arrivals On Time</i>		<i>Cancellations</i>	
	<i>Sched.</i>	<i>Flown</i>	<i>No.</i>	<i>%</i>	<i>No.</i>	<i>%</i>	<i>No.</i>	<i>%</i>
Gold Coast-Sydney								
Jetstar	317	315	286	90.8	286	90.8	2	0.6
Qantas	85	84	75	89.3	72	85.7	1	1.2
Tigerair	49	49	33	67.3	33	67.3	0	0.0
Virgin Australia	332	323	299	92.6	294	91.0	9	2.7
All Airlines	783	771	693	89.9	685	88.8	12	1.5
Hamilton Island-Brisbane								
Jetstar	16	16	16	100.0	16	100.0	0	0.0
Virgin Australia	31	31	30	96.8	30	96.8	0	0.0
All Airlines	47	47	46	97.9	46	97.9	0	0.0
Hamilton Island-Melbourne								
Jetstar	20	20	18	90.0	19	95.0	0	0.0
Virgin Australia	22	22	14	63.6	18	81.8	0	0.0
All Airlines	42	42	32	76.2	37	88.1	0	0.0
Hamilton Island-Sydney								
Jetstar	30	30	28	93.3	29	96.7	0	0.0
Virgin Australia	31	31	22	71.0	21	67.7	0	0.0
All Airlines	61	61	50	82.0	50	82.0	0	0.0
Hobart-Brisbane								
Jetstar	30	30	18	60.0	19	63.3	0	0.0
Virgin Australia	31	31	18	58.1	24	77.4	0	0.0
All Airlines	61	61	36	59.0	43	70.5	0	0.0
Hobart-Melbourne								
Jetstar	179	178	138	77.5	144	80.9	1	0.6
QantasLink	115	113	74	65.5	70	61.9	2	1.7
Tigerair	26	26	19	73.1	18	69.2	0	0.0
Virgin Australia	145	141	119	84.4	108	76.6	4	2.8
All Airlines	465	458	350	76.4	340	74.2	7	1.5
Hobart-Sydney								
Jetstar	67	67	55	82.1	51	76.1	0	0.0
QantasLink	31	31	26	83.9	25	80.6	0	0.0
Virgin Australia	62	62	55	88.7	55	88.7	0	0.0
All Airlines	160	160	136	85.0	131	81.9	0	0.0
Kalgoorlie-Perth								
Qantas	23	23	20	87.0	20	87.0	0	0.0
QantasLink	60	59	52	88.1	49	83.1	1	1.7
Virgin Australia	48	45	31	68.9	32	71.1	3	6.3
Virgin Australia Regional Airlines	9	9	5	55.6	5	55.6	0	0.0
All Airlines	140	136	108	79.4	106	77.9	4	2.9
Karratha-Perth								
Qantas	126	122	111	91.0	112	91.8	4	3.2
QantasLink	95	93	84	90.3	86	92.5	2	2.1
Virgin Australia	69	68	46	67.6	49	72.1	1	1.4
Virgin Australia Regional Airlines	16	14	7	50.0	8	57.1	2	12.5
All Airlines	306	297	248	83.5	255	85.9	9	2.9
Launceston-Melbourne								
Jetstar	100	100	76	76.0	74	74.0	0	0.0
QantasLink	124	117	87	74.4	86	73.5	7	5.6
Virgin Australia	120	119	102	85.7	93	78.2	1	0.8
All Airlines	344	336	265	78.9	253	75.3	8	2.3
Launceston-Sydney								
Jetstar	52	52	46	88.5	48	92.3	0	0.0
Virgin Australia	31	31	24	77.4	26	83.9	0	0.0
All Airlines	83	83	70	84.3	74	89.2	0	0.0

	<i>Sectors</i>		<i>Departures On Time</i>		<i>Arrivals On Time</i>		<i>Cancellations</i>	
	<i>Sched.</i>	<i>Flown</i>	<i>No.</i>	<i>%</i>	<i>No.</i>	<i>%</i>	<i>No.</i>	<i>%</i>
Mackay-Brisbane								
Jetstar	60	60	56	93.3	56	93.3	0	0.0
QantasLink	110	108	89	82.4	88	81.5	2	1.8
Virgin Australia	156	151	129	85.4	131	86.8	5	3.2
All Airlines	326	319	274	85.9	275	86.2	7	2.1
Melbourne-Adelaide								
Jetstar	118	118	87	73.7	90	76.3	0	0.0
Qantas	286	284	249	87.7	236	83.1	2	0.7
QantasLink	18	16	13	81.3	11	68.8	2	11.1
Tigerair	63	63	54	85.7	48	76.2	0	0.0
Virgin Australia	287	279	216	77.4	214	76.7	8	2.8
All Airlines	772	760	619	81.4	599	78.8	12	1.6
Melbourne-Alice Springs								
Qantas	31	31	17	54.8	19	61.3	0	0.0
Tigerair	12	12	11	91.7	8	66.7	0	0.0
All Airlines	43	43	28	65.1	27	62.8	0	0.0
Melbourne-Brisbane								
Jetstar	103	103	72	69.9	91	88.3	0	0.0
Qantas	430	429	328	76.5	338	78.8	1	0.2
Tigerair	114	114	76	66.7	75	65.8	0	0.0
Virgin Australia	404	390	279	71.5	283	72.6	14	3.5
All Airlines	1 051	1 036	755	72.9	787	76.0	15	1.4
Melbourne-Cairns								
Jetstar	110	110	99	90.0	94	85.5	0	0.0
Qantas	31	31	21	67.7	19	61.3	0	0.0
Tigerair	49	48	42	87.5	36	75.0	1	2.0
Virgin Australia	35	35	25	71.4	23	65.7	0	0.0
All Airlines	225	224	187	83.5	172	76.8	1	0.4
Melbourne-Canberra								
Qantas	189	187	165	88.2	165	88.2	2	1.1
QantasLink	114	109	80	73.4	66	60.6	5	4.4
Virgin Australia	185	181	145	80.1	148	81.8	4	2.2
All Airlines	488	477	390	81.8	379	79.5	11	2.3
Melbourne-Darwin								
Jetstar	30	30	26	86.7	24	80.0	0	0.0
Qantas	31	31	20	64.5	12	38.7	0	0.0
Virgin Australia	32	32	26	81.3	22	68.8	0	0.0
All Airlines	93	93	72	77.4	58	62.4	0	0.0
Melbourne-Gold Coast								
Jetstar	234	232	179	77.2	183	78.9	2	0.9
Tigerair	67	67	50	74.6	46	68.7	0	0.0
Virgin Australia	178	174	125	71.8	138	79.3	4	2.2
All Airlines	479	473	354	74.8	367	77.6	6	1.3
Melbourne-Hamilton Island								
Jetstar	21	21	19	90.5	19	90.5	0	0.0
Virgin Australia	22	22	19	86.4	18	81.8	0	0.0
All Airlines	43	43	38	88.4	37	86.0	0	0.0
Melbourne-Hobart								
Jetstar	178	177	155	87.6	156	88.1	1	0.6
QantasLink	115	113	62	54.9	60	53.1	2	1.7
Tigerair	26	26	22	84.6	20	76.9	0	0.0
Virgin Australia	145	141	121	85.8	117	83.0	4	2.8
All Airlines	464	457	360	78.8	353	77.2	7	1.5

	<i>Sectors</i>		<i>Departures On Time</i>		<i>Arrivals On Time</i>		<i>Cancellations</i>	
	<i>Sched.</i>	<i>Flown</i>	<i>No.</i>	<i>%</i>	<i>No.</i>	<i>%</i>	<i>No.</i>	<i>%</i>
Melbourne-Launceston								
Jetstar	100	100	80	80.0	85	85.0	0	0.0
QantasLink	124	118	99	83.9	86	72.9	6	4.8
Virgin Australia	121	119	97	81.5	93	78.2	2	1.7
All Airlines	345	337	276	81.9	264	78.3	8	2.3
Melbourne-Mildura								
QantasLink	89	89	77	86.5	63	70.8	0	0.0
Regional Express	89	89	78	87.6	73	82.0	0	0.0
Virgin Australia	31	30	22	73.3	21	70.0	1	3.2
All Airlines	209	208	177	85.1	157	75.5	1	0.5
Melbourne-Newcastle								
Jetstar	104	104	90	86.5	96	92.3	0	0.0
Virgin Australia	31	31	24	77.4	24	77.4	0	0.0
All Airlines	135	135	114	84.4	120	88.9	0	0.0
Melbourne-Perth								
Jetstar	81	81	66	81.5	65	80.2	0	0.0
Qantas	218	216	174	80.6	168	77.8	2	0.9
Tigerair	56	55	41	74.5	38	69.1	1	1.8
Virgin Australia	146	144	106	73.6	102	70.8	2	1.4
All Airlines	501	496	387	78.0	373	75.2	5	1.0
Melbourne-Sunshine Coast								
Jetstar	71	71	55	77.5	58	81.7	0	0.0
Tigerair	21	21	20	95.2	18	85.7	0	0.0
Virgin Australia	31	30	21	70.0	17	56.7	1	3.2
All Airlines	123	122	96	78.7	93	76.2	1	0.8
Melbourne-Sydney								
Jetstar	307	298	214	71.8	225	75.5	9	2.9
Qantas	918	873	743	85.1	732	83.8	45	4.9
Tigerair	192	187	138	73.8	140	74.9	5	2.6
Virgin Australia	816	751	627	83.5	636	84.7	65	8.0
All Airlines	2 233	2 109	1 722	81.7	1 733	82.2	124	5.6
Mildura-Melbourne								
QantasLink	89	89	76	85.4	74	83.1	0	0.0
Regional Express	89	89	74	83.1	72	80.9	0	0.0
Virgin Australia	31	30	22	73.3	25	83.3	1	3.2
All Airlines	209	208	172	82.7	171	82.2	1	0.5
Moranbah-Brisbane								
QantasLink	130	125	108	86.4	111	88.8	5	3.8
Virgin Australia Regional Airlines	94	92	85	92.4	83	90.2	2	2.1
All Airlines	224	217	193	88.9	194	89.4	7	3.1
Mount Isa-Brisbane								
Qantas	58	58	48	82.8	53	91.4	0	0.0
Virgin Australia	23	23	18	78.3	21	91.3	0	0.0
All Airlines	81	81	66	81.5	74	91.4	0	0.0
Newcastle-Brisbane								
Jetstar	108	108	94	87.0	95	88.0	0	0.0
QantasLink	72	70	47	67.1	48	68.6	2	2.8
Virgin Australia	85	84	65	77.4	71	84.5	1	1.2
All Airlines	265	262	206	78.6	214	81.7	3	1.1
Newcastle-Melbourne								
Jetstar	104	104	91	87.5	87	83.7	0	0.0
Virgin Australia	31	31	23	74.2	20	64.5	0	0.0
All Airlines	135	135	114	84.4	107	79.3	0	0.0

	<i>Sectors</i>		<i>Departures On Time</i>		<i>Arrivals On Time</i>		<i>Cancellations</i>	
	<i>Sched.</i>	<i>Flown</i>	<i>No.</i>	<i>%</i>	<i>No.</i>	<i>%</i>	<i>No.</i>	<i>%</i>
Newman-Perth								
Qantas	131	127	117	92.1	115	90.6	4	3.1
QantasLink	32	32	29	90.6	29	90.6	0	0.0
Virgin Australia	33	33	29	87.9	27	81.8	0	0.0
Virgin Australia Regional Airlines	4	4	3	75.0	3	75.0	0	0.0
All Airlines	200	196	178	90.8	174	88.8	4	2.0
Perth-Adelaide								
Jetstar	36	36	30	83.3	32	88.9	0	0.0
Qantas	120	120	104	86.7	112	93.3	0	0.0
Virgin Australia	67	67	59	88.1	64	95.5	0	0.0
All Airlines	223	223	193	86.5	208	93.3	0	0.0
Perth-Brisbane								
Qantas	128	128	109	85.2	110	85.9	0	0.0
Virgin Australia	89	89	67	75.3	72	80.9	0	0.0
All Airlines	217	217	176	81.1	182	83.9	0	0.0
Perth-Broome								
Qantas	35	35	30	85.7	31	88.6	0	0.0
QantasLink	50	50	43	86.0	44	88.0	0	0.0
Virgin Australia	51	50	38	76.0	40	80.0	1	2.0
Virgin Australia Regional Airlines	18	18	12	66.7	12	66.7	0	0.0
All Airlines	154	153	123	80.4	127	83.0	1	0.6
Perth-Darwin								
Qantas	36	36	32	88.9	34	94.4	0	0.0
Virgin Australia	28	28	22	78.6	23	82.1	0	0.0
All Airlines	64	64	54	84.4	57	89.1	0	0.0
Perth-Geraldton								
QantasLink	53	52	47	90.4	44	84.6	1	1.9
Virgin Australia Regional Airlines	94	94	81	86.2	76	80.9	0	0.0
All Airlines	147	146	128	87.7	120	82.2	1	0.7
Perth-Kalgoorlie								
Qantas	23	23	19	82.6	18	78.3	0	0.0
QantasLink	60	59	50	84.7	51	86.4	1	1.7
Virgin Australia	47	46	30	65.2	33	71.7	1	2.1
Virgin Australia Regional Airlines	9	9	6	66.7	6	66.7	0	0.0
All Airlines	139	137	105	76.6	108	78.8	2	1.4
Perth-Karratha								
Qantas	126	123	115	93.5	113	91.9	3	2.4
QantasLink	95	93	82	88.2	84	90.3	2	2.1
Virgin Australia	69	68	55	80.9	57	83.8	1	1.4
Virgin Australia Regional Airlines	16	14	9	64.3	11	78.6	2	12.5
All Airlines	306	298	261	87.6	265	88.9	8	2.6
Perth-Melbourne								
Jetstar	82	81	55	67.9	60	74.1	1	1.2
Qantas	218	215	180	83.7	195	90.7	3	1.4
Tigerair	56	54	28	51.9	34	63.0	2	3.6
Virgin Australia	144	142	112	78.9	127	89.4	2	1.4
All Airlines	500	492	375	76.2	416	84.6	8	1.6
Perth-Newman								
Qantas	131	128	115	89.8	116	90.6	3	2.3
QantasLink	32	32	30	93.8	30	93.8	0	0.0
Virgin Australia	33	33	23	69.7	24	72.7	0	0.0
Virgin Australia Regional Airlines	4	4	3	75.0	3	75.0	0	0.0
All Airlines	200	197	171	86.8	173	87.8	3	1.5

	<i>Sectors</i>		<i>Departures On Time</i>		<i>Arrivals On Time</i>		<i>Cancellations</i>	
	<i>Sched.</i>	<i>Flown</i>	<i>No.</i>	<i>%</i>	<i>No.</i>	<i>%</i>	<i>No.</i>	<i>%</i>
Perth-Port Hedland								
Qantas	120	119	113	95.0	114	95.8	1	0.8
QantasLink	48	48	47	97.9	46	95.8	0	0.0
Virgin Australia	45	45	40	88.9	42	93.3	0	0.0
All Airlines	213	212	200	94.3	202	95.3	1	0.5
Perth-Sydney								
Jetstar	30	30	10	33.3	16	53.3	0	0.0
Qantas	202	202	169	83.7	184	91.1	0	0.0
Tigerair	25	23	15	65.2	18	78.3	2	8.0
Virgin Australia	120	117	90	76.9	108	92.3	3	2.5
All Airlines	377	372	284	76.3	326	87.6	5	1.3
Port Hedland-Perth								
Qantas	120	118	104	88.1	106	89.8	2	1.7
QantasLink	48	48	48	100.0	47	97.9	0	0.0
Virgin Australia	45	45	40	88.9	40	88.9	0	0.0
All Airlines	213	211	192	91.0	193	91.5	2	0.9
Port Lincoln-Adelaide								
QantasLink	98	95	86	90.5	86	90.5	3	3.1
Regional Express	218	215	196	91.2	189	87.9	3	1.4
All Airlines	316	310	282	91.0	275	88.7	6	1.9
Port Macquarie-Sydney								
QantasLink	139	138	101	73.2	88	63.8	1	0.7
Virgin Australia Regional Airlines	62	61	50	82.0	44	72.1	1	1.6
All Airlines	201	199	151	75.9	132	66.3	2	1.0
Proserpine-Brisbane								
Jetstar	30	30	28	93.3	28	93.3	0	0.0
Virgin Australia	54	53	47	88.7	50	94.3	1	1.9
All Airlines	84	83	75	90.4	78	94.0	1	1.2
Rockhampton-Brisbane								
QantasLink	203	200	153	76.5	153	76.5	3	1.5
Virgin Australia	106	102	85	83.3	91	89.2	4	3.8
Virgin Australia Regional Airlines	118	117	97	82.9	98	83.8	1	0.8
All Airlines	427	419	335	80.0	342	81.6	8	1.9
Sunshine Coast-Melbourne								
Jetstar	71	71	57	80.3	54	76.1	0	0.0
Tigerair	21	21	18	85.7	13	61.9	0	0.0
Virgin Australia	31	30	13	43.3	15	50.0	1	3.2
All Airlines	123	122	88	72.1	82	67.2	1	0.8
Sunshine Coast-Sydney								
Jetstar	95	95	89	93.7	90	94.7	0	0.0
Virgin Australia	31	30	21	70.0	23	76.7	1	3.2
All Airlines	126	125	110	88.0	113	90.4	1	0.8
Sydney-Adelaide								
Jetstar	120	119	87	73.1	82	68.9	1	0.8
Qantas	237	236	200	84.7	193	81.8	1	0.4
QantasLink	23	23	16	69.6	7	30.4	0	0.0
Tigerair	29	29	27	93.1	25	86.2	0	0.0
Virgin Australia	170	170	150	88.2	143	84.1	0	0.0
All Airlines	579	577	480	83.2	450	78.0	2	0.3
Sydney-Albury								
QantasLink	120	118	92	78.0	85	72.0	2	1.7
Regional Express	114	114	82	71.9	86	75.4	0	0.0
Virgin Australia Regional Airlines	62	62	52	83.9	50	80.6	0	0.0
All Airlines	296	294	226	76.9	221	75.2	2	0.7

	<i>Sectors</i>		<i>Departures On Time</i>		<i>Arrivals On Time</i>		<i>Cancellations</i>	
	<i>Sched.</i>	<i>Flown</i>	<i>No.</i>	<i>%</i>	<i>No.</i>	<i>%</i>	<i>No.</i>	<i>%</i>
Sydney-Alice Springs								
Qantas	31	31	28	90.3	26	83.9	0	0.0
Tigerair	12	12	12	100.0	11	91.7	0	0.0
All Airlines	43	43	40	93.0	37	86.0	0	0.0
Sydney-Armidale								
QantasLink	137	137	112	81.8	108	78.8	0	0.0
Regional Express	81	80	68	85.0	70	87.5	1	1.2
All Airlines	218	217	180	82.9	178	82.0	1	0.5
Sydney-Ayers Rock								
Jetstar	30	30	27	90.0	24	80.0	0	0.0
Virgin Australia	31	31	27	87.1	23	74.2	0	0.0
All Airlines	61	61	54	88.5	47	77.0	0	0.0
Sydney-Ballina								
Jetstar	72	72	65	90.3	64	88.9	0	0.0
Regional Express	32	31	25	80.6	27	87.1	1	3.1
Virgin Australia	31	30	29	96.7	28	93.3	1	3.2
All Airlines	135	133	119	89.5	119	89.5	2	1.5
Sydney-Brisbane								
Jetstar	173	168	128	76.2	140	83.3	5	2.9
Qantas	589	578	488	84.4	458	79.2	11	1.9
Tigerair	81	81	59	72.8	56	69.1	0	0.0
Virgin Australia	574	556	475	85.4	470	84.5	18	3.1
All Airlines	1 417	1 383	1 150	83.2	1 124	81.3	34	2.4
Sydney-Cairns								
Jetstar	107	107	102	95.3	97	90.7	0	0.0
Qantas	74	74	63	85.1	64	86.5	0	0.0
Tigerair	35	34	32	94.1	29	85.3	1	2.9
Virgin Australia	93	92	73	79.3	70	76.1	1	1.1
All Airlines	309	307	270	87.9	260	84.7	2	0.6
Sydney-Canberra								
Qantas	14	14	13	92.9	10	71.4	0	0.0
QantasLink	543	514	432	84.0	413	80.4	29	5.3
Virgin Australia	53	53	41	77.4	42	79.2	0	0.0
Virgin Australia Regional Airlines	253	244	203	83.2	209	85.7	9	3.6
All Airlines	863	825	689	83.5	674	81.7	38	4.4
Sydney-Coffs Harbour								
QantasLink	156	154	135	87.7	138	89.6	2	1.3
Tigerair	12	11	10	90.9	10	90.9	1	8.3
Virgin Australia	62	60	55	91.7	54	90.0	2	3.2
All Airlines	230	225	200	88.9	202	89.8	5	2.2
Sydney-Darwin								
Jetstar	28	28	27	96.4	21	75.0	0	0.0
Qantas	62	62	47	75.8	43	69.4	0	0.0
Virgin Australia	30	30	28	93.3	22	73.3	0	0.0
All Airlines	120	120	102	85.0	86	71.7	0	0.0
Sydney-Dubbo								
QantasLink	128	128	104	81.3	105	82.0	0	0.0
Regional Express	161	161	132	82.0	135	83.9	0	0.0
All Airlines	289	289	236	81.7	240	83.0	0	0.0

	<i>Sectors</i>		<i>Departures On Time</i>		<i>Arrivals On Time</i>		<i>Cancellations</i>	
	<i>Sched.</i>	<i>Flown</i>	<i>No.</i>	<i>%</i>	<i>No.</i>	<i>%</i>	<i>No.</i>	<i>%</i>
Sydney-Gold Coast								
Jetstar	321	319	284	89.0	291	91.2	2	0.6
Qantas	85	85	76	89.4	79	92.9	0	0.0
Tigerair	48	48	33	68.8	34	70.8	0	0.0
Virgin Australia	332	323	275	85.1	275	85.1	9	2.7
All Airlines	786	775	668	86.2	679	87.6	11	1.4
Sydney-Hamilton Island								
Jetstar	30	30	30	100.0	29	96.7	0	0.0
Virgin Australia	31	31	25	80.6	22	71.0	0	0.0
All Airlines	61	61	55	90.2	51	83.6	0	0.0
Sydney-Hobart								
Jetstar	67	67	62	92.5	64	95.5	0	0.0
QantasLink	31	31	28	90.3	28	90.3	0	0.0
Virgin Australia	62	62	58	93.5	56	90.3	0	0.0
All Airlines	160	160	148	92.5	148	92.5	0	0.0
Sydney-Launceston								
Jetstar	52	52	46	88.5	48	92.3	0	0.0
Virgin Australia	31	31	26	83.9	25	80.6	0	0.0
All Airlines	83	83	72	86.7	73	88.0	0	0.0
Sydney-Melbourne								
Jetstar	305	298	236	79.2	217	72.8	7	2.3
Qantas	919	873	739	84.7	674	77.2	46	5.0
Tigerair	190	187	146	78.1	127	67.9	3	1.6
Virgin Australia	816	751	623	83.0	580	77.2	65	8.0
All Airlines	2 230	2 109	1 744	82.7	1 598	75.8	121	5.4
Sydney-Perth								
Jetstar	30	30	24	80.0	25	83.3	0	0.0
Qantas	206	206	182	88.3	164	79.6	0	0.0
Tigerair	22	22	17	77.3	12	54.5	0	0.0
Virgin Australia	120	119	97	81.5	83	69.7	1	0.8
All Airlines	378	377	320	84.9	284	75.3	1	0.3
Sydney-Port Macquarie								
QantasLink	139	138	117	84.8	102	73.9	1	0.7
Virgin Australia Regional Airlines	62	62	53	85.5	51	82.3	0	0.0
All Airlines	201	200	170	85.0	153	76.5	1	0.5
Sydney-Sunshine Coast								
Jetstar	94	94	90	95.7	92	97.9	0	0.0
Virgin Australia	31	30	23	76.7	24	80.0	1	3.2
All Airlines	125	124	113	91.1	116	93.5	1	0.8
Sydney-Townsville								
Jetstar	24	24	23	95.8	24	100.0	0	0.0
Virgin Australia	31	31	28	90.3	23	74.2	0	0.0
All Airlines	55	55	51	92.7	47	85.5	0	0.0
Sydney-Wagga Wagga								
QantasLink	116	114	90	78.9	91	79.8	2	1.7
Regional Express	144	141	121	85.8	126	89.4	3	2.1
All Airlines	260	255	211	82.7	217	85.1	5	1.9
Townsville-Brisbane								
Jetstar	54	54	51	94.4	53	98.1	0	0.0
Qantas	151	151	134	88.7	133	88.1	0	0.0
Virgin Australia	166	163	140	85.9	146	89.6	3	1.8
All Airlines	371	368	325	88.3	332	90.2	3	0.8

	<i>Sectors</i>		<i>Departures On Time</i>		<i>Arrivals On Time</i>		<i>Cancellations</i>	
	<i>Sched.</i>	<i>Flown</i>	<i>No.</i>	<i>%</i>	<i>No.</i>	<i>%</i>	<i>No.</i>	<i>%</i>
Townsville-Sydney								
Jetstar	24	24	21	87.5	22	91.7	0	0.0
Virgin Australia	31	31	17	54.8	20	64.5	0	0.0
All Airlines	55	55	38	69.1	42	76.4	0	0.0
Wagga Wagga-Sydney								
QantasLink	116	114	87	76.3	91	79.8	2	1.7
Regional Express	143	141	119	84.4	119	84.4	2	1.4
All Airlines	259	255	206	80.8	210	82.4	4	1.5

Airports

On time performance is reported for all routes where the passenger load averages over 8000 passengers per month, and where two or more airlines operate in competition. The following data reports by airport against flights operated on those routes only.

Airport	Departures			Arrivals		
	Sectors	On Time		Sectors	On Time	
	Flown	No.	%	Flown	No.	%
Adelaide						
Jetstar	333	249	74.8	333	259	77.8
Qantas	792	692	87.4	793	673	84.9
QantasLink	156	123	78.8	154	114	74.0
Regional Express	218	204	93.6	215	189	87.9
Tigerair	114	90	78.9	116	93	80.2
Virgin Australia	688	565	82.1	689	541	78.5
All Airlines	2 301	1 923	83.6	2 300	1 869	81.3
Relates to services to and from Brisbane, Canberra, Gold Coast, Melbourne, Perth, Port Lincoln and Sydney.						
Albury						
QantasLink	118	83	70.3	118	85	72.0
Regional Express	115	97	84.3	114	86	75.4
Virgin Australia Regional Airlines	61	47	77.0	62	50	80.6
All Airlines	294	227	77.2	294	221	75.2
Relates to services to and from Sydney only.						
Alice Springs						
Qantas	62	36	58.1	62	45	72.6
Tigerair	24	14	58.3	24	19	79.2
All Airlines	86	50	58.1	86	64	74.4
Relates to services to and from Melbourne and Sydney.						
Armidale						
QantasLink	137	105	76.6	137	108	78.8
Regional Express	80	69	86.3	80	70	87.5
All Airlines	217	174	80.2	217	178	82.0
Relates to services to and from Sydney only.						
Ayers Rock						
Jetstar	30	24	80.0	30	24	80.0
Virgin Australia	31	22	71.0	31	23	74.2
All Airlines	61	46	75.4	61	47	77.0
Relates to services to and from Sydney only.						
Ballina						
Jetstar	71	59	83.1	72	64	88.9
Regional Express	25	23	92.0	31	27	87.1
Virgin Australia	30	27	90.0	30	28	93.3
All Airlines	126	109	86.5	133	119	89.5
Relates to services to and from Sydney only.						

Airport	Departures			Arrivals		
	Sectors Flown	On Time		Sectors Flown	On Time	
		No.	%		No.	%
Brisbane						
Jetstar	744	672	90.3	749	666	88.9
Qantas	1 703	1 443	84.7	1 675	1 373	82.0
QantasLink	1 142	1 021	89.4	1 131	926	81.9
Tigerair	273	194	71.1	273	182	66.7
Virgin Australia	2 052	1 715	83.6	2 051	1 700	82.9
Virgin Australia Regional Airlines	490	407	83.1	489	409	83.6
All Airlines	6 404	5 452	85.1	6 368	5 256	82.5

Relates to services to and from Adelaide, Bundaberg, Cairns, Canberra, Darwin, Emerald, Gladstone, Hamilton Island, Hobart, Mackay, Melbourne, Moranbah, Mount Isa, Newcastle, Perth, Proserpine, Rockhampton, Sydney and Townsville.

Broome

Qantas	35	20	57.1	35	31	88.6
QantasLink	50	40	80.0	50	44	88.0
Virgin Australia	50	28	56.0	50	40	80.0
Virgin Australia Regional Airlines	22	13	59.1	18	12	66.7
All Airlines	157	101	64.3	153	127	83.0

Relates to services to and from Perth only.

Bundaberg

QantasLink	121	109	90.1	121	114	94.2
Virgin Australia Regional Airlines	40	34	85.0	39	35	89.7
All Airlines	161	143	88.8	160	149	93.1

Relates to services to and from Brisbane only.

Cairns

Jetstar	342	293	85.7	341	300	88.0
Qantas	225	171	76.0	225	186	82.7
QantasLink	4	4	100.0	4	4	100.0
Tigerair	111	66	59.5	110	77	70.0
Virgin Australia	264	213	80.7	263	215	81.7
All Airlines	946	747	79.0	943	782	82.9

Relates to services to and from Brisbane, Melbourne and Sydney.

Canberra

Qantas	295	267	90.5	297	262	88.2
QantasLink	753	595	79.0	758	576	76.0
Virgin Australia	357	295	82.6	357	300	84.0
Virgin Australia Regional Airlines	243	216	88.9	244	209	85.7
All Airlines	1 648	1 373	83.3	1 656	1 347	81.3

Relates to services to and from Adelaide, Brisbane, Melbourne and Sydney.

Coffs Harbour

QantasLink	154	132	85.7	154	138	89.6
Tigerair	11	10	90.9	11	10	90.9
Virgin Australia	60	54	90.0	60	54	90.0
All Airlines	225	196	87.1	225	202	89.8

Relates to services to and from Sydney only.

Darwin

Jetstar	90	53	58.9	87	72	82.8
Qantas	178	119	66.9	179	130	72.6
Tigerair	26	25	96.2	26	23	88.5
Virgin Australia	120	74	61.7	121	92	76.0
All Airlines	414	271	65.5	413	317	76.8

Relates to services to and from Brisbane, Melbourne, Perth and Sydney.

Airport	Departures			Arrivals		
	Sectors Flown	On Time		Sectors Flown	On Time	
		No.	%		No.	%
Dubbo						
QantasLink	128	108	84.4	128	105	82.0
Regional Express	163	147	90.2	161	135	83.9
All Airlines	291	255	87.6	289	240	83.0
Relates to services to and from Sydney only.						
Emerald						
QantasLink	154	125	81.2	154	122	79.2
Virgin Australia Regional Airlines	85	74	87.1	85	63	74.1
All Airlines	239	199	83.3	239	185	77.4
Relates to services to and from Brisbane only.						
Geraldton						
QantasLink	52	50	96.2	52	44	84.6
Virgin Australia Regional Airlines	98	80	81.6	94	76	80.9
All Airlines	150	130	86.7	146	120	82.2
Relates to services to and from Perth only.						
Gladstone						
QantasLink	234	205	87.6	215	195	90.7
Virgin Australia	1	1	100.0	1	1	100.0
Virgin Australia Regional Airlines	155	125	80.6	155	123	79.4
All Airlines	390	331	84.9	371	319	86.0
Relates to services to and from Brisbane only.						
Gold Coast						
Jetstar	581	523	90.0	587	506	86.2
Qantas	84	75	89.3	85	79	92.9
Tigerair	112	73	65.2	115	80	69.6
Virgin Australia	528	463	87.7	528	442	83.7
All Airlines	1 305	1 134	86.9	1 315	1 107	84.2
Relates to services to and from Adelaide, Melbourne and Sydney.						
Hamilton Island						
Jetstar	66	62	93.9	67	64	95.5
Virgin Australia	84	66	78.6	84	70	83.3
All Airlines	150	128	85.3	151	134	88.7
Relates to services to and from Brisbane, Melbourne and Sydney.						
Hobart						
Jetstar	275	211	76.7	273	248	90.8
QantasLink	144	100	69.4	144	88	61.1
Tigerair	26	19	73.1	26	20	76.9
Virgin Australia	234	192	82.1	234	193	82.5
All Airlines	679	522	76.9	677	549	81.1
Relates to services to and from Brisbane, Melbourne and Sydney.						
Kalgoorlie						
Qantas	23	20	87.0	23	18	78.3
QantasLink	59	52	88.1	59	51	86.4
Virgin Australia	45	31	68.9	46	33	71.7
Virgin Australia Regional Airlines	9	5	55.6	9	6	66.7
All Airlines	136	108	79.4	137	108	78.8
Relates to services to and from Perth only.						

Airport	Departures			Arrivals		
	Sectors Flown	On Time		Sectors Flown	On Time	
		No.	%		No.	%
Karratha						
Qantas	122	111	91.0	123	113	91.9
QantasLink	93	84	90.3	93	84	90.3
Virgin Australia	68	46	67.6	68	57	83.8
Virgin Australia Regional Airlines	14	7	50.0	14	11	78.6
All Airlines	297	248	83.5	298	265	88.9
Relates to services to and from Perth only.						
Launceston						
Jetstar	152	122	80.3	152	133	87.5
QantasLink	117	87	74.4	118	86	72.9
Virgin Australia	150	126	84.0	150	118	78.7
All Airlines	419	335	80.0	420	337	80.2
Relates to services to and from Melbourne and Sydney.						
Mackay						
Jetstar	60	56	93.3	59	58	98.3
QantasLink	108	89	82.4	109	97	89.0
Virgin Australia	151	129	85.4	151	131	86.8
All Airlines	319	274	85.9	319	286	89.7
Relates to services to and from Brisbane only.						
Melbourne						
Jetstar	1 445	1 142	79.0	1 440	1 126	78.2
Qantas	2 082	1 717	82.5	2 081	1 633	78.5
QantasLink	445	331	74.4	446	314	70.4
Regional Express	89	78	87.6	89	72	80.9
Tigerair	593	454	76.6	588	367	62.4
Virgin Australia	2 359	1 853	78.6	2 358	1 737	73.7
All Airlines	7 013	5 575	79.5	7 002	5 249	75.0
Relates to services to and from Adelaide, Alice Springs, Brisbane, Cairns, Canberra, Darwin, Gold Coast, Hamilton Island, Hobart, Launceston, Mildura, Newcastle, Perth, Sunshine Coast and Sydney.						
Mildura						
QantasLink	89	76	85.4	89	63	70.8
Regional Express	89	74	83.1	89	73	82.0
Virgin Australia	30	22	73.3	30	21	70.0
All Airlines	208	172	82.7	208	157	75.5
Relates to services to and from Melbourne only.						
Moranbah						
QantasLink	125	108	86.4	130	122	93.8
Virgin Australia Regional Airlines	92	85	92.4	93	85	91.4
All Airlines	217	193	88.9	223	207	92.8
Relates to services to and from Brisbane only.						
Mount Isa						
Qantas	58	48	82.8	58	52	89.7
Virgin Australia	23	18	78.3	23	20	87.0
All Airlines	81	66	81.5	81	72	88.9
Relates to services to and from Brisbane only.						

Airport	Departures			Arrivals		
	Sectors	On Time		Sectors	On Time	
	Flown	No.	%	Flown	No.	%
Newcastle						
Jetstar	212	185	87.3	212	199	93.9
QantasLink	70	47	67.1	71	45	63.4
Virgin Australia	115	88	76.5	116	100	86.2
All Airlines	397	320	80.6	399	344	86.2
Relates to services to and from Brisbane and Melbourne.						
Newman						
Qantas	127	117	92.1	128	116	90.6
QantasLink	32	29	90.6	32	30	93.8
Virgin Australia	33	29	87.9	33	24	72.7
Virgin Australia Regional Airlines	4	3	75.0	4	3	75.0
All Airlines	196	178	90.8	197	173	87.8
Relates to services to and from Perth only.						
Perth						
Jetstar	147	95	64.6	147	120	81.6
Qantas	1 129	986	87.3	1 123	930	82.8
QantasLink	334	299	89.5	334	300	89.8
Tigerair	77	43	55.8	77	50	64.9
Virgin Australia	685	536	78.2	685	498	72.7
Virgin Australia Regional Airlines	139	111	79.9	147	94	63.9
All Airlines	2 511	2 070	82.4	2 513	1 992	79.3
Relates to services to and from Adelaide, Brisbane, Broome, Darwin, Geraldton, Kalgoorlie, Karratha, Melbourne, Newman, Port Hedland and Sydney.						
Port Hedland						
Qantas	118	104	88.1	119	114	95.8
QantasLink	48	48	100.0	48	46	95.8
Virgin Australia	45	40	88.9	45	42	93.3
All Airlines	211	192	91.0	212	202	95.3
Relates to services to and from Perth only.						
Port Lincoln						
QantasLink	95	86	90.5	96	85	88.5
Regional Express	215	196	91.2	218	197	90.4
All Airlines	310	282	91.0	314	282	89.8
Relates to services to and from Adelaide only.						
Port Macquarie						
QantasLink	138	101	73.2	138	102	73.9
Virgin Australia Regional Airlines	61	50	82.0	62	51	82.3
All Airlines	199	151	75.9	200	153	76.5
Relates to services to and from Sydney only.						
Proserpine						
Jetstar	30	28	93.3	30	27	90.0
Virgin Australia	53	47	88.7	53	50	94.3
All Airlines	83	75	90.4	83	77	92.8
Relates to services to and from Brisbane only.						

Airport	Departures			Arrivals		
	Sectors Flown	On Time		Sectors Flown	On Time	
		No.	%		No.	%
Rockhampton						
QantasLink	200	153	76.5	223	186	83.4
Virgin Australia	102	85	83.3	102	91	89.2
Virgin Australia Regional Airlines	117	97	82.9	118	90	76.3
All Airlines	419	335	80.0	443	367	82.8
Relates to services to and from Brisbane only.						
Sunshine Coast						
Jetstar	166	146	88.0	165	150	90.9
Tigerair	21	18	85.7	21	18	85.7
Virgin Australia	60	34	56.7	60	41	68.3
All Airlines	247	198	80.2	246	209	85.0
Relates to services to and from Melbourne and Sydney.						
Sydney						
Jetstar	1 438	1 231	85.6	1 438	1 191	82.8
Qantas	2 159	1 836	85.0	2 186	1 889	86.4
QantasLink	1 357	1 126	83.0	1 351	1 071	79.3
Regional Express	527	428	81.2	524	441	84.2
Tigerair	424	336	79.2	425	321	75.5
Virgin Australia	2 400	2 033	84.7	2 399	2 055	85.7
Virgin Australia Regional Airlines	368	308	83.7	365	310	84.9
All Airlines	8 673	7 298	84.1	8 688	7 278	83.8
Relates to services to and from Adelaide, Albury, Alice Springs, Armidale, Ayers Rock, Ballina, Brisbane, Cairns, Canberra, Coffs Harbour, Darwin, Dubbo, Gold Coast, Hamilton Island, Hobart, Launceston, Melbourne, Perth, Port Macquarie, Sunshine Coast, Townsville and Wagga Wagga.						
Townsville						
Jetstar	78	72	92.3	78	76	97.4
Qantas	151	134	88.7	151	128	84.8
Virgin Australia	194	157	80.9	194	169	87.1
All Airlines	423	363	85.8	423	373	88.2
Relates to services to and from Brisbane and Sydney.						
Wagga Wagga						
QantasLink	114	87	76.3	114	91	79.8
Regional Express	141	119	84.4	141	126	89.4
All Airlines	255	206	80.8	255	217	85.1
Relates to services to and from Sydney only.						

Definitions

On time departure A flight departure is counted as "on time" if it departs the gate before 15 minutes after the scheduled departure time shown in the carriers' schedule.

On time arrival A flight arrival is counted as "on time" if it arrived at the gate before 15 minutes after the scheduled arrival time shown in the carriers' schedule.
Neither diverted nor cancelled flights count as on time.

Cancellation A flight removed from service within 7 days of scheduled departure is regarded as a cancellation.

On time departure percentage The percentage of on time departures is measured against the number of departures *operated* on any particular sector.

On time arrival percentage The percentage of on time arrivals is measured against the number of arrivals *operated* on any particular sector.

Cancellation percentage The percentage of cancellations is measured against the number of services *scheduled* on any particular sector.
