



**Australian Government**

**Department of Infrastructure and Transport**

Bureau of Infrastructure, Transport and Regional Economics

STATISTICAL REPORT



# Aviation

Domestic airline on time performance  
July 2013

© Commonwealth of Australia 2013

ISSN: 1832-0759

### **Ownership of intellectual property rights in this publication**

Unless otherwise noted, copyright (and any other intellectual property rights, if any) in this publication is owned by the Commonwealth of Australia (referred to below as the Commonwealth).

### **Disclaimer**

The material contained in this publication is made available on the understanding that the Commonwealth is not providing professional advice, and that users exercise their own skill and care with respect to its use, and seek independent advice if necessary.

The Commonwealth makes no representations or warranties as to the contents or accuracy of the information contained in this publication. To the extent permitted by law, the Commonwealth disclaims liability to any person or organisation in respect of anything done, or omitted to be done, in reliance upon information contained in this publication.

### **Creative Commons licence**

With the exception of (a) the Coat of Arms; and (b) the Department of Infrastructure's photos and graphics, copyright in this publication is licensed under a Creative Commons Attribution 3.0 Australia Licence.

Creative Commons Attribution 3.0 Australia Licence is a standard form licence agreement that allows you to copy, communicate and adapt this publication provided that you attribute the work to the Commonwealth and abide by the other licence terms. A summary of the licence terms is available from <http://creativecommons.org/licenses/by/3.0/au/deed.en>. The full licence terms are available from <http://creativecommons.org/licenses/by/3.0/au/legalcode>.

### **Use of the Coat of Arms**

The Department of the Prime Minister and Cabinet sets the terms under which the Coat of Arms is used. Please refer to the Department's Commonwealth Coat of Arms and Government branding web page <http://www.dpmmc.gov.au/guidelines/index.cfm#brand> and, in particular, the Guidelines on the use of the Commonwealth Coat of Arms publication.

An appropriate citation for this report is:

Bureau of Infrastructure, Transport and Regional Economics (BITRE), 2013, Domestic airline on time performance, Statistical Report, BITRE, Canberra ACT.

### **Contact us**

This publication is available in PDF format. All other rights are reserved, including in relation to any Departmental logos or trade marks which may exist. For enquiries regarding the licence and any use of this publication, please contact:

Bureau of Infrastructure, Transport and Regional Economics (BITRE)  
Department of Infrastructure and Transport  
GPO Box 501, Canberra ACT 2601, Australia  
Telephone: (international) +61 2 6274 7210  
Fax: (international) +61 2 6274 6855  
Email: [bitre@infrastructure.gov.au](mailto:bitre@infrastructure.gov.au)  
Website: [www.bitre.gov.au](http://www.bitre.gov.au)

### **Inquiries**

Should you require additional information about the statistics contained in this publication:

Telephone (02) 6274 7790 or Facsimile (02) 6274 7727

Electronic mail: [AVSTATS@infrastructure.gov.au](mailto:AVSTATS@infrastructure.gov.au)

Web site: <http://www.bitre.gov.au/statistics/aviation/otphome.aspx>

# Foreword

The Bureau of Infrastructure, Transport and Regional Economics (BITRE) monitors the punctuality and reliability of major domestic airlines operating between Australian airports. The purpose of this is to allow for evaluation of overall industry and individual airline performance, so that consumers of air travel can make informed decisions.

The following domestic airlines currently report this information monthly to the BITRE: Jetstar, Qantas, QantasLink, Regional Express, Tigerair, Virgin Australia and Virgin Australia Regional Airlines. Data has been gathered since November 2003, although some airlines commenced reporting at a later date, including Jetstar which first reported in May 2004, MacAir in July 2005 and Tigerair in April 2008. MacAir ceased operations in February 2009 and data was not received for December 2008 onwards. Virgin Blue was rebranded as Virgin Australia in May 2011 and Tiger Airways was rebranded as Tigerair in July 2013 and time series data in Microsoft Excel spreadsheet format on the BITRE website have been revised to reflect these changes. Virgin Australia Regional Airlines commenced operations in May 2013. It was formed after the acquisition of Skywest by Virgin Australia and represents a combination of operations previously reported under Skywest and Virgin Australia – ATR/F100 Operations. Services operated by Skywest on behalf of Virgin Australia using ATR/F100 aircraft commenced in November 2011 and were shown separately as Virgin Australia – ATR/F100 Operations until April 2013.

Information presented in this report is for Australian domestic routes for which the passenger load averaged 8 000 or more passengers per month over the previous six months and where two or more airlines operated in competition on those routes. There were 61 routes that met this definition in July 2013. Over time, routes which meet these criteria change as airline networks and traffic levels vary.

Participating airlines report their overall monthly network performance where this is possible.

Total industry figures encompass all services operated by reporting airlines only. These airlines collectively carried over 95 per cent of total domestic passengers (regular public transport only) in 2012.

The method of capturing on time performance varies between airlines utilising different recording systems. Jetstar and Qantas jet aircraft use Aircraft Communication Addressing and Reporting System (ACARS) to electronically measure on time performance. Regional Express, Tigerair, Virgin Australia, Virgin Australia Regional Airlines and the Qantas non-jet fleet record on time performance manually using records from pilots, gate agents and/or ground crews.

After initial data is collected, aggregate reports are audited internally by participating airlines prior to publication.

Reports and detailed time series data in Microsoft Excel spreadsheet format are available from the BITRE website at: <http://www.bitre.gov.au/statistics/aviation/otphome.aspx>.



# Contents

	Page
Industry performance .....	1
Individual routes .....	9
Airports .....	21
Definitions .....	27



## Industry performance

For July 2013, on time performance over all routes operated by participating airlines (Jetstar, Qantas, QantasLink, Regional Express, Tigerair, Virgin Australia and Virgin Australia Regional Airlines) averaged 78.3 per cent for on time departures and 76.2 per cent for on time arrivals. Cancellations represented 2.0 per cent of all scheduled flights. The equivalent figures for July 2012 were 79.0 per cent for departures, 77.1 per cent for arrivals and 2.3 per cent for cancellations.

This month's figures were worse than the long term average performance for all routes since the collection began (83.6 per cent for departures and 82.2 per cent for arrivals). The rate of cancellations was also worse than the long term average of 1.3 per cent.

Of the major domestic airlines, Qantas achieved the highest level of on time departures for July 2013 at 82.9 per cent, followed by Virgin Australia at 77.3 per cent, Jetstar at 73.7 per cent and Tigerair at 66.6 per cent. The regional airlines were led by Regional Express at 84.5 per cent, followed by QantasLink at 77.2 per cent and Virgin Australia Regional Airlines at 74.4 per cent.

Qantas also achieved the highest on time arrivals among the major domestic airlines at 81.7 per cent, followed by Virgin Australia at 75.0 per cent, Jetstar at 74.5 per cent and Tigerair at 60.5 per cent. Regional Express was the best performing regional airline for on time arrivals at 81.3 per cent, followed by QantasLink at 73.8 per cent and Virgin Australia Regional Airlines at 71.8 per cent.

QantasLink had the highest percentage of cancellations (3.3 per cent) during the month, followed by Jetstar (2.1 per cent), Virgin Australia Regional Airlines (1.8 per cent) Virgin Australia (1.7 per cent), Tigerair (1.6 per cent), Regional Express (also 1.6 per cent) and Qantas (1.3 per cent).

Of the 61 routes which met the criteria for on time performance reporting in July 2013, the Sydney-Sunshine Coast route had the highest percentage of on time departures (91.8 per cent) while the Alice Springs-Melbourne route had the lowest percentage of on time departures (40.8 per cent). The Perth-Port Hedland route had the highest percentage of on time arrivals (93.1 per cent) while the Proserpine-Brisbane route had the lowest percentage of on time arrivals (35.3 per cent).

Cancellations were highest on the Moranbah-Brisbane route at 9.5 per cent, followed by Brisbane-Moranbah at 9.2 per cent, Canberra-Sydney at 6.1 per cent, Adelaide-Gold Coast at 5.6 per cent and Sydney-Canberra at 5.5 per cent.

Port Hedland Airport recorded the highest percentage of on time departures (89.5 per cent) and the highest percentage of on time arrivals (93.1 per cent). Alice Springs Airport recorded the lowest percentage of on time departures (40.8 per cent) and Albury Airport recorded the lowest percentage of on time arrivals (61.8 per cent). These figures only refer to reported routes and do not cover all flights at these airports.

Table 1 On time performance for July 2013 — Total Industry

	<i>Sectors</i>		<i>Departures On Time</i>		<i>Arrivals On Time</i>		<i>Cancellations</i>	
	<i>Scheduled</i>	<i>Flown</i>	<i>No.</i>	<i>%</i>	<i>No.</i>	<i>%</i>	<i>No.</i>	<i>%</i>
Jetstar	6 863	6 717	4 950	73.7	5 004	74.5	146	2.1
Qantas	10 994	10 849	8 991	82.9	8 864	81.7	145	1.3
QantasLink	10 100	9 769	7 537	77.2	7 211	73.8	331	3.3
Regional Express	5 801	5 708	4 823	84.5	4 640	81.3	93	1.6
Tigerair	1 837	1 807	1 203	66.6	1 093	60.5	30	1.6
Virgin Australia	11 660	11 466	8 860	77.3	8 600	75.0	194	1.7
Virgin Australia Regional Airlines	2 763	2 712	2 018	74.4	1 947	71.8	51	1.8
All Airlines	50 018	49 028	38 382	78.3	37 359	76.2	990	2.0

Total airline network data (including routes not shown in this report).

Virgin Australia Regional Airlines commenced operations in May 2013. It was formed after the acquisition of Skywest by Virgin Australia and represents a combination of operations previously reported under Skywest and Virgin Australia – ATR/F100 Operations.

Table 2 Top ten routes for on time performance for July 2013 (participating airlines only)

<i>Departures</i>		<i>Arrivals</i>	
<i>Route</i>	<i>On Time (%)</i>	<i>Route</i>	<i>On Time</i>
Sydney-Sunshine Coast	91.8	Perth-Port Hedland	93.1
Adelaide-Port Lincoln	91.7	Perth-Newman	91.9
Perth-Port Hedland	91.3	Perth-Karratha	91.4
Perth-Karratha	91.1	Darwin-Perth	89.7
Perth-Newman	90.2	Sydney-Sunshine Coast	89.6
Perth-Darwin	89.7	Perth-Adelaide	89.0
Port Hedland-Perth	89.5	Sunshine Coast-Sydney	88.7
Port Lincoln-Adelaide	89.3	Perth-Darwin	87.9
Newman-Perth	88.0	Sydney-Cairns	87.9
Gold Coast-Adelaide	86.8	Adelaide-Port Lincoln	87.7

Table 3 Top ten airports for on time performance for July 2013 (participating airlines and reported routes only)

<i>Departures</i>		<i>Arrivals</i>	
<i>Airport</i>	<i>On Time (%)</i>	<i>Airport</i>	<i>On Time</i>
Port Hedland	89.5	Port Hedland	93.1
Port Lincoln	89.3	Newman	91.9
Newman	88.0	Karratha	91.4
Karratha	86.5	Port Lincoln	87.7
Geraldton	84.3	Broome	86.6
Kalgoorlie	82.6	Mount Isa	85.2
Perth	81.9	Kalgoorlie	85.1
Dubbo	81.3	Adelaide	82.3
Canberra	81.3	Townsville	81.9
Sydney	81.0	Hobart	81.8



## Total industry on time performance

Figure 1 On time performance (by month from July 2010)—Total Industry

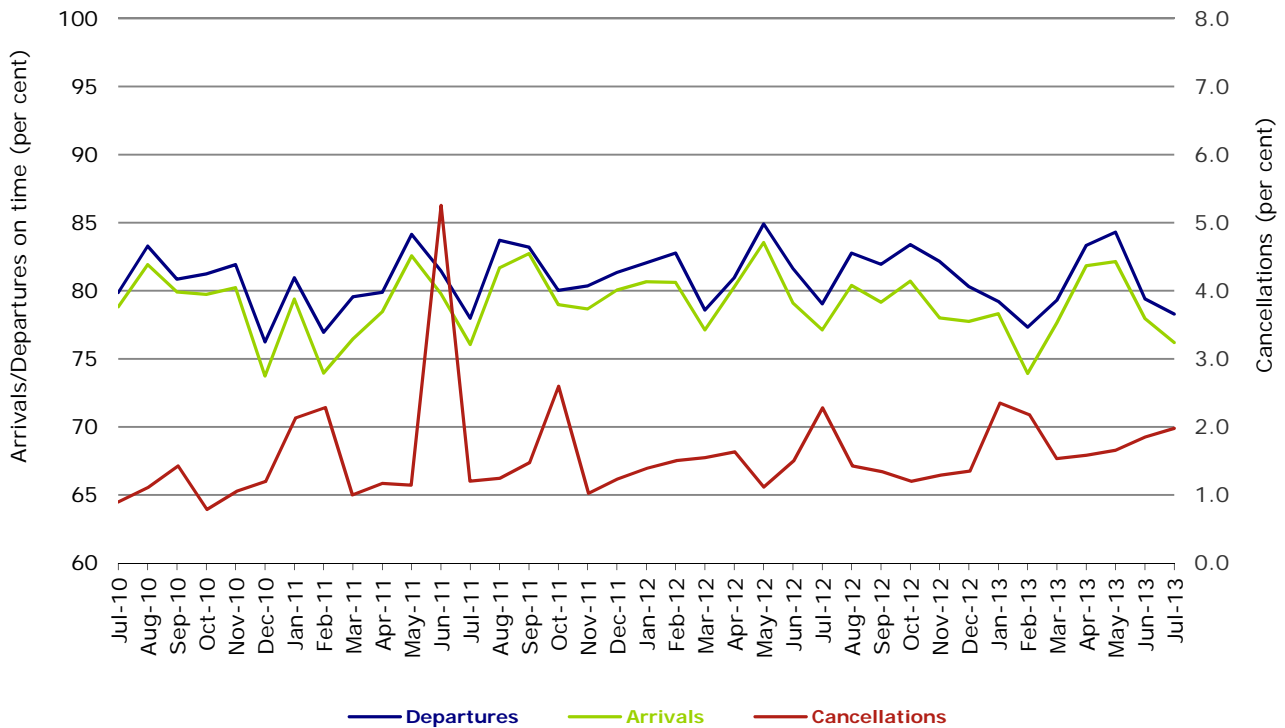
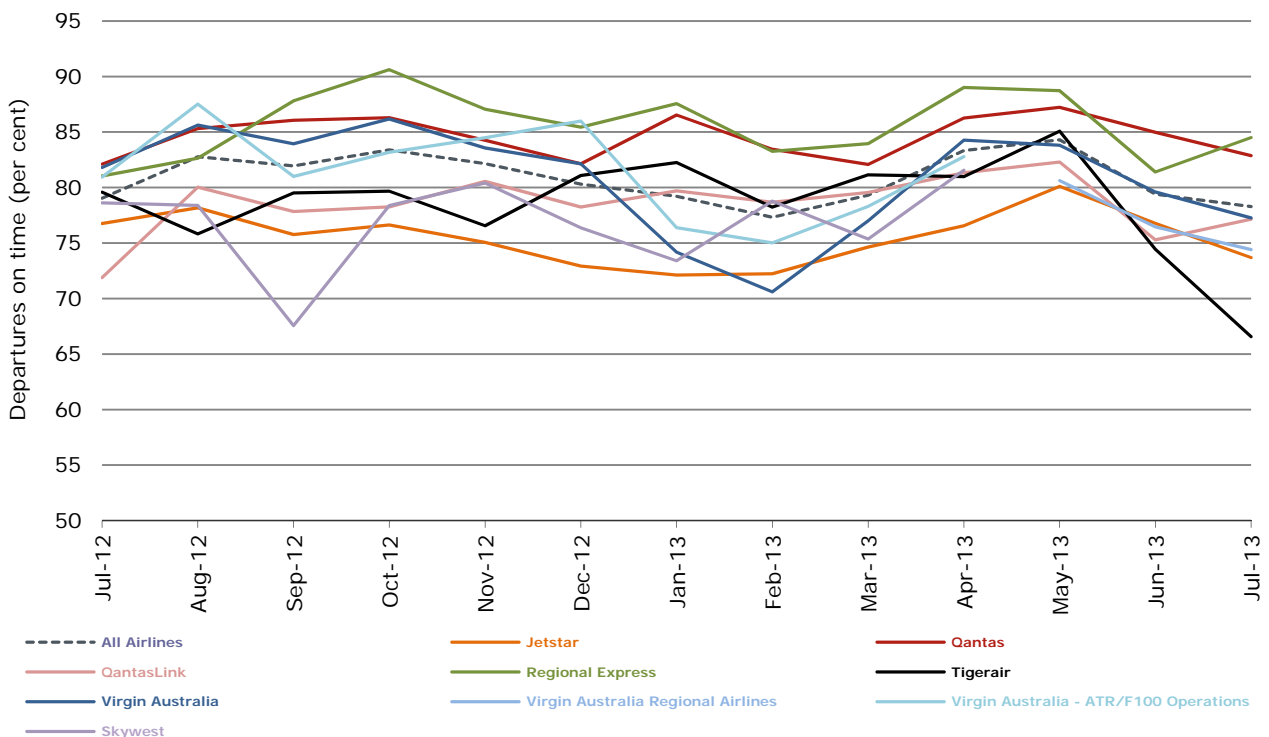
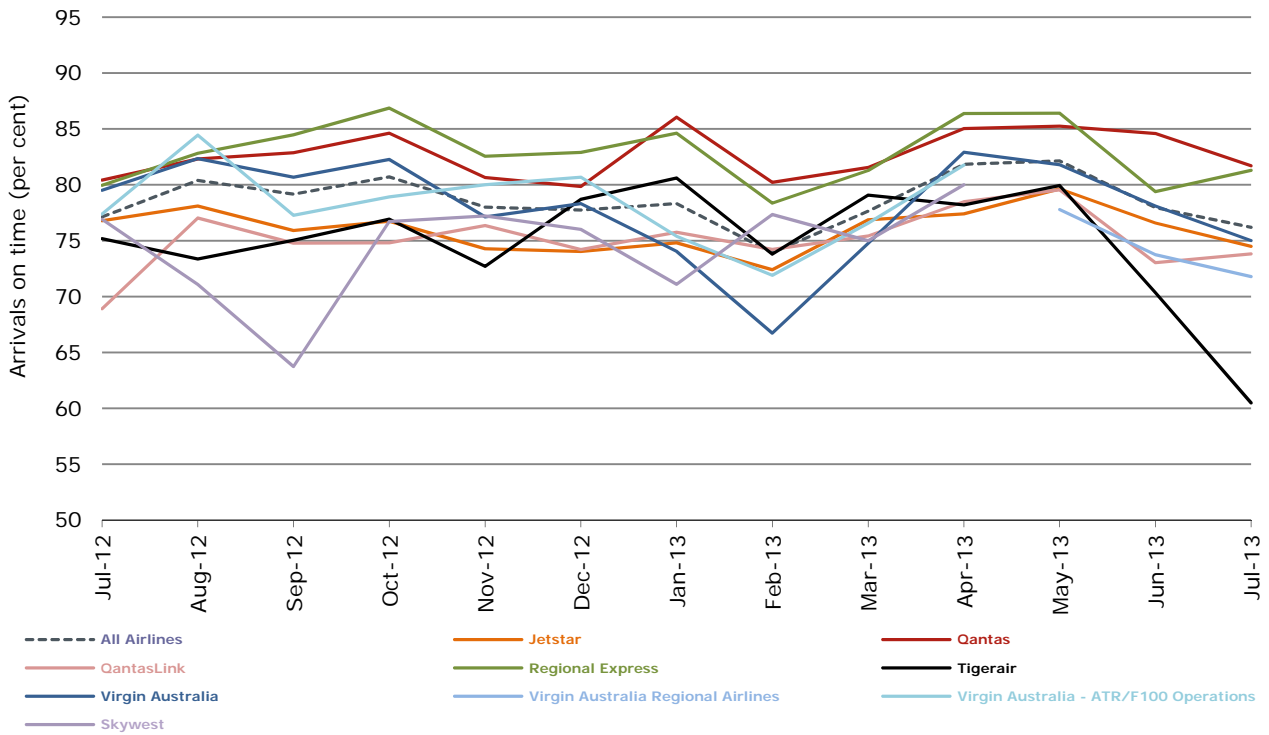


Figure 2 Departures on time (by month from July 2012)



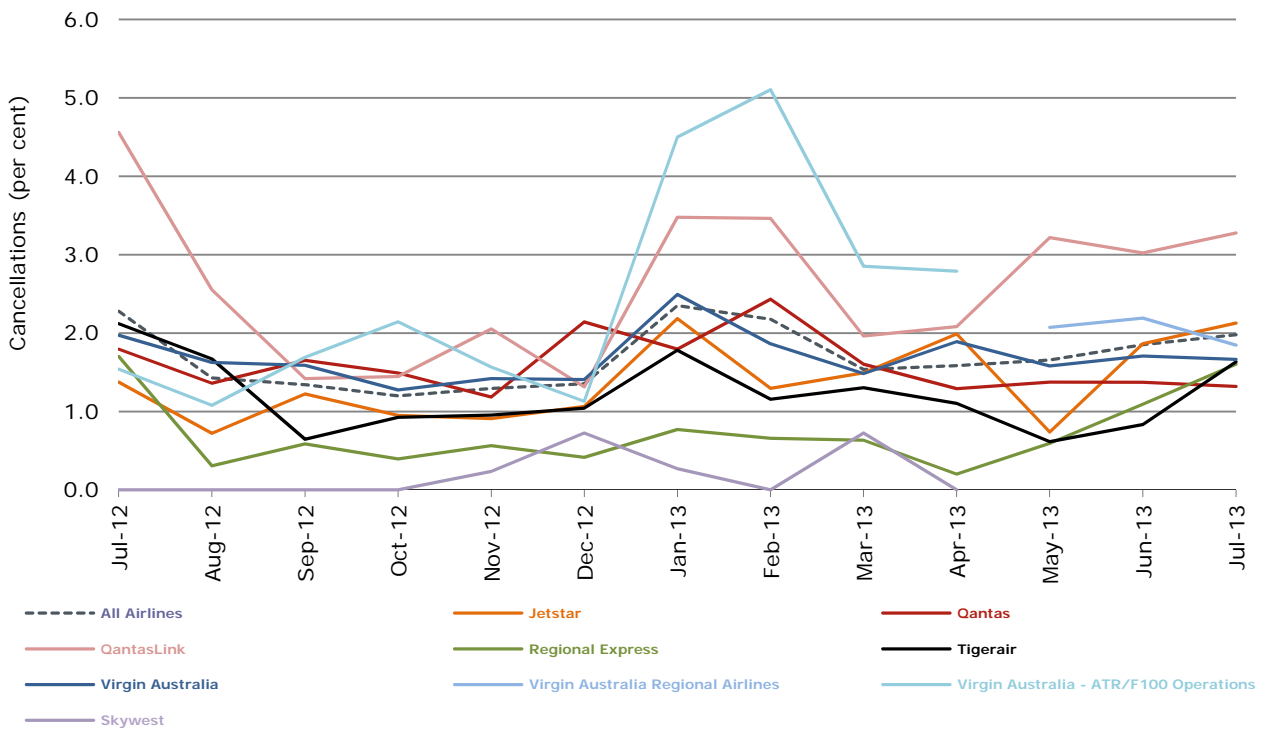
Virgin Australia Regional Airlines commenced operations in May 2013. It was formed after the acquisition of Skywest by Virgin Australia and represents a combination of operations previously reported under Skywest and Virgin Australia – ATR/F100 Operations.

Figure 3 Arrivals on time (by month from July 2012)



Virgin Australia Regional Airlines commenced operations in May 2013. It was formed after the acquisition of Skywest by Virgin Australia and represents a combination of operations previously reported under Skywest and Virgin Australia – ATR/F100 Operations.

Figure 4 Cancellations (by month from July 2012)



Virgin Australia Regional Airlines commenced operations in May 2013. It was formed after the acquisition of Skywest by Virgin Australia and represents a combination of operations previously reported under Skywest and Virgin Australia – ATR/F100 Operations.

## Major domestic airlines on time performance

Figure 5 On time performance (by month from July 2010)—Jetstar

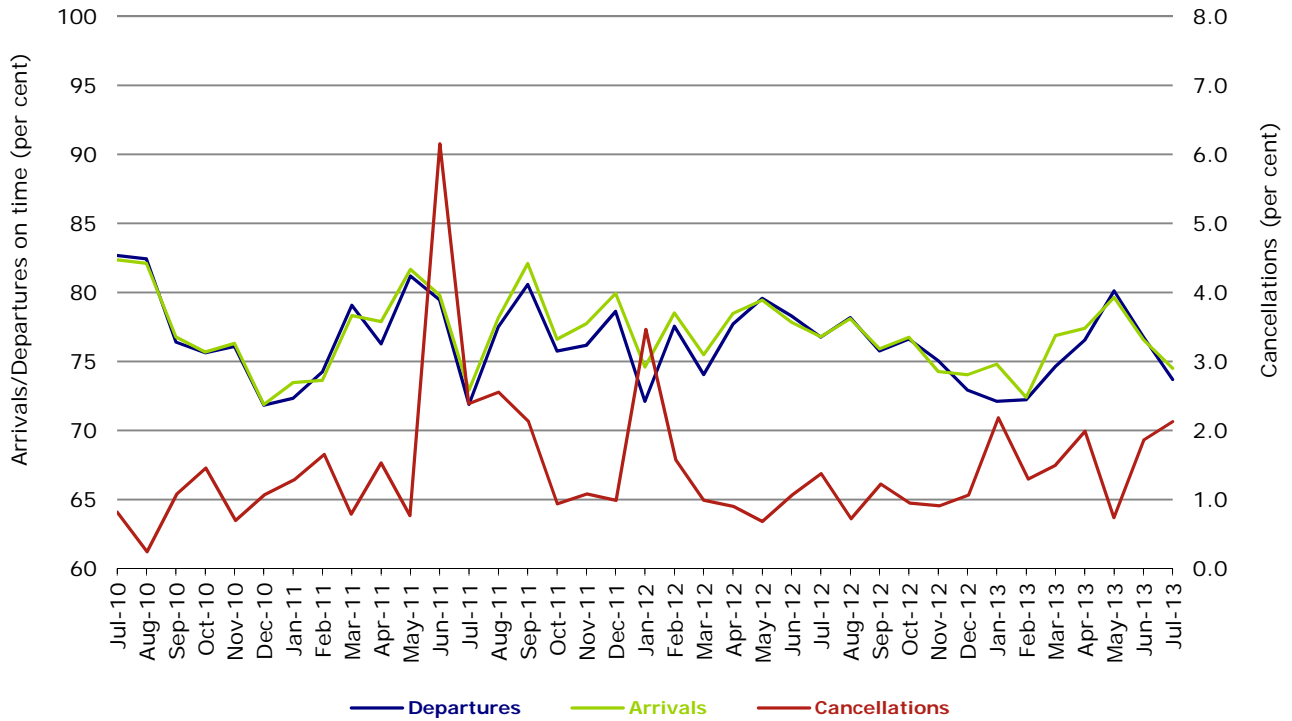


Figure 6 On time performance (by month from July 2010)—Qantas

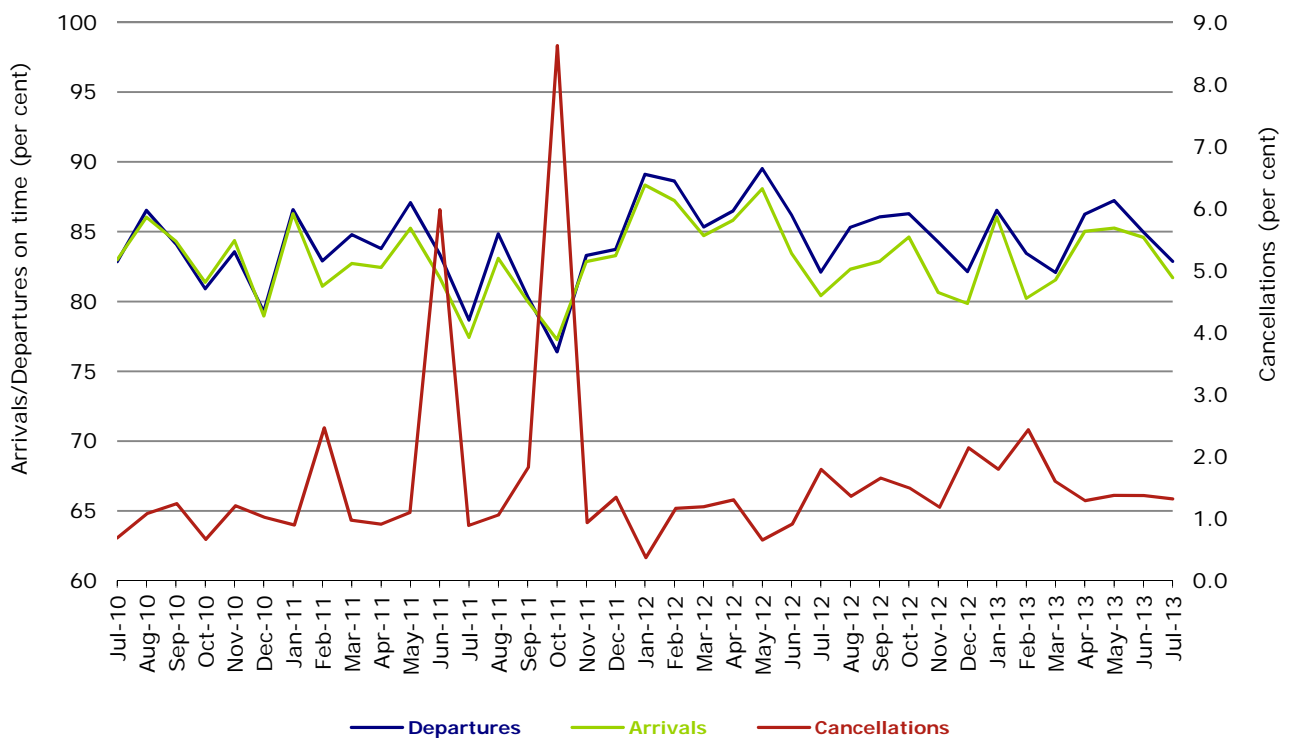
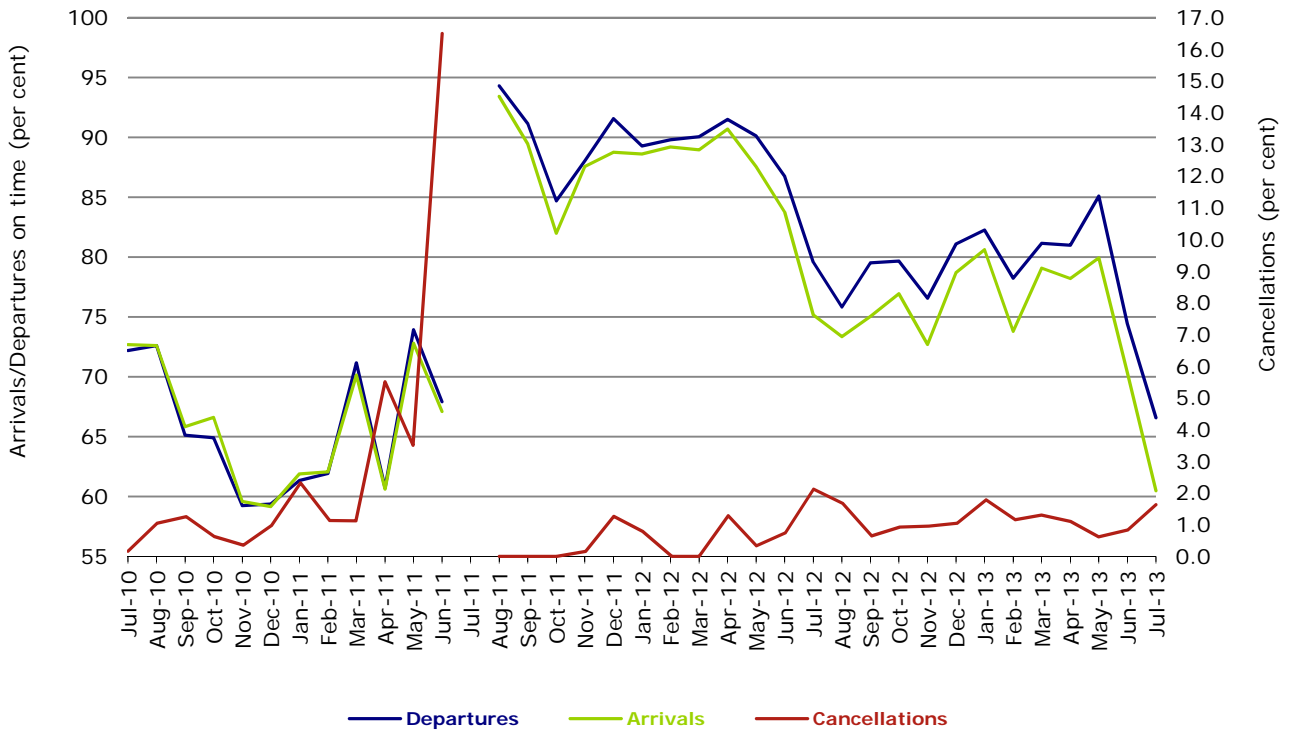
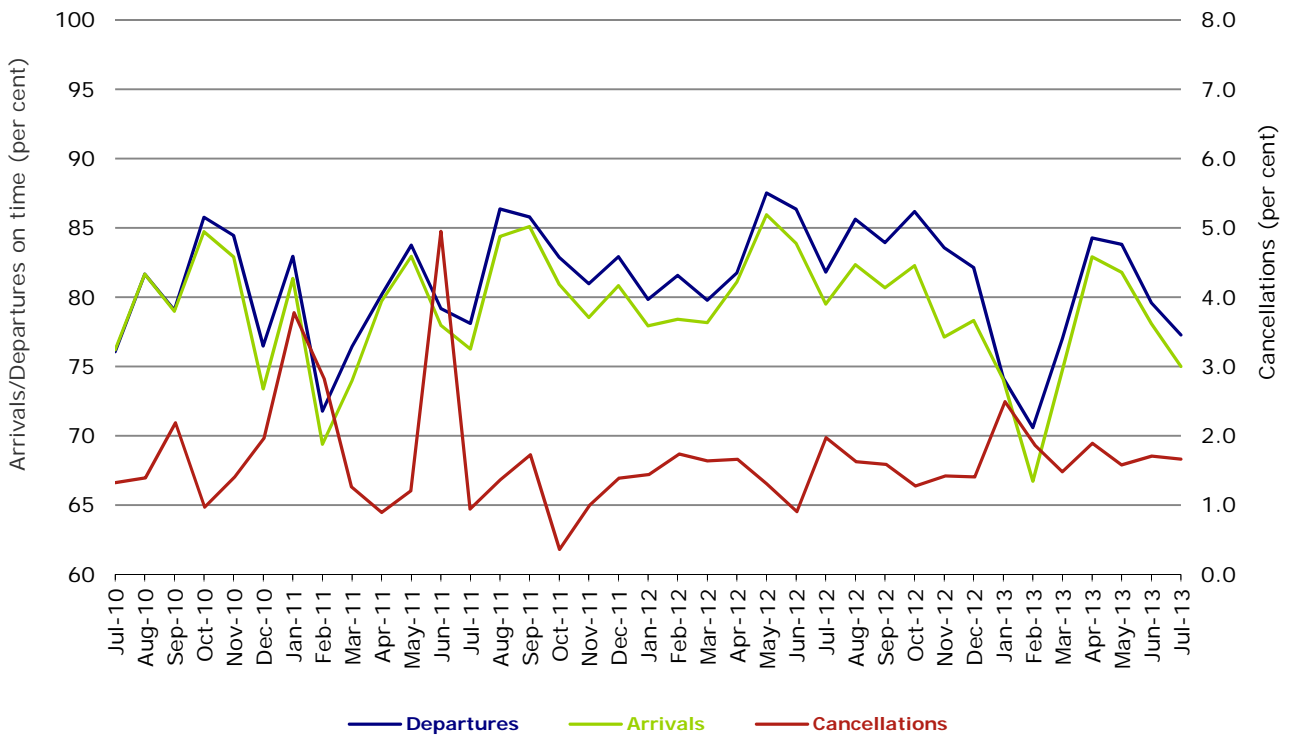


Figure 7 On time performance (by month from July 2010)—Tigerair



No data for Tigerair for July 2011 as it was grounded by CASA from 2/7/2011 to 11/8/2011.

Figure 8 On time performance (by month from July 2010)—Virgin Australia



## Major regional airlines on time performance

Figure 9 On time performance (by month from July 2010)—QantasLink

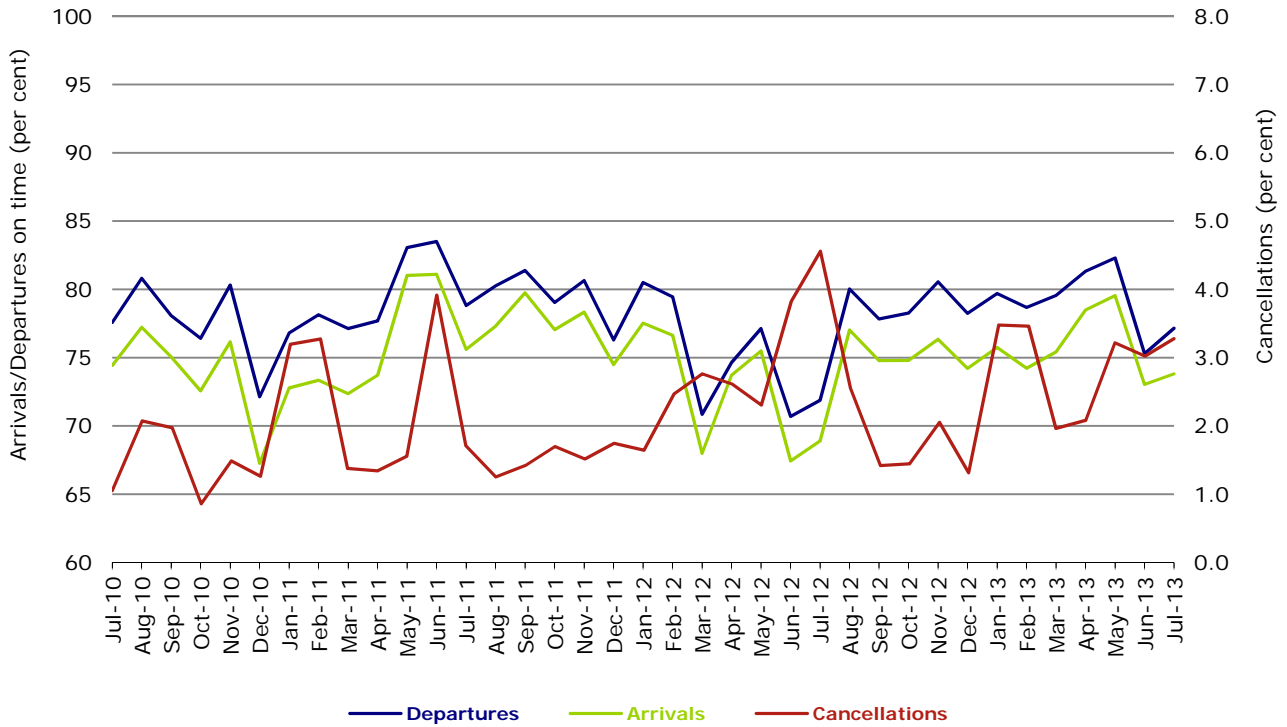


Figure 10 On time performance (by month from July 2010)—Regional Express

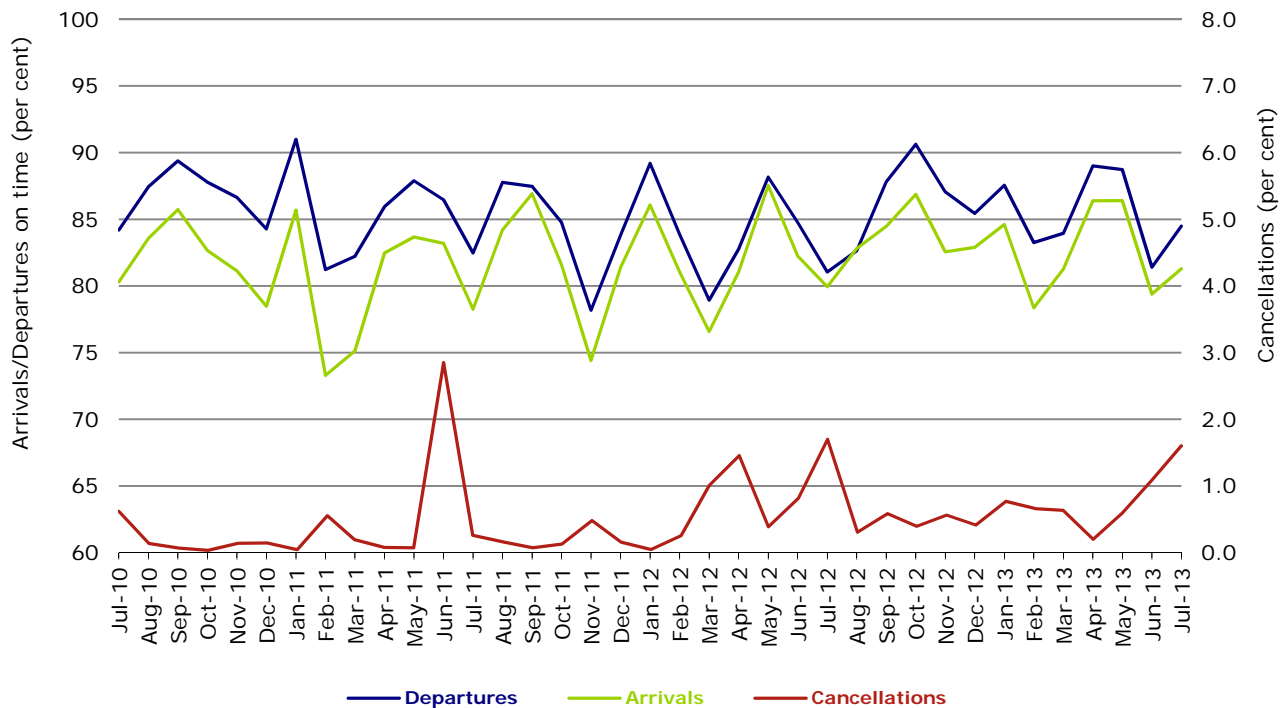
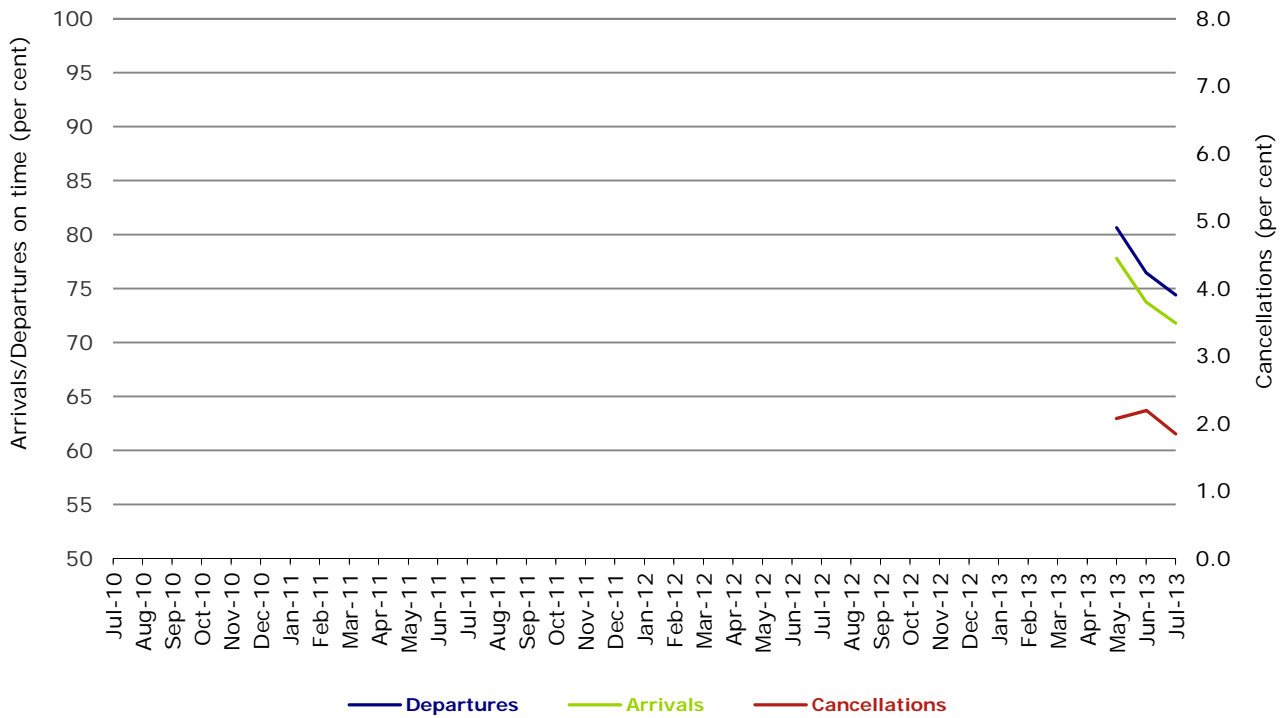


Figure 11 On time performance (by month from July 2010)  
Virgin Australia Regional Airlines



Virgin Australia Regional Airlines commenced operations in May 2013. It was formed after the acquisition of Skywest by Virgin Australia and represents a combination of operations previously reported under Skywest and Virgin Australia – ATR/F100 Operations.

## Individual routes

On time performance is reported for all routes where the passenger load averages over 8000 passengers per month over the previous six months, and where two or more airlines operate in competition on those routes. There are now 61 routes which meet this definition. Over time, however, routes which meet this definition may change as airline networks and traffic levels vary.

	<i>Sectors</i>		<i>Departures On Time</i>		<i>Arrivals On Time</i>		<i>Cancellations</i>	
	<i>Sched.</i>	<i>Flown</i>	<i>No.</i>	<i>%</i>	<i>No.</i>	<i>%</i>	<i>No.</i>	<i>%</i>
<b>Adelaide-Brisbane</b>								
Jetstar	30	30	19	63.3	15	50.0	0	0.0
Qantas	109	109	88	80.7	78	71.6	0	0.0
Virgin Australia	116	114	75	65.8	74	64.9	2	1.7
All Airlines	255	253	182	71.9	167	66.0	2	0.8
<b>Adelaide-Canberra</b>								
Qantas	43	43	38	88.4	38	88.4	0	0.0
QantasLink	23	21	14	66.7	16	76.2	2	8.7
Virgin Australia	27	27	24	88.9	24	88.9	0	0.0
All Airlines	93	91	76	83.5	78	85.7	2	2.2
<b>Adelaide-Gold Coast</b>								
Jetstar	42	40	30	75.0	34	85.0	2	4.8
Virgin Australia	30	28	24	85.7	24	85.7	2	6.7
All Airlines	72	68	54	79.4	58	85.3	4	5.6
<b>Adelaide-Melbourne</b>								
Jetstar	89	87	65	74.7	69	79.3	2	2.2
Qantas	301	296	241	81.4	255	86.1	5	1.7
QantasLink	17	16	15	93.8	14	87.5	1	5.9
Tigerair	75	73	52	71.2	38	52.1	2	2.7
Virgin Australia	289	285	228	80.0	228	80.0	4	1.4
All Airlines	771	757	601	79.4	604	79.8	14	1.8
<b>Adelaide-Perth</b>								
Jetstar	37	35	25	71.4	24	68.6	2	5.4
Qantas	115	115	98	85.2	94	81.7	0	0.0
Virgin Australia	68	67	58	86.6	55	82.1	1	1.5
All Airlines	220	217	181	83.4	173	79.7	3	1.4
<b>Adelaide-Port Lincoln</b>								
QantasLink	97	90	82	91.1	81	90.0	7	7.2
Regional Express	215	212	195	92.0	184	86.8	3	1.4
All Airlines	312	302	277	91.7	265	87.7	10	3.2
<b>Adelaide-Sydney</b>								
Jetstar	99	96	61	63.5	67	69.8	3	3.0
Qantas	273	272	224	82.4	248	91.2	1	0.4
Virgin Australia	174	172	138	80.2	155	90.1	2	1.1
All Airlines	546	540	423	78.3	470	87.0	6	1.1
<b>Albury-Sydney</b>								
QantasLink	116	114	64	56.1	63	55.3	2	1.7
Regional Express	114	113	96	85.0	95	84.1	1	0.9
Virgin Australia Regional Airlines	62	62	38	61.3	34	54.8	0	0.0
All Airlines	292	289	198	68.5	192	66.4	3	1.0
<b>Alice Springs-Melbourne</b>								
Qantas	31	31	14	45.2	22	71.0	0	0.0
Tigerair	18	18	6	33.3	6	33.3	0	0.0
All Airlines	49	49	20	40.8	28	57.1	0	0.0

	<i>Sectors</i>		<i>Departures On Time</i>		<i>Arrivals On Time</i>		<i>Cancellations</i>	
	<i>Sched.</i>	<i>Flown</i>	<i>No.</i>	<i>%</i>	<i>No.</i>	<i>%</i>	<i>No.</i>	<i>%</i>
<b>Ayers Rock-Sydney</b>								
Jetstar	17	17	9	52.9	9	52.9	0	0.0
Virgin Australia	31	31	22	71.0	27	87.1	0	0.0
All Airlines	48	48	31	64.6	36	75.0	0	0.0
<b>Ballina-Sydney</b>								
Jetstar	68	67	50	74.6	48	71.6	1	1.5
Regional Express	29	28	19	67.9	15	53.6	1	3.4
Virgin Australia	31	31	25	80.6	22	71.0	0	0.0
All Airlines	128	126	94	74.6	85	67.5	2	1.6
<b>Brisbane-Adelaide</b>								
Jetstar	30	30	26	86.7	25	83.3	0	0.0
Qantas	109	109	77	70.6	89	81.7	0	0.0
Virgin Australia	117	116	83	71.6	94	81.0	1	0.9
All Airlines	256	255	186	72.9	208	81.6	1	0.4
<b>Brisbane-Bundaberg</b>								
QantasLink	125	124	92	74.2	93	75.0	1	0.8
Virgin Australia Regional Airlines	31	31	22	71.0	21	67.7	0	0.0
All Airlines	156	155	114	73.5	114	73.5	1	0.6
<b>Brisbane-Cairns</b>								
Jetstar	133	132	75	56.8	83	62.9	1	0.8
Qantas	120	120	84	70.0	94	78.3	0	0.0
QantasLink	4	4	4	100.0	4	100.0	0	0.0
Virgin Australia	173	173	137	79.2	140	80.9	0	0.0
All Airlines	430	429	300	69.9	321	74.8	1	0.2
<b>Brisbane-Canberra</b>								
Qantas	147	146	121	82.9	126	86.3	1	0.7
QantasLink	22	22	18	81.8	16	72.7	0	0.0
Virgin Australia	98	97	74	76.3	72	74.2	1	1.0
All Airlines	267	265	213	80.4	214	80.8	2	0.7
<b>Brisbane-Darwin</b>								
Jetstar	9	9	7	77.8	8	88.9	0	0.0
Qantas	31	31	19	61.3	20	64.5	0	0.0
Virgin Australia	31	31	21	67.7	19	61.3	0	0.0
All Airlines	71	71	47	66.2	47	66.2	0	0.0
<b>Brisbane-Emerald</b>								
QantasLink	189	178	156	87.6	143	80.3	11	5.8
Virgin Australia Regional Airlines	108	106	86	81.1	81	76.4	2	1.9
All Airlines	297	284	242	85.2	224	78.9	13	4.4
<b>Brisbane-Gladstone</b>								
QantasLink	234	228	192	84.2	187	82.0	6	2.6
Virgin Australia	45	45	37	82.2	32	71.1	0	0.0
Virgin Australia Regional Airlines	110	102	56	54.9	60	58.8	8	7.3
All Airlines	389	375	285	76.0	279	74.4	14	3.6
<b>Brisbane-Hamilton Island</b>								
Jetstar	17	17	11	64.7	14	82.4	0	0.0
Virgin Australia	31	31	27	87.1	26	83.9	0	0.0
All Airlines	48	48	38	79.2	40	83.3	0	0.0
<b>Brisbane-Mackay</b>								
Jetstar	110	106	72	67.9	83	78.3	4	3.6
QantasLink	112	110	88	80.0	89	80.9	2	1.8
Virgin Australia	171	170	145	85.3	143	84.1	1	0.6
All Airlines	393	386	305	79.0	315	81.6	7	1.8



	<i>Sectors</i>		<i>Departures On Time</i>		<i>Arrivals On Time</i>		<i>Cancellations</i>	
	<i>Sched.</i>	<i>Flown</i>	<i>No.</i>	<i>%</i>	<i>No.</i>	<i>%</i>	<i>No.</i>	<i>%</i>
<b>Brisbane-Melbourne</b>								
Jetstar	97	96	61	63.5	69	71.9	1	1.0
Qantas	426	424	337	79.5	331	78.1	2	0.5
Tigerair	95	93	52	55.9	47	50.5	2	2.1
Virgin Australia	398	393	282	71.8	243	61.8	5	1.3
All Airlines	1 016	1 006	732	72.8	690	68.6	10	1.0
<b>Brisbane-Moranbah</b>								
QantasLink	185	163	142	87.1	147	90.2	22	11.9
Virgin Australia Regional Airlines	77	75	47	62.7	32	42.7	2	2.6
All Airlines	262	238	189	79.4	179	75.2	24	9.2
<b>Brisbane-Mount Isa</b>								
Qantas	58	58	52	89.7	54	93.1	0	0.0
Virgin Australia	23	23	16	69.6	15	65.2	0	0.0
All Airlines	81	81	68	84.0	69	85.2	0	0.0
<b>Brisbane-Newcastle</b>								
Jetstar	117	115	84	73.0	87	75.7	2	1.7
QantasLink	73	73	59	80.8	44	60.3	0	0.0
Virgin Australia	84	84	69	82.1	70	83.3	0	0.0
All Airlines	274	272	212	77.9	201	73.9	2	0.7
<b>Brisbane-Perth</b>								
Jetstar	25	25	19	76.0	18	72.0	0	0.0
Qantas	124	124	94	75.8	106	85.5	0	0.0
Virgin Australia	89	89	59	66.3	56	62.9	0	0.0
All Airlines	238	238	172	72.3	180	75.6	0	0.0
<b>Brisbane-Proserpine</b>								
Jetstar	31	31	18	58.1	12	38.7	0	0.0
Virgin Australia	54	54	40	74.1	41	75.9	0	0.0
All Airlines	85	85	58	68.2	53	62.4	0	0.0
<b>Brisbane-Rockhampton</b>								
QantasLink	218	213	170	79.8	165	77.5	5	2.3
Virgin Australia	108	105	82	78.1	83	79.0	3	2.8
Virgin Australia Regional Airlines	116	116	72	62.1	78	67.2	0	0.0
All Airlines	442	434	324	74.7	326	75.1	8	1.8
<b>Brisbane-Sydney</b>								
Jetstar	103	96	66	68.8	73	76.0	7	6.8
Qantas	628	618	483	78.2	486	78.6	10	1.6
Tigerair	79	79	32	40.5	30	38.0	0	0.0
Virgin Australia	575	555	412	74.2	398	71.7	20	3.5
All Airlines	1 385	1 348	993	73.7	987	73.2	37	2.7
<b>Brisbane-Townsville</b>								
Jetstar	31	30	17	56.7	22	73.3	1	3.2
Qantas	152	152	119	78.3	124	81.6	0	0.0
Virgin Australia	170	170	129	75.9	140	82.4	0	0.0
All Airlines	353	352	265	75.3	286	81.3	1	0.3
<b>Broome-Perth</b>								
Qantas	36	36	15	41.7	23	63.9	0	0.0
QantasLink	53	53	47	88.7	47	88.7	0	0.0
Virgin Australia	62	61	40	65.6	46	75.4	1	1.6
Virgin Australia Regional Airlines	22	22	12	54.5	9	40.9	0	0.0
All Airlines	173	172	114	66.3	125	72.7	1	0.6
<b>Bundaberg-Brisbane</b>								
QantasLink	125	124	84	67.7	79	63.7	1	0.8
Virgin Australia Regional Airlines	31	31	20	64.5	22	71.0	0	0.0
All Airlines	156	155	104	67.1	101	65.2	1	0.6

	<i>Sectors</i>		<i>Departures On Time</i>		<i>Arrivals On Time</i>		<i>Cancellations</i>	
	<i>Sched.</i>	<i>Flown</i>	<i>No.</i>	<i>%</i>	<i>No.</i>	<i>%</i>	<i>No.</i>	<i>%</i>
<b>Cairns-Brisbane</b>								
Jetstar	131	130	81	62.3	62	47.7	1	0.8
Qantas	120	119	90	75.6	78	65.5	1	0.8
QantasLink	4	4	4	100.0	4	100.0	0	0.0
Virgin Australia	173	172	130	75.6	108	62.8	1	0.6
All Airlines	428	425	305	71.8	252	59.3	3	0.7
<b>Cairns-Melbourne</b>								
Jetstar	115	115	98	85.2	98	85.2	0	0.0
Qantas	31	31	21	67.7	26	83.9	0	0.0
Tigerair	61	61	38	62.3	29	47.5	0	0.0
Virgin Australia	35	35	19	54.3	20	57.1	0	0.0
All Airlines	242	242	176	72.7	173	71.5	0	0.0
<b>Cairns-Sydney</b>								
Jetstar	112	111	81	73.0	79	71.2	1	0.9
Qantas	79	79	67	84.8	68	86.1	0	0.0
Tigerair	31	31	22	71.0	20	64.5	0	0.0
Virgin Australia	93	93	82	88.2	82	88.2	0	0.0
All Airlines	315	314	252	80.3	249	79.3	1	0.3
<b>Cairns-Townsville</b>								
QantasLink	188	184	154	83.7	156	84.8	4	2.1
Virgin Australia Regional Airlines	27	27	23	85.2	24	88.9	0	0.0
All Airlines	215	211	177	83.9	180	85.3	4	1.9
<b>Canberra-Adelaide</b>								
Qantas	47	47	43	91.5	43	91.5	0	0.0
QantasLink	23	21	16	76.2	14	66.7	2	8.7
Virgin Australia	27	27	23	85.2	22	81.5	0	0.0
All Airlines	97	95	82	86.3	79	83.2	2	2.1
<b>Canberra-Brisbane</b>								
Qantas	147	146	117	80.1	116	79.5	1	0.7
QantasLink	22	22	16	72.7	16	72.7	0	0.0
Virgin Australia	98	95	79	83.2	74	77.9	3	3.1
All Airlines	267	263	212	80.6	206	78.3	4	1.5
<b>Canberra-Melbourne</b>								
Qantas	269	263	230	87.5	226	85.9	6	2.2
QantasLink	39	37	31	83.8	29	78.4	2	5.1
Virgin Australia	182	171	124	72.5	123	71.9	11	6.0
All Airlines	490	471	385	81.7	378	80.3	19	3.9
<b>Canberra-Sydney</b>								
Qantas	166	161	141	87.6	143	88.8	5	3.0
QantasLink	412	373	282	75.6	305	81.8	39	9.5
Virgin Australia	58	53	42	79.2	43	81.1	5	8.6
Virgin Australia Regional Airlines	255	250	210	84.0	208	83.2	5	2.0
All Airlines	891	837	675	80.6	699	83.5	54	6.1
<b>Coffs Harbour-Sydney</b>								
QantasLink	155	154	108	70.1	105	68.2	1	0.6
Tigerair	22	22	19	86.4	20	90.9	0	0.0
Virgin Australia	62	61	54	88.5	56	91.8	1	1.6
All Airlines	239	237	181	76.4	181	76.4	2	0.8
<b>Darwin-Brisbane</b>								
Jetstar	8	8	5	62.5	4	50.0	0	0.0
Qantas	31	31	13	41.9	16	51.6	0	0.0
Virgin Australia	31	31	17	54.8	18	58.1	0	0.0
All Airlines	70	70	35	50.0	38	54.3	0	0.0

	<i>Sectors</i>		<i>Departures On Time</i>		<i>Arrivals On Time</i>		<i>Cancellations</i>	
	<i>Sched.</i>	<i>Flown</i>	<i>No.</i>	<i>%</i>	<i>No.</i>	<i>%</i>	<i>No.</i>	<i>%</i>
<b>Darwin-Melbourne</b>								
Jetstar	13	13	2	15.4	2	15.4	0	0.0
Qantas	18	18	10	55.6	13	72.2	0	0.0
Virgin Australia	31	31	28	90.3	25	80.6	0	0.0
All Airlines	62	62	40	64.5	40	64.5	0	0.0
<b>Darwin-Perth</b>								
Qantas	31	31	22	71.0	26	83.9	0	0.0
Virgin Australia	27	27	21	77.8	26	96.3	0	0.0
All Airlines	58	58	43	74.1	52	89.7	0	0.0
<b>Darwin-Sydney</b>								
Jetstar	31	31	19	61.3	26	83.9	0	0.0
Qantas	58	58	45	77.6	49	84.5	0	0.0
Virgin Australia	31	31	20	64.5	23	74.2	0	0.0
All Airlines	120	120	84	70.0	98	81.7	0	0.0
<b>Dubbo-Sydney</b>								
QantasLink	131	131	90	68.7	81	61.8	0	0.0
Regional Express	163	163	149	91.4	147	90.2	0	0.0
All Airlines	294	294	239	81.3	228	77.6	0	0.0
<b>Emerald-Brisbane</b>								
QantasLink	189	178	134	75.3	124	69.7	11	5.8
Virgin Australia Regional Airlines	108	106	79	74.5	84	79.2	2	1.9
All Airlines	297	284	213	75.0	208	73.2	13	4.4
<b>Geraldton-Perth</b>								
QantasLink	63	63	56	88.9	53	84.1	0	0.0
Virgin Australia Regional Airlines	104	96	78	81.3	71	74.0	8	7.7
All Airlines	167	159	134	84.3	124	78.0	8	4.8
<b>Gladstone-Brisbane</b>								
QantasLink	257	250	181	72.4	163	65.2	7	2.7
Virgin Australia	45	45	24	53.3	17	37.8	0	0.0
Virgin Australia Regional Airlines	110	103	67	65.0	54	52.4	7	6.4
All Airlines	412	398	272	68.3	234	58.8	14	3.4
<b>Gold Coast-Adelaide</b>								
Jetstar	40	40	36	90.0	35	87.5	0	0.0
Virgin Australia	30	28	23	82.1	24	85.7	2	6.7
All Airlines	70	68	59	86.8	59	86.8	2	2.9
<b>Gold Coast-Melbourne</b>								
Jetstar	198	196	164	83.7	159	81.1	2	1.0
Tigerair	74	74	41	55.4	31	41.9	0	0.0
Virgin Australia	176	176	132	75.0	138	78.4	0	0.0
All Airlines	448	446	337	75.6	328	73.5	2	0.4
<b>Gold Coast-Sydney</b>								
Jetstar	323	307	240	78.2	250	81.4	16	5.0
Qantas	93	93	82	88.2	85	91.4	0	0.0
Tigerair	58	56	33	58.9	30	53.6	2	3.4
Virgin Australia	316	311	257	82.6	261	83.9	5	1.6
All Airlines	790	767	612	79.8	626	81.6	23	2.9
<b>Hamilton Island-Brisbane</b>								
Jetstar	17	17	10	58.8	11	64.7	0	0.0
Virgin Australia	31	31	24	77.4	20	64.5	0	0.0
All Airlines	48	48	34	70.8	31	64.6	0	0.0

	<i>Sectors</i>		<i>Departures On Time</i>		<i>Arrivals On Time</i>		<i>Cancellations</i>	
	<i>Sched.</i>	<i>Flown</i>	<i>No.</i>	<i>%</i>	<i>No.</i>	<i>%</i>	<i>No.</i>	<i>%</i>
<b>Hamilton Island-Sydney</b>								
Jetstar	31	31	19	61.3	21	67.7	0	0.0
Virgin Australia	31	31	21	67.7	21	67.7	0	0.0
All Airlines	62	62	40	64.5	42	67.7	0	0.0
<b>Hobart-Melbourne</b>								
Jetstar	169	164	130	79.3	126	76.8	5	3.0
Qantas	62	62	56	90.3	55	88.7	0	0.0
QantasLink	31	31	30	96.8	27	87.1	0	0.0
Tigerair	32	31	16	51.6	14	45.2	1	3.1
Virgin Australia	145	143	117	81.8	114	79.7	2	1.4
All Airlines	439	431	349	81.0	336	78.0	8	1.8
<b>Hobart-Sydney</b>								
Jetstar	68	68	50	73.5	50	73.5	0	0.0
Qantas	31	31	27	87.1	27	87.1	0	0.0
Virgin Australia	62	61	49	80.3	53	86.9	1	1.6
All Airlines	161	160	126	78.8	130	81.3	1	0.6
<b>Kalgoorlie-Perth</b>								
Qantas	62	62	53	85.5	53	85.5	0	0.0
QantasLink	28	28	24	85.7	24	85.7	0	0.0
Virgin Australia Regional Airlines	59	59	46	78.0	40	67.8	0	0.0
All Airlines	149	149	123	82.6	117	78.5	0	0.0
<b>Karratha-Perth</b>								
Qantas	193	185	165	89.2	159	85.9	8	4.1
QantasLink	68	64	56	87.5	53	82.8	4	5.9
Virgin Australia	77	76	60	78.9	63	82.9	1	1.3
All Airlines	338	325	281	86.5	275	84.6	13	3.8
<b>Launceston-Melbourne</b>								
Jetstar	120	118	72	61.0	78	66.1	2	1.7
QantasLink	110	103	81	78.6	79	76.7	7	6.4
Virgin Australia	125	124	95	76.6	88	71.0	1	0.8
All Airlines	355	345	248	71.9	245	71.0	10	2.8
<b>Launceston-Sydney</b>								
Jetstar	49	49	27	55.1	32	65.3	0	0.0
Virgin Australia	31	30	24	80.0	24	80.0	1	3.2
All Airlines	80	79	51	64.6	56	70.9	1	1.3
<b>Mackay-Brisbane</b>								
Jetstar	110	105	51	48.6	45	42.9	5	4.5
QantasLink	112	109	78	71.6	74	67.9	3	2.7
Virgin Australia	171	170	134	78.8	112	65.9	1	0.6
All Airlines	393	384	263	68.5	231	60.2	9	2.3
<b>Melbourne-Adelaide</b>								
Jetstar	89	88	79	89.8	71	80.7	1	1.1
Qantas	301	298	258	86.6	257	86.2	3	1.0
QantasLink	17	17	16	94.1	15	88.2	0	0.0
Tigerair	75	73	60	82.2	50	68.5	2	2.7
Virgin Australia	289	284	229	80.6	229	80.6	5	1.7
All Airlines	771	760	642	84.5	622	81.8	11	1.4
<b>Melbourne-Alice Springs</b>								
Qantas	31	31	25	80.6	24	77.4	0	0.0
Tigerair	18	18	15	83.3	8	44.4	0	0.0
All Airlines	49	49	40	81.6	32	65.3	0	0.0

	<i>Sectors</i>		<i>Departures On Time</i>		<i>Arrivals On Time</i>		<i>Cancellations</i>	
	<i>Sched.</i>	<i>Flown</i>	<i>No.</i>	<i>%</i>	<i>No.</i>	<i>%</i>	<i>No.</i>	<i>%</i>
<b>Melbourne-Brisbane</b>								
Jetstar	96	95	51	53.7	34	35.8	1	1.0
Qantas	426	425	331	77.9	276	64.9	1	0.2
Tigerair	95	93	51	54.8	46	49.5	2	2.1
Virgin Australia	398	394	254	64.5	232	58.9	4	1.0
All Airlines	1 015	1 007	687	68.2	588	58.4	8	0.8
<b>Melbourne-Cairns</b>								
Jetstar	115	115	89	77.4	93	80.9	0	0.0
Qantas	31	31	22	71.0	23	74.2	0	0.0
Tigerair	62	62	48	77.4	45	72.6	0	0.0
Virgin Australia	35	35	23	65.7	25	71.4	0	0.0
All Airlines	243	243	182	74.9	186	76.5	0	0.0
<b>Melbourne-Canberra</b>								
Qantas	269	263	231	87.8	227	86.3	6	2.2
QantasLink	39	33	30	90.9	28	84.8	6	15.4
Virgin Australia	182	173	119	68.8	127	73.4	9	4.9
All Airlines	490	469	380	81.0	382	81.4	21	4.3
<b>Melbourne-Darwin</b>								
Jetstar	13	13	5	38.5	6	46.2	0	0.0
Qantas	18	18	14	77.8	13	72.2	0	0.0
Virgin Australia	31	31	27	87.1	20	64.5	0	0.0
All Airlines	62	62	46	74.2	39	62.9	0	0.0
<b>Melbourne-Gold Coast</b>								
Jetstar	198	196	152	77.6	150	76.5	2	1.0
Tigerair	74	74	46	62.2	45	60.8	0	0.0
Virgin Australia	176	176	116	65.9	133	75.6	0	0.0
All Airlines	448	446	314	70.4	328	73.5	2	0.4
<b>Melbourne-Hobart</b>								
Jetstar	169	164	135	82.3	144	87.8	5	3.0
Qantas	62	62	58	93.5	58	93.5	0	0.0
QantasLink	31	31	25	80.6	23	74.2	0	0.0
Tigerair	32	31	20	64.5	16	51.6	1	3.1
Virgin Australia	145	143	108	75.5	107	74.8	2	1.4
All Airlines	439	431	346	80.3	348	80.7	8	1.8
<b>Melbourne-Launceston</b>								
Jetstar	119	117	85	72.6	84	71.8	2	1.7
QantasLink	110	104	85	81.7	79	76.0	6	5.5
Virgin Australia	125	125	98	78.4	106	84.8	0	0.0
All Airlines	354	346	268	77.5	269	77.7	8	2.3
<b>Melbourne-Mildura</b>								
QantasLink	89	88	67	76.1	59	67.0	1	1.1
Regional Express	88	88	83	94.3	68	77.3	0	0.0
Virgin Australia	31	31	22	71.0	20	64.5	0	0.0
All Airlines	208	207	172	83.1	147	71.0	1	0.5
<b>Melbourne-Newcastle</b>								
Jetstar	106	106	78	73.6	82	77.4	0	0.0
Virgin Australia	31	31	27	87.1	28	90.3	0	0.0
All Airlines	137	137	105	76.6	110	80.3	0	0.0
<b>Melbourne-Perth</b>								
Jetstar	85	84	68	81.0	64	76.2	1	1.2
Qantas	231	230	179	77.8	184	80.0	1	0.4
Tigerair	62	60	48	80.0	41	68.3	2	3.2
Virgin Australia	143	143	116	81.1	95	66.4	0	0.0
All Airlines	521	517	411	79.5	384	74.3	4	0.8

	<i>Sectors</i>		<i>Departures On Time</i>		<i>Arrivals On Time</i>		<i>Cancellations</i>	
	<i>Sched.</i>	<i>Flown</i>	<i>No.</i>	<i>%</i>	<i>No.</i>	<i>%</i>	<i>No.</i>	<i>%</i>
<b>Melbourne-Sunshine Coast</b>								
Jetstar	67	66	38	57.6	41	62.1	1	1.5
Tigerair	31	31	30	96.8	29	93.5	0	0.0
Virgin Australia	31	31	22	71.0	22	71.0	0	0.0
All Airlines	129	128	90	70.3	92	71.9	1	0.8
<b>Melbourne-Sydney</b>								
Jetstar	304	285	198	69.5	217	76.1	19	6.3
Qantas	924	893	771	86.3	775	86.8	31	3.4
Tigerair	223	217	141	65.0	161	74.2	6	2.7
Virgin Australia	823	797	626	78.5	636	79.8	26	3.2
All Airlines	2 274	2 192	1 736	79.2	1 789	81.6	82	3.6
<b>Mildura-Melbourne</b>								
QantasLink	89	88	70	79.5	66	75.0	1	1.1
Regional Express	88	88	76	86.4	71	80.7	0	0.0
Virgin Australia	31	31	17	54.8	21	67.7	0	0.0
All Airlines	208	207	163	78.7	158	76.3	1	0.5
<b>Moranbah-Brisbane</b>								
QantasLink	185	163	134	82.2	115	70.6	22	11.9
Virgin Australia Regional Airlines	77	74	27	36.5	18	24.3	3	3.9
All Airlines	262	237	161	67.9	133	56.1	25	9.5
<b>Mount Isa-Brisbane</b>								
Qantas	58	58	46	79.3	39	67.2	0	0.0
Virgin Australia	23	23	15	65.2	10	43.5	0	0.0
All Airlines	81	81	61	75.3	49	60.5	0	0.0
<b>Newcastle-Brisbane</b>								
Jetstar	117	115	80	69.6	85	73.9	2	1.7
QantasLink	73	73	39	53.4	33	45.2	0	0.0
Virgin Australia	84	84	54	64.3	44	52.4	0	0.0
All Airlines	274	272	173	63.6	162	59.6	2	0.7
<b>Newcastle-Melbourne</b>								
Jetstar	107	107	86	80.4	85	79.4	0	0.0
Virgin Australia	31	30	23	76.7	22	73.3	1	3.2
All Airlines	138	137	109	79.6	107	78.1	1	0.7
<b>Newman-Perth</b>								
Qantas	141	141	125	88.7	118	83.7	0	0.0
QantasLink	34	32	30	93.8	28	87.5	2	5.9
Virgin Australia	41	41	33	80.5	33	80.5	0	0.0
Virgin Australia Regional Airlines	20	20	18	90.0	16	80.0	0	0.0
All Airlines	236	234	206	88.0	195	83.3	2	0.8
<b>Perth-Adelaide</b>								
Jetstar	36	35	22	62.9	29	82.9	1	2.8
Qantas	119	119	93	78.2	104	87.4	0	0.0
Virgin Australia	66	65	58	89.2	62	95.4	1	1.5
All Airlines	221	219	173	79.0	195	89.0	2	0.9
<b>Perth-Brisbane</b>								
Jetstar	26	26	9	34.6	19	73.1	0	0.0
Qantas	124	124	100	80.6	101	81.5	0	0.0
Virgin Australia	89	88	67	76.1	68	77.3	1	1.1
All Airlines	239	238	176	73.9	188	79.0	1	0.4

	<i>Sectors</i>		<i>Departures On Time</i>		<i>Arrivals On Time</i>		<i>Cancellations</i>	
	<i>Sched.</i>	<i>Flown</i>	<i>No.</i>	<i>%</i>	<i>No.</i>	<i>%</i>	<i>No.</i>	<i>%</i>
<b>Perth-Broome</b>								
Qantas	36	36	34	94.4	33	91.7	0	0.0
QantasLink	53	53	45	84.9	46	86.8	0	0.0
Virgin Australia	62	61	49	80.3	52	85.2	1	1.6
Virgin Australia Regional Airlines	22	22	17	77.3	18	81.8	0	0.0
All Airlines	173	172	145	84.3	149	86.6	1	0.6
<b>Perth-Darwin</b>								
Qantas	31	31	28	90.3	26	83.9	0	0.0
Virgin Australia	27	27	24	88.9	25	92.6	0	0.0
All Airlines	58	58	52	89.7	51	87.9	0	0.0
<b>Perth-Geraldton</b>								
QantasLink	63	63	53	84.1	50	79.4	0	0.0
Virgin Australia Regional Airlines	100	92	73	79.3	72	78.3	8	8.0
All Airlines	163	155	126	81.3	122	78.7	8	4.9
<b>Perth-Kalgoorlie</b>								
Qantas	62	62	51	82.3	53	85.5	0	0.0
QantasLink	28	28	27	96.4	25	89.3	0	0.0
Virgin Australia Regional Airlines	58	58	50	86.2	48	82.8	0	0.0
All Airlines	148	148	128	86.5	126	85.1	0	0.0
<b>Perth-Karratha</b>								
Qantas	193	186	171	91.9	172	92.5	7	3.6
QantasLink	68	64	59	92.2	59	92.2	4	5.9
Virgin Australia	77	76	67	88.2	67	88.2	1	1.3
All Airlines	338	326	297	91.1	298	91.4	12	3.6
<b>Perth-Melbourne</b>								
Jetstar	86	84	58	69.0	62	73.8	2	2.3
Qantas	231	230	184	80.0	202	87.8	1	0.4
Tigerair	62	60	37	61.7	37	61.7	2	3.2
Virgin Australia	143	143	108	75.5	119	83.2	0	0.0
All Airlines	522	517	387	74.9	420	81.2	5	1.0
<b>Perth-Newman</b>								
Qantas	141	141	129	91.5	128	90.8	0	0.0
QantasLink	34	32	29	90.6	30	93.8	2	5.9
Virgin Australia	41	41	35	85.4	37	90.2	0	0.0
Virgin Australia Regional Airlines	20	20	18	90.0	20	100.0	0	0.0
All Airlines	236	234	211	90.2	215	91.9	2	0.8
<b>Perth-Port Hedland</b>								
Qantas	132	130	115	88.5	118	90.8	2	1.5
QantasLink	44	44	42	95.5	43	97.7	0	0.0
Virgin Australia	57	57	54	94.7	54	94.7	0	0.0
All Airlines	233	231	211	91.3	215	93.1	2	0.9
<b>Perth-Sydney</b>								
Jetstar	38	38	14	36.8	22	57.9	0	0.0
Qantas	209	209	171	81.8	189	90.4	0	0.0
Virgin Australia	120	120	91	75.8	110	91.7	0	0.0
All Airlines	367	367	276	75.2	321	87.5	0	0.0
<b>Port Hedland-Perth</b>								
Qantas	132	128	114	89.1	107	83.6	4	3.0
QantasLink	44	44	38	86.4	38	86.4	0	0.0
Virgin Australia	57	57	53	93.0	50	87.7	0	0.0
All Airlines	233	229	205	89.5	195	85.2	4	1.7

	<i>Sectors</i>		<i>Departures On Time</i>		<i>Arrivals On Time</i>		<i>Cancellations</i>	
	<i>Sched.</i>	<i>Flown</i>	<i>No.</i>	<i>%</i>	<i>No.</i>	<i>%</i>	<i>No.</i>	<i>%</i>
<b>Port Lincoln-Adelaide</b>								
QantasLink	97	89	82	92.1	81	91.0	8	8.2
Regional Express	214	211	186	88.2	179	84.8	3	1.4
All Airlines	311	300	268	89.3	260	86.7	11	3.5
<b>Port Macquarie-Sydney</b>								
QantasLink	139	132	96	72.7	87	65.9	7	5.0
Virgin Australia Regional Airlines	62	62	43	69.4	42	67.7	0	0.0
All Airlines	201	194	139	71.6	129	66.5	7	3.5
<b>Proserpine-Brisbane</b>								
Jetstar	31	31	21	67.7	16	51.6	0	0.0
Virgin Australia	54	54	30	55.6	14	25.9	0	0.0
All Airlines	85	85	51	60.0	30	35.3	0	0.0
<b>Rockhampton-Brisbane</b>								
QantasLink	200	195	136	69.7	114	58.5	5	2.5
Virgin Australia	108	105	76	72.4	65	61.9	3	2.8
Virgin Australia Regional Airlines	116	116	78	67.2	72	62.1	0	0.0
All Airlines	424	416	290	69.7	251	60.3	8	1.9
<b>Sunshine Coast-Melbourne</b>								
Jetstar	68	67	36	53.7	39	58.2	1	1.5
Tigerair	31	31	28	90.3	20	64.5	0	0.0
Virgin Australia	31	31	19	61.3	23	74.2	0	0.0
All Airlines	130	129	83	64.3	82	63.6	1	0.8
<b>Sunshine Coast-Sydney</b>								
Jetstar	100	98	80	81.6	84	85.7	2	2.0
Virgin Australia	35	35	34	97.1	34	97.1	0	0.0
All Airlines	135	133	114	85.7	118	88.7	2	1.5
<b>Sydney-Adelaide</b>								
Jetstar	100	99	70	70.7	68	68.7	1	1.0
Qantas	265	265	231	87.2	217	81.9	0	0.0
Virgin Australia	174	172	129	75.0	129	75.0	2	1.1
All Airlines	539	536	430	80.2	414	77.2	3	0.6
<b>Sydney-Albury</b>								
QantasLink	116	114	67	58.8	54	47.4	2	1.7
Regional Express	113	112	85	75.9	88	78.6	1	0.9
Virgin Australia Regional Airlines	62	62	40	64.5	36	58.1	0	0.0
All Airlines	291	288	192	66.7	178	61.8	3	1.0
<b>Sydney-Ayers Rock</b>								
Jetstar	17	17	12	70.6	9	52.9	0	0.0
Virgin Australia	31	31	27	87.1	23	74.2	0	0.0
All Airlines	48	48	39	81.3	32	66.7	0	0.0
<b>Sydney-Ballina</b>								
Jetstar	67	67	55	82.1	55	82.1	0	0.0
Regional Express	34	34	28	82.4	23	67.6	0	0.0
Virgin Australia	31	31	28	90.3	26	83.9	0	0.0
All Airlines	132	132	111	84.1	104	78.8	0	0.0
<b>Sydney-Brisbane</b>								
Jetstar	104	99	79	79.8	65	65.7	5	4.8
Qantas	599	591	485	82.1	390	66.0	8	1.3
Tigerair	80	80	42	52.5	26	32.5	0	0.0
Virgin Australia	574	553	439	79.4	362	65.5	21	3.7
All Airlines	1 357	1 323	1 045	79.0	843	63.7	34	2.5



	<i>Sectors</i>		<i>Departures On Time</i>		<i>Arrivals On Time</i>		<i>Cancellations</i>	
	<i>Sched.</i>	<i>Flown</i>	<i>No.</i>	<i>%</i>	<i>No.</i>	<i>%</i>	<i>No.</i>	<i>%</i>
<b>Sydney-Cairns</b>								
Jetstar	111	110	90	81.8	88	80.0	1	0.9
Qantas	79	79	67	84.8	74	93.7	0	0.0
Tigerair	31	31	28	90.3	25	80.6	0	0.0
Virgin Australia	93	93	82	88.2	88	94.6	0	0.0
All Airlines	314	313	267	85.3	275	87.9	1	0.3
<b>Sydney-Canberra</b>								
Qantas	170	165	146	88.5	132	80.0	5	2.9
QantasLink	412	380	285	75.0	289	76.1	32	7.8
Virgin Australia	58	52	43	82.7	42	80.8	6	10.3
Virgin Australia Regional Airlines	256	250	199	79.6	200	80.0	6	2.3
All Airlines	896	847	673	79.5	663	78.3	49	5.5
<b>Sydney-Coffs Harbour</b>								
QantasLink	155	154	107	69.5	102	66.2	1	0.6
Tigerair	22	22	16	72.7	14	63.6	0	0.0
Virgin Australia	62	61	51	83.6	54	88.5	1	1.6
All Airlines	239	237	174	73.4	170	71.7	2	0.8
<b>Sydney-Darwin</b>								
Jetstar	30	30	29	96.7	26	86.7	0	0.0
Qantas	58	58	43	74.1	50	86.2	0	0.0
Virgin Australia	31	31	26	83.9	23	74.2	0	0.0
All Airlines	119	119	98	82.4	99	83.2	0	0.0
<b>Sydney-Dubbo</b>								
QantasLink	131	131	101	77.1	86	65.6	0	0.0
Regional Express	158	158	144	91.1	145	91.8	0	0.0
All Airlines	289	289	245	84.8	231	79.9	0	0.0
<b>Sydney-Gold Coast</b>								
Jetstar	324	310	249	80.3	248	80.0	14	4.3
Qantas	93	93	84	90.3	87	93.5	0	0.0
Tigerair	57	56	36	64.3	38	67.9	1	1.8
Virgin Australia	316	312	242	77.6	236	75.6	4	1.3
All Airlines	790	771	611	79.2	609	79.0	19	2.4
<b>Sydney-Hamilton Island</b>								
Jetstar	30	30	21	70.0	23	76.7	0	0.0
Virgin Australia	31	31	24	77.4	22	71.0	0	0.0
All Airlines	61	61	45	73.8	45	73.8	0	0.0
<b>Sydney-Hobart</b>								
Jetstar	66	66	57	86.4	55	83.3	0	0.0
Qantas	31	31	25	80.6	27	87.1	0	0.0
Virgin Australia	62	61	51	83.6	52	85.2	1	1.6
All Airlines	159	158	133	84.2	134	84.8	1	0.6
<b>Sydney-Launceston</b>								
Jetstar	48	48	37	77.1	31	64.6	0	0.0
Virgin Australia	31	30	27	90.0	27	90.0	1	3.2
All Airlines	79	78	64	82.1	58	74.4	1	1.3
<b>Sydney-Melbourne</b>								
Jetstar	307	289	233	80.6	229	79.2	18	5.9
Qantas	924	890	800	89.9	733	82.4	34	3.7
Tigerair	224	218	160	73.4	145	66.5	6	2.7
Virgin Australia	823	800	672	84.0	603	75.4	23	2.8
All Airlines	2 278	2 197	1 865	84.9	1 710	77.8	81	3.6

	<i>Sectors</i>		<i>Departures On Time</i>		<i>Arrivals On Time</i>		<i>Cancellations</i>	
	<i>Sched.</i>	<i>Flown</i>	<i>No.</i>	<i>%</i>	<i>No.</i>	<i>%</i>	<i>No.</i>	<i>%</i>
<b>Sydney-Perth</b>								
Jetstar	39	39	31	79.5	26	66.7	0	0.0
Qantas	213	213	184	86.4	164	77.0	0	0.0
Virgin Australia	120	120	105	87.5	76	63.3	0	0.0
All Airlines	372	372	320	86.0	266	71.5	0	0.0
<b>Sydney-Port Macquarie</b>								
QantasLink	139	132	90	68.2	92	69.7	7	5.0
Virgin Australia Regional Airlines	62	62	44	71.0	44	71.0	0	0.0
All Airlines	201	194	134	69.1	136	70.1	7	3.5
<b>Sydney-Sunshine Coast</b>								
Jetstar	100	99	89	89.9	87	87.9	1	1.0
Virgin Australia	35	35	34	97.1	33	94.3	0	0.0
All Airlines	135	134	123	91.8	120	89.6	1	0.7
<b>Sydney-Townsville</b>								
Jetstar	25	25	19	76.0	21	84.0	0	0.0
Virgin Australia	31	31	25	80.6	20	64.5	0	0.0
All Airlines	56	56	44	78.6	41	73.2	0	0.0
<b>Sydney-Wagga Wagga</b>								
QantasLink	116	113	77	68.1	68	60.2	3	2.6
Regional Express	139	137	119	86.9	117	85.4	2	1.4
All Airlines	255	250	196	78.4	185	74.0	5	2.0
<b>Townsville-Brisbane</b>								
Jetstar	31	30	15	50.0	14	46.7	1	3.2
Qantas	152	151	135	89.4	120	79.5	1	0.7
Virgin Australia	170	170	125	73.5	100	58.8	0	0.0
All Airlines	353	351	275	78.3	234	66.7	2	0.6
<b>Townsville-Cairns</b>								
QantasLink	188	185	137	74.1	135	73.0	3	1.6
Virgin Australia Regional Airlines	27	27	24	88.9	23	85.2	0	0.0
All Airlines	215	212	161	75.9	158	74.5	3	1.4
<b>Townsville-Sydney</b>								
Jetstar	25	25	17	68.0	17	68.0	0	0.0
Virgin Australia	31	30	11	36.7	13	43.3	1	3.2
All Airlines	56	55	28	50.9	30	54.5	1	1.8
<b>Wagga Wagga-Sydney</b>								
QantasLink	116	113	76	67.3	72	63.7	3	2.6
Regional Express	139	138	120	87.0	118	85.5	1	0.7
All Airlines	255	251	196	78.1	190	75.7	4	1.6

# Airports

On time performance is reported for all routes where the passenger load averages over 8000 passengers per month, and where two or more airlines operate in competition. The following data reports by airport against flights operated on those routes only.

Airport	Departures			Arrivals		
	Sectors	On Time		Sectors	On Time	
	Flown	No.	%	Flown	No.	%
<b>Adelaide</b>						
Jetstar	288	200	69.4	292	228	78.1
Qantas	835	689	82.5	838	710	84.7
QantasLink	127	111	87.4	127	110	86.6
Regional Express	212	195	92.0	211	179	84.8
Tigerair	73	52	71.2	73	50	68.5
Virgin Australia	693	547	78.9	692	560	80.9
All Airlines	2 228	1 794	80.5	2 233	1 837	82.3
Relates to services to and from Brisbane, Canberra, Gold Coast, Melbourne, Perth, Port Lincoln and Sydney.						
<b>Albury</b>						
QantasLink	114	64	56.1	114	54	47.4
Regional Express	113	96	85.0	112	88	78.6
Virgin Australia Regional Airlines	62	38	61.3	62	36	58.1
All Airlines	289	198	68.5	288	178	61.8
Relates to services to and from Sydney only.						
<b>Alice Springs</b>						
Qantas	31	14	45.2	31	24	77.4
Tigerair	18	6	33.3	18	8	44.4
All Airlines	49	20	40.8	49	32	65.3
Relates to services to and from Melbourne only.						
<b>Ayers Rock</b>						
Jetstar	17	9	52.9	17	9	52.9
Virgin Australia	31	22	71.0	31	23	74.2
All Airlines	48	31	64.6	48	32	66.7
Relates to services to and from Sydney only.						
<b>Ballina</b>						
Jetstar	67	50	74.6	67	55	82.1
Regional Express	28	19	67.9	34	23	67.6
Virgin Australia	31	25	80.6	31	26	83.9
All Airlines	126	94	74.6	132	104	78.8
Relates to services to and from Sydney only.						
<b>Brisbane</b>						
Jetstar	687	456	66.4	686	370	53.9
Qantas	1 782	1 386	77.8	1 754	1 214	69.2
QantasLink	1 115	921	82.6	1 118	722	64.6
Tigerair	172	84	48.8	173	72	41.6
Virgin Australia	2 136	1 613	75.5	2 129	1 318	61.9
Virgin Australia Regional Airlines	430	283	65.8	430	250	58.1
All Airlines	6 322	4 743	75.0	6 290	3 946	62.7
Relates to services to and from Adelaide, Bundaberg, Cairns, Canberra, Darwin, Emerald, Gladstone, Hamilton Island, Mackay, Melbourne, Moranbah, Mount Isa, Newcastle, Perth, Proserpine, Rockhampton, Sydney and Townsville.						

Airport	Departures			Arrivals		
	Sectors Flown	On Time		Sectors Flown	On Time	
		No.	%		No.	%
<b>Broome</b>						
Qantas	36	15	41.7	36	33	91.7
QantasLink	53	47	88.7	53	46	86.8
Virgin Australia	61	40	65.6	61	52	85.2
Virgin Australia Regional Airlines	22	12	54.5	22	18	81.8
All Airlines	172	114	66.3	172	149	86.6
Relates to services to and from Perth only.						
<b>Bundaberg</b>						
QantasLink	124	84	67.7	124	93	75.0
Virgin Australia Regional Airlines	31	20	64.5	31	21	67.7
All Airlines	155	104	67.1	155	114	73.5
Relates to services to and from Brisbane only.						
<b>Cairns</b>						
Jetstar	356	260	73.0	357	264	73.9
Qantas	229	178	77.7	230	191	83.0
QantasLink	188	158	84.0	189	139	73.5
Tigerair	92	60	65.2	93	70	75.3
Virgin Australia	300	231	77.0	301	253	84.1
Virgin Australia Regional Airlines	27	23	85.2	27	23	85.2
All Airlines	1 192	910	76.3	1 197	940	78.5
Relates to services to and from Brisbane, Melbourne, Sydney and Townsville.						
<b>Canberra</b>						
Qantas	617	531	86.1	617	523	84.8
QantasLink	453	345	76.2	456	349	76.5
Virgin Australia	346	268	77.5	349	265	75.9
Virgin Australia Regional Airlines	250	210	84.0	250	200	80.0
All Airlines	1 666	1 354	81.3	1 672	1 337	80.0
Relates to services to and from Adelaide, Brisbane, Melbourne and Sydney.						
<b>Coffs Harbour</b>						
QantasLink	154	108	70.1	154	102	66.2
Tigerair	22	19	86.4	22	14	63.6
Virgin Australia	61	54	88.5	61	54	88.5
All Airlines	237	181	76.4	237	170	71.7
Relates to services to and from Sydney only.						
<b>Darwin</b>						
Jetstar	52	26	50.0	52	40	76.9
Qantas	138	90	65.2	138	109	79.0
Virgin Australia	120	86	71.7	120	87	72.5
All Airlines	310	202	65.2	310	236	76.1
Relates to services to and from Brisbane, Melbourne, Perth and Sydney.						
<b>Dubbo</b>						
QantasLink	131	90	68.7	131	86	65.6
Regional Express	163	149	91.4	158	145	91.8
All Airlines	294	239	81.3	289	231	79.9
Relates to services to and from Sydney only.						

Airport	Departures			Arrivals		
	Sectors Flown	On Time		Sectors Flown	On Time	
		No.	%		No.	%
<b>Emerald</b>						
QantasLink	178	134	75.3	178	143	80.3
Virgin Australia Regional Airlines	106	79	74.5	106	81	76.4
All Airlines	284	213	75.0	284	224	78.9
Relates to services to and from Brisbane only.						
<b>Geraldton</b>						
QantasLink	63	56	88.9	63	50	79.4
Virgin Australia Regional Airlines	96	78	81.3	92	72	78.3
All Airlines	159	134	84.3	155	122	78.7
Relates to services to and from Perth only.						
<b>Gladstone</b>						
QantasLink	250	181	72.4	228	187	82.0
Virgin Australia	45	24	53.3	45	32	71.1
Virgin Australia Regional Airlines	103	67	65.0	102	60	58.8
All Airlines	398	272	68.3	375	279	74.4
Relates to services to and from Brisbane only.						
<b>Gold Coast</b>						
Jetstar	543	440	81.0	546	432	79.1
Qantas	93	82	88.2	93	87	93.5
Tigerair	130	74	56.9	130	83	63.8
Virgin Australia	515	412	80.0	516	393	76.2
All Airlines	1 281	1 008	78.7	1 285	995	77.4
Relates to services to and from Adelaide, Melbourne and Sydney.						
<b>Hamilton Island</b>						
Jetstar	48	29	60.4	47	37	78.7
Virgin Australia	62	45	72.6	62	48	77.4
All Airlines	110	74	67.3	109	85	78.0
Relates to services to and from Brisbane and Sydney.						
<b>Hobart</b>						
Jetstar	232	180	77.6	230	199	86.5
Qantas	93	83	89.2	93	85	91.4
QantasLink	31	30	96.8	31	23	74.2
Tigerair	31	16	51.6	31	16	51.6
Virgin Australia	204	166	81.4	204	159	77.9
All Airlines	591	475	80.4	589	482	81.8
Relates to services to and from Melbourne and Sydney.						
<b>Kalgoorlie</b>						
Qantas	62	53	85.5	62	53	85.5
QantasLink	28	24	85.7	28	25	89.3
Virgin Australia Regional Airlines	59	46	78.0	58	48	82.8
All Airlines	149	123	82.6	148	126	85.1
Relates to services to and from Perth only.						

Airport	Departures			Arrivals		
	Sectors Flown	On Time		Sectors Flown	On Time	
		No.	%		No.	%
<b>Karratha</b>						
Qantas	185	165	89.2	186	172	92.5
QantasLink	64	56	87.5	64	59	92.2
Virgin Australia	76	60	78.9	76	67	88.2
All Airlines	325	281	86.5	326	298	91.4
Relates to services to and from Perth only.						
<b>Launceston</b>						
Jetstar	167	99	59.3	165	115	69.7
QantasLink	103	81	78.6	104	79	76.0
Virgin Australia	154	119	77.3	155	133	85.8
All Airlines	424	299	70.5	424	327	77.1
Relates to services to and from Melbourne and Sydney.						
<b>Mackay</b>						
Jetstar	105	51	48.6	106	83	78.3
QantasLink	109	78	71.6	110	89	80.9
Virgin Australia	170	134	78.8	170	143	84.1
All Airlines	384	263	68.5	386	315	81.6
Relates to services to and from Brisbane only.						
<b>Melbourne</b>						
Jetstar	1 329	978	73.6	1 336	1 016	76.0
Qantas	2 251	1 889	83.9	2 245	1 863	83.0
QantasLink	273	223	81.7	275	215	78.2
Regional Express	88	83	94.3	88	71	80.7
Tigerair	659	459	69.7	659	367	55.7
Virgin Australia	2 394	1 787	74.6	2 393	1 767	73.8
All Airlines	6 994	5 419	77.5	6 996	5 299	75.7
Relates to services to and from Adelaide, Alice Springs, Brisbane, Cairns, Canberra, Darwin, Gold Coast, Hobart, Launceston, Mildura, Newcastle, Perth, Sunshine Coast and Sydney.						
<b>Mildura</b>						
QantasLink	88	70	79.5	88	59	67.0
Regional Express	88	76	86.4	88	68	77.3
Virgin Australia	31	17	54.8	31	20	64.5
All Airlines	207	163	78.7	207	147	71.0
Relates to services to and from Melbourne only.						
<b>Moranbah</b>						
QantasLink	163	134	82.2	163	147	90.2
Virgin Australia Regional Airlines	74	27	36.5	75	32	42.7
All Airlines	237	161	67.9	238	179	75.2
Relates to services to and from Brisbane only.						
<b>Mount Isa</b>						
Qantas	58	46	79.3	58	54	93.1
Virgin Australia	23	15	65.2	23	15	65.2
All Airlines	81	61	75.3	81	69	85.2
Relates to services to and from Brisbane only.						

Airport	Departures			Arrivals		
	Sectors Flown	On Time		Sectors Flown	On Time	
		No.	%		No.	%
<b>Newcastle</b>						
Jetstar	222	166	74.8	221	169	76.5
QantasLink	73	39	53.4	73	44	60.3
Virgin Australia	114	77	67.5	115	98	85.2
All Airlines	409	282	68.9	409	311	76.0
Relates to services to and from Brisbane and Melbourne.						
<b>Newman</b>						
Qantas	141	125	88.7	141	128	90.8
QantasLink	32	30	93.8	32	30	93.8
Virgin Australia	41	33	80.5	41	37	90.2
Virgin Australia Regional Airlines	20	18	90.0	20	20	100.0
All Airlines	234	206	88.0	234	215	91.9
Relates to services to and from Perth only.						
<b>Perth</b>						
Jetstar	183	103	56.3	183	132	72.1
Qantas	1 268	1 076	84.9	1 265	1 034	81.7
QantasLink	284	255	89.8	284	243	85.6
Tigerair	60	37	61.7	60	41	68.3
Virgin Australia	678	553	81.6	681	500	73.4
Virgin Australia Regional Airlines	192	158	82.3	197	136	69.0
All Airlines	2 665	2 182	81.9	2 670	2 086	78.1
Relates to services to and from Adelaide, Brisbane, Broome, Darwin, Geraldton, Kalgoorlie, Karratha, Melbourne, Newman, Port Hedland and Sydney.						
<b>Port Hedland</b>						
Qantas	128	114	89.1	130	118	90.8
QantasLink	44	38	86.4	44	43	97.7
Virgin Australia	57	53	93.0	57	54	94.7
All Airlines	229	205	89.5	231	215	93.1
Relates to services to and from Perth only.						
<b>Port Lincoln</b>						
QantasLink	89	82	92.1	90	81	90.0
Regional Express	211	186	88.2	212	184	86.8
All Airlines	300	268	89.3	302	265	87.7
Relates to services to and from Adelaide only.						
<b>Port Macquarie</b>						
QantasLink	132	96	72.7	132	92	69.7
Virgin Australia Regional Airlines	62	43	69.4	62	44	71.0
All Airlines	194	139	71.6	194	136	70.1
Relates to services to and from Sydney only.						
<b>Proserpine</b>						
Jetstar	31	21	67.7	31	12	38.7
Virgin Australia	54	30	55.6	54	41	75.9
All Airlines	85	51	60.0	85	53	62.4
Relates to services to and from Brisbane only.						

Airport	Departures			Arrivals		
	Sectors	On Time		Sectors	On Time	
	Flown	No.	%	Flown	No.	%
<b>Rockhampton</b>						
QantasLink	195	136	69.7	213	165	77.5
Virgin Australia	105	76	72.4	105	83	79.0
Virgin Australia Regional Airlines	116	78	67.2	116	78	67.2
All Airlines	416	290	69.7	434	326	75.1
Relates to services to and from Brisbane only.						
<b>Sunshine Coast</b>						
Jetstar	165	116	70.3	165	128	77.6
Tigerair	31	28	90.3	31	29	93.5
Virgin Australia	66	53	80.3	66	55	83.3
All Airlines	262	197	75.2	262	212	80.9
Relates to services to and from Melbourne and Sydney.						
<b>Sydney</b>						
Jetstar	1 328	1 071	80.6	1 319	995	75.4
Qantas	2 385	2 065	86.6	2 414	2 070	85.7
QantasLink	1 024	727	71.0	1 017	713	70.1
Regional Express	441	376	85.3	442	375	84.8
Tigerair	407	282	69.3	405	261	64.4
Virgin Australia	2 444	2 005	82.0	2 442	1 958	80.2
Virgin Australia Regional Airlines	374	283	75.7	374	284	75.9
All Airlines	8 403	6 809	81.0	8 413	6 656	79.1
Relates to services to and from Adelaide, Albury, Ayers Rock, Ballina, Brisbane, Cairns, Canberra, Coffs Harbour, Darwin, Dubbo, Gold Coast, Hamilton Island, Hobart, Launceston, Melbourne, Perth, Port Macquarie, Sunshine Coast, Townsville and Wagga Wagga.						
<b>Townsville</b>						
Jetstar	55	32	58.2	55	43	78.2
Qantas	151	135	89.4	152	124	81.6
QantasLink	185	137	74.1	184	156	84.8
Virgin Australia	200	136	68.0	201	160	79.6
Virgin Australia Regional Airlines	27	24	88.9	27	24	88.9
All Airlines	618	464	75.1	619	507	81.9
Relates to services to and from Brisbane, Cairns and Sydney.						
<b>Wagga Wagga</b>						
QantasLink	113	76	67.3	113	68	60.2
Regional Express	138	120	87.0	137	117	85.4
All Airlines	251	196	78.1	250	185	74.0
Relates to services to and from Sydney only.						



## Definitions

---

On time departure                      A flight departure is counted as "on time" if it departs the gate before 15 minutes after the scheduled departure time shown in the carriers' schedule.

---

On time arrival                         A flight arrival is counted as "on time" if it arrived at the gate before 15 minutes after the scheduled arrival time shown in the carriers' schedule.  
Neither diverted nor cancelled flights count as on time.

---

Cancellation                            A flight removed from service within 7 days of scheduled departure is regarded as a cancellation.

---

On time departure percentage                      The percentage of on time departures is measured against the number of departures *operated* on any particular sector.

---

On time arrival percentage                         The percentage of on time arrivals is measured against the number of arrivals *operated* on any particular sector.

---

Cancellation percentage                            The percentage of cancellations is measured against the number of services *scheduled* on any particular sector.

---