



Australian Government

Department of Infrastructure and Transport

Bureau of Infrastructure, Transport and Regional Economics

STATISTICAL REPORT



Aviation

Domestic airline on time performance
July 2012

© Commonwealth of Australia 2012

ISSN: 1832-0759

Ownership of intellectual property rights in this publication

Unless otherwise noted, copyright (and any other intellectual property rights, if any) in this publication is owned by the Commonwealth of Australia (referred to below as the Commonwealth).

Disclaimer

The material contained in this publication is made available on the understanding that the Commonwealth is not providing professional advice, and that users exercise their own skill and care with respect to its use, and seek independent advice if necessary.

The Commonwealth makes no representations or warranties as to the contents or accuracy of the information contained in this publication. To the extent permitted by law, the Commonwealth disclaims liability to any person or organisation in respect of anything done, or omitted to be done, in reliance upon information contained in this publication.

Creative Commons licence

With the exception of (a) the Coat of Arms; and (b) the Department of Infrastructure's photos and graphics, copyright in this publication is licensed under a Creative Commons Attribution 3.0 Australia Licence.

Creative Commons Attribution 3.0 Australia Licence is a standard form licence agreement that allows you to copy, communicate and adapt this publication provided that you attribute the work to the Commonwealth and abide by the other licence terms. A summary of the licence terms is available from <http://creativecommons.org/licenses/by/3.0/au/deed.en>. The full licence terms are available from <http://creativecommons.org/licenses/by/3.0/au/legalcode>.

Use of the Coat of Arms

The Department of the Prime Minister and Cabinet sets the terms under which the Coat of Arms is used. Please refer to the Department's Commonwealth Coat of Arms and Government branding web page <http://www.dpmmc.gov.au/guidelines/index.cfm#brand> and, in particular, the Guidelines on the use of the Commonwealth Coat of Arms publication.

An appropriate citation for this report is:

Bureau of Infrastructure, Transport and Regional Economics (BITRE), 2012, Domestic airline on time performance, Statistical Report, BITRE, Canberra ACT.

Contact us

This publication is available in PDF format. All other rights are reserved, including in relation to any Departmental logos or trade marks which may exist. For enquiries regarding the licence and any use of this publication, please contact:

Bureau of Infrastructure, Transport and Regional Economics (BITRE)
Department of Infrastructure and Transport
GPO Box 501, Canberra ACT 2601, Australia
Telephone: (international) +61 2 6274 7210
Fax: (international) +61 2 6274 6855
Email: bitre@infrastructure.gov.au
Website: www.bitre.gov.au

Inquiries

Should you require additional information about the statistics contained in this publication:

Telephone (02) 6274 7790 or Facsimile (02) 6274 7727

Electronic mail: AVSTATS@infrastructure.gov.au

Web site: <http://www.bitre.gov.au/statistics/aviation/otphome.aspx>

Foreword

The Bureau of Infrastructure, Transport and Regional Economics (BITRE) monitors the punctuality and reliability of major domestic airlines operating between Australian airports. The purpose of this is to allow for evaluation of overall industry and individual airline performance, so that consumers of air travel can make informed decisions.

The following domestic airlines report this information monthly to the BITRE: Jetstar, Qantas, QantasLink, Regional Express, Skywest Airlines, Tiger Airways, Virgin Australia and Virgin Australia – ATR/F100 Operations. Data has been gathered since November 2003, although some airlines commenced reporting at a later date, including Jetstar which first reported in May 2004, MacAir in July 2005 and Tiger Airways in April 2008. MacAir ceased operations in February 2009 and data was not received for December 2008 onwards. Virgin Blue was rebranded as Virgin Australia in May 2011 and time series data in Microsoft Excel spreadsheet format on the BITRE website has been revised to reflect this. Services operated by Skywest on behalf of Virgin Australia using ATR/F100 aircraft commenced in November 2011 and are shown separately as Virgin Australia – ATR/F100 Operations.

Information presented in this report is for Australian domestic routes for which the passenger load averaged 8 000 or more passengers per month over the previous six months and where two or more airlines operated in competition on those routes. There were 57 routes that met this definition in July 2012. Over time, routes which meet these criteria change as airline networks and traffic levels vary.

Participating airlines report their overall monthly network performance where this is possible.

Total industry figures encompass all services operated by reporting airlines only. These airlines collectively carried over 95 per cent of total domestic passengers (regular public transport only) in 2011.

The method of capturing on time performance varies between airlines utilising different recording systems. Jetstar and Qantas jet aircraft use Aircraft Communication Addressing and Reporting System (ACARS) to electronically measure on time performance. Regional Express, Skywest, Tiger Airways, Virgin Australia, Virgin Australia – ATR/F100 Operations and the Qantas non-jet fleet record on time performance manually using records from pilots, gate agents and/or ground crews.

After initial data is collected, aggregate reports are audited internally by participating airlines prior to publication.

Reports and detailed time series data in Microsoft Excel spreadsheet format are available from the BITRE website at: <http://www.bitre.gov.au/statistics/aviation/otphome.aspx>.

Contents

	Page
Industry performance	1
Individual routes	9
Airports	20
Definitions	26

Industry performance

For July 2012, on time performance over all routes operated by participating airlines (Jetstar, Qantas, QantasLink, Regional Express, Skywest Airlines, Tiger Airways, Virgin Australia and Virgin Australia – ATR/F100 Operations) averaged 79.1 per cent for on time departures, and 77.2 per cent for on time arrivals. Cancellations represented 2.2 per cent of all scheduled flights. The equivalent figures for July 2011 were 78.0 per cent for departures, 76.1 per cent for arrivals and 1.2 per cent for cancellations.

The long term average performance for all routes since reporting commenced in November 2003 is 83.9 per cent for on time departures and 82.6 per cent for on time arrivals. Cancellations average 1.3 per cent of all scheduled flights.

Tiger Airways operations are now returning to pre-grounding levels with 1 293 sectors flown in July 2012 compared to an average of 1 725 sectors flown per month for January to May 2011.

Of the major domestic airlines, Qantas achieved the highest level of on time departures for July 2012 at 82.1 per cent, followed by Virgin Australia at 81.8 per cent, Tiger Airways at 79.6 per cent and Jetstar at 76.8 per cent. The regional airlines were led by Regional Express at 81.0 per cent, followed by Virgin Australia – ATR/F100 Operations at 80.9 per cent, Skywest at 78.6 per cent and QantasLink at 72.1 per cent.

Qantas also achieved the highest on time arrivals among the major domestic airlines at 80.4 per cent, followed by Virgin Australia at 79.5 per cent, Jetstar at 76.8 per cent and Tiger Airways at 75.2 per cent. Regional Express was the best performing regional airline for on time arrivals at 79.9 per cent, followed by Virgin Australia – ATR/F100 Operations at 77.4 per cent, Skywest at 76.9 per cent and QantasLink at 69.2 per cent.

QantasLink had the highest percentage of cancellations for July 2012 at 4.1 per cent, while Skywest had no cancellations.

Of the 57 routes which met the criteria for on time performance reporting in July 2012, the Canberra-Adelaide route had the highest percentage of on time departures (96.3 per cent) and the Hamilton Island-Sydney route had the lowest percentage of on time departures (52.7 per cent). The Canberra-Adelaide route also had the highest percentage of on time arrivals (95.0 per cent) and the Townsville-Cairns route had the lowest percentage of on time arrivals (53.7 per cent).

Cancellations were highest on the Hamilton Island-Sydney route at 11.3 per cent, followed by Hamilton Island-Brisbane at 9.8 per cent, Canberra-Sydney at 8.2 per cent, Sydney-Canberra at 6.2 per cent and Gladstone-Brisbane at 5.8 per cent.

Ayers Rock Airport recorded the highest percentage of on time departures (90.2 per cent) and Hamilton Island Airport recorded the lowest percentage of on time departures (63.4 per cent). Port Hedland Airport recorded the highest percentage of on time arrivals (89.2 per cent) and Albury Airport recorded the lowest percentage of on time arrivals (68.2 per cent). These figures only refer to reported routes and do not cover all flights at these airports.

Table 1 On time performance for July 2012 — Total Industry

	<i>Sectors</i>		<i>Departures On Time</i>		<i>Arrivals On Time</i>		<i>Cancellations</i>	
	<i>Scheduled</i>	<i>Flown</i>	<i>No.</i>	<i>%</i>	<i>No.</i>	<i>%</i>	<i>No.</i>	<i>%</i>
Jetstar	6 616	6 525	5 009	76.8	5 010	76.8	91	1.4
Qantas	11 258	11 056	9 078	82.1	8 891	80.4	202	1.8
QantasLink	9 349	8 964	6 460	72.1	6 205	69.2	385	4.1
Regional Express	5 646	5 550	4 498	81.0	4 437	79.9	96	1.7
Skywest	931	931	732	78.6	716	76.9	0	0.0
Tiger Airways	1 321	1 293	1 029	79.6	972	75.2	28	2.1
Virgin Australia	11 611	11 382	9 312	81.8	9 049	79.5	229	2.0
Virgin Australia - ATR/F100 Operations	1 428	1 406	1 138	80.9	1 088	77.4	22	1.5
All Airlines	48 160	47 107	37 256	79.1	36 368	77.2	1 053	2.2

Total airline network data (including routes not shown in this report).

Table 2 Top ten routes for on time performance for July 2012 (participating airlines only)

<i>Departures</i>		<i>Arrivals</i>	
<i>Route</i>	<i>On Time (%)</i>	<i>Route</i>	<i>On Time</i>
Canberra-Adelaide	96.3	Canberra-Adelaide	95.0
Gold Coast-Adelaide	90.2	Ayers Rock-Sydney	93.4
Ayers Rock-Sydney	90.2	Brisbane-Adelaide	90.6
Adelaide-Gold Coast	88.5	Gold Coast-Adelaide	90.2
Adelaide-Canberra	88.2	Adelaide-Perth	89.5
Adelaide-Sydney	87.6	Perth-Port Hedland	89.2
Perth-Port Hedland	87.4	Adelaide-Gold Coast	88.5
Canberra-Brisbane	87.1	Perth-Karratha	88.2
Adelaide-Port Lincoln	86.8	Adelaide-Canberra	88.2
Newcastle-Melbourne	86.8	Sydney-Adelaide	87.9

Table 3 Top ten airports for on time performance for July 2012 (participating airlines and reported routes only)

<i>Departures</i>		<i>Arrivals</i>	
<i>Airport</i>	<i>On Time (%)</i>	<i>Airport</i>	<i>On Time</i>
Ayers Rock	90.2	Port Hedland	89.2
Port Hedland	86.5	Karratha	88.2
Adelaide	86.2	Newman	86.0
Karratha	86.1	Adelaide	86.0
Newman	86.0	Port Lincoln	84.2
Mildura	83.3	Melbourne	80.4
Port Lincoln	83.3	Broome	80.4
Melbourne	83.3	Perth	80.3
Canberra	80.7	Newcastle	78.8
Perth	80.3	Gold Coast	78.5

Total industry on time performance

Figure 1 On time performance (by month from July 2009)—Total Industry

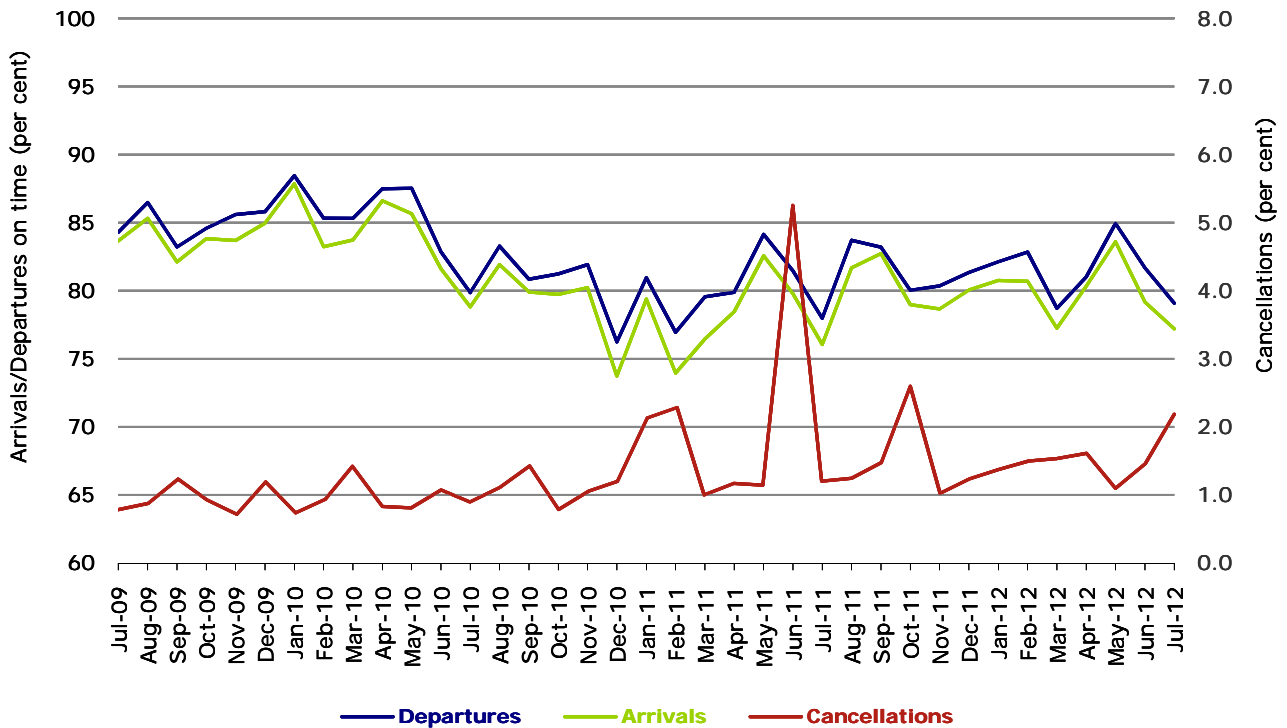
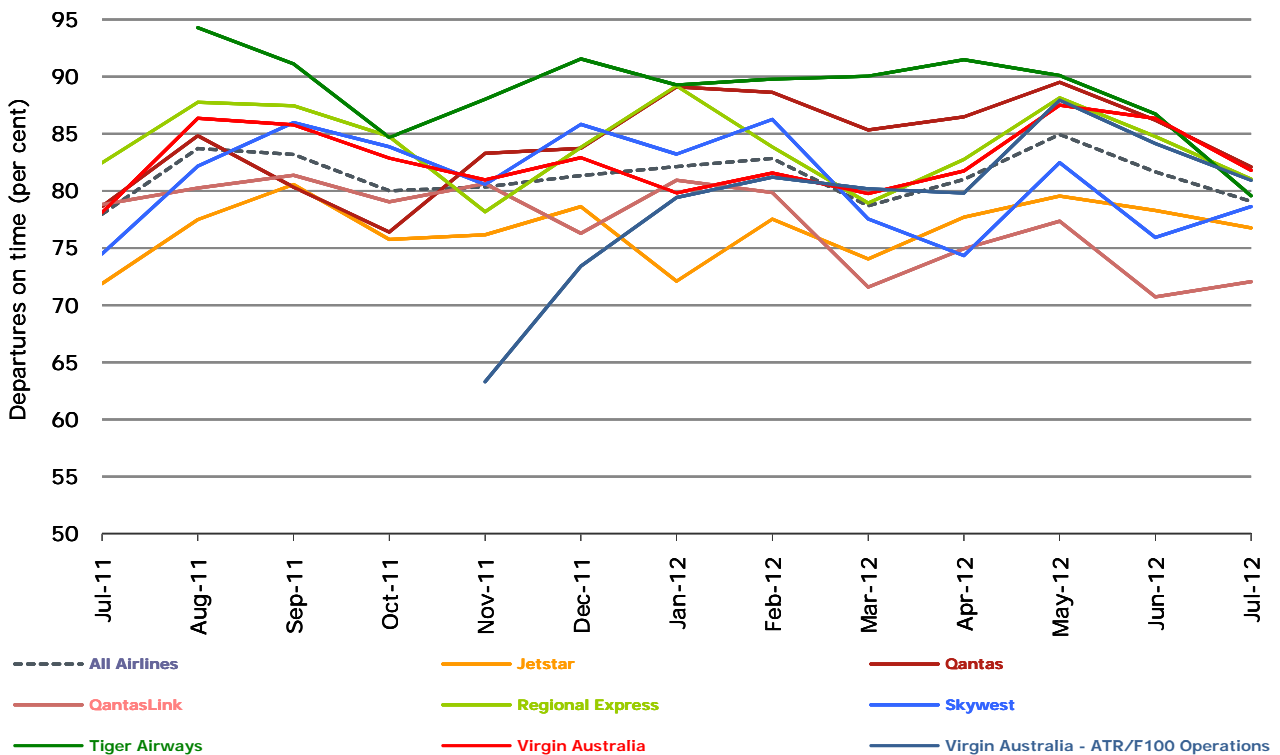


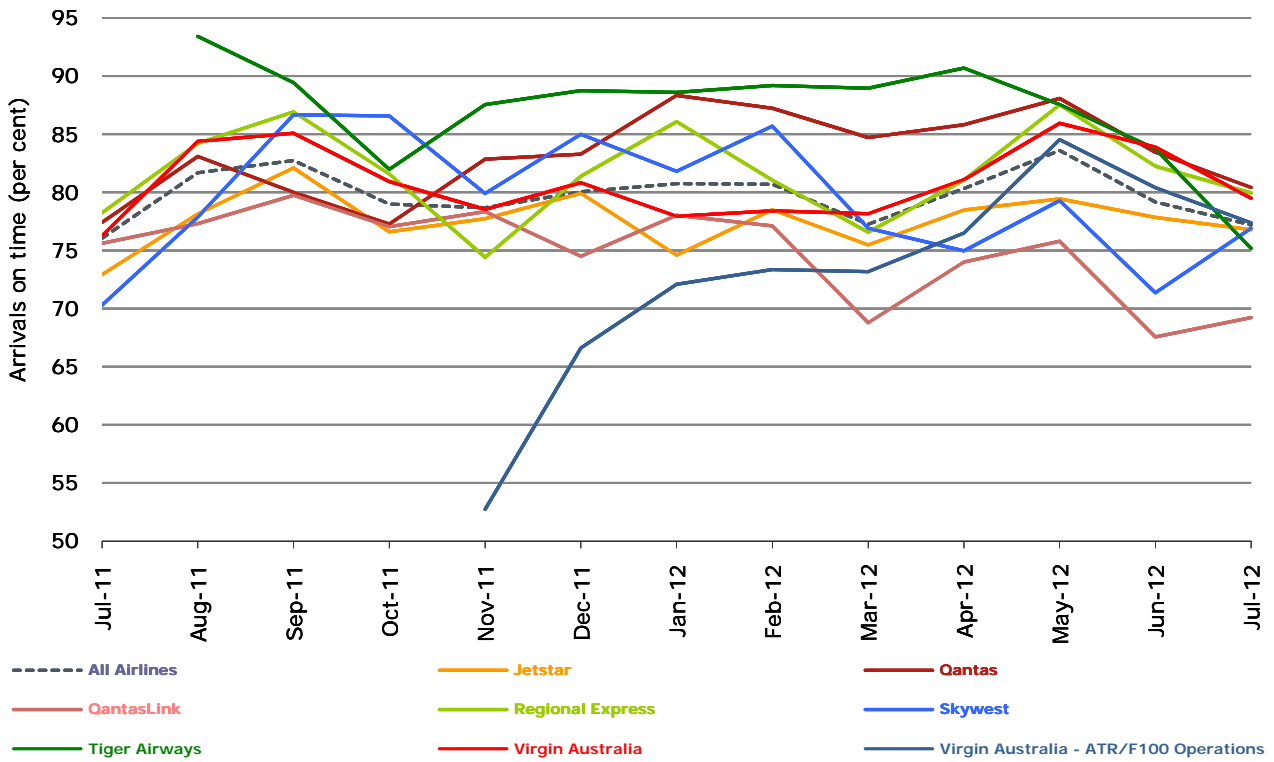
Figure 2 Departures on time (by month from July 2011)



No data for Tiger Airways for July 2011 as it was grounded by CASA from 2/7/2011 to 11/8/2011.

Virgin Australia - ATR/F100 Operations commenced in November 2011.

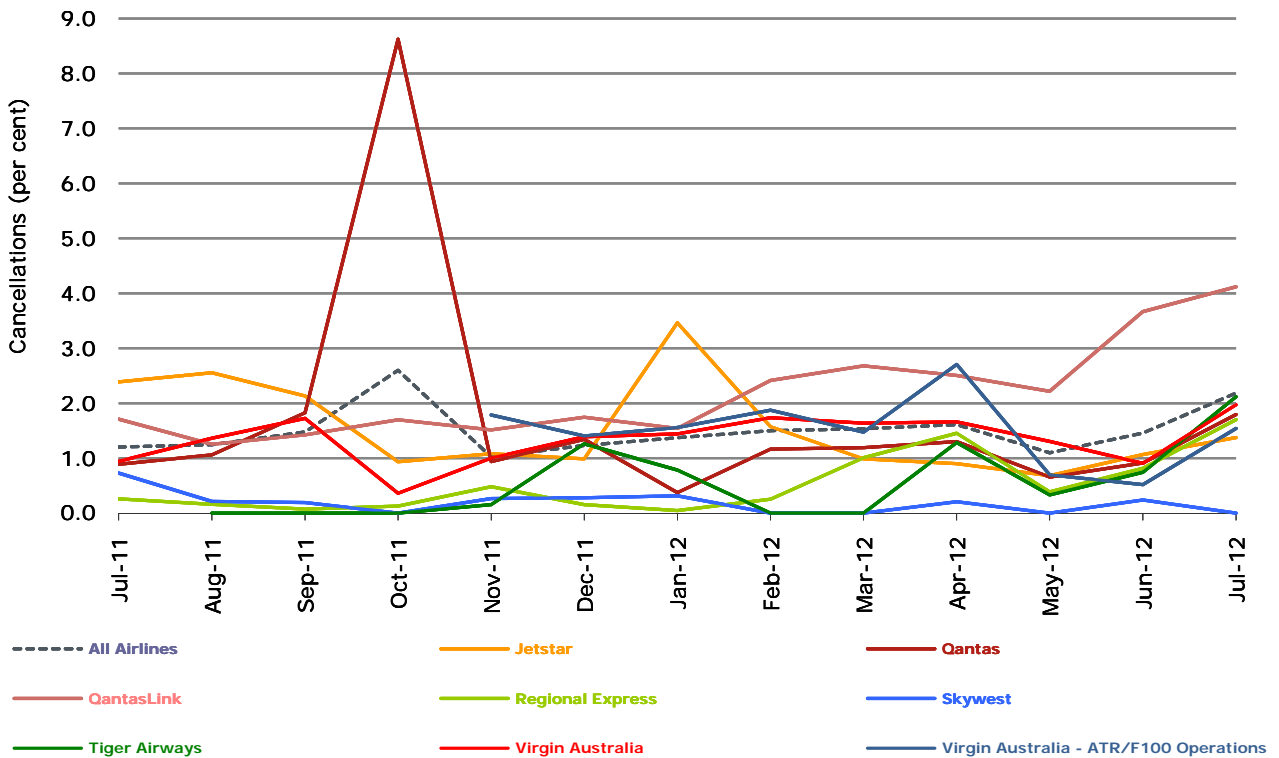
Figure 3 Arrivals on time (by month from July 2011)



No data for Tiger Airways for July 2011 as it was grounded by CASA from 2/7/2011 to 11/8/2011.

Virgin Australia - ATR/F100 Operations commenced in November 2011.

Figure 4 Cancellations (by month from July 2011)



No data for Tiger Airways for July 2011 as it was grounded by CASA from 2/7/2011 to 11/8/2011.

Virgin Australia - ATR/F100 Operations commenced in November 2011.

Major domestic airlines on time performance

Figure 5 On time performance (by month from July 2009)—Jetstar

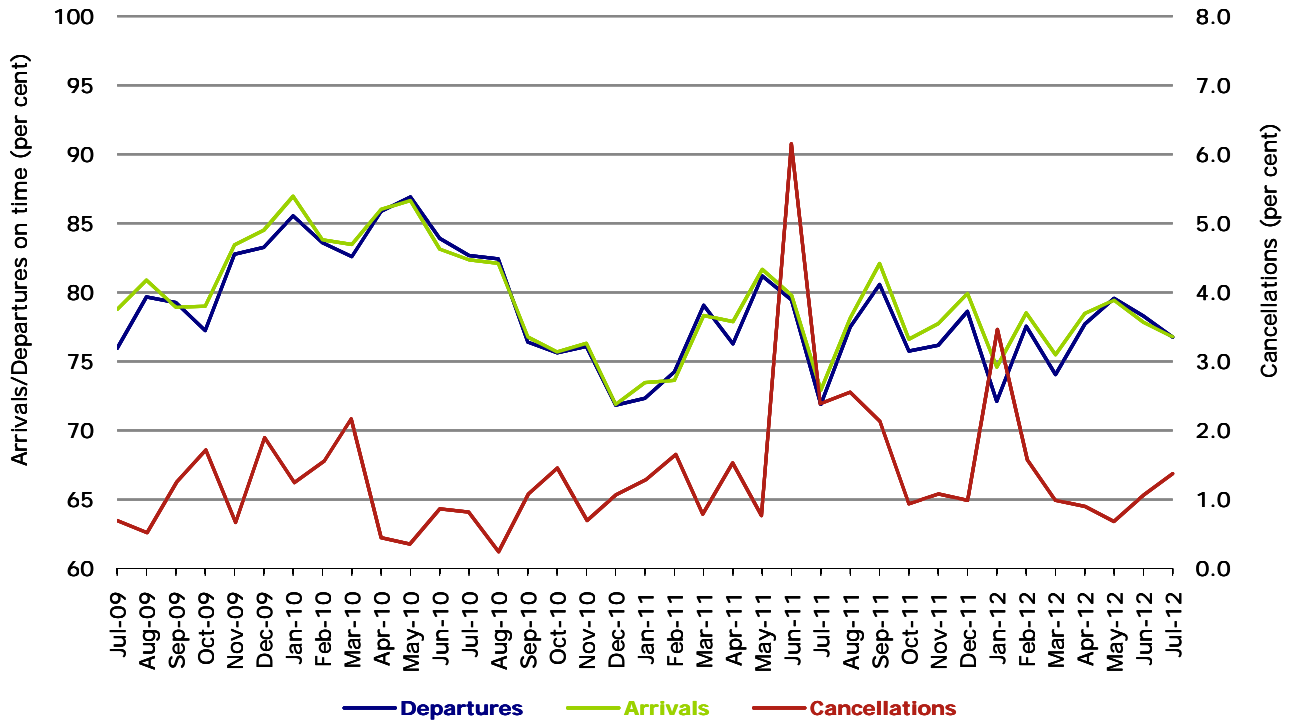


Figure 6 On time performance (by month from July 2009)—Qantas

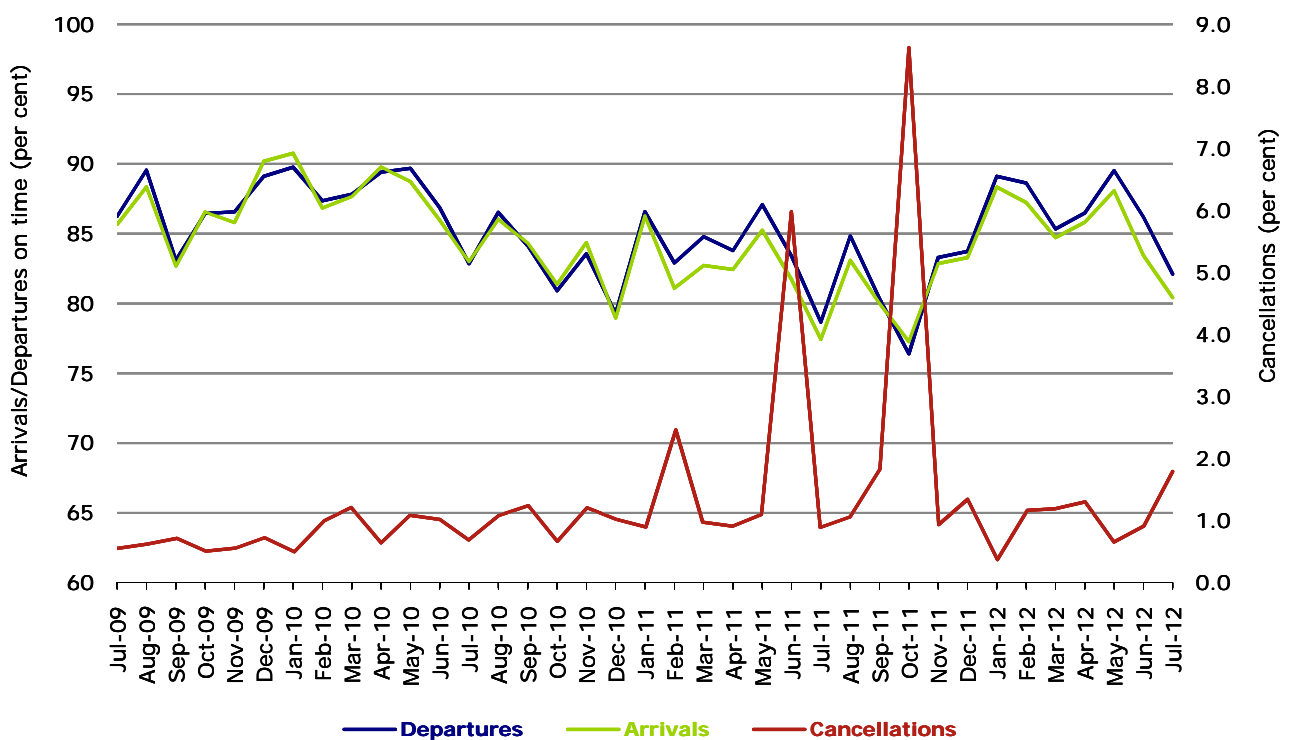
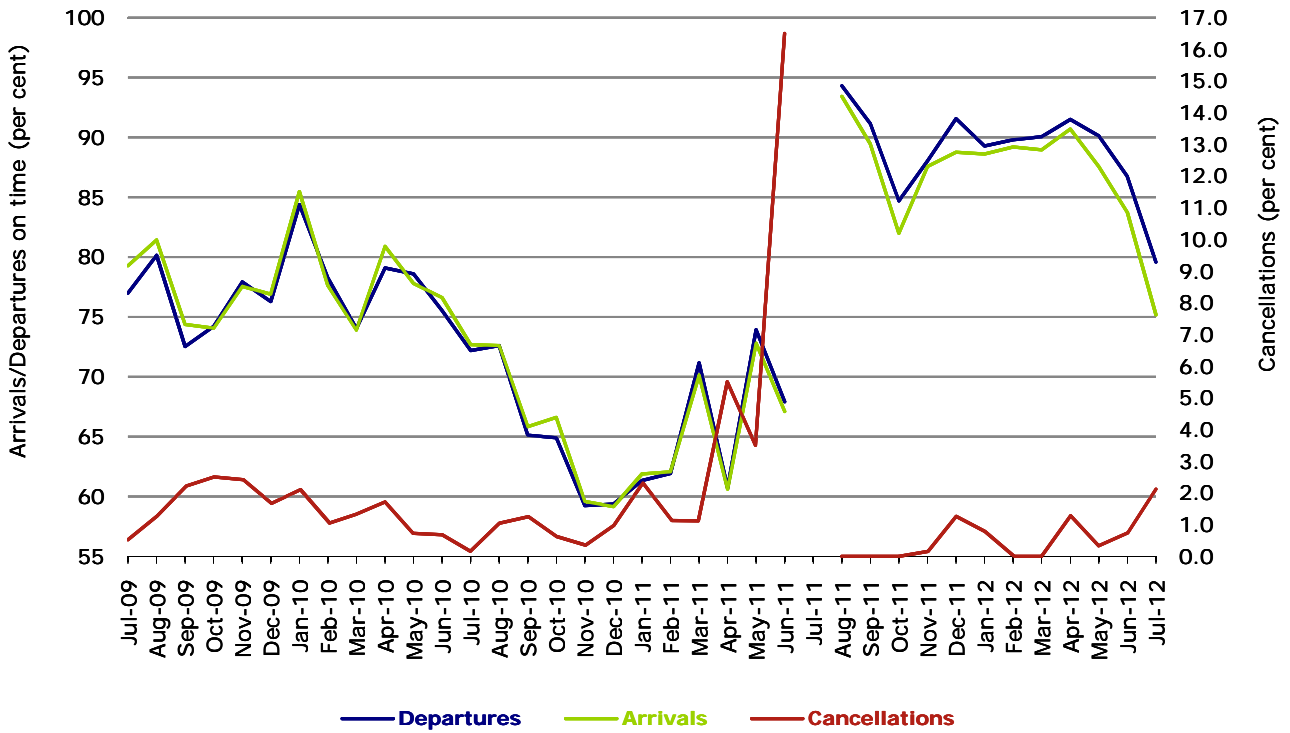
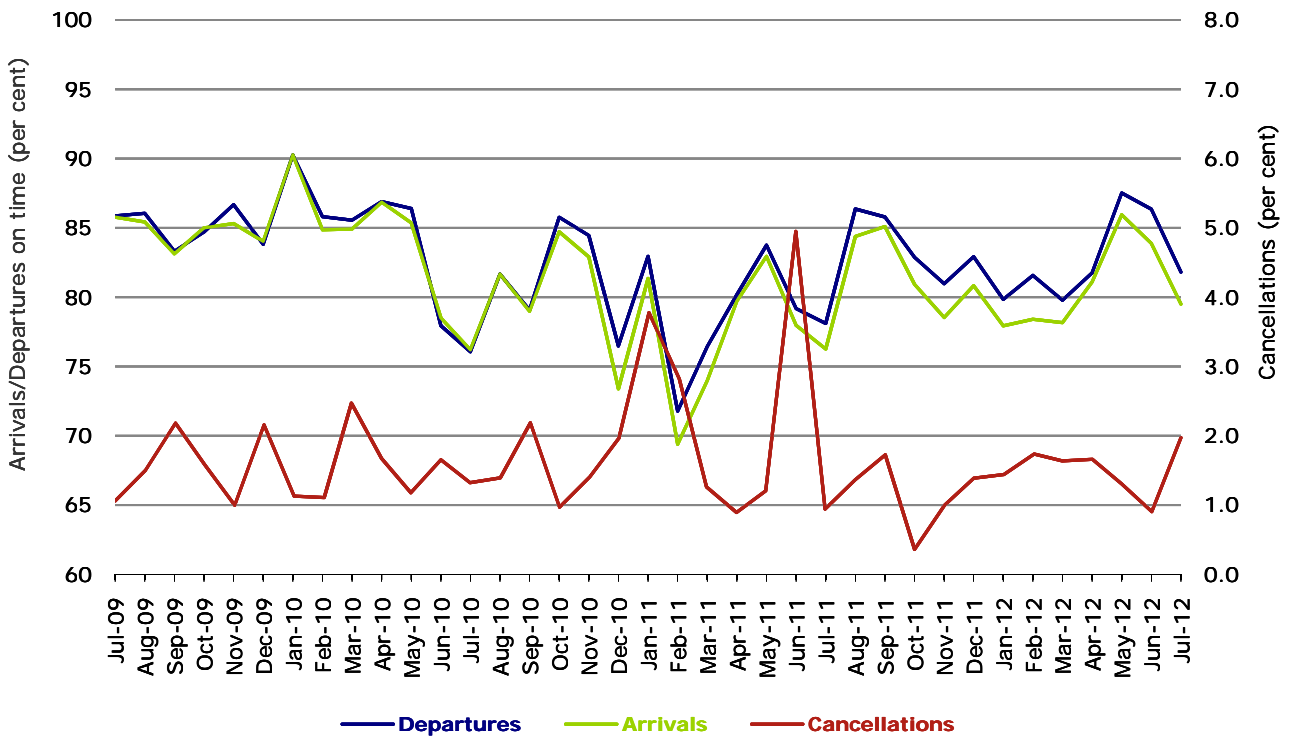


Figure 7 On time performance (by month from July 2009)—Tiger Airways



No data for Tiger Airways for July 2011 as it was grounded by CASA from 2/7/2011 to 11/8/2011.

Figure 8 On time performance (by month from July 2009)—Virgin Australia



Major regional airlines on time performance

Figure 9 On time performance (by month from July 2009)—QantasLink

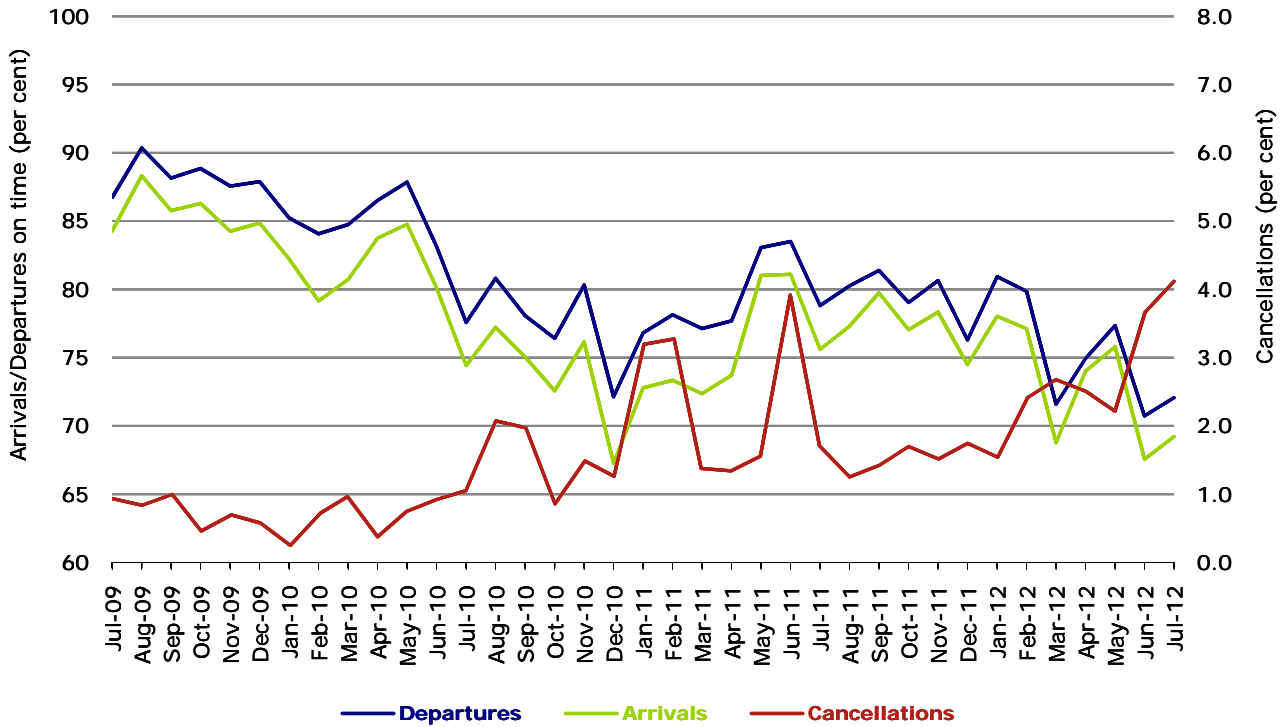


Figure 10 On time performance (by month from July 2009)—Regional Express

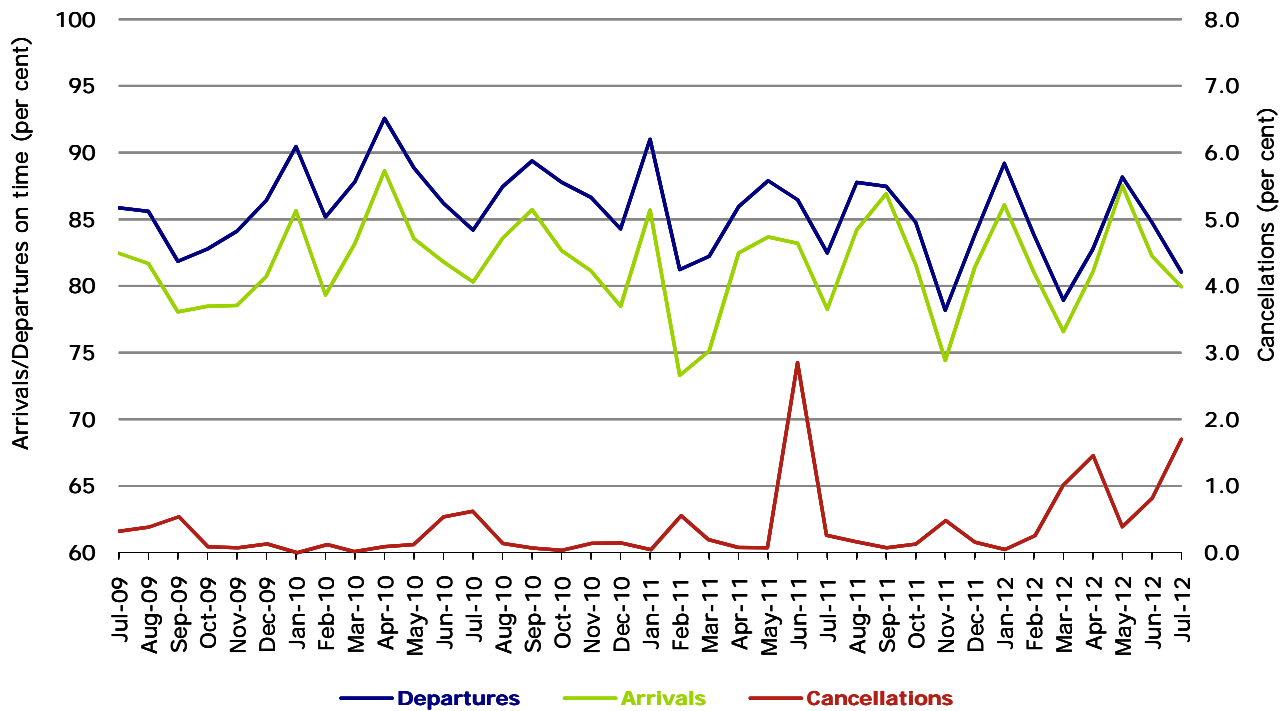


Figure 11 On time performance (by month from July 2009)—Skywest

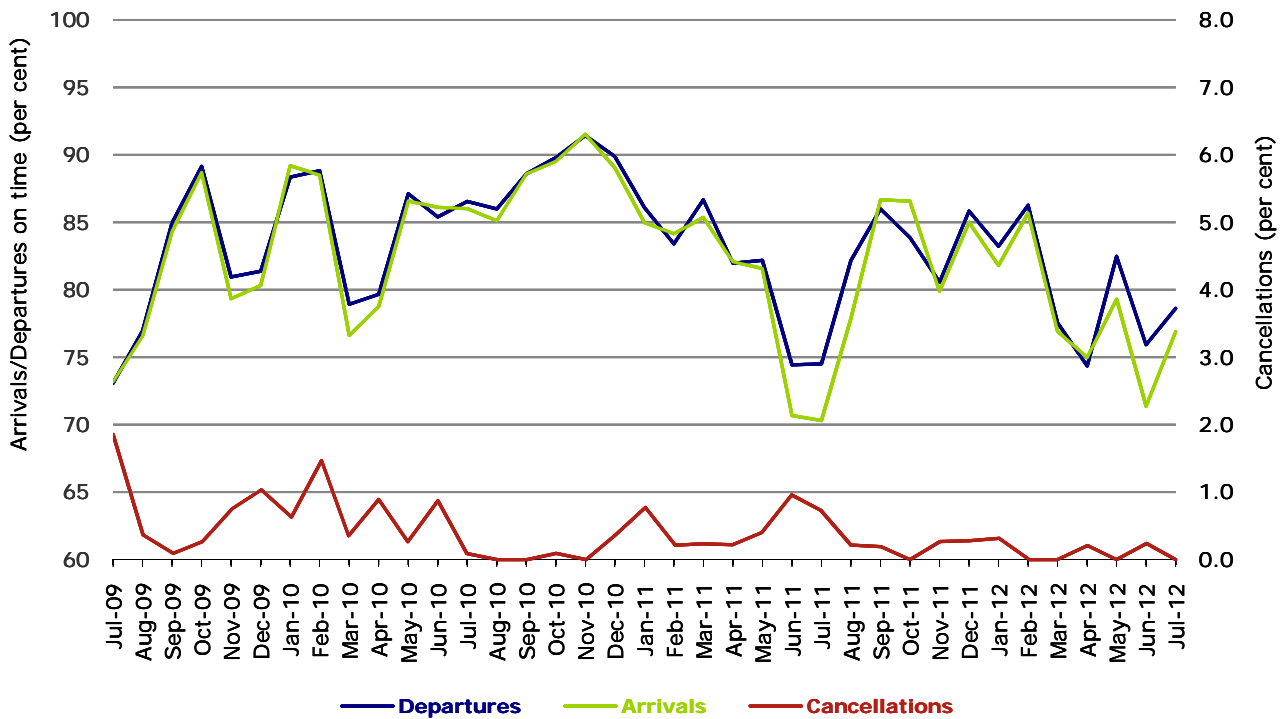
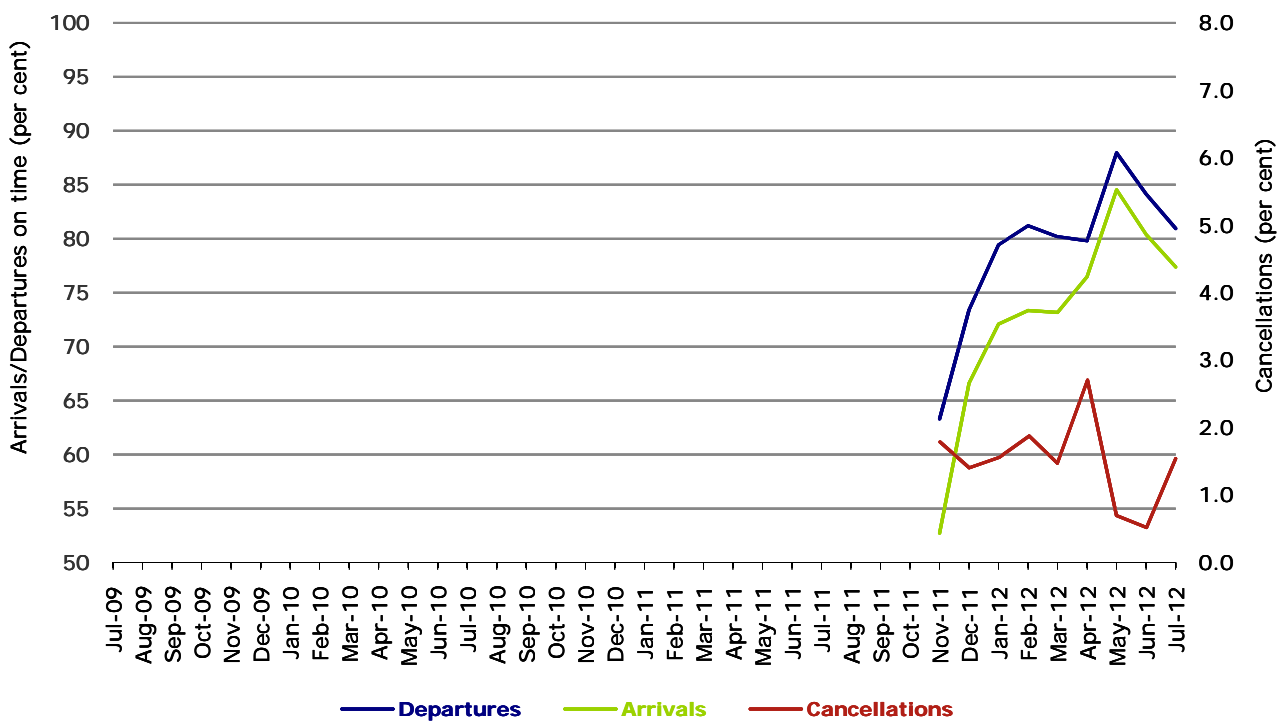


Figure 12 On time performance (by month from July 2009)
Virgin Australia - ATR/F100 Operations



Virgin Australia - ATR/F100 Operations commenced in November 2011.

Individual routes

On time performance is reported for all routes where the passenger load averages over 8000 passengers per month over the previous six months, and where two or more airlines operate in competition on those routes. There are now 57 routes which meet this definition. Over time, however, routes which meet this definition may change as airline networks and traffic levels vary.

	<i>Sectors</i>		<i>Departures On Time</i>		<i>Arrivals On Time</i>		<i>Cancellations</i>	
	<i>Sched.</i>	<i>Flown</i>	<i>No.</i>	<i>%</i>	<i>No.</i>	<i>%</i>	<i>No.</i>	<i>%</i>
Adelaide-Brisbane								
Jetstar	32	32	31	96.9	31	96.9	0	0.0
Qantas	111	111	88	79.3	78	70.3	0	0.0
Virgin Australia	123	123	107	87.0	109	88.6	0	0.0
All Airlines	266	266	226	85.0	218	82.0	0	0.0
Adelaide-Canberra								
Qantas	49	49	41	83.7	41	83.7	0	0.0
Virgin Australia	27	27	26	96.3	26	96.3	0	0.0
All Airlines	76	76	67	88.2	67	88.2	0	0.0
Adelaide-Gold Coast								
Jetstar	31	31	26	83.9	26	83.9	0	0.0
Virgin Australia	31	30	28	93.3	28	93.3	1	3.2
All Airlines	62	61	54	88.5	54	88.5	1	1.6
Adelaide-Melbourne								
Jetstar	92	91	72	79.1	69	75.8	1	1.1
Qantas	310	305	255	83.6	252	82.6	5	1.6
QantasLink	18	16	13	81.3	10	62.5	2	11.1
Virgin Australia	288	283	249	88.0	244	86.2	5	1.7
All Airlines	708	695	589	84.7	575	82.7	13	1.8
Adelaide-Perth								
Jetstar	41	41	33	80.5	36	87.8	0	0.0
Qantas	117	117	103	88.0	105	89.7	0	0.0
Virgin Australia	61	61	53	86.9	55	90.2	0	0.0
All Airlines	219	219	189	86.3	196	89.5	0	0.0
Adelaide-Port Lincoln								
QantasLink	103	99	81	81.8	74	74.7	4	3.9
Regional Express	206	204	182	89.2	181	88.7	2	1.0
All Airlines	309	303	263	86.8	255	84.2	6	1.9
Adelaide-Sydney								
Jetstar	91	91	78	85.7	79	86.8	0	0.0
Qantas	284	282	252	89.4	255	90.4	2	0.7
Virgin Australia	177	176	151	85.8	145	82.4	1	0.6
All Airlines	552	549	481	87.6	479	87.2	3	0.5
Albury-Sydney								
QantasLink	119	118	79	66.9	79	66.9	1	0.8
Regional Express	111	109	84	77.1	82	75.2	2	1.8
Virgin Australia	62	58	47	81.0	45	77.6	4	6.5
All Airlines	292	285	210	73.7	206	72.3	7	2.4
Ayers Rock-Sydney								
Qantas	31	31	27	87.1	27	87.1	0	0.0
Virgin Australia	31	30	28	93.3	30	100.0	1	3.2
All Airlines	62	61	55	90.2	57	93.4	1	1.6

	<i>Sectors</i>		<i>Departures On Time</i>		<i>Arrivals On Time</i>		<i>Cancellations</i>	
	<i>Sched.</i>	<i>Flown</i>	<i>No.</i>	<i>%</i>	<i>No.</i>	<i>%</i>	<i>No.</i>	<i>%</i>
Ballina-Sydney								
Jetstar	62	62	50	80.6	50	80.6	0	0.0
Regional Express	22	20	12	60.0	12	60.0	2	9.1
Virgin Australia	31	31	26	83.9	25	80.6	0	0.0
All Airlines	115	113	88	77.9	87	77.0	2	1.7
Brisbane-Adelaide								
Jetstar	32	32	29	90.6	31	96.9	0	0.0
Qantas	111	111	91	82.0	97	87.4	0	0.0
Virgin Australia	123	122	100	82.0	112	91.8	1	0.8
All Airlines	266	265	220	83.0	240	90.6	1	0.4
Brisbane-Cairns								
Jetstar	105	105	82	78.1	76	72.4	0	0.0
Qantas	120	120	80	66.7	87	72.5	0	0.0
Virgin Australia	151	151	115	76.2	115	76.2	0	0.0
Virgin Australia - ATR/F100 Operations	27	27	20	74.1	9	33.3	0	0.0
All Airlines	403	403	297	73.7	287	71.2	0	0.0
Brisbane-Canberra								
Qantas	147	146	131	89.7	130	89.0	1	0.7
QantasLink	23	21	13	61.9	15	71.4	2	8.7
Virgin Australia	98	98	85	86.7	87	88.8	0	0.0
All Airlines	268	265	229	86.4	232	87.5	3	1.1
Brisbane-Darwin								
Qantas	31	31	29	93.5	27	87.1	0	0.0
Virgin Australia	31	31	22	71.0	17	54.8	0	0.0
All Airlines	62	62	51	82.3	44	71.0	0	0.0
Brisbane-Emerald								
QantasLink	199	192	150	78.1	135	70.3	7	3.5
Virgin Australia - ATR/F100 Operations	74	73	64	87.7	60	82.2	1	1.4
All Airlines	273	265	214	80.8	195	73.6	8	2.9
Brisbane-Gladstone								
QantasLink	166	156	106	67.9	105	67.3	10	6.0
Virgin Australia - ATR/F100 Operations	125	122	93	76.2	90	73.8	3	2.4
All Airlines	291	278	199	71.6	195	70.1	13	4.5
Brisbane-Hamilton Island								
Jetstar	18	17	15	88.2	14	82.4	1	5.6
Virgin Australia	31	30	21	70.0	23	76.7	1	3.2
All Airlines	49	47	36	76.6	37	78.7	2	4.1
Brisbane-Mackay								
Jetstar	109	105	80	76.2	83	79.0	4	3.7
QantasLink	54	50	35	70.0	27	54.0	4	7.4
Virgin Australia	174	171	130	76.0	114	66.7	3	1.7
All Airlines	337	326	245	75.2	224	68.7	11	3.3
Brisbane-Melbourne								
Jetstar	108	105	73	69.5	82	78.1	3	2.8
Qantas	430	428	327	76.4	345	80.6	2	0.5
Tiger Airways	93	93	72	77.4	73	78.5	0	0.0
Virgin Australia	371	363	300	82.6	307	84.6	8	2.2
All Airlines	1 002	989	772	78.1	807	81.6	13	1.3
Brisbane-Newcastle								
Jetstar	122	121	99	81.8	99	81.8	1	0.8
QantasLink	71	68	50	73.5	45	66.2	3	4.2
Virgin Australia - ATR/F100 Operations	62	62	58	93.5	48	77.4	0	0.0
All Airlines	255	251	207	82.5	192	76.5	4	1.6

	<i>Sectors</i>		<i>Departures On Time</i>		<i>Arrivals On Time</i>		<i>Cancellations</i>	
	<i>Sched.</i>	<i>Flown</i>	<i>No.</i>	<i>%</i>	<i>No.</i>	<i>%</i>	<i>No.</i>	<i>%</i>
Brisbane-Perth								
Jetstar	30	30	28	93.3	27	90.0	0	0.0
Qantas	124	124	84	67.7	101	81.5	0	0.0
Virgin Australia	71	71	57	80.3	62	87.3	0	0.0
All Airlines	225	225	169	75.1	190	84.4	0	0.0
Brisbane-Proserpine								
Jetstar	31	31	28	90.3	26	83.9	0	0.0
Virgin Australia	31	31	26	83.9	25	80.6	0	0.0
Virgin Australia - ATR/F100 Operations	22	22	18	81.8	9	40.9	0	0.0
All Airlines	84	84	72	85.7	60	71.4	0	0.0
Brisbane-Rockhampton								
QantasLink	164	161	114	70.8	118	73.3	3	1.8
Virgin Australia	85	85	71	83.5	68	80.0	0	0.0
Virgin Australia - ATR/F100 Operations	97	97	90	92.8	81	83.5	0	0.0
All Airlines	346	343	275	80.2	267	77.8	3	0.9
Brisbane-Sydney								
Jetstar	125	122	78	63.9	71	58.2	3	2.4
Qantas	609	601	481	80.0	485	80.7	8	1.3
Virgin Australia	573	563	476	84.5	462	82.1	10	1.7
All Airlines	1 307	1 286	1 035	80.5	1 018	79.2	21	1.6
Brisbane-Townsville								
Jetstar	31	30	16	53.3	16	53.3	1	3.2
Qantas	151	151	116	76.8	113	74.8	0	0.0
Virgin Australia	174	174	138	79.3	132	75.9	0	0.0
All Airlines	356	355	270	76.1	261	73.5	1	0.3
Broome-Perth								
Qantas	52	52	28	53.8	29	55.8	0	0.0
QantasLink	32	32	27	84.4	27	84.4	0	0.0
Skywest	23	23	17	73.9	12	52.2	0	0.0
Virgin Australia	62	62	48	77.4	42	67.7	0	0.0
All Airlines	169	169	120	71.0	110	65.1	0	0.0
Cairns-Brisbane								
Jetstar	106	105	97	92.4	87	82.9	1	0.9
Qantas	119	119	91	76.5	79	66.4	0	0.0
Virgin Australia	151	151	125	82.8	114	75.5	0	0.0
Virgin Australia - ATR/F100 Operations	27	27	9	33.3	13	48.1	0	0.0
All Airlines	403	402	322	80.1	293	72.9	1	0.2
Cairns-Melbourne								
Jetstar	109	109	84	77.1	91	83.5	0	0.0
Qantas	31	31	14	45.2	22	71.0	0	0.0
Tiger Airways	31	31	14	45.2	17	54.8	0	0.0
Virgin Australia	35	35	23	65.7	26	74.3	0	0.0
All Airlines	206	206	135	65.5	156	75.7	0	0.0
Cairns-Sydney								
Jetstar	96	95	70	73.7	73	76.8	1	1.0
Qantas	111	111	96	86.5	100	90.1	0	0.0
Virgin Australia	93	93	78	83.9	81	87.1	0	0.0
All Airlines	300	299	244	81.6	254	84.9	1	0.3
Cairns-Townsville								
QantasLink	191	185	136	73.5	119	64.3	6	3.1
Virgin Australia	1	1	1	100.0	1	100.0	0	0.0
Virgin Australia - ATR/F100 Operations	25	25	18	72.0	17	68.0	0	0.0
All Airlines	217	211	155	73.5	137	64.9	6	2.8

	<i>Sectors</i>		<i>Departures On Time</i>		<i>Arrivals On Time</i>		<i>Cancellations</i>	
	<i>Sched.</i>	<i>Flown</i>	<i>No.</i>	<i>%</i>	<i>No.</i>	<i>%</i>	<i>No.</i>	<i>%</i>
Canberra-Adelaide								
Qantas	53	53	51	96.2	50	94.3	0	0.0
Virgin Australia	27	27	26	96.3	26	96.3	0	0.0
All Airlines	80	80	77	96.3	76	95.0	0	0.0
Canberra-Brisbane								
Qantas	147	147	129	87.8	117	79.6	0	0.0
QantasLink	23	21	14	66.7	14	66.7	2	8.7
Virgin Australia	98	95	86	90.5	70	73.7	3	3.1
All Airlines	268	263	229	87.1	201	76.4	5	1.9
Canberra-Melbourne								
Qantas	264	256	222	86.7	217	84.8	8	3.0
QantasLink	40	33	22	66.7	21	63.6	7	17.5
Virgin Australia	173	171	140	81.9	139	81.3	2	1.2
All Airlines	477	460	384	83.5	377	82.0	17	3.6
Canberra-Sydney								
Qantas	171	169	136	80.5	135	79.9	2	1.2
QantasLink	407	353	244	69.1	235	66.6	54	13.3
Virgin Australia	96	87	67	77.0	66	75.9	9	9.4
Virgin Australia - ATR/F100 Operations	160	157	129	82.2	130	82.8	3	1.9
All Airlines	834	766	576	75.2	566	73.9	68	8.2
Coffs Harbour-Sydney								
QantasLink	147	145	98	67.6	104	71.7	2	1.4
Virgin Australia	62	61	54	88.5	54	88.5	1	1.6
All Airlines	209	206	152	73.8	158	76.7	3	1.4
Darwin-Brisbane								
Qantas	31	31	20	64.5	22	71.0	0	0.0
Virgin Australia	31	31	15	48.4	25	80.6	0	0.0
All Airlines	62	62	35	56.5	47	75.8	0	0.0
Darwin-Melbourne								
Qantas	19	19	10	52.6	10	52.6	0	0.0
Virgin Australia	31	31	29	93.5	30	96.8	0	0.0
All Airlines	50	50	39	78.0	40	80.0	0	0.0
Darwin-Perth								
Qantas	31	31	18	58.1	20	64.5	0	0.0
Virgin Australia	27	27	24	88.9	23	85.2	0	0.0
All Airlines	58	58	42	72.4	43	74.1	0	0.0
Darwin-Sydney								
Qantas	57	57	40	70.2	47	82.5	0	0.0
Virgin Australia	31	31	17	54.8	24	77.4	0	0.0
All Airlines	88	88	57	64.8	71	80.7	0	0.0
Dubbo-Sydney								
QantasLink	111	111	70	63.1	58	52.3	0	0.0
Regional Express	167	157	128	81.5	122	77.7	10	6.0
All Airlines	278	268	198	73.9	180	67.2	10	3.6
Emerald-Brisbane								
QantasLink	199	191	125	65.4	122	63.9	8	4.0
Virgin Australia - ATR/F100 Operations	74	72	60	83.3	62	86.1	2	2.7
All Airlines	273	263	185	70.3	184	70.0	10	3.7
Geraldton-Perth								
QantasLink	54	53	41	77.4	34	64.2	1	1.9
Skywest	82	82	57	69.5	54	65.9	0	0.0
All Airlines	136	135	98	72.6	88	65.2	1	0.7

	<i>Sectors</i>		<i>Departures On Time</i>		<i>Arrivals On Time</i>		<i>Cancellations</i>	
	<i>Sched.</i>	<i>Flown</i>	<i>No.</i>	<i>%</i>	<i>No.</i>	<i>%</i>	<i>No.</i>	<i>%</i>
Gladstone-Brisbane								
QantasLink	188	178	108	60.7	99	55.6	10	5.3
Virgin Australia - ATR/F100 Operations	125	117	87	74.4	92	78.6	8	6.4
All Airlines	313	295	195	66.1	191	64.7	18	5.8
Gold Coast-Adelaide								
Jetstar	31	31	28	90.3	28	90.3	0	0.0
Virgin Australia	31	30	27	90.0	27	90.0	1	3.2
All Airlines	62	61	55	90.2	55	90.2	1	1.6
Gold Coast-Melbourne								
Jetstar	226	224	165	73.7	168	75.0	2	0.9
Tiger Airways	86	84	57	67.9	51	60.7	2	2.3
Virgin Australia	217	216	185	85.6	192	88.9	1	0.5
All Airlines	529	524	407	77.7	411	78.4	5	0.9
Gold Coast-Sydney								
Jetstar	351	343	259	75.5	262	76.4	8	2.3
Tiger Airways	31	31	19	61.3	16	51.6	0	0.0
Virgin Australia	367	351	300	85.5	306	87.2	16	4.4
All Airlines	749	725	578	79.7	584	80.6	24	3.2
Hamilton Island-Brisbane								
Jetstar	18	17	14	82.4	12	70.6	1	5.6
Virgin Australia	33	29	21	72.4	24	82.8	4	12.1
All Airlines	51	46	35	76.1	36	78.3	5	9.8
Hamilton Island-Sydney								
Jetstar	31	27	15	55.6	15	55.6	4	12.9
Virgin Australia	31	28	14	50.0	16	57.1	3	9.7
All Airlines	62	55	29	52.7	31	56.4	7	11.3
Hobart-Melbourne								
Jetstar	151	151	117	77.5	116	76.8	0	0.0
Qantas	62	61	57	93.4	54	88.5	1	1.6
Virgin Australia	137	137	115	83.9	111	81.0	0	0.0
All Airlines	350	349	289	82.8	281	80.5	1	0.3
Hobart-Sydney								
Jetstar	61	59	50	84.7	44	74.6	2	3.3
Qantas	31	31	20	64.5	20	64.5	0	0.0
Virgin Australia	61	61	31	50.8	36	59.0	0	0.0
All Airlines	153	151	101	66.9	100	66.2	2	1.3
Kalgoorlie-Perth								
Qantas	72	72	54	75.0	52	72.2	0	0.0
QantasLink	20	20	13	65.0	14	70.0	0	0.0
Skywest	57	57	40	70.2	37	64.9	0	0.0
All Airlines	149	149	107	71.8	103	69.1	0	0.0
Karratha-Perth								
Qantas	240	232	198	85.3	188	81.0	8	3.3
QantasLink	21	19	15	78.9	15	78.9	2	9.5
Virgin Australia	54	52	48	92.3	37	71.2	2	3.7
All Airlines	315	303	261	86.1	240	79.2	12	3.8
Launceston-Melbourne								
Jetstar	100	100	82	82.0	78	78.0	0	0.0
QantasLink	75	73	59	80.8	58	79.5	2	2.7
Virgin Australia	137	136	115	84.6	114	83.8	1	0.7
All Airlines	312	309	256	82.8	250	80.9	3	1.0

	<i>Sectors</i>		<i>Departures On Time</i>		<i>Arrivals On Time</i>		<i>Cancellations</i>	
	<i>Sched.</i>	<i>Flown</i>	<i>No.</i>	<i>%</i>	<i>No.</i>	<i>%</i>	<i>No.</i>	<i>%</i>
Launceston-Sydney								
Jetstar	31	31	19	61.3	21	67.7	0	0.0
Virgin Australia	31	31	23	74.2	24	77.4	0	0.0
All Airlines	62	62	42	67.7	45	72.6	0	0.0
Mackay-Brisbane								
Jetstar	111	105	80	76.2	72	68.6	6	5.4
QantasLink	53	50	29	58.0	31	62.0	3	5.7
Virgin Australia	174	169	120	71.0	111	65.7	5	2.9
All Airlines	338	324	229	70.7	214	66.0	14	4.1
Melbourne-Adelaide								
Jetstar	89	89	79	88.8	74	83.1	0	0.0
Qantas	310	307	272	88.6	261	85.0	3	1.0
QantasLink	18	17	11	64.7	7	41.2	1	5.6
Virgin Australia	289	287	245	85.4	250	87.1	2	0.7
All Airlines	706	700	607	86.7	592	84.6	6	0.8
Melbourne-Brisbane								
Jetstar	110	107	82	76.6	68	63.6	3	2.7
Qantas	429	429	359	83.7	304	70.9	0	0.0
Tiger Airways	93	93	79	84.9	72	77.4	0	0.0
Virgin Australia	373	364	307	84.3	268	73.6	9	2.4
All Airlines	1 005	993	827	83.3	712	71.7	12	1.2
Melbourne-Cairns								
Jetstar	109	109	94	86.2	94	86.2	0	0.0
Qantas	31	31	23	74.2	18	58.1	0	0.0
Tiger Airways	31	31	25	80.6	17	54.8	0	0.0
Virgin Australia	35	35	30	85.7	29	82.9	0	0.0
All Airlines	206	206	172	83.5	158	76.7	0	0.0
Melbourne-Canberra								
Qantas	264	259	232	89.6	229	88.4	5	1.9
QantasLink	40	33	25	75.8	20	60.6	7	17.5
Virgin Australia	173	171	139	81.3	134	78.4	2	1.2
All Airlines	477	463	396	85.5	383	82.7	14	2.9
Melbourne-Darwin								
Qantas	19	19	15	78.9	13	68.4	0	0.0
Virgin Australia	31	31	26	83.9	24	77.4	0	0.0
All Airlines	50	50	41	82.0	37	74.0	0	0.0
Melbourne-Gold Coast								
Jetstar	226	224	170	75.9	162	72.3	2	0.9
Tiger Airways	86	85	74	87.1	64	75.3	1	1.2
Virgin Australia	217	215	186	86.5	189	87.9	2	0.9
All Airlines	529	524	430	82.1	415	79.2	5	0.9
Melbourne-Hobart								
Jetstar	152	152	119	78.3	117	77.0	0	0.0
Qantas	62	61	47	77.0	34	55.7	1	1.6
Virgin Australia	136	135	115	85.2	108	80.0	1	0.7
All Airlines	350	348	281	80.7	259	74.4	2	0.6
Melbourne-Launceston								
Jetstar	99	99	81	81.8	82	82.8	0	0.0
QantasLink	75	73	56	76.7	48	65.8	2	2.7
Virgin Australia	137	137	112	81.8	113	82.5	0	0.0
All Airlines	311	309	249	80.6	243	78.6	2	0.6

	<i>Sectors</i>		<i>Departures On Time</i>		<i>Arrivals On Time</i>		<i>Cancellations</i>	
	<i>Sched.</i>	<i>Flown</i>	<i>No.</i>	<i>%</i>	<i>No.</i>	<i>%</i>	<i>No.</i>	<i>%</i>
Melbourne-Mildura								
QantasLink	91	89	64	71.9	60	67.4	2	2.2
Regional Express	90	90	80	88.9	75	83.3	0	0.0
Virgin Australia	31	31	23	74.2	22	71.0	0	0.0
All Airlines	212	210	167	79.5	157	74.8	2	0.9
Melbourne-Newcastle								
Jetstar	105	105	85	81.0	85	81.0	0	0.0
Virgin Australia	31	30	27	90.0	27	90.0	1	3.2
All Airlines	136	135	112	83.0	112	83.0	1	0.7
Melbourne-Perth								
Jetstar	89	88	73	83.0	69	78.4	1	1.1
Qantas	230	230	197	85.7	206	89.6	0	0.0
Tiger Airways	93	92	81	88.0	78	84.8	1	1.1
Virgin Australia	155	154	126	81.8	127	82.5	1	0.6
All Airlines	567	564	477	84.6	480	85.1	3	0.5
Melbourne-Sunshine Coast								
Jetstar	66	66	47	71.2	41	62.1	0	0.0
Virgin Australia	31	30	27	90.0	24	80.0	1	3.2
All Airlines	97	96	74	77.1	65	67.7	1	1.0
Melbourne-Sydney								
Jetstar	240	233	158	67.8	156	67.0	7	2.9
Qantas	979	914	777	85.0	754	82.5	65	6.6
Tiger Airways	326	315	259	82.2	266	84.4	11	3.4
Virgin Australia	796	764	656	85.9	613	80.2	32	4.0
All Airlines	2 341	2 226	1 850	83.1	1 789	80.4	115	4.9
Mildura-Melbourne								
QantasLink	90	89	72	80.9	67	75.3	1	1.1
Regional Express	90	90	81	90.0	77	85.6	0	0.0
Virgin Australia	31	31	22	71.0	22	71.0	0	0.0
All Airlines	211	210	175	83.3	166	79.0	1	0.5
Newcastle-Brisbane								
Jetstar	124	122	99	81.1	94	77.0	2	1.6
QantasLink	70	66	39	59.1	38	57.6	4	5.7
Virgin Australia - ATR/F100 Operations	62	62	46	74.2	45	72.6	0	0.0
All Airlines	256	250	184	73.6	177	70.8	6	2.3
Newcastle-Melbourne								
Jetstar	107	106	92	86.8	89	84.0	1	0.9
Virgin Australia	31	30	26	86.7	27	90.0	1	3.2
All Airlines	138	136	118	86.8	116	85.3	2	1.4
Newman-Perth								
Qantas	116	116	100	86.2	92	79.3	0	0.0
QantasLink	18	18	13	72.2	13	72.2	0	0.0
Virgin Australia	30	30	28	93.3	27	90.0	0	0.0
All Airlines	164	164	141	86.0	132	80.5	0	0.0
Perth-Adelaide								
Jetstar	43	42	33	78.6	35	83.3	1	2.3
Qantas	116	116	91	78.4	92	79.3	0	0.0
Virgin Australia	61	60	51	85.0	50	83.3	1	1.6
All Airlines	220	218	175	80.3	177	81.2	2	0.9
Perth-Brisbane								
Jetstar	31	31	12	38.7	23	74.2	0	0.0
Qantas	124	124	97	78.2	87	70.2	0	0.0
Virgin Australia	71	71	65	91.5	61	85.9	0	0.0
All Airlines	226	226	174	77.0	171	75.7	0	0.0

	<i>Sectors</i>		<i>Departures On Time</i>		<i>Arrivals On Time</i>		<i>Cancellations</i>	
	<i>Sched.</i>	<i>Flown</i>	<i>No.</i>	<i>%</i>	<i>No.</i>	<i>%</i>	<i>No.</i>	<i>%</i>
Perth-Broome								
Qantas	52	52	33	63.5	38	73.1	0	0.0
QantasLink	32	32	25	78.1	27	84.4	0	0.0
Skywest	22	22	14	63.6	18	81.8	0	0.0
Virgin Australia	62	62	50	80.6	52	83.9	0	0.0
All Airlines	168	168	122	72.6	135	80.4	0	0.0
Perth-Darwin								
Qantas	31	31	18	58.1	21	67.7	0	0.0
Virgin Australia	27	27	22	81.5	23	85.2	0	0.0
All Airlines	58	58	40	69.0	44	75.9	0	0.0
Perth-Geraldton								
QantasLink	53	53	38	71.7	43	81.1	0	0.0
Skywest	81	81	60	74.1	60	74.1	0	0.0
All Airlines	134	134	98	73.1	103	76.9	0	0.0
Perth-Kalgoorlie								
Qantas	71	71	58	81.7	54	76.1	0	0.0
QantasLink	18	18	13	72.2	12	66.7	0	0.0
Skywest	56	56	42	75.0	39	69.6	0	0.0
All Airlines	145	145	113	77.9	105	72.4	0	0.0
Perth-Karratha								
Qantas	240	233	197	84.5	206	88.4	7	2.9
QantasLink	21	20	17	85.0	18	90.0	1	4.8
Virgin Australia	53	52	44	84.6	45	86.5	1	1.9
All Airlines	314	305	258	84.6	269	88.2	9	2.9
Perth-Melbourne								
Jetstar	88	87	73	83.9	67	77.0	1	1.1
Qantas	229	228	189	82.9	193	84.6	1	0.4
Tiger Airways	94	93	70	75.3	45	48.4	1	1.1
Virgin Australia	154	154	129	83.8	100	64.9	0	0.0
All Airlines	565	562	461	82.0	405	72.1	3	0.5
Perth-Newman								
Qantas	116	116	99	85.3	100	86.2	0	0.0
QantasLink	18	18	13	72.2	13	72.2	0	0.0
Virgin Australia	30	30	28	93.3	28	93.3	0	0.0
All Airlines	164	164	140	85.4	141	86.0	0	0.0
Perth-Port Hedland								
Qantas	136	135	112	83.0	119	88.1	1	0.7
QantasLink	28	27	25	92.6	25	92.6	1	3.6
Virgin Australia	61	60	57	95.0	54	90.0	1	1.6
All Airlines	225	222	194	87.4	198	89.2	3	1.3
Perth-Sydney								
Jetstar	48	45	28	62.2	31	68.9	3	6.3
Qantas	216	214	174	81.3	156	72.9	2	0.9
Virgin Australia	150	149	120	80.5	100	67.1	1	0.7
All Airlines	414	408	322	78.9	287	70.3	6	1.4
Port Hedland-Perth								
Qantas	136	134	116	86.6	107	79.9	2	1.5
QantasLink	28	28	23	82.1	23	82.1	0	0.0
Virgin Australia	61	61	54	88.5	46	75.4	0	0.0
All Airlines	225	223	193	86.5	176	78.9	2	0.9
Port Lincoln-Adelaide								
QantasLink	102	98	75	76.5	75	76.5	4	3.9
Regional Express	205	202	175	86.6	170	84.2	3	1.5
All Airlines	307	300	250	83.3	245	81.7	7	2.3

	<i>Sectors</i>		<i>Departures On Time</i>		<i>Arrivals On Time</i>		<i>Cancellations</i>	
	<i>Sched.</i>	<i>Flown</i>	<i>No.</i>	<i>%</i>	<i>No.</i>	<i>%</i>	<i>No.</i>	<i>%</i>
Port Macquarie-Sydney								
QantasLink	137	134	99	73.9	91	67.9	3	2.2
Virgin Australia - ATR/F100 Operations	62	61	52	85.2	53	86.9	1	1.6
All Airlines	199	195	151	77.4	144	73.8	4	2.0
Proserpine-Brisbane								
Jetstar	31	31	27	87.1	25	80.6	0	0.0
Virgin Australia	31	31	23	74.2	20	64.5	0	0.0
Virgin Australia - ATR/F100 Operations	22	22	11	50.0	6	27.3	0	0.0
All Airlines	84	84	61	72.6	51	60.7	0	0.0
Rockhampton-Brisbane								
QantasLink	143	142	101	71.1	87	61.3	1	0.7
Virgin Australia	86	84	66	78.6	65	77.4	2	2.3
Virgin Australia - ATR/F100 Operations	95	94	84	89.4	83	88.3	1	1.1
All Airlines	324	320	251	78.4	235	73.4	4	1.2
Sunshine Coast-Melbourne								
Jetstar	66	66	34	51.5	35	53.0	0	0.0
Virgin Australia	31	30	20	66.7	21	70.0	1	3.2
All Airlines	97	96	54	56.3	56	58.3	1	1.0
Sunshine Coast-Sydney								
Jetstar	115	113	89	78.8	87	77.0	2	1.7
Virgin Australia	35	32	24	75.0	22	68.8	3	8.6
All Airlines	150	145	113	77.9	109	75.2	5	3.3
Sydney-Adelaide								
Jetstar	91	91	75	82.4	81	89.0	0	0.0
Qantas	280	279	245	87.8	251	90.0	1	0.4
Virgin Australia	177	177	141	79.7	149	84.2	0	0.0
All Airlines	548	547	461	84.3	481	87.9	1	0.2
Sydney-Albury								
QantasLink	120	119	74	62.2	72	60.5	1	0.8
Regional Express	110	108	75	69.4	78	72.2	2	1.8
Virgin Australia	62	59	51	86.4	45	76.3	3	4.8
All Airlines	292	286	200	69.9	195	68.2	6	2.1
Sydney-Ayers Rock								
Qantas	31	31	24	77.4	24	77.4	0	0.0
Virgin Australia	31	30	24	80.0	22	73.3	1	3.2
All Airlines	62	61	48	78.7	46	75.4	1	1.6
Sydney-Ballina								
Jetstar	62	62	49	79.0	51	82.3	0	0.0
Regional Express	28	27	17	63.0	16	59.3	1	3.6
Virgin Australia	31	31	28	90.3	27	87.1	0	0.0
All Airlines	121	120	94	78.3	94	78.3	1	0.8
Sydney-Brisbane								
Jetstar	123	119	98	82.4	91	76.5	4	3.3
Qantas	606	598	508	84.9	396	66.2	8	1.3
Virgin Australia	573	556	458	82.4	401	72.1	17	3.0
All Airlines	1 302	1 273	1 064	83.6	888	69.8	29	2.2
Sydney-Cairns								
Jetstar	95	95	78	82.1	73	76.8	0	0.0
Qantas	111	111	95	85.6	95	85.6	0	0.0
Virgin Australia	93	93	68	73.1	64	68.8	0	0.0
All Airlines	299	299	241	80.6	232	77.6	0	0.0

	<i>Sectors</i>		<i>Departures On Time</i>		<i>Arrivals On Time</i>		<i>Cancellations</i>	
	<i>Sched.</i>	<i>Flown</i>	<i>No.</i>	<i>%</i>	<i>No.</i>	<i>%</i>	<i>No.</i>	<i>%</i>
Sydney-Canberra								
Qantas	176	175	144	82.3	143	81.7	1	0.6
QantasLink	408	361	222	61.5	210	58.2	47	11.5
Virgin Australia	96	94	64	68.1	70	74.5	2	2.1
Virgin Australia - ATR/F100 Operations	161	159	132	83.0	127	79.9	2	1.2
All Airlines	841	789	562	71.2	550	69.7	52	6.2
Sydney-Coffs Harbour								
QantasLink	148	147	104	70.7	98	66.7	1	0.7
Virgin Australia	62	61	51	83.6	53	86.9	1	1.6
All Airlines	210	208	155	74.5	151	72.6	2	1.0
Sydney-Darwin								
Qantas	58	58	42	72.4	42	72.4	0	0.0
Virgin Australia	31	31	21	67.7	12	38.7	0	0.0
All Airlines	89	89	63	70.8	54	60.7	0	0.0
Sydney-Dubbo								
QantasLink	111	111	78	70.3	76	68.5	0	0.0
Regional Express	168	159	116	73.0	124	78.0	9	5.4
All Airlines	279	270	194	71.9	200	74.1	9	3.2
Sydney-Gold Coast								
Jetstar	350	343	257	74.9	258	75.2	7	2.0
Tiger Airways	31	31	18	58.1	19	61.3	0	0.0
Virgin Australia	368	357	293	82.1	287	80.4	11	3.0
All Airlines	749	731	568	77.7	564	77.2	18	2.4
Sydney-Hamilton Island								
Jetstar	30	28	14	50.0	16	57.1	2	6.7
Virgin Australia	31	31	22	71.0	20	64.5	0	0.0
All Airlines	61	59	36	61.0	36	61.0	2	3.3
Sydney-Hobart								
Jetstar	59	59	48	81.4	52	88.1	0	0.0
Qantas	31	31	28	90.3	29	93.5	0	0.0
Virgin Australia	62	62	31	50.0	36	58.1	0	0.0
All Airlines	152	152	107	70.4	117	77.0	0	0.0
Sydney-Launceston								
Jetstar	31	31	19	61.3	19	61.3	0	0.0
Virgin Australia	31	31	26	83.9	26	83.9	0	0.0
All Airlines	62	62	45	72.6	45	72.6	0	0.0
Sydney-Melbourne								
Jetstar	238	230	150	65.2	178	77.4	8	3.4
Qantas	978	914	803	87.9	775	84.8	64	6.5
Tiger Airways	326	314	261	83.1	254	80.9	12	3.7
Virgin Australia	797	762	625	82.0	626	82.2	35	4.4
All Airlines	2 339	2 220	1 839	82.8	1 833	82.6	119	5.1
Sydney-Perth								
Jetstar	46	44	34	77.3	35	79.5	2	4.3
Qantas	218	216	161	74.5	190	88.0	2	0.9
Virgin Australia	151	151	111	73.5	121	80.1	0	0.0
All Airlines	415	411	306	74.5	346	84.2	4	1.0
Sydney-Port Macquarie								
QantasLink	137	134	91	67.9	94	70.1	3	2.2
Virgin Australia - ATR/F100 Operations	62	62	48	77.4	44	71.0	0	0.0
All Airlines	199	196	139	70.9	138	70.4	3	1.5

	<i>Sectors</i>		<i>Departures On Time</i>		<i>Arrivals On Time</i>		<i>Cancellations</i>	
	<i>Sched.</i>	<i>Flown</i>	<i>No.</i>	<i>%</i>	<i>No.</i>	<i>%</i>	<i>No.</i>	<i>%</i>
Sydney-Sunshine Coast								
Jetstar	115	114	96	84.2	98	86.0	1	0.9
Virgin Australia	35	32	28	87.5	26	81.3	3	8.6
All Airlines	150	146	124	84.9	124	84.9	4	2.7
Sydney-Townsville								
Jetstar	28	28	21	75.0	22	78.6	0	0.0
Virgin Australia	31	31	17	54.8	17	54.8	0	0.0
All Airlines	59	59	38	64.4	39	66.1	0	0.0
Sydney-Wagga Wagga								
QantasLink	116	116	78	67.2	67	57.8	0	0.0
Regional Express	121	120	105	87.5	103	85.8	1	0.8
All Airlines	237	236	183	77.5	170	72.0	1	0.4
Townsville-Brisbane								
Jetstar	31	30	16	53.3	15	50.0	1	3.2
Qantas	151	151	106	70.2	101	66.9	0	0.0
Virgin Australia	174	173	133	76.9	122	70.5	1	0.6
All Airlines	356	354	255	72.0	238	67.2	2	0.6
Townsville-Cairns								
QantasLink	189	179	105	58.7	88	49.2	10	5.3
Virgin Australia	1	1	1	100.0	1	100.0	0	0.0
Virgin Australia - ATR/F100 Operations	25	25	21	84.0	21	84.0	0	0.0
All Airlines	215	205	127	62.0	110	53.7	10	4.7
Townsville-Sydney								
Jetstar	28	28	21	75.0	21	75.0	0	0.0
Virgin Australia	31	31	11	35.5	16	51.6	0	0.0
All Airlines	59	59	32	54.2	37	62.7	0	0.0
Wagga Wagga-Sydney								
QantasLink	115	115	73	63.5	70	60.9	0	0.0
Regional Express	120	119	110	92.4	108	90.8	1	0.8
All Airlines	235	234	183	78.2	178	76.1	1	0.4

Airports

On time performance is reported for all routes where the passenger load averages over 8000 passengers per month, and where two or more airlines operate in competition. The following data reports by airport against flights operated on those routes only.

Airport	Departures			Arrivals		
	Sectors	On Time		Sectors	On Time	
	Flown	No.	%	Flown	No.	%
Adelaide						
Jetstar	286	240	83.9	285	249	87.4
Qantas	864	739	85.5	866	751	86.7
QantasLink	115	94	81.7	115	82	71.3
Regional Express	204	182	89.2	202	170	84.2
Virgin Australia	700	614	87.7	703	614	87.3
All Airlines	2 169	1 869	86.2	2 171	1 866	86.0
Relates to services to and from Brisbane, Canberra, Gold Coast, Melbourne, Perth, Port Lincoln and Sydney.						
Albury						
QantasLink	118	79	66.9	119	72	60.5
Regional Express	109	84	77.1	108	78	72.2
Virgin Australia	58	47	81.0	59	45	76.3
All Airlines	285	210	73.7	286	195	68.2
Relates to services to and from Sydney only.						
Ayers Rock						
Qantas	31	27	87.1	31	24	77.4
Virgin Australia	30	28	93.3	30	22	73.3
All Airlines	61	55	90.2	61	46	75.4
Relates to services to and from Sydney only.						
Ballina						
Jetstar	62	50	80.6	62	51	82.3
Regional Express	20	12	60.0	27	16	59.3
Virgin Australia	31	26	83.9	31	27	87.1
All Airlines	113	88	77.9	120	94	78.3
Relates to services to and from Sydney only.						
Brisbane						
Jetstar	698	528	75.6	699	518	74.1
Qantas	1 712	1 339	78.2	1 710	1 184	69.2
QantasLink	648	468	72.2	648	391	60.3
Tiger Airways	93	72	77.4	93	72	77.4
Virgin Australia	1 890	1 541	81.5	1 877	1 390	74.1
Virgin Australia - ATR/F100 Operations	403	343	85.1	394	301	76.4
All Airlines	5 444	4 291	78.8	5 421	3 856	71.1
Relates to services to and from Adelaide, Cairns, Canberra, Darwin, Emerald, Gladstone, Hamilton Island, Mackay, Melbourne, Newcastle, Perth, Proserpine, Rockhampton, Sydney and Townsville.						

Airport	Departures			Arrivals		
	Sectors	On Time		Sectors	On Time	
	Flown	No.	%	Flown	No.	%
Broome						
Qantas	52	28	53.8	52	38	73.1
QantasLink	32	27	84.4	32	27	84.4
Skywest	23	17	73.9	22	18	81.8
Virgin Australia	62	48	77.4	62	52	83.9
All Airlines	169	120	71.0	168	135	80.4
Relates to services to and from Perth only.						
Cairns						
Jetstar	309	251	81.2	309	243	78.6
Qantas	261	201	77.0	262	200	76.3
QantasLink	185	136	73.5	179	88	49.2
Tiger Airways	31	14	45.2	31	17	54.8
Virgin Australia	280	227	81.1	280	209	74.6
Virgin Australia - ATR/F100 Operations	52	27	51.9	52	30	57.7
All Airlines	1 118	856	76.6	1 113	787	70.7
Relates to services to and from Brisbane, Melbourne, Sydney and Townsville.						
Canberra						
Qantas	625	538	86.1	629	543	86.3
QantasLink	407	280	68.8	415	245	59.0
Virgin Australia	380	319	83.9	390	317	81.3
Virgin Australia - ATR/F100 Operations	157	129	82.2	159	127	79.9
All Airlines	1 569	1 266	80.7	1 593	1 232	77.3
Relates to services to and from Adelaide, Brisbane, Melbourne and Sydney.						
Coffs Harbour						
QantasLink	145	98	67.6	147	98	66.7
Virgin Australia	61	54	88.5	61	53	86.9
All Airlines	206	152	73.8	208	151	72.6
Relates to services to and from Sydney only.						
Darwin						
Qantas	138	88	63.8	139	103	74.1
Virgin Australia	120	85	70.8	120	76	63.3
All Airlines	258	173	67.1	259	179	69.1
Relates to services to and from Brisbane, Melbourne, Perth and Sydney.						
Dubbo						
QantasLink	111	70	63.1	111	76	68.5
Regional Express	157	128	81.5	159	124	78.0
All Airlines	268	198	73.9	270	200	74.1
Relates to services to and from Sydney only.						
Emerald						
QantasLink	191	125	65.4	192	135	70.3
Virgin Australia - ATR/F100 Operations	72	60	83.3	73	60	82.2
All Airlines	263	185	70.3	265	195	73.6
Relates to services to and from Brisbane only.						

Airport	Departures			Arrivals		
	Sectors Flown	On Time		Sectors Flown	On Time	
		No.	%		No.	%
Geraldton						
QantasLink	53	41	77.4	53	43	81.1
Skywest	82	57	69.5	81	60	74.1
All Airlines	135	98	72.6	134	103	76.9
Relates to services to and from Perth only.						
Gladstone						
QantasLink	178	108	60.7	156	105	67.3
Virgin Australia - ATR/F100 Operations	117	87	74.4	122	90	73.8
All Airlines	295	195	66.1	278	195	70.1
Relates to services to and from Brisbane only.						
Gold Coast						
Jetstar	598	452	75.6	598	446	74.6
Tiger Airways	115	76	66.1	116	83	71.6
Virgin Australia	597	512	85.8	602	504	83.7
All Airlines	1 310	1 040	79.4	1 316	1 033	78.5
Relates to services to and from Adelaide, Melbourne and Sydney.						
Hamilton Island						
Jetstar	44	29	65.9	45	30	66.7
Virgin Australia	57	35	61.4	61	43	70.5
All Airlines	101	64	63.4	106	73	68.9
Relates to services to and from Brisbane and Sydney.						
Hobart						
Jetstar	210	167	79.5	211	169	80.1
Qantas	92	77	83.7	92	63	68.5
Virgin Australia	198	146	73.7	197	144	73.1
All Airlines	500	390	78.0	500	376	75.2
Relates to services to and from Melbourne and Sydney.						
Kalgoorlie						
Qantas	72	54	75.0	71	54	76.1
QantasLink	20	13	65.0	18	12	66.7
Skywest	57	40	70.2	56	39	69.6
All Airlines	149	107	71.8	145	105	72.4
Relates to services to and from Perth only.						
Karratha						
Qantas	232	198	85.3	233	206	88.4
QantasLink	19	15	78.9	20	18	90.0
Virgin Australia	52	48	92.3	52	45	86.5
All Airlines	303	261	86.1	305	269	88.2
Relates to services to and from Perth only.						
Launceston						
Jetstar	131	101	77.1	130	101	77.7
QantasLink	73	59	80.8	73	48	65.8
Virgin Australia	167	138	82.6	168	139	82.7
All Airlines	371	298	80.3	371	288	77.6
Relates to services to and from Melbourne and Sydney.						

Airport	Departures			Arrivals		
	Sectors Flown	On Time		Sectors Flown	On Time	
		No.	%		No.	%
Mackay						
Jetstar	105	80	76.2	105	83	79.0
QantasLink	50	29	58.0	50	27	54.0
Virgin Australia	169	120	71.0	171	114	66.7
All Airlines	324	229	70.7	326	224	68.7
Relates to services to and from Brisbane only.						
Melbourne						
Jetstar	1 272	988	77.7	1 269	973	76.7
Qantas	2 250	1 922	85.4	2 242	1 868	83.3
QantasLink	212	156	73.6	211	156	73.9
Regional Express	90	80	88.9	90	77	85.6
Tiger Airways	616	518	84.1	615	440	71.5
Virgin Australia	2 384	2 019	84.7	2 379	1 959	82.3
All Airlines	6 824	5 683	83.3	6 806	5 473	80.4
Relates to services to and from Adelaide, Brisbane, Cairns, Canberra, Darwin, Gold Coast, Hobart, Launceston, Mildura, Newcastle, Perth, Sunshine Coast and Sydney.						
Mildura						
QantasLink	89	72	80.9	89	60	67.4
Regional Express	90	81	90.0	90	75	83.3
Virgin Australia	31	22	71.0	31	22	71.0
All Airlines	210	175	83.3	210	157	74.8
Relates to services to and from Melbourne only.						
Newcastle						
Jetstar	228	191	83.8	226	184	81.4
QantasLink	66	39	59.1	68	45	66.2
Virgin Australia	30	26	86.7	30	27	90.0
Virgin Australia - ATR/F100 Operations	62	46	74.2	62	48	77.4
All Airlines	386	302	78.2	386	304	78.8
Relates to services to and from Brisbane and Melbourne.						
Newman						
Qantas	116	100	86.2	116	100	86.2
QantasLink	18	13	72.2	18	13	72.2
Virgin Australia	30	28	93.3	30	28	93.3
All Airlines	164	141	86.0	164	141	86.0
Relates to services to and from Perth only.						
Perth						
Jetstar	205	146	71.2	203	167	82.3
Qantas	1 320	1 068	80.9	1 324	1 090	82.3
QantasLink	168	131	78.0	170	126	74.1
Skywest	159	116	73.0	162	103	63.6
Tiger Airways	93	70	75.3	92	78	84.8
Virgin Australia	665	566	85.1	669	540	80.7
All Airlines	2 610	2 097	80.3	2 620	2 104	80.3
Relates to services to and from Adelaide, Brisbane, Broome, Darwin, Geraldton, Kalgoorlie, Karratha, Melbourne, Newman, Port Hedland and Sydney.						

Airport	Departures			Arrivals		
	Sectors		On Time No. %	Sectors		On Time No. %
	Flown			Flown		
Port Hedland						
Qantas	134	116	86.6	135	119	88.1
QantasLink	28	23	82.1	27	25	92.6
Virgin Australia	61	54	88.5	60	54	90.0
All Airlines	223	193	86.5	222	198	89.2
Relates to services to and from Perth only.						
Port Lincoln						
QantasLink	98	75	76.5	99	74	74.7
Regional Express	202	175	86.6	204	181	88.7
All Airlines	300	250	83.3	303	255	84.2
Relates to services to and from Adelaide only.						
Port Macquarie						
QantasLink	134	99	73.9	134	94	70.1
Virgin Australia - ATR/F100 Operations	61	52	85.2	62	44	71.0
All Airlines	195	151	77.4	196	138	70.4
Relates to services to and from Sydney only.						
Proserpine						
Jetstar	31	27	87.1	31	26	83.9
Virgin Australia	31	23	74.2	31	25	80.6
Virgin Australia - ATR/F100 Operations	22	11	50.0	22	9	40.9
All Airlines	84	61	72.6	84	60	71.4
Relates to services to and from Brisbane only.						
Rockhampton						
QantasLink	142	101	71.1	161	118	73.3
Virgin Australia	84	66	78.6	85	68	80.0
Virgin Australia - ATR/F100 Operations	94	84	89.4	97	81	83.5
All Airlines	320	251	78.4	343	267	77.8
Relates to services to and from Brisbane only.						
Sunshine Coast						
Jetstar	179	123	68.7	180	139	77.2
Virgin Australia	62	44	71.0	62	50	80.6
All Airlines	241	167	69.3	242	189	78.1
Relates to services to and from Melbourne and Sydney.						
Sydney						
Jetstar	1 244	939	75.5	1 249	910	72.9
Qantas	2 413	2 050	85.0	2 410	1 979	82.1
QantasLink	988	647	65.5	976	637	65.3
Regional Express	414	313	75.6	405	324	80.0
Tiger Airways	345	279	80.9	346	282	81.5
Virgin Australia	2 589	2 059	79.5	2 577	2 065	80.1
Virgin Australia - ATR/F100 Operations	221	180	81.4	218	183	83.9
All Airlines	8 214	6 467	78.7	8 181	6 380	78.0
Relates to services to and from Adelaide, Albury, Ayers Rock, Ballina, Brisbane, Cairns, Canberra, Coffs Harbour, Darwin, Dubbo, Gold Coast, Hamilton Island, Hobart, Launceston, Melbourne, Perth, Port Macquarie, Sunshine Coast, Townsville and Wagga Wagga.						

<i>Airport</i>	<i>Departures</i>			<i>Arrivals</i>		
	<i>Sectors</i>	<i>On Time</i>		<i>Sectors</i>	<i>On Time</i>	
	<i>Flown</i>	<i>No.</i>	<i>%</i>	<i>Flown</i>	<i>No.</i>	<i>%</i>
Townsville						
Jetstar	58	37	63.8	58	38	65.5
Qantas	151	106	70.2	151	113	74.8
QantasLink	179	105	58.7	185	119	64.3
Virgin Australia	205	145	70.7	206	150	72.8
Virgin Australia - ATR/F100 Operations	25	21	84.0	25	17	68.0
All Airlines	618	414	67.0	625	437	69.9
Relates to services to and from Brisbane, Cairns and Sydney.						
Wagga Wagga						
QantasLink	115	73	63.5	116	67	57.8
Regional Express	119	110	92.4	120	103	85.8
All Airlines	234	183	78.2	236	170	72.0
Relates to services to and from Sydney only.						

Definitions

On time departure A flight departure is counted as "on time" if it departs the gate within 15 minutes of the scheduled departure time shown in the carriers' schedule.

On time arrival A flight arrival is counted as "on time" if it arrived at the gate within 15 minutes of the scheduled arrival time shown in the carriers' schedule.
Neither diverted nor cancelled flights count as on time.

Cancellation A flight removed from service within 7 days of scheduled departure is regarded as a cancellation.

On time departure percentage The percentage of on time departures is measured against the number of departures *operated* on any particular sector.

On time arrival percentage The percentage of on time arrivals is measured against the number of arrivals *operated* on any particular sector.

Cancellation percentage The percentage of cancellations is measured against the number of services *scheduled* on any particular sector.
