



Australian Government

Department of Infrastructure, Transport,  
Regional Development and Local Government  
Bureau of Infrastructure, Transport and Regional Economics



bitre

## AVIATION STATISTICS

### Airline On Time Performance

July 2009—OTP 76

© Commonwealth of Australia 2009

ISSN 1832-0759

This work is copyright and the data contained in this publication should not be reproduced or used in any form without acknowledgement.

#### Enquiries

Bureau of Infrastructure, Transport and Regional Economics  
GPO Box 501  
Canberra ACT 2601

Telephone: 02 6274 7790

Facsimile: 02 6274 7727

Website: [www.bitre.gov.au](http://www.bitre.gov.au)

Email: [avstats@infrastructure.gov.au](mailto:avstats@infrastructure.gov.au)

This publication, including a spreadsheet of the time-series data, can be downloaded from the BITRE website: <http://www.bitre.gov.au/info.aspx?ResourceId=214&NodeId=104>.

#### Disclaimers

BITRE seeks to publish its work to the highest professional standards. However, it cannot accept responsibility for any consequences arising from the use of information herein. Readers should rely on their own skill and judgment in applying any information or analysis to particular issues or circumstances.

# Foreword

The Bureau of Infrastructure, Transport and Regional Economics (BITRE) monitors the punctuality and reliability of major domestic airlines operating between Australian airports. The purpose of this is to allow for evaluation of overall industry and individual airline performance, so that consumers of air travel can make informed decisions.

The following domestic airlines report this data monthly to the BITRE: Jetstar, Qantas, QantasLink, Regional Express, Skywest Airlines, Tiger Airways, and Virgin Blue. Data has been gathered since November 2003, although some airlines commenced reporting since then, including Jetstar which first reported in May 2004, MacAir in July 2005 and Tiger Airways in April 2008. MacAir ceased operations in February 2009 and data was not received for December 2008 onwards.

Information presented in this report is for Australian domestic routes for which the passenger load averaged 8000 or more passengers per month over the previous six months, *and* where two or more airlines operated in competition on those routes. There were 53 routes that met this definition in July 2009. Over time, routes which meet these criteria change as airline networks and traffic levels vary.

Participating airlines report their overall monthly network performance where this is possible.

Total industry figures encompass all services operated by reporting airlines only. These airlines collectively carried over 95 per cent of total domestic passengers (regular public transport only) in 2008.

The method of capturing on time performance varies between airlines utilising different recording systems. Jetstar and Qantas jet aircraft use Aircraft Communication Addressing and Reporting System (ACARS) to electronically measure on time performance. Regional Express, Skywest, Tiger Airways, Virgin Blue and the Qantas non-jet fleet record on time performance manually using records from pilots, gate agents and/or ground crews.

After initial data is collected, aggregate reports are audited internally by participating airlines prior to publication.

Reports and detailed time series data in Microsoft Excel spreadsheet format are available from the BITRE website at: <http://www.bitre.gov.au/info.aspx?ResourceId=214&NodeId=104>.



# Contents

	Page
Industry performance .....	1
Individual routes .....	9
Airports .....	21
Definitions .....	27



## Industry performance

For July 2009, on time performance over all routes operated by participating airlines (Jetstar, Qantas, QantasLink, Regional Express, Skywest Airlines, Tiger Airways and Virgin Blue) averaged 84.5 per cent for on time departures, and 83.9 per cent for on time arrivals. Cancellations represented 0.8 per cent of all scheduled flights. The equivalent figures for July 2008 were 72.7 per cent for departures, 70.2 per cent for arrivals and 3.0 per cent for cancellations.

The long term average performance for all routes since reporting commenced in November 2003 is 84.9 per cent for on time departures and 83.7 per cent for on time arrivals. Cancellations average 1.2 per cent of all scheduled flights.

Of the major domestic airlines, Qantas achieved the highest level of on time departures for July 2009 at 86.2 per cent, followed by Virgin Blue at 85.9 per cent, Tiger Airways at 77.0 per cent and Jetstar at 75.9 per cent. The regional airlines were led by Regional Express at 87.2 per cent, followed by QantasLink at 86.7 per cent and Skywest at 73.1 per cent.

Virgin Blue achieved the highest on time arrivals among the major domestic airlines at 85.8 per cent, followed by Qantas at 85.7 per cent, Tiger Airways at 79.3 per cent and Jetstar at 78.8 per cent. QantasLink was the best performing regional airline for on time arrivals at 84.3 per cent, followed by Regional Express at 84.0 per cent and Skywest at 73.2 per cent.

Skywest had the highest percentage of cancellations for July 2009 at 1.9 per cent, while Regional Express had the lowest at 0.3 per cent.

Of the 53 routes which met the criteria for on time performance reporting in July 2009, the Sydney-Hervey Bay route had the highest percentage of on time departures (95.9 per cent), while the Melbourne-Darwin route had the lowest (58.9 per cent). On time arrivals were highest on the Brisbane-Hamilton Island route (95.1 per cent) and lowest on the Melbourne-Darwin route (50.0 per cent).

Cancellations were highest on the Canberra-Sydney route at 3.4 per cent, followed by Sydney-Canberra at 3.2 per cent, Kalgoorlie-Perth at 2.5 per cent and both Sydney-Melbourne and Melbourne-Sydney routes at 2.1 per cent.

Coffs Harbour Airport recorded the highest percentage of on time departures (91.4 per cent), while Broome Airport recorded the lowest (65.5 per cent). Hamilton Island Airport recorded the highest percentage of on time arrivals (95.1 per cent), while Perth Airport recorded the lowest (69.7 per cent).

Table 1 On time performance for July 2009 — Total Industry

	<i>Sectors</i>		<i>Departures On Time</i>		<i>Arrivals On Time</i>		<i>Cancellations</i>	
	<i>Scheduled</i>	<i>Flown</i>	<i>No.</i>	<i>%</i>	<i>No.</i>	<i>%</i>	<i>No.</i>	<i>%</i>
Jetstar	5 317	5 280	4 010	75.9	4 159	78.8	37	0.7
Qantas	10 135	10 079	8 692	86.2	8 633	85.7	56	0.6
QantasLink	7 904	7 830	6 792	86.7	6 599	84.3	74	0.9
Regional Express	5 841	5 824	5 076	87.2	4 895	84.0	17	0.3
Skywest	1 132	1 111	812	73.1	813	73.2	21	1.9
Tiger Airways	1 140	1 134	873	77.0	899	79.3	6	0.5
Virgin Blue	11 512	11 390	9 780	85.9	9 770	85.8	122	1.1
All Airlines	42 981	42 648	36 035	84.5	35 768	83.9	333	0.8

1. Total airline network data (including routes not shown in this report).

Table 2 Top ten routes for on time performance for July 2009 (participating airlines only)

<i>Departures</i>		<i>Arrivals</i>	
<i>Route</i>	<i>On Time (%)</i>	<i>Route</i>	<i>On Time (%)</i>
Sydney-Hervey Bay	95.9	Brisbane-Hamilton Island	95.1
Adelaide-Alice Springs	95.5	Sydney-Townsville	94.6
Canberra-Brisbane	93.5	Melbourne-Brisbane	93.7
Brisbane-Melbourne	92.4	Cairns-Brisbane	93.5
Adelaide-Perth	92.3	Perth-Newman	93.0
Brisbane-Hamilton Island	91.8	Adelaide-Gold Coast	92.5
Brisbane-Canberra	91.7	Brisbane-Canberra	92.4
Perth-Darwin	91.5	Canberra-Brisbane	92.4
Perth-Newman	91.5	Sydney-Hervey Bay	91.8
Coffs Harbour-Sydney	91.4	Brisbane-Cairns	91.8

Table 3 Top ten airports for on time performance for July 2009 (participating airlines and reported routes only)

<i>Departures</i>		<i>Arrivals</i>	
<i>Airport</i>	<i>On Time (%)</i>	<i>Airport</i>	<i>On Time (%)</i>
Coffs Harbour	91.4	Hamilton Island	95.1
Newman	90.6	Newman	93.0
Mildura	90.5	Hervey Bay	91.8
Hervey Bay	89.8	Brisbane	89.0
Canberra	89.5	Townsville	88.7
Hamilton Island	88.7	Maroochydore	88.1
Newcastle	87.8	Karratha	88.1
Townsville	87.7	Coffs Harbour	87.2
Kalgoorlie	87.0	Newcastle	87.1
Brisbane	86.8	Proserpine	87.1

## Total industry on time performance

Figure 1 On time performance (by month from July 2006)—Total Industry

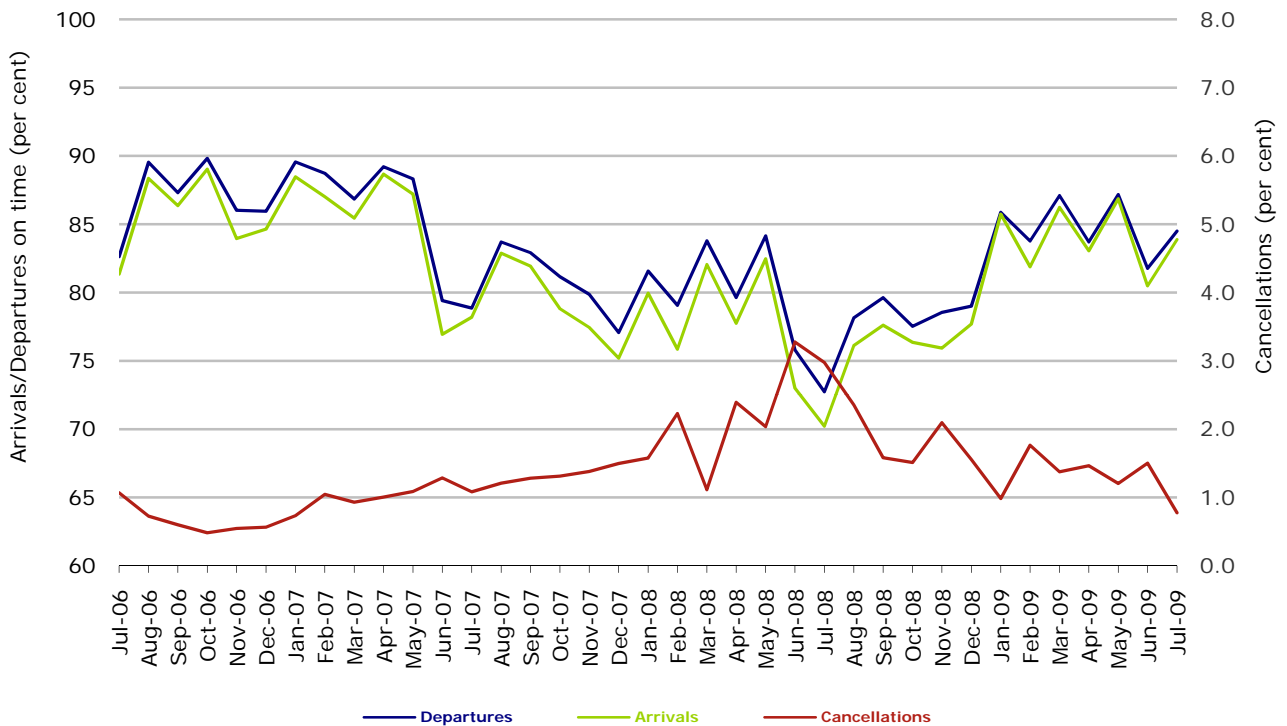
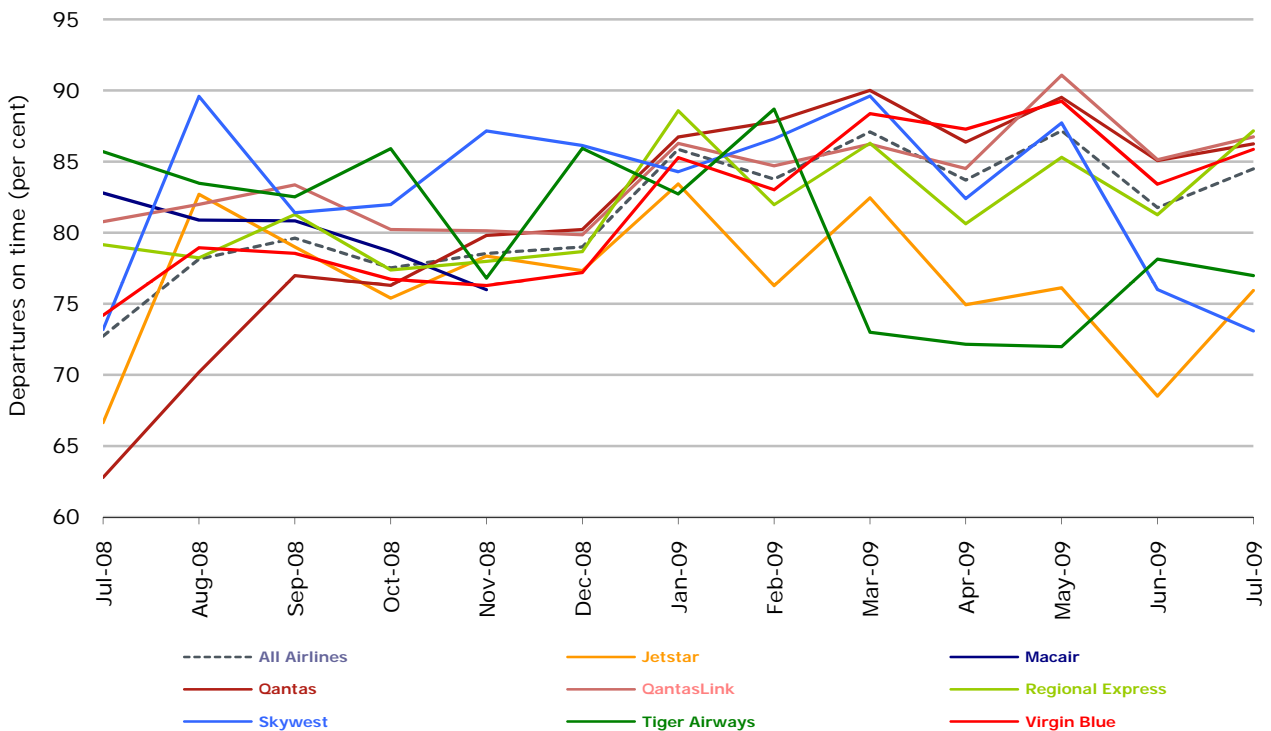
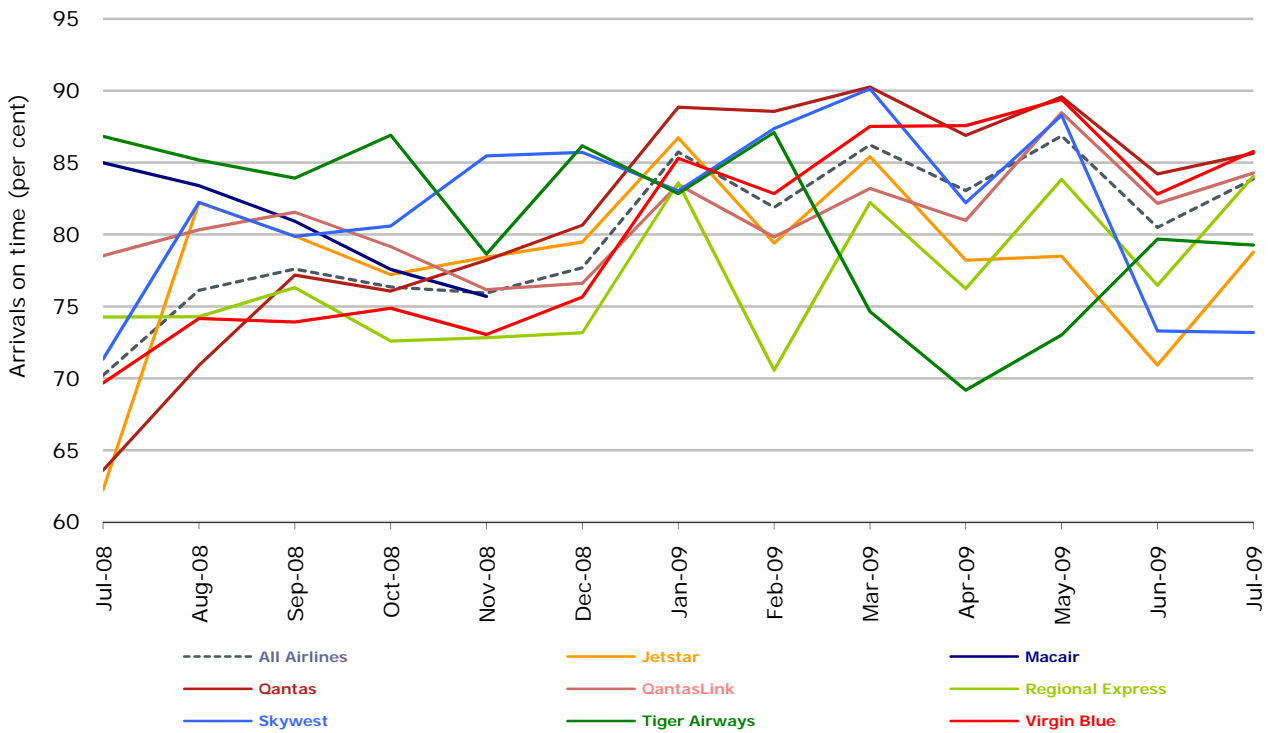


Figure 2 Departures on time (by month from July 2008)



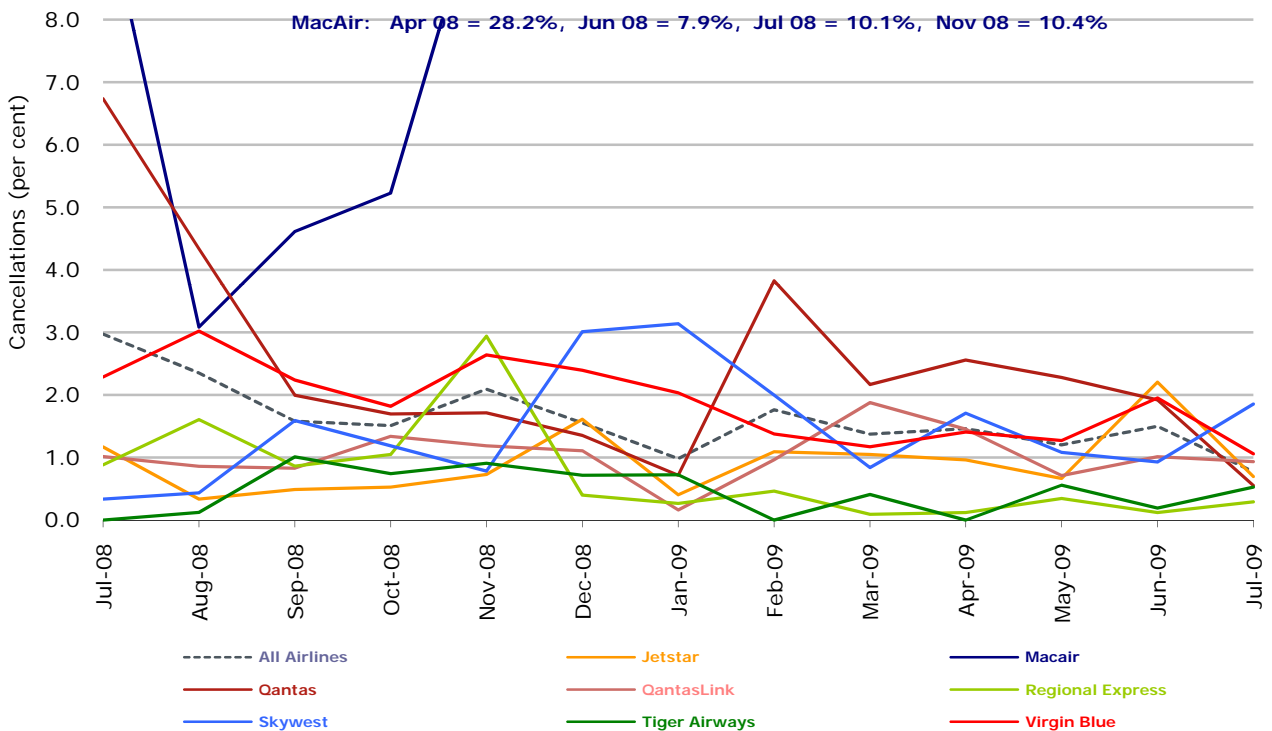
No data received from MacAir for December 2008 and onwards. Operations ceased in February 2009.

Figure 3 Arrivals on time (by month from July 2008)



No data received from MacAir for December 2008 and onwards. Operations ceased in February 2009.

Figure 4 Cancellations (by month from July 2008)



No data received from MacAir for December 2008 and onwards. Operations ceased in February 2009.

## Major domestic airlines on time performance

Figure 5 On time performance (by month from July 2006)—Jetstar

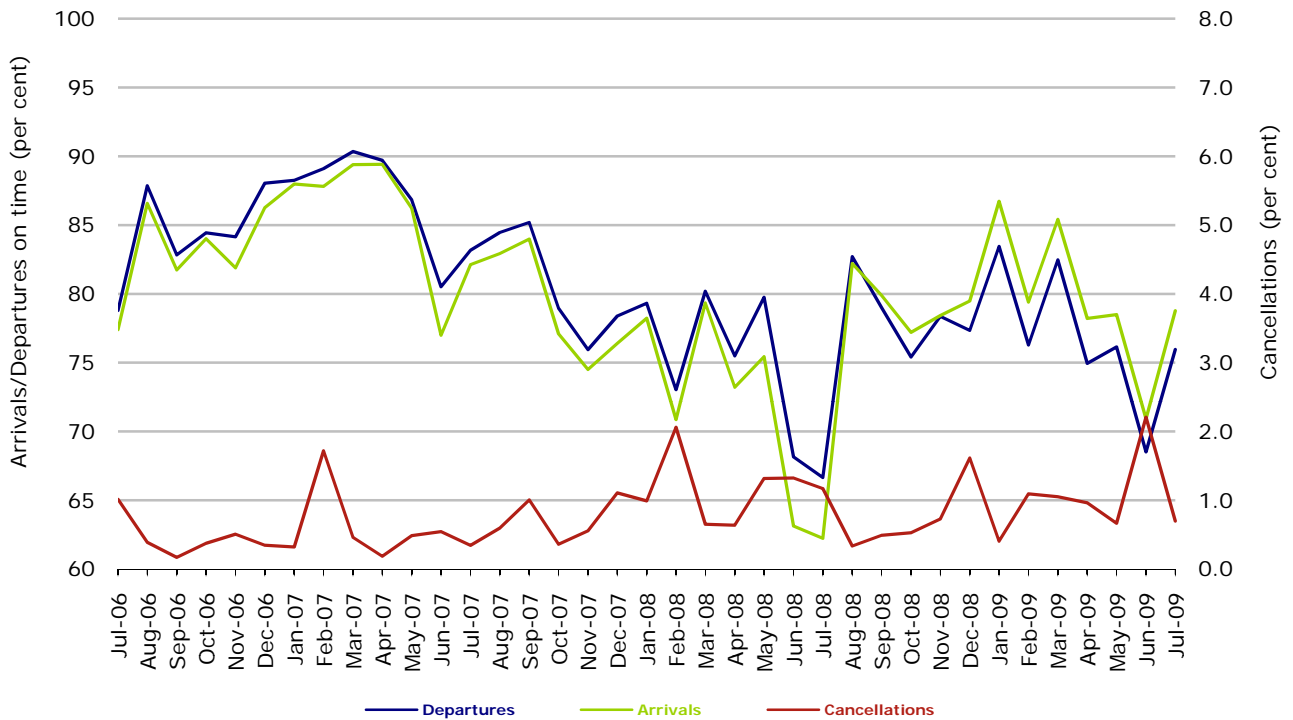


Figure 6 On time performance (by month from July 2006)—Qantas

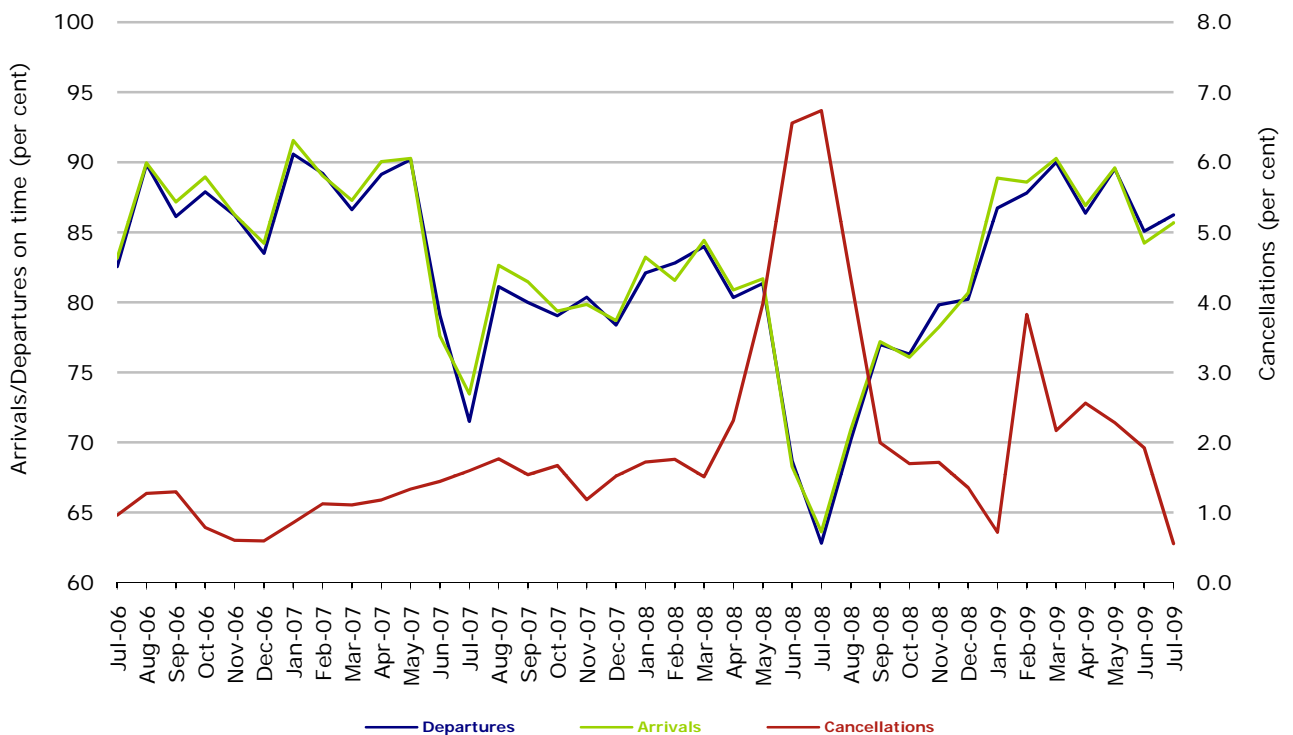
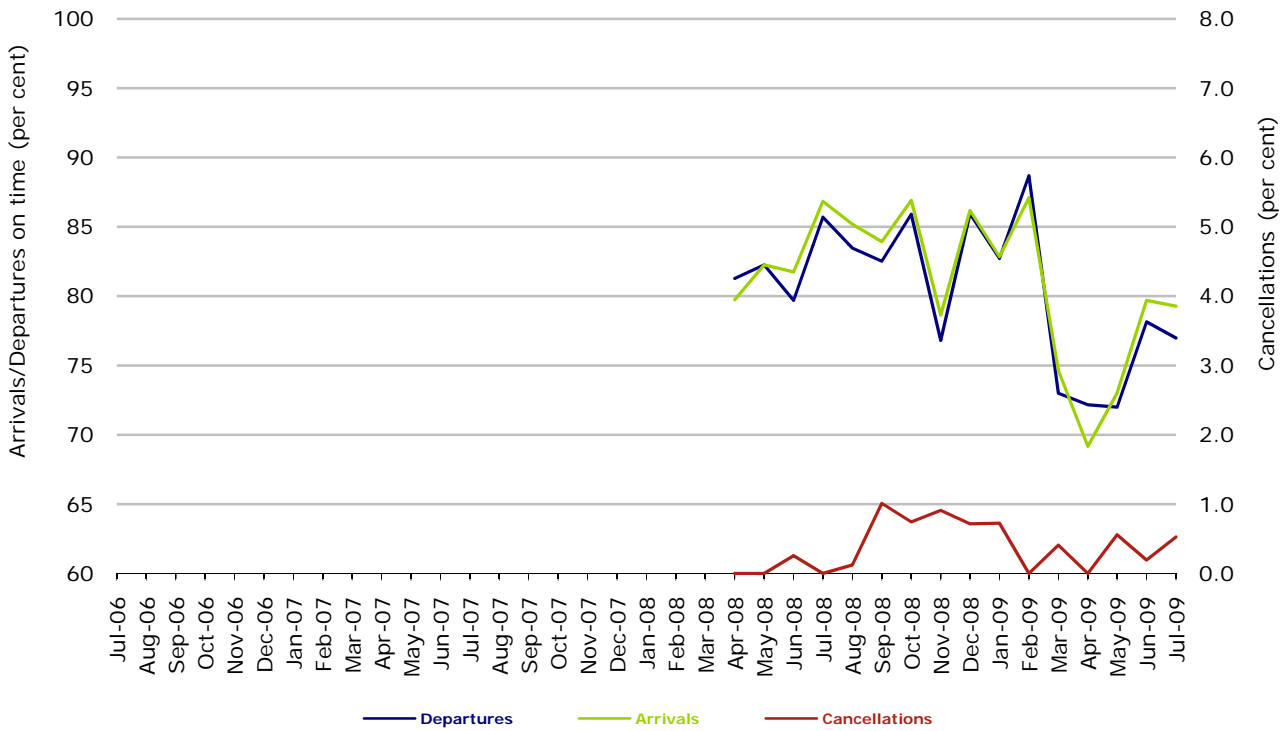
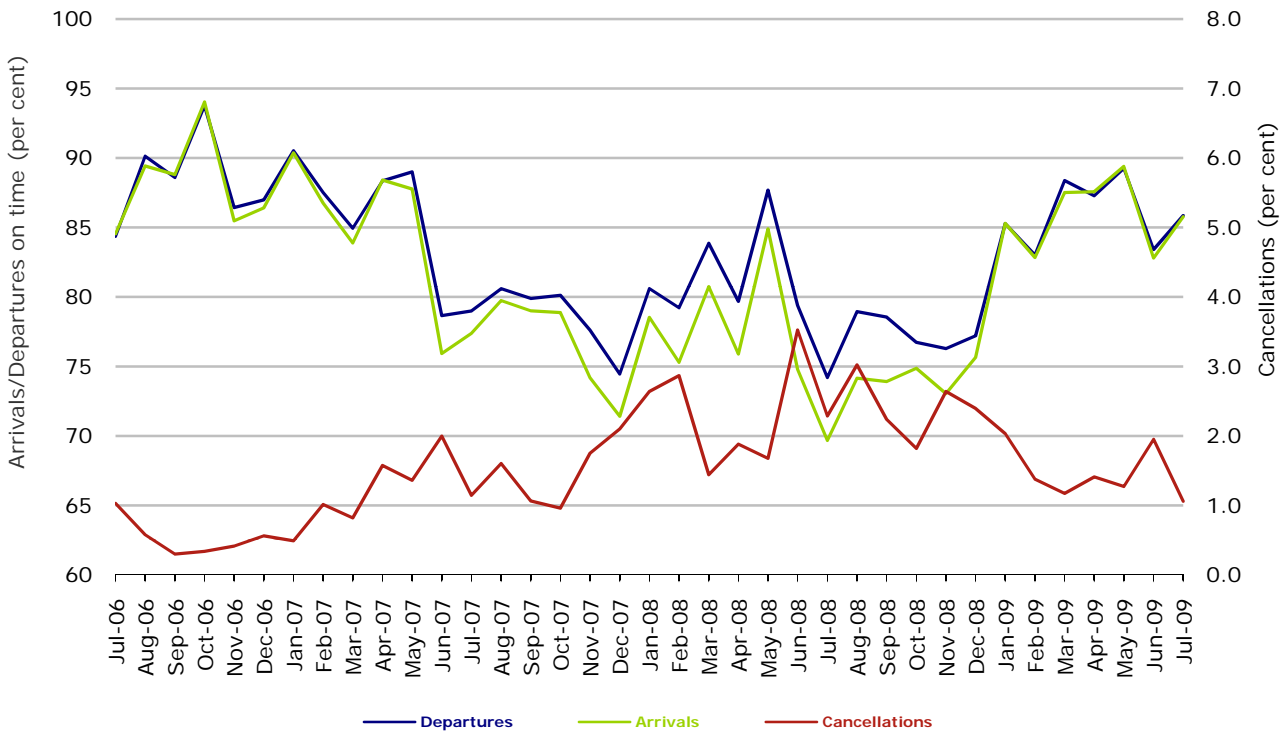


Figure 7 On time performance (by month from July 2006)—Tiger Airways



Tiger Airways began reporting in April 2008.

Figure 8 On time performance (by month from July 2006)—Virgin Blue



## Major regional airlines on time performance

Figure 9 On time performance (by month from July 2006)—QantasLink

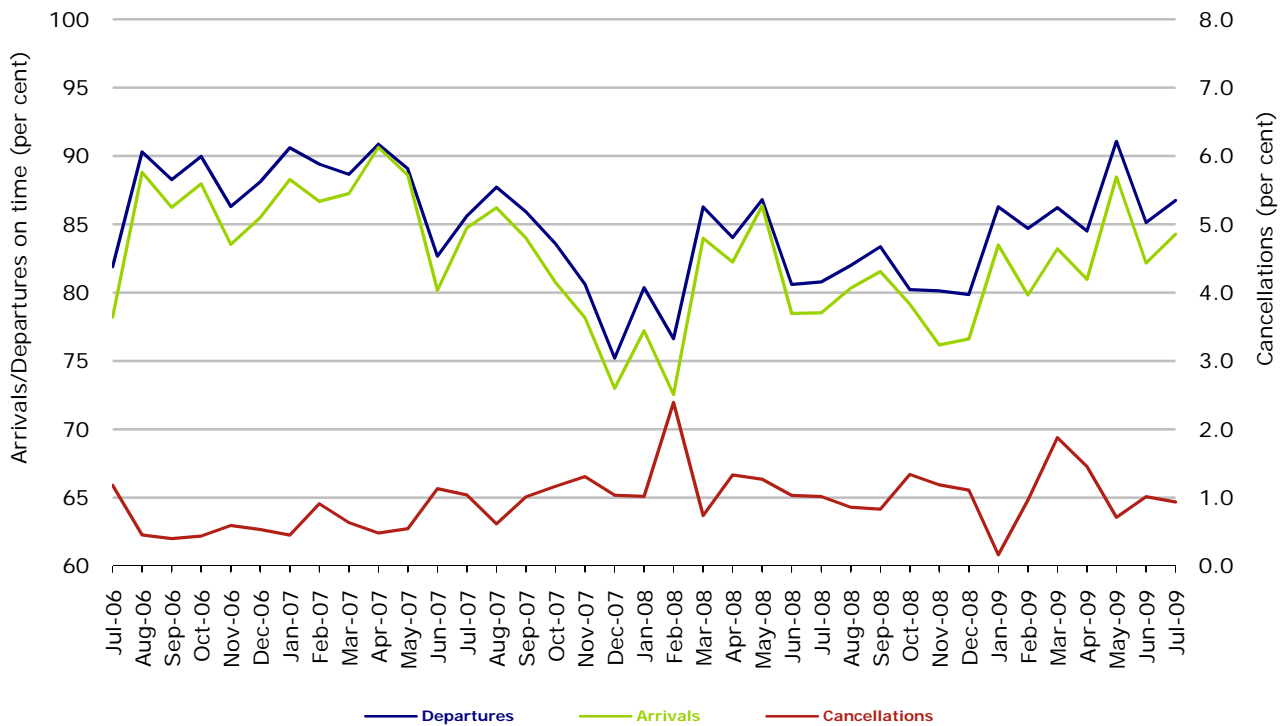


Figure 10 On time performance (by month from July 2006)—Regional Express

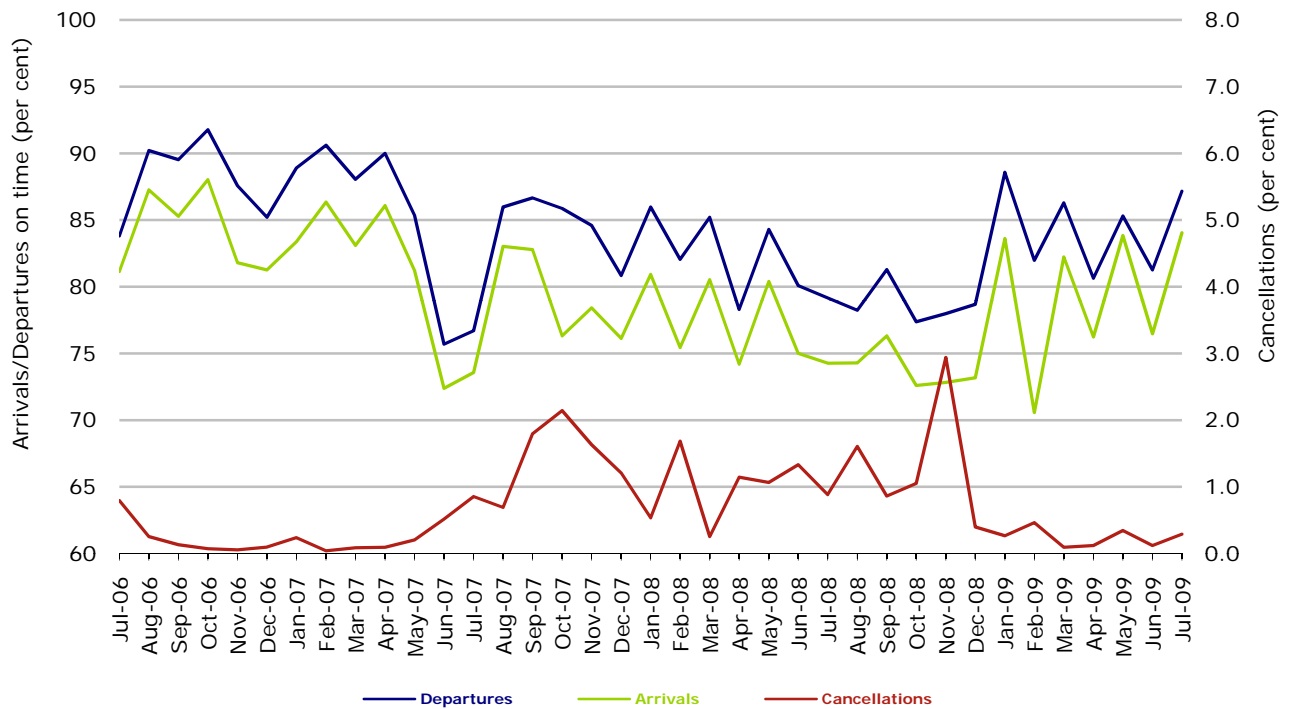
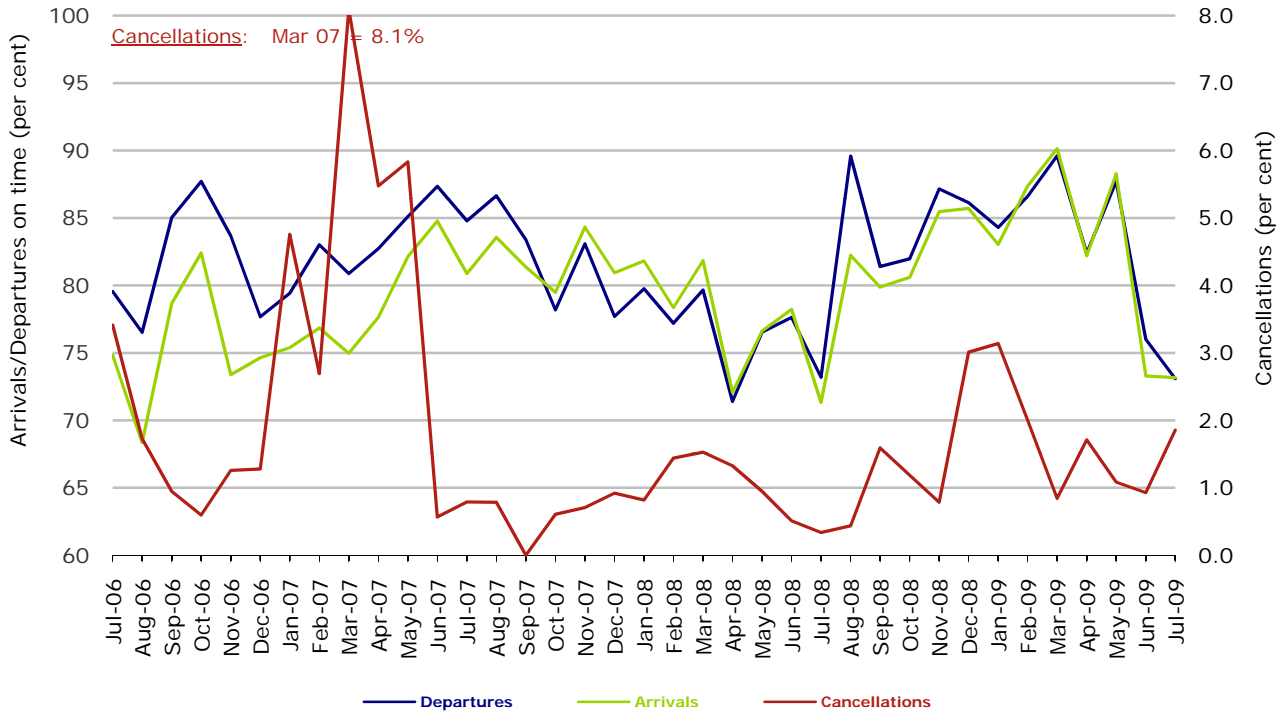


Figure 11 On time performance (by month from July 2006)—Skywest



## Individual routes

On time performance is reported for all routes where the passenger load averages over 8000 passengers per month over the previous six months, and where two or more airlines operate in competition on those routes. There are now 53 routes which meet this definition. Over time, however, routes which meet this definition may change as airline networks and traffic levels vary.

	<i>Sectors</i>		<i>Departures On Time</i>		<i>Arrivals On Time</i>		<i>Cancellations</i>	
	<i>Sched.</i>	<i>Flown</i>	<i>No.</i>	<i>%</i>	<i>No.</i>	<i>%</i>	<i>No.</i>	<i>%</i>
<b>Adelaide-Alice Springs</b>								
Qantas	31	31	30	96.8	28	90.3	0	0.0
Tiger Airways	13	13	12	92.3	12	92.3	0	0.0
All Airlines	44	44	42	95.5	40	90.9	0	0.0
<b>Adelaide-Brisbane</b>								
Jetstar	31	31	17	54.8	26	83.9	0	0.0
Qantas	90	90	84	93.3	86	95.6	0	0.0
Virgin Blue	93	92	75	81.5	81	88.0	1	1.1
All Airlines	214	213	176	82.6	193	90.6	1	0.5
<b>Adelaide-Canberra</b>								
Qantas	50	50	42	84.0	41	82.0	0	0.0
Tiger Airways	18	18	11	61.1	13	72.2	0	0.0
Virgin Blue	31	31	27	87.1	28	90.3	0	0.0
All Airlines	99	99	80	80.8	82	82.8	0	0.0
<b>Adelaide-Gold Coast</b>								
Jetstar	31	31	22	71.0	26	83.9	0	0.0
Tiger Airways	31	31	28	90.3	29	93.5	0	0.0
Virgin Blue	31	31	30	96.8	31	100.0	0	0.0
All Airlines	93	93	80	86.0	86	92.5	0	0.0
<b>Adelaide-Melbourne</b>								
Jetstar	48	48	20	41.7	22	45.8	0	0.0
Qantas	323	323	273	84.5	274	84.8	0	0.0
Tiger Airways	54	54	37	68.5	37	68.5	0	0.0
Virgin Blue	240	238	213	89.5	218	91.6	2	0.8
All Airlines	665	663	543	81.9	551	83.1	2	0.3
<b>Adelaide-Perth</b>								
Jetstar	31	31	25	80.6	18	58.1	0	0.0
Qantas	119	119	110	92.4	99	83.2	0	0.0
Tiger Airways	31	31	30	96.8	30	96.8	0	0.0
Virgin Blue	67	67	64	95.5	46	68.7	0	0.0
All Airlines	248	248	229	92.3	193	77.8	0	0.0
<b>Adelaide-Sydney</b>								
Jetstar	31	31	26	83.9	29	93.5	0	0.0
Qantas	290	290	261	90.0	262	90.3	0	0.0
Virgin Blue	147	147	111	75.5	126	85.7	0	0.0
All Airlines	468	468	398	85.0	417	89.1	0	0.0

	<i>Sectors</i>		<i>Departures On Time</i>		<i>Arrivals On Time</i>		<i>Cancellations</i>	
	<i>Sched.</i>	<i>Flown</i>	<i>No.</i>	<i>%</i>	<i>No.</i>	<i>%</i>	<i>No.</i>	<i>%</i>
<b>Albury-Sydney</b>								
QantasLink	115	115	86	74.8	89	77.4	0	0.0
Regional Express	120	120	103	85.8	101	84.2	0	0.0
Virgin Blue	62	60	49	81.7	52	86.7	2	3.2
All Airlines	297	295	238	80.7	242	82.0	2	0.7
<b>Alice Springs-Adelaide</b>								
Qantas	31	31	28	90.3	29	93.5	0	0.0
Tiger Airways	13	13	11	84.6	11	84.6	0	0.0
All Airlines	44	44	39	88.6	40	90.9	0	0.0
<b>Alice Springs-Melbourne</b>								
Qantas	31	31	21	67.7	26	83.9	0	0.0
Tiger Airways	13	13	10	76.9	11	84.6	0	0.0
All Airlines	44	44	31	70.5	37	84.1	0	0.0
<b>Ballina-Sydney</b>								
Jetstar	31	31	27	87.1	26	83.9	0	0.0
Regional Express	81	81	64	79.0	56	69.1	0	0.0
Virgin Blue	35	35	31	88.6	30	85.7	0	0.0
All Airlines	147	147	122	83.0	112	76.2	0	0.0
<b>Brisbane-Adelaide</b>								
Jetstar	31	31	25	80.6	22	71.0	0	0.0
Qantas	91	91	85	93.4	83	91.2	0	0.0
Virgin Blue	93	92	83	90.2	74	80.4	1	1.1
All Airlines	215	214	193	90.2	179	83.6	1	0.5
<b>Brisbane-Cairns</b>								
Jetstar	107	107	84	78.5	94	87.9	0	0.0
Qantas	124	124	112	90.3	116	93.5	0	0.0
Virgin Blue	124	124	113	91.1	116	93.5	0	0.0
All Airlines	355	355	309	87.0	326	91.8	0	0.0
<b>Brisbane-Canberra</b>								
Qantas	147	147	136	92.5	139	94.6	0	0.0
QantasLink	8	8	8	100.0	8	100.0	0	0.0
Virgin Blue	124	123	111	90.2	110	89.4	1	0.8
All Airlines	279	278	255	91.7	257	92.4	1	0.4
<b>Brisbane-Darwin</b>								
Jetstar	58	58	44	75.9	45	77.6	0	0.0
Qantas	31	31	27	87.1	26	83.9	0	0.0
Virgin Blue	31	31	28	90.3	29	93.5	0	0.0
All Airlines	120	120	99	82.5	100	83.3	0	0.0
<b>Brisbane-Hamilton Island</b>								
Jetstar	31	30	25	83.3	27	90.0	1	3.2
Virgin Blue	31	31	31	100.0	31	100.0	0	0.0
All Airlines	62	61	56	91.8	58	95.1	1	1.6

	<i>Sectors</i>		<i>Departures On Time</i>		<i>Arrivals On Time</i>		<i>Cancellations</i>	
	<i>Sched.</i>	<i>Flown</i>	<i>No.</i>	<i>%</i>	<i>No.</i>	<i>%</i>	<i>No.</i>	<i>%</i>
<b>Brisbane-Mackay</b>								
Jetstar	93	93	66	71.0	79	84.9	0	0.0
QantasLink	77	77	64	83.1	57	74.0	0	0.0
Virgin Blue	142	142	126	88.7	128	90.1	0	0.0
All Airlines	312	312	256	82.1	264	84.6	0	0.0
<b>Brisbane-Melbourne</b>								
Qantas	428	428	395	92.3	384	89.7	0	0.0
Virgin Blue	338	332	307	92.5	293	88.3	6	1.8
All Airlines	766	760	702	92.4	677	89.1	6	0.8
<b>Brisbane-Newcastle</b>								
Jetstar	126	124	103	83.1	108	87.1	2	1.6
QantasLink	73	73	69	94.5	58	79.5	0	0.0
Virgin Blue	49	49	49	100.0	49	100.0	0	0.0
All Airlines	248	246	221	89.8	215	87.4	2	0.8
<b>Brisbane-Perth</b>								
Qantas	123	123	106	86.2	69	56.1	0	0.0
Virgin Blue	62	62	51	82.3	45	72.6	0	0.0
All Airlines	185	185	157	84.9	114	61.6	0	0.0
<b>Brisbane-Proserpine</b>								
Jetstar	31	31	21	67.7	25	80.6	0	0.0
Virgin Blue	31	31	29	93.5	29	93.5	0	0.0
All Airlines	62	62	50	80.6	54	87.1	0	0.0
<b>Brisbane-Rockhampton</b>								
Jetstar	31	31	21	67.7	22	71.0	0	0.0
QantasLink	186	186	158	84.9	147	79.0	0	0.0
Virgin Blue	151	151	137	90.7	138	91.4	0	0.0
All Airlines	368	368	316	85.9	307	83.4	0	0.0
<b>Brisbane-Sydney</b>								
Jetstar	82	77	57	74.0	65	84.4	5	6.1
Qantas	584	579	501	86.5	508	87.7	5	0.9
Virgin Blue	547	540	444	82.2	407	75.4	7	1.3
All Airlines	1,213	1,196	1,002	83.8	980	81.9	17	1.4
<b>Brisbane-Townsville</b>								
Jetstar	61	61	45	73.8	52	85.2	0	0.0
Qantas	150	150	129	86.0	131	87.3	0	0.0
Virgin Blue	147	147	130	88.4	135	91.8	0	0.0
All Airlines	358	358	304	84.9	318	88.8	0	0.0
<b>Broome-Perth</b>								
Qantas	18	18	8	44.4	8	44.4	0	0.0
QantasLink	67	67	52	77.6	55	82.1	0	0.0
Skywest	27	27	9	33.3	6	22.2	0	0.0
Virgin Blue	63	62	45	72.6	46	74.2	1	1.6
All Airlines	175	174	114	65.5	115	66.1	1	0.6

	<i>Sectors</i>		<i>Departures On Time</i>		<i>Arrivals On Time</i>		<i>Cancellations</i>	
	<i>Sched.</i>	<i>Flown</i>	<i>No.</i>	<i>%</i>	<i>No.</i>	<i>%</i>	<i>No.</i>	<i>%</i>
<b>Cairns-Brisbane</b>								
Jetstar	107	107	89	83.2	96	89.7	0	0.0
Qantas	124	124	109	87.9	119	96.0	0	0.0
Virgin Blue	124	124	114	91.9	117	94.4	0	0.0
All Airlines	355	355	312	87.9	332	93.5	0	0.0
<b>Cairns-Melbourne</b>								
Jetstar	30	30	18	60.0	15	50.0	0	0.0
Qantas	31	31	25	80.6	25	80.6	0	0.0
Virgin Blue	47	47	37	78.7	38	80.9	0	0.0
All Airlines	108	108	80	74.1	78	72.2	0	0.0
<b>Cairns-Sydney</b>								
Jetstar	57	52	37	71.2	42	80.8	5	8.8
Qantas	110	110	94	85.5	95	86.4	0	0.0
Virgin Blue	80	80	70	87.5	70	87.5	0	0.0
All Airlines	247	242	201	83.1	207	85.5	5	2.0
<b>Cairns-Townsville</b>								
QantasLink	158	156	134	85.9	132	84.6	2	1.3
Virgin Blue	31	31	30	96.8	30	96.8	0	0.0
All Airlines	189	187	164	87.7	162	86.6	2	1.1
<b>Canberra-Adelaide</b>								
Qantas	54	54	50	92.6	50	92.6	0	0.0
Tiger Airways	18	18	14	77.8	15	83.3	0	0.0
Virgin Blue	31	31	27	87.1	27	87.1	0	0.0
All Airlines	103	103	91	88.3	92	89.3	0	0.0
<b>Canberra-Brisbane</b>								
Qantas	147	147	139	94.6	136	92.5	0	0.0
QantasLink	8	8	8	100.0	7	87.5	0	0.0
Virgin Blue	124	123	113	91.9	114	92.7	1	0.8
All Airlines	279	278	260	93.5	257	92.4	1	0.4
<b>Canberra-Melbourne</b>								
Qantas	272	267	239	89.5	230	86.1	5	1.8
QantasLink	39	38	34	89.5	31	81.6	1	2.6
Tiger Airways	31	31	26	83.9	26	83.9	0	0.0
Virgin Blue	182	180	162	90.0	159	88.3	2	1.1
All Airlines	524	516	461	89.3	446	86.4	8	1.5
<b>Canberra-Sydney</b>								
Qantas	184	182	160	87.9	158	86.8	2	1.1
QantasLink	411	396	339	85.6	345	87.1	15	3.6
Virgin Blue	233	222	208	93.7	204	91.9	11	4.7
All Airlines	828	800	707	88.4	707	88.4	28	3.4
<b>Coffs Harbour-Sydney</b>								
QantasLink	125	125	113	90.4	109	87.2	0	0.0
Virgin Blue	62	62	58	93.5	58	93.5	0	0.0
All Airlines	187	187	171	91.4	167	89.3	0	0.0

	<i>Sectors</i>		<i>Departures On Time</i>		<i>Arrivals On Time</i>		<i>Cancellations</i>	
	<i>Sched.</i>	<i>Flown</i>	<i>No.</i>	<i>%</i>	<i>No.</i>	<i>%</i>	<i>No.</i>	<i>%</i>
<b>Darwin-Brisbane</b>								
Jetstar	58	58	40	69.0	48	82.8	0	0.0
Qantas	31	31	16	51.6	21	67.7	0	0.0
Virgin Blue	31	31	27	87.1	27	87.1	0	0.0
All Airlines	120	120	83	69.2	96	80.0	0	0.0
<b>Darwin-Melbourne</b>								
Jetstar	62	62	45	72.6	45	72.6	0	0.0
Virgin Blue	27	27	25	92.6	18	66.7	0	0.0
All Airlines	89	89	70	78.7	63	70.8	0	0.0
<b>Darwin-Perth</b>								
Qantas	41	41	34	82.9	34	82.9	0	0.0
Virgin Blue	31	31	30	96.8	23	74.2	0	0.0
All Airlines	72	72	64	88.9	57	79.2	0	0.0
<b>Dubbo-Sydney</b>								
QantasLink	108	108	88	81.5	85	78.7	0	0.0
Regional Express	169	168	136	81.0	133	79.2	1	0.6
All Airlines	277	276	224	81.2	218	79.0	1	0.4
<b>Gold Coast-Adelaide</b>								
Jetstar	31	31	25	80.6	23	74.2	0	0.0
Tiger Airways	31	31	29	93.5	29	93.5	0	0.0
Virgin Blue	31	31	31	100.0	30	96.8	0	0.0
All Airlines	93	93	85	91.4	82	88.2	0	0.0
<b>Gold Coast-Melbourne</b>								
Jetstar	179	178	140	78.7	128	71.9	1	0.6
Tiger Airways	93	92	76	82.6	78	84.8	1	1.1
Virgin Blue	155	154	138	89.6	134	87.0	1	0.6
All Airlines	427	424	354	83.5	340	80.2	3	0.7
<b>Gold Coast-Newcastle</b>								
Jetstar	31	31	24	77.4	26	83.9	0	0.0
Virgin Blue	13	13	12	92.3	12	92.3	0	0.0
All Airlines	44	44	36	81.8	38	86.4	0	0.0
<b>Gold Coast-Sydney</b>								
Jetstar	272	272	210	77.2	198	72.8	0	0.0
Virgin Blue	359	357	324	90.8	321	89.9	2	0.6
All Airlines	631	629	534	84.9	519	82.5	2	0.3
<b>Hamilton Island-Brisbane</b>								
Jetstar	31	31	25	80.6	26	83.9	0	0.0
Virgin Blue	31	31	30	96.8	30	96.8	0	0.0
All Airlines	62	62	55	88.7	56	90.3	0	0.0
<b>Hervey Bay-Sydney</b>								
Jetstar	18	18	15	83.3	13	72.2	0	0.0
Virgin Blue	31	31	29	93.5	30	96.8	0	0.0
All Airlines	49	49	44	89.8	43	87.8	0	0.0

	<i>Sectors</i>		<i>Departures On Time</i>		<i>Arrivals On Time</i>		<i>Cancellations</i>	
	<i>Sched.</i>	<i>Flown</i>	<i>No.</i>	<i>%</i>	<i>No.</i>	<i>%</i>	<i>No.</i>	<i>%</i>
<b>Hobart-Melbourne</b>								
Jetstar	135	134	86	64.2	90	67.2	1	0.7
Qantas	62	62	61	98.4	60	96.8	0	0.0
Tiger Airways	31	31	25	80.6	26	83.9	0	0.0
Virgin Blue	124	124	109	87.9	108	87.1	0	0.0
All Airlines	352	351	281	80.1	284	80.9	1	0.3
<b>Hobart-Sydney</b>								
Jetstar	61	61	39	63.9	46	75.4	0	0.0
Qantas	31	31	28	90.3	29	93.5	0	0.0
Virgin Blue	62	62	55	88.7	56	90.3	0	0.0
All Airlines	154	154	122	79.2	131	85.1	0	0.0
<b>Kalgoorlie-Perth</b>								
Qantas	27	27	23	85.2	20	74.1	0	0.0
QantasLink	64	62	54	87.1	54	87.1	2	3.1
Skywest	27	26	23	88.5	19	73.1	1	3.7
All Airlines	118	115	100	87.0	93	80.9	3	2.5
<b>Karratha-Perth</b>								
Qantas	150	150	123	82.0	120	80.0	0	0.0
QantasLink	36	35	32	91.4	32	91.4	1	2.8
Skywest	22	22	18	81.8	13	59.1	0	0.0
Virgin Blue	54	53	44	83.0	41	77.4	1	1.9
All Airlines	262	260	217	83.5	206	79.2	2	0.8
<b>Launceston-Melbourne</b>								
Jetstar	93	93	71	76.3	79	84.9	0	0.0
QantasLink	60	59	45	76.3	45	76.3	1	1.7
Tiger Airways	31	31	20	64.5	20	64.5	0	0.0
Virgin Blue	124	122	114	93.4	112	91.8	2	1.6
All Airlines	308	305	250	82.0	256	83.9	3	1.0
<b>Launceston-Sydney</b>								
Jetstar	31	31	21	67.7	25	80.6	0	0.0
Virgin Blue	31	31	24	77.4	28	90.3	0	0.0
All Airlines	62	62	45	72.6	53	85.5	0	0.0
<b>Mackay-Brisbane</b>								
Jetstar	93	93	70	75.3	77	82.8	0	0.0
QantasLink	77	77	61	79.2	66	85.7	0	0.0
Virgin Blue	142	142	131	92.3	128	90.1	0	0.0
All Airlines	312	312	262	84.0	271	86.9	0	0.0
<b>Maroochydore-Melbourne</b>								
Jetstar	62	62	39	62.9	36	58.1	0	0.0
Tiger Airways	18	18	18	100.0	18	100.0	0	0.0
Virgin Blue	35	35	29	82.9	26	74.3	0	0.0
All Airlines	115	115	86	74.8	80	69.6	0	0.0

	<i>Sectors</i>		<i>Departures On Time</i>		<i>Arrivals On Time</i>		<i>Cancellations</i>	
	<i>Sched.</i>	<i>Flown</i>	<i>No.</i>	<i>%</i>	<i>No.</i>	<i>%</i>	<i>No.</i>	<i>%</i>
<b>Maroochydore-Sydney</b>								
Jetstar	90	89	83	93.3	82	92.1	1	1.1
Virgin Blue	39	38	31	81.6	33	86.8	1	2.6
All Airlines	129	127	114	89.8	115	90.6	2	1.6
<b>Melbourne-Adelaide</b>								
Jetstar	50	49	37	75.5	39	79.6	1	2.0
Qantas	323	323	290	89.8	274	84.8	0	0.0
Tiger Airways	54	54	37	68.5	41	75.9	0	0.0
Virgin Blue	240	238	205	86.1	201	84.5	2	0.8
All Airlines	667	664	569	85.7	555	83.6	3	0.4
<b>Melbourne-Alice Springs</b>								
Qantas	31	31	25	80.6	23	74.2	0	0.0
Tiger Airways	13	13	10	76.9	10	76.9	0	0.0
All Airlines	44	44	35	79.5	33	75.0	0	0.0
<b>Melbourne-Brisbane</b>								
Qantas	424	424	375	88.4	406	95.8	0	0.0
Virgin Blue	339	333	274	82.3	303	91.0	6	1.8
All Airlines	763	757	649	85.7	709	93.7	6	0.8
<b>Melbourne-Cairns</b>								
Jetstar	31	30	21	70.0	23	76.7	1	3.2
Qantas	31	31	28	90.3	26	83.9	0	0.0
Virgin Blue	47	47	41	87.2	42	89.4	0	0.0
All Airlines	109	108	90	83.3	91	84.3	1	0.9
<b>Melbourne-Canberra</b>								
Qantas	272	269	242	90.0	244	90.7	3	1.1
QantasLink	39	38	36	94.7	36	94.7	1	2.6
Tiger Airways	31	31	23	74.2	26	83.9	0	0.0
Virgin Blue	179	177	148	83.6	150	84.7	2	1.1
All Airlines	521	515	449	87.2	456	88.5	6	1.2
<b>Melbourne-Darwin</b>								
Jetstar	62	62	29	46.8	24	38.7	0	0.0
Virgin Blue	28	28	24	85.7	21	75.0	0	0.0
All Airlines	90	90	53	58.9	45	50.0	0	0.0
<b>Melbourne-Gold Coast</b>								
Jetstar	179	178	137	77.0	152	85.4	1	0.6
Tiger Airways	93	92	71	77.2	75	81.5	1	1.1
Virgin Blue	155	154	134	87.0	138	89.6	1	0.6
All Airlines	427	424	342	80.7	365	86.1	3	0.7
<b>Melbourne-Hobart</b>								
Jetstar	135	134	92	68.7	97	72.4	1	0.7
Qantas	62	62	54	87.1	52	83.9	0	0.0
Tiger Airways	31	31	24	77.4	25	80.6	0	0.0
Virgin Blue	124	124	105	84.7	106	85.5	0	0.0
All Airlines	352	351	275	78.3	280	79.8	1	0.3

	<i>Sectors</i>		<i>Departures On Time</i>		<i>Arrivals On Time</i>		<i>Cancellations</i>	
	<i>Sched.</i>	<i>Flown</i>	<i>No.</i>	<i>%</i>	<i>No.</i>	<i>%</i>	<i>No.</i>	<i>%</i>
<b>Melbourne-Launceston</b>								
Jetstar	93	93	76	81.7	76	81.7	0	0.0
QantasLink	62	59	46	78.0	43	72.9	3	4.8
Tiger Airways	31	31	22	71.0	21	67.7	0	0.0
Virgin Blue	124	123	114	92.7	109	88.6	1	0.8
All Airlines	310	306	258	84.3	249	81.4	4	1.3
<b>Melbourne-Maroochydore</b>								
Jetstar	62	62	42	67.7	47	75.8	0	0.0
Tiger Airways	18	18	17	94.4	18	100.0	0	0.0
Virgin Blue	35	35	31	88.6	32	91.4	0	0.0
All Airlines	115	115	90	78.3	97	84.3	0	0.0
<b>Melbourne-Mildura</b>								
QantasLink	103	103	91	88.3	77	74.8	0	0.0
Regional Express	95	95	86	90.5	83	87.4	0	0.0
Virgin Blue	31	31	29	93.5	27	87.1	0	0.0
All Airlines	229	229	206	90.0	187	81.7	0	0.0
<b>Melbourne-Newcastle</b>								
Jetstar	92	91	73	80.2	76	83.5	1	1.1
Virgin Blue	31	31	30	96.8	30	96.8	0	0.0
All Airlines	123	122	103	84.4	106	86.9	1	0.8
<b>Melbourne-Perth</b>								
Jetstar	61	60	37	61.7	25	41.7	1	1.6
Qantas	205	205	163	79.5	145	70.7	0	0.0
Tiger Airways	56	55	38	69.1	23	41.8	1	1.8
Virgin Blue	125	124	115	92.7	84	67.7	1	0.8
All Airlines	447	444	353	79.5	277	62.4	3	0.7
<b>Melbourne-Sydney</b>								
Jetstar	10	10	4	40.0	5	50.0	0	0.0
Qantas	889	872	753	86.4	761	87.3	17	1.9
Virgin Blue	737	719	537	74.7	592	82.3	18	2.4
All Airlines	1,636	1,601	1,294	80.8	1,358	84.8	35	2.1
<b>Mildura-Melbourne</b>								
QantasLink	103	103	92	89.3	91	88.3	0	0.0
Regional Express	97	97	89	91.8	88	90.7	0	0.0
Virgin Blue	31	31	28	90.3	29	93.5	0	0.0
All Airlines	231	231	209	90.5	208	90.0	0	0.0
<b>Newcastle-Brisbane</b>								
Jetstar	124	124	105	84.7	109	87.9	0	0.0
QantasLink	73	73	62	84.9	67	91.8	0	0.0
Virgin Blue	49	48	46	95.8	46	95.8	1	2.0
All Airlines	246	245	213	86.9	222	90.6	1	0.4

	<i>Sectors</i>		<i>Departures On Time</i>		<i>Arrivals On Time</i>		<i>Cancellations</i>	
	<i>Sched.</i>	<i>Flown</i>	<i>No.</i>	<i>%</i>	<i>No.</i>	<i>%</i>	<i>No.</i>	<i>%</i>
<b>Newcastle-Gold Coast</b>								
Jetstar	31	31	27	87.1	28	90.3	0	0.0
Virgin Blue	13	13	12	92.3	12	92.3	0	0.0
All Airlines	44	44	39	88.6	40	90.9	0	0.0
<b>Newcastle-Melbourne</b>								
Jetstar	91	91	78	85.7	77	84.6	0	0.0
Virgin Blue	31	31	31	100.0	30	96.8	0	0.0
All Airlines	122	122	109	89.3	107	87.7	0	0.0
<b>Newman-Perth</b>								
QantasLink	93	93	85	91.4	84	90.3	0	0.0
Virgin Blue	36	35	31	88.6	30	85.7	1	2.8
All Airlines	129	128	116	90.6	114	89.1	1	0.8
<b>Perth-Adelaide</b>								
Jetstar	31	31	15	48.4	10	32.3	0	0.0
Qantas	119	119	107	89.9	98	82.4	0	0.0
Tiger Airways	31	31	25	80.6	21	67.7	0	0.0
Virgin Blue	66	65	57	87.7	62	95.4	1	1.5
All Airlines	247	246	204	82.9	191	77.6	1	0.4
<b>Perth-Brisbane</b>								
Qantas	123	123	89	72.4	110	89.4	0	0.0
Virgin Blue	62	62	54	87.1	56	90.3	0	0.0
All Airlines	185	185	143	77.3	166	89.7	0	0.0
<b>Perth-Broome</b>								
Qantas	18	18	12	66.7	12	66.7	0	0.0
QantasLink	66	66	53	80.3	51	77.3	0	0.0
Skywest	28	28	16	57.1	17	60.7	0	0.0
Virgin Blue	63	63	53	84.1	54	85.7	0	0.0
All Airlines	175	175	134	76.6	134	76.6	0	0.0
<b>Perth-Darwin</b>								
Qantas	40	40	38	95.0	33	82.5	0	0.0
Virgin Blue	31	31	27	87.1	28	90.3	0	0.0
All Airlines	71	71	65	91.5	61	85.9	0	0.0
<b>Perth-Kalgoorlie</b>								
Qantas	27	27	25	92.6	26	96.3	0	0.0
QantasLink	63	63	53	84.1	55	87.3	0	0.0
Skywest	27	26	19	73.1	20	76.9	1	3.7
All Airlines	117	116	97	83.6	101	87.1	1	0.9
<b>Perth-Karratha</b>								
Qantas	151	150	130	86.7	135	90.0	1	0.7
QantasLink	36	35	33	94.3	31	88.6	1	2.8
Skywest	22	22	20	90.9	18	81.8	0	0.0
Virgin Blue	54	53	46	86.8	45	84.9	1	1.9
All Airlines	263	260	229	88.1	229	88.1	3	1.1

	<i>Sectors</i>		<i>Departures On Time</i>		<i>Arrivals On Time</i>		<i>Cancellations</i>	
	<i>Sched.</i>	<i>Flown</i>	<i>No.</i>	<i>%</i>	<i>No.</i>	<i>%</i>	<i>No.</i>	<i>%</i>
<b>Perth-Melbourne</b>								
Jetstar	61	60	19	31.7	36	60.0	1	1.6
Qantas	204	203	139	68.5	158	77.8	1	0.5
Tiger Airways	56	55	20	36.4	32	58.2	1	1.8
Virgin Blue	124	123	112	91.1	118	95.9	1	0.8
All Airlines	445	441	290	65.8	344	78.0	4	0.9
<b>Perth-Newman</b>								
QantasLink	94	94	87	92.6	87	92.6	0	0.0
Virgin Blue	36	35	31	88.6	33	94.3	1	2.8
All Airlines	130	129	118	91.5	120	93.0	1	0.8
<b>Perth-Sydney</b>								
Qantas	200	200	132	66.0	162	81.0	0	0.0
Virgin Blue	151	151	135	89.4	145	96.0	0	0.0
All Airlines	351	351	267	76.1	307	87.5	0	0.0
<b>Port Macquarie-Sydney</b>								
QantasLink	111	111	98	88.3	88	79.3	0	0.0
Virgin Blue	62	62	52	83.9	51	82.3	0	0.0
All Airlines	173	173	150	86.7	139	80.3	0	0.0
<b>Proserpine-Brisbane</b>								
Jetstar	31	31	23	74.2	24	77.4	0	0.0
Virgin Blue	31	31	29	93.5	29	93.5	0	0.0
All Airlines	62	62	52	83.9	53	85.5	0	0.0
<b>Rockhampton-Brisbane</b>								
Jetstar	31	31	18	58.1	19	61.3	0	0.0
QantasLink	162	162	125	77.2	130	80.2	0	0.0
Virgin Blue	151	150	135	90.0	139	92.7	1	0.7
All Airlines	344	343	278	81.0	288	84.0	1	0.3
<b>Sydney-Adelaide</b>								
Jetstar	31	31	30	96.8	29	93.5	0	0.0
Qantas	285	285	256	89.8	243	85.3	0	0.0
Virgin Blue	147	147	131	89.1	122	83.0	0	0.0
All Airlines	463	463	417	90.1	394	85.1	0	0.0
<b>Sydney-Albury</b>								
QantasLink	115	115	98	85.2	80	69.6	0	0.0
Regional Express	121	121	96	79.3	89	73.6	0	0.0
Virgin Blue	62	62	55	88.7	50	80.6	0	0.0
All Airlines	298	298	249	83.6	219	73.5	0	0.0
<b>Sydney-Ballina</b>								
Jetstar	31	31	27	87.1	29	93.5	0	0.0
Regional Express	81	81	64	79.0	67	82.7	0	0.0
Virgin Blue	35	35	30	85.7	30	85.7	0	0.0
All Airlines	147	147	121	82.3	126	85.7	0	0.0

	<i>Sectors</i>		<i>Departures On Time</i>		<i>Arrivals On Time</i>		<i>Cancellations</i>	
	<i>Sched.</i>	<i>Flown</i>	<i>No.</i>	<i>%</i>	<i>No.</i>	<i>%</i>	<i>No.</i>	<i>%</i>
<b>Sydney-Brisbane</b>								
Jetstar	82	77	64	83.1	68	88.3	5	6.1
Qantas	588	586	509	86.9	523	89.2	2	0.3
Virgin Blue	547	540	392	72.6	437	80.9	7	1.3
All Airlines	1,217	1,203	965	80.2	1,028	85.5	14	1.2
<b>Sydney-Cairns</b>								
Jetstar	57	52	45	86.5	43	82.7	5	8.8
Qantas	110	110	86	78.2	90	81.8	0	0.0
Virgin Blue	80	80	62	77.5	70	87.5	0	0.0
All Airlines	247	242	193	79.8	203	83.9	5	2.0
<b>Sydney-Canberra</b>								
Qantas	187	185	169	91.4	166	89.7	2	1.1
QantasLink	410	395	343	86.8	322	81.5	15	3.7
Virgin Blue	236	226	193	85.4	185	81.9	10	4.2
All Airlines	833	806	705	87.5	673	83.5	27	3.2
<b>Sydney-Coffs Harbour</b>								
QantasLink	125	125	107	85.6	104	83.2	0	0.0
Virgin Blue	62	62	60	96.8	59	95.2	0	0.0
All Airlines	187	187	167	89.3	163	87.2	0	0.0
<b>Sydney-Dubbo</b>								
QantasLink	108	108	85	78.7	88	81.5	0	0.0
Regional Express	170	169	146	86.4	142	84.0	1	0.6
All Airlines	278	277	231	83.4	230	83.0	1	0.4
<b>Sydney-Gold Coast</b>								
Jetstar	272	272	206	75.7	222	81.6	0	0.0
Virgin Blue	359	357	304	85.2	321	89.9	2	0.6
All Airlines	631	629	510	81.1	543	86.3	2	0.3
<b>Sydney-Hervey Bay</b>								
Jetstar	18	18	18	100.0	16	88.9	0	0.0
Virgin Blue	31	31	29	93.5	29	93.5	0	0.0
All Airlines	49	49	47	95.9	45	91.8	0	0.0
<b>Sydney-Hobart</b>								
Jetstar	62	62	54	87.1	50	80.6	0	0.0
Qantas	31	31	30	96.8	30	96.8	0	0.0
Virgin Blue	62	62	52	83.9	51	82.3	0	0.0
All Airlines	155	155	136	87.7	131	84.5	0	0.0
<b>Sydney-Launceston</b>								
Jetstar	31	31	25	80.6	24	77.4	0	0.0
Virgin Blue	31	31	26	83.9	25	80.6	0	0.0
All Airlines	62	62	51	82.3	49	79.0	0	0.0

	<i>Sectors</i>		<i>Departures On Time</i>		<i>Arrivals On Time</i>		<i>Cancellations</i>	
	<i>Sched.</i>	<i>Flown</i>	<i>No.</i>	<i>%</i>	<i>No.</i>	<i>%</i>	<i>No.</i>	<i>%</i>
<b>Sydney-Maroochydore</b>								
Jetstar	91	90	82	91.1	85	94.4	1	1.1
Virgin Blue	39	39	35	89.7	33	84.6	0	0.0
All Airlines	130	129	117	90.7	118	91.5	1	0.8
<b>Sydney-Melbourne</b>								
Jetstar	12	11	5	45.5	3	27.3	1	8.3
Qantas	887	872	770	88.3	712	81.7	15	1.7
Virgin Blue	733	714	590	82.6	538	75.4	19	2.6
All Airlines	1,632	1,597	1,365	85.5	1,253	78.5	35	2.1
<b>Sydney-Perth</b>								
Qantas	198	198	147	74.2	106	53.5	0	0.0
Virgin Blue	151	151	125	82.8	102	67.5	0	0.0
All Airlines	349	349	272	77.9	208	59.6	0	0.0
<b>Sydney-Port Macquarie</b>								
QantasLink	110	110	92	83.6	93	84.5	0	0.0
Virgin Blue	62	62	52	83.9	52	83.9	0	0.0
All Airlines	172	172	144	83.7	145	84.3	0	0.0
<b>Sydney-Townsville</b>								
Jetstar	22	21	20	95.2	21	100.0	1	4.5
Virgin Blue	35	35	28	80.0	32	91.4	0	0.0
All Airlines	57	56	48	85.7	53	94.6	1	1.8
<b>Sydney-Wagga Wagga</b>								
QantasLink	139	138	120	87.0	110	79.7	1	0.7
Regional Express	136	133	106	79.7	95	71.4	3	2.2
All Airlines	275	271	226	83.4	205	75.6	4	1.5
<b>Townsville-Brisbane</b>								
Jetstar	61	61	47	77.0	53	86.9	0	0.0
Qantas	150	150	131	87.3	135	90.0	0	0.0
Virgin Blue	147	147	138	93.9	138	93.9	0	0.0
All Airlines	358	358	316	88.3	326	91.1	0	0.0
<b>Townsville-Cairns</b>								
QantasLink	159	157	131	83.4	120	76.4	2	1.3
Virgin Blue	31	31	30	96.8	30	96.8	0	0.0
All Airlines	190	188	161	85.6	150	79.8	2	1.1
<b>Townsville-Sydney</b>								
Jetstar	22	21	18	85.7	19	90.5	1	4.5
Virgin Blue	35	35	33	94.3	31	88.6	0	0.0
All Airlines	57	56	51	91.1	50	89.3	1	1.8
<b>Wagga Wagga-Sydney</b>								
QantasLink	139	139	111	79.9	108	77.7	0	0.0
Regional Express	138	134	104	77.6	100	74.6	4	2.9
All Airlines	277	273	215	78.8	208	76.2	4	1.4

# Airports

On time performance is reported for all routes where the passenger load averages over 8000 passengers per month, and where two or more airlines operate in competition. The following data reports by airport against flights operated on those routes only.

Airport	Departures			Arrivals		
	Sectors	On Time		Sectors	On Time	
	Flown	No.	%	Flown	No.	%
<b>Adelaide</b>						
Jetstar	172	110	64.0	173	123	71.1
Qantas	903	800	88.6	903	777	86.0
Tiger Airways	147	118	80.3	147	117	79.6
Virgin Blue	606	520	85.8	604	516	85.4
All Airlines	1 828	1 548	84.7	1 827	1 533	83.9
Relates to services to and from Alice Springs, Brisbane, Canberra, Gold Coast, Melbourne, Perth and Sydney.						
<b>Albury</b>						
QantasLink	115	86	74.8	115	80	69.6
Regional Express	120	103	85.8	121	89	73.6
Virgin Blue	60	49	81.7	62	50	80.6
All Airlines	295	238	80.7	298	219	73.5
Relates to services to and from Sydney only.						
<b>Alice Springs</b>						
Qantas	62	49	79.0	62	51	82.3
Tiger Airways	26	21	80.8	26	22	84.6
All Airlines	88	70	79.5	88	73	83.0
Relates to services to and from Adelaide and Melbourne.						
<b>Ballina</b>						
Jetstar	31	27	87.1	31	29	93.5
Regional Express	81	64	79.0	81	67	82.7
Virgin Blue	35	31	88.6	35	30	85.7
All Airlines	147	122	83.0	147	126	85.7
Relates to services to and from Sydney only.						
<b>Brisbane</b>						
Jetstar	643	491	76.4	644	546	84.8
Qantas	1 673	1 491	89.1	1 675	1 536	91.7
QantasLink	344	299	86.9	320	270	84.4
Virgin Blue	1 855	1 639	88.4	1 854	1 645	88.7
All Airlines	4 515	3 920	86.8	4 493	3 997	89.0
Relates to services to and from Adelaide, Cairns, Canberra, Darwin, Hamilton Island, Mackay, Melbourne, Newcastle, Perth, Proserpine, Rockhampton, Sydney and Townsville.						

Airport	Departures			Arrivals		
	Sectors Flown	On Time No.	On Time %	Sectors Flown	On Time No.	On Time %
<b>Broome</b>						
Qantas	18	8	44.4	18	12	66.7
QantasLink	67	52	77.6	66	51	77.3
Skywest	27	9	33.3	28	17	60.7
Virgin Blue	62	45	72.6	63	54	85.7
All Airlines	174	114	65.5	175	134	76.6
Relates to services to and from Perth only.						
<b>Cairns</b>						
Jetstar	189	144	76.2	189	160	84.7
Qantas	265	228	86.0	265	232	87.5
QantasLink	156	134	85.9	157	120	76.4
Virgin Blue	282	251	89.0	282	258	91.5
All Airlines	892	757	84.9	893	770	86.2
Relates to services to and from Brisbane, Melbourne, Sydney and Townsville.						
<b>Canberra</b>						
Qantas	650	588	90.5	651	590	90.6
QantasLink	442	381	86.2	441	366	83.0
Tiger Airways	49	40	81.6	49	39	79.6
Virgin Blue	556	510	91.7	557	473	84.9
All Airlines	1 697	1 519	89.5	1 698	1 468	86.5
Relates to services to and from Adelaide, Brisbane, Melbourne and Sydney.						
<b>Coffs Harbour</b>						
QantasLink	125	113	90.4	125	104	83.2
Virgin Blue	62	58	93.5	62	59	95.2
All Airlines	187	171	91.4	187	163	87.2
Relates to services to and from Sydney only.						
<b>Darwin</b>						
Jetstar	120	85	70.8	120	69	57.5
Qantas	72	50	69.4	71	59	83.1
Virgin Blue	89	82	92.1	90	78	86.7
All Airlines	281	217	77.2	281	206	73.3
Relates to services to and from Brisbane, Melbourne and Perth.						
<b>Dubbo</b>						
QantasLink	108	88	81.5	108	88	81.5
Regional Express	168	136	81.0	169	142	84.0
All Airlines	276	224	81.2	277	230	83.0
Relates to services to and from Sydney only.						

<i>Airport</i>	<i>Departures</i>			<i>Arrivals</i>		
	<i>Sectors Flown</i>	<i>On Time</i>		<i>Sectors Flown</i>	<i>On Time</i>	
		<i>No.</i>	<i>%</i>		<i>No.</i>	<i>%</i>
<b>Gold Coast</b>						
Jetstar	512	399	77.9	512	428	83.6
Tiger Airways	123	105	85.4	123	104	84.6
Virgin Blue	555	505	91.0	555	502	90.5
All Airlines	1 190	1 009	84.8	1 190	1 034	86.9
Relates to services to and from Adelaide, Melbourne, Newcastle and Sydney.						
<b>Hamilton Island</b>						
Jetstar	31	25	80.6	30	27	90.0
Virgin Blue	31	30	96.8	31	31	100.0
All Airlines	62	55	88.7	61	58	95.1
Relates to services to and from Brisbane only.						
<b>Hervey Bay</b>						
Jetstar	18	15	83.3	18	16	88.9
Virgin Blue	31	29	93.5	31	29	93.5
All Airlines	49	44	89.8	49	45	91.8
Relates to services to and from Sydney only.						
<b>Hobart</b>						
Jetstar	195	125	64.1	196	147	75.0
Qantas	93	89	95.7	93	82	88.2
Tiger Airways	31	25	80.6	31	25	80.6
Virgin Blue	186	164	88.2	186	157	84.4
All Airlines	505	403	79.8	506	411	81.2
Relates to services to and from Melbourne and Sydney.						
<b>Kalgoorlie</b>						
Qantas	27	23	85.2	27	26	96.3
QantasLink	62	54	87.1	63	55	87.3
Skywest	26	23	88.5	26	20	76.9
All Airlines	115	100	87.0	116	101	87.1
Relates to services to and from Perth only.						
<b>Karratha</b>						
Qantas	150	123	82.0	150	135	90.0
QantasLink	35	32	91.4	35	31	88.6
Skywest	22	18	81.8	22	18	81.8
Virgin Blue	53	44	83.0	53	45	84.9
All Airlines	260	217	83.5	260	229	88.1
Relates to services to and from Perth only.						

Airport	Departures			Arrivals		
	Sectors	On Time		Sectors	On Time	
	Flown	No.	%	Flown	No.	%
<b>Launceston</b>						
Jetstar	124	92	74.2	124	100	80.6
QantasLink	59	45	76.3	59	43	72.9
Tiger Airways	31	20	64.5	31	21	67.7
Virgin Blue	153	138	90.2	154	134	87.0
All Airlines	367	295	80.4	368	298	81.0
Relates to services to and from Melbourne and Sydney.						
<b>Mackay</b>						
Jetstar	93	70	75.3	93	79	84.9
QantasLink	77	61	79.2	77	57	74.0
Virgin Blue	142	131	92.3	142	128	90.1
All Airlines	312	262	84.0	312	264	84.6
Relates to services to and from Brisbane only.						
<b>Maroochydore</b>						
Jetstar	151	122	80.8	152	132	86.8
Tiger Airways	18	18	100.0	18	18	100.0
Virgin Blue	73	60	82.2	74	65	87.8
All Airlines	242	200	82.6	244	215	88.1
Relates to services to and from Melbourne and Sydney.						
<b>Melbourne</b>						
Jetstar	769	548	71.3	769	531	69.1
Qantas	2 217	1 930	87.1	2 217	1 869	84.3
QantasLink	200	173	86.5	200	167	83.5
Regional Express	95	86	90.5	97	88	90.7
Tiger Airways	325	242	74.5	325	248	76.3
Virgin Blue	2 164	1 787	82.6	2 158	1 821	84.4
All Airlines	5 770	4 766	82.6	5 766	4 724	81.9
Relates to services to and from Adelaide, Alice Springs, Brisbane, Cairns, Canberra, Darwin, Gold Coast, Hobart, Launceston, Maroochydore, Mildura, Newcastle, Perth and Sydney.						
<b>Mildura</b>						
QantasLink	103	92	89.3	103	77	74.8
Regional Express	97	89	91.8	95	83	87.4
Virgin Blue	31	28	90.3	31	27	87.1
All Airlines	231	209	90.5	229	187	81.7
Relates to services to and from Melbourne only.						
<b>Newcastle</b>						
Jetstar	246	210	85.4	246	210	85.4
QantasLink	73	62	84.9	73	58	79.5
Virgin Blue	92	89	96.7	93	91	97.8
All Airlines	411	361	87.8	412	359	87.1
Relates to services to and from Brisbane, Gold Coast and Melbourne.						

Airport	Departures			Arrivals		
	Sectors	On Time		Sectors	On Time	
	Flown	No.	%	Flown	No.	%
<b>Newman</b>						
QantasLink	93	85	91.4	94	87	92.6
Virgin Blue	35	31	88.6	35	33	94.3
All Airlines	128	116	90.6	129	120	93.0
Relates to services to and from Perth only.						
<b>Perth</b>						
Jetstar	91	34	37.4	91	43	47.3
Qantas	880	672	76.4	881	601	68.2
QantasLink	258	226	87.6	257	225	87.5
Skywest	76	55	72.4	75	38	50.7
Tiger Airways	86	45	52.3	86	53	61.6
Virgin Blue	583	515	88.3	585	417	71.3
All Airlines	1 974	1 547	78.4	1 975	1 377	69.7
Relates to services to and from Adelaide, Brisbane, Broome, Darwin, Kalgoorlie, Karratha, Melbourne, Newman, and Sydney.						
<b>Port Macquarie</b>						
QantasLink	111	98	88.3	110	93	84.5
Virgin Blue	62	52	83.9	62	52	83.9
All Airlines	173	150	86.7	172	145	84.3
Relates to services to and from Sydney only.						
<b>Proserpine</b>						
Jetstar	31	23	74.2	31	25	80.6
Virgin Blue	31	29	93.5	31	29	93.5
All Airlines	62	52	83.9	62	54	87.1
Relates to services to and from Brisbane only.						
<b>Rockhampton</b>						
Jetstar	31	18	58.1	31	22	71.0
QantasLink	162	125	77.2	186	147	79.0
Virgin Blue	150	135	90.0	151	138	91.4
All Airlines	343	278	81.0	368	307	83.4
Relates to services to and from Brisbane only.						
<b>Sydney</b>						
Jetstar	696	576	82.8	693	550	79.4
Qantas	2 267	1 967	86.8	2 264	1 975	87.2
QantasLink	991	845	85.3	994	824	82.9
Regional Express	504	412	81.7	503	390	77.5
Virgin Blue	2 634	2 164	82.2	2 632	2 234	84.9
All Airlines	7 092	5 964	84.1	7 086	5 973	84.3
Relates to services to and from Adelaide, Albury, Ballina, Brisbane, Cairns, Canberra, Coffs Harbour, Dubbo, Gold Coast, Hervey Bay, Hobart, Launceston, Maroochydore, Melbourne, Perth, Port Macquarie, Townsville and Wagga Wagga.						

<i>Airport</i>	<i>Departures</i>			<i>Arrivals</i>		
	<i>Sectors</i>	<i>On Time</i>		<i>Sectors</i>	<i>On Time</i>	
	<i>Flown</i>	<i>No.</i>	<i>%</i>	<i>Flown</i>	<i>No.</i>	<i>%</i>

**Townsville**

Jetstar	82	65	79.3	82	73	89.0
Qantas	150	131	87.3	150	131	87.3
QantasLink	157	131	83.4	156	132	84.6
Virgin Blue	213	201	94.4	213	197	92.5
All Airlines	602	528	87.7	601	533	88.7

Relates to services to and from Brisbane, Cairns and Sydney.

**Wagga Wagga**

QantasLink	139	111	79.9	138	110	79.7
Regional Express	134	104	77.6	133	95	71.4
All Airlines	273	215	78.8	271	205	75.6

Relates to services to and from Sydney only.

## Definitions

---

On time departure                      A flight departure is counted as "on time" if it departs the gate within 15 minutes of the scheduled departure time shown in the carriers' schedule.

---

On time arrival                         A flight arrival is counted as "on time" if it arrived at the gate within 15 minutes of the scheduled arrival time shown in the carriers' schedule.  
Neither diverted nor cancelled flights count as on time.

---

Cancellation                            A flight is regarded as a cancellation if it is cancelled or rescheduled less than 7 days prior to its scheduled departure time.

---

On time departure percentage                      The percentage of on time departures is measured against the number of departures *operated* on any particular sector.

---

On time arrival percentage                         The percentage of on time arrivals is measured against the number of arrivals *operated* on any particular sector.

---

Cancellation percentage                         The percentage of cancellations is measured against the number of services *scheduled* on any particular sector.

---