



Australian Government

Department of Infrastructure and Regional Development

Bureau of Infrastructure, Transport and Regional Economics

STATISTICAL REPORT



Aviation

Domestic airline on time performance
January 2017

© Commonwealth of Australia 2017

ISSN: 1832-0759

Ownership of intellectual property rights in this publication

Unless otherwise noted, copyright (and any other intellectual property rights, if any) in this publication is owned by the Commonwealth of Australia (referred to below as the Commonwealth).

Disclaimer

The material contained in this publication is made available on the understanding that the Commonwealth is not providing professional advice, and that users exercise their own skill and care with respect to its use, and seek independent advice if necessary.

The Commonwealth makes no representations or warranties as to the contents or accuracy of the information contained in this publication. To the extent permitted by law, the Commonwealth disclaims liability to any person or organisation in respect of anything done, or omitted to be done, in reliance upon information contained in this publication.

Creative Commons licence

With the exception of (a) the Coat of Arms; and (b) the Department of Infrastructure and Regional Development's photos and graphics, copyright in this publication is licensed under a Creative Commons Attribution 3.0 Australia Licence.

Creative Commons Attribution 3.0 Australia Licence is a standard form licence agreement that allows you to copy, communicate and adapt this publication provided that you attribute the work to the Commonwealth and abide by the other licence terms. A summary of the licence terms is available from <http://creativecommons.org/licenses/by/3.0/au/deed.en>. The full licence terms are available from <http://creativecommons.org/licenses/by/3.0/au/legalcode>.

Use of the Coat of Arms

The Department of the Prime Minister and Cabinet sets the terms under which the Coat of Arms is used. Please refer to the Department's Commonwealth Coat of Arms and Government branding web page <http://www.dpmmc.gov.au/guidelines/index.cfm#brand> and, in particular, the Guidelines on the use of the Commonwealth Coat of Arms publication.

An appropriate citation for this report is:

Bureau of Infrastructure, Transport and Regional Economics (BITRE), 2017, Domestic airline on time performance, Statistical Report, BITRE, Canberra ACT.

Contact us

This publication is available in PDF format. All other rights are reserved, including in relation to any Departmental logos or trade marks which may exist. For enquiries regarding the licence and any use of this publication, please contact:

Bureau of Infrastructure, Transport and Regional Economics (BITRE)
Department of Infrastructure and Regional Development
GPO Box 501, Canberra ACT 2601, Australia
Telephone: (international) +61 2 6274 7210
Fax: (international) +61 2 6274 6855
Email: bitre@infrastructure.gov.au
Website: www.bitre.gov.au

Inquiries

Should you require additional information about the statistics contained in this publication:

Telephone (02) 6274 7790 or Facsimile (02) 6274 7727

Electronic mail: AVSTATS@infrastructure.gov.au

Web site: <http://www.bitre.gov.au/statistics/aviation/otphome.aspx>

Foreword

The Bureau of Infrastructure, Transport and Regional Economics (BITRE) monitors the punctuality and reliability of major domestic airlines operating between Australian airports. The purpose of this is to allow for evaluation of overall industry and individual airline performance, so that consumers of air travel can make informed decisions.

The following domestic airlines currently report this information monthly to the BITRE: Jetstar, Qantas, QantasLink, Regional Express, Tigerair Australia, Virgin Australia and Virgin Australia Regional Airlines. Data has been gathered since November 2003, although some airlines commenced reporting at a later date, including Jetstar which first reported in May 2004, MacAir in July 2005, Tigerair Australia in April 2008 and Virgin Australia Regional Airlines in May 2013. MacAir ceased operations in February 2009 and data was not received for December 2008 onwards. Virgin Blue was rebranded as Virgin Australia in May 2011 and Tiger Airways was rebranded as Tigerair Australia in July 2013 and time series data in Microsoft Excel spreadsheet format on the BITRE website have been revised to reflect these changes. Services operated by Skywest on behalf of Virgin Australia using ATR/F100 aircraft commenced in November 2011 and were shown separately as Virgin Australia – ATR/F100 Operations. Virgin Australia Regional Airlines commenced operations in May 2013. It was formed after the acquisition of Skywest by Virgin Australia and represented a combination of operations previously reported under Skywest and Virgin Australia – ATR/F100 Operations. In January 2016, Virgin Australia transferred their ATR fleet from Virgin Australia Regional Airlines to Virgin Australia.

Information presented in this report is for Australian domestic routes for which the passenger load averaged 8 000 or more passengers per month over the previous six months and where two or more airlines operated in competition on those routes. There were 66 routes that met this definition in January 2017. Over time, routes which meet these criteria change as airline networks and traffic levels vary.

Participating airlines report their overall monthly network performance where this is possible.

Total industry figures encompass all services operated by reporting airlines only. These airlines collectively carried over 95 per cent of total domestic passengers (regular public transport only) in 2015.

The method of capturing on time performance varies between airlines utilising different recording systems. Jetstar and Qantas jet aircraft use Aircraft Communication Addressing and Reporting System (ACARS) to electronically measure on time performance. Regional Express, Tigerair Australia, Virgin Australia, Virgin Australia Regional Airlines and the Qantas non-jet fleet record on time performance manually using records from pilots, gate agents and/or ground crews.

After initial data is collected, aggregate reports are audited internally by participating airlines prior to publication.

Reports and detailed time series data in Microsoft Excel spreadsheet format are available from the BITRE website at: <http://www.bitre.gov.au/statistics/aviation/otphome.aspx>.

Contents

	Page
Industry performance	1
Individual routes	10
Airports	23
Definitions	29

Industry performance

For January 2017, on time performance over all routes operated by participating airlines (Jetstar, Qantas, QantasLink, Regional Express, Tigerair Australia, Virgin Australia and Virgin Australia Regional Airlines) averaged 87.6 per cent for on time arrivals and 87.2 per cent for on time departures. Cancellations represented 1.1 per cent of all scheduled flights. The equivalent figures for January 2016 were 84.4 per cent for both arrivals and departures and 2.1 per cent for cancellations.

This month's on time arrivals figure was higher than the long term average performance for all routes (82.8 per cent) and the on time departures figure was also higher than the long term average (84.2 per cent). The rate of cancellations was lower than the long term average of 1.4 per cent.

Qantas achieved the highest on time arrivals among the major domestic airlines at 91.7 per cent followed by Virgin Australia at 91.6 per cent, Jetstar at 81.2 per cent and Tigerair Australia at 79.0 per cent. Of the regional airlines, Virgin Australia Regional Airlines recorded 90.3 per cent for on time arrivals, followed by Regional Express at 89.2 per cent and QantasLink at 86.1 per cent. The Qantas network (Qantas and QantasLink combined operations) recorded 88.7 per cent for on time arrivals while the Virgin Australia network (Virgin Australia and Virgin Australia Regional Airlines combined operations) recorded 91.6 per cent.

Virgin Australia achieved the highest level of on time departures for January 2017 at 91.7 per cent, followed by Qantas at 91.5 per cent, Tigerair Australia at 77.5 per cent and Jetstar at 76.4 per cent. Of the regional airlines, Regional Express and Virgin Australia Regional Airlines recorded 92.1 per cent, followed by QantasLink at 86.6 per cent. The Qantas network recorded 88.9 per cent for on time departures while the Virgin Australia network recorded 91.7 per cent.

QantasLink recorded the highest percentage of cancellations (2.2 per cent) during the month, followed by Virgin Australia Regional Airlines (2.0 per cent), Tigerair Australia (1.5 per cent), Jetstar (1.0 per cent), Virgin Australia (0.9 per cent), Qantas (0.5 per cent) and Regional Express (0.2 per cent).

Airlines' on time performance varies across the routes they serve. Individual route data by specific airline for 66 routes are shown on pages 10-22.

Of the 66 routes which met the criteria for on time performance reporting in January 2017, the Sydney-Ayers Rock route had the highest percentage of on time arrivals (98.1 per cent) and the Brisbane-Hobart route had the highest percentage of on time departures (98.5 per cent). The Townsville-Sydney route had the lowest percentage of on time arrivals (68.5 per cent) and the Sydney-Townsville route had the lowest percentage of on time departures (65.5 per cent).

Cancellations were highest on the Karratha-Perth route at 6.5 per cent, followed by the Proserpine-Brisbane and Brisbane-Proserpine routes at 6.3 per cent, the Perth-Karratha route

at 3.6 percent, the Port Hedland-Perth route at 3.3 per cent and the Canberra-Sydney route at 3.1 per cent.

Ayers Rock Airport recorded the highest percentage of on time arrivals (98.1 per cent) and Newman Airport recorded the highest percentage of on time departures (94.4 per cent). Armidale Airport recorded the lowest percentage of on time arrivals (77.4 per cent) and Ballina Airport and Sunshine Coast Airport both recorded the lowest percentage of on time departures (75.5 per cent). These figures only refer to reported routes and do not cover all flights at these airports.

Table 1 On time performance for January 2017 — Total Industry

	<i>Sectors</i>		<i>Arrivals On Time</i>		<i>Departures On Time</i>		<i>Cancellations</i>	
	<i>Scheduled</i>	<i>Flown</i>	<i>No.</i>	<i>%</i>	<i>No.</i>	<i>%</i>	<i>No.</i>	<i>%</i>
Jetstar	8 481	8 398	6 816	81.2	6 412	76.4	83	1.0
Qantas	8 543	8 498	7 796	91.7	7 777	91.5	45	0.5
QantasLink	9 921	9 702	8 354	86.1	8 406	86.6	219	2.2
Regional Express	5 483	5 474	4 881	89.2	5 040	92.1	9	0.2
Tigerair Australia	2 460	2 423	1 914	79.0	1 878	77.5	37	1.5
Virgin Australia	11 519	11 411	10 458	91.6	10 465	91.7	108	0.9
Virgin Australia Regional Airlines	655	642	580	90.3	591	92.1	13	2.0
All Airlines	47 062	46 548	40 799	87.6	40 569	87.2	514	1.1
Qantas - all QF designated services	18 464	18 200	16 150	88.7	16 183	88.9	264	1.4
Virgin Australia - all VA designated services	12 174	12 053	11 038	91.6	11 056	91.7	121	1.0

Total airline network data (including routes not shown in this report).

Airlines' on time performance varies across the routes they serve. Individual route data by specific airline for 66 routes are shown on pages 10-22.

Table 2 Top ten routes for on time performance for January 2017 (participating airlines only)

<i>Arrivals</i>		<i>Departures</i>	
<i>Route</i>	<i>On Time (%)</i>	<i>Route</i>	<i>On Time (%)</i>
Sydney-Ayers Rock	98.1	Brisbane-Hobart	98.5
Alice Springs-Adelaide	97.7	Alice Springs-Adelaide	97.7
Brisbane-Darwin	97.6	Darwin-Alice Springs	97.7
Perth-Adelaide	97.2	Canberra-Adelaide	96.7
Sydney-Darwin	96.9	Perth-Darwin	95.2
Adelaide-Canberra	96.7	Darwin-Sydney	94.8
Melbourne-Darwin	95.6	Adelaide-Port Lincoln	94.6
Brisbane-Hobart	95.4	Newman-Perth	94.4
Darwin-Alice Springs	95.3	Darwin-Perth	93.5
Canberra-Adelaide	95.0	Melbourne-Hamilton Island	93.5

Table 3 Top ten airports for on time performance for January 2017 (participating airlines and reported routes only)

<i>Arrivals</i>		<i>Departures</i>	
<i>Airport</i>	<i>On Time (%)</i>	<i>Airport</i>	<i>On Time (%)</i>
Ayers Rock	98.1	Newman	94.4
Darwin	95.5	Mildura	93.0
Mount Isa	94.7	Darwin	92.6
Alice Springs	94.2	Mount Isa	91.9
Port Lincoln	93.9	Canberra	91.5
Emerald	91.5	Albury	91.5
Coffs Harbour	91.4	Emerald	91.4
Newman	91.4	Tamworth	91.1
Cairns	91.0	Moranbah	91.0
Ballina	90.8	Alice Springs	90.7

Total industry on time performance

Figure 1 On time performance (by month from January 2014)—Total Industry

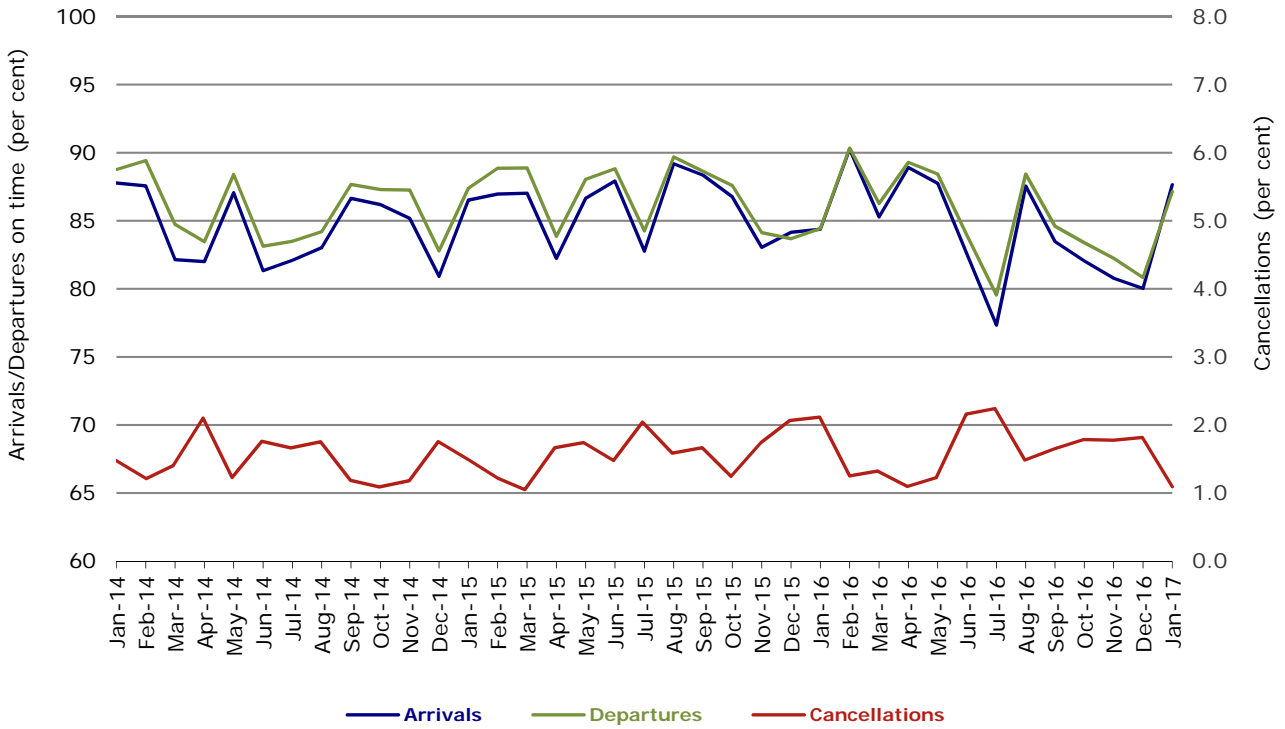


Figure 2 Arrivals on time (by month from January 2016)

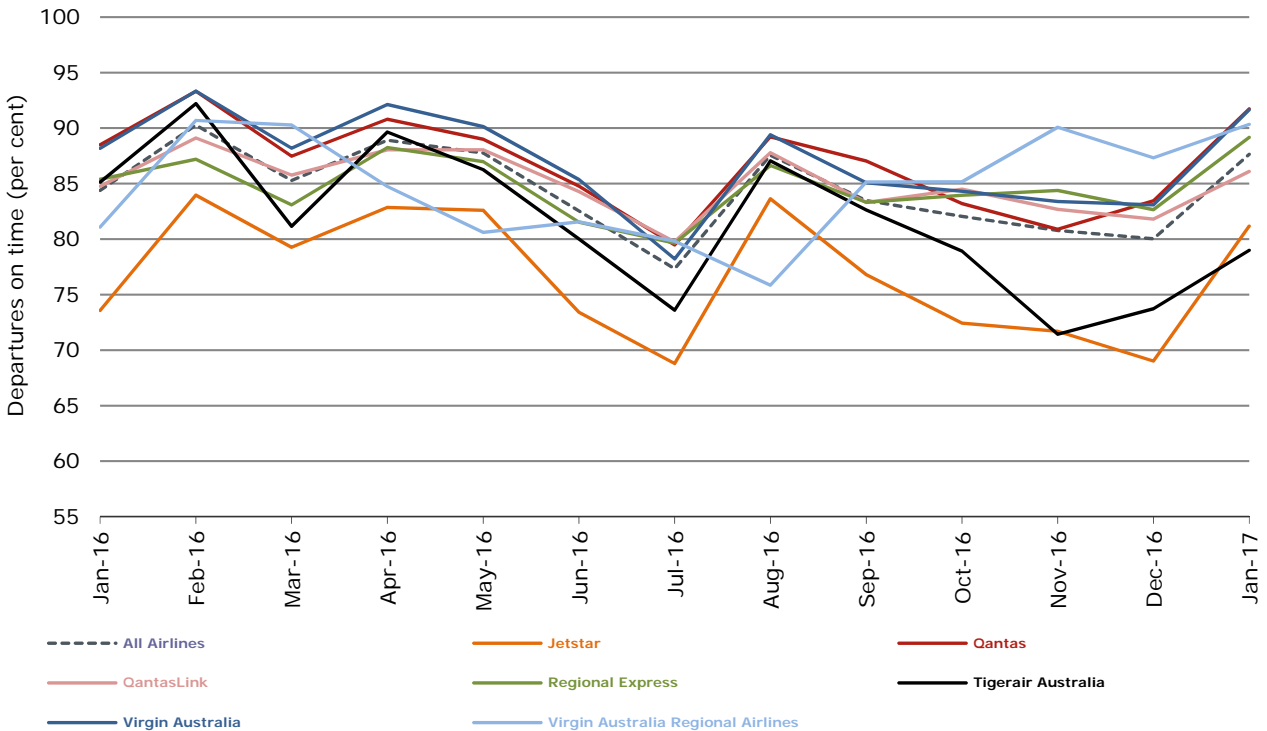


Figure 3 Departures on time (by month from January 2016)

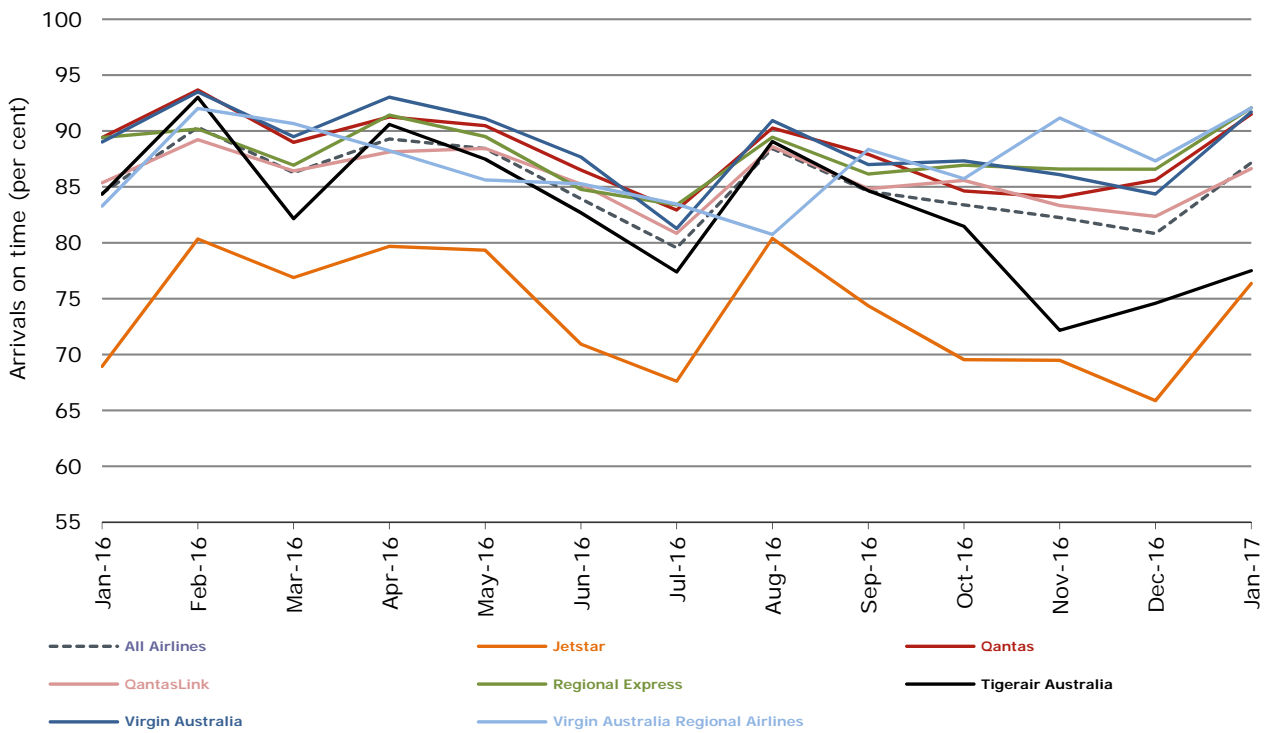
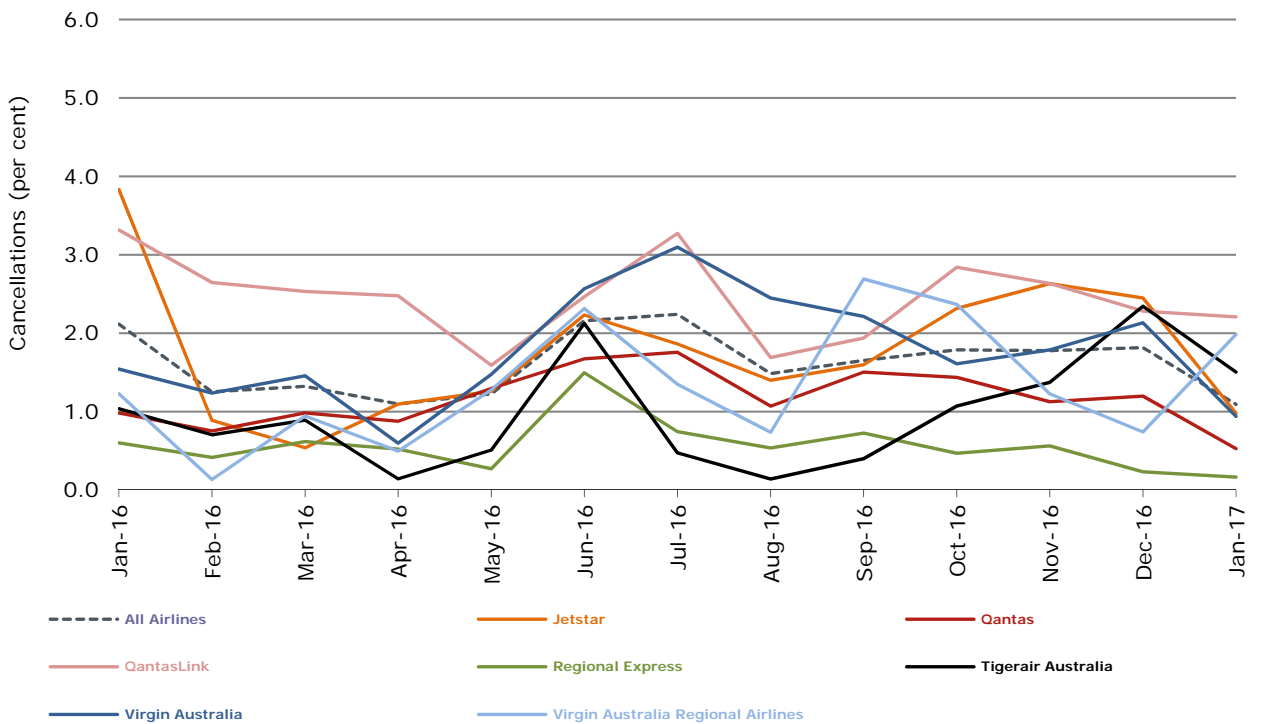


Figure 4 Cancellations (by month from January 2016)



Major domestic airlines on time performance

Figure 5 On time performance (by month from January 2014)—Jetstar

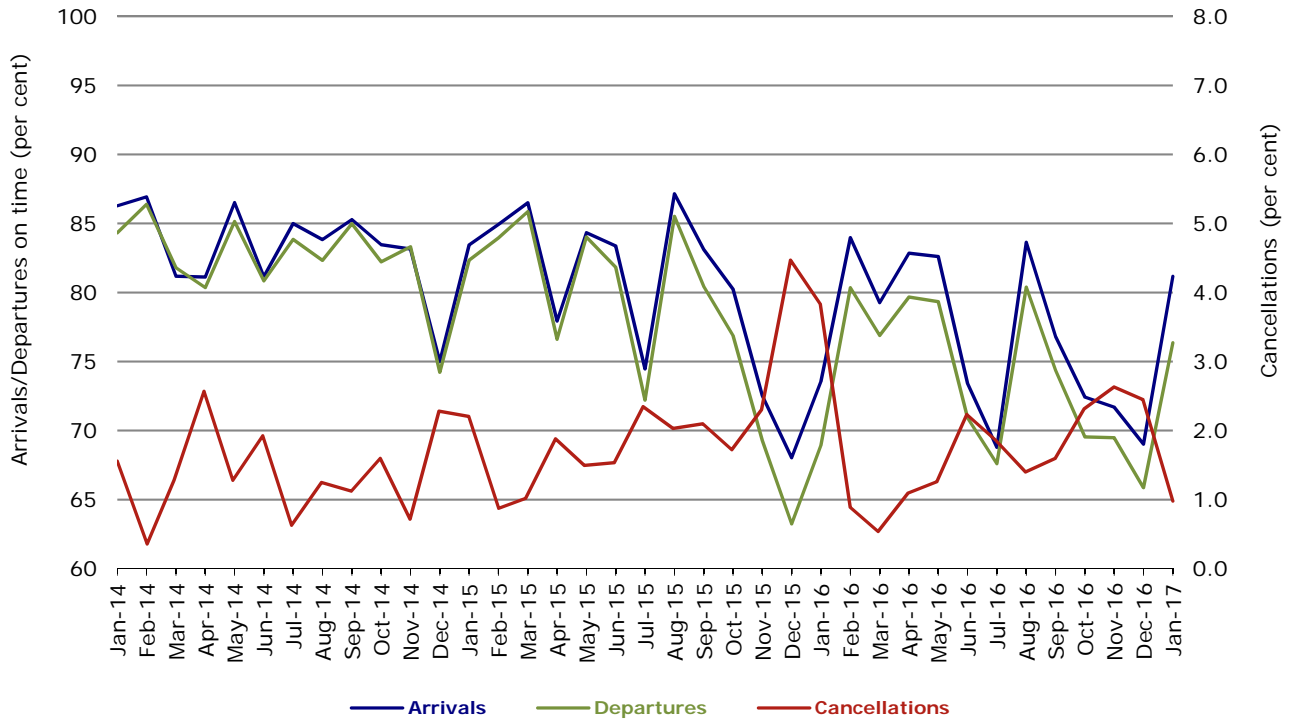


Figure 6 On time performance (by month from January 2014)—Qantas

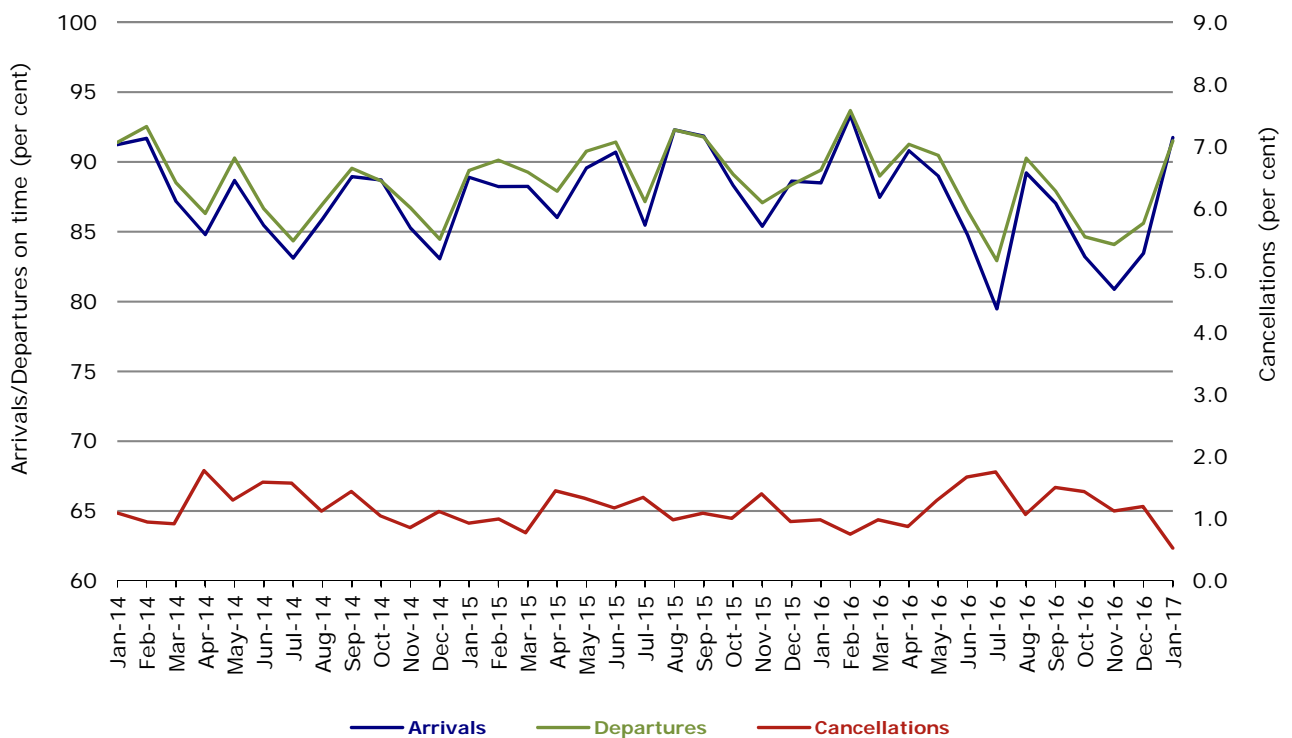


Figure 7 On time performance (by month from January 2014)—Tigerair Australia

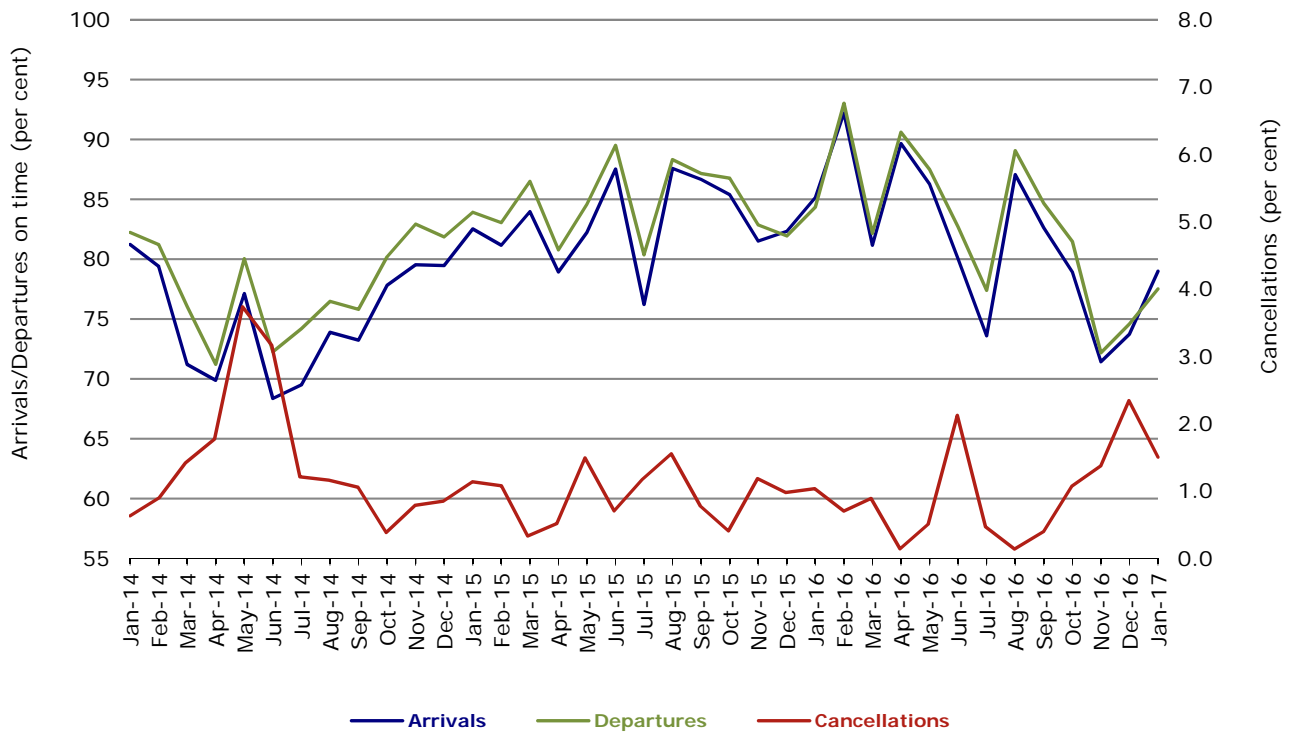
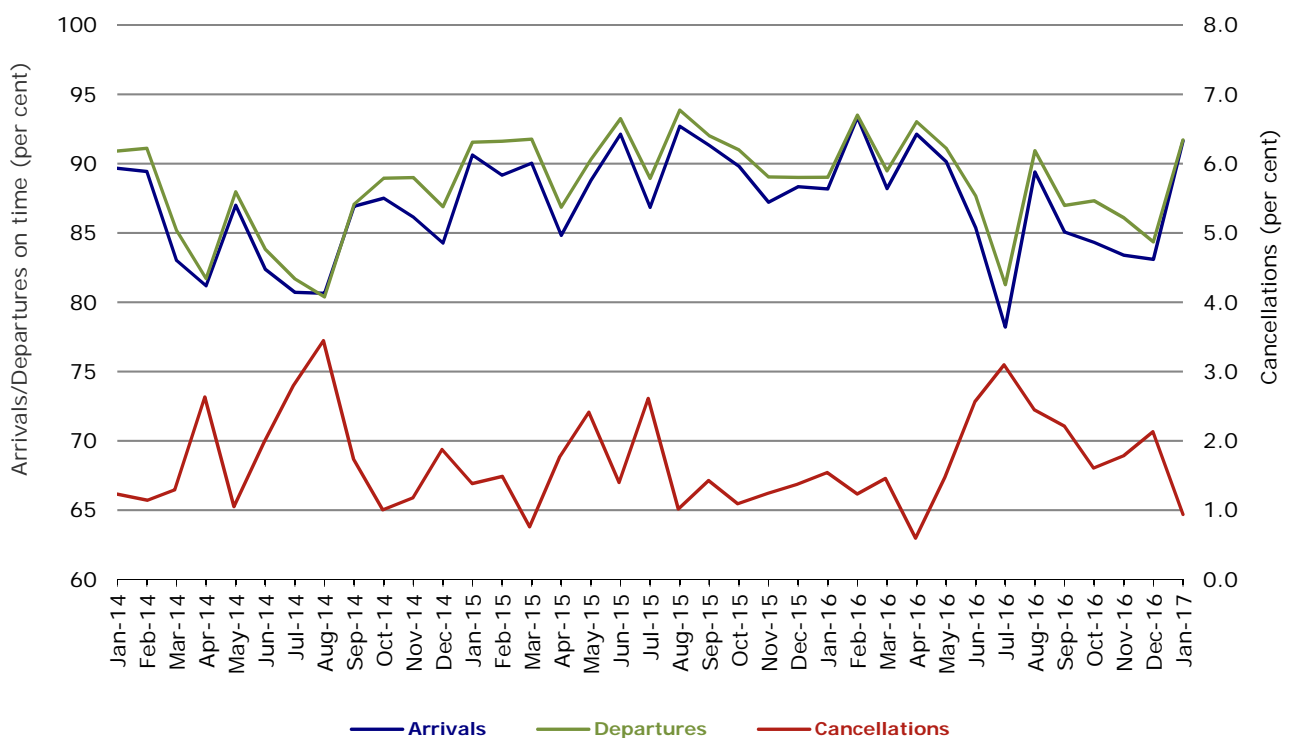


Figure 8 On time performance (by month from January 2014)—Virgin Australia



In January 2016, Virgin Australia transferred their ATR fleet from Virgin Australia Regional Airlines to Virgin Australia.

Major regional airlines on time performance

Figure 9 On time performance (by month from January 2014)—QantasLink

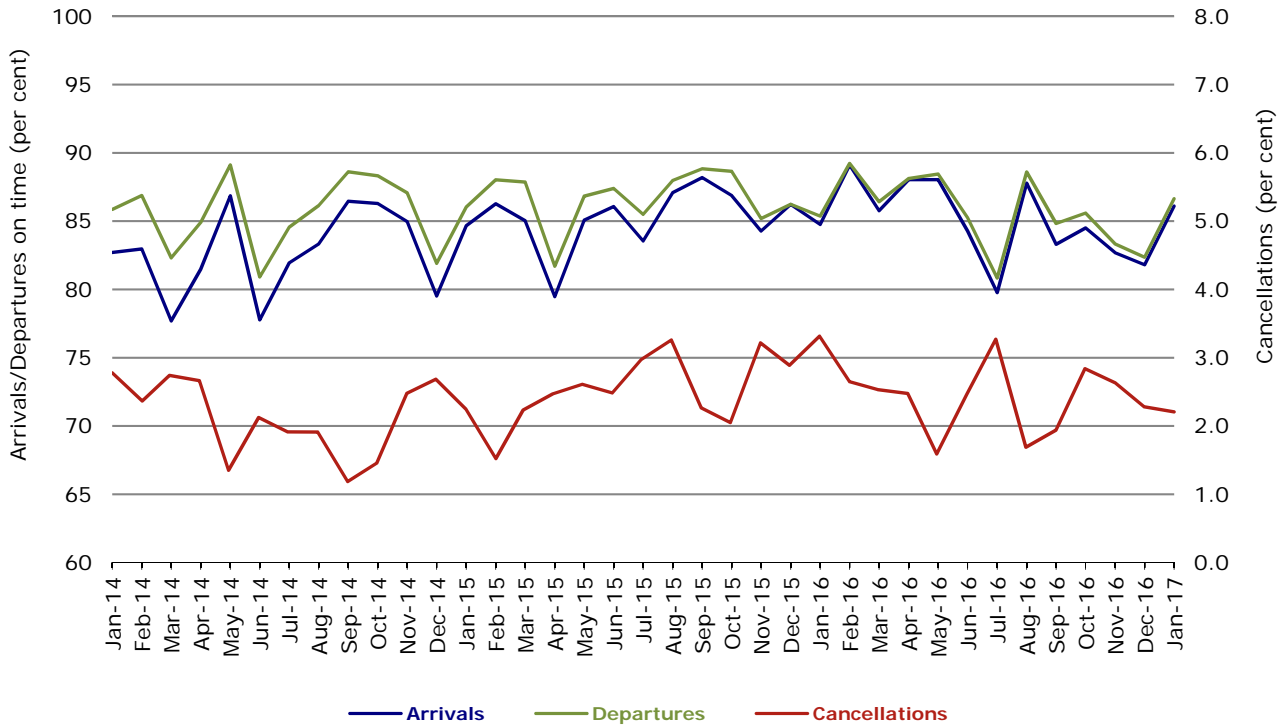


Figure 10 On time performance (by month from January 2014)—Regional Express

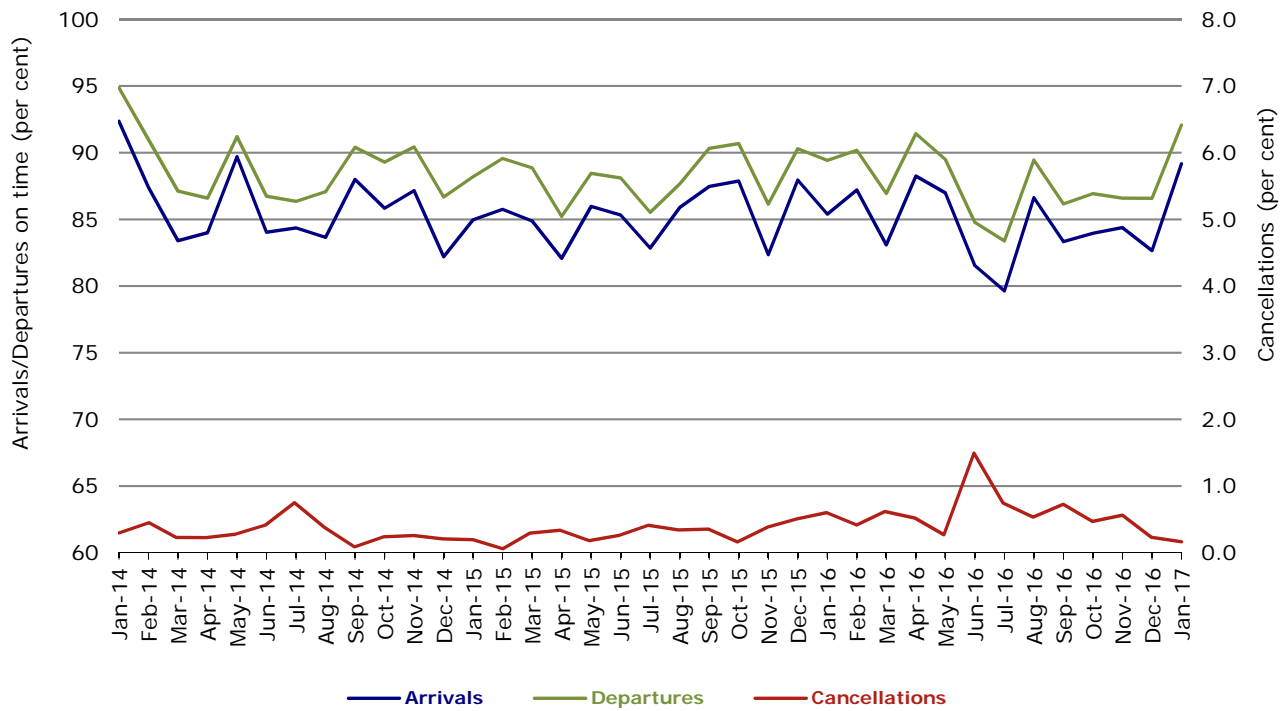
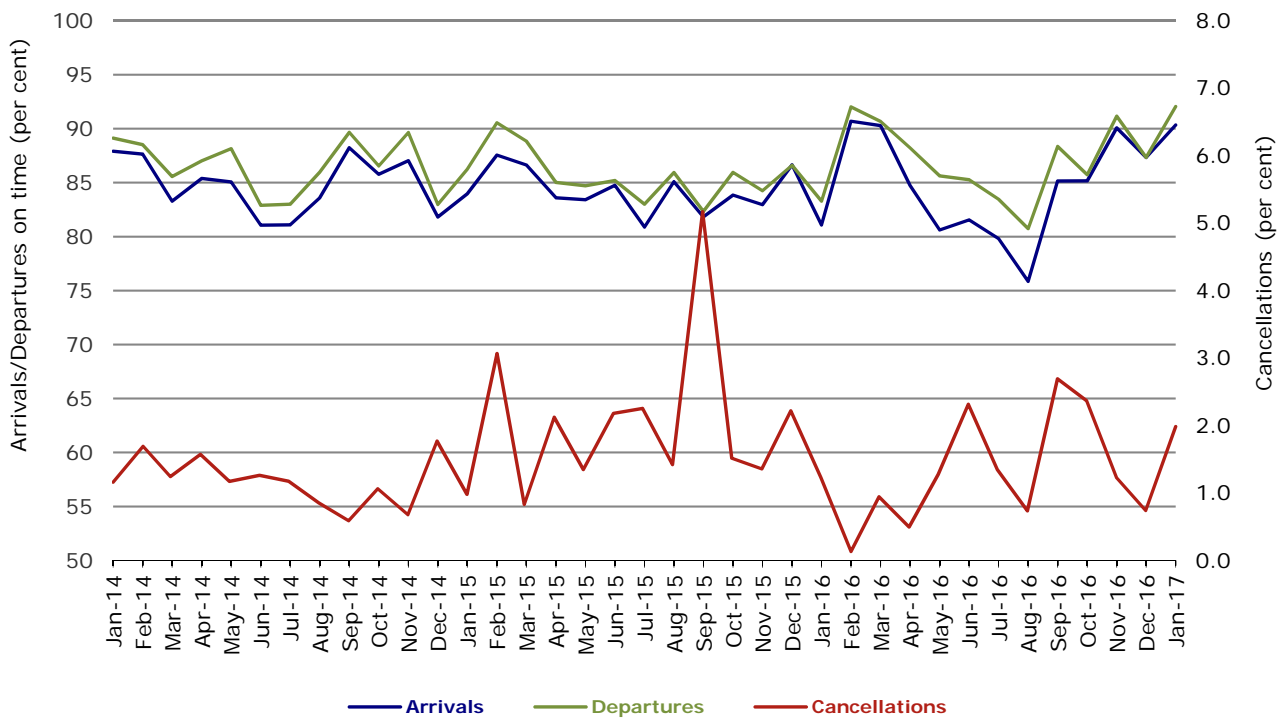


Figure 11 On time performance (by month from January 2014)
Virgin Australia Regional Airlines



In January 2016, Virgin Australia transferred their ATR fleet from Virgin Australia Regional Airlines to Virgin Australia.

Individual routes

On time performance is reported for all routes where the passenger load averages over 8000 passengers per month over the previous six months, and where two or more airlines operate in competition on those routes. There are now 66 routes which meet this definition. Over time, however, routes which meet this definition may change as airline networks and traffic levels vary.

	<i>Sectors</i>		<i>Arrivals On Time</i>		<i>Departures On Time</i>		<i>Cancellations</i>	
	<i>Sched.</i>	<i>Flown</i>	<i>No.</i>	<i>%</i>	<i>No.</i>	<i>%</i>	<i>No.</i>	<i>%</i>
Adelaide-Alice Springs								
Qantas	30	30	27	90.0	25	83.3	0	0.0
Virgin Australia	13	13	13	100.0	13	100.0	0	0.0
All Airlines	43	43	40	93.0	38	88.4	0	0.0
Adelaide-Brisbane								
Jetstar	30	30	25	83.3	22	73.3	0	0.0
Qantas	92	92	89	96.7	87	94.6	0	0.0
QantasLink	7	7	6	85.7	6	85.7	0	0.0
Tigerair Australia	29	29	27	93.1	26	89.7	0	0.0
Virgin Australia	112	112	105	93.8	104	92.9	0	0.0
All Airlines	270	270	252	93.3	245	90.7	0	0.0
Adelaide-Canberra								
Qantas	33	33	33	100.0	33	100.0	0	0.0
Virgin Australia	27	27	25	92.6	23	85.2	0	0.0
All Airlines	60	60	58	96.7	56	93.3	0	0.0
Adelaide-Gold Coast								
Jetstar	31	31	26	83.9	26	83.9	0	0.0
Virgin Australia	31	31	30	96.8	30	96.8	0	0.0
All Airlines	62	62	56	90.3	56	90.3	0	0.0
Adelaide-Melbourne								
Jetstar	126	122	101	82.8	95	77.9	4	3.2
Qantas	242	242	210	86.8	209	86.4	0	0.0
Tigerair Australia	80	79	68	86.1	65	82.3	1	1.3
Virgin Australia	262	261	242	92.7	237	90.8	1	0.4
All Airlines	710	704	621	88.2	606	86.1	6	0.8
Adelaide-Perth								
Jetstar	31	31	31	100.0	30	96.8	0	0.0
Qantas	93	93	85	91.4	88	94.6	0	0.0
QantasLink	13	13	11	84.6	11	84.6	0	0.0
Virgin Australia	74	74	70	94.6	68	91.9	0	0.0
All Airlines	211	211	197	93.4	197	93.4	0	0.0
Adelaide-Port Lincoln								
QantasLink	107	105	94	89.5	95	90.5	2	1.9
Regional Express	173	173	167	96.5	168	97.1	0	0.0
All Airlines	280	278	261	93.9	263	94.6	2	0.7
Adelaide-Sydney								
Jetstar	139	134	103	76.9	89	66.4	5	3.6
Qantas	215	215	211	98.1	207	96.3	0	0.0
QantasLink	27	27	25	92.6	23	85.2	0	0.0
Tigerair Australia	49	49	36	73.5	35	71.4	0	0.0
Virgin Australia	156	156	151	96.8	150	96.2	0	0.0
All Airlines	586	581	526	90.5	504	86.7	5	0.9
Albury-Sydney								
QantasLink	100	100	87	87.0	89	89.0	0	0.0
Regional Express	49	49	47	95.9	49	100.0	0	0.0
Virgin Australia	62	62	57	91.9	55	88.7	0	0.0
All Airlines	211	211	191	90.5	193	91.5	0	0.0

	<i>Sectors</i>		<i>Arrivals On Time</i>		<i>Departures On Time</i>		<i>Cancellations</i>	
	<i>Sched.</i>	<i>Flown</i>	<i>No.</i>	<i>%</i>	<i>No.</i>	<i>%</i>	<i>No.</i>	<i>%</i>
Alice Springs-Adelaide								
Qantas	30	30	29	96.7	29	96.7	0	0.0
Virgin Australia	13	13	13	100.0	13	100.0	0	0.0
All Airlines	43	43	42	97.7	42	97.7	0	0.0
Alice Springs-Darwin								
QantasLink	31	30	25	83.3	23	76.7	1	3.2
Virgin Australia	13	13	13	100.0	13	100.0	0	0.0
All Airlines	44	43	38	88.4	36	83.7	1	2.3
Armidale-Sydney								
QantasLink	116	115	87	75.7	83	72.2	1	0.9
Regional Express	49	49	42	85.7	45	91.8	0	0.0
All Airlines	165	164	129	78.7	128	78.0	1	0.6
Ayers Rock-Sydney								
Jetstar	22	22	19	86.4	18	81.8	0	0.0
Virgin Australia	31	31	29	93.5	29	93.5	0	0.0
All Airlines	53	53	48	90.6	47	88.7	0	0.0
Ballina-Sydney								
Jetstar	91	91	75	82.4	63	69.2	0	0.0
Regional Express	23	23	22	95.7	22	95.7	0	0.0
Virgin Australia	37	37	32	86.5	29	78.4	0	0.0
All Airlines	151	151	129	85.4	114	75.5	0	0.0
Brisbane-Adelaide								
Jetstar	30	30	30	100.0	25	83.3	0	0.0
Qantas	92	92	89	96.7	86	93.5	0	0.0
QantasLink	7	7	7	100.0	6	85.7	0	0.0
Tigerair Australia	29	29	26	89.7	25	86.2	0	0.0
Virgin Australia	117	117	108	92.3	105	89.7	0	0.0
All Airlines	275	275	260	94.5	247	89.8	0	0.0
Brisbane-Bundaberg								
QantasLink	132	130	113	86.9	112	86.2	2	1.5
Virgin Australia	31	31	29	93.5	29	93.5	0	0.0
All Airlines	163	161	142	88.2	141	87.6	2	1.2
Brisbane-Cairns								
Jetstar	134	133	114	85.7	104	78.2	1	0.7
Qantas	120	120	118	98.3	113	94.2	0	0.0
QantasLink	4	4	4	100.0	4	100.0	0	0.0
Tigerair Australia	31	31	29	93.5	28	90.3	0	0.0
Virgin Australia	138	137	131	95.6	127	92.7	1	0.7
All Airlines	427	425	396	93.2	376	88.5	2	0.5
Brisbane-Canberra								
Qantas	61	61	56	91.8	56	91.8	0	0.0
QantasLink	88	87	77	88.5	79	90.8	1	1.1
Virgin Australia	93	93	88	94.6	88	94.6	0	0.0
All Airlines	242	241	221	91.7	223	92.5	1	0.4
Brisbane-Darwin								
Jetstar	30	30	29	96.7	23	76.7	0	0.0
Qantas	43	43	42	97.7	42	97.7	0	0.0
Tigerair Australia	23	23	22	95.7	21	91.3	0	0.0
Virgin Australia	31	31	31	100.0	31	100.0	0	0.0
All Airlines	127	127	124	97.6	117	92.1	0	0.0
Brisbane-Emerald								
QantasLink	116	115	100	87.0	99	86.1	1	0.9
Virgin Australia	74	74	73	98.6	72	97.3	0	0.0
All Airlines	190	189	173	91.5	171	90.5	1	0.5

	<i>Sectors</i>		<i>Arrivals On Time</i>		<i>Departures On Time</i>		<i>Cancellations</i>	
	<i>Sched.</i>	<i>Flown</i>	<i>No.</i>	<i>%</i>	<i>No.</i>	<i>%</i>	<i>No.</i>	<i>%</i>
Brisbane-Gladstone								
QantasLink	125	123	102	82.9	108	87.8	2	1.6
Virgin Australia	92	91	75	82.4	79	86.8	1	1.1
All Airlines	217	214	177	82.7	187	87.4	3	1.4
Brisbane-Hamilton Island								
QantasLink	40	39	34	87.2	34	87.2	1	2.5
Virgin Australia	31	31	26	83.9	28	90.3	0	0.0
All Airlines	71	70	60	85.7	62	88.6	1	1.4
Brisbane-Hobart								
Jetstar	31	31	30	96.8	30	96.8	0	0.0
Qantas	3	3	3	100.0	3	100.0	0	0.0
Virgin Australia	31	31	29	93.5	31	100.0	0	0.0
All Airlines	65	65	62	95.4	64	98.5	0	0.0
Brisbane-Mackay								
Jetstar	32	32	18	56.3	16	50.0	0	0.0
QantasLink	111	108	92	85.2	91	84.3	3	2.7
Virgin Australia	142	142	130	91.5	128	90.1	0	0.0
All Airlines	285	282	240	85.1	235	83.3	3	1.1
Brisbane-Melbourne								
Jetstar	150	148	127	85.8	115	77.7	2	1.3
Qantas	422	420	382	91.0	391	93.1	2	0.5
Tigerair Australia	134	130	104	80.0	100	76.9	4	3.0
Virgin Australia	368	364	308	84.6	327	89.8	4	1.1
All Airlines	1 074	1 062	921	86.7	933	87.9	12	1.1
Brisbane-Moranbah								
QantasLink	81	78	69	88.5	69	88.5	3	3.7
Virgin Australia	61	61	54	88.5	55	90.2	0	0.0
All Airlines	142	139	123	88.5	124	89.2	3	2.1
Brisbane-Mount Isa								
QantasLink	58	57	53	93.0	53	93.0	1	1.7
Virgin Australia	18	18	18	100.0	17	94.4	0	0.0
All Airlines	76	75	71	94.7	70	93.3	1	1.3
Brisbane-Newcastle								
Jetstar	92	91	71	78.0	71	78.0	1	1.1
QantasLink	97	95	76	80.0	77	81.1	2	2.1
Virgin Australia	89	89	85	95.5	85	95.5	0	0.0
All Airlines	278	275	232	84.4	233	84.7	3	1.1
Brisbane-Perth								
Qantas	135	135	130	96.3	125	92.6	0	0.0
Virgin Australia	107	107	99	92.5	87	81.3	0	0.0
All Airlines	242	242	229	94.6	212	87.6	0	0.0
Brisbane-Proserpine								
Jetstar	44	42	33	78.6	28	66.7	2	4.5
Virgin Australia	36	33	30	90.9	31	93.9	3	8.3
All Airlines	80	75	63	84.0	59	78.7	5	6.3
Brisbane-Rockhampton								
QantasLink	179	175	152	86.9	152	86.9	4	2.2
Virgin Australia	133	131	115	87.8	115	87.8	2	1.5
All Airlines	312	306	267	87.3	267	87.3	6	1.9

	<i>Sectors</i>		<i>Arrivals On Time</i>		<i>Departures On Time</i>		<i>Cancellations</i>	
	<i>Sched.</i>	<i>Flown</i>	<i>No.</i>	<i>%</i>	<i>No.</i>	<i>%</i>	<i>No.</i>	<i>%</i>
Brisbane-Sydney								
Jetstar	188	181	139	76.8	135	74.6	7	3.7
Qantas	603	601	563	93.7	571	95.0	2	0.3
Tigerair Australia	106	104	86	82.7	90	86.5	2	1.9
Virgin Australia	503	492	443	90.0	447	90.9	11	2.2
All Airlines	1 400	1 378	1 231	89.3	1 243	90.2	22	1.6
Brisbane-Townsville								
Jetstar	47	47	41	87.2	38	80.9	0	0.0
Qantas	76	76	72	94.7	70	92.1	0	0.0
QantasLink	76	69	63	91.3	62	89.9	7	9.2
Virgin Australia	142	142	129	90.8	123	86.6	0	0.0
All Airlines	341	334	305	91.3	293	87.7	7	2.1
Broome-Perth								
QantasLink	83	80	69	86.3	63	78.8	3	3.6
Virgin Australia	1	1	1	100.0	1	100.0	0	0.0
Virgin Australia Regional Airlines	44	44	32	72.7	31	70.5	0	0.0
All Airlines	128	125	102	81.6	95	76.0	3	2.3
Bundaberg-Brisbane								
QantasLink	132	130	109	83.8	115	88.5	2	1.5
Virgin Australia	31	31	28	90.3	26	83.9	0	0.0
All Airlines	163	161	137	85.1	141	87.6	2	1.2
Cairns-Brisbane								
Jetstar	133	132	108	81.8	108	81.8	1	0.8
Qantas	119	119	115	96.6	116	97.5	0	0.0
QantasLink	5	5	4	80.0	4	80.0	0	0.0
Tigerair Australia	31	30	27	90.0	28	93.3	1	3.2
Virgin Australia	138	137	127	92.7	127	92.7	1	0.7
All Airlines	426	423	381	90.1	383	90.5	3	0.7
Cairns-Melbourne								
Jetstar	108	107	83	77.6	80	74.8	1	0.9
Qantas	43	43	35	81.4	38	88.4	0	0.0
Tigerair Australia	44	44	34	77.3	35	79.5	0	0.0
Virgin Australia	32	32	28	87.5	31	96.9	0	0.0
All Airlines	227	226	180	79.6	184	81.4	1	0.4
Cairns-Sydney								
Jetstar	124	124	92	74.2	98	79.0	0	0.0
Qantas	78	78	74	94.9	72	92.3	0	0.0
Tigerair Australia	47	47	32	68.1	33	70.2	0	0.0
Virgin Australia	93	93	87	93.5	87	93.5	0	0.0
All Airlines	342	342	285	83.3	290	84.8	0	0.0
Cairns-Townsville								
QantasLink	143	142	133	93.7	133	93.7	1	0.7
Regional Express	21	21	19	90.5	19	90.5	0	0.0
All Airlines	164	163	152	93.3	152	93.3	1	0.6
Canberra-Adelaide								
Qantas	33	33	33	100.0	33	100.0	0	0.0
Virgin Australia	27	27	24	88.9	25	92.6	0	0.0
All Airlines	60	60	57	95.0	58	96.7	0	0.0
Canberra-Brisbane								
Qantas	62	62	57	91.9	59	95.2	0	0.0
QantasLink	87	84	76	90.5	76	90.5	3	3.4
Virgin Australia	93	91	83	91.2	80	87.9	2	2.2
All Airlines	242	237	216	91.1	215	90.7	5	2.1

	<i>Sectors</i>		<i>Arrivals On Time</i>		<i>Departures On Time</i>		<i>Cancellations</i>	
	<i>Sched.</i>	<i>Flown</i>	<i>No.</i>	<i>%</i>	<i>No.</i>	<i>%</i>	<i>No.</i>	<i>%</i>
Canberra-Melbourne								
Qantas	169	167	163	97.6	162	97.0	2	1.2
QantasLink	59	57	50	87.7	53	93.0	2	3.4
Tigerair Australia	31	31	18	58.1	18	58.1	0	0.0
Virgin Australia	119	117	106	90.6	106	90.6	2	1.7
All Airlines	378	372	337	90.6	339	91.1	6	1.6
Canberra-Sydney								
QantasLink	321	309	277	89.6	280	90.6	12	3.7
Virgin Australia	166	163	153	93.9	152	93.3	3	1.8
All Airlines	487	472	430	91.1	432	91.5	15	3.1
Coffs Harbour-Sydney								
QantasLink	153	149	128	85.9	133	89.3	4	2.6
Tigerair Australia	15	14	11	78.6	10	71.4	1	6.7
Virgin Australia	57	56	54	96.4	53	94.6	1	1.8
All Airlines	225	219	193	88.1	196	89.5	6	2.7
Darwin-Alice Springs								
QantasLink	31	30	28	93.3	29	96.7	1	3.2
Virgin Australia	13	13	13	100.0	13	100.0	0	0.0
All Airlines	44	43	41	95.3	42	97.7	1	2.3
Darwin-Brisbane								
Jetstar	30	30	25	83.3	24	80.0	0	0.0
Qantas	43	43	42	97.7	42	97.7	0	0.0
Tigerair Australia	23	23	20	87.0	21	91.3	0	0.0
Virgin Australia	31	31	23	74.2	30	96.8	0	0.0
All Airlines	127	127	110	86.6	117	92.1	0	0.0
Darwin-Melbourne								
Jetstar	30	30	24	80.0	21	70.0	0	0.0
Qantas	29	29	25	86.2	27	93.1	0	0.0
Virgin Australia	31	31	31	100.0	31	100.0	0	0.0
All Airlines	90	90	80	88.9	79	87.8	0	0.0
Darwin-Perth								
Qantas	31	31	29	93.5	29	93.5	0	0.0
Virgin Australia	31	31	29	93.5	29	93.5	0	0.0
All Airlines	62	62	58	93.5	58	93.5	0	0.0
Darwin-Sydney								
Jetstar	30	30	25	83.3	28	93.3	0	0.0
Qantas	36	36	30	83.3	36	100.0	0	0.0
Virgin Australia	31	31	27	87.1	28	90.3	0	0.0
All Airlines	97	97	82	84.5	92	94.8	0	0.0
Dubbo-Sydney								
QantasLink	121	121	102	84.3	109	90.1	0	0.0
Regional Express	88	87	75	86.2	76	87.4	1	1.1
All Airlines	209	208	177	85.1	185	88.9	1	0.5
Emerald-Brisbane								
QantasLink	116	114	96	84.2	99	86.8	2	1.7
Virgin Australia	73	73	71	97.3	72	98.6	0	0.0
All Airlines	189	187	167	89.3	171	91.4	2	1.1
Geraldton-Perth								
QantasLink	45	45	39	86.7	38	84.4	0	0.0
Virgin Australia Regional Airlines	50	50	47	94.0	47	94.0	0	0.0
All Airlines	95	95	86	90.5	85	89.5	0	0.0

	<i>Sectors</i>		<i>Arrivals On Time</i>		<i>Departures On Time</i>		<i>Cancellations</i>	
	<i>Sched.</i>	<i>Flown</i>	<i>No.</i>	<i>%</i>	<i>No.</i>	<i>%</i>	<i>No.</i>	<i>%</i>
Gladstone-Brisbane								
QantasLink	125	124	106	85.5	107	86.3	1	0.8
Virgin Australia	92	90	80	88.9	79	87.8	2	2.2
All Airlines	217	214	186	86.9	186	86.9	3	1.4
Gold Coast-Adelaide								
Jetstar	31	31	27	87.1	25	80.6	0	0.0
Virgin Australia	31	31	30	96.8	29	93.5	0	0.0
All Airlines	62	62	57	91.9	54	87.1	0	0.0
Gold Coast-Melbourne								
Jetstar	242	242	212	87.6	197	81.4	0	0.0
Qantas	36	36	29	80.6	26	72.2	0	0.0
Tigerair Australia	97	96	73	76.0	71	74.0	1	1.0
Virgin Australia	207	207	191	92.3	186	89.9	0	0.0
All Airlines	582	581	505	86.9	480	82.6	1	0.2
Gold Coast-Sydney								
Jetstar	345	340	282	82.9	273	80.3	5	1.4
Qantas	114	114	111	97.4	108	94.7	0	0.0
QantasLink	4	4	2	50.0	2	50.0	0	0.0
Tigerair Australia	123	121	84	69.4	75	62.0	2	1.6
Virgin Australia	262	258	234	90.7	239	92.6	4	1.5
All Airlines	848	837	713	85.2	697	83.3	11	1.3
Hamilton Island-Brisbane								
QantasLink	40	39	32	82.1	34	87.2	1	2.5
Virgin Australia	31	31	26	83.9	23	74.2	0	0.0
All Airlines	71	70	58	82.9	57	81.4	1	1.4
Hamilton Island-Melbourne								
Qantas	19	19	18	94.7	18	94.7	0	0.0
Virgin Australia	27	27	24	88.9	24	88.9	0	0.0
All Airlines	46	46	42	91.3	42	91.3	0	0.0
Hamilton Island-Sydney								
Jetstar	30	30	20	66.7	20	66.7	0	0.0
Qantas	27	27	23	85.2	22	81.5	0	0.0
QantasLink	6	6	4	66.7	4	66.7	0	0.0
Virgin Australia	32	31	29	93.5	29	93.5	1	3.1
All Airlines	95	94	76	80.9	75	79.8	1	1.1
Hobart-Brisbane								
Jetstar	31	31	29	93.5	24	77.4	0	0.0
Qantas	3	3	3	100.0	3	100.0	0	0.0
Virgin Australia	31	31	28	90.3	24	77.4	0	0.0
All Airlines	65	65	60	92.3	51	78.5	0	0.0
Hobart-Melbourne								
Jetstar	245	243	173	71.2	157	64.6	2	0.8
Qantas	12	12	9	75.0	10	83.3	0	0.0
QantasLink	131	130	112	86.2	115	88.5	1	0.8
Tigerair Australia	46	46	37	80.4	32	69.6	0	0.0
Virgin Australia	148	148	119	80.4	128	86.5	0	0.0
All Airlines	582	579	450	77.7	442	76.3	3	0.5
Hobart-Sydney								
Jetstar	127	127	86	67.7	81	63.8	0	0.0
Qantas	1	1	0	0.0	0	0.0	0	0.0
QantasLink	57	57	50	87.7	50	87.7	0	0.0
Virgin Australia	65	65	62	95.4	61	93.8	0	0.0
All Airlines	250	250	198	79.2	192	76.8	0	0.0

	<i>Sectors</i>		<i>Arrivals On Time</i>		<i>Departures On Time</i>		<i>Cancellations</i>	
	<i>Sched.</i>	<i>Flown</i>	<i>No.</i>	<i>%</i>	<i>No.</i>	<i>%</i>	<i>No.</i>	<i>%</i>
Kalgoorlie-Perth								
Qantas	5	5	4	80.0	3	60.0	0	0.0
QantasLink	59	57	49	86.0	48	84.2	2	3.4
Virgin Australia	26	26	24	92.3	24	92.3	0	0.0
Virgin Australia Regional Airlines	37	37	34	91.9	32	86.5	0	0.0
All Airlines	127	125	111	88.8	107	85.6	2	1.6
Karratha-Perth								
Qantas	13	13	13	100.0	13	100.0	0	0.0
QantasLink	179	166	138	83.1	141	84.9	13	7.3
Virgin Australia	5	5	3	60.0	2	40.0	0	0.0
Virgin Australia Regional Airlines	78	73	67	91.8	70	95.9	5	6.4
All Airlines	275	257	221	86.0	226	87.9	18	6.5
Launceston-Melbourne								
Jetstar	197	195	143	73.3	134	68.7	2	1.0
QantasLink	119	112	95	84.8	100	89.3	7	5.9
Virgin Australia	98	98	84	85.7	87	88.8	0	0.0
All Airlines	414	405	322	79.5	321	79.3	9	2.2
Launceston-Sydney								
Jetstar	91	91	67	73.6	58	63.7	0	0.0
Virgin Australia	32	32	31	96.9	31	96.9	0	0.0
All Airlines	123	123	98	79.7	89	72.4	0	0.0
Mackay-Brisbane								
Jetstar	32	32	17	53.1	14	43.8	0	0.0
QantasLink	110	107	78	72.9	86	80.4	3	2.7
Virgin Australia	142	142	130	91.5	129	90.8	0	0.0
All Airlines	284	281	225	80.1	229	81.5	3	1.1
Melbourne-Adelaide								
Jetstar	127	124	77	62.1	79	63.7	3	2.4
Qantas	241	241	219	90.9	225	93.4	0	0.0
Tigerair Australia	80	79	68	86.1	67	84.8	1	1.3
Virgin Australia	258	257	232	90.3	245	95.3	1	0.4
All Airlines	706	701	596	85.0	616	87.9	5	0.7
Melbourne-Brisbane								
Jetstar	151	150	123	82.0	108	72.0	1	0.7
Qantas	428	424	389	91.7	391	92.2	4	0.9
Tigerair Australia	134	132	97	73.5	96	72.7	2	1.5
Virgin Australia	357	354	325	91.8	331	93.5	3	0.8
All Airlines	1 070	1 060	934	88.1	926	87.4	10	0.9
Melbourne-Cairns								
Jetstar	108	108	91	84.3	82	75.9	0	0.0
Qantas	43	43	42	97.7	42	97.7	0	0.0
Tigerair Australia	44	44	37	84.1	35	79.5	0	0.0
Virgin Australia	32	32	32	100.0	32	100.0	0	0.0
All Airlines	227	227	202	89.0	191	84.1	0	0.0
Melbourne-Canberra								
Qantas	168	166	153	92.2	150	90.4	2	1.2
QantasLink	59	57	45	78.9	48	84.2	2	3.4
Tigerair Australia	31	31	23	74.2	25	80.6	0	0.0
Virgin Australia	120	119	109	91.6	109	91.6	1	0.8
All Airlines	378	373	330	88.5	332	89.0	5	1.3
Melbourne-Darwin								
Jetstar	30	30	27	90.0	20	66.7	0	0.0
Qantas	29	29	28	96.6	27	93.1	0	0.0
Virgin Australia	31	31	31	100.0	29	93.5	0	0.0
All Airlines	90	90	86	95.6	76	84.4	0	0.0

	<i>Sectors</i>		<i>Arrivals On Time</i>		<i>Departures On Time</i>		<i>Cancellations</i>	
	<i>Sched.</i>	<i>Flown</i>	<i>No.</i>	<i>%</i>	<i>No.</i>	<i>%</i>	<i>No.</i>	<i>%</i>
Melbourne-Gold Coast								
Jetstar	242	242	210	86.8	201	83.1	0	0.0
Qantas	36	36	31	86.1	33	91.7	0	0.0
Tigerair Australia	97	96	78	81.3	77	80.2	1	1.0
Virgin Australia	206	206	188	91.3	191	92.7	0	0.0
All Airlines	581	580	507	87.4	502	86.6	1	0.2
Melbourne-Hamilton Island								
Qantas	19	19	18	94.7	18	94.7	0	0.0
Virgin Australia	27	27	23	85.2	25	92.6	0	0.0
All Airlines	46	46	41	89.1	43	93.5	0	0.0
Melbourne-Hobart								
Jetstar	244	244	203	83.2	195	79.9	0	0.0
Qantas	12	12	11	91.7	12	100.0	0	0.0
QantasLink	131	130	116	89.2	111	85.4	1	0.8
Tigerair Australia	46	46	33	71.7	35	76.1	0	0.0
Virgin Australia	148	148	138	93.2	134	90.5	0	0.0
All Airlines	581	580	501	86.4	487	84.0	1	0.2
Melbourne-Launceston								
Jetstar	196	195	160	82.1	153	78.5	1	0.5
QantasLink	119	113	101	89.4	96	85.0	6	5.0
Virgin Australia	98	98	88	89.8	89	90.8	0	0.0
All Airlines	413	406	349	86.0	338	83.3	7	1.7
Melbourne-Mildura								
QantasLink	91	90	75	83.3	75	83.3	1	1.1
Regional Express	52	52	44	84.6	48	92.3	0	0.0
Virgin Australia	31	31	29	93.5	30	96.8	0	0.0
All Airlines	174	173	148	85.5	153	88.4	1	0.6
Melbourne-Newcastle								
Jetstar	130	129	115	89.1	102	79.1	1	0.8
Virgin Australia	31	31	25	80.6	26	83.9	0	0.0
All Airlines	161	160	140	87.5	128	80.0	1	0.6
Melbourne-Perth								
Jetstar	63	63	58	92.1	52	82.5	0	0.0
Qantas	205	204	156	76.5	158	77.5	1	0.5
Tigerair Australia	62	62	53	85.5	50	80.6	0	0.0
Virgin Australia	142	142	128	90.1	125	88.0	0	0.0
All Airlines	472	471	395	83.9	385	81.7	1	0.2
Melbourne-Sunshine Coast								
Jetstar	90	90	80	88.9	70	77.8	0	0.0
QantasLink	12	12	5	41.7	4	33.3	0	0.0
Virgin Australia	44	44	42	95.5	42	95.5	0	0.0
All Airlines	146	146	127	87.0	116	79.5	0	0.0
Melbourne-Sydney								
Jetstar	412	401	293	73.1	299	74.6	11	2.7
Qantas	861	847	748	88.3	757	89.4	14	1.6
Tigerair Australia	246	240	180	75.0	177	73.8	6	2.4
Virgin Australia	671	650	603	92.8	610	93.8	21	3.1
All Airlines	2 190	2 138	1 824	85.3	1 843	86.2	52	2.4
Mildura-Melbourne								
QantasLink	91	90	79	87.8	81	90.0	1	1.1
Regional Express	51	51	45	88.2	50	98.0	0	0.0
Virgin Australia	31	31	28	90.3	29	93.5	0	0.0
All Airlines	173	172	152	88.4	160	93.0	1	0.6

	<i>Sectors</i>		<i>Arrivals On Time</i>		<i>Departures On Time</i>		<i>Cancellations</i>	
	<i>Sched.</i>	<i>Flown</i>	<i>No.</i>	<i>%</i>	<i>No.</i>	<i>%</i>	<i>No.</i>	<i>%</i>
Moranbah-Brisbane								
QantasLink	77	73	59	80.8	64	87.7	4	5.2
Virgin Australia	61	61	57	93.4	58	95.1	0	0.0
All Airlines	138	134	116	86.6	122	91.0	4	2.9
Mount Isa-Brisbane								
QantasLink	58	57	51	89.5	53	93.0	1	1.7
Virgin Australia	17	17	15	88.2	15	88.2	0	0.0
All Airlines	75	74	66	89.2	68	91.9	1	1.3
Newcastle-Brisbane								
Jetstar	92	90	70	77.8	73	81.1	2	2.2
QantasLink	96	92	81	88.0	79	85.9	4	4.2
Virgin Australia	89	88	87	98.9	86	97.7	1	1.1
All Airlines	277	270	238	88.1	238	88.1	7	2.5
Newcastle-Melbourne								
Jetstar	130	130	110	84.6	110	84.6	0	0.0
Virgin Australia	31	31	21	67.7	23	74.2	0	0.0
All Airlines	161	161	131	81.4	133	82.6	0	0.0
Newman-Perth								
Qantas	68	68	67	98.5	66	97.1	0	0.0
QantasLink	56	52	47	90.4	46	88.5	4	7.1
Virgin Australia	22	22	22	100.0	22	100.0	0	0.0
Virgin Australia Regional Airlines	18	18	16	88.9	17	94.4	0	0.0
All Airlines	164	160	152	95.0	151	94.4	4	2.4
Perth-Adelaide								
Jetstar	31	31	29	93.5	25	80.6	0	0.0
Qantas	95	95	93	97.9	93	97.9	0	0.0
QantasLink	13	13	12	92.3	11	84.6	0	0.0
Virgin Australia	74	74	73	98.6	70	94.6	0	0.0
All Airlines	213	213	207	97.2	199	93.4	0	0.0
Perth-Brisbane								
Qantas	129	129	122	94.6	117	90.7	0	0.0
Virgin Australia	107	107	96	89.7	98	91.6	0	0.0
All Airlines	236	236	218	92.4	215	91.1	0	0.0
Perth-Broome								
QantasLink	83	81	71	87.7	65	80.2	2	2.4
Virgin Australia	1	1	1	100.0	1	100.0	0	0.0
Virgin Australia Regional Airlines	44	44	33	75.0	40	90.9	0	0.0
All Airlines	128	126	105	83.3	106	84.1	2	1.6
Perth-Darwin								
Qantas	31	31	28	90.3	29	93.5	0	0.0
Virgin Australia	31	31	30	96.8	30	96.8	0	0.0
All Airlines	62	62	58	93.5	59	95.2	0	0.0
Perth-Geraldton								
QantasLink	45	45	34	75.6	31	68.9	0	0.0
Virgin Australia Regional Airlines	50	50	48	96.0	47	94.0	0	0.0
All Airlines	95	95	82	86.3	78	82.1	0	0.0
Perth-Kalgoorlie								
Qantas	5	5	5	100.0	5	100.0	0	0.0
QantasLink	59	57	48	84.2	48	84.2	2	3.4
Virgin Australia	25	25	21	84.0	22	88.0	0	0.0
Virgin Australia Regional Airlines	37	37	36	97.3	36	97.3	0	0.0
All Airlines	126	124	110	88.7	111	89.5	2	1.6

	<i>Sectors</i>		<i>Arrivals On Time</i>		<i>Departures On Time</i>		<i>Cancellations</i>	
	<i>Sched.</i>	<i>Flown</i>	<i>No.</i>	<i>%</i>	<i>No.</i>	<i>%</i>	<i>No.</i>	<i>%</i>
Perth-Karratha								
Qantas	13	13	13	100.0	13	100.0	0	0.0
QantasLink	179	173	147	85.0	147	85.0	6	3.4
Virgin Australia	5	5	3	60.0	3	60.0	0	0.0
Virgin Australia Regional Airlines	78	74	71	95.9	72	97.3	4	5.1
All Airlines	275	265	234	88.3	235	88.7	10	3.6
Perth-Melbourne								
Jetstar	62	62	51	82.3	44	71.0	0	0.0
Qantas	203	203	186	91.6	173	85.2	0	0.0
Tigerair Australia	62	62	57	91.9	56	90.3	0	0.0
Virgin Australia	139	139	134	96.4	131	94.2	0	0.0
All Airlines	466	466	428	91.8	404	86.7	0	0.0
Perth-Newman								
Qantas	68	68	65	95.6	65	95.6	0	0.0
QantasLink	56	54	45	83.3	46	85.2	2	3.6
Virgin Australia	22	22	22	100.0	22	100.0	0	0.0
Virgin Australia Regional Airlines	18	18	16	88.9	16	88.9	0	0.0
All Airlines	164	162	148	91.4	149	92.0	2	1.2
Perth-Port Hedland								
Qantas	30	30	29	96.7	30	100.0	0	0.0
QantasLink	97	95	69	72.6	78	82.1	2	2.1
Virgin Australia	23	23	23	100.0	22	95.7	0	0.0
Virgin Australia Regional Airlines	30	29	27	93.1	28	96.6	1	3.3
All Airlines	180	177	148	83.6	158	89.3	3	1.7
Perth-Sydney								
Jetstar	31	31	28	90.3	20	64.5	0	0.0
Qantas	199	199	179	89.9	164	82.4	0	0.0
Tigerair Australia	30	28	27	96.4	27	96.4	2	6.7
Virgin Australia	119	119	114	95.8	110	92.4	0	0.0
All Airlines	379	377	348	92.3	321	85.1	2	0.5
Port Hedland-Perth								
Qantas	30	30	28	93.3	29	96.7	0	0.0
QantasLink	97	92	78	84.8	74	80.4	5	5.2
Virgin Australia	23	23	22	95.7	23	100.0	0	0.0
Virgin Australia Regional Airlines	30	29	27	93.1	27	93.1	1	3.3
All Airlines	180	174	155	89.1	153	87.9	6	3.3
Port Lincoln-Adelaide								
QantasLink	106	105	87	82.9	87	82.9	1	0.9
Regional Express	172	172	161	93.6	164	95.3	0	0.0
All Airlines	278	277	248	89.5	251	90.6	1	0.4
Port Macquarie-Sydney								
QantasLink	127	126	103	81.7	106	84.1	1	0.8
Virgin Australia	60	60	52	86.7	46	76.7	0	0.0
All Airlines	187	186	155	83.3	152	81.7	1	0.5
Proserpine-Brisbane								
Jetstar	43	41	29	70.7	27	65.9	2	4.7
Virgin Australia	36	33	28	84.8	29	87.9	3	8.3
All Airlines	79	74	57	77.0	56	75.7	5	6.3
Rockhampton-Brisbane								
QantasLink	179	175	145	82.9	151	86.3	4	2.2
Virgin Australia	133	131	115	87.8	116	88.5	2	1.5
All Airlines	312	306	260	85.0	267	87.3	6	1.9

	<i>Sectors</i>		<i>Arrivals On Time</i>		<i>Departures On Time</i>		<i>Cancellations</i>	
	<i>Sched.</i>	<i>Flown</i>	<i>No.</i>	<i>%</i>	<i>No.</i>	<i>%</i>	<i>No.</i>	<i>%</i>
Sunshine Coast-Melbourne								
Jetstar	91	91	71	78.0	60	65.9	0	0.0
QantasLink	12	12	5	41.7	5	41.7	0	0.0
Virgin Australia	44	44	38	86.4	39	88.6	0	0.0
All Airlines	147	147	114	77.6	104	70.7	0	0.0
Sunshine Coast-Sydney								
Jetstar	126	125	97	77.6	92	73.6	1	0.8
QantasLink	35	33	29	87.9	29	87.9	2	5.7
Virgin Australia	42	42	38	90.5	37	88.1	0	0.0
All Airlines	203	200	164	82.0	158	79.0	3	1.5
Sydney-Adelaide								
Jetstar	139	138	103	74.6	99	71.7	1	0.7
Qantas	212	212	202	95.3	196	92.5	0	0.0
QantasLink	27	27	22	81.5	24	88.9	0	0.0
Tigerair Australia	49	49	39	79.6	38	77.6	0	0.0
Virgin Australia	156	156	150	96.2	147	94.2	0	0.0
All Airlines	583	582	516	88.7	504	86.6	1	0.2
Sydney-Albury								
QantasLink	100	100	85	85.0	85	85.0	0	0.0
Regional Express	49	49	47	95.9	48	98.0	0	0.0
Virgin Australia	62	62	56	90.3	55	88.7	0	0.0
All Airlines	211	211	188	89.1	188	89.1	0	0.0
Sydney-Armidale								
QantasLink	117	117	83	70.9	85	72.6	0	0.0
Regional Express	51	51	47	92.2	48	94.1	0	0.0
All Airlines	168	168	130	77.4	133	79.2	0	0.0
Sydney-Ayers Rock								
Jetstar	22	22	21	95.5	20	90.9	0	0.0
Virgin Australia	31	31	31	100.0	28	90.3	0	0.0
All Airlines	53	53	52	98.1	48	90.6	0	0.0
Sydney-Ballina								
Jetstar	91	91	82	90.1	81	89.0	0	0.0
Regional Express	25	25	23	92.0	24	96.0	0	0.0
Virgin Australia	37	37	34	91.9	35	94.6	0	0.0
All Airlines	153	153	139	90.8	140	91.5	0	0.0
Sydney-Brisbane								
Jetstar	188	182	146	80.2	130	71.4	6	3.2
Qantas	603	601	566	94.2	557	92.7	2	0.3
Tigerair Australia	106	104	88	84.6	84	80.8	2	1.9
Virgin Australia	522	510	470	92.2	471	92.4	12	2.3
All Airlines	1 419	1 397	1 270	90.9	1 242	88.9	22	1.6
Sydney-Cairns								
Jetstar	124	124	105	84.7	93	75.0	0	0.0
Qantas	78	78	75	96.2	74	94.9	0	0.0
Tigerair Australia	47	47	39	83.0	38	80.9	0	0.0
Virgin Australia	94	94	89	94.7	87	92.6	0	0.0
All Airlines	343	343	308	89.8	292	85.1	0	0.0
Sydney-Canberra								
QantasLink	320	312	271	86.9	270	86.5	8	2.5
Virgin Australia	166	165	145	87.9	143	86.7	1	0.6
All Airlines	486	477	416	87.2	413	86.6	9	1.9

	<i>Sectors</i>		<i>Arrivals On Time</i>		<i>Departures On Time</i>		<i>Cancellations</i>	
	<i>Sched.</i>	<i>Flown</i>	<i>No.</i>	<i>%</i>	<i>No.</i>	<i>%</i>	<i>No.</i>	<i>%</i>
Sydney-Coffs Harbour								
QantasLink	154	150	135	90.0	135	90.0	4	2.6
Tigerair Australia	16	15	13	86.7	14	93.3	1	6.3
Virgin Australia	57	56	54	96.4	53	94.6	1	1.8
All Airlines	227	221	202	91.4	202	91.4	6	2.6
Sydney-Darwin								
Jetstar	30	30	29	96.7	24	80.0	0	0.0
Qantas	36	36	35	97.2	29	80.6	0	0.0
Virgin Australia	31	31	30	96.8	29	93.5	0	0.0
All Airlines	97	97	94	96.9	82	84.5	0	0.0
Sydney-Dubbo								
QantasLink	122	122	102	83.6	109	89.3	0	0.0
Regional Express	87	87	76	87.4	73	83.9	0	0.0
All Airlines	209	209	178	85.2	182	87.1	0	0.0
Sydney-Gold Coast								
Jetstar	345	342	300	87.7	292	85.4	3	0.9
Qantas	114	114	110	96.5	111	97.4	0	0.0
QantasLink	4	4	2	50.0	4	100.0	0	0.0
Tigerair Australia	122	121	93	76.9	95	78.5	1	0.8
Virgin Australia	262	259	248	95.8	249	96.1	3	1.1
All Airlines	847	840	753	89.6	751	89.4	7	0.8
Sydney-Hamilton Island								
Jetstar	30	30	26	86.7	23	76.7	0	0.0
Qantas	27	27	24	88.9	24	88.9	0	0.0
QantasLink	6	6	4	66.7	4	66.7	0	0.0
Virgin Australia	32	31	30	96.8	30	96.8	1	3.1
All Airlines	95	94	84	89.4	81	86.2	1	1.1
Sydney-Hobart								
Jetstar	127	127	98	77.2	93	73.2	0	0.0
Qantas	1	1	1	100.0	1	100.0	0	0.0
QantasLink	58	58	55	94.8	52	89.7	0	0.0
Virgin Australia	65	65	64	98.5	64	98.5	0	0.0
All Airlines	251	251	218	86.9	210	83.7	0	0.0
Sydney-Launceston								
Jetstar	91	91	81	89.0	78	85.7	0	0.0
Virgin Australia	32	32	30	93.8	31	96.9	0	0.0
All Airlines	123	123	111	90.2	109	88.6	0	0.0
Sydney-Melbourne								
Jetstar	412	401	295	73.6	280	69.8	11	2.7
Qantas	867	851	732	86.0	759	89.2	16	1.8
Tigerair Australia	246	240	176	73.3	175	72.9	6	2.4
Virgin Australia	657	638	583	91.4	598	93.7	19	2.9
All Airlines	2 182	2 130	1 786	83.8	1 812	85.1	52	2.4
Sydney-Perth								
Jetstar	31	31	26	83.9	24	77.4	0	0.0
Qantas	201	201	176	87.6	165	82.1	0	0.0
Tigerair Australia	30	29	28	96.6	26	89.7	1	3.3
Virgin Australia	120	120	109	90.8	102	85.0	0	0.0
All Airlines	382	381	339	89.0	317	83.2	1	0.3
Sydney-Port Macquarie								
QantasLink	128	127	100	78.7	100	78.7	1	0.8
Virgin Australia	60	60	50	83.3	50	83.3	0	0.0
All Airlines	188	187	150	80.2	150	80.2	1	0.5

	<i>Sectors</i>		<i>Arrivals On Time</i>		<i>Departures On Time</i>		<i>Cancellations</i>	
	<i>Sched.</i>	<i>Flown</i>	<i>No.</i>	<i>%</i>	<i>No.</i>	<i>%</i>	<i>No.</i>	<i>%</i>
Sydney-Sunshine Coast								
Jetstar	127	127	114	89.8	106	83.5	0	0.0
QantasLink	36	35	30	85.7	32	91.4	1	2.8
Virgin Australia	42	42	38	90.5	38	90.5	0	0.0
All Airlines	205	204	182	89.2	176	86.3	1	0.5
Sydney-Tamworth								
QantasLink	150	147	127	86.4	124	84.4	3	2.0
Virgin Australia	47	47	41	87.2	40	85.1	0	0.0
All Airlines	197	194	168	86.6	164	84.5	3	1.5
Sydney-Townsville								
Jetstar	30	30	16	53.3	12	40.0	0	0.0
Virgin Australia	25	25	23	92.0	24	96.0	0	0.0
All Airlines	55	55	39	70.9	36	65.5	0	0.0
Sydney-Wagga Wagga								
QantasLink	110	110	88	80.0	92	83.6	0	0.0
Regional Express	64	64	59	92.2	58	90.6	0	0.0
All Airlines	174	174	147	84.5	150	86.2	0	0.0
Tamworth-Sydney								
QantasLink	149	145	133	91.7	132	91.0	4	2.7
Virgin Australia	46	46	43	93.5	42	91.3	0	0.0
All Airlines	195	191	176	92.1	174	91.1	4	2.1
Townsville-Brisbane								
Jetstar	47	47	41	87.2	39	83.0	0	0.0
Qantas	76	76	71	93.4	72	94.7	0	0.0
QantasLink	76	70	58	82.9	62	88.6	6	7.9
Virgin Australia	142	142	134	94.4	128	90.1	0	0.0
All Airlines	341	335	304	90.7	301	89.9	6	1.8
Townsville-Cairns								
QantasLink	142	140	127	90.7	126	90.0	2	1.4
Regional Express	21	21	19	90.5	19	90.5	0	0.0
All Airlines	163	161	146	90.7	145	90.1	2	1.2
Townsville-Sydney								
Jetstar	30	29	16	55.2	15	51.7	1	3.3
Virgin Australia	25	25	21	84.0	21	84.0	0	0.0
All Airlines	55	54	37	68.5	36	66.7	1	1.8
Wagga Wagga-Sydney								
QantasLink	110	110	94	85.5	94	85.5	0	0.0
Regional Express	66	66	55	83.3	57	86.4	0	0.0
All Airlines	176	176	149	84.7	151	85.8	0	0.0

Airports

On time performance is reported for all routes where the passenger load averages over 8000 passengers per month, and where two or more airlines operate in competition. The following data reports by airport against flights operated on those routes only. This month, 8 major city airports and 33 regional city airports are covered.

Airport	Arrivals			Departures		
	Sectors	On Time		Sectors	On Time	
	Flown	No.	%	Flown	No.	%
Adelaide						
Jetstar	354	266	75.1	348	262	75.3
Qantas	703	665	94.6	705	649	92.1
QantasLink	152	128	84.2	152	135	88.8
Regional Express	172	161	93.6	173	168	97.1
Tigerair Australia	157	133	84.7	157	126	80.3
Virgin Australia	675	630	93.3	674	625	92.7
All Airlines	2 213	1 983	89.6	2 209	1 965	89.0
Relates to services to and from Alice Springs, Brisbane, Canberra, Gold Coast, Melbourne, Perth, Port Lincoln and Sydney.						
Albury						
QantasLink	100	85	85.0	100	89	89.0
Regional Express	49	47	95.9	49	49	100.0
Virgin Australia	62	56	90.3	62	55	88.7
All Airlines	211	188	89.1	211	193	91.5
Relates to services to and from Sydney only.						
Alice Springs						
Qantas	30	27	90.0	30	29	96.7
QantasLink	30	28	93.3	30	23	76.7
Virgin Australia	26	26	100.0	26	26	100.0
All Airlines	86	81	94.2	86	78	90.7
Relates to services to and from Adelaide and Darwin.						
Armidale						
QantasLink	117	83	70.9	115	83	72.2
Regional Express	51	47	92.2	49	45	91.8
All Airlines	168	130	77.4	164	128	78.0
Relates to services to and from Sydney only.						
Ayers Rock						
Jetstar	22	21	95.5	22	18	81.8
Virgin Australia	31	31	100.0	31	29	93.5
All Airlines	53	52	98.1	53	47	88.7
Relates to services to and from Sydney only.						
Ballina						
Jetstar	91	82	90.1	91	63	69.2
Regional Express	25	23	92.0	23	22	95.7
Virgin Australia	37	34	91.9	37	29	78.4
All Airlines	153	139	90.8	151	114	75.5
Relates to services to and from Sydney only.						

Airport	Arrivals			Departures		
	Sectors	On Time		Sectors	On Time	
	Flown	No.	%	Flown	No.	%
Brisbane						
Jetstar	765	613	80.1	765	585	76.5
Qantas	1 549	1 454	93.9	1 551	1 457	93.9
QantasLink	1 077	901	83.7	1 087	946	87.0
Tigerair Australia	318	259	81.4	317	264	83.3
Virgin Australia	2 212	2 028	91.7	2 215	2 005	90.5
All Airlines	5 921	5 255	88.8	5 935	5 257	88.6

Relates to services to and from Adelaide, Bundaberg, Cairns, Canberra, Darwin, Emerald, Gladstone, Hamilton Island, Hobart, Mackay, Melbourne, Moranbah, Mount Isa, Newcastle, Perth, Proserpine, Rockhampton, Sydney and Townsville.

Broome

QantasLink	81	71	87.7	80	63	78.8
Virgin Australia	1	1	100.0	1	1	100.0
Virgin Australia Regional Airlines	44	33	75.0	44	31	70.5
All Airlines	126	105	83.3	125	95	76.0

Relates to services to and from Perth only.

Bundaberg

QantasLink	130	113	86.9	130	115	88.5
Virgin Australia	31	29	93.5	31	26	83.9
All Airlines	161	142	88.2	161	141	87.6

Relates to services to and from Brisbane only.

Cairns

Jetstar	365	310	84.9	363	286	78.8
Qantas	241	235	97.5	240	226	94.2
QantasLink	144	131	91.0	147	137	93.2
Regional Express	21	19	90.5	21	19	90.5
Tigerair Australia	122	105	86.1	121	96	79.3
Virgin Australia	263	252	95.8	262	245	93.5
All Airlines	1 156	1 052	91.0	1 154	1 009	87.4

Relates to services to and from Brisbane, Melbourne, Sydney and Townsville.

Canberra

Qantas	260	242	93.1	262	254	96.9
QantasLink	456	393	86.2	450	409	90.9
Tigerair Australia	31	23	74.2	31	18	58.1
Virgin Australia	404	367	90.8	398	363	91.2
All Airlines	1 151	1 025	89.1	1 141	1 044	91.5

Relates to services to and from Adelaide, Brisbane, Melbourne and Sydney.

Coffs Harbour

QantasLink	150	135	90.0	149	133	89.3
Tigerair Australia	15	13	86.7	14	10	71.4
Virgin Australia	56	54	96.4	56	53	94.6
All Airlines	221	202	91.4	219	196	89.5

Relates to services to and from Sydney only.

Darwin

Jetstar	90	85	94.4	90	73	81.1
Qantas	139	133	95.7	139	134	96.4
QantasLink	30	25	83.3	30	29	96.7
Tigerair Australia	23	22	95.7	23	21	91.3
Virgin Australia	137	135	98.5	137	131	95.6
All Airlines	419	400	95.5	419	388	92.6

Relates to services to and from Alice Springs, Brisbane, Melbourne, Perth and Sydney.

Airport	Arrivals			Departures		
	Sectors Flown	On Time		Sectors Flown	On Time	
		No.	%		No.	%
Dubbo						
QantasLink	122	102	83.6	121	109	90.1
Regional Express	87	76	87.4	87	76	87.4
All Airlines	209	178	85.2	208	185	88.9
Relates to services to and from Sydney only.						
Emerald						
QantasLink	115	100	87.0	114	99	86.8
Virgin Australia	74	73	98.6	73	72	98.6
All Airlines	189	173	91.5	187	171	91.4
Relates to services to and from Brisbane only.						
Geraldton						
QantasLink	45	34	75.6	45	38	84.4
Virgin Australia Regional Airlines	50	48	96.0	50	47	94.0
All Airlines	95	82	86.3	95	85	89.5
Relates to services to and from Perth only.						
Gladstone						
QantasLink	123	102	82.9	124	107	86.3
Virgin Australia	91	75	82.4	90	79	87.8
All Airlines	214	177	82.7	214	186	86.9
Relates to services to and from Brisbane only.						
Gold Coast						
Jetstar	615	536	87.2	613	495	80.8
Qantas	150	141	94.0	150	134	89.3
QantasLink	4	2	50.0	4	2	50.0
Tigerair Australia	217	171	78.8	217	146	67.3
Virgin Australia	496	466	94.0	496	454	91.5
All Airlines	1 482	1 316	88.8	1 480	1 231	83.2
Relates to services to and from Adelaide, Melbourne and Sydney.						
Hamilton Island						
Jetstar	30	26	86.7	30	20	66.7
Qantas	46	42	91.3	46	40	87.0
QantasLink	45	38	84.4	45	38	84.4
Virgin Australia	89	79	88.8	89	76	85.4
All Airlines	210	185	88.1	210	174	82.9
Relates to services to and from Brisbane, Melbourne and Sydney.						
Hobart						
Jetstar	402	331	82.3	401	262	65.3
Qantas	16	15	93.8	16	13	81.3
QantasLink	188	171	91.0	187	165	88.2
Tigerair Australia	46	33	71.7	46	32	69.6
Virgin Australia	244	231	94.7	244	213	87.3
All Airlines	896	781	87.2	894	685	76.6
Relates to services to and from Brisbane, Melbourne and Sydney.						
Kalgoorlie						
Qantas	5	5	100.0	5	3	60.0
QantasLink	57	48	84.2	57	48	84.2
Virgin Australia	25	21	84.0	26	24	92.3
Virgin Australia Regional Airlines	37	36	97.3	37	32	86.5
All Airlines	124	110	88.7	125	107	85.6
Relates to services to and from Perth only.						

Airport	Arrivals			Departures		
	Sectors Flown	On Time		Sectors Flown	On Time	
		No.	%		No.	%
Karratha						
Qantas	13	13	100.0	13	13	100.0
QantasLink	173	147	85.0	166	141	84.9
Virgin Australia	5	3	60.0	5	2	40.0
Virgin Australia Regional Airlines	74	71	95.9	73	70	95.9
All Airlines	265	234	88.3	257	226	87.9
Relates to services to and from Perth only.						
Launceston						
Jetstar	286	241	84.3	286	192	67.1
QantasLink	113	101	89.4	112	100	89.3
Virgin Australia	130	118	90.8	130	118	90.8
All Airlines	529	460	87.0	528	410	77.7
Relates to services to and from Melbourne and Sydney.						
Mackay						
Jetstar	32	18	56.3	32	14	43.8
QantasLink	108	92	85.2	107	86	80.4
Virgin Australia	142	130	91.5	142	129	90.8
All Airlines	282	240	85.1	281	229	81.5
Relates to services to and from Brisbane only.						
Melbourne						
Jetstar	1 771	1 390	78.5	1 776	1 361	76.6
Qantas	2 022	1 789	88.5	2 021	1 813	89.7
QantasLink	401	341	85.0	402	334	83.1
Regional Express	51	45	88.2	52	48	92.3
Tigerair Australia	728	567	77.9	730	562	77.0
Virgin Australia	2 168	1 937	89.3	2 170	2 018	93.0
All Airlines	7 141	6 069	85.0	7 151	6 136	85.8
Relates to services to and from Adelaide, Brisbane, Cairns, Canberra, Darwin, Gold Coast, Hamilton Island, Hobart, Launceston, Mildura, Newcastle, Perth, Sunshine Coast and Sydney.						
Mildura						
QantasLink	90	75	83.3	90	81	90.0
Regional Express	52	44	84.6	51	50	98.0
Virgin Australia	31	29	93.5	31	29	93.5
All Airlines	173	148	85.5	172	160	93.0
Relates to services to and from Melbourne only.						
Moranbah						
QantasLink	78	69	88.5	73	64	87.7
Virgin Australia	61	54	88.5	61	58	95.1
All Airlines	139	123	88.5	134	122	91.0
Relates to services to and from Brisbane only.						
Mount Isa						
QantasLink	57	53	93.0	57	53	93.0
Virgin Australia	18	18	100.0	17	15	88.2
All Airlines	75	71	94.7	74	68	91.9
Relates to services to and from Brisbane only.						

Airport	Arrivals			Departures		
	Sectors	On Time		Sectors	On Time	
	Flown	No.	%	Flown	No.	%
Newcastle						
Jetstar	220	186	84.5	220	183	83.2
QantasLink	95	76	80.0	92	79	85.9
Virgin Australia	120	110	91.7	119	109	91.6
All Airlines	435	372	85.5	431	371	86.1
Relates to services to and from Brisbane and Melbourne.						
Newman						
Qantas	68	65	95.6	68	66	97.1
QantasLink	54	45	83.3	52	46	88.5
Virgin Australia	22	22	100.0	22	22	100.0
Virgin Australia Regional Airlines	18	16	88.9	18	17	94.4
All Airlines	162	148	91.4	160	151	94.4
Relates to services to and from Perth only.						
Perth						
Jetstar	125	115	92.0	124	89	71.8
Qantas	780	688	88.2	773	689	89.1
QantasLink	505	431	85.3	518	426	82.2
Tigerair Australia	91	81	89.0	90	83	92.2
Virgin Australia	551	507	92.0	546	509	93.2
Virgin Australia Regional Airlines	251	223	88.8	252	239	94.8
All Airlines	2 303	2 045	88.8	2 303	2 035	88.4
Relates to services to and from Adelaide, Brisbane, Broome, Darwin, Geraldton, Kalgoorlie, Karratha, Melbourne, Newman, Port Hedland and Sydney.						
Port Hedland						
Qantas	30	29	96.7	30	29	96.7
QantasLink	95	69	72.6	92	74	80.4
Virgin Australia	23	23	100.0	23	23	100.0
Virgin Australia Regional Airlines	29	27	93.1	29	27	93.1
All Airlines	177	148	83.6	174	153	87.9
Relates to services to and from Perth only.						
Port Lincoln						
QantasLink	105	94	89.5	105	87	82.9
Regional Express	173	167	96.5	172	164	95.3
All Airlines	278	261	93.9	277	251	90.6
Relates to services to and from Adelaide only.						
Port Macquarie						
QantasLink	127	100	78.7	126	106	84.1
Virgin Australia	60	50	83.3	60	46	76.7
All Airlines	187	150	80.2	186	152	81.7
Relates to services to and from Sydney only.						
Proserpine						
Jetstar	42	33	78.6	41	27	65.9
Virgin Australia	33	30	90.9	33	29	87.9
All Airlines	75	63	84.0	74	56	75.7
Relates to services to and from Brisbane only.						

Airport	Arrivals			Departures		
	Sectors Flown	On Time		Sectors Flown	On Time	
		No.	%		No.	%
Rockhampton						
QantasLink	175	152	86.9	175	151	86.3
Virgin Australia	131	115	87.8	131	116	88.5
All Airlines	306	267	87.3	306	267	87.3
Relates to services to and from Brisbane only.						
Sunshine Coast						
Jetstar	217	194	89.4	216	152	70.4
QantasLink	47	35	74.5	45	34	75.6
Virgin Australia	86	80	93.0	86	76	88.4
All Airlines	350	309	88.3	347	262	75.5
Relates to services to and from Melbourne and Sydney.						
Sydney						
Jetstar	1 756	1 342	76.4	1 766	1 355	76.7
Qantas	2 118	1 939	91.5	2 121	1 916	90.3
QantasLink	1 302	1 121	86.1	1 315	1 116	84.9
Regional Express	274	241	88.0	276	251	90.9
Tigerair Australia	603	456	75.6	605	470	77.7
Virgin Australia	2 449	2 260	92.3	2 461	2 274	92.4
All Airlines	8 502	7 359	86.6	8 544	7 382	86.4
Relates to services to and from Adelaide, Albury, Armidale, Ayers Rock, Ballina, Brisbane, Cairns, Canberra, Coffs Harbour, Darwin, Dubbo, Gold Coast, Hamilton Island, Hobart, Launceston, Melbourne, Perth, Port Macquarie, Sunshine Coast, Tamworth, Townsville and Wagga Wagga.						
Tamworth						
QantasLink	147	127	86.4	145	132	91.0
Virgin Australia	47	41	87.2	46	42	91.3
All Airlines	194	168	86.6	191	174	91.1
Relates to services to and from Sydney only.						
Townsville						
Jetstar	77	57	74.0	76	54	71.1
Qantas	76	72	94.7	76	72	94.7
QantasLink	211	196	92.9	210	188	89.5
Regional Express	21	19	90.5	21	19	90.5
Virgin Australia	167	152	91.0	167	149	89.2
All Airlines	552	496	89.9	550	482	87.6
Relates to services to and from Brisbane, Cairns and Sydney.						
Wagga Wagga						
QantasLink	110	88	80.0	110	94	85.5
Regional Express	64	59	92.2	66	57	86.4
All Airlines	174	147	84.5	176	151	85.8
Relates to services to and from Sydney only.						

Definitions

On time arrival	A flight arrival is counted as "on time" if it arrived at the gate before 15 minutes after the scheduled arrival time shown in the carriers' schedule. Neither diverted nor cancelled flights count as on time.
On time departure	A flight departure is counted as "on time" if it departs the gate before 15 minutes after the scheduled departure time shown in the carriers' schedule.
Cancellation	A flight removed from service within 7 days of scheduled departure is regarded as a cancellation.
On time departure percentage	The percentage of on time departures is measured against the number of departures <i>operated</i> on any particular sector.
On time arrival percentage	The percentage of on time arrivals is measured against the number of arrivals <i>operated</i> on any particular sector.
Cancellation percentage	The percentage of cancellations is measured against the number of services <i>scheduled</i> on any particular sector.
