



Australian Government

Department of Infrastructure and Regional Development

Bureau of Infrastructure, Transport and Regional Economics

STATISTICAL REPORT



Aviation

Domestic airline on time performance
January 2016

© Commonwealth of Australia 2016

ISSN: 1832-0759

Ownership of intellectual property rights in this publication

Unless otherwise noted, copyright (and any other intellectual property rights, if any) in this publication is owned by the Commonwealth of Australia (referred to below as the Commonwealth).

Disclaimer

The material contained in this publication is made available on the understanding that the Commonwealth is not providing professional advice, and that users exercise their own skill and care with respect to its use, and seek independent advice if necessary.

The Commonwealth makes no representations or warranties as to the contents or accuracy of the information contained in this publication. To the extent permitted by law, the Commonwealth disclaims liability to any person or organisation in respect of anything done, or omitted to be done, in reliance upon information contained in this publication.

Creative Commons licence

With the exception of (a) the Coat of Arms; and (b) the Department of Infrastructure and Regional Development's photos and graphics, copyright in this publication is licensed under a Creative Commons Attribution 3.0 Australia Licence.

Creative Commons Attribution 3.0 Australia Licence is a standard form licence agreement that allows you to copy, communicate and adapt this publication provided that you attribute the work to the Commonwealth and abide by the other licence terms. A summary of the licence terms is available from <http://creativecommons.org/licenses/by/3.0/au/deed.en>. The full licence terms are available from <http://creativecommons.org/licenses/by/3.0/au/legalcode>.

Use of the Coat of Arms

The Department of the Prime Minister and Cabinet sets the terms under which the Coat of Arms is used. Please refer to the Department's Commonwealth Coat of Arms and Government branding web page <http://www.dpmmc.gov.au/guidelines/index.cfm#brand> and, in particular, the Guidelines on the use of the Commonwealth Coat of Arms publication.

An appropriate citation for this report is:

Bureau of Infrastructure, Transport and Regional Economics (BITRE), 2016, Domestic airline on time performance, Statistical Report, BITRE, Canberra ACT.

Contact us

This publication is available in PDF format. All other rights are reserved, including in relation to any Departmental logos or trade marks which may exist. For enquiries regarding the licence and any use of this publication, please contact:

Bureau of Infrastructure, Transport and Regional Economics (BITRE)
Department of Infrastructure and Regional Development
GPO Box 501, Canberra ACT 2601, Australia
Telephone: (international) +61 2 6274 7210
Fax: (international) +61 2 6274 6855
Email: bitre@infrastructure.gov.au
Website: www.bitre.gov.au

Inquiries

Should you require additional information about the statistics contained in this publication:

Telephone (02) 6274 7790 or Facsimile (02) 6274 7727

Electronic mail: AVSTATS@infrastructure.gov.au

Web site: <http://www.bitre.gov.au/statistics/aviation/otphome.aspx>

Foreword

The Bureau of Infrastructure, Transport and Regional Economics (BITRE) monitors the punctuality and reliability of major domestic airlines operating between Australian airports. The purpose of this is to allow for evaluation of overall industry and individual airline performance, so that consumers of air travel can make informed decisions.

The following domestic airlines currently report this information monthly to the BITRE: Jetstar, Qantas, QantasLink, Regional Express, Tigerair, Virgin Australia and Virgin Australia Regional Airlines. Data has been gathered since November 2003, although some airlines commenced reporting at a later date, including Jetstar which first reported in May 2004, MacAir in July 2005, Tigerair in April 2008 and Virgin Australia Regional Airlines in May 2013. MacAir ceased operations in February 2009 and data was not received for December 2008 onwards. Virgin Blue was rebranded as Virgin Australia in May 2011 and Tiger Airways was rebranded as Tigerair in July 2013 and time series data in Microsoft Excel spreadsheet format on the BITRE website have been revised to reflect these changes. Services operated by Skywest on behalf of Virgin Australia using ATR/F100 aircraft commenced in November 2011 and were shown separately as Virgin Australia – ATR/F100 Operations. Virgin Australia Regional Airlines commenced operations in May 2013. It was formed after the acquisition of Skywest by Virgin Australia and represented a combination of operations previously reported under Skywest and Virgin Australia – ATR/F100 Operations. In January 2016, Virgin Australia transferred their ATR fleet from Virgin Australia Regional Airlines to Virgin Australia. The Virgin Australia booking website has not been fully updated to reflect these changes.

Information presented in this report is for Australian domestic routes for which the passenger load averaged 8 000 or more passengers per month over the previous six months and where two or more airlines operated in competition on those routes. There were 66 routes that met this definition in January 2016. Over time, routes which meet these criteria change as airline networks and traffic levels vary.

Participating airlines report their overall monthly network performance where this is possible.

Total industry figures encompass all services operated by reporting airlines only. These airlines collectively carried over 95 per cent of total domestic passengers (regular public transport only) in 2014.

The method of capturing on time performance varies between airlines utilising different recording systems. Jetstar and Qantas jet aircraft use Aircraft Communication Addressing and Reporting System (ACARS) to electronically measure on time performance. Regional Express, Tigerair, Virgin Australia, Virgin Australia Regional Airlines and the Qantas non-jet fleet record on time performance manually using records from pilots, gate agents and/or ground crews.

After initial data is collected, aggregate reports are audited internally by participating airlines prior to publication.

Reports and detailed time series data in Microsoft Excel spreadsheet format are available from the BITRE website at: <http://www.bitre.gov.au/statistics/aviation/otphome.aspx>.

Contents

	Page
Industry performance	1
Individual routes	10
Airports	23
Definitions	29

Industry performance

For January 2016, on time performance over all routes operated by participating airlines (Jetstar, Qantas, QantasLink, Regional Express, Tigerair, Virgin Australia and Virgin Australia Regional Airlines) averaged 84.4 per cent for both on time arrivals and on time departures. Cancellations represented 2.1 per cent of all scheduled flights. The equivalent figures for January 2015 were 86.5 per cent for arrivals, 87.4 per cent for departures and 1.5 per cent for cancellations.

This month's on time arrivals figure was better than the long term average performance for all routes (82.6 per cent) and the on time departures figure was also better than the long term average (84.1 per cent). The rate of cancellations was higher than the long term average of 1.4 per cent.

Qantas achieved the highest on time arrivals among the major domestic airlines at 88.5 per cent, followed by Virgin Australia at 88.2 per cent, Tigerair at 85.1 per cent and Jetstar at 73.6 per cent. Regional Express was the best performing regional airline for on time arrivals at 85.4 per cent, followed by QantasLink at 84.8 per cent and Virgin Australia Regional Airlines at 81.1 per cent. The Qantas network (Qantas and QantasLink combined operations) recorded 86.6 per cent for on time arrivals while the Virgin Australia network (Virgin Australia and Virgin Australia Regional Airlines combined operations) recorded 87.8 per cent.

Qantas also achieved the highest level of on time departures for January 2016 at 89.4 per cent, followed by Virgin Australia at 89.0 per cent, Tigerair at 84.3 per cent and Jetstar at 68.9 per cent. Of the regional airlines, Regional Express recorded 89.4 per cent followed by QantasLink at 85.4 per cent and Virgin Australia Regional Airlines at 83.3 per cent. The Qantas network recorded 87.3 per cent for on time departures while the Virgin Australia network recorded 88.7 per cent.

Jetstar had the highest percentage of cancellations (3.8 per cent) during the month, followed by QantasLink (3.3 per cent), Virgin Australia (1.5 per cent), Virgin Australia Regional Airlines (1.2 per cent), Tigerair and Qantas (both on 1.0 per cent) and Regional Express (0.6 per cent).

Airlines' on time performance varies across the routes they serve. Individual route data by specific airline for 66 routes are shown on pages 10-22.

Of the 66 routes which met the criteria for on time performance reporting in January 2016, the Melbourne-Hamilton Island route had the highest percentage of on time arrivals (100.0 per cent) and the Darwin-Alice Springs route had the highest percentage of on time departures (also 100.0 per cent). The Port Macquarie-Sydney route had the lowest percentage of on time arrivals (61.7 per cent) and the Townsville-Sydney route had the lowest percentage of on time departures (60.0 per cent).

Cancellations were highest on the Moranbah-Brisbane route at 10.6 per cent, followed by the Perth-Melbourne route at 10.1 per cent, the Melbourne-Perth route at 9.1 per cent, the Brisbane-Moranbah and Canberra-Sydney routes at 8.5 per cent and the Sydney-Canberra route at 7.6 per cent.

Alice Springs Airport recorded the highest percentage of on time arrivals (96.5 per cent) and the highest percentage of on time departures (94.2 per cent). Port Macquarie Airport recorded the lowest percentage of on time arrivals (65.0 per cent) and Sunshine Coast Airport recorded the lowest percentage of on time departures (64.9 per cent). These figures only refer to reported routes and do not cover all flights at these airports.

Table 1 On time performance for January 2016 — Total Industry

	Sectors		Arrivals On Time		Departures On Time		Cancellations	
	Scheduled	Flown	No.	%	No.	%	No.	%
Jetstar	8 533	8 206	6 037	73.6	5 657	68.9	327	3.8
Qantas	8 954	8 866	7 846	88.5	7 928	89.4	88	1.0
QantasLink	9 801	9 476	8 032	84.8	8 089	85.4	325	3.3
Regional Express	3 994	3 970	3 390	85.4	3 550	89.4	24	0.6
Tigerair	2 414	2 389	2 034	85.1	2 015	84.3	25	1.0
Virgin Australia	12 119	11 932	10 521	88.2	10 622	89.0	187	1.5
Virgin Australia Regional Airlines	733	724	587	81.1	603	83.3	9	1.2
All Airlines	46 548	45 563	38 447	84.4	38 464	84.4	985	2.1
Qantas - all QF designated services	18 755	18 342	15 878	86.6	16 017	87.3	413	2.2
Virgin Australia - all VA designated services	12 852	12 656	11 108	87.8	11 225	88.7	196	1.5

Total airline network data (including routes not shown in this report).

From January 2016, Virgin transferred their ATR fleet from Virgin Australia Regional Airlines to Virgin Australia.

Airlines' on time performance varies across the routes they serve. Individual route data by specific airline for 66 routes are shown on pages 10-22.

Table 2 Top ten routes for on time performance for January 2016 (participating airlines only)

Arrivals		Departures	
Route	On Time (%)	Route	On Time (%)
Melbourne-Hamilton Island	100.0	Darwin-Alice Springs	100.0
Darwin-Alice Springs	97.7	Darwin-Perth	98.5
Hamilton Island-Melbourne	97.6	Alice Springs-Darwin	97.7
Brisbane-Hobart	97.0	Melbourne-Hamilton Island	97.6
Darwin-Perth	95.5	Brisbane-Hobart	97.0
Perth-Darwin	95.5	Brisbane-Mount Isa	96.1
Hobart-Brisbane	95.5	Perth-Darwin	95.5
Adelaide-Alice Springs	95.3	Adelaide-Alice Springs	95.3
Alice Springs-Darwin	95.3	Canberra-Adelaide	95.1
Moranbah-Brisbane	95.1	Townsville-Cairns	94.2

Table 3 Top ten airports for on time performance for January 2016 (participating airlines and reported routes only)

Arrivals		Departures	
Airport	On Time (%)	Airport	On Time (%)
Alice Springs	96.5	Alice Springs	94.2
Mount Isa	94.7	Moranbah	93.7
Kalgoorlie	92.8	Kalgoorlie	93.6
Proserpine	92.7	Mount Isa	93.4
Moranbah	92.7	Port Lincoln	92.6
Port Lincoln	91.5	Karratha	91.7
Newman	91.4	Newman	91.4
Darwin	90.2	Bundaberg	91.2
Hamilton Island	90.0	Port Hedland	90.1
Bundaberg	89.9	Darwin	89.9

Total industry on time performance

Figure 1 On time performance (by month from January 2013)—Total Industry

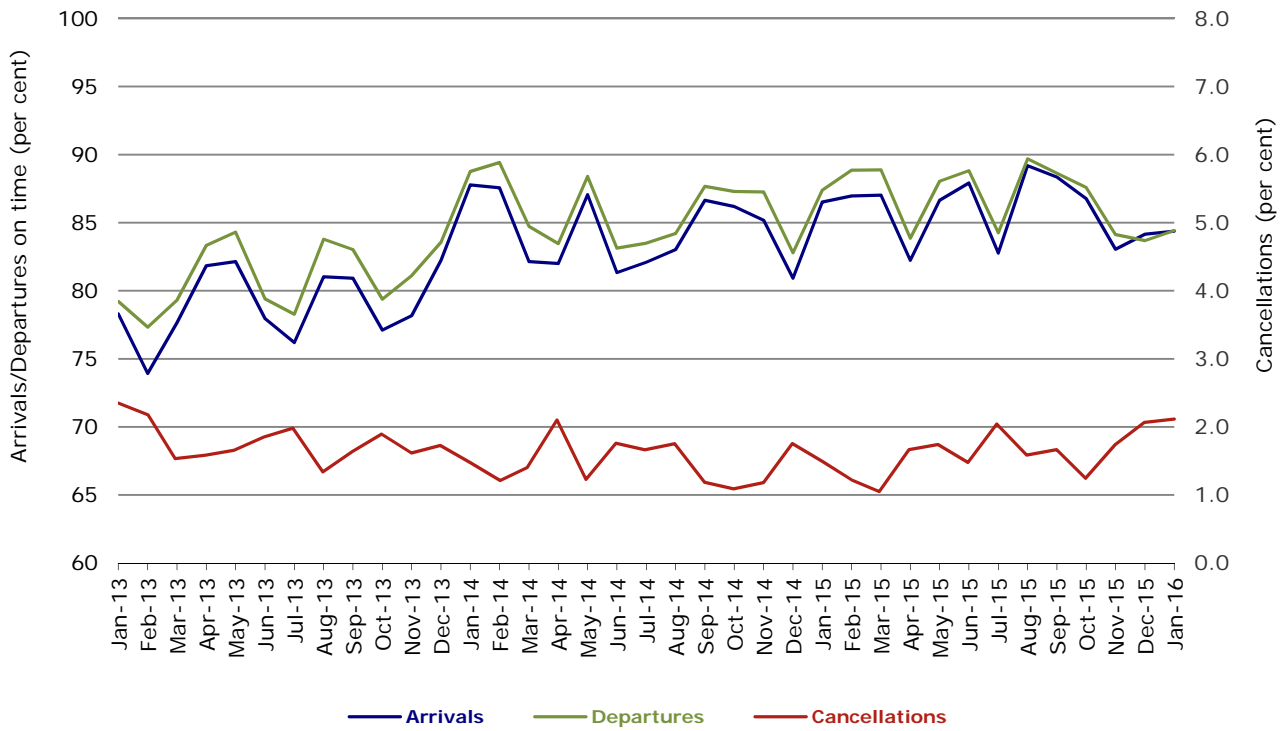


Figure 2 Arrivals on time (by month from January 2015)

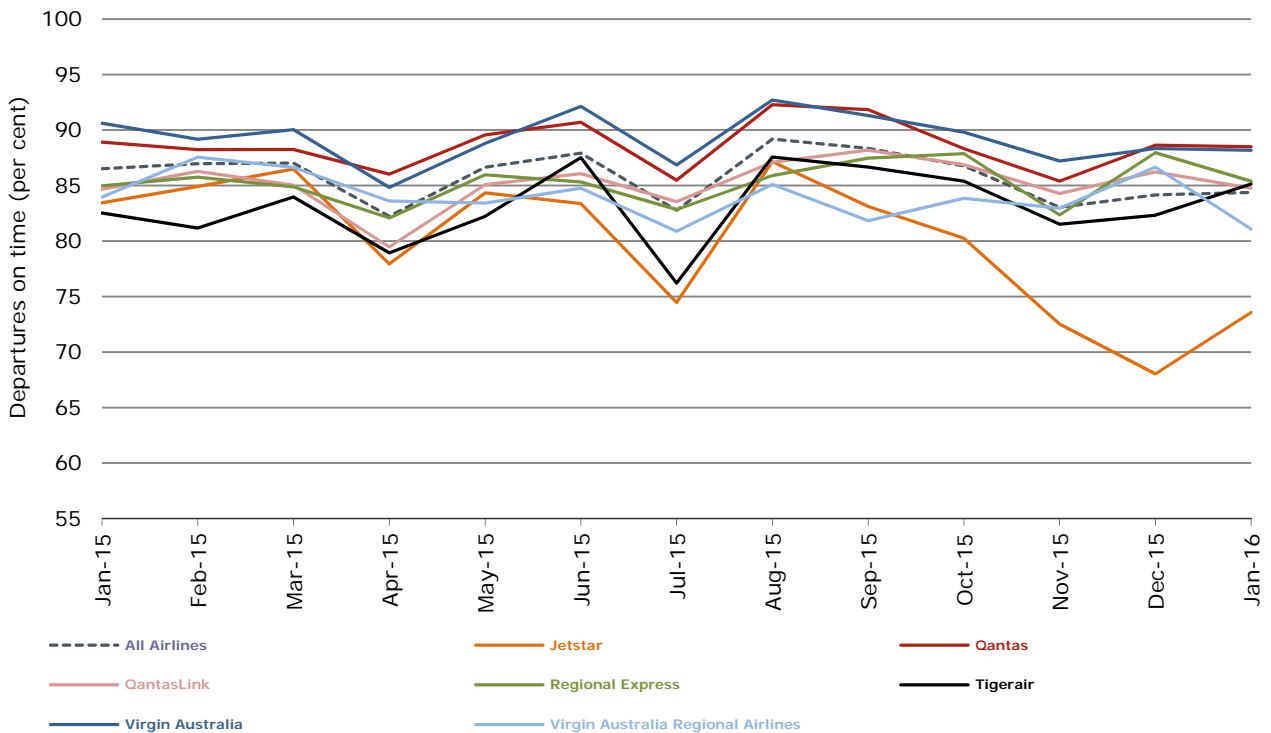


Figure 3 Departures on time (by month from January 2015)

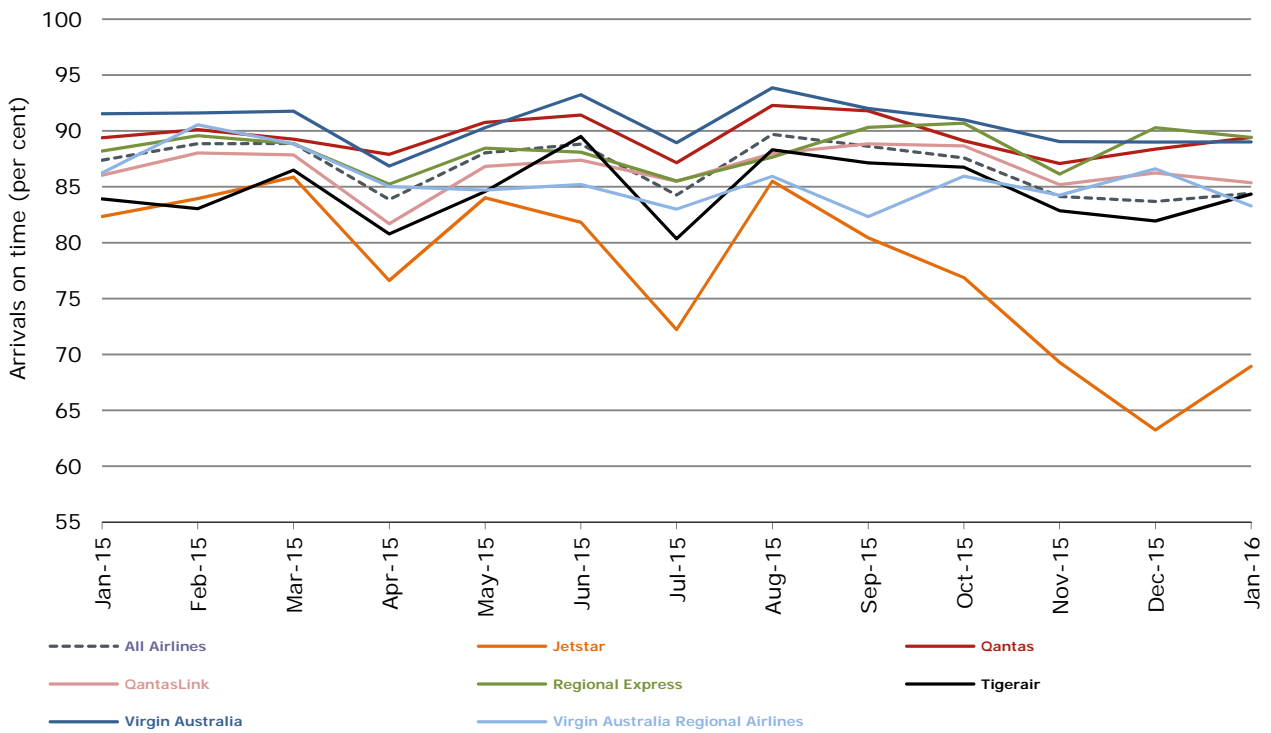
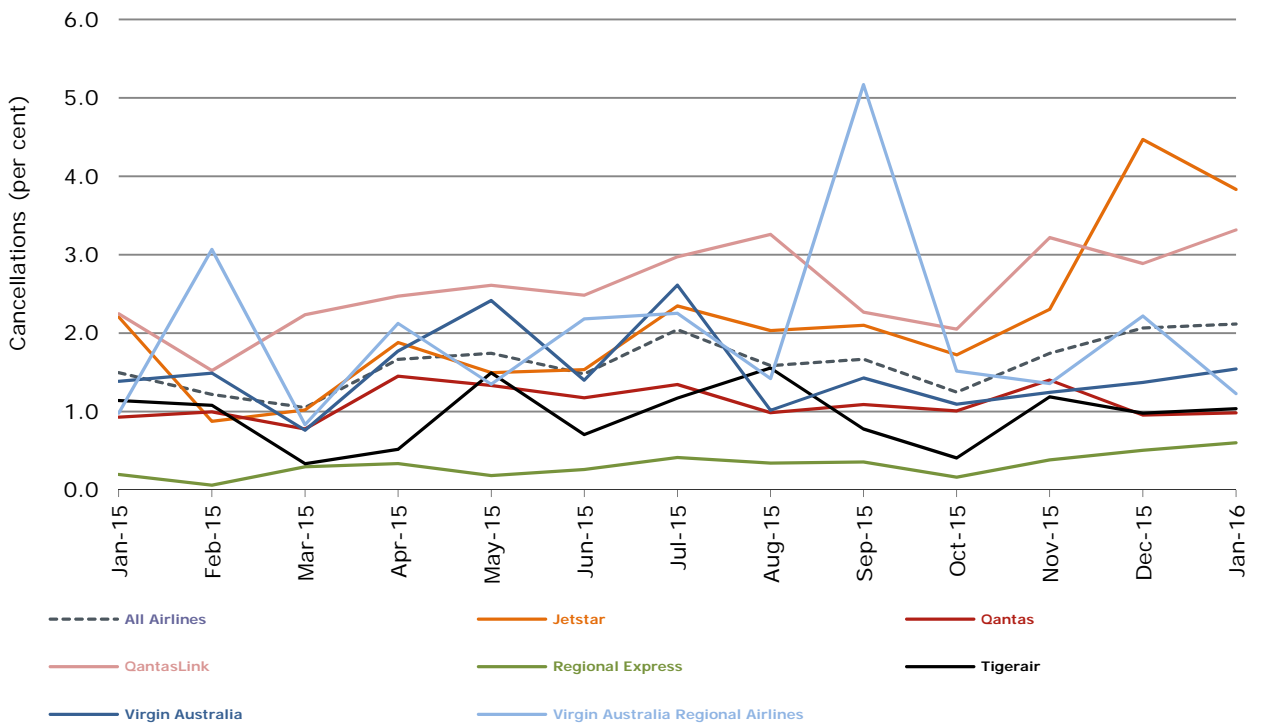


Figure 4 Cancellations (by month from January 2015)



Major domestic airlines on time performance

Figure 5 On time performance (by month from January 2013)—Jetstar

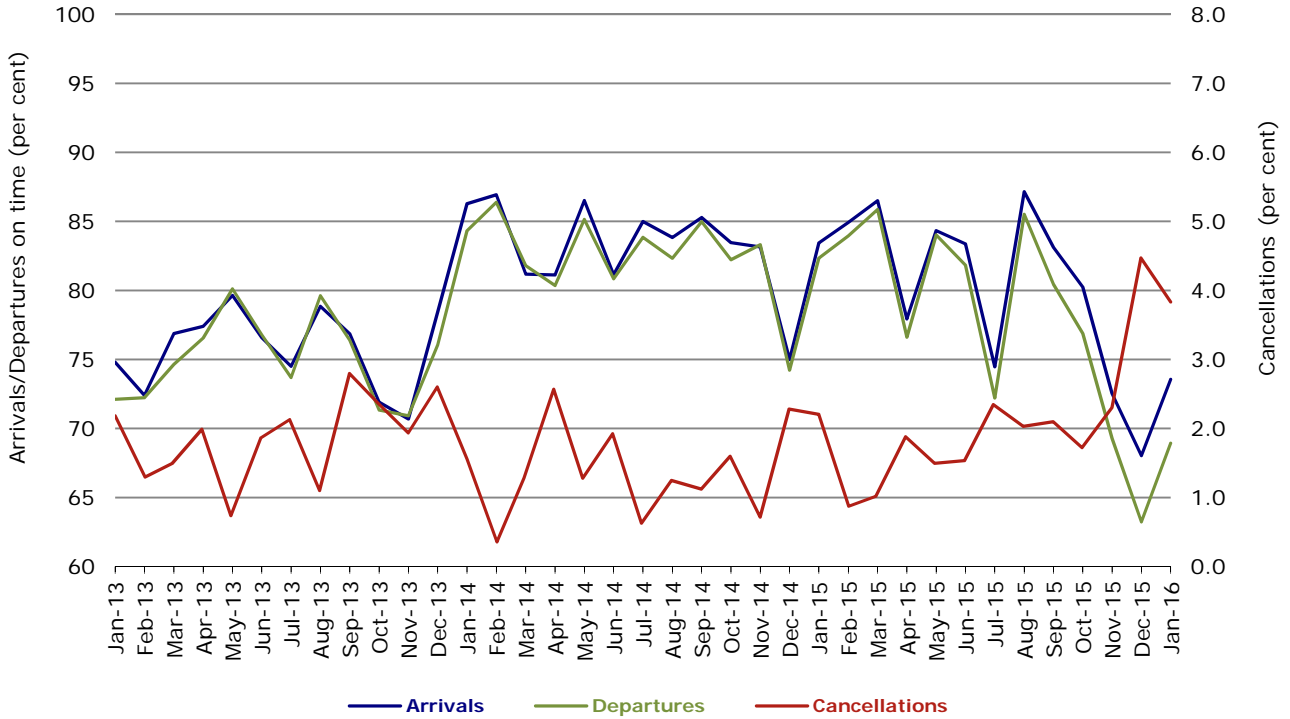


Figure 6 On time performance (by month from January 2013)—Qantas

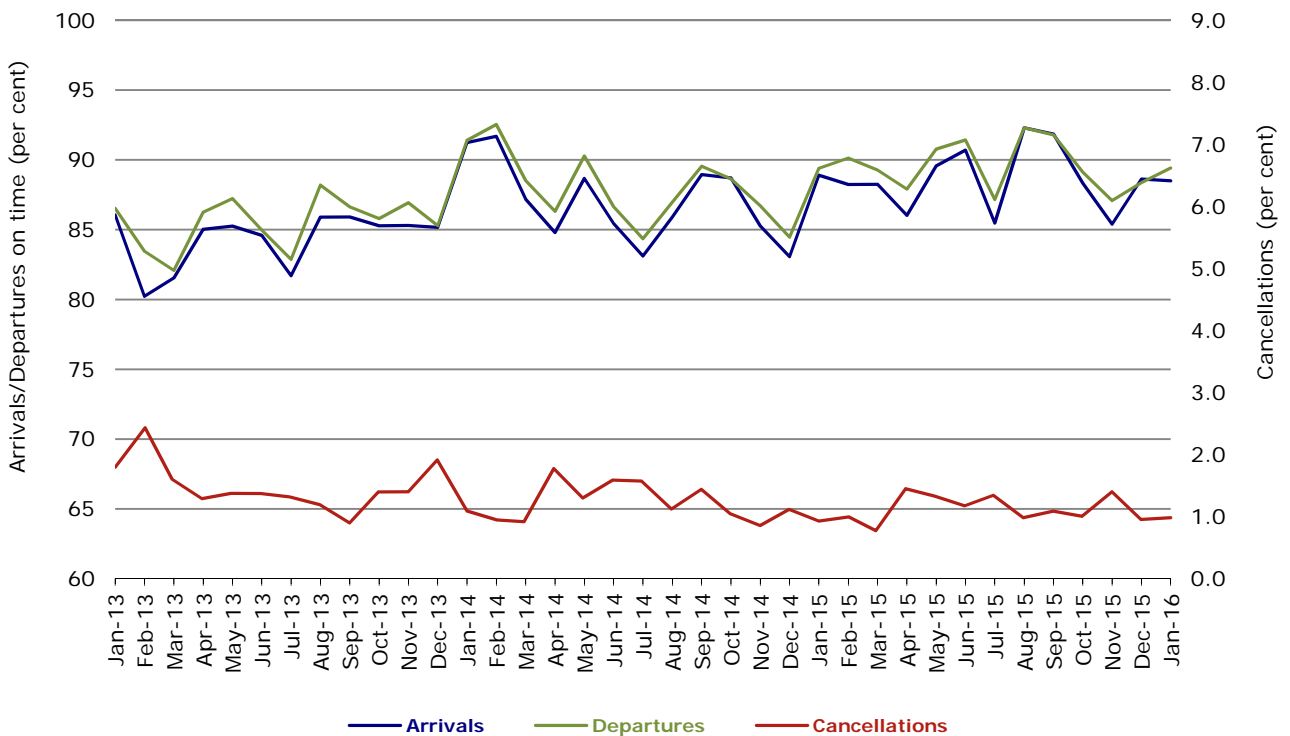


Figure 7 On time performance (by month from January 2013)—Tigerair

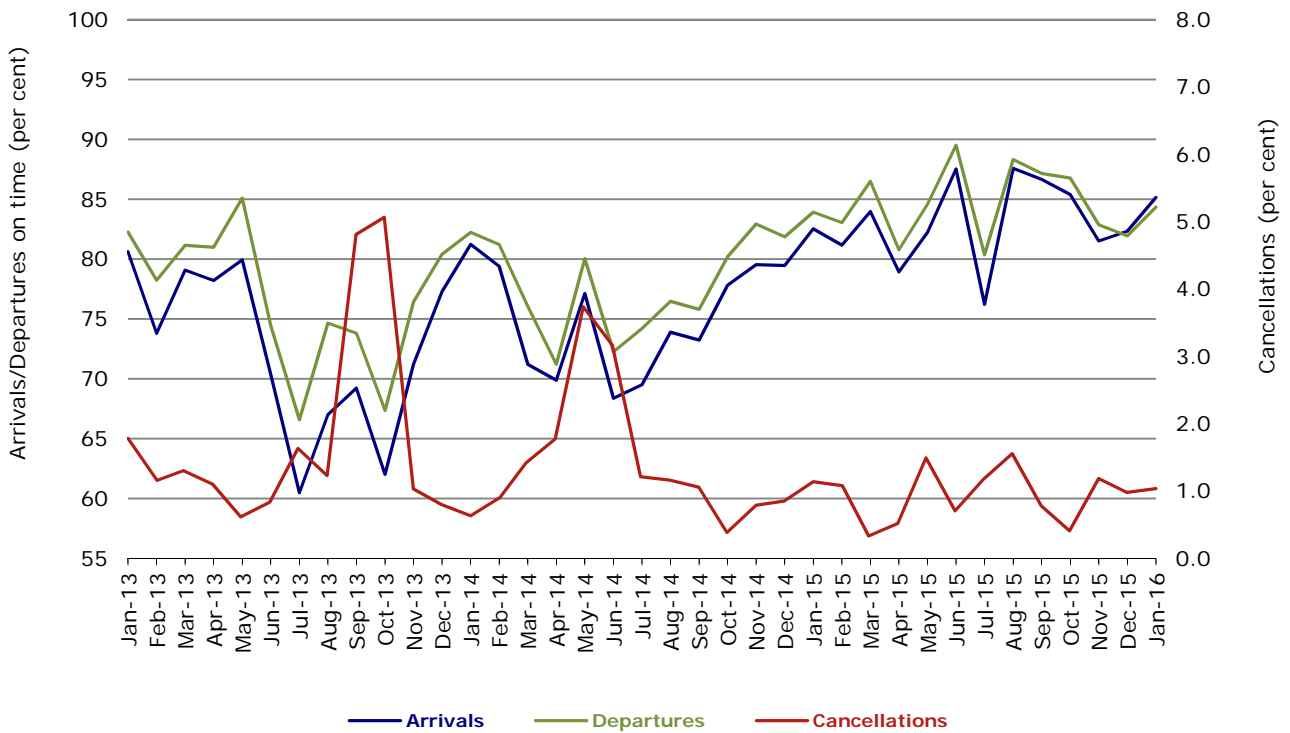
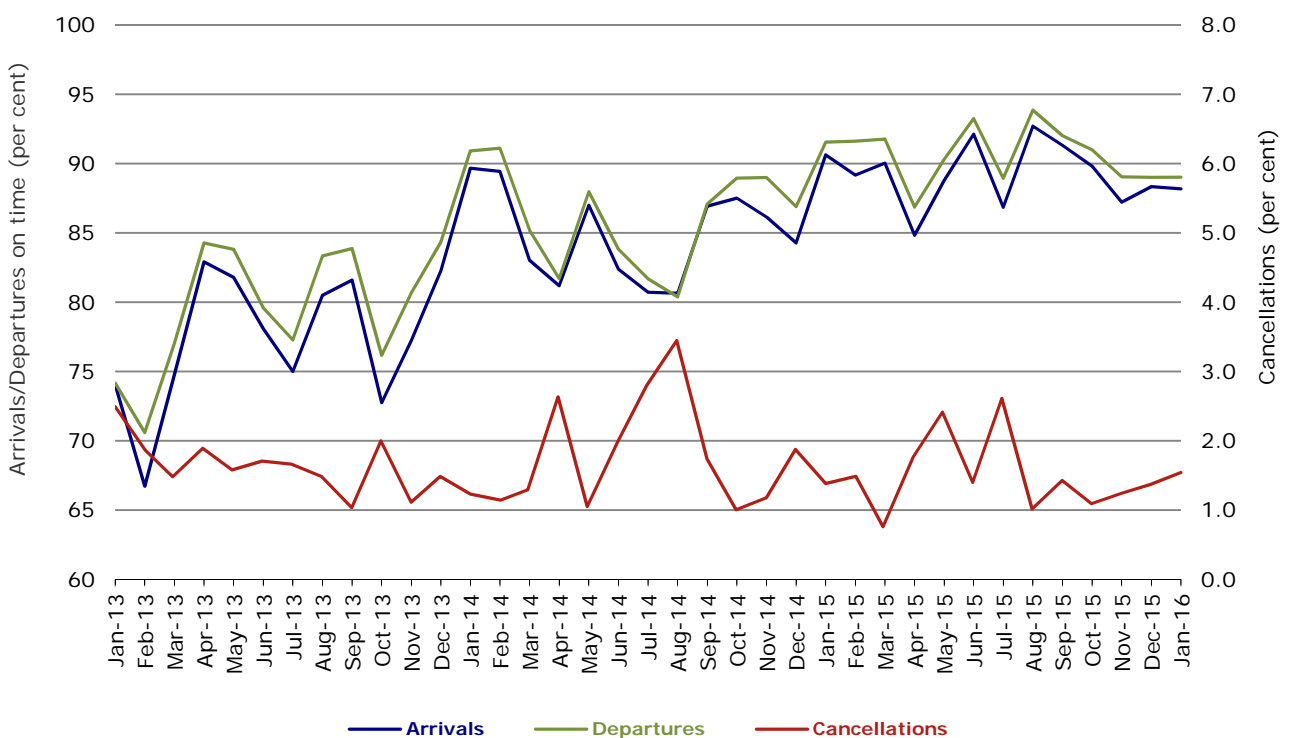


Figure 8 On time performance (by month from January 2013)—Virgin Australia



From January 2016, Virgin transferred their ATR fleet from Virgin Australia Regional Airlines to Virgin Australia.

Major regional airlines on time performance

Figure 9 On time performance (by month from January 2013)—QantasLink

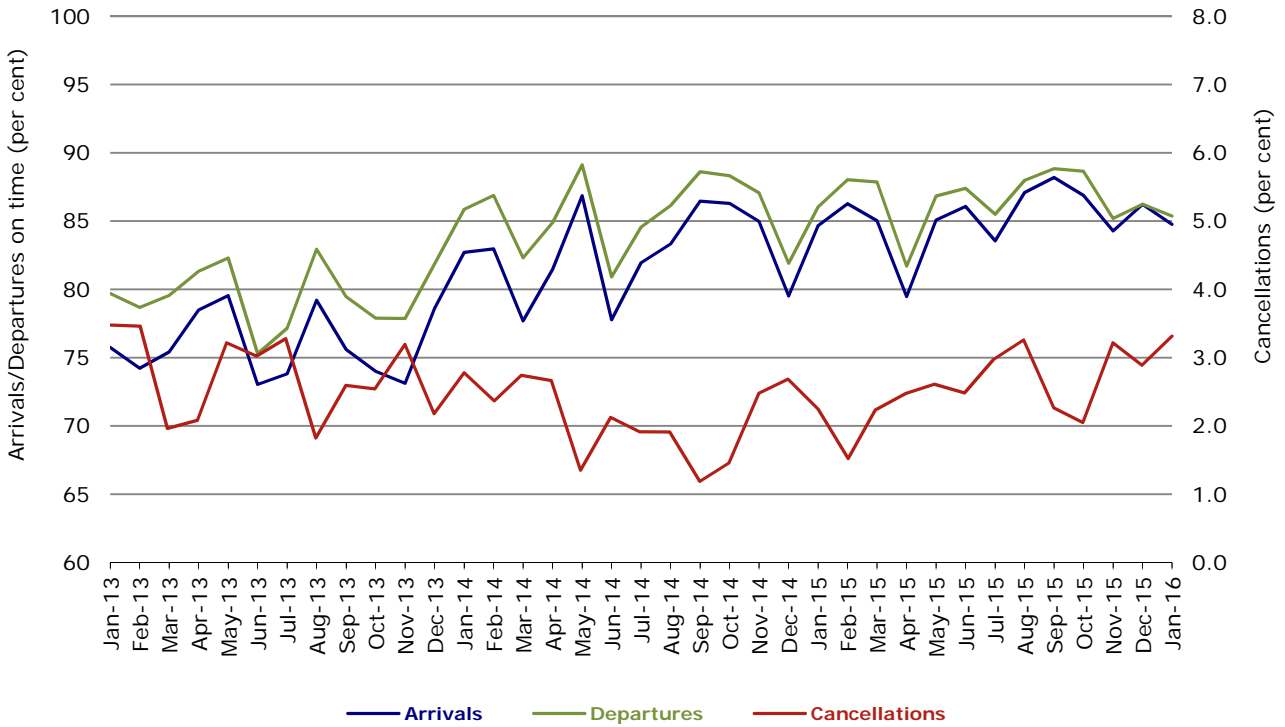


Figure 10 On time performance (by month from January 2013)—Regional Express

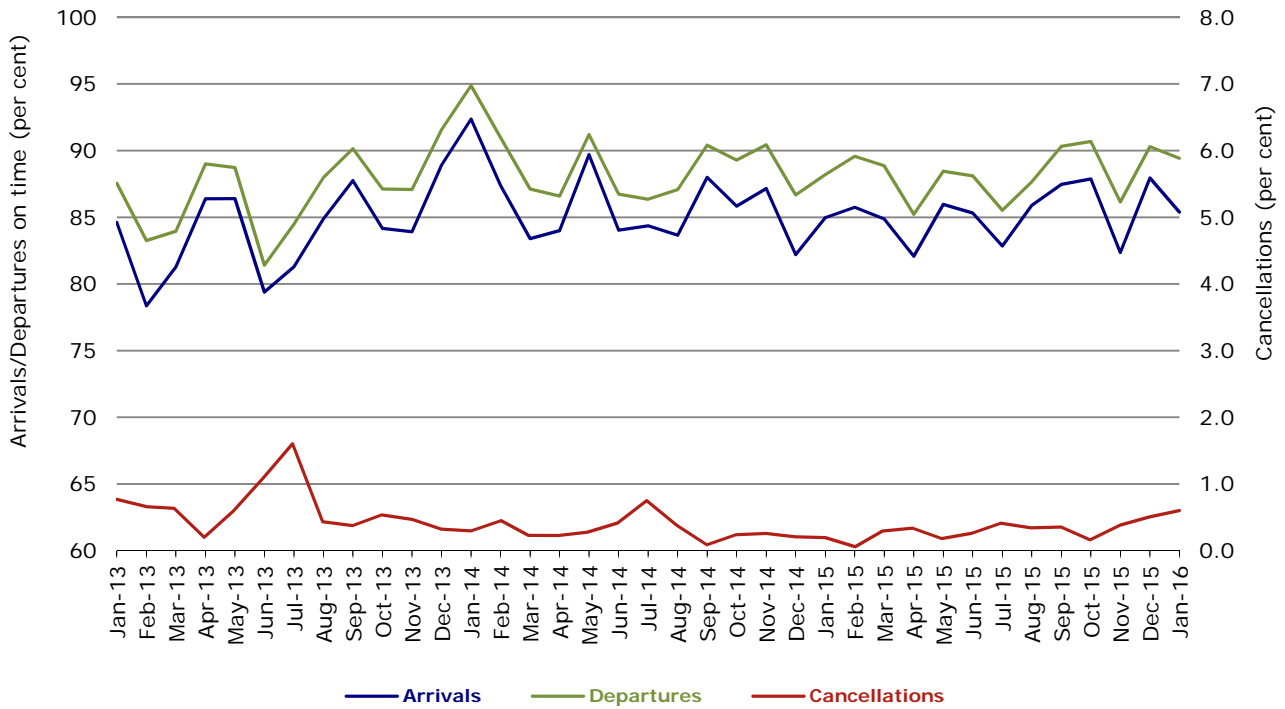
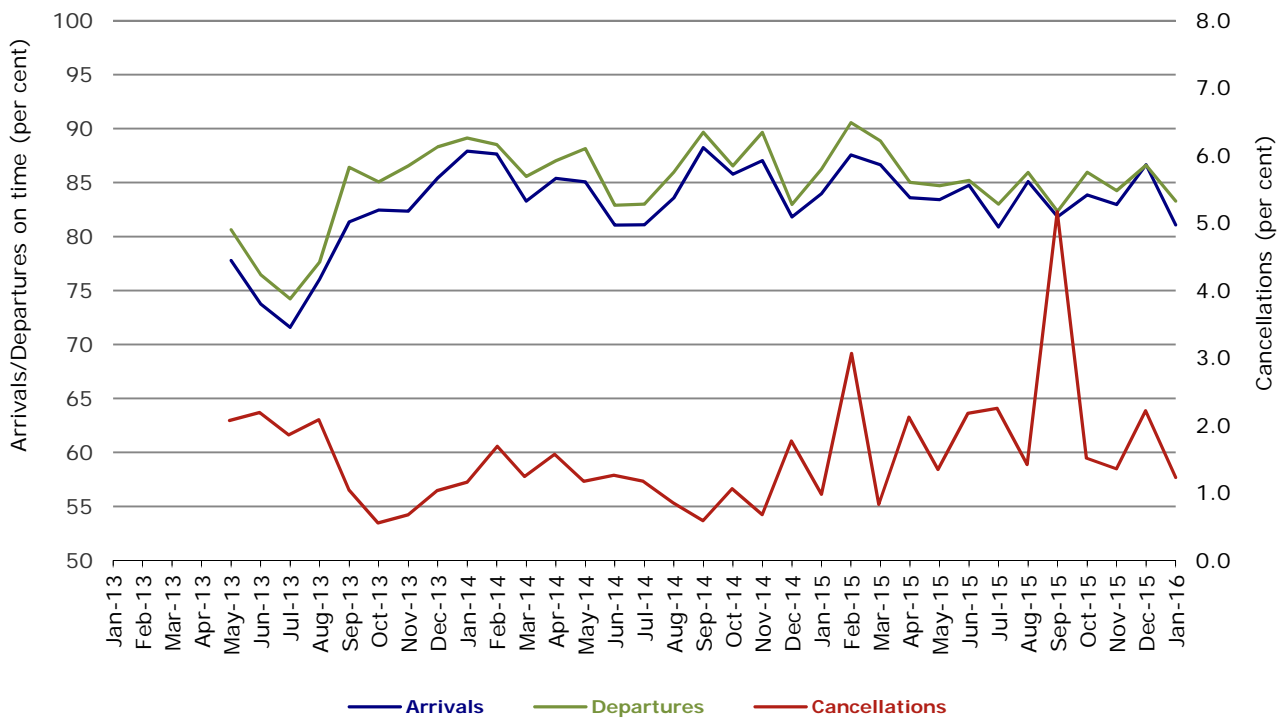


Figure 11 On time performance (by month from January 2013)
Virgin Australia Regional Airlines



Virgin Australia Regional Airlines commenced operations in May 2013. It was formed after the acquisition of Skywest by Virgin Australia and represented a combination of operations previously reported under Skywest and Virgin Australia – ATR/F100 Operations. From January 2016, Virgin transferred their ATR fleet from Virgin Australia Regional Airlines to Virgin Australia.

Individual routes

On time performance is reported for all routes where the passenger load averages over 8000 passengers per month over the previous six months, and where two or more airlines operate in competition on those routes. There are now 66 routes which meet this definition. Over time, however, routes which meet this definition may change as airline networks and traffic levels vary.

	<i>Sectors</i>		<i>Arrivals On Time</i>		<i>Departures On Time</i>		<i>Cancellations</i>	
	<i>Sched.</i>	<i>Flown</i>	<i>No.</i>	<i>%</i>	<i>No.</i>	<i>%</i>	<i>No.</i>	<i>%</i>
Adelaide-Alice Springs								
Qantas	31	31	29	93.5	29	93.5	0	0.0
Virgin Australia	12	12	12	100.0	12	100.0	0	0.0
All Airlines	43	43	41	95.3	41	95.3	0	0.0
Adelaide-Brisbane								
Jetstar	31	31	22	71.0	21	67.7	0	0.0
Qantas	113	113	106	93.8	106	93.8	0	0.0
Tigerair	30	30	27	90.0	27	90.0	0	0.0
Virgin Australia	117	117	108	92.3	107	91.5	0	0.0
All Airlines	291	291	263	90.4	261	89.7	0	0.0
Adelaide-Canberra								
Qantas	35	35	30	85.7	32	91.4	0	0.0
Virgin Australia	26	26	25	96.2	25	96.2	0	0.0
All Airlines	61	61	55	90.2	57	93.4	0	0.0
Adelaide-Gold Coast								
Jetstar	43	42	38	90.5	36	85.7	1	2.3
Virgin Australia	36	36	36	100.0	36	100.0	0	0.0
All Airlines	79	78	74	94.9	72	92.3	1	1.3
Adelaide-Melbourne								
Jetstar	124	122	99	81.1	90	73.8	2	1.6
Qantas	259	258	231	89.5	236	91.5	1	0.4
Tigerair	87	86	83	96.5	78	90.7	1	1.1
Virgin Australia	288	285	259	90.9	255	89.5	3	1.0
All Airlines	758	751	672	89.5	659	87.7	7	0.9
Adelaide-Perth								
Jetstar	31	30	27	90.0	24	80.0	1	3.2
Qantas	115	115	109	94.8	103	89.6	0	0.0
Virgin Australia	76	74	71	95.9	71	95.9	2	2.6
All Airlines	222	219	207	94.5	198	90.4	3	1.4
Adelaide-Port Lincoln								
QantasLink	126	124	115	92.7	120	96.8	2	1.6
Regional Express	160	160	145	90.6	145	90.6	0	0.0
All Airlines	286	284	260	91.5	265	93.3	2	0.7
Adelaide-Sydney								
Jetstar	151	147	118	80.3	116	78.9	4	2.6
Qantas	243	241	221	91.7	222	92.1	2	0.8
QantasLink	11	8	7	87.5	7	87.5	3	27.3
Tigerair	48	48	36	75.0	38	79.2	0	0.0
Virgin Australia	168	166	155	93.4	158	95.2	2	1.2
All Airlines	621	610	537	88.0	541	88.7	11	1.8
Albury-Sydney								
QantasLink	92	90	69	76.7	71	78.9	2	2.2
Regional Express	41	41	40	97.6	41	100.0	0	0.0
Virgin Australia	62	61	47	77.0	50	82.0	1	1.6
All Airlines	195	192	156	81.3	162	84.4	3	1.5

	<i>Sectors</i>		<i>Arrivals On Time</i>		<i>Departures On Time</i>		<i>Cancellations</i>	
	<i>Sched.</i>	<i>Flown</i>	<i>No.</i>	<i>%</i>	<i>No.</i>	<i>%</i>	<i>No.</i>	<i>%</i>
Alice Springs-Adelaide								
Qantas	31	31	29	93.5	29	93.5	0	0.0
Virgin Australia	12	12	11	91.7	10	83.3	0	0.0
All Airlines	43	43	40	93.0	39	90.7	0	0.0
Alice Springs-Darwin								
QantasLink	31	31	29	93.5	30	96.8	0	0.0
Virgin Australia	12	12	12	100.0	12	100.0	0	0.0
All Airlines	43	43	41	95.3	42	97.7	0	0.0
Armidale-Sydney								
QantasLink	127	125	89	71.2	86	68.8	2	1.6
Regional Express	32	32	23	71.9	25	78.1	0	0.0
All Airlines	159	157	112	71.3	111	70.7	2	1.3
Ayers Rock-Sydney								
Jetstar	23	23	17	73.9	16	69.6	0	0.0
Virgin Australia	31	30	27	90.0	27	90.0	1	3.2
All Airlines	54	53	44	83.0	43	81.1	1	1.9
Ballina-Sydney								
Jetstar	90	89	62	69.7	53	59.6	1	1.1
Regional Express	9	8	8	100.0	8	100.0	1	11.1
Virgin Australia	31	31	28	90.3	28	90.3	0	0.0
All Airlines	130	128	98	76.6	89	69.5	2	1.5
Brisbane-Adelaide								
Jetstar	31	31	28	90.3	26	83.9	0	0.0
Qantas	113	113	110	97.3	105	92.9	0	0.0
Tigerair	30	30	27	90.0	24	80.0	0	0.0
Virgin Australia	122	122	114	93.4	112	91.8	0	0.0
All Airlines	296	296	279	94.3	267	90.2	0	0.0
Brisbane-Bundaberg								
QantasLink	127	127	111	87.4	113	89.0	0	0.0
Virgin Australia	32	32	32	100.0	32	100.0	0	0.0
All Airlines	159	159	143	89.9	145	91.2	0	0.0
Brisbane-Cairns								
Jetstar	135	132	112	84.8	98	74.2	3	2.2
Qantas	120	120	118	98.3	117	97.5	0	0.0
QantasLink	5	5	5	100.0	5	100.0	0	0.0
Tigerair	31	31	31	100.0	30	96.8	0	0.0
Virgin Australia	137	137	128	93.4	127	92.7	0	0.0
All Airlines	428	425	394	92.7	377	88.7	3	0.7
Brisbane-Canberra								
Qantas	26	26	24	92.3	25	96.2	0	0.0
QantasLink	115	113	107	94.7	103	91.2	2	1.7
Virgin Australia	90	90	86	95.6	86	95.6	0	0.0
All Airlines	231	229	217	94.8	214	93.4	2	0.9
Brisbane-Darwin								
Jetstar	30	30	25	83.3	23	76.7	0	0.0
Qantas	45	45	43	95.6	42	93.3	0	0.0
Tigerair	24	24	24	100.0	24	100.0	0	0.0
Virgin Australia	32	32	29	90.6	29	90.6	0	0.0
All Airlines	131	131	121	92.4	118	90.1	0	0.0
Brisbane-Emerald								
QantasLink	135	130	123	94.6	125	96.2	5	3.7
Virgin Australia	68	67	54	80.6	58	86.6	1	1.5
All Airlines	203	197	177	89.8	183	92.9	6	3.0

	<i>Sectors</i>		<i>Arrivals On Time</i>		<i>Departures On Time</i>		<i>Cancellations</i>	
	<i>Sched.</i>	<i>Flown</i>	<i>No.</i>	<i>%</i>	<i>No.</i>	<i>%</i>	<i>No.</i>	<i>%</i>
Brisbane-Gladstone								
QantasLink	200	186	169	90.9	169	90.9	14	7.0
Virgin Australia	125	121	94	77.7	96	79.3	4	3.2
All Airlines	325	307	263	85.7	265	86.3	18	5.5
Brisbane-Hamilton Island								
QantasLink	28	28	27	96.4	27	96.4	0	0.0
Virgin Australia	31	31	27	87.1	28	90.3	0	0.0
All Airlines	59	59	54	91.5	55	93.2	0	0.0
Brisbane-Hobart								
Jetstar	31	31	29	93.5	29	93.5	0	0.0
Qantas	4	4	4	100.0	4	100.0	0	0.0
Virgin Australia	31	31	31	100.0	31	100.0	0	0.0
All Airlines	66	66	64	97.0	64	97.0	0	0.0
Brisbane-Mackay								
Jetstar	49	49	33	67.3	28	57.1	0	0.0
QantasLink	106	99	88	88.9	90	90.9	7	6.6
Virgin Australia	146	146	131	89.7	130	89.0	0	0.0
All Airlines	301	294	252	85.7	248	84.4	7	2.3
Brisbane-Melbourne								
Jetstar	153	146	123	84.2	115	78.8	7	4.6
Qantas	421	420	386	91.9	394	93.8	1	0.2
Tigerair	137	134	122	91.0	115	85.8	3	2.2
Virgin Australia	377	369	324	87.8	331	89.7	8	2.1
All Airlines	1 088	1 069	955	89.3	955	89.3	19	1.7
Brisbane-Moranbah								
QantasLink	104	91	87	95.6	85	93.4	13	12.5
Virgin Australia	60	59	52	88.1	56	94.9	1	1.7
All Airlines	164	150	139	92.7	141	94.0	14	8.5
Brisbane-Mount Isa								
Qantas	33	33	32	97.0	32	97.0	0	0.0
QantasLink	22	22	21	95.5	21	95.5	0	0.0
Virgin Australia	21	21	19	90.5	20	95.2	0	0.0
All Airlines	76	76	72	94.7	73	96.1	0	0.0
Brisbane-Newcastle								
Jetstar	92	91	74	81.3	64	70.3	1	1.1
QantasLink	90	87	78	89.7	77	88.5	3	3.3
Virgin Australia	82	80	77	96.3	77	96.3	2	2.4
All Airlines	264	258	229	88.8	218	84.5	6	2.3
Brisbane-Perth								
Qantas	140	140	123	87.9	118	84.3	0	0.0
Virgin Australia	114	114	101	88.6	96	84.2	0	0.0
All Airlines	254	254	224	88.2	214	84.3	0	0.0
Brisbane-Proserpine								
Jetstar	31	31	26	83.9	23	74.2	0	0.0
Virgin Australia	51	51	50	98.0	51	100.0	0	0.0
All Airlines	82	82	76	92.7	74	90.2	0	0.0
Brisbane-Rockhampton								
QantasLink	165	162	147	90.7	147	90.7	3	1.8
Virgin Australia	163	159	135	84.9	137	86.2	4	2.5
All Airlines	328	321	282	87.9	284	88.5	7	2.1

	<i>Sectors</i>		<i>Arrivals On Time</i>		<i>Departures On Time</i>		<i>Cancellations</i>	
	<i>Sched.</i>	<i>Flown</i>	<i>No.</i>	<i>%</i>	<i>No.</i>	<i>%</i>	<i>No.</i>	<i>%</i>
Brisbane-Sydney								
Jetstar	202	178	119	66.9	114	64.0	24	11.9
Qantas	590	576	522	90.6	531	92.2	14	2.4
Tigerair	107	107	95	88.8	94	87.9	0	0.0
Virgin Australia	528	511	463	90.6	468	91.6	17	3.2
All Airlines	1 427	1 372	1 199	87.4	1 207	88.0	55	3.9
Brisbane-Townsville								
Jetstar	48	48	31	64.6	29	60.4	0	0.0
Qantas	145	145	132	91.0	132	91.0	0	0.0
Virgin Australia	144	142	126	88.7	127	89.4	2	1.4
All Airlines	337	335	289	86.3	288	86.0	2	0.6
Broome-Perth								
Qantas	4	4	2	50.0	2	50.0	0	0.0
QantasLink	77	77	68	88.3	61	79.2	0	0.0
Virgin Australia	7	7	5	71.4	6	85.7	0	0.0
Virgin Australia Regional Airlines	38	38	23	60.5	25	65.8	0	0.0
All Airlines	126	126	98	77.8	94	74.6	0	0.0
Bundaberg-Brisbane								
QantasLink	127	127	113	89.0	114	89.8	0	0.0
Virgin Australia	32	32	32	100.0	31	96.9	0	0.0
All Airlines	159	159	145	91.2	145	91.2	0	0.0
Cairns-Brisbane								
Jetstar	136	132	115	87.1	115	87.1	4	2.9
Qantas	120	120	114	95.0	112	93.3	0	0.0
QantasLink	5	5	5	100.0	5	100.0	0	0.0
Tigerair	31	31	30	96.8	30	96.8	0	0.0
Virgin Australia	137	137	129	94.2	129	94.2	0	0.0
All Airlines	429	425	393	92.5	391	92.0	4	0.9
Cairns-Melbourne								
Jetstar	107	107	84	78.5	83	77.6	0	0.0
Qantas	41	41	38	92.7	38	92.7	0	0.0
Tigerair	47	45	41	91.1	39	86.7	2	4.3
Virgin Australia	31	31	28	90.3	29	93.5	0	0.0
All Airlines	226	224	191	85.3	189	84.4	2	0.9
Cairns-Sydney								
Jetstar	118	115	84	73.0	88	76.5	3	2.5
Qantas	83	83	74	89.2	77	92.8	0	0.0
Tigerair	48	48	39	81.3	40	83.3	0	0.0
Virgin Australia	93	93	87	93.5	89	95.7	0	0.0
All Airlines	342	339	284	83.8	294	86.7	3	0.9
Cairns-Townsville								
QantasLink	142	136	125	91.9	125	91.9	6	4.2
Regional Express	21	20	19	95.0	19	95.0	1	4.8
All Airlines	163	156	144	92.3	144	92.3	7	4.3
Canberra-Adelaide								
Qantas	35	35	32	91.4	33	94.3	0	0.0
Virgin Australia	26	26	25	96.2	25	96.2	0	0.0
All Airlines	61	61	57	93.4	58	95.1	0	0.0
Canberra-Brisbane								
Qantas	26	26	26	100.0	26	100.0	0	0.0
QantasLink	115	114	98	86.0	100	87.7	1	0.9
Virgin Australia	90	89	85	95.5	83	93.3	1	1.1
All Airlines	231	229	209	91.3	209	91.3	2	0.9

	<i>Sectors</i>		<i>Arrivals On Time</i>		<i>Departures On Time</i>		<i>Cancellations</i>	
	<i>Sched.</i>	<i>Flown</i>	<i>No.</i>	<i>%</i>	<i>No.</i>	<i>%</i>	<i>No.</i>	<i>%</i>
Canberra-Melbourne								
Qantas	154	154	142	92.2	140	90.9	0	0.0
QantasLink	82	81	74	91.4	73	90.1	1	1.2
Virgin Australia	147	146	134	91.8	137	93.8	1	0.7
All Airlines	383	381	350	91.9	350	91.9	2	0.5
Canberra-Sydney								
QantasLink	374	338	270	79.9	270	79.9	36	9.6
Virgin Australia	181	170	150	88.2	155	91.2	11	6.1
All Airlines	555	508	420	82.7	425	83.7	47	8.5
Coffs Harbour-Sydney								
QantasLink	143	143	109	76.2	107	74.8	0	0.0
Tigerair	14	13	13	100.0	13	100.0	1	7.1
Virgin Australia	61	61	56	91.8	57	93.4	0	0.0
All Airlines	218	217	178	82.0	177	81.6	1	0.5
Darwin-Alice Springs								
QantasLink	31	31	31	100.0	31	100.0	0	0.0
Virgin Australia	12	12	11	91.7	12	100.0	0	0.0
All Airlines	43	43	42	97.7	43	100.0	0	0.0
Darwin-Brisbane								
Jetstar	30	30	28	93.3	22	73.3	0	0.0
Qantas	45	45	43	95.6	43	95.6	0	0.0
Tigerair	24	24	24	100.0	24	100.0	0	0.0
Virgin Australia	32	32	27	84.4	31	96.9	0	0.0
All Airlines	131	131	122	93.1	120	91.6	0	0.0
Darwin-Melbourne								
Jetstar	31	30	15	50.0	14	46.7	1	3.2
Qantas	30	30	28	93.3	29	96.7	0	0.0
Virgin Australia	31	31	29	93.5	29	93.5	0	0.0
All Airlines	92	91	72	79.1	72	79.1	1	1.1
Darwin-Perth								
Qantas	35	35	33	94.3	34	97.1	0	0.0
Virgin Australia	31	31	30	96.8	31	100.0	0	0.0
All Airlines	66	66	63	95.5	65	98.5	0	0.0
Darwin-Sydney								
Jetstar	30	30	24	80.0	24	80.0	0	0.0
Qantas	35	35	27	77.1	31	88.6	0	0.0
Virgin Australia	31	31	27	87.1	29	93.5	0	0.0
All Airlines	96	96	78	81.3	84	87.5	0	0.0
Dubbo-Sydney								
QantasLink	109	109	78	71.6	78	71.6	0	0.0
Regional Express	84	79	65	82.3	69	87.3	5	6.0
All Airlines	193	188	143	76.1	147	78.2	5	2.6
Emerald-Brisbane								
QantasLink	135	131	119	90.8	120	91.6	4	3.0
Virgin Australia	68	67	57	85.1	55	82.1	1	1.5
All Airlines	203	198	176	88.9	175	88.4	5	2.5
Geraldton-Perth								
QantasLink	47	47	41	87.2	41	87.2	0	0.0
Virgin Australia Regional Airlines	45	45	38	84.4	40	88.9	0	0.0
All Airlines	92	92	79	85.9	81	88.0	0	0.0

	<i>Sectors</i>		<i>Arrivals On Time</i>		<i>Departures On Time</i>		<i>Cancellations</i>	
	<i>Sched.</i>	<i>Flown</i>	<i>No.</i>	<i>%</i>	<i>No.</i>	<i>%</i>	<i>No.</i>	<i>%</i>
Gladstone-Brisbane								
QantasLink	201	184	167	90.8	166	90.2	17	8.5
Virgin Australia	125	120	106	88.3	101	84.2	5	4.0
All Airlines	326	304	273	89.8	267	87.8	22	6.7
Gold Coast-Adelaide								
Jetstar	43	42	39	92.9	38	90.5	1	2.3
Virgin Australia	36	36	35	97.2	34	94.4	0	0.0
All Airlines	79	78	74	94.9	72	92.3	1	1.3
Gold Coast-Melbourne								
Jetstar	256	251	212	84.5	187	74.5	5	2.0
Qantas	31	31	28	90.3	29	93.5	0	0.0
Tigerair	99	97	84	86.6	77	79.4	2	2.0
Virgin Australia	201	199	179	89.9	175	87.9	2	1.0
All Airlines	587	578	503	87.0	468	81.0	9	1.5
Gold Coast-Sydney								
Jetstar	374	363	258	71.1	236	65.0	11	2.9
Qantas	113	113	98	86.7	98	86.7	0	0.0
Tigerair	127	125	96	76.8	88	70.4	2	1.6
Virgin Australia	276	267	226	84.6	222	83.1	9	3.3
All Airlines	890	868	678	78.1	644	74.2	22	2.5
Hamilton Island-Brisbane								
QantasLink	28	28	26	92.9	25	89.3	0	0.0
Virgin Australia	31	31	28	90.3	27	87.1	0	0.0
All Airlines	59	59	54	91.5	52	88.1	0	0.0
Hamilton Island-Melbourne								
Qantas	15	15	14	93.3	13	86.7	0	0.0
Virgin Australia	27	27	27	100.0	26	96.3	0	0.0
All Airlines	42	42	41	97.6	39	92.9	0	0.0
Hamilton Island-Sydney								
Jetstar	30	30	20	66.7	18	60.0	0	0.0
Qantas	17	17	13	76.5	10	58.8	0	0.0
Virgin Australia	32	32	25	78.1	26	81.3	0	0.0
All Airlines	79	79	58	73.4	54	68.4	0	0.0
Hobart-Brisbane								
Jetstar	31	31	30	96.8	27	87.1	0	0.0
Qantas	4	4	4	100.0	4	100.0	0	0.0
Virgin Australia	31	31	29	93.5	28	90.3	0	0.0
All Airlines	66	66	63	95.5	59	89.4	0	0.0
Hobart-Melbourne								
Jetstar	244	243	159	65.4	142	58.4	1	0.4
Qantas	16	16	14	87.5	13	81.3	0	0.0
QantasLink	116	116	99	85.3	106	91.4	0	0.0
Tigerair	34	34	25	73.5	24	70.6	0	0.0
Virgin Australia	148	148	122	82.4	125	84.5	0	0.0
All Airlines	558	557	419	75.2	410	73.6	1	0.2
Hobart-Sydney								
Jetstar	128	126	79	62.7	79	62.7	2	1.6
Qantas	4	4	4	100.0	4	100.0	0	0.0
QantasLink	43	41	35	85.4	37	90.2	2	4.7
Virgin Australia	64	64	54	84.4	55	85.9	0	0.0
All Airlines	239	235	172	73.2	175	74.5	4	1.7

	<i>Sectors</i>		<i>Arrivals On Time</i>		<i>Departures On Time</i>		<i>Cancellations</i>	
	<i>Sched.</i>	<i>Flown</i>	<i>No.</i>	<i>%</i>	<i>No.</i>	<i>%</i>	<i>No.</i>	<i>%</i>
Kalgoorlie-Perth								
Qantas	10	10	9	90.0	9	90.0	0	0.0
QantasLink	71	71	69	97.2	68	95.8	0	0.0
Virgin Australia	32	32	29	90.6	29	90.6	0	0.0
Virgin Australia Regional Airlines	28	27	25	92.6	25	92.6	1	3.6
All Airlines	141	140	132	94.3	131	93.6	1	0.7
Karratha-Perth								
Qantas	50	49	46	93.9	47	95.9	1	2.0
QantasLink	150	146	137	93.8	137	93.8	4	2.7
Virgin Australia	37	37	33	89.2	34	91.9	0	0.0
Virgin Australia Regional Airlines	47	46	37	80.4	37	80.4	1	2.1
All Airlines	284	278	253	91.0	255	91.7	6	2.1
Launceston-Melbourne								
Jetstar	194	193	145	75.1	145	75.1	1	0.5
QantasLink	123	118	96	81.4	94	79.7	5	4.1
Virgin Australia	95	95	83	87.4	85	89.5	0	0.0
All Airlines	412	406	324	79.8	324	79.8	6	1.5
Launceston-Sydney								
Jetstar	89	89	59	66.3	60	67.4	0	0.0
Virgin Australia	32	32	30	93.8	31	96.9	0	0.0
All Airlines	121	121	89	73.6	91	75.2	0	0.0
Mackay-Brisbane								
Jetstar	49	49	29	59.2	28	57.1	0	0.0
QantasLink	105	99	81	81.8	78	78.8	6	5.7
Virgin Australia	147	146	133	91.1	133	91.1	1	0.7
All Airlines	301	294	243	82.7	239	81.3	7	2.3
Melbourne-Adelaide								
Jetstar	124	124	86	69.4	84	67.7	0	0.0
Qantas	259	257	235	91.4	235	91.4	2	0.8
Tigerair	87	86	79	91.9	79	91.9	1	1.1
Virgin Australia	278	275	248	90.2	251	91.3	3	1.1
All Airlines	748	742	648	87.3	649	87.5	6	0.8
Melbourne-Brisbane								
Jetstar	154	147	114	77.6	102	69.4	7	4.5
Qantas	422	419	376	89.7	385	91.9	3	0.7
Tigerair	137	134	113	84.3	117	87.3	3	2.2
Virgin Australia	378	367	322	87.7	336	91.6	11	2.9
All Airlines	1 091	1 067	925	86.7	940	88.1	24	2.2
Melbourne-Cairns								
Jetstar	107	107	86	80.4	75	70.1	0	0.0
Qantas	41	41	40	97.6	39	95.1	0	0.0
Tigerair	47	47	42	89.4	40	85.1	0	0.0
Virgin Australia	31	31	31	100.0	31	100.0	0	0.0
All Airlines	226	226	199	88.1	185	81.9	0	0.0
Melbourne-Canberra								
Qantas	154	154	138	89.6	146	94.8	0	0.0
QantasLink	82	81	69	85.2	72	88.9	1	1.2
Virgin Australia	147	147	131	89.1	137	93.2	0	0.0
All Airlines	383	382	338	88.5	355	92.9	1	0.3
Melbourne-Darwin								
Jetstar	31	31	25	80.6	22	71.0	0	0.0
Qantas	30	30	28	93.3	28	93.3	0	0.0
Virgin Australia	31	31	24	77.4	23	74.2	0	0.0
All Airlines	92	92	77	83.7	73	79.3	0	0.0

	<i>Sectors</i>		<i>Arrivals On Time</i>		<i>Departures On Time</i>		<i>Cancellations</i>	
	<i>Sched.</i>	<i>Flown</i>	<i>No.</i>	<i>%</i>	<i>No.</i>	<i>%</i>	<i>No.</i>	<i>%</i>
Melbourne-Gold Coast								
Jetstar	256	253	198	78.3	192	75.9	3	1.2
Qantas	31	31	31	100.0	31	100.0	0	0.0
Tigerair	98	97	89	91.8	92	94.8	1	1.0
Virgin Australia	201	200	172	86.0	180	90.0	1	0.5
All Airlines	586	581	490	84.3	495	85.2	5	0.9
Melbourne-Hamilton Island								
Qantas	15	15	15	100.0	14	93.3	0	0.0
Virgin Australia	27	27	27	100.0	27	100.0	0	0.0
All Airlines	42	42	42	100.0	41	97.6	0	0.0
Melbourne-Hobart								
Jetstar	243	242	175	72.3	172	71.1	1	0.4
Qantas	16	16	15	93.8	16	100.0	0	0.0
QantasLink	116	115	96	83.5	95	82.6	1	0.9
Tigerair	34	34	29	85.3	27	79.4	0	0.0
Virgin Australia	148	148	133	89.9	133	89.9	0	0.0
All Airlines	557	555	448	80.7	443	79.8	2	0.4
Melbourne-Launceston								
Jetstar	194	193	157	81.3	153	79.3	1	0.5
QantasLink	123	118	91	77.1	96	81.4	5	4.1
Virgin Australia	95	95	85	89.5	84	88.4	0	0.0
All Airlines	412	406	333	82.0	333	82.0	6	1.5
Melbourne-Mildura								
QantasLink	87	86	63	73.3	64	74.4	1	1.1
Regional Express	49	48	39	81.3	42	87.5	1	2.0
Virgin Australia	31	31	28	90.3	28	90.3	0	0.0
All Airlines	167	165	130	78.8	134	81.2	2	1.2
Melbourne-Newcastle								
Jetstar	98	97	65	67.0	64	66.0	1	1.0
Virgin Australia	31	30	24	80.0	26	86.7	1	3.2
All Airlines	129	127	89	70.1	90	70.9	2	1.6
Melbourne-Perth								
Jetstar	99	53	43	81.1	38	71.7	46	46.5
Qantas	197	197	155	78.7	158	80.2	0	0.0
Tigerair	62	62	58	93.5	55	88.7	0	0.0
Virgin Australia	148	148	128	86.5	121	81.8	0	0.0
All Airlines	506	460	384	83.5	372	80.9	46	9.1
Melbourne-Sunshine Coast								
Jetstar	90	88	56	63.6	51	58.0	2	2.2
Virgin Australia	37	37	28	75.7	32	86.5	0	0.0
All Airlines	127	125	84	67.2	83	66.4	2	1.6
Melbourne-Sydney								
Jetstar	399	363	230	63.4	243	66.9	36	9.0
Qantas	857	833	684	82.1	728	87.4	24	2.8
Tigerair	250	248	189	76.2	195	78.6	2	0.8
Virgin Australia	677	664	572	86.1	602	90.7	13	1.9
All Airlines	2 183	2 108	1 675	79.5	1 768	83.9	75	3.4
Mildura-Melbourne								
QantasLink	87	86	69	80.2	69	80.2	1	1.1
Regional Express	48	47	38	80.9	40	85.1	1	2.1
Virgin Australia	31	31	29	93.5	29	93.5	0	0.0
All Airlines	166	164	136	82.9	138	84.1	2	1.2

	<i>Sectors</i>		<i>Arrivals On Time</i>		<i>Departures On Time</i>		<i>Cancellations</i>	
	<i>Sched.</i>	<i>Flown</i>	<i>No.</i>	<i>%</i>	<i>No.</i>	<i>%</i>	<i>No.</i>	<i>%</i>
Moranbah-Brisbane								
QantasLink	100	85	81	95.3	81	95.3	15	15.0
Virgin Australia	60	58	55	94.8	53	91.4	2	3.3
All Airlines	160	143	136	95.1	134	93.7	17	10.6
Mount Isa-Brisbane								
Qantas	33	33	31	93.9	31	93.9	0	0.0
QantasLink	22	22	21	95.5	21	95.5	0	0.0
Virgin Australia	21	21	19	90.5	19	90.5	0	0.0
All Airlines	76	76	71	93.4	71	93.4	0	0.0
Newcastle-Brisbane								
Jetstar	92	90	60	66.7	65	72.2	2	2.2
QantasLink	89	85	71	83.5	69	81.2	4	4.5
Virgin Australia	82	80	74	92.5	74	92.5	2	2.4
All Airlines	263	255	205	80.4	208	81.6	8	3.0
Newcastle-Melbourne								
Jetstar	99	96	73	76.0	72	75.0	3	3.0
Virgin Australia	31	30	20	66.7	20	66.7	1	3.2
All Airlines	130	126	93	73.8	92	73.0	4	3.1
Newman-Perth								
Qantas	71	71	65	91.5	65	91.5	0	0.0
QantasLink	70	70	64	91.4	64	91.4	0	0.0
Virgin Australia	24	24	21	87.5	21	87.5	0	0.0
Virgin Australia Regional Airlines	10	10	10	100.0	10	100.0	0	0.0
All Airlines	175	175	160	91.4	160	91.4	0	0.0
Perth-Adelaide								
Jetstar	31	30	22	73.3	26	86.7	1	3.2
Qantas	119	118	108	91.5	109	92.4	1	0.8
Virgin Australia	80	78	66	84.6	71	91.0	2	2.5
All Airlines	230	226	196	86.7	206	91.2	4	1.7
Perth-Brisbane								
Qantas	140	140	124	88.6	118	84.3	0	0.0
Virgin Australia	115	115	102	88.7	101	87.8	0	0.0
All Airlines	255	255	226	88.6	219	85.9	0	0.0
Perth-Broome								
Qantas	4	4	3	75.0	3	75.0	0	0.0
QantasLink	77	77	63	81.8	63	81.8	0	0.0
Virgin Australia	7	7	5	71.4	6	85.7	0	0.0
Virgin Australia Regional Airlines	38	38	28	73.7	31	81.6	0	0.0
All Airlines	126	126	99	78.6	103	81.7	0	0.0
Perth-Darwin								
Qantas	35	35	34	97.1	34	97.1	0	0.0
Virgin Australia	31	31	29	93.5	29	93.5	0	0.0
All Airlines	66	66	63	95.5	63	95.5	0	0.0
Perth-Geraldton								
QantasLink	47	47	41	87.2	40	85.1	0	0.0
Virgin Australia Regional Airlines	40	40	34	85.0	36	90.0	0	0.0
All Airlines	87	87	75	86.2	76	87.4	0	0.0
Perth-Kalgoorlie								
Qantas	10	10	9	90.0	9	90.0	0	0.0
QantasLink	71	71	68	95.8	66	93.0	0	0.0
Virgin Australia	31	31	29	93.5	29	93.5	0	0.0
Virgin Australia Regional Airlines	28	27	23	85.2	23	85.2	1	3.6
All Airlines	140	139	129	92.8	127	91.4	1	0.7

	<i>Sectors</i>		<i>Arrivals On Time</i>		<i>Departures On Time</i>		<i>Cancellations</i>	
	<i>Sched.</i>	<i>Flown</i>	<i>No.</i>	<i>%</i>	<i>No.</i>	<i>%</i>	<i>No.</i>	<i>%</i>
Perth-Karratha								
Qantas	50	49	47	95.9	47	95.9	1	2.0
QantasLink	151	148	129	87.2	139	93.9	3	2.0
Virgin Australia	37	37	35	94.6	35	94.6	0	0.0
Virgin Australia Regional Airlines	47	46	35	76.1	38	82.6	1	2.1
All Airlines	285	280	246	87.9	259	92.5	5	1.8
Perth-Melbourne								
Jetstar	101	52	33	63.5	32	61.5	49	48.5
Qantas	198	198	157	79.3	161	81.3	0	0.0
Tigerair	63	61	57	93.4	58	95.1	2	3.2
Virgin Australia	144	144	111	77.1	115	79.9	0	0.0
All Airlines	506	455	358	78.7	366	80.4	51	10.1
Perth-Newman								
Qantas	71	71	65	91.5	66	93.0	0	0.0
QantasLink	70	70	63	90.0	66	94.3	0	0.0
Virgin Australia	24	24	22	91.7	22	91.7	0	0.0
Virgin Australia Regional Airlines	10	10	10	100.0	10	100.0	0	0.0
All Airlines	175	175	160	91.4	164	93.7	0	0.0
Perth-Port Hedland								
Qantas	68	66	62	93.9	61	92.4	2	2.9
QantasLink	65	61	45	73.8	56	91.8	4	6.2
Virgin Australia	41	39	36	92.3	36	92.3	2	4.9
All Airlines	174	166	143	86.1	153	92.2	8	4.6
Perth-Sydney								
Jetstar	31	31	23	74.2	15	48.4	0	0.0
Qantas	201	201	171	85.1	177	88.1	0	0.0
Tigerair	29	29	27	93.1	25	86.2	0	0.0
Virgin Australia	124	123	104	84.6	100	81.3	1	0.8
All Airlines	385	384	325	84.6	317	82.6	1	0.3
Port Hedland-Perth								
Qantas	68	66	58	87.9	59	89.4	2	2.9
QantasLink	63	59	55	93.2	53	89.8	4	6.3
Virgin Australia	41	37	34	91.9	34	91.9	4	9.8
All Airlines	172	162	147	90.7	146	90.1	10	5.8
Port Lincoln-Adelaide								
QantasLink	126	123	115	93.5	115	93.5	3	2.4
Regional Express	159	159	142	89.3	146	91.8	0	0.0
All Airlines	285	282	257	91.1	261	92.6	3	1.1
Port Macquarie-Sydney								
QantasLink	126	123	67	54.5	80	65.0	3	2.4
Virgin Australia	62	60	46	76.7	47	78.3	2	3.2
All Airlines	188	183	113	61.7	127	69.4	5	2.7
Proserpine-Brisbane								
Jetstar	31	31	24	77.4	21	67.7	0	0.0
Virgin Australia	51	51	49	96.1	50	98.0	0	0.0
All Airlines	82	82	73	89.0	71	86.6	0	0.0
Rockhampton-Brisbane								
QantasLink	164	160	141	88.1	140	87.5	4	2.4
Virgin Australia	163	159	146	91.8	144	90.6	4	2.5
All Airlines	327	319	287	90.0	284	89.0	8	2.4
Sunshine Coast-Melbourne								
Jetstar	90	87	58	66.7	49	56.3	3	3.3
Virgin Australia	37	36	28	77.8	27	75.0	1	2.7
All Airlines	127	123	86	69.9	76	61.8	4	3.1

	<i>Sectors</i>		<i>Arrivals On Time</i>		<i>Departures On Time</i>		<i>Cancellations</i>	
	<i>Sched.</i>	<i>Flown</i>	<i>No.</i>	<i>%</i>	<i>No.</i>	<i>%</i>	<i>No.</i>	<i>%</i>
Sunshine Coast-Sydney								
Jetstar	131	127	75	59.1	77	60.6	4	3.1
QantasLink	30	30	22	73.3	22	73.3	0	0.0
Virgin Australia	39	39	33	84.6	32	82.1	0	0.0
All Airlines	200	196	130	66.3	131	66.8	4	2.0
Sydney-Adelaide								
Jetstar	151	146	93	63.7	85	58.2	5	3.3
Qantas	238	238	207	87.0	205	86.1	0	0.0
QantasLink	11	8	7	87.5	6	75.0	3	27.3
Tigerair	48	48	39	81.3	40	83.3	0	0.0
Virgin Australia	168	166	149	89.8	149	89.8	2	1.2
All Airlines	616	606	495	81.7	485	80.0	10	1.6
Sydney-Albury								
QantasLink	92	91	71	78.0	65	71.4	1	1.1
Regional Express	41	41	35	85.4	35	85.4	0	0.0
Virgin Australia	62	61	50	82.0	51	83.6	1	1.6
All Airlines	195	193	156	80.8	151	78.2	2	1.0
Sydney-Armidale								
QantasLink	127	125	81	64.8	81	64.8	2	1.6
Regional Express	33	33	29	87.9	29	87.9	0	0.0
All Airlines	160	158	110	69.6	110	69.6	2	1.3
Sydney-Ayers Rock								
Jetstar	24	24	19	79.2	16	66.7	0	0.0
Virgin Australia	31	31	29	93.5	27	87.1	0	0.0
All Airlines	55	55	48	87.3	43	78.2	0	0.0
Sydney-Ballina								
Jetstar	90	90	61	67.8	60	66.7	0	0.0
Regional Express	9	9	8	88.9	8	88.9	0	0.0
Virgin Australia	31	31	29	93.5	29	93.5	0	0.0
All Airlines	130	130	98	75.4	97	74.6	0	0.0
Sydney-Brisbane								
Jetstar	202	179	110	61.5	104	58.1	23	11.4
Qantas	574	562	481	85.6	488	86.8	12	2.1
Tigerair	108	108	90	83.3	98	90.7	0	0.0
Virgin Australia	532	516	438	84.9	452	87.6	16	3.0
All Airlines	1 416	1 365	1 119	82.0	1 142	83.7	51	3.6
Sydney-Cairns								
Jetstar	118	115	81	70.4	67	58.3	3	2.5
Qantas	83	83	77	92.8	75	90.4	0	0.0
Tigerair	48	48	44	91.7	45	93.8	0	0.0
Virgin Australia	93	93	83	89.2	81	87.1	0	0.0
All Airlines	342	339	285	84.1	268	79.1	3	0.9
Sydney-Canberra								
QantasLink	372	341	261	76.5	261	76.5	31	8.3
Virgin Australia	182	171	139	81.3	137	80.1	11	6.0
All Airlines	554	512	400	78.1	398	77.7	42	7.6
Sydney-Coffs Harbour								
QantasLink	143	143	112	78.3	109	76.2	0	0.0
Tigerair	14	13	13	100.0	13	100.0	1	7.1
Virgin Australia	61	61	57	93.4	57	93.4	0	0.0
All Airlines	218	217	182	83.9	179	82.5	1	0.5

	<i>Sectors</i>		<i>Arrivals On Time</i>		<i>Departures On Time</i>		<i>Cancellations</i>	
	<i>Sched.</i>	<i>Flown</i>	<i>No.</i>	<i>%</i>	<i>No.</i>	<i>%</i>	<i>No.</i>	<i>%</i>
Sydney-Darwin								
Jetstar	30	30	22	73.3	18	60.0	0	0.0
Qantas	36	36	33	91.7	29	80.6	0	0.0
Virgin Australia	31	31	30	96.8	29	93.5	0	0.0
All Airlines	97	97	85	87.6	76	78.4	0	0.0
Sydney-Dubbo								
QantasLink	110	110	75	68.2	72	65.5	0	0.0
Regional Express	85	80	73	91.3	74	92.5	5	5.9
All Airlines	195	190	148	77.9	146	76.8	5	2.6
Sydney-Gold Coast								
Jetstar	375	365	247	67.7	238	65.2	10	2.7
Qantas	113	113	102	90.3	102	90.3	0	0.0
Tigerair	126	124	102	82.3	106	85.5	2	1.6
Virgin Australia	276	269	227	84.4	240	89.2	7	2.5
All Airlines	890	871	678	77.8	686	78.8	19	2.1
Sydney-Hamilton Island								
Jetstar	30	30	23	76.7	20	66.7	0	0.0
Qantas	17	17	17	100.0	17	100.0	0	0.0
Virgin Australia	32	32	26	81.3	24	75.0	0	0.0
All Airlines	79	79	66	83.5	61	77.2	0	0.0
Sydney-Hobart								
Jetstar	128	126	96	76.2	83	65.9	2	1.6
Qantas	4	4	4	100.0	4	100.0	0	0.0
QantasLink	43	41	39	95.1	38	92.7	2	4.7
Virgin Australia	64	64	58	90.6	59	92.2	0	0.0
All Airlines	239	235	197	83.8	184	78.3	4	1.7
Sydney-Launceston								
Jetstar	90	90	68	75.6	55	61.1	0	0.0
Virgin Australia	32	32	29	90.6	28	87.5	0	0.0
All Airlines	122	122	97	79.5	83	68.0	0	0.0
Sydney-Melbourne								
Jetstar	396	364	243	66.8	205	56.3	32	8.1
Qantas	856	834	695	83.3	703	84.3	22	2.6
Tigerair	250	248	186	75.0	181	73.0	2	0.8
Virgin Australia	672	659	572	86.8	567	86.0	13	1.9
All Airlines	2 174	2 105	1 696	80.6	1 656	78.7	69	3.2
Sydney-Perth								
Jetstar	31	31	23	74.2	15	48.4	0	0.0
Qantas	205	205	158	77.1	151	73.7	0	0.0
Tigerair	29	29	28	96.6	28	96.6	0	0.0
Virgin Australia	125	124	95	76.6	94	75.8	1	0.8
All Airlines	390	389	304	78.1	288	74.0	1	0.3
Sydney-Port Macquarie								
QantasLink	126	123	73	59.3	78	63.4	3	2.4
Virgin Australia	62	60	46	76.7	44	73.3	2	3.2
All Airlines	188	183	119	65.0	122	66.7	5	2.7
Sydney-Sunshine Coast								
Jetstar	133	129	89	69.0	81	62.8	4	3.0
QantasLink	30	30	25	83.3	27	90.0	0	0.0
Virgin Australia	39	39	33	84.6	35	89.7	0	0.0
All Airlines	202	198	147	74.2	143	72.2	4	2.0

	<i>Sectors</i>		<i>Arrivals On Time</i>		<i>Departures On Time</i>		<i>Cancellations</i>	
	<i>Sched.</i>	<i>Flown</i>	<i>No.</i>	<i>%</i>	<i>No.</i>	<i>%</i>	<i>No.</i>	<i>%</i>
Sydney-Tamworth								
QantasLink	143	140	102	72.9	105	75.0	3	2.1
Virgin Australia	29	29	25	86.2	24	82.8	0	0.0
All Airlines	172	169	127	75.1	129	76.3	3	1.7
Sydney-Townsville								
Jetstar	30	30	16	53.3	14	46.7	0	0.0
Virgin Australia	30	30	25	83.3	29	96.7	0	0.0
All Airlines	60	60	41	68.3	43	71.7	0	0.0
Sydney-Wagga Wagga								
QantasLink	101	101	74	73.3	73	72.3	0	0.0
Regional Express	54	54	46	85.2	46	85.2	0	0.0
All Airlines	155	155	120	77.4	119	76.8	0	0.0
Tamworth-Sydney								
QantasLink	143	140	108	77.1	110	78.6	3	2.1
Virgin Australia	29	29	22	75.9	24	82.8	0	0.0
All Airlines	172	169	130	76.9	134	79.3	3	1.7
Townsville-Brisbane								
Jetstar	48	48	31	64.6	29	60.4	0	0.0
Qantas	145	145	139	95.9	140	96.6	0	0.0
Virgin Australia	144	141	134	95.0	130	92.2	3	2.1
All Airlines	337	334	304	91.0	299	89.5	3	0.9
Townsville-Cairns								
QantasLink	142	135	128	94.8	126	93.3	7	4.9
Regional Express	21	20	19	95.0	20	100.0	1	4.8
All Airlines	163	155	147	94.8	146	94.2	8	4.9
Townsville-Sydney								
Jetstar	30	30	13	43.3	12	40.0	0	0.0
Virgin Australia	30	30	26	86.7	24	80.0	0	0.0
All Airlines	60	60	39	65.0	36	60.0	0	0.0
Wagga Wagga-Sydney								
QantasLink	103	100	79	79.0	79	79.0	3	2.9
Regional Express	58	58	48	82.8	51	87.9	0	0.0
All Airlines	161	158	127	80.4	130	82.3	3	1.9

Airports

On time performance is reported for all routes where the passenger load averages over 8000 passengers per month, and where two or more airlines operate in competition. The following data reports by airport against flights operated on those routes only. This month, 8 major city airports and 33 regional city airports are covered.

Airport	Arrivals			Departures		
	Sectors	On Time		Sectors	On Time	
	Flown	No.	%	Flown	No.	%
Adelaide						
Jetstar	373	268	71.8	372	287	77.2
Qantas	792	721	91.0	793	728	91.8
QantasLink	131	122	93.1	132	127	96.2
Regional Express	159	142	89.3	160	145	90.6
Tigerair	164	145	88.4	164	143	87.2
Virgin Australia	715	648	90.6	716	664	92.7
All Airlines	2 334	2 046	87.7	2 337	2 094	89.6
Relates to services to and from Alice Springs, Brisbane, Canberra, Gold Coast, Melbourne, Perth, Port Lincoln and Sydney.						
Albury						
QantasLink	91	71	78.0	90	71	78.9
Regional Express	41	35	85.4	41	41	100.0
Virgin Australia	61	50	82.0	61	50	82.0
All Airlines	193	156	80.8	192	162	84.4
Relates to services to and from Sydney only.						
Alice Springs						
Qantas	31	29	93.5	31	29	93.5
QantasLink	31	31	100.0	31	30	96.8
Virgin Australia	24	23	95.8	24	22	91.7
All Airlines	86	83	96.5	86	81	94.2
Relates to services to and from Adelaide and Darwin.						
Armidale						
QantasLink	125	81	64.8	125	86	68.8
Regional Express	33	29	87.9	32	25	78.1
All Airlines	158	110	69.6	157	111	70.7
Relates to services to and from Sydney only.						
Ayers Rock						
Jetstar	24	19	79.2	23	16	69.6
Virgin Australia	31	29	93.5	30	27	90.0
All Airlines	55	48	87.3	53	43	81.1
Relates to services to and from Sydney only.						
Ballina						
Jetstar	90	61	67.8	89	53	59.6
Regional Express	9	8	88.9	8	8	100.0
Virgin Australia	31	29	93.5	31	28	90.3
All Airlines	130	98	75.4	128	89	69.5
Relates to services to and from Sydney only.						

Airport	Arrivals			Departures		
	Sectors Flown	On Time		Sectors Flown	On Time	
		No.	%		No.	%
Brisbane						
Jetstar	768	563	73.3	767	549	71.6
Qantas	1 607	1 444	89.9	1 622	1 500	92.5
QantasLink	1 040	923	88.8	1 050	962	91.6
Tigerair	327	284	86.9	326	287	88.0
Virgin Australia	2 310	2 073	89.7	2 315	2 092	90.4
All Airlines	6 052	5 287	87.4	6 080	5 390	88.7

Relates to services to and from Adelaide, Bundaberg, Cairns, Canberra, Darwin, Emerald, Gladstone, Hamilton Island, Hobart, Mackay, Melbourne, Moranbah, Mount Isa, Newcastle, Perth, Proserpine, Rockhampton, Sydney and Townsville.

Broome

Qantas	4	3	75.0	4	2	50.0
QantasLink	77	63	81.8	77	61	79.2
Virgin Australia	7	5	71.4	7	6	85.7
Virgin Australia Regional Airlines	38	28	73.7	38	25	65.8
All Airlines	126	99	78.6	126	94	74.6

Relates to services to and from Perth only.

Bundaberg

QantasLink	127	111	87.4	127	114	89.8
Virgin Australia	32	32	100.0	32	31	96.9
All Airlines	159	143	89.9	159	145	91.2

Relates to services to and from Brisbane only.

Cairns

Jetstar	354	279	78.8	354	286	80.8
Qantas	244	235	96.3	244	227	93.0
QantasLink	140	133	95.0	141	130	92.2
Regional Express	20	19	95.0	20	19	95.0
Tigerair	126	117	92.9	124	109	87.9
Virgin Australia	261	242	92.7	261	247	94.6
All Airlines	1 145	1 025	89.5	1 144	1 018	89.0

Relates to services to and from Brisbane, Melbourne, Sydney and Townsville.

Canberra

Qantas	215	192	89.3	215	199	92.6
QantasLink	535	437	81.7	533	443	83.1
Virgin Australia	434	381	87.8	431	400	92.8
All Airlines	1 184	1 010	85.3	1 179	1 042	88.4

Relates to services to and from Adelaide, Brisbane, Melbourne and Sydney.

Coffs Harbour

QantasLink	143	112	78.3	143	107	74.8
Tigerair	13	13	100.0	13	13	100.0
Virgin Australia	61	57	93.4	61	57	93.4
All Airlines	217	182	83.9	217	177	81.6

Relates to services to and from Sydney only.

Darwin

Jetstar	91	72	79.1	90	60	66.7
Qantas	146	138	94.5	145	137	94.5
QantasLink	31	29	93.5	31	31	100.0
Tigerair	24	24	100.0	24	24	100.0
Virgin Australia	137	124	90.5	137	132	96.4
All Airlines	429	387	90.2	427	384	89.9

Relates to services to and from Alice Springs, Brisbane, Melbourne, Perth and Sydney.

Airport	Arrivals			Departures		
	Sectors Flown	On Time		Sectors Flown	On Time	
		No.	%		No.	%
Dubbo						
QantasLink	110	75	68.2	109	78	71.6
Regional Express	80	73	91.3	79	69	87.3
All Airlines	190	148	77.9	188	147	78.2
Relates to services to and from Sydney only.						
Emerald						
QantasLink	130	123	94.6	131	120	91.6
Virgin Australia	67	54	80.6	67	55	82.1
All Airlines	197	177	89.8	198	175	88.4
Relates to services to and from Brisbane only.						
Geraldton						
QantasLink	47	41	87.2	47	41	87.2
Virgin Australia Regional Airlines	40	34	85.0	45	40	88.9
All Airlines	87	75	86.2	92	81	88.0
Relates to services to and from Perth only.						
Gladstone						
QantasLink	186	169	90.9	184	166	90.2
Virgin Australia	121	94	77.7	120	101	84.2
All Airlines	307	263	85.7	304	267	87.8
Relates to services to and from Brisbane only.						
Gold Coast						
Jetstar	660	483	73.2	656	461	70.3
Qantas	144	133	92.4	144	127	88.2
Tigerair	221	191	86.4	222	165	74.3
Virgin Australia	505	435	86.1	502	431	85.9
All Airlines	1 530	1 242	81.2	1 524	1 184	77.7
Relates to services to and from Adelaide, Melbourne and Sydney.						
Hamilton Island						
Jetstar	30	23	76.7	30	18	60.0
Qantas	32	32	100.0	32	23	71.9
QantasLink	28	27	96.4	28	25	89.3
Virgin Australia	90	80	88.9	90	79	87.8
All Airlines	180	162	90.0	180	145	80.6
Relates to services to and from Brisbane, Melbourne and Sydney.						
Hobart						
Jetstar	399	300	75.2	400	248	62.0
Qantas	24	23	95.8	24	21	87.5
QantasLink	156	135	86.5	157	143	91.1
Tigerair	34	29	85.3	34	24	70.6
Virgin Australia	243	222	91.4	243	208	85.6
All Airlines	856	709	82.8	858	644	75.1
Relates to services to and from Brisbane, Melbourne and Sydney.						
Kalgoorlie						
Qantas	10	9	90.0	10	9	90.0
QantasLink	71	68	95.8	71	68	95.8
Virgin Australia	31	29	93.5	32	29	90.6
Virgin Australia Regional Airlines	27	23	85.2	27	25	92.6
All Airlines	139	129	92.8	140	131	93.6
Relates to services to and from Perth only.						

Airport	Arrivals			Departures		
	Sectors Flown	On Time		Sectors Flown	On Time	
		No.	%		No.	%
Karratha						
Qantas	49	47	95.9	49	47	95.9
QantasLink	148	129	87.2	146	137	93.8
Virgin Australia	37	35	94.6	37	34	91.9
Virgin Australia Regional Airlines	46	35	76.1	46	37	80.4
All Airlines	280	246	87.9	278	255	91.7
Relates to services to and from Perth only.						
Launceston						
Jetstar	283	225	79.5	282	205	72.7
QantasLink	118	91	77.1	118	94	79.7
Virgin Australia	127	114	89.8	127	116	91.3
All Airlines	528	430	81.4	527	415	78.7
Relates to services to and from Melbourne and Sydney.						
Mackay						
Jetstar	49	33	67.3	49	28	57.1
QantasLink	99	88	88.9	99	78	78.8
Virgin Australia	146	131	89.7	146	133	91.1
All Airlines	294	252	85.7	294	239	81.3
Relates to services to and from Brisbane only.						
Melbourne						
Jetstar	1 691	1 244	73.6	1 698	1 196	70.4
Qantas	1 997	1 733	86.8	1 993	1 780	89.3
QantasLink	401	338	84.3	400	327	81.8
Regional Express	47	38	80.9	48	42	87.5
Tigerair	705	598	84.8	708	605	85.5
Virgin Australia	2 231	1 945	87.2	2 231	2 011	90.1
All Airlines	7 072	5 896	83.4	7 078	5 961	84.2
Relates to services to and from Adelaide, Brisbane, Cairns, Canberra, Darwin, Gold Coast, Hamilton Island, Hobart, Launceston, Mildura, Newcastle, Perth, Sunshine Coast and Sydney.						
Mildura						
QantasLink	86	63	73.3	86	69	80.2
Regional Express	48	39	81.3	47	40	85.1
Virgin Australia	31	28	90.3	31	29	93.5
All Airlines	165	130	78.8	164	138	84.1
Relates to services to and from Melbourne only.						
Moranbah						
QantasLink	91	87	95.6	85	81	95.3
Virgin Australia	59	52	88.1	58	53	91.4
All Airlines	150	139	92.7	143	134	93.7
Relates to services to and from Brisbane only.						
Mount Isa						
Qantas	33	32	97.0	33	31	93.9
QantasLink	22	21	95.5	22	21	95.5
Virgin Australia	21	19	90.5	21	19	90.5
All Airlines	76	72	94.7	76	71	93.4
Relates to services to and from Brisbane only.						

Airport	Arrivals			Departures		
	Sectors Flown	On Time		Sectors Flown	On Time	
		No.	%		No.	%
Newcastle						
Jetstar	188	139	73.9	186	137	73.7
QantasLink	87	78	89.7	85	69	81.2
Virgin Australia	110	101	91.8	110	94	85.5
All Airlines	385	318	82.6	381	300	78.7
Relates to services to and from Brisbane and Melbourne.						
Newman						
Qantas	71	65	91.5	71	65	91.5
QantasLink	70	63	90.0	70	64	91.4
Virgin Australia	24	22	91.7	24	21	87.5
Virgin Australia Regional Airlines	10	10	100.0	10	10	100.0
All Airlines	175	160	91.4	175	160	91.4
Relates to services to and from Perth only.						
Perth						
Jetstar	114	93	81.6	113	73	64.6
Qantas	892	758	85.0	892	785	88.0
QantasLink	470	434	92.3	474	430	90.7
Tigerair	91	86	94.5	90	83	92.2
Virgin Australia	628	547	87.1	629	544	86.5
Virgin Australia Regional Airlines	166	133	80.1	161	138	85.7
All Airlines	2 361	2 051	86.9	2 359	2 053	87.0
Relates to services to and from Adelaide, Brisbane, Broome, Darwin, Geraldton, Kalgoorlie, Karratha, Melbourne, Newman, Port Hedland and Sydney.						
Port Hedland						
Qantas	66	62	93.9	66	59	89.4
QantasLink	61	45	73.8	59	53	89.8
Virgin Australia	39	36	92.3	37	34	91.9
All Airlines	166	143	86.1	162	146	90.1
Relates to services to and from Perth only.						
Port Lincoln						
QantasLink	124	115	92.7	123	115	93.5
Regional Express	160	145	90.6	159	146	91.8
All Airlines	284	260	91.5	282	261	92.6
Relates to services to and from Adelaide only.						
Port Macquarie						
QantasLink	123	73	59.3	123	80	65.0
Virgin Australia	60	46	76.7	60	47	78.3
All Airlines	183	119	65.0	183	127	69.4
Relates to services to and from Sydney only.						
Proserpine						
Jetstar	31	26	83.9	31	21	67.7
Virgin Australia	51	50	98.0	51	50	98.0
All Airlines	82	76	92.7	82	71	86.6
Relates to services to and from Brisbane only.						

Airport	Arrivals			Departures		
	Sectors Flown	On Time		Sectors Flown	On Time	
		No.	%		No.	%
Rockhampton						
QantasLink	162	147	90.7	160	140	87.5
Virgin Australia	159	135	84.9	159	144	90.6
All Airlines	321	282	87.9	319	284	89.0
Relates to services to and from Brisbane only.						
Sunshine Coast						
Jetstar	217	145	66.8	214	126	58.9
QantasLink	30	25	83.3	30	22	73.3
Virgin Australia	76	61	80.3	75	59	78.7
All Airlines	323	231	71.5	319	207	64.9
Relates to services to and from Melbourne and Sydney.						
Sydney						
Jetstar	1 741	1 181	67.8	1 749	1 061	60.7
Qantas	2 103	1 814	86.3	2 092	1 774	84.8
QantasLink	1 247	933	74.8	1 253	915	73.0
Regional Express	218	184	84.4	217	192	88.5
Tigerair	618	495	80.1	618	511	82.7
Virgin Australia	2 494	2 178	87.3	2 499	2 156	86.3
All Airlines	8 421	6 785	80.6	8 428	6 609	78.4
Relates to services to and from Adelaide, Albury, Armidale, Ayers Rock, Ballina, Brisbane, Cairns, Canberra, Coffs Harbour, Darwin, Dubbo, Gold Coast, Hamilton Island, Hobart, Launceston, Melbourne, Perth, Port Macquarie, Sunshine Coast, Tamworth, Townsville and Wagga Wagga.						
Tamworth						
QantasLink	140	102	72.9	140	110	78.6
Virgin Australia	29	25	86.2	29	24	82.8
All Airlines	169	127	75.1	169	134	79.3
Relates to services to and from Sydney only.						
Townsville						
Jetstar	78	47	60.3	78	41	52.6
Qantas	145	132	91.0	145	140	96.6
QantasLink	136	125	91.9	135	126	93.3
Regional Express	20	19	95.0	20	20	100.0
Virgin Australia	172	151	87.8	171	154	90.1
All Airlines	551	474	86.0	549	481	87.6
Relates to services to and from Brisbane, Cairns and Sydney.						
Wagga Wagga						
QantasLink	101	74	73.3	100	79	79.0
Regional Express	54	46	85.2	58	51	87.9
All Airlines	155	120	77.4	158	130	82.3
Relates to services to and from Sydney only.						

Definitions

On time arrival	A flight arrival is counted as "on time" if it arrived at the gate before 15 minutes after the scheduled arrival time shown in the carriers' schedule. Neither diverted nor cancelled flights count as on time.
On time departure	A flight departure is counted as "on time" if it departs the gate before 15 minutes after the scheduled departure time shown in the carriers' schedule.
Cancellation	A flight removed from service within 7 days of scheduled departure is regarded as a cancellation.
On time departure percentage	The percentage of on time departures is measured against the number of departures <i>operated</i> on any particular sector.
On time arrival percentage	The percentage of on time arrivals is measured against the number of arrivals <i>operated</i> on any particular sector.
Cancellation percentage	The percentage of cancellations is measured against the number of services <i>scheduled</i> on any particular sector.
