



Australian Government

Department of Infrastructure and Regional Development

Bureau of Infrastructure, Transport and Regional Economics

STATISTICAL REPORT



Aviation

Domestic airline on time performance
January 2015

© Commonwealth of Australia 2015

ISSN: 1832-0759

Ownership of intellectual property rights in this publication

Unless otherwise noted, copyright (and any other intellectual property rights, if any) in this publication is owned by the Commonwealth of Australia (referred to below as the Commonwealth).

Disclaimer

The material contained in this publication is made available on the understanding that the Commonwealth is not providing professional advice, and that users exercise their own skill and care with respect to its use, and seek independent advice if necessary.

The Commonwealth makes no representations or warranties as to the contents or accuracy of the information contained in this publication. To the extent permitted by law, the Commonwealth disclaims liability to any person or organisation in respect of anything done, or omitted to be done, in reliance upon information contained in this publication.

Creative Commons licence

With the exception of (a) the Coat of Arms; and (b) the Department of Infrastructure and Regional Development's photos and graphics, copyright in this publication is licensed under a Creative Commons Attribution 3.0 Australia Licence.

Creative Commons Attribution 3.0 Australia Licence is a standard form licence agreement that allows you to copy, communicate and adapt this publication provided that you attribute the work to the Commonwealth and abide by the other licence terms. A summary of the licence terms is available from <http://creativecommons.org/licenses/by/3.0/au/deed.en>. The full licence terms are available from <http://creativecommons.org/licenses/by/3.0/au/legalcode>.

Use of the Coat of Arms

The Department of the Prime Minister and Cabinet sets the terms under which the Coat of Arms is used. Please refer to the Department's Commonwealth Coat of Arms and Government branding web page <http://www.dpmmc.gov.au/guidelines/index.cfm#brand> and, in particular, the Guidelines on the use of the Commonwealth Coat of Arms publication.

An appropriate citation for this report is:

Bureau of Infrastructure, Transport and Regional Economics (BITRE), 2015, Domestic airline on time performance, Statistical Report, BITRE, Canberra ACT.

Contact us

This publication is available in PDF format. All other rights are reserved, including in relation to any Departmental logos or trade marks which may exist. For enquiries regarding the licence and any use of this publication, please contact:

Bureau of Infrastructure, Transport and Regional Economics (BITRE)
Department of Infrastructure and Regional Development
GPO Box 501, Canberra ACT 2601, Australia
Telephone: (international) +61 2 6274 7210
Fax: (international) +61 2 6274 6855
Email: bitre@infrastructure.gov.au
Website: www.bitre.gov.au

Inquiries

Should you require additional information about the statistics contained in this publication:

Telephone (02) 6274 7790 or Facsimile (02) 6274 7727

Electronic mail: AVSTATS@infrastructure.gov.au

Web site: <http://www.bitre.gov.au/statistics/aviation/otphome.aspx>

Foreword

The Bureau of Infrastructure, Transport and Regional Economics (BITRE) monitors the punctuality and reliability of major domestic airlines operating between Australian airports. The purpose of this is to allow for evaluation of overall industry and individual airline performance, so that consumers of air travel can make informed decisions.

The following domestic airlines currently report this information monthly to the BITRE: Jetstar, Qantas, QantasLink, Regional Express, Tigerair, Virgin Australia and Virgin Australia Regional Airlines. Data has been gathered since November 2003, although some airlines commenced reporting at a later date, including Jetstar which first reported in May 2004, MacAir in July 2005 and Tigerair in April 2008. MacAir ceased operations in February 2009 and data was not received for December 2008 onwards. Virgin Blue was rebranded as Virgin Australia in May 2011 and Tiger Airways was rebranded as Tigerair in July 2013 and time series data in Microsoft Excel spreadsheet format on the BITRE website have been revised to reflect these changes. Virgin Australia Regional Airlines commenced operations in May 2013. It was formed after the acquisition of Skywest by Virgin Australia and represents a combination of operations previously reported under Skywest and Virgin Australia – ATR/F100 Operations. Services operated by Skywest on behalf of Virgin Australia using ATR/F100 aircraft commenced in November 2011 and were shown separately as Virgin Australia – ATR/F100 Operations until April 2013.

Information presented in this report is for Australian domestic routes for which the passenger load averaged 8 000 or more passengers per month over the previous six months and where two or more airlines operated in competition on those routes. There were 62 routes that met this definition in January 2015. Over time, routes which meet these criteria change as airline networks and traffic levels vary.

Participating airlines report their overall monthly network performance where this is possible.

Total industry figures encompass all services operated by reporting airlines only. These airlines collectively carried over 95 per cent of total domestic passengers (regular public transport only) in 2013.

The method of capturing on time performance varies between airlines utilising different recording systems. Jetstar and Qantas jet aircraft use Aircraft Communication Addressing and Reporting System (ACARS) to electronically measure on time performance. Regional Express, Tigerair, Virgin Australia, Virgin Australia Regional Airlines and the Qantas non-jet fleet record on time performance manually using records from pilots, gate agents and/or ground crews.

After initial data is collected, aggregate reports are audited internally by participating airlines prior to publication.

Reports and detailed time series data in Microsoft Excel spreadsheet format are available from the BITRE website at: <http://www.bitre.gov.au/statistics/aviation/otphome.aspx>.

Contents

	Page
Industry performance	1
Individual routes	9
Airports	21
Definitions	27

Industry performance

For January 2015, on time performance over all routes operated by participating airlines (Jetstar, Qantas, QantasLink, Regional Express, Tigerair, Virgin Australia and Virgin Australia Regional Airlines) averaged 87.4 per cent for on time departures and 86.5 per cent for on time arrivals. Cancellations represented 1.5 per cent of all scheduled flights. The equivalent figures for January 2014 were 88.8 per cent for departures, 87.8 per cent for arrivals and 1.5 per cent for cancellations.

This month's figures were above the long term average performance for all routes (83.8 per cent for departures and 82.3 per cent for arrivals). The rate of cancellations was higher than the long term average of 1.3 per cent.

Of the major domestic airlines, Virgin Australia achieved the highest level of on time departures for January 2015 at 91.5 per cent, followed by Qantas at 89.4 per cent, Tigerair at 83.9 per cent and Jetstar at 82.3 per cent. The regional airlines were led by Regional Express at 88.2 per cent, followed by Virgin Australia Regional Airlines at 86.2 per cent and QantasLink at 86.0 per cent.

Virgin Australia also achieved the highest on time arrivals among the major domestic airlines at 90.6 per cent, followed by Qantas at 88.9 per cent, Jetstar at 83.4 per cent and Tigerair at 82.5 per cent. Regional Express was the best performing regional airline for on time arrivals at 85.0 per cent, followed by QantasLink at 84.7 per cent and Virgin Australia Regional Airlines at 84.0 per cent.

QantasLink and Jetstar had the highest percentage of cancellations (2.2 per cent) during the month, followed by Virgin Australia (1.4 per cent), Tigerair (1.1 per cent), Virgin Australia Regional Airlines (1.0 per cent), Qantas (0.9 per cent) and Regional Express (0.2 per cent).

Of the 62 routes which met the criteria for on time performance reporting in January 2015, the Brisbane-Mount Isa route had the highest percentage of on time departures (97.2 per cent) and the Brisbane-Darwin route had the highest percentage of on time arrivals (95.8 per cent). The Hobart-Brisbane route had the lowest percentage of on time departures (62.9 per cent) and the lowest percentage of on time arrivals (71.0 per cent).

Cancellations were highest on the Sydney-Canberra route at 5.9 per cent, followed by the Canberra-Sydney route at 5.6 per cent, the Brisbane-Moranbah route at 4.7 per cent, the Moranbah-Brisbane route at 4.3 per cent and the Gold Coast-Sydney route at 3.3 per cent.

Bundaberg Airport recorded the highest percentage of on time departures (94.9 per cent) and Mount Isa Airport recorded the highest percentage of on time arrivals (94.4 per cent). Hobart Airport recorded the lowest percentage of on time departures (74.7 per cent) and Proserpine Airport recorded the lowest percentage of on time arrivals (77.4 per cent). These figures only refer to reported routes and do not cover all flights at these airports.

Table 1 On time performance for January 2015 — Total Industry

	<i>Sectors</i>		<i>Departures On Time</i>		<i>Arrivals On Time</i>		<i>Cancellations</i>	
	<i>Scheduled</i>	<i>Flown</i>	<i>No.</i>	<i>%</i>	<i>No.</i>	<i>%</i>	<i>No.</i>	<i>%</i>
Jetstar	8 344	8 160	6 719	82.3	6 809	83.4	184	2.2
Qantas	8 944	8 861	7 921	89.4	7 878	88.9	83	0.9
QantasLink	10 015	9 790	8 423	86.0	8 289	84.7	225	2.2
Regional Express	4 068	4 060	3 581	88.2	3 450	85.0	8	0.2
Tigerair	2 107	2 083	1 748	83.9	1 719	82.5	24	1.1
Virgin Australia	10 540	10 394	9 515	91.5	9 419	90.6	146	1.4
Virgin Australia Regional Airlines	2 349	2 326	2 006	86.2	1 953	84.0	23	1.0
All Airlines	46 367	45 674	39 913	87.4	39 517	86.5	693	1.5

Total airline network data (including routes not shown in this report).

Table 2 Top ten routes for on time performance for January 2015 (participating airlines only)

<i>Departures</i>		<i>Arrivals</i>	
<i>Route</i>	<i>On Time (%)</i>	<i>Route</i>	<i>On Time (%)</i>
Brisbane-Mount Isa	97.2	Brisbane-Darwin	95.8
Bundaberg-Brisbane	94.9	Perth-Darwin	94.8
Darwin-Brisbane	94.9	Brisbane-Mount Isa	94.4
Adelaide-Gold Coast	94.8	Adelaide-Perth	94.1
Sydney-Hamilton Island	94.7	Perth-Adelaide	93.9
Ayers Rock-Sydney	94.6	Adelaide-Gold Coast	93.5
Brisbane-Hamilton Island	93.9	Adelaide-Brisbane	93.5
Brisbane-Hobart	93.7	Canberra-Sydney	93.3
Perth-Darwin	93.1	Darwin-Perth	93.1
Melbourne-Mildura	92.9	Brisbane-Bundaberg	93.0

Table 3 Top ten airports for on time performance for January 2015 (participating airlines and reported routes only)

<i>Departures</i>		<i>Arrivals</i>	
<i>Airport</i>	<i>On Time (%)</i>	<i>Airport</i>	<i>On Time (%)</i>
Bundaberg	94.9	Mount Isa	94.4
Ayers Rock	94.6	Bundaberg	93.0
Mount Isa	92.9	Port Lincoln	91.6
Mildura	92.3	Sunshine Coast	91.5
Karratha	91.1	Ayers Rock	91.1
Canberra	91.1	Cairns	90.8
Adelaide	91.0	Darwin	90.7
Wagga Wagga	91.0	Hamilton Island	90.4
Geraldton	90.4	Port Hedland	90.4
Albury	90.1	Broome	90.2

Total industry on time performance

Figure 1 On time performance (by month from January 2012)—Total Industry

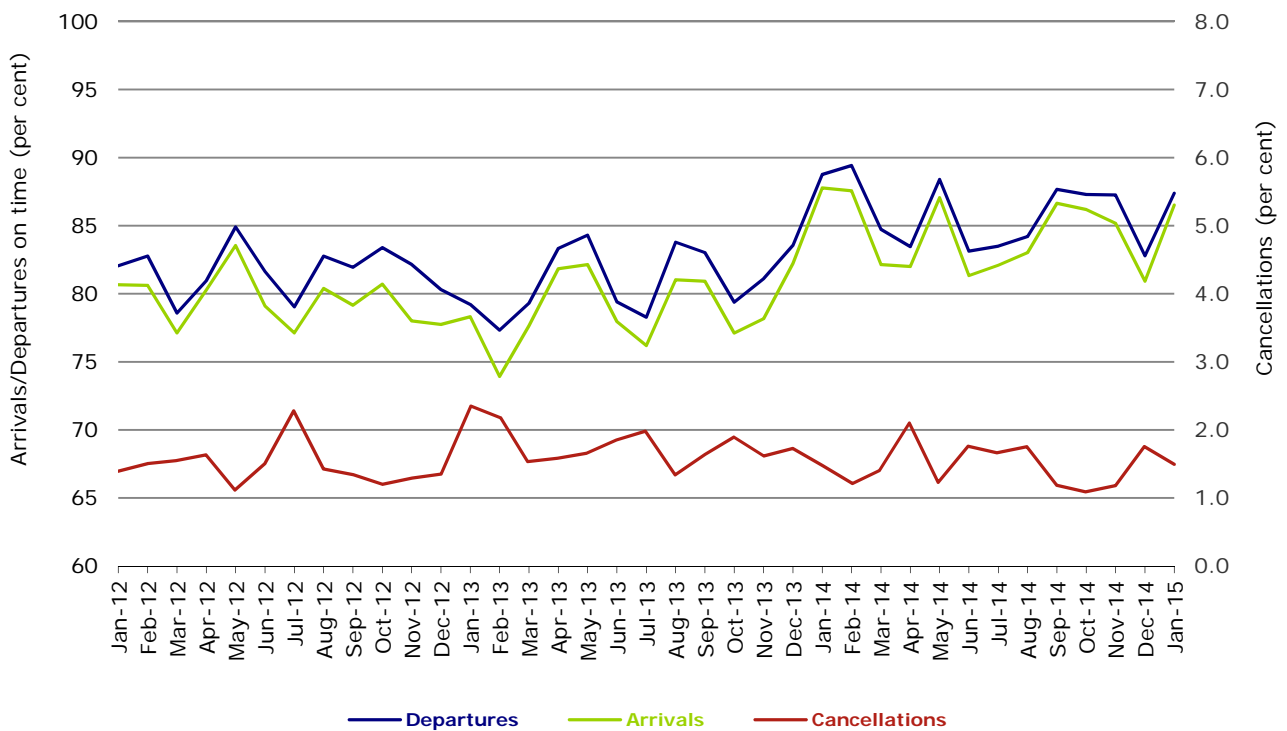


Figure 2 Departures on time (by month from January 2014)

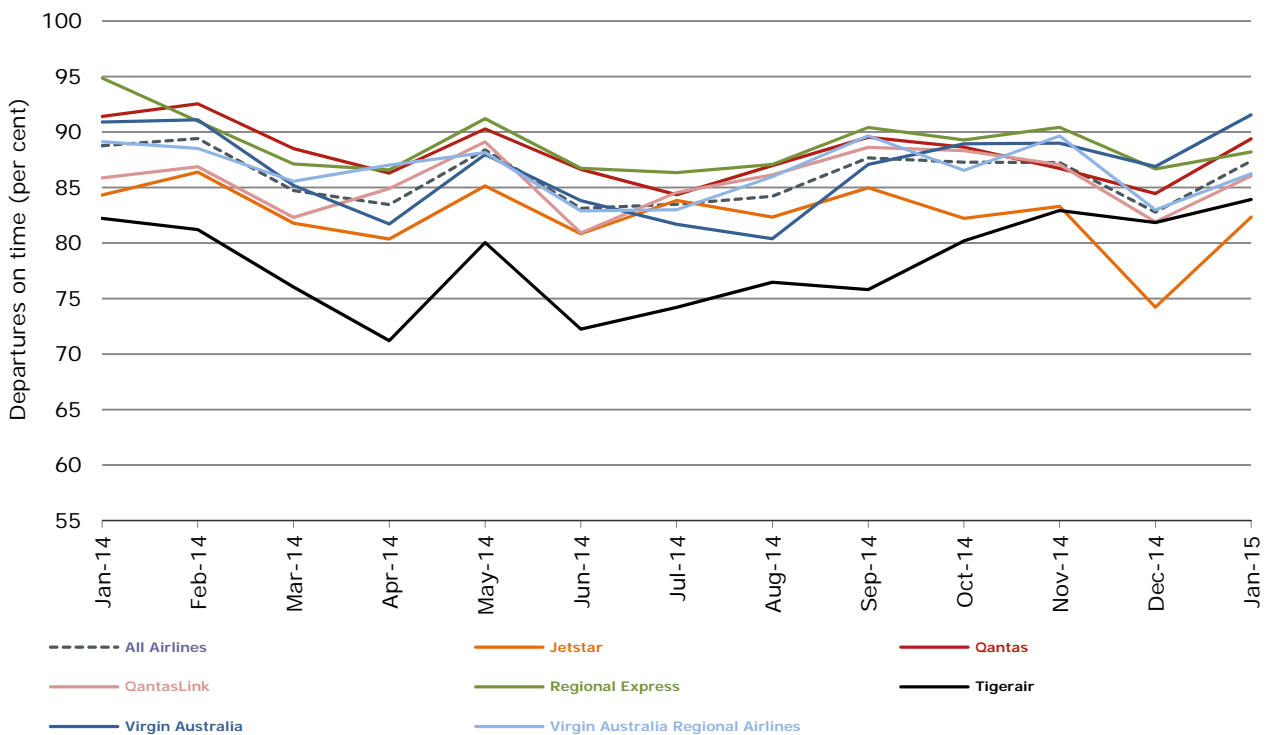


Figure 3 Arrivals on time (by month from January 2014)

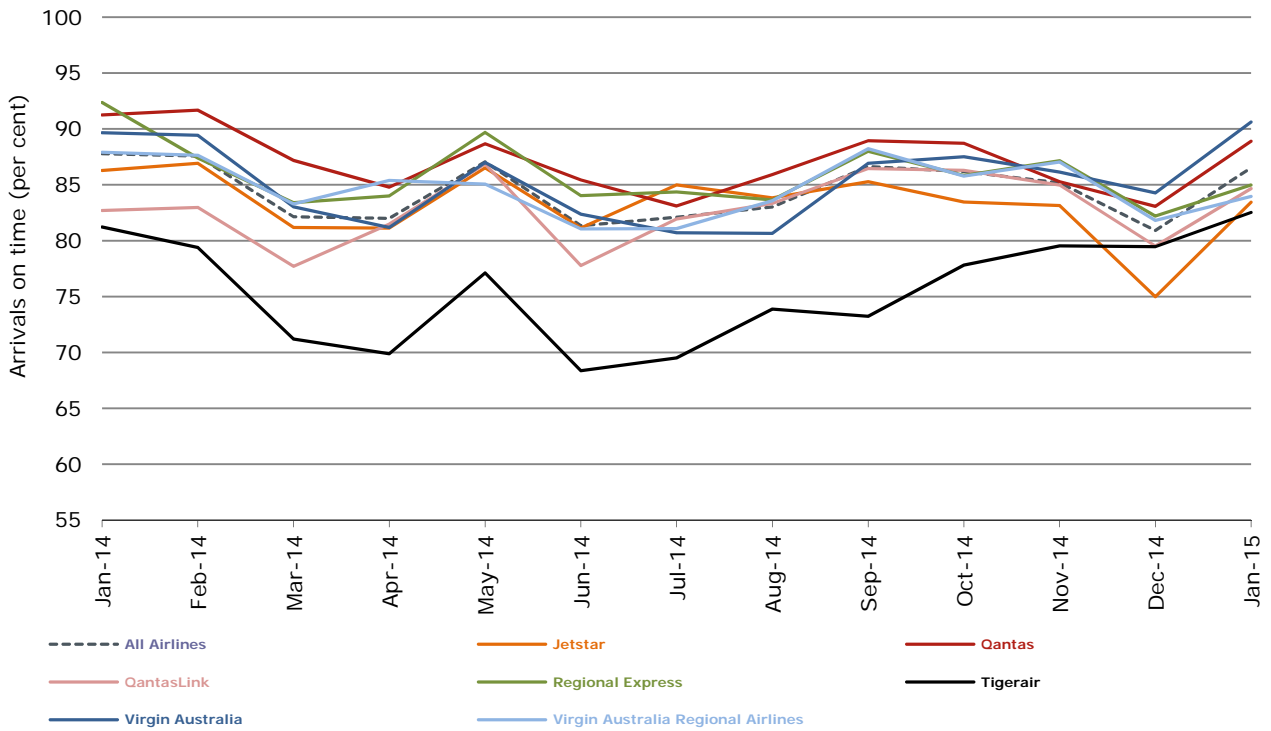
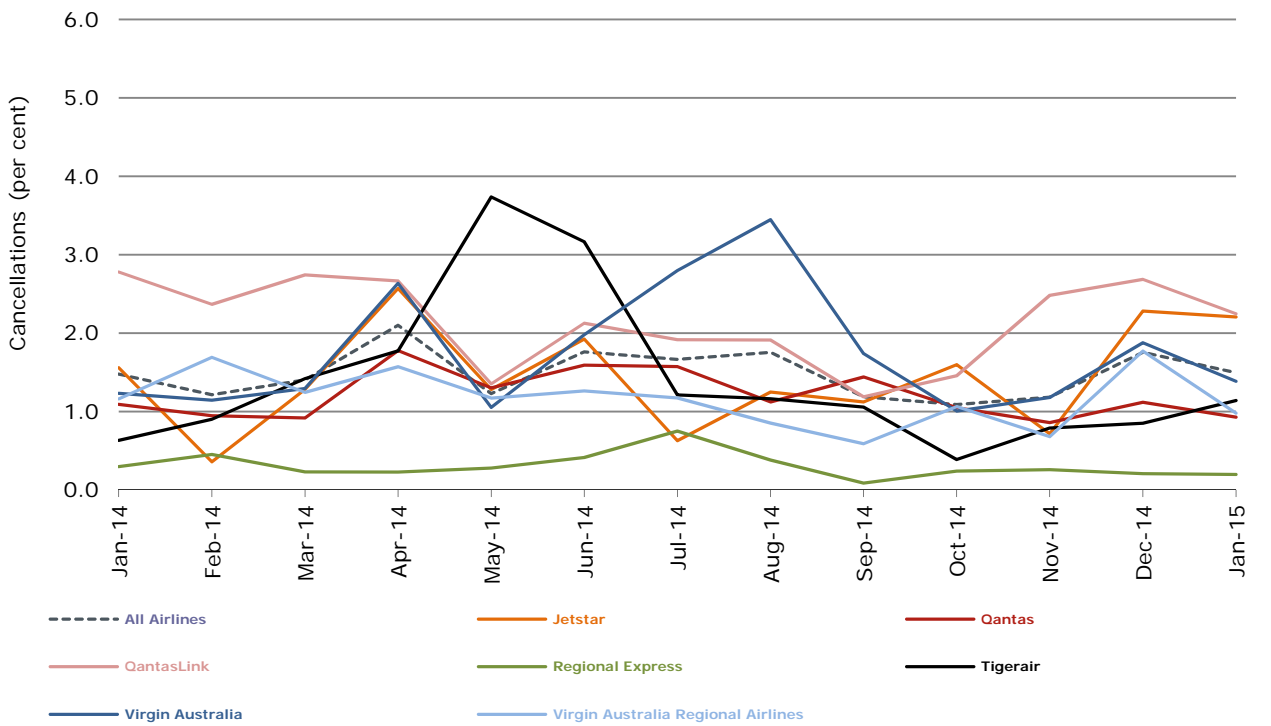


Figure 4 Cancellations (by month from January 2014)



Major domestic airlines on time performance

Figure 5 On time performance (by month from January 2012)—Jetstar

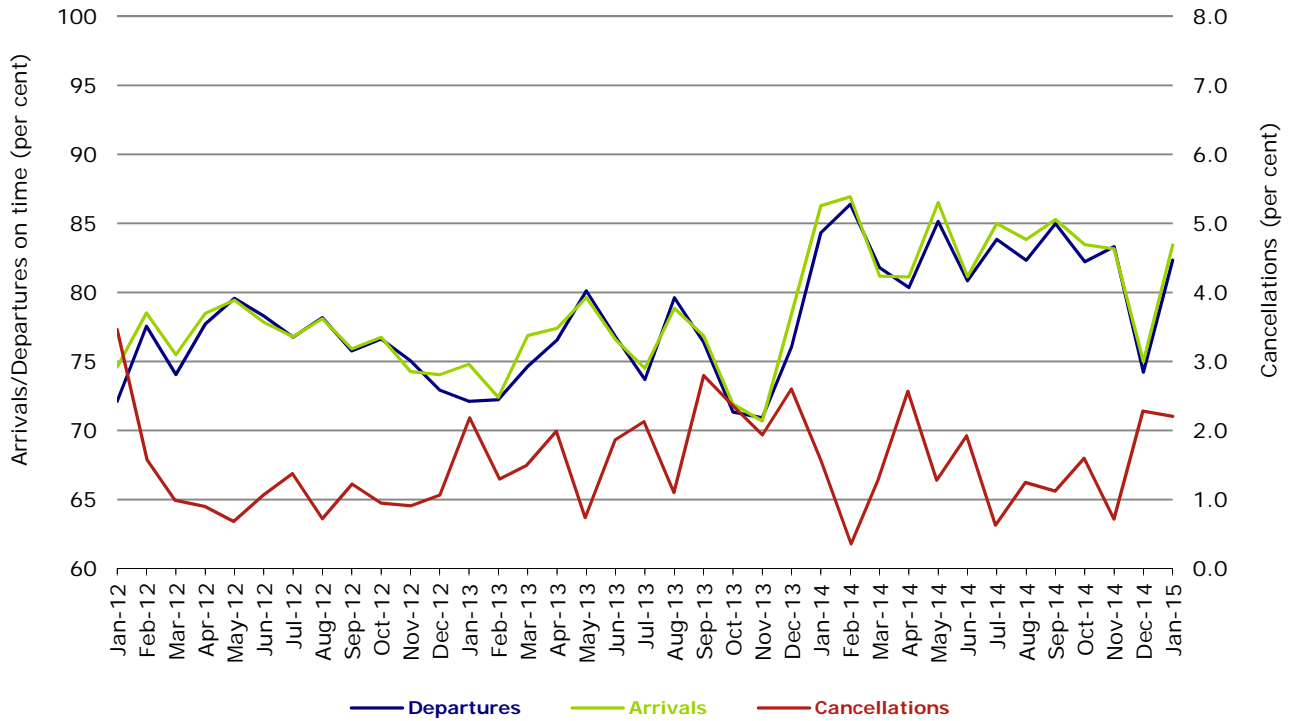


Figure 6 On time performance (by month from January 2012)—Qantas

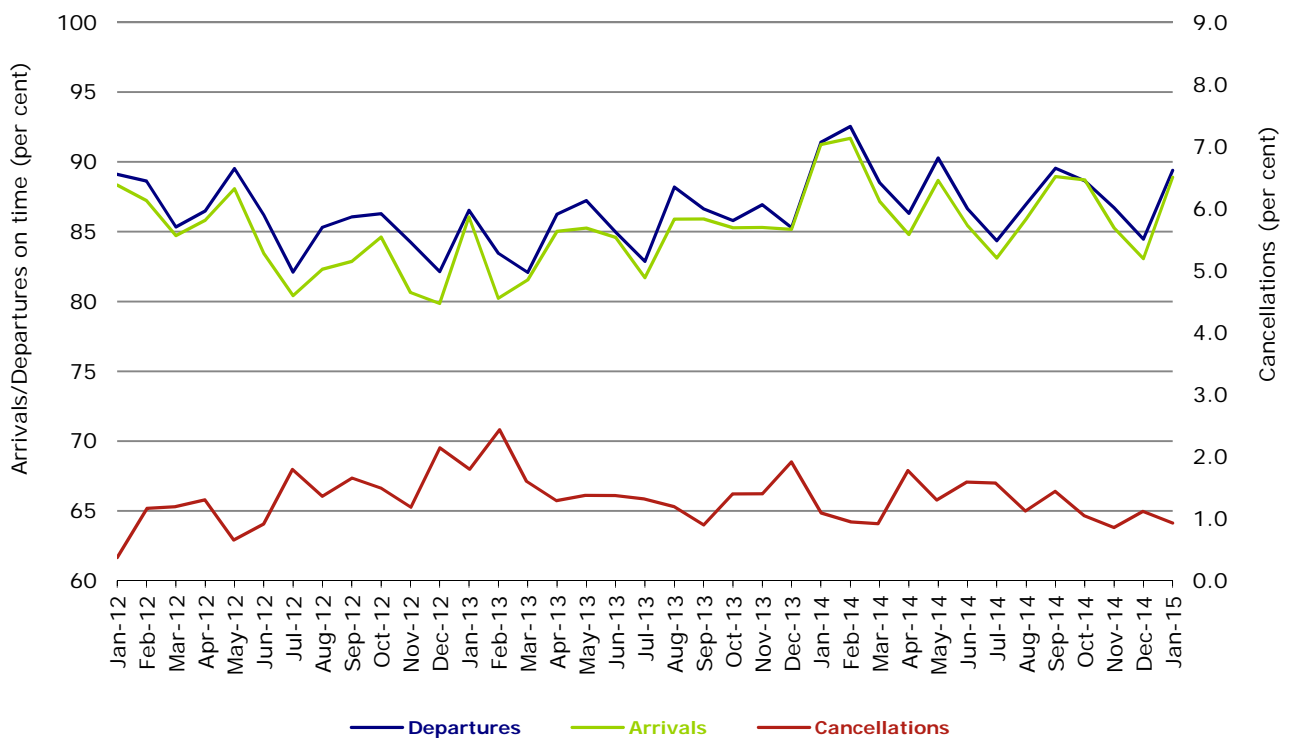


Figure 7 On time performance (by month from January 2012)—Tigerair

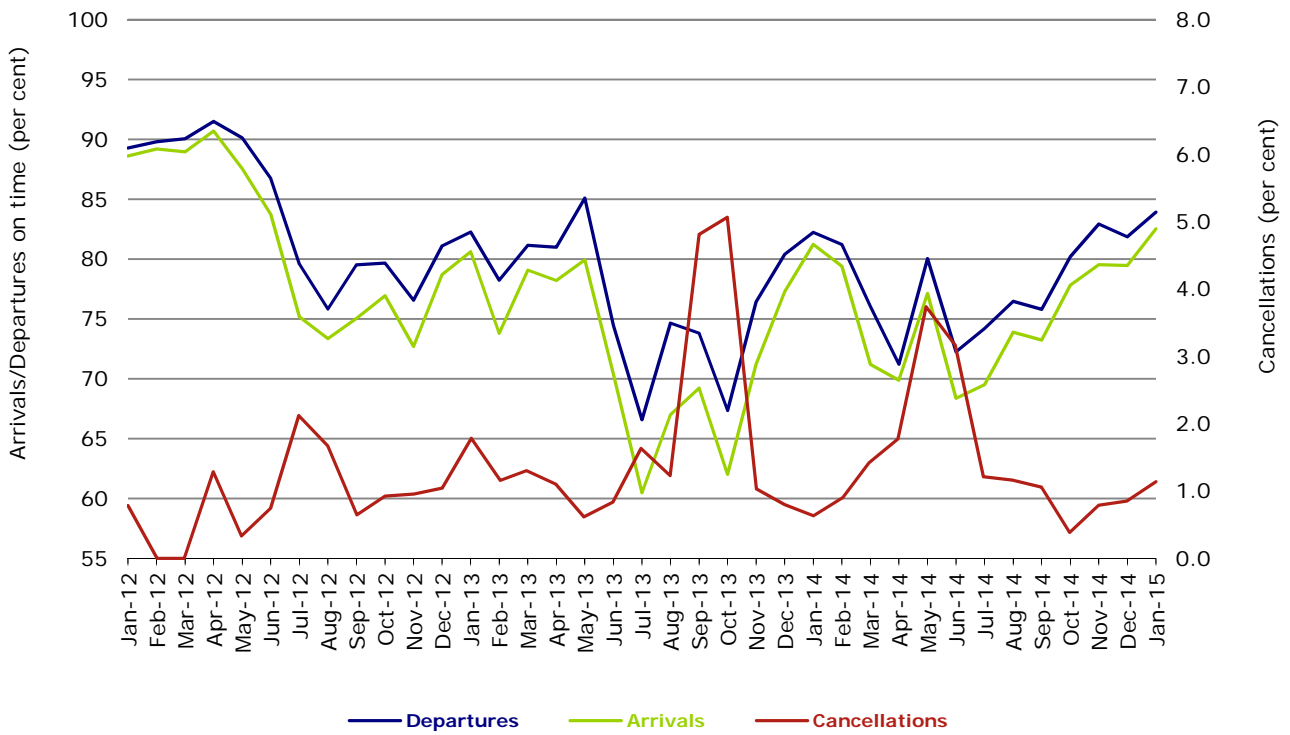
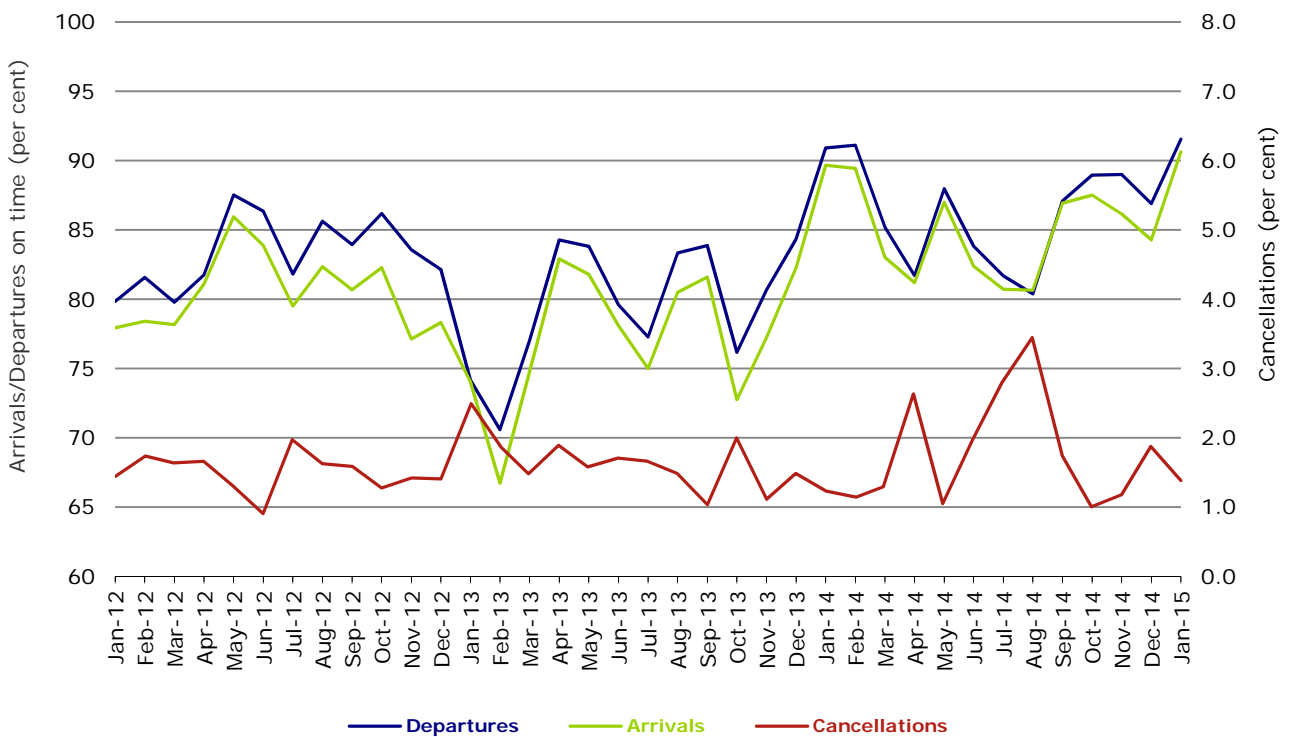


Figure 8 On time performance (by month from January 2012)—Virgin Australia



Major regional airlines on time performance

Figure 9 On time performance (by month from January 2012)—QantasLink

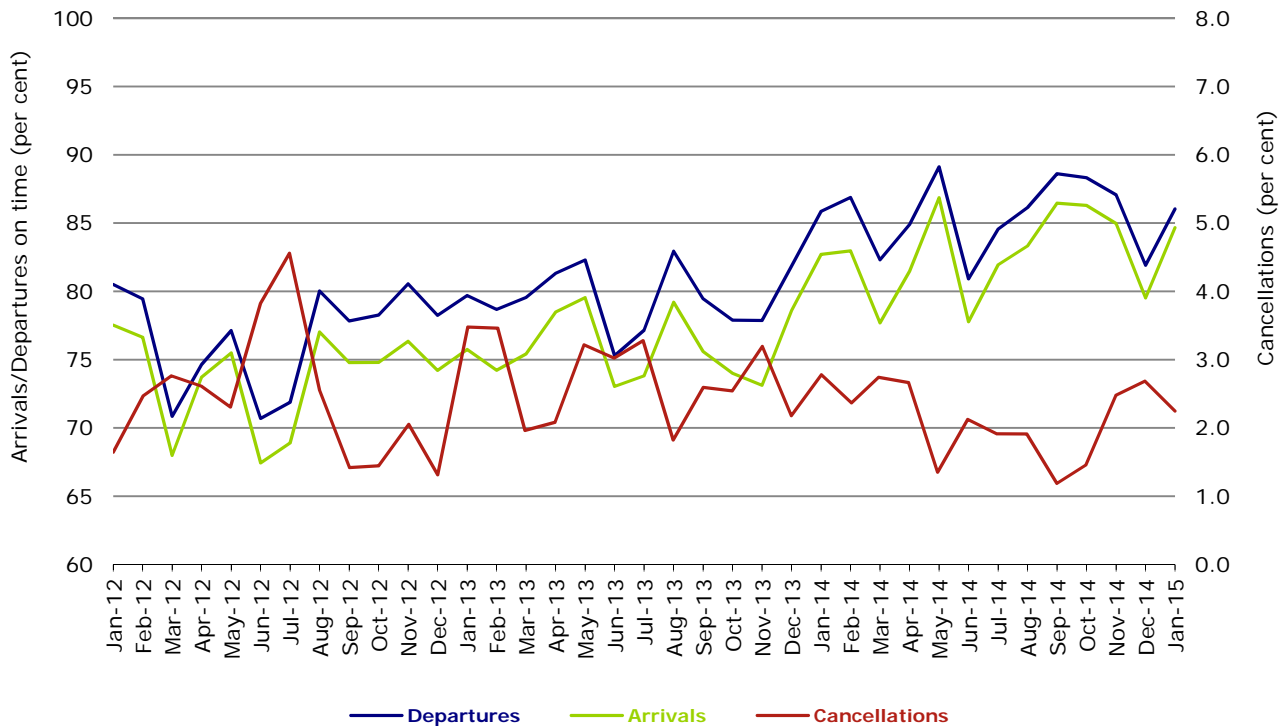


Figure 10 On time performance (by month from January 2012)—Regional Express

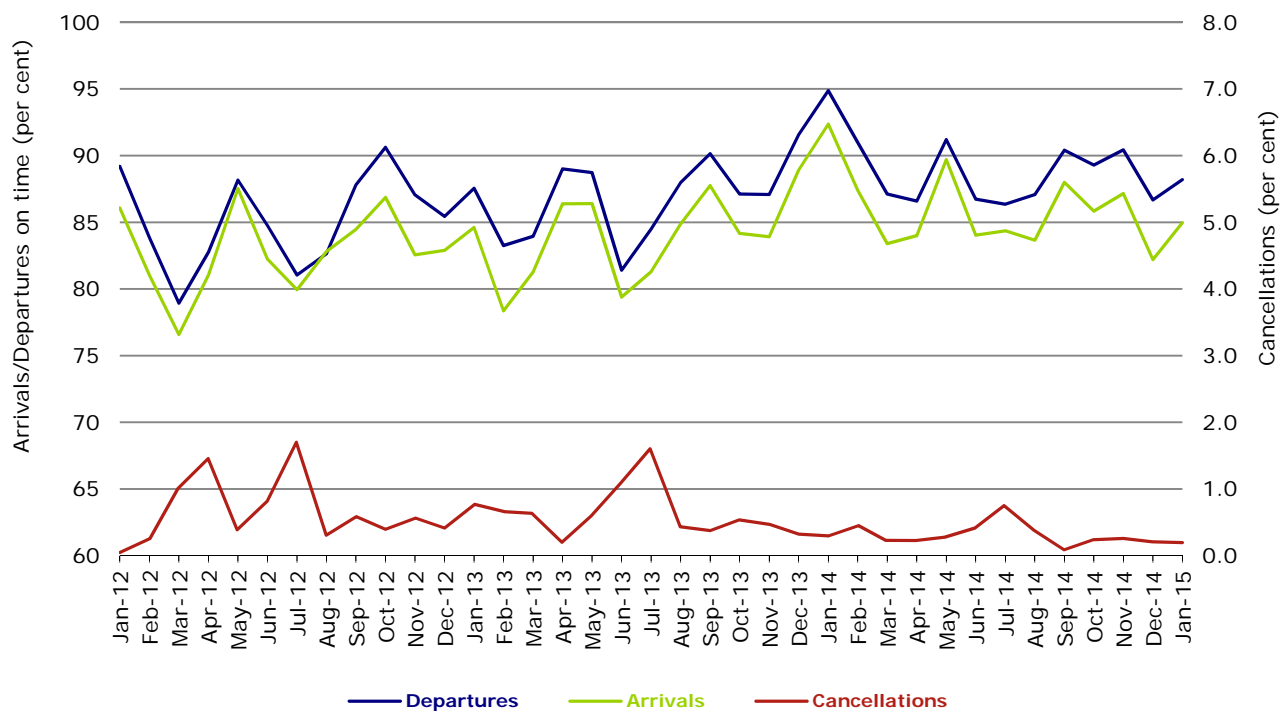
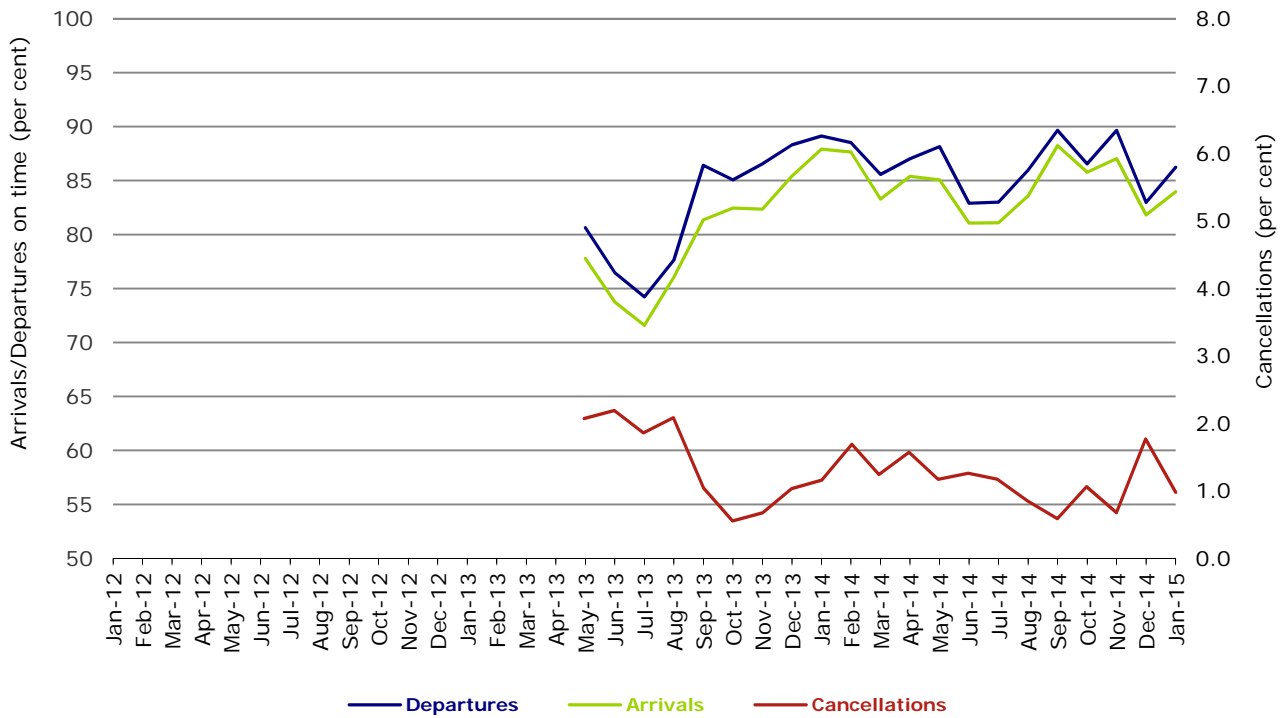


Figure 11 On time performance (by month from January 2012)
Virgin Australia Regional Airlines



Virgin Australia Regional Airlines commenced operations in May 2013. It was formed after the acquisition of Skywest by Virgin Australia and represents a combination of operations previously reported under Skywest and Virgin Australia – ATR/F100 Operations.

Individual routes

On time performance is reported for all routes where the passenger load averages over 8000 passengers per month over the previous six months, and where two or more airlines operate in competition on those routes. There are now 62 routes which meet this definition. Over time, however, routes which meet this definition may change as airline networks and traffic levels vary.

	<i>Sectors</i>		<i>Departures On Time</i>		<i>Arrivals On Time</i>		<i>Cancellations</i>	
	<i>Sched.</i>	<i>Flown</i>	<i>No.</i>	<i>%</i>	<i>No.</i>	<i>%</i>	<i>No.</i>	<i>%</i>
Adelaide-Brisbane								
Jetstar	31	31	30	96.8	31	100.0	0	0.0
Qantas	104	104	93	89.4	97	93.3	0	0.0
Tigerair	24	24	22	91.7	21	87.5	0	0.0
Virgin Australia	116	116	109	94.0	108	93.1	0	0.0
All Airlines	275	275	254	92.4	257	93.5	0	0.0
Adelaide-Canberra								
Qantas	27	27	25	92.6	25	92.6	0	0.0
QantasLink	17	17	15	88.2	16	94.1	0	0.0
Virgin Australia	26	26	23	88.5	22	84.6	0	0.0
All Airlines	70	70	63	90.0	63	90.0	0	0.0
Adelaide-Gold Coast								
Jetstar	47	46	42	91.3	43	93.5	1	2.1
Virgin Australia	31	31	31	100.0	29	93.5	0	0.0
All Airlines	78	77	73	94.8	72	93.5	1	1.3
Adelaide-Melbourne								
Jetstar	122	116	104	89.7	102	87.9	6	4.9
Qantas	268	266	238	89.5	242	91.0	2	0.7
Tigerair	76	75	65	86.7	65	86.7	1	1.3
Virgin Australia	266	262	245	93.5	243	92.7	4	1.5
All Airlines	732	719	652	90.7	652	90.7	13	1.8
Adelaide-Perth								
Jetstar	43	43	38	88.4	41	95.3	0	0.0
Qantas	109	109	98	89.9	102	93.6	0	0.0
Virgin Australia	69	69	65	94.2	65	94.2	0	0.0
All Airlines	221	221	201	91.0	208	94.1	0	0.0
Adelaide-Port Lincoln								
QantasLink	88	88	75	85.2	81	92.0	0	0.0
Regional Express	151	151	146	96.7	138	91.4	0	0.0
All Airlines	239	239	221	92.5	219	91.6	0	0.0
Adelaide-Sydney								
Jetstar	150	146	118	80.8	123	84.2	4	2.7
Qantas	225	225	207	92.0	214	95.1	0	0.0
QantasLink	20	19	14	73.7	16	84.2	1	5.0
Tigerair	28	28	26	92.9	25	89.3	0	0.0
Virgin Australia	167	165	159	96.4	157	95.2	2	1.2
All Airlines	590	583	524	89.9	535	91.8	7	1.2
Albury-Sydney								
QantasLink	92	92	82	89.1	77	83.7	0	0.0
Regional Express	49	49	47	95.9	42	85.7	0	0.0
Virgin Australia Regional Airlines	61	61	53	86.9	51	83.6	0	0.0
All Airlines	202	202	182	90.1	170	84.2	0	0.0
Armidale-Sydney								
QantasLink	124	119	97	81.5	101	84.9	5	4.0
Regional Express	44	44	39	88.6	36	81.8	0	0.0
All Airlines	168	163	136	83.4	137	84.0	5	3.0

	<i>Sectors</i>		<i>Departures On Time</i>		<i>Arrivals On Time</i>		<i>Cancellations</i>	
	<i>Sched.</i>	<i>Flown</i>	<i>No.</i>	<i>%</i>	<i>No.</i>	<i>%</i>	<i>No.</i>	<i>%</i>
Ayers Rock-Sydney								
Jetstar	25	25	24	96.0	21	84.0	0	0.0
Virgin Australia	31	31	29	93.5	30	96.8	0	0.0
All Airlines	56	56	53	94.6	51	91.1	0	0.0
Ballina-Sydney								
Jetstar	90	90	68	75.6	71	78.9	0	0.0
Regional Express	12	11	8	72.7	8	72.7	1	8.3
Virgin Australia	31	31	28	90.3	31	100.0	0	0.0
All Airlines	133	132	104	78.8	110	83.3	1	0.8
Brisbane-Adelaide								
Jetstar	31	31	31	100.0	31	100.0	0	0.0
Qantas	104	104	96	92.3	94	90.4	0	0.0
Tigerair	24	24	20	83.3	19	79.2	0	0.0
Virgin Australia	116	116	104	89.7	105	90.5	0	0.0
All Airlines	275	275	251	91.3	249	90.5	0	0.0
Brisbane-Bundaberg								
QantasLink	122	122	113	92.6	115	94.3	0	0.0
Virgin Australia Regional Airlines	35	35	31	88.6	31	88.6	0	0.0
All Airlines	157	157	144	91.7	146	93.0	0	0.0
Brisbane-Cairns								
Jetstar	119	117	97	82.9	101	86.3	2	1.7
Qantas	119	119	109	91.6	112	94.1	0	0.0
QantasLink	5	5	5	100.0	5	100.0	0	0.0
Tigerair	26	26	21	80.8	24	92.3	0	0.0
Virgin Australia	138	138	134	97.1	128	92.8	0	0.0
All Airlines	407	405	366	90.4	370	91.4	2	0.5
Brisbane-Canberra								
Qantas	27	27	27	100.0	25	92.6	0	0.0
QantasLink	132	132	119	90.2	116	87.9	0	0.0
Virgin Australia	91	91	83	91.2	82	90.1	0	0.0
All Airlines	250	250	229	91.6	223	89.2	0	0.0
Brisbane-Darwin								
Jetstar	30	30	20	66.7	28	93.3	0	0.0
Qantas	33	33	33	100.0	32	97.0	0	0.0
Tigerair	25	25	25	100.0	24	96.0	0	0.0
Virgin Australia	31	31	28	90.3	30	96.8	0	0.0
All Airlines	119	119	106	89.1	114	95.8	0	0.0
Brisbane-Emerald								
QantasLink	131	131	118	90.1	112	85.5	0	0.0
Virgin Australia Regional Airlines	83	81	63	77.8	58	71.6	2	2.4
All Airlines	214	212	181	85.4	170	80.2	2	0.9
Brisbane-Gladstone								
QantasLink	214	209	192	91.9	185	88.5	5	2.3
Virgin Australia	12	12	10	83.3	9	75.0	0	0.0
Virgin Australia Regional Airlines	139	137	118	86.1	104	75.9	2	1.4
All Airlines	365	358	320	89.4	298	83.2	7	1.9
Brisbane-Hamilton Island								
QantasLink	18	18	16	88.9	15	83.3	0	0.0
Virgin Australia	31	31	30	96.8	29	93.5	0	0.0
All Airlines	49	49	46	93.9	44	89.8	0	0.0

	<i>Sectors</i>		<i>Departures</i>		<i>Arrivals</i>		<i>Cancellations</i>	
	<i>Sched.</i>	<i>Flown</i>	<i>On Time</i>		<i>On Time</i>		<i>No.</i>	<i>%</i>
			<i>No.</i>	<i>%</i>	<i>No.</i>	<i>%</i>		
Brisbane-Hobart								
Jetstar	31	31	28	90.3	27	87.1	0	0.0
Qantas	1	1	1	100.0	1	100.0	0	0.0
Virgin Australia	31	31	30	96.8	28	90.3	0	0.0
All Airlines	63	63	59	93.7	56	88.9	0	0.0
Brisbane-Mackay								
Jetstar	59	59	40	67.8	41	69.5	0	0.0
QantasLink	100	100	94	94.0	94	94.0	0	0.0
Virgin Australia	151	149	139	93.3	138	92.6	2	1.3
All Airlines	310	308	273	88.6	273	88.6	2	0.6
Brisbane-Melbourne								
Jetstar	150	144	120	83.3	122	84.7	6	4.0
Qantas	412	410	368	89.8	357	87.1	2	0.5
Tigerair	118	116	99	85.3	102	87.9	2	1.7
Virgin Australia	385	379	337	88.9	328	86.5	6	1.6
All Airlines	1 065	1 049	924	88.1	909	86.7	16	1.5
Brisbane-Moranbah								
QantasLink	118	109	103	94.5	99	90.8	9	7.6
Virgin Australia Regional Airlines	74	74	63	85.1	64	86.5	0	0.0
All Airlines	192	183	166	90.7	163	89.1	9	4.7
Brisbane-Mount Isa								
Qantas	50	50	49	98.0	47	94.0	0	0.0
Virgin Australia	22	22	21	95.5	21	95.5	0	0.0
All Airlines	72	72	70	97.2	68	94.4	0	0.0
Brisbane-Newcastle								
Jetstar	89	89	80	89.9	83	93.3	0	0.0
QantasLink	69	68	55	80.9	35	51.5	1	1.4
Virgin Australia	85	84	75	89.3	76	90.5	1	1.2
All Airlines	243	241	210	87.1	194	80.5	2	0.8
Brisbane-Perth								
Qantas	134	134	122	91.0	119	88.8	0	0.0
Virgin Australia	99	99	76	76.8	86	86.9	0	0.0
All Airlines	233	233	198	85.0	205	88.0	0	0.0
Brisbane-Proserpine								
Jetstar	32	31	23	74.2	22	71.0	1	3.1
Virgin Australia	53	53	48	90.6	43	81.1	0	0.0
All Airlines	85	84	71	84.5	65	77.4	1	1.2
Brisbane-Rockhampton								
QantasLink	221	220	196	89.1	198	90.0	1	0.5
Virgin Australia	88	88	82	93.2	77	87.5	0	0.0
Virgin Australia Regional Airlines	112	110	90	81.8	84	76.4	2	1.8
All Airlines	421	418	368	88.0	359	85.9	3	0.7
Brisbane-Sydney								
Jetstar	182	169	136	80.5	142	84.0	13	7.1
Qantas	566	558	513	91.9	503	90.1	8	1.4
Tigerair	94	94	89	94.7	87	92.6	0	0.0
Virgin Australia	521	504	454	90.1	445	88.3	17	3.3
All Airlines	1 363	1 325	1 192	90.0	1 177	88.8	38	2.8
Brisbane-Townsville								
Jetstar	67	66	52	78.8	54	81.8	1	1.5
Qantas	148	147	130	88.4	129	87.8	1	0.7
Virgin Australia	146	145	133	91.7	123	84.8	1	0.7
All Airlines	361	358	315	88.0	306	85.5	3	0.8

	<i>Sectors</i>		<i>Departures On Time</i>		<i>Arrivals On Time</i>		<i>Cancellations</i>	
	<i>Sched.</i>	<i>Flown</i>	<i>No.</i>	<i>%</i>	<i>No.</i>	<i>%</i>	<i>No.</i>	<i>%</i>
Broome-Perth								
Qantas	28	28	27	96.4	28	100.0	0	0.0
QantasLink	54	54	51	94.4	51	94.4	0	0.0
Virgin Australia	26	26	21	80.8	22	84.6	0	0.0
Virgin Australia Regional Airlines	18	18	12	66.7	13	72.2	0	0.0
All Airlines	126	126	111	88.1	114	90.5	0	0.0
Bundaberg-Brisbane								
QantasLink	122	122	117	95.9	107	87.7	0	0.0
Virgin Australia Regional Airlines	35	35	32	91.4	32	91.4	0	0.0
All Airlines	157	157	149	94.9	139	88.5	0	0.0
Cairns-Brisbane								
Jetstar	119	116	102	87.9	99	85.3	3	2.5
Qantas	120	120	115	95.8	114	95.0	0	0.0
QantasLink	4	4	4	100.0	3	75.0	0	0.0
Tigerair	26	26	23	88.5	19	73.1	0	0.0
Virgin Australia	138	138	126	91.3	129	93.5	0	0.0
All Airlines	407	404	370	91.6	364	90.1	3	0.7
Cairns-Melbourne								
Jetstar	89	89	71	79.8	70	78.7	0	0.0
Qantas	31	31	23	74.2	23	74.2	0	0.0
Tigerair	34	34	30	88.2	28	82.4	0	0.0
Virgin Australia	33	33	29	87.9	30	90.9	0	0.0
All Airlines	187	187	153	81.8	151	80.7	0	0.0
Cairns-Sydney								
Jetstar	99	99	83	83.8	82	82.8	0	0.0
Qantas	71	71	62	87.3	61	85.9	0	0.0
Tigerair	31	31	28	90.3	26	83.9	0	0.0
Virgin Australia	91	90	80	88.9	87	96.7	1	1.1
All Airlines	292	291	253	86.9	256	88.0	1	0.3
Canberra-Adelaide								
Qantas	27	27	24	88.9	24	88.9	0	0.0
QantasLink	17	17	13	76.5	13	76.5	0	0.0
Virgin Australia	26	26	21	80.8	21	80.8	0	0.0
All Airlines	70	70	58	82.9	58	82.9	0	0.0
Canberra-Brisbane								
Qantas	27	27	27	100.0	27	100.0	0	0.0
QantasLink	132	130	111	85.4	113	86.9	2	1.5
Virgin Australia	91	90	79	87.8	79	87.8	1	1.1
All Airlines	250	247	217	87.9	219	88.7	3	1.2
Canberra-Melbourne								
Qantas	147	147	139	94.6	137	93.2	0	0.0
QantasLink	80	78	70	89.7	68	87.2	2	2.5
Virgin Australia	131	129	117	90.7	120	93.0	2	1.5
Virgin Australia Regional Airlines	31	31	30	96.8	27	87.1	0	0.0
All Airlines	389	385	356	92.5	352	91.4	4	1.0
Canberra-Sydney								
QantasLink	415	383	348	90.9	355	92.7	32	7.7
Virgin Australia	4	3	1	33.3	1	33.3	1	25.0
Virgin Australia Regional Airlines	211	209	202	96.7	199	95.2	2	0.9
All Airlines	630	595	551	92.6	555	93.3	35	5.6
Coffs Harbour-Sydney								
QantasLink	146	143	126	88.1	123	86.0	3	2.1
Tigerair	13	13	12	92.3	12	92.3	0	0.0
Virgin Australia	62	62	56	90.3	58	93.5	0	0.0
All Airlines	221	218	194	89.0	193	88.5	3	1.4

	<i>Sectors</i>		<i>Departures On Time</i>		<i>Arrivals On Time</i>		<i>Cancellations</i>	
	<i>Sched.</i>	<i>Flown</i>	<i>No.</i>	<i>%</i>	<i>No.</i>	<i>%</i>	<i>No.</i>	<i>%</i>
Darwin-Brisbane								
Jetstar	30	30	28	93.3	28	93.3	0	0.0
Qantas	33	33	31	93.9	29	87.9	0	0.0
Tigerair	23	23	23	100.0	19	82.6	0	0.0
Virgin Australia	31	31	29	93.5	24	77.4	0	0.0
All Airlines	117	117	111	94.9	100	85.5	0	0.0
Darwin-Melbourne								
Jetstar	31	30	26	86.7	25	83.3	1	3.2
Qantas	21	21	17	81.0	17	81.0	0	0.0
Virgin Australia	31	31	29	93.5	22	71.0	0	0.0
All Airlines	83	82	72	87.8	64	78.0	1	1.2
Darwin-Perth								
Qantas	32	32	30	93.8	30	93.8	0	0.0
Virgin Australia	26	26	23	88.5	24	92.3	0	0.0
All Airlines	58	58	53	91.4	54	93.1	0	0.0
Darwin-Sydney								
Jetstar	30	30	24	80.0	24	80.0	0	0.0
Qantas	35	35	28	80.0	30	85.7	0	0.0
Virgin Australia	31	31	30	96.8	29	93.5	0	0.0
All Airlines	96	96	82	85.4	83	86.5	0	0.0
Dubbo-Sydney								
QantasLink	104	103	80	77.7	80	77.7	1	1.0
Regional Express	59	59	51	86.4	48	81.4	0	0.0
All Airlines	163	162	131	80.9	128	79.0	1	0.6
Emerald-Brisbane								
QantasLink	131	130	112	86.2	110	84.6	1	0.8
Virgin Australia Regional Airlines	83	81	65	80.2	64	79.0	2	2.4
All Airlines	214	211	177	83.9	174	82.5	3	1.4
Geraldton-Perth								
QantasLink	53	53	48	90.6	48	90.6	0	0.0
Virgin Australia Regional Airlines	72	72	65	90.3	66	91.7	0	0.0
All Airlines	125	125	113	90.4	114	91.2	0	0.0
Gladstone-Brisbane								
QantasLink	233	225	182	80.9	189	84.0	8	3.4
Virgin Australia	12	12	9	75.0	8	66.7	0	0.0
Virgin Australia Regional Airlines	139	137	106	77.4	97	70.8	2	1.4
All Airlines	384	374	297	79.4	294	78.6	10	2.6
Gold Coast-Adelaide								
Jetstar	47	46	41	89.1	41	89.1	1	2.1
Virgin Australia	31	31	26	83.9	26	83.9	0	0.0
All Airlines	78	77	67	87.0	67	87.0	1	1.3
Gold Coast-Melbourne								
Jetstar	271	265	226	85.3	234	88.3	6	2.2
Tigerair	84	83	46	55.4	57	68.7	1	1.2
Virgin Australia	193	188	175	93.1	174	92.6	5	2.6
All Airlines	548	536	447	83.4	465	86.8	12	2.2
Gold Coast-Sydney								
Jetstar	391	373	315	84.5	328	87.9	18	4.6
Qantas	101	101	86	85.1	92	91.1	0	0.0
Tigerair	99	97	80	82.5	81	83.5	2	2.0
Virgin Australia	254	246	209	85.0	210	85.4	8	3.1
All Airlines	845	817	690	84.5	711	87.0	28	3.3

	<i>Sectors</i>		<i>Departures On Time</i>		<i>Arrivals On Time</i>		<i>Cancellations</i>	
	<i>Sched.</i>	<i>Flown</i>	<i>No.</i>	<i>%</i>	<i>No.</i>	<i>%</i>	<i>No.</i>	<i>%</i>
Hamilton Island-Brisbane								
QantasLink	18	18	15	83.3	17	94.4	0	0.0
Virgin Australia	31	31	26	83.9	24	77.4	0	0.0
All Airlines	49	49	41	83.7	41	83.7	0	0.0
Hamilton Island-Melbourne								
Jetstar	20	20	19	95.0	18	90.0	0	0.0
Virgin Australia	22	22	18	81.8	19	86.4	0	0.0
All Airlines	42	42	37	88.1	37	88.1	0	0.0
Hamilton Island-Sydney								
Jetstar	29	29	26	89.7	26	89.7	0	0.0
Qantas	13	13	11	84.6	12	92.3	0	0.0
Virgin Australia	33	32	30	93.8	30	93.8	1	3.0
All Airlines	75	74	67	90.5	68	91.9	1	1.3
Hobart-Brisbane								
Jetstar	31	31	22	71.0	22	71.0	0	0.0
Virgin Australia	31	31	17	54.8	22	71.0	0	0.0
All Airlines	62	62	39	62.9	44	71.0	0	0.0
Hobart-Melbourne								
Jetstar	267	262	185	70.6	192	73.3	5	1.9
Qantas	1	1	1	100.0	1	100.0	0	0.0
QantasLink	122	120	77	64.2	72	60.0	2	1.6
Tigerair	34	34	21	61.8	23	67.6	0	0.0
Virgin Australia	146	145	132	91.0	129	89.0	1	0.7
All Airlines	570	562	416	74.0	417	74.2	8	1.4
Hobart-Sydney								
Jetstar	118	116	85	73.3	81	69.8	2	1.7
Qantas	1	1	0	0.0	0	0.0	0	0.0
QantasLink	32	32	24	75.0	24	75.0	0	0.0
Virgin Australia	62	62	60	96.8	59	95.2	0	0.0
All Airlines	213	211	169	80.1	164	77.7	2	0.9
Kalgoorlie-Perth								
Qantas	21	21	18	85.7	19	90.5	0	0.0
QantasLink	59	58	53	91.4	53	91.4	1	1.7
Virgin Australia	36	35	30	85.7	33	94.3	1	2.8
Virgin Australia Regional Airlines	20	20	17	85.0	17	85.0	0	0.0
All Airlines	136	134	118	88.1	122	91.0	2	1.5
Karratha-Perth								
Qantas	100	98	89	90.8	90	91.8	2	2.0
QantasLink	101	100	93	93.0	94	94.0	1	1.0
Virgin Australia	69	66	59	89.4	58	87.9	3	4.3
Virgin Australia Regional Airlines	18	18	16	88.9	16	88.9	0	0.0
All Airlines	288	282	257	91.1	258	91.5	6	2.1
Launceston-Melbourne								
Jetstar	165	164	137	83.5	135	82.3	1	0.6
QantasLink	125	121	104	86.0	100	82.6	4	3.2
Virgin Australia	93	93	81	87.1	75	80.6	0	0.0
Virgin Australia Regional Airlines	7	7	5	71.4	5	71.4	0	0.0
All Airlines	390	385	327	84.9	315	81.8	5	1.3
Launceston-Sydney								
Jetstar	90	90	81	90.0	77	85.6	0	0.0
Virgin Australia	32	32	29	90.6	30	93.8	0	0.0
All Airlines	122	122	110	90.2	107	87.7	0	0.0

	<i>Sectors</i>		<i>Departures On Time</i>		<i>Arrivals On Time</i>		<i>Cancellations</i>	
	<i>Sched.</i>	<i>Flown</i>	<i>No.</i>	<i>%</i>	<i>No.</i>	<i>%</i>	<i>No.</i>	<i>%</i>
Mackay-Brisbane								
Jetstar	59	58	37	63.8	37	63.8	1	1.7
QantasLink	100	99	91	91.9	92	92.9	1	1.0
Virgin Australia	151	149	131	87.9	135	90.6	2	1.3
All Airlines	310	306	259	84.6	264	86.3	4	1.3
Melbourne-Adelaide								
Jetstar	122	116	98	84.5	95	81.9	6	4.9
Qantas	268	268	248	92.5	240	89.6	0	0.0
Tigerair	76	75	67	89.3	67	89.3	1	1.3
Virgin Australia	265	262	243	92.7	237	90.5	3	1.1
All Airlines	731	721	656	91.0	639	88.6	10	1.4
Melbourne-Brisbane								
Jetstar	151	145	97	66.9	106	73.1	6	4.0
Qantas	413	410	378	92.2	366	89.3	3	0.7
Tigerair	119	117	92	78.6	93	79.5	2	1.7
Virgin Australia	381	375	349	93.1	332	88.5	6	1.6
All Airlines	1 064	1 047	916	87.5	897	85.7	17	1.6
Melbourne-Cairns								
Jetstar	89	89	70	78.7	75	84.3	0	0.0
Qantas	31	31	27	87.1	30	96.8	0	0.0
Tigerair	34	34	30	88.2	33	97.1	0	0.0
Virgin Australia	33	33	30	90.9	30	90.9	0	0.0
All Airlines	187	187	157	84.0	168	89.8	0	0.0
Melbourne-Canberra								
Qantas	147	147	135	91.8	135	91.8	0	0.0
QantasLink	80	78	63	80.8	61	78.2	2	2.5
Virgin Australia	131	129	119	92.2	117	90.7	2	1.5
Virgin Australia Regional Airlines	30	30	26	86.7	22	73.3	0	0.0
All Airlines	388	384	343	89.3	335	87.2	4	1.0
Melbourne-Darwin								
Jetstar	31	31	20	64.5	23	74.2	0	0.0
Qantas	21	21	20	95.2	18	85.7	0	0.0
Virgin Australia	31	31	26	83.9	28	90.3	0	0.0
All Airlines	83	83	66	79.5	69	83.1	0	0.0
Melbourne-Gold Coast								
Jetstar	273	268	222	82.8	223	83.2	5	1.8
Tigerair	83	83	69	83.1	57	68.7	0	0.0
Virgin Australia	193	190	179	94.2	177	93.2	3	1.6
All Airlines	549	541	470	86.9	457	84.5	8	1.5
Melbourne-Hamilton Island								
Jetstar	20	20	18	90.0	19	95.0	0	0.0
Virgin Australia	22	22	19	86.4	20	90.9	0	0.0
All Airlines	42	42	37	88.1	39	92.9	0	0.0
Melbourne-Hobart								
Jetstar	267	262	218	83.2	212	80.9	5	1.9
QantasLink	121	119	67	56.3	63	52.9	2	1.7
Tigerair	34	34	27	79.4	24	70.6	0	0.0
Virgin Australia	146	145	131	90.3	135	93.1	1	0.7
All Airlines	568	560	443	79.1	434	77.5	8	1.4
Melbourne-Launceston								
Jetstar	165	164	146	89.0	145	88.4	1	0.6
QantasLink	124	120	103	85.8	98	81.7	4	3.2
Virgin Australia	93	93	82	88.2	84	90.3	0	0.0
Virgin Australia Regional Airlines	7	7	6	85.7	5	71.4	0	0.0
All Airlines	389	384	337	87.8	332	86.5	5	1.3

	<i>Sectors</i>		<i>Departures On Time</i>		<i>Arrivals On Time</i>		<i>Cancellations</i>	
	<i>Sched.</i>	<i>Flown</i>	<i>No.</i>	<i>%</i>	<i>No.</i>	<i>%</i>	<i>No.</i>	<i>%</i>
Melbourne-Mildura								
QantasLink	88	87	79	90.8	73	83.9	1	1.1
Regional Express	51	51	47	92.2	45	88.2	0	0.0
Virgin Australia	31	31	31	100.0	31	100.0	0	0.0
All Airlines	170	169	157	92.9	149	88.2	1	0.6
Melbourne-Newcastle								
Jetstar	94	94	72	76.6	70	74.5	0	0.0
Virgin Australia	34	32	30	93.8	29	90.6	2	5.9
All Airlines	128	126	102	81.0	99	78.6	2	1.6
Melbourne-Perth								
Jetstar	93	86	71	82.6	76	88.4	7	7.5
Qantas	207	206	166	80.6	163	79.1	1	0.5
Tigerair	62	61	49	80.3	47	77.0	1	1.6
Virgin Australia	140	140	120	85.7	124	88.6	0	0.0
All Airlines	502	493	406	82.4	410	83.2	9	1.8
Melbourne-Sunshine Coast								
Jetstar	86	86	78	90.7	80	93.0	0	0.0
Virgin Australia	35	35	32	91.4	32	91.4	0	0.0
All Airlines	121	121	110	90.9	112	92.6	0	0.0
Melbourne-Sydney								
Jetstar	370	356	266	74.7	265	74.4	14	3.8
Qantas	883	860	777	90.3	740	86.0	23	2.6
Tigerair	244	237	200	84.4	187	78.9	7	2.9
Virgin Australia	674	657	625	95.1	615	93.6	17	2.5
All Airlines	2 171	2 110	1 868	88.5	1 807	85.6	61	2.8
Mildura-Melbourne								
QantasLink	87	86	78	90.7	77	89.5	1	1.1
Regional Express	51	51	46	90.2	43	84.3	0	0.0
Virgin Australia	31	31	31	100.0	31	100.0	0	0.0
All Airlines	169	168	155	92.3	151	89.9	1	0.6
Moranbah-Brisbane								
QantasLink	114	106	94	88.7	94	88.7	8	7.0
Virgin Australia Regional Airlines	74	74	66	89.2	66	89.2	0	0.0
All Airlines	188	180	160	88.9	160	88.9	8	4.3
Mount Isa-Brisbane								
Qantas	50	48	44	91.7	42	87.5	2	4.0
Virgin Australia	22	22	21	95.5	21	95.5	0	0.0
All Airlines	72	70	65	92.9	63	90.0	2	2.8
Newcastle-Brisbane								
Jetstar	89	89	75	84.3	69	77.5	0	0.0
QantasLink	70	69	48	69.6	40	58.0	1	1.4
Virgin Australia	85	84	71	84.5	73	86.9	1	1.2
All Airlines	244	242	194	80.2	182	75.2	2	0.8
Newcastle-Melbourne								
Jetstar	94	94	82	87.2	82	87.2	0	0.0
Virgin Australia	34	32	21	65.6	23	71.9	2	5.9
All Airlines	128	126	103	81.7	105	83.3	2	1.6
Newman-Perth								
Qantas	80	80	72	90.0	72	90.0	0	0.0
QantasLink	58	58	53	91.4	54	93.1	0	0.0
Virgin Australia	30	29	23	79.3	24	82.8	1	3.3
Virgin Australia Regional Airlines	4	4	4	100.0	4	100.0	0	0.0
All Airlines	172	171	152	88.9	154	90.1	1	0.6

	<i>Sectors</i>		<i>Departures On Time</i>		<i>Arrivals On Time</i>		<i>Cancellations</i>	
	<i>Sched.</i>	<i>Flown</i>	<i>No.</i>	<i>%</i>	<i>No.</i>	<i>%</i>	<i>No.</i>	<i>%</i>
Perth-Adelaide								
Jetstar	43	43	37	86.0	38	88.4	0	0.0
Qantas	115	115	106	92.2	109	94.8	0	0.0
Virgin Australia	70	70	67	95.7	67	95.7	0	0.0
All Airlines	228	228	210	92.1	214	93.9	0	0.0
Perth-Brisbane								
Qantas	134	134	117	87.3	121	90.3	0	0.0
Virgin Australia	100	100	90	90.0	92	92.0	0	0.0
All Airlines	234	234	207	88.5	213	91.0	0	0.0
Perth-Broome								
Qantas	28	28	26	92.9	27	96.4	0	0.0
QantasLink	54	54	50	92.6	50	92.6	0	0.0
Virgin Australia	26	26	22	84.6	23	88.5	0	0.0
Virgin Australia Regional Airlines	14	14	10	71.4	10	71.4	0	0.0
All Airlines	122	122	108	88.5	110	90.2	0	0.0
Perth-Darwin								
Qantas	32	32	31	96.9	30	93.8	0	0.0
Virgin Australia	26	26	23	88.5	25	96.2	0	0.0
All Airlines	58	58	54	93.1	55	94.8	0	0.0
Perth-Geraldton								
QantasLink	53	53	46	86.8	46	86.8	0	0.0
Virgin Australia Regional Airlines	64	64	54	84.4	55	85.9	0	0.0
All Airlines	117	117	100	85.5	101	86.3	0	0.0
Perth-Kalgoorlie								
Qantas	21	21	17	81.0	18	85.7	0	0.0
QantasLink	60	59	54	91.5	54	91.5	1	1.7
Virgin Australia	37	36	34	94.4	33	91.7	1	2.7
Virgin Australia Regional Airlines	20	20	16	80.0	17	85.0	0	0.0
All Airlines	138	136	121	89.0	122	89.7	2	1.4
Perth-Karratha								
Qantas	100	98	87	88.8	87	88.8	2	2.0
QantasLink	101	101	93	92.1	90	89.1	0	0.0
Virgin Australia	69	66	59	89.4	57	86.4	3	4.3
Virgin Australia Regional Airlines	18	18	15	83.3	14	77.8	0	0.0
All Airlines	288	283	254	89.8	248	87.6	5	1.7
Perth-Melbourne								
Jetstar	94	87	74	85.1	77	88.5	7	7.4
Qantas	209	209	167	79.9	178	85.2	0	0.0
Tigerair	63	62	52	83.9	47	75.8	1	1.6
Virgin Australia	140	139	125	89.9	123	88.5	1	0.7
All Airlines	506	497	418	84.1	425	85.5	9	1.8
Perth-Newman								
Qantas	80	80	69	86.3	70	87.5	0	0.0
QantasLink	58	58	53	91.4	52	89.7	0	0.0
Virgin Australia	30	29	25	86.2	23	79.3	1	3.3
Virgin Australia Regional Airlines	4	4	4	100.0	4	100.0	0	0.0
All Airlines	172	171	151	88.3	149	87.1	1	0.6
Perth-Port Hedland								
Qantas	110	106	94	88.7	95	89.6	4	3.6
QantasLink	49	47	42	89.4	42	89.4	2	4.1
Virgin Australia	44	44	40	90.9	41	93.2	0	0.0
All Airlines	203	197	176	89.3	178	90.4	6	3.0

	<i>Sectors</i>		<i>Departures On Time</i>		<i>Arrivals On Time</i>		<i>Cancellations</i>	
	<i>Sched.</i>	<i>Flown</i>	<i>No.</i>	<i>%</i>	<i>No.</i>	<i>%</i>	<i>No.</i>	<i>%</i>
Perth-Sydney								
Jetstar	31	31	29	93.5	31	100.0	0	0.0
Qantas	195	195	160	82.1	164	84.1	0	0.0
Tigerair	29	29	26	89.7	23	79.3	0	0.0
Virgin Australia	120	120	110	91.7	116	96.7	0	0.0
All Airlines	375	375	325	86.7	334	89.1	0	0.0
Port Hedland-Perth								
Qantas	110	106	92	86.8	94	88.7	4	3.6
QantasLink	49	47	38	80.9	39	83.0	2	4.1
Virgin Australia	44	44	42	95.5	42	95.5	0	0.0
All Airlines	203	197	172	87.3	175	88.8	6	3.0
Port Lincoln-Adelaide								
QantasLink	89	89	79	88.8	76	85.4	0	0.0
Regional Express	151	151	137	90.7	132	87.4	0	0.0
All Airlines	240	240	216	90.0	208	86.7	0	0.0
Port Macquarie-Sydney								
QantasLink	126	122	93	76.2	94	77.0	4	3.2
Virgin Australia Regional Airlines	61	61	50	82.0	47	77.0	0	0.0
All Airlines	187	183	143	78.1	141	77.0	4	2.1
Proserpine-Brisbane								
Jetstar	31	30	24	80.0	24	80.0	1	3.2
Virgin Australia	53	53	42	79.2	42	79.2	0	0.0
All Airlines	84	83	66	79.5	66	79.5	1	1.2
Rockhampton-Brisbane								
QantasLink	198	196	166	84.7	154	78.6	2	1.0
Virgin Australia	88	88	78	88.6	79	89.8	0	0.0
Virgin Australia Regional Airlines	112	108	95	88.0	93	86.1	4	3.6
All Airlines	398	392	339	86.5	326	83.2	6	1.5
Sunshine Coast-Melbourne								
Jetstar	86	86	73	84.9	76	88.4	0	0.0
Virgin Australia	35	35	32	91.4	30	85.7	0	0.0
All Airlines	121	121	105	86.8	106	87.6	0	0.0
Sunshine Coast-Sydney								
Jetstar	121	120	97	80.8	96	80.0	1	0.8
Virgin Australia	31	30	29	96.7	29	96.7	1	3.2
All Airlines	152	150	126	84.0	125	83.3	2	1.3
Sydney-Adelaide								
Jetstar	150	147	120	81.6	120	81.6	3	2.0
Qantas	219	219	188	85.8	190	86.8	0	0.0
QantasLink	19	19	17	89.5	17	89.5	0	0.0
Tigerair	28	28	24	85.7	27	96.4	0	0.0
Virgin Australia	167	166	158	95.2	162	97.6	1	0.6
All Airlines	583	579	507	87.6	516	89.1	4	0.7
Sydney-Albury								
QantasLink	92	92	76	82.6	77	83.7	0	0.0
Regional Express	49	49	46	93.9	46	93.9	0	0.0
Virgin Australia Regional Airlines	62	62	55	88.7	55	88.7	0	0.0
All Airlines	203	203	177	87.2	178	87.7	0	0.0
Sydney-Armidale								
QantasLink	122	119	96	80.7	89	74.8	3	2.5
Regional Express	45	45	39	86.7	41	91.1	0	0.0
All Airlines	167	164	135	82.3	130	79.3	3	1.8

	<i>Sectors</i>		<i>Departures On Time</i>		<i>Arrivals On Time</i>		<i>Cancellations</i>	
	<i>Sched.</i>	<i>Flown</i>	<i>No.</i>	<i>%</i>	<i>No.</i>	<i>%</i>	<i>No.</i>	<i>%</i>
Sydney-Ayers Rock								
Jetstar	25	25	21	84.0	23	92.0	0	0.0
Virgin Australia	31	31	30	96.8	28	90.3	0	0.0
All Airlines	56	56	51	91.1	51	91.1	0	0.0
Sydney-Ballina								
Jetstar	89	89	70	78.7	72	80.9	0	0.0
Regional Express	12	12	11	91.7	11	91.7	0	0.0
Virgin Australia	31	31	31	100.0	29	93.5	0	0.0
All Airlines	132	132	112	84.8	112	84.8	0	0.0
Sydney-Brisbane								
Jetstar	183	173	133	76.9	135	78.0	10	5.5
Qantas	566	558	482	86.4	465	83.3	8	1.4
Tigerair	95	95	87	91.6	85	89.5	0	0.0
Virgin Australia	523	507	479	94.5	465	91.7	16	3.1
All Airlines	1 367	1 333	1 181	88.6	1 150	86.3	34	2.5
Sydney-Cairns								
Jetstar	99	98	83	84.7	87	88.8	1	1.0
Qantas	71	71	64	90.1	65	91.5	0	0.0
Tigerair	31	31	29	93.5	30	96.8	0	0.0
Virgin Australia	90	90	82	91.1	81	90.0	0	0.0
All Airlines	291	290	258	89.0	263	90.7	1	0.3
Sydney-Canberra								
QantasLink	417	384	325	84.6	337	87.8	33	7.9
Virgin Australia	3	2	2	100.0	1	50.0	1	33.3
Virgin Australia Regional Airlines	210	207	196	94.7	199	96.1	3	1.4
All Airlines	630	593	523	88.2	537	90.6	37	5.9
Sydney-Coffs Harbour								
QantasLink	147	144	118	81.9	127	88.2	3	2.0
Tigerair	13	13	12	92.3	12	92.3	0	0.0
Virgin Australia	62	62	55	88.7	56	90.3	0	0.0
All Airlines	222	219	185	84.5	195	89.0	3	1.4
Sydney-Darwin								
Jetstar	30	30	23	76.7	27	90.0	0	0.0
Qantas	35	35	24	68.6	29	82.9	0	0.0
Virgin Australia	31	31	30	96.8	29	93.5	0	0.0
All Airlines	96	96	77	80.2	85	88.5	0	0.0
Sydney-Dubbo								
QantasLink	104	102	77	75.5	76	74.5	2	1.9
Regional Express	61	61	52	85.2	54	88.5	0	0.0
All Airlines	165	163	129	79.1	130	79.8	2	1.2
Sydney-Gold Coast								
Jetstar	390	380	322	84.7	317	83.4	10	2.6
Qantas	101	101	98	97.0	99	98.0	0	0.0
Tigerair	99	98	86	87.8	81	82.7	1	1.0
Virgin Australia	253	248	231	93.1	218	87.9	5	2.0
All Airlines	843	827	737	89.1	715	86.5	16	1.9
Sydney-Hamilton Island								
Jetstar	29	29	26	89.7	23	79.3	0	0.0
Qantas	13	13	13	100.0	12	92.3	0	0.0
Virgin Australia	33	33	32	97.0	32	97.0	0	0.0
All Airlines	75	75	71	94.7	67	89.3	0	0.0

	<i>Sectors</i>		<i>Departures On Time</i>		<i>Arrivals On Time</i>		<i>Cancellations</i>	
	<i>Sched.</i>	<i>Flown</i>	<i>No.</i>	<i>%</i>	<i>No.</i>	<i>%</i>	<i>No.</i>	<i>%</i>
Sydney-Hobart								
Jetstar	117	116	100	86.2	104	89.7	1	0.9
Qantas	1	1	1	100.0	0	0.0	0	0.0
QantasLink	32	32	27	84.4	27	84.4	0	0.0
Virgin Australia	62	62	62	100.0	62	100.0	0	0.0
All Airlines	212	211	190	90.0	193	91.5	1	0.5
Sydney-Launceston								
Jetstar	89	89	80	89.9	82	92.1	0	0.0
Virgin Australia	32	32	30	93.8	30	93.8	0	0.0
All Airlines	121	121	110	90.9	112	92.6	0	0.0
Sydney-Melbourne								
Jetstar	370	355	276	77.7	280	78.9	15	4.1
Qantas	884	864	780	90.3	772	89.4	20	2.3
Tigerair	244	239	186	77.8	198	82.8	5	2.0
Virgin Australia	671	657	626	95.3	614	93.5	14	2.1
All Airlines	2 169	2 115	1 868	88.3	1 864	88.1	54	2.5
Sydney-Perth								
Jetstar	31	31	27	87.1	30	96.8	0	0.0
Qantas	198	198	162	81.8	172	86.9	0	0.0
Tigerair	28	28	25	89.3	24	85.7	0	0.0
Virgin Australia	119	119	105	88.2	106	89.1	0	0.0
All Airlines	376	376	319	84.8	332	88.3	0	0.0
Sydney-Port Macquarie								
QantasLink	127	124	99	79.8	89	71.8	3	2.4
Virgin Australia Regional Airlines	61	61	56	91.8	57	93.4	0	0.0
All Airlines	188	185	155	83.8	146	78.9	3	1.6
Sydney-Sunshine Coast								
Jetstar	121	120	107	89.2	106	88.3	1	0.8
Virgin Australia	31	31	31	100.0	31	100.0	0	0.0
All Airlines	152	151	138	91.4	137	90.7	1	0.7
Sydney-Townsville								
Jetstar	30	30	23	76.7	26	86.7	0	0.0
Virgin Australia	31	31	29	93.5	27	87.1	0	0.0
All Airlines	61	61	52	85.2	53	86.9	0	0.0
Sydney-Wagga Wagga								
QantasLink	105	105	85	81.0	91	86.7	0	0.0
Regional Express	64	63	60	95.2	60	95.2	1	1.6
All Airlines	169	168	145	86.3	151	89.9	1	0.6
Townsville-Brisbane								
Jetstar	67	66	59	89.4	59	89.4	1	1.5
Qantas	148	147	138	93.9	137	93.2	1	0.7
Virgin Australia	146	144	125	86.8	129	89.6	2	1.4
All Airlines	361	357	322	90.2	325	91.0	4	1.1
Townsville-Sydney								
Jetstar	30	30	23	76.7	24	80.0	0	0.0
Virgin Australia	31	31	27	87.1	25	80.6	0	0.0
All Airlines	61	61	50	82.0	49	80.3	0	0.0
Wagga Wagga-Sydney								
QantasLink	106	103	92	89.3	89	86.4	3	2.8
Regional Express	63	63	59	93.7	53	84.1	0	0.0
All Airlines	169	166	151	91.0	142	85.5	3	1.8

Airports

On time performance is reported for all routes where the passenger load averages over 8000 passengers per month, and where two or more airlines operate in competition. The following data reports by airport against flights operated on those routes only.

Airport	Departures			Arrivals		
	Sectors	On Time		Sectors	On Time	
	Flown	No.	%	Flown	No.	%
Adelaide						
Jetstar	382	332	86.9	383	325	84.9
Qantas	731	661	90.4	733	657	89.6
QantasLink	124	104	83.9	125	106	84.8
Regional Express	151	146	96.7	151	132	87.4
Tigerair	127	113	89.0	127	113	89.0
Virgin Australia	669	632	94.5	671	618	92.1
All Airlines	2 184	1 988	91.0	2 190	1 951	89.1
Relates to services to and from Brisbane, Canberra, Gold Coast, Melbourne, Perth, Port Lincoln and Sydney.						
Albury						
QantasLink	92	82	89.1	92	77	83.7
Regional Express	49	47	95.9	49	46	93.9
Virgin Australia Regional Airlines	61	53	86.9	62	55	88.7
All Airlines	202	182	90.1	203	178	87.7
Relates to services to and from Sydney only.						
Armidale						
QantasLink	119	97	81.5	119	89	74.8
Regional Express	44	39	88.6	45	41	91.1
All Airlines	163	136	83.4	164	130	79.3
Relates to services to and from Sydney only.						
Ayers Rock						
Jetstar	25	24	96.0	25	23	92.0
Virgin Australia	31	29	93.5	31	28	90.3
All Airlines	56	53	94.6	56	51	91.1
Relates to services to and from Sydney only.						
Ballina						
Jetstar	90	68	75.6	89	72	80.9
Regional Express	11	8	72.7	12	11	91.7
Virgin Australia	31	28	90.3	31	29	93.5
All Airlines	132	104	78.8	132	112	84.8
Relates to services to and from Sydney only.						
Brisbane						
Jetstar	767	627	81.7	769	610	79.3
Qantas	1 583	1 448	91.5	1 581	1 398	88.4
QantasLink	1 114	1 011	90.8	1 099	919	83.6
Tigerair	285	254	89.1	285	237	83.2
Virgin Australia	1 973	1 784	90.4	1 971	1 762	89.4
Virgin Australia Regional Airlines	437	365	83.5	435	352	80.9
All Airlines	6 159	5 489	89.1	6 140	5 278	86.0
Relates to services to and from Adelaide, Bundaberg, Cairns, Canberra, Darwin, Emerald, Gladstone, Hamilton Island, Hobart, Mackay, Melbourne, Moranbah, Mount Isa, Newcastle, Perth, Proserpine, Rockhampton, Sydney and Townsville.						

Airport	Departures			Arrivals		
	Sectors Flown	On Time		Sectors Flown	On Time	
		No.	%		No.	%
Broome						
Qantas	28	27	96.4	28	27	96.4
QantasLink	54	51	94.4	54	50	92.6
Virgin Australia	26	21	80.8	26	23	88.5
Virgin Australia Regional Airlines	18	12	66.7	14	10	71.4
All Airlines	126	111	88.1	122	110	90.2
Relates to services to and from Perth only.						
Bundaberg						
QantasLink	122	117	95.9	122	115	94.3
Virgin Australia Regional Airlines	35	32	91.4	35	31	88.6
All Airlines	157	149	94.9	157	146	93.0
Relates to services to and from Brisbane only.						
Cairns						
Jetstar	304	256	84.2	304	263	86.5
Qantas	222	200	90.1	221	207	93.7
QantasLink	4	4	100.0	5	5	100.0
Tigerair	91	81	89.0	91	87	95.6
Virgin Australia	261	235	90.0	261	239	91.6
All Airlines	882	776	88.0	882	801	90.8
Relates to services to and from Brisbane, Melbourne and Sydney.						
Canberra						
Qantas	201	190	94.5	201	185	92.0
QantasLink	608	542	89.1	611	530	86.7
Virgin Australia	248	218	87.9	248	222	89.5
Virgin Australia Regional Airlines	240	232	96.7	237	221	93.2
All Airlines	1 297	1 182	91.1	1 297	1 158	89.3
Relates to services to and from Adelaide, Brisbane, Melbourne and Sydney.						
Coffs Harbour						
QantasLink	143	126	88.1	144	127	88.2
Tigerair	13	12	92.3	13	12	92.3
Virgin Australia	62	56	90.3	62	56	90.3
All Airlines	218	194	89.0	219	195	89.0
Relates to services to and from Sydney only.						
Darwin						
Jetstar	90	78	86.7	91	78	85.7
Qantas	121	106	87.6	121	109	90.1
Tigerair	23	23	100.0	25	24	96.0
Virgin Australia	119	111	93.3	119	112	94.1
All Airlines	353	318	90.1	356	323	90.7
Relates to services to and from Brisbane, Melbourne, Perth and Sydney.						
Dubbo						
QantasLink	103	80	77.7	102	76	74.5
Regional Express	59	51	86.4	61	54	88.5
All Airlines	162	131	80.9	163	130	79.8
Relates to services to and from Sydney only.						

Airport	Departures			Arrivals		
	Sectors	On Time		Sectors	On Time	
	Flown	No.	%	Flown	No.	%
Emerald						
QantasLink	130	112	86.2	131	112	85.5
Virgin Australia Regional Airlines	81	65	80.2	81	58	71.6
All Airlines	211	177	83.9	212	170	80.2
Relates to services to and from Brisbane only.						
Geraldton						
QantasLink	53	48	90.6	53	46	86.8
Virgin Australia Regional Airlines	72	65	90.3	64	55	85.9
All Airlines	125	113	90.4	117	101	86.3
Relates to services to and from Perth only.						
Gladstone						
QantasLink	225	182	80.9	209	185	88.5
Virgin Australia	12	9	75.0	12	9	75.0
Virgin Australia Regional Airlines	137	106	77.4	137	104	75.9
All Airlines	374	297	79.4	358	298	83.2
Relates to services to and from Brisbane only.						
Gold Coast						
Jetstar	684	582	85.1	694	583	84.0
Qantas	101	86	85.1	101	99	98.0
Tigerair	180	126	70.0	181	138	76.2
Virgin Australia	465	410	88.2	469	424	90.4
All Airlines	1 430	1 204	84.2	1 445	1 244	86.1
Relates to services to and from Adelaide, Melbourne and Sydney.						
Hamilton Island						
Jetstar	49	45	91.8	49	42	85.7
Qantas	13	11	84.6	13	12	92.3
QantasLink	18	15	83.3	18	15	83.3
Virgin Australia	85	74	87.1	86	81	94.2
All Airlines	165	145	87.9	166	150	90.4
Relates to services to and from Brisbane, Melbourne and Sydney.						
Hobart						
Jetstar	409	292	71.4	409	343	83.9
Qantas	2	1	50.0	2	1	50.0
QantasLink	152	101	66.4	151	90	59.6
Tigerair	34	21	61.8	34	24	70.6
Virgin Australia	238	209	87.8	238	225	94.5
All Airlines	835	624	74.7	834	683	81.9
Relates to services to and from Brisbane, Melbourne and Sydney.						
Kalgoorlie						
Qantas	21	18	85.7	21	18	85.7
QantasLink	58	53	91.4	59	54	91.5
Virgin Australia	35	30	85.7	36	33	91.7
Virgin Australia Regional Airlines	20	17	85.0	20	17	85.0
All Airlines	134	118	88.1	136	122	89.7
Relates to services to and from Perth only.						

Airport	Departures			Arrivals		
	Sectors	On Time		Sectors	On Time	
	Flown	No.	%	Flown	No.	%
Karratha						
Qantas	98	89	90.8	98	87	88.8
QantasLink	100	93	93.0	101	90	89.1
Virgin Australia	66	59	89.4	66	57	86.4
Virgin Australia Regional Airlines	18	16	88.9	18	14	77.8
All Airlines	282	257	91.1	283	248	87.6
Relates to services to and from Perth only.						
Launceston						
Jetstar	254	218	85.8	253	227	89.7
QantasLink	121	104	86.0	120	98	81.7
Virgin Australia	125	110	88.0	125	114	91.2
Virgin Australia Regional Airlines	7	5	71.4	7	5	71.4
All Airlines	507	437	86.2	505	444	87.9
Relates to services to and from Melbourne and Sydney.						
Mackay						
Jetstar	58	37	63.8	59	41	69.5
QantasLink	99	91	91.9	100	94	94.0
Virgin Australia	149	131	87.9	149	138	92.6
All Airlines	306	259	84.6	308	273	88.6
Relates to services to and from Brisbane only.						
Melbourne						
Jetstar	1 717	1 376	80.1	1 712	1 413	82.5
Qantas	1 943	1 751	90.1	1 949	1 727	88.6
QantasLink	404	312	77.2	405	317	78.3
Regional Express	51	47	92.2	51	43	84.3
Tigerair	641	534	83.3	643	520	80.9
Virgin Australia	2 175	2 016	92.7	2 176	1 961	90.1
Virgin Australia Regional Airlines	37	32	86.5	38	32	84.2
All Airlines	6 968	6 068	87.1	6 974	6 013	86.2
Relates to services to and from Adelaide, Brisbane, Cairns, Canberra, Darwin, Gold Coast, Hamilton Island, Hobart, Launceston, Mildura, Newcastle, Perth, Sunshine Coast and Sydney.						
Mildura						
QantasLink	86	78	90.7	87	73	83.9
Regional Express	51	46	90.2	51	45	88.2
Virgin Australia	31	31	100.0	31	31	100.0
All Airlines	168	155	92.3	169	149	88.2
Relates to services to and from Melbourne only.						
Moranbah						
QantasLink	106	94	88.7	109	99	90.8
Virgin Australia Regional Airlines	74	66	89.2	74	64	86.5
All Airlines	180	160	88.9	183	163	89.1
Relates to services to and from Brisbane only.						
Mount Isa						
Qantas	48	44	91.7	50	47	94.0
Virgin Australia	22	21	95.5	22	21	95.5
All Airlines	70	65	92.9	72	68	94.4
Relates to services to and from Brisbane only.						

Airport	Departures			Arrivals		
	Sectors	On Time		Sectors	On Time	
	Flown	No.	%	Flown	No.	%
Newcastle						
Jetstar	183	157	85.8	183	153	83.6
QantasLink	69	48	69.6	68	35	51.5
Virgin Australia	116	92	79.3	116	105	90.5
All Airlines	368	297	80.7	367	293	79.8
Relates to services to and from Brisbane and Melbourne.						
Newman						
Qantas	80	72	90.0	80	70	87.5
QantasLink	58	53	91.4	58	52	89.7
Virgin Australia	29	23	79.3	29	23	79.3
Virgin Australia Regional Airlines	4	4	100.0	4	4	100.0
All Airlines	171	152	88.9	171	149	87.1
Relates to services to and from Perth only.						
Perth						
Jetstar	161	140	87.0	160	147	91.9
Qantas	1 018	874	85.9	1 012	889	87.8
QantasLink	372	338	90.9	370	339	91.6
Tigerair	91	78	85.7	89	71	79.8
Virgin Australia	656	595	90.7	653	584	89.4
Virgin Australia Regional Airlines	120	99	82.5	132	116	87.9
All Airlines	2 418	2 124	87.8	2 416	2 146	88.8
Relates to services to and from Adelaide, Brisbane, Broome, Darwin, Geraldton, Kalgoorlie, Karratha, Melbourne, Newman, Port Hedland and Sydney.						
Port Hedland						
Qantas	106	92	86.8	106	95	89.6
QantasLink	47	38	80.9	47	42	89.4
Virgin Australia	44	42	95.5	44	41	93.2
All Airlines	197	172	87.3	197	178	90.4
Relates to services to and from Perth only.						
Port Lincoln						
QantasLink	89	79	88.8	88	81	92.0
Regional Express	151	137	90.7	151	138	91.4
All Airlines	240	216	90.0	239	219	91.6
Relates to services to and from Adelaide only.						
Port Macquarie						
QantasLink	122	93	76.2	124	89	71.8
Virgin Australia Regional Airlines	61	50	82.0	61	57	93.4
All Airlines	183	143	78.1	185	146	78.9
Relates to services to and from Sydney only.						
Proserpine						
Jetstar	30	24	80.0	31	22	71.0
Virgin Australia	53	42	79.2	53	43	81.1
All Airlines	83	66	79.5	84	65	77.4
Relates to services to and from Brisbane only.						

Airport	Departures			Arrivals		
	Sectors	On Time		Sectors	On Time	
	Flown	No.	%	Flown	No.	%
Rockhampton						
QantasLink	196	166	84.7	220	198	90.0
Virgin Australia	88	78	88.6	88	77	87.5
Virgin Australia Regional Airlines	108	95	88.0	110	84	76.4
All Airlines	392	339	86.5	418	359	85.9
Relates to services to and from Brisbane only.						
Sunshine Coast						
Jetstar	206	170	82.5	206	186	90.3
Virgin Australia	65	61	93.8	66	63	95.5
All Airlines	271	231	85.2	272	249	91.5
Relates to services to and from Melbourne and Sydney.						
Sydney						
Jetstar	1 712	1 411	82.4	1 704	1 391	81.6
Qantas	2 060	1 812	88.0	2 059	1 816	88.2
QantasLink	1 121	920	82.1	1 116	959	85.9
Regional Express	230	208	90.4	226	187	82.7
Tigerair	532	449	84.4	529	441	83.4
Virgin Australia	2 133	2 013	94.4	2 127	1 952	91.8
Virgin Australia Regional Airlines	330	307	93.0	331	297	89.7
All Airlines	8 118	7 120	87.7	8 092	7 043	87.0
Relates to services to and from Adelaide, Albury, Armidale, Ayers Rock, Ballina, Brisbane, Cairns, Canberra, Coffs Harbour, Darwin, Dubbo, Gold Coast, Hamilton Island, Hobart, Launceston, Melbourne, Perth, Port Macquarie, Sunshine Coast, Townsville and Wagga Wagga.						
Townsville						
Jetstar	96	82	85.4	96	80	83.3
Qantas	147	138	93.9	147	129	87.8
Virgin Australia	175	152	86.9	176	150	85.2
All Airlines	418	372	89.0	419	359	85.7
Relates to services to and from Brisbane and Sydney.						
Wagga Wagga						
QantasLink	103	92	89.3	105	91	86.7
Regional Express	63	59	93.7	63	60	95.2
All Airlines	166	151	91.0	168	151	89.9
Relates to services to and from Sydney only.						

Definitions

On time departure A flight departure is counted as "on time" if it departs the gate before 15 minutes after the scheduled departure time shown in the carriers' schedule.

On time arrival A flight arrival is counted as "on time" if it arrived at the gate before 15 minutes after the scheduled arrival time shown in the carriers' schedule.
Neither diverted nor cancelled flights count as on time.

Cancellation A flight removed from service within 7 days of scheduled departure is regarded as a cancellation.

On time departure percentage The percentage of on time departures is measured against the number of departures *operated* on any particular sector.

On time arrival percentage The percentage of on time arrivals is measured against the number of arrivals *operated* on any particular sector.

Cancellation percentage The percentage of cancellations is measured against the number of services *scheduled* on any particular sector.
