



Australian Government

Department of Infrastructure and Regional Development

Bureau of Infrastructure, Transport and Regional Economics

STATISTICAL REPORT



Aviation

Domestic airline on time performance
January 2014

© Commonwealth of Australia 2014

ISSN: 1832-0759

Ownership of intellectual property rights in this publication

Unless otherwise noted, copyright (and any other intellectual property rights, if any) in this publication is owned by the Commonwealth of Australia (referred to below as the Commonwealth).

Disclaimer

The material contained in this publication is made available on the understanding that the Commonwealth is not providing professional advice, and that users exercise their own skill and care with respect to its use, and seek independent advice if necessary.

The Commonwealth makes no representations or warranties as to the contents or accuracy of the information contained in this publication. To the extent permitted by law, the Commonwealth disclaims liability to any person or organisation in respect of anything done, or omitted to be done, in reliance upon information contained in this publication.

Creative Commons licence

With the exception of (a) the Coat of Arms; and (b) the Department of Infrastructure and Regional Development's photos and graphics, copyright in this publication is licensed under a Creative Commons Attribution 3.0 Australia Licence.

Creative Commons Attribution 3.0 Australia Licence is a standard form licence agreement that allows you to copy, communicate and adapt this publication provided that you attribute the work to the Commonwealth and abide by the other licence terms. A summary of the licence terms is available from <http://creativecommons.org/licenses/by/3.0/au/deed.en>. The full licence terms are available from <http://creativecommons.org/licenses/by/3.0/au/legalcode>.

Use of the Coat of Arms

The Department of the Prime Minister and Cabinet sets the terms under which the Coat of Arms is used. Please refer to the Department's Commonwealth Coat of Arms and Government branding web page <http://www.dpmmc.gov.au/guidelines/index.cfm#brand> and, in particular, the Guidelines on the use of the Commonwealth Coat of Arms publication.

An appropriate citation for this report is:

Bureau of Infrastructure, Transport and Regional Economics (BITRE), 2014, Domestic airline on time performance, Statistical Report, BITRE, Canberra ACT.

Contact us

This publication is available in PDF format. All other rights are reserved, including in relation to any Departmental logos or trade marks which may exist. For enquiries regarding the licence and any use of this publication, please contact:

Bureau of Infrastructure, Transport and Regional Economics (BITRE)
Department of Infrastructure and Regional Development
GPO Box 501, Canberra ACT 2601, Australia
Telephone: (international) +61 2 6274 7210
Fax: (international) +61 2 6274 6855
Email: bitre@infrastructure.gov.au
Website: www.bitre.gov.au

Inquiries

Should you require additional information about the statistics contained in this publication:

Telephone (02) 6274 7790 or Facsimile (02) 6274 7727

Electronic mail: AVSTATS@infrastructure.gov.au

Web site: <http://www.bitre.gov.au/statistics/aviation/otphome.aspx>

Foreword

The Bureau of Infrastructure, Transport and Regional Economics (BITRE) monitors the punctuality and reliability of major domestic airlines operating between Australian airports. The purpose of this is to allow for evaluation of overall industry and individual airline performance, so that consumers of air travel can make informed decisions.

The following domestic airlines currently report this information monthly to the BITRE: Jetstar, Qantas, QantasLink, Regional Express, Tigerair, Virgin Australia and Virgin Australia Regional Airlines. Data has been gathered since November 2003, although some airlines commenced reporting at a later date, including Jetstar which first reported in May 2004, MacAir in July 2005 and Tigerair in April 2008. MacAir ceased operations in February 2009 and data was not received for December 2008 onwards. Virgin Blue was rebranded as Virgin Australia in May 2011 and Tiger Airways was rebranded as Tigerair in July 2013 and time series data in Microsoft Excel spreadsheet format on the BITRE website have been revised to reflect these changes. Virgin Australia Regional Airlines commenced operations in May 2013. It was formed after the acquisition of Skywest by Virgin Australia and represents a combination of operations previously reported under Skywest and Virgin Australia – ATR/F100 Operations. Services operated by Skywest on behalf of Virgin Australia using ATR/F100 aircraft commenced in November 2011 and were shown separately as Virgin Australia – ATR/F100 Operations until April 2013.

Information presented in this report is for Australian domestic routes for which the passenger load averaged 8 000 or more passengers per month over the previous six months and where two or more airlines operated in competition on those routes. There were 63 routes that met this definition in January 2014. Over time, routes which meet these criteria change as airline networks and traffic levels vary.

Participating airlines report their overall monthly network performance where this is possible.

Total industry figures encompass all services operated by reporting airlines only. These airlines collectively carried over 95 per cent of total domestic passengers (regular public transport only) in 2012.

The method of capturing on time performance varies between airlines utilising different recording systems. Jetstar and Qantas jet aircraft use Aircraft Communication Addressing and Reporting System (ACARS) to electronically measure on time performance. Regional Express, Tigerair, Virgin Australia, Virgin Australia Regional Airlines and the Qantas non-jet fleet record on time performance manually using records from pilots, gate agents and/or ground crews.

After initial data is collected, aggregate reports are audited internally by participating airlines prior to publication.

Reports and detailed time series data in Microsoft Excel spreadsheet format are available from the BITRE website at: <http://www.bitre.gov.au/statistics/aviation/otphome.aspx>.

Contents

	Page
Industry performance	1
Individual routes	9
Airports	22
Definitions	28

Industry performance

For January 2014, on time performance over all routes operated by participating airlines (Jetstar, Qantas, QantasLink, Regional Express, Tigerair, Virgin Australia and Virgin Australia Regional Airlines) averaged 88.8 per cent for on time departures and 87.8 per cent for on time arrivals. Cancellations represented 1.5 per cent of all scheduled flights. The equivalent figures for January 2013 were 79.2 per cent for departures, 78.3 per cent for arrivals and 2.4 per cent for cancellations.

This month's figures were significantly better than the long term average performance for all routes (83.6 per cent for departures and 82.1 per cent for arrivals). The rate of cancellations was above the long term average of 1.3 per cent.

Of the major domestic airlines, Qantas achieved the highest level of on time departures for January 2014 at 91.4 per cent, followed by Virgin Australia at 91.0 per cent, Jetstar at 84.3 per cent and Tigerair at 82.2 per cent. The regional airlines were led by Regional Express at 94.9 per cent, followed by Virgin Australia Regional Airlines at 89.1 per cent and QantasLink at 85.9 per cent.

Qantas also achieved the highest on time arrivals among the major domestic airlines at 91.2 per cent, followed by Virgin Australia at 89.7 per cent, Jetstar at 86.3 per cent and Tigerair at 81.2 per cent. Regional Express was the best performing regional airline for on time arrivals at 92.4 per cent, followed by Virgin Australia Regional Airlines at 87.9 per cent and QantasLink at 82.7 per cent.

QantasLink had the highest percentage of cancellations (2.8 per cent) during the month, followed by Jetstar (1.6 per cent), Virgin Australia (1.2 per cent), Virgin Australia Regional Airlines (also 1.2 per cent), Qantas (1.1 per cent), Tigerair (0.6 per cent) and Regional Express (0.3 per cent).

Of the 63 routes which met the criteria for on time performance reporting in January 2014, the Sydney-Townsville route had the highest percentage of on time departures (98.3 per cent) while the Hobart-Brisbane route had the lowest percentage of on time departures (62.3 per cent). The Sydney-Alice Springs route had the highest percentage of on time arrivals (100.0 per cent) while the Port Macquarie-Sydney route had the lowest percentage of on time arrivals (73.1 per cent).

Cancellations were highest on the Brisbane-Moranbah route at 10.3 per cent, followed by Moranbah-Brisbane at 9.6 per cent, Proserpine-Brisbane at 7.1 per cent, Sydney-Hamilton Island at 6.6 per cent and Hamilton Island-Sydney at 6.5 per cent.

Mount Isa Airport recorded the highest percentage of on time departures (96.2 per cent) and the highest percentage of on time arrivals (98.7 per cent). Newcastle Airport recorded the lowest percentage of on time departures (78.6 per cent) and the lowest percentage of on time arrivals (82.2 per cent). These figures only refer to reported routes and do not cover all flights at these airports.

Table 1 On time performance for January 2014 — Total Industry

	<i>Sectors</i>		<i>Departures On Time</i>		<i>Arrivals On Time</i>		<i>Cancellations</i>	
	<i>Scheduled</i>	<i>Flown</i>	<i>No.</i>	<i>%</i>	<i>No.</i>	<i>%</i>	<i>No.</i>	<i>%</i>
Jetstar	7 769	7 648	6 449	84.3	6 599	86.3	121	1.6
Qantas	9 804	9 697	8 863	91.4	8 848	91.2	107	1.1
QantasLink	9 931	9 655	8 290	85.9	7 985	82.7	276	2.8
Regional Express	4 045	4 033	3 826	94.9	3 725	92.4	12	0.3
Tigerair	1 897	1 885	1 550	82.2	1 531	81.2	12	0.6
Virgin Australia	10 952	10 819	9 841	91.0	9 710	89.7	133	1.2
Virgin Australia Regional Airlines	2 326	2 299	2 049	89.1	2 021	87.9	27	1.2
All Airlines	46 724	46 036	40 868	88.8	40 419	87.8	688	1.5

Total airline network data (including routes not shown in this report).

Table 2 Top ten routes for on time performance for January 2014 (participating airlines only)

<i>Departures</i>		<i>Arrivals</i>	
<i>Route</i>	<i>On Time (%)</i>	<i>Route</i>	<i>On Time (%)</i>
Sydney-Townsville	98.3	Sydney-Alice Springs	100.0
Brisbane-Mount Isa	97.5	Brisbane-Mount Isa	98.7
Perth-Karratha	96.9	Sydney-Townsville	98.3
Mount Isa-Brisbane	96.2	Sydney-Ayers Rock	98.0
Melbourne-Mildura	96.1	Perth-Karratha	97.5
Ayers Rock-Sydney	95.9	Karratha-Perth	96.6
Alice Springs-Sydney	95.9	Adelaide-Gold Coast	96.1
Sydney-Alice Springs	95.9	Perth-Port Hedland	95.6
Brisbane-Hamilton Island	95.6	Sydney-Darwin	95.3
Karratha-Perth	95.4	Cairns-Sydney	94.9

Table 3 Top ten airports for on time performance for January 2014 (participating airlines and reported routes only)

<i>Departures</i>		<i>Arrivals</i>	
<i>Airport</i>	<i>On Time (%)</i>	<i>Airport</i>	<i>On Time (%)</i>
Mount Isa	96.2	Mount Isa	98.7
Ayers Rock	95.9	Ayers Rock	98.0
Karratha	95.4	Karratha	97.5
Kalgoorlie	95.0	Port Hedland	95.6
Mildura	93.9	Moranbah	94.5
Port Lincoln	93.2	Kalgoorlie	94.4
Perth	92.4	Newman	93.8
Newman	92.3	Alice Springs	92.9
Adelaide	91.4	Port Lincoln	91.2
Albury	90.7	Mildura	91.2

Total industry on time performance

Figure 1 On time performance (by month from January 2011)—Total Industry

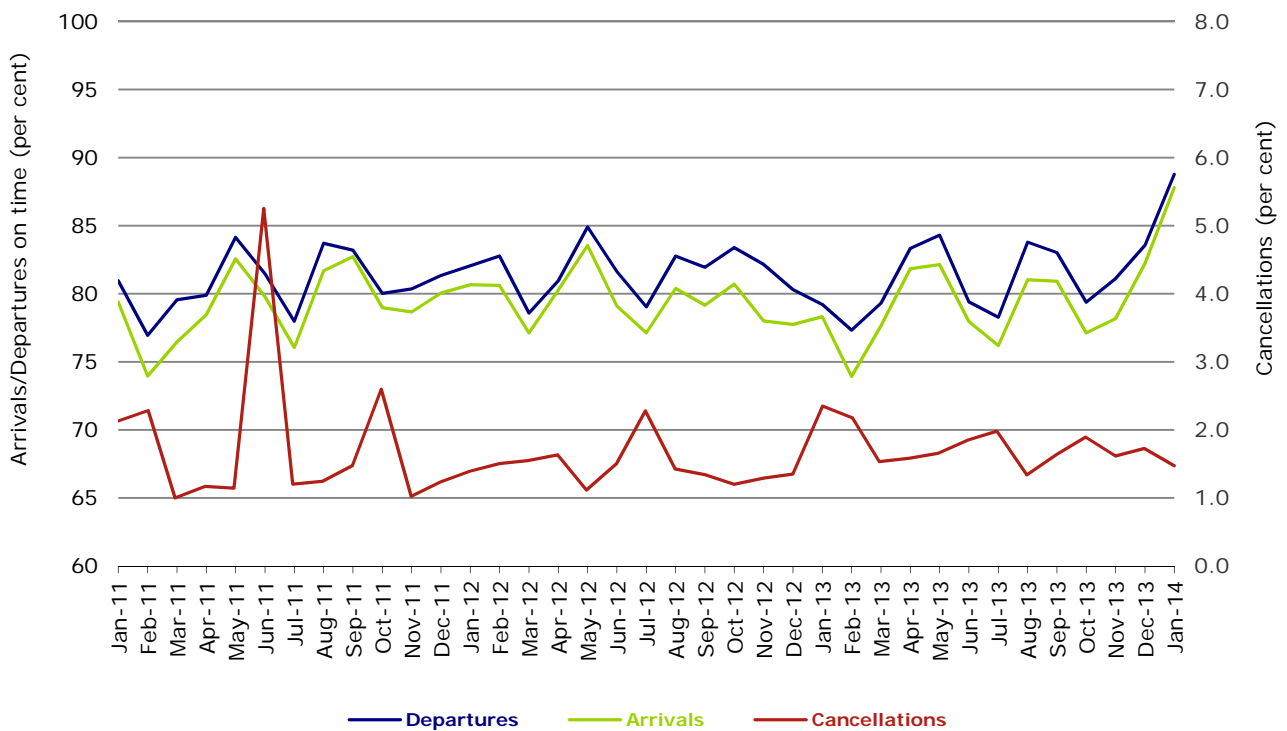
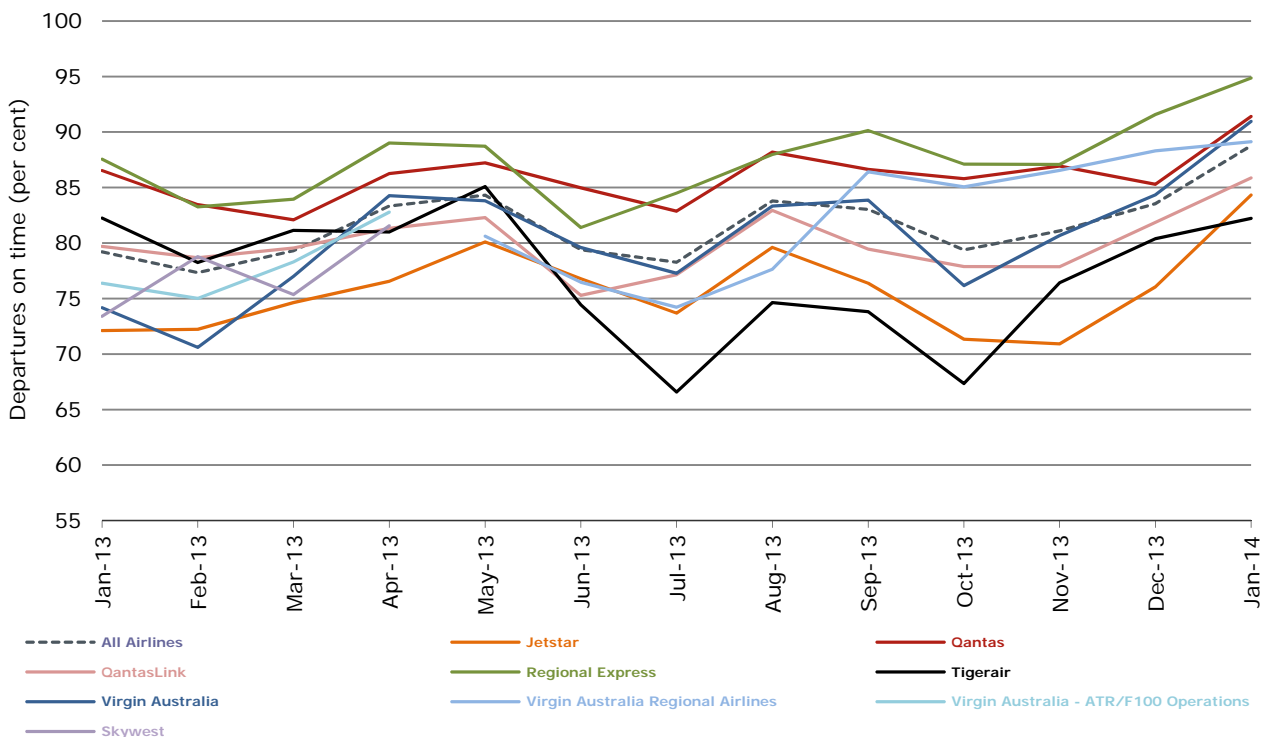
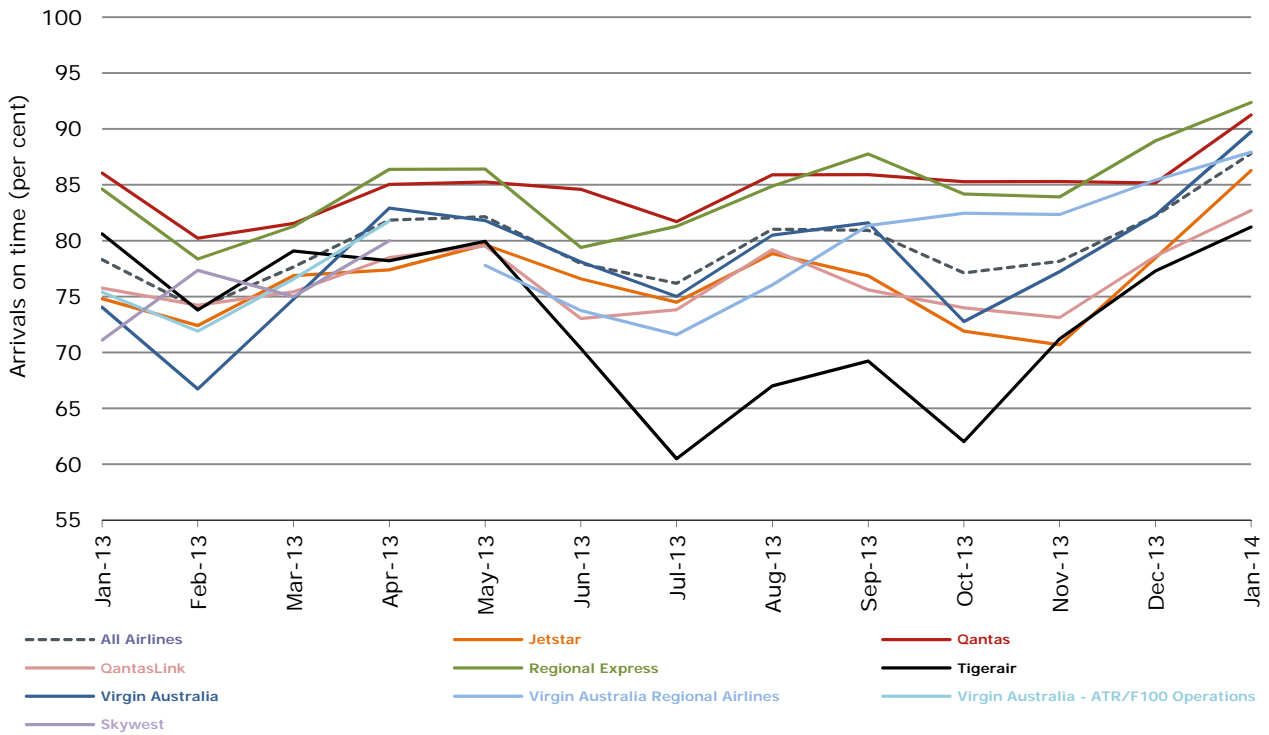


Figure 2 Departures on time (by month from January 2013)



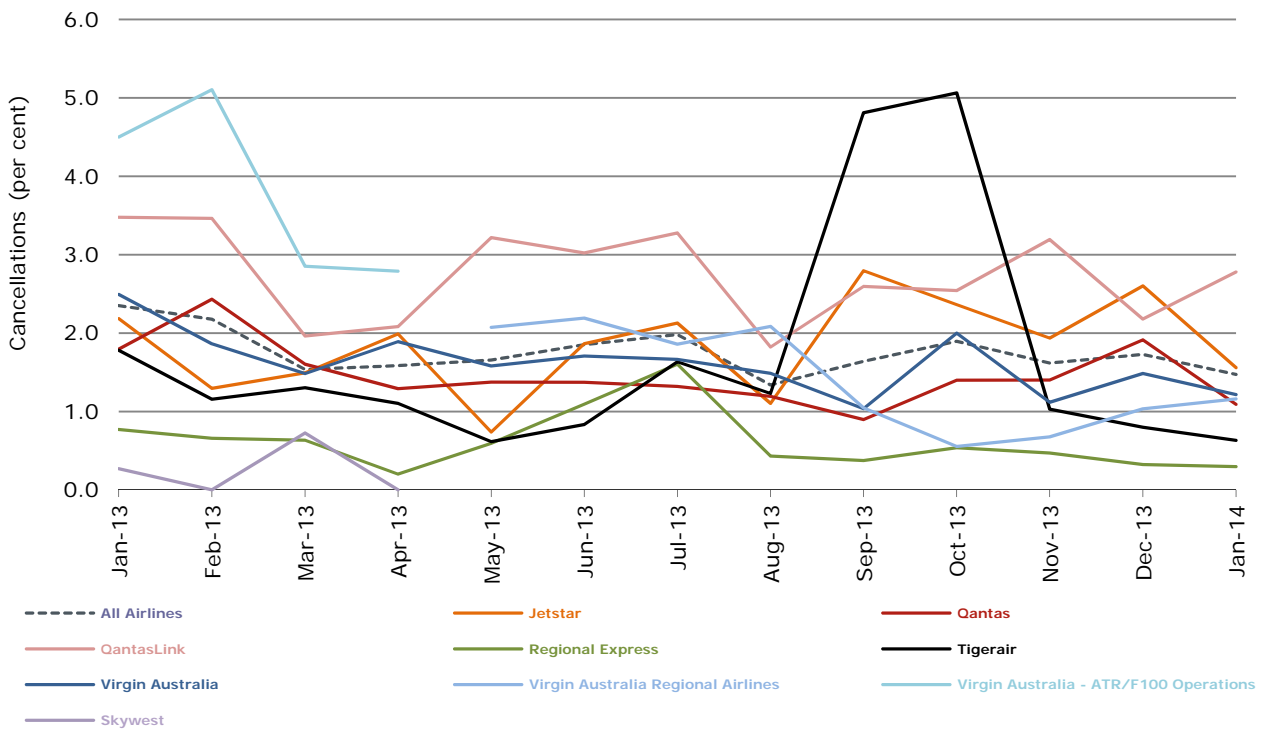
Virgin Australia Regional Airlines commenced operations in May 2013. It was formed after the acquisition of Skywest by Virgin Australia and represents a combination of operations previously reported under Skywest and Virgin Australia – ATR/F100 Operations.

Figure 3 Arrivals on time (by month from January 2013)



Virgin Australia Regional Airlines commenced operations in May 2013. It was formed after the acquisition of Skywest by Virgin Australia and represents a combination of operations previously reported under Skywest and Virgin Australia – ATR/F100 Operations.

Figure 4 Cancellations (by month from January 2013)



Virgin Australia Regional Airlines commenced operations in May 2013. It was formed after the acquisition of Skywest by Virgin Australia and represents a combination of operations previously reported under Skywest and Virgin Australia – ATR/F100 Operations.

Major domestic airlines on time performance

Figure 5 On time performance (by month from January 2011)—Jetstar

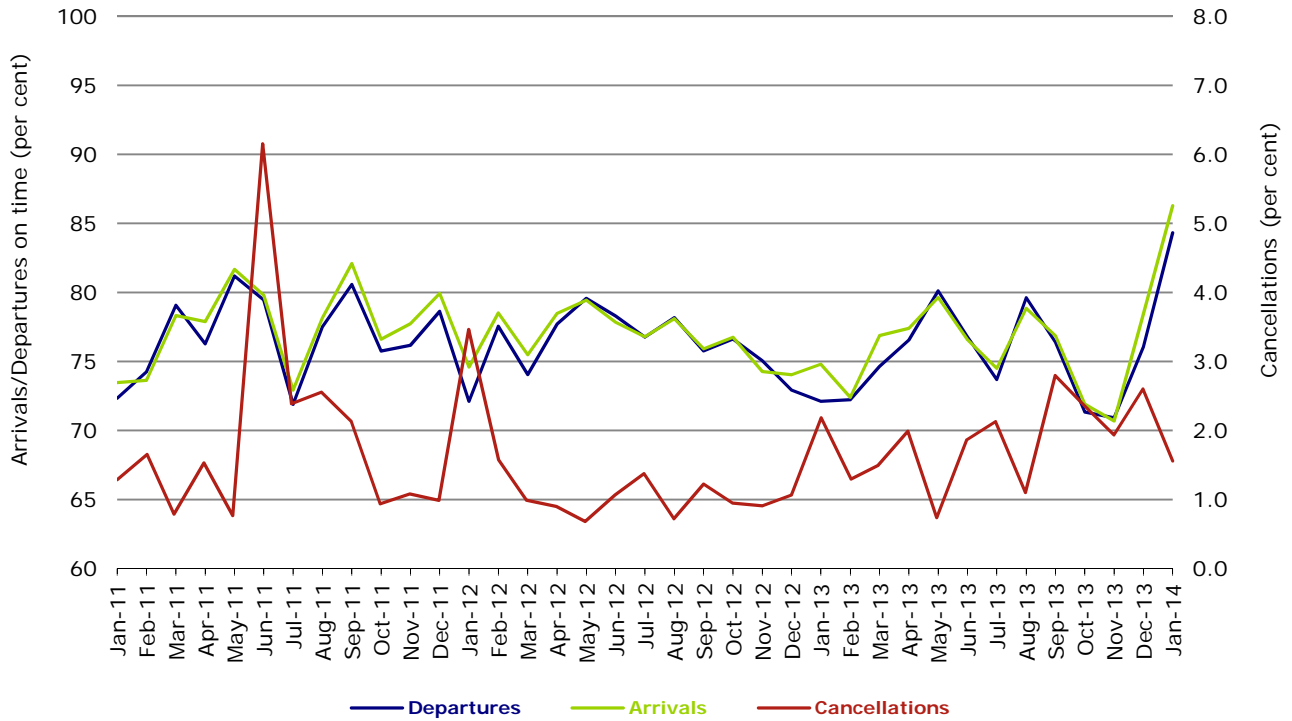


Figure 6 On time performance (by month from January 2011)—Qantas

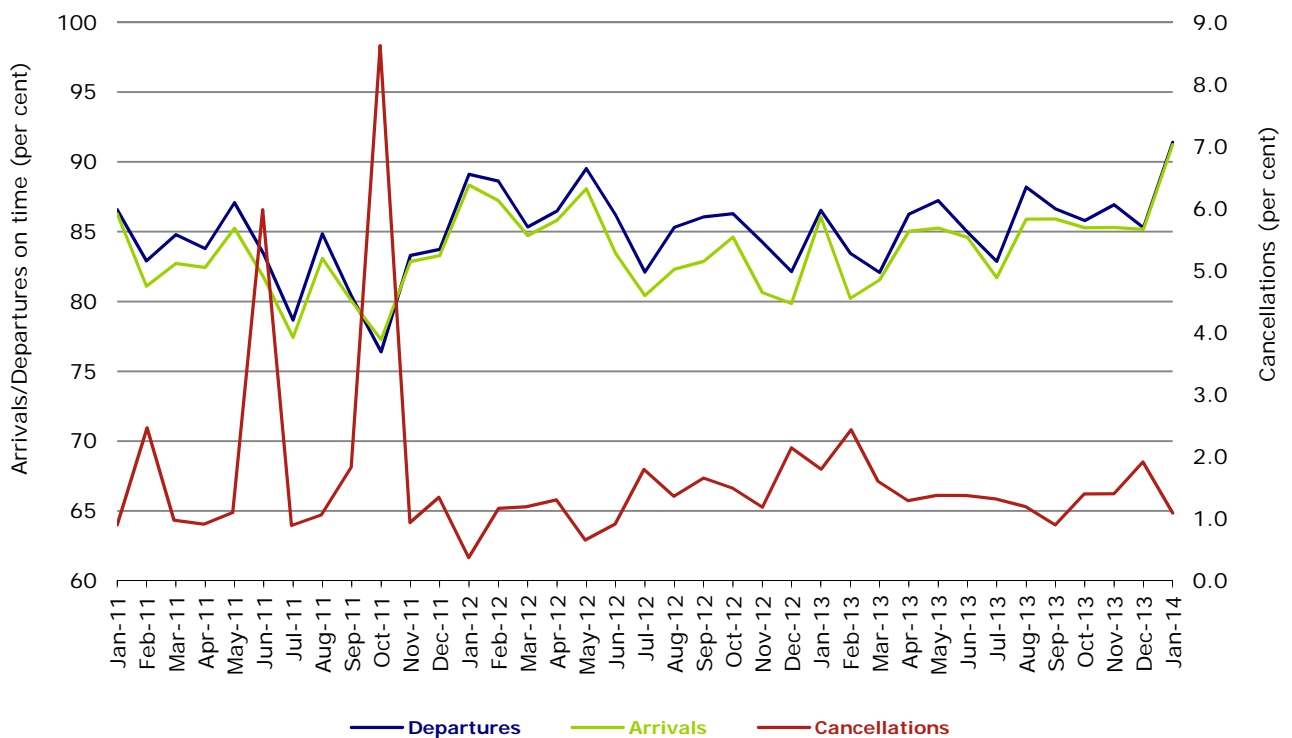
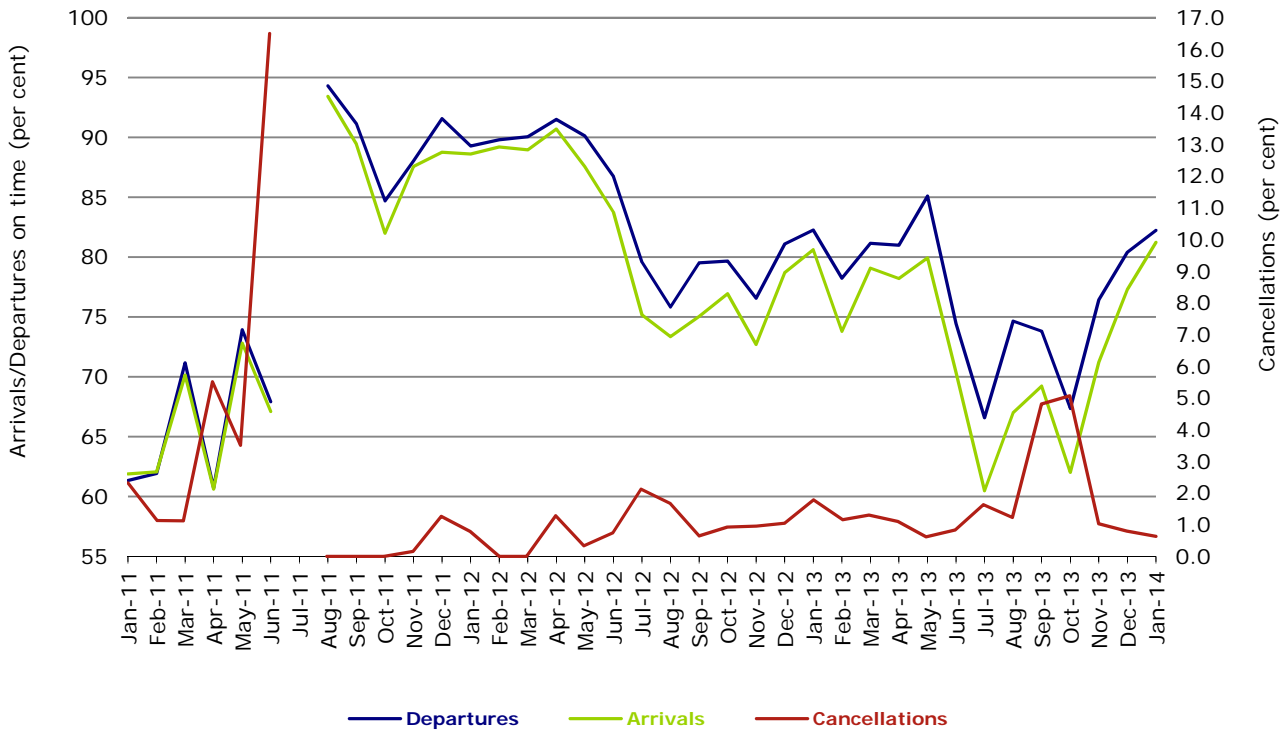
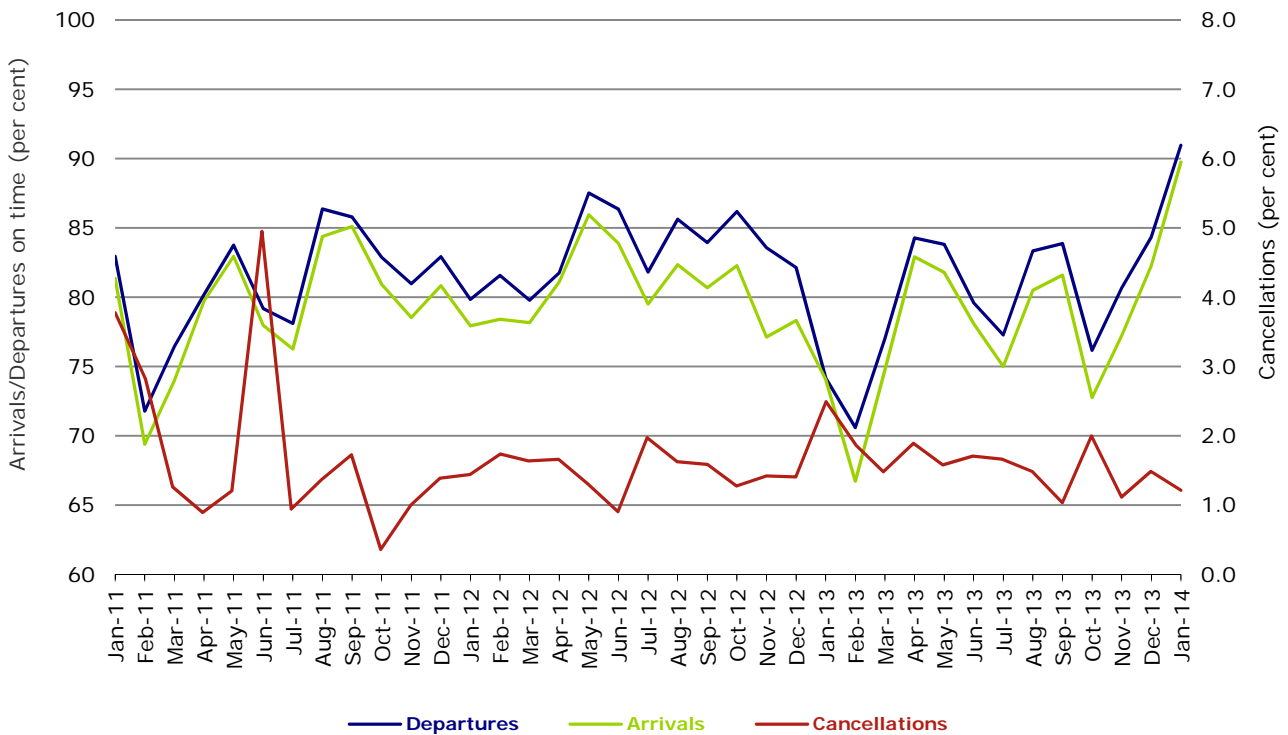


Figure 7 On time performance (by month from January 2011)—Tigerair



No data for Tigerair for July 2011 as it was grounded by CASA from 2/7/2011 to 11/8/2011.

Figure 8 On time performance (by month from January 2011)—Virgin Australia



Major regional airlines on time performance

Figure 9 On time performance (by month from January 2011)—QantasLink

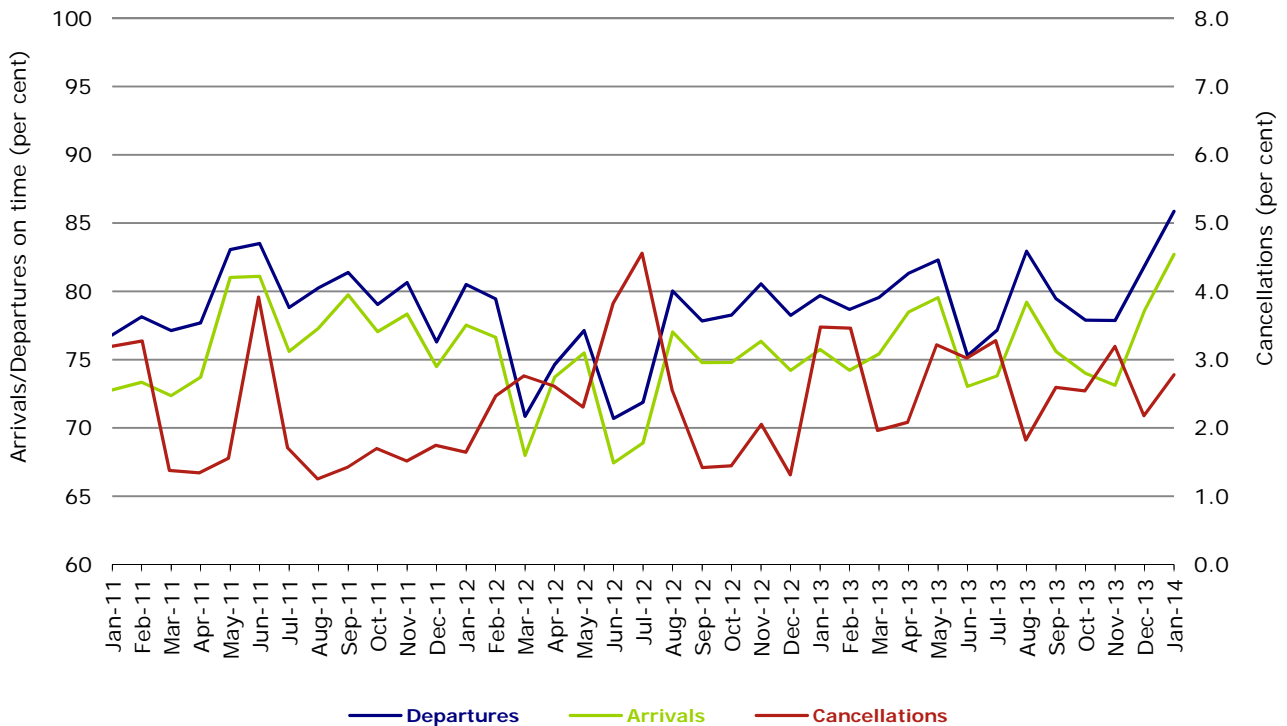


Figure 10 On time performance (by month from January 2011)—Regional Express

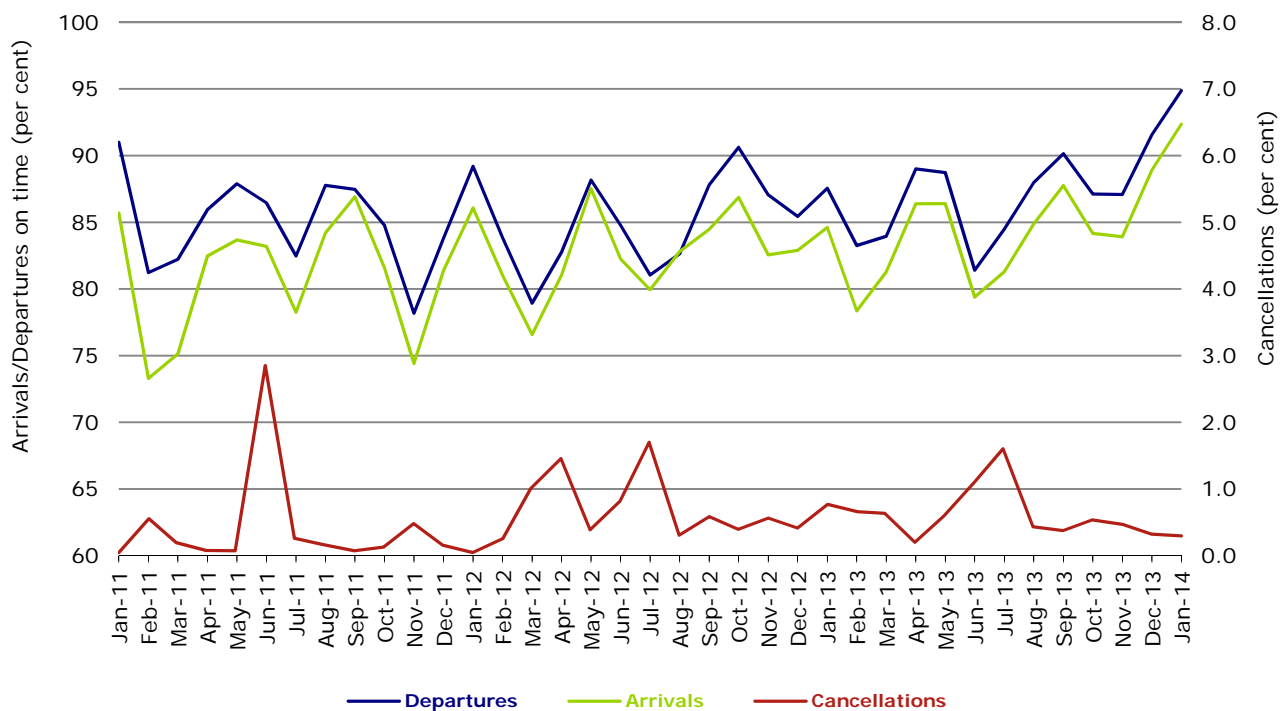
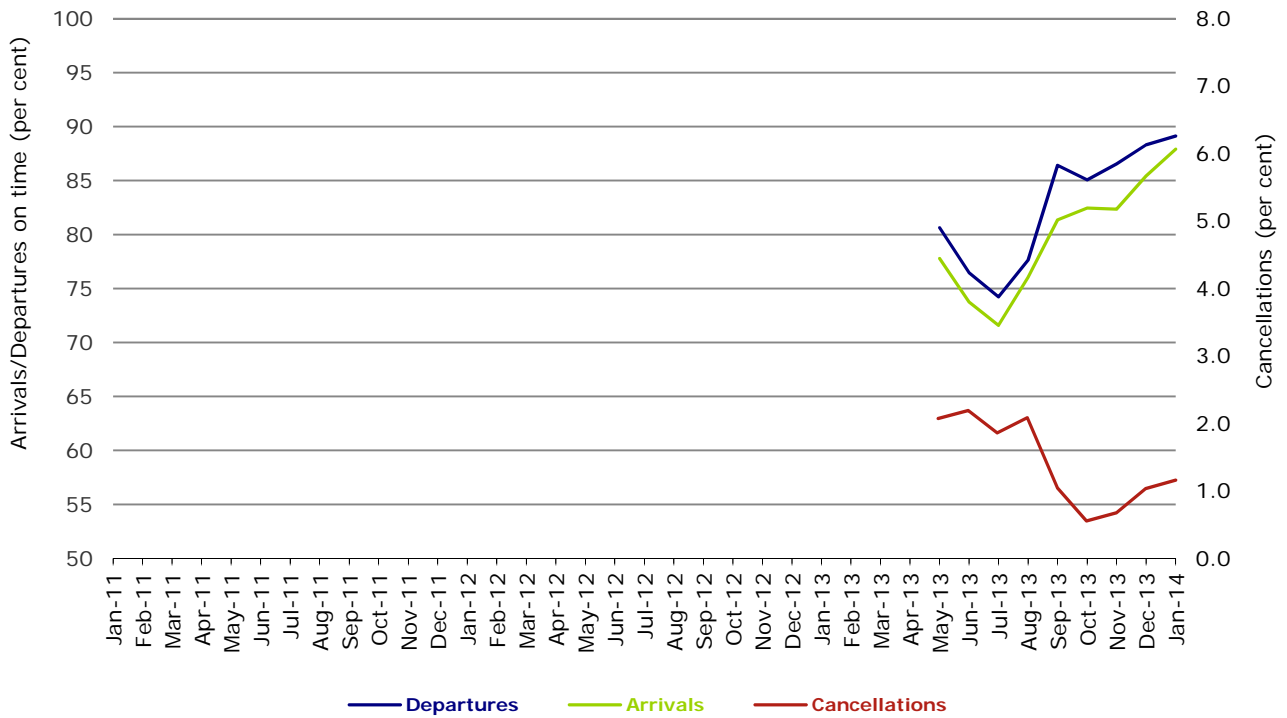


Figure 11 On time performance (by month from January 2011)
Virgin Australia Regional Airlines



Virgin Australia Regional Airlines commenced operations in May 2013. It was formed after the acquisition of Skywest by Virgin Australia and represents a combination of operations previously reported under Skywest and Virgin Australia – ATR/F100 Operations.

Individual routes

On time performance is reported for all routes where the passenger load averages over 8000 passengers per month over the previous six months, and where two or more airlines operate in competition on those routes. There are now 63 routes which meet this definition. Over time, however, routes which meet this definition may change as airline networks and traffic levels vary.

	<i>Sectors</i>		<i>Departures On Time</i>		<i>Arrivals On Time</i>		<i>Cancellations</i>	
	<i>Sched.</i>	<i>Flown</i>	<i>No.</i>	<i>%</i>	<i>No.</i>	<i>%</i>	<i>No.</i>	<i>%</i>
Adelaide-Brisbane								
Jetstar	31	31	29	93.5	29	93.5	0	0.0
Qantas	111	111	99	89.2	98	88.3	0	0.0
Virgin Australia	116	114	107	93.9	109	95.6	2	1.7
All Airlines	258	256	235	91.8	236	92.2	2	0.8
Adelaide-Canberra								
Qantas	27	27	24	88.9	24	88.9	0	0.0
QantasLink	22	22	18	81.8	19	86.4	0	0.0
Virgin Australia	27	27	25	92.6	24	88.9	0	0.0
All Airlines	76	76	67	88.2	67	88.2	0	0.0
Adelaide-Gold Coast								
Jetstar	47	46	42	91.3	43	93.5	1	2.1
Virgin Australia	31	31	31	100.0	31	100.0	0	0.0
All Airlines	78	77	73	94.8	74	96.1	1	1.3
Adelaide-Melbourne								
Jetstar	94	91	81	89.0	78	85.7	3	3.2
Qantas	295	291	269	92.4	274	94.2	4	1.4
QantasLink	17	17	15	88.2	14	82.4	0	0.0
Tigerair	71	70	56	80.0	57	81.4	1	1.4
Virgin Australia	267	265	249	94.0	248	93.6	2	0.7
All Airlines	744	734	670	91.3	671	91.4	10	1.3
Adelaide-Perth								
Jetstar	43	43	37	86.0	34	79.1	0	0.0
Qantas	113	113	105	92.9	107	94.7	0	0.0
Virgin Australia	66	66	64	97.0	61	92.4	0	0.0
All Airlines	222	222	206	92.8	202	91.0	0	0.0
Adelaide-Port Lincoln								
QantasLink	83	83	75	90.4	73	88.0	0	0.0
Regional Express	155	155	148	95.5	144	92.9	0	0.0
All Airlines	238	238	223	93.7	217	91.2	0	0.0
Adelaide-Sydney								
Jetstar	119	115	91	79.1	94	81.7	4	3.4
Qantas	269	268	246	91.8	256	95.5	1	0.4
Virgin Australia	166	166	155	93.4	154	92.8	0	0.0
All Airlines	554	549	492	89.6	504	91.8	5	0.9
Albury-Sydney								
QantasLink	105	104	89	85.6	87	83.7	1	1.0
Regional Express	63	63	59	93.7	61	96.8	0	0.0
Virgin Australia Regional Airlines	58	58	56	96.6	54	93.1	0	0.0
All Airlines	226	225	204	90.7	202	89.8	1	0.4
Alice Springs-Melbourne								
Qantas	31	31	25	80.6	30	96.8	0	0.0
Tigerair	18	18	14	77.8	14	77.8	0	0.0
All Airlines	49	49	39	79.6	44	89.8	0	0.0

	<i>Sectors</i>		<i>Departures On Time</i>		<i>Arrivals On Time</i>		<i>Cancellations</i>	
	<i>Sched.</i>	<i>Flown</i>	<i>No.</i>	<i>%</i>	<i>No.</i>	<i>%</i>	<i>No.</i>	<i>%</i>
Alice Springs-Sydney								
Qantas	31	31	29	93.5	30	96.8	0	0.0
Tigerair	18	18	18	100.0	15	83.3	0	0.0
All Airlines	49	49	47	95.9	45	91.8	0	0.0
Ayers Rock-Sydney								
Jetstar	18	18	17	94.4	16	88.9	0	0.0
Virgin Australia	31	31	30	96.8	30	96.8	0	0.0
All Airlines	49	49	47	95.9	46	93.9	0	0.0
Ballina-Sydney								
Jetstar	88	88	73	83.0	77	87.5	0	0.0
Regional Express	15	15	12	80.0	12	80.0	0	0.0
Virgin Australia	32	31	30	96.8	29	93.5	1	3.1
All Airlines	135	134	115	85.8	118	88.1	1	0.7
Brisbane-Adelaide								
Jetstar	31	31	30	96.8	30	96.8	0	0.0
Qantas	111	111	97	87.4	97	87.4	0	0.0
Virgin Australia	116	115	100	87.0	98	85.2	1	0.9
All Airlines	258	257	227	88.3	225	87.5	1	0.4
Brisbane-Bundaberg								
QantasLink	118	116	100	86.2	99	85.3	2	1.7
Virgin Australia Regional Airlines	31	31	28	90.3	29	93.5	0	0.0
All Airlines	149	147	128	87.1	128	87.1	2	1.3
Brisbane-Cairns								
Jetstar	128	128	108	84.4	115	89.8	0	0.0
Qantas	119	119	110	92.4	113	95.0	0	0.0
QantasLink	4	4	3	75.0	3	75.0	0	0.0
Virgin Australia	164	164	143	87.2	145	88.4	0	0.0
All Airlines	415	415	364	87.7	376	90.6	0	0.0
Brisbane-Canberra								
Qantas	36	34	30	88.2	32	94.1	2	5.6
QantasLink	109	108	99	91.7	102	94.4	1	0.9
Virgin Australia	97	96	85	88.5	85	88.5	1	1.0
All Airlines	242	238	214	89.9	219	92.0	4	1.7
Brisbane-Darwin								
Qantas	36	36	34	94.4	34	94.4	0	0.0
Virgin Australia	31	31	26	83.9	28	90.3	0	0.0
All Airlines	67	67	60	89.6	62	92.5	0	0.0
Brisbane-Emerald								
QantasLink	172	168	152	90.5	138	82.1	4	2.3
Virgin Australia Regional Airlines	97	96	90	93.8	86	89.6	1	1.0
All Airlines	269	264	242	91.7	224	84.8	5	1.9
Brisbane-Gladstone								
QantasLink	224	218	201	92.2	196	89.9	6	2.7
Virgin Australia Regional Airlines	151	150	133	88.7	132	88.0	1	0.7
All Airlines	375	368	334	90.8	328	89.1	7	1.9
Brisbane-Hamilton Island								
Jetstar	17	16	15	93.8	15	93.8	1	5.9
Virgin Australia	31	29	28	96.6	27	93.1	2	6.5
All Airlines	48	45	43	95.6	42	93.3	3	6.3
Brisbane-Hobart								
Jetstar	30	30	28	93.3	27	90.0	0	0.0
Virgin Australia	31	31	27	87.1	21	67.7	0	0.0
All Airlines	61	61	55	90.2	48	78.7	0	0.0

	<i>Sectors</i>		<i>Departures On Time</i>		<i>Arrivals On Time</i>		<i>Cancellations</i>	
	<i>Sched.</i>	<i>Flown</i>	<i>No.</i>	<i>%</i>	<i>No.</i>	<i>%</i>	<i>No.</i>	<i>%</i>
Brisbane-Mackay								
Jetstar	78	75	61	81.3	62	82.7	3	3.8
QantasLink	107	102	88	86.3	92	90.2	5	4.7
Virgin Australia	142	136	120	88.2	118	86.8	6	4.2
All Airlines	327	313	269	85.9	272	86.9	14	4.3
Brisbane-Melbourne								
Jetstar	121	120	91	75.8	96	80.0	1	0.8
Qantas	427	426	362	85.0	362	85.0	1	0.2
Tigerair	97	96	60	62.5	65	67.7	1	1.0
Virgin Australia	368	358	322	89.9	307	85.8	10	2.7
All Airlines	1 013	1 000	835	83.5	830	83.0	13	1.3
Brisbane-Moranbah								
QantasLink	149	131	124	94.7	127	96.9	18	12.1
Virgin Australia Regional Airlines	75	70	65	92.9	63	90.0	5	6.7
All Airlines	224	201	189	94.0	190	94.5	23	10.3
Brisbane-Mount Isa								
Qantas	57	57	57	100.0	57	100.0	0	0.0
Virgin Australia	22	22	20	90.9	21	95.5	0	0.0
All Airlines	79	79	77	97.5	78	98.7	0	0.0
Brisbane-Newcastle								
Jetstar	117	117	101	86.3	101	86.3	0	0.0
QantasLink	71	68	49	72.1	36	52.9	3	4.2
Virgin Australia	76	76	68	89.5	70	92.1	0	0.0
All Airlines	264	261	218	83.5	207	79.3	3	1.1
Brisbane-Perth								
Jetstar	31	31	23	74.2	25	80.6	0	0.0
Qantas	133	133	111	83.5	123	92.5	0	0.0
Virgin Australia	91	91	75	82.4	78	85.7	0	0.0
All Airlines	255	255	209	82.0	226	88.6	0	0.0
Brisbane-Proserpine								
Jetstar	31	30	27	90.0	26	86.7	1	3.2
Virgin Australia	52	49	46	93.9	44	89.8	3	5.8
All Airlines	83	79	73	92.4	70	88.6	4	4.8
Brisbane-Rockhampton								
QantasLink	203	198	169	85.4	168	84.8	5	2.5
Virgin Australia	93	91	80	87.9	84	92.3	2	2.2
Virgin Australia Regional Airlines	106	102	86	84.3	87	85.3	4	3.8
All Airlines	402	391	335	85.7	339	86.7	11	2.7
Brisbane-Sydney								
Jetstar	177	164	131	79.9	139	84.8	13	7.3
Qantas	609	593	537	90.6	543	91.6	16	2.6
Tigerair	75	74	61	82.4	58	78.4	1	1.3
Virgin Australia	517	505	464	91.9	462	91.5	12	2.3
All Airlines	1 378	1 336	1 193	89.3	1 202	90.0	42	3.0
Brisbane-Townsville								
Jetstar	30	30	23	76.7	24	80.0	0	0.0
Qantas	149	147	130	88.4	134	91.2	2	1.3
Virgin Australia	159	157	139	88.5	136	86.6	2	1.3
All Airlines	338	334	292	87.4	294	88.0	4	1.2

	<i>Sectors</i>		<i>Departures On Time</i>		<i>Arrivals On Time</i>		<i>Cancellations</i>	
	<i>Sched.</i>	<i>Flown</i>	<i>No.</i>	<i>%</i>	<i>No.</i>	<i>%</i>	<i>No.</i>	<i>%</i>
Broome-Perth								
Qantas	30	30	29	96.7	29	96.7	0	0.0
QantasLink	58	57	53	93.0	54	94.7	1	1.7
Virgin Australia	31	30	25	83.3	26	86.7	1	3.2
Virgin Australia Regional Airlines	9	9	4	44.4	3	33.3	0	0.0
All Airlines	128	126	111	88.1	112	88.9	2	1.6
Bundaberg-Brisbane								
QantasLink	118	116	97	83.6	89	76.7	2	1.7
Virgin Australia Regional Airlines	31	31	26	83.9	26	83.9	0	0.0
All Airlines	149	147	123	83.7	115	78.2	2	1.3
Cairns-Brisbane								
Jetstar	127	127	114	89.8	112	88.2	0	0.0
Qantas	119	119	108	90.8	107	89.9	0	0.0
QantasLink	4	4	2	50.0	2	50.0	0	0.0
Virgin Australia	164	164	150	91.5	139	84.8	0	0.0
All Airlines	414	414	374	90.3	360	87.0	0	0.0
Cairns-Melbourne								
Jetstar	89	89	67	75.3	68	76.4	0	0.0
Qantas	31	31	27	87.1	28	90.3	0	0.0
Tigerair	33	33	27	81.8	29	87.9	0	0.0
Virgin Australia	35	35	31	88.6	27	77.1	0	0.0
All Airlines	188	188	152	80.9	152	80.9	0	0.0
Cairns-Sydney								
Jetstar	90	90	83	92.2	84	93.3	0	0.0
Qantas	64	64	59	92.2	62	96.9	0	0.0
Tigerair	31	31	29	93.5	29	93.5	0	0.0
Virgin Australia	92	92	88	95.7	88	95.7	0	0.0
All Airlines	277	277	259	93.5	263	94.9	0	0.0
Cairns-Townsville								
QantasLink	171	161	146	90.7	145	90.1	10	5.8
Virgin Australia Regional Airlines	15	15	15	100.0	15	100.0	0	0.0
All Airlines	186	176	161	91.5	160	90.9	10	5.4
Canberra-Adelaide								
Qantas	27	27	24	88.9	25	92.6	0	0.0
QantasLink	22	22	17	77.3	19	86.4	0	0.0
Virgin Australia	27	27	24	88.9	26	96.3	0	0.0
All Airlines	76	76	65	85.5	70	92.1	0	0.0
Canberra-Brisbane								
Qantas	36	35	35	100.0	35	100.0	1	2.8
QantasLink	109	108	90	83.3	90	83.3	1	0.9
Virgin Australia	96	95	83	87.4	84	88.4	1	1.0
All Airlines	241	238	208	87.4	209	87.8	3	1.2
Canberra-Melbourne								
Qantas	180	179	167	93.3	169	94.4	1	0.6
QantasLink	79	77	63	81.8	63	81.8	2	2.5
Virgin Australia	152	151	134	88.7	134	88.7	1	0.7
All Airlines	411	407	364	89.4	366	89.9	4	1.0
Canberra-Sydney								
Qantas	38	38	38	100.0	37	97.4	0	0.0
QantasLink	403	380	333	87.6	342	90.0	23	5.7
Virgin Australia	35	35	35	100.0	34	97.1	0	0.0
Virgin Australia Regional Airlines	179	177	170	96.0	168	94.9	2	1.1
All Airlines	655	630	576	91.4	581	92.2	25	3.8

	<i>Sectors</i>		<i>Departures On Time</i>		<i>Arrivals On Time</i>		<i>Cancellations</i>	
	<i>Sched.</i>	<i>Flown</i>	<i>No.</i>	<i>%</i>	<i>No.</i>	<i>%</i>	<i>No.</i>	<i>%</i>
Coffs Harbour-Sydney								
QantasLink	151	151	129	85.4	134	88.7	0	0.0
Tigerair	31	31	26	83.9	27	87.1	0	0.0
Virgin Australia	62	62	59	95.2	60	96.8	0	0.0
All Airlines	244	244	214	87.7	221	90.6	0	0.0
Darwin-Brisbane								
Qantas	36	36	34	94.4	30	83.3	0	0.0
Virgin Australia	31	31	28	90.3	27	87.1	0	0.0
All Airlines	67	67	62	92.5	57	85.1	0	0.0
Darwin-Melbourne								
Jetstar	31	31	23	74.2	26	83.9	0	0.0
Qantas	27	27	25	92.6	25	92.6	0	0.0
Virgin Australia	31	31	30	96.8	29	93.5	0	0.0
All Airlines	89	89	78	87.6	80	89.9	0	0.0
Darwin-Perth								
Qantas	31	31	25	80.6	28	90.3	0	0.0
Virgin Australia	27	27	25	92.6	25	92.6	0	0.0
All Airlines	58	58	50	86.2	53	91.4	0	0.0
Darwin-Sydney								
Jetstar	30	30	19	63.3	19	63.3	0	0.0
Qantas	44	44	44	100.0	42	95.5	0	0.0
Virgin Australia	31	31	31	100.0	24	77.4	0	0.0
All Airlines	105	105	94	89.5	85	81.0	0	0.0
Dubbo-Sydney								
QantasLink	108	108	97	89.8	92	85.2	0	0.0
Regional Express	87	87	79	90.8	79	90.8	0	0.0
All Airlines	195	195	176	90.3	171	87.7	0	0.0
Emerald-Brisbane								
QantasLink	172	168	142	84.5	137	81.5	4	2.3
Virgin Australia Regional Airlines	97	95	89	93.7	87	91.6	2	2.1
All Airlines	269	263	231	87.8	224	85.2	6	2.2
Geraldton-Perth								
QantasLink	62	62	56	90.3	57	91.9	0	0.0
Virgin Australia Regional Airlines	99	98	89	90.8	90	91.8	1	1.0
All Airlines	161	160	145	90.6	147	91.9	1	0.6
Gladstone-Brisbane								
QantasLink	247	241	197	81.7	190	78.8	6	2.4
Virgin Australia Regional Airlines	151	150	135	90.0	129	86.0	1	0.7
All Airlines	398	391	332	84.9	319	81.6	7	1.8
Gold Coast-Adelaide								
Jetstar	47	47	43	91.5	44	93.6	0	0.0
Virgin Australia	31	31	30	96.8	30	96.8	0	0.0
All Airlines	78	78	73	93.6	74	94.9	0	0.0
Gold Coast-Melbourne								
Jetstar	245	245	202	82.4	204	83.3	0	0.0
Tigerair	80	80	47	58.8	51	63.8	0	0.0
Virgin Australia	177	177	162	91.5	163	92.1	0	0.0
All Airlines	502	502	411	81.9	418	83.3	0	0.0

	<i>Sectors</i>		<i>Departures On Time</i>		<i>Arrivals On Time</i>		<i>Cancellations</i>	
	<i>Sched.</i>	<i>Flown</i>	<i>No.</i>	<i>%</i>	<i>No.</i>	<i>%</i>	<i>No.</i>	<i>%</i>
Gold Coast-Sydney								
Jetstar	402	392	341	87.0	360	91.8	10	2.5
Qantas	93	93	85	91.4	86	92.5	0	0.0
Tigerair	70	70	57	81.4	56	80.0	0	0.0
Virgin Australia	326	324	295	91.0	306	94.4	2	0.6
All Airlines	891	879	778	88.5	808	91.9	12	1.3
Hamilton Island-Brisbane								
Jetstar	17	16	15	93.8	15	93.8	1	5.9
Virgin Australia	31	29	27	93.1	26	89.7	2	6.5
All Airlines	48	45	42	93.3	41	91.1	3	6.3
Hamilton Island-Sydney								
Jetstar	31	29	25	86.2	24	82.8	2	6.5
Virgin Australia	31	29	24	82.8	23	79.3	2	6.5
All Airlines	62	58	49	84.5	47	81.0	4	6.5
Hobart-Brisbane								
Jetstar	30	30	27	90.0	27	90.0	0	0.0
Virgin Australia	31	31	11	35.5	18	58.1	0	0.0
All Airlines	61	61	38	62.3	45	73.8	0	0.0
Hobart-Melbourne								
Jetstar	213	212	172	81.1	169	79.7	1	0.5
Qantas	62	62	57	91.9	53	85.5	0	0.0
QantasLink	32	32	31	96.9	26	81.3	0	0.0
Tigerair	34	34	27	79.4	27	79.4	0	0.0
Virgin Australia	145	145	120	82.8	118	81.4	0	0.0
All Airlines	486	485	407	83.9	393	81.0	1	0.2
Hobart-Sydney								
Jetstar	117	117	94	80.3	108	92.3	0	0.0
Qantas	32	32	30	93.8	30	93.8	0	0.0
Virgin Australia	62	62	56	90.3	59	95.2	0	0.0
All Airlines	211	211	180	85.3	197	93.4	0	0.0
Kalgoorlie-Perth								
Qantas	64	62	59	95.2	59	95.2	2	3.1
QantasLink	25	23	21	91.3	20	87.0	2	8.0
Virgin Australia	45	44	42	95.5	41	93.2	1	2.2
Virgin Australia Regional Airlines	12	11	11	100.0	11	100.0	1	8.3
All Airlines	146	140	133	95.0	131	93.6	6	4.1
Karratha-Perth								
Qantas	192	183	176	96.2	179	97.8	9	4.7
QantasLink	60	55	55	100.0	55	100.0	5	8.3
Virgin Australia	90	87	79	90.8	80	92.0	3	3.3
All Airlines	342	325	310	95.4	314	96.6	17	5.0
Launceston-Melbourne								
Jetstar	164	164	143	87.2	143	87.2	0	0.0
QantasLink	124	121	96	79.3	95	78.5	3	2.4
Virgin Australia	123	123	111	90.2	105	85.4	0	0.0
All Airlines	411	408	350	85.8	343	84.1	3	0.7
Launceston-Sydney								
Jetstar	90	90	69	76.7	72	80.0	0	0.0
Virgin Australia	31	31	30	96.8	30	96.8	0	0.0
All Airlines	121	121	99	81.8	102	84.3	0	0.0

	<i>Sectors</i>		<i>Departures On Time</i>		<i>Arrivals On Time</i>		<i>Cancellations</i>	
	<i>Sched.</i>	<i>Flown</i>	<i>No.</i>	<i>%</i>	<i>No.</i>	<i>%</i>	<i>No.</i>	<i>%</i>
Mackay-Brisbane								
Jetstar	78	75	57	76.0	51	68.0	3	3.8
QantasLink	107	102	85	83.3	83	81.4	5	4.7
Virgin Australia	142	136	122	89.7	123	90.4	6	4.2
All Airlines	327	313	264	84.3	257	82.1	14	4.3
Melbourne-Adelaide								
Jetstar	95	94	86	91.5	86	91.5	1	1.1
Qantas	295	292	275	94.2	268	91.8	3	1.0
QantasLink	17	17	14	82.4	12	70.6	0	0.0
Tigerair	71	70	62	88.6	53	75.7	1	1.4
Virgin Australia	266	266	250	94.0	240	90.2	0	0.0
All Airlines	744	739	687	93.0	659	89.2	5	0.7
Melbourne-Alice Springs								
Qantas	31	31	27	87.1	28	90.3	0	0.0
Tigerair	18	18	16	88.9	14	77.8	0	0.0
All Airlines	49	49	43	87.8	42	85.7	0	0.0
Melbourne-Brisbane								
Jetstar	121	119	82	68.9	88	73.9	2	1.7
Qantas	427	425	374	88.0	350	82.4	2	0.5
Tigerair	98	97	70	72.2	62	63.9	1	1.0
Virgin Australia	369	360	317	88.1	288	80.0	9	2.4
All Airlines	1 015	1 001	843	84.2	788	78.7	14	1.4
Melbourne-Cairns								
Jetstar	87	87	69	79.3	73	83.9	0	0.0
Qantas	31	31	27	87.1	28	90.3	0	0.0
Tigerair	33	33	29	87.9	29	87.9	0	0.0
Virgin Australia	35	35	32	91.4	30	85.7	0	0.0
All Airlines	186	186	157	84.4	160	86.0	0	0.0
Melbourne-Canberra								
Qantas	180	178	164	92.1	162	91.0	2	1.1
QantasLink	79	77	69	89.6	60	77.9	2	2.5
Virgin Australia	152	151	136	90.1	133	88.1	1	0.7
All Airlines	411	406	369	90.9	355	87.4	5	1.2
Melbourne-Darwin								
Jetstar	30	30	23	76.7	23	76.7	0	0.0
Qantas	27	27	26	96.3	24	88.9	0	0.0
Virgin Australia	31	31	28	90.3	29	93.5	0	0.0
All Airlines	88	88	77	87.5	76	86.4	0	0.0
Melbourne-Gold Coast								
Jetstar	243	243	188	77.4	198	81.5	0	0.0
Tigerair	80	80	69	86.3	60	75.0	0	0.0
Virgin Australia	177	177	165	93.2	158	89.3	0	0.0
All Airlines	500	500	422	84.4	416	83.2	0	0.0
Melbourne-Hobart								
Jetstar	210	210	173	82.4	179	85.2	0	0.0
Qantas	62	62	57	91.9	59	95.2	0	0.0
QantasLink	32	32	24	75.0	25	78.1	0	0.0
Tigerair	34	34	28	82.4	27	79.4	0	0.0
Virgin Australia	145	145	128	88.3	125	86.2	0	0.0
All Airlines	483	483	410	84.9	415	85.9	0	0.0
Melbourne-Launceston								
Jetstar	163	163	144	88.3	145	89.0	0	0.0
QantasLink	124	121	94	77.7	90	74.4	3	2.4
Virgin Australia	123	123	108	87.8	109	88.6	0	0.0
All Airlines	410	407	346	85.0	344	84.5	3	0.7

	<i>Sectors</i>		<i>Departures On Time</i>		<i>Arrivals On Time</i>		<i>Cancellations</i>	
	<i>Sched.</i>	<i>Flown</i>	<i>No.</i>	<i>%</i>	<i>No.</i>	<i>%</i>	<i>No.</i>	<i>%</i>
Melbourne-Mildura								
QantasLink	89	89	83	93.3	80	89.9	0	0.0
Regional Express	61	61	61	100.0	57	93.4	0	0.0
Virgin Australia	31	31	30	96.8	28	90.3	0	0.0
All Airlines	181	181	174	96.1	165	91.2	0	0.0
Melbourne-Newcastle								
Jetstar	108	107	93	86.9	93	86.9	1	0.9
Virgin Australia	31	31	30	96.8	28	90.3	0	0.0
All Airlines	139	138	123	89.1	121	87.7	1	0.7
Melbourne-Perth								
Jetstar	81	80	69	86.3	67	83.8	1	1.2
Qantas	228	228	200	87.7	176	77.2	0	0.0
Tigerair	60	60	53	88.3	54	90.0	0	0.0
Virgin Australia	141	141	119	84.4	119	84.4	0	0.0
All Airlines	510	509	441	86.6	416	81.7	1	0.2
Melbourne-Sunshine Coast								
Jetstar	73	71	64	90.1	65	91.5	2	2.7
Tigerair	30	30	24	80.0	22	73.3	0	0.0
Virgin Australia	31	31	28	90.3	26	83.9	0	0.0
All Airlines	134	132	116	87.9	113	85.6	2	1.5
Melbourne-Sydney								
Jetstar	334	323	272	84.2	284	87.9	11	3.3
Qantas	755	746	690	92.5	680	91.2	9	1.2
Tigerair	227	227	183	80.6	201	88.5	0	0.0
Virgin Australia	691	681	640	94.0	639	93.8	10	1.4
All Airlines	2 007	1 977	1 785	90.3	1 804	91.2	30	1.5
Mildura-Melbourne								
QantasLink	89	89	82	92.1	83	93.3	0	0.0
Regional Express	61	61	61	100.0	60	98.4	0	0.0
Virgin Australia	31	31	27	87.1	28	90.3	0	0.0
All Airlines	181	181	170	93.9	171	94.5	0	0.0
Moranbah-Brisbane								
QantasLink	144	128	116	90.6	110	85.9	16	11.1
Virgin Australia Regional Airlines	75	70	63	90.0	54	77.1	5	6.7
All Airlines	219	198	179	90.4	164	82.8	21	9.6
Mount Isa-Brisbane								
Qantas	57	56	54	96.4	52	92.9	1	1.8
Virgin Australia	22	22	21	95.5	21	95.5	0	0.0
All Airlines	79	78	75	96.2	73	93.6	1	1.3
Newcastle-Brisbane								
Jetstar	117	115	95	82.6	97	84.3	2	1.7
QantasLink	71	67	35	52.2	33	49.3	4	5.6
Virgin Australia	76	76	66	86.8	62	81.6	0	0.0
All Airlines	264	258	196	76.0	192	74.4	6	2.3
Newcastle-Melbourne								
Jetstar	109	109	90	82.6	87	79.8	0	0.0
Virgin Australia	31	31	27	87.1	23	74.2	0	0.0
All Airlines	140	140	117	83.6	110	78.6	0	0.0
Newman-Perth								
Qantas	133	128	117	91.4	120	93.8	5	3.8
QantasLink	33	33	32	97.0	32	97.0	0	0.0
Virgin Australia	41	40	37	92.5	38	95.0	1	2.4
Virgin Australia Regional Airlines	9	8	7	87.5	7	87.5	1	11.1
All Airlines	216	209	193	92.3	197	94.3	7	3.2

	<i>Sectors</i>		<i>Departures On Time</i>		<i>Arrivals On Time</i>		<i>Cancellations</i>	
	<i>Sched.</i>	<i>Flown</i>	<i>No.</i>	<i>%</i>	<i>No.</i>	<i>%</i>	<i>No.</i>	<i>%</i>
Perth-Adelaide								
Jetstar	43	41	37	90.2	38	92.7	2	4.7
Qantas	119	119	108	90.8	106	89.1	0	0.0
Virgin Australia	67	67	67	100.0	67	100.0	0	0.0
All Airlines	229	227	212	93.4	211	93.0	2	0.9
Perth-Brisbane								
Jetstar	31	30	24	80.0	23	76.7	1	3.2
Qantas	132	131	123	93.9	114	87.0	1	0.8
Virgin Australia	91	91	86	94.5	74	81.3	0	0.0
All Airlines	254	252	233	92.5	211	83.7	2	0.8
Perth-Broome								
Qantas	30	30	29	96.7	28	93.3	0	0.0
QantasLink	58	58	56	96.6	54	93.1	0	0.0
Virgin Australia	31	30	27	90.0	27	90.0	1	3.2
Virgin Australia Regional Airlines	10	10	8	80.0	6	60.0	0	0.0
All Airlines	129	128	120	93.8	115	89.8	1	0.8
Perth-Darwin								
Qantas	31	31	29	93.5	26	83.9	0	0.0
Virgin Australia	27	27	21	77.8	22	81.5	0	0.0
All Airlines	58	58	50	86.2	48	82.8	0	0.0
Perth-Geraldton								
QantasLink	62	62	57	91.9	56	90.3	0	0.0
Virgin Australia Regional Airlines	94	94	84	89.4	83	88.3	0	0.0
All Airlines	156	156	141	90.4	139	89.1	0	0.0
Perth-Kalgoorlie								
Qantas	64	63	62	98.4	62	98.4	1	1.6
QantasLink	25	24	21	87.5	21	87.5	1	4.0
Virgin Australia	44	44	42	95.5	42	95.5	0	0.0
Virgin Australia Regional Airlines	13	13	12	92.3	11	84.6	0	0.0
All Airlines	146	144	137	95.1	136	94.4	2	1.4
Perth-Karratha								
Qantas	192	182	176	96.7	178	97.8	10	5.2
QantasLink	60	56	54	96.4	54	96.4	4	6.7
Virgin Australia	90	87	85	97.7	85	97.7	3	3.3
All Airlines	342	325	315	96.9	317	97.5	17	5.0
Perth-Melbourne								
Jetstar	83	83	70	84.3	74	89.2	0	0.0
Qantas	228	228	198	86.8	201	88.2	0	0.0
Tigerair	60	59	54	91.5	49	83.1	1	1.7
Virgin Australia	141	141	128	90.8	130	92.2	0	0.0
All Airlines	512	511	450	88.1	454	88.8	1	0.2
Perth-Newman								
Qantas	133	129	120	93.0	121	93.8	4	3.0
QantasLink	33	33	33	100.0	32	97.0	0	0.0
Virgin Australia	41	40	38	95.0	37	92.5	1	2.4
Virgin Australia Regional Airlines	9	8	7	87.5	7	87.5	1	11.1
All Airlines	216	210	198	94.3	197	93.8	6	2.8
Perth-Port Hedland								
Qantas	132	131	127	96.9	127	96.9	1	0.8
QantasLink	43	42	38	90.5	38	90.5	1	2.3
Virgin Australia	53	53	50	94.3	51	96.2	0	0.0
All Airlines	228	226	215	95.1	216	95.6	2	0.9

	<i>Sectors</i>		<i>Departures On Time</i>		<i>Arrivals On Time</i>		<i>Cancellations</i>	
	<i>Sched.</i>	<i>Flown</i>	<i>No.</i>	<i>%</i>	<i>No.</i>	<i>%</i>	<i>No.</i>	<i>%</i>
Perth-Sydney								
Jetstar	48	44	38	86.4	36	81.8	4	8.3
Qantas	208	208	190	91.3	189	90.9	0	0.0
Tigerair	26	26	23	88.5	26	100.0	0	0.0
Virgin Australia	117	117	109	93.2	107	91.5	0	0.0
All Airlines	399	395	360	91.1	358	90.6	4	1.0
Port Hedland-Perth								
Qantas	132	131	113	86.3	114	87.0	1	0.8
QantasLink	43	42	38	90.5	38	90.5	1	2.3
Virgin Australia	53	53	53	100.0	52	98.1	0	0.0
All Airlines	228	226	204	90.3	204	90.3	2	0.9
Port Lincoln-Adelaide								
QantasLink	83	83	78	94.0	76	91.6	0	0.0
Regional Express	152	152	141	92.8	136	89.5	0	0.0
All Airlines	235	235	219	93.2	212	90.2	0	0.0
Port Macquarie-Sydney								
QantasLink	139	139	115	82.7	96	69.1	0	0.0
Virgin Australia Regional Airlines	58	58	49	84.5	48	82.8	0	0.0
All Airlines	197	197	164	83.2	144	73.1	0	0.0
Proserpine-Brisbane								
Jetstar	31	30	24	80.0	25	83.3	1	3.2
Virgin Australia	53	48	40	83.3	34	70.8	5	9.4
All Airlines	84	78	64	82.1	59	75.6	6	7.1
Rockhampton-Brisbane								
QantasLink	180	174	146	83.9	140	80.5	6	3.3
Virgin Australia	92	90	79	87.8	74	82.2	2	2.2
Virgin Australia Regional Airlines	104	103	93	90.3	90	87.4	1	1.0
All Airlines	376	367	318	86.6	304	82.8	9	2.4
Sunshine Coast-Melbourne								
Jetstar	75	72	63	87.5	63	87.5	3	4.0
Tigerair	31	31	20	64.5	22	71.0	0	0.0
Virgin Australia	31	31	23	74.2	24	77.4	0	0.0
All Airlines	137	134	106	79.1	109	81.3	3	2.2
Sunshine Coast-Sydney								
Jetstar	120	118	108	91.5	108	91.5	2	1.7
Virgin Australia	35	35	30	85.7	31	88.6	0	0.0
All Airlines	155	153	138	90.2	139	90.8	2	1.3
Sydney-Adelaide								
Jetstar	120	118	96	81.4	99	83.9	2	1.7
Qantas	265	265	249	94.0	256	96.6	0	0.0
Virgin Australia	166	166	150	90.4	154	92.8	0	0.0
All Airlines	551	549	495	90.2	509	92.7	2	0.4
Sydney-Albury								
QantasLink	105	105	87	82.9	83	79.0	0	0.0
Regional Express	63	63	62	98.4	62	98.4	0	0.0
Virgin Australia Regional Airlines	58	58	53	91.4	55	94.8	0	0.0
All Airlines	226	226	202	89.4	200	88.5	0	0.0
Sydney-Alice Springs								
Qantas	31	31	30	96.8	31	100.0	0	0.0
Tigerair	18	18	17	94.4	18	100.0	0	0.0
All Airlines	49	49	47	95.9	49	100.0	0	0.0

	<i>Sectors</i>		<i>Departures On Time</i>		<i>Arrivals On Time</i>		<i>Cancellations</i>	
	<i>Sched.</i>	<i>Flown</i>	<i>No.</i>	<i>%</i>	<i>No.</i>	<i>%</i>	<i>No.</i>	<i>%</i>
Sydney-Ayers Rock								
Jetstar	18	18	17	94.4	18	100.0	0	0.0
Virgin Australia	31	31	29	93.5	30	96.8	0	0.0
All Airlines	49	49	46	93.9	48	98.0	0	0.0
Sydney-Ballina								
Jetstar	88	88	77	87.5	77	87.5	0	0.0
Regional Express	20	20	20	100.0	19	95.0	0	0.0
Virgin Australia	31	30	29	96.7	29	96.7	1	3.2
All Airlines	139	138	126	91.3	125	90.6	1	0.7
Sydney-Brisbane								
Jetstar	176	164	132	80.5	136	82.9	12	6.8
Qantas	577	563	505	89.7	493	87.6	14	2.4
Tigerair	75	74	64	86.5	59	79.7	1	1.3
Virgin Australia	518	504	463	91.9	445	88.3	14	2.7
All Airlines	1 346	1 305	1 164	89.2	1 133	86.8	41	3.0
Sydney-Cairns								
Jetstar	87	87	66	75.9	78	89.7	0	0.0
Qantas	64	64	61	95.3	62	96.9	0	0.0
Tigerair	31	31	29	93.5	31	100.0	0	0.0
Virgin Australia	92	92	83	90.2	87	94.6	0	0.0
All Airlines	274	274	239	87.2	258	94.2	0	0.0
Sydney-Canberra								
Qantas	37	37	35	94.6	35	94.6	0	0.0
QantasLink	403	381	339	89.0	342	89.8	22	5.5
Virgin Australia	35	35	35	100.0	35	100.0	0	0.0
Virgin Australia Regional Airlines	179	178	169	94.9	172	96.6	1	0.6
All Airlines	654	631	578	91.6	584	92.6	23	3.5
Sydney-Coffs Harbour								
QantasLink	151	151	139	92.1	125	82.8	0	0.0
Tigerair	31	31	26	83.9	26	83.9	0	0.0
Virgin Australia	62	62	59	95.2	59	95.2	0	0.0
All Airlines	244	244	224	91.8	210	86.1	0	0.0
Sydney-Darwin								
Jetstar	30	30	28	93.3	28	93.3	0	0.0
Qantas	45	45	42	93.3	42	93.3	0	0.0
Virgin Australia	31	31	31	100.0	31	100.0	0	0.0
All Airlines	106	106	101	95.3	101	95.3	0	0.0
Sydney-Dubbo								
QantasLink	108	108	96	88.9	87	80.6	0	0.0
Regional Express	83	83	80	96.4	80	96.4	0	0.0
All Airlines	191	191	176	92.1	167	87.4	0	0.0
Sydney-Gold Coast								
Jetstar	402	393	347	88.3	349	88.8	9	2.2
Qantas	93	93	88	94.6	91	97.8	0	0.0
Tigerair	70	70	60	85.7	62	88.6	0	0.0
Virgin Australia	325	323	293	90.7	293	90.7	2	0.6
All Airlines	890	879	788	89.6	795	90.4	11	1.2
Sydney-Hamilton Island								
Jetstar	30	28	24	85.7	25	89.3	2	6.7
Virgin Australia	31	29	25	86.2	22	75.9	2	6.5
All Airlines	61	57	49	86.0	47	82.5	4	6.6

	<i>Sectors</i>		<i>Departures On Time</i>		<i>Arrivals On Time</i>		<i>Cancellations</i>	
	<i>Sched.</i>	<i>Flown</i>	<i>No.</i>	<i>%</i>	<i>No.</i>	<i>%</i>	<i>No.</i>	<i>%</i>
Sydney-Hobart								
Jetstar	117	117	99	84.6	103	88.0	0	0.0
Qantas	31	31	29	93.5	31	100.0	0	0.0
Virgin Australia	62	62	59	95.2	58	93.5	0	0.0
All Airlines	210	210	187	89.0	192	91.4	0	0.0
Sydney-Launceston								
Jetstar	89	89	72	80.9	76	85.4	0	0.0
Virgin Australia	31	31	30	96.8	31	100.0	0	0.0
All Airlines	120	120	102	85.0	107	89.2	0	0.0
Sydney-Melbourne								
Jetstar	337	327	285	87.2	293	89.6	10	3.0
Qantas	758	747	693	92.8	692	92.6	11	1.5
Tigerair	227	226	194	85.8	183	81.0	1	0.4
Virgin Australia	693	683	629	92.1	628	91.9	10	1.4
All Airlines	2 015	1 983	1 801	90.8	1 796	90.6	32	1.6
Sydney-Perth								
Jetstar	48	45	35	77.8	40	88.9	3	6.3
Qantas	212	212	186	87.7	198	93.4	0	0.0
Tigerair	27	27	25	92.6	25	92.6	0	0.0
Virgin Australia	117	117	100	85.5	103	88.0	0	0.0
All Airlines	404	401	346	86.3	366	91.3	3	0.7
Sydney-Port Macquarie								
QantasLink	138	138	122	88.4	113	81.9	0	0.0
Virgin Australia Regional Airlines	58	58	55	94.8	54	93.1	0	0.0
All Airlines	196	196	177	90.3	167	85.2	0	0.0
Sydney-Sunshine Coast								
Jetstar	121	121	112	92.6	113	93.4	0	0.0
Virgin Australia	35	35	33	94.3	34	97.1	0	0.0
All Airlines	156	156	145	92.9	147	94.2	0	0.0
Sydney-Townsville								
Jetstar	28	28	27	96.4	27	96.4	0	0.0
Virgin Australia	31	31	31	100.0	31	100.0	0	0.0
All Airlines	59	59	58	98.3	58	98.3	0	0.0
Sydney-Wagga Wagga								
QantasLink	103	103	90	87.4	82	79.6	0	0.0
Regional Express	64	64	61	95.3	60	93.8	0	0.0
All Airlines	167	167	151	90.4	142	85.0	0	0.0
Townsville-Brisbane								
Jetstar	31	31	23	74.2	24	77.4	0	0.0
Qantas	149	147	138	93.9	135	91.8	2	1.3
Virgin Australia	159	157	133	84.7	130	82.8	2	1.3
All Airlines	339	335	294	87.8	289	86.3	4	1.2
Townsville-Cairns								
QantasLink	171	160	126	78.8	129	80.6	11	6.4
Virgin Australia Regional Airlines	15	15	15	100.0	15	100.0	0	0.0
All Airlines	186	175	141	80.6	144	82.3	11	5.9
Townsville-Sydney								
Jetstar	30	30	26	86.7	27	90.0	0	0.0
Virgin Australia	31	31	28	90.3	28	90.3	0	0.0
All Airlines	61	61	54	88.5	55	90.2	0	0.0

	<i>Sectors</i>		<i>Departures On Time</i>		<i>Arrivals On Time</i>		<i>Cancellations</i>	
	<i>Sched.</i>	<i>Flown</i>	<i>No.</i>	<i>%</i>	<i>No.</i>	<i>%</i>	<i>No.</i>	<i>%</i>
Wagga Wagga-Sydney								
QantasLink	103	103	85	82.5	81	78.6	0	0.0
Regional Express	64	64	56	87.5	58	90.6	0	0.0
All Airlines	167	167	141	84.4	139	83.2	0	0.0

Airports

On time performance is reported for all routes where the passenger load averages over 8000 passengers per month, and where two or more airlines operate in competition. The following data reports by airport against flights operated on those routes only.

Airport	Departures			Arrivals		
	Sectors	On Time		Sectors	On Time	
	Flown	No.	%	Flown	No.	%
Adelaide						
Jetstar	326	280	85.9	331	297	89.7
Qantas	810	743	91.7	814	752	92.4
QantasLink	122	108	88.5	122	107	87.7
Regional Express	155	148	95.5	152	136	89.5
Tigerair	70	56	80.0	70	53	75.7
Virgin Australia	669	631	94.3	672	615	91.5
All Airlines	2 152	1 966	91.4	2 161	1 960	90.7
Relates to services to and from Brisbane, Canberra, Gold Coast, Melbourne, Perth, Port Lincoln and Sydney.						
Albury						
QantasLink	104	89	85.6	105	83	79.0
Regional Express	63	59	93.7	63	62	98.4
Virgin Australia Regional Airlines	58	56	96.6	58	55	94.8
All Airlines	225	204	90.7	226	200	88.5
Relates to services to and from Sydney only.						
Alice Springs						
Qantas	62	54	87.1	62	59	95.2
Tigerair	36	32	88.9	36	32	88.9
All Airlines	98	86	87.8	98	91	92.9
Relates to services to and from Melbourne and Sydney.						
Ayers Rock						
Jetstar	18	17	94.4	18	18	100.0
Virgin Australia	31	30	96.8	31	30	96.8
All Airlines	49	47	95.9	49	48	98.0
Relates to services to and from Sydney only.						
Ballina						
Jetstar	88	73	83.0	88	77	87.5
Regional Express	15	12	80.0	20	19	95.0
Virgin Australia	31	30	96.8	30	29	96.7
All Airlines	134	115	85.8	138	125	90.6
Relates to services to and from Sydney only.						
Brisbane						
Jetstar	772	638	82.6	768	627	81.6
Qantas	1 656	1 468	88.6	1 623	1 414	87.1
QantasLink	1 113	985	88.5	1 108	874	78.9
Tigerair	170	121	71.2	171	121	70.8
Virgin Australia	1 951	1 743	89.3	1 948	1 654	84.9
Virgin Australia Regional Airlines	449	402	89.5	449	386	86.0
All Airlines	6 111	5 357	87.7	6 067	5 076	83.7
Relates to services to and from Adelaide, Bundaberg, Cairns, Canberra, Darwin, Emerald, Gladstone, Hamilton Island, Hobart, Mackay, Melbourne, Moranbah, Mount Isa, Newcastle, Perth, Proserpine, Rockhampton, Sydney and Townsville.						

Airport	Departures			Arrivals		
	Sectors Flown	On Time		Sectors Flown	On Time	
		No.	%		No.	%
Broome						
Qantas	30	29	96.7	30	28	93.3
QantasLink	57	53	93.0	58	54	93.1
Virgin Australia	30	25	83.3	30	27	90.0
Virgin Australia Regional Airlines	9	4	44.4	10	6	60.0
All Airlines	126	111	88.1	128	115	89.8
Relates to services to and from Perth only.						
Bundaberg						
QantasLink	116	97	83.6	116	99	85.3
Virgin Australia Regional Airlines	31	26	83.9	31	29	93.5
All Airlines	147	123	83.7	147	128	87.1
Relates to services to and from Brisbane only.						
Cairns						
Jetstar	306	264	86.3	302	266	88.1
Qantas	214	194	90.7	214	203	94.9
QantasLink	165	148	89.7	164	132	80.5
Tigerair	64	56	87.5	64	60	93.8
Virgin Australia	291	269	92.4	291	262	90.0
Virgin Australia Regional Airlines	15	15	100.0	15	15	100.0
All Airlines	1 055	946	89.7	1 050	938	89.3
Relates to services to and from Brisbane, Melbourne, Sydney and Townsville.						
Canberra						
Qantas	279	264	94.6	276	253	91.7
QantasLink	587	503	85.7	588	523	88.9
Virgin Australia	308	276	89.6	309	277	89.6
Virgin Australia Regional Airlines	177	170	96.0	178	172	96.6
All Airlines	1 351	1 213	89.8	1 351	1 225	90.7
Relates to services to and from Adelaide, Brisbane, Melbourne and Sydney.						
Coffs Harbour						
QantasLink	151	129	85.4	151	125	82.8
Tigerair	31	26	83.9	31	26	83.9
Virgin Australia	62	59	95.2	62	59	95.2
All Airlines	244	214	87.7	244	210	86.1
Relates to services to and from Sydney only.						
Darwin						
Jetstar	61	42	68.9	60	51	85.0
Qantas	138	128	92.8	139	126	90.6
Virgin Australia	120	114	95.0	120	110	91.7
All Airlines	319	284	89.0	319	287	90.0
Relates to services to and from Brisbane, Melbourne, Perth and Sydney.						
Dubbo						
QantasLink	108	97	89.8	108	87	80.6
Regional Express	87	79	90.8	83	80	96.4
All Airlines	195	176	90.3	191	167	87.4
Relates to services to and from Sydney only.						

Airport	Departures			Arrivals		
	Sectors	On Time		Sectors	On Time	
	Flown	No.	%	Flown	No.	%
Emerald						
QantasLink	168	142	84.5	168	138	82.1
Virgin Australia Regional Airlines	95	89	93.7	96	86	89.6
All Airlines	263	231	87.8	264	224	84.8
Relates to services to and from Brisbane only.						
Geraldton						
QantasLink	62	56	90.3	62	56	90.3
Virgin Australia Regional Airlines	98	89	90.8	94	83	88.3
All Airlines	160	145	90.6	156	139	89.1
Relates to services to and from Perth only.						
Gladstone						
QantasLink	241	197	81.7	218	196	89.9
Virgin Australia Regional Airlines	150	135	90.0	150	132	88.0
All Airlines	391	332	84.9	368	328	89.1
Relates to services to and from Brisbane only.						
Gold Coast						
Jetstar	684	586	85.7	682	590	86.5
Qantas	93	85	91.4	93	91	97.8
Tigerair	150	104	69.3	150	122	81.3
Virgin Australia	532	487	91.5	531	482	90.8
All Airlines	1 459	1 262	86.5	1 456	1 285	88.3
Relates to services to and from Adelaide, Melbourne and Sydney.						
Hamilton Island						
Jetstar	45	40	88.9	44	40	90.9
Virgin Australia	58	51	87.9	58	49	84.5
All Airlines	103	91	88.3	102	89	87.3
Relates to services to and from Brisbane and Sydney.						
Hobart						
Jetstar	359	293	81.6	357	309	86.6
Qantas	94	87	92.6	93	90	96.8
QantasLink	32	31	96.9	32	25	78.1
Tigerair	34	27	79.4	34	27	79.4
Virgin Australia	238	187	78.6	238	204	85.7
All Airlines	757	625	82.6	754	655	86.9
Relates to services to and from Brisbane, Melbourne and Sydney.						
Kalgoorlie						
Qantas	62	59	95.2	63	62	98.4
QantasLink	23	21	91.3	24	21	87.5
Virgin Australia	44	42	95.5	44	42	95.5
Virgin Australia Regional Airlines	11	11	100.0	13	11	84.6
All Airlines	140	133	95.0	144	136	94.4
Relates to services to and from Perth only.						

Airport	Departures			Arrivals		
	Sectors Flown	On Time		Sectors Flown	On Time	
		No.	%		No.	%
Karratha						
Qantas	183	176	96.2	182	178	97.8
QantasLink	55	55	100.0	56	54	96.4
Virgin Australia	87	79	90.8	87	85	97.7
All Airlines	325	310	95.4	325	317	97.5
Relates to services to and from Perth only.						
Launceston						
Jetstar	254	212	83.5	252	221	87.7
QantasLink	121	96	79.3	121	90	74.4
Virgin Australia	154	141	91.6	154	140	90.9
All Airlines	529	449	84.9	527	451	85.6
Relates to services to and from Melbourne and Sydney.						
Mackay						
Jetstar	75	57	76.0	75	62	82.7
QantasLink	102	85	83.3	102	92	90.2
Virgin Australia	136	122	89.7	136	118	86.8
All Airlines	313	264	84.3	313	272	86.9
Relates to services to and from Brisbane only.						
Melbourne						
Jetstar	1 527	1 263	82.7	1 543	1 301	84.3
Qantas	2 020	1 840	91.1	2 022	1 834	90.7
QantasLink	336	284	84.5	336	281	83.6
Regional Express	61	61	100.0	61	60	98.4
Tigerair	649	534	82.3	647	497	76.8
Virgin Australia	2 203	2 011	91.3	2 202	1 964	89.2
All Airlines	6 796	5 993	88.2	6 811	5 937	87.2
Relates to services to and from Adelaide, Alice Springs, Brisbane, Cairns, Canberra, Darwin, Gold Coast, Hobart, Launceston, Mildura, Newcastle, Perth, Sunshine Coast and Sydney.						
Mildura						
QantasLink	89	82	92.1	89	80	89.9
Regional Express	61	61	100.0	61	57	93.4
Virgin Australia	31	27	87.1	31	28	90.3
All Airlines	181	170	93.9	181	165	91.2
Relates to services to and from Melbourne only.						
Moranbah						
QantasLink	128	116	90.6	131	127	96.9
Virgin Australia Regional Airlines	70	63	90.0	70	63	90.0
All Airlines	198	179	90.4	201	190	94.5
Relates to services to and from Brisbane only.						
Mount Isa						
Qantas	56	54	96.4	57	57	100.0
Virgin Australia	22	21	95.5	22	21	95.5
All Airlines	78	75	96.2	79	78	98.7
Relates to services to and from Brisbane only.						

Airport	Departures			Arrivals		
	Sectors Flown	On Time		Sectors Flown	On Time	
		No.	%		No.	%
Newcastle						
Jetstar	224	185	82.6	224	194	86.6
QantasLink	67	35	52.2	68	36	52.9
Virgin Australia	107	93	86.9	107	98	91.6
All Airlines	398	313	78.6	399	328	82.2
Relates to services to and from Brisbane and Melbourne.						
Newman						
Qantas	128	117	91.4	129	121	93.8
QantasLink	33	32	97.0	33	32	97.0
Virgin Australia	40	37	92.5	40	37	92.5
Virgin Australia Regional Airlines	8	7	87.5	8	7	87.5
All Airlines	209	193	92.3	210	197	93.8
Relates to services to and from Perth only.						
Perth						
Jetstar	198	169	85.4	199	166	83.4
Qantas	1 252	1 162	92.8	1 251	1 133	90.6
QantasLink	275	259	94.2	272	256	94.1
Tigerair	85	77	90.6	87	79	90.8
Virgin Australia	697	653	93.7	696	623	89.5
Virgin Australia Regional Airlines	125	111	88.8	126	111	88.1
All Airlines	2 632	2 431	92.4	2 631	2 368	90.0
Relates to services to and from Adelaide, Brisbane, Broome, Darwin, Geraldton, Kalgoorlie, Karratha, Melbourne, Newman, Port Hedland and Sydney.						
Port Hedland						
Qantas	131	113	86.3	131	127	96.9
QantasLink	42	38	90.5	42	38	90.5
Virgin Australia	53	53	100.0	53	51	96.2
All Airlines	226	204	90.3	226	216	95.6
Relates to services to and from Perth only.						
Port Lincoln						
QantasLink	83	78	94.0	83	73	88.0
Regional Express	152	141	92.8	155	144	92.9
All Airlines	235	219	93.2	238	217	91.2
Relates to services to and from Adelaide only.						
Port Macquarie						
QantasLink	139	115	82.7	138	113	81.9
Virgin Australia Regional Airlines	58	49	84.5	58	54	93.1
All Airlines	197	164	83.2	196	167	85.2
Relates to services to and from Sydney only.						
Proserpine						
Jetstar	30	24	80.0	30	26	86.7
Virgin Australia	48	40	83.3	49	44	89.8
All Airlines	78	64	82.1	79	70	88.6
Relates to services to and from Brisbane only.						

Airport	Departures			Arrivals		
	Sectors	On Time		Sectors	On Time	
	Flown	No.	%	Flown	No.	%
Rockhampton						
QantasLink	174	146	83.9	198	168	84.8
Virgin Australia	90	79	87.8	91	84	92.3
Virgin Australia Regional Airlines	103	93	90.3	102	87	85.3
All Airlines	367	318	86.6	391	339	86.7
Relates to services to and from Brisbane only.						
Sunshine Coast						
Jetstar	190	171	90.0	192	178	92.7
Tigerair	31	20	64.5	30	22	73.3
Virgin Australia	66	53	80.3	66	60	90.9
All Airlines	287	244	85.0	288	260	90.3
Relates to services to and from Melbourne and Sydney.						
Sydney						
Jetstar	1 653	1 417	85.7	1 648	1 448	87.9
Qantas	2 088	1 918	91.9	2 117	1 955	92.3
QantasLink	986	873	88.5	985	832	84.5
Regional Express	230	223	97.0	229	210	91.7
Tigerair	477	415	87.0	477	412	86.4
Virgin Australia	2 262	2 079	91.9	2 263	2 104	93.0
Virgin Australia Regional Airlines	294	277	94.2	293	270	92.2
All Airlines	7 990	7 202	90.1	8 012	7 231	90.3
Relates to services to and from Adelaide, Albury, Alice Springs, Ayers Rock, Ballina, Brisbane, Cairns, Canberra, Coffs Harbour, Darwin, Dubbo, Gold Coast, Hamilton Island, Hobart, Launceston, Melbourne, Perth, Port Macquarie, Sunshine Coast, Townsville and Wagga Wagga.						
Townsville						
Jetstar	61	49	80.3	58	51	87.9
Qantas	147	138	93.9	147	134	91.2
QantasLink	160	126	78.8	161	145	90.1
Virgin Australia	188	161	85.6	188	167	88.8
Virgin Australia Regional Airlines	15	15	100.0	15	15	100.0
All Airlines	571	489	85.6	569	512	90.0
Relates to services to and from Brisbane, Cairns and Sydney.						
Wagga Wagga						
QantasLink	103	85	82.5	103	82	79.6
Regional Express	64	56	87.5	64	60	93.8
All Airlines	167	141	84.4	167	142	85.0
Relates to services to and from Sydney only.						

Definitions

On time departure A flight departure is counted as "on time" if it departs the gate before 15 minutes after the scheduled departure time shown in the carriers' schedule.

On time arrival A flight arrival is counted as "on time" if it arrived at the gate before 15 minutes after the scheduled arrival time shown in the carriers' schedule.
Neither diverted nor cancelled flights count as on time.

Cancellation A flight removed from service within 7 days of scheduled departure is regarded as a cancellation.

On time departure percentage The percentage of on time departures is measured against the number of departures *operated* on any particular sector.

On time arrival percentage The percentage of on time arrivals is measured against the number of arrivals *operated* on any particular sector.

Cancellation percentage The percentage of cancellations is measured against the number of services *scheduled* on any particular sector.
