



Australian Government

Department of Infrastructure and Transport

Bureau of Infrastructure, Transport and Regional Economics

STATISTICAL REPORT



Aviation

Domestic airline on time performance
January 2013

© Commonwealth of Australia 2013

ISSN: 1832-0759

Ownership of intellectual property rights in this publication

Unless otherwise noted, copyright (and any other intellectual property rights, if any) in this publication is owned by the Commonwealth of Australia (referred to below as the Commonwealth).

Disclaimer

The material contained in this publication is made available on the understanding that the Commonwealth is not providing professional advice, and that users exercise their own skill and care with respect to its use, and seek independent advice if necessary.

The Commonwealth makes no representations or warranties as to the contents or accuracy of the information contained in this publication. To the extent permitted by law, the Commonwealth disclaims liability to any person or organisation in respect of anything done, or omitted to be done, in reliance upon information contained in this publication.

Creative Commons licence

With the exception of (a) the Coat of Arms; and (b) the Department of Infrastructure's photos and graphics, copyright in this publication is licensed under a Creative Commons Attribution 3.0 Australia Licence.

Creative Commons Attribution 3.0 Australia Licence is a standard form licence agreement that allows you to copy, communicate and adapt this publication provided that you attribute the work to the Commonwealth and abide by the other licence terms. A summary of the licence terms is available from <http://creativecommons.org/licenses/by/3.0/au/deed.en>. The full licence terms are available from <http://creativecommons.org/licenses/by/3.0/au/legalcode>.

Use of the Coat of Arms

The Department of the Prime Minister and Cabinet sets the terms under which the Coat of Arms is used. Please refer to the Department's Commonwealth Coat of Arms and Government branding web page <http://www.dpmmc.gov.au/guidelines/index.cfm#brand> and, in particular, the Guidelines on the use of the Commonwealth Coat of Arms publication.

An appropriate citation for this report is:

Bureau of Infrastructure, Transport and Regional Economics (BITRE), 2013, Domestic airline on time performance, Statistical Report, BITRE, Canberra ACT.

Contact us

This publication is available in PDF format. All other rights are reserved, including in relation to any Departmental logos or trade marks which may exist. For enquiries regarding the licence and any use of this publication, please contact:

Bureau of Infrastructure, Transport and Regional Economics (BITRE)
Department of Infrastructure and Transport
GPO Box 501, Canberra ACT 2601, Australia
Telephone: (international) +61 2 6274 7210
Fax: (international) +61 2 6274 6855
Email: bitre@infrastructure.gov.au
Website: www.bitre.gov.au

Inquiries

Should you require additional information about the statistics contained in this publication:

Telephone (02) 6274 7790 or Facsimile (02) 6274 7727

Electronic mail: AVSTATS@infrastructure.gov.au

Web site: <http://www.bitre.gov.au/statistics/aviation/otphome.aspx>

Foreword

The Bureau of Infrastructure, Transport and Regional Economics (BITRE) monitors the punctuality and reliability of major domestic airlines operating between Australian airports. The purpose of this is to allow for evaluation of overall industry and individual airline performance, so that consumers of air travel can make informed decisions.

The following domestic airlines report this information monthly to the BITRE: Jetstar, Qantas, QantasLink, Regional Express, Skywest Airlines, Tiger Airways, Virgin Australia and Virgin Australia – ATR/F100 Operations. Data has been gathered since November 2003, although some airlines commenced reporting at a later date, including Jetstar which first reported in May 2004, MacAir in July 2005 and Tiger Airways in April 2008. MacAir ceased operations in February 2009 and data was not received for December 2008 onwards. Virgin Blue was rebranded as Virgin Australia in May 2011 and time series data in Microsoft Excel spreadsheet format on the BITRE website has been revised to reflect this. Services operated by Skywest on behalf of Virgin Australia using ATR/F100 aircraft commenced in November 2011 and are shown separately as Virgin Australia – ATR/F100 Operations.

Information presented in this report is for Australian domestic routes for which the passenger load averaged 8 000 or more passengers per month over the previous six months and where two or more airlines operated in competition on those routes. There were 58 routes that met this definition in January 2013. Over time, routes which meet these criteria change as airline networks and traffic levels vary.

Participating airlines report their overall monthly network performance where this is possible.

Total industry figures encompass all services operated by reporting airlines only. These airlines collectively carried over 95 per cent of total domestic passengers (regular public transport only) in 2011.

The method of capturing on time performance varies between airlines utilising different recording systems. Jetstar and Qantas jet aircraft use Aircraft Communication Addressing and Reporting System (ACARS) to electronically measure on time performance. Regional Express, Skywest, Tiger Airways, Virgin Australia, Virgin Australia – ATR/F100 Operations and the Qantas non-jet fleet record on time performance manually using records from pilots, gate agents and/or ground crews.

After initial data is collected, aggregate reports are audited internally by participating airlines prior to publication.

Reports and detailed time series data in Microsoft Excel spreadsheet format are available from the BITRE website at: <http://www.bitre.gov.au/statistics/aviation/otphome.aspx>.

Contents

	Page
Industry performance	1
Individual routes	9
Airports	20
Definitions	26

Industry performance

For January 2013, on time performance over all routes operated by participating airlines (Jetstar, Qantas, QantasLink, Regional Express, Skywest Airlines, Tiger Airways, Virgin Australia and Virgin Australia – ATR/F100 Operations) averaged 79.2 per cent for on time departures, and 78.3 per cent for on time arrivals. Cancellations represented 2.4 per cent of all scheduled flights. The equivalent figures for January 2012 were 82.0 per cent for departures, 80.7 per cent for arrivals and 1.4 per cent for cancellations.

This month's figures were below the long term average performance for all routes since the collection began (83.8 per cent for departures and 82.4 per cent for arrivals). The rate of cancellations was also worse than the long term average of 1.3 per cent.

Of the major domestic airlines, Qantas achieved the highest level of on time departures for January 2013 at 86.5 per cent, followed by Tiger Airways at 82.3 per cent, Virgin Australia at 74.2 per cent and Jetstar at 72.1 per cent. The regional airlines were led by Regional Express at 87.6 per cent, followed by QantasLink at 79.7 per cent, Virgin Australia – ATR/F100 Operations at 76.3 per cent and Skywest at 73.4 per cent.

Qantas achieved the highest on time arrivals among the major domestic airlines at 86.1 per cent, followed by Tiger Airways at 80.6 per cent, Jetstar at 74.8 per cent and Virgin Australia at 74.1 per cent. Regional Express was the best performing regional airline for on time arrivals at 84.6 per cent, followed by QantasLink at 75.8 per cent, Virgin Australia – ATR/F100 Operations at 75.3 per cent and Skywest at 71.1 per cent.

Virgin Australia – ATR/F100 Operations had the highest percentage of cancellations (4.5 per cent) during the month, followed by QantasLink (3.5 per cent), Virgin Australia (2.5 per cent) and Jetstar (2.2 per cent). Skywest had the lowest percentage of cancellations at 0.3 per cent.

Of the 58 routes which met the criteria for on time performance reporting in January 2013, the Mildura-Melbourne route had the highest percentage of on time departures (93.9 per cent) and the Brisbane-Hamilton Island route had the lowest percentage of on time departures (56.3 per cent). The Darwin-Perth route had the highest percentage of on time arrivals (94.7 per cent) and the Proserpine-Brisbane route had the lowest percentage of on time arrivals (50.0 per cent).

Cancellations were highest on the Gladstone-Brisbane route at 8.9 per cent, followed by Brisbane-Gladstone at 8.3 per cent, Brisbane-Rockhampton at 7.6 per cent, Rockhampton-Brisbane at 7.5 per cent and Gold Coast-Adelaide at 6.6 per cent.

Mildura Airport recorded the highest percentage of on time departures (93.9 per cent) and Ayers Rock Airport recorded the highest percentage of on time arrivals (91.9 per cent). Proserpine Airport recorded the lowest percentage of on time departures (60.7 per cent) and the lowest percentage of on time arrivals (66.3 per cent). These figures only refer to reported routes and do not cover all flights at these airports.

Table 1 On time performance for January 2013 — Total Industry

	<i>Sectors</i>		<i>Departures On Time</i>		<i>Arrivals On Time</i>		<i>Cancellations</i>	
	<i>Scheduled</i>	<i>Flown</i>	<i>No.</i>	<i>%</i>	<i>No.</i>	<i>%</i>	<i>No.</i>	<i>%</i>
Jetstar	7 369	7 208	5 198	72.1	5 392	74.8	161	2.2
Qantas	9 632	9 459	8 185	86.5	8 140	86.1	173	1.8
QantasLink	9 288	8 965	7 145	79.7	6 791	75.8	323	3.5
Regional Express	4 284	4 251	3 722	87.6	3 597	84.6	33	0.8
Skywest	739	737	541	73.4	524	71.1	2	0.3
Tiger Airways	1 796	1 764	1 451	82.3	1 422	80.6	32	1.8
Virgin Australia	10 990	10 716	7 950	74.2	7 937	74.1	274	2.5
Virgin Australia - ATR/F100 Operations	1 802	1 721	1 313	76.3	1 296	75.3	81	4.5
All Airlines	45 900	44 821	35 505	79.2	35 099	78.3	1 079	2.4

Total airline network data (including routes not shown in this report).

Table 2 Top ten routes for on time performance for January 2013 (participating airlines only)

<i>Departures</i>		<i>Arrivals</i>	
<i>Route</i>	<i>On Time (%)</i>	<i>Route</i>	<i>On Time</i>
Mildura-Melbourne	93.9	Darwin-Perth	94.7
Adelaide-Port Lincoln	92.1	Mildura-Melbourne	92.2
Ayers Rock-Sydney	90.3	Sydney-Ayers Rock	91.9
Melbourne-Canberra	90.1	Melbourne-Cairns	90.6
Melbourne-Mildura	90.0	Ayers Rock-Sydney	90.3
Port Lincoln-Adelaide	89.6	Adelaide-Port Lincoln	90.0
Brisbane-Mount Isa	87.5	Brisbane-Adelaide	89.5
Perth-Newman	87.1	Port Lincoln-Adelaide	89.2
Canberra-Melbourne	87.0	Adelaide-Melbourne	89.1
Perth-Karratha	86.8	Sydney-Townsville	88.9

Table 3 Top ten airports for on time performance for January 2013 (participating airlines and reported routes only)

<i>Departures</i>		<i>Arrivals</i>	
<i>Airport</i>	<i>On Time (%)</i>	<i>Airport</i>	<i>On Time</i>
Mildura	93.9	Ayers Rock	91.9
Ayers Rock	90.3	Port Lincoln	90.0
Port Lincoln	89.6	Mount Isa	88.8
Mount Isa	86.1	Mildura	87.8
Adelaide	85.4	Dubbo	87.3
Dubbo	83.7	Adelaide	85.2
Canberra	83.5	Karratha	84.8
Emerald	83.2	Cairns	84.6
Melbourne	81.8	Emerald	83.3
Karratha	81.4	Hobart	83.0

Total industry on time performance

Figure 1 On time performance (by month from January 2010)—Total Industry

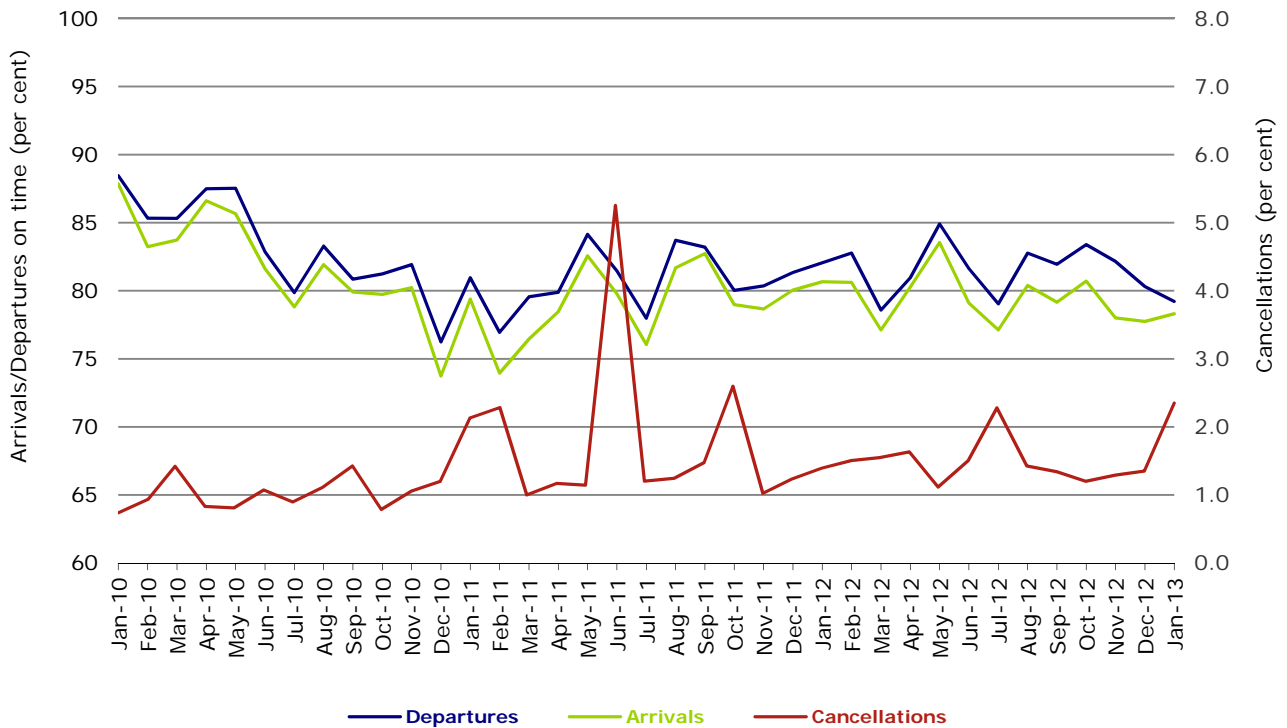


Figure 2 Departures on time (by month from January 2012)

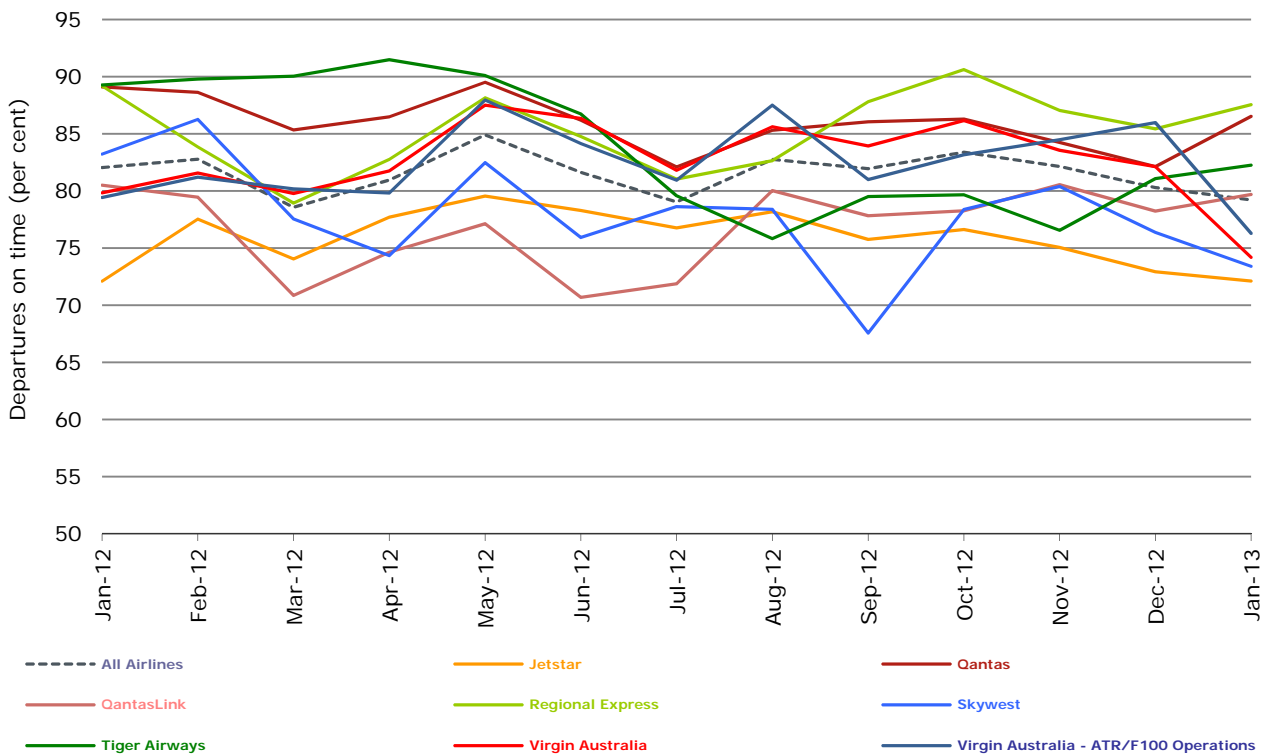


Figure 3 Arrivals on time (by month from January 2012)

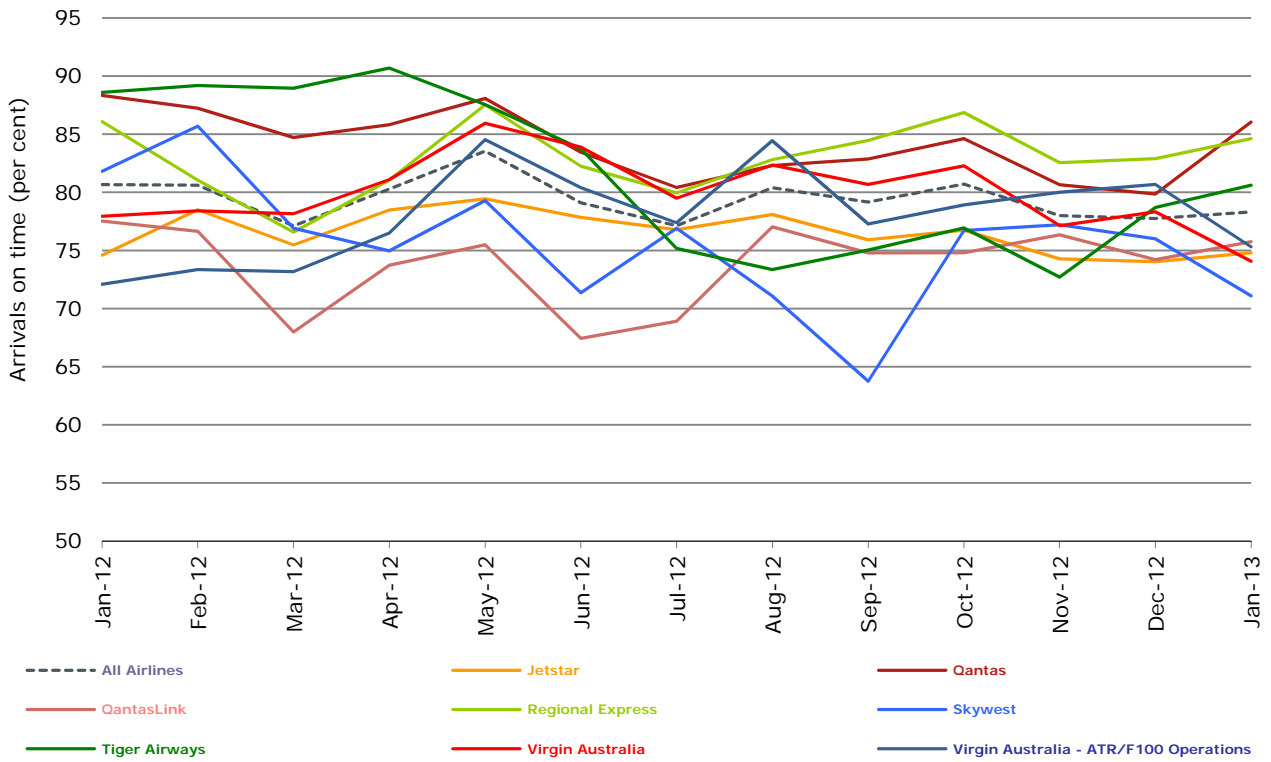
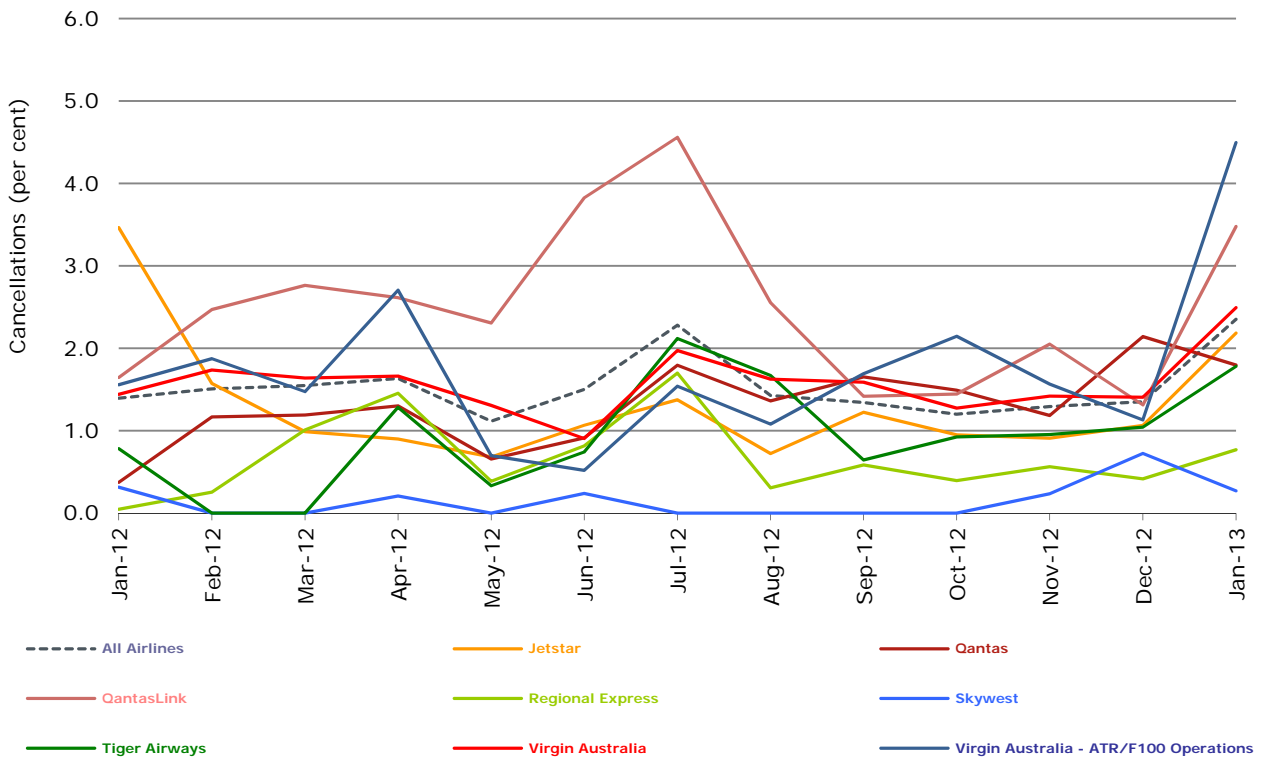


Figure 4 Cancellations (by month from January 2012)



Major domestic airlines on time performance

Figure 5 On time performance (by month from January 2010)—Jetstar

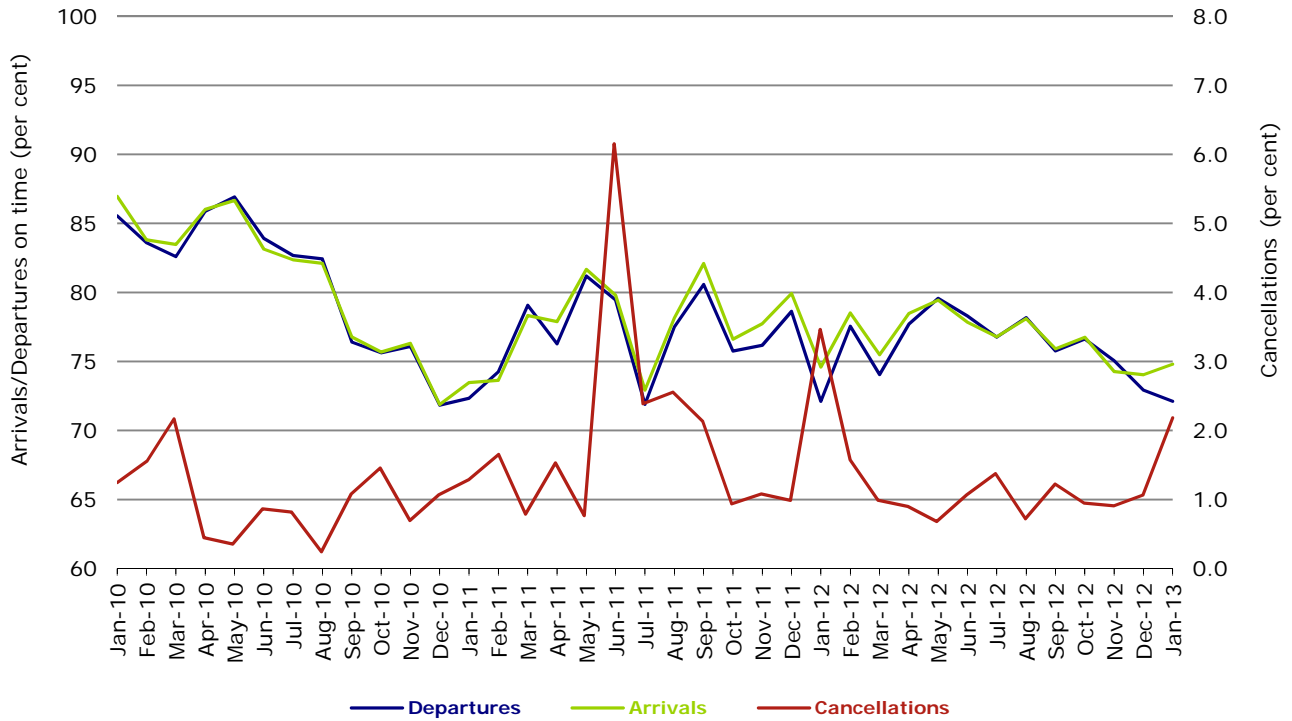


Figure 6 On time performance (by month from January 2010)—Qantas

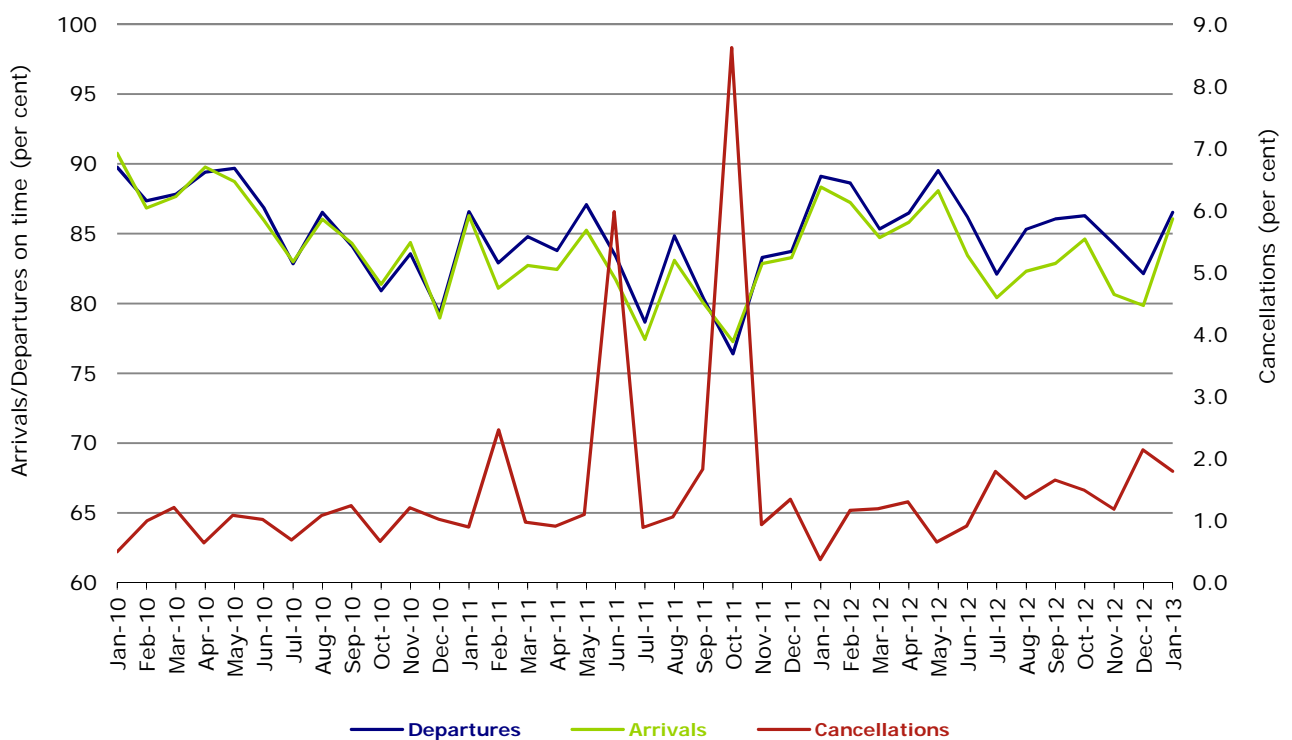
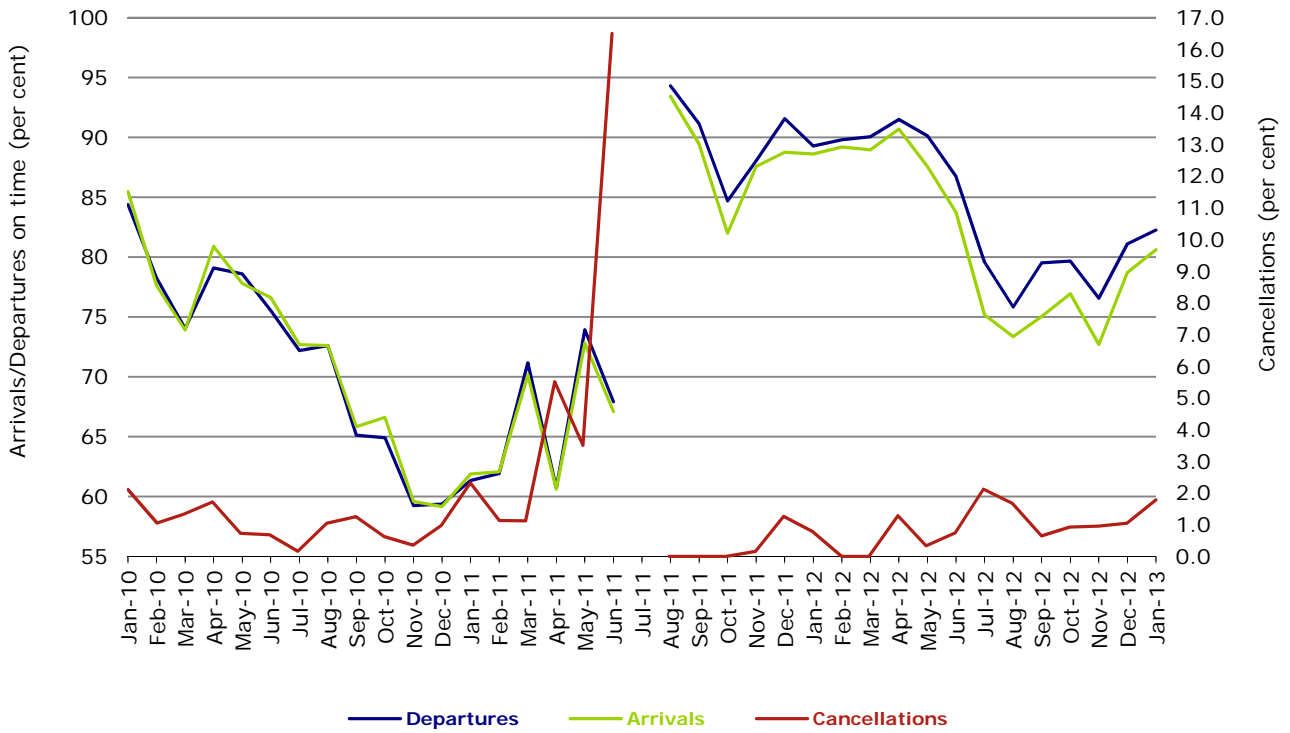
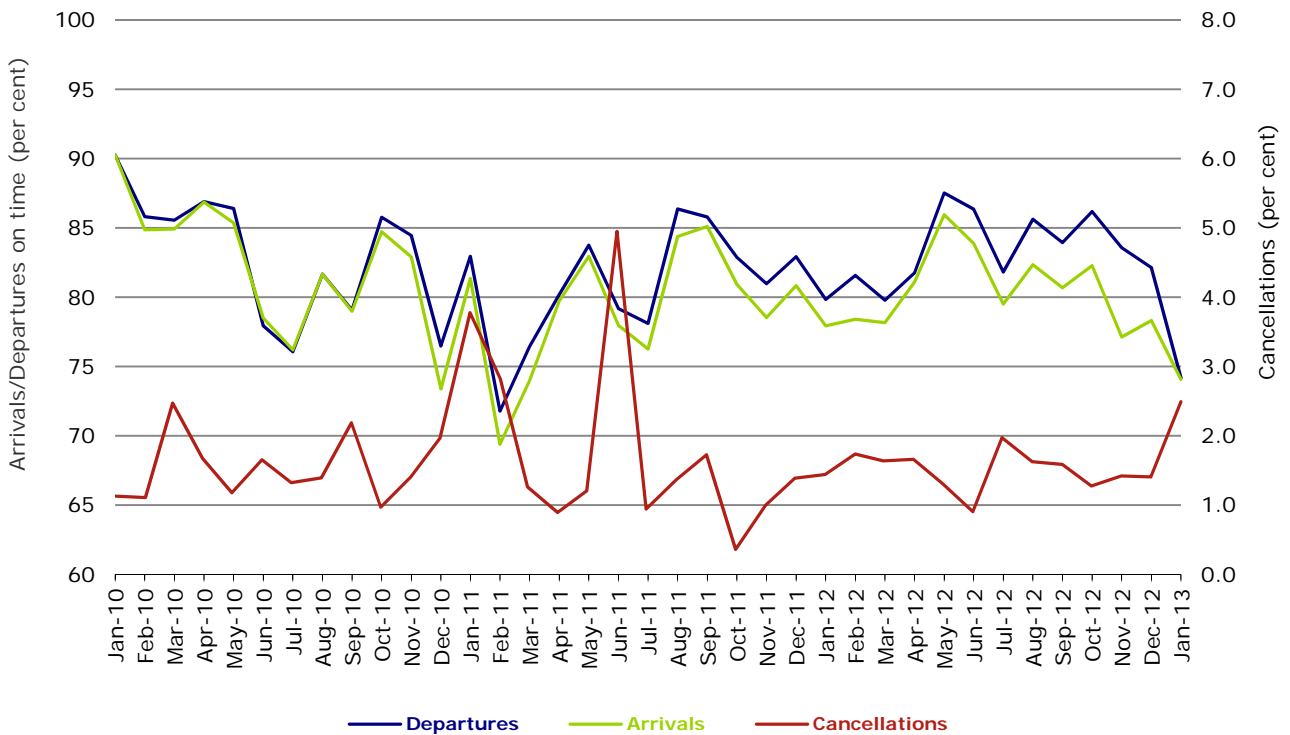


Figure 7 On time performance (by month from January 2010)—Tiger Airways



No data for Tiger Airways for July 2011 as it was grounded by CASA from 2/7/2011 to 11/8/2011.

Figure 8 On time performance (by month from January 2010)—Virgin Australia



Major regional airlines on time performance

Figure 9 On time performance (by month from January 2010)—QantasLink

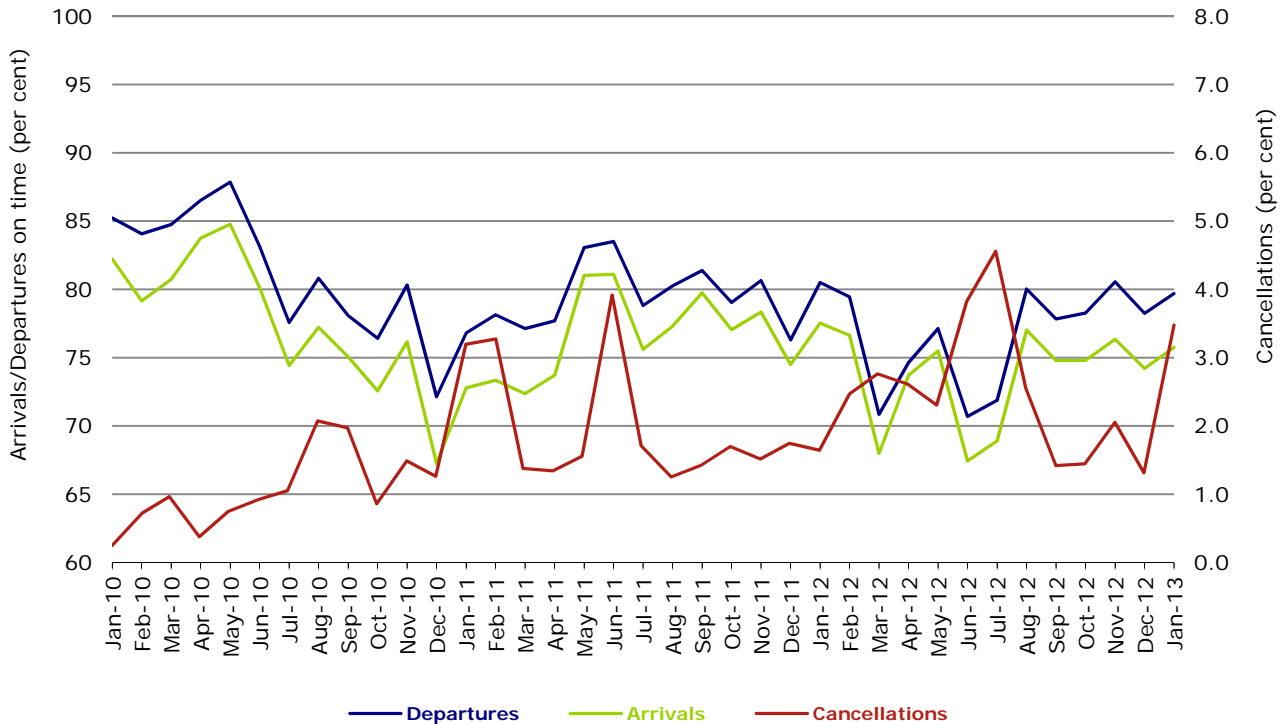


Figure 10 On time performance (by month from January 2010)—Regional Express

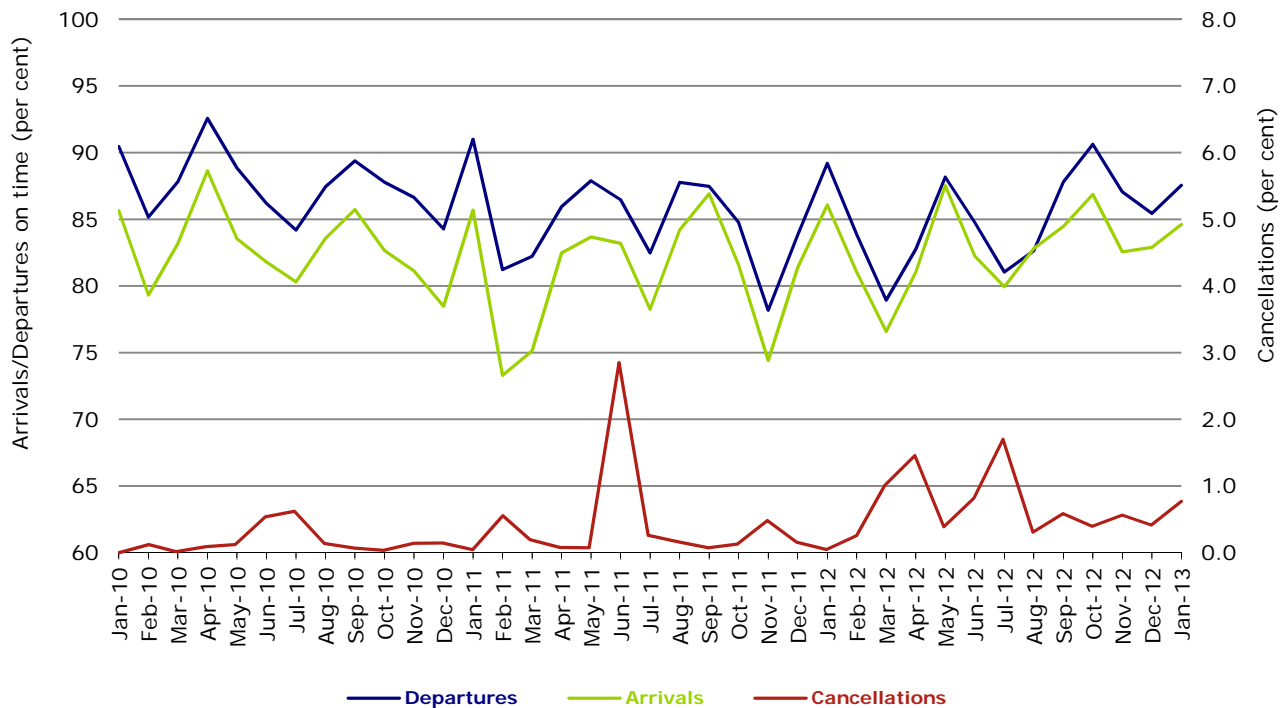


Figure 11 On time performance (by month from January 2010)—Skywest

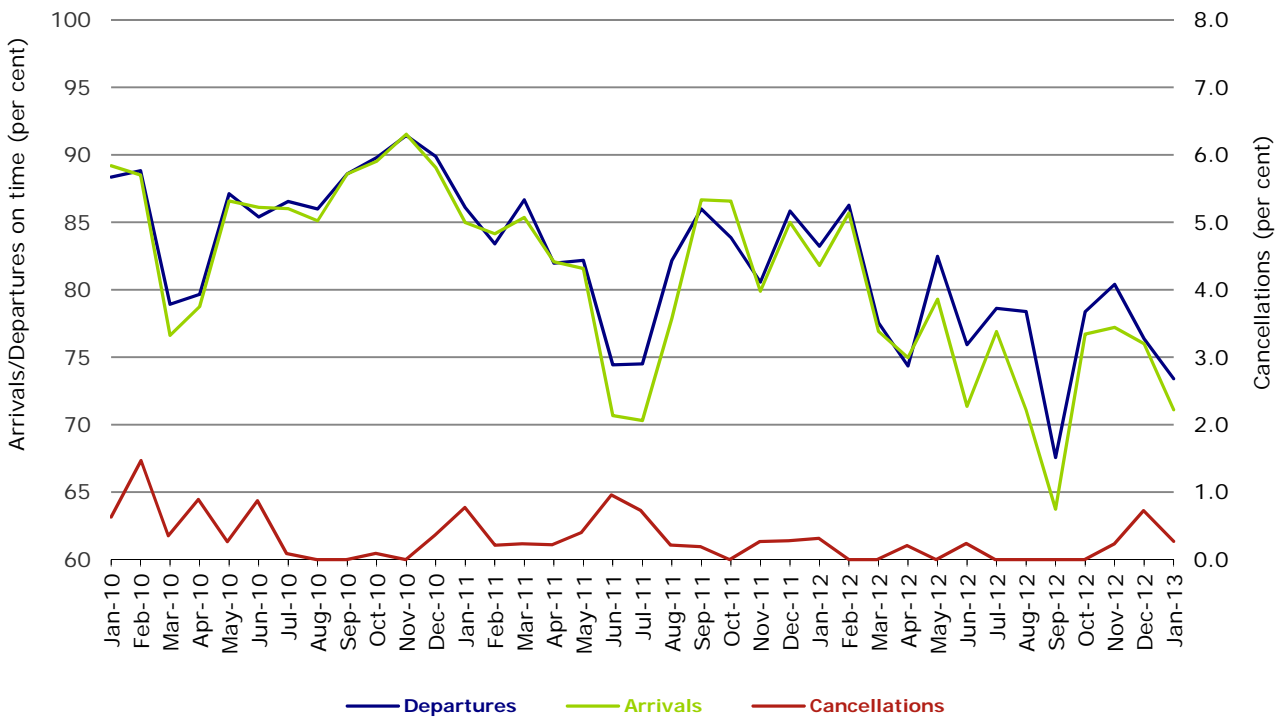
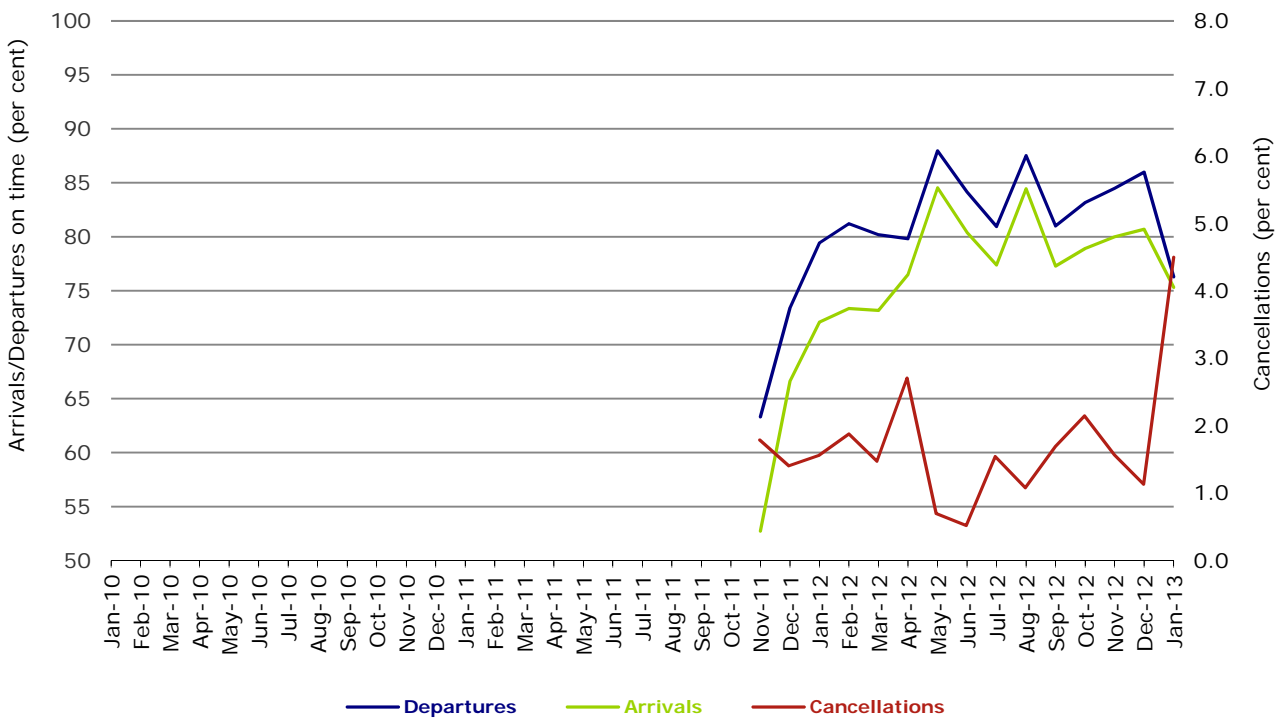


Figure 12 On time performance (by month from January 2010) Virgin Australia - ATR/F100 Operations



Virgin Australia - ATR/F100 Operations commenced in November 2011.

Individual routes

On time performance is reported for all routes where the passenger load averages over 8000 passengers per month over the previous six months, and where two or more airlines operate in competition on those routes. There are now 58 routes which meet this definition. Over time, however, routes which meet this definition may change as airline networks and traffic levels vary.

	<i>Sectors</i>		<i>Departures On Time</i>		<i>Arrivals On Time</i>		<i>Cancellations</i>	
	<i>Sched.</i>	<i>Flown</i>	<i>No.</i>	<i>%</i>	<i>No.</i>	<i>%</i>	<i>No.</i>	<i>%</i>
Adelaide-Brisbane								
Jetstar	29	29	27	93.1	27	93.1	0	0.0
Qantas	109	108	95	88.0	98	90.7	1	0.9
Virgin Australia	120	118	97	82.2	92	78.0	2	1.7
All Airlines	258	255	219	85.9	217	85.1	3	1.2
Adelaide-Canberra								
Qantas	27	27	26	96.3	26	96.3	0	0.0
QantasLink	22	22	14	63.6	15	68.2	0	0.0
Virgin Australia	27	26	23	88.5	23	88.5	1	3.7
All Airlines	76	75	63	84.0	64	85.3	1	1.3
Adelaide-Gold Coast								
Jetstar	46	44	33	75.0	32	72.7	2	4.3
Virgin Australia	31	28	26	92.9	26	92.9	3	9.7
All Airlines	77	72	59	81.9	58	80.6	5	6.5
Adelaide-Melbourne								
Jetstar	102	100	79	79.0	84	84.0	2	2.0
Qantas	300	291	259	89.0	275	94.5	9	3.0
QantasLink	18	17	16	94.1	17	100.0	1	5.6
Tiger Airways	64	64	53	82.8	54	84.4	0	0.0
Virgin Australia	285	281	234	83.3	241	85.8	4	1.4
All Airlines	769	753	641	85.1	671	89.1	16	2.1
Adelaide-Perth								
Jetstar	43	43	32	74.4	33	76.7	0	0.0
Qantas	107	107	96	89.7	99	92.5	0	0.0
Virgin Australia	62	61	51	83.6	53	86.9	1	1.6
All Airlines	212	211	179	84.8	185	87.7	1	0.5
Adelaide-Port Lincoln								
QantasLink	86	83	74	89.2	73	88.0	3	3.5
Regional Express	158	158	148	93.7	144	91.1	0	0.0
All Airlines	244	241	222	92.1	217	90.0	3	1.2
Adelaide-Sydney								
Jetstar	114	106	73	68.9	74	69.8	8	7.0
Qantas	269	267	241	90.3	234	87.6	2	0.7
Virgin Australia	175	173	141	81.5	135	78.0	2	1.1
All Airlines	558	546	455	83.3	443	81.1	12	2.2
Albury-Sydney								
QantasLink	94	94	72	76.6	71	75.5	0	0.0
Regional Express	71	71	58	81.7	59	83.1	0	0.0
Virgin Australia - ATR/F100 Operations	61	61	49	80.3	41	67.2	0	0.0
All Airlines	226	226	179	79.2	171	75.7	0	0.0
Ayers Rock-Sydney								
Qantas	31	31	30	96.8	29	93.5	0	0.0
Virgin Australia	31	31	26	83.9	27	87.1	0	0.0
All Airlines	62	62	56	90.3	56	90.3	0	0.0

	<i>Sectors</i>		<i>Departures On Time</i>		<i>Arrivals On Time</i>		<i>Cancellations</i>	
	<i>Sched.</i>	<i>Flown</i>	<i>No.</i>	<i>%</i>	<i>No.</i>	<i>%</i>	<i>No.</i>	<i>%</i>
Ballina-Sydney								
Jetstar	72	69	42	60.9	42	60.9	3	4.2
Regional Express	29	29	21	72.4	20	69.0	0	0.0
Virgin Australia	31	30	18	60.0	18	60.0	1	3.2
All Airlines	132	128	81	63.3	80	62.5	4	3.0
Brisbane-Adelaide								
Jetstar	29	29	26	89.7	28	96.6	0	0.0
Qantas	109	109	97	89.0	100	91.7	0	0.0
Virgin Australia	120	119	87	73.1	102	85.7	1	0.8
All Airlines	258	257	210	81.7	230	89.5	1	0.4
Brisbane-Cairns								
Jetstar	120	112	76	67.9	87	77.7	8	6.7
Qantas	110	110	98	89.1	101	91.8	0	0.0
QantasLink	4	4	3	75.0	3	75.0	0	0.0
Virgin Australia	142	142	113	79.6	120	84.5	0	0.0
Virgin Australia - ATR/F100 Operations	27	27	22	81.5	23	85.2	0	0.0
All Airlines	403	395	312	79.0	334	84.6	8	2.0
Brisbane-Canberra								
Qantas	120	120	97	80.8	104	86.7	0	0.0
QantasLink	22	20	19	95.0	19	95.0	2	9.1
Virgin Australia	97	96	63	65.6	59	61.5	1	1.0
All Airlines	239	236	179	75.8	182	77.1	3	1.3
Brisbane-Darwin								
Qantas	31	31	26	83.9	25	80.6	0	0.0
Virgin Australia	32	31	24	77.4	27	87.1	1	3.1
All Airlines	63	62	50	80.6	52	83.9	1	1.6
Brisbane-Emerald								
QantasLink	171	165	140	84.8	138	83.6	6	3.5
Virgin Australia - ATR/F100 Operations	109	104	80	76.9	86	82.7	5	4.6
All Airlines	280	269	220	81.8	224	83.3	11	3.9
Brisbane-Gladstone								
QantasLink	231	209	170	81.3	160	76.6	22	9.5
Virgin Australia - ATR/F100 Operations	130	122	87	71.3	89	73.0	8	6.2
All Airlines	361	331	257	77.6	249	75.2	30	8.3
Brisbane-Hamilton Island								
Jetstar	16	16	2	12.5	14	87.5	0	0.0
Virgin Australia	33	32	25	78.1	24	75.0	1	3.0
All Airlines	49	48	27	56.3	38	79.2	1	2.0
Brisbane-Mackay								
Jetstar	101	100	71	71.0	74	74.0	1	1.0
QantasLink	108	106	87	82.1	88	83.0	2	1.9
Virgin Australia	173	171	135	78.9	135	78.9	2	1.2
All Airlines	382	377	293	77.7	297	78.8	5	1.3
Brisbane-Melbourne								
Jetstar	105	101	68	67.3	74	73.3	4	3.8
Qantas	404	402	343	85.3	359	89.3	2	0.5
Tiger Airways	93	93	57	61.3	62	66.7	0	0.0
Virgin Australia	371	366	258	70.5	261	71.3	5	1.3
All Airlines	973	962	726	75.5	756	78.6	11	1.1
Brisbane-Mount Isa								
Qantas	57	57	51	89.5	52	91.2	0	0.0
Virgin Australia	23	23	19	82.6	19	82.6	0	0.0
All Airlines	80	80	70	87.5	71	88.8	0	0.0

	<i>Sectors</i>		<i>Departures On Time</i>		<i>Arrivals On Time</i>		<i>Cancellations</i>	
	<i>Sched.</i>	<i>Flown</i>	<i>No.</i>	<i>%</i>	<i>No.</i>	<i>%</i>	<i>No.</i>	<i>%</i>
Brisbane-Newcastle								
Jetstar	117	116	92	79.3	95	81.9	1	0.9
QantasLink	72	70	44	62.9	31	44.3	2	2.8
Virgin Australia - ATR/F100 Operations	86	82	66	80.5	64	78.0	4	4.7
All Airlines	275	268	202	75.4	190	70.9	7	2.5
Brisbane-Perth								
Jetstar	29	29	23	79.3	24	82.8	0	0.0
Qantas	121	121	74	61.2	94	77.7	0	0.0
Virgin Australia	91	91	58	63.7	61	67.0	0	0.0
All Airlines	241	241	155	64.3	179	74.3	0	0.0
Brisbane-Proserpine								
Jetstar	29	29	14	48.3	15	51.7	0	0.0
Virgin Australia	30	30	24	80.0	23	76.7	0	0.0
Virgin Australia - ATR/F100 Operations	24	24	15	62.5	17	70.8	0	0.0
All Airlines	83	83	53	63.9	55	66.3	0	0.0
Brisbane-Rockhampton								
QantasLink	190	175	123	70.3	125	71.4	15	7.9
Virgin Australia	84	76	57	75.0	55	72.4	8	9.5
Virgin Australia - ATR/F100 Operations	135	127	95	74.8	100	78.7	8	5.9
All Airlines	409	378	275	72.8	280	74.1	31	7.6
Brisbane-Sydney								
Jetstar	141	136	75	55.1	86	63.2	5	3.5
Qantas	555	543	444	81.8	436	80.3	12	2.2
Tiger Airways	105	100	78	78.0	76	76.0	5	4.8
Virgin Australia	522	493	356	72.2	363	73.6	29	5.6
All Airlines	1 323	1 272	953	74.9	961	75.6	51	3.9
Brisbane-Townsville								
Jetstar	30	29	15	51.7	17	58.6	1	3.3
Qantas	130	130	108	83.1	109	83.8	0	0.0
Virgin Australia	172	169	110	65.1	117	69.2	3	1.7
All Airlines	332	328	233	71.0	243	74.1	4	1.2
Broome-Perth								
Qantas	30	29	18	62.1	23	79.3	1	3.3
QantasLink	53	52	43	82.7	46	88.5	1	1.9
Skywest	12	12	6	50.0	6	50.0	0	0.0
Virgin Australia	32	31	23	74.2	24	77.4	1	3.1
All Airlines	127	124	90	72.6	99	79.8	3	2.4
Cairns-Brisbane								
Jetstar	119	112	86	76.8	78	69.6	7	5.9
Qantas	110	110	100	90.9	91	82.7	0	0.0
QantasLink	4	4	3	75.0	3	75.0	0	0.0
Virgin Australia	141	141	110	78.0	101	71.6	0	0.0
Virgin Australia - ATR/F100 Operations	28	28	21	75.0	21	75.0	0	0.0
All Airlines	402	395	320	81.0	294	74.4	7	1.7
Cairns-Melbourne								
Jetstar	83	83	64	77.1	67	80.7	0	0.0
Qantas	31	31	29	93.5	30	96.8	0	0.0
Tiger Airways	31	31	29	93.5	30	96.8	0	0.0
Virgin Australia	35	35	19	54.3	25	71.4	0	0.0
All Airlines	180	180	141	78.3	152	84.4	0	0.0
Cairns-Sydney								
Jetstar	86	86	71	82.6	67	77.9	0	0.0
Qantas	64	63	55	87.3	53	84.1	1	1.6
Virgin Australia	93	93	77	82.8	81	87.1	0	0.0
All Airlines	243	242	203	83.9	201	83.1	1	0.4

	<i>Sectors</i>		<i>Departures On Time</i>		<i>Arrivals On Time</i>		<i>Cancellations</i>	
	<i>Sched.</i>	<i>Flown</i>	<i>No.</i>	<i>%</i>	<i>No.</i>	<i>%</i>	<i>No.</i>	<i>%</i>
Cairns-Townsville								
QantasLink	172	167	133	79.6	128	76.6	5	2.9
Virgin Australia - ATR/F100 Operations	27	26	20	76.9	20	76.9	1	3.7
All Airlines	199	193	153	79.3	148	76.7	6	3.0
Canberra-Adelaide								
Qantas	31	31	27	87.1	27	87.1	0	0.0
QantasLink	22	22	16	72.7	16	72.7	0	0.0
Virgin Australia	27	26	23	88.5	22	84.6	1	3.7
All Airlines	80	79	66	83.5	65	82.3	1	1.3
Canberra-Brisbane								
Qantas	120	120	108	90.0	104	86.7	0	0.0
QantasLink	22	20	17	85.0	17	85.0	2	9.1
Virgin Australia	97	95	65	68.4	64	67.4	2	2.1
All Airlines	239	235	190	80.9	185	78.7	4	1.7
Canberra-Melbourne								
Qantas	187	186	171	91.9	177	95.2	1	0.5
QantasLink	38	38	30	78.9	25	65.8	0	0.0
Virgin Australia	169	168	140	83.3	143	85.1	1	0.6
All Airlines	394	392	341	87.0	345	88.0	2	0.5
Canberra-Sydney								
Qantas	49	46	43	93.5	43	93.5	3	6.1
QantasLink	377	370	301	81.4	290	78.4	7	1.9
Virgin Australia	66	63	53	84.1	50	79.4	3	4.5
Virgin Australia - ATR/F100 Operations	177	172	139	80.8	141	82.0	5	2.8
All Airlines	669	651	536	82.3	524	80.5	18	2.7
Coffs Harbour-Sydney								
QantasLink	146	145	107	73.8	111	76.6	1	0.7
Virgin Australia	62	59	41	69.5	41	69.5	3	4.8
All Airlines	208	204	148	72.5	152	74.5	4	1.9
Darwin-Brisbane								
Qantas	31	31	20	64.5	23	74.2	0	0.0
Virgin Australia	32	31	24	77.4	22	71.0	1	3.1
All Airlines	63	62	44	71.0	45	72.6	1	1.6
Darwin-Melbourne								
Jetstar	12	12	6	50.0	7	58.3	0	0.0
Qantas	9	9	7	77.8	8	88.9	0	0.0
Virgin Australia	31	31	29	93.5	28	90.3	0	0.0
All Airlines	52	52	42	80.8	43	82.7	0	0.0
Darwin-Perth								
Qantas	31	31	25	80.6	29	93.5	0	0.0
Virgin Australia	27	26	24	92.3	25	96.2	1	3.7
All Airlines	58	57	49	86.0	54	94.7	1	1.7
Darwin-Sydney								
Jetstar	29	28	23	82.1	25	89.3	1	3.4
Qantas	45	45	37	82.2	36	80.0	0	0.0
Virgin Australia	26	26	22	84.6	20	76.9	0	0.0
All Airlines	100	99	82	82.8	81	81.8	1	1.0
Dubbo-Sydney								
QantasLink	102	102	84	82.4	74	72.5	0	0.0
Regional Express	101	101	86	85.1	81	80.2	0	0.0
All Airlines	203	203	170	83.7	155	76.4	0	0.0

	<i>Sectors</i>		<i>Departures On Time</i>		<i>Arrivals On Time</i>		<i>Cancellations</i>	
	<i>Sched.</i>	<i>Flown</i>	<i>No.</i>	<i>%</i>	<i>No.</i>	<i>%</i>	<i>No.</i>	<i>%</i>
Emerald-Brisbane								
QantasLink	171	165	135	81.8	113	68.5	6	3.5
Virgin Australia - ATR/F100 Operations	109	103	88	85.4	77	74.8	6	5.5
All Airlines	280	268	223	83.2	190	70.9	12	4.3
Geraldton-Perth								
QantasLink	54	54	40	74.1	34	63.0	0	0.0
Skywest	73	73	49	67.1	46	63.0	0	0.0
All Airlines	127	127	89	70.1	80	63.0	0	0.0
Gladstone-Brisbane								
QantasLink	240	219	157	71.7	144	65.8	21	8.8
Virgin Australia - ATR/F100 Operations	130	118	85	72.0	81	68.6	12	9.2
All Airlines	370	337	242	71.8	225	66.8	33	8.9
Gold Coast-Adelaide								
Jetstar	45	43	33	76.7	33	76.7	2	4.4
Virgin Australia	31	28	25	89.3	25	89.3	3	9.7
All Airlines	76	71	58	81.7	58	81.7	5	6.6
Gold Coast-Melbourne								
Jetstar	237	234	159	67.9	177	75.6	3	1.3
Tiger Airways	74	71	44	62.0	54	76.1	3	4.1
Virgin Australia	199	191	136	71.2	152	79.6	8	4.0
All Airlines	510	496	339	68.3	383	77.2	14	2.7
Gold Coast-Sydney								
Jetstar	350	333	226	67.9	239	71.8	17	4.9
Qantas	93	88	69	78.4	73	83.0	5	5.4
Tiger Airways	98	91	73	80.2	73	80.2	7	7.1
Virgin Australia	335	308	200	64.9	221	71.8	27	8.1
All Airlines	876	820	568	69.3	606	73.9	56	6.4
Hamilton Island-Brisbane								
Jetstar	16	16	13	81.3	14	87.5	0	0.0
Virgin Australia	33	31	21	67.7	20	64.5	2	6.1
All Airlines	49	47	34	72.3	34	72.3	2	4.1
Hamilton Island-Sydney								
Jetstar	31	30	18	60.0	22	73.3	1	3.2
Virgin Australia	31	30	20	66.7	19	63.3	1	3.2
All Airlines	62	60	38	63.3	41	68.3	2	3.2
Hobart-Melbourne								
Jetstar	208	200	141	70.5	122	61.0	8	3.8
Qantas	62	62	57	91.9	57	91.9	0	0.0
QantasLink	31	31	28	90.3	21	67.7	0	0.0
Tiger Airways	57	57	47	82.5	45	78.9	0	0.0
Virgin Australia	164	164	128	78.0	131	79.9	0	0.0
All Airlines	522	514	401	78.0	376	73.2	8	1.5
Hobart-Sydney								
Jetstar	114	114	78	68.4	89	78.1	0	0.0
Qantas	31	31	27	87.1	29	93.5	0	0.0
Virgin Australia	62	61	43	70.5	44	72.1	1	1.6
All Airlines	207	206	148	71.8	162	78.6	1	0.5
Kalgoorlie-Perth								
Qantas	65	56	48	85.7	48	85.7	9	13.8
QantasLink	31	31	29	93.5	27	87.1	0	0.0
Skywest	58	58	40	69.0	33	56.9	0	0.0
All Airlines	154	145	117	80.7	108	74.5	9	5.8

	<i>Sectors</i>		<i>Departures On Time</i>		<i>Arrivals On Time</i>		<i>Cancellations</i>	
	<i>Sched.</i>	<i>Flown</i>	<i>No.</i>	<i>%</i>	<i>No.</i>	<i>%</i>	<i>No.</i>	<i>%</i>
Karratha-Perth								
Qantas	189	183	162	88.5	155	84.7	6	3.2
QantasLink	67	59	48	81.4	48	81.4	8	11.9
Virgin Australia	53	53	31	58.5	27	50.9	0	0.0
Virgin Australia - ATR/F100 Operations	1	1	0	0.0	0	0.0	0	0.0
All Airlines	310	296	241	81.4	230	77.7	14	4.5
Launceston-Melbourne								
Jetstar	148	146	111	76.0	110	75.3	2	1.4
QantasLink	113	111	98	88.3	95	85.6	2	1.8
Virgin Australia	138	138	106	76.8	108	78.3	0	0.0
All Airlines	399	395	315	79.7	313	79.2	4	1.0
Launceston-Sydney								
Jetstar	83	83	54	65.1	56	67.5	0	0.0
Virgin Australia	31	31	23	74.2	25	80.6	0	0.0
All Airlines	114	114	77	67.5	81	71.1	0	0.0
Mackay-Brisbane								
Jetstar	101	99	58	58.6	59	59.6	2	2.0
QantasLink	107	105	81	77.1	77	73.3	2	1.9
Virgin Australia	173	171	133	77.8	122	71.3	2	1.2
All Airlines	381	375	272	72.5	258	68.8	6	1.6
Melbourne-Adelaide								
Jetstar	99	98	82	83.7	83	84.7	1	1.0
Qantas	300	291	273	93.8	269	92.4	9	3.0
QantasLink	18	17	16	94.1	16	94.1	1	5.6
Tiger Airways	64	64	57	89.1	54	84.4	0	0.0
Virgin Australia	285	282	222	78.7	214	75.9	3	1.1
All Airlines	766	752	650	86.4	636	84.6	14	1.8
Melbourne-Brisbane								
Jetstar	106	102	54	52.9	56	54.9	4	3.8
Qantas	404	402	364	90.5	329	81.8	2	0.5
Tiger Airways	95	95	75	78.9	64	67.4	0	0.0
Virgin Australia	366	360	268	74.4	228	63.3	6	1.6
All Airlines	971	959	761	79.4	677	70.6	12	1.2
Melbourne-Cairns								
Jetstar	84	84	70	83.3	74	88.1	0	0.0
Qantas	31	31	30	96.8	31	100.0	0	0.0
Tiger Airways	31	31	30	96.8	30	96.8	0	0.0
Virgin Australia	35	35	25	71.4	29	82.9	0	0.0
All Airlines	181	181	155	85.6	164	90.6	0	0.0
Melbourne-Canberra								
Qantas	187	187	179	95.7	175	93.6	0	0.0
QantasLink	38	37	36	97.3	31	83.8	1	2.6
Virgin Australia	169	168	138	82.1	142	84.5	1	0.6
All Airlines	394	392	353	90.1	348	88.8	2	0.5
Melbourne-Darwin								
Jetstar	12	12	8	66.7	7	58.3	0	0.0
Qantas	9	9	7	77.8	7	77.8	0	0.0
Virgin Australia	31	31	26	83.9	23	74.2	0	0.0
All Airlines	52	52	41	78.8	37	71.2	0	0.0
Melbourne-Gold Coast								
Jetstar	235	233	157	67.4	153	65.7	2	0.9
Tiger Airways	74	71	54	76.1	46	64.8	3	4.1
Virgin Australia	199	191	154	80.6	147	77.0	8	4.0
All Airlines	508	495	365	73.7	346	69.9	13	2.6

	<i>Sectors</i>		<i>Departures On Time</i>		<i>Arrivals On Time</i>		<i>Cancellations</i>	
	<i>Sched.</i>	<i>Flown</i>	<i>No.</i>	<i>%</i>	<i>No.</i>	<i>%</i>	<i>No.</i>	<i>%</i>
Melbourne-Hobart								
Jetstar	208	200	145	72.5	157	78.5	8	3.8
Qantas	62	62	61	98.4	58	93.5	0	0.0
QantasLink	31	30	23	76.7	23	76.7	1	3.2
Tiger Airways	57	57	50	87.7	50	87.7	0	0.0
Virgin Australia	164	164	129	78.7	132	80.5	0	0.0
All Airlines	522	513	408	79.5	420	81.9	9	1.7
Melbourne-Launceston								
Jetstar	146	145	117	80.7	118	81.4	1	0.7
QantasLink	113	111	99	89.2	96	86.5	2	1.8
Virgin Australia	137	137	108	78.8	110	80.3	0	0.0
All Airlines	396	393	324	82.4	324	82.4	3	0.8
Melbourne-Mildura								
QantasLink	89	89	75	84.3	72	80.9	0	0.0
Regional Express	60	60	58	96.7	58	96.7	0	0.0
Virgin Australia	31	31	29	93.5	28	90.3	0	0.0
All Airlines	180	180	162	90.0	158	87.8	0	0.0
Melbourne-Newcastle								
Jetstar	111	110	92	83.6	91	82.7	1	0.9
Virgin Australia	31	31	26	83.9	28	90.3	0	0.0
All Airlines	142	141	118	83.7	119	84.4	1	0.7
Melbourne-Perth								
Jetstar	89	88	61	69.3	64	72.7	1	1.1
Qantas	209	209	162	77.5	152	72.7	0	0.0
Tiger Airways	62	62	52	83.9	57	91.9	0	0.0
Virgin Australia	143	143	105	73.4	72	50.3	0	0.0
All Airlines	503	502	380	75.7	345	68.7	1	0.2
Melbourne-Sunshine Coast								
Jetstar	70	67	51	76.1	52	77.6	3	4.3
Virgin Australia	31	29	23	79.3	21	72.4	2	6.5
All Airlines	101	96	74	77.1	73	76.0	5	5.0
Melbourne-Sydney								
Jetstar	330	324	218	67.3	241	74.4	6	1.8
Qantas	710	684	625	91.4	606	88.6	26	3.7
Tiger Airways	273	271	241	88.9	240	88.6	2	0.7
Virgin Australia	705	679	534	78.6	527	77.6	26	3.7
All Airlines	2 018	1 958	1 618	82.6	1 614	82.4	60	3.0
Mildura-Melbourne								
QantasLink	89	89	83	93.3	79	88.8	0	0.0
Regional Express	60	60	59	98.3	59	98.3	0	0.0
Virgin Australia	31	31	27	87.1	28	90.3	0	0.0
All Airlines	180	180	169	93.9	166	92.2	0	0.0
Mount Isa-Brisbane								
Qantas	57	56	49	87.5	46	82.1	1	1.8
Virgin Australia	23	23	19	82.6	16	69.6	0	0.0
All Airlines	80	79	68	86.1	62	78.5	1	1.3
Newcastle-Brisbane								
Jetstar	116	115	90	78.3	86	74.8	1	0.9
QantasLink	72	70	28	40.0	25	35.7	2	2.8
Virgin Australia - ATR/F100 Operations	86	82	64	78.0	57	69.5	4	4.7
All Airlines	274	267	182	68.2	168	62.9	7	2.6

	<i>Sectors</i>		<i>Departures On Time</i>		<i>Arrivals On Time</i>		<i>Cancellations</i>	
	<i>Sched.</i>	<i>Flown</i>	<i>No.</i>	<i>%</i>	<i>No.</i>	<i>%</i>	<i>No.</i>	<i>%</i>
Newcastle-Melbourne								
Jetstar	109	108	81	75.0	85	78.7	1	0.9
Virgin Australia	31	31	20	64.5	21	67.7	0	0.0
All Airlines	140	139	101	72.7	106	76.3	1	0.7
Newman-Perth								
Qantas	137	129	98	76.0	102	79.1	8	5.8
QantasLink	29	29	27	93.1	27	93.1	0	0.0
Skywest	15	15	15	100.0	15	100.0	0	0.0
Virgin Australia	37	37	25	67.6	27	73.0	0	0.0
All Airlines	218	210	165	78.6	171	81.4	8	3.7
Perth-Adelaide								
Jetstar	43	42	28	66.7	32	76.2	1	2.3
Qantas	107	107	87	81.3	91	85.0	0	0.0
Virgin Australia	62	61	58	95.1	59	96.7	1	1.6
All Airlines	212	210	173	82.4	182	86.7	2	0.9
Perth-Brisbane								
Jetstar	28	28	20	71.4	20	71.4	0	0.0
Qantas	121	121	97	80.2	90	74.4	0	0.0
Virgin Australia	91	91	72	79.1	49	53.8	0	0.0
All Airlines	240	240	189	78.8	159	66.3	0	0.0
Perth-Broome								
Qantas	30	30	21	70.0	22	73.3	0	0.0
QantasLink	53	51	42	82.4	36	70.6	2	3.8
Skywest	8	8	6	75.0	5	62.5	0	0.0
Virgin Australia	31	31	26	83.9	29	93.5	0	0.0
All Airlines	122	120	95	79.2	92	76.7	2	1.6
Perth-Darwin								
Qantas	31	31	24	77.4	25	80.6	0	0.0
Virgin Australia	27	27	25	92.6	23	85.2	0	0.0
All Airlines	58	58	49	84.5	48	82.8	0	0.0
Perth-Geraldton								
QantasLink	54	54	43	79.6	43	79.6	0	0.0
Skywest	71	71	51	71.8	43	60.6	0	0.0
All Airlines	125	125	94	75.2	86	68.8	0	0.0
Perth-Kalgoorlie								
Qantas	65	57	52	91.2	51	89.5	8	12.3
QantasLink	31	31	30	96.8	29	93.5	0	0.0
Skywest	59	59	44	74.6	39	66.1	0	0.0
All Airlines	155	147	126	85.7	119	81.0	8	5.2
Perth-Karratha								
Qantas	189	184	165	89.7	160	87.0	5	2.6
QantasLink	67	58	54	93.1	54	93.1	9	13.4
Virgin Australia	53	53	38	71.7	37	69.8	0	0.0
Virgin Australia - ATR/F100 Operations	1	1	0	0.0	0	0.0	0	0.0
All Airlines	310	296	257	86.8	251	84.8	14	4.5
Perth-Melbourne								
Jetstar	92	90	63	70.0	67	74.4	2	2.2
Qantas	209	209	170	81.3	177	84.7	0	0.0
Tiger Airways	62	62	51	82.3	48	77.4	0	0.0
Virgin Australia	143	143	104	72.7	95	66.4	0	0.0
All Airlines	506	504	388	77.0	387	76.8	2	0.4

	<i>Sectors</i>		<i>Departures On Time</i>		<i>Arrivals On Time</i>		<i>Cancellations</i>	
	<i>Sched.</i>	<i>Flown</i>	<i>No.</i>	<i>%</i>	<i>No.</i>	<i>%</i>	<i>No.</i>	<i>%</i>
Perth-Newman								
Qantas	137	129	108	83.7	106	82.2	8	5.8
QantasLink	29	29	28	96.6	27	93.1	0	0.0
Skywest	15	15	15	100.0	15	100.0	0	0.0
Virgin Australia	37	37	32	86.5	26	70.3	0	0.0
All Airlines	218	210	183	87.1	174	82.9	8	3.7
Perth-Port Hedland								
Qantas	121	117	94	80.3	89	76.1	4	3.3
QantasLink	47	45	44	97.8	44	97.8	2	4.3
Virgin Australia	77	77	62	80.5	57	74.0	0	0.0
All Airlines	245	239	200	83.7	190	79.5	6	2.4
Perth-Sydney								
Jetstar	47	47	31	66.0	32	68.1	0	0.0
Qantas	203	201	174	86.6	180	89.6	2	1.0
Virgin Australia	120	120	83	69.2	88	73.3	0	0.0
All Airlines	370	368	288	78.3	300	81.5	2	0.5
Port Hedland-Perth								
Qantas	121	115	85	73.9	82	71.3	6	5.0
QantasLink	47	46	43	93.5	43	93.5	1	2.1
Virgin Australia	77	77	55	71.4	53	68.8	0	0.0
All Airlines	245	238	183	76.9	178	74.8	7	2.9
Port Lincoln-Adelaide								
QantasLink	86	83	74	89.2	75	90.4	3	3.5
Regional Express	157	157	141	89.8	139	88.5	0	0.0
All Airlines	243	240	215	89.6	214	89.2	3	1.2
Port Macquarie-Sydney								
QantasLink	134	132	101	76.5	98	74.2	2	1.5
Virgin Australia - ATR/F100 Operations	62	59	45	76.3	42	71.2	3	4.8
All Airlines	196	191	146	76.4	140	73.3	5	2.6
Proserpine-Brisbane								
Jetstar	30	30	17	56.7	18	60.0	0	0.0
Virgin Australia	32	31	21	67.7	16	51.6	1	3.1
Virgin Australia - ATR/F100 Operations	23	23	13	56.5	8	34.8	0	0.0
All Airlines	85	84	51	60.7	42	50.0	1	1.2
Rockhampton-Brisbane								
QantasLink	179	165	117	70.9	101	61.2	14	7.8
Virgin Australia	84	76	54	71.1	39	51.3	8	9.5
Virgin Australia - ATR/F100 Operations	135	127	96	75.6	93	73.2	8	5.9
All Airlines	398	368	267	72.6	233	63.3	30	7.5
Sunshine Coast-Melbourne								
Jetstar	72	69	44	63.8	49	71.0	3	4.2
Virgin Australia	31	29	16	55.2	20	69.0	2	6.5
All Airlines	103	98	60	61.2	69	70.4	5	4.9
Sunshine Coast-Sydney								
Jetstar	115	110	75	68.2	73	66.4	5	4.3
Virgin Australia	35	34	19	55.9	21	61.8	1	2.9
All Airlines	150	144	94	65.3	94	65.3	6	4.0
Sydney-Adelaide								
Jetstar	114	108	77	71.3	79	73.1	6	5.3
Qantas	266	265	228	86.0	236	89.1	1	0.4
Virgin Australia	175	173	120	69.4	135	78.0	2	1.1
All Airlines	555	546	425	77.8	450	82.4	9	1.6

	<i>Sectors</i>		<i>Departures On Time</i>		<i>Arrivals On Time</i>		<i>Cancellations</i>	
	<i>Sched.</i>	<i>Flown</i>	<i>No.</i>	<i>%</i>	<i>No.</i>	<i>%</i>	<i>No.</i>	<i>%</i>
Sydney-Albury								
QantasLink	94	94	70	74.5	69	73.4	0	0.0
Regional Express	71	71	63	88.7	63	88.7	0	0.0
Virgin Australia - ATR/F100 Operations	61	61	47	77.0	46	75.4	0	0.0
All Airlines	226	226	180	79.6	178	78.8	0	0.0
Sydney-Ayers Rock								
Qantas	31	31	29	93.5	31	100.0	0	0.0
Virgin Australia	31	31	21	67.7	26	83.9	0	0.0
All Airlines	62	62	50	80.6	57	91.9	0	0.0
Sydney-Ballina								
Jetstar	69	68	46	67.6	48	70.6	1	1.4
Regional Express	34	33	29	87.9	27	81.8	1	2.9
Virgin Australia	31	30	23	76.7	24	80.0	1	3.2
All Airlines	134	131	98	74.8	99	75.6	3	2.2
Sydney-Brisbane								
Jetstar	140	134	88	65.7	83	61.9	6	4.3
Qantas	527	522	452	86.6	404	77.4	5	0.9
Tiger Airways	108	104	86	82.7	67	64.4	4	3.7
Virgin Australia	523	495	340	68.7	314	63.4	28	5.4
All Airlines	1 298	1 255	966	77.0	868	69.2	43	3.3
Sydney-Cairns								
Jetstar	87	87	62	71.3	74	85.1	0	0.0
Qantas	64	64	57	89.1	60	93.8	0	0.0
Virgin Australia	93	93	68	73.1	80	86.0	0	0.0
All Airlines	244	244	187	76.6	214	87.7	0	0.0
Sydney-Canberra								
Qantas	55	51	46	90.2	44	86.3	4	7.3
QantasLink	377	370	300	81.1	287	77.6	7	1.9
Virgin Australia	66	65	49	75.4	51	78.5	1	1.5
Virgin Australia - ATR/F100 Operations	177	171	110	64.3	123	71.9	6	3.4
All Airlines	675	657	505	76.9	505	76.9	18	2.7
Sydney-Coffs Harbour								
QantasLink	147	146	114	78.1	107	73.3	1	0.7
Virgin Australia	62	61	44	72.1	45	73.8	1	1.6
All Airlines	209	207	158	76.3	152	73.4	2	1.0
Sydney-Darwin								
Jetstar	30	30	25	83.3	26	86.7	0	0.0
Qantas	44	44	30	68.2	40	90.9	0	0.0
Virgin Australia	26	26	21	80.8	21	80.8	0	0.0
All Airlines	100	100	76	76.0	87	87.0	0	0.0
Sydney-Dubbo								
QantasLink	102	102	84	82.4	86	84.3	0	0.0
Regional Express	102	102	90	88.2	92	90.2	0	0.0
All Airlines	204	204	174	85.3	178	87.3	0	0.0
Sydney-Gold Coast								
Jetstar	344	330	245	74.2	244	73.9	14	4.1
Qantas	93	89	85	95.5	82	92.1	4	4.3
Tiger Airways	95	90	77	85.6	77	85.6	5	5.3
Virgin Australia	336	315	204	64.8	203	64.4	21	6.3
All Airlines	868	824	611	74.2	606	73.5	44	5.1
Sydney-Hamilton Island								
Jetstar	31	30	22	73.3	22	73.3	1	3.2
Virgin Australia	32	31	19	61.3	24	77.4	1	3.1
All Airlines	63	61	41	67.2	46	75.4	2	3.2

	<i>Sectors</i>		<i>Departures On Time</i>		<i>Arrivals On Time</i>		<i>Cancellations</i>	
	<i>Sched.</i>	<i>Flown</i>	<i>No.</i>	<i>%</i>	<i>No.</i>	<i>%</i>	<i>No.</i>	<i>%</i>
Sydney-Hobart								
Jetstar	114	114	85	74.6	94	82.5	0	0.0
Qantas	31	31	29	93.5	30	96.8	0	0.0
Virgin Australia	62	61	48	78.7	53	86.9	1	1.6
All Airlines	207	206	162	78.6	177	85.9	1	0.5
Sydney-Launceston								
Jetstar	84	84	58	69.0	67	79.8	0	0.0
Virgin Australia	31	31	22	71.0	23	74.2	0	0.0
All Airlines	115	115	80	69.6	90	78.3	0	0.0
Sydney-Melbourne								
Jetstar	330	324	232	71.6	251	77.5	6	1.8
Qantas	711	685	627	91.5	623	90.9	26	3.7
Tiger Airways	274	271	230	84.9	226	83.4	3	1.1
Virgin Australia	702	674	474	70.3	515	76.4	28	4.0
All Airlines	2 017	1 954	1 563	80.0	1 615	82.7	63	3.1
Sydney-Perth								
Jetstar	46	46	38	82.6	39	84.8	0	0.0
Qantas	202	200	146	73.0	164	82.0	2	1.0
Virgin Australia	120	120	62	51.7	70	58.3	0	0.0
All Airlines	368	366	246	67.2	273	74.6	2	0.5
Sydney-Port Macquarie								
QantasLink	135	133	108	81.2	103	77.4	2	1.5
Virgin Australia - ATR/F100 Operations	62	59	54	91.5	49	83.1	3	4.8
All Airlines	197	192	162	84.4	152	79.2	5	2.5
Sydney-Sunshine Coast								
Jetstar	116	112	82	73.2	84	75.0	4	3.4
Virgin Australia	35	34	24	70.6	26	76.5	1	2.9
All Airlines	151	146	106	72.6	110	75.3	5	3.3
Sydney-Townsville								
Jetstar	28	28	25	89.3	26	92.9	0	0.0
Virgin Australia	26	26	19	73.1	22	84.6	0	0.0
All Airlines	54	54	44	81.5	48	88.9	0	0.0
Sydney-Wagga Wagga								
QantasLink	92	91	67	73.6	61	67.0	1	1.1
Regional Express	74	74	60	81.1	65	87.8	0	0.0
All Airlines	166	165	127	77.0	126	76.4	1	0.6
Townsville-Brisbane								
Jetstar	30	29	17	58.6	17	58.6	1	3.3
Qantas	130	130	114	87.7	107	82.3	0	0.0
Virgin Australia	172	169	129	76.3	109	64.5	3	1.7
All Airlines	332	328	260	79.3	233	71.0	4	1.2
Townsville-Cairns								
QantasLink	170	165	121	73.3	121	73.3	5	2.9
Virgin Australia - ATR/F100 Operations	27	26	22	84.6	22	84.6	1	3.7
All Airlines	197	191	143	74.9	143	74.9	6	3.0
Townsville-Sydney								
Jetstar	29	29	27	93.1	25	86.2	0	0.0
Virgin Australia	26	26	20	76.9	21	80.8	0	0.0
All Airlines	55	55	47	85.5	46	83.6	0	0.0
Wagga Wagga-Sydney								
QantasLink	91	90	67	74.4	65	72.2	1	1.1
Regional Express	76	76	62	81.6	57	75.0	0	0.0
All Airlines	167	166	129	77.7	122	73.5	1	0.6

Airports

On time performance is reported for all routes where the passenger load averages over 8000 passengers per month, and where two or more airlines operate in competition. The following data reports by airport against flights operated on those routes only.

Airport	Departures			Arrivals		
	Sectors	On Time		Sectors	On Time	
	Flown	No.	%	Flown	No.	%
Adelaide						
Jetstar	322	244	75.8	320	255	79.7
Qantas	800	717	89.6	803	723	90.0
QantasLink	122	104	85.2	122	107	87.7
Regional Express	158	148	93.7	157	139	88.5
Tiger Airways	64	53	82.8	64	54	84.4
Virgin Australia	687	572	83.3	689	557	80.8
All Airlines	2 153	1 838	85.4	2 155	1 835	85.2
Relates to services to and from Brisbane, Canberra, Gold Coast, Melbourne, Perth, Port Lincoln and Sydney.						
Albury						
QantasLink	94	72	76.6	94	69	73.4
Regional Express	71	58	81.7	71	63	88.7
Virgin Australia - ATR/F100 Operations	61	49	80.3	61	46	75.4
All Airlines	226	179	79.2	226	178	78.8
Relates to services to and from Sydney only.						
Ayers Rock						
Qantas	31	30	96.8	31	31	100.0
Virgin Australia	31	26	83.9	31	26	83.9
All Airlines	62	56	90.3	62	57	91.9
Relates to services to and from Sydney only.						
Ballina						
Jetstar	69	42	60.9	68	48	70.6
Regional Express	29	21	72.4	33	27	81.8
Virgin Australia	30	18	60.0	30	24	80.0
All Airlines	128	81	63.3	131	99	75.6
Relates to services to and from Sydney only.						
Brisbane						
Jetstar	697	462	66.3	694	458	66.0
Qantas	1 623	1 338	82.4	1 600	1 292	80.8
QantasLink	749	586	78.2	748	480	64.2
Tiger Airways	193	135	69.9	199	131	65.8
Virgin Australia	1 839	1 329	72.3	1 832	1 192	65.1
Virgin Australia - ATR/F100 Operations	486	365	75.1	481	337	70.1
All Airlines	5 587	4 215	75.4	5 554	3 890	70.0
Relates to services to and from Adelaide, Cairns, Canberra, Darwin, Emerald, Gladstone, Hamilton Island, Mackay, Melbourne, Mount Isa, Newcastle, Perth, Proserpine, Rockhampton, Sydney and Townsville.						

Airport	Departures			Arrivals		
	Sectors	On Time		Sectors	On Time	
	Flown	No.	%	Flown	No.	%
Broome						
Qantas	29	18	62.1	30	22	73.3
QantasLink	52	43	82.7	51	36	70.6
Skywest	12	6	50.0	8	5	62.5
Virgin Australia	31	23	74.2	31	29	93.5
All Airlines	124	90	72.6	120	92	76.7
Relates to services to and from Perth only.						
Cairns						
Jetstar	281	221	78.6	283	235	83.0
Qantas	204	184	90.2	205	192	93.7
QantasLink	171	136	79.5	169	124	73.4
Tiger Airways	31	29	93.5	31	30	96.8
Virgin Australia	269	206	76.6	270	229	84.8
Virgin Australia - ATR/F100 Operations	54	41	75.9	53	45	84.9
All Airlines	1 010	817	80.9	1 011	855	84.6
Relates to services to and from Brisbane, Melbourne, Sydney and Townsville.						
Canberra						
Qantas	383	349	91.1	385	349	90.6
QantasLink	450	364	80.9	449	352	78.4
Virgin Australia	352	281	79.8	355	275	77.5
Virgin Australia - ATR/F100 Operations	172	139	80.8	171	123	71.9
All Airlines	1 357	1 133	83.5	1 360	1 099	80.8
Relates to services to and from Adelaide, Brisbane, Melbourne and Sydney.						
Coffs Harbour						
QantasLink	145	107	73.8	146	107	73.3
Virgin Australia	59	41	69.5	61	45	73.8
All Airlines	204	148	72.5	207	152	73.4
Relates to services to and from Sydney only.						
Darwin						
Jetstar	40	29	72.5	42	33	78.6
Qantas	116	89	76.7	115	97	84.3
Virgin Australia	114	99	86.8	115	94	81.7
All Airlines	270	217	80.4	272	224	82.4
Relates to services to and from Brisbane, Melbourne, Perth and Sydney.						
Dubbo						
QantasLink	102	84	82.4	102	86	84.3
Regional Express	101	86	85.1	102	92	90.2
All Airlines	203	170	83.7	204	178	87.3
Relates to services to and from Sydney only.						
Emerald						
QantasLink	165	135	81.8	165	138	83.6
Virgin Australia - ATR/F100 Operations	103	88	85.4	104	86	82.7
All Airlines	268	223	83.2	269	224	83.3
Relates to services to and from Brisbane only.						

Airport	Departures			Arrivals		
	Sectors	On Time		Sectors	On Time	
	Flown	No.	%	Flown	No.	%
Geraldton						
QantasLink	54	40	74.1	54	43	79.6
Skywest	73	49	67.1	71	43	60.6
All Airlines	127	89	70.1	125	86	68.8
Relates to services to and from Perth only.						
Gladstone						
QantasLink	219	157	71.7	209	160	76.6
Virgin Australia - ATR/F100 Operations	118	85	72.0	122	89	73.0
All Airlines	337	242	71.8	331	249	75.2
Relates to services to and from Brisbane only.						
Gold Coast						
Jetstar	610	418	68.5	607	429	70.7
Qantas	88	69	78.4	89	82	92.1
Tiger Airways	162	117	72.2	161	123	76.4
Virgin Australia	527	361	68.5	534	376	70.4
All Airlines	1 387	965	69.6	1 391	1 010	72.6
Relates to services to and from Adelaide, Melbourne and Sydney.						
Hamilton Island						
Jetstar	46	31	67.4	46	36	78.3
Virgin Australia	61	41	67.2	63	48	76.2
All Airlines	107	72	67.3	109	84	77.1
Relates to services to and from Brisbane and Sydney.						
Hobart						
Jetstar	314	219	69.7	314	251	79.9
Qantas	93	84	90.3	93	88	94.6
QantasLink	31	28	90.3	30	23	76.7
Tiger Airways	57	47	82.5	57	50	87.7
Virgin Australia	225	171	76.0	225	185	82.2
All Airlines	720	549	76.3	719	597	83.0
Relates to services to and from Melbourne and Sydney.						
Kalgoorlie						
Qantas	56	48	85.7	57	51	89.5
QantasLink	31	29	93.5	31	29	93.5
Skywest	58	40	69.0	59	39	66.1
All Airlines	145	117	80.7	147	119	81.0
Relates to services to and from Perth only.						
Karratha						
Qantas	183	162	88.5	184	160	87.0
QantasLink	59	48	81.4	58	54	93.1
Virgin Australia	53	31	58.5	53	37	69.8
Virgin Australia - ATR/F100 Operations	1	0	0.0	1	0	0.0
All Airlines	296	241	81.4	296	251	84.8
Relates to services to and from Perth only.						

Airport	Departures			Arrivals		
	Sectors Flown	On Time		Sectors Flown	On Time	
		No.	%		No.	%
Launceston						
Jetstar	229	165	72.1	229	185	80.8
QantasLink	111	98	88.3	111	96	86.5
Virgin Australia	169	129	76.3	168	133	79.2
All Airlines	509	392	77.0	508	414	81.5
Relates to services to and from Melbourne and Sydney.						
Mackay						
Jetstar	99	58	58.6	100	74	74.0
QantasLink	105	81	77.1	106	88	83.0
Virgin Australia	171	133	77.8	171	135	78.9
All Airlines	375	272	72.5	377	297	78.8
Relates to services to and from Brisbane only.						
Melbourne						
Jetstar	1 463	1 055	72.1	1 467	1 093	74.5
Qantas	1 875	1 701	90.7	1 875	1 706	91.0
QantasLink	284	249	87.7	286	237	82.9
Regional Express	60	58	96.7	60	59	98.3
Tiger Airways	651	559	85.9	649	519	80.0
Virgin Australia	2 281	1 787	78.3	2 282	1 768	77.5
All Airlines	6 614	5 409	81.8	6 619	5 382	81.3
Relates to services to and from Adelaide, Brisbane, Cairns, Canberra, Darwin, Gold Coast, Hobart, Launceston, Mildura, Newcastle, Perth, Sunshine Coast and Sydney.						
Mildura						
QantasLink	89	83	93.3	89	72	80.9
Regional Express	60	59	98.3	60	58	96.7
Virgin Australia	31	27	87.1	31	28	90.3
All Airlines	180	169	93.9	180	158	87.8
Relates to services to and from Melbourne only.						
Mount Isa						
Qantas	56	49	87.5	57	52	91.2
Virgin Australia	23	19	82.6	23	19	82.6
All Airlines	79	68	86.1	80	71	88.8
Relates to services to and from Brisbane only.						
Newcastle						
Jetstar	223	171	76.7	226	186	82.3
QantasLink	70	28	40.0	70	31	44.3
Virgin Australia	31	20	64.5	31	28	90.3
Virgin Australia - ATR/F100 Operations	82	64	78.0	82	64	78.0
All Airlines	406	283	69.7	409	309	75.6
Relates to services to and from Brisbane and Melbourne.						
Newman						
Qantas	129	98	76.0	129	106	82.2
QantasLink	29	27	93.1	29	27	93.1
Skywest	15	15	100.0	15	15	100.0
Virgin Australia	37	25	67.6	37	26	70.3
All Airlines	210	165	78.6	210	174	82.9
Relates to services to and from Perth only.						

Airport	Departures			Arrivals		
	Sectors	On Time		Sectors	On Time	
	Flown	No.	%	Flown	No.	%
Perth						
Jetstar	207	142	68.6	206	160	77.7
Qantas	1 186	992	83.6	1 180	948	80.3
QantasLink	268	241	89.9	271	225	83.0
Skywest	153	116	75.8	158	100	63.3
Tiger Airways	62	51	82.3	62	57	91.9
Virgin Australia	640	500	78.1	639	412	64.5
Virgin Australia - ATR/F100 Operations	1	0	0.0	1	0	0.0
All Airlines	2 517	2 042	81.1	2 517	1 902	75.6

Relates to services to and from Adelaide, Brisbane, Broome, Darwin, Geraldton, Kalgoorlie, Karratha, Melbourne, Newman, Port Hedland and Sydney.

Port Hedland

Qantas	115	85	73.9	117	89	76.1
QantasLink	46	43	93.5	45	44	97.8
Virgin Australia	77	55	71.4	77	57	74.0
All Airlines	238	183	76.9	239	190	79.5

Relates to services to and from Perth only.

Port Lincoln

QantasLink	83	74	89.2	83	73	88.0
Regional Express	157	141	89.8	158	144	91.1
All Airlines	240	215	89.6	241	217	90.0

Relates to services to and from Adelaide only.

Port Macquarie

QantasLink	132	101	76.5	133	103	77.4
Virgin Australia - ATR/F100 Operations	59	45	76.3	59	49	83.1
All Airlines	191	146	76.4	192	152	79.2

Relates to services to and from Sydney only.

Proserpine

Jetstar	30	17	56.7	29	15	51.7
Virgin Australia	31	21	67.7	30	23	76.7
Virgin Australia - ATR/F100 Operations	23	13	56.5	24	17	70.8
All Airlines	84	51	60.7	83	55	66.3

Relates to services to and from Brisbane only.

Rockhampton

QantasLink	165	117	70.9	175	125	71.4
Virgin Australia	76	54	71.1	76	55	72.4
Virgin Australia - ATR/F100 Operations	127	96	75.6	127	100	78.7
All Airlines	368	267	72.6	378	280	74.1

Relates to services to and from Brisbane only.

Sunshine Coast

Jetstar	179	119	66.5	179	136	76.0
Virgin Australia	63	35	55.6	63	47	74.6
All Airlines	242	154	63.6	242	183	75.6

Relates to services to and from Melbourne and Sydney.

Airport	Departures			Arrivals		
	Sectors	On Time		Sectors	On Time	
	Flown	No.	%	Flown	No.	%
Sydney						
Jetstar	1 495	1 085	72.6	1 495	1 071	71.6
Qantas	1 982	1 729	87.2	1 999	1 719	86.0
QantasLink	936	743	79.4	933	709	76.0
Regional Express	280	242	86.4	277	217	78.3
Tiger Airways	465	393	84.5	462	389	84.2
Virgin Australia	2 266	1 558	68.8	2 257	1 701	75.4
Virgin Australia - ATR/F100 Operations	291	211	72.5	292	224	76.7
All Airlines	7 715	5 961	77.3	7 715	6 030	78.2
Relates to services to and from Adelaide, Albury, Ayers Rock, Ballina, Brisbane, Cairns, Canberra, Coffs Harbour, Darwin, Dubbo, Gold Coast, Hamilton Island, Hobart, Launceston, Melbourne, Perth, Port Macquarie, Sunshine Coast, Townsville and Wagga Wagga.						
Townsville						
Jetstar	58	44	75.9	57	43	75.4
Qantas	130	114	87.7	130	109	83.8
QantasLink	165	121	73.3	167	128	76.6
Virgin Australia	195	149	76.4	195	139	71.3
Virgin Australia - ATR/F100 Operations	26	22	84.6	26	20	76.9
All Airlines	574	450	78.4	575	439	76.3
Relates to services to and from Brisbane, Cairns and Sydney.						
Wagga Wagga						
QantasLink	90	67	74.4	91	61	67.0
Regional Express	76	62	81.6	74	65	87.8
All Airlines	166	129	77.7	165	126	76.4
Relates to services to and from Sydney only.						

Definitions

On time departure A flight departure is counted as "on time" if it departs the gate within 15 minutes of the scheduled departure time shown in the carriers' schedule.

On time arrival A flight arrival is counted as "on time" if it arrived at the gate within 15 minutes of the scheduled arrival time shown in the carriers' schedule.
Neither diverted nor cancelled flights count as on time.

Cancellation A flight removed from service within 7 days of scheduled departure is regarded as a cancellation.

On time departure percentage The percentage of on time departures is measured against the number of departures *operated* on any particular sector.

On time arrival percentage The percentage of on time arrivals is measured against the number of arrivals *operated* on any particular sector.

Cancellation percentage The percentage of cancellations is measured against the number of services *scheduled* on any particular sector.
