



Australian Government

Department of Infrastructure, Transport,
Regional Development and Local Government
Bureau of Infrastructure, Transport and Regional Economics



bitre

AVIATION STATISTICS

Airline

On Time Performance

November 2008—OTP 67

© Commonwealth of Australia 2008

ISSN 1832-0759

This work is copyright and the data contained in this publication should not be reproduced or used in any form without acknowledgement.

Enquiries

Bureau of Infrastructure, Transport and Regional Economics
GPO Box 501
Canberra ACT 2601

Telephone: 02 6274 7210

Facsimile: 02 6274 7727

Website: www.bitre.gov.au

Email: avstats@infrastructure.gov.au

This publication, including a spreadsheet of the time-series data, can be downloaded from the BITRE website:

<http://www.bitre.gov.au/info.aspx?ResourceId=214&NodeId=104>.

Disclaimers

BITRE seeks to publish its work to the highest professional standards. However, it cannot accept responsibility for any consequences arising from the use of information herein. Readers should rely on their own skill and judgment in applying any information or analysis to particular issues or circumstances.

Foreword

The Bureau of Infrastructure, Transport and Regional Economics (BITRE) reports on domestic aviation on time performance of the following participating Australian domestic airlines: Jetstar, MacAir, Qantas, QantasLink, Regional Express, Skywest Airlines, Tiger Airways and Virgin Blue.

Reporting commenced in November 2003, except for Jetstar which commenced reporting in May 2004, MacAir which commenced reporting in July 2005, and Tiger Airways which commenced reporting in April 2008.

The purpose of collecting this information is to monitor overall industry and individual airline performance on punctuality, and to allow consumers of air travel to make informed decisions when planning air travel.

On time performance is reported for all routes where the passenger load averaged 8000 or more passengers per month over the previous six months, and where two or more airlines operated in competition on those routes. There were 49 routes that met this definition in November 2008. Over time, however, routes which meet these criteria may change as airline networks and traffic levels vary.

The participating airlines also report overall monthly network performance, except for MacAir which only supplies total network data because it does not operate on competitive routes.

Total industry figures refer to all services operated by reporting airlines only. These airlines collectively carried over 95 per cent of total domestic passengers (regular public transport only) in 2007.

The method of capturing on time performance varies between airlines utilising different recording systems. Jetstar and Qantas jet aircraft use Aircraft Communication Addressing and Reporting System (ACARS) to electronically measure on time performance. MacAir, Regional Express, Skywest, Tiger Airways, Virgin Blue and the Qantas non-jet fleet record on time performance manually using records from pilots, gate agents and/or ground crews.

Reports are published monthly on the BITRE web site. After collection of initial data, aggregate reports are subject to internal audit by participating airlines prior to publication. The target date for publication is within six weeks of the end of the reporting period. The report for November 2008 includes comparable data for the total industry for previous months.

Information on the total network for the month ending 30 November 2008 is presented on Page 1.

On time performance reporting was provided for 49 different routes covering 31 airports for November 2008. Detailed information on the performance of these routes is included in the tables beginning on Page 9, while detailed information on performance by airport is included from Page 21. The definitions can be found on Page 27.

Detailed time series data is available in Microsoft Excel spreadsheet format from the BITRE website at <http://www.bitre.gov.au/info.aspx?ResourceId=214&NodeId=104>.

Contents

	Page
Industry performance	1
Individual routes	9
Airports	21
Definitions.....	27

Industry performance

For the month ending 30 November 2008, airline on time performance over all routes operated by participating airlines (Jetstar, MacAir, Qantas, QantasLink, Regional Express, Skywest Airlines, Tiger Airways, and Virgin Blue) averaged 78.5 per cent for on time departures, and 75.9 per cent for on time arrivals. Cancellations for November 2008 represented 2.1 per cent of all scheduled flights. The equivalent figures for November 2007 were 79.9 per cent for departures, 77.4 per cent for arrivals and 1.4 per cent for cancellations.

The long term average performance for all routes since reporting commenced in November 2003 is 85.0 per cent for on time departures and 83.7 per cent for on time arrivals. Cancellations average 1.2 per cent of all scheduled flights.

Of the major domestic airlines, Qantas achieved the highest level of on time departures for November 2008 at 79.8 per cent, followed by Jetstar at 78.4 per cent, Tiger Airways at 76.8 per cent, and Virgin Blue at 76.3 per cent. Skywest was the best performing regional airline with 87.2 per cent departures on time, followed by QantasLink (80.1 per cent), Regional Express (78.0 per cent) and MacAir (76.0 per cent).

Tiger Airways achieved the highest on time arrivals among the major domestic airlines at 78.6 per cent, followed closely by Jetstar at 78.4 per cent, Qantas at 78.2 per cent, and Virgin Blue at 73.1 per cent. Skywest was also the best performing regional airlines for on time arrivals at 85.5 per cent, followed by QantasLink (76.2 per cent), MacAir (75.7 per cent) and Regional Express (72.8 per cent).

MacAir had the highest percentage of cancellations for November 2008 at 10.4 per cent, while Jetstar had the lowest at 0.7 per cent.

Of the 49 routes which met the criteria for on time performance reporting in November 2008, the Brisbane–Hamilton Island route had the highest percentage of on time departures (91.7 per cent), while the Alice Springs–Melbourne route had the lowest (53.5 per cent). On time arrivals were also highest on the Brisbane–Hamilton Island route (91.7 per cent), and lowest on the Sydney–Perth route (39.1 per cent).

Cancellations were highest on the Brisbane–Sydney route at 4.9 per cent, followed by Sydney–Brisbane at 4.8 per cent, Melbourne–Sydney at 4.7 per cent, Sydney–Melbourne at 4.6 per cent, Canberra–Sydney at 4.5 per cent, and Sydney–Canberra at 4.4 per cent.

Hamilton Island Airport recorded the highest percentage of on time departures (91.7 per cent), while Alice Springs Airport recorded the lowest (53.5 per cent). Hamilton Island Airport also recorded the highest percentage of on time arrivals (91.7 per cent), while Albury Airport recorded the lowest (58.8 per cent).

Table 1 On time performance for November 2008—Total Industry

	<i>Sectors</i>		<i>Departures On Time</i>		<i>Arrivals On Time</i>		<i>Cancellations</i>	
	<i>Scheduled</i>	<i>Flown</i>	<i>No.</i>	<i>%</i>	<i>No.</i>	<i>%</i>	<i>No.</i>	<i>%</i>
Jetstar	4 943	4 907	3 845	78.4	3 848	78.4	36	0.7
MacAir	1 088	975	741	76.0	738	75.7	113	10.4
Qantas	10 391	10 213	8 151	79.8	7 988	78.2	178	1.7
QantasLink	7 661	7 570	6 066	80.1	5 766	76.2	91	1.2
Regional Express	5 240	5 086	3 966	78.0	3 704	72.8	154	2.9
Skywest	1 020	1 012	882	87.2	865	85.5	8	0.8
Tiger Airways	770	763	586	76.8	600	78.6	7	0.9
Virgin Blue	11 812	11 500	8 773	76.3	8 401	73.1	312	2.6
All Airlines	42 925	42 026	33 010	78.5	31 910	75.9	899	2.1

Note: 1. Total airline network data (including routes not shown in this report).

2. Tiger Airways began reporting in April 2008.

Table 2 Top ten routes for on time performance for November 2008 (participating airlines only)

<i>Departures</i>		<i>Arrivals</i>	
<i>Route</i>	<i>On Time (%)</i>	<i>Route</i>	<i>On Time (%)</i>
Brisbane-Hamilton Island	91.7	Brisbane-Hamilton Island	91.7
Hamilton Island-Brisbane	91.7	Townsville-Brisbane	88.9
Townsville-Brisbane	89.7	Brisbane-Townsville	87.8
Perth-Kalgoorlie	88.9	Sydney-Hervey Bay	87.2
Canberra-Adelaide	88.8	Canberra-Brisbane	86.9
Kalgoorlie-Perth	88.2	Brisbane-Cairns	86.7
Cairns-Brisbane	87.8	Sydney-Townsville	86.3
Sydney-Hervey Bay	87.2	Canberra-Melbourne	85.5
Brisbane-Melbourne	86.9	Perth-Kalgoorlie	85.5
Canberra-Melbourne	86.7	Melbourne-Canberra	85.2

Table 3 Top ten airports for on time performance for October 2008 (participating airlines and reported routes only)

<i>Departures</i>		<i>Arrivals</i>	
<i>Airport</i>	<i>On Time (%)</i>	<i>Airport</i>	<i>On Time (%)</i>
Hamilton Island	91.7	Hamilton Island	91.7
Townsville	89.3	Townsville	87.6
Kalgoorlie	88.2	Hervey Bay	87.2
Rockhampton	85.9	Kalgoorlie	85.5
Hervey Bay	85.1	Karratha	83.8
Canberra	84.5	Cairns	83.4
Cairns	84.1	Rockhampton	82.7
Mackay	84.1	Mackay	81.6
Karratha	83.5	Launceston	81.3
Hobart	83.0	Brisbane	81.1

Total industry on time performance

Figure 1 On time performance (by month from November 2005)—Total Industry

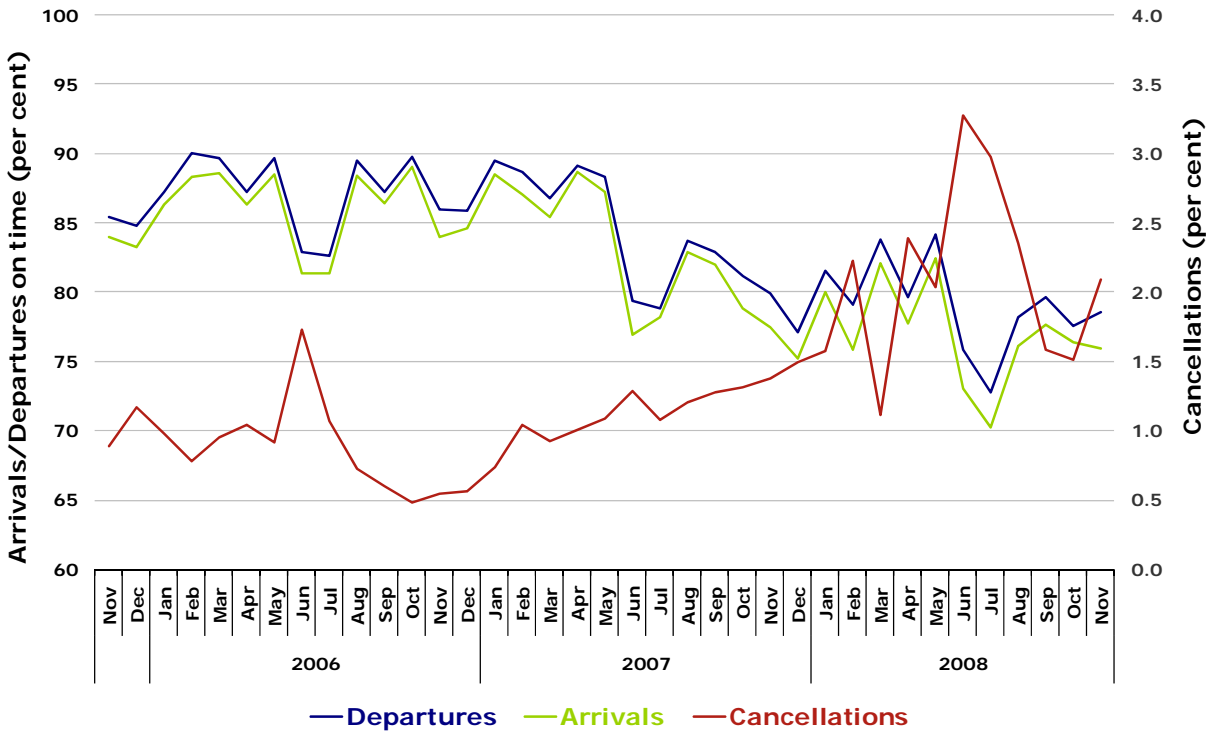


Figure 2 Departures on time (by month from November 2007)

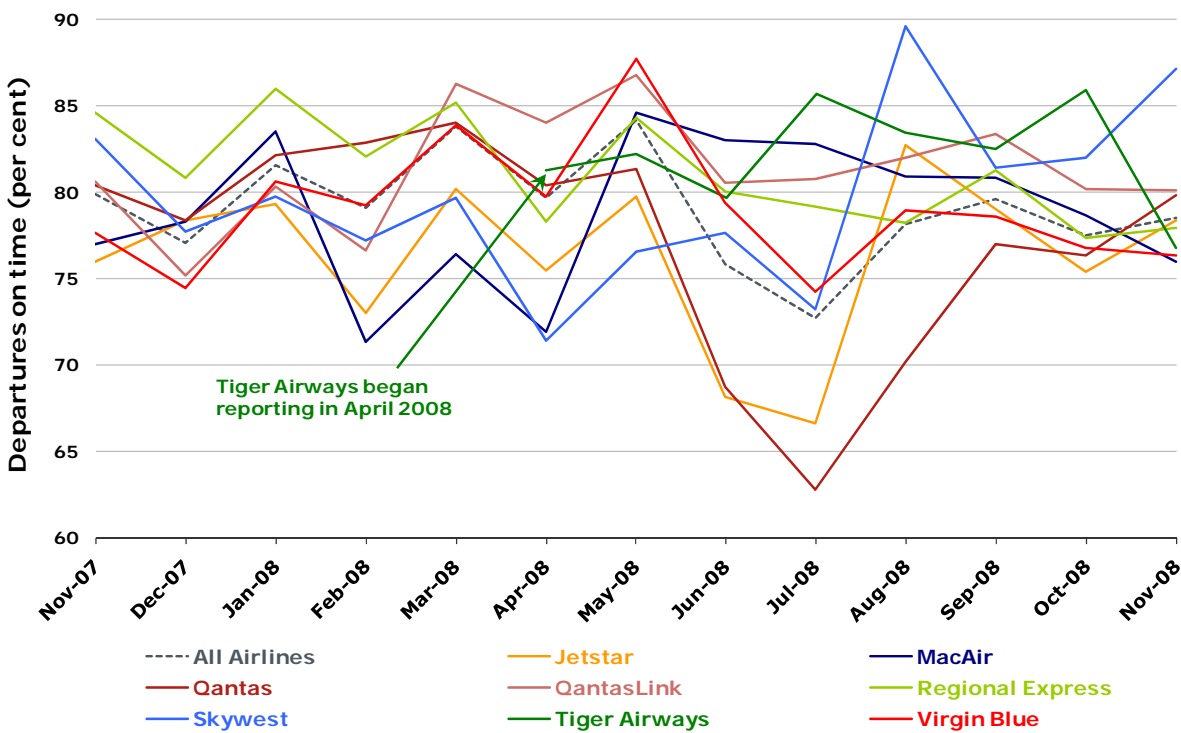


Figure 3 Arrivals on time (by month from November 2007)

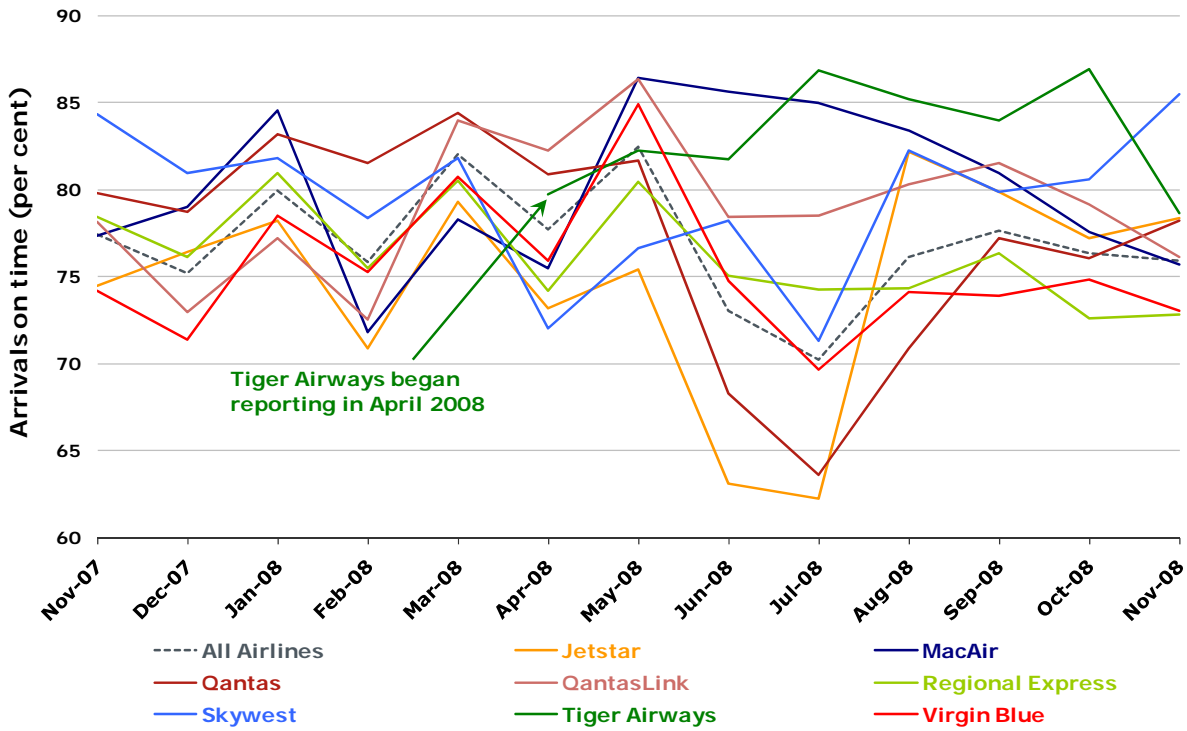
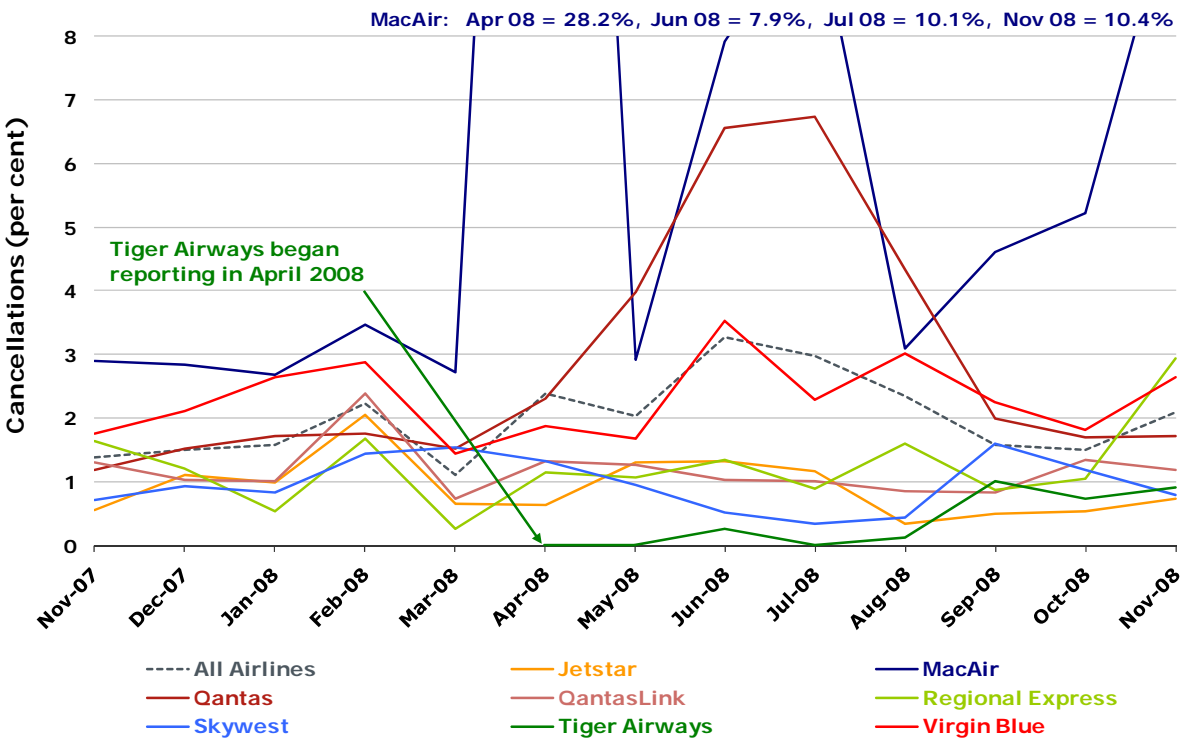


Figure 4 Cancellations (by month from November 2007)



Major domestic airlines on time performance

Figure 5 On time performance (by month from November 2005)—Jetstar

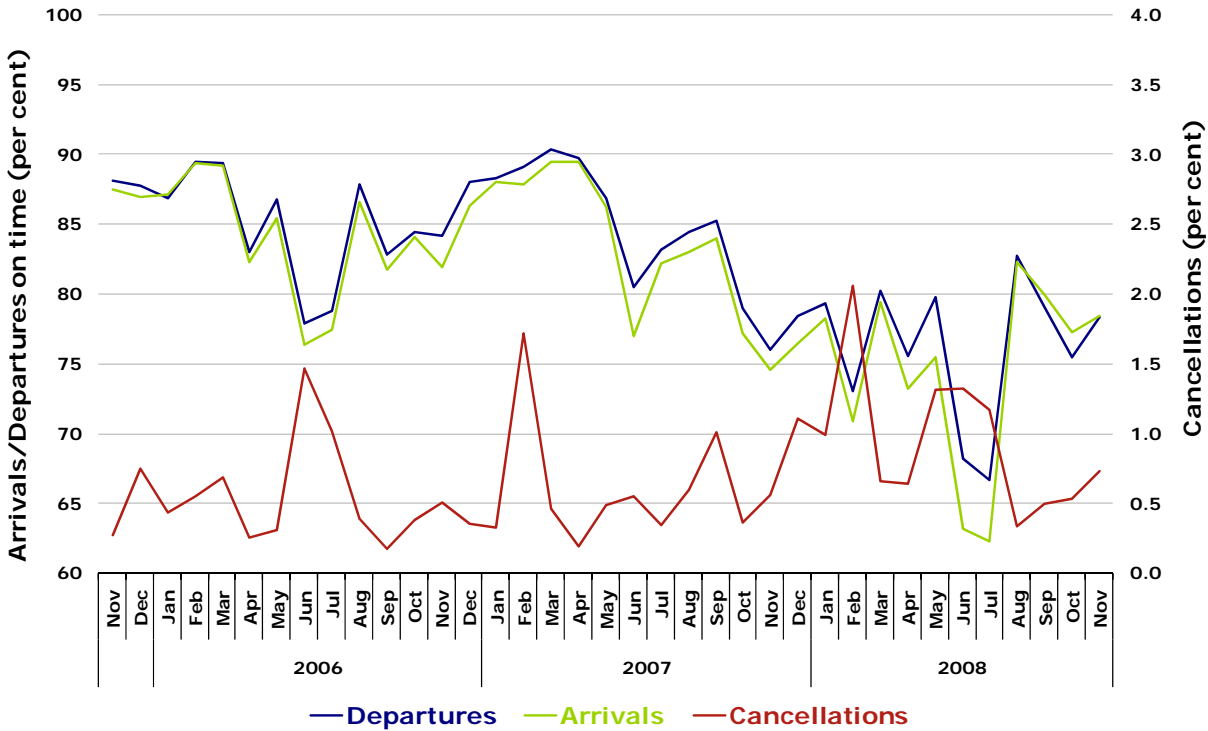


Figure 6 On time performance (by month from November 2005)—Qantas

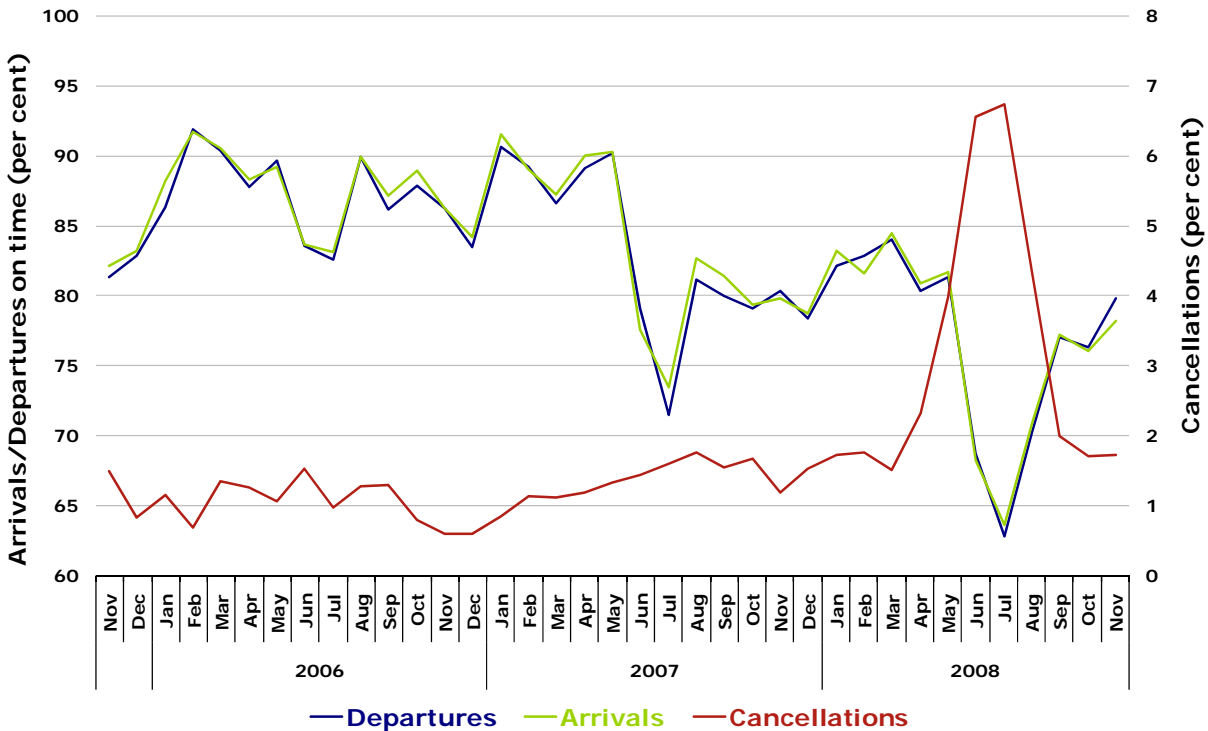


Figure 7 On time performance (by month from November 2005)—Tiger Airways

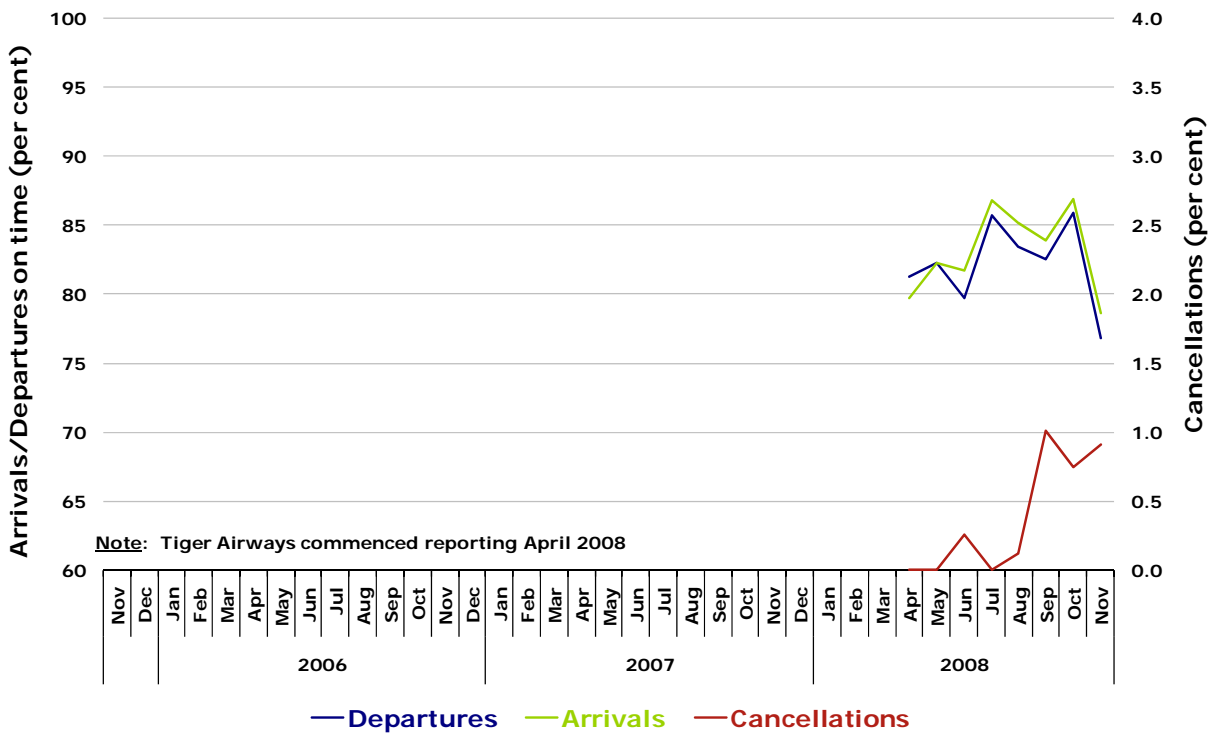
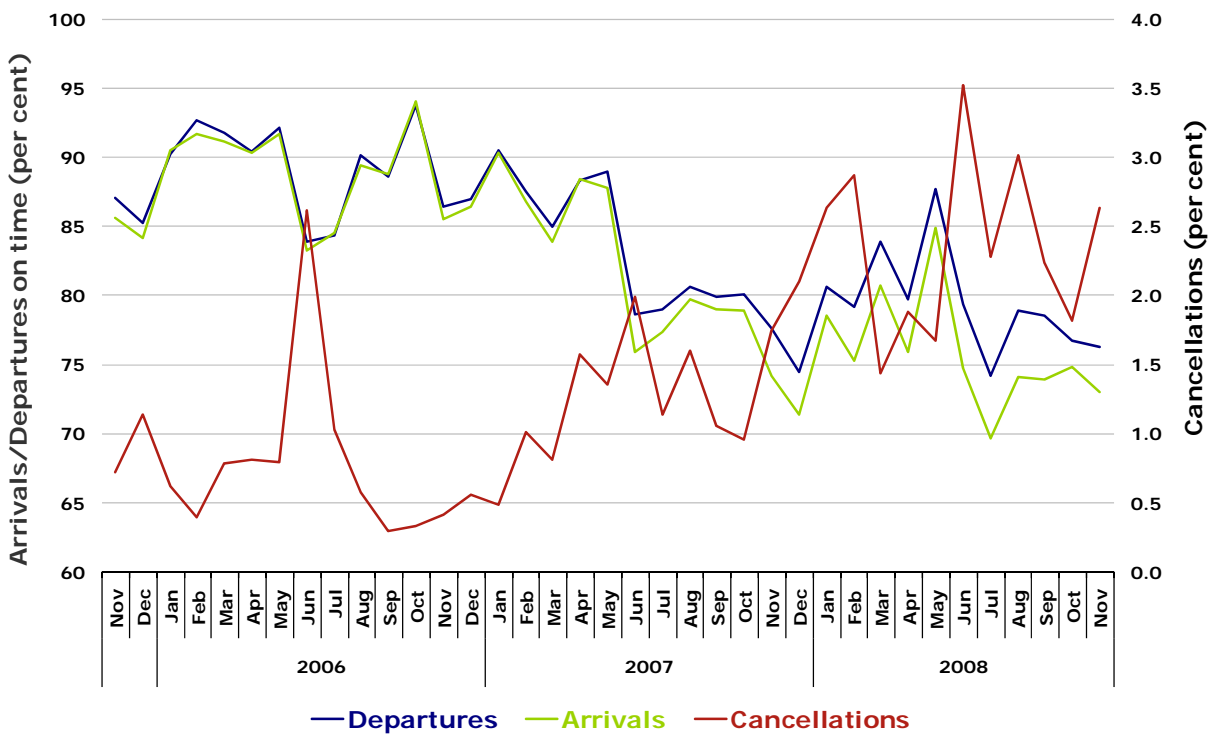


Figure 8 On time performance (by month from November 2005)—Virgin Blue



Major regional airlines on time performance

Figure 9 On time performance (by month from November 2005)—MacAir

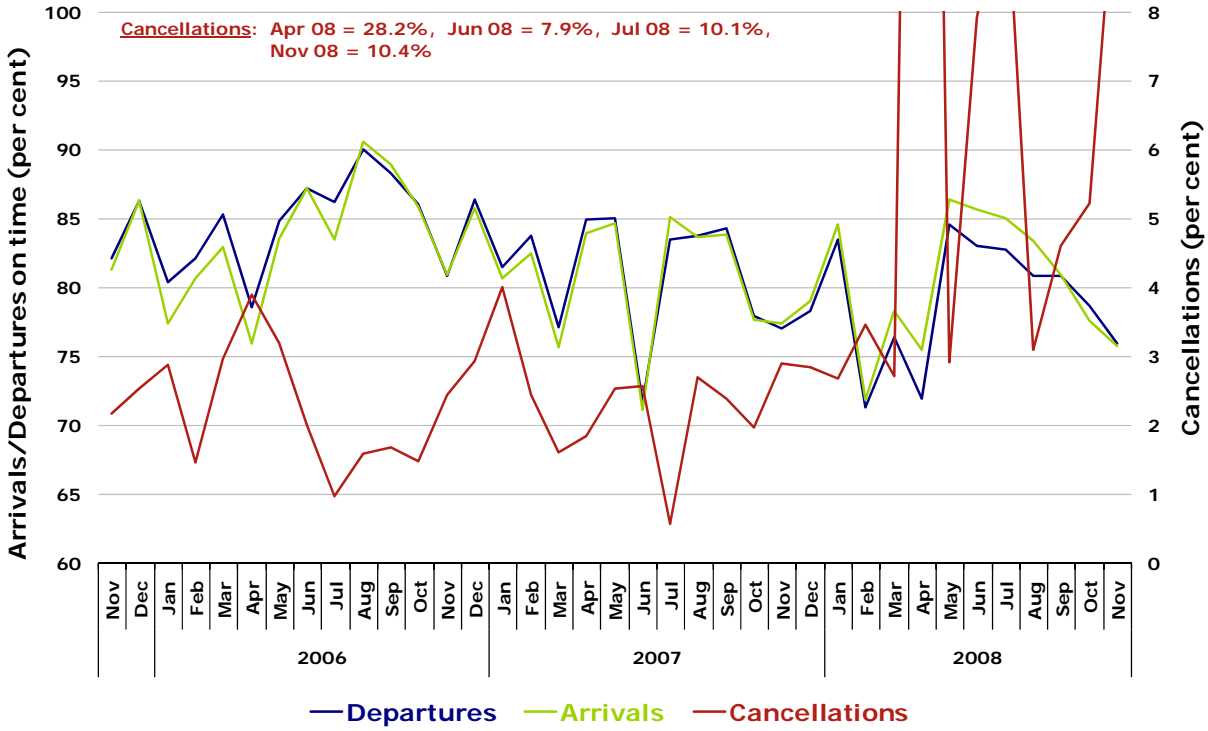


Figure 10 On time performance (by month from November 2005)—QantasLink

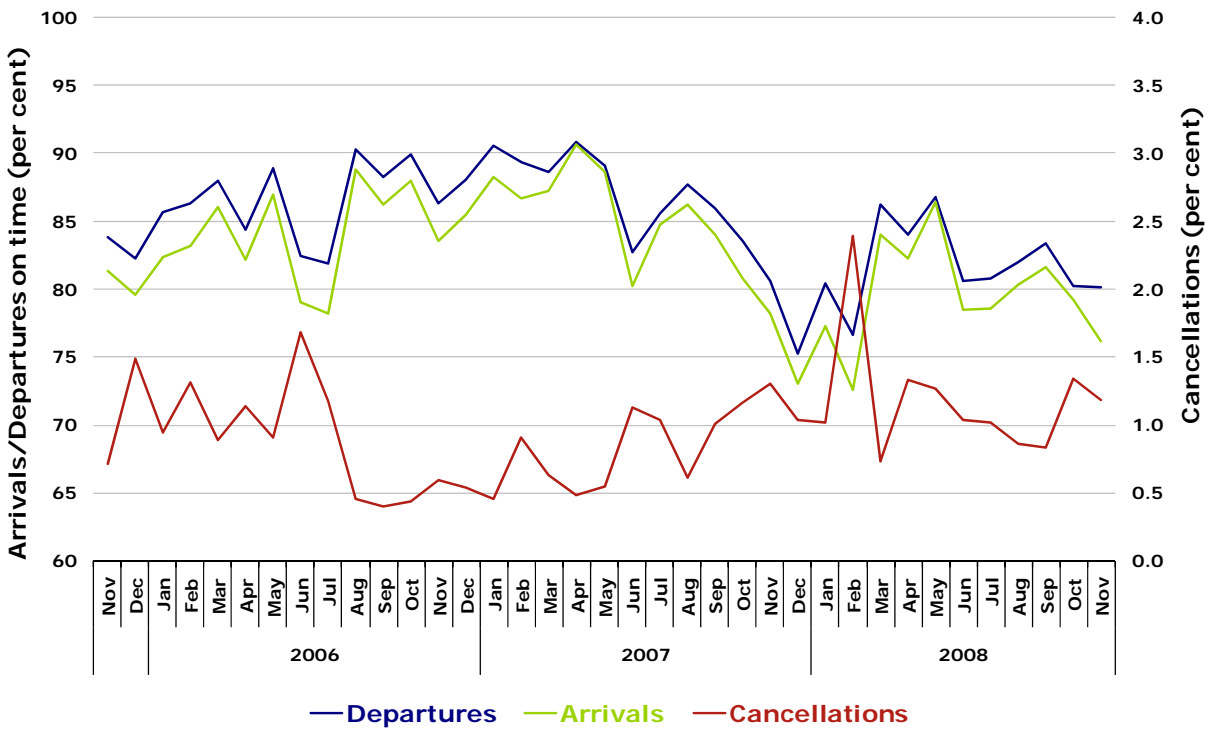


Figure 11 On time performance (by month from November 2005)—Regional Express

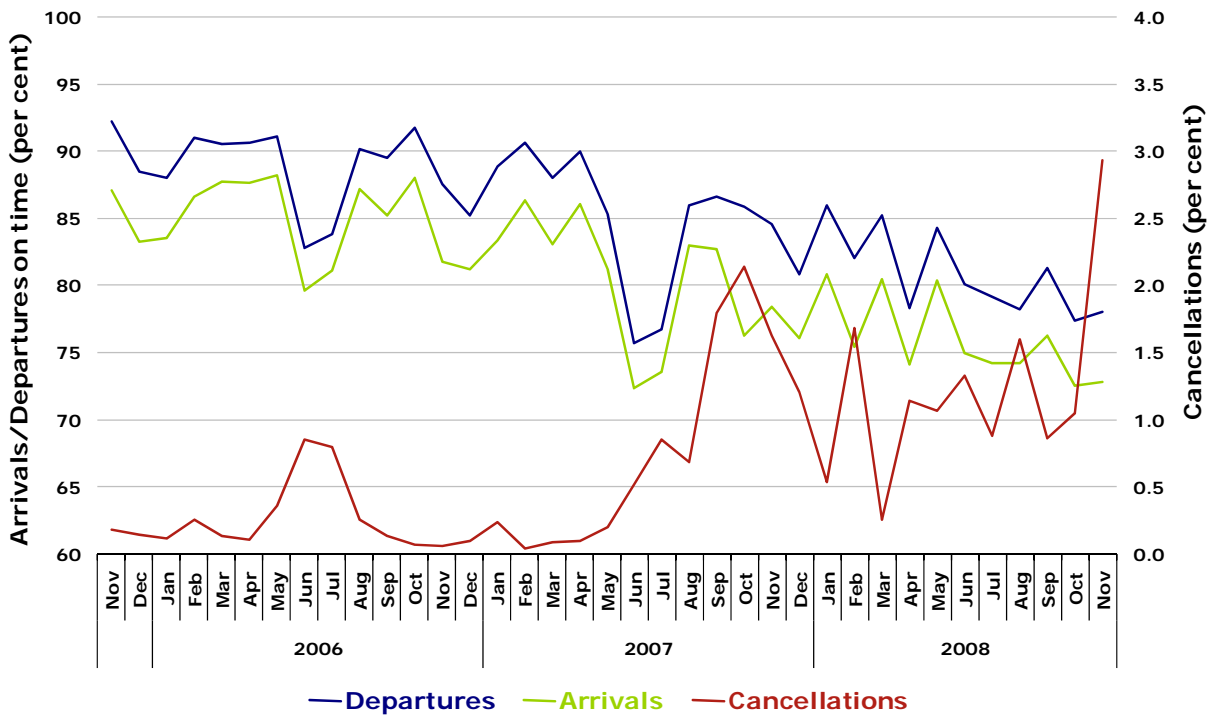
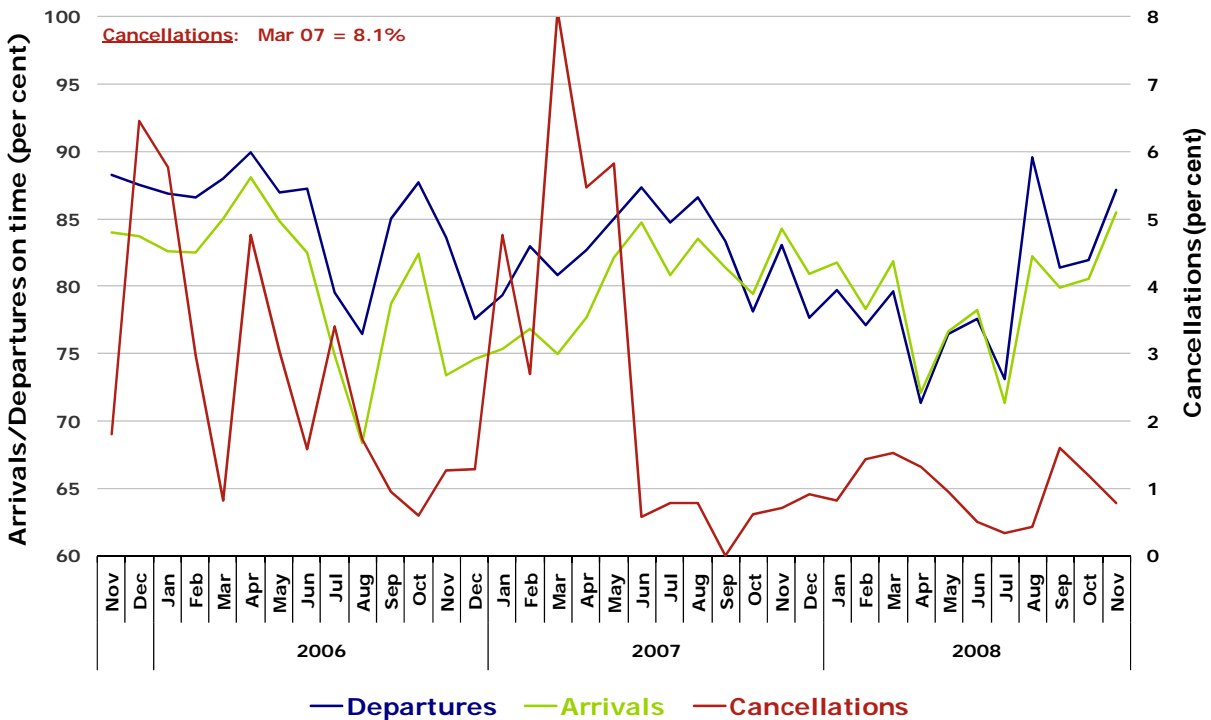


Figure 12 On time performance (by month from November 2005)—Skywest



Individual routes

On time performance is reported for all routes where the passenger load averages over 8000 passengers per month over the previous six months, and where two or more airlines operate in competition on those routes. There are now 49 routes which meet this definition. Over time, however, routes which meet this definition may change as airline networks and traffic levels vary.

	<i>Sectors</i>		<i>Departures</i>		<i>Arrivals</i>		<i>Cancellations</i>	
	<i>Sched.</i>	<i>Flown</i>	<i>On Time</i>		<i>On Time</i>			
			<i>No.</i>	<i>%</i>	<i>No.</i>	<i>%</i>	<i>No.</i>	<i>%</i>
Adelaide-Brisbane								
Jetstar	30	30	19	63.3	24	80.0	0	0.0
Qantas	85	85	74	87.1	80	94.1	0	0.0
Virgin Blue	115	115	72	62.6	85	73.9	0	0.0
All Airlines	230	230	165	71.7	189	82.2	0	0.0
Adelaide-Canberra								
Qantas	45	45	27	60.0	30	66.7	0	0.0
Virgin Blue	30	29	20	69.0	23	79.3	1	3.3
All Airlines	75	74	47	63.5	53	71.6	1	1.3
Adelaide-Gold Coast								
Jetstar	30	30	23	76.7	25	83.3	0	0.0
Virgin Blue	30	30	24	80.0	26	86.7	0	0.0
All Airlines	60	60	47	78.3	51	85.0	0	0.0
Adelaide-Melbourne								
Qantas	358	355	291	82.0	300	84.5	3	0.8
Tiger Airways	67	66	48	72.7	48	72.7	1	1.5
Virgin Blue	302	295	212	71.9	221	74.9	7	2.3
All Airlines	727	716	551	77.0	569	79.5	11	1.5
Adelaide-Perth								
Qantas	140	140	108	77.1	111	79.3	0	0.0
Virgin Blue	90	88	70	79.5	54	61.4	2	2.2
All Airlines	230	228	178	78.1	165	72.4	2	0.9
Adelaide-Sydney								
Jetstar	36	36	29	80.6	32	88.9	0	0.0
Qantas	308	307	263	85.7	268	87.3	1	0.3
Virgin Blue	150	150	93	62.0	115	76.7	0	0.0
All Airlines	494	493	385	78.1	415	84.2	1	0.2
Albury-Sydney								
QantasLink	115	115	80	69.6	84	73.0	0	0.0
Regional Express	115	108	74	68.5	75	69.4	7	6.1
Virgin Blue	55	53	40	75.5	37	69.8	2	3.6
All Airlines	285	276	194	70.3	196	71.0	9	3.2
Alice Springs-Melbourne								
Qantas	30	30	15	50.0	22	73.3	0	0.0
Tiger Airways	13	13	8	61.5	8	61.5	0	0.0
All Airlines	43	43	23	53.5	30	69.8	0	0.0

	<i>Sectors</i>		<i>Departures</i>		<i>Arrivals</i>		<i>Cancellations</i>	
	<i>Sched.</i>	<i>Flown</i>	<i>On Time</i>		<i>On Time</i>		<i>No.</i>	<i>%</i>
			<i>No.</i>	<i>%</i>	<i>No.</i>	<i>%</i>		
Ballina-Sydney								
Jetstar	28	28	14	50.0	13	46.4	0	0.0
Regional Express	82	78	44	56.4	34	43.6	4	4.9
Virgin Blue	32	31	23	74.2	20	64.5	1	3.1
All Airlines	142	137	81	59.1	67	48.9	5	3.5
Brisbane-Adelaide								
Jetstar	30	30	25	83.3	22	73.3	0	0.0
Qantas	85	84	66	78.6	59	70.2	1	1.2
Virgin Blue	115	115	94	81.7	53	46.1	0	0.0
All Airlines	230	229	185	80.8	134	58.5	1	0.4
Brisbane-Cairns								
Jetstar	90	90	76	84.4	84	93.3	0	0.0
Qantas	120	120	96	80.0	98	81.7	0	0.0
Virgin Blue	120	120	103	85.8	104	86.7	0	0.0
All Airlines	330	330	275	83.3	286	86.7	0	0.0
Brisbane-Canberra								
Qantas	138	138	120	87.0	117	84.8	0	0.0
QantasLink	10	10	8	80.0	7	70.0	0	0.0
Virgin Blue	146	142	119	83.8	102	71.8	4	2.7
All Airlines	294	290	247	85.2	226	77.9	4	1.4
Brisbane-Darwin								
Jetstar	25	25	21	84.0	21	84.0	0	0.0
Qantas	30	30	24	80.0	27	90.0	0	0.0
Virgin Blue	30	30	16	53.3	16	53.3	0	0.0
All Airlines	85	85	61	71.8	64	75.3	0	0.0
Brisbane-Hamilton Island								
Jetstar	30	30	27	90.0	26	86.7	0	0.0
Virgin Blue	30	30	28	93.3	29	96.7	0	0.0
All Airlines	60	60	55	91.7	55	91.7	0	0.0
Brisbane-Mackay								
Jetstar	90	90	70	77.8	76	84.4	0	0.0
QantasLink	54	54	45	83.3	44	81.5	0	0.0
Virgin Blue	145	144	114	79.2	115	79.9	1	0.7
All Airlines	289	288	229	79.5	235	81.6	1	0.3
Brisbane-Melbourne								
Qantas	444	442	374	84.6	327	74.0	2	0.5
Virgin Blue	376	367	329	89.6	294	80.1	9	2.4
All Airlines	820	809	703	86.9	621	76.8	11	1.3
Brisbane-Newcastle								
Jetstar	113	113	94	83.2	102	90.3	0	0.0
QantasLink	65	61	41	67.2	32	52.5	4	6.2
Virgin Blue	46	46	34	73.9	33	71.7	0	0.0
All Airlines	224	220	169	76.8	167	75.9	4	1.8
Brisbane-Perth								
Qantas	120	120	83	69.2	59	49.2	0	0.0
Virgin Blue	60	60	42	70.0	12	20.0	0	0.0
All Airlines	180	180	125	69.4	71	39.4	0	0.0

	<i>Sectors</i>		<i>Departures On Time</i>		<i>Arrivals On Time</i>		<i>Cancellations</i>	
	<i>Sched.</i>	<i>Flown</i>	<i>No.</i>	<i>%</i>	<i>No.</i>	<i>%</i>	<i>No.</i>	<i>%</i>
Brisbane-Proserpine								
Jetstar	30	30	18	60.0	22	73.3	0	0.0
Virgin Blue	30	30	24	80.0	24	80.0	0	0.0
All Airlines	60	60	42	70.0	46	76.7	0	0.0
Brisbane-Rockhampton								
Jetstar	30	30	26	86.7	29	96.7	0	0.0
QantasLink	189	185	152	82.2	150	81.1	4	2.1
Virgin Blue	150	149	121	81.2	122	81.9	1	0.7
All Airlines	369	364	299	82.1	301	82.7	5	1.4
Brisbane-Sydney								
Qantas	662	637	501	78.6	424	66.6	25	3.8
Virgin Blue	592	555	423	76.2	345	62.2	37	6.3
All Airlines	1 254	1 192	924	77.5	769	64.5	62	4.9
Brisbane-Townsville								
Jetstar	55	54	43	79.6	46	85.2	1	1.8
Qantas	165	165	137	83.0	146	88.5	0	0.0
Virgin Blue	150	150	127	84.7	132	88.0	0	0.0
All Airlines	370	369	307	83.2	324	87.8	1	0.3
Broome-Perth								
Qantas	30	30	21	70.0	21	70.0	0	0.0
QantasLink	47	47	42	89.4	43	91.5	0	0.0
Skywest	25	25	20	80.0	18	72.0	0	0.0
Virgin Blue	54	49	21	42.9	29	59.2	5	9.3
All Airlines	156	151	104	68.9	111	73.5	5	3.2
Cairns-Brisbane								
Jetstar	90	90	85	94.4	80	88.9	0	0.0
Qantas	120	120	101	84.2	100	83.3	0	0.0
Virgin Blue	120	119	103	86.6	92	77.3	1	0.8
All Airlines	330	329	289	87.8	272	82.7	1	0.3
Cairns-Melbourne								
Jetstar	30	30	23	76.7	18	60.0	0	0.0
Qantas	30	30	22	73.3	21	70.0	0	0.0
Virgin Blue	65	65	44	67.7	33	50.8	0	0.0
All Airlines	125	125	89	71.2	72	57.6	0	0.0
Cairns-Sydney								
Jetstar	30	30	24	80.0	23	76.7	0	0.0
Qantas	108	107	88	82.2	87	81.3	1	0.9
Virgin Blue	110	108	98	90.7	91	84.3	2	1.8
All Airlines	248	245	210	85.7	201	82.0	3	1.2
Canberra-Adelaide								
Qantas	50	50	42	84.0	42	84.0	0	0.0
Virgin Blue	30	30	29	96.7	25	83.3	0	0.0
All Airlines	80	80	71	88.8	67	83.8	0	0.0

	<i>Sectors</i>		<i>Departures On Time</i>		<i>Arrivals On Time</i>		<i>Cancellations</i>	
	<i>Sched.</i>	<i>Flown</i>	<i>No.</i>	<i>%</i>	<i>No.</i>	<i>%</i>	<i>No.</i>	<i>%</i>
Canberra-Brisbane								
Qantas	138	138	126	91.3	125	90.6	0	0.0
QantasLink	10	10	4	40.0	4	40.0	0	0.0
Virgin Blue	146	142	118	83.1	123	86.6	4	2.7
All Airlines	294	290	248	85.5	252	86.9	4	1.4
Canberra-Melbourne								
Qantas	250	246	211	85.8	209	85.0	4	1.6
QantasLink	40	40	35	87.5	35	87.5	0	0.0
Tiger Airways	53	52	42	80.8	44	84.6	1	1.9
Virgin Blue	180	173	155	89.6	149	86.1	7	3.9
All Airlines	523	511	443	86.7	437	85.5	12	2.3
Canberra-Sydney								
Qantas	187	182	160	87.9	157	86.3	5	2.7
QantasLink	431	409	328	80.2	320	78.2	22	5.1
Virgin Blue	210	200	163	81.5	167	83.5	10	4.8
All Airlines	828	791	651	82.3	644	81.4	37	4.5
Coffs Harbour-Sydney								
QantasLink	115	115	77	67.0	68	59.1	0	0.0
Virgin Blue	61	60	47	78.3	38	63.3	1	1.6
All Airlines	176	175	124	70.9	106	60.6	1	0.6
Darwin-Brisbane								
Jetstar	25	25	17	68.0	19	76.0	0	0.0
Qantas	30	30	24	80.0	20	66.7	0	0.0
Virgin Blue	30	30	16	53.3	21	70.0	0	0.0
All Airlines	85	85	57	67.1	60	70.6	0	0.0
Dubbo-Sydney								
QantasLink	85	85	67	78.8	61	71.8	0	0.0
Regional Express	153	144	101	70.1	100	69.4	9	5.9
All Airlines	238	229	168	73.4	161	70.3	9	3.8
Gold Coast-Adelaide								
Jetstar	30	30	24	80.0	23	76.7	0	0.0
Virgin Blue	30	30	25	83.3	14	46.7	0	0.0
All Airlines	60	60	49	81.7	37	61.7	0	0.0
Gold Coast-Melbourne								
Jetstar	175	175	128	73.1	115	65.7	0	0.0
Tiger Airways	87	87	65	74.7	68	78.2	0	0.0
Virgin Blue	150	146	117	80.1	80	54.8	4	2.7
All Airlines	412	408	310	76.0	263	64.5	4	1.0
Gold Coast-Newcastle								
Jetstar	30	30	20	66.7	19	63.3	0	0.0
Virgin Blue	14	14	14	100.0	14	100.0	0	0.0
All Airlines	303	303	230	75.9	208	68.6	0	0.0
Gold Coast-Sydney								
Jetstar	289	289	216	74.7	194	67.1	0	0.0
Virgin Blue	354	341	264	77.4	239	70.1	13	3.7
All Airlines	643	630	480	76.2	433	68.7	13	2.0

	<i>Sectors</i>		<i>Departures On Time</i>		<i>Arrivals On Time</i>		<i>Cancellations</i>	
	<i>Sched.</i>	<i>Flown</i>	<i>No.</i>	<i>%</i>	<i>No.</i>	<i>%</i>	<i>No.</i>	<i>%</i>
Hamilton Island-Brisbane								
Jetstar	30	30	27	90.0	26	86.7	0	0.0
Virgin Blue	30	30	28	93.3	24	80.0	0	0.0
All Airlines	60	60	55	91.7	50	83.3	0	0.0
Hervey Bay-Sydney								
Jetstar	17	17	13	76.5	13	76.5	0	0.0
Virgin Blue	30	30	27	90.0	25	83.3	0	0.0
All Airlines	47	47	40	85.1	38	80.9	0	0.0
Hobart-Melbourne								
Jetstar	134	134	112	83.6	112	83.6	0	0.0
Qantas	60	60	52	86.7	51	85.0	0	0.0
Tiger Airways	30	30	24	80.0	25	83.3	0	0.0
Virgin Blue	150	150	125	83.3	121	80.7	0	0.0
All Airlines	374	374	313	83.7	309	82.6	0	0.0
Hobart-Sydney								
Jetstar	60	60	49	81.7	50	83.3	0	0.0
Qantas	30	30	24	80.0	27	90.0	0	0.0
Virgin Blue	60	60	49	81.7	47	78.3	0	0.0
All Airlines	150	150	122	81.3	124	82.7	0	0.0
Kalgoorlie-Perth								
Qantas	61	61	55	90.2	54	88.5	0	0.0
QantasLink	25	25	23	92.0	23	92.0	0	0.0
Skywest	35	33	27	81.8	21	63.6	2	5.7
All Airlines	121	119	105	88.2	98	82.4	2	1.7
Karratha-Perth								
Qantas	113	113	93	82.3	92	81.4	0	0.0
QantasLink	37	37	33	89.2	35	94.6	0	0.0
Virgin Blue	50	44	36	81.8	37	84.1	6	12.0
All Airlines	200	194	162	83.5	164	84.5	6	3.0
Launceston-Melbourne								
Jetstar	90	89	74	83.1	73	82.0	1	1.1
QantasLink	60	59	52	88.1	42	71.2	1	1.7
Tiger Airways	30	30	26	86.7	26	86.7	0	0.0
Virgin Blue	121	120	106	88.3	101	84.2	1	0.8
All Airlines	301	298	258	86.6	242	81.2	3	1.0
Launceston-Sydney								
Jetstar	30	30	11	36.7	18	60.0	0	0.0
Virgin Blue	30	30	26	86.7	23	76.7	0	0.0
All Airlines	60	60	37	61.7	41	68.3	0	0.0
Mackay-Brisbane								
Jetstar	90	90	70	77.8	69	76.7	0	0.0
QantasLink	55	55	48	87.3	46	83.6	0	0.0
Virgin Blue	145	144	125	86.8	121	84.0	1	0.7
All Airlines	290	289	243	84.1	236	81.7	1	0.3

	<i>Sectors</i>		<i>Departures</i>		<i>Arrivals</i>		<i>Cancellations</i>	
	<i>Sched.</i>	<i>Flown</i>	<i>On Time</i>		<i>On Time</i>			
			<i>No.</i>	<i>%</i>	<i>No.</i>	<i>%</i>	<i>No.</i>	<i>%</i>
Maroochydore-Melbourne								
Jetstar	60	59	38	64.4	37	62.7	1	1.7
Tiger Airways	18	18	15	83.3	15	83.3	0	0.0
Virgin Blue	52	50	39	78.0	27	54.0	2	3.8
All Airlines	130	127	92	72.4	79	62.2	3	2.3
Maroochydore-Sydney								
Jetstar	90	87	64	73.6	64	73.6	3	3.3
Virgin Blue	60	60	35	58.3	31	51.7	0	0.0
All Airlines	150	147	99	67.3	95	64.6	3	2.0
Melbourne-Adelaide								
Qantas	358	357	296	82.9	284	79.6	1	0.3
Tiger Airways	67	66	47	71.2	48	72.7	1	1.5
Virgin Blue	302	296	206	69.6	190	64.2	6	2.0
All Airlines	727	719	549	76.4	522	72.6	8	1.1
Melbourne-Alice Springs								
Qantas	30	30	21	70.0	19	63.3	0	0.0
Tiger Airways	13	13	11	84.6	10	76.9	0	0.0
All Airlines	43	43	32	74.4	29	67.4	0	0.0
Melbourne-Brisbane								
Qantas	439	438	359	82.0	369	84.2	1	0.2
Virgin Blue	375	367	284	77.4	295	80.4	8	2.1
All Airlines	814	805	643	79.9	664	82.5	9	1.1
Melbourne-Cairns								
Jetstar	30	30	26	86.7	25	83.3	0	0.0
Qantas	30	30	22	73.3	25	83.3	0	0.0
Virgin Blue	65	65	44	67.7	47	72.3	0	0.0
All Airlines	125	125	92	73.6	97	77.6	0	0.0
Melbourne-Canberra								
Qantas	250	246	198	80.5	203	82.5	4	1.6
QantasLink	40	40	35	87.5	35	87.5	0	0.0
Tiger Airways	53	52	40	76.9	43	82.7	1	1.9
Virgin Blue	180	174	153	87.9	155	89.1	6	3.3
All Airlines	523	512	426	83.2	436	85.2	11	2.1
Melbourne-Gold Coast								
Jetstar	175	175	146	83.4	143	81.7	0	0.0
Tiger Airways	87	87	69	79.3	67	77.0	0	0.0
Virgin Blue	150	146	102	69.9	114	78.1	4	2.7
All Airlines	412	408	317	77.7	324	79.4	4	1.0
Melbourne-Hobart								
Jetstar	134	134	105	78.4	110	82.1	0	0.0
Qantas	60	60	46	76.7	47	78.3	0	0.0
Tiger Airways	30	30	25	83.3	25	83.3	0	0.0
Virgin Blue	150	150	108	72.0	117	78.0	0	0.0
All Airlines	374	374	284	75.9	299	79.9	0	0.0

	<i>Sectors</i>		<i>Departures</i>		<i>Arrivals</i>		<i>Cancellations</i>	
	<i>Sched.</i>	<i>Flown</i>	<i>On Time</i>		<i>On Time</i>		<i>No.</i>	<i>%</i>
			<i>No.</i>	<i>%</i>	<i>No.</i>	<i>%</i>		
Melbourne-Launceston								
Jetstar	90	89	77	86.5	78	87.6	1	1.1
QantasLink	60	59	50	84.7	50	84.7	1	1.7
Tiger Airways	30	30	26	86.7	26	86.7	0	0.0
Virgin Blue	121	120	94	78.3	96	80.0	1	0.8
All Airlines	301	298	247	82.9	250	83.9	3	1.0
Melbourne-Maroochydore								
Jetstar	60	60	41	68.3	41	68.3	0	0.0
Tiger Airways	18	18	18	100.0	16	88.9	0	0.0
Virgin Blue	52	51	34	66.7	44	86.3	1	1.9
All Airlines	130	129	93	72.1	101	78.3	1	0.8
Melbourne-Mildura								
QantasLink	110	110	81	73.6	69	62.7	0	0.0
Regional Express	105	104	84	80.8	80	76.9	1	1.0
Virgin Blue	30	30	21	70.0	17	56.7	0	0.0
All Airlines	245	244	186	76.2	166	68.0	1	0.4
Melbourne-Newcastle								
Jetstar	90	90	64	71.1	66	73.3	0	0.0
Virgin Blue	30	30	25	83.3	27	90.0	0	0.0
All Airlines	120	120	89	74.2	93	77.5	0	0.0
Melbourne-Perth								
Qantas	207	206	129	62.6	109	52.9	1	0.5
Tiger Airways	57	56	48	85.7	54	96.4	1	1.8
Virgin Blue	120	119	100	84.0	80	67.2	1	0.8
All Airlines	384	381	277	72.7	243	63.8	3	0.8
Melbourne-Sydney								
Qantas	967	923	708	76.7	726	78.7	44	4.6
Virgin Blue	873	831	581	69.9	617	74.2	42	4.8
All Airlines	1 840	1 754	1 289	73.5	1 343	76.6	86	4.7
Mildura-Melbourne								
QantasLink	110	110	80	72.7	79	71.8	0	0.0
Regional Express	104	103	82	79.6	81	78.6	1	1.0
Virgin Blue	30	30	18	60.0	22	73.3	0	0.0
All Airlines	244	243	180	74.1	182	74.9	1	0.4
Newcastle-Brisbane								
Jetstar	114	114	89	78.1	90	78.9	0	0.0
QantasLink	65	61	41	67.2	43	70.5	4	6.2
Virgin Blue	46	46	37	80.4	38	82.6	0	0.0
All Airlines	225	221	167	75.6	171	77.4	4	1.8
Newcastle-Gold Coast								
Jetstar	30	30	26	86.7	27	90.0	0	0.0
Virgin Blue	14	14	14	100.0	14	100.0	0	0.0
All Airlines	104	104	80	76.9	81	77.9	0	0.0
Newcastle-Melbourne								
Jetstar	90	90	66	73.3	67	74.4	0	0.0
Virgin Blue	30	30	27	90.0	25	83.3	0	0.0
All Airlines	120	120	93	77.5	92	76.7	0	0.0

	<i>Sectors</i>		<i>Departures</i>		<i>Arrivals</i>		<i>Cancellations</i>	
	<i>Sched.</i>	<i>Flown</i>	<i>On Time</i>		<i>On Time</i>			
			<i>No.</i>	<i>%</i>	<i>No.</i>	<i>%</i>	<i>No.</i>	<i>%</i>
Newman-Perth								
QantasLink	83	83	71	85.5	72	86.7	0	0.0
Virgin Blue	30	30	24	80.0	24	80.0	0	0.0
All Airlines	113	113	95	84.1	96	85.0	0	0.0
Perth-Adelaide								
Qantas	140	140	103	73.6	113	80.7	0	0.0
Virgin Blue	90	87	54	62.1	62	71.3	3	3.3
All Airlines	230	227	157	69.2	175	77.1	3	1.3
Perth-Brisbane								
Qantas	120	120	71	59.2	93	77.5	0	0.0
Virgin Blue	60	60	42	70.0	52	86.7	0	0.0
All Airlines	180	180	113	62.8	145	80.6	0	0.0
Perth-Broome								
Qantas	30	30	24	80.0	24	80.0	0	0.0
QantasLink	46	46	39	84.8	41	89.1	0	0.0
Skywest	25	25	19	76.0	17	68.0	0	0.0
Virgin Blue	54	50	29	58.0	33	66.0	4	7.4
All Airlines	155	151	111	73.5	115	76.2	4	2.6
Perth-Kalgoorlie								
Qantas	61	61	54	88.5	55	90.2	0	0.0
QantasLink	27	25	24	96.0	23	92.0	2	7.4
Skywest	33	31	26	83.9	22	71.0	2	6.1
All Airlines	121	117	104	88.9	100	85.5	4	3.3
Perth-Karratha								
Qantas	115	113	94	83.2	93	82.3	2	1.7
QantasLink	38	37	34	91.9	33	89.2	1	2.6
Virgin Blue	50	47	40	85.1	39	83.0	3	6.0
All Airlines	203	197	168	85.3	165	83.8	6	3.0
Perth-Melbourne								
Qantas	207	205	128	62.4	153	74.6	2	1.0
Tiger Airways	57	56	29	51.8	32	57.1	1	1.8
Virgin Blue	120	119	68	57.1	79	66.4	1	0.8
All Airlines	384	380	225	59.2	264	69.5	4	1.0
Perth-Newman								
QantasLink	83	83	73	88.0	72	86.7	0	0.0
Virgin Blue	30	30	28	93.3	28	93.3	0	0.0
All Airlines	113	113	101	89.4	100	88.5	0	0.0
Perth-Sydney								
Qantas	181	181	123	68.0	153	84.5	0	0.0
Virgin Blue	150	149	95	63.8	128	85.9	1	0.7
All Airlines	331	330	218	66.1	281	85.2	1	0.3
Port Macquarie-Sydney								
QantasLink	109	109	75	68.8	65	59.6	0	0.0
Virgin Blue	60	59	43	72.9	33	55.9	1	1.7
All Airlines	169	168	118	70.2	98	58.3	1	0.6

	<i>Sectors</i>		<i>Departures On Time</i>		<i>Arrivals On Time</i>		<i>Cancellations</i>	
	<i>Sched.</i>	<i>Flown</i>	<i>No.</i>	<i>%</i>	<i>No.</i>	<i>%</i>	<i>No.</i>	<i>%</i>
Proserpine-Brisbane								
Jetstar	30	30	22	73.3	23	76.7	0	0.0
Virgin Blue	30	30	23	76.7	21	70.0	0	0.0
All Airlines	60	60	45	75.0	44	73.3	0	0.0
Rockhampton-Brisbane								
Jetstar	30	30	29	96.7	28	93.3	0	0.0
QantasLink	164	161	143	88.8	137	85.1	3	1.8
Virgin Blue	150	149	120	80.5	111	74.5	1	0.7
All Airlines	344	340	292	85.9	276	81.2	4	1.2
Sydney-Adelaide								
Jetstar	36	36	34	94.4	33	91.7	0	0.0
Qantas	305	303	254	83.8	254	83.8	2	0.7
Virgin Blue	150	150	124	82.7	85	56.7	0	0.0
All Airlines	491	489	412	84.3	372	76.1	2	0.4
Sydney-Albury								
QantasLink	115	115	76	66.1	64	55.7	0	0.0
Regional Express	115	106	63	59.4	57	53.8	9	7.8
Virgin Blue	55	53	41	77.4	40	75.5	2	3.6
All Airlines	285	274	180	65.7	161	58.8	11	3.9
Sydney-Ballina								
Jetstar	29	29	24	82.8	23	79.3	0	0.0
Regional Express	80	75	46	61.3	41	54.7	5	6.3
Virgin Blue	32	32	28	87.5	28	87.5	0	0.0
All Airlines	141	136	98	72.1	92	67.6	5	3.5
Sydney-Brisbane								
Qantas	667	642	518	80.7	532	82.9	25	3.7
Virgin Blue	592	556	366	65.8	394	70.9	36	6.1
All Airlines	1 259	1 198	884	73.8	926	77.3	61	4.8
Sydney-Cairns								
Jetstar	30	30	30	100.0	29	96.7	0	0.0
Qantas	108	108	77	71.3	84	77.8	0	0.0
Virgin Blue	110	107	86	80.4	88	82.2	3	2.7
All Airlines	248	245	193	78.8	201	82.0	3	1.2
Sydney-Canberra								
Qantas	192	186	156	83.9	150	80.6	6	3.1
QantasLink	431	409	329	80.4	298	72.9	22	5.1
Virgin Blue	210	201	155	77.1	153	76.1	9	4.3
All Airlines	833	796	640	80.4	601	75.5	37	4.4
Sydney-Coffs Harbour								
QantasLink	115	115	86	74.8	77	67.0	0	0.0
Virgin Blue	60	60	46	76.7	47	78.3	0	0.0
All Airlines	175	175	132	75.4	124	70.9	0	0.0
Sydney-Dubbo								
QantasLink	85	85	69	81.2	64	75.3	0	0.0
Regional Express	151	145	100	69.0	90	62.1	6	4.0
All Airlines	236	230	169	73.5	154	67.0	6	2.5

	<i>Sectors</i>		<i>Departures</i>		<i>Arrivals</i>		<i>Cancellations</i>	
	<i>Sched.</i>	<i>Flown</i>	<i>No.</i>	<i>%</i>	<i>No.</i>	<i>%</i>	<i>No.</i>	<i>%</i>
Sydney-Gold Coast								
Jetstar	290	290	233	80.3	243	83.8	0	0.0
Virgin Blue	353	342	268	78.4	272	79.5	11	3.1
All Airlines	643	632	501	79.3	515	81.5	11	1.7
Sydney-Hervey Bay								
Jetstar	17	17	16	94.1	16	94.1	0	0.0
Virgin Blue	30	30	25	83.3	25	83.3	0	0.0
All Airlines	47	47	41	87.2	41	87.2	0	0.0
Sydney-Hobart								
Jetstar	60	60	52	86.7	53	88.3	0	0.0
Qantas	30	30	26	86.7	24	80.0	0	0.0
Virgin Blue	60	60	39	65.0	31	51.7	0	0.0
All Airlines	150	150	117	78.0	108	72.0	0	0.0
Sydney-Launceston								
Jetstar	30	30	13	43.3	13	43.3	0	0.0
Virgin Blue	30	30	28	93.3	28	93.3	0	0.0
All Airlines	60	60	41	68.3	41	68.3	0	0.0
Sydney-Maroochydore								
Jetstar	89	88	71	80.7	71	80.7	1	1.1
Virgin Blue	60	60	37	61.7	38	63.3	0	0.0
All Airlines	149	148	108	73.0	109	73.6	1	0.7
Sydney-Melbourne								
Qantas	959	915	733	80.1	647	70.7	44	4.6
Virgin Blue	872	831	607	73.0	535	64.4	41	4.7
All Airlines	1 831	1 746	1 340	76.7	1 182	67.7	85	4.6
Sydney-Perth								
Qantas	181	181	138	76.2	82	45.3	0	0.0
Virgin Blue	150	149	116	77.9	47	31.5	1	0.7
All Airlines	331	330	254	77.0	129	39.1	1	0.3
Sydney-Port Macquarie								
QantasLink	110	110	77	70.0	68	61.8	0	0.0
Virgin Blue	60	59	45	76.3	45	76.3	1	1.7
All Airlines	170	169	122	72.2	113	66.9	1	0.6
Sydney-Townsville								
Jetstar	21	21	21	100.0	21	100.0	0	0.0
Virgin Blue	30	30	22	73.3	23	76.7	0	0.0
All Airlines	51	51	43	84.3	44	86.3	0	0.0
Sydney-Wagga Wagga								
QantasLink	110	110	84	76.4	76	69.1	0	0.0
Regional Express	132	130	81	62.3	68	52.3	2	1.5
All Airlines	242	240	165	68.8	144	60.0	2	0.8
Townsville-Brisbane								
Jetstar	56	54	43	79.6	43	79.6	2	3.6
Qantas	165	165	147	89.1	145	87.9	0	0.0
Virgin Blue	150	150	141	94.0	140	93.3	0	0.0
All Airlines	371	369	331	89.7	328	88.9	2	0.5

	<i>Sectors</i>		<i>Departures On Time</i>		<i>Arrivals On Time</i>		<i>Cancellations</i>	
	<i>Sched.</i>	<i>Flown</i>	<i>No.</i>	<i>%</i>	<i>No.</i>	<i>%</i>	<i>No.</i>	<i>%</i>
Townsville-Sydney								
Jetstar	21	21	20	95.2	20	95.2	0	0.0
Virgin Blue	30	30	24	80.0	22	73.3	0	0.0
All Airlines	51	51	44	86.3	42	82.4	0	0.0
Wagga Wagga-Sydney								
QantasLink	110	110	83	75.5	83	75.5	0	0.0
Regional Express	130	128	79	61.7	79	61.7	2	1.5
All Airlines	240	238	162	68.1	162	68.1	2	0.8

Airports

On time performance is reported for all routes where the passenger load averages over 8 000 passengers per month, and where two or more airlines operate in competition. The following data reports by airport against flights operated on those routes only.

<i>Airport</i>	<i>Departures</i>			<i>Arrivals</i>		
	<i>Sectors Flown</i>	<i>On Time No.</i>	<i>On Time %</i>	<i>Sectors Flown</i>	<i>On Time No.</i>	<i>On Time %</i>
Adelaide						
Jetstar	96	71	74.0	96	78	81.3
Qantas	932	763	81.9	934	752	80.5
Tiger Airways	66	48	72.7	66	48	72.7
Virgin Blue	707	491	69.4	708	429	60.6
All Airlines	1 801	1 373	76.2	1 804	1 307	72.5
Relates to services to and from Brisbane, Canberra, Gold Coast, Melbourne, Perth and Sydney.						
Albury						
QantasLink	115	80	69.6	115	64	55.7
Regional Express	108	74	68.5	106	57	53.8
Virgin Blue	53	40	75.5	53	40	75.5
All Airlines	276	194	70.3	274	161	58.8
Relates to services to and from Sydney only.						
Alice Springs						
Qantas	30	15	50.0	30	19	63.3
Tiger Airways	13	8	61.5	13	10	76.9
All Airlines	43	23	53.5	43	29	67.4
Relates to services to and from Melbourne only.						
Ballina						
Jetstar	28	14	50.0	29	23	79.3
Regional Express	78	44	56.4	75	41	54.7
Virgin Blue	31	23	74.2	32	28	87.5
All Airlines	137	81	59.1	136	92	67.6
Relates to services to and from Sydney only.						
Brisbane						
Jetstar	492	400	81.3	493	402	81.5
Qantas	1 736	1 401	80.7	1 738	1 464	84.2
QantasLink	310	246	79.4	287	230	80.1
Virgin Blue	1 938	1 574	81.2	1 938	1 517	78.3
All Airlines	4 476	3 621	80.9	4 456	3 613	81.1
Relates to services to and from Adelaide, Cairns, Canberra, Darwin, Hamilton Island, Mackay, Melbourne, Newcastle, Perth, Proserpine, Rockhampton, Sydney and Townsville.						

<i>Airport</i>	<i>Departures</i>			<i>Arrivals</i>		
	<i>Sectors</i>	<i>On Time</i>		<i>Sectors</i>	<i>On Time</i>	
	<i>Flown</i>	<i>No.</i>	<i>%</i>	<i>Flown</i>	<i>No.</i>	<i>%</i>
Broome						
Qantas	30	21	70.0	30	24	80.0
QantasLink	47	42	89.4	46	41	89.1
Skywest	25	20	80.0	25	17	68.0
Virgin Blue	49	21	42.9	50	33	66.0
All Airlines	151	104	68.9	151	115	76.2
Relates to services to and from Perth only.						
Cairns						
Jetstar	150	132	88.0	150	138	92.0
Qantas	257	211	82.1	258	207	80.2
Virgin Blue	292	245	83.9	292	239	81.8
All Airlines	699	588	84.1	700	584	83.4
Relates to services to and from Brisbane, Melbourne and Sydney.						
Canberra						
Qantas	616	539	87.5	615	500	81.3
QantasLink	459	367	80.0	459	340	74.1
Tiger Airways	52	42	80.8	52	43	82.7
Virgin Blue	545	465	85.3	546	433	79.3
All Airlines	1 672	1 413	84.5	1 672	1 316	78.7
Relates to services to and from Adelaide, Brisbane, Melbourne and Sydney.						
Coffs Harbour						
QantasLink	115	77	67.0	115	77	67.0
Virgin Blue	60	47	78.3	60	47	78.3
All Airlines	175	124	70.9	175	124	70.9
Relates to services to and from Sydney only.						
Darwin						
Jetstar	25	17	68.0	25	21	84.0
Qantas	30	24	80.0	30	27	90.0
Virgin Blue	30	16	53.3	30	16	53.3
All Airlines	85	57	67.1	85	64	75.3
Relates to services to and from Brisbane and Melbourne.						
Dubbo						
QantasLink	85	67	78.8	85	64	75.3
Regional Express	144	101	70.1	145	90	62.1
All Airlines	229	168	73.4	230	154	67.0
Relates to services to and from Sydney only.						
Gold Coast						
Jetstar	524	388	74.0	525	438	83.4
Tiger Airways	87	65	74.7	87	67	77.0
Virgin Blue	531	420	79.1	532	426	80.1
All Airlines	1 401	1 069	76.3	1 204	971	80.6
Relates to services to and from Adelaide, Melbourne and Sydney.						

<i>Airport</i>	<i>Departures</i>			<i>Arrivals</i>		
	<i>Sectors</i>	<i>On Time</i>		<i>Sectors</i>	<i>On Time</i>	
	<i>Flown</i>	<i>No.</i>	<i>%</i>	<i>Flown</i>	<i>No.</i>	<i>%</i>
Hamilton Island						
Jetstar	30	27	90.0	30	26	86.7
Virgin Blue	30	28	93.3	30	29	96.7
All Airlines	60	55	91.7	60	55	91.7
Relates to services to and from Brisbane only.						
Hervey Bay						
Jetstar	17	13	76.5	17	16	94.1
Virgin Blue	30	27	90.0	30	25	83.3
All Airlines	47	40	85.1	47	41	87.2
Relates to services to and from Sydney only.						
Hobart						
Jetstar	194	161	83.0	194	163	84.0
Qantas	90	76	84.4	90	71	78.9
Tiger Airways	30	24	80.0	30	25	83.3
Virgin Blue	210	174	82.9	210	148	70.5
All Airlines	524	435	83.0	524	407	77.7
Relates to services to and from Melbourne and Sydney.						
Kalgoorlie						
Qantas	61	55	90.2	61	55	90.2
QantasLink	25	23	92.0	25	23	92.0
Skywest	33	27	81.8	31	22	71.0
All Airlines	119	105	88.2	117	100	85.5
Relates to services to and from Perth only.						
Karratha						
Qantas	113	93	82.3	113	93	82.3
QantasLink	37	33	89.2	37	33	89.2
Virgin Blue	44	36	81.8	47	39	83.0
All Airlines	194	162	83.5	197	165	83.8
Relates to services to and from Perth only.						
Launceston						
Jetstar	119	85	71.4	119	91	76.5
QantasLink	59	52	88.1	59	50	84.7
Tiger Airways	30	26	86.7	30	26	86.7
Virgin Blue	150	132	88.0	150	124	82.7
All Airlines	358	295	82.4	358	291	81.3
Relates to services to and from Melbourne and Sydney.						
Mackay						
Jetstar	90	70	77.8	90	76	84.4
QantasLink	55	48	87.3	54	44	81.5
Virgin Blue	144	125	86.8	144	115	79.9
All Airlines	289	243	84.1	288	235	81.6
Relates to services to and from Brisbane only.						

<i>Airport</i>	<i>Departures</i>			<i>Arrivals</i>		
	<i>Sectors Flown</i>	<i>On Time</i>		<i>Sectors Flown</i>	<i>On Time</i>	
		<i>No.</i>	<i>%</i>		<i>No.</i>	<i>%</i>
Maroochydore						
Jetstar	146	102	69.9	148	112	75.7
Tiger Airways	18	15	83.3	18	16	88.9
Virgin Blue	110	74	67.3	111	82	73.9
All Airlines	274	191	69.7	277	210	75.8
Relates to services to and from Melbourne and Sydney.						
Melbourne						
Jetstar	578	459	79.4	577	422	73.1
Qantas	2 290	1 779	77.7	2 283	1 730	75.8
QantasLink	209	166	79.4	209	156	74.6
Regional Express	104	84	80.8	103	81	78.6
Tiger Airways	352	284	80.7	352	266	75.6
Virgin Blue	2 379	1 752	73.6	2 376	1 687	71.0
All Airlines	5 912	4 524	76.5	5 900	4 342	73.6
Relates to services to and from Adelaide, Alice Springs, Brisbane, Cairns, Canberra, Darwin, Gold Coast, Hobart, Launceston, Maroochydore, Mildura, Newcastle, Perth and Sydney.						
Mildura						
QantasLink	110	80	72.7	110	69	62.7
Regional Express	103	82	79.6	104	80	76.9
All Airlines	243	180	74.1	244	166	68.0
Relates to services to and from Melbourne only.						
Newcastle						
Jetstar	234	181	77.4	233	187	80.3
QantasLink	61	41	67.2	61	32	52.5
Virgin Blue	90	78	86.7	90	74	82.2
All Airlines	445	340	76.4	643	468	72.8
Relates to services to and from Brisbane and Melbourne.						
Newman						
QantasLink	83	71	85.5	83	72	86.7
Virgin Blue	30	24	80.0	30	28	93.3
All Airlines	113	95	84.1	113	100	88.5
Relates to services to and from Perth only.						
Perth						
Qantas	850	597	70.2	851	528	62.0
QantasLink	191	170	89.0	192	173	90.1
Skywest	56	45	80.4	58	39	67.2
Tiger Airways	56	29	51.8	56	54	96.4
Virgin Blue	542	356	65.7	539	283	52.5
All Airlines	1 695	1 197	70.6	1 696	1 077	63.5
Relates to services to and from Adelaide, Brisbane, Broome, Kalgoorlie, Melbourne, and Sydney.						
Port Macquarie						
QantasLink	109	75	68.8	110	68	61.8
Virgin Blue	59	43	72.9	59	45	76.3
All Airlines	168	118	70.2	169	113	66.9
Relates to services to and from Sydney only.						

<i>Airport</i>	<i>Departures</i>			<i>Arrivals</i>		
	<i>Sectors Flown</i>	<i>On Time No.</i>	<i>%</i>	<i>Sectors Flown</i>	<i>On Time No.</i>	<i>%</i>
Proserpine						
Jetstar	30	22	73.3	30	22	73.3
Virgin Blue	30	23	76.7	30	24	80.0
All Airlines	60	45	75.0	60	46	76.7
Relates to services to and from Brisbane only.						
Rockhampton						
Jetstar	30	29	96.7	30	29	96.7
QantasLink	161	143	88.8	185	150	81.1
Virgin Blue	149	120	80.5	149	122	81.9
All Airlines	340	292	85.9	364	301	82.7
Relates to services to and from Brisbane only.						
Sydney						
Jetstar	601	494	82.2	598	427	71.4
Qantas	2 365	1 902	80.4	2 367	1 842	77.8
QantasLink	944	721	76.4	943	681	72.2
Regional Express	456	290	63.6	458	288	62.9
Virgin Blue	2 750	2 033	73.9	2 747	1 978	72.0
All Airlines	7 116	5 440	76.4	7 113	5 216	73.3
Relates to services to and from Adelaide, Albury, Ballina, Brisbane, Cairns, Canberra, Coffs Harbour, Dubbo, Gold Coast, Hervey Bay, Hobart, Launceston, Maroochydore, Melbourne, Perth, Port Macquarie, Townsville and Wagga Wagga.						
Townsville						
Jetstar	75	63	84.0	75	67	89.3
Qantas	165	147	89.1	165	146	88.5
Virgin Blue	180	165	91.7	180	155	86.1
All Airlines	420	375	89.3	420	368	87.6
Relates to services to and from Brisbane and Sydney.						
Wagga Wagga						
QantasLink	110	83	75.5	110	76	69.1
Regional Express	128	79	61.7	130	68	52.3
All Airlines	238	162	68.1	240	144	60.0
Relates to services to and from Sydney only.						

Definitions

On time departure A flight departure is counted as "on time" if it departs the gate within 15 minutes of the scheduled departure time shown in the carriers' schedule.

On time arrival A flight arrival is counted as "on time" if it arrived at the gate within 15 minutes of the scheduled arrival time shown in the carriers' schedule.
Neither diverted nor cancelled flights count as on time.

Cancellation A flight is regarded as a cancellation if it is cancelled or rescheduled less than 7 days prior to its scheduled departure time.

On time departure percentage The percentage of on time departures is measured against the number of departures *operated* on any particular sector.

On time arrival percentage The percentage of on time arrivals is measured against the number of arrivals *operated* on any particular sector.

Cancellation percentage The percentage of cancellations is measured against the number of services *scheduled* on any particular sector.
