



Australian Government

Department of Infrastructure and Regional Development

Bureau of Infrastructure, Transport and Regional Economics

STATISTICAL REPORT



Aviation

Domestic airline on time performance
February 2017

© Commonwealth of Australia 2017

ISSN: 1832-0759

Ownership of intellectual property rights in this publication

Unless otherwise noted, copyright (and any other intellectual property rights, if any) in this publication is owned by the Commonwealth of Australia (referred to below as the Commonwealth).

Disclaimer

The material contained in this publication is made available on the understanding that the Commonwealth is not providing professional advice, and that users exercise their own skill and care with respect to its use, and seek independent advice if necessary.

The Commonwealth makes no representations or warranties as to the contents or accuracy of the information contained in this publication. To the extent permitted by law, the Commonwealth disclaims liability to any person or organisation in respect of anything done, or omitted to be done, in reliance upon information contained in this publication.

Creative Commons licence

With the exception of (a) the Coat of Arms; and (b) the Department of Infrastructure and Regional Development's photos and graphics, copyright in this publication is licensed under a Creative Commons Attribution 3.0 Australia Licence.

Creative Commons Attribution 3.0 Australia Licence is a standard form licence agreement that allows you to copy, communicate and adapt this publication provided that you attribute the work to the Commonwealth and abide by the other licence terms. A summary of the licence terms is available from <http://creativecommons.org/licenses/by/3.0/au/deed.en>. The full licence terms are available from <http://creativecommons.org/licenses/by/3.0/au/legalcode>.

Use of the Coat of Arms

The Department of the Prime Minister and Cabinet sets the terms under which the Coat of Arms is used. Please refer to the Department's Commonwealth Coat of Arms and Government branding web page <http://www.dpmmc.gov.au/guidelines/index.cfm#brand> and, in particular, the Guidelines on the use of the Commonwealth Coat of Arms publication.

An appropriate citation for this report is:

Bureau of Infrastructure, Transport and Regional Economics (BITRE), 2017, Domestic airline on time performance, Statistical Report, BITRE, Canberra ACT.

Contact us

This publication is available in PDF format. All other rights are reserved, including in relation to any Departmental logos or trade marks which may exist. For enquiries regarding the licence and any use of this publication, please contact:

Bureau of Infrastructure, Transport and Regional Economics (BITRE)
Department of Infrastructure and Regional Development
GPO Box 501, Canberra ACT 2601, Australia
Telephone: (international) +61 2 6274 7210
Fax: (international) +61 2 6274 6855
Email: bitre@infrastructure.gov.au
Website: www.bitre.gov.au

Inquiries

Should you require additional information about the statistics contained in this publication:

Telephone (02) 6274 7790 or Facsimile (02) 6274 7727

Electronic mail: AVSTATS@infrastructure.gov.au

Web site: <http://www.bitre.gov.au/statistics/aviation/otphome.aspx>

Foreword

The Bureau of Infrastructure, Transport and Regional Economics (BITRE) monitors the punctuality and reliability of major domestic airlines operating between Australian airports. The purpose of this is to allow for evaluation of overall industry and individual airline performance, so that consumers of air travel can make informed decisions.

The following domestic airlines currently report this information monthly to the BITRE: Jetstar, Qantas, QantasLink, Regional Express, Tigerair Australia, Virgin Australia and Virgin Australia Regional Airlines. Data has been gathered since November 2003, although some airlines commenced reporting at a later date, including Jetstar which first reported in May 2004, MacAir in July 2005, Tigerair Australia in April 2008 and Virgin Australia Regional Airlines in May 2013. MacAir ceased operations in February 2009 and data was not received for December 2008 onwards. Virgin Blue was rebranded as Virgin Australia in May 2011 and Tiger Airways was rebranded as Tigerair Australia in July 2013 and time series data in Microsoft Excel spreadsheet format on the BITRE website have been revised to reflect these changes. Services operated by Skywest on behalf of Virgin Australia using ATR/F100 aircraft commenced in November 2011 and were shown separately as Virgin Australia – ATR/F100 Operations. Virgin Australia Regional Airlines commenced operations in May 2013. It was formed after the acquisition of Skywest by Virgin Australia and represented a combination of operations previously reported under Skywest and Virgin Australia – ATR/F100 Operations. In January 2016, Virgin Australia transferred their ATR fleet from Virgin Australia Regional Airlines to Virgin Australia.

Information presented in this report is for Australian domestic routes for which the passenger load averaged 8 000 or more passengers per month over the previous six months and where two or more airlines operated in competition on those routes. There were 66 routes that met this definition in February 2017. Over time, routes which meet these criteria change as airline networks and traffic levels vary.

Participating airlines report their overall monthly network performance where this is possible.

Total industry figures encompass all services operated by reporting airlines only. These airlines collectively carried over 95 per cent of total domestic passengers (regular public transport only) in 2016.

The method of capturing on time performance varies between airlines utilising different recording systems. Jetstar and Qantas jet aircraft use Aircraft Communication Addressing and Reporting System (ACARS) to electronically measure on time performance. Regional Express, Tigerair Australia, Virgin Australia, Virgin Australia Regional Airlines and the Qantas non-jet fleet record on time performance manually using records from pilots, gate agents and/or ground crews.

After initial data is collected, aggregate reports are audited internally by participating airlines prior to publication.

Reports and detailed time series data in Microsoft Excel spreadsheet format are available from the BITRE website at: <http://www.bitre.gov.au/statistics/aviation/otphome.aspx>.

Contents

	Page
Industry performance	1
Individual routes	10
Airports	23
Definitions	29

Industry performance

For February 2017, on time performance over all routes operated by participating airlines (Jetstar, Qantas, QantasLink, Regional Express, Tigerair Australia, Virgin Australia and Virgin Australia Regional Airlines) averaged 82.8 per cent for on time arrivals and 84.0 per cent for on time departures. Cancellations represented 1.8 per cent of all scheduled flights. The equivalent figures for February 2016 were 90.3 per cent for both arrivals and departures and 1.3 per cent for cancellations.

This month's on time arrivals figure was the same as the long term average performance for all routes (82.8 per cent) and the on time departures figure was slightly lower than the long term average (84.2 per cent). The rate of cancellations was higher than the long term average of 1.4 per cent.

Qantas achieved the highest on time arrivals among the major domestic airlines at 87.6 per cent followed by Virgin Australia at 85.9 per cent, Jetstar at 75.8 per cent and Tigerair Australia at 67.7 per cent. Of the regional airlines, QantasLink recorded 84.8 per cent for on time arrivals, followed by Virgin Australia Regional Airlines at 81.7 per cent and Regional Express at 79.4 per cent. The Qantas network (Qantas and QantasLink combined operations) recorded 86.1 per cent for on time arrivals while the Virgin Australia network (Virgin Australia and Virgin Australia Regional Airlines combined operations) recorded 85.7 per cent.

Qantas also achieved the highest level of on time departures for February 2017 at 89.6 per cent, followed by Virgin Australia at 87.6 per cent, Jetstar at 73.6 per cent and Tigerair Australia at 67.0 per cent. Of the regional airlines, QantasLink recorded 85.7 per cent, followed by Virgin Australia Regional Airlines at 83.8 per cent and Regional Express at 83.5 per cent. The Qantas network recorded 87.5 per cent for on time departures while the Virgin Australia network recorded 87.4 per cent.

QantasLink recorded the highest percentage of cancellations (2.6 per cent) during the month, followed by Virgin Australia (2.2 per cent), Jetstar and Virgin Australia Regional Airlines (both at 2.0 per cent), Tigerair Australia (1.7 per cent), Qantas (1.0 per cent) and Regional Express (0.6 per cent).

Airlines' on time performance varies across the routes they serve. Individual route data by specific airline for 66 routes are shown on pages 10-22.

Of the 66 routes which met the criteria for on time performance reporting in February 2017, the Adelaide-Alice Springs route had the highest percentage of on time arrivals (97.5 per cent) and the highest percentage of on time departures (also 97.5 per cent). The Launceston-Sydney route had the lowest percentage of on time arrivals (59.5 per cent) and the lowest percentage of on time departures (also 59.5 per cent).

Cancellations were highest on the Canberra-Sydney route at 6.3 per cent, followed by the Karratha-Perth route at 6.1 per cent, the Darwin-Alice Springs route at 6.0 per cent, the Perth-Karratha route at 5.7 per cent and the Sydney-Canberra route at 5.5 per cent.

Mount Isa Airport recorded the highest percentage of on time arrivals (95.6 per cent) and Port Lincoln Airport recorded the highest percentage of on time departures (95.5 per cent). Port Macquarie Airport recorded the lowest percentage of on time arrivals (66.3 per cent) and the lowest percentage of on time departures (64.9 per cent). These figures only refer to reported routes and do not cover all flights at these airports.

Table 1 On time performance for February 2017 — Total Industry

	<i>Sectors</i>		<i>Arrivals On Time</i>		<i>Departures On Time</i>		<i>Cancellations</i>	
	<i>Scheduled</i>	<i>Flown</i>	<i>No.</i>	<i>%</i>	<i>No.</i>	<i>%</i>	<i>No.</i>	<i>%</i>
Jetstar	6 200	6 075	4 604	75.8	4 472	73.6	125	2.0
Qantas	8 390	8 304	7 276	87.6	7 437	89.6	86	1.0
QantasLink	9 626	9 375	7 953	84.8	8 030	85.7	251	2.6
Regional Express	5 719	5 687	4 517	79.4	4 751	83.5	32	0.6
Tigerair Australia	2 049	2 015	1 364	67.7	1 350	67.0	34	1.7
Virgin Australia	10 967	10 726	9 210	85.9	9 394	87.6	241	2.2
Virgin Australia Regional Airlines	597	585	478	81.7	490	83.8	12	2.0
All Airlines	43 548	42 767	35 402	82.8	35 924	84.0	781	1.8
Qantas - all QF designated services	18 016	17 679	15 229	86.1	15 467	87.5	337	1.9
Virgin Australia - all VA designated services	11 564	11 311	9 688	85.7	9 884	87.4	253	2.2

Total airline network data (including routes not shown in this report).

Airlines' on time performance varies across the routes they serve. Individual route data by specific airline for 66 routes are shown on pages 10-22.

Table 2 Top ten routes for on time performance for February 2017 (participating airlines only)

<i>Arrivals</i>		<i>Departures</i>	
<i>Route</i>	<i>On Time (%)</i>	<i>Route</i>	<i>On Time (%)</i>
Adelaide-Alice Springs	97.5	Adelaide-Alice Springs	97.5
Port Lincoln-Adelaide	96.2	Adelaide-Port Lincoln	97.2
Brisbane-Mount Isa	95.6	Brisbane-Hobart	96.4
Brisbane-Hamilton Island	95.3	Port Lincoln-Adelaide	95.5
Adelaide-Port Lincoln	95.2	Hamilton Island-Brisbane	95.3
Brisbane-Canberra	95.1	Darwin-Melbourne	94.6
Brisbane-Perth	94.2	Canberra-Adelaide	94.1
Mount Isa-Brisbane	94.1	Brisbane-Mount Isa	94.1
Brisbane-Adelaide	94.1	Mount Isa-Brisbane	94.1
Adelaide-Perth	93.9	Brisbane-Canberra	93.8

Table 3 Top ten airports for on time performance for February 2017 (participating airlines and reported routes only)

<i>Arrivals</i>		<i>Departures</i>	
<i>Airport</i>	<i>On Time (%)</i>	<i>Airport</i>	<i>On Time (%)</i>
Mount Isa	95.6	Port Lincoln	95.5
Port Lincoln	95.2	Mount Isa	94.1
Bundaberg	93.2	Bundaberg	91.8
Emerald	92.6	Moranbah	90.6
Moranbah	92.4	Rockhampton	90.5
Ayers Rock	92.3	Townsville	90.4
Alice Springs	92.0	Mackay	89.8
Mackay	91.0	Gladstone	89.7
Rockhampton	90.5	Emerald	89.2
Broome	90.4	Brisbane	88.7

Total industry on time performance

Figure 1 On time performance (by month from February 2014)—Total Industry

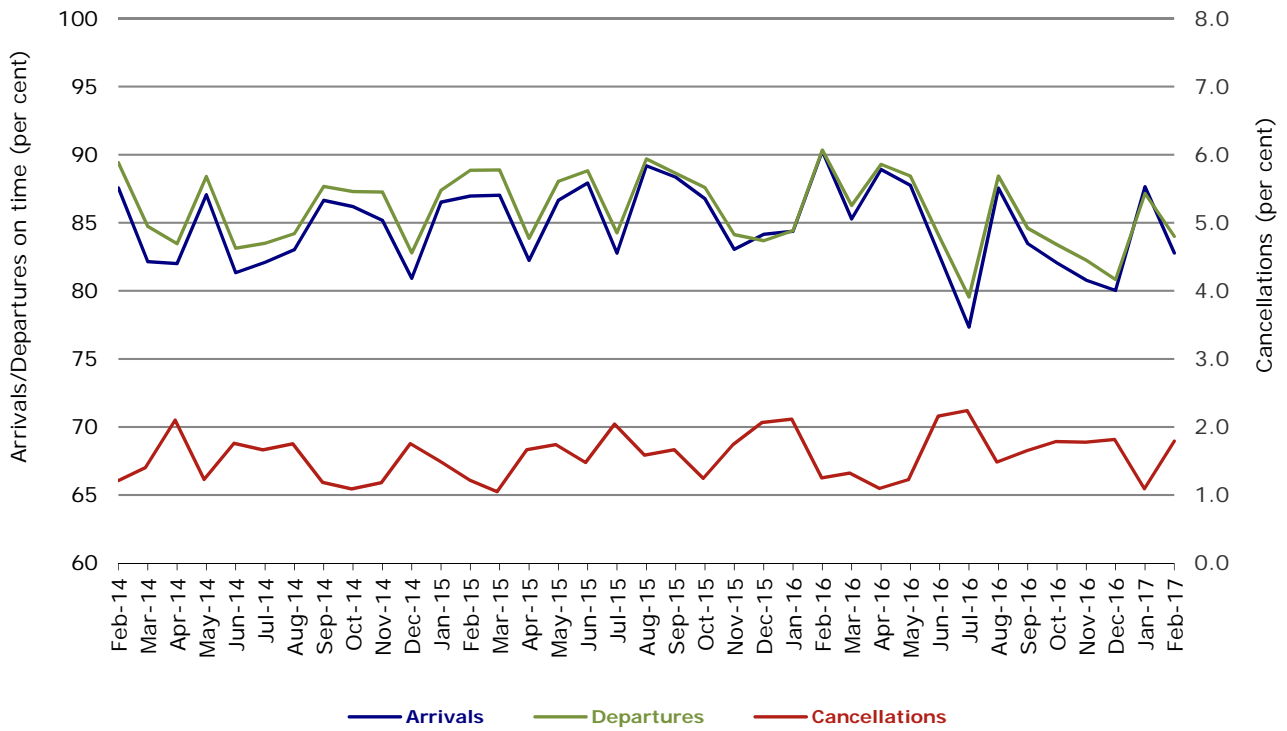


Figure 2 Arrivals on time (by month from February 2016)

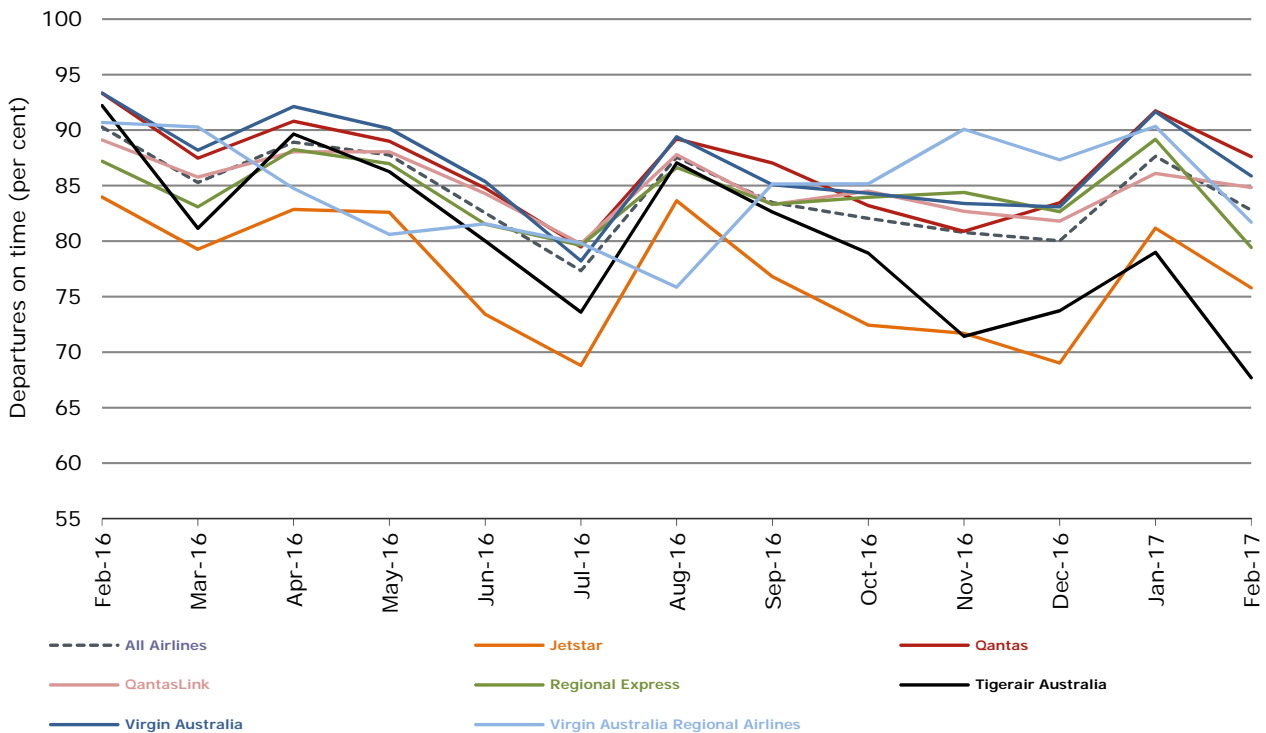


Figure 3 Departures on time (by month from February 2016)

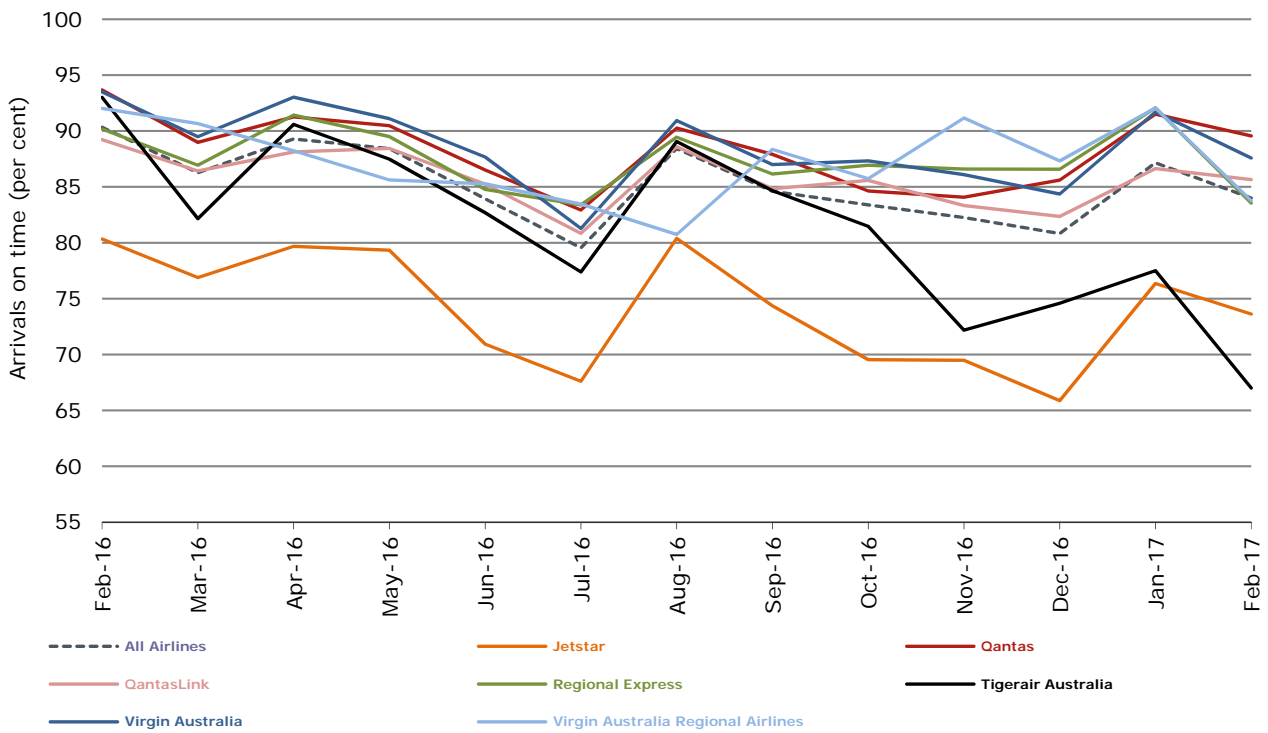
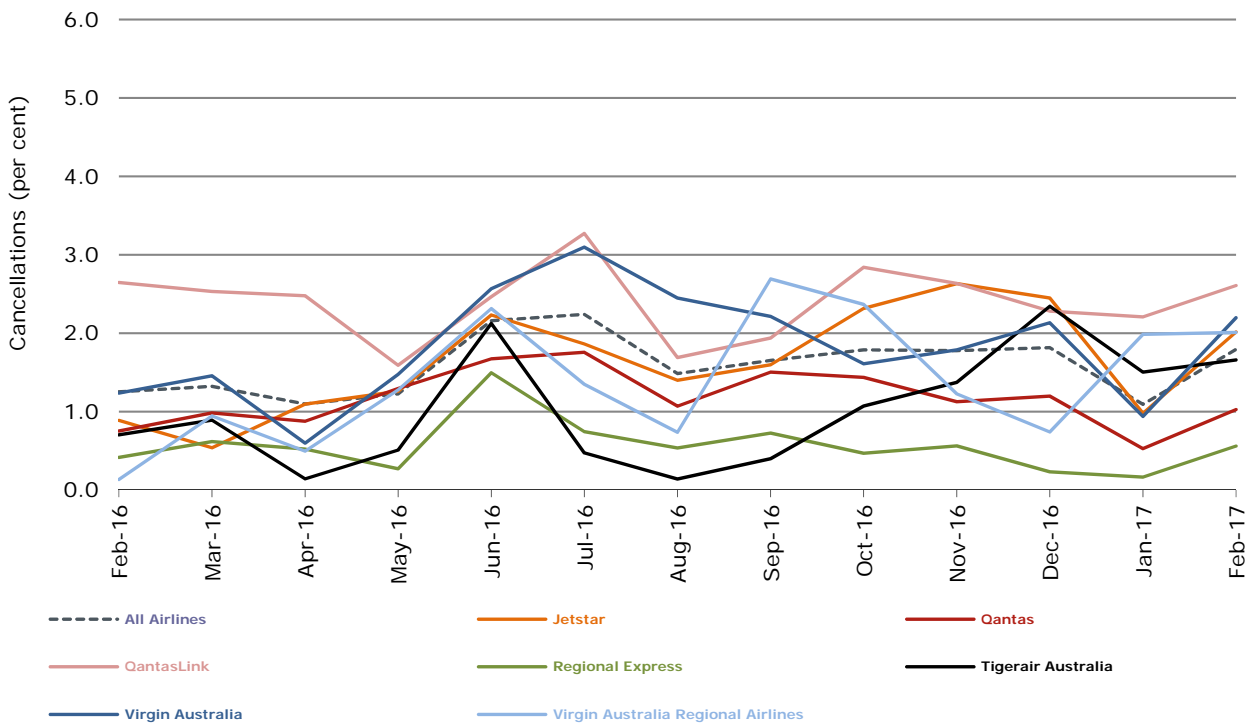


Figure 4 Cancellations (by month from February 2016)



Major domestic airlines on time performance

Figure 5 On time performance (by month from February 2014)—Jetstar

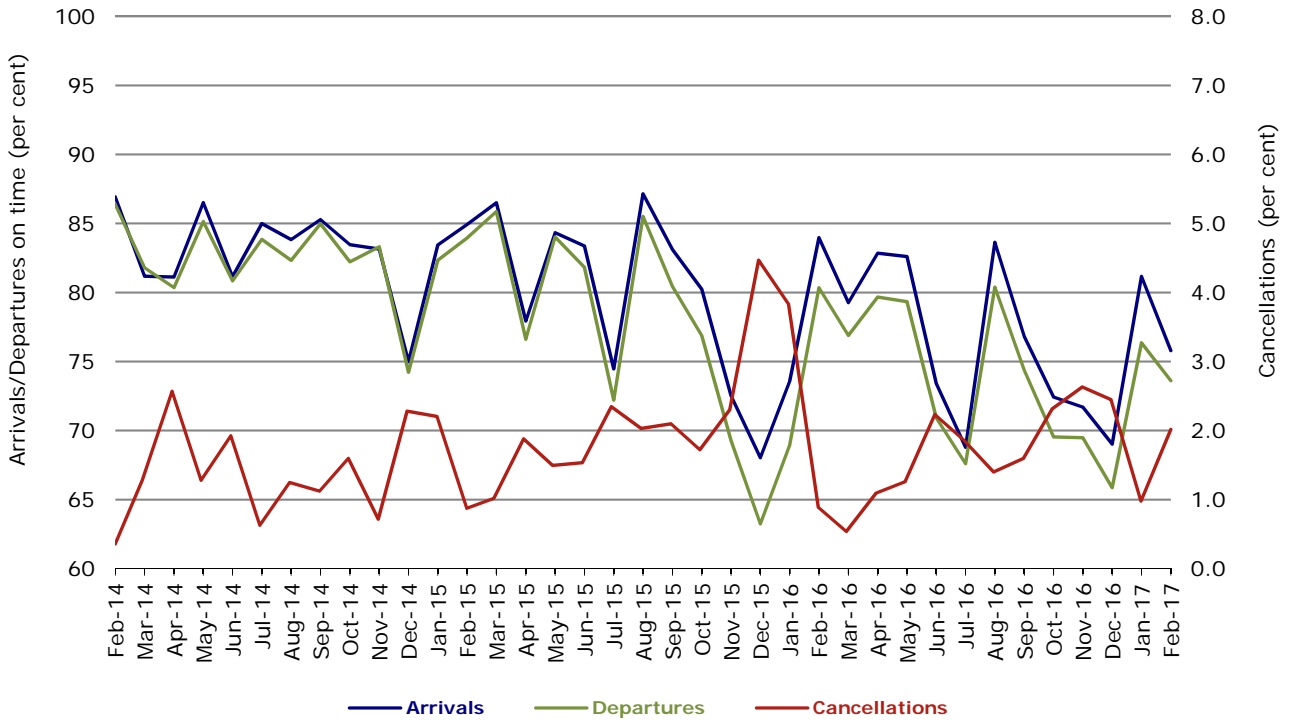


Figure 6 On time performance (by month from February 2014)—Qantas

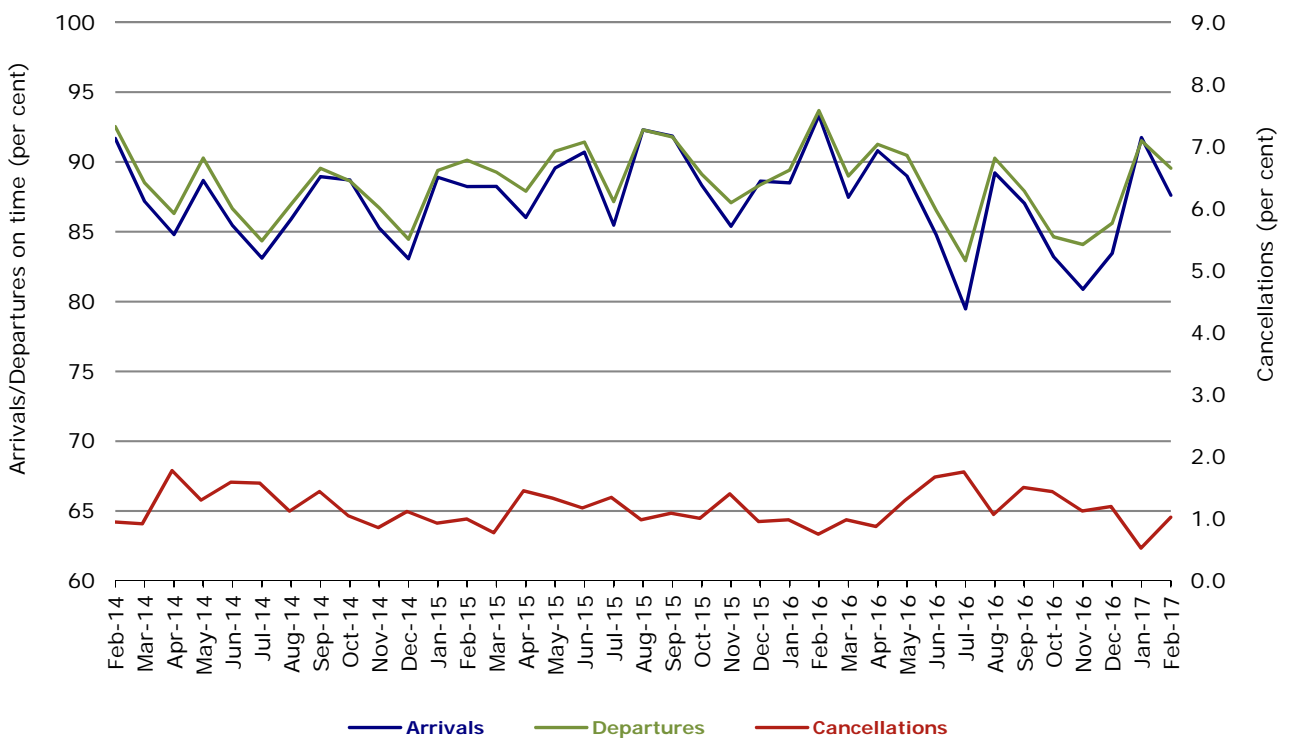


Figure 7 On time performance (by month from February 2014)—Tigerair Australia

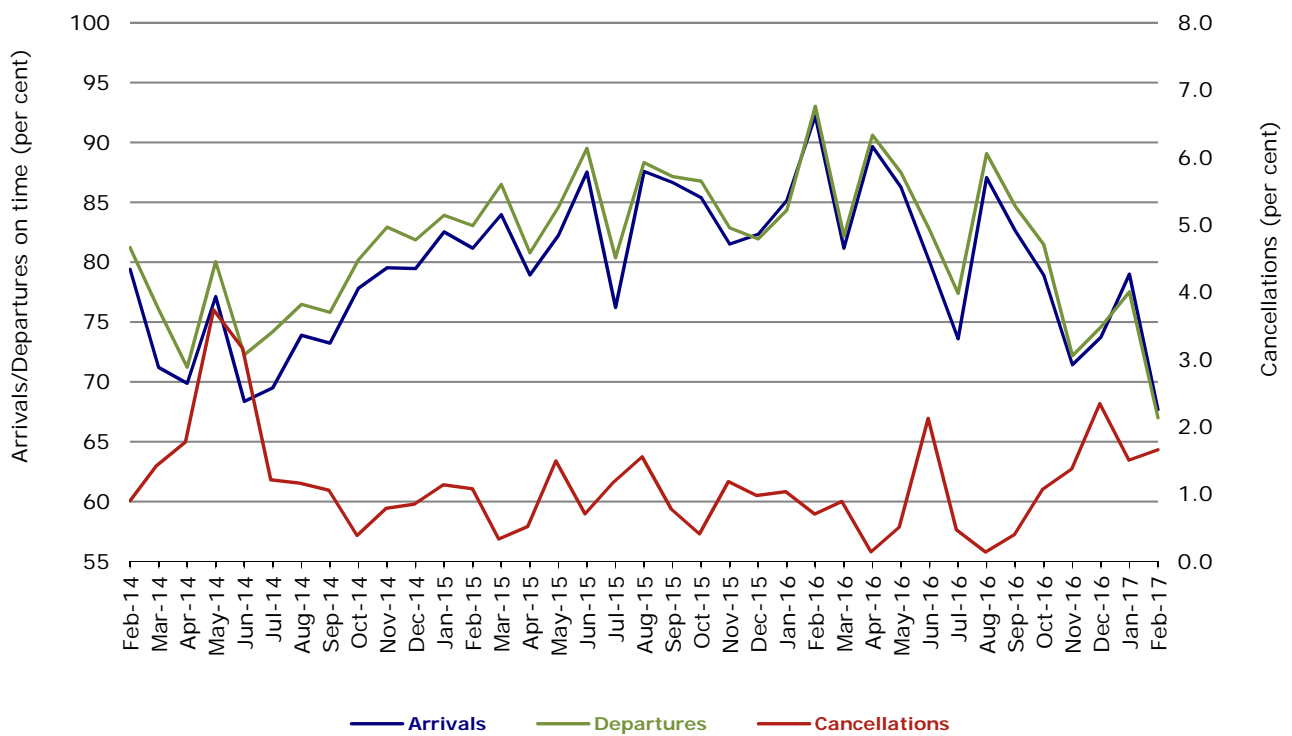
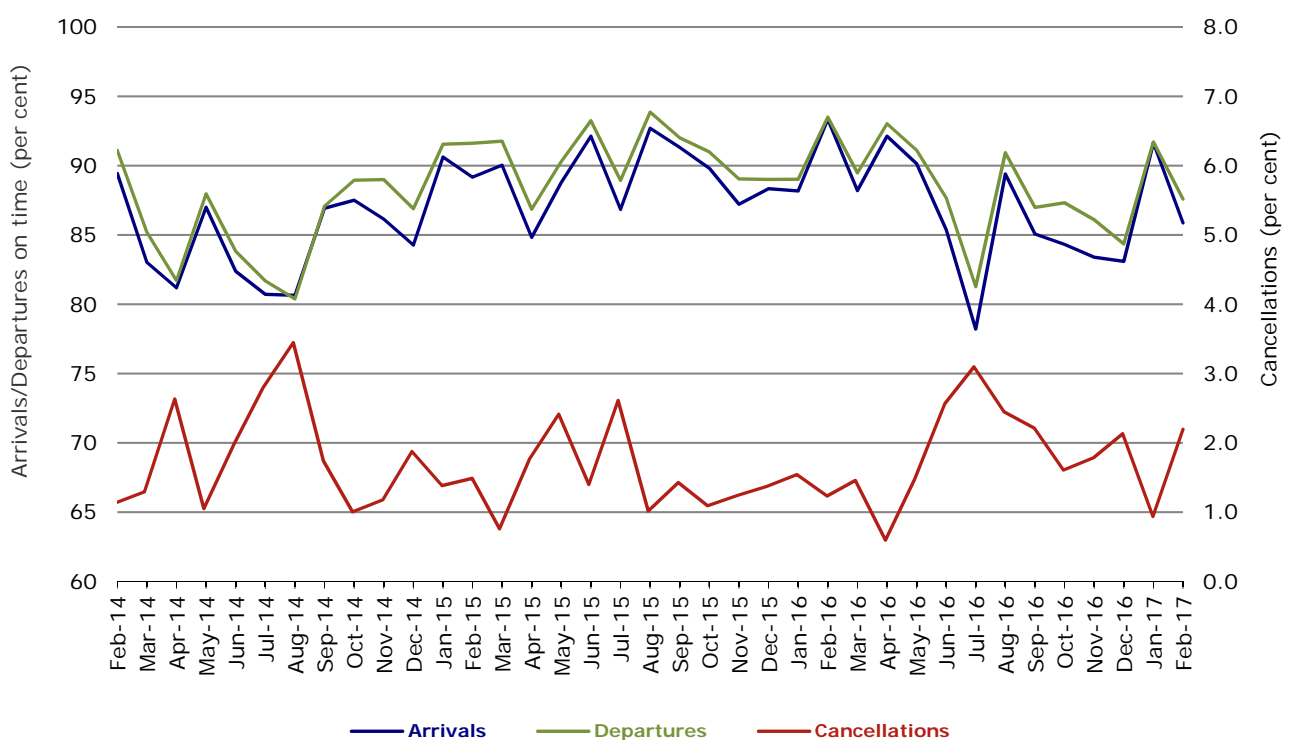


Figure 8 On time performance (by month from February 2014)—Virgin Australia



In January 2016, Virgin Australia transferred their ATR fleet from Virgin Australia Regional Airlines to Virgin Australia.

Major regional airlines on time performance

Figure 9 On time performance (by month from February 2014)—QantasLink

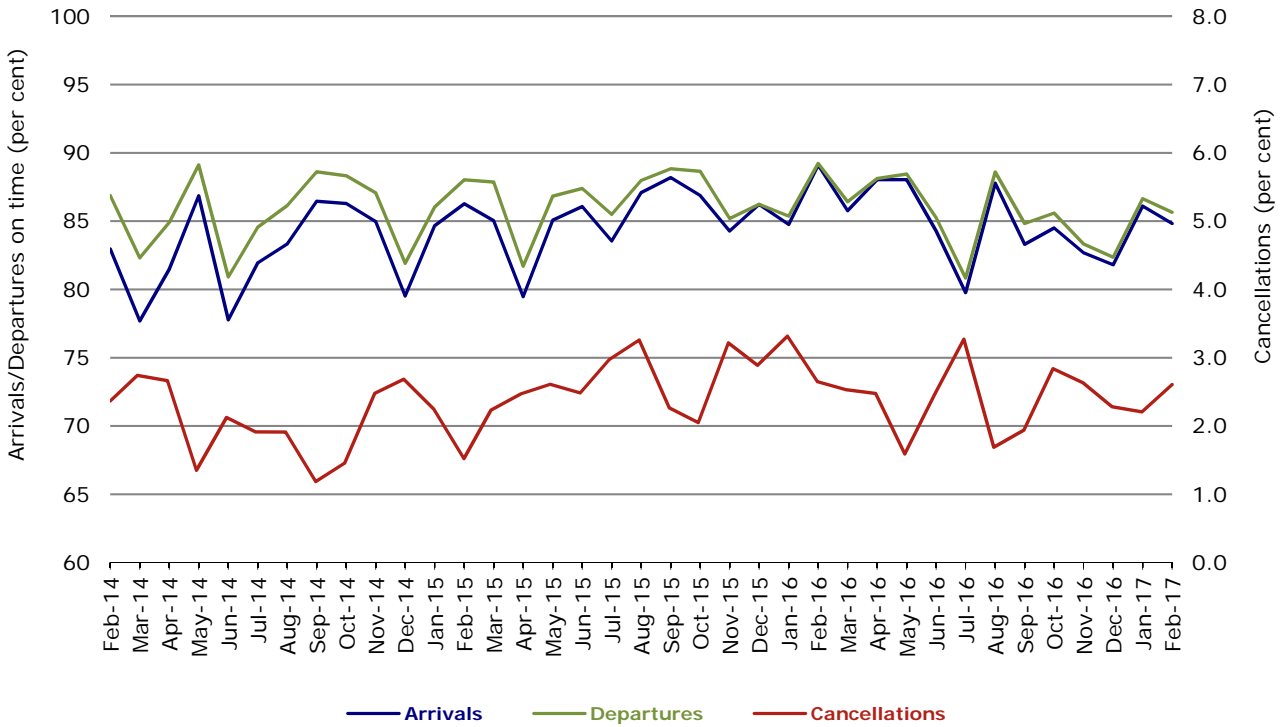


Figure 10 On time performance (by month from February 2014)—Regional Express

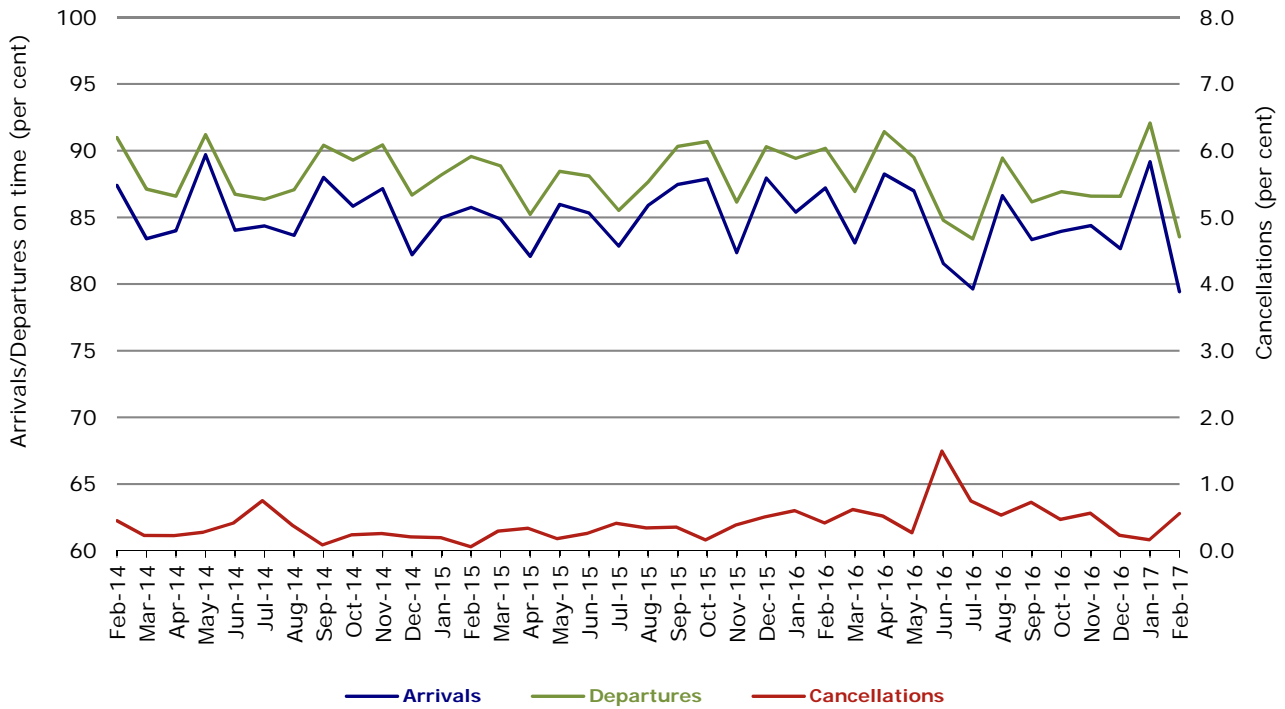
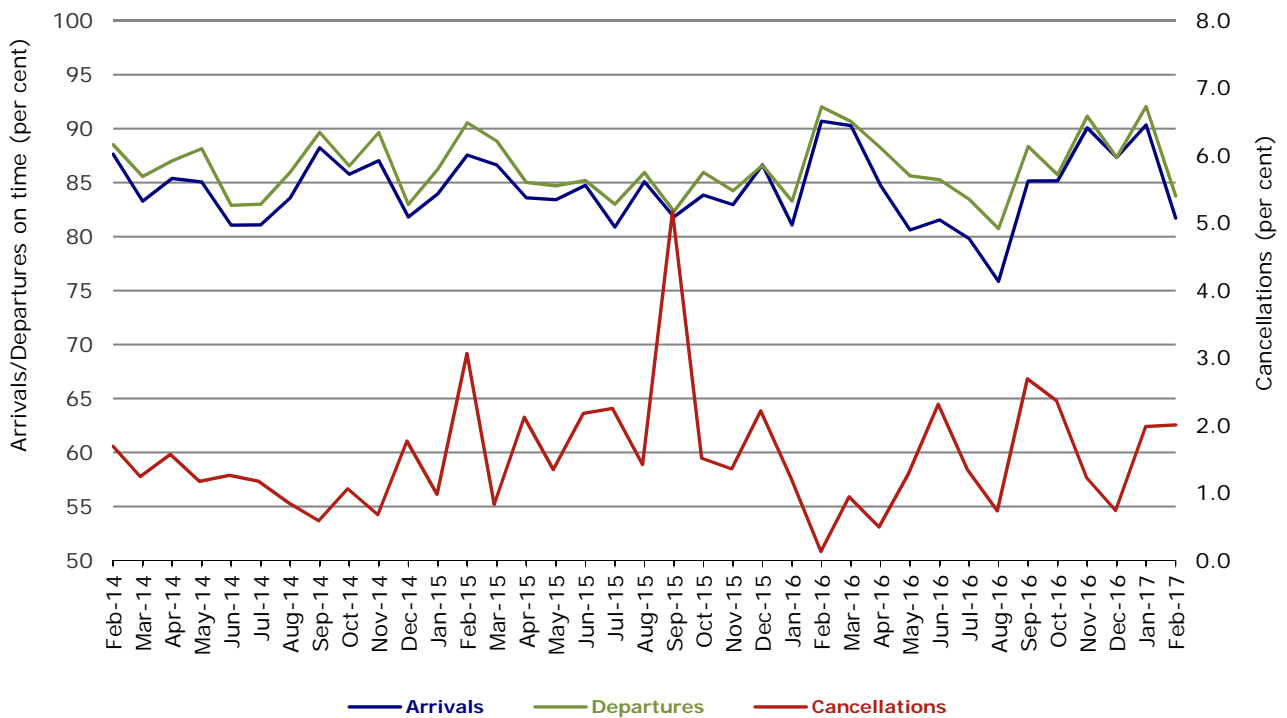


Figure 11 On time performance (by month from February 2014)
Virgin Australia Regional Airlines



In January 2016, Virgin Australia transferred their ATR fleet from Virgin Australia Regional Airlines to Virgin Australia.

Individual routes

On time performance is reported for all routes where the passenger load averages over 8000 passengers per month over the previous six months, and where two or more airlines operate in competition on those routes. There are now 66 routes which meet this definition. Over time, however, routes which meet this definition may change as airline networks and traffic levels vary.

	<i>Sectors</i>		<i>Arrivals On Time</i>		<i>Departures On Time</i>		<i>Cancellations</i>	
	<i>Sched.</i>	<i>Flown</i>	<i>No.</i>	<i>%</i>	<i>No.</i>	<i>%</i>	<i>No.</i>	<i>%</i>
Adelaide-Alice Springs								
Qantas	28	28	28	100.0	28	100.0	0	0.0
Virgin Australia	12	12	11	91.7	11	91.7	0	0.0
All Airlines	40	40	39	97.5	39	97.5	0	0.0
Adelaide-Brisbane								
Jetstar	24	23	18	78.3	18	78.3	1	4.2
Qantas	92	92	91	98.9	89	96.7	0	0.0
QantasLink	16	15	12	80.0	15	100.0	1	6.3
Tigerair Australia	20	20	17	85.0	17	85.0	0	0.0
Virgin Australia	99	99	90	90.9	93	93.9	0	0.0
All Airlines	251	249	228	91.6	232	93.2	2	0.8
Adelaide-Canberra								
Qantas	44	44	41	93.2	41	93.2	0	0.0
Virgin Australia	24	24	22	91.7	22	91.7	0	0.0
All Airlines	68	68	63	92.6	63	92.6	0	0.0
Adelaide-Gold Coast								
Jetstar	28	28	23	82.1	25	89.3	0	0.0
Virgin Australia	28	28	27	96.4	27	96.4	0	0.0
All Airlines	56	56	50	89.3	52	92.9	0	0.0
Adelaide-Melbourne								
Jetstar	104	101	72	71.3	70	69.3	3	2.9
Qantas	262	260	214	82.3	224	86.2	2	0.8
Tigerair Australia	65	65	52	80.0	47	72.3	0	0.0
Virgin Australia	247	243	221	90.9	217	89.3	4	1.6
All Airlines	678	669	559	83.6	558	83.4	9	1.3
Adelaide-Perth								
Jetstar	28	28	28	100.0	25	89.3	0	0.0
Qantas	79	79	76	96.2	67	84.8	0	0.0
QantasLink	27	24	21	87.5	21	87.5	3	11.1
Virgin Australia	68	67	61	91.0	59	88.1	1	1.5
All Airlines	202	198	186	93.9	172	86.9	4	2.0
Adelaide-Port Lincoln								
QantasLink	97	95	91	95.8	92	96.8	2	2.1
Regional Express	195	195	185	94.9	190	97.4	0	0.0
All Airlines	292	290	276	95.2	282	97.2	2	0.7
Adelaide-Sydney								
Jetstar	109	107	81	75.7	79	73.8	2	1.8
Qantas	213	213	186	87.3	189	88.7	0	0.0
QantasLink	29	28	24	85.7	25	89.3	1	3.4
Tigerair Australia	44	43	25	58.1	27	62.8	1	2.3
Virgin Australia	155	152	130	85.5	136	89.5	3	1.9
All Airlines	550	543	446	82.1	456	84.0	7	1.3
Albury-Sydney								
QantasLink	100	97	68	70.1	75	77.3	3	3.0
Regional Express	93	93	71	76.3	79	84.9	0	0.0
Virgin Australia	56	55	43	78.2	43	78.2	1	1.8
All Airlines	249	245	182	74.3	197	80.4	4	1.6

	<i>Sectors</i>		<i>Arrivals On Time</i>		<i>Departures On Time</i>		<i>Cancellations</i>	
	<i>Sched.</i>	<i>Flown</i>	<i>No.</i>	<i>%</i>	<i>No.</i>	<i>%</i>	<i>No.</i>	<i>%</i>
Alice Springs-Adelaide								
Qantas	28	28	25	89.3	25	89.3	0	0.0
Virgin Australia	12	12	11	91.7	11	91.7	0	0.0
All Airlines	40	40	36	90.0	36	90.0	0	0.0
Alice Springs-Darwin								
QantasLink	38	38	33	86.8	31	81.6	0	0.0
Virgin Australia	12	12	11	91.7	11	91.7	0	0.0
All Airlines	50	50	44	88.0	42	84.0	0	0.0
Armidale-Sydney								
QantasLink	112	109	72	66.1	77	70.6	3	2.7
Regional Express	72	72	43	59.7	48	66.7	0	0.0
All Airlines	184	181	115	63.5	125	69.1	3	1.6
Ayers Rock-Sydney								
Jetstar	24	24	17	70.8	17	70.8	0	0.0
Virgin Australia	28	28	20	71.4	20	71.4	0	0.0
All Airlines	52	52	37	71.2	37	71.2	0	0.0
Ballina-Sydney								
Jetstar	72	72	56	77.8	49	68.1	0	0.0
Regional Express	19	19	9	47.4	9	47.4	0	0.0
Virgin Australia	28	28	24	85.7	25	89.3	0	0.0
All Airlines	119	119	89	74.8	83	69.7	0	0.0
Brisbane-Adelaide								
Jetstar	24	23	21	91.3	21	91.3	1	4.2
Qantas	92	92	90	97.8	90	97.8	0	0.0
QantasLink	16	15	14	93.3	14	93.3	1	6.3
Tigerair Australia	20	20	18	90.0	16	80.0	0	0.0
Virgin Australia	103	103	95	92.2	95	92.2	0	0.0
All Airlines	255	253	238	94.1	236	93.3	2	0.8
Brisbane-Bundaberg								
QantasLink	120	119	111	93.3	109	91.6	1	0.8
Virgin Australia	28	28	26	92.9	24	85.7	0	0.0
All Airlines	148	147	137	93.2	133	90.5	1	0.7
Brisbane-Cairns								
Jetstar	81	78	57	73.1	52	66.7	3	3.7
Qantas	105	105	102	97.1	97	92.4	0	0.0
QantasLink	4	4	4	100.0	4	100.0	0	0.0
Tigerair Australia	20	20	16	80.0	15	75.0	0	0.0
Virgin Australia	114	114	104	91.2	99	86.8	0	0.0
All Airlines	324	321	283	88.2	267	83.2	3	0.9
Brisbane-Canberra								
Qantas	93	93	91	97.8	87	93.5	0	0.0
QantasLink	47	46	43	93.5	43	93.5	1	2.1
Virgin Australia	87	87	81	93.1	82	94.3	0	0.0
All Airlines	227	226	215	95.1	212	93.8	1	0.4
Brisbane-Darwin								
Jetstar	15	15	14	93.3	11	73.3	0	0.0
Qantas	41	41	40	97.6	41	100.0	0	0.0
Tigerair Australia	17	17	16	94.1	14	82.4	0	0.0
Virgin Australia	28	28	24	85.7	22	78.6	0	0.0
All Airlines	101	101	94	93.1	88	87.1	0	0.0
Brisbane-Emerald								
QantasLink	108	108	98	90.7	94	87.0	0	0.0
Virgin Australia	68	68	65	95.6	65	95.6	0	0.0
All Airlines	176	176	163	92.6	159	90.3	0	0.0

	<i>Sectors</i>		<i>Arrivals On Time</i>		<i>Departures On Time</i>		<i>Cancellations</i>	
	<i>Sched.</i>	<i>Flown</i>	<i>No.</i>	<i>%</i>	<i>No.</i>	<i>%</i>	<i>No.</i>	<i>%</i>
Brisbane-Gladstone								
QantasLink	127	126	102	81.0	109	86.5	1	0.8
Virgin Australia	79	77	72	93.5	71	92.2	2	2.5
All Airlines	206	203	174	85.7	180	88.7	3	1.5
Brisbane-Hamilton Island								
QantasLink	36	36	34	94.4	31	86.1	0	0.0
Virgin Australia	28	28	27	96.4	27	96.4	0	0.0
All Airlines	64	64	61	95.3	58	90.6	0	0.0
Brisbane-Hobart								
Jetstar	28	28	26	92.9	28	100.0	0	0.0
Virgin Australia	28	28	26	92.9	26	92.9	0	0.0
All Airlines	56	56	52	92.9	54	96.4	0	0.0
Brisbane-Mackay								
Jetstar	40	40	31	77.5	27	67.5	0	0.0
QantasLink	100	99	90	90.9	87	87.9	1	1.0
Virgin Australia	128	127	121	95.3	115	90.6	1	0.8
All Airlines	268	266	242	91.0	229	86.1	2	0.7
Brisbane-Melbourne								
Jetstar	80	77	67	87.0	66	85.7	3	3.8
Qantas	382	381	351	92.1	360	94.5	1	0.3
Tigerair Australia	112	110	88	80.0	91	82.7	2	1.8
Virgin Australia	349	339	300	88.5	313	92.3	10	2.9
All Airlines	923	907	806	88.9	830	91.5	16	1.7
Brisbane-Moranbah								
QantasLink	72	72	68	94.4	68	94.4	0	0.0
Virgin Australia	60	59	53	89.8	51	86.4	1	1.7
All Airlines	132	131	121	92.4	119	90.8	1	0.8
Brisbane-Mount Isa								
QantasLink	52	52	49	94.2	48	92.3	0	0.0
Virgin Australia	16	16	16	100.0	16	100.0	0	0.0
All Airlines	68	68	65	95.6	64	94.1	0	0.0
Brisbane-Newcastle								
Jetstar	75	75	65	86.7	61	81.3	0	0.0
QantasLink	88	84	76	90.5	75	89.3	4	4.5
Virgin Australia	80	78	74	94.9	72	92.3	2	2.5
All Airlines	243	237	215	90.7	208	87.8	6	2.5
Brisbane-Perth								
Qantas	123	123	115	93.5	114	92.7	0	0.0
Virgin Australia	100	100	95	95.0	89	89.0	0	0.0
All Airlines	223	223	210	94.2	203	91.0	0	0.0
Brisbane-Proserpine								
Jetstar	24	24	16	66.7	14	58.3	0	0.0
Virgin Australia	28	28	26	92.9	26	92.9	0	0.0
All Airlines	52	52	42	80.8	40	76.9	0	0.0
Brisbane-Rockhampton								
QantasLink	176	174	159	91.4	158	90.8	2	1.1
Virgin Australia	158	154	138	89.6	137	89.0	4	2.5
All Airlines	334	328	297	90.5	295	89.9	6	1.8

	<i>Sectors</i>		<i>Arrivals On Time</i>		<i>Departures On Time</i>		<i>Cancellations</i>	
	<i>Sched.</i>	<i>Flown</i>	<i>No.</i>	<i>%</i>	<i>No.</i>	<i>%</i>	<i>No.</i>	<i>%</i>
Brisbane-Sydney								
Jetstar	149	142	99	69.7	96	67.6	7	4.7
Qantas	591	582	519	89.2	526	90.4	9	1.5
Tigerair Australia	101	100	63	63.0	61	61.0	1	1.0
Virgin Australia	486	469	400	85.3	417	88.9	17	3.5
All Airlines	1 327	1 293	1 081	83.6	1 100	85.1	34	2.6
Brisbane-Townsville								
Jetstar	28	28	25	89.3	25	89.3	0	0.0
Qantas	67	67	61	91.0	62	92.5	0	0.0
QantasLink	67	67	64	95.5	60	89.6	0	0.0
Virgin Australia	134	133	119	89.5	119	89.5	1	0.7
All Airlines	296	295	269	91.2	266	90.2	1	0.3
Broome-Perth								
QantasLink	76	71	68	95.8	65	91.5	5	6.6
Virgin Australia	4	4	4	100.0	3	75.0	0	0.0
Virgin Australia Regional Airlines	36	36	27	75.0	27	75.0	0	0.0
All Airlines	116	111	99	89.2	95	85.6	5	4.3
Bundaberg-Brisbane								
QantasLink	120	119	107	89.9	109	91.6	1	0.8
Virgin Australia	28	28	25	89.3	26	92.9	0	0.0
All Airlines	148	147	132	89.8	135	91.8	1	0.7
Cairns-Brisbane								
Jetstar	81	78	64	82.1	63	80.8	3	3.7
Qantas	105	105	97	92.4	97	92.4	0	0.0
QantasLink	4	4	4	100.0	4	100.0	0	0.0
Tigerair Australia	20	20	17	85.0	14	70.0	0	0.0
Virgin Australia	114	114	106	93.0	106	93.0	0	0.0
All Airlines	324	321	288	89.7	284	88.5	3	0.9
Cairns-Melbourne								
Jetstar	65	65	48	73.8	47	72.3	0	0.0
Qantas	34	34	25	73.5	26	76.5	0	0.0
Tigerair Australia	32	32	21	65.6	15	46.9	0	0.0
Virgin Australia	25	25	20	80.0	18	72.0	0	0.0
All Airlines	156	156	114	73.1	106	67.9	0	0.0
Cairns-Sydney								
Jetstar	85	84	65	77.4	72	85.7	1	1.2
Qantas	68	68	57	83.8	61	89.7	0	0.0
Tigerair Australia	34	34	22	64.7	24	70.6	0	0.0
Virgin Australia	76	76	70	92.1	68	89.5	0	0.0
All Airlines	263	262	214	81.7	225	85.9	1	0.4
Cairns-Townsville								
QantasLink	132	130	118	90.8	119	91.5	2	1.5
Regional Express	42	41	39	95.1	39	95.1	1	2.4
All Airlines	174	171	157	91.8	158	92.4	3	1.7
Canberra-Adelaide								
Qantas	44	44	41	93.2	42	95.5	0	0.0
Virgin Australia	24	24	21	87.5	22	91.7	0	0.0
All Airlines	68	68	62	91.2	64	94.1	0	0.0
Canberra-Brisbane								
Qantas	92	92	88	95.7	90	97.8	0	0.0
QantasLink	48	48	41	85.4	39	81.3	0	0.0
Virgin Australia	86	85	81	95.3	81	95.3	1	1.2
All Airlines	226	225	210	93.3	210	93.3	1	0.4

	<i>Sectors</i>		<i>Arrivals On Time</i>		<i>Departures On Time</i>		<i>Cancellations</i>	
	<i>Sched.</i>	<i>Flown</i>	<i>No.</i>	<i>%</i>	<i>No.</i>	<i>%</i>	<i>No.</i>	<i>%</i>
Canberra-Melbourne								
Qantas	187	187	177	94.7	178	95.2	0	0.0
QantasLink	87	82	69	84.1	72	87.8	5	5.7
Tigerair Australia	28	27	15	55.6	13	48.1	1	3.6
Virgin Australia	159	156	140	89.7	143	91.7	3	1.9
All Airlines	461	452	401	88.7	406	89.8	9	2.0
Canberra-Sydney								
QantasLink	464	443	376	84.9	384	86.7	21	4.5
Virgin Australia	250	226	184	81.4	187	82.7	24	9.6
All Airlines	714	669	560	83.7	571	85.4	45	6.3
Coffs Harbour-Sydney								
QantasLink	140	139	107	77.0	109	78.4	1	0.7
Tigerair Australia	12	12	7	58.3	6	50.0	0	0.0
Virgin Australia	53	52	42	80.8	42	80.8	1	1.9
All Airlines	205	203	156	76.8	157	77.3	2	1.0
Darwin-Alice Springs								
QantasLink	38	35	32	91.4	32	91.4	3	7.9
Virgin Australia	12	12	9	75.0	11	91.7	0	0.0
All Airlines	50	47	41	87.2	43	91.5	3	6.0
Darwin-Brisbane								
Jetstar	15	15	13	86.7	12	80.0	0	0.0
Qantas	41	41	41	100.0	39	95.1	0	0.0
Tigerair Australia	17	17	16	94.1	16	94.1	0	0.0
Virgin Australia	28	28	23	82.1	26	92.9	0	0.0
All Airlines	101	101	93	92.1	93	92.1	0	0.0
Darwin-Melbourne								
Jetstar	19	19	16	84.2	18	94.7	0	0.0
Qantas	28	28	26	92.9	26	92.9	0	0.0
Virgin Australia	28	27	26	96.3	26	96.3	1	3.6
All Airlines	75	74	68	91.9	70	94.6	1	1.3
Darwin-Perth								
Qantas	28	28	24	85.7	23	82.1	0	0.0
Virgin Australia	28	28	25	89.3	25	89.3	0	0.0
All Airlines	56	56	49	87.5	48	85.7	0	0.0
Darwin-Sydney								
Jetstar	16	16	11	68.8	11	68.8	0	0.0
Qantas	36	36	28	77.8	27	75.0	0	0.0
Virgin Australia	28	28	19	67.9	23	82.1	0	0.0
All Airlines	80	80	58	72.5	61	76.3	0	0.0
Dubbo-Sydney								
QantasLink	116	108	75	69.4	85	78.7	8	6.9
Regional Express	141	138	91	65.9	96	69.6	3	2.1
All Airlines	257	246	166	67.5	181	73.6	11	4.3
Emerald-Brisbane								
QantasLink	108	108	93	86.1	93	86.1	0	0.0
Virgin Australia	68	68	63	92.6	64	94.1	0	0.0
All Airlines	176	176	156	88.6	157	89.2	0	0.0
Geraldton-Perth								
QantasLink	41	39	35	89.7	36	92.3	2	4.9
Virgin Australia Regional Airlines	52	52	37	71.2	37	71.2	0	0.0
All Airlines	93	91	72	79.1	73	80.2	2	2.2

	<i>Sectors</i>		<i>Arrivals On Time</i>		<i>Departures On Time</i>		<i>Cancellations</i>	
	<i>Sched.</i>	<i>Flown</i>	<i>No.</i>	<i>%</i>	<i>No.</i>	<i>%</i>	<i>No.</i>	<i>%</i>
Gladstone-Brisbane								
QantasLink	127	126	109	86.5	108	85.7	1	0.8
Virgin Australia	80	77	74	96.1	74	96.1	3	3.8
All Airlines	207	203	183	90.1	182	89.7	4	1.9
Gold Coast-Adelaide								
Jetstar	28	28	24	85.7	20	71.4	0	0.0
Virgin Australia	28	28	26	92.9	25	89.3	0	0.0
All Airlines	56	56	50	89.3	45	80.4	0	0.0
Gold Coast-Melbourne								
Jetstar	126	126	113	89.7	105	83.3	0	0.0
Qantas	28	28	24	85.7	22	78.6	0	0.0
Tigerair Australia	69	68	50	73.5	40	58.8	1	1.4
Virgin Australia	170	170	146	85.9	143	84.1	0	0.0
All Airlines	393	392	333	84.9	310	79.1	1	0.3
Gold Coast-Sydney								
Jetstar	274	265	211	79.6	197	74.3	9	3.3
Qantas	84	84	77	91.7	75	89.3	0	0.0
QantasLink	13	13	12	92.3	11	84.6	0	0.0
Tigerair Australia	111	108	61	56.5	59	54.6	3	2.7
Virgin Australia	223	221	172	77.8	177	80.1	2	0.9
All Airlines	705	691	533	77.1	519	75.1	14	2.0
Hamilton Island-Brisbane								
QantasLink	36	36	33	91.7	34	94.4	0	0.0
Virgin Australia	28	28	27	96.4	27	96.4	0	0.0
All Airlines	64	64	60	93.8	61	95.3	0	0.0
Hamilton Island-Melbourne								
Qantas	16	16	15	93.8	15	93.8	0	0.0
Virgin Australia	15	15	13	86.7	12	80.0	0	0.0
All Airlines	31	31	28	90.3	27	87.1	0	0.0
Hamilton Island-Sydney								
Jetstar	16	16	11	68.8	11	68.8	0	0.0
Qantas	8	8	8	100.0	8	100.0	0	0.0
QantasLink	12	12	10	83.3	11	91.7	0	0.0
Virgin Australia	28	28	22	78.6	21	75.0	0	0.0
All Airlines	64	64	51	79.7	51	79.7	0	0.0
Hobart-Brisbane								
Jetstar	28	28	23	82.1	21	75.0	0	0.0
Virgin Australia	28	28	23	82.1	25	89.3	0	0.0
All Airlines	56	56	46	82.1	46	82.1	0	0.0
Hobart-Melbourne								
Jetstar	186	186	134	72.0	115	61.8	0	0.0
QantasLink	132	128	114	89.1	114	89.1	4	3.0
Tigerair Australia	28	28	15	53.6	14	50.0	0	0.0
Virgin Australia	132	132	107	81.1	111	84.1	0	0.0
All Airlines	478	474	370	78.1	354	74.7	4	0.8
Hobart-Sydney								
Jetstar	72	72	40	55.6	45	62.5	0	0.0
QantasLink	52	52	38	73.1	43	82.7	0	0.0
Virgin Australia	56	56	37	66.1	42	75.0	0	0.0
All Airlines	180	180	115	63.9	130	72.2	0	0.0

	<i>Sectors</i>		<i>Arrivals On Time</i>		<i>Departures On Time</i>		<i>Cancellations</i>	
	<i>Sched.</i>	<i>Flown</i>	<i>No.</i>	<i>%</i>	<i>No.</i>	<i>%</i>	<i>No.</i>	<i>%</i>
Kalgoorlie-Perth								
Qantas	4	4	4	100.0	3	75.0	0	0.0
QantasLink	73	70	62	88.6	60	85.7	3	4.1
Virgin Australia	33	33	31	93.9	32	97.0	0	0.0
Virgin Australia Regional Airlines	23	23	18	78.3	19	82.6	0	0.0
All Airlines	133	130	115	88.5	114	87.7	3	2.3
Karratha-Perth								
Qantas	12	12	11	91.7	11	91.7	0	0.0
QantasLink	157	146	112	76.7	120	82.2	11	7.0
Virgin Australia	7	6	1	16.7	1	16.7	1	14.3
Virgin Australia Regional Airlines	69	66	52	78.8	55	83.3	3	4.3
All Airlines	245	230	176	76.5	187	81.3	15	6.1
Launceston-Melbourne								
Jetstar	137	133	91	68.4	93	69.9	4	2.9
QantasLink	107	104	94	90.4	97	93.3	3	2.8
Virgin Australia	88	88	79	89.8	76	86.4	0	0.0
All Airlines	332	325	264	81.2	266	81.8	7	2.1
Launceston-Sydney								
Jetstar	56	56	30	53.6	26	46.4	0	0.0
Virgin Australia	28	28	20	71.4	24	85.7	0	0.0
All Airlines	84	84	50	59.5	50	59.5	0	0.0
Mackay-Brisbane								
Jetstar	40	40	30	75.0	29	72.5	0	0.0
QantasLink	100	98	86	87.8	88	89.8	2	2.0
Virgin Australia	128	127	120	94.5	121	95.3	1	0.8
All Airlines	268	265	236	89.1	238	89.8	3	1.1
Melbourne-Adelaide								
Jetstar	103	101	56	55.4	58	57.4	2	1.9
Qantas	262	261	232	88.9	237	90.8	1	0.4
Tigerair Australia	65	65	51	78.5	51	78.5	0	0.0
Virgin Australia	243	238	200	84.0	211	88.7	5	2.1
All Airlines	673	665	539	81.1	557	83.8	8	1.2
Melbourne-Brisbane								
Jetstar	80	77	58	75.3	58	75.3	3	3.8
Qantas	386	382	334	87.4	346	90.6	4	1.0
Tigerair Australia	112	111	88	79.3	89	80.2	1	0.9
Virgin Australia	339	330	290	87.9	301	91.2	9	2.7
All Airlines	917	900	770	85.6	794	88.2	17	1.9
Melbourne-Cairns								
Jetstar	65	65	51	78.5	48	73.8	0	0.0
Qantas	34	34	29	85.3	30	88.2	0	0.0
Tigerair Australia	32	32	23	71.9	22	68.8	0	0.0
Virgin Australia	25	25	17	68.0	17	68.0	0	0.0
All Airlines	156	156	120	76.9	117	75.0	0	0.0
Melbourne-Canberra								
Qantas	187	187	180	96.3	181	96.8	0	0.0
QantasLink	87	81	70	86.4	70	86.4	6	6.9
Tigerair Australia	28	27	21	77.8	21	77.8	1	3.6
Virgin Australia	159	156	146	93.6	145	92.9	3	1.9
All Airlines	461	451	417	92.5	417	92.5	10	2.2
Melbourne-Darwin								
Jetstar	19	19	18	94.7	18	94.7	0	0.0
Qantas	28	28	28	100.0	27	96.4	0	0.0
Virgin Australia	28	27	22	81.5	22	81.5	1	3.6
All Airlines	75	74	68	91.9	67	90.5	1	1.3

	<i>Sectors</i>		<i>Arrivals On Time</i>		<i>Departures On Time</i>		<i>Cancellations</i>	
	<i>Sched.</i>	<i>Flown</i>	<i>No.</i>	<i>%</i>	<i>No.</i>	<i>%</i>	<i>No.</i>	<i>%</i>
Melbourne-Gold Coast								
Jetstar	126	126	107	84.9	104	82.5	0	0.0
Qantas	28	28	22	78.6	25	89.3	0	0.0
Tigerair Australia	69	68	50	73.5	49	72.1	1	1.4
Virgin Australia	170	170	137	80.6	146	85.9	0	0.0
All Airlines	393	392	316	80.6	324	82.7	1	0.3
Melbourne-Hamilton Island								
Qantas	16	16	15	93.8	14	87.5	0	0.0
Virgin Australia	15	15	12	80.0	13	86.7	0	0.0
All Airlines	31	31	27	87.1	27	87.1	0	0.0
Melbourne-Hobart								
Jetstar	186	186	144	77.4	154	82.8	0	0.0
QantasLink	132	127	111	87.4	114	89.8	5	3.8
Tigerair Australia	28	28	21	75.0	19	67.9	0	0.0
Virgin Australia	132	132	113	85.6	118	89.4	0	0.0
All Airlines	478	473	389	82.2	405	85.6	5	1.0
Melbourne-Launceston								
Jetstar	137	134	107	79.9	105	78.4	3	2.2
QantasLink	107	104	96	92.3	96	92.3	3	2.8
Virgin Australia	88	88	79	89.8	79	89.8	0	0.0
All Airlines	332	326	282	86.5	280	85.9	6	1.8
Melbourne-Mildura								
QantasLink	88	88	81	92.0	83	94.3	0	0.0
Regional Express	72	72	60	83.3	62	86.1	0	0.0
Virgin Australia	28	28	25	89.3	27	96.4	0	0.0
All Airlines	188	188	166	88.3	172	91.5	0	0.0
Melbourne-Newcastle								
Jetstar	87	87	61	70.1	60	69.0	0	0.0
Virgin Australia	28	28	20	71.4	23	82.1	0	0.0
All Airlines	115	115	81	70.4	83	72.2	0	0.0
Melbourne-Perth								
Jetstar	55	48	44	91.7	44	91.7	7	12.7
Qantas	183	183	137	74.9	145	79.2	0	0.0
Tigerair Australia	52	52	40	76.9	36	69.2	0	0.0
Virgin Australia	120	120	104	86.7	102	85.0	0	0.0
All Airlines	410	403	325	80.6	327	81.1	7	1.7
Melbourne-Sunshine Coast								
Jetstar	64	64	51	79.7	52	81.3	0	0.0
Virgin Australia	32	32	27	84.4	25	78.1	0	0.0
All Airlines	96	96	78	81.3	77	80.2	0	0.0
Melbourne-Sydney								
Jetstar	359	342	203	59.4	226	66.1	17	4.7
Qantas	966	938	754	80.4	811	86.5	28	2.9
Tigerair Australia	224	217	120	55.3	137	63.1	7	3.1
Virgin Australia	713	676	531	78.6	597	88.3	37	5.2
All Airlines	2 262	2 173	1 608	74.0	1 771	81.5	89	3.9
Mildura-Melbourne								
QantasLink	88	88	83	94.3	82	93.2	0	0.0
Regional Express	72	72	53	73.6	58	80.6	0	0.0
Virgin Australia	28	28	25	89.3	25	89.3	0	0.0
All Airlines	188	188	161	85.6	165	87.8	0	0.0

	<i>Sectors</i>		<i>Arrivals On Time</i>		<i>Departures On Time</i>		<i>Cancellations</i>	
	<i>Sched.</i>	<i>Flown</i>	<i>No.</i>	<i>%</i>	<i>No.</i>	<i>%</i>	<i>No.</i>	<i>%</i>
Moranbah-Brisbane								
QantasLink	68	68	57	83.8	61	89.7	0	0.0
Virgin Australia	60	59	52	88.1	54	91.5	1	1.7
All Airlines	128	127	109	85.8	115	90.6	1	0.8
Mount Isa-Brisbane								
QantasLink	52	52	49	94.2	48	92.3	0	0.0
Virgin Australia	16	16	15	93.8	16	100.0	0	0.0
All Airlines	68	68	64	94.1	64	94.1	0	0.0
Newcastle-Brisbane								
Jetstar	75	74	58	78.4	61	82.4	1	1.3
QantasLink	88	84	77	91.7	74	88.1	4	4.5
Virgin Australia	80	78	74	94.9	75	96.2	2	2.5
All Airlines	243	236	209	88.6	210	89.0	7	2.9
Newcastle-Melbourne								
Jetstar	87	87	65	74.7	66	75.9	0	0.0
Virgin Australia	28	28	17	60.7	20	71.4	0	0.0
All Airlines	115	115	82	71.3	86	74.8	0	0.0
Newman-Perth								
Qantas	57	57	55	96.5	54	94.7	0	0.0
QantasLink	63	59	44	74.6	45	76.3	4	6.3
Virgin Australia	13	13	12	92.3	13	100.0	0	0.0
Virgin Australia Regional Airlines	23	23	20	87.0	21	91.3	0	0.0
All Airlines	156	152	131	86.2	133	87.5	4	2.6
Perth-Adelaide								
Jetstar	28	27	25	92.6	23	85.2	1	3.6
Qantas	83	83	75	90.4	75	90.4	0	0.0
QantasLink	27	25	21	84.0	22	88.0	2	7.4
Virgin Australia	72	71	69	97.2	69	97.2	1	1.4
All Airlines	210	206	190	92.2	189	91.7	4	1.9
Perth-Brisbane								
Qantas	119	119	102	85.7	108	90.8	0	0.0
Virgin Australia	100	100	86	86.0	90	90.0	0	0.0
All Airlines	219	219	188	85.8	198	90.4	0	0.0
Perth-Broome								
QantasLink	76	75	72	96.0	69	92.0	1	1.3
Virgin Australia	4	4	3	75.0	4	100.0	0	0.0
Virgin Australia Regional Airlines	36	36	29	80.6	30	83.3	0	0.0
All Airlines	116	115	104	90.4	103	89.6	1	0.9
Perth-Darwin								
Qantas	28	28	24	85.7	25	89.3	0	0.0
Virgin Australia	28	28	26	92.9	26	92.9	0	0.0
All Airlines	56	56	50	89.3	51	91.1	0	0.0
Perth-Geraldton								
QantasLink	41	39	31	79.5	30	76.9	2	4.9
Virgin Australia Regional Airlines	52	52	38	73.1	38	73.1	0	0.0
All Airlines	93	91	69	75.8	68	74.7	2	2.2
Perth-Kalgoorlie								
Qantas	4	4	4	100.0	3	75.0	0	0.0
QantasLink	72	70	58	82.9	57	81.4	2	2.8
Virgin Australia	33	33	30	90.9	31	93.9	0	0.0
Virgin Australia Regional Airlines	23	23	16	69.6	18	78.3	0	0.0
All Airlines	132	130	108	83.1	109	83.8	2	1.5

	Sectors		Arrivals On Time		Departures On Time		Cancellations	
	Sched.	Flown	No.	%	No.	%	No.	%
Perth-Karratha								
Qantas	12	12	10	83.3	12	100.0	0	0.0
QantasLink	159	149	122	81.9	126	84.6	10	6.3
Virgin Australia	7	6	4	66.7	6	100.0	1	14.3
Virgin Australia Regional Airlines	69	66	60	90.9	60	90.9	3	4.3
All Airlines	247	233	196	84.1	204	87.6	14	5.7
Perth-Melbourne								
Jetstar	56	49	44	89.8	41	83.7	7	12.5
Qantas	183	183	169	92.3	168	91.8	0	0.0
Tigerair Australia	52	52	44	84.6	40	76.9	0	0.0
Virgin Australia	120	120	109	90.8	107	89.2	0	0.0
All Airlines	411	404	366	90.6	356	88.1	7	1.7
Perth-Newman								
Qantas	57	57	55	96.5	54	94.7	0	0.0
QantasLink	63	60	43	71.7	46	76.7	3	4.8
Virgin Australia	13	13	12	92.3	13	100.0	0	0.0
Virgin Australia Regional Airlines	23	23	21	91.3	22	95.7	0	0.0
All Airlines	156	153	131	85.6	135	88.2	3	1.9
Perth-Port Hedland								
Qantas	32	32	30	93.8	31	96.9	0	0.0
QantasLink	87	84	55	65.5	67	79.8	3	3.4
Virgin Australia	18	18	17	94.4	17	94.4	0	0.0
Virgin Australia Regional Airlines	30	30	24	80.0	25	83.3	0	0.0
All Airlines	167	164	126	76.8	140	85.4	3	1.8
Perth-Sydney								
Jetstar	28	28	24	85.7	22	78.6	0	0.0
Qantas	189	189	160	84.7	174	92.1	0	0.0
Tigerair Australia	24	22	21	95.5	21	95.5	2	8.3
Virgin Australia	104	104	95	91.3	96	92.3	0	0.0
All Airlines	345	343	300	87.5	313	91.3	2	0.6
Port Hedland-Perth								
Qantas	32	32	29	90.6	29	90.6	0	0.0
QantasLink	88	82	61	74.4	62	75.6	6	6.8
Virgin Australia	18	18	12	66.7	16	88.9	0	0.0
Virgin Australia Regional Airlines	30	30	26	86.7	26	86.7	0	0.0
All Airlines	168	162	128	79.0	133	82.1	6	3.6
Port Lincoln-Adelaide								
QantasLink	97	95	93	97.9	91	95.8	2	2.1
Regional Express	195	195	186	95.4	186	95.4	0	0.0
All Airlines	292	290	279	96.2	277	95.5	2	0.7
Port Macquarie-Sydney								
QantasLink	124	120	78	65.0	78	65.0	4	3.2
Virgin Australia	52	51	28	54.9	33	64.7	1	1.9
All Airlines	176	171	106	62.0	111	64.9	5	2.8
Proserpine-Brisbane								
Jetstar	24	24	13	54.2	11	45.8	0	0.0
Virgin Australia	28	28	26	92.9	25	89.3	0	0.0
All Airlines	52	52	39	75.0	36	69.2	0	0.0
Rockhampton-Brisbane								
QantasLink	176	173	154	89.0	153	88.4	3	1.7
Virgin Australia	158	154	144	93.5	143	92.9	4	2.5
All Airlines	334	327	298	91.1	296	90.5	7	2.1

	<i>Sectors</i>		<i>Arrivals On Time</i>		<i>Departures On Time</i>		<i>Cancellations</i>	
	<i>Sched.</i>	<i>Flown</i>	<i>No.</i>	<i>%</i>	<i>No.</i>	<i>%</i>	<i>No.</i>	<i>%</i>
Sunshine Coast-Melbourne								
Jetstar	64	64	45	70.3	38	59.4	0	0.0
Virgin Australia	32	32	25	78.1	20	62.5	0	0.0
All Airlines	96	96	70	72.9	58	60.4	0	0.0
Sunshine Coast-Sydney								
Jetstar	92	91	59	64.8	55	60.4	1	1.1
QantasLink	32	30	26	86.7	24	80.0	2	6.3
Virgin Australia	30	30	25	83.3	25	83.3	0	0.0
All Airlines	154	151	110	72.8	104	68.9	3	1.9
Sydney-Adelaide								
Jetstar	108	104	82	78.8	82	78.8	4	3.7
Qantas	209	209	179	85.6	182	87.1	0	0.0
QantasLink	29	28	24	85.7	24	85.7	1	3.4
Tigerair Australia	44	43	28	65.1	26	60.5	1	2.3
Virgin Australia	151	149	133	89.3	130	87.2	2	1.3
All Airlines	541	533	446	83.7	444	83.3	8	1.5
Sydney-Albury								
QantasLink	100	97	69	71.1	70	72.2	3	3.0
Regional Express	94	94	83	88.3	85	90.4	0	0.0
Virgin Australia	56	55	45	81.8	43	78.2	1	1.8
All Airlines	250	246	197	80.1	198	80.5	4	1.6
Sydney-Armidale								
QantasLink	112	109	73	67.0	70	64.2	3	2.7
Regional Express	70	70	54	77.1	52	74.3	0	0.0
All Airlines	182	179	127	70.9	122	68.2	3	1.6
Sydney-Ayers Rock								
Jetstar	24	24	23	95.8	21	87.5	0	0.0
Virgin Australia	28	28	25	89.3	23	82.1	0	0.0
All Airlines	52	52	48	92.3	44	84.6	0	0.0
Sydney-Ballina								
Jetstar	72	72	60	83.3	63	87.5	0	0.0
Regional Express	21	21	13	61.9	16	76.2	0	0.0
Virgin Australia	28	28	24	85.7	25	89.3	0	0.0
All Airlines	121	121	97	80.2	104	86.0	0	0.0
Sydney-Brisbane								
Jetstar	149	142	100	70.4	96	67.6	7	4.7
Qantas	591	584	515	88.2	522	89.4	7	1.2
Tigerair Australia	101	100	63	63.0	70	70.0	1	1.0
Virgin Australia	500	482	389	80.7	398	82.6	18	3.6
All Airlines	1 341	1 308	1 067	81.6	1 086	83.0	33	2.5
Sydney-Cairns								
Jetstar	85	84	71	84.5	68	81.0	1	1.2
Qantas	68	68	62	91.2	63	92.6	0	0.0
Tigerair Australia	34	34	27	79.4	29	85.3	0	0.0
Virgin Australia	76	76	67	88.2	66	86.8	0	0.0
All Airlines	263	262	227	86.6	226	86.3	1	0.4
Sydney-Canberra								
QantasLink	462	447	373	83.4	369	82.6	15	3.2
Virgin Australia	249	225	181	80.4	178	79.1	24	9.6
All Airlines	711	672	554	82.4	547	81.4	39	5.5

	<i>Sectors</i>		<i>Arrivals On Time</i>		<i>Departures On Time</i>		<i>Cancellations</i>	
	<i>Sched.</i>	<i>Flown</i>	<i>No.</i>	<i>%</i>	<i>No.</i>	<i>%</i>	<i>No.</i>	<i>%</i>
Sydney-Coffs Harbour								
QantasLink	140	140	107	76.4	104	74.3	0	0.0
Tigerair Australia	12	12	8	66.7	8	66.7	0	0.0
Virgin Australia	53	52	43	82.7	43	82.7	1	1.9
All Airlines	205	204	158	77.5	155	76.0	1	0.5
Sydney-Darwin								
Jetstar	16	16	14	87.5	13	81.3	0	0.0
Qantas	36	36	29	80.6	30	83.3	0	0.0
Virgin Australia	28	27	23	85.2	25	92.6	1	3.6
All Airlines	80	79	66	83.5	68	86.1	1	1.3
Sydney-Dubbo								
QantasLink	116	110	80	72.7	80	72.7	6	5.2
Regional Express	140	138	109	79.0	107	77.5	2	1.4
All Airlines	256	248	189	76.2	187	75.4	8	3.1
Sydney-Gold Coast								
Jetstar	274	267	207	77.5	203	76.0	7	2.6
Qantas	84	84	76	90.5	73	86.9	0	0.0
QantasLink	13	13	10	76.9	13	100.0	0	0.0
Tigerair Australia	111	108	65	60.2	71	65.7	3	2.7
Virgin Australia	223	221	184	83.3	190	86.0	2	0.9
All Airlines	705	693	542	78.2	550	79.4	12	1.7
Sydney-Hamilton Island								
Jetstar	16	16	14	87.5	12	75.0	0	0.0
Qantas	8	8	8	100.0	7	87.5	0	0.0
QantasLink	12	12	11	91.7	10	83.3	0	0.0
Virgin Australia	28	28	22	78.6	23	82.1	0	0.0
All Airlines	64	64	55	85.9	52	81.3	0	0.0
Sydney-Hobart								
Jetstar	72	72	57	79.2	56	77.8	0	0.0
QantasLink	52	52	44	84.6	45	86.5	0	0.0
Virgin Australia	56	56	51	91.1	54	96.4	0	0.0
All Airlines	180	180	152	84.4	155	86.1	0	0.0
Sydney-Launceston								
Jetstar	56	56	41	73.2	37	66.1	0	0.0
Virgin Australia	28	28	22	78.6	22	78.6	0	0.0
All Airlines	84	84	63	75.0	59	70.2	0	0.0
Sydney-Melbourne								
Jetstar	358	342	246	71.9	226	66.1	16	4.5
Qantas	970	937	764	81.5	805	85.9	33	3.4
Tigerair Australia	223	217	119	54.8	116	53.5	6	2.7
Virgin Australia	699	659	521	79.1	545	82.7	40	5.7
All Airlines	2 250	2 155	1 650	76.6	1 692	78.5	95	4.2
Sydney-Perth								
Jetstar	28	28	23	82.1	23	82.1	0	0.0
Qantas	189	189	154	81.5	152	80.4	0	0.0
Tigerair Australia	24	22	17	77.3	18	81.8	2	8.3
Virgin Australia	108	108	90	83.3	91	84.3	0	0.0
All Airlines	349	347	284	81.8	284	81.8	2	0.6
Sydney-Port Macquarie								
QantasLink	124	120	79	65.8	79	65.8	4	3.2
Virgin Australia	52	52	35	67.3	34	65.4	0	0.0
All Airlines	176	172	114	66.3	113	65.7	4	2.3

	<i>Sectors</i>		<i>Arrivals On Time</i>		<i>Departures On Time</i>		<i>Cancellations</i>	
	<i>Sched.</i>	<i>Flown</i>	<i>No.</i>	<i>%</i>	<i>No.</i>	<i>%</i>	<i>No.</i>	<i>%</i>
Sydney-Sunshine Coast								
Jetstar	92	91	68	74.7	64	70.3	1	1.1
QantasLink	32	31	25	80.6	25	80.6	1	3.1
Virgin Australia	30	30	27	90.0	28	93.3	0	0.0
All Airlines	154	152	120	78.9	117	77.0	2	1.3
Sydney-Tamworth								
QantasLink	144	138	105	76.1	100	72.5	6	4.2
Virgin Australia	36	36	28	77.8	29	80.6	0	0.0
All Airlines	180	174	133	76.4	129	74.1	6	3.3
Sydney-Townsville								
Jetstar	16	16	6	37.5	3	18.8	0	0.0
Virgin Australia	28	28	26	92.9	26	92.9	0	0.0
All Airlines	44	44	32	72.7	29	65.9	0	0.0
Sydney-Wagga Wagga								
QantasLink	104	103	83	80.6	85	82.5	1	1.0
Regional Express	118	117	96	82.1	103	88.0	1	0.8
All Airlines	222	220	179	81.4	188	85.5	2	0.9
Tamworth-Sydney								
QantasLink	144	135	106	78.5	106	78.5	9	6.3
Virgin Australia	36	36	31	86.1	31	86.1	0	0.0
All Airlines	180	171	137	80.1	137	80.1	9	5.0
Townsville-Brisbane								
Jetstar	28	28	24	85.7	23	82.1	0	0.0
Qantas	67	67	63	94.0	62	92.5	0	0.0
QantasLink	67	67	59	88.1	63	94.0	0	0.0
Virgin Australia	134	133	128	96.2	123	92.5	1	0.7
All Airlines	296	295	274	92.9	271	91.9	1	0.3
Townsville-Cairns								
QantasLink	132	130	118	90.8	121	93.1	2	1.5
Regional Express	42	41	38	92.7	37	90.2	1	2.4
All Airlines	174	171	156	91.2	158	92.4	3	1.7
Townsville-Sydney								
Jetstar	16	16	7	43.8	5	31.3	0	0.0
Virgin Australia	28	28	26	92.9	27	96.4	0	0.0
All Airlines	44	44	33	75.0	32	72.7	0	0.0
Wagga Wagga-Sydney								
QantasLink	104	103	79	76.7	86	83.5	1	1.0
Regional Express	120	118	90	76.3	99	83.9	2	1.7
All Airlines	224	221	169	76.5	185	83.7	3	1.3

Airports

On time performance is reported for all routes where the passenger load averages over 8000 passengers per month, and where two or more airlines operate in competition. The following data reports by airport against flights operated on those routes only. This month, 8 major city airports and 33 regional city airports are covered.

Airport	Arrivals			Departures		
	Sectors	On Time		Sectors	On Time	
	Flown	No.	%	Flown	No.	%
Adelaide						
Jetstar	283	208	73.5	287	217	75.6
Qantas	717	642	89.5	716	638	89.1
QantasLink	163	152	93.3	162	153	94.4
Regional Express	195	186	95.4	195	190	97.4
Tigerair Australia	128	97	75.8	128	91	71.1
Virgin Australia	625	555	88.8	625	565	90.4
All Airlines	2 111	1 840	87.2	2 113	1 854	87.7
Relates to services to and from Alice Springs, Brisbane, Canberra, Gold Coast, Melbourne, Perth, Port Lincoln and Sydney.						
Albury						
QantasLink	97	69	71.1	97	75	77.3
Regional Express	94	83	88.3	93	79	84.9
Virgin Australia	55	45	81.8	55	43	78.2
All Airlines	246	197	80.1	245	197	80.4
Relates to services to and from Sydney only.						
Alice Springs						
Qantas	28	28	100.0	28	25	89.3
QantasLink	35	32	91.4	38	31	81.6
Virgin Australia	24	20	83.3	24	22	91.7
All Airlines	87	80	92.0	90	78	86.7
Relates to services to and from Adelaide and Darwin.						
Armidale						
QantasLink	109	73	67.0	109	77	70.6
Regional Express	70	54	77.1	72	48	66.7
All Airlines	179	127	70.9	181	125	69.1
Relates to services to and from Sydney only.						
Ayers Rock						
Jetstar	24	23	95.8	24	17	70.8
Virgin Australia	28	25	89.3	28	20	71.4
All Airlines	52	48	92.3	52	37	71.2
Relates to services to and from Sydney only.						
Ballina						
Jetstar	72	60	83.3	72	49	68.1
Regional Express	21	13	61.9	19	9	47.4
Virgin Australia	28	24	85.7	28	25	89.3
All Airlines	121	97	80.2	119	83	69.7
Relates to services to and from Sydney only.						

Airport	Arrivals			Departures		
	Sectors Flown	On Time		Sectors Flown	On Time	
		No.	%		No.	%
Brisbane						
Jetstar	529	401	75.8	530	401	75.7
Qantas	1 482	1 331	89.8	1 484	1 377	92.8
QantasLink	998	881	88.3	1 002	900	89.8
Tigerair Australia	268	201	75.0	267	197	73.8
Virgin Australia	2 062	1 836	89.0	2 064	1 866	90.4
All Airlines	5 339	4 650	87.1	5 347	4 741	88.7

Relates to services to and from Adelaide, Bundaberg, Cairns, Canberra, Darwin, Emerald, Gladstone, Hamilton Island, Hobart, Mackay, Melbourne, Moranbah, Mount Isa, Newcastle, Perth, Proserpine, Rockhampton, Sydney and Townsville.

Broome

QantasLink	75	72	96.0	71	65	91.5
Virgin Australia	4	3	75.0	4	3	75.0
Virgin Australia Regional Airlines	36	29	80.6	36	27	75.0
All Airlines	115	104	90.4	111	95	85.6

Relates to services to and from Perth only.

Bundaberg

QantasLink	119	111	93.3	119	109	91.6
Virgin Australia	28	26	92.9	28	26	92.9
All Airlines	147	137	93.2	147	135	91.8

Relates to services to and from Brisbane only.

Cairns

Jetstar	227	179	78.9	227	182	80.2
Qantas	207	193	93.2	207	184	88.9
QantasLink	134	122	91.0	134	123	91.8
Regional Express	41	38	92.7	41	39	95.1
Tigerair Australia	86	66	76.7	86	53	61.6
Virgin Australia	215	188	87.4	215	192	89.3
All Airlines	910	786	86.4	910	773	84.9

Relates to services to and from Brisbane, Melbourne, Sydney and Townsville.

Canberra

Qantas	324	312	96.3	323	310	96.0
QantasLink	574	486	84.7	573	495	86.4
Tigerair Australia	27	21	77.8	27	13	48.1
Virgin Australia	492	430	87.4	491	433	88.2
All Airlines	1 417	1 249	88.1	1 414	1 251	88.5

Relates to services to and from Adelaide, Brisbane, Melbourne and Sydney.

Coffs Harbour

QantasLink	140	107	76.4	139	109	78.4
Tigerair Australia	12	8	66.7	12	6	50.0
Virgin Australia	52	43	82.7	52	42	80.8
All Airlines	204	158	77.5	203	157	77.3

Relates to services to and from Sydney only.

Darwin

Jetstar	50	46	92.0	50	41	82.0
Qantas	133	121	91.0	133	115	86.5
QantasLink	38	33	86.8	35	32	91.4
Tigerair Australia	17	16	94.1	17	16	94.1
Virgin Australia	122	106	86.9	123	111	90.2
All Airlines	360	322	89.4	358	315	88.0

Relates to services to and from Alice Springs, Brisbane, Melbourne, Perth and Sydney.

Airport	Arrivals			Departures		
	Sectors Flown	On Time		Sectors Flown	On Time	
		No.	%		No.	%
Dubbo						
QantasLink	110	80	72.7	108	85	78.7
Regional Express	138	109	79.0	138	96	69.6
All Airlines	248	189	76.2	246	181	73.6
Relates to services to and from Sydney only.						
Emerald						
QantasLink	108	98	90.7	108	93	86.1
Virgin Australia	68	65	95.6	68	64	94.1
All Airlines	176	163	92.6	176	157	89.2
Relates to services to and from Brisbane only.						
Geraldton						
QantasLink	39	31	79.5	39	36	92.3
Virgin Australia Regional Airlines	52	38	73.1	52	37	71.2
All Airlines	91	69	75.8	91	73	80.2
Relates to services to and from Perth only.						
Gladstone						
QantasLink	126	102	81.0	126	108	85.7
Virgin Australia	77	72	93.5	77	74	96.1
All Airlines	203	174	85.7	203	182	89.7
Relates to services to and from Brisbane only.						
Gold Coast						
Jetstar	421	337	80.0	419	322	76.8
Qantas	112	98	87.5	112	97	86.6
QantasLink	13	10	76.9	13	11	84.6
Tigerair Australia	176	115	65.3	176	99	56.3
Virgin Australia	419	348	83.1	419	345	82.3
All Airlines	1 141	908	79.6	1 139	874	76.7
Relates to services to and from Adelaide, Melbourne and Sydney.						
Hamilton Island						
Jetstar	16	14	87.5	16	11	68.8
Qantas	24	23	95.8	24	23	95.8
QantasLink	48	45	93.8	48	45	93.8
Virgin Australia	71	61	85.9	71	60	84.5
All Airlines	159	143	89.9	159	139	87.4
Relates to services to and from Brisbane, Melbourne and Sydney.						
Hobart						
Jetstar	286	227	79.4	286	181	63.3
QantasLink	179	155	86.6	180	157	87.2
Tigerair Australia	28	21	75.0	28	14	50.0
Virgin Australia	216	190	88.0	216	178	82.4
All Airlines	709	593	83.6	710	530	74.6
Relates to services to and from Brisbane, Melbourne and Sydney.						
Kalgoorlie						
Qantas	4	4	100.0	4	3	75.0
QantasLink	70	58	82.9	70	60	85.7
Virgin Australia	33	30	90.9	33	32	97.0
Virgin Australia Regional Airlines	23	16	69.6	23	19	82.6
All Airlines	130	108	83.1	130	114	87.7
Relates to services to and from Perth only.						

Airport	Arrivals			Departures		
	Sectors Flown	On Time		Sectors Flown	On Time	
		No.	%		No.	%
Karratha						
Qantas	12	10	83.3	12	11	91.7
QantasLink	149	122	81.9	146	120	82.2
Virgin Australia	6	4	66.7	6	1	16.7
Virgin Australia Regional Airlines	66	60	90.9	66	55	83.3
All Airlines	233	196	84.1	230	187	81.3
Relates to services to and from Perth only.						
Launceston						
Jetstar	190	148	77.9	189	119	63.0
QantasLink	104	96	92.3	104	97	93.3
Virgin Australia	116	101	87.1	116	100	86.2
All Airlines	410	345	84.1	409	316	77.3
Relates to services to and from Melbourne and Sydney.						
Mackay						
Jetstar	40	31	77.5	40	29	72.5
QantasLink	99	90	90.9	98	88	89.8
Virgin Australia	127	121	95.3	127	121	95.3
All Airlines	266	242	91.0	265	238	89.8
Relates to services to and from Brisbane only.						
Melbourne						
Jetstar	1 249	941	75.3	1 249	927	74.2
Qantas	2 054	1 765	85.9	2 057	1 816	88.3
QantasLink	402	360	89.6	400	363	90.8
Regional Express	72	53	73.6	72	62	86.1
Tigerair Australia	599	404	67.4	600	424	70.7
Virgin Australia	2 062	1 749	84.8	2 065	1 826	88.4
All Airlines	6 438	5 272	81.9	6 443	5 418	84.1
Relates to services to and from Adelaide, Brisbane, Cairns, Canberra, Darwin, Gold Coast, Hamilton Island, Hobart, Launceston, Mildura, Newcastle, Perth, Sunshine Coast and Sydney.						
Mildura						
QantasLink	88	81	92.0	88	82	93.2
Regional Express	72	60	83.3	72	58	80.6
Virgin Australia	28	25	89.3	28	25	89.3
All Airlines	188	166	88.3	188	165	87.8
Relates to services to and from Melbourne only.						
Moranbah						
QantasLink	72	68	94.4	68	61	89.7
Virgin Australia	59	53	89.8	59	54	91.5
All Airlines	131	121	92.4	127	115	90.6
Relates to services to and from Brisbane only.						
Mount Isa						
QantasLink	52	49	94.2	52	48	92.3
Virgin Australia	16	16	100.0	16	16	100.0
All Airlines	68	65	95.6	68	64	94.1
Relates to services to and from Brisbane only.						

Airport	Arrivals			Departures		
	Sectors	On Time		Sectors	On Time	
	Flown	No.	%	Flown	No.	%
Newcastle						
Jetstar	162	126	77.8	161	127	78.9
QantasLink	84	76	90.5	84	74	88.1
Virgin Australia	106	94	88.7	106	95	89.6
All Airlines	352	296	84.1	351	296	84.3
Relates to services to and from Brisbane and Melbourne.						
Newman						
Qantas	57	55	96.5	57	54	94.7
QantasLink	60	43	71.7	59	45	76.3
Virgin Australia	13	12	92.3	13	13	100.0
Virgin Australia Regional Airlines	23	21	91.3	23	21	91.3
All Airlines	153	131	85.6	152	133	87.5
Relates to services to and from Perth only.						
Perth						
Jetstar	104	95	91.3	104	86	82.7
Qantas	707	605	85.6	707	650	91.9
QantasLink	491	403	82.1	502	417	83.1
Tigerair Australia	74	57	77.0	74	61	82.4
Virgin Australia	497	435	87.5	497	459	92.4
Virgin Australia Regional Airlines	230	180	78.3	230	193	83.9
All Airlines	2 103	1 775	84.4	2 114	1 866	88.3
Relates to services to and from Adelaide, Brisbane, Broome, Darwin, Geraldton, Kalgoorlie, Karratha, Melbourne, Newman, Port Hedland and Sydney.						
Port Hedland						
Qantas	32	30	93.8	32	29	90.6
QantasLink	84	55	65.5	82	62	75.6
Virgin Australia	18	17	94.4	18	16	88.9
Virgin Australia Regional Airlines	30	24	80.0	30	26	86.7
All Airlines	164	126	76.8	162	133	82.1
Relates to services to and from Perth only.						
Port Lincoln						
QantasLink	95	91	95.8	95	91	95.8
Regional Express	195	185	94.9	195	186	95.4
All Airlines	290	276	95.2	290	277	95.5
Relates to services to and from Adelaide only.						
Port Macquarie						
QantasLink	120	79	65.8	120	78	65.0
Virgin Australia	52	35	67.3	51	33	64.7
All Airlines	172	114	66.3	171	111	64.9
Relates to services to and from Sydney only.						
Proserpine						
Jetstar	24	16	66.7	24	11	45.8
Virgin Australia	28	26	92.9	28	25	89.3
All Airlines	52	42	80.8	52	36	69.2
Relates to services to and from Brisbane only.						

Airport	Arrivals			Departures		
	Sectors Flown	On Time		Sectors Flown	On Time	
		No.	%		No.	%
Rockhampton						
QantasLink	174	159	91.4	173	153	88.4
Virgin Australia	154	138	89.6	154	143	92.9
All Airlines	328	297	90.5	327	296	90.5
Relates to services to and from Brisbane only.						
Sunshine Coast						
Jetstar	155	119	76.8	155	93	60.0
QantasLink	31	25	80.6	30	24	80.0
Virgin Australia	62	54	87.1	62	45	72.6
All Airlines	248	198	79.8	247	162	65.6
Relates to services to and from Melbourne and Sydney.						
Sydney						
Jetstar	1 331	914	68.7	1 330	967	72.7
Qantas	2 118	1 789	84.5	2 115	1 834	86.7
QantasLink	1 389	1 071	77.1	1 400	1 074	76.7
Regional Express	440	304	69.1	440	363	82.5
Tigerair Australia	536	319	59.5	536	338	63.1
Virgin Australia	2 372	1 919	80.9	2 368	1 973	83.3
All Airlines	8 186	6 316	77.2	8 189	6 549	80.0
Relates to services to and from Adelaide, Albury, Armidale, Ayers Rock, Ballina, Brisbane, Cairns, Canberra, Coffs Harbour, Darwin, Dubbo, Gold Coast, Hamilton Island, Hobart, Launceston, Melbourne, Perth, Port Macquarie, Sunshine Coast, Tamworth, Townsville and Wagga Wagga.						
Tamworth						
QantasLink	138	105	76.1	135	106	78.5
Virgin Australia	36	28	77.8	36	31	86.1
All Airlines	174	133	76.4	171	137	80.1
Relates to services to and from Sydney only.						
Townsville						
Jetstar	44	31	70.5	44	28	63.6
Qantas	67	61	91.0	67	62	92.5
QantasLink	197	182	92.4	197	184	93.4
Regional Express	41	39	95.1	41	37	90.2
Virgin Australia	161	145	90.1	161	150	93.2
All Airlines	510	458	89.8	510	461	90.4
Relates to services to and from Brisbane, Cairns and Sydney.						
Wagga Wagga						
QantasLink	103	83	80.6	103	86	83.5
Regional Express	117	96	82.1	118	99	83.9
All Airlines	220	179	81.4	221	185	83.7
Relates to services to and from Sydney only.						

Definitions

On time arrival	A flight arrival is counted as "on time" if it arrived at the gate before 15 minutes after the scheduled arrival time shown in the carriers' schedule. Neither diverted nor cancelled flights count as on time.
On time departure	A flight departure is counted as "on time" if it departs the gate before 15 minutes after the scheduled departure time shown in the carriers' schedule.
Cancellation	A flight removed from service within 7 days of scheduled departure is regarded as a cancellation.
On time departure percentage	The percentage of on time departures is measured against the number of departures <i>operated</i> on any particular sector.
On time arrival percentage	The percentage of on time arrivals is measured against the number of arrivals <i>operated</i> on any particular sector.
Cancellation percentage	The percentage of cancellations is measured against the number of services <i>scheduled</i> on any particular sector.
