



**Australian Government**

**Department of Infrastructure and Regional Development**

Bureau of Infrastructure, Transport and Regional Economics

STATISTICAL REPORT



## Aviation

Domestic airline on time performance  
February 2016

© Commonwealth of Australia 2016

ISSN: 1832-0759

### **Ownership of intellectual property rights in this publication**

Unless otherwise noted, copyright (and any other intellectual property rights, if any) in this publication is owned by the Commonwealth of Australia (referred to below as the Commonwealth).

### **Disclaimer**

The material contained in this publication is made available on the understanding that the Commonwealth is not providing professional advice, and that users exercise their own skill and care with respect to its use, and seek independent advice if necessary.

The Commonwealth makes no representations or warranties as to the contents or accuracy of the information contained in this publication. To the extent permitted by law, the Commonwealth disclaims liability to any person or organisation in respect of anything done, or omitted to be done, in reliance upon information contained in this publication.

### **Creative Commons licence**

With the exception of (a) the Coat of Arms; and (b) the Department of Infrastructure and Regional Development's photos and graphics, copyright in this publication is licensed under a Creative Commons Attribution 3.0 Australia Licence.

Creative Commons Attribution 3.0 Australia Licence is a standard form licence agreement that allows you to copy, communicate and adapt this publication provided that you attribute the work to the Commonwealth and abide by the other licence terms. A summary of the licence terms is available from <http://creativecommons.org/licenses/by/3.0/au/deed.en>. The full licence terms are available from <http://creativecommons.org/licenses/by/3.0/au/legalcode>.

### **Use of the Coat of Arms**

The Department of the Prime Minister and Cabinet sets the terms under which the Coat of Arms is used. Please refer to the Department's Commonwealth Coat of Arms and Government branding web page <http://www.dpmmc.gov.au/guidelines/index.cfm#brand> and, in particular, the Guidelines on the use of the Commonwealth Coat of Arms publication.

An appropriate citation for this report is:

Bureau of Infrastructure, Transport and Regional Economics (BITRE), 2016, Domestic airline on time performance, Statistical Report, BITRE, Canberra ACT.

### **Contact us**

This publication is available in PDF format. All other rights are reserved, including in relation to any Departmental logos or trade marks which may exist. For enquiries regarding the licence and any use of this publication, please contact:

Bureau of Infrastructure, Transport and Regional Economics (BITRE)  
Department of Infrastructure and Regional Development  
GPO Box 501, Canberra ACT 2601, Australia  
Telephone: (international) +61 2 6274 7210  
Fax: (international) +61 2 6274 6855  
Email: [bitre@infrastructure.gov.au](mailto:bitre@infrastructure.gov.au)  
Website: [www.bitre.gov.au](http://www.bitre.gov.au)

### **Inquiries**

Should you require additional information about the statistics contained in this publication:

Telephone (02) 6274 7790 or Facsimile (02) 6274 7727

Electronic mail: [AVSTATS@infrastructure.gov.au](mailto:AVSTATS@infrastructure.gov.au)

Web site: <http://www.bitre.gov.au/statistics/aviation/otphome.aspx>

# Foreword

The Bureau of Infrastructure, Transport and Regional Economics (BITRE) monitors the punctuality and reliability of major domestic airlines operating between Australian airports. The purpose of this is to allow for evaluation of overall industry and individual airline performance, so that consumers of air travel can make informed decisions.

The following domestic airlines currently report this information monthly to the BITRE: Jetstar, Qantas, QantasLink, Regional Express, Tigerair, Virgin Australia and Virgin Australia Regional Airlines. Data has been gathered since November 2003, although some airlines commenced reporting at a later date, including Jetstar which first reported in May 2004, MacAir in July 2005, Tigerair in April 2008 and Virgin Australia Regional Airlines in May 2013. MacAir ceased operations in February 2009 and data was not received for December 2008 onwards. Virgin Blue was rebranded as Virgin Australia in May 2011 and Tiger Airways was rebranded as Tigerair in July 2013 and time series data in Microsoft Excel spreadsheet format on the BITRE website have been revised to reflect these changes. Services operated by Skywest on behalf of Virgin Australia using ATR/F100 aircraft commenced in November 2011 and were shown separately as Virgin Australia – ATR/F100 Operations. Virgin Australia Regional Airlines commenced operations in May 2013. It was formed after the acquisition of Skywest by Virgin Australia and represented a combination of operations previously reported under Skywest and Virgin Australia – ATR/F100 Operations. In January 2016, Virgin Australia transferred their ATR fleet from Virgin Australia Regional Airlines to Virgin Australia.

Information presented in this report is for Australian domestic routes for which the passenger load averaged 8 000 or more passengers per month over the previous six months and where two or more airlines operated in competition on those routes. There were 66 routes that met this definition in February 2016. Over time, routes which meet these criteria change as airline networks and traffic levels vary.

Participating airlines report their overall monthly network performance where this is possible.

Total industry figures encompass all services operated by reporting airlines only. These airlines collectively carried over 95 per cent of total domestic passengers (regular public transport only) in 2015.

The method of capturing on time performance varies between airlines utilising different recording systems. Jetstar and Qantas jet aircraft use Aircraft Communication Addressing and Reporting System (ACARS) to electronically measure on time performance. Regional Express, Tigerair, Virgin Australia, Virgin Australia Regional Airlines and the Qantas non-jet fleet record on time performance manually using records from pilots, gate agents and/or ground crews.

After initial data is collected, aggregate reports are audited internally by participating airlines prior to publication.

Reports and detailed time series data in Microsoft Excel spreadsheet format are available from the BITRE website at: <http://www.bitre.gov.au/statistics/aviation/otphome.aspx>.



# Contents

	Page
Industry performance .....	1
Individual routes .....	10
Airports .....	23
Definitions .....	29



## Industry performance

For February 2016, on time performance over all routes operated by participating airlines (Jetstar, Qantas, QantasLink, Regional Express, Tigerair, Virgin Australia and Virgin Australia Regional Airlines) averaged 90.3 per cent for both on time arrivals and on time departures. Cancellations represented 1.3 per cent of all scheduled flights. This month's on time arrivals and on time departures figures are the third best recorded since this collection commenced. The equivalent figures for February 2015 were 87.0 per cent for arrivals, 88.9 per cent for departures and 1.2 per cent for cancellations.

This month's on time arrivals figure was better than the long term average performance for all routes (82.7 per cent) and the on time departures figure was also better than the long term average (84.1 per cent). The rate of cancellations was lower than the long term average of 1.4 per cent.

Of the major domestic airlines, Virgin Australia and Qantas both recorded 93.3 per cent for on time arrivals, followed by Tigerair at 92.2 per cent and Jetstar at 84.0 per cent. Virgin Australia Regional Airlines was the best performing regional airline for on time arrivals at 90.7 per cent, followed by QantasLink at 89.1 per cent and Regional Express at 87.2 per cent. The Qantas network (Qantas and QantasLink combined operations) recorded 91.1 per cent for on time arrivals while the Virgin Australia network (Virgin Australia and Virgin Australia Regional Airlines combined operations) recorded 93.2 per cent.

Qantas achieved the highest level of on time departures for February 2016 at 93.7 per cent, followed by Virgin Australia at 93.5 per cent, Tigerair at 93.0 per cent and Jetstar at 80.3 per cent. Of the regional airlines, Virgin Australia Regional Airlines recorded 92.0 per cent followed by Regional Express at 90.2 per cent and QantasLink at 89.2 per cent. The Qantas network recorded 91.4 per cent for on time departures while the Virgin Australia network recorded 93.4 per cent.

QantasLink had the highest percentage of cancellations (2.6 per cent) during the month, followed by Virgin Australia (1.2 per cent), Jetstar (0.9 per cent), Qantas (0.8 per cent), Tigerair (0.7 per cent), Regional Express (0.4 per cent) and Virgin Australia Regional Airlines (0.1 per cent).

Airlines' on time performance varies across the routes they serve. Individual route data by specific airline for 66 routes are shown on pages 10-22.

Of the 66 routes which met the criteria for on time performance reporting in February 2016, the Brisbane-Darwin route had the highest percentage of on time arrivals (99.1 per cent) and the Brisbane-Hobart route had the highest percentage of on time departures (98.3 per cent). The Port Macquarie-Sydney route had the lowest percentage of on time arrivals (76.5 per cent) and the Hamilton Island-Sydney route had the lowest percentage of on time departures (74.6 per cent).

Cancellations were highest on the Moranbah-Brisbane route at 8.2 per cent, followed by the Brisbane-Moranbah route at 8.0 per cent, the Canberra-Sydney route at 4.9 per cent, the

Brisbane-Gladstone and Gladstone-Brisbane routes at 4.7 per cent and the Sydney-Canberra route at 4.3 percent.

Mount Isa Airport recorded the highest percentage of on time arrivals (98.7 per cent) and the highest percentage of on time departures (97.3 per cent). Port Macquarie Airport recorded the lowest percentage of on time arrivals (80.5 per cent) and the lowest percentage of on time departures (80.2 per cent). These figures only refer to reported routes and do not cover all flights at these airports.



Table 1 On time performance for February 2016 — Total Industry

	<i>Sectors</i>		<i>Arrivals On Time</i>		<i>Departures On Time</i>		<i>Cancellations</i>	
	<i>Scheduled</i>	<i>Flown</i>	<i>No.</i>	<i>%</i>	<i>No.</i>	<i>%</i>	<i>No.</i>	<i>%</i>
Jetstar	6 312	6 256	5 253	84.0	5 026	80.3	56	0.9
Qantas	9 050	8 982	8 382	93.3	8 414	93.7	68	0.8
QantasLink	9 898	9 636	8 587	89.1	8 598	89.2	262	2.6
Regional Express	5 767	5 743	5 008	87.2	5 179	90.2	24	0.4
Tigerair	1 990	1 976	1 822	92.2	1 838	93.0	14	0.7
Virgin Australia	12 065	11 916	11 122	93.3	11 141	93.5	149	1.2
Virgin Australia Regional Airlines	753	752	682	90.7	692	92.0	1	0.1
All Airlines	45 835	45 261	40 856	90.3	40 888	90.3	574	1.3
Qantas - all QF designated services	18 948	18 618	16 969	91.1	17 012	91.4	330	1.7
Virgin Australia - all VA designated services	12 818	12 668	11 804	93.2	11 833	93.4	150	1.2

Total airline network data (including routes not shown in this report).

In January 2016, Virgin Australia transferred their ATR fleet from Virgin Australia Regional Airlines to Virgin Australia.

Airlines' on time performance varies across the routes they serve. Individual route data by specific airline for 66 routes are shown on pages 10-22.

Table 2 Top ten routes for on time performance for February 2016 (participating airlines only)

<i>Arrivals</i>		<i>Departures</i>	
<i>Route</i>	<i>On Time (%)</i>	<i>Route</i>	<i>On Time (%)</i>
Brisbane-Darwin	99.1	Brisbane-Hobart	98.3
Brisbane-Mount Isa	98.7	Darwin-Brisbane	98.1
Mount Isa-Brisbane	98.7	Perth-Broome	97.5
Brisbane-Hobart	98.3	Perth-Brisbane	97.4
Sydney-Ayers Rock	98.1	Mount Isa-Brisbane	97.3
Darwin-Brisbane	97.2	Adelaide-Canberra	97.2
Perth-Darwin	96.9	Perth-Darwin	96.9
Darwin-Alice Springs	96.8	Darwin-Alice Springs	96.8
Brisbane-Adelaide	96.8	Brisbane-Mount Isa	96.0
Perth-Broome	96.6	Melbourne-Hamilton Island	96.0

Table 3 Top ten airports for on time performance for February 2016 (participating airlines and reported routes only)

<i>Arrivals</i>		<i>Departures</i>	
<i>Airport</i>	<i>On Time (%)</i>	<i>Airport</i>	<i>On Time (%)</i>
Mount Isa	98.7	Mount Isa	97.3
Ayers Rock	98.1	Kalgoorlie	94.8
Broome	96.6	Geraldton	94.6
Alice Springs	96.2	Port Hedland	94.4
Newman	94.9	Newman	94.3
Darwin	94.7	Broome	94.1
Geraldton	94.4	Perth	94.0
Kalgoorlie	94.1	Darwin	93.4
Port Hedland	94.0	Canberra	93.2
Hamilton Island	93.2	Townsville	93.1

## Total industry on time performance

Figure 1 On time performance (by month from February 2013)—Total Industry

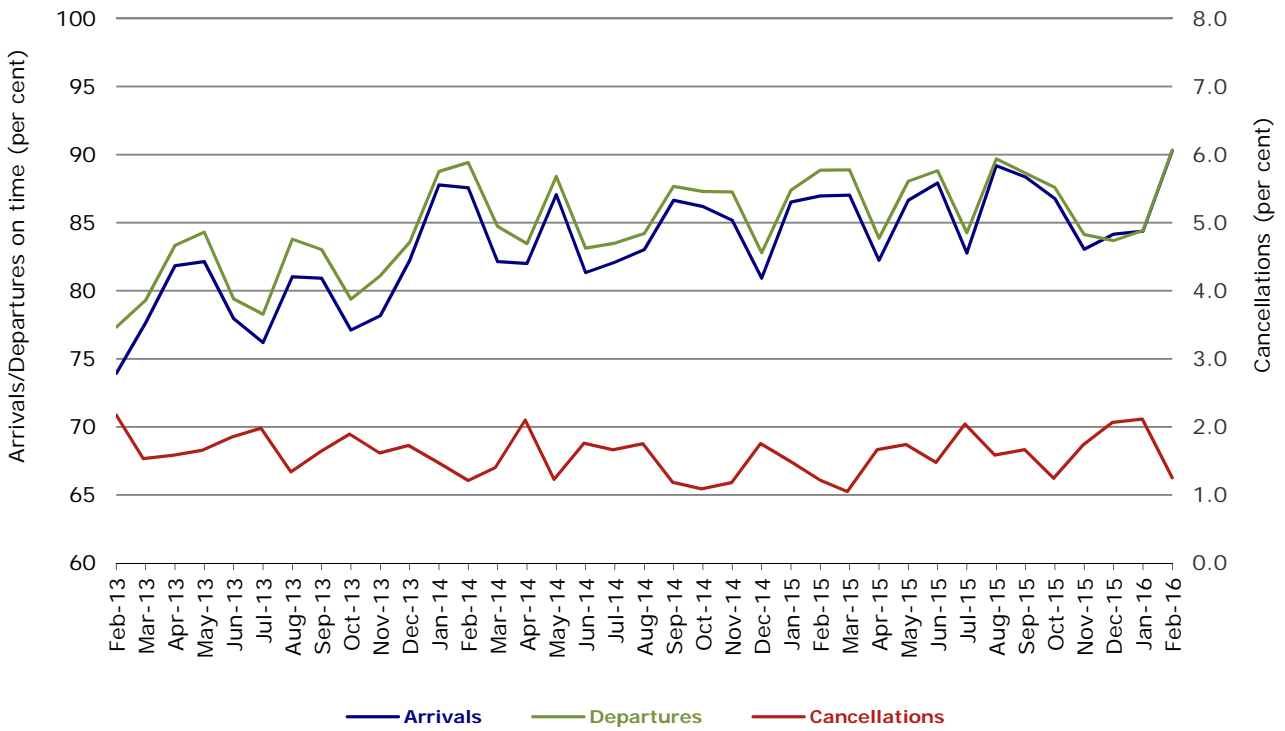


Figure 2 Arrivals on time (by month from February 2015)

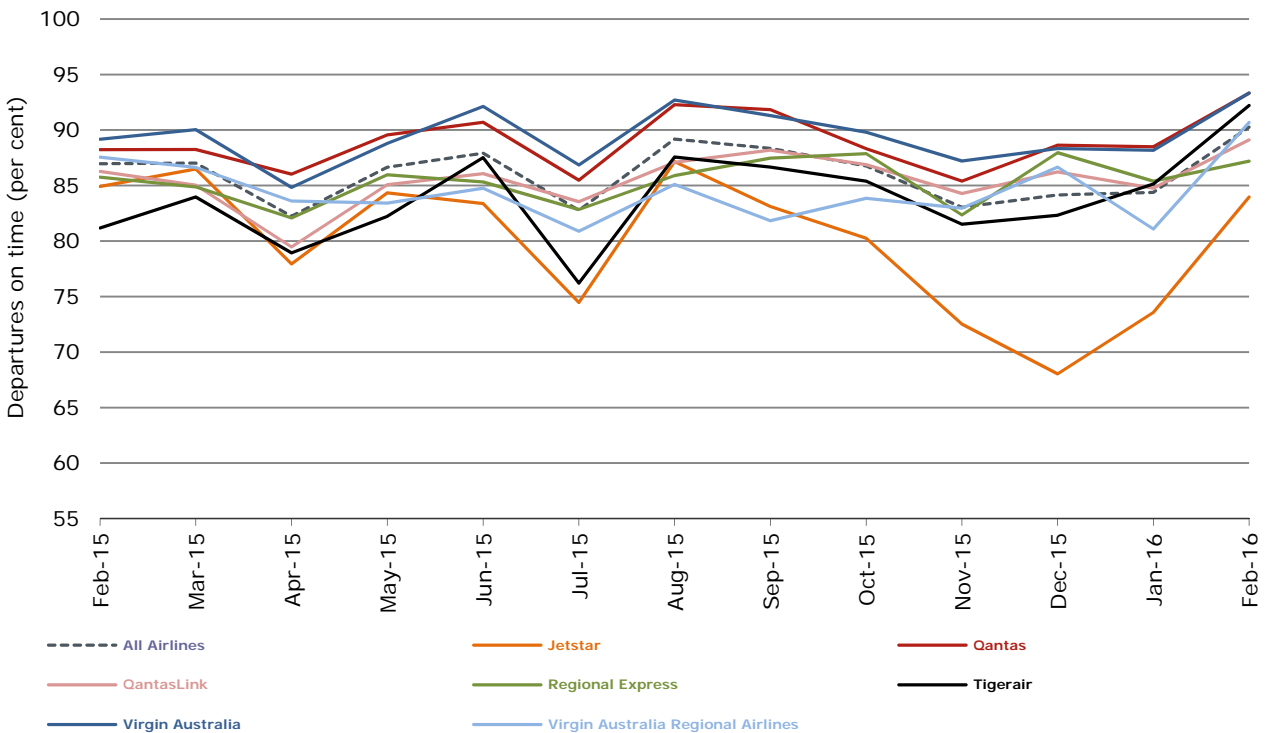


Figure 3 Departures on time (by month from February 2015)

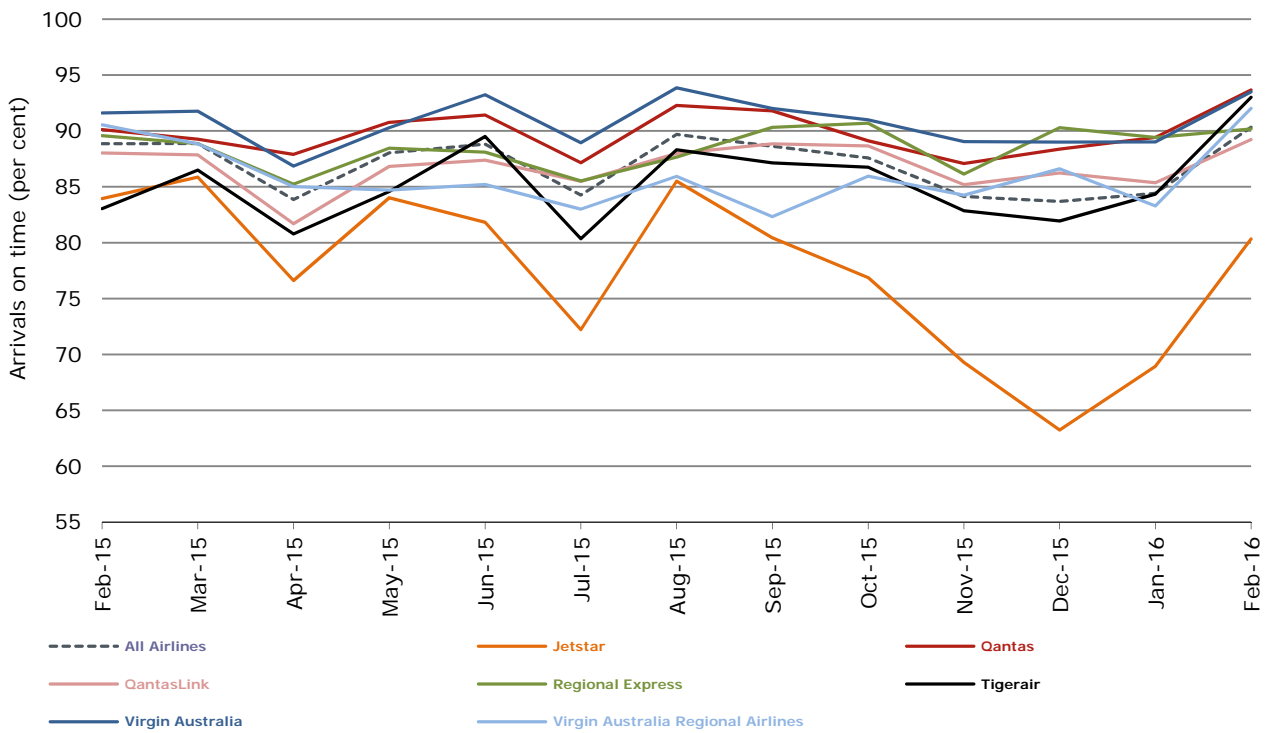
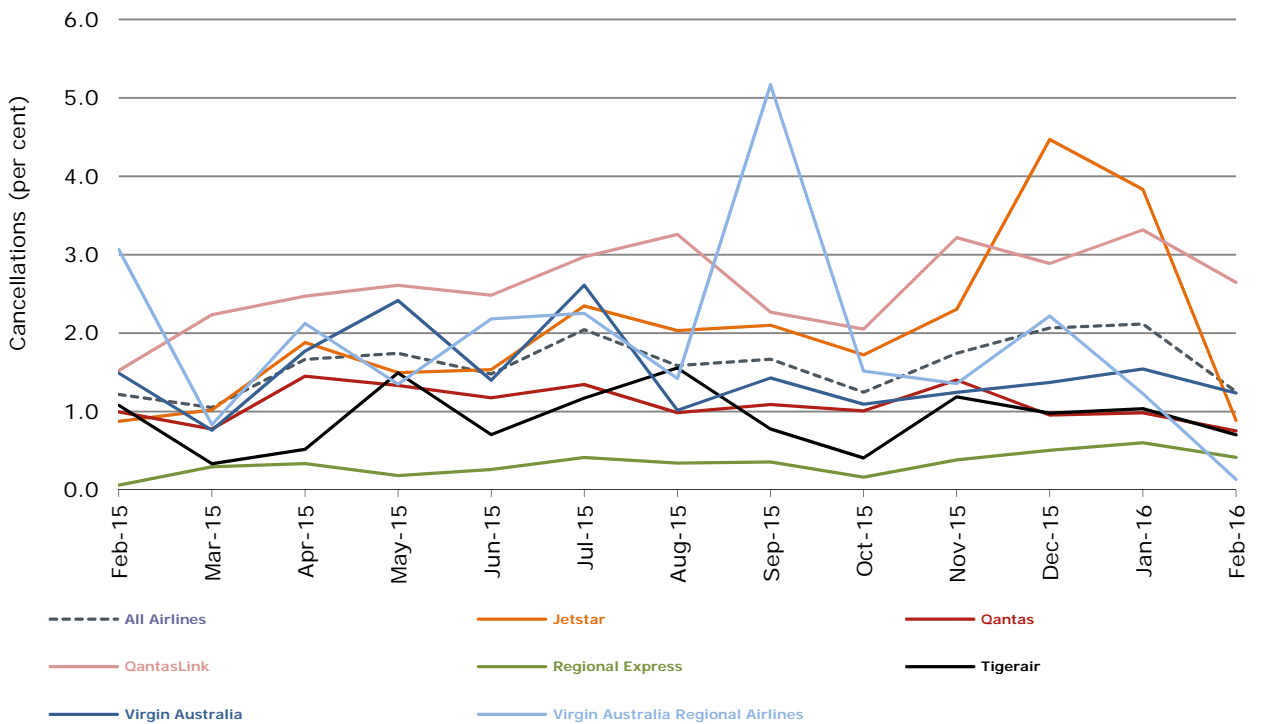


Figure 4 Cancellations (by month from February 2015)



## Major domestic airlines on time performance

Figure 5 On time performance (by month from February 2013)—Jetstar

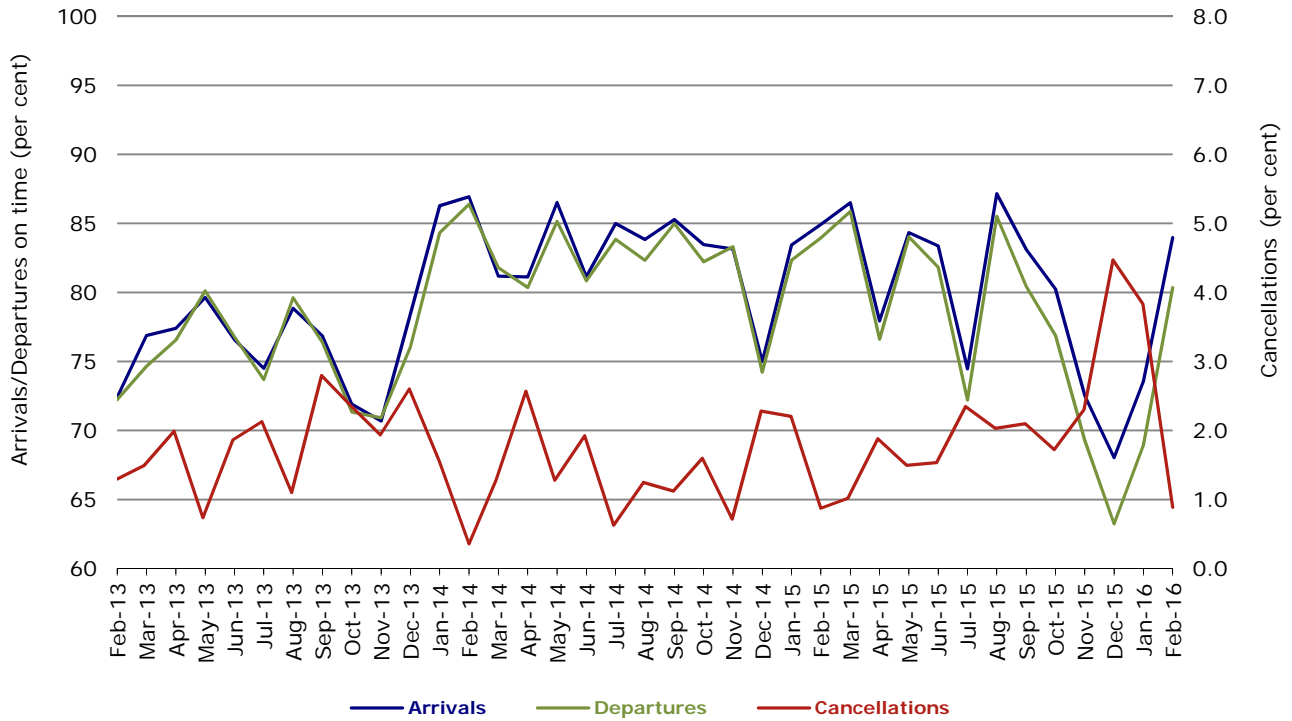


Figure 6 On time performance (by month from February 2013)—Qantas

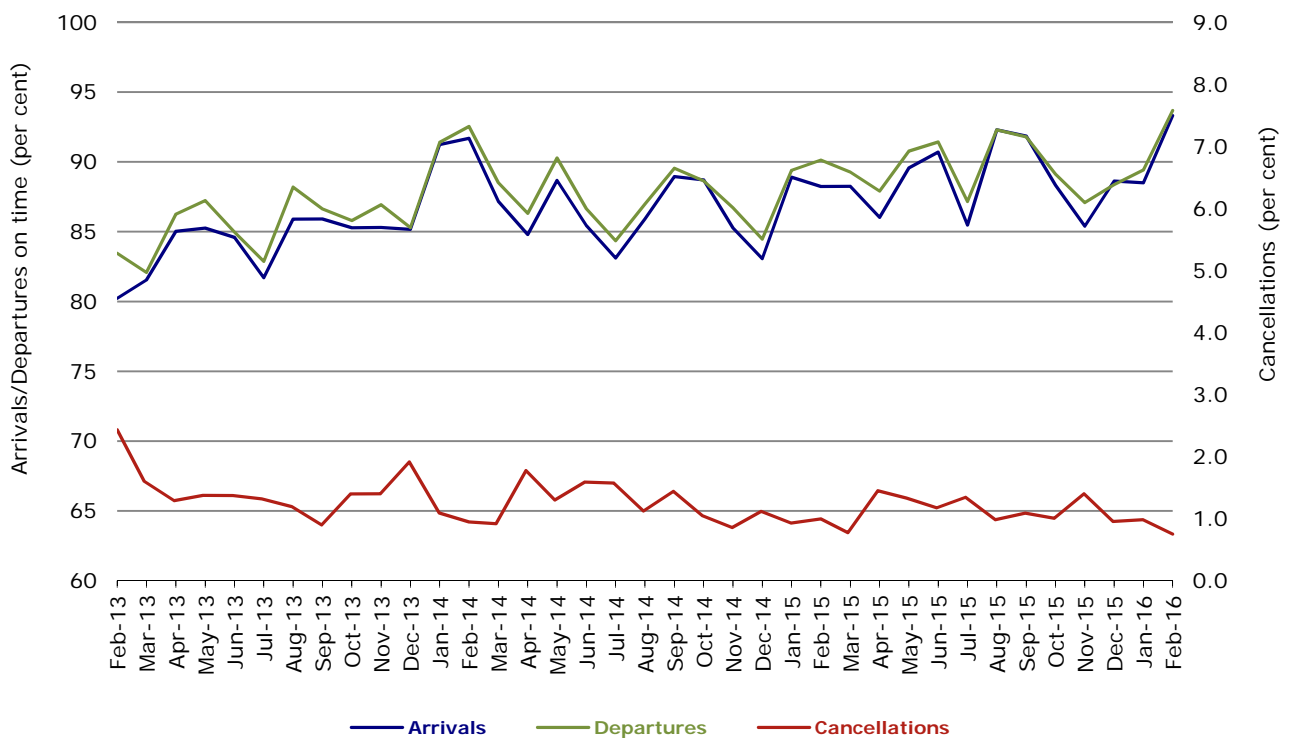


Figure 7 On time performance (by month from February 2013)—Tigerair

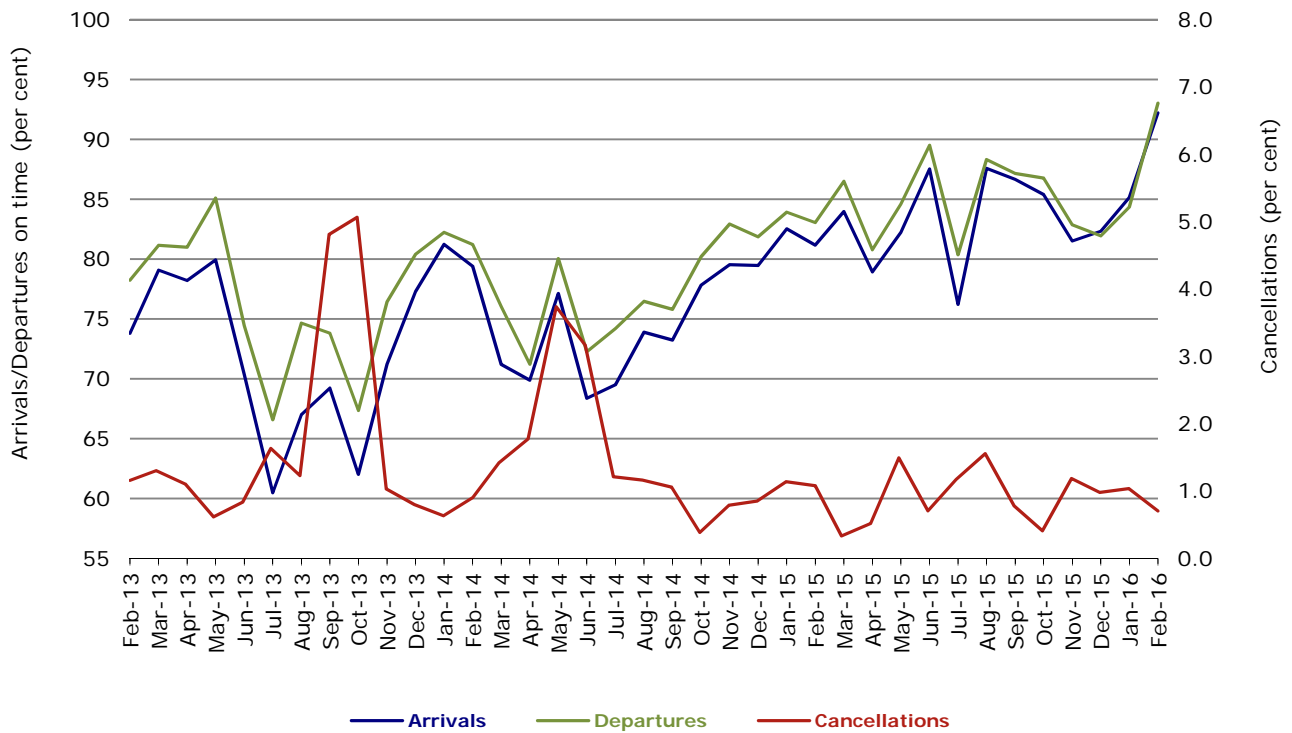
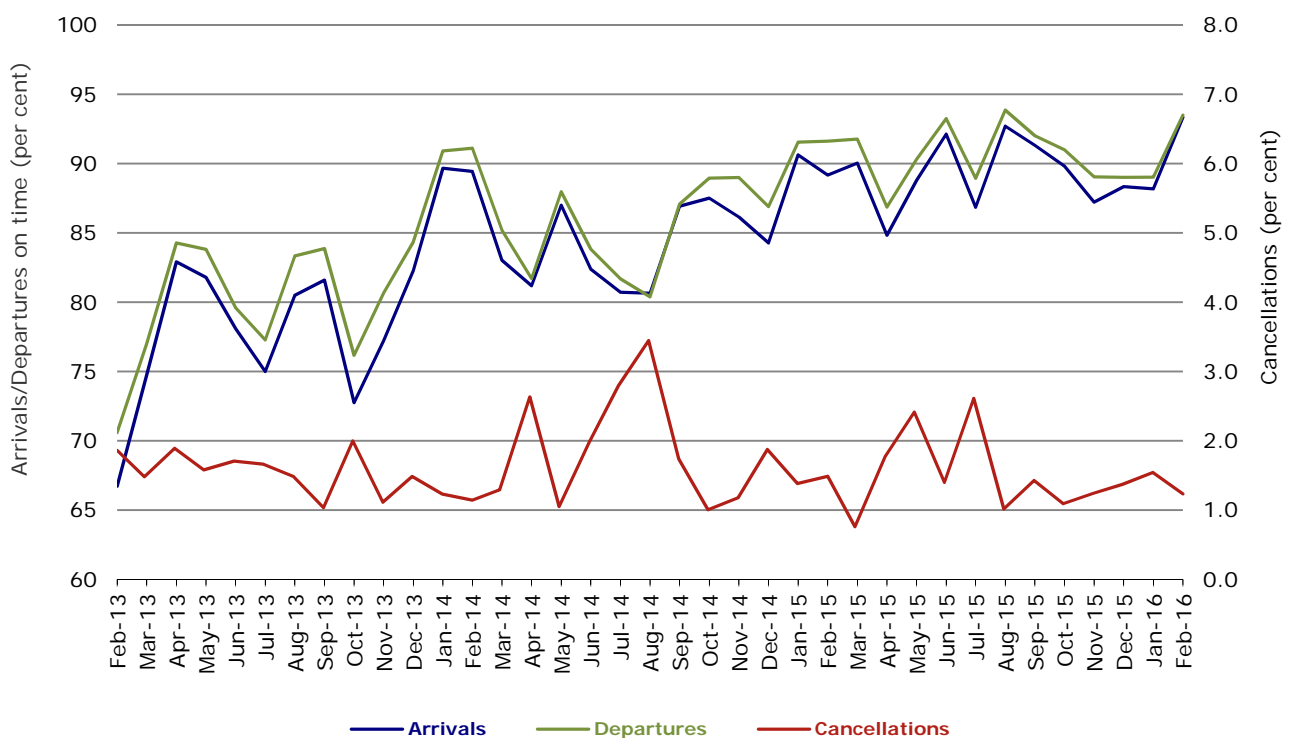


Figure 8 On time performance (by month from February 2013)—Virgin Australia



In January 2016, Virgin Australia transferred their ATR fleet from Virgin Australia Regional Airlines to Virgin Australia.

## Major regional airlines on time performance

Figure 9 On time performance (by month from February 2013)—QantasLink

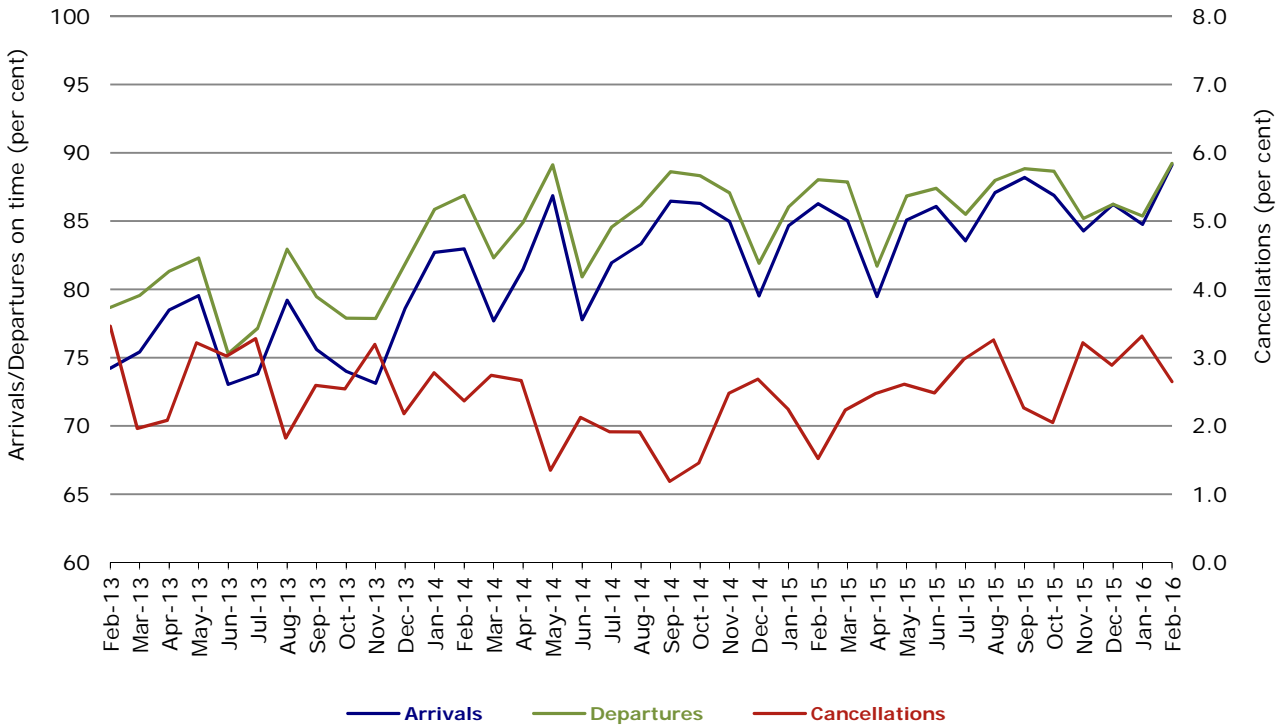


Figure 10 On time performance (by month from February 2013)—Regional Express

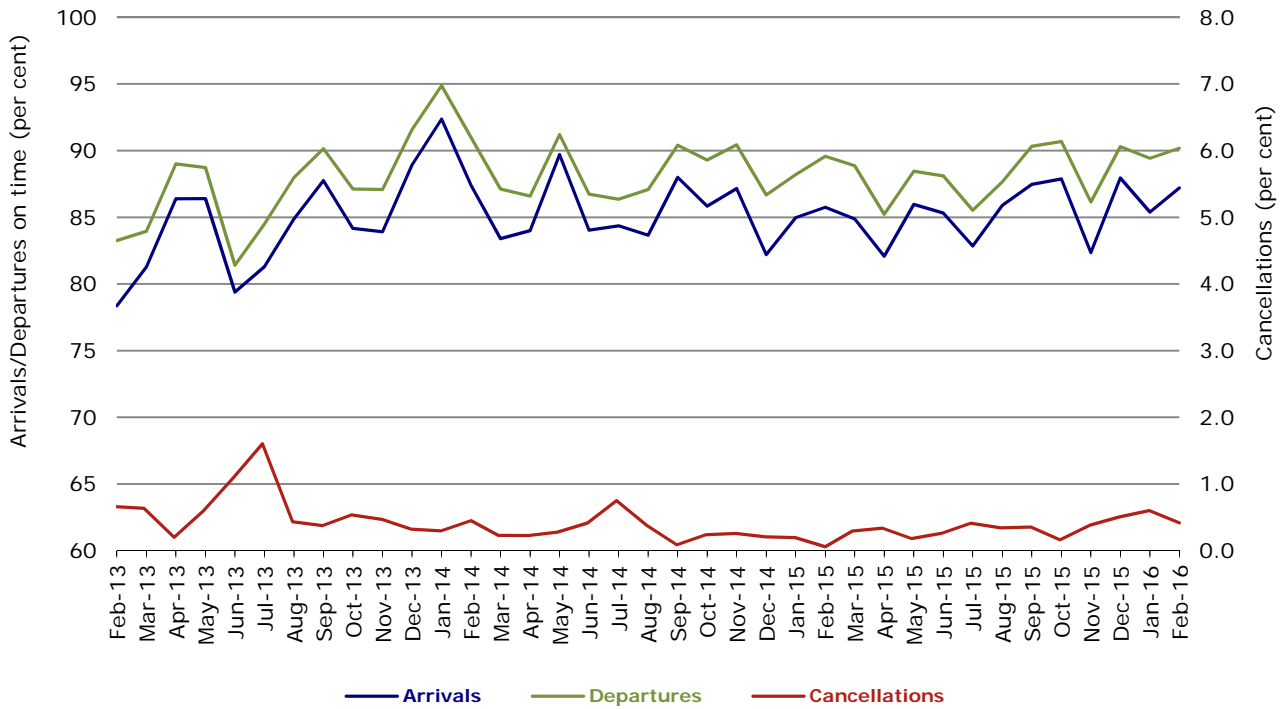
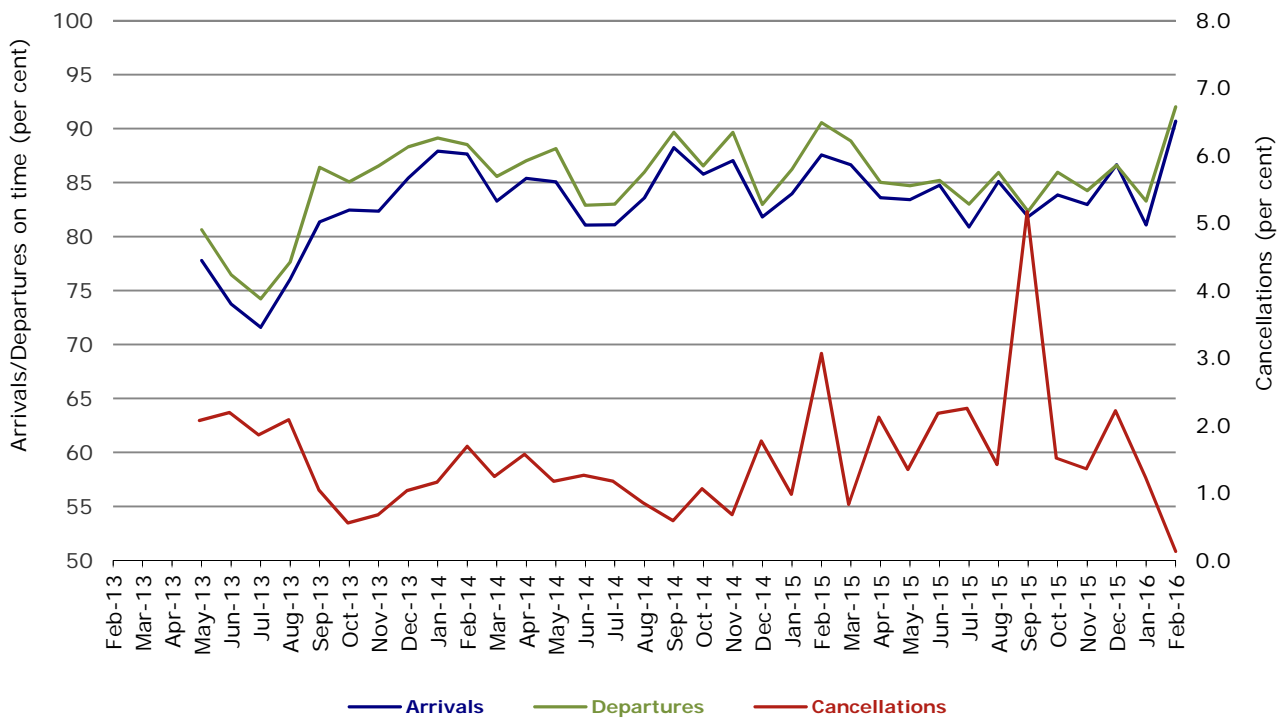


Figure 11 On time performance (by month from February 2013)  
Virgin Australia Regional Airlines



Virgin Australia Regional Airlines commenced operations in May 2013. It was formed after the acquisition of Skywest by Virgin Australia and represented a combination of operations previously reported under Skywest and Virgin Australia – ATR/F100 Operations. In January 2016, Virgin Australia transferred their ATR fleet from Virgin Australia Regional Airlines to Virgin Australia.

## Individual routes

On time performance is reported for all routes where the passenger load averages over 8000 passengers per month over the previous six months, and where two or more airlines operate in competition on those routes. There are now 66 routes which meet this definition. Over time, however, routes which meet this definition may change as airline networks and traffic levels vary.

	<i>Sectors</i>		<i>Arrivals On Time</i>		<i>Departures On Time</i>		<i>Cancellations</i>	
	<i>Sched.</i>	<i>Flown</i>	<i>No.</i>	<i>%</i>	<i>No.</i>	<i>%</i>	<i>No.</i>	<i>%</i>
<b>Adelaide-Alice Springs</b>								
Qantas	29	29	29	100.0	29	100.0	0	0.0
Virgin Australia	13	13	11	84.6	11	84.6	0	0.0
All Airlines	42	42	40	95.2	40	95.2	0	0.0
<b>Adelaide-Brisbane</b>								
Jetstar	25	25	21	84.0	20	80.0	0	0.0
Qantas	116	116	114	98.3	113	97.4	0	0.0
Tigerair	25	25	25	100.0	25	100.0	0	0.0
Virgin Australia	113	113	105	92.9	108	95.6	0	0.0
All Airlines	279	279	265	95.0	266	95.3	0	0.0
<b>Adelaide-Canberra</b>								
Qantas	46	46	45	97.8	45	97.8	0	0.0
Virgin Australia	25	25	23	92.0	24	96.0	0	0.0
All Airlines	71	71	68	95.8	69	97.2	0	0.0
<b>Adelaide-Gold Coast</b>								
Jetstar	29	29	25	86.2	23	79.3	0	0.0
Virgin Australia	29	29	29	100.0	28	96.6	0	0.0
All Airlines	58	58	54	93.1	51	87.9	0	0.0
<b>Adelaide-Melbourne</b>								
Jetstar	115	113	98	86.7	92	81.4	2	1.7
Qantas	274	273	258	94.5	264	96.7	1	0.4
Tigerair	72	72	65	90.3	62	86.1	0	0.0
Virgin Australia	276	274	257	93.8	257	93.8	2	0.7
All Airlines	737	732	678	92.6	675	92.2	5	0.7
<b>Adelaide-Perth</b>								
Jetstar	29	29	27	93.1	24	82.8	0	0.0
Qantas	117	117	114	97.4	113	96.6	0	0.0
Virgin Australia	71	71	66	93.0	65	91.5	0	0.0
All Airlines	217	217	207	95.4	202	93.1	0	0.0
<b>Adelaide-Port Lincoln</b>								
QantasLink	104	102	90	88.2	93	91.2	2	1.9
Regional Express	201	199	182	91.5	185	93.0	2	1.0
All Airlines	305	301	272	90.4	278	92.4	4	1.3
<b>Adelaide-Sydney</b>								
Jetstar	110	109	95	87.2	88	80.7	1	0.9
Qantas	224	224	215	96.0	215	96.0	0	0.0
QantasLink	28	28	23	82.1	23	82.1	0	0.0
Tigerair	37	37	35	94.6	35	94.6	0	0.0
Virgin Australia	164	163	157	96.3	157	96.3	1	0.6
All Airlines	563	561	525	93.6	518	92.3	2	0.4
<b>Albury-Sydney</b>								
QantasLink	87	86	81	94.2	81	94.2	1	1.1
Regional Express	100	100	90	90.0	90	90.0	0	0.0
Virgin Australia	58	58	48	82.8	50	86.2	0	0.0
All Airlines	245	244	219	89.8	221	90.6	1	0.4



	<i>Sectors</i>		<i>Arrivals On Time</i>		<i>Departures On Time</i>		<i>Cancellations</i>	
	<i>Sched.</i>	<i>Flown</i>	<i>No.</i>	<i>%</i>	<i>No.</i>	<i>%</i>	<i>No.</i>	<i>%</i>
<b>Alice Springs-Adelaide</b>								
Qantas	29	29	29	100.0	29	100.0	0	0.0
Virgin Australia	13	13	10	76.9	10	76.9	0	0.0
All Airlines	42	42	39	92.9	39	92.9	0	0.0
<b>Alice Springs-Darwin</b>								
QantasLink	50	49	45	91.8	45	91.8	1	2.0
Virgin Australia	13	13	11	84.6	11	84.6	0	0.0
All Airlines	63	62	56	90.3	56	90.3	1	1.6
<b>Armidale-Sydney</b>								
QantasLink	126	121	100	82.6	92	76.0	5	4.0
Regional Express	75	73	58	79.5	66	90.4	2	2.7
All Airlines	201	194	158	81.4	158	81.4	7	3.5
<b>Ayers Rock-Sydney</b>								
Jetstar	25	25	20	80.0	21	84.0	0	0.0
Virgin Australia	29	29	28	96.6	28	96.6	0	0.0
All Airlines	54	54	48	88.9	49	90.7	0	0.0
<b>Ballina-Sydney</b>								
Jetstar	67	67	62	92.5	52	77.6	0	0.0
Regional Express	24	24	16	66.7	17	70.8	0	0.0
Virgin Australia	29	29	29	100.0	29	100.0	0	0.0
All Airlines	120	120	107	89.2	98	81.7	0	0.0
<b>Brisbane-Adelaide</b>								
Jetstar	25	25	24	96.0	22	88.0	0	0.0
Qantas	116	116	112	96.6	111	95.7	0	0.0
Tigerair	25	25	25	100.0	25	100.0	0	0.0
Virgin Australia	116	116	112	96.6	112	96.6	0	0.0
All Airlines	282	282	273	96.8	270	95.7	0	0.0
<b>Brisbane-Bundaberg</b>								
QantasLink	129	127	111	87.4	113	89.0	2	1.6
Virgin Australia	29	29	26	89.7	25	86.2	0	0.0
All Airlines	158	156	137	87.8	138	88.5	2	1.3
<b>Brisbane-Cairns</b>								
Jetstar	97	95	88	92.6	81	85.3	2	2.1
Qantas	116	116	112	96.6	113	97.4	0	0.0
QantasLink	4	4	4	100.0	4	100.0	0	0.0
Tigerair	27	27	27	100.0	26	96.3	0	0.0
Virgin Australia	133	133	128	96.2	123	92.5	0	0.0
All Airlines	377	375	359	95.7	347	92.5	2	0.5
<b>Brisbane-Canberra</b>								
Qantas	27	27	26	96.3	26	96.3	0	0.0
QantasLink	120	117	109	93.2	108	92.3	3	2.5
Virgin Australia	88	88	85	96.6	85	96.6	0	0.0
All Airlines	235	232	220	94.8	219	94.4	3	1.3
<b>Brisbane-Darwin</b>								
Jetstar	17	17	17	100.0	15	88.2	0	0.0
Qantas	44	44	44	100.0	44	100.0	0	0.0
Tigerair	17	17	16	94.1	16	94.1	0	0.0
Virgin Australia	29	29	29	100.0	27	93.1	0	0.0
All Airlines	107	107	106	99.1	102	95.3	0	0.0
<b>Brisbane-Emerald</b>								
QantasLink	135	129	119	92.2	121	93.8	6	4.4
Virgin Australia	71	71	62	87.3	64	90.1	0	0.0
All Airlines	206	200	181	90.5	185	92.5	6	2.9

	<i>Sectors</i>		<i>Arrivals On Time</i>		<i>Departures On Time</i>		<i>Cancellations</i>	
	<i>Sched.</i>	<i>Flown</i>	<i>No.</i>	<i>%</i>	<i>No.</i>	<i>%</i>	<i>No.</i>	<i>%</i>
<b>Brisbane-Gladstone</b>								
QantasLink	188	177	166	93.8	169	95.5	11	5.9
Virgin Australia	134	130	113	86.9	118	90.8	4	3.0
All Airlines	322	307	279	90.9	287	93.5	15	4.7
<b>Brisbane-Hamilton Island</b>								
QantasLink	25	23	22	95.7	22	95.7	2	8.0
Virgin Australia	29	29	27	93.1	25	86.2	0	0.0
All Airlines	54	52	49	94.2	47	90.4	2	3.7
<b>Brisbane-Hobart</b>								
Jetstar	29	29	28	96.6	28	96.6	0	0.0
Virgin Australia	29	29	29	100.0	29	100.0	0	0.0
All Airlines	58	58	57	98.3	57	98.3	0	0.0
<b>Brisbane-Mackay</b>								
Jetstar	46	46	36	78.3	35	76.1	0	0.0
QantasLink	102	101	93	92.1	93	92.1	1	1.0
Virgin Australia	141	140	133	95.0	134	95.7	1	0.7
All Airlines	289	287	262	91.3	262	91.3	2	0.7
<b>Brisbane-Melbourne</b>								
Jetstar	95	92	83	90.2	83	90.2	3	3.2
Qantas	416	411	395	96.1	393	95.6	5	1.2
Tigerair	108	106	100	94.3	97	91.5	2	1.9
Virgin Australia	372	362	338	93.4	345	95.3	10	2.7
All Airlines	991	971	916	94.3	918	94.5	20	2.0
<b>Brisbane-Moranbah</b>								
QantasLink	109	97	89	91.8	85	87.6	12	11.0
Virgin Australia	66	64	56	87.5	55	85.9	2	3.0
All Airlines	175	161	145	90.1	140	87.0	14	8.0
<b>Brisbane-Mount Isa</b>								
Qantas	38	38	38	100.0	38	100.0	0	0.0
QantasLink	16	16	16	100.0	15	93.8	0	0.0
Virgin Australia	21	21	20	95.2	19	90.5	0	0.0
All Airlines	75	75	74	98.7	72	96.0	0	0.0
<b>Brisbane-Newcastle</b>								
Jetstar	75	75	67	89.3	66	88.0	0	0.0
QantasLink	89	89	82	92.1	81	91.0	0	0.0
Virgin Australia	81	81	78	96.3	76	93.8	0	0.0
All Airlines	245	245	227	92.7	223	91.0	0	0.0
<b>Brisbane-Perth</b>								
Qantas	129	129	121	93.8	119	92.2	0	0.0
Virgin Australia	102	101	94	93.1	88	87.1	1	1.0
All Airlines	231	230	215	93.5	207	90.0	1	0.4
<b>Brisbane-Proserpine</b>								
Jetstar	24	24	20	83.3	17	70.8	0	0.0
Virgin Australia	50	50	49	98.0	49	98.0	0	0.0
All Airlines	74	74	69	93.2	66	89.2	0	0.0
<b>Brisbane-Rockhampton</b>								
QantasLink	182	180	167	92.8	166	92.2	2	1.1
Virgin Australia	181	177	163	92.1	167	94.4	4	2.2
All Airlines	363	357	330	92.4	333	93.3	6	1.7

	<i>Sectors</i>		<i>Arrivals On Time</i>		<i>Departures On Time</i>		<i>Cancellations</i>	
	<i>Sched.</i>	<i>Flown</i>	<i>No.</i>	<i>%</i>	<i>No.</i>	<i>%</i>	<i>No.</i>	<i>%</i>
<b>Brisbane-Sydney</b>								
Jetstar	153	148	124	83.8	115	77.7	5	3.3
Qantas	573	569	538	94.6	538	94.6	4	0.7
Tigerair	92	92	87	94.6	87	94.6	0	0.0
Virgin Australia	519	505	476	94.3	480	95.0	14	2.7
All Airlines	1 337	1 314	1 225	93.2	1 220	92.8	23	1.7
<b>Brisbane-Townsville</b>								
Jetstar	32	32	25	78.1	23	71.9	0	0.0
Qantas	139	139	131	94.2	134	96.4	0	0.0
Virgin Australia	143	137	130	94.9	132	96.4	6	4.2
All Airlines	314	308	286	92.9	289	93.8	6	1.9
<b>Broome-Perth</b>								
Qantas	13	12	12	100.0	12	100.0	1	7.7
QantasLink	66	65	63	96.9	63	96.9	1	1.5
Virgin Australia	6	6	5	83.3	5	83.3	0	0.0
Virgin Australia Regional Airlines	36	36	32	88.9	32	88.9	0	0.0
All Airlines	121	119	112	94.1	112	94.1	2	1.7
<b>Bundaberg-Brisbane</b>								
QantasLink	129	127	110	86.6	110	86.6	2	1.6
Virgin Australia	29	29	25	86.2	25	86.2	0	0.0
All Airlines	158	156	135	86.5	135	86.5	2	1.3
<b>Cairns-Brisbane</b>								
Jetstar	96	93	77	82.8	77	82.8	3	3.1
Qantas	116	116	108	93.1	108	93.1	0	0.0
QantasLink	4	4	3	75.0	3	75.0	0	0.0
Tigerair	27	27	26	96.3	27	100.0	0	0.0
Virgin Australia	133	133	126	94.7	127	95.5	0	0.0
All Airlines	376	373	340	91.2	342	91.7	3	0.8
<b>Cairns-Melbourne</b>								
Jetstar	70	70	57	81.4	58	82.9	0	0.0
Qantas	37	37	35	94.6	34	91.9	0	0.0
Tigerair	37	37	34	91.9	35	94.6	0	0.0
Virgin Australia	29	29	27	93.1	29	100.0	0	0.0
All Airlines	173	173	153	88.4	156	90.2	0	0.0
<b>Cairns-Sydney</b>								
Jetstar	86	86	75	87.2	76	88.4	0	0.0
Qantas	76	75	71	94.7	70	93.3	1	1.3
Tigerair	33	33	30	90.9	30	90.9	0	0.0
Virgin Australia	85	85	83	97.6	80	94.1	0	0.0
All Airlines	280	279	259	92.8	256	91.8	1	0.4
<b>Cairns-Townsville</b>								
QantasLink	137	134	118	88.1	119	88.8	3	2.2
Regional Express	54	54	54	100.0	54	100.0	0	0.0
All Airlines	191	188	172	91.5	173	92.0	3	1.6
<b>Canberra-Adelaide</b>								
Qantas	46	46	45	97.8	44	95.7	0	0.0
Virgin Australia	25	25	23	92.0	22	88.0	0	0.0
All Airlines	71	71	68	95.8	66	93.0	0	0.0
<b>Canberra-Brisbane</b>								
Qantas	27	27	27	100.0	27	100.0	0	0.0
QantasLink	120	116	108	93.1	106	91.4	4	3.3
Virgin Australia	88	88	87	98.9	86	97.7	0	0.0
All Airlines	235	231	222	96.1	219	94.8	4	1.7

	<i>Sectors</i>		<i>Arrivals On Time</i>		<i>Departures On Time</i>		<i>Cancellations</i>	
	<i>Sched.</i>	<i>Flown</i>	<i>No.</i>	<i>%</i>	<i>No.</i>	<i>%</i>	<i>No.</i>	<i>%</i>
<b>Canberra-Melbourne</b>								
Qantas	199	199	190	95.5	190	95.5	0	0.0
QantasLink	79	78	70	89.7	68	87.2	1	1.3
Virgin Australia	179	179	167	93.3	169	94.4	0	0.0
All Airlines	457	456	427	93.6	427	93.6	1	0.2
<b>Canberra-Sydney</b>								
Qantas	29	29	28	96.6	27	93.1	0	0.0
QantasLink	458	432	405	93.8	401	92.8	26	5.7
Virgin Australia	288	276	255	92.4	254	92.0	12	4.2
All Airlines	775	737	688	93.4	682	92.5	38	4.9
<b>Coffs Harbour-Sydney</b>								
QantasLink	145	142	126	88.7	125	88.0	3	2.1
Tigerair	13	13	13	100.0	13	100.0	0	0.0
Virgin Australia	56	55	52	94.5	52	94.5	1	1.8
All Airlines	214	210	191	91.0	190	90.5	4	1.9
<b>Darwin-Alice Springs</b>								
QantasLink	50	50	49	98.0	49	98.0	0	0.0
Virgin Australia	13	13	12	92.3	12	92.3	0	0.0
All Airlines	63	63	61	96.8	61	96.8	0	0.0
<b>Darwin-Brisbane</b>								
Jetstar	17	17	17	100.0	17	100.0	0	0.0
Qantas	44	44	44	100.0	43	97.7	0	0.0
Tigerair	17	17	16	94.1	16	94.1	0	0.0
Virgin Australia	29	29	27	93.1	29	100.0	0	0.0
All Airlines	107	107	104	97.2	105	98.1	0	0.0
<b>Darwin-Melbourne</b>								
Jetstar	21	21	15	71.4	16	76.2	0	0.0
Qantas	29	29	27	93.1	27	93.1	0	0.0
Virgin Australia	29	29	25	86.2	24	82.8	0	0.0
All Airlines	79	79	67	84.8	67	84.8	0	0.0
<b>Darwin-Perth</b>								
Qantas	35	35	35	100.0	35	100.0	0	0.0
Virgin Australia	29	29	25	86.2	24	82.8	0	0.0
All Airlines	64	64	60	93.8	59	92.2	0	0.0
<b>Darwin-Sydney</b>								
Jetstar	16	16	15	93.8	14	87.5	0	0.0
Qantas	38	38	37	97.4	38	100.0	0	0.0
Virgin Australia	29	29	28	96.6	26	89.7	0	0.0
All Airlines	83	83	80	96.4	78	94.0	0	0.0
<b>Dubbo-Sydney</b>								
QantasLink	121	118	99	83.9	99	83.9	3	2.5
Regional Express	147	147	129	87.8	135	91.8	0	0.0
All Airlines	268	265	228	86.0	234	88.3	3	1.1
<b>Emerald-Brisbane</b>								
QantasLink	134	128	116	90.6	118	92.2	6	4.5
Virgin Australia	71	71	66	93.0	64	90.1	0	0.0
All Airlines	205	199	182	91.5	182	91.5	6	2.9
<b>Geraldton-Perth</b>								
QantasLink	46	46	45	97.8	44	95.7	0	0.0
Virgin Australia Regional Airlines	66	66	61	92.4	62	93.9	0	0.0
All Airlines	112	112	106	94.6	106	94.6	0	0.0

	<i>Sectors</i>		<i>Arrivals On Time</i>		<i>Departures On Time</i>		<i>Cancellations</i>	
	<i>Sched.</i>	<i>Flown</i>	<i>No.</i>	<i>%</i>	<i>No.</i>	<i>%</i>	<i>No.</i>	<i>%</i>
<b>Gladstone-Brisbane</b>								
QantasLink	188	177	159	89.8	162	91.5	11	5.9
Virgin Australia	134	130	119	91.5	118	90.8	4	3.0
All Airlines	322	307	278	90.6	280	91.2	15	4.7
<b>Gold Coast-Adelaide</b>								
Jetstar	29	29	27	93.1	25	86.2	0	0.0
Virgin Australia	29	29	28	96.6	28	96.6	0	0.0
All Airlines	58	58	55	94.8	53	91.4	0	0.0
<b>Gold Coast-Melbourne</b>								
Jetstar	138	136	117	86.0	112	82.4	2	1.4
Qantas	29	29	27	93.1	27	93.1	0	0.0
Tigerair	78	76	75	98.7	72	94.7	2	2.6
Virgin Australia	179	178	171	96.1	165	92.7	1	0.6
All Airlines	424	419	390	93.1	376	89.7	5	1.2
<b>Gold Coast-Sydney</b>								
Jetstar	270	268	226	84.3	214	79.9	2	0.7
Qantas	87	87	84	96.6	84	96.6	0	0.0
Tigerair	98	98	86	87.8	88	89.8	0	0.0
Virgin Australia	243	241	220	91.3	213	88.4	2	0.8
All Airlines	698	694	616	88.8	599	86.3	4	0.6
<b>Hamilton Island-Brisbane</b>								
QantasLink	24	23	21	91.3	21	91.3	1	4.2
Virgin Australia	29	29	27	93.1	26	89.7	0	0.0
All Airlines	53	52	48	92.3	47	90.4	1	1.9
<b>Hamilton Island-Melbourne</b>								
Qantas	12	12	11	91.7	11	91.7	0	0.0
Virgin Australia	13	13	12	92.3	12	92.3	0	0.0
All Airlines	25	25	23	92.0	23	92.0	0	0.0
<b>Hamilton Island-Sydney</b>								
Jetstar	17	17	15	88.2	15	88.2	0	0.0
Qantas	25	25	19	76.0	15	60.0	0	0.0
Virgin Australia	29	29	23	79.3	23	79.3	0	0.0
All Airlines	71	71	57	80.3	53	74.6	0	0.0
<b>Hobart-Brisbane</b>								
Jetstar	29	29	27	93.1	27	93.1	0	0.0
Virgin Australia	29	29	27	93.1	26	89.7	0	0.0
All Airlines	58	58	54	93.1	53	91.4	0	0.0
<b>Hobart-Melbourne</b>								
Jetstar	182	182	142	78.0	133	73.1	0	0.0
Qantas	1	1	1	100.0	1	100.0	0	0.0
QantasLink	115	115	76	66.1	78	67.8	0	0.0
Tigerair	29	29	24	82.8	26	89.7	0	0.0
Virgin Australia	136	136	128	94.1	127	93.4	0	0.0
All Airlines	463	463	371	80.1	365	78.8	0	0.0
<b>Hobart-Sydney</b>								
Jetstar	74	74	55	74.3	60	81.1	0	0.0
Qantas	1	1	1	100.0	1	100.0	0	0.0
QantasLink	27	26	18	69.2	19	73.1	1	3.7
Virgin Australia	58	58	55	94.8	55	94.8	0	0.0
All Airlines	160	159	129	81.1	135	84.9	1	0.6

	<i>Sectors</i>		<i>Arrivals On Time</i>		<i>Departures On Time</i>		<i>Cancellations</i>	
	<i>Sched.</i>	<i>Flown</i>	<i>No.</i>	<i>%</i>	<i>No.</i>	<i>%</i>	<i>No.</i>	<i>%</i>
<b>Kalgoorlie-Perth</b>								
Qantas	5	5	5	100.0	5	100.0	0	0.0
QantasLink	74	72	67	93.1	66	91.7	2	2.7
Virgin Australia	32	32	32	100.0	31	96.9	0	0.0
Virgin Australia Regional Airlines	26	26	26	100.0	26	100.0	0	0.0
All Airlines	137	135	130	96.3	128	94.8	2	1.5
<b>Karratha-Perth</b>								
Qantas	39	36	35	97.2	35	97.2	3	7.7
QantasLink	166	164	149	90.9	150	91.5	2	1.2
Virgin Australia	42	41	40	97.6	40	97.6	1	2.4
Virgin Australia Regional Airlines	41	40	34	85.0	36	90.0	1	2.4
All Airlines	288	281	258	91.8	261	92.9	7	2.4
<b>Launceston-Melbourne</b>								
Jetstar	136	135	111	82.2	109	80.7	1	0.7
QantasLink	112	109	95	87.2	94	86.2	3	2.7
Virgin Australia	91	91	86	94.5	85	93.4	0	0.0
All Airlines	339	335	292	87.2	288	86.0	4	1.2
<b>Launceston-Sydney</b>								
Jetstar	58	58	43	74.1	43	74.1	0	0.0
Virgin Australia	29	29	29	100.0	28	96.6	0	0.0
All Airlines	87	87	72	82.8	71	81.6	0	0.0
<b>Mackay-Brisbane</b>								
Jetstar	45	45	34	75.6	34	75.6	0	0.0
QantasLink	102	101	88	87.1	89	88.1	1	1.0
Virgin Australia	141	140	134	95.7	134	95.7	1	0.7
All Airlines	288	286	256	89.5	257	89.9	2	0.7
<b>Melbourne-Adelaide</b>								
Jetstar	116	114	89	78.1	91	79.8	2	1.7
Qantas	274	273	257	94.1	258	94.5	1	0.4
Tigerair	72	72	65	90.3	66	91.7	0	0.0
Virgin Australia	270	269	253	94.1	255	94.8	1	0.4
All Airlines	732	728	664	91.2	670	92.0	4	0.5
<b>Melbourne-Brisbane</b>								
Jetstar	95	92	81	88.0	73	79.3	3	3.2
Qantas	417	412	383	93.0	390	94.7	5	1.2
Tigerair	108	106	97	91.5	94	88.7	2	1.9
Virgin Australia	368	358	337	94.1	343	95.8	10	2.7
All Airlines	988	968	898	92.8	900	93.0	20	2.0
<b>Melbourne-Cairns</b>								
Jetstar	69	69	54	78.3	49	71.0	0	0.0
Qantas	37	37	35	94.6	36	97.3	0	0.0
Tigerair	37	37	36	97.3	35	94.6	0	0.0
Virgin Australia	29	29	28	96.6	28	96.6	0	0.0
All Airlines	172	172	153	89.0	148	86.0	0	0.0
<b>Melbourne-Canberra</b>								
Qantas	199	197	184	93.4	180	91.4	2	1.0
QantasLink	79	77	69	89.6	71	92.2	2	2.5
Virgin Australia	179	179	168	93.9	171	95.5	0	0.0
All Airlines	457	453	421	92.9	422	93.2	4	0.9
<b>Melbourne-Darwin</b>								
Jetstar	21	21	19	90.5	18	85.7	0	0.0
Qantas	29	29	28	96.6	28	96.6	0	0.0
Virgin Australia	29	29	24	82.8	25	86.2	0	0.0
All Airlines	79	79	71	89.9	71	89.9	0	0.0

	<i>Sectors</i>		<i>Arrivals On Time</i>		<i>Departures On Time</i>		<i>Cancellations</i>	
	<i>Sched.</i>	<i>Flown</i>	<i>No.</i>	<i>%</i>	<i>No.</i>	<i>%</i>	<i>No.</i>	<i>%</i>
<b>Melbourne-Gold Coast</b>								
Jetstar	138	137	104	75.9	94	68.6	1	0.7
Qantas	29	29	26	89.7	27	93.1	0	0.0
Tigerair	78	76	74	97.4	76	100.0	2	2.6
Virgin Australia	179	178	167	93.8	166	93.3	1	0.6
All Airlines	424	420	371	88.3	363	86.4	4	0.9
<b>Melbourne-Hamilton Island</b>								
Qantas	12	12	12	100.0	12	100.0	0	0.0
Virgin Australia	13	13	12	92.3	12	92.3	0	0.0
All Airlines	25	25	24	96.0	24	96.0	0	0.0
<b>Melbourne-Hobart</b>								
Jetstar	182	182	149	81.9	146	80.2	0	0.0
Qantas	1	1	1	100.0	1	100.0	0	0.0
QantasLink	115	114	67	58.8	69	60.5	1	0.9
Tigerair	29	29	26	89.7	27	93.1	0	0.0
Virgin Australia	136	136	125	91.9	125	91.9	0	0.0
All Airlines	463	462	368	79.7	368	79.7	1	0.2
<b>Melbourne-Launceston</b>								
Jetstar	136	136	113	83.1	109	80.1	0	0.0
QantasLink	112	109	88	80.7	91	83.5	3	2.7
Virgin Australia	91	91	85	93.4	86	94.5	0	0.0
All Airlines	339	336	286	85.1	286	85.1	3	0.9
<b>Melbourne-Mildura</b>								
QantasLink	87	87	77	88.5	78	89.7	0	0.0
Regional Express	80	80	74	92.5	77	96.3	0	0.0
Virgin Australia	29	29	26	89.7	26	89.7	0	0.0
All Airlines	196	196	177	90.3	181	92.3	0	0.0
<b>Melbourne-Newcastle</b>								
Jetstar	87	87	69	79.3	65	74.7	0	0.0
Virgin Australia	29	29	29	100.0	29	100.0	0	0.0
All Airlines	116	116	98	84.5	94	81.0	0	0.0
<b>Melbourne-Perth</b>								
Jetstar	69	65	57	87.7	57	87.7	4	5.8
Qantas	189	188	155	82.4	164	87.2	1	0.5
Tigerair	51	51	51	100.0	50	98.0	0	0.0
Virgin Australia	135	134	121	90.3	126	94.0	1	0.7
All Airlines	444	438	384	87.7	397	90.6	6	1.4
<b>Melbourne-Sunshine Coast</b>								
Jetstar	58	58	51	87.9	47	81.0	0	0.0
Virgin Australia	32	32	31	96.9	31	96.9	0	0.0
All Airlines	90	90	82	91.1	78	86.7	0	0.0
<b>Melbourne-Sydney</b>								
Jetstar	348	344	280	81.4	270	78.5	4	1.1
Qantas	941	926	836	90.3	835	90.2	15	1.6
Tigerair	224	221	196	88.7	203	91.9	3	1.3
Virgin Australia	758	745	705	94.6	710	95.3	13	1.7
All Airlines	2 271	2 236	2 017	90.2	2 018	90.3	35	1.5
<b>Mildura-Melbourne</b>								
QantasLink	87	87	78	89.7	80	92.0	0	0.0
Regional Express	80	79	72	91.1	71	89.9	1	1.3
Virgin Australia	29	29	27	93.1	27	93.1	0	0.0
All Airlines	196	195	177	90.8	178	91.3	1	0.5

	<i>Sectors</i>		<i>Arrivals On Time</i>		<i>Departures On Time</i>		<i>Cancellations</i>	
	<i>Sched.</i>	<i>Flown</i>	<i>No.</i>	<i>%</i>	<i>No.</i>	<i>%</i>	<i>No.</i>	<i>%</i>
<b>Moranbah-Brisbane</b>								
QantasLink	105	93	86	92.5	86	92.5	12	11.4
Virgin Australia	66	64	59	92.2	60	93.8	2	3.0
All Airlines	171	157	145	92.4	146	93.0	14	8.2
<b>Mount Isa-Brisbane</b>								
Qantas	38	38	38	100.0	38	100.0	0	0.0
QantasLink	16	16	15	93.8	15	93.8	0	0.0
Virgin Australia	21	21	21	100.0	20	95.2	0	0.0
All Airlines	75	75	74	98.7	73	97.3	0	0.0
<b>Newcastle-Brisbane</b>								
Jetstar	75	75	62	82.7	67	89.3	0	0.0
QantasLink	89	89	85	95.5	83	93.3	0	0.0
Virgin Australia	81	81	77	95.1	76	93.8	0	0.0
All Airlines	245	245	224	91.4	226	92.2	0	0.0
<b>Newcastle-Melbourne</b>								
Jetstar	87	87	66	75.9	68	78.2	0	0.0
Virgin Australia	29	29	28	96.6	29	100.0	0	0.0
All Airlines	116	116	94	81.0	97	83.6	0	0.0
<b>Newman-Perth</b>								
Qantas	70	69	69	100.0	68	98.6	1	1.4
QantasLink	73	73	69	94.5	68	93.2	0	0.0
Virgin Australia	20	19	17	89.5	18	94.7	1	5.0
Virgin Australia Regional Airlines	14	14	10	71.4	11	78.6	0	0.0
All Airlines	177	175	165	94.3	165	94.3	2	1.1
<b>Perth-Adelaide</b>								
Jetstar	29	29	26	89.7	27	93.1	0	0.0
Qantas	121	121	120	99.2	117	96.7	0	0.0
Virgin Australia	74	74	69	93.2	69	93.2	0	0.0
All Airlines	224	224	215	96.0	213	95.1	0	0.0
<b>Perth-Brisbane</b>								
Qantas	128	128	119	93.0	125	97.7	0	0.0
Virgin Australia	100	100	96	96.0	97	97.0	0	0.0
All Airlines	228	228	215	94.3	222	97.4	0	0.0
<b>Perth-Broome</b>								
Qantas	13	12	12	100.0	12	100.0	1	7.7
QantasLink	66	65	65	100.0	65	100.0	1	1.5
Virgin Australia	6	6	5	83.3	5	83.3	0	0.0
Virgin Australia Regional Airlines	36	36	33	91.7	34	94.4	0	0.0
All Airlines	121	119	115	96.6	116	97.5	2	1.7
<b>Perth-Darwin</b>								
Qantas	35	35	35	100.0	35	100.0	0	0.0
Virgin Australia	29	29	27	93.1	27	93.1	0	0.0
All Airlines	64	64	62	96.9	62	96.9	0	0.0
<b>Perth-Geraldton</b>								
QantasLink	46	46	43	93.5	43	93.5	0	0.0
Virgin Australia Regional Airlines	62	62	59	95.2	60	96.8	0	0.0
All Airlines	108	108	102	94.4	103	95.4	0	0.0
<b>Perth-Kalgoorlie</b>								
Qantas	5	5	5	100.0	5	100.0	0	0.0
QantasLink	74	72	67	93.1	65	90.3	2	2.7
Virgin Australia	32	32	31	96.9	31	96.9	0	0.0
Virgin Australia Regional Airlines	26	26	24	92.3	25	96.2	0	0.0
All Airlines	137	135	127	94.1	126	93.3	2	1.5



	<i>Sectors</i>		<i>Arrivals On Time</i>		<i>Departures On Time</i>		<i>Cancellations</i>	
	<i>Sched.</i>	<i>Flown</i>	<i>No.</i>	<i>%</i>	<i>No.</i>	<i>%</i>	<i>No.</i>	<i>%</i>
<b>Perth-Karratha</b>								
Qantas	39	36	35	97.2	35	97.2	3	7.7
QantasLink	166	164	148	90.2	150	91.5	2	1.2
Virgin Australia	42	41	40	97.6	40	97.6	1	2.4
Virgin Australia Regional Airlines	41	41	37	90.2	39	95.1	0	0.0
All Airlines	288	282	260	92.2	264	93.6	6	2.1
<b>Perth-Melbourne</b>								
Jetstar	67	63	53	84.1	49	77.8	4	6.0
Qantas	189	189	180	95.2	174	92.1	0	0.0
Tigerair	51	51	48	94.1	49	96.1	0	0.0
Virgin Australia	131	131	124	94.7	125	95.4	0	0.0
All Airlines	438	434	405	93.3	397	91.5	4	0.9
<b>Perth-Newman</b>								
Qantas	70	69	68	98.6	68	98.6	1	1.4
QantasLink	74	74	71	95.9	69	93.2	0	0.0
Virgin Australia	20	19	17	89.5	17	89.5	1	5.0
Virgin Australia Regional Airlines	14	14	11	78.6	11	78.6	0	0.0
All Airlines	178	176	167	94.9	165	93.8	2	1.1
<b>Perth-Port Hedland</b>								
Qantas	71	71	70	98.6	70	98.6	0	0.0
QantasLink	66	61	53	86.9	55	90.2	5	7.6
Virgin Australia	41	41	39	95.1	39	95.1	0	0.0
Virgin Australia Regional Airlines	9	9	9	100.0	9	100.0	0	0.0
All Airlines	187	182	171	94.0	173	95.1	5	2.7
<b>Perth-Sydney</b>								
Jetstar	29	28	26	92.9	24	85.7	1	3.4
Qantas	194	194	177	91.2	177	91.2	0	0.0
Tigerair	25	25	25	100.0	25	100.0	0	0.0
Virgin Australia	112	112	107	95.5	105	93.8	0	0.0
All Airlines	360	359	335	93.3	331	92.2	1	0.3
<b>Port Hedland-Perth</b>								
Qantas	71	70	67	95.7	67	95.7	1	1.4
QantasLink	66	60	56	93.3	55	91.7	6	9.1
Virgin Australia	41	41	40	97.6	40	97.6	0	0.0
Virgin Australia Regional Airlines	9	9	8	88.9	8	88.9	0	0.0
All Airlines	187	180	171	95.0	170	94.4	7	3.7
<b>Port Lincoln-Adelaide</b>								
QantasLink	104	102	90	88.2	90	88.2	2	1.9
Regional Express	202	200	181	90.5	183	91.5	2	1.0
All Airlines	306	302	271	89.7	273	90.4	4	1.3
<b>Port Macquarie-Sydney</b>								
QantasLink	132	130	89	68.5	98	75.4	2	1.5
Virgin Australia	58	57	54	94.7	52	91.2	1	1.7
All Airlines	190	187	143	76.5	150	80.2	3	1.6
<b>Proserpine-Brisbane</b>								
Jetstar	25	25	18	72.0	17	68.0	0	0.0
Virgin Australia	50	50	46	92.0	46	92.0	0	0.0
All Airlines	75	75	64	85.3	63	84.0	0	0.0
<b>Rockhampton-Brisbane</b>								
QantasLink	183	179	164	91.6	163	91.1	4	2.2
Virgin Australia	181	177	161	91.0	164	92.7	4	2.2
All Airlines	364	356	325	91.3	327	91.9	8	2.2

	<i>Sectors</i>		<i>Arrivals On Time</i>		<i>Departures On Time</i>		<i>Cancellations</i>	
	<i>Sched.</i>	<i>Flown</i>	<i>No.</i>	<i>%</i>	<i>No.</i>	<i>%</i>	<i>No.</i>	<i>%</i>
<b>Sunshine Coast-Melbourne</b>								
Jetstar	58	58	49	84.5	45	77.6	0	0.0
Virgin Australia	32	32	31	96.9	30	93.8	0	0.0
All Airlines	90	90	80	88.9	75	83.3	0	0.0
<b>Sunshine Coast-Sydney</b>								
Jetstar	87	87	67	77.0	67	77.0	0	0.0
QantasLink	18	18	15	83.3	17	94.4	0	0.0
Virgin Australia	29	29	27	93.1	26	89.7	0	0.0
All Airlines	134	134	109	81.3	110	82.1	0	0.0
<b>Sydney-Adelaide</b>								
Jetstar	112	111	85	76.6	79	71.2	1	0.9
Qantas	221	221	207	93.7	204	92.3	0	0.0
QantasLink	28	28	23	82.1	24	85.7	0	0.0
Tigerair	37	37	35	94.6	34	91.9	0	0.0
Virgin Australia	165	164	156	95.1	156	95.1	1	0.6
All Airlines	563	561	506	90.2	497	88.6	2	0.4
<b>Sydney-Albury</b>								
QantasLink	87	86	78	90.7	75	87.2	1	1.1
Regional Express	100	99	89	89.9	89	89.9	1	1.0
Virgin Australia	58	58	49	84.5	45	77.6	0	0.0
All Airlines	245	243	216	88.9	209	86.0	2	0.8
<b>Sydney-Armidale</b>								
QantasLink	126	121	96	79.3	98	81.0	5	4.0
Regional Express	75	73	62	84.9	60	82.2	2	2.7
All Airlines	201	194	158	81.4	158	81.4	7	3.5
<b>Sydney-Ayers Rock</b>								
Jetstar	24	24	24	100.0	22	91.7	0	0.0
Virgin Australia	29	29	28	96.6	27	93.1	0	0.0
All Airlines	53	53	52	98.1	49	92.5	0	0.0
<b>Sydney-Ballina</b>								
Jetstar	67	67	54	80.6	53	79.1	0	0.0
Regional Express	25	25	23	92.0	22	88.0	0	0.0
Virgin Australia	29	29	29	100.0	29	100.0	0	0.0
All Airlines	121	121	106	87.6	104	86.0	0	0.0
<b>Sydney-Brisbane</b>								
Jetstar	153	148	110	74.3	112	75.7	5	3.3
Qantas	557	554	490	88.4	514	92.8	3	0.5
Tigerair	92	92	87	94.6	91	98.9	0	0.0
Virgin Australia	528	515	477	92.6	487	94.6	13	2.5
All Airlines	1 330	1 309	1 164	88.9	1 204	92.0	21	1.6
<b>Sydney-Cairns</b>								
Jetstar	86	86	77	89.5	65	75.6	0	0.0
Qantas	76	76	70	92.1	68	89.5	0	0.0
Tigerair	33	33	31	93.9	33	100.0	0	0.0
Virgin Australia	85	85	76	89.4	76	89.4	0	0.0
All Airlines	280	280	254	90.7	242	86.4	0	0.0
<b>Sydney-Canberra</b>								
Qantas	29	29	26	89.7	27	93.1	0	0.0
QantasLink	458	433	392	90.5	376	86.8	25	5.5
Virgin Australia	286	278	247	88.8	244	87.8	8	2.8
All Airlines	773	740	665	89.9	647	87.4	33	4.3

	<i>Sectors</i>		<i>Arrivals On Time</i>		<i>Departures On Time</i>		<i>Cancellations</i>	
	<i>Sched.</i>	<i>Flown</i>	<i>No.</i>	<i>%</i>	<i>No.</i>	<i>%</i>	<i>No.</i>	<i>%</i>
<b>Sydney-Coffs Harbour</b>								
QantasLink	145	142	125	88.0	123	86.6	3	2.1
Tigerair	13	13	13	100.0	13	100.0	0	0.0
Virgin Australia	56	55	52	94.5	52	94.5	1	1.8
All Airlines	214	210	190	90.5	188	89.5	4	1.9
<b>Sydney-Darwin</b>								
Jetstar	16	16	15	93.8	14	87.5	0	0.0
Qantas	37	37	37	100.0	36	97.3	0	0.0
Virgin Australia	29	29	26	89.7	25	86.2	0	0.0
All Airlines	82	82	78	95.1	75	91.5	0	0.0
<b>Sydney-Dubbo</b>								
QantasLink	120	118	93	78.8	88	74.6	2	1.7
Regional Express	148	148	142	95.9	138	93.2	0	0.0
All Airlines	268	266	235	88.3	226	85.0	2	0.7
<b>Sydney-Gold Coast</b>								
Jetstar	270	269	217	80.7	211	78.4	1	0.4
Qantas	87	87	85	97.7	82	94.3	0	0.0
Tigerair	98	98	94	95.9	96	98.0	0	0.0
Virgin Australia	243	241	220	91.3	224	92.9	2	0.8
All Airlines	698	695	616	88.6	613	88.2	3	0.4
<b>Sydney-Hamilton Island</b>								
Jetstar	17	17	16	94.1	16	94.1	0	0.0
Qantas	25	25	25	100.0	24	96.0	0	0.0
Virgin Australia	29	29	24	82.8	24	82.8	0	0.0
All Airlines	71	71	65	91.5	64	90.1	0	0.0
<b>Sydney-Hobart</b>								
Jetstar	74	74	67	90.5	63	85.1	0	0.0
Qantas	1	1	1	100.0	1	100.0	0	0.0
QantasLink	27	27	21	77.8	23	85.2	0	0.0
Virgin Australia	58	58	56	96.6	56	96.6	0	0.0
All Airlines	160	160	145	90.6	143	89.4	0	0.0
<b>Sydney-Launceston</b>								
Jetstar	58	58	56	96.6	51	87.9	0	0.0
Virgin Australia	29	29	27	93.1	27	93.1	0	0.0
All Airlines	87	87	83	95.4	78	89.7	0	0.0
<b>Sydney-Melbourne</b>								
Jetstar	348	344	281	81.7	266	77.3	4	1.1
Qantas	941	923	824	89.3	843	91.3	18	1.9
Tigerair	224	221	190	86.0	194	87.8	3	1.3
Virgin Australia	751	737	676	91.7	689	93.5	14	1.9
All Airlines	2 264	2 225	1 971	88.6	1 992	89.5	39	1.7
<b>Sydney-Perth</b>								
Jetstar	29	29	27	93.1	22	75.9	0	0.0
Qantas	198	197	173	87.8	169	85.8	1	0.5
Tigerair	25	25	25	100.0	25	100.0	0	0.0
Virgin Australia	112	112	99	88.4	96	85.7	0	0.0
All Airlines	364	363	324	89.3	312	86.0	1	0.3
<b>Sydney-Port Macquarie</b>								
QantasLink	130	128	97	75.8	103	80.5	2	1.5
Virgin Australia	58	57	52	91.2	53	93.0	1	1.7
All Airlines	188	185	149	80.5	156	84.3	3	1.6

	<i>Sectors</i>		<i>Arrivals On Time</i>		<i>Departures On Time</i>		<i>Cancellations</i>	
	<i>Sched.</i>	<i>Flown</i>	<i>No.</i>	<i>%</i>	<i>No.</i>	<i>%</i>	<i>No.</i>	<i>%</i>
<b>Sydney-Sunshine Coast</b>								
Jetstar	87	87	76	87.4	69	79.3	0	0.0
QantasLink	20	19	16	84.2	17	89.5	1	5.0
Virgin Australia	29	29	27	93.1	28	96.6	0	0.0
All Airlines	136	135	119	88.1	114	84.4	1	0.7
<b>Sydney-Tamworth</b>								
QantasLink	150	146	122	83.6	126	86.3	4	2.7
Virgin Australia	25	25	22	88.0	21	84.0	0	0.0
All Airlines	175	171	144	84.2	147	86.0	4	2.3
<b>Sydney-Townsville</b>								
Jetstar	16	16	11	68.8	10	62.5	0	0.0
Virgin Australia	26	26	24	92.3	23	88.5	0	0.0
All Airlines	42	42	35	83.3	33	78.6	0	0.0
<b>Sydney-Wagga Wagga</b>								
QantasLink	108	108	94	87.0	92	85.2	0	0.0
Regional Express	123	121	113	93.4	114	94.2	2	1.6
All Airlines	231	229	207	90.4	206	90.0	2	0.9
<b>Tamworth-Sydney</b>								
QantasLink	150	146	128	87.7	130	89.0	4	2.7
Virgin Australia	25	25	21	84.0	22	88.0	0	0.0
All Airlines	175	171	149	87.1	152	88.9	4	2.3
<b>Townsville-Brisbane</b>								
Jetstar	32	32	27	84.4	22	68.8	0	0.0
Qantas	139	139	135	97.1	136	97.8	0	0.0
Virgin Australia	143	137	133	97.1	131	95.6	6	4.2
All Airlines	314	308	295	95.8	289	93.8	6	1.9
<b>Townsville-Cairns</b>								
QantasLink	135	134	126	94.0	124	92.5	1	0.7
Regional Express	54	54	53	98.1	54	100.0	0	0.0
All Airlines	189	188	179	95.2	178	94.7	1	0.5
<b>Townsville-Sydney</b>								
Jetstar	16	16	11	68.8	10	62.5	0	0.0
Virgin Australia	26	26	25	96.2	24	92.3	0	0.0
All Airlines	42	42	36	85.7	34	81.0	0	0.0
<b>Wagga Wagga-Sydney</b>								
QantasLink	108	108	91	84.3	95	88.0	0	0.0
Regional Express	121	119	99	83.2	107	89.9	2	1.7
All Airlines	229	227	190	83.7	202	89.0	2	0.9

## Airports

On time performance is reported for all routes where the passenger load averages over 8000 passengers per month, and where two or more airlines operate in competition. The following data reports by airport against flights operated on those routes only. This month, 8 major city airports and 33 regional city airports are covered.

Airport	Arrivals			Departures		
	Sectors	On Time		Sectors	On Time	
	Flown	No.	%	Flown	No.	%
<b>Adelaide</b>						
Jetstar	308	251	81.5	305	247	81.0
Qantas	806	770	95.5	805	779	96.8
QantasLink	130	113	86.9	130	116	89.2
Regional Express	200	181	90.5	199	185	93.0
Tigerair	134	125	93.3	134	122	91.0
Virgin Australia	690	651	94.3	688	650	94.5
All Airlines	2 268	2 091	92.2	2 261	2 099	92.8
Relates to services to and from Alice Springs, Brisbane, Canberra, Gold Coast, Melbourne, Perth, Port Lincoln and Sydney.						
<b>Albury</b>						
QantasLink	86	78	90.7	86	81	94.2
Regional Express	99	89	89.9	100	90	90.0
Virgin Australia	58	49	84.5	58	50	86.2
All Airlines	243	216	88.9	244	221	90.6
Relates to services to and from Sydney only.						
<b>Alice Springs</b>						
Qantas	29	29	100.0	29	29	100.0
QantasLink	50	49	98.0	49	45	91.8
Virgin Australia	26	23	88.5	26	21	80.8
All Airlines	105	101	96.2	104	95	91.3
Relates to services to and from Adelaide and Darwin.						
<b>Armidale</b>						
QantasLink	121	96	79.3	121	92	76.0
Regional Express	73	62	84.9	73	66	90.4
All Airlines	194	158	81.4	194	158	81.4
Relates to services to and from Sydney only.						
<b>Ayers Rock</b>						
Jetstar	24	24	100.0	25	21	84.0
Virgin Australia	29	28	96.6	29	28	96.6
All Airlines	53	52	98.1	54	49	90.7
Relates to services to and from Sydney only.						
<b>Ballina</b>						
Jetstar	67	54	80.6	67	52	77.6
Regional Express	25	23	92.0	24	17	70.8
Virgin Australia	29	29	100.0	29	29	100.0
All Airlines	121	106	87.6	120	98	81.7
Relates to services to and from Sydney only.						

Airport	Arrivals			Departures		
	Sectors Flown	On Time		Sectors Flown	On Time	
		No.	%		No.	%
<b>Brisbane</b>						
Jetstar	581	474	81.6	583	485	83.2
Qantas	1 574	1 458	92.6	1 589	1 516	95.4
QantasLink	1 053	955	90.7	1 060	977	92.2
Tigerair	267	251	94.0	267	251	94.0
Virgin Australia	2 294	2 150	93.7	2 292	2 153	93.9
All Airlines	5 769	5 288	91.7	5 791	5 382	92.9

Relates to services to and from Adelaide, Bundaberg, Cairns, Canberra, Darwin, Emerald, Gladstone, Hamilton Island, Hobart, Mackay, Melbourne, Moranbah, Mount Isa, Newcastle, Perth, Proserpine, Rockhampton, Sydney and Townsville.

#### Broome

Qantas	12	12	100.0	12	12	100.0
QantasLink	65	65	100.0	65	63	96.9
Virgin Australia	6	5	83.3	6	5	83.3
Virgin Australia Regional Airlines	36	33	91.7	36	32	88.9
All Airlines	119	115	96.6	119	112	94.1

Relates to services to and from Perth only.

#### Bundaberg

QantasLink	127	111	87.4	127	110	86.6
Virgin Australia	29	26	89.7	29	25	86.2
All Airlines	156	137	87.8	156	135	86.5

Relates to services to and from Brisbane only.

#### Cairns

Jetstar	250	219	87.6	249	211	84.7
Qantas	229	217	94.8	228	212	93.0
QantasLink	138	130	94.2	138	122	88.4
Regional Express	54	53	98.1	54	54	100.0
Tigerair	97	94	96.9	97	92	94.8
Virgin Australia	247	232	93.9	247	236	95.5
All Airlines	1 015	945	93.1	1 013	927	91.5

Relates to services to and from Brisbane, Melbourne, Sydney and Townsville.

#### Canberra

Qantas	299	281	94.0	301	288	95.7
QantasLink	627	570	90.9	626	575	91.9
Virgin Australia	570	523	91.8	568	531	93.5
All Airlines	1 496	1 374	91.8	1 495	1 394	93.2

Relates to services to and from Adelaide, Brisbane, Melbourne and Sydney.

#### Coffs Harbour

QantasLink	142	125	88.0	142	125	88.0
Tigerair	13	13	100.0	13	13	100.0
Virgin Australia	55	52	94.5	55	52	94.5
All Airlines	210	190	90.5	210	190	90.5

Relates to services to and from Sydney only.

#### Darwin

Jetstar	54	51	94.4	54	47	87.0
Qantas	145	144	99.3	146	143	97.9
QantasLink	49	45	91.8	50	49	98.0
Tigerair	17	16	94.1	17	16	94.1
Virgin Australia	129	117	90.7	129	115	89.1
All Airlines	394	373	94.7	396	370	93.4

Relates to services to and from Alice Springs, Brisbane, Melbourne, Perth and Sydney.

Airport	Arrivals			Departures		
	Sectors Flown	On Time		Sectors Flown	On Time	
		No.	%		No.	%
<b>Dubbo</b>						
QantasLink	118	93	78.8	118	99	83.9
Regional Express	148	142	95.9	147	135	91.8
All Airlines	266	235	88.3	265	234	88.3
Relates to services to and from Sydney only.						
<b>Emerald</b>						
QantasLink	129	119	92.2	128	118	92.2
Virgin Australia	71	62	87.3	71	64	90.1
All Airlines	200	181	90.5	199	182	91.5
Relates to services to and from Brisbane only.						
<b>Geraldton</b>						
QantasLink	46	43	93.5	46	44	95.7
Virgin Australia Regional Airlines	62	59	95.2	66	62	93.9
All Airlines	108	102	94.4	112	106	94.6
Relates to services to and from Perth only.						
<b>Gladstone</b>						
QantasLink	177	166	93.8	177	162	91.5
Virgin Australia	130	113	86.9	130	118	90.8
All Airlines	307	279	90.9	307	280	91.2
Relates to services to and from Brisbane only.						
<b>Gold Coast</b>						
Jetstar	435	346	79.5	433	351	81.1
Qantas	116	111	95.7	116	111	95.7
Tigerair	174	168	96.6	174	160	92.0
Virgin Australia	448	416	92.9	448	406	90.6
All Airlines	1 173	1 041	88.7	1 171	1 028	87.8
Relates to services to and from Adelaide, Melbourne and Sydney.						
<b>Hamilton Island</b>						
Jetstar	17	16	94.1	17	15	88.2
Qantas	37	37	100.0	37	26	70.3
QantasLink	23	22	95.7	23	21	91.3
Virgin Australia	71	63	88.7	71	61	85.9
All Airlines	148	138	93.2	148	123	83.1
Relates to services to and from Brisbane, Melbourne and Sydney.						
<b>Hobart</b>						
Jetstar	285	244	85.6	285	220	77.2
Qantas	2	2	100.0	2	2	100.0
QantasLink	141	88	62.4	141	97	68.8
Tigerair	29	26	89.7	29	26	89.7
Virgin Australia	223	210	94.2	223	208	93.3
All Airlines	680	570	83.8	680	553	81.3
Relates to services to and from Brisbane, Melbourne and Sydney.						
<b>Kalgoorlie</b>						
Qantas	5	5	100.0	5	5	100.0
QantasLink	72	67	93.1	72	66	91.7
Virgin Australia	32	31	96.9	32	31	96.9
Virgin Australia Regional Airlines	26	24	92.3	26	26	100.0
All Airlines	135	127	94.1	135	128	94.8
Relates to services to and from Perth only.						

Airport	Arrivals			Departures		
	Sectors Flown	On Time		Sectors Flown	On Time	
		No.	%		No.	%
<b>Karratha</b>						
Qantas	36	35	97.2	36	35	97.2
QantasLink	164	148	90.2	164	150	91.5
Virgin Australia	41	40	97.6	41	40	97.6
Virgin Australia Regional Airlines	41	37	90.2	40	36	90.0
All Airlines	282	260	92.2	281	261	92.9
Relates to services to and from Perth only.						
<b>Launceston</b>						
Jetstar	194	169	87.1	193	152	78.8
QantasLink	109	88	80.7	109	94	86.2
Virgin Australia	120	112	93.3	120	113	94.2
All Airlines	423	369	87.2	422	359	85.1
Relates to services to and from Melbourne and Sydney.						
<b>Mackay</b>						
Jetstar	46	36	78.3	45	34	75.6
QantasLink	101	93	92.1	101	89	88.1
Virgin Australia	140	133	95.0	140	134	95.7
All Airlines	287	262	91.3	286	257	89.9
Relates to services to and from Brisbane only.						
<b>Melbourne</b>						
Jetstar	1 301	1 072	82.4	1 305	1 019	78.1
Qantas	2 103	1 948	92.6	2 104	1 931	91.8
QantasLink	389	319	82.0	387	309	79.8
Regional Express	79	72	91.1	80	77	96.3
Tigerair	592	536	90.5	592	551	93.1
Virgin Australia	2 249	2 097	93.2	2 251	2 133	94.8
All Airlines	6 713	6 044	90.0	6 719	6 020	89.6
Relates to services to and from Adelaide, Brisbane, Cairns, Canberra, Darwin, Gold Coast, Hamilton Island, Hobart, Launceston, Mildura, Newcastle, Perth, Sunshine Coast and Sydney.						
<b>Mildura</b>						
QantasLink	87	77	88.5	87	80	92.0
Regional Express	80	74	92.5	79	71	89.9
Virgin Australia	29	26	89.7	29	27	93.1
All Airlines	196	177	90.3	195	178	91.3
Relates to services to and from Melbourne only.						
<b>Moranbah</b>						
QantasLink	97	89	91.8	93	86	92.5
Virgin Australia	64	56	87.5	64	60	93.8
All Airlines	161	145	90.1	157	146	93.0
Relates to services to and from Brisbane only.						
<b>Mount Isa</b>						
Qantas	38	38	100.0	38	38	100.0
QantasLink	16	16	100.0	16	15	93.8
Virgin Australia	21	20	95.2	21	20	95.2
All Airlines	75	74	98.7	75	73	97.3
Relates to services to and from Brisbane only.						



Airport	Arrivals			Departures		
	Sectors Flown	On Time		Sectors Flown	On Time	
		No.	%		No.	%
<b>Newcastle</b>						
Jetstar	162	136	84.0	162	135	83.3
QantasLink	89	82	92.1	89	83	93.3
Virgin Australia	110	107	97.3	110	105	95.5
All Airlines	361	325	90.0	361	323	89.5
Relates to services to and from Brisbane and Melbourne.						
<b>Newman</b>						
Qantas	69	68	98.6	69	68	98.6
QantasLink	74	71	95.9	73	68	93.2
Virgin Australia	19	17	89.5	19	18	94.7
Virgin Australia Regional Airlines	14	11	78.6	14	11	78.6
All Airlines	176	167	94.9	175	165	94.3
Relates to services to and from Perth only.						
<b>Perth</b>						
Jetstar	123	111	90.2	120	100	83.3
Qantas	858	786	91.6	860	818	95.1
QantasLink	480	449	93.5	482	447	92.7
Tigerair	76	76	100.0	76	74	97.4
Virgin Australia	586	539	92.0	585	555	94.9
Virgin Australia Regional Airlines	191	171	89.5	188	178	94.7
All Airlines	2 314	2 132	92.1	2 311	2 172	94.0
Relates to services to and from Adelaide, Brisbane, Broome, Darwin, Geraldton, Kalgoorlie, Karratha, Melbourne, Newman, Port Hedland and Sydney.						
<b>Port Hedland</b>						
Qantas	71	70	98.6	70	67	95.7
QantasLink	61	53	86.9	60	55	91.7
Virgin Australia	41	39	95.1	41	40	97.6
Virgin Australia Regional Airlines	9	9	100.0	9	8	88.9
All Airlines	182	171	94.0	180	170	94.4
Relates to services to and from Perth only.						
<b>Port Lincoln</b>						
QantasLink	102	90	88.2	102	90	88.2
Regional Express	199	182	91.5	200	183	91.5
All Airlines	301	272	90.4	302	273	90.4
Relates to services to and from Adelaide only.						
<b>Port Macquarie</b>						
QantasLink	128	97	75.8	130	98	75.4
Virgin Australia	57	52	91.2	57	52	91.2
All Airlines	185	149	80.5	187	150	80.2
Relates to services to and from Sydney only.						
<b>Proserpine</b>						
Jetstar	24	20	83.3	25	17	68.0
Virgin Australia	50	49	98.0	50	46	92.0
All Airlines	74	69	93.2	75	63	84.0
Relates to services to and from Brisbane only.						

Airport	Arrivals			Departures		
	Sectors	On Time		Sectors	On Time	
	Flown	No.	%	Flown	No.	%
<b>Rockhampton</b>						
QantasLink	180	167	92.8	179	163	91.1
Virgin Australia	177	163	92.1	177	164	92.7
All Airlines	357	330	92.4	356	327	91.9
Relates to services to and from Brisbane only.						
<b>Sunshine Coast</b>						
Jetstar	145	127	87.6	145	112	77.2
QantasLink	19	16	84.2	18	17	94.4
Virgin Australia	61	58	95.1	61	56	91.8
All Airlines	225	201	89.3	224	185	82.6
Relates to services to and from Melbourne and Sydney.						
<b>Sydney</b>						
Jetstar	1 343	1 114	82.9	1 346	1 053	78.2
Qantas	2 168	2 006	92.5	2 150	1 968	91.5
QantasLink	1 355	1 175	86.7	1 356	1 145	84.4
Regional Express	463	392	84.7	466	423	90.8
Tigerair	519	472	90.9	519	486	93.6
Virgin Australia	2 580	2 422	93.9	2 585	2 382	92.1
All Airlines	8 428	7 581	90.0	8 422	7 457	88.5
Relates to services to and from Adelaide, Albury, Armidale, Ayers Rock, Ballina, Brisbane, Cairns, Canberra, Coffs Harbour, Darwin, Dubbo, Gold Coast, Hamilton Island, Hobart, Launceston, Melbourne, Perth, Port Macquarie, Sunshine Coast, Tamworth, Townsville and Wagga Wagga.						
<b>Tamworth</b>						
QantasLink	146	122	83.6	146	130	89.0
Virgin Australia	25	22	88.0	25	22	88.0
All Airlines	171	144	84.2	171	152	88.9
Relates to services to and from Sydney only.						
<b>Townsville</b>						
Jetstar	48	36	75.0	48	32	66.7
Qantas	139	131	94.2	139	136	97.8
QantasLink	134	118	88.1	134	124	92.5
Regional Express	54	54	100.0	54	54	100.0
Virgin Australia	163	154	94.5	163	155	95.1
All Airlines	538	493	91.6	538	501	93.1
Relates to services to and from Brisbane, Cairns and Sydney.						
<b>Wagga Wagga</b>						
QantasLink	108	94	87.0	108	95	88.0
Regional Express	121	113	93.4	119	107	89.9
All Airlines	229	207	90.4	227	202	89.0
Relates to services to and from Sydney only.						

## Definitions

---

On time arrival	A flight arrival is counted as "on time" if it arrived at the gate before 15 minutes after the scheduled arrival time shown in the carriers' schedule. Neither diverted nor cancelled flights count as on time.
On time departure	A flight departure is counted as "on time" if it departs the gate before 15 minutes after the scheduled departure time shown in the carriers' schedule.
Cancellation	A flight removed from service within 7 days of scheduled departure is regarded as a cancellation.
On time departure percentage	The percentage of on time departures is measured against the number of departures <i>operated</i> on any particular sector.
On time arrival percentage	The percentage of on time arrivals is measured against the number of arrivals <i>operated</i> on any particular sector.
Cancellation percentage	The percentage of cancellations is measured against the number of services <i>scheduled</i> on any particular sector.

---